

QUOTE

"Liberty, when it begins to take root, is a plant of rapid growth."
—George Washington

The Chelsea Standard

35¢
per copy

ONE HUNDRED-NINETEENTH YEAR—No. 32

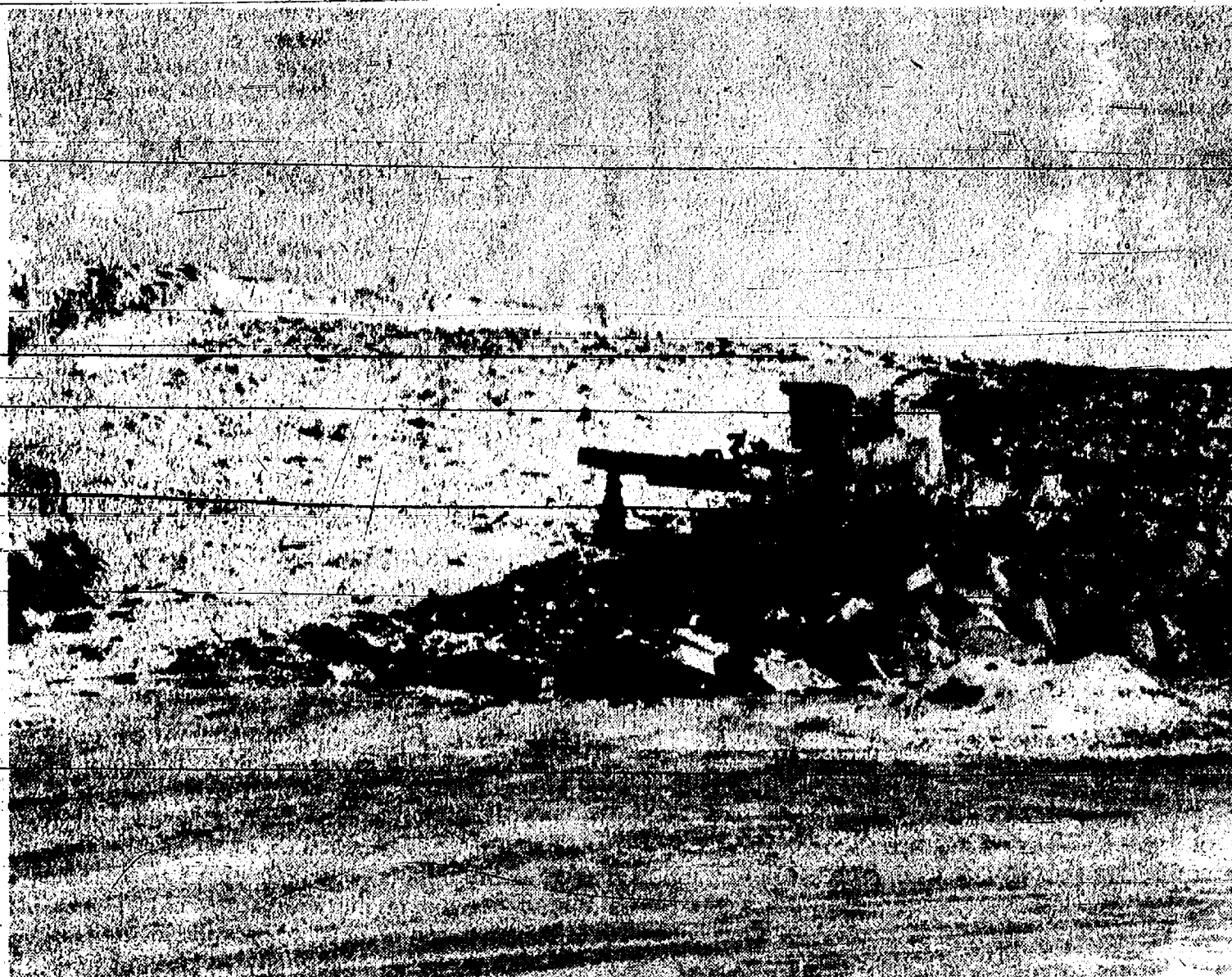
CHELSEA, MICHIGAN, WEDNESDAY, JANUARY 3, 1990

16 Pages This Week



THE BIG HOLE in the parking lot of the former Hop-In store on S. Main St. next to McKune Memorial Library has been filled in. Last Thursday workers trucked sand to the site to fill the area from which gasoline tanks had been

removed. The building is still vacant and as of press time village government did not know what the final disposition of the building would be.



CHELSEA LANDFILL space has dwindled to a few thousand yards. Business has tapered off to such an extent that the remaining room could last until early spring. The village, as of press time, was still waiting to find out when

an administrative hearing will be held on the terms of its new operating license. The village is objecting to the amount of bond required by the Department of Natural Resources.

March Village Elections May Be Wide Open For New Candidates

Chelsea village council will have at least one new member and possibly more as the March elections could shape up to be one of the most wide open in several years.

Trustee Phil Boham was scheduled to submit his resignation at last night's first council meeting of the year. Boham, a two-term trustee, is moving out of the village. His term is due to expire this year.

Trustee Gary Bentley said last week that he "is leaning toward" not running again, but hasn't made a final decision. Bentley is also a two-term council member.

Village president Jerry Satterthwaite has also said he probably won't run again, although he won't say he positively won't run again. Satterthwaite is closing out his third term as president.

Satterthwaite has said several factors could persuade him to seek another term. Among them, he wants to see who plans to run for president, and he wants to see how the landfill situation is shaping up.

The election is slated for March 12. Nominating petitions, available at the Chelsea Village Office, must be returned by Feb. 5.

Wastewater Plant Has Capacity Beyond License

Village of Chelsea's wastewater treatment plant may have more capacity left than previously indicated, according to village engineers.

However, whether or not the village will ever have access to the additional capacity is up to the Department of Natural Resources.

According to a recent study by the engineering firm of Finkbeiner, Pettis & Strout, the new treatment plant is operating at about two-thirds capacity, based on flow amounts authorized

in its National Pollutant Discharge Elimination System Permit.

However, engineers later said that the treatment plant probably has considerably more capacity built into its design.

The permit is based on maximum flow rates of 910,000 gallons per day. However, engineers said the plant's design could probably handle 1,130,000 gallons per day, which means the plant may only be operating at about 50 percent capacity.

The additional design capacity, however, is not recognized by the village's discharge permit. If the village should ever desire to exceed

the current permit maximum, it would have to get the DNR to amend the permit. According to village manager Robert Stalker, that is "not guaranteed in any way."

Village council recently authorized the administration to work on a policy for annexing property into the village as the village is trying to juggle the pressure to expand its boundaries with its need to preserve enough plant capacity for land already within the village. Village manager Robert Stalker told council that any decision-making processes should be based on the permit figure rather than any possible plant capacity.

Shoplifter Nabbed At Polly's Market

Police are seeking shoplifting charges against a 21-year-old Chelsea woman who was caught trying to steal a carton of cigarettes at Polly's Market on Thursday, Dec. 28.

Police said the Main St. resident put the carton in her coat then went through the checkout line and paid for other items she could afford at about 9:45 p.m.

Area Teens Adult Board Changes Meeting Place

The Adult Board of the Chelsea Area Teens will be moving their regular meeting place to one of the private dining rooms located adjacent to the Main Dining Room of the Chelsea Community Hospital starting with the next meeting. The next meeting will be held on Monday, Jan. 8 beginning at 7:30 p.m. Following meetings will be held every first and third Monday of each month at this new location.

Invitations were mailed before Thanksgiving to those people who have expressed interest in working with the Chelsea Area Teens. These invitations will be followed by telephone calls beginning after the first of the year. If the members of the Adult Board have overlooked people who are interested or if you are interested in becoming involved with the Chelsea Area Teens, please come to this meeting. We need to strengthen efforts to reach the Middle school teens and those interested in Middle school teens are particularly invited.

Working with our teens is fun, challenging and rewarding. The environment to which our teens are being exposed needs to be changed in a positive way. By working with the Chelsea Area Teens you can help your teens develop into successful adults while they are enjoying what should be a very exciting time of life.

Five Appointed To Chelsea DDA

Village of Chelsea has appointed five people to serve on the Downtown Development Authority. The appointments were made at the Dec. 19 village council meeting.

Mark Heydlauff, of Heydlauff's, Inc. and Judy McArthur, of Chelsea Cleaners, were each re-appointed for another term. Their terms will expire in 1994.

Village clerk Allen Anderson was appointed to succeed Jerry Ashby, of State Farm Insurance, whose term is also scheduled to expire in 1994.

Frank Renton, of Chelsea State Bank, was appointed to succeed Judy Moisan, whose term expires in 1992.

Biff Weber, of Palmer Ford-Mercury, was appointed to succeed Ron Walters, formerly of Chelsea Hardware Co., whose term expires in 1993.

According to village manager Robert Stalker's report to village council, DDA attempted to convene meetings in November and December so that official action could be taken to form recommendations for council to act on. However, due to decreased

membership, a quorum was never attained.

In other DDA news, the group is working on a final list of projects that would be included in a tax increment financing plan. The plan would serve as the basis for a bond issue, pending approval by council.

The village anticipates that DDA will approach council early this year with a specific proposal.

PA Equipment Stolen from Chelsea Hospital

About \$700 in public address equipment was stolen from Chelsea Community Hospital between Dec. 22-26.

A hospital employee noticed the equipment was missing from a conference room when he returned to work Dec. 26. Police said there was no sign of forced entry and the door to the room was not locked.

The stolen items included a \$500 microphone, a pre-amp/mixer, and microphone cables.

Chelsea Girl Interns For U.S. Sen. Levin In Washington

Kirsten Erickson, a 1987 Chelsea High school graduate, has completed a fall semester working as a Capitol Hill intern for U.S. Sen. Carl Levin (D-Mich.).

Erickson, a Hillsdale College junior, assisted the senator's press office. She worked with television and radio stations, distributed news releases, and prepared daily packages of national and state news clippings. She also helped to prepare and co-ordinate senate hearings, and researched constituent requests.

"I have always been interested in our political system," Erickson said. "Working here in Washington has

really given me a first-hand look at how it really works. Senator Levin has been one of my role models, and it is a great opportunity to work in his office."

Erickson, a history major, has served as resident assistant at Hillsdale, and is an active member of the Chi Omega sorority.

As a student at Chelsea High school, Erickson was a member of the student council, and was an avid participant in the school newspaper, "The Blue Print."

"Participating in these two groups in high school has given me the framework to work with the press

staff in a senate office," Erickson said.

"I have always been interested in journalism and public relations, and this internship is a terrific beginning."

Erickson is the daughter of Bob and Mary Erickson, 50-Butternut Ct.

The Washington-Hillsdale Internship Program selects a group of students each semester on the basis of grades, majors, and campus participation. This semester five Hillsdale students are working in various Washington offices.

Chelsea Police Assist in Capture of Auto Thieves

Chelsea police assisted Ann Arbor police in the apprehension of three suspected auto thieves last Friday, Dec. 29 shortly after 9 p.m.

According to reports, two brothers, 18 and 20, and an accomplice, 17, all from Toledo, were taken into custody near Old US-12 and Freer Rd. after crashing the stolen vehicle into a ditch on Old US-12 about 100 yards east of Freer.

The incident started when an Ann Arbor rookie police officer, after hearing a radioed description of the vehicle, attempted to stop the car, even though the vehicle's Ohio license plates had been replaced by Michigan plates.

The trio led police on a chase down I-94, and they exited at Fletcher Rd. Chelsea police took positions at Freer Rd. and M-52 on Old US-12.

After the crash, Ann Arbor police captured two of the suspects near the

car after they tried to flee on foot. Chelsea police captured the third man near Freer Rd. after a foot chase into a field.

The car was stolen from the parking lot at ABC Warehouse in Ann Arbor, where it was left idling and unlocked. It belonged to a Toledo couple.

Village To Buy Grass Fire Truck

Village of Chelsea will purchase a modified four-wheel-drive pick-up truck from Palmer Ford-Mercury in March.

The truck, to be used to fight brush fires, will replace a 1982 army vehicle, according to fire chief Bud Hankerd.

Palmer Ford-Mercury had the low bid, \$16,887, of three submitted by

(Continued on page two)

Hall Has Best Council Attendance Record for 1989

Village trustee Dennis Hall had the best record of attendance at the 24 regular village council meetings during 1989.

Hall missed no meetings during the year, according to a tabulation of the official meeting minutes. He was the only member with a perfect record.

Village president Jerry Satterthwaite was a close second as he missed just one meeting.

Trustees Richard Steele and Stephanie Kanten were each absent twice.

Trustee Joe Merkel missed three meetings.

Trustees Phil Boham and Gary

Bentley each missed five meetings. As a body, council never lacked a quorum during the year. At no time were more than two trustees absent.

Hubcaps Stolen From Vehicle

A Gregory man told Chelsea police that someone stole three hubcaps from his car while it was parked next to Heydlauff's, Inc. on Christmas Eve.

The man told police he was trying to finish his Christmas shopping that morning and returned to discover the hubcaps missing from his Acura.



BEN HADLEY, 2, holds up a part of his catch as his family did a little ice fishing at Cavanaugh Lake last week-end. Ben is the son of Brock and Candace Hadley of Chelsea. Fishermen were reporting good catches of perch, bass, and even a few pike at the lake.

Established
1871

The Chelsea Standard

Telephone
(313) 475-1371

300 N. Main St., Chelsea, Mich. 48118

Walter P. Leonard and Helen May Leonard

Publishers and Editors

Brian Hamilton

Assistant Editor



Published every Wednesday at 300 N. Main Street, Chelsea, Mich. 48118, and second class postage paid at Chelsea, Mich. under the Act of March 3, 1879. Postmaster: Send address changes to The Chelsea Standard, 300 N. Main St., Chelsea, Mich. 48118.

USPS No. 101-720

In Michigan:	Outside Michigan:
One year in advance \$12.50	One year in advance \$15.50
Six months \$7.00	Six months \$8.50
Single copies mailed \$.50	Single copies mailed \$.75

Subscription Rates (Payable in Advance)



National Advertising Representative
MICHIGAN NEWSPAPERS, INC.
827 N. Washington Ave.
Lansing, Mich. 48906

JUST REMINISCING

Items taken from the files of The Chelsea Standard

4 Years Ago . . .

Wednesday, Jan. 8, 1986—

The fire that destroyed the building at 20416 Old US-12 on Dec. 26 was probably caused by an electrical malfunction. That was the tentative conclusion of fire investigator Doug Eder of the Chelsea Fire Department.

Artist George Fisher of Detroit returned to Chelsea to take another look at the mural he painted for the lobby of the post office nearly 50 years ago. Fisher, now 90, was commissioned to do the painting for a program in the New Deal.

"The Chelsea depot as it stands today is solid and strong. The foundation is sound and the structure of the building is a tribute to the architects and builders who designed and erected the structure in 1880." That was the opinion delivered to the trustees of the Depot Association by architect Arthur L. Lindauer.

Nearly 600,000 Michiganders were expected to travel to Florida in the winter, with more persons flying than driving for the second consecutive year, reported AAA Michigan.

turned up eight other Chelseans in seven states and one Canadian province.

Three Livingston county men were to be arraigned in Municipal Court in Ann Arbor for the brutal beating of Freddie Henes. Henes suffered a laceration to the lip, lacerations above both eyes and a black eye.

One hundred and five members and wives attended the Chelsea Chamber of Commerce Christmas dinner at Bill Cone's Supper Club in Jackson. The date, midway between Christmas and New Year's was considered a perfect time to hold the holiday meeting.

In a small community, nicknames often replace first names to the point that a man's name can be forgotten. In the tiny, mid-Atlantic island of Bermuda the telephone directory and newspapers resort to nicknames so readers can correctly identify the parties concerned. So it is that visitors are sometimes startled at such names as "Monkey Rat," "Weatherbird," "Bulldozer," "Bunker," or "Colonel Bogey."

34 Years Ago . . .

Wednesday, Jan. 5, 1956—

Final action on adoption of the fringe benefit and salary scale for village employees, was taken at the Village Council meeting. The schedule for the plan had been approved at the Dec. 19 meeting.

Marcia Bedford, four-year-old polio victim from Eaton county, signaled the beginning of the 1956 March of Dimes by selling the first Blue Crutch lapel pin to Gov. G. Mennen Williams in the State Capitol. The annual campaign for funds to care for victims of the crippling disease was to continue until Jan. 31.

Announcement was made of the purchase of two and seven-tenths acres of land on Old US-12 as a site for the eventual construction of a church, parish hall and rectory for St. Barnabas Episcopal Mission. The property was part of the Sorensen farm and was located immediately west of the Archie Wilkinson property on the north side of the highway.

The highlight of the year for one local group proved to be the Kiwanis club's annual pancake supper when the entire membership rolled up their sleeves and served pancakes and sausage to all comers. In addition to enjoying the good fellowship—and lots of hard work—members found the project had grown to become a major source of funds for the club's many community service projects.

WEATHER

For the Record . . .

	Max.	Min.	Precip.
Wednesday, Dec. 27	22	3	0.00
Thursday, Dec. 28	32	10	0.01
Friday, Dec. 29	35	25	0.12
Saturday, Dec. 30	34	23	0.52
Sunday, Dec. 31	35	22	0.00
Monday, Jan. 1	30	22	0.01
Tuesday, Jan. 2	38	4	0.00

Tell Them
You Read It
in
THE STANDARD

Governor Announces Public-Private Venture To Improve Schools

A unique five-year, \$48 million partnership involving private business and the state in an effort to provide Michigan's schools and teachers with new learning and teaching techniques has been announced by Governor James J. Blanchard.

The Michigan Partnership for New Education will also bring the research capabilities of the state's universities to the public school system to develop, test and evaluate new methods of teaching and learning.

The governor called the program a "bold, new, ambitious venture" that "will make Michigan a leader in developing, adapting and sharing new learning approaches and teaching techniques to help young people master the challenges of the next century."

Partnership schools for educational innovation, similar to teaching hospitals, will be set up in 18-24 public schools across Michigan, where university faculty and students can work with teachers and parents to develop, test and demonstrate new approaches to learning and teaching.

The network of schools will not be fully operational until 1995. "We want to make sure it's test-marketed and understood," the governor said.

The program also calls for the formation of three new institutions to support and strengthen existing education efforts.

They include the Michigan Institute for Restructuring the Preparation of Education, to work with colleges to update teacher preparation; the Michigan Education Leadership Academy, to disseminate education reform ideas to school administrators, school board members and interested citizens groups; and the Education Extension Service, recently created by the state, will be expanded to disseminate what is learned in partnership schools and

elsewhere, to the state's education community.

Also, in an effort to improve public knowledge and participation in education reform, two additional organizations will be founded; the Michigan Institute on Education and the Economy, a predominantly private-sector effort to help businesses better define its educational needs and hold public schools accountable to these standards; and the Michigan Institute on Public Policy, to work with policy makers to help them identify and respond to education problems.

"The key is to find ways to educate all children better," said Judith Lanier, the dean of Michigan State University's College of Education, who will serve as executive director of the partnership. "We all have to learn better and learn more. We're not sure how to do that, but we're willing to try."

The governor, who said the program includes \$300,000 in "seed" money from the Department of Education's co-operative extension services program and the Department of Commerce's Strategic Fund, said the program is in part of a response to the failed school finance ballot proposals in November.

"People are saying, show us some new developments. This whole effort is to focus our resources on teaching and learning in the classroom," he said. "It's a commitment to try to find cost effective ways for schools."

Sen. Dan DeGrow (R-Port Huron), a frequent critic of the Blanchard administration, called the program a "good approach" to improving education. "I think it's something worth exploring. I'll try to set aside my dislike for him (Governor) and decide if it has merit."

Michigan Education Association President Larry Chunovich said the program would provide the state an opportunity to expand on its six current developmental schools. "We're

pleased private individuals are in a supportive role for education and a role that is going to have a long-range, lasting impact rather than a Band-Aid approach."

DeGrow said he would prefer the experimental schools include a cross-section of urban, suburban and rural schools in the state. "That's more likely to get through the Legislature," he said.

He added that he would like to see the program experiment with classrooms of 15 or fewer pupils in grades 1-3.

Village To Buy Grass Fire Truck

(Continued from page one)

local dealerships. In addition to the basic truck, the department will purchase a hydraulic winch system for \$6,765, and other miscellaneous equipment, bringing the total price of the truck to \$24,525.76.

The truck is being budgeted into the village's 1990-91 fiscal year.

"I would like to have had it earlier, but that's the way it goes with budgets," Hankard said.

Spring is one of the heaviest times of the year for grass fires.

Standard Want Ads
Get Quick Results!

WCC Offers Variety of Classes in Chelsea, Dexter

The coming winter semester of 1990 offers many opportunities to Chelsea and Dexter residents. There are 39 Washtenaw Community College off-campus classes offered in the area at three separate locations.

Classes are open to anyone who is interested, and registration resumes on-campus Jan. 3.

Classes offered this term at Chelsea High school, Washington St. are as follows:

—Principles of Accounting (ACC 111) Wednesdays from 6:30 to 9:25 p.m.

—Principles of Accounting (ACC 122) Thursdays from 6:30 to 9:25 p.m.

—Drawing and Painting (ART 101) Tuesdays from 6:30 to 9:25 p.m.

—Business Law II (BMG 122) Mondays from 6:30 to 9:25 p.m.

—Principles of Marketing (BMG 250) Tuesdays from 6:30 to 9:25 p.m.

—Intro to Computers (CIS 100) Mondays and Wednesdays from 6:30 to 9:25 p.m.

—Composition I (ENG 111) Wednesdays from 6:30 to 9:25 p.m.

—Composition II (ENG 122) Tuesdays from 6:30 to 9:25 p.m.

—Basic Mathematics (MTH 039) Wednesdays from 6:30 to 9:25 p.m.

—Occupational Math (MTH 060) Wednesdays from 6:30 to 9:25 p.m.

—Introduction to Algebra (MTH 071A) Wednesdays from 6:30 to 9:25 p.m.

—Introduction to Algebra (MTH 071B) Wednesdays from 6:30 to 9:25 p.m.

—Business Math (MTH 163) Wednesdays from 6:30 to 9:25 p.m.

—Health Science Math (MTH 165) Wednesdays from 6:30 to 9:25 p.m.

—Intermediate Algebra (MTH 169A) Wednesdays from 6:30 to 9:25 p.m.

or Thursdays from 6:30 to 9:25 p.m.

—Intermediate Algebra (MTH 169B) Wednesdays from 6:30 to 9:25 p.m.

or Thursdays from 6:30 to 9:25 p.m.

—Triangle Trigonometry (MTH 177) Wednesdays from 6:30 to 9:25 p.m.

or Thursdays from 6:30 to 9:25 p.m.

—General Photography (PHO 090) Thursdays from 6:30 to 9:25 p.m.

—State and Local Government (PLS 180) Wednesdays from 6:30 to 9:25 p.m.

—Introductory Psychology (PSY 100) Mondays from 6:30 to 9:25 p.m.

Classes offered at the Western Regional Center, 134 W. Middle St., Chelsea are:

—Day Care Administration (CCW 111) Saturdays from 9 to 11:55 a.m.

—Voice Improvement for the Business Professional (CMT 140) Tuesdays from Jan. 4, through Feb. 28, 4 to 5:55 p.m.

—United States, 1865 to Present (HST 202) Mondays from 6:30 to 9:25 p.m.

—Psychology of Adjustment (PSY 209) Thursdays from 6:30 to 9:25 p.m.

—Losses & Grieving (PSY 222) Tuesdays from 6:30 to 9:25 p.m.

—Medical Terminology (RDG 115) Mondays from 4:30 to 6:25 p.m.

At Dexter High school, 2615 Baker Rd., classes are:

—Small Engine Repair (AS 160) Tuesdays from 6 to 9:55 p.m.

—Introduction to Computers (CIS 100) Mondays and Wednesdays from 6:30 to 9:25 p.m.

—Basic Mathematics (MTH 039) Tuesdays from 6:30 to 9:25 p.m.

—Occupational Math (MTH 060) Tuesdays from 6:30 to 9:25 p.m.

—Introduction to Algebra (MTH 071A) Tuesdays from 6:30 to 9:25 p.m.

—Business Math (MTH 163) Tuesdays from 6:30 to 9:25 p.m.

—Health Science Math (MTH 165) Tuesdays from 6:30 to 9:25 p.m.

(Continued on page three)

Uncle Lew from Lima Says:

DEAR MISTER EDITOR:

There must be someone to what a national column writer said—recent about a information glut. He allowed there is too much being offered for anybody to know, that we need to know very little of it, and if we ain't choosy in what we read, see and hear and separate some wheat from all the chaff we can work ourselves into serious mental problems. I wish I had made copies of that column and passed em out during the session at the country store Saturday night.

Most of the fellers were drafted by their old ladies last week for kitchen police. If they weren't helping with the cooking or tasting what was cooking they were going for more stuff to cook. A feller can stand only so much of that, so maybe they got to the session with wimmin bearing heavy on their minds.

It was Bug Hookum that said he had saw where wimmin mud wrestling is big on television, and the more mud and the less clothes the wimmin are in the more exciting this spectator sport is. The more fun the newspaper TV writers make of these shows the more the men tune to em. Like the man said, Bug declared, nobody ever went broke underestimating the taste of TV watchers.

In that same paper, Bug went on, he read where more wimmin are taking up weight lifting and some are organizing boxing clubs. And there's been all that talk lately about how terrible it is that the "mommy track" is holding back the real movers and shakers of the business world. Bug said he ain't seen the next shoe, but it's bound to fall. More men that lose their jobs are becoming "house-

husbands" so their wives can stay on their career track.

In all this Bug said, he feels like he's driving the wrong way on the one-way road of life. He said he can't deal with the idea of the husband skipping the soaps and getting supper early for the kids so they can watch mommy fighting on TV for the lightweight title. Bug said his plan is to pull off the road and wait. He figures soon or late the traffic will stop for directions, turn around and head his way.

Bug's lament got mixed reviews. Clem Webster allowed that Bug sounded like he wanted a return to that early American arrangement where the squaws took care of everything but the hunting, fishing and fighting. Clem said it's time the worm turned. For so long men have been killing themselves off chasing rats in a high pressure world. Besides, if the man don't object to his old lady holding down a full-time job outside the house he ought not to mind helping out at home.

Final, Ed Doolittle managed to git the floor with his usual collection of clippings. He had this one item where Florida is taking a strong stand again men that don't hold up their end of the family bargain. The state is passing out posters with names and pictures of the "10 Most Wanted" fathers that won't pay child support. With 84,000 husband runaways and 7,000 cases being added ever month in Florida alone, Ed said, it ain't no wonder more wimmin are aiming at better paying jobs.

After thinking it up one side and down the other, I am of a mind that Ed doesn't need that information glut piece as much as some of us. He usual is able to come to a sharp opinion on any subject. I won't say his mind's made up before the facts are presented, but I'll say he's as close to an instant expert as we got out our way.

Yours truly,
Uncle Lew.

DISCOVERY MAY END OBESITY

National Dietary Research, an organization committed to the research and development of nutritional solutions to worldwide health problems, reported in a Washington, D. C. press release, "Obesity may be controlled naturally with a new type of pill, discovered by accident. In studies with potential cholesterol-lowering agents, scientists noted an unusual side effect. Patients receiving an ingredient in what is now being called FS-1, all lost weight in spite of being instructed not to alter normal eating patterns, while body weight in control groups remained constant." Scientists say the mechanism behind the weight reduction is partially due to a decrease in the intestinal absorption of calorie rich dietary fats.

In a comparative study by NDR whose research topics have been the subject of articles published in recent Medical and Nutritional Journals, FS-1 was found to be most effective for weight loss and most acceptable to patients. Because FOOD-SOURCE-ONE contains only natural ingredients recognized as safe, it is available to the public immediately!

FS-1 is currently available in CHOCOLATE, VANILLA or STRAWBERRY flavors, from select pharmacies for \$24.98 for 100 tablets with instructions for proper use and optimum results. Also available by mail, add \$2.00 shipping/handling to Nutra Health Company, 41630 Garfield Suite 567, Mt. Clemens, MI 48044.

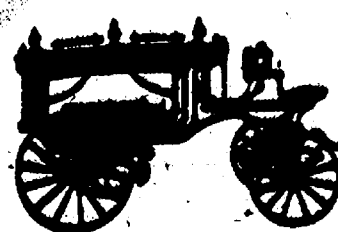
FS-1 IS AVAILABLE AT THESE STORES

Chelsea Drug Store 101 N. Main St. Chelsea - 475-9103	Mindell's Pharmacy 2140 Carpenter Rd. Ann Arbor - 971-1644
Chelsea Pharmacy #2 1930 S. Main St. Chelsea - 475-1188	Stockbridge Pharmacy 100 S. Clinton St. Stockbridge - 831-7575

The Tradition
Continues—

Serving
Chelsea Since
1853—

PRE-ARRANGED ACCOUNTS
MONUMENTS-MARKERS



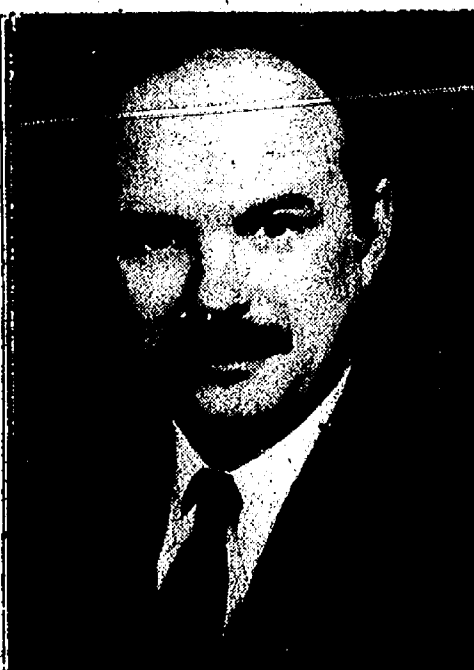
Staffan-Mitchell

FUNERAL HOME

124 PARK ST., CHELSEA

1-313-475-1444

Member By Invitation—NSM



JOHN W. MITCHELL
Director

PHOTOGRAPHER'S CHOICE FILM DEVELOPING SALE

TAKE 1

For 110, 126, 135mm or disc



One standard
size 3 1/2" print

\$1.99

12 exp	\$1.99
15 exp	\$2.49
24 exp	\$3.99
36 exp	\$5.99

S-P1

TAKE 2

For 110, 126, 135mm or disc



Two standard
size 3 1/2" prints

\$2.49

12 exp	\$2.49
15 exp	\$2.99
24 exp	\$4.99
36 exp	\$7.49

D-P2

TAKE 4

For 135mm or disc



One jumbo
size 4" print

\$2.99

12 exp	\$2.99
15 exp	\$3.99
24 exp	\$5.99
36 exp	\$7.99

J-P2

All offers apply only to film developed and printed in the U.S. and are subject to change without notice. Offer expires—

HURON CAMERA

1989 CHELSEA HISTORY:

Year-End News Summary

(Continued from last week)

December ...

6—Scores for Chelsea students increased in every grade and every subject in the Michigan Educational Assessment Tests given this fall to fourth, seventh, and 10th graders.

6—Michigan Department of Natural Resources approved a new landfill operating license for the Village of Chelsea, but village officials weren't exactly overjoyed about the long-awaited news.

8—John Hall was one of three Chelsea High school students to qualify for the second part of the 33rd annual Michigan Mathematics Price Competition.

8—Fred Worden of Faust-Morrow Buick-Olds-Chevrolet, Chelsea, was one of the 48 national finalists in the 1989 Chevrolet Certified Master Technician "Performance Challenge" competition.

8—Jean Satterthwaite was a cookie specialist for the holidays this year. She created unusual flower cookies, complete with stems that made fine gifts, treats for Santa or even package decorations.

9—Donna M. Bouley was announced as Employee of the Year for Chelsea Community Hospital. Donna is director of recreational therapy.

13—Money and keys exchanged hands outside what will become a playhouse for local aspiring performers and writers next fall in Chelsea.

13—The Village of Chelsea decided to contest the bonding stipulation attached to the new landfill operating license by the Michigan Department of Natural Resources.

13—Chelsea High novice debaters qualified for the state finals with their performance at the qualifier where they tied for 13th.

13—Debby Webb was presented with the Deanna L. Zangara Memorial Award at the girls swim team awards night.

20—A pickup truck full of new toys was donated to Chelsea Social Services by Palmer Ford-Mercury for distribution to area needy families at Christmas time.

20—Women's Fellowship of the First

Congregational church of Chelsea made up 95 packages of assorted candy that were included in the Chelsea Social Services holiday boxes.

21—John Norris, 512 McKinley St., was the first place winner in the Downtown Merchants Christmas Decorations Contest.

23—Chelsea Baton Corps members participated in a major competition at Lakeview for the National Baton Twirling Association state championships.

24—Members of Brownie Troop 719 and Girl Scout Senior Troop 777, Chelsea, held their Christmas Party with residents of the Chelsea United Methodist Retirement Home.

27—Record-breaking temperatures hit the Chelsea area, as well as much of the country, last week. Friday

morning temperatures reached -10 degrees and area road service companies had more work than they could handle jump starting cold vehicles.

27—A public outburst by Chelsea resident George Navin that some village council members considered threatening prompted the village to take some unusual measures, such as seeking a restraining order, and having a police officer present at all village meetings.

27—Seven young Chelsea runners participated in the National Youth AAU-USA Cross Country Championships in Hammond, Ind.

**Please Notify Us
In Advance of
Any Change in Address**



Sally Heil
Chelsea Representative

To arrange for a visit
please call 475-3149

Are You New to the Chelsea Area?

Newcomers Welcome Service

sponsored by
the area's leading merchants
and
The Chelsea Chamber of Commerce
would like to visit you
and help you become acquainted
with your new community
13909 Scio Church Rd.
Chelsea, MI 48118

LEARN TO BALLROOM DANCE

Instructor Gary Carlson

Tired of being a wall flower? Need some fun as well as some exercise? Come join in the fun and learn to Ballroom Dance.

Classes Start Jan. 9, 1990

12 weeks of Fox Trot, Waltz,
Swing, Rumba and Cha Cha

BEGINNING BALLROOM

Tuesday evenings 7:30-8:30 p.m.

CONTINUING BALLROOM

Tuesday evenings 8:30-9:30 p.m.

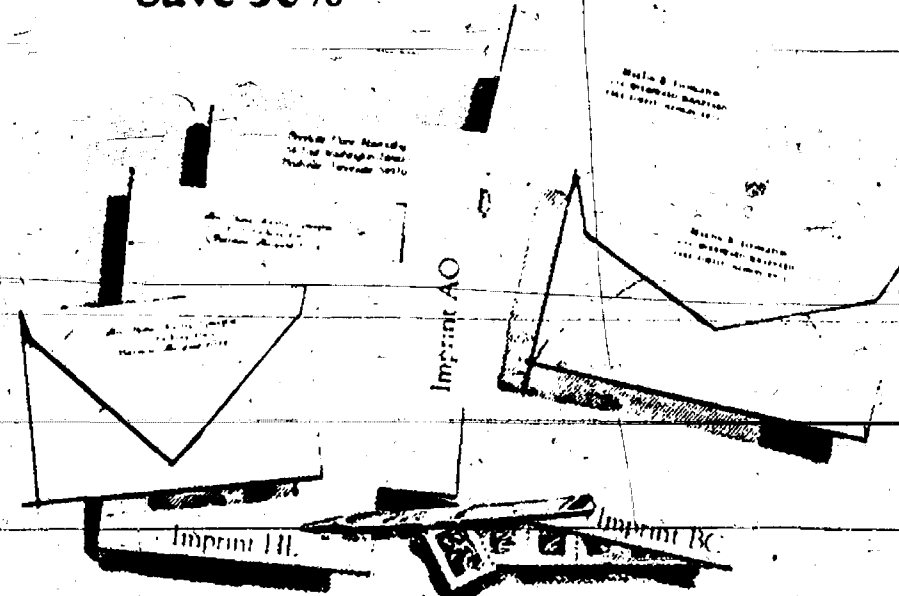
Designed to be taken repeatedly to maintain
as well as expand your dancing skills

All Classes Will Be at South School Gym

**For Further Information Contact
The Chelsea Community
Education Department
At: 475-9830
ENROLL NOW!!**

The Chelsea Standard

Save 50%



Rytex Antique Vellum Stationery

10.95

regularly \$22

The subtle landmark pattern in this handsome paper dates back to the beginning of papermaking when handmade sheets were placed on latticed racks to dry in the sun. Today Rytex Antique Vellum still bears this handworked touch, refined for use with modern pen or typewriter. Select from luxury shades of white, pale blue or soft grey, paper in princeps (5 1/4") or monarch (7 1/4" x 10 1/2") sizes. Choice of imprints shown (HL, AO, BC) in deep blue or dark grey ink. Gift boxed, 100 princeps sheets and 100 envelopes or 80 monarch sheets and 80 envelopes.

Suggestion: 50 extra, unprinted sheets for second pages \$4.00 with order.

THE CHELSEA STANDARD
300 N. MAIN ST., CHELSEA, MICH. 48118

Phone mail order: 475-3149. In store: 475-9830. Add 4% Michigan Sales Tax.

Imprint Name _____
Address _____
City, State, Zip _____

Check paper choice, imprint style and ink color:
Princeps size: ☐ White (1500) ☐ Blue (1550) ☐ Grey (1560)
Monarch size: ☐ White (1600) ☐ Blue (1650) ☐ Grey (1660)
Imprint style: ☐ HL ☐ AO ☐ BC ☐ Ink color: ☐ Blue ☐ Grey

Please Add 4% Michigan Sales Tax



In Germany, Jack Frost appears as an old woman. When Old Mother Frost shakes her bed, snow begins to fall.

Chiropractic Health Care



Dr. J. Nicholas Koffeman

Over the last few weeks we have discussed the basic functional problems that doctors of chiropractic treat: the subluxation. We've talked about structural, chemical, and emotional dis-STRESS to the body as well as some of the various characteristics of each; and we've said that these three forms of stress bring about spinal misalignments (subluxations) that create joint problems and neurovascular compression syndromes ("pinched nerves").

Why does the body respond to these stresses by subluxating a bone, especially in the spine? That question has been debated by chiropractic researchers for nearly 100 years. It seems that many times these stresses cause the nervous system to "misread" information. An example of this (one that follows the structural stresses examples) is the repeated, sustained contraction of a muscle. To show this, think of a person at a computer terminal holding his or her head forward (by use of the muscles on the back of the neck). As the time of use increases, the nervous system begins to tell the muscle it must do more work (increase contraction) with a resulting stiffness, fatigue and soreness of the neck. This relative strain causes an imbalance between these muscles and the muscles on the other side of the joints (antagonists). If this imbalance isn't corrected by the body with rest, nutritional repair, waste cleaning etc., it will pull the bone out of place and the bone will adapt and "lock" (more on that later) out of position. This causes joints to not function correctly, and neurovascular compression syndromes.

Now we've come full circle and hopefully tied this difficult concept together.

As time goes by we'll talk about how the subluxation creates a decreased function of the nervous system and also about how many ongoing research projects and studies that confirm the validity of this concept.



FOLCIK-MICHELL: Edward and Cindy Folcik of Grass Lake have announced the engagement of their daughter, Lori Lee, to Capt. Joseph Frederick Michell, IV, son of Lois Michell, of Woodbridge, Va., and the late Joseph Frederick Michell, III. The future bride is a 1985 graduate of Chelsea High school and from 1985 to 1989 was stationed at Tindall Air Force Base. She is in her junior year at Northern Michigan University. The future bridegroom is a graduate of the U. S. Air Force Academy and is stationed at K. I. Sawyer Air Force Base in Gwin as a pilot on the KC-135 air refueling tanker. The couple plans a June 23 wedding.

WCC Classes

(Continued from page two)

—Intermediate Algebra (MTH 189A) Tuesdays from 6:30 to 9:25 p.m.

—Intermediate Algebra (MTH 189B) Tuesdays from 6:30 to 9:25 p.m.

—Triangle Trigonometry (MTH 177) Tuesdays from 6:30 to 9:25 p.m.

—Study Skills (RDG 103) Mondays and Wednesdays from 6:30 to 7:55 p.m.

—Real Estate Principles (RE 100) Tuesdays from 6:30 to 9:25 p.m.

For more information on classes or to register, call the WCC Western Regional Office at (313) 475-5935.

SENIOR MENU & ACTIVITIES

Weeks of Jan. 3 - 12
Food, Fun and Fellowship for Seniors
North Elementary School
McKinley Rd. Ph. 475-9242

Wednesday, Jan. 3—

9:30-noon—Cards.

1:00 p.m.—Fitness.

1:00 p.m.—Bowling.

Thursday, Jan. 4—

9:30-noon—Cards.

1:00 p.m.—Kitchen band.

2:00-4:00 p.m.—Square Dance.

Friday, Jan. 5—

9:30-noon—Jackpot Bingo.

1:00 p.m.—Advisory meeting.

Saturday, Jan. 6—

7:00 p.m.—Card Party.

Monday, Jan. 8—

9:30-noon—Bingo.

9:30 a.m.—China Painting.

10:00 a.m.—Widows.

1:00 p.m.—Bingo.

Tuesday, Jan. 9—

9:30-11:30 a.m.—Creative Expressions class.

9:30 a.m.—Art class.

1:00 p.m.—Euchre.

1:00 p.m.—Chair Caning.

Wednesday, Jan. 10—

9:30-noon—Cards.

1:00 p.m.—Fitness.

1:00 p.m.—Bowling.

Thursday, Jan. 11—

9:30-noon—Cards.

1:00 p.m.—Kitchen band.

Friday, Jan. 12—

9:30-noon—Jackpot Bingo.

11:45 a.m.—Birth Day Party.

(Sorry, no menu available)

Lioness Members Busy During Holiday Season

Chelsea Lioness ended the year with a Christmas progressive dinner Saturday, Dec. 16. Hor d'oeuvres were at the home of Diane Daniel; the main course at Betty Severn's and dessert at Louise Likavec's. The main course was catered and members brought their favorite appetizers and desserts.

On Dec. 14 the Lioness were busy touring the village area judging the best Christmas decorations for the Chelsea Chamber of Commerce.

Throughout the month members helped the Lions sell Christmas candy and candles to raise funds for worthy causes.

The next Lioness meeting is Monday evening, Jan. 8 at the Trustcorp Bank. Erlene Kemnitz will demonstrate basket making.

**Please Notify Us
In Advance of
Any Change in Address**



BRIDAL FAIRE '90

NO ADMISSION CHARGE

Sunday, January 7th

from 1 until 4 p.m.

Fashion Show at 2 o'clock

Exhibitors

Wesley Berry Florist

President Tuxedo

A-1 Rental

Say It With Balloons

Stickfaden Assoc. LTD.

Dominoes Destinations

Sunny J's

Vann Buren Hair Salon

Weber's Inn

Expressions In Colors

Appaloosa Video

Dazz Dance

For reservations call

930-0840

Door Prizes

Sponsored by White Lace Bridal Salon

EAR PIERCING FREE

with purchase of piercing
earrings Parental consent
required under 18

WINANS JEWELRY

Letters to the Editor

To the Editor,

It seems the village council still assumes that citizens have no rights. The first amendment rights are preferred rights and must be respected and their exercise should not be substantially impaired but rather actively encouraged. This does include public outbursts. As for threats, which council members felt threatened and why, there were no anatomical or material threats made. Could it be fear of disclosure and discovery?

"To get the village," yes, I fully intend to try and make the village accountable to all citizens of the village and not just a chosen few. I believe the time has come for this. The accusation of lying appears to have been taken care of quite well by village officials. Now to express one's individual opinions at a public meeting, no matter how flagrant or shocking it is to others, hardly calls for a restraining order, the whole truth and exposure does disturb some.

In regard to fools, the word represented by a large number of Hebrew and Greek words and used in scripture with respect to morals more than to intellectual deficiencies.

The fool is not so much one lacking in mental powers as to one who misuses them. Not one who does not reason but reasons wrongly.

Fool goes back ages as "Thou fool" Matt 5:22, Prov. 14:9, Jer 17:11.

The term has its ordinary use and denotes one who is senseless or unreasonable and as a word it is a weak and absurd act and foolishness is a want of wisdom or judgment.

George Navin.



The circulatory system of the human body contains about 60,000 miles of blood vessels and capillaries.

RADON

Certified-Licensed
& Insured

Michigan's most experienced
full service contractor

Universal Builders/Safe Aire

(677-2366)

WE'LL BEND TO YOUR NEEDS

- CUSTOM SHEET METAL FABRICATION
- SHEARING
- PLASMA CUTTING
- WELDING

ALL SEASON COMFORT CO.

Your AMANA dealer for heating & cooling products

115 W. MIDDLE

CHELSEA

475-7617

Frontier mechanical inc.

COMMERCIAL • INDUSTRIAL • RESIDENTIAL

Plumbing

New Construction & Repair

FREE ESTIMATES

FOR ALL YOUR PLUMBING NEEDS.

Toilets • Sinks • Faucets • Garbage Disposals
Water Heaters • Water Softeners • Hot Tubs • Whirlpools

EMERGENCY SERVICE

Licensed Master Plumber
C. JERRY PICKLESIMER
(313) 475-2380

Health Services Certificate
Redeemable for
\$60 OF SERVICES

May be applied to 1990 Insurance
Deductibles, Consultations,
Examinations, Adjustments,
Spinal Supports. (Certificate must be
presented on 1st visit.)

**ARBOR WEST
CHIROPRACTIC
CENTER**

Call for your appointment
today!

993-8770

Headaches • Low Back Pain • Shoulder Pain • Sinus Trouble • Leg Pain

THE AFFORDABLE CHIROPRACTIC
CENTER IS OPEN 5 DAYS A WEEK



IT WAS A BIG DAY OF ROLLER SKATING for special education students at Washtenaw county schools recently as 135 youngsters had the chance to try out their skills at the Ann Arbor Skate Company recently. The children had the chance to enjoy pizza and pop as well.

Above, teacher assistant Karen McCollough of High Point/Pioneer helps David Andy and Rochelle Nickerson put their skates on. The party was sponsored by Chelsea Lions and Lioness Clubs.

Sunday Trail Walk Offered By Matthaei Botanical Gardens

Does the whirlwind of the holidays leave you feeling a bit out of sync and wishing for a slower pace in the New Year?

Perhaps one of the best ways to relax would be to go out on a Sunday afternoon and explore the beauty of the fields and woods. Like on Sunday, Jan. 7 at 2 p.m. at the Matthaei Botanical Gardens.

"But, the flowers are all gone. What is there to see?", you might ask.

Are the flowers really all gone? The winter wildflowers are among the treasures which may be discovered on the Sunday Trail Walk. The remnant pods and stalks of last autumn's flowers often have a flower-like beauty of their own, which we may not see or enjoy until we look for them.

Docents will meet all interested persons in the lobby of the Conservatory. Participants are advised to dress for the weather with warm clothing and warm boots. The free tour begins promptly at 2 and will last at least 1 1/2 hours.

The Matthaei Botanical Gardens of the University of Michigan is located at 1800 N. Dixboro Rd., Ann Arbor.

Fitness Classes Offered By Chelsea Community Hospital

Chelsea Community Hospital's Fitness Center offers a wide variety of fun and effective fitness classes. The Fitness Center staff is CPR certified and knowledgeable in the latest exercise physiology. Enjoy safe workouts and decreased body shock with the center's "Ultimate Aerobic Carpet."

Session I runs from Jan. 7 through Feb. 17 and Session II is Feb. 18 through March 31. Registration is required by calling 475-3935.

A "Prenatal Class" will offer important information for parents in the sixth month of pregnancy or later. This class will be held on Wednesday, Jan. 3 from 7:30 to 9:30 p.m. at the Chelsea Pediatric Center, Beach Middle school. Contact Dr. Westhoff's office at 475-9175 for more information and pre-registration.

Ongoing programs held at Chelsea Community Hospital include "Children Are People," a chemical dependency prevention program for children ages 5 to 12 years. This program is offered by the Substance Abuse Department and is held on Tuesday and Thursday evenings from 6:45 to 8:15 p.m. at Chelsea Community Hospital Kresge House. For registration or additional information call Betsy Beckerman at 475-4100.

"Breathers Club," an educational presentation and a supportive atmosphere for sharing for all interested individuals who have chronic respiratory problems, is offered by the Cardio Pulmonary service. Sessions are held the third Saturday of every month from 11 a.m. to 1 p.m. at Chelsea Community Hospital.

"Cardiac Rehabilitation—Outpatient" is designed to provide rehabilitation for people who are recovering from a heart attack or heart surgery. Sessions are individually scheduled by calling 475-3951.

"Speech and Language Therapy for Children—Outpatient Program" offers comprehensive, individualized evaluations and therapy programs for youngsters with delayed speech or language development. For more information, call 475-3982.

The "Chemical Dependency Lecture Series" is free and open to the public to provide awareness and education regarding various aspects of alcoholism and other chemical dependencies. Lectures are held every Thursday evening from 7 to 8 p.m. in Chelsea Community Hospital Dining Room.

The "Outpatient Diabetes Education" program is designed for people with diabetes and their families. Sessions are individually scheduled by calling Pat Parr, R.N., B.S.N. at 475-3935.

The weekly education presentation and discussion, "Family Education Series—Department of Psychiatry," focuses on understanding emotional or mental difficulties that require psychiatric treatment such as depression, anxiety, bipolar disorder, and schizophrenia. Presentations are held Thursday evenings from 7:15 to 9 p.m. at Chelsea Community Hospital Partial Hospitalization, 955 W. Eisenhower Circle, Suite H, Ann Arbor. For further information call Partial Hospitalization, 313/996-1010.

"Diabetes Sharing Group" offers an

opportunity for patients with diabetes and their families to meet together in an informal setting. The group meets the second Wednesday of each month from 3:30 to 5 p.m. at Chelsea Community Hospital Private Dining Rooms.

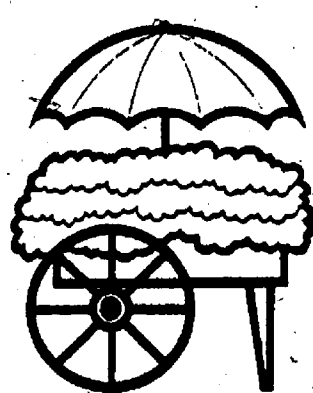
With "Individual Nutrition Counseling" a registered dietitian will work with you to create a meal plan that is nutritionally adequate and easy to follow. When your physician has prescribed a special diet for you, contact your nutrition counseling service at 475-4026.

The "Individual Supermarket Tour" is held at the supermarket of your choice within a 20-mile radius of Chelsea and is led by a registered dietitian. Tours are scheduled by appointment.

Individuals who have a bladder control problem, referred to as incontinence, are sometimes reluctant to seek medical assistance. If you or a loved one experiences incontinence or other uncomfortable urinary system problems, there may be a simple medical solution. "The Continence Clinic" can answer your needs. Call 313/475-4019 for more information.

"The Senior Fitness Program" (Age 50+) is a safe, individualized exercise program designed especially for seniors. No exercise experience is necessary! Check with your doctor and then join the group on Tuesdays and Thursdays from 9 to 10 a.m. or on Mondays and Wednesdays from 6:15 to 7:15 p.m. For more information call 475-3951.

Pre-registration is required for all classes. For further information call the Education Department, 475-3935.



**MAIN STREET
FLOWER SHOP**

FULL SERVICE FLORIST
Fresh • Silks • Dried • Plants
Wire Service • Delivery

114 N. Main (Sylvan Building)
Chelsea, MI 48118
(313) 475-3040

Hours:
Monday-Friday 9-5:30
Saturday 9-5



ORTHODONTIST

Raymond P. Howe, D.D.S., M.S.
515 South Main Street
Chelsea, MI 48118 475-2260

NEW PATIENTS WELCOME
EXAMINATION APPOINTMENT WITHOUT CHARGE

Telephone
(517) 851-7175



General Practice
Contact Lenses
Glaucoma Test

DELBERT W. FOUST, O.D.
OPTOMETRIST

Office Hours
By Appointment

120 E. Main Street
Stockbridge, Michigan 48265

Subscribe to The Chelsea Standard!

GORDON SAVERY BUILDING & REMODELING

- CARPENTRY
- SIDING
- ADDITIONS
- CABINETS
- FINISH WORK

Licensed

Ph. 426-2300

25 Years Experience

4801 Mast Rd., Dexter, Mich. 48130

ARNET'S

CEMETERY MONUMENTS ARE OUR PROFESSION
... NOT A SIDE LINE.

Check out our new reduced prices.

Now you can have the best quality
at the best price!

Oldest and Largest in this County

4495 Jackson Road, Ann Arbor, Mich.

If you would like to join our sales staff, call Ben Sieg, 663-3658, or
Jim Mooney, 475-3069

Sullivan Plumbing

Licensed Michigan Master Plumber

- Water Heaters
- Remodeling
- Service & Repair
- New Construction
- Water Softeners
- Sewer Cleaning

475-8114

Free Estimates

Reasonable Rates

(313) 449-8543

ANN ARBOR ANTENNA

• PRE WIRE OF NEW HOMES

• INSURANCE WORK

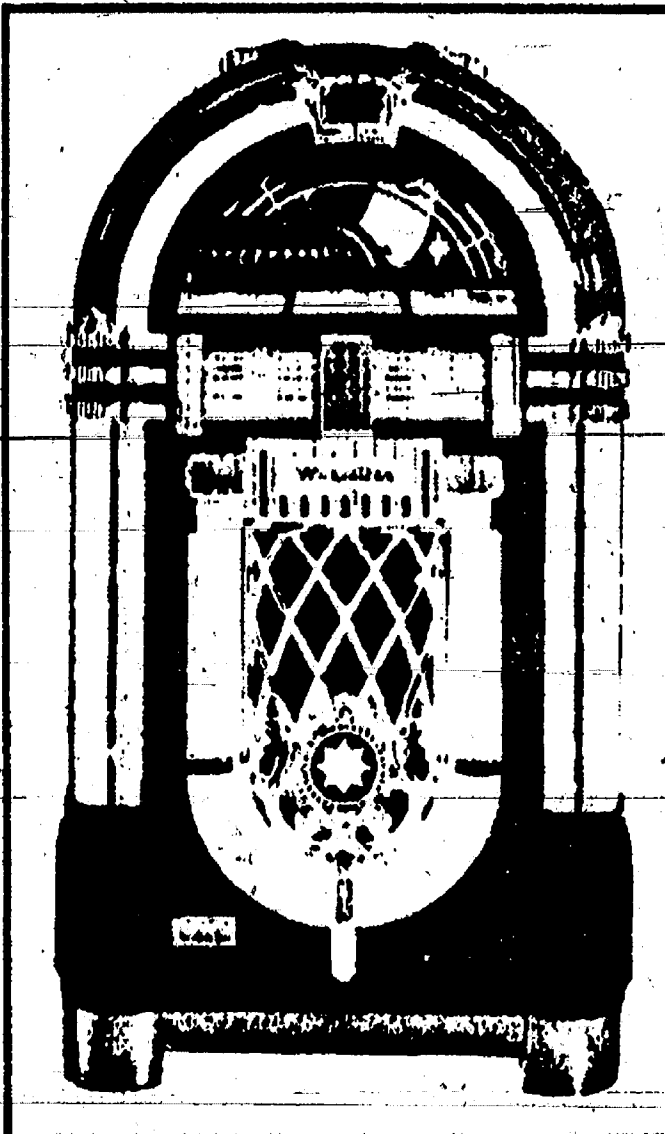
• TOWERS

MICHAEL ALEXA
SALES & SERVICE

CHANNEL MASTER

Your
P-a-r-t-y
can have
24-Hours
of
Music

For just over \$100*



Replica of Wurlitzer's now-classic phonograph
is not currently available for rent

• Choose your own tunes

for information contact

ZEMKE OPERATED MACHINES

662-1771

*in Chelsea Village

Church Services

Assembly of God—

FIRST ASSEMBLY OF GOD
1490 Old US-12, Chelsea
The Rev. Edward Lang, Pastor
Every Sunday—
9:45 a.m.—Sunday school.
10:45 a.m.—Sunday morning worship, and children's service.
6:00 p.m.—Evening service.
Every Wednesday—
7:00 p.m.—Mid-week services.

Baptist—

FIRST BAPTIST CHURCH OF GREGORY
The Rev. Richard Mathew, Pastor
(313) 488-2591
Every Sunday—
9:45 a.m.—Sunday school.
11:00 a.m.—Morning worship.
7:00 p.m.—Evening worship.
Every Wednesday—
7:00 p.m.—Mid-week service.
6:00 p.m.—Choir practice.

NORTH SHARON BAPTIST

Sylvan and Washburne Rds.
The Rev. William Winkler, Pastor
Every Sunday—
10:00 a.m.—Sunday school.
11:00 a.m.—Worship service.
6:00 p.m.—Senior High Youth meeting, Youth choir.
7:00 p.m.—Evening worship service; nursery available.
Every Wednesday—
7:00 p.m.—Bible study and prayer meeting; nursery available. Bus transportation available: 428-7222.

Catholic—

ST. MARY
The Rev. Fr. David Philip Dupuis, Pastor
Every Sunday—
8:00 a.m.—Mass.
10:00 a.m.—Mass.
Every Saturday—
12:00 noon-1:00 p.m.—Confessions.
6:00 p.m.—Mass.

Christian Scientist—

FIRST CHURCH OF CHRIST SCIENTIST
1885 Washington Ave., Ann Arbor
Every Sunday—
10:30 a.m.—Sunday school, morning service.

Church of Christ—

CHURCH OF CHRIST
1380 Old US-12, East
Jerry Robertson, Minister
Every Sunday—
9:30 a.m.—Bible classes, all ages.
10:30 a.m.—Worship service. Nursery available.
6:00 p.m.—Worship service. Nursery available.
Every Wednesday—
7:00 p.m.—Bible classes, all ages.
First and Third Tuesday of every month—
7:00 p.m.—Ladies class.

Episcopal—

ST. BARNABAS
2500 Old US-12
(Directly across from the Fairgrounds)
The Rev. Fr. Jerrold F. Beaumont, O.S.P.
478-2003
Every Sunday—
Youth Inquirers class.
10:00 a.m.—Eucharist (Holy Communion), first, third and fifth Sundays.
10:30 a.m.—Morning Prayer, second and fourth Sundays. (Holy Communion available immediately following service.)
10:30 a.m.—Church school, K-12.
11:00 a.m.—Family coffee hour.
11:00 a.m.—First Sunday of the month, pot-luck dinner.
Nursery available for all services.

Free Methodist—

CHELSEA FREE METHODIST
7645 Warkner Rd.
Nurt Bradley, Pastor
Wednesday, Jan. 3—
7:00 p.m.—5 Tracks.
Prayer Group—
Bible Study.
Group Study.
Young Adults.
CLC and teens.
8:15 p.m.—Pastor's Cabinet meets.
Friday, Jan. 5—
8:30 p.m.—Evangelism committee meets at Crockett's.
Sunday, Jan. 7—
8:30 a.m.—Early Celebration Service.
9:30 a.m.—Coffee Fellowship.
10:45 a.m.—Sunday school for all ages.
11:00 a.m.—Morning Celebration Service.
6:00 p.m.—Evening Worship Service.
Monday, Jan. 8—
9:00-10:00 a.m.—Faithful Fitness.
9:30 a.m.—Growth Group.
Tuesday, Jan. 9—
9:30-11:30 a.m.—Ladies Bible study.
9:00 a.m.-2:00 p.m.—Pastor's Prayer Day in Spring Arbor.
Wednesday, Jan. 10—
9:00-10:00 a.m.—Faithful Fitness.
7:00 p.m.—"5 Tracks".
8:15 p.m.—Worship Committee meets.

Lutheran—

FAITH EVANGELICAL LUTHERAN
2675 North Territorial Rd.
The Rev. Mark Portinsky, Pastor
Church: 428-4302
Lutheran Elementary School
Mr. Keith Kopynski, Principal
Wednesday, Jan. 3—
7:45-9:00 p.m.—Ladies evening Bible study.
Sunday, Jan. 7—
9:00 a.m.—Sunday school for adults and children.
10:00 a.m.—Worship.
1:00 a.m.—Coffee hour.
OUR SAVIOR LUTHERAN
1815 S. Main, Chelsea
The Rev. Franklin H. Giebel, Pastor
Thursday, Jan. 4—
1:00 p.m.—Bible class.
7:30 p.m.—Inquirers class.
Sunday, Jan. 7—
9:00 a.m.—Bible classes and S.S.
10:30 a.m.—Worship service.
ST. JACOB EVANGELICAL LUTHERAN
12601 Rietmiller Rd., Grass Lake
The Rev. Thomas Johnston, Pastor
Every Sunday—
9:00 a.m.—Sunday school.
10:10 a.m.—Divine services.

ST. THOMAS LUTHERAN
10001 W. Ellsworth Rd.
(8 miles south and 3 miles west of Dexter)
The Rev. John Riska, Pastor
Every Sunday—
9:30 a.m.—Sunday school and Bible classes.
10:45 a.m.—Worship service.

TRINITY LUTHERAN
2756 M-36, three miles east of Gregory
William J. Trosien, Pastor
978-0477 church, 978-5015 pastor
Plymouth, Michigan
Every Sunday—
10:00—Morning Worship with Communion.

ZION LUTHERAN
E.L.C.A.
Corner of Fletcher and Waters Rds.
The Rev. Mark Weirauch, Pastor
Sunday, Jan. 7—
9:00 a.m.—Sunday school.
10:15 a.m.—Worship.

Methodist

SALEM GROVE UNITED METHODIST
128 Notten Rd.
The Rev. Don Woolm, Pastor
Every Sunday—
9:30 a.m.—Church school.
10:30 a.m.—Morning worship.

FIRST UNITED METHODIST
Paris and Territorial Rds.
The Rev. Merlin Pratt
Every Sunday—
9:30 a.m.—Worship service.
10:30 a.m.—Sunday school.

WATERLOO VILLAGE UNITED METHODIST
8115 Washington St.
The Rev. Merlin Pratt
Every Sunday—
9:30 a.m.—Sunday school.
11:15 a.m.—Worship service.

FIRST UNITED METHODIST

128 Park St.
The Rev. Dr. Jerry Parker, Pastor
Wednesday, Jan. 3—
8:30 p.m.—Prayer Group meets in Room 2.
7:00 p.m.—Study Group meets in Room 2.
7:00 p.m.—United Methodist Women Executive Committee meets.
Thursday, Jan. 4—
1:30 p.m.—Pastor meets with members residing at the Retirement Home.
Sunday, Dec. 7—
8:15 a.m.—Crib Nursery opens.
8:30 a.m.—Worship service.
Supervised care for preschoolers in the Education Building.
9:30 a.m.—Fellowship Time.
Church school for all ages.
9:45 a.m.—Membership class meets in Pastor's office.
10:45 a.m.—Church school concludes.
11:00 a.m.—Worship service.
11:30 a.m.—Kindergarten and first graders have the worship service for ACP.
1:00 p.m.—Fellowship Time. Chancel Bells.
Monday, Jan. 8—
8:15 a.m.—Crib nursery closes.
Tuesday, Jan. 9—
7:30 a.m.—Worship Committee meets in Room 2 in the Education Building.
11:30 a.m.—Staff Meeting.
Wednesday, Jan. 10—
8:30 a.m.—Praise Choir rehearses in the Social Center.
8:30 p.m.—Prayer Group meets in Room 2.
7:15 p.m.—Study Group meets in Room 2.
7:15 p.m.—Chancel Bells rehearsal.
8:00 p.m.—Chancel Choir.

METHODIST HOME CHAPEL

Every Sunday—
8:45 a.m.—Worship service.
NORTH LAKE UNITED METHODIST CHURCH
14111 N. Territorial Road
The Rev. Sandra Wilcox, Pastor
Every Sunday—
9:30 a.m.—Sunday school for all ages.
10:30 a.m.—Worship service.
11:30 a.m.—Fellowship time.

SHARON UNITED METHODIST
Corner Pleasant Lake Rd. and M-52
The Rev. Erik Alsgaard, Pastor
Every Sunday—
10:00 a.m.—Sunday school.
11:00 a.m.—Worship service.

Mormon—

CHURCH OF JESUS CHRIST OF LATTER-DAY SAINTS
1380 Freer Rd.
Wayne L. Wenzel, president
Every Sunday—
9:30 a.m.—Sacrament.
10:30 a.m.—Sunday school.
11:40 a.m.—Priesthood.

Non-Denominational—
CHELSEA FAMILY WORSHIP CENTER
1194 S. Main St. (Rebekah Hall)
Ed Sauvageau, Pastor
Every Sunday—
10:00 a.m.—Worship service.

CHELSEA HOSPITAL MINISTRY
Hospital Chapel.
Every Sunday—
10:00 a.m.—Morning service, Chelsea Community Hospital Chapel.

COVENANT
50 N. Freer Rd.
Every Sunday—
9:45 a.m.—Church school.
10:30 a.m.—Worship service.
7:00 p.m.—Bible study.
Every Wednesday—
7:30 p.m.—Choir practice, new singers welcome.

CHELSEA CHRISTIAN FELLOWSHIP
337 Wilkinson St.
T. B. Thodeson, Interim Pastor
Every Sunday—
10:00 a.m.—Learning from God's word.
10:45 a.m.—Morning worship service and Junior church.
6:00 p.m.—Evangelistic service. First Sunday of the month—Christian film.
Second Tuesday of each month—
7:00 p.m.—Faith, Hope, & Charity Circle (women's group)
Every Wednesday—
7:00 p.m.—Adult Bible studies and prayer for special needs.

CHELSEA FULL GOSPEL
11452 Jackson Rd.
John & Sarah Groesser, Pastors
475-7379
Every Sunday—
10:00 a.m.—Sunday school.
11:00 a.m.—Morning worship.
6:00 p.m.—Evening worship.
Every Wednesday—
7:00 p.m.—Family Night.

IMMANUEL BIBLE
145 E. Summit St.
Ron Clark, Pastor
Every Sunday—
9:45 a.m.—Sunday school, nursery provided.
11:00 a.m.—Morning worship, nursery provided.
6:00 p.m.—Evening worship.
Every Wednesday—
7:00 p.m.—Family hour, prayer meeting and Bible study.

MT. HOPE BIBLE
12804 Trist Rd., Grass Lake
The Rev. Don E. Peterson, Pastor
Every Sunday—
10:00 a.m.—Sunday school.
11:00 a.m.—Morning worship.
6:00 p.m.—Evening service.
Every Wednesday—
7:00 p.m.—Bible study.

ST. VLADIMIR ORTHODOX CHURCH
The Rev. Fr. Paul Karas, Pastor
9900 Jackson Rd.
(between Steinbach and Dancer Rds.)
Sunday Services—
9:30 a.m.—Hour.
9:45 a.m.—Holy Confession.
10:00 a.m.—Divine Liturgy.

Presbyterian—
FIRST UNITED PRESBYTERIAN
United
The Rev. Mary Groty
Every Sunday—
9:30 a.m.—Sunday school.
11:00 a.m.—Worship service.

United Church of Christ—
BETHEL EVANGELICAL AND REFORMED
Freedom A. Reinick, Pastor
Every Sunday—
10:00 a.m.—Worship service.

CONGREGATIONAL
121 East Middle Street
The Rev. Leland E. Spoker, Pastor
Every Sunday—
10:00 a.m.—Worship.
10:45 a.m.—Sunday school, K-8. Nursery provided.

ST. JOHN'S
Rogers Corners, Waters and Fletcher Rds.
The Rev. Theodore Winkler, Pastor
Every Sunday—
10:30 a.m.—Worship service, Sunday school.

ST. JOHN'S EVANGELICAL AND REFORMED
Francisco
The Rev. Thomas Baird, Pastor
Every Sunday—
10:30 a.m.—Sunday school and worship service.
1st Sunday of every month—
Communion.

ST. PAUL
The Rev. Erwin R. Koch, Pastor
Wednesday, Jan. 3—
7:30 p.m.—125th Anniversary Committee.
Sunday, Jan. 7—
9:00 a.m.—Church school—5th-8th grades.
9:00 a.m.—Confirmation Class—7th and 8th grades.
10:30 a.m.—Church school—3 year olds through 5th grades.
10:30 a.m.—Morning Worship—Holy Communion.
11:30 a.m.—Special Church Council meeting.
11:30 a.m.—Fellowship hour in lounge.
11:45 a.m.—Church school classes are dismissed.
3:00 p.m.—Junior High YF Winter Party.
Monday, Jan. 8—
7:45 p.m.—Board of Memorialists and Trustees.
Tuesday, Jan. 9—
9:00 a.m.—Women's Fellowship.
5:30-6:15 p.m.—Chancel choir rehearsal.
7:30 p.m.—Chancel choir rehearsal.

DISC JOCKEY

Music from the 40's-80's
Specializing in 50's & 60's Music
Country - Rock
Big Band and more!
Not just a D.J.
Call Jerry
475-1966
Reasonable Rates

Gift giving made easy with...
U.S. SAVINGS BONDS

The Great American Investment

Guest Minister Will Speak Sunday at Christian Fellowship

Chelsea Christian Fellowship, 337 Wilkinson St., is being favored with the ministry of the Rev. Samuel Wright of Detroit, Sunday, Jan. 7 in the 11 a.m. worship service, according to the interim pastor, the Rev. Thode Thodeson.

The Rev. Wright is on the ministerial staff of Calvary Church of God in Christ in Southfield. His ministerial credentials were earned with the Detroit branch of Central Bible College of Springfield, Mo. He is a graduate of Ferris State College in marketing and is an associate in building construction. He served for two years in Ethiopia with the U.S. Peace Corps.

He ministers once a month as a volunteer at the chapel in the Cassidy Lake Corrections facility. The public is invited to meet and enjoy the ministry of the Rev. Wright.

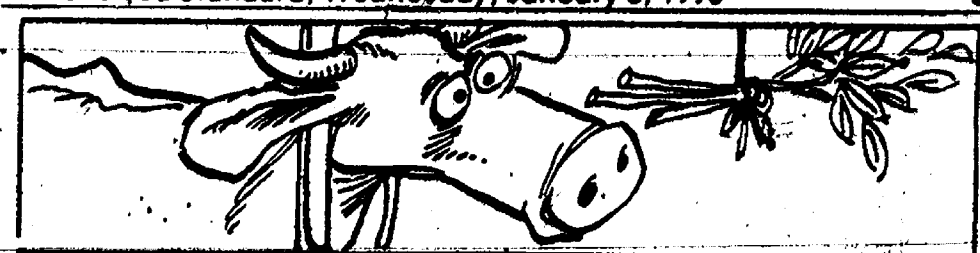
Douglas Henson Earns Degree at Oklahoma Christian

Douglas Leroy Henson, 13460 Harper Dr., Chelsea, graduating cum laude, received the Bachelor of Arts in English in mid-winter commencement ceremonies Dec. 15 from Oklahoma Christian College in Oklahoma City, Okla.

T. Don Stacy, chairman of the board and president of Amoco Canada Petroleum Co. addressed the December graduating class of 53 students.

Stacy received his honorary doctor of laws degree from President J. Terry Johnson in recognition of his international contribution to the petroleum industry including his leadership in developing advanced technology and his service as worldwide president of the Society of Petroleum Engineers, as well as his encouragement of students.

Oklahoma Christian College is a four-year private liberal arts institution offering more than 70 academic majors as well as pre-med and pre-law programs. Students represent 47 states, 14 foreign countries and a U.S. territory. Celebrating its 40th year, Oklahoma Christian moves to university status as Oklahoma Christian University of Science and Arts in the spring of 1990.



People once believed they could keep their cattle healthy by hanging boughs of the mountain ash tree in front of the stables.

PARISHO & COMPANY

Professional Corporation
JAMES (JAY) W. PARISHO, C.P.A.
CERTIFIED PUBLIC ACCOUNTANT
Two locations to serve you:
1905 Pauline Boulevard, Suite 5 107 1/2 South Main, P.O. Box 251
Ann Arbor, Michigan 48103-5001 Chelsea, Michigan 48118
313/995-5656 313/475-9640
WE SERVICE: Personal — Corporate — Partnership — Farms
ACCOUNTING — TAX PREPARATION & CONSULTING — FINANCIAL PLANNING
Appointments available Monday through Saturday

Appearing Sunday January 7th The 6 p.m. **STOVERS** in Chelsea



Gospel Music Favorites
145 E. Summit St.
Immanuel Bible Church

Call 475-8936 for more information

WINTER CLEARANCE CONTINUES

50% OFF

ALL CHILDREN'S WINTER CLOTHES

DANCER'S

STOCKBRIDGE — CHELSEA



CHELSEA FULL GOSPEL CHURCH

Pastors John & Sarah Groesser
475-7379

Romans 10:17—"Faith comes by hearing and hearing by the Word of God."

Do you wish you had more faith? Does God seem distant and unconcerned with your problems? If so, now is the time to change all that.

Romans 12:3 tells us that, "God has dealt to every man the measure of faith." If you have made Jesus Christ your personal Saviour, all the faith you need is already available. What you must do is act on it to release His power. Speak God's Word aloud; believe His promises; pray to receive guidance in carrying out His plan for your life.

If you have not given your life to Jesus yet, don't wait. Call to him now, and He will answer you. Receive the faith God wants to pour into you, and release that faith by believing God's Word and acting on it. Something wonderful will happen!

Jesus is Lord and Saviour!

Services:

Sunday: 10:00 a.m.
11:00 a.m.
6:00 p.m.

Church School
Worship Service
Evening Worship

Currently Meeting: Lima Township Hall 11452 Jackson Road - Just East of Chelsea

Come worship the Lord with us.

COMMUNITY CALENDAR



Monday—

Lima Township Board meeting for January only has been changed to Monday, Jan. 8, 1989. advc31-3

Chelsea Recreation Council 7:30 p.m., fourth Monday of the month, Village Council chambers. 35tf

Chelsea Kiwanis Club meets every Monday, 8:30 p.m. at Chelsea Community Hospital.

Chelsea School Board meets the first and third Mondays of each month, 8 p.m., in the Board Room.

Chelsea Lionses, second Monday of each month at the Meeting Room in the Trustcorp Bank on M-52, Chelsea, at 7:30 p.m. Call 475-1791 for information.

Parents' Anonymous Group, Chelsea, a self-help group for abusive or potentially abusive parents, Mondays, 7-9 p.m. Call 475-9176 for information.

Waterloo Area Historical Society Board of Directors meets the third Monday of each month 7:30 p.m., at Waterloo Farm Museum. For more information call Nancy Kaufman, 475-3692.

VFW Ladies Auxiliary, second Monday of each month, 7:30 p.m. at 105 N. Main St., Chelsea.

Chelsea Area Historical Society meets the second Monday of every month, 7:30 p.m., at the Chelsea Depot. New members welcome. Ph. 475-7047 for further information.

Women in Abusive Relationships, drop-in support group, 7-8:30 p.m., Chelsea Community Hospital, 775 Kresge House. 973-0242 or 24-hour crisis line: 995-5444.

Interstitial Cystitis Support Group, second Monday of each month at Women's Health Center, Chelsea Community Hospital, 7 to 8:30 p.m. Call Betty 475-9250 or more information. 32-2

Tuesday—

Sylvan Township Board regular meetings, first Tuesday of each month, 7 p.m. Sylvan Township hall, 112 W. Middle St. advtf

American Business Women's Association 8:30 p.m. at the Chelsea Hospital fourth Tuesday of each month. Call 475-2041 for information.

Olive Lodge 156 F&AM, Chelsea. Regular meeting, first Tuesday of each month.

Lima Township Planning Commission, third Tuesday of each month, 8 p.m., Lima Township Hall. advx30tf

Lions Club, first and third Tuesday of every month, 8:45 p.m., at Chelsea Community Hospital. Ph. 475-7324 or write P.O. Box 121, Chelsea.

Chelsea Rod and Gun Club regular meeting, second Tuesday of each month at the clubhouse, Lingane Rd. 49tf

Chelsea Rebekah Lodge No. 130 meets the first and third Tuesday of each month, at 7:30 p.m.

Chelsea Amateur Radio Club, Inc., fourth Tuesday of each month, 7 p.m., Trustcorp Bank basement.

Rotary Club, Tuesday noon, Woodlands Room, Chelsea Community Hospital. For more information call Dr. Frederik van Reesema, 475-3925, or Mark Cwiek, 475-3913.

Chelsea Chamber of Commerce Board of Directors meetings, second Tuesday, each month, noon, Chelsea Community Hospital, private dining room. 7tf

Wednesday—

OES Past-Matrons dinner and meeting at Senior Citizen site, North school, second Wednesday every month at 11:45 a.m. Ph. 475-1141 for reservations by Monday preceding meeting. 33-2

VFW Post 4076 meeting second Wednesday of month, 7:30 p.m. VFW Hall, 105 N. Main.

Pittsfield Union Grange, No. 882, meets the second Wednesday of each month, 8 p.m. at Pittsfield Grange Hall, 3337 Ann Arbor-Saline Rd., Ann Arbor. 31tf

OES meets first Wednesday of the month at the Masonic Temple, 113 W. Middle St., 7:30 p.m.

Toastmasters International, first and third Wednesdays at 12 noon in Woodland Room B at Chelsea Community Hospital. For information call Jim Birchler, 475-3913.

Fraternal Order of Eagles, Ladies Auxiliary No. 2154 meet second, fourth Wednesday of each month, 7 p.m., 7530 Jackson Rd.

Friends of McKune Memorial Library meets at 7 p.m. first Wednesday of each month upstairs at McKune Memorial Library. Visitors are welcome.

Chelsea Depot Association will meet the first Wednesday of each month at 7 a.m. at the Chelsea Depot. Every third month, beginning with the month of November, the meetings will be at 7 p.m. All interested persons are welcome to attend.

Thursday—

Chelsea Rod and Gun Club Auxiliary regular meeting, second Thursday of each month, 7:30, clubhouse, Lingane Rd.

Chelsea Area Players Board meeting second Thursday of each month, 7:30 p.m., at Trustcorp Bank meeting room. For more information call 475-2629.

American Legion Post No. 31. General meeting the first Thursday of each month at the post home, Cavanaugh Lake.

Knights of Columbus Women's Auxiliary, second Thursday of each month, 8 p.m. at K. of C. Hall, 20750 Old US-12.

Substance Abuse Lecture Series: Meetings: 7:15 p.m. every Thursday; Chelsea Community Hospital, Dining Room. Series is open to the public to provide awareness and education regarding various aspects of alcoholism or other chemical dependence abuse.

Chelsea High School P. T. T. (Parents Teachers Together) third Thursday of every month in Board of Education Room.

New Beginnings—Grief Group first and third Thursdays, 7:30-9 p.m., Family Practice Center classroom at 775 S. Main St., Chelsea.

Friday—

Senior Citizens meet third Friday of every month for pot-luck dinner, games and cards, 6 p.m. at Senior Citizen Activities Center at North School.

Misc. Notices—

Parent to Parent Program: in home, friendly, visiting support system for families with children. Call 475-3306.

Parents Without Partners, support group for single parents. Youth activities, social events, discussion groups. For membership information, call recording at 973-1933.

Home Meals Service, Chelsea. Meals served daily to elderly or disabled. Cost per meal, \$2.50, for those able to pay. Interested parties call Ann Feeney, 475-1493, or Mary Erskine, 475-2821.

Chelsea Social Service, 475-1581, 2nd floor of Village Offices. Thursdays, 10 to 4, or if an emergency need at other times, call Linda at 475-7406 or Jackie at 475-1925.

Assault Crisis Center has moved to 1800 Packard Rd., Ypsilanti 48197. Ph. 483-RAPE, 24-hour crisis line, 483-7942, business line.

Alcoholics Anonymous group, every Tuesday, 12 noon, 2nd floor, 104 E. Middle St., Chelsea. A. A. Alonon meets every Saturday at 7 p.m., 2nd floor, 104 E. Middle St., Chelsea.

Faith in Action House Community Center, open daily throughout the week provides various free services to those in need. Services include food, clothing, financial help, advocacy and many other forms of assistance. Need friendly help? Call us from 9 a.m. to 4 p.m., 475-3306.

Dexter Area Museum, 3443 Inverness, open every Friday and Saturday, 1 to 3 p.m. Ph. 426-2519.

Fun Runs (at Chelsea High School)—Mon. and Wed. nights, 6:30 to 8 p.m. Tues. and Thurs., 10:30 a.m. to 12 noon.

Chelsea Together. For information, call 475-4030, M-F, 8 a.m.-5 p.m., or 475-5935, M-F, 5 p.m.-9 p.m.



CHILDREN WAIT THEIR TURN to perform in the South school production of Christmas Around the World. The play, performed recently by Suzanne DeVries fourth graders, is an annual event.

TEL-MED Tapes May Help With 1990 Resolutions

Tel-Med, a health-education-by-telephone program, can help you keep your New Year's resolutions. Call Tel-Med for up-to-date information on smoking cessation, nutrition education, alcohol and substance abuse. This service, which is completely anonymous and confidential, is free and accessible from the privacy of your Chelsea, Dexter or Manchester area home by calling 668-1551.

Tel-Med is open to take your calls weekdays from 9 a.m. to 9 p.m. and Saturdays from 12 noon to 8 p.m. Tel-Med is sponsored, in part, by Chelsea Community Hospital and Chelsea United Way.

To help you keep your New Year's resolutions, Tel-Med suggests the following tapes:

Smoking Cessation: Cigarettes and Heart Disease (No. 21), Reducing the Risks of Smoking (No. 695), What Do You Get Out of Smoking? (No. 698).

Diet and Nutrition: Breakfast: Why Is it Important? (No. 603), Guide to Good Eating (No. 604), Snacks (No. 606).

Alcohol Use: Drinking: Is it a Problem? (No. 943), How AA Can Help the Problem Drinker (No. 946), To Drink or Not To Drink (No. 944).

Other Drugs: Amphetamines and Barbiturates (No. 136), Marijuana (No. 137), Narcotics (No. 138).

Happy 30th Jeff

December 30

Love,
Rose, Andy
Mom and Dad



She's Sweet Sixteen on January 7

Happy Birthday Jenny Bobo

Love,
The Heil Family,
Bob, Sally, Bobby & Katie



DRAINS and SEWERS CLEANED ELECTRICALLY

SINKS
SUMPS
TOILETS



PROMPT SERVICE

FLOOR
DRAINS
MAIN
LINES
STORM
SEWERS

SEPTIC TANKS—Cleaned, Installed, Repaired
DRAINFIELD & OTHER EXCAVATING

• RESIDENTIAL • COMMERCIAL • INDUSTRIAL

BOLLINGER SANITATION SERVICE

PHONE (313) 475-2097

GIVE THE TIME OF YOUR LIFE.

Be a volunteer.

SUBSCRIPTION ORDER FORM for

The Chelsea Standard

BY MAIL DELIVERY

elsewhere in

United States.....\$15.50

in Michigan.....\$12.50

Name _____

Address _____

City _____ State _____ Zip _____

If you are not presently a subscriber, receiving your Standard by mail, clip and send with payment in advance to

THE CHELSEA STANDARD, 300 N. MAIN, CHELSEA 48118

Sue Pierzynowski

Surgery Sue

is

40

on January 4th!

Come toast her demise
and extend your collective sympathies

Thursday, January 4th

from 4 until 7

at

The Wolverine!

Santa Is Alive, Very Well and Attends EMU

Yes, Virginia, there is a Santa Claus and he's a telecommunications major at Eastern Michigan University, an ex-keyboard player for a top 40 rock 'n' roll band and smokes Marlboro cigarettes. He was also scheduled to be featured on WTVS-TV's (Channel 58) "Club Connect" Wednesday, Dec. 20, and Saturday, Dec. 23.

Eric Kroph, a junior from Grosse Pointe Woods, was in need of some holiday employment when he came across an ad seeking Santas. He went in for an interview, gave his best Ho! Ho! Ho! and was hired as one of Briarwood Mall's five jolly fat men.

"It's pretty hot and itchy in the suit. It's wool with fur lining and I have to pad myself with pillows," Kroph said noting that his usual shift is between three and five hours long and on the week-end he'll see more than 400 kids in a shift.

But he's not complaining; Kroph likes kids and being a Santa allows him to see them at their most naughty and nice. "The best part is making kids believe you're Santa. Some kids aren't sure they believe but after I convince the skeptics it's great! They really open up and start asking questions—Where are your reindeer now? Do you come down from the North Pole everyday? — and saying what they want for Christmas," Kroph said. "They get really excited."

Are visions of sugar plums dancing in the heads of children who climb on to his lap to disclose their Christmas wish list? Not really. "The boys ask for anything to do with Teenage Mutant Ninja Turtles, Batman or Ghostbusters and all the girls want Barbie dolls or Little Miss Make-Up," Kroph advised.

The spirit of giving hasn't escaped all children though, according to Kroph who mentioned one little boy's selfless request. "He asked for a toothbrush for his dad, a watch for his mom and a doll for his sister but nothing for himself."

Generally, Kroph said being Santa is a low stress job, except for tired arms from lifting up kids, but added it's not as easy as it looks. "It's like playing a role; I get into character. I think about what Santa means to me and I try to portray that image. You can't be negative. You don't want to be responsible for someone having a bad Santa complex," he joked. He also said a few "Merry Christmases and Ho! Ho! Ho!" help him get into the spirit of things.

Is there really a Santa Claus? Kroph thinks so. "There definitely is one for children but there's one for adults, too. There is a Santa in the spirit of the season and in the joy of giving."

Pet of the Week

Pet of the Week is a weekly feature of this newspaper. Pets shown are available at the Humane Society of Huron Valley, 3180 Cherry Hill Rd., Ann Arbor.

• Cost of a pet is \$25 plus a sterilization fee.

• Sterilization fees are \$20 for a male cat, \$30 for a female cat, \$25 for a male dog under 40 pounds, and \$35 for

a female dog under 40 pounds.

• If you already have a pet, you must provide proof of current vaccinations.

• Landlord approval is necessary if you rent your residence.

• Pets can be adopted seven days a week from 11 a.m. to 4:30 p.m.

Visiting hours end at 5 p.m.

• For more information, contact the Humane Society of Huron Valley at 682-5585.



DAISY is a smooth-coated collie mix adult female who would make a great jogging companion. She is described as "sweet-faced, sweet-tempered, and sweet-hearted." She was a stray.



LOVERLY is a spayed, domestic long-haired cat with calico-colored fur. She's an older adult, mellow, litter-trained, good with kids, and seems to be good with other cats.

Dial-A-Garden Topics Listed

The following is a weekly schedule of Dial-A-Garden, the system of pre-recorded daily gardening tips sponsored by the Washtenaw County Cooperative Extension Service. The system is in operation 24 hours a day, seven days a week. Interested persons are invited to call 971-1129 at their convenience to listen to timely, up-to-date gardening information.

Wednesday, Jan. 3—"Growing Succulents."

Thursday, Jan. 4—"Winter Checklist."

Friday, Jan. 5—"Storm Injury on Trees."

Monday, Jan. 8—"Growing Bromeliads."

Tuesday, Jan. 9—"Home Greenhouse."

Wednesday, Jan. 10—"Plant Hardiness Zones."

Two from Area Earn Degrees at Eastern Michigan

Niles N. Mayrand and David G. Bareis from the Dexter-Chelsea area were among approximately 1,300 students upon whom degrees were conferred at Eastern Michigan University's winter commencement ceremonies in Bowen Field House, Sunday, Dec. 17.

Mayrand completed requirements for his bachelor of business administration (BBA) degree, and Bareis qualified for a bachelor of science (BS) degree.

Both Sims and Michigan Senator Lana Pollack received honorary Doctor of Public Service degrees from Eastern Michigan University.

The Chelsea Standard, Wednesday, January 3, 1990

Mr. Dee's
Sea Food n' Things
not your ordinary fish market
QUALITY IS OUR PRODUCT

OPEN:
Mon.-Thurs. 7:30-5:30
Fri., 7:30-6 Sat., 9-4:30

Mr. Dee's Specials Thru Jan. 9, 1990

Fresh Rainbow Trout . . . bone-out, 8 oz. . . . **1b. \$3.95**

Florida Mahi Mahi, Fresh **1b. \$3.95**

Gulf Shrimp 36-40 ct., shell on, I.Q.F. **1b. \$5.75**

3950 Jackson Ave.
1/2 mile west of Wagner Rd.
(next door to Madison Electric)

747-8475

QUALITY USED CARS

1989 OLDSMOBILE 98

Leather trim, loaded, loaded, loaded! 9,600 actual miles. Orig. sticker over \$27,000. **\$18,900**

1989 CHEVROLET CORSICA 4-DOOR

4-cyl., auto. trans., p.s., p.b., air, AM/FM stereo. 7,900 miles **\$8,995**

1989 OLDS CUTLASS SUPREME

2-dr., 6-cyl., automatic, p.s., p.b., cruise, tilt, real defog., AM/FM stereo. **\$10,500**

1989 OLDS CUTLASS SUPREME

5-L model, loaded! Power seats and windows. **\$11,900**

1989 CAPRICE STATION WAGON

V-8 auto. trans., air, cruise, tilt, power windows & seats. 12,600 miles. **NOW \$13,900**

1988 CHEV. S-10 BLAZER

Tahoe pkg., 6-cyl., auto. trans., air cond., cruise control, tilt wheel, AM/FM stereo, luggage carrier. **\$10,900**

1988 PONTIAC GRAND PRIX

6-cyl., auto. trans., power steering, power brakes, air, cruise, tilt, AM/FM stereo cassette. A real nice car! **\$11,900**

1987 FORD AEROSTAR VAN

6-cyl., air, cruise, tilt **\$8,495**

1986 BUICK CENTURY CUSTOM 4-DOOR

4-cyl., auto. transmission, power steering, power brakes, cruise, tilt, AM/FM stereo cassette, power locks. **\$5,995**

1986 PONTIAC 6000 4-DOOR

4-cyl., auto. trans., p. steering, p. brakes, air cond., cruise, tilt, AM/FM stereo **\$5,995**

1986 PONTIAC 6000 LE

6 cyl., auto. trans., p.s., p.b., air, cruise, tilt, rear def., AM/FM stereo cassette, power seat, windows and locks, luggage carrier. 34,000 miles. **\$6,295**

1986 DELTA '88

Stock No. 1540 V-6, auto. trans., p.s., p.b., air, cruise, tilt **\$6,495**

1986 BUICK SKYHAWK 2-DR. LIMITED

Auto. trans., p.s., p.b., a.c., cruise, tilt wheel, luggage carrier. **\$4,995**

1986 CUTLASS SUPREME 4-DR. SEDAN

6 cyl., auto. trans., p.s., p.b., ac, cruise control, power windows, AM/FM stereo, 29,000 miles. **\$6,995**

1986 DELTA 88 ROYAL BROUGHAM

Auto. trans., power steering This is a good car. We have 3 of these. and brakes, air cond., cruise and tilt, AM/FM stereo cassette, power seat and locks. **\$6,995**

1986 BUICK REGAL 2-DR

V-6 air, auto. trans., Nice car. 28,000 miles **\$7,495**

1986 OLDSMOBILE DELTA 88, 4-Dr.

auto. trans., cruise, tilt, rear defogger, power locks, 35,000 miles. **\$7,995**

1985 CHEV ASTRO VAN

6-cyl., auto. trans., p.s., p.b., cruise, tilt, AM/FM stereo. **\$6,995**

1985 DODGE ARIES 4-dr.

4-cyl., auto. trans., p.s., p.b., air cond., rear def., stereo radio. Nice clean car. **\$1,495**

1985 GMC RALLY VAN, 8 PASSENGER

6.2 diesel. Auto. trans., p.s., p.b., air, cruise, tilt, AM/FM stereo cassette, rally wheels, power windows, power locks. **\$7,995**

1985 BUICK REGAL 2 DOOR LIMITED

6 cyl. auto. trans., air condition, cruise, tilt, full power **\$6,995**

1985 CHEVROLET WORK VAN

6-cyl. auto. trans., power steering, power brakes, AM/FM radio **\$5,995**

1985 DELTA 88 4 DR

V-8, cruise, tilt, power locks 41,000 miles. **\$6,695**

1985 CHEV. S-10 BLAZER

Sport pkg., auto. trans., p.s., p.b., air cond., cruise & tilt wheel, AM/FM stereo cassette, running boards, new tires. **\$7,995**

1985 CHEVROLET CELEBRITY 4-DOOR

4-cyl., auto trans., power steering, power brakes, air, AM/FM stereo **\$4,695**

1985 BUICK CENTURY STATION WAGON

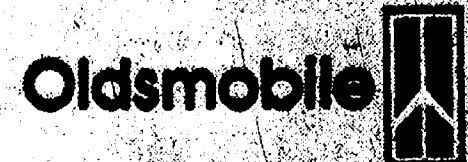
V-6 engine, p.s., p.b., air, wood grain. Pretty car! **\$5,995**

1984 BUICK PARK AVE. 4-DR.

Locally owned with equipment. New car condition. **\$5,995**

1984 OLDS TORONADO

V-8, auto. trans., p.s., p.b., air cond., cruise & tilt, power seats, windows & locks. **\$3,995**



FAIST-MORROW

1800 S. Main St., Chelsea

475-8663

OPEN UNTIL 6:00 P.M.
Monday and Thursday

OPEN SATURDAY
9:00-5:00 P.M.



FEBRUARY 1990 IS



WELLNESS

MONTH

In Washtenaw County

Watch for this logo publicizing events in the six dimensions of wellness

- PHYSICAL
- SOCIAL
- EMOTIONAL
- MENTAL
- SPIRITUAL
- OCCUPATIONAL

Well All Ways

747-8677

coordinated by

Parish Partnerships
of Washtenaw County

ROCKEFELLERS

ROCKS - FOSSILS
MINERALS - SUPPLIES

12290 JACKSON RD.

475-0101

Open Tues. - Sat., 10-5:30
and by appointment

CHELSEA SELF STORAGE

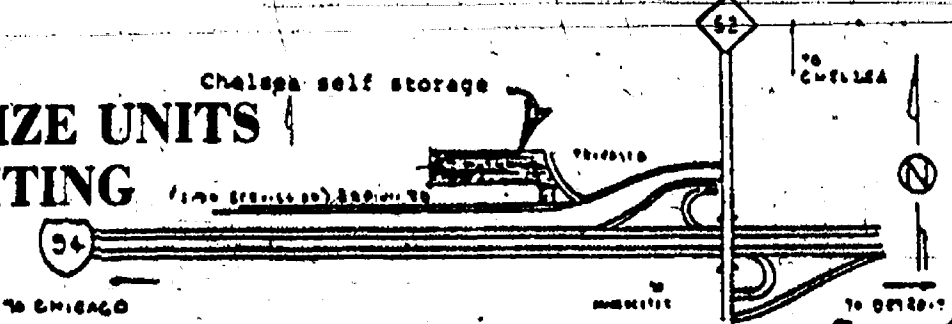
18000 BROWN DRIVE, CHELSEA

PHONE (313) 475-8888

STORAGE RENTAL UNITS LOCATION MAP

Check Our
New Prices!

- 5 DIFFERENT SIZE UNITS
- SECURITY LIGHTING
- U-LOCK



State Licensed and Insured

JERRY HANSEN & SONS
ROOFING & SIDING COMPANY

Phone (313) 994-4232
 P.O. Box 2123, Ann Arbor, Mich. 48106

ALL TYPES OF ROOF REPAIRS, SIDING, GUTTERS
 DOWNSPOUTS INSURANCE WORK

27 Years Experience

Standard Want Ads Get Quick Results.

CAVANAUGH LAKE STORE

A FAMILY BUSINESS
 SERVING THE LAKE
 FOR 90 YEARS

**WE ARE NOW CARRYING KEROSENE
 FOR YOUR CONVENIENCE**

Get your photographs
 in time to share the
 holiday memories with
 family and friends.

**1 HOUR
 SERVICE**

**FREE DOUBLE
 PRINTS** MEMORIES TO SHARE
 MEMORIES TO KEEP

Make V.I.P. Your New Year's Resolution
 for professional photo finishing

• QUALITY • SECURITY • SPEED
 • PERSONAL SERVICE •

Village Instant Photo

CHELSEA SHOPPING CENTER-NEXT TO THE FLAG POLES
 1090 SOUTH MAIN STREET-CORNER MAIN AND OLD U.S. 12
 MON-SAT: 9-9 SUN: 12-5
(313)475-5920



DOUG COOPER of Pioneer High school, and husband of Chelsea High school teacher Nancy Cooper, helps Bates Elementary school student Juanita Businger at the recent Christmas skating party for special education students sponsored by the Chelsea Lions and Lioness Clubs. Students from Chelsea, Dexter, Manchester, Lincoln, Pioneer, Willow Run, Lakewood Center, High Point, and Whitmore Lake schools were treated to the party of "rolling merriment" at the Ann Arbor Skate Company.

**Consumer Products
 Safe Testing Bill
 Now Before Congress**

Consumer Products Safe Testing Act, H.R. 1876, S.891, currently before both the House of Representatives and the Senate, would ban two common product toxicity tests used on animals.

Targeted are the Draize test, in which the eyes of rodents (usually rabbits) are irrigated with products to determine the amount of irritation they will cause, and the Lethal Dose 50 (LD-50) test, in which rodents are fed sufficient quantities of products to cause death.

These two tests are responsible for the suffering of millions of laboratory animals annually.

Faster, more cost-effective, and more humane alternatives such as computer modeling and bacteria-based tests are already being used by such companies as Avon Products, Inc., and Revlon, Inc.

Write to Rep. Carl Pursell, urging him to co-sponsor the bill, and to Rep. James Florio (D-N.J.), the appropriate subcommittee chairman, to encourage him to give this important bill a hearing.



According to Justice Department statistics, crime rates in the U.S. are falling.

PROPERTY OF U.S. Gov't

WOW!

The world's largest landowner is the United States Government with a holding of 732 million acres.

ILES COLLISION
 BUMPING - PAINTING - INSURANCE WORK
 EXPERT COLOR MATCHING

AUTO PAINTING - \$150 up

142 W. Michigan Ave. Grass Lake, Mich. 49240

(517) 522-5122

JAMES BARRY
 ACCOUNTANT & TAX ADVISOR

TAX PLANNING AND RETURN PREPARATION
 COMPLETE ACCOUNTING AND TAX SERVICES
 INDIVIDUALS, PARTNERSHIPS AND CORPORATIONS
 NOTARY PUBLIC

9412 HORSESHOE BEND
 DEXTER
 TELEPHONE 426-2395
 DAY OR EVENING APPOINTMENTS

Unadilla
 Since 1873
 Party Store & Deli

Open All Year
 7 days a week
498-2400

Located in the heart of downtown Unadilla
 "The oldest store in Livingston County
 ... a little of everything!"

**THE COLDEST
 BEER & POP
 AROUND!!**

Unadilla's one-and-only
DELI OPEN FRIDAY,
 SATURDAY & SUNDAY
 delicious subs anytime!
 HOT COFFEE • HOT CHILI
 SANDWICHES

Lights Out • It's Showtime
 Featuring
 Over 200 Movies
 To Choose from
 (Including the Latest Releases)

• Groceries • Ice
 • Camping Supplies
 • Beer • Wine • Pop
 • Liquor on Sundays
 • Campfire Wood
 • Bait • Tackle
 • Gas • Oil

★ Penny Candy

Come to Gee's
OPEN DAILY, 9 to 6
and see what
19¢ will buy

• Bananas . . lb. 19¢ • Idaho Potatoes
 • Sweet Onions • Winter Squash

Large Navel ORANGES Indian River GRAPEFRUIT

Washington Red
 Yellow Delicious
 Granny Smith
 Apples

Pears

19¢ each

BIRDFEEDERS
 Black Oil SUNFLOWER SEEDS
 50 lbs. \$9.95
 THISTLE SEED 50 lb. Bag \$34.95
 WILD BIRD MIX 50 lbs. . . \$6.49

Lettuce
 2 heads/99¢

★ All-Star Hand-Dipped ICE CREAM ★ GEE'S BAKERY—Fresh Baked Goods ★

GEE FARMS

14928 Bunker Hill Rd., Stockbridge (517) 769-6772

Open daily 9 a.m. till 6 p.m.
 Directions: N. M-52 to North Territorial to M-104 W.
 North Territorial 2 miles to Bunker Hill Rd.

MasterCard VISA

**Don't get left out
 in the cold.**

9-MONTH CD
8.10%*
 Effective Annual Interest Rate
 *simple interest

Get great rates with Great Lakes.

The Great Lakes 9-month CD is a great way to make your money work for you, without putting your money on ice for a year or more.

You get Great Lakes' usual great interest rate, so your money's working to earn a great return. You don't have to freeze your funds for long, either—you'll be able to roll it over again in just 9 months! And with Great Lakes, you know your investment is

FDIC insured, and safe and sound in one of the largest savings banks in the Midwest.

So come inside for your 9-month CD today! Visit any Great Lakes office. Or stay inside, and call Great Lakes toll-free, 1-800-544-4703.

GREAT LAKES BANCORP
 100 Years of Building Tomorrow

FOR MORE INFORMATION, CALL 800-342-5453 OR YOUR NEAREST GREAT LAKES OFFICE.
 62 OFFICES STRONG IN MICHIGAN AND INDIANA.

Chelsea: 1135 S. Main, 475-1341
 Ann Arbor: Corporate Headquarters
 One Great Lakes Plaza, 769-8300
 Dexter: 8081 Main St., 426-3913

100 Please join us for a special year-round program of festivities, including traveling historical displays and videos, our Centennial sweepstakes, and other gala activities, in celebration of our 100th anniversary. FDIC Insured

Half Million Michigan Snowbirds Pack for Florida Vacations

This winter, more than 500,000 Michigani-ans will "say no to snow" and escape to the sugar-white beaches of Florida, where state residents will pump nearly \$9 billion annually into the sunshine state's economy, AAA Michigan reports.

Average high temperatures of 78 degrees, endless beaches, 600 golf courses, 106 state parks, fishing and other water sports are some reasons why Florida is one of the favorite vacation spots of Michigani-ans.

Half of the visitors will travel by

air, paying round trip coach fares between \$260 and \$722 during the peak season. Tickets in the lower price range must be purchased at least seven days in advance and are non-refundable.

"AAA Travel offers seats on charter flights to Florida cities with fares as low as \$139 round trip," said Diane Willard, vice-president of AAA Travel Agency. "Prices are based on availability and require a willingness to be flexible about travel times."

Packages such as Delta Dream

Vacations to Orlando begin as low as \$312 per person and include air, three night accommodations and car rental, Willard said.

Michigan sent the ninth-highest number of visitors to the "state's other peninsula" by air in 1988.

Last year, state motorists represented the seventh-largest group of visitors to Florida. AAA Michigan members request between 85,000 and 100,000 Florida Triptiks annually, most between November and March.

The shortest route from the Detroit area to Miami is I-75, about 1,388 miles—a three-day drive with two overnight stops. This route has 50 miles of semi-mountainous driving. From Kalamazoo, the most direct route to Miami is southbound I-49 to I-65 at Indianapolis.

A family of four vacationing in Florida should budget \$168 per day for lodging and meals, plus \$8 per 100 miles for gasoline and other auto-related expenses if driving.

A new stand-out Florida draw is Orlando's Disney-MGM Studios theme park, a \$300 million addition to Walt Disney World, which features a motion picture studio.

The Chelsea Standard

Section 2

Chelsea, Michigan, Wednesday, January 3, 1990

Pages 9-16



TWO CHELSEA-AREA ROCK BANDS, The Holy Cows, above, and the Opossums, below, along with the Ann Arbor band Anne Be Davis, will be featured in a showcase of area musicians at The Blind Pig in Ann Arbor on Friday, Jan. 12 beginning at 9 p.m. The three bands are the first signings by Picnic Horn Records, Inc., a new record company headquartered at Cavanaugh Lake. The Holy Cows have just released their second album, "To Be Not To Be; That's What I'm Talkin' About," a record of

We don't care if you paint your hair blue, rip the sleeves off your shirt or pierce your ear.



But don't smoke just to be like your friends. Or to be different from your friends. Or to be anything at all. Because with everything we know about cigarettes today, there's only one thing you'll be if you start smoking now. And that's sorry. Sorry you can't get up in the morning without coughing your lungs out. Sorry you can't climb a single flight of stairs without getting winded. Sorry that every time you light one up, your risk of heart disease goes up. If you're a smoker, take some time to stop and think it all the way through. Right now, it's your decision. In the long run, it's your life.

WE'RE FIGHTING FOR YOUR LIFE
American Heart Association



Chelsea Cyclist Honored By American Lung Assoc.

Diane Weid of Chelsea was honored recently by the American Lung Association of Michigan for her participation in the Association's Bicycle Around Michigan tours and for her outstanding fund-raising efforts. Weid raised \$768 in pledges.

Weid was inducted into the Lung Association's Winner's Circle, along with 18 other cyclists from across the state. These cyclists participated in three-day bicycle tours through the northern lower peninsula last summer. Each cyclist raised more than \$500 in pledges. Over-all, the two tours generated \$50,000 for the American Lung Association of Michigan.

Proceeds from the tours support the Lung Association's programs to prevent and control lung disease. Freedom from Smoking clinics, fami-

ly asthma support groups and pulmonary research are some of the programs that benefit.

Key Tours, Inc. donated a Toronto week-end trip for two. The trip was raffled-off during the awards ceremony, which was held in Lansing on Dec. 1.

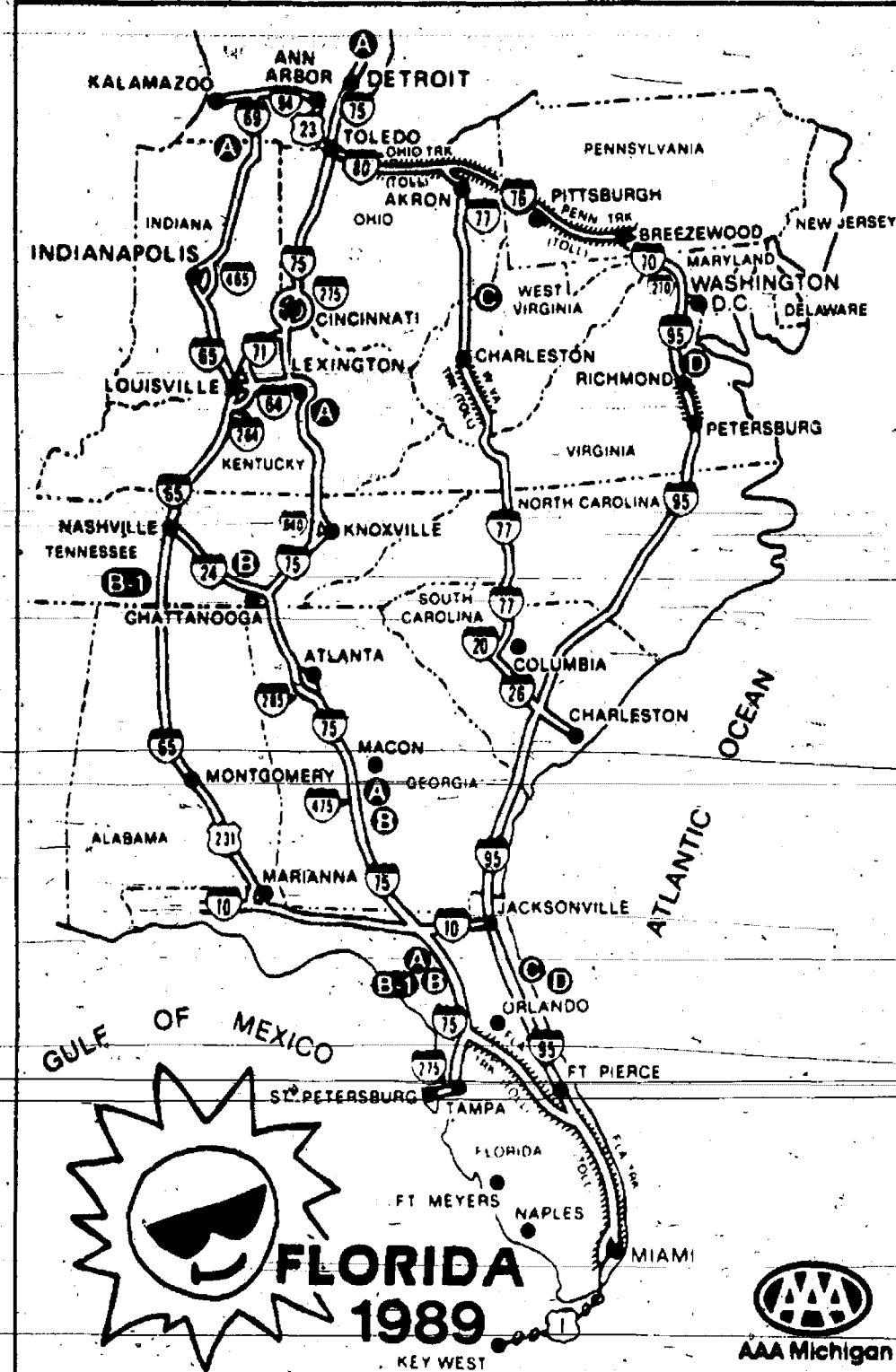
For information on 1990 Bicycle Around Michigan tours, call the American Lung Association of Michigan toll-free at 1-800-678-LUNG.



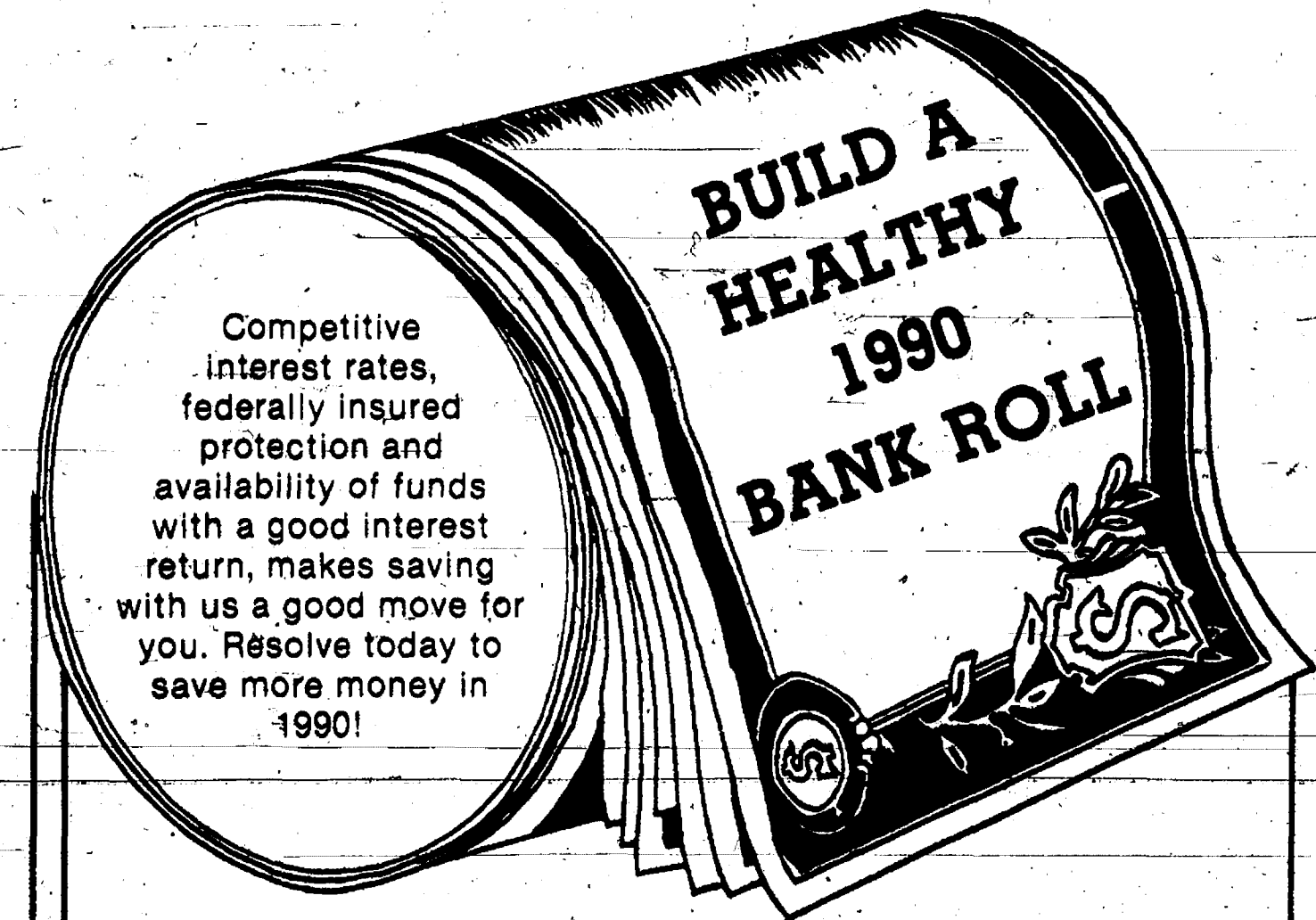
Some 6.5 million Americans play tennis at least twice a week.

Have You Renewed your subscription to THE STANDARD
If you've put it off . . . please renew NOW to continue receiving your copy of THE STANDARD each week!

ROUTES TO THE RAYS



COMPARISON OF ROUTES					
KALAMAZOO TO MIAMI			DETROIT TO MIAMI		
ROUTE	MILEAGE	TOLL	ROUTE	MILEAGE	TOLL
A	1474	5.70	A	1388	5.70
B	1433	5.70	B	1436	5.70
B-1	1493	5.70	B-1	1506	5.70
C	1498	9.35	C	1415	9.00
D	1682	11.90	D	1548	11.55



**\$ REGULAR SAVINGS
\$ INTEREST EARNING CHECKING
\$ MONEY MARKET ACCOUNT
\$ CERTIFICATES OF DEPOSIT
\$ INDIVIDUAL RETIREMENT ACCOUNT**

CSB CHELSEA STATE BANK
Member F.D.I.C.

Branch Office 1010 S. Main Phone 475-1335 Main Office 305 S. Main

All funds on deposit are insured by the Federal Deposit Insurance Corporation up to \$100,000 per depositor. IRA funds are insured separately with the FDIC up to \$100,000 per depositor. Early withdrawal of time funds results in a penalty.

David W. Swan, D.D.S.
Comprehensive Dental Care for Children & Adults

Preventive Care • Cosmetic Procedures
Implants • Wisdom Tooth Removal
Root Canals • Fillings • Dentures • Bridgework

Intravenous and/or nitrous oxide sedation available.
Initial visit includes blood pressure and oral cancer exam screening.



Ph. 475-3444
1200 South Main Street
Chelsea



SPORTS

Let's Go

Bulldogs!

Dog Cagers Face Dexter, Netters Host Tourney As CHS Sports Resume

Chelsea High school sports teams get back into action beginning this Friday evening when the Bulldog varsity and junior varsity teams play at Dexter.

On Saturday, the varsity volleyball team sees its first action of the season in the Chelsea Invitational. In addition, the varsity wrestling team competes at Jackson County Western.

Friday's basketball game at Dexter will pit the undefeated Bulldogs against the upset-minded Dreadnaughts.

Senior Marty Walsh is the heart of the Dreadnaught offense and is their primary scoring threat. He's quick, has a good shot, and is an intelligent player. John King, another senior, plays the pivot and has the potential to dominate the middle.

The challenge for Chelsea on defense will be to stop Walsh and force everyone else to take up the slack. It's likely junior Kerry Plank will draw that key defensive assignment.

The challenge for Dexter on defense will be to stop an arsenal of weapons led by senior pivot Brian Burg, who has yet to meet anyone in the Southeastern Conference who can stop him inside. Chelsea also features the outside shooting of Chad Starkey, inside-outside play of Kyle Plank, a strong bench, and an exceptionally strong passing game.

If the game stays close until the end, however, Dexter could have the edge as the Bulldogs have been inconsistent at the foul line.

The Dexter game begins perhaps

the toughest and most critical week of the season for Chelsea. They host Milford-Lakeland this Saturday, go to Stockbridge on Tuesday, then host the undefeated and state-ranked Tecumseh Indians on Friday in a crucial SEC game for both teams.

The Chelsea Invitational volleyball tournament will feature, in addition to Chelsea, Milan, Pinckney, Stockbridge, and Williamston.

The teams are divided into two groups, and action takes place at both Chelsea High school and Beach Middle school beginning at 8 a.m.

Second-year coach Sue Steeves hopes her team can improve on last year's 4-4 record in the tournament and 3-8 season over-all.

On Monday, Jan. 8 the girls face

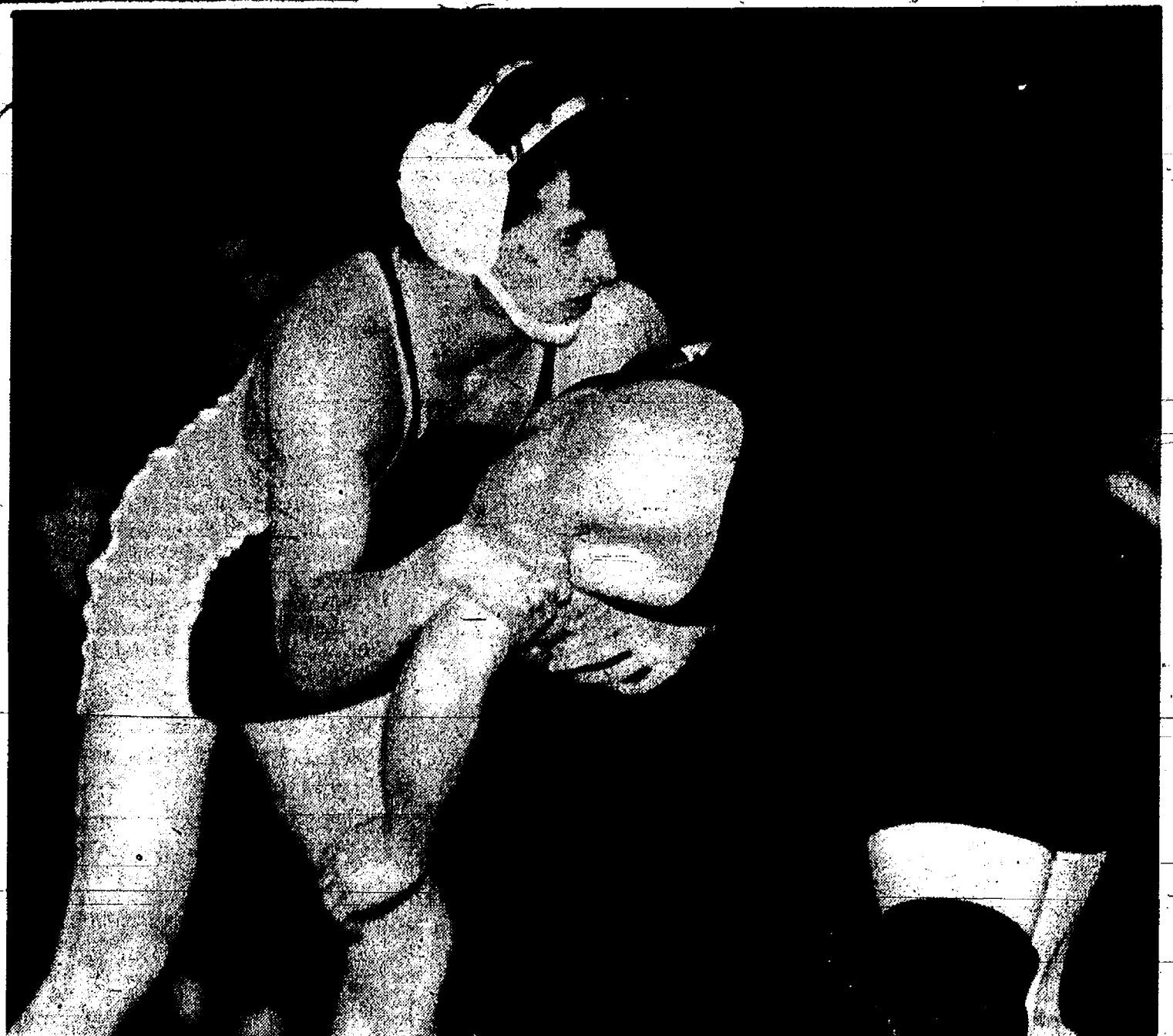
Milan at home at 7 p.m. in their first SEC contest. On Thursday, Chelsea travels to Jackson Lumen Christi.

Varsity wrestling team travels to another tough invitational this Saturday at Jackson County Western.

Chelsea enters the meet with two undefeated wrestlers, Karl Wikman at 112 pounds and Pat Taylor at 119 pounds. In addition, several other Chelsea wrestlers are having excellent seasons, including Alan Hagna at 125, Doug Wingrove at 152, and Tim VanSchoick at 189 pounds.

Next Tuesday, Jan. 9 Chelsea faces the Lincoln Railsplitters in an SEC dual meet at Chelsea.

Chelsea has recently been ranked as high as number one in class B.

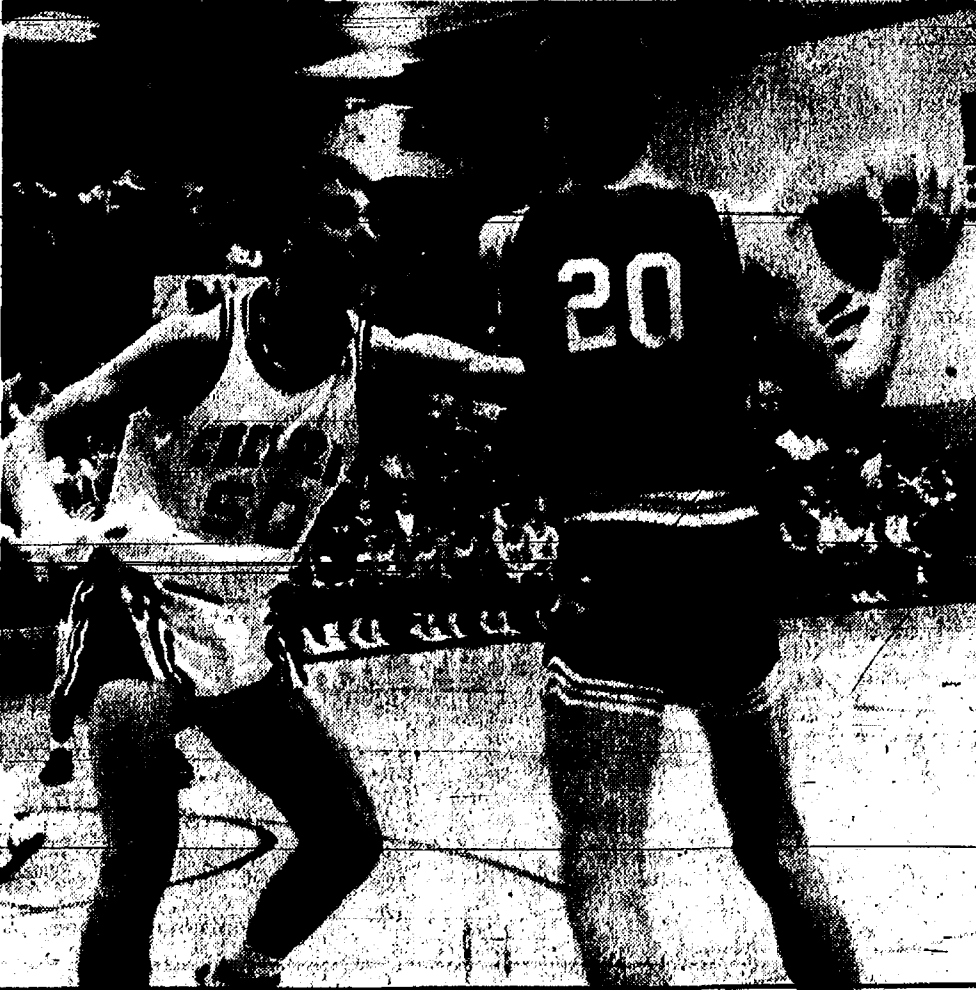


PAT TAYLOR, one of two undefeated Bulldog Western Invitational this Saturday. Taylor, at 119 pounds, will compete with his teammates at the and Karl Wikman, at 112 pounds, are both undefeated.

Chelsea Sports Calendar

Friday, Jan. 5—	Basketball vs. Dexter..... 8:00 A
Saturday, Jan. 6—	Wrestling, Western Inv..... 8:00 A
	Basketball vs. Milford..... 5:30 H
	Volleyball, CHS Inv..... 8:00 H
	JV Wrestling, Northwest..... 11:00 A
Monday, Jan. 8—	Volleyball vs. Milan..... 7:00 H
	9 basketball vs. Milan..... 7:00 A
Tuesday, Jan. 9—	Basketball vs. Stockbridge..... 6:00 A
	Swimming vs. Lincoln..... 7:00 H
	Wrestling vs. Lincoln..... 6:30 H

More than two million skiers will ski nearly 600 runs at 43 Michigan downhill resorts this year. Hundreds of thousands more will glide along 1,500 kilometers of groomed cross-country ski trails.



KERRY PLANK and the Chelsea Bulldogs get back into action this Friday in a key game at Dexter. Plank will probably have the job of guarding Dexter's high-scoring Marty Walsh. The Bulldogs play at home Saturday in a non-conference game against Milford-Lakeland. Chelsea is undefeated at 5-0.

Second Film Night Slated

Chelsea Basketball Club is sponsoring the season's second film night next Wednesday, Jan. 10 at 7:30 p.m. at the Chelsea High School Media Center.

Coach Robin Raymond will be on hand to show films of recent games and explain the fine points of Bulldog basketball.

The event is free and open to the public. Refreshments will be served.

MUCC Pushing Legislation To Reinstate Venison Donations

A vow by state public health officials to stop Michigan hunters from donating packages of commercially processed white tailed deer meat to the Salvation Army to feed the needy has drawn sharp criticism from the state's largest conservation organization.

Calling the Michigan Department of Public Health decree "a slap in the face to the thousands of hungry people who need a helping hand," Michigan United Conservation Clubs (MUCC) officials say they will seek enactment of legislation when the Legislature returns in January to allow Michigan sportsmen and women to donate nutritious meat from deer and other game animals to the Salvation Army and other organizations that provide meals to people in need.

"At a time when thousands of needy folks are flooding Salvation Army centers across Michigan looking for a hot, nourishing meal, I just cannot believe that the state bureaucracy would move arbitrarily to cut off a source of wholesome food to these people," said Thomas L. Washington, MUCC executive director. "Last week, the Salvation Army had to battle with shopping mall owners to keep their 'bellringers' out of the cold. Now they're being told they can't use commercially processed venison to feed the hungry. It's just not right."

Earlier this month, MUCC, together with the local chapters of Safari Club International, spearheaded the state-

wide public information campaign encouraging hunters to donate packages of venison to the Salvation Army for use in the organization's kitchens. Prior to the program's launch, the U. S. Department of Agriculture's Cooperative Extension Service office at Michigan State University had advised MUCC officials that donated venison could be used by the Salvation Army and other community food programs provided that the meat was butchered and packaged by a licensed meat processor and the packages are stamped "not for sale." Under law, licensed and inspected meat processing facilities are allowed to butcher and package venison provided the game is processed separately from beef, pork and poultry.

"Now that Michigan's sportsmen and women are trying in their own way to be one of President Bush's 'thousand points of light,' the state is trying to snuff them out," Washington added. "I've hunted for more than 40 years and have met dozens of hunters who donated venison to needy families across the state. Not once have I heard of someone falling ill because they ate contaminated deer meat donated by a thoughtful and generous hunter."

Washington expressed confidence that state legislators will examine the problem and adopt appropriate legislation when they return to session in January.

Michael W. Bush, CPA, PC

CERTIFIED PUBLIC ACCOUNTANT

Bookkeeping, Tax Consulting, Payroll
Financial Planning, Business Start-Up

PERSONAL - BUSINESS - CORPORATE - FARM

Mon.-Fri., 9 a.m.-5 p.m.
Evening & Sat., by appointment8064 Main St., Dexter
Telephone: 426-3045

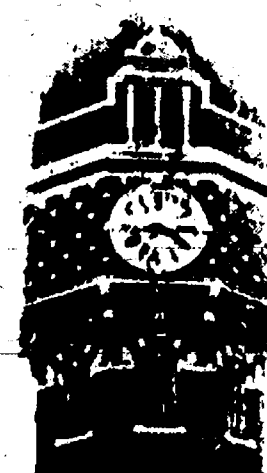
Your advertising support helps make The Standard possible

CHELSEA HEARING AID CENTRE

134 W. Middle Street
Suite A 475-9109
Middle SquareMon.-Fri. 9:30 to 3:00
Sat. 8:30 to 12

Compare the Premium Zinc Air battery, PRO LINE, to other popular hearing aid batteries. With up to 35% more rated capacity* than standard zinc air cells and 27% more rated capacity* than mercury cells (more than double the capacity), PRO LINE is a powerful friend—one who'll stay with you longer!

We Carry All Sizes for Your Hearing Aid Needs



TOWER MART PARTY STORE

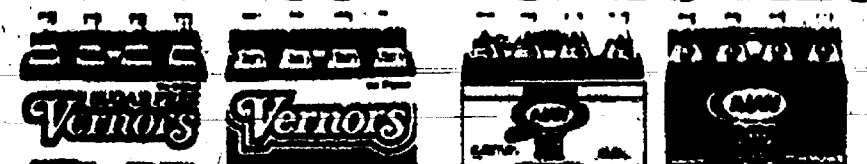
528 N. Main Ph. 475-9270

OPEN:

Monday-Thursday..... 6 a.m.-9 p.m.
Fri. 6-10..... Sat.-Sun. 9-9

★ Hot Sandwiches ★ Salads and More!

PEPSI-COLA SPECIALS



8 1/2-liter bottles \$2.29 plus deposit

6 12-oz. cans \$2.19 plus deposit

2 Liter bottles..... \$1.39

Every Wednesday all 1/2 liter Pepsi products are 35¢

\$1 Coney Dogs every Saturday!

Delicious Knockwurst
Italian & Polish Sausage

LOW FAT FROZEN YOGURT

... one little taste is all it takes!

Country Fresh Eggs daily

SATELLITE SYSTEMS

Sold-Installed
ServicedChannel Master
and BirdviewWe Also Service
Other Leading BrandsVIDEO CIPHER DECODERS
Sold and Serviced

LOY'S TV

512 N. Maple Rd., Ann Arbor
Ph. 769-0198

Open Mon. 9-8, T-W-Th-S, 9-6



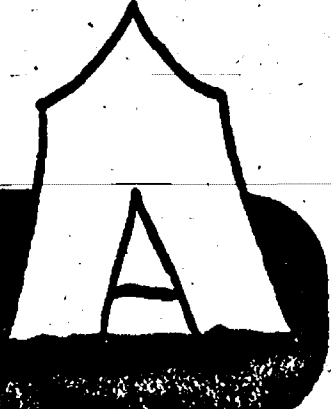
Other credit plans available

FOX TENT AND AWNING CO.

"If it's made of Canvas we make it"

GET YOUR CUSTOM
ICE FISHING SHANTIES
MADE NOW!

617 S. Ashley, Ann Arbor • 313-665-9126

Professional
Workout
1990Personalized
and StylizedLook Good
Feel Great...

EXERCISE

Classes begin Jan. 2nd

Call for Schedule
475-9300BODY GLOW
WORK-OUT STUDIO118 1/2 S. Main St.
Chelsea, Mich.

FUN CHARTERS TO FLORIDA

Deluxe non-stop
wide-bodied L1011 service

ROUND TRIP \$139 including tax

CALL

ACCENT ON TRAVEL

102 N. Main St., Chelsea

Ph. 475-3639

Open Mon & T-F, 9:30-5, Sat., 10-1

BOWLING

Senior Fun Time League

Standings as of Dec. 27

	W	L
Marie's Gang	42 1/2	25 1/2
Ten Pins	42	25
CPB	42	25
Dottie & Fellows	41	27
Green Ones	38 1/2	31 1/2
Spliters	38	32
Chas	34 1/2	33 1/2
Two S's & K	33	35
Gochanours & Jeanne	32	36
Strikers	29 1/2	38 1/2
Jolly Trio	29 1/2	38 1/2
Chetelw Fw	29 1/2	38 1/2
Go Getters	26	42
All Bad Luck	26	42

Men's high games: R. Snyder, 181; G. Beeman, 180; N. Alkembert, 174; P. Dillon, 163; A. Stoffer, 162; S. White, 160; C. Lantz, 159; B. Kishnaul, 158.

Women's high games: M. Greenanier, 415; E. Klink, 184; A. Hoover, 186; D. Brooks, 147; M. Walker, 139.

Spliters made: G. Beeman, 5-10; J. Stoffer, 5-10; E. Klink, 2-10; L. Bowen, 5-10.

Tri-City Mixed

Standings as of Dec. 29

	W	L
Chelsea Lanes	79	37
Century Dodge	78	40
Chelsea Telecom	75	51
Alkens	70	58
S-D	69	64
M & M's	69	67
Gemini	69	67
Zoe's	67	69
Dexter Party Store	61	65
H & O's	55	66
Hansen's Ski-Do	54 1/2	63 1/2
Guy's & Dolls	55	71
D & E Enterprise	54	73
Blind	53	75

Women, games 150 and over: V. Lipinski, 154; J. Schulte, 150; C. Stoffer, 149; J. Staph, 151; J. Gipsen, 172; T. Seidenstucker, 158; 150; J. Sauer, 158; 150; T. Ritchie, 152; 150; N. Rosen, 154; M. Higgins, 150; D. Schneider, 158; 150; M. Ritchie, 175; 150; L. Mann, 152; S. Varney, 150; D. Olszowski, 158; E. Hannah, 152.

Men, games 175 and over: W. Lipinski, 210; T. Wade, 150; 177; J. Stoffer, 178; C. Gipsen, 192; 158; L. Sauer, 176; R. Chedester, 197; K. Schneider, 180; 179; J. Olszowski, 205; 177.

Men, series 450 and over: W. Lipinski, 461; T. Wade, 453; C. Staph, 450; C. Gipsen, 456; L. Sauer, 478; K. Schneider, 456; J. Olszowski, 473.

Sunday Nite Come-Ons

Standings as of Dec. 17

	W	L
The Sports Four	40	23
The Misfits	40	23
Proctor Racing	38	25
Whatchamacallit	37	26
Nico's & Rose's	37	26
Bottom's Up	37	26
Noids	37	26
Sixty Miners	34	29
Walsaco Aces	34	29
Neighbors	34	29
C & V	30 1/2	32 1/2
Bollinger Sant	30	33
Lotta Balls	27	36
Four Poor Bowlers	27	36
The Diners	24	39
Lucky Fours	22 1/2	40 1/2
Spare Us Your Strikes	22	41
Gutter Balls	19	45

Women, 150 games and over: D. Klink, 153; K. Fouty, 178; 155; J. Oake, 156; L. Paton, 160; K. Rosenreiter, 151; P. Vogel, 201; 172; S. Walz, 194; 190; 191; R. Calkins, 168; B. Houk, 178; C. Walz, 185; G. Clark, 237; 163; J. Glosau, 154; D. Dault, 185; E. Layher, 157; 160; M. Vanorman, 163.

Men, 450 series and over: K. Fouty, 478; P. Vogel, 520; S. Walz, 541; B. Houk, 544; C. Walz, 451; G. Clark, 453.

Men, 175 games and over: M. Fouty, 200; N. Rosenreiter, 185; J. Vogel, 177; M. Walz, 182; R. Rosenreiter, 180; B. Calkins, 180; M. Dault, 211; B. Pearson, 182; S. Dault, 179; A. Fletcher, 178; K. Vanorman, 185.

Junior House League

Standings as of Dec. 28

	W	L
Associated Drywall	77	35
Wolverine	70	42
Janax	67	45
Jiffy Mix	67	45
Murphy's Barber Shop	63	49
Print Shop	61	51
Little Wack Excavating	59	53
Smith's Service	55	57
Vogel's Party Store	54	58
Chelsea Lanes	54	58
Wastewar Engineering	53 1/2	59 1/2
Chelsea Woodshed	52	60
Village Motors	51 1/2	60 1/2
Mark IV Lounge	48	66
Belair Builders	29	83

Ind. high games: D. Collins, 212; D. Gipsen, 212; R. Whitlock, 209; E. Greenleaf, 209; M. Burnett, 209; M. Smith, 205.

Ind. high series: M. Burnett, 591; D. Gipsen, 589; R. Whitlock, 581; E. Greenleaf, 580; M. Smith, 574; R. Zatorski, 542.

Chelsea Realty League

Standings as of Dec. 27

	W	L
Aces	80	39
Stand Finders	74	55
Quit Claim	62	57
Septic Tanks	62	60
Land Lovers	50 1/2	68 1/2
Attic Rats	41 1/2	70 1/2
Games over 150: S. Potock, 177; E. Good, 183; D. Borders, 163, 166; L. Clark, 160, 162, 150; K. Clark, 166; S. Steele, 165, 163; K. Greenleaf, 459, 157; T. Mackinder, 164, 178; R. Hummel, 177, 161, 163; E. Gendek, 157; B. Phelps, 150.		
Games over 200: T. Mackinder, 200.		
Series over 450: D. Borders, 474; L. Clark, 462; S. Steele, 483; K. Greenleaf, 459.		
Series over 600: T. Mackinder, 542; R. Hummel, 501.		

Refuge Wildlife Protection Legislation Considered By Congress

Recreational hunting is currently permitted on 259 of the nation's 442 wildlife refuges, while 91 refuges allow commercial trapping (often including the use of the leghold trap).

National wildlife refuges account for only five percent of the land available for hunting in the United States and are located mostly in Alaska.

In Michigan, hunting and/or trapping takes place on five of the state's six national wildlife refuges. These refuges are no longer the places of sanctuary for wild animals as originally established in 1904.

An act currently before Congress would stop hunting and trapping on all 422 refuges. Humane Society of Huron Valley urges you to write to Rep. Carl Pursell (House of Representatives, Washington, D.C., 20515) encouraging him to co-sponsor the legislation, and to Senators Carl Levin and Donald Riegle, Jr. (U.S. Senate, Washington, D.C., 20510) to ask them to sponsor a Senate version of the bill.



Dennis J. Stoffer Named Branch Manager For Trustcorp Bank

Dennis J. Stoffer has been elected to the position of branch manager at the Chelsea Office of Trustcorp Bank, it was announced by George H. Cress, chairman, president and chief executive officer.

Stoffer has been the assistant manager at the Chelsea office since March, 1989. He was first employed at Trustcorp Bank in 1984. Previous positions within Trustcorp Bank had been as the assistant manager of the Main Office in Ann Arbor and as a customer service specialist at the same office. He also had been employed as a head teller at the Chelsea State Bank from 1973 until 1983.

In 1973 Stoffer received a bachelor of arts degree from Michigan State University.

Please Notify Us In Advance of Any Change in Address

NOTICE OF PUBLIC HEARING

DEXTER TOWNSHIP ZONING BOARD OF APPEALS

TUESDAY, JAN. 9, 1990

Dexter Township Hall - 7:30 p.m.
6880 Dexter-Pinckney Rd.
Dexter, MI 48130

AGENDA:
1 - Ed Bouillon - 8510 North Territorial Rd.
2 - Brian L. Happel, 9383 Dexter-Pinckney Rd.

DEXTER TOWNSHIP ZONING BOARD OF APPEALS

Bill Robertson, Chairman, 475-7173

NOTICE OF PUBLIC HEARING

DEXTER TOWNSHIP ZONING BOARD

Will Meet
MONDAY, JAN. 8, 1990
7:30 p.m.

DEXTER TOWNSHIP HALL
6880 Dexter-Pinckney Rd., Dexter, Mich.

TAKE NOTICE that a Public Hearing and Meeting shall be held by the Dexter Township Zoning Board on January 8, 1990 at 7:30 p.m. o'clock in the evening, at the Dexter Township Hall, 6880 Dexter-Pinckney Road, Dexter, Michigan 48130, for hearing, consideration, and action on the following items:

1. Final action on the Application of Robert B. Thornton, Jr. and Alice Thornton, for approval of a Site Plan for a proposed Site Condominium, North Lake Farm No. 3.
2. Discussion and action upon the question of access to North Lake for units within North Lake Farms No. 3, Site Condominium, and other adjacent lands, and the application of the Michigan Court of Appeals Decision, Fox and Associates, Inc. v. Hayes Township, 152 Mich App 647 (1987), to Sections 3.119 - Non-Riparian Access to Water Bodies; Section 4.70 - Common Use District; Section 5.02 - Access to Public Streets; and Section 11.02 - Non-Conforming Uses of Parcels and Lots.
3. The Application for the Approval of the proposed Site Condominium, North Lake Farms No. 3, and other materials are available for inspection at the Office of the Clerk of the Township, and at the Office of the Secretary of the Zoning Board, at 6880 Dexter-Pinckney Road, Dexter, Michigan 48130, during regular business hours.

DEXTER TOWNSHIP ZONING BOARD

Jerry Straub, Chairman - 475-7648

The Prudential

THOMAS DAULT, Agent
500 W. Michigan Ave., Jackson
Office: (517) 784-8539
Home: (313) 475-2830
FINANCIAL SERVICES

Advertisers Like To Know You
Read Their Adv. in The Standard

NOTICE

Lima Township Taxpayers

TAX COLLECTION HOURS:

(at my home, 13610 Sager Rd.)
Fridays in December 9 a.m. to 3 p.m.
Saturdays in December 9 a.m. to 1 p.m.
In January and February:
Saturdays 9 a.m. to 1 p.m.
Evenings and other days by appointment

1990 county dog license may be purchased at the township until Feb. 28, 1990, fee \$10.00. You must have a valid rabies certificate. Reduced fee \$5.00 with proof of spaying or neutering. Reduced fee \$5.00 for senior citizens. (No charge for blind or deaf persons)

PAYMENTS WILL BE ACCEPTED BY MAIL
Receipt Will Be Returned

BETTY T. MESSMAN

LIMA TOWNSHIP TREASURER
13610 Sager Rd., Chelsea, MI 48118 Ph. 475-8483

NOTICE

Lyndon Township Taxpayers

Tax Collection Hours

Tuesday & Friday in December and February . . . 10:00 a.m. to 5:00 p.m.
Friday in January 10:00 a.m. to 5:00 p.m.
(at my home office)

Available at Lyndon Township Hall on the below dates
Saturday . . . Dec. 30, 1989 Feb. 3 & 10, 1990, 9:00 a.m. to 12:00 noon.
Payments may be made by mail. Receipt will be returned.

Dog License \$10. You must have a valid rabies certificate. With proof of spaying or neutering \$5. Senior Citizens \$5.

GERALDINE REITH

Lyndon Township Treasurer
18238 N. Territorial, Chelsea, MI 48118 Ph. 475-2044

Dexter Township Notice 1989 Winter Taxes Due

Tax Collection Hours:

Tuesdays and Fridays 9:00 a.m. to 4:00 p.m.
Wednesdays 9:00 a.m. to 1:00 p.m.

Application may be made by qualifying senior citizens, disabled citizens and eligible veterans to defer tax payment to April 30, by filing with the township treasurer by February 15, 1990.

1990 County dog licenses may be purchased at the Township Office until Feb. 28, 1990. Fee \$10. You must have a valid rabies certificate. Reduced fee \$5 with proof of spaying or neutering. Reduced fee \$5 for senior citizens.

JULIE A. KNIGHT

6880 Dexter-Pinckney Rd., Dexter, Mich. 48130 Ph. 426-3767

- NOTICE -

Sylvan Township Taxpayers

Sylvan Township Treasurer will be at Sylvan Township Hall, 112 W. Middle St., Chelsea, to collect Sylvan Township Taxes every Wednesday and Friday from 1 to 5 p.m., and Saturdays from 10:00 a.m. to 3:00 p.m. during the months of Dec., Jan., and Feb.

PAYMENTS WILL BE ACCEPTED BY MAIL
Receipt Will Be Returned

Dog License \$10. With proof of spaying or neutering, \$5. Blind and deaf citizens with Leader Dog, no charge. Senior Citizen, \$5 years or older, \$5.
Rabies Vaccination papers must be presented in order to obtain license.

FRED W. PEARSALL

SYLVAN TOWNSHIP TREASURER
PHONE 475-8890

OPEN BOWLING SCHEDULE

1989-90 SEASON

*Sunday 11:30 a.m. till 5:30 p.m.
8 p.m. - 11:00 p.m.

Monday 12:00 noon till 11 p.m.

Tuesday 8:30 a.m. till 5:40 p.m.
8:30 - 11 p.m.

Wednesday . . . 12:00 noon till 6:15 p.m.
9 p.m. - 10:30 p.m.

Thursday . . . 12:00 noon till 10:30 p.m.

Friday 12:00 noon till 12 a.m.

*Saturday . . . 12:00 noon till midnight

*Please call on week-ends for exact times available,
475-8141

"Let the Good Times Roll"

CHELSEA LANES, INC.

Featuring the Mark IV Lounge
1180 M-52, Chelsea Ph. 475-8141

PAGE
DEADLINE
NOON,
SATURDAY
Phone
475-1371

PUT IT IN THE WANT ADS FOR RESULTS

Just
Phone
475-1371

Automotive

76 FORD F-150, 4x4, with camper top, tool box, wagon wheels, new parts. \$2,500. Call 428-8519. c32-2
1981 TOYOTA COROLLA Station Wagon — Air cond., High mileage. \$1,000. Ph. 498-2340. c32-2
87 FORD 4x4, 150 Pick-up with cap. Equipped for plowing. Good condition. \$9,800. Call 878-0335. c32-2
CREDIT PROBLEMS? NO CREDIT? SLOW CREDIT? DIVORCE? BANKRUPT? Let your job be your credit. All you need is a job and a reasonable down payment to buy a car. Call 475-1800 or 475-3650. c27H

BODY SHOP

COMPLETE FULL TIME
Estimates Available

PALMER FORD

222 S. Main 475-1301
17H

Farm & Garden

2 HEREFORD COWS, 26 months old, good health, wormed, due to calve Aug. '90. 475-3408 after 6 p.m. c32-3

APPLES

Macintosh - Red Delicious
\$8.00 bushel

SEASONED FIREWOOD

\$40 per face cord.
You pick-up.

LESSER FARMS

Call before coming: 426-8309
c33-3

For Sale

SNOWMOBILE SUITS — Ski-Doo, 1 size medium, 1 large. 2-Ski-Doo helmets, pr. boots, both size 10. Phone 663-5133. c32-2

SATELLITE SYSTEMS

No money down. Financing. Satellite and Projection TV Specialists.
JIM'S MICROVA COMMUNICATIONS
(313) 475-9484 c32-5

HUSKY POLE BUILDINGS — Call toll free, 800-292-0679. 24x40x8. For garages, shops, storage. \$4,990.00. 100% galvanized screw nails. One 36" entrance and 9x7 steel overhead door. 12 colors. Choice of many options. Free quotes. Other sizes. Extra strong for longer life. c47H

PIONEER POLE BUILDING — 30x40x10, 12' slider, 36" entrance door. 100% galvanized screw nails. 1" boxed eave overhang. 45# 2x6 truss. 1/2" roof insulation. Free fiberglass ridgecap. 12 matching colors in siding, roofing and trim. \$5,790.00. Free estimates. Call toll free, 800-292-0679. c47H

FOR SALE — Golden Goodies-Records 78 rpm. old 30's, 40's. Good condition. 662-1773. Labels: Victor, Carol, Columbia and many others. x24H

WEDDING STATIONERY — Prospective brides are invited to see our complete line of invitations and wedding accessories. The Chelsea Standard, 300 N. Main. Ph. 475-1371. x8H

Auction

Household Auction

Having sold my home, we will sell the following at public auction at 629 North Main St., Chelsea, Mich., just north of town.

Wednesday, Jan. 10th

at 11:00
Seth Thomas Mantle Clock.
Oak dresser with brass pulls. Danish drop-leaf table with 14 chairs and matching buffet.
Wrought Iron lamp.
Couch and chair.
Mahogany double bed, dresser, and chest of drawers.
Floor lamps.
Littor microwave oven and stand.
Small formica table and 4 chairs.
Occasional chairs. Metal saw. Twin beds. Old Basket. Wood clothes dryer. Pots, pans, misc. dishes, lawn chairs, vanity, luggage, metal wardrobe, floral rug. Maytag gulf washer and dryer, step ladder, garden tools. Simplicity self-propelled lawn mower, many more items not listed.

OWNER:

Kathleen Chapman

32

Antique and Collectible Auction

Sunday, Jan. 7

at 12 noon

Viewing at 11 a.m.

DEXTER K. O'F. HALL

8265 Dexter-Chelsea Rd., Dexter

Victorian, Walnut, Oak and Pine Furniture. Advertising. Many early automobile items including Model T, Chevy, Essex and Hudson parts. Trippe headlight and more. Pottery, glassware, oil lamps, crocks and much, much more.

CONRAD and TALBOT

Auction Service

(313) 454-0310

Real Estate

ONLY A FEW DAYS REMAINING — To take advantage of 1989 prices. We start at \$98,500. Spacious Contemporary design, 2 bedrooms, 2 full baths, full appliance package, central air, garage with door opener, full basement, secluded quiet location in Dexter's newest development area near the Huron River. Come and compare the difference. Models open daily, dawn to dusk. Call LYNN or TERRY DEGENER, 994-4300 or 475-2737 for personal consultation. Take Dexter/Ann Arbor St. to Hudson St.

32

SPEAR

& Associates, Inc.,

REALTORS

c32

Real Estate

BELSER ESTATES

ANTICIPATE THE SPRING RUSH — Buy now! Belser Estates in Chelsea, still has beautiful home sites available starting at \$30,000. All underground utilities with city sewer and water. Call now for details. STEVE EASDES 475-9193/475-8053 or LANG RAMSAY 475-9193/475-8133.

SPEAR

& Associates, Inc.,

REALTORS

32

HOME FOR SALE, East Jackson Area — Easy access to I-94. Energy efficient. Unique 2-bedroom contemporary, 1-acre fenced, across from golf course. Central air, swimming pool, built-in dishwasher. \$55,000. 1(517) 787-9172, after 5 p.m. weekdays. c32-2

Animals & Pets

AKC-TOY POODLES — 7 weeks. Males \$125, females \$150. AKC Poodle, 5 months, male, loves children. \$35. Coldwater 1(517) 278-6871 anytime including Sundays. c32-2

MINI-LOP BUNNIES

\$5 each. Ph. 475-5993. c32-2

SPAY/NEUTER CLINIC of the Huron Valley Humane Society. Ph. (313) 662-4365, 10 a.m. to 4 p.m. x1H

Lost & Found

TWO LABS — One yellow and the other black. Found. Jan. 1st. Please call 475-7098. c32-2

LOST — Man's diamond ring. Chelsea shopping area. Please return. Kewgard. Ph. 475-3406. c32-3

HUMANE SOCIETY of Huron Valley

3100 Cherry Hill Rd., Ann Arbor. Call the shelter (313) 662-5585 for lost and found, adoptions, 7 days a week, 11 a.m. to 5 p.m.

Help Wanted

8

RADIOGRAPHER

The McAuley Urgent Care in Ann Arbor (Maple Health Building) has a position available for an ARRT certified Radiographer with six months experience. This position is 30 hrs./wk. primarily evening hours (3:30 p.m.-10:00 p.m.) and includes weekend and holiday rotations. Interested candidates may send their resume or apply in person to:

CATHERINE MCAULEY

HEALTH CENTER

5301 E. Huron River Drive

P.O. Box 995/101

Ann Arbor, MI 48106

Equal Opportunity Employer

URGENTLY NEED DEPENDABLE PERSON

SON to work without supervision for Texas oilco. in Chelsea area. We train. Write W. D. Dickerson, Pres. SWEPCO, Box 961005, Ft. Worth, TX 76161. c32

ATTENTION — Easy work, excellent pay!

Assemble products at home. Details: (1) 602-838-8885 Ext. W-6514. c34-3

CRUISE SHIPS

Now hiring all positions. Both skilled and unskilled. For information call (615) 779-5507. Ext. H-568. c32

SERVICE STATION ATTENDANT

2nd Shift. See Pam at Chelsea Shell c32-2

DEPENDABLE male and female aides needed for Friends Who Care, Home Care Agency. All shifts and benefits available with exceptional pay. Full-time and part-time positions available for long-term employment. Call 1-800-288-2167. c36-5

FRANK GROHS

CHEVROLET

REBATES ARE BACK!

Full Size Pickups

Geo Tracker \$7300

Geo Tracker \$1,000

Astro Vans \$1,000

Cavalier, Corsica \$1,000

Beretta, Lumina \$1,000

Corvette (89) \$2,500

Geo Metro \$600

Geo Storm \$800

Geo Prizm \$1,400

7128-7140

Dexter-Ann Arbor Rd.

in Historic Dexter

Ph. 426-4677

or 1-800-873-CHEV

Help Wanted

PART-TIME Nursing Assistants

Paid Training
\$5.27 per hour
Call now for an appointment.
313-475-8633

Chelsea Methodist Home

805 W. Middle St.
Chelsea

c32

PART-TIME BARTENDER

Thurs.-Fri. (4-7), Sat. (6hrs.)

at

DEXTER AMERICAN LEGION

Call

426-4307 or 426-8353

or apply in person at

8225 Dexter-Chelsea Rd., Dexter

c32-2

MODELS ACTORS, ACTRESSES!

Children, teens, and adults needed for television commercials. Many extras needed, with or without experience. Assistance on your resume and portfolio available.

Call I.C.C. at

(313) 852-9183

c17H

EARN MONEY Reading books!

\$30,000/yr. Income potential. Details: (1) 805-687-6000 Ext. Y-7002. c34-4

ATTENTION — HIRING! Government jobs, your area.

\$17,840-\$49,485. Call 1-602-838-8885, Ext. R6514. c32-3

Full-Time Sales Clerk

For Dexter Card & Gift

Starting early January.

Good working conditions.

Call Fred or Carol

at 426-5890

c30H

McDonald's of Chelsea

is now hiring day-time and late night premium pay. Stop in or call for an interview now!

475-9620

Ask for a manager.

c20H

ATTENTION: EARN MONEY READING BOOKS!

\$32,000/yr. Income potential. Details: (1) 602-838-8885 Ext. Bk6514. c32-3

In Chelsea

Dining Room Personnel (Host-Hostess, Waiter-Waitress, Bus Persons.)

Line Cooks, Pantry, and Prep.

Dish Machine Operators.

Maintenance Personnel.

Experienced only.

Please Phone for appointment

Gina's Cafe

663-0645

M-F 9-5

We are an Equal Opportunity Employer

c32H

ABOVE AVERAGE

Position for above average administrative assistant. Work with top executives and top notch secretary. Excellent clerical skills as well as word processing skills (training available) are necessary for this top paying, long term assignment. Short-hand skills preferred. Call 665-3757 or 665-5511 today for your personal interview.

MANPOWER

Call Manpower's 24-hour

Job Line, 761-5627

c32

JANITORIAL — \$5.50 per hour,

evenings. Must have own transportation. Chelsea downtown area. 663-0104. c32-2

BANK TELLER

wanted at

Chelsea State Bank

Apply to

P.O. Box 10, Chelsea, MI 48118

or

Main Office

305 S. Main St.

c33-2

MAINTENANCE/BUS DRIVER/SECURITY

Must be insurable and able to pass Class-3 State Certification. Start date is Jan. 15, 1990. This position requires person to work odd hours. Contact Randy Lane at Chelsea Methodist Home, Ph. (313) 475-8633, ext. 316. c32-2

Work Wanted

HOUSECLEANING — Conscientious, dependable, and experienced. One, Thursday opening. 475-7478. c32

Child Care

CHILD CARE/Light Housekeeping — Looking for person to care for newborn in our Dexter home beginning Jan. 29. Own transportation, references required. Call 426-8409. c32-2

Wanted

CLEAN FILL DIRT wanted at 1140 N. Freer Rd., Chelsea. Call 475-2709. c34-4

For Rent

1-BEDROOM BASEMENT APARTMENT

for rent — \$325 per month. No pets. Call 475-7061. c32-2

APARTMENTS available Jan. 1st.

1 and 2 bedroom, range \$375 to \$450 per month, plus deposit. For more information call 1(517) 851-8000. c32

COMMERCIAL BUILDING

DOWNTOWN CHELSEA

138 Park St.

Opens to public parking lot, 3,600 sq. ft. Call 426-8507 or 475-7048. c14H

ROOM in beautiful downtown Month

References and deposit required. 1(517) 596-2679. c35-4

DEXTER — 1-bedroom spacious

apartment, newly remodeled, walk-in closet, \$450/mo. Available now. Ph. 1(313) 347-9626. c32-2

2-BEDROOM, 1st-floor apt. in wall

kept Victorian home in Chelsea, basement. Washer-dryer hook up, 2-car garage. Close to downtown. \$575 per month. No pets, references required. 475-8937. c32-2

DEXTER AREA — 1-bedroom base-

ment apartment, \$250 per month, nice neighborhood. Clean, no-smoker, non-drinker, no pets. Need summer help. 426-8724 evenings. c32

HOUSE — 3 bedrooms, 2 baths.

Chelsea schools, lake-front, very secluded area with Pinckney Recreation Area on 2 sides. \$650 per month. References: 475-8857. c32

SPACIOUS 1-BEDROOM in Village.

Perfect for single or couple. No pets. \$380 per month plus utilities. 475-2477. c32

FOR RENT — Fair Service Center

for meetings, parties, wedding reception, etc. Weekdays or weekends. Contact Cheryl Haab, 475-2648 after 6 p.m. c20H

Misc. Notices

13

WOMEN

Who need a job and are separated, widowed or divorced. Begins Jan. 9th. Call 663-6689.

SOUNDINGS:

A job-readiness program for women. c32-2

Entertainment

15

Rent A JUKE BOX

For Your Parties and Entertainment

Less than half the cost of a band. Make your selections of music and your favorite artists.

ZEMKE

OPERATED MACHINES

Call 662-1771 for details. c25H

Bus. Services

16

General

SEAMLESS EAVESTROUGHS, Custom made for your home. Colors available. Free estimates. Licensed and insured. Craft Builders. Call 1(517) 851-7625. c40-9

INTERIOR PAINTING — References,



MARTHA TAYLOR of Chelsea helps a classmate with her skating at the Lions-Lioness Christmas skating party for special education students from all over Washtenaw county. The party was held recently at the Ann Arbor Skate Company.



JOHNNY BELL, of Bates Elementary school in Dexter, puts on his skates for the Lions-Lioness Christmas party for special education students. 135 young people, ranging in age from 6-25, participated in the party at Ann Arbor Skate Company.



SPECIAL ED TEACHERS get into the holiday spirit during the Christmas skating party for their students sponsored by the Chelsea Lions and Lioness Clubs recently.

From left are Nancy Cooper, of Chelsea High school, Kathy Gilbert, of Beach Middle school, Neta Sage, of Dexter High school, and Anna Boote, of Chelsea High school.

New Apple Variety Gaining Popularity Across Michigan

Michigan consumers see apples in stores everyday, but for the first time ever, they will be able to meet the farmers who grow them. Over 200 Michigan fruit growers are co-operating in a first-time effort to answer consumers' questions about fruit growing, varieties and nutrition in 46 Meljer's produce sections throughout Michigan on Jan. 12 and 13.

Consumers will also be able to sample a NEW variety called EMPIRE with flavor that promises to rival all other varieties. The Empire is gaining popularity with Michigan growers because it is ideally suited for Michigan's climate and is a big part of Michigan's 25,000,000 bushel crop. It is a genetic cross between two old favorites—Red Delicious and McIntosh.

Since Michigan is the second largest producer of apples in the U.S., Meljer's, Inc., has agreed to work with fruit growers by providing an opportunity to educate consumers about this new variety that could potentially be one of the most planted varieties in the state.

Interlochen Announces Scholarship Auditions

Interlochen Center for the Arts, often referred to as Michigan's "Fame in the Woods," will audition in Detroit for the National Music Camp and Interlochen Arts Academy.

Music auditions will be Feb. 17, 9 a.m. to 4 p.m., in Room 1 at Orchestra Hall, 3711 Woodward Ave. For more information, call Helen Manuel at (313) 547-3111.

Dance auditions will be Feb. 11 at Julie Marie's Art of Dance, 6331 Orchard Lake Rd., West Bloomfield. They will be combined with Ballet Aspen auditions. Hours are 1 p.m. to 3 p.m. for 11-13 year olds and 3 p.m. to 6 p.m. for 14-18 year olds.

Students unable to audition in Detroit may audition at Interlochen Feb. 12 at 2 p.m. in the H. Lewis Dance Building.

Music applicants must be between the ages of 8 and 18. They will be required to perform a movement, or movements, from a standard concerto, sonata, or solo piece, limited to eight minutes. Memorization isn't necessary. Piano accompaniment, provided by the applicant, is allowed. Dance applicants must be qualified

intermediate and advanced students. They must perform ballet and jazz combinations and submit an 8 x 10 photo, resume, and references to the registrar. A \$7 fee for a master class and the audition will be due at registration.

Interlochen Center for the Arts is the umbrella organization for the National Music Camp, Interlochen Arts Academy, and WIAA-FM. The 1,200-acre campus is located 16 miles southwest of Traverse City in north-west Michigan.

Founded in 1927, the National Music Camp offers students, ages 8-18, eight weeks of intensive training in music, dance, theatre, and visual arts. This year's program, expected to attract more than 2,100 students from around the world, begins June 24 and runs through Aug. 20.

Interlochen Arts Academy, opened in 1962 by Dr. Joseph Maddy, is in session from September through May. The school provides 440 high school students from throughout the U.S. and numerous foreign countries with instruction in creative writing, dancing, theatre, music, visual arts, design and production, and academics.

Among distinguished Interlochen alumni are Meredith Baxter-Birney, Tom Hulce, Lorin Maazel, Jessye Normal, Sean Young, Cathy Guisewite, Tovah Feldshuh, and Peter Sparling.

For more information on Interlochen, contact Carlene Peregrine, director of admissions, National Music Camp, or Katherine Murdock, director of admissions, Interlochen Arts Academy, Interlochen Center for the Arts, PO Box 199, Interlochen 49642 or call (616) 276-9221.

Pinckney Man Completes Training At Ft. Benning, Ga.

Pvt. Mark A. Brugman has completed training at the U.S. Army Infantry School, Fort Benning, Ga.

During the course, students received training which qualified them as light-weapon infantrymen and as indirect-fire crewmen in a rifle or mortar squad.

He is the son of Laura H. and Edward J. Brugman of Pinckney.

He wife, Virginia, is the daughter of Gene J. and Janet Coleman of 1441 Chicago Blvd., Howell.

Chili Open Golf Tourney Slated

Don't put away those golf clubs yet. Those who want to play a cool game of golf in the middle of winter can register for the seventh annual Chili Open Golf Tournament which takes place at Leslie Park Golf Course on Saturday, Jan. 6 at 9 a.m. The fee is \$7 which includes six holes of golf and delicious hot chili upon completion of the game. There will be awards for 1st, 2nd, and 3rd place and closest to the pin. You can even blame your score on the weather.

Golfers may register in-person from Dec. 10 through Dec. 30 at Buhr Park Ice Rink (2751 Packard Rd.) any Saturday or Sunday from 2-4 p.m. or Monday, Wednesday, Friday, or Saturday from 7-9 p.m. Registrations will not be taken at any other location. The number of participants is limited, so register soon. For more information call 971-9841 or 971-3228.

Same Sex Search For Visitors Required Of Prison Guards

Legislation prohibiting body searches of visitors to state correctional facilities by prison guards of the opposite sex has passed the House and awaits consideration by the Senate, State Representative Margaret O'Connor (R-Lodi Twp.) said today. O'Connor, sponsor of House Bill 4668, said her legislation was prompted by complaints from female visitors who claimed some male prison guards were "unprofessional" with the searches and used the patdowns as a form of harassment.

"Despite requests from several legislators, the Department of Corrections has not adhered to its professed policy of same-sex patdowns," O'Connor said. "Obviously, corrections officials need this legal mandate to ensure the policy is carried out."

"Prison visits can be traumatic enough. Friends or relatives should not have to fear retaliation against the inmates they have come to see because of requests for same-sex patdowns. My bill works toward eliminating that concern and would give prison visitors more dignity," O'Connor said.

Include fiber-rich foods each day, and drink 6 to 8 glasses of water. Keep a box of raisins, apricots or prunes in your desk drawer for an instant high-fiber snack.

Deer Continuing Hazard to Drivers

Drivers traveling the roads of western Washtenaw county, beware of four-footed whitetails!

The warning is a serious one, which drivers should observe on a 24-hour basis.

Car-deer crashes continue to plague motorists and the law enforcement officers who are frequently summoned to investigate such incidents.

Kenneth A. Ward of Novi was traveling northbound on Earhart Rd., at 11:25 p.m. Thursday, Dec. 21, when a doe suddenly appeared from the west and struck his vehicle, then fled the scene.

Deputies Deacons and Calmes filed a report of the incident, in addition to filing a report listing another car-deer mishap, which driver Kimberly Ann Pattwell of Westland reported.

She told the deputies she was headed westbound on North Territorial Rd., east of Jennings, at 11 p.m. Fri-

day, Dec. 22, when, without warning, her vehicle was struck by a deer.

Ypellanti motorist Michael Lee Mellinger reported at 8:35 p.m. Saturday, Dec. 23, to deputy Steve Platt, he was traveling southbound on Dexter-Pinckney Rd. when a doe deer jumped out and was hit.

Mellinger said it happened too fast for him to stop.

Jason Derek Sheffield of Saginaw told deputies he observed three deer run across Dexter-Chelsea Rd., as he traveled it about 5:45 p.m. Saturday, Dec. 23, and as he approached closer, a fourth animal suddenly ran out and he couldn't keep from hitting it.

Alicia Anne Seegert of Manchester explained to deputy Platt she was traveling westbound on Pleasant Lake Rd., just east of Fletcher Rd., at 6 p.m. Sunday, Dec. 24, when a deer suddenly jumped out and she was unable to stop before hitting it.



**MILLER'S TRANSPORTATION
ON VACATION
FROM JAN. 17
THRU FEB. 1, 1990**

KLINK EXCAVATING

SCREENED or UNSCREENED

TOP SOIL

LIMESTONE
SAND

PROCESSED
ROAD GRAVEL

ASPHALT
DRIVES

475-7631

Good Friends Deserve A Little Ribbing.

(Prime Ribbing!)

Join us Friday nights for our

**All-You-Can-Eat
Prime Rib Special**
only \$1.95

for the tender Prime Rib and all the trimmings.

TRADITIONS
STEAK · SEAFOOD · RAW BAR

Holiday Inn

HOLIDAY
CONFERENCE CENTER

2900 Jackson Rd., Ann Arbor, MI 48103 • 665-4444

Opening Soon!!!

We proudly announce the opening
of

Gina's Cafe

A fresh concept family restaurant

OUR COMMITMENT TO CHELSEA WILL BE:

- A. Fresh ingredients
- B. No frills
- C. Friendly and Efficient service
- D. Affordable Prices
- E. Accessibility
- F. Neat and Charming atmosphere
- G. An Imaginative menu fit for all ages
- H. Professionalism

1120 S. Main St. — at the mall

Chelsea Eyeglass

is pleased to now offer its customers

Complete Vision Examinations

including

- Glaucoma Testing
- Contact Lens Fitting

(with emphasis on contacts for astigmats)

We invite you to benefit from Dr. Edwards' experience
as an optometrist:

- Graduate of Ferris State University College of Optometry
- Members of Michigan Optometric Assoc., American Optometric Assoc. and Central Michigan Optometric Society.
- Trustee and charter member of Volunteer Optometric Services to Humanity-Michigan, a non-profit organization providing vision examinations and eyeglasses to people living in under-developed countries, having served in Haiti, Dominica and to Mexico as of March 1990.
- Adjunct Faculty at Ferris State University Optometry Clinic.

136 W. Middle St., Chelsea • Call 475-1122



Dr. Nelson Edwards

AREA DEATHS

Raymond Buckingham

13525 Old US-12
Chelsea

Raymond E. Buckingham, 13525 Old US-12, Chelsea, age 65, died Monday, Dec. 26, 1989 at St. Joseph Mercy Hospital, Ann Arbor, following a long illness.

He was born Aug. 30, 1924 in Raisinville township, Mich., the son of Harley and Olive (Shinevarre) Buckingham and had lived in Chelsea the past 20 years.

On Sept. 28, 1946 he married Josephine Katanski in New Boston and she survives.

He was a member of St. Mary's church, a veteran of World War II, member of American Legion Post 404 in Harrison, and VFW Post 409 in Carleton.

Mr. Buckingham had retired April 4, 1960 from the Michigan Department of Natural Resources.

He is survived by one son, Randy C., of Chelsea; three daughters, Nancy Cuthbert of Palmer, Alaska, Carolyn Bollinger of Harrison, Raylene Marcum of Ann Arbor; three brothers, Kenneth and Everett, both of Carleton, Harlan of East Detroit; one sister, Emma Mell of Carleton; and eight grandchildren. He was preceded in death by two brothers, Harold and Robert.

Scripture services were held Thursday, Dec. 28, 7:30 p.m. at Cole-Burghardt Funeral Chapel.

Mass of the Resurrection was Friday, Dec. 29 at 11 a.m. at St. Mary's church with the Rev. Fr. Philip Dupuis officiating. Burial was in Mt. Olivet Cemetery, Chelsea.

Memorials may be made to the American Lung Association.

Lloyd M. Keeny

222 East Ave., Napoleon
(Formerly of Chelsea)

Lloyd M. Keeny, 222 East Ave., Napoleon, formerly of Chelsea and Manchester, age 81, died Saturday, Dec. 23, 1989 at University of Michigan Hospital, Ann Arbor.

He was born Feb. 4, 1908 in Walton, the son of Guy L. and Ella M. (Belding) Keeny.

On March 10, 1930 he married Doris N. Brewer and she preceded him in death on June 19, 1983. Mr. Keeny retired from Federal Screw Works in 1966 with 20 years service.

He is survived by his two daughters, Patricia G. Keezer of Napoleon; Jacqueline K. Zumbro of New Mexico; one son, Douglas L. Keeny, of Kentucky; four sisters, Mrs. Harry Furgeson, Mrs. Derbert Keck, Mrs. Willard Keck, Mrs. Norris Hubert; nine grandchildren, several great-grandchildren, nieces and nephews.

He was preceded in death by one sister and four brothers.

Funeral services were held Tuesday, Dec. 26, 1 p.m. at the Cole-Burghardt Funeral Chapel, with the Rev. Dr. Jerry Parker officiating.

Memorial contributions may be made to The American Cancer Society.

Ella McMillan

169 Orchard St.
Chelsea

Ella McMillan, 69, 169 Orchard St., died Tuesday, Jan. 2, 1990 at her home.

She was born April 11, 1900. On Dec. 27, 1922 she married John A. McMillan, who preceded her in death on March 22, 1968.

Mrs. McMillan was the long-time owner of Chelsea Restaurant, which closed in 1979. She was a member of St. Mary's Catholic church, Chelsea.

She is survived by her daughter, Noel Laraway; 10 grandchildren; and 14 great-grandchildren.

Funeral arrangements are being handled by Staffan-Mitchell Funeral Home.

Vera Lentz Balliet

Methodist Retirement Home
(Formerly of 761 Taylor St., Chelsea)

Vera Epigene (Lentz) Balliet, formerly of 761 Taylor St., Chelsea, age 81, died Wednesday evening, Dec. 27, 1989 at Chelsea United Methodist Retirement Home. She was born April 21, 1908 in Milan, the daughter of Jesse and Daisy (Van Houten) Millage.

Mrs. Balliet was a life-long resident of Washtenaw county. She was preceded in death by three husbands, Ronald E. Lentz, Edwin Nagel, Ray Balliet.

Mrs. Balliet was a professional knitter and was for many years employed at the Yarncraft Shop in the Nichols Arcade Building in Ann Arbor. She taught knitting at the YM/YWCA in Ann Arbor and also at the Chelsea Adult Education Dept.

She was a member of the Chelsea Community Hospital Auxiliary and prior to entering the Chelsea Methodist Home she also was a volunteer there.

She was a member of St. Paul United Church of Christ in Chelsea.

Surviving are her two daughters, Joyce Lentz Schneider and her husband Lloyd, of Chelsea, Rowena Lentz Gladstone and her husband Robert, of Stockbridge; five grandchildren, Margene Gladstone of Haslett, Philip Gladstone and his wife Karen, of Farmington, U., Joanne Schneider Bälze of Chelsea, Mark Gladstone and his wife Mariann, of Spring Arbor, and Jeffrey Gladstone of Chelsea; six great-grandchildren, Michael Schneider Mayer of Bakersfield, Calif., Jodi Schneider Balze of Chelsea, Daniel Gladstone of Farmington, U., Justin Gladstone of Spring Arbor, Joshua and Jeremiah Gladstone, both of Farmington, U., and one sister, Zona Fielder of Harrison. She was preceded in death by one brother.

Funeral services were held Saturday, Dec. 30, at 11 a.m. from the Staffan-Mitchell Funeral Home with the Rev. Erwin R. Koch of St. Paul United Church of Christ officiating. Burial was in Oak Grove Cemetery, Chelsea.

Expressions of sympathy in her honor may be made to St. Paul United Church of Christ or C.A.T.S. Senior Transportation.

Lorriane D. Howe

148 Van Buren St.
Chelsea

Lorriane D. Howe, 148 Van Buren St., Chelsea, age 88, died Thursday morning, Dec. 28, 1989 at Chelsea Community Hospital. She was born Oct. 11, 1901 in Manchester, the daughter of Alfred and Matilda (Paul) Braun.

Mrs. Howe was married to Harold J. Howe on Aug. 9, 1928 and he preceded her in death on July 31, 1972.

Mrs. Howe was a life-long resident of Washtenaw county and will be remembered for her love of dogs and her talent as a groomer.

Surviving are three sisters, Minola Schellenberger of Ann Arbor, Pauline Taylor of Boca Raton, Fla., and Dorothy Russ of Jackson; and several nieces and nephews.

She was preceded in death by three brothers, Paul, Arthur, and Carl Braun.

Funeral services were held Saturday, Dec. 30 at 1 p.m. from the Staffan-Mitchell Funeral Home with the Rev. Erwin R. Koch of St. Paul United Church of Christ officiating. Burial was made in Mount Olivet Cemetery, Chelsea.

Expressions of sympathy may be made to Michigan Heart Fund or to the charity of your choice.

Bernice L. Baker

805 W. Middle St. Chelsea
(Formerly of Dexter)

Bernice L. Baker, 805 W. Middle St., Chelsea, a former Dexter resident, age 81, died Monday, Dec. 26, 1989.

She was born May 26, 1908, in Dexter township, the daughter of Claude and Lena Baker Austin.

She had been a Washtenaw county resident most of her life, and a resident of the Dexter area since 1971.

She was a member of Webster United Church of Christ, the Rebekah Lodge No. 460 IOOF, the Webster Study Group, and the Webster Fellowship.

She was married to Stephen Baker, Aug. 24, 1950. He died April 19, 1968.

Mrs. Baker is survived by one daughter, Mrs. Felix (Louise) Stone of West Palm Beach, Fla.; two sisters-in-law, Connie Scroggins of New Mexico and Winfred Austin of Kalamazoo. She was preceded in death by four brothers, W. B. Austin, Ralph, Lawrence and Ellis Austin.

Funeral services were held at 11 a.m. Thursday, Dec. 28, at the Hosmer Funeral Home, Dexter, with the Rev. James G. Simmons, chaplain of the Chelsea United Methodist Retirement Home, officiating.

Burial followed in North Waterloo Cemetery, Stockbridge.

Memorials may be made to Webster United Church of Christ, or to the Chelsea United Methodist Retirement Home.

Envelopes are available at the funeral home.



Wolfgang Amadeus Mozart played the harpsichord when he was only three and wrote a symphony when he was eight-years-old.



DOUG MILKEY of Cavanaugh Lake was one of several fishermen to sit in the cold and snow for the chance to catch bass last Saturday at the lake. Milkey reported seeing several bass in the 5-6 pound range. He was using chubs and minnows.

Stolen Vehicle Recovered By Sheriff's Dept.

A stolen vehicle was identified, after deputy Steve Platt of the Washtenaw County Sheriff's Department was dispatched at 5:50 p.m. Saturday, Dec. 23, to a location near Little Lake Dr. where a large pile of dirt hid a vehicle, from which all four tires had been removed.

On arrival, Platt attempted to confirm the vehicle's registration, and was informed the automobile had been reported stolen, Dec. 20, by its

owner, John Mender of Jackson Rd. In addition to removing the four tires, thieves had removed the radio. A key, which Platt surmised was the ignition key, was discovered lying on the dash.

Mark Stevens Wilson of Fleming Rd. notified deputies about 5 a.m. Friday, Dec. 22, he woke to find someone had driven through his yard sometime during the previous night and run over several trees, damaging seven or

eight of the trees. Wilson said he retired about 11 p.m., but he didn't hear anything during the night.

An incident was reported at 6:51 a.m. Friday, Dec. 22, involving two vehicles parked in a driveway located in the 4500-block of Jackson Rd.

Both autos were hit by a (unknown) vehicle, which left the scene.

Heart attack symptoms put you in a race against time.

Winners head for the emergency room as if their lives depended on it.

Dramatic new ways to save lives and stop permanent damage from heart attacks are available to you and your family in our emergency room. These treatments must be given in a hospital setting.

More importantly, the treatments must be given AS SOON AS POSSIBLE to be effective.

Even if you're not sure it's a heart attack, you should be seen by a doctor. We can help you with the race against time, but you have to get here first.

Call an ambulance, or, at the very least, call our emergency room.

Chelsea Community Hospital provides state-of-the-art care for heart attacks. Through its link with the Cardiac Emergency Network, a coordinated life-saving support system sponsored by the Michigan Heart Institute and Catherine McAuley Health Center in Ann Arbor, Chelsea Community Hospital can offer comprehensive cardiology services. The physicians of the Michigan Heart Institute are among the most experienced cardiologists and cardiovascular surgeons in Michigan. They are "on call" to our emergency room 365 days a year, 24 hours a day. Medical tests can be telecopied (FAXed) whenever the need arises for additional consultation.

All of this means that for the people of the Chelsea area, the closest hospital is now the best hospital.

Know the symptoms of a heart attack.

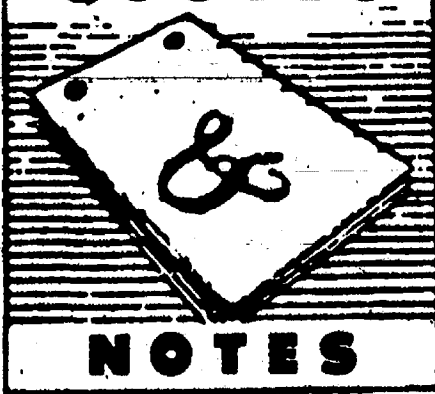
- Pressure, tightness and aching in the chest.
- Nausea, sweatiness or weakness that may come and go.
- Shortness of breath.
- Numbness or pain in the left arm or left side of the chest or neck.



Chelsea Community Hospital
775 South Main St.
Chelsea, MI 48118
(313)475-1311
Emergency: (313)475-3960

Chelsea Community Hospital is a member of the Cardiac Emergency Network. Sponsored by the Michigan Heart Institute and Catherine McAuley Health Center.

QUOTES



NOTES



DONALD A. COLE, Director

"Aim at the sun. You may not reach it, but your arrow will fly higher than if you aimed at an object on a level with yourself."

—J. Hous

Even though we may fall short of too ambitious personal goals, we are likely to find that all our resources and talents have been called into play. As time goes on and we continue to reach out towards goals beyond our reach, we find our capabilities lengthening and our ambition continually whetted by the desire to do better and accomplish more.

Strangely, people often tend to underestimate their potential. It is only by aiming high that many of us discover to our pleasant surprise that our resources, courage and abilities are greater than first imagined.

Our entire staff extend to your and yours Best Wishes for the New Year.

COLE-BURGHARDT FUNERAL CHAPEL

Your Chelsea Funeral Home with the "HOME" like atmosphere

214 EAST MIDDLE ST.

PHONE 475-1551

MINUTES COUNT

