

QUOTE

"Every hero becomes a bore at last."
—Ralph Waldo Emerson

The Chelsea Standard

25¢
per copy

ONE HUNDRED-THIRTEENTH YEAR—No. 28

CHELSEA, MICHIGAN, TUESDAY, DECEMBER 14, 1982

18 Pages This Week



YOU WERE EXPECTING SANTA PERHAPS? The jolly old man did make an appearance at the Chelsea senior citizens Christmas-birthday party Friday night at the North school cafeteria, but these belly dancers from the community education class stole the limelight. Five local dancers gave their first performance ever and

seemed to be a big hit, according to different persons there. Seniors stood up to see better, and smiling men nudged each other. The dancers' traditional ethnic costumes with veils and finger cymbals, said Karen Mirochna, who has taught the class 2½ years, are a bit more reserved than what cabaret belly dancers usually wear.

Senior Citizens Entertained By Local Belly Dance Class

Chelsea senior citizens had special guests at their Christmas-monthly birthday party Friday night at the North school cafeteria.

If you guessed Santa Claus, you were only half-right. Belly dancers from the Community Education class also entertained. One man, obviously enjoying the show, nudged the man beside him, said Treva Winans, senior activity center director. "I was born 30 years too soon," he said, as he watched the costumed dancers wearing veils, bells, and finger cymbals.

Elementary school classes had decorated the cafeteria walls with posters and drawings. Johnson Wax Company, whose Nigerian employees burned in an industrial fire were treated at Chelsea Community Hospital, donated green shampoo and hair conditioner to the hospital, and these were used as favors. The bottles of green, combined with red poinsettias, greenery and gold table clothes made the tables very festive, said Mrs. Winans. "Maybe next year someone will give us red conditioner!"

The 165 guests dined on turkeys and capons donated by Chelsea Community Hospital. The Contemporaries, a 15-voice girls singing group at Chelsea High school, both sang and led the group in carols.



OFFICER OF THE YEAR in the Chelsea Police Department is Patrolman Rick Walters (center), who was cited by Chief Robert Aiello (left) especially for his detective work. At right is Jack Merkel, village president, who presented Walters two awards—one for Patrolman of the Year, the other for saving a life.

Rick Walters Honored As 'Officer of the Year'

Richard A. (Rick) Walters was honored at last week's village council meeting as the Chelsea police department's "Officer of the Year" and also received a special award for having saved a life.

Walters, who lives in Jackson, has been on the Chelsea police force for a little more than five years. A native of Milan, he was graduated from the Michigan Police Academy in 1977 and went to work in the village.

Police Chief Robert Aiello cited Walters as the member of the department who contributed the most to it during the year, and especially praised his ability as a detective.

"He conducted seven major investigations during the year and completed every one of them successfully, resulting in numerous arrests and recovery of stolen property," Aiello said. "He convinced a man armed with a 12-gauge shotgun, who had barricaded himself in an attic, to come out and surrender without harming anyone."

"He has a knack for handling situations and solving things. He keeps up with what's going on. He digs in and carries on investigations until he either clears up the case or exhausts all possible leads."

The department does not have a detective as such. All uniformed officers work at the investigative phase of police work as their assignments and abilities allow. Walters has proven to be very good at it, Aiello noted.

The life-saving award resulted from an incident on Sept. 25, 1981, when Walters, a certified emergency medical technician, responded to a call to help a man in full cardiac arrest. His heart had stopped.

Walters administered cardiopulmonary resuscitation (CPR), restarted the victim's heart and maintained his life until he could be taken to a hospital where equipment was available to stabilize his condition.

"The doctor in the case certified that Walter's prompt and effective action made the difference between life and death," Aiello said. "Unfortunately, the man died later from another, separate heart attack, but that in no way detracts from what Rick did. He had been trained, he diagnosed the problem, he knew exactly what to do, and he did it."

Village president Jack Merkel said he was proud of both the police department as a group and of Walters as an individual. "As village president and speaking for all the people in the

community, I'm proud and grateful to have an officer of Rick Walters' ability serving and protecting us," Merkel said. "We are fortunate to have him on our police force. And we are fortunate to have a police department that does such a good job for us. If you look at the crime rates in some other communities, you can see how well we do by comparison. Our police are highly visible, and they have the confidence of the community."

For his part, Walters echoed the sentiments expressed by Merkel and Aiello. "The people here in Chelsea are very co-operative," he said. "They help us, and we help them. It's an excellent relationship."

Walters expressed gratitude to Aiello for "giving me a free hand" to conduct investigations. "All he asks is that I keep him posted on what I'm doing, which is his duty as chief. When I need help, he gives it to me. Our department is a team. We all work well together. Nobody is going to go out there and do it all by himself."

Asked if he has any special "secret to success," Walters said it probably is his ability to get along with and talk to people. "I think my strong point is in-

(Continued on page three)

Christmas Spectacular Scheduled Tonight By School Music Groups

The school's first Christmas music spectacular with 11 groups performing 25 Christmas and wintery numbers will begin tonight at 7:30 p.m. in the high school gymnasium.

Choirs, bands and orchestras, from Beach Middle and Chelsea High school will play in a "collage" performance—such as a junior high choir, followed by a high school band, followed by an orchestra. Each group will per-

form about two selections with some group numbers, such as the "Hallelujah Chorus" from Handel's "Messiah" and a Christmas carol sing-a-long as finale, with audience included.

Christmas music to be performed by the different groups includes "Deck the Halls," "Do You Hear What I Hear," "Jingle Bells Rhapsody," "Fantasia on Greensleeves," and the appropriately named tune,

"Christmas in a Small Town."

Tamara Barbret will direct the choir; Warren J. Mayer, the Beach school bands; Carol Wells Palms, the orchestras, and William W. Gourley, chairman of the music department, will direct the high school bands.

Gourley suggests getting to the concert early for both parking ease and because the gymnasium only seats 1,200. The all-schools concerts are usually big draws.

Council Unanimously Votes To Buy into New Edison Electric Plant

Chelsea's Village Council voted unanimously last Tuesday night to buy into the Detroit Edison Company's new Belle River power plant, but will have to wait until spring to find out whether the deal goes through for sure.

It will take that long for the complicated agreement between the Michigan Public Power Agency (MPPA) and Edison to be formalized and a bond issue sold, said Village Administrator Frederick W. Weber.

Chelsea is a member of MPPA, and Weber represents the village on the agency's commission.

Weber attended an MPPA commission meeting in Lansing on Thursday, and said afterward that he sees no reason why the electrical power purchase deal will not develop. However, he added, there are a lot of details to be worked out and "it's not a sure thing" until all the papers are signed.

If it all happens, Chelsea will own a share of the Belle River generating plant and its transmission lines. The plant,

which will burn low-sulphur coal imported from Montana, is scheduled to start up in 1984.

As of last Thursday, MPPA members including Chelsea had agreed to buy a total of 233½ megawatts of power from the Belle River plant, which has a potential generating capacity of 650 megawatts. Bay City has been given until Dec. 15 to decide whether it, too, wants to buy in.

Chelsea's share would be three megawatts.

"It's safe to say that last week's council committed the village to the project and that we are definitely 'in' provided the master contract is approved," Weber said. "It's a good move for the village. It will guarantee us a long-term power supply and also enable us to be more competitive in our rate structure."

"The whole purpose of Chelsea's having its own electric utility is to be able to sell reliable power at lower rates than village users could buy otherwise. If we can't do that, we shouldn't be in the business."

The village presently owns a share of Consumers Power Company's Campbell No. 3 plant and gets 1.85 megawatts of electricity annually from that source. It buys another 4-plus megawatts from Consumers at the company's "wholesale" rate.

That combination of sources allows the village to sell power to residential and commercial customers at lower rates than Consumers can offer directly. However, Consumers' direct rate for industrial users is lower than the village can meet.

"When the new source (from Belle River) comes on line, we will be able to adjust our rate structure so that we can go to Chelsea Milling, for example, and sell them electricity for less than they pay Consumers," Weber said.

"As we begin to get electricity from Belle River, we will cut back correspondingly on the amount we purchase from Consumers. It's complicated, but the net effect will be more power at (Continued on page eight)

Build the Unit Yourself Is Best Way To Assure Quality

Chelsea fire chief Paul "Bud" Hankerd should be quite confident of the quality control in the power take-offs the fire department installs on their trucks.

He makes them.

Power take-offs attach to a transmission so the transmission can be used as a power source. The PTO on the ¾-ton army truck the department uses for grass fires runs the winch loaded with cable and a hook to pull cars from ditches or away from trees. The PTO for that new truck, which was wrecked on its way here for the fair parade but which may make it here in January, runs both its water pump and winch.

Hankerd assembles PTOs at Dana Corporation, whose plant here is the largest PTO manufacturer in the country.

He has worked there since 1963 and has assembled PTOs the last three years. He has served with the volunteer Chelsea Fire Department for 26 years.

Hankerd prefers PTOs to electrical connections which depend on the car battery for two reasons, he says. "When we are at a fire, we are already draining the battery with headlights and radios."

"The last thing we need is to depend on a run-down battery as a power source for our water pumps."

The PTO is also less difficult to maintain, he says. They outlive the trucks they are installed on.

When the new truck arrived, it was not adapted for a PTO as was requested by the fire department. Hankerd got help converting the truck to PTO use from Dana's engineers, who also helped make the truck capable of pumping water and moving at the same time.

Hankerd either wears or sets his fire department radio on his workbench. If he gets a call, he leaves in a hurry without having to ask anyone for permission. (Continued on page five)



BOTH MAKER AND USER: Chelsea fire chief, Bud Hankerd, uses an air gun to assemble the power take-off, a power source attached to a transmission and made at Dana Corp., for a Chelsea grass-fire truck. He has made both this PTO and the one for the new truck due in January as part of his assembly job. The hardened-steel alloy gears showing are what will mesh with the transmission. It takes Hankerd about 10 minutes to finish each PTO. His fire department radio is always within reach, either on his work bench or attached to his belt.

Blood Bank Donor Clinic Slated Today

Chelsea High school will be invaded by vampires today—Red Cross blood-drawing vampires.

The health careers class is sponsoring the blood drive from 8:30 a.m. until 2:30 p.m. in room 23 of the science building.

Health careers students will do the preliminary interviewing, and Red Cross volunteers will draw the blood.

Walk-in donors will be accepted, said Sharon Glassford, a health careers student. Donors must be at least 17 years of age and have permission from a parent or guardian to donate.

As of Friday, 18 faculty members and 58 students had signed up for the drive.

Cookies and juice will be offered during the mandatory post-donation rest period.

Library Will Close For Coming Holidays

McKune Memorial Public Library will be closed Dec. 24-25 and Dec. 31-Jan. 1, librarian Joan Walters announces.

She also reminds that persons wishing to donate gifts to the library may do so before the end of the year and thus qualify them for deductions from 1982 income tax liability.

Published every Tuesday at 300 N. Main Street, Chelsea Mich. 48118, and second class postage paid at Chelsea, Mich. under the Act of March 3, 1879. Postmaster: Send address changes to The Chelsea Standard, 300 N. Main St., Chelsea, Mich. 48118.

Subscription Rates (Payable in Advance)
In Michigan: One year in advance\$8.00
Six months\$4.50
Single copies mailed\$.50
Outside Michigan: One year in advance\$10.50
Six months\$6.00
Single copies mailed\$.75

MEMBER
NATIONAL NEWSPAPER
Association - Founded 1908
National Advertising Representative:
MICHIGAN NEWSPAPERS, INC.
827 N. Washington Ave.
Lansing, Mich. 48906

JUST REMINISCING

Items taken from the files of The Chelsea Standard

4 Years Ago . . . 24 Years Ago . . .

Thursday, Dec. 21, 1978—

Chelsea Jaycees collected 91 pints of blood at their annual drive last Saturday. They had hoped to break the 100 mark.

Two county Special Olympian floor hockey players will play on the Michigan all-star team at the national tournament in San Diego. Ryan Sweeny will play offense and Terry Walkowke as goalie.

Lydia Zahn, 97, and her daughter, Mrs. Irma Grau, both of 3380 S. Fletcher Rd. are on vacation—a well-deserved one. Together they made 200 quilted lap robes this year, their 10th annual Christmas present to hospital and nursing home residents in the county. They are lasting better than their sewing machines, one of which belonged to Lydia's mother. It's hard to find replacement parts, such as an antique shuttle.

Bulldog wrestlers won their first dual meet of the season, 36-26, over Tecumseh Tuesday.

Chelsea Community Fair board voted to change their by-laws to increase the number of board members from 21 to 25 at their Dec. 14 meeting.

14 Years Ago . . .

Thursday, Dec. 12, 1968—

A Chelsea resident delivered a 195-pound baby by caesarian section Tuesday. Paul Kalmbach's five-year-old Holstein had her calf about three months overdue. It was about 100 pounds above normal weight and stillborn.

Registered property owners will vote Dec. 18 on a one-mill levy for a county-wide vocational education program through the Washtenaw Intermediate School District.

Bulldog grapplers won their first dual meet, 34-16, over Tecumseh Thursday at home. Co-captains, Kerry Kargel and Mike Gaken, and John Bassett and Bob Koengeter pinned their opponents.

Santa Claus talked to more than 500 local children and passed out filled stockings Saturday on the Chelsea fire truck.

Thursday, Dec. 18, 1958—

Santa Claus attracted 1,500 children to the annual Christmas party sponsored by the Community Chest and local UAW unions Saturday at the Sylvan Theatre. The party was held in three shifts to prevent overcrowding.

Fluoridation of the village's water supply was urged by county health department officials at Tuesday's village council meeting. It can definitely reduce the average number of defective teeth in eight-year-old children, said Dr. Otto K. Engelke, county health officer.

Bulldog hoopers won their first game of the season, a 65-50 win over Lincoln last Friday at home.

John Palmer was appointed Chelsea police chief and Dale Collins police officer effective Jan. 1 at Tuesday evening's village council meeting.

Mr. and Mrs. Lewis Noll have sold Grove Brothers 5 cents to \$1.00 store to John Perry of Flushing who has been manager of the Flushing store for 15 years. Perry will take ownership of the Chelsea store Jan. 1, and he and his family will be moving here next week.

34 Years Ago . . .

Thursday, Dec. 16, 1948—

Sentinel Aircraft Co., located halfway between Chelsea and Ann Arbor on Jackson Rd., has announced its plans to start producing about 10 L-5 army liaison planes a week beginning Feb. 1. Since the company was founded in 1945 in a remodeled barn, it has limited its production to L-5 parts.

Christian Rural Overseas Program (CROP) will begin soliciting county farmers this week for wheat donations to help feed children and elderly persons abroad who are going hungry.

Norris J. Wiltse, representing the state's high school accrediting bureau at a recent visit here, said the consolidation of districts has caused temporary overcrowding, but new facilities can alleviate that. If the school wants to become accredited every three years, meaning it would be grade A, the highest rating, it needs a library catalogued and staffed by a teacher to meet North Central Association requirements. Presently the school is accredited every two years.

A county-wide steering committee has been appointed this month to develop a county building code.

MICHIGAN MIRROR

By Warren M. Hoyt, Secretary, Michigan Press Association

Transportation Package Appears Dead for Year

After it became apparent there were not enough votes to approve a sales tax on amusements and some services in the state House of Representatives, supporters of Governor William G. Milliken's \$2 billion, four-phase transportation package declared the package dead for the year.

Prime supporter, Representative William Ryan (D-Detroit) said the package is dead "for all practical purposes" while Management and Budget Director Gerald Miller said there was still hope but admitted it didn't look good.

Both Democrats and Republicans said a lack of Republican support killed the proposal.

House Speaker Bobby Crim (D-Davison) said Democrats could have raised 35 of the necessary 56 votes, if Republicans could have guaranteed 21. But there did not appear to be any more than five Republican votes, said Republican floor leader Representative Michael Busch (R-Saginaw).

In an effort to attract

Republican votes, Miller was unsuccessful in developing other proposals which would be acceptable. Ryan said Miller was authorized to come up with any formula that raised the same revenue and replaced the lost money to the general fund.

Earlier, Milliken said the package had to be passed if the state was to meet the matching requirements to get up to \$134 million in federal revenue if the federal gas tax is increased.

Busch said that in 1983, if the state should fail to qualify for those funds it could give more impetus to some sort of program.

During a Republican caucus, Miller admitted that to meet the federal match would only require an increase of about one cent per gallon.

If the package had been limited to a tax increase simply for road repairs, it could have generated more Republican votes, Busch said.

But urban representatives insisted a package had to include increased funding for comprehensive transportation. "They went for more than they

could realistically expect," Busch said.

The package was expected to raise some \$2 billion over five years. The first part of the package would increase the gasoline tax according to a highway maintenance index, with a cap on increases of two cents a year.

Over five years, the tax would have raised an additional \$911.7 million.

Weight taxes would be increased 30 percent for automobiles initially and 45 percent on commercial trucks, with the increase indexed each year to the increase in the state's personal income.

Over five years, the tax would raise some \$176.5 million.

The package also phased-in a greater earmarking of auto-related sales tax for comprehensive transportation. That would cost the general fund \$418 million over the period, and the package's most controversial element—imposing a sales tax on amusements and some repair services—would have raised \$484 million.

With continued declining revenues, not only in the state's general fund but also in the state transportation fund, and a state transportation system in need of repair and updating, the new Legislature, along with new Governor-elect James Blanchard may have to face raising gasoline and weight taxes as its first order of business next year.

Ann Arbor Trust Increases Dividend Rate to Shareholders

The Board of Directors of the Ann Arbor Trust Co. has approved an increase in the quarterly dividend rate to shareholders, from 43 cents to 45 cents per share. The fourth quarter distribution will be paid on Dec. 15, to shareholders to record as of Dec. 1, 1982.

President George H. Cress explained that the new indicated annual dividend rate becomes \$1.80 per share, up from \$1.72. This makes the 10th consecutive year that Ann Arbor Trust has increased dividends to shareholders, he added.

BARBARA M. WEHR, D.D.S.
JOHN C. WEHR, D.D.S.
FAMILY DENTISTRY
9477 N. Territorial, Dexter
In North Territorial Family Clinic
426-4635

Our office hours:
Monday-Thursday 7:30 a.m.-9:00 a.m.
Friday 7:30 a.m.-4:00 p.m.
most Saturdays 9:00 a.m.-2:00 p.m.

Yours truly,
Uncle Lew.

Uncle Lew from Lima Says:

DEAR MISTER EDITOR:

The fellers huddled close to the stove at the back of the country store Saturday night and spent most of the session talking about guilt. Ed Doolittle got the floor first with a report from a clipping about boys and girls in a club in Hollywood that were dressed so neat and being so orderly that somebody called the law. What's wrong with us, Ed said all them guilty parents out there must be wondering, that our kids didn't turn out like everybody else's.

These strange young people call themselves Mods, Ed said, and their idea is to be and do what other young folks ain't and don't. They take baths, get haircuts, wear nice clothes and ride scooters. They don't take drugs and some even have been heard saying "excuse me" and "thank you" to one another and to other people. What they're doing, Ed said, is behaving like the rule was before the exception become the rule.

It may be, allowed Zeke Grubb, that everything has swung to the end of its rope and now it's coming back to the middle. Zeke had saw the Army has decided men and women recruits at Fort Jackson, S.C. are different after all. By order of commander general, female fighters will learn to powder their noses while the males are at bayonet drill. The Army felt guilty about training young women to kill with knives, Zeke said, so it set up a makeup class for em instead.

Clem Webster reported that a baby doctor in Arizona believes parents have ever right to feel guilty about the way they're raising their kids. Clem had saw where Dr. Oscar Christensen told a meeting of the American Academy of Pediatrics in New York that American parents have spoiled their children rotten, and sassy. He said parents have become confused with all the equal rights movements, and they want their children to be

equal to. When you got a kid that thinks he and his parents are equal, you got a child you can't control and you got parents with a heavy load of guilt, the doctor claimed.

Actual, went on Clem, the sad truth is most of our lives are run on guilt. He said he didn't really want to teach a Sunday school class next year, but he felt bad after his old lady give him a lecture about allus taking and never giving. We might call it our conscience, Clem said, but the fact of the matter is, most of us folks didn't keep telling us we ought to be ashamed for not letting our consciences bother us. If we learned anything from Adam and Eve and the apple, Clem said, it's that we can't git away from guilt.

Usual, Clem went on, we turn to old American values for remedies. We make a money police and lay it right on the sore. Clem had saw where somepam called "parenting workshops" are being held all over the country. This is where, he said, parents pay \$10 a head to come and hear, child-raising experts that probably don't have any kids tell em how bad they've been and what they've got to do to make amends.

If that ain't turning guilt into a profitable virtue, Clem asked, what is?

Yours truly,
Uncle Lew.

UNDERCOVERWEAR AGENTS NOW IN CHELSEA

AVA 475-8040 - KIM 475-7698

Featuring
IN-HOME LINGERIE PARTIES
GREAT FUN - LOTS OF LAUGHS
PLUS QUALITY LINGERIE

As Seen on the Phil Donahue Show

CHELSEA UNITED METHODIST RETIREMENT HOME

Accepting applications for immediate occupancy in the residential area. No entry fee.

For Details Contact
MRS. CATHERINE DURKIN, Administrator
for appointment. Ph. 475-8633.

KITCHEN REMODELING



★ We at Dutch Country are kitchen remodeling specialists.
★ Expert installation available.
★ Free design layout service.

★ Featuring: HAND CRAFTED AMISH CABINETS.
★ Custom Quality Cabinetry by Fieldstone.
★ Jenn-Air Appliances ★ Delta Faucets ★ Elkay & Kohler Sinks.

VISIT OUR SHOWROOM

DUTCH COUNTRY KITCHENS

146 E. Main 428-7292 Manchester

MARK LEVENTER, M. D.

and

KATHLEEN ANZICEK, D. O.

take pleasure in announcing
the opening of their office for
the practice of
FAMILY MEDICINE

at

Grass Lake Medical/Dental Center
375 Lakeside Drive
Grass Lake, Michigan

Office Hours:
By Appointment

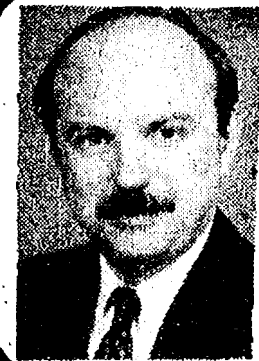
Telephone:
(517) 522-8403

WEATHER

For the Record . . .

	Max.	Min.	Precip.
Tuesday, Dec. 7	38	28	0.00
Wednesday, Dec. 8	45	13	0.00
Thursday, Dec. 9	26	13	0.00
Friday, Dec. 10	28	17	0.03
Saturday, Dec. 11	32	27	trace
Sunday, Dec. 12	25	15	0.00
Monday, Dec. 13	31	17	0.00

Talking it Out



With
JOHN W. MITCHELL
Owner-Director

Staffan-Mitchell
FUNERAL HOME

WE PERFORM AT LEAST 85 SERVICES FOR A FUNERAL!

We handle a myriad of details for each funeral to meet the special wishes and needs of the family. As funeral directors, we often help out for several months after the funeral to make sure all the details are completed.

It is important for funeral directors to consult at length with the family on literally dozens of details. Here are just a few of them:

FUNERAL: setting its time and who is to officiate: choice of casket and clothing, music, Scriptures, etc.

CEMETERY: purchase of lot or opening of family plot; getting permits.

NOTICES: arranging death certificates, obituaries, notifying fraternal (or other) groups, distant relatives.

FUNERAL DAY: organizing service details: helping conduct service; providing family cars and organizing procession.

CLAIMS: helping family file for Social Security, military, union or insurance benefits.

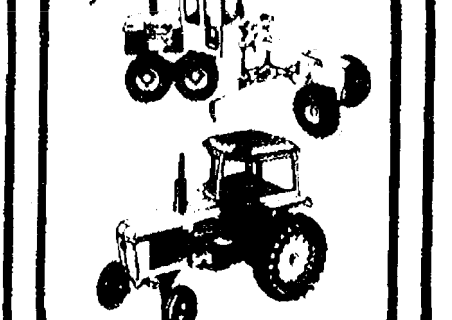
Any of the 85 service details can cause grief when not handled right. We have to give EVERY funeral 110% of our time and attention to perform a service which comforts and fulfills the family's needs.

Since 1862
126 PARK ST. PH. 475-1444

Christmas and Kids—Two Very Good Reasons For Shopping John Deere



Toys . . . toys . . . toys. We have a wide selection of the gifts kids want most. Choose the pedal-driven riding tractor and trailer. Or replicas of tractors, combines, dealership trucks, and more. Surprise the children on your list with a genuine John Deere toy.



Huron Farm Supply
Phone 426-8847
6150 Dexter-Chelsea Rd. Dexter, Mich.

Free Parking

Chelsea Christmas Festival

Store Hours

Sunday	Monday	Tuesday	Wednesday	Thursday	Friday	Saturday
12	13 CHRISTMAS SING	14	15	16	17	18 Santa
	Open til 10:00	Open til 8:30	Open til 8:30	Open til 8:30	Open til 8:30	Open til 8:30
19 OPEN NOON TIL 5:00 ★	20 Open til 8:30	21 Open til 8:30	22 Open til 8:30	23 Open til 8:30	24 Open til 5:00	25 CHRISTMAS

★ Saturday, Dec. 18th, 12-4 p.m. — SANTA CLAUS at Longworth Plating

CHRISTMAS SWEEPSTAKES

WIN A FREE 2-DAY WEEKEND TRIP FOR TWO TO TORONTO

Trip includes transportation from Windsor - 2 day stay at the Westin Hotel, \$100 cash spending money, return trip to Windsor. Winners may go anytime in January.

NAME _____ ADDRESS _____ PH. _____

Clip this Coupon and Deposit at any Participating Chelsea Merchant You must be 18 or over to be eligible to win. Drawing Wed., Dec. 22 7:30 pm at the Chelsea Woodshed.

Sponsored by Downtown Merchants Association — Division of Chelsea Chamber of Commerce

Modern Mothers Enjoy Christmas Mexican Fiesta

Chelsea Modern Mothers held their annual Christmas party, which was a Mexican fiesta this year, Tuesday, Dec. 7 at June Wilson's home.

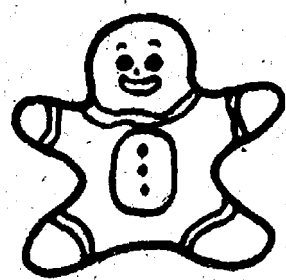
A social hour when sangria and quesadillas were served began the evening. Judy Wahl and Debbie Peck, both new members, were welcomed. A dinner of guacamole salad, posole (soup), turkey enchiladas, rice with artichoke hearts and refried beans followed and was thoroughly enjoyed by all.

Following the meal, club members gathered around a Christmas tree to learn of Mexican traditions including a pinata breaking. A surprise visit from Pancho Gonzales (June Wilson) added to the fun of the traditional gift exchange. A dessert of ice cream and Kahlua ended a real Mexican fiesta.

June Wilson, chairperson, was assisted by her committee, Jean Cooper, Marsy Doan, Jan Grenier, Mitzi Lewis, Denise Long, Mickey Michaud, Liz Prentis and Judy Steger.

The next meeting will be Jan. 11 at the high school auditorium. Peg Skelton, the guest speaker, will present a "Richard Simmons Show." Call 475-9856 for further information.

Telephone your club news to 475-1371



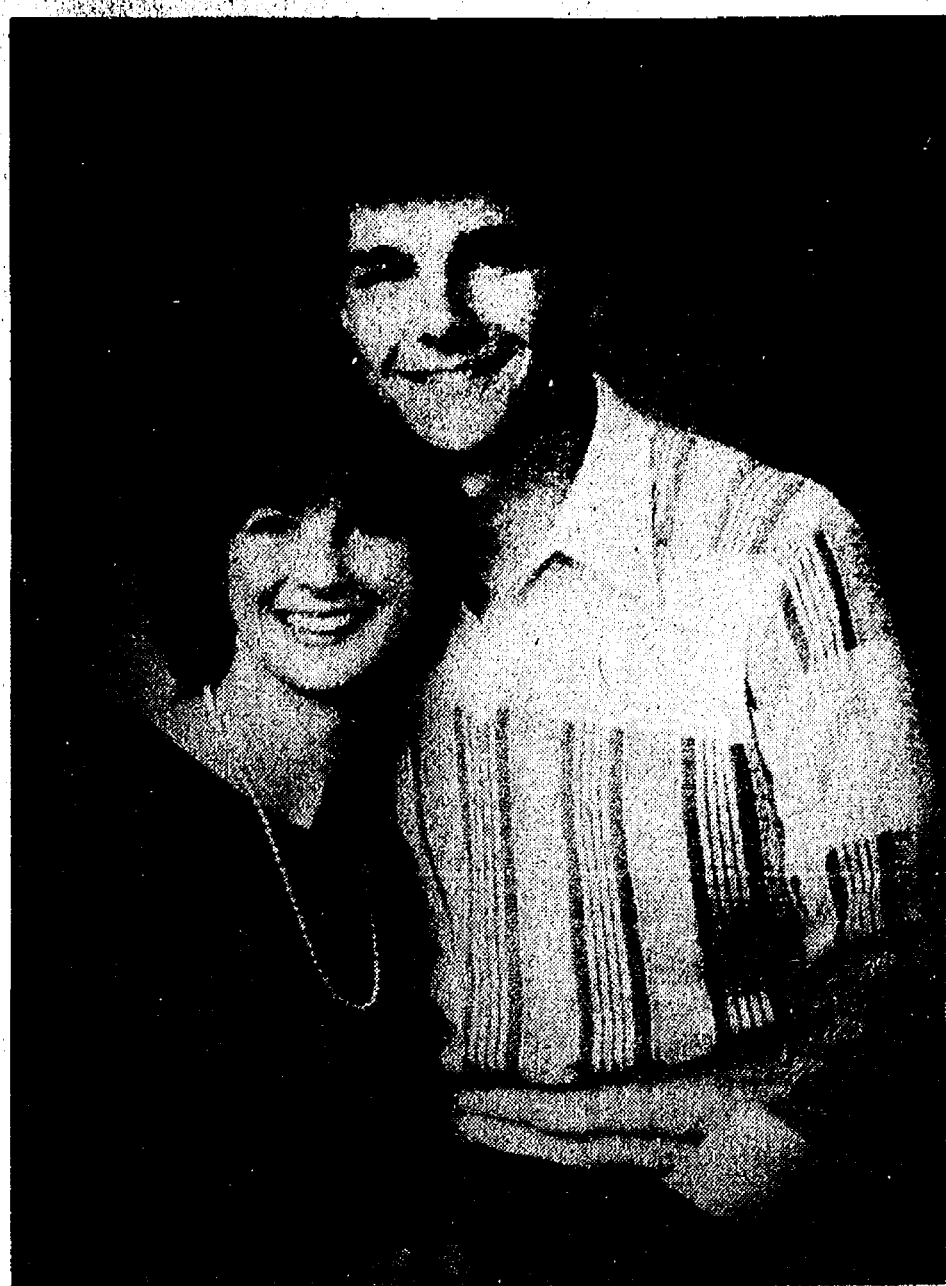
An Early Christmas at COUNTRY CRAFTIQUE

STORE-WIDE SALE
Friday and Saturday, Dec. 17-18
25% OFF
on all merchandise in stock

STORE HOURS:

Monday-Friday 9:30 a.m. to 9:30 p.m.
Friday, Dec. 23 Close at noon
Mondays (after Christmas) Open till 8:30 p.m.

COUNTRY CRAFTIQUE
103 N. Main St., Chelsea Ph. 475-2512



EDWARDS-LAPHAM: Clifford and Bev Edwards of Grass Lake have announced the engagement of their daughter, Lisa K., to Curtis A. Lapham, the son of Richard and Barb Lapham of Jackson. Miss Edwards is a 1981 graduate of Grass Lake High School, attended Jackson Community College, and is employed in the children's center at Chelsea Community Hospital. Mr. Lapham is a 1979 graduate of Grass Lake High School and is a senior in forestry at Michigan State University. He is in ROTC and will enter the U.S. Army after his graduation. The couple plans a March 19 wedding at Grass Lake Assembly of God.

Homemakers Club Members Enjoy Christmas Party

Chelsea Homemakers met Thursday evening, Dec. 9 for their Christmas celebration and gift exchange at Jean Satterthwaite's home.

A delicious shrimp salad bar, wine and cookies were enjoyed by everyone. Co-hostesses for the party were Diane Horning, Pat Flinn, Vicki Kern, Holly Porter, Leah Herrick, and Jean Satterthwaite.

Marie Koch Listed in College Who's Who

Marie Koch, daughter of the Rev. and Mrs. Erwin Koch of 760N. Main St., Chelsea and a student at Heidelberg College in Tiffin, O., has been selected for listing in "Who's Who Among Students in American Colleges and Universities." Among her many activities she is a member of the 88-voice Heidelberg Concert Choir which has won international acclaim for its excellence.

Altar Society Members Gather For Gift Exchange

St. Mary's Altar Society held their Dec. 6 meeting in the rectory basement with 32 members and three guests attending. Also present for this event were Fr. Philip Dupuis and his mother.

The meeting room was decorated for the Christmas season. A pot-luck dinner was served at 6:30 p.m. Also gracing the table was a decorated cake in honor of Fr. Dupuis' 31st anniversary in the priesthood.

After a short business meeting conducted by Bernice Augustine, president, those attending sang Christmas carols, led by Gertrude Drouyer, program chairwoman, assisted by Mary Guinan and Lynn Fowler. A gift exchange followed.

Persons selected for December altar duty are Kathleen Chapman, and Geraldine Sullivan. The next regular meeting will be held at 7:30 p.m. Monday, Jan. 3 in the rectory basement.

Area Craftspeople Showing Work at Manchester Gallery

A special showing and sale of works by area artists and craftspeople is presented by the Manchester Art Guild during the next two weeks. Pottery, woodwork, painting, printed cards, quilting, and more are included in the exhibit.

In Guild tradition, items reflect a great variety in type and price, whether it be a special painting to fall in love with or a simple stoneware candle-holder. The most valuable gifts at any time of the year are ones made lovingly and in the one-of-a-kind manner symbolic of this holiday season.

Among Dexter artists displaying work, is Pam Grau, a potter and instructor at Artworlds in Ann Arbor.

This quality Christmas exhibit is located in the Manchester Art Gallery, 138 E. Main St., off the lobby of the Black Sheep Theater. Hours for the show coincide with theater performances of "Christmas Coast To Coast" Dec. 10-19. In addition to intermission, the gallery is open Thursday-Saturday from 7-8:15 p.m., Saturday from 10 a.m.-12 noon, and Sunday from 1-4 p.m. Additional hours will be posted.

Michigan apple farmers harvested 640,000,000 pounds of apples in 1981, valued at \$66.3 million. Michigan is the nation's leading producer of Jonathans and Northern Spys and ranks third in the production of all apples.

Woman's Club Marathon Bridge Standings

AFTERNOON LEAGUE		
Place	Team No.	Score
1	8	8,860
2	9	8,350
3	7	7,770
4	5	6,520
5	3	6,300
6	1	5,690
7	6	5,120
8	4	4,980
9	10	3,680
10	2	2,290

AFTERNOON-EVENING LEAGUE		
Place	Team No.	Score
1	4	13,800
2	1	7,580
3	7	6,960
4	10	6,360
5	5	6,230
6	2	5,980
7	3	5,310
8	9	5,190
10	8	4,190

EVENING LEAGUE		
Place	Team No.	Score
1	3	9,180
2	4	9,090
3	2	8,090
4	9	6,190
5	10	6,110
6	1	5,940
7	5	5,820
8	7	5,450
9	6	5,150
10	8	4,240

What's Cooking In Michigan

If Christmas shopping has put a strain on your budget, don't think you have to forgo the pleasures of entertaining. Using some of the many good things growing in Michigan, you can entertain elegantly and inexpensively.

Hearty soup, of course, is an appropriate main dish, needing only a good crusty bread, salad and a simple dessert to complete the meal.

Another time, invite guests to a fondue party. Melt cheese with wine and seasonings, offer chunks of French bread for dunking. A relish tray replaces the salad course, and a sweet fondue (chocolate?) into which you dunk fresh apple wedges provides dessert.

A sit-down dinner could feature a rich beef stew. Just call it Ragout de Boeuf, as the French do, and you've upgraded the value instantly. With it, a green or molded salad and a light dessert—perhaps Michigan ice cream with raspberries from your freezer.

A French provincial cassoulet makes a wonderful party dish, you can use almost any combination of meats, and it's inexpensive. Soak 1 pound Michigan navy pea beans overnight, then par-boil. In large skillet, brown 1 pound lean pork and 1 pound of poultry, both cut in chunks. Remove and set aside. In same skillet, brown 1 pound smoked sausage, remove and slice. Saute in a little butter just until tender 1 medium onion, chopped, and 2 cloves minced garlic.

In large buttered casserole, combine beans, meats, onion and garlic, a pinch of cloves and thyme, and a little chopped parsley. You may also add a diced carrot if you like.

Pour over the mixture ½ cup Michigan red wine and enough of the bean liquid to cover. Bake in 325 degree oven about 3 hours, adding more liquid if necessary. You may also add about 2 tablespoons tomato paste to the liquid. Top with buttered bread crumbs for the last hour of baking.

The classic recipe calls for duck, but you can use the less expensive chicken or turkey just as well. You can also make this dish with leftover cooked meats, but in that case beef or chicken stock should replace part of the bean liquid.

Folder Offered on Holiday Menus For Diabetics

The American Diabetes Association-Michigan Affiliate, Inc. has available a free leaflet on holiday menus to help the worried hostess entertain guests with diabetes.

The leaflet includes several menus that are easy to prepare and which will appeal to the entire family.

Anyone interested may obtain the holiday menus by sending a long self-addressed stamped envelope to Holiday Dining, ADA-Michigan, 23100 Providence Dr., Southfield 48075.

CAROL'S CUTS 40 CHESTNUT

Monday, Wednesday and Friday
475-7094
Appts. Only
9:30 a.m. - 3:00 p.m.

The Chelsea Standard, Tuesday, December 14, 1982 3



CHRISTMAS FILM: Senior Girl Scouts, Jimmie Ritter, left, Tammy Jankuski and Katie Heaton put up a poster announcing their showing of "Hansel and Gretel and the Littlest Angel" Friday, Dec. 17 at the high school. Pat Borders of Vogel's Department Store, one of the stores co-sponsoring the film, stands with them in front of the store.

Senior Citizen Nutrition Program MENU and ACTIVITIES

Weeks of Dec. 14 - 21

Tuesday, Dec. 14—Macaroni and cheese, peas and carrots, spinach salad, rye bread with butter, peaches. Bingo.

Wednesday, Dec. 15—Liver and onions, mashed potatoes, brussel sprouts, wheat bread with butter, applesauce.

Thursday, Dec. 16—Spanish rice and beef, coleslaw, broccoli, roll with butter, pudding. Cards.

Friday, Dec. 17—Roast pork, sweet potatoes, zucchini, rye bread with butter, apples. Cards.

Monday, Dec. 20—Spaghetti with meat sauce, spinach and lettuce salad, broccoli, French bread with butter, pineapple. Bingo.

Christmas is a year-round business for Michigan farmers. As the nation's largest grower of plantation Christmas trees, Michigan shipped almost four million trees last year, some as far away as Hawaii. The crop was valued at \$40 to \$50 million.

Tuesday, Dec. 21—Fish sticks, peas, orange rice, tomato salad, rolls with butter, gingerbread. Cards.

Senior Citizen Activities

Tuesday, Dec. 14—1:00 p.m.—Euchre.

Wednesday, Dec. 15—1:00 p.m.—Bowling.

1:00 p.m.—Fitness.

Thursday, Dec. 16—10:00 a.m.—Ceramics.

1:00 p.m.—Needlework.

1:00 p.m.—Sunshine committee.

Friday, Dec. 17—2:00 p.m.—Creative writing.

6:00 p.m.—Pot-luck.

Saturday, Dec. 18—Nutcracker Ballet, Power Center.

Monday, Dec. 20—1:00 p.m.—Bingo.

Tuesday, Dec. 21—1:00 p.m.—Euchre.

VILLAGE FRAME SHOPPE ART GALLERY



CARVINGS — PRINTS — GIFTS
STATE DUCK STAMP PRINTS
GIFT CERTIFICATES

8107 Main St.

DEXTER

426-8988

Tues.-Fri. 9:30 to 5:30 • Sat. 9:30 to 4 • Monday by Appointment

COME TO SPECIAL SHOWING AREA ARTISTS & CRAFTSMEN

DECEMBER 10-19

MANCHESTER ART GALLERY

138 E. Main St., Manchester

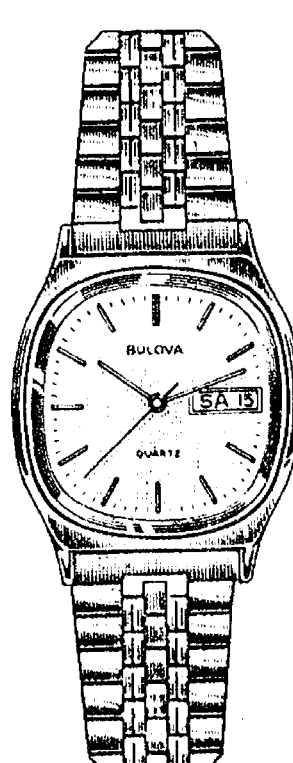
POTTERY — PAINTING — WOOD WORK — QUILTING
and much more

Thursday, 7-8:15 p.m. Friday, 11 a.m.-5 p.m., 7-8:15 p.m.
Saturday, 10 a.m.-Noon, 7-8:15 p.m. Sunday, 1-4 p.m.

BULOVA QUARTZ FOR CHRISTMAS



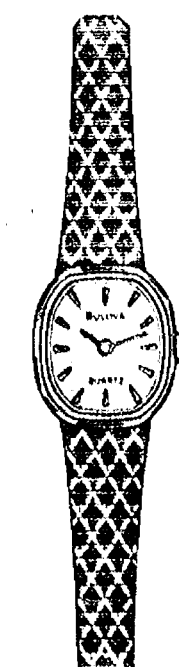
92C80 Goldtone. Vertically patterned dial. \$165.00.



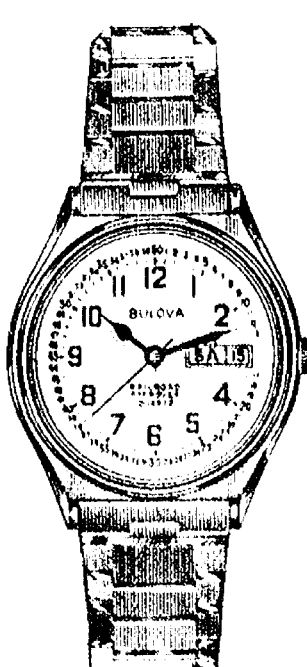
92C76 Goldtone. Champagne dial. \$168.00.



92L19 Goldtone case. Silver dial. Bark-textured bracelet. \$135.00.



92L17 Goldtone case and bracelet. Champagne dial. \$180.00.



91C57 All stainless steel. White dial. \$120.00.



92B79 Goldtone case. Champagne dial. Brown leather strap. \$129.00.

WINANS JEWELRY

Sale GIFT CERTIFICATES

Save 10% for one week on the ultimate stocking stuffer... a gift certificate from Merkel's.

Come in or phone. Use your Visa or Mastercharge. Sale ends Wednesday, December 22.

Merkel
HOME FURNISHINGS

MAIN STREET, CHELSEA
Phone 475-8621 or 1-800-482-3650
OPEN MONDAY & THURS. TIL 8:30 p.m.

Free Gift Wrapping and Delivery for Christmas

Council OKs Purchase of New Loader

Chelsea Village Council last Tuesday night approved buying a new front-end loader to replace the machine which has been in use since 1969. Purchase price is \$50,534 with a trade-in of the old loader.

The Caterpillar vehicle will be delivered by Michigan Tractor and Equipment Co. of Novi in three of four weeks, village administrator Frederick A. Weber said.

The loader will be used for leaf pick-up, snow removal, excavation and similar duties, Weber said, and will also serve as a back-up for the machine at the village landfill.

Tax Increase Seen Probable To Help Balance Budget

Governor Milliken's August executive order quarterbacked education across the state. The state highway system is in desperate need of repairs. Raymond Van Meer, schools superintendent, says he doesn't see either area able to survive deeper budget cuts to help the state meet its "compromise" deficit of \$500 million.

The temporary income tax increase and executive order were supposed to balance the budget. Although estimates ran as high as \$535 million, the outgoing and incoming governors and legislatures settled on the \$500 million deficit figure last Wednesday.

"I don't know where they could make cuts to raise that kind of money," said Van Meer. He assumes it will come from higher revenue—another tax increase.

Officer of the Year

(Continued from page one) interviewing," he said. "I like people, and they seem to like me. We can communicate. If there is a secret, that's it."

Walters asked that credit be given also to retired police chief George Meranuck, who hired him in 1977. "He had the courage to put three rookies on the force all at the same time. That meant half the department had no experience whatever. If he hadn't been willing to take that gamble, I wouldn't be working here."

Michigan dairy farms last year produced a record 4.97 billion pounds of milk valued at \$658,028,000. More than 395,000 cows on 9,500 dairy farms set another record, with average production per cow of 12,582 pounds of milk.

Antique
WATCH
RESTORATION
& SALES
Campus Jewelers
719 N. University, Ann Arbor
665-4355, 9-5 Mon.-Fri.

MARGIE'S
UPHOLSTERY
FREE ESTIMATES
• Large Selection of Materials
• Upholstery Supplies
• Repair Service
Pick-up and Delivery Available
MARJORIE SMITH
Ph. 1 (517) 536-4230
Call Collect between 8 a.m.-6 p.m. Monday thru Saturday
6245 Brooklyn Rd., Napolean



DOLL CONTEST WINNER AND SECOND PLACE: Mercedes DeLaTorre, left, won the Great Lakes Federal Savings Dress-A-Doll contest in Chelsea with her elegant Spanish doll wearing a red dress trimmed in black lace. Betty Zabinski took second with her skater doll, which had a fur hat, taffeta dress, and skates complete with blades, gold laces and fur.



DOLL CONTEST HONORABLE MENTIONS: Nanette Havens, left, Irene Sherman and Chris Hoopingarner were recognized for their entries in the Great Lakes Federal Savings doll contest. Mrs. Havens also made a nightgown and pants for her doll, so the Chelsea Social Services or

Spaulding for Children client receiving it could have fun changing the doll into different outfits. Mrs. Sherman's doll's crocheted dress is a bright red. Mrs. Hoopingarner, the mother of twin daughters, dressed her doll in pastel, flowered material complete with a matching purse.

Winners Named in Christmas Doll Dressing Competition

Some little girl's face will glow Christmas day when she sees the doll Mercedes DeLaTorre of 524 Lane St. dressed for her.

Mrs. DeLaTorre, one of Santa's special helpers in Chelsea, won the local Great Lakes Federal Savings Dress-A-Doll contest this year with a Spanish dream doll, which will go to a little girl whose family is a client of Chelsea Social Services or of Spaulding for Children.

The doll wears a red taffeta-like dress with several flounces edged in black lace. Mrs. DeLaTorre crocheted and starched a black lace comb to hold a black mantilla. Satin roses adorn her hair and dress, which has a fabric flower edging a flounce. She wears little red drop earrings and a black lace fan on her bodice too.

Mrs. DeLaTorre, a former "tomboy," said she never played with dolls herself, but dressed dolls for her daughter and granddaughters, so that it became a hobby.

Betty Zabinski, of 10810 Beach Rd. and second prize winner with a skater doll complete with fur-trimmed skates, said when she was growing up during the Depression, dolls were luxuries. She has made doll clothes more than 30 years for hers and other's

children, so some little girl will have a doll.

"I remember I wanted a real doll—one with hair—so badly," she said. "I was given a bald baby doll instead. But dolls were so precious then, you didn't dare complain."

"I'm so glad Great Lakes gives us dolls with hair!"

The children getting the dolls were the motivation for these two women and the three honorable mentions, Chris Hoopingarner of 704 S. Main St., Nanette Havens of 10420 Hershey Lane East, and Irene Sherman. They said the prize money the bank awards them doesn't really matter—\$25, \$15, and \$5 is no where near the value of the creativity and time these women put into their dolls.

They made little pocketbooks, petticoats, extra outfits such as nightgowns and pants so the girl could change the doll into something different, crocheted leg warmers, eyelet pinafores, and lace skirts.

Unfortunately this is the last year Great Lakes will sponsor the doll contest, said Robert Porter, branch manager, because of a lack of interest at other branches. The Chelsea branch had all 20 dolls at their office taken home and dressed, although it did take a little longer this year for them

to go out, said Porter. "We had all these naked dolls lined up on the counter for a few weeks."

It could be the contest, in its 13th year, is old hat, he said. The bank had bought 6,000 dolls and used the same amount of advertising as in the past.

For first-time entrant Mrs. Havens and the other women, not having a contest next year will be a disappointment. This is a hobby for them and a way to share their talent. Mrs. Hoopingarner has twin daughters but still found time to dress one.

Great Lakes will pass out the surplus dolls from this year next October for anyone who wants to dress it.

But there are still going to be some very creative caring doll dressers who will need some dolls—preferably ones with hair.

The dolls will be on display at Great Lakes office this week, until Santa collects them for distribution.

Promoted in Navy

Marine Pfc. Anthony J. Klobuchar, son of Thomas C. and Margret A. Klobuchar of Chelsea, has been promoted to his present rank while serving with 2nd Force Service Support Group, Camp Lejeune, N.C.

No Moratorium in 14th District Court

Christmas-time "justice" as is observed in Ann Arbor's 15th District Court has two sides to it, said Judge Kenneth Bronson of 14th District Court 3 in Chelsea.

Three Ann Arbor judges signed a Christmas moratorium preventing creditors from garnishing or collecting from their debtors' paychecks or bank accounts from Dec. 13-31.

A creditor who has a judgment against a debtor must get court approval each time he wants to collect a specific amount.

But who is that playing Santa Claus to, asks Bronson. It gives debtors a good Christmas but not creditors who may need that money for their families' holiday.

Even Ann Arbor judges admit they don't have the authority to enforce this long-standing tradition. Bronson says the questionable legality of the tradition is another reason the 14th District has no such Christmas traditions. In sentences he gave last week, many of the fines are due between the middle and end of the month, as is usual for him.

County district courts are usually quieter during the last two weeks of December, he says, because the judges and attorneys often take vacation time then. But this year since he will move

to the Saline court Jan. 3, he is trying to finish up loose ends and expects a heavy schedule.

An estimated 106,000,000 pounds of grapes, valued at \$14.4 million, were harvested in 1981, another vintage year for Michigan grapes. This was a seven percent increase over 1980. Michigan is in fifth place among grape producing states with about 15,000 acres of commercial vineyards.

Old Man Winter Sweater Special

3¹⁰
3.33

Limited time only.

Chelsea Cleaners

• 113 Park St. - Chelsea
• Gambles - Manchester
• Frank's Shop-Rite - Grass Lake
• VILLAGE CLEANERS - Dexter
8122 Main St.

During fiscal year 1981, the Labor Department's Office of the Solicitor and Office of the Inspector General worked in several areas eliminating backlogs of unresolved employment and training grant audits and obtained significant indictments, convictions and sentences in major racketeering cases, according to the department's 69th Annual Report.

GIFT SUGGESTIONS



From The **PARTS PEDDLER AUTO SUPPLY**
Give A Useful, Handy Year-Around Gift!

150 FOOT LB.
TORQUE WRENCHES
\$11.95

JUMPER CABLES

FROM \$9.95

Fit top or side mount batteries.

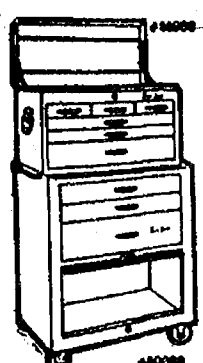
BATTERY CHARGERS



Compare our prices!

3-Amp. \$23.95
6-Amp. \$29.95
10-Amp. \$39.95
Floor Type \$179.95
With Booster

TOOL CABINETS



Bright red wrinkle finish.
6-DRAWER TOP SECTION \$89.95
3-DRAWER BOTTOM ROLLAWAY \$119.95
Top & Bottom, Only \$189.95

HAND POWER PULL

2-Ton

\$27.95

HAND TOOLS

The perfect gift.
We carry SK - KD - B&D OLD FORGE, etc.

WE ACCEPT MASTER CHARGE

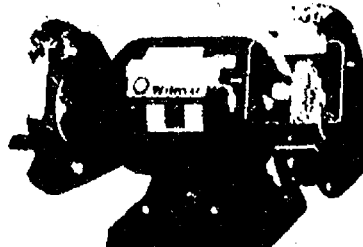
PARTS PEDDLER AUTO SUPPLY
GIFT CERTIFICATE

IF IN DOUBT GIVE A PARTS PEDDLER
GIFT CERTIFICATE

The Gift You Can Use When You Need It!

WE ACCEPT VISA CARDS

1/2 H.P.
BENCH GRINDERS



\$59.95

1/2 h.p.—3450 RPM. Includes shields, 2 grinding wheels, ball bearing drive.

NYLON TAFFETA
CAR COVERS



from \$42.40

Protect your car this winter and all year around.

CAR RAMPS Only \$19.95

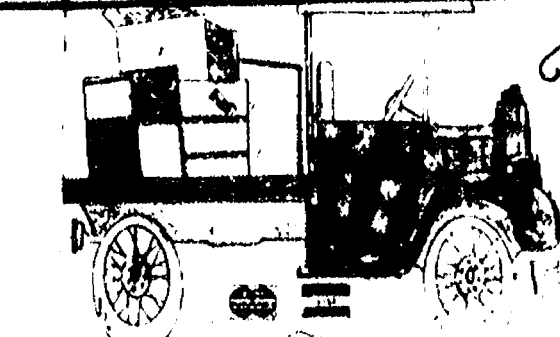
SUN
TIMING LIGHTS
Only \$54.95

1600 RPM - 7" - 2-SPEED
CAR POLISHERS \$64.95

Come in — Let Us Suggest

Some Christmas Gifts

"The Friendly Place To Buy Christmas Gifts"



The PARTS PEDDLER

AUTO SUPPLY STORES

1414 S. MAIN ST.
CHELSEA
475-9106

108 E. MIDDLE ST.
CHELSEA
475-1366

2092 BAKER RD.
DEXTER
426-4688

8715 MAIN ST.
WHITMORE LAKE
449-4312



Holiday Greetings from Dayspring Gifts

Helpful, courteous gift consultants to help you select the "perfect gift" for everyone on your list.

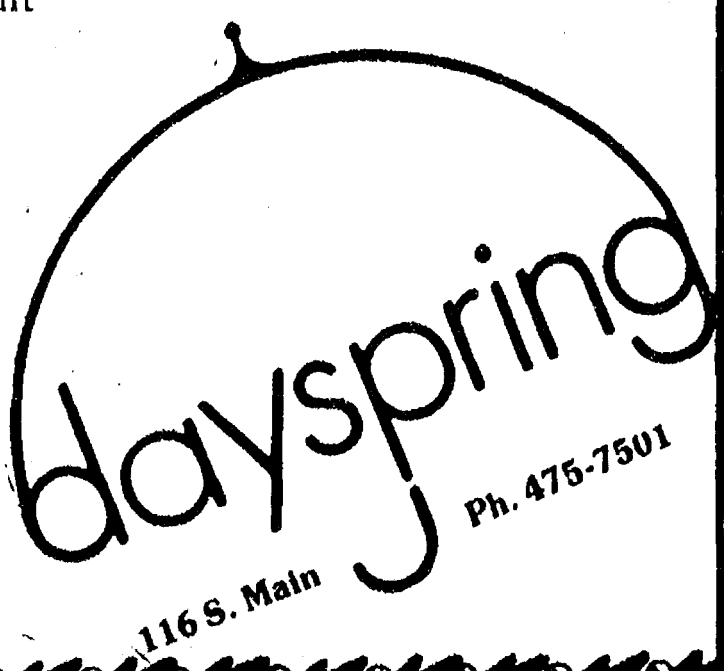
You May Choose From:

- ★ HALLMARK CARDS
- ★ HUMMELS & GERMAN STEINS
- ★ BALDWIN BRASS
- ★ GORHAM SILVER
- ★ COLONIAL & CAROLINA CANDLES
- ★ CHRISTMAS ORNAMENTS
- From Around the World

SPECIALS THIS WEEK:
DISCONTINUED HALLMARK ITEMS

- ★ JEWELRY
- ★ FIGURINES
- ★ PEWTER
- ★ CRYSTAL ICEBERGS

and much, much more!



116 S. Main

Ph. 475-7501



INSTALLING THE PTO THAT BUD BUILT: Chelsea firemen, Keith O'Neill, left, and Doug Eder are installing on a truck the power take-off that Bud Harker, the Chelsea fire chief, assembled at Dana Corp. O'Neill, who joined the department last summer, holds the PTO which will attach to the truck's transmission and power a 10,000-pound winch. Eder is a six-year veteran fireman.

Firemen Build, Install Fire Truck PTO

(Continued from page one)

The Dana plant has five firemen from Gregory, Munith, Stockbridge and Chelsea employed there. If they are called out, they leave at no risk to their paycheck. They will still be paid for the time they respond to fire runs.

"We're glad to have Bud here," said Dan Ewald, field service engineer. "Any business would want someone around who has had his fire fighting and first aid training. He has helped out here when employees suffered heart attacks."

Doug Eder and Keith O'Neill, six year and six month Chelsea fire department veterans respectively, are installing the PTO on the army truck.

Hearing Slated Tonight On Zoning Amendment

Chelsea Village Planning Commission will hold a public hearing tonight at 7:30 p.m. in the council chambers on an amendment to the zoning ordinance to update the ordinance's language on special land uses and planned unit developments.

A letter from Pump 'N Pantry concerning the rejection of their site plan will also be read.

The ordinance amendment, which also must be approved by the village council, is necessary to bring the village's zoning ordinance into compliance with 1978 amendments to the state's City and Village Zoning Act.

Christmas Dance Slated by CHS Student Council

Chelsea High school will hold a Christmas dance, their only school-wide semiformal event, Saturday, Dec. 18 from 7 to 11 p.m. at the school gymnasium.

Girls are asked to wear dresses and boys ties. They may either go alone or as couples.

The dance's theme is "Christmas Fantasy," said Amy Poljan, student council president. The gymnasium and "fish bowl" will have crepe paper and mural-poster decorations made by art classes.

Doug Ingalls and his "Sanity Wall" stereo system will provide music. Cookies, punch, mints and candy canes will be served, and school staff will chaperone.

Tickets for the dance must be purchased by Dec. 15. Single tickets cost \$3, and \$5 for a couple.

Two More Escapes Are Reported from Area Prison Camps

The escapes go on. Camp Waterloo and the Cassidy Lake Technical School each "lost" one inmate last Thursday night.

Rick Allen Schwartz, 23, of Fenton, serving 1½ to 5 years for attempted burglary, escaped from Camp Waterloo. Richard Daniel, 19, of Detroit, sentenced to two years for illegal possession of firearms, ran away from Cassidy Lake.

Both are being sought by area police agencies.

Season's Greetings

DIAMOND GLASS & FENNER'S

2350 W. Liberty Ann Arbor, MI 48103

- * Auto Glass
- * Mirrors
- * Shower Enclosures
- * Glass & Screen Repair
- * Aluminum Doors & Framing
- * Insulated Glass Units

from your friends at Fenner's

769-2722

Jiffy market

Big Enough To Serve You... Small Enough To Know You!

Corner of Sibley and Wacker Rds. - Chelsea, Michigan 48118

PHONE 475-1701

Sale Prices Good Dec. 14-Dec. 18 1982

Complete Fresh Meat Dept. - U.S.D.A. Choice Beef - The Finest of Fresh Pork

FRESH PORK

JUST CUT

WHOLE PORK LOINS . . . lb. \$1.39

8 - 10 CHOPS

QUARTERED PK. LOINS . lb. \$1.49

CENTER CUT

LOIN PORK CHOPS . . . lb. \$1.99

RIB PORK CHOPS . . . lb. \$1.89

LOIN END PK. ROAST . lb. \$1.69

COUNTRY STYLE RIBS . lb. \$1.49

U.S.D.A. CHOICE

BEEF ROAST

FIRST CUT

Blade Cut lb. \$1.39

Center Cut lb. \$1.59

Arm Cut lb. \$1.69

English Cut lb. \$1.69

All Roast Limited Cuts To Customer

SMOKED PICNICS lb. 89¢

Wesley's Quaker Maid Flavor of the Month

CHRISTMAS

TREE CENTER ½ gal. \$1.99

Random Weights

COLBY LONGHORN

STORE CHEESE lb. \$1.99

1-Lb. Bag

CAIN'S

POTATO CHIPS \$1.69

FARM MAID

FRESH

HOMO MILK . gal. \$1.98

LOW-FAT MILK . gal. \$1.69

ORANGE JUICE ½ gal. \$1.19

EGG

NOG qt. 99¢

FRESH

COTTAGE CHEESE . lb. 99¢

WHIPPING CREAM ½ pt. 59¢

PEPSI-COLA 8 pac 16-oz Bottles \$2.29 plus deposit

FRESH MEATS - GROCERIES - PRODUCE - BEER - WINE - LIQUOR

7 a.m. Morning to 10 p.m. Nights - 7 Days A Week

BURGHARDT-COLE CHELSEA CHAPEL

214 East Middle Street
Phone 475-1551

- You are assured of a wide range of prices.
- Our prices are always shown in each casket. This means the price of a casket will not be raised at the time you select a casket for any reason. (It is possible the price may be lowered if our standard full service is not used.)
- You have complete freedom to select a funeral service within your means and desires.
- You will receive complete information concerning our services and an accurate accounting of all costs.
- You will have a real personal choice and "you" will make the final decision as to what best serves your need.
- We promise to serve "all the people" of Chelsea—Rich or Poor—the best way we know how.



DONALD A. COLE, Director



YOU CAN SAVE At Dancer's Now thru Christmas!!

10 STOREWIDE to 40% Off

CHELSEA CHRISTMAS HOURS

Tues., Dec. 15
Thru Fri., Dec. 17 9 to 8:30
Sunday, Dec. 19 12 to 5
Mon., Dec. 20
Thru Thurs., Dec. 23 9 to 8
Fri., Dec. 24 9 to 5

DEXTER CHRISTMAS HOURS

Wed., Dec. 15
Thru Fri., Dec. 17 9 to 8
Sunday, Dec. 19 11 to 3
Mon., Dec. 20
Thru Thurs., Dec. 23 9 to 8
Fri., Dec. 24 9 to 5

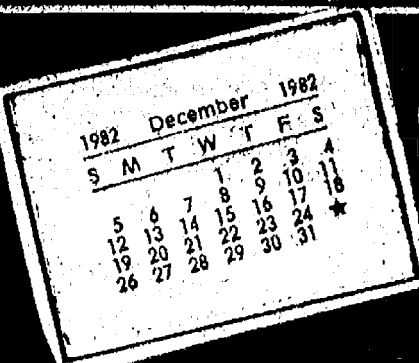
DANCER'S OF CHELSEA

112 S. Main St.
Ph. 475-1811



DANCER'S of DEXTER

8060 Main St.
Ph. 426-3833



COMMUNITY CALENDAR

Monday—

Chelsea Kiwanis Club meets every Monday, 8:30 p.m. at Chelsea Community Hospital.

Chelsea School Board meets the first and third Mondays of each month, 8 p.m., in the Board Room.

Chelsea Lioness, second Monday of each month at the Meeting Room in the Ann Arbor Trust Co. on M-52, Chelsea, at 7:30 p.m. Call 428-7179 for information.

Lima Township Board regular meeting first Monday of each month, 8 p.m., Lima Township Hall.

New Beginning Grief Group 1st, 3rd (5th) Monday each month, 7:30-9 p.m., Family Practice Center, 775 S. Main St., Chelsea.

Tuesday—

Lima Township Planning Commission, no meeting for December.

Chelsea Village Council, first and third Tuesdays of each month.

Sylvan Township Board regular meetings, first Tuesday of each month, 7 p.m., Sylvan Township Hall, 112 W. Middle St.

Woman's Club of Chelsea at McKune Library, 8 p.m., second and fourth Tuesday of the month. For membership information call 475-8929.

Lions Club, first and third Tuesday of every month, 6:45 p.m., at the Wolverine Lounge, Ph. 475-2831 or write P.O. Box 121, Chelsea.

Chelsea Community Hospital Nutrition Program, pre-natal nutrition classes, fourth Tuesday of each month, 6 to 7 p.m. at the hospital. To register, phone 475-1311 (ext. 354). Class is free of charge.

Chelsea Child Study Club second and fourth Tuesday of each month, 8 p.m.

Chelsea Jaycees, first Tuesday of each month. For more information call Wendall Wagner, 475-2571.

Chelsea Rod and Gun Club regular meeting, second Tuesday of each month at the clubhouse, Lingane Rd.

Chelsea Rebekah Lodge No. 130 meets the first and third Tuesday of each month, at 7:30 p.m.

Wednesday—

Chelsea Communications Club, fourth Wednesday of each month, 8 p.m., Chelsea Lanes basement meeting room.

All-Masonic Christmas party, 8 p.m., Wednesday, Dec. 15 at the temple. All members and friends welcome. \$2 gift exchange.

Chelsea Athletic Boosters, third Wednesday of month, 7:30 p.m., room 118, gymnasium building, Chelsea High School. Parents of athletes invited.

Thursday—

Lyndon Township Planning Commission, 8:00 p.m. the second Thursday of each month.

Chelsea Music Boosters, second Thursday of each month, 7:30 p.m., high school band room.

Knights of Columbus Women's Auxiliary, second Thursday of each month, 8 p.m. at K. of C. Hall, 20750 Old US-12.

ACATS (Association for Creative and Academically Talented Students) first Thursday of each month at Chelsea High School Media Room, 7 p.m.

Friday—

Senior Citizens meet third Friday of every month, pot-luck dinner, games and cards. 6 p.m. at Senior Citizen Activities Center at North School.

Saturday—

Rogers Corner Extension Christmas party, 6:30 p.m., Saturday, Dec. 18 at Zion Lutheran church, Fletcher and Waters Rds. Bring one hot and one cold dish and cookies.

Misc. Notices—

Home Meals Service, Chelsea. Meals served daily to elderly or disabled. Cost per meal, \$2.25 for those able to pay. Interested parties, call Barbara Branch, 475-7644 or Ann Feeney, 475-1493.

Chelsea Social Service, 475-1581, 2nd floor of Village Offices. Thursdays, 10 to 4, or if an emergency need at other times, call Linda at 475-7405 or Jackie at 475-1925.

North Lake Co-Op Nursery school is now taking enrollments for the 1982-83 year for 2- and 4-year-old sessions. Anyone interested should call Gale Johnson, 475-1284.

Chelsea Co-op Nursery is now accepting enrollments for 1982-83 school year. Please call Pat Peterson, 475-3282, or Deborah Feldkamp, 475-2825.

If you need help with clothing, shelter or putting food on the table, Faith in Action can help. We have food and clothing, and can help in other ways when the need arises. Please call 475-2003 or 475-2594, 10 a.m. to 8 p.m.

Amy Weir Awarded Twirling Scholarship

Chelsea Charm Amy Weir won a \$100 baton camp scholarship Dec. 4 at the "Miss Holiday" majorette baton contest in Petersburg by defeating 23 former first place winners in basic twirl.

All first place winners in basic twirl solo may compete in the biannual twirl-off for two years after their first win or until they reach intermediate status.

Amy, 8, will attend the Twirling Unlimited Michigan camp in June in Adrian. Two camp scholarships are awarded each year, one for a junior twirler up to 10 years old, and one to an older twirler.

Amy, the 1982 juvenile basic strut state champion, also won basic strut at the Petersburg competition, took third in modeling, and fourth in military strut. She is the daughter of Mr. and Mrs. Glenn Weir.

Brooke Quartermaine, the six-year old daughter of Mr. and Mrs. David Quartermaine took first in beginning basic strut; first, beginning military strut; and sixth, basic twirl twirl-off.

Michelle Graflund, the 10-year-old daughter of Mr. and Mrs. Steve Graflund, won beginning military strut and took sixth in novice solo.

Laurie Honbaum, the nine-year-old daughter of Mr. and Mrs. Merritt Honbaum, won basic twirl solo; fourth, modeling; and fifth, basic twirl twirl-off.

Kori White, the five-year-old daughter of Mr. and Mrs. Gary White, took second in beginning basic strut, beginning military strut, and novice solo.

Heather Wynn, the seven-year-old daughter of Mr. and Mrs. Michael Wynn, took second in basic twirl.

School Board Briefs

Present at a regular meeting of the Chelsea Board of Education Monday, Dec. 6, were Feeney, Schumann, Heller, Dils, Grau, Snyder, Comeau, Superintendent Van Meer, Assistant Superintendent Mills, Principals Williams, Conklin, Wojcik, Assistant Principal Vogel, Special Education Director DeYoung, Athletic Director Nemeth, guests.

Meeting called to order at 8 p.m. by President Ann Feeney. The Board approved the minutes of the Nov. 15 meeting.

The Board of Education held a workshop on "Your Attitude Is Showing." The workshop was presented by Louise Hubal. Also in attendance for the workshop were students, teachers and parents from the various building committees formed to accentuate a positive attitude program. Mrs. Hubal stressed the commitment to making positive affirmations. The process of making positive affirmations in committing oneself to an element of positiveness can have a powerful effect on one's daily living.

The Board recessed to executive session to hear a parent's appeal of a high school disciplinary action. The Board subsequently returned to public session. No action was taken on the matter inasmuch as a recommendation from the high school principal gave solution to the problem.

Sue Carter, district testing coordinator, reviewed with the Board the results of the Michigan Assessment Test which was administered to 4th, 7th and 10th graders. Again, Chelsea continues to show reading improvement at all levels. Math Scores deviated, however, staying about the same. Both areas are above the state averages.

Principal John Williams reviewed with the Board the North Central evaluation. Overall, the report was very positive. Williams indicated that upon receipt of the written evaluation a plan will be implemented to strengthen any weaknesses.

Superintendent Van Meer indicated to the Board that the latest economic news from the State of Michigan is not good. It appears that the budget deficit could be as large as \$355 million. The economic sag is due mainly to lack of sales tax generation. It is very possible that another Executive Order will be forthcoming. The educational systems have already had an executive order. The highway system is in need of repair making further reductions more complicated. The state may have to raise revenues.

The Board approved negotiation of a contract with DiGeronimo Architects to provide planning services for improving the tennis, track and football field facilities. This is part of the five-year maintenance millage plan.

The Board passed a resolution honoring the services of Judge Kenneth Bronson, 14th District Court, for his contributions to the students and staff of the Chelsea School District. Judge Bronson has been transferred to Saline.

The Board cancelled the Dec. 20 meeting of the Board of Education.

The Board approved the hiring of MAB to negotiate a Master Agreement with the Chelsea Education Association.

The Board was informed that the administration is critiquing energy management system bids, looking toward the installation of a computerized energy management system later this year.

Board adjourned at 11:10 p.m.

Dial-A-Garden Topics Listed

Dial-A-Garden, the system of pre-recorded daily gardening tips, is sponsored by the Washtenaw County Co-operative Extension Service. The system is in operation 24 hours per day, seven days per week. Interested persons are invited to call 971-1122 at their convenience and receive timely, up-to-date gardening information.

Tuesday, Dec. 14—"Williamsburg Christmas—Lemon and Magnolia Leaves."

Wednesday, Dec. 15—"Williamsburg Christmas—Mantels, Doorwrap and Kissing Balls."

Thursday, Dec. 16—"Christmas Goodies for Gifts."

Friday, Dec. 17—"Williamsburg Christmas—Apple Cones."

Monday, Dec. 20—"Poinsettia Care."

Tuesday, Dec. 21—"Houseplants for Cool Houses."

Correction

In the Nov. 30 issue of The Standard, it was mistakenly printed that the Christmas Caroling order forms were available at Dayspring Gifts. The article should have read that they are available at Merkel's and the Chelsea Drug Store. The Chelsea High School Band apologizes to Dayspring Gifts for any inconveniences this caused.

D. C. CHIMNEY SERVICE
9823 Dexter
Plymouth Rd.
Plymouth, Mich.
878-6207
475-8503

FRESH BAKED GOODS At Discount Prices!

All merchandise dated to assure freshness.

Stop in for friendly, courteous service.

DISCOUNT BAKERY

PHONE 995-9104
6043 JACKSON RD., ANN ARBOR

Open Mon.-Sat., 9 a.m. to 5:30 p.m.

Closed Circuit Satellite TV

Major Sporting Events
GREAT FOOD and GOOD DRINKS
For Your Dancing Pleasure and Enjoyment—
Greg Stevens and White Gold Band
Friday and Saturday, 9:30 p.m. to 1:30 a.m.
NO COVER CHARGE

DAILY SPECIALS

NEW YEAR'S EVE TICKETS
Now On Sale.
Get them early!
Makes A Great Holiday Gift.

LITTLE ROOSTER RESTAURANT & LOUNGE

11485 North Territorial Rd. Ph. 426-8668
Tues., Wed., Thurs. 4 p.m. to 10 p.m.
Friday, 4 p.m. to 2 a.m. Saturday, 12 p.m. to 2:30 a.m.
Sunday 12 p.m. to 11 p.m.

CARRY-OUTS 426-8668 - PIZZA - FRIED CHICKEN

CULLIGAN WATER CONDITIONING

is pleased to announce
Area Representative
RON SCHULZ

FOR THE FOLLOWING TOWNSHIPS:
Lima, Lyndon, Dexter, Sylvan, Webster,
and the Village of Chelsea

Call Ron today
for soft water tomorrow. Call 76-WATER.

THE CAPTAIN'S TABLE

FINE FOODS AND COCKTAILS

Join Us for Our Daily
LUNCHEON SPECIALS
Soup and Sandwich or Soup and Salad
EVENING SPECIALS

Monday Our regular menu
Tuesday Chicken Buffet
Wednesday New York Strip Steak
Thursday Roast Beef Buffet
Friday Prime Rib
Saturday Prime Rib

WITH SALAD BAR

Choose from Our Scrumptious
Home-Made Dessert Cart
Friday and Saturday Evenings

HOURS: Monday thru Friday ... 6 a.m. to 9 p.m.
Saturday ... 7 a.m. to 9 p.m.

8093 Main St. 426-3811
Dexter



Juke Box Rentals

- for:
- ★ REUNIONS
 - ★ RECEPTIONS
 - ★ PARTIES

... every special event

Zemke
Operated Machines
(313) 662-1771

How to be a Great Santa



GIVE PLEASURE

to yourself, a friend or loved one
GIVE A GIFT SUBSCRIPTION

to

The Chelsea Standard

We will supply you with a gift card to let them know they will be receiving your thoughtful gift each week for the next year.

A One-Year
GIFT SUBSCRIPTION
to
THE CHELSEA STANDARD
has been given you by

Clip the coupon below and mail or bring with payment to The Chelsea Standard
300 N. Main St., Chelsea, Mich. 48118

1-YEAR (anywhere in Michigan) \$8.00
1-YEAR (elsewhere in U.S.) \$10.50

GIFT ORDER BLANK

Please send a 1-Year Gift Subscription to

Name
Street/Road City State Zip
☐ New Subscription ☐ Renewal Subscription
☐ Please send gift card to above in your name
☐ Send gift card to me for me to sign card sent
Given By (Name)
(Address)

The Chelsea Standard

Is Brim Full of
★ NEWS OF THIS AREA
★ PHOTOS
★ LOCAL LEGAL INFORMATION
★ MERCHANTS ADVERTISING TO HELP YOU SPEND YOUR MONEY WISELY

Rick's Market Contamination Case Officially Settled

All the legal papers have been signed and the out-of-court settlement in the chemical contamination case involving Rick's Market on M-52 north of Chelsea is now official and final.

A spokesman for the Ann Arbor law firm of Bishop & Shelton, which took over the case from Dexter attorney Daniel F. Giardina several months ago as the representative of the store owner Terry Rickerman, confirmed the settlement which was finally agreed to formally by all parties last Thursday.

Giardina had disclosed the tentative settlement three weeks ago, although he was not representing Rickerman at that time.

A condition of the settlement is that its precise terms not be revealed. It is said to involve hundreds of thousands of dollars.

It all started on Oct. 10, 1980, when agents for Orkin Exterminating Co. came to Rick's Market to carry out a routine pest control fumigating operation. Something went wrong.

A few days later customers began complaining about bad smells and tastes in meat, cheese, fruit, vegetables and other merchandise carried in the store. Rickerman closed the place, tried to clean up and announced that he would reopen in a week. The market has been out of business ever since. Rickerman subsequently sued Orkin for

more than a million dollars. Although nobody has admitted anything publicly, it appears that Orkin may have applied too much of the chemical use for fumigation. It is supposed to be sprayed as a fine mist which evaporates before it hits the floor. Instead, there were puddles of liquid left. The residue continued to cause contamination of food samples put into the market as recently as last July, according to the Michigan Department of Agriculture's food inspection division.

The federal Environmental Protection Agency has certified that the building is now cleared of contamination and could be reopened as a food-marketing store, and has so notified the Department of Agriculture.

The Bishop & Shelton spokesman said that, to his knowledge, no decision has been made by his client, Rickerman, as to what will be done with the property.

"It is a valuable site in a good location," the spokesman said. "It has a package liquor license attached to it. There is presently no other grocery or party store in the vicinity on the north end of Chelsea, not even a gas station. I believe somebody will do something out there. There was some interest expressed in the property during negotiations for the settlement of the lawsuit."

Chelsea Hospital Pilots Rehabilitation Project

The Chelsea Community Hospital Rehabilitation Unit serves as a site for a pilot project of Rehabilitation Sources, an information service located in Lansing.

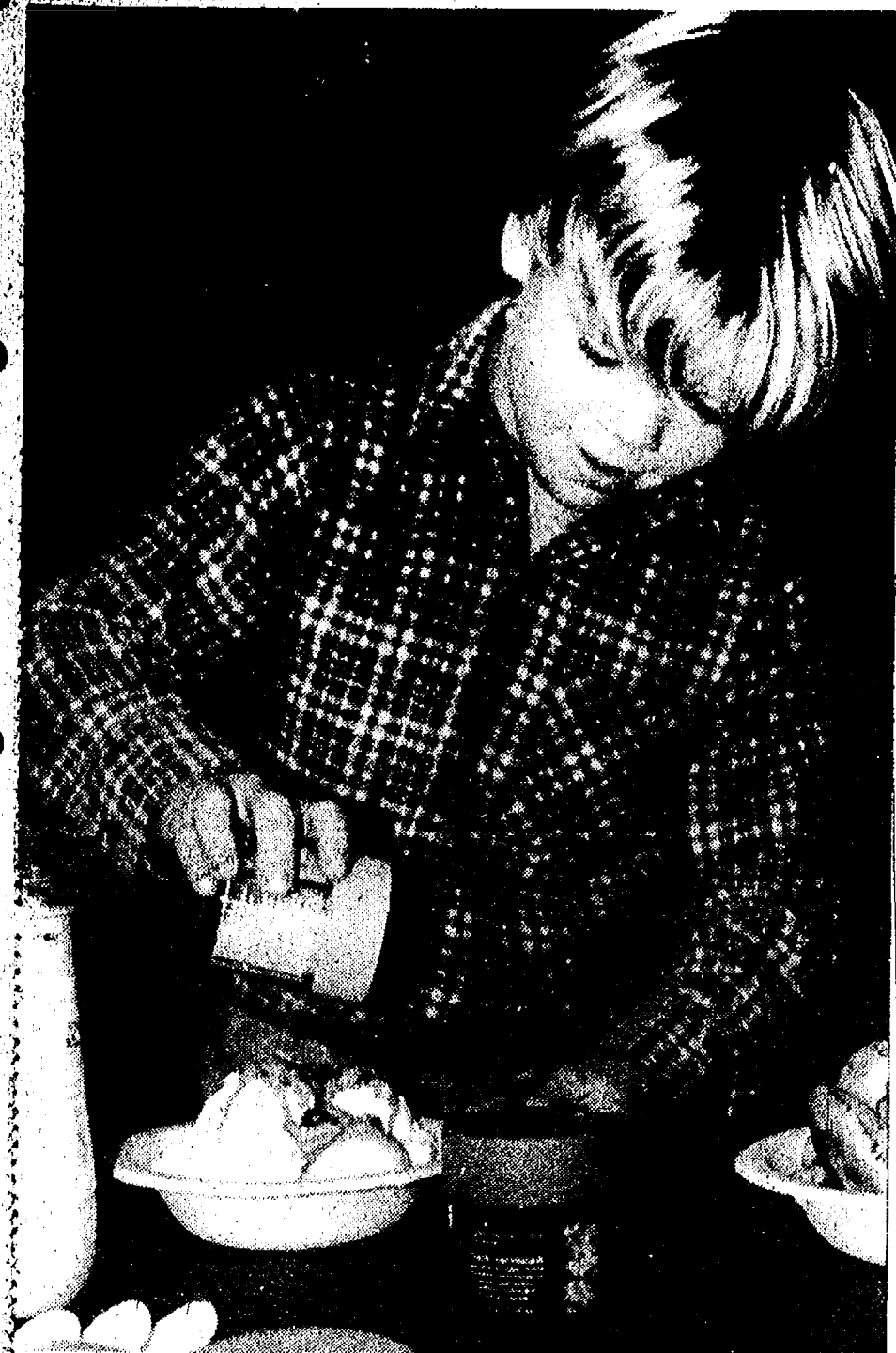
Rehabilitation Sources is a state-wide service which assists professionals and individuals in locating assistive devices needed by the handicapped for accomplishing every-day tasks. Some examples of the kinds of information requested are:

Where to locate adapted clothing for an individual with limited movement, to aid in dressing independently; where a talking clock for a blind person or special toy for a handicapped child might be found; is there such a thing as a fishing pole holder which can be easily used by a man with a paralyzed arm; are there aids for crafts or homemaking available?

Isabelle Green, R.N., of Rehabilitation Sources and

former employee of Chelsea Community Hospital, feels that this is a time-saving service helpful to the therapy, social work, and nursing staff of the hospital.

Rehabilitation Sources is an adjunct service of the Physically Impaired Association of Michigan Assistance Centre.



SPIKE SHAKERS-ICE CREAM TRADE: Mrs. Richard Clarke's fifth grade classroom at North School won an ice cream party Dec. 8 for selling 177 spike and flavor shakers, the most of any classroom in the school's annual fund-raiser for playground equipment. Chris Underhill uses one of the shakers to put sprinkles on his ice cream. Mrs. Packard's first grade class took second with 137 and Mrs. Mortensen's fifth grade class third with 131. Students raised more than \$1,000 with the sale.

Subscribe to The Chelsea Standard!

LIVE CHRISTMAS TREES

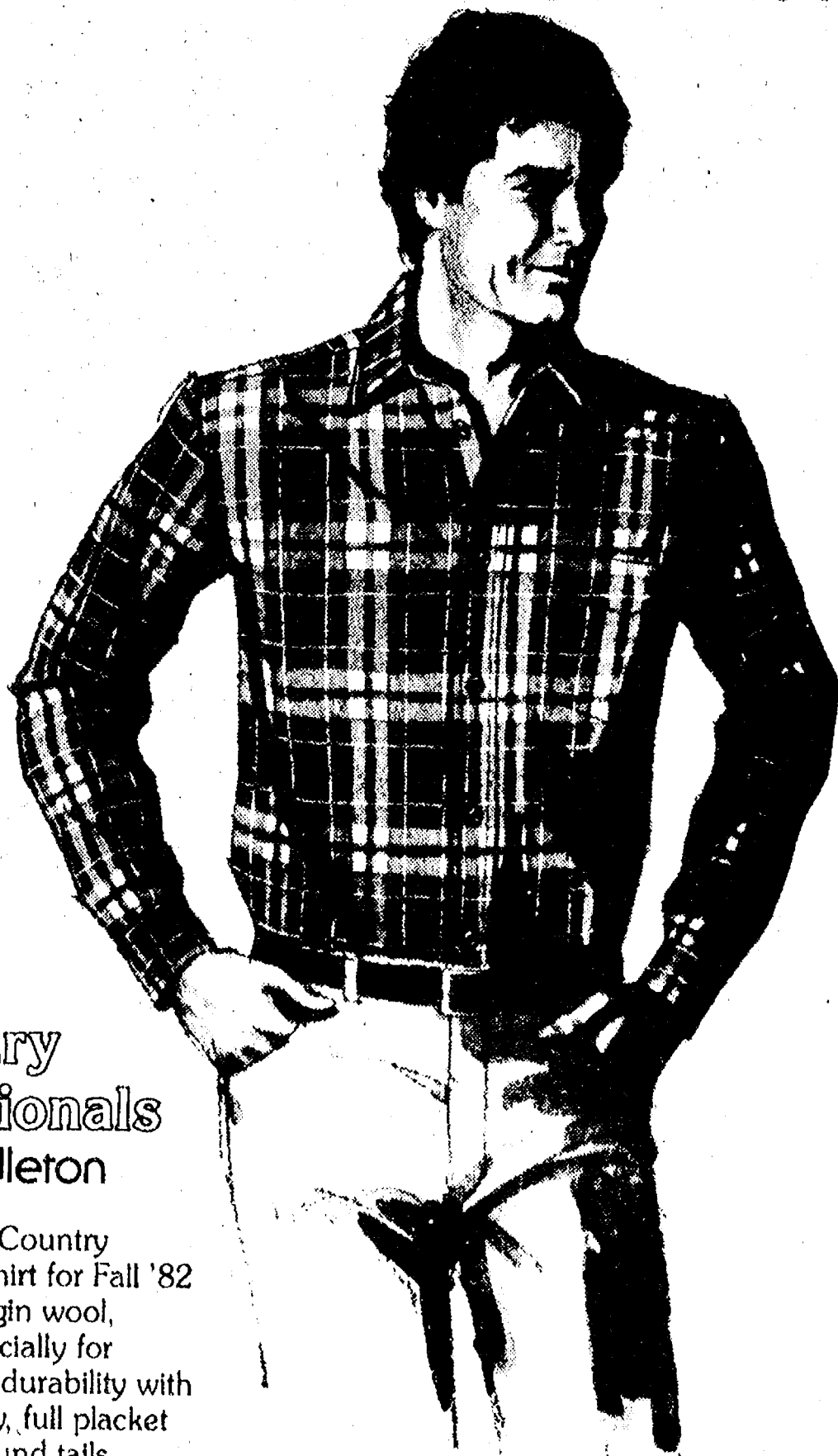
Spruce & Pine
2' to 4' Tall
\$10 - \$30

50% Guaranteed

PRE-CUT TREES
ALSO AVAILABLE
\$12 - \$18

HASTINGS TREE FARM & NURSERY

9500 North Territorial Rd.
426-4829 or 426-3985
HOURS: 10 a.m. to 12 Noon



Country
Traditionals
by Pendleton

Pendleton's Country
Traditional shirt for Fall '82
... 100% virgin wool,
tailored especially for
comfort and durability with
tapered body, full placket
front, and round tails.

STRIETER'S CHRISTMAS STORE FOR MEN

Since 1914

SALE! SAVE \$585*

**MODEL 5116 SIMPLICITY
16 HP TWIN CYLINDER
5-SPEED DELUXE
LAWN TRACTOR**

Complete with
36" mower, snow
blade, chains.

Now 'til
Jan. 1, 1983



* Off Mfr. Sug. Price

Only
\$2269

**THE PERFECT MOWING MACHINE FOR THE
LARGER LAWN.** Smooth, Fuel efficient engine,
quiet Lo-Tone muffler, extended wheelbase, wider
stance and wide tread tires that are gentle on lawn
and driver. Anti-scalp deep deck 36" or 42" mower
rides on wide rollers, pivots with front axle for
smooth, even cut, on uneven terrain. Options
include cart, blade for light dozing, vacuum
attachment, snowthrower. Headlights and hub caps
standard. Hurry in and compare the value.

**SUPER
SAVIN'
DAYS**

CHELSEA HARDWARE

GARD 'N SAW ANNEX
120 S. Main St., Chelsea

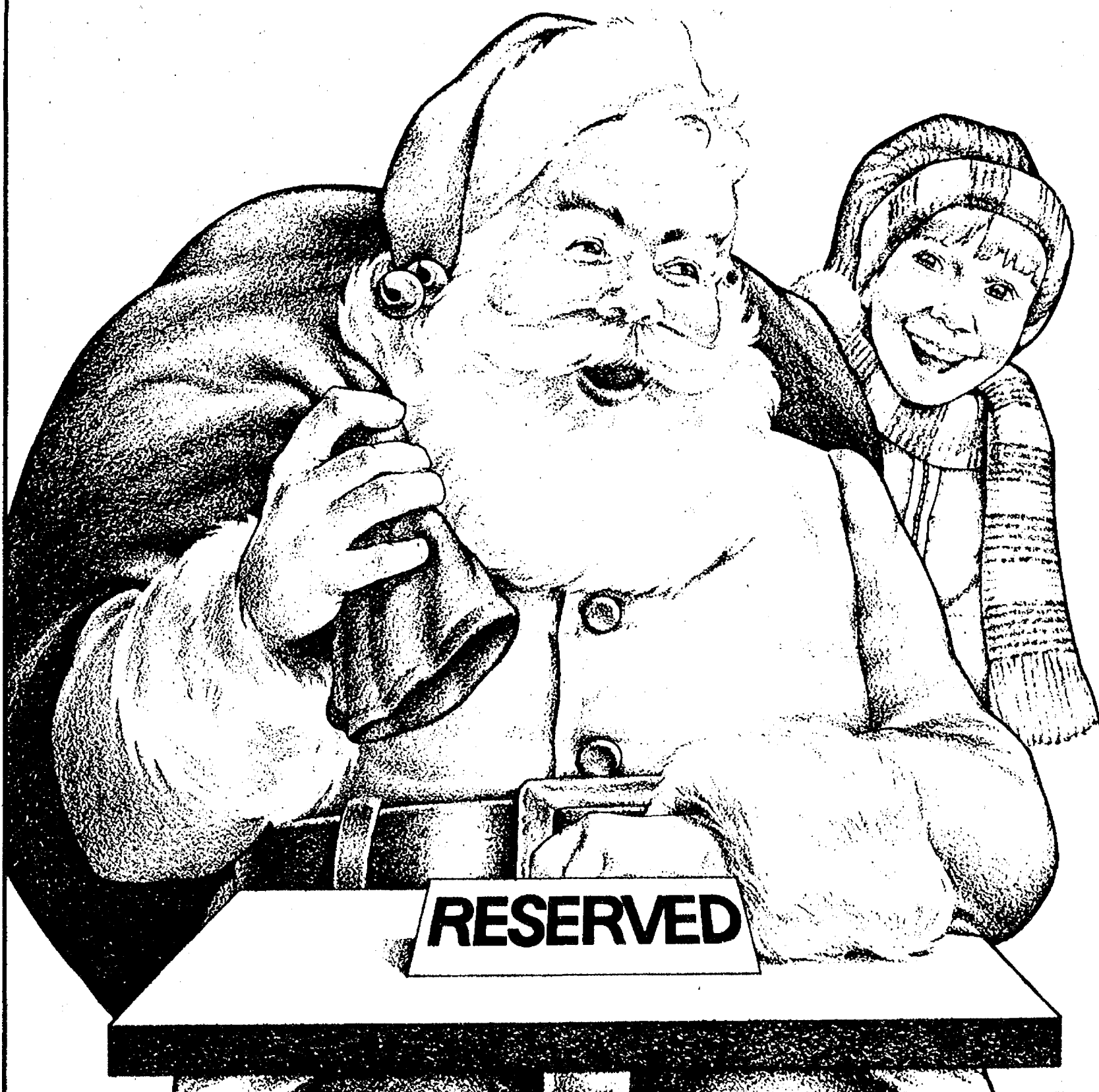
Ph. 475-1121

When you want dependability, look for...

Simplicity
AN ALLIS-CHALMERS COMPANY

Tell Them You Read It in The Standard

Santa's got a table waiting for you.



Come and Enjoy

DINNER WITH SANTA TUESDAY, DEC. 14th

5:30 p.m. to 7:30 p.m.

FREE Suprises for the Kiddies
1535 S. Main, Chelsea

Nobody can do it like McDonald's can

You deserve
a break today.



1535 S. Main, Chelsea
Ph. 475-9620

Girl Scouts Will Present Holiday Film

As part of holiday festivities, Chelsea Senior Girl Scouts will present a showing of the children's film, "Hansel and Gretel and the Littlest Angel" from 6:30 to 8:30 p.m. Friday, Dec. 17, the last day of school, at Chelsea High school auditorium.

The movie will be followed by a Christmas carol sing.

Parents may leave their children at school while they finish last minute shopping downtown. Movie tickets will be sold at the door.

Webster Home Reports Theft of Stereo, Photo Units

Stereo and photographic equipment valued by their owner at more than \$8,000 were stolen from a home at 7366 Jennings Rd., Webster township, last Friday, the sheriff's department reports. Entry into the home was made by breaking through a side door.

It was the latest in a recent series of similar burglaries in Webster, Scio and Dexter townships.

Please Notify Us of Any Change in Address

Outgoing Chelsea Area Chamber of Commerce President Sam Johnson states that the chamber has worked diligently to

IN CHARGE AT SHERIFF'S STATION: The new command arrangement at the Chelsea station of the Sheriff's Department has Sgt. Donald N. Wenk (left) and Harley Rider (right) in charge of the day (8 a.m.-4 p.m.) and afternoon (4 p.m.-midnight) shifts, respec-

Chamber of Commerce Expands Its Activities

maintain and improve the Chelsea area telephone service.

The chamber has also met on a regular basis with village leaders to discuss areas of mutual concern; maintained liaison with other government leaders; met with surrounding township leaders; been concerned with central village development, including parking problems; sponsored Michigan Week and a series of plant tours; worked with the Chelsea Fire Department on its house number project; initiated a series of brochures soon to be available which will help the Chelsea business community; in-

fulfill its mandate since being formed two years ago. At that time the Chamber committed itself to speaking for a unified business community; leading an economic development program which will replace lost jobs; informing and taking an active role in local government and area concerns; leading a program of Chelsea vitalization; being concerned with short and long range planning; and presenting to the membership information on local issues on a regular basis.

President Johnson notes the following accomplishments of the Chamber of Commerce: recruited 64 members; taken a survey of area industry to aid economic development efforts; joined in a county-wide economic development plan; conducted a village election candidates night with a direct mailing to village residents urging them to vote; sponsored meetings for area employers with our congressman and Washtenaw Community College's Institute of Economic Development and Job Training, and taken the lead in trying to

tively. In center is detective Paul Wade, who works out of the station, which is located in a corner of the Chelsea school district's bus garage off Old US-12 east of the village.

Council Buys Power Source

(Continued from page one) lower prices than our competition."

Necessary legal forms and contracts are being drawn up by a Lansing law firm. Village President Jack Merkel and Clerk Evelyn Rosentreter will sign them for the village. They key to when it all becomes official will be the date that a revenue bond issue to finance MMPA's share of

the venture will be offered for sale, and that will depend partly on when the bond market is most favorable, Weber said.

Weber emphasized that Chelsea does not have to put up any money or pledge its faith and credit for the bonds.

Onions are Michigan's largest volume fresh market vegetable crop, valued at \$23,810,000 in 1981.

WHIPLASH! IT IS SERIOUS!



THE SPINE IS YOUR LIFE LINE STRONG BUT SENSITIVE

Virtually every auto accident causes neck or lower back injury. Watch for these danger signals:

- 1 HEADACHES • DIZZINESS
- 2 IRRITABILITY
- 3 NERVOUS TENSION
- 4 PERSONALITY CHANGES
- 5 NECK & LOWER BACK PAIN
- 6 ARM & SHOULDER PAIN OR NUMBNESS
- 7 NAUSEA
- 8 INDIGESTION

Pain pills and muscle relaxants simply cover up the symptoms.

Do something about the cause!

THE ATKINSON CLINIC combines the most modern equipment and techniques with highly trained professionals specializing in nerve and spine rehabilitation.

You don't have to live with pain! Call today for a consultation.

Your auto insurance pays for your treatment.

Atkinson Chiropractic Clinic
7970 Clark Lake Rd., Chelsea, MI. 475-8669

DROP-IN CHILD CARE at UNITED METHODIST CHURCH

128 Park St., Chelsea. Ph. 475-9251

MONDAY	TUESDAY	WEDNESDAY	THURSDAY	FRIDAY	SATURDAY
DECEMBER	1	2	3	4	
6	7	8	9	10 5 p.m.- 9 p.m.	11 9 a.m.- 4 p.m.
13 5 p.m.- 9 p.m.	14	15 9 a.m.- 9 p.m.	16 5 p.m.- 9 p.m.	17 9 a.m.- 9 p.m.	18 9 a.m.- 4 p.m.
20 9 a.m.- 9 p.m.	21	22 9 a.m.- 9 p.m.	23 9 a.m.- 9 p.m.	24 9 a.m.- 4 p.m.	25 Merry Christmas

Suggested Donations:
\$1.00 per hour for 1 or 2 children
\$2.00 per hour for 3 or 4 children

All ages welcome

The new Money Market Account with FDIC safety.

Now, for as little as \$2500, you, too, can earn money market rates. Unlike other money market programs, here, each depositor is fully insured up to \$100,000 by the Federal Deposit Insurance Corporation.

The interest you earn will reflect the interest paid in the money market field. The interest credited will vary at intervals so we suggest you call or stop in for the current interest rate.

Rest assured, the interest rate you receive will be competitive with other money

market investments, even though these other money market investments fail to provide FDIC safety.

Here, you have immediate access to your funds. No need to lock up your money for any specific length of time. There are certain limitations, however, even though unlimited withdrawals are permitted. One of our Money Market Funds Counselors will be happy to acquaint you with full details.

HOLIDAY HOURS:

Thursday, Dec. 23 and 30 9 a.m. to 5:30 p.m.
Friday, Dec. 24 and 31 9 a.m. to Noon
Saturday, Dec. 25 and Jan. 1 Closed

CSB CHELSEA STATE BANK

Member F.D.I.C.

Branch Office
1010 S. Main

Phone 475-1355

Main Office
305 S. Main

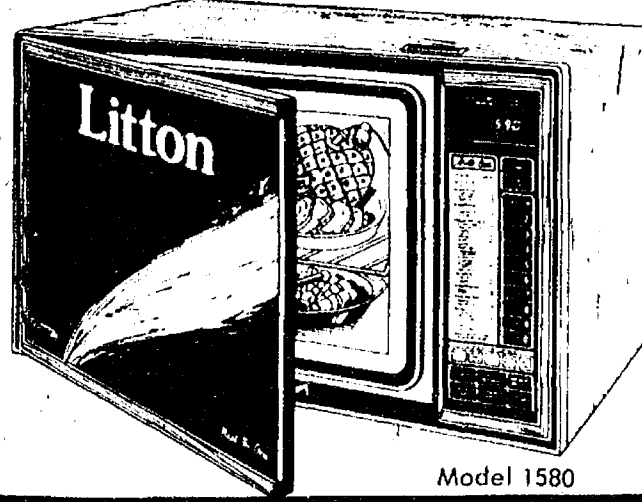
MICROWAVE COOKING DEMONSTRATION

SATURDAY, DEC. 18, Noon til 4 p.m.

Save up to \$50

Litton Rebate Days

Big Savings on Selected Litton Microwave Ovens



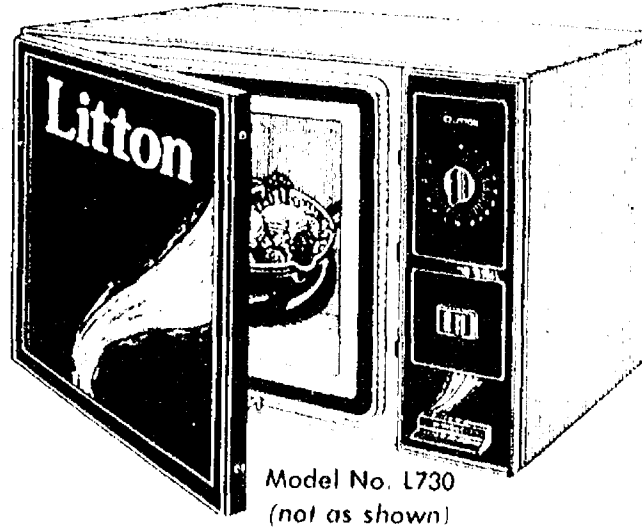
- Auto-Cook Microwave Oven
- Litton Exclusive Features
- Auto-Defrost
- Auto-Cook
- Even Wave™ Performance
- 650 Watts Cooking Power
- Electronic Touch Control
- Extra Large 1.5 Cubic Foot Oven Capacity

Our Price \$579⁹⁵

LITTON REBATE -50⁰⁰

YOU PAY \$529⁹⁵

Full Size Litton Microwave Oven



Litton-Aire Microwave Oven

- Litton Exclusive Features
- Auto-Defrost
- Auto-Cook
- Large 1.1 Cubic Foot Oven Capacity
- Even Wave™ Performance
- 600 Watts Cooking Power
- Electronic Touch Control

Our Price \$619⁹⁵

LITTON REBATE -30⁰⁰

YOU PAY \$589⁹⁵

- 700 watts cooking power
- Large 1.2 cu. ft. oven
- Automatic Defrost
- 45 minute timer
- Vari-Temp control
- Vari-Cook

Nobody knows more about microwave cooking than Litton.

Only \$349⁹⁵

A Litton Home Economist will be in our store to answer your questions.

HEYDLAUFF'S

113 N. Main St., Chelsea



Ph. 475-1221

Break-in Reported At South School

A break-in at South Elementary school last week resulted in the principal's office being ransacked but nothing apparently stolen, Chelsea village police said. A window was broken to gain entry into the school.

Development Proposed For Eight-Acre Parcel

The Chelsea Village Council has asked for more information on a proposal to develop an eight-acre parcel of land on the

southwest side of the village for residential purposes.

The site is located east of Wilkinson St., south of Chandler, west of Grant and north of Wellington. The owner is Marvin Salyer of 314 Washington St. Much of it is low-lying swamp and presumably would have to be drained and/or filled.

Thornton Realty, Inc., represented Salyer in an appearance before the village council last Tuesday night, and a spokesman for the firm inquired specifically whether sewer hook-ups are available for the tract.

Village administrator Frederick A. Weber said there are sewer lines along the streets which front the property, but none extending into its interior.

After some discussion the council decided to ask for a detailed development and site plan, including the density of proposed homesites. Unclear at this point is whether single homes or multiple-dwelling buildings (apartments or condominiums) are planned.

"This is not a brand-new proposal," Weber said. "The Planning Commission considered it a year ago, and probably will have to look at it again because there apparently have been some changes in thinking. We all need to see a plan."

There are existing homes fronting along Wilkinson, Chandler and Grant Sts. The vacant land, except for a single large home, lies behind them. Right now a large portion of the property is under water as the result of recent heavy rains.

The Chelsea Standard

Section 2

Chelsea, Michigan, Tuesday, December 14, 1982

Pages 9-18

POINSETTIAS

Grown in our greenhouse

GROCERY

PHONE 475-7600

BUCK \$6.95

2.29 SIZE LAYS \$1.79

BULK \$1.69

BACON \$1.69

CKLE & PIMENTO \$2.09

GROCERIES - PRODUCE

- WINE - LIQUOR



80TH BIRTHDAYS DESERVE BIG CARDS. Milly Smith, who has volunteered in South school first grade classrooms teaching reading for more than 10 years, turned 80 Dec. 8. Students in Mrs. Thornton's class gave her this card signed by all the students in the school, many of them her former reading pupils. Those balloons are some of the 80 that decorated the room. Mrs. Smith, in the center, took the card to another party Saturday to share with her teacher-

friends. Sharing the party were Elizabeth McLaughlin, front row, left, Jackie Crawford, Lindsay Johnson, Julie Flynn, Josh Hall, Brian Oullette; Becky Hubert; second row, Daniel Allen, Leonard Kitchen, Philip Steele, Adam Bragg, Christopher Taylor, Beth Bell, Reece Correll, Myra Musolf, Dale Hansen, Colby Gorton, Brian Dufek, Kyle Klink, Jessica Burby, Vera Eddy, and Rebecca Flintoft. Carol Flintoft helped Mrs. Thornton with party arrangements.

Volunteer 1st Grade Assistant Honored on 80th Birthday

The oldest "first grader" in South school history celebrated her birthday last Wednesday.

Milly Smith, a daily volunteer in JoAnn Thornton's first grade class, turned 80 Dec. 8. The children honored her with a birthday party, a card the size of a blackboard, and a chrysanthemum corsage.

Six-year-olds understand the idea of birthday, said Mrs. Thornton, "and were excited about honoring Mrs. Smith, a special person in the classroom."

But 80th birthday? That number was a bit large to comprehend, she said. The 80 helium-filled balloons she and her husband filled the classroom with, did help.

Mrs. Smith, a retired first grade teacher and in her 11th year of volunteering at the school, had also told them stories

before about being a little girl in Indiana with no cars or electric lights.

First graders have a special place in Mrs. Smith's heart. "They are my favorites. They are just beginning and so eager and anxious to learn to read."

"If you can teach them to do that well," she said, "they are on

their way to being successful—and that is so rewarding."

Mrs. Thornton teaches the basic reading skills, and Mrs. Smith drills and reinforces them one-on-one with word cards from their vocabulary level, listens to them read, and reads to them. She began volunteering when she

moved to Chelsea in the early 1970s.

The children are "honored" to read with their special teacher, said Mrs. Thornton. "They look forward to their next chance."

Mrs. Smith is an exceptional 80-year-old in other ways too. When she was 75, her daughter convinced her to take a mule ride into the Grand Canyon so she could see it.

"I had a nice mule," she said, "but I was scared stiff. That's when I learned to hike."

She ordered a backpack and sleeping bag and started walking in Waterloo with a load of books. Since then she has hiked into the canyon four times.

It's hard to keep a secret from a savvy 80-year-old, so she had a hint there would be a party Wednesday. But the card and "all those balloons" were a big surprise, she said.

Social Services Needs New Toys

New toys are needed to brighten Christmas for 60 children whose families are clients of Chelsea Social Services.

Each year social services would like to be able to put at least one new toy for each child in his or her family's holiday box, said Linda Ormsby, director of social services. The children's ages range from birth to 13.

Social services will pack the holiday boxes from 10 a.m. to 4 p.m. Thursday, Dec. 16 at Sylvan Township Hall. Community members may drop by toys then.

Donations of used toys, nonperishable food, clothing or personal care products such as shampoo or soap are also welcome, said Mrs. Ormsby, but they do have a special need for new toys.

SEASON'S BEST

SPORTCOATS AND BLAZERS SLACKS DRESS SHIRTS TIES BELTS SWEATERS SOCKS ACCESSORIES

FOSTER'S MEN'S WEAR

OPEN SUNDAY
DEC. 19
NOON to 5 p.m.

OPEN EVERY
EVENING
UNTIL 8:30

FREE
GIFT
WRAP

FREE

ODYSSEY VIDEO GAMES WORTH \$82.00*

*Suggested retail price.
Offer good through Dec. 24, 1982.

When you buy an
Odyssey² before
Christmas!

Choose one free game from the
Master Strategy Series, in-
cluding Quest for the Rings,

Conquest of the World, and the Great Wall Street Fortune Hunt.
Choose one free game from the Challenger Series - Pick Axe Pete or
K. C.'s Crazy Chase. Get three games - Speedway, Crypto Logic, and
Spin-Out - on one action-packed cartridge included in the Odyssey²
carton. You get a total of 5 games!

The Wizard will send your selected games directly to you when you
complete the Great Game Giveaway coupon and mail it in with your
proofs of purchase. See us today for the official coupon.

ODYSSEY² NOW ONLY \$119.95

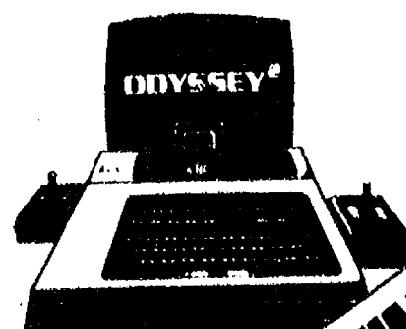
ODYSSEY²

THE KEYBOARD IS THE KEY TO GREATER CHALLENGE.

HEYDLAUFF'S

113 N. Main, Chelsea

Ph 475-1221



LIMITED TIME OFFER!
OFFER GOOD THROUGH DECEMBER 24, 1982.

SPORTS



Pressure Defense Nets Big Bulldog Varsity Win Over Tecumseh

One mark of a good basketball team is its ability to win on the road, and Chelsea's Bulldogs made it two in a row in that department with a 56-48 victory at Tecumseh last Friday night.

The win gave Chelsea a 3-0 season record going into this Friday's clash with Dexter, and mightily pleased Bulldog coach Robin Raymond.

"Tecumseh has a small gym, and the crowd seems to be sitting right out there on the floor with the players," Raymond said. "It's a very tough place for a visiting team, and we have always had trouble down there."

Chelsea won it by rushing out to a 17-10 lead at the end of the first quarter and playing the Indians a little more than even the rest of the way. It was 31-26 at the half and 43-34 at the end of three periods.

"Tecumseh came back at us several times," Raymond commented, "but we were always able to maintain control of the game. Whenever they threatened to get close, we got the points we needed to maintain our margin."

Matt Villemure's 18-foot jumper at the buzzer put the Bulldogs up by five at half-time and just may have been the most important basket of the game.

Chelsea came on after the intermission to outscore Tecumseh, 12-8, in the third quarter, and that locked it up.

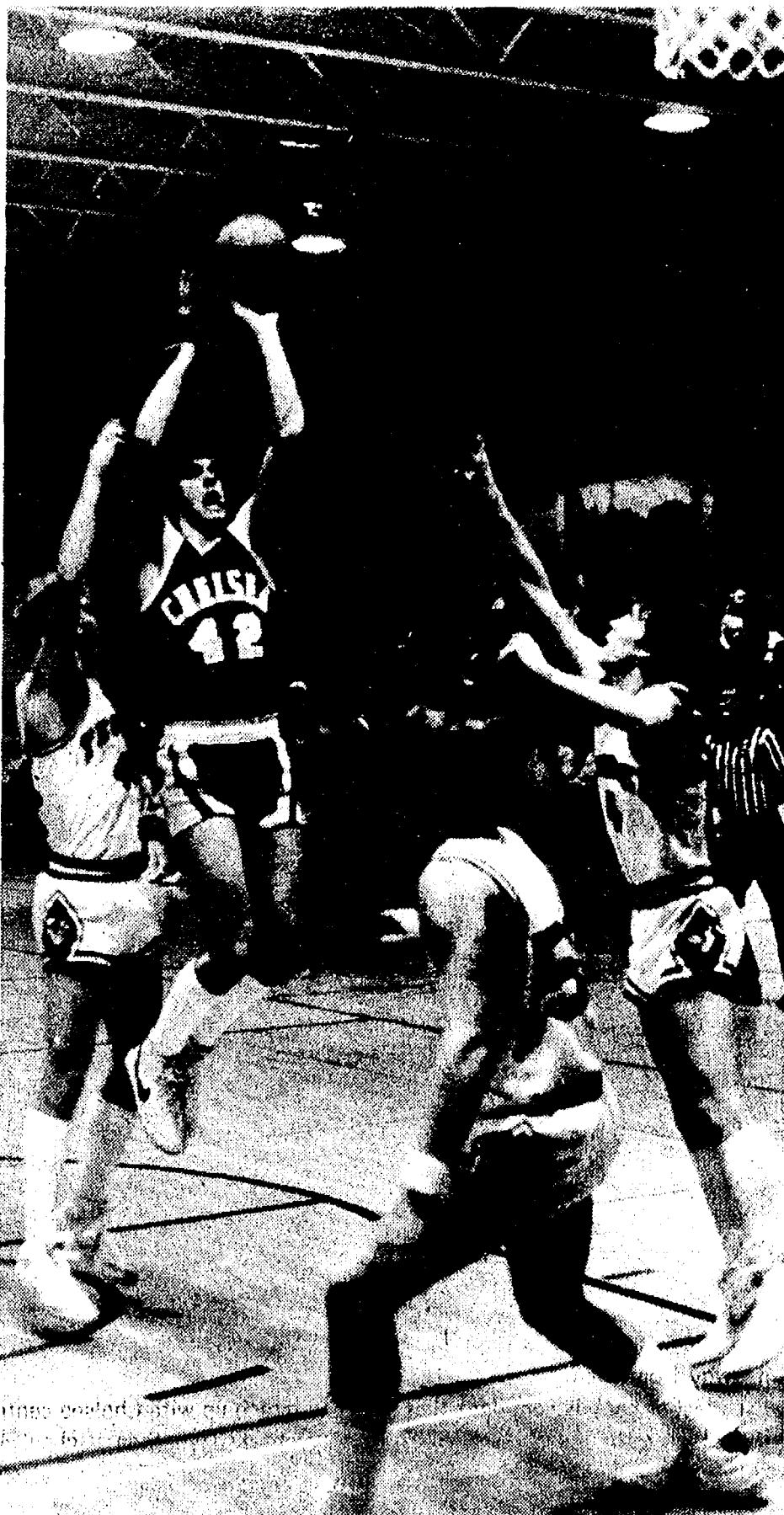
The Bulldogs' third-period edge was triggered by a shift of Marty Steinhauer to guard from his normal forward position. He and captain Dave Wojcicki shut down Tecumseh's two hot-shooting guards, who had kept the game close in the first half.

"Our pressure defense is what made the difference," Raymond said. "We made them work hard to get the ball upcourt and forced them into some poor shots."

Chelsea showed marked improvement in another important phase of the sport. After turning over the ball 33 and 27 times in their first two games, the Bulldogs gave it up only 11 times against Tecumseh.

And, after being badly out-rebounded by Pinckney last Tuesday night, Chelsea came back to earn a decisive 34-25 edge on the boards against Tecumseh, with center Dave Kiel picking off 15.

Still another bright spot was the Bulldogs' accuracy from the foul line, where they made 10 of 13 attempts. Tecumseh, meanwhile, hit only two of 10, an eight-



CHelsea's MARTY STEINHAUER goes up in a crowd of Tecumseh defenders to put in two of his team-leading 14 points in the Bulldogs' 56-48 Southeastern Conference victory at Tecumseh last Friday night.

point difference in Chelsea's favor. Considering that Chelsea won by eight, that swing was critical.

Steinhauer paced the Bulldogs with 14 points in a well balanced team scoring effort. Wojcicki had 11. Carl Pate came off the bench to get 10, once again playing his role as a "sixth man" in fine fashion. Kiel had eight to go along with his great play on the boards, and Villemure chipped in six. Dave Mann had five and Eric Schaffner two.

Chelsea's point total of 56 was well below its 80 average for the

first two games. One reason was that Tecumseh tried to slow things down, Raymond said. Another was the Bulldog defense, which made the Indians take a lot of time to bring the ball upcourt and maneuver for a shot.

Chelsea has tonight off and will travel down the road to Dexter on Friday to try for its third successive away-from-home victory. After that comes the holiday break, with play resuming Jan. 7, a home date against Saline.

In last Friday's junior varsity clash, Chelsea was a 47-44 winner in overtime.

Cagers Hang on for Win at Pinckney

Chelsea Basketball coach Robin Raymond was happy to get out of Pinckney's new fieldhouse with a 72-62 victory over the tenacious Pirates Tuesday, but wasn't so pleased with some of the things that happened during the game.

He was especially unhappy that Pinckney had a 47-38 edge in rebounds, which helped to keep the game close. "They just plain out-hustled us on the boards, and we have to correct that if we are going to be big winners this season," he said.

Raymond also didn't like the fact that his Bulldogs turned the ball over 27 times, an improvement over the opening-game total of 33 but still far too many. "We have to get it down to around 15," he said.

Still, it was a win on the road against a good Pinckney team which hung in and scrapped after Chelsea opened up a 10-2 lead in the opening minutes and seemed en route to a runaway. The Pirates came back to tie the game at 16 at the end of the first quarter and were behind by only two, 32-30, at the half.

The Bulldogs actually won the game in the third quarter, outscoring Pinckney 15-7 to take a 48-37 lead. The two teams battled evenly the rest of the way, and Chelsea sealed the victory by making 10 of 12 free throws in the last two minutes as the Pirates were forced to foul to get the ball.

"We did a nice job in those last two minutes," Raymond said. "We were under pressure, and we stood up to it. Our third-quarter effort was the difference. We try to come on strong after the half, and we did this time."

Dave Wojcicki paced the Bull-

dogs with 23 points, including 10 in the third quarter, but it was Marty Steinhauer's fourth-quarter surge that kept his team on top. Steinhauer had 11 of his 19 points in the final period.

Matt Villemure contributed four key free throws in the final seconds to make sure that Pinckney didn't close the gap. The hustling point guard doesn't get to take many shots in the Chelsea offensive scheme but dishes out a lot of assists. He had five for the game.

Center Dave Kiel had seven points and, more important, 14 rebounds, 40 percent of his team's total.

"Part of our rebounding problem was simply that the ball took some bad bounces for us," Raymond said, "but Kiel was the only one who really scrapped for the ball underneath. His effort shows in the statistics."

Raymond suggested that the Bulldogs may have been bothered a bit by playing in the new Pinckney facility, which is more like a college field house than a high school gym.

"It's a very nice place, but it's different from what our boys are used to playing in," he commented. "I think we may have had a little trouble adjusting. But, give credit to the Pinckney team. They stayed in there when they could have folded. They had been blown out by Williamston in the final game of their tournament three nights before, and came back to play very well against us."

8th Grade Cagers Split First Two

Chelsea's eighth-grade basketball team made its debut last Tuesday night with a 31-30 victory over Lincoln that wasn't quite as close as the score.

Up by 10 points with two minutes to play, Chelsea coach Jim Tallman emptied his bench, and Lincoln came on to narrow the count to the eventual one-point difference.

"I have 18 players on the squad, and I want to be sure they all get a chance to play," Tallman said. "At the eighth-grade level that is probably more important than anything else. We have a good group of kids, and some of them will develop into fine players."

Todd Starkey led the team with 11 points, Matt Bolander had six, and Jon Lane and Mark Bareis four each. Starkey and Matt Steinhauer were top rebounders.

The eighth graders' next outing, against Saline two nights later, did not come out as well in terms of the score, the Hornets winning, 45-36.

"Strange as it may seem, we played better against Saline than we did against Lincoln, even though we lost this time," Tallman said. "We showed great improvement. Saline is an excellent team. They were unbeaten as seventh graders, and they haven't lost this year."

Starkey, with 18 points, and Jeffy Harvey with 12 accounted for all but six of Chelsea's total.

Frosh Cagers Dominate JC Western

Chelsea's freshman basketball team began its season on a high note with a resounding 77-26 win over Jackson County Western last Thursday, to the pleasant surprise of new coach Paul Ash.

"Frankly, I didn't know what to expect going into the game," Ash said. "I knew these kids didn't have much success last year, but they played well and showed a lot of ability. They aren't big, but they work hard and get the job done."

Ash lives in Milan and works full-time for Michigan Bell Telephone Co. He has been hired as freshman basketball coach but does not teach in the Chelsea school system.

"I've been in basketball all my life, but this is my first coaching assignment and I'm enjoying it," Ash said.

All 11 members of the Chelsea frosh squad got on the scoresheet. Ken Martin led with 16 points, Dan Bellus had 13, Tim Bowdish 11 and Kevin Maynard 10.

Chelsea led, 42-19, at the half, and Western managed only seven points the rest of the way.

"We weren't trying to run up the score," Ash said, "and tried to hold it down."

A sour note was a second-half ankle injury to center Mark Mull, who is expected to miss the next two games.



STUCK FOR A GOOD GIFT?

As Christmas approaches, it's the same old dilemma — what to get for Dad or Uncle Joe or Cousin Mark?

Reid Biggs, Auto Parts Counter Supervisor at A&L, says, "It shouldn't be that difficult. Tools are always a good present. Here at A&L we've got all sorts of hand and power tools that would do just fine. Socket sets in either U.S. or metric; or an impact wrench — how about a jack for the guy who really likes to work on his own car?"

"Then of course there's add-on equipment — things like tachometers or gauges or mirrors or even splash guards. Oil and a filter would be an unusual gift, but practical. So would anti-freeze or automatic transmission fluid."

"If someone is an old-car buff, some hard-to-find part would make a super present. And over at the Paint & Equipment store on Ashley Street there would be all kinds of polishes, cleaners, dressings, and waxes."

Reid is right. A&L could be your Christmas store. It's handy (on Main St.); open Saturday mornings (8 'til noon); is certainly a retail sales store; takes VISA and MasterCard; and now has TeleCheck (your personal check is welcome).

A&L PARTS, INC.

— SERVING SOUTHEAST MICHIGAN FOR 66 YEARS —



(Yes, We Sell Retail!)



Your Check is Welcome

Open Saturdays, 8 to 12; Weekdays, 8 to 5
629 South Main Ann Arbor 313/665-4411

FREE

1/2 TON SALT*

Culligan

INVITES YOU TO SAVE WHILE YOU SAVE!

Fine, filtered soft water can save you money all around the house. Water heating costs are less, clothes wash whiter and wear longer. Soft water means the end to plumbing scale that can clog pipes, too.

CALL
RON SCHULZ
Area Representative
Phone 76-WATER
769-2637

*With purchase of Culligan Automatic Reverse Osmosis

NEW STYLES for CHRISTMAS SPEEDO



SPEEDO
Speedo suits America.

*Speedo is a registered trademark of Speedo Knitting Mills, Pty. Ltd.

VOGEL'S & FOSTER'S

Swimmers Win Tough EMU Relays

A scientifically designed swimming pool combined with some Bulldog revenge gave Chelsea a big win Saturday at the Eastern Michigan Relays, a 12-team invitational for teams whose coaches are EMU graduates or former EMU swimmers.

Brighton, a two-time defending champion, had beaten Chelsea by just two points the last two years. This year Brighton was second with 105 to Chelsea's 118 points.

Winning the 200-yard freestyle relay was important to Chelsea's win, said coach Larry Reed. The team of John Drew, Kent Noll, Hans Timmer and Steve Ramsey was seeded eighth, which put them in an outside lane.

In an older pool that is the kiss of death, because an outside lane gets all the backwash from the wall. But the new EMU pool is "designed to be fast," said Reed, and the outside lane has an advantage.

Although the Monroe relay had a better time than the Bulldog four, a Monroe swimmer false-started and their relay was disqualified.

The usual two high school relays, the 200 medley and 400 free relays were swum along with unusual events such as a 1500 free relay, three swimmers going 500 yards each, and a diving relay. The meet is intended to be a fun

kick-off to the boy's season. Nine teams were Class A schools, and Chelsea was one of three Class B teams competing.

Bulldogs Dave Nicola, Ted Merkel, Brent Bauer and Sean Oxner won the 400 individual medley relay, each swimmer doing a 100 IM. Nicola, Mike Coffman, Merkel and Oxner also won the 200 breaststroke relay. Chelsea's 200 medley relay, second, and 400 free relay, fifth, recorded state meet qualifying times, in different line-ups than their two previous qualifications.

Chelsea scored in the top six in 9 of 10 events, and seventh in that 10th event. That balanced scoring was the difference in the meet, said Reed.

Reed was pleased with the state qualifying times, he said, and with Don Skiff's eight-second drop in his 200 free time.

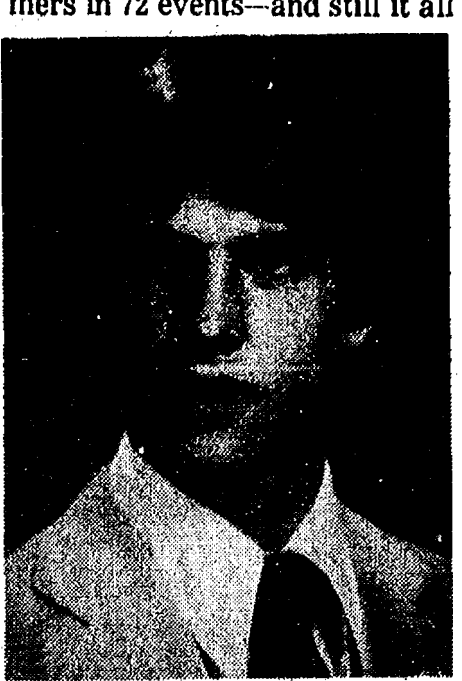
"We are going to have a lot more flexibility in our relays for the state meet," he said, "than I had expected. We learned a lot from this meet about possible relay line-ups."

Cherry Hill was third with 98 points; Troy Athens, fourth; Milan, fifth, 87; Ypsilanti, seventh, 71; and Willow Run, 12th, 25.

The Bulldogs' next meet is at 4:30 p.m. today against Okemos at Cameron Pool.

Aquatic Club Takes Area Championship

Southern Michigan Swim League Championships spread over four different days in two weeks with more than 600 swimmers in 72 events—and still it all



JEFF LANTIS
Jeff Lantis on Title Seeking Hillsdale Team

Jeff Lantis of Chelsea is a freshman split end on the Hillsdale College football team which is shooting for the NAIA national championship. Lantis starred at Chelsea High school for three years.

He does not get a lot of playing time but is a member of Hillsdale's 42-man traveling squad and was to go to Grand Junction, Colo., last weekend for a semi-final game against Mesta College.

Hockey Clinic Set at Veterans Ice Arena

The City of Ann Arbor, Department of Parks and Recreation and North Sports Camp will be conducting a Christmas Hockey Clinic Dec. 26-31 at Veterans Park Ice Arena. The clinic will serve youth ages 6 to 13 in skill levels ranging from novice to advanced.

A special adult clinic will also be held with specific emphasis on development of skating techniques and stick handling skills.

For further information regarding fees, times and registration please call the Veterans Park Ice Arena, 761-7240 or the Department of Parks and Recreation, 994-2780.

came down to the last heat of the last event to give Chelsea Aquatic Club the championship Dec. 9 at Cameron Pool.

Chelsea was 25 points behind Ann Arbor Y at that point. Chelsea's 15- and older boys relay was seeded behind Brighton, and Chelsea lagged after the first two swimmers. John Drew, the third swimmer gave anchorman Sean Oxner a slight lead, and Oxner pulled away for a relay and team championship win. The power of three seconds of time!

Chelsea's relays finished first and fifth for 52 points and a final margin of 27 points over Ann Arbor.

Ann Arbor Y led after the first two days of events, Nov. 30 and Dec. 1 away, and the third day of events Dec. 6 at Cameron Pool. But high school coaches in Ann Arbor won't allow their swimmers to compete in club competition during the varsity season. Ann Arbor scored no points in that all-important 15- and older age-group—the difference in the championship.

Larry Reed, co-coach for the CAC and coach for the boys varsity team, said he had no qualms about letting boys varsity swimmers compete in such a meet, four months away from the most important varsity meet, the state championship.

During the CAC's winter season beginning after New Year's, there will be no 15- and older boys events as there wasn't for girl swimmers during their fall season.

Chelsea had 1,923 points total; Ann Arbor Y, 1,896; Milan, 1,687; Brighton, 994; Ypsilanti, 940; and Jackson, 187.

Complete results from the two week championships are not yet available.

Varsity Swimming Schedule

Dec. 9—Monroe	A	5:00
Dec. 11—EMU Relays	A	9:00
Dec. 16—Okemos	H	7:00
Jan. 6—Huron	A	7:00
Jan. 11—Fenton	H	7:00
Jan. 13—Riverview	H	7:00
Jan. 18—Adrian	H	7:00
Jan. 20—Dundee	H	7:00
Jan. 27—Lincoln	A	7:00
Feb. 1—Lakeview	H	7:00
Feb. 8—Cherry Hill	A	7:00
Feb. 15—Jackson	A	7:00
Feb. 22—Willow Run	A	7:00
Feb. 24—Chelsea Invit.	H	6:00

Wrestlers Bounce Back In Invitational After Loss

There was bad news and good news on the Chelsea High school wrestling front last week.

The bad news was that the Bulldogs took a thorough beating on their opening Southeastern Conference dual meet against Jackson County Western, losing 47-15 last Thursday night. The only bright spots were Mark Rosen-

treter's decision victory in the 119-pound class and Jeff Morgan's pin at 126 pounds. Travis Rudd won by forfeit at 132 pounds. Otherwise, Chelsea lost every match.

"Western has a strong team, but I honestly didn't believe they would beat us that badly," said a disappointed Kerry Kargel,

Chelsea wrestling coach.

The good news is that the Bulldogs came back strong last Saturday to finish third in a nine-team field at the Linden Invitational meet, despite having no entrants in three weight classes because of illnesses and injuries.

Class A Holly was first with 58 points, Fenton second with 154 and Chelsea third with 103.

Bulldog freshman Pete Harma and his older brother, Bill, both won individual championships at 98 and 112 pounds, respectively. Rudd was second in the 132-pound class, and Rosentreter, Morgan, Scott Dault (138) and John Bowdish (187) each earned third places.

"Our kids really did well," Kargel said, "and I was pleased by their progress. This was a tough meet with several good teams and many good individuals entered. Both Rosentreter and Bowdish came up out of the 'rat pack' (loser's bracket) to earn their places. They each had to wrestle four matches during the day, and that isn't easy."

While the Bulldog varsity was competing at Linden, the JV wrestlers went to Dexter's Invitational meet. Freshman Andy Fenton won a fourth place there at 112 pounds.

"I knew we wouldn't score well at Dexter, but I wanted some of our younger boys to get experience by going up against varsity wrestlers from other schools. Andy Fenton's showing was a pleasant surprise."

Kargel anticipates an up-and-down season as his young, inexperienced squad goes through the learning process.

"We have very few veterans," he said, "and one of those (Ernie Bristle) has been available for only one meet because of weight problems and injuries. But we're coming along, and by February I think we are going to surprise some people."

COMMISSION ORDER

Protection of Muskellunge and Northern Pike

The Natural Resources Commission, at its November 5, 1982, meeting, under the authority of Act 230, P.A. 1925, as amended, ordered that all spearing be prohibited throughout January, February, and March 1983 on the following waters: WHITMORE LAKE, Washtenaw County.

BREAKFAST SPECIAL 99¢

Hot Dog, French Fries & Small Drink ... \$1.59

CLAXTON FRUIT CAKES 3 lbs. \$6.87

Stuckey's

11-94 at Fletcher Rd. Ph: 475-7334

Before you make your next investment, give it this little test:

	YES	NO
1. Does it pay market-rate interest?	<input type="checkbox"/>	<input type="checkbox"/>
2. Is it readily accessible?	<input type="checkbox"/>	<input type="checkbox"/>
3. Can you write checks on it?	<input type="checkbox"/>	<input type="checkbox"/>
4. Does it require a minimum balance of just \$2500?	<input type="checkbox"/>	<input type="checkbox"/>
5. Is it fully insured by the FDIC?	<input type="checkbox"/>	<input type="checkbox"/>
6. Does it benefit the local economy?	<input type="checkbox"/>	<input type="checkbox"/>

you can access your investment just by writing a check.

Above all, you have the security of knowing that your funds are insured for up to \$100,000 by the Federal Government. You also have the assurance that your funds stay right here in this community, supporting local enterprise and local people.

Our Money Market Investment Account is available right now. Plan to come in soon... and put it to the test.

Many investments can offer you the first three. Or, in a few cases, even the first four. But when it comes to guaranteed security and local control of your funds, they can't do a thing.

They can't, but Ann Arbor Trust can.

Our new Money Market Investment Account offers you interest rates linked to a high-earning Treasury Bill. Yet your funds aren't tied up for years, months, or even weeks.

Minimum opening deposit is just \$2500. And



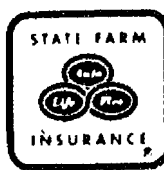
ANN ARBOR TRUST

MEMBER FDIC

Ann Arbor Downtown • South State Street • Brighton • Chelsea • Plymouth Mall CashPort

"I back the family insurance I sell with good neighbor service."
CALL ME.

JERRY ASHBY
102 E. Middle 475-8637



STATE FARM Insurance Companies
Home Offices:
Bloomington, Illinois

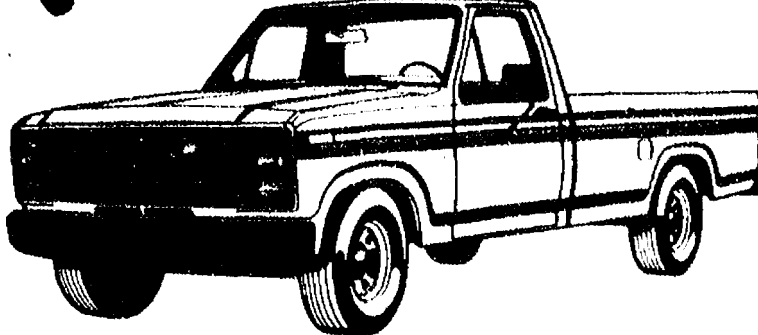


Like a good neighbor, State Farm is there.

PACMER Ford
MICHIGAN'S OLDEST FORD DEALER

NEW FORD Standard Size Pick-Up

4897 STOCK NO. 2204
PLUS HIGHEST TRADE-IN VALUES



*PLUS TAX, TITLE, DESTINATION CHARGES, AND REBATES

PACMER Ford
IN WASHTENAW COUNTY SINCE APRIL 15, 1912
CHELSEA 475-1301

LOY'S TV

Sales & Service

512 N. Maple Rd., Ann Arbor
We Service All Makes
VISA MASTER CARD

769-0198

Milan, Saline Win Season Openers

Two of the three Southeastern Conference pre-season co-favorites won their opening league basketball games last Friday night, but defending champion Dexter dropped its contest with Saline.

Chelsea and Milan both began their pursuit of the SEC title with impressive victories. Chelsea dumped Tecumseh, 56-48, and Milan had a surprisingly easy time against Lincoln, winning 67-51. Lincoln has been regarded as a dark horse in the chase for the championship.

The other SEC member, Jackson County Western, did not have a league contest scheduled. With seven teams in the conference, only six can be involved in conference play on any given night.

Dexter jumped out to a big early lead over visiting Saline but let the game get away with poor play during the two middle quarters. A strong fourth-period Dexter rally fell short as Saline held on by out-shooting the Dreadnaughts at the foul line.

Chelsea led all the way in its road triumph over Tecumseh, opening up a 17-10 first quarter lead and maintaining the margin the rest of the way. The remaining three periods were played on fairly even terms. The Bulldogs' pressure defense, 10-of-13 free throw shooting, avoidance of turnovers (only 12 for the game) and rebounding edge (37-27) were big factors in the win.

Milan's tough defense keyed its home victory over Lincoln, which fell behind early and never got close. The Railsplitters made it

easy for Milan with cold shooting from the floor, especially during the third quarter when they dropped in only two field goals.

Lincoln nevertheless has a lot of talent, and coach Bill Welch promises his team will be in the thick of things once it jells.

Putting it all together after the first night of play, it looks like at least six of the seven SEC teams must be considered legitimate contenders in what promises to be a real scramble for the title.

The jury is still out on Western, which was winless in the conference last year.

STANDINGS

	W	L
Chelsea	1	0
Milan	1	0
Saline	1	0
Dexter	0	1
Lincoln	0	1
Tecumseh	0	1
Western	0	0

Willard Johnson To Head Area Hospital Council

Willard H. Johnson, administrator of Chelsea Community Hospital, is the chairman-elect of the newly formed Southeast Michigan Hospital Council.

The organization represents hospitals in Washtenaw, Livingston, Monroe, Wayne, Oakland, Macomb and St. Clair counties, and is affiliated with the Michigan Hospital Association. It includes about 90 hospitals in the seven-county area.

Nature Center May Offer Cross-Country Skiing

The scope of this winter's activity at the Waterloo Nature Center will depend on whether the Department of Natural Resources grants the Waterloo Natural History Association permission to charge fees for cross-country skiing on the trails in the vicinity. A decision from Lansing is expected in the next week or two.

"In any case we will be open on week-ends only, and only on those week-ends when there is enough snow for skiing," said Mrs. Emilie Polens, center coordinator. "If we get permission to charge for skiing, we will set up a collection booth and provide a shelter where people can warm up and get a cup of coffee."

The association took over operation of the center after the DNR was forced to abandon it for budget reasons. It has been a constant touch-and-go struggle to keep the facility afloat financially.

"One thing we hope to do is offer rental of a horse-drawn sleigh," Mrs. Polens said. "For that we will need somebody to offer us the use of a draft horse, and volunteers to help provide the service."

Supposed 'Stolen' Ring Found in Locker Room

The ring reported stolen from a Chelsea High school locker on Dec. 2 apparently wasn't. It was found on the floor near the locker by a Chelsea student and turned in to the school office for return to its owner.

The supposed theft was reported to Chelsea police by a member of the Stockbridge High school wrestling team who used the locker during a dual meet between the two schools.

"It appears there was some horseplay involved," said Ron Nemeth, Chelsea athletic director. "The report to the police definitely was premature. The ring was found, and I'm glad of that."

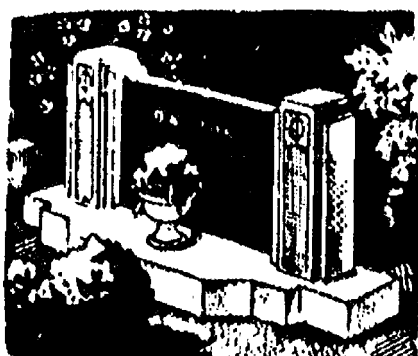
Case closed.

Pinckney Area Youth Participates in Marine Training Exercise

Marine Lance Cpl. Jordan E. Hannah, son of Barbara J. Hannah of 3390 Orchard Dr., Pinckney, recently participated in "UNITAS XXIII."

He is a member of the Marine Detachment, "UNITAS XXIII." This marked the 23rd consecutive year for the series of combined U.S. and South American "UNITAS" exercises. These operations are designed to promote a high state of preparedness and co-operation between the various naval and air forces that protect the southern sea lanes of the Western Hemisphere.

Operations included anti-submarine and anti-aircraft warfare, surface gunnery, communications and amphibious operations.



MAUSOLEUMS ★ MONUMENTS
BRONZE TABLETS ★ MARKERS

BECKER MEMORIALS
6033 Jackson Road
ANN ARBOR, MICHIGAN

Overheated Electric Blanket Brings Call

Chelsea firemen put out a mattress fire at 16720 Kilmer Rd. Sunday afternoon. The mattress burned, and there was some smoke damage to the house. The blaze apparently was started by an overheated electric blanket. Village firefighters also made two rescue runs last week.

NOTICE

LYNDON TOWNSHIP TAXPAYERS

I will be at 9508 Beeman Rd. to accept taxes and issue dog licenses every Friday and Saturday between 9:00 and 5:00 during the month of December only. January and February, I will be available Saturdays only. I will be available at the Lyndon Townhall on Saturday, February 5 and 12 from 9:00 A.M. to 12:00 p.m. to accept payment of taxes and issue dog licenses.

Payments by mail will be accepted

Dog license fees are as follows:

Regular dog license	\$10.00
Spayed or Neutered dog license (with written proof)	\$ 5.00
Blind and Deaf Citizens with Leader Dogs	\$ 0.00
Senior Citizens 65 years and older	\$ 5.00

Rabies Vaccination Papers must be presented

BARBARA RODERICK

LYNDON TOWNSHIP TREASURER

Phone 475-7056

9508 Beeman Rd. Chelsea, Mi. 48118

- NOTICE -

Sylvan Township Taxpayers

Sylvan Township Treasurer will be at Sylvan Township Hall, 112 W. Middle St., Chelsea, to collect Sylvan Township Taxes every Wednesday and Friday from 1 to 5 p.m., and Saturdays from 10:00 a.m. to 3:00 p.m. during the months of Dec., Jan., and Feb.

PAYMENTS WILL BE ACCEPTED BY MAIL
Receipt Will Be Returned

All Dog Licenses must be paid to Sylvan Township Treasurer before March 1, 1983, to avoid penalty.

Dog License \$10. With proof of spaying or neutering, \$5. Blind and deaf citizens with Leader Dog, no charge. Senior Citizen, 65 years or older, \$5.

Rabies Vaccination papers must be presented in order to obtain license.

FRED W. PEARSALL

SYLVAN TOWNSHIP TREASURER

PHONE 475-8890 or 475-7251

- NOTICE -

Lima Township Taxpayers

Office hours for collecting taxes will be Fridays 9:00 a.m. to 5:30 p.m., Saturdays 9:00 a.m. to 12:00 noon Dec. 1 through Feb. 27. Friday, Feb. 25, 9 a.m. to 9 p.m. Will be at the Chelsea State Bank these dates only Feb. 11-18-25. Hours there are 9 to 12:00 a.m. and 1 to 5:30 p.m.

Payments may be made by mail. Receipt will be returned.

All Dog Licenses must be paid to Lima Township Treasurer before March 1, 1983, to avoid penalty.

Dog License \$10. With proof of spaying or neutering, \$5. Blind and deaf citizens with Leader Dog, no charge. Senior Citizen, 65 years or older, \$5.

Unexpired rabies vaccination papers must be presented in order to obtain dog licenses

BETTY T. MESSMAN

LIMA TOWNSHIP TREASURER

13610 Sager Rd. Ph. 475-8483

- NOTICE -

DEXTER TOWNSHIP TAXPAYERS

I will be at Dexter Township Hall, 6880 Dexter-Pinckney Rd., Dexter, to collect Dexter Township taxes on the following days: Wednesday, Dec. 8-15-22-29 from 9 a.m. to 4 p.m., and Friday, Dec. 3-10-17, from 9 a.m. to 5 p.m., Dec. 24, 31, from 9 a.m. to 12 noon. Jan. 5-7-12-14-19-21-26-28, from 9 a.m. to 4 p.m. Feb. 2-4-9-11-16-18-23-25-28, from 9 a.m. to 4 p.m.

Those who wish may send check or money order. Receipts will be returned by mail.

All dog licenses must be paid to the Dexter Township Treasurer before March 1, 1983 to avoid penalty.

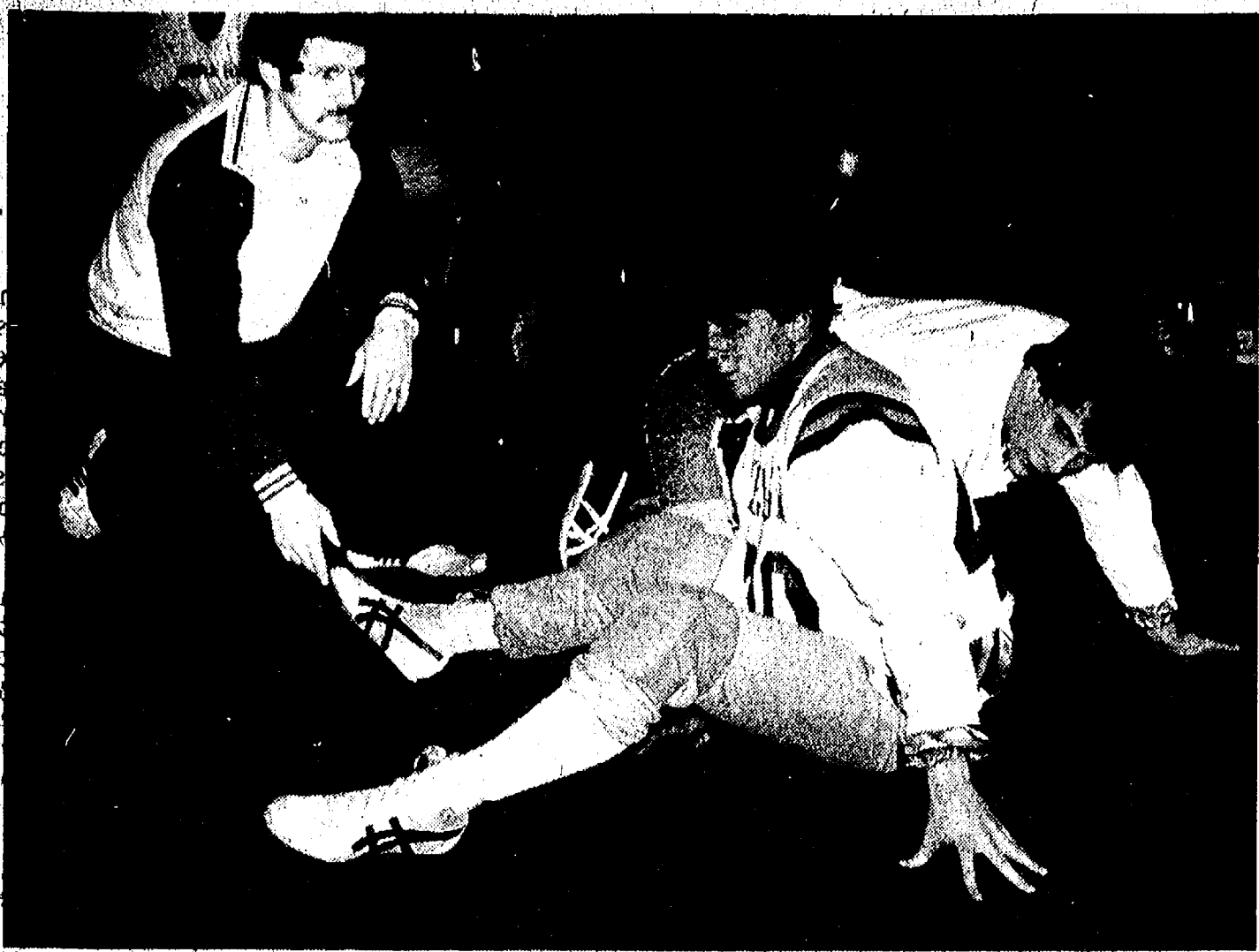
Dog Licenses \$10. If spayed or neutered, \$5. Proof of altering required. Senior Citizens pay only \$5 for dog license.

Unexpired rabies vaccination papers must be presented in order to obtain dog licenses.

JULIE A. KNIGHT

DEXTER TOWNSHIP TREASURER

6880 Dexter-Pinckney Rd. Ph. 426-3767



WRESTLERS OF THE WEEK are Travis Rudd (rear) and Jeff Morgan, shown practicing a "switch" under the watchful eye of Chelsea Coach Kerry Kargel, a former Bulldog state champion wrestler in his first year as Chelsea's head coach. Rudd and Morgan, both veterans, are both off to good starts this season. Rudd wrestles at 132, Morgan at 128.

OUT IN THE OPEN

By BILL MULLENDORE



Doug Fulton took me (and I suspect a lot of other people) by surprise with his public announcement Dec. 5 that he plans to retire next spring from the position of outdoor editor of the Ann Arbor News, a job he has held for 20 years and some months.

Maybe I shouldn't have been surprised, because Doug's proclaimed reason for leaving is the same that mine was when I took early retirement from the Michigan Department of Natural Resources in the fall of 1981. He wants a change of pace and a chance to try something else. I hope he finds it, and wish him well.

Doug Fulton and I have known each other and been friends and professional associates for a long time. I helped to hire him at the News as a photographer, and he was (and still is) a darned good one. He has a wall full of plaques and citations to show for his genius with a camera.

When I left Ann Arbor in August of 1962, Doug volunteered to take over editorship of the paper's outdoor page, which at that time was a collateral assignment earning no extra pay or accolades. It was a task you did in whatever time you

had left over after completing the duties of your regular job. It was mostly a labor of love, which I had worked at for 15 years.

One of Doug's accomplishments was to get the paper's management to recognize that outdoor writing is a legitimate occupation, and to create a full-time position as outdoor editor. Had that been done in my era, I might still be there and Doug might still be taking pictures for a living.

Doug has done some other important things. He had a lot to do with getting the Washtenaw county park system established, something that I had tried and failed to accomplish (although I like to think that I helped to lay a little groundwork).

He has been instrumental in the expansion and development of the Ann Arbor city park system, to the point where it is one of the finest of its kind in the nation.

He has been a vigorous voice in favor of the Ann Arbor Ecology Center, the Waterloo Natural History Association, and many other worthwhile environmental protection organizations and causes. He has never hesitated to speak out through his typewriter

and take stands on controversial issues, sometimes offending those who were paying his salary. A newspaper columnist must have the courage of his convictions, and Doug never lacked that.

Doug Fulton will be missed when he leaves Ann Arbor permanently for the sunny southwest climate of Arizona. He has made his mark here, and the area is a better place because of his work.

A friend asked me if I intend to apply for Doug's job. Having learned long ago to never say never, I didn't answer with a flat-out no, but my inclinations are all against it.

I suspect the News will be looking for a younger person, one who will establish and develop continuity and reader rapport over more years than I intend to continue working. The job of an outdoor editor-writer is basically personal journalism, and it takes time to build the kind of writer-reader relationship that yields productive results.

I wouldn't be surprised if the assignment goes to a woman, because the News does that kind of thing. There is nothing wrong with the idea, assuming the person is competent, and it would not be a first in Michigan. At least two other Michigan newspapers that I know of have had female outdoor editors, and a good friend of mine, Gay Cowels of the DNR's information and education division, is currently an officer of the Michigan Outdoor Writers Association.

Beyond that, I'm not sure that Ann Arbor and its newspaper, and I, are compatible any more. Both the city and the News have changed drastically over the past 20 years, and I have, too, no doubt.

I belong to the "traditional" school of outdoor writing. Hunting, fishing, camping, boating, forestry are the things I know about and write about. Environmental protection and natural history are important, but they don't interest me enough to make me want to specialize in them full time. Other writers (like Doug Fulton) with more education and experience than I have in those fields are far better qualified to carry on.

So, I haven't applied for the job and have no reason to believe it would be given to me if I did. I suspect Doug Fulton's successor has already been selected, and hope that he or she carries on in Doug's tradition.

As a footnote, I hope Doug manages to get written the books that he says he wants to write. I'm carrying a couple of those around in my head, too, and am about to concede that they will never be put on paper. There is just too darned much else to do.

\$100.00 REWARD VILLAGE OF CHELSEA

The Chelsea Village Council has authorized a \$100.00 reward for information leading to the conviction of the person or persons responsible for destroying the electric meter, located on a utility pole in the Chelsea State Bank parking lot, on November 17, 1982, and again on November 29, 1982.

VILLAGE OF CHELSEA

Frederick A. Weber, Village Administrator

APPLICATIONS SOUGHT

Applications are being accepted to fill a vacancy on the Sylvan Township Planning Commission.

Interested persons may call or write to: Mary Harris, Sylvan Township Clerk, 415 S. Main St., Chelsea, Michigan. 48118. Phone 475-2938.

Deadline for applications is Dec. 31, 1982.

DATED: DEC. 14, 1982.

SYLVAN TOWNSHIP

Mary Harris, Clerk

APPLICATIONS SOUGHT

Applications are being accepted to fill the position of Sylvan Township Zoning Inspector.

Interested persons may call or write to: Mary Harris, Sylvan Township Clerk, 415 S. Main St., Chelsea, Michigan. 48118. Phone 475-2938.

Deadline for applications is Dec. 31, 1982.

DATED: DEC. 14, 1982.

SYLVAN TOWNSHIP

Mary Harris, Clerk

OFFICIAL NOTICE Regular Meeting of the DEXTER TOWNSHIP BOARD Will Be Held

TUESDAY, DEC. 21, 1982 - 7:30 p.m.

at DEXTER TOWNSHIP HALL

6880 Dexter-Pinckney Rd., Dexter, Mich.

WILLIAM EISENBEISER
Dexter Township Clerk

Ads
Taken
Until
10 a.m.
Monday

PUT IT IN THE WANT ADS FOR RESULTS

Just
Phone
475-1371

Automotive

Palmer Motors & National Autofinders

1976 DUSTER 2-door
Nice car, with air \$2495
1978 PINTO 3-door
48,000 miles, automatic \$2495
1980 PINTO 2-door
Fuel saver \$3495
1978 GRANADA 2-door
locally owned \$3495

Michigan's Oldest Ford Dealer

1979 MUSTANG 2-door,
Low mileage, automatic \$4295
1979 THUNDERBOLT
Only 33,000 miles \$4895
1980 MUSTANG 2-door
Nicest car in town \$4695
1977 CHEV. C-10 4x4
Get ready for snow \$4995

BUY...SELL... BROKER...

1982 ESCORT 1.3-door
4,000 miles \$5495
1979 MERCURY MARQUIS 4-door
Brougham model \$5695
1980 CORDOBA CROWN 2-door
Super, super sharp \$5695
1981 FORD F-100
Only 21,000 miles \$5995

We Buy Used Cars & Trucks

1981 FUTURA 2-door
Tune with air \$5995
1982 CHEV. S-10
13,000 miles, with cover \$6995
1982 ESCORT WAGON
Demo, with air \$6995
1979 FORD CLUB WAGON
Super sharp \$7495
1982 GRANADA 4-door
Dealer demonstrator \$8495

Privately Owned Cars For Sale

1976 CUTLASS SUPREME 2-door
A real sharp car \$2995
1978 CHEV MONZA
2-2 sport model \$2995
1982 FORD F-150 4x4
Only 2,400 miles \$9495

Palmer Motors & National Autofinders

Display Lot Open
Mon. & Thurs. 8:30
Tues., Wed., Fri. 9:30
Saturday 11:30

CHELSEA

475-3650

Automotive

BODY SHOP

COMPLETE FULL TIME
Estimates Available

PALMER FORD

222 S. Main 475-1301

401f

ALL PARTS for 1971 Plymouth two-

door Scamp, very good condition,

Ph. 426-8019. x231f

69 PONTIAC — 2-dr. Automatic,

good tires, new shocks, tuned up

for winter. Good transportation.

Asking \$450 or best offer. Call

475-2757 between noon - 2:30 p.m.

-28-2

1979 CHEVETTE — 4-dr., auto, Ph.

475-9342. x28

1978 BUICK CENTURY — station

wagon, V-6, auto, Ph. 475-9342.

-28

1972 CHEVELLE — V-8, auto, Ph. 475-

9342. x28

Farm & Garden

STEERFEED — Call for price on

ton lots of special made Steer

Feed, Cole's Elevator, Gregory,

498-2735. x29-4

For Sale

BUNK BEDS — Oak frame, Ph.

475-1647 after 5 p.m. x28

MUSICAL INSTRUMENTS — Fender

Mustang, \$175; Yamaha G170,

\$125. 475-3330. x29-2

WEDDING STATIONERY — Prospective

brides are invited to see our

complete line of invitations and wed-

ding accessories. The Chelsea Stand-

ard, 300 N. Main, Ph. 475-1371. 81f

Wurlitzer

and

Seeburg

Jukeboxes

for home use

\$650, \$700, \$850

Ph. 662-1771

x131f

NO

HUNTING

SIGNS

On Sale At

THE

CHELSEA

STANDARD

300 N. Main St.

Chelsea

151f

FOR SALE — Many articles, also all

parts from 2 Ford pick-ups, one '69,

one '65. Call 426-8019. x231f

BUILDERS

For \$12,600 you can pour your own

basements and other people's, too. I

have a complete set of SIMPLEX

POURED WALL FORMS for sale.

Everything you need to go into

business. Call

475-2828 475-2734

441f

DRYER, used, electric, in good work-

ing order. Call 475-7361. x29-2

Grinnell's console piano, 3 years

old, lift-up top, \$1,000. 475-2318.

-28-4

FOR SALE — Canopy bed, double

seven-drawer lingerie chest,

spread, shams, canopy, like new,

\$175. Excellent condition. Ph.

426-3660. x28

For Sale

Reliable Hardwoods

Seasoned Firewood
Red/White Oak/Ash
Delivered or you pick up

Ph. 475-1505 or 475-9954

EARTH WOOD-BURNING stove, large

excellent condition, \$410.

475-9509. Call anytime. x28

CHRISTMAS TREES — Cut your own,

\$5.00. 7575 Marshall Rd., Dexter.

x29-3

PREMIUM

CHRISTMAS TREES

Roping - Wreaths - Boughs

Open daily, 10 a.m.

LEVERETT'S

COUNTRY MARKET

4092 Packard Rd., Ann Arbor

Ph. 971-0240 x28-2

Auction

4a

Another Gorrell

BROS.

Public Auction

AN ESTATE SALE

SATURDAY,

DECEMBER 18, 1982

10 a.m.

LOCATION: 10 miles east of Jackson,

Michigan on Page Ave. at the corner

of Page Ave. and Gray Tower Rd. 20

miles west of Ann Arbor, Mich.

(Watch for Auction Signs.) OR 1 mile

S. of Grass Lake on Wolf Lk. Rd., then

West 1/8 mile on Page Ave.

5-Acre Parcels

Two 5-acre parcels to be offered in 2

separate tracts.

Each 5 acre parcel has 660 ft. frontage

on Page Ave. They are high and

dry, in a high caliber community in

the Grass Lake School District.

Possible Land

Contract

If you have been wanting some small

acreage in the country, then by all

means, YOU HAD BETTER SEE THESE 2

five acre tracts of land

MAY SELL FOR LESS THAN YOU

WOULD HAVE BEEN WILLING TO

PAY. BUY ON A BUYER'S MARKET AT

AUCTION WHERE YOU SET THE

PRICE.

Don't miss this opportunity. Close to

Grass Lake for the sports enthusiast.

One of the best locations in Jackson

county. This is your opportunity. Auction

Sale — plan to be there and pick up

the bargains on these 2 pieces of

Prime Real Estate on Saturday,

December 18, 1982 at 10 a.m.

Terms: \$100.00 down day of sale.

Balance on delivery of Survey, War-

ranty Deed and Title Insurance on or

before January 18, 1983. IF land con-

tract terms are desired, call Robert L.

Gorrell, Realtor at (517) 764-2600

prior to sale day. Being offered sub-

ject to confirmation of the sellers and

Probate Court. All Statements made

sole day will take precedence over

all printed matter.

DEAN NORMAN MEYER,

Personal Representative

for the Estate of Walter M. Meyer.

Auctioneers: Gorrell Bros.

Bob - Larry - Cliff - Dick

Robert L. Gorrell, Realtor

108 Napoleon Rd., Michigan Center,

Michigan

(517) 764-2600

Call Today And Reserve

Your Sale Date!

We Sell The Earth And

Everything On It!

28

PUBLIC AUCTION — Saturday, Dec.

18 at 1 p.m. Real estate &

household goods located at 11750

Leeke Rd. (4 miles SE of Stockbridge,

MI. on M-52 to Leeke Rd. then south

1/2 mile to 11750 Leeke Rd. OR 11

miles NW of Chelsea, MI. on M-52

then South 1/2 mile, corner of Leeke &

Tophitt Rds. (Watch for signs.) We

will offer this 3 bedroom executive

style tri-level home with attached

two-car garage on 1 acre. Household

items: velvet couch, end tables,

bedroom suite, desk, lamps, dining

table, upright freezer, exercise items

and many other items, plus a 1976

Chevrolet 2-ton wrecker, 1973 Brown

40-ft. dry van trailer, a 20-ton Tulsa

wrecker unit & winch, a Suzuki 125

motor bike. Call for brochures. Lunch

stand on grounds. Owners: Mr. &

Mrs. Jerry Risner. Auctioneers: Gor-

rell Bros. (517) 764-2600 and Price

Bros. (517) 851-8042 Robert L. Gor-

rell, Realtor. x28

Sheriff's Auction

Date: Dec. 21, 1982.

Time: 10 a.m.-12 Noon.

Place: Ed's Garage, 386 S. Ford Blvd.

Ypsilanti, MI.

Vehicle: '74 AMC

VIN A4A167H501796. -28

Garage Sale

4b

HILLTOP, INC.

TRADING POST &

SECOND-HAND STORE.

8316 Werkner Rd., Ph. 475-2573

Hours:

MONDAY THRU SUNDAY

10 a.m. to 5 p.m.

Now accepting good, clean

assignments and will buy leftovers

om garage and yard sales. 111f

CLASSIFIED

RATES

Ad Rates:
10 words or less \$1.00

when payment accompanies order
7¢ per word over 10

Card of Thanks & Memorials
50 words \$2.50

when payment accompanies order
7¢ per word over 50

Add \$1.00 per insertion
if changed.

\$1.00 charge for tear-

sheets and duplicate in-

voice on any ad under

\$5.00

Deadline for ads in

classified section is noon

Saturday. Copy received

between noon Saturday

and 10 a.m. Monday may

appear under a separate

heading on another page.

Any change or cancella-

tion in advertising made

after noon Saturday may

not appear in that week's

issue.

All advertisers should check their

ad the first week. The Standard

cannot accept responsibility for

errors on ads received by

telephone but will make every ef-

fort to make them appear correct-

ly. Refunds may be made only

when erroneous ad is cancelled

after the first week that it ap-

pears.

Antiques 4c

Real Estate 5

Animals, Pets 6

Lost & Found 7

Help Wanted 8

Situation Wanted 8a

Babysitter 9

Wanted 10

Wanted To Rent 10a

For Rent 11

Houses, Apartments, Land

Misc. Notices 12

Bus. Services 13

Financial 13

Bus. Opportunity 15

Financial 14

Bus. Opportunity 15

Card of Thanks 16

In Memoriam 17

Legal Notices 18

Antiques 4c

Real Estate 5

Animals, Pets 6

Lost & Found 7

Help Wanted 8

Situation Wanted 8a

Babysitter 9

Wanted 10

Wanted To Rent 10a

For Rent 11

Houses, Apartments, Land

Misc. Notices 12

Bus. Services 13

Financial 13

Bus. Opportunity 15

LITTLE WANT ADS! BIG PLUSES FOR BIG RESULTS!

Washtenaw County's Busy Marketplace . . . Quick, Economical Results . . . Give 'em a try!

Bus. Services 13

PAINTING

PAPER HANGING

Over 30 years experience
Free estimates, insured

Bill Lurkins
475-9464

Bus. Services 13

Excavating

SAND GRAVEL

KLINK

EXCAVATING

Bullbozer — Backhoe
Road Work — Basements
Trucking — Crane Work
Top Soil — Demolition
Drainfield — Septic Tank
Trenching, 5" up
Industrial, Residential, Commercial
CALL 475-7631

LITTLE WACK EXCAVATING

Basement — Drainfields
Bulldozing — Digging
Snow Removal — Tree Removal
LICENSED AND INSURED

Paul Wackenhut

Ph. 428-8025

Landscaping/Outdoor Maint.

LAWN MAINTENANCE

'Snow Plowing
Building Maintenance
Small Landscaping

RICHARD SMITH
475-8984 after 5 p.m.

SNOW PLOWING

Residential or Commercial
475-1857

34-12

R & F TREE SERVICE

•TRIMMING •REMOVAL
Free Estimates
Bonded & Insured
Ph. 428-9296

after 3 p.m.

Repairs/Improvements

ALUMINUM & STEEL WELDING —
Light repairs and fabrication. Dale
Richardson, 475-7462.

CHELSEA PLUMBING

NEW CONSTRUCTION
REMODEL
REPAIR
WATER HEATER REPLACEMENT
BOILER REPAIR & REPLACEMENT
475-1037

LET GEORGE DO IT!

HOME REPAIR AND MAINTENANCE
SERVICE

PHONE 475-8903
GEORGE ELLENWOOD
563 McKinley St.
Chelsea Mich.

PATCHING and PLASTERING. Call
475-7489.

Window Screens
Repaired

Reasonable rates

Chelsea Hardware
110 S. Main Ph. 475-1121

BRANHAM'S WELDING

Arc - Gas - Cutting - Brazing
Build-Up Welding
Custom & Production Welding
Heavy Equipment Repair

PORTABLE UNIT
24-HOUR SERVICE

(517) 596-2995 475-7639

FOR ALL REPAIRS — household to
farm equipment, ph. (313)
498-2537.

COMPLETE AUTOMOTIVE — machine
work. We enjoy working with
home mechanics. Pentad Engineer-
ing, 1904 Federal, Ann Arbor.
663-5625.

WANTED STANDING TIMBER

Cash Paid In Advance
**Maple Rapids
Lumber Mill, Inc.**

Ph. (517) 676-1329

Financial 14

PRIVATE PARTY. Purchasers land
contracts and mortgages. Eves. on-
ly 475-1469. x211f

Card of Thanks 16

CARD OF THANKS
We would like to thank all of
our neighbors, friends, relatives
and Zion Lutheran church for
their help after our house fire.
Without everyone's help we could
not have been back in the house in
two weeks.

Jerry, Barb,
Tom and Kerry Hunget.

THANK YOU

The family of Mrs. Ruby Boyer
wishes in this way, to ex-
press their appreciation for all
the thoughtfulness and acts of
sympathy showed by their many
friends, neighbors and relatives.
A special thanks to Mr. Don Cole
for his understanding and the
Rev. Marvin McCallum for just
being there.

Boyer Brothers
and Eulabee Packard (Mrs. Mac.)

Sylvan Township Board Proceedings

Regular Meeting

Dec. 7, 1982

Supervisor George Sweeny
opened the meeting by recogniz-
ing James P. Liebeck for all of
his work done for the township,
by advising and working with the
Board and for his job as Sec-
retary of the Zoning and Planning
Commission. He will be sadly
missed.

Also present was Treasurer
Pearsall, Trustee Carruthers,
Trustee Lesser, and Clerk Har-
ris.

Minutes of the last meeting
were read and approved.

Bills were presented by the
Clerk.

Motion made and carried that
orders be drawn and bills be paid.

Correspondence was received
and accepted from: Burnham
and Flower Insurance Agency;
Washtenaw County Road Com-
mission regarding stop signs to
be installed at the end of Ivey Rd.
where it meets Bush Rd. and on
Bush Rd. where it meets Sibley
Rd.; Department of Natural
Resources regarding a Farmland
Agreement.

Supervisor Sweeny reported
for 1983 preliminary ratios for ap-
praisal, Sylvan Township is using
a 1-year study. The appraisal
ratio for 1982 is 1.0841 for residen-
tial parcels and 1.0525 for
Agricultural parcels.

Sylvan Township Assessor,
Dan Dzierbicki, will be in his of-
fice at the Sylvan Township Hall
on Saturdays from 12:30 to 3:30.

Harold Jones was present
stating we need a replacement on
the Planning & Zoning Commis-
sion. The Clerk was instructed to
place an ad in The Chelsea Stand-
ard.

The liquor license ordinance
was reviewed. No action taken.
Meeting was adjourned.

Mary M. Harris, Clerk.

RESOLUTION COMMENDING JAMES P. LIEBECK

WHEREAS, James P. Liebeck
served as Sylvan Township Plan-
ning and Zoning Commission
Secretary from 1961 to 1982 and
WHEREAS, during his 21 years
of service, James P. Liebeck
demonstrated dedication and
donated uncalculable hours of
research and help to the
Township Board and the
Township Planning and Zoning
commission as Secretary and
NOW THEREFORE, the
Township Board of Sylvan
Township, posthumously com-
mends James P. Liebeck for his
unselfish contribution to the com-
munity.

Mary M. Harris,
Sylvan Township Clerk.

Commercial - Residential - Industrial

CHELSEA GLASS

SALES and SERVICE

140 W. Middle St. Chelsea

WINTER HOURS:
Monday-Friday 8 to 5
CLOSED SATURDAY

Home Seal Storm Windows & Doors

THERM-O-PANE
INSULATED
GLASS

• PLEXIGLASS
• SHOWER DOORS
• TABLE TOPS
• MIRRORS
• SUN ROOFS

AUTO GLASS & WINDSHIELD

Installation Specialists

Call 475-8667 or (517) 782-4524

DOUG'S

• INTERIOR • EXTERIOR
RESIDENTIAL • COMMERCIAL
• ROOM TRUCK
• WALLPAPER HANGING
• COMPLETE PAINTING
• SENSIBLE PRICES
• QUALITY WORKMANSHIP

CALL 475-1196

3040 MESTER RD. CHELSEA

Dexter Township Board Proceedings

Regular Meeting

Date: Tuesday, Dec. 7, 1982,
7:30 p.m.

Place: Dexter Township Hall.
Present: Arlene Howe, William
Eisenbeiser, Julie Knight, Jim
Drolett, Doug Smith.

Meeting called to order by the
Supervisor, Arlene Howe. Agen-
da approve.

Moved by Eisenbeiser, sup-
ported by Knight, to approve the
minutes of the Nov. 9, 1982
meeting. Carried.

Moved by Eisenbeiser, sup-
ported by Drolett, to approve the
Nickel Farmland agreement.
Carried.

Clerk's Report — Wylie Rd.
Home, application has been
withdrawn.

Treasurer's Report — Julie
Knight.

Zoning Board Report —
Charles Thomas.

Health Dept. Report — Doug
Smith.

Sheriff's Report — Seargent
Wenk.

Discussion of Zoning Matters.
Moved by Smith, supported by
Eisenbeiser, to appoint Julie
Knight as the Dexter Township
alternate delegate to the MTA
Washtenaw County Chapter. Car-
ried.

Moved by Knight, supported by
Smith, to appoint Eisenbeiser as
fence viewer. Carried.

Moved by Smith, supported by
Knight, to appoint Jim Drolett as
animal control officer. Carried.

Moved by Eisenbeiser, sup-
ported by Drolett, to subscribe to
Planning and Zoning News for
one year. Carried.

Moved by Smith, supported by
Knight, to contribute \$50 to the
Huron River Watershed Council
for matching funds. Carried.

Moved by Eisenbeiser, sup-
ported by Drolett, to adjourn the
meeting. Carried.

Meeting adjourned.

Respectfully submitted,
William Eisenbeiser,
Dexter Township Clerk.

CLASSIFIED ADS

Really work

HAPPY BIRTHDAY FRANK

the 12-12-12 Boy

From Your Wife, Bernie

MINIX OFFICE SUPPLY

112 E. Main
Stockbridge

(517)
851-7823

COMPLETE OFFICE SUPPLIES,
FURNITURE & BUSINESS MACHINES
TYPEWRITER REPAIR & SERVICE

All Makes

Commercial - Residential - Industrial

CHELSEA GLASS

SALES and SERVICE

140 W. Middle St. Chelsea

WINTER HOURS:
Monday-Friday 8 to 5
CLOSED SATURDAY

Home Seal Storm Windows & Doors

THERM-O-PANE
INSULATED
GLASS

• PLEXIGLASS
• SHOWER DOORS
• TABLE TOPS
• MIRRORS
• SUN ROOFS

AUTO GLASS & WINDSHIELD

Installation Specialists

Call 475-8667 or (517) 782-4524

DOUG'S

• INTERIOR • EXTERIOR
RESIDENTIAL • COMMERCIAL
• ROOM TRUCK
• WALLPAPER HANGING
• COMPLETE PAINTING
• SENSIBLE PRICES
• QUALITY WORKMANSHIP

CALL 475-1196

3040 MESTER RD. CHELSEA

It Really Is A Small World

By Bill Mullendore

Somebody once wrote a song
titled "It's a Small World After
All," and Walt Disney used it as
the theme for one of the more
popular attractions at Disney
Land in California and Disney
World in Florida.

For me the "small world" con-
cept came home last week when I
met one of the two sergeants new-
ly assigned to command positions
at the Chelsea station of the
Washtenaw County Sheriff's
Department.

Back in the early 1950's my
wife and I bought our first house,
on Baylis Drive in Brookside sub-
division, Ann Arbor. It was a
neighborhood of young couples
establishing families, and it turned
out that most of us were pretty
good at it. Pregnancies and
subsequent births were announc-
ed and celebrated with enough
regularity that there was almost
always an excuse to have a
neighborhood party. We came to
call the subdivision "Fertile
Acres."

There was one small fly in the
ointment. Almost all the babies
born were girls, to the point
where there was a string of 17
straight female births, climaxed
by the delivery of triplet girls to
one couple.

There is nothing at all wrong
with girls, of course, but most of
us were hoping for a mixture of
sexes in the families we planned
and wanted to raise, and that
didn't happen. We began to
wonder if there was something in
the air out there that ordained the
begetting of girls.

There was an exception, a little
boy a couple of blocks down the
street. He was kind of lonely,
because there weren't any other
little boys. He became sort of
special in the neighborhood,
simply because he was the only
one of his kind. We fathers of all-
girl families paid considerable
attention to him, to learn what it
was like to have a boy around.

After a few years we bought
another house and moved out of
the neighborhood, and I forgot all
about the nice little boy.

I met him again last week. His
name is Harley Rider, and he has
been put in charge of the after-
noon shift at the Chelsea sheriff's
station. We recognized and

remembered each other instan-
tly.

That we should both turn up on
new jobs in Chelsea and meet one
another is one of those near-

impossibilities of mathematical
probability, maybe a million-to-

one chance.
As I said, it's a small world
after all.

GIFT SUGGESTION:



877
Irish Setter
SPORT BOOTS

PUT A PAIR OF
IRISH SETTER
SPORT BOOTS
UNDER THE TREE
FOR YOUR
FAVORITE
SPORTSMAN.

AVAILABLE IN MOST
SIZES AND WIDTHS.

Red Wing Gift
Certificates are
Available.

RED WING
SHOES

Red Wings

FOSTER'S MEN'S WEAR

107 S. MAIN, CHELSEA

SPECIALS

ECKRICH SMOKED

Sausage lb. \$1.73

16-SLICE PKG. KRAFT

American Cheese \$1.45

12-OZ. PKG. NESTLE'S

Chocolate Chips \$1.59

48-OZ. CAN

Hawaiian Punch .69¢

Play the New Michigan State Lottery Card Game

KUSTERER'S

FOOD MARKET
DIAL 475-2721 WE DELIVER

HERE IS THE PRESENT THAT WILL MAKE YOUR FAMILY HAPPY THIS YEAR!



JACKSON ROAD — Beautifully remodeled farm home on one acre of
trees and plantings — with a two-story barn. \$69,000. Call Shari
475-8348.



FAHRNER ROAD — Almost five acres. Pole barn, 3 bedrooms, 1 1/2 bath
tri-level. Additional acreage available. Assumable loan. \$78,000. Call
Shari, 475-8348.



CASSIDY ROAD — Modified "A" Frame on 3 1/2 acres. Redwood both in-
side and out. Extra large garage. Owners have had job change and are
anxious to move. Call Shari, 475-8348.

SHARON B.

ROBERTS

REALTOR

115 PARK STREET
CHELSEA, MICHIGAN 48118
One block east of the Court House

(313) 475-8348

Bus. Services 13

PAINTING

PAPER HANGING

Over 30 years experience
Free estimates, insured

Bill Lurkins
475-9464

Bus. Services 13

PAINTING

PAPER HANGING

Over 30 years experience
Free estimates, insured

Bill Lurkins
475-9464

Bus. Services 13

PAINTING

PAPER HANGING

Over 30 years experience
Free estimates, insured

Bill Lurkins
475-9464

Bus. Services 13

PAINTING

PAPER HANGING

Over 30 years experience
Free estimates, insured

Bill Lurkins
475-9464

Bus. Services 13

PAINTING

PAPER HANGING

Over 30 years experience
Free estimates, insured

Bill Lurkins
475-9464

Bus. Services 13

PAINTING

PAPER HANGING

Over 30 years experience
Free estimates, insured

Bill Lurkins
475-9464

Bus. Services 13

PAINTING

PAPER HANGING

Over 30 years experience
Free estimates, insured

Bill Lurkins
475-9464

Bus. Services 13

PAINTING

PAPER HANGING

Over 30

Legal Notices

NOTICE OF JUDICIAL SALE
Judicial Sale in Pursuance and by virtue of a Judgment of the Circuit Court of the County of Washtenaw, State of Michigan, made and entered on the 18th day of October A.D. 1982, in a certain cause therein pending, wherein William Wassenaar, through Power of Attorney Granted him by John A. Van Allen and George N. Van Allen, his wife, are Plaintiffs, and Charles A. Prochazka and William T. Prochazka, are Defendants.

Notice is hereby given that I shall sell at public auction to the highest bidder at the westerly entrance of the County Building, in the City of Ann Arbor, County of Washtenaw, State of Michigan (that being the building in which the Circuit Court for the County of Washtenaw is held) on Thursday the 13th day of January A.D. 1983, at 10:00 o'clock A.M. Local Time, on the said day, the following described property, viz.:

All that certain piece or parcel of land situated and being in the Township of Salem, County of Washtenaw and State of Michigan, described as follows, to-wit:

Beginning at a point on Section 11 of Township 25 N., Range 7 E., East, Salem Township, Washtenaw County, Michigan, South 86°32'00" West 330.00 feet from the South 1/4 corner of said section; thence continuing South 86°32'00" West along the South section line 382.55 feet; thence North 84°00'00" East 431.85 feet; thence North 92°32'00" 396.55 feet; thence South 04°30'00" West 431.85 feet to the point of beginning.

Dated, Detroit November 12, 1982.

THOMAS R. MINICK
Washtenaw County Sheriff

ROBERT IGRISAN,
2820 Orchard Lake Road, Ste. 115
Farmington Hills, MI 48018

Nov. 23-30-Dec. 7-14-21-28-Jan. 4

MORTGAGE SALE

Default having been made in the terms and conditions of a certain mortgage made by ROONEY J. BRANHAM and DORIS A. BRANHAM, husband and wife, of Chelsea, Michigan, to Ann Arbor Federal Savings & Loan Association, now known as Great Lakes Federal Savings & Loan Association, of the City of Ann Arbor, Washtenaw County, Michigan, a corporation organized under the Home Owners' Loan Act of 1933, of the United States of America, as amended, Mortgage, dated the 5th day of December, 1979, and recorded in the office of the Register of Deeds for the County of Washtenaw, State of Michigan, on the 8th day of December, 1979, in Liber 1533 of Washtenaw County Records, at Page 244, on which mortgage there is claimed to be due, at the date of this notice, for principal and interest, the sum of Twenty Two Thousand Seven Hundred and Thirty Nine and 68/100 (\$22,739.68) Dollars.

And no suit or proceedings at law or in equity having been instituted to recover the debt secured by said mortgage or any part thereof.

Now, therefore, by virtue of the power of sale contained in said mortgage, and pursuant to the statute of the State of Michigan in such case made and provided, notice is hereby given that on the 6th day of January, 1983, at 10:00 o'clock in the forenoon, Local Time, said mortgage will be foreclosed by a sale at public auction, to the highest bidder, at the Huron Street Entrance to the Washtenaw County Building, in the City of Ann Arbor, Washtenaw County, Michigan, (that being the building where the Circuit Court for the County of Washtenaw is held), of the premises described in said mortgage, or so much thereof as may be necessary to pay the amount due, as aforesaid, on said mortgage, with the interest thereon at Nine and 1/2% (9.5%) per cent per annum and all legal costs, charges and expenses, including the attorney fees allowed by law, and also any sum or sums which may be paid by the undersigned, necessary to protect its interest in the premises. Said premises are situated in the Township of Ypsilanti, County of Washtenaw, State of Michigan, and described as:

A 2.10 acre parcel of land in the SE 1/4 of Section 19, T1S, R4E, Lyndon Township, Washtenaw County, Michigan, described as beginning at a point located by the following course from the SE corner of said Section 19: N 01° 28' 38" E 792.00 feet (recorded as 12 chains) along the east line of said Section 19 and the center line of Roe Road; thence N 73° 31' 22" W 315.57 feet where the 02° 28' 32" W 280.30 feet; thence S 87° 21' 22" E 306.45 feet; thence S 01° 28' 38" W 332.17 feet along said east line of Section 19 and the center line of Roe Road to the Point of Beginning; being subject to the rights of the public over the center line of the said Roe Road.

During the six months immediately following the sale, the property may be redeemed.

Dated at Ann Arbor, Michigan November 16, 1982.

GREAT LAKES FEDERAL SAVINGS & LOAN ASSOCIATION,
Mortgagee

LAIRD & CHIN, By: Sheila Schwartz
Attorney for Mortgagee

Great Lakes Federal Savings Bldg.
401 E. Liberty Street
Ann Arbor, Michigan 48104

Nov. 30-Dec. 7-14-21-28

Legal Notices

NOTICE OF JUDICIAL SALE
To the Owner or Owners of any and all interests in, or Liens upon the Lands herein described.

Take Notice, that sale has been lawfully made of the following described land for unpaid taxes thereon, and that the undersigned has title thereto under tax deed or deeds issued therefor, and that you are entitled to reconveyance thereof, at any time within 6 months after return of service of this notice, upon payment to the undersigned or to the Registrar in Chancery of the County in which the lands lie, of all sums paid upon such purchase, together with 10 per cent additional thereto, and the fees of the Sheriff for the service or cost of publication of this notice, to be computed as upon personal service of a declaration as commencement of suit, and the further sum of five dollars for each description without other additional cost or charges: Provided, That with respect to purchasers at the tax sale held in the years 1980, 1981 and 1982 the sum stated in such notice as a condition of reconveyance shall be the sum paid as a condition of the tax title purchase, together with 10 per cent additional thereto. If payment as aforesaid is not made, the undersigned will institute Proceedings for possession of the land.

DESCRIPTION OF LAND

STATE OF MICHIGAN

County of Washtenaw

Section 20, Town 1S, Range 6E

Beginning at Northwest corner of Section 20, thence South 10° 34' 54" East 400 feet thence North 88° 10' 00" East to West line of Highway right of way thence Northwest on Highway right of way to North line of Section, thence South 88° 10' 00" East 180.72 feet on North line of section to point of beginning, part NW 1/4, Section 20 containing 2.40 acres or thereabouts, Town 1 South, Range 6 East, Northfield Township.

Amount paid: \$180.71

Tax for Year 1977.

Amount necessary to redeem, \$291.06 plus interest at 10% per annum.

Signed William W. Evans, 29196 Brody Westland, MI 48186, Ph. 425-4776

To Riverside Sales and Investment Co., 1300 City National Bank Bldg., Detroit, MI, last grantee in the regular chain title of such lands or of any interest therein as appearing by the records in the office of the Register of Deeds of said County.

William W. Evans grantee under the tax deed issued by the Auditor General for the latest year's taxes appearing of record in said registry of deeds.

Nov. 23-30-Dec. 7-14

MORTGAGE SALE

Default has been made in the conditions of a mortgage made by RUDOLPH J. DAWSON and JEAN DAWSON, husband and wife, to Community Bank of Washtenaw County, Michigan, a corporation, Mortgage, dated March 9, 1979, and recorded on March 30, 1979 in Liber 1707, on page 305, Washtenaw County Records, Michigan, on which mortgage there is claimed to be due at the date hereof the sum of Fifty Thousand One Hundred Sixty Eight and 69/100 Dollars (\$50,168.69), including interest at 10.875% per annum.

Under the power of sale contained in said mortgage and the statute in such case made and provided, notice is hereby given that said mortgage will be foreclosed by a sale at public auction, to the highest bidder, at the mortgaged premises, or some part of them, at public venue, at the west entrance to the County Building in Ann Arbor, Michigan, at 10:00 o'clock A.M., Local Time, on Thursday, January 13, 1983.

Said premises are situated in Township of Superior, Washtenaw County, Michigan, and are described as:

Lot 483, Woodland Acres Subdivision No. 5, part of the 1/2 of Section 34, T2S., R7E., Superior Township, Washtenaw County, Michigan, as recorded in Liber 19 of Plats, Pages 61, 62, and 63, Washtenaw County Records.

During the six months immediately following the sale the property may be redeemed.

Dated: November 30, 1982.

Community Bank of Washtenaw,
Mortgagee

Hecht, Buchanan & Cheney
Sixth Floor Frey Building
Grand Rapids, Michigan 49503

Nov. 30-Dec. 7-14-21-28

MORTGAGE SALE

Default having been made in the terms and conditions of a certain mortgage made by J. S. GARLIC and MILDRED GARLIC, husband and wife, of Ann Arbor, Michigan, to Ann Arbor Federal Savings & Loan Association, now known as Great Lakes Federal Savings & Loan Association, of the City of Ann Arbor, Washtenaw County, Michigan, a corporation organized under the Home Owners' Loan Act of 1933, of the United States of America, as amended, Mortgage, dated the 19th day of January, 1979, and recorded in the office of the Register of Deeds for the County of Washtenaw, State of Michigan, on the 22nd day of January, 1979, in Liber 1314 of Washtenaw County Records, at Page 540, on which mortgage there is claimed to be due at the date hereof the sum of or thereabouts, Town 1 South, Range 6 East, Northfield Township.

Amount paid: \$180.71

Tax for Year 1977.

Amount necessary to redeem, \$291.06 plus interest at 10% per annum.

Signed William W. Evans, 29196 Brody Westland, MI 48186, Ph. 425-4776

To Riverside Sales and Investment Co., 1300 City National Bank Bldg., Detroit, MI, last grantee in the regular chain title of such lands or of any interest therein as appearing by the records in the office of the Register of Deeds of said County.

William W. Evans grantee under the tax deed issued by the Auditor General for the latest year's taxes appearing of record in said registry of deeds.

Nov. 23-30-Dec. 7-14

MORTGAGE SALE

Default has been made in the conditions of a mortgage made by RUDOLPH J. DAWSON and JEAN DAWSON, husband and wife, to Community Bank of Washtenaw County, Michigan, a corporation, Mortgage, dated March 9, 1979, and recorded on March 30, 1979 in Liber 1707, on page 305, Washtenaw County Records, Michigan, on which mortgage there is claimed to be due at the date hereof the sum of Fifty Thousand One Hundred Sixty Eight and 69/100 Dollars (\$50,168.69), including interest at 10.875% per annum.

Under the power of sale contained in said mortgage and the statute in such case made and provided, notice is hereby given that said mortgage will be foreclosed by a sale at public auction, to the highest bidder, at the mortgaged premises, or some part of them, at public venue, at the west entrance to the County Building in Ann Arbor, Michigan, at 10:00 o'clock A.M., Local Time, on Thursday, January 13, 1983.

Said premises are situated in Township of Superior, Washtenaw County, Michigan, and are described as:

Lot 483, Woodland Acres Subdivision No. 5, part of the 1/2 of Section 34, T2S., R7E., Superior Township, Washtenaw County, Michigan, as recorded in Liber 19 of Plats, Pages 61, 62, and 63, Washtenaw County Records.

During the six months immediately following the sale the property may be redeemed.

Dated: November 30, 1982.

Community Bank of Washtenaw,
Mortgagee

Hecht, Buchanan & Cheney
Sixth Floor Frey Building
Grand Rapids, Michigan 49503

Nov. 30-Dec. 7-14-21-28

MORTGAGE SALE

Default having been made in the terms and conditions of a certain mortgage made by J. S. GARLIC and MILDRED GARLIC, husband and wife, of Ann Arbor, Michigan, to Ann Arbor Federal Savings & Loan Association, now known as Great Lakes Federal Savings & Loan Association, of the City of Ann Arbor, Washtenaw County, Michigan, a corporation organized under the Home Owners' Loan Act of 1933, of the United States of America, as amended, Mortgage, dated the 19th day of January, 1979, and recorded in the office of the Register of Deeds for the County of Washtenaw, State of Michigan, on the 22nd day of January, 1979, in Liber 1314 of Washtenaw County Records, at Page 540, on which mortgage there is claimed to be due at the date hereof the sum of or thereabouts, Town 1 South, Range 6 East, Northfield Township.

Amount paid: \$180.71

Tax for Year 1977.

Amount necessary to redeem, \$291.06 plus interest at 10% per annum.

Signed William W. Evans, 29196 Brody Westland, MI 48186, Ph. 425-4776

To Riverside Sales and Investment Co., 1300 City National Bank Bldg., Detroit, MI, last grantee in the regular chain title of such lands or of any interest therein as appearing by the records in the office of the Register of Deeds of said County.

William W. Evans grantee under the tax deed issued by the Auditor General for the latest year's taxes appearing of record in said registry of deeds.

Nov. 23-30-Dec. 7-14

MORTGAGE SALE

Default has been made in the conditions of a mortgage made by RUDOLPH J. DAWSON and JEAN DAWSON, husband and wife, to Community Bank of Washtenaw County, Michigan, a corporation, Mortgage, dated March 9, 1979, and recorded on March 30, 1979 in Liber 1707, on page 305, Washtenaw County Records, Michigan, on which mortgage there is claimed to be due at the date hereof the sum of Fifty Thousand One Hundred Sixty Eight and 69/100 Dollars (\$50,168.69), including interest at 10.875% per annum.

Under the power of sale contained in said mortgage and the statute in such case made and provided, notice is hereby given that said mortgage will be foreclosed by a sale at public auction, to the highest bidder, at the mortgaged premises, or some part of them, at public venue, at the west entrance to the County Building in Ann Arbor, Michigan, at 10:00 o'clock A.M., Local Time, on Thursday, January 13, 1983.

Said premises are situated in Township of Superior, Washtenaw County, Michigan, and are described as:

Lot 483, Woodland Acres Subdivision No. 5, part of the 1/2 of Section 34, T2S., R7E., Superior Township, Washtenaw County, Michigan, as recorded in Liber 19 of Plats, Pages 61, 62, and 63, Washtenaw County Records.

During the six months immediately following the sale the property may be redeemed.

Dated: November 30, 1982.

Community Bank of Washtenaw,
Mortgagee

Hecht, Buchanan & Cheney
Sixth Floor Frey Building
Grand Rapids, Michigan 49503

Nov. 30-Dec. 7-14-21-28

MORTGAGE SALE

Default has been made in the conditions of a mortgage made by RUDOLPH J. DAWSON and JEAN DAWSON, husband and wife, to Community Bank of Washtenaw County, Michigan, a corporation, Mortgage, dated March 9, 1979, and recorded on March 30, 1979 in Liber 1707, on page 305, Washtenaw County Records, Michigan, on which mortgage there is claimed to be due at the date hereof the sum of Fifty Thousand One Hundred Sixty Eight and 69/100 Dollars (\$50,168.69), including interest at 10.875% per annum.

Under the power of sale contained in said mortgage and the statute in such case made and provided, notice is hereby given that said mortgage will be foreclosed by a sale at public auction, to the highest bidder, at the mortgaged premises, or some part of them, at public venue, at the west entrance to the County Building in Ann Arbor, Michigan, at 10:00 o'clock A.M., Local Time, on Thursday, January 13, 1983.

Said premises are situated in Township of Superior, Washtenaw County, Michigan, and are described as:

Lot 483, Woodland Acres Subdivision No. 5, part of the 1/2 of Section 34, T2S., R7E., Superior Township, Washtenaw County, Michigan, as recorded in Liber 19 of Plats, Pages 61, 62, and 63, Washtenaw County Records.

During the six months immediately following the sale the property may be redeemed.

Dated: November 30, 1982.

Community Bank of Washtenaw,
Mortgagee

Hecht, Buchanan & Cheney
Sixth Floor Frey Building
Grand Rapids, Michigan 49503

Nov. 30-Dec. 7-14-21-28

Legal Notices

MORTGAGE SALE—Default having been made in the terms and conditions of a certain mortgage made by GREGG A. JOHNSON to Standard Federal Savings & Loan Association, a Federal Association, of Troy, Oakland County, Michigan, dated the 7th day of July, 1977, and recorded in the office of the Register of Deeds for the County of Washtenaw, State of Michigan, on the 12th day of July, 1977, in Liber 1603 of Washtenaw County Records, on Page 725, on which mortgage there is claimed to be due, at the date of this notice, for principal and interest, the sum of Twenty Seven Thousand Sixty Two and 00/100 Dollars (\$27,062.00).

And no suit or proceedings at law or in equity having been instituted to recover the debt secured by said mortgage or any part thereof.

Now, therefore, by virtue of the power of sale contained in said mortgage, and pursuant to the statute of the State of Michigan in such case made and provided, notice is hereby given that on the 8th day of January, 1983, at 10:00 o'clock in the forenoon, Local Time, said mortgage will be foreclosed by a sale at public auction, to the highest bidder, at the Huron Street Entrance to the Washtenaw County Building in the City of Ann Arbor, Washtenaw County, Michigan, (that being the building where the Circuit Court for the County of Washtenaw is held), of the premises described in said mortgage, or so much thereof as may be necessary to pay the amount due, as aforesaid, on said mortgage, with the interest thereon at Eight and 1/2% (8.5%) per cent per annum and all legal costs, charges and expenses, including the attorney fees allowed by law, and also any sum or sums which may be paid by the undersigned, necessary to protect its interest in the premises. Said premises are situated in the City of Ann Arbor, County of Washtenaw, State of Michigan, and described as:

The Southern 42 feet in length of Lot 9, according to the recorded plat of A. Ten Brook's Addition to the City of Ann Arbor, as recorded on Page 190 in Liber 78 of Deeds, in the office of the Register of Deeds for the County of Washtenaw, State of Michigan; being the Southern 42 feet in length of the Eastern 45 feet in length of the land adjoining on the North; reserving right of way in common over the Southern 42 feet in length of the Eastern 45 feet in length of the land above described.

During the six months immediately following the sale, the property may be redeemed.

Dated at Ann Arbor, Michigan, November 19, 1982.

GREAT LAKES FEDERAL SAVINGS & LOAN ASSOCIATION,
Mortgagee

LAIRD & CHIN, By: Sheila Schwartz
Attorneys for Mortgagee

Great Lakes Federal Savings Bldg.
401 E. Liberty Street
Ann Arbor, Michigan 48104

Nov. 30-Dec. 7-14-21-28

MORTGAGE SALE

Default having been made in the terms and conditions of a certain mortgage made by J. S. GARLIC and MILDRED GARLIC, husband and wife, of Ann Arbor, Michigan, to Ann Arbor Federal Savings & Loan Association, now known as Great Lakes Federal Savings & Loan Association, of the City of Ann Arbor, Washtenaw County, Michigan, a corporation organized under the Home Owners' Loan Act of 1933, of the United States of America, as amended, Mortgage, dated the 19th day of January, 1979, and recorded in the office of the Register of Deeds for the County of Washtenaw, State of Michigan, on the 22nd day of January, 1979, in Liber 1314 of Washtenaw County Records, at Page 540, on which mortgage there is claimed to be due at the date hereof the sum of or thereabouts, Town 1 South, Range 6 East, Northfield Township.

Amount paid: \$180.71

Tax for Year 1977.

Amount necessary to redeem, \$291.06 plus interest at 10% per annum.

Signed William W. Evans, 29196 Brody Westland, MI 48186, Ph. 425-4776

To Riverside Sales and Investment Co., 1300 City National Bank Bldg., Detroit, MI, last grantee in the regular chain title of such lands or of any interest therein as appearing by the records in the office of the Register of Deeds of said County.

William W. Evans grantee under the tax deed issued by the Auditor General for the latest year's taxes appearing of record in said registry of deeds.

Nov. 23-30-Dec. 7-14

MORTGAGE SALE

Default has been made in the conditions of a mortgage made by RUDOLPH J. DAWSON and JEAN DAWSON, husband and wife, to Community Bank of Washtenaw County, Michigan, a corporation, Mortgage, dated March 9, 1979, and recorded on March 30, 1979 in Liber 1707, on page 305, Washtenaw County Records, Michigan, on which mortgage there is claimed to be due at the date hereof the sum of Fifty Thousand One Hundred Sixty Eight and 69/100 Dollars (\$50,168.69), including interest at 10.875% per annum.

Under the power of sale contained in said mortgage and the statute in such case made and provided, notice is hereby given that said mortgage will be foreclosed by a sale at public auction, to the highest bidder, at the mortgaged premises, or some part of them, at public venue, at the west entrance to the County Building in Ann Arbor, Michigan, at 10:00 o'clock A.M., Local Time, on Thursday, January 13, 1983.

Said premises are situated in Township of Superior, Washtenaw County, Michigan, and are described as:

Lot 483, Woodland Acres Subdivision No. 5, part of the 1/2 of Section 34, T2S., R7E., Superior Township, Washtenaw County, Michigan, as recorded in Liber 19 of Plats, Pages 61, 62, and 63, Washtenaw County Records.

During the six months immediately following the sale the property may be redeemed.

Dated: November 30, 1982.

Community Bank of Washtenaw,
Mortgagee

Hecht, Buchanan & Cheney
Sixth Floor Frey Building
Grand Rapids, Michigan 49503

Nov. 30-Dec. 7-14-21-28

MORTGAGE SALE

Default has been made in the conditions of a mortgage made by RUDOLPH J. DAWSON and JEAN DAWSON, husband and wife, to Community Bank of Washtenaw County, Michigan, a corporation, Mortgage, dated March 9, 1979, and recorded on March 30, 1979 in Liber 1707, on page 305, Washtenaw County Records, Michigan, on which mortgage there is claimed to be due at the date hereof the sum of Fifty Thousand One Hundred Sixty Eight and 69/100 Dollars (\$50,168.69), including interest at 10.875% per annum.

Under the power of sale contained in said mortgage and the statute in such case made and provided, notice is hereby given that said mortgage will be foreclosed by a sale at public auction, to the highest bidder, at the mortgaged premises, or some part of them, at public venue, at the west entrance to the County Building in Ann Arbor, Michigan, at 10:00 o'clock A.M., Local Time, on Thursday, January 13, 1983.

Said premises are situated in Township of Superior, Washtenaw County, Michigan, and are described as:

Lot 483, Woodland Acres Subdivision No. 5, part of the 1/2 of Section 34, T2S., R7E., Superior Township, Washtenaw County, Michigan, as recorded in Liber 19 of Plats, Pages 61, 62, and 63, Washtenaw County Records.

During the six months immediately following the sale the property may be redeemed.

Dated: November 30, 1982.

Community Bank of Washtenaw,
Mortgagee

Hecht, Buchanan & Cheney
Sixth Floor Frey Building
Grand Rapids, Michigan 49503

Nov. 30-Dec. 7-14-21-28

MORTGAGE SALE

Default has been made in the conditions of a mortgage made by RUDOLPH J. DAWSON and JEAN DAWSON, husband and wife, to Community Bank of Washtenaw County, Michigan, a corporation, Mortgage, dated March 9, 1979, and recorded on March 30, 1979 in Liber 1707, on page 305, Washtenaw County Records, Michigan, on which mortgage there is claimed to be due at the date hereof the sum of Fifty Thousand One Hundred Sixty Eight and 69/100 Dollars (\$50,168.69), including interest at 10.875% per annum.

Under the power of sale contained in said mortgage and the statute in such case made and provided, notice is hereby given that said mortgage will be foreclosed by a sale at public auction, to the highest bidder, at the mortgaged premises, or some part of them, at public venue, at the west entrance to the County Building in Ann Arbor, Michigan, at 10:00 o'clock A.M., Local Time, on Thursday, January 13, 1983.

Said premises are situated in Township of Superior, Washtenaw County, Michigan, and are described as:

Lot 483, Woodland Acres Subdivision No. 5, part of the 1/2 of Section 34, T2S., R7E., Superior Township, Washtenaw County, Michigan, as recorded in Liber 19 of Plats, Pages 61, 62, and 63, Washtenaw County Records.

During the six months immediately following the sale the property may be redeemed.

Dated: November 30, 1982.

Community Bank of Washtenaw,
Mortgagee

Hecht, Buchanan & Cheney
Sixth Floor Frey Building
Grand Rapids, Michigan 49503

Nov. 30-Dec. 7-14-21-28

MORTGAGE SALE

Default has been made in the conditions of a mortgage made by RUDOLPH J. DAWSON and JEAN DAWSON, husband and wife, to Community Bank of Washtenaw County, Michigan, a corporation, Mortgage, dated March 9, 1979, and recorded on March

Church Services

Lutheran—
ST. JACOB EVANGELICAL LUTHERAN
 The Rev. Andrew Bloom, Pastor
 12501 Riehmiller Rd., Grass Lake
 Every Sunday—
 9:00 a.m.—Sunday school.
 10:15 a.m.—Divine services.
ST. THOMAS EVANGELICAL LUTHERAN
 Ellsworth and Haab Rds.
 The Rev. Paul Puffe, Pastor
 Every Sunday—
 9:30 a.m.—Sunday school.
 10:45 a.m.—Worship service.
FAITH EVANGELICAL LUTHERAN
 5675 North Territorial Rd.
 The Rev. Mark Portinsky, Pastor
 Tuesday, Dec. 14—
 8:45 p.m.—Confirmation.
 Wednesday, Dec. 15—
 9:30 a.m.—Bible brunch upstairs at church.
 4:00 p.m.—Junior choir.
 7:30 p.m.—Advent III worship, Junior choir sings, coffee by Ladies Aid.
 Friday, Dec. 17—
 6:30 p.m.—Family Christmas caroling.
 Saturday, Dec. 18—
 10:30 a.m.—Board of Christian education.
 10:00 a.m.—Christmas eve rehearsal.
 Sunday, Dec. 19—
 8:45 a.m.—Sunday school, adult class.
 10:00 a.m.—Worship service, Holy Communion, choir sings, sermon on Acts 21:1-18.
 7:00 p.m.—Christmas eve rehearsal.
 Tuesday, Dec. 21—
 8:45 p.m.—Confirmation.
OUR SAVIOR LUTHERAN
 1515 S. Main, Chelsea
 The Rev. Franklin H. Giebel, Pastor
 Every Sunday—
 9:00 a.m.—Sunday school.
 10:30 a.m.—Worship service, Holy Communion 1st, 3rd and 5th Sunday.
 A schedule of Bible Classes is available by calling 475-7648.
ZION LUTHERAN
 Corner of Fletcher and Waters Rds.
 The Rev. John R. Morris, Pastor
 Tuesday, Dec. 14—
 8:00 a.m.—Chelsea Ministers, Methodist church.
 4:00 p.m.—Joymakers, caroling at Chelsea Community Hospital and parlay at phisange.
 Wednesday, Dec. 15—
 1:15 p.m.—WOZ Ypsilanti State Hospital Christmas party.
 Saturday, Dec. 18—
 9:00 a.m.—Bible VI classes.
 10:30 a.m.—S.S. program practice.
 Sunday, Dec. 19—
 9:00 a.m.—Sunday school.
 10:15 a.m.—Worship, fourth Sunday in Advent, choral experience, congregational meeting.
 6:30 p.m.—Senior choir caroling and party.
 Tuesday, Dec. 21—
 7:15 p.m.—Senior choir.
Church of Christ—
CHURCH OF CHRIST
 1861 Old US-12, East
 Every Sunday—
 7:30 a.m.—Radio program-WNRS in Saline.
 9:30 a.m.—Bible study.
 10:30 a.m.—Worship service. Nursery available.
 6:00 p.m.—Worship service.
 Every Wednesday—
 7:30 p.m.—Bible study classes for all ages.
Presbyterian—
FIRST UNITED PRESBYTERIAN
 Unadilla
 William D. Kuenzli, Pastor
 Every Sunday—
 11:00 a.m.—Worship service.

Catholic—
ST. MARY
 The Rev. Fr. David Philip Dupuis, Pastor
 Every Saturday—
 5:00 p.m.—Mass.
 7:00 p.m.—Mass.
 9:30 p.m. to 4:30 p.m.—Confessions.
 Every Sunday—
 8 a.m. to 10 a.m. and noon—Mass.
United Church of Christ—
ST. JOHN'S EVANGELICAL AND REFORMED
 Francisco
 The Rev. Paul McKenna, Pastor
 Every Sunday—
 10:30 a.m.—Sunday school and worship service.
 First Sunday of every month—
 Communion.
BETHLEHEM EVANGELICAL AND REFORMED
 Freedom Township
 The Rev. Roman A. Reineck, Pastor
 Every Sunday—
 10:00 a.m.—Worship service.
ST. PAUL
 The Rev. Erwin R. Koch, Pastor
 Tuesday, Dec. 14—
 1:00 p.m.—Women's fellowship.
 7:30 p.m.—Church council.
 Wednesday, Dec. 15—
 8:30 p.m.—Chapel choir.
 6:45 p.m.—Confirmation class.
 7:30 p.m.—Chancel choir.
 Thursday, Dec. 16—
 6:00 p.m.—XYZ Christmas party.
 Saturday, Dec. 18—
 10:00 a.m.—Church school Christmas pageant dress rehearsal, until 1 p.m.
 Sunday, Dec. 19—
 9:00 a.m.—Church school, grades 3 through adults.
 10:30 a.m.—Worship service, fourth Sunday in Advent, church school Christmas pageant.
 SPV party and caroling.
 Monday, Dec. 20—
 Courier articles due.
CONGREGATIONAL
 The Rev. Carl Schwarm, Pastor
 Every Sunday—
 10:30 a.m.—Worship and Sunday school
 Nursery provided for pre-schoolers during worship.
 Second Thursday—
 1:00 p.m.—Women of the Church.
 Weekly Bible study—As scheduled in Sunday bulletin.
 Youth groups—As scheduled in Sunday bulletin.
 Adult Fellowship group—As scheduled in the Sunday bulletin.
ST. JOHN'S
 Rogers, Roman, Waters and Fletcher Rds.
 Mr. Roger Samonek, Lay Pastor
 Every Sunday—
 10:30 a.m.—Worship service, Sunday school.
Episcopal—
ST. BARNABAS
 The Rev. Fr. Jerrold F. Beaumont, B.S.P.
 Every Sunday—
 9:30 a.m.—Christian education, adult and children's classes.
 10:30 a.m.—Holy Communion first, third and fifth Sundays.
 10:30 a.m.—Morning Prayer, second and fourth Sundays.
 Nursery available every Sunday. Coffee hour follows all Sunday services.
 First Sunday of the month—
 Pot-luck dinner follows the service. All are welcome.
 First Monday of the month—
 7:30 p.m.—Bishop's Committee.
 Every Wednesday—
 6:15 p.m.—Choir practice.
 7:15 p.m.—Soup and sandwich supper.
 7:45 p.m.—Holy Communion.
 8:30 p.m.—Bible Study class open to all.

Methodist—
SALEM GROVE UNITED METHODIST
 2320 Nottan Rd.
 The Rev. Dale B. Ward, Pastor
 Every Sunday—
 9:30 a.m.—Sunday school.
 10:30 a.m.—Morning worship.
 7:00 p.m.—Youth Fellowship.
FIRST UNITED METHODIST
 Parks and Territorial Rds.
 The Rev. Larry Nichols and
 The Rev. David Goldsmith, Pastors
 Every Sunday—
 9:15 a.m.—Morning worship.
 10:00 a.m.—Sunday school.
WATERLOO VILLAGE UNITED METHODIST
 2118 Washington St.
 The Rev. Larry Nichols and
 The Rev. David Goldsmith, Pastors
 Every Sunday—
 10:00 a.m.—Sunday school.
 11:15 a.m.—Worship service.
FIRST UNITED METHODIST
 128 Park St.
 The Rev. Marvin H. McCallum, Pastor
 Inspiration Line: 475-1852.
 Tuesday, Dec. 14—
 8:00 a.m.—Chelsea Ministerial Fellowship, education building.
 9:15 a.m.—United Methodist Women executive committee, Litteral Room.
 Noon—Advent study, Crippen Building at Methodist Home. Bring sack lunch, beverages provided.
 Wednesday, Dec. 15—
 3:30 p.m.—Prase Choir.
 6:30 p.m.—ZOE class, education building.
 8:00 p.m.—Chancel choir.
 Sunday, Dec. 19—
 8:00 a.m.—Men's fellowship, education building. Newcomers welcome.
 9:00 a.m.—Worship service, crib nursery.
 10:00 a.m.—Worship service, crib nursery for infants up to the age of two and church school for pre-schoolers.
 10:25 a.m.—Kindergarten-sixth graders leave sanctuary to attend music sessions.
 10:55 a.m.—Church school classes begin for K-6.
 11:00 a.m.—Church school classes begin for junior high, senior highs, and adults.
 11:55 a.m.—All church school classes dismissed.
 5:00 p.m.—Confirmation class Christmas party.
 6:00 p.m.—Senior High UMYF.
 Tuesday, Dec. 21—
 noon—Advent study, Crippen Building.
 7:30 p.m.—Wesleyan Circle, home of Miss Lucile Finkbeiner.
NORTH LAKE UNITED METHODIST
 The Rev. David Strobe, Pastor
 Wednesday, Dec. 15—
 6:30 p.m.—Advent pot-luck dinner.
 Every Sunday—
 9:00 a.m.—Church school.
 10:15 a.m.—Worship service.
 Nursery available for both.
CHELSEA FREE METHODIST
 7665 Warkner Rd.
 Mearl Bradley, Pastor
 Tuesday, Dec. 14—
 7:30 p.m.—TRI-W.
 Wednesday, Dec. 15—
 6:30 p.m.—Children's choir.
 7:00 p.m.—CVC, FMY, Jr. High.
 7:00 p.m.—Adult mid-week family service.
 Thursday, Dec. 16—
 7:30 p.m.—Growth groups.
 Sunday, Dec. 19—
 9:45 a.m.—Sunday school opening, "Get to Know a Family."
 10:00 a.m.—Hospital ministry.
 11:00 a.m.—Morning worship.
 6:00 p.m.—Kent, Sue Bowden, chalk talk, music.
 Tuesday, Dec. 21—
 7:30 p.m.—TRI-W.
METHODIST HOME CHAPEL
 The Rev. Ira Wood, Chaplain
 Every Sunday—
 8:45 a.m.—Worship service.
SHARON UNITED METHODIST
 The Rev. Ronald L. Iris, Pastor
 Corner Pleasant Lake Rd. and M-52
 Every Sunday—
 10:00 a.m.—Sunday school.
 11:00 a.m.—Worship service.

Mormon—
CHURCH OF JESUS CHRIST OF LATTER-DAY SAINTS
 Chelsea Branch-Rebekah Hall
 Every Sunday—
 9:30 a.m.—Sacrament.
 10:30 a.m.—Sunday school.
 11:40 a.m.—Priesthood.
Baptist—
CHELSEA BAPTIST
 377 Wilkinson St.
 The Rev. Barry Hampton, Pastor
 Every Sunday—
 10:00-10:45 a.m.—Church school.
 10:50 a.m.—Morning worship.
 11:30 a.m.—Junior church school.
 8:00 p.m.—Evening fellowship.
 Every Wednesday—
 7:00 p.m.—Mid-week Bible study and prayer.
GREGORY BAPTIST
 The Rev. David Brinkman, Pastor
 Every Sunday—
 9:45 a.m.—Sunday school.
 11:00 a.m.—Morning worship.
 6:00 p.m.—Young people.
 7:00 p.m.—Evening worship.
FELLOWSHIP BAPTIST
 The Rev. Larry Mattis,
 The Rev. Roy Harrison, pastors.
 Every Sunday—
 3:00 p.m.—Worship service at the Rebekah Hall.
 Every Wednesday—
 7:30 p.m.—Bible Study and prayer at the Village Apartments, No. 106.
Assembly of God—
FIRST ASSEMBLY OF GOD
 The Rev. Richard Coury, Pastor
 Every Sunday—
 9:45 a.m.—Sunday school.
 10:30 a.m.—Worship service and Sunday school nursery for pre-schoolers.
 6:00 p.m.—Evening worship.
 Every Wednesday—
 7:00 p.m.—Christ's Ambassadors. Bible study and prayer.
Sharon Davis Chosen For Personalities of America Publication
 Sharon E. Davis, the daughter of Mr. and Mrs. Prentiss Davis of 2038 M-52, has been chosen to appear in the third edition of Personalities of America honoring those with dedicated community service.
 Miss Davis, a 1967 graduate of Chelsea High school, is a psychiatric clinical nurse specialist at the Veteran's Administration hospital in Battle Creek.
 She was nominated by one of the physicians at the hospital. The board of directors and the publications board of the American Biographical Institute chose entries from nominations by civic, governmental, and professional organizations.
 Miss Davis graduated from the former Foote School of Nursing in 1970, and received both her Bachelors and Masters degrees in psychiatric nursing from the University of Michigan.
Please Notify Us In Advance of Any Change in Address.



VOCAL RECORDING ARTIST, Kent Bowden, and chalk artist, Sue Bowden, will give a concert at 8 p.m. Sunday, Dec. 19 at Chelsea Free Methodist church, 7665 Warkner Rd. The Bowdens tour nationally combining art, music and humor.

THURSDAY IS ROAST BEEF BUFFET NIGHT at THE CAPTAINS TABLE

A delicious cut of roast beef with potatoes, vegetable, roll and salad bar

\$5.50 (\$3.00 children under 12)

8093 MAIN ST. DEXTER **PHONE 426-3811**

DRAINS and SEWERS CLEANED ELECTRICALLY

PROMPT SERVICE

SEPTIC TANKS-Cleaned, Installed, Repaired DRAINFIELD & OTHER EXCAVATING

•RESIDENTIAL •COMMERCIAL • INDUSTRIAL

BOLLINGER SANITATION SERVICE

PHONE (313) 475-2097

Everything a Wall Street Money Fund Can Offer, Plus...

THE NEW CASH FUND

Insured Safety • Check Writing Capability

• 60 Statewide Offices to Service Your Account • Same Day Withdrawals... No Wait... No Penalties • Your Dollars Help Your Community... Not New York.

HOW CASH FUND WORKS

With the Great Lakes Cash Fund you get money market rates, immediate accessibility to your funds, plus insured safety. And you can open a Cash Fund Account with just \$2500 at any Great Lakes Office.

With Cash Fund, you can make deposits or withdrawals anytime... no wait... no penalties. Each month you receive a statement reflecting the interest earned, account activity and your balance.

Interest is compounded monthly providing for you an even higher rate of return—a feature uncommon to most Wall Street funds. Your Great Lakes Cash Fund features check writing capability and, unlike most Wall Street funds, requires no minimum amount for which your checks must be written.

GREATER SAFETY THAN A WALL STREET MONEY FUND

At Great Lakes Federal, your accounts are insured to at least \$100,000 with an agency of

the federal government. Different account ownerships can provide additional insurance coverage. No Wall Street fund offers you this kind of protection.

BETTER ACCOUNT SERVICING

Sixty statewide offices make the handling of your financial business so convenient. No need to travel long distances to a brokerage office or to send burdensome paperwork to New York. Since your transactions are processed locally, deposits to your Great Lakes Cash Fund begin earning interest immediately.

CASH FUND DOLLARS

The money you invest in a Great Lakes Cash Fund stays in your community, and is used to help speed economic recovery in our state.

If you want high interest, instant accessibility to your money and more security than a Wall Street fund can offer, come to GLFS.

GREAT LAKES FEDERAL SAVINGS

60 Statewide Offices To Serve You - Member FSLIC

DEATHS

Felix B. Janusz

Coldwater
(Formerly of Chelsea)
Felix B. Janusz, 61, a former Chelsea resident, died Nov. 28 in Coldwater, where he had been the owner of a party store since 1974. His wife, the former Rita Honeck of Chelsea, survives him.

Mr. Janusz was born in Jackson and served in the U. S. Marine Corps in World War II. He graduated in 1951 from the University of Detroit. At various times he owned and operated taverns and party stores in Concord, Sturgis and Coldwater.

He was a member of St. Charles Catholic church of Coldwater, the American Legion, Veterans of Foreign Wars, Disabled American Veterans, Fraternal Order of Eagles, Michigan Licensed Beverage Association, Package Liquor Dealers Association and Michigan Sheriffs Association.

Surviving, in addition to his widow, are a son, Robert of Coldwater; two grandchildren; three brothers and four sisters.

Funeral services were held Dec. 1 at the Dutch Funeral Home in Coldwater. Memorial contributions may be made to the American Heart Association.

Telephone your club news to 475-1371



THE MOUSE'S ARMY: Grand Fenwick, a small duchy in the Alps, declares war on the United States in "The Mouse That Roared," a comedy to be performed by the stage and drama class Thursday, Dec. 16 at Chelsea High school. Members of Grand Fenwick's "modern" army are Jennifer Gibb, first row, left, Bob Koch, Eric Eeles; Rob Devoe, back row, Tom Lytle and their rulers, Thad Bell, Lisa Von Wald, Tom Mull and Rob Beaudoin.

Drama Class Play Slated Thursday

Eight weeks of work for Chelsea High school's stage and drama class will end at 7:30 p.m. Dec. 16 with the curtain rising on their public performance of Leonard Wibberley's comedy, "The Mouse That Roared" at the high school auditorium.

The last week has been spent finishing sets, rehearsing scene changes, designing lights and last minute polish of acting. Costumes have been rented from Lansing, make-up has been bought and drops rented—all to make the show more enjoyable.

Tim Benjamin and Eric Kruger, the student directors, both anticipate a successful performance. William Coelius III, the producer and drama teacher, says he is pleased with the job the directors are doing.

Tickets are general admission only. They are available at Chelsea Pharmacy. If any are left, they will be available at the door the night of the performance. The play will be put on in separate performances earlier in the week for both Beach Middle school and high school students.

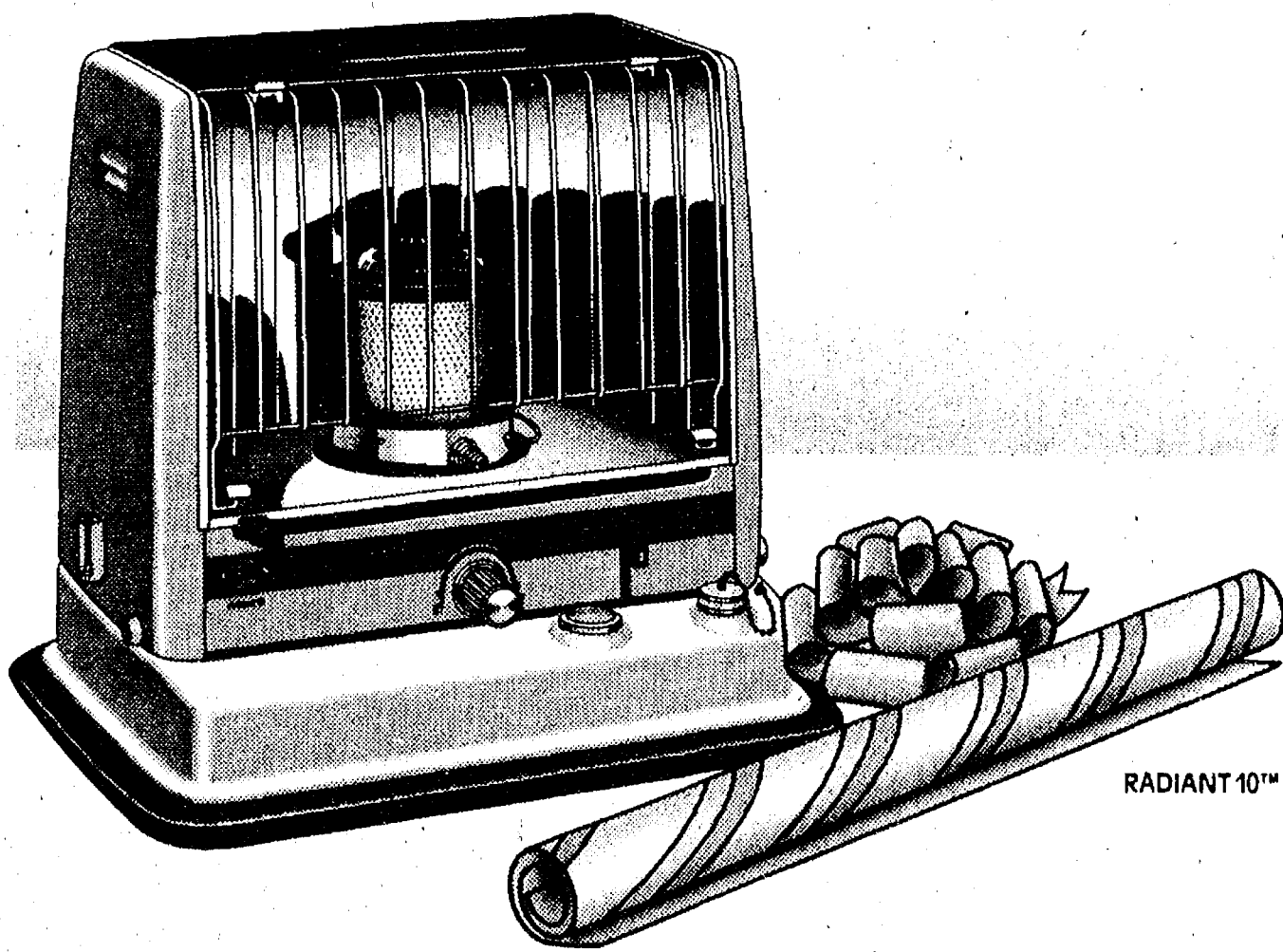
Michigan growers picked 32,000,000 pounds of prune plums from 412,000 trees grown on 5,400 acres in 1981.

NEW!
at **A&W**

SOUP and SALAD \$1.79 all day

CHELSEA A&W RESTAURANT
M-52 — Chelsea-Manchester Rd.

WARM GIFT IDEAS



A KERO-SUN® PORTABLE HEATER IS THE ECONOMIC GIFT THAT SPREADS WARM FEELINGS ALL YEAR LONG.

Give the warm, money-saving gift that your family and friends can use wherever they go—a Kero-Sun® portable heater. There are 10 models and sizes to choose from. All 99.9% fuel-efficient. All cost just pennies per hour to operate. They're smokeless and odorless in operation. Easy to operate. Safety-tested and listed by Underwriters Laboratories.

A Kero-Sun® portable kerosene

heater can be used in the living room, kitchen, basement, vacation home, work place, add-on room—and many more applications.

People remember you all year long when you give a warm, money-saving gift. See the full line of Kero-Sun® portable heaters today.

KERO-SUN® HEATERS GIVE A LOT OF WARMTH FOR THE MONEY.

Check local codes for permitted uses.



Open Till 8 Every Night Until

WE BRING COMFORT TO INNER SPACE

110 N. Main St., Chelsea

Ph. 475-7472 Christmas

SCHOOL LUNCH MENU

Weeks of Dec. 14 - Dec. 17

Tuesday, Dec. 14—Turkey soup with crackers, deli-turkey sandwich, dill pickles, chilled apricots.

Wednesday, Dec. 15—Cheese and sausage pizza, tossed salad with dressing, fresh fruit, cookie.

Thursday, Dec. 16—Cheeseburger on bun, oven fries, vegetable munchies, diced pears.

Friday, Dec. 17—Christmas dinner, baked chicken with dressing and gravy, whipped potato, cranberry sauce, buttered green beans, dinner roll with butter, cherry crisp.

School holiday until Jan. 3.

Good things come in small packages. Great things come in gift envelopes filled with market-based rate U.S. Savings Bonds. So envelope your family this Christmas with the gift that keeps giving. And seal it with a kiss.

Beach School Drama Class Offers 5 Plays

Do you know what Old Cap keeps in his trash can? Will Lucius McNeil be able to get his beloved Letty from the top of the ferris wheel? What will happen when Pandora opens the colorful box? What does zymurgy mean? What exactly is a man of considerable value?

For answers to these questions and more, plan to attend the Winter Plays put on by Beach Middle school's drama department at 7:30 p.m. Jan. 20 at the school stage. More than 50 students will present five one-act plays: "Pandora's Box," "The Carousel and the Cold Fried Egg," "A Young Man of Considerable Value," "What's Zymurgy with You?" and "A View of the Sea."

Admission is \$1 per person.

Births

A daughter, Heather Anne-Marie, Friday, Dec. 3 at St. Joseph Mercy Hospital to Jonathan and Anna-Marie Wang of Ann Arbor. Maternal grandparents are Sheila Hoag of 2212 Monroe and the late Milbourne Hoag. Paternal grandparents are David and Anne Wang of Parkridge, N.J.

A daughter, Mary Elizabeth, Wednesday, Dec. 8 to Jim and Janice Coffman of 18829 Bush Rd. Maternal grandparents are Walter and Catherine Berjeski of Chelsea. Paternal grandparents are Rose Coffman of Detroit and the late Clarence Coffman. Mary Elizabeth has two brothers, Michael and Jimmy, and a sister, Catherine.

A son, Sean Dennis, Nov. 25 in Ann Arbor, to Vickie and Dennis Crupper of Angola, Ind. Maternal grandparents are Robert and Betty Koch of Chelsea. Paternal grandparents are Dwight and Dolores Crupper of Novi.

A daughter, Erin Elizabeth, Thursday, Dec. 2 at St. Joseph Mercy Hospital to Carolyn and Patrick McNamara of Ann Arbor. Maternal grandparents are Mr. and Mrs. Ernest Wenk of 2833 Fletcher Rd. Paternal grandparents are Mr. and Mrs. Earl McNamara of Trenton. Erin has a brother, Ryan, age 3.

Job Bank employment listings are circulated around the country through the 1,700 local Job Service offices.

ODYSSEY² VIDEO GAME CARTRIDGES

We Stock ALL GAME CARTRIDGES

Including:

- ★ PICK AXE PETE!
- ★ K.C.'s KRAZY CHASE! (w/voice)
- ★ P. T. BARNUM'S ACROBATS (w/voice)

Stop in and hear the **VOICE** New for Any Odyssey² ONLY \$8995

HEYDLAUFF'S

113 N. Main, Chelsea

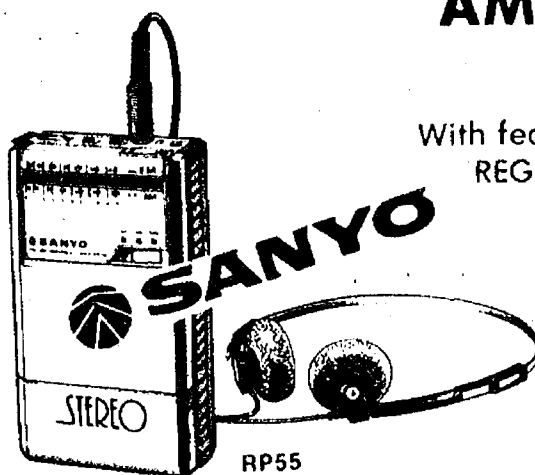
Ph. 475-1221

RADIOS — STEREO SYSTEMS — TAPE RECORDERS



MINIATURE AM/FM — STEREO RADIO

With featherweight stereo earphones REG. \$34.95



ONLY \$32⁹⁵

AM-FM CASSETTE RADIOS

More than 12 different models



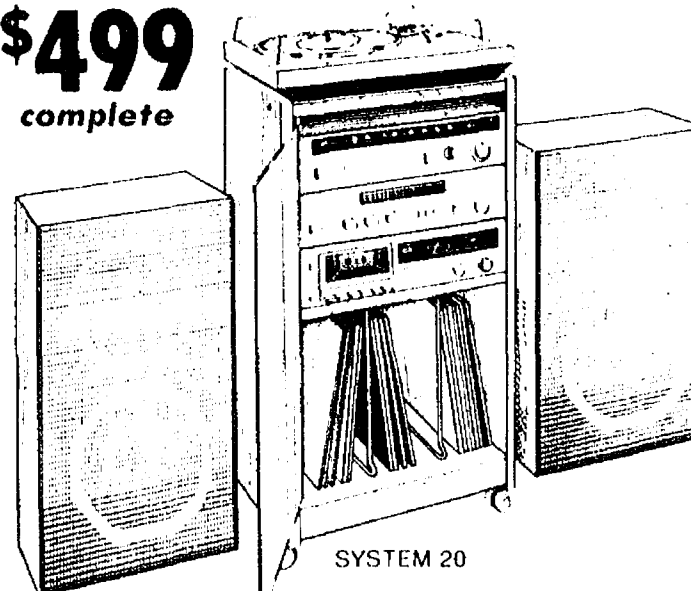
Priced from \$49⁹⁵

Including AC Adapter

Some Radios Stereo!

SANYO Audio Systems \$100 OFF

Only \$499 complete



- Full Featured Home Music System
- 16 Watt Stereo Integrated Amp with LED Power Level Meters
- AM/FM Stereo Tuner with LED Signal Strength Tuning Meter
- Semi-Automatic Turntable with Magnetic Cartridge
- Comes with Audio Cabinet with Simulated Walnut Grain Finish
- Two Deluxe Stereo Speaker Systems

Includes:

- Stereo Cassette Deck with Dolby, Metal Tape Capability and Two VU Meters

WE SELL & SERVICE SANYO, MAGNAVOX, PANASONIC RADIOS

CHECK OUR PRICES!

Open 8:30 a.m. to 8:30 p.m. Every Evening Until Christmas, Starting Monday, Dec. 13

HEYDLAUFF'S

113 N. Main St., Chelsea

Ph. 475-1221

