

QUOTE
"Happiness isn't something you experience, it's something you remember."
—Oscar Levant.

The Chelsea Standard

25¢
per copy

ONE HUNDRED-TWELFTH YEAR—No. 52

CHELSEA, MICHIGAN, TUESDAY, JUNE 1, 1982

16 Pages This Week



CONGRESSIONAL RESOLUTION: George Palmer was presented with a certificate of recognition, in the form of a resolution passed by Michigan legislature, citing the 70th anniversary of

Palmer Motor Sales. Making the presentation is Rep. Mary Keith Ballantine as Village President Jack Merkel looks on.

Palmer Motor Sales Honored By Michigan Legislature

70 years old and still going strong is Chelsea's Palmer Motor Sales, celebrating its 70th birthday as a Ford Motor Co. franchise last April 15. Begun in 1912, according to Ford Motor Co. records, Palmer Motor Sales is the oldest Ford dealership in Michigan as well as one of the oldest in the United States.

Palmer Motor Sales, Inc., was first established in 1910 by Leigh G. Palmer in a two-car garage on E. Middle St. where the Regal automobile was sold. In 1911, the business was moved to its present location and, at that time, a sub-dealership was obtained from Ford Motor Co., adding Ford products to the stock line as well as the EMP.

In 1912, a Ford franchise was awarded to L. G. Palmer and other vehicles carried were dropped from the line. In addition to continuing to carry its Ford inventory, Palmer Motor Sales also offered buyers the Studebaker between 1915 and 1917 and the Dodge between 1915 and 1916.

By 1918, a two-story automotive shop was built on the rear of the building and the Fordson tractor entered into the line of vehicles sold until it was dropped in 1927.

Lincolns were added to the available stock in 1920 and Mercury followed suit in 1938. Both models were sold by Palmer Motor Sales until 1942 when the Chelsea business became exclusively a Ford business.

The present showroom was built in front of the old garage and office buildings in 1948, thereby uniting the two previously separated structures.

In addition to having the oldest Ford dealership in Michigan, L. G. Palmer, who served as president of Palmer Motor Sales for 60 years, was also associated with Standard Oil Co. since 1910, a tradition which remains today.

George Palmer, son of the original owner, began working at Palmer Motor Sales in 1943. He took over the business as president in 1972.

Following his take over of the business, an off-site used car sales location was added and is located on the corner of M-52 and Old Manchester Rd.

Palmer Motor Sales has continuously operated in the same location since 1911. Traditionally, the Palmers have seen to it that their facilities, parts and inventory have remained comparable to those of their competitors and have employed between 20 and 30 persons at any given time.

In recognition of the continued service to the company, the state and the community, George Palmer was presented with a resolution (Resolution No. 688) adopted jointly by the Michigan Senate and the House of Representatives marking the firm's 70th anniversary as Michigan's oldest Ford dealership under the continuous ownership of the Palmer family. Making the presentation were Village President Jack Merkel and Rep. Mary Keith Ballantine.

School Will Honor Exemplary Employees

The Chelsea Board of Education will institute an annual recognition of exemplary employees and retirees. The first annual, Board of Education recognition luncheon will be held Wednesday, June 2, at 12 p.m., in the Board Room of the Administration Building, located on Washington St.

Exemplary employees will be recognized and, additionally, the

Chelsea School District employees who retired in the years 1977 and 1982 will be honored. The employees have been nominated by their supervisors and rated in categories pertaining to exemplary character traits, job performance and leadership. The Board will also pay tribute to retired employees who admirably served the school district.

Chelsealand Painters Plan Art Show, Sale

Chelsealand Painters will present their 10th annual Art Show and Sale on Saturday and Sunday, June 5 and 6 between the hours of 10 a.m. and 5 p.m. All works will be exhibited at the Chelsea Medical Center.

Fifteen area artists will exhibit and sell watercolors, acrylics, drawings and collages with prices as low as \$10. A percentage of the proceeds will be donated toward the provision of a medical scholarship.

Chelsea Community Hospital

Auxiliary will assist with refreshments and there will be music and entertainment both days. Betsy Beckerman, folk and country singer, will entertain both days while Franz Horary, a professional magician, will appear Saturday at 2 p.m. Old time blue grass music by David Murphy will be featured Saturday and the Morris Dancers will appear Sunday afternoon.

This year's art show and sale will be held rain or shine. It is open to the public.



CERTIFICATE OF MERIT: Dave Kaercher and Kathy Vogt of the Chelsea Woodshed display the second annual certificate of merit presented to

the local restaurant by the Washtenaw County Health Department at a meeting held last Friday, May 21.

New Civic Foundation At Half-Way Mark In Membership Drive

The new Civic Foundation of Chelsea has reached the halfway mark in its efforts to secure founding members.

A temporary steering committee is currently approaching leading citizens to become founding members of the Foundation.

The Foundation is established in order to raise the funds in order to finance community projects and programs which are not new fundable from existing sources.

The temporary steering committee consists of Art Dils, chairman; James Brown; Charles Cameron; Marilyn Chasteen; Thomas Eisele; Dudley Holmes, Jr.; Willard Johnson; Helen Lancaster; Paul Mann; Jack Merkel; Robert Merkel; the Rev. John Morris; Ronald Olmsted; George Palmer; Kay Poljan; Jackie Rogers; Shirley Schaible; Ray Van Meer; and Joan Wolfe.

Founding members, who contribute \$50, will elect the officers and Board of Trustees of the Foundation and will take part in the formation of the Foundation and the determination of objectives and goals.

The Civic Foundation of Chelsea is a non-profit organization and contributions are tax deductible.

Art Dils, chairman of the temporary steering committee, said, "The new Civic Foundation of

Chelsea will be of vital importance to the Chelsea area in the coming years. The projects and programs it will support will benefit all the people of Chelsea. Several people have asked me if the Foundation will support only the School District or only particular organizations or groups. I can assure everyone that the Foundation support will not be restricted to any special organization or group. Similar community foundations make grants to senior citizen centers, area transportation services,

libraries, museums, parks, recreation centers, etc. The founding members, who will elect the officers and trustees, will determine how the funds will be used. Therefore, I urge every interested person who lives or works in the Chelsea area to become a founding member."

Efforts to secure Foundation founding members will continue for the next several weeks.

Interested persons should contact any member of the committee or Art Dils at 994-3904, or Ron Olmsted at 475-1311.

Schools Seek Renewal of Operating Tax

The Chelsea Board of Education will seek 20.5 mills for operating on Monday, June 14. This will be the same operating levy with which the schools have been operating during the current school year. The 20.5 mills (\$20.50 on each \$1,000 of state equalized valuation) will be for a period of five years, 1982 through 1986, inclusive. The current 20.5 mills of operating millage expires with the 1981 tax levy.

Additionally, the Board seeks a 0.5 mill increase for maintenance, which will be used for maintenance, repair and improvement of the school district's facilities. The 0.5 mill increase (\$0.50 on each \$1,000 of state equalized valuation) will be for a period of six years, 1982 through 1987, inclusive. The Board of Education will reduce the debt retirement millage from 3.5 to 3.0

mills, a net reduction of 0.5 mill. Therefore, there will be no increase in the millage levy to taxpayers with the passage of both proposals.

The third proposal will be the election of two school board candidates from the four candidates running: Raymond G. Coulter, Dale A. Schumann (incumbent), James A. Patterson, and Daniel T. Snyder (incumbent). The school board positions will be for four years.

The fourth proposal will be a Washtenaw Intermediate School District proposal asking county residents to approve a 0.5 mill increase for the education of handicapped children.

The polls are located at Beach Middle school and will be open from 7 a.m. until 8 p.m. Monday, June 14.

Trinkle Barn Dance Set For June 19

Saturday, June 19 is the date set for "old-fashioned fun" as the annual "Old Fashioned Barn Dance" benefit is held at the Charles Trinkle farm, 9621 Trinkle Rd., Dexter.

Music, as in the past, will be presented by the Luke Schaible Band for square and round dancing between the hours of 9 p.m. and 2 a.m.

Refreshments and set-ups will be available for purchase together with German sausage, hot dogs, popcorn and pop.

The dance is again sponsored by the Lima Liberty Belles and the Lima Brushkateers, a chapter group from the Dexter Sesquicentennial of 1973. All proceeds will go to the Special Olympics organizations in the Chelsea and Dexter School Districts as well as High Point Center.

Tickets may be purchased in advance at a savings at area businesses including McLeod's, Royal Hair Fashions, Bouillion Sales and Service and the Captains Table in Dexter; Vogel's Foster's, Heydlauff's and McCalla Feeds in Chelsea; Gambles in Manchester and Fran Coy Hairstyles in Ann Arbor.

Octogenarians To Be Guests of Kiwanis Club

Chelsea Kiwanis Club will present its annual Octogenarian Night Monday, June 7 at 6 p.m. at the Chelsea Senior Citizen Center at North school.

(Continued on page four)

Beach School Art Show Set Tuesday

Attention art lovers! The Beach Middle School Spring Art Show will be held Tuesday, June 1, between the hours of 6:30 p.m. and 8 p.m.

Featured at the exhibit will be drawings, paintings, constructions and sculptures, tooling and pottery.

Students in the sixth, seventh and eighth grades have been busily preparing their displays and have finished many semester projects.

Following this art exhibit, Beach Middle school choir, under the direction of Tamara Barbre, will perform a concert featuring small ensembles as well as full choir and solos. This will be the group's final concert of the season.

Area residents are invited and encouraged to attend this exhibit of special artworks, followed by the choral presentation.

Electronics Swap Show Set Sunday At Fairgrounds

Chelsea Communications Club will sponsor its annual Electronics Swap and Show, Sunday, June 6 at the Chelsea fairgrounds. Gates will be open from 5 a.m. to 2 p.m.

This is a yearly event sponsored by area hams, members of the Chelsea Communications Club. A donation of \$2.50 will be taken at the entrance gate; ladies will enter free of charge.

(Continued on page six)

School Orchestras Plan Final Concert

Four Chelsea High school seniors from the music department will perform concertos with the high school orchestra on Thursday, June 3 at 7:30 p.m. in the high school auditorium.

The four soloists are Laura Hines, violin, playing the Romanze in G Major by Beethoven; Zach Smith, trumpet, playing the Haydn Trumpet Concerto; Katie Ullman, violin, playing the Concerto No. 1 for Violin by Max Bruch; and Jennifer Wellnitz, viola, playing the Brandenburg Concerto No. 6 for two solo violas by J. S. Bach. Assisting Ms. Wellnitz will be Susan Bareis, a junior in the orchestra.

The Beach Middle school orchestra will open the concert with three selections, Allemande and Bourree by Telemann, Brandenburg Concerto No. 3 by J. S. Bach, and Songs of the Sea by Delwyn Elliot.

The concert will conclude with the high school orchestra performing "In the Hall of the Mountain King" from the Peer Gynt Suite by Grieg. Admission is free.

This will be the final full-length program for both orchestras during a year in which the Beach orchestra has performed six times and the high school orchestra has given 16 performances, playing 34 compositions. The final appearance for the high school orchestra will be at Class Night Wednesday, June 9.

Chelsea Lamb Club Weigh-in Scheduled

Chelsea Lamb Club will hold its annual lamb weigh-in Saturday, June 5 between the hours of 9 a.m. and 12 noon for Chelsea and Dexter youth interested in participating in this year's Chelsea Community Fair.



NATURE CENTER DONATION: The Homemaker Club presented Emilie Polens and Carol Strahler, co-directors of Waterloo Nature Center, with a \$500 donation May 20, following a successful Christmas bazaar and auction held in November. Making the presentation were club

president Martha Lulek and treasurer Kay Heller. A portion of the donation will be used to purchase teaching aids including flash cards and magnetic tape/picture recordings. In addition, several books will also be purchased and will be incorporated into the interpretive program.

Published every Tuesday at 300 N. Main Street, Chelsea Mich. 48118, and second class postage paid at Chelsea, Mich. under the Act of March 3, 1879. Postmaster: Send address changes to The Chelsea Standard, 300 N. Main St., Chelsea, Mich. 48118.

Subscription Rates (Payable in Advance)
In Michigan: One year in advance ...\$8.00
Six months\$4.50
Single copies mailed ...\$.50
Outside Michigan: One year in advance ...\$10.50
Six months\$6.00
Single copies mailed ...\$.75

MEMBER **NATIONAL NEWS PAPER ASSOCIATION** Founded 1898
National Advertising Representative: MICHIGAN NEWSPAPERS, INC.
827 N. Washington Ave.
Lansing, Mich. 48906

JUST REMINISCING
Items taken from the files of The Chelsea Standard

4 Years Ago . . .

Thursday, June 8, 1978—

Tradition will reign for a few brief hours tomorrow evening as nearly 200 class of 1978 graduating seniors partake in commencement ceremonies beginning at 8 p.m. under anticipated clear skies on the Chelsea High school athletic field.

Voters in the Monday, June 12 Chelsea School District election will face both a millage request of 1/2-mill for five years and the selection of two, out of five, candidates for the school board.

Sunny, pleasant weather greeted the record crowd of 180 cyclists who joined on Sunday to ride for cancer at the Chrysler Proving Grounds in the third annual Bike-A-Thon sponsored by the American Cancer Society, Chelsea chapter. More than \$7,000 in pledges was received.

"Allemande" left and "Do-Si-Do," shake the dust off your Bicentennial costumes and get ready to go to the fifth annual Trinkle Barn Dance to be held Saturday, June 17 at the Charles Trinkle farm.

14 Years Ago . . .

Thursday, June 6, 1968—

Chelsea High school class of 1968 will be honored at a week of graduation activities beginning with baccalaureate services, June 9, at 7:30 p.m. in the high school auditorium.

G. A. Sales, located on Chelsea-Manchester Rd., has become a popular place for robbers as of late. In the space on one week, police have discovered two cases of breaking and entering and have arrested individuals on that charge. Each time the arrested persons have been juveniles from Detroit.

Seven candidates are seeking two vacant positions on the Chelsea School District's Board of Education. Vying for the positions are Gary Albrecht, Keith L. Boylan, L. D. Guinan, Donald Irwin, Edward E. Lewis, Robert J. Updegraff and Floyd E. Walz. The election will be held June 10. Chelsea School District's boiler problem will be left up in the air for another week, as contesting

WEATHER

For the Record . . .

	Max.	Min.	Precip.
Tuesday, May 26	83	50	Trace
Wednesday, May 26	72	54	0.00
Thursday, May 27	74	60	1.02
Friday, May 28	76	61	0.39
Saturday, May 29	74	59	Trace
Sunday, May 30	78	62	0.02
Monday, May 31	75	57	Trace

DIAMOND GLASS & FEINER'S
2350 W. Liberty
Ann Arbor, MI 48103

- * Auto Glass
- * Glass & Screen Repair
- * Mirrors
- * Aluminum Doors & Framing
- * Shower Enclosures
- * Insulated Glass Units

(SPECIAL SHAPES & SIZES)

MIKE WALTON, Owner 769-2722

DON'T BUY A WEAK EXCUSE FOR A BRUSHCUTTER. BUY A STIHL FS80.

Before you buy a brushcutter, buckle yourself into a powerful, responsive Stihl FS80. It'll start in a second, be comfortable for hours, and last for years. Comes standard with Stihl's exclusive Polycut™ head. And two types of metal blades are available as options.

Try the FS80 and you'll buy the FS80. Because why buy any weak excuse when you can have the strength of Stihl?

STIHL
The World's Largest Selling Chain Saw

HURON VALLEY GARDEN CENTER
5024 Jackson Rd.
Ann Arbor
Ph. 662-6714

★ MICHIGAN MIRROR ★

By Warren M. Hoyt, Secretary, Michigan Press Association

Negotiations Break Down Over State Employees Bargaining

The head of the Office of State Employer and an official of the Michigan State Employees Association announced that, barring an injunction by the circuit court, bargaining for contract concessions has collapsed.

Stanley Kravitt said the Michigan State Employees Association's (MSEA) council action, to break off negotiations unless the state withdraws its decision to cut back work hours of union members, means it is now clear negotiations have failed.

Laurie Kipp, representative of the state's largest employee union, said unless the state undergoes a miraculous change and rescinds the reduction order, there will be no further negotiations.

Both people said negotiations could resume, however, if Ingham County Circuit Court Judge James Kallman enjoins the state from imposing the work reductions.

Kravitt, however, said if the state is enjoined from hourly reductions it will be forced to lay off workers.

Both also condemned the actions of the other. Kravitt called MESA irresponsible and Kipp said the state had tried to circumvent collective bargaining.

Uncle Lew from Lima Says:

DEAR MISTER EDITOR:

Zeke Grubb was digging fer facts during the session at the country store Saturday night. He told the fellers he had heard onct that a fact is nothing but the point where reserch stopped, but he hadn't give it much thought until recent. What brung facts to mind, he said, is the two direct opposite sets we live by. Whatever fact you mention there's at least another one on the same matter that ain't nowhere near the same, was Zeke's words.

Fer instant, he went on, the British got a solid set of facts about what has gone on in the Faltland Islands and what brought it on. The Argentines got another set just as hard, and if you read both you wonder if they're talking about the same war. Zeke said he heard one feller say that Argentina was doing what Britain done 149 year ago, and what America done in Texas and Hawaii, which brings up a whole new set of facts.

Fathermore, Zeke went on, the Baptist got their facts, the Mormons got theirs and the twain don't meet at many places. But fer keeping the twain complete apart, Zeke declared, you can't beat Democrats and Republicans. This country has been bending history to suit the campaign platform ever since she's been a country, and even while she was gitting to be one, Zeke said. Right now we're starting to crank up off-year election campaigns, he allowed, and both sides is busy drawing up their own statics to prove the doing and the undoing of everthing to split with American life.

The fellers was pritty even split on Zeke's facts. Clem Webster

The MSEA board voted to stop any negotiations unless the hourly reductions, announced in late April and affecting some 16,000 MSEA members whose units have contracts with the state, are rescinded.

The board overwhelmingly voted down a proposal to ask the membership for authority to call a strike.

Strikes by state employees are prohibited by the state constitution.

Kipp said the action reflected a general frustration by the union members. "People are tired of being threatened by management. There have been efforts on their part to circumvent the bargaining process. I think the members have had enough," she said.

"Our stand is we don't negotiate with anyone who's burning your house down," she added.

Kravitt said the union had consistently denied there is any fiscal crisis and attempted to circumvent any effort to make state employees join in solving Michigan's budgetary problems.

He also said the MSEA board's action was incredulous, because the Human Services Unit—representing some 10,000 workers—had walked out of negotiations several weeks

before reductions had been ordered.

"A responsible union would be trying to protect its members. MSEA has been highly irresponsible," Kravitt said.

Meanwhile, the second largest state employee union—the American Federation of State, County and Municipal Employees—ratified its contract concessions, which Governor William G. Milliken said would save some \$10 million over the two-year agreement.

Milliken also praised the union workers for "their willingness to join in the sacrifices being asked of all to help resolve Michigan's current fiscal crisis."

The agreement, which calls for a rollback of a 5 percent pay increase for the 1982-83 fiscal year in return for protection against lay-offs for the more than 7,000 AFSCME members, must now be approved by the State Civil Service Commission.

Speech Pathologist Available at Schools

This is the fourth in a series of articles dealing with speech, language and hearing impairments in children. This article is going to focus on the problems which are typically found in children of high school age.

By the time most children get to high school, most of the minor speech and language problems have been handled and any speech help received by the child is usually just a memory. However, for some children the nature and severity of the impairment is such that the problem persists even into the high school years. This can be very difficult for the child, as it is during these years that peer pressure and the desire to fit in with others is at its height. An impairment in speech and language then becomes not only a hindrance to communication, but a social and emotionally charged problem and deny its existence during these years. This usually only makes things worse for all concerned.

Stuttering (interruptions in the normal flow of speech) and language impairments are the usual problems found in the high school population. Some articulation disorders (inability to say certain sounds correctly) and voice disorders (use of proper pitch, volume, resonance and quality) can also be found at this age.

For the stuttering child, the high school years can be extremely frustrating. This disorder is one which causes the sufferer a great deal of embarrassment and makes social interactions very difficult. This embarrassment is not only felt on the child's part but on the listener's part as well. Handling stuttering problems often becomes one of counseling with parents and close friends of the child as well as the child himself.

Helping the child to understand and deal with his own as well as others reactions to his speech disruptions is as important a part of therapy as is teaching the child a new pattern of speech which



BON VOYAGE: At a farewell gathering for Mrs. Florence Hakala, retiring second grade teacher at North Elementary school, a dinner party was held at the home of Mary Alice Hafer. Serving Mrs. Hakala and her husband Warren shish kebab is North school principal Bob Benedict.

F. Hakala Retires from North School

Florence Hakala, second grade teacher at North Elementary school since 1958, was honored on the occasion of her retirement by her colleagues. The event was held at the home of Mary Alice Hafer on Tuesday, May 25.

After attending Eastern Michigan University, then known as Michigan State Normal College, Florence began her teaching career in a one-room country school (K-8th grade) in the Brighton area. For this, she was paid \$90 per month.

Thereafter she worked at the Ford Bomber Plant in Ypsilanti during World War II. After the war, she went on to work for eight years at University Hospital. There, she served as a clinic clerk in dermatology.

Florence went back to teaching in 1954 and accepted a position at Lima Center. This also meant going back to EMU to obtain the necessary credits for a permanent teaching certificate, which she received in 1963 along with her BS degree in elementary education. In 1958, she came to North school where she has taught second grade ever since.

Florence, who lives in Ann Arbor with her husband, Warner, is looking forward to being a full-time homemaker in retirement and is also anticipating to do some traveling.

Please Notify Us In Advance of Any Change in Address

BARBARA M. WEHR, D.D.S.
JOHN C. WEHR, D.D.S.

FAMILY DENTISTRY

9477 N. Territorial, Dexter
In North Territorial Family Clinic
426-4635

Our office hours:
Monday-Thursday 7:30 a.m.-9:00 p.m.
Friday 7:30 a.m.-4:00 p.m.
most Saturdays 9:00 a.m.-2:00 p.m.

"Goodbye! I'm Off To New York!"

Your Community Needs Your Investment Dollars...

"We're Stay-At-Homes!"

Invest Locally - Build Homes, Local Jobs.

91 DAY CERTIFICATE Interest rate is fixed for a 91 day term. Minimum deposit \$7500.	3½ YEAR CERTIFICATE Rate is not fixed and fluctuates weekly. Minimum deposit \$500.	30 MONTH CERTIFICATES Interest rate is fixed throughout the term of the certificate. Minimum deposit \$100.	26 WEEK CERTIFICATES Minimum deposit \$10,000. Interest rate is fixed for a 26 week term.	GREAT INTEREST CHECK Every dollar in your account earns 5¼%, compounded continuously. There are 5 ways to obtain no minimum checking.
------------------------------------------------------------------------------------------------	-----------------------------------------------------------------------------------------------	-----------------------------------------------------------------------------------------------------------------------	-----------------------------------------------------------------------------------------------------	-------------------------------------------------------------------------------------------------------------------------------------------------

Federal regulations require substantial penalty for early withdrawal from certificate accounts and prohibit the compounding of interest during the term of 26 Week Money Market Certificates.

GREAT LAKES FEDERAL SAVINGS
Member FS LIC

Appreciation Tea Recognizes North School Helpers

On Wednesday, May 19, the PTN at North Elementary school held an Appreciation Tea in the media center. They recognized the teachers, the media center volunteers, the math lab volunteers, the Bucket Brigade volunteers, and the parents who the teachers felt had given them the most help during the 1981-82 school year.

Special recognition went to Mrs. Florence Hakala upon her retirement. She was presented with a plant.

The first Appreciation Tea was held three years ago. Each year since it has been well-attended and enjoyed by all the staff and North school and the honored guests who have volunteered their time to assist in various areas of tutoring and teaching the children.

Election of PTN officers was also held. Karen Koch will remain president while Dorothy Boughton will serve as vice-president. Christa Fischer will be treasurer and Clara Smith will be secretary for the coming year.

Inverness Ladies Day Golf Results

Regular golf was played on Thursday, May 27 by the Inverness Ladies Day members. First flight winners were Yolaine Carignan with low score and Agnes Haselschwardt with low putts.

Dot Hume won second flight with Olga McCormick getting low putts.

Third flight was won by Mary Turcott with low score and low putts. Millie Townsend had the only chip-in of the day. Roberta Barstow and Jan Glazier along with Maryann Centofanti were hostesses for the day.

Subscribe today to The Standard.

CAROL'S CUTS

40 CHESTNUT

Monday, Wednesday and Friday
475-7094

Appts. Only
9:30 a.m. - 3:00 p.m.

Chelsea Charms Twirlers Win Awards at Waterford

Four members of the Chelsea Charms Baton Twirling Corps were awarded seven trophies and three medals for achievements at the recent Drum Majorettes Association contest held Saturday, May 23 at Waterford.

Laurie Honbaum, a newcomer to competition and entering her first contest in Waterford, managed to capture a first-place trophy in both "beginner basic strut" and "special beginner solo." Laurie is the nine-year-old daughter of Mr. and Mrs. Merritt Honbaum.

Winning trophies in baton contests is nothing new to Michelle Graflund, 10-year-old daughter of Mr. and Mrs. Steve Graflund. Michelle captured two first-place trophies in both "modelling" and "basic strut," a second-place trophy in "fancy strut" and a third-place trophy in "beginner solo."

Kristen Clark, daughter of Mr. and Mrs. Joseph Clark, was awarded a second-place trophy in both "basic strut" and in "special beginner solo." These were eight-year-old Kristen's first trophies, although she had previously won a first place ribbon in "basic twirl" at a former contest.

Susan Schmunk, drum major of the Chelsea Charms, performed remarkably well in a very difficult 10-12-year-old age group of "beginner solo." She captured a well-deserved third place medal in solo category and was awarded a fourth place medal in "basic strut." Susan is the 12-year-old daughter of Mr. and Mrs. Charles Schmunk.

Observing the contest were Norma Graflund, Merritt and Arlene Honbaum with daughters Kathy and Debbie, Laura Turner

Elsie Paul Honored At Birthday Party

Elsie Paul was treated to a surprise 80th birthday party Saturday, May 22. A total of 32 immediate relatives enjoyed a fine dinner at the Paul residence before traveling to Sylvan Town Hall for a second surprise birthday party attended by 75 friends and relatives. Ice cream and cake was served.

Organizing the party were Arthur Paul and family and Mary and George Sweeny and guests came from Ann Arbor, Dearborn, Jackson, Dexter and Rives Junction.

Mrs. Paul's 80th birthday is Thursday, June 3.

Piano, Organ Students Present Spring Recital

Piano and organ pupils of La Vonne Harris presented their 10th annual spring recital Sunday afternoon, May 23 at the First United Methodist church on Park St.

Taking part in the event were Martina Grenier, Heather Grenier, Scott Marentay, Jay Marentay, Jennifer Weir, Melissa Johnson, Sarah Bentley, Charlotte Bentley, Sarah Schwarm, Stephanie Jeffrey, Piper Copeland, Kelly Kuzon, Jennifer Colvin, Timothy Weir, Meredith Johnson, Deborah Garman, Mary Beth Wolfe, Jennifer Freeman, Margaret Merkel, Susan Riemenschneider, Bridget Love, Brendan Love, Lisa Poe, Brandon Murrell, Matt Riemenschneider, Scott Mullison, Lee Riemenschneider, Linda Mullison, Allison Chasteen and Dave Mayer. Performing the Pony Trot was Carrie Flintoft, a guest pupil of Pat Stirling.

from Ann Arbor and Chelsea Charms teacher, Rita Wilson-Howard.

Good Things Growing in Michigan

June is Dairy month, and Michigan's 395,000 cows on 9,500 dairy farms are all ready to help you celebrate. Our state ranks sixth in milk production nationally, according to officials of the Michigan Department of Agriculture, marketing almost five billion pounds of milk valued at \$658 million.

So you can see there's plenty of nourishing milk, cream, cottage cheese and ice cream available for all nine million residents of the state where good things are growing. Incidentally, milk is the largest single source of farm income in Michigan, accounting for about one-fourth of all farm cash receipts.

All fluid milk for bottling in Michigan must meet strict Grade A standards, and ours was the first state in the nation to adopt those federal standards. Dairy inspectors from MDA routinely check milk supplies from cow to consumer to insure sanitation and wholesomeness.

The versatility of dairy products makes them suitable for people of all ages and most conditions. If you're counting calories, count on cottage cheese. If not, dig into a fantastic assortment of ice cream delights.

For a refreshing summer cooler, prepare your favorite eggnog with low-fat milk instead of cream. Serve a bowl of chilled sour cream alongside a bowl of confectioners' sugar and invite guests to dunk fresh strawberries. Surround individual servings of cottage cheese with a colorful assortment of fresh crunchy vegetables. Another time, use a variety of fresh fruits with your cottage cheese.

Use sour cream, yogurt, cream and cottage cheeses for dips and salad dressings, as a topping for fresh steamed vegetables, in casseroles and desserts.

'My Fair Lady'

Cast Member Omitted

In last week's listing of cast members in the Chelsea Area Players' upcoming production of "My Fair Lady," the group omitted the name of Elizabeth Williams as a cast member in the July presentation.



65TH WEDDING ANNIVERSARY: Mr. and Mrs. Emory Pickell, 12766 Roepke Rd., Gregory, will celebrate their 65th wedding anniversary during an open house Sunday, June 6, between the hours of 2 p.m. and 5 p.m. The open house will be held at the Christian Education Building, Presbyterian church, Stockbridge, and will be hosted by their children, Donna Lee of Stockbridge, and Maxine Corser and Beulah Landis, both of Gregory. The Pickells have nine grandchildren and seven great-grandchildren. The family requests no gifts.



A mockingbird has been known to change its tune 87 times in seven minutes.

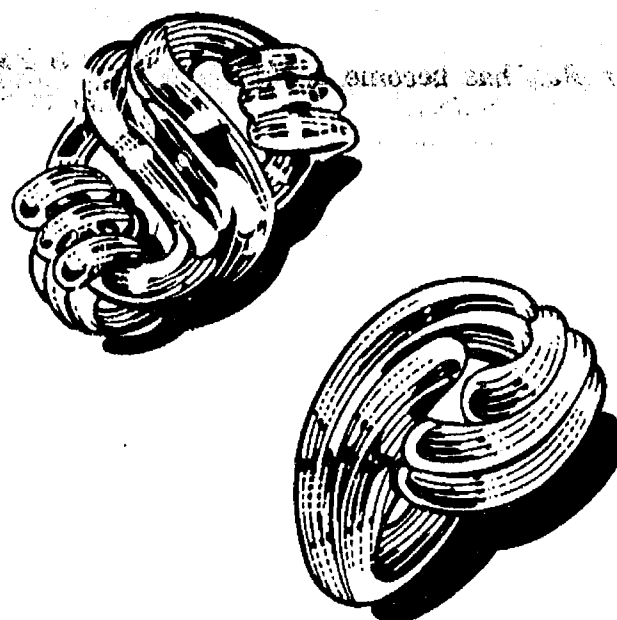
NETA'S PARTY DECORATING

Let me help you decorate for that special occasion. Weddings, Graduation, etc. . . .

NETA MILLS

Ph. 475-1647

FOR THE GRADUATE WHO'S AS GOOD AS GOLD



Whether your graduate finishes tops in the class, or just tops in your heart, she's done something special. And there's nothing like real karat gold jewelry to show how proud you are. Come in today and look over our selection of fine karat gold gifts to congratulate someone special on a job well done.

NOTHING ELSE FEELS LIKE REAL GOLD

WINANS JEWELRY

CHELSEALAND PAINTERS

invite you to come help celebrate their 10th ANNUAL

ART SHOW & SALE

Saturday & Sunday, June 5-6

10 a.m. to 5 p.m.

CHELSEA MEDICAL CENTER

ENTERTAINMENT - REFRESHMENTS

Come, Rain or Shine

ORIGINAL PAINTINGS \$10 and up*

*Percentage of sale given for a medical scholarship



HEISS-SPRAGUE: Mr. and Mrs. Norman Heiss of Langley, Whidbey Island, Wash., have announced the engagement of their daughter, Lori, to Jeffrey Sprague, son of Mr. and Mrs. James Sprague of Grass Lake. A winter wedding is planned. The bride-elect received a BA and BFA degree in art from Western Washington University, Bellingham, Wash. The prospective bridegroom is a 1974 graduate of Chelsea High school and received his BS in geology in 1980 from Western Washington University. He is a candidate for an MS degree in geology at this time. He is employed with Reservoirs, Inc., in Houston, Tex.

LIMITED EDITION PRINTS
Solberg•Bateman•Foote•Calle
Wysocki•Parnell•McClung
and others

CUSTOM FRAMING
THE LOFT FRAME and ART GALLERY
Monday-Friday 10-5:30, Saturday 9-4, Sunday 12-4
107 1/2 S. Main CHELSEA 475-2726

PRINTS & CARVINGS

- ★ CUSTOM FRAMING SPECIALISTS
Prints - Needlework - Photos - Mirrors
- ★ LIMITED EDITION PRINTS
- ★ WATERFOWL CARVINGS by John Hriczak

Working out of our home shop enables us to sell to you at WHOLESALE PRICES!

PAT HRICZAK - 665-0505

SALE!

SELECTED
KATZ NIGHTWEAR Reg. \$6.88
\$9.99

ALL
HANG TEN JOGGING SETS . . 25% Off

ALL GIRLS', JUNIOR'S, WOMEN'S
DRESSES 25% Off

DANCER'S

Chelsea's Friendly Dept. Store



FIREFIGHTING MADE EASY: Aaron Riley learns some firefighting basics during a visit to the Chelsea Fire Department last week with

Chelsea Co-Op Nursery. Assisting in the hose-handling is Chelsea fireman Steve Jaskot.

Area Students Nominated For Gifted Students Program

Three Washtenaw county students are among the 145 Michigan high school students selected to participate in the first annual Michigan Summer Institute for Gifted Students to be held at Michigan State University, Aug. 2-14, under the auspices of the State Board of Education, the Intermediate School Districts and MSU.

Pamela Bonzo of Milan High school, Rebecca Etelamaki of Ann Arbor Huron High school and Steve Gendin of Ypsilanti High school will attend the Institute through the sponsorship of the Washtenaw Intermediate School District.

A total of 17 area students outstanding in the visual arts or sciences were nominated to Washtenaw Intermediate School District for pre-screening and forwarding to the State Department of Education. Nominated students in addition to those selected included Amy Finkbeiner and Daniel Klemer, both of Chelsea High school and Peter Kelly of Dexter High school.

Final determination of the invited students was made by the Michigan Department of Education and included attention to balance among males and females, science and arts, ethnic groups and geographic regions of the state.

The Institute will bring together 10th and 11th grade students from all areas of the state who are highly talented in the visual arts and sciences.

According to a statement from the office of Phillip E. Runkel, State Superintendent of Public Instruction, "The Summer Institute for Gifted Students is based on the premise that highly talented young people are Michigan's most valuable

resource. They are likely to become the scientists, philosophers, artists, historians and problem solvers of the future. They should be encouraged to develop their minds and talents by coming together to work with the finest practitioners and thinkers."

Students selected to participate were first nominated by their high schools as outstanding students showing evidence of unique talent and motivation in the visual arts or sciences. Personal statements from their teachers and counselors addressed each nominated student's qualifications, while the application form summarized his or her achievements in the area of talent.

This summer's Institute is intended as a pilot, offering a model for the development of programs in all areas of study and in several regions of the state which will offer Michigan's most uniquely talented students the opportunity to work with experts in their own fields of interest and to interact with others having similar creativity and commitment.

Faculty for the Michigan Summer Institute for Gifted Students will be chosen from university faculty, professional artists and scientists, talented high school teachers, and professionals from business, industry and government.

Octogenarians

(Continued from page one)

Male area seniors, ages 80 or older, are urged to contact Treva Winans at the Center to make dinner reservations for this occasion.

Industrial Plant Tours Well Received

Chelsea Chamber of Commerce sponsored Michigan Week industrial tours for area citizens was extremely successful, according to Sam Johnson, chamber president.

More than 300 persons toured the three plants which were offering tours during the special Michigan Week.

Tours were offered by Dana Corp., BookCrafters, and Federal Screw Works.

These tours featured industrial plants which do not typically provide tours of their facilities to the public. Because they were asked by the Chamber of Commerce to participate, all three plants agreed to open tours to area citizens.

Johnson further stated, "Because of the increased understanding and general goodwill produced by these tours, there is no question but that the Chamber will sponsor them next year. We thank the area industries for participating."

Lansing Firm Granted Contract For \$8.4 Million

Granger Construction Co. of 6287 Aurelius Rd., Lansing, has been awarded an \$8,425,000 contract by the U.S. Army Corps of Engineers to renovate medical facilities at Wurtsmith Air Force Base in Oscoda, U.S. Rep. Jim Dunn announced this week.

The renovation work to be done by Granger Construction will include remodeling the existing medical and dental facilities and building a 50,000 square foot addition, Rep. Dunn said.

Granger Construction was awarded the contract after submitting the lowest bid among 18 competitors for the contract, the mid-Michigan Congressman said.

Bill Frank, budget manager for the construction company, said work at the Air Base should begin by July 1. The project is expected to take 27 months for completion, he said.

"Granger has a fine record for doing quality work," Rep. Dunn said. "It is an important contract and I'm pleased that they have been awarded the job."

"Defense contracts are an important means of helping the economic fortunes of mid-Michigan," he added.

LOY'S TV

Sales & Service

312 N. Maple Rd., Ann Arbor

"We Service All Makes"

VISA MASTER CARD

769-0198



THE LATEST STYLE in firefighting apparel is modeled by Josh Bernhard during a recent visit to Chelsea Fire Department with his class at Chelsea Co-Op Nursery. Decked out in one boot and a helmet complete with mask, Josh is obviously ready for any sort of mishap.

Dial-A-Garden Topics Listed

Dial-A-Garden, the system of pre-recorded daily gardening tips, is sponsored by the Washtenaw County Co-operative Extension Service. The system is in operation 24 hours per day, seven days per week. Interested persons are invited to call 971-1122 at their convenience and receive timely, up-to-date gardening information.

Tuesday, June 1—"Bearded Iris."

Wednesday, June 2—"Prim-

roses for Winter and Next Spring."

Thursday, June 3—"Equipment You Need for Canning."

Friday, June 4—"What To Do About Flowers That Don't."

Monday, June 7—"Pruning Flowering Shrubs."

Tuesday, June 8—"Do You Remember the Storm of '80?"

Telephone your club news to 475-1371.



The largest single dish in the world is a whole roasted camel, prepared occasionally for Bedouin wedding feasts.

You are invited . . .



to see our wide selection of wedding stationery and accessories. Beautiful styles in every price range.

The Chelsea Standard

Phone (313) 475-1371
300 N. Main St., Chelsea



KITCHEN REMODELING

★ We at Dutch Country are kitchen remodeling specialists.

★ Expert installation available.

★ Free design layout service.

★ Featuring: HAND CRAFTED AMISH CABINETS.

★ Custom Quality Cabinetry by Fieldstone.

★ Jenn-Air Appliances ★ Delta Faucets ★ Elkay & Kohler Sinks.

VISIT OUR SHOWROOM

DUTCH COUNTRY KITCHENS

146 E. Main 428-7292 Manchester



THURSDAY IS ROAST BEEF BUFFET NIGHT at THE CAPTAINS TABLE

A delicious cut of roast beef with potatoes, vegetable, roll and salad bar

\$5.50

(\$3.00 children under 12)

8093 MAIN ST. DEXTER

PHONE 426-3811

"\$600 TO OVERHAUL A TRANSMISSION IN A CAR ONLY 3 YEARS OLD?"



"NOT WHEN YOU BUY A NEW '82 CHRYSLER OR PLYMOUTH?"

EVERY NEW '82 AMERICAN-BUILT CAR AT YOUR CHRYSLER-PLYMOUTH DEALER COMES WITH THREE 5-YEAR/50,000 MILE GUARANTEES:

GUARANTEE #1: 5-YEAR OR 50,000 MILES ENGINE AND POWER TRAIN PROTECTION.*
Limited warranty covers engine block, transmission case and every single part inside them...in both front and rear-wheel-drive cars. Protects you against unexpected repair expense. A \$25 deductible may be required.

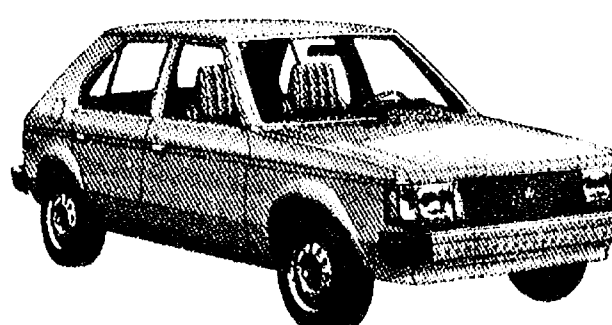
GUARANTEE #2: 5-YEAR OR 50,000 MILES OF OUTER BODY RUST-THROUGH PROTECTION.*
Limited warranty covers repair and/or replacement costs for rust-through of any part of the outside body of your car.

GUARANTEE #3: 5 YEAR OR 50,000 MILES OF FREE SCHEDULED MAINTENANCE.*
Includes oil change, oil filter, air filter and spark plug replacement, valve lash and drive belt adjustment. All of the Scheduled Maintenance recommended by your owner's manual for 5 years or 50,000 miles, whichever comes first, is done without charge.

*5 years or 50,000 miles, whichever comes first. Excludes trucks and imports.

**Base sticker price excluding title, taxes and destination charges.

† Use EPA estimated mpg for comparison. Your mileage may vary depending on speed, trip length and weather conditions. Highway mileage probably less.



PLYMOUTH HORIZON

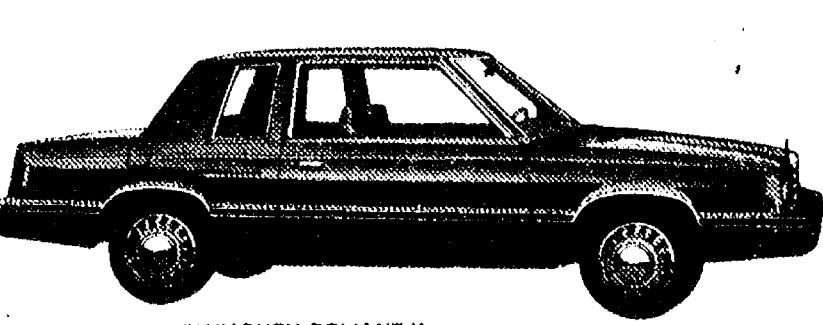
\$5499**

52

35

EST HWY

EPA EST MPG



PLYMOUTH RELIANT K

\$5990**

41

26

EST HWY

EPA EST MPG

IF YOU CAN FIND BETTER PROTECTION, TAKE IT. IF YOU CAN FIND A BETTER CAR, BUY IT. SEE YOUR CHRYSLER-PLYMOUTH DEALER FOR FULL DETAILS.



CHRYSLER

Plymouth

VILLAGE MOTOR SALES, INC.

1185 Manchester Rd.

Chelsea, Mich.



FOR PROFIT

FEED

See us for feed needs!

Feed Formulas Tested, Proved To Get Results

Extra proteins, vitamins and minerals in proper balance, scientifically blended, make our feeds real profit producers for you.

Farmers' Supply Co.

Phone 475-1777



YEARBOOK CREATORS: The 1981-82 Beach school yearbook is the by-product of a year's activities at the school. Putting the memories on paper was this group of diligent English students in Jim Hoeft's and Barbara Brown's classes. They are, first row, left

to right, Charna Street, Jeff Mason, Drew Hubal; second row, left to right, Carrie Collinsworth, Wendy Hunn, Matt Doan; third row, left to right, Karen Michaud, Kristen Muncer, Sara Noah, Jennifer Lindsay, Christina Guard and Melanie Flanigan.



CREATIVE ENERGIES were expelled by this duo, Jeff Mason and Drew Hubal, who designed the cover of this year's Beach Middle school yearbook. They are students in Jim Hoeft's and Barbara Brown's English classes.

Bonds Purchased By Chelsea State Bank

At a special meeting of the Chelsea School District Board of Education, held Wednesday, May 26, the Board accepted the low bid of Chelsea State Bank for the borrowing of \$475,000 against the 1982-83 tax levy. Chelsea State Bank's bid was 9.60 percent interest. Other sealed bids presented in-

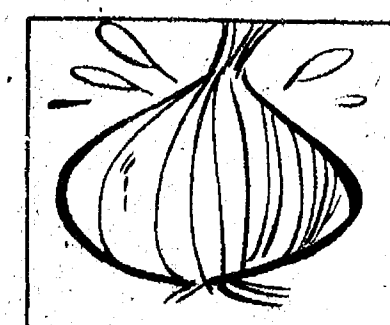
cluded Ann Arbor Bank & Trust, bidding for the LaSalle National Bank of Chicago, 10.15 percent; E. F. Hutton of Chicago, 12 percent; and Ann Arbor Bank & Trust of Ann Arbor, 13.45 percent.

Methodist Home Seeks Summer Volunteer Aides

Chelsea United Methodist Retirement Home is again looking for young people to volunteer this summer in the Activity Aide Program.

This is an excellent opportunity to meet older people and to do valuable Christian service. Aides visit, take residents for wheelchair rides, assist with programs and help out in a variety of ways. Also, this volunteer program provides excellent practical experience in preparation for a future job.

Students in grades six through 12 may participate. Interested persons should call Bill Champion, activities director, at 475-8633.



You'll be able to chop onions without tears if you periodically rinse your hands under cold water while chopping.



HOSPITAL RETIREE HONORED: A breakfast was held for Lois Speer, LPN, who retired from Chelsea Community Hospital after eight years of service. "Lois has been a very dedicated, caring employee. She provided warm, individual care to each of her patients. The hospital is sad to see her go," remarked Kathy Brubaker, director of nursing. Lois plans to take advantage of her free time, beginning with a trip to California. Lois is a licensed practical nurse who worked on the west unit of the hospital.

U.S.-China Trade Declines This Year

U.S.-China trade totalled 1.46 billion U. S. dollars in the first quarter of 1982, a 6.5% decline compared to the same three months last year, the U. S. embassy reported.

The United States maintained an over-all trade surplus with China, but it was less than half the surplus recorded in first quarter 1982, the embassy said.

U.S. exports to China totalled \$1.18 billion in first quarter 1981, but only reached \$905 million this year, primarily because of sales declines in wheat, raw cotton and textile yarns and fabrics, the embassy said.

Meanwhile, Chinese exports to the United States increased from \$380.4 million to \$556.6 million on the strength of new sales of crude petroleum, petroleum products, clothing and accessories, footwear and nonmetallic minerals.

The trade trend reflected the dramatic shift in China's agricultural policies. Farmers now may own private plots and sell commercial crops such as cotton and tobacco.

FOOD BUY-LINES

By Ada Shmabarger, Extension Food Marketing Specialist

June is about to "bust out all over." So are some exceptionally good food values, such as seasonal fruits and vegetables, broilers, eggs and turkeys. These, plus news of lower prices for coffee, cocoa and sugar, should give food shoppers a better than usual month.

Michigan strawberries are now predicted to come to market in volume the first week in June, a little ahead of schedule. The crop looks good at this point, but weather at harvest is most critical.

The outlook for early peaches from the South is not good. North Carolina was the hardest hit by early spring freezes and hail, which cut production of Southern peaches by 53 percent.

California had weather problems which will curtail production of early plums. A good crop of Valencia oranges is coming to market now. Sizes are larger than they were at the beginning of the season. Western peaches are in fairly good shape and nectarines are looking very good. Eastern nectarine producing

areas did not fare so well and will not be a big factor this year.

Melons from Texas and Florida are coming to market in such volume that shoppers won't have to wait until July 4 to buy a whole one. Michigan melons won't be available until the end of July.

A large array of vegetables is available, and the list gets longer almost every day. For starters, head lettuce during June will come almost exclusively from the Salinas, Calif. area. Size and quality may be variable for a week or so but should then reach the high standards shoppers have come to expect. Lettuce prices will probably drop, allowing consumers to buy other salad fixings, such as vine ripe red tomatoes, radishes, green onions, cucumbers and peppers. As the season progresses and sources of production move closer to Michigan, prices will moderate.

Sweet corn, green beans, broccoli and cauliflower will be coming in from other states in June. The quality of these items is exceptional because of new varieties that hold well and improved packaging and refrigeration.

An ample supply of meat and poultry is available to go with all these good fruits and vegetables. Large storage holdings of turkey make it a likely candidate for specializing throughout the summer.

Broilers will also be featured often by supermarkets as they scramble for specials in the meat department.

Boost Your Herd's Weight Gains With Staley® Sweetlix® Rumensin® Blocks

- Improves Nutritional Value of Most Forage
- Promotes Faster, More Economical Weight Gains
- Excellent for Weaned Calves and Yearlings
- Self Controlled Consumption
- Includes Important Vitamins and Minerals

We carry a complete line of these and other Economical Sweetlix Blocks.



McCALLA FEED SERVICE

CHELSEA, MICHIGAN 48118

CHELSEA COMMUNITY HOSPITAL presents another **SMOKE STOPPERS CLASS**

- If you are a health professional, you may want to refer a patient to us.
- If you are a Smoke Stoppers graduate, you may want to tell a friend or relative about us.
- If you are a smoker, maybe the time has come when you want to stop. And stay stopped.

STOP SMOKING IN 5 DAYS.
No ifs, ands or butts!



No matter how many times you have tried to stop smoking before, this will be your last. Because our 5-day group program neutralizes your desire for tobacco...easily and painlessly. That's why The American Medical Association, Blue Cross/Blue Shield and other leading health care organizations have selected the Smoke Stoppers program for their employees. We don't use scare tactics or filters and devices to get you to stop smoking. Nor do you have to worry about weight gain or tension.

Five Days to Freedom

At the completion of the Smoke Stoppers program, you will find that you are once again your own person. You will be completely free from the need to smoke. And all it takes is five days...seven informative hours...and the first session is free.

Free Explanatory Session

Monday, June 7th, at 7:00 p.m.
or Tuesday, June 8th, at 7:00 p.m.
Chelsea Community Hospital

Come to this session and bring your cigarettes. In 5 days, you won't need them any more - no ifs, ands or butts! Chelsea Community Hospital is sponsoring this highly successful program for employees and the general public at a specially reduced fee. If additional information is needed please call:

994-3329

Smoke Stoppers

THE PROVEN WAY TO STOP SMOKING

© 1981 SSL

Jiffy market

Big Enough To Serve You... Small Enough To Know You!

Corner of Sibley and Werkner Rds. - Chelsea, Michigan 48118

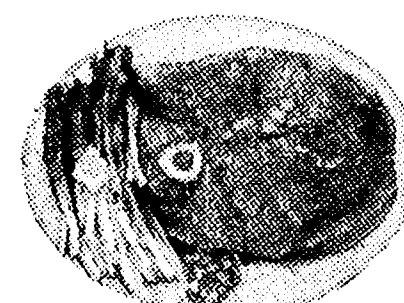
PHONE 475-1701

Sale Prices Good June 1-June 5

Complete Fresh Meat Dept. - U.S.D.A. Choice Beef - The Finest of Fresh Pork

JIFFY MARKET MEAT DEPT.

U.S.D.A. CHOICE



ROUND STEAK
Full Cut lb. **\$1.98**



Quartered PORK LOINS
1/4 Pork Loin Sliced into 9 to 11 chops **\$1.59**

FRESH LOCAL FARM

LARGE EGGS ... doz. **69¢**

CAIN'S **POTATO CHIPS**

Reg. or Marcelle

1-lb. Bag **\$1.79**

FRESH CALIFORNIA **HEAD LETTUCE**

59¢ ea.

FARM MAID **HOMOGENIZED MILK** ... gal. **\$1.98**

LOW-FAT MILK ... gal. **\$1.69**

ORANGE JUICE ... 1/2 gal. **\$1.19**

COTTAGE CHEESE 1-lb. ctn. **89¢**

"NEW" HOLSUM BUTTERTOP "NEW"

WHEAT BREAD 20-Oz. Loaf 1 1/4-Lb. **69¢**

FRESH MEATS - GROCERIES - PRODUCE - BEER - WINE - LIQUOR

Open 7 a.m. Morning to 10 p.m. Nights - 7 Days A Week

Letters to the Editor

Dear Editor:

I found the article in May 23's issue of The Ann Arbor News regarding Kinship Homes and area dairy farmers extremely upsetting. I teach mentally impaired adults at Chelsea High school and have a member of the group home in my classroom. I have taught for more than 13 years and my experience with area farmers has been absolutely fantastic. They have bent over backwards to help the handicapped. Several of my students have received paid job training working on dairy farms.

I might also mention that were it not for area farmers, many Special Olympic athletes would not have been able to go to the annual state meet held at Central Michigan University. The Trinkle Barn Dance Committee has annually held a dance that has sent our youngsters to compete in this special athletic competition for mentally impaired children and adults. During the years that I was Area Director, I received tremendous support from them.

I feel The News article did a disservice to dairy farmers. They were treated as if one man was a spokesman for the entire group. I want to emphasize that I have never seen any negative attitudes towards the mentally impaired exhibited by any of the dairy farmers I have come into contact with in my teaching career. On the contrary, they have been supportive and a very important part of my vocational training program.

Nancy Cooper
Chelsea High School
Special Education

Dear Mr. Editor:

As I sat down to breakfast and The Chelsea Standard what do my wondering eyes behold but the scriptures according to Mrs. Millie Warner.

She is an excellent example of the destructive powers of people with good intentions. I have so far managed to ignore her letters but today she hit a nerve.

She wishes everyone to live as

she thinks best, and worse yet she wants to make it law. There was another like her called Mrs. O'Hare, who so objected to prayer in public schools she had the law changed to abolish it.

But back to the issue of the Right to Life. I think it could be safely said she wasn't raised in an incestuous atmosphere or made pregnant by rape or already had five kids and have another unwanted pregnancy.

Oh, it sounds good that "ounce of prevention being worth a pound of cure." However, some of the unwanted pregnancies are teens or younger and their parents don't want their moral lowered by telling them about the preventives. Then are so surprised when Precious starts putting on weight around the waist line.

Now how about the children that are born, some to children themselves. How about statistics on the other side. How many cases of neglected or abused children has she seen, and those made public are only the tip of the iceberg, about 10 percent.

Those born into an incestuous home will be abused, some when they are less than a year old, by their father, grandfather, uncle or all combined.

Those neglected are stunted mentally and physically; they will live on the streets or in institutions their entire lives. When you look in their eyes nothing looks back at you.

The abused are worse. Unwanted, the parents take every disappointment and failure out on them. The only attention they get is torture. The lucky ones die young. If they live to adulthood there is a pattern of abuse established they will pass on to their children.

I can hear you saying, "But the courts protect them." My dear Millie you have lived with your head in the sand so long you think grit in the eyes is the norm. The courts are overloaded and 80 percent of abused and neglected cases never make the courts. The courts hesitate to remove a child from a parent and sometimes return the child to the

parent and are surprised when that child is killed.

Of those removed to foster homes, they are shuffled from home to home, some good, some not so good. By the time they are grown they have never known love so they don't feel love. Look back over the court records and see where the habitual criminal comes from—it's there but not published by the right to life.

When your grandmother is beaten to death, with a hammer, for her social security check, and your child mugged and the robber, rapist is jimmying your door, ask them what kind of childhood they had. Ask if they were a wanted pregnancy.

Before you start shaking your finger at me, screaming pro-murder, think about this—is it better to end a life, before birth or waste one? I'm not omnipotent, I don't know. I know something as personal as abortion is best left to the individual to decide not the courts.

I think the ideal solution would be for those wanting an abortion to line up at one door and the pro-lifers at another. Then take the fetuses from one and implant in the other. That way both are happy. I wonder if the pro-lifers would be so eager to sign up if it meant they would take the financial and emotional responsibility of raising another child.

I won't sign this as I don't have time to trip over Millie and her right-to-lifers on my doorstep. I am busy trying to deal with the children of unwanted pregnancies.

My name is legion.

Dear Mr. Editor,

I am a regular reader of The Chelsea Standard and really enjoy it. However, I have found the gospel according to Mrs. Millie Warner rather trying.

This latest has hit an all-time low in tastelessness. Reprinting the propaganda of the Right To Life of Michigan News is right up there with a photo album of Springtime in Auschwitz.

I know there are gore stories put out by every agency to popularize their cause. Next week, why not equal time for the Humane Society?

I really hope you will find something better to print than another Millie Warner letter.

Mrs. Dan Knight.

Lansing Firm Granted Contract For \$8.4 Million

Granger Construction Co. of 6287 Aurelius Rd., Lansing, has been awarded an \$8,425,000 contract by the U.S. Army Corps of Engineers to renovate medical facilities at Wurtsmith Air Force Base in Oscoda, U.S. Rep. Jim Dunn announced this week.

The renovation work to be done by Granger Construction will include remodeling the existing medical and dental facilities and building a 50,000 square foot addition, Rep. Dunn said.

Granger Construction was awarded the contract after submitting the lowest bid among 18 competitors for the contract, the mid-Michigan Congressman said.

Bill Frank, budget manager for the construction company, said work at the Air Base should begin by July 1. The project is expected to take 27 months for completion, he said.

"Granger has a fine record for doing quality work," Rep. Dunn said. "It is an important contract and I'm pleased that they have been awarded the job."

"Defense contracts are an important means of helping the economic fortunes of mid-Michigan," he added.



CHELSEA KICKS: Members of the 1982 Chelsea Kicks soccer team include, front row, left to right, R. Sabo, J. Popovich, W. van Reesema, J. Mitchell and B. Ackley; back row, left to right, J.

Wilcox, B. Centifanti, D. Hutting, T. Greenleaf, B. Schulz, G. Ackley, V. Salyer, R. Castillo, T. Pennington and D. Lange. Not present for the photograph was C. Burkhalter.



ANOTHER GOAL is booted toward the opposing goalie as John Mitchell maintains the ball in

bounds enroute to another Chelsea Kicks score.



'SAFE BOATING TIPS'

From Ann Arbor Flotilla 17-03,
U. S. Coast Guard Auxiliary

*"Keep Boat Wake Down"

Ann Arbor's Flotilla 17-03 of the U. S. Coast Guard Auxiliary reminds you that when you are boating, you should watch your boat's wake. A boat owner is legally responsible for personal injury or property damage caused by waves from his boat.

Slow down to "no-wake" speeds near swimming areas and boat landings. Even small waves

can cause problems to swimmers, and make launching a boat extremely dangerous.

Beware of making sizeable waves near fishing boats, which are often loaded to capacity and therefore easily swamped or capsized.

Reckless or negligent operation of a power boat can subject the owner to a citation.

BIG SCREEN - TV

GREAT FOOD and GOOD DRINKS

For Your Dancing Pleasure and Enjoyment—
"DENNIS RUBY and THE PERSUADERS"

Music for all ages

Friday and Saturday, 9:30 p.m. to 1:30 a.m.

LITTLE ROOSTER RESTAURANT & LOUNGE

11485 North Territorial Rd.

Ph. 426-8668

Tues., Wed., Thurs. 4 p.m. to 10 p.m.
Friday, 4 p.m. to 2 a.m. Saturday, 2 p.m. to 2 a.m.
Sunday 4 p.m. to 10 p.m.

CARRY-OUTS 426-8668 - PIZZA - FRIED CHICKEN

20% Discount to Senior Citizens

Swap Shop . . .

(Continued from page one)

Swap and Shop hosts ham radio operators from various cities and states who will have their wares available for purchase. Anyone with an interest in electronics will be sure to take advantage of this sale.

Food will be available through Timothy's Catering service.

PAINTING, LAWN MAINTENANCE and other odd jobs.

Call
475-8804
or 475-8005
LOW RATES



Juke Box Rentals

for:

- ★ REUNIONS
- ★ RECEPTIONS
- ★ PARTIES

... every special event

Zemke

Operated Machines

(313) 662-1771

Let's Dance

Friday & Saturday 9 P.M. - 1 A.M.



Featuring
Sca!

The FRIENDLIEST Food & Drink
Establishment in Jackson

Off 194 Al Sargent Rd. Exit - (517) 764-1200



THE CAPTAIN'S TABLE

FINE FOODS AND COCKTAILS

Join Us for Our Daily

LUNCHEON SPECIALS

Soup and Sandwich or Soup and Salad

EVENING SPECIALS

Monday Our regular menu

Tuesday Chicken Buffet

Wednesday New York Strip Steak

Thursday Roast Beef Buffet

Friday Prime Rib

Lake Superior Whitefish

Saturday Prime Rib

WITH SALAD BAR

Choose from Our Scrumptious
Home-Made Dessert Cart
Friday and Saturday Evenings

HOURS: Monday thru Friday . . . 6 a.m. to 9 p.m.
Saturday 7 a.m. to 9 p.m.

8093 Main St.
Dexter

426-3811



BREAKFASTS

★ Egg McMuffin

★ Hot Cakes

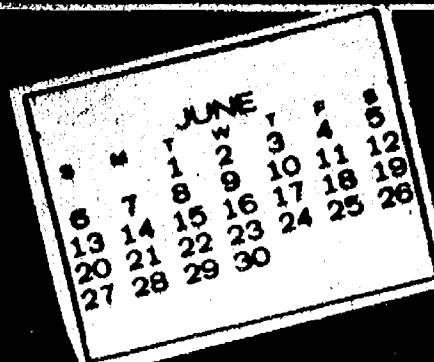
and Sausage

★ Scrambled Eggs,
Sausage, English
Muffin

You deserve
a break today.



1535 S. Main, Chelsea
Ph. 475-9620



COMMUNITY CALENDAR

Monday—

Chelsea Kiwanis Club meets every Monday, 8:30 p.m. at Chelsea Community Hospital.

Parents Without Partners—support group for single parents, Monday, June 7, 8 p.m. Call S. Woods at 971-8084 for directions.

Chelsea School Board meets the first and third Mondays of each month, 8 p.m., in the Board Room.

St. Mary's Altar Society, first Monday of each month, 7:30 p.m., at Rectory basement.

Chelsea Lionsess, second Monday of each month at the Meeting Room in the Ann Arbor Trust Co. on M-52, Chelsea, at 7:30 p.m. Call 428-7179 or 475-9455 for information.

Lima Township Board regular meeting first Monday of each month, 8 p.m., Lima Township Hall.

Chelsea Area Historical Society, Monday, June 14, 7:30, McKune Memorial Library. General meeting.

Recreation Council, second Monday of each month, 7:30 p.m. in the Village Council room above the police offices. Open to the public.

Tuesday—

Lima Township Planning Commission, third Tuesday of each month, 8 p.m., Lima Township Hall.

Chelsea Village Council, first and third Tuesdays of each month.

Sylvan Township Board regular meetings, first Tuesday of each month, 7 p.m., Sylvan Township Hall, 112 W. Middle St.

Inverness Country Club pot-luck and euchre party, 6:30 p.m., first Tuesday of each month.

Lions Club, first and third Tuesday of every month, 6:45 p.m., at the Wolverine Lounge.

Chelsea Community Hospital Nutrition Program, pre-natal nutrition classes, fourth Tuesday of each month, 6 to 7 p.m. at the Hospital. To register, phone 475-1311 (ext. 354). Class is free of charge.

Rebekah Lodge No. 130 first and third Tuesday of each month, 7:30 p.m.

Chelsea Child Study Club second and fourth Tuesday of each month, 8 p.m.

Chelsea Jaycees, first Tuesday of each month. For more information call Jerry Martell, 475-1966.

Chelsea Rod and Gun Club regular meeting, second Tuesday of each month at the clubhouse, Lingane Rd.

Huron River food co-op forming, new member openings. Next meeting, June 15, 7 p.m., St. Joseph convent basement, Dexter. For product and price information call Jan Dohner, 475-9633.

Olive Lodge No. 156 F&AM regular communications Tuesday, June 1, 7:30 p.m.

Wednesday—

Chelsea Communications Club, fourth Wednesday of each month, 8 p.m., Chelsea Lanes basement meeting room.

OES regular meeting, Wednesday, June 2, 7:30 p.m., at the Masonic Hall.

Thursday—

Chelsea Band and Orchestra Boosters, second Thursday of each month, 7:30 p.m., high school band room.

Knights of Columbus Women's Auxiliary, second Thursday of each month, 8 p.m. at K. of C. Hall, 20750 Old US-12.

Lyndon Township Planning commission will now meet at 8 p.m. the second Thursday of each month.

Royal Arch Masons No. 140, regular convocations Thursday, June 3, 7:30 p.m.

Friday—

Senior Citizens meet third Friday of every month, pot-luck dinner, games and cards, 6 p.m. at Senior Citizen Activities Center at North School.

Saturday—

Exhibitors of hand-made arts and crafts are invited to participate in the 6th annual Dixboro Festival on Saturday, July 17 from 1 to 9 p.m. Sponsored by the United Methodist church of Dixboro. Call Diane LaPointe, 668-7987 after 5 p.m. if interested.

Dexter-Chelsea Lamb Club lamb weigh-in June 5, 9 a.m.-12 p.m. at Chelsea Fairgrounds. Open to all Chelsea and Dexter youngsters. For information call Richard Bareis, 475-2202.

Sunday—

Divorced and Separated Catholics, Sunday, June 6, 6:30 p.m. in the library of St. Francis school. Lora Johnstone, licensed credit counselor and office manager of Debt Aid, Inc., of Ann

Arbor, will discuss financial budgeting, a topic of immediate concern to most. After a wine and cheese break, a question and answer session will follow. For further information, contact Lois Plantefaber (662-4534) during the day or Judy (475-1898) or Roberta (483-0798) evenings.

Misc. Notices—

Home Meals Service, Chelsea. Meals served daily to elderly or disabled. Cost per meal, \$2.25 for those able to pay. Interested parties, call Barbars Branch, 475-7644 or Ann Feeney, 475-1493.

Photography. Contest sponsored by the Humane Society of Huron Valley, in celebration of "Be Kind to Animals Week." Deadline: June 1. Pickup entry blanks at the Humane Society of Huron Valley, 3100 Cherry Hill Rd., Ann Arbor, or your local camera store.

Chelsea Social Service, 475-1581, 2nd floor of Village Offices. Thursdays, 10 to 4, or if an emergency need at other times, call Linda at 475-7406 or Jackie at 475-1925.

North Lake Co-Op Nursery school is now taking enrollments for the 1981-82 year for 3- and 4-year-old sessions. Anyone interested should call Gale Johnson, 475-1284.

Lamaze childbirth preparation classes are offered continually at Chelsea Community Hospital. To register, call 475-9556 or 475-7484.

Chelsea Co-op Nursery is now accepting applications for September, 1982. Please call Pat Peterson, 475-3282, or Deborah Feldkamp, 475-2825.

If you need help with clothing, shelter or putting food on the table, Faith in Action can help. We have food and clothing, and can help in other ways when the need arises. Please call 475-2003 or 475-2594, 10 a.m. to 8 p.m.

Construction Work May Delay Traffic

Resurfacing of the bridge deck carrying Interstate 94 Freeway over US-127 north of Jackson will cause 24-hour traffic slowdowns in both directions beginning Tuesday, May 25, the Michigan Department of Transportation (MDOT) reports.

Traffic will be reduced from two lanes to one lane in each direction.

Also affected will be the ramps carrying traffic from northbound 127 onto westbound I-94 and southbound 127 traffic onto eastbound I-94.

The work, expected to last four to six weeks, also will cause week-end slowdowns in the area.



CYNTHIA BOWEN

Cynthia Bowen Granted Business Education Award

The United States Achievement Academy announced last week that Cynthia Bowen has been named a 1982 United States National Award winner in business education.

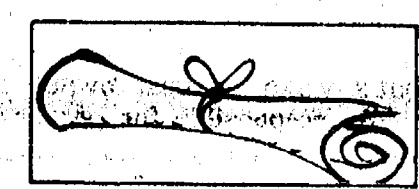
This award is a prestigious honor very few students can ever hope to attain. In fact, the Academy recognizes less than five percent of all American high school students.

Cyndi, who attends Chelsea High school, was nominated for this national award by Mrs. Marian Williams, an accounting teacher at the school.

Cyndi will appear in the United States Achievement Academy Official Yearbook, published nationally.

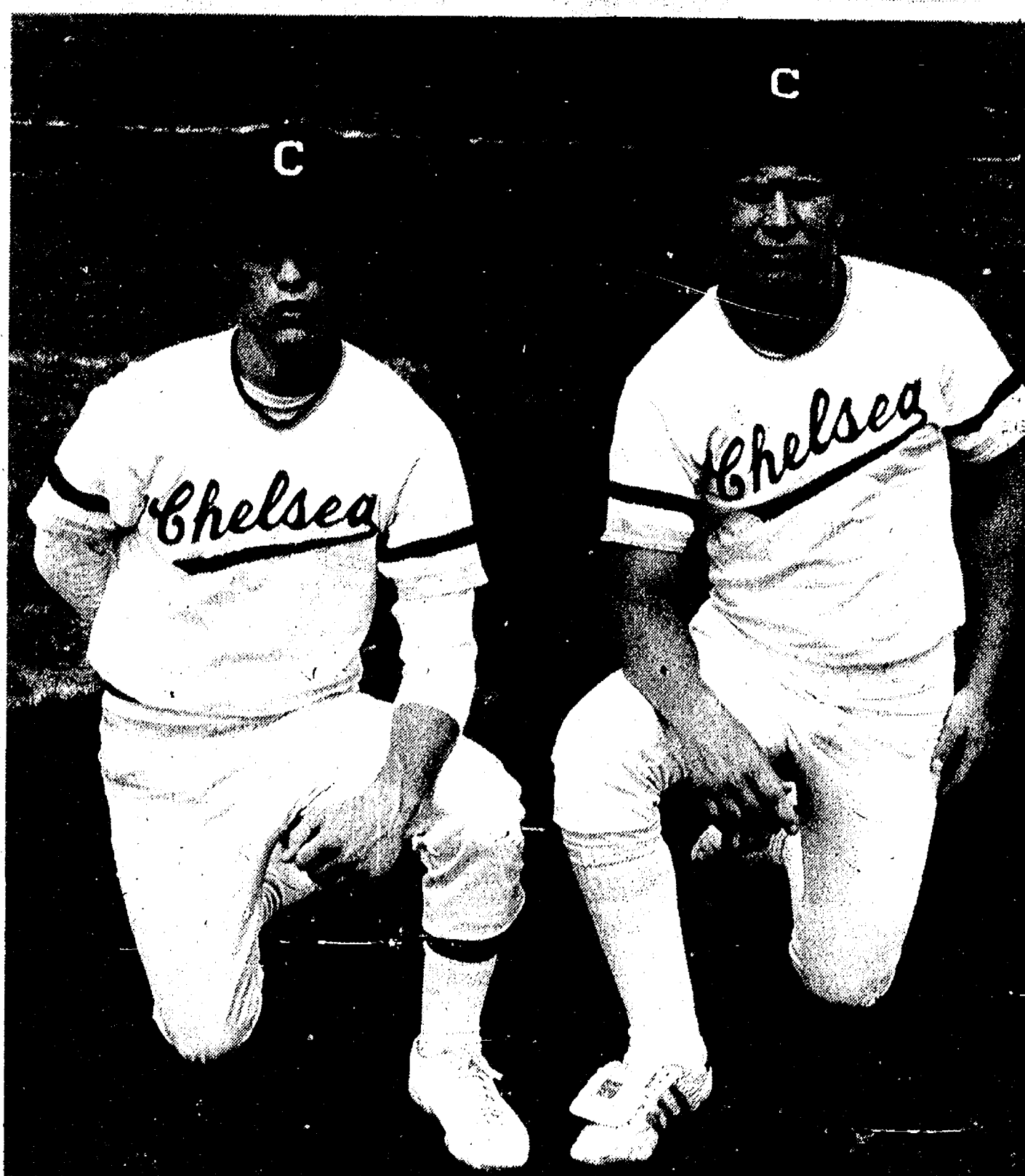
The Academy selects USAA winners upon the exclusive recommendation of teachers, coaches, counselors or other school sponsors and upon the standards for selection set forth by the Academy. The criteria for selection are a student's academic performance, interest and aptitude, leadership qualities, responsibility, enthusiasm, motivation to learn and improve, citizenship, attitude and co-operative spirit, dependability, and recommendation from a teacher or director.

Cyndi is the daughter of Mr. and Mrs. Tony Bowen. Her grandparents are Mr. and Mrs. Roy Krichbaum of Servia, Ind., and Mr. and Mrs. George Bowen of Belmont, N. C.



The first public high school in the United States was opened in Boston in 1821.

Sluggers of the Week



BULLDOGS STEVE GRAU AND BOB TREVINO are this week's featured baseball players. Grau is a senior right-handed pitcher who wrestles in the off season. Currently, he has an ERA of 2.24 and shut out Ann Arbor Huron during

opening day this season. Trevino is a middle infielder who alternates between second base and shortstop. Playing baseball only, Trevino's versatility is an asset to the Bulldog team.

Senior Citizens Offered Trip To Rochester

On Tuesday, June 8, Chelsea senior citizens will head to Rochester for a tour of Applebarrel Farm and its octagon house, featured in many recent newspaper articles. Departure time is 9 a.m. via chartered bus.

Following the visit to the farm, participants will travel to Win Schuler's Great Steak for dinner, choosing from chicken teriyaki and London broil.

Filled with fine food, the group will proceed to a variety of outlet stores for browsing and shopping prior to the trip home.

END THE MUD PROBLEM and Get Ready for Summer! HAVE A NEW ASPHALT DRIVEWAY

FREE ESTIMATES KLINK EXCAVATING PHONE 475-7631

If you're over 21, own a home, and have a family... ..start clipping:

Your home, your savings, your investments, and all your possessions make up an estate that you'll want your family to have, upon your death.

Ann Arbor Trust can help you be sure of that.

Our Estate Planning service can minimize taxes and help you build your estate. And help build your family's future.

It's easy, affordable, and, best of all, it's something you can do now.

ANN ARBOR TRUST

"Everyone's Guide to Financial Security" series

Free Brochure/Free Initial Consultation:

☐ Yes, please send me a copy of Ann Arbor Trust's guide to Estate Planning. How to minimize taxes while providing for your family's future. I understand that there's no obligation and my initial consultation, should I choose one, is free.

☐ Yes, please send me a copy of Ann Arbor Trust's guide to Estate Planning. How to minimize taxes while providing for your family's future. I understand that there's no obligation and my initial consultation, should I choose one, is free.

Name _____
 Address _____
 City/State/Zip _____
 Phone _____

Call for faster service:
 994-5555

Mail to: Ann Arbor Trust Company 1478 Chelsea-Manchester Road Chelsea, MI 48118

PALMER

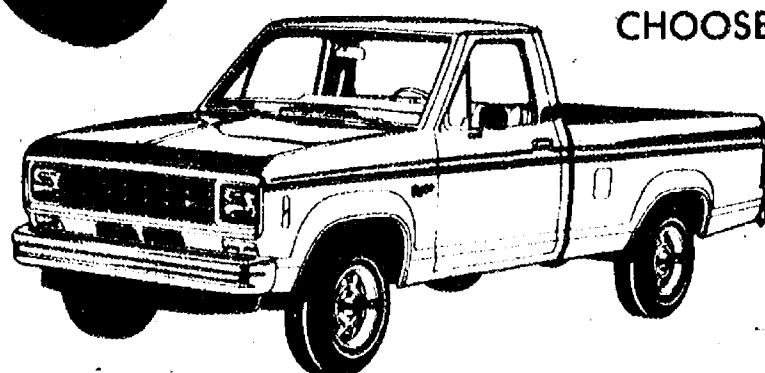
19th ANNUAL "AMERICAN MADE"

PICK-UP SALE

LIMITED TIME ONLY

FROM \$5495⁰⁰ **PLUS HIGHEST TRADE-IN VALUES**

OVER 40 TO CHOOSE FROM



new-size "AMERICAN MADE"

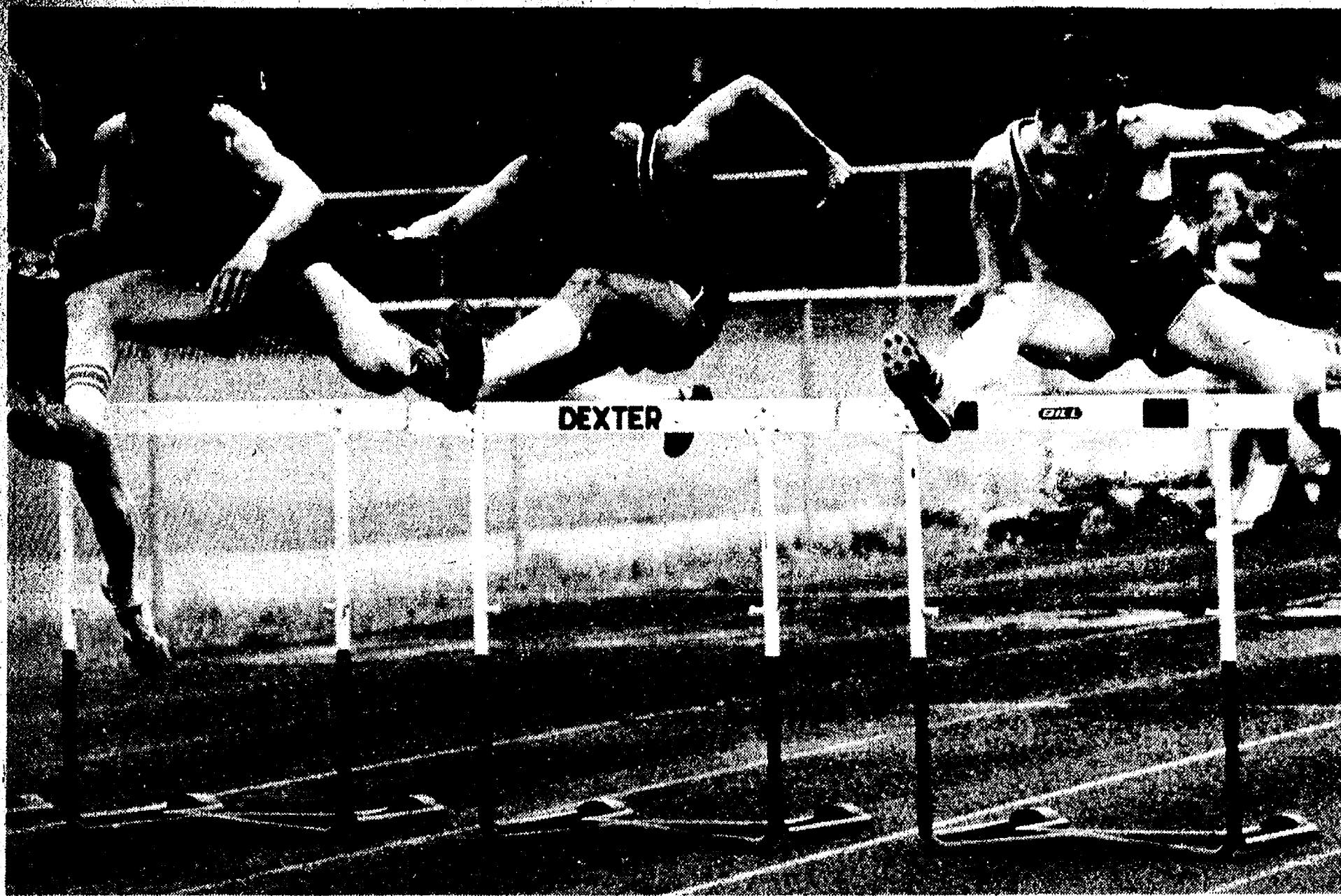
'83 FORD RANGER pickup

*Plus Tax, Title, Destination Charges, and Rebates

PALMER

Michigan's Oldest Ford Dealer

CHELSEA 475-1301



100 HIGH HURDLES: Early in the event, the Chelsea hurdler appears to have taken a slight lead, crossing the hurdles on the Dexter track with apparent ease and fine form during the

Southeastern Conference league track meet held Wednesday. Chelsea finished the meet and the season in second place.

Tracksters Take 2nd in SEC Meet

Chelsea's boys track team finished second in the Southeastern Conference track meet held at Dexter on Wednesday, May 26. Winning the meet was Lincoln with 84 points followed by Chelsea with 71. Milan was third with 62 points, Saline fourth with 58. Western took fifth place with 49.5 points while Tecumseh scored 25.5 points for sixth place and Dexter was seventh with 19 points.

The second-place league meet finish puts the Bulldogs in second

place over-all to Lincoln.

The outstanding performance of the meet was the Bulldogs' distance ace Mark Brosnan who set two SEC records, winning the 1600 M run at 4:20.40 and the 3200 M run at 9:36.4.

Senior Bob Benedict also had a fine day, breaking his own SEC record by more than three seconds to win the 800 M run at 1:56.7.

Weightmen Todd Sprague and Ken Nicholas each won their specialties to give Chelsea five

first places on the day. Sprague won the shot put at 50' 5" while Nicholas took the discus at 158' 3".

"We ran very well and moved from a tied for third to sole possession of second place," said Coach Pat Clarke of his charges.

Other Bulldog placers at the league meet included:

Pole vault: Eric Buckberry, fourth, 10' 6"; Jeff Lantis, fifth, 10' 6".

High jump: Daren Pierson, fifth, 5' 10".

Discus: Todd Sprague, third, 137' 11".

Shot put: Ken Nicholas, third, 46' 5".

800 M relay: Toby Boyd, Randy

Krichbaum, Kevin Richardson and Russ Ramsey, third, at 1:32.2.

400 M relay: Toby Boyd, Randy Krichbaum, Kevin Richardson and Russ Ramsey, fourth at :44.9.

1600 M run: Del Magee, third, 4:33; Dave Kies, fifth, 4:45.

300 M low hurdles: Mike Hintzen, third, :39.7.

200 M dash: Toby Boyd, sixth, :23.7.

3200 M run: Allen Cole, sixth, 10:26.

1600 M relay: Mike Hintzen, Kevin Richardson, Daren Pierson and Bob Benedict, sixth at 3:35.2.

Girls Track Team Places 6th in SEC Meet

Chelsea's girls track team edged Western, 28-19, to finish sixth in the Southeastern Conference track meet Wednesday. Milan was a convincing winner in the meet and claimed the over-all league championship for the second consecutive year. Tecumseh was second.

The Bulldogs got off to a good start with strong showings in three field events. Cinda Thornton hit a personal best for the third consecutive week with a 95' 3" throw and a fourth place in the discus, losing by 1/4". Tracy Bohlender equaled the winning height in the high jump with a jump of 5' but was third because of more misses. Sue Young jumped 15' 4 1/2" in the long jump, good for sixth in a strong field.

In the 100 hurdles, Bohlender ran a :15.5 for a strong second behind Martha Hans of Tecumseh. The same pair also ran 1-2 in the 200 hurdles. Sue Young, Carolyn Chandler, Carol Warren and Tracy Bohlender ran an excellent 800 relay but their 1:52 time was only good enough

for sixth place in a very fast field.

The 400 relay team also ran their best, cutting a second off Saturday's regional time. Still, the team of Lisa Vandegrift, Sue Young, Carolyn Chandler and Wendy Wolfgang couldn't place.

Sandra Frame ran a 5:35 1600 meters, her best ever, for fifth in that event. She came back later to run an outstanding race in the 3200 but wasn't able to outkick arch rival Jennifer Pratt of Milan, who narrowly edged

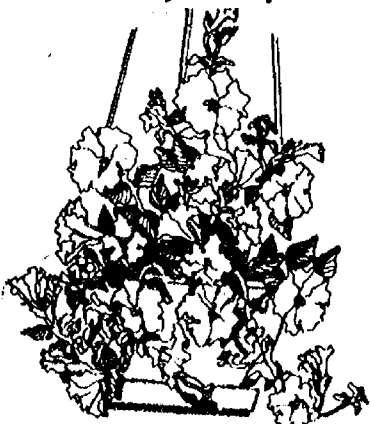
Frame for third. Frame's fourth place time was 11:75. Carol Warren turned a :62.2 400, the best on the team this year, for fifth in that event. Warren combined with Wendy Wolfgang, Carolyn Chandler and Lisa Vandegrift to finish fifth in the 1600 relay to round out Chelsea's scoring.

"I'm pleased with our efforts," said Coach Bill Bainton. "This was a very competitive meet and we ran some good times. I think we ended the season on a good note with our performances Saturday and today. With some help from the freshmen next year, we could get back in the thick of things."

D. C. CHIMNEY SERVICE
9823 Dexter-Pindney Rd.
Pindney, Mich.
878-6207
475-8503

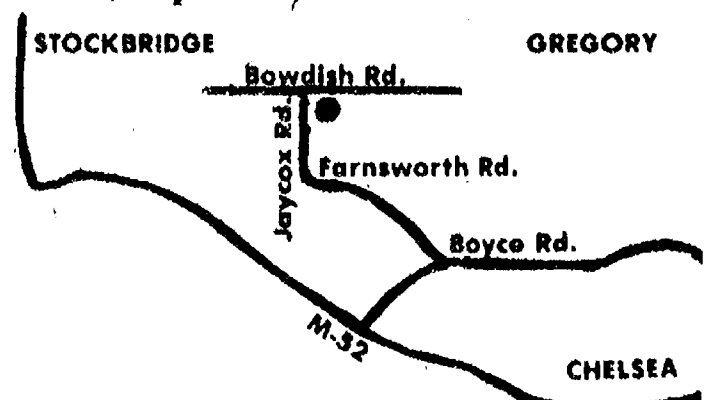
Dieting? You'll be delighted to know there's a satisfying snack food that's less than 100 calories. A hard-cooked egg is only about 80 calories, and, enjoyed slowly with a sprinkling of an herb or some seasoned salt, it really helps satisfy hunger pangs.

Kaiser's Greenhouse
12700 Jaycox Rd., Stockbridge
Open 7 Days, 8 a.m. - 9 p.m.



Geraniums
Flowering Annuals
Vegetable Plants
Hanging Baskets
Ceramics

Melon, Squash & Cucumber Plants



(517) 851-8745



WALLHANGING PRESENTATION: Members of Girl Scout Cadette Troop 98 presented a hand-made wallhanging depicting a rainbow and two doves to Chelsea Community Hospital. The wallhanging was presented in celebration of Girl

Scout Week. Accepting the wallhanging on behalf of Chelsea Community Hospital is Kathy Brubaker, left. Also pictured, from left to right, are Katie Heaton, Jimmie Ritter, Karen Paulsell and Tammy Jankuski.

Your Health Options

By Beverly Chethik
Director of Health Education, Washtenaw County Health Dept.

Every summer I realize—too late—that I need to lose weight. A friend suggested that I go on an 800-calorie diet, but I am not sure it will be safe.

You are right to be skeptical about very low calorie diets. While these diets have become popular, recently, the Michigan Department of Public Health suggests that they "can be dangerous or even fatal if they are used without close medical supervision" throughout both the dieting period and after the diet period has ended.

Supervision includes—at least—physical examinations and regular blood and urine tests. People respond differently to very low calorie diets. Some persons—even those who have not had health problems in the past—develop medical complications after only a few weeks on a diet with a calorie intake of 800 or less.

Medical complications can range from dizziness and nausea to collapse or even death.

Even after the dieter is finished dieting, it is important that food be reintroduced very, very gradually—still while the dieter is under medical supervision. If the dieter increases calorie intake rapidly, his/her heart may be seriously strained.

The best diets provide a full range of essential nutrients. Be sure your diet includes these nutrients; then you can reduce your intake of high calorie foods, avoid empty calorie foods and begin an exercise program to increase your physical fitness.

Swift and massive weight loss is risky business. A short-term effort—such as the 800 calorie diet you are talking about—is NOT

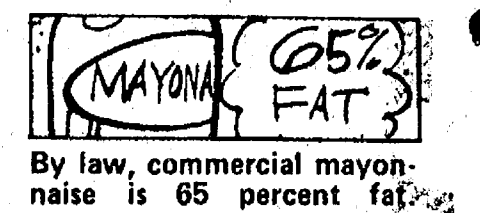
something you can live with on a permanent basis.

You'll be more likely to achieve your weight loss goal if you make permanent changes in your eating habits—building your diet around a selection of foods from the basic four food groups.

For more information about

nutrition and diets, please contact the Health Education Office at 973-1488.

YOUR HEALTH OPTIONS appears monthly in this paper. If you have a health related question, please write to this paper, Attn: YOUR HEALTH OPTIONS, or directly to the Washtenaw County Health Department, Health Education Office, Box 8645, Ann Arbor 48107.



By law, commercial mayonnaise is 65 percent fat.

SUMMERS CLEANING SERVICES

RESIDENTIAL - COMMERCIAL

Carpets - Walls - Upholstery - Floors
General Office Cleaning

475-3320

MIKE SUMMERS

FRANK GROHS CHEVROLET IN DEXTER

Would be pleased to take care of all your service, body shop needs, including Chevrolet warranty work on your present Chevy.

Give ROLLY SPAULDING or CHARLIE FREDETTE
a call at 426-4677
"Get the Best for Less"

FOR THE **GRAD** IN YOUR LIFE

SPORT SHIRTS

DRESS SLACKS

ATHLETIC SHIRTS

DRESS SHIRTS

JEANS

SHORTS

SWIMWEAR

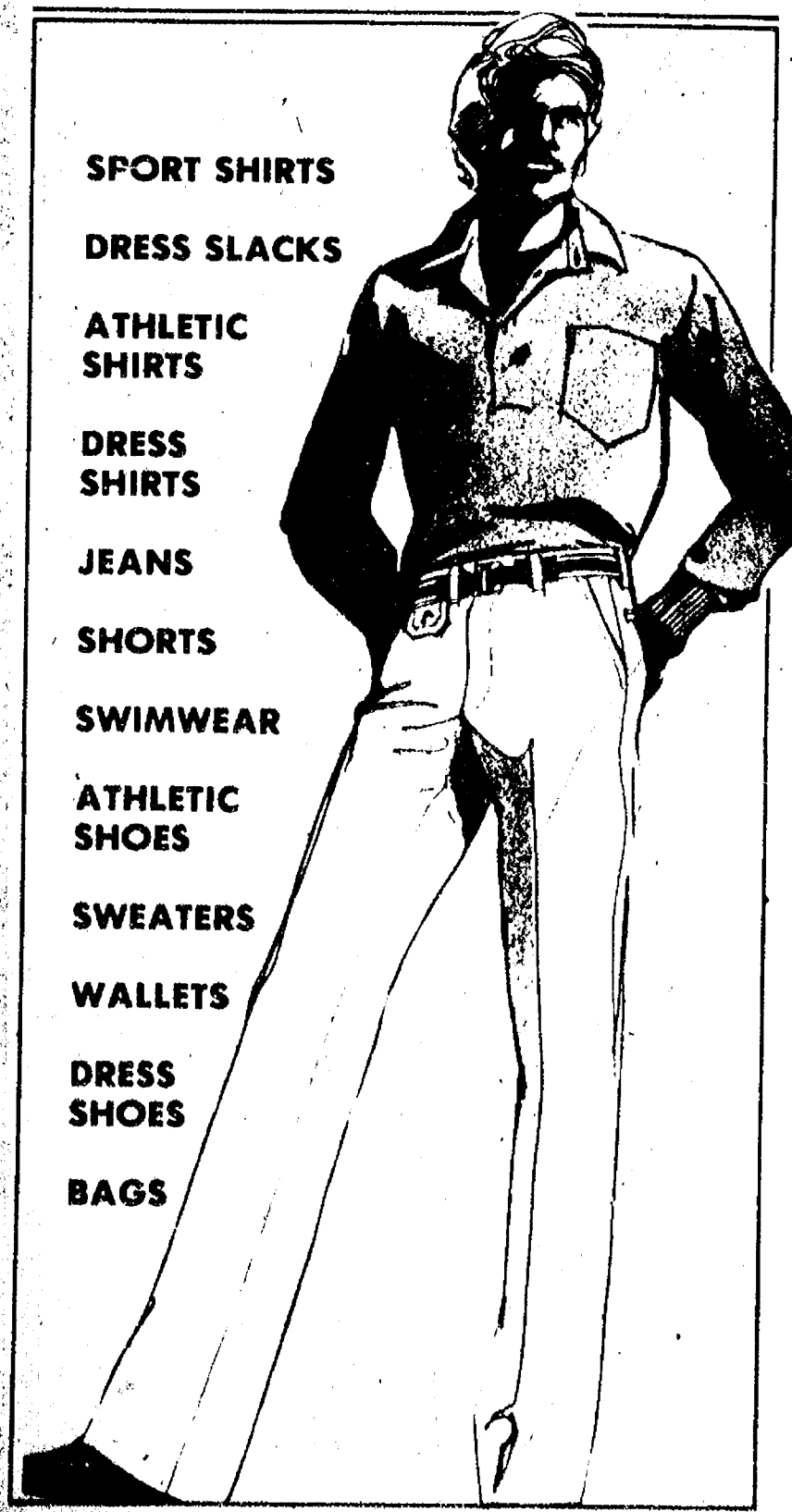
ATHLETIC SHOES

SWEATERS

WALLETS

DRESS SHOES

BAGS



FOSTER'S MEN'S WEAR

HOME PROTECTION

SALE

on Pittsburgh House Paints

SAVE \$4.00 gal.
off regular price.



Sun-Proof® Acrylic Latex Flat House Paint

Mildew resistant on paint film for its own protection. Has built-in acrylic flexibility to weather the weather! Resists cracking and peeling. Easy application and clean-up.

NOW ONLY \$16.95 gal.

White and ready-mixed colors only
Custom colors slightly higher

Sun-Proof® Oil Type House & Trim Paint

NOW \$17.95

White and ready-mixed colors only. Custom colors slightly higher.

REZ®

Wood Stains

NOW

\$11.49 gal.

Latex Type

\$12.97 gal.

Oil Type

CHELSEA HARDWARE

110 S. Main St., Chelsea

Ph. 475-1121

W. Schirmmacher Granted Degree

William Schirmmacher graduated from Santa Fe Community College, Gainesville, Fla. Friday, April 23, receiving an associate of arts degree with a major in physical sciences.

Schirmmacher, the son of Virginia Schirmmacher of Chelsea, was a cum laude graduate, completing his studies and maintaining a 3.7 grade point average. He is a member of Phi Theta Kappa national honor fraternity, Alpha Zeta Phi chapter.

Ohio Trip Offered To Senior Citizens

In a four day and three night outing, local senior citizens will head to our neighbor state, Ohio, Monday, June 28, returning home Thursday, July 1.

On the first day, the group will depart at 8:30 a.m. from the bus garage, traveling via chartered bus and arriving later in the day at Chillicothe. Upon arrival, the group will visit ancient Indian mounds, enjoy a buffet dinner and see the theatrical production,

"Tecumseh," prior to retiring to the Holiday Inn for the night.

Bright and early the next day, a visit to the Bob Evans Farm will take place followed by a trip to the Hudson Holiday Inn, where the group will stay for the next two nights. Enroute to this home away from home, an Amish dinner will be enjoyed and various points of interest explored.

Sea World and a Goodtime II boat ride and dinner will highlight day three followed by the return trip home Thursday. Enroute to Chelsea, the group will make a stop in Akron to visit Quaker Square and those interested may also decide to visit the Railway Museum adjacent to the square.

Cost for this holiday is \$170 for a double room, \$157 for a triple and \$150 for a quad and the tour price includes lodging, transportation, all admissions and three dinners.

Shopping Tour Set For Senior Citizens

Chelsea senior citizens will take part in yet another shopping adventure this week as the group boards a van at 12:30 p.m. at the North school Senior Citizen Center and heads into Ann Arbor.

This trip will include visits to various co-operative stores as well as an Ann Arbor spice shop. Cost of this month's shopping adventure is \$2.

The Chelsea Standard

Section 2

Chelsea, Michigan, Tuesday, June 1, 1982

Pages 9-16

Workingmens' Choice!



Fit... comfort... wear... three good reasons why this continues to be a "top demand" work shoe in the Red Wing line.

Features cushion insole with inside arch lift, inch-wide steel shank, oil and slip-resistant chemigum cork sole and heel. Stop in.

SIZES A-EEEE/6-16" *Not all sizes in all widths.

Red Wings

FOSTER'S MEN'S WEAR

SCHNEIDER'S GROCERY

121 S. MAIN ST., CHELSEA

PHONE 475-7600

10-OZ. PKG. ECKRICH SMOK-Y-LINKS	\$1.29	14-OZ. FROZEN PET RITZ CREAM PIES	49¢
8-OZ. CRTN. FROZEN BIRDSEYE COOL WHIP	69¢	STICK-QUARTERS KEYKO MARGARINE .2 lbs. 89¢	
6½-OZ. CAN CHICKEN OF THE SEA CHUNK LIGHT TUNA	85¢	8-OZ. TWIN PAK FLEISCHMANS SOFT MARGARINE	99¢
7-OZ. BOX KRAFT MACARONI & CHEESE DINNER 37¢		46-OZ. CAN H-L-C FRUIT DRINKS	67¢
18-OZ. BOX BETTY CROCKER CAKE MIXES	73¢	SINGLE 180-COUNT SIZE ROLL SCOTT TOWELS	67¢

HOURS: 8-6 Mon.-Fri.
8-4 Sat.

MEATS · GROCERIES · PRODUCE
BEER · WINE · LIQUOR

FUTURE SOFTBALL DIAMOND SITE: Dana Corp. presented the Village of Chelsea with a 5.5 acre plot of land for the development of two softball diamonds adjacent to Veteran's Park. Present for the official ceremony Friday afternoon were Phil Boham, Dana

Industrial relations manager; Village Administrator Fritz Weber; Village President Jack Merkel; and Dana plant manager Tom Green.

Dana Corp. Recreation Area Presented As Gift to Village

Nearly two years after the initial stages of Dana Corporation's 5.5 acre gift of land to the Village of Chelsea, a formal presentation and dedication of the land took place Friday afternoon.

This land will be used for the development of recreational facilities including two softball diamonds, which will be constructed in the near future.

Approval of a Federally subsidized grant to assist with this development came through in the

summer of 1980, less than two weeks after the federal assistance application was submitted to the United States Department of the Interior's Heritage Conservation and Recreation Service.

Monies received from the Federal government totaled \$39,000 and were taken from the Land and Water Conservation Fund, which helps states and local governments purchase needed lands and develop facilities for outdoor recreation on them. The project sponsor matches the

Federal grant with funds from state or other sources. The Chelsea Dana Field Recreation Area has matched the

Federal grant. The area has been appraised the Village of Chelsea's share is a portion of the value of the land—\$39,000 in all.

Environmental Education Camp Set at Nature Center

After last year's tremendous response, the "Waterloo" Nature Center will again be offering its Environmental Education Day Camp for the children of Chelsea and surrounding communities. The sessions will run for one week and will be tailored to a specific age group.

The camp will be offered during the week of June 21-25 for six- and seven-year-olds, and from Aug. 9-13 for eight- to 10-year-olds. Daily programs will run from 10 a.m. to 3 p.m.

Activities will incorporate hands-on experiences and constructive projects, making learning an enjoyable experience for the children. Each day will focus on a single theme dealing with the environment or natural history of the Waterloo area. Depending on the topics studied, children may learn about pioneer skills, wilderness survival, microscopic critters or pond life. Songs, games, hikes and crafts

will re-inforce the learning process.

Last year, Chelsea Community Hospital provided van-pool transportation for Chelsea village children. Unfortunately, the van-pool will not be available this year. When registering children, please let the Nature Center staff know if you are interested in car-pooling.

Cost for a one-week session is \$25 for members of the Waterloo Natural History Association, and \$35 for non-members. To register your child or if you desire further information, call the Nature Center Tuesday through Thursday, between the hours of 9 a.m. and 3 p.m. at 475-9069, or phone co-directors Emilie Polens at 475-7840 or Carol Strahler at 475-9444. Each session has a limited enrollment.

During the month of July, the Nature Center will be sponsoring a camp for children with learning problems. Call the Nature Center for further information.

Take A Look!



We have the cash to put you behind the wheel of a new '82.

Check out the smooth drive, easy handling and low gas consumption of the new '82's. When you've made a choice as to which new car you would enjoy driving stop in and arrange for a direct-to-you new car loan. We have new car cash that will put you in the drivers seat immediately.

CHELSEA STATE BANK

Member F.D.I.C.

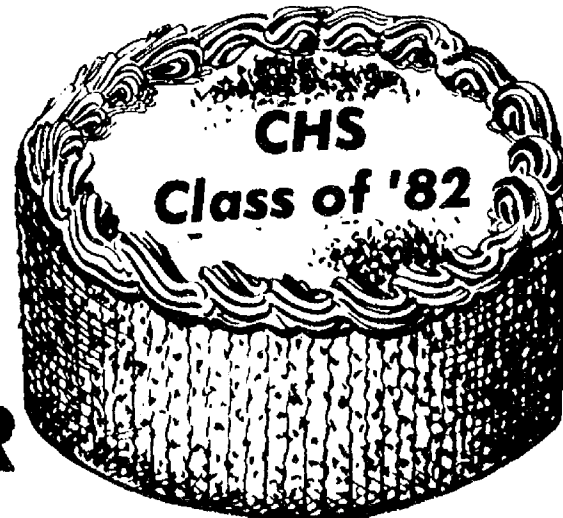
CSB

Branch Office
1010 S. Main

Ph. 475-1355

Main Office
305 S. Main

DECORATED CAKES



ORDER YOUR GRADUATION CAKES NOW!

All sizes available

Decorated to your specifications

OPEN 5:30 a.m. to 9 p.m. Mon. thru Sat. 7:30 a.m. to 9 p.m. Sun.

VILLAGE BAKERY

103 W. Middle

Ph. 475-9066

SPORTS



Softball Team Posts 5-0 Record To Win Title in Ann Arbor Tourney

Chelsea varsity softball team took part in the Ann Arbor News Softball Tournament on May 5-7 and came away as champions with an unblemished 5-0 record. The Chelsea team played their strongest ball of the year as they gave up just four runs in winning their five games in the rain interrupted tournament.

Chelsea opened the tournament by facing Pinckney with junior Donna Popovich on the mound. Donna pitched five strong innings, giving up just one hit and no runs before freshman Beth Unterbrink came on in the fifth inning to pitch. Beth gave up just three runs, three hits in pitching three strong innings as the Chelsea team came away with an easy 9-3 win. Maggy Sweet and Julie Patrick led the Chelsea hitters with two hits each with Sweet getting the big hit with a two-run double.

Next the Chelsea team met league rival Milan with ace pitcher Amy Unterbrink on the mound and Chelsea put the Big Reds away with an easy 8-0 win as Unterbrink gave up just one hit while striking out 10. Cathy Doll was the only Chelsea player with

two hits, including a double; while Unterbrink collected a bases loaded triple.

Saturday the Chelsea team faced Howell in a classic pitching duel between Amy Unterbrink and Howell's ace pitcher Julie Clark. The Howell pitcher shut down the Chelsea hitting attack until the fifth inning when Chelsea scored six runs, as Amy Hume walked and Shelly Weber singled, Hume was out on a fielder's choice but then Unterbrink singled and Maggy Sweet walked to force in the first run of the game. Laurie Cobb then singled in the second run and with the bases loaded Lisa Beeman broke the back of the Howell team with a solid triple into right center field. Cathy Doll followed this with a single to drive in the last run of the game. Amy Unterbrink then proceeded to strike out five of the Howell batters as she continued to shut out the Howell team, giving up just three hits and striking out 14 batters as Chelsea advanced with a 6-0 win.

Chelsea faced a very hot Pioneer team next, a team that had advanced through a strong bracket in a contest of unbeaten

teams. Donna Popovich started for Chelsea and shut out the hot hitting Pioneer team for five innings. The Chelsea team failed to get a run for Donna as the Pioneer pitcher, Debbie Copp, held the lady Bulldogs at bay. With the score tied at 0-0, Coach Waller brought in Unterbrink when it looked as if the game would be decided by which team scored first.

Chelsea opened the seventh inning as Laurie Cobb led off the top of the seventh inning with a hot smash off the glove of Pioneer shortstop and Chelsea was in business as Cobb reached first base. Copp struck out the next hitter, but Kim Forner put down a fine sacrifice bunt and was safe on the throw as Pioneer committed its second error of the inning. Cobb advanced to third on the play and Chelsea had a runner in scoring position with one out. Forner took second on the first pitch to Cathy Doll and Pioneer gave her an intentional walk to load the bases and create a force out at any base. Amy Hume took the first two pitches and then ripped the ball up the middle of the diamond and drove Cobb in with the winning run.

Pioneer went on the defeat their arch rival, Ann Arbor Huron, 6-1, before the rain stopped play for the day. The final game of the day was moved to Sunday which gave Pioneer a chance to rest before playing Chelsea again. On Sunday, Chelsea only had to beat Pioneer once while Pioneer needed two wins to defeat Chelsea. Amy Unterbrink started for Chelsea and Debbie Copp for Pioneer. Chelsea scored in the first inning to take a 1-0 lead but Pioneer came back in the third inning to tie the score without a hit and deadlock the game, 1-1. However, the Chelsea bats came alive in the fourth inning as Jane Verwey led off with a perfect bunt single and advanced to third on an error and a fielder's choice. However, with two runs in scoring positions and one out, Pioneer cut down the lead runner at home as Lisa Beeman laid down a sacrifice bunt.

What looked like a perfect play turned into disaster as Amy Unterbrink came in behind the Pioneer catcher who was running Lisa back to first. Beeman advanced to second on the play on Unterbrink at the plate and then scored as Kim Forner pounded the ball into center field. Chelsea had a three-run lead as Cathy Doll drove Forner home. Chelsea took the game and the championship as Unterbrink held Pioneer in check for the last three innings, posting a 4-1 win in the final game. It was Amy's third no-hitter of the year as she struck out only five and walked one as only three Pioneer runners reached base.

Amy Unterbrink, Amy Hume and Kim Forner were all named to the All Tournament Team and received medals. Coach Waller commented that it was a fine tournament for the entire Chelsea team.



CHAMPION BULLDOGS: Members of the 1982 Southeastern Conference championship Bulldog softball team are, front row, left to right, bat boy Eddie Waller, Amy Unterbrink, Shelly Weber, Laurie Cobb, Maggy Sweet, and manager Mary Lazarz; second row,

left to right, Lisa Beeman, Celeste Powell, Amy Hume, Donna Popovich, Jane Verwey, Marty Kovick; third row, left to right, Kathy Degener, Julie Patrick, Kim Forner, Cathy Doll, Missi Lazarz, and Coach Charles Waller.

Softball Team Claims SEC Title

Chelsea's varsity softball team wrapped up its fourth consecutive Southeastern Conference championship with a perfect 12-0 record. The lady Bulldogs fought off challenges from two strong league opponents, as they remained unbeaten in the league for the second year, compiling a 23-0 record.

Saline finished second in the league, losing only to Chelsea, 5-4, and 5-1, while Tecumseh lost to Chelsea in tough games, 4-3 and 5-4.

The Chelsea team featured the outstanding pitching of Amy Unterbrink (8-0 in the league) and Donna Popovich (4-0 in the league) along with excellent defense from an all-junior infield and a well-balanced hitting attack.

Chelsea outscored its league opponents, 116-28 as senior Shelly Weber led the hitting attack with a .541 league average and senior Maggy Sweet led the team in hits while hitting .466 in the league. Junior Amy Hume led the teams in runs scored and RBIs while hitting .433 and was also the leading power hitter with five extra base hits.

Juniors Julie Patrick (.500), Missi Lazarz (.350), Lisa Beeman (.461), Celeste Powell (.357) and Kim Forner (.352) all contributed to Chelsea's undefeated record in the league as Chelsea pounded out 118 base hits while the Chelsea pitchers gave up just 28 base hits while striking out 95 of 273 batters faced.

The Chelsea defense was led by senior outfielders Laurie Cobb and Maggy Sweet along with co-captains Amy Unterbrink and Shelly Weber. The young Chelsea infield of Cathy Doll at third, Julie Patrick at shortstop, Amy Hume at second and Kim Forner at first has improved all during the season, giving the Chelsea team a stronger defense with each game they played.

Bulldog Thinclads 2nd in Regional

Chelsea took second place at the regional track meet held at Dexter Saturday, May 22. The Bulldogs were edged by Lincoln, 83-82, for the second place finish in the 17-team field.

Mark Brosnan won the 1600 meter and the 3200 meter runs to establish two track records and one school record.

Bob Benedict won the 800 meter run at 1:56.4 to blast the school record and Dexter track record.

Ken Nicholas won the discus at 160' 11" to set a field record. Todd Sprague won the shot put at 51' 1 1/2" and Ken Nicholas was second at 50' 7".

Daren Pierson was second in the high jump at 6' 1" and sixth at 15.9. Chelsea qualified five people in

seven events for the state meet to be held at Grand Rapids' Houseman Field on Saturday, June 5.

"We ran very well and really put up quite a battle," said Coach Pat Clarke of his team. "In addition to the state qualifiers, I want to make special mention of junior Del Magee's efforts. Del ran his best 1600 meters ever to place fifth (4:28.8) and his best 3200 meters ever to place fourth at 10:08.9."

Other Bulldogs placing at the regional meet included Todd Sprague, third, discus, at 143' 11".

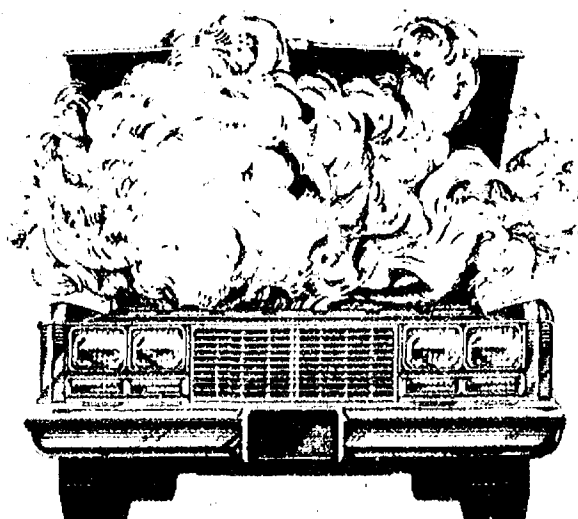
110 high hurdles: Mike Hintzen, sixth at 15.9. (Continued on page 11)



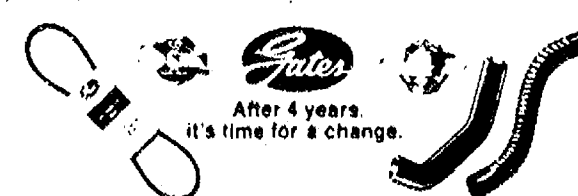
WITHOUT GETTING ENOUGH SPRING in his vault, Daria Rowe approached the bar but was unable to thrust himself over it. Instead, he dropped from this upright position, into the fall-breaking assistance of the spotter below.



Don't let this happen to your car's cooling system



Preventive maintenance is very important with any car's cooling system. The two things that most people overlook on their cars are the belts and hoses. They don't last forever. After 4 years they can go anywhere. And with today's belts, you can't tell just by looking. So if your car is four years old, save yourself some big trouble. Replace the belts. And get them you want Gates. Gates is the leader in automotive belts and hoses — and it pays to buy the best.



A&L PARTS, INC.

For 64 years, one of Michigan's largest full-line distributors of original equipment manufacturers (O.E.M.) parts

129 South Main Ann Arbor 313/665-4411

FREE

INSPECTION

of your furnace's heat exchanger!

FOR FURNACES 10 YEARS OR OLDER

It Could Be a Life-Saver!

CALL

STEELE BROS. HEATING & COOLING

TOM 475-1222

JOHN 428-8692

Offer good thru June 30, 1982.

NOW IN STOCK

In Our NEW Dexter Store

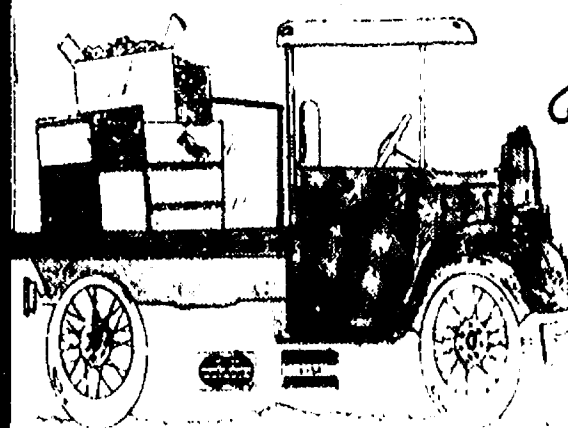
2902 Baker Rd., Dexter

COMPLETE STOCK OF AMERICAN & FOREIGN AUTO, TRUCK, CAR PAINT

We can mix or match most any stock car, truck, tractor paint. Acrylic Enamel or Lacquer

ALSO: A complete stock of painter's supplies, masks, tape, primers, hardeners, thinners, etc.

"The Friendly Parts Store now has Paint in Dexter."



The PARTS PEDDLER

AUTO SUPPLY STORES

1414 S. MAIN ST.
CHELSEA
475-9106

108 E. MIDDLE ST.
CHELSEA
475-1366

2092 BAKER RD.
DEXTER
426-4688

8715 MAIN ST.
WHITMORE LAKE
449-4312



CHELSEA'S 1982 TENNIS TEAM has, according to Coach Terri Schreiner, "done an excellent job at the regionals and has come further than any other Chelsea tennis team in the past." Members of this squad are, back row, left to right, Greg Markie,

Mike Reid, Brett Knickerbocker, David Barels, Damon Mark; middle row, left to right, Rob Moore, Craig Hinz, Tom Schumann, Rod Worthing and Coach Terri Schreiner; front row, left to right, Bob Bentley, Bill Merkel and Kurt Eisenbeler.



CHRISTINA SOMMER hurls her body across the bar while taking part in the high jump competition at Wednesday's Southeastern Conference

track meet. Chelsea's girls finished the meet in sixth place, edging Western, 28-19.

BOWLING

Tuesday Family League
Standings as of May 26

	W	L
Good, Bad & Ugly's	14	0
Clark Bars	12	2
Little Rascals	10	4
Familia	9	5
Four T's	9	5
Double A's	9	5
All Stars	8	6
Three Strikes & A Spare	5	9
Pack-man	5	9
Three & One	5	9
Red Sox	5	9
Star Bowlers	4	10
Energizers	4	10
No. 14	4	10
MADD	2	12
Children with games 25 pins over their average: Daniel Allen, 74; Jon Clark, 76; Tom Steele, 87; Tricia Wurster, 83, 89; Danielle Taylor, 94; Rex Nye, 106; Mary Worden, 133, 136; David Bable, 133; Reno Nye, 151.		
Women, series 450 and over: V. Wurster, 453; V. Workman, 473; K. GreenLeaf, 478.		
Men, 200 games and over: J. Harok, 201; D. Adams, 214.		
Men, series 500 and over: D. Taylor, 517; D. Adams, 524; E. GreenLeaf, 533; J. Harok, 552; G. Seltz, 561.		

Track . . .

(Continued from page ten)

800 M relay: Chelsea, eighth, Toby Boyd, Randy Krichbaum, Kevin Richardson and Russ Ramsey, at 1:33.6.

400 M run: Chelsea, sixth, Mike Hintzen, Toby Boyd, Kevin Richardson, Russ Ramsey, at 44.8.

300 M low hurdles: Mike Hintzen, fifth, :39.8.

SERVING SANDWICHES

from 11:00 a.m. till 2:00 a.m. Mon, thru Sat.

BEER & WINE CARRY OUT

FOOD CARRY OUT

Open Sunday 12:00 Noon Till 11 p.m.

MARK IV LOUNGE

1180 M-52

Phone 475-1951

Chelsea

Back By Popular Demand!

BOWL FREE

With any purchase
at Chelsea



1535 S. MAIN ST., CHELSEA

Thru July 15 you will receive a

TICKET FOR 1 FREE GAME OF BOWLING
USEABLE WITH 1 PAID GAME

(NON-TRANSFERABLE)

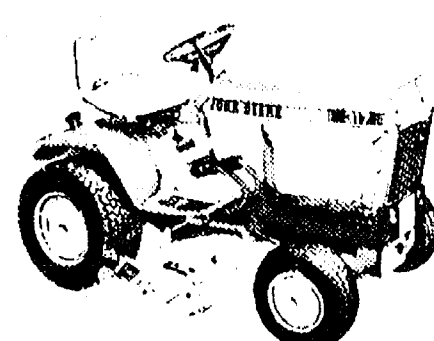
At the time you bowl, present this FREE
ticket and receive a second game FREE
at

CHELSEA LANES

1180 S. MAIN ST., CHELSEA
PHONE 475-8141



UP AND OVER: Eric Buckberry springs over the 10' 6" bar enroute to a fourth-place finish in the polevaulting competition. Earning fifth place in the event was Jeff Lantis who, like Buckberry, cleared 10' 6".



Nothing Runs
Like a Deere

14- and 17-hp Tractors

Two hydrostatic drive models --- the 14-hp 314 and the twin-cylinder, 17-hp 317. Hydraulic lift Built-in headlights Color-coded controls Variety of implements available

HURON FARM SUPPLY

Phone 426-8847

8250 Dexter-Chelsea Rd.

Dexter, Mich.

FRANK GROHS

CHEVY

BUY NOW
SAVE NOW!

12.8% APR

FINANCING

on ALL
NEW CHEVROLET
CARS & TRUCKS
During April & May

1978 BUICK LeSABRE

2-dr., auto, p.s., p.b., air.

1980 CITATION

2-dr. Hatchback, 4-cyl.
4-speed, custom interior.
Sharp!

1980 CHEVETTE

4-dr., A.T., 4-cyl., AM/FM

1980 CHEVETTE

2-dr., 4-spd., AM/FM, W/W
CLEAN!

1979 MONZA 2-DR.

SPORT COUPE
4 cyl., auto.

1977 OLDS

CUTLASS SUPREME
Bucket seats, air, stereo

TRUCKS & 4x4's

1974 GMC

JIMMY 4x4

1978 CHEVY

3/4-ton 4x4

Auto., p.s., p.b.,
many extras
Only \$3295

1979 CHEVY

1/2-T, Big 10, V-8, auto.,
p.s., p.b., 33,000 mi. lwb
Don't Miss This Beauty!

TRANSPORTATION
SPECIALS

★'76 CHEVETTE 2-dr.
4-speed

★'76 FIREBIRD

★'76 CHEVY PICK-UP

★'75 FORD WAGON

★'74 IMPALA 4-dr.

★'73 MONTE CARLO

★'75 MAVERICK
Grabber 6-cyl., auto.

SPECIAL OF THE MONTH

1976 CHEVY

1/2-T 4x4

Only \$1795

SEE
FRED KLING
or JEFF GROHS

OPEN

MON.-FRI. 9-6
WED. 9-8
SAT. 9-1

Frank Grohs

Chevrolet

DEXTER, MICH.

426-4677

Ads
Taken
Until
10 a.m.
Monday

PUT IT IN THE WANT ADS FOR

Automotive 1

PALMER FORD

BEST BUY FOR YOUR DOLLAR

1975 NOVA 2-dr. Priced right. \$795
1973 PLYMOUTH WAGON Good transportation. \$995
1976 PINTO WAGON Squire Model. \$1995
1975 GRAN TORINO BROUGHAM One of a kind. \$2495
1976 GRANADA 4-dr. Priced to sell. \$2795

We Buy Used Cars & Trucks

1976 CUTLASS SUPREME White and right. \$2995
1977 GRANADA 4-Dr. A Real Beauty. \$3395
1978 THUNDERBIRD Locally owned. \$3695
1978 GRANADA 2-Dr. Red and Ready. \$3995

Michigan's Oldest Ford Dealer

1980 PINTO 2-Dr. Gas miser. \$3995
1979 FAIRMONT 4-Dr. Locally Owned. \$3995
1978 COUGAR XR7 A black beauty. \$4495
1980 FAIRMONT 4-Dr. Roomy, comfortable. \$4695

Buying, Selling and Leasing Since 1912

1979 THUNDERBIRD Priced right! \$4695
1980 MUSTANG 3-Dr. Sport Model. \$4995
1979 FORD Stake body. \$4995
1979 THUNDERBIRD Town Landau. \$5995
1981 FAIRMONT 4-Dr. Only 9,000 miles. \$5995

We Buy Used Cars & Trucks At Michigan's Oldest Ford Dealer

PALMER FORD

Used Car Lot Open Mon. & Thurs. 9:00-5:00
Saturday 10:00-1:00
CHELSEA 475-1800

BODY SHOP

COMPLETE FULL TIME Estimates Available

PALMER FORD

222 S. Main 475-1301
FOR SALE — 4 15"x8" slotted E.T. wheels. Unilug with locks. \$100. Ph. 475-1371 9-5, ask for Steve. x48f
1981 PONTIAC PHOENIX LJ hatchback, loaded. Call 662-6636 or 878-6489, evenings. x50ff
CONVERTIBLE — '73 Olds Delta 88 Royale. No rust, fine interior. Needs to be seen. Call 475-9108, ask for Dave Wilson. After 6 p.m., call 475-2642. 52-2

Classified Ad Order Blank

Mail Your Copy to The Chelsea Standard

P. O. Box 340, Chelsea, Mich. 48118

Name _____
Address _____
City _____
Ad is to appear week of _____ number of weeks _____
in The Chelsea Standard \$ _____
and or _____
The Dexter Leader \$ _____ Charge Ad _____
Total Enclosed \$ _____
Please run ad under the following Classification _____
(Please type your ad copy to avoid errors)

Ad Rates: 10 words or less—\$1.00 (paid in advance). Over 10 words, 7¢ per word.

Complete group of figures for phone number and address each count as 1 word, each abbreviation counts as 1 word. You don't save money by abbreviating and you make your ad harder to read.

The Chelsea Standard

Phone (313) 475-1371

Automotive 1

'69 FORD LTD — Air, power steering and brakes, new tires, exhaust and battery. \$650. Ph. 475-2789. 52-2
1972 DODGE flatbed truck. 318, new flat bed, little rust. \$850. Ph. 475-2669. x52

'77 RAMCHARGER — 2-wheel drive, power, rust-proofed. Good condition. \$2,500. Ph. (517) 851-7283. x52

1972 CADILLAC. Reliable. \$300. Ph. 475-9261. x1-2

Motorcycles 1a

1979 YAMAHA XT 500 4-stroke. Enduro. Never rode in dirt. Excellent condition. 2,500 miles. \$1,200 or best offer. Ph. 475-3442 after 7 p.m. x52-4

Farm & Garden 2

STANDING HAY wanted. Also, wheat and oat straw in windrows. Cash paid in advance. Ph. 1-(517)-764-0700. 47ff
BLACK DIRT, PEAT MIXTURE—Self-serve by bushel. Delivered by the load. Pick-up and trucks loaded at the farm. Organic and ideal for gardens, lawns, flower beds, etc. 4200 Liberty Road Farm, between Wagner and Zeeb Rds. x2-8

GARDEN VIEW GREENHOUSE

5505 M-52 South
Just 4 miles south of I-94
Ph. 475-2791

Flowers - Bedding Plants - Cabbage Seed Potatoes - Head Lettuce Onions - Cauliflower

DISCING and roto-tilling. Ph. 475-3263. x52-4

SELECT GROUP of foundation cows with calves at side. Western bred, \$800-\$1,500 per head. Proven herd, size, performance plus easy calving. Delhi Mill Farms. Registered Polled Herefords. Ph. 761-3532 or 662-5432. x48ff

FIREWOOD FOR SALE — Ash, oak, cherry, apple, beech, walnut. Discounts to those who haul their own. Presently cut in chunks and lengths, unsplit. Stockpile for next winter, now. Ph. 429-2755. x52-2

BLACK DIRT AND PEAT — Tested and proven excellent for lawns, gardens, flower beds; 6 yards delivered, \$40. Guaranteed satisfaction. Ph. 428-7784 or 428-9578. 51ff

BABY CHICKS & DUCKS — All ages, custom hatching. Rabbits. Grass Lake, Michigan. Ph. 522-4773. 2-4

BABY CHICKS, ducks, geese, turkeys, pheasants, quail now available. G & K Poultry, 426-8323. x2-4

2 JERSEY HEIFERS, 1½ yrs. old, for sale. Ph. 475-9752. x2-4

FOR SALE — Farmall H tractor, \$950. Call 475-9229. x52-2

1953 FARMALL SUPER M — 12-volt system, power steering, excellent condition. \$2,500. Also, 2 12-door Smiley hog feeders, \$175 each. Good condition. Ph. 663-0980, evenings. x52

MARGIE'S UPHOLSTERY

FREE ESTIMATES

Large Selection of Materials

Upholstery Supplies

Repair Service

Pick-Up and Delivery Available

MARJORIE SMITH

Ph. 1 (517) 536-4230

Call Collect between 8 a.m.-6 p.m. Monday thru Saturday

6245 Brooklyn Rd., Napoleon

Farm & Garden 2

FOR SALE — New Holland Haybine, John Deere hay rake, New Holland baler. Ford 3-pt. disk. Ford 3-pt. drag. Grain elevator. 3-14 John Deere plows, 3-pt. John Deere side mount mower. Ph. 475-8330. x52

STRAWBERRIES

Inglis Strawberry Farm
U-PICK or PICKED
Beginning
Approximately
June 15

Corner of Jackson and
Dancer Rds.

Call for picking schedule:
475-1662

Recreation Eqpt. 3

FOR SALE — 12'x55' Richardson 2-bedroom mobile home. Excellent condition. Evenings, 475-7309. x52-2
11-FOOT OPEN ROAD pick-up camper. Immaculate. Self-contained. Sleeps 6. \$1,000 or would consider swap for economy car. Ph. 428-9651. x52

For Sale 4

SEE US for transit mixed concrete. Klumpp Bros. Gravel Co. Phone Chelsea 475-2530, 4920 Loveland Rd., Grass Lake, Mich. x40ff

WEDDING STATIONERY — Prospective brides are invited to see our complete line of invitations and wedding accessories. The Chelsea Standard, 300 N. Main. Ph. 475-1371. 8ff

SEARS GARDEN TRACTOR

•12 HORSE POWER

•42" CUT

•SNOW PLOW

\$690

BE WINTER READY - 475-2828

COUNTER TOP RANGE — for sale — Sparkling white, ceramic, 4 burners, electric, easy cleaning, like new. Phone 475-9414 evenings after 6 p.m. or anytime week-ends. x32ff

25' PONTON BOAT, carpeted, 35 h.p. Steel pontoons, \$750. Ph. 426-4286. x52-2

TENOR SAX, Yamaha, 2 years old, \$550. Ph. 475-2729. x52-2

FOR SALE — Conn french horn, very good condition. Ph. 475-9691. x52-2

FOR SALE — Conn, coronet, good condition. Ph. 475-9691. x52-2

P. F. INC. OAK — 4'x8'x18" cut, split. Pick-up or delivered. Ph. 662-7655. 52

STORM DOOR for sale includes glass and screen. Almost new. Small refrigerator, good condition. Ph. 475-3666. x52

FOR SALE — Frame toilet building, to be removed from site. Located off Clear Lake Rd. at the former Tamarack Camp. Bids for the building must be received no later than 5 p.m. June 18, 1982. For further information contact Waterloo Recreation Area (313) 475-8307. 52

FIREWOOD — Semi or partial loads. 4'x4'x100" federal cords. Seasoned available. Please call 426-8578. x4-5

AIR CONDITIONERS — 2 large window units, \$125 ea. Ph. 475-1751. x2-3

BRAND NEW — 2" well-points; 30' of new 2" galvanized pipe; 4 drive couplings. Ph. 475-1751. x2-3

BUILDERS

For \$12,600 you can pour your own basements and other people's, too. I have a complete set of SIMPLEX POURED WALL FORMS for sale. Everything you need to go into business. Call

WEBER HOMES

475-2828 475-2734

Garage Sale 4b

GARAGE SALE — 5 families. Friday & Saturday, June 4-5. Furniture, ladies and children's clothing, maternity and baby clothing, dishes, pictures, lamps, tarp. 1976 Olds Cutlass. 18498 M-52, Chelsea. 52

GARAGE SALE — June 4-5, 8 a.m. to 7 p.m. 14 ft. Starcraft speedboat with 40 h.p. Evinrude, 78 Yamaha 175 IT, ladies leather jacket, Kay 5-string banjo, clothes, household goods, misc. 20331 Jerusalem Rd. x52

MOVING SALE — Hotpoint upright freezer, antique green china cabinet and hutch, two orange nylon chairs, kitchen table and chairs. Ph. 475-3635 after 5 p.m. x52

7-FAMILY YARD SALE — Baby items, TV, household appliances and items, clothing. Glen Brooke Beach Association, Half Moon Lake, June 4 and 5, 9 to 6. 52

5-FAMILY GARAGE SALE — June 4 and 5, 9 to 5, at 115 Pierce St. Ph. 475-2786. Clarinet with case, \$100 (appraised at \$250); old peanut vendor, old cavalry saddle, fun boat, wooden-fishing boat, baby items, clothing all sizes, household items, toy wooden barns and auto parts! Super sale, don't miss it. 52

YARD SALE — 102 E. Summit, June 4-5, 10 to 5. Children's clothing, appliances, toys, some furniture, misc. 52

ANTIQUE SALE — Lots of furniture, sets of chairs, clocks, quilts, wicker, crockery, baskets, many small items. All priced to sell. Farmhouse at corner of Waterloo and Werker, Chelsea. Sat., June 5, 9 to 4. Ph. 475-1454. 52

3-FAMILY YARD SALE — June 4 and 5, Beginning, 9 a.m. 227 Buchanan St. 52

CLASSIFIED ADVERTISING RATES

Ad Rates:

10 words or less \$1.00

when payment accompanies order

7¢ per word over 10

Card of Thanks & Memoriams

50 words \$2.50

when payment accompanies order

7¢ per word over 50

Add \$1.00 per insertion if charged.

Deadline for ads in classified section is noon Saturday. Copy received between noon Saturday and noon Monday may appear under a separate heading on another page.

\$1.00 charge for tear-sheets and duplicate invoice on any ad under \$5.00

Any change or cancellation in advertising made after noon Saturday may not appear in that week's issue.

All advertisers should check their ad the first week. The Standard cannot accept responsibility for errors on ads received by telephone but will make every effort to make them appear correctly. Refunds may be made only when erroneous ad is cancelled after the first week that it appears.

Garage Sale 4b

DALLAS CORNER TRADE MART — Permanent indoor and outdoor clean air-conditioned. Free parking and admission. Dealers welcome. Ph. (313) 242-6284, Monroe, Mi. 3-4

Grand Opening

HILLTOP, INC.
Trading Post
and Second-Hand
Store.

8136 Werker Rd., Chelsea
Saturday, June 5

9 a.m. to 8 p.m.
Sunday, June 6

10 a.m. to 5 p.m.

SPECIAL COFFEE & DOUGHNUTS.

2-ton floor jack, \$45; 2" lock back knives in case, \$3; ½-horse bench grinder, \$48; 17-piece socket set, \$5; 40-piece socket set, \$8; Men's digital watches, \$8; small pinky turquoise rings in silver, \$5. x52

COVENANT CHURCH GARAGE SALE

Friday & Saturday,
June 4-5

9 a.m. to 5 p.m.

Household items, furniture, clothing. Other items too numerous to mention

50 N. Freer Rd., Chelsea

Corner Old US-12 and Freer Rd. x50

MOVING SALE — June 5-6, 9 to 6. Sofa, Hide-A-Bed, queen size bed, office desk chairs, household. 7900 Huron River Dr., Dexter. x52

FIFTH ANNUAL NEIGHBORHOOD GARAGE SALE — Weber Subdivision, Friday and Saturday, June 4-5, 9-5, 2077 Johanne Dr., Dexter. x52

SPRING SUPER SALE

The Best Bargains in Town
June 3-4-5-6
10 a.m. to dark

Harlequin, Silhouette and other paper and hard cover books, furniture, tools, 3-speed bicycle, adult's and children's clothing, household items, etc.

14140 WORDEN RD.

South off M-106
between Stockbridge and Gregory. x52

Antiques 4c

THE OAKS ANTIQUES, 5041 Dexter-Pinckney Rd. 426-8106. Open Thurs. thru Sat., 12 to 5; Sunday, 1 to 5. x37ff

Real Estate 5

AT CLEAR LAKE — We have two properties for sale on Clear Lake. One is a year-round cottage with full basement, big living room-dining room area, kitchen, bedroom and large sleeping deck. Approximately ½ acre of land, priced at \$57,900. We also have a smaller trailer/cottage priced at \$26,500. It has approximately ½ acre and is well situated overlooking the lake. More room here than you would guess and it can be used year round. For an appointment, Ph. 1-484-1111. x2ff

HALF MOON LAKE — Desirable lake-front log home. 150 feet excellent beach, 4-bedroom, 16'x22' dock, 2½-car garage, Chelsea schools. Land contract. Low interest. Low payments. \$24,500. Ph. 475-7462. x52

Want Ad Classifications

Automotive 1

Motorcycles 1a

Farm & Garden 2

Equipment Livestock Feed

Recreational Equipment 3

Boats Motors Mobile Homes Snowmobiles Sports Equipment

For Sale (General) 4

Auction 4a

Garage Sales 4b

Antiques 4c

Real Estate 5

Land Homes Cottages

Animals, Pets 6

Lost & Found 7

Help Wanted 8

Situation Wanted 8a

Babysitter 9

Wanted 10

Wanted To Rent 10a

For Rent 11

Houses Apartments Land

Misc. Notices 12

Bus. Services 13

Financial 14

Bus. Opportunity 15

Card of Thanks 16

In Memoriam 17

Legal Notices 18

Garage Sale 4b

HEAVILY WOODED

Residential building sites—all oak and maple. Chelsea schools. Underground utilities. Close to lakes & private golf course. In established area of very nice homes. Asphalt county maintained road, presently under construction. Reserve your lot now with a 10% escrowed deposit. Substantial price reductions on reserved lots. Land contract terms at 10%.

Directions: I-94 west to Chelsea exit, take M-52 north of Chelsea approximately 1 mile to Werker Rd., follow blocktop approximately 4 miles to Rambling Oaks sign on right.

10 of these exceptional 1 acre-plus wooded lots will be available.

475-7437

10-acre parcels also available

44ff

10-ACRES

BREATH-TAKING VIEW

1-MILE NORTH OF CHELSEA

PERFECT FOR PASSIVE SOLAR CONSTRUCTION. \$25,000 LAND CONTRACT. \$22,000 CASH.

Call Owner, 475-2828

x25ff

3½-ACRE

BUILDING SITE

BETWEEN CHELSEA AND DEXTER

This lot has an easy south rise making it perfect for passive solar construction. \$16,900. Land Contract. \$15,900, cash.

Call 475-2828

x25ff

3-BEDROOM HOUSE for sale by owner. Good location. Nearly new 2-car garage. Paved driveway. House needs work inside. \$30,000. Possible land contract. Ph. 475-1609, after 5 p.m. 475-8915. 49ff

10 ACRES — Beautiful home site, perked, 15 miles west of Ann Arbor, Chelsea schools, 2 miles from I-94. Ph. 663-6799 or 995-9638. x8ff

FRISINGER

475-8681

10 ACRES — 4-bedroom Colonial, fireplace, wood stove, family room. Chelsea schools. \$78,500.

CHELSEA — 1.5 acres, quality plaster walls, cove ceilings, 2 bedrooms, 2 baths, heat-a-lator, full basement. 15 min. to Ann Arbor. \$69,500.

NORTH LAKE AREA — 11½ financing, 5% down, 4-bedroom 1-year-old, modern home on 1.5 acres. Family room, fireplace, 2-car garage 2'x6' side walls. \$79,900.

EXCELLENT BUY — 3-bedroom ranch home in the Village of Grass Lake. Plaster wall, fireplace. Land contract. \$45,900.

REALTORS

Bob Koch 426-4754

Herman Koehn 475-2613

Ray Knight 475-9230

Paul Frisinger 475-8681

x50ff

WANTED

STANDING

LITTLE WANT ADS! BIG PLUSES FOR BIG RESULTS!

Washtenaw County's Busy Marketplace . . . Quick, Economical Results . . . Give 'em a try!

or Rent 11

ENT/OPTION, Dexter schools, 1 bedrooms, 2 fireplaces, available 1 July, but plant your garden now. 300. Chuck Walters, Realtor, 13475-2882 or 475-2808. x52

ARGE 2.3 BEDROOM, 1st floor apt. in Stockbridge village, \$250 per month. Chuck Walters Realtor, (313) 75-2882 or 475-2808. x52

Misc. Notices 12

NEED CREDIT?

Guaranteed! Receive Master Card, Visa & major credit cards, even if you have bad or no credit at all. For free brochure send self addressed stamped envelope to Capital Credit, Box 902128, Dallas TX. 75390 or call 214-828-3882. x1-4

Enroll now for the Fall/Winter Term 1982-83

"CHELSEA CHARMS" Baton Twirling Studio

ages 4-18

Call Rita Howard - 996-1360 if no answer call - 475-8175

Bus. Services 13

General

All Insurance Needs

Call 665-3037

H. Miles, Allstate

52

CLINTON UPHOLSTERY

Free estimates, pick-up and delivery. 6+ years experience. 10% Senior Citizen discount. Special: 10% off fabric until Aug. 1. 2-year guarantee on workmanship. Call (517) 456-4850. 1830 Clinton-Tecumseh Rd., Clinton. x5-8

KIRBY SALES & SERVICE available

in Chelsea, Ph. 475-2515. 31f

NORMA JEAN SMITH SEWING & ALTERATIONS

18470 M-52

Chelsea, MI 48118

Ph. (313) 475-8984

30f

PIANO LESSONS — \$5 per lesson.

North Lake area. Ph. 475-9365. -2-4

PIANO TUNING and repair. Quali-

fied technician. Call Ron Harris, 475-7134. x431f

SUMMER TUTORING — Reading and

math. \$7.50 per hr. North Lake area. Chelsea teacher. 475-9365. -2-4

TUTORING — Grammar and writing.

Chelsea High School teacher. Ph. 475-1601. -3-4

Carpentry/Construction

BRICK MASON — Brick and block work. Fireplaces, chimney repair. Tuck pointing and stone work. Dennis Goren. Ph. 475-2584. 481f

CARPENTRY WORK — Remodeling,

siding, roofing, cement work, reasonable rates. Call Jim Hughes at 475-2079 or 475-2582. x141f

Custom Built Homes

Oh! We Remodel too

Urban count on us

No Job Too Small

Trim Inside and Out

ROUGH-IN Only if

You want to Finish.

Siding Aluminum, 5" Gutters

Immediate Attention

DALE COOK & CO.

Estimates, Free

BUILDERS

Please Call

475-9153

DALE COOK

171f

D. R. ANDARIESE

Building & Remodeling

ROUGH & TRIM SERVICE

KITCHENS REMODELED

BASEMENTS FINISHED

GARAGES

ADDITIONS

ALSO

CUSTOM CABINETWORK

AND WOOD TURNING

FREE ESTIMATES

Quality Work at Reasonable Rates

498-2297

421f

J. R. CARRUTHERS

LICENSED RESIDENTIAL BUILDER

CUSTOM HOMES

ADDITIONS/FIREPLACES

PATIOS

ROOFING/SIDING/REPAIRS

475-7234

CHELSEA

101f

Bus. Services 13

Norval R. Menge Builder

CUSTOM BUILT HOMES

ADDITIONS, REMODELING

GARAGES AND POLE BARN

We also do—

LIGHT HAULING

BACKHOE WORK

GENERAL REPAIRS

all our work fully guaranteed

CALL FOR FREE ESTIMATES

475-1005

x441f

POE'S CONSTRUCTION

Any kind of remodeling, siding, roof-

ing, cement work, panelling, drop

ceilings, new bathrooms, new

homes. Also, any type of commercial

work, large or small. Licensed con-

tractor and bonded. Free estimates.

Anywhere.

Silas Poe

Ph. 428-9266

52-2

POLE BARNs or buildings. All sizes

available. Please call (517)

522-4873. x51-5

R. L. BAUER Builders

LICENSED AND INSURED

Custom Building

Houses — Garages

Pole Barns

Roofing — Siding

Concrete Work

FREE ESTIMATES

Call 475-1218

31f

RON MONTANGE CONSTRUCTION

Full carpentry services

(rough and finish)

Additions, remodeling and repairs

Concrete

Roofing and siding

Cabinets and Formica work

Metal form buildings

Grain storage bins

Excavating and trenching

QUALITY WORKMANSHIP

FREE ESTIMATES

475-1080

191f

Excavating

SAND GRAVEL

KLINK EXCAVATING

Bullbozer — Backhoe

Road Work — Basements

Trucking — Crane Work

Top Soil — Demolition

Drainfield — Septic Tank

Trenching, 5' up

Industrial, Residential, Commercial

CALL 475-7631

131f

LITTLE WACK EXCAVATING

Basement — Drainfields

Bulldozing — Digging

Snow Removal — Tree Removal

LICENSED AND INSURED

Paul Wackenhut

Ph. 428-8025

521f

Landscaping/Outdoor Maint.

BLACK DIRT

Top Soil — Wood Chips

Railroad Ties

WE DELIVER

C. L. Broderick & Son

475-2722 or 475-2796

x471f

DOES YOUR DRIVEWAY or parking

lot need attention. Call Robison

Farms, Saline, 429-2755. Gravel,

limestone, also top soil, sand, black

dirt and peat moss. x1-4

LANDSCAPING

Lawn Maintenance

Complete Landscaping

Sand — Gravel — Topsoil

Sprinkler systems

GREENHILLS LANDSCAPING

475-7637

x481f

SNOW PLOWING

Lawn Maintenance

Building Maintenance

Small Landscaping

RICHARD SMITH

475-8984 after 5 p.m.

101f

Bus. Services 13

Repairs/Improvements

ALUMINUM & STEEL WELDING —

Light repairs, light fabrication.

Dale Richardson, 475-7462. x431f

CHELSEA PLUMBING

NEW CONSTRUCTION

REMODEL

REPAIR

WATER HEATER REPLACEMENT

BOILER REPAIR & REPLACEMENT

475-1037

431f

LEONARD REITH

Master Plumber

Licensed Electrician

Hot Water Heat

18238 N. Territorial

Rd.

Chelsea, Mich. 48118

Phone: 475-2044

521f

LET GEORGE DO IT!

HOME REPAIR AND MAINTENANCE

SERVICE

PHONE 475-8903

521f

GEORGE ELLENWOOD

563 McKinley St.

Chelsea Mich.

521f

PATCHING AND PLASTERING. Call

475-7489. 331f

Window Screens

Repaired

Reasonable rates

Chelsea Hardware

110 S. Main Ph. 475-1121

301f

Financial 14

PRIVATE PARTY. Purchasers land

contracts and mortgages. Eves, on-

ly 475-1469. x211f

LAND CONTRACTS PURCHASED —

Any size, any property type.

Courteous and reliable service. Call

Stan Hentkowski, Huron Valley

Creative Financing Services.

668-8595. 481f

Card of Thanks 16

CARD OF THANKS

I would like to thank Fr.

Dupuis, Deacon Cesarz, Sister

Pat, concerned friends and

relatives for their prayers, visits

and many acts of kindness during

my recent stay at St. Joseph Mer-

cy Hospital.

Jerry Gondok.

THANK YOU

My family and I wish to ex-

press to all our friends and

neighbors our sincere thanks for

the many kindnesses extended to

us during our recent illness.

Kathy Love.

Dry Weather Could Hurt Michigan Farmers

Dry weather between now and

the middle of June could hurt

Michigan wheat, corn and feed

grain farmers, according to Bob

Craig, manager of Commodity

Activities and Research for

Michigan Farm Bureau.

"Although it's still early in the

season, it has been very dry and

the wheat crop in Michigan has

been suffering," Craig says.

"Unless we get some rain or

farmers are able to irrigate,

development of feed grain crops

will be slowed. Also, some soy-

bean planting may be delayed."

Craig notes that wet weather in

the western half of the nation's

corn belt implies that corn prices

will not rise much in the near

future. Therefore, he says,

Michigan farmers in the dryer,

eastern corn belt could face low

prices on top of a reduced crop.

Telephone your club news

to 475-1371

DOUG'S

INTERIOR • EXTERIOR

RESIDENTIAL • COMMERCIAL

• BOOM TRUCK

• WALLPAPER HANGING

• COMPLETE PAINTING

Legal Notices

MORTGAGE SALE - Default has been made in the conditions of a mortgage made by KURT S. WINTERS, a single man, to ANN ARBOR MORTGAGE CORPORATION, a Michigan Corporation, Mortgagee, dated May 22, 1979, and recorded on May 22, 1979, in Liber 1707, on page 741, Washtenaw County Records, Michigan, and assigned by said Mortgagee to FEDERAL NATIONAL MORTGAGE ASSOCIATION, a National Mortgage Association, by an assignment dated May 22, 1979, and recorded on May 22, 1979, in Liber 1707, on page 745, Washtenaw County Records, Michigan, on which mortgage there is claimed to be due at the date hereof the sum of THIRTY THOUSAND EIGHT HUNDRED SIX AND 1/100 Dollars (\$30,806.01), including interest at 11% per annum.

Under the power of sale contained in said mortgage and the statute in such case made and provided, notice is hereby given that said mortgage will be foreclosed by a sale of the mortgaged premises, or some part of them, at public venue, at the Huron St. entrance to the Washtenaw County Building in Ann Arbor, Michigan, at 10:00 o'clock A.M., Local Time, on June 3, 1982.

Said premises are situated in the Township of Northfield, Washtenaw County, Michigan, and are described as:

The South 1/2 of Lot 189, all of lots 190 and 191, Whitmore Lake Subdivision, Northfield, as recorded in Liber 4 of Plats, Page 6, Washtenaw County Records.

During the six months immediately following the sale, the property may be redeemed.

Dated: April 27-May 4-11-18-25
FEDERAL NATIONAL MORTGAGE ASSOCIATION, a National Mortgage Association Assignee of Mortgagee
GEORGE E. KARL, Attorney for Assignee of Mortgagee
1475 Penobscot Bldg., Detroit, Michigan 48226

May 11-18-25-June 1

MORTGAGE SALE - Default has been made in the terms and conditions of a certain mortgage made by GERARD BUILDERS, INC. of 124 Pearl, Ypsilanti, Michigan 48197, Mortgagee, to MICHIGAN SAVINGS AND LOAN ASSOCIATION, of 111 South Main Street, Ann Arbor, Michigan, Mortgagee, dated 20th day of February, 1980, and recorded in the Office of the Register of Deeds, for the County of Washtenaw and State of Michigan, on the 29th day of February, 1980, in Liber 1750 of Washtenaw County Records, on pages 38-42, on which mortgage there is claimed to be due, at the date of this notice, for principal and interest, the sum of (\$82,708.32) Sixty-two Thousand Seven Hundred Eight and 32/100 Dollars.

And no suit or proceedings at law or in equity having been instituted to recover the debt secured by said mortgage or any part thereof. Now, therefore, by virtue of the power of sale contained in said mortgage, and pursuant to the statute of the State of Michigan in such case made and provided, notice is hereby given that on Thursday, the 10th day of June, 1982, at 10:00 o'clock A.M., Local Time, said mortgage will be foreclosed by a sale at public auction, to the highest bidder, immediately inside westerly entrance to the County Building in Ann Arbor, Michigan, of the premises described in said mortgage, or so much thereof as may be necessary to pay the amount due, as aforesaid, on said mortgage, with the interest thereon at seventeen percent (17%) per annum and all legal costs, charges and expenses, including the attorney fees allowed by law, and also any sum or sums which may be paid by the undersigned, necessary to protect its interest in the premises. Which said premises are described as follows:

All that certain piece or parcel of land situate in the Township of Ypsilanti, in the County of Washtenaw and State of Michigan, and described as follows, to-wit: The East 28.0 feet of Lot 258 and the West 20.0 feet of Lot 257, Westlawn Subdivision, a part of the SW 1/4 of Section 6, Ypsilanti Township, Washtenaw County, Michigan, according to the plat thereof as recorded in Liber 6 of Plats, page 40, Washtenaw County Records.

During the six months immediately following the sale, the property may be redeemed. Dated at Ann Arbor, Michigan, April 14, 1982.
MICHIGAN SAVINGS AND LOAN ASSOCIATION
By: Grace Palazzolo
FORSYTHE, VANDENBERG & MORRIS, P.C.
Attorneys for Mortgagee
By: J. Michael Forsythe
111 S. Main St.
Ann Arbor, Michigan 48104
April 27-May 4-11-18-25

MORTGAGE SALE - Default having been made in the terms and conditions of a certain mortgage made by Robert Franzen and Diane C. Franzen, his wife to Standard Federal Savings and Loan Association, a Federal Association, for the County of Washtenaw and State of Michigan, dated the 21st day of September, 1972, and recorded in the Office of the Register of Deeds, for the County of Washtenaw and State of Michigan, on the 3rd day of October, 1972, in Liber 1414 of Washtenaw County Records, on Page 87, on which mortgage there is claimed to be due, at the date of this notice, for principal and interest, the sum of Nineteen Thousand Three Hundred Forty Three and 11/100 Dollars (\$19,343.11).

And no suit or proceedings at law or in equity having been instituted to recover the debt secured by said mortgage or any part thereof. Now, therefore, by virtue of the power of sale contained in said mortgage, and pursuant to the statute of the State of Michigan in such case made and provided, notice is hereby given that on Thursday, the 3rd day of June, 1982, at 10:00 o'clock A.M., Local Time, said mortgage will be foreclosed by a sale at public auction, to the highest bidder at the West entrance to the Washtenaw County Building in the City of Ann Arbor, Washtenaw County, Michigan (that being the building where the Circuit Court for the County of Washtenaw is held), of the premises described in said mortgage, or so much thereof as may be necessary to pay the amount due, as aforesaid, on said mortgage, with the interest thereon at eight and one-quarter percent (8 1/4%) per annum and all legal costs, charges and expenses, including the attorney fees allowed by law, and also any sum or sums which may be paid by the undersigned, necessary to protect its interest in the premises. Which said premises are described as follows:

All that certain piece or parcel of land situate in the Township of Ypsilanti in the County of Washtenaw and State of Michigan, and described as follows, to-wit: Easterly 10.0 feet of Lot 278, and all of Lots 279 and 280, South Devonshire Subdivision No. 1 of part of the south half of Section 11, Town 3 South, Range 7 East, Ypsilanti Township, Washtenaw County, Michigan, according to the plat thereof as recorded in Liber 8 of Plats, page 8, WASHTENAW COUNTY RECORDS.

During the six months immediately following the sale, the property may be redeemed. Dated at Troy, Michigan, March 29, 1982.
STANDARD FEDERAL SAVINGS AND LOAN ASSOCIATION
Mortgagee
DYKEMA, GOSSETT, SPENCER, GOODNOW & TRING
Attorneys for Mortgagee
3290 W. Big Beaver Rd., Ste. 310
Troy, Michigan 48064
April 27-May 4-11-18-25

MAUSOLEUMS ★ MONUMENTS
BRONZE ★ SOULS ★ MARKERS
BECKER MEMORIALS
6033 Jackson Road
ANN ARBOR, MICHIGAN

LEGAL NOTICES

Legal Notices

NOTICE OF MORTGAGE SALE - Default having been made in the terms of a mortgage made by LARRY D. COLE and ALLENE M. COLE, his wife, to CITIZENS MORTGAGE CORPORATION, n/k/a MANUFACTURERS HANOVER MORTGAGE CORPORATION dated July 28, 1978 and recorded August 30, 1978, in Liber 1869, Page 345, Washtenaw County Records, on which mortgage there is claimed to be due at the date thereof for principal and interest the sum of \$54,782.94.

Under the power of sale contained in said mortgage and pursuant to the statute in such case made, notice is hereby given that on the 4th day of June, 1982, at 10:00 o'clock a.m., local time, said mortgage will be foreclosed by a sale at public auction to the highest bidder at the West entrance of the Washtenaw County Building in the City of Ann Arbor, Washtenaw County, Michigan, that being the place where the Circuit Court of said County is held, of the premises described in said mortgage, or so much as may be necessary to pay the amount due with interest at 9 1/4% percent per annum and all legal costs and charges.

Said premises are located in the Township of Superior, Washtenaw County, Michigan, and are described as:

Lot 765, WOODLAND ACRES NO. 9 as recorded in L. 21 of Plats on Ps 78, 79 & 80, Washtenaw County Records.

The redemption period is six months from the time of sale.

Dated: May 5, 1982
CITIZENS MORTGAGE CORPORATION, n/k/a MANUFACTURERS HANOVER MORTGAGE CORPORATION, Mortgagee
LEITHAUSER and LEITHAUSER, P.C.
18301 E. 8 Mile Rd., Suite 215
East Detroit, MI 48021-3263
771-6010
Attorneys for Mortgagee/assignee
May 11-18-25-June 1

MORTGAGE SALE - Default has been made in the conditions of a mortgage made by Robert S. McConaughy, a single man to Ann Arbor Mortgage Corporation, a Michigan corporation Mortgagee, dated October 19, 1979, and recorded on October 29, 1979, in Liber 1735, on page 365, Washtenaw County Records, Michigan, and assigned by said Mortgagee to Federal National Mortgage Association, a National Mortgage Association by an assignment dated October 19, 1979, and recorded on October 29, 1979, in Liber 1735, on page 369, Washtenaw County Records, Michigan, on which mortgage there is claimed to be due at the date of this notice, for principal and interest, the sum of (\$82,708.32) Sixty-two Thousand Seven Hundred Eight and 32/100 Dollars.

Under the power of sale contained in said mortgage and the statute in such case made and provided, notice is hereby given that said mortgage will be foreclosed by a sale of the mortgaged premises, or some part of them, at public venue, at the Huron St. entrance to the Washtenaw County Building in Ann Arbor, Michigan, at 10:00 o'clock A.M., Local Time, on June 3, 1982.

Said premises are situated in the City of Ann Arbor, Washtenaw County, Michigan, and are described as:

Lot 145 Springwater Subdivision No. 2, according to the plat thereof as recorded in Liber 18 of Plats, Page 47, Washtenaw County Records.

During the six months immediately following the sale, the property may be redeemed. Dated: May 11, 1982
Ann Arbor Mortgage Corporation
Mortgagee
George E. Karl,
Attorney for Mortgagee
1475 Penobscot Bldg., Detroit, Mich. 48226
May 11-18-25-June 1

NOTICE OF MORTGAGE SALE - Default having been made in the terms of a mortgage made by JOHN L. PATRICK and MAMIE G. PATRICK, his wife, to CITIZENS MORTGAGE CORPORATION, n/k/a MANUFACTURERS HANOVER MORTGAGE CORPORATION dated July 18, 1979 and recorded July 23, 1979, in Liber 1518, Page 92, Washtenaw County Records, Michigan, and assigned by said Mortgagee to UNITED MUTUAL SAVINGS BANK by assignment dated October 8, 1979, and recorded October 16, 1979, in Liber 1527 Page 685, Washtenaw County Records, on which mortgage there is claimed to be due at the date thereof for principal and interest the sum of \$29,897.22.

Under the power of sale contained in said mortgage and pursuant to the statute in such case provided, notice is hereby given that on the 8th day of July, 1982, at 10:00 o'clock a.m., local time, said mortgage will be foreclosed by a sale at public auction to the highest bidder at the West entrance of the Washtenaw County Building in the City of Ann Arbor, Washtenaw County, Michigan, that being the place where the Circuit Court of said County is held, of the premises described in said mortgage, or so much as may be necessary to pay the amount due with interest at 8 1/4% percent per annum and all legal costs and charges.

Said premises are located in the Township of Ypsilanti, Washtenaw County, Michigan, and are described as:

N. 4 ft. of Lot 70 and S. 50 ft. of Lot 71, WESTWILLOW UNIT ONE, a subdivision of part of E 1/2 of Secs. 11 and 14, according to the plat thereof as recorded in L. 10 of Plats Pages 28 and 29 Sheet 2 of which has been revised in Liber 10 of Plats, Page 37, Washtenaw Co. Records.

The redemption period is six months from the time of sale.
Dated: May 21, 1982
UNITED MUTUAL SAVINGS BANK, Assignee
LEITHAUSER and LEITHAUSER, P.C.
18301 E. 8 Mile Rd., Suite 215
East Detroit, MI 48021-3263
771-6010
Attorneys for Mortgagee/assignee
June 1-8-15-22-29

LEGAL NOTICES

Legal Notices

MORTGAGE SALE - Default has been made in the conditions of a mortgage made by WILLIAM NAPIER, JR. and ANNA NAPIER, husband and wife, to Liberty Mortgage Corporation, a Michigan corporation, Mortgagee, dated August 8, 1980, and recorded on August 12, 1980, in Liber 1787, on page 903, Washtenaw County Records, Michigan, and assigned by said Mortgagee to Mortgage Associates, Inc., a Rhode Island corporation, by an assignment dated September 2, 1980, and recorded on September 12, 1980, in Liber 1772, on page 846, Washtenaw County Records, Michigan, on which mortgage there is claimed to be due at the date hereof the sum of Forty Eight Thousand Eight Hundred Forty Seven and 94/100 Dollars (\$48,847.96), including interest at 11 1/2% per annum.

Under the power of sale contained in said mortgage and the statute in such case made and provided, notice is hereby given that said mortgage will be foreclosed by a sale of the mortgaged premises, or some part of them, at public venue, at the West entrance to the County Building in Ann Arbor, Michigan, at 10:00 o'clock A.M., Local Time, on Thursday, July 15, 1982.

Said premises are situated in Township of Ypsilanti, Washtenaw County, Michigan, and are described as:

Lot 198, Turtle Creek Subdivision No. 2, a part of the Northeast one-quarter of section 14, Town 3 South, Range 7 East, Ypsilanti Township, Washtenaw County, Michigan, according to the Plat thereof as recorded in Liber 18 of Plats, Pages 41 and 42, Washtenaw County Records.

During the six months immediately following the sale, the property may be redeemed. Dated: June 1, 1982
Mortgage Associates, Inc., Assignee of Mortgagee
Hecht, Buchanan & Cheney
Sixth Floor Frey Building
Grand Rapids, Michigan 49503
June 1-8-15-22-29

MORTGAGE SALE - Default has been made in the conditions of a mortgage made by EDWARD OTIS MORNING and PAULA K. MORNING, Husband and Wife, to ANN ARBOR MORTGAGE CORPORATION, a Michigan Corporation, Mortgagee, dated March 31, 1978, and recorded on April 10, 1978, in Liber 1644, on page 858, Washtenaw County Records, Michigan, and assigned by said Mortgagee to FEDERAL NATIONAL MORTGAGE ASSOCIATION, a National Mortgage Association, by an assignment dated May 17, 1978, and recorded on May 22, 1978, in Liber 1650, on page 586, Washtenaw County Records, Michigan, on which mortgage there is claimed to be due at the date hereof the sum of THIRTY THOUSAND ONE HUNDRED THIRTY ONE AND 56/100 Dollars (\$30,131.56), including interest at 8 1/4% per annum.

Under the power of sale contained in said mortgage and the statute in such case made and provided, notice is hereby given that said mortgage will be foreclosed by a sale of the mortgaged premises, or some part of them, at public venue, at the Huron St. entrance to the Washtenaw County Building in Ann Arbor, Michigan, at 10:00 o'clock A.M., Local Time, on July 1, 1982.

Said premises are situated in the Township of Ypsilanti, Washtenaw County, Michigan, and are described as:

All of Lot 366, except the North 5 feet thereof and the North 20 feet of Lot 367, The Pines Subdivision of part of the North one-half of the Northeast one-quarter of Section 27, Town 3 South, Range 7 East, Ypsilanti Township, Washtenaw County, Michigan, according to the Plat thereof as recorded in Liber 8 of Plats, Page 1, Washtenaw County Records.

During the six months immediately following the sale, the property may be redeemed. Dated: June 1, 1982
FEDERAL NATIONAL MORTGAGE ASSOCIATION, Assignee of Mortgagee
GEORGE E. KARL, Attorney for Assignee of Mortgagee
1475 Penobscot Bldg., Detroit, Michigan 48226
June 1-8-15-22-29

STATE OF MICHIGAN
In the Circuit Court for the County of Washtenaw.
File No. 82-29038 DM
JERI MURRAY, Plaintiff
vs.
KENNETH S. MURRAY, Defendant.
ORDER TO ANSWER
At a session of said Court held in Court Room 110, 3 of the Washtenaw County Building, in the City of Ann Arbor in said County and State on the 21st day of April, 1982.

PRESENT: Honorable Edward D. Deake, Circuit Judge.
On the 10th day of March, 1982, a Complaint for Divorce was filed in the Circuit Court for the County of Washtenaw by Jeri Murray, Plaintiff herein, against Kenneth S. Murray, Defendant herein.

IT IS ORDERED, that the Defendant, Kenneth S. Murray of 5712 Bellevue Avenue, Sacramento, California, shall Answer or take such other action as may be permitted by law on or before the 25th day of June, 1982.

Failure to comply with this Order will result in judgment by Plaintiff against the said Defendant for the relief demanded in the Complaint for Divorce filed in the Court and cause.
s/ Edward D. Deake, Circuit Judge
William J. Rademacher,
Attorney for Plaintiff
Business Address:
110 East Middle Street
Chelsea, Michigan 48118
Tel.: 475-6986
May 18-25-June 1-8

LEGAL NOTICES

LEGAL NOTICES

Big Boy Softball Team Undefeated

Chelsea Big Boy's fastpitch team came away from Tuesday night's action still perfect. They defeated defending champion Wolverine Supply of Ann Arbor by a score of 4-0, to stay a game ahead of Omega Farms, which also won.

Big Boy has a 5-0 record thus far in league play. They have now faced all the teams in the league once and have come away with a win each time.

In the win over Wolverine, Big Boy was held to four runs on eight hits, their lowest hitting total this year. It still proved to be enough, however, to defeat their opponents.

Big Boy's scoring came in the second and third innings. The team scored twice in each frame to account for their four runs in the second inning. Mike Lauerman reached second base with a double and scored when Craig Houle followed with a double. Al Augustine then hit a two-out single which drove in Houle. In the third inning, Big Boy scored when Roger Bourne reached base with a single and Mike Lauerman got aboard on a fielder's choice. Bourne then scored on a throwing error by Wolverine's catcher and Todd Orbring got an RBI single, driving in Lauerman.

John Strong picked up his third win of the year against no losses. Strong pitched a four-hit shutout for his best performance to date.

Thursday's action was postponed because of the rain.

Over Memorial Day week-end, Big Boy traveled to Frankenmuth for a 10-team round robin tournament. The finals were scheduled for Memorial Day. Results of the tourney will be in next week's Standard.

Meanwhile, Big Boy's own second annual slow-pitch tournament was held last week-end. Despite intermittent rain all week-end, the tournament was played to its conclusion. Big Boy players and associates, umpired and worked the two Beach school fields. With the amount of rainfall, the fields were kept in reasonably good condition by the efforts of Big Boy's squad. The tournament was finished Sunday

evening with Ypsilanti Local 735 taking the team and individual championship trophies. Mike Jones, Ypsi's left fielder, won the tournament's MVP award for his fine defense and key hitting including seven home runs. Belleville took the runners up trophy. The final score was 8-7. Ypsi had defeated Belleville earlier in the tourney, 12-11. The tournament was a 15-team double elimination event with many local area teams competing. Last year's champions, Brighton Travel Service, finished third this year.

Four Big Boy players have been named to the Ann Arbor Major All Star Team. They include Randy Brler, shortstop; Craig Houle, first base; Mike Lauerman, centerfield; and, pitcher John Strong, who was chosen as one of the two all star pitchers.

The All-Star game will be held at Vet's Park starting at 8 p.m. Thursday, June 3. The All-Stars will be matched against Midland Valley Mechanical, one of the top teams in the midwest. Valley is led by pitcher Peter Finn, who is well-known in fastpitch competition. Finn throws as hard as anyone and will give the All-Star hitters all they can handle.

Big Boy's next league action is Tuesday, June 1 at 9:45 p.m. against Portage Hardware. All games are played at Vet's Park in Ann Arbor.



Cook eggs at low to moderate temperatures. Overcooking and high heat toughen eggs. To hardcook, place eggs in cold water, bring to boil, cover and turn off heat. Let stand 25 minutes, then plunge in cold water and remove shells.

Please Notify Us In Advance of Any Change in Address

LIMA TOWNSHIP NOTICE ESPECIALLY FOR FLETCHER ROAD RESIDENTS Tuesday, June 1, 1982

at the Townhall at 8:00 p.m.

There will be a PUBLIC HEARING concerning the at-grade crossing of Fletcher Road with the Conrail Railway.

Recommendations for increasing public safety at this crossing will be discussed.

For further information call 475-2202.

LIMA TOWNSHIP

Arlene R. Bareis, Clerk

OFFICIAL NOTICE REGULAR MEETING OF THE DEXTER TOWNSHIP BOARD will be held TUESDAY, JUNE 1, 1982-7:30 p.m.

at the Dexter Township Hall, 6880 Dexter-Pinckney Rd.

Items to be discussed:

1. Blight and dilapidated buildings ordinance.
2. Sheriff's Report.
3. Recreation & Senior Citizen funding.

WILLIAM EISENBEISER
Dexter Township Clerk

NOTICE OF PUBLIC HEARING On Proposed Amendment to the Lyndon Township Zoning Ordinance

TAKE NOTICE: that the Lyndon Township Planning Commission will hold a public hearing on the 6th day of July, 1982 at 8:30 p.m., at the Lyndon Townhall for the purpose of considering the following amendment to the Lyndon Township Zoning Ordinance:

Amendment of Article V, Section 5.03, Conditional Uses: add a new use to the permitted uses as follows,

"N. Operation of transit mix cement delivery vehicles, if operated as an ancillary use by the operators of a sand or gravel pit."

Written comments concerning the above Amendment will be received by regular mail at 17090 Boyce Rd., Stockbridge, MI. 49285.

Lyndon Township Planning Commission

George Coash, Co-Secretary

ANNUAL SCHOOL ELECTION

NOTICE OF ANNUAL ELECTION OF THE ELECTORS OF CHELSEA SCHOOL DISTRICT

Washtenaw and Jackson Counties, Michigan To Be Held

JUNE 14, 1982

TO THE ELECTORS OF THE SCHOOL DISTRICT:

Please Take Notice that the Annual Election of the School District will be held on Monday, June 14, 1982, in the Large Group Instruction Room of the Dwight E. Beach School.

THE POLLS OF ELECTION WILL OPEN AT 7:00 O'CLOCK, A.M., AND CLOSE AT 8:00 O'CLOCK, P.M.

At the Annual School Election there will be elected two (2) members to the Board of Education of the district for full terms of four (4) years ending in 1986.

THE FOLLOWING PERSONS HAVE BEEN NOMINATED TO FILL SUCH VACANCY:

Raymond Gorton Coulter
James A. Patterson

Dale A. Schumann
Daniel T. Snyder

TAKE FURTHER NOTICE THAT the following propositions will be submitted to the vote of the electors at the Annual School Election:

I. MILLAGE RENEWAL PROPOSITION

Shall the limitation on the amount of taxes which may be assessed against all property in Chelsea School District, Washtenaw and Jackson Counties, Michigan, be increased by 20.5 mills (\$20.50 on each \$1,000.00) on state equalized valuation for a period of 5 years, 1982 to 1986, inclusive, for the purpose of providing additional funds for operating purposes (this being a renewal of 20.5 mills for operating purposes which expired with the 1981 tax levy)?

II. TAX RATE LIMITATION INCREASE PROPOSITION FOR OPERATING PURPOSES

Shall the limitation on the amount of taxes which may be assessed against all property in Chelsea School District, Washtenaw and Jackson Counties, Michigan, be increased by 1/2 mill (\$0.50 on each \$1,000.00) on state equalized valuation for a period of 6 years, 1982 to 1987, inclusive, to provide additional operating funds to be used for maintenance, repair and improvement of school facilities?

NOTICE IS HEREBY GIVEN THAT the following proposition will be voted upon by the registered school electors of this school district at the annual school election to be held on Monday, June 14, 1982, which proposition was set forth in a resolution adopted by the Intermediate School Board of Washtenaw Intermediate School District, Michigan, on February 23, 1982, to wit:

WASHTENAW INTERMEDIATE SCHOOL DISTRICT SPECIAL EDUCATION MILLAGE INCREASE QUESTION

Shall the one and one-half (1 1/2) mill limitation on the annual property tax previously approved by the electors of the Washtenaw Intermediate School District, State of Michigan, for the education of handicapped persons be increased by one-half (1/2) mill?

All school electors who are registered with the city or township clerk of the city or township in which they reside are eligible to vote at this election.

I, Michael A. Stimpson, Treasurer of Washtenaw County, Michigan, hereby certify that as of March 15, 1982, the records of this Office indicate that the total of all voted increases over and above the tax limitation established by the Constitution of Michigan, in any local units of government affecting the taxable property located in Chelsea School District, Washtenaw and Jackson Counties, Michigan, is as follows:

By Washtenaw County 0.040674 1968-1982
0.25 1982 thru 1985
0.25 1982 and Future

By Sylvan Township: None
By Sharon Township: None
By Freedom Township: None
By Lima Township: None
By Dexter Township: None
By Lyndon Township: None
By the School District 1/2 Mill 1982 only

Michael A. Stimpson
Treasurer,
Washtenaw County, Michigan

I, Janet C. Rochefort, Treasurer of Jackson County, Michigan, hereby certify that as of March 15, 1982, the records of this Office indicate that the total of all voted increases over and above the tax limitation established by the Constitution of Michigan, in any local units of government affecting the taxable property located in Chelsea School District, Washtenaw and Jackson Counties, Michigan, is as follows:

By Jackson County: None
By Grass Lake Township: 1 Mill 1981
By Waterloo Township: None
By the School District 1/2 Mill 1982 only
By Jackson Community College: 2.37 Mills 1981 Unlimited
By Jackson County Intermediate School District Special Education: 4.00 Mills 1981 Unlimited
By Jackson County Intermediate School District Vocational Education: 1.70 Mills 1981 Unlimited
By Jackson District Library: 1 Mill 1981-1996 Inc.

Janet C. Rochefort
Treasurer,
Jackson County, Michigan

This Notice is given by order of the Board of Education.

Arthur E. Dils

Secretary, Board of Education

Church Services

Church of Christ—

CHURCH OF CHRIST
1361 Old US-12, East
Evangelist Robert B. Murray
Every Sunday—
7:30 a.m.—Radio program-WNRS in
Saline.
9:30 a.m.—Bible study.
10:30 a.m.—Worship service, Nursery
available.
6:00 p.m.—Worship service.
Every Wednesday—
7:30 p.m.—Bible study classes for all ages.

Catholic—

ST. MARY
The Rev. Fr. David Philip Dupuis, Pastor
Every Saturday—
8:00 p.m.—Mass.
7:00 p.m.—Mass.
3:30 p.m. to 4:30 p.m.—Confessions.
Every Sunday—
7 a.m., 9 a.m. and 11 a.m.—Mass.

United Church of Christ—

ST. JOHN'S EVANGELICAL
AND REFORMED
Francisco
The Rev. Paul McKenna, Pastor
Every Sunday—
10:30 a.m.—Sunday school and worship
service.
First Sunday of every month—
Communion.

Bethel Evangelical and Reformed

Freedom Township
The Rev. Roman A. Reineck, Pastor
Every Sunday—
10:00 a.m.—Worship service.
ST. PAUL
The Rev. Erwin R. Koch, Pastor
Wednesday, June 2—
7:45 p.m.—Chancel choir rehearsal.
Sunday, June 6—
9:00 a.m. and 10:30 a.m.—Church school.
10:30 a.m.—Morning worship service.

Congregational

The Rev. Carl Schwan, Pastor
Every Sunday—
9:30 a.m.—Summer worship (June-August). No Sunday school.
10:30 a.m.—Worship and Sunday school (January-May, September-December).
Nursery provided for pre-schoolers during
worship all year.
Second Thursday—
1:00 p.m.—Women of the Church (January-May, September-December).
Weekly Bible study—As scheduled in Sunday
bulletin.
Youth groups—As scheduled in Sunday
bulletin.
Adult Fellowship group—As scheduled in
the Sunday bulletin.

St. John's

Rogers Corners, Waters and Fletcher Rds.
The Rev. Gary Kwiatek, Pastor
Every Sunday—
10:30 a.m.—Worship and Sunday school.

Episcopal—

ST. BARNABAS
The Rev. Fr. Jerrold F. Beaumont, B.S.P.
Every Sunday—
9:30 a.m.—Christian education, adult and
children's classes.
10:30 a.m.—Holy Communion first, third
and fifth Sundays.
10:30 a.m.—Morning Prayer, second and
fourth Sundays.
Nursery available every Sunday. Coffee
hour follows all Sunday services.
First Sunday of the month—
Pot-luck dinner follows the service. All are
welcome.
First Monday of the month—
7:30 p.m.—Bishop's Committee.
Every Wednesday—
6:15 p.m.—Choir practice.
7:15 p.m.—Soup and sandwich supper.
7:45 p.m.—Holy Communion.
8:30 p.m.—Bible Study class open to all.

Mormon—

CHURCH OF JESUS CHRIST
OF LATTER-DAY SAINTS
Chelsea Branch-Rebekah Hall
Every Sunday—
9:30 a.m.—Sacrament.
10:30 a.m.—Sunday school.
11:40 a.m.—Priesthood.

Methodist—

SALEM GROVE UNITED METHODIST
3320 Notan Rd.
The Rev. Dale B. Ward, Pastor
Every Sunday—
9:30 a.m.—Sunday school.
10:30 a.m.—Morning worship.
7:00 p.m.—Youth Fellowship.

First United Methodist

Parks and Territorial Rds.
The Rev. Larry Nichols and
The Rev. David Goldsmith, Pastors
Every Sunday—
9:30 a.m.—Morning worship.
10:00 a.m.—Sunday school.

Waterloo Village United Methodist

6110 Washington St.
The Rev. Larry Nichols and
The Rev. David Goldsmith, Pastors
Every Sunday—
10:00 a.m.—Sunday school.
11:15 a.m.—Worship service.

First United Methodist

124 Park St.
The Rev. Marvin H. McCallum, Pastor
Inspiration Line: 475-1852.
Tuesday, June 1—
7:30 p.m.—Chelsea Players will rehearse
in the Social Center.
Wednesday, June 2—
7:30 p.m.—Bradley childbirth class.
8:00 p.m.—Chancel choir.
Thursday, June 3—
7:30 p.m.—Chelsea Players will rehearse
in the Social Center.
Sunday, June 6—
9:00 a.m.—Worship service. Crib
nursery.
9:45 a.m.—Senior high church school
class.
10:00 a.m.—Worship service. Crib nursery
for infants up to the age of two and church
school for children ages two through five
years (not in kindergarten).
10:25 a.m.—Kindergartners through fifth
graders leave worship service for music
lessons.
11:00 a.m.—Class sessions for kindergart-
ners through junior high and adults.
11:55 a.m.—All church school classes are
dismissed.
Monday, June 7—
9:30 a.m.—Western Washtenaw Com-
munity Council.
1:00 p.m.—Church Women United exe-
cutive committee will meet in the Litteral
Room.
8:00 p.m.—Outreach ministries.
Tuesday, June 8—
7:30 p.m.—Parish-Staff relations com-
mittee.

North Lake United Methodist

The Rev. John Elliott, Pastor
Every Sunday—
9:00 a.m.—Christian Education.
10:15 a.m.—Worship service. Nursery pro-
vided for children up to first grade.
5:00 p.m.—U.M.Y.F.
CHELSEA FREE METHODIST
7665 Werkner Rd.
Mearl Bradley, Pastor
Wednesday, June 2—
Day of Prayer.
8:30 p.m.—Junior choir.
6:30 p.m.—CYC Honor Council pot-luck.
7:30 p.m.—Honor council.
Thursday, June 3—
7:30 p.m.—Growth groups.
Friday, June 4—Senior banquet.
Sunday, June 7—
9:45 a.m.—Sunday school.
10:00 a.m.—Hospital ministry.
11:00 a.m.—Morning worship.
6:00 p.m.—Worship service. World Wide
Pictures, "The Living Word."
Tuesday, June 8—
7:30 p.m.—T.N.W.

Methodist Home Chapel

The Rev. Ira Wood, Chaplain
Every Sunday—
8:45 a.m.—Worship service.

Sharon United Methodist

The Rev. Ronald L. Iris, Pastor
Corner Pleasant Lake Rd. and M-52
Every Sunday—
10:00 a.m.—Sunday school.
11:00 a.m.—Worship service.

Lutheran—

ST. JACOB EVANGELICAL
LUTHERAN
The Rev. Andrew Bloom, Pastor
12501 Rietmiller Rd., Grass Lake
Every Sunday—
9:00 a.m.—Sunday school.
10:15 a.m.—Divine services.

St. Thomas Evangelical Lutheran

Elsworth and Isaac Rds.
The Rev. Paul Puffe, Pastor
Every Sunday—
9:30 a.m.—Sunday school.
10:45 a.m.—Worship service.

Faith Evangelical Lutheran

9575 North Territorial Rd.
The Rev. Mark Porinsky, Pastor
Wednesday, June 2—
7:30 p.m.—Day school graduation.
Saturday, June 5—
8:30 p.m.—Board of Education.
Sunday, June 6—
8:45 a.m.—Sunday school, adult class.
10:00 a.m.—Worship service with Lord's
Supper.

Our Savior Lutheran

1515 S. Main, Chelsea
The Rev. Franklin H. Giebel, Pastor
Broadcast Sundays—
Watch "This is the Life."
7:00 a.m.—WXYZ, channel 7, Detroit.
"The Church of the Lutheran Hour."
8:35 a.m.—WIBM, 1450 AM, Jackson.
12:30 p.m.—WYFC, 1520 AM, Ypsilanti.
Every Sunday—
9:00 a.m.—Sunday School and Bible
classes.
10:30 a.m.—Morning worship.
Holy Communion 1st, 3rd and 5th Sundays.
Every Monday—
7:00 p.m.—Confirmation classes.
Every Thursday—
1:00 p.m.—Adult Bible class.

Zion Lutheran

Corner of Fletcher and Waters Rds.
The Rev. John R. Morris, Pastor
Tuesday, June 1—
4:00 p.m.—Joy-makers.
Sunday, June 6—
9:00 a.m.—Sunday school group pro-
gram.
Tuesday, June 7—
4:00 p.m.—Joy-makers.
Vacation Bible school will be held June 14
through June 18 from 9 a.m. to noon. Theme
for the session is "God's People Together in
Christ."

Baptist—

CHELSEA BAPTIST
337 Wilkinson St.
The Rev. Thode B. Thodeson, Pastor
Every Sunday—
10:00-10:45 a.m.—Church school.
10:30 a.m.—Morning worship.
11:20 a.m.—Junior church school.
6:00 p.m.—Evening fellowship.
Every Wednesday—
7:00 p.m.—Mid-week Bible study and
prayer.

Gregory Baptist

The Rev. David Brinkman, Pastor
Every Sunday—
9:45 a.m.—Sunday school.
11:00 a.m.—Morning worship.
6:00 p.m.—Young people.
7:00 p.m.—Evening worship.
FELLOWSHIP BAPTIST
The Rev. M. Keith McIver, Pastor
Every Sunday—
8:00 p.m.—Worship service at the
Rebekah Hall.
Every Wednesday—
7:30 p.m.—Bible Study and prayer at the
Village Apartments, No. 106.

First United Presbyterian

Unadilla
William D. Kuenzli, Pastor
Every Sunday—
11:00 a.m.—Worship service.

Christian Scientist—

FIRST CHURCH OF CHRIST SCIENTIST
1983 Washtenaw Ave., Ann Arbor
Every Sunday—
10:30 a.m.—Sunday school, morning ser-
vice.

Zion Lutheran Plans Vacation Bible School

Zion Lutheran church on the corner of Fletcher and Waters Rds. in Chelsea, will hold its annual Vacation Bible School, June 14 through 18, between the hours of 9 a.m. and 12 noon.

The 1982 theme is "God's People Together in Christ" and will cover the topics we are God's called people, and He cares for us; we are a redeemed people, and God helps and forgives us; we are a worshipping people, and we celebrate as we praise Him in worship; we are a challenged people as we care for others, and share God's love; and we are a hopeful people and God gives us hope which we share with others. Bible school is open to all children from three years of age through the sixth grade. There will be Bible lessons, stories, crafts, songs and treats. There is no registration fee, but a daily free will offering will be taken. Everyone is welcome.

North Lake Church Vacation Church School Scheduled

North Lake United Methodist church, 1411 North Territorial Rd., will present Vacation Church School beginning the week of June 21. The week-long session will begin at 9:30 each morning and continue through 11:45 a.m.

This time of Christian fellowship will be enjoyed through music, crafts and classroom activities and children ranging in age from kindergarten through sixth grade are welcome. Refreshments will be provided and there is a \$2 per family registration fee.

Non-Denominational—

CHELSEA FULL GOSPEL
11452 Jackson Rd.
The Rev. Chuck Clemens, Pastor
Every Sunday—
10:00 a.m.—Sunday school.
11:00 a.m.—Morning worship.
6:30 p.m.—Evening worship.
Every Wednesday—
7:00 p.m.—Midweek prayer and Bible study.

Immanuel Bible

The Rev. Ron Little, Pastor
Every Sunday—
9:45 a.m.—Sunday school, nursery pro-
vided.
11:00 a.m.—Morning worship, nursery
provided.
6:00 p.m.—Evening worship.
Every Wednesday—
7:00 p.m.—Family hour, prayer meeting
and Bible study.

Covenant

Dr. R. J. Ratcliff, Pastor
50 N. Freer Rd.
Every Sunday—
9:00 a.m.—Sunday school.
10:30 a.m.—Worship. Nursery provided.

Mt. Hope Bible

12884 Trist Rd., Grass Lake
The Rev. R. H. Brandon, Pastor
Every Sunday—
10:00 a.m.—Sunday school.
11:00 a.m.—Morning worship.
7:00 p.m.—Evening service.
Every Wednesday—
7:00 p.m.—Bible study.

North Sharon Bible

Sylvan and Washburne Rds.
The Rev. William Ensten, Pastor
Every Sunday—
10:00 a.m.—Sunday school.
11:00 a.m.—Worship service.
6:00 p.m.—Senior High Youth meeting.
Youth choir.
7:00 p.m.—Evening worship service.
(Nursery available.) All services in-
terpreted for the deaf.
Every Wednesday—
7:00 p.m.—Bible study and prayer
meeting. (Nursery available.) Bus transpor-
tation available: 428-7222.

Chelsea Christian Men's Fellowship Prayer Breakfast

Chelsea Hospital Cafeteria
First Saturday Each Month—
8:00 a.m.—Breakfast.
8:30-10:00 a.m.—Program.

Chelsea Hospital Ministry

Every Sunday—
10:00 a.m.—Morning service, Chelsea
Community Hospital Cafeteria.

Church of the Nazarene—

SOUTHWEST
CHURCH OF THE NAZARENE
14555 Holmes Rd. (M-106)
Fred Bridge, Pastor
Every Sunday—
10:00 a.m.—Sunday school.
11:00 a.m.—Morning worship.
6:00 p.m.—Evangelical service.
Every Wednesday—
7:00 p.m.—Bible Study and Prayer
Meeting.

Assembly of God—

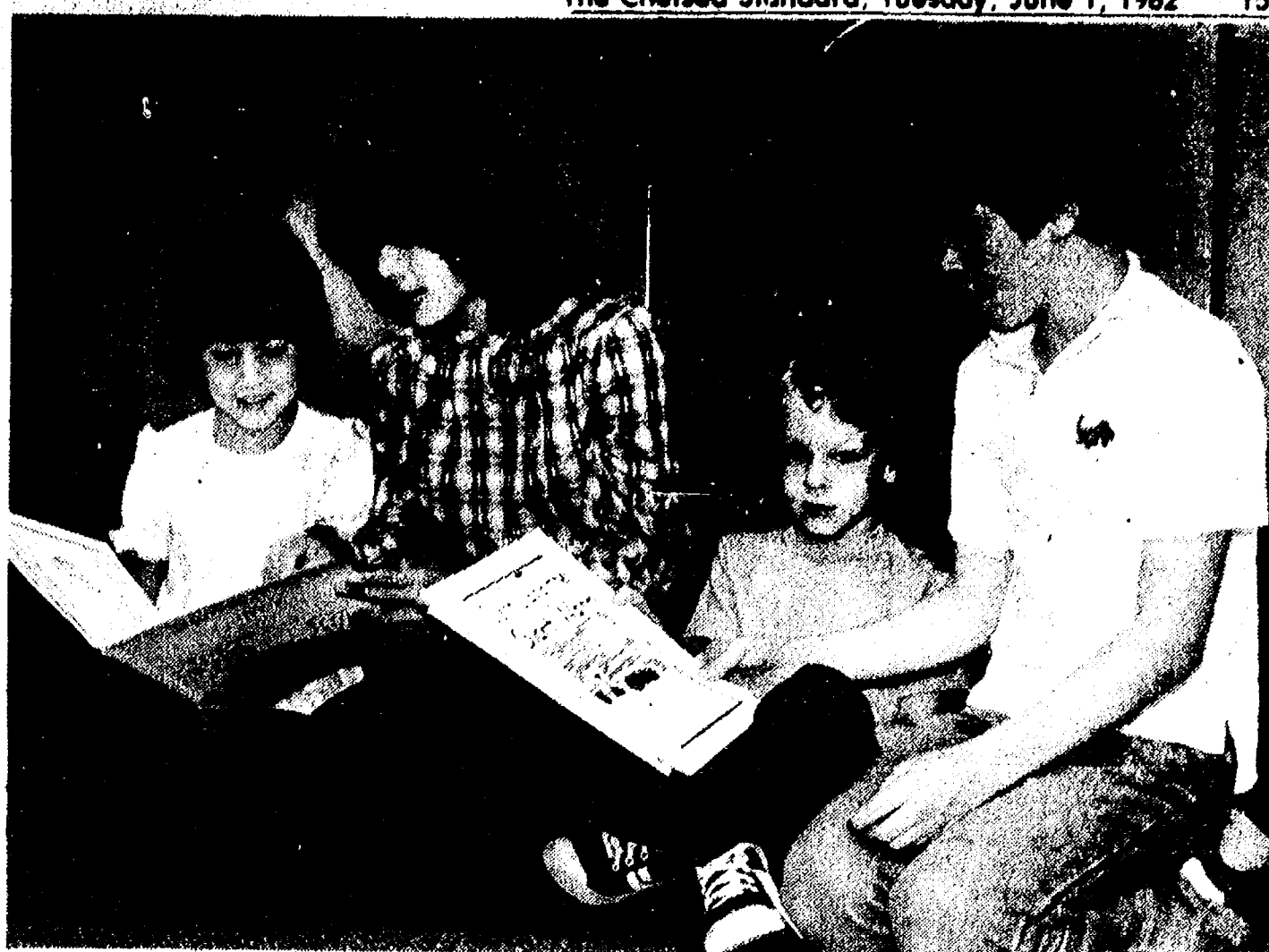
FIRST ASSEMBLY OF GOD
The Rev. Richard Coury, Pastor
Every Sunday—
9:45 a.m.—Sunday school.
10:30 a.m.—Worship service and Sunday
school nursery for pre-schoolers.
6:00 p.m.—Evening worship.
Every Wednesday—
7:00 p.m.—Christ's Ambassadors. Bible
study and prayer.

We build special storage buildings.

Cuckler pre-engineered, all-steel buildings for storage on the farm, business and industry. Wide variety of types and sizes. Let us help you plan and build for your present and future needs.

Cuckler
AUTHORIZED BUILDER

DICK POLJAN
13875 MCKINLEY
CHELSEA, MICH.
Ph. 475-2921



BOOK EXCHANGE: Following a month of interviews with Chelsea kindergartners, sixth grade students in Mrs. Koch's and Mr. Wescott's English/geography block classes presented novels based on the kindergartners' interests. A total of 140 books were exchanged last week.

Above, Jayma Spears, Arlene Tal, Dennis Katakowski and Brant Snyder compare novels following the presentation. Kindergarten teachers involved in the program were Mrs. Plank, Mrs. Carlson, Mrs. Bower and Mrs. Van Blaricum.

Greek Festival Slated June 3-5

St. Nicholas Greek Orthodox church, 414 N. Main St., Ann Arbor, will host Ya'ssoo Ann Arbor, 1982! this coming Thursday, Friday and Saturday, June 3-5. This annual fund-raising event will administer proceeds to the Church Future Expansion Fund.

This year's Greek festival will feature a bake sale, luncheons and dinners, entertainment and a Grecian boutique and will be open from 11 a.m. to midnight each day, on the plaza under an outdoor festive weatherproof canopy stretching from Main St. to Fourth Ave.

More than 23,000 pieces of various Greek pastries will be available for purchase and the varied menu will include, along with entrees, rice, Greek bread and Greek salad. Spinach and cheese pie will also be available.

Hellenic artifacts will be featured in the boutique and will include such items as clothing, tote bags, worry beads, records and more. Also available will be St. Nicholas Kousina, a Greek cookbook compiled by the ladies of St. Nicholas church.

This year, three famous Greek bands will fill the downtown area with their music. On Thursday evening, entertainment will be provided by Markogiannakis orchestra from Chicago while Friday evening will feature the Grecian Lads from Youngstown, O. Saturday, Levendes, from Detroit, will provide entertainment.

An admission fee of \$6 will be charged after 6 p.m. and this includes admission of \$1.50 and a \$4.50 balance that may be applied to any purchase once inside. With a tent stretching one block long,

Free Methodists Schedule Film

On Sunday, June 6, at 6 p.m., the Chelsea Free Methodist church, 7665 Werkner Rd., will be showing the film "The Living Word" produced by World Wide Pictures. This film will share with you, "What God has to say to us today."

"The Living Word" traces God's most precious promise—life everlasting with Him from the moment he first breathed life into man, to the incredible moment when His son, Jesus Christ, broke the power of death with His resurrection. Through this remarkable motion picture, viewers will capture a new sense of the beauty of His plan and the sureness of His love for mankind. The public is invited at no charge and nursery care will be provided.

Michigan State University's medical technology program, one of the nation's largest, is associated with clinical programs in 18 Michigan hospitals.

CATS CHELSEA AREA TRANSPORTATION SYSTEM

Transportation for the Senior Citizen 65 years & Older, & the Handicapped.

Advance reservations are required. For morning transportation call the preceding afternoon between 1 p.m. and 3 p.m. For afternoon transportation call in the morning from 9 a.m. to 11 a.m.

CALL 475-9494

between 9 to 11 a.m. or 1 to 3 p.m.

Service hours are 9 a.m. to 4:30 p.m. daily; Thursdays, 9 a.m. to 1 p.m.

A Friendly Church



Active Christian fellowship in church-school, worship, music and caring.

WORSHIP SCHEDULE:

Service's 9:00 and 10:00 am.
Church School for all ages.

For complete schedule call the church office at 475-8119

First United Methodist Church

128 Park Street
Chelsea

Rev. Marvin McCallum, Pastor

The Chelsea Standard

Mrs. Thomas R. Sington
2215 Parkway Drive
Baltimore, Maryland 21224

IMPRINT HL

June Sale
Save 44%

Rytex
Deckle-Edge
Vellum
Personalized
Stationery

8.95
regularly \$16

Your name and address custom printed on genuine vellum paper that is subtly deckle edged in the manner of fine books. Paper choice in Windsor White, Antique Grey or Wedgewood Blue. Choice of print styles HL or MC as shown with ink color in deep grey, blue or raspberry red. Choose 100 Princess sheets, 100 envelopes or 80 King size sheets, 80 envelopes.

Special Bonus:

50 extra, unprinted sheets for use as second pages... only \$3 with order.

THE CHELSEA STANDARD
300 N. Main St., Chelsea, Mich. 48118

Please send _____ Boxes DECKLE EDGE VELLUM on sale @ \$8.95 each.
Include Bonus: ☐ (check) 50 extra, plain sheets at \$3.00 each box.

Imprint Name _____

Address _____

City/State/Zip _____

Check choice of: paper size & color, imprint style and ink color

Princess Size: ☐ White (9401) ☐ Blue (9451) ☐ Grey (9481)

King Size: ☐ White (9101) ☐ Blue (9151) ☐ Grey (9181)

Imprint: ☐ HL ☐ MC Ink: ☐ Blue ☐ Grey ☐ Red

ORDERED BY _____

Address _____ Apt. _____

City, State, Zip _____

Account No. _____ Phone _____

☐ Charge ☐ Check or M.O. I _____ enclosed. Sorry, no C.O.D.'s or phone orders.

Please include Michigan Sales Tax

AT BURGHARDT-COLE CHELSEA CHAPEL

214 East Middle Street
Phone 475-1551

—You are assured of a wide range of prices.
—Our prices are always shown in each casket. This means the price of a casket will not be raised at the time you select a casket for any reason. (It is possible the price may be lowered if our standard full service is not used.)
—You have complete freedom to select a funeral service within your means and desires.
—You will receive complete information concerning our services and an accurate accounting of all costs.
—You will have a real personal choice and "you" will make the final decision as to what best serves your need.
—We promise to serve "all the people" of Chelsea—Rich or Poor—the best way we know how.



DONALD A. COLE, Director

DEATHS

Leon R. Marsh

713 Wildwood Dr.
Holland

Leon R. Marsh of 713 Wildwood Dr., Holland, died Saturday morning in Holland Community Hospital following an apparent heart attack. He was 59.

Mr. Marsh, vice-president in charge of manufacturing for Northern Fibre Products, Co., was born in Waterloo, attended schools in Chelsea and graduated from Chelsea High school. He served as a first lieutenant with the U. S. Army during World War II.

Following the war, he returned to Chelsea where he was plant superintendent for Central Fibre Products. He came to Holland in 1961 to work for Northern Fibre.

He was a member and past exalted ruler of Holland Elks Lodge 1350, a member of Holland American Legion and VFW Post 2144. He had served on the Chelsea school board and was a member of the Chelsea Rod and Gun Club.

Two brothers, Harold and Frank, preceded him in death.

Mr. Marsh is survived by his widow, Margaret; two sons, Michael Marsh of Saugatuck and Eric Marsh of Escanaba; three daughters, Mrs. John (Marleone) Ten Cate of Grand Rapids, Mrs. Jerry (Pamela) Hoag of Wyoming and Nannette Marsh at home; six grandchildren; one brother, Duane Marsh of Jackson; one sister, Mrs. Donald (Shirley) Schneider of Chelsea; two sisters-in-law, Louvay Marsh of Michigan Center and Dora Marsh of Bay City; and several nieces, nephews and cousins.

Funeral services were held Tuesday, May 25 at 10 a.m. at the Dykstra Downtown Chapel with the Rev. Donald Hoekstra officiating. Graveside services were held at 3 p.m. at Mount Hope Cemetery, Waterloo.



EN ESPANOL, Katie Francis identifies a number of edibles and serves drinks in Mrs. Stein's North school classroom last Wednesday prior to a feast enjoyed by all of the students.

Eager to partake in some tortillas, avocados, papayas, beans and melon are, left to right, Justin White, Rickey Westcott, Matt Francis, Travis Garman and Craig Ferry.



A daughter, Christina Marie, Wednesday, May 26, Bronson Hospital, Kalamazoo to Mr. and Mrs. William Willett of Plainwell. Maternal grandparents are Mr. and Mrs. Horace Robinson of Grass Lake. Paternal grandparents are Mr. and Mrs. Darwin Willett of Harbor Beach.

A son, Daniel Thomas, Friday, May 21, St. Joseph Mercy Hospital, Ann Arbor, to Danny and Denise Whitesall of 245 Adams. Paternal grandparents are Robert and Delores Whitesall of Hamburg, formerly of Chelsea.

Telephone your club news to 475-1371

Grass Lake Meets New Physicians

Residents of eastern Jackson county and the Grass Lake area had the opportunity to get acquainted with their new physicians, Dr. Mark Leventer and Dr. Kathleen Anzick, on Tuesday, May 25 at the Grass Lake Lions Community Building. The evening was sponsored by the Lions Club of Grass Lake.

Drs. Leventer and Anzick, who are husband and wife, will be establishing their practice in the fall and will be located at 373 Lakeside Dr., Grass Lake.

In addressing the area residents, Drs. Leventer and Anzick stressed the family medicine aspect of their practice and their interest in providing medical care to the "total" person.

Drs. Leventer and Anzick feel strongly that family practitioners should live in the area in which

they practice. They will be living in Grass Lake.

They spoke of providing medical care throughout the complete life cycle including infancy, adolescence, young adulthood, middle age, the older years, and the time of dying. They indicated they would make home visits when it was necessary.

They told of their strong feelings about meeting the needs of the community which will include preventive health care as well as classes in CPR, nutrition, stress management, etc.

Drs. Leventer and Anzick were recruited and brought to the Grass Lake area by the Grass Lake Committee to Recruit Physicians and a Dentist, and Chelsea Community Hospital where they will be members of the Medical Staff.

Senior Citizen Activities

Tuesday, June 1—

9:00 a.m.—Art class.

1:00 p.m.—Euchre.

Wednesday, June 2—

10:00 a.m.—Ceramics.

12:30 p.m.—Shopping trip.

1:00 p.m.—Bowling.

1:00 p.m.—Knitting.

1:00 p.m.—Fitness.

Friday, June 4—

12:30 p.m.—Antique trip.

Monday, June 7—

1:00 p.m.—Bingo.

1:00 p.m.—Hostess meeting.

Tuesday, June 8—

Rochester trip.

1:00 p.m.—Euchre.

1:00 p.m.—Euchre.

1:00 p.m.—Euchre.

1:00 p.m.—Euchre.

1:00 p.m.—Euchre.

1:00 p.m.—Euchre.

1:00 p.m.—Euchre.

1:00 p.m.—Euchre.

1:00 p.m.—Euchre.

1:00 p.m.—Euchre.

1:00 p.m.—Euchre.

1:00 p.m.—Euchre.

1:00 p.m.—Euchre.

1:00 p.m.—Euchre.

1:00 p.m.—Euchre.

1:00 p.m.—Euchre.

1:00 p.m.—Euchre.

1:00 p.m.—Euchre.

1:00 p.m.—Euchre.

1:00 p.m.—Euchre.

1:00 p.m.—Euchre.

1:00 p.m.—Euchre.

1:00 p.m.—Euchre.

1:00 p.m.—Euchre.

1:00 p.m.—Euchre.

1:00 p.m.—Euchre.

1:00 p.m.—Euchre.

1:00 p.m.—Euchre.

1:00 p.m.—Euchre.

1:00 p.m.—Euchre.

1:00 p.m.—Euchre.

1:00 p.m.—Euchre.

1:00 p.m.—Euchre.

1:00 p.m.—Euchre.

1:00 p.m.—Euchre.

1:00 p.m.—Euchre.

1:00 p.m.—Euchre.

1:00 p.m.—Euchre.

1:00 p.m.—Euchre.

1:00 p.m.—Euchre.

1:00 p.m.—Euchre.

1:00 p.m.—Euchre.

1:00 p.m.—Euchre.

1:00 p.m.—Euchre.

1:00 p.m.—Euchre.

1:00 p.m.—Euchre.

1:00 p.m.—Euchre.

1:00 p.m.—Euchre.

1:00 p.m.—Euchre.

1:00 p.m.—Euchre.

1:00 p.m.—Euchre.

1:00 p.m.—Euchre.

1:00 p.m.—Euchre.

1:00 p.m.—Euchre.

1:00 p.m.—Euchre.

1:00 p.m.—Euchre.

1:00 p.m.—Euchre.

1:00 p.m.—Euchre.

1:00 p.m.—Euchre.

1:00 p.m.—Euchre.

1:00 p.m.—Euchre.

1:00 p.m.—Euchre.

1:00 p.m.—Euchre.

1:00 p.m.—Euchre.

1:00 p.m.—Euchre.

1:00 p.m.—Euchre.

1:00 p.m.—Euchre.

1:00 p.m.—Euchre.

1:00 p.m.—Euchre.

1:00 p.m.—Euchre.

1:00 p.m.—Euchre.

1:00 p.m.—Euchre.

1:00 p.m.—Euchre.

1:00 p.m.—Euchre.

1:00 p.m.—Euchre.

1:00 p.m.—Euchre.

1:00 p.m.—Euchre.

1:00 p.m.—Euchre.

1:00 p.m.—Euchre.

1:00 p.m.—Euchre.

1:00 p.m.—Euchre.

1:00 p.m.—Euchre.

1:00 p.m.—Euchre.

1:00 p.m.—Euchre.

1:00 p.m.—Euchre.

1:00 p.m.—Euchre.

1:00 p.m.—Euchre.

1:00 p.m.—Euchre.

1:00 p.m.—Euchre.

1:00 p.m.—Euchre.

1:00 p.m.—Euchre.

1:00 p.m.—Euchre.

1:00 p.m.—Euchre.

1:00 p.m.—Euchre.

1:00 p.m.—Euchre.

1:00 p.m.—Euchre.

1:00 p.m.—Euchre.

1:00 p.m.—Euchre.

1:00 p.m.—Euchre.

1:00 p.m.—Euchre.

1:00 p.m.—Euchre.

1:00 p.m.—Euchre.

1:00 p.m.—Euchre.

1:00 p.m.—Euchre.

1:00 p.m.—Euchre.

1:00 p.m.—Euchre.

1:00 p.m.—Euchre.

1:00 p.m.—Euchre.

1:00 p.m.—Euchre.

1:00 p.m.—Euchre.

1:00 p.m.—Euchre.

1:00 p.m.—Euchre.

1:00 p.m.—Euchre.

1:00 p.m.—Euchre.

1:00 p.m.—Euchre.

1:00 p.m.—Euchre.

1:00 p.m.—Euchre.

1:00 p.m.—Euchre.

1:00 p.m.—Euchre.

1:00 p.m.—Euchre.

1:00 p.m.—Euchre.

1:00 p.m.—Euchre.

1:00 p.m.—Euchre.

1:00 p.m.—Euchre.

1:00 p.m.—Euchre.

1:00 p.m.—Euchre.

1:00 p.m.—Euchre.

1:00 p.m.—Euchre.

1:00 p.m.—Euchre.

1:00 p.m.—Euchre.

1:00 p.m.—Euchre.

1:00 p.m.—Euchre.

1:00 p.m.—Euchre.

1:00 p.m.—Euchre.

1:00 p.m.—Euchre.

1:00 p.m.—Euchre.

1:00 p.m.—Euchre.

1:00 p.m.—Euchre.

1:00 p.m.—Euchre.

1:00 p.m.—Euchre.

1:00 p.m.—Euchre.

1:00 p.m.—Euchre.

1:00 p.m.—Euchre.

1:00 p.m.—Euchre.

1:00 p.m.—Euchre.

1:00 p.m.—Euchre.

1:00 p.m.—Euchre.

1:00 p.m.—Euchre.

1:00 p.m.—Euchre.

1:00 p.m.—Euchre.

1:00 p.m.—Euchre.

1:00 p.m.—Euchre.

1:00 p.m.—Euchre.

1:00 p.m.—Euchre.

1:00 p.m.—Euchre.

1:00 p.m.—Euchre.

1:00 p.m.—Euchre.

1:00 p.m.—Euchre.

1:00 p.m.—Euchre.

1:00 p.m.—Euchre.

1:00 p.m.—Euchre.

1:00 p.m.—Euchre.

1:00 p.m.—Euchre.

1:00 p.m.—Euchre.

1:00 p.m.—Euchre.

1:00 p.m.—Euchre.

1:00 p.m.—Euchre.

1:00 p.m.—Euchre.

1:00 p.m.—Euchre.

1:00 p.m.—Euchre.

1:00 p.m.—Euchre.

1:00 p.m.—Euchre.

1:00 p.m.—Euchre.

1:00 p.m.—Euchre.

1:00 p.m.—Euchre.

1:00 p.m.—Euchre.

1:00 p.m.—Euchre.

1:00 p.m.—Euchre.

1:00 p.m.—Euchre.

1:00 p.m.—Euchre.

1:00 p.m.—Euchre.

1:00 p.m.—Euchre.

1:00 p.m.—Euchre.

1:00 p.m.—Euchre.

1:00 p.m.—Euchre.

1:00 p.m.—Euchre.

1:00 p.m.—Euchre.

1:00 p.m.—Euchre.

1:00 p.m.—Euchre.

1:00 p.m.—Euchre.

1:00 p.m.—Euchre.

1:00 p.m.—Euchre.

1:00 p.m.—Euchre.

1:00 p.m.—Euchre.

1:00 p.m.—Euchre.

1:00 p.m.—Euchre.

1:00 p.m.—Euchre.

1:00 p.m.—Euchre.

1:00 p.m.—Euchre.

1:00 p.m.—Euchre.

1:00 p.m.—Euchre.

1:00 p.m.—Euchre.

1:00 p.m.—Euchre.

1:00 p.m.—Euchre.

1:00 p.m.—Euchre.

1:00 p.m.—Euchre.