

# Study Underway To Ease Village Sewage Treatment Problems

Chelsea Village Council will hold a public hearing Tuesday, March 6 at 7:30 p.m. in the village chambers on E. Middle St. to decide whether or not Chelsea should have a single-family residential district which would allow septic fields.

The new zoning, if passed, would be called Estate Residential District (RE) as any land zoned under RE must be at least 20,000 square feet (just more than one-half acre) large. The majority of lots for single-family homes in the village average 7,500 to 8,000 square feet and all of them are hooked into the central sewage system provided by the village.

Other restrictions include that the district exist only in areas

which are to be subdivided into residential neighborhoods; have access to municipal water; be approved by the Washtenaw County Health Department's PERK testing and by the Village Council; and that the septic field be discontinued when a central system is available.

Chelsea Planning Commission initiated the details of the new zoning district in response to an increasingly tight situation at the Sewage Treatment Plant on McKinley St., according to Planning Commission chairman William Storey.

"The Planning Commission wanted to open up a new avenue for people wishing to build in Chelsea," Storey explained. "There are no developers that

I am aware of at the moment who are waiting for this new avenue to open so that they may start building," he added.

Built in 1937 and renovated in 1959-60, the sewage treatment plant was designed to treat a maximum of 600,000 gallons a day. The daily rate, however, runs between 650,000 and 700,000 gallons in the dry months and, during the spring, the count at times may reach one million gallons according to Melvin Leach, who has supervised the plant's operation for the past 18 years.

"We have two major problems. One is that we get our biggest flow between about 8 a.m. and 10 p.m. when schools and industry are in use. This puts an ex-

cessive burden on the system. Our second problem involves an incredible amount of inflow-infiltration (I and I) especially during the spring months.

Infiltration consists of water that enters the collection system through the walls of the pipe and joints, and through cracks in the pipes and tiles. Inflow consists of water that comes directly in the sanitary sewer system through things like illegal catch basin connections or roof drains.

As a result of the overuse, the plant is unable to adequately treat the sewage, the liquid portion of which is pumped directly into Letts Creek (a tributary of the Huron River).

While little can be done about

the problem of concentrated use, the village, with the hired firm of Finkbeiner, Pettis & Strout (original engineers of the present plant) have been in the thick of correcting the I and I problem for the past 3½ years.

In 1975 the federal government passed Public Law 92-500, enacted to establish adequate wastewater treatment facilities throughout the country. A three-step system was established, complete with typical bureaucratic red tape to which a file four inches thick on Fritz Weber's desk will attest.

The first step, which Chelsea is only in the middle of after 3½ years, is called the planning phase; the second is called a detailed design phase; and

step three is the construction phase.

Step one involves preparing a plan of various alternative methods or means of wastewater collection and treatment and determining which is the less costly to use. Doing the planning is Finkbeiner, Pettis & Strout.

In explaining why it has taken so many years just to complete the first phase, Village Administrator Fritz Weber was precise and to the point—"the red tape is unbelievable."

Much of the paper work the village must fill out has to do with applying for state and federal grants.

All three steps of the program must be closely co-ordinated and

approved by the Federal Environmental Protection Agency (EPA), the Michigan Department of Natural Resources (DNR), and the Southeastern Michigan (SEMCOG). The PL 92-500 established that the Federal government will provide grants totaling 75 percent of each project's eligible cost. The state pays 20 percent and the local government 5 percent.

"Each phase or step of the program is funded individually. An application requesting funds has to be filed prior to each phase of the work and no work can proceed until each grant application has been approved by the EPA," Weber said.

So, much of the time has been spent in waiting. Presently,

Chelsea is waiting for approval of a grant it requested to conduct smoke testing on the existing sewer pipe system although a promise was made that Jan. 15, 1979 would be the latest the village would receive word.

"If we had received approval a few months earlier then we could have started the testing. As it is, we'll have to wait until the dry months of the summer when the weather will permit this type of testing," Weber said.

Smoke testing involves blowing smoke through the underground pipelines and using a complex system of video taping to find where the cracks, leaks, and other problems exist.

## WEATHER

	Min.	Max.	Precip.
Thursday, Feb. 8	35	40	0.00
Friday, Feb. 9	35	40	0.00
Saturday, Feb. 10	35	40	0.00
Sunday, Feb. 11	35	40	0.00
Monday, Feb. 12	35	40	0.00
Tuesday, Feb. 13	35	40	0.00
Wednesday, Feb. 14	35	40	0.00

# The Chelsea Standard

## QUOTE

"Men are but children of a larger growth."

—John Dryden.

ONE HUNDRED-NINTH YEAR—No. 35

12 Pages This Week 2 Supplements

CHELSEA, MICHIGAN, THURSDAY, FEBRUARY 8, 1979

15c per copy

SUBSCRIPTION: \$6.00 PER YEAR

## Varsity Cagers Trample South Lyon, Lincoln

Chelsea varsity cagers brought a two-game losing streak to a quick halt Friday, Feb. 3 as they demolished the South Lyon Lions, 99-50, in a Southeastern Conference match.

"For a while the team looked like it was going to play with a lackluster, we're better than they are" attitude," Coach Robin Raymond remarked. "A few words during half-time woke them up a little so that we really socked them in the last two quarters," he added.

Where the Bulldogs scored 31 points during the first half, to the Lions' 24, a red-hot Chelsea offense burned the nets with 26 tallies in the third quarter and an incredible 32 in the final stanza.

Four Bulldogs scored in double digits, eight collected six points or more, and everyone else on the squad chipped in at least one.

Taking top honors was Jeff Dils with 18 points. Charlie Bridges had 14; Jesse Coburn, 14; Gary Dils, 10; Matt Feeney and Mike Machesky, eight each; Don Schrotenboer, six; Brad Knickerbocker, six; John Dunn, four; and Mike Killelea, one.

"Our scoring balance was exceptional, as it has been most of the year. We also had our best balance in rebounding Friday," Raymond commented.

Chelsea out-rebounded South Lyon 49 to 27 with Gary Dils accounting for nine; Charlie Bridges, eight; Don Schrotenboer, six; Jesse Coburn, six; Mike Killelea, six; Mike Machesky, five; and Brad Knickerbocker, four.

"The brightest spot of the game was our free throw average. Before the South Lyon match we were averaging 56 percent but on Friday night, we completed 25

(Continued on page five)

There are 32 official minutes in a high school basketball game, but it is the first four minutes of the third quarter that spells the game, according to Chelsea Coach Robin Raymond.

While he speaks with 20-20 hindsight, there is little to refute his statement after the Bulldogs' last two games. Chelsea dumped South Lyon Friday thanks to a third quarter spurt and on Tuesday, Feb. 6, in a make-up game with Lincoln, Bulldogs let loose, again in the third quarter, for a 91-76 victory.

"Whoever sinks the first baskets after half-time is almost guaranteed the winner," Raymond remarked. Taking this advice to heart were Mike Machesky and Don Schrotenboer. Immediately after half-time was over, Machesky hit two outside jump shots while Schrotenboer took a hook shot to start the momentum.

Chelsea outscored Lincoln, 25 to 16, in the third period and added 27 more points in the final quarter for the win.

During the first half, Chelsea and the 2-12 Railsplitters played closely, although the Bulldogs kept a small lead—19-15 in the first quarter and 39-34 in the second period.

Statistically, Lincoln and Chelsea maintained similar figures. Chelsea completed 32 of 67 shots from the floor for 48 percent while Lincoln had 33 percent. Of the 73 free throws in the game Chelsea completed 27 of 38 for 71 percent and Lincoln made 24 out of 35 for 68 percent. Chelsea made 25 fouls and Lincoln, 27. Lincoln barely out-rebounded the Bulldogs, 42-41.

"The big difference was in the number of turnovers. We had 20

(Continued on page five)

## School Board Briefs

February 5, 1979 Meeting

Present: Tobin, Feeney, Heller, Schumann, Snyder, Superintendent Van Meer, Business Manager Mills, Principals Wojcik, Williams, Assistant Principal Vogel, Special Education Director DeYoung, Community Education Director Rogers.

Meeting called to order at 8 p.m. by President Martin H. Tobin.

Board approved minutes of Jan. 15 meeting.

Business Manager Mills presented the following informational reports:

1. A 5-year facility improvement plan subject to annual review.
2. Transportation report.
3. MASH contract negotiations. (Continued on page three)

## Jeff Dils Is Athlete of the Year at EMU

Eastern Michigan University has chosen Jeff Dils, senior trackman, as "Athlete of the Year" for 1978. It was announced recently.

Dils, 6'2", 175 lbs., earned All-American honors in indoor track last year, finishing fifth in the 440-yard dash at the NCAA Indoor Championships with a time of .48.94. He also qualified for NCAA championships in the indoor and outdoor hurdles last year.

This year, Dils qualified for the NCAA Indoor Track and Field Championships which will be held in Cobo Hall in March.

Eastern's Phi Sigma Epsilon Fraternity sponsored the "Athlete of the Year" award with students voting on the top 16 athletes from a variety of varsity sports. The top five were then voted on by a panel.

He is the son of Mr. and Mrs. Arthur Dils, 650 N. Main St.

## Sharpshooting JV Cagers Dump S. Lyon

Chelsea junior varsity cagers continued their winning streak Friday, dumping South Lyon, 54-46, and extending their record to 6-3 in the SEC and 6-8 overall.

"Everyone played a lot in the game and there was little that we did wrong," Coach Jon Schaffner commented. Chelsea turned in 46 percent from the field and 55 percent from the line.

Taking a 15-8 advantage in the first eight minutes, Chelsea doubled their efforts in the second period for a 33-18 lead at the half. The final quarter saw South Lyon's offense nudge 17 points onto the scoreboard to Chelsea's nine but the rally came far too late.

Junior Bulldog Carl Simpson collected 12 tallies; Mike Lazar, seven; Karl Albrecht, seven; Jeff Price, six; Jon Riemschneider, six; Mark Steinaway, five; Mike Wade, four; Chris Tobin, three; Chris Heaton, two; and Sean Peterson, two.

Steinaway led the way in rebounds with eight. Albrecht added seven; Heaton, four; and Lazar, four. Albrecht hustled for two steals, two assists, and three blocked shots. Peterson had three steals and four assists; Carl Simpson, two steals; Steinaway two steals; and Jeff Price, six assists.



WOODWIND MUSICIANS: Chelsea High School students who received Division I ratings in the Janis Proctor, Jeannie Bury, Mary Anderson, Kathy Waldyke and Chuck Dalton. A complete list of the students is provided in the article below.



BRASS, STRING DIVISION I MUSICIANS: Taking top honors during the District 12 Solo and Ensemble Festival held Saturday, Feb. 3 in Livonia were these Chelsea High School musicians, from left, Robert Benedict, Drew Sprague, Jeff Rowe, Duane Robbins, Jim Herter, Cinda Thornton, Zac Smith, Sara Merkel, Paula Beaudoin, and Katy Ullman. These are just a few of the many students who took Division I honors in the festival.

## High School Musicians Garner High Honors at District Festival

Surpassing all of their predecessors from the past three years in the annual District 12 Solo & Ensemble Festival, Chelsea High school musicians returned home from the Saturday, Feb. 3 contest in Livonia with 10 Division I ratings in solo and eight in ensemble performances.

More than 50 percent of the 62 students who attended received Division I (highest) ratings, according to band director Steve Bergmann. Karey Johnson directs the orchestra.

Band soloists with high honors were Lori Van Riper, oboe; Drew Sprague, trumpet; Debbie Koepke, trumpet; Eric Widmeyer, trombone; David Cooley, tenor sax; Ellen Bury, flute; Cindy Wolter, flute; Ann O'Hagen, flute; Cinda Thornton, piano; and Nancy Heller, piano.

Band ensembles (two or more) with Division I ratings included Lori Van Riper, Jeannette

Morrison, Janis Proctor, Kris Kvarnberg, and Julie Botsford, woodwind quintet; Zac Smith, Jim Herter, and Jeff Rowe, trumpet trio; Drew Sprague and Debbie Koepke, trumpet duo; Kathy Herst, Kathy Waldyke, and Mary Anderson, woodwind trio; Donna Finkbeiner and Theresa Merkel, flute duo; Cindy Wolter, Donna Finkbeiner, and Theresa Merkel, flute trio; Cindy Wolter, Ellen Bury, Ann O'Hagen, and Gayle Beyer, flute quartet; and Duane Robbins and Robert Benedict, trombone duo.

Band soloists who earned Division II ratings were Zac Smith, trumpet; Cindy Klobuchar, clarinet; Mary Anderson, piano; and Kathy Waldyke, flute. Ensembles were Phil Powers and Chuck Dalton, sax duo; and Joanne Bury and Bethel Snyder, woodwind duo. The high school clarinet duo, French horn quartet, French horn quartet-freshmen, flute-clarinet

duet, clarinet trio, and bass clarinet solo all received Division III ratings.

Orchestra soloists with a Division I rating were Katy Ullman, violin; (Continued on page three)

## Alcoholism Lecture Series Slated at Chelsea Hospital

Starting Feb. 15 at 7:15 p.m. in the Chelsea Community Hospital Dining Room, Dr. J. Hardy Betha will be lecturing on Alcoholism. There will be 12 lectures in the series.

Dr. Betha will touch on "Symptomatology of Alcoholism," "The Brain and Alcohol," "Treatment of Alcoholism" and many others. Patients from all services of the Hospital are welcome to attend as well as their families and other interested parties.

## CHS Winter Carnival Fun Starts Today

Chelsea High school will once again host its annual answer to the winter blaws with a Winter Carnival on Thursday and Friday, Feb. 8-9.

Organized to parallel Homecoming activities which boost the spirits and energies of the football squad, cheerleaders, and students, the Winter Carnival is intended to do the same for the varsity and junior varsity cagers before their big game against Milan on Friday.

Also to reap the benefits of the high-energy plans will be the freshman basketball team which plays Milan on Thursday evening.

Freshmen start to play at 7 p.m. with the game to be followed by a three-legged basketball game between the freshmen and sophomores. At approximately 9 p.m. the juniors will meet the seniors. No admission will be charged.

Just as there is a Homecoming Queen, the Winter Carnival will have its own King with two candidates from each class. Students will be voting all week up until Friday on their choice.

From the freshman class are Bob Trevino and Dave Peterson; sophomores are Jeff Dils and Eric Headrick; juniors Dave Wilson and Bill Spaulding; and seniors Tim Bareis and Mike Eisele.

On Friday afternoon a pep rally will be staged including a peanut butter sandwich eating contest (no jelly allowed) between representatives from each class. Further entertainment will be provided by "Crazy George" of the Detroit Pistons with his wild dribbling performances.

Also on Friday, winners from the three-legged basketball game will compete in a showdown.

Junior varsity will play the Big Reds beginning at 6:30 p.m. Friday evening with the varsity teams to follow. During the half-time, the four classes will parade the gym with their mini-floats and the King will be announced.

Chelsea High school student council is sponsoring the Winter Carnival with Sue Inglis, president, and Jeannette Morrison, vice-president, in charge.

## Search Underway for Ambulance Housing

Chelsea may not have the luxury of a resident ambulance unless the new county contract holders, Fontana-Taylor Ambulance Service, are able to locate a clean, comfortable large garage or similar structure to house a vehicle, it was learned recently.

As of Jan. 1, 1979, Fontana-Taylor officially assumed the duties of providing ambulance service to the entire county, replacing the services of the Horne-Vinson Ambulance, Inc.

Unlike the contract Horne-Vinson operated under, the new five-year contract awarded to Fontana-Taylor does not specifically state that an ambulance be stationed in Chelsea. Instead, the contract says that there must be two ambulances stationed anywhere west of the north-south access of Wagner and Ann Arbor Saline Rd., and three stationed in the Ann Arbor-Ypsilanti area.

Because Fontana-Taylor has been unsuccessful in finding a suitable housing for its brand-new, oversized modular vehicles, Chelsea has not had an ambulance close by since Jan. 1.

"A call to us for an ambulance has meant a wait of approximately 20 minutes before the ambulance arrives," Police Chief George Meranuck said.

John Fontana, co-owner and operator of the Fontana-Taylor Service explained the reasons for the wait.

"It isn't that we don't want to have an ambulance in Chelsea but all our efforts to find a large enough, reasonably priced garage in the area have been futile," Fontana said.

"What we are looking for is basically a 30'x50' building which has at least a 12'x12' opening to accept the ambulance. We are willing to renovate a building to meet our needs if that is necessary," Fontana commented.

Fontana has been contacted a local real estate agent in search of property on which to build a brand new structure, but that

has brought similar results. "We were shown property that was selling for \$5,000 a square foot. We don't need prime land with a spectacular view and we aren't too concerned with having a prime location for walk-in customers," Fontana added.

To help in his search for a sub-station, Fontana said that he has contacted the village and several area service organizations. "We haven't exactly received an abundance of help," he commented.

"They know the village's resources far better than we do but I haven't seen much of a community effort," Fontana added.

Fritz Weber, however, stated that he was only aware of a few phone calls made to his office by Fontana for assistance and that no formal request was made to the Village Council. "We put up a sign in the office here for people to see when they come in," Weber said of the efforts to help find a garage.

Weber added that they informed Fontana-Taylor of the vacancy at the old Quality Gas Station on N. Main St.

According to Fontana, "the building has too small an opening and there isn't a possibility of enlarging the door. In addition, we are concerned about being north of the railroad tracks as there could be problems getting around if a train was stopped," he explained.

According to the contract, Fontana-Taylor has a 90-day grace period to meet initial requirements. That period is up on March 6.

"We have had an offer from Manchester, but because we already have an ambulance in Saline we don't want to over-load one area. Unless we can find a place in Chelsea, however, we may have to go there," Fontana said.

Currently, Fontana-Taylor has five ambulances in service, with another two vehicles to be put into operation in the near future. (Continued on page five)

## Wrestlers Showing Steady Improvement

Grappling with the first and second-place teams in the Southeastern Conference, Chelsea varsity wrestling team conceded to Milan, 36-27, and to Saline, 42-18.

Chelsea winners in the Tuesday, Jan. 30 meet with second-place Milan were Jeff Osentoski, who an 8-6 score at 112 lbs.; Chuck Young, 8-1 at 132 lbs.; Bart Bauer, a fall at 3:05 in the 145-lb. division; John Whitaker, a fall at 1:44 at 191 lbs.; and Tom Bareis, in the outstanding match of the evening, a 6-1 decision at heavy-weight.

Bareis hooked up against Milan's Tim Couch in a match which went 1-1 into the third period when Bareis scored a take-down and near fall.

"Over-all I was pleased with the wrestling. The seniors carried the load and if we could have pulled off an upset or two we could have won the match," Coach Richard Bareis remarked.

In junior varsity action, wins were recorded by Craig Sturgeon, Andy Bullock, and Ray Williams. On Thursday, Feb. 1, Chelsea defeated the Saline Hornets who dominated the contest. Chelsea's wins were from seniors Chuck Young, 6-2; Bart Bauer, 3-0; John Whitaker, 1-0; Alan Au-

gustine, 8-3; and Tom Bareis, a fall victory.

"Our team is improving," Bareis said, "but sometimes it is hard to realize it. Our young wrestlers are at such a disadvantage because of inexperience and physical strength that it is hard to see improvement but it is there. These young wrestlers put a lot of effort in their matches and are showing good moves although they just don't have it all together yet," he added.

Fine individual records are held by Chelsea seniors including Chuck Young, 22-5; Bart Bauer, 20-8; John Whitaker, 17-3; Alan Augustine, 17-5; Tom Bareis, 15-3; and Tony Wisniewski, 15-10-1.

## First Robin Reported Monday

A birdie with an orange breast hopped upon the wild ash tree at 314 Washington St., cocked its head as if to say, "this is spring?"

"The poor bird looked a little confused," Mrs. Shadoan said of the robin which nibbled at the ash tree berries all day on Monday, Feb. 5. "It was here all day Monday. (Continued on page six)



Established 1871 **The Chelsea Standard** Telephone 475-1371

Walter P. Leonard, Editor and Publisher  
Excellence Awarded By Michigan Press Association  
1951-1952-1953-1954-1955-1956



Published every Thursday morning at 300 North Main Street, Chelsea, Mich. 48118, and second class postage paid at Chelsea Mich., under the Act of March 3, 1970.

#### Subscription Rates (Payable in Advance)

In Michigan:		Outside Michigan:	
Single Copies	.....\$ .20	Single Copies	.....\$ .25
Six Months	.....\$3.50	Six Months	.....\$4.50
One Year	.....\$6.00	One Year	.....\$8.50

MEMBER  
**NATIONAL NEWSPAPER**  
Association - Founded 1885

National Advertising Representative:  
MICHIGAN NEWSPAPERS, INC.  
257 Michigan Ave.  
East Lansing, Mich. 48823

## JUST REMINISCING

Items taken from the files of The Chelsea Standard

### 4 Years Ago...

Thursday, Feb. 13, 1975—

Ellen Bonus, daughter of Mr. and Mrs. Thaddeus Bonus, 2000 South Lake Rd., was named Chelsea High School's Family Leader of Tomorrow by the General Mills Food Co.

Township canvassing results from January's March of Dimes drive from residents, businesses, dime boards, and canisters have yielded a total of more than \$1,700 for the drive to combat birth defects.

Chelsea cagers provided a Parents' Night crowd with some fine entertainment Friday night by downing the other set of Southeastern Conference Bulldogs from Brighton, 69-50.

Rocket Derby champs of Pack 455 were Cub Scouts Alan Friday, Jeff Halst, John Hoffman, and Steve Hughes. Tom Bell is scoutmaster.

Ruth A. Stewart, Michigan Consolidated Gas Company's Director of Consumer Services, has announced her retirement after a 23-year-career in which she gained state-wide recognition for her efforts in initiating basic nutrition programs for low income groups and senior citizens.

### 14 Years Ago...

Thursday, Feb. 18, 1965—

Chelsea Fire Department was called to Hanker's Service Station Thursday evening about 6 p.m. when gasoline ignited on the floor of the station and considerable damage was done to the building by the smoke.

The seniors of Chelsea High School are breaking a tradition and will present a Broadway musical "Oklahoma," a "first" in the senior productions.

After dropping an earlier decision to the Dexter Dreadnaughts the Chelsea Bulldogs pressed to a 65-50 victory over the Dexterites Friday night.

At the People's Party caucus, held Monday evening, Joe Scott was nominated as a candidate for a two-year term as trustee.

Dr. and Mrs. Bruce T. Stubbs returned home Friday after a trip to Cadillac.

Mrs. George Beutler reports seeing a robin hopping around on her lawn on Feb. 9.

### 24 Years Ago...

Thursday, Feb. 17, 1955—

Kenneth Gilbert, son of Mr. and Mrs. Howard Gilbert, was recently promoted to the rank of lieutenant in his position as Assistant Supervisor of Radio for the Detroit Police Department. He has been a member of the department for 15 years.

Tuesday afternoon of last week, Larry Schrader, 12-year-old son of Mr. and Mrs. Walter Schrader, Jr., of Cavanaugh Lake, speared a seven-pound, 31-inch pike through a fishing hole in the ice.

At the annual session of the Washtenaw-Chelsea Dairy Herd Improvement Association meeting, Tuesday, annual reports credited George Erke & Sons of Chelsea with having the top herd in the association.

Thursday night's benefit basketball game yielded a total of \$43.73 in contributions for the March of Dimes fund. The contest was between the faculty women and senior girls with the faculty losing by a score of 26-24.

Mr. and Mrs. W. R. Guest and their son and daughter, Buddy and Pat, spent Saturday and Sunday in Port Wayne, Ind., as guests of Mr. and Mrs. Hubert Berg and family.

### 34 Years Ago...

Thursday, Feb. 15, 1945—

Fire of undetermined origin did considerable damage to the Masonic Hall on Wednesday evening of last week. The loss, which is estimated at \$1,200 to \$1,500 is covered by insurance.

Mrs. F. E. Storms returned Saturday from a week's visit at the home of her daughter, Mrs. Donald Barden and family in South Haven.

More than 1,000 persons attended the performances of the Kiwanis Minstrel Jamboree on Friday and Saturday nights. The flawless manner in which the show was produced reflected the fine talents of cast, as well as the efforts of Paul F. Niehaus, director, with the able assistance of Mrs. Niehaus.

Mr. and Mrs. Julius Basler and family have moved from the Mayers apartments on East St. to the Schatz residence, 115 Lincoln St.

Subscribe today to The Standard!

## MICHIGAN MIRROR

By Warren M. Hoyt, Secretary, Michigan Press Association

### Open Government Not Easy

As hard as they might try, opening all aspects of government to the public and press does not come easily for legislative members.

Leaders and many members would like to make the upcoming session of the legislature one of reform and openness, but when it comes down to dealing with personalities and making sure all members of the respective caucuses are happy, openness quite often goes out the window.

The House of Representatives last year passed legislation to require that their own caucuses be open to the public. However, legislation is not needed to open caucuses. All it takes is agreement among the majority of the caucus members.

The House vote was a shallow gesture as they were fairly certain the Senate would never follow suit and pass the bill. They were right, as the bill was never brought before the body for a vote.

Ironically, however, the Senate Republicans have already voted to open their caucuses this year while pending amendments to the Senate rules would also prohibit closed caucuses.

With recent Senate changes and a new membership elected largely on a reform platform, the ball is now back in the court of the House where there has been no movement to open caucuses yet this year.

The House must follow the lead of the Senate and open their caucuses to bring as much government before the people, especially since government is becoming an ever-increasing part of our lives.

### State Offers Savings Booklet

The Financial Institutions Bureau, within the Department of Commerce, has prepared a new publication to help Michigan residents manage their savings.

The Bureau, which is the state regulatory agency for state chartered banks, savings and loans, credit companies and credit unions, announced the pamphlet is available upon request as a companion piece to the bureau's popular brochure, "How to Shop for Credit."

The booklet, entitled "Taking Interest in Your Savings," provides the consumer with information on savings accounts, time deposits and share accounts.

It also tells how to determine the true interest return on deposits and how interest is computed by banks, savings and loan associations and credit unions.

Penalties for early withdrawal for time deposit accounts are explained as are a number of other factors which should be considered when deciding where to deposit funds.

Copies are available from the bureau's Office of Policy and Consumer Affairs, 3rd Floor, Law Building, Lansing 48909.

### Fund for Conservation Center

The Michigan United Conservation Clubs (MUCC) and the Michigan Wildlife Foundation (MWF) are establishing a special fund to acquire and operate a conservation center for the use of persons throughout the state.

To be known as the Michigan Conservation Education Center, the facility would be used as a training and recreation center for young persons and adults interested in conservation.

Directors of the two conservation groups recently authorized the establishment of the fund and appointed a committee to explore means of developing the facility. The MUCC currently operates a six-week summer program on conservation but hopes to make that program more permanent with an ongoing program of conservation.

## Dial-A-Garden Topics Listed

Dial-A-Garden, the system of pre-recorded daily gardening tips, is sponsored by the Washtenaw County Co-operative Extension Service. The system is in operation 24 hours per day, seven days per week. Interested persons are invited to call 871-1122 at their convenience and receive timely, up-to-date gardening information.

Next week's Dial-A-Garden topics are:

Friday, Feb. 9—"Plants Kids Like to Grow."

Tuesday, Feb. 13—"Book Review, 'Home Landscape,' by Garrett Eckbo."

Wednesday, Feb. 14—"Cacti."

Thursday, Feb. 15—"Keep Your Fern Healthy."

## Christine Duerr Posts All-A Record At Nazareth College

Christine Duerr, a senior at Nazareth College, was named to the dean's list there for the fall, 1978 semester. She completed a 4.0 (all A) average.

Christine is working towards a bachelor of science in nursing. She is the daughter of Mrs. Lina Duerr, 503 East St.

## Senior Citizen Nutrition Program MENU and ACTIVITIES

Editor's note: The following is a new feature in The Chelsea Standard which will be run weekly in order to keep Chelsea's senior citizens up to date on the menus and activities of the Nutrition Program held at St. Mary's school. Any person over the age of 60 is entitled to take part in the program which is held every Monday through Friday from 9 a.m. to 1 p.m., excluding holidays. Further information may be obtained by calling Betty Koch, director, at 475-8382. All meals are prepared in the St. Mary's kitchen.

### Week of Feb. 8-15

Thursday—Roasted cube steak, baked potato, cabbage wedges with cheese sauce, bread and butter, cake, beverage. Indoor gardening.

Friday—Chicken-a-la-king, broccoli, beet and onion salad, biscuits and butter, applesauce, beverage. Recorder class. Bible study.

Monday—Lincoln's birthday. Holiday.

Tuesday—Spanish rice with beef, orange juice, salad with dressing, bread and butter, peanut butter fudge brownies, beverage. Arbor Vitae Chiropractic Center with Dr. Atkinson.

Wednesday—Baked chicken, corn, salad with dressing, bread and butter, snowballs, beverage. Square dancing.

Thursday—Swedish meatballs, baked sweet potato, broccoli, bread and butter, apricots, beverage. Indoor gardening. Nutrition education.

## ATTENTION Farmers! Beat the Frost Laws!

FREE STORAGE to April 15, 1979

on all grain received from Feb. 1 thru March 15, 1979

For all grain held after April 15, storage will be charged at daily rates in effect at that time.

Market discounts to apply.

**HONEGGERS & CO., INC.**

Ph. 475-1386

## FEBRUARY RED TAG

# CLEARANCE SALE

## WINTER FABRICS 20% to 40% OFF

# COUNTRY CRAFTIQUE

103 N. Main St., Chelsea

Phone 475-2512

## Howell Livestock Auction

Starts 1 p.m. Every Monday  
Mason 676-5400

The Wise Owl Says Ship to Howell  
Phone 546-2470 Bim Franklin  
Market Report for Feb. 6

### CATTLE—

Bulk Gd.-Choice Steers, \$83 to \$85  
Few High Choice Steers, \$85 to \$85.50  
Gd.-Choice Heifers, \$80 to \$80.50  
Fed Holstein Steers, \$45 to \$50  
Ut.-Std., \$44 and down.

### COWS—

Heifer Cows, \$80.50 to \$87  
Ut.-Commercial, \$80 to \$85.50  
Canner-Cutter, \$45 to \$50  
Fnt Beef Cows, \$50 to \$52

### BULLS—

Heavy Bologna, \$60 to \$65  
Light and Common, \$60 and down.

### FEEDERS—

400-600 lb. Good-Choice Steers, \$80 to \$80.50  
600-800 lb. Good-Choice Steers, \$80 to \$80.50  
300-600 lb. Good-Choice Heifers, \$85 to \$85.50  
300-500 lb. Holstein Steers, \$80 to \$87  
500-800 lb. Holstein Steers, \$50 to \$60

### CALVES—

Prime, \$85 to \$105  
Good-Choice, \$80 to \$85  
Heavy Deacons, \$80 to \$100  
Cull & Med., \$50 to \$80  
Calves going back to farms sold up to \$125

### SHEEP—

Woolled Slaughter Lambs:  
Choice-Prime, \$72 to \$73  
Good-Utility, \$70 to \$72  
Slaughter Ewes, \$28 to \$36  
Feeder Lambs, All Weights, \$70 to \$78

### HOGS—

210 to 240 lbs., No. 1, \$55 to \$56.30  
200-250 lbs., No. 2, \$53 to \$55  
Heavy Hogs, 250 lbs. up, \$46 to \$53  
Light Hogs, 200 lbs. down, \$30 to \$50

### Sows—

Fancy Light, \$46 to \$47.50  
300-500 lb., \$44 to \$46  
200 lbs. and up, \$45 to \$47

### Boars and Stags—

All Weights, \$37 to \$44

### Feeder Pigs—

Per Head, \$27 to \$54  
Est. 40 lb. pigs, \$43 to \$45

### HAY—

1st Cutting, per bale, 50c to \$1.00  
2nd Cutting, per bale, \$1.00 to \$1.20

### STRAW—

Per Bale, 50c to \$1.00

### COWS—

Tested Dairy Cows, \$300 to \$900  
Tested Beef Type Cows, \$300 to \$600

## Uncle Lew from Lima Says:

DEAR MISTER EDITOR:

Just when I was sure everything I eat, drink and breathe was going to be the death of me, along comes GRAS. Mister Editor, GRAS is such good news I finger you'll want to share it with your readers. It stands for Generally Regarded As Safe, and it's a list of 600 things that if they ain't downright good fer you at least they ain't likely to kill you.

Actual, I was surprised to run across GRAS in a small item inside the paper. I would of thought news of this list was front page stuff. I ain't trying to tell you your job, Mister Editor, but if you happen to see GRAS you might do well to put it out there where folks can get at it. According to this piece I saw, a Food and Drug Administration official actual come right out and says not only does everything not cause cancer, but more things don't than do. Fer instant, we can keep right on eating citric acid and drinking caffeine and going through the monosodium glutamate that is in everything that comes in a can or a jar. According to the item, the FDA is giving help from the Federation of American Sciences and the full list won't be made up fer another two months.

I give the GRAS report to the fellers during the session at the country store Saturday night, and it played, as they say, to mixed reviews. Clem Webster said he was happy to see salt on the safe list. He said he and his old lady never can agree on how much. She says he eats enough to dry up his blood and turn him into a cured ham, but he allows it brings out the flavor in food and if it was good enough fer folks in Bible days to

use fer money it must be better than today's money. But it was Zeke Grubb that said GRAS give him a worst scare than ever. This must mean, declared Zeke, that the FDA has decided it's easier to list the things that won't kill you than them that will.

Fer instant, went on Zeke, some feller at Temple University says a digital watch is hazardous to our health. This is a watch that don't have a big hand and a little hand, Zeke said, it flashes the time when you push a button. According to Dr. Miles Orvell this is bad because we feel alone in the world just looking at numbers. When we get the clock face and the hands we can find where we are in relation to the world and the day, the doctor said, and "the cycle gives us a sense of continuity." Zeke said he didn't know what kind of sense that is, but if looking at a flashing number makes a feller lonesome he had some big problems before he got his digital watch.

Ed Doolittle said his first concern was whether his old lady's coffee was on the GRAS list. He said she got one of them contraptions that makes coffee as soon as you pour water through it, and he ain't sure about coffee that don't perk and give a feller time to appreciate that first cup. Ed said it look like the dos and don'ts are turning around. He said he had saw latest studies show a good snort now and agin not only makes you feel good, it's good fer you. Drinkers live longer than abstainers, Ed reported, they have fewer heart attacks, and them that do have em don't worry about it near as much.

Yours truly,  
Uncle Lew.

## FAIST-SPRAGUE BUICK-OLDS, INC. February Service Specials

COUPON  
**\$5.00 OFF**  
SERVICE COSTING  
**\$25 OR MORE**

Have \$25 or more worth of service done in our service department and we'll reduce the bill by \$5. (Not valid with other coupons or service specials.)

VALID MONTH OF FEBRUARY, 1979, ONLY

COUPON  
**10% OFF**  
ENGINE TUNE-UP

Includes: Install spark plugs, points and condenser; set engine dwell and timing; adjust carburetor idle and fuel mixture; check PCV valve, air filter, distributor cap and rotor, choke and linkage.

VALID MONTH OF FEBRUARY, 1979, ONLY

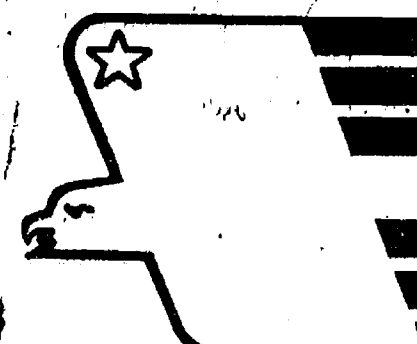
Your Friendly Buick-Olds Dealer

## Tonight and Every Thursday THE CAPTAINS TABLE ROAST BEEF BUFFET



"Carved Before Your Eyes"  
Serving from 4:30-9:30 p.m.

The Captains Table - 8093 Main St., Dexter



"I am a lawyer, self employed. My KEOGH retirement plan at Great Lakes Federal will provide \$225,899 when I retire in 15 years."

Ms. Ethelyn Carver is a self-employed lawyer who has earned income that puts her into the 50% tax bracket.

Because Ms. Carver wanted to keep as much of her income as possible, while planning for her retirement years, she opened a KEOGH tax deferred retirement account. She found that she could contribute 15% of her income, up to a maximum of \$7,500 each year and deduct this amount from her taxable income.

She will have accumulated \$225,899 in her KEOGH account when she retires in 15 years. Because she qualifies for the maximum contribution, she will have reduced her taxable income each year by \$7,500. In an account or investment that was being reduced by taxes, she would only have \$78,804.

If you are self-employed you too can deposit up to 15% of your income, maximum \$7,500, in a tax deferred KEOGH retirement account. This amount can be deducted from your current taxable income and you do not pay taxes on it until you start making withdrawals after age 59½ at which time you will probably be in a lower tax bracket.

Your KEOGH account can earn the high interest rate of 8% per annum. Interest is compounded monthly and paid quarterly for an effective annual rate of 8.30%. At this rate your money doubles in approximately 8 years and 8 months. Minimum term 36 months.

With your account you receive a Retirement Account card which you can use when making deposits to your account and which entitles you to Travelers Checks and Money Orders free of charge. At the end of March, June, September, and December you receive a detailed statement which describes each deposit to your account.

YOU STILL HAVE TIME TO CUT YOUR 1978 INCOME TAX  
If you now have a KEOGH account and have not deposited up to your maximum you have up to April 15, 1979 to make your full 1978 contribution.

Federal regulations require a substantial interest penalty for early withdrawals.

The name and profession of the person in this ad is fictitious and solely an example of the benefits of a retirement account at Great Lakes Federal Savings.

## GREAT LAKES FEDERAL SAVINGS

Offices in Ann Arbor, Battle Creek, Albion, Bellevue, Brighton, Chelsea, Coldwater, Dexter, Hastings, Jackson, Manchester, Marshall, Richland, Saline, Ypsilanti • Member FDIC



# Smorgasbord

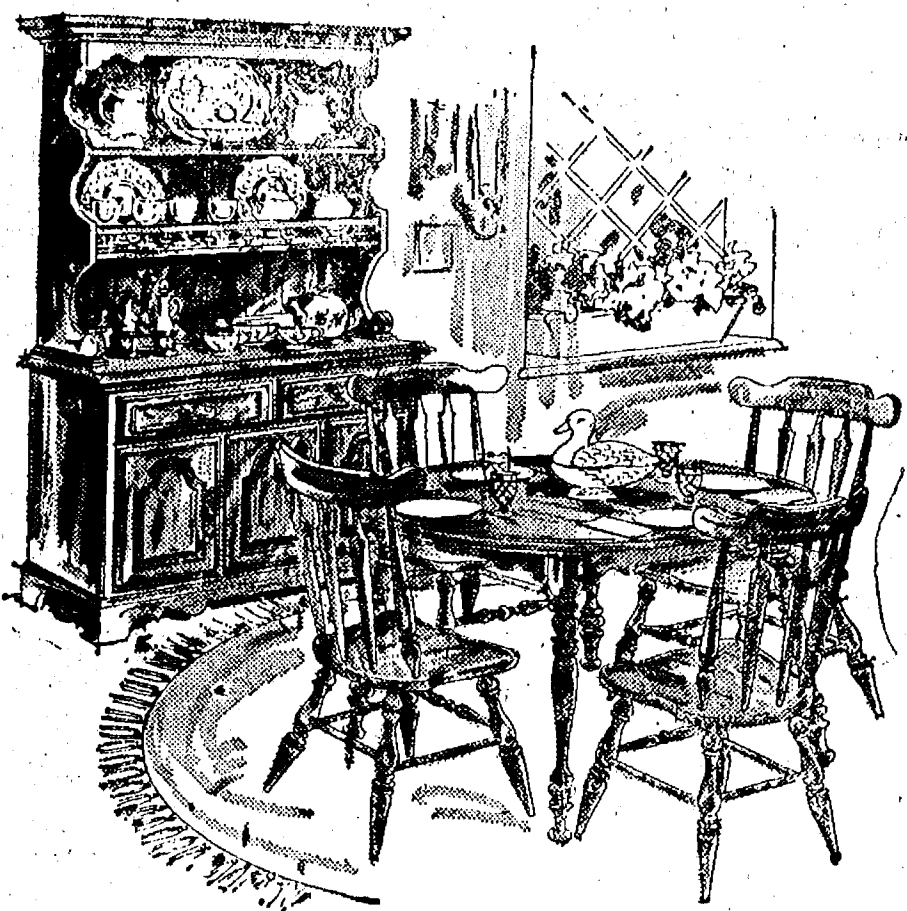
ST. PAUL UNITED CHURCH OF CHRIST  
14600 Old US-12, Chelsea

**SHROVE TUESDAY, FEBRUARY 27th**  
Serving 5 to 7:30 p.m.

Proceeds to be used for Confirmation  
Class 1979 St. Louis Study Tour.

Tickets available from Confirmation Class Members  
or reservations by calling church office, 475-2545.

Donations: Adults \$4  
Children, 5-14, \$2.50. Children under 5 FREE  
NEW: FAMILY TICKET \$12



Store-Wide Winter

## SALE

EVERYTHING REDUCED

### 10 to 50% Off

Furnishings and floor coverings... heart warming  
savings on your heart's desire for your home beau-  
tiful. Come in now and make your selections. You  
can even special order at savings.

*Merkel*

FURNITURE & CARPET

OPEN MONDAY, THURSDAY & FRIDAY TIL 9



**GAKEN-HINDERER:** Sally Ann Gaken has become the bride-  
elect of John Walter Hinderer according to an announcement by  
the future bride's parents, Mr. and Mrs. James L. Gaken, 310  
Pierce St. Her fiancé is the son of Mr. and Mrs. Walter A. Hinderer,  
11866 Hieber Rd., Manchester. Sally is a 1973 graduate of Chelsea  
High school and is employed with the U. of M. Family Practice  
Center in Chelsea. John is a 1976 graduate of Manchester High  
school and is employed with the Chrysler Proving Grounds. An  
Aug. 3 wedding date has been set.

## BEACH MIDDLE SCHOOL HONOR ROLL

First Semester

6th Grade—  
Brian Ackley, Laura Anderson,  
David Bareis, Brent Bauer, Gay-  
la Bauer, Mark Bentley, Deb Bo-  
lanowski, Shane Brown, Marie  
Bulick, Scott Burkhalter, Jill Chap-  
pelow, Amy Depping, Beth Fahey  
(all A), Rebecca Finch (all A),  
Chad Freyre (all A), Deborah Gar-  
men, William Geddes, Carol Gerst-  
ler (all A), Matthew Grau (all A),  
Kevin Gross, Tony Hammersch-  
midt, Kelly Hawker (all A), Chris  
Hegadorn, Mark Henson, Steven  
Hunn (all A), Cynthia Issel, Scott  
Jones.  
Marcia Keezer (all A), Kyle  
Kemmlish, Brian Knickerbocker,  
Julie Koch, Charles Koenig, Laura  
Koepele (all A), Steven Kropf (all  
A), Rebecca Lee (all A), Jeff Lei-  
singer, Kelly Machesky, Andrew  
Martin (all A), Scott Miller, Karen  
Moore, Jennifer Morris, Mark

Neff, Keith Niebauer, Kendra Nie-  
bauer, Leigh Nelson, Carol Nix,  
Dawn Olson, Tina Paddock, Lori  
Patrick, Lorrie Paxton, Jason Pier-  
son, John Popovich, Julianne Pratt,  
Cathy Prentice, Stephanie Reynold  
Maryann Richardson.

Rod Satterthwaite (all A), Tho-  
mas Schaff, Eric Schaffner, Rac-  
hel Schmell, Cheryl Schulze, Jo-  
seph Simon (all A), Donald Skiff,  
Joshua Smith, Lisa Smith, Matt-  
hew Smith, Mark Stebelton, Ann  
Stock, Phoebe Strong (all A), Dav-  
id Sumner, Philip Sweet, JoAnn  
Tobin (all A), Beth Unterbrink,  
Anne Weber, Wendy Westphal,  
Patricia Wilber, John Wilcox (all  
A), Amy Wolter, Michelle Young  
(all A).

7th Grade—

Christine Arbogast (all A), Kel-  
ly Barkley, JoEllen Bell, Connie  
Bollinger, Martin Boote, Teresa  
Bort, Laurie Brugh, Allen Cole  
(all A), Kevin Colombo (all A),  
Diane Desmyther (all A), Julie  
Dunlap, Kurt Eisenbeiser (all A),  
Amy Finkbeiner (all A), Darrin  
Fowler, Alena Freysinger, Walter  
Gray, Eric Green, Gregory Green-  
leaf, Guy Gross, Joycen Guen-  
ther, Susan Gunn, Kimberly Guy-  
or, Charles Hager, Laurie Heller,  
Mary Helmer, Derek Hodgins,  
Brenda Hoelzer, Eric Inglis, Val-  
erie Kelemen, David Kiel, Kim-  
berly Kleis, Leslie Koepf.  
Brenda Lewis, Timothy Loucks,  
Jeffrey Martin (all A), Tanya  
Mattoff, Beverly McLaughlin, Ed-  
ward Merkel, Richard Merkel,  
Julie Minick, Deborah Morris,  
Thomas Mull, Susan Oesterle (all  
A), Mary O'Quinn, Mark Porath,  
Carrie Puglisi (all A), Steve Ram-  
sey, Marjorie Rawson, Susan Ri-  
emenschneider, James Ritter, Joyce  
Robards, Jenette Rouse, Jodi Rowe.

Rebecca Schlup (all A), Hallie  
Schmidt, Matthew Schnadt, Tho-  
mas Schumann, Carla Sears, Joan  
Shonk, Kimberly Smith (all A),  
Mark Spayd, Eric Stoffel, Mary  
Vaught, Gretchen Vogel, Lisa  
VonWald, Kevin Wahr, Daniel Wal-  
dyke, LeAnn Walz (all A), Carol  
Warren, Shelly Wheaton, Karen  
Wilson, Jane Wood, Michael Wynn,  
Susan Young.

8th Grade—

Anna Aiello, Susan Bareis, Thad  
Bell, Jon Bentley, Jennifer Bodnar,  
Tracy Borton, Kimberly Boyd,  
Kimberly Boyer, Ernest Bristle,  
Mark Brosnan, Betty Case, Caro-  
lyn Chandler, DeAnn Colvia, Cindy  
Connell, Kathleen Degener, Cath-  
erine Doll, Theresa Dyer, Anita  
Farley, Jean Folsom, Kimberly  
Former, Jon Goderis, Jeffrey Halst,  
Russell Harris, Gaylene Hawkins,  
Caroline Heaton, Amy Hume, Julie  
Hunn, Lisa Hurd, David Kles.

Patrick Killelea, Daniel Kiemer  
(all A), Jana Knickerbocker, Jean-  
ette Koch, Jeffrey Koepele (all A),  
Betsy Kolander, Martha Kovick,  
Eric Kruger, Randalyn Larson,  
Melissa Lazarz, Melanie Lee (all  
A), Colleen Lewis, Margaret Lew-  
is, Thomas Lytle, Damon Mark,  
Brent Martin, Chris Martin, Matt-  
hew McCallum, Margaret Merkel,  
William Merkel, Susan Messner,  
Kathleen Morris.

Michael Niebauer, Peggy O'-  
Grady, Kimberly O'Quinn, James  
Owings (all A), Sean Oxner, Pearl  
Phillips, Amy Poljan, Celeste  
Powell, Arlene Presley, Kevin  
Richardson, Anita Roderick, Chris-  
tofer Seltz, Andrew Simon, Michael  
Smith (all A), Cathy Surgeon,  
Marie Sullivan, Sandra Sundling  
(all A), Kristin Thomas, Matt Vil-  
lure, Neal Vorus, Nancy Weir,  
David Wojcik.

## Quilting Mini-Course Offered at WCC

A special two session quilting  
mini-course will be offered by the  
Ypsilanti Center of Washtenaw  
Community College Friday, Feb. 9  
and Friday, Feb. 16 from 7 to 10  
p.m.

Zane Olukals, crafts instructor,  
notes that the course will demon-  
strate "quilt construction methods,  
appliques, designs for hand or ma-  
chine sewing." She adds that no  
previous knowledge of quilting is  
necessary and that materials other  
than fabric will be provided to class  
participants. Enrollees are asked  
to bring a small square of fabric  
to the first class.

The course, open to the public,  
is offered at the Ypsi Center of  
the College at 411 Florence. A \$10  
fee is charged. In-district senior  
citizens are invited to participate  
at no charge.

Advanced registration is request-  
ed by phoning 482-2230.

The U. S. Employment Service  
provides services to youth, includ-  
ing counseling, testing, referral to  
training and other agencies, and  
job development placement; these  
services are geared to both high  
school dropouts and graduates en-  
tering the labor market.

## Board Briefs...

(Continued from page one)

Board approved hiring the au-  
diting firm of Curtis, Bailey, Ex-  
elby and Sposito to conduct the  
1978-79 financial audit.

Superintendent Van Meer pre-  
sented the following informational  
reports:

1. Reading Is Fundamental  
(RIF).
2. 10th Grade Voluntary State  
Assessment Test results.
3. Enrollment comparisons.
4. POHI Programs.
5. National Honor Society, selec-  
tion process.
6. Proposed high school curri-  
culum changes.

Trustees Ann Feeney and Dale  
Schumann reported on the recent  
County School Officers' meeting  
at WISD. The next County School  
Officials' meeting will be Feb. 22.

Adjournment at 10:40 p.m.

The agencies providing services  
to migrant and seasonal farmwork-  
ers vary from area to area but  
generally are private non-profit  
organizations, state and local gov-  
ernments and universities.

The Chelsea Standard, Thursday, February 8, 1979 3

## Orchestra Festival Winners...

(Continued from page one)

Orchestra ensemble with a Divi-  
sion I rating was Sara Merkel and  
Paul Beaudoin, viola duet.  
Orchestra ensembles with Divi-  
sion II ratings were Shari Weber,  
Theresa Degener, Faith Markel,  
and Kurt Walworth, string quar-

et; Laura Hines, Margie Peter-  
son, Paul Schumann and Jim Hea-  
ton, string quartet.

Orchestra soloists with Division  
II ratings were Sue Cobb, Michele  
Clark, Jeff Cox and Laura Hines,  
violin; Paula Beaudoin and Sara  
Markel, viola.

## RICARDO'S HAIR STYLING

107 N. Main, Chelsea

OPEN TUESDAY THROUGH SATURDAY  
475-1671

## TOUCH OF CLASS HAIRSTYLING

A Style for Any Occasion

1196 S. M-52

Judy Ehnis and Jackie Whitaker have  
joined our staff of professional hairdressers.

MEN & BOYS WELCOME TOO!

Lowest Rates in Town

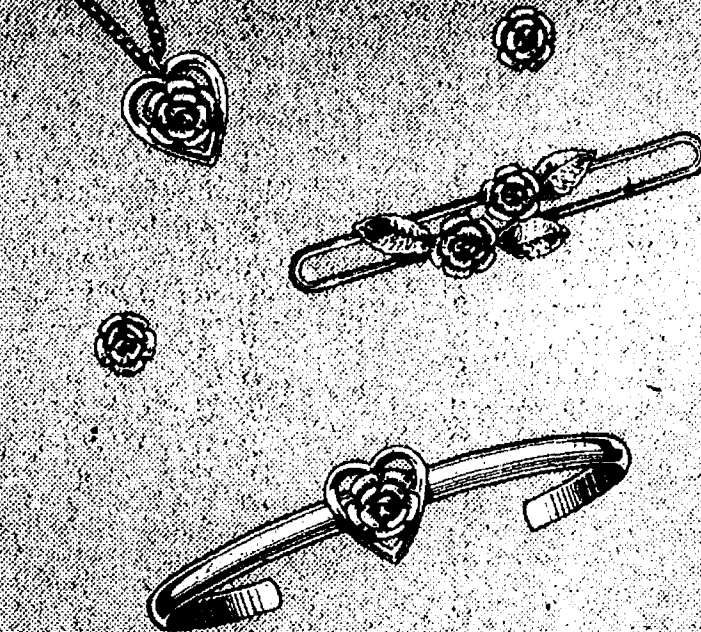
HOURS: Monday, closed; Tues. thru Fri., 9 a.m. to 4 p.m.  
Sat., 9 a.m. to 2 p.m.

Evening Appointments available Thurs. and Fri.

PH. 475-1591

NOLA - BECKY - JOYCE - JUDY - JACKIE

For Valentine's Day...



Hearts and Roses go together in 14Kt.  
Gold Overlay by Klementz. A special  
gift for a special lady... Come in today  
and see our complete selection.

WINANS  
JEWELRY

*Klementz*

## When we open our doors, we open our hearts.

At McDonald's®  
we've got a way of making  
Grand Openings  
considerably grander.

After we cut the  
ribbon and let the crowds  
into our new store, we'll  
donate the ribbon to

Chelsea  
Community Hospital

And it'll make a  
fine gift, because our  
ribbon will be made of  
dollar bills. Lots of them.

It's our way of  
making ourselves  
welcome. Right from

the moment the ribbon  
is cut.

We do it all for you.®



1535 South Main Street  
Chelsea



"This is a cut above most Grand Openings!"

We Will Be Open Wednesday, Feb. 14 at 10 a.m.

Say  
**Happy Valentine's Day**  
With A Gift from

# DANCER'S

## ALL NEW SPRING FASHIONS

from Queen Casual, Aileen, Trissi, Hang Ten, Garland,  
Fritzi, You Babes, and more.

### HEALTH-TEX

for infants and girls.

## WOMEN'S SWIM SUITS

for those who are going south.

BUY YOUR VALENTINE A PRESENT

at

# DANCER'S

Chelsea's Friendly Dept. Store



## + Services in Our Churches +

**FAITH EVANGELICAL LUTHERAN CHURCH**  
8375 North Territorial Rd., Dexter  
The Rev. Mark Porinsky, Pastor

Thursday, Feb. 8—  
8:00 p.m.—Choir.  
Friday, Feb. 9—  
7:30 p.m.—Inquirers.  
Saturday, Feb. 10—  
6:30 p.m.—Family night pot-luck.  
Sunday, Feb. 11—  
9:00 a.m.—Sunday school, adult class.  
10:00 a.m.—Worship service.  
Day school 4th through 8th grades sing.  
Monday, Feb. 12—  
7:30 p.m.—PTO.  
Tuesday, Feb. 13—  
6:00 p.m.—Beginner's confirmation.  
Wednesday, Feb. 14—  
9:45 a.m.—Bible brunch at the home of Jo Jedele.  
4:30 p.m.—Advanced confirmation.  
8:00 p.m.—Counsell.  
Thursday, Feb. 15—  
8:00 p.m.—Choir.

**ZION LUTHERAN CHURCH**  
Corner of Fletcher and Waters Rds.  
The Rev. John R. Morris, Pastor

Thursday, Feb. 8—  
8:00 p.m.—Senior Choir.  
Saturday, Feb. 10—  
9:00 and 10:30 a.m.—Youth instruction.  
1:00 p.m.—Senior citizens.  
Sunday, Feb. 11—  
9:00 a.m.—Sunday school.  
10:15 a.m.—Worship service.  
Tuesday, Feb. 13—  
4:00 p.m.—Joy Makers.  
7:30 p.m.—Shuffleboard.  
Wednesday, Feb. 14—  
8:00 p.m.—Church council.  
Thursday, Feb. 15—  
8:00 p.m.—Senior Choir.

**NORTH LAKE UNITED METHODIST CHURCH**  
The Rev. John Elliott, Pastor

Sunday, Feb. 11—  
10:00 a.m.—Worship service. "Is Christianity a Crutch?"  
10:30 a.m.—Church school.

**IMMANUEL BIBLE CHURCH**  
145 E. Summit St.  
The Rev. Ron Little, Pastor

Every Sunday—  
9:45 a.m.—Sunday school, nursery provided.  
11:00 a.m.—Morning worship, nursery provided.  
6:00 p.m.—Evening worship.  
Every Wednesday—  
7:00 p.m.—Family hour, prayer meeting and Bible study.

**ST. MARY CATHOLIC CHURCH**  
The Rev. Fr. David Philip Dupuis, Mass Schedule:

Every Saturday—  
4:00-5:00 p.m.—Confession.  
7:00 p.m.—Mass.  
Immediately after 7 p.m. Mass, Confession.  
Every Sunday—  
7:00 a.m., 9:00 a.m., 11:00 a.m.—Mass.

**FIRST UNITED METHODIST CHURCH**  
The Rev. Marvin H. McCallum, Pastor

Thursday, Feb. 8—  
12:30 p.m.—United Methodist Women soup and salad luncheon. Guest speaker Phil Radant on "Charter for Racial Justice."  
Guests welcome. Bring a dish to pass and table service.  
Sunday, Feb. 11—  
10:00 a.m.—Worship service. (Crib nursery for infants up to the age of 2 and church school for children ages 2 through 5.)  
10:20 a.m.—Church school for children from kindergarten through 6th grade.  
11:00 a.m.—Coffee and punch hour.  
11:10 a.m.—Adult discussion group in the social center.  
11:10 a.m.—Junior and senior high church school.  
3:00 p.m.—Leader training event in Milan.  
6:00 p.m.—Confirmation training—Youth group.  
6:00 p.m.—Senior high UMYF.

Monday, Feb. 12—  
7:30 p.m.—Council on ministries.  
Tuesday, Feb. 13—  
7:30 p.m.—Youth Bell Choir.  
Wednesday, Feb. 14—  
3:30 p.m.—Kinder Choir.  
4:00 p.m.—Praise Choir.  
7:00 p.m.—Adult Bell Choir.  
8:00 p.m.—Chancel Choir.  
Thursday, Feb. 15—  
9:00 a.m.—Elizabeth Circle in the home of Wanda Conner.

**ST. BARNABAS EPISCOPAL CHURCH**  
20500 Old US-12  
The Rev. Fr. Jerrold F. Beaumont, B.S.P.

10:00 a.m.—Holy Communion, first, third, and fifth Sundays, and 7:30 p.m. every Wednesday.  
10:00 a.m.—Morning prayer, second and fourth Sundays. Church school and nursery every Sunday.  
Every Wednesday—  
8:15 p.m.—Bible study and discussion groups.  
First Wednesday of every month—Bishop's Committee.  
Third Thursday of every month—Episcopal church women.

**NORTH SHARON BIBLE CHURCH**  
Sylvan and Washburne Rds.  
The Rev. Ronald C. Purkey, Pastor

Every Sunday—  
10:00 a.m.—Sunday school. (Nursery available.) Junior church classes.  
11:00 a.m.—Worship service.  
6:00 p.m.—Senior High Youth meeting. Youth Choir.  
7:00 p.m.—Evening worship services. (Nursery available.) All services interpreted for the deaf.  
Every Wednesday—  
7:00 p.m.—Bible study and prayer meeting. (Nursery available.) Bus transportation available: 428-7222.

**ST. PAUL UNITED CHURCH OF CHRIST**  
The Rev. R. J. Raizlaff, Pastor

Thursday, Feb. 8—  
7:30 p.m.—Spiritual Life Department.  
Saturday, Feb. 10—  
9:00 a.m.—Confirmation classes.  
Sunday, Feb. 11—  
9:00 and 10:30 a.m.—Church school.  
9:30 a.m.—Chancel Choir.  
10:30 a.m.—Worship service.  
Coffee fellowship hour.  
Blanket Sunday.  
Tuesday, Feb. 13—  
3:30 p.m.—Joyful Noise.  
Wednesday, Feb. 14—  
1:30 p.m.—World Wide.  
3:30 p.m.—Junior Choir.  
Thursday, Feb. 15—  
12:30 p.m.—XYZ's pot-luck.

**CONGREGATIONAL CHURCH**  
(United Church of Christ)  
The Rev. Carl Schwarm, Pastor

Every Sunday—  
10:30 a.m.—Worship service and Sunday school. Nursery provided for children, infants through 5 years.  
Church of Christ  
13661 Old US-12, East  
Evangelist John M. Hamilton

Every Sunday—  
10:00 a.m.—Church school.  
11:00 a.m.—Worship service.  
Nursery will be available.  
6:00 p.m.—Worship service.  
7:30 p.m.—Bible study.

**FIRST UNITED PRESBYTERIAN CHURCH**  
Unadilla  
The Rev. T. H. Liang, Pastor

9:45 a.m.—Sunday school.  
11:00 a.m.—Worship service.  
Every Sunday—  
7:00 p.m.—Mid-week prayer and share.

**CHURCH OF JESUS CHRIST OF LATTER-DAY SAINTS**  
Meetings at  
Church of Jesus Christ of Latter-Day Saints  
2141 Brockman, Ann Arbor  
9:30 a.m.—Sunday school.

**SALEM GROVE UNITED METHODIST CHURCH**  
3320 Notten Rd.  
The Rev. Ferris Woodruff, Pastor

Every Sunday—  
9:30 a.m.—Sunday school.  
10:30 a.m.—Worship service.

**ST. JOHN'S EVANGELICAL AND REFORMED CHURCH**  
(United Church of Christ)  
Francisco

Every Sunday—  
9:30 a.m.—Sunday school.  
10:30 a.m.—Church services.

**WATERLOO VILLAGE UNITED METHODIST CHURCH**  
8118 Washington St.  
The Rev. Larry Nichols and The Rev. David Goldsmith, Pastors

Every Sunday—  
10:00 a.m.—Sunday school.  
11:15 a.m.—Worship service.

**CHELSEA FREE METHODIST FELLOWSHIP**  
Meetings at St. Barnabas Episcopal Church  
20500 Old US-12  
The Rev. Mearl L. Bradley, Pastor  
Call 475-9868 for information  
Parsonage, 208 E. Middle St.

Every Sunday—  
3:45 p.m.—Sunday school classes for all ages, nursery through adult.  
5:00 p.m.—Worship service. Nursery provided.  
Every Thursday—  
7:30 p.m.—Family happening. Mid-week service for the entire family. Third Thursdays meeting held in homes. Call 475-9868 for location. Second and fourth Sunday.  
6:00 p.m.—Youth meeting.

**FIRST ASSEMBLY OF GOD**  
The Rev. Richard Coury, Pastor

Every Sunday—  
9:45 a.m.—Sunday school.  
11:00 a.m.—Worship service.  
6:00 p.m.—Evening worship.  
Every Wednesday—  
7:00 p.m.—Christ's Ambassadors. Missionettes. Bible meditation and prayer.

**FIRST UNITED METHODIST PARKS AND TERRITORIAL RDS.**  
The Rev. Larry Nicols and The Rev. David Goldsmith, Pastors

Every Sunday—  
9:15 a.m.—Morning worship.  
10:00 a.m.—Sunday school.  
ST. JACOB EVANGELICAL LUTHERAN CHURCH  
The Rev. Andrew Bloom, Pastor  
12501 Rietmiller Rd., Grass Lake

Every Sunday—  
9:00 a.m.—Worship service.  
10:15 a.m.—Divine services.  
ST. THOMAS EVANGELICAL LUTHERAN  
Ellsworth and Haab Rds.  
The Rev. Jerome Dykstra, Pastor

Every Sunday—  
10:00 a.m.—Worship service.  
OUR SAVIOR LUTHERAN CHURCH  
1515 S. Main, Chelsea  
The Rev. Gene A. Wyssman, Pastor

Every Sunday—  
9:00 a.m.—Sunday school.  
10:30 a.m.—Worship service.

**CHELSEA BAPTIST CHURCH**  
437 Wilkinson St.  
The Rev. Thode B. Thodeson, Pastor

Every Sunday—  
9:45 a.m.—Sunday school for the whole family.  
11:00 a.m.—Morning worship.  
6:00 p.m.—Evening fellowship.  
Every Wednesday—  
7:00 p.m.—Mid-week prayer and share.

**GREGORY BAPTIST CHURCH**  
The Rev. David Brinkman, Pastor

Every Sunday—  
9:45 a.m.—Sunday school.  
11:00 a.m.—Morning worship.  
6:00 p.m.—Young people.  
7:00 p.m.—Evening worship.

**METHODIST HOME CHAPEL**  
Chaplain Ira Wood, Pastor

Every Sunday—  
8:45 a.m.—Worship service.

**FIRST CHURCH OF CHRIST SCIENTIST**  
1883 Washtenaw Ave., Ann Arbor

Every Sunday—  
10:30 a.m.—Sunday school, morning service.

**BAHA'I FIRESIDE**  
Every Thursday—  
8:00 p.m.—At the home or Toby Peterson, 705 S. Main St. Anyone wishing to learn about the Baha'i faith is welcome.

**ST. JOHN'S UNITED CHURCH OF CHRIST**  
Rogers Corners

Every Sunday—  
10:30 a.m.—Sunday school, morning service.

**BETHEE EVANGELICAL AND REFORMED CHURCH**  
(United Church of Christ)  
Freedom Township  
The Rev. Roman A. Reineck, Pastor

Every Sunday—  
10:00 a.m.—Worship service.

**Seminar Slated on Feeding Cattle for Profit**

A seminar for cattle feeders entitled "Feeding Cattle for Profit" will be held Thursday, Feb. 15, 9:30 a.m. to 3:30 p.m. at the Le-nawee County Extension Center, 199 N. Broad St., Adrian.  
Dr. John Waller, Michigan State University Beef Specialist and Dr. John Melancon, Michigan State University Extension Veterinarian, will discuss starting cattle on feed, nutrient requirement of cattle, feeding industry by-products, silage additives, implanting, disease and bird control in feedlots.  
For additional information contact your local Co-operative Extension Service. Washtenaw county, 973-9510.

Telephone Your Club News To 475-1371.

"If we make an error, we pay the penalty. And the interest!"

Henry W. Block  
H&R Block preparers are carefully trained. But if we should ever make an error that costs you additional tax, you pay only the tax. Block pays any penalty and interest. We stand behind our work. That's another reason why we should do your taxes, whichever form you use, short or long.

**H&R BLOCK**  
THE INCOME TAX PEOPLE  
CHELSEA  
105 S. MAIN ST.  
PH. 475-2752  
9 to 6 Mon. thru Sat.  
Evenings and Sundays by appointment.

## Ann Arbor Kiwanis Sale Starts Thursday

The 53rd annual sale of the Kiwanis Club of Ann Arbor Downtown will be held Thursday, Friday, and Saturday at the Kiwanis Activity Center, W. Washington and First Streets, Ann Arbor.

Ralph E. Maten and Arnold W. Loyd, co-chairmen of this year's sale, are confident that this year's sale will be the "best ever" and the selections of merchandise features everything from furniture, appliances, antiques and television sets in the basement, to draperies, hand bags, and white goods on the top floor. All three floors of the building will be used for the sale and the entire event will be dedicated to the memory of Dean Bogos, a prominent Kiwanian who died recently and who had worked many hours on previous sales.

More than 170 Kiwanians and their families staff the sale. All proceeds are used for the more than 100 project expenses, incurred by the club, for the ensuing year. Chief recipient is the Hospital School at the C. S. Mott's Children's Hospital, with additional funds going to 4-H sponsorship, camperships, kid baseball and hockey, Boy Scout and Girl Scout work, underprivileged and crippled children's work, drug abuse education, hearing aids for the deaf, learn-to-swim program at the YMCA and many other projects for children and senior citizens.

Large donations have also been given in the past to Spaulding for Children, the YM-YWCA Building fund, the Ann Arbor Public Lib-

### Beef Cow-Calf Seminar Slated at Manchester High

A Tri-County extension sponsored Beef Cow-Calf Seminar has been scheduled for Feb. 15, 7:30 p.m. to 10 p.m. at the Manchester High school Library, 710 E. Main St. Dr. Harland Ritchie, Michigan State University Beef Cow Specialist, will discuss wintering the cow herd, feeding crop residue, feeding out your own calves, cross-breeding and developing replacement females.

For further information contact your local Co-operative Extension Service at 973-9510.

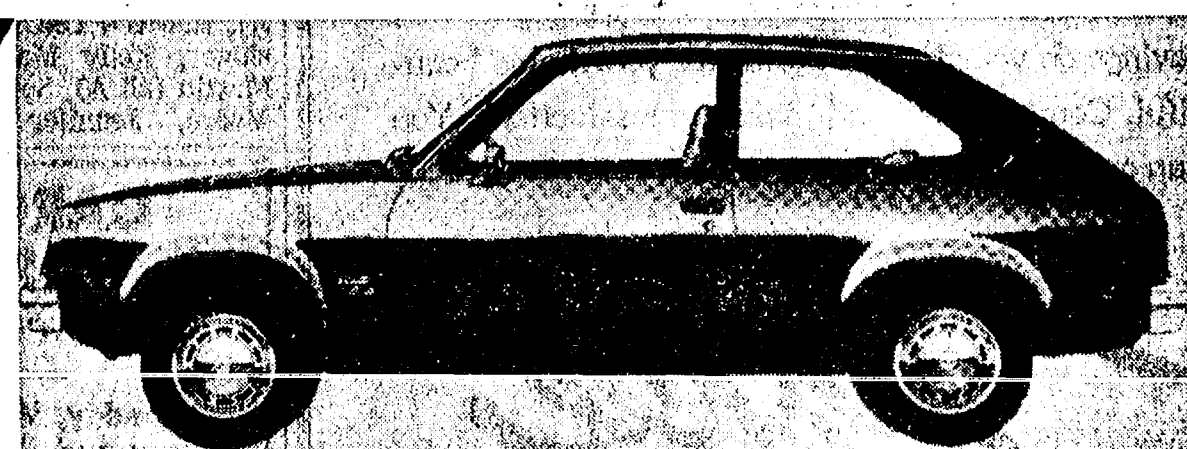
Please Notify Us of Any Change in Address

**DON'T MISS THE ANNUAL KIWANIS SALE**  
Thurs., Fri., Sat., Feb. 8-9-10  
10 a.m. to 8 p.m. 12 Noon to 8 p.m. 9 a.m. to 2 p.m.  
at the KIWANIS ACTIVITIES CENTER  
Corner of W. Washington and First Sts., Ann Arbor  
3 Floors of Furniture, Clothing, Books, Shoes, Hardware, Toys, Bicycles, White Goods, etc.

## America's Lowest Priced Hatchback

'79 CHEVY CHEVETTE SCOOTER

\$3298<sup>87</sup>



Includes 1.6 litre 2 barrel L-4 engine, 4-speed transmission. Price does not include taxes or license fees.

<sup>87</sup>Based on comparison of Manufacturer's Suggested Retail Prices.

## SAVE ON GAS MILEAGE

CHEVETTE	29 EPA ESTIMATED MPG (CITY)
HONDA CIVIC	28 EPA ESTIMATED MPG (CITY)
FIESTA	28 EPA ESTIMATED MPG (CITY)
DATSUN	27 EPA ESTIMATED MPG (CITY)
VW RABBIT	25 EPA ESTIMATED MPG (CITY)

<sup>88</sup>All with Standard Engine.

IN CITIES, WHERE MOST SMALL CARS ARE DRIVEN.

Remember: Compare this ESTIMATE to the "estimated mpg" of other cars. You may get different mileage, depending on your speed, trip length and weather. Your actual mileage will be lower in heavy city traffic.

CHEVY CHEVETTE. BEST SELLING SMALL CAR IN AMERICA FOR 1978.

BUY YOURS HERE

**COUPON**  
**TUNE-UP SPECIAL**  
15% OFF PARTS & LABOR  
Service includes: scope engine check all filters, service emissions, check belts, hoses, battery. Replace any needed parts.

**COUPON**  
**BRAKE SPECIAL**  
15% OFF PARTS & LABOR  
Reline front or rear brakes. Inspect lines, master cylinder, wheel cylinders, bearings, and seals. Turn rotors and drums. Bleed system.

**COUPON**  
**LUBRICATION SPECIAL**  
Lube, oil change, filter  
**\$11.50** plus tax

**COUPON**  
**TRANSMISSION SERVICE SPECIAL**  
Change transmission filter, fluid, gasket and inspect, road test.  
**\$24.95** complete

OPEN Mon.-Thurs., 8 to 8:30; Friday, 8 to 6; Saturday, 8 to 5

**LLOYD BRIDGES CHEVROLET**

FOR QUALITY, SERVICE & PRICE, Travel With Lloyd

I-94 and M-52, CHELSEA

PH. 475-1373

## NOW ON TUESDAY NIGHTS CHICKEN BUFFET



with our Famous Deep-Fried Chicken and SPECIAL BARBECUED CHICKEN also mashed potatoes and gravy, dressing, and salad bar. Serving from 4:30-9:00

at the CAPTAINS TABLE  
8093 MAIN ST., DEXTER PH. 426-3811

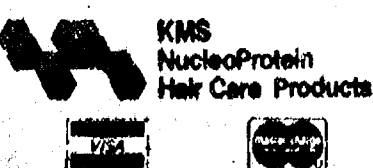
A Beautiful Gift...  
A Gift of Beauty...

**Fran Coy's**  
HAIR STYLISTS

Gift Certificate

Best Wishes to  
From  
For \$

For Your Valentine



**Fran Coy's**  
HAIR STYLISTS

418 S. Wagner Rd.  
Ann Arbor, Mich.  
665-7207



Migrant and other seasonally employed farmworkers and their dependents who earned most of their income from farmwork in 12 of the last 18 months, and whose income is under federal poverty standards are eligible for special Labor Department programs.

## OIL-PROOF PLUS SUPPORT



Mechanics, station attendants, machine shop operators—end tired feet and ankles. Full-grain leather, steel shank and "Sweat-Proof" flexible split leather insole provide total comfort. Try on a pair today.

RED WING

VOGEL'S & FOSTER'S

Ph. 475-1606 Chelsea, Mich.



CAN DO: Girl Scout Troop No. 719 members, from left, Kirsten Erickson, Jennifer Boughton, Karen Killelea, Marla Feldman, and Deana Slusher, pause momentarily from their trash can decorating project for a little recognition. Having secured the donation of the cans from Dana Corp., the group set out to make them as lively and

inviting as possible in the hopes that students at North school will want to use them as often as possible. To follow up on their project, the girls are planning a program to present to North school classes emphasizing the importance of litter control at the school.

How much do you know about your heart, how it works and how you can protect it? We'd like you to know. Call us, won't you? We're the Michigan Heart Association and we're fighting for your life.

## Lincoln Blasted

(Continued from page one) and Lincoln had 30." Raymond said. "When we came out in the half as strong as we did, Lincoln changed from its half-court zone to full-court zone defense. This opened up the passing lanes for our fast break which Jeff Dils and John Dunn took good advantage of," he explained.

At the same time, Chelsea switched from a full-court press to a man-to-man full-court press to put more pressure on the ball carrier.

Leading Chelsea in another fine display of balanced scoring was Charlie Bridges with 17 and Jesse Coburn with 16. Gary Dils counted for 14; John Dunn, nine; Jeff Dils, nine; Don Schrotenboer, nine; Mike Machesky, eight; Matt Feeney, five; and Brad Knickerbocker, four.

"We have had incredibly good balance in scoring all season. It means that everyone is making a big contribution to the game, not just the starters. We have 10 players, not five starters and five on the bench. In the Tuesday game our bench counted for 39 points. I tell the kids that it's not who starts in a game but who is in the game when the pressure is on," Raymond said.

Raymond cited Jesse Coburn and Gary Dils who both came off the bench in the third quarter. Coburn collected 16 points and Dils, 14.

Bulldog rebounders were Charlie Bridges with 10; Gary Dils, nine; Don Schrotenboer, six; Mike Killelea, six; Mike Machesky, five; and Jesse Coburn, five.

Chelsea collected 13 steals and 23 assists.

Bulldogs are a half-game behind Saline in fifth place in the SEC. They host the Milan Big Reds during the Winter Carnival festivities on Friday, Feb. 9 for an important game.

It killed 35,000 people in Michigan last year. What is it? Heart disease. We think that's a tragedy because a lot of those deaths might have been avoided if people had done everything they could to protect their hearts. Having a heart attack or stroke isn't just a matter of chance. There are things you can do to protect yourself. Like eating a heart-healthy diet; getting the proper amount of exercise; and having your blood pressure checked. We'd like to tell you more. Call us, won't you? We're the Michigan Heart Association and we're fighting for your life.

Telephone Your Club News To 475-1371.

## Novi Dumped

(Continued from page one) out of 30 for 83 percent," Raymond said.

Raymond further noted that a different approach to free throws has been worked on during practices with noticeable results in the past few games.

South Lyon attempted 36 free throws and made 18 for 50 percent.

In field goals Chelsea made 32 of 74 for 43 percent. The Lions made 16 of 48 for 33 percent.

Chelsea collected 30 fouls, with three men fouled out while South Lyon had 23 fouls. South Lyon committed 24 turnovers and Chelsea had 17.

Novi 58, Brighton 50

In other SEC action Friday night Brighton faced defeat at the hands of the Novi Wildcats, 58-50, to put Novi a half game out of first place which is shared by Brighton and Milan.

Brighton couldn't put their offense together while Novi's Chris Giorgio led with 16 points. Brighton's Craig Bachelor and Rich Close led with 12 points each.

Saline 59, Dexter 50

In Dexter, the Saline Hornets took a close one, 59-51, for its eighth win in 12 games. Dexter is 3-11 over-all. Scoring for Saline were Len Frey, 12; Matt McGuire, 11; John Kendzicky, and Steve Rahan with 10 each. Dreadnaught scorers were Jeff Leighton with 19; Jeff Krull, 10; and Jim Vaughan, 10.

Milan 44, Lincoln 42

Milan had an even closer encounter with Lincoln as they took a 44-42 decision in the final few seconds as Big Red Ivan Callo-way sank two free throws with 14 seconds left. Milan's win gave them a 10-4 record and Lincoln is now 2-12.

## Host Carpet Cleaning

Happy Valentine's Day! Here's a wet weather suggestion for cleaning. We recommend Host, the new method of cleaning carpets without water. The carpet is dry and ready to walk on immediately. Use our Host Electric Up-Brush. It's easy. Clean 40 sq. yds. only \$9.95. Phone for information.

MERKEL BROTHERS

Get Out of That Rut . . .  
DON'T BE A  
"STUCK IN THE MUD"

Call

M & M GRAVEL CO.

Repair Your Old Driveway  
Or Build A New One!

WE CAN DO THE JOB . . .  
... WE HAVE WHAT IT TAKES!

★ ROAD STONE  
★ BASE STONE  
★ DRAINFIELD STONE  
★ WASHED SAND  
★ PEA STONE  
★ FILL DIRT

PHONE  
475-1941  
Or after 4 p.m.  
(313) 498-2866

Located 4 Miles North of Chelsea  
M-52 and ROE ROAD

PIT HOURS: 8 to 5 Mon. thru Fri. 8 to 12 Sat.

## Search Underway for Ambulance Housing

(Continued from page one)

Three ambulances are now stationed in the Ann Arbor-Ypsilanti area, one in Saline, and one to the far east of the city of Ypsilanti. "Our intentions are to have all seven vehicles going as soon as possible with all res of the county covered uniformly. We've got to find a place in the northwest as soon as possible," Fontana stated.

Fontana added that the city of Saline has gone so far as to provide the company with a new building to house an ambulance while the city and service clubs in Ypsilanti were able to put their

resources together in locating a garage.

"What we are looking at is a long-term arrangement. Our contract is for five years with first option on renewal. 10 years is a long time and it would be a definite advantage for the village to have an ambulance located within its boundaries."

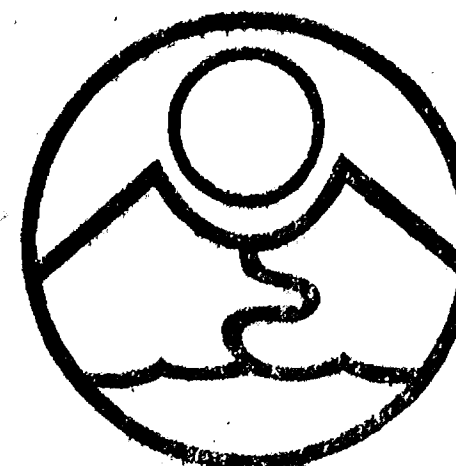
Those boundaries, according to Fontana, could be between Baker Rd., Jackson Ave., M-52 and Dexter-Chelsea Rd.

Please Notify Us of  
Any Change in Address

The Chelsea Standard, Thursday, February 8, 1979 5

## NEW NATURADE MAKE-UP

Lipstick, blusher, foundation, eyeliner, mascara  
Natural!



RIVENELL  
NATURAL  
FOODS  
3212 ALPINE  
DEXTER, MICH 48130  
426-2549

Monday through Saturday, 9 a.m. to 5:30 p.m.  
(Across from the Farmers' Market)

# Jiffy market

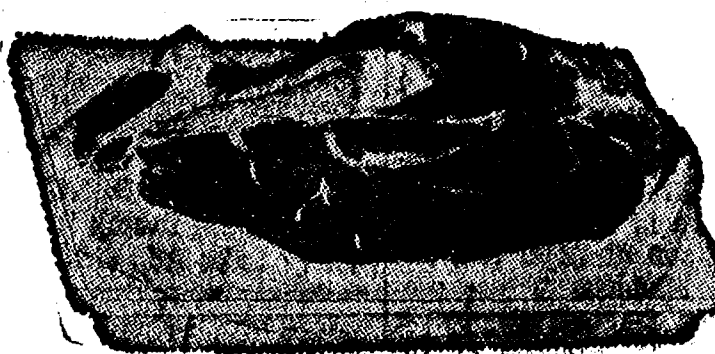
Big Enough To Serve You . . . Small Enough To Know You!

PHONE 475-1701

SALE PRICES GOOD FEB. 8-11, 1979

TOP VALUE FOODS - GUARANTEED SATISFACTION - COURTEOUS SERVICE

COMPLETE FRESH MEAT DEPT. - USDA CHOICE BEEF - THE FINEST OF FRESH PORK



Tender Beef with Flavor!

U.S.D.A. CHOICE

## RIB STEAKS

Large \$1.98 lb.  
End

JIFFY MARKET TASTIEST  
TENDEREST CHOICE MEATS

## USDA CHOICE STEAK SALE

Sirloin Steak . . . lb. \$2.09

T-Bone Steak . . . lb. \$2.99

Porterhouse Stk. . lb. \$2.99

Club Steak . . . lb. \$2.79

Cube Steak . . . lb. \$1.99

WILLIAMS - AT MEAT COUNTER

## LONGHORN CHEESE

Random Weights lb. \$1.49

Kiebler Old Fashioned

RING  
LIVER

\$1.49 lb.

FRESH, LEAN

PORK  
HOCKS

69¢ lb.

LEAN - TENDER

PORK  
CUTLETS

\$1.98 lb.

Kiebler Old Fashioned

HEAD  
CHEESE

\$1.69 lb.

MEDIUM SIZE

## FRESH EGGS . . . . . doz. 79¢

FRITO-LAY'S

DORITOS

Reg., Sour Cream,  
Nacho Cheese or  
Taco

7-Oz. Pkg. 69¢

MAMA

ASSORTED

COOKIES

6 1/4-Oz.

3 pkgs. \$1.09

12-OZ. CANS

7-UP, DIET 7-UP,  
ROOT BEER,  
ORANGE CRUSH

6 pac \$1.49

Plus Deposit

SUNBEAM

HAMBURGER

or  
HOT DOG BUNS

8-Pack 10-Oz. 39¢

FARM MAID HOMOGENIZED

## MILK . . . . . gal. \$1.69

## FARM MAID SPECIALS

LOW-FAT  
MILK

\$1.39 gal.

ORANGE  
JUICE

1/2 gal. 89¢

COTTAGE  
CHEESE

1-Lb. Crtn. 79¢

CHOC.  
MILK

49¢ qt.

SUNBEAM ENRICHED

## WHITE BREAD . . . . . Large 1-Lb., 4-Oz. Loaf 29¢

## JIFFY MEAT SERVICE

CUSTOM CUTTING, WRAPPING, FREEZING.

QUICK SERVICE ON BUTCHERING —  
YOUR BEEF OR OURS.

★ U.S.D.A. CHOICE SIDES OF BEEF  
★ FRONTS - HINDS - WHOLE RIB - WHOLE LOINS  
★ LOCAL FARM CORN-FED BEEF AVAILABLE

## JIFFY MARATHON GAS PUMPS

REGULAR  
GAS

70.9 gal.

Includes  
All Taxes

THANK YOU — We Appreciate Your Business!

Open With Complete Service, 7 Days A Week  
TOP VALUE 7 a.m. MORNING to 10 p.m. NIGHTS  
FOODS

Sale Prices  
Feb. 8  
Thru  
Feb. 11

What good is insurance that pays for accidents, if it takes you 6 months to get paid?

When you purchase car insurance from Auto-Owners, you get more than just protection. You get a commitment. A commitment from us to provide the most efficient claims service anywhere.

Because when you get in an accident, you need the money.

Not next month. But now. And that's just when you get it from Auto-Owners. After all, our reputation was built on fast, fair claim service. But don't just take our word for it. Talk to anyone who's ever had a claim through Auto-Owners. Then, talk to us.



Auto-Owners  
Insurance

You can't find a better name for fast, fair claims service.

## MAYER AGENCY

OF SPRINGER-KLEINSCHMIDT AGENCY, INC.

Phone 475-8689

Chelsea, Michigan



## Community Calendar

Week of Feb. 8-15  
1979

Modern Mothers Child Study Club, Tuesday, Feb. 13, 8 p.m. at the home of Gloria Greenleaf. Program on "Mental Health and Today's Woman."

Chelsea Child Study Club, Tuesday, Feb. 13, Charles S. Cameron Pool, Beach school, for "Swim & Trim" led by Helen Thomas. Regular meeting to follow at the home of Barbara Branch, 234 Washington St. Guests welcome.

Chelsea Woman's Club Valentine Tea, United Methodist Home, 2 p.m., Tuesday, Feb. 13. Bring cookie donation.

Chelsea Community Farm Bureau, Thursday, Feb. 8 at the home of Mr. and Mrs. Allen Broesamle. Pot-luck supper at 7:15 p.m.

Rogers Corners Farm Bureau, Friday, Feb. 9, 8:30 p.m. at the home of Mr. and Mrs. Harold Eismann.

Lamaze childbirth preparation classes. For information call 475-9558 or 475-7484.

Regularly scheduled Lima Township Planning Commission meetings will be held on the first Tuesday of each month beginning January, 1979 at 8 p.m., Lima Town Hall.

Lima township board regular meeting first Monday of each month, 8 p.m., Lima Township Hall.

Chelsea Rebekah Lodge No. 130, the first and third Tuesday of every month, 7:30 p.m., at the Temple.

Regular meetings of the Lyndon Township Planning Commission are held at 8 p.m. the second Thursday of each month at Lyndon Town Hall.

Lima Center Extension Study Group, Wednesday, Feb. 14, 10:30 a.m., Lima Center Hall. Hostesses are Mrs. Freeman Molsinger and Mrs. Thomas Vaillencourt. Pot-luck at noon.

Dexter High school FHA Community Square Dance Saturday, Feb. 24, 8 p.m. to midnight at the high school. Music by Luke Schable and his band. Couples \$6, singles, \$3.50. Tickets at McLeod Pharmacy or at the door. Refreshments available. advx36

Chelsea Area Historical Society, Monday, Feb. 12, 8 p.m., McKune Memorial Library. Membership drive underway. Speaker, Mrs. Paul Hoffman.

Senior Citizens meet the third Friday of every month. Pot-luck, games, and cards at St. Mary's school, 6 p.m.

Waterloo Interpretive Center is open Tuesday through Sunday, 9 a.m. to 5:30 p.m. Ph. 475-5063 for more information.

Sharon Township Board regular meeting first Thursday of each month, 8:30 p.m. advx21f

Chelsea Communications Club, fourth Wednesday of each month at 7:30 p.m., in the Chelsea Lanes basement meeting room.

Lyndon Township Board regular meetings the third Tuesday of each month, 7 p.m., in Lyndon Town Hall.

American Legion hospital equipment is available by contacting Larry Gaken at 475-7891.

Chelsea Home Meal Service delivers one hot meal a day to elderly and disabled living in the Chelsea area. For more information, call Carolee Hoffmeyer, 475-8014, or Barbara Branch, 475-7844.

Chelsea Jaycees general membership meets the first Tuesday of every month, 7:30 p.m., in the basement of Chelsea Lanes; Chelsea Jaycees Board of Directors, the last Tuesday of every month, 7:30 p.m.; and the Chelsea Jaycee Auxiliary, the third Tuesday of every month, 7:30 p.m. Contact Bob Ponto at 475-9191 for more information.

Services provided by the Department of Labor's Employment and Training Administration for migrant and seasonal farmworkers referral, emergency services, residential support, self-help housing, legal services, transportation and relocation assistance.

## MARGIE'S UPHOLSTERY

FREE ESTIMATES  
• Large Selection of Materials  
• Upholstery Supplies  
• Repair Service  
Pick-Up and Delivery Available  
MARJORIE SMITH  
Phone (313) 428-7146  
207 W. Duncan,  
Manchester

## Martin-Senour Paint Sale!

Save your walls.  
Save your wallet.



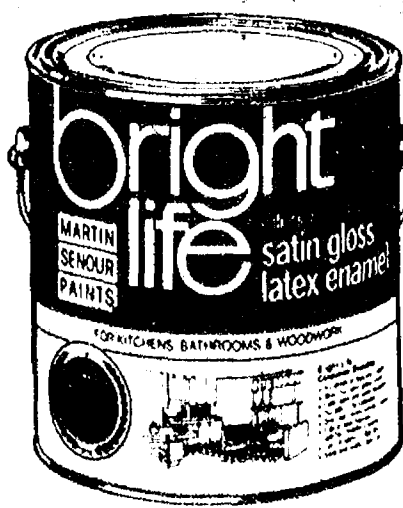
Flat Latex  
NOW \$9.99 gal.  
Reg. \$11.55

- Beautiful, flat finish in hundreds of decorator colors.
- Fade, spot, stain resistant.
- Lasts for years—washable.
- Goes on easy, soap and water clean-up.
- Safe for children's rooms.

Satin Gloss Latex  
NOW

\$12.50 gal.  
Reg. \$14.45

- Perfect for kitchens, bathrooms, woodwork.
- Color matched to Bright Life™ Flat Latex.
- Durable—scrubbable.
- Safe for children's rooms.
- Soap and water clean-up.



MARTIN  
SENOUR  
PAINTS

Save on these fine Martin-Senour Paints today at:

GO **GAMBLES**

110 N. Main Ph. 475-7472

## DEATHS

### Harlan D. Shelly

Former Area Businessman Dies at Grayling Hospital

Harlan D. Shelly, 72, of Grayling, died Wednesday, Jan. 31 at Grayling Mercy Hospital. He was born June 19, 1908, the son of William and Stella (Smith) Shelly.

Mr. Shelly owned the Shelly Lumber Co., of Grass Lake and the Munith Lumber Co. He was on the Board of Directors of Michigan Wholesalers until his retirement in 1953.

He married Mae Hamp Platt on April 30, 1970. She survives. The Shellys moved to Grayling in 1971. Mr. Shelly was a Knight Templar, a Shriner, and a member of the Moslem Temple of Detroit. He was also a life member of Excelsior Lodge No. 116, F&AM of Grass Lake.

In addition to his widow, he is survived by two daughters, Mrs. Marjorie Hansen of Birmingham and Mrs. John (Carolyn) Rudd of Chelsea; seven grandchildren; and one sister, Mrs. Don (Margaret) Chaper of Grass Lake. Two sisters preceded him in death.

Cremation has taken place and a memorial service will be held at a later date. Arrangements were handled by the Staffan Funeral Home.

### Gerald B. Madden

Former Area Resident Dies in Detroit Hospital

Gerald B. Madden, 74, died Saturday, Jan. 17 at Harper Hospital, Detroit, after a long illness. He was born in Chelsea on July 27, 1904, the son of Peter and Ellen (Dealy) Madden.

Mr. Madden is survived by a sister, Eileen M. Roberts of Livonia; a niece, Rita M. Burke of Detroit; and a cousin, Gerald D. Grohnert of Chelsea.

Graveside services were held Saturday, Feb. 3 with the Rev. Fr. Philip Dupuis of St. Mary Catholic church, Chelsea, officiating. Burial followed in Mt. Olivet Cemetery, Chelsea.

## Bowl for Burns Tourney Raises Total of \$223.50

Sixteen leagues with 35 winners accounted for a \$223.50 kitty in the fund-raising drive, "Bowl for Impact on Burns," sponsored by the Chelsea Jaycee Auxiliary. During the week of Jan. 21-28 teams and leagues chipped in a dollar per bowler with 50 percent of what was taken in per league presented to individual winners and 50 percent of what was taken in for the entire week given to team winners.

On Saturday, Feb. 17, the check for \$223.50 will be presented to Dr. Irving Feller for the Institute of Burns Medicine during the Jaycee and Jaycee Auxiliary winter board meeting.

Shirley Weatherwax, project chairwoman, said the Auxiliary was pleased with the results of the tournament and congratulates the winners.

Sunday Night Come Ons, Kitty Hamel and Dan Bleske; Split Week-enders, Janet Schneider and Elmer Vassas; Senior House, Jim Eder; Nite Owl, Jerry Bullick; Rolling Pin, Helen Ringe; Jolly Keglers, Ann Pajot; Manchester BM, Gary Stoll; Unknowns, Kathy Buss; Suburban, Paula Schaff; CWBC, Arlene Fahrner; Industrial, Edwin Gleske; Leisure Time, Carol Hoffman; Junior House, John Milligan; Junior House Girls, Marilyn Uphaus; Tri City Mixed, Mary Lou Westcott and Claude J. Gipson; Chelsea Mixed, Frank White and Juanita Cook; Leftovers, Vi Morrell and John Beeman; Kahuna Mixed, Cindy Bradbury and Tom Steele.

League winners were Ann Arbor Hydraulic—Edwin Gleske, first; Bill Clark, second; Jim Goss, third; Dick Friday, fourth; and Ray Wurster, fifth. Misfits—Ginny Wheaton, first; Denise Thompson, second; Sharon Friday, third; and Kathy Haywood, fourth. Mercer and Shipley—Butch and Pat Mercer, first; Clyde and Val Hiple, second.

## BEEF FRONT QUARTERS

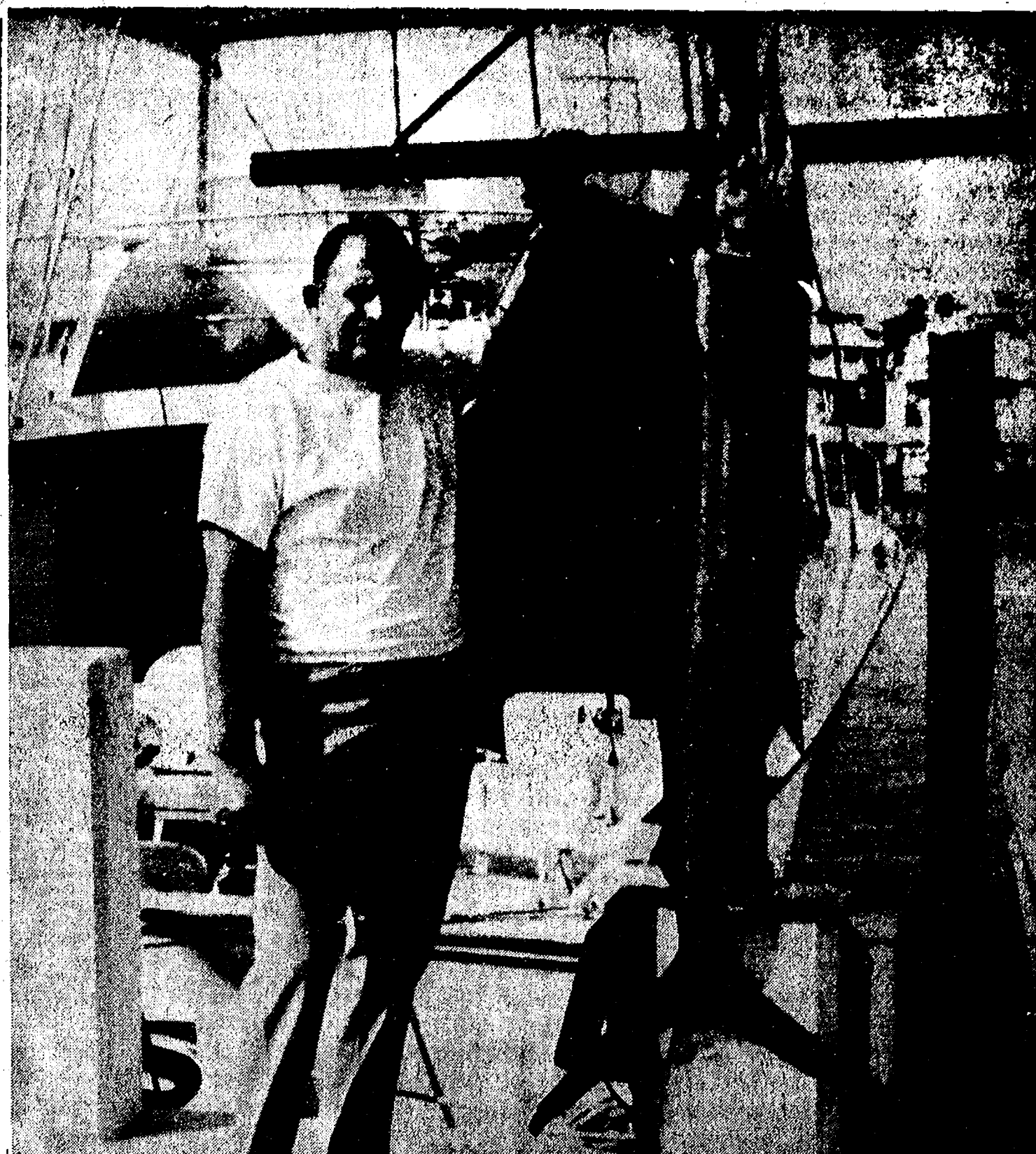
\$1.19 lb.

- 6 pcs. CHUCK ROAST
- 4 pcs. CHUCK STEAK
- 2 pcs. SWISS STEAK
- 2 pcs. ARM ROUND ROAST
- 2 pcs. ENGLISH ROAST
- 14 pcs. RIB STEAK
- 1 pcs. RIB ROAST
- 6 lbs. STEW BEEF
- 12 lbs. SHORT RIBS
- 50 lbs. HAMBURGER

After Processing \$1.70-\$1.75 lb.

**DUNBAR'S**  
DEXTER FOOD LOCKERS

Paul Dunbar, Owner. 8063 Main St., Dexter  
Ph. 426-8466



VACATION BONUS: Entering the Fort Lauderdale annual fishing festival, George Dygert of 3732 Clear Lake Rd., Grass Lake, landed this 47-pound, 84-inch long sailfin which earned him a citation in the contest. Dygert was aboard the 3T's cap-tained by Bill Timms.

## Chelsea Automotive Sold to Parts Peddler

As of February 1979, Chelsea Automotive, Inc., has changed ownership. The business assets of Chelsea Automotive, Inc., have been purchased by The Parts Peddler Auto Supply, Inc.

The Parts Peddler Auto Supply, is a Chelsea-based automotive parts accessory store, with branches in Dexter and Whitmore Lake.

The stores are owned by Richard Kolander of Chelsea. Richard, formerly of Ann Arbor, purchased the stores in July 1978. He was previous co-owner of Boyer Automotive Supply of Ann Arbor. His experience includes more than 24 years in the automotive parts business. He plans to continue to operate both stores in the Chelsea area, as well as the Dexter and Whitmore Lake stores.

The new 6,000-sq.-ft. facility allow much-needed expansion area for updated inventories and new lines. Complete inventory updates are under way in all the stores, including the new one.

Store hours at the new store will remain the same as always and will continue with Sunday service. The new store will honor all previous warranties on products sold by Chelsea Automotive, Inc. The telephone numbers will also remain the same.

Employees include Andy Fleisch-

mann, Jeff Layher, Glen Rentschler, Norm Saunders, Chris Smith, Ray Canine, Jim Karpus, Dave and Tom Gibbons, David Wilson, Martha Kolander, Dan Kolander and Betsy Kolander.

### First Robin...

(Continued from page one)  
day, but I haven't seen it since," she commented.

While robins are typically thought of as an optimistic indication of warm weather approaching, snow-shy Michiganders should know better by now. Blizzards in late February and mid-March are not uncommon, not to mention the frequency of flying snow as far into spring as May.



JEANENE RIEMENSCHNEIDER



PATRICK MERKEL

## Become Associate Real Estate Brokers

Pierson & Riemenschneider, Realtors has announced that two of its long-time associates have attained high levels of professional achievement.

Both Jeanene Riemenschneider and Patrick Merkel have passed the State of Michigan broker's exams and are now associate brokers with their firm.

Both have also attained the prestigious GRI (Graduate of Realtors Institute) designation which is awarded to those who have completed comprehensive educational requirements covering all aspects

of the real estate profession and is administered by the Michigan Association of Realtors.

### CHS 1978-79 Varsity Basketball Schedule

Feb. 9—Milan .....H  
Feb. 13—Carlton Airport .....H  
Feb. 16—Dexter .....T  
Feb. 23—Saline .....H  
Feb. 27—Lumen Christi .....T  
Mar. 2—Lincoln .....T  
All games start at 6:30 p.m.



## KITCHEN REMODELING

- ★ We at Dutch Country are kitchen remodeling specialists.
- ★ Expert installation available.
- ★ Free design layout service.

- ★ Featuring: HAND CRAFTED AMISH CABINETS.
- ★ Distinctive "GOLDEN OAK CABINETS" By Continental.
- ★ Jenn-Air Appliances ★ Delta Faucets ★ Elkay & Kohler Sinks.

VISIT OUR SHOWROOM

**DUTCH COUNTRY KITCHENS**

146 E. Main 428-7292 Manchester

## A CUSTOMER

A customer is the most important person ever in this business, in person, or by telephone.

A customer is not dependent on us ... we are dependent on him.

A customer is not an interruption of our work ... he is the purpose of our work.

A customer is not an outsider in our business, but part of it.

A customer is not a cold statistic, but a human being with feelings and emotions like our own.

A customer is a person who brings us his wants. It is our job to handle them profitably to him and to ourselves.

We would like you to become our customer. Stop in today and let us provide you with the service you deserve.

*William J. Bell*

Assistant Vice President  
and Branch Manager



**ANN ARBOR TRUST COMPANY**  
1478 Chelsea-Manchester Road • Chelsea, Michigan 48118 • 313-475-9154





## Real Estate

By PAUL FRISINGER

REALTOR

### THE 'DREAM HOUSE' SYNDROME

There are two species of househunter — the pragmatist and the idealist. Beware of going to extremes at either end of the financial spectrum.

You can be too practical. For instance, assuming that a home in need of repair can be fixed at an overall price savings and find out that the final cost greatly exceeds the estimate.

Buying a home in a neighborhood whose value is going downhill because "it's a bargain" . . . Buying a home with fewer rooms than you really need. You may end up with an unsuitable, uncomfortable home with a lower resale potential.

On the other hand, the idealist should beware of the all-too-frequent "dream house" syndrome. Sure, it's tempting to set out in quest of the absolutely perfect home, but it's better to balance your dreams with your pocketbook. Even if you can define the perfect home (which is doubtful), you probably couldn't afford it. Be prepared to compromise.

If there is anything we can do to help you in the field of real estate, please phone or drop in at FRISINGER REALTY CO., 935 S. Main St., Chelsea. Phone: 475-8683; evenings 475-2621. We're here to help!

475-8680  
475-8689

115 PARK ST.  
CHELSEA, MICH.

# MAYER AGENCY

(of Springer-Kleinschmidt Agency Inc.)

Your Local Independent Insurance Agency providing dependable protection and prompt claim payment through 10 of the nation's leading insurance companies.

## HOME - AUTO - BUSINESS INSURANCE



Sheridan W. Springer  
Ruth DeVine



Charles A. Kleinschmidt  
Micky Quackenbush

## Legion's Winter Carnival Was 'Best Ever,' Says Chairman

Cavanaugh Lake blossomed into a veritable winter ice garden last week-end as multi-colored parkas, caps, and mittens converged for the 6th annual Winter Carnival fishing derby sponsored by the Herbert J. McKune American Legion Post No. 31.

Carnival activities were officially kicked off Friday evening with the euchre tournament, while ice fishermen and fisherwomen met at a chilly 7 a.m. on Saturday and Sunday.

"Cavanaugh Lake has never seen so many people fishing, ever," declared a happy carnival chairman Pat Merkel who reported that while over-all attendance was down from last year, gross profits were up as well as the fun. "We all had a heck of a good time. Everything went like clockwork," Merkel commented.

Winners in the card tournament included a three-way tie for first place with Bob Usher, Richard Westcott, and Jerry Herrick each taking 13 out of 15 hands and splitting first-prize. Duane Bycraft

successfully completed seven longers for first place in that category.

Total attendance in the euchre tournament was 102-20 percent more than last year.

Somewhat less successful was the cross-country expeditions to the Waterloo Recreation Area. "I was surprised because of all the interest I heard before the carnival," Merkel said.

Clear blue skies with only a whisper of wind greeted those ice fishing on Saturday. "The weather was absolutely perfect; the best we've ever had for our winter week-ends," Merkel testified.

LaVonne Harris attracted more than 130 listeners during her piano performance on Saturday afternoon and The Gaken Band and southern fried chicken buffet was a complete sell-out, as were the "boneless chickens."

Fishing continued on Sunday although the winds picked up and temperatures dropped.

For the first time since 1974, pike were landed and prizes were awarded accordingly. In the adult category first place went to David McLaughlin for panfish; Bryan Herrick for perch and for pike. Second-place went to James Ross, panfish; Pam Michells, perch; and Chuck Belser, pike. Third-place winners were Rubin Edick, panfish; David Wutke, perch; and Gerald Herrick, pike.

Under 12-year-old winners were Sherie Rowe, first, panfish; Ellis Fryer, first, perch; Chad Tribble, second, panfish; Todd Rowe, second, perch; Tod Tribble, third, panfish; and Ed Dickleman, Jr., third, perch.

Merkel reported that there was "standing room only on both floors for the Kanten-Simms Ruby Group which performed Sunday afternoon from 2 to 5."

Proceeds from the carnival go in large part to the July 4 fireworks display.

### EDUCATIONAL ASSESSMENT TESTS:

## 10th Graders Score Above State Average

Tenth-grade students at Chelsea High school who participated in the Michigan Educational Assessment test last September, scored just above the state average, according to a report presented to the Board of Education on Monday, Jan. 5.

The test, which measures reading and math abilities, has been given only to 4th and 7th grade students until last year when 10th grade students were included for the first time.

The over-all state average for 10th graders in reading was 75.47 percent while Chelsea students scored 78.93 percent.

The difference between the state average and Chelsea's average indicates that 3.46 percent more Chelsea students answered the objectives correctly.

In math the state percent was 69.55 while Chelsea had 73.75 percent.

"In general, Chelsea's 10th grade students were higher on every question except the one which asked about percentages of a given number," Sue Carter, test coordinator, commented.

"The results do not show as high a difference between ours and the state-wide students as the 4th and 7th grades did. This may be a result of this being the first time the test was administered and the lack of incentive to score well on the test. This is not common in 4th and 7th grade students," Carter commented.

"Specific objectives indicate a growth in certain previously weaker areas. As in the case of our 7th graders, decimals continue to be a problem; however, adding and subtracting two mixed numbers with like and/or unlike denominators has become easier. Where 'less factual and causation' type problems in reading are very difficult for students at the 4th and 7th grade levels, the 10th graders seem to be more knowledgeable and experience little difficulty," she further explained.

Test results will be studied by high school principal John Williams as well as the teachers. Williams can then proceed to develop a program to generate improvement in "weak areas" for the teachers to follow in the classrooms.

### Sheep Shearing School Slated On MSU Campus

Interested in learning how to shear sheep? Steve Baertsche, Michigan State University extension sheep specialist, has put together a Sheep Shearing School, to be held at the Michigan State University Livestock Pavilion on March 23 and 24.

The school will be conducted by Bob Taylor, Professional Shearer from Mid-States Wool Grower's Co-operative.

In order to justify the school there must be a minimum of 10 people enrolled. Conversely the maximum number that they can handle is 30 people. Therefore, you must make out an application. These are available from your Co-operative Extension Office.

For additional information contact your local Co-operative Extension Service at 973-9510.

### Volunteer Help Needed at Waterloo Interpretive Center

As spring approaches, so does the busy season at Waterloo Interpretive Center. The staff is kept busy working with school groups throughout the week.

Volunteer service in the past has enabled the center to offer programs to the public on Sunday afternoons. Last year these programs were enjoyed by more than 800 people.

"In order to offer Sunday programs during our busy season," according to Tom Hodgson, chief naturalist at the center, "we are once again looking for volunteers with duties including working the reception desk, answering the telephone, and answering visitor questions. Leading groups on nature hikes might also be possible if you are interested. If you would like to work Sunday afternoons, or possibly other times, please call the Waterloo Interpretive Center, 475-8089."

### REMODELING

Residential - Commercial  
FREE ESTIMATES

Ib V. JENSEN

and SON

LICENSED BUILDER

378 Spring Lake Drive  
Chelsea, Mich.  
PHONE 475-1820

Section  
Two

The Chelsea Standard

Pages  
7-12

CHELSEA, MICHIGAN, THURSDAY, FEBRUARY 8, 1979



CHRISTMAS IN FEBRUARY: Chelsea Child Study Club members Ann Schaller, left and Neta Mills, right, present Park Naturalist Tom Hodgson of the Waterloo Interpretive Center one of several gifts made recently to the center. Here the members contribute a record changer while other gifts,

## Chelsea Child Study Club Gives Needed Items to Nature Center

Chelsea Child Study Club donated much needed equipment to the Waterloo Nature Center. The equipment, valued at more than \$1,400, was purchased with funds from the club's annual Christmas bazaar held last November.

The donations included a new 35-mm camera with special lenses for wildlife photography, an electronic flash and battery charger, a camera tripod, a portable field tape recorder, a record turn-table, a refrigerator, and two park benches.

The camera equipment will be used to develop new audio-visual programs to be shown in the center's auditorium as well as to take photographs for displays, newspaper articles, and nature center publications. The record turn-table will be used to review

background music for the programs. The portable tape recorder will be used to record wildlife sounds for future programs, and to play bird calls to lure birds close.

The refrigerator will be used to maintain living props such as frog eggs, cocoons, and insect galls in a state of suspended animation until they are needed for programs. The benches will be placed along the asphalt foot path leading from the parking lot to the nature center so that those who are handicapped or not up to walking the more rugged trails will be able to sit and have an enjoyable outdoor experience.

We are extremely grateful for the club's generosity," says chief naturalist Tom Hodgson. "The Department of Natural Resources provided the Nature Center with certain basic equipment. Getting additional equipment through the DNR is very difficult. Many requests are turned down due to lack of funds. Those that are approved often take years to get."

### SCHOOL LUNCH MENU

Week of Feb. 12-16

Monday — Hero burgers with cheese on hot dog buns cold pork and beans, applesauce, cookie, milk.

Tuesday — Macaroni and cheese, slice of meat, buttered peas, bread and butter, chocolate eclair, milk.

Wednesday — Pizza slice, buttered beans, half a peanut butter sandwich, fruit mix, coffee cake, milk.

Thursday — Tacos with trimmings, soup of the day, package of crackers, dessert, milk.

Friday — Patriot's Day. No school.

### High Point Cagers Defeat Chelsea Special Olympians

Super shooter Lorraine Martel of High Point connected for 26 points to lead her team to victory last week-end over the Chelsea-Dexter Special Olympic basketball squad.

Seven cagers from Chelsea and Dexter fell to a 32-28 decision. Scoring for Chelsea-Dexter were Kim Foss with 18 points and Lori Brown with 10. Also playing were Teresa Murphy, Lynn Vencil, Linda Alber, Theresa Calcut, and Sue Armstrong.

High Point boasted 26 points by Martel; and two each by Charlynn Hayes and Geneva Clark.

Chelsea High school students who volunteered as referees for the tournament as well as many other Special Olympic activities were Nanette Push and Gloria Pearson.

Research conducted by Office of Research and Development in the Labor Department's Employment and Training Administration is designed to increase the effectiveness of CETA programs, the Work Incentive (WIN) program, and employment service operations, and activities of the Bureau of Apprenticeship and Training.

## VALENTINE'S DAY CANDY

By  
"The Sugar Shack"  
of Chelsea

Now Available at  
THE VILLAGE BAKERY

HAND-MADE BOXED  
ASSORTED CHOCOLATES . . . Box \$4.95

HAND PAINTED  
SOLID CHOCOLATE  
HEART-SHAPED SUCKERS . . . ea. 75c

INDIVIDUALLY WRAPPED  
HEART-SHAPED CANDY . . . . . ea. 85c

## FINAL CLOSE-OUT

LAMBSKIN LEATHER JACKETS

and

LAMBSKIN SUEDE JACKETS

Reg. \$150 to \$175  
NOW \$99.00

Store Hours: Open Mon. thru Sat., 8 a.m. to 5:30 p.m.

Strieter's Men's Wear

Since 1914

# RICK'S MARKET

20490 M-52

"The Store with the Spartan on the Door"

Phone 475-2898

JACK RABBIT

GREEN  
SPLIT PEAS  
1-Lb.  
Bag 24¢

BLUE STAR

WHOLE  
CHICKEN

52-Oz.  
Can \$1.70

PRINCE

SPAGHETTI  
SAUCE  
(Meat or Meatless)

32-Oz.  
Jar \$1.25

CEDARGREEN

RED  
RASPBERRIES  
16-Oz.  
Box \$1.52

BORDEN'S

HOMO. MILK . gal. \$1.49

RICK'S HOT BREAD DAILY

Weekdays by 3:30 p.m. Sat. & Sun., by 10:30 a.m.  
(QUANTITY RIGHTS RESERVED)

CARNATION

HOT  
COCOA  
MIX  
20-Oz.  
Jar \$1.90

VELVET

PEANUT  
BUTTER  
3-Lb.  
Jar \$2.58

COKE, SPRITE,  
TAB, FRESCA  
6 pac \$1.09  
(plus deposit)

KOOL  
AID

6 25-Oz.  
Pkgs. 64¢

HUNT'S

KETCHUP  
32-Oz.  
Jar 98¢

TASTE O' SEA

SHRIMP  
DINNER

7-Oz.  
Box \$1.04



Ads  
Taken  
Till 5 p.m.  
Monday

# PUT IT IN THE CHAIN FOR RESULTS

Just  
Phone  
475-1371

## WANT ADS

### The Chelsea Standard

**WANT AD RATES**  
PAID IN ADVANCE—All regular advertisements, 75 cents for 25 words or less, each insertion. Count each line as a word. For more than 25 words add 3 cents per word for each insertion. "Wanted" ads or box number ads, 85¢ extra per insertion.

**CHARGE RATES**—Same as cash in advance, with 25 cents back on the first insertion if not paid before 5 p.m. Monday preceding publication. Pay in advance, send cash or stamps and save 25¢.

**DISPLAY WANT ADS**—Rate, \$1.40 per column inch, single column width only. 4-point and 14-point light type only. No borders or boldface type. Minimum 1 inch.

**CARDS OF THANKS or MEMORIALS**—Single paragraph style, \$1.50 per insertion for 10 words or less, 3 cents per word beyond 10 words.

**COPY DEADLINE**—5 p.m. Monday week of publication.

**ERRORS**—Advertisers should check their ads in the first publication. This newspaper will not be liable for errors in publication except to the extent of the cost of the ad for the first week's insertion. Adjustment for errors is limited to the cost of portion of the ad wherein the error occurred.

**CASHIER WANTED**—Full- and/or part-time, flexible hours, some evenings and week-ends required. Dexter store. Send resume to Box 547, Dexter. x35

**FIREWOOD FOR SALE**—\$35 per cord. Ph. 426-3362. x37

**FOR SALE**—1976 Chevelle Malibu Classic, beautiful condition, aded, \$3,395. Ph. 878-9433. x35

**FATCHING and PLASTERING**—Call 475-7489. x31f

**BORED WITH WINTER?** Come work with us until the snow melts! Vitality Seeds needs about 20 nice people to help fill seed orders. Most need no experience but could use some typists and office machine operators. Hours, 8 a.m. - 4:30 p.m. Pay, \$3 per hour. Apply in person, 4115 Jackson Rd., Ann Arbor. Ph. 662-6542 for additional information. Starts Feb. 12. x35

## WANT A STEADY YEAR-ROUND JOB?

Then see Culligan.

## MAINTENANCE DELIVERY PHYSICAL WORK

Vacation, Pension, Uniforms, Hospitalization and Other Fringes.  
2321 Jackson Ave., Ann Arbor x36

## SAND GRAVEL

## KLINK EXCAVATING

Bulldozer — Backhoe  
Road Work — Basements  
Trucking — Crane Work  
Top Soil — Demolition  
Drainfield — Septic Tank  
Trenching, 5" up

Industrial, Residential, Commercial  
CALL 475-7631 x13f

**FOR SALE** — Approximately 2 acres, country, 2 miles to Chelsea. Ravine, huge oaks, beautiful view. Waterloo Rd. \$19,000 cash. Ph. 475-7465. x27f

**LAND, CONTRACTS & MORTGAGES** wanted — Land contracts purchased, any amount, anywhere in Michigan. Lowest discounts. Can also make real estate loans. Call Dan Duncanson, Ann Arbor Real Estate Co., 688-8595. x3f

**1973 FORD LTD BROUHAM** — Station wagon, 8-passenger, leather upholstery, all extras. Good condition. 7618 Grand Ave., Dexter. Ph. 420-3890. x18f

## WANT ADS

**CAR RENTAL** by the day, week-end, week or month. Full insurance coverage, low rates. Call Lyle Christwell at Palmer Motor Sales, 475-1301. x25f

**LICENSED BABYSITTER** has an opening for full- or part-time child. South school area. Ph. 475-7030. x36

## Complete Body Shop Service

FREE ESTIMATES  
Contact Ralph Machesky

Faist - Sprague  
Buick - Olds, Inc.  
475-8664 x51f

## BODY SHOP

COMPLETE FULL TIME  
Estimates Available

PALMER FORD  
22 S. Main 475-1301  
404f

**FOR SALE** or trade for tractor, Olds Delta 88, nice, Ford pickup, 4-speed. Barrel stove on legs, new, \$45 firm. Also misc. items. Ph. 426-8019. x29f

## Used Trucks

'77 DODGE W-100 pickup, 4-wheel drive, 318, auto., p.s., p.b. \$4995

'76 FORD 1/2-ton, 4-wheel drive, 360, auto., p.s., p.b. \$4595

'76 DODGE W-100 pickup, 4-wheel drive, 360, auto., p.s., p.b. \$4895

'74 DODGE Tradesman van, 318, auto., p.s., p.b. \$1995

## Quality Used Cars

'76 ASPEN SE 4-dr., 318, custom, p.s., p.b., air \$2995

'75 DART Custom 4-dr., 6-cyl., auto., p.s., low mileage \$2495

'75 DODGE B-200 Sportsman, 109" wheelbase, 318, auto., p.s., p.b. \$1995

'74 OLDS Custom Cruiser wagon, V-8, auto., p.s., p.b. \$1495

'74 PONTIAC Ventura 2-dr., V-8, auto., p.s., p.b., AM-FM \$1695

'73 DUSTER, 318, auto., p.s. \$995

'73 OLDS Custom Cruiser wagon, V-8, auto., p.s., p.b., air \$1495

## Village

Motor Sales, Inc.  
CHRYSLER - DODGE  
PLYMOUTH - DODGE TRUCKS

Phone 475-8661  
1185 Manchester Rd., Chelsea

Hours: 8 a.m. to 5:30 p.m.  
Tues. thru Fri. Until 8 Monday  
Saturday 9 to 12 x33f

## Floor Covering Is Our Business

TILE - SOLARIAN - HARDWOOD  
CARPET - INSTALLATION -  
REPAIRS

FREE ESTIMATES - 475-8621

## Merkel Home Furnishings

PASTURE FOR RENT—For cattle and horses separately. 5 miles east of Grass Lake. Ph. Ed Eisner, (517) 522-8256. x38

## WANT ADS

**SNOW PLOWING** — Prompt, efficient service. Richard Smith, Ph. 475-8964. x21f

## Have You Been Thinking of Selling?

Then call us about

Listings at 3 1/2 %

or don't complain about high real estate commissions.

MANCHESTER SCHOOLS—10 acres of rolling land, huge heated pole barn and a beautiful brick and frame 3-year-old ranch with 2 fireplaces, walk-out basement and 2-car attached garage makes this \$85,000 price surprisingly low.

COUNTRY SETTING—Some pasture, some trees and a family home with 4 bedrooms, 2 1/2 baths, full walk-out basement and lots of extras, \$88,900.

YOU HEARD ABOUT this kind of deal, now you can experience it. 3-bedroom aluminum sided ranch with full walk-out basement, 2 1/2-car attached garage, 4 stall pole barn, 1.2 acres, and name your own terms. That's right, name your own terms. \$65,500.

OWNER'S ANXIOUS to sell this spacious 5-bedroom family home. Includes fireplace, recreation room, dining room, 2 1/2 baths and lots more. Reasonable to heat. Lovely setting on 10 acres. \$85,000.

NATURE LOVERS DELIGHT! Newer 4-bedroom family home with private and secluded hillside location and private pond. Franklin fireplace, 2 full baths, 5 acres. Chelsea schools. \$86,500.

JOSLIN LAKE FRONTAGE—Super starter home on 1-plus acre. 3 bedrooms, Fieldstone fireplace. New plumbing. Chelsea schools. \$52,900.

Robert H. THORNTON  
Jr. P.C. Realtors

Mark McKernan 475-8424  
Lang Ramsay 475-8133  
Chuck Walters 475-2808  
George Knickerbocker 475-2646  
Daria Bohlender 475-1478 x35f

2-BEDROOM APARTMENT for rent, Pinckney. Ph. 426-8129. x35

SUNFLOWER SEED — 50-lb. bag, \$9.50, 25-lb. bag, \$4.50. Also, cracked corn and millet. Ph. 426-8404. x19f

CAR FOR SALE? Apartment for rent? The Chelsea Standard has a sign for most every need. 300 N. Main St., Chelsea. Ph. 475-1371. x40f

DANCE — Manchester Sportsmen Club, Saturday, Feb. 10, 9 a.m. to 1:30 a.m. Luke Schaible Band, \$8 per couple. BYOB. x35

ROOMS by day, week or month. Excellent for the single man or retiree. Sylvan Hotel, Chelsea. Ph. 475-2911. x31f

FOR RENT — Fair Service Center for meetings, parties, wedding receptions, etc. Weekdays or week-ends. Contact John Wellnitz, phone 475-1518. x31f

CALL

Gallatin Realty Co.

427 N. Main, Ann Arbor  
Ph. 994-1202 x35

QUASAR TV

Sales and Service

Also Service on Most Major Brands

Antenna Installation and Supplies

We Do Home Service.

PORTER'S TV

212 Buchanan St., Chelsea  
Ph. 475-8380 x46

VACUUM CLEANERS

Authorized Electrolux sales and service.

James Cox

428-8444, or 428-8688

118 Riverside Dr., Manchester x48f

TRAVEL TRAILERS — 13-ft. and up; 10x35 ft. trailers. John R. Jones Trailer Sales, Gregory, Mich. Phone 498-2655. x49f

J. R. CARRUTHERS

LICENSED RESIDENTIAL BUILDER

CUSTOM HOMES

ADDITIONS/FIREPLACES

PATIOS

ROOFING/SIDING/REPAIRS

475-7234

CHELSEA x30f

We Buy Land Contracts

LARGE OR SMALL, residential or commercial. Lowest discount. Ann Arbor. Ph. Dan Duncanson, Ann Arbor Real Estate Co., Realtors. 668-8595. x47f

All Insurance Needs

In the convenience of your own home — or mine

N. H. Miles, Allstate

Call Only 475-8334

18238 N. Territorial Rd.

Chelsea, Mich. 48118

Phone: 475-2044

52f

MAUSOLEUMS • MONUMENTS

BRONZE TABLETS • MARKERS

BECKER MEMORIALS

6033 Jackson Road

ANN ARBOR, MICHIGAN

47f

47f

47f

47f

47f

47f

## WANT ADS

**FOR SALE**—1976 Plymouth Volare station wagon. Power brakes, power steering, 3-speed manual transmission, AM-FM 8-track, 39,000 miles. Price \$2,250. Ph. 475-8990. x35

## HELP WANTED

Senior Citizens Welcome

Two part-time positions available.

Office and telephone work in established business near Dexter.

CALL 663-4169

Ask for manager 9 a.m. to 4 p.m. x35

HOSPITAL FOOD SERVICE has part-time position open, 11:30 a.m. to 8 p.m. Apply in person, dietary dept., Chelsea Community Hospital, 775 S. Main St., Chelsea. An Equal Opportunity Employer. x36

THORNTON

475-9193

OWNER'S ANXIOUS to sell this spacious 5-bedroom family home. Includes fireplace, recreation room, dining room, 2 1/2 baths and lots more. Reasonable to heat. Lovely setting on 10 acres. \$85,000.

NATURE LOVERS DELIGHT! Newer 4-bedroom family home with private and secluded hillside location and private pond. Franklin fireplace, 2 full baths, 5 acres. Chelsea schools. \$86,500.

JOSLIN LAKE FRONTAGE—Super starter home on 1-plus acre. 3 bedrooms, Fieldstone fireplace. New plumbing. Chelsea schools. \$52,900.

Robert H. THORNTON

Jr. P.C. Realtors

Mark McKernan 475-8424

Lang Ramsay 475-8133

Chuck Walters 475-2808

George Knickerbocker 475-2646

Daria Bohlender 475-1478 x35f

2-BEDROOM APARTMENT for rent, Pinckney. Ph. 426-8129. x35

SUNFLOWER SEED — 50-lb. bag, \$9.50, 25-lb. bag, \$4.50. Also, cracked corn and millet. Ph. 426-8404. x19f

CAR FOR SALE? Apartment for rent? The Chelsea Standard has a sign for most every need. 300 N. Main St., Chelsea. Ph. 475-1371. x40f

DANCE — Manchester Sportsmen Club, Saturday, Feb. 10, 9 a.m. to 1:30 a.m. Luke Schaible Band, \$8 per couple. BYOB. x35

ROOMS by day, week or month. Excellent for the single man or retiree. Sylvan Hotel, Chelsea. Ph. 475-2911. x31f

FOR RENT — Fair Service Center for meetings, parties, wedding receptions, etc. Weekdays or week-ends. Contact John Wellnitz, phone 475-1518. x31f

QUASAR TV

Sales and Service

Also Service on Most Major Brands

Antenna Installation and Supplies

We Do Home Service.

PORTER'S TV

212 Buchanan St., Chelsea  
Ph. 475-8380 x46

VACUUM CLEANERS

Authorized Electrolux sales and service.

James Cox

428-8444, or 428-8688

118 Riverside Dr., Manchester x48f

TRAVEL TRAILERS — 13-ft. and up; 10x35 ft. trailers. John R. Jones Trailer Sales, Gregory, Mich. Phone 498-2655. x49f

J. R. CARRUTHERS

LICENSED RESIDENTIAL BUILDER

CUSTOM HOMES

ADDITIONS/FIREPLACES

PATIOS

ROOFING/SIDING/REPAIRS

475-7234

CHELSEA x30f

We Buy Land Contracts

LARGE OR SMALL, residential or commercial. Lowest discount. Ann Arbor. Ph. Dan Duncanson, Ann Arbor Real Estate Co., Realtors. 668-8595. x47f

All Insurance Needs

In the convenience of your own home — or mine

N. H. Miles, Allstate

Call Only 475-8334

18238 N. Territorial Rd.

Chelsea, Mich. 48118

Phone: 475-2044

52f

MAUSOLEUMS • MONUMENTS

BRONZE TABLETS • MARKERS

BECKER MEMORIALS

6033 Jackson Road

ANN ARBOR, MICHIGAN

47f

## WANT ADS

**FOR SALE**—Sprague and Carleton maple dry sink, copper lining. Ph. 475-7362. x35

**FOR SALE**—1969 Ford Galaxie 500, air cond., excellent running condition. Over \$300 in new parts alone. V-8, auto. \$350 or best offer. Ph. 475-2943 after 4 p.m. x35

**MAINTENANCE HELP** needed at Chelsea McDonald's, \$4 per hr. to start. Apply at 373 N. Zeeb Rd. x35f

**LIVE BAND MUSIC** for weddings, parties, banquets, etc. Ph. 475-1811. x31f

WATERLOO REALTY

3-BEDROOM HOME with much remodeling done. New kitchen, bath, fireplace. Updated wiring. New plumbing, drainfield, good well. Mature walnut trees encircle house. 40 acres with frontage on 2 roads. Approx. 12 acres tillable. Stockbridge-Munith schools. \$59,500.

LAKE ACCESS — 2-bedroom year-round home has family room, enclosed porch, patio, new natural gas furnace, updated wiring, alum. storms and screens. Neat. Only steps to Patterson Lake, Gregory schools. \$32,900.

VACANT SPORTS CENTER and attractive 3-bedroom home. Large commercial bldg. with much versatility has coolers, counters, abundance of storage and parking. Home has 2 1/2 baths, superb kitchen, marble fireplace, utility room, central air, attached garage. On 2 acres adjoining state land. \$106,000.

\$42,000 — VILLAGE OF CHELSEA 3-bedroom home, new kitchen, new carpet, vinyl siding, low utilities. Neat and well decorated. A good buy.

BEAUTIFUL CHALET — Unique home has 2 kitchens, 3 full baths, 2 magnificent fieldstone fireplaces, floor to ceiling window wall, 2nd floor view of ponded stream and woods, full basement, attached garage. Central vac. Large pole barn. Much, much, more. On 4.3 acres. Chelsea schools. \$103,500.

2 ADJOINING LOTS — Mature shade and fruit trees, deep well and large garage on property. Nearly 1/2 acre. Village of Munith. Bldg. for \$7,800.

1.1 ACRE—Nice hill overlooking Waterloo Mill pond. Some trees, pretty bldg. site. Village of Waterloo. Chelsea schools. \$8,900.

10 ACRES—Sunny, open land. Surveyed, blacktop road, 5 miles north of I-94. 20 min. to Chelsea. Stockbridge - Munith schools. \$17,000.

WATERLOO REALTY

355 Clear Lake

JOANN VARYWODA, BROKER

Phone 475-8674

Evenings and Sundays:

Sue Lowe 1-517-522-5252

Carol Lakatos 475-7129

Evelyn White 475-1069 x35f



# LITTLE WANT ADS! BIG PLUSES FOR BIG RESULTS!

JUST PHONE  
475-1371

## WANT ADS

**BABYSITTER WANTED** — One or two days a week for two children ages 8-months and 4 years. Ph. 475-7270. x35

**WANTED** — High school student to help on hog farm. Ph. 475-7326. x35

**FREE PUPPIES** — Half registered Shorthair, half retriever. Ph. 475-2921. x35

**WANTED** — A girl to live in for light housekeeping, over 5'7", \$650 per month, (313) 287-2216 after 5:30 p.m. x35

## BY OWNER

**DEXTER-CHELSEA AREA** — Beautifully landscaped 3-bedroom cedar ranch on heavily wooded acre. Spacious living room with bay window and fireplace, formal dining room with beamed ceiling and floorwall onto large 2-level redwood deck. Large country kitchen, full tiled basement and attached 2 1/2-car garage. An outdoor sports paradise in the heart of the 3,000-acre Pinckney Recreation Area. Easy access to Half Moon Lake, hiking and skiing trails. Chelsea schools. \$74,900. Ph. 475-1089. x35

Allen's Plumbing  
and  
Heating Repair  
Ph. 475-2204. x26f

Chelsea Plumbing  
& Heating  
Reasonable Rates

GAIL SHEARS  
Licensed Journeyman  
GARLAND DE YOE  
Licensed Master  
Ph. 475-1037. x17f

**ROOFING**, siding, gutters, storm windows and doors. For a free estimate phone 428-7104. Service Roofing Co., Manchester, Mich. x48f

**FOR SALE** — 1972 VW van, excellent cond., new radials, 47,000 miles, no rust. Ph. 662-5730 days, or 878-6820 eves. x17f

**FOR SALE** — 1974 Jeep CJ5, new top, lock hubs, FM, heater, snow tires, good condition, 35,000 miles, \$3,100. Ph. 498-2515. x30f

## WANT ADS

**CLEANING WOMAN WANTED** — 2 days a week. Ph. 475-9736. x37

**1973 CHEVY Caprice wagon**. Ph. 475-8524. x35

**ONE - BEDROOM APARTMENT** for rent in Chelsea. Young couple preferred. Ph. 475-8840. x35

**'69 MUSTANG** — Mag wheels. Recently repainted. \$1,250. Ph. 475-9295 after 5 p.m. x35

**ANYONE INTERESTED** in obtaining information on the purchase of an existing 2-story house to be removed from its site on Orchard St. in the village of Chelsea may contact — Barber-McCalpin Assoc., 9834 Dixie Highway, Anchorville 48004. Ph. (313) 725-9401. Removal is expected to be performed on or before March 15, 1979. x35

**SEAMLESS ALUMINUM** eaves, troughs, roofing, siding, and carpentry work of all kinds. Experienced installers. All work guaranteed. For free estimate, call R. D. Kleinschmidt Co., 428-8836. x31f

## COUNTRY LIVING

**NEW LISTING** — 3-bedroom brick and frame ranch, 2 1/2 baths, dining room, space for rec. room, 2 1/2-car attached garage, pole barn 10 acres. Chelsea schools. \$117,000. x35

**BRICK COLONIAL** — 4 bedrooms, 2 1/2 baths, family room, fireplace, dining room, 2 1/2-car attached garage, secluded 7 acres, with woods, quality custom built. Chelsea schools. \$110,500. x35

**NEW LISTING** — \$47,900. 3-bedroom ranch, 1 1/2 baths, finished basement with study, rec. room, laundry and Franklin fireplace, close to schools. x35

\$69,000 — 4 bedrooms, dining area, 2-car garage. Beautiful 20 acres surrounded by state land, pole barn and older 2-story barn. 6 miles west of Manchester, \$69,000. x35

## FRISINGER REALTORS

Chelsea 475-8681  
935 S. Main St.

Eves:  
Bob Koch ..... 426-4754  
Paul Erickson ..... 475-8111  
Herman Koehn ..... 475-2613  
Paul Frisinger ..... 475-2621  
Eva Halverson ..... 426-4483  
Dolly Alber ..... 475-2801  
x35f

## Headquarters for RED WING WORK SHOES

Vogel's and Foster's  
40f

**FOR SALE** — Four six-hole Chevrolet lims. One fireplace furnace used one season. One PTO unit for Chevrolet truck. Ph. 475-8316. x31f

## WANT ADS

**SNOW PLOWING** — Duane Dorr. Ph. 475-8365. x42

**WANTED** — Working person to share house in Chelsea. Ph. 475-2549. x35

**WAITRESSES OR WAITERS** needed — Full or part-time. Experience not necessary. See manager at Country Kitchen, 8128 Main St., Dexter. x38

**FREE HOUSE** — Must tear down and haul away. Lots of good lumber and materials for the ambitious. 417 Railroad St. Ph. 475-2828 or 475-1707. Weber Homes. x35f

**HAVE A HIGHLY** profitable and beautiful jean shop of your own. Featuring the latest in jeans, denims and sportswear. \$15,500 includes beginning inventory, fixtures and training. You may have your store open in as little as 15 days. Call any time for Mr. Loughlin. 612-835-1304. x35

**FOR SALE** — Mediterranean 6-cushion, green davenport and coffee table. Like new. Ph. 475-7969. x35

## Special Sale of NEW '78 AUTOMOBILES

Save Hundreds of Dollars!

These must be sold by Feb. 15

'78 ASPEN SE wagon, 6, auto., s.p., p.b., air, classic cream. Stock No. 1852. x35

'78 ARROW 6S Coupe, 1600 cc., auto., blue. Stock No. 1628. x35

'78 ASPEN wagon, 6, auto., p.s., p.b., blue. Stock No. 1645. x35

'78 VOLARE Premier wagon, 318, auto., p.s., p.b., red. Stock No. 1747. x35

'78 CHALLENGER, 2600 cc., auto., p.s., silver. Stock No. 1765. x35

'78 ARROW coupe, 1600 cc., 4-speed, tan. Stock No. 1838. x35

'78 COIT 4-dr., 1600 cc., 4-speed, white. Stock No. 1839. x35

'78 MAGNUM XE, 400, auto., p.s., p.b., air, black. Stock No. 1842. x35

'78 SAPPORO, 1600 cc., 5-speed, ballast sand. Stock No. 1859. x35

'78 SAPPORO, 1600 cc., 5-speed, charcoal. Stock No. 1862. x35

'78 ASPEN 4-dr., 6, auto., p.s., p.b., tan. Stock No. 1869. x35

'78 CORDOBA, 400, auto., p.s., p.b., air, T-bar roof, red. Stock No. 1883. x35

'78 CHRYSLER Town & Country wagon, 360, auto., p.s., p.b., air, sable tan. Stock No. 1884. x35

'78 VOLARE 2-dr., 6, 4-speed overdrive, p.s., red. Stock No. 1903. x35

'78 ARROW coupe, 1600 cc., 4-speed, yellow. Stock No. 1905. x35

'78 ARROW GT coupe, 2000 cc., 5-speed, tan. Stock No. 1908. x35

'78 VOLARE coupe, 6, 4-speed overdrive, p.s., white. Stock No. 1909. x35

'78 ASPEN SE wagon, 6, auto., p.s., p.b., air, classic cream. Stock No. 1852. x35

'78 DIPLOMAT 2-dr., 318, auto., p.s., p.b., air, black. Stock No. 1771. x35

**DEMOS**

Village Motor Sales, Inc.  
CHRYSLER - DODGE  
PLYMOUTH - DODGE TRUCKS  
Phone 475-8661  
1185 Manchester Rd., Chelsea  
Hours: 8 a.m. to 5:30 p.m.  
Tues. thru Fri. Until 8 Monday  
Saturday 9 to 12 x34f

**Fireplace Builder**  
field stone mason, block and brick mason, tuck pointing.  
FREE ESTIMATES  
Call 475-8025 after 3 p.m.

Patrick Grammatico  
x40f

**CALL OR STOP IN**

**CHELSEA GLASS, INC.**  
WORKMANSHIP AND MATERIALS FULLY GUARANTEED  
Open Daily 8 a.m. to 5 p.m.; Sat., 8 a.m. to 1 p.m.  
140 W. Middle, Chelsea Phone (313) 475-4667

**WE REPAIR AND REPLACE:**

★ STORE FRONTS  
★ FURNITURE TOPS  
★ SHOWER DOORS  
★ THERMOPANES  
★ AUTO GLASS - Including Windshields  
Free Pick-up and delivery on auto work.

**Storm Door & Window Reglazing & Screens**  
COMMERCIAL BUILDINGS OR RESIDENTIAL  
PROMPT SERVICE  
REASONABLE PRICES

## WANT ADS

**FOR SALE** — 2 snow tires, H78x15. Ph. 475-8809. x35

**FOR SALE** — 16' Frigidaire refrigerator, \$150; 30' Frigidaire range, \$40; dinette set, \$50; heavy duty vari speed Nadeo belt masager, \$75. Ph. 475-7399. x35

**FOR SALE** — Coats 10-10 tire changer, and a Micro bubble balancer. Harper Sales & Service, Inc., 118 W. Middle St., Chelsea. Ph. 475-1306. x34f

**OPEN HOUSE**  
Sunday, Feb. 11  
1-5 p.m.

12535 Scio Church Rd., Chelsea

**ARE YOU INTERESTED** in a wise purchase? Would you like 5 bedrooms, 3 baths, living room, dining room, family room with fireplace, study, first-floor laundry, and rec room with fireplace? Would you also like this superior quality home to be located on four acres in the Chelsea area? Then this is the home for you.

Call Dove Margenau 665-4923

**DeLoof & Associates**  
Ann Arbor, Mich. x35

**WOODSTOCK KENNELS**  
18531 Bush Rd.  
Ph. 475-1794

Inside and Outside  
Heated Runs

Separate Housing  
for Cats

Love Provided  
Free x31f

**Complete Body Repair Service**  
Bumping — Painting  
Windshield and Side Glass Replacement

Open Monday Until 8  
CONTACT DON KNOLL  
FOR FREE ESTIMATE

**Village Motor Sales, Inc.**  
CHRYSLER - DODGE  
PLYMOUTH - DODGE TRUCKS  
Phone 475-8661  
1185 Manchester Rd., Chelsea  
Hours: 8 a.m. to 5:30 p.m.  
Tues. thru Fri. Until 8 Monday  
9 a.m. to 12 noon Saturday x14f

**FOR RENT:**

**Music Machines**  
Juke Boxes  
for Parties,  
Receptions or  
Any Special Gathering.

**CALL**  
Zemke  
Operated Machines  
Days 662-1771 x38f

**CARPET CLEANING** — 12 cents a square foot. Free estimates. 12 years experience. Ph. 475-9379. x19f

**ROOFING SPECIALIST** — All types of roof repairs, homes, barns, commercial. Insurance repairs. Asphalt shingles, hot built-up roofing, cedar-slate tile-asbestos. Awnings and porch enclosures. Siding and storm windows. Call Joe Hayes for free estimates. Manchester, 428-8520. x39f

## WANT ADS

**SINGLE MATURE MALE** looking for apartment or furnished efficiency within driving distance of Hydromatics. Contact Ken at (517) 851-7767. x35

**NEED** a reliable babysitter in the North Lake area? Ph. 475-9492. x37

**MAC DEE INC.**  
Quality control  
inspector  
needed  
for the day shift.

Job will require mechanical aptitude along with basic inspection techniques and record-keeping abilities.

Starting pay will be based on applicant's current skills.

Ph. Virginia Dietle at 475-9185. x35

**GERMAN SHEPHERD PUPPIES** — \$75. Ph. 475-7630. x33f

**FOR SALE** — '77 Ford 1/2 ton pickup, short box, 27,000 miles, better than excellent condition. Ziebarted, \$3,800. Must sell. Ph. 475-1119 between 6-10 p.m. week-days. x33f

**NEW HOME FOR SALE**  
With 5 Acres  
— 1 1/2 MILES FROM CHELSEA  
— 2 FULL BATHS  
— FULL BASEMENT  
— 2-CAR GARAGE  
— FIREPLACE  
Located on Waterloo Rd., East of Werkner Rd.  
\$68,900  
CALL  
WEBER HOMES  
OWNER - BUILDER  
475-2828 x36

**Window Screens Repaired**  
Reasonable rates.  
Chelsea Hardware  
110 S. Main Ph. 475-1121 30f

**HELP WANTED** — Small office. Accurate typing ability, pleasing phone answering skill. Willing to learn operation of computer. Full fringe package. Hourly wage based on ability. Write P. O. Box 1366, Ann Arbor, Mi. 48106. x35

**BY OWNER**, attractive, 3-bedroom ranch on treed one acre. Heated workshop-garage, fenced backyard. Immediate possession, \$40,900. No realtors. Ph. 878-3876. x35

## WANT ADS

**FOR SALE** — Wurlitzer console piano 1 year old, \$900. Ph. 475-8082. x36

**PART-TIME** — Book manufacturer looking for persons with good manual dexterity for bindery handwork. These will be day or afternoon, on-call assignments. Flexible hours to fit your schedule. Contact Bruce Blankenship at Baum-Brumfield, 100 N. Staebler (west of Zeeb on Jackson Rd.), Ann Arbor, Mich. (313) 662-3291. An equal opportunity employer. x36

**1978 SCOTTDAL** 1/2-ton pickup, 6-foot bed with 7'6" Western plow blade. 6,000 miles, \$5,995. Ph. 475-9315. x37

**KITCHEN CABINETS** — Display group sale, 10-foot main-run with 36" chef's pantry, 54" island at left. Modern styling, lime green color. This is a model kitchen — never used, only looked at. Normal discount price, \$2,220, off-the-floor one only price, \$1,225 includes white slate counter top. See it now at Chelsea Lumber Co. x35

**FOR SALE** — Vacation home on wheels. Strong, dependable, 1978 Pace Arrow, 28 feet of living area. Loaded with options for comfort and safety. Excellent condition. Sacrifice at \$16,500. Ph. 475-7465. x34f

**STEP UP TO KOZMA CONSTRUCTION**  
And  
Step  
Down  
In  
Price

**LICENSED BUILDER**  
FREE ESTIMATES  
COMPLETE  
CONSTRUCTION  
SERVICES

**CALL LEN KOZMA**  
475-7452 x26f

**ATTIC INSULATION**  
Class I  
Cellulose Insulation  
installed by trained  
installers

**FOAM WALL INSULATION**  
Highest thermal efficiency  
of any insulation type.  
New and Existing Construction.

**FOAM MASTERS**  
Complete insulation contractor  
Licensed and Insured.  
475-1625  
Free Estimates x31f

## WANT ADS

**I WILL DO BABYSITTING** evenings or afternoons in Chelsea. Ph. 475-2549. x38

**BE GENTLE**, be kind, to that expensive carpet, clean with Blue Lustre. Rent electric shampooer, \$2. Chelsea Hardware. x35

**FOR RENT** — Basement apt., furnished. Utilities included. Suitable for 1 person. Ph. 475-2485. x35

**FOR SALE** — Amara upright freezer, 16-cu. ft. Excellent condition. \$175. Ph. 475-9086. x36

## Card of Thanks

**CARD OF THANKS**  
I would like to thank my many friends and neighbors for the cards, plants, and fruit baskets sent to me during my stay in the hospital and while I am recovering at home. I would especially like to thank Dr. Stubbs for the great job he did.  
Harold Trinkle.

Subscribe today to The Standard!



Lou Burghardt

## This Week's Thought

from



Don Cole

Your Chelsea Funeral Home with the "HOME" like atmosphere  
By Donald A. Cole

"Actions speak louder than words." Do you think this holds true all the time, or most of the time? We think it does, especially since sentimental or emotional factors cause most of life's decisions. So many people are so preoccupied with personal thoughts, they are apt to listen only to the words they want to hear, or words they fear to hear. Consequently, words alone, without visible action . . . and especially words of advice, encouragement, sympathy, caution and the like, often lack the impact to express love, joy, happiness, satisfaction — or their opposites.

Personal action with or without words, in a person to person communication speaks loud and clear. More importantly, it is understood more clearly than words. Edgar A. Guest expresses the thought beautifully in "Sermons We See" . . . "The eye's a better pupil and more willing than the ear, fine counsel is confusing, but example's always clear" . . .

**BURGHARDT-COLE CHELSEA CHAPEL**  
Phone 475-1551  
214 E. Middle Street Chelsea, Mich.

**SPECIALS**  
67-OZ. BOTTLE  
Coke . . . . . 79c (plus deposit)

10 1/2-OZ. CAN CAMPBELL'S  
Tomato Soup . . . 3 for 62c

7 1/2-OZ. CAN BALLARD  
Biscuits . . . . . 3 for 46c

1-LB. PKG. ECKRICH  
Rolled Sausage . . . \$1.35

NO. 303 CAN DEL MONTE SLICED OR HALVES  
Pears . . . . . 53c

**KUSTERER'S FOOD MARKET**  
DIAL 475-2721 WE DELIVER

**ATTORNEYS NEEDED**  
To Staff Law Center Offices  
throughout Wayne, Oakland, Macomb  
and Washtenaw Counties  
SALARY: \$15,000 plus  
Depending on experience.  
CALL MR. BEAN  
PROFESSIONAL LEGAL CENTERS, P.C.  
963-4000

**Thinking CARPET? Think SCHNEIDER'S**  
Visit the wonderful world of carpeting at Schneider's, one of the area's finest, full-service carpet stores, conveniently located in West Ann Arbor on Wagner Road between Jackson and Liberty.  
Schneider's carries a broad selection of quality, name-brand carpets at prices consistently among the lowest in the entire area. Try us.  
662-9332  
OPEN MON & FRI NIGHTS TIL 8:00 PM  
SCHNEIDER CARPET CO. INC.  
745 S. WAGNER RD. ANN ARBOR

**Commercial & Investment REAL ESTATE**  
TOOL SHOP — Excellent brick and block building, 2,700 sq. ft., 10' ceilings, plus storage building, 24'x36', 1.3 ac., all machinery and equipment. Buildings and machinery may be purchased separately. 475-9101.  
WE HAVE immediate buyers for farms suitable for beef cattle operations.  
124-ACRE FARM — Classic farmhouse, 5 bedrooms, study, smokehouse, several large barns and out-buildings, good productive ground, excellent road frontage. Terms available. 475-9101.  
PLUMBING BUSINESS — An excellent business opportunity with an extensive customer list, fully equipped, good cash flow, tremendous potential. Terms possible. 475-9101.  
HORSE TRAINING FARM — Includes 1/2 mile track, new 9,800 sq. ft. training barn, 21 stalls, exercise pool, full-time trainer will stay, good cash flow. Excellent opportunity for a knowledgeable horseman. 475-9101.

**Pierson & Riemenschneider**  
Member of  
Partridge & Assoc. Commercial Realtor Network  
475-9101

**CSB CHELSEA STATE BANK**  
Member F.D.I.C.

We recognize Monday, February 12th as LINCOLN'S BIRTHDATE  
History recognizes the strong leadership shown by Abraham Lincoln throughout his office as President of our United States of America, by setting aside a day of celebration, his birthdate. His service and dedication to his fellowman and country serves as an example for all of us to follow.  
We will be closed Monday, Feb. 12th in observance of Lincoln's birthday.







# BOWLING

## Chelsea Suburban

Standings as of Jan. 31

Log Cabin Restaurant	W	L
Chelsea Pharmacy	60 1/2	31 1/2
Dancer's	58 1/2	33 1/2
Dairy Queen	54	38
Mark IV Lounge	53	39
Dana Dee Lites	47 1/2	44 1/2
Awards & Specialties	46 1/2	45 1/2
State Farm	46	46
Chelsea Assoc. Builders	41	51
Ricardo's	37 1/2	54 1/2
Frisinger Realty	35	57
Chelsea State Bank	32	60

150 games and over: N. Packard, 173, 187, 176; D. McAllister, 202, 159, 174; J. Schulze, 210, 168; M. Vassas, 185, 186; P. Harook, 189, 159; T. Monroe, 192, 151; J. Buku, 166, 153; C. Stoffer, 187; N. Prater, 159, 159; G. DeSmith, 167, 152; P. Hartman, 158, 162; B. Kunzelman, 161, 158; S. Bowen, 159; A. Wood, 154; E. Harmon, 154; A. Hocking, 168; D. Keezer, 159; E. Miller, 151; J. Burnett, 168; P. Sober, 157; A. Bohne, 153; B. Beeman, 148; N. Beeman, 159; D. Vargo, 164; S. Hafner, 167; F. Cole, 175; C. Risner, 158; B. Murphy, 164; D. Orlovski, 157; V. Stoll, 157; M. Bollinger, 151; D. Collins, 152; B. Loucks, 164; M. DeLaTorre, 160.

425 series and over: N. Packard, 541; D. McAllister, 535; J. Schulze, 526; M. Vassas, 520; P. Harook, 497; T. Monroe, 487; J. Buku, 466; C. Stoffer, 465; N. Prater, 460; G. DeSmith, 459; P. Hartman, 463; S. Bowen, 449; B. Kunzelman, 450; E. Figs, 449; H. Harrison, 435; D. Keezer, 429; B. Beeman, 430; P. Sober, 428; J. Burnett, 433; B. Loucks, 425; B. Murphy, 427; S. Nicola, 429; S. Hafner, 426.

## Leisure Time League

Standings as of Feb. 1

Misfits	W	L
Afternoon Delights	62	22
Sugar Loafers	56 1/2	27 1/2
Four Stooges	49 1/2	34 1/2
Shud O. Bens	46 1/2	37 1/2
Holy Rollers	45	39
Rug Rats	45	39
Lady Bugs	40 1/2	43 1/2
Gutter Strutters	36 1/2	47 1/2
Mamas & Grandmas	33	51
Crackpots	31	53
Slowpokes	22	62

200 games: D. Clark, 200.  
140 games: E. Goss, 184; L. Longe, 144, 141; J. Riemschneider, 145; P. Whitesall, 140, 153; D. Thompson, 172; S. Friday, 163; K. Haywood, 143; C. Thompson, 148, 158; J. Stackhouse, 153; M. Smith, 146; M. Herrin, 142; J. Westphal, 141, 166; D. Bell, 164, 166; R. Dils, 146; A. Grau, 142; S. Roehm, 165, 161; R. Musbach, 150, 154; S. Bowen, 145, 160, 153; W. Picklesimer, 150; E. Williams, 160, 152; J. Stapish, 159; R. Forner, 177, 180; B. Robinson, 167; J. Salyer, 159; J. Pagliarini, 151; C. Hoffman, 168; D. Spalding, 148, 147; S. Weston, 156.

400 series: E. Goss, 454; D. Clark, 457; P. Whitesall, 422; D. Thompson, 433; S. Friday, 408; C. Thompson, 420; J. Stackhouse, 406; M. Herrin, 412; J. Westphal, 409; D. Bell, 429; S. Roehm, 450; R. Musbach, 427; S. Bowen, 458; B. Check, 401; E. Williams, 447; R. Forner, 471; B. Robinson, 424; J. Salyer, 426; J. Pagliarini, 407; C. Hoffman, 424; D. Spalding, 422.

## Women's Bowling Club

Standings as of Jan. 31

Parish Cleaners	W	L
Chelsea Milling	64	24
Palmer Ford	63	33
Laura's Beauty Salon	61 1/2	36 1/2
DD DeBurring	48	40
Washtenaw Eng.	47	41
Heller Electric	47	41
Jiffy Mixes	43	45
Alley Cats	43	45
Dana Diamonds	42 1/2	45 1/2
Palmer Leasing	41	47
Norris Electric	39 1/2	48 1/2
Wolverine Bar	38	52
Freeman Machine	34	54
Good Time Girls	34	54
Klink Excavating	25 1/2	62 1/2

600 series and over: C. Thompson, 556; J. Hafner, 553; C. Bradbury, 538; J. Andarise, 533; R. Hummel, 501; K. Powers, 501; 450 series and over: D. Verwey, 493; S. Klink, 490; P. Fitzsimmons, 478; N. Packard, 478; A. Sindlinger, 473; M. Fahrner, 470; S. McCalla, 469; J. Johnston, 462; B. Bush, 460; M. E. Sutter, 455; J. Pagliarini, 454; F. Andrews, 451; S. Ringe, 451.

180 games and over: C. Thompson, 193, 177, 188; J. Hafner, 154, 171, 228; C. Bradbury, 180, 179, 189; J. Andarise, 184, 182, 179; B. Hummel, 188, 183, 180; K. Powers, 172, 188, 171; D. Verwey, 176, 181; S. Klink, 159, 172, 189; P. Fitzsimmons, 159, 164, 156; N. Packard, 167, 158, 155; A. Sindlinger, 182, 158; M. Fahrner, 150, 194; S. McCalla, 156, 161, 152; J. Johnston, 151, 169; B. Bush, 187; M. E. Sutter, 158, 156; J. Pagliarini, 153, 168; F. Andrews, 176; S. Ringe, 173; P. Poertner, 168, 155; J. Collins, 153, 163; S. Settle, 160, 158; L. Alder, 164, 154; J. Norris, 160; D. Fouty, 190; J. Alber, 177; C. Scherdt, 177; B. Houle, 173; T. Kennedy, 169; S. Schulze, 157; E. Kuhl, 157; M. McGuire, 156; G. Beeman, 154; D. Alber, 153; D. Eisenbeiser, 152; B. Anderson, 150.

## Prep League

Standings as of Feb. 3

The Pros	W	L
Thompson Strikers	47	10
Dana Chargers	37	19
Jacquars	33 1/2	23 1/2
Bad News Bears	32	25
Chelsea Bowlers	31	26
Pin Smashers	27	30
Blue Jean Bowlers	24	33
Screaming Deamings	23 1/2	33 1/2
The Screamers	19	38
Rolling Rockets	17	40
Alley Angels	15	42

Games 100 and over: G. Boyer, 122; D. Thompson, 107; P. Fletcher, 105; J. Toon, 117; G. Anderson, 127, 130; D. Collins, 111, 120; C. Hegadorn, 109, 101; K. Thayer, 164, 146; M. Anderson, 135, 110; G. Greenleaf, 140, 128; T. Loucks, 103; M. White, 120; D. Dettling, 147, 141; J. Salyer, 102, 127; J. Bodnar, 128; C. Schulze, 129, 104; J. Tobin, 103, 106; J. Morgan, 122; J. Schaefer, 110; D. Hodgins, 106, 105; S. Cheever, 108, 114; David Boote, 151; J. O'Bryan, 113; D. Waldyke, 101; S. Huhn, 146; K. Nadeau, 122, 108; T. Bowditch, 109.  
Series 150 and over: D. Thompson, 198; G. Boyer, 221; R. Loucks, 188; D. Collins, 231; G. Anderson, 257; J. Toon, 212; P. Fletcher, 186; S. Rowe, 160; C. Hegadorn, 210; K. Thayer, 310; M. Anderson, 245; D. Dettling, 288; M. White, 199; T. Loucks, 182; G. Greenleaf, 268; S. Steele, 157; J. Bodnar, 218; J. Salyer, 183; J. Salyer, 228; J. Tobin, 209; C. Schulze, 233; S. Cheever, 220; D. Hodgins, 211; J.

Schaefer, 188; J. Morgan, 205; David Boote, 218; Dean Boote, 189; J. Samek, 180; E. Zink, 168; M. Ryan, 164; J. O'Bryan, 207; M. Boote, 194; T. Bush, 158; K. Roberts, 170; D. Waldyke, 188; S. Huhn, 237; K. Nadeau, 230; J. Stephens, 162; T. Bowditch, 205; Bentley, 171; M. Connell, 150.

## Nite Owl League

Standings as of Feb. 5

Thompson's Plaza	W	L
Hanco Sports Center	110	44
Parts Peddler	94	60
H & R Farms	87	67
A. D. Mayer	81	73
Nu Yu Boutique	80	74
K. of C.	80	74
HRWS Farms	75	79
Fitzsimmons	74	80
Cavanaugh Lake Store	76	88
Chelsea Automotive	63	91
Chelsea Lions Club	63	91
Norm's Body Shop	60	94
Team No. 14	38	116

600 series: M. Grambau, 618.  
500 series: B. Pagliarini, 503; J. Renz, 546; K. McCalla, 523; D. Bycraft, 525; J. Elliott, 524; H. Schenk, 504; J. Sweet, 522; S. Schanz, 506; D. Thompson, 532.  
Over 200: M. Grambau, 214, 231; K. McCalla, 204; S. Schanz, 211; D. Thompson, 214.

## Split Weekenders

Standings as of Feb. 5

Team No. 5	W	L
Team No. 1	47	23
Team No. 3	47	23
Team No. 1	43	27
Team No. 6	40	30
Team No. 2	34	36
Team No. 7	34	36
Team No. 4	33	37
Team No. 8	32	38
Team No. 10	14	21

Men, games over 190: J. Hardesty, 203; T. Helmboldt, 208; M. Power, 192; L. Marshall, 194; J. Koepke, 190.  
Men, series over 500: T. Helmboldt, 527; M. Power, 541; L. Marshall, 524.

## Chelsea Lanes Mixed

Standings as of Feb. 2

VFW	W	L
Federal Screw Outlaws	98	58
Hawley Truck Repair	90	64
Ann Arbor Centerless	85	69
Hav-A-Electric	85	69
White Lightning	83	71
Fox Point Flashes	79	75
North Lake Dunlopers	78	76
Ken's Glass	78	76
Fireballs	73	81
Accra Gauge	68	86
Michigan Mutual	66	88
King Pins	60	94
Wire & Fire	49	105

Women, 425 series and over: J. Bickner, 425; S. West, 425; B. Torrice, 494; S. Clark, 435; N. Keezer, 463.  
Men, 475 series and over: F. White, 527; R. Zatorski, 562; A. Hawley, 519; R. Clark, 563; R. Pieske, 502; N. Lee, 551; N. Jose, 481; B. McGibney, 515; L. Keezer, 476.  
Women, 150 games and over: J. Buckner, 174; L. Behnke, 158; B. White, 154; F. Zatorski, 157, 154; S. Centilli, 154; D. Oesterle, 171, 152; S. Weston, 191, 200; D. Neuman, 152; B. Torrice, 176, 164, 154; S. Clark, 159; G. Fox, 153; D. Keezer, 160; N. Keezer, 170, 176.  
Men, 175 games and over: J. Richmond, 184; F. White, 155, 206, 168; R. Zatorski, 193, 183, 186; A. Oesterle, 177; A. Hawley, 212; R. Clark, 205, 204; R. Pieske, 187; N. Lee, 198, 178, 175; N. Jose, 183; B. McGibney, 176, 185.

## Senior House League

Standings as of Feb. 5

Washtenaw Eng.	W	L
Schneider's Grocery	28	9
McCalla Feeds	24	11
Central Fibre	23	12
Freeman Machine	23	12
Bauer Builders	22	13
Captains Table	21	14
Steele's Heating	21	14
Kilbreath's	18	17
Village Motors	18	17
VFW	16	19
Frank Grohs Chevrolet	16	19
K. of C.	15	20
C & J Body	13	22
S. J. Custom	11	24
Deansburro	9	26
Walt's Barber Shop	8	27
Chelsea Lumber	2	33

600 series: W. Sisco, 637; N. Fahrner, 607.  
525 and over series: J. Harook, 566; M. Poertner, 542; J. Torrice, 543; P. Kelly, 544; W. Beeman, 556; R. Bush, 544; L. Marshall, 569; L. Keezer, 541; D. Murphy, 556; A. Zangara, 529; R. Maurer, 558; B. Stacey, 532; D. Elfe, 534.  
210 and over games: J. Torrice, 211; W. Sisco, 240; J. Harook, 212; N. Fahrner, 241; R. Bush, 216; D. Murphy, 210; M. Spears, 213; R. Maurer, 245.

## Snoopy Peanut League

Standings as of Feb. 3

	W	L
ed Barons .....	39	18
ew Ones .....	37 1/2	19 1/2
ool Kids .....	37	20
ad News Bowlers .....	30	27
helsea Dragons .....	19	38
ooting Stars .....	9 1/2	47 1/2
125 and over series: S. Adkins, 182; L. Hafner, 171; S. Wolak, 162; T. Harook, 278; L. Walton, 199; T. Rowe, 199; G. Brown, 126; M. Ryan, 160; J. Fletcher, 154; T. P. Goins, 165; S. Van Natter, 174; B. Worsham, 162; D. Klink, 153; Adkins, 140; J. Gray, 158; L. Boy-		

## Rolling Pin League

Standings as of Feb. 6

Poachers	W	L
Grinders	62	30
Sugar Bowls	61 1/2	30 1/2
Egg Beaters	54 1/2	37 1/2
Coffee Cups	50	42
B. aters	48	44
Spooners	47 1/2	44 1/2
Blenders	46	50
Mixers	45 1/2	46 1/2
Pots	45 1/2	46 1/2
Kitchen Kapers	45 1/2	46 1/2
Brooms	45	47
Kookie Cutters	43	49
Jolly Mops	43	49
Dish Washers	38	54
Moppper Uppers	38 1/2	55 1/2
Jelly Rollers	36	60
Silverware	32	60

600 series and over: P. Poertner, 517; M. Walt, 521.  
425 and over: R. Musbach, P. Wurster, G. Brier, 431; B. Worsham, 438; G. Clark, 427; B. Wolfgang, 478; B. Halst, 473; S. Bowen, 428; P. Smith, 445; D. Farrington, 434; J. Shepherd, 466; P. Harook, 466; K. Hamel, 423; V. Shonk, 438; D. Boughton, 462.  
150 games and over: R. Musbach, 160; P. Wurster, 154; G. Brier, 160; N. Lee, 188; B. Herter, 152; V. Vanmeter, 160; T. Losey, 152.

## Sunday Night Leftovers

Standings as of Feb. 4

Twins	W	L
Clean Sweeps	41	22
Jim Rudnicki	38	25
All in the Family	35	28
Unpredictables	35	28
Pin Seekers	34	29
Low Rollers	33	30
C and M	32	31
Blue Bloods	32	31
Boyce Herter	31	32
Hal Losey	31	32
Serendipity	29	34
John Beeman	28	35
Ron Fick	27	36
Four K's	26	37
Tom Dittmar	25	38
Kissin Cousins	25	38
Bill Katon	24	39

High men's series: R. Skelly, 631.  
High men's games: R. Short, 247.  
Men, over 175: L. Herter, 199; M. Kelley, 187; R. Short, 182; S. Morgan, 188; J. Beeman, 188.  
High women's series: N. Jedele, 613.  
High women's game: N. Jedele, 240.  
Women, over 150: B. Herter, 161; N. Jedele, 188; B. Herter, 152; V. Vanmeter, 160; T. Losey, 152.

## SERVING SANDWICHES

from 11:00 a.m. till 2:00 a.m. Mon. thru Sat.  
Open Sunday 12:00 Noon Till 11 p.m.

BEER & WINE CARRY-OUT FOOD CARRY-OUT

## MARK IV LOUNGE

1180 M-52 Phone 475-1951 Chelsea

## MOONLIGHT BOWLING

Every Friday Night at 11:30

Bowl 3 games, pizza and lots of fun for \$4 per person

## SENIOR CITIZENS AFTERNOON OF FUN

Every Wednesday at 2 p.m.  
Bowl 3 games for \$2.50.

Free shoes, coffee, exercise and lots of fun!

## CHELSEA LANES, Inc.

1180 M-52 Ph. 475-8141

## REGENCY TRAVEL

Presents  
AIR ONLY SPECIALS

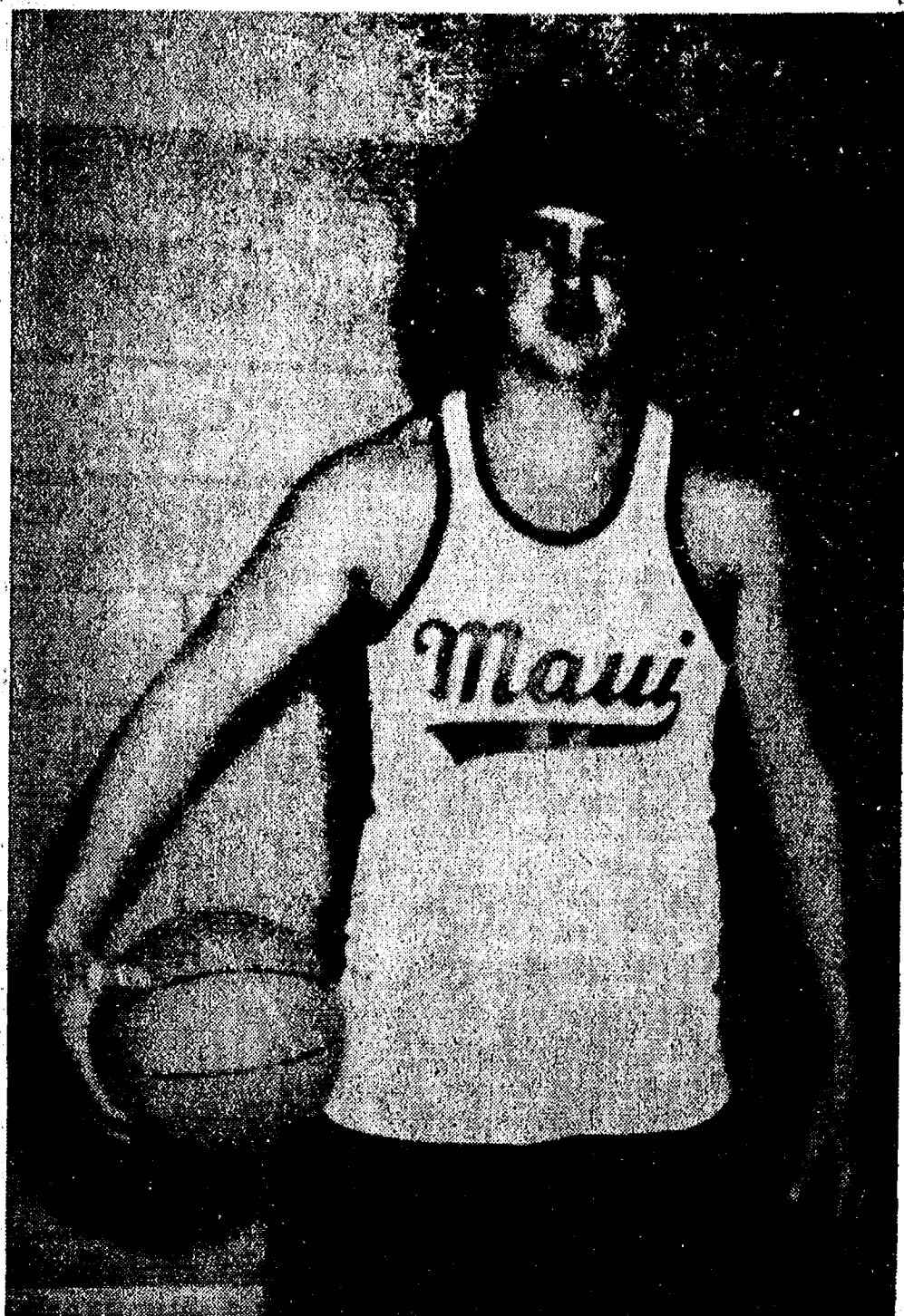
Athens	from \$519
Bangkok	from \$479
Berlin	from \$199
Brussels	from \$184
Hong Kong	from \$429
Israel	from \$479
Jakarta	from \$559
Korea	from \$728
Kuala Lumpur	from \$514
London	from \$177
Manila	from \$425
Singapore	from \$519
Taipei	from \$429
Tokyo	from \$514

## One Week Bargains\*

Acapulco	from \$295
Aruba	from \$341
Bonaire	from \$341
Cancun	from \$335
Costa Rica	from \$409
Cozumel	from \$369
Curacao	from \$341
Florida Fly-Drive	from \$283
Freeport	from \$264
Grand Cayman	from \$359
Guadeloupe	from \$439
Hawaii	from \$479
Ixtapa	from \$345
Jamaica	from \$295
London	from \$669
Martinique	from \$509
Mazatlan	from \$339
Mexico, 3 cities	from \$333
Nassau or	
Paradise Island	from \$288
Puerto Rico	from \$459
Rio	from \$469



## Cager of the Week



JESSE COBURN (12): Officially removed from the recovery list six games ago, the 1978-79 captain of the varsity basketball squad is in full swing as a forward for the Bulldogs. Just as Coburn described the requirements of a forward as "keeping the scoring and rebounding at a maximum," so do the statistics from last Friday's game with South Lyon attest to this statement. Coburn completed 14 points and six rebounds. Now in his second year on varsity, the 6'3", 175-lb. cager shot his first basket while in the 5th grade and found the game to his liking. He's played the forward position for the past eight years. According to Coburn, he has "nearly recovered," from a hunting accident last fall and has "few problems," with his leg. "It bothers me a little but not enough to interfere with my playing," he commented. To keep in condition, he attends all the practices and adds "a lot of running" on the side. Of all the Bulldogs' games this year, Coburn views the South Lyon match as the team's best. "Anytime a team scores 89 points they must be doing something right," he commented. Still, Coburn hesitates to say the squad will win the remaining games but is sure "we'll come out the third or fourth best team in the league." Coburn, a senior, was also starting quarterback of the varsity football team. He is the son of Mr. and Mrs. Jesse Coburn, 404 Chandler St.

## High School Honor Roll

2nd Marking Period, Jan. 19

## 12th GRADE—

Linda Alber, Renee Alexander, Susan Armstrong, Jeanine Arnett, David Baldwin, Cheryl Bareis, Cynthia Bareis, Timothy Bareis, Donna Bauer, Lisa Bauer, Scott Beyer, Daniel Blough, Becky Bolinger, Lucy Bott, Cindy Broderick, Karen Bross, Donald Burdett, Ellen Bury, Douglas Clark, Jenny Clark, Tammy Collinsworth, Margaret Comeau, Clayton Cook, Diana Cooley, Aimee Cover, Shannon Culver, Debra Desmyther, Tammy Downer, Nancy Drew (all A).

Paula Ellenwood, Caroline Endler, Daniel Grau, Judy Guenther, Debra Harrison, Shelly Hatt, Susan Heller, Laura Hense, Bryan Herrick, Kelly Hill, Anders Holter, Kevin Houle, Alison Hovater, Susan Inglis, Sheryl Kiel, Susan Kirby, Sharon Klosiewicz, John Koepele (all A), Michael Kropf, Caroline Lane, Margaret Lewis, Donna Marshall, Patty McClanahan, Linda McGuire, Lori Miles, Arnel Mixix, Roger Moore, Theresa Murphy.

Mary Noah (all A), Mary Northrop, Laura Paul, April Picklesimer, Janis Proctor, Michael Robbins, Dawn Roderick, Matthew Schnadt, Tracy Schumann, Sara Schwarze, Thomas Severn (all A), Michael Shonk, Mark Snyder, Richard Spayd, Shelly Springer, Mary Stoll, Sheila Tarasow, Dennis Thompson, Theresa Thompson, Nancy Tison, Daniel Trinkle, David Trinkle, Thomas Troutman, Robert Usher, Lori VanRiper, Cathy Villemure, Cathy Voita, Michael Waldyke (all A), Janet Walz (all A), Cynthia Welshans, Douglas Wetzel, John Whitaker, Chris Williams, Susan Williams, Penny Wood.

## 11th GRADE—

Tracy Alexander, Dawn Apilado, Jamie Atkinson, Molly Bacon, Paula Bennett, Rebecca Bentley, Gayle Beyer, Karen Blanchard, Kent Bollinger, Mary Bort, Julie Botsford (all A), Douglas Bowen, William Burgess, Tracy Cattell, Karen Dault, Daniel Desmyther, Alice Erke, Dace Ertel, Bradley Flanagan, Cynthia Gerstler, Thomas Glibreath, Diana Gordon, Marilyn Hafner, Linda Hamilton, Sara Haselschwardt, Laurie Hastings, Teresa Hoffman, Debbie Honbaum.

Michael Killelea, Marie Klink, Brad Knickerbocker, Debra Koepele (all A), Sharon Kropf, Brian Kruger, Steven Kvarnberg, John LaBarbara, Daniel McGill, Elizabeth Merkel (all A), David Morris, Jeanette Morrison (all A), Eileen Musolf, Ann O'Hagan, Lee Owings, Valisa Pletcher, Scott Prohaska, Strat Rademacher, Killeth Rinehart, Shari Robards, Daniel Rowe, Clifford Scholz, Amanda Schwarze, Pat Shoemaker, Kimberly Slater, Wm. Spaulding, Drew Sprague (all A), Shannon Springer, Kelly Stebelton, Lisa Stephens, Pamela Stephens, Ryan Sweeney, David Waldyke (all A), Sandra Welshans, David Wilson.

## 10th GRADE—

Michelle Alexander, Paul Anderson, Michael Bohlender, Joan Bort, Mary Boylan, Elizabeth Bush, Scott Chapman, Radine Cheever, Michele Clark, Teresa Degener, Janine Diedrich, Jeffrey Dils, Priscilla Drew, Cara Feeney, Donna Finkbeiner, William Freeman, Thomas Gaunt, Patricia Gerstler, Lynora Gordon, Roger Graves, Paula Haist, Kimberly Harvey, Chris Heaton, Nancy Heller, Kelly Hense, Susan Herrst, Kathy Honbaum, Angela Inglis, Chris Johnson, Brian Koepele, Lori Kornet, Chris Kvarnberg.

Chandler Lane, Jane Lantis, Anne Lewis, Michael Mason, Sara Merkel, Theresa Merkel, Elaine Meyer, Alicia Noah, Rhea O'Toole, Eric Pichlik, Mary Poljan, Anita Powell, Patrick Powers, Susan Prinzing, Patricia Rawson, Elizabeth Russell, Melani Schneider, Patty Schumann, Amy Smith, Cynthia Snyder, Krystin Steinhauer, Ross Stofflet, Julie Sundling.

Diane Thompson, Sara Ullman (all A), Lorrie Vandegrift, Patrice Villemure, Darla Walz, Shari Weber, Michael Wiesner, Pat Williams.

## 9th GRADE—

Celeste Arbogast, Melissa Arnett, Tracy Bohlender, Catherine Boomus, Carol Boyce, Jeanne Burchett, Patricia Butcher, Amy Eisenbeiser, Doris Erke, Nancy Hastings, James Heaton, Beth Heller, Michelle Hellner, Laura Hines, Laura Hodge, Karen Kiel, Sarah Leisinger, Sharon Liebeck, Terry Lucas.

Mark Machesky, David Mason, Craig McLaughlin, Karen Miller, Diane Moller, David Nicholas, Margaret Peterson, Carla Pfizenmaier, Laura Ratzlaff, Angela Richardson, Zachery Smith, Margaret Sweet, Cinda Thornton, Caroline Tracy, Katherine Ullman (all A), Amy Unterbrink, Lisa Vandegrift, Laurie Voita, Kathryn Waldyke.

## Women in Business Seminar Slated On WCC Campus

Women in business as managers, supervisors or executives are the focal point of a special two-hour seminar offered by Washbeh Community College, Friday evening, Feb. 9 from 6:30 to 8:30 p.m.

The seminar is part of a continuing series designed for women and business and discusses attitudes and skills required by women today. Women's role in management is the topic of this third session of the series, taught by Gwen Arnold. Remaining seminars in the series will discuss career opportunities and options on Feb. 23; unions and women on March 9 and women and options on March 23.

Offered in Room 1706 of the Student Center Building of WCC's main campus at 4800 E. Huron River Dr., the class is open to the public. A \$5 fee is charged all participants except in-district senior citizens who are invited to attend at no charge.

Advanced registration is requested by phoning WCC staff at 482-2230.



COOKIE SALE CHAIRPERSONS: From left are Bert Hinz, 282 Harrison St., Chelsea; Fat Bob, the Singing Plumber, celebrity cookie chairman; and Dot Clary of Saline. Not pictured is Linda Dyer, 3341 McKinley, Chelsea. This year's goal for the Huron Valley Girl Scout Council annual cookie sale is 500,000 boxes for a profit of \$365,000.

## Girl Scout Cookie Chairpersons Named

Dot Clary, 272 Mark Hannah, Saline, Bert Hinz, 262 Harrison, Chelsea, and Linda Dyer, 3341 McKinley, Chelsea, were named area chairpersons for the 1979 Huron Valley Girl Scout Council annual cookie sale.

They are among 30 persons appointed by Council Cookie Sale Chairwoman Ruth Weber of Ann Arbor. As part of their responsibilities, they will help to organize and conduct the sale in their designated areas. In addition, they will help to recruit and then train Troop Cookie chairmen on sale procedures.

The goal for this year's sale

which begins Feb. 23 and ends March 19 is to sell one-half million boxes. If realized, this will mean a Girl Scout profit of \$365,000. Profits help supplement funds from United Ways, fees, and other contributions, and help to insure a high quality of Girl Scout programs available to all girls in Washtenaw, western Wayne, northern Monroe, and Livingston counties.

"It takes a lot of hard-working girls and adults to sell 500,000 boxes of cookies and crackers," explained Ruth Weber, who added, "but with people like these serving as area chairpersons, I know we can do the job."

## GIRL SCOUT NEWS



## TROOP 678—

Troop No. 678 opened the Saturday, Jan. 24 meeting with the flag ceremony. We participated in making emergency calls on real telephones supplied by the telephone company. All the Brownies took emergency information pamphlets home with them.

Lisa and Laura Unterbrink, and Deanne Ruse, scribes.

## TROOP 689—

Last week members of Troop 689 made Valentine cards. For Valentine's Day we are going to the Methodist Home to give them cookies and punch.

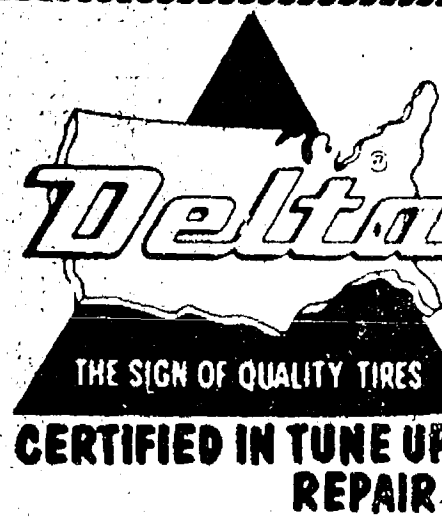
Jenny Cattell, scribe.

## TROOP 82—

painting badge during the month been working on the drawing and Junior Girl Scout Troop 82 has been working on the drawing and painting badge during the month of January. We went to the University of Michigan Museum of Art on Jan. 31. Our guides, Christa Janecke and Dorothy Farhat, had very interesting tours prepared for us. We divided into two groups and saw scrolls, oil paintings, and abstract art.

Sommer Havens, scribe.

Please Inform Us of Any Address Change.



## Hoffman Tire & Service

7 miles west of Chelsea  
13660 E. Michigan  
Grass Lake 522-8542

CERTIFIED IN TUNE UPS & ENGINE REPAIR

# Meet Our New Trust Officers

Chelsea State Bank is now offering complete Trust Services to all customers and Chelsea-area residents. Through a special arrangement with National Bank and Trust Company of Ann Arbor, a fully staffed, specialized Trust Department is ready to serve you. A full range of Trust Services including Estate Analysis, Investment Management and Financial Planning, will now be available to you at Chelsea State Bank. NBT's Trust Division is staffed with 18 specialists, currently managing in excess of \$120 million in assets. And we're bringing their expertise and experience in the Trust field to you. Jim Meretta, Vice President and Steve Hoffman, Assistant Vice President, members of National Bank's Trust Department, will be available at our office on a regularly scheduled basis to discuss your financial program and Trust needs. They're here to serve you and will always be just a phone call away. So stop in to meet them or call for an appointment. Discover how your new, local Trust Officers can help you at the Chelsea State Bank.

**CSB** CHELSEA STATE BANK  
Member FDIC



**FEED**

**FOR PROFIT**



**Feed Formulas Tested, Proved To Get Results**  
Extra proteins, vitamins and minerals in proper balance, scientifically blended, make our feeds real profit producers for you.

**Farmers' Supply Co.**  
Phone GR 5-5511

## VILLAGE CAUCUS

NOTICE is hereby given that an **INDEPENDENT PARTY VILLAGE CAUCUS** for the purpose of placing in nomination candidates for the following Village Offices:

CLERK

TRUSTEES

LIBRARY BOARD TRUSTEES

For the Village of Chelsea, County of Washtenaw, State of Michigan, and for the purpose of transacting such other business as may properly come before it, will be held at the

**MUNICIPAL BUILDING**  
104 EAST MIDDLE STREET, CHELSEA

**On Monday, the 12th day of Feb., 1979**  
at 8:00 o'clock p.m.

By Order of

**THOMAS NEUMEYER**  
Village Clerk

**AURA** presents  
**Capt. Casey LEWIS & CLARK EXPEDITION & THE FLORIDA SUNSHINE BOYS**  
foot-stomping country to easy rock  
Come Join Us this Thursday thru Sunday

**AURA INN**  
11275 PLEASANT LAKE RD.  
FOOT-STOMPING FUN DANCING FOR EVERYONE!





**Polly's**  
MASTERMARKETS

5 CONVENIENT LOCATIONS  
201 PARK AVE. V.L.  
1821 SPRING ARBOR RD.  
960 NORTH WEST AVE.  
3152 EAST MICHIGAN  
1011 M-52 CHELSEA

# CRACKER BARREL PRICES!!



BUY 2 SAVE \$2.20 WITH COUPON  
8 PAK 1/2 LITER

**7-UP 99¢**

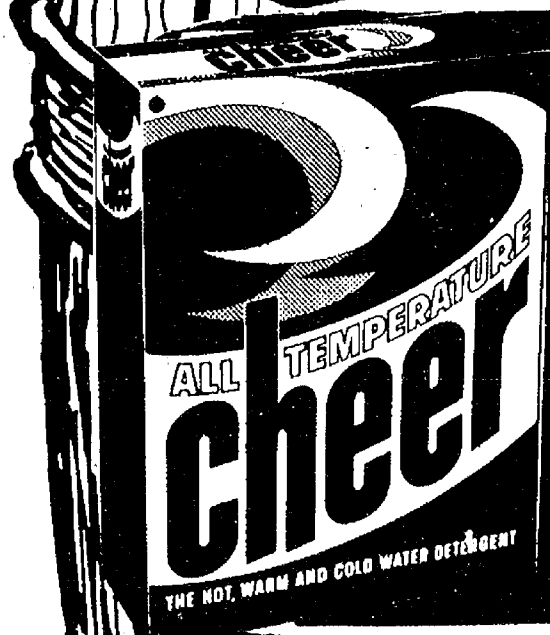
HIRES or CRUSH

PLUS 80¢ DEPOSIT

SAVE 44¢ WITH COUPON  
NABISCO  
**RITZ CRACKERS**

**69¢**

16 OZ.



SAVE 36¢ WITH COUPON  
10¢ OFF LABEL

**CHEER DETERGENT**

**\$1.29**

49 oz.

SAVE \$1.00 WITH COUPON  
HILLS BROS.

**INSTANT COFFEE**

**\$2.99**

10 OZ.

BUY 2 SAVE 52¢ WITH COUPON  
SOFT STICK

**CHIFFON MARGARINE**

**39¢**

1 LB. QTRS.





**Polly's**  
MASTERMARKETS

5 CONVENIENT  
LOCATIONS  
201 PARK AVE. V.L.  
1821 SPRING ARBOR RD.  
980 NORTH WEST AVE.  
3152 EAST MICHIGAN Coming  
1011 M-32 CHELSEA Soon

CHOICE BEEF BLADE CUT

**CHUCK ROAST**

LB. \$1.19

CHOICE BEEF BONELESS

**CHUCK ROAST**

LB. \$1.39

CHOICE BEEF

**ARM CUT ROAST**

LB. \$1.39

CHOICE BEEF

**ENGLISH ROAST**

LB. \$1.29

HYGRADE WHOLE

**SEMI BONELESS**

**HAM**

WATER ADDED

LB. \$1.29

ALL BEEF  
**HAMBURG**

LB. \$1.25

CHOICE BEEF

**RIB STEAK**

LB. \$1.99

EXTRA FANCY

**CUBE STEAK**

LB. \$1.99

LAND O LAKE GRADE A

**TURKEYS**

LB. 89¢

HYGRADE PORTER

**BACON**

3 LB. \$1.59

ARMOUR SLICED

**PEPPERONI**

4 OZ. 99¢

ARMOUR STAR

**SMOKEE'S**

12 OZ. \$1.19

OSCAR MAYER SLICED

**BACON**

LB. \$1.59

OSCAR MAYER SLICED

**BOLOGNA**

LB. \$1.59

OSCAR MAYER BEEF

**VARIETY PAK**

12 OZ. \$1.59

OSCAR MAYER SLICED

**BRAUNSWEIGER**

8 OZ. 99¢

OSCAR MAYER

**WIENERS**

LB. \$1.49

ARMOUR

**CANNED**

**HAM**

3 LB. \$5.99

SAVE 40¢ WITH IN-STORE COUPON

HYGRADE

**BALLPARK FRANKS**

LB. \$1.39

SAVE 50¢ WITH IN-STORE COUPON

HYGRADE

**BALLPARK BOLOGNA**

LB. \$1.39

SAVE 50¢ WITH IN-STORE COUPON

ARMOUR

**CANNED PICNICS**

1 1/2 LB. \$2.99

SAVE 40¢ WITH IN-STORE COUPON

THORNAPPLE VALLEY

**PARTY ASSORTMENT**

LB. \$1.59

GOVERNMENT INSPECTED

**MIXED  
FRYER  
PARTS**

57¢

LB.

GOVERNMENT INSPECTED

**FRYER BREASTS**

GOVERNMENT INSPECTED

**FRYER LEGS**

LB. 99¢

LB. 89¢

HANGING BASKET

**BOSTON  
FERN**

8 IN. \$4.99

CRISP  
PASCAL

**CELERY**

49¢

TASTY  
**BROCCOLI**

59¢

U.S. NO. 1 MICHIGAN  
**ROME APPLES**

3-LB. BAG 69¢

FRESH  
**GREEN ONIONS**

6 FOR \$1.00

CELLO PAK  
**RED RADISHES**

6 6 OZ. FOR \$1.00

LITTLE HUG  
**FRUIT DRINKS**

8 8 OZ. FOR 99¢

U.S. NO. 1  
VINE RIPE

**TOMATOES**

8/79¢

EASY PEEL

**TEMPLE  
ORANGES**

DOZEN 99¢





SAVE 40¢ WITH IN-STORE COUPON  
SEVEN SEAS  
**SALAD DRESSING**  
16 OZ. **89¢**

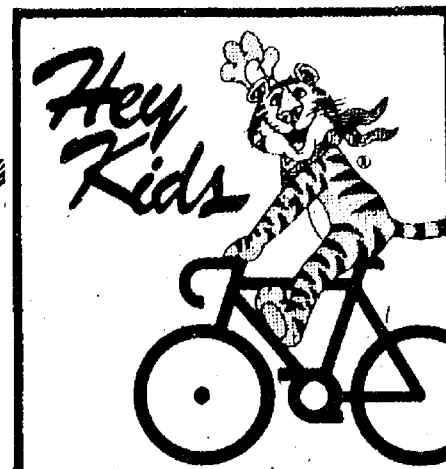
SAVE 60¢ WITH IN-STORE COUPON  
PRESTONE II  
**ANTI-FREEZE**  
GALLON **\$2.99**

SAVE 36¢ WITH IN-STORE COUPON  
JUMBO  
**TERI TOWELS**  
8 OZ. **59¢**

SAVE 20¢ WITH IN-STORE COUPON  
KRAFT  
**CHEEZ WHIZ**  
8 OZ. **79¢**



**5 CONVENIENT LOCATIONS**  
201 PARK AVE. V.L.  
1821 SPRING ARBOR RD.  
960 NORTH WEST AVE.  
3152 EAST MICHIGAN  
1011 M-32 CHELSEA



**WIN A SCHWINN® 10-SPEED BIKE IN Kellogg's® STICK UP FOR BREAKFAST CONTEST**

Kellogg's Sugar Flakes*	20 oz. pkg.	1.29
Froot Loops*	15 oz. pkg.	1.29
Apple Jacks*	15 oz. pkg.	1.49
Sugar Corn Pops*	15 oz. pkg.	1.27
Rice Krispies*	13 oz. pkg.	1.01
Cocoa Krispies*	13 oz. pkg.	1.09
Kellogg's Frosted Rice	12 oz. pkg.	.97

**KELLOGG'S SUGAR SMACKS**  
18 OZ.  
**99¢**  
© 1979 Kellogg Company  
\*Schwinn is a trademark of Schwinn Bicycle Co.

BORDEN'S ELSIE  
**VANILLA ICE CREAM**  
BORDEN'S  
**COTTAGE CHEESE**

BORDEN HALF n HALF	QT.	69¢
ALPINE BAKERY PUMPKIN PIES	8 IN.	89¢
AUNT JEMINA JUMBO WAFFLES	10 OZ.	59¢
SCOT LAD S.S. POTATOES	40 OZ.	49¢
BORDEN SUNDAY CONES	6 PK.	69¢
MOTT'S APPLESauce	44 OZ.	79¢
VLASIC SWEET GHERKINS	16 OZ.	79¢
STAYFREE MAXI PADS	30 CT.	\$1.99
HILLS BROS. COFFEE	2 LB.	\$5.09
HILLS BROS. COFFEE	1 LB.	\$2.69

HALF GALLON **99¢**  
16 OZ. **69¢**

SCHAFFERS WHEAT BREAD	2 16 OZ.	89¢
MINUTE MAID ORANGE JUICE	2 6 OZ.	79¢
SCOT LAD TATER TOTS	32 OZ.	69¢
LA PIZZERIA SAUSAGE PIZZAS	23 OZ.	\$1.89
BORDEN YOGURT CUPS	6 PK.	79¢
PLANTERS COCKTAIL PEANUTS	12 OZ.	99¢
KRAFT 1/2-MOON COLBY LONGHORN	16 OZ.	\$1.79
G.W. POST CEREAL	15 OZ.	85¢
HI YIELD COFFEE	26 OZ.	\$4.54
HI YIELD COFFEE	39 OZ.	\$6.69

SAVE 26¢ WITH IN-STORE COUPON  
NESTLE  
**HOT COCOA MIX**  
12 OZ. **99¢**

SAVE 40¢ WITH IN-STORE COUPON  
NESTLE  
**CHOCOLATE QUIK**  
2 LB. **\$2.29**

BUY 2 • SAVE 48¢ WITH IN-STORE COUPON  
NESTLE SUGAR OATMEAL or PEANUT BUTTER  
**COOKIE MIX**  
15 OZ. **69¢**

SAVE 20¢ WITH IN-STORE COUPON  
NESTLE  
**CHOCOLATE CHIPS**  
12 OZ. **\$1.49**



**Freshlike Sale!!**  
• FRENCH GREEN BEANS  
• CREAM STYLE CORN  
• WHOLE KERNEL CORN  
• GARDEN SWEET PEAS  
• VEG-ALL  
12/16 OZ. **29¢**

SAVE 40¢ WITH IN-STORE COUPON  
KLEENEX

**HUGGIES**  
DAYTIME DIAPERS

24 CT. **\$2.89**

SAVE 45¢ WITH IN-STORE COUPON  
ASSORTED FLAVORS

**9 LIVES**

CAT FOOD

5 6 1/2 OZ. CANS **\$1.00**

**CRACKER BARREL PRICES!!**

HEFTY 2 PLY TRASH BAGS	10 CT.	99¢
SUNSHINE HONEY GRAHAMS	16 OZ.	69¢
SUNSHINE HYDROX COOKIES	15 OZ.	79¢
DOLE JUICE PAK PINEAPPLE	20 OZ.	57¢
LIBBY FRUIT NECTARS	6 PK. CANS	99¢
PETER PIPER FRESH KOSHER DILLS	48 OZ.	\$1.09
OCEAN SPRAY GRAPEFRUIT JUICE	48 OZ.	79¢
GLAD TRASH BAGS	10 CT.	99¢
SNOWS NEW ENGLAND CLAM CHOWDER	15 OZ.	79¢
STA PUFF FABRIC SOFTENER	GAL.	\$1.09
STALEY PANCAKE SYRUP	36 OZ.	\$1.29
HELLMANS TARTAR SAUCE	2 6 OZ. FOR	89¢

**HEALTH & BEAUTY AIDS ALWAYS DAYS**

GET A \$4.00 REFUND from Johnson & Johnson

ob 30's	\$1.79
TYLENOL 100 CT.	\$1.73
band-aid 24 CT.	\$1.84
band-aid 65 CT.	90¢

SEE STORE DISPLAY FOR DETAILS

**Excedrin** PAIN RELIEF  
36 COUNT TABLETS  
\$1.38 VALUE **99¢**

**MISS BRECK HAIRSPRAY**  
9 OUNCE AEROSOL  
Reg. Unscented \$1.19  
Super Ultimate Super Unscented

**SPRING LAKE**  
16 Ounce SHAMPOO  
GOLDEN OR EMERALD **99¢**  
HERBAL OR STRAWBERRY **99¢**  
BALSAM SHAMPOO OR CONDITIONER **99¢**

**Aim** 12¢ OFF LABEL  
**AIM TOOTHPASTE**  
4 1/2 OZ. **86¢**

LIQUID 64 OZ.  
**WISK DETERGENT** **\$2.09**

CHOCK FULL O' NUTS  
**2 LB. COFFEE** **\$3.99**

RED 46 OZ.  
**HAWAIIAN PUNCH** **53¢**

PILLAR ROCK 15 1/2 OZ.  
**PINK SALMON** **\$1.49**

CONTADINA  
**TOMATO SAUCE**  
3 15 OZ. CANS **\$1.00**

CONTADINA  
**TOMATO PASTE**  
2 12 OZ. CANS **89¢**





**5 CONVENIENT  
LOCATIONS**

1101 M-52 CHELSEA  
201 PARK AVE., V.L.  
1821 SPRING ARBOR RD.  
960 N. WEST AVE.  
1809 E. MICHIGAN

**OPEN DAILY**  
**8** A.M. 'til **10** P.M.  
**SUNDAY**  
**9** A.M. 'til **6** P.M.

**MASTER  
MARKETS**

**We Keep  
You Coming  
Back!**

- ★ **QUALITY**
- ★ **VARIETY**
- ★ **SERVICE**

- ★ **QUALITY PRODUCE**
- ★ **CHOICE BEEF**
- ★ **FRESH BAKED GOODS**
- ★ **LIQUOR**
- ★ **COLD BEER**
- ★ **LOTTERY TICKETS**

- ★ **SIDES OF BEEF**
- ★ **FRUIT BASKETS**
- ★ **KEG BEER**
- ★ **CARRY-OUT SERVICE**
- ★ LARGE SELECTION OF **NATIONAL BRANDS**
- ★ **LOW PRICES**



QUALITY IN EVERY DETAIL



**Beat inflation! The biggest Factory Rebate Checks in Magnavox history are here now. And we'll pass them on to you. So come in today for **Instant Factory Rebates** and **Super Savings**. No waiting—no forms to fill out. **Save even more** with our many **SPECIAL BONUS OFFERS** as shown inside.**



**SAVE ANNUAL SALE SAVE ANNUAL SALE SAVE ANNUAL SALE**

**MAGNANIMITY SALE SAVE ANNUAL SALE SAVE ANNUAL SALE**

**VE ANNUAL SALE SAVE ANNUAL SALE SAVE ANNUAL SALE**

**INSTANT FACTORY REBATE**

PAY ONLY TO  
AUTHORIZED DEALER:

**ANNUAL SALE SAVE ANNUAL SALE SAVE ANNUAL SALE**

**NNUAL SALE SAVE ANNUAL SALE SAVE ANNUAL SALE**

**NIAL SALE SAVE ANNUAL SALE SAVE ANNUAL SALE**

**UAL SALE SAVE ANNUAL SALE SAVE ANNUAL SALE**

**AL SALE SAVE ANNUAL SALE SAVE ANNUAL SALE**

CONSUMER ELECTRONICS COMPANY  
FORT WAYNE, INDIANA

EXPIRES JUNE 30, 1984

\*00100006\* :07100008: 30008603\*



# 25" diagonal TOUCH-TUNE TV™

## COMPUTER COLOR 330

...a 25% sharper,  
crisper, clearer  
picture than ever  
before possible!

MAG  
24th A

Super

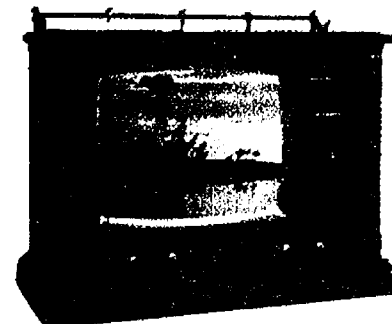
The Magnavox Touch-Tune Computer Color 330 models shown here have a combination of features not found on any other TV. A specially designed High Resolution Filter increases the lines of resolution from 260 (found on ordinary color TV's) to 330 — for an exceptionally sharp picture with great definition of detail. And, state-of-the-art technology has been incorporated into an advanced, totally electronic tuning system that offers random access to any UHF/VHF channel. No programming is required. A small, yet highly sophisticated microprocessor has been factory programmed for 90 channels — 82 UHF/VHF and 8 midband channels for CATV. They are cable ready to receive 20 cable channels — without the use of a converter (on non-scrambled systems)...with all remote control functions.



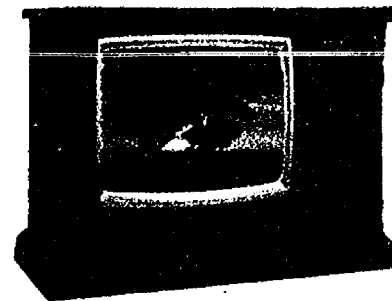
**Model 4640** — offers you streamlined Contemporary styling (with a removable base for use as a table model)...plus all features described above. It also has a 25" diagonal 100° In-Line Picture Tube for even greater sharpness and brilliant color, as well as a 100% solid-state modular chassis for great reliability.



**Model 4664** — combines authentic Early American styling with today's most advanced video electronics to bring you a color picture of exceptional sharpness — with computer precision — at the touch of your finger. It, (and the models shown above right) also has a 25" diagonal 100° In-Line tube and a solid-state chassis.

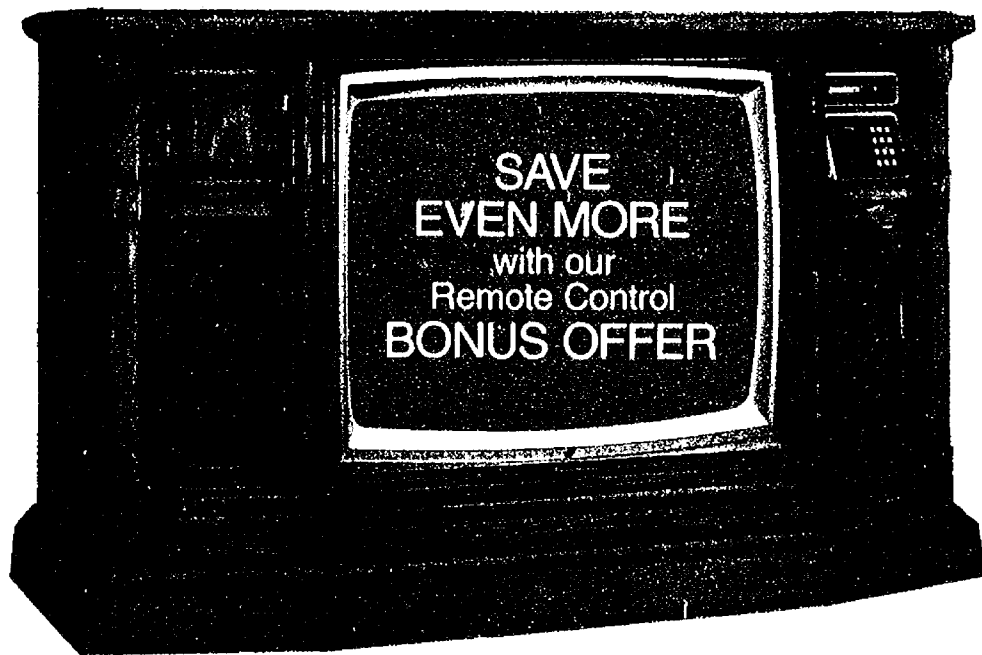


**Model 4662** — in classic Contemporary styling.



**Model 4666** — in detailed Mediterranean styling.

All models shown are crafted of selected wood solids, wood products and non-wood materials.  
**Simulated TV Pictures.**



**Model 4676** — in finely crafted Mediterranean styling, brings you all the superb performance features detailed for the models above...plus two speakers for outstanding sound reproduction. As with the other Computer Color 330 Touch-Tune models shown, the remote control also offers random access to any channel...and it also offers channel scan up or down for sequential channel change. Early American styling also available.



**Decorator Table Model.** Enjoy the convenience of Videomatic One-Button Tuning that even automatically adjusts the picture to changing room light. Model 4466 also offers you beautifully detailed Mediterranean styling, a 100° In-Line Picture Tube for outstanding sharpness and brilliant color...plus a 100% solid-state modular chassis. Early American styling also available.

**SAVE EVEN MORE!**  
with our Pedestal Base  
**BONUS OFFER**



**MAGNAVOX**  
Annual Sale

**\$avings**

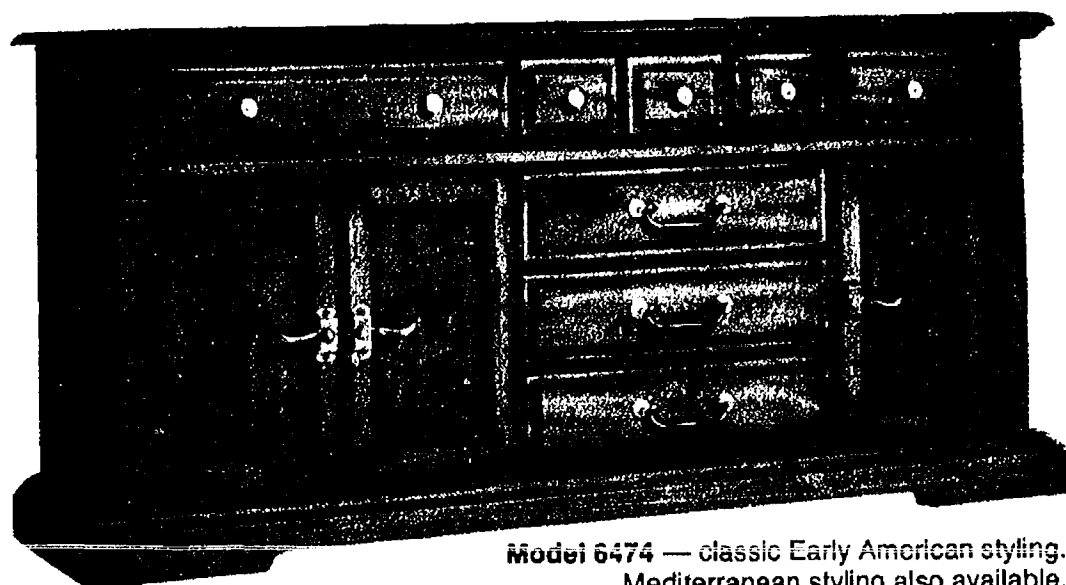
# DECORATOR & COMPONENT

## Audio Systems with...

# TRICOUSTIC PROJECTION™

...adds a third dimension to Stereo Sound

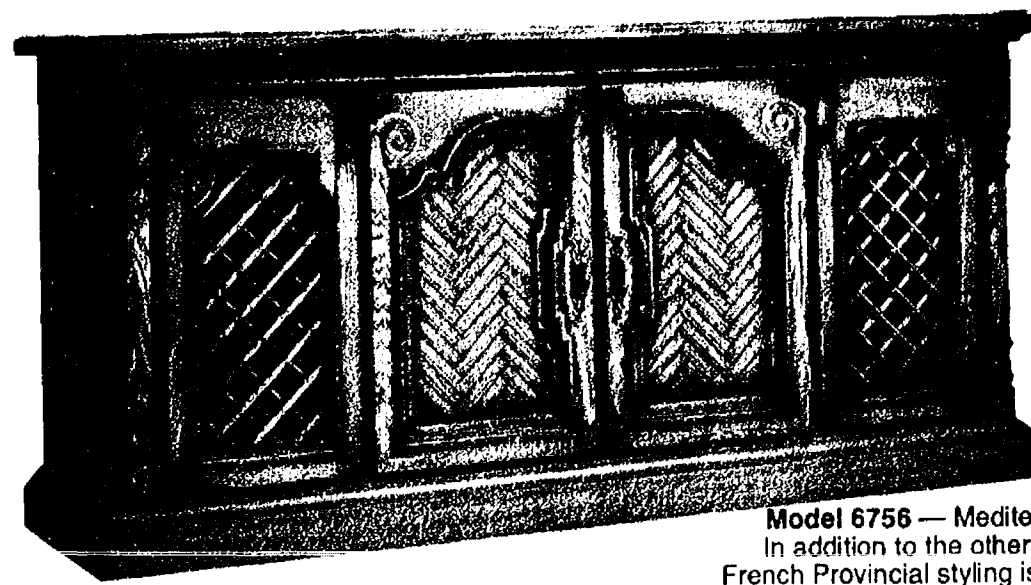
Whether you prefer the look of fine furniture, or the sleek lines of individual components . . . Magnavox offers you a sound that will please your ears. The specially designed Tricoustic Projection Speaker Systems have a bass woofer for deep, smooth bass response; a tweeter to define and brilliantly project the high to mid-range tones . . . and an acoustic energizer that permits sound "trapped" in conventional speakers to escape — thus providing richer, fuller bass tones for more exciting sound. And, all Magnavox Decorator and Component Audio Systems have components that are acoustically matched and precision-engineered for their optimum performance in the faithful reproduction of sound for your listening enjoyment.



Model 6474 — classic Early American styling.  
Mediterranean styling also available.

### Super Savings!

Concealed behind the exquisite exterior of this delightful cabinet is a magnificently engineered audio system that includes a full-featured AM/FM/FM Stereo tuner/amplifier, a full-size automatic record changer with a highly accurate 4-pole motor, an 8-track player/recorder . . . plus a Tricoustic Projection Speaker System with two 10" bass woofers, two 3" tweeters and two acoustic energizers — for the full beauty of music.

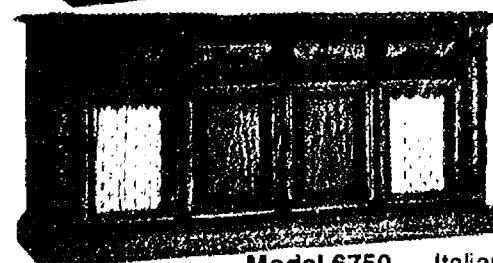


Model 6756 — Mediterranean styling.  
In addition to the other models shown,  
French Provincial styling is also available.

### Super Savings!

Especially designed for the discriminating audiophile . . . and lover of fine furniture, the models at left and above will bring to your home a charming note of elegance — while filling it with the sound of beautiful music. Each contains an acoustically matched audio system that includes a superb performing AM/FM/FM Stereo tuner/amplifier, a full-featured automatic record changer, an 8-track player/recorder . . . and a Tricoustic Speaker System with two 10" bass woofers, two phenolic ring tweeters and two acoustic energizers.

All cabinets shown are crafted of selected wood solids, wood products and non-wood material.



Model 6750 — Italian  
Provincial styling.

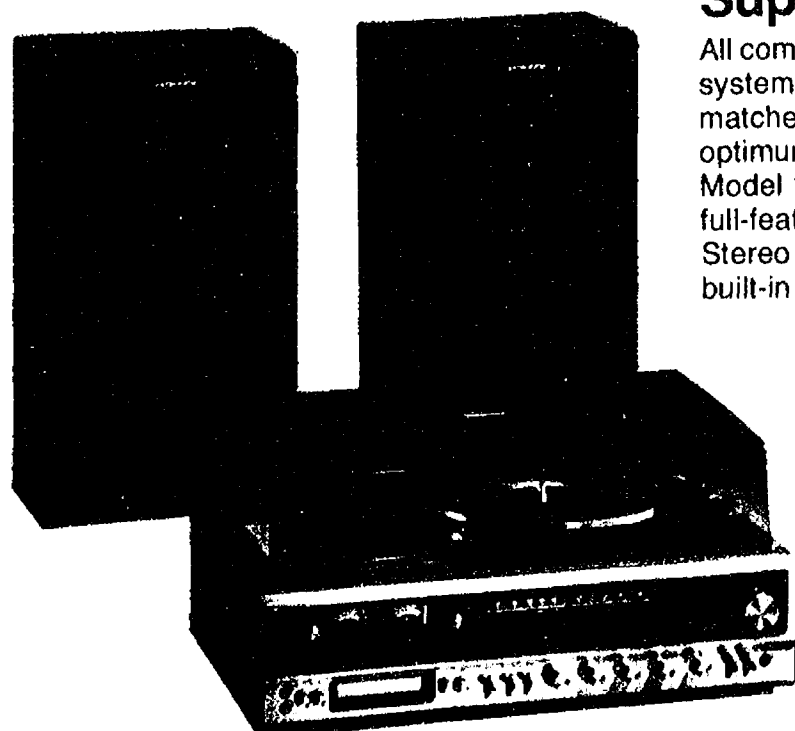


Model 6754 — Early  
American styling.

Magnavox takes the guesswork out of buying components!

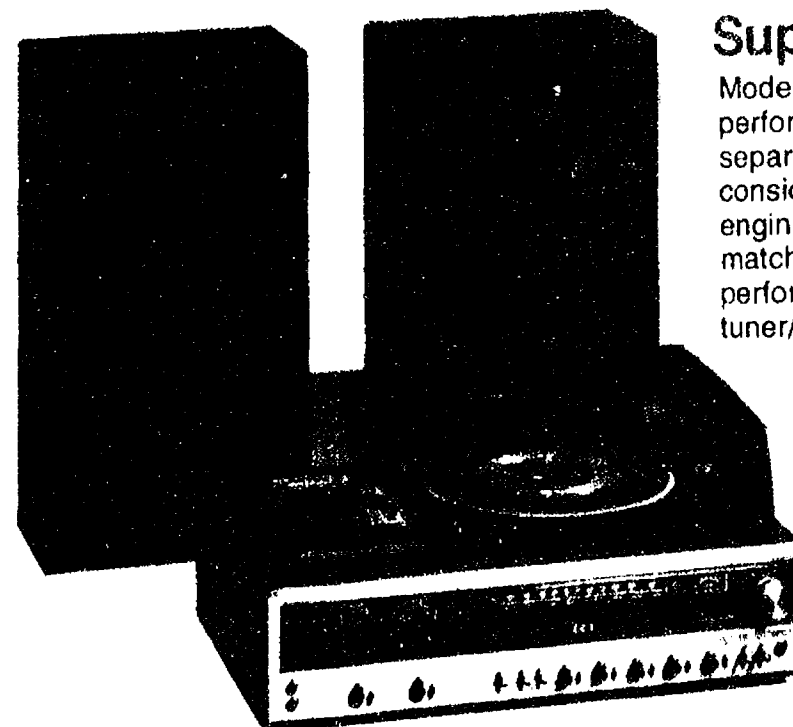
### Super Savings!

All components of both audio systems shown have been matched to bring you their optimum performance. Model 1830 includes a full-featured AM/FM/FM Stereo tuner/amplifier with built-in automatic record changer and 8-track player/recorder. And the Tricoustic Projection Speaker System has a 6" bass woofer, a phenolic ring tweeter and an acoustic energizer in each speaker enclosure.



### Super Savings!

Model 1836 offers you a standard of performance one would expect from separate components costing considerably more. It is precisely engineered and acoustically matched. In addition to the fine performing AM/FM/FM Stereo tuner/amplifier, it includes a built-in automatic record changer, and a cassette player/recorder. Each Tricoustic Projection speaker system enclosure has an 8" bass woofer, a phenolic ring tweeter and an acoustic energizer. All units are of non-wood material, as are those of model 1830.





**19" diagonal**  
**COMPUTER™**  
**COLOR 330**

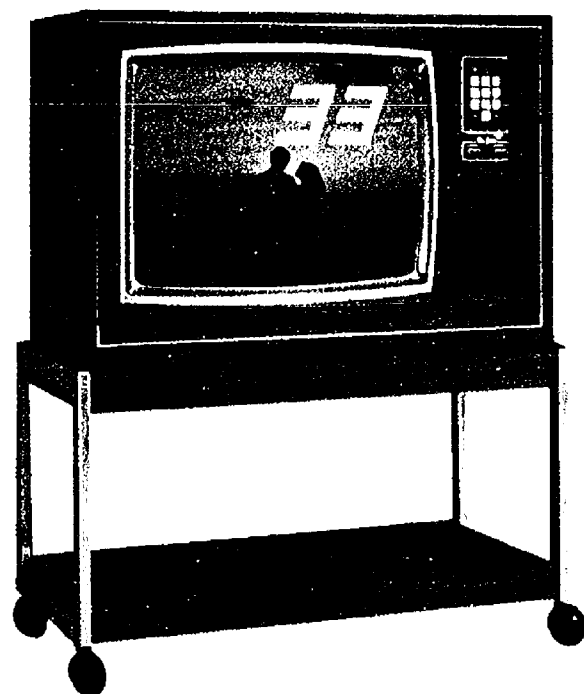
**STAR SYSTEM**  
**TOUCH-TUNE TV™**

...a 25% sharper, crisper,  
 clearer picture than ever  
 before possible!

**MAGNAVOX 24<sup>th</sup> Annual Sale**  
**\$uper \$avings**

INSTANT FACTORY REBATES!  
 YOUR LOWEST PRICE!  
 SPECIAL BONUS OFFERS!

Enjoy a level of  
 performance considered  
 unattainable until now!  
 Ordinary color TV's offer  
 only approximately 260  
 lines of resolution. The two  
 Magnavox models shown  
 have a special High  
 Resolution Filter to deliver  
 330 lines of resolution —  
 for a picture of  
 extraordinary clarity and  
 definition of detail — at the  
 touch of your finger.



**19" diagonal Portable.**  
 Model 4471 offers you sleek  
 Contemporary styling, plus  
 the precision of  
 all-electronic touch-tuning  
 for instant access to any  
 channel — at the set or by  
 remote control (included).  
 There's no need to program  
 or fine tune — ever. The  
 channel number even  
 flashes on the screen.

Ask about our Special  
 Bonus Offer on an  
 attractive Mobile Cart.



**19" diagonal**  
**Decorator TV.** Model  
 4477, in finely detailed  
 Mediterranean styling,  
 includes all the superb  
 performance features  
 described at left for an  
 exceptionally sharp,  
 crisp, clear picture. A  
 picture that must be  
 seen to be believed.  
 Early American styling  
 also available.

Ask about our  
 Special Bonus Offer  
 on a decorative  
 Pedestal Base.

Simulated TV pictures

See the many Magnavox **24<sup>th</sup> Annual Sale** money saving values at:

Form No. AS79

All models shown may not be available at all dealers. The two models shown above are crafted of wood products and non-wood material.

Printed in U.S.A.

**Heydlauff's**

**113 N. Main**

**Chelsea, MI 48118**

**Phone 475-1221**