

WEATHER

	Min.	Max.	Precip.
Thursday, Jan. 25	22	27	Trace
Friday, Jan. 26	26	33	Trace
Saturday, Jan. 27	28	34	0.00
Sunday, Jan. 28	29	33	0.00
Monday, Jan. 29	28	35	0.02
Tuesday, Jan. 30	22	28	Trace
Wednesday, Jan. 31	15	25	0.02

The Chelsea Standard

QUOTE

"I look upon every day to be lost, in which I do not make a new acquaintance."
—Samuel Johnson.

ONE HUNDRED-NINTH YEAR—No. 34

12 Pages This Week

Plus 4-Page Supplement

CHELSEA, MICHIGAN, THURSDAY, FEBRUARY 1, 1979

15c per copy

SUBSCRIPTION: \$6.00 PER YEAR

Cagers Shoot Poorly, Lose to Novi, Brighton

Retaliating against an earlier loss, Novi Wildcats clawed the Bulldogs, 54-38, on Friday, Jan. 26 while the following evening found the league-leading Brighton squad topping Chelsea, 56-42.

A usually verbose Robin Raymond, Chelsea coach, was short and to the point in commenting on the losses. "When we shoot poorly, we lose."

In Friday's game, Chelsea dropped from its season average of 40 percent from the floor to 26 percent, making only 16 out of 63. Novi, in comparison, completed 23 for 57 for 40 percent.

Another key to the losses was the rebounding statistics. Two Novi Wildcats, Dave Pisha, 6'4", and Duane Ridenour, 6'5", accounted for a total of 28 rebounds. In all, Novi collected 49 while Chelsea had 27.

Wildcats hustled for a 19-10 lead in the first quarter and held a six- to 12-point lead throughout the game. "We had a change in the last three minutes of the fourth quarter when two or three baskets in succession would have made the difference," Raymond said.

Novi, however, with two minutes remaining, sunk three easy baskets for the win.

The only Bulldog to score in double digits was Jeff Dils with 12. Charlie Bridges added eight; Don Schrotenboer, six; and John Dunn, four. Gary Dils, Matt Feeney, Mike Machesky, and Mike Killelea chipped in two each.

Top Chelsea rebounders were Don Schrotenboer with 11 and Charlie Bridges with seven. Chelsea had 10 turnovers to Novi's 15.

Despite the defeat issued by Brighton on Saturday, Raymond remarked that "we played our best all-around game this year—except for one part."

That part, as in the Novi contest, was crucial. While Chelsea made an extraordinary amount of floor shots—81—they completed a dismal 18.

"We like to take the fast-break basket. The idea is to run every time we have possession so that we don't waste time," Raymond explained. "That's what we did Saturday night and out of the 81 attempts there were few 'bad' shots; the ball reached the basket, rolled around the rim, and fell out. If I knew why it happened that way I'd sure correct it," he added.

Raymond continued his praise saying "the team played the best man-to-man defense of the season. Brighton averages 70 points a game and we held them to 56."

Both Chelsea and Brighton made 18 field goals but it was in the free throw shooting that Chelsea lagged. Brighton completed 20 of 28 while Chelsea made six of 13.

First quarter action saw Brighton ahead by a single point, 12-11, which they increased to 29-24 by the half. Chelsea jumped ahead in the third, 41-38, and further closed the gap in the final period, 41-38, before Brighton scored nine out of 10 free throws in four minutes.

While Brighton rallied for the win, Chelsea went through 10 possessions without a single score. Chelsea's full-court press forced Brighton into 23 turnovers while Chelsea had 14. Chelsea totaled 21 fouls and Brighton had 13.

Leading Chelsea scorer was Jeff Dils with 12. Gary Dils netted nine; Don Schrotenboer, six; John Dunn, four; Mike Machesky, four; Charlie Bridges, three; Mike Killelea, three, and Matt Feeney, two.

Top Chelsea rebounders were Charlie Bridges, 10; Jeff Dils, 10; Don Schrotenboer, four; and John Dunn, three. Dunn added five steals and Bridges had three.

Southeastern Conference records to date are Brighton, 8-1; Milan, 7-2; Novi, 6-3; Saline, 4-4; Chelsea, 3-5 (6-6 over-all); Dexter, 2-6; Lincoln, 1-7; and South Lyon, 1-7.

Chelsea travels to South Lyon on Feb. 3.



DIVISION I SOLOISTS: Seven Beach Middle school musicians earned the highest ranking possible during the Saturday, Jan. 27 District 12 Solo and Ensemble Festival held at Franklin High school in Livonia. From left are Dan Klemer, awarded both for his piano and percussion performances; Leann Walz, Marie Sullivan, Brent Martin, Pat Killelea, Melanie Lee, and Lisa Hurd. Warren Mayer directs the band and Karey Johnson directs the orchestra.



TOP 7th GRADE PERFORMERS: Receiving Division I ratings during the annual District 12 Solo and Ensemble Festival held at Franklin High school in Livonia on Saturday, Jan. 27 are, in back row, from left, Brenda Hoelzer, Margie Rawson, Kevin Colombo, Richard Merkel, Kirk Eisenbeiser, Daniel Walz, Randy Sabo, Jeffery Martin, and Tim Dmoch. In the front row, from left, are Carol Warren, Diane DeSmyther, Laurie Heller, Becky Schluppe, Tonya Mattoff, Carol Stirling, Susan Riemenschneider, Alena Freysinger and Kim Kleis.



DIVISION I MUSICIANS: 8th grade students from Beach Middle school who earned top honors in the District 12 Solo and Ensemble Festival on Saturday, Jan. 27 at Franklin High school in Livonia, are, from left, standing in back row, Carolyn Chandler, Mark Smith, Barry Newkirk, Kim Boyd, Tha Bell, Brent Martin, Tim Dmoch, Chris Martin, and Pearl Phillips. In front, from left, are Marie Sullivan, Amy Ziegler, Kim O'Quinn, Julie Patrick, Melanie Lee, Lisa Hurd, Kathy Degener, Jean Folsum and Nancy Weir.

Beach School Musicians Earn Honors at Solo, Ensemble Festival

Eight Beach Middle school soloists and 11 ensembles returned home from Franklin High school Saturday, Jan. 27 with Division I ratings, the highest award presented in the annual District 12 Junior High Solo and Ensemble Festival.

Earning top honors for their individual performances were Patrick Killelea, piano; Dan Klemer, piano; Marie Sullivan, piano; Melanie Lee, oboe; Brent Martin, trombone; Leann Walz, clarinet; Lisa Hurd, flute; and Dan Klemer, percussion.

Ensemble Division I ratings went to Kevin Colombo, Richard Merkel, and Kirk Eisenbeiser, saxophone trio; Alena Freysinger and Kim Kleis, clarinet duet; Daniel Walz, Randy Sabo, Jeffery Martin, and Tom Schumann, brass quartet; Amy Ziegler, Kim O'Quinn, and Julie Patrick, clarinet trio; Jean Folsum, Kathleen Degener, Nancy Weir, flute trio; Brenda Hoelzer and Margie Rawson, string duet; Carol Warren, Diane DeSmyther, Laurie Heller, flute trio; Kimberly Boyd, Barry Newkirk, Mark Smith, Duane

Adult Rec. Basketball Underway

Chelsea Recreation Adult Basketball action got underway last Sunday, Jan. 28.

Dana Corp. defeated Wolverine Bar, 44-37; Ann Arbor Centerless took a 58-47 decision from Chelsea State Bank; and Banner, Spring, and 4 Slides demolished Utrogs, 52-37.

Games scheduled for Feb. 4 are: Wolverine Bar vs. Ann Arbor Centerless, 1 p.m.; Chelsea State Bank vs. Utrogs, 2:10 p.m.; and Independents vs. Dana Corp., 3:20 p.m. All games are played at Chelsea High school. The public is invited to cheer these teams.

Vacancy Filled On St. Paul Church Council

Mrs. Ellis (Elaine) Boyce was appointed to fill the unexpired term of James Stirling, Sr., on the St. Paul United church council during their meeting on Jan. 16.

Mrs. Boyce was a candidate for council on the 1979 ballot. She has served the church on various committees and departments, most recently on the Spiritual Life Department where she served a full term as well as chairman for the last two years.

She is a registered nurse and is employed by Dr. Charles Krause. She has two children at home, Carol and Kim.

Mrs. Boyce will be installed as council member by the Rev. R. J. Ratzlaff during a morning worship service in the near future, along with Fred Schwarze who was unable to be present on Jan. 7 for installation. Her term will expire in 1980.

In other action that night, council members discussed the church's budget for 1980.

Plans Complete For 6th Winter Carnival Fun

Herbert J. McKune Post 31, American Legion is ready for the 6th annual Winter Carnival. Last year more than 500 people participated in the Carnival and with this year's expanded activities a bigger crowd is expected.

Friday night Feb. 2, the Carnival opens at 7 p.m. with the annual euchre tournament. John Popovich, the "card shark" will be conducting the tournament. There is an entry fee and a player need not bring a partner. Prizes will be awarded for most games and most losers.

The fishing derby begins at 7 a.m. Saturday with an entrance fee for adults and children. Ice augers will be the first prizes in the perch and panfish divisions, and a fishing shanty, donated by the Chelsea Lumber Co., is designated for pike. Prizes will also be awarded in the children's division. Participants must enter before going on the lake and only fish caught on Cavanaugh Lake are allowed.

A new attraction this year is guided cross-country skiing tours. Bob Rohrkeper and Bob Riemenschneider will be guiding the two-hour trek through parts of the Waterloo Recreation Area. All skiers are welcome from beginners to pros. Tours are scheduled for 10 a.m. and 2 p.m. on Saturday, and 10 a.m. on Sunday.

Also added this year is LaVonne Harris at the piano from 1 to 6 p.m. on Saturday. There is no admission charge so come in to listen, sing along, or just watch the

outdoor activities through the panoramic view on the upper deck. The Carnival Dance and Buffet will be on Saturday evening at 9. Music will be provided by the Gaken Band. Tickets are on sale at Streiter's Men's Wear or by calling the chairman Larry Gaken, 475-7881.

Sunday afternoon features a new musical group from 1 until 5 p.m. Wynn Kanten (of the Scat Band) has assembled Dennis Ruby and Art Simms who will play old and new songs for listening and dancing. According to Kanten a "good time is guaranteed." There is a cover charge at the door and children under 12 are free.

Carnival Chairman Pat Merkel encourages parents to bring their families for the fun-filled Sunday afternoon.

The Carnival will end Sunday at 5 p.m. with the awarding of all prizes. Leg'on Commander Harold Haliburton stresses that while activities are taking place on the upper deck the ground floor will be open to all fishermen, snowmobilers and skiers or anyone wishing to stop in.

The 1979 Carnival Committee includes Jim Knott, Walter Bolanowski, Bill Coltre, Gary Grossman, Lena Behnke, Larry Gaken, Mel Jones, Ray Lutovsky, Bill Wade, John Snay, Mike Kushmaul, Tom Dunlap, Tom Franklin, Carl Heldt, Ray Maistre, Bob Rush, Alva Fouty, Jeff Flintoff, Bill Geddes, Earl Heller, and friends of the Legion: Porky Hatley, John Klink, Bruce Bycraft, and George W. Mayer.

Nancy Cooper Named State's Outstanding Young Woman

In matters concerning her special education students, Nancy Cooper is about as subtle as a hand grenade.

As a result of her dynamic perseverance, abhorance to the word "no," and rock-solid belief in the children she teaches, coaches, and cherishes, Cooper was distinguished by being named one of five outstanding young women in Michigan by the Michigan Jaycees and Auxiliary organizations.

Nominated by the Chelsea chapter of the Jaycee Auxiliary, she was chosen out of hundreds of possible candidates for the honor.

A 1966 graduate of Cass Tech in Detroit, Cooper received her BA degree on a full scholarship from the University of Michigan in a record 2½ years.

When she came to Chelsea as a student teacher, armed with double majors in American and Russian history, an urge to expand her horizons led to substitute teaching.

"One day she was asked to take the special education classroom and it was almost as if something clicked inside her," according to Alberta Colby, Chelsea Jaycee Auxiliary member who wrote Nancy's biography for the nomination.

"To Nancy, it was genuine teaching—the students were learning to live," she said. Cooper resumed her education was certified in special education, and received her masters from U. of M. in 1970.

Since then, she has taught the educable mentally impaired at Chelsea High school and has seen 20 of her students achieve success in becoming entirely self-sufficient.

In the early '70s, state guidelines and set curriculums for special students were non-existent. The Chelsea classrooms, however, experienced a re-vamping as Cooper established individual programs, and incorporated that programming into a workable group situation. Her Room 224 was never off-limits to anyone and in time, the special ed students merged with the rest of the student body.

"It wasn't long before the regular students not only accepted the special students, but they also became caught up in their special programming," Colby discovered in her research.

In 1973, Cooper, along with many hundreds of fellow supporters, saw their efforts in passing State Act No. 94102 realized. The law mandated that special education stu-



OUTSTANDING YOUNG WOMAN: Nancy Cooper, Chelsea High school special education teacher and area director of the Michigan Special Olympics, was named one of five outstanding young women in Michigan by the Michigan Jaycees and Auxiliary on Saturday, Jan. 27. Nominated by the Chelsea chapter of the Jaycee Auxiliary, Cooper, along with her four colleagues, will be honored during an Awards Presentation in Troy on Saturday, Feb. 17.

dents in Michigan were assured an education.

"Nancy believes that nothing with special kids is impossible, as long as there is a will to work," Colby commented.

"She went into the community and found her students part-time jobs, from dairy farming to nurses' aides. A housekeeping business was set up so that the students could learn responsibility, including handling of money.

"Transportation to their jobs wasn't easily found so arrangements were made to clean parts of the school for the use of a vehicle. When the school mileage failed and there were no funds for

a bus driver, she secured her chauffeur's license and drove them herself.

"The school had a pool, but no instructor with extra time. Nancy became certified in water safety so her students would have the same advantages as other children.

"She takes her class on week-end trips and when she became acquainted with the Special Olympics she started a program in Chelsea. The kids needed equipment and when the school couldn't supply them she went out, raised money, bought what she could, and begged or made the rest. (Continued on page six)

Two Directors Retire From CSB Board

Two Chelsea State Bank Board of Director members, with a combined service of 31 years, have retired, according to Paul Mann, bank president and chairman of the board, in a report issued following the board's annual meeting on Tuesday, Jan. 30.

F. W. Merkel with 25 years of service and General Dwight E. Beach with six years of service, both retired in compliance with the bank's mandatory retirement age of 70.

During the meeting, the number of members on the board was increased from eight to 10 and the number of officers was increased from six to seven.

Newly-elected board members are Lawrence C. Dietle, president of MacDoe, Inc.; William W. Freeman, president of Freeman Machine Co.; George L. Palmer, president of Palmer Motor Sales; and David H. Streiter, owner and operator of Streiter's Men's Wear. All are of Chelsea.

Filling the newly-created position of assistant vice-president and auditor is Scott S. Tanner of Ypsilanti. Tanner joined the bank on Jan. 1, 1979 after serving in various capacities with the Ypsilanti Savings Bank, Ypsilanti. Tanner, his wife, and two children, plan to move to Chelsea in the near future, Mann stated.

Re-elected to the board are Robert L. Daniels, president of Chelsea Lumber Co.; Dudley K. Holmes, vice-president, Chelsea Milling Co.; Howard S. Holmes, president, Chelsea Milling Co.; John P. Keusch, attorney; Paul G. Schaible, Jr., executive vice-president and cashier; Richard J. Kern, vice-president; Rosemary Hummel, assistant vice-president; and David P. Feldkamp and Gail Bauer, assistant cashiers.

Varsity Swimmers Season Record, 6-2

Chelsea High school swimmers raised their season record to 6 and 2 with wins over River Rouge, 115-47, Lincoln, 99-73, and a loss to state-power Milan, 64-107.

In the meet at River Rouge, the medley relay team of Tom Gaunt, Kirk Myers, Henri Vander-Waard, and Scott Prohaska combined to break the Rouge pool record.

In the freestyle relay event, Vander-Waard, Dave Mason, Mike Mason and Phil Hoffman teamed up to break the pool and school varsity records. Hoffman and John Robbins also broke pool records in the 200-yard I.M. and 100-yard backstroke.

The meet with Milan was highlighted by Tom Gaunt's winning the backstroke, breaking the school

record and qualifying for state competition. His time of 1:00.5 placed him among the top 10 class "B" backstroke swimmers in the state. Gaunt also broke the school record in the 200-yard I.M. with a time of 2:15.6.

Other outstanding performances were turned in by John Robbins in the 50-yard backstroke and Scott Prohaska in the 200-yard freestyle.

In the Lincoln meet, many Chelsea swimmers were swimming out of their events and yet easily won the meet and had many life-time bests.

Henri Vander-Waard had best times in the 50-yard freestyle, 24.9, and 100-yard freestyle, 55.5, and Scott Prohaska's 2:22.9 and Mike Mason's 2:28.8 in the 200. (Continued on page five)

Established 1871 **The Chelsea Standard** Telephone 475-1371

Walter P. Leonard, Editor and Publisher
Excellence Awarded By Michigan Press Association
1951-1952-1960-1964-1965-1966



Published every Thursday morning at 300 North Main Street, Chelsea, Mich. 48118, and second class postage paid at Chelsea Mich., under the Act of March 3, 1879.

Subscription Rates (Payable in Advance)

In Michigan:		Outside Michigan:	
Single Copies\$.20	Single Copies\$.25
Six Months\$3.50	Six Months\$4.50
One Year\$6.00	One Year\$8.50

MEMBER
NATIONAL NEWSPAPER
Association - Founded 1885

National Advertising Representative:
MICHIGAN NEWSPAPERS, INC.
237 Michigan Ave.
East Lansing, Mich. 48823

Uncle Lew from Lima Says:

DEAR MISTER EDITOR:

The fellers got into a discussion of what people think Saturday night at the country store after Bug Hookum give a report where a woman in Los Angeles says she can read animals' minds. The most interesting thing the animals have told her, Bug said, is that they can tell what people are thinking. This is really something, declared Bug, since 99 per cent of the cases people don't have the foggiest notion what people are thinking.

This lady says she can communicate with all animals, and she has found that dogs are best at figuring out what people are up to. She says when your dog sets and stares at you under the dinner table he's reading your mind as much as he's trying to get his message across to you. She said she talked to a lobster that knew he was going to get dropped live in boiling water, and he let her know he didn't like it one bit. A wild horse told her he couldn't understand how other horses were willing to do what people asked them. She said she can form mental pictures with animals thousands of miles away.

General speaking, the fellers took Bug's report with a large grain of salt, but it got them to

thinking of the possibilities. Clem Webster said the woman's claims were pretty safe since as far as he could learn none of the animals was speaking on the record. But Ed Doolittle said he was going to write the lady and see if she can reach Billy Carter's dog. If she can raise him on her mental telephone, Ed said, maybe the mut can give us some idea what Billy is thinking, cause people communication keeps having breakdowns.

One thing that Billy has done, Ed said, is send his brother Jimmy to the doctor. Ed said he had heard the President's nerves had been jangling lately, and the doctor give him a prescription for Carter's Little Brother Pills. About all you can find out about America's domestic and foreign policies these days, said Republican Ed, is that Billy and Jimmy want the country to understand that neither one has anything to do with what the other does.

Democrat Clem Webster jumped in to say President Carter has got more important dealings than Billy, and inviting Ed's former President back to the White House to meet the Chinese ought to count for something. What it did, Clem said, was draw some of the fire off HEW Califano and his war on tobacco, but the big chance is to do for the country what the whole Watergate business couldn't do. If the President can get the Carter family dog to read Nixon's mind, Clem said, we might get filled in on that 18 minute gap in the tapes and no telling what all.

Uncle Lew.

Dexter Co-Op Nursery Wins CCA Prize

On Tuesday, Jan. 23, Dexter Co-Op Nursery was once again a big winner in the WAAM radio-sponsored Community Club Awards program.

Turning in a large number of receipts and bottle caps, the nursery took a first prize of \$100.

The support of the community is appreciated as the nursery continues its fund-raising projects, and anyone wishing to help save receipts and other CCA items may get more information by calling 426-8885.

DAVID WERBER, Attorney at Law

General Practitioner, including divorces, drunk driving, bankruptcy.

Call 995-4646

111 N. Main St., Ann Arbor Across from County Bldg.

Tonight and Every Thursday THE CAPTAINS TABLE ROAST BEEF BUFFET



"Carved Before Your Eyes" Serving from 4:30-9:30 p.m.

The Captains Table - 8093 Main St., Dexter

MICHIGAN MIRROR

By Warren M. Hoyt, Secretary, Michigan Press Association

Caution Is Key To Next Year In State Government

Governor William G. Milliken has opened the new legislative year proposing no new programs, and, in fact, expressed caution re-emphasizing the "age of caution" theme his administration sounded late last year.

In his 11th State of the State Message to the legislature, Milliken continued with emphasis on reworking existing programs and laws, restructuring government agencies and restating previous proposals.

Politicians and government officials are tip-toeing into the new year before making any recommendations of changes in light of a possible recession during the current calendar year.

The governor's address was so matter-of-fact and routine that it was not once interrupted by applause. However, House Speaker Bobby Crim of Davison said that may have been by design in that the government must recognize limits and not make any promises that cannot be kept.

Any possible tax relief was re-

moved from the address this year because of the expected pressures on the budget and an anticipated economic slow-down. Fiscal experts are, at least, predicting a fall-off of economic activity if not a full-scale recession.

A major effort is expected later aimed at revitalization in both large and small cities.

The governor announced his Lieutenant Governor, James Brickley, will head a community development cabinet and co-ordinate efforts at all levels of government to stimulate city development.

Further, the governor announced that a non-profit corporation will be formed to plan major neighborhood revitalization and an industrial development project in southwest Detroit, with planning funds coming from the state.

Generally, the Milliken message exercised caution but emphasized there will be state assistance for local units of government to help themselves.

"Restraint need not halt progress. It provides an incentive to re-examine and revise. It's not going to hurt basic institutions to shake things up a bit," Milliken said.

Insurance Companies Being Watched On Inflation Guidelines

The state is keeping a watchful eye on insurance companies doing business in the state to make sure the companies adhere to President Carter's anti-inflation guidelines.

Acting Insurance Commissioner Earl Carlson has announced that all rate applications filed by insurance companies after Jan. 29 must indicate whether the proposals will cause rate increases for a company or group to exceed the federal guidelines.

All companies and rating bureaus must notify the state Insurance Bureau by Jan. 20 whether they intend to apply the guidelines to companies, business expenses.

Carlson said premium renewal notices sent to policyholders after March 1 must state whether the company is complying with the guidelines.

A National Association of Insurance Commissioners' proposal allows companies to apply the guidelines to their nation-wide business,

Development of New County Parks To Be Discussed

The county's first two new County Parks, Independence Lake and Rolling Hills, will be discussed at the Washtenaw County Parks and Recreation Commission meeting Thursday night, Feb. 1.

The Commission's plan is to approve a master plan for the long range development of Rolling Hills in the southwest corner of Ypsilanti township. Action by the Commission follows a series of public meetings for discussion of concepts developed by consultants to the Commission. The Commission hopes that development of the first phase of the park may get under way in about a year.

Also on the agenda are a review of the latest plans for Independence Lake Park and election of Commission officers for 1979.

The Commission meets at 7:30 p.m. at the County Recreation Center at the County Service Center, Washtenaw and Hogback Rds.

The U. S. Department funds a Federal Bonding Program to help ex-offenders who cannot obtain commercial bonding.

thus allowing larger increases in some states if the over-all effect is to stay within the inflation limits.

Exceptions will be allowed for changed coverages, classification changes, different experience ratings or other surcharges.

Unified Mental Health System To Be Sought

A task force to develop a program for a unified mental health system will be established by Governor Milliken. A report is due Sept. 1.

Milliken said a unified system would have a set of uniform policies applicable throughout Michigan and include establishing mandatory services offered through either inpatient, alternative residential, partial day or outpatient status.

The governor said counties or groups of counties could assume responsibilities to provide mandatory services or have the state provide the services.

Mental Health Director Vernon Stehman will chair the task force which is to suggest administrative alternatives to implement a unified effort.

Dial-A-Garden Topics Listed

Dial-A-Garden, the system of pre-recorded daily gardening tips, is sponsored by the Washtenaw County Co-operative Extension Service. The system is in operation 24 hours per day, seven days a week. Interested persons are invited to call 971-1122 at their convenience and receive timely, up-to-date gardening information.

Next week's Dial-A-Garden topics are:

Friday, Feb. 2—"Growing Celery."

Monday, Feb. 5—"Book Review—"Guides to Trees."

Tuesday, Feb. 6—"Houseplant Pest Series—Spider Mites and Thrips."

Wednesday, Feb. 7—"Scales and Mealybugs."

Thursday, Feb. 8—"Whiteflies and Springtails."

Subscribe today to The Standard!

We build special storage buildings.

Cuckler pre-engineered, all-steel buildings for storage on the farm, business and industry. Wide variety of types and sizes. Let us help you plan and build for your present and future needs.

Cuckler
AUTHORIZED BUILDER

DICK POLJAN
13875 MCKINLEY
CHELSEA, MICH.
Ph. 475-2921

ATTENTION Farmers! Beat the Frost Laws!

FREE STORAGE to April 15, 1979 on all grain received from Feb. 1 thru March 15, 1979

For all grain held after April 15, storage will be charged at daily rates in effect at that time.

Market discounts to apply.

HONEGGERS & CO., INC.

Ph. 475-1386

Advertise Your Auction in The Standard!

4 Years Ago...

Thursday, Feb. 6, 1975—

Dave Alber hit for a 20-foot jump shot with one second remaining in a second overtime to lead Chelsea cagers to a 67-65 victory over New Boston Huron Tuesday night. The win upped the Bulldog's season record to 13-2. Alber was virtually the whole show in the contest, as he scored a career-high of 35 points and also paced the team in rebounds with 17.

FBI agents continued their search this week for a Superior township man who remains at large after his part in robbing Chelsea's branch of Ann Arbor Federal Savings Friday of more than \$6,000.

Band and string musicians from Beach Middle school captured a total of 12 Division I ratings and 22 Division II ratings in last Saturday's junior high school Solo and Ensemble Festival at Henry Ford Community College, in what band director Ronald Harris called "a very good showing."

Mr. and Mrs. N. H. Miles entertained at a family dinner on Sunday in honor of their daughter, Kim, who recently graduated from Chelsea High school.

A portion of the roof of Beach Middle school was torn off by wind early last Thursday afternoon, but has since been repaired, according to Principal Alan Conklin.

14 Years Ago...

Thursday, Feb. 11, 1965—

The Cold Extrusion Division of Federal Screw Works is building an addition to their existing facility located at 516 Congdon St. This addition of 9,000 square feet will more than double the division's manufacturing space.

The two Chelsea village political parties will hold their party caucuses Monday, Feb. 15 at 8 p.m. The Independent Party will meet in the Municipal Building and the People's Party will meet there also on the third floor.

Boy Scout Troop 476 plans an Eagle Court of Honor at the Congregational church on Saturday, Feb. 13. Scouts Robert Miller, Kenneth Reinhardt, and Ray Worden will receive their Eagle award.

Wednesday, Feb. 24, the electorate of Chelsea School District will have the opportunity to vote on the proposed bond issue for a 10-classroom addition to the Senior High school.

Julius Kaercher retired last week from the William A. Thomas Co. after 17 years of service as maintenance mechanic.

24 Years Ago...

Thursday, Feb. 10, 1955—

Mrs. Hugh Sorenson, Chelsea March of Dimes chairperson, reported this week that the total amount contributed to date is

\$1,318.32. No industrial gifts have been received, she said.

At the Washtenaw county Republican convention in Ann Arbor Monday, L. G. Palmer was elected a Sylvan township delegate to the state and district Republican conventions to be held in Detroit, Feb. 19.

Two walk-aways from Cassidy Lake Technical school camp were captured at White Pigeon at 2:30 a.m. Wednesday in a stolen car a few hours after they had been reported missing.

Jackie Hibbs, Chelsea High school sophomore, was named "queen of the year" Saturday night at the formal dance sponsored by the High School chorus and chaired by Miss Martha Smith, music director for the school.

To Mrs. Frank Reed goes the honor of reporting to The Chelsea Standard the first robin of 1955. She actually saw two at her home on 121 North St.

34 Years Ago...

Thursday, Feb. 8, 1945—

Sponsored by the Young Mothers' Child Study Club of Chelsea, an open meeting was held in the kindergarten room of the public school on Wednesday evening, Jan. 31 to organize a Parent-Teacher Association.

The Village of Chelsea took possession of the Vogel building on E. Middle St. on Feb. 1 and no time was lost in making plans for remodeling work which will be done in preparation for the housing of all village departments.

(Continued on page five)

"Using the Short Form could cost you money!"



Henry W. Block

If you don't know tax laws, you need H&R Block to review your tax situation. You want to be sure you are using the proper tax form. Even if you filed the Short Form last year, your circumstances this year could let you save money by filing the Long Form. At H&R Block, we'll take all the time necessary because we want to be sure you pay the lowest legitimate tax.

H&R BLOCK
THE INCOME TAX PEOPLE

CHELSEA
105 S. MAIN ST.

PH. 475-2752

9 to 6 Mon. thru Sat.
Evenings and Sundays by appointment.

BEEF FRONT QUARTERS

\$1.19 lb.

Buy Your Hamburger NOW Before the Summer Cook-Out Rush!

HAMBURGER PATTIES

\$1.59 lb.

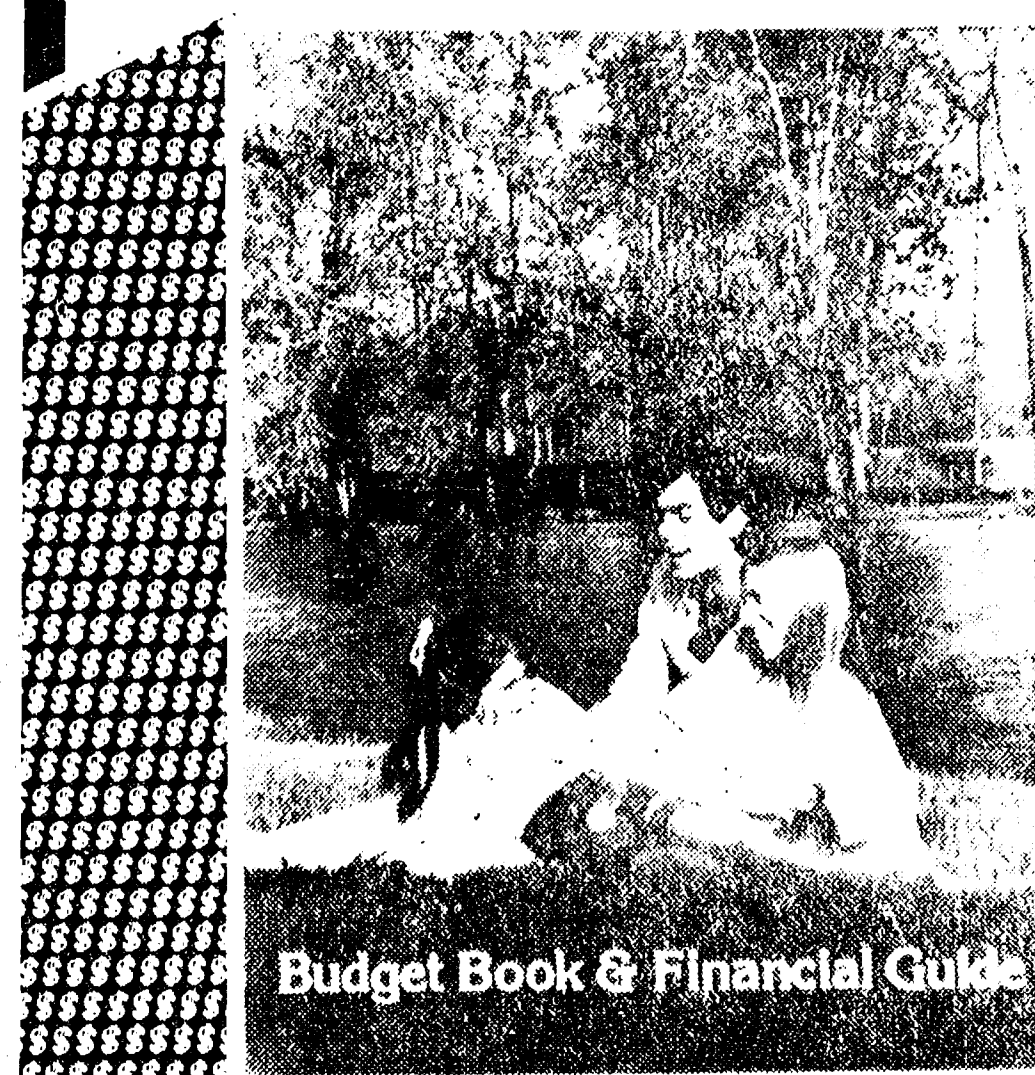
Double wax paper between patties for easy separation.

DUNBAR'S DEXTER FOOD LOCKERS

Paul Dunbar, Owner 8063 Main St., Dexter

Ph. 426-8466

FREE BUDGET BOOK



Budget Book & Financial Guide

Helps you manage your income for more fun, less worry and still save money!

By planning the distribution of your income ahead of time and exerting a bit of discipline, you can make more efficient use of your income with the help of the budget book. This easy-to-use book not only contains monthly budget charts but also helpful information such as:

- How to accumulate a fortune
- How to buy a home
- How to determine how much home you can afford
- Household inventory, for insurance purposes
- Safe deposit box inventory
- Useful metric conversions

FREE at any office or send coupon.

GREAT LAKES FEDERAL SAVINGS

P. O. Box 8600, Ann Arbor, MI 48107

(Please send Budget Book and Financial Guide)

Name

Address

City

State

Zip



GREAT LAKES FEDERAL SAVINGS

Offices in Ann Arbor, Battle Creek, Albion, Bellevue, Brighton, Chelsea, Coldwater, Dexter, Hastings, Jackson, Manchester, Marshall, Richland, Saline, Ypsilanti • Member FSLIC

Rogers Corners Study Club met Jan. 16 with 16 members present at the home of Marge Thompson on Fletcher Rd.

Italian dinner recipes were distributed to members and will be prepared by county study groups for a dinner at the Service Center in Ann Arbor on Feb. 5.

Martha Powers, community chairman, will have charge of the Feb. 19 meeting at the home of Edna Wenk.

A silent auction was held and refreshments were served.

Women who drink heavily during pregnancy risk having babies with physical and mental defects, according to The National Foundation-March of Dimes. More than one million American women of childbearing age are alcoholics.



Jaycee Auxiliary Hears Talk By State Chairman

The January general membership meeting of the Chelsea Jaycee Auxiliary was held in the meeting room of Chelsea Lanes. Hostess for the night was Denise Martell. Special guests were Paula Joyner, Michigan Jaycee Auxiliary M.O.R.E. chairman; and Nancy Freeman, past-president of the Livonia Jaycees.

Sandy Meyer, Auxiliary president, installed new member Cindy Beauchamp in a candlelight ceremony. Beauchamp was presented with a long-stem yellow rose and was welcomed into the organization by the membership.

Keynote speaker for the evening was Joyner, who represents the state in membership, orientation, retention, and enthusiasm. She spoke on the difference between internal and external enthusiasm and concluded by stressing the importance of passing Jayceism on to others.

Sue Zink announced elections for the March meeting, with the officer slate to be presented in February. Members were reminded that the winter board meeting is scheduled for Feb. 16-18.

During standing project reports, Kathy Sprawka announced her plans to make Redball a standing project. Carol Smith, BUBS (Buckle Up Babes) chairman reported that the chairs were in and the project should be in full swing within the next month.

The second half-year's planned program and joint policy were reviewed and approved. A completion report on the JC Blood Drive Assist, and a progress report on Bowl for Impact on Burns were heard.

Jaycette Week was introduced as new business, with Sue Zink taking on the chairmanship. A leadership dynamics workshop was announced along with plans to run the pet food drive again. Pam Lewis agreed to take on the teacher's appreciation project.

Nan Rowe was the recipient of "The Girl of the Month Award." Jill Comeau was given the "Presidential Pepper Award," and Chris Wagner was presented with "The Moonie Award."

The meeting ended with newly installed member, Beauchamp, leading the group in the Creed.

Liebeck - Wilson Engagement Told

Mr. and Mrs. Douglas Liebeck of Chelsea, have announced the engagement of their daughter Joyce Marie to Barry Wilson, son of Mr. and Mrs. Charles Wilson of Jackson.

Miss Liebeck is a 1977 graduate of Chelsea High school. Her fiancé is a 1976 graduate of Northwest High school, Jackson.

A September wedding is planned.

Special Class Series on Energy

Help with income tax problems is being provided by Washtenaw Community College in several 10-session courses. The class is being offered both during the day, beginning Tuesday, Feb. 6 from 9:30 to 11 a.m. and during the evening beginning Thursday, Feb. 8 from 6 to 7:30 p.m.

Dr. Steven Vass, course instructor, explains that the class, which may be taken for one hour credit, if desired, has been designed to cover individual questions and provide specific, expert instruction. A \$14 fee is being charged. In-district senior citizens are invited to attend at no charge. Registration may be completed in advance by calling 973-3548, 973-3464 or 973-3375 or at the first class session.

The day-time session meets on Tuesday and Thursday mornings in Room 2706 of the Student Center Building of the College's Main Campus at 4800 E. Huron River Dr. Evening sessions meet Thursdays and Fridays in Room 1806 of the same building.

VALENTINE'S DAY CANDY

By
"The Sugar Shack"
of Chelsea

Now Available at
THE VILLAGE BAKERY

HAND-MADE BOXED
ASSORTED CHOCOLATES . . . Box \$4.95

HAND PAINTED
SOLID CHOCOLATE
HEART-SHAPED SUCKERS . . . ea. .75c

INDIVIDUALLY WRAPPED
HEART-SHAPED CANDY ea. 85c

Child Study Club Hears Discussion on 'Being A Woman'

Chelsea Child Study Club met at the home of Ruth Dills on Jan. 23 with 24 members present. Guests for the evening were Roberta Cobb, Carol Ghent, Daphne Hodder, Donna Lane, Kathy Peterson, JoAnn Richardson, and Gerry Tallman.

Kay Redding will be welcomed as a new member at the next meeting.

Ann Schaffner reported an excellent profit from the Christmas bazaar, 90 percent of which will go to the Waterloo Interpretive Center. The total amounted to \$1,400.

The meeting was followed by a panel presentation "On Being A Woman," with guest speakers Ann Feeney, Sherri Plank and June Warren, led by Neta Mills.

Dessert was served by Marion Sprague and Camie Noah.

The next meeting of Chelsea Child Study Club will be an evening of "Swim and Trim" led by Helen Thomas at Beach Middle school. Following the exercise time, the group will meet at Barbara Branch's home for a meeting and refreshments. Guests are welcome.

Susan Kay German Joins U-M Sorority

Susan Kay German, daughter of Robert and Marjorie German of Chelsea and a freshman at the University of Michigan majoring in business, has been initiated by Theta Chapter of Alpha Phi Sorority.

Cards of Thanks

THANK YOU
I would like to thank the Chelsea High school teachers for their contribution to Special Olympics made in memory of my father, Claude Wise. I know he would have appreciated it and the joy that it brings to mentally impaired youngsters. Thank you for your kindness.

Nancy Cooper,
Chelsea Special Olympics.

THANK YOU
The family of Elizabeth Harper wishes to express its sincere thanks to the members of the Chelsea Fire and Police Departments who gave such welcome assistance during Mrs. Harper's recent illness and special thanks to Mr. Cole.

CARD OF THANKS
We would like to thank our friends in Chelsea for their thoughts, cards, and flowers during our recent loss of husband and son-in-law.

Marilyn Adamson,
Mr. and Mrs. Lyman Adams.

CARD OF THANKS
We wish to thank our neighbors, friends, and relatives for the kindness and thoughtfulness extended to us during the recent loss of our mother and grandmother.

The family of Mary Kuslak.

As part of its work therapy program, the Veterans Administration has 66 printing plants in its medical centers. Last year this therapeutic training helped 33 former patients find jobs in private off-set printing shops.

Telephone Your Club News
To 476-1371.

CAROL'S CUTS
328 Wilkinson

Monday, Wednesday
and Friday
475-7094
Appts. Only

Women and the Law Courses Set at WCC

Two courses in Women and the Law will begin on the main campus of Washtenaw Community College during the week of Feb. 5. Each course runs seven weeks.

Basic Women and the Law will be taught on Wednesday evenings from 7:30 p.m. to 10 p.m. beginning Feb. 7, in Room 3805 of the Student Center Building. Each course carries one hour's credit.

Tuition for in-county students is \$14 per credit hour. There is a one-time additional fee for students new to the college. Students may register the first night of class. Subjects discussed will include employment, education, sports, reproductive freedom, divorce, rape, credit, women's names, and the Equal Rights Amendment. The instructor is Jean L. King, an Ann Arbor attorney.

The second course, Advanced Women and the Law will be taught on Thursday evenings from 7:30 to 10 p.m. beginning Feb. 8, Room 3805 of the Student Center Building. This course will be taught from cases and previous experience in the subject is not a prerequisite for taking the advanced section.

Girl Scout Association Will Meet

A very special night is planned for the meeting of Western Washtenaw Area Association of Huron Valley Girl Scouts Thursday, Feb. 15 at 7:30 p.m. at the Beach Middle school, Chelsea, off Freer Rd.

All leaders and committee members are urged to attend. Also, all mothers are invited to see the S.A.F.E. Program to be presented at this meeting. There will be a slide presentation for Brownies and Juniors entitled "You Are Special," and "Rape Prevention; No Pat Answer," a movie for Cadettes and Seniors. New Program Specialist Janet Thomas will be administering the S.A.F.E. Program.

Information about the Area-wide "Indoor Activity Day," Cookie Sale, and a Council-wide big event in June will be discussed. The enthusiastic Barb Boelter of Belleville is chairman for this event, and she will be on hand to talk about it. Form car pools. For more information, call Grete Skjaerlund, 426-3294, or Sandy Schunk, 475-8175.

Extension Service Starting Housplant Clinic Feb. 13

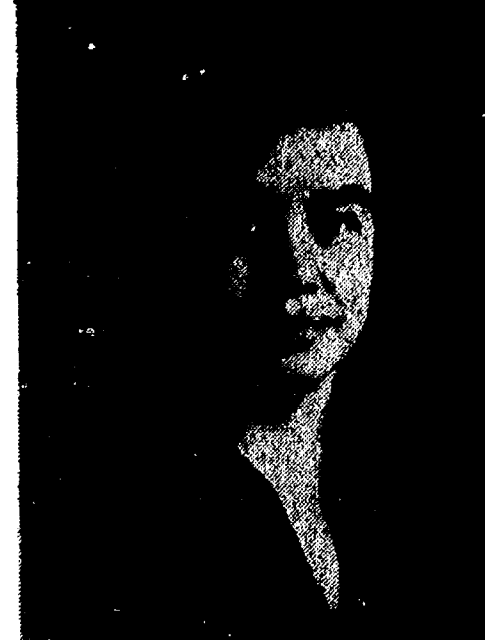
The Washtenaw County Co-operative Extension Service is announcing the opening of a houseplant clinic on Feb. 13. The clinic is to be held every Tuesday, from 9 to 11 a.m. and Thursdays from 1 to 3 p.m. on the ground floor at the Washtenaw County Service Center, 4133 Washtenaw Ave., Ann Arbor.

The clinic will offer a wide range of services. It will be a place where people may bring their ailing plants to have them diagnosed. In addition to diagnosing insect and disease problems, clients may receive instruction on culture.

Periodically, special sessions will be held concerning topics such as fertilization, culture of special plants, and raising transplants. These special sessions will be announced in advance on Dial-A-Garden at 971-1122.

The clinic will be staffed by qualified Master Gardeners as well as the Extension Horticultural Staff. Most required materials will be supplied at a minimal charge.

For further information please contact the Washtenaw County Co-operative Extension Service at 973-9510.



JEAN L. KING

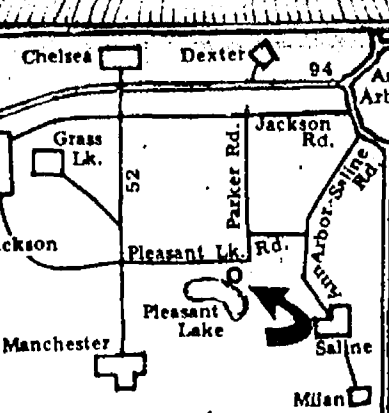
Pioneer Girls To Mark 40th Anniversary

The entire Feb. 4, Sunday evening service at Immanuel Bible church will be conducted by the Pioneer Girls.

Program begins at 6 p.m. and will honor the 40th anniversary of the International Pioneer Girls organization.

Highlights of the evening will include a play entitled "The Light of the World," honoring girls who have earned awards; a dramatized history of Pioneer Girls; display of items which the girls have made; and a dessert buffet.

Anyone interested in learning about Pioneer Girls is invited to attend.



AURA INN
11279 PLEASANT LK. RD.

FOOT-STOMPING FUN
DANCING FOR EVERYONE!

RICARDO'S HAIR STYLING

107 N. Main, Chelsea

OPEN TUESDAY THROUGH SATURDAY
475-1671



Store-Wide Winter

SALE

EVERYTHING REDUCED

10 to 50% Off

Furnishings and floor coverings . . . heart warming savings on your heart's desire for your home beautiful. Come in now and make your selections. You can even special order at savings.

Mikel
FURNITURE & CARPET
OPEN MONDAY, THURSDAY & FRIDAY TIL 9

Tell Them You Read It
In The Standard!

SIXTH ANNUAL

WINTER CARNIVAL

CAVANAUGH LAKE

FRIDAY, SATURDAY & SUNDAY
FEBRUARY 2nd 3rd & 4th

FRIDAY NIGHT

7:00 p.m.—Carnival begins, Post open to public.
7:30 p.m.—Euchre tournament on upper deck.
\$1.00 entrance fee. Prizes.

SATURDAY

7:00 a.m.—Fishing Derby begins.
1st, 2nd & 3rd prizes for Perch, Pike & Panfish.
10:00 a.m.—Cross Country Skiing with guide. Leaves from the Legion. 2 hours.
1:00 to 6:00 p.m.—LaVonne Harris plays the piano on the upper deck.
2:00 p.m.—Cross Country Skiing with guide. Leaves from the Legion. 2 hours.
9:00 p.m.—Carnival Dance with The Gaken Band. Buffet.

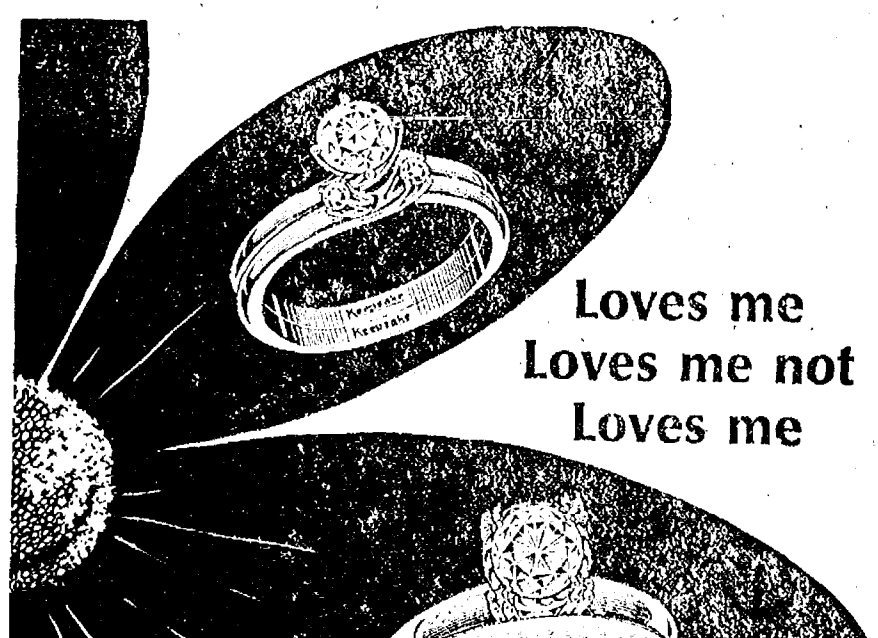
SUNDAY

8:00 a.m.—Fishing Derby continues.
10:00 a.m.—Cross Country Skiing.
2 to 5 p.m.—Live band on upper deck. \$2.00 cover charge.
Music by Kanten-Simms & Ruby Group.
5:30 p.m.—Prizes awarded.
6:00 p.m.—1979 Winter Carnival ends.

SNOWMOBILERS WELCOME

Sponsored by

HERBERT J. McKUNE POST 31, AMERICAN LEGION



Loves me
Loves me not
Loves me

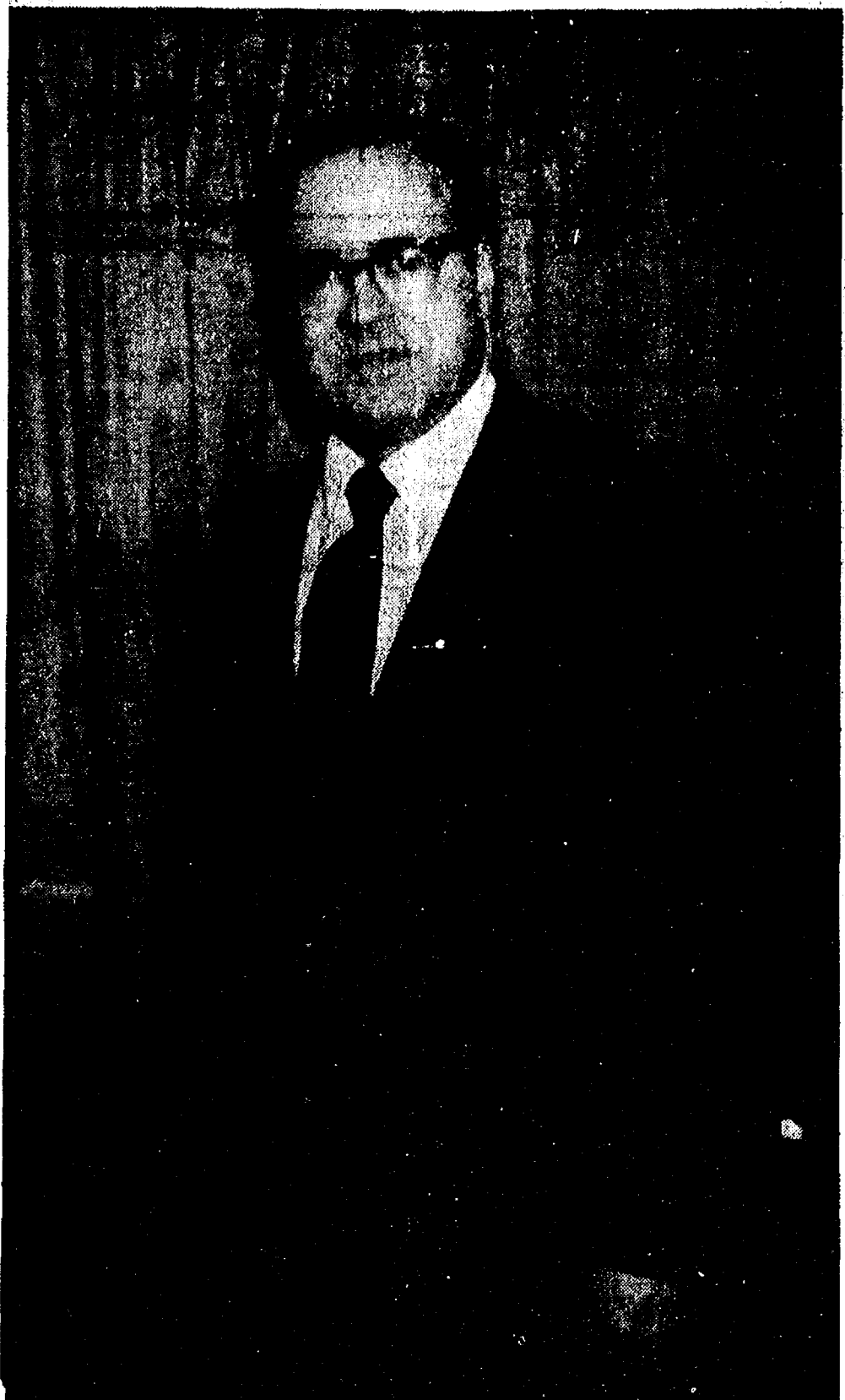
When you know it's for keeps, choose a Keepsake diamond ring to symbolize your love forever. A perfect, fine white diamond precisely cut, with permanent registration and loss protection. There is no finer diamond ring.

Keepsake
REGISTERED DIAMOND RINGS

WINANS JEWELRY

YOUR AUTHORIZED KEEPSAKE DEALER

James A. Williams Retiring from Rockwell With 40 Years Service



James A. Williams, currently serving in an advisory capacity for the plant's product engineering department at Rockwell International's Mechanical Devices Division plant in Chelsea, will retire Feb. 1, with more than 40 years of service.

Williams, 59, began working for the Muelhausen Spring Co., a Rockwell predecessor company, in Logansport, Ind., in 1938 as a set-up man and machine operator. In the 29 years that followed until he was transferred here, his company first became part of Standard Steel Spring Co. and in 1963 Standard Steel Spring merged with Timken-Detroit Axle Co. to become Rockwell-Standard Corp., which ultimately became Rockwell International.

In 1967, Williams moved to the Chelsea Rockwell plant to be foreman of the heavy coil department. Later, he also served the company as production superintendent and as quality control manager.

In describing his job, Williams said, "I'm a trouble shooter with a lot of experience."

He, and his wife, Carolyn, plan to travel the country in their 26-foot motor home. "We'll set up a base in Arizona and next summer we plan to go to Alaska," Williams said.

Rockwell International is a major multi-industry company applying advanced technology to a wide range of products in its automotive, electronics, aerospace, and general industries businesses.

RETIRING: Describing himself as "a trouble shooter with a lot of experience," Williams will formally retire from Rockwell International following 40 years of service today, Thursday, Feb. 1. He, and his wife, Carolyn, plan to travel the country in their 26-foot motor home. "We'll set up a base in Arizona and next summer we plan to go to Alaska," he said.

According to the U.S. Labor Department, there was a seven percent increase in 1978 in the total amount of money found due employees under the federal wage and hour laws over the previous year.

The year 1978 marks the 40th anniversary of the Fair Labor Standards Act, the federal law which established the principles of nationwide minimum wage, overtime pay and child-labor protection for the nation's workforce.



SWIMMERS OF THE WEEK are Henri Vanderwaard, left, and sophomore Tom Gaunt. Vanderwaard has teamed up with other varsity swimmers to break records in the medley relay and freestyle relay. He also holds the 100-yard breaststroke record. Gaunt turned in top performances during the Milan meet. He led off the medley relay with a best time and then broke the varsity record in the 200-yard IM. He also broke the varsity record in the backstroke which earned him a berth in the state meet—the first Chelsea swimmer to do so this year.

CHS Class of '69 Seeks Addresses For Classmates

A Chelsea High school Class of 1969 planning meeting was held Jan. 24 to formulate plans for a summer 10-year reunion.

Tentative plans and classmate addresses were discussed. Any one with addresses for Mike Bivins, Chris Frinkle, Debra Hoy, Bonnie Parnell, or Deborah West may contact Nancy Montagne at 475-1080.

A second planning and work meeting will be held on Monday, Feb. 5 at 7:30 p.m. at the home of Mrs. Mary (Steele) Picklesimer, 16791 Winters Rd., 475-7695. All classmates in the area are urged to attend to present their

Ann Arbor Trust Has Record High Earnings

Record high earnings will be reported to Ann Arbor Trust Co. shareholders along with a Board of Directors resolution proposing a two for one stock split at the firm's Annual Meeting scheduled for Feb. 20 at the Campus Inn.

Ann Arbor Trust President George H. Cress said 1978 earnings reached \$3.46 per share compared to \$7.14 in 1977, an increase of 18.5 percent. Cash dividends in 1978 were \$2.50 per share versus \$2.00 in 1977, up 21.4 percent, he added.

Total assets of the trust company at Dec. 31 1978, were \$76,550,000 compared to \$75,122,000 on Dec. 31, 1977. Cress attributed this modest increase to three main factors:

"There were unusual short term deposits during the last week of 1977 that did not reoccur in 1978. Also," he explained, "we reduced our investment in time deposits more than \$100,000 due to the high level of interest rates on these deposits compared to one year ago."

"And finally, higher rates available in commercial paper and government bonds have slowed bank savings deposits nationally, as well as here in Ann Arbor," Cress pointed out.

The trust company's quarterly dividend rate has been increased by 10 cents per share to a new indicated annual rate of \$2.80 per share.

"This marks the sixth consecutive year that the Ann Arbor Trust Co. dividend has been increased," Cress reported. "The dividend has nearly tripled in this six-year period" he said.

REGENCY TRAVEL Presents AIR ONLY SPECIALS

Athens	from \$519
Bangkok	from \$479
Berlin	from \$199
Brussels	from \$184
Hong Kong	from \$429
Israel	from \$479
Jakarta	from \$559
Korea	from \$728
Chicago Departure	
Kuala Lumpur	from \$514
London	from \$177
Manila	from \$425
Singapore	from \$519
Taipei	from \$429
Tokyo	from \$514
Chicago Departure	

One Week Bargains*	
Acapulco	from \$295
Aruba	from \$341
Bonaire	from \$341
Cancun	from \$335
Costa Rica	from \$409
Cozumel	from \$369
Curacao	from \$341
Florida Fly-Drive	from \$283
Freeport	from \$264
Grand Cayman	from \$359
Guadeloupe	from \$439
Hawaii	from \$479
Ixtapa	from \$345
Jamaica	from \$295
London	from \$669
Martinique	from \$509
Mazatlan	from \$339
Mexico, 3 cities	from \$333
Nassau or	
Paradise Island	from \$288
Puerto Rico	from \$459
Rio	from \$469
(New York City Departure)	
Ski Utah	from \$359
St. Croix	from \$479
St. Maarten	from \$499
St. Thomas	from \$499
Tahiti	from \$699
Chicago Departure	

Air/Sea Cruise* From \$679

Call for Wide Cruise Selection	
Week-End Specials*	
Chicago	from \$ 66
Las Vegas	from \$196
Montreal	from \$ 99
New York City	from \$193
Toronto	from \$ 38

Around the World in 80 Days or Less from \$999

REGENCY TRAVEL

The Friendly Tour Store on the Corner
665-6122
601 E. William (Corner Maynard)
ANN ARBOR, MICH. 48104

REGISTRATION NOTICE

VILLAGE ELECTION Monday, March 12, 1979

TO THE QUALIFIED ELECTORS OF THE Village of Chelsea
COUNTY OF WASHTENAW, STATE OF MICHIGAN
Notice is hereby given that in conformity with the "Michigan Election Law," I, the undersigned Clerk, will upon any day, except Sunday and a legal holiday, the day of any regular or special election or primary election, receive for registration the name of any legal voter in said Township, City or Village not already registered who may APPLY TO ME PERSONALLY for such registration. Provided, however, that I can receive no names for registration during the time intervening between the Thirtieth day before any regular, special or official primary election and the day of such election.

NOTICE IS HEREBY GIVEN THAT I WILL BE AT MY OFFICE
Feb. 12, 1979 - Last Day
From 8 o'clock a.m. until 8 o'clock p.m.
The 30th day preceding said election
As provided by Section 498, Act No. 116, Public Acts of 1954
at Municipal Building, 104 E. Middle St.
For the purpose of REVIEWING the REGISTRATION and REGISTERING such of the qualified electors in said TOWNSHIP, CITY or VILLAGE as SHALL PROPERLY apply therefor.
The name of no person but an ACTUAL RESIDENT of the precinct at the time of registration, and entitled under the Constitution, if remaining such resident, to vote at the next election, shall be entered in the registration book.

In addition to the election of candidates for various offices, the following proposition (s) (if any) will be voted on:
Thomas Neumeyer, Village Clerk
Standard Want Ads Will Sell Your Unwanted Items

You are invited to an

OPEN HOUSE

(at one of three locations - directors below)

FEB. 3-4
1-5 p.m.
SAN JUAN

Here's your chance to see how CENTENNIAL HOMES erects, encloses and completely finishes the exterior of a home. This allows you to save a bundle by doing the finishing yourself, or simply subcontracting the interior. CENTENNIAL HOMES gives you complete design flexibility. Use one of our plans, your own plans or the best of both.

Since this house is not all finished and fancied up with furniture, you will be able to examine our workmanship and materials very closely. We feel a CENTENNIAL HOME does not have to be finished to look impressive! We certainly hope that you will plan to visit our open house so that you can — GET THE INSIDE STORY!!

BETWEEN BRIGHTON & ANN ARBOR

FEB. 4

ADRIAN
FEB. 3

ANN ARBOR
FEB. 4

Mail the coupon or call our sales representative

KALAMAZOO: Howard Keck Phone: 616/323-2370
HUDDON: Bob Hutton Phone: 517/448-8880
GRAND RAPIDS: Don McCallum Phone: 616/363-3246
ANN ARBOR: Tom Marshall Phone: 313/769-5010
CADILLAC: Jim Proznicki Phone: 616/775-3327

CENTENNIAL HOMES, INC.
5331 Plymouth Road
Ann Arbor, Michigan 48105
Please rush me your New Homes Idea Book — with no cost or obligation.

NAME _____
ADDRESS _____
CITY/TOWN _____ COUNTY _____
STATE _____ ZIP _____ PHONE _____
☐ We own a lot. ☐ We can get a lot in _____

Why open a BUSINESS SAVINGS Account at Ann Arbor Trust?

Here's why:

- Your funds will earn 5% interest, continuously compounded for an effective annual yield of 5.20%. That's the highest bank rate in Chelsea!
- If you also have a Business Checking account with us, we provide free transfers from your checking to savings account and back again.
- We make banking easy. You can make deposits or transfers in person, by mail or by phone.
- Every month you will receive a statement of account detailing deposits, withdrawals, and interest paid.

High interest, free transfers, monthly statements and convenience. Add our prompt, friendly service and you have all the reasons you need to open a Business Savings account at Ann Arbor Trust. Call us today.

ANN ARBOR TRUST COMPANY

100 South Main, Ann Arbor • Phone 994-5555
1478 Chelsea Main Street Road, Chelsea • Phone 475-9154

Hospital Child Care Center Is Busy Place

Children at the Chelsea Community Hospital's Child Care Center should enjoy the interesting activities planned for them in the next four weeks.

During the first week, the theme will be transportation, designed to familiarize the children with different modes of travel. What are the different ways we can move our bodies? How do our animal friends move?

The children will also be participating in activities that will help them identify various transportation vehicles. They will discuss the similarities and differences between these vehicles. The sounds of different transportation machines will also be identified. A walk to observe different kinds of cars and trucks is planned.

Songs, stories and art projects about transportation will provide fun activities for the children. With blocks and chairs, "buses," "trains," and "cars" will be built for the children, so they may pretend to drive and ride in them.

The following week, the children will be learning about Valentine's Day activities. What is a valentine? Why do we give valentines to our friends? All of these questions will be answered for the children.

On Valentine's Day, a party is being planned, where the children will exchange valentines, play games and sing songs. The color red will be highlighted during the Valentine celebration. Children will use red paint at the easel, the water table will have red water to play in, and the playdough will be red.

The next subject of study will be colors. Every day children will concentrate on one color. The

children will be asked to wear clothing displaying the color of the day. They will paint with that color, sing songs and find the color all around the school.

The following week, the theme will be vegetables. During this week, children will build on their knowledge of vegetables. They will discuss familiar and unfamiliar vegetables, the differences between vegetables and fruits and the shapes and colors of the vegetables.

They will use various vegetables in science experiments and art projects. The children will also participate in the making of vegetable soup.

There are still a few full- or part-time openings in the Child Care Center. The center is licensed for children ages 2½ through 7, and operates from 8:30 a.m. to 5:30 p.m. Monday through Friday. The center is located at St. Paul United Church of Christ, 14800 Old US-12 Chelsea. For further information, please contact Corinne Gillan at 475-1920.

34 Years Ago...

(Continued from page two)

R. E. Jolly, whose 80th birthday anniversary occurred Friday, was honor guest at a party given Sunday at his home on Garfield St.

A family dinner on Sunday at the home of Mr. and Mrs. Vernon Satterthwaite celebrated the birthday of Mr. Satterthwaite, his sister, Mrs. Leon Chapman and her daughter, Donna Lee. Covers were laid for 14.

Subscribe today to The Standard!

Cager of the Week



MIKE KILLELEA (44) is a junior playing his first year on varsity for the Chelsea cagers. Last year, the 6'3", 180-lb. forward-center was a member of the junior varsity squad and his basketball career spans all the way back to 7th grade. Until this year, Killelea has been stationed in the forward position but when the varsity team needed a backup center, he was chosen. A forward, according to Killelea, "is concerned with racking up the points. He handles the ball a lot during a game and concentrates on passing the ball out on the fast break," Killelea explained. Like most of his teammates, Killelea considers the Bulldogs' first encounter with Novi this season as the brightest spot in an otherwise disappointing year. "When we defeated them we proved we had the ability to play any team in the league. We performed soundly in all phases of that game," he commented. On an average, Killelea produces four points a game and three-and-a-half rebounds. During the Jackson Northwest game, however, Killelea hustled for nine points which he cites as his "personal best." In spite of the Bulldogs' two recent losses, Killelea is optimistic for the remaining season. "We can still finish with a decent record—maybe as the top third or fourth team in the league. The biggest thing in our favor is that most of the games are at home," he said. Killelea is the son of Tom and Diane Killelea, 42 Chestnut Dr.

Education Finance Seminar Slated

Interested members of the community are invited to attend a special seminar Wednesday, Feb. 7 from 9 a.m. until noon at Washenaw Community College concerned with how students can finance their education.

Guy Hower, instructional coordinator and financial aid officer at Washenaw Community College, will present the discussion, providing detailed information about federal grants, bank loans, eligibility for CETA and Department of Social Service programs and others.

The seminar is open to the public at no charge and will be offered in Room 2704 of the College's Student Center Building at 4800 E. Huron River Dr. Further information regarding the program is available by phoning 973-3528.

Child Abuse Meeting Slated Next Tuesday

Chelsea Church Women United is sponsoring a community meeting on child abuse on Feb. 6 at 8 p.m. in the large group instruction room at the Beach Middle school.

Speaker will be Sara Gibb, director of the Parent Aid Program in Ann Arbor and Ypsilanti. Mrs. Gibb previously worked with parents Anonymous in Ann Arbor and later began the Parent Aid Program which trains volunteers to provide friendship and support to parents who have abused their children.

This meeting will provide information on child abuse and on forming a Parent Aid Program. In the event of severe weather, the meeting will be postponed until Feb. 20 at 8 p.m. at Beach school.

All parents, teachers, and people interested in children are urged to attend. Sponsoring this children-oriented meeting is part of the Chelsea Church Women United involvement in the Year of the Child.

Please Notify Us of Any Change in Address

Natural Shampoos and Conditioners

Fragrant!

Rivendell Natural Foods

Mon.-Sat., 9 a.m.-5:30 p.m.
3212 Alpine, Dexter
Across from Farmers' Market
Ph. 426-2549

Get Out of That Rut...

DON'T BE A "STUCK IN THE MUD"

Call

M & M GRAVEL CO.

Repair Your Old Driveway
Or Build A New One!

WE CAN DO THE JOB... WE HAVE WHAT IT TAKES!

★ ROAD STONE
★ BASE STONE
★ DRAINFIELD STONE
★ WASHED SAND
★ PEA STONE
★ FILL DIRT

PHONE
475-1941

Or after 4 p.m.
(313) 498-2866

Located 4 Miles North of Chelsea
M-52 and ROE ROAD

PIT HOURS: 8 to 5 Mon. thru Fri. 8 to 12 Sat.

Varsity Swimmers...

(Continued from page one)

yard I.M. Mike also had a best time of 1:05.6 in the fly.

Paul Schumann had best times in the 50-yard freestyle, :28.4, and 500-yard freestyle, 6:13.1. Craig Wirtz had a best time of :27.1 in the 50-yard freestyle. C. B. Wiesner had a top performance in the 50-yard breaststroke, :33.4, and in the 100-yard freestyle, :58.8. Kirk Myers had best times of 1:03.4 and 1:13.3 in the butterfly and backstroke. Shawn Pletton had a best time of 1:27.4 in the butterfly and Andy Weir had a 27-second drop in the 500-yard freestyle to 7:30.9.

Also in the 500-yard freestyle, Todd Oxner had a best time of 5:37.2. In the breaststroke, Tom Gaunt and Doug Pichlik each had best times of 1:13.3 and 1:23.7,

respectively. Phil Hoffman had best times in the 50-yard fly, :27.1, and broke the school record in the 100-yard freestyle with a time of :53.2.

Chelsea's next meet is at home against River Rouge on Feb. 6 and then travels for a tough Brighton meet on Feb. 8.

The Humphrey-Hawkins Bill establishes as a national goal the fulfillment of the right of all Americans able, willing, and seeking work to full opportunities for useful paid employment at fair rates of compensation.

The U. S. Department of Labor was established by law in 1913; it included the Bureau of Labor Statistics, the Bureau of Immigration and Naturalization, and the Children's Bureau.

The Chelsea Standard, Thursday, February 1, 1979

NOW ON TUESDAY NIGHTS

CHICKEN BUFFET



with our Famous Deep-Fried Chicken
and SPECIAL BARBECUED CHICKEN
also mashed potatoes and gravy, dressing, and salad bar
serving from 4:30-9:00

at the **CAPTAINS TABLE**
8093 MAIN ST. DEXTER PH 426-3811

Jiffy market

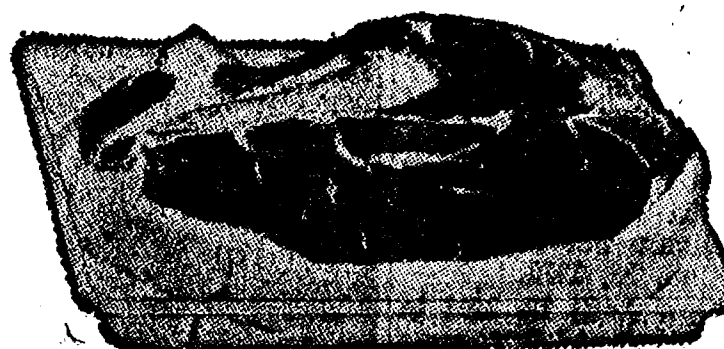
Big Enough To Serve You... Small Enough To Know You!

PHONE 475-1701

SALE PRICES GOOD FEB. 1-4, 1979

TOP VALUE FOODS - GUARANTEED SATISFACTION - COURTEOUS SERVICE

COMPLETE FRESH MEAT DEPT. - USDA CHOICE BEEF - THE FINEST OF FRESH PORK



Tender Beef with Flavor!

U.S.D.A. CHOICE

RIB STEAKS

Large End \$1.98 lb.

JIFFY MARKET TASTIEST
TENDEREST CHOICE MEATS

USDA CHOICE STEAK SALE

Sirloin Steak....lb. \$2.09

T-Bone Steak....lb. \$2.99

Porterhouse Stk..lb. \$2.99

Club Steak.....lb. \$2.79

Cube Steak.....lb. \$1.99

WILLIAMS - AT MEAT COUNTER

LONGHORN CHEESE

Random Weights lb. \$1.49

Kiebler Old Fashioned

RING
LIVER

\$1.49 lb.

FRESH, LEAN

PORK
HOCKS

69¢ lb.

LEAN - TENDER

PORK
CUTLETS

\$1.98 lb.

Kiebler Old Fashioned

HEAD
CHEESE

\$1.69 lb.

MEDIUM SIZE

FRESH EGGS..... doz. 79¢

FRITO-LAY'S

DORITOS
Reg., Sour Cream,
Nacho Cheese or
Taco

7-Oz.
Pkg. 69¢

MAMA

ASSORTED
COOKIES
6 1/4-Oz.

3 pkgs. \$1.09

12-OZ. CANS

7-UP, DIET 7-UP,
ROOT BEER,
ORANGE CRUSH

6 pac \$1.49
Plus Deposit

SUNBEAM

HAMBURGER
or
HOT DOG BUNS

8-Pack
10-Oz. 39¢

FARM MAID HOMOGENIZED

MILK..... gal. \$1.59

FARM MAID SPECIALS

LOW-FAT
MILK

\$1.29 gal.

ORANGE
JUICE

1/2 gal. 89¢

HALF &
HALF

69¢ qt.

SOUR
CREAM

69¢ pt.

SUNBEAM ENRICHED

WHITE BREAD... Large 1-Lb., 4-Oz. Loaf 29¢

JIFFY MEAT SERVICE

CUSTOM CUTTING, WRAPPING, FREEZING.
QUICK SERVICE ON BUTCHERING —
YOUR BEEF OR OURS.

★ U.S.D.A. CHOICE SIDES OF BEEF
★ FRONTS - HINDS - WHOLE RIB - WHOLE LOINS
★ LOCAL FARM CORN-FED BEEF AVAILABLE

JIFFY MARATHON GAS PUMPS

REGULAR GAS **70.9** gal. Includes All Taxes

THANK YOU — We Appreciate Your Business!

Open With Complete Service, 7 Days A Week

TOP VALUE **7 a.m. MORNING to 10 p.m. NIGHTS** FOODS

Sale Prices
Feb. 4
Thru
Feb. 1

CATS CHELSEA AREA TRANSPORTATION SYSTEM

Transportation for the Senior Citizens, 65 years and Older, and the Handicapped.

Advance reservations are required. For morning transportation call the preceding afternoon between 1 p.m. and 3 p.m. For afternoon transportation call in the morning from 9 a.m. to 11 a.m.

CALL 475-9494

between 9 to 11 a.m. or 1 to 3 p.m.

Service hours are 9 a.m. to 4:30 p.m. daily; Thurs., 9 to 1

Auto-Owners Insurance claims service. It's our claim to fame.

In 60 years, Auto-Owners has grown from a small car insurance company to a major company offering protection for all your personal and business needs. And we didn't get there by being slow or tough when it comes to claims. Auto-Owners reputation was built on having the fastest, fairest claims

service possible. A claim service that was designed with just one thing in mind: you!

Just ask anyone who's ever had a claim through Auto-Owners.

Just ask us about your insurance needs. Whatever it is—life, home, car, business—we think you'll claim we do better, too.



Auto-Owners Insurance

You can't find a better name for fast, fair claims service.

MAYER AGENCY

OF SPRINGER-KLEINSCHMIDT AGENCY, INC.

Phone 475-8689

Chelsea, Michigan

LIMITED TIME ONLY!



director and president of the Chelsea Community Chest, and as a director of the Chelsea Community Hospital.

Telephone Your Club News
To 475-1371.

Gains Honors As U. of M. Debater

since the fall of 1978 and will continue during the month of February so that they may qualify for District honors at Butler University.

Pick-Up and Delivery Available
MARJORIE SMITH
Phone (313) 428-7146

Store Hours

rs: Open Mon. thru Sat., 8 a.m. to 5:30 p.m.

Since 1914



Ph. 475-1221



Real Estate

By PAUL FRISINGER

REALTOR

CASH PLANNING IMPORTANT

If you are considering the purchase of your first home, you should also consider taking a close look at your financial balance sheet so that your decision will be one of pleasure rather than pain.

Items to take into consideration are, first and foremost, the down payment, settlement fees and moving costs. These will make the biggest dent in your savings. You should have enough margin to draw on for such items as furniture, carpeting, storm windows, etc., if needed.

After figuring what your mortgage payments will be, don't forget to add on the cost of utilities and services that may

be included in the rent you are now paying.

FHA and VA mortgages, if available, can be used to keep the down payment low. And don't be shy about asking your Realtor to spell out all the closing costs in advance—on paper. Financial surprises — you don't need!

If there is anything we can do to help you in the field of real estate, please phone or drop in at FRISINGER REALTY CO., 935 S. Main St., Chelsea. Phone: 475-8682; evenings, 475-2621. We're here to help!

Aquatic Club Wins First Two Meets

Chelsea Aquatic Club won their first two meets of the winter season by defeating Willow Run on Jan. 22, 284-219 and defeating Plymouth, 366-252 on Jan. 29.

This Saturday morning, Feb. 3, the Chelsea swimmers will meet Milan at the Chelsea pool.

The following medley relay teams placed first in the meet against Willow Run. 8-year-old and under girls, Kelly Kuzon, Jenny Pichlik, Sarah Weis, and Cathy Hoffman. 9- and 10-year-old boys, John Cattell, Ted Lewis, Darren Girard, and Danny Degener. 9- and 10-year-old girls, Kris Mattoff, Melanie Gunn, Jennifer Cattell, and Paula Colombo.

Individuals who placed first in the backstroke event were 8-year-olds and under, Jenny Pichlik, with a time of 19.7. 9- and 10-year-olds John Cattell with 42.9 and Kris Mattoff with 41.2. 11- and 12-year-olds Scott Miller with 39.5.

Freestyle relay teams which placed first were 8-year-olds and under girls, Kelly Kuzon, Cathy Hoffman, Sarah Weis, and Jenny

Pichlik. 9- and 10-year-old boys, Ted Lewis, Gary Callison, John Cattell, and Danny Degener. 9- and 10-year-old girls, Jennifer Cattell, Kris Mattoff, Melanie Gunn, and Paula Colombo. 11- and 12-year-old boys, Scott Miller, Chris Baker, Mike Carignan, and Dave Cox.

Medley relay teams placing first in the meet against Plymouth were 8-year-old and under boys, Kyle Plank, Dave Karns, Tim Karns, and Kevan Flanagan. 8-year-old and under girls, Kelly Kuzon, Jenny Pichlik, Sarah Weis, and Cathy Hoffman. 9- and 10-year-old girls, Kris Mattoff, Melanie Gunn, Jennifer Cattell, and Paula Colombo. 13- and 14-year-old boys, John Robbins, Dave Nicola, Dave Mason, and Sean Oxner.

The specialty stroke during the Plymouth meet was free-style. 8-year-olds and under swim 25 yards; 9-year-olds and older swim 50.

The following individuals placed first. 8-year-olds and under, Kevan Flanagan with 17.0, and Jenny Pichlik with 16.4. 9- and 10-year-olds Danny Degener, 33.9 and Paula Colombo, 33.2. 11- and 12-year-olds, John Hoffman with 30.3. 13- and 14-year-olds Dave Mason, 25.2, and Kristin Thomas, 28.7.

The following freestyle relay teams placed first: 8-year-olds and under boys, Matt Weis, Tim Karns, Dave Karns, and Kevan Flanagan. 8-year-old and under girls, Sarah Weis, Cathy Hoffman, Kelly Kuzon, and Jenny Pichlik. 11- and 12-year-old boys, Mike Carignan, Chris Baker, Dave Cox, and John Hoffman. 13- and 14-year-old boys, Dave Nicola, Sean Oxner, Dave Mason, and John Robbins. 13- and 14-year-old girls, Kristin Thomas, Janine Hoffman, Dee Dee Hammell, and Arlene Presley.

Richard J. Conner Earns BAS Degree At Sienna Heights

Richard John Conner, 13242 Rainbow Dr., Gregory was among the 77 fall semester graduates announced at Sienna Heights College in Adrian on Jan. 26.

Conner received a BAS in electronic engineering technology with a minor in criminal justice.

Please Notify Us In Advance of Any Change in Address

THE CHELSEA STANDARD

Second Section

CHELSEA, MICHIGAN, THURSDAY, FEBRUARY 1, 1979

Pages 7-14



THE STRING SENSATION: Directed by Cynthia Cooper, far left, these 11 musicians will travel to Chelsea from the Scioto Darby City School District in Hilliard, O., for a free concert

tonight, Thursday, at 8 p.m. in the Chelsea High school auditorium. The public is invited.

475-8680
475-8689

115 PARK ST.
CHELSEA, MICH.

MAYER AGENCY

(of Springer-Kleinschmidt Agency Inc.)

Your Local Independent Insurance Agency providing dependable protection and prompt claim payment through 10 of the nation's leading insurance companies.

HOME - AUTO - BUSINESS

INSURANCE



Sheridan W. Springer
Ruth DeVine

Charles A. Kleinschmidt
Micky Quackenbush

JV Cagers Win Over Both Novi, Brighton

Outstanding performances on the part of the Junior Bulldog offensive on Friday and their defense on Saturday accounted for two conference victories by Chelsea junior varsity cagers last weekend.

Against Novi on Friday, superior shooting by Jon Riemenschneider accounted for 20 of the Bulldogs' 55 points. Wildcats went down with 43 tallies.

A first-quarter lead of 16-14 was increased by Chelsea to 36-19 by half-time. Novi's defense was felt in the third period as the junior Bulldogs were limited to five points while the final stanza saw both team's offense and defense weaken as 14 points were tallied by each.

Chelsea shot a fine 25 of 54 for 46 percent and out-rebounded Novi, 26-20.

Following Riemenschneider in points were Mike Lazarz with nine; Sean Peterson, eight; Karl Albrecht, seven; Jeff Price, four; Carl Simpson, four, and Mark Steinaway, three.

Riemenschneider was also top rebounder for the night with 10. Albrecht had six; Mike Lazarz, three; and Chris Heaton, three. Peterson added four assists and Lazarz, two. Lazarz also contributed two steals as did Jeff Price, on Friday, Feb. 2.

Carl Heldt Retiring As Director of Vet Affairs

Carl A. Heldt of Chelsea, director of Veterans Affairs for Washtenaw county, will retire Friday, Feb. 2 after 26 years of helping thousands and thousands of veterans obtain federal benefits.

Because Heldt is still nine years away from early retirement, the 53-year-old World War II Marine Corps veteran will begin seeking a job almost immediately.

According to Heldt, his early retirement stems from a situation where "it just got to be too much."

"I'm just tired of fighting the system," the system he fought was on two separate battlefields. In the beginning, from 1953 when he was hired until the '60s when the Vietnam War escalated, Heldt's only adversary was the Veterans Administration in Washington which his office was filing claims against.

As the war mounted, so did what Heldt described as the "anti-veteran" sentiments of some Board of Commissioners members which manifested into a tighter office budget. And, Heldt remarked, while the number of veterans began to decrease, the work load didn't because veteran's depen-

dents are granted the same services as the veteran himself. "I don't think this was ever fully understood," he commented.

Also overlooked, Heldt contends, is that the benefits received by county veterans meant increased buying power of between five and seven million dollars brought into the area.

At one point, the Board of Commissioners put Heldt on a medical leave in 1974 but only, long enough for him to have a physical examination and a report made back to the board.

A successor to Heldt was expected to be announced on Wednesday, Jan. 31 during the board's meeting and whether he or she will meet with an easier time remains to be seen, Heldt believes. "I've always felt the service veteran earned whatever he had coming. I don't think he should suffer because of the local political atmosphere," he said.

At the present it is estimated that there are nearly 35,000 veterans from four wars in the county.

Telephone Your Club News To 475-1371

RICK'S MARKET

20490 M-52

"The Store with the Spartan on the Door"

Phone 475-2898

JACK RABBIT

GREEN
SPLIT PEAS
1-Lb.
Bag **24¢**

BLUE STAR

WHOLE
CHICKEN

52-Oz.
Can **\$1.70**

PRINCE

SPAGHETTI
SAUCE
(Meat or Meatless)

32-Oz.
Jar **\$1.25**

CEDARGREEN

RED
RASPBERRIES
16-Oz.
Box **\$1.52**

BORDEN'S

SKIM MILK . 1/2 gal. 69¢

RICK'S HOT BREAD DAILY

Weekdays by 3:30 p.m. Sat. & Sun., by 10:30 a.m.
(QUANTITY RIGHTS RESERVED)

CARNATION

**HOT
COCOA
MIX**
20-Oz.
Jar **\$1.90**

VELVET

**PEANUT
BUTTER**
3-Lb.
Jar **\$2.58**

COKE, SPRITE,
TAB, FRESCA

6 pac **\$1.09**
(plus deposit)

KOOL
AID

6 25-Oz.
Pkgs. **64¢**

HUNT'S

KETCHUP
32-Oz.
Jar **98¢**

TASTE O' SEA

SHRIMP
DINNER

7-Oz.
Box **\$1.04**

Babysitting Clinic Slated Next Week

Chelsea Jaycee Auxiliary will hold a babysitting clinic on Feb. 6-8 at Beach Middle school for all students in the 6th through 12th grades, from 6:30 to 8 p.m.

Speakers will include a fireman, policeman, nurse, and doctor who will explain a variety of babysitting requirements from changing diapers to fire safety.

Those who complete the course will receive a certificate and their name will be added to a list available to families needing a babysitter.

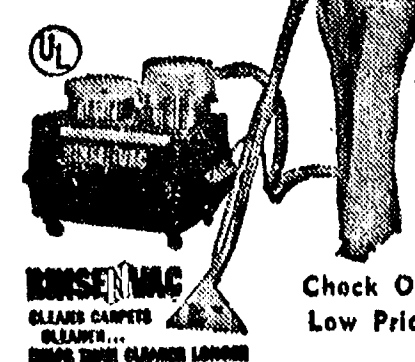
To register, call Denise Martell, chairperson, at 475-1966 or Chris Wagner, co-chairperson, 475-2571.

Brenda Shadoan on Capital U. Honors List

Brenda Shadoan was named to the dean's list at Capital University, Columbus, O., where she is a junior. She is the daughter of Dr. and Mrs. James Shadoan of Washington St., Chelsea.

GET PROFESSIONAL carpet cleaning results! (At do-it-yourself prices)

RENT OUR RINSEVAC—the new portable, easy-to-use hot water extraction carpet cleaning machine that gently...
• rinses carpet fibers with hot water and cleaning solution
• loosens and lifts dirt, grime and residues to the carpet surface where they are immediately vacuumed up
• leaves your carpets CLEAN and FRESH!



CHECK OUR Low Price
GAMBLES
110 N. Main Ph. 475-7472

JANUARY CLEARANCE SALE

CONTINUES THRU FEB. 3

INSULATED BOOTS

Reg. \$41.95

Reg. \$58.95

Reg. \$64.95

NOW \$33.50 NOW \$46.95 NOW \$51.95

OPEN-END TROUSERS HALF PRICE

WINTER JACKETS . . 1/3 OFF

SUITS Reg. \$120 to \$185 **Now \$80 to \$140**

SPORT COATS . . From \$40 to \$85

SWEATERS
1/3 OFF

BOYS' PANTS
1/3 OFF

BOYS' LONG-SLEEVE SHIRTS
1/3 OFF

PAJAMAS
1/3 OFF

FOSTER'S MEN'S WEAR

**Ads
Taken
Till 5 p.m.
Monday**

PUT IT IN THE WANT ADS FOR RESULTS

**Just
Phone
475-1371**

WANT ADS

The Chelsea Standard

WANT AD RATES

PAID IN ADVANCE—All regular advertisements, 75 cents for 25 words or less, each insertion. Count each word as a word. For more than 25 words add 3 cents per word for each insertion. "Blind" ads or ads with no return address, 25¢ extra per insertion.

CHARGE RATES—Same as cash in advance, with 25 cents honorarium charge if not paid before 5 p.m. Monday preceding publication. Pay in advance, send cash or stamps and save 25 cents.

DISPLAY WANT ADS—Rate, \$1.40 per column inch, single column width only. 5-point and 14-point light type only. No borders or headline type. Minimum 3 lines.

CARDS OF THANKS or MEMORIALS—Single paragraph style, \$1.50 per insertion for 50 words or less, 8 cents per word beyond 50 words.

COPY DEADLINE—5 p.m. Monday week of publication.

ERRORS—Advertisers should check their ads the first publication. This newspaper will not be liable for errors of the ad where the error occurred, errors in publication except to the extent of the cost of the ad for the first week's insertion. Adjustment for errors is limited to the cost of portion of the ad wherein the error occurred.

FOR SALE—1976 Chevrolet Malibu Classic, beautiful condition, loaded, \$3,895. Ph. 878-9483. x35

DEMOS

1979 OLDS Cutlass Supreme Brougham station wagon

1979 OLDS Cutlass Supreme Brougham station wagon

1977 BUICK LeSabre Custom 2-dr.

1978 OLDS Cutlass Supreme 2-dr.

1975 OLDS Delta 88 2-dr.

Faist - Sprague Buick - Olds

Chelsea, 475-8664

Mon-Fri: 9:30 a.m. - 5:30 p.m.
Thursday night till 9 p.m.
Saturday till 1 p.m.

FOR SALE—AMC Hornet wagon, 1976, 6 cyl., low mileage, 9-speed, radials. Excellent condition, \$1,800 or best offer. Ph. 475-2609 or 428-7850. x34

1-BEDROOM APARTMENT for rent in Gregory. Newly redecorated. No pets. \$190 per month plus deposit. Ph. 1-498-2683 after 5 p.m. x34

SAND GRAVEL

KLINK EXCAVATING

Buildover — Backhoe Road Work — Basements Trucking — Crane Work Top Soil — Demolition Drainfield — Septic Tank Trenching, 5" up

Industrial, Residential, Commercial CALL 475-7631 13tf

FOR SALE — Approximately 2 acres, country, 2 miles to Chelsea. Ravine, huge oaks, beautiful view. Waterloo Rd. \$19,000 cash. Ph. 475-7465. x27tf

LAND CONTRACTS & MORTGAGES wanted — Land contracts purchased, any amount, anywhere in Michigan. Lowest discounts. Can also make real estate loans. Call Dan Duncan, Ann Arbor Real Estate Co., 688-8595. 3tf

1973 FORD LTD BROUHAM — Station wagon, 8-passenger, leather upholstery, all extras. Good condition. 7618 Grand Ave., Dexter, Ph. 428-3890. x18tf

FOR SALE or trade for tractor, Olds Delta 88, nice. Ford pickup, 4-speed. Barrel stove on legs, new, \$45 firm. Also misc. items. Ph. 426-8019. x29tf

1973 FORD LTD BROUHAM — Station wagon, 8-passenger, leather upholstery, all extras. Good condition. 7618 Grand Ave., Dexter, Ph. 428-3890. x18tf

1973 FORD LTD BROUHAM — Station wagon, 8-passenger, leather upholstery, all extras. Good condition. 7618 Grand Ave., Dexter, Ph. 428-3890. x18tf

1973 FORD LTD BROUHAM — Station wagon, 8-passenger, leather upholstery, all extras. Good condition. 7618 Grand Ave., Dexter, Ph. 428-3890. x18tf

1973 FORD LTD BROUHAM — Station wagon, 8-passenger, leather upholstery, all extras. Good condition. 7618 Grand Ave., Dexter, Ph. 428-3890. x18tf

1973 FORD LTD BROUHAM — Station wagon, 8-passenger, leather upholstery, all extras. Good condition. 7618 Grand Ave., Dexter, Ph. 428-3890. x18tf

1973 FORD LTD BROUHAM — Station wagon, 8-passenger, leather upholstery, all extras. Good condition. 7618 Grand Ave., Dexter, Ph. 428-3890. x18tf

1973 FORD LTD BROUHAM — Station wagon, 8-passenger, leather upholstery, all extras. Good condition. 7618 Grand Ave., Dexter, Ph. 428-3890. x18tf

1973 FORD LTD BROUHAM — Station wagon, 8-passenger, leather upholstery, all extras. Good condition. 7618 Grand Ave., Dexter, Ph. 428-3890. x18tf

1973 FORD LTD BROUHAM — Station wagon, 8-passenger, leather upholstery, all extras. Good condition. 7618 Grand Ave., Dexter, Ph. 428-3890. x18tf

1973 FORD LTD BROUHAM — Station wagon, 8-passenger, leather upholstery, all extras. Good condition. 7618 Grand Ave., Dexter, Ph. 428-3890. x18tf

1973 FORD LTD BROUHAM — Station wagon, 8-passenger, leather upholstery, all extras. Good condition. 7618 Grand Ave., Dexter, Ph. 428-3890. x18tf

1973 FORD LTD BROUHAM — Station wagon, 8-passenger, leather upholstery, all extras. Good condition. 7618 Grand Ave., Dexter, Ph. 428-3890. x18tf

1973 FORD LTD BROUHAM — Station wagon, 8-passenger, leather upholstery, all extras. Good condition. 7618 Grand Ave., Dexter, Ph. 428-3890. x18tf

1973 FORD LTD BROUHAM — Station wagon, 8-passenger, leather upholstery, all extras. Good condition. 7618 Grand Ave., Dexter, Ph. 428-3890. x18tf

1973 FORD LTD BROUHAM — Station wagon, 8-passenger, leather upholstery, all extras. Good condition. 7618 Grand Ave., Dexter, Ph. 428-3890. x18tf

WANT ADS

B. CATERING SERVICE — Dinners, banquets, weddings, and parties. Reasonable rates. Ph. 475-2609. x34

FOR SALE — Baby items, furniture, clothes and toys. All in good condition. Will sell Thursday thru Sunday. 231 W. Middle St., Chelsea. 475-1301. x24

CAR RENTAL by the day, week-end, week or month. Full insurance coverage, low rates. Call Lyle Christwell at Palmer Motor Sales, 475-1301. x25tf

LICENSED BABYSITTER has an opening for full- or part-time child. South school area. Ph. 475-7630. x26

Used Trucks

'78 RAMCHARGER 4-wheel drive, 318, auto, p.s., p.b., white, 3-spoke wheels. \$6295

'77 DODGE W-100 pick-up, 4-wheel drive, 318, auto, p.s., p.b. \$4995

'76 DODGE W-100 pick-up, 4-wheel drive, 360, auto, p.s., p.b., roll bar, white, AM-FM. \$4995

'74 DODGE D-200 pick-up, 360, auto, p.s., p.b. \$5995

'74 DODGE Tradesman van, 318, auto, p.s., p.b. \$1995

'70 CHEVY 3/4-ton, 350, auto, p.s., p.b. \$695

Quality Used Cars

'76 PINTO station wagon, auto, trans., Pirelli radials. \$1795

'76 ASPEN SE 4-dr., 318, custom, p.s., p.b., air. \$3295

'75 DART Custom 4-dr., 6-cyl., auto, p.s., low mileage. \$2495

'75 DODGE B-200 Sportsman, 109" wheelbase, 318, auto, p.s., p.b. \$1995

'74 OLDS Custom Cruiser wagon, V-8, auto, p.s., p.b., air. \$1495

'74 PONTIAC Ventura 2-dr. V-8, auto, p.s., p.b., AM-FM. \$1695

'73 DUSTER, 318, auto, p.s. \$695

'73 OLDS Custom Cruiser wagon, V-8, auto, p.s., p.b., air. \$1495

'72 CHEVY Bol Air 4-dr., V-8, auto, p.s. \$695

Village

Motor Sales, Inc.

CHRYSLER - DODGE PLYMOUTH - DODGE TRUCKS

Phone 475-8661

1186 Manchester Rd., Chelsea

Hours: 8 a.m. to 5:30 p.m.
Tues. thru Fri. until 8 Monday
Saturday 9 to 12 x28tf

Complete Body Shop Service

FREE ESTIMATES
Contact Ralph Machesky

Faist - Sprague Buick - Olds, Inc.

475-8664 x51tf

BODY SHOP

COMPLETE FULL TIME Estimates Available

PALMER FORD

222 S. Main 475-1301 40tf

FOR SALE or trade for tractor, Olds Delta 88, nice. Ford pickup, 4-speed. Barrel stove on legs, new, \$45 firm. Also misc. items. Ph. 426-8019. x29tf

1973 FORD LTD BROUHAM — Station wagon, 8-passenger, leather upholstery, all extras. Good condition. 7618 Grand Ave., Dexter, Ph. 428-3890. x18tf

1973 FORD LTD BROUHAM — Station wagon, 8-passenger, leather upholstery, all extras. Good condition. 7618 Grand Ave., Dexter, Ph. 428-3890. x18tf

1973 FORD LTD BROUHAM — Station wagon, 8-passenger, leather upholstery, all extras. Good condition. 7618 Grand Ave., Dexter, Ph. 428-3890. x18tf

1973 FORD LTD BROUHAM — Station wagon, 8-passenger, leather upholstery, all extras. Good condition. 7618 Grand Ave., Dexter, Ph. 428-3890. x18tf

1973 FORD LTD BROUHAM — Station wagon, 8-passenger, leather upholstery, all extras. Good condition. 7618 Grand Ave., Dexter, Ph. 428-3890. x18tf

1973 FORD LTD BROUHAM — Station wagon, 8-passenger, leather upholstery, all extras. Good condition. 7618 Grand Ave., Dexter, Ph. 428-3890. x18tf

1973 FORD LTD BROUHAM — Station wagon, 8-passenger, leather upholstery, all extras. Good condition. 7618 Grand Ave., Dexter, Ph. 428-3890. x18tf

1973 FORD LTD BROUHAM — Station wagon, 8-passenger, leather upholstery, all extras. Good condition. 7618 Grand Ave., Dexter, Ph. 428-3890. x18tf

1973 FORD LTD BROUHAM — Station wagon, 8-passenger, leather upholstery, all extras. Good condition. 7618 Grand Ave., Dexter, Ph. 428-3890. x18tf

1973 FORD LTD BROUHAM — Station wagon, 8-passenger, leather upholstery, all extras. Good condition. 7618 Grand Ave., Dexter, Ph. 428-3890. x18tf

1973 FORD LTD BROUHAM — Station wagon, 8-passenger, leather upholstery, all extras. Good condition. 7618 Grand Ave., Dexter, Ph. 428-3890. x18tf

1973 FORD LTD BROUHAM — Station wagon, 8-passenger, leather upholstery, all extras. Good condition. 7618 Grand Ave., Dexter, Ph. 428-3890. x18tf

1973 FORD LTD BROUHAM — Station wagon, 8-passenger, leather upholstery, all extras. Good condition. 7618 Grand Ave., Dexter, Ph. 428-3890. x18tf

1973 FORD LTD BROUHAM — Station wagon, 8-passenger, leather upholstery, all extras. Good condition. 7618 Grand Ave., Dexter, Ph. 428-3890. x18tf

1973 FORD LTD BROUHAM — Station wagon, 8-passenger, leather upholstery, all extras. Good condition. 7618 Grand Ave., Dexter, Ph. 428-3890. x18tf

1973 FORD LTD BROUHAM — Station wagon, 8-passenger, leather upholstery, all extras. Good condition. 7618 Grand Ave., Dexter, Ph. 428-3890. x18tf

WANT ADS

SNOW PLOWING — Prompt, efficient service. Richard Smith, Ph. 475-8994. 23tf

FREE — Baby crib. Ph. 475-1017 134

Pierson & Riemenschneider

475-9101

MINI FARM — Perfect for you and your family. 7 1/2 acres with barn that is suitable for horses. Fruit trees have already been planted. Super deal! \$49,900.

MOVE TO TOWN — 3-bedroom home located in the Village of Chelsea. Save money by being able to walk to do your shopping. Immediate occupancy! \$54,900.

LIKE THE COUNTRY LIFE? Lovely well-kept home on 2 acres of wooded property. Beautiful inground pool and patio area, maybe not too appealing at the moment but wait till summer. \$71,500.

GREAT INVESTMENT — 3-unit income property located in the Village. Many possibilities. Buy now and become immediate possessor. \$54,900.

Pierson & Riemenschneider

REALTORS

111 Park St. - 475-9101

EVES: Patrick Merkel 475-1824

Marilyn Chastain 475-2834

John Pierson 475-2064

Dal Queenan 475-1819

Jeanene Riemenschneider 475-1468

Norma Kern 475-8132 34tf

Floor Covering Is Our Business

TILE—SOLARIAN—HARDWOOD CARPET—INSTALLATION—REPAIRS

FREE ESTIMATES — 475-8621

Merkel Home Furnishings

PATCHING and PLASTERING. Call 475-7489. 33tf

ROOMS by day, week or month. Excellent for the single man or retiree. Sylvan Hotel, Chelsea. Ph. 475-2911. x31tf

FOR RENT — Fair Service Center for meetings, parties, wedding receptions, etc. Weekdays or week-ends. Contact John Wellnitz, phone 475-1518. x31tf

QUASAR TV Sales and Service

Also Service on Most Major Brands Antenna Installation and Supplies We Do Home Service.

PORTER'S TV

212 Buchanan St., Chelsea Ph. 475-8380 46

VACUUM CLEANERS

Authorized Electrolux sales and service.

James Cox

428-8443, or 428-8686

118 Riverside Dr., Manchester 48tf

TRAVEL TRAILERS — 13-ft. and up; 10x5 ft. trailers. John R. Jones Trailer Sales, Gregory, Mich. Phone 498-2655. 43tf

J. R. CARRUTHERS

LICENSED RESIDENTIAL BUILDER CUSTOM HOMES ADDITIONS/FIREPLACES PATIOS ROOFING/SIDING/REPAIRS

475-7234 CHELSEA

80tf

MAUSOLEUMS * MONUMENTS BRONZE TABLETS * MARKERS

BECKER MEMORIALS

6083 Jackson Road ANN ARBOR, MICHIGAN 47tf

LARGE OR SMALL, residential or commercial. Lowest discount in Michigan. Ph. Dan Duncan, Ann Arbor Real Estate Co., Realtors. 668-8595. 47tf

1973 FORD LTD BROUHAM — Station wagon, 8-passenger, leather upholstery, all extras. Good condition. 7618 Grand Ave., Dexter, Ph. 428-3890. x18tf

1973 FORD LTD BROUHAM — Station wagon, 8-passenger, leather upholstery, all extras. Good condition. 7618 Grand Ave., Dexter, Ph. 428-3890. x18tf

1973 FORD LTD BROUHAM — Station wagon, 8-passenger, leather upholstery, all extras. Good condition. 7618 Grand Ave., Dexter, Ph. 428-3890. x18tf

1973 FORD LTD BROUHAM — Station wagon, 8-passenger, leather upholstery, all extras. Good condition. 7618 Grand Ave., Dexter, Ph. 428-3890. x18tf

1973 FORD LTD BROUHAM — Station wagon, 8-passenger, leather upholstery, all extras. Good condition. 7618 Grand Ave., Dexter, Ph. 428-3890. x18tf

1973 FORD LTD BROUHAM — Station wagon, 8-passenger, leather upholstery, all extras. Good condition. 7618 Grand Ave., Dexter, Ph. 428-3890. x18tf

1973 FORD LTD BROUHAM — Station wagon, 8-passenger, leather upholstery, all extras. Good condition. 7618 Grand Ave., Dexter, Ph. 428-3890. x18tf

1973 FORD LTD BROUHAM — Station wagon, 8-passenger, leather upholstery, all extras. Good condition. 7618 Grand Ave., Dexter, Ph. 428-3890. x18tf

1973 FORD LTD BROUHAM — Station wagon, 8-passenger, leather upholstery, all extras. Good condition. 7618 Grand Ave., Dexter, Ph. 428-3890. x18tf

1973 FORD LTD BROUHAM — Station wagon, 8-passenger, leather upholstery, all extras. Good condition. 7618 Grand Ave., Dexter, Ph. 428-3890. x18tf

1973 FORD LTD BROUHAM — Station wagon, 8-passenger, leather upholstery, all extras. Good condition. 7618 Grand Ave., Dexter, Ph. 428-3890. x18tf

1973 FORD LTD BROUHAM — Station wagon, 8-passenger, leather upholstery, all extras. Good condition. 7618 Grand Ave., Dexter, Ph. 428-3890. x18tf

1973 FORD LTD BROUHAM — Station wagon, 8-passenger, leather upholstery, all extras. Good condition. 7618 Grand Ave., Dexter, Ph. 428-3890. x18tf

WANT ADS

A GOOD BUY... give it a try. Blue Lustre, America's favorite carpet shampoo. Chelsea Hardware. 23tf

FOR SALE—1976 Plymouth Volare station wagon. Power brakes, power steering, 8-speed manual transmission, AM-FM 8-track, 39,000 miles. Price \$2,250. Ph. 475-8850. x35

LYNN BRIDGES CHEVROLET Chelsea

1978 NEW & DEMOS ALL AT INVOICE.

Ph. 475-1373 x34

THORNTON 475-9193

CENTENNIAL FARMHOME — In super condition and well insulated lot includes country kitchen, 5 bedrooms, 1st floor laundry. On 25 acres with complete set of farm buildings. \$79,500.

THINK SPRING! Think about a new home in the country! See this 3-year-old ranch on 9 1/2 acres. Oak trim thru-out, fireplace, 3 bedrooms, 2 1/2 baths, full basement. Barn with electric and water. \$89,500.

VILLAGE OF MANCHESTER — Nicely remodeled older home in excellent condition. Lots of storage space. 3 large bedrooms, 1 1/2 baths. Large lot. Nice neighborhood. \$58,500.

VACANT

NORTH LAKE FRONTAGE — Beautiful wooded building site with hilltop setting and gorgeous view. \$27,900.

GET READY to build your new home this spring! Take a look at this 2.3 acres on quiet country road. Already perked. Topsoil stripped and ready to dig basement. \$13,500.

Robert H. THORNTON

Jr. P.C. Realtors

George Knickerbocker 475-2645

Marie McKernan 475-8424

Chuck Walters 475-2808

Lang Ramsay 475-8133 34tf

Assistant Librarian Position is Open.

at McKune Memorial Library.

Applications available at the library, 221 S. Main, Chelsea. 32tf

SUNFLOWER SEED — 50-lb. bag, \$8.50, 25-lb. bag, \$4.50. Also, cracked corn and millet. Ph. 426-8404. x19tf

CAR FOR SALE? Apartment for rent? The Chelsea Standard has a sign for most every need. 300 N. Main St., Chelsea. Ph. 475-1371. 13tf

McCulloch Portable Generators Chain Saws

WE SELL, SERVICE, SHARPEN AND TRADE.

Chelsea Hardware 21tf

LEONARD REITH

LITTLE WANT ADS! BIG PLUSES FOR BIG RESULTS!

JUST PHONE
475-1371

WANT ADS

HAPPY BIRTHDAY MOM—From Brendan and Bridget. 34
WANTED—High school student to help on hog farm. Ph. 475-7326. 35
FREE PUPPIES—Half registered Shorthair, half retriever. Ph. 475-2921. 35
WANTED—A girl to live in for light housekeeping, over 5'7", \$650 per month. (313) 287-2216 after 5:30 p.m. 35

OPEN HOUSE

Sunday, Feb. 4
1-5 p.m.
12535 Scio Church Rd., Chelsea

ARE YOU INTERESTED in a wise purchase? Would you like 5 bedrooms, 3 baths, living room, dining room, family room with fireplace, study, first floor laundry, and rear room with fireplace? Would you also like this superior quality home to be located on four acres in the Chelsea area? Then this is the home for you.

Call Dove Margenau
665-4923

DeLoof & Associates
Ann Arbor, Mich. x34

BY OWNER

DEXTER-CHELSEA AREA—Beautifully landscaped 3-bedroom cedar ranch on heavily wooded acre. Spacious living room with bay window and fireplace, formal dining room with beamed ceiling and doorwall onto large 2-level redwood deck. Large country kitchen, full tiled basement and attached 2 1/2-car garage. An outdoor sports paradise in the heart of the 3,000-acre Pinckney Recreation Area. Easy access to Half Moon Lake, hiking and skiing trails. Chelsea schools. \$74,900. Ph. 475-1089. x35

Allen's Plumbing and Heating Repair
Ph. 475-2204 261f

Chelsea Plumbing and Heating
Reasonable Rates

GAIL SHEARS
Licensed Journeyman
GARLAND DE YOE
Licensed Master
Ph. 475-1037 171f

ROOFING, siding, gutters, storm windows and doors. For a free estimate, phone 428-7104. Service Roofing Co., Manchester, Mich. x481f

FOR SALE—1972 VW van, excellent cond., new radials, 47,000 miles, no rust. Ph. 662-5790 days, or 878-6820 eves. x11f

FOR SALE—1974 Jeep CJ5, new top, lock hubs, FM, heater, snow tires, good condition, 35,000 miles, \$3,100. Ph. 498-2515. x301f

WANT ADS

SEAMLESS ALUMINUM case-toughs, roofing, siding, and carpentry work of all kinds. Experienced installers. All work guaranteed. For free estimate, call R. D. Kleinschmidt Co., 428-8836. x311f

WANTED—Mature woman for part-time housekeeping duties in private foster care home. Please call 475-7338 for additional information. x34

LLOYD BRIDGES CHEVROLET
Chelsea

1978 NEW & DEMOS
ALL AT INVOICE.
Ph. 475-1373 x34

WOODSTOCK KENNELS
18531 Bush Rd.
Ph. 475-1794

Inside and Outside Heated Runs

Separate Housing for Cats

Love Provided Free 311f

Headquarters for RED WING WORK SHOES

Vogel's and Foster's
401f

FOR SALE—Four six-hole Chevrolet rims. One fireplace furnace used one season. One PTO unit for Chevrolet truck. Ph. 475-8316. x311f

ATTIC INSULATION Class I

Cellulose Insulation installed by trained installers

FOAM WALL INSULATION
Highest thermal efficiency of any insulation type.

New and Existing Construction.

FOAM MASTERS
Complete insulation contractor
Licensed and Insured.

475-1625
Free Estimates x311f

WANT ADS

FOR SALE—Redtick coon hound. Female. Ph. 483-3467. x34

BABY-SITTER NEEDED—Half Moon Lake area, 2 evenings per week and 1 week-end every 2 months. Must love children, be responsible, dependable and have own transportation. Ph. 475-9569. x34

MECHANIC—1 certified truck mechanic with references, experienced in gasoline and diesel heavy equipment repair and maintenance desired. Apply at the personnel office between 8 a.m. and 3 p.m., Monday-Friday, Washtenaw County Road Commission, 555 N. Zeeb Rd., Ann Arbor. Equal opportunity employer. x35

Special Sale of NEW '78 AUTOMOBILES
Save Hundreds of Dollars!
These must be sold by Feb. 15

Job will require mechanical aptitude along with basic inspection techniques and record-keeping abilities.

Starting pay will be based on applicant's current skills.
Ph. Virginia Dietle at 475-9165. x34

78 ASPEN SE wagon, 6, auto., p.s., p.b., air, classic cream. Stock No. 1652.

78 ARROW 6S Coupe, 1600 cc., auto., blue. Stock No. 1628.

78 ASPEN wagon, 6, auto., p.s., p.b., blue. Stock No. 1645.

78 VOLARE Premier wagon, 318, auto., p.s., p.b., red. Stock No. 1747.

78 CHALLENGER, 2600 cc., auto., p.s., silver. Stock No. 1765.

78 ARROW coupe, 1600 cc., 4-speed, tan. Stock No. 1838.

78 COLT 4-dr., 1600 cc., 4-speed, white. Stock No. 1839.

78 MAGNUM XE, 400, auto., p.s., p.b., air, black. Stock No. 1842.

78 SAPPORO, 1600 cc., 5-speed, ballast sand. Stock No. 1859.

78 SAPPORO, 1600 cc., 5-speed, charcoal. Stock No. 1862.

78 ASPEN 4-dr., 6, auto., p.s., p.b., tan. Stock No. 1869.

78 CORDOBA, 400, auto., p.s., p.b., air, T-bar roof, red. Stock No. 1883.

78 CHRYSLER Town & Country wagon, 360, auto., p.s., p.b., air, sable tan. Stock No. 1884.

78 VOLARE 2-dr., 6, 4-speed overdrive, p.s., red. Stock No. 1903.

78 ARROW coupe, 1600 cc., 4-speed, yellow. Stock No. 1905.

78 ARROW GT coupe, 2000 cc., 5-speed, tan. Stock No. 1908.

78 VOLARE coupe, 6, 4-speed overdrive, p.s., white. Stock No. 1909.

78 CHALLENGER, 1600 cc., 75-speed, silver. Stock No. 1965.

DEMOS and Driver Training Car

78 ASPEN SE wagon, 6, auto., p.s., p.b., air, classic cream. Stock No. 1652.

78 DIPLOMAT 2-dr., 318, auto., p.s., p.b., air, black. Stock No. 1771.

78 CHRYSLER Town & Country wagon, 318, auto., p.s., p.b., air, white. Stock No. 1809.

FOR RENT:

Music Machines

Juke Boxes

for Parties, Receptions or Any Special Gathering.

CALL

Zemke

Operated Machines

Days 662-1771 x381f

CARPET CLEANING—12 cents a square foot. Free estimates. 12 years experience. Ph. 475-9379. x191f

ROOFING SPECIALIST—All types of roof repairs, homes, barns, commercial. Insurance repairs. Asphalt shingles, hot built-up roofing, cedar-slate tile-asbestos. Awnings and porch enclosures. Sliding and storm windows. Call Joe Hayes for free estimates. Manchester, 428-8520. x391f

Fireplace Builder

field stone mason, block and brick mason, tuck pointing.
FREE ESTIMATES
Call 475-8025 after 3 p.m.

Patrick Grammatico
7401f 8520

WANT ADS

78 CHEVY IMPALA 2-dr. coupe, AM-FM, blue finish. \$2,895. Lloyd Bridges Chevrolet. Ph. 475-1373.

MAC DEE

INC.

Quality control

inspector

needed

for the day shift.

Job will require mechanical aptitude along with basic inspection techniques and record-keeping abilities.

Starting pay will be based on applicant's current skills.
Ph. Virginia Dietle at 475-9165. x34

GRAND OPENING

Jan. 30-Feb. 3

The Restoration Center

of

Antique Gallery, Inc.

5235 Jackson Rd.
Ann Arbor

15% Off

on all restoration contracted during this week and big savings on antiques.

Hours 10 a.m. - 5 p.m.
Tuesday through Saturday

Ph. 663-5055 x34

Complete Body Repair Service

Bumping - Painting
Windshield and Side Glass Replacement

Open Monday Until 8

CONTACT DON KNOLL
FOR FREE ESTIMATE

Village Motor Sales, Inc.

CHRYSLER - DODGE
PLYMOUTH - DODGE TRUCKS

Phone 475-8661

1185 Manchester Rd., Chelsea

Hours: 8 a.m. to 5:30 p.m.

Tues. thru Fri. Until 8 Monday

9 a.m. to 12 noon Saturday x141f

FOR RENT:

Music Machines

Juke Boxes

for Parties, Receptions or Any Special Gathering.

CALL

Zemke

Operated Machines

Days 662-1771 x381f

CARPET CLEANING—12 cents a square foot. Free estimates. 12 years experience. Ph. 475-9379. x191f

ROOFING SPECIALIST—All types of roof repairs, homes, barns, commercial. Insurance repairs. Asphalt shingles, hot built-up roofing, cedar-slate tile-asbestos. Awnings and porch enclosures. Sliding and storm windows. Call Joe Hayes for free estimates. Manchester, 428-8520. x391f

Fireplace Builder

field stone mason, block and brick mason, tuck pointing.
FREE ESTIMATES
Call 475-8025 after 3 p.m.

Patrick Grammatico
7401f 8520

WANT ADS

GERMAN SHEPHERD PUPPIES—\$75. Ph. 475-7630. x331f

BABYSITTER NEEDED for 7-month-old, 3 days a week. Ph. Pat Brink, 475-7052. x35

FOR SALE—77 Ford 1/2 ton pickup, short box, 27,000 miles, better than excellent condition. Ziebarted, \$3,800. Must sell. Ph. 475-1119 between 6-10 p.m. week-days. x311f

NEW HOME

FOR SALE

With 5 Acres

—1 1/2 MILES FROM CHELSEA

—2 FULL BATHS

—FULL BASEMENT

—2-CAR GARAGE

—FIREPLACE

Located on Waterloo Rd., East of Werkner Rd.

\$68,900

CALL

WEBER HOMES

OWNER - BUILDER

475-2828 x36

CERTIFIED MECHANICS needed at high volume GM dealership. Top wages and benefits. Apply at John Lee Oldsmobile-Renault, 3120 Washtenaw, Ann Arbor. Ph. 971-8100. x34

Window Screens Repaired

Reasonable rates.

Chelsea Hardware

110 S. Main Ph. 475-1121 301f

HELP WANTED—Small office. Accurate typing ability, pleasing phone answering skill. Willing to learn operation of computer. Full fringe package. Hourly wage based on ability. Write P. O. Box 1366, Ann Arbor, MI. 48106. x35

All Insurance Needs

In the convenience of your own home — or mine

N. H. Miles, Allstate

Call Only 475-8334 34

FURNITURE for home and shop—Bentwood rocking chair, cane back and seat, \$50. Full size 6-cushion davenport, \$75. Two knob-brie-a-brac shelves 57 1/2" high, \$12 each. Classic walnut china cabinet 7' high, \$79. Daybed and mattress \$24. Maple writing desk with drawers and inner compartments, \$29. Upholstered chair, \$15. Spanish cabinet, 3' high with front opening doors and wrought-iron hardware, \$20. Framed reproductions of great paintings, \$7 each. Two H-K 40 stereo loudspeakers, walnut finish, \$60 for pair. Samsonite overnite case, \$5. Four work tables with 2"x4" bases and plywood or Formica tops in various sizes, \$12 to \$25. This is a private sale by well known Chelsea residents. Cash only. No refunds. No returns. You haul. Ph. 475-7332. x34

78 SUBURBAN Carry-All station wagon, 350 V-8, automatic. Low miles, \$5,895. Lloyd Bridges Chevrolet. Ph. 475-1373. x34

PARTS DRIVER—Permanent position open for reliable, qualified person in well established dealership with excellent sales and service reputation. Good wages and working conditions, hospitalization, dental plan, and life insurance paid, retirement and vacation benefits, uniforms furnished and opportunity for advancement. Call or see Dick Cook, Parts Manager, for an appointment, Palmer Ford, Chelsea, Ph. 475-1301. x35

YOU! Do you believe in your management potential? We are supplementing our current staff.

Large mid-western firm to hire only people with desire to advance and money motivation. Ph. Mr. Walker in Ann Arbor. 971-2860, 1 to 5 p.m. x34

IRISH SETTER—3-year-old male needs good home in country. Dexter, Ph. 426-2271. x34

BY OWNER, attractive, 3-bedroom ranch on treed one acre. Heated workshop-garage, fenced backyard. Immediate possession, \$49,900. No realtors. Ph. 878-3876. x35

FOR SALE—Sprague and Carleton maple dry sink, copper lining. Ph. 475-7362. x34

WANT ADS

1969 FORD Galaxy 500, air cond., excellent running condition. Over \$300 in new parts alone. V-8, auto, \$350 or best offer. Ph. 475-2943, after 4 p.m. x34

FOR SALE—77 Ford 1/2 ton pickup, short box, 27,000 miles, better than excellent condition. Ziebarted, \$3,800. Must sell. Ph. 475-1119 between 6-10 p.m. week-days. x311f

WATERLOO REALTY

COZY 2-BEDROOM lake access home. Year-round home has new natural gas heating system, family room, enclosed porch, aluminum storms and screens, brick outdoor barbeque. Very neat and well decorated. Patterson Lake. \$32,900.

SPARKLING NEW 3-bedroom b-level. Deck off dining area overlooks active stream at rear of property. Fireplace in large family room. Good blacktop road. Approx. 1 acre backs to State Land. Gregory schools. \$59,900.

GOLD RUSH ERA—Old-fashioned brick home has 4,660 sq. ft. of living space, 7 bedrooms, 5 bathrooms, 3 kitchens. New well and drainfield. Large garage. Currently used as adult care home. 20 minutes from Chelsea. \$140,000.

\$59,500—3-bedroom farmhouse and 40 acres. Fully insulated home has new kitchen, new bath and fireplace, new drainfield, good well. Mature walnut trees. Approx. 12 acres tillable. Stockbridge-Munith schools.

.8 ACRE in Village of Waterloo. Trees, overlooks Waterloo Mill pond. \$7,900.

1.1 ACRE in Village of Waterloo. Some trees, overlooking Waterloo Mill pond. \$8,900.

1.5 ACRES, woods, surveyed, perked, good blacktop road, 3 miles west of Grass Lake. \$6,500. Land contract possible with \$1,500 down.

6 ACRES, rolling, scattered evergreens. County maintained road. 10 minutes from Chelsea. 1/2 mile west of M-52. \$16,900.

WATERLOO REALTY

355 Clear Lake.

JOANN VARYWODA, BROKER

Phone 475-8674

Evenings and Sundays:

Sue Lewie 1-517-522-5252

Carol Lakatos 475-7129

Evelyn White 475-1066 x341f

HOT dry cleans new life into any carpet—shag, kitchen or indoor-outdoor. It's easy. Rent the HOST machine. Merkel Home Furnishings, Chelsea, 475-8621. x34

FIREWOOD FOR SALE—\$35 per cord. Ph. 426-3362. x341f

PART-TIME—Book manufacturer looking for persons with good manual dexterity for bindery handwork. These will be day or afternoon, on-call assignments. Flexible hours to fit your schedule. Contact Bruce Blankenship at Baum-Brunfield, 100 N. Staebler (west of Zeeb on Jackson Rd.), Ann Arbor, Mich. (313) 662-3291. An equal opportunity employer. x36

1978 SCOTTDAL 34-ton pickup, 6-foot bed with 76" Western plow blade. 6,000 miles, \$5,995. Ph. 475-9315. x37

FOR SALE—Franklin fireplace. 30" opening, like new, all accessories. Must sell, \$250. Ph. 665-5026. x33

KITCHEN CABINETS—Display group sale. 10-foot main-run with 36" chef's pantry. 54" island at left. Modern styling, lime green color. This is a model kitchen never used, only looked at. Normal discount price, \$2,220; off-the-floor, one only price, \$1,225 includes white slate counter top. See it now! Call at Chelsea Lumber Co. x35

FOR SALE—Vacation home on wheels. Strong, dependable, 1978 Pace Arrow, 26 feet of living area. Loaded with options for comfort and safety. Excellent condition. Sacrifice at \$16,500. Ph. 475-7465. x341f

ADMINISTRATIVE POSITION—Invoicing, journal accounting, typing of routine correspondence, accounts receivable and purchasing follow-up. Send resume to P. O. Box 338, Dexter, Mich. 48130. x34

FOR SALE—16' Frigidaire refrigerator. \$150; 30" Frigidaire range, \$40; dinette set, \$50; heavy duty vari speed Nacdo belt masager, \$75. Ph. 475-7396. x35

FOR SALE—Coats 10-10 tie changer, and a Micro bubble balancer. Harper Sales & Service, Inc., 118 W. Middle St., Chelsea, Ph. 475-1306. x341f

NEED a reliable babysitter in the North Lake area? Ph. 475-9482. x37

SINGLE MATURE MALE looking for apartment or furnished efficiency within driving distance of Hydromatics. Contact Ken at (517) 851-7767. x35

BOWLING

Kahunas Mixed

Standings as of Jan. 28

W	L
Small Super's	52 25
All Stars	48 29
The Boozers	47 30
Me and them three	43 34
Untouchables	42 35
Proud Mary's Gang	42 35
Good Timers	42 35
Whiteheads	39 38
Udder Fools	39 38
Sunday Funnies	38 38
The Foursome	37 39
G and the Kids	37 40
Four on the Floor	37 40
P H - 2	33 44
Ma Gu	31 46
Herr - Bares	27 50
Maybe's	26 51

Women, games 150 and over: F. Ferry, 188, 158; J. Buku, 153; D. Thompson, 165; C. Thompson, 164, 164, 154; L. Sanderson, 157; A. Grau, 162; E. Heller, 151; P. Scholz, 152; S. Steele, 162, 159; M. Vasas, 177, 168; J. Staphish, 171; R. Forner, 177; M. Picklesimer, 190; L. Stahl, 168; C. Bradbury, 207, 158; M. Sweeney, 181; D. Steinaway, 158, 153.

Women's Bowling Club

Standings as of Jan. 24

W	L
Parish Cleaners	60 24
Chelsea Milling	54 30
Palmer Ford	53 31
Laura's Beauty Salon	51 32 1/2
Washtenaw Eng.	45 39
DD Deburrring	44 40
Heller Electric	43 41
Jiffy Mixes	42 42
Alley Cats	41 43
Palmer Leasing	41 43
Dana Diamonds	38 45 1/2
Norris Electric	36 47 1/2
Wolverine Bar	33 51
Good Time Girls	33 51
Freeman Machine	31 53
Klink Excavating	25 58 1/2

450 series and over: P. Fitzsimmons, 522; A. Boham, 497; P. Poertner, 496; A. Sindlinger, 495; L. Orlovski, 494; N. Kern, 490; J. Johnston, 478; D. Verwey, 476; M. E. Sutter, 473; C. Parsons, 472; L. Hafner, 472; J. Hafner, 463; K. Tobin, 461; B. Bush, 457; D. Alber, 473.

150 games and over: P. Fitzsimmons, 156, 226; A. Boham, 173, 174, 150; P. Poertner, 153, 182, 161; A. Sindlinger, 159, 181, 156; L. Orlovski, 160, 202; N. Kern, 153, 187; A. Fahrner, 157, 191; J. Johnston, 158, 155, 165; D. Verwey, 179, 157; D. Alber, 157, 162, 154; M. E. Sutter, 150, 180; C. Parsons, 184, 172; L. Hafner, 164, 161; J. Hafner, 182; K. Tobin, 162, 154; B. Bush, 151, 177; F. Andrews, 156, 152; S. Schulze, 155, 153; R. Hummel, 179; N. Packard, 178; J. Keiser, 175; S. Morton, 172; A. Alexander, 168; M. McGuire, 168; S. Trinkle, 165; P. Wurster, 163; L. Alder, 162; M. Kozminski, 160; J. Rowe, 160; S. Klink, 160; C. Bradbury, 160; N. Smith, 159; B. Pike, 158; E. Kuhl, 155; D. Fouty, 154; D. Frisbie, 153; J. Pagliarini, 153; V. Downer, 150.

Junior House Girls

Standings as of Jan. 25

W	L
Coolman Parking	50 33 1/2
Backdoor Party Store	50 34
Cliff's Ace Hardware	49 35
Manchester Car Wash	48 35 1/2
Kozy Kitchen	43 37
Wolverine Lounge	41 42 1/2
Chelsea Lanes	40 42
W. C. Klep	38 48
K & W Equipment	33 50 1/2
Drakes	26 58

140 games and over: M. Up-

haus, 140, 152; J. Bucholtz, 141;

K. Currey, 151, 149; T. Sanderson,

144; O. Kouba, 157, 147; J. Cyers,

164, 181, 180; D. Gotts, 192; J.

Roberts, 183, 155; A. Kensler, 186;

C. Powell, 155, 154; P. Devulder,

143; S. Ratzlaff, 159, 159; R. Hatch,

145; K. Kensler, 148, 165; M. A.

Mulcare, 168; L. A. Van Deven,

158; J. Duval, 178, 186, 155.

425 series and over: J. Duval,

519; J. Roberts, 471; A. Kensler,

430; C. Powell, 445; S. Ratzlaff,

435; J. Cyers, 524; K. Currey, 434.

Rolling Pin League

Standings as of Jan. 30

W	L
Poachers	61 27
Grinders	59 28 1/2
Sugar Bowls	51 36 1/2
Coffee Cups	49 39
Egg Beaters	48 39 1/2
Beats	47 41
Pots	44 43 1/2
Spooners	44 43 1/2
Blenders	44 43 1/2
Mixers	43 44 1/2
Kitchen Kapers	42 45 1/2
Brooms	42 46
Kookie Cutters	41 47
Jolly Mops	40 48
Dish Washers	37 51
Mopper Uppers	35 52 1/2
Jelly Rollers	33 59
Silverware	32 56

500 series and over: P. Wurster,

506; M. Walz, 529.

425 and over series: G. Clark,

445; E. Whitaker, 427; B. Wolf-

gang, 426; C. Dmoch, 446; B. Selwa,

447; B. Torrice, 448; A. Boote,

482; P. Bonfers, 429; M. Biggs,

428; P. Harook, 495; J. Cronkrite,

461; A. Oetzman, 429; J. Shepherd,

456; D. Boughton, 460.

150 games and over: B. Wolf-

gang, 466; A. Grau, 455; G. Clark,

183; E. Whitaker, 154; C. Dmoch,

152; P. Wurster, 214, 168; S. Seitz,

155; B. Selwa, 194; A. Classon,

165; J. Yeaky, 153; T. Doll, 159;

E. Heller, 150; J. Hadley, 162; B.

Torrice, 156; A. Boote, 150, 165,

167; B. Van Gorder, 151; P. Bor-

ders, 150, 154; M. Walz, 160, 166,

203; M. Biggs, 152, 167; C. Baker,

177; V. Workman, 154; P. Harook,

180, 181; J. Cronkrite, 162, 150;

A. Oetzman, 161; D. Boughton,

158, 167; B. Worsham, 151; S. Seitz,

153; J. Shepherd, 160; F. Andrews,

371.

Bulldogs Mixed

Standings as of Jan. 25

W	L
D. D. Deburrring	54 29 1/2
Richardson's Asphalt	49 34 1/2
Norm's Sales	46 38
Dottie-O-Dairy	45 39
Smith's Service	42 42
Spadafore	40 44
Joe's Bar & Grill	35 47
Rowdies	24 60

Women, 150 and over: S. Nix,

187, 179; P. Smith, 167; W. Jack-

son, 160; B. Bush, 183, 162, 178;

J. Kaiser, 151, 209; M. Stafford,

162; V. Cooper, 151, 155; J. Penn-

ington, 158.

Men, 170 and over: J. Van Ri-

per, 176; D. Bush, 179; G. White,

193; B. Smith, 177, 180.

Chelsea Lanes Mixed

Standings as of Jan. 28

W	L
Federal Screw Outlaws	90 57
VFW	89 58
Hawley Truck Repair	88 59
Ann Arbor Centerless	83 64
Hav-A-Electric	80 67
White Lightning	78 69
Ken's Glass	74 73
Fireballs	73 74
North Lake Dunlopers	73 74
Fox Point Flashes	72 75
Accra Gauge	63 84
Michigan Mutual	59 88
King Pins	58 89
Wire & Fire	49 98

Women 425 series and over: E.

Finfrock, 425; N. Keizer, 468; L.

Behnke, 484; J. Jose, 451; H. Fox,

425.

Men, 475 series and over: R.

Clark, 498; L. Keizer, 564; A. Oes-

terle, 479; J. Richmond, 556; A.

Mich. Livestock Exch., 75 72

Gibney, 491; F. White, 537; R. Za-

toski, 590; W. Kulenkamp, 479.

Women, 150 games and over: E.

Finfrock, 187; S. Clark, 157; D.

Keizer, 188; N. Keizer, 173, 178;

L. Behnke, 155, 194; D. Hawley,

151; J. Jose, 168, 165; H. Fox, 159.

Men, 175 games and over: L.

Keizer, 213, 162; R. Herrst, 200;

J. Richmond, 188, 200; A. Hawley,

178, 177; B. McGibney, 195; W.

Weston, 186; F. White, 197, 179;

R. Zatoski, 193, 193, 204; W. Ku-

lenkamp, 180.

Prep League

Standings as of Jan. 27

W	L
The Pros	47 7
Thompson Strikers	36 18
Dana Chargers	34 20
Jackquers	31 22 1/2
Chelsea Bowlers	30 24
Bad News Bowlers	29 25
Pin Smashers	25 29
Screaming Deamings	23 30 1/2
Blue Jean Bowlers	23 31
The Screammers	17 37
Alley Angels	14 40
Rolling Rockets	14 40

Games 100 and over: S. Hunn,

107, 134; T. Push, 103; K. Thayer,

164, 140; M. Anderson, 119; C.

Hegadorn, 106; M. Ryan, 102, 112;

J. Samek, 104, 107; Dean Boote,

111; Dave Boote, 105; J. Morgan,

148, 121; J. Schaefer, 120, 125; D.

Hodgins, 142, 135; S. Cheever, 109,

106; H. Morrell, 114, 162; P. Fle-

tcher, 114, 109; J. Toon, 132, 130;

D. Collins, 130, 118; G. Anderson,

411; S. Lorenzen, 120; D. Dettling,

365, 138; M. White, 111, 117; D.

Settle, 110, 133; T. Loucks, 111,

112; G. Greenleaf, 123, 150; P.

Shures, 115; R. Loucks, 104; G.

Boyer, 117; D. Thompson, 128,

133; J. Tobin, 122, 152; N. Case,

107; C. Schulze, 108; M. Boote,

101, 108; T. Bowdish, 101; J. Sal-

yer, 130.

Series 150 and over: S. Hunn,

241; K. Roberts, 180; T. Push,

175; C. Hegadorn, 179; M. Ander-

son, 248; K. Thayer, 304; Dave

Boote, 195; Dean Boote, 266; J.

Samek, 219; E. Zink, 157; M. Ryan,

214; S. Cheever, 215; D. Hodgins,

277; J. Schaefer, 245; J. Morgan,

269; H. Morrell, 276; P. Fletcher,

223; J. Toon, 262; D. Collins, 248.

G. Anderson, 200; S. Lorenzen,

207; M. Connell, 175; D. Dettling,

303; M. White, 228; D. Settle, 243;

T. Loucks, 228; G. Greenleaf, 273;

P. Shures, 211; R. Loucks, 174;

G. Boyer, 193; D. Thompson, 261;

J. Koch, 168; N. Case, 202; C.

Schulze, 192; J. Tobin, 274; P.

Barth, 171; M. Boote, 209; J. Bod-

nar, 161; T. Bowdish, 182; J. Sal-

yer, 224.

Snoopy Peanut League

Standings as of Jan. 27

W	L
Red Barons	37 17
New Ones	36 17 1/2
Kool Kids	34 20
Bad News Bowlers	30 24
Chelsea Dragons	26 28
Shooting Stars	9 44 1/2

70 games: C. Giesko, 74; J.

Hafner, 88, 70; S. Wolak, 87; E.

Greenleaf, 70, 89; M. Ryan, 107,

81; J. Fletcher, 72; D. Buku, 96,

98; J. Waldyke, 85, 108; J. Boyer,

70; R. Finch, 71, 102; R. Finch,

70; C. Alexander, 115, 105; D. Har-

ris, 78; T. Harook, 134, 101; L.

Walton, 74, 101; J. Gray, 88; L.

Boyer, 78, 84; T. Rowe, 72, 76.

125 series: T. Rowe, 148; L. Boy-

er, 162; J. Gray, 149; D. Buku,

194; J. Waldyke, 194; R. Finch,

173; R. Finch, 128; C. Alexander,

220; D. Harris, 128; T. Harook,

235; L. Walton, 175; C. Giesko, 136;

L. Hafner, 158; S. Wolak, 152; E.

Greenleaf, 159; M. Ryan, 188; J.

Fletcher, 128.

Junior House League

Standings as of Jan. 25

W	L
Broderick Shell	102 45
Smith's Service	88 59
Xpsi Asphalt	84 63
3-D Sales & Service	83 64
Rickwell International	82 65
Mark IV Lounge	79 68
F. J. Siller & Co.	77 70
Mich. Livestock Exch.	75 72



JUNIOR VARSITY WRESTLERS: In one of their best performances of the season these grapplers all placed in the meet against Dexter on Thursday, Jan. 25. Standing in back row, from left are Bill Lamb, 2nd; Dave Harrison, 2nd; John Preston, 3rd; Steve Grau, 2nd; and Rick Poljan, 3rd. In the front row, from left, are Ray Williams, 1st; Andy Bulick, 3rd; Jeff Osentoski, 3rd; and Jim Cobb, 1st.

Varsity Basketball Schedule

Feb. 2—South LyonT
Feb. 9—MilanH
Feb. 13—Carlton AirportH
Feb. 16—DexterT
Feb. 23—SalineH
Feb. 27—Lumen ChristiT
Mar. 2—LincolnT

All games start at 6:30 p.m.

Wrestlers Gain Win On Opponent Penalty

A team point penalty against the Dexter varsity grapplers, turned into a dual victory for Chelsea,

Carl's Cleaning Service
521 S. Main St. Chelsea, Mich.
Professional Carpet & Upholstery Cleaning
BUSINESS - RESIDENTIAL
FREE ESTIMATES Phone 475-8007

FOR PROFIT
FEED
Feed Formulas Tested, Proved To Get Results
Extra proteins, vitamins and minerals in proper balance, scientifically blended, make our feeds real profit producers for you.
Farmers' Supply Co.
Phone GR 5-5511

VILLAGE CAUCUS
NOTICE is hereby given that an **INDEPENDENT PARTY VILLAGE CAUCUS** for the purpose of placing in nomination candidates for the following Village Offices:
CLERK
TRUSTEES
LIBRARY BOARD TRUSTEES
For the Village of Chelsea, County of Washtenaw, State of Michigan, and for the purpose of transacting such other business as may properly come before it, will be held at the
MUNICIPAL BUILDING
104 EAST MIDDLE STREET, CHELSEA
On Monday, the 12th day of Feb., 1979
at 8:00 o'clock p.m.
By Order of
THOMAS NEUMEYER
Village Clerk

33-32, on Thursday, Jan. 25. Chelsea was awarded four forfeits and won three matches by decisions. Bulldog winners were Chuck Young, 4-2; Bart Bauer, 8-2; and John Whitaker, 3-2. During the last of the tournament's eight matches, Chelsea and Dexter were tied, 33-33, when Dexter was penalized for misconduct. While the Bulldogs took the decision, Coach Richard Bareis commented, "I was not pleased by our performance as we were thrown all over the mat."

A better balanced performance was turned in by the junior varsity wrestling team. Junior Bulldogs Ray Williams and Jim Cobb both captured championships while Steve Grau, Dave Harrison, and Bill Lamb finished second in their divisions.

Finishing third for Chelsea were Jeff Osentoski, John Preston, and Rick Poljan. Andy Bulick gained a fourth-place finish.

Also wrestling for the Chelsea team were Tim Pennington, Jeff Cox, Steve Snyder and Bob Schleede.

"The young wrestlers have made progress in their wrestling skills," Coach Bareis said. "We still have to develop strength and more ability, but we are showing a lot of promise," he added.



GIRL SCOUTS
TROOP 689—Last week members of Troop 689 who did not have the cooking badge started work on it. The other girls who had the badge thought of what to put up in one of the town's windows and tried to decide what to do on thinking day.
Jenny Catell, scribe.

TROOP 82—Junior Girl Scout Troop No. 82 went tobogganing at the Chelsea Rod and Gun Club. We made hot chocolate and exchanged cookies. We had a lot of fun.
Sommer Havens, scribe.

TROOP 729—Brownie Troop No. 729 met Tuesday, Jan. 30. We worked on our Brownie scrapbooks again and shared our progress with each other. Then we played charades and volleyball. Michaela Scrip-ter brought the treats.
Dawn Spade, scribe.

The survival rate for low-birth-weight babies treated in intensive care nurseries now is between 75 and 95 percent, according to The National Foundation - March of Dimes. Even the sickest newborns have vastly improved chances for survival, thanks to these life-giving centers.

REMODELING
Residential - Commercial
FREE ESTIMATES
Ib V. JENSEN and SON
LICENSED BUILDER
378 Spring Lake Drive
Chelsea, Mich.
PHONE 475-1820

★ District Court Proceedings ★

Week of Jan. 10-26
Franklin D. Woods was sentenced for making a threatening phone call to fines and costs of \$100, 20 days in jail, and six months probation.
Ginger C. Mullins was sentenced for larceny under \$100 to fines and costs of \$100 and three days in jail.
Sarah Vauters was sentenced for larceny under \$100 to fines and costs of \$100 and three days in jail.
Robbie E. Olds was sentenced for reckless driving. He was ordered to attend driving school. He was also sentenced for failing to obey a police officer to fines and costs of \$155.
Joseph G. Burman, II, pled guilty to speeding. Fines and costs, \$30.
Ernest G. Norton appeared on a violation of probation hearing for driving under the influence of liquor. He was sentenced to 90 days in jail and his probation was revoked.
Janice K. Hamilton was sentenced for reckless driving to fines and costs of \$130. She was ordered to attend driving school.
Robert P. Griggs was sentenced for driving with a suspended license to 90 days in jail with credit for time spent.
Richard C. Lowe pled guilty to a violation of the basic speed law and causing a personal injury accident. Fines and costs, \$35.
Thomas C. Gregory pled guilty to careless driving. Fines and costs, \$30.
Bert Britton pled no contest to failing to stop for a school bus. He was ordered to attend driving school and pay fines and costs of \$30.
Roslyn Chung pled guilty to a parking meter violation. Fines and costs, \$20.
Cecil Richards, Jr., was sentenced for reckless driving to fines and costs of \$50. He was ordered to attend driving school.
Gregory Webb was sentenced for reckless use of firearms to 30 days in jail, one year probation, and fines and costs of \$305. He will be allowed credit for time spent and to partake in the County Work Program.
Elvin L. Ambruster was sentenced for failing to yield the right of way and causing a personal injury accident. Fines and costs, \$75.
Ernest Norton appeared on a bench warrant for a parking meter violation. He was sentenced to 25 in contempt fines and given a \$25 bond.
William S. Miller was found guilty of driving with a suspended license. Fines and costs, \$80. He was referred to the Alcohol Education Program. He was also sentenced for possession of open intoxicants in a moving vehicle. Fines and costs, \$100. He was ordered to spend three days on the County Work Program.
Jeffrey Eberts was found guilty of making unnecessary noise. Fines and costs, \$30.
James P. Renton was found guilty of speeding. Fines and costs, \$50.
Douglas J. Cole pled guilty to transporting open intoxicants. Fines and costs, \$45. He was referred to the Alcohol Education Program.
Robert Oltersdorf pled guilty to careless driving. Fines and costs, \$85.
Charles E. Cook was sentenced for leaving the scene of a property damage accident to fines and costs of \$150. He was also sentenced for failing to yield the right of way to fines and costs of \$50.
Thomas M. Nilsun pled guilty to possession of beer at a beach. Fines and costs, \$50.
Jimmy Haywood appeared on a bench warrant for possession of beer at a beach. He pled guilty and received fines and costs of \$50.
Clifford L. Fair pled guilty to possession of open intoxicants in a moving vehicle. Fines and costs, \$50.
Joseph P. Marentette pled guilty to careless driving and causing a property damage accident. Fines and costs, \$40.
Dale R. Grandson pled guilty to charges of littering. Fines and costs, \$100.

Senior Citizen Nutrition Program MENU and ACTIVITIES

Editor's note: The following is a new feature in The Chelsea Standard which will be run weekly in order to keep Chelsea's senior citizens up to date on the menu and activities of the Nutrition Program held at St. Mary's school. Any person over the age of 60 is entitled to take part in the program which is held every Monday through Friday from 9 a.m. to 1 p.m., excluding holidays. Further information may be obtained by calling Betty Koch, director, at 475-8882. All meals are prepared in the St. Mary's kitchen.
Thursday, Feb. 1 through Feb. 8
Thursday—Turkey and macaroni casserole, tomatoes, carrot and celery sticks, bread and butter, pineapple rings, beverage. Indoor gardening, nutrition.
Friday—Chicken soup with mushrooms, sub gum, beef with celery cabbage, fried rice and peas, cucumber salad, cake of good fortune. Recorder class, Bible study.
Monday—Meat potato burgers, lyonnaise green beans, calico slaw, bran muffins and butter, fresh fruit, beverage. Folk dancing.
Thursday—Oven-fried chicken, mashed sweet potatoes, buttered peas, bread and butter, apricot beverage. Blood pressure clinic. Tax rebate class.
Wednesday—Chili con carne with crackers, orange juice, cottage cheese and peach salad, bread and butter, peanut butter and raisin cake, beverage. Exercise.
Thursday—Roasted cube steak, cheese sauce, bread and butter, yellow cake, beverage. Indoor gardening.
Mr. and Mrs. Leigh Luick of Chelsea recently returned from a two-week trip to Tucson, Ariz., where they visited their daughter, Mrs. Jean Cameron. On Sunday, Jan. 28, while in Tucson, the Luicks were guests at an open house which honored their birthdays. 30 guests attended and cake and coffee were served.

Hoffman Tire & Service
7 miles west of Chelsea
13660 E. Michigan
Grass Lake 522-8542
THE SIGN OF QUALITY TIRES
CERTIFIED IN TUNE UPS & ENGINE REPAIR

The Timberline Fireplace INSERT
HEATS UP TO 1600 SQ. FT.
USES UP TO A 20" LOG
This fireplace inserts directly into your existing fireplace and utilizes the existing chimney without any complicated installation. So easily installed you can take it with you when you move!
Your fireplace and chimney provide the safe installation required.
IT'S ONLY 28 1/2" WIDE
The Timberline FIREPLACE INSERT prevents the loss of warm air up your chimney and eliminates cold drafts. For the first time, you can convert your expensive, fuel-wasting fireplace into an efficient wood burning heater... and still, whenever you like, enjoy the warmth and romance of an open fire.
LIFETIME GUARANTEE
ASCCO ALL-SEASON COMFORT CO.
Now Open 8 a.m. to 5 p.m. Mon. thru Sat.
Heating, Air Conditioning & Custom Sheet Metal Work
115 W. MIDDLE ST.
CHELSEA, MICH. 48118 (313) 475-7617

Meet Our New Trust Officers

Chelsea State Bank is now offering complete Trust Services to all customers and Chelsea-area residents. Through a special arrangement with National Bank and Trust Company of Ann Arbor, a fully staffed, specialized Trust Department is ready to serve you. A full range of Trust Services including Estate Analysis, Investment Management and Financial Planning, will now be available to you at Chelsea State Bank. NBT's Trust Division is staffed with 18 specialists, currently managing in excess of \$120 million in assets. And we're bringing their expertise and experience in the Trust field to you. Jim Meretta, Vice President and Steve Hoffman, Assistant Vice President, members of National Bank's Trust Department, will be available at our office on a regularly scheduled basis to discuss your financial program and Trust needs. They're here to serve you and will always be just a phone call away. So stop in to meet them or call for an appointment. Discover how your new, local Trust Officers can help you at the Chelsea State Bank.





Polly's
MASTERMARKETS

5 CONVENIENT LOCATIONS
201 PARK AVE., V.L.
1821 SPRING ARBOR RD.
960 NORTH WEST AVE.
3152 EAST MICHIGAN Coming Soon
1101 M-52 CHELSEA

CRACKER BARREL PRICES!!



8 PAK
16 OZ.

SAVE \$1.29 WITH COUPON
DIET RITE or

R.C. COLA

99¢

PLUS DEPOSIT

SAVE 20¢ WITH COUPON
KRAFT
MIRACLE WHIP
32 OZ.
89¢



SAVE 41¢ WITH COUPON
KRAFT

PARKAY MARGARINE
1 LB. QTRS.
2/89¢



SAVE 38¢ WITH COUPON
CAMPBELLS

TOMATO SOUP
10 3/4 OZ. CANS
6/\$1.00



SAVE 16¢ WITH COUPON
CHICKEN OF THE SEA

CHUNK LIGHT TUNA
6 1/2 OZ. CAN
59¢

VALUABLE COUPON
SAVE UP TO 1.29
Diet Rite or R.C. COLA 8 16 oz. 99¢ plus dep.
LIMIT 2 PER COUPON PER FAMILY
GOOD THRU 2/3/79
Polly's

VALUABLE COUPON
SAVE 20¢
Kraft Miracle Whip 32 oz. 89¢
LIMIT 1 PER COUPON PER FAMILY
GOOD THRU 2/3/79
Polly's

VALUABLE COUPON
SAVE UP TO .41¢
Parkay Margarine 2 lbs. 89¢
LIMIT 2 PER COUPON PER FAMILY
GOOD THRU 2/3/79
Polly's

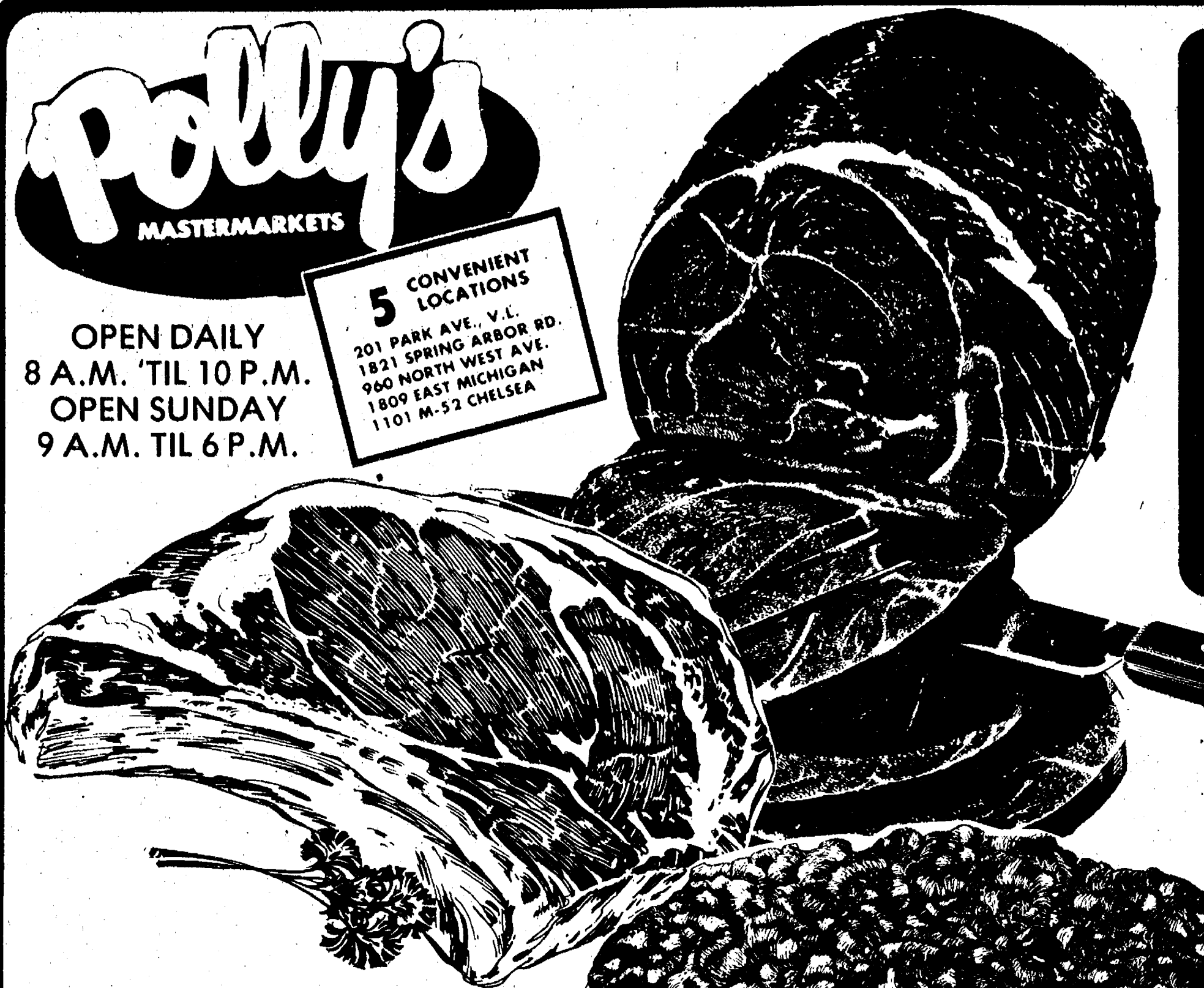
VALUABLE COUPON
SAVE 38¢
Campbell's Tomato Soup 6 10 3/4 oz. \$1.00
LIMIT 6 PER COUPON PER FAMILY
GOOD THRU 2/3/79
Polly's

VALUABLE COUPON
SAVE UP TO .16¢
Chicken-O-Sea Chunk Light Tuna 6 1/2 oz. 59¢
LIMIT 2 PER COUPON PER FAMILY
GOOD THRU 2/3/79
Polly's

Polly's
MASTERMARKETS

OPEN DAILY
8 A.M. 'TIL 10 P.M.
OPEN SUNDAY
9 A.M. 'TIL 6 P.M.

5 CONVENIENT
LOCATIONS
201 PARK AVE., V.L.
1821 SPRING ARBOR RD.
960 NORTH WEST AVE.
1809 EAST MICHIGAN
1101 M-52 CHELSEA



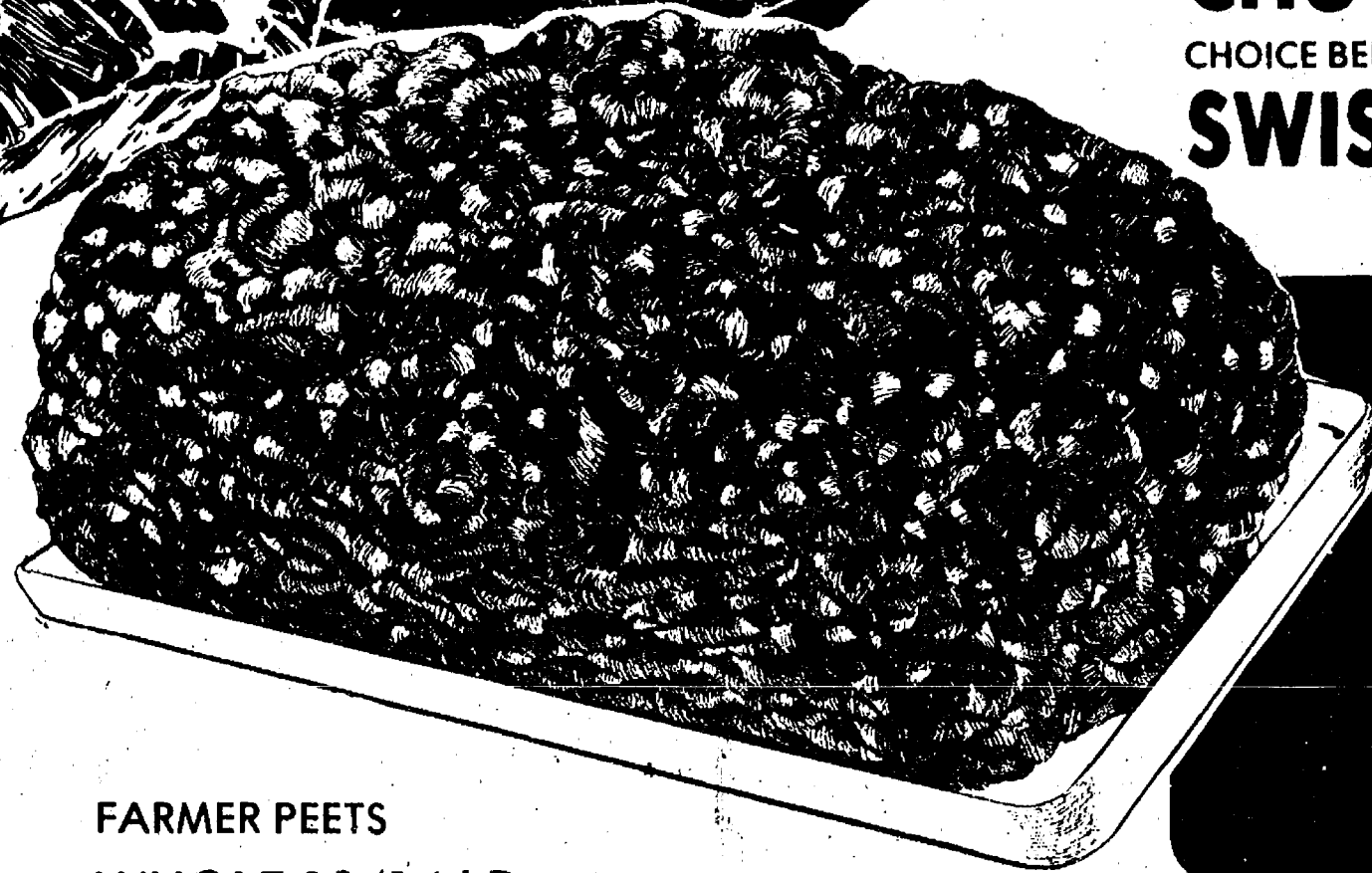
FARMER PEETS
WHOLE
**BONANZA
HAM**
WATER ADDED

LB. **\$1.69**

CHOICE BEEF BONELESS
CHUCK ROAST LB. **\$1.49**
CHOICE BEEF BONELESS
CHUCK STEAK LB. **\$1.59**
CHOICE BEEF BONELESS
SWISS STEAK LB. **\$1.59**

CHOICE BEEF

RIB STEAK
\$1.99
LB.



ALL BEEF

HAMBURG
\$1.35
LB.

CHOICE BEEF

RIB ROASTS
5TH THRU 7TH RIB
\$1.79
LB.
1ST THRU 4TH RIB
\$1.79
LB.

FARMER PEETS
WHOLE 10/14 LB.

**PORK
LOINS**
\$1.49
LB.

SLICED FREE!

FANCY MIXED
PORK CHOPS LB. **\$1.59**
HYGRADE SMOKED
PORK CHOPS LB. **\$1.89**
TURKEY
DRUMSTICKS LB. **45¢**
EXTRA LEAN
CHOP SUEY MEAT LB. **\$1.59**
FROZEN
SMELT LB. **89¢**
FROZEN FILLETS OF
WHITING LB. **59¢**

FARMER PEETS ALL
BEEF FRANKS LB. **\$1.39**
FARMER PEETS ROLL
SAUSAGE LB. **\$1.29**
FARMER PEETS
LUNCH MEAT LB. **\$1.39**
WILSON CORN KING
BACON LB. **\$1.29**
WILSON CORN KING
FRANKS LB. **99¢**
HYGRADE
BRAUNSWEIGER LB. **59¢**

EXTRA LEAN BEEF

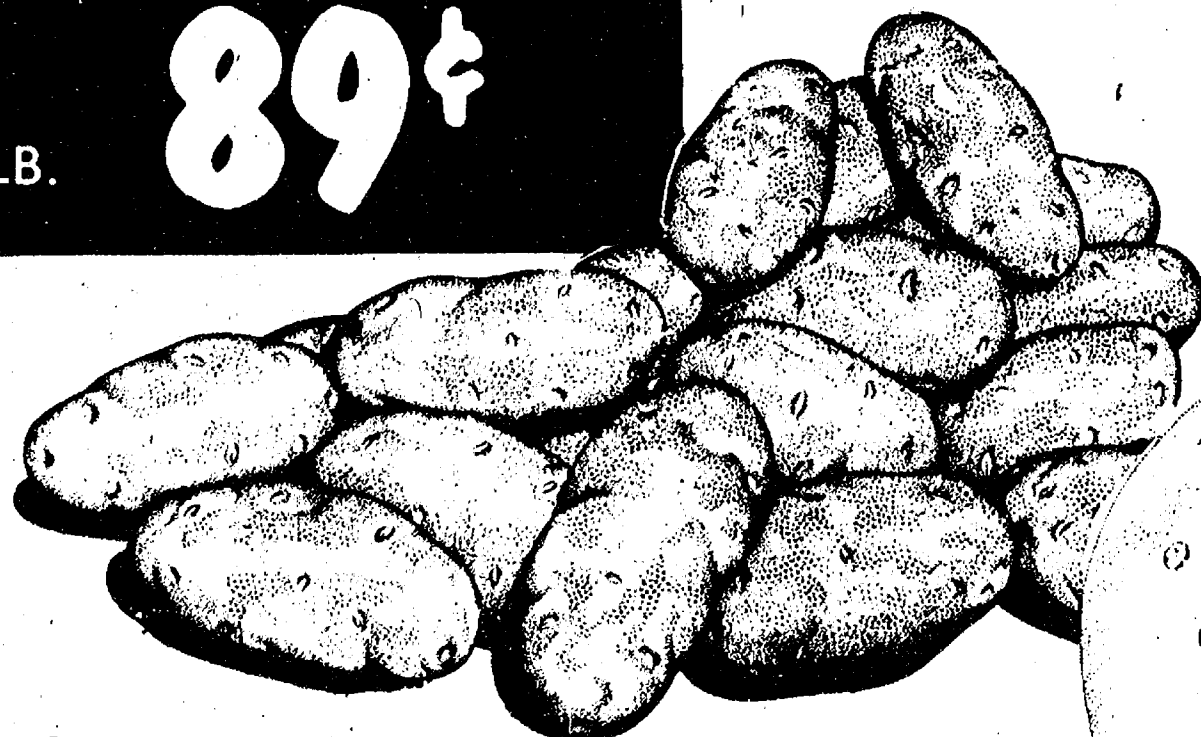
SHORT RIBS
89¢
LB.

SAVE 50¢ W/IN-STORE COUPON
ECKRICH
**SMORGAS
PAK**
\$1.79
LB.

SAVE 62¢ W/IN-STORE COUPON
ECKRICH SLENDER
**SLICED
MEATS**
3/\$1.75
3 OZ.
PKGS.

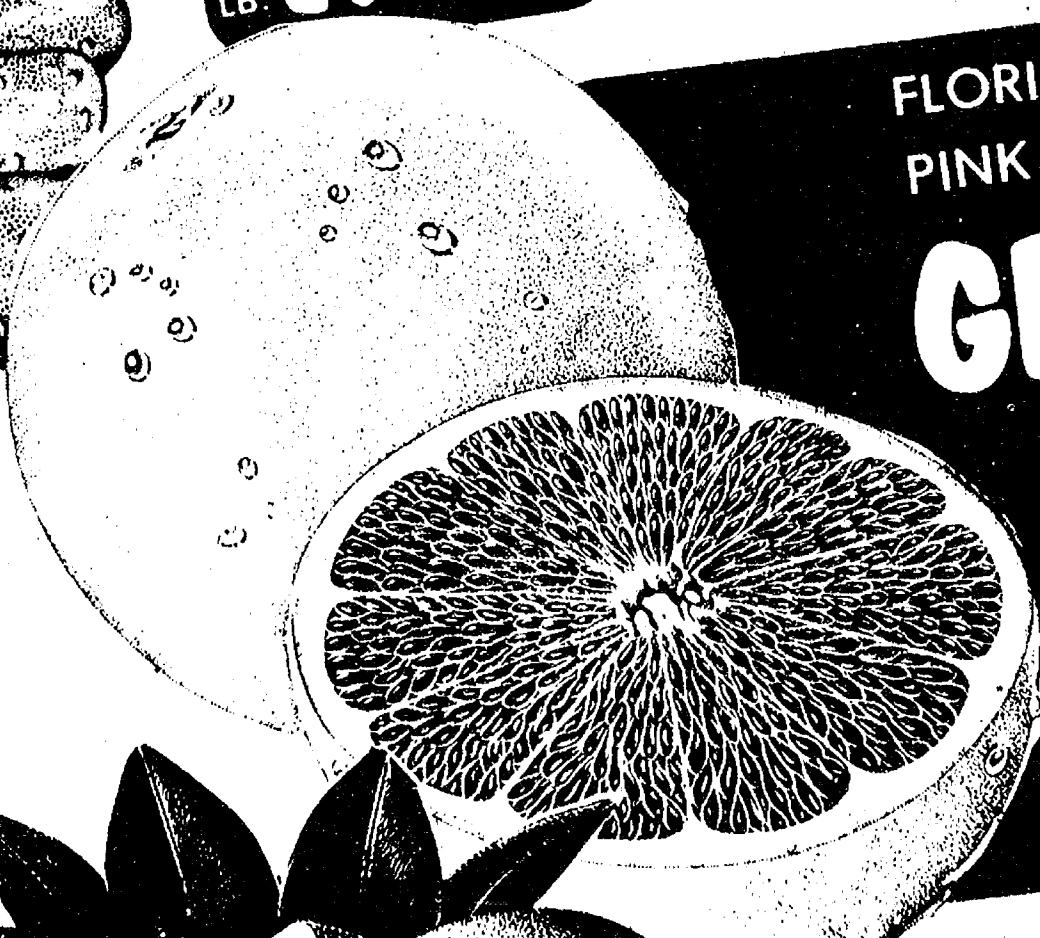
SAVE 50¢ W/IN-STORE COUPON
HYGRADE
**SLICED
BOLOGNA**
\$1.19
LB.

SAVE 40¢ W/IN-STORE COUPON
WEST VIRGINIA
**SLICED
BACON**
\$1.59
LB.



U.S. NO. 1 MICHIGAN

POTATOES
\$1.29
20
LB.



FLORIDA
PINK or WHITE

GRAPEFRUIT
5 LB. BAG

99¢

CALIFORNIA 138 SIZE

NAVEL ORANGES
99¢
DOZEN



U.S. NO. 1 JONATHAN
APPLES

3 LB. BAG

69¢

SNO-WHITE

CAULIFLOWER

99¢

SNO-WHITE

MUSHROOMS

LB.

99¢

HANGING BASKET

SPIDER PLANT 7 1/2 IN. POT

\$3.99

POLLY'S QUALITY

**WHITE
BREAD**

3/89¢
20-OZ.
LOAVES

Polly's
MASTERMARKETS

**5 CONVENIENT
LOCATIONS**
201 PARK AVE., V.I.
1821 SPRING ARBOR RD.
960 NORTH WEST AVE.
1809 EAST MICHIGAN
1101 M-52 CHELSEA

BORDEN
**CHOCOLATE
MILK**

QT. **49¢**

ALPINE BAKERY
**RYE
BREAD**
LIGHT or DARK

2 16-OZ.
for **\$1.19**

BANQUET

**POT
PIES**

4/\$1.00
8-OZ.
PKGS.

SAVE 50¢ W/IN-STORE COUPON
SWISS MISS

**HOT
COCOA**

32-OZ.
CAN **\$2.27**

SAVE 28¢ W/IN-STORE COUPON
MINUTE MAID,

**ORANGE
JUICE**

64-OZ. **\$1.09**

SAVE 36¢ W/IN-STORE COUPON
DURKEE GROUND

**BLACK
PEPPER**

4-OZ. **69¢**

SAVE 20¢ W/IN-STORE COUPON
20¢ OFF LABEL

**DERMASSAGE
LIQUID**

32-OZ. **\$1.09**

SAVE 24¢ W/IN-STORE COUPON
GLAD

**SANDWICH
BAGS**

150-CT. **59¢**

SAVE 30¢ W/IN-STORE COUPON
LOG CABIN COMPLETE

**PANCAKE
MIX**

2-LB. BOX **69¢**

SAVE 30¢ W/IN-STORE COUPON
CAINS

**POTATO
CHIPS**

13-OZ. **89¢**

SAVE 24¢ W/IN-STORE COUPON
GLADE AEROSOL

**AIR
FRESHENER**

7-OZ. **49¢**

**Del
Monte
Sale!**

• MIXED VEGETABLES
• SPINACH
• STEWED TOMATOES

3 16-OZ.
for **\$1.00**

• FRUIT COCKTAIL
• SLICED PEACHES
• LIMA BEANS

2 16-OZ.
for **89¢**

• PEAR HALVES
• SLICED PEARS

16-OZ. **49¢**

• APRICOT HALVES 17-OZ.
• TOMATO JUICE 46-OZ.

59¢

BOOTH BATTERED

FISH PORTIONS

24-OZ. **\$1.49**

BIRDS EYE

BROCCOLI SPEARS

2 10-OZ. **89¢**

BIRDS EYE

CAULIFLOWER

2 10-OZ. **89¢**

BORDEN LITE-LINE

YOGURT

3 8-OZ. FOR **99¢**

10¢ OFF

FREE n' SOFT

WELCH'S

GRAPE JUICE

24-OZ. **69¢**

KRAFT MIDGET

COLBY LONGHORN

16-OZ. **\$1.69**

SUNSWET

PRUNE JUICE

40-OZ. **79¢**

10¢ OFF LABEL COUNTYLINE

CHEESE

LB. **\$2.49**

PETER PIPER

FRESH DILLS

32-OZ. **79¢**

6-OZ. FREE! LOG CABIN

PANCAKE SYRUP

30-OZ. **\$1.19**

**CRACKER BARREL
PRICES!!**

HEFTY 2-PLY
TRASH BAGS 10-CT. **99¢**

CONTADINA
TOMATO SAUCE 3 15-OZ. CANS **\$1.00**

CONTADINA
TOMATO PASTE 2 12-OZ. CANS **89¢**

SUNSHINE
HONEY GRAHAMS 16-OZ. BOX **69¢**

SUNSHINE
HYDROX COOKIES 15-OZ. **79¢**

DOLE JUICE PAK
PINEAPPLE 20-OZ. **57¢**

LIBBY
FRUIT NECTARS 6-PK. CANS **99¢**

CHOCK FULL O' NUTS
COFFEE 2-LB. **\$3.99**

DOMINO
SUGAR 5-LB. **\$1.15**



SAVE 20¢ WITH IN-STORE COUPON

Doritos
Tortilla Chips

7-OZ.
BAG

69¢

JOHNSONS

TODDLER

12-
CT.

DIAPERS

\$1.59

RED

**HAWAIIAN
PUNCH**

46-
OZ.

53¢

PLASTIC BOTTLE

**2 LITER
COKE**

PLUS
10¢
DEPOSIT

99¢



**5 CONVENIENT
LOCATIONS**

1101 M-52 CHELSEA
201 PARK AVE., V.L.
1821 SPRING ARBOR RD.
960 N. WEST AVE.
1809 E. MICHIGAN

OPEN DAILY
8 A.M. 'til 10 P.M.
SUNDAY
9 A.M. 'til 6 P.M.

**MASTER
MARKETS**

**We Keep
You Coming
Back!**

★ **QUALITY**
★ **VARIETY**
★ **SERVICE**

★ **QUALITY PRODUCE**
★ **CHOICE BEEF**
★ **FRESH BAKED GOODS**
★ **LIQUOR**
★ **COLD BEER**
★ **LOTTERY TICKETS**

★ **SIDES OF BEEF**
★ **FRUIT BASKETS**
★ **KEG BEER**
★ **CARRY-OUT SERVICE**
★ LARGE SELECTION OF **NATIONAL BRANDS**
★ **LOW PRICES**