

School Board Reduces Millage Request to 3.8 Mills

At an organizational meeting Monday night, the Chelsea School Board of Education set its millage request for the Aug. 15 special election and began establishing its priorities for the 1977-78 school year.

In a unanimous decision, board members agreed to ask for a 3.8-mill tax hike for school operating costs. Coupled with a 1.2-mill reduction in the district's debt retirement levy, the net increase in taxes to Chelsea School District residents will be 2.6 mills if the August millage election succeeds.

Board members stated they arrived at the lower millage figure, reduced from the 4.4 increase asked in two previous elections, after receiving word that the Michigan State Legislature had passed a liberalized state aid act to public schools July 7, which resulted in an increase of state aid revenues

slightly over \$40,000 for the Chelsea School District.

Also, in the June 13 school election, Washtenaw County Intermediate School voters passed a 1/2-mill levy for handicapped students which will result in a \$15,000 increase in tax revenues for local schools.

The 3.8-mill request, now being asked by the board, represents \$408,000, or 10 percent of the school board's 1977-78 operating budget. With current enrollment figures at 2,700 students, the local Board of Education has set its budget at a little more than \$4 million to run the Chelsea School District for the upcoming school year.

In supplying these facts to residents, Robert Daniels, newly-elected president of the Chelsea Board of Education, said, "Speaking as board president, the school board's major concern at this time is to get information to resi-

dents of the Chelsea School District, so they know and understand what they are voting on. We feel this is critical when their tax money represents 10 percent of school district revenues."

If Chelsea School District voters pass the school board's upcoming millage request, more than a dozen changes in the current status of school programs would take effect immediately.

One of these would be to use tax money from the increase to purchase new textbooks. According to Daniels, "a considerable amount of the added revenues would be used in this area because our district has fallen behind in the quality of our textbooks." He stated that success of the millage would mean that in a three- to four-year period, all classroom books would be updated and the district could maintain this new standard of quality.

Other effects would include an increase in teaching supplies. "We would like to return to the level of expenditure we had in the 1973-74 school years," Daniels explained. Field trips, described by Daniels "so necessary to elementary students, and also some in the middle school and high school," would also be reinstated.

By voting in a 3.8-mill increase, school district voters would receive three more teachers which would reduce the class overloads in Chelsea's elementary schools and offset overcrowding from additions to the student population.

A learning disabilities teacher would be hired in the middle school, where there are currently 18 students without a teacher to handle their needs.

Also, extra-curricular activities would be entirely reinstated, providing a complete athletic program for boys and girls in

both the middle and high schools, and providing debate, band, forensics, musical and other non-athletic program activities.

Passage of the Aug. 15 millage request would enable the high school library to purchase more library books and more adequate library supplies to upgrade its instructional media center, would provide for custodial supplies and maintenance to improve school buildings and grounds, would reinstate the driver's education program, and would provide for community use of all school buildings and facilities.

A counselor would be hired at the middle school to bring the student load for counselors down to a 300-student maximum, as recommended by state guidelines.

Millage funds are needed for five new buses, one of which would be used for the establishment of a new bus run to accommodate the growing student pop-

ulation in the Chelsea School District.

Four other buses in the district need to be replaced, according to advice given to the school board by the school district bus mechanic, Stan Schiller.

The four buses each have logged between 80,000 and 100,000 miles, which is considered to be below safety standards. In addition, the buses are constantly under repair which costs the district more money than the buses are worth.

Finally, inflationary pressures on the cost of utilities, wages, insurance and school supplies represents a continuing increase in costs to the school district. The only remedy is an increase in revenues which would occur if the school board's millage request were approved.

Outside of outlining where the district's additional tax money would be spent at their July 11

meeting, the Board of Education announced its plans to bring citizen input into the district, whether or not the Aug. 15 millage passes.

The first of their proposals has already been organized. On the fourth Monday of every month, board members and school administrators will meet informally with the public to discuss school issues. The first meeting will be held July 25, 8 p.m. in the high school board room, and these informal gatherings will be sustained throughout the school year.

Also, newsletters from the Board of Education to residents of the school district will be mailed out regularly. Printing costs for the newsletters, and other related expenses will be funded by donations.

At their July 11 meeting, the Board of Education further appointed a two-man committee to

study and recommend new attendance requirements at the high school. Jim Stirling and Martin Tobin form the committee.

In other action, the board moved to push up the deadline for the 1977-78 school calendar by requesting administrators to provide the board with school calendar information no later than Aug. 1, so families could plan their vacations.

To conclude the board's organization of priorities, two separate revisions in policy were made when the board scheduled an Aug. 1 meeting with Chelsea's new high school principal and the school's assistant principal to discuss the high school discipline policy, and asked school administrators to study library hours at the high school with the object of possibly extending library hours to better serve student needs.

WEATHER

	Min.	Max.	Precip.
Thursday, July 7	74	85	0.00
Friday, July 8	75	88	0.07
Saturday, July 9	78	90	0.07
Sunday, July 10	78	88	0.00
Monday, July 11	76	81	0.00
Tuesday, July 12	76	85	0.00
Wednesday, July 13	74	83	0.01

The Chelsea Standard

QUOTE

"Sorrow is often the interest you pay on troubles you borrow."
—Anonymous.

ONE HUNDRED-EIGHTH YEAR—No. 5

12 Pages This Week

Plus 4-Page Supplement

CHELSEA, MICHIGAN, THURSDAY, JULY 14, 1977

15c per copy

SUBSCRIPTION: \$6.00 PER YEAR

School Board Hotline Offers You Answers

In an effort to produce an open communications network between taxpayers of the Chelsea School District and the Chelsea Board of Education, board members will respond to any questions regarding school issues in a newly-established column in The Chelsea Standard which is scheduled to begin next week, July 21.

Anyone wishing to address questions to the School Board should mail his or her inquiries to the "School Board Hotline," in care of The Chelsea Standard, 300 N. Main St., Chelsea. All questions received by Saturday, prior to the following Thursday's publication, will be answered in that week's column.

Fair Board Sponsoring Circus July 28

"Hurry, hurry, hurry . . . step right up folks, witness the greatest show on earth!"

Yielding to that Barker's bellow in July 28, area residents will find themselves under a billowing canvas big-top where elephants, dancing horses, trained wild animals, clowns, wire-walkers, trapeze artists, and other members of the Hagan-Wallace and Sells-Gray combined circus will perform, in three rings.

Sponsored by the Chelsea Community Fair Board, the circus will be set up on the Bridges property east of the fairgrounds at M-52 and Old US-12. Two performances have been slated, at 4:30 p.m. and 8 p.m., with proceeds from the event to be used in funding continuing local fair projects.

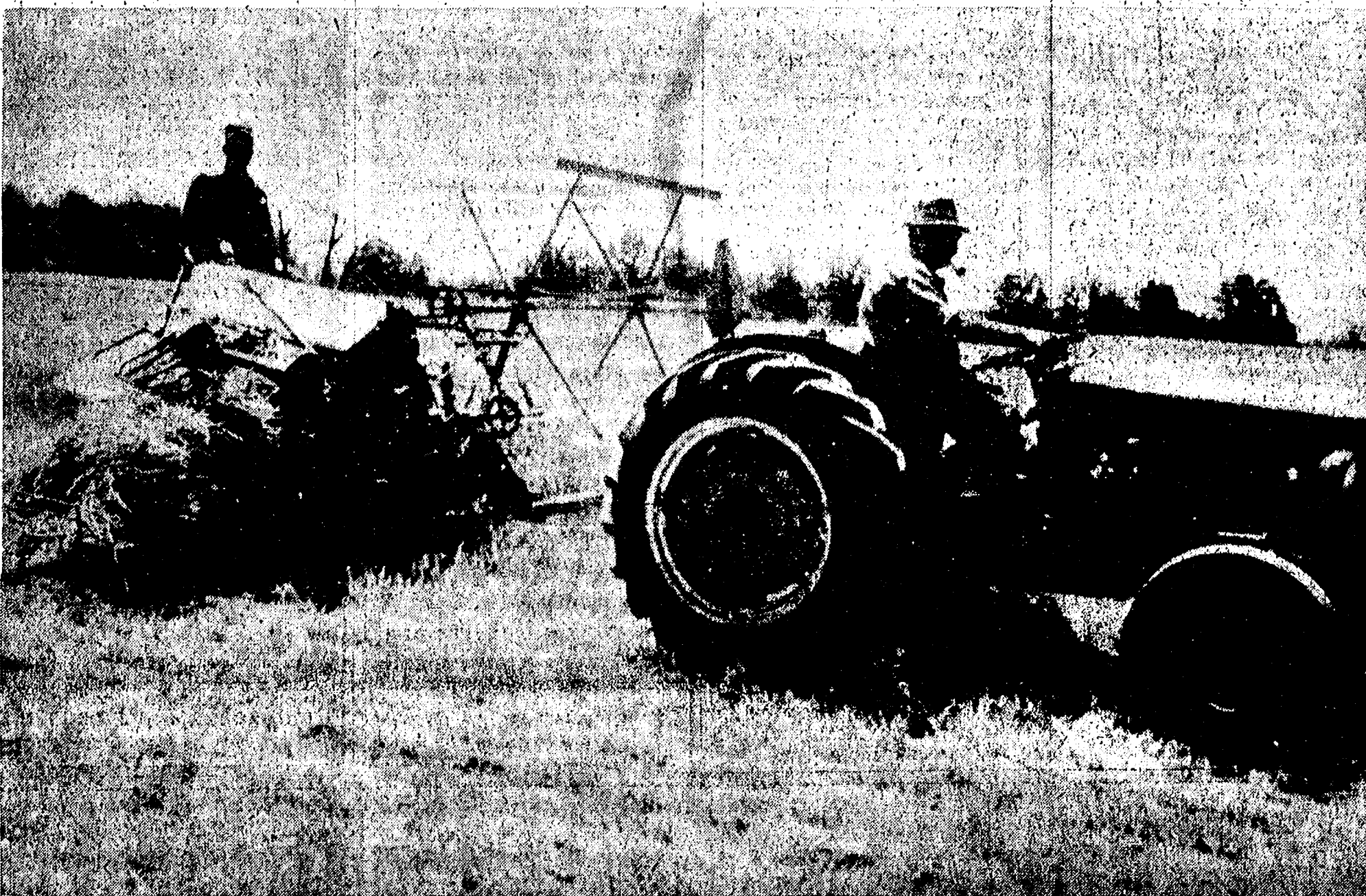
Advance ticket sales, at reduced prices, will be conducted throughout the Chelsea area by Fair board members, or tickets may be purchased at the Village Bakery on W. Middle St., Friday, July 15, 9 a.m. to 11 a.m. Senior citizens will be admitted for the price of a children's ticket. For more information, call 475-2921 or 75-7329.

For many years, Hagan-Wallace and Sells-Gray toured the United States as separate shows. Now, as a combined, larger circus on national tour, many new attractions will be featured, including arena stars from all parts of the world.

T. Quigley Sentenced in Traffic Fatality

A 54-year-old Chelsea man who died the scene of a traffic fatality two months ago was given a suspended jail sentence and was placed on probation in Ann Arbor Circuit Court Friday, July 6. Thomas P. Quigley had earlier pleaded guilty to failing to stop at the scene of a personal injury accident. Washtenaw County Sheriff's deputies said Quigley's 1974 model pickup truck had hit and killed Shama Williams, 8, on Sylvan Rd. in Sylvan township May 8. The child was riding a bicycle at the time.

Officers say Quigley drove from the fatality scene and was tracked down and arrested about 10 hours later. Judge Ross Campbell suspended Quigley's jail term for Quigley and placed him on three years probation.



BACK TO THE BASICS: Providing a glimpse of how farmers harvested their wheat up until about 45 years ago are Paul Seitz, in the seat of the tractor, and Paul Bollinger, who oversees the binder operation. Using an old McCormick binder owned by Seitz,

these men and other members of an able-bodied crew, succeeded Saturday in preparing several wagon loads of wheat for threshing at Chelsea's upcoming Community Fair. The above demonstration took place Saturday at the Reuben Lesser, Sr. farm on M-52.

Wheat Cut for Fair Threshing

Opening up the wheat field with a tractor, and then proceeding to use an old McCormick binder in a fashion which died out 45 years ago, an able-bodied crew of Paul Bollinger, Paul Seitz, Reuben Lesser, Jr., Loren Heller, LaVerne Hadley and Don Turner succeeded in binding a field of wheat at the Reuben Lesser, Sr. farm on M-52 by late afternoon last Saturday.

Their "couple of wagon loads" of wheat, according to the younger Lesser, will be threshed during Old Timer's Day at Chelsea's upcoming Community Fair, Aug. 23-27.

"It was just a spontaneous idea to kick-off the fair before it really starts," Reuben Lesser, Jr., said Saturday in explaining what inspired the group's old-fashioned binding effort.

"We talked about it one year ago after some of the older farmers expressed interest in seeing the revival of old-fashioned wheat harvest demonstrations," he added. "Many of the younger farmers also wanted to see it happen for the benefit of Chelsea's young generation."

To see how a field of golden wheat was turned into bushels of grain many years ago, residents are urged to attend the old-fashioned threshing exhibition at the Fair, where Saturday's crew will complete the work they began last week-end.

The board approved Supervisor Musolf's first appointment suggestion when he presented the name of Robert Heller, a Lima township farmer, to members of the board.

Then, however, the sparring began as board members were unable to duplicate their initial success with any of the six remaining names offered in appointment by the supervisor. The six-name list included Walter Inglis, Ron Ziegler, Pat Steirle, Fred Schwarze, Miriam Klemer and Paul Frisinger.

Supervisor Musolf attempted to close the floor to comment at that point after passing over the names of the final two candidates, David Bacon and Wallace Fusilier, a move which ensued in the emotion-charged display on the part of many residents attending the meeting.

One township resident stood up identifying himself as one of Lima's biggest taxpayers, and said that in her 25 years of political involvement in the township, she had never witnessed such intense friction in the township's governing body. She demanded the supervisor stop "his political games" and proceed with efforts to expedite the appointment.

Other residents took up the call while Supervisor Musolf's response was to try and move on to the matter of paying township bills. This led to a suggestion by one resident that the township not pay any bills, including the supervisor's salary, until planning commission appointments were complete. Supervisor Musolf then stood up, declared the meeting adjourned and walked out.

In the succeeding hour, members of the board attempted to return the meeting to some semblance of order, knowing a proper adjournment, via a motion and second to the motion from a member of their ranks, was needed to make the previous business proceedings legal.

As order was restored, Robert Heller announced he was withdrawing his resume for the position of planning commission member. "I promised myself and others that if Lima township couldn't choose a Planning Commission at this board meeting, then I would withdraw my application," he

stated.

The corner of Sharon Hollow Rd. and Grass Lake Rd. will be the site of a "shocking" demonstration Saturday, July 16, at 1 p.m., when Don Irwin begins his old-fashioned wheat harvest exhibition.

Joining Irwin will be Paul Bollinger, with his old-fashioned wooden thresher, and others who will operate two steam engines and an old-fashioned stationary baler.

By late afternoon, the wheat harvest crew expects to have harvested about five acres of the golden crop. Area residents and their families are invited to come and witness the methods used in harvesting wheat more than half a century ago.

Volunteers are needed to help dismantle stalls in the old horse barn in preparation for the move to the new building to be constructed.

(Continued on page three)

Mrs. James Hoffmeyer of 146 Orchard St., returned Monday from the four-day 1977 Ecumenical Assembly of Church Women United, USA, held July 7-10 at Purdue University, East Lafayette, Ind.

She was one of nearly 100 Michigan women attending the national assembly and the only local woman to be present at the tri-annual event over a period of many years.

A past president of Chelsea Church Women United, and currently a member of its Board of Directors, as well as state chairperson for the United Nations, Mrs. Hoffmeyer was selected as Chelsea's delegate to the convention.

Highlights of the 1977 Ecumenical Assembly included the election of a new national Church Women United president, the Rev. Mary Louise Rowand of Dallas, Tex., and the opportunity to participate in any of 100 Bible Study workshops led by Dr. Hans-Reudi Weber.

Dr. Weber is from Geneva, Switzerland, and is director of Bible Studies for the World Council of Churches.

The Chelsea Community Fair Horse Division Committee, headed by superintendent Merle Sibley, is holding a workbee this Thursday, July 14, 7 p.m. at the Fairgrounds.

Volunteers are needed to help dismantle stalls in the old horse barn in preparation for the move to the new building to be constructed.

(Continued on page three)

Although a funnel was sighted by law enforcement officials 15 miles north of Dexter, and several sightings flowed in from areas north of Chelsea on M-52, no touchdowns occurred locally.

Fire trucks from the Chelsea Fire Department were dispatched to sites all around the outskirts of the village where firemen sat watching the skies until the warning was lifted, shortly before 11 p.m.

A two-hour tornado warning issued for Livingston and Washtenaw counties Friday, sent area residents scurrying for safety shortly after 9 p.m. that evening when they were alerted to the danger of the approaching turbulence by a blast of Chelsea's weather warning signal.

Although a funnel was sighted by law enforcement officials 15 miles north of Dexter, and several sightings flowed in from areas north of Chelsea on M-52, no touchdowns occurred locally.

Fire trucks from the Chelsea Fire Department were dispatched to sites all around the outskirts of the village where firemen sat watching the skies until the warning was lifted, shortly before 11 p.m.

A two-hour tornado warning issued for Livingston and Washtenaw counties Friday, sent area residents scurrying for safety shortly after 9 p.m. that evening when they were alerted to the danger of the approaching turbulence by a blast of Chelsea's weather warning signal.

Although a funnel was sighted by law enforcement officials 15 miles north of Dexter, and several sightings flowed in from areas north of Chelsea on M-52, no touchdowns occurred locally.

Fire trucks from the Chelsea Fire Department were dispatched to sites all around the outskirts of the village where firemen sat watching the skies until the warning was lifted, shortly before 11 p.m.

A two-hour tornado warning issued for Livingston and Washtenaw counties Friday, sent area residents scurrying for safety shortly after 9 p.m. that evening when they were alerted to the danger of the approaching turbulence by a blast of Chelsea's weather warning signal.

Although a funnel was sighted by law enforcement officials 15 miles north of Dexter, and several sightings flowed in from areas north of Chelsea on M-52, no touchdowns occurred locally.

Tempers Flare As Lima Township Tries To Fill Vacant Posts

Monday night's Lima Township Board meeting erupted into a heated shouting match, punctuated by cries of "recall" and "resign" aimed at Supervisor Robert Musolf, as the supervisor and board members failed in their fifth attempt to complete appointments to the Lima Township Planning Commission.

Adding fuel to the explosion of tempers, Supervisor Musolf, walked out of the meeting on the heels of an improper adjournment, thereby threatening the legality of the previous three hours of township business proceedings.

Reserving the appointment issue for the last item of business, Supervisor Musolf announced the names of nine candidates currently in contention for the two-member planning commission vacancy to board members and a crowd of nearly 60 residents attending the meeting.

A motion passed by the board only moments earlier had returned planning body membership to six, in accordance with its original constitution.

The board approved Supervisor Musolf's first appointment suggestion when he presented the name of Robert Heller, a Lima township farmer, to members of the board.

Then, however, the sparring began as board members were unable to duplicate their initial success with any of the six remaining names offered in appointment by the supervisor. The six-name list included Walter Inglis, Ron Ziegler, Pat Steirle, Fred Schwarze, Miriam Klemer and Paul Frisinger.

Supervisor Musolf attempted to close the floor to comment at that point after passing over the names of the final two candidates, David Bacon and Wallace Fusilier, a move which ensued in the emotion-charged display on the part of many residents attending the meeting.

One township resident stood up identifying himself as one of Lima's biggest taxpayers, and said that in her 25 years of political involvement in the township, she had never witnessed such intense friction in the township's governing body. She demanded the supervisor stop "his political games" and proceed with efforts to expedite the appointment.

Other residents took up the call while Supervisor Musolf's response was to try and move on to the matter of paying township bills. This led to a suggestion by one resident that the township not pay any bills, including the supervisor's salary, until planning commission appointments were complete. Supervisor Musolf then stood up, declared the meeting adjourned and walked out.

In the succeeding hour, members of the board attempted to return the meeting to some semblance of order, knowing a proper adjournment, via a motion and second to the motion from a member of their ranks, was needed to make the previous business proceedings legal.

As order was restored, Robert Heller announced he was withdrawing his resume for the position of planning commission member. "I promised myself and others that if Lima township couldn't choose a Planning Commission at this board meeting, then I would withdraw my application," he

stated.

The corner of Sharon Hollow Rd. and Grass Lake Rd. will be the site of a "shocking" demonstration Saturday, July 16, at 1 p.m., when Don Irwin begins his old-fashioned wheat harvest exhibition.

Joining Irwin will be Paul Bollinger, with his old-fashioned wooden thresher, and others who will operate two steam engines and an old-fashioned stationary baler.

By late afternoon, the wheat harvest crew expects to have harvested about five acres of the golden crop. Area residents and their families are invited to come and witness the methods used in harvesting wheat more than half a century ago.

Volunteers are needed to help dismantle stalls in the old horse barn in preparation for the move to the new building to be constructed.

(Continued on page three)

said. "Because I said it, I'm going to stick with it."

"I've been unhappy with things since election time to this night," he added. "I'm going back to farming and am going to stay out of politics like I've done for the past 25 years."

According to comments circulating throughout Lima Township Hall in the aftermath of Supervisor Musolf's walk-out, the supervisor's inability to reach agreement with the board on planning commission appointments was just one of a series of complaints concerned citizens have leveled against him during his six-month tenure in office.

Residents pointed out they were also disenchanted with the supervisor's refusal to level with board members and residents on issues tied in to township interests.

One of these issues covered during Monday night's meeting pertained to the supervisor's failure to disclose his progress toward certification as a tax assessor to the members of the board. Supervisor Musolf stated publicly that he would be taking his certification exam on a date when the exam had not been scheduled.

When asked to explain the discrepancy, the supervisor replied he could take the exam any time he chose, and stated he would not have to be certified until Dec. 31 to attend to Lima's tax rolls.

It was further pointed out by Lima Treasurer Jean Tilt that although Supervisor Musolf had declared he had yet to take the exam, he had actually taken it once without passing. "We can't understand why you told us you never took the exam when you

took it and failed it in April," Mrs. Tilt argued.

The issue of certification is a hot one in Lima township as residents are generally against hiring an outside assessor to certify the tax rolls. Citing the prohibitive costs of an outside assessor, the township board has paid Supervisor Musolf to take an assessing class. Musolf supports finding an outside assessor.

Other issues covered by the board at Monday night's meeting included holding a discussion with a representative from the Ann Arbor Transportation Authority regarding Dial-A-Ride service in Lima township. A decision on whether to pay the required \$1,000 for continuation of the service has been tabled for three months. According to latest figures, Lima had only one regular Dial-A-Ride subscriber in the first six-months of the system's operations in the township.

A permit request for water treatment research by the Department of Natural Resources was reviewed. By taking no prohibitive action the board granted approval to the DNR to proceed.

Lima residents were reminded that July 18 is the last day to register for the Chelsea School District millage election.

In other action, the township clerk was instructed to inquire from county officials whether assessments on land under Act 198, or land designated as industrial development districts, are classified as a loss or negative adjustment on township tax rolls; a discussion was held on suing the Con-Rail railway system for rail-

(Continued on page three)

ties and leave their name and phone number. The rate of pay will be \$2.57 per hour and workers can work 40 hours per week from July 25 until school resumes in the fall.

Some local projects may continue after school begins if there are sufficient workers to maintain the crews. All projects must end by Sept. 30.

If approved, the Chelsea program will have openings for about 50 young people.

In addition, there will be six to seven openings for adult crew leaders. These jobs will pay \$4.70 per hour. Interested adults should also call the high school office and leave their name and phone number.

The Chelsea School District and the Village of Chelsea have submitted a joint proposal to the Department of Natural Resources for funds to provide conservation jobs for local area youth this summer.

Last week, the state legislature appropriated \$3 million to the DNR to create summer conservation-type jobs for youths 15 to 21 years of age. School districts and local units of government have been notified that they may apply for these funds for local projects and that approval of projects could come as early as July 20.

Any young person who is not working, and who would like to be considered for a job, if funds are allocated to Chelsea, should contact the high school office at

475-9131 and leave their name and phone number. The rate of pay will be \$2.57 per hour and workers can work 40 hours per week from July 25 until school resumes in the fall.

Some local projects may continue after school begins if there are sufficient workers to maintain the crews. All projects must end by Sept. 30.

If approved, the Chelsea program will have openings for about 50 young people.

In addition, there will be six to seven openings for adult crew leaders. These jobs will pay \$4.70 per hour. Interested adults should also call the high school office and leave their name and phone number.

The Chelsea School District and the Village of Chelsea have submitted a joint proposal to the Department of Natural Resources for funds to provide conservation jobs for local area youth this summer.

Last week, the state legislature appropriated \$3 million to the DNR to create summer conservation-type jobs for youths 15 to 21 years of age. School districts and local units of government have been notified that they may apply for these funds for local projects and that approval of projects could come as early as July 20.

Any young person who is not working, and who would like to be considered for a job, if funds are allocated to Chelsea, should contact the high school office at

475-9131 and leave their name and phone number. The rate of pay will be \$2.57 per hour and workers can work 40 hours per week from July 25 until school resumes in the fall.

Some local projects may continue after school begins if there are sufficient workers to maintain the crews. All projects must end by Sept. 30.

If approved, the Chelsea program will have openings for about 50 young people.

In addition, there will be six to seven openings for adult crew leaders. These jobs will pay \$4.70 per hour. Interested adults should also call the high school office and leave their name and phone number.

The Chelsea School District and the Village of Chelsea have submitted a joint proposal to the Department of Natural Resources for funds to provide conservation jobs for local area youth this summer.

Last week, the state legislature appropriated \$3 million to the DNR to create summer conservation-type jobs for youths 15 to 21 years of age. School districts and local units of government have been notified that they may apply for these funds for local projects and that approval of projects could come as early as July 20.

Any young person who is not working, and who would like to be considered for a job, if funds are allocated to Chelsea, should contact the high school office at

475-9131 and leave their name and phone number. The rate of pay will be \$2.57 per hour and workers can work 40 hours per week from July 25 until school resumes in the fall.

Some local projects may continue after school begins if there are sufficient workers to maintain the crews. All projects must end by Sept. 30.

If approved, the Chelsea program will have openings for about 50 young people.

In addition, there will be six to seven openings for adult crew leaders. These jobs will pay \$4.70 per hour. Interested adults should also call the high school office and leave their name and phone number.

The Chelsea School District and the Village of Chelsea have submitted a joint proposal to the Department of Natural Resources for funds to provide conservation jobs for local area youth this summer.

Last week, the state legislature appropriated \$3 million to the DNR to create summer conservation-type jobs for youths 15 to 21 years of age. School districts and local units of government have been notified that they may apply for these funds for local projects and that approval of projects could come as early as July 20.

Any young person who is not working, and who would like to be considered for a job, if funds are allocated to Chelsea, should contact the high school office at

475-9131 and leave their name and phone number. The rate of pay will be \$2.57 per hour and workers can work 40 hours per week from July 25 until school resumes in the fall.

Some local projects may continue after school begins if there are sufficient workers to maintain the crews. All projects must end by Sept. 30.

If approved, the Chelsea program will have openings for about 50 young people.

ties and leave their name and phone number. The rate of pay will be \$2.57 per hour and workers can work 40 hours per week from July 25 until school resumes in the fall.

Some local projects may continue after school begins if there are sufficient workers to maintain the crews. All projects must end by Sept. 30.

If approved, the Chelsea program will have openings for about 50 young people.

In addition, there will be six to seven openings for adult crew leaders. These jobs will pay \$4.70 per hour. Interested adults should also call the high school office and leave their name and phone number.

The Chelsea School District and the Village of Chelsea have submitted a joint proposal to the Department of Natural Resources for funds to provide conservation jobs for local area youth this summer.

Last week, the state legislature appropriated \$3 million to the DNR to create summer conservation-type jobs for youths 15 to 21 years of age. School districts and local units of government have been notified that they may apply for these funds for local projects and that approval of projects could come as early as July 20.

Any young person who is not working, and who would like to be considered for a job, if funds are allocated to Chelsea, should contact the high school office at

475-9131 and leave their name and phone number. The rate of pay will be \$2.57 per hour and workers can work 40 hours per week from July 25 until school resumes in the fall.

Some local projects may continue after school begins if there are sufficient workers to maintain the crews. All projects must end by Sept. 30.

If approved, the Chelsea program will have openings for about 50 young people.

In addition, there will be six to seven openings for adult crew leaders. These jobs will pay \$4.70 per hour. Interested adults should also call the high school office and leave their name and phone number.

The Chelsea School District and the Village of Chelsea have submitted a joint proposal to the Department of Natural Resources for funds to provide conservation jobs for local area youth this summer.

Last week, the state legislature appropriated \$3 million to the DNR to create summer conservation-type jobs for youths

Uncle Lew from Lima Says:

DEAR MISTER EDITOR:

I got right tickled the other day reading about the preacher who forgot his glasses when he came to the church to perform a wedding. He said he could make out the big objects like the bride and groom without his specs, but he couldn't read a lick. He borrowed a pair that helped him see his book of church services, but he allowed he was powerful worried reading the vows because he could barely make out the words and he recalled that the marriage ceremony and funeral rites was just a page apart in the book. He got through the wedding fine, but he said if he had lost his place he would be in real trouble.

Mister Editor, there are them nowadays that figger they ain't hardly a page difference in weddings and funerals. In both cases, they say you're dealing with the end of life as they know it. These are the folks that have what they call a relationship. They just live together til one or both decide to move on. Besides them, we got them that git married, but not til death do them part. They try on a marriage like a pair of shoes, and if it don't fit they try another one. This was the kind the fellers spoke about Saturday night at the country store.

Zeke Grubb noted that June saw a jump in weddings, like always, and he wished all the young folks well that are just starting out. Zeke said his preacher had five weddings last month, and he passed along a few tips on how they've changed in the last 20 year. For one thing, he said, wedding rings seem to be getting smaller. The preacher admitted he could be his eyes are getting weaker, but he had to wear his bifocals to see when the ring was put on. If he had left his glasses

at home, I don't reckon he'd been able to even see the bride and groom. But Zeke's preacher allowed rings may be smaller cause they ain't made to last long. Marriage, like everything else, he declared, has got what the kitchen appliance makers call planned obsolescence.

What that means, Zeke said, is that it is made to break down before it wears out, like a car has somepun built in that makes it fall to pieces at the same time the house has got to have a new roof or the last payment is made on the car, whichever is soonest. Back in the old days, went on Zeke, wedding rings and cars were made thick and heavy because they were meant to last a lifetime.

Zeke's preacher said we need to git back to the old style heavy rings that keep wimmen mindful of their place in the home and keep men weighed down so they won't wander off the reservation. Zeke said his preacher talked mighty brave fer a feller with a little house and a big wife.

Actual, the fellers were not so much agreed with Zeke's preacher as they were with this report Bug Hookum brung in on a recent speech by a UCLA psychologist. This feller said men git the worst deal in a marriage because their wimmen demand too much and they demand too much of themselves. Men, the feller said, are "deeply and primitively" dependent on wimmen and we don't dominate, we are dominated. For sure, Mister Editor, our old ladies would go along with the primitive part.

Yours truly,
Uncle Lew

Please Notify Us
Any Change in Address

MICHIGAN MIRROR

By Warren M. Hoyt, Secretary, Michigan Press Association

Abortion Fees Ahead
Last week, the U. S. Supreme Court relieved the states of an obligation to help pay for poor women's abortions. With that, many state legislatures—including Michigan's—cranked up the machinery to

end Medicaid payments for the operations. And both supporters and opponents of easy access to abortion are predicting success for the move. Michigan officials estimate about

1,000 abortions each week are funded by Medicaid, a federally-administered health care program for the indigent. Funding is shared between the federal and state governments.

Officials here say they don't expect to save any money if Medicaid abortions are ended. Instead, they say, Michigan taxpayers likely will have to pay more for welfare. That is because Medicaid payments for a pregnancy are much greater than those for an abortion, and a woman who has a child then may qualify for Aid for Dependent Children (ADC) payments.

Action on legislative attempts to halt the Medicaid money for abortions may not come until the fall. Legislative leaders say they don't want to bog down the budget-writing process with an emotional issue like that.

But by fall, Congress may have given final approval to a bill to cut off federal funding for abortions. The House already has approved the measure.

If that happens, it's likely the state would probably be forced to scrap its program, since federal funds provide an estimated 90 percent of abortion costs.

Budget Blues

It's the equivalent of final exam week for the Michigan legislature. After taking it easy for months, lawmakers have begun cramming to approve important legislation—including the state budget for the fiscal year starting in October and a bill to keep the state income tax where it is, instead of reducing it as the legislature promised in 1975.

So instead of meeting for 2-3 hours on Monday through Thursday afternoons per the usual schedule, the House and Senate have been holding extended sessions or meetings on Friday. And they may pull an all nighter to top off the spring term. That's been done before.

The fact is that legislators like most everyone would rather be vacationing than working. And the three-day Fourth of July week-end is a convenient time to start.

Phosphates Face Fall Ban
A virtual ban on phosphates in laundry detergents will likely go into effect Oct. 1. A key legislative committee could not muster enough votes to reject the proposed ban, which would state rules means the ban won approval by default.

Now it needs the final approval of the Natural Resources Commission, which already has tentatively endorsed it. The ban would bar from sale in Michigan supermarkets any detergent containing more than a per-

JUST REMINISCING

Items Taken from the files of The Chelsea Standard

4 Years Ago...

Thursday, July 18, 1973

A Lima township historical survey, undertaken in mid-June by two University of Michigan landscape architecture students, will result in the designation of several old structures in the township as historically significant. Carol Butz and Phyllis Willbach are the two students conducting the survey.

Louise Schneider, supervisor of Chelsea's 14th District Court since January, 1972 will leave his home near Gregory next week for Villa Rica, Ga., where he will become chief of police of that town's 10-man force.

The sewer project conceived by the village in 1971 to relieve the overload on the present system has been mired in bureaucratic red tape and easement disputes for more than 18 months now. However, progress was finally made and work on the trunkline that will reach west from the sewage treatment plant is scheduled to start any day.

Another chapter in the history of the 106-year-old congregation of Zion Lutheran church will begin Sunday, July 22, when a groundbreaking ceremony will take place to mark the start of construction of the congregation's new church. The new church should be completed in a year.

14 Years Ago...

Thursday, July 18, 1963

Chelsea's first Midnight Madness sale, promoted by the Chelsea Chamber of Commerce retail committee, will begin at 8 p.m. Monday night. Fantastic markdowns on a variety of merchandise will be in effect throughout the evening, along with one-item specials which will vary every half-hour.

Exact scale model replicas of the equipment used by such famous name outfits as Ringling Brothers and Barnum and Bailey Circus are contained in the miniature model circus built by Charles Spencer of Chelsea, a member of the national Circus Model Builders.

Joseph T. Merkel, Sr., announced this week that he has purchased the Sylvan Hotel and plans to take possession Aug. 15. He bought the place from Henry Clary who took possession from Mike Apel about one month ago. Merkel plans some remodeling while keeping the hotel and attached bowling lanes in operation.

24 Years Ago...

Thursday, July 16, 1953

M-Sgt. William Schrader, Chelsea's silver star award winner, is scheduled to arrive home Tuesday from Korea. He is to be honored at a public reception Saturday from

Howell Livestock Auction

Starts 1 p.m. Every Monday
Mason 676-5400
The Wise Owl Says Ship to Howell
Phone 546-2470 Bim Franklin
Market Report for July 11

CATTLE—

Bulk Gd.-Choice Steers, \$39 to \$40
Few High Choice Steers, \$40 to \$40.25
Gd.-Choice Heifers, \$35 to \$36
Fed Holstein Steers, \$30 to \$35
Dl.-Std., \$30 and down.

COWS—

Heifer Cows, \$28 to \$30
Dl.-Commercial, \$25 to \$29
Canner-Culler, \$18 to \$26
Fat Beef Cows, \$24 to \$27

BULLS—

Heavy Bologna, \$30 to \$34
Light and Common, \$30 and down.

FEEDERS—

400-600 lb. Good-Choice Steers, \$35 to \$40
600-800 lb. Good-Choice Steers, \$34 to \$36
300-600 lb. Good-Choice Heifers, \$28 to \$32
300-500 lb. Holstein Steers, \$27 to \$30
500-800 lb. Holstein Steers, \$25 to \$27

CALVES—

Prime, \$50 to \$53
Good-Choice, \$40 to \$50
Heavy Decent, \$30 to \$40
Cull & Med., \$20 to \$30
Calves going back to farms sold up to \$40

SHEEP—

Woolled Slaughter Lambs, Springs:
Choice-Prime, \$50 to \$53
Good-Utility, \$48 to \$50
Slaughter Ewes, \$27 to \$34
Feeder Lambs, All Weights, \$45 to \$50

HOGS—

210 to 240 lbs., No. 1, \$47.50 to \$48.50
200-250 lbs., No. 2, \$46 to \$47
Heavy Hogs, 250 lbs. up, \$40 to \$46
Light Hogs, 220 lbs. down, \$35 to \$36

Sows—

Fancy Light, \$36 to \$37
300-500 lbs., \$36 to \$37.50
500 lbs. and up, \$37 to \$38.25

Bears and Stags—

All Weights, \$28 to \$36

Feeder Pigs—

Per Head, \$20 to \$40
Fesl. 40 lb. pigs, \$30 to \$34

HAY—

1st Cutting, per bale, \$10 to \$12.20
2nd Cutting, per bale, \$1.20 to \$1.80

STRAW—

Per Bale, \$6 to \$8

COWS—

Tested Dairy Cows, \$300 to \$600
Tested Beef Type Cows, \$200 to \$300

Dexter Township Board Co-ordinates Zoning

At the regular July meeting of the Dexter Township Board, board members held a discussion with the Washtenaw County Building Inspector to co-ordinate the activities of the County Building Department with those of the Township Zoning Officer in regards to township zoning procedures. Further discussions will be held to establish the procedure to insure zoning compliance prior to issuance of an occupancy permit.

In other business, the supervisor reported that Dexter township has filed a court action along with several other townships opposing changes in property assessments required by the State Tax Commission.

The Township Sign Program was discussed and a questionnaire developed to ascertain the opinions of possible sign advertisers. This questionnaire will be sent to local businesses in the near future. Interested parties failing to receive questionnaires should contact the supervisor to express their opinions.

A request for acceptance of a private road on the Wylie property was denied until a final inspection has been completed. The road was built prior to the adoption of the

township's private road ordinance, but has not been inspected by the township engineer.

In a final item of business, the township denied a \$1,000 request from the Ann Arbor Transportation Authority for Dial-A-Ride services. Local usage reports indicated only eight to 10 township users. The Township Board will investigate the possibility of subscribing to

this service provided the costs are based on usage rather than a fixed fee.

You've probably got two lamps that need new shades.

We've got the shades.

Top of the Lamp

217 North Main Tel. 769-7019

Across from a. a. old post office

J. T. BUILDING CO.

PHONE 475-2419

Quality Home Builders

We can build your dream home on your lot or ours. We have desirable building lots in the Chelsea School District.

For More information

CALL 475-2419

and let us show you how easy

we can make it for you!

ANNOUNCEMENT

Grohnert & Giardina announce they

have moved their Law Offices to 3141

Baker Rd., Dexter, Mich. (across from

the Dexter Post Office). The telephone

number remains the same, 426-4597.

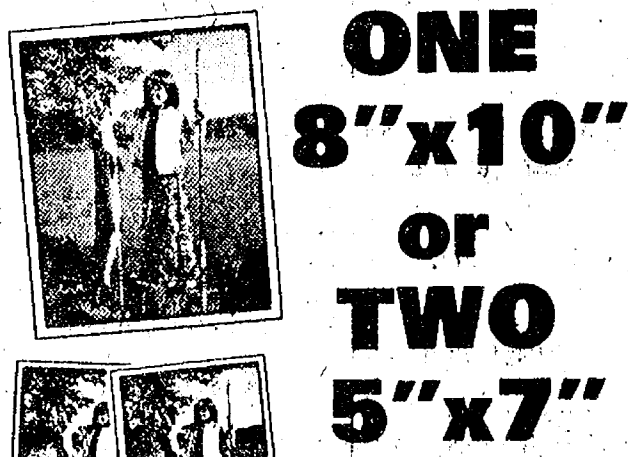
- ★ A 24-hour Hotline
- ★ Accurate and reliable drug information and identification
- ★ Extensive referral information
- ★ Free long term counseling
- ★ Drug Education presentations
- ★ Assertiveness, empathy and suicide prevention training

CALL 994-HELP

(994-HELP/994-HELP/DRUG HELP is Federally licensed for substance abuse counseling.)

Photo Enlargement SALE

CLIP 'N SAVE COUPON



ONE 8"x10" or TWO 5"x7" from your favorite color negative.

COLOR ENLARGEMENTS \$1.29

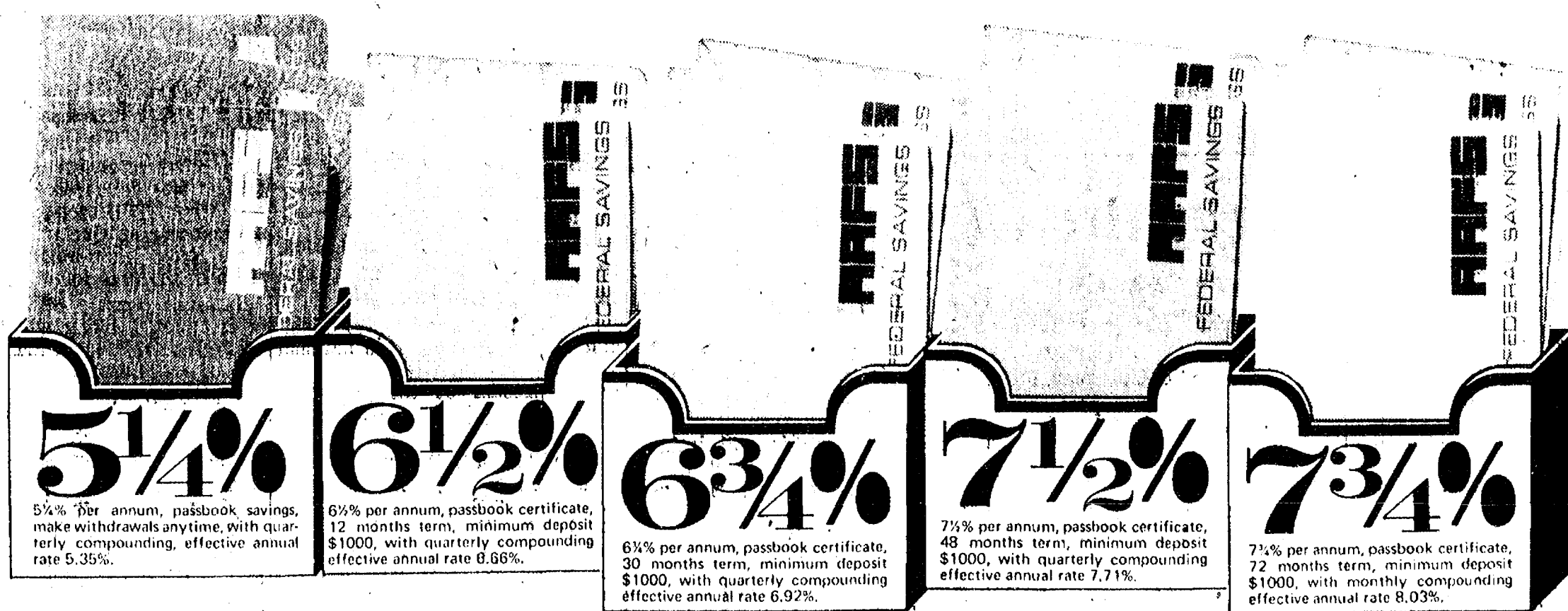
18x10 OR 25x7 FROM COLOR SLIDE... \$1.99
COUPON MUST ACCOMPANY ORDER
COUPON EXPIRES JULY 31

FRESH FROM KODAK
126-12
110-12

COLOR PRINT FILM 99¢
Limit 3 Rolls

HURON CAMERA
8005 Main St.
Dexter, Mich.

TRY OUR VARIETY PACK



for savers who want more...

You have a wide variety of savings plans to pick from when you save at Ann Arbor Federal Savings. There's the 5% regular passbook savings account that pays you daily interest and lets you make withdrawals at any time without loss of interest. Then there's the 6% passbook certificate account that combines substantial interest with short term. And our higher paying passbook certificate accounts all the way up to 7%...the highest interest paying certificate permitted by law.

With this variety of savings plans you can have a 5% account that lets you keep money readily available for emergencies and a high interest paying account that lets you double your money in ten years or less. There are many options and combinations and they're all available at any AAFS office.

Federal regulations require substantial penalty for early withdrawals from certificate savings accounts.

ANN ARBOR FEDERAL SAVINGS

11 OFFICES TO SERVE YOU IN: ANN ARBOR, BRIGHTON, CHELSEA, DEXTER, MANCHESTER, SALINE, YPSILANTI

VFW Auxiliary Hears Reports On Recent State Convention

The regular business session of the local VFW Ladies Auxiliary No. 4076 was held Monday, July 11, with 13 members in attendance. The meeting opened with reports on the state VFW convention, June 23-28, presented by Chelsea's delegates Elizabeth Smith, Leahlee Packard, Lucy Platt and Essie Sharp.

An Auxiliary planning meeting was scheduled for July 26, 7:30 p.m. in the VFW Hall by the president of the group. All members are invited to attend.

Appointed to the dues collection committee at Monday's meeting were Mary Kniss, chairman; Lucy Platt, Sandi Ellenwood and Gertrude O'Dell.

Reports on past Auxiliary activities followed. On Sunday, July 10, the Auxiliary and Auxiliary No. 4076, and their guests, motored to Rapid Rapids to attend the annual carnival for children at the national home. Mrs. Platt, one of those traveling to the event, stated it was a grand success.

Members of the local Auxiliary hosted 27 children from the national home and their chaperones at a luncheon and supper at the Post Home, the previous night. The guests stopped in Chelsea both before and after attending a circus.

On other business, VFW Auxiliary No. 4076 is formulating plans to serve the public during Chelsea's upcoming Sidewalk Sales, July 5 and 6.

Auxiliary members and all other interested persons are urged to urge Congressman Bob Carr, stating that the VFW does not want No. 7200 approved as the effect of the bill would be to take VFW National Home away from the VFW, and put it under jurisdiction of Michigan Social Services.

The national VFW has built and

beautifully maintained the Home; they would like to keep it for veterans and their families.

The meeting concluded with the announcement of upcoming events. VFW Post No. 4076, assisted by members of its Auxiliary, will sponsor a picnic for VA Hospital patients at Huron Metropolitan Park, Tuesday, July 19, 10 a.m. to 3 p.m. Auxiliary members who would like to help with the picnic are directed to contact Elizabeth Smith.

Local Auxiliary members are further reminded that all Michigan VFW Ladies Auxiliary units will be honored at a golden anniversary banquet on July 23 at the National Guard Armory in Lansing.

The state organization now has 314 auxiliaries, with eight of the original 11 which first formed the state organization 50 years ago still active. A special tribute will be given to past state presidents at the banquet. Mrs. Orvel (Faye) Walter of Ovid, a past state president, is chairman of the event.

Next regular business meeting of VFW Auxiliary No. 4076 will be Aug. 8 in the VFW Hall.

PERSONALS

Mrs. Floyd E. Gentner of 316 Jackson St., spent the Fourth of July week visiting her son and his family, Mr. and Mrs. Duane L. Gentner and their two children, Lisa and Christopher, in Hanover Park, Ill. On July 2, she attended a competition of bands at Belvedere, Wis., witnessing the Conant Cougar Band in competition. Her granddaughter, Lisa, is a drum major with the band. The same evening, Mrs. Gentner's son, Duane, retired as president of the Conant school Band Parents Club, a position he had held for the past two years.

LESSONS

at The Music Hutch

DRUMS - GUITAR
PIANO - ORGAN
ALL TYPES BAND
INSTRUMENTS

The MUSIC HUTCH

8407 Main St., Dexter
Ph. 426-4380

NOW OPEN

THE GLASS BARN

OLD & NEW GLASS
ANTIQUES & COLLECTIBLES

DEPRESSION GLASS
A SPECIALTY

ARLENE HARGRAVE

Ph. 498-2849

12719 Respects Rd., Gregory
Open By Chance or Appt.

FOXY LADY

Finest in Professional
Hair Care!

107 W. MIDDLE, CHELSEA
475-8196

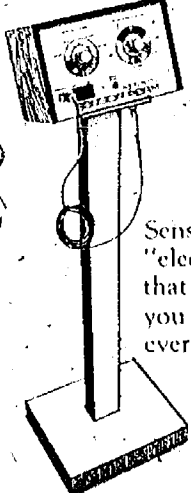
Open Tues. thru Sat.

Thurs. and Fri. eve. appts.

Carol, Jane, Denise, Carolyn

Realistic
invented electronic
Sensor Perm™ because your
hair is as individual
as your fingerprints.

And we have it.



Sensor Perm. The
"electronic brain"
that helps you give
you a perfect perm
every time.

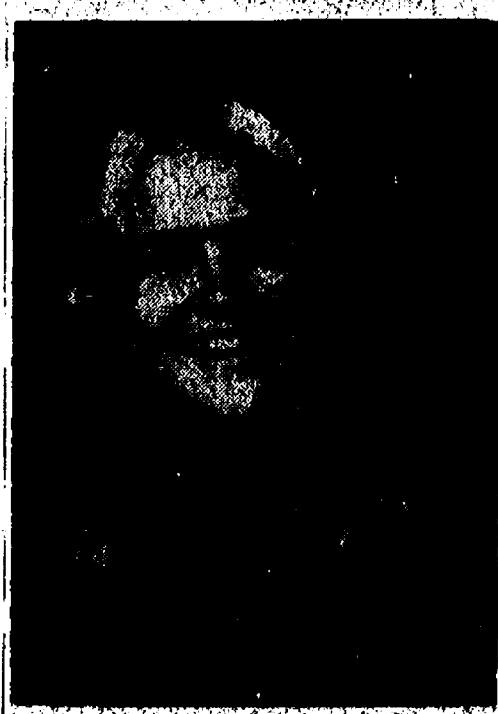
Now, electronic accuracy lets you give you an individualized, exactly-right-for-you, perfect perm every time.

Introducing Sensor Perm, by Realistic. We program it for your exact hair type and condition, so your hair can take and hold virtually any hairstyle imaginable.

Sound great? It is. So call us today for your Sensor Perm Experience.

Sensor Perm, by Realistic.
A perfect perm every time.

Fran Coy's
HAIR STYLISTS
UNISEX FULL SERVICE SALON
418 S. WAGNER RD., ANN ARBOR
665-7207
Sensor Controlled Acid pH Perm



JCs, Auxiliary Meet Together At Park Lyndon

Park Lyndon on July 5 was the scene of the first joint Chelsea Jaycee-Auxiliary meeting for the 1977-78 year. Children of the members were invited to the business meeting in order to acquaint them with their parents' involvement in the Jaycees. Other efforts are being made to make them feel a part of the organization.

Reports of progress by Jaycee Bob Smith were given on the jogging trail presently under construction at the Chelsea Medical Center. Plans for a local Road Rally were started. The Auxiliary discussed further details on the selling of a safety record album entitled "Hear-See-Do" at the Fair and Sidewalk Days. Ideas to create a Community Dental Fund by saving Jiffy Mix box tops were reported on by the project chairman Pam Lewis.

Special guest for the night was regional director Rick Brownlee who installed new member Don Hubert. District vice-presidents Mitch Zink and Alberta Colby were on hand to give facts on the upcoming Bob-Lo Social.

Upon adjournment of the joint meeting, a vigorous round of "Happy Birthday" was sung as Jaycee president Bob Ponte presented a cake to Jaycee president, Barb Baker, in celebration of the 21st anniversary of the Auxiliary.

Organ Recital Stated Sunday at St. Paul Church

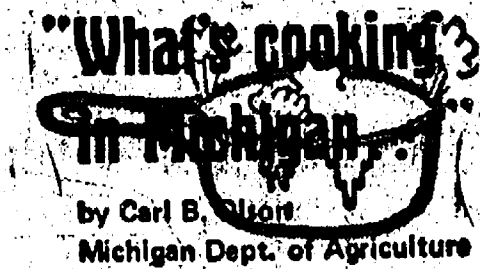
Mary Olney, organist staff assistant at St. Paul church, will present a special organ recital on Sunday, July 17, immediately following the 10 a.m. worship service at St. Paul church.

This half-hour program will include works by three Germanic composers: Beethoven, Bach, and Brahms, of the 17th, 18th, and 19th centuries respectively.

Miss Olney will present the same program July 20, 11:45 a.m. at Christian Reformed church, 1717 Broadway, Ann Arbor, as part of the American Guild of Organists' Summer Recital Series.

Mary Olney is a graduate of Lewis and Clark College, Portland, Ore., and received her Master of Music degree from University of Cincinnati, College-Conservatory of Music in 1976.

The public is invited to attend these summer musical programs.



It's blueberry time in Michigan and you can celebrate right now. You'll find these tasty berries in grocery stores through the end of August. An even better idea is to go out and pick your own right from the fields.

Our state, according to Michigan Department of Agriculture figures, produces around 35 million pounds of blueberries annually, with about two-thirds of production going to processing plants. Michigan leads the nation in production.

While there's nothing much better than milk and sugar on blueberries, my wife and I love blueberry pancakes for a late Sunday breakfast.

Beat one egg well. Then beat in 1 1/4 cups buttermilk, two tablespoons soft shortening, 1/4 cups sifted flour, one teaspoon sugar, one teaspoon baking powder, and one-half teaspoon each soda and salt.

Beat the batter until smooth and make small pancakes in a medium hot frying pan. I'll bet you think I forgot the blueberries. Not so, my friend.

At this point take a handful of whole, washed blueberries and sprinkle them onto the uncooked tops of the pancakes. When brown on the bottom, flip the pancakes over and finish cooking. The blueberries cook beautifully and retain their delicious flavor.

When served, spread fresh butter on them and some blueberry pancake syrup and you'll get the day off to a proper start.

Barn Work Bee...

(Continued from page one)

ed-for this year's fair. All help is welcome.

Please bring tools for this purpose and meet at the old barn on the fairgrounds at 7 p.m. For more information, call 475-1909.

Watch for announcements on the planned activities at this year's fair in future editions of The Standard.

Authorization for eight Veterans Administration hospitals is the largest construction program approved in one action since 1947, when 14 were authorized.

CAROL'S CUTS

328 Wilkinson

COOL CUTS FOR SUMMER

475-7094

Appts. Only

BABE RUTH ROUND-UP:

Royals Remain Undefeated To Retain League Leadership

A sparkling comeback by the Dexter Dreadnaughts and a mid-season slump on the part of the Chelsea Pirates, shuffled the order of team standings as Babe Ruth play moved through its fourth week.

Winning both their games, the Dreadnaughts moved up a notch in the league, while the Pirates succumbed to both their opponents to drop down one rung on the ladder.

In other games, the Chelsea Royals remained undefeated to tightens their grip on the number-one spot, ahead of the Dexter Warriors and Chelsea Athletics, now locked in behind at second and third.

Highlights of the fourth week of action included a 16-4 sixth inning win by the Dreadnaughts over Manchester No. 2 in a game that had been tied up until that point. The winning pitcher was Gary Neff in relief.

Dreadnaught players with two or more hits were Pat Cornils, Jeff Elise, John Conlin and Brian Hochrein. Hochrein had three hits, including a triple, and three runs batted in. Cornils scored four runs to keep the game close in early innings.

The Dreadnaughts' other victory came as they slid past the Chelsea Athletics, 10-9. Receiving credit for the win was pitcher Rich Neff, with Gary Neff pitching scoreless.

relief the last three innings. Get Jon Riemschneider.

In perhaps the most unique game of the week, Manchester No. 1 swept by the Pirates, 8-4, without getting a single base hit. Manchester scored all its runs on 14 walks and three errors.

Leading hitters for Chelsea were Al Augustine with 2, Steve Wilson, 1; and Dan McGill, 1.

Standings as of July 12

Team	W	L
Chelsea Royals	8	0
Dexter Warriors	6	2
Chelsea Athletics	4	3
Chelsea Pirates	4	4
Manchester No. 1	3	3
Dexter Dreadnaughts	3	4
Chelsea Orioles	1	6
Manchester No. 2	0	7

Connecting for the Orioles were Mike Wade and Scott Price.

Undaunted by that defeat, the Chelsea Orioles returned to win their second game of the season in a thrilling 6-5 squeeze past the Chelsea Pirates. The Orioles scored three runs in the top of the seventh inning to ice the decision.

Getting hits for the Orioles were Tim Sweeney, Lou Jahnke, Mike Wade, Scott Price and Eric Pichlik. Pirate batters were led by Al Augustine, who had three including a long home run over the left field fence, Mark Barnes and Dan McGill.

Pitching was handled by Scott Price and Steve Hawker for the Orioles, and Dan Alber for the Pirates.

The most outstanding defensive play of the game was an unass-

Lima Meeting Explodes

(Continued from page one)

road grass fires; and residents were notified of a seminar on roadway lighting and right-of-turns on red lights, sponsored by the Washtenaw County Road Commission.

Also discussed were the Urban Land Preservation Act which gives a tax break to persons owning land used for agricultural purposes; the possibility of a conflict of interest arising from the fact that Marge Nusca serves as president of the Lima Township Planning Commission and also serves as recording secretary for the township Board of Appeals; and whether the township should look for another attorney as its current attorney, Peter Flintoft, also represents other governing bodies in the area which could also lead to a conflict of interest. No action was taken.

Officers stated the dark brown, four-door hardtop had been found stripped of its engine, transmission, battery and radiator. Also missing were the vehicle's spare tire and jack, and the trunk had been punched.

According to police reports, Sgt. Lenard E. McDougall was on street patrol Saturday when he received information that a 1973 stripped-down Chevy, which looked as though it may have been stolen, had been sighted in the Duffy's Lake area.

Upon learning that the color of the vehicle matched that of the one reported missing by Sprague, he contacted Chelsea Patrolman Robert Browning to request use of Browning's four-wheel drive vehicle to investigate the tip.

After a thorough search of the Duffy's Lake area, the two officers located the missing vehicle. The hood of the car had been thrown into the lake and they found the engine had been removed by using a chain fall of some type.

With all its parts intact, the Oldsmobile had been valued at \$1,200.

In accordance with the request of the vehicle's owner, police summoned Smith's Service of Chelsea to tow the car into town for repairs. No suspects have been named in the case.

Please Notify Us of
Any Change in Address



Foam Insulate Now For a
More Comfortable Summer

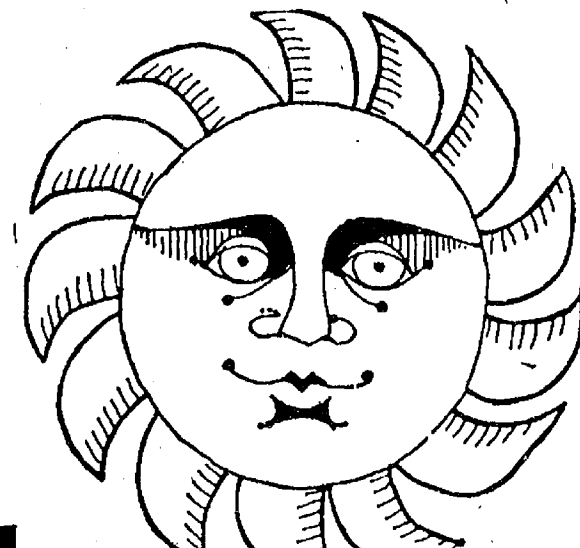
Don't wait until next winter to get the
benefits of foam insulation. Foam pro-
tects you year around from weather
and high fuel bills.

Call today for a free estimate and inspection.

Phone 313-475-1625

FOAM MASTERS

115 E. Summit • Chelsea.



sale...

SAVE 10% to 30% ON ALL CARPETING
SAVE 15% ON ALL PADDING, AND
SAVE 10% ON EXPERT INSTALLATION

If new carpeting is what you've been mid-summer dreaming about, wake up to the triple savings at Merkel during the big summer sale now in progress. Our entire collection... hundreds of colors and textures to select from. All famous names... Lees, Karastan, Berven, Milliken, Cabin Crafts, Mohawk. CALL 475-8621 FOR YOUR PRE-MEASUREMENT. When you make your choice in the store, we'll be able to tell you how much you'll spend and save... to the penny.

Merkel
MAIN STREET IN CHELSEA - PHONE 475-8621

Games Last Week

Royals, 7; Pirates, 5.
Dreadnaughts, 16; Manchester No. 2, 4.
Manchester No. 1, 10; Orioles, 9.
Athletics, 12; Warriors, 5.
Royals, 12; Manchester No. 2, 1.
Dreadnaughts, 10; Athletics, 8.
Manchester No. 1, 8; Pirates, 4.
Warriors, 9; Orioles, 2.

Chris Ford, the Pistons guard, specializes in defense. Ford, the all-time Detroit Pistons steal leader, set one-season club records in each of the last two seasons in the steals category.

RICARDO'S

Professional Hair-Styling

Men and Women

Thursday and Friday evening appointments.

475-1671

107 N. Main Chelsea

ICE CREAM SOCIAL JULY 17 - 3 p.m. to 8 p.m.

Sponsored by
Francisco United Church of Christ

270 Bohn Rd., Grass Lake

Sloppy-joes, hot dogs, potato salad, baked beans,
ice cream, cake and pie.

ABBY'S HOBBY HOUSE

A 'HIS' and 'HERS' Hobby Shop

Crafts for "HER" Models for "HIM"

★ MACRAME ★ AIRPLANES
★ KNIT SHOP ★ BOATS
★ LATCH HOOK RUGS ★ ROCKETS
★ JEWELRY SUPPLIES ★ SUPPLIES

and More!

6400 JACKSON RD.

(Across from Farmer Grant's)

761-5965

PLUCK'S ANTIQUES

WATERLOO VILLAGE PH. 475-7456

A General Line of Antiques

including:

GLASS - PORCELAIN
CHINA - FURNITURE

Also:

★ A Superb Collection of Art Glass
★ Fine European Porcelains
★ Period English and French Furniture
★ Decorative Accessories and Curios
Items for the beginning through
advanced collector.

"A thing of beauty is a joy forever" — (John Keats)

OPEN TUES. THROUGH SUN. 12 NOON TO 8 p.m.

or by appointment.



Open Friday and Monday Nights Til 9. pm.

★ District Court Proceedings ★

Week of July 1-11

Rose M. Thomas pled guilty to charges of forgery. She was sentenced to pay fines and costs of \$75, to pay restitution costs, and to six months probation.

Kurt Acosta pled guilty to reduced charges of careless driving and use of marijuana. He will be sentenced Sept. 18.

William C. Boonenberg pled guilty to reduced charges of use of marijuana. He will be sentenced Sept. 16.

William S. King pled guilty to charges of no operator's license on his person. Fines and costs, \$25.

Virginia W. Kulbicki was sentenced to pay fines and costs of \$250 on charges of driving under the influence of liquor.

Cheryl Dockett pled guilty to charges of allowing an unlicensed person to drive. Fines and costs, \$30.

Bret J. Kuhl was sentenced to pay fines and costs of \$25 on charges of allowing his biting dog to run at large and failing to obtain a license or shots for his dog.

James Jeanette pled guilty to reduced charges of impaired driving. He was referred to probation and will be sentenced Sept. 16.

James MacKay pled guilty to reduced charges of impaired driving. He was referred to probation and will be sentenced Sept. 16.

Richard E. Bennett pled guilty to charges of disturbing and annoying others to the point that they left early. Fines and costs, \$15.

David J. Bennett pled guilty to charges of disturbing and annoying others to the point that they left early. Fines and costs, \$15.

Thomas Blakenbaker was found guilty on charges of no operator's license on his person. He was sentenced to pay fines and costs of \$100 and to one year probation.

Thomas Blakenbaker was found guilty on charges of speeding. He was sentenced to pay fines and costs of \$95 and to one year probation.

Linda Barrish pled guilty to charges of passing on a double yellow line. Fines and costs, \$15.

Pamela S. Merritt pled guilty to charges of illegal possession of open intoxicants. She was sentenced to pay fines and costs of \$35 and to three days on the Washtenaw County Sheriff's Department work program.

Stanley Cyrus pled guilty to charges of possession of alcohol in a closed area. Fines and costs, \$35.

Thomas Madigan pled guilty to charges of possession of alcohol in a closed area. Fines and costs, \$35.

Richard Langworthy pled guilty to charges of illegal possession of open intoxicants. He was sentenced to pay fines and costs of \$35 and to three days on the Washtenaw County Sheriff's Department work program.

Gary Houston pled guilty to charges of possession of beer in a park. Fines and costs, \$35.

Thomas Anoit pled guilty to charges of possession of beer at a beach. Fines and costs, \$35.

Gary Jonas pled guilty to charges of transporting open intoxicants. He was sentenced to pay fines and costs of \$35 and to three days on the Washtenaw County Sheriff's Department work program.

Leslie Porretta pled guilty to charges of no proof of insurance and no registration on her person. Fines and costs, \$20.

Brian Putnam pled guilty to charges of illegal possession of open intoxicants. He was sentenced to pay fines and costs of \$35 and to three days on the Washtenaw County Sheriff's Department work program.

James Snyder pled guilty to charges of speeding. Fines and costs, \$35.

Ronald Weiss pled guilty to charges of possession of beer in a park. Fines and costs, \$35.

Robert Betleski pled guilty to charges of possession of beer in a park. Fines and costs, \$35.

John Collin pled guilty to charges of no legal operator's license on his person and driving with license suspended. He was sentenced to pay fines and costs of \$75 or to 30 days in jail.

James M. Hill pled guilty to charges of possession of marijuana. He was referred to probation and will be sentenced Sept. 13.

Allen D. Bowerman pled guilty to charges of driving with license suspended. He was sentenced to pay fines and costs of \$75 or to 30 days in jail.

Jordan Peizman pled guilty to charges of possession of beer in a park. Fines and costs, \$35.

Denise Curtis pled guilty to charges of possession of beer in a park. Fines and costs, \$35.

Jaife Donaldson pled guilty to charges of possession of beer in a park. Fines and costs, \$35.

Linda Rockman pled guilty to charges of possession of beer in a park. Fines and costs, \$35.

Robert Rockman pled guilty to charges of possession of beer in a park. Fines and costs, \$35.

Henry Clark pled guilty to charges of possession of beer in a park. Fines and costs, \$35.

Thomas Glenn pled guilty to charges of possession of beer in a park. Fines and costs, \$35.

Jeffery McGrath pled guilty to charges of possession of alcohol in a park. Fines and costs, \$50.

John Boscacci pled guilty to charges of littering. He was sentenced to pay fines and costs of \$75 and to three days on the probation department work program.

Tom Lovachis pled guilty to charges of open alcohol in a park. Fines and costs, \$35.

Gary Houston pled guilty to charges of possession of beer in a park. Fines and costs, \$35.

Thomas Anoit pled guilty to charges of possession of beer at a beach. Fines and costs, \$35.

David Roughton pled guilty to charges of illegal possession of open intoxicants. Fines and costs, \$50.

Jeffery Gray pled guilty to charges of illegal possession of open intoxicants. He was referred to probation and was sentenced to three days on the probation department work program.

Dona T. Joseph pled guilty to charges of possession of open intoxicants in a motor vehicle. She was referred to probation and was sentenced to three days on the probation department work program.

Robin Armstrong pled guilty to charges of driving under the influence of liquor. She will be sentenced Aug. 29.

Patrick McDonald pled guilty to charges of drunk and disorderly. He will be sentenced Aug. 29.

Mark Pierson pled guilty to charges of littering. He was sentenced to pay fines and costs of \$75 and to three days on the probation department work program.

Jeffery McGrath pled guilty to charges of possession of beer at a beach. Fines and costs, \$35.

Laurel Gossen pled guilty to charges of possession of beer at a beach. Fines and costs, \$35.

Dave Myrning pled guilty to charges of possession of beer at a beach. Fines and costs, \$35.

Ronald Snyder pled guilty to charges of possession of beer at a beach. Fines and costs, \$35.

Colleen C. Hamic pled guilty to charges of possession of beer at a beach. Fines and costs, \$35.

Geoffrey Roberts pled guilty to charges of possession of beer at a beach. Fines and costs, \$35.

Yvonne Roberts pled guilty to charges of possession of beer at a beach. Fines and costs, \$35.

Robert Fagan pled guilty to charges of possession of beer at a beach. Fines and costs, \$35.

Karen Justin pled guilty to charges of possession of beer at a beach. Fines and costs, \$35.

Daniel Leasure pled guilty to charges of possession of beer at a beach. Fines and costs, \$35.

John Goodman pled guilty to charges of possession of beer at a beach. Fines and costs, \$35.

Anthony Qunzar pled guilty to charges of possession of beer at a beach. Fines and costs, \$35.

Paul Coughannon pled guilty to charges of possession of beer at a beach. Fines and costs, \$35.

John Cantrell pled guilty to charges of possession of beer at a beach. Fines and costs, \$35.

Barbara Bales pled guilty to charges of possession of beer at a beach. Fines and costs, \$35.

Peter Frost pled guilty to charges of possession of beer at a beach. Fines and costs, \$35.

Cynthia Fry pled guilty to charges of possession of beer at a beach. Fines and costs, \$35.

Christopher Fry pled guilty to charges of possession of beer at a beach. Fines and costs, \$35.

Eugene Johnson pled guilty to charges of possession of beer at a beach. Fines and costs, \$35.

Rusty Lusby pled guilty to charges of possession of beer at a beach. Fines and costs, \$35.

David Sancenito pled guilty to charges of possession of beer at a beach. Fines and costs, \$35.

Shelly Quandahl pled guilty to charges of possession of beer at a beach. Fines and costs, \$35.

John Simons pled guilty to charges of possession of beer at a beach. Fines and costs, \$35.

Brenda Small pled guilty to charges of possession of beer at a beach. Fines and costs, \$35.

Dennis S. Molan pled guilty to charges of possession of beer at a beach. Fines and costs, \$35.

Glena Wolyniak pled guilty to charges of exceeding the capacity limit for passengers in a boat. Fines and costs, \$75.

Willie Williams, Jr., pled guilty to charges of speeding. He was sentenced to pay fines and costs of \$50 and to six months probation.

John Ford was sentenced to pay fines and costs of \$300, to the Alcohol Safety Action Program, and his license was suspended on charges of driving under the influence of liquor.

Michael Huang was sentenced to pay fines and costs of \$200 on charges of assault and battery.

Patrick McKillen was sentenced to six months probation and to the Alcohol Safety Action Program on charges of driving under the influence of liquor.

John Woodland pled guilty to charges of running coon dogs after the close of the season. Fines and costs, \$25.

Leonard Harrison pled guilty to charges of running coon dogs after the close of the season. Fines and costs, \$25.

Glenn Fuller pled guilty to charges of impaired driving. He was referred to probation and will be sentenced Sept. 12.

Lawrence E. Perezord pled guilty to charges of driving with license suspended. Fines and costs, \$100.

Jimmy Collinsworth was sentenced to pay fines and costs of \$100 and to three days in jail, or to 20 days in jail, on charges of driving with license suspended.

Residential - Commercial
REMODELING
FREE ESTIMATES
Ib V. JENSEN
and SON
LICENSED BUILDER
378 Spring Lake Drive
Chelsea, Mich.
PHONE 475-1820



NEW EDITORS: Mr. and Mrs. Roger Graves, of Grass Lake, newly appointed editors of the Quarter Horse Journal, pose with one of their Quarter horses on the grounds of their small farm north of Chelsea. Graves is a member of the Chelsea Police Department, while his wife operates a graphic arts studio from her home. Both have many years of experience in producing horse publications.

Local Couple Now Edit Quarter Horse Journal

The Michigan Quarter Horse Association has announced the appointment of Roger and Diana Graves as new editors of the Quarter Horse Journal.

Mr. and Mrs. Graves have a well-established record of experience and know how in producing horse publications. Graves was recently the editor of a regional horse magazine, and his wife was the art director of the same publication.

Mrs. Graves has been a graphic artist for many years, and operates a graphic studio from her home. Her husband has been in law enforcement for 10 years and is a member of the Chelsea Police Department. He is also a part-time instructor at Washtenaw Community College.

The Graveses live on a small farm north of Chelsea with their two sons, Roger, Jr., and Randy.

horses which their sons are active with in a local 4-H club.

Both Mr. and Mrs. Graves are interested in hunting and jumping and have competed in "Hunters Pace" events at the Waterloo Hunt Club.

Lt. Ronald Peterson Promoted With Marines

Marine First Lieutenant Ronald J. Peterson, son of Mr. and Mrs. Leslie J. Peterson of 13378 Old US-12 East, Chelsea, has been promoted to his present rank while serving with 2nd Marine Aircraft Wing, Marine Corps Air Station, Cherry Point, N.C.

A 1974 graduate of College of Desert, Twentynine Palms, Calif., with an associate of arts degree, he joined the Marine Corps in June 1962.

HOME GROWN SWEET CORN

at
GEE FARMS

NEW POTATOES
FRESH GREEN BEANS
Other Fresh Fruits and Vegetables

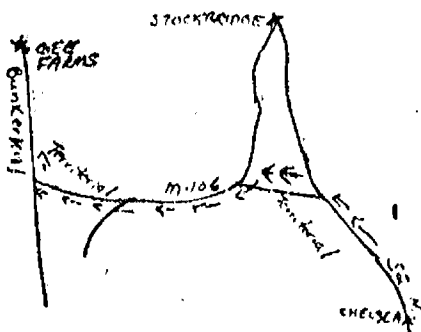
ICE COLD WATERMELON

FARM BAKED DONUTS AND BREAD

GEE FARMS

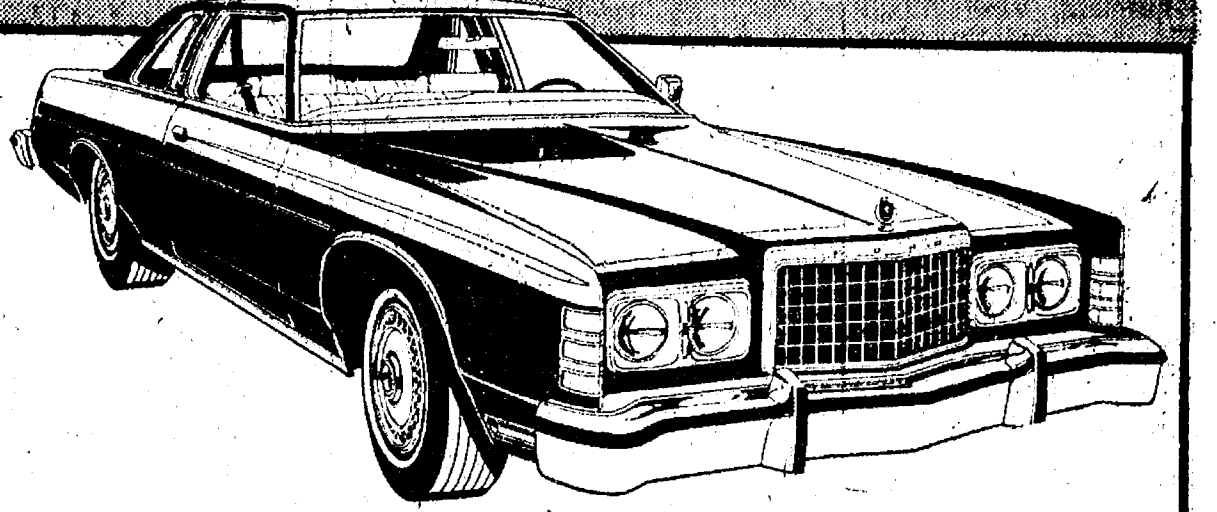
PHONE (517) 769-6772
14928 BUNKER HILL RD. STOCKBRIDGE

Taking Orders for
FROZEN STRAWBERRIES
CHERRIES, RASPBERRIES
PEAS and APPLES



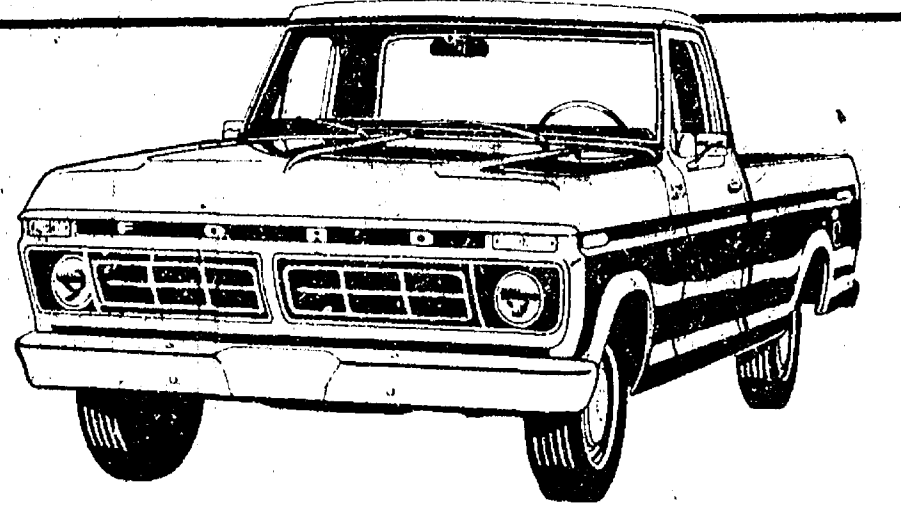
NEW SUMMER STOCK

To keep up sales momentum, Ford dealers are getting fresh stocks of new cars and trucks and the deals are getting better and better!



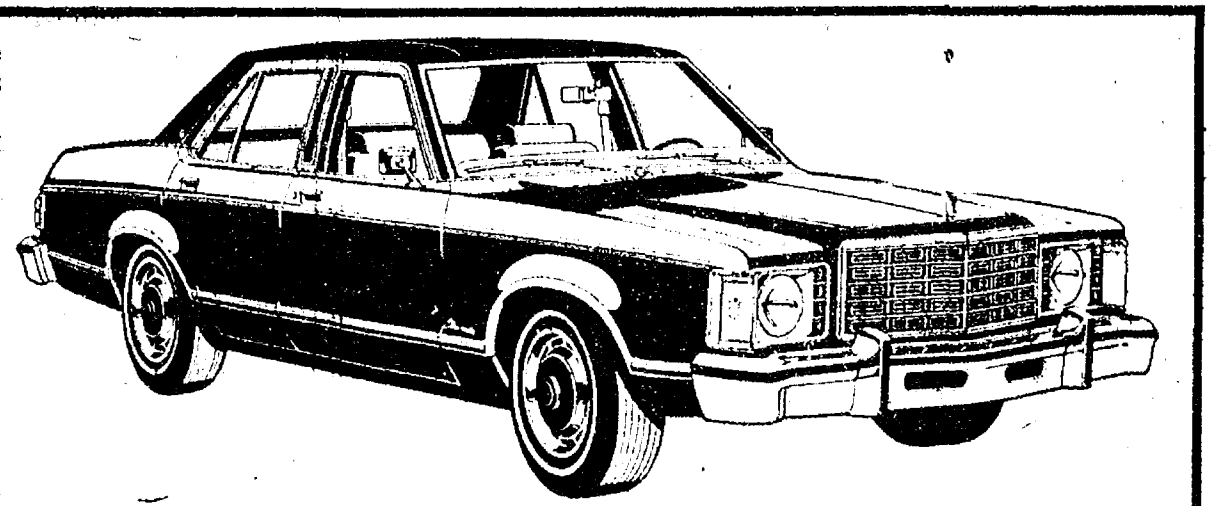
FORD LTD

The full-size Ford with LTD's famous room, comfort and luxury.



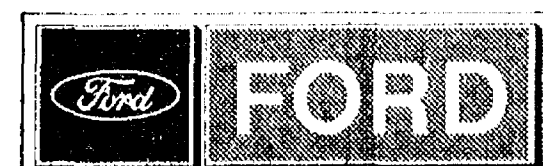
FORD PICKUPS

Tough trucks for tough jobs.



GRANADA

Trim, European look and smooth riding comfort at a modest price.



We Ford dealers are building our success with fresh stocks of new Ford cars and trucks. Be smart. Buy from your Ford dealer's big selection and get a low price in the bargain!

IT'S BEEN A GREAT FORD SALES YEAR...AND WE'RE NOT ABOUT TO SLOW DOWN NOW.

PALMER MOTOR SALES, Inc.
CHELSEA, MICHIGAN

+ Services in Our Churches +

FIRST UNITED METHODIST CHURCH
The Rev. Marvin H. McCallum, Pastor
Sunday, July 17—9:00 a.m.—Pastor Parish Conference in the Education Building.
Monday, July 18—9:00 a.m.—Worship service (nursery available). Church school for children two and three years old.
Tuesday, July 19—9:00 a.m.—Worship service.
Wednesday, July 20—9:00 a.m.—Worship service.
Thursday, July 21—9:00 a.m.—Worship service.
Friday, July 22—9:00 a.m.—Worship service.
Saturday, July 23—9:00 a.m.—Worship service.
Sunday, July 24—9:00 a.m.—Worship service.
Monday, July 25—9:00 a.m.—Worship service.
Tuesday, July 26—9:00 a.m.—Worship service.
Wednesday, July 27—9:00 a.m.—Worship service.
Thursday, July 28—9:00 a.m.—Worship service.
Friday, July 29—9:00 a.m.—Worship service.
Saturday, July 30—9:00 a.m.—Worship service.
Sunday, July 31—9:00 a.m.—Worship service.

ST. PAUL UNITED CHURCH OF CHRIST
The Rev. R. J. Ratzliff, Pastor
Sunday, July 17—9:00 a.m.—Church school and worship.
Tuesday, July 19—7:30 p.m.—Council.

CHURCH OF CHRIST
The Rev. James E. Storer, Pastor
Every Sunday—9:00 a.m.—Sunday school for the whole family.
10:00 a.m.—Morning worship service and children's church.
6:00 p.m.—Evening service, including singing, sharing, study and discussion. (Nursery care provided for all services.)
Home Bible Studies each week in the homes of the laity.
For information, call 475-2323.

IMMANUEL BIBLE CHURCH
The Rev. Larry Johnson, Pastor
Every Sunday—9:00 a.m.—Sunday school. Nursery provided.
10:00 a.m.—Morning worship.
6:00 p.m.—Evening worship.
Every Wednesday—7:00 p.m.—Family hour: prayer meeting and Bible study.

OUR SAVIOR LUTHERAN CHURCH
1515 S. Main, Chelsea
The Rev. William H. Keller, Pastor
Sunday, July 17—9:00 a.m.—Worship service.
10:00 a.m.—Bible study.

ST. THOMAS EVANGELICAL LUTHERAN CHURCH
Elsworth and Haab Rds.
The Rev. Jerome Dykstra, Pastor
Every Sunday—9:30 a.m.—Sunday school and Bible class.
10:45 a.m.—Worship service.

FAITH EVANGELICAL LUTHERAN CHURCH
9575 North Territorial Rd., Dexter.
The Rev. John P. Huebner, Pastor
Sunday, July 17—9:00 a.m.—Worship service.
10:00 a.m.—Fellowship time after worship service.
Tuesday, July 19—7:30 p.m.—Inquirers.

NORTH LAKE UNITED METHODIST CHURCH
The Rev. David Stiles, Pastor
Every Sunday—8:30 and 10:00 a.m.—Worship service.

METHODIST HOME CHAPEL
Chaplain Ira Wood, Pastor
Every Sunday—8:45 a.m.—Worship service.

CONGREGATIONAL CHURCH
(United Church of Christ)
The Rev. Carl Schwarm, Pastor
Every Sunday—8:30 a.m.—Worship and church school.

ST. BARNABAS EPISCOPAL CHURCH
20550 Old US-12
The Rev. Fr. Jerrold F. Beaumont, B.S.P.
Every Sunday—10:00 a.m.—Holy Communion.
First, third and fifth Sundays, and 7:30 p.m.—evening service.
10:00 a.m.—Morning prayer.
Second and fourth Sundays, church school and nursery every Sunday.
Every Wednesday—8:15 p.m.—Bible study and discussion groups.
First Wednesday of every month—Bishop's Committee.
Third Thursday of every month—Episcopal church women.

FIRST UNITED METHODIST CHURCH
Raintree and Territorial Rds.
The Rev. Glenn Kjellberg, Pastor
Every Sunday—9:00 a.m.—Morning worship.
10:00 a.m.—Sunday school.
Every Wednesday—7:00 p.m.—Family hour: prayer meeting and Bible study.

NORTH SHARON BIBLE CHURCH
Sylvan and Washington Rds.
The Rev. Ronald C. Putney, Pastor
Every Sunday—9:00 a.m.—Sunday school.
10:00 a.m.—Worship service.
6:00 p.m.—Senior High Youth meeting. Youth Choir.
7:00 p.m.—Evening worship service. (Nursery available.) All services interpreted for the deaf.
Every Wednesday—7:00 p.m.—Bible study and prayer meeting. (Nursery available.)
Bus transportation available: 428-7222.

BETH EL EVANGELICAL AND REFORMED CHURCH
(United Church of Christ)
Freedom Township
The Rev. Roman A. Reineck, Pastor
Every Sunday—10:00 a.m.—Worship service.

FIRST ASSEMBLY OF GOD
The Rev. Richard Coury, Pastor
Every Sunday—9:45 a.m.—Sunday school.
11:00 a.m.—Worship service.
6:00 p.m.—Evening worship.
Every Wednesday—7:00 p.m.—Christ's Ambassadors. Missionettes. Bible meditation and prayer.

ST. JOHN'S UNITED CHURCH OF CHRIST
Rogers Corners
Every Sunday—10:30 a.m.—Worship service.

ST. JACOB EVANGELICAL LUTHERAN CHURCH
12501 Rietmiller Rd., Grass Lake
The Rev. Andrew Bloom, Pastor
Every Sunday—9:00 a.m.—Worship service.
10:15 a.m.—Divine services.

FIRST CHURCH OF CHRIST SCIENTIST
1883 Washtenaw Ave., Ann Arbor
Every Sunday—10:30 a.m.—Sunday school, morning service.

WATERLOO VILLAGE UNITED METHODIST CHURCH
8118 Washington St.
The Rev. Glenn Kjellberg, Pastor
Every Sunday—10:00 a.m.—Sunday school.
11:15 a.m.—Worship service.

GREGORY BAPTIST CHURCH
The Rev. Paul White, Pastor
Every Sunday—9:45 a.m.—Sunday school.
11:00 a.m.—Morning worship.
8:00 p.m.—Young people.
7:00 p.m.—Evening worship.
7:30 p.m.—Thursday mid-week worship service.

ST. JOHN'S EVANGELICAL AND REFORMED CHURCH
(United Church of Christ)
Francisco
The Rev. Virgil King, Pastor
Every Sunday—10:30 a.m.—Church services.

BAHA'I FIRESIDE
Every Thursday—8:00 p.m.—At the home of Toby Peterson, 705 S. Main St. Anyone wishing to learn about the Baha'i faith is welcome.

FIRST UNITED PRESBYTERIAN CHURCH
Unaquila
The Rev. T. H. Liang, Pastor
Every Sunday—9:45 a.m.—Sunday school.
11:00 a.m.—Worship service.

CHURCH OF JESUS CHRIST OF LATTER-DAY SAINTS
Meetings at Church of Jesus Christ of Latter-Day Saints
2141 Brockman, Ann Arbor
Every Sunday—9:30 a.m.—Sunday school.

SALEM GROVE UNITED METHODIST CHURCH
3320 Norton Rd.
The Rev. Gerald R. Parker, Pastor
Every Sunday—9:30 a.m.—Sunday school.
10:30 a.m.—Worship service.

Curtis Family Reunion Held at Grass Lake Park

The fourth annual Curtis family reunion was held Sunday, July 10, at Grass Lake County Park with 50 family members in attendance. Hosting the event were Mr. and Mrs. Elton Curtis of Grass Lake.

Receiving special recognition at the reunion were Jeffrey Teed, 6-week-old, youngest family member present; Hammond Curtis of Dexter, oldest member present; Mr. and Mrs. Bill Brantigan, most recently married family members; and Mr. and Mrs. Al Gross of Wichita, Kan., who had traveled the greatest distance to attend the reunion.

Also present were family members from Chelsea, Dexter, Jackson, Grass Lake, Manchester, Houghton Lake and Wilmington, O. Selected to host next year's reunion were Mr. and Mrs. Ed Hamilton of Jackson.

Col. Wayne Lehr With Air Force Unit Returned from England

Lieutenant Colonel Wayne R. Lehr, son of Glenn C. Lehr of 10905 Pleasant Acres, Manchester, recently participated in the second redeployment of F-4 Phantom fighter-bombers from Lakenheath RAF Station, England, to Hill AFB, Utah.

Colonel Lehr is a squadron commander with Lakenheath's 48th Tactical Fighter Wing. The operation's purpose is to replace the Phantom aircraft with four squadrons of swept-wing F-111F tactical fighter-bombers. The switch at Lakenheath will help modernize the Air Force's airpower contribution to the North Atlantic Treaty Organization.

After a short stay at Hill, the F-4's will move to Nellis AFB, Nev.

Phantom-qualified aircrews now at Lakenheath will be reassigned to other F-4 equipped bases in the United States and Europe.

The colonel, a 1954 graduate of Ottawa Hills High school, Grand Rapids, received a B.S. degree at the University of Nebraska extension at Lakenheath RAF Station, England. He received his commission in 1958 through the aviation cadet program.

ST. JACOB EVANGELICAL LUTHERAN CHURCH
12501 Rietmiller Rd., Grass Lake
The Rev. Andrew Bloom, Pastor
Every Sunday—9:00 a.m.—Worship service.
10:15 a.m.—Divine services.

FIRST CHURCH OF CHRIST SCIENTIST
1883 Washtenaw Ave., Ann Arbor
Every Sunday—10:30 a.m.—Sunday school, morning service.

WATERLOO VILLAGE UNITED METHODIST CHURCH
8118 Washington St.
The Rev. Glenn Kjellberg, Pastor
Every Sunday—10:00 a.m.—Sunday school.
11:15 a.m.—Worship service.

GREGORY BAPTIST CHURCH
The Rev. Paul White, Pastor
Every Sunday—9:45 a.m.—Sunday school.
11:00 a.m.—Morning worship.
8:00 p.m.—Young people.
7:00 p.m.—Evening worship.
7:30 p.m.—Thursday mid-week worship service.

ST. JOHN'S EVANGELICAL AND REFORMED CHURCH
(United Church of Christ)
Francisco
The Rev. Virgil King, Pastor
Every Sunday—10:30 a.m.—Church services.

BAHA'I FIRESIDE
Every Thursday—8:00 p.m.—At the home of Toby Peterson, 705 S. Main St. Anyone wishing to learn about the Baha'i faith is welcome.

FIRST UNITED PRESBYTERIAN CHURCH
Unaquila
The Rev. T. H. Liang, Pastor
Every Sunday—9:45 a.m.—Sunday school.
11:00 a.m.—Worship service.

CHURCH OF JESUS CHRIST OF LATTER-DAY SAINTS
Meetings at Church of Jesus Christ of Latter-Day Saints
2141 Brockman, Ann Arbor
Every Sunday—9:30 a.m.—Sunday school.

SALEM GROVE UNITED METHODIST CHURCH
3320 Norton Rd.
The Rev. Gerald R. Parker, Pastor
Every Sunday—9:30 a.m.—Sunday school.
10:30 a.m.—Worship service.

FARLEY CONSTRUCTION
522 HOWARD RD.
ADDITIONS • REMODELING
REPAIRS
NEW HOMES
475-8265 or 475-7643

Kiwanis Club Officers Attend Convention

Mr. and Mrs. Eugene Duhamel of 720 McKinley Rd., and Mr. and Mrs. Elmer Kiel of 746 Book St., were among more than 15,000 people attending the 62nd annual convention of Kiwanis International in Dallas, Tex., June 26-29.

Members of the Chelsea Kiwanis Club, both Duhamel and Kiel participated in the election of new international officers and trustees, the passing of resolutions upon which the organization's 1977-78 community programs will be built, and the amending of the Kiwanis International constitution.

Among the noted individuals speaking before the conventioners were Dr. Charles L. Allen, pastor of the First United Methodist church of Houston, Tex., the largest Methodist church in the world; Art Buchwald, syndicated columnist, author and playwright; and Stanley E. Schneider of Crestline, O.

A series of conferences on contemporary issues headed by experts in various socio-economic fields included Donald A. Byrd, chief of police in Dallas, Tex.; Senator John G. Tower (Rep., Texas); James N. Sites, senior vice-president for communications of the National Association of Manufacturers in Washington, D.C.; and Charles A. LeMaistre, M.D., chancellor of the University of Texas system.

Kiwanis International, a worldwide men's service organization,

IRS Offers Booklets On Audits, Appeals, Claims for Refund

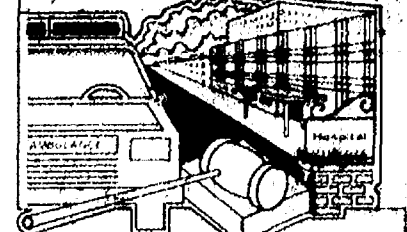
Taxpayers who are currently undergoing an audit of their federal tax return and those who wish to be prepared for one will find some valuable information in two free booklets from the Internal Revenue Service.

Publication 556, "Audit of Returns, Appeals Rights, and Claims for Refund," discusses IRS audit procedures and the avenues of appeal open to taxpayers who disagree with an examiner's findings. It is also available in Spanish (Publication 556S).

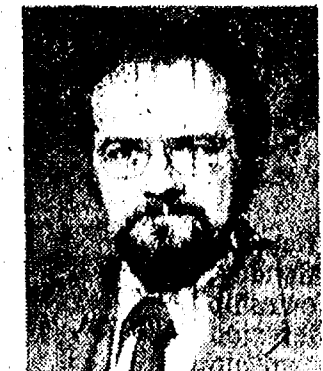
Publication 552, "Recordkeeping Requirements and a Guide to Tax Publications," is an English-language booklet that explains the requirements and benefits of keeping good records. It also describes some recordkeeping methods for both individuals and businesses and provides a list of IRS publications.

Both Publications 556 and 552 may be obtained by calling, writing, or visiting IRS offices.

uninsured farm workers?



FINANCIAL FARM DISASTER COULD RESULT
Agricultural employers must provide the same worker's disability compensation coverage for their employees as do non-agricultural employers. It's the law.
Farm Bureau Mutual can help. Our agricultural worker's disability compensation insurance programs are proven to work right for all types of Michigan farmers.
If you employ any agricultural labor, remember the law. Your Farm Bureau Insurance agent can help.



Dave Rowe

Visit us or give us a call. We're in Chelsea at 107 1/2 South Main Street. Phone 475-8085.

FARM BUREAU INSURANCE GROUP

FARM BUREAU MUTUAL • FARM BUREAU LIFE • COMMUNITY SERVICE INSURANCE

A Standard Want Ad Gets Results!

Jiffy market

Big Enough To Serve You . . . Small Enough To Know You!

TOP VALUE FOODS - GUARANTEED SATISFACTION - COURTEOUS SERVICE

COMPLETE FRESH MEAT DEPT. - USDA CHOICE BEEF - THE FINEST OF FRESH PORK

U.S.D.A. CHOICE BEEF CHUCK ROAST

BLADE CUT . . . lb. 69¢
CENTER CUT . . . lb. 79¢
ARM CUT . . . lb. \$1.09
ENGLISH CUT . . lb. \$1.09



Tender Beef with Flavor!
MAHOGANY FARM BEEF
From Dugdale Packing, St. Joseph, Mo.

ECKRICH SAUSAGE
OLD FASHION SMOKED or NEW POLISH STYLE . . . lb. \$1.39

YOUNG, TENDER
BEEF LIVER . . . lb. 39¢

HICKORY SMOKED
SLAB BACON . . . lb. \$1.09

CAMELOT
LIVER SAUSAGE or BRAUNSCHWEIGER . . . lb. 69¢

HAMBURGER MADE FROM
GROUND CHUCK . . . lb. \$1.09

HAMBURGER MADE FROM
GROUND ROUND . . . lb. \$1.19

FARM MAID HOMOGENIZED

MILK Gallon \$1.29

QUAKER MAID
FLAVOR OF MONTH
Root Beer Float Ice Cream
1/2 gal. \$1.09

COTT SODA POP
Orange - Root Beer
Red Pop
1/2 gal. 69¢

MRS. ALISON'S
SANDWICH CREME COOKIES
2-Lb. Pkg. 98¢ WOW!

CALIFORNIA
HEAD LETTUCE
Large Heads 29¢

NEW MICHIGAN - SUNNYCREST FARMS

POTATOES 10-Lb. Bag 89¢

JIFFY MEAT SERVICE
CUSTOM CUTTING, WRAPPING, FREEZING.
QUICK SERVICE ON BUTCHERING — YOUR BEEF OR OURS.

★ U.S.D.A. CHOICE SIDES OF BEEF
★ LOCAL FARM GRAIN FED BEEF AVAILABLE
★ FRONTS - HINDS - WHOLE RIB - WHOLE LOINS

JIFFY MARATHON GAS PUMPS
REGULAR GAS **59.9** Includes All Taxes

THANK-YOU — We Appreciate Your Business!

Open With Complete Service, 7 Days A Week
TOP VALUE 7 a.m. MORNING to 10 p.m. NIGHTS
FOODS

Sale Prices
July 14
Thru
July 17

SPRED HOUSE PAINT SALE



SPRED HOUSE PAINT \$7.99
Acrylic Latex Reg. \$11.05 gal.

SPRED LATEX GLOSS \$7.99
House and Trim Paint Reg. \$12.69 gal.

(Sale Prices in Effect Thru Sat., July 16, 1977)

CHELSEA LUMBER

Community Calendar



Chelsea Lions Club, Tuesday, July 19, 6:45 p.m., at Chelsea Community Hospital. Interested parties are invited to attend.

Rummage Sale, North Lake United Methodist church, 1411 North Territorial Rd., Friday, July 15, and Saturday, July 16, 9 a.m. to 4 p.m. Lunch available. -advx3

Citizens Committee for the Recall of Robert Musolf, Monday, July 18, 8 p.m., at Lima Township Hall. All Lima residents interested in recalling the current township supervisor are invited to attend.

Tickets for the Chelsea Players summer theatre production of "Anything Goes," July 28-30, are now on sale at Palmer Ford in Chelsea. Tickets may also be purchased for the opening night "Afterglow."

Ice Cream Social, sponsored by Zion Lutheran church of Rogers Corners, July 19, 5 p.m. to 9 p.m. at the church. -advx31

The dining room of Chelsea Community Hospital is available for women's club meetings in the fall, every second Tuesday of the month. If interested, call 475-2034.

All Senior Citizens meetings will be cancelled until further notice.

Lyndon Township Planning Commission meets the second Thursday of the month at the Township Hall at 8 p.m. -adv.421f

McKune Memorial Library hours are Monday, 10-5 and 7-9; Tuesday, 12-5; Wednesday, 12-5 and 7-9; Thursday, 10-3; Friday, 12-5 and 7-9; and Saturday, 12-5.

Chelsea Home Meal Service delivers one hot meal a day to elderly and disabled living in the Chelsea area. For information, call Caralee Hoffmeyer, 475-8014, or Barbara Branch, 475-7644.

Masonic and OES family picnic, Sunday, June 17, 1 p.m. to 4 p.m., at the home of Jim McLaughlin, 66 Cavanaugh Lake Rd.

Past Matrons and Past Patrons picnic, Wednesday, July 20, 6:30 p.m., at the home of Ethel and Lionel Vickers, 668 Washington St. Bring own table service and a dish to pass. Note change of date.

Washtenaw County Pork Producers annual picnic, Sunday, July 17, 1 p.m. at the Bill Baldus farm on Webster Church Rd., Dexter. All hog raisers welcome.

Lima Township Board regular meeting, the first Monday of the month, 8 p.m. at Lima Township Hall. -adv.421f

Chelsea Co-op Nursery is now taking applications for the 1977-78 school year. To enroll, call Kay Johnson, 475-7765 or 475-8316. -advx431f

Human Society of Huron Valley has dogs and cats for adoption. Owners may reclaim their lost pets. Phone 682-5585. Open from 9 a.m. to 5 p.m. daily, Sunday, 1 p.m. to 5 p.m. 100 Cherry Hill Rd., one-fourth mile south of Plymouth Rd. at Dixboro.

Chelsea Social Service hours are Thursday, 10 a.m. to 4 p.m., or call 475-1581, or 475-1012.

Sharon Township Planning Commission regular meeting, Wednesday of each month, adv.421f

Lyndon Township Board regular meetings the third Tuesday of each month, 7 p.m., in Lyndon Township Hall.

Sylvan Township Board meeting the first Tuesday of the month, at 7 p.m., at Sylvan Township Hall. -adv.421f

Chelsea Jaycees are actively seeking new members among young men between the ages of 18 and 36. Meetings conducted the first Tuesday of each month, 7:30 p.m. Women's Auxiliary meets the third Tuesday of each month, 7:30 p.m. For more information, contact Bob Ponte, 475-9191, or Bob Smith, 475-2038.

American Legion Hospital equipment is available by contacting Larry Gaken at 475-7891.

Sharon Township Board regular meeting first Thursday of each month, 8:30 p.m. -adv.421f

Tours of Chelsea Community Hospital and surgical center are available for small groups. To arrange for tours, call: Neva Jordan, 426-8027, or Dorothy Miller, 475-8020.

DEATHS

Mrs. Clare Fenn

Chelsea Native Dies In California Hospital

Mrs. Clare (Agnes) Fenn, 78, of LaGuna Hills, Calif., and formerly of Ann Arbor, died suddenly July 8, at Saddle Back Community Hospital, LaGuna Hills. She was the daughter of Edward and Margaret Wade Weber of Chelsea.

Mrs. Fenn was the widow of Clarence H. Fenn. Together they operated Fenn's Drug Store on Forest Ave. in Ann Arbor for many years, selling the business in 1934. Mr. Fenn died June 16, 1966.

In 1963, Mrs. Fenn moved from Ann Arbor to "Leisure World," located in LaGuna, Calif.

She is survived by one son, Howard Fenn, of 24682 San Andres Lane, Mission Viejo, Calif.; and three grandchildren.

Funeral services and burial took place in California.

Mrs. Henry Keil

Former Chelsea Woman Dies in Three Rivers

Mrs. Henry (Grace A.) Keil, 66, of Jones, and formerly of 354 Elm St., Chelsea, died suddenly, July 8, at Three Rivers Hospital, Three Rivers. She was born April 20, 1911, in Litchfield, Ill., to Edward and Rosa Westbrook Wright.

On Oct. 7, 1943, she married Henry Keil in Vandellia, Ill. He survives.

Mr. and Mrs. Keil moved to Chelsea five years ago from Granite City, Ill. Mrs. Keil had worked at Chelsea's F&M Restaurant and at Dancer's Department Store before retiring in 1973. Approximately two months ago, the Keils moved to Jones.

In addition to her husband, survivors include one daughter, Mrs. Ralph (Bonnie) Erskine of Chelsea; five grandchildren; seven great grandchildren; and one sister, Mrs. Gladys Littlejohn of Litchfield, Ill. She was preceded in death by two brothers.

Friends called at Staffan Funeral Home last Saturday and Sunday before Mrs. Keil was taken to Thomas Memorial Mortuary, Granite City, Ill., where funeral services were held Tuesday, July 12. Burial followed in Sunset Hill Cemetery, Edwardsville, Ill. Memorial contributions may be made in Mrs. Keil's name to the Michigan Heart Fund.

Area All-Stars Enter Babe Ruth District Tourney

Saturday, July 16, a combined all-star team composed of players from Chelsea, Dexter and Manchester will challenge Jackson in the opening round of the Babe Ruth District Tournament. The game will be played at the Beck Rd. field in Belleville.

Local area all-star squad members include Brad Knickerbocker, David Stock, Lou Jahnke, Scott Price, Mark Barnes, Al Augustine and Pat Murphy from Chelsea; Garry Neff, Brian Hochrein, Harvey Proctor, Dave Hollister and Mike D'Ambrosio from Dexter; and Troy Walden and John Alexander from Manchester.

Dan Murphy is the team coach.

The Veterans Administration leads all federal agencies in the hiring of Vietnam-era veterans with more than 33,000 on its rolls.

Erwin N. Clark

Well Known Auctioneer Dies at Ann Arbor Hospital

Erwin N. Clark, 58, of Ann Arbor, died Tuesday morning, July 12, in St. Joseph Mercy Hospital, Ann Arbor. Born Feb. 2, 1919 in Dexter, he was the son of Arthur S. and Ellen Ryan Clark. He had been a resident of the Dexter-Ann Arbor area his entire life.

Mr. Clark, a former owner of Stadium Tavern in Ann Arbor, was a member of the Ann Arbor Moose Lodge. He was also well known in both Chelsea and Dexter areas where he had served as auctioneer for numerous auctions.

Survivors include three sons, Nelson, Gary and Ronald, all of Ann Arbor; one sister, Mrs. Vincent (Viola May) Loy of Ann Arbor; one brother, Elmer Clark of Dexter; six grandchildren; and five nephews. He was preceded in death by one brother and one sister.

Funeral services will be held today, July 14, 11 a.m., at Muehl Funeral Chapel, Ann Arbor, with the Rev. Orval L. E. Willmann officiating. Burial will follow in Bethlehem Cemetery.

Memorial contributions in Mr. Clark's name may be made to the Kidney Foundation of Michigan.

Three Chelsea Students Enroll At Music Camp

Individualized music instruction is the focus of a two-week program involving three local students at Camp Emery, an extension of the Blue Lake Fine Arts Camp located just north of Muskegon.

Students from Chelsea participating in the Camp Emery program are Kim Smith of 18185-North Territorial Rd., Thomas Donkin of 675 Glazier Rd., and Timothy Dmoch of 30 Sycamore Dr.

Many advantages are offered to youngsters at Camp Emery as a result of the music program's limited enrollment, outstanding curriculum, and the camp's intimate environment.

A staff of accomplished counselors and instructors are carefully selected to direct the instrumental music studies. Throughout the program the emphasis is on self-motivation with no competition for chair position.

Conductor at Camp Emery is Fred Hubbell of the Park Ridge, Illinois schools, who returns after spending the 1976 summer at Camp Emery.

BIRTHS

A daughter, Michelle Lynette, to Mr. and Mrs. Don Henry of Pinckney, June 26, at St. Joseph Mercy Hospital, Ann Arbor. Maternal grandparents are Mr. and Mrs. Donald Zeeb of Ann Arbor and paternal grandparents are Mr. and Mrs. William Henry of Stockbridge.

A son, Brett Phillip, to Mr. and Mrs. Glen Schaner of Boyce Rd., Grass Lake, Monday, July 5, at McPherson Community Hospital, Howell. Maternal grandparents are Mrs. Pat Robison and Melvin Robison, both of Lakeland. Paternal grandparents are Mr. and Mrs. Dutch Schaner, also of Lakeland.



ALL THE COMFORTS OF HOME: Harvesting wheat is not all work if this Saturday morning scene at the Reuben Lesser, Sr. farm on M-52 is any testimony. After cutting wheat for a few hours, these veteran farmers uncorked a jug, brought out a wine glass, and served their visitors something they called "lemonade."

In regal style, filling the glass is Paul Seltz, while others, from left, include Standard reporter Mary Barinoff, Reuben Lesser, Sr., LaVerne Haffley, Mark Lesser, Paul Bollinger, Mrs. Paul Bollinger, and Reuben Lesser, Jr., partially obscured.

Bike Rodeo Slated Friday at CHS Track

The summer recreation playground programs at North and South Elementary schools will feature a bike rodeo tomorrow, July 16, beginning at 10 a.m. on the Chelsea High School track. Activities will include bike-decorating, cross-country and track races and relays, coasting, and an obstacle course.

Both playground programs will continue their regular supervised play and arts and crafts activities until the end of July.

In urging parents to register

their primary-age children for the two remaining weeks of either playground program, Dave Nicowicz, South school playground supervisor, or stated, "The recreation department has invested generously in excellent arts and crafts supplies and playground equipment, and staff members at both playgrounds truly enjoy working with the children."

If the feedback from children is any indication, they too have enjoyed participating in playground activities.

At South school, Teresa Rudnicki, 7, of 520 Lane St., said she especially enjoyed the checker tournament held Friday, July 8. Kim Collins, 8, of 328 Wilkinson St., a regular at South school, joined Teresa in her enthusiasm for kickball and admitted she also enjoys painting.

Brian Donovan, 9, and David Smith, 9, like softball and other active sports.

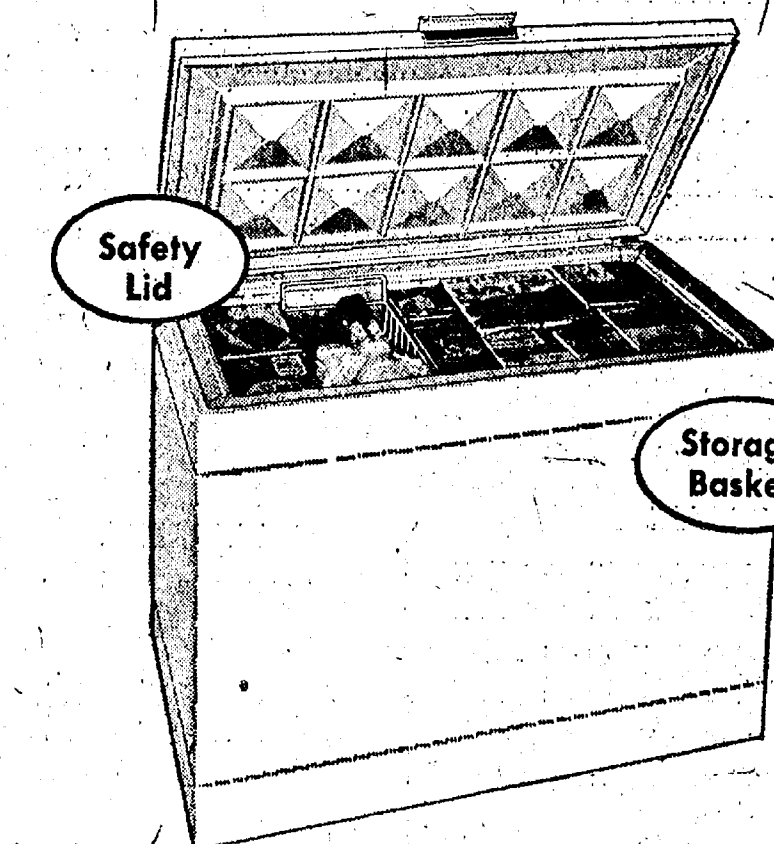
According to Kathy Rybka, a North School playground staff member, "there is something to

interest just about every child here. The playground programs provide an excellent opportunity for children to participate in organized activities and for parents to be assured of professional care for their children in the morning hours."

"I hope we can interest even more people in the last two weeks of the program," she added.

Playground registration fee is \$1 payable to the Chelsea Recreation Department.

GAMBLE'S FREEZER SALE! WHY PAY MORE?



CORONADO 15 Cu. Ft. CHEST FREEZER

REG. \$269.00
\$219⁰⁰

Use Our Budget Pay Plan!

U-Haul SAVE \$50.00

Priced to please! Chest freezer maintains balanced cold you select in 15 cu. ft. area, stores up to 526 lbs. of frozen foods. Lift-out basket. Safety lid stays open by itself, closes tight. An outstanding Coronado value with 4-way warranty! 44-850

20.3 CU. FT. CHEST FREEZER Reg. \$309.95 **\$249⁰⁰** U-Haul SAVE \$60.00

16 CU. FT. UPRIGHT FREEZER Reg. \$299.95 **\$259⁰⁰** U-Haul SAVE \$40.00

SHOP NOW & SAVE!
110 N. Main, Chelsea Ph. 475-7472

THE BIG Clearance

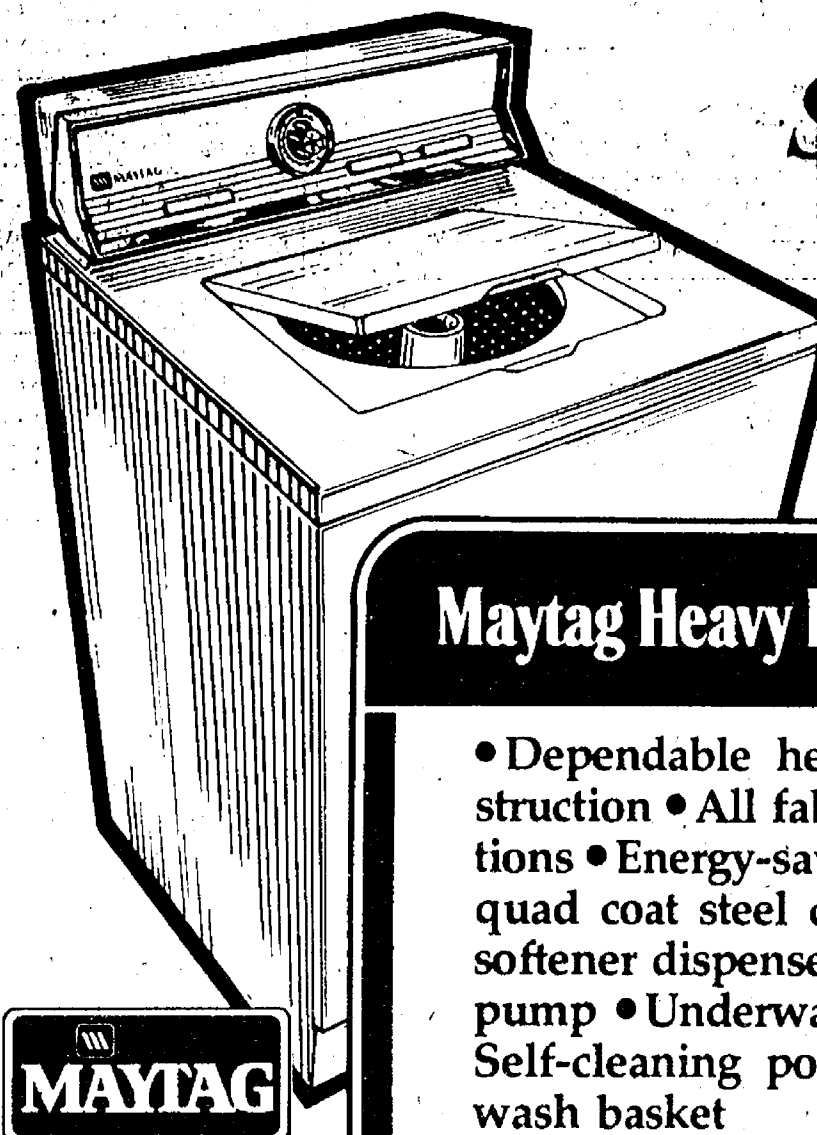
A huge assortment of Levis in European styles
Reg. \$17 to \$20

NOW **\$13⁰⁰**

SUITS SPORT COATS
20% Off

STORE HOURS: 8 a.m. to 5:30 p.m. Mon, thru Sat.

STRIETER'S MEN'S WEAR
Since 1914



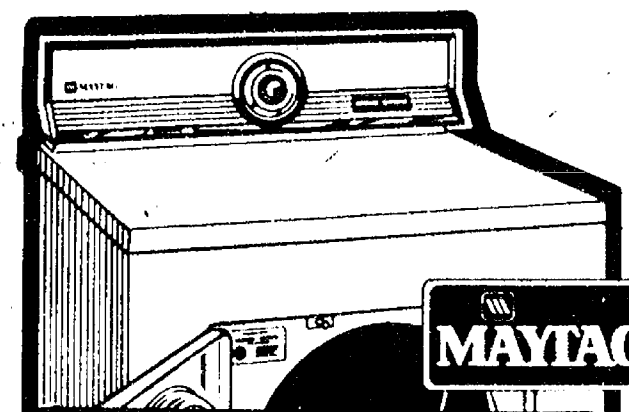
Maytag Heavy Duty Washers

- Dependable heavy duty construction • All fabric cycle selections • Energy-saving • Long life quad coat steel cabinet • Fabric softener dispenser • Tough poly pump • Underwater lint filter • Self-cleaning porcelain enamel wash basket

Save Now on Maytag Dependability

Rare opportunity for savings on Maytag dependability. Hurry!

SAVE NOW!



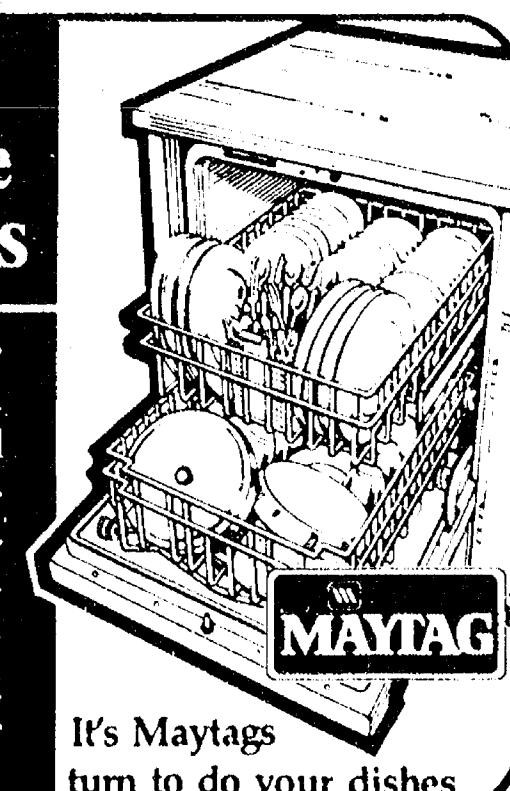
Maytag Big Load Dryers

- 26% more capacity • Exclusive low-temp, stream-of-heat drying • Multi-cycle selection • Fast, efficient energy-saving operation • Efficient drum size • Unique air-ride drying system

SAVE!

Maytag Power Module Dishwashers

- Three level washing • Unsurpassed capacity • Balanced racking • Multi-cycle • Easy installation plus front service • Quiet operation • Self-cleaning Micro-Mesh™ filter • Power Module



It's Maytag's turn to do your dishes

When you buy a DEPENDABLE MAYTAG we DON'T try to sell you an Extra Service Contract.

HEYDLAUFF'S

113 N. Main St., Chelsea

Phone 475-1221



Real Estate

By PAUL FRISINGER
REALTOR

PRINTED FORM FOLLY

In any real estate transaction you'll normally find printed forms used in the area of sales contracts, deeds, mortgages, and leases. Ever wonder why any layman can't use printed forms himself and save the fees of an attorney, Realtor, or lending institution?

A typical legal stationery store will have dozens of varieties of leases, deeds, and mortgage forms, but which is the right one for your situation? These printed forms are only a starting point. It's what goes into the blanks, what is crossed out, and what is added that gives you the value, security,

and protection that you are paying the experts for. Believe me, some of the largest financial losses and legal hassles have resulted from printed forms being incorrectly used. About the only safe one an amateur can depend on is a marriage license.

If there is anything we can do to help you in the field of real estate, please phone or drop in at FRISINGER REALTY CO., 935 S. Main St., Chelsea, Phone: 475-8681; evenings 475-2621. We're here to help!

Speech, Language Therapy Program Offered at Hospital

Chelsea Community Hospital has announced the initiation of a Summer Speech and Language Therapy Program from July 12-28. Children from Chelsea, Manchester, Dexter, Whitmore Lake, Pinckney, Gregory, Stockbridge, Grass Lake, Ann Arbor, and Ypsilanti, with speech and language problems, will be accepted for this program. The program will be conducted by Mrs. Gloria B. Nelson, the Speech and Language Pathologist at the hospital, at St. Paul United Church of Christ, 14600 Old US-12. Hospital Volunteers: Maria Valencia, Lisa Radke, Dawn Le May, Lucy Lindemann, and Wendy Varrellmann, will be assisting Mrs. Nelson with the program. Parents of children served will be asked to pay a moderate charge for the program; however, no child will be denied services due to inability to pay. Parents will be given the opportunity to observe the therapy and to discuss their child's problems and progress with the clinician. If successful, the hospital intends to present this Summer Speech and Language Therapy Program on an annual basis. Referrals will be accepted after Jan. 1, from parents, school speech pathologists, physicians, dentists, and other professionals for the upcoming summer program. Chelsea Community Hospital has an ongoing speech pathology program which provides diagnostic and therapy services for both children and adults. Outpatient referrals are accepted from physicians, dentists, school personnel, as well as the person desiring therapy. For more information concerning the Summer Children's Speech and Language Therapy Program or the ongoing speech pathology services, please contact Mrs. Gloria B. Nelson at 475-1311.

Spaulding for Children Plans Ice Cream Social

Chelsea residents and their families are invited to participate in the annual Spaulding for Children ice cream social and picnic which is slated for Sunday, July 17, 2 p.m. to 6 p.m., on the grounds of the local adoption agency, located at 3660 Waltrous Rd. A crowd of 300 is expected to gather for this year's event, according to Kathy Cavanagh, Spaulding's public relations coordinator. "The annual ice cream social has traditionally been a time when families who have adopted our children can come back to visit with the Spaulding staff and other Spaulding children," Miss Cavanagh explained. "We also invite all our past contributors to see what their money has done," she added. The ice cream social and picnic will be a staff-run operation with assistance from volunteers and the Spaulding Board of Directors, who will supervise games and the distribution of prizes. Games to be played include races, getting fish out of a pond, balloon games, and other carnival-type attractions. All games will be geared to the skills of the children involved, so that even those without a great deal of ability will be able to win a prize. Several arts and crafts projects will be given away, including an afghan and needlepoint pillow. Warren Spaulding, a Chelsea Methodist Home resident who donated his home and property to Spaulding for Children to make the adoption agency possible, is also expected to make a special guest appearance.

Three Chelsea Students Named to Honors List

Three students from the Chelsea area were named to the Dean's List at Valparaiso University, Valparaiso, Ind., for their outstanding academic achievement during the 1977 Spring Semester. Receiving the honor were Karen E. Severn, a business administration major; Brenda L. Shadoan, an arts and sciences major; and Carol M. Spencer, also an arts and sciences major. To be named to the Dean's List, students must have earned a grade point average of 3.5 or better under a 4.0 system.

THE CHELSEA STANDARD

Second Section

CHELSEA, MICHIGAN, THURSDAY, JULY 14, 1977

Pages 7-12



AGILE ATHLETICS: Putting their prowess to work on the baseball diamond last week, these members of the Babe Ruth Athletics moved into third place in league standings as they defeated the Dexter Warriors Friday, and narrowly missed matching that effort when they skidded in behind the Dexter Dreadnaughts.

two runs short of victory, Tuesday. Pictured in the first row, from left, are Dave Morris, Randy Luick, Jim Stock, Jeff Fouty, Carl Schwarze and John Welton. In the back row, from left, are Brad Knickerbocker, Dave Stock, Dennis White, Keith Hegadorn, Toby Boyd and Coach Tom Stock.

Junior Girls Softball Teams Get Good Start

The junior girls' softball season has gotten off to a 'super start' for the three teams in the league. Although the first game was rained out, the remaining two games last week proved to be quite exciting. In their first encounter with the Braves, the Pirates managed to come out on top with a 19-18 win. The score sheet produced a see-saw effect, with the lead being shifted back and forth between the teams. But the score was tied going into the last inning when the Pirates gained the winning edge.

The next scheduled game was between the Royals and the Pirates and although the final score wasn't as close, the excitement kept the teams and spectators on the edge of their seats. The Pirates led 1-0, going into the third inning, but a hit by Burkell and a home run by Roberts put the Royals ahead and ignited a fuse under their opponents. With 10 hits to their credit and two home runs by Wilson, the Pirates added 13 runs in the fourth while the Royals did their best to come back with eight hits in the same inning. The final score, 18-11, gave the Pirates another win.

The Royals and the Braves began this week's schedule as they faced each other for the first time. It was a battle to the finish as all of this league's games seem to be, but the Braves seemed to ignore the Royals' two home runs by Stock and Palowski as they took the lead in the last inning and won over the Royals, 7-6.

The junior girls' softball league is quite small and the first time for many of these girls to participate on such a team, but they certainly have shown a great deal of effort and sportsmanship. Coaches and players alike have enough enthusiasm and team spirit to continue the short season and tournament play in exciting style.

Michigan State University's "talking computer" has been adapted by linguists and computer scientists to aid speech-impaired children and adults in Michigan.

Area Bicyclists Preparing for Saturday Ride Through Hell

Although the ranks of those who will be participating in the Ann Arbor Bicycle Touring Society's first "One Helluva Ride" to Hell and back on July 16 have swollen to more than 100, late registration is still being accepted. The three loops for the ride, measured out at 50 kilometers, 100 kilometers, and 100 miles each, will leave Dexter, pass through Hell which is 400 miles south of Paradise, and return to Dexter where bikers will be greeted with a chicken dinner prepared by the Dexter American Legion women's auxiliary. Serving will be under the Legion Pavilion or inside the Legion Hall should there be rain.

Each route boasts of equal amounts of flat, gently rolling and hilly sections passing through some of southeastern Michigan's most scenic areas. Refreshments will be available during the ride at all small town or rural settlements along the way.

The Village Market in Waterloo Prenatal diagnosis of birth defects is saving lives, says the March of Dimes. Nearly 97 percent of pregnant women who underwent amniocentesis were assured that their unborn babies were free of the disorder for which they were being tested. The technique prevents many abortions which might have been performed on the basis of statistical odds alone.

will have a free drink stand for "One Helluva Ride" participants and Hilltop Manufacturing will sponsor two snack stops along the bike routes which will offer fresh fruit, gatorade and ice water. Hilltop Manufacturing is the producer of the "Bummer," a revolutionary bicycle seat invented by John Marchello of South Lyon. "The Bummer" was named 1977 Michigan product of the year.

For safety purposes, mobile ham radio operators will be located at strategic points along the bike routes and a roving van will tour the routes to help cycling enthusiasts with any needed repairs. A day care center will be set up at Dexter Methodist church, from 7 a.m. to 4 p.m. the day of the ride. The \$1.50 charge per child includes lunch. For an application or information about child care, call Dave Knox, evenings at 668-7817. To late register for "One Helluva Ride," send your name, address, age and date of birth, with a check in the amount of \$4 to Ann Arbor Bicycle Touring Society, c/o Wayne Malburg, 51074 Mott No. 184, Canton 48188. Specify if you will be participating in the chicken dinner after the ride. Both are available to bikers at an additional, but nominal cost.

NOW OPEN FOR SEASON

Sweet Corn and Huckleberries are ready.

GROHNERT'S Farm Market

Corner Waterloo and Bush Rds.

Chelsea

SUMMER SALE MEN'S and BOY'S

1/2 OFF

Summer Sport Coats & Vests
Knee-length PJ's

1/2 OFF

Cut-off & Bermudas - Bathing Trunks
Summer Dress Pants
Short Sleeve Shirts

WOMEN'S and JUNIORS'

1/2 OFF

Summer Gouchos
Bathing Suits - Summer Jewelry
Dresses - Pant Suits

1/3 OFF

Slacks - Blazers
Short Sleeve Blouses - Shirts
Pant Coats & Jackets

INFANTS' and CHILDREN'S

1/2 OFF

Summer Sleepwear
Blouses - All Swimwear

1/3 OFF

Sun Suits - Shorts - Shirts
Tank Tops - Jackets

BEACH TOWELS 1/3 OFF

BankAmericard & Master Charge Welcome

Open Fri. Night

DANCER'S

Chelsea's Friendly Dept. Store

RICK'S MARKET

20490 M-52

"The Store with the Spartan on the Door"

Phone 475-2898

BORDEN FRUIT DRINKS

1/2 Gal. Asst. Flavors

39¢

HUNGRY JACK EXTRA LIGHT PANCAKE MIX

32-Oz. Pkg.

73¢

BRILLO SOAP PADS

Pkg. of 10

39¢

SPARTAN MILD CHEDDAR MIDGET

1-Lb.

\$1.53

BORDEN'S CRACKER JACK

ICE CREAM BARS . . 6 pac 79¢

RICK'S HOT BREAD DAILY

Weekdays by 3:30 p.m. Sat. & Sun., by 10:30 a.m.

(QUANTITY RIGHTS RESERVED)

IT'S CHERRY TIME! RED SOUR PITTED CHERRIES

30-Lb. Tin

\$19.95

(5 lbs. Cherries to 1 lb. Sugar)

Special Orders Only!
PUT YOUR ORDER IN NOW!

GRAPE OR ORANGE TANG BREAKFAST DRINK

18-Oz.

\$1.13

GORTON'S FROZEN FISH & CHIPS

1-Lb. Pkg.

99¢

ECKRICH SMORGAS-PAC

1-Lb. Pkg.

\$1.39

BORDEN'S HALF & HALF

Qt.

59¢

MAKE COMFORT PART OF YOUR UNIFORM!



Tired feet taking away your good disposition? Red Wing has the answer! Our popular service oxford provides "cushion comfort" all day long. Styles to match any uniform!

RED WING FOSTER'S MEN'S WEAR

Ph. 475-1606 Chelsea, Mich.

PUT IT IN THE WANT ADS FOR RESULTS

Just Phone 475-1371

WANT ADS

The Chelsea Standard
WANT AD RATES
PAID IN ADVANCE—All regular ad-
vertisements, 15 cents for 25 words
or less. Each insertion, 10 cents.
Longer ads and ads of more than 25
words add 3 cents per word for each
insertion. "Building" ads on busi-
ness ads, \$30 extra per insertion.
CHARGE RATES—Same as cash in
advance. With 25 cents bookkeeping
charge if not paid before 1 p.m. Tues-
day preceding publication. Pay in ad-
vance, send cash or stamps and save
25 cents.
DISPLAY WANT ADS—Rate, \$1.40 per
column inch, single column, with
only 10 lines and 1-point light type
only. No borders or boldface type.
Minimum 1 inch.
CARDS OF THANKS or MEMORIALS—
Single paragraph style, \$1.50 per
insertion for 50 words or less; 2 cents
per word beyond 50 words.
COPY DEADLINE—1 p.m. Tuesday
week of publication.
ERRORS—Advertisers should check
their ads at the time of publication. This
newspaper will not be liable for errors
in publication except to the extent
of the cost of the ad for the first
week's insertion. Adjustment for er-
rors is limited to the cost of portion
of the ad wherein the error occurred.

FOR RENT—Fair Service Center
for meetings, parties, wedding
receptions, etc. Weekdays or
week-ends. Contact John Welton,
phone 475-1518. x31tf

SAND GRAVEL

KLINK EXCAVATING

Bulldozer Backhoe
Road Work - Basements
Trucking - Crane Work
Top Soil - Demolition
Drainfield - Septic Tank
Trenching, 5' up
Industrial, Residential, Commercial
CALL 475-7031 13tf

J. R. CARRUTHERS

LICENSED
RESIDENTIAL BUILDER
CUSTOM HOMES
ADDITIONS/FIREPLACES
PATIO
ROOFING/SIDING/REPAIRS
475-7234
CHELSEA 20tf

CAR RENTAL by the day, week-
end, week or month. Full insur-
ance coverage, low rates. Call
Lyle Christwell at Palmer Motor
Sales. 475-1301. 25tf

Fireplace Builder

Field stone mason, block and brick
masonry, tuck pointing.
FREE ESTIMATES
Call 475-8025 after 3 p.m.

Patrick Grammatico

740tf

All Insurance Needs

In the convenience of your own
home - or mine

N. H. Miles, Allstate

Call Only 475-8334 5

GARAGE SALE—Thursday, Friday
and Saturday, 10 to 7, 3 gas
ranges, 2 sets of new luggage,
hand-made gun cabinet, automatic
shotgun, high powered rifle, Ka-
wasaki street and trail motorcycle,
lawn mowers, bikes, clothing and
miscellaneous items. 17250 Garvey
Rd., Chelsea, near I-94 exit 158. 5

Your Approval
is the
cornerstone
of our
business.

Staffan Funeral Home
"Funeral Directors for Four Generations"
124 PARK STREET • PHONE GR 5-1444

WANT ADS

HILLTOP, INC.
8310 WERNER RD., CHELSEA
We Do It All!

PLUMBING
HEATING
ELECTRICAL
SEPTIC TANKS & DRAINFIELDS
REPAIR - REMODELING
CONTRACTING
BY
"THE SPECIALISTS"
Robert Shears, Master Plumber
Gail Shears, Journeyman
Call 475-2949
FREE ESTIMATES x31tf

ROOFING SPECIALIST—All types
of roof repairs, homes, barns,
commercial, insurance repairs. As-
phalt shingles, not built-up roofing,
cedar-shingle tile-asbestos. Awnings
and porch enclosures. Siding and
storm windows. Call Joe Hayes for
free estimates. Manchester, 425-
8520. x31tf

RADIO & PHONOGRAPH REPAIR
OB Sales & Installation
THE MUSIC HUTCH
8407 Main St., Dexter
426-4390 x52tf

FOR SALE—86" aluminum camp-
er with two top access doors.
Best offer. Ph. 475-2419. x2tf

1973 SCOUT II - Power steering,
power brakes, V-8, 4-speed, 4-
wheel drive, top package, skid
plates, street tires, 4 m u d and
snow tires available. \$2,800. Ph.
475-9853. x5

Pierson & Riemenschneider

REALTORS
111 Park St. - 475-9101

WHAT A BUY! This home has
everything you may want at a
price you can afford. Cheerful 3-
bedroom ranch home with family
room, dining room, 2 1/2-car garage
and basement. Convenient loca-
tion. Reasonably priced at \$43,900.
MUST BE SEEN—4-bedroom tri-
level in the village. New kitchen,
plenty of storage space, large fam-
ily room, 2 baths, excellent loca-
tion and nice yard. Priced at
\$46,000.

A LITTLE BIT of country in the
village (Stockbridge). 2 1/2-acre
lot. 4-bedroom home, family room,
stone fireplace, 2 baths, 2-car ga-
rage and lovely in-ground heated
pool. \$57,500.

WHATEVER your real estate
needs, whether it be residential,
commercial or industrial, buying
or selling, land contract or any
other phase of real estate, we have
several qualified salespeople here
to serve you. Call or stop in from
9:00 to 5:30 Mon.-Fri. or Saturday
9:00 to 3:00.

Pierson & Riemenschneider

REALTORS - 475-9101
111 Park St., Chelsea
Evenings and Sundays:
Ruth Harbaugh 475-1477
Pat Merkel 475-1824
John Pierson 475-2064
Jeanene Riemenschneider 475-1469 5

SECRETARY with good typing
skills and command of English
needed for small, friendly office in
Chelsea. Must be responsible and
able to take initiative. Understanding
of church relations helpful.
Fringe benefits included. Ph. 873-
0210 for interview. Bring resume,
including educational background
and work experience with you. x6
THE ANTIQUE GALLERY, 5235
Jackson Rd., Ann Arbor. New
hours, 10 a.m. to 5 p.m., Tuesday
through Saturday, evenings and
Sunday by appointment. Visit us
soon. x6

WANT ADS

LEONARD REITH

Master Plumber

Licensed Electrician

Hot Water Heat

18238 N. Territorial

Rd.

Chelsea, Mich. 48118

Phone: 475-2044

FOR RENT - American Legion

Hall. 450. Call 475-1921. 20tf

BODY SHOP

COMPLETE FULL TIME

Estimates Available

PALMER FORD

222 S. Main 475-1901 40tf

THORNTON

475-8628

VERY ANXIOUS OWNERS! Cen-
tennial family home in the Vil-
lage of Chelsea. Nicely decorated
kitchen, 1st floor laundry. Main-
tains a colonial look with carriage
house in back. \$39,900.

HURRY and see this now! Re-
freshingly new custom built
home just finished in May. Your
choice of carpeting, 3 bedrooms,
1 1/2 baths. Full basement. Owner
anxious. \$48,500.

\$23,900 - Lake house with Sugar
Leaf Lake access. 2 bedrooms,
Very good condition. Adjacent to
state land. Small shed for storage
or work shop.

A COUNTRY HOME with mature
shade trees on approximately an
acre. Aluminum sided with new
roof. Includes 3 bedrooms, dining
room, partial basement, and much
more! \$38,000.

VACANT

10 PLUS ACRES—Beautiful build-
ing site. Stream on property. L.
C. terms pos. \$17,500.

SIX & TEN ACRE parcels avail-
able with beautiful trees and
stream on property. Land contract
possible. \$13,500 - \$18,500.

MANY TREES, rolling, high land.
2 acres fronts on blacktop road.
Gorgeous building site. Chelsea
schools. \$11,500.

ROBERT H. THORNTON

JR. P.C. REALTOR

Lang Ramsay 475-8133

Chuck Walters 475-2808

Chuck Cresswell 688-0708

Helen Lancaster 475-1198

Pat Starkey 475-9544

Barb Rybak 475-8498

George Knickerbocker 475-2940

Mark McKernan 475-8423

Mike McPhillips 517-467-7900 31

Restaurant Help

ALL POSITIONS available, all
shifts. Good wages and benefits.
Apply in person, 8 a.m. to 4 p.m.,
to Mr. Daryl Haynes, restaurant
manager.

Union 76 Truck Plaza

1-94 and Baker Rd.
Dexter Exit

YARD SALE—TV, bedroom suite,
miscellaneous oak chairs, tables,
beds. Some are antique. Many
miscellaneous items. Starting noon
Thursday, July 14 thru 16, 6111
Sibley Rd., Chelsea. Ph. 475-2355. x5

FOR SALE - Beets, beans, and
cucumbers. Other vegetables
coming. Steve Toth, 475-7989. x5tf

FOR SALE - Araucana chickens
that lay colored easter eggs. 5
dayold. Ph. 475-7450. x5

PERK TEST GUARANTEED.
Terms Available.

HOMES

UNIQUE contemporary home with
266 ft. of frontage on North
Lake in Stonehedge on the Lake—
Chelsea's most beautiful subdivi-
sion. Immediate occupancy. Mort-
gage approved. \$69,900. x5

475-9569

Fresh Frozen Fruit

NOW TAKING ORDERS. Direct
from western Michigan. Cleaned
and ready to eat. Sour cherries,
dark sweet cherries, raspberries,
blueberries, boysenberries, black-
berries, peaches, apricots, apples,
plum, currants, melon balls,
fruit cocktail and mixed fruit.
Orders must be in by July 22.

MAUSOLEUMS • MONUMENTS
BRONZE TABLETS • MARKERS

BECKER MEMORIALS

4033 Jackson Road
ANN ARBOR, MICHIGAN

Manchester Locker Plant
Ph. Manchester 428-7600 x5

WANT ADS

VACUUM CLEANERS

Authorized Electrolex
sales and service.

James Cox

423-2444, or 423-8088

118 Riverside Dr., Manchester 48tf

Complete Body Repair Service

Bumping - Painting

Windshield and Side Glass

Replacement

Free Pick-up & Delivery

Open Monday Until 9

CONTACT DON KNOLL

FOR FREE ESTIMATE

Village Motor Sales, Inc.

CHRYSLER - DODGE

PLYMOUTH - DODGE TRUCKS

Phone 475-8661

1185 Manchester Rd., Chelsea

Hours: 8 a.m. to 5:30 p.m.

Tues. thru Fri. Until 9 Monday.

9 a.m. to 1 p.m. Saturday

YARD SALE—Friday and Satur-
day, July 15-16, 105 W. Summit.
Three-fold plant table, oriental
rug and lots of many other nice
items. 5

RUMMAGE SALE - North Lake
United Methodist church, 14111
North Territorial Rd., Friday, July
15 and Saturday, July 16, 9 a.m.
to 4 p.m. Lunch available. x5

STEP UP TO KOZMA CONSTRUCTION

And Step Down In Price

LICENSED BUILDER

FREE ESTIMATES

COMPLETE CONSTRUCTION SERVICES

CALL LEN KOZMA

475-7452 20tf

Jim Fahey Associates Property

IN CHELSEA:

OVER 1 ACRE of woods and se-
clusion with access to West Lake.
\$12,500.

10 ACRES with 200-ft. frontage
on West Lake. \$18,000.

65 ACRES with 2,000-ft. frontage
on West Lake. \$50,000.

10 ACRES on Fletcher Rd. \$16,000.

OTHER LAKE PROPERTY avail-
able.

IN ANN ARBOR:

2 ACRES on Riverbend Dr., ad-
jacent to Barton Hills, \$17,500.

30 ACRES adjacent to Barton Hills,
\$120,000.

Perk Test Guaranteed.
Terms Available.

HOMES

UNIQUE contemporary home with
266 ft. of frontage on North
Lake in Stonehedge on the Lake—
Chelsea's most beautiful subdivi-
sion. Immediate occupancy. Mort-
gage approved. \$69,900. x5

475-9569

Fresh Frozen Fruit

NOW TAKING ORDERS. Direct
from western Michigan. Cleaned
and ready to eat. Sour cherries,
dark sweet cherries, raspberries,
blueberries, boysenberries, black-
berries, peaches, apricots, apples,
plum, currants, melon balls,
fruit cocktail and mixed fruit.
Orders must be in by July 22.

MAUSOLEUMS • MONUMENTS
BRONZE TABLETS • MARKERS

BECKER MEMORIALS

4033 Jackson Road
ANN ARBOR, MICHIGAN

Manchester Locker Plant
Ph. Manchester 428-7600 x5

WANT ADS

Custom Built Homes

O-hl We Remodel too

U-can count on us

N-o Job Too Small

T-rim Inside & Out

R-ough-In Only If

Y-ou Want to Finish

S-iding Aluminum, 5" Gutters

I-mmediate Attention

D-ALCOCK & CO.

E-estimates, Free

BUILDERS

Please Call

475-9153

DALE COOK

17tf

KETO USED CARS

8020 GRAND, DEXTER

426-4535

CARS BOUGHT AND SOLD x38tf

Headquarters for RED WING WORK SHOES

Faster's Men's Wear 40tf

FOR SALE - '72 Allouette 295
Eliminator; '73 Allouette Snow-
brute 440; dog sled, \$1,200 or best
offer; Malibu Magneto set, \$75;
Gallery Daule paint, \$15. Phone
475-8755 after 4:30 p.m., ask for
Mark. x5

Special of the Week

1977 BUICK RIVIERA

2-dr. hardtop, air cond.

7,800 miles

\$7495

USED CARS

1974 BUICK Skyhawk, air cond.,
4-speed \$3495

1976 OLDS Delta 88 Royale 4-dr.
hardtop, air cond. \$3995

1976 PONTIAC LeMans Sport
Coupe, air cond. \$3895

1975 OLDS Cutlass Supreme 2-dr.
hardtop, air cond., 25,000
miles \$3795

1975 OLDS Cutlass Supreme 2-dr.
hardtop, air cond. \$3595

1974 BUICK Regal 2-dr. hardtop,
air cond., 36,000 miles. \$3195

1974 BUICK Regal 2-dr. hardtop,
air cond., 41,000 miles. \$2995

1973 BUICK Century 2-dr. hardtop,
air cond. \$2195

1973 FORD Grand Torino 2-dr.
hardtop, air cond., 41,000
miles \$2195

1973 BUICK Century 4-dr. sedan,
air cond. \$2095

1973 OLDS Toronado 2-dr. hard-
top, air cond. \$1895

1973 OLDS Delta 88 4-dr. hardtop,
air cond. \$1495

1972 OLDS Toronado 2-dr. hard-
top, air cond. \$1495

1972 CHEVROLET Impala 4-dr. se-
dan, 43,000 miles \$1495

1972 BUICK Electra 225 2-dr. hard-
top, air cond. \$1495

1972 FORD LTD 2-dr. hardtop \$1195

1971 BUICK Electra 225 2-dr. hard-
top, air cond., 54,000 miles
..... \$1595

NEW HOURS
Mon., Tues., Wed., Fri., 8:00-5:30
Thurs., 8:00-9:00
Sat., 9:00-1:00

SPRAGUE Buick-Olds-Opel, Inc.

1500 S. Main St., Chelsea
Ph. 475-8864 5tf

TWO TEENAGERS' GARAGE
SALE—Saturday, July 16, 1023
Frear Rd., to I. Mini-bike, toys,
games, sporting goods, 8-track
tapes and 45's, books, hot wheel
set, household items, misc. x5

WEBER HOMES has pre-selected
several building sites for our cus-
tomers. Call our office for a map.
Ph. 475-2828. x5tf

FOR RENT - 2-bedroom home in
the country, \$175 per mo. Ph.
(517) 878-9495. x5

CASH FOR LAND CONTRACTS

Any type of real estate
First National Accep.,
241 Bldg. East Lansing, MI
No commissions or costs
Call Free 1-800-292-1550

WANT ADS

ROOMS by day, week or month.
Excellent for the single man or
retiree. Sylvan Hotel, Chelsea. Ph.
475-2911. x31tf

Automotive Rust Proofing Cars and Trucks

Village Motor Sales, Inc.

LITTLE WANT ADS! BIG PLUSES FOR BIG RESULTS!

JUST PHONE
475-1371

WANT ADS

- YOUNG -

We list and sell lake, country and town properties. Eugene Young, Real Estate & Builder, 878-3792, 1598 Dexter-Pinckney Rd., Pinckney 48169. x341f

R. L. BAUER Builders

LICENSED and INSURED
Custom Building
Houses - Garages
Pole Barns
Roofing - Siding
Concrete Work
FREE ESTIMATES
Call 475-1218

A fine selection of
New and Used Cars
for immediate delivery

Harper Pontiac
Sales & Service
475-1306
Evenings, 475-1608

CUSTOM BUILDING

LICENSED & INSURED
FREE ESTIMATES
TOTAL
CONSTRUCTION
SERVICES

Homes, factories, warehouses
Pole buildings
Garages
Remodeling - Additions
Aluminum Siding
Roofing
Masonry Work, fireplaces, block
work, patios, etc.

SLOCUM CONTRACTORS & BUILDERS

Serving Washtenaw County
For Over 20 years
20700 OLD US-12
CHELSEA
Phone 475-8321 or 475-7611

WE US for transit mixed
concrete. Klump Bros. Gravel Co.
Chase Chelsea 475-2530, 4920 Love-
land Rd., Grass Lake, Mich. x401f

Manchester Area

BEDROOM RANCH, family
room, with fireplace, 2 1/2 baths,
basement and garage, pole barn
with elec. and water. 5 acres, beau-
tiful hilltop view. \$68,900.

Kliemann Real Estate
Ph. Ypsilanti 482-3126 x5

PAINTING

INTERIOR - EXTERIOR
WALL PAPERING
COMMERCIAL
RESIDENTIAL

MIKE NAGEL
Call evenings 475-1170

SEAMLESS ALUMINUM GUT-
TERS - High quality work at
small town prices. Walkover's Home
Improvement Co. Ph. 428-8468.
Contractors welcome. x8

GARAGE SALE - All kinds of
antiques, commode, frames, min-
atures, glass, so forth. Also CB
base aerial, tires, and numerous
misc. items. 2180 Saline Rd., Ann
Arbor, at Briarwood traffic light.
Friday through Sunday. x5

CALL OR STOP IN

CHELSEA GLASS, INC.

WORKMANSHIP AND MATERIALS FULLY GUARANTEED

Open Daily 8 a.m. to 5 p.m.; Sat., 8 a.m. to 1 p.m.

140 W. Middle, Chelsea

Phone (313) 475-8667

WE REPAIR AND REPLACE:

★ STORE FRONTS
★ FURNITURE TOPS
★ SHOWER DOORS
★ THERMOPANES
★ AUTO GLASS - Including Windshields
Free Pick-up and delivery on auto work.

★ MIRRORS
★ PATIO DOORS
★ TUB ENCLOSURES

Storm Door & Window Reglazing & Screens

COMMERCIAL BUILDINGS OR RESIDENTIAL

PROMPT SERVICE REASONABLE PRICES

WANT ADS

WEDDING STATIONERY - Pros-
pective brides are invited to see
our complete line of invitations and
wedding accessories. The Chelsea
Standard, 300 N. Main. Ph. 475-1371.
x341f

McCulloch

Portable Generators
Chain Saws

WE SELL, SERVICE,
SHARPEN AND TRADE.

Chelsea Hardware

SEAMLESS ALUMINUM eaves-
troughs, roofing, siding, and
carpentry work of all kinds. Ex-
perienced installers. All work
guaranteed. For free estimate,
call R. D. Kleinschmidt Co., 428-
8836. x311f

TRAVEL TRAILERS - 13-ft. and
up; 10x55 ft. trailers. John R.
Jones Trailer Sales, Gregory, Mich.
Phone 498-2755. x31f

LOST CAT - Reward. Long haired,
silver gray tiger, 12-year family
member. Want him back very
much. Needs medication. Call any-
time, day or night, 428-7293. x31f

GAR - NETT'S GREENHOUSE, Flower & Gift Shop

Your Friendly Florist
112 E. Middle St., Chelsea

PHONE 475-1400

Funeral Flowers
Wedding Flowers
Cut Flowers (arranged or boxed)
Potted Flowering Plants
Green Plants - Corsages
WE DELIVER x31f

WANTED - Catholic catechisms,
missals, prayer books, Bibles,
statues, crucifixes, rosaries, med-
als, etc. in any condition. Ph. 475-
7161. x5

FOR SALE by owner, year 'round
home on Harrison between 2
lakes. Fireplace, 2 bedrooms, car-
peting, natural gas, patio, all mod-
ern facilities. Ph. 429-4311. x41f

VACANT LAND - Two 10-acre
parcels on Clear Lake Rd. across
the street from Clear Lake. Bar-
n, rolling and overgrown. Ex-
cellent building location. Terms avail-
able. Ph. (1) 676-1481. x461f

Phinney Excavating

BUILDING, back hoe, drain
fields and ponds.
Ph. 475-1963 x521f

SPINNER ASPHALT PAVING

Parking Lots and Driveways
Free Estimates. Ph. 429-7132
Saline, Michigan x521f

MOVING SALE

COLOR TV - 25" rectangular. Dig-
ital tuning. Remote control. Ear-
ly American 48" cabinet.

BOAT - 32" model boat with 5
channel digital remote control.
Control can be used for model
planes.

ELECTRIC HAMMER - 3/4"
Black & Decker.

HEATER-COOLER - Fan can be
used with or without 750-1500
watt heater. Nice for campers.

FOR ROCK HOUNDS - 240 watt
black light.

GUN - Remington. Model 1100.
20 gauge automatic shotgun.

GUN - Stevens 22 bolt action re-
peater target rifle.

Call 475-8467

1975 HONDA - 125 Elsinore. Like
new, less than 300 miles. Dirt and
road bike. \$400. Ph. 475-9506. x6

WANTED TO RENT - Need house
in country, can do repairs. Call
Bob at work, 994-7153 before 4:30
p.m. x7

FOR SALE - Snowmobile heavy
duty trailer. Balloon tires. 1977
model, \$200. 16-ft. fiberglass boat,
50 h.p. Evinrude outboard, \$700.
Ph. 475-7550. x5

GARAGE SALE - Friday and Sat-
urday, July 15-16. Teen girls
clothing, jeans, books, plants. Some
collectibles and miscellaneous. 402
W. Middle, Chelsea. x5

WANT ADS

CUSTOM SEWING and alterations.
Ph. 475-2248. x381f

70 CHEVELLE Malibu 2-dr. 307
V-8, auto., transmission. Mechan-
ically sound, body in excellent con-
dition. Ph. 663-8192. x431f

CARPENTER WORK - Inside or
out. Mr. Coburn, 475-2893. 121f

CAR & TRUCK LEASING - For
details see Lyle Christwell at
Palmer Motor Sales, 475-1301. 491f

EDWARDS CONSTRUCTION

INSULATION, siding, roofing,
storm windows and doors. Re-
modeling. Residential builder.
Licensed. Certified. Insured.
FREE ESTIMATES
Call JOE EDWARDS
428-4057, Dexter x471f

WATERLOO REALTY

OPEN HOUSE
Sunday, July 17
1 to 5 p.m.

9000 Gross Road, Dexter, Mi.
10.9 ACRE HORSE FARM, com-
pletely fenced, luxurious 5-bed-
room ranch, 3 fireplaces, large
family room, 2 1/2 baths, central air,
plus air purification system, inter-
com, finished 2 1/2-car garage. First
floor laundry. Sited on scenic pic-
nic area. Outdoor barbecue. Stable
with corral and exercise area. Feed
barn. Select neighborhood. Dexter
schools. \$106,000.

GOOD STARTER HOME on 9.8
acres. 2-bedroom home, knotty
pine paneled living room has hard-
wood floors, large kitchen with din-
ing space. Oil forced-air heat. East
Jackson schools. \$25,000.

3-BEDROOM, aluminum sided
ranch home, paneled living room,
large kitchen with dining space,
large utility room, plenty of stor-
age. One acre. Fifteen minutes
from Chelsea. Gregory schools.
\$34,500.

VERY WELL BUILT, spacious
ranch home. 4 bedrooms, study or
5th bedroom, 2 full baths, hard-
wood floors, plaster walls, family
room, finished basement with rec.
room, space. Corner lot in
Village of Chelsea. \$38,000.

2.3 ACRES - Beautiful, heavily
wooded land, surveyed. Waterloo
Rec. Area. \$7,300. Land contract
possible.

3 ACRES - Level, sunny land, on
country road. Chelsea schools.
\$8,000.

4.7 ACRES - Open sunny land,
nice slope. Scenic country road.
Chelsea schools. \$11,750. Land con-
tract possible.

5 ACRES - Tillable land and good
barn. Waterloo-Munith area.
\$12,000.

6 ACRES - High, rolling land, 1/2
mile off M-52. Chelsea schools.
\$13,900.

10 ACRES - Tillable land, sur-
veyed, per se no problem, black-
top road. Waterloo Rec. Area.
\$15,000.

COMMERCIAL PROPERTY
Leased service station garage
with two bays, plus 30'x60' build-
ing with walk-in cooler and kitchen
area, (would be great for party
store, sporting goods, bait shop,
etc.); and 3-bedroom brick home.
At gateway to Waterloo Rec. Area.
\$150,000. Good land contract terms.

151-ACRE FARM - Dexter-Chel-
sea area. Farm or develop. Older
5-bedroom home. Very large
pole barn. Approximately 75 acres
tillable, plenty of woods. Two
streams. 1/2 mile road frontage.
\$900 per acre. Dexter schools.

WATERLOO REALTY

355 Clear Lake
JOANN WARYWODA, BROKER
Phone 475-8674

Evenings and Sundays:
Jerry Gondek 475-8265
Paul Erickson 475-1748
Sue Lewie 1-517-522-5525
Carol Lakatos 475-1729
Evelyn White 475-7551

FOR SALE BY OWNER - His-
toric 3- to 4-bedroom 2 1/2-bath
farmhouse in Ann Arbor School
District. New wiring, plumbing,
kitchen and utility room. 10 acres
with barn, outbuildings with pond.
\$104,000. Ph. 663-0219 for appoint-
ment. x8

1973 BUICK CENTURY 2-door.
Stereo, air, power brakes, steel-
beated tires. Gold and white with
white vinyl interior. Excellent con-
dition. Ph. 663-0818. x8

FOR SALE - 1973 LeMans, V-8,
automatic, p.s., p.b., low mil-
age, one owner. Like new. Ph. 878-
3734. x8

FOR SALE - 1973 Pinto, automa-
tic, runs good. \$450. Ph. 878-3734. x8

GARAGE SALE - Excellent cond.
Infant car seats, GM and Bobby
Mac. Misc. infants' items, toys,
snowmobile suits, size 4 and 6.
Brand new king-size bedspreads,
brand new permanent press boys'
slacks, size 14, 16, 18, 20. Lots of
misc. 7380 Chemberlin Rd., Dexter.
x5

FOR SALE - Boy's 10-speed bike,
\$40. Ph. 475-1647. x5

LOST - Four kids are without
their dog, a collie lost at Sugar
Loaf Lake on July 4. Call collect,
(313) 770-4170. Reward. x5

FOLK GUITAR - Epiphone 6-string,
never used, has case, beautiful
guitar. \$150. Ph. 475-1663 after 5
on week days, week-ends persis-
ently. x5

WANT ADS

BURT LAKE - 2-bedroom furnis-
hed cottage for rent. Lake access,
boat, \$150 per week. 665-4641 or
663-7804. x5

HELP WANTED - Live in house-
keeper for elderly couple. No
heavy housework. Attractive home
overlooking lake in Chelsea area.
\$325 a month. Negotiable. Free
time to be arranged. Possible use
of a car. Send reply and reference
to Box JU-30, care of Chelsea
Standard.

WANTED - Plow ground and stand-
ing hay. Ph. 475-2771. x371f

MARSHALL REALTY

(313) 878-3182
400 Dexter Rd.
Pinckney, Mich. 48169

ON 11 ACRES - Nice 2-story farm
house, alum. sided large barn
with six stalls. Anxious to sell.

OLDER 2-STORY HOME on 3/4
acre, fireplace. Could be made
into a two-family. \$34,000.

2 1/2 ACRES - Easy access to state
land. Low down L. C.

5 ACRES close to state land. Nice
for walk-out. L. C.

2-BEDROOM on 1/4 acre. Priced
right. \$19,500.

10 ACRES with barn-house comb.
Some fencing. \$30,000. L. C.
available.

18 ACRES - 3-bedroom, 7-stall
barn, tack room, nice training
track. \$69,000. L. C. available.

Marshall Realty

Evelyn 475-8583
Elmer 878-3182 x5

Designer - Draftsman

Experienced with electro-mechani-
cal layout. Stimulating work for
growing medical equipment com-
pany. Good benefits, excellent
working conditions. Wage negotia-
ble. Ann Arbor area. Send resume
to Box JU-14, care of Chelsea
Standard. x5

FOR RENT - Industrial manufac-
turing building. Cement block,
gas heat, 3-phase electric, Class A
road, 3,000 sq. ft., low rent. Can
also be rented with 1,800 sq. ft.
steel storage building. Dexter, 428-
8826. x431f

MAKE BEATEN DOWN CARPET NAP at
doorway bright and fluffy again
with Blue Lustre. Chelsea 475-
5000. x5

WOMAN CASHIER WANTED -
Rick's Market. Call 475-2898. x5

WANTED TO RENT - 3-bedroom
home in the Chelsea School Dis-
trict by Aug. 1. Call Mark McKern-
an, Realtor, 475-8628 or 475-8424. x5

LAKE-FRONT HOME for sale -
2 lots, Cavanaugh Lake, com-
pletely redecorated, \$30,000. 835
Lowry. Ph. 475-9233. x501f

Real Estate

NICELY REMODELED FARM-
HOUSE and just over 23 acres
in Manchester. 5 bedrooms, 2
baths, dining area, full basement
and a double split stone fireplace,
24'x48' barn and 4 outbuildings.
\$89,500.

50-ACRE FARM with 48 tillable.
3-bedroom aluminum sided
ranch home with bath, dining room,
full basement and a 2-car garage.
32'x50' barn and a 40'x100' multi-
purpose outbuilding. 2 miles north-
west of Manchester. \$99,000.

FOUR BEAUTIFUL 10-acre build-
ing sites with plenty of room for
fun! \$15,900 each or can be bought
as 20, 30, or 40 acre parcel.

Spear & Assoc., Inc.

MANN REALTORS
122 W. Main St., Manchester
Office Phone 428-8388
Eves and week-ends:

James Mann 428-8074
Ellis Pratt 428-8562
Joan Beal 428-7082 x5

JOIN A SLIMMING CLUB - Lose
weight, feel great. Safe and sure.
We meet once a week. Call 475-
2638. x7

YARD SALE - Play pen, girls 20"
bike, training wheels, clothes,
toys, misc. items. Saturday, July 15,
4 to 6 p.m., Saturday, July 16,
10 to 6 p.m. 146 Park St. x5

GARAGE SALE - Friday and Sat-
urday, July 15-16. 615 N. Main,
9 to 4. Baby furniture, auto parts,
clothing, dishwasher and misc. x5

FOUND - Small, male, orange
and white kitten. Ph. 475-8014. x5

FURNITURE GLASSWARE PRIMITIVES GENERAL LINE

SCHAULES ANTIQUES

Dick & Bertie Schaules

We Buy and Sell
Appraising

14450 Island Lake Rd., Chelsea
Phone 475-7362

WANT ADS

MOBILE HOME for sale - 12'x50',
1971 Rembrandt, Chelsea Trailer
Park. Ph. 475-2632, after 4. x434f

CORRECTIVE HORSESHOEING
and trimming. Mike Brisbois.
Ph. 585-3036. x451f

DESK - Solid walnut, 32 1/2"x62",
5 drawers, 1 file drawer, Mfg. by
Stow Davis. Also leather covered
swivel chair. Sold together or sepa-
rately. Ph. 663-8228. x501f

FOR SALE - Octagon dining table
with 4 ladderback chairs, like
new. 475-7389 after 3 p.m. 491f

FOR SALE - 14 1/2-foot ski boat
with Evinrude 40 h.p. motor and
trailer. Mooring cover included.
Excellent condition. Ph. 475-8087.
x5

HELP WANTED - Experienced
roofing and siding applicators.
Apply at R. D. Kleinschmidt Co.,
200 Riverside Dr., Manchester. Ph.
428-8836. x31f

ARE YOU BUILDING YOUR OWN
HOME? Construction money
available for residential homes.
Marlax Corp., Ann Arbor. 665-
8000. x13

HORSES BOARDED - Box stall
and pasture. Reserve a stall
now, and ride your horse on the
miles of trails available in Water-
loo Recreation Area. Excellent
care, reasonable rates! Call: Lone
Oak Stables, 475-7449. x6

PIANO & ORGAN LESSONS for
adult or student, either popular
or classical available now. Call
LaVonne Harris, certified teacher
by Michigan Music Teachers As-
sociation. x5

PIANO TUNING and repair. Qual-
ified technician. Call Ron Har-
ris, 475-7134. x5

HAROLD'S UPHOLSTERING AND
REPAIR. Free estimates and
pick-up. Ph. 475-9241. x8

WANTED TO RENT - 2-bedroom
house or apt. First floor. Ph.
887-8025. x5

FOR SALE - Chickering console
piano. Excellent condition. \$1,500.
Ph. 475-2092. x5

MATURE COUPLE with infant
need to rent 2- to 3-bedroom
house or apartment beginning
Sept. 1. Prefer rural access to Ann
Arbor. References. Call collect,
(616) 877-4884. x6

GARAGE SALE - Sat. 16 and Sun.,
17, 5520 N. Territorial Rd., Dex-
ter, corner of Zeeb and N. Terri-
torial. Hours 10 to 6. x5

FOR SALE - 2 wooden dining
room chairs. \$8. Ph. 428-3792. x5

WANTED - Mother and 4-year-
old daughter in desperate need
of apt. or house in Dexter. Help!
426-2376. x5

4-FAMILY YARD SALE - Friday
and Saturday, 10-7, 8330 W. Hur-
on River Dr., Dexter. x5

FOR SALE - Steel pontoon boat,
21-ft. 20 h.p. electric motor,
vinyl awning, very good condition,
783 Glazier Rd., Cavanaugh Lake.
\$750 or best offer. Ph. 1-274-5205.
x7

GOLDEN SWEET CORN now
ready. Other vegetables in sea-
son. Sugar Loaf Lake Farm, 475-
7295. x5

YARD SALE - Thursday and Fri-
day, July 21-22, 518 Howard Rd.
x6

MOVING SALE - Saturday and
Sunday, 6 miles north of Chelsea,
just off M-52. Furniture, clothes,
many household items, van, motor-
cycle, garage stuff. x5

GARAGE SALE - 522 Arthur, Chel-
sea. A lot of antiques, furniture,
dishes and many miscellaneous
items. Saturday and Sunday, July
16-17, 9-? x5

Dial-A-Garden Topics Listed

Dial-A-Garden, the system of pre-
recorded, daily gardening tips is
sponsored by the Washtenaw Coun-
ty Co-operative Extension Service.
The system is in operation 24
hours per day, 7 days per week.
Interested persons are invited to
call 971-1122 at their convenience
and receive timely, up to date
gardening information.

Next week's Dial-A-Garden top-
ics are:

Letters to the Editor

Dear Editor:

In considering all the letters concerning the school millage, most seem to take one side or the other, would like to put in my 4c worth (inflation you know) on the subject.

To make our schools successful, I see it, all three parties involved must convince the public that they are making sincere efforts in their area of the partnership in the school system.

I would suggest that each group meet very soon, and let the public know exactly what they sincerely want to do for the community's schools. The following are a few of the subjects that the voting public is discussing:

School Board:

1—No more threats! Stop sending propaganda home with young children! Stop feeding them information, some slightly distorted, that almost make them despise their parents if they do not agree to vote for the millage!

2—Let parents buy musical instruments locally or at the place of their choice.

3—Contract for year book photos by one of our three local photographers. At least give them a chance to bid on the contract. Secondly, issue a less elaborate book, with a soft cover. The same income would be realized from the advertising, which is actually a donation by the business community.

4—Teachers are paid for 12 months. They should work 12 months per year to justify their salaries. Perhaps they could tutor slow learners during the summer, paint school buildings, clean grounds, do general repairs, etc. A teacher should not be "above" doing a little extra. They would gain more respect in the community.

5—Investigate seriously the system that some Detroit Metro schools are using to cut vandalism of the buildings—i.e. set up a fund similar to the cost of vandalism in the past and paying a percentage of the excess over actual future costs to the classes that are helping to reduce it.

Students:

1—Monitor rowdiness and vandalism on and off the school property.

2—Be more helpful and responsive to the school personnel. A little discipline won't hurt you. It will undoubtedly help you.

3—Be proud of the Chelsea school system, not just at sports, but in its entirety.

4—Turn your thinking around. Think constructively, not destructively. It is easier. Lead or follow in the group that is thoughtfully trying to improve not only themselves but the school and the community.

5—Whether you realize it or not, education is a privilege, and you should do your best. Become curious about your subjects. Try to learn more than just what is required. This is a challenge that will make your teachers work harder and more efficiently.

Teachers:

1—Stronger student supervision.

2—Show better example to students. I have had the opportunity to visit the teachers' lounge at the high school on several occasions. To put it bluntly, it was a mess—dirty, bottles and containers on the floor.

3—Get involved in the community.

4—No more strikes in defiance of the state law. How can you possibly direct the character of your students in the right direction when you feel you do not have to obey the law. Work through the proper channels to make changes. If needed.

5—Put pressure on your State Association to lobby for a change in the allotment of state income for the schools. I voted for the Michigan Lottery because it was stated that a large portion of the income was to be given to the schools.

Unless the current attitudes of all the parties are changed, I feel that the millage will not pass.

I think that most of the troubles of our still great country, in the political, governmental, personal and moral areas, started with the man that invented the safety razor—thus getting rid of the razor strap in every home!

A concerned taxpayer and student at age 20.

To the Editor:

I believe the people of Lima Township should have a response to Mr. Fusilier's letter of July 7. Mr. Fusilier served up his usual sugar-coated distortions which, if they have not attended the board meetings, they might tend to believe. First of all, his signature as "former Supervisor for the people of Lima Township" implies other than the fact he was an appointee who was not returned to that office by the people when they had a choice at election time.

Second, he modestly attempts to give the impression he does not have influence on the board members, but if you read it closely, he does not deny it, and by not denying it his statement does cast aspersions on the intelligence of the board members.

Next, his statements relative to the appointments are rather clever. He interweaves his "opinion" into the context which makes it read as if his opinion and the board's were one and the same. I find it difficult to believe that all members of the board would publicly challenge Paul Frisinger's integrity unless they were under the influence of Fusilier. Fusilier's rationale about Mr. Schwarze, an attorney, is most far-fetched. As he knows, but all people do not know, attorneys specialize, like doctors. Our township attorneys are one of three offices in Washtenaw County who are recognized as specialists in township law. I would hope this far-fetched "conflict" was not the reason he was turned down. But whatever the reason, the township is the loser because his capable services were not accepted.

Finally, regarding the issue of Mr. Gross, non-property owner. Mr. Fusilier should go back and read Mrs. Klemmer's letter again and closely. It says that she had come to the conclusion that the board members, one of whom is not a property owner, whose salaries are paid, in part, by my tax dollars, are not interested in having well qualified respected citizens on the Planning Commission chosen by the Supervisor.

She did not say it was illegal as Fusilier implies. She did not

Library Offers New Books for Summer

Exploring a new book while cultivating a tan is a standard way to spend a summer day for many Chelsea folks. For those who desire to expand their reading horizons, McKune Memorial Library has a ready answer with several newly-arrived biographies of women that read like novels.

Among these is "Tisha," an exciting book about a young woman's experience as a novice teacher in a small Alaskan village. Although the book may sound like just another story about a pioneer spirit, in reality it is a fast-paced, adventure-packed selection, guaranteed to be a book that can't be put down.

With qualities such as these, it comes as no surprise that "Tisha" is a popular work, so anyone interested in reading the book should put their name on McKune's reserve list immediately.

"Full Moon in France," another recent library acquisition, is the autobiographical account of a young, wealthy, rather spoiled American woman who is drifting around Europe at the start of World War II. She finds herself becoming entangled in underground activities as the war progresses, until she finally emerges as a full-fledged spy.

"Another Winter, Another Spring"

is a woman's heartbreaking memoir of her years with a Russian husband who was dedicated to stopping the Russian revolution of 1917 and to restoring the Motherland to its former grace. The strong character of this counter-revolutionary pervades the pages of this book.

Another true account of a strong character is "Woodswoman," the story of a contemporary female ecologist who lives alone in New York's Adirondack wilderness in a log cabin she built herself.

In addition to these biographies, McKune continues to offer many new arrivals in various areas of interest. According to Debby A. Leabu, head librarian at McKune, the library prides itself on having something for everyone. "If you don't see something on the shelf, always ask so we can serve your needs better," she adds.

Attempts to better serve the needs of the community have resulted in several new or revitalized programs at the library this summer including the Children's Summer Reading Program, "Putt-It-Together With Books," which will continue through August. Parents are urged to register their children, who will have time to read 10 books and get their flags up on the library wall.

Federal Funds Requested For New County Park

The Michigan Department of Natural Resources has just informed the Washtenaw County Parks (WCPARC) of its approval of a \$260,000 federal grant pre-application for the acquisition of a new County Park in Ypsilanti township.

If successful in the final application stage, the WCPARC will match these federal funds and begin negotiations to acquire the 167-acre park site.

The new park, located near Bemis and Stony Creek Rds., will offer a variety of recreational facilities desired by county residents as indicated in a 1974 Survey of Recreational Behaviors and Attitudes. Four or five baseball diamonds, some of which will be lighted, picnic areas, winter sports facilities and an interpretive center for day camping are tentatively planned for the site.

This Ypsilanti Township Park will be the second county site acquired with federal funds. Independence Lake, a beach-swimming park, was approved for Federal Land and Water Conservation Fund monies last November. The 50 percent matching funds which the Parks Commission must provide for both sites will be obtained from the recently approved mill parks and recreation levy.

state it was Gross. Fusilier has. All the people of Lima township now know (and that may cost him the next election) thanks to Fusilier.

Although it is legal, I feel that of all the people cited by Fusilier of having a conflict, this situation of Gross is the only real conflict. He, a non-property owner, is serving as board member involved in decisions of all matters relating to land use, expenditures of tax monies, etc. Further, he by appointment of the board serves as a member of the Board of Appeals. The Board of Appeals makes all FINAL decisions for land use deviations from the Zoning Ordinance. This is a powerful position for a non-property owner. It may be legal, but I consider it to be in conflict with the best interests of the property taxpayer. For my statement or Mrs. Klemmer's statement quoted above, no apology is required.

I do believe that if any apology is in order, that Fusilier owes an apology to Frisinger for challenging his integrity; to Gross for unnecessary personal public exposure; to Mrs. Klemmer for deliberate distortion of her statement; and to the members of the board for assuming their views to be as distorted as his.

Ray Nusca,
Lima Township Resident
Property Owner.

KEN OSBORNE INSULATION CONTRACTOR

- ★ Blown in side walls and attic.
- ★ R = 4.17 per inch.
- ★ Resists fire and moisture.
- ★ Lightweight.
- ★ Meets Federal Specification HM-1-B12.
- ★ This insulation made from 100% wood fibres.

KEEP COOL & SAVE FUEL.
DON'T WAIT TOO LONG,
IT'LL COST MORE LATER.

35 years in the building and insulation business in this area.
FREE ESTIMATES

KEN OSBORNE
Ph. (517) 851-7497
ALUMINUM STORM WINDOWS
AND DOORS

School Board Briefs

At a regular Board of Education meeting Monday, July 11, present were Daniels, Stirling, Tobin, Heller, Feeney, Hodgson, Schaffer, Superintendent Cameron, Business Manager Mills and Principal Wojcicki. Several guests also attended.

Meeting called to order at 8 p.m.
The minutes of June 20, 27, 28 and 30 were approved as read.

Robert Daniels was elected president; Martin Tobin was elected vice-president; Robert Schaffer was elected secretary; Thomas Hodgson was elected treasurer.

President Daniels expressed the thanks of the board to Howard Haselchardt for eight years of service to the district as a board member.

Discussion of the August 15 millage was held.

The board unanimously approved a motion by Trustee Heller, supported by Trustee Feeney to set the millage for the Aug. 15 election at 3.8 mills for one year and to appoint Frances Manzel, Virginia Visel, Lorena Wenk, Ethel Haist, Irene Claire, Dorothy Koeniger, Mary Ann Coltre, Marjorie Plumb, Antoinette Hawker, Kathleen Arnett and Evelyn Haab as election inspectors.

Regular meetings of the Board will be held on the first and third Mondays of each month at 8 p.m. in the Board Room in the high school administration building.

The board authorized the superintendent to sign payroll checks and the officers of the board to sign all other checks.

The board authorized the treasurer, superintendent, business manager and Mrs. Manzel to endorse all checks "For Deposit Only." Chelsea State Bank was designated as the depository for school funds.

The firm of Kusch and Flinck was retained as legal counsel.

The business manager was authorized to invest school funds to the best interest of the district and was also authorized to participate in co-operative purchasing.

The board authorized general fund expenditures at the 1976-77 level until the 1977-78 budget is adopted.

The board will hold an informal meeting on the fourth Monday of each month at 8 p.m. in the Board Room for the purpose of listening to the public regarding concerns about the school system. The first meeting will be held on July 25.

The Board approved the filing of an application to the Municipal Finance Commission to borrow \$900,000 against anticipated tax collections for operations until taxes are collected.

A leave of absence was granted to Mary P. Boher for 1977-78.

Resignations of Regina Fritzsche, Scott Foster and Pamela Seyfried were accepted.

Robert Schaffer was appointed as Michigan Association of School Boards liaison person.

President Daniels directed the administration and negotiators to develop the school calendar by the Aug. 1 meeting.

The board approved the filing of an application with the Michigan Department of Natural Resources for 100 percent funding for a work project on school and other public property along with the Village of Chelsea. This program was approved by the legislature on July 8, and would provide for labor to do work on public property.

Martin Tobin was appointed as board representative to the Recreation Council and Ann Feeney was appointed as representative to the Washtenaw School Officers Association.

The board will meet with the

High Point Needs

Volunteer Help in Swimming Pool Area

High Point, Washtenaw County's teaching center for severely and trainable mentally impaired children and young adults, is in need of volunteers to help in the swimming pool area this summer.

Volunteers must be at least 18 years of age. Certification in life-saving is not required, but they must know how to swim and be comfortable in the water. They must also be willing to help severely and trainable mentally impaired children and young adults. School is in session Monday through Friday from 9 a.m. to 2 p.m., and volunteers are asked to give a minimum of one hour during the school day.

For further information, call either 769-6322 or 761-2266.

The 1976-77 Detroit Pistons team shot better from the field, sank more field goals, stole more balls from opponents and blocked rival attempts more than any other Pistons team.

You've probably got two lamps that need new shades.

We've got the shades.

Top of the Lamp

217 North Main Tel. 769-7019

Across from a.p. old post office

NOW ON TUESDAY NIGHTS CHICKEN BUFFET

with our Famous Deep-Fried Chicken and SPECIAL BARBECUED CHICKEN also mashed potatoes and gravy, dressing, and salad bar.

Serving from 4:30-9:00

at the CAPTAINS TABLE

8093 MAIN ST., DEXTER PH. 426-3811

Thinking CARPET? Think SCHNEIDER'S

Visit the wonderful world of carpeting at Schneider's, one of the area's finest, full-service carpet stores, conveniently located in West Ann Arbor on Wagner Road between Jackson and Liberty.

Schneider's carries a broad selection of quality, name-brand carpets at prices consistently among the lowest in the entire area. Try us.

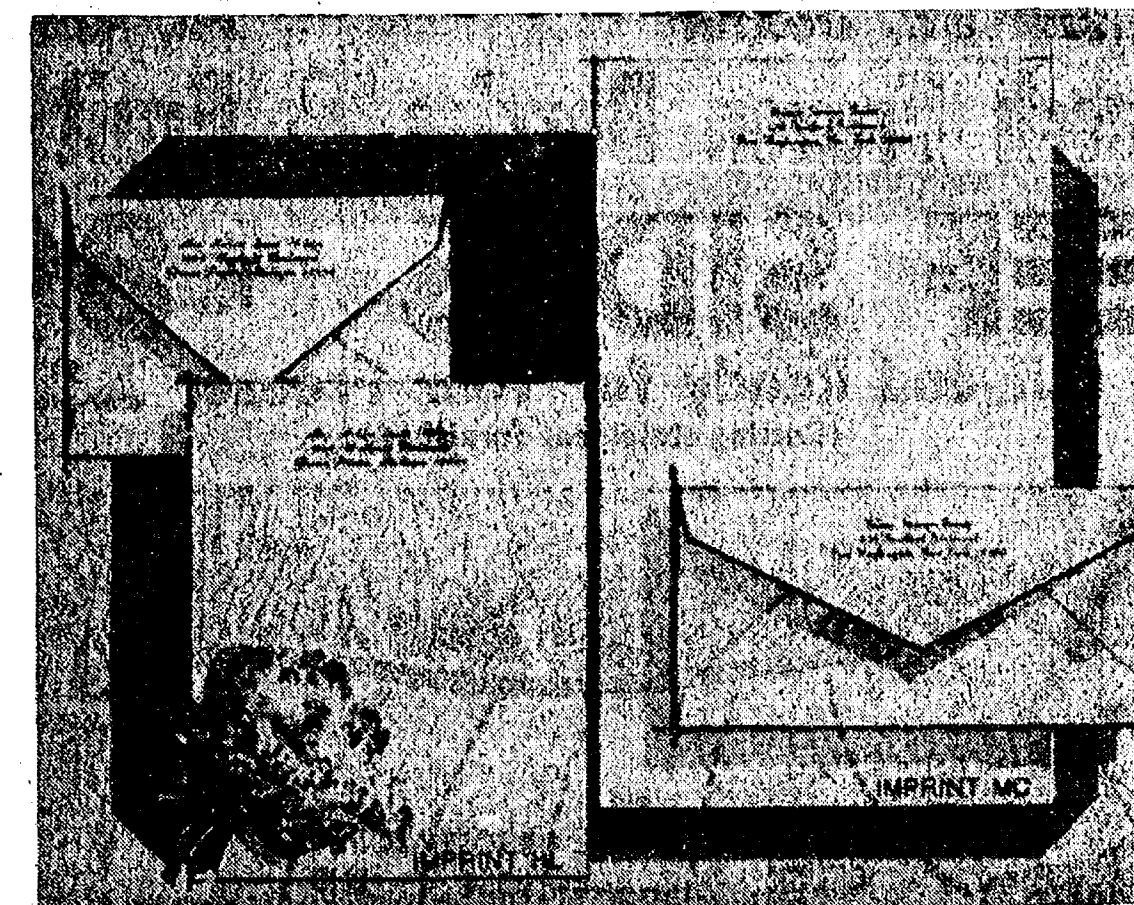
662-9332

OPEN MON & FRI NIGHTS TIL 8:00 PM

SCHNEIDER CARPET CO., INC.

745 S. WAGNER RD. ANN ARBOR

The Chelsea Standard



July Sale . . . Save 40% Rytex Hand Craft Vellum, Now \$6.95

Regularly \$12.00. The luxurious, damask-smooth personalized stationery you'll use with pride. Choose the paper size and color that suits your writing taste. Select Princess (5 3/4 x 7 3/4) or Monarch (7 1/4 x 10 7/8) size in white, pale blue or soft grey. Choice of imprint styles as shown (HL or MC) printed in deep blue, dark grey or raspberry red ink. Beautifully gift boxed: 100 printed sheets & 100 matching envelopes.

Bonus: 50 extra, unprinted sheets for second pages, \$2.00 with order.

THE CHELSEA STANDARD

CHELSEA, MICHIGAN 48118

Send _____ boxes HAND CRAFT VELLUM at \$6.95. Include ☐ 50 extra, plain sheets at \$2 each box.

Imprint Name _____

Address _____

City, State, Zip _____

Choice of Paper (for size and color)

Princess size in: ☐ White (1000) ☐ Blue (1050) ☐ Grey (1060)

Monarch size in: ☐ White (1200) ☐ Blue (1250) ☐ Grey (1260)

Imprint Style: ☐ HL ☐ MC Ink Color: ☐ Blue ☐ Deep Grey ☐ Raspberry Red

ORDERED BY _____

Address _____

Apt. _____

City, State, Zip _____

Account No. _____

Phone _____

☐ Charge ☐ Payment Enclosed Sorry no C.O.D. or phone orders.

Please include 4% Michigan State Sales Tax.

ENJOY AN EVENING IN MANCHESTER 24th Annual CHARCOAL CHICKEN BROIL THURSDAY, JULY 21

Serving from 4 p.m. to 8 p.m.

Prepared To Serve 10,000 at Manchester Athletic Field (Midway Between Jackson and Ann Arbor, 12 miles south of Chelsea) Butter broiled, slow broiled one-half chicken prepared on four 100-foot long pits. Over 550 men and boys work at the broil. Two girls softball games. Free shuttle bus service to dinner area. Shelter if it rains. Free parking. Quick service.

COMPLETE DINNER OR TAKE OUT
Pre-Sale Tickets, \$2.75 At the Gate, \$3.25

Tickets available in Chelsea at Ann Arbor Federal Savings, Chelsea State Bank, Schumm's Restaurant & Lounge; at Ann Arbor Trust Co. and Lodi Furniture. In Manchester tickets are available at Gambles, both banks, Feed Mill, Manchester Enterprise and from all workers.

Sponsored by Optimists and Jaycees. Profits for youth projects.

**BUSINESSMEN'S
LUNCHEON**
Served from 11:30 to 1 Daily
MARK IV LOUNGE
PHONE 475-1951
1180 M-52 CHELSEA

**OPEN
BOWLING
EVERY DAY**
(thru Aug. 15)
MONDAY thru FRIDAY
11 a.m. to 11 p.m.
SATURDAY
11 a.m. to 12 midnight
SUNDAY
2 p.m. to 10 p.m.
CHELSEA LANES, Inc.
1180 M-52 Ph. 475-8141

**KEN OSBORNE
INSULATION
CONTRACTOR**
★ Blown in side walls and attic.
★ R = 4.17 per inch.
★ Resists fire and moisture.
★ Lightweight.
★ Meets Federal Specification HM-1-B12.
★ This insulation made from 100% wood fibres.
KEEP COOL & SAVE FUEL.
DON'T WAIT TOO LONG,
IT'LL COST MORE LATER.
35 years in the building and insulation business in this area.
FREE ESTIMATES
KEN OSBORNE
Ph. (517) 851-7497
ALUMINUM STORM WINDOWS
AND DOORS

**ENJOY AN EVENING IN MANCHESTER
24th Annual CHARCOAL
CHICKEN BROIL
THURSDAY, JULY 21**
Serving from 4 p.m. to 8 p.m.
Prepared To Serve 10,000 at Manchester Athletic Field (Midway Between Jackson and Ann Arbor, 12 miles south of Chelsea) Butter broiled, slow broiled one-half chicken prepared on four 100-foot long pits. Over 550 men and boys work at the broil. Two girls softball games. Free shuttle bus service to dinner area. Shelter if it rains. Free parking. Quick service.
COMPLETE DINNER OR TAKE OUT
Pre-Sale Tickets, \$2.75 At the Gate, \$3.25
Tickets available in Chelsea at Ann Arbor Federal Savings, Chelsea State Bank, Schumm's Restaurant & Lounge; at Ann Arbor Trust Co. and Lodi Furniture. In Manchester tickets are available at Gambles, both banks, Feed Mill, Manchester Enterprise and from all workers.
Sponsored by Optimists and Jaycees. Profits for youth projects.

THE CHELSEA STANDARD
CHELSEA, MICHIGAN 48118
Send _____ boxes HAND CRAFT VELLUM at \$6.95. Include ☐ 50 extra, plain sheets at \$2 each box.
Imprint Name _____
Address _____
City, State, Zip _____
Choice of Paper (for size and color)
Princess size in: ☐ White (1000) ☐ Blue (1050) ☐ Grey (1060)
Monarch size in: ☐ White (1200) ☐ Blue (1250) ☐ Grey (1260)
Imprint Style: ☐ HL ☐ MC Ink Color: ☐ Blue ☐ Deep Grey ☐ Raspberry Red
ORDERED BY _____
Address _____ Apt. _____
City, State, Zip _____
Account No. _____ Phone _____
☐ Charge ☐ Payment Enclosed Sorry no C.O.D. or phone orders.
Please include 4% Michigan State Sales Tax.

Raycon Wins Local Slow Pitch Tourney

By winning three games and losing only one during the past week-end, Raycon was able to win Chelsea's double elimination softball tournament. Raycon's only loss was to runner-up Village Motors in one of the two final games.

On their way to the finals Raycon received a bye in the first round; then defeated McCalla Feeds, 13-11, in the second round after being behind 7-0.

In the semi-finals, Raycon defeated Village Motors, 5-3.

Raycon faced a rematch with Village Motors in the finals after Village Motors won in the consolation. In the first contest, Village Motors defeated Raycon, 14-4, in five innings. This forced a third game between the two which was won by Raycon, 12-5.

While earning runner-up honors, Village Motors defeated Federal Screw Works, 12-2, and later defeated them, 4-1, in the consolation bracket.

Village Motors manager Steve Iyerla stated that his team played well during the week-end. Raycon's manager Dave Lukasiak said the same about his team, and singled out Steve Flint as his outstanding player. Flint batted 9 for 12 over the week-end and won two games as pitcher.

This week-end, July 16 and 17,

Chelsea's fast-pitch teams will take part in a local tournament. Games begin at 10 a.m. Saturday, with finals scheduled to follow at 5 p.m. Sunday.

Men's Softball Leagues

SLOW PITCH

Standings as of July 11

NATIONAL DIVISION	
T & R Pallets	W 6
Raycon	L 1
Federal Screw Works	W 2
Chelsea Drug	L 4
Bohemians	W 5
	L 6

AMERICAN DIVISION

McCalla Feeds	W 8
Village Motors	L 1
Eagles	W 2
Gania Oil	L 3
Mark IV	W 4
	L 5

FAST PITCH

Standings as of July 12

W	
Chelsea Merchants	1
Ann Arbor Centerless	2
Hackney & Bennett	3
Jiffy Mix	4
Howell Town & Country	5
3-D Sales	6

Yankees Undefeated in Girls Fast-Pitch League

Chelsea's inner-village girls fast-pitch league closed out its third week of action last Thursday in a highly competitive fashion.

The Yankees remained undefeated by coming from behind in the last inning to defeat the much improved Reds, 5-4. Throughout the game, the fine pitching and fielding of the Reds offset the power hitting of the Yankees, who had averaged close to 20 runs a game until Thursday.

However, the game ended when the Yankees won their bid for the decision on a bases loaded single by Linda Wilson.

In other league action last week, the Giants continued close behind the Yankees by edging past the Dodgers, 18-6. According to league

director Bill Wescott, the talented Giants combined hitting and fielding to outlast the Dodgers for the victor's laurels.

The Giants have lost only to the Yankees, who they played without two of their best players. Consequently, an upcoming rematch should produce some fine action between the two teams.

Standings as of July 11

W	
Yankees	4
Giants	3
Dodgers	1

Please Notify Us of

Any Change in Address

Girls Softball Team Evens Season Record

Chelsea's girls high school fast-pitch team completed its third week of play in the Ann Arbor Girls Fast-Pitch League with an exciting win over second place Ann Arbor St. Thomas last Friday, July 8.

Chelsea defeated St. Thomas, 7-3, behind the excellent pitching of Nanette Push and the fine fielding of Mary Jo Elisele and Patty Hume. Leading the hitting attack were Jenny Clark, Sue Heydlauff, and Patty Hume.

Coached by Bill Wescott, CHS varsity softball coach, Chelsea's fast-pitch team includes girls from both the varsity and junior varsity high school teams. Coach Wescott stated he has been pleased with the play of all team players and has consistently played all of the girls in each game. Expounding on his philosophy behind the summer sport, Coach Wescott said, "Summer softball should be played for the fun of the game as well as to develop skills for future play."

Friday's win evened Chelsea's record at 3-3, but Chelsea has been competitive in all of the games played so far which is encouraging for the future of Chelsea's softball program.

The Summer Program, supported by the Chelsea Recreation Council, is new this year and has had strong support from Chelsea merchants and the parents of the girls involved. The Recreation Council hopes that Chelsea is now meeting the needs of all local girls as far as softball is concerned with programs for fourth graders through those girls in high school.

Next year this program will expand even farther by including younger girls and more teams at each level.

This week-end, July 16 and 17,

Gregory Area Youth With Air Force ROTC Summer Camp

Cadet Donald E. VanSlambrook, son of Mr. and Mrs. Alonzo T. VanSlambrook of 106 Cass St., Gregory, is participating in a U.S. Air Force Reserve Officers Training Corps field training encampment at Dyess AFB, Tex.

During the encampment, cadets receive survival and small arms training and aircraft and aircrew indoctrination.

Cadet VanSlambrook, a student at Michigan Technological University, is a 1974 graduate of Stockbridge High school.

Tornado Warning Given By Three Long Siren Blasts

Following the sudden tornado warning of last Friday, Chelsea residents are again reminded of the local "take cover" warning signal.

The "take cover" signal for the local area, in case of a tornado warning or sighting, is a long, one-minute blast of the Chelsea fire siren, repeated three times. This signal is given when approaching weather conditions are severe enough to warn residents to take protective action. This warning will be sounded when there is an official tornado warning given for Washtenaw county, or when local conditions are severe, in the opinion of local authorities.

The "all clear" signal will be sounded when local conditions have cleared and no longer present a threat. The "all clear" will be four, short siren blasts at close intervals. This signal, and the "take cover" signal should not be confused with the standard fire alarm signal of two blasts of the fire siren.

Cops for Kids Bowl Game Slated Aug. 6

The Cops for Kids Bowl is the first annual Ypsilanti Area Jaycees sponsored football game. The idea for the game came jointly from the Jaycees and police officers from several departments who saw this contest as a way to raise funds for youth programs in Washtenaw county.

The youth projects that are annually sponsored by the Jaycees are the Easter Egg Hunt, Santa's Hotline, Punt, Pass and Kick, Haunted House, Pass, Dribble and Shoot, and Hunter Safety to name just a few. If the anticipated response is forthcoming the Jaycees will be able to expand this area to include more programs benefiting youth. The projects are Ypsilanti based, but are not limited to just area residents. In the past children have been found from outside the city and township who have participated in many of the programs for youth.

The game itself will be played at 7 p.m., Saturday, Aug. 6 at Eastern Michigan University Stadium. Tickets may be obtained the night of game at the gate; however, we encourage people to obtain \$2 tickets in advance. Advance tickets may be picked up at the various Ypsilanti Police agencies, the Washtenaw County Sheriff's office, or from any Ypsilanti Jaycee. All seats are \$2.

Teams have started practice in earnest and the contest is heating up. There is much good-natured ribbing and allegations are being tossed back and forth about "Ring-ers" being brought in to both departments at the last moment. If one believed half the rumors the game might look like a cross between Sunday afternoon pro-football and the "Gong Show."

The Community's support of this first annual event will determine whether this charity fund raiser will be repeated. We encourage everyone to contribute to this worthwhile event by obtaining your ticket before the game. If you will be unable to attend the game your ticket or tickets will be donated to a charitable program so others may enjoy this super spectacle. Remember Saturday, Aug. 6 at 7 p.m.

Gregory Area Scouts Bicycle to Mackinac Island

Pedaling a total of 76 miles along the Michigan shores of Lake Huron their first day, 20 members of Boy Scout Troop 320 and Girl Scout Troop 507, both of Gregory, struck out on an estimated 11-day bicycle trip to Mackinac Island and back.

On Sunday, July 10, word was received that the group had reached its mid-point destination, only six days after beginning the marathon trek.

After spending a day touring Mackinac Island, members of the two scout troops repacked their backpacks, bed rolls and sleeping bags, secured them to their bicycles, and started their return trip down a route parallel to Michigan's western coast. They then proceeded down M-66.

The cyclists are expected to arrive in Unadilla about 5 p.m. tomorrow.

According to Shirley Gladstone, who has been monitoring the progress of the group, outside of a few tired muscles the biking trip has remained incident-free to date.

trying to
got it together?
free counseling:
★ Youth advocacy
★ runaways
★ families
662-2222

ANN ARBOR
HOUSE



LESSON IN SHOCKING WHEAT: Don Turner, left, an ex-farm boy from way-back, helps Paul Seitz stack freshly-bundled wheat into even rows on the Reuben Lesser, Sr. farm last Saturday. According to Seitz, the knot in the twine which holds each bundle together should be turned inward against the supporting row

of wheat so that the bundle curves outward and rain slides off more easily. Bound by an old-fashioned binder, the wheat in the above photo is destined for the Chelsea Community Fair, where it will be threshed during the fair, using old-time methods and equipment.

Ed Wade Wins Drag Boat Meet

Driving his own outboard-powered drag-racing boat, Ed Wade of Luick Dr. received a trophy for fastest speed for competition outboard class in the Eastern Regional Drag Boat meet Sunday. The racing was held at Columbia, under the sanction of the National Drag Boat Association. Wade's boat, a Switzer Shorting Star, powered by a Johnson, 200 h.p. outboard motor, made a best speed of 78.8 mph through the 1/4-mile course.

The boat is sponsored by Nate's Boat Shop of Ann Arbor and Chelsea Automotive.

Children's Tennis Class Series To Start July 18

A second session of tennis classes for children is scheduled to begin July 18. Sponsored by the Chelsea Recreation Department, the classes will meet weekly on Mondays, Wednesdays and Fridays for a period of three weeks, ending Aug. 5.

Classes will be conducted on the Chelsea High school tennis courts with 5- to 7-year-olds playing at 9 a.m.; 8- to 10-year-olds playing at 10 a.m.; and 11- to 13-year-olds playing at 11 a.m. Instructor for the classes is Terry Schreiner.

Fee for the three-week, nine-class tennis session is \$3, payable at the first class meeting.

Tonight and Every Thursday THE CAPTAINS TABLE ROAST BEEF BUFFET



"Carved Before Your Eyes"

Serving from 4:30-9:30 p.m.

The Captains Table - 8093 Main St., Dexter

DUNBAR'S DEXTER LOCKER

PAUL DUNBAR, OWNER

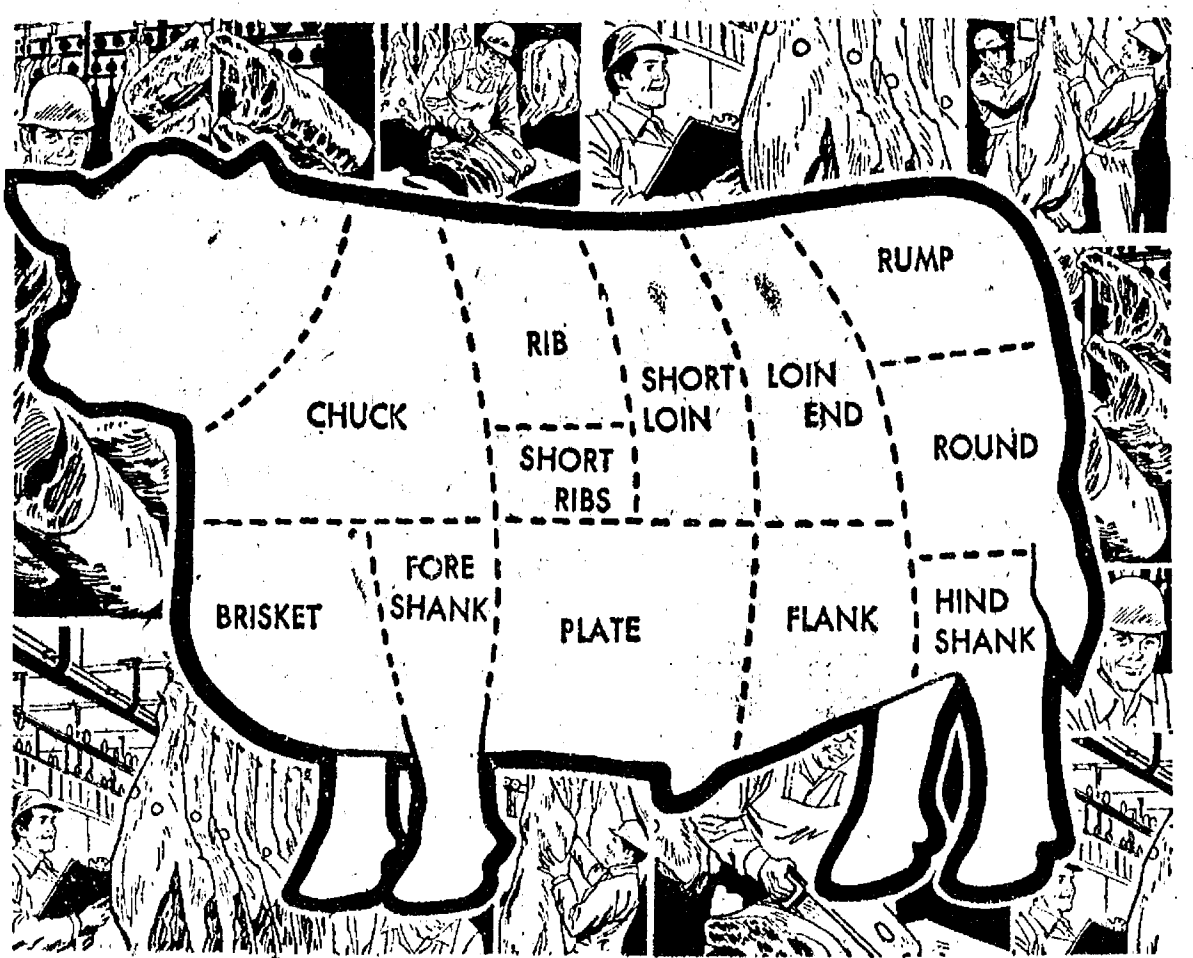
8083 Main St., Dexter Ph. 426-8466

Fresh Frozen Berries & Fruit

BEEF SIDES lb. 89¢

Cut and Ready for Your Freezer \$1.15 after processing

(Cutting statement furnished)



HICKORY SMOKED SLICED BACON CENTER CUT \$1.29 lb.	Hamburger Patties 98¢ lb.	Skinless Wieners 79¢ lb.	Sliced Bologna 79¢ lb.
SMOKED POLISH SAUSAGE 89¢ lb.	Breakfast Sausage Patties 98¢ lb.	Chicken Necks 15¢ lb.	Chicken Gizzards 39¢ lb.
			Chicken Livers 49¢ lb.

Discount to Civic Groups - We Accept Federal Food Stamps
Custom Slaughtering & Processing

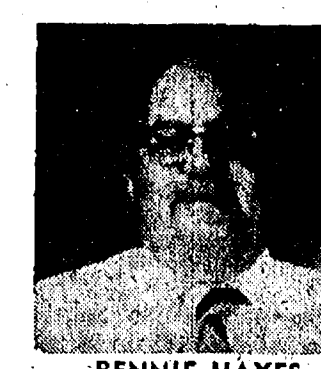
14th ANNUAL PICK-UP SALE



LYLE CHRISWELL



JOHN POPOVICH



BENNIE HAYES



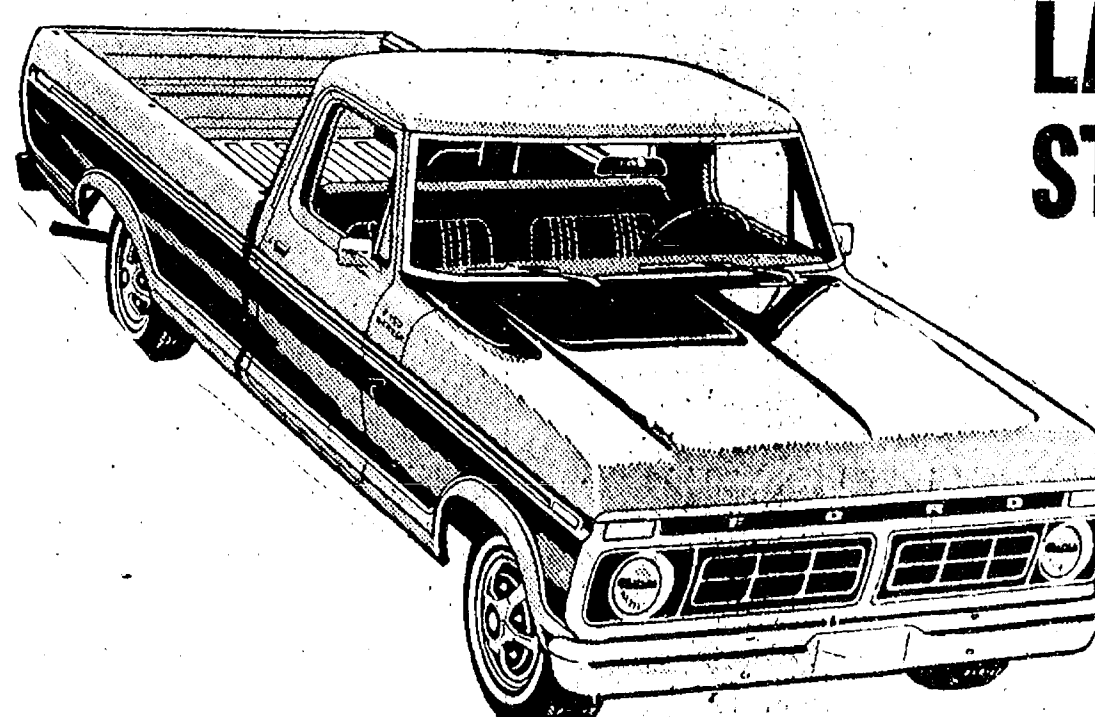
RON SCHUYLER



JOHN HAVER

BUY OR LEASE

ALL PRICES REDUCED



LARGE STOCK

Sale Begins Thursday, July 7, 1977

ONLY \$3425.00

(GOOD UNTIL CURRENT MODEL STOCK EXHAUSTED)

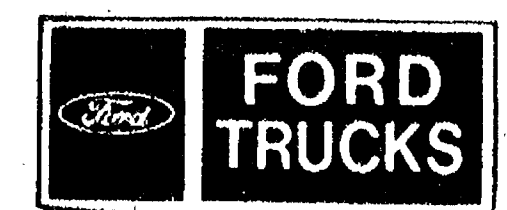


For a Brand New 1977 Ford 1/2-ton Pick-Up with fresh air heater, gauges, heavy duty rear springs, chrome front bumper, bright metal grille, foam cushion seat, freight and delivery charges.

(Does not include Sales Tax and License.)

Sale Ends Wednesday, August 17, 1977

PALMER



CHelsea SINCE APRIL 1912 (313) 475-1301
Open Monday, Tuesday, Wednesday, Thursday Till 9:00 p.m.; Friday Till 6:00 p.m.; Saturday Till 4:00 p.m.



Polly's MASTER
MARKETS

1101 M-52

CHELSEA, MICH.

(Corner M-52 and Old U.S. 12)

Supplement to Ann Arbor News, Chelsea Standard

get to know us...

WE CAN HELP YOU SAVE ON YOUR FOOD BILL!

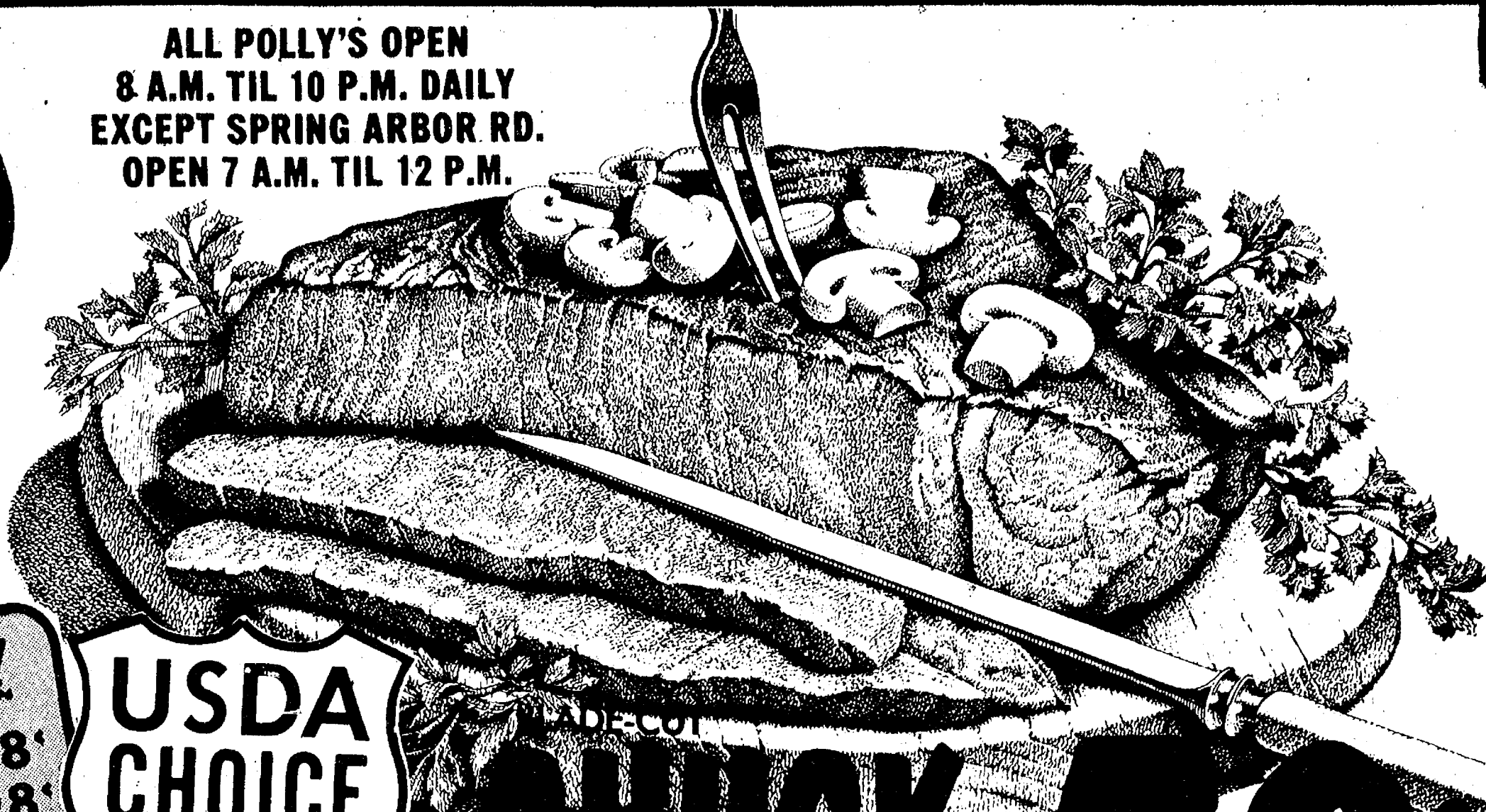
Open Daily 8 to 10
Sunday 9 to 9

- ★ **QUALITY PRODUCE**
- ★ **QUALITY MEAT**
- ★ **COLD BEER, WINE, LIQUOR**
- ★ **LOTTERY TICKETS**
- ★ **SIDES OF BEEF**
- ★ **FRUIT BASKETS**
- ★ **DRY CLEANING**
- ★ **PHOTO PROCESSING**
- ★ **VARIETY AT LOW PRICES**



Polly's MASTER MARKETS
1101 M-52
CHELSEA, MICH.
(Corner M-52 and Old U.S. 12)

ALL POLLY'S OPEN
8 A.M. TIL 10 P.M. DAILY
EXCEPT SPRING ARBOR RD.
OPEN 7 A.M. TIL 12 P.M.



ALL SALE PRICES
GOOD THRU SATURDAY
JULY 16, 1977



Cook-Out Specials!

U.S.D.A. CHOICE ARM-CUT BEEF ROAST	LB.	88¢
U.S.D.A. CHOICE BONELESS CHUCK ROAST	LB.	98¢
U.S.D.A. CHOICE BONELESS BEEF ROAST	LB.	88¢
U.S.D.A. CHOICE BONELESS CHUCK ROAST	LB.	98¢
U.S.D.A. CHOICE SWISS STEAK	LB.	68¢
U.S.D.A. CHOICE CHUCK ROAST	LB.	\$1.29
U.S.D.A. CHOICE CHUCK STEAK	LB.	\$2.99
U.S.D.A. CHOICE STRIP STEAKS	LB.	\$2.99
U.S.D.A. CHOICE FLANK STEAKS	LB.	\$2.59
U.S.D.A. CHOICE LONDON BROIL	LB.	\$2.39
U.S.D.A. CHOICE CLUB STEAK	LB.	\$4.29
U.S.D.A. CHOICE BEEF TENDERLOIN	LB.	\$1.29
U.S.D.A. BOTTOM ROUND ROAST	LB.	

USDA CHOICE



CHUCK ROAST LB. **58¢**

BLADE-CUT
CHUCK STEAK LB. **68¢**



ECKRICH
SMOK-Y LINKS
10-OZ. PKG. **89¢**

WILSON'S CORN KING
REGULAR or BEEF

HOT DOGS

1-LB. PKG.

79¢

SUGAR SWEET

CANTALOUPE



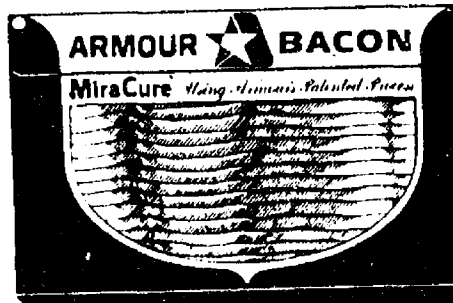
CALIFORNIA

HEAD

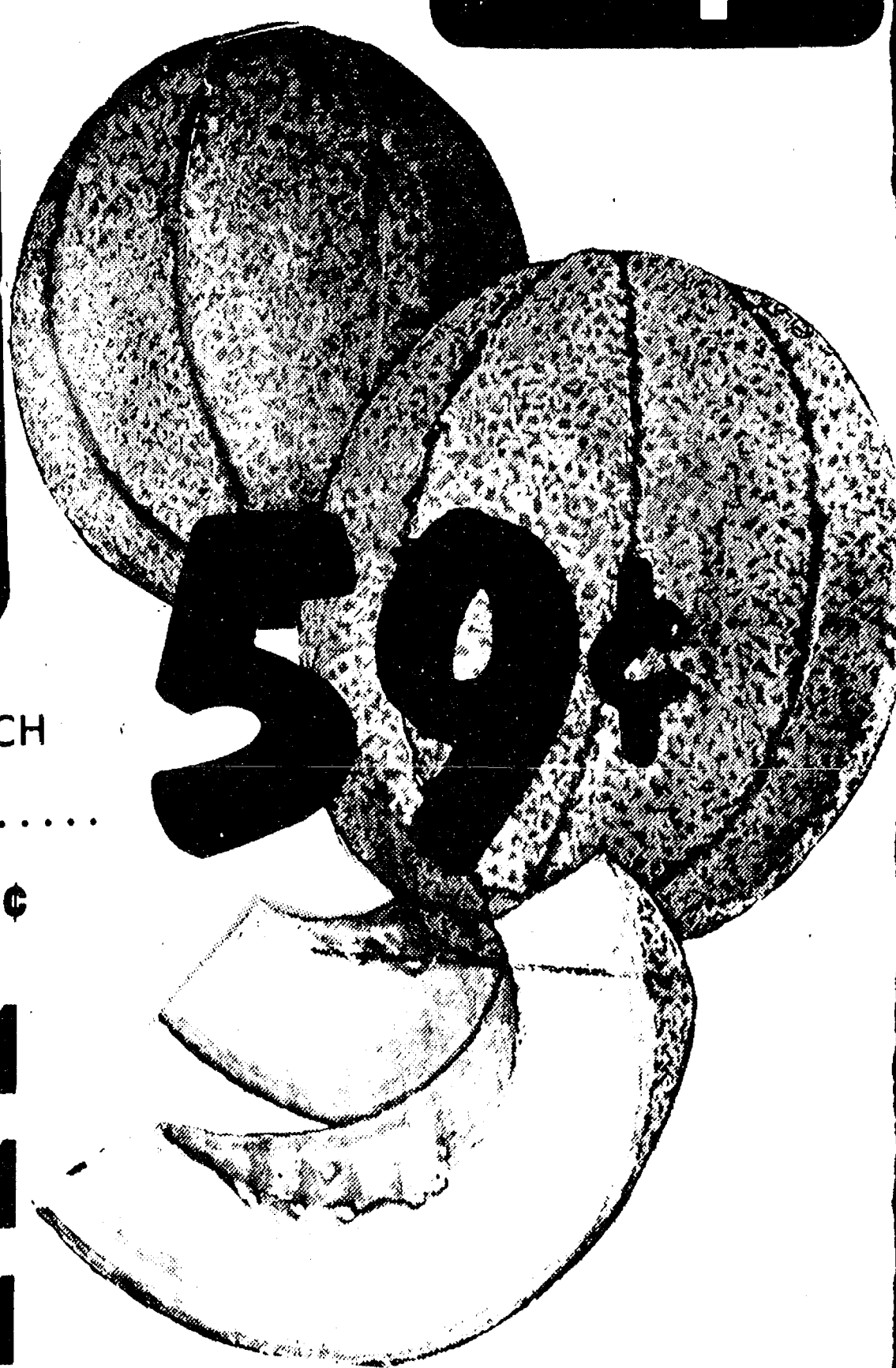
LETTUCE

3 for \$1

WILSON'S CORN KING SLICED BACON	1-LB. PKG.	\$1.19
ECKRICH SMORGAS PAK	1-LB. PKG.	\$1.39
ECKRICH SLENDER SLICED MEATS	3-OZ. PKG.	49¢
ECKRICH SLICED BOLOGNA	1-LB. PKG.	\$1.39
ARMOUR STAR POLISH HOT DOGS	1-LB. PKG.	\$1.19
FRESH FROZEN LAKE SMELT	LB.	69¢
ARMOUR PEAR SHAPED CANNED HAM	1 1/2-LB.	\$2.99
HEROLD PARTY ASSORTMENT	1-LB. PKG.	\$1.39
HEROLD FAMILY PAK	20-OZ.	\$1.49
HYGRADE HOT DOGS	1-LB. PKG.	79¢
WEST VIRGINIA SLICED BACON	1-LB. PKG.	\$1.49



ARMOUR STAR
BACON
1-LB. PKG. **\$1.39**



59¢

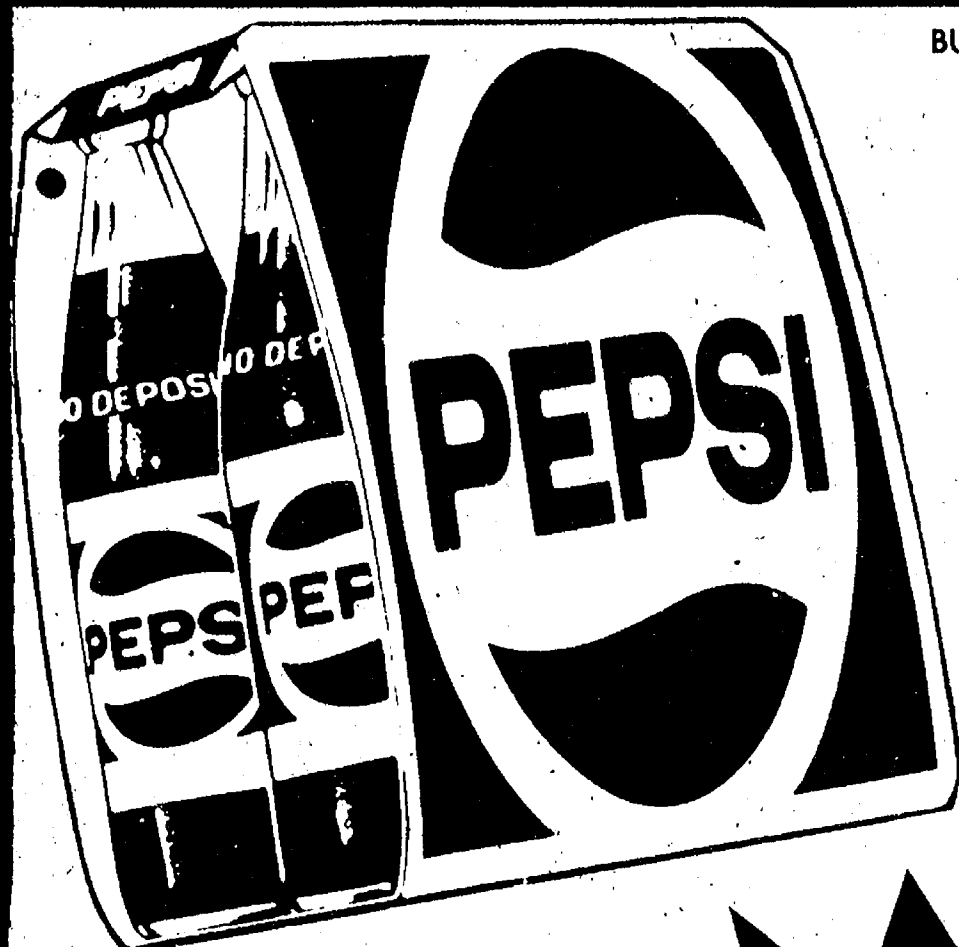
EACH

VINE • RIPE **TOMATOES** 8 for **99¢**

CALIFORNIA **AVACADOES** 4 for **\$1**

MICHIGAN PASCAL **CELERY** 3 for **\$1**

TANGY **LIMES** 10 for **\$1**



BUY 3 • SAVE \$1.98 WITH IN-STORE COUPON

8-PAK PEPSI

DIET PEPSI, MOUNTAIN DEW or WELCH'S GRAPE

16-OZ.

\$1.39



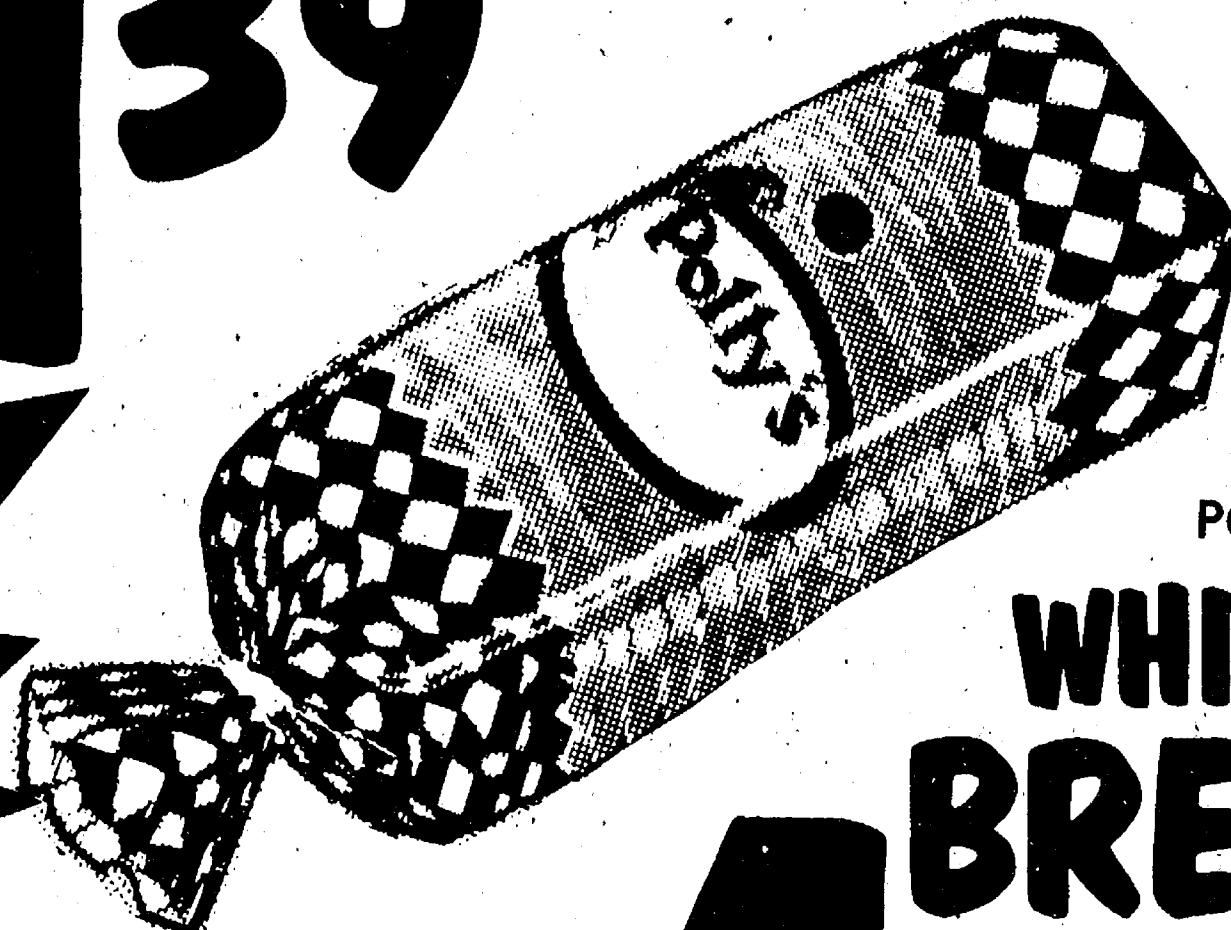
BUY 2 • SAVE \$1.00 WITH IN-STORE COUPON

BORDEN JUMBO TREAT

ONE GALLON

ICE CREAM

\$1.43



SAVE 4¢ WITH IN-STORE COUPON
POLLY'S QUALITY

WHITE BREAD

20-OZ. LOAVES for

\$1.43

- MINUTE MAID LEMONADE 12-OZ. **39¢**
- ORE-IDA CRISPERS 20-OZ. **59¢**
- MORTON JELLY DONUTS 11-OZ. **59¢**
- MORTON CHOCOLATE DONUTS 9-OZ. **59¢**
- GORTONS BATTERED FISH PORTIONS 15-OZ. **\$1.09**

BORDEN ICE MILK STIX BARS 12-PAK **89¢**



SAVE 30¢ WITH IN-STORE COUPON KEEBLER

ZESTA SALTINE CRACKERS

16-OZ. BOX

39¢



SAVE 35¢ WITH IN-STORE COUPON

SEALTEST SOUR CREAM

8-OZ. for

\$1.39



CREAM of CHICKEN, CHICKEN with RICE or CHICKEN NOODLE 'OS

Campbell's

SOUP 5 10 1/2-OZ. CANS \$1.39

COUNTRY TIME LEMONADE

33-OZ.

\$1.39

- SCOT LAD SHORTENING 3-LB. **\$1.39**
- PRIMA SALSA SPAGHETTI SAUCE 32-OZ. **99¢**
- FOR A QUICK MEAL HORMEL SPAM 12-OZ. **88¢**
- SCOT LAD AUTOMATIC DISHWASHER DETERGENT 35-OZ. **77¢**
- 25¢ OFF LABEL DOWNY FABRIC SOFTENER 96-OZ. **\$2.09**
- SCOT LAD CHEESE SPREAD 2-LB. **\$1.25**
- CHARMIN TOILET TISSUE 4-ROLL PAK **88¢**

- DIET or REGULAR FAYGO POP 16-OZ. **15¢**
- COSTELLO PEPPERONI PIZZA 11-INCH **\$1.37**
- PURINA DOG CHOW 25-LB. **\$5.59**
- KRAFT MIRACLE WHIP 32-OZ. **99¢**
- 13¢ OFF LABEL DOVE DETERGENT 22-OZ. **79¢**
- 25¢ OFF LABEL ALL DETERGENT 64-OZ. **\$2.29**
- BATH SIZE ZEST SOAP 3 BARS for **\$1**

- BETTY CROCKER CAKE MIXES 18-OZ. **49¢**
- BEST XXX PILLSBURY FLOUR 10-LB. **\$1.09**
- NABISCO CHIPS AHoy 14 1/2-OZ. **89¢**
- NABISCO NILLA WAFERS 12-OZ. **59¢**
- MEADOWMOOR ORANGE JUICE 64-OZ. **79¢**
- SCOT LAD TOMATO CATSUP 3 14-OZ. for **\$1**
- SCOT LAD ALL PURPOSE FLOUR 5-LB. **44¢**

Q-TIPS COTTON SWABS
170 Swabs **88¢** \$1.49 Value

ROLAIDS ANTACID TABLETS
Regular & Spearmint
Bottle of 75 - \$1.37 Value **\$1.17**

SCHICK PLATINUM PLUS
Double Edge 5's - \$1.20 Value **59¢**

LISTERINE ANTISEPTIC
30c Off Label
32 ounce \$3.01 Value **\$1.77**

LISTERMINT MOUTHWASH
25c Off Label
24 ounce \$2.63 Value **\$1.65**

Thank You

FOR SHOPPING AT...



Polly's

MASTER
MARKETS

1101 M-52

CHELSEA, MICH.

(Corner M-52 and Old U.S. 12)

WHERE WE ARE
HAPPY TO.....

save

YOU MONEY!