

WEATHER

|                    |         |         |              |
|--------------------|---------|---------|--------------|
| Thursday, June 23  | Min. 63 | Max. 79 | Precip. 0.00 |
| Friday, June 24    | 61      | 78      | 0.00         |
| Saturday, June 25  | 62      | 83      | trace        |
| Sunday, June 26    | 63      | 87      | 0.00         |
| Monday, June 27    | 61      | 84      | 0.00         |
| Tuesday, June 28   | 63      | 83      | 0.00         |
| Wednesday, June 29 | 59      | 88      | 0.44         |

ONE HUNDRED-EIGHTH YEAR—No. 3

12 Pages This Week

Plus 4-Page Supplement

CHELSEA, MICHIGAN, THURSDAY, JUNE 30, 1977

15c per copy

SUBSCRIPTION: \$6.00 PER YEAR

# The Chelsea Standard

QUOTE

"A realist is one who reads bitter lessons from the past. A cynic is one who is prematurely disappointed in the future."  
—Sydney Harris.

## School Millage Vote Date Set for Aug. 15

The annual meeting of the Chelsea Board of Education will be held July 11, 8 p.m., in the Chelsea High school board room. During the course of the meeting, the board will decide on the millage amount to be requested in the Aug. 15 special election, the date recently approved by the county's election scheduling committee.

Also on the agenda is organization of the board for the 1977-78 school year, including the election of officers; days, time, and place of board meetings; appointment

of a school attorney; approval of depository for school district funds; approval of the use of signature plates on checks for payroll, general fund, debt retirement fund and building and site fund; authorization of business manager to invest funds; authorization of business manager to participate in co-operative buying.

The appointment of a committee or committees to review the attendance policy and the discipline policy will be a final item of consideration.

## School Board Briefs

Special Board of Education Meeting Monday, June 27 was called to order at 7 p.m. by Robert Daniels, vice-president of the board, to conduct interviews for the position of high school principal.

Present: Daniels, Schafer, Hodgson, Haselschwardt, Feeney, Tobin, Stirling and trustee-elect Earl Heller. Superintendent Cameron and a few guests. Absent: None.

Nancy Schave was interviewed from 7 to 8 p.m.; Carlos Florido from 8 to 9 p.m.; and Richard Sweet from 9 to 10 p.m.

Motion by Schafer supported by Stirling to hold a special board meeting at 7 p.m., June 30, to decide on a new high school principal. All ayes.

A work session on the 1977-78 budget will be held July 6 at 8 p.m. in the board room.

Howard Haselschwardt administered the oath of office to Earl Heller and James Stirling.

Meeting adjourned at 10:45 p.m.

## Police Warn Against Using Firecrackers

"Firecrackers are strictly illegal," Chelsea Police Chief George Meranuck began in discussing his department's latest crackdown policy on persons caught with firecrackers. "If anyone is apprehended setting off firecrackers, the police department will prosecute."

Chief Meranuck emphasized the need for parents to realize that firecrackers are illegal and for parents not to condone the use of firecrackers by their children.

In addition to the danger of personal injury which may result from a miscalculated toss of a firecracker, Chief Meranuck cited a thrown firecracker as the suspected cause of at least one fire in the Chelsea area.

He also stated the police department had received several calls from area residents who had mistaken the sound of firecrackers for pistol shots.

## Babe Ruth Pirates Down Manchester

The Babe Ruth League Pirates won two more games by downing Manchester No. 1, 7-3, on June 21, and returning Friday, June 24, to waste Manchester No. 2, 20-5, on the Manchester diamond.

The Pirate record is now 4-0 on the season.

In the first game, the Pirates attacked behind the one-hit pitching of Dan Alber and some solid hitting by Al Augustine, who blasted out two doubles, to roll to a third consecutive win.

Dan McGill, Bob McAllister and (Continued on page three)



KIWANIS KIDDIES PICNIC: Christine McLaughlin, daughter of Mr. and Mrs. David McLaughlin of Butternut Ct., scores a hit with a wet bean bag during the Chelsea Kiwanis Club's annual Kiddles Picnic. Target of her pitch was the face in the sun. Several youthful onlookers line up to join the fun and witness the efforts of their peers. Altogether, more than 30 children participated in the affair at Pierce Park Monday evening.

the sun. Several youthful onlookers line up to join the fun and witness the efforts of their peers. Altogether, more than 30 children participated in the affair at Pierce Park Monday evening.

## Conrad Hafner To Supervise Venezuela Plants for Dana Corp.

Conrad M. Hafner, former area manager of assembly and manufacturing at Chelsea's Dana plant, has been named vice-president of operations for C. A. Danaven, an affiliate of the Dana Corporation. The appointment, effective June 1, was announced by R. D. Morrison, president of the Spicer Axle Division of Dana, Fort Wayne, Ind.

Hafner's new assignment includes responsibility for the operation of three plants in Venezuela. He will report directly to Chedo Eterovic, president of C. A. Danaven. These facilities manufacture axles and universal joints for the automotive industry in Venezuela.



CONRAD W. HAFNER

## Youth Baseball Play Debuts for Summer

Youth Baseball, sponsored by the Chelsea Recreation Department, made its summer debut last week with five teams in Pony League and nine teams in Little League seeing action. T-Ball season also slipped into gear with openers in that league scheduled throughout the current week.

After a seven-day period of action in the two older leagues, the Pony Royals, LL Reds and the LL Dodgers remain unbeaten and undefeated.

Pony League play was launched with a minimum of contests as the Pirates massacred the Braves, 18-3, and the Yankees shut out the Giants, 9-0. Games on Tuesday, June 21, and Thursday, June 23, proved to be tighter, however, as the Giants felled the Pirates, 12-8; the Royals overpowered the Braves 3-3; and the Braves returned to trim the Yankees, 7-4.

Inversely, Little League games were hotly contested all week with the Pirates and the Giants playing to a 6-6 tie; the Dodgers edging the Blue Jays, 5-4; the Braves dropping the Twins, 6-3; the Yankees

## Police Warn Against Wave Of Petty Thefts

Chelsea police are warning west side residents to take precautions against possible petty theft in the wake of four stolen purses reported during the past six weeks.

In all cases, the purses had been left unattended in the home or on the porches of the victims, most of whom reside in the Chandler St. and Wilkinson St. area. Police believe a juvenile who resides in the area is responsible for the thefts.

Two stolen purses were reported to police within a 12-hour period Wednesday, June 22.

The first occurred at approximately 9:45 a.m. when a west side resident discovered her purse was missing from a room inside her home. Although no money had been in the purse, the purse and its contents had an estimated \$23 value. Recovery has not been made.

In the second incident, a purse was stolen from the 700 block of S. Main St. between 9:45 p.m. and 10 p.m. when the owner left it on her porch to go for a short ride with friends. Upon her return, she found the purse missing. The purse, which contained \$12 has since been recovered by police but the money is still missing.

In what police suspect is a related incident a few weeks ago another west side resident reported that someone apparently entered her home, took money out of her purse and left. The other contents of her purse were left intact.

## Gary Larson Earns MA Degree at WMU

Gary R. Larson of 325 W. Middle St., was one of nearly 380 students who received master's specialist's degrees from Western Michigan University, Kalamazoo, at the university's recent second semester commencement exercises. Larson was awarded a Master of Arts degree.

## Fireworks Display Set For July 4

Once again, Herbert J. McKine Post 31 of the American Legion will host Chelsea's annual Independence Day Celebration, beginning with a chicken barbecue at noon Monday, July 4 at the Chelsea Fairgrounds, and continuing on into the evening with a fireworks display.

Legion grilling pits will roast a total of 2,000 chicken halves, a 500 increase over last year's 1,500 sell-out. Box lunches containing half a chicken, cole slaw, rolls and chips will be available for \$2.75.

Dining facilities will be provided in the Chelsea Fairgrounds Service Center, or the lunches may be ordered to take out if a picnic seems in order. Beverages will

also be available to quench all manner of thirsts.

The Legion will be serving diners until the very last chicken is devoured.

Beginning at 7 p.m., an Ice Cream Social will spotlight the event, with plenty of cake and ice cream in stock to sweeten the celebration.

Then, for those still craving excitement after their hunger has been satiated, more than \$1,700 worth of fireworks will color the skies at dusk. The Kiwanis Club is sharing in the cost of fireworks.

Supervising the barbecue pits will be Chef Jim Gaken while John Popovich will organize and direct the 4th of July celebration.

## IPSCO Workers Gain First Contract

Members of UAW Local 985, who had been on strike against Chelsea's Industrial Plastics Specialties Co. (IPSCO) since June 13, nearly unanimously ratified an initial three-year contract last Thursday before returning to work, Monday, June 27, to end the dispute which had focused on economic issues. Some 102 IPSCO workers had been affected by the strike.

According to Robert Chrisman, union committee chairman with UAW Local 985, the settlement increases average hourly pay of \$3.25 by 50 cents the first year, 45 cents the second year, and 50 cents the third year, counting cost-of-living increases.

Pension, holiday, and other fringe benefits were also improved, according to Chrisman.

IPSCO, located on Cleveland St., is an affiliate of Trim Trends, Inc., of Clawson, a 10-year-old firm which supplies trim parts to the auto industry.

## Chelsea Sidewalk Festival Set Aug. 5-6

An old-fashioned auction and craft demonstrations, in addition to retail bargains, will highlight the 4th annual Chelsea Sidewalk Festival, Aug. 5-6. The festival is a combination of the Chelsea Merchants' annual Sidewalk Sales and an outdoor art fair.

The auction will be held Friday night, Aug. 5 and will feature many valuable items donated by Chelsea merchants.

Among the craftsmen who will demonstrate their talents are Peter Severn, a scientific glass blower employed by the University of Michigan's Chemical and Metallurgical Engineering Department who creates objects of art from glass when time allows and the spirit moves him; and Earl Whitney, who travels nationwide to collect rocks which he then polishes, carves and cuts into gem stones. His work has been shown in many states.

All area artists are invited to join Severn and Whitney in this year's Sidewalk Festival. However, only hand-made items will be accepted.

Rules for exhibition are as follows: 1—Exhibits will be displayed from 8:30 a.m. to 8:30 p.m. Friday, Aug. 5, and from 8:30 a.m. to 5:30 p.m. Saturday, Aug. 6. 2—An entry fee of \$10 for the two days will be charged. 3—Artists and craftsmen will be assigned a 10-foot space. 4—Tables, easels and waterproof coverings are the responsibility of the exhibitor. 5—Artists are encouraged to be present to discuss and demonstrate their craft, and displays should be limited to three media forms.

The Sidewalk Festival is juried so samples of art must be presented to the Chelsea Jury Committee at 110 or 118 S. Main St. (Continued on page three)

## Aquatic Club Downs Ann Arbor Dolphins

Chelsea Aquatic Club fought a determined battle Saturday, June 24, as a result came from behind to defeat Dolphin Swim Club Ann Arbor, 286-252, in its opening meet of the summer.

The meet was close all the way

## Junior Tennis Class Sessions Will Be Offered

Only two tennis classes for youngsters 14 to 17 years of age will be offered through the Chelsea Recreation Department this summer.

The classes, to be taught by Jerry Schreiner, will be conducted Thursday only, with beginners scheduled to play at 2:30 p.m. and intermediates to play at 3 p.m.

Classes will begin today, June 23, on the Chelsea High school tennis courts and will continue for six weeks. A \$5 fee will be charged for the six lessons, payable upon registration at the first class meeting.

Classes will only be held if a sufficient number of youngsters show interest.



ANYTHING GOES: With a swivel and toss of her hip, "Bonnie," the gangsters' girlfriend in Cole Porter's "Anything Goes," beckons the dancing sailors during a rehearsal of the musical Monday evening in Sylvan Township Hall. "Bonnie," played by Julie Vorus, and the sailors, played by Dennis Suar (far left), Bob Martin (second from left), Art Dwyer (second from right) and Neil Cockerline (right), are part of the 35-member cast for "Anything Goes." The play, which takes place entirely on shipboard, is being produced by The Chelsea Players as part of their summer theatre program. Gina Descenzo is directing the production which will be staged July 28-30 in the Little Red building at the Chelsea Community Fairgrounds.

## Scavenger Hunt Slated On Playgrounds Friday

A crowd of high-spirited children will prow through a scavenger hunt tomorrow, July 1, at North and South Elementary schools as part of the Chelsea Recreation Department's summer playground program.

Parents may continue to register

## Need Early Copy For Next Week

Because of the Independence Day holiday, Monday, July 4, The Standard will have early deadlines for the July 7 issue.

All display copy must be in The Standard office by 5 p.m. Friday, July 4, and news items must be submitted by noon on Saturday, July 2. The office will be closed Monday, July 4.

Late-breaking news and classified ads will be accepted until 1 p.m. Tuesday, July 5.



"EDUCATOR OF YEAR": Dr. Gorton Reithmiller, former president of the State Board of Education, has been named Educator of the Year by the Wayne State University Chapter of Phi Delta Kappa, a professional education society. Dr. Reithmiller, of Eaton Rapids, was a member of the State Board of Education from 1969-1976, serving as its president from 1973-74. A former assistant of Olivet College, Dr. Reithmiller now serves as a special assistant to State Superintendent of Public Instruction John W. Porter.



Established 1871 **The Chelsea Standard** Telephone 475-1371

Excellence Award By Michigan Press Association  
1951-1952-1960-1964-1965-1966  
Walter P. Leonard, Editor and Publisher

Published every Thursday morning at 300 North Main Street, Chelsea, Mich. 48118, and second class postage paid at Chelsea, Mich., under the Act of March 3, 1979.

Subscription Rates (Payable in Advance)  
In Michigan: One Year \$6.00, Six Months \$3.50, Single Copies \$ .20  
Outside Michigan: One Year \$8.50, Six Months \$4.50, Single Copies \$ .25

MEMBER **NATIONAL ADVERTISING REPRESENTATIVE**  
**NATIONAL NEWSPAPER ASSOCIATION - FOUNDED 1885**  
MICHIGAN NEWSPAPERS, INC.  
257 Michigan Ave.  
East Lansing, Mich. 48823

## Uncle Lew from Lima Says:

DEAR MISTER EDITOR:

I see where this fellow has offered to install a system in the White House that will move air instead of condition it. He is a engineer, and he says he will do the job free. He says he wants to use the White House as a national example to show you can cool a house without refrigerating it. What he really wants is a lot of money and a lot of energy.

Mister Editor, the poor devil ain't got a chance. Any time anybody comes up with a idea that would save the Government money people in the Government figure there's somepon wrong with it. Look at the post office. The idea was to save money by increasing efficiency by putting the mails on a business basis. The way the plan was dropped out, the U. S. Postal Service was to start paying its own way in the early 1980s. The Congress passed a law saying it had to do this. Nobody believed it, least of all Congress. Otherwise, would all members of Congress keep flooding the post office with the mountains of stuff they mail free?

What they've decided to do now is less for more. The latest study of the mails by a commission set up by Congress decided Saturday mail is "extravagant," and 13 cent to send a letter is too cheap. So what they're going to do is cut out Saturday delivery and raise first class to 15 cent. This pattern means we'll pay more and more, fer less and less. In the bargain, the Government will forget that the postal system was set up to be a Federal public service, and it was no more intended to make money than is the Army or the Department of Agriculture.

The fellers at the country store Saturday night discussed shrinking mail service, and Ed Doolittle was of a mind that the Government wants private haulers to take over. Ed had saw where a county figured it would have to charge each customer \$6 a month if the county hired a private outfit kept on picking up the same garbage without the county involved, the cost would stay at \$4 a month. That kind of saving is what keeps Governments at all levels in trouble, was Ed's words. The mails has as much chance of operating in the black as Washington, D.C. does of collecting the \$251,000 the police there say Russia owes fer parking tickets.

General speaking, the fellers was agreed they ain't no way to figure the way folks think. Zeke Grubb said he saw a piece the other day that told why pickles never are in cans, always in glass jars. Nobody plans to buy pickles, the experts say, they go to the grocery store, see the pretty rows of pickles and buy on impulse. A marketing company found out women are drawn to the number nine. They won't buy a item priced at 25 cent, but mark it 29 cent and they want it. This way, it's less than 30, not more than 20. The fellers was of mind Government is run on impulse. If that engineer would say his fan system was \$9.99, marked down from \$35.00, he might get a second look.

Yours truly,  
Uncle Lew.

### Howell Livestock Auction

Starts 1 p.m. Every Monday  
Mason 675-5400

The Wise Owl Says: Ship to Howell  
Phone 546-2370 Bim Franklin

Market Report for June 27

**CATTLE**—  
Bulk Gt.-Choice Steers, \$30 to \$40.40  
Fry High Choice Steers, \$40.40 to \$40.60  
Gt.-Choice Heifers, \$36 to \$40.10  
Fry High Choice Heifers, \$32 to \$36  
U.-S.D., \$30 and down.

**COWS**—  
Heifer Cows, \$31 to \$32  
U.-Commercial, \$27 to \$31  
Claner-Cullers, \$25 to \$27  
Fry High Cows, \$24 to \$26

**BULLS**—  
Heavy Bologna, \$30 to \$35  
Light and Common, \$30 and down.

**FEEDERS**—  
400-600 lb. Good-Choice Steers, \$32 to \$38  
600-800 lb. Good-Choice Steers, \$32 to \$38  
300-600 lb. Good-Choice Heifers, \$25 to \$30  
300-600 lb. Holstein Steers, \$24 to \$27  
500-800 lb. Holstein Steers, \$24 to \$27

**CALVES**—  
Primus, \$30 to \$53  
Good-Choice, \$40 to \$50  
Heavy Heifers, \$30 to \$42  
Cull & Met., \$20 to \$30  
Calves going back to farms sold up to \$40

**SHEEP**—  
Woolled Slaughter Lambs, Spring: Choice-Prime, \$50 to \$53.75  
Good-Utility, \$48 to \$50  
Slaughter Ewes, \$38 to \$46  
Feeder Lambs, All Weights, \$45 to \$50

**HOGS**—  
210 to 240 lbs., No. 1, \$46 to \$47.20  
200-250 lbs., No. 2, \$45 to \$46  
Heavy Hogs, 250 lbs. up, \$40 to \$45  
Light Hogs, 200 lbs. down, \$30 to \$45

**SWINE**—  
Fancy Light, \$36 to \$37.50  
300-400 lbs., \$34 to \$37.25  
500 lbs. and up, \$35 to \$37

**Boars and Stags:**  
All Weights, \$29 to \$32.50

**Feeder Pigs:**  
Per Head, \$15 to \$38  
Est. 40 lb. pigs, \$30 to \$32

**HAY**—  
1st Cutting, per bale, \$10 to \$15  
2nd Cutting, \$1.50 to \$1.75

**STRAW**—  
Per Bale, 60c to 95c

**COWS**—  
Tested Dairy Cows, \$350 to \$600  
Tested Beef Type Cows, \$250 to \$350

### Why put up with odors, taste and stains?

Are you ready for a solution?

Then call us now.

Every water problem can be solved. Reliable, guaranteed water testing, softening equipment, service and repair is available to you

from  
**CRYSTAL CLEAR CO.**  
4757 Dexter-Pinckney Rd. Ph. 426-2220

## MICHIGAN MIRROR

By Warren M. Hoyt, Secretary, Michigan Press Association

**Daily Lottery Lurches Along**  
Lady Luck has not been entirely on the state's side as it begins its first fling with a daily lottery.

On its first day, the numbers game drew \$296,000 in bets, netting \$222,000 for the state general fund.

The next day, the people were lucky and collected \$25,947 more from the state than they bet.

"One of the exciting aspects of the game is that on certain days the customers will beat us," said state Lottery Commissioner Gus Harrison after his bad luck.

The reason for the state's loss was that more people picked the winning numbers than the state had statistically planned on. A Lansing lottery agent had predicted the winning number—137—on television that day, and apparently people seized on it.

The agent says he plans no more predictions.

Numbers betting has been illegal in Michigan for a century.

**Vanity Plates Win Attention**  
There are about 13,000 people in this state "vain" and gutsy enough to spend \$25 for license plates that say something.

And for many of them, a lot gets said back by passing motorists.

Jack Waters of Birmingham, for example, gets lots of V for Victory signs because his plates read GO BLUE. But Dennis Burns of Lansing, an Ohio State University alumnus, gets other not-so-polite gestures for his GO BUCS plates.

Ginger Sharp of Lansing put I'M LOST on her plates and has found lots of unsought advice on how to get to anywhere. One woman coming out of church spotted the plates, insisted Ms. Sharp needed saving and went back into church to pray for her.

Money from the so-called "vanity plates"—which totals about \$300,000-\$400,000 a year—goes to clean up roadside litter.

Other appropo plates include A-A-A-G-H, belonging to a Birmingham doctor, AHCHOO for a Franklin doctor, and UNWED for a St. Clair Shores bachelor.

## JUST REMINISCING

Items Taken from the files of The Chelsea Standard

### 4 Years Ago...

Thursday, July 5, 1973—

Robert R. Aello is one of three Washtenaw County Sheriff Department officers to be promoted to the rank of sergeant. Aello, 39, assumed the new rank Monday.

Local Jaycee Walt Brown, of 18 Chestnut Dr., was elected one of the outstanding national directors at the National Jaycees convention held in Minneapolis, Minn., this last week-end.

Spokesmen from Lima township joined counterparts from Wayne county, Detroit and Ray township, June 25, in arguing that changes should be made in Huron-Clinton (HCMA) enabling legislation. They spoke at a public hearing in Detroit, arranged by members of the House Committee on City Government.

North Sharon Bible church will take on a new aspect in coming weeks as the congregation consecrates its new church building July 7. The old building is a landmark, having stood for nearly 100 years. It will not be abandoned, but will be used instead to house Sunday school and youth activities.

### 24 Years Ago...

Thursday, July 2, 1953—

Janet Widmayer, daughter of Mr. and Mrs. Harold Widmayer, is one of a group of 13 boys and girls from Washtenaw county who are attending Michigan 4-H Club Week at Michigan State College this week.

With the 2nd Infantry Division in Korea, Army M-Sgt. William D. Schrader, son of Mr. and Mrs. Walter Schrader, 1250 Wilkinson St., was recently awarded the nation's third highest combat award, the Silver Star, for gallantry in action in Korea.

The labor dispute of the Borg-Warner Co., pending since April 20, which had indirectly affected employment at the Chelsea Manufacturing Corp., was settled June 27 and the Chelsea plant will go on full-time schedule as soon as the annual vacation period is over, according to L. M. Benkert, president of the Chelsea firm. Borg-Warner Co. manufactures transmissions for International Harvester.

The labor dispute of the Borg-Warner Co., pending since April 20, which had indirectly affected employment at the Chelsea Manufacturing Corp., was settled June 27 and the Chelsea plant will go on full-time schedule as soon as the annual vacation period is over, according to L. M. Benkert, president of the Chelsea firm. Borg-Warner Co. manufactures transmissions for International Harvester.

### 14 Years Ago...

Thursday, July 4, 1973—

The Chelsea High school athletic field is now equipped with floodlights. The six-pole, 24-light system was installed through the co-operation of the Kiwanis Club of Chelsea and the Chelsea Village Council.

Wilbert Breitenwischer, employed by the Washtenaw County Road Commission for 42 years and Chelsea Yard district foreman for more than 20 years, retired as of July 1.

The committee for the Florence Howlett Fund to purchase the old Beach school at 11000 Chelsea-Dexter Rd., reports a total of \$1,278 received to date.

Mrs. Herbert Lindow, who is taking a leave of absence, effective this week, after 13 years as office manager of Chelsea Manufacturing Corp., has been honored by the company and its personnel at farewell parties. She will leave Chelsea for an extended stay in Phoenix, Ariz.

Excavation work and gravel fill were completed last week-end on the E. Middle St. construction project. The gravel fill will be left to pack until fall when backtop is applied. New curbing and widening of the street are added features of the street improvement, one of the major projects of the 1963 village road program.

### 34 Years Ago...

Thursday, July 1, 1943—

Germany has recently completed the training of 35 saboteurs for special assignment in the United States and some of them may already be here, if information sources usually found reliable are correct, John S. Bugas, in charge of the Detroit office of the FBI, warned.

The new pay-as-you-go tax plan, which goes into effect on July 1, has more balm than bite in the opinion of Frank N. Isbey, Michigan chairman of the U. S. Treasury War Finance Committee. The plan should result in more purchases of War Savings Bonds.

The Rev. Henry W. Lenz, who is retiring from the ministry, closed his labors as pastor of Salem Grove Methodist church, North Francisco, on Sunday morning. He (Continued on page four)

### 14 Years Ago...

Thursday, July 4, 1973—

The Chelsea High school athletic field is now equipped with floodlights. The six-pole, 24-light system was installed through the co-operation of the Kiwanis Club of Chelsea and the Chelsea Village Council.

Wilbert Breitenwischer, employed by the Washtenaw County Road Commission for 42 years and Chelsea Yard district foreman for more than 20 years, retired as of July 1.

The committee for the Florence Howlett Fund to purchase the old Beach school at 11000 Chelsea-Dexter Rd., reports a total of \$1,278 received to date.

Mrs. Herbert Lindow, who is taking a leave of absence, effective this week, after 13 years as office manager of Chelsea Manufacturing Corp., has been honored by the company and its personnel at farewell parties. She will leave Chelsea for an extended stay in Phoenix, Ariz.

Excavation work and gravel fill were completed last week-end on the E. Middle St. construction project. The gravel fill will be left to pack until fall when backtop is applied. New curbing and widening of the street are added features of the street improvement, one of the major projects of the 1963 village road program.

### 24 Years Ago...

Thursday, July 2, 1953—

Janet Widmayer, daughter of Mr. and Mrs. Harold Widmayer, is one of a group of 13 boys and girls from Washtenaw county who are attending Michigan 4-H Club Week at Michigan State College this week.

With the 2nd Infantry Division in Korea, Army M-Sgt. William D. Schrader, son of Mr. and Mrs. Walter Schrader, 1250 Wilkinson St., was recently awarded the nation's third highest combat award, the Silver Star, for gallantry in action in Korea.

The labor dispute of the Borg-Warner Co., pending since April 20, which had indirectly affected employment at the Chelsea Manufacturing Corp., was settled June 27 and the Chelsea plant will go on full-time schedule as soon as the annual vacation period is over, according to L. M. Benkert, president of the Chelsea firm. Borg-Warner Co. manufactures transmissions for International Harvester.

The labor dispute of the Borg-Warner Co., pending since April 20, which had indirectly affected employment at the Chelsea Manufacturing Corp., was settled June 27 and the Chelsea plant will go on full-time schedule as soon as the annual vacation period is over, according to L. M. Benkert, president of the Chelsea firm. Borg-Warner Co. manufactures transmissions for International Harvester.

### 14 Years Ago...

Thursday, July 4, 1973—

The Chelsea High school athletic field is now equipped with floodlights. The six-pole, 24-light system was installed through the co-operation of the Kiwanis Club of Chelsea and the Chelsea Village Council.

Wilbert Breitenwischer, employed by the Washtenaw County Road Commission for 42 years and Chelsea Yard district foreman for more than 20 years, retired as of July 1.

The committee for the Florence Howlett Fund to purchase the old Beach school at 11000 Chelsea-Dexter Rd., reports a total of \$1,278 received to date.

Mrs. Herbert Lindow, who is taking a leave of absence, effective this week, after 13 years as office manager of Chelsea Manufacturing Corp., has been honored by the company and its personnel at farewell parties. She will leave Chelsea for an extended stay in Phoenix, Ariz.

Excavation work and gravel fill were completed last week-end on the E. Middle St. construction project. The gravel fill will be left to pack until fall when backtop is applied. New curbing and widening of the street are added features of the street improvement, one of the major projects of the 1963 village road program.

### 24 Years Ago...

Thursday, July 2, 1953—

Janet Widmayer, daughter of Mr. and Mrs. Harold Widmayer, is one of a group of 13 boys and girls from Washtenaw county who are attending Michigan 4-H Club Week at Michigan State College this week.

With the 2nd Infantry Division in Korea, Army M-Sgt. William D. Schrader, son of Mr. and Mrs. Walter Schrader, 1250 Wilkinson St., was recently awarded the nation's third highest combat award, the Silver Star, for gallantry in action in Korea.

The labor dispute of the Borg-Warner Co., pending since April 20, which had indirectly affected employment at the Chelsea Manufacturing Corp., was settled June 27 and the Chelsea plant will go on full-time schedule as soon as the annual vacation period is over, according to L. M. Benkert, president of the Chelsea firm. Borg-Warner Co. manufactures transmissions for International Harvester.

The labor dispute of the Borg-Warner Co., pending since April 20, which had indirectly affected employment at the Chelsea Manufacturing Corp., was settled June 27 and the Chelsea plant will go on full-time schedule as soon as the annual vacation period is over, according to L. M. Benkert, president of the Chelsea firm. Borg-Warner Co. manufactures transmissions for International Harvester.

### 14 Years Ago...

Thursday, July 4, 1973—

The Chelsea High school athletic field is now equipped with floodlights. The six-pole, 24-light system was installed through the co-operation of the Kiwanis Club of Chelsea and the Chelsea Village Council.

Wilbert Breitenwischer, employed by the Washtenaw County Road Commission for 42 years and Chelsea Yard district foreman for more than 20 years, retired as of July 1.

The committee for the Florence Howlett Fund to purchase the old Beach school at 11000 Chelsea-Dexter Rd., reports a total of \$1,278 received to date.

Mrs. Herbert Lindow, who is taking a leave of absence, effective this week, after 13 years as office manager of Chelsea Manufacturing Corp., has been honored by the company and its personnel at farewell parties. She will leave Chelsea for an extended stay in Phoenix, Ariz.

Excavation work and gravel fill were completed last week-end on the E. Middle St. construction project. The gravel fill will be left to pack until fall when backtop is applied. New curbing and widening of the street are added features of the street improvement, one of the major projects of the 1963 village road program.

### 24 Years Ago...

Thursday, July 2, 1953—

Janet Widmayer, daughter of Mr. and Mrs. Harold Widmayer, is one of a group of 13 boys and girls from Washtenaw county who are attending Michigan 4-H Club Week at Michigan State College this week.

With the 2nd Infantry Division in Korea, Army M-Sgt. William D. Schrader, son of Mr. and Mrs. Walter Schrader, 1250 Wilkinson St., was recently awarded the nation's third highest combat award, the Silver Star, for gallantry in action in Korea.

The labor dispute of the Borg-Warner Co., pending since April 20, which had indirectly affected employment at the Chelsea Manufacturing Corp., was settled June 27 and the Chelsea plant will go on full-time schedule as soon as the annual vacation period is over, according to L. M. Benkert, president of the Chelsea firm. Borg-Warner Co. manufactures transmissions for International Harvester.

The labor dispute of the Borg-Warner Co., pending since April 20, which had indirectly affected employment at the Chelsea Manufacturing Corp., was settled June 27 and the Chelsea plant will go on full-time schedule as soon as the annual vacation period is over, according to L. M. Benkert, president of the Chelsea firm. Borg-Warner Co. manufactures transmissions for International Harvester.

### 14 Years Ago...

Thursday, July 4, 1973—

The Chelsea High school athletic field is now equipped with floodlights. The six-pole, 24-light system was installed through the co-operation of the Kiwanis Club of Chelsea and the Chelsea Village Council.

Wilbert Breitenwischer, employed by the Washtenaw County Road Commission for 42 years and Chelsea Yard district foreman for more than 20 years, retired as of July 1.

The committee for the Florence Howlett Fund to purchase the old Beach school at 11000 Chelsea-Dexter Rd., reports a total of \$1,278 received to date.

Mrs. Herbert Lindow, who is taking a leave of absence, effective this week, after 13 years as office manager of Chelsea Manufacturing Corp., has been honored by the company and its personnel at farewell parties. She will leave Chelsea for an extended stay in Phoenix, Ariz.

Excavation work and gravel fill were completed last week-end on the E. Middle St. construction project. The gravel fill will be left to pack until fall when backtop is applied. New curbing and widening of the street are added features of the street improvement, one of the major projects of the 1963 village road program.

### 24 Years Ago...

Thursday, July 2, 1953—

Janet Widmayer, daughter of Mr. and Mrs. Harold Widmayer, is one of a group of 13 boys and girls from Washtenaw county who are attending Michigan 4-H Club Week at Michigan State College this week.

With the 2nd Infantry Division in Korea, Army M-Sgt. William D. Schrader, son of Mr. and Mrs. Walter Schrader, 1250 Wilkinson St., was recently awarded the nation's third highest combat award, the Silver Star, for gallantry in action in Korea.

The labor dispute of the Borg-Warner Co., pending since April 20, which had indirectly affected employment at the Chelsea Manufacturing Corp., was settled June 27 and the Chelsea plant will go on full-time schedule as soon as the annual vacation period is over, according to L. M. Benkert, president of the Chelsea firm. Borg-Warner Co. manufactures transmissions for International Harvester.

The labor dispute of the Borg-Warner Co., pending since April 20, which had indirectly affected employment at the Chelsea Manufacturing Corp., was settled June 27 and the Chelsea plant will go on full-time schedule as soon as the annual vacation period is over, according to L. M. Benkert, president of the Chelsea firm. Borg-Warner Co. manufactures transmissions for International Harvester.

### 14 Years Ago...

Thursday, July 4, 1973—

The Chelsea High school athletic field is now equipped with floodlights. The six-pole, 24-light system was installed through the co-operation of the Kiwanis Club of Chelsea and the Chelsea Village Council.

Wilbert Breitenwischer, employed by the Washtenaw County Road Commission for 42 years and Chelsea Yard district foreman for more than 20 years, retired as of July 1.

The committee for the Florence Howlett Fund to purchase the old Beach school at 11000 Chelsea-Dexter Rd., reports a total of \$1,278 received to date.

Mrs. Herbert Lindow, who is taking a leave of absence, effective this week, after 13 years as office manager of Chelsea Manufacturing Corp., has been honored by the company and its personnel at farewell parties. She will leave Chelsea for an extended stay in Phoenix, Ariz.

Excavation work and gravel fill were completed last week-end on the E. Middle St. construction project. The gravel fill will be left to pack until fall when backtop is applied. New curbing and widening of the street are added features of the street improvement, one of the major projects of the 1963 village road program.

### 24 Years Ago...

Thursday, July 2, 1953—

Janet Widmayer, daughter of Mr. and Mrs. Harold Widmayer, is one of a group of 13 boys and girls from Washtenaw county who are attending Michigan 4-H Club Week at Michigan State College this week.

With the 2nd Infantry Division in Korea, Army M-Sgt. William D. Schrader, son of Mr. and Mrs. Walter Schrader, 1250 Wilkinson St., was recently awarded the nation's third highest combat award, the Silver Star, for gallantry in action in Korea.

The labor dispute of the Borg-Warner Co., pending since April 20, which had indirectly affected employment at the Chelsea Manufacturing Corp., was settled June 27 and the Chelsea plant will go on full-time schedule as soon as the annual vacation period is over, according to L. M. Benkert, president of the Chelsea firm. Borg-Warner Co. manufactures transmissions for International Harvester.

The labor dispute of the Borg-Warner Co., pending since April 20, which had indirectly affected employment at the Chelsea Manufacturing Corp., was settled June 27 and the Chelsea plant will go on full-time schedule as soon as the annual vacation period is over, according to L. M. Benkert, president of the Chelsea firm. Borg-Warner Co. manufactures transmissions for International Harvester.

### 14 Years Ago...

Thursday, July 4, 1973—

The Chelsea High school athletic field is now equipped with floodlights. The six-pole, 24-light system was installed through the co-operation of the Kiwanis Club of Chelsea and the Chelsea Village Council.

Wilbert Breitenwischer, employed by the Washtenaw County Road Commission for 42 years and Chelsea Yard district foreman for more than 20 years, retired as of July 1.

The committee for the Florence Howlett Fund to purchase the old Beach school at 11000 Chelsea-Dexter Rd., reports a total of \$1,278 received to date.

Mrs. Herbert Lindow, who is taking a leave of absence, effective this week, after 13 years as office manager of Chelsea Manufacturing Corp., has been honored by the company and its personnel at farewell parties. She will leave Chelsea for an extended stay in Phoenix, Ariz.

Excavation work and gravel fill were completed last week-end on the E. Middle St. construction project. The gravel fill will be left to pack until fall when backtop is applied. New curbing and widening of the street are added features of the street improvement, one of the major projects of the 1963 village road program.

### 24 Years Ago...

Thursday, July 2, 1953—

Janet Widmayer, daughter of Mr. and Mrs. Harold Widmayer, is one of a group of 13 boys and girls from Washtenaw county who are attending Michigan 4-H Club Week at Michigan State College this week.

With the 2nd Infantry Division in Korea, Army M-Sgt. William D. Schrader, son of Mr. and Mrs. Walter Schrader, 1250 Wilkinson St., was recently awarded the nation's third highest combat award, the Silver Star, for gallantry in action in Korea.

The labor dispute of the Borg-Warner Co., pending since April 20, which had indirectly affected employment at the Chelsea Manufacturing Corp., was settled June 27 and the Chelsea plant will go on full-time schedule as soon as the annual vacation period is over, according to L. M. Benkert, president of the Chelsea firm. Borg-Warner Co. manufactures transmissions for International Harvester.

The labor dispute of the Borg-Warner Co., pending since April 20, which had indirectly affected employment at the Chelsea Manufacturing Corp., was settled June 27 and the Chelsea plant will go on full-time schedule as soon as the annual vacation period is over, according to L. M. Benkert, president of the Chelsea firm. Borg-Warner Co. manufactures transmissions for International Harvester.

### 14 Years Ago...

Thursday, July 4, 1973—

The Chelsea High school athletic field is now equipped with floodlights. The six-pole, 24-light system was installed through the co-operation of the Kiwanis Club of Chelsea and the Chelsea Village Council.

Wilbert Breitenwischer, employed by the Washtenaw County Road Commission for 42 years and Chelsea Yard district foreman for more than 20 years, retired as of July 1.

The committee for the Florence Howlett Fund to purchase the old Beach school at 11000 Chelsea-Dexter Rd., reports a total of \$1,278 received to date.

Mrs. Herbert Lindow, who is taking a leave of absence, effective this week, after 13 years as office manager of Chelsea Manufacturing Corp., has been honored by the company and its personnel at farewell parties. She will leave Chelsea for an extended stay in Phoenix, Ariz.

Excavation work and gravel fill were completed last week-end on the E. Middle St. construction project. The gravel fill will be left to pack until fall when backtop is applied. New curbing and widening of the street are added features of the street improvement, one of the major projects of the 1963 village road program.

### 24 Years Ago...

Thursday, July 2, 1953—

Janet Widmayer, daughter of Mr. and Mrs. Harold Widmayer, is one of a group of 13 boys and girls from Washtenaw county who are attending Michigan 4-H Club Week at Michigan State College this week.

With the 2nd Infantry Division in Korea, Army M-Sgt. William D. Schrader, son of Mr. and Mrs. Walter Schrader, 1250 Wilkinson St., was recently awarded the nation's third highest combat award, the Silver Star, for gallantry in action in Korea.

The labor dispute of the Borg-Warner Co., pending since April 20, which had indirectly affected employment at the Chelsea Manufacturing Corp., was settled June 27 and the Chelsea plant will go on full-time schedule as soon as the annual vacation period is over, according to L. M. Benkert, president of the Chelsea firm. Borg-Warner Co. manufactures transmissions for International Harvester.

The labor dispute of the Borg-Warner Co., pending since April 20, which had indirectly affected employment at the Chelsea Manufacturing Corp., was settled June 27 and the Chelsea plant will go on full-time schedule as soon as the annual vacation period is over, according to L. M. Benkert, president of the Chelsea firm. Borg-Warner Co. manufactures transmissions for International Harvester.

### 14 Years Ago...

Thursday, July 4, 1973—

The Chelsea High school athletic field is now equipped with floodlights. The six-pole, 24-light system was installed through the co-operation of the Kiwanis Club of Chelsea and the Chelsea Village Council.

Wilbert Breitenwischer, employed by the Washtenaw County Road Commission for 42 years and Chelsea Yard district foreman for more than 20 years, retired as of July 1.

The committee for the Florence Howlett Fund to purchase the old Beach school at 11000 Chelsea-Dexter Rd., reports a total of \$1,278 received to date.

Mrs. Herbert Lindow, who is taking a leave of absence, effective this week, after 13 years as office manager of Chelsea Manufacturing Corp., has been honored by the company and its personnel at farewell parties. She will leave Chelsea for an extended stay in Phoenix, Ariz.

Excavation work and gravel fill were completed last week-end on the E. Middle St. construction project. The gravel fill will be left to pack until fall when backtop is applied. New curbing and widening of the street are added features of the street improvement, one of the major projects of the 1963 village road program.

### 24 Years Ago...

Thursday, July 2, 1953—

Janet Widmayer, daughter of Mr. and Mrs. Harold Widmayer, is one of a group of 13 boys and girls from Washtenaw county who are attending Michigan 4-H Club Week at Michigan State College this week.

With the 2nd Infantry Division in Korea, Army M-Sgt. William D. Schrader, son of Mr. and Mrs. Walter Schrader, 1250 Wilkinson St., was recently awarded the nation's third highest combat award, the Silver Star, for gallantry in action in Korea.

The labor dispute of the Borg-Warner Co., pending since April 20, which had indirectly affected employment at the Chelsea Manufacturing Corp., was settled June 27 and the Chelsea plant will go on full-time schedule as soon as the annual vacation period is over, according to L. M. Benkert, president of the Chelsea firm. Borg-Warner Co. manufactures transmissions for International Harvester.

The labor dispute of the Borg-Warner Co., pending since April 20, which had indirectly affected employment at the Chelsea Manufacturing Corp., was settled June 27 and the Chelsea plant will go on full-time schedule as soon as the annual vacation period is over, according to L. M. Benkert, president of the Chelsea firm. Borg-Warner Co. manufactures transmissions for International Harvester.

### 14 Years Ago...

Thursday, July 4, 1973—

The Chelsea High school athletic field is now equipped with floodlights. The six-pole, 24-light system was installed through the co-operation of the Kiwanis Club of Chelsea and the Chelsea Village Council.

Wilbert Breitenwischer, employed by the Washtenaw County Road Commission for 42 years and Chelsea Yard district foreman for more than 20 years, retired as of July 1.

The committee for the Florence Howlett Fund to purchase the old Beach school at 11000 Chelsea-Dexter Rd., reports a total of \$1,278 received to date.

Mrs. Herbert Lindow, who is taking a leave of absence, effective this week, after 13 years as office manager of Chelsea Manufacturing Corp., has been honored by the company and its personnel at farewell parties. She will leave Chelsea for an extended stay in Phoenix, Ariz.

Excavation work and gravel fill were completed last week-end on the E. Middle St. construction project. The gravel fill will be left to pack until fall when backtop is applied. New curbing and widening of the street are added features of the street improvement, one of the major projects of the 1963 village road program.

### 24 Years Ago...

Thursday, July 2, 1953—

Janet Widmayer, daughter of Mr. and Mrs. Harold Widmayer, is one of a group of 13 boys and girls from Washtenaw county who are attending Michigan 4-H Club Week at Michigan State College this week.

With the 2nd Infantry Division in Korea, Army M-Sgt. William D. Schrader, son of Mr. and Mrs. Walter Schrader, 1250 Wilkinson St., was recently awarded the nation's third highest combat award, the Silver Star, for gallantry in action in Korea.

The labor dispute of the Borg-Warner Co., pending since April 20, which had indirectly affected employment at the Chelsea Manufacturing Corp., was settled June 27 and the Chelsea plant will go on full-time schedule as soon as the annual vacation period is over, according to L. M. Benkert, president of the Chelsea firm. Borg-Warner Co. manufactures transmissions for International Harvester.

The labor dispute of the Borg-Warner Co., pending since April 20, which had indirectly affected employment at the Chelsea Manufacturing Corp., was settled June 27 and the Chelsea plant will go on full-time schedule as soon as the annual vacation period is over, according to L. M. Benkert, president of the Chelsea firm. Borg-Warner Co. manufactures transmissions for International Harvester.

### 14 Years Ago...

Thursday, July 4, 1973—

The Chelsea High school athletic field is now equipped with floodlights. The six-pole, 24-light system was installed through the co-operation of the Kiwanis Club of Chelsea and the Chelsea Village Council.

Wilbert Breitenwischer, employed by the Washtenaw County Road Commission for 42 years and Chelsea Yard district foreman for more than 20 years, retired as of July 1.

The committee for the Florence Howlett Fund to purchase the old Beach school at 11000 Chelsea-Dexter Rd., reports a total of \$1,278 received to date.

Mrs. Herbert Lindow, who is taking a leave of absence, effective this week, after 13 years as office manager of Chelsea Manufacturing Corp., has been honored by the company and its personnel at farewell parties. She will leave Chelsea for an extended stay in Phoenix, Ariz.

Excavation work and gravel fill were completed last week-end on the E. Middle St. construction project. The gravel fill will be left to pack until fall when backtop is applied. New curbing and widening of the street are added features of the street improvement, one of the major projects of the 1963 village road program.

### 24 Years Ago...

Thursday, July 2, 1953—

Janet Widmayer, daughter of Mr. and Mrs. Harold Widmayer, is one of a group of 13 boys and girls from Washtenaw county who are attending Michigan 4-H Club Week at Michigan State College this week.

With the 2nd Infantry Division in Korea, Army M-Sgt. William D. Schrader, son of Mr. and Mrs. Walter Schrader, 1250 Wilkinson St., was recently awarded the nation's third highest combat award, the Silver Star, for gallantry in action in Korea.

The labor dispute of the Borg-Warner Co., pending since April 20, which had indirectly affected employment at the Chelsea Manufacturing Corp., was settled June 27 and the Chelsea plant will go on full-time schedule as soon as the annual vacation period is over, according to L. M. Benkert, president of the Chelsea firm. Borg-Warner Co. manufactures transmissions for International Harvester.

The labor dispute of the Borg-Warner Co., pending since April 20, which had indirectly affected employment at the Chelsea Manufacturing Corp., was settled June 27 and the Chelsea plant will go on full-time schedule as soon as the annual vacation period is over, according to L. M. Benkert, president of the Chelsea firm. Borg-Warner Co. manufactures transmissions for International Harvester.

### 14 Years Ago...

Thursday, July 4, 1973—

The Chelsea High school athletic field is now equipped with floodlights. The six-pole, 24-light system was installed through the co-operation of the Kiwanis Club of Chelsea and the Chelsea Village Council.

Wilbert Breitenwischer, employed by the Washtenaw County Road Commission for 42 years and Chelsea Yard district foreman for more than 20 years, retired as of July 1.

The committee for the Florence Howlett Fund to purchase the old Beach school at 11000 Chelsea-Dexter Rd., reports a total of \$1,278 received to date.

Mrs. Herbert Lindow, who is taking a leave of absence, effective this week, after 13 years as office manager of Chelsea Manufacturing Corp., has been honored by the company and its personnel at farewell parties. She will leave Chelsea for an extended stay in Phoenix, Ariz.

Excavation work and gravel fill were completed last week-end on the E. Middle St. construction project. The gravel fill will be left to pack until fall when backtop is applied. New curbing and widening of the street are added features of the street improvement, one of the major projects of the 1963 village road program.

## Vital Information Program

Sponsored By Park Comm.

Washtenaw County Parks and Recreation Commission is sponsoring a new program for senior citizens that will benefit all county residents. Entitled Vital Information Program for Very Important Persons or VIP-2, the program is designed to provide medical and other emergency information to those who might find an elderly person ill or injured. Names of relatives, doctors and types of prescribed medication for each participating senior citizen will be listed on a standardized form, placed in a plastic tube and secured to the inside of the elderly person's refrigerator. Consequently, neighbors and rescue personnel are able to obtain this critical information in emergency situations.

Introduced in Monroe county by the Sheriff's Department, this information program has been enthusiastically received by hundreds of senior citizens. Richard Marsh, the program's founder, explained that refrigerators are used "because they are fireproof and easily accessible."

The procedure to distribute the VIP-2 tubes will be as follows: 1) Letters of explanation with VIP forms attached will be available at all Senior Citizen centers in the county. Other places where they will be available are Washtenaw County Parks and Recreation, 2355 W. Stadium, Ann Arbor; Local public libraries; and local police and sheriff stations. If a group of Senior Citizens would like to have the forms distributed at their meeting they should contact Parks and Recreation or the Washtenaw County Sheriff Crime Prevention Department, 971-3400 ext. 84, to set up a date. 2) When someone completes a form, she or he will call the Washtenaw County Parks and Recreation office to make an appointment for installation of the tube and form.

3) Volunteers from the Washtenaw County Sheriff's Auxiliary or the Retired Senior Volunteer Program (RSVP) will come to put the form in the tube and secure it in place. All volunteers will have identification and are urged to present it to participants. Senior Citizens should ask to see identification if it is not presented.

4) The VIP-2 will follow a time schedule throughout the county which is divided into regions. WCPARC will try to complete as many installations as possible in each region before moving on to the next one. If the designated time has passed for a region, interested seniors should call and make other arrangements. Region I—June 1-17, Ypsilanti township, Superior township, Salem township, Augusta township; Region II—June 18-24, City of Ypsilanti; Region III—June 25-July 8, Lodi township, Saline township, Pittsfield township, York township, Milan, Saline; Region V—July 18-29, Webster township, Scio township, Ann Arbor township, Dexter Village; Region VI—Aug. 1-12, Lyndon township, Dexter township, Sylvan township, Lima township, Chelsea; Region VII—Aug. 8-19, Sharon township, Freedom township, Manchester township, Bridgewater township, Manchester.

5) All the information on the form is confidential and no copies or lists will be made of participants' names.

The Veteran's Administration Hospital in Ann Arbor has donated all of the tubes for the VIP-2. Tape to secure the information is being donated by Meijer Thrifty Acres. In addition, the Sheriff's Department and the RSVP are assisting the Parks Commission in sponsoring this program. The Sheriff's Department has informed all rescue personnel in the county of the program. RSVP is recruiting Retired Volunteers to assist in delivery of the tubes.

Questions regarding VIP-2 may be addressed to the Washtenaw County Parks and Recreation Commission at 994-2575.

You may receive supplemental security income and own a home of any value.

### Water Rates Wrangle

A bill that has won house approval would give Detroit suburbs a bigger voice in how the Detroit Water Department is run. It also would require an annual audit of the giant system, which provides water to not only the city of Detroit but 39 other communities as well.

The measure is sponsored by a Redford lawmaker, John Benne who's tried to win approval for such measure before, but unsuccessfully.

Besides the audits, the bill would expand the Board of Water Commissioners — which basically sets rate hikes—from seven to nine members, with four elected from the suburbs. Suburbs buy water from the city at rates the board sets but have complained they do not have true representation on the board.

Some Detroit lawmakers say the bill would just harass the city. They were able to tag on a line that would force the state to pay for the annual audits and require suburbs to audit their own operations, too.

Water rates have been steadily rising in the Detroit area, and some angry suburbs are wondering if it might not be because the system is improperly run.

It provides water for about 40 percent of Michigan residents.

### Gill Net Issue Still Tangles

It was in 1974





Mr. and Mrs. Stephen Donald Worley

## Elizabeth M. Leonard, S. Worley Are Wed in Ann Arbor Church

Elizabeth May (Betsy) Leonard, daughter of Mr. and Mrs. Walter Leonard, and Stephen Donald Worley, son of Mr. and Mrs. Donald Worley of 910 Arbdale, Ann Arbor, were married Saturday, June 25 in the First United Methodist church, Ann Arbor.

The six o'clock candlelight ceremony was performed by the Rev. Donald B. Strobe.

The bride, who was given in marriage by her parents, wore a white tulle, princess style gown with chapel length train. At the neckline and edging the wrists of the long fitted sleeves were heirloom chantilly lace from the wedding gown of the bride's grandmother, the late Hattie May Bartlett Gasser. The bride's gown had been the wedding gown of both her mother and her aunt, Mrs. Frederick Zemke, at their weddings.

The bride's mantilla veil was ordered by chantilly lace. She carried a cascade bouquet of white chrysanthemums, white roses, ranunculus and English ivy.

The bride's sister, Helen Kay Leonard of Ann Arbor, was maid of honor. Laura H. McMahon of Rosette Pointe Woods and Nancy J. Fultz of Holmdel, N. J., were bridesmaids. The bride's attendants were dressed identically in necked, floor-length, peach-colored tulle jersey gowns with matching long-sleeve bolero jackets. The full

skirts fell into soft pleats at the front of the empire waistline.

The bridesmaids carried deep peach colored nosegay bouquets of Sonja roses, carnations and baby's breath. They wore a small cluster of the baby's breath and peach-colored roses in their hair.

David Wayne Worley, of Ann Arbor, brother of the bridegroom, served as best man. Thomas W. Zemke, cousin of the bride, and James Hense, both of Ann Arbor, were ushers and all wore ivory-colored tuxedos with peach colored shirts and rose boutonnières. The bridegroom wore an ivory tuxedo with white shirt. The bride's father who escorted her to the altar, wore an ivory tuxedo with white shirt and boutonniere as did the bridegroom's father.

Mrs. Leonard, the bride's mother, wore a champagne-beige colored chiffon floor-length gown and cape with bodice of beige lace while Mrs. Worley, mother of the bridegroom, wore a floor-length rose-colored chiffon gown and white accessories.

After a dinner-reception at Campus Inn, the newlyweds left for a wedding trip to Hilton-Head Island, S. C. and on their return will make their home at 1433 Chestnut, Ypsilanti.

Attending the wedding from Colorado were the bride's aunt, Mrs. Lucian McClure of Ft. Collins, the bride's cousins, Mr. and Mrs. Paul Weibel and son Tim and daughter Amy, of Arvada, Mrs. Lloyd Boggs and son Ryan, of Estes Park. Others attended from Cincinnati, O., Barrington, Ill., and Valparaiso, Ind. Other guests from Michigan were from Onondaga, Jackson, Chelsea, Detroit, Northville, Dexter and Ypsilanti.

Both the bride and bridegroom graduated from Ann Arbor Pioneer High school. The bride is a senior at the University of Michigan, while the bridegroom is in his senior year at Eastern Michigan University, Ypsilanti.

## JC Auxiliary Plans Program For Next Year

On June 21, the Chelsea Jaycee Auxiliary held its first meeting of the 1977-78 season at the home of Louise Pontie. With President Barb Baker officiating, the planned program and budget for the new year were discussed and approved by the membership.

Popular projects such as Redball, Fluoride and Lunch With Santa will again be scheduled. New projects introduced to the program were Buckle Up Babe, Community Dental Fund and Dinner Theatre.

Plans for the near future include selling a new children's record album at Chelsea's upcoming outdoor art fair and sidewalk sales. The album, entitled "Hear-See-Do," stresses safety. Also, a family week-end campout has been scheduled for July 22-24.

Lou Tudor was presented with the Girl of the Month Award at Tuesday's meeting for donating more than 90 hours of her time to various Auxiliary activities. The meeting then adjourned and refreshments were served by Pam Lewis.

## Inverness Women's Golf Results

Women of Inverness Country Club played their regularly scheduled golf program on Thursday, June 23. Prizes were awarded for low gross, low net and now putts.

First flight winners were: Sallie Springer, 36 low net; Agnes Hasel-schwardt, 36 low net; Dorothy Hale, 36 low net; Yolaine Carignan, 46 low gross; Yolaine Carignan, 12 putts (low).

Second flight winners were: Jane Priest, 36 low net; Helen Wilson, 36 low net; Helen Wilson, 15 putts (low); Eleanor Douglas, 55 low gross.

Third flight winners were: Virginia Waha, 26 low net; Virginia Waha, 59 low gross; Eileen Brown, 14 putts (low).

## Strawberry Harvest in Full Swing

Strawberry season is now in full swing in southeast Michigan with several dozen growers throughout the metro county area offering a bumper crop of sweet berries to their Pick-Your-Own customers. Pickers will find that the cold spring weather did little to reduce the supply of berries and that with favorable conditions now through mid-July berries should be plentiful and reasonable for those who like to pick their own, says Roberta Lawrence, County Horticultural Agent.

Most growers sell by the pound, providing containers for pick-your-own customers but some still sell by the quart, either providing the baskets or leaving it up to the customer to bring his own. Pickers should phone the farm first if at all possible to determine when the best time is to come and pick, and whether or not they should provide their own containers says Roberta Lawrence, County Horticultural Agent.

Early varieties such as Redglo, Catskill, and Earldown are now in with Midway, Sparkle, and Guardian ripening a few days later. Pickers should ask the grower the advantages of the various varieties for freezing, jam, and shortcakes, says Roberta Lawrence, because the varieties do differ in size, firmness, and dessert or processing quality, especially for freezing.

All county extension offices throughout southeast Michigan can provide information on where to pick, says Roberta Lawrence, in addition to checking local newspapers under "good things to eat" and "farm produce" sections of the classified advertisement. Chambers of Commerce and the Michigan Department of Agriculture also have a bulletin called Country Carousel which lists all of the Pick-Your-Own farms in the state, listing the various fruits and vegetables available at each farm with phone numbers and locations, in addition to estimated picking dates.

Both the bride and bridegroom graduated from Ann Arbor Pioneer High school. The bride is a senior at the University of Michigan, while the bridegroom is in his senior year at Eastern Michigan University, Ypsilanti.



Mr. and Mrs. Ernest H. Hadley, II

## Debora Cundet, Ernest Hadley, II, Establish New Home in Dexter

Debora Ann Cuendet, daughter of Mr. and Mrs. Arthur Cuendet of 14621 Waldo Rd., married Ernest Henry Hadley, II, son of Mr. and Mrs. Ernest Hadley of 510 Arthur St., Saturday, June 18 in St. Paul United Church of Christ, Chelsea. The 3 p.m. ceremony was performed by the Rev. R. J. Ratzlaff.

For her wedding, the bride chose a white, lace trimmed silk and organza gown with a square neckline at the front and a long lace train. Pearl beads adorned the front lace overlay of the gown. Her floor-length, layered veil was also trimmed with lace and pearls. She carried a bouquet of white roses, blue and white daisies, and baby's breath with white silk ribbon streamers.

Maid of honor was Linda Brown of Chelsea. She appeared in a white gown with blue and white lace trim, and a long blue ribbon around her waist. The gown was styled with floppy sleeves, a scooped neckline and a ruffle around the bottom of the skirt. A white floppy-brimmed hat with a blue ribbon hatband completed her attire. She held a white basket of blue and white daisies and baby's breath accented with a blue ribbon.

Serving as bridesmaids were Mary Beth Milliken of Chelsea, Laurie Bycraft of Chelsea, and Cindy Hess of Saline. Their costumes matched that of the maid of honor.

Mrs. Cuendet, mother of the bride, wore a cream colored floor-length dress with a high collar and lace-covered bodice for the occasion. On her shoulder was a pink carnation corsage.

Mrs. Hadley, mother of the bridegroom, chose an aqua-green floor-length dress with a V-neckline and matching aqua-green jacket. She wore a yellow carnation corsage.

Attending as flower girl was Laurie Hadley, niece of the bridegroom, while ringbearer was Steven Cuendet, brother of the bride. Best man was Don Hadley of Chelsea, brother of the bridegroom. He was assisted by ushers Dave Boham, Gerald Milliken and Steve Check, all of Chelsea. Guest usher was Dick Gillespie.

Following the wedding, a reception was held at the Chelsea Rod and Gun Club. Marybeth Willan and Sue Adkins poured punch, while Liz Foster was in charge of the guest book.

Following a week-end wedding trip in Michigan, the newlyweds returned to Dexter where they now make their home.

BALOGH-NIEDERMEIER: Mr. and Mrs. Joseph D. Balogh of 236 E. Middle St. have announced the engagement of their daughter, Celeste Jeanine, to Jon Francis Niedermeier, son of Mr. and Mrs. Joseph J. Niedermeier of Cadillac. The bride-elect is a 1969 graduate of Chelsea High school and a 1976 graduate of the University of Michigan. Her fiancé attended Ferris State College, Big Rapids, and Cleary College, Ypsilanti, where he completed his studies in 1969. He is currently a self-employed carpentry contractor and is also a part-time antique dealer. A July wedding is planned.

## Energy Price Hikes Threaten State's Economy

If the cost of energy increases drastically, our national economy will not suffer too much strain, but Michigan will bear a heavy unemployment burden, predicts a Michigan State University economist.

Addressing a special Michigan legislative symposium on energy, Dr. Thomas Edens, assistant professor of agricultural economics, said higher fuel prices could be a disaster for the state's economy.

Edens sees a strong relationship between the state's high unemployment and Michigan's role as the nation's leading producer of durable goods — cars, construction, equipment and appliances.

As fuel prices increase, he explains, the price of all goods will inflate. To halt inflation, the government will act to slow the economy down, and that means increased unemployment with a drop in consumer spending for durable goods.

With 80 percent of Michigan's manufacturing workers involved in durable goods manufacture, Edens said, "Michigan could have a lot of unemployment."

## Babe Ruth Pirates Down Manchester

(Continued from page one)

Mark Barnes also collected base hits.

In the game at Manchester, the Pirates spotted a run to the Manchester No. 2 team in the first inning, then came back to score 20 big ones for an easy 20-5 win. Al Augustine struck out 14 in five innings on the mound for a fine pitching performance.

Everyone played for the Pirates, with some first-year men doing a fine job, including Leon Durgan, Warrington Parker, Don Marshall and Doug Burchett.

Subscribe today to The Standard!

## NOW ON TUESDAY NIGHTS CHICKEN BUFFET



with our Famous Deep-Fried Chicken and SPECIAL BARBECUED CHICKEN also mashed potatoes and gravy, dressing, and salad bar.

Serving from 4:30-9:00 at the CAPTAINS TABLE 8093 MAIN ST., DEXTER PH. 426-3811

# DANCER'S TRADE-IN SALE LEVI TRADE

Bring any old pair of jeans, any make, size, shape or form, and we will allow you \$3.00 on purchase of any Levi Jeans,

big bell, flairs or straight leg One Pair Per Person

FRIDAY and SATURDAY JULY 1-2 ONLY

\*Pre-washed not included

# DANCER'S

Chelsea's Friendly Dept. Store

**LESSONS at The Music Hutch**

DRUMS - GUITAR  
PIANO - ORGAN  
ALL TYPES BAND INSTRUMENTS

**The MUSIC HUTCH**  
8407 Main St., Dexter  
Ph. 426-4380  
OPEN FRIDAYS TILL 8 p.m.

**FOXY LADY**  
Finest in Professional Hair Care!

**107 W. MIDDLE, CHELSEA**  
**475-8196**

Open Tues. thru Sat.  
Thurs. and Fri. eve. appts.

**Carol, Jane, Denise, Carolyn**

**Congratulations**

J. F. Beaumont of Chelsea is the winner of the Dinner for Four Dine At Webers in Ann Arbor Drawing. We thank everyone who took the time to enter and wish you could have won too.

**Merkel CHELSEA**

**Sidewalk Festival**  
(Continued from page one)

Deadline for exhibit reservations is July 21 and cancellations in writing will be accepted no later than July 30. No entry fees will be refunded after that time.

General chairman for the Sidewalk Festival is Karen Johnson. For further information, she may be contacted at 475-7501 or call Eve Policht at 475-7601.

**CAROL'S CUTS**  
328 Wilkinson

**COOL CUTS FOR SUMMER**  
**475-7094**  
Appts. Only

**INSIST ON HOOVER**  
HIGH PERFORMANCE TRIPLE-ACTION CLEANING

**OUR SPECIAL BUYS SAVE YOU MONEY**

- ★ ALL STEEL AGITATOR
- ★ ALL ALUMINUM CHASSIS
- ★ 4 POSITION ADJUSTMENT
- ★ DISPOSABLE BAG
- ★ 3 POSITION HANDLE
- ★ FULL SIZE
- ★ POWERFUL MOTOR
- ★ TOOLS AVAILABLE

**SEE IT TODAY! WHILE QUANTITY LASTS**  
**Only \$59.95**  
Model U4123

**SUMMER SALES SAVINGS**

**at HEYDLAUFF'S**

Some Special Hoover Purchases to make your Summer Cleaning Easier ...

**HOOVER CONVERTIBLE ESTATE**

- ★ NEW FOR 1977
- ★ COMFORT GRIP HANDLE
- ★ NEW HEAVIER CONSTRUCTION
- ★ ALUMINUM CHASSIS
- ★ 3 POSITION HANDLE
- ★ 4 POSITION RUG ADJUSTMENT
- ★ DIRT FINDER HEADLAMP
- ★ FURNITURE GUARD
- ★ EXTRA LARGE ZIP CLOSE VINYL OUTER BAG
- ★ STEEL AGITATOR
- ★ NEW TOP-FILL DISPOSABLE BAG - 13 1/2 QT. CAPACITY
- ★ QUICK 'N' CLEAN BAG CHANGER
- ★ POWERFUL 2 SPEED MOTOR
- ★ TOOLS AVAILABLE

See the Entire Hoover Line in Our Showroom and Take Advantage of Sale Prices Now!

We will be closed all day Saturday, July 2

**HEYDLAUFF'S**  
113 N. Main St., Chelsea Ph. 475-1221





Mrs. Kirk Heard

## Kim Marie Miles, Kirk Heard Are Wed at St. Paul Church

Kim Marie Miles of Ann Arbor, daughter of Mr. and Mrs. N. H. Miles of 20735 Scio Church Rd., became the wife of Kirk Heard, son of Mr. and Mrs. Hubert Heard of 1478 Chelsea-Manchester Rd., Saturday, June 18, in St. Paul United Church of Christ, Chelsea. The 7 p.m. ceremony was performed by the Rev. R. J. Ratcliff before a gathering of 150 guests.

As she approached the altar, the bride was wearing a white, silk-like gown with an empire waistline, round neckline, stand-up collar and long, sheer sleeves. The sleeves and bodice of the gown were trimmed with white lace flowers as was her waist-length veil. She carried a long, streaming bouquet of yellow and white roses.

Maid of honor for the occasion was Susan Allen of Mountain Home, Ark. She appeared in a soft-knit light green gown with a darker green floral bodice which laced up the front. She held a bouquet of yellow roses nestled in an assortment of summer flowers.

Bridesmaids were Audrey Heard, sister of the bridegroom; and Bernice Pearson of Chelsea. They wore matching yellow gowns which varied in style, although all were fashioned with empire waistlines. Their bouquets were a mix of white and yellow flowers.

For her daughter's wedding, Mrs. Miles chose a green, A-line dress with a stand-up collar. A full-length green lace coat completed her attire. Mrs. Heard, mother of the bridegroom, appeared in a full-length blue dress with an empire waistline and puffy sleeves.

Attending as flower girl was Trisha Richardson of Chelsea. She was dressed in yellow. Ringbearer was Curtis Heard of Chelsea, who was dressed in a suit of brown.

Serving as best man was Anthony Clark of Chelsea. He was assisted by ushers Larry Hafner, Lance Fletcher and Anthony Willan. All wore brown tuxedos with yellow ruffled shirts and yellow boutonnières.

Following the wedding, a reception was held at the UAW Hall, Chelsea, by the parents of the bride, Mary Miles of Brighton, sister-in-law of the bride, and Karen Edwards of Dexter, sister of the bride, cut the cake, while Kathy Buck of Chelsea was in charge of the guest book.

After an overnight honeymoon at the Crystal House Motel, Ann Arbor, the newlyweds returned to their residence in Ann Arbor.

The former Miss Miles is a key-club graduate of Lansing Business University. Her husband is a graduate of Chelsea High school.

## What's cooking in Michigan

by Carl B. Olson  
Michigan Dept. of Agriculture

I remember a summer in Alpena when a group of us got together on a summer afternoon to fish, swim and, in general, just have a good time. In late afternoon we brought out an old hand-crank ice cream freezer to make delicious homemade ice cream.

There is something special about homemade ice cream. I'm not putting down any of the excellent Grade A products made in Michigan dairies. But, let's face it, there is a difference. Perhaps it's the arm power contributed, maybe the companionship of good friends, or just the fact that it's a lovely afternoon.

don't think this is a rapturous description of the ice cream we made that afternoon. It is not. Indeed, the ice cream never set, even after three hours of cranking. We must have made a grave error in mixing salt and ice in the freezer.

A recipe I use now, though, never fails and you might want to try it over the 4th of July holiday weekend. Beat 4 eggs until it thickens. Then add 6 cups of milk, 3 cups light cream, 1 cup heavy cream, 2 tablespoons of vanilla, and 1/2 teaspoon salt. Mix thoroughly. Have you noticed, as does the Michigan Department of Agriculture, that everything but the vanilla is a state product?

Put the mixture into the ice cream freezer, pack rock salt and ice around it according to directions with your unit and start cranking. After it thickens, cover with old sacks or newspapers and let the ice cream "ripen" for about 20 minutes. Then, dig in. Remember how the greatest pleasure was licking off the paddles?

## Students Want More Involvement In College Policy

Students want more involvement in university policy, but don't want to see students establishing major policy, a Michigan State University study of student attitudes shows.

The study, by Arvo E. Juola, professor and consultant on instructional evaluation, compared students of 1971 and 1975 and found general student desires for greater influence, more freedom, more options and generally less administrative control.

A student voice at the board-of-trustees-level was on the minds of 65 percent of the seniors and 80 percent of the freshmen.

More students in 1975 than in 1971 rejected abolishing grades, open admissions and having student evaluations influence faculty promotions, according to the MSU study.

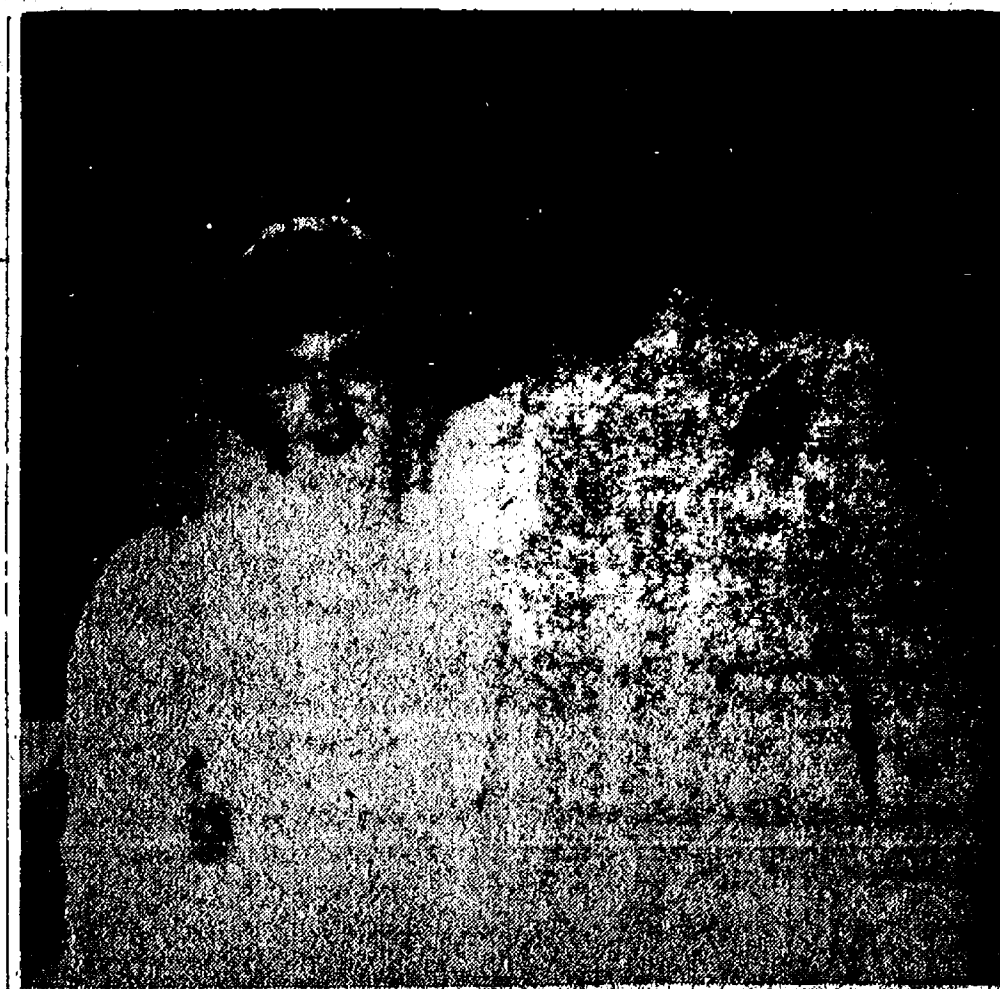
The students, however, were more supportive (more than 90 percent) of increased freedom for student publications, off-campus living, and selection of courses.

## You've probably got two lamps that need new shades.

We've got the shades.

Top of the Lamp

217 North Main Tel. 769-7019  
Across from a.a. old post office



Mr. and Mrs. Don A. Noye

## Deborah M. Packard, Don Noye Wed at Methodist Church

Deborah M. Packard, daughter of Mr. and Mrs. Gary Packard of 19678 North Territorial Rd., exchanged marriage vows with Don A. Noye, son of Mr. and Mrs. Frank L. Noye of Ann Arbor, Saturday, June 25, in First United Methodist church, Chelsea. The 4 p.m. ceremony was performed by the Rev. Marvin H. McCallum before a gathering of 300 guests.

Organist for the occasion was Doug Foreman of Chelsea. Prior to the ceremony, he also played "Evergreen" on piano.

As she approached the altar, the bride was wearing a white taffeta gown with a sheer overlay which she had made with the help of her aunt, Mrs. Judy Radant. The bodice of the gown was accented with daisy trim as was the bride's chapel length veil. She carried a bouquet of yellow sweetheart roses, yellow daisies and baby's breath.

Maid of honor was Kim M. Adams of Sterling Heights. She appeared in a mint green, floor-length dress styled with an empire waist and spaghetti straps. A co-ordinating flower print jacket covered the dress. She held a bouquet of mint green tinted daisies intermingled with baby's breath. Blossoms of baby's breath adorned her hair.

Serving as bridesmaids were Kathy Foreman of Gregory; Glenna Noye of Ypsilanti, sister of the bridegroom; Laura Aldrich of Ypsilanti, and Jeanette Harris of Chelsea, cousin of the bridegroom. Their gowns were styled to match the gown worn by the maid of honor though each was fashioned in a pastel shade of peach, pink, yellow or blue. Each of their bouquets was an arrangement of daisies tinted to match the shade of their dress. Each also wore a sprig of baby's breath in her hair.

For her daughter's wedding, Mrs. Packard chose a floor-length green gown with spaghetti straps and a matching, pleated, sleeveless jacket. On her shoulder was a corsage of yellow roses surrounded by white daisies.

Mrs. Noye, mother of the bridegroom, selected a floor-length baby blue gown with a matching long-sleeved jacket. She also wore a corsage of yellow roses surrounded by white daisies.

Attending as flower girl was Donna Jean Harris of Chelsea, cousin of the bridegroom, while ringbearer was Stephen Radant of Chelsea, cousin of the bride.

Best man was Neil O. Lindemann of Ann Arbor. He was assisted by groomsmen John McMullen of Saline, cousin of the bridegroom; Don Harris of Chelsea, cousin of the bridegroom; Gary Packard, Jr. of Chelsea,

brother of the bride; and John Packard of Chelsea, brother of the bride.

Soloist for the wedding was Kathy Treago.

Following the wedding, a reception was held at Chelsea Rod and Gun Club. During the reception, Jenny Bott cut the wedding cake; Beth Collins tended to the guests; Donna Craft, Linda Wahl and Dianne Van Gorder opened gifts; Terry Cameron poured punch and Lynn Castle poured coffee.

Also assisting were two of the bride's aunts, Michelle Gauthier and Colleen Collins, who were in charge of music; Glenda Geist and Nadine Packard, both aunts of the bride, who pinned flowers on guests at the reception; Jack Collins, who tended bar; and four other aunts of the bride, Marilyn Hopkins, Virginia Weese, Vivian Michelson and Donna McAllister, who were food helpers.

Hostesses for the reception were Gloria Greenleaf and Norene Collins, also aunts of the bride.

Several notable items of interest marked the nuptial celebration. The bride's tiara, the ringbearer's pillow and the bride's knife were all from the wedding of the bride's parents; and the marriage ceremony was witnessed by four grandmothers and three great-grandmothers of the bride and bridegroom. The bridal cake had been made by Mrs. Judy Radant, aunt of the bride.

Upon their return from a one-week wedding trip to Michigan's Upper Peninsula, the newlyweds will reside in Saline.

The former Miss Packard is a 1976 graduate of Chelsea High school and is a sophomore at Eastern Michigan University where she is majoring in special education.

Her husband is a 1975 graduate of Saline High school and is employed by Tamarack Plumbing and Heating, Saline. He also attends the Detroit Institute of Aeronautics at Willow Run Airport, Ypsilanti.

Telephone: Your Club News  
To 475-1371.

trying to  
get it together?  
free counseling:

- ★ Youth advocacy
- ★ runaways
- ★ families

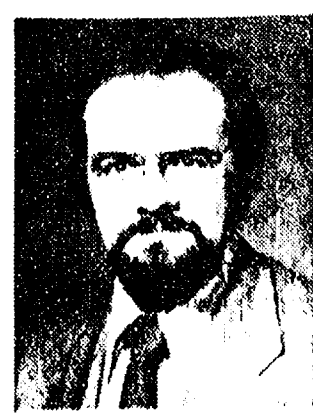
662-2222

ANN ARBOR

OZON HOUSE

## What is your biggest family liability?

For families buying their homes, it is probably their mortgage. Have you thought about mortgage insurance? Mortgage insurance makes sense. It is the best way to protect your family against their largest liability -- and it costs no more than the outstanding balance of your mortgage justifies. Ask us about mortgage insurance.



Dave Rowe

We're right in Chelsea at 107 1/2 South Main Street. Phone 475-8065.

FARM BUREAU  
INSURANCE  
GROUP

Farm Bureau Mutual • Farm Bureau Life • Community Service Insurance

## Seven Receive U-M Regents Scholarships

Seven area high school graduates have been selected Regents-Alumni Scholars for their "superior academic achievement and their potential contribution to the scholarly community of the University of Michigan."

Area recipients, all of whom plan to enter the University of Michigan this year, are Dorjan Jean Billik, 2635 W. Delhi Rd. and Mark Andrew Haney, 9200 Island Lake Rd., Dexter; Kim Denise Evans, 4985 Gallagher Blvd., David Thomas Lavey, 234 Putnam, and Robert Louis Muglia, 8327 Pleasant Lake Dr., Pinckney; Brian Lawrence Luchs, 8820 Lincoln, and Nina Shishkoff, 9214 Kearney Rd., Whitmore Lake.

A total of 1,083 outstanding Michigan high school graduates were chosen to receive the honor. A certificate for each Regents-Alumni Scholar has been sent to each student's high school. In addition, all scholars will receive a \$50 honorarium when they enroll at the University in September.

## Farmers Reminded To Report Acreages To ASCS Office

Farmers who have planted corn and/or spring barley and grain sorghum should report their acreage to the Agricultural Stabilization and Conservation Service (ASCS) by Aug. 15. Report wheat and/or winter barley acreage before harvest if possible, Mrs. Dorothy M. Howard, acting county executive director of the ASCS office advises.

"So far, 285 farmers in Washtenaw county have reported their plantings," according to Mrs. Howard. Farmers who have planted acreage in 1977-crops wheat, corn, grain sorghum or barley, and fail to report such acreage may be ineligible for program benefits in 1978," Mrs. Howard said.

According to proposed legislation, if the Secretary of Agriculture declares a set-aside for 1978 crops, 1977 planted acreage could be used to determine set-aside requirement. ASCS employees will make random checks of farms to verify that acreage reports are accurate.

The Michigan State University Library is recognized as one of the fastest growing research libraries in the nation.

## 34 Years Ago...

(Continued from page two)

will be succeeded by the Rev. C. S. Riley of Webberville, who was pastor of the Chelsea Methodist Church from 1923 to 1928.

Carolyn E. Kalmbach of Chelsea is among 13 undergraduates at Michigan State College who made straight-A scholastic averages

during the spring term just concluded. She is a sophomore in home economics.

Michigan State University is one of the top 10 universities in the United States in the receipt of graduate fellowships awarded competitively by the National Science Foundation.

Subscribe today to The Standard!

## THE CRACKLE BOX

731 Taylor St.  
Chelsea, Mich.

Ph. 475-8435  
(after 5 p.m.)

## JULY 2-3-4

10 a.m. to 5 p.m.

- ★ GEORGIAN LOVE BIRD (service for 12) .....\$300
- ★ 6 CLARK BRONSON PLATES (Limited Edition) \$60.
- ★ ROYAL RUBY 4 5-pc. place settings .....\$48
- ★ CAMBRIDGE "SQUARE," 24-pc. set .....\$152
- ★ JADITE, "Alice" pattern, service for 8 .....\$46
- ★ RIVIERA, service for 8 .....\$80
- ★ AZALEA, 20-pc. luncheon set .....\$95
- ★ 3-pc. (large plate, punch bowl and ladle) .....\$125

Also other antiques and collectibles  
from which to choose.

## CATS

CHELSEA AREA

## TRANSPORTATION SYSTEM

Transportation for the Senior Citizens,  
65 years and Older,  
and the Handicapped.

CALL 475-9494

between 9 to 11 a.m. or 1 to 3 p.m.

Service hours are 9 a.m. to 4:30 p.m. daily; Thurs., 9 to 1

## DUNBAR'S DEXTER LOCKER

PAUL DUNBAR, OWNER

8083 Main St., Dexter

Ph. 426-8466

## Fresh Frozen Berries & Fruit

Orders Must Be Placed By July 6 for First Shipment

30 lbs. STRAWBERRIES . \$16.90

28 lbs. RASPBERRIES . \$25.20

30 lbs. CHERRIES . \$19.50

30 lbs. PINEAPPLES . \$21.50

32 lbs. APRICOTS . \$19.98

32 lbs. PEACHES . \$16.50

and More!

- Also Featuring -

## BEEF SIDES lb. 93¢

Cut and Ready for Your Freezer

(Cutting statement furnished)

|  |                                      |                             |                           |
|--|--------------------------------------|-----------------------------|---------------------------|
| HICKORY SMOKED<br>SLICED BACON<br>CENTER CUT<br>\$1.29 lb. | Hamburger Patties<br>98¢ lb.         | Skinless Wieners<br>79¢ lb. | Sliced Bologna<br>79¢ lb. |
| SMOKED POLISH SAUSAGE<br>89¢ lb.                           | Breakfast Sausage Patties<br>98¢ lb. | ROASTING PIGS<br>75¢ doz.   | FARM EGGS                 |

Discount to Civic Groups - We Accept Federal Food Stamps

Custom Slaughtering & Processing

## BICYCLE LICENSES

Bicycle licenses are now on sale at the Chelsea Police Station.

Old bicycle licenses expire July 1, 1977, and new licenses must be displayed by that date.

## POLICE DEPARTMENT

VILLAGE OF CHELSEA

## MICHIGAN HOME-GROWN STRAWBERRIES

By the Case or Quarts  
You Pick or We Pick.

## FRESH HOME-GROWN PEAS

You Pick or We Pick

## NEW CALIFORNIA POTATOES ICE COLD WATERMELON

Other Fresh Fruits and Vegetables

FARM BAKED DONUTS and BREAD

## GEE FARMS

OPEN DAILY, 8 a.m. to 7 p.m.

14928 Bunker Hill Rd., Stockbridge

Ph. (517) 769-6772

M-52 north to Territorial, turn west, crossing M-106 to Bunkerhill Rd., north 1 1/2 miles to GEE FARMS.



## Letters to the Editor

to the Editor:

I am writing this letter as an outgoing member of the Chelsea Board of Education. I would like to express some of my personal opinions regarding some decisions made by the board in the past few months.

First, I would like to deal with the issue of the millage. Although everyone's taxes have increased in the past several years, the school district's income has NOT increased enough because of cuts in State Aid. This may not make sense, but it is true. Therefore, the board is faced with the problem of cutting programs.

Because of our decisions to cut certain programs, some people have said that the board is "inflexible." (I take this to mean that people feel we are unwilling to change our decisions.) The board follows laws laid down by the State of Michigan. State law says that a Board of Education may not KNOWINGLY deficit spend. In the case of driver education, for example, it would cost the district nearly \$9,000 in cash to offer the program this summer. Even though this \$9,000 could be partially reimbursed by the state next year, the outlay of the cash NOW would force us to deficit spend, which is against the law.

I do not believe in fund-raising campaigns or gifts to the district to finance certain school programs. These types of programs or donations make it possible for the more affluent people in the district to pay for certain extra-

curricular programs in which their children participate. This may provide one or two programs that please a few people, but this is not fair to the hundreds of other kids whose parents can't afford to provide the funds to run their activities. Therefore, I believe that the fair thing to do is to cut ALL extra-curricular activities.

As my term ends as a board member, I would like to remind taxpayers in Chelsea that the board consists of people chosen by the voters! As a board, these people do their best to make decisions according to state law that will provide a well-rounded and quality education on an EQUAL basis for all students.

In summary, I would like to repeat a statement that I made before: "School millage is the only tax that a taxpayer is privileged to vote upon." I feel that Chelsea has a fine school system, and I would hope that all voters could support the millage request.

Howard Haselschwardt.

Dear Editor:

It seems that some of our community's concerned voters have been given one item of incorrect information concerning the Beach school swimming pool. As a point of clarification the pool at this time has not been drained but will be later this summer. This will be done as a matter of routine maintenance. The purpose being to thoroughly clean the pool area that is normally underwater. While the pool is empty underwater lights, filters, analyzers, etc., may be serviced as needed. This procedure was to have been carried out between Aug. 6 and Aug. 28, if the summer program had been conducted. This is only an action of responsible maintenance on our community's investment.

Larry Reed, pool director

**You've probably got two lamps that need new shades.**

We've got the shades.

**Top of the Lamp**

217 North Main Tel. 769-7019 Across from a.a. old post office

**Please Notify Us of In Advance of Any Change in Address**

Please call us now

Our services are guaranteed

Our staff is well trained

Lovely in-ground pools

Sure it's not too early

### CRYSTAL CLEAR CO.

4757 Dexter-Pinckney Rd.

Ph. 426-4220

## RELAX...

Enjoy the Holiday With Leisure Clothes from Strieter's

SPORT

KNIT SHIRTS

\$10 up

HAGGAR

or

FARRAH

SLACKS

\$16 up

BERMUDA

and

TENNIS

SHORTS

FREEMAN

SHOES

See You at the Chicken Bar-B.Q. on Mon., July 4

STORE HOURS: 8 a.m. to 5:30 p.m. Mon. thru Sat.

### STRIETER'S MEN'S WEAR

Since 1914



Mr. and Mrs. Robert L. Taylor

**Carol Ann Heller, Robert L. Taylor  
Wed at Dexter Methodist Church**

Carol Ann Heller, daughter of Mr. and Mrs. Donald Alber, of 10701 Jackson Rd., Dexter, exchanged marriage vows with Robert Leland Taylor of Dexter, son of Mr. and Mrs. Richard Taylor of Fairfax, Va., Saturday, June 25, in Dexter United Methodist church. The 7-p.m. ceremony was performed by the Rev. James Hynes, of Dexter and the Rev. Richard Lyndon of Porter, Ind., before a gathering of 175 guests.

As she approached the altar, the bride was wearing a white Quiana gown with a flower pattern and lace trim which she had made with help from her grandmother, Mrs. Le-

Roy Heller of Chelsea. Her veil was also trimmed with lace.

Matron of honor was Mrs. Gary Koscielniak of Westland, aunt of the bride. She appeared in a white dress with a red flower print. A matching red polyester-crepe jacket completed her attire. She held a bouquet of red-tipped white carnations and baby's breath.

Serving as bridesmaids were Sandy Steers of Ann Arbor, sister of the bride; Terry Proctor of Ann Arbor, cousin of the bride; Judy Ralston of Dexter; and Connie Burritt. Their costumes were identical to the gown worn by the matron of honor.

For her daughter's wedding, Mrs. Alber chose a beige silk dress with a blue silk screen print on the skirt. Mrs. Taylor, mother of the bridegroom, appeared in a yellow sleeveless polyester gown.

Attending as flower girl was Holly Carol Koscielniak of Westland, cousin of the bride.

Best man for the occasion was Richard Taylor, brother of the bridegroom. He was assisted by ushers Ken Haight of Atlanta, Ga.; Paul White; Charles Steers of Dexter; brother of the bride; and Gul Do Torri.

Following the wedding, a reception was held at the Chelsea Fairgrounds Service Center for 175 guests. Beth Thalmann of Delton, cousin of the bride, was in charge of the guest book; Mrs. Darrell Pidd of Stockbridge, aunt of the bride, poured punch; Mrs. Richard Schultz of Wayne, aunt of the bride, poured coffee; Mrs. Richard Lyndon of Porter, Ind., and Mrs. Benjamin Powell of Dexter, both aunts of the bride, cut the wedding cake; and Krystal and Kimberly Lyndon, both of Porter, Ind., helped with gifts. Host and hostess for the reception were Mr. and Mrs. Vernon Thalmann of Delton, the bride's uncle and aunt.

At the conclusion of the reception, the newlyweds departed for a honeymoon in Toronto, Ont., Canada.

The former Miss Heller graduated from Dexter High school in 1973 and is a 1977 graduate of Eastern Michigan University. Her husband is a 1974 graduate of Dexter High school. He attends Michigan State University, East Lansing.

### Servicemen's Corner

Grass Lake Area

Youth Promoted By

Air Force in England

Clifford W. Hoffman, son of Mr. and Mrs. Harry J. Hoffman of 6014 Trist Rd., Grass Lake, has been promoted to technical sergeant in the U. S. Air Force.

Sergeant Hoffman, a veterinary service technician, is assigned at Lakenheath RAF Station, England, with a unit of the U. S. Air Forces in Europe.

The sergeant, a 1964 graduate of Grass Lake High school, received an associate degree from Jackson Junior Community College, Jackson.

**Arthur L. Kaiser, Jr.,  
On Destroyer Cruising  
In Mediterranean Area**

Navy Boiler Technician Fireman Arthur L. Kaiser, Jr., son of Samuel Howard and Blanch E. Howard of 3115 Mack Island, both of Grass Lake, is currently on an extended deployment in the Mediterranean Sea.

He is serving as a crewmember aboard the guided missile destroyer USS Farragut, homeported in Norfolk, Va. His ship is operating as a unit of the U. S. Sixth Fleet.

He and his fellow shipmates recently visited Athens and Turkey. During the remainder of the cruise, his ship is scheduled to participate in several training operations with other Sixth Fleet units and with ships of allied nations. In addition to the training exercises, several more port visits in Mediterranean countries are planned.

The Farragut is 512 feet long and carries a crew of 377 officers and enlisted men. She is outfitted with guns, torpedo tubes and an antisubmarine rocket launcher. Kaiser joined the Navy in June 1973.



**The Chelsea Standard**  
Ph. 475-1371  
300 N. Main Chelsea

**GET PROFESSIONAL carpet cleaning results!**  
(At do-it-yourself prices)

RENT OUR RINSE N VAC—the new portable, easy-to-use hot water extraction carpet cleaning machine that gently...  
• rinses carpet fibers with hot water and cleaning solution  
• loosens and lifts all dirt, grime and residue to the carpet surface where they are immediately vacuumed up  
• leaves your carpets CLEAN, FRESH and ODDOR-FREE!

**RINSE N VAC**  
CLEANS CARPETS CLEANER.  
KEEPS THEM CLEANER LONGER

Reserve RINSE N VAC for the day you want to get your carpets really clean

Rent for only  
**\$10 1/2 day**

**CHELSEA HARDWARE**  
110 S. MAIN ST. PHONE 475-1121

# Jiffy market

Big Enough To

Serve You . . . Small Enough To Know You!

Full Line Supermarket

BEER - WINE - LIQUOR

AUTHORIZED FOOD STAMP STORE

MARATHON GAS PUMPS

Corner Sibley  
and Werkner Rds.

PHONE 475-1701

Sale Prices Effective  
Thurs., June 30 thru Sun., July 3

**OPEN**  
**7 DAYS A WEEK**  
**7 a.m. - 10 p.m.**

TOP VALUE FOODS - GUARANTEED SATISFACTION - COURTEOUS SERVICE

### JIFFY MARKET'S FRESH MEATS FEATURING USDA CHOICE BEEF

U.S.D.A. CHOICE

**ROUND STEAK** . . . . . Full Cut lb. **\$1.49**

HAMBURGER THAT YOU CAN ENJOY

**HAMBURGER** . . . . . lb. **79¢**

YOUNG, LEAN, TENDER — SLICED IN CHOPS. EXCEPTIONAL GOOD BUY

**QUARTERED PORK LOIN** 9 to 11 Chops lb. **\$1.39**

COLBY LONGHORN

**STORE CHEESE** . . . . . At the Meat Counter lb. **\$1.29**

RE-PEAT-ER — FROM FARMER PEET

**SLICED BACON** . . . . . lb. **\$1.29**

FARMER PEET'S

**CHUNK BOLOGNA** . . . . . lb. **89¢**

FARMER PEET'S ALL-BEEF AND

**PLAYTIME FRANKS** . . . . . 1-Lb. Pkg. **89¢**

KRAFT'S

**MIRACLE WHIP** . . . . . Quart **97¢**

GOOD ANYTIME

**COCA-COLA** . . . . . 16-Oz. No-Return Bottles 8 pac **\$1.39**

CONTINENTAL BAKING COUNTRY STYLE

**WHITE BREAD** . . . . . 3 1 1/4-Lb. Loaves **\$1.00**

OPEN PIT, THE ORIGINAL

**BAR-B-QUE SAUCE** . . . . . 1-Pt., 2-Oz. (18-Oz.) **49¢**

KRUNCHEE REG. 79¢ - SAVE 20¢ BAG

**POTATO CHIPS** . . . . . 9-Oz. Bag **59¢**

U. S. GRADE A WHITE MEDIUM

**FRESH EGGS** . . . . . doz. **59¢**

BREAST O' CHICKEN

**TUNA, Chunk Style** . . . . . 6 1/2-Oz. Can **47¢**

CALIFORNIA U. S. NO. 1

**LONG WHITE POTATOES** . . . . . 10-Lb. Bag **\$1.29**

### FARM MAID DAIRY - CHELSEA'S FAVORITE!!

**HALF & HALF** . . . . . Quarts **49¢**

**CHOCOLATE MILK** . . . . . Quarts 3 qts. **\$1.00**

**HOMOGENIZED MILK** . . . . . Gallon **\$1.39**

### U.S.D.A. Choice Freezer Beef

SIDES - FRONTS - HINDS - LOINS - FULL RIB

Cut, Wrapped, Frozen To Your Specifications.

LOCAL FARM BEEF FOR SALE

CORN-FED BEEF AT ITS BEST!

Custom Cutting, Grinding, Wrapping and Freezing

### YOUR BEEF

QUICK SERVICE on HAULING and SLAUGHTERING

### JIFFY MARATHON GAS PUMPS

GAS

## 59.9

Includes All Taxes

THANK YOU — We Appreciate Your Business!

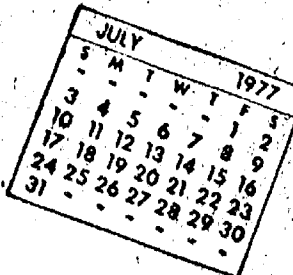
### JIFFY MARKET

**A One-Stop Store**

Gas - Household Supplies - Fresh Meat - Food Stamp Store  
Fresh Produce - Supermarket Groceries  
Beer - Wine - Liquor



## Community Calendar



Limaners, Thursday, July 7, at the home of Mrs. Lee Weiss. Potluck dinner at 12:30 p.m.

The dining room of Chelsea Community Hospital is available for women's club meetings in the fall, every second Tuesday of the month. If interested, call 475-2034.

Chelsea High Class of 1980 will meet July 9, 4 p.m. at the home of Tracy Cattell, 358 Washington St. to choose a Fair Queen candidate, discuss float ideas for the Community Fair Parade, and to collect delinquent dues of \$5. Everyone urged to attend.

All Senior Citizens meetings will be cancelled until further notice.

Chelsea Social Service hours are Thursday, 10 a.m. to 4 p.m., or call 475-1581, or 475-1012.

Sharon Township Planning Commission regular meeting third Wednesday of each month, adv42tf

Lyndon Township Board regular meetings the third Tuesday of each month, 7 p.m., in Lyndon Town Hall.

Sylvan Township Board meeting the first Tuesday of the month, at 7 p.m., at Sylvan Township Hall, adv42tf

Chelsea Jaycees are actively seeking new members among young men between the ages of 18 and 36. Meetings conducted the first Tuesday of each month, 7:30 p.m. Women's Auxiliary meets the third Tuesday of each month, 7:30 p.m. For more information, contact Bob Ponte, 475-9191, or Bob Smith, 475-2038.

Lima Township Planning Commission regular meeting the third Tuesday of every month, 8 p.m. at the Township Hall.

Sharon Township Board regular meeting first Thursday of each month, 8:30 p.m., adv42tf

Lyndon Township Planning Commission meets the second Thursday of the month at the Township Hall at 8 p.m., adv42tf

Inverness Country Club, euchre party and potluck, July 5, 6:30 p.m., at the clubhouse.

Chelsea Community Fair Horse Committee, Tuesday, July 5, 7:30 p.m. at the Fairgrounds Service Center. All committeemen requested to attend.

American Legion Hospital equipment is available by contacting Larry Gaken at 475-7391.

Chelsea Home Meal Service delivers one hot meal a day to elderly and disabled living in the Chelsea area. For information, call Carole Hoffmeyer, 475-8014, or Barbara Branch, 475-7644.

Ann Arbor Bicycle Touring Society's "One Helluva Ride," Saturday, July 16 for Midwest bicycling enthusiasts who will ride from Dexter to Hell, Mich. and back. Advance registration required before July 2. For further information, call Dave Knox, 985-5778, or write AABTS, 1921 Norway, Ann Arbor.

Lima Township Board regular meeting the first Monday of the month, 8 p.m. at Lima Township Hall.

Chelsea Co-op Nursery is now taking applications for the 1977-78 school year. To enroll, call Kay Johnson, 475-7765 or 475-8316, adv43tf

McKune Memorial Library hours are Monday, 10-5 and 7-9; Tuesday, 12-5; Wednesday, 12-5 and 7-9; Thursday, 10-3; Friday, 12-5 and 7-9; and Saturday, 12-5.

Tours of Chelsea Community Hospital and surgical center are available for small groups. To arrange for tours, call: Neva Jordan, 426-8027, or Dorothy Miller 475-8020.

Humane Society of Huron Valley has dogs and cats for adoption. Owners may reclaim their lost pets. Phone 662-5585. Open from 9 a.m. to 5 p.m. daily; Sunday, 1 p.m. to 5 p.m. 100 Cherry Hill Rd., one-fourth mile south of Plymouth Rd. at Dixboro.

## DEATHS

### Mrs. William R. Prather

Former Chelsea Resident Dies Following Long Illness  
Mrs. William R. (Nancy Lee) Prather, 32, of 766 N. Wilson Ave., Pasadena, Calif., a former Chelsea resident, died Sunday, June 26, at Huntington Memorial Hospital, Pasadena, following an extended illness.

Born on July 10, 1944 in Asbury Park, N.J., Mrs. Prather was a daughter of Bradford and Joan Newman Carter. She graduated from Chelsea High School in 1962, and had been a member of St. Paul United Church of Christ in Chelsea. She married William R. Prather on April 6, 1963 in Arizona. He survives.

Mrs. Prather was employed as a trust officer by the Glendale (California) Federal Savings and Loan Association and was a member of the California League. Also surviving are her parents, Mr. and Mrs. Julius Blass of Chelsea, her father, Bradford Carter of Maryland, two sisters, Mrs. Tom (Pat) Whitesall and Mrs. Dun (Judith) Erskine, both of Chelsea, three nephews, Tim and Steve Whitesall and Adam Erskine, her maternal grandmother, Edith Newman of Asbury Park, N.J. and her paternal grandmother, Ruth Carter of Northville, several aunts, uncles and cousins.

Cremation has taken place. Memorial services will be held at 2 p.m. Thursday, June 30 (today) at the Burghard Funeral Home, with the Rev. Carl W. Schwarm officiating. The family suggests that memorial contributions in Nancy's name may be made to the Michigan Diabetes Association or the Michigan Kidney Disease Foundation.

## LIBERTIES

A daughter, Jessica Jo, to Steven and Frances Smith of Saginaw, June 27, in Bay City. Maternal grandparents are Mrs. Carol Billot of Bay City and Francis Billot of Snover. Paternal grandparents are Mr. and Mrs. LaVerne Smith of Chelsea.

Please Notify Us  
In Advance of  
Any Change in Address



**PARTIALLY PLASTERED PASTOR:** The Rev. John R. Morris, pastor of Chelsea's Zion Lutheran church, will be greeting members of his congregation Sunday with a weighty addition to his ecclesiastical attire. On his left leg will be a full cast, the result of a basketball mishap that occurred last week-end while he was participating in a Lutheran campout at Stoney Lake near Muskegon. According to reports on the accident, the Rev. Morris was attempting to sink a basket from the far end of the court when the force of body thrust behind the effort ripped his Achilles tendon. Although he has been forced to postpone his athletic pursuits for the next two months, the Rev. Morris has found a way to circumvent the dilemma. Instead of action in the field, he has joined the spectator ranks at sporting events.

## HCMA Board Elects Officers

The Board of Commissioners of the Huron-Clinton Metropolitan (Park) Authority has elected officers for 1977-78. They are:

Chairman—Clifton W. Heller (Livingston county), who has served on the Board since May 15, 1973. He owns Heller's Flowers in Howell and was elected Mayor of the City of Howell six times.

Vice-Chairman—Thomas S. Welsh (Macomb county), who has served on the HCMA Board since March 26, 1961. He served three years as a Governor Appointee representing the district-at-large. He has represented Macomb county since December of 1984 and is Macomb County Public Works Commissioner.

Treasurer—Charles R. Shafer (Oakland county), who has served on the HCMA Board since May 20, 1976. He is president of Michigan National Bank-Oakland, which has 10 branch offices in South-

field and two in Waterford. He lives in Southfield.

They will serve one-year terms ending in June of 1978. Each was originally elected to the present post in an unusual mid-term election held Dec. 13, 1976 (because Jesse A. Rutherford, chairman since Jan. 10, 1976, died on Nov. 23, 1976).

The governing body of the Huron-Clinton Metropark system is a seven-member Board of Commissioners, including Governor Appointees: Eugene J. Ellison (St. Clair Shores) and Kurt R. Keydel (Detroit) plus County Representatives: Wayne—William E. Kreger; Livingston—Clifton W. Heller; Macomb—Thomas S. Welsh; Oakland—Charles R. Shafer; and Washtenaw—John H. Dillon.

The largest Huron-Clinton Metroparks include Metro Beach near Mt. Clemens, Stoney Creek near Rochester-Utica, Kensington near Milford, Hudson Mills near Dexter, Lower Huron near Belleville, Willow near New Boston and Oakwoods near Flat Rock.

## Jeffrey Sprague Posts All-A Record at Western Washington

Jeffrey Sprague, son of Mr. and Mrs. James Sprague of 3490 Clear Lake, Grass Lake, completed the second semester of his junior year at Western Washington State College, Bellingham, Wash., with an all-A or 4.0 grade point average.

A 1974 graduate of Chelsea High school, Sprague is majoring in environmental studies at Washington State.

## Fair Horse Show Committee To Meet

A meeting of the Chelsea Community Fair Horse Show Committee has been scheduled for Tuesday, July 5, 7:30 p.m. at the Fairgrounds Service Center. All committeemen are requested to attend.

Several issues raised during past months will be discussed.

Telephone Your Club News To 475-1371.

## Phyllis Buss Graduates With Honors at WMU

Phyllis H. Buss, daughter of Mr. and Mrs. Henry W. Buss of 110 Clardale Ct., has graduated summa cum laude from Western Michigan University, Kalamazoo, according to an announcement made by WMU Registrar Dennis E. Boyle.

Miss Buss, who earned a bachelor's degree from Western, was one of 1,300 persons receiving bachelor's degrees at the university's recent second semester commencement exercises.

Telephone Your Club News To 475-1371.

## Mary Ann Warren Earns Masters Degree At Michigan State

Mary Ann Warren, daughter of Mr. and Mrs. Wilbur Hanson of 545 Howard Rd., was recently awarded her Master of Arts degree from Michigan State University. She graduated from MSU's reading specialist program with high honors.

Mrs. Warren is currently employed by the Eaton Rapids Public School System as a reading specialist. She and her husband, Ron, have two children, Kristin, 10, and Kevin, 7.

GO

## GAMBLES

## Exterior House Paint Sale! PICK YOUR PRICE

GAMBLES EXTERIOR FLAT LATEX, White only ..... gal. **\$4.77**

GAMBLES HOMEGUARD White only. List \$10.49 ..... gal. **\$7.49**  
SAVE \$3.00

MARTIN SENOUR FLAT LATEX HOUSE PAINT White only. List \$10.80 ..... gal. **\$8.25**  
SAVE \$2.55

MARTIN SENOUR HOME STYLER White or Colors. List \$11.90 ..... gal. **\$8.95**  
SAVE \$1.95

MARTIN SENOUR GREAT LIFE FLAT LATEX White or Colors. List \$14.20 ..... gal. **\$10.95**  
SAVE \$3.25

MARTIN SENOUR GREAT LIFE SATIN GLOSS White or Colors. List \$15.40 ..... gal. **\$11.95**  
SAVE \$3.45

MARTIN SENOUR ALKLYD GLOSS White or Colors. List \$16.10 ..... gal. **\$12.25**  
SAVE \$3.85

## SHOP NOW & SAVE AT GAMBLES

110 N. MAIN

PH. 475-7472

Fran Coy invites you to her NEW salon...

## GRAND OPENING

This Holiday Week!!

Tuesday, July 5th thru Saturday, the 9th  
All Day from 9 a.m. to 9 p.m. Stop in!

★ Free Gift ★ Cookies (homemade) ★ Punch

**Fran Coy's**  
HAIR STYLISTS

**NEW • Unisex • Full-Service Salon**

Please Call: Meet and Visit Our Experienced Staff...

**665-7207**

**418 Wagner**

between  
Jackson & Liberty



Fran Coy



Ruth Blanchard



Jo Ann Uranga



Sandy Arnold



Cheryl (Martin) Berry



Shirley Wilson

# CHICKEN BAR-B-Q

**MONDAY, JULY 4**

**CHELSEA FAIRGROUNDS**

Serving from 12 Noon Until Sold Out  
2,000 Chicken Halves To Serve.

Sponsored By American Legion Post No. 31

# FIREWORKS

Beginning at Dusk

# ICE CREAM SOCIAL

ICE CREAM and CAKE ONLY

Serving Starts at 7 p.m.





## Real Estate

By PAUL FRISINGER

REALTOR

### NEVER ARGUE WITH SUCCESS

There is a sound philosophy based on the premise: "Never argue with success." If you have the urge to invest in real estate, listen to what some of the most successful investors have to say about it.

**Andrew Carnegie:** "Ninety percent of all millionaires become so through owning real estate. More money has been made in real estate than in all industrial investments combined. The wise young man or wage-earner invests his money in real estate."

**Marshall Field:** "Buying real estate is not only the best way, the quickest way, and the safest way, but the only way to become wealthy."

**John D. Rockefeller:** "The big fortunes in the future will be made in real estate."

**John Jacob Astor:** (He's a little more specific.) "Buy on the fringe and wait. Buy land near a growing city! Buy real estate when other people want to sell. Hold what you buy."

If there is anything we can do to help you in the field of real estate, please phone or drop in at FRISINGER REALTY CO., 935 S. Main St., Chelsea, Phone: 475-8881; evenings 475-2621. We're here to help!

## Chelsea Delegates Attend State DAV Convention

"Well-organized" and "productive" were the key words used by Chelsea's three-member delegation to describe the 52nd annual convention of Disabled American Veterans of Michigan, held at the Hyatt Regency Hotel, Dearborn, June 16-19.

Chelsea representatives included Kermit Sharp, DAV Chapter 13 commander; Bill Pierce, officer of the day; and Bessie Sharp, DAV Ladies Auxiliary Unit 13 senior vice-commander.

Others attending from Washtenaw County DAV Chapter 13 were Larry Hooper of Whitmore Lake, adjutant; Bill Isola of Ann Arbor, sergeant-at-arms; and Reuben Swisher of Ann Arbor, past commander. From the Washtenaw County Ladies Auxiliary Unit 13 were Charlotte Apple of Ann Arbor, commander; Margaret Bailey of Ann Arbor, adjutant; Virginia Busch and Ruth Otto, both of Ann Arbor; and Alma Hooper of Whitmore Lake.

During the four-day convention, appearances were made by many dignitaries from local, state and national levels including Michigan Lt. Governor James J. Damman; Michigan Congressional leaders;

heads of all Michigan Veterans organizations; heads of Michigan Veterans Administration Hospitals; and others who wished the officers and delegates of the DAV success in their convention.

The convention program consisted of four business sessions, many committee meetings and a banquet. Some 600 members and guests were present for the banquet, held in the Hubbard Ballroom of the hotel on the evening of June 18.

Wrapping up the affair was the election and installation of officers for the 1977-78 year, conducted June 19. Officers for the coming year are Harold Cobb of Sault Ste. Marie, commander; Delbert Copinger, senior vice-commander; George Zosack, first junior vice-commander; Orlan Foster, second junior vice-commander; and James E. Cole of Sault Ste. Marie, third junior vice-commander. Cole is one of the first Vietnam veterans to hold high office in the DAV organization.

Next year's Michigan Disabled American Veterans Convention will be June 15-18 at Sault Ste. Marie.

## Todd Headrick Attends Student Police Session

Todd Headrick, a Chelsea High school junior, attended the American Legion sponsored Student Trooper Program, June 20-24. Headrick was one of 60 finalists in the state selected to participate in the program. He represented the American Legion 2nd District and Chelsea American Legion Post 31.

Participants in the Student Trooper Program attend the Michigan State Police Training Center in Lansing where they engage in a first-hand examination of law enforcement philosophies, functions, procedures and training.

The program teaches youth to appreciate and respect law enforcement agencies and often launches youth into a career in that field.

To be eligible for the program, applicants must demonstrate a wholesome attitude towards law and order as evidenced by a personal history of respectable citizenship, mental alertness and leadership abilities. Applicants must also be high school juniors with a satisfactory scholastic record, and must be in good health.

Participants in the Student Trooper Program are selected by the American Legion District Com-

(Continued on page 12)

# THE CHELSEA STANDARD

Second Section

CHELSEA, MICHIGAN, THURSDAY, JUNE 30, 1977

Pages 7-12

## Chelsea Fitness Trail Under Construction Around Grounds of Medical Center Complex

Physical fitness devotees and area residents on fitness building programs will soon be able to stride into shape through use of a unique exercise concept, the Chelsea Fitness Trail. Currently under construction around the Chelsea Medical Center complex, the community-oriented jogging course is scheduled to open within the next eight weeks.

Modeled after a fitness innovation which originated in Switzerland in the late 60's, the Chelsea Fitness Trail will feature a six-foot wide, mile and one-half long wood chip path, sprinkled with 15 exercise stations at 50 to 100-ft. intervals along the path. The entrance and finish to the course will be at the rear of Pierce Park on Main St.

The course has been scientifically designed to help people of all ages and varied fitness levels maintain good physical condition. If followed as prescribed, the estimated one-hour run through the course and its exercises will produce results equivalent to a one-hour work-out in gymnastics.

Geared to promote flexibility and muscular development, the Chelsea Fitness Trail will begin with a warm-up stretch at the start of the course and will conclude with a cooling down stretch at the finish. The most strenuous portions of the course will be in between the former and latter stretches. Along the way, exercises to be performed include jumping jacks, bending, chin-up, push-ups, sit-ups, twisting and balancing.

Signs at the exercise stations will inform trail runners which exercise is to be done, how to do it, and the number of times it is to be repeated. The signs, as well as all other parts of the course, will be made from natural materials to blend with the natural environment of the course location.

Total cost to construct the Chelsea Fitness Trail has been estimated at \$1,000. The project is being funded by a donation from the Chelsea Child Study Club with the Chelsea Recreation Council handling the disbursement of funds. The Washtenaw County Parks and Recreation Department is also lending its support to the project.

Labor for construction of the trail is being provided by the Chelsea Jaycees, Cub Scouts, Boy Scouts and community volunteers. Others involved on a volunteer basis include Chelseaite Harold Davis, who will do the lettering for all trail signs, and Brown's Welding of Chelsea, which will donate welding services to the project where needed. Alice Tite, a Chelsea Community Hospital employee, is responsible for initiating and co-ordinating the sea Fitness Trail project.

Preliminary work already completed on the Chelsea Fitness Trail includes all bulldozing, and the cutting and painting of signs to be used in marking the course. Those who contributed labor and equipment to the bulldozing effort are Carl and Rufus Goins, Bob Baker, Hap Baker, Bob Ponte and Dr. F. S. Van Reese.

Hand grading and clearing of the trail has been scheduled for July 9 and will be done jointly by the Jaycees, Cub Scouts and Boy Scouts. Community volunteers are also welcome. Anyone interested in assisting with the project should call Bob Ponte at 475-9191.

Land being used for the Chelsea Fitness Trail is primarily owned by Chelsea Community Hospital although portions of the trail transect some privately owned land. In both instances, permission to use the land for the trail has been granted free of charge.

Persons using the exercise course for therapy reasons are urged to consult their physicians for approval prior to using the course. Hospital patients, athletes, joggers and families are all expected to use the course at various times during the day. The course, which can accommodate more than 1,000 persons per day, will be open during regular park hours.

Maintenance of the Chelsea Fitness Trail will be supervised jointly by the Chelsea Recreation Council and Chelsea Community Hospital. Both will contribute to a maintenance fund on an estimated \$1 per day basis.

Chelsea's fitness course, when complete, will be the second one built in Michigan. The first was constructed in Ann Arbor several years ago and is now the subject of widespread use in the county. Other fitness trails modeled after the Swiss original mal also be found in several cities nation-wide, including Brookings, S. D., Tulsa, Okla., and Charlotte, N. C.

Zebco Division Brunswick Corp. began the planning which led to the introduction of this exercise concept in the United States.



**CHELSEA FITNESS TRAIL:** Gathered around a rather nondescript wooden stake which marks the end of the new Chelsea Fitness Trail, now under construction around the Chelsea Medical Center complex, are volunteers who helped bulldoze the course and organizers, supporters, and financiers of the project. The mile and one-half long jogging trail will begin and end at Pierce Park and will feature 15 exercise stations to challenge fitness buffs and persons on fitness therapy programs. Pictured, from left, are Nancy Grau, president of Chelsea Child Study Club which is funding the project; Bob Baker, internal vice-president of the Chelsea Jaycees with volunteering labor for the project; Bob Ponte, president of the Chelsea Jaycees; Carol Kvarnberg, treasurer of Chelsea Recreation Council which is disbursing the donated funds; Alice Tite, project initiator and co-ordinator; and Carl Goins, work chairman for the Chelsea Fitness Trail.

## U-M Regents - Alumni Scholarships Awarded

Eight local area graduates are among 1,033 outstanding Michigan high school graduates planning to enter the University of Michigan this year, who were named Regents-Alumni Scholars by the university.

Each year the U-M selects Regents-Alumni Scholars for their superior academic achievement and their potential contribution to the scholarly community of the University of Michigan.

The local area scholars are Kimberly A. Brown of 2098 Brown Dr. and Delany L. Seitz of 111 Arden Lane, both of Chelsea; Dorian J. Bilik of 2635 W. Delhi Rd. and Mark A. Haney of 9200 Island Lake Dr., both of Dexter; Kim D. Evans of 4985 Gallagher Blvd., David T. Lavey of 234 Putnam, and Robert L. Muglia of 8827 Pleasant Lake Dr., all of Pinckney; and Carolyn J. Hubbard of 1184 Grandview Dr., Grass Lake.

This year there were more than 1,900 candidates from 472 Michigan high schools in contention for the scholarship honor, according to Ivan W. Parker, chairman of the

U-M Regents - Alumni Selection Committee.

U-M alumni play an active part in the selection procedure. Finalists, chosen from all applicants for freshman admission, are referred to local U-M alumni for interviews and recommendations. Some 200 alumni participated this year.

A certificate for each Regents-Alumni Scholar has been sent to the Scholar's high school. All Scholars will receive a \$50 honorarium when they enroll in the U-M in September. Financial need is not a consideration in the selection of Regents-Alumni Scholars.

## Hospital Dining Room Available to Clubs

The Chelsea Community Hospital Auxiliary has announced that the hospital dining room will be available to local women's clubs for meetings on the second Tuesday of each month, beginning in the fall. Interested groups should call 475-2034 for arrangements and more information.

## Children's Theatre Workshop Classes Start Tuesday

Chelsea Players have finalized their plans for this summer's annual Children's Theatre Workshop. Classes will begin Tuesday, July 5, in the First United Methodist Church Education Building on Park St.

Course offerings include acting and dramatics; mime, clowning and make-up; set design, construction and lighting; and dance and movement.

Registration for the workshop will be Friday, July 1, 1 p.m. to 4 p.m., at Chelsea State Bank; and Tuesday, July 5, 9 a.m. to 10 a.m. at the first class meeting.

## RICARDO'S

Professional Hair-Styling Men and Women

Thursday and Friday evening appointments.

475-1671

107 N. Main Chelsea

# RICK'S MARKET

20490 M-52

"The Store with the Spartan on the Door"

Phone 475-2898

12-OZ. CANS  
**DIET 7-UP**  
**7-UP**  
**Orange Crush**  
**GRAPE**  
**FROSTIE**  
**6 pac \$1.09**

DEL MONTE  
**CATSUP**  
20-Oz. Bottle **59¢**

SPARTAN  
**SANDWICH**  
**COOKIES**  
1 1/2-Lb. Box **57¢**

BORDEN'S  
**SUNDAE CONE** 6 pac **73¢**

**RICK'S HOT BREAD DAILY**

Weekdays by 3:30 p.m. Sat. & Sun., by 10:30 a.m.

(QUANTITY RIGHTS RESERVED)

ECKRICH  
**FRANKS**  
Reg. or Jumbo  
1-Lb. Pkg. **\$1.09**

NABISCO  
**SNACK**  
**CRACKERS**  
Assorted Flavors  
**65¢**

SPARTAN FROZEN  
**GREEN**  
**PEAS**  
10-Oz. Pkg. **27¢**

BANQUET FROZEN  
**FRIED**  
**CHICKEN**  
2-Lb. Pkg. **\$1.99**

SUNSHINE  
**KRISPY**  
**CRACKERS**  
Saltines or Unsalted  
1-Lb. Box **57¢**



**Ads  
Taken  
Full 1 p.m.  
Tuesday**

# PUT IT IN THE WANT ADS FOR RESULTS

**Just  
Phone  
475-1371**

## WANT ADS

### The Chelsea Standard

#### WANT AD RATES

PAID IN ADVANCE—All regular advertisements, 75 cents for 25 words or less, each insertion. Count each line as 10 words. For more than 25 words add 3 cents per word for each insertion. "Blind" ads or box number ads, 50c extra per insertion.

CHARGE RATES—Same as cash in advance, with 25 cents bookkeeping charge if not paid before 1 p.m. Tuesday preceding publication. Pay in advance, send cash or stamps and save 25 cents.

DISPLAY WANT ADS—Rate, \$1.40 per column inch, single column width only. 8-point and 14-point light type only. No borders or boldface type. Minimum 1 inch.

CARDS OF THANKS or MEMORIALS—Single paragraph style, \$1.50 per insertion for 50 words or less; 5 cents per word beyond 50 words.

COPY DEADLINE—1 p.m. Tuesday week of publication.

ERRORS—Advertisers should check their ads the first publication. This newspaper will not be liable for failure to publish an ad or any typographic errors in publication except to the extent of the cost of the ad for the first week's insertion. Adjustment for errors is limited to the cost of position of the ad wherein the error occurred.

FOR RENT—Fair Service Center for meetings, parties, wedding receptions, etc. Weekdays or week-ends. Contact John Wellnitz, phone 475-1518. x31tf

SAND GRAVEL

### KLINK EXCAVATING

Backhoe - Backhoe  
Road Work - Basements  
Trucking - Crane Work  
Top Soil - Demolition  
Drainfield - Septic Tank  
Trenching, 5' up

Industrial, Residential, Commercial  
CALL 475-7831 13tf

### J. R. CARRUTHERS

LICENSED  
RESIDENTIAL BUILDER  
CUSTOM HOMES  
ADDITIONS/FIREPLACES  
PATIO  
ROOFING/SIDING/REPAIRS

475-7234

CHELSEA 30tf

CAR RENTAL by the day, week-end, rental or month. Full insurance coverage, low rates. Call Lyle Christwell at Palmer Motor Sales, 475-1301. 25tf

### Fireplace Builder

Field stone mason, block and brick mason, tuck pointing.  
FREE ESTIMATES  
Call 475-8025 after 3 p.m.

### Patrick Grammatico

440tf

### Kitchen Help Wanted

From 7 a.m. to 1 p.m.  
Mon. thru Friday.  
Apply in person.

### Chelsea Restaurant

119 S. Main, Chelsea 34tf

MOVING SALE—Franklin 82-in. davenport and two chairs. Early American. Call 475-8497. x3

FOR SALE—Deluxe Whirlpool washer and dryer, \$300. Realistic stereo tape deck, \$60. Ph. 475-8746. x3

## WANT ADS

### HILLTOP, INC.

8316 WERNER RD., CHELSEA

### We Do It All!

PLUMBING  
HEATING  
ELECTRICAL  
SEPTIC TANKS & DRAINFIELDS

REPAIR - REMODELING  
CONTRACTING

BY

"THE SPECIALISTS"

Robert Shears, Master Plumber  
Gail Shears, Journeyman  
Call 475-2949

FREE ESTIMATES

x31tf

ROOFING SPECIALIST—All types of roof repairs, homes, barns, commercial. Insurance repairs. Asphalt shingles, hot built-up roofing, cedar-slate tile-asbestos. Awnings and porch enclosures. Siding and storm windows. Call Joe Hayes for free estimates. Manchester, 428-8520. x39tf

RADIO & PHONOGRAPH REPAIR

CB Sales & Installation

THE MUSIC HUTCH

8407 Main St., Dexter

426-4380 x52tf

FOR SALE—60" aluminum camper top with two access doors. Best offer. Ph. 475-2419. x2tf

### Moving Sale

FURNITURE—Early American. Good quality furniture in excellent condition for living, dining, family and bedroom.

DISHES—Service for 12. Noritake china. Perfect condition.

GLOBE—12-inch, lighted with floor stand.

AQUARIUM TANK—22 gal. and accessories.

PRINTING PRESS—Small with trays of type.

CAMPING VAN—Dodge '71. Fully self-contained. Top raises 24 inches electrically. Air conditioning, power steering, power brakes, speed control, electronic miles per gallon gauge, 318 engine, 127 inch wheelbase. Very deluxe and very clean. 20,000 miles.

KODAK CAROUSEL slide trays—80 slides. \$1.25 ea.

FAN—26" High volume, 3-speed.

PICNIC TABLE—Western pine, 6 ft.

TOOLS—Pipe threading and wrenches.

ANIMAL CAGES—Several, new. 12"x12"x24" top opening. \$4 ea.

SHIPPING BOXES—New. Wood. Several. 5"x10"x18". \$1 ea.

Call 475-8467

x3

DRY CLEAN your carpets with HOST and save. Faster, easier than shampooing. Rent the machine. Merkel Home Furnishings, Chelsea, 475-8621. x3

MOVING OUT OF STATE SALE—Couch, chairs, tables, baby furniture, misc. household items. Thursday, Friday, 10 to 12. 8535 Orchard Rd. off McGregor, Pinckney. x3

FOR SALE—Dodge '71 Camping Van. Fully self-contained. Top raises 24 inches electrically. Air conditioning, power steering, power brakes, speed control, electronic miles per gallon gauge, 318 engine, 127-inch wheelbase. Very deluxe and very clean. 20,000 miles. Call 475-8467. x3

GIANT FLOOR PILLOWS, filled with shredded foam, 4 1/2 ft. diameter, can seat 2 adults. One all black, one yellow and black. Both for \$100 or \$80 for one. Ph. 475-2426. x3

## WANT ADS

### LEONARD REITH

### Master Plumber

Licensed Electrician

### Hot Water Heat

18238 N. Territorial

Rd.

Chelsea, Mich. 48118

Phone: 475-2044

FOR RENT—American Legion Hall. \$50. Call 475-7521. 40tf

BODY SHOP

COMPLETE FULL TIME

Estimates Available

PALMER FORD

222 S. Main 475-1301

MOVING SALE—Captain's chairs. Ethan Allen solid maple. Call reasonable. Call 428-2573. x3

### THORNTON

475-8628

STARTER HOME in Dexter! 2 bedrooms. Partially carpeted. Insulated garage with workbench. Enjoy a beautiful backyard view of Mill Creek.

SUMMER COTTAGE for \$23,900! 2 bedrooms, fireplace. Washer and dryer included. Storage shed. New roof in 1974. Needs some repair. Access to Sugar Loaf Lake.

MOBILE HOME situated on approx. one well landscaped acre. Dining room, 2 bedrooms, some carpeting. Separate 2-car garage. Mint condition! \$26,900.

EASY TO MAINTAIN retirement home built with quality and craftsmanship that shows. 3 spacious bedrooms, 2 baths, dining room, rec. room in basement. Excellent condition. Chelsea Village. \$54,500.

VACANT

ROLLING AND BEAUTIFUL—2-acre building site. Many trees. Nice location. Chelsea schools. \$11,500.

LAKEFRONT LOT—Great place to build that summer cottage! Electric already in. \$12,500 with anxious owner!

BUILDING SITES—Five 1-acre parcels—some wooded, some lake privileges. Near golf course. \$13,500 and \$14,500.

ROBERT H.

THORNTON

JR., P.C.

REALTOR

Pat Starkey 475-9544

Mark McKernan 475-8424

Lang Ramsay 475-8138

Chuck Walters 475-2808

Mike McPhillips 517-467-7982

Chuck Cresswell 688-6708

Helen Lancaster 475-1198

475-1198

475-1198

475-1198

475-1198

475-1198

475-1198

475-1198

475-1198

475-1198

475-1198

475-1198

475-1198

475-1198

475-1198

475-1198

475-1198

475-1198

475-1198

475-1198

475-1198

475-1198

475-1198

475-1198

475-1198

475-1198

475-1198

475-1198

475-1198

475-1198

475-1198

475-1198

475-1198

475-1198

475-1198

475-1198

475-1198

475-1198

475-1198

475-1198

475-1198

475-1198

475-1198

475-1198

475-1198

475-1198

475-1198

475-1198

475-1198

475-1198

475-1198

## WANT ADS

### VACUUM CLEANERS

Authorized Electrolux sales and service.

### James Cox

428-8444, or 428-8686

118 Riverside Dr., Manchester

48tf

MOVING SALE—Dishes. Noritake china. Service for 12. Perfect condition. Call 475-8467. x3

### Complete

Body Repair

Service

Bumping - Painting

Windshield and Side Glass

Replacement

Free Pick-up & Delivery

Open Monday Until 9

CONTACT DON KNOLL

FOR FREE ESTIMATE

475-9153

475-9153

475-9153

475-9153

475-9153

475-9153

475-9153

475-9153

475-9153

475-9153

475-9153

475-9153

475-9153

475-9153

475-9153

475-9153

475-9153

475-9153

475-9153

475-9153

475-9153

475-9153

475-9153

475-9153

475-9153

475-9153

475-9153

475-9153

475-9153

475-9153

475-9153

475-9153

475-9153

475-9153

475-9153

475-9153

475-9153

475-9153

475-9153

475-9153

475-9153

475-9153

475-9153

475-9153

475-9153

475-9153

475-9153

475-9153

475-9153

475-9153

475-9153

475-9153

475-9153

475-9153

475-9153

475-9153

475-9153

475-9153

475-9153

475-9153

475-9153

475-9153

475-9153

475-9153

475-9153

475-9153

475-9153

475-9153

475-9153

475-9153

475-9153

475-9153

475-9153

475-9153

475-9153



# LITTLE WANT ADS! BIG PLUSES FOR BIG RESULTS!

JUST PHONE  
475-1371

## WANT ADS

### - YOUNG -

We list and sell lake, country and town properties. Eugene Young, Real Estate & Builder, 878-3792, 1596 Dexter-Pinckney Rd., Pinckney 48169. x34tf

### R. L. BAUER

#### Builders

LICENSED and INSURED  
Custom Building  
Houses - Garages  
Pole Barns  
Roofing - Siding  
Concrete Work

FREE ESTIMATES

Call 475-1218

### A fine selection of

### New and Used Cars

or immediate delivery

### Harper Pontiac

#### Sales & Service

475-1306

Evenings, 475-1608

### CUSTOM

#### BUILDING

LICENSED & INSURED

FREE ESTIMATES

### TOTAL

#### CONSTRUCTION

SERVICES

Homes, factories, warehouses

Pole buildings

Garages

Remodeling - Additions

Aluminum Siding

Roofing

Masonry Work, fireplaces, block

work, patios, etc.

### SLOCUM

#### CONTRACTORS

#### & BUILDERS

Serving Washtenaw County

For Over 20 years

20700 OLD US-12

CHELSEA

Phone 475-9321 or 475-7611

WE US for transit mixed con-

crete. Klump Bros. Gravel Co.

one Chelsea 475-2550, 4920 Love-

d Rd., Grass Lake, Mich. x40tf

LIKES HANDYMAN SERVICE—

insured work guaranteed. Free

estimates, reasonable rates. In-

stance estimates. Home modern-

izations and improvements. Pat-

ios decks, interior and exterior

painting, paneling and redecorat-

ing, roofing and roofing repair.

all and large home repairs, in-

cluding electrical. Landscaping

dening. Top soil, sand, gravel,

and large stones. Hauling

moving, dump truck work.

trimming and removal. Ph. x2tf

4717.

Manchester Area

EDROOM RANCH, family

room, with fireplace, 2 1/2 baths,

ement and garage, pole barn

elec. and water. 5 acres, beau-

tiful view. \$88,900.

iemann Real Estate

Ph. Ypsilanti 482-3126

x5

PRIVATE TENNIS LESSONS to

be offered this summer. Individ-

ual semi-private or small group

lessons will be taught by Terry

Reiner during the summer

months. If interested call and ar-

range, 475-2538. You will have to

quiet the court yourself for these

months as the courts will not be

open for this purpose. x3

CONDITIONERS for sale.

one small and one medium. Be-

cause window units, fine condition.

ed very reasonable. Ph. 475-

4.

## WANT ADS

WEDDING STATIONERY—Prospective brides are invited to see our complete line of invitations and wedding accessories. The Chelsea Standard, 300 N. Main. Ph. 475-1371. x1tf

### McCulloch

#### Portable Generators

#### Chain Saws

WE SELL, SERVICE,

SHARPEN AND TRADE.

#### Chelsea Hardware

81tf

SEAMLESS ALUMINUM over-

troughs, roofing, siding, and

carpentry work of all kinds. Ex-

perienced installers. All work

guaranteed. For free estimate,

call R. D. Kleinschmidt Co., 428-

8938. x31tf

TRAVEL TRAILERS—13-ft. and

up; 10x55 ft. trailers. John R.

Jones Trailer Sales, Gregory, Mich.

Phone 498-2455. x3tf

FOR SALE by owner, business and

living space block building, 3

floors with office and apartment

zoned commercial. 134 ft. road

frontage, over 1 acre. Call for ap-

pointment 475-9209. x12tf

LOST CAT—Reward. Long haired,

silver gray tiger, 12-year family

member. Want him back very

much. Needs medication. Call any

time, day or night. 428-7233. x9tf

### GAR - NETT'S

#### GREENHOUSE,

#### Flower & Gift Shop

Your Friendly Florist

112 E. Middle St., Chelsea

PHONE 475-1400

Funeral Flowers

Wedding Flowers

Cut Flowers (arranged or boxed)

Potted Flowering Plants

Green Plants - Corsages

WE DELIVER x9tf

BLACK DIRT and peat mixture

for sale. Excellent for lawns,

planters, gardens. Delivered by

load. Duane Landwehr, 18000 Cav-

anaugh Lake Rd. Ph. 475-8480. x3

WANTED - Catholic, catholicism,

missals, prayer books, Bibles,

statues, crucifixes, rosaries, im-

ages, etc. In any condition. Ph. 475-

7161. x3

LEGAL SECRETARY—experi-

enced. Send resume and reply to

Box No. JU-24, care of Chelsea

Standard, Chelsea. x3

### Pierson &

#### Riemenschneider

REALTORS

111 Park St. - 475-9101

COMFORTABLE 4-bedroom tri-

level in the village. Much to offer

with a study, 2 baths, family

room, lots of storage space. A good

location and a nice yard. Priced

to sell in the \$40's.

SOUTH LAKE - Large lovely lake

front home. Including 4 bed-

rooms, family room, 2 fireplaces,

1 1/2 baths, and 2 1/2 car garage. Nice

setting on 1.8 acres. Chelsea school

district.

LAKE-FRONT HOME - Recently

reduced to sell at \$46,900. Locat-

ed on the chain of lakes with 150'

of water frontage on Patterson

Lake. Year 'round home in excel-

lent condition including 3 bed-

rooms, 1 1/2 baths, large screened

porch, cathedral ceilings, Franklin

fireplace and heated garage.

VACANT LAND

BUILDING SITE - 1 acre, \$10,500.

Land contract possible.

ROLLING - 5-acre parcels. Land

contract possible. \$12,000.

LOCATION - Prime area just out-

side of Chelsea, in an area of

lovely country estates. 6.5-14.6

acres, terms.

Pierson &

Riemenschneider

REALTORS - 475-9101

111 Park St., Chelsea

Evenings and Sundays:

Ruth Harbaugh 475-1477

Pat Merkel 475-1824

John Pierson 475-2064

Jeanene Riemenschneider 475-1469

3

LOST—Vicinity of Jerusalem Rd.,

Saturday, 4-year-old male beagle,

brown, white and black, scar

in front of hind leg, kink in tail.

Won't hunt, strictly a family pet.

Reward. Ph. 475-9544. x3

## WANT ADS

CUSTOM SEWING and alterations.

Ph. 475-2248. x3tf

FOR RENT - Industrial manufac-

turing building. Cement block,

gas heat, 3-phase electric, Class A

road, 3,000 sq. ft., low rent. Can

also be rented with 1,800 sq. ft.

steel storage building. Dexter, 426-

3829. x43tf

'70 CHEVELLE Malibu 2-dr. 307

V-8, auto, transmission. Mechan-

ically sound, body in excellent

condition. Ph. 683-9182. x43tf

CARPENTER WORK - Inside on

out. Mr. Coburn, 475-2893. 12tf

CAR & TRUCK LEASING - For

details see Lyle Chriswell at

Palmer Motor Sales, 475-1391. 49tf

### EDWARDS

#### CONSTRUCTION

INSULATION, siding, roofing,

storm windows and doors. Re-

modeling. Residential building.

Licensed, Certified, Insured

FREE ESTIMATES

Call JOE EDWARDS

428-4057, Dexter x47tf

FOR SALE by owner, year 'round

home near Harrison between 2

lakes. Fireplace, 2 bedrooms, car-

peting, natural gas, patio, all mod-

ern facilities. Ph. 428-4311. 47tf

VACANT LAND - Two 10-acre

parcels on Clear Lake Rd. across

the street from Clear Lake. Par-

tial rolling and evergreens. Ex-

cellent building location. Terms avail-

able. Ph. (1) 676-1481. x46tf

HORSE TRAINING and riding les-

sons. English or western. Ph.

665-5466 or 428-8300. x3tf

### Phinney Excavating

BULLDOZING, back hoe, drain

fields and ponds.

Ph. 475-1963 52tf

### SPINNER

#### ASPHALT PAVING

Parking Lots and Driveways

Free Estimates. Ph. 429-7132

Saline, Michigan. x52tf

FOR SALE - 1947 International

Harvester panel truck, model

KB-1GRD214, 6-cylinder, partially

restored. Must see to appreciate.

Phone 475-1592. x3

### WATERLOO REALTY

SUGAR LOAF LAKE - 3-bedroom

summer cottage to swim, ski

and relax. 1 1/2 lots. Waterfront.

\$16,900.

ONE-MILE NORTH of Stockbridge

- 4-bedroom home, full base-

ment, large kitchen, 1 1/2 baths,

family room, 2-car garage with

mechanic's pit. \$24,500.

WEST OF MANCHESTER on Shar-

on Valley Rd. Brand new 3-bed-

room ranch home. Large kitchen.

Full basement. Attached garage.

Stained cedar exterior. \$35,500.

5-BEDROOM RANCH HOME - In

excellent condition, two full

baths, large family room, base-

ment, carport, on nicely land-

scaped lot in Village of Chelsea.

ON 10 ACRES just 20 minutes west

of Chelsea. 3-bedroom quad-level

home with two fireplaces, rec.

room, pretty kitchen includes built

in range and oven. Attached gar-

age. Brick







## + Services in Our Churches +

**ST. PAUL UNITED CHURCH OF CHRIST**  
The Rev. R. J. Ratliff, Pastor  
Friday, July 1—  
Three-day Foreign Student Hospitality Week-end begins, sponsored by Church Women United, 11th General Synod, Washington D. C., begins today and continues through July 5.  
Sunday, July 3—  
10:00 a.m.—Church school and worship.  
Monday, July 4—  
Independence Day.

**ST. MARY CATHOLIC CHURCH**  
The Rev. Fr. David Philip Dupuis, Pastor  
Mass Schedule:  
Every Saturday—  
4:00-5:00 p.m. Confession.  
7:00 p.m.—Mass.  
Immediately after 7 p.m. Mass, Confession.  
Every Sunday—  
8:00 a.m., 10:00 a.m., 12:00 noon—Mass.

**ZION LUTHERAN CHURCH**  
Corner of Fletcher, Waters Rds.  
The Rev. John R. Morris, Pastor  
Sunday, July 3—  
8:30 a.m.—Sunday school.  
9:30 a.m.—Worship.  
Wednesday, July 6—  
WOZ picnic.

**CHURCH OF CHRIST**  
13661 Old US-12, East  
Evangelist John M. Hamilton  
Every Sunday—  
10:00 a.m.—Church school.  
11:00 a.m.—Worship service.  
Nursery will be available.  
6:00 p.m.—Worship service.  
Every Wednesday—  
7:30 p.m.—Bible study.

**ST. THOMAS EVANGELICAL LUTHERAN**  
Ellsworth and Haab Rds.  
The Rev. Jerome Dykstra, Pastor  
Every Sunday—  
9:30 a.m.—Sunday school and Bible class.  
10:45 a.m.—Worship service.

**GREGORY BAPTIST CHURCH**  
The Rev. Paul White, Pastor  
Every Sunday—  
9:45 a.m.—Sunday school.  
11:00 a.m.—Morning worship.  
8:00 p.m.—Young people.  
7:00 p.m.—Evening worship.  
7:30 p.m.—Thursday mid-week worship service.

**ST. JOHN'S EVANGELICAL AND REFORMED CHURCH**  
(United Church of Christ)  
Francisco  
The Rev. Virgil King, Pastor.  
Every Sunday—  
10:30 a.m.—Church services.

**FIRST ASSEMBLY OF GOD**  
The Rev. Richard Coury, Pastor  
Every Sunday—  
9:45 a.m.—Sunday school.  
11:00 a.m.—Worship service.  
6:00 p.m.—Evening worship.  
Every Wednesday—  
7:00 p.m.—Christ's Ambassadors. Missionettes. Bible meditation and prayer.

**WATERLOO VILLAGE UNITED METHODIST CHURCH**  
8118 Washington St.  
The Rev. Glenn Kjellberg, Pastor  
Every Sunday—  
10:00 a.m.—Sunday school.  
11:15 a.m.—Worship service.

**ST. JOHN'S UNITED CHURCH OF CHRIST**  
Rogers Corners  
Every Sunday—  
10:30 a.m.—Worship service.

**NORTH LAKE UNITED METHODIST CHURCH**  
The Rev. David Stiles, Pastor  
Every Sunday—  
8:30 and 10:00 a.m.—Worship service.  
June 20-24—  
Vacation Church School, 9:30 a.m. to 11:30 a.m. Ages 2 years through junior high school.

**IMMANUEL BIBLE CHURCH**  
145 E. Summit St.  
The Rev. LeRoy Johnson, Pastor  
Every Sunday—  
9:45 a.m.—Sunday school, nursery provided.  
11:00 a.m.—Morning worship, nursery provided.  
6:00 p.m.—Evening worship.  
Every Wednesday—  
7:00 p.m.—Family hour, prayer meeting, and Bible study.

**OUR SAVIOR LUTHERAN CHURCH**  
1515 S. Main, Chelsea  
The Rev. William H. Keller, Pastor  
Sunday, July 3—  
9:00 a.m.—Worship service.

**FIRST UNITED METHODIST CHURCH**  
The Rev. Marvin H. McCallum, Pastor  
Sunday, July 3—  
10:00 a.m.—Worship service (nursery provided). Church school for two- and three-year-olds through first graders.  
11:00 a.m.—Punch hour in the narthex.  
Monday, July 4—  
Church office will be closed.

**FIRST UNITED METHODIST PARKS AND TERRITORIAL RDS.**  
The Rev. Glenn Kjellberg, Pastor  
Every Sunday—  
9:15 a.m.—Morning worship.  
10:00 a.m.—Sunday school.

**FIRST CHURCH OF CHRIST SCIENTIST**  
1883 Washtenaw Ave., Ann Arbor  
Every Sunday—  
10:30 a.m.—Sunday school, morning service.

**CONGREGATIONAL CHURCH**  
(United Church of Christ)  
The Rev. Carl Schwarm, Pastor  
Every Sunday—  
9:30 a.m.—Worship and church school.

**ST. JACOB EVANGELICAL LUTHERAN CHURCH**  
12501 Riethmiller Rd., Grass Lake  
The Rev. Andrew Bloom, Pastor  
Every Sunday—  
9:00 a.m.—Worship service.  
10:15 a.m.—Divine services.

**NORTH SHARON BIBLE CHURCH**  
Sylvan and Washburne Rds.  
The Rev. Ronald C. Purkey, Pastor  
Every Sunday—  
10:00 a.m.—Sunday school.  
(Nursery available). Junior church classes.

11:00 a.m.—Worship service.  
6:00 p.m.—Senior High Youth meeting. Youth Choir.  
7:00 p.m.—Evening worship services. (Nursery available.) All services interpreted for the deaf.  
Every Wednesday—  
7:00 p.m.—Bible study and prayer meeting. (Nursery available.) Bus transportation available: 428-7222.

**BETHEL EVANGELICAL AND REFORMED CHURCH**  
(United Church of Christ)  
Freedom Township  
The Rev. Roman A. Reineck, Pastor  
Every Sunday—  
10:00 a.m.—Worship service.

**ST. BARNABAS EPISCOPAL CHURCH**  
20550 Old US-12  
The Rev. Fr. Jerrold F. Beaumont, B.S.P.  
Every Sunday—  
10:00 a.m.—Holy Communion first, third, and fifth Sundays, and 7:30 p.m. every Wednesday.  
10:00 a.m.—Morning prayer. Second and fourth Sundays. Church school and nursery every Sunday.

Every Wednesday—  
8:15 p.m.—Bible study and discussion groups.  
First Wednesday of every month—  
Bishop's Committee.  
Third Thursday of every month—  
Episcopal church women.

**CHELSEA BAPTIST CHURCH**  
377 Wilkinson St.  
The Rev. James Stacey, Pastor  
Every Sunday—  
9:45 a.m.—Sunday school for the whole family.

11:00 a.m.—Morning worship service and children's church.  
6:00 p.m.—Evening service, informal singing, sharing, study and discussion. (Nursery care provided for all services).  
Home Bible Studies each week in the homes of the elders.  
For information, call 475-8323.

**METHODIST HOME CHAPEL**  
Chaplain Ira Wood, Pastor  
Every Sunday—  
8:45 a.m.—Worship service.

**BAHA'I FIRESIDE**  
Every Thursday—  
8:00 p.m.—At the home of Toby Peterson, 705 S. Main St. Anyone wishing to learn about the Baha'i faith is welcome.

**FIRST UNITED PRESBYTERIAN CHURCH**  
Unadilla  
The Rev. T. H. Liang, Pastor  
Every Sunday—  
9:45 a.m.—Sunday school.  
11:00 a.m.—Worship service.

**FAITH EVANGELICAL LUTHERAN CHURCH**  
9575 North Territorial Rd., Dexter.  
The Rev. John P. Huebner, Pastor  
Sunday, July 3—  
9:00 a.m.—Worship service.

**CHURCH OF JESUS CHRIST OF LATTER-DAY SAINTS**  
Meetings at  
Church of Jesus Christ of Latter-Day Saints  
2141 Brockman, Ann Arbor  
Every Sunday—  
9:30 a.m.—Sunday school.

**SALEM GROVE UNITED METHODIST CHURCH**  
3320 Notten Rd.  
The Rev. Gerald R. Parker, Pastor  
Every Sunday—  
9:30 a.m.—Sunday school.  
10:30 a.m.—Worship service.

**Super Cyclotron Magnet**  
Now Working at MSU

The world's largest superconducting cyclotron magnet which can produce 900 tons of force, is now operating at Michigan State University.

Destined for eventual installation in a cyclotron where it will accelerate heavy atomic nuclei, the magnet was developed by scientists in MSU's Cyclotron Laboratory.  
Magnets using the principles developed in this device may eventually be used to harness nuclear fusion for electricity production.

**NOW OPEN THE GLASS BARN**  
OLD & NEW GLASS  
ANTIQUES & COLLECTIBLES  
DEPRESSION GLASS  
A SPECIALTY

**ARLENE HARGRAVE**  
Ph. 498-2849  
12719 Roeschke Rd., Gregory  
Open By Chance or Appt.

**DNR Purchases**  
25.7 Acres Adjoining  
Pinckney Rec. Area

Senator Gilbert E. Bursley (R-Ann Arbor) learned today that Michigan's Natural Resources Commission has authorized the purchase of 25.7 acres of land to extend the Pinckney Recreation Area in northern Washtenaw county.  
The Commission accepted a Department of Natural Resources Lands Division appraisal of the property, purchased from Thomas Jacob Francis of Ann Arbor for \$38,500.  
"The DNR feels that acquisition of the tracts and associated creek frontage will provide a more manageable boundary of the area," said Senator Bursley. "I am pleased that the Commission has made a decision which will add to the recreation resources available to the citizens of the 18th Senatorial District."

The Commission's action means that the size of the Pinckney Recreation Area is now 9,985 acres of land and water.

Subscribe today to The Standard!

**Residential - Commercial REMODELING**  
FREE ESTIMATES  
**ib V. JENSEN and SON**  
LICENSED BUILDER  
378 Spring Lake Drive  
Chelsea, Mich.  
PHONE 475-1820

**24,012 Native American Students Enrolled in State's Public Schools**

A total of 24,012 Native American students are enrolled in public schools in Michigan, the State Board of Education reported today.  
Michigan has a total public school enrollment of approximately two million pupils.  
The State Board said more than half of all American Indian and Alaskan Native public school students attend classes in six counties—Wayne, Genesee, Macomb, Oakland, Chippewa and Kent.  
Slightly more than four percent—1,050 of all Native American students—reside on federal reservations in the state, the State Board said.

Telephone Your Club News  
To 475-1371.

**FURNITURE GLASSWARE .PRIMITIVES GENERAL LINE**  
**SCHAULES ANTIQUES**  
Dick & Bertie Schauls  
We Buy and Sell Appraising  
14450 Island Lake Rd., Chelsea  
Phone 475-7862

**Ty My Wife, Diane:**

Thank you for helping sell our home and saving \$4,100.

Your grateful husband,  
Wayne

**Happy 40th Birthday HELEN BULICK**

## 4th of JULY SALE

**1977 BLAZER CHEYENNE WAGON** — Black, 4-wheel drive. Loaded with equipment and priced to save you hundreds!!

**1975 CHEVROLET SCOTTS DALE 3/4-TON PICK-UP** — 4-wheel drive, silver and black. 350 V-8, automatic. Sharp, and priced to sell at only **\$3695**

**1975 PINTO 2-DR.** — Red, 4-cylinder 4-speed. 26,000 one-owner miles, only **\$1995**

**1972 MERCURY MONTEGO MX BROUGHAM** — 4-dr., V-8, automatic, full power, factory air. Only **\$1095**

**1974 CHEVROLET IMPALA 2-DR. HARDTOP** — Ivory. 41,000 like-new miles. Excellent condition **\$2595**

**1973 IMPALA 4-DR.** — Black vinyl roof, 350, automatic, power, air cond. Only **\$2295**

**1971 OLDS TORONADO COUPE** — This one has it all, and at a great price. Only **\$1395**

**1973 CAMARO Z-28** — Dark blue metallic. V-8, automatic, full power . . . and we MEAN POWER! **SAVE HUNDREDS**

40 ITEM SAFETY CHECKS - 2-YEAR WARRANTIES

## LLOYD BRIDGES CHEVROLET

I-94 at M-52

**CHELSEA, MICH.**

OPEN  
MON.-TUES.  
WED.-THURS.  
TILL 8:30

OPEN  
FRI. TILL 6  
SAT. TILL 5

**PROUD YANKEES:** Suited in cleats, baseball caps, mitts and protective padding, members of the powerful looking Yankees Pony League squad presented a formidable image to their opponents as they took time out to pose for a photo during their latest game Tuesday afternoon. The Yankees shut out the Giants, 9-0, in their first game of the season, but were dumped by the Braves, 7-4, in their second game. Members of the team are: Seated, from left, Jay Marshall, Darin Rowe, Jay Eibeler, Ted Merkel, John Wilson, and Richard Gaul; standing, from left, Assistant Coach Dan Wilson, Scott Hayes, Russ Harris, Tim Greenleaf, Bill Merkel, Frank Waller, Walt Gray, Coach Charlie Waller and Bob Trevino.

## ★ District Court Proceedings ★

Curtis R. Miller pled guilty to charges of no operator's license on his person. Fines and costs, \$25.  
Terrence R. Marsh appeared in court on a bench warrant and pled guilty to charges of possession of open intoxicants in an auto. He was sentenced to pay fines and costs of \$35 and to three days on the probation department work program.

Thomas Richter was sentenced to pay fines and costs of \$25 or to 5 days in jail on charges of violation of probation.

Anthony K. Steward pled guilty to charges of speeding. Fines and costs, \$50.

William Harris was sentenced to pay fines and costs of \$200 on charges of impaired driving.

Alan F. Lance was found guilty in charges of impaired driving. He was referred to probation, to the Alcohol Safety Action Program and will be sentenced Aug. 15.

Kathy Dills pled guilty to charges of littering. She was sentenced to pay fines and costs of \$35 and to five days on the probation department work program.

John Chamberlain pled guilty to charges of driving under the influence of liquor and driving with expired license plates. He will be sentenced Aug. 17.

Arthur Inaz was sentenced to pay fines and costs of \$400, to the Alcohol Safety Action Program and to one year probation on charges of driving under the influence of liquor.

Allan Abdon was sentenced to pay fines and costs of \$250 and to the Alcohol Safety Action Program on charges of driving under the influence of liquor.

Richard D. McCullough was sentenced to pay fines and costs of \$25 on charges of dog at large.

Thomas Krul, Jr., was sentenced

to pay fines and costs of \$250 on charges of impaired driving.

Gordon McNutt was sentenced to pay fines and costs of \$350 and to the Alcohol Safety Action Program on charges of driving under the influence of liquor.

Karen A. Cook pled guilty to charges of dog at large that bites. Fines and costs, \$50.

Anthony J. Van Hutten pled guilty to charges of driving under the influence of liquor. He will be sentenced Aug. 15.

Thomas Ingalls pled guilty to charges of possession of alcoholic beverages at a beach. Fines and costs, \$50.

Jeff Edmonds pled guilty to charges of possession of alcoholic beverages at a beach. Fines and costs, \$35.

Franklin K. Curry pled guilty to charges of driving under the influence of liquor. He will be sentenced Aug. 15.

to pay fines and costs of \$250 on charges of impaired driving.

Robert M. Cratly pled guilty to charges of disobeying a posted speed limit. Fines and costs, \$35.

Timothy Schrader appeared in court on a bench warrant and pled guilty to charges of leaving the scene of a property damage accident. He was sentenced to pay fines and costs of \$50 or to 15 days in jail.

Dale Warwick pled guilty to charges of being intoxicated in a public place. Fines and costs, \$50.

Darryl M. West was found guilty on charges of no operator's license on his person. Fines and costs, \$50.

Dale R. Robbins was found guilty on charges of failing to stop at a stop sign. Fines and costs, \$25.

Gerald Alenori was found guilty on charges of larceny of property valued under \$100. He was referred to probation and will be sentenced Aug. 17.

## Warriors Down Orioles In Babe Ruth Action

Dexter Warriors, now entering their third week of Babe Ruth play, came from behind Monday, June 20, to edge out the Chelsea Orioles, 8-6. Jeff Leithon and Harvey Proctor pitched a four-hitter, striking out six.

Leithon continued to help his cause with four hits in four at-bats, including a double in the game, while Mark Hizer had a double and a single in three at-bats. Mike Dambrosio hit a home run.

Returning to the diamond Friday, June 24, Dexter Warriors battled with Manchester No. 1 in

a four-hour marathon for a 16-7 rout.

Winning pitcher was Brent Garber who struck out five. Harvey Proctor relieved in the seventh to preserve the win.

In the offensive spotlight was Dexter's Dave Hollister, who went two for four, squeezing in a triple, to score twice.

| BABE RUTH LEAGUE        |        |   |   |
|-------------------------|--------|---|---|
| Standings as of June 27 |        |   |   |
| Chelsea Royals          | .....5 | W | L |
| Chelsea Pirates         | .....4 | 0 | 1 |
| Dexter Warriors         | .....4 | 1 | 1 |
| Chelsea Athletics       | .....3 | 1 | 1 |
| Dexter Dreadnaughts     | .....1 | 3 | 3 |
| Manchester No. 1        | .....1 | 3 | 3 |
| Chelsea Orioles         | .....0 | 4 | 4 |
| Manchester No. 2        | .....0 | 5 | 5 |

Scores through June 27—

|                                   |
|-----------------------------------|
| Royals 10, Manchester No. 2, 3.   |
| Warriors 8, Orioles 6.            |
| Pirates 11, Manchester No. 7, 2.  |
| Athletics 14, Orioles 2.          |
| Royals 15, Royals 1.              |
| Athletics 7, Dreadnaughts 2.      |
| Pirates 16, Manchester No. 2, 6.  |
| Warriors 16, Manchester No. 7, 7. |
| Warriors 8, Manchester No. 8, 3.  |
| Royals 3, Manchester No. 7, 2.    |
| Dreadnaughts 3, Pirates 2.        |

The extensive residence facilities at Michigan State University include 36 residence halls which house more than 18,000 single men and women students.

One out of every seven people in the United States gets a social security check.

Thinking CARPET?  
Think SCHNEIDER'S

Visit the wonderful world of carpeting at Schneider's, one of the area's finest, full-service carpet stores, conveniently located in West Ann Arbor on Wagner Road between Jackson and Liberty.

Schneider's carries a broad selection of quality, name-brand carpets at prices consistently among the lowest in the entire area. Try us.

662-9332

OPEN MON & FRI NIGHTS TILL 8:00 PM

SCHNEIDER CARPET CO. INC.

745 S. WAGNER RD. ANN ARBOR



equipment operators!



Here's a man's boot every step of the way! Rugged, handsome, ready for a rough day's work anytime. Easy on the feet, too. Stop by—try on Paces by Red Wing and be convinced!

RED WING

FOSTER'S MEN'S WEAR

Ph. 475-1606 Chelsea, Mich.

**BUSINESSMEN'S LUNCHEON**  
Served from 11:30 to 1 Daily  
**MARK IV LOUNGE**  
PHONE 475-1951  
1180 M-52 CHELSEA

**OPEN BOWLING EVERY DAY**  
(thru Aug. 15)

**MONDAY thru FRIDAY**  
11 a.m. to 11 p.m.

**SATURDAY**  
11 a.m. to 12 midnight

**SUNDAY**  
2 p.m. to 10 p.m.

**CHELSEA LANES, Inc.**  
1180 M-52 Ph. 475-8141





**THIS WEEK'S PET OF THE WEEK** is a long-haired Calico cat named "Peanuts." He is a one-and-a-half year old cat whose owner could not keep him because her husband didn't want the cat around. He has a long coat, and tail. The cat is good with children and dogs. It is housebroken but is used to being both indoors and outdoors. If you have room for Peanuts or a cat similar to him or a dog, please call the Humane Society of Huron Valley at 662-5585 between 10 a.m. and 5 p.m. Monday through Saturday with the exceptions of Wednesday and Sunday when the shelter is open between 1 and 5 p.m. There are many other beautiful cats at the shelter this week including several white cats with chinchilla-like coats and there are always one or two Siamese to be found at the shelter. Every cat, dog, puppy, kitten, guinea pig, rabbit or bird at the shelter is in dire need of a home as the shelter can only provide space for a limited time due to the incredible numbers of animals that come in daily. So open your heart to one of the animals at the shelter when you are looking for a pet. Remember that your pet, cat or dog, will continue to love you faithfully, through thick and thin, and when your human relationships falter, your pet will still be there.

## CUSTOM

**BUMPING and PAINTING**

FREE ESTIMATES - ALL MAKES

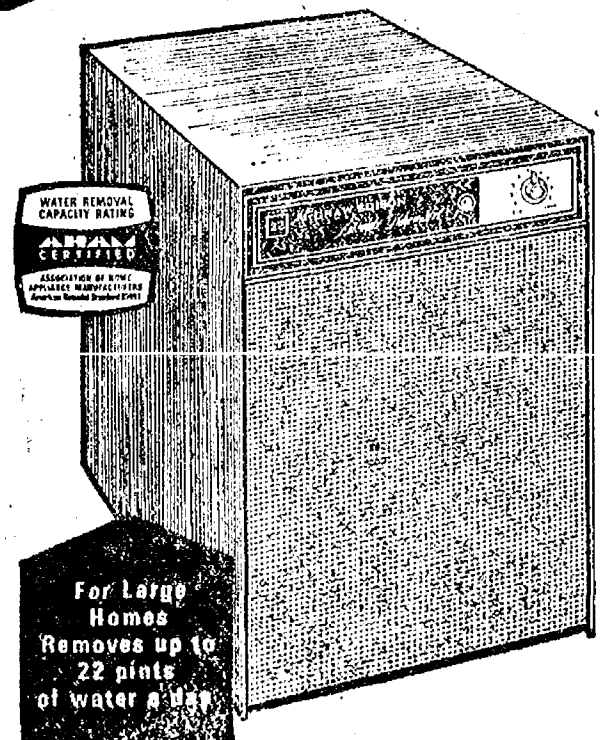
Get the Best for Less!

**FRANK GROHS CHEVROLET**

Phone 426-4677 Dexter, Mich.

Standard Want Ads Will Sell Your Unwanted Items

Guard your home against  
**EXCESS DAMPNESS**  
the vandal  
you can't see or hear



**DRY  
OUT  
DAMP  
AREAS  
WITH  
A**

**Coolerator  
DEHUMIDIFIER**

Stop damp air damage with this super-capacity "Celebrity" model. It protects your tools from rusting, furniture from warping, clothes from mildew, books and papers from mold, walls and pipes from sweating. Quickly pays for itself in savings.

• Automatic Humidistat • Automatic Overflow Control  
• "In Operation" Light • Walnut Grain, Furniture  
Finished Cabinet

We Will Be Closed All Day Saturday, July 2

Starting  
As  
As Low

**\$129<sup>95</sup>****HEYDLAUFF'S**

113 N. Main

Ph. 475-1221

**Babe Ruth Action  
Into Second Week**

Chelsea No. 1 crushed Chelsea No. 3, 15-2, as Babe Ruth League action moved through its second week Wednesday, June 22. Returning for a follow-up game on Friday, June 24, Chelsea No. 1 sluggers boosted their record to 3-1 as they rounded the bases for a 7-2 victory over the Dexter Dreadnaughts.

Bringing a tight offensive attack into play behind the pitching of Brad Knickerbocker and reliever John Welton, Chelsea No. 1 collected 15 runs on 10 hits to Chelsea No. 3's two runs on six hits.

Crossing the plate for Chelsea No. 1 were Brad Knickerbocker with 3 runs; Dennis White, 2; Jim Stock, 2; Dave Stock, 2; Dave Parks, Dave Morris, Randy Luick, John Welton, Ray Ziegler and Toby Boyd, all 1. Connecting for hits were Brad Knickerbocker with 3, Dave Stock with 2, Dennis White, Dave Morris, Randy Luick, John Welton and Toby Boyd.

Scoring runs for Chelsea No. 3 were Scott Price and G. Ackley. Hits were recorded by S. Price, J. Price, John Riemenschneider, L. Yahne and Shepard.

In their second game of the week, members of the Chelsea No. 1 squad matched hits with the Dexter Dreadnaughts as each team collected five; however, Chelsea transformed its hits into 7 runs as opposed to Dexter's 2.

Pitching again for Chelsea No. 1, Brad Knickerbocker launched the game with three scoreless innings. He was relieved by John Welton who finished the game, allowing only two runs in the sixth. Guarding the outfield with good fielding plays were Jeff Fouty, Brad Knickerbocker and Dave Parks.

Runs for Chelsea were by Jeff Fouty (2), John Welton (2), Dave Parks, Dave Morris and Randy Luick. Jeff Fouty and John Welton had two hits each.

Getting hits for the Dreadnaughts were Rick Neff, Brian Hochrein, John Conlin, Gary Neff and Dave Munding.

After winning their June 13 opener against the Orioles, 11-2, the Babe Ruth Royals maintained their momentum through three successive games for a perfect 4-0 record on the season in only two weeks of ballpark action.

Facing off against the Orioles, the Royals' Chuck Moore pitched a no-hitter until two were out in the last inning of the game. Then, Scott Price singled to right field for the Orioles only hit. Moore struck out 12 batters.

Leading hitters for the Royals were Mike Wood with a double and a single, and Ross Stoflett, Pat Murphy and Wally Soltzyak with one hit each.

In their June 15 game with the Warriors, the Royals edged their opponents, 3-2, as Wally Soltzyak pitched a no-hitter and struck out 10 batters. Leading the Royals offense were Ross Stoflett with two hits, and Mike Wood with one hit and two RBIs.

Chuck Moore pitched a three-hitter and added two singles at the plate as the Royals won their third straight game by cruising to a 10-3 victory over Manchester No. 2, Monday, June 20.

In addition to Moore, connecting for the Royals in that game were Mike Wood with two hits, and Jeff Dils, Ross Stoflett, Wally Soltzyak, John Dunn and Mike Gipson with one each.

Blasting their way to a 15-1 win over the Dexter Dreadnaughts in the fourth game of their four-game winning streak, the Royals again attacked behind the pitching of Wally Soltzyak, who delivered a two-hitter from the mound.

Leading the Royals at the plate were Ross Stoflett with three singles; Chuck Moore and John Dunn, each with one double and one single; Pat Murphy with two singles; and Wally Soltzyak and Mike Wood, each with one hit.

Connecting for the Dreadnaughts were Gary Neff and Brian Hochrein. Mike Claffay pitched for the Dreadnaughts in that game.

**Howard Holmes Re-Elected  
To Head Development Council**

Howard S. Holmes, president of the Chelsea Milling Co., has been re-elected chairman of St. Joseph Mercy Hospital's Development Council. Dr. Harry A. Towsley, Emeritus Professor of Pediatrics and Postgraduate Medicine at the University of Michigan, again will serve as vice-chairman.

Members elected or re-elected to the Council at its annual meeting last week (June 15) are Bruce Benner, senior vice-president of the Ann Arbor Bank and Trust Co.; Donald Canham, director of the University of Michigan Athletic Department; Mrs. John F. Daly; Jay J. DeLay, president of the Huron Valley National Bank; Joseph J. Fitzsimmons, president of Xerox-University Microfilms; Dr. Richard D. Judge; Mrs. Ben Kess Thomas Monaghan, Domino's Pizzas; Mrs. Elizabeth Stranahan; and Dr. Towsley, all of Ann Arbor; William F. Anhut, attorney, of Ypsilanti; Mrs. Harold B. Kukes of Southfield, and Mrs. James W. Myers of Saline.

Formed in 1976, the Development Council assists in long-range fundraising efforts to support hospital programs and to purchase vital, life-saving equipment for the new facility, 5301 E. Huron River Dr.

One of the Council's fundraising activities last year, under the direction of its special events committee, was "St. Joe's Goes to the Movies," which raised more than \$90,000. This year the committee will sponsor the second annual benefit, "St. Joe's Plays the Palace," an original musical, Oct. 7 in Ann Arbor's Michigan Thea-

tre. Judy Manos is chairman of the special events committee and honorary chairman of the benefit.

**Early Retirement  
Tied to Income**

When people have the financial resources to stop work, most do, points out a Michigan State University sociology professor.

Many studies of blue-collar workers, says Dr. William A. Faunce, show that money is the primary work motivation and, where it is, workers could be expected to quit if they have adequate retirement income.

Faunce, who has written extensively in the field of industrial sociology, is not surprised at the growing trend among General Motors auto workers to take their "30 and out" retirement under the age of 55.

The MSU sociologist suggests that the recent acceleration of GM workers to retire in their 50s is due to the fact that these workers who began work in the auto industry after World War II, may be different in some ways from those who began work during the war.

**Student Troopers**

(Continued from page seven.) mander after he and his assistants interview all applicants within their district.

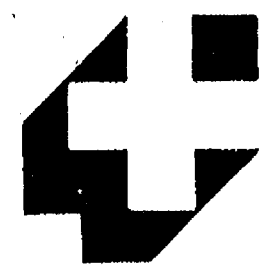
Headrick is the son of Mrs. Don Proctor and Robert Headrick.

Give something  
very special



A Keepsake diamond is the perfect symbol of the love you share... guaranteed perfect permanently registered protected against loss.

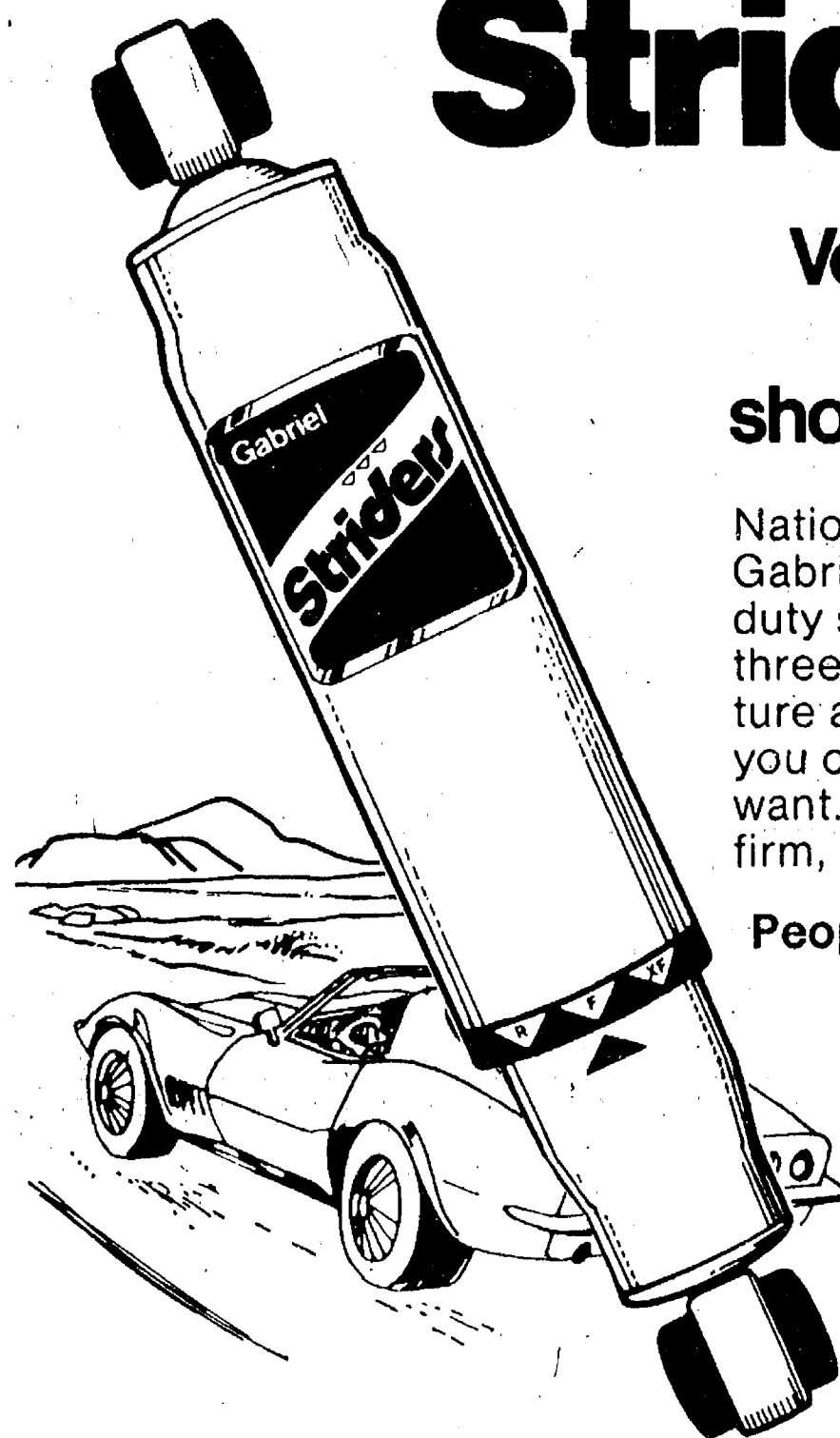
**Keepsake**  
Registered Diamond Rings

**WINANS JEWELRY****CHELSEA  
AUTOMOTIVE**1414 S. MAIN ST.  
CHELSEA**Parts  
Plus**

Phone

**475-9106**

Open Mon. thru Thurs., Sat., 8 a.m. to 6 p.m. Friday 8 a.m. to 7 p.m. Sunday, 10 a.m. to 2 p.m.

**Gabriel<sup>®</sup>  
heavy-duty  
Striders<sup>®</sup>**

**Versatile, 3-way  
adjustable  
shock absorbers.**

Nationally advertised Gabriel Striders. A heavy-duty shock with a versatile three-way adjustability feature and a 1 1/8" piston. Lets you choose the ride you want. Adjusts to regular, firm, or extra firm.

People who know shocks,  
go Gabriel.

**ONLY  
\$11<sup>95</sup>**

Plus Installation  
**\$23.95 VALUE**

**CHELSEA AUTOMOTIVE  
SAYS: For a "SHOCKING DEAL"**

See us if you intend to install them yourself at the low price of \$13.50 or for a small installation charge see your local dealer listed below.

**IN CHELSEA:**

**RALPH FLETCHER'S MOBIL  
FRED'S UNION 76 GARAGE  
ROMINE'S QUALITY SERVICE  
NORTH LAKE SALES & SERVICE  
MAUZY'S MOBIL  
GLENN'S SERVICE**

**IN ANN ARBOR:**

**PARTIN MOBIL**  
Zeeb Road and I-94

**IN MANCHESTER:****GERRY MANN'S STANDARD****IN PLEASANT LAKE:****DAN'S SERVICE****IN STOCKBRIDGE:****SCHULTZ ENTERPRISES**





**Polly's** MASTER  
MARKETS

1101 M-52

**CHELSEA, MICH.**

(Corner M-52 and Old U.S. 12)

Supplement to Ann Arbor News, Chelsea Standard

**get to know us...**

**WE CAN HELP YOU SAVE ON YOUR FOOD BILL!**

**Open Daily 8 to 10  
Sunday 9 to 9**

- ★ **QUALITY PRODUCE**
- ★ **QUALITY MEAT**
- ★ **COLD BEER, WINE, LIQUOR**
- ★ **LOTTERY TICKETS**
- ★ **SIDES OF BEEF**
- ★ **FRUIT BASKETS**
- ★ **DRY CLEANING**
- ★ **PHOTO PROCESSING**
- ★ **VARIETY AT LOW PRICES**



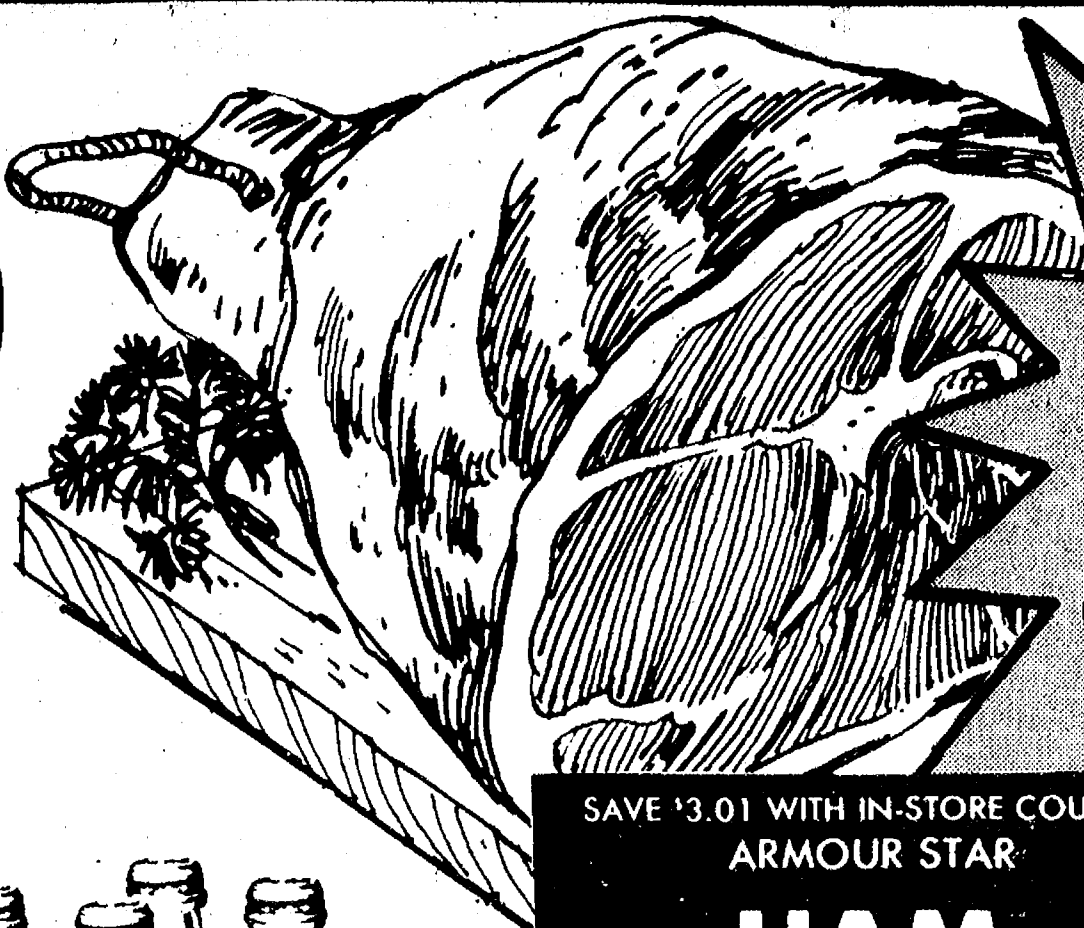


**Polly's** MASTER MARKETS

1101 M-52

**CHELSEA, MICH.**

(Corner M-52 and Old U.S. 12)



HYGRADE SEMI-BONELESS  
WHOLE or HALF

**SMOKED HAMS**

LB.  
(Water Added)

**89¢**

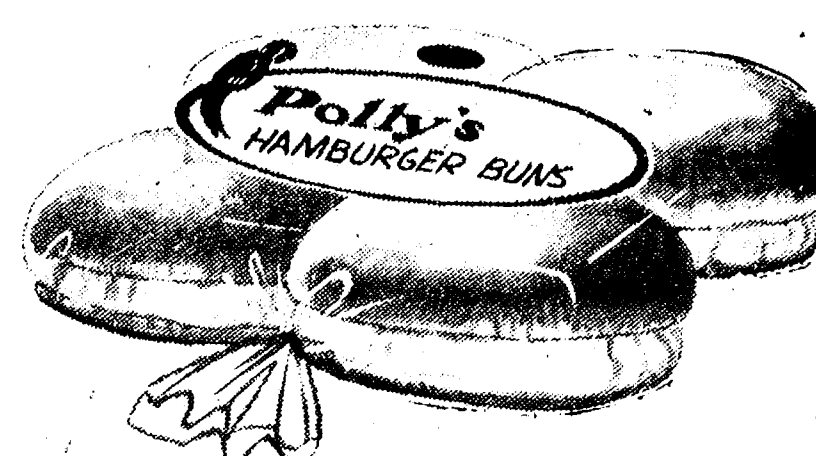
SLICES LB. \$1.39

SAVE '3.01 WITH IN-STORE COUPON  
ARMOUR STAR

**HAM**

**\$7.89**

5-LB.  
CAN



SAVE 39¢ WITH COUPON  
**POLLY'S QUALITY  
HAMBURG or  
HOT DOG  
BUNS**

**3 89¢**

8-Ct.  
Pkgs.  
For

**SAVE \$10**  
WITH POLLY'S BONUS  
and IN-STORE  
COUPONS!



SAVE 84¢ WITH COUPON  
8-PAK RETURNABLE

**COKE**

**79¢**

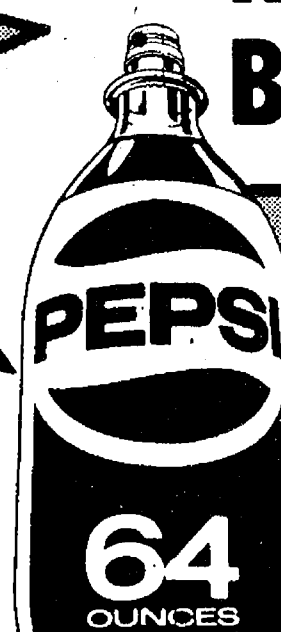
PLUS DEPOSIT



SAVE 41¢ WITH COUPON  
**SHASTA  
SOFT DRINKS**

**8 89¢**

12-OZ.  
CANS FOR



SAVE 15¢...DIET PEPSI  
PEPSI LIGHT, MOUNTAIN DEW or

**PEPSI**

64-  
OZ.

**88¢**

NEW!!  
PLASTIC  
BOTTLES



SAVE 40¢...8-PAK

**PEPSI**

12-oz.  
Cans

**\$1.69**

SAVE 41¢ WITH IN-STORE COUPON  
BLUE BONNET

**MARGARINE**

**2 89¢**

1-Lb.  
Qtrs.

SAVE 59¢ WITH IN-STORE COUPON  
BORDEN PRIZE

**LEMONADE**

**\$1.39**

33-OZ.  
MIX

SAVE \$1.00 WITH IN-STORE COUPON  
PACESETTER CHUNK

**DOG FOOD**

**\$3.29**

25-lb.

BUY 2-Save 40¢ With In-store Coupon  
GENERAL MILLS

**BUGLES**

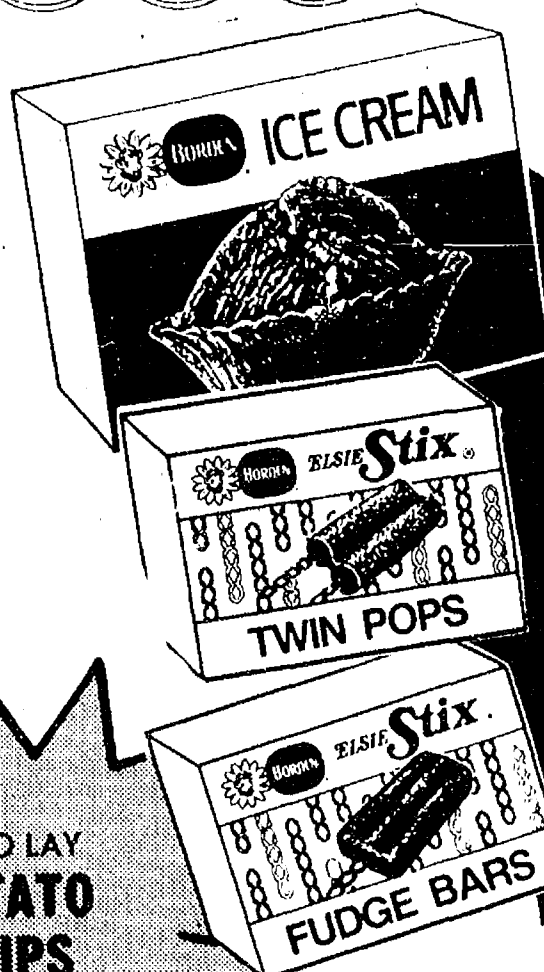
**49¢**

7-oz. Box

FRITO LAY  
POTATO  
CHIPS

**69¢**

12-oz.  
Bag



BORDEN'S  
**ICE CREAM**

SAVE 40¢  
Half Gallon

**99¢**

ELSIE STIX  
**TWIN POPS**

12-Pak **59¢**

ELSIE STIX  
**FUDGE BARS**

12-Pak **65¢**

KRAFT  
**ORANGE JUICE**

Half Gallon

**79¢**

|                                      |                |        |
|--------------------------------------|----------------|--------|
| SCOT FARM<br>AMERICAN SINGLES        | 16-oz.         | \$1.19 |
| NABISCO<br>NILLA WAFERS              | 12-oz.         | 59¢    |
| NABISCO<br>CHIPS AHoy                | 14-1/2-oz.     | 89¢    |
| SEALTEST<br>CHIP DIPS                | 2 8-oz. for    | 89¢    |
| ARMOUR<br>CHOPPED BEEF               | 12-oz.         | 79¢    |
| REYNOLDS HEAVY DUTY<br>ALUMINUM FOIL | 37 1/2 Sq. Ft. | 57¢    |
| EGGO<br>FRENCH TOAST                 | 9-oz.          | 49¢    |
| JOHNS CHEESE or<br>SAUSAGE PIZZA     | 3-Pak 16-oz.   | 89¢    |
| BIRDSEYE<br>COOL WHIP                | 9-oz.          | 57¢    |

GAYMONT'S IMITATION  
**SOUR CREAM**

16-oz. **49¢**

LIBBY'S  
**FRUIT COCKTAIL**

17-oz.  
Can

**39¢**

VAN CAMP  
PORK and  
BEANS

**4 \$1**

16-oz.  
cans

VLASIC  
GENUINE  
DILLS

**99¢**

46-oz.

BAMA  
GRAPE  
JELLY

**\$1**

2 18-oz.  
Jars

NABISCO  
SNACK  
CRACKERS

**66¢**

8 1/2-oz.

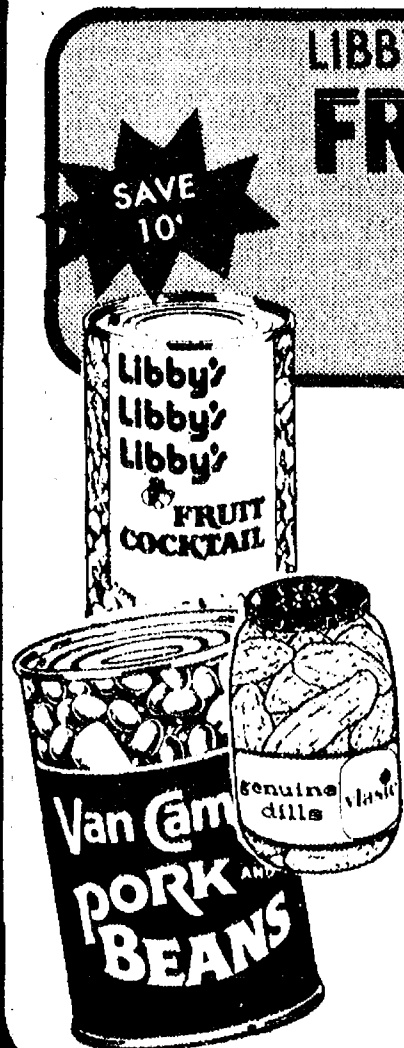
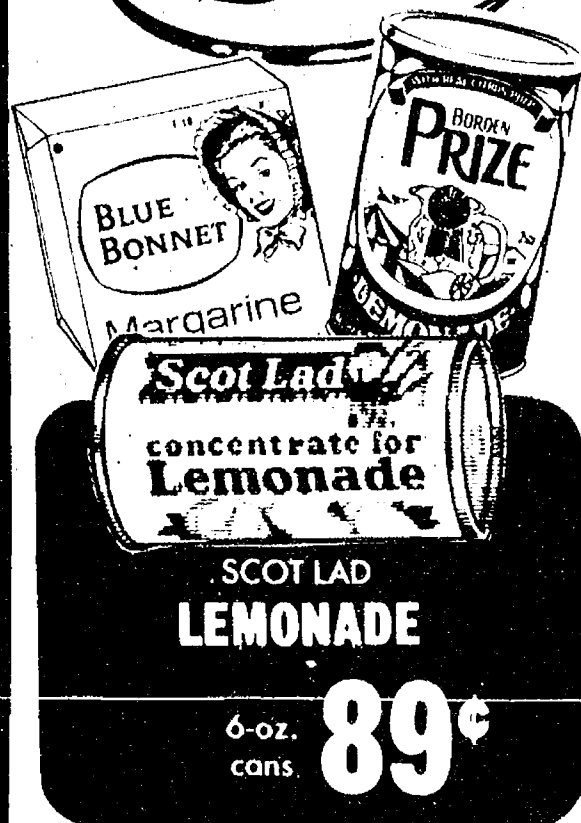


**Tony's  
PIZZA**

**30¢**

OFF

ANY TONY'S PIZZA  
WITH IN-STORE COUPON







U.S.D.A. CHOICE WESTERN  
4TH THRU 7TH RIB

**STANDING RIB ROAST**  
LB. \$1.39

U.S.D.A. CHOICE WESTERN

**RIB STEAK** LB. \$1.79

GOVERNMENT INSPECTED

**MIXED FRYER PARTS**  
48¢ LB.

- 3 forequarters
- 3 hindquarters
- 3 wings
- necks and giblets included

**Polly's** MASTER MARKETS

1101 M-52  
**CHELSEA, MICH.**  
(Corner M-52 and Old U.S. 12)

FRYER BREASTS WITH RIBS LB. 89¢

FRYER LEGS and THIGHS WITH BACK LB. 79¢

FRYER DRUMSTICKS LB. 99¢

BUY 2 • SAVE 60¢ WITH IN-STORE COUPON  
FOREST BROOK SLICED **BACON**  
1-LB. PKG. 89¢

|                          |                 |         |
|--------------------------|-----------------|---------|
| PARTS MISSING            |                 |         |
| <b>CORNISH HEN</b>       | 13-OZ. AVG.     | LB. 63¢ |
| PLANT A                  |                 |         |
| <b>BROILER TURKEY</b>    |                 | LB. 58¢ |
| TURKEY                   |                 |         |
| <b>DRUMSTICKS</b>        |                 | LB. 29¢ |
| ECKRICH REGULAR or       |                 |         |
| <b>BEEF FRANKS</b>       | LB. PKG.        | 99¢     |
| U.S.D.A. CHOICE          |                 |         |
| <b>CHUCK STEAK</b>       | LB.             | 99¢     |
| U.S.D.A. CHOICE BONELESS |                 |         |
| <b>CHUCK STEAK</b>       | LB.             | \$1.29  |
| 80% LEAN GROUND          | 10-LBS. OR MORE | LB. 89¢ |
| <b>CHUCK BEEF</b>        |                 |         |
| MIXED                    |                 |         |
| <b>PORK CHOPS</b>        | LB.             | \$1.29  |

**HYGRADE'S**  
**beef**  
**franks**

|                      |           |        |
|----------------------|-----------|--------|
| OCEAN                |           |        |
| <b>PERCH FILLETS</b> | LB.       | \$1.49 |
| FRESH                |           |        |
| <b>FROG LEGS</b>     | LB.       | \$2.49 |
| FRESH                |           |        |
| <b>SALT COD</b>      | 1-LB. BOX | \$2.89 |
| FRESH                |           |        |
| <b>SOLE FILLETS</b>  | LB.       | \$1.99 |
| SHOULDER CUT         |           |        |
| <b>LAMB CHOPS</b>    | LB.       | \$1.59 |
| SHOULDER CUT SQUARE  |           |        |
| <b>LAMB ROAST</b>    | LB.       | \$1.29 |
| FRESH                |           |        |
| <b>LEG O' LAMB</b>   | LB.       | \$1.69 |
| FRESH SHOULDER CUT   |           |        |
| <b>VEAL CHOPS</b>    | LB.       | \$1.39 |
| FRESH VEAL           |           |        |
| <b>ROUND STEAK</b>   | LB.       | \$2.49 |
| FRESH SHOULDER CUT   |           |        |
| <b>VEAL ROAST</b>    | LB.       | \$1.29 |
| COUNTRY STYLE        |           |        |
| <b>SPARE RIBS</b>    | LB.       | \$1.29 |

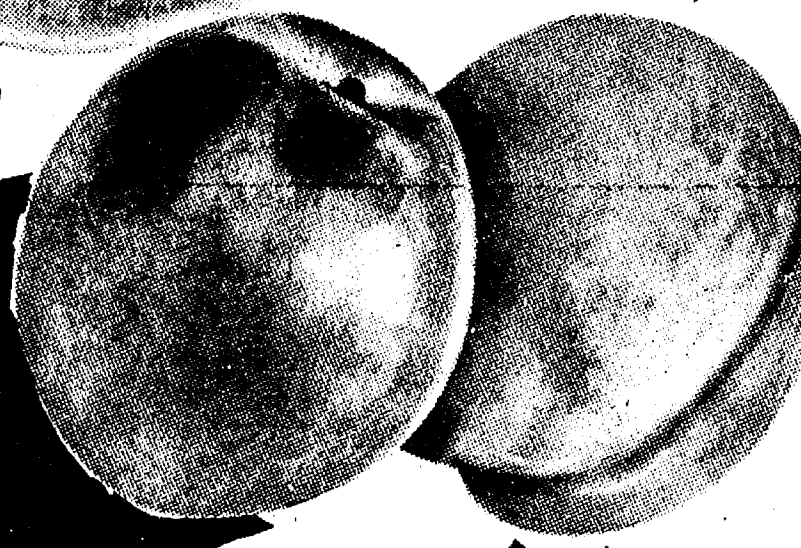
BUY 2 • SAVE 60¢ WITH IN-STORE COUPON

**HYGRADE'S MEAT or BEEF FRANKS**  
1-LB. PKG. 59¢



SUGAR SWEET  
**HONEYDEW**  
MELONS  
8-SIZE EACH 69¢

TASTY  
**NECTARINES**  
LB. 39¢



|                   |     |     |
|-------------------|-----|-----|
| CALIFORNIA PASCAL |     |     |
| <b>CELERY</b>     |     | 39¢ |
| TANGY             |     |     |
| <b>LIMES</b>      | EA. | 10¢ |
| SWEET SPANISH     |     |     |
| <b>ONIONS</b>     | LB. | 19¢ |

Ad Zest To Your Salad!

FRESH GREEN  
**ROMAINE, ENDIVE or ESCAROLE**  
Your Choice EA. 29¢

40¢ OFF LABEL  
**CHEER**  
LAUNDRY DETERGENT  
171-OZ. \$3.99

20¢ OFF LABEL  
**DAWN**  
DISHWASHING DETERGENT  
32-OZ. 99¢

**FREE** OFFICIALLY LICENSED  
**MAJOR LEAGUE BASEBALL JACKET**  
FOR 3 PROOFS OF PURCHASE FROM  
**Aim**

Choice of favorite National or American League Team Jacket with printed team name or emblem and patch.

1.4 oz. 39¢ 2.7 oz. 68¢ 6.4 oz. 93¢

ORDER BLANKS AVAILABLE IN STORE

|   |   |  |   |   |
|---|---|--|---|---|
| <p><b>Agree</b><br/>Creme Rinse &amp; Conditioner<br/>12 oz. \$1.09</p> <p>Helps stop the greasies</p> <p><b>JOHNSON'S DENTAL FLOSS</b><br/>Waxed &amp; Unwaxed<br/>50 Yd. \$1.07 \$1.19 Value</p> <p><b>Aim</b> FLUORIDE<br/>15c Off Label 6.4 oz. Tube 93¢ \$1.52 Value</p> <p><b>EFFERDENT DENTURE CLEANSER</b><br/>15c Off Label<br/>40 Tablets \$1.12 \$1.59 Value</p> <p>SAVE \$1.00 on LISTERMINT<br/>See Store Display For Details 18 oz. \$1.19</p> <p><b>NEW! Clairol SHORT &amp; SASSY SHAMPOO</b><br/>7 oz. - \$1.99 Value \$1.59</p> | <p><b>MISS BRECK HAIRSPRAY</b><br/>11 oz. - \$1.73 Value 99¢</p> <p><b>CURAD BANDAGES</b><br/>Plastic or Transparent<br/>Box of 80 \$1.09 \$1.43 Value</p> <p><b>SCOPE MOUTHWASH</b><br/>12c Off Label<br/>12 oz. \$1.56 Value 98¢</p> <p><b>PEPTO-BISMOL</b><br/>LIQUID 12 oz. \$1.69<br/>TABLETS 24's 69¢</p> | <p>SAVE 30¢ WITH IN-STORE COUPON<br/><b>SURE DEODORANT</b><br/>5-OZ. 88¢</p> <p><b>EDGE PROTECTIVE SHAVE</b><br/>Gel Makes The Difference<br/>7 oz. \$1.70 Value \$1.53</p> <p><b>ULTRA-BRITE TOOTH PASTE</b><br/>20c Off Label<br/>6 oz. Tube 88¢ \$1.51 Value</p> <p><b>DRISTAN</b><br/>NASAL MIST<br/>Bottle of 24 \$1.21<br/>Bottle of 50 \$2.40<br/>NASAL MIST 15cc \$1.42 \$1.75 Value</p> | <p><b>Midol</b><br/>30 Tablets \$1.27 \$1.59 Value</p> <p>7c OFF AT CHECKOUT<br/>Tear Off Coupon on Pack</p> <p><b>Alka-Seltzer 7off</b></p> <p>25 Tablets 76¢ \$1.13 Value</p> <p><b>EARTHBORN SHAMPOO</b><br/>8 ounce \$1.85 Value 99¢</p> <p><b>ROSEMILK SKIN CARE LOTION</b><br/>8 oz. \$1.89 Value \$1.51</p> <p><b>FACE CREAM</b><br/>2 oz. \$2.98 Value \$2.38</p> | <p><b>TROPICAL BLEND</b><br/>DARK TANNING LOTION or DARK TANNING OIL<br/>8 ounce \$1.99 \$3.50 Value</p> <p><b>COPPERTONE SUNTAN LOTION or OIL</b><br/>4 ounce \$2.19 Value \$1.79</p> <p><b>TANNING BUTTER</b><br/>4 oz. Aerosol \$1.39</p> <p><b>SOLARCAINE SPRAY</b><br/>4 oz. - \$2.49 Value \$1.99</p> <p><b>Q.T. QUICK TANNING LOTION</b><br/>2 oz. Tube \$1.79 Value \$1.39</p> <p><b>TROPIC SUN by Sea &amp; Ski</b><br/>DARK TANNING LOTION or OIL<br/>8 oz. - \$3.50 Value \$2.39</p> <p><b>SEA &amp; SKI</b><br/>SUNTAN LOTION, GOLDEN TAN DARK TANNING LOTION<br/>4 oz. \$2.20 Value \$1.95 Your Choice</p> |
|---|---|--|---|---|



# Thank You

FOR SHOPPING AT...



WHERE WE ARE  
HAPPY TO.....

**save** YOU MONEY!