

# WEATHER

	Min.	Max.	Precip.
Thursday, June 16	57	79	0.00
Friday, June 17	62	84	0.46
Saturday, June 18	67	92	0.41
Sunday, June 19	63	85	0.00
Monday, June 20	61	78	0.00
Tuesday, June 21	53	76	0.00
Wednesday, June 22	53	75	0.00

ONE HUNDRED-EIGHTH YEAR—No. 2

12 Pages This Week

Plus 4-Page Supplement

CHELSEA, MICHIGAN, THURSDAY, JUNE 23, 1977

15c per copy

SUBSCRIPTION: \$6.00 PER YEAR

# The Chelsea Standard

## QUOTE

"Talk is cheap because the supply invariably exceeds the demand."

—Anonymous

## IPSCO Strike Settlement May Be Imminent

"They're going to have to settle eventually, they can't afford to lose it down," several striking members of UAW Local 935 asserted as they spoke about the 11-year old labor dispute which has crippled production at Chelsea's Industrial Plastic Specialties Co. (IPSCO) on Cleveland St.

The workers' words came Wednesday as they manned a picket line near an entrance to the IPSCO plant. At the same time, union and management bargaining representatives were engaged in table talks in Detroit in an attempt to settle the strike.

Some 102 IPSCO workers, who had voted for union representation last December, put their new union to a test June 13 when they walked off their jobs at 7 a.m. after a lingering wage dispute held up what would be the workers' first contract agreement.

IPSCO manufactures automotive trim work parts.

Topping the list of the workers' economic demands is a 15 percent cost of living increase. "Management offered us 10 percent," the workers revealed, "but we turned that down because the full cost of living is up 31 percent, which is

neener to what most automotive workers receive."

"Management has turned down everything we're asking for," one worker concluded, but he failed to specify the union's other demands. In an attempt to meet production quotas, the workers declared that management, foremen, supervisors and secretaries were all working production lines at IPSCO. A rumor spreading through the picket lines at IPSCO was that management had been trying to remove completed parts from the plant and had been trying to deliver the parts to IPSCO's customers. The rumor was confirmed Wednesday morning when a truck bearing Ford Motor Company's Grand Prix die and about 2,000 Grand Prix parts was allowed to pass by the striking workers.

When contacted for a statement, Stanley Gomez, IPSCO plant manager, refused to comment on the situation. Though annoyed by IPSCO's strike-breaking tactics, union members have remained peaceful throughout the strike. The mood on the picket line Wednesday was that a settlement was imminent, and that all striking workers would probably be back to work on Monday.

## Fairgrounds Offered For Rec. Program

A regular meeting of the Chelsea Community Fair Board was held Thursday, June 16. President J. Grau called the meeting to order.

Officers present were L. Grau, president; K. Poljan, treasurer; J. Eller, manager; and R. Leach, air secretary.

Board members in attendance included F. Renton, H. Trinkle, A. Steinaway, J. Herrick, R. Poljan, K. Bradbury, and R. Lesser, Jr. Absent were E. Keizer, board secretary; P. Merkel, H. Gross, J. Leydlauff, R. Haist, J. Klink, C. Koenn, R. McCalla, J. Merkel, III, C. Stapish and F. Sweeny.

Guests present included Pat Whitesall and Jim Winter, Recreation Council representatives, and Wellnitz.

The Recreation Council representatives requested the use of the Chelsea Fairgrounds for summer recreation programs. The request was granted, subject to evidence of insurance and agreement on water, toilet and storage facilities.

Topics which dominated the remainder of the meeting included repair and replacement of vandalized property, and details relating to the horse barn for this year's Fair. Plans were also considered for relocation of the bleachers at the fairgrounds.

With the Chelsea Community Fair nearing rapidly, the Fair Board will be busy implementing its plans for a bigger and better

event this year. Several Fair superintendents will attend the next meeting of the Fair Board on June 30 to finalize plans for their respective exhibits and shows.

The dates of this year's Fair are Aug. 23-27.

## Class of '72 Needs Some Addresses

The July 30 reunion of Chelsea High's Class of 1972 at the Cascades Clubhouse, Jackson, is approaching quickly, but several class members remain inaccessible.

Anyone knowing the current address of Rudy Hertlein, Dave Hess, Sheri McClain, Katherine Murray, Barb Steinaway, Norbert Weber, Joe O'Neill, Keith Pfeifle, Tim Ruhlig, Robin Sawyer or Tim Van Slambrouck is asked to contact reunion committee members Jackie Schiller at 475-1713 or Bonnie Hosler Robbins at (517) 522-8360.

In other final preparations, the reunion committee has asked those who have not yet received their reunion invitation to contact either Miss Schiller or Mrs. Robbins.

Furthermore, anyone who did not officially graduate with the (Continued on page six)

## Playground Programs Start Monday

Chelsea's Summer Playground program will assume operations at the beginning of next week, according to Summer Director Jim Winter. The program, sponsored by the Chelsea Recreation Council will be offered at two sites: North Elementary and South Elementary schools.

"There was some uncertainty about this program following last week's school millage defeat," explained Winter. "We looked at some alternate sites, talked with the school board and worked out a few details that make it possible to stick with the school locations which have the best access for the kids."

This year's playgrounds will be for children from 5 to 12 years of age, and will be open from 9 a.m. to noon, Monday through Friday, beginning June 27 and running through July 29.

Registration for the five-week program will be held at both sites Friday, June 24 between 9 a.m. and noon. Registration requires a \$2 fee and a parent's signature.

Activities will include arts and crafts, softball, kickball, frisbee golf and free play time. Anyone missing Friday's registration may sign up at the playgrounds any time during regular playground hours.

## School Board Briefs

At a regular meeting of the Chelsea Board of Education Monday, June 20, present were Haselschwardt, Schafer, Hodgson, Dan- tils, Robin, Feeney, Stirling, Sturt, Cameron, Business Manager Mills, Principal Conklin and Acting Assistant High School Principal Schave. Several guests also attended the meeting.

Meeting called to order at 8:00 p.m. by President Haselschwardt.

The minutes of June 6 and 13 were approved as presented.

The board directed the business manager to request the date of Aug. 8 from the Washtenaw County Elections Committee for a Special Millage Election with Aug. 9 and Aug. 15 as alternate dates.

A discussion was held with Mrs. Gladys Bush, chairperson of the Chelsea Parents of Special Education and other parents regarding the need for a teacher for the Emotionally Impaired - Learning Disabled for the Beach Middle school.

The board directed Dr. Henry DeYoung, Special Education director to apply to the Washtenaw Intermediate School District for supplemental federal funds for students who are not presently being served to provide the EI-LD teacher.

An extended discussion, with audience participation, was held regarding the millage election, Special Education and Driver Education. (Continued on page six)



**MEDICAL SCHOLARSHIP CONTRIBUTION:** Mrs. Betty Maxwell, right, director of the Chelsea Painters, and Mrs. Gale Johnson, left, chairman of the Chelsea Community Hospital Auxiliary, present Dr. William Hawks with a check for \$475 from the Chelsea Painters. The contribution will help support the A. A. Palmer Medical Scholarship Fund which was awarded this year Siebert, a 1973 graduate of Chelsea High school. The check represents a share of the proceeds from the third annual Chelsea Painters Art Show and Sale held June 3 and 4 on the Chelsea Medical Center grounds. Dr. Hawks is chairman of the scholarship fund.

## Babe Ruth Teams Swing Into Action

Dan Alber struck out the final batter with the bases loaded in the top of the seventh to give the Pirates a 6 to 5 win over the Athletics Tuesday, June 14 as the season opened on Babe Ruth Day.

At Augustine, with three hits, Cameron, Business Manager Mills, and Mark Stevenson and Dan Ragliarini, with two hits each, led the Pirates in the batter's box.

Challenging the Pirates' precision at the plate were Jim and David Stock, who led the hitting for the Athletics.

Following Tuesday's victory, the Pirates returned to the diamond Thursday, June 16 to collect their second win of the season as they downed the Orioles, 8-2. Al Augustine and Mark Barnes pitched a five-hitter for the Pirates.

Both team pitchers had trouble finding the plate as both the Pirates and the Orioles received nine walks.

Alber had a triple for the Pirates while Lou Jahnke led the Orioles with two singles.

Standings as of June 21

	W	L
Chelsea Royals	3	0
Chelsea Pirates	2	0
Manchester No. 1	1	0
Dexter Warriors	2	1
Chelsea Athletics	1	1
Dexter Dreadnaughts	0	1
Chelsea Orioles	0	3
Manchester No. 2	0	3

## Work Begins On New Legion Post Home

Don't be misled by the clamor which is bound to be in evidence around the Herbert J. McKune American Legion Post Home on Cavanaugh Lake, Wednesday, July 13 through Sunday, July 17. What you may believe to be a ringing in your ears will actually be the sounds of Legion Home expansion.

For five days, beginning Wednesday, members of the Post will be clanging crowbars and swinging hammers as they first strip the Home of all its inside equipment and paneling, follow that initial endeavor with the removal of roof shingles and lowering of the Home's flat roof, and then tear down the entire structure on Saturday and Sunday with the help of Dagart and McClear Construction.

By Monday, July 18, the Legion Home site must be cleared and ready for Tom Dunlap, a building contractor, to begin his work. A recently approved mortgage agreement has assured the Post of a totally new, enlarged shelter.

In an effort to prod slackers, should there be any, Post Commander Larry Gaken has proclaimed July 15-17 as official Legion Week-end, and requests that all Legionnaires mark the date on their calendars. Purpose of the observance is to remind Legion members that total membership participation is needed for the success of the expansion project.

## Hospital Volunteers Attend Training Day

On June 6, volunteers of Chelsea Community Hospital gathered for an In-Service Training Day. Approximately 35 members worked with Gloria Bartholomew, Nelson, who conducted the in-service program. Focus of the program was "Improving Communication Through Assertiveness Training."

At the close of the program session, a delicious luncheon was served, followed by a regular meeting of the Volunteer Board.

One upcoming event, planned by the board to help volunteers meet their quota and pledge to the hospital's Care Campaign, will be a Mystery Sale. More information on drop-off points for the sale will be forthcoming.

In the meantime, area residents are urged to save their old but usable bedding, usable and workable household items, and old jewelry. No large pieces of furniture, large appliances, or clothes will be accepted for the sale.

The board then announced that there is still room for entries in the volunteer sponsored Marathon Bridge Tournament which is slated to begin in September. Plans are currently underway to begin a Pinochle Marathon Tournament as well. Anyone interested in playing in either tournament is directed to call Mrs. Staffan, 475-8946.

## Three Chelsea Youths Attending Boys State

Jason Lindauer, Brad Myers and Gary Packard, all juniors at Chelsea High school, will return from American Legion Boys State at Michigan State University today, having completed the one-week program which began June 15.

Purpose of Boys State is to emphasize the importance of government; stimulate a lasting interest in government; and enlarge the understanding of governmental processes.

Upon their arrival at Michigan State last Wednesday, the boys were assigned to one of two political parties—the Federalists or the Nationalists. Both political parties are purely mythical, but simulate the functions of existing political parties.

The Federalists and Nationalists vie for power in the 51st state, complete with mythical city and county political subdivisions. The parties function for a period of seven days.

The basic laws of the state of Michigan and its constitution form the basis for political activities. The convention system is used throughout Boys State to nominate candidates for city, county and state offices.

While at Boys State, the youths are able to run for any office from the three accepted divisions of government: judicial, legislative and executive.

The Boys State governor, with the approval and consent of the Boys State Senate, make appointments to fill various political positions.

**CHS Class of '78 To Meet Sunday**  
The Senior Class of 1978 will meet Sunday, June 26, 8 p.m., at the home of Shelley Warren, 132 E. Summit St.  
Purpose of the meeting is to choose a Fair Queen candidate and her court, and to decide on a theme for the Senior Stand at the Chelsea Community Fair. All seniors are urged to attend. Bring along a bathing suit for swimming after the meeting.

## School Board Requests New Millage Vote

In the wake of two millage defeats in as many months, the Chelsea Board of Education Monday night directed Fred Mills, business manager, to ask the county's election scheduling committee to approve Aug. 8 as a date for another vote.

If Aug. 8 is not available when the elections committee meets today, alternate dates for the election will be Aug. 9 and Aug. 15.

At Monday night's meeting, a motion to set the millage request for the August election at 4.4 mills was defeated. The amount of the new millage request is pending the swearing in of newly-elected board members, Earl Heller and James Stirling. A decision on the amount of the new millage request will be made when the new board meets at 8 p.m. July 11.

During the June 13 school election, voters in the Chelsea School District rejected a proposed 4.4 mill tax hike for one year's operating expenses, 1,409,136 in a record turnout. An earlier request for 4.4 additional mills had failed during a special election May 23 by 1,193-1,088.

If the millage had passed, it would have brought in an additional \$475,000 and restored more than \$250,000 in school programs cut during the past year. The funds would also have purchased five new buses, replaced old textbooks and improved and maintained school facilities.

Programs cut as a result of the June 13 school millage defeat include summer swimming programs, driver education, and summer band and string programs. School facilities have also been closed to use by the Chelsea Recreation Department.

## Appointment Attempt Fails in Lima Meeting

A third attempt to fill a one-member vacancy on the Lima Township Planning Commission at a special meeting Tuesday evening ended in a stalemate as Supervisor Robert Musolf and members of the Lima Township Board failed to reach agreement on any of the five candidates vying for the post.

The appointment must be made by the supervisor, but is contingent upon the approval of the board.

In a maneuver to break the deadlock, Supervisor Musolf introduced the names of four new candidates for the planning commission vacancy. However, objections were raised against this tactic by other members of the board who pointed out that residents of the township had not been notified that resumes for the vacancy were still being accepted.

Consequently, the meeting adjourned after the supervisor agreed with the board to give public notice to that effect.

Anyone interested in serving on the planning commission is requested to send a resume to Supervisor Musolf, 12535 Scio Church Rd., Chelsea, by July 6. The appointment is now scheduled to be made July 11 at a regular meeting of the board.

Of the five candidates already in contention for the planning commission post, two have been refused for consideration by Supervisor Musolf. He stated that appointment of either of the two, Wallace Fusilier or David Baconi, would be too controversial to the people of Lima township.

Other members of the board, on the other hand, refused to approve the supervisor's suggested appointment of Fred Schwarze, Miriam Klemer or Paul Frisinger, the three remaining candidates to date.

The four new candidates introduced by Musolf Tuesday will be officially recognized after the July 6 deadline for additional resumes is met.

## Communications Club Planning Field Day

Chelsea Communications Club members and amateur radio operators in the Chelsea area will stage a 24-hour demonstration of amateur radio communications under actual field conditions Saturday, June 25. The Club will be participating in the annual Field Day, sponsored by the American Radio Relay League, a national association of amateur radiomen.

Field Day is a test of self-powered radio equipment, operating strictly on emergency power

generators and batteries. Hundreds of clubs and thousands of amateurs throughout the nation participate annually in the event.

The stations attempt to contact as many other stations throughout the nation as they can within the allotted time. Field Day commences June 25 at 2 p.m. and terminates June 26 at 5 p.m.

Through the co-operation of John Kostoy, Washtenaw County Civil Defense Director, the Chelsea Club (Continued on page six)



**LITTLE LEAGUE BRAVES:** Teaming up for a group photo are members of the Braves Little League squad. The team is one of eight playing in the league this summer. First row, from left, are Jim Eisenbeiser, Mark Watson, Pat Rowe, Matt Koenn, Charlie Koenn, Jimmy Toon and Peter Katula. Second row, from left, are Ed Esch, Shanga Parker, Mark Bentley, Tony Push, and Dennis Parisho. Bringing up the rear are Coach John Parisho and Assistant Coach Chuck Koenn.



**LITTLE LEAGUE TWINS:** Although they lost their opener, 3-6, Tuesday evening, these members of the Twins Little League team, coached by Fred Mills, showed talent and an aggressive spirit while going through their paces on the diamond. Kneeling in the front row, from left, are Baja Trimble, John Walker, Scott Mills, Tim Wier, Kevin Nebauer, Roger Loucks and Steve Whitesall. Standing in the second row, from left, are David Barols, Tim Loucks, Jeff Chandler, Dan Pennington, Gar DeVoe, Greg Schafer and David Cox. Overlooking the players from the back of the photo is Coach Mills.



Established 1871 **The Chelsea Standard** Telephone 475-1371

Excellence Award By Michigan Press Association  
1951-1952-1960-1964-1965-1966  
Walter P. Leonard, Editor and Publisher

Published every Thursday morning at 300 North Main Street, Chelsea, Mich. 48118, and second class postage paid at Chelsea, Mich., under the Act of March 3, 1879.

Subscription Rates (Payable in Advance)  
In Michigan: One Year .....\$6.00  
Six Months .....\$3.50  
Single Copies .....\$ .20  
Outside Michigan: One Year .....\$8.50  
Six Months .....\$5.00  
Single Copies .....\$ .25

MEMBER **NATIONAL NEWSPAPER ASSOCIATION** Founded 1885

National Advertising Representative: **MICHIGAN NEWSPAPERS, INC.**  
257 Michigan Ave.  
East Lansing, Mich. 48823

## Uncle Lew from Lima Says:

DEAR MISTER EDITOR:

Zeke Grubb told the tellers at the country store Saturday night that he reckons Cecil Heidelberg's neighbors is whistling a new tune when they go by his place these days. Instead of turning up their noses at a ugly pile of worn out tires they're admiring a pritty ripe cash crop Cecil is about to harvest, was Zeke's words.

Zeke brung a clipping to the meeting that told how Cecil had up to 12 million thrown away tires back of his house near Andover, Minn. He's been piling em up for 30 year, and now he has 10 acres 40 foot high. A few weeks back a feller from Okla-homa got in touch with Cecil and offered him cash fer ever tire, at least 35 cent apiece and up to \$5 fer the biggest ones. Zeke said he couldn't figger near that high, but if he sells 12 million it's bound to add up to a right good return on them 10 acres.

The beauty of the deal, Zeke went on, is that tire dealers all over the place have been paying Cecil to take them old tires off their hands. He's been stacking em out back, he said, knowing that soon or late somebody would want em. He was right, Zeke de-

### Howell Livestock Auction

Starts 1 p.m. Every Monday  
Mason 676-5400

The Wise Owl Says Shop to Howell  
Phone 546-2370 Bim Franklin

Market Report for June 20

**CATTLE**—  
Bulk Gd.-Choice Steers, \$32 to \$39.00  
New High Choice Steers, \$39.00 to \$40  
Gd.-Choice Heifers, \$32 to \$37  
Fed Holstein Steers, \$31 to \$35  
1st-5th, \$30 and down.

**COWS**—  
Heavy Cows, \$28 to \$30  
1st-Commercial, \$24 to \$29  
Canner-Cutter, \$18 to \$24  
Fat Beef Cows, \$24 to \$27

**BULLS**—  
Heavy Bologna, \$32 to \$35  
Light and Common, \$30 and down.

**FEEDERS**—  
400-600 lb. Good-Choice Steers, \$36 to \$40  
600-800 lb. Good-Choice Steers, \$32 to \$36  
300-600 lb. Good-Choice Heifers, \$26 to \$32  
300-500 lb. Holstein Steers, \$24 to \$27  
500-800 lb. Holstein Steers, \$23 to \$26

**CALVES**—  
Prime, \$40 to \$50  
Good-Choice, \$35 to \$40  
Heavy Decreas, \$25 to \$36  
Cull & Med., \$15 to \$25  
Calves going back to farms sold up to \$40

**SHEEP**—  
Woolled Slaughter Lambs, Spring: Choice-Prime, \$50 to \$55  
Good-Hilly, \$45 to \$50  
Slaughter Ewes, \$10 to \$18  
Feeder Lambs, All Weights, \$45 to \$50

**HOGS**—  
210 to 240 lbs., No. 1, \$45 to \$46.30  
200-250 lbs., No. 2, \$44 to \$45  
Heavy Hogs, 250 lbs. up, \$36 to \$44  
Light Hogs, 200 lbs. down, \$30 to \$40

**Sows**—  
Fancy Light, \$35 to \$36  
300-500 lbs., \$35 to \$36  
500 lbs. and up, \$34 to \$36

**Boars and Stags**—  
All Weights, \$25 to \$34

**Feeder Pigs**—  
Per Head, \$15 to \$42  
Est. 40 lb. pigs, \$32 to \$34

**HAY**—  
1st Cutting, per bale, 60c to \$1.10  
2nd Cutting, per bale, \$1.10 to \$1.80

**STRAW**—  
Per Bale, 60c to 85c

**COWS**—  
Tested Dairy Cows, \$350 to \$600  
Tested Beef Type Cows, \$250 to \$350

Why put up with odors, taste and stains?  
Are you ready for a solution?  
Then call us now.  
Every water problem can be solved.  
Reliable, guaranteed water testing,  
softening equipment, service and re-  
pair is available to you  
from  
**CRYSTAL CLEAR CO.**  
4757 Dexter-Pinckney Rd. Ph. 426-4220

## MICHIGAN MIRROR

By Warren M. Hoyt, Secretary, Michigan Press Association

### Lawmakers Tackle Controversies

Tackling three of the most controversial topics in the hopper, state legislators have taken some small, but significant, steps toward raising the legal drinking age, allowing birth control teaching in schools and banning abortion in the state and nation.

The Senate overwhelmingly approved a bill to boost the drinking age to 19 for a trial three years. It still needs the House okay, but it's been assigned to a committee headed by liberal Perry Bullard, whose district includes the University of Michigan.

He can be expected to give the measure a good airing, Critics,

## JUST REMINISCING

Items Taken from the files of The Chelsea Standard

### 4 Years Ago...

Thursday, June 23, 1973—  
Chelsea's Peanut League bowlers rolled their way to a State Championship at Timber Lanes in Lansing, Sunday. Members of the team are John Rowe, Dan Alber, Mark Steingway, Tim Greenleaf and Billy Freeman.

Chelsea Jaycees will conduct a bicycle licensing and safety check clinic Saturday to stress the importance of bicycle safety. While at the clinic, cyclists may purchase bright bike flags and fluorescent fender signs.

In the wake of the well-publicized fuel problem, area motorists may be annoyed by the 10-imposed at Jiffy's Marathon pumps gallon limits on gas such as are or Stuckey's Texaco pumps on Fletcher Rd. at I-94, but they have had no trouble finding fuel for their vehicles.

Chelsea Hardware's parts department and repair facilities for power equipment are being transferred to the building at 120 S. Main St. as a result of the fire that did extensive damage to the old repair shed behind the hardware store.

### 34 Years Ago...

Thursday, June 24, 1943—  
A curfew ordinance has been adopted in Chelsea to remedy the growing child delinquency problem. Included in the ordinance is a part which places the responsibility of controlling the behavior of youngsters upon the parents with severe penalties for laxity in such control.

Permanent headquarters for the Chelsea Kiwanis Emergency Farm Labor program have been established in the E. J. Claire & Son store, North Main St., where farmers needing help may call. Two Chelsea companies will each have a list of 25 men available for the program when necessary.

Charles Cameron and Grace Riemschneider will direct activities for the summer recreation program this season at the Chelsea High school playground. As soon as the Winters lot is cleaned up, it will also be used for daytime play.

Formal acceptance by the conservation commission of property transfers from the National Park Service has assured the opening of the Waterloo recreation demonstration area of 3,700 acres near Jackson on July 1. The entire Waterloo area includes 12,000 acres.

### 14 Years Ago...

Thursday, June 27, 1963—  
Doris Zeeb, who will be a sophomore at Chelsea High school in September, was selected from Chelsea to attend the second annual high school music camp conducted by Central Michigan University's music department.

A special water baptismal service at Cavanaugh Lake has been planned for 6:30 p.m. Sunday by the Assembly of God congregation. Eight young people will be baptized by immersion with the Rev. Harold S. Bilotta officiating.

The Chelsea School District Board of Education has approved textbook changes for two junior high school subjects and six senior high subjects. The changes are in General Mathematics, Algebra I, Geometry, Physiology, French, Shorthand, 7th and 8th grade Mathematics and 7th grade Social Studies.

A surprise reception Tuesday evening at McKune Memorial Library honored Mrs. E. W. Eaton, Mrs. George Walworth and Mrs. Warren Daniels in recognition of their work for the library since its founding 31 years ago.

### 24 Years Ago...

Thursday, June 25, 1953—  
The narrow bridge on M-52 near Ivey Rd., which has been a bottle-neck for traffic, north of Chelsea, was replaced during the past week. Installation of a 60-foot culvert pipe, which cost \$2,300, affords width for four-lane traffic where formerly there was room for only one car to cross at a time.

Donald Proctor joined Assistant 4-H Club leader Nevels Pearson and Mrs. Pearson, and his three teammates on the national dairy cattle judging team today for a trip to England where they are to participate in the international contests at the Royal Livestock Show at Blackpool, north of Liverpool.

The Rev. Shirley D. Kinde, newly-appointed pastor of the Chelsea Methodist church, moved into the Methodist parsonage Monday with his family. The Rev. Kinde will deliver his first sermon as pastor of the local church on Sunday.

The Chelsea Spring division of UAW-CIO Local No. 437, elected Joe Baldwin plant chairman in the shop election held Tuesday, June 18. He received 189 votes to the 23 received by his opponent, Laurence Boyer.

### Dial-A-Garden Topics Listed

Dial-a-Garden, the system of pre-recorded daily gardening tips is sponsored by the Washtenaw County Co-operative Extension Service. The system is in operation 24 hours per day, 7 days per week. Interested persons are invited to call 971-1122 at their convenience and receive timely, up-to-date gardening information.

Next week's Dial-a-Garden topics are:

Friday, June 24—"Aphids Like It Hot."

Monday, June 27—"Can You Grow Lilacs from Suckers?"

Tuesday, June 28—"Keeping Houseplants While on Vacation."

Wednesday, June 29—"Cutting Roses—Keep 'em Blooming."

Thursday, June 30—"Garden Tips."

### GERMAN PARK GRAND OPENING PICNIC

ANN ARBOR

This Saturday, June 25. Fine dance band. Park opens at 4 p.m. Dinner served 4:30 p.m. Due to limited accommodations, attendance will be limited to 2,000 people. No admittance after 10:00 p.m. You must be 18 or over to enter. Bring your I.D. card. Admission \$1.00.

## DEA Ratifies Contract for Last Year

After working the entire period without a contract, the Dexter Education Association (DEA), comprised of 103 teachers in the district, voted to ratify a master agreement with the Dexter School Board for the 1976-77 school year Friday, June 17.

The contract calls for minor increases in teachers' salaries and extra duty compensation, but no increases in any other benefits. Some changes were made in the language of the contract which will affect working conditions for teachers within the district. According to DEA member Jerry Smith, a teacher at Wylie Middle school, many received less than a cost of living increase. The class size, he said, remained the same as in previous years.

increase premiums an average \$7 a month.

Senior citizens on Medicare, however, will pay only \$1.53 more per month. The rates take effect July 1.

### It's Out-Speed Limit Is Soft

Michigan motorists who drive 63 miles per hour on freeways are generally safe from being ticketed, state police director, Gerald Hough says.

"You can probably figure on 63 and not get a ticket, although you might get stopped," Hough said in an interview. He was responding to a reporter who asked how fast he could really go without getting a ticket.

Hough's remarks were probably something motorists have suspected for some time — that the 55 m.p.h. speed limit is not the limit at all.

In fact, Hough said, the statewide average freeway speed is 62 m.p.h. "I doubt if anybody gets ticketed at less than 65," he said bluntly.

### Blues Get More Green

The Blues have been given the red light to collect more green from their five million Michigan policyholders.

State Insurance Commissioner Thomas Jones told Michigan Blue Cross-Blue Shield that it could raise rates by 9.5 percent, enough to bring in an additional \$94 million a year.

The increase won't directly affect most people, whose insurance costs are paid by their employers. But for the 400,000 people who pay from their own pockets for their policies, the rate hike will

## Now on Tuesday Nights CHICKEN BUFFET

with our Famous Deep-Fried Chicken and SPECIAL BARBECUED CHICKEN also mashed potatoes and gravy, dressing, and salad bar.

Serving from 4:30-9:00

at the **CAPTAINS TABLE**  
8093 MAIN ST., DEXTER PH. 426-3811

Harry Kenworthy, Community Relations Manager, Ann Arbor, reminds you:

### "How and When you call Long Distance can make a big difference in savings".

Be sure you know all the ways you can save on long distance. Most people already save by dialing direct, instead of going through the operator. And, on calls within Michigan, you can save most by calling weekdays after 5 p.m. or on weekends till 5 p.m. Sunday. You save when you dial direct on out-of-state calls, too. Check the front pages of your telephone directory for the best times.

When you want to dial direct, but don't know the number, you can receive long distance directory assistance by dialing 1, plus the area code of the city you want to reach, plus 555-1212. You'll find a listing of some distant city area codes in the front of your directory. If you have any questions, just call your local Michigan Bell business office, also listed in the front of your telephone book. We're ready to help.

**Michigan Bell**

## I want to open a savings account for my granddaughter...

Good thinking! Start 'em young!

You want to start your granddaughter off right. Good for you. If you put just \$15 in an AAFS passbook savings account each month for fifteen years, you will have deposited \$2700 and she will have \$4104.\* In twenty years after you have deposited \$3600, she will have \$6357.\* It will be a good start towards her college education or other special needs she is sure to have at that time. Stop at any of our offices and investigate the various savings programs that we have available for granddaughter and grandsons. They'll be glad you did.

\* Figures based on current annual rate of 6 1/2% compounded quarterly.

**ANN ARBOR FEDERAL SAVINGS**

11 OFFICES TO SERVE YOU IN: ANN ARBOR, BRIGHTON, CANTON, DEXTER, MANCHESTER, SALINE, YPSILANTI MEMBER FSIC





Mr. and Mrs. Thomas C. Bailey

## Jane Haselschwardt, T. Bailey Speak Vows at St. Mary Church

Jane M. Haselschwardt, daughter of Mr. and Mrs. Howard Haselschwardt, 754 Book St., exchanged marriage vows with Thomas C. Bailey, son of Mr. and Mrs. Ralph Bailey of Marquette, Saturday, June 18 in St. Mary's Catholic church, Chelsea. The ceremony was conducted by Rev. David Philip Dupuis.

Jeanne and Sarah Haselschwardt, sisters of the bride, provided special music for the nuptial mass, while Elizabeth Haselschwardt, also a sister of the bride, was reader for the occasion. Assisting the Rev. Fr. Dupuis at the altar were John Dettling and Scott Haselschwardt, brother of the bride.

Serving as honor attendants were Margaret Neubacher of Bloomfield Hills and John Soyring of Marquette. Theda Allen and Joan Yocum, both of Chelsea, greeted and seated guests attending the marriage ceremony.

Following the wedding, a reception was held at Inverness Country Club. Shelley Romsek of Muskegon tended to the guest book.

The newlyweds will be staying at the Huron Mountain Club, Marquette, where both are employed for the summer. In the fall, they will reside in Petoskey.

**CAROL'S CUTS**  
328 Wilkinson

**COOL CUTS FOR SUMMER**  
475-7094  
Apts. Only

## New Name Change: TOUCH OF CLASS HAIR STYLING

Formerly Lynn's Beauty Shop

(Because of legal paperwork we were unable to announce the change in May.)

Thank you to all who participated in the "Name the Shop Contest." The winning name was submitted by Jane Lingerfelt.

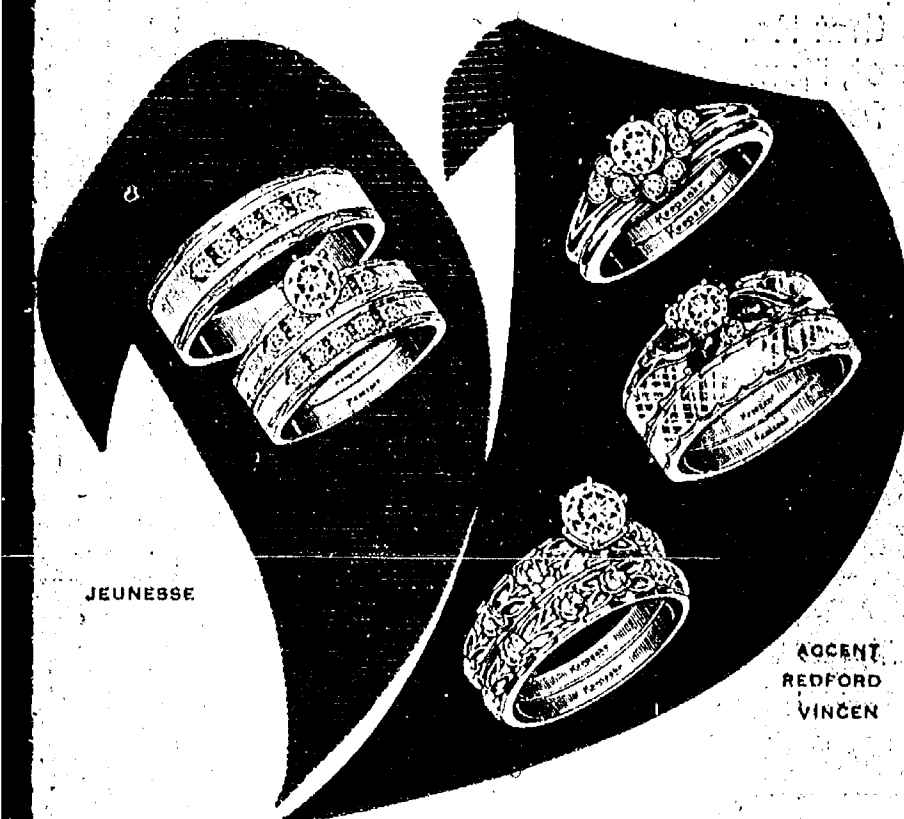
We're located across from Village Motor Sales on M-52, next to the car wash, out from the madness of town rush hours.

- ★ FREE PARKING
- ★ MEN'S & BOYS' CUTS & STYLES
- ★ LOW PRICES FOR QUALITY WORK
- ★ SENIOR CITIZEN DISCOUNT EVERY DAY

We will help you with your personal hair problems.

GIVE US A CALL - 475-1591

**Nola - Becky**  
Looking forward to serving you!



Because you want the finest

A Keepsake diamond is precisely cut to accent the brilliance of its fine white color... and Keepsake guarantees perfect clarity in writing. You can give no finer diamond ring.

**Keepsake**  
Registered Diamond Rings

**WINANS JEWELRY**

## Inverness Ladies Golf Club Hosts Chemung Group

The Inverness Ladies Golf Club hosted 64 women from Chemung for golf and a luncheon Thursday, June 16.

After playing nine holes of the 18-hole course, awards were presented to the day's top performers.

Low net winners from Chemung were Vicki Streng, Ann Vaughn, Sally Heinze and Bev Tucker, all with a 33. Closest to pin was Doris MacFarland, while Ann Vaughn was recognized for longest drive. In putting, Vicki Streng and Sally Heinze tied for honors with 15 putts each. Jane Wimmer had a chip in on No. 2.

Low net winners representing Inverness were Louella Patterson and Olga McCormick with 34. The local group's closest to pin award went to Jean Lewis, while Polly Goins recorded the longest drive. Low putt winner was Agnes Denton with 13, and Dorothy Foster, Yolaine Carignan, Pat Noll and Virginia Waha all darded a chip-in. Yolaine Carignan had a birdie on No. 8.

A salad luncheon, served by the Chelsea Players, concluded the affair.

## Willow Creek Chippers Golfers Hold Tournament

Willow Creek Chippers Golf League held its mid-season golf tournament and luncheon Tuesday, June 21.

The top three golfers in the first flight were Sherri Plank, Roberta Johnson and Ruth Dills. Winners in the second flight were JoAnn Rowe, Carol Kyarnberg, and Lois Shively, and June Warren won the third flight prize followed by Ruth Musbach and Pam Lewis.

A salad luncheon followed the tournament.

## Ruth Circle

Ruth Circle of the Chelsea United Methodist Women met June 15 at 12:30 p.m. at the Crippen building. A pot-luck luncheon was enjoyed by 14 members and one guest.

The business meeting was called to order by Martha Earles, who acted as chairperson.

The secretary's minutes were read and approved.

The treasurer reported on pledges and donations paid in May.

The group had a few minutes of silent prayer and then joined in a prayer given by Martha Earles in memory of Florence Stanford and Mrs. Seyfried.

Martha Earles reported Mrs. Wood was in Chelsea Community Hospital in intensive care and to remember her in our prayers.

Devotions were read from "Matthew" Chapter 6, and then Martha Earles read a prayer poem, which was very mindful of the occasion.

The group was reminded of the July 6, 12:30 p.m., picnic at the Methodist Home.

The meeting was closed with a prayer led by Martha Earles.

Hostesses for the June meeting were, Martha Earles and Elaine McCalla.

The next meeting of Ruth Circle will be Sept. 21 at the Crippen building.

## Pinckney Man Competes in Ohio Marathon Run

Gary Moore of Pinckney was a participant in the second annual Revco-Western Reserve Marathon on Sunday, May 15. Moore, who placed 281st out of the field of 505 runners who entered, had a finishing time of 4:10:27.

The Revco-Western Reserve Marathon is run annually from Hudson, O., to the campus of Case Western Reserve University in Cleveland, a distance of 26 miles, 385 yards.

Winner of this year's Marathon was Barry Brown, an international caliber runner from Gainesville, Fla. Brown, 33, set a new course record as he came across the finish line in 2 hours, 21 minutes and 42 seconds. 505 runners left the starting line, and 360 crossed the finish.

Crowds of people lined the streets of the race course feeding water and orange slices to the runners as they made their way through Cleveland's eastern suburbs. A large crowd of spectators also packed the Case Reserve athletic facility, Finnerlin Fields, cheering and applauding the runners as they arrived.

Moore's home address is: 10283 Kress, Pinckney.

Student traffic at Michigan State University's Computer Center has more than doubled from 1972 to 1976 as computers become almost as vital to academic life as the library.

## RICARDO'S

Professional Hair-Styling  
Men and Women

Thursday and Friday evening appointments.

475-1671

107 N. Main Chelsea



Mr. and Mrs. Stephen Frederick Harris

## Darlene Davis, Stephen F. Harris Wed at Congregational Church

Darlene Davis, daughter of Mr. and Mrs. Rudy Davis of David, Ky., married Stephen Frederick Harris, son of Fred Harris, Jr., of Chelsea, and the late Sarah E. McGuire Harris, Saturday, June 4, in First Congregational church, Chelsea. The 6 p.m. ceremony was performed by the Rev. Carl Schwarm.

As she approached the altar, the bride was wearing a white tulle gown with a round neckline, a silk bodice trimmed in lace, half sleeves, a stand-up collar and a matching train. A headpiece of daisies completed her attire. She carried a bouquet of white daisies and baby's breath secured by ribbons.

Bridesmaid for the occasion was Mrs. Letha Khosvov of Stockbridge. She wore a pale green gown which matched the gown worn by the maid of honor, and also held a single yellow rose, surrounded by baby's breath and a ribbon.

For her daughter's wedding, Mrs. Harook chose a white, sleeveless polyester dress, accented with navy blue dots. The dress was styled with a stand-up collar, a full skirt and was belted at the waist. A corsage of miniature roses and carnations adorned her shoulder.

Mrs. Hoover, mother of the bridegroom, appeared in a yellow polyester dress with a rounded neckline, full skirt and belted waistline. Her corsage was an arrangement of miniature carnations and daisies.

Attending as flower girl was Tracie Harook, sister of the bride, while ringbearer was Thomas Hoover, nephew of the bridegroom.

Serving as best man was Roger Stevens of Munnith. He was assisted by a groomsman, Roger Hoover, brother of the bridegroom, and two ushers, Gary and Phillip Hoover, also brothers of the bridegroom.

Following the wedding, a reception was held at the American Legion Hall in Munnith, hosted by Mr. and Mrs. John Harook. Beth Tobin poured punch while Mary Hudson and Jean Campbell, both aunts of the bride, cut the wedding cake. Jeanette Harris tended to the guest book.

The former Miss Harook is a 1975 graduate of Chelsea High school and is employed by Farmer's State Bank of Munnith. Her husband is employed by Central Fibre, Chelsea.

The newlyweds currently reside in Munnith.

FRISBIE-BAUER: Mr. and Mrs. Jerald Frisbie of 519 Madison St., have announced the engagement of their daughter, Susan Kay, to Dennis Earl Bauer, son of Mr. and Mrs. Norman Bauer of 19917 Waterloo Rd. The bride-elect is a 1977 graduate of Chelsea High school and plans to enter the School of Business at Eastern Michigan University, Ypsilanti, in September. Her fiancé is a 1976 graduate of Chelsea High school and currently attends the University of Michigan, Ann Arbor. A wedding date has not been set.

The rubella vaccine can spare the unborn severe, sometimes fatal birth defects, reports the March of Dimes. In less than six years, the number of infants born damaged by congenital rubella has been reduced by 70 percent.



FRISBIE-BAUER: Mr. and Mrs. Jerald Frisbie of 519 Madison St., have announced the engagement of their daughter, Susan Kay, to Dennis Earl Bauer, son of Mr. and Mrs. Norman Bauer of 19917 Waterloo Rd. The bride-elect is a 1977 graduate of Chelsea High school and plans to enter the School of Business at Eastern Michigan University, Ypsilanti, in September. Her fiancé is a 1976 graduate of Chelsea High school and currently attends the University of Michigan, Ann Arbor. A wedding date has not been set.

## NEW SALON Fran Coy's HAIR STYLISTS



FRAN COY, Owner

Former Co-Owner Magic Mirror

665-7207

Our experienced staff includes Ruth Blanchard, receptionist; Jo Ann Uranga, Sandy Arnold, Cheryl (Martin) Berry, Shirley Wilson and Fran Coy, stylists.

418 S. Wagner, between Jackson Rd. & Liberty

Call us soon  
and Please Visit



## Harook-Hoover Vows Spoken At Waterloo

Cindy Harook, daughter of Mr. and Mrs. John Harook of 1281 Guinan Rd., married Woodrow Hoover, son of Mrs. Virginia Hoover of Stockbridge and the late Epp Hoover, Saturday, June 11, in Waterloo United Methodist church. The 5 p.m. ceremony was conducted by the Rev. Glenn Kjellberg before a gathering of 125 guests.

As she approached the altar, the bride was wearing a white A-line gown styled with an empire waist, a silk bodice trimmed in lace, half sleeves, a stand-up collar and a matching train. A headpiece of daisies completed her attire. She carried a bouquet of white daisies and baby's breath secured by ribbons.

Maid of honor was Anita Bruder of Manchester. She appeared in a pale yellow, sleeveless, cotton-polyester gown with a round neckline and the sash at the waistline. She held a single yellow rose surrounded by baby's breath and a ribbon.

Bridesmaid for the occasion was Mrs. Letha Khosvov of Stockbridge. She wore a pale green gown which matched the gown worn by the maid of honor, and also held a single yellow rose, surrounded by baby's breath and a ribbon.

For her daughter's wedding, Mrs. Harook chose a white, sleeveless polyester dress, accented with navy blue dots. The dress was styled with a stand-up collar, a full skirt and was belted at the waist. A corsage of miniature roses and carnations adorned her shoulder.

Mrs. Hoover, mother of the bridegroom, appeared in a yellow polyester dress with a rounded neckline, full skirt and belted waistline. Her corsage was an arrangement of miniature carnations and daisies.

Attending as flower girl was Tracie Harook, sister of the bride, while ringbearer was Thomas Hoover, nephew of the bridegroom.

Serving as best man was Roger Stevens of Munnith. He was assisted by a groomsman, Roger Hoover, brother of the bridegroom, and two ushers, Gary and Phillip Hoover, also brothers of the bridegroom.

Following the wedding, a reception was held at the American Legion Hall in Munnith, hosted by Mr. and Mrs. John Harook. Beth Tobin poured punch while Mary Hudson and Jean Campbell, both aunts of the bride, cut the wedding cake. Jeanette Harris tended to the guest book.

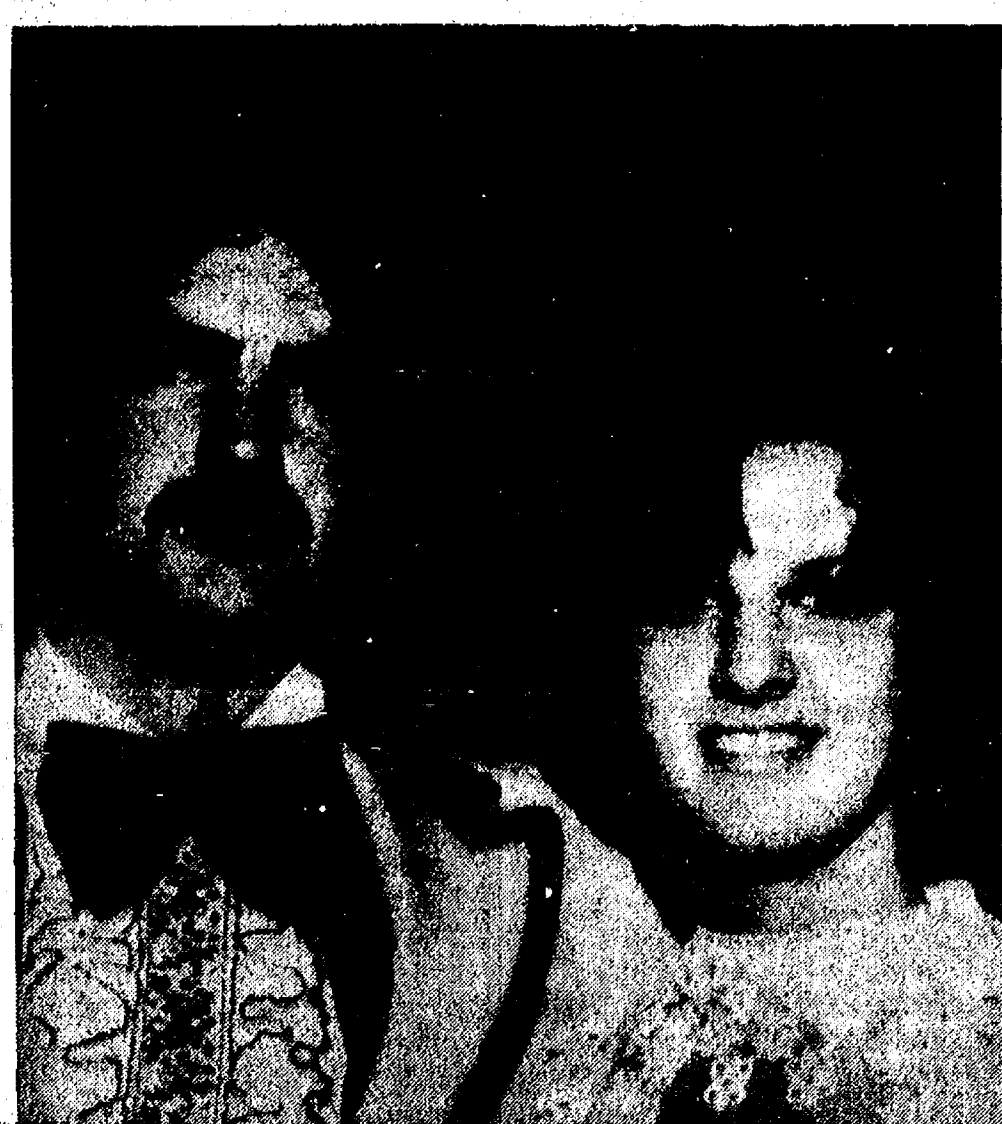
The former Miss Harook is a 1975 graduate of Chelsea High school and is employed by Farmer's State Bank of Munnith. Her husband is employed by Central Fibre, Chelsea.

The newlyweds currently reside in Munnith.

## Magic Mirror Beauty Salon

Open Tuesday thru Friday  
9 a.m. to 9 p.m.  
Saturday, 8 a.m. to 3 p.m.

PHONE 665-0816



Mr. and Mrs. Woodrow Hoover

You've probably  
got two lamps  
that need  
new shades.

We've got the shades.

Top of the Lamp

217 North Main Tel. 769-7019  
Across from a.a. old post office

## LESSONS

at The Music Hutch

DRUMS - GUITAR  
PIANO - ORGAN  
ALL TYPES BAND  
INSTRUMENTS

The MUSIC HUTCH

8407 Main St., Dexter  
Ph. 426-4380  
OPEN FRIDAYS TILL 8 p.m.

## CARPET REBIRTH

Give your carpet a new lease on life  
by cleaning it regularly.

## JET SPRAY CARPET CLEANING

Use Your  
BankAmericard

Phone 761-3025 or 475-1509  
Ask for John Lixey.

## FOXY LADY

Finest in Professional  
Hair Care!

107 W. MIDDLE, CHELSEA  
475-8196

Open Tues. thru Sat.  
Thurs. and Fri. eve. appts.

Carol, Jane, Janet, Carolyn

A Standard Want Ad Gets Results!

## PRE-4th of JULY SALE

SEPARATES, JR. & MISSY  
MENDOTA SLACKS (short, reg., tall) .... 30% Off

LARGE SIZE TOPS  
Sizes 36-52 ..... 30% Off

ALL DRESSES  
Junior, Missy, long and short ..... 30% Off

EVERYTHING IN JR. MODE SHOP  
Tops, Shorts, Halters, Slacks, Blouses ..... 30% Off

ALL SWIMWEAR & COVER-UPS  
30% OFF

Handbags, Lounge Wear, Belts, Scarfs  
30% to 50% OFF

Your BankAmericard or Master Charge Welcome

**KAREN'S BOUTIQUE**

Open 9:30 to 5:30 Daily, Till 8:30 Friday  
118 S. MAIN ST., CHELSEA

PH. 475-2678



## + Services in Our Churches +

**ST. PAUL  
UNITED CHURCH OF CHRIST**  
The Rev. R. J. Raziaff, Pastor  
Saturday, June 25—  
20th Anniversary of UCC.  
Sunday, June 26—  
10:00 a.m.—Church school and worship.

**ST. MARY CATHOLIC CHURCH**  
The Rev. Fr. David Philip Dupuis, Pastor  
Mass Schedule:  
Every Saturday—  
1:00-3:00 p.m. Confession.  
7:00 p.m.—Mass.  
Immediately after 7 p.m. Mass, Confession.  
Every Sunday—  
8:00 a.m., 10:00 a.m., 12:00 noon—Mass.

**ZION LUTHERAN CHURCH**  
Corner of Fletcher, Waters Rds.  
The Rev. John R. Morris, Pastor  
7:30 a.m.—Men's Prayer Break.  
Sunday, June 26—  
8:30 a.m.—Sunday school.  
8:30 a.m.—Worship.  
Wednesday, June 29—  
7:30 p.m.—WOZ Executive Board meeting.

**CHURCH OF CHRIST**  
13661 Old US-12, East  
Evangelist John M. Hamilton  
Every Sunday—  
10:00 a.m.—Church school.  
11:00 a.m.—Worship service.  
Nursery will be available.  
6:00 p.m.—Worship service.  
Every Wednesday—  
7:30 p.m.—Bible study.

**ST. THOMAS  
EVANGELICAL LUTHERAN**  
Ellsworth and Haab Rds.  
The Rev. Jerome Dykstra, Pastor  
Every Sunday—  
9:30 a.m.—Sunday school and Bible class.  
10:45 a.m.—Worship service.

**GREGORY BAPTIST CHURCH**  
The Rev. Paul White, Pastor  
Every Sunday—  
9:45 a.m.—Sunday school.  
11:00 a.m.—Morning worship.  
8:00 p.m.—Young people.  
7:00 p.m.—Evening worship.  
7:30 p.m.—Thursday mid-week worship service.

**ST. JOHN'S EVANGELICAL  
AND REFORMED CHURCH**  
(United Church of Christ)  
Francisco  
The Rev. Virgil King, Pastor.  
Every Sunday—  
10:30 a.m.—Church services.

**FIRST ASSEMBLY OF GOD**  
The Rev. Richard Coury, Pastor  
Every Sunday—  
9:45 a.m.—Sunday school.  
11:00 a.m.—Worship service.  
6:00 p.m.—Evening worship.  
Every Wednesday—  
7:00 p.m.—Christ's Ambassadors. Missionettes. Bible meditation and prayer.

**WATERLOO VILLAGE  
UNITED METHODIST CHURCH**  
8118 Washington St.  
The Rev. Glenn Kjellberg, Pastor  
Every Sunday—  
10:00 a.m.—Sunday school.  
11:15 a.m.—Worship service.

**ST. JOHN'S  
UNITED CHURCH OF CHRIST**  
Rogers Corners  
Every Sunday—  
10:30 a.m.—Worship service.

**NORTH LAKE  
UNITED METHODIST CHURCH**  
The Rev. David Stiles, Pastor  
Every Sunday—  
8:30 and 10:00 a.m.—Worship service.  
June 20-24—  
Vacation Church School, 9:30 a.m. to 11:30 a.m. Ages 2 years through junior high school.

**IMMANUEL BIBLE CHURCH**  
145 E. Summit St.  
The Rev. LeRoy Johnson, Pastor  
Every Sunday—  
9:45 a.m.—Sunday school, nursery provided.  
11:00 a.m.—Morning worship, nursery provided.  
6:00 p.m.—Evening worship.  
Every Wednesday—  
7:00 p.m.—Family hour, prayer meeting, and Bible study.

**OUR SAVIOR LUTHERAN  
CHURCH**  
1515 S. Main, Chelsea  
The Rev. William H. Keller, Pastor  
Friday, June 24—  
9:00 to 11:30 a.m.—Vacation Bible school.  
Sunday, June 26—  
9:00 a.m.—Worship service.  
Monday, June 27—  
9:00 to 11:30 a.m.—Vacation Bible school.  
Tuesday, June 28—  
9:00 to 11:30 a.m.—Vacation Bible school.  
Wednesday, June 29—  
9:00 to 11:30 a.m.—Vacation Bible school.  
Thursday, June 30—  
7:30 p.m.—Vacation Bible school closing service. Luke 9:18-24.

**FIRST UNITED METHODIST  
Parks and Territorial Rds.**  
The Rev. Glenn Kjellberg, Pastor  
Every Sunday—  
9:15 a.m.—Morning worship.  
10:00 a.m.—Sunday school.

**METHODIST HOME CHAPEL**  
Chaplain Ira Wood, Pastor  
Every Sunday—  
8:45 a.m.—Worship service.

**CONGREGATIONAL CHURCH**  
(United Church of Christ)  
The Rev. Carl Schwarm, Pastor  
Every Sunday—  
9:30 a.m.—Worship and church school.

**FIRST UNITED  
METHODIST CHURCH**  
The Rev. Marvin H. McCallum, Pastor  
Sunday, June 26—  
10:00 a.m.—Worship service (nursery provided). Church school for two- and three-year olds through first graders.

**ST. JACOB EVANGELICAL  
LUTHERAN CHURCH**  
12501 Rietmiller Rd., Grass Lake  
The Rev. Andrew Bloom, Pastor  
Every Sunday—  
9:00 a.m.—Worship service.  
10:15 a.m.—Divine services.

**NORTH SHARON BIBLE CHURCH**  
Sylvan and Washburne Rds.  
The Rev. Ronald C. Purkey, Pastor  
Every Sunday—  
10:00 a.m.—Sunday school. (Nursery available). Junior church classes.

11:00 a.m.—Worship service.  
6:00 p.m.—Senior High Youth meeting. Youth Choir.  
7:00 p.m.—Evening worship services. (Nursery available.) All services interpreted for the deaf.  
Every Wednesday—  
7:00 p.m.—Bible study and prayer meeting. (Nursery available.) Bus transportation available: 428-7222.

**BETHEL EVANGELICAL AND  
REFORMED CHURCH**  
(United Church of Christ)  
Freedom Township  
The Rev. Roman A. Reineck, Pastor  
Every Sunday—  
10:00 a.m.—Worship service.

**ST. BARNABAS  
EPISCOPAL CHURCH**  
20550 Old US-12  
The Rev. Fr. Jerrold F. Beaumont, B.S.P.  
Every Sunday—  
10:00 a.m.—Holy Communion first, third, and fifth Sundays, and 7:30 p.m. every Wednesday.  
10:00 a.m.—Morning prayer. Second and fourth Sundays. Church school and nursery every Sunday.  
Every Wednesday—  
8:15 p.m.—Bible study and discussion groups.  
First Wednesday of every month—Bishop's Committee.  
Third Thursday of every month—Episcopal church women.

**CHELSEA BAPTIST CHURCH**  
377 Wilkinson St.  
The Rev. James Stacey, Pastor  
Every Sunday—  
9:45 a.m.—Sunday school for the whole family.  
11:00 a.m.—Morning worship service and children's church.  
6:00 p.m.—Evening service, informal singing, sharing, study and discussion. (Nursery care provided for all services).  
Home Bible Studies each week in the homes of the elders.  
For information, call 475-8323.

## THE CRACKLE BOX

731 Taylor St.  
Chelsea, Mich. Ph. 475-8435  
(after 5 p.m.)

**JULY 2-3-4**

10 a.m. to 5 p.m.

- ★ GEORGIAN LOVE BIRD (service for 12) .....\$300
- ★ 6 CLARK BRONSON PLATES (Limited Edition) \$60
- ★ ROYAL RUBY 4 5-pc. place settings .....\$48
- ★ CAMBRIDGE "SQUARE," 24-pc. set .....\$152
- ★ JADITE, "Alice" pattern, service for 8 .....\$46
- ★ RIVIERA, service for 8 .....\$80
- ★ AZALEA, 20-pc. luncheon set .....\$95
- ★ 3-pc. (large plate, punch bowl and ladle) .....\$125

Also other antiques and collectibles  
from which to choose.

## MICHIGAN HOME-GROWN STRAWBERRIES

By the Case or Quarts  
You Pick or We Pick.

## FRESH HOME-GROWN PEAS

You Pick or We Pick

## NEW CALIFORNIA POTATOES

## ICE COLD WATERMELON

## Other Fresh Fruits and Vegetables

## FARM BAKED DONUTS and BREAD

# GEE FARMS

OPEN DAILY, 8 a.m. to 7 p.m.

14928 Bunker Hill Rd., Stockbridge Ph. (517) 769-6772

M-52 north to Territorial, turn west, crossing M-106 to Bunkerhill Rd., north 1 1/2 miles to GEE FARMS.

**FIRST CHURCH OF CHRIST  
SCIENTIST**  
1883 Washtenaw Ave., Ann Arbor  
Every Sunday—  
10:30 a.m.—Sunday school, morning service.

**BAHA'I FIRESIDE**  
Every Thursday—  
8:00 p.m.—At the home of Toby Peterson, 705 S. Main St. Anyone wishing to learn about the Baha'i faith is welcome.

**FIRST UNITED  
PRESBYTERIAN CHURCH**  
Unadilla  
The Rev. T. H. Liang, Pastor  
Every Sunday—  
9:45 a.m.—Sunday school.  
11:00 a.m.—Worship service.

**FAITH EVANGELICAL  
LUTHERAN CHURCH**  
9575 North Territorial Rd., Dexter.  
The Rev. John P. Huebner, Pastor  
Sunday, June 26—  
9:00 a.m.—Worship service.

**CHURCH OF JESUS CHRIST  
OF LATTER-DAY SAINTS.**  
Meetings at  
Church of Jesus Christ  
of Latter-Day Saints  
2141 Brockman, Ann Arbor  
Every Sunday—  
9:30 a.m.—Sunday school.

**SALEM GROVE  
UNITED METHODIST CHURCH**  
3320 Notten Rd.  
The Rev. Gerald R. Parker, Pastor  
Every Sunday—  
9:30 a.m.—Sunday school.  
10:30 a.m.—Worship service.

## Final Federal Crop Insurance Report Date Is June 30

Farmers participating in the 1977 Federal Crop Insurance program are reminded that the final date for reporting their planted acres of spring crops is June 30. Forms for this purpose have been mailed to all 1977 insureds. Farmers are reminded that if the acreage is not reported prior to June 30 damaged crops could be uninsurable for the 1977 crop year under the terms of the contract.

Heavy sign-up in the 1977 program has resulted in extra heavy workloads in the local county offices, therefore, farmers must take it upon themselves to file their acreage report.

## Fire Dept. Offers Smoke Detectors

Citing the fact that 2,000 residential fires occur daily on a nation-wide basis, coupled with the fact that 75 percent of all fatal fires occur between 9 p.m. and 6 a.m., Chelsea firemen have launched a drive to help protect area residents from the potentially fatal effects of a late night blaze in their homes.

For a nominal fee of \$30, homeowners may purchase a Smoke-master ionization-type smoke detector from any Chelsea fireman. The battery-operated units are easy to install and are basically designed to protect sleeping quarters, according to spokespersons from the local fire department. When triggered, the unit emits a high-pitched warning signal which will awaken all those within hearing range.

In addition to using any Chelsea fireman as a source for the unit, the smoke detectors are available by calling Larry Koch, 475-7319; Larry Adams, 475-7478; or Bob Dorer, 475-2721.

Along with the smoke detectors, the fire department has life ladders available for purchase. These chain-link ladders may be readily stored in closets or dresser drawers and are designed for use in escaping fires through second-story windows.

As a final reminder to residents interested in protecting themselves against fire, Chelsea firemen urge residents to make use of the department's fire extinguisher service. Along with selling new fire extinguishers, Chelsea firemen can recharge dormant ones.

## Residential - Commercial REMODELING

FREE ESTIMATES

**1b V. JENSEN  
and SON**

LICENSED BUILDER

378 Spring Lake Drive  
Chelsea, Mich.  
PHONE 475-1820

# Dexter American Legion Post 557 is having a 30-Year Birthday Party

**SATURDAY, JULY 9**

Starting at 7 p.m.

Charge \$4, to Include

Dancing, Dinner, Drawing, Door Prizes,

Orchestra, Awards

and Recognitions to 30-Year

and Charter Members

The Post to Host the 30-Year Members

Invitations Extended to

ALL Legionnaires, Auxiliary & S.A.L.

Members & Guests.

# STOP. DETOUR

Unless you're crazy about the drive, there's no real reason to drive into Detroit looking for new car bargains. Rumpy Chevrolet in Ann Arbor is a lot closer and you'll get the same low prices you find in Detroit—maybe even lower. At Rumpy you'll also find the kind of careful, competent, come again service you expect from small town folks who know their neighbors.

You see, Rumpy's not just the biggest Chevrolet dealer in Washtenaw County, he's got the biggest dealership of any kind in the country. That means that he's governed by the same kind of high volume economics you've been driving all the way into Detroit to find.

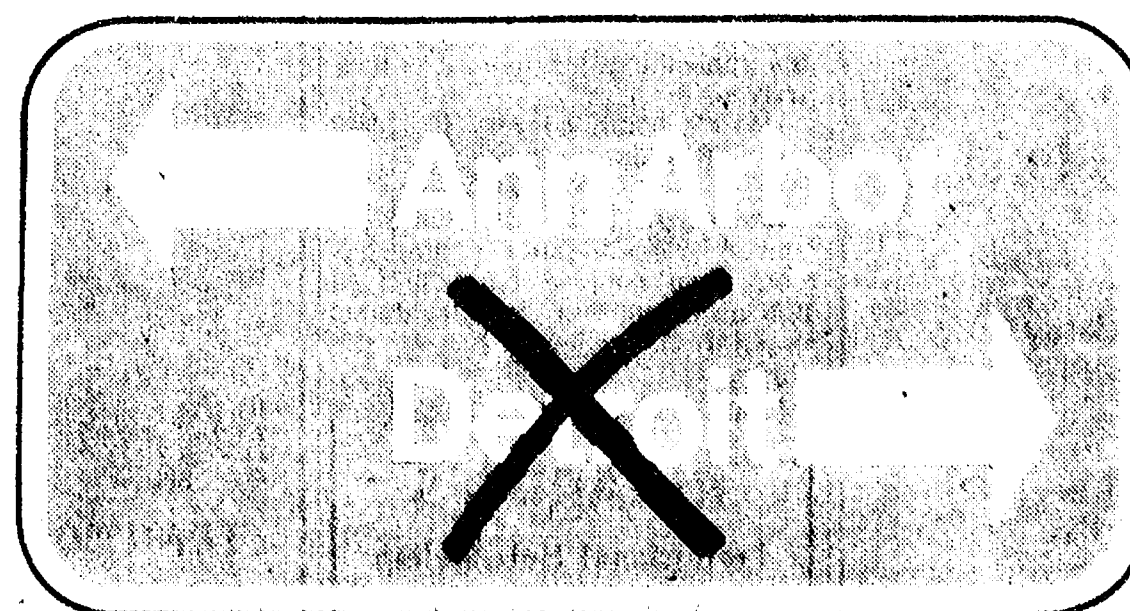
On the other hand, Ann Arbor is a town where people do know each other. Word gets around. And the word is that Rumpy gives good service after the sale. As a matter of fact, Rumpy's service department has been used as a model for training other Chevrolet dealers.

Isn't it time you took a detour?  
Before you drive all the way into Detroit  
looking for a new car... stop at Rumpy.  
We don't think you'll go any further.

# Rumpy

CHEVROLET

CORNER JACKSON & WAGNER RDS., ANN ARBOR, PHONE 663-3321



Rumpy sponsors the Huron Valley  
Corvette Club. For information  
call 482-3303.



## VFW Post Receives Perpetual Charter

On Saturday evening, June 11, Chelsea Veterans of Foreign Wars Post No. 4076 and its Ladies Auxiliary hosted a dinner for guests and members to celebrate the receipt of the Post's Perpetual Charter from the VFW National Headquarters. The charter was presented to the Post for obtaining at least 25 life members. At the present time, the Post has 38 paid up life members.

Some 60 guests, Post members and Auxiliary members attended the affair. Among the guests were the Rev. Harvey Ellsworth of Laingsburg, commander of VFW District No. 6, VFW Post 701, Lansing; Bill Goodwin, past commander, VFW District No. 6, VFW Post 6132, Lansing; Glenn Carnes, past commander VFW District No. 6, VFW Post 6132, Lansing; Marvin Smith, past commander VFW District No. 6, VFW Post 3725, Erie; Mrs. Betty Ellsworth, president VFW Ladies Auxiliary, District No. 6; Mrs. Lucille Smith, Sr., vice-president, VFW Ladies Auxiliary, District No. 6; Mrs. Jean Goodwin and Mrs. Edith Carnes.

After sharing a dinner prepared by Chelsea's VFW Auxiliary, the guests were introduced by Mac Packard, master of ceremonies for the evening. Guest speaker was Glenn Carnes, staff member of the VFW National Home at Eaton Rapids.

Carnes spoke on current events at the VFW National Home, the number of children graduating from school and new children being admitted to the Home. He also encouraged the invitation of Michigan Congressmen to the National Home for a first-hand look at the facilities. Michigan Social Services is still campaigning for jurisdiction over the National Home.

Highlight of the evening was the presentation of the Perpetual Charter to the Chelsea VFW Post by Bill Goodwin of Lansing. Goodwin was selected for this honor because of his deep interest and helpfulness in keeping the momentum going in the Chelsea VFW Post over the years.

Life members present for the evening festivities were Mac Packard, Ken Platt, Fremont Boyer, Laurence Boyer, Byron Smith, Frank White, Kermit Sharp, Vern Packard, Tom Collinsworth, Duane Boyer, Gary Kent, Clarence Bohenna and Max Grambau.

Also life members, but not in attendance at the presentation are Charles Ritter, Dave Strleter, Bill Pierce, Dave Myers, Roy Johnson, Duane Weiss, Clair Harms, Harold Osborne, Warren Wadhams, Jim French, Willard Pearson, Robert Foster, Jim Finch, Charles Slo-

cum, Dick Seyfried, T. S. McKaye, George Winans, Jim Barnes, Charles Kuhn, Lloyd May, John Stoffer, Dick Clark, Dell Packard and Gary Speer.

Another presentation made by Goodwin that evening was to Mac Packard of Chelsea VFW Post 4076 from VFW Post 6132, Lansing. Packard received a Citation of Merit for his work in Lansing in the Jerry Lewis Muscular Dystrophy Drive. Packard and his fire truck raised in excess of \$3,000 for that cause.

After the presentations, guests and members were entertained by Jeff Boyer and Jim Fitzsimmons who performed acts of magic. All agreed the two young men had a lot of talent.

Co-chairmen for the evening events were local VFW Post Commander Byron Smith, VFW Auxiliary President Betty Smith, and Chelsea VFW members Mr. and Mrs. Mac Packard.

## Loren Beutler Named to Cleary Board

Loren Beutler has been appointed to the Cleary College Board of Trustees, according to an announcement made by Dr. Ervin Steiner, chairman of the board, last Thursday, June 16. Cleary College is headquartered in Ypsilanti.

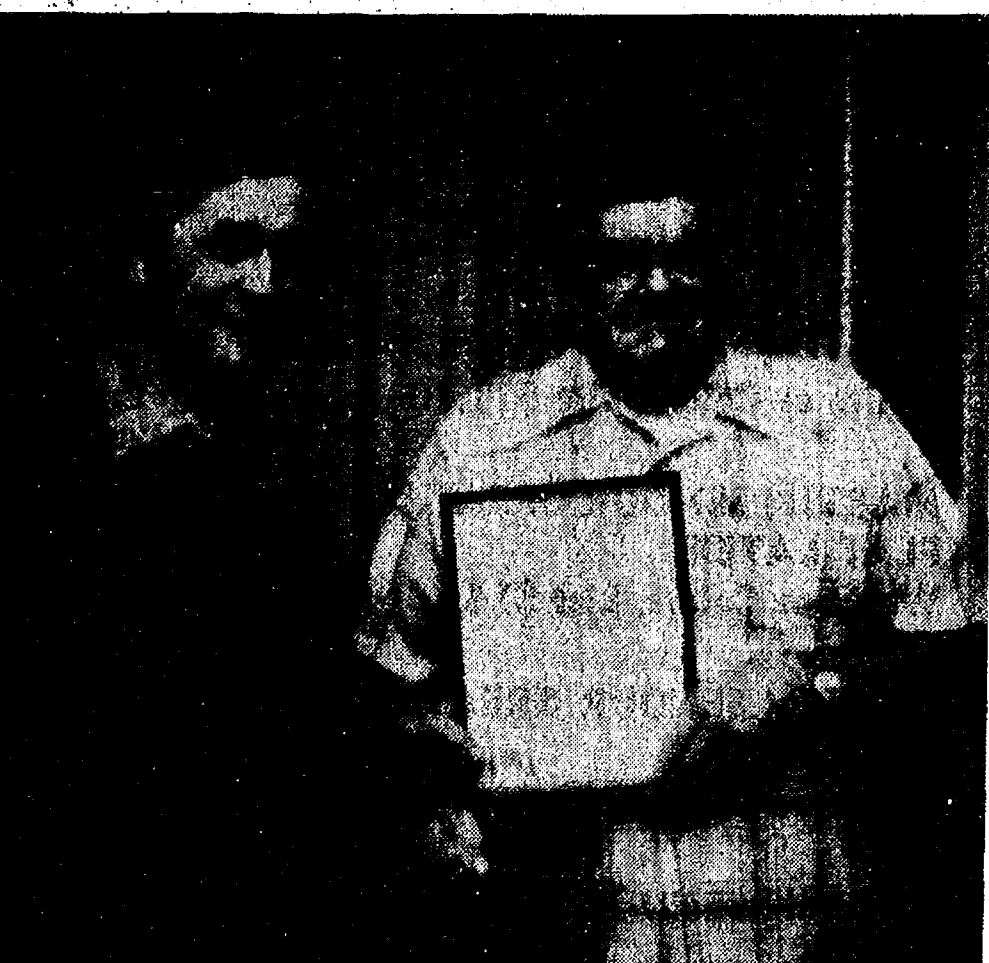
Beutler, who has lived in Ypsilanti for the past 26 years, is a graduate of Chelsea High school. He received his BBA degree from Eastern Michigan University.

Beutler retired from Ford Motor Co. in 1973 after 23 years of service. During his career at Ford's, he worked in the Forward Plans Department of Finance at the company's World Headquarters in Dearborn for nine years.

Among his other achievements, Beutler served as president of the Southeastern Michigan Growers Association, and served on the Board of Directors of the Metropolitan Tree Growers Association. He has also been involved in other business activities, including the development of real estate.



**PERPETUAL CHARTER PRESENTED:** To climax a special celebration hosted by Chelsea Veterans of Foreign Wars Post No. 4076 and its Ladies Auxiliary, June 11, Bill Goodwin, left, past commander of VFW District 6 and member of VFW Post No. 701, Lansing, presented a Perpetual Charter from the VFW National Headquarters to local Post Commander Byron E. Smith. The charter was presented to the Chelsea Post for its efforts in obtaining 38 paid-up lifemembers.



**CERTIFICATE OF MERIT:** Bill Goodwin, left, past commander of VFW District 6 and member of VFW Post No. 701, Lansing, presents a Certificate of Merit to Mac Packard, member of Chelsea VFW Post No. 4076, during an honorary dinner at the local VFW Home, June 11. The presentation was made in recognition of Packard's work in Lansing during the Jerry Lewis Muscular Dystrophy Drive there.

## TP-77 Truck & Tractor Pull

**JULY 2-7 p.m.**

**4x4 Truck Pull**

**Weight Classes:** (see flyers at Wolverine Lounge)

**Rules:** (see flyers)

**Weigh In:** 4-6 p.m.

(scales on grounds)

**Pull:** 7 p.m.

**Prize Money:** (see flyers at Wolverine Lounge)

**JULY 3-1 p.m.**

**Type:** Farm Factory Stock,

**Open Modified & Super Stock**

**Classes:** Farm Stock 6,000,

9,000, 12,000, 15,000

**Open Modified & Super**

5,000, 7,000

**Weigh In:** 10-12 noon

(scales on grounds)

**Pull:** 1 p.m.

**Rules:** NTPA STANDARDS

**Prize Money:** (see flyers at Wolverine Lounge)

**LOCATION:** Stockbridge Athletic Field

**SPONSORS:** Stockbridge FFA and Jaycees



**HEIFERS REPAY HANDSOMELY—Grow 'Em Right!**

At Wayne Research Farm twin 3-day-old heifers went on test.

One was fed Wayne Calnup medicated non-cereal milk replacer followed by Wayne Calf Krunch. The other: whole milk, hay, grain, soybean meal.

Wayne-fed heifer was ready for breeding earlier, calved earlier, produced milk 3 months earlier. And 2 1/2 years later, showed a profit difference over twin sister of \$164.25!

Better stop in.

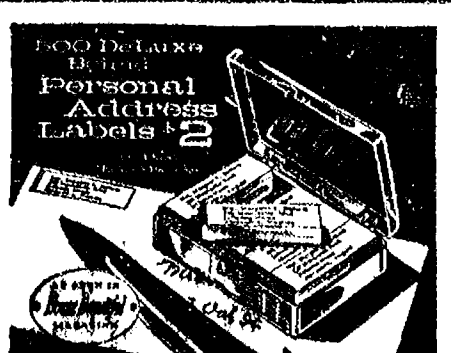
**McCALLA FEED SERVICE**

Phone 475-8153

12875 Old US-12, Chelsea

**WAYNE CALNUP & CALF KRUNCH**

From Allied Mills: The Innovators



**The Chelsea Standard**  
Ph. 475-1371  
300 N. Main Chelsea

# Jiffy market

Big Enough To

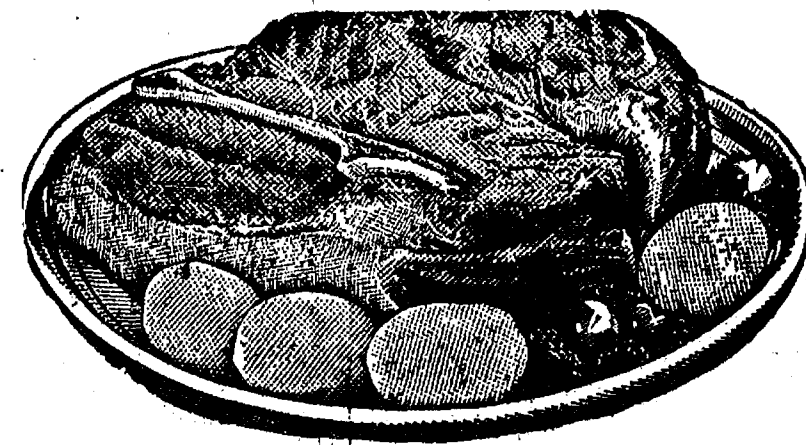
Serve You . . . Small Enough To Know You!

**TOP VALUE FOODS - GUARANTEED SATISFACTION - COURTEOUS SERVICE**

**COMPLETE FRESH MEAT DEPT. - USDA CHOICE BEEF - THE FINEST OF FRESH PORK**

**U.S.D.A. CHOICE BEEF**

**SPECIAL SALE ON U.S.D.A. CHOICE FRONT QUARTERS**



*Tender Beef with Flavor!*

U.S.D.A. Choice



**HANGING WEIGHT**

Approximately 140 to 160 lbs.

**59¢ lb.**

Plus 14¢ lb. for processing.

Approximate cost after processing 98¢/lb.

Processing includes cutting, grinding and wrapping to your specifications, and sharp freezing.

U.S.D.A.

**Blade Cut Chuck Roast lb. 69¢ CHOICE BEEF**

**Center Cut Chuck Roasts lb. 79¢**

**Arm Chuck Roast lb. \$1.09**

**English Roast lb. \$1.09**

**Rib Steaks lb. \$1.69**

**Beef Stew lb. \$1.19**

**Ground Chuck lb. \$1.09**

**Short Ribs lb. 49¢**

**EXTRA SPECIAL YOUNG - TENDER BEEF LIVER 39¢ lb.**

**NOTE!! This is GRAIN FED BEEF with full flavor and tenderness that you are paying for.**

**STAMPED AND GRADED U.S.D.A. CHOICE**

**SIDES - FRONTS - HINDS WHOLE RIBS - WHOLE LOINS**

**CUSTOM CUTTING - WRAPPING - FREEZING QUICK SERVICE ON BUTCHERING YOUR BEEF OR OURS**

HERRUD <b>LIVERWURST</b> 69¢ lb.	HERRUD <b>Braunschweiger</b> 69¢ lb.	Eckrich Old Fashion <b>Smoked Polish SAUSAGE</b> \$1.19 lb.	<b>HAMBURGER</b> PACKAGED FRESH DAILY Lean 79¢ lb. SATISFACTION GUARANTEED
--	--	---	---

**Supermarket Groceries-Fresh Produce-Large Assortment Frozen Foods**

12-OZ. CANS <b>COCA-COLA</b> 8 pac \$1.39	<b>WONDER COUNTRY STYLE BREAD</b> 3 1 1/4-Lb. Loaves \$1.00	<b>PRINGLE'S NEW FANGLED POTATO CHIPS</b> 4 1/2-Oz. Can 39¢
---	--	--

**COLBY LONGHORN STORE CHEESE** Random Weights **\$1.29 lb.**

**JIFFY MARKET-YOUR MILK STOP - FARM MAID DAIRY -**

**HOMOGENIZED MILK . . . . gal. \$1.39**

FARM MAID FRESH <b>ORANGE JUICE</b> 1/2 gal. 59¢	FARM MAID FRESH <b>COTTAGE CHEESE</b> 1-Lb. Ctn. 59¢	FARM MAID <b>HALF and HALF</b> 16-Oz. Pk. 39¢	FARM MAID <b>SOUR CREAM</b> 8-Oz. 1/2-Pt. 39¢
--	--	---	---

**JIFFY MARKET MARATHON GAS PUMPS**

<b>REGULAR GAS</b> <b>59.9</b> Includes All Taxes	<b>GAS PUMP SPECIAL WINDSHIELD WASHER CLEANER</b> One Gallon <b>79¢</b>	<b>NEWS FLASH!!</b> But It's Nothing New! OUR COST OF GAS HAS GONE UP! So please!! don't blame us for High Gas Prices!
---	--	---

**Open With Complete Service, 7 Days A Week**  
**TOP VALUE FOODS 7 a.m. MORNING to 10 p.m. NIGHTS**  
Sale Prices June 23 June 27



## Community Calendar

All Senior Citizens meetings will be cancelled until further notice.

Chelsea Social Service hours are Thursday, 10 a.m. to 4 p.m., or call 475-1581, or 475-1012.

Sharon Township Planning Commission regular meeting third Wednesday of each month. adv42tf

Lyndon Township Board regular meetings the third Tuesday of each month, 7 p.m., in Lyndon Town Hall.

Sylvan Township Board meeting the first Tuesday of the month, at 7 p.m., at Sylvan Township Hall. adv42tf

Vermont Cemetery Association, June 25, 1:30 p.m. at the cemetery. In case of rain, meeting will be held at the home of Vernon Satterthwaite.

Chelsea Jaycees are actively seeking new members among young men between the ages of 18 and 36. Meetings conducted the first Tuesday of each month, 7:30 p.m. Women's Auxiliary meets the third Tuesday of each month, 7:30 p.m. For more information, contact Bob Ponte, 475-9191, or Bob Smith, 475-2038.

American Legion Hospital equipment is available by contacting Larry Gaken at 475-7891.

Chelsea Home Meal Service delivers one hot meal a day to elderly and disabled living in the Chelsea area. For information, call Caralee Hoffmeyer, 475-8014, or Barbara Branch, 475-7644.

Ann Arbor Bicycle Touring Society's "One Helluva Ride," Saturday, July 16 for Midwest bicycling enthusiasts who will ride from Dexter to Hell, Mich. and back. Advance registration required before July 2. For further information, call Dave Knox, 995-5778, or write AABTS, 1921 Norway, Ann Arbor.

Lima Township Planning Commission regular meeting the third Tuesday of every month, 8 p.m. at the Township Hall.

Sharon Township Board regular meeting first Thursday of each month, 8:30 p.m. adv42tf

Lyndon Township Planning Commission meets the second Thursday of the month at the Township Hall at 8 p.m. adv42tf

Lima Township Board regular meeting the first Monday of the month, 8 p.m. at Lima Township Hall. adv42tf

Chelsea Co-op Nursery is now taking applications for the 1977-78 school year. To enroll, call Kay Johnson, 475-7765 or 475-8316. advx43tf

Past Matrons OES, meeting and pot-luck, Thursday, June 23, 12:30 p.m. at the Masonic Temple.

Ice cream social at Emmanuel Church of Christ, W. Main St., Manchester, Wednesday, June 29, 5 p.m. to 8 p.m. adv2

Washtenaw Genealogical Society, annual meeting, salad luncheon and "show and tell," Sunday, June 26, 1 p.m. at 2310 Ayrshire Dr., Ann Arbor. Bring a salad for eight and table service. Tea and coffee provided.

Dexter-Chelsea LaLeche League, Monday, June 27, 7:30 p.m. at the home of Shirrell Fischer, 3044 N. Lima Center Rd., ph. 475-2551. Topic of meeting will be "Art of Breastfeeding and Overcoming Difficulties."

Humane Society of Huron Valley has dogs and cats for adoption. Owners may reclaim lost pets. Phone 662-5585. Open from 9 a.m. to 5 p.m. daily; Sunday, 1 p.m. to 5 p.m. 100 Cherry Hill Rd., one-fourth mile south of Plymouth Rd. at Dixboro.

McKune Memorial Library hours are Monday, 10-5 and 7-9; Tuesday, 12-5; Wednesday, 12-5 and 7-9; Thursday, 10-3; Friday, 12-5 and 7-9; and Saturday, 12-5.

Inquiries regarding the Chelsea blood bank may be directed to Harold Jones in the event that Mrs. Dudley Holmes is unavailable, or to Cornelia Fry, American Red Cross in Ann Arbor, 971-5300.

Child birth preparation classes, LaMaze method, are being held at Chelsea Community Hospital Tuesday evenings. Contact Dee Burkel, 475-9316, for information.

Tours of Chelsea Community Hospital and surgical center are available for small groups. To arrange for tours, call: Neva Jordan, 475-8027, or Dorothy Miller 475-8020.

A daughter, Christine Mary, to Mr. and Mrs. Pat Vargo of 16460 Waterloo Rd., June 20, at St. Joseph Mercy Hospital, Ann Arbor. Maternal grandparents are Mr. and Mrs. Donald Beaman of Chelsea, and paternal grandmother is Mrs. Mary Vargo of Belleville.

Last week, Mrs. Ruth Skittenhelm of Ann Arbor, Mrs. Leroy Bristle and Mrs. Bristle's son, Ernie, both of Chelsea, flew to Raleigh, N.C., to visit Capt. and Mrs. Ronald Falcone of Fayetteville, N.C. Mrs. Skittenhelm and Mrs. Bristle returned home Saturday, June 18, while Mrs. Bristle's son remained in Fayetteville where he will be the guest of his sister, Elaine, for one month. Her husband, Capt. Falcone, is a navigator stationed with the U. S. Air Force in Fayetteville.

### Personal Notes

Nutritious food for mothers during pregnancy is important not only to her but to her unborn baby, says the March of Dimes. Malnourished mothers risk giving birth to infants who are underdeveloped mentally and physically. A sound diet is an important part of prenatal care, according to the voluntary health agency.

## DEATHS

### Role Salyer Dies Saturday at Hospital Following Short Illness

Role Salyer, 71, of 525 N. Main St., died Saturday, June 18, at Chelsea Community Hospital following a short illness. He was born Jan. 6, 1906, in Hendricks, Ky., to William J. and Arizona Mcarty Salyer.

On Aug. 3, 1927, he married Gladys Flint in Royalton, Ky. She survives.

Mr. and Mrs. Salyer moved to Chelsea from Kentucky on May 11, 1937. Shortly thereafter, Mr. Salyer began working as a muck farmer in the Chelsea area, where he continued to farm for a number of years. He was a member of Stockbridge Church of Christ.

In addition to his widow, survivors include three sons, Ollie Lee of Jackson, Lawrence of Jackson, and Lushin of Manchester; three brothers; four sisters; eight grandchildren; five great-grandchildren; and two great-great-grandchildren. He was preceded in death by one son, Role Salyer, Jr., on Jan. 17, 1971; four sisters; and one brother.

Funeral services were held Tuesday, June 21, 1:30 p.m. at the Staffan Funeral Home with the Rev. Cledys Whitaker of Stockbridge Church of Christ officiating. Burial followed in Leoni Cemetery, Leoni.

### Mrs. James Herter Dies Suddenly Saturday In Grass Lake Township

Karen Jean Herter, 33, of 1630 Rank Rd., Grass Lake, died suddenly Saturday, June 18, in Grass Lake township. She was born Aug. 26, 1943, in Ypsilanti to Donald R. and Jeannette E. Sayre Rank.

On April 10, 1964, she married James Herter in Plymouth. He survives. Mr. and Mrs. Herter moved from Plymouth to the Grass Lake area three years ago.

At the time of her death, Mrs. Herter was employed as a receptionist by Sycor of Ann Arbor. She was a member of First United Methodist church, Chelsea.

In addition to her husband, survivors include three sons, James, Christopher and Matthew, all at home; both parents; one brother; her paternal grandmother, Mrs. Inez Rank of Chelsea; her maternal grandmother, Mrs. Aleda Sayre of Belleville; and a great-aunt, Myrtle Bidwell of Grass Lake.

Funeral services were held Tuesday, June 21, 11 a.m. at Staffan Funeral Home with the Rev. Henry Walsh of First Presbyterian church, Plymouth, officiating. Burial followed in Maple Grove Cemetery, Sylvan Center.

Please Notify Us In Advance of Any Change in Address

### Mrs. George Stanford Dies June 6 in Virginia

Florence Evelyn Stanford, 82, of the Chelsea United Methodist Retirement Home, died Monday, June 6, in Fairfax, Va., following a brief illness. She was born in Wallin, July 19, 1895, to Edgar and Effie Wright.

On Dec. 31, 1914, she married the Rev. George Stanford. He survives.

Mrs. Stanford served with her husband at pastorates in the Detroit and West Michigan Conferences of the United Methodist Church for more than 40 years. In 1964, the Stanfords moved to the Chelsea United Methodist Retirement community where the Rev. Stanford had previously served as chaplain for six years, living in the minister's duplex there.

In addition to her husband, survivors include four daughters, Mrs. Don (Edith) McLouth of Montague, Mrs. Ahmet (Florence) Dudas of Fairfax, Va., Mrs. Lawrence (June) Olson of Ravenna, and Mrs. Melva Kohler of Vicksburg; two sons, Dr. Clare Stanford of Vienna, Va., and Alonzo Stanford of Mexico City, Mex.; 16 grandchildren; 13 great-grandchildren; one sister; one brother; and many nieces and nephews.

Memorial services were conducted Wednesday, June 15, in the Chelsea United Methodist Retirement Home Chapel with the Rev. Ira L. Wood, chaplain, and the Rev. Marvin H. McCallum officiating.

### Radio Field Day

(Continued from page one)

will establish its Field Day stations at Park Sharon, on M-52, south of Chelsea, setting up communications equipment and portable power sources, and erecting antennas.

Present plans call for operating at least five separate transmitting stations and three emergency power generators, with use of both voice and code transmissions. General organization of the event is being co-ordinated by Bill Wade, Bill Altenberndt and Russ Pichlik.

Field Day, conducted under simulated emergency conditions, provides an opportunity for interested residents to observe radio communications in action. The public is invited to visit the Club station at Park Sharon during the upcoming week-end activities.

Club personnel will be available and ready to assist in providing members of the community with an interesting view of public service radio communications in action.

### Class of '72 Reunion

(Continued from page one)

Class of 1972, but who went through a good portion of high school with the class, is also invited to attend the upcoming event. Those who qualify should contact either of the two reunion committee members mentioned above for an invitation.

All reservations for the reunion must be made before the June 30 deadline.

## Babe Ruth Athletics Down Manchester

Last Friday, the Chelsea Athletics edged past Manchester No. 8, 7-6, as they raked in seven runs on 11 hits to Manchester's

### Two Cyclists Injured on Mayer Dr.

Two Chelsea motorcyclists were injured in related accidents Saturday evening, June 18, while riding along A. D. Meyer Dr., near the Madison St. intersection. According to police reports, Jerry D. Anderson, 19, of 503 Wellington St., was eastbound on A. D. Meyer Dr. about 5:30 p.m. Saturday, when he hit a chuckhole going into a curve at approximately 35 m.p.h. He looked back to check on the motorcycle behind him when his vehicle hit some gravel, causing him to lose control. Anderson went over the curb and hit a lamp post.

Riding a short distance behind Anderson was Lawrence D. Cobb, 23, of Munith. Cobb saw Anderson's motorcycle veer out of control. As he was watching, his motorcycle hit the same chuckhole in the pavement, and he, too, lost control of his vehicle. He struck the curb and the impact forced his motorcycle to flip on its side.

Both youths were transported to Chelsea Community Hospital where they were treated and released.

### Players Needed, Summer Tennis Leagues Closing

Anyone still interested in joining one or more of the 10 summer tennis leagues offered through the Chelsea Recreation Department should do so immediately by calling Terry Schreiner at 475-2536. There is a need for more players in some of the leagues in order to schedule games for those leagues.

The 10 league divisions are Men's A Singles, Men's A Doubles, Women's A Singles, Women's A Doubles, Men's B Singles, Men's B Doubles, Women's B Singles, Women's B Doubles, Mixed A Singles, and Mixed B Doubles.

Each participant will be charged a \$3 fee per league upon registration. Fees must be brought to 800 Book St. anytime between 9 a.m. and 11 p.m.

six runs on five hits in Babe Ruth action. Leading the attack for the Athletics with two home runs over the fence was Dave Stock, while Randy Luick paced the fielders with four fine catches in left field. Putting a final seal on the Athletics' successful strategy was Brad Knickerbocker, who made several critical plays at shortstops in addition to pitching well for three innings.

Relieving Knickerbocker at the pitching mound was John Welton, who came in for the last four innings. He struck out the last two Manchester batters with Manchester's tying run on base to ice the victory for the Athletics. Connecting for the Athletics were Dennis White, Brad Knickerbocker, John Welton, Jeff Fouty, Randy Luick, Jim Stock and Dave Stock. Crossing home plate to score for Chelsea were Jim Stock, Dave Stock, Brad Knickerbocker and Dennis White.

### Softball League

Standings as of June 20

FAST PITCH	
	W L
Chelsea Merchants	3 0
Ann Arbor Centerless	1 1
Hackney & Bennett	1 1
Howell Town & Country	1 1
3-D	1 1
Jiffy Mix	0 3

### SLOW PITCH LEADERS

American Division	
	W L
Village Motors	4 0
National Division	
	W L
T & R Pallet	2 1
Raycon	2 1

### Adult Tennis Class Offered By Rec. Dept.

A final six-week summer session of adult tennis classes for three levels of play will begin Thursday, June 30. Sponsored by the Chelsea Recreation Department, the classes will be held on the Chelsea High school tennis courts.

Class times will be 6 p.m., 7 p.m. and 8 p.m. daily, Monday through Friday, for beginning, intermediate and advanced players, respectively.

Fee for the six-week session is \$8. To register, call Terry Schreiner at 475-2536. Participants will be required to provide their own tennis racquets.

### School Board Briefs

(Continued from page one)

A motion to set the millage request for the August election at 4.4 mills was defeated. The millage request will be on the agenda for the meeting of July 11 when new board members are sworn in.

A resolution was adopted to borrow \$510,913 against anticipated state aid for 1977-78 to provide operating funds until taxes are collected.

Meeting adjourned at 10:45 p.m.

Telephone Your Club News To 475-1371.

Each year, scientists at Michigan State University receive about 1,000 grants totaling \$26 million for research projects.

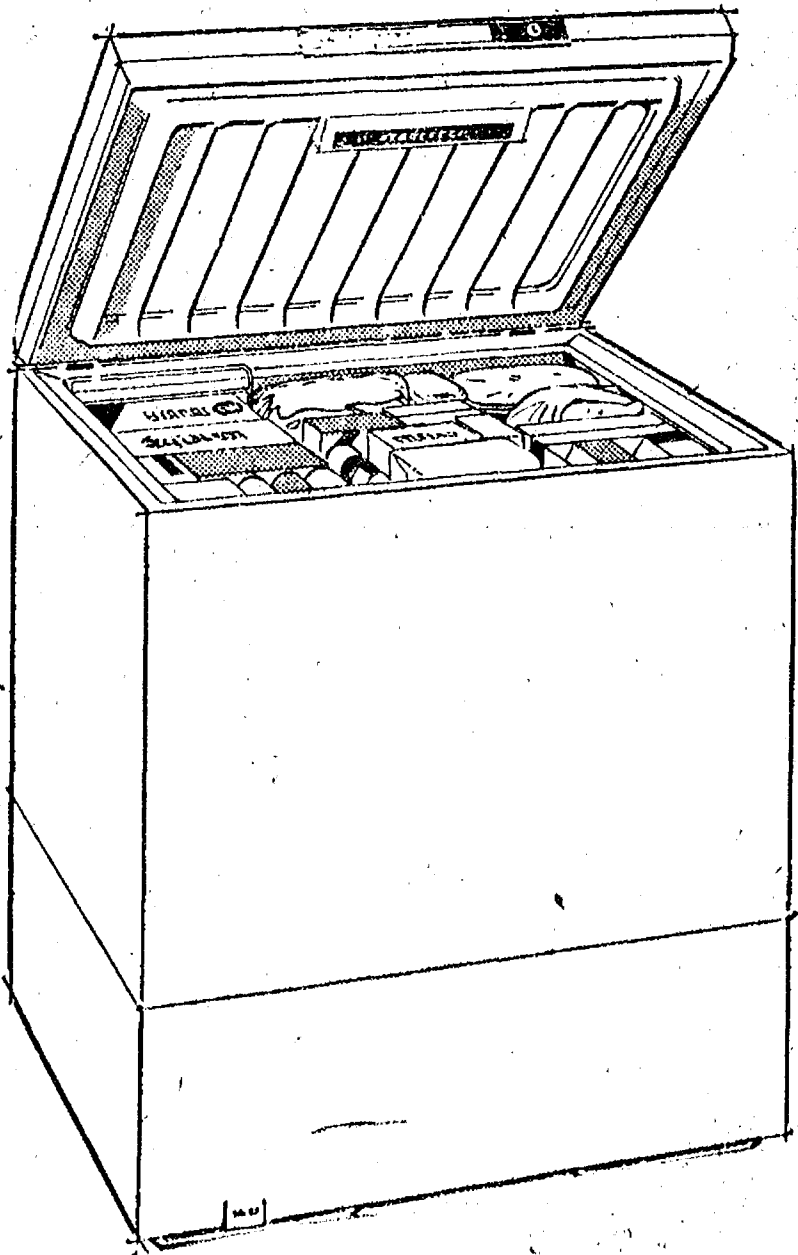
**NOW OPEN**  
**THE GLASS BARN**  
OLD & NEW GLASS  
ANTIQUES & COLLECTIBLES  
DEPRESSION GLASS  
A SPECIALTY  
**ARLENE HARGRAVE**  
Ph. 498-2849  
12719 Roepcke Rd., Gregory  
Open By Chance or Appt.

**GO GAMBLES**  
**Exterior House Paint Sale!**  
**PICK YOUR PRICE**

GAMBLES EXTERIOR FLAT LATEX, White only	gal.	<b>\$477</b>
GAMBLES HOMEGUARD White only. List \$10.49	gal.	<b>\$749</b> SAVE \$3.00
MARTIN SENOUR FLAT LATEX HOUSE PAINT White only. List \$10.80	gal.	<b>\$825</b> SAVE \$2.55
MARTIN SENOUR HOME STYLER White or Colors. List \$11.90	gal.	<b>\$895</b> SAVE \$1.95
MARTIN SENOUR GREAT LIFE FLAT LATEX White or Colors. List \$14.20	gal.	<b>\$1095</b> SAVE \$3.25
MARTIN SENOUR GREAT LIFE SATIN GLOSS White or Colors. List \$15.40	gal.	<b>\$1195</b> SAVE \$3.45
MARTIN SENOUR GREAT LIFE GLOSS White or Colors. List \$16.10	gal.	<b>\$1225</b> SAVE \$3.85

**SHOP NOW & SAVE AT GAMBLES**  
110 N. MAIN PH. 475-7472

## FREEZER SALE



**AMANA**  
**GENERAL ELECTRIC**  
**REVCO**

**185-LB. CAPACITY GE CHEST FREEZER**  
**Only \$199<sup>95</sup>**

**HEYDLAUFF'S**

113 N. MAIN ST., CHELSEA

PH. 475-1221

# CHICKEN BAR-B-Q

## MONDAY, JULY 4

### CHELSEA FAIRGROUNDS

Serving from 12 Noon Until Sold Out  
2,000 Chicken Halves To Serve.

Sponsored By American Legion Post No. 31

# FIREWORKS

Beginning at Dusk

## ICE CREAM SOCIAL

### ICE CREAM and CAKE ONLY

Serving Starts at 7 p.m.





## Real Estate

By PAUL FRISINGER

REALTOR

### HOME BUYER PSYCHOLOGY

Buyers buy homes by comparison. The average buyer is no slouch. He'll shop a particular neighborhood and home-type. He'll rarely buy the first one he visits. It's too big an investment to be nonchalant. He will then compare prices against comparative value. He'll quickly throw out any obviously overpriced homes.

If the buyer really likes one of these overpriced homes, he may make a counter offer at a lower price—closer to its true value. But history shows that he'll probably make his offer for one already realistically valued.

A Realtor can save the home seller much chagrin because he

has accurate knowledge of what similar houses in his neighborhood are selling for; which have been taken off the market because of overpricing. Doesn't it make sense to work with documented facts instead of guesswork. Who knows, you may even be planning to sell your house for less than you should. Why not drop in and find out? We have the facts.

If there is anything we can do to help you in the field of real estate, please phone or drop in at FRISINGER REALTY CO., 935 S. Main St., Chelsea. Phone: 475-8681; evenings 475-2621. We're here to help!

## Rev. Weiss Honored By Baldwin-Wallace College

The Rev. Edwin J. Weiss, 79, a retired Methodist minister and resident of Chelsea's United Methodist Retirement Home, was inducted into the Golden Legion of the Baldwin-Wallace College Alumni Association during an annual commencement banquet, June 11, on the college campus, south of Cleveland, O.

A member of the Baldwin-Wallace College Class of 1927, the Rev. Weiss has been an alumnus of the college for 50 years.

Out of a 127-member graduating class, the Rev. Weiss and 29 of his former classmates attended the ceremonies in their honor two weeks ago. In addition to receiving certificates of recognition, the 30-year alumni were awarded golden motor boards by A. B. Bonds, Jr., college president, and Robert C. Cawse, president of the Alumni Association.

The Rev. Weiss and two other members of the Class of 1927 were also distinguished with 1977 Merit Awards from the Alumni Association. The Rev. Weiss' award, presented in lieu of a doctorate of divinity degree, cited him "for devoted ministry and administrative leadership in the United Methodist Church."



The Rev. Edwin J. Weiss

A cum laude graduate of Baldwin-Wallace College, the Rev. Weiss began serving Methodist churches in Ohio, Indiana, Mississippi and Michigan as a minister, shortly after graduation. He then served as pastor of Ann Arbor's West Side Methodist church for 8½ years before coming to Chelsea in 1956. While he was pastor of the Ann Arbor church, the Rev. Weiss succeeded in building a new church building for the congregation.

The Rev. Weiss came to Chelsea in 1956 to assume the administrative directorship of the Methodist Home. During his 10-year tenure at that post, he was responsible for the addition of nursing units and efficiency units to the Home, and for the remodeling of the kitchen and dining room at the retirement facility.

In 1966, the Rev. Weiss returned to Ann Arbor where he served as associate minister of visitation at the West Side Methodist church for a period of 6½ years.

Now retired, the Rev. Weiss and his wife, the former Helen Artz, have spent a substantial portion of their time traveling, touring five Canadian provinces and the Alaskan Yukon Territory. They have three daughters, Jean, Joyce and Marilyn.

Both the Rev. and Mrs. Weiss, their three daughters and their daughters' spouses, were guests of Baldwin-Wallace College at the commencement banquet two weeks ago, and were also guests of the college for overnight lodging at a nearby motel.

Alcoholic mothers run a substantially higher chance of giving birth to a child with birth defects, according to the March of Dimes. Early, regular prenatal care, and good personal health habits improve a woman's chance of having a healthy baby.

## Child Abuse Conference Held at U-M

Parental abuse of children, the leading cause of pediatric death in the United States, was the topic of the Southeastern Michigan Conference on Child Abuse, Tuesday, June 14, at the University of Michigan's School of Public Health in the Francis Building on the U-M campus.

Helping to sponsor the conference were 23 agencies in Washtenaw county which are either directly or indirectly involved in aiding children and their families affected by problems of child abuse.

Three major groups represented at the conference were public health nurses, social workers and lay care center workers. Attending the day-long event from Chelsea was Eleanor Strong of 20501 Jerusalem Rd.

Main conference speakers included Dr. Ray Helfer, professor of human development at Michigan State University; Leslie Hoover, head nurse of pediatric services at Ingram Medical Center; Maxine Virtue, an Ann Arbor attorney representing the Washtenaw County Committee for Children-at-Risk; Dr. Mark Hildebrandt, a S.C.A.N. team representative from the University of Michigan Medical Center; and Magdalene Hester of the Child and Family Center, Detroit.

Through their various presentations, the speakers placed emphasis on detecting cases of child abuse and neglect, helping families of these children recognize and overcome their problem, and preventing possible cases of child abuse by providing parenting preparation.

## James Carroll Granted M.D. Degree at U-M

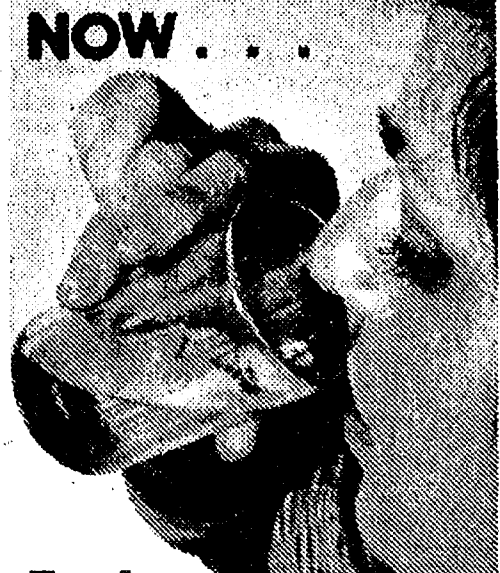
James Carroll of Chelsea received his M.D. degree from the University of Michigan Medical School, Friday, June 3.

A total of 227 new physicians were awarded diplomas during the ceremonies at which polio vaccine developer Jonas Salk, M.D., addressed the class. One of the largest and oldest medical schools in the nation, the U-M has now graduated 13,247 physicians since its founding in 1850.

Carroll, who lives at 622 Taylor St. with his wife, Elizabeth, is the son of Dorothy Carroll of Flint. He was previously graduated from Holy Redeemer High School in Flint and from Lake Forest College. A U. S. Marine Corps veteran, Carroll served in Vietnam during the American intervention there.

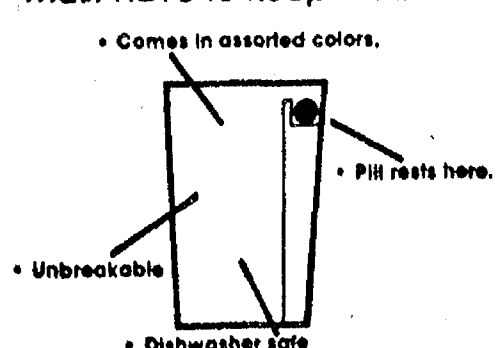
## Alice Juergens Named To Honor Roll at College of Great Falls

Alice F. Juergens, daughter of Mr. and Mrs. Alfred Juergens, has been named to the honor roll for spring semester at the College of Great Falls, Great Falls, Mont. To make the honor roll, a grade point average of 3.25 or better must be maintained. She is a freshman majoring in physical education.



**End Pill Swallowing Problems Forever**  
Everyone wants better health, but pill swallowing problems keep many from taking the medicine they must have to keep well.

• Comes in assorted colors.



Apex ends this problem with Drink-A-Pill. With Drink-A-Pill you can swallow a pill as easily as drinking a glass of water. Drink-A-Pill by Apex is Available at:

**CHELSEA PHARMACY**

101 N. Main Ph. 475-9103

©Copyright 1977 Apex Medical Supply, Inc.

Second Section

The Chelsea Standard

Pages 7-12

CHELSEA, MICHIGAN, THURSDAY, JUNE 23, 1977



**METHODIST HOME VOLUNTEERS:** Tired, but surrounded by an aura of accomplishment, these members of the Emmanuel United Methodist church Senior High Youth Fellowship in Blissfield worked for three days to transform ragged lawns and shrubbery around Chelsea's United Methodist Retirement Home into neatly manicured grounds last week. The clean-up effort was the final phase of a voluntary project to benefit the Home. A volleyball-a-thon last December launched the project,

and was followed by a spaghetti dinner at Easter. Along with the clean-up, the Youth Group donated \$600 to Chelsea's Methodist Home. Members of the Youth Group are: front row, from left, Amy Brubaker, Betty Brubaker and Zell Eiserman; second row, from left, Rose Eiseman, Lisa Veldhoff, Barbara Brubaker, Beth Veldhoff and Beth Ikle; third row, from left, Craig Shannon, Mark Sutton, Mrs. Erick of the Chelsea Methodist Home Resident Council, Martha Mallory and Mic Suman.

## Blissfield Youth Fellowship Group Manicures Methodist Home Grounds

Blissfield is a town of 3,500 residents. The Emmanuel United Methodist church there has a membership of about 200. Its Senior High Youth Fellowship has 20 energetic, creative, concerned and dedicated young people.

Last winter these young people chose the Chelsea United Methodist Home as their project, and considered possible ways to help. They began raising money with a volleyball-a-thon in December, playing a marathon game against teams from the Blissfield community. At Easter, they sold wooden crosses, followed by a spaghetti dinner later in the month. They had raised \$600 in all.

Not content with this, members of the Youth Fellowship came to visit the Home to find ways in which the "people power" of the group could assist the Home. After conferring with Home administrators, they decided on a work project to clean up the Home grounds. As soon as school was

out, the group packed up their camping gear and headed for the Waterloo area.

After establishing camp headquarters they arrived at the Home on Monday, June 13, armed with an assortment of garden tools. Twelve young people and their counselors, Mr. and Mrs. Mic Suman, were introduced to the residents and then had a picnic lunch with the officers and committee chairman of the Resident Council.

## Recreation Dept. Tennis Lessons Start Monday

Sponsored by the Chelsea Recreation Department, three-week tennis classes for children in three age group divisions will begin Monday, June 27.

Youngsters aged five to seven will play daily on weekdays from 9 a.m. to 10 a.m.; those aged eight to 10 will play from 10 a.m. to 11 a.m.; and those aged 11 to 13 will play from 11 a.m. to noon.

A second session of children's tennis lessons will begin July 18 and continue through Aug. 5.

The fee for each session is \$3, payable to the Chelsea Recreation Department. Instructor for each session will be Terry Schreiner. To register, call Mrs. Schreiner, 475-2536. Registration fees must be paid at the first class meeting.

Following lunch, the young people, in conjunction with residents, set to work on the grounds around the Home. Three days later, the group had transformed the area into neatly manicured grounds, and had acquired blisters, sunburn and poison ivy in the process. As they sat in the picnic area, eating ice cream cones, Amy Brubaker, president of the group, discussed the project. "The weather was perfect, the camping was great, and we feel we really got to know some incredibly wise and interesting people, besides making a contribution."

That evening, the group visited nursing patients at the Home, presenting each with a handsome wooden cross decorated with flowers and bows, for a bedside table. They ended the evening by entertaining all the residents with a variety program.

Mrs. Erick, president of the Resident Council, received their check of \$600. "You have brought us much more than money," she said as she accepted the donation. "Your enthusiasm, energy and joy in your work has inspired us all. You are a credit to your parents, your church and your country. Thank you and God bless you."

The money donated by the Youth Fellowship is being used to purchase needed equipment at the Home, so that the lawn, trees and shrubs can be kept in the fine condition that was achieved by the efforts of these outstanding, young people, according to administrators at the Methodist Home.

**CORRECTION**  
On page 3 of the June 16 issue of The Standard, the name of Donna Burg, junior vice-president of the Chelsea American Legion Auxiliary, was omitted from the list of newly elected officers in the report of the June 7 meeting of the Legion Auxiliary.

## OIL-PROOF PLUS SUPPORT



Mechanics, station attendants, machine shop operators—and tired feet and ankles. Full-grain leather, steel shank and "Oil-Proof" flexible split leather insole provide total comfort. Try on a pair today.

**RED WING**

**FOSTER'S MEN'S WEAR**

Ph. 475-1606 Chelsea, Mich.

## Style that's as comfortable as it looks; quality shoes by Wolverine®

For work or play, you can't beat the oxford for good looks and durability. It's the best all 'round shoe you can buy.



**Durables** This classic service oxford with plain toe features a non slip, oil proof Durables sole and heel and black onyx uppers. Cushion insole and steel shank provide lasting comfort and support.

**\$25.00**

**Wolverine Shoes**

STORE HOURS: 8 a.m. to 5:30 p.m. Mon. thru Sat.

**STRIETER'S MEN'S WEAR**

Since 1914

## RICK'S MARKET

20490 M-52

"The Store with the Spartan on the Door"

Phone 475-2898

BISQUICK  
**BUTTERMILK BAKING MIX**

40-Oz. Box

**\$1.05**

CREAMETTES  
**MACARONI**

16-Oz. Box

**49¢**

6.4-OZ. TUBE  
**AIM TOOTH PASTE**

With Stannous Fluoride

**\$1.09**

17-OZ. SIZE  
**COMET CLEANSER**

With Chlorinol

**41¢**

PLASTIC  
**FREEZER CONTAINERS**

40-OZ. BOX

**CALGON WATER SOFTENER . . . \$1.69**

**RICK'S HOT BREAD DAILY**

Weekdays by 3:30 p.m. Sat. & Sun., by 10:30 a.m.

(QUANTITY RIGHTS RESERVED)

SPECIAL  
**LIPTON INSTANT TEA**

100% Tea

2-Oz. Jar

**\$1.19**

CHOCOLATE FLAVOR  
**NESTLE'S QUIK**

32-Oz. Can

**\$1.75**

CROSSE & BLACKWELL  
**SEAFOOD COCKTAIL SAUCE**

12-Oz. Bottle

**63¢**

HERSHEY'S  
**ALMOND or MILK CHOC. BAR**

8-Oz. Bar

**89¢**

SPARTAN SALTED  
**WHOLE CASHEWS**

12-Oz. Can

**\$2.99**

HOLMES BRAND  
**SARDINES**

In Mustard Sauce

15-Oz. Can

**69¢**

**99¢**

7 1-Pint or 6 1/2-Pints.







# LITTLE WANT ADS! BIG PLUSES FOR BIG RESULTS!

JUST PHONE  
475-1371

## WANT ADS

### - YOUNG -

We list and sell lake, country and town properties. Eugene Young, Real Estate & Builder, 878-3792, 11596 Dexter-Pinckney Rd., Pinckney 48169. x341f

### R. L. BAUER Builders

LICENSED and INSURED  
Custom Building  
Houses - Garages  
Pole Barns  
Roofing - Siding  
Concrete Work  
FREE ESTIMATES  
Call 475-1218

### A fine selection of

### New and Used Cars

### for immediate delivery

### Harper Pontiac Sales & Service

475-1306  
Evenings, 475-1608

### CUSTOM BUILDING

LICENSED & INSURED  
FREE ESTIMATES

### TOTAL CONSTRUCTION SERVICES

Homes, factories, warehouses  
Pole buildings  
Garages  
Remodeling - Additions  
Aluminum Siding  
Roofing  
Masonry Work, fireplaces, block work, patios, etc.

### SLOCUM CONTRACTORS & BUILDERS

Serving Washtenaw County  
For Over 20 years  
20700 OLD US-12  
CHELSEA  
Phone 475-8321 or 475-7811

### SEE US for transit mixed concrete. Klumpp Bros. Gravel Co.

Phone 475-2530, 4920 Love and Rd., Grass Lake, Mich. x401f

### SHARPENING SERVICE

SCISSORS - All Kinds.  
AXES - All Sizes.  
KNIVES - All Lengths.  
MILL TOOLS - Chisels and Drills.  
REASONABLE RATES  
CHELSEA HARDWARE

### Real Estate

A REAL SHOW PLACE! 4-bedroom home with study or a 5th bedroom. 1 1/2 baths, dining room, full basement with recreation room and fireplace, 3-car garage and many extra features situated on a 107'x266' lot in the Village of Manchester. \$65,000.

LOVELY REMODELED farm-house situated on just over 23 acres. 5 bedrooms, 2 baths, dining area, double stone fireplace, and many extras. 24'x48' barn and 4 outbuildings. Manchester schools. \$89,500.

### Spear & Assoc., Inc.

MANN REALTORS  
122 W. Main St., Manchester  
Office Phone 428-8388  
Eves and week-ends:  
James Mann 428-8074  
Ellis Pratt 428-8562  
Joan Beal 428-7802

### CALL OR STOP IN

### CHELSEA GLASS, INC.

WORKMANSHIP AND MATERIALS FULLY GUARANTEED  
Open Daily 8 a.m. to 5 p.m.; Sat. 8 a.m. to 1 p.m.

140 W. Middle, Chelsea Phone (313) 475-8667

### WE REPAIR AND REPLACE:

★ STORE FRONTS  
★ FURNITURE TOPS  
★ SHOWER DOORS  
★ THERMOPANES  
★ AUTO GLASS - Including Windshields  
Free Pick-up and delivery on auto work.

### Storm Door & Window Reglazing & Screens

COMMERCIAL BUILDINGS OR RESIDENTIAL  
PROMPT SERVICE  
REASONABLE PRICES

### WANT ADS

### WEDDING STATIONERY - Prospective brides are invited to see our complete line of invitations and wedding accessories. The Chelsea Standard, 300 N. Main. Ph. 475-1371.

### McCulloch

Portable Generators  
Chain Saws  
WE SELL, SERVICE,  
SHARPEN AND TRADE.  
Chelsea Hardware

SEAMLESS ALUMINUM eaves-troughs, roofing, siding, and carpentry work of all kinds. Experienced installers. All work guaranteed. For free estimate, call R. D. Kleinschmidt Co., 428-8836. x311f

TRAVEL TRAILERS - 13-ft. and up; 10x55 ft. trailers. John R. Jones Trailer Sales, Gregory, Mich. Phone 498-2755. x41f

FOR SALE by owner, business and living space block building, 2 floors with office and apartment, zoned commercial, 134 ft. road frontage, over 1 acre. Call for appointment 475-9208. x121f

LOST CAT - Reward. Long haired, silver gray tiger, 12-year family member. Want him back very much. Needs medication. Call anytime, day or night. 428-7233. x31f

### GAR - NETT'S GREENHOUSE,

Flower & Gift Shop  
Your Friendly Florist  
112 E. Middle St., Chelsea  
PHONE 475-1400

Funeral Flowers  
Wedding Flowers  
Cut Flowers (arranged or boxed)  
Potted Flowering Plants  
Green Plants - Corsages  
WE DELIVER x91f

BLACK DIRT and peat mixture for sale. Excellent for lawns, planters, gardens. Delivered by the load. Duane Landwehr, 18000 Cavanaugh Lake Rd. Ph. 475-8480. x3

PRIVATE TENNIS LESSONS to be offered this summer. Individual, semi-private or small group lessons will be taught by Terry Schneider during the summer months. If interested call and arrange, 475-2536. You will have to racquet the court yourself for these lessons as the courts will not be taken for this purpose. x3

### LAKE PROPERTY

PATTERSON LAKE - 3-bedroom older home with 1 lake access. Fireplace. Nicely decorated, in good condition. \$31,500.

PORTAGE LAKE Access - 3-bedroom cottage with rear deck. 2 fireplaces, 1 bath, walk-out basement. \$30,500.

SPACIOUS 3-bedroom brick ranch with access to Portage Lake. 3 baths, 2-car garage, rear family room looking out over patio. Shaded private yard. Unbelievable at just \$37,900.

A chance to own your own business.

PARTY STORE with beer & wine license. Two apts. in same building. Patterson Lake. \$69,900. Terms available.

### VACANT LAND

WE LIST and sell vacant land and desirable building sites in Chelsea, Manchester, and Dexter area. We now have several 1, 2 1/2 and 10 acre building sites with excellent land contract terms.

### Dexter Area

3-BEDROOM, 2 fireplaces, 10 acres wooded, 2 barns. \$86,900.

### ED COY REALTY

426-3948  
Ed Coy, Broker  
Rae Kozlowski, Salesman

WANTED - Catholic catechisms, missals, prayer books, Bibles, statues, crucifixes, rosaries, medals, etc. in any condition. Ph. 475-7161. x5

LEGAL SECRETARY, experienced. Send resume and reply to Box No. JU-24, care of Chelsea Standard, Chelsea. x3

FOR SALE - 2-bedroom home on 3 acres, 8 miles NW of Chelsea. Ph. (517) 851-7860. x2

## WANT ADS

CUSTOM SEWING and alterations. Ph. 475-2248. x81f

FOR RENT - Industrial manufacturing building. Cement block, gas heat, 3-phase electric, Class A road, 3,000 sq. ft., low rent. Can also be rented with 1,800 sq. ft. steel storage building. Dexter, 428-3829. x431f

'70 CHEVELLE Malibu 2-dr., 307 V-8, auto, transmission. Mechanically sound, body in excellent condition. Ph. 663 9192. x431f

CARPENTER WORK - Inside or out. Mr. Coburn, 475-2893. 121f

CAR & TRUCK LEASING - For details see Lyle Christwell at Palmer Motor Sales, 475-1301. 491f

### EDWARDS CONSTRUCTION

INSULATION, siding, roofing, storm windows and doors. Remodeling. Residential builder. Licensed, Certified, Insured. FREE ESTIMATES

Call JOE EDWARDS 426-4057, Dexter x471f

FOR SALE by owner, year 'round home near Harrison between 2 lakes. Fireplace, 2 bedrooms, carpeting, natural gas, patio, all modern facilities. Ph. 420-4911. 471f

VACANT LAND - Two 10-acre parcels on Clear Lake Rd. across the street from Clear Lake. Partial rolling and evergreens. Excellent building location. Terms available. Ph. (1) 676-1481. x461f

WANTED - Plow ground and standing hay. Ph. 475-2771. 371f

### Phinney Excavating

BULLDOZING, back hoe, drain fields and ponds.  
Ph. 475-1963 521f

### SPINNER ASPHALT PAVING

Parking Lots and Driveways  
Free Estimates. Ph. 429-7132  
Saline, Michigan x521f

### Pierson & Riemenschneider REALTORS

111 Park St. - 475-9101

JUST REDUCED! Charming ranch home located on a corner lot in Chelsea. Exterior is maintenance free aluminum siding. Convenient to schools and shopping. Including 3 bedrooms, dining room, family room, full basement and 2 1/2-car garage. Reduced to \$43,900.

LARGE 4-BEDROOM HOME on 2 1/2 acres in Stockbridge. Home includes family room, recreation room, fireplace, 2 baths, 2-car garage, basement and in-ground pool. A bargain at \$57,500.

CHARMING 2-BEDROOM home on 2 1/2 lovely acres. Room for a 3rd bedroom. School bus stops at the door, 26 fruit trees, easy access to I-94. \$45,000.

ONE OF A KIND custom built home on 1 acre. 4 bedrooms, 2 baths, fireplace, basement and 2 1/2-car garage. Exclusive area. Chelsea school district. \$73,000.

OLDER 4-BEDROOM home on 10 acres in the Chelsea school district. Lake on property and land contract possible. \$55,000.

CHALET - Hilltop setting, quality built, 4 bedrooms, family room, 2 fireplaces, 1 1/2 baths, basement and 2 1/2-car garage, 2 acres, close to Chelsea. Chelsea schools.

FOR SALE - '73 Plymouth Satellite, small V-8, automatic, p.s., p.b., one owner. Ph. 1-878-3734. x5

'73 PLYMOUTH Gran Fury, V-8, automatic, p.w. steering, brakes, air cond. In good condition, \$1,250. Ph. 1-878-3734. x5

FOR SALE - One pair of geese. Ph. 426-3260. x2

FOR SALE - St. Bernard pups. AKC champion line. Ph. 878-3263. x2

FLOOR SPECIALISTS - Wood floors-laid, sanded and finished. Complete floor maintenance. Free estimates. 665-7109. x2

BURT LAKE - 2-bedroom furnished cottage for rent. Lake access, boat, \$150 per week. 665-4641 or 663-7604. x5

FOR SALE - Hoover Mini-Washer. \$50. Call 475-7831. x2

QUARTER HORSE for sale. Call 475-2515. x2

IMMEDIATE OPENING for car route delivery in the Chelsea, Clinton and Saline area. Sunday only route. Early morning hours, dependable car necessary. Commission and car allowance. Ph. 1-483-0090 or 1-222-6500. Detroit Free Press. x2

GARAGE SALE - 243 Harrison St., Chelsea. Thursday, Friday and Saturday, 9-5. Tires 78x13, snare drum, dishes, clothes, cedar chest, and misc. x2

FOR SALE - 10-speed bike. Best offer over \$50. Call between 10-5. 428-2287. x2

MOVING SALE - Everything must go. Entire household contents to see. Call 878-6717 for appointment to see. x3

FOR SALE - Good black dirt, any amount, you haul or will deliver. Ph. 475-1541. x3

FOR SALE - '23" Raleigh Grand Prix bicycle, quick release Normandy hubs, Suntour GT front and rear derailleurs, alloy handle-bar, rigid chromed rims, high pressure gum-wall tires, leather saddle, black with silver trim, 28-14 free-wheel. Well kept bike; campus ridden, nice for touring. Call 475-7596. x2

FOR SALE - Nice, small home-made trailer, \$75 or best offer. Ph. 475-1644. x21f

### Manchester Area

4-BEDROOM RANCH, family room, with fireplace, 2 1/2 baths, basement and garage, pole barn with elec. and water. 5 acres, beautiful hilltop view. \$68,900.

### Kliemann Real Estate

Ph. Ypsilanti 482-3128 x5

WANTED TO RENT - House wanted in country or lake setting by experienced handyman. Willing to do all repairs, remodeling and upkeep. Call Bill, 663-6378. x2

FOR SALE - Two 14-ft. 45 cement stove silos. Ph. 426-8254. x2

## WANT ADS

FOR SALE - 3-bedroom brick home. Recreation room with fireplace, 2 1/2 acres on N. Main. \$77,000. Shown by appointment. 475-8226. x2

MOVING SALE - Lots of household items. Chord organ, tools, lawn and garden items. Fri., Sat., Sun., 10 to 4. 310 Island Lake, 1 mile west of North Lake Store. x2

### A-1 USED CARS

THIS WEEK'S SPECIAL

1975 Ford Ranchero

Air, One Owner,  
Excellent Condition

ONLY

\$3595

### CARS

'76 PINTO Runabout.

'74 GRAN TORINO Wagon.

'74 MUSTANG 2 plus 2.

'73 CHEV. Station Wagon.

### TRUCKS

'76 F-250 4-Wheel Drive.

'75 FORD F-100 1/2-Ton.

'74 FORD F-100 1/2-Ton.

'73 FORD Ranchero G.T.

25 OTHER CARS AND TRUCKS TO CHOOSE FROM

### PALMER FORD

Mon. thru Thur. until 9:00  
Fri. 'til 6:00; Sat. 'til 4:00  
CHELSEA - 475-1301 x21f

FOR SALE BY OWNER - 3-bedroom home on Waterloo Mill pond. Attached 2-car garage, 1 1/2 baths, walk-out basement. Must be seen to appreciate. 151-ft. of lake frontage. 15722 Waterloo Rd., Chelsea area. x2

LOST - Long-haired silver grey male cat, June 14 in South St. area. Reward. Ph. 475-7389. x2

FOR SALE - Large older home, 3 bedrooms, 1 1/2 baths, centrally located. Ph. 475-8762 after 6 p.m. x2

GARAGE SALE - 436 McKinley, Friday and Saturday, June 24-25, 9 a.m. to 4 p.m. x2

JEEP FOR SALE - 1976 CJ7, automatic, 11.00x15 tires, soft top. \$3,900. Ph. 475-7975. x2

FOR RENT - 3-bedroom house in country. Ph. 428-7573. x2

3-FAMILY YARD SALE - Saturday, June 25, 9 to 3. Many kitchen items, clothes, old and new; knickknacks, sewing accessories, plants and freebies. 144 Van Buren St. x2

GARAGE SALE - Thurs. and Fri., June 23-24. Miscellaneous articles. 18000 M-52 North. x2

THE HENNERLY - Antiques and primitives. Tel. 428-8465. x3

FREE - 8 mos. old Brittany Spaniel, all shots, registered. Ph. 426-4815 after 7 p.m. x2

FOR SALE - Exercise bike, like new. Sears best, \$30. Ph. 475-1424. x2

HELP WANTED - Chelsea Recreation Council. Part-time year-round program director. If interested please contact Pat Whitesall, 475-2538. x3

FOR SALE - Ornate upright Kimball piano in excellent condition, recently tuned. \$200. Kenmore dryer, in good condition, \$50. Call 475-7237. x3

FOR SALE - '73 Plymouth Satellite, small V-8, automatic, p.s., p.b., one owner. Ph. 1-878-3734. x5

'73 PLYMOUTH Gran Fury, V-8, automatic, p.w. steering, brakes, air cond. In good condition, \$1,250. Ph. 1-878-3734. x5

FOR SALE - One pair of geese. Ph. 426-3260. x2

FOR SALE - St. Bernard pups. AKC champion line. Ph. 878-3263. x2

FLOOR SPECIALISTS - Wood floors-laid, sanded and finished. Complete floor maintenance. Free estimates. 665-7109. x2

BURT LAKE - 2-bedroom furnished cottage for rent. Lake access, boat, \$150 per week. 665-4641 or 663-7604. x5

FOR SALE - Hoover Mini-Washer. \$50. Call 475-7831. x2

QUARTER HORSE for sale. Call 475-2515. x2

IMMEDIATE OPENING for car route delivery in the Chelsea, Clinton and Saline area. Sunday only route. Early morning hours, dependable car necessary. Commission and car allowance. Ph. 1-483-0090 or 1-222-6500. Detroit Free Press. x2

GARAGE SALE - 243 Harrison St., Chelsea. Thursday, Friday and Saturday, 9-5. Tires 78x13, snare drum, dishes, clothes, cedar chest, and misc. x2

FOR SALE - 10-speed bike. Best offer over \$50. Call between 10-5. 428-2287. x2

MOVING SALE - Everything must go. Entire household contents to see. Call 878-6717 for appointment to see. x3

FOR SALE - Good black dirt, any amount, you haul or will deliver. Ph. 475-1541. x3

FOR SALE - '23" Raleigh Grand Prix bicycle, quick release Normandy hubs, Suntour GT front and rear derailleurs, alloy handle-bar, rigid chromed rims, high pressure gum-wall tires, leather saddle, black with silver trim, 28-14 free-wheel. Well kept bike; campus ridden, nice for touring. Call 475-7596. x2

FOR SALE - Nice, small home-made trailer, \$75 or best offer. Ph. 475-1644. x21f

## WANT ADS

MOBILE HOME for sale - 12'x50', 1971 Rembrandt, Chelsea Trailer Park. Ph. 475-2632, after 4. x451f

CORRECTIVE HORSESHOEING and trimming. Mike Brishois. Ph. 565-3036. x451f

DESK - Solid walnut, 32 1/2"x62", 5 drawers, 1 file drawer. Mfg. by Stow Davis. Also leather covered swivel chair. Sold together or separately. Ph. 663-8228. x501f

STRAWBERRIES, you pick, 30 cents per pound. Call for picking time. Chad Strawberries, 4255 Brogan Rd., Stockbridge. (517) 851-8023. x2

FOR SALE - Octagon dining table with 4 ladderback chairs, like new. 475-7369 after 3 p.m. 491f

### CHELSEA SCHOOLS Building Sites

-N. Territorial Rd., 1 1/4 acre, \$8,500.

-Waterloo Rd., 2 acres, \$10,500.

-Lima Center Rd., between Chelsea and Dexter, 1 acre, \$9,000.

-Lingane Rd., 2 acres, \$9,500.

-Bush Road, 2 mi. from I-94, 4 beautiful 2-acre sites. \$9,000 ea.

-Corner Hankard and Noah Rd., Dexter Township. Tree covered, 1 acre, \$9,500.

-Mester Rd. Several 10-acre sites.

WEBER HOMES has pre-selected these sites for our customers. All health and zoning permits have been obtained. Our lots are priced right, and so are our homes.

For directions, call

### WEBER HOMES

475-2828 521f

MEET GEORGE VANDEMAN on TV, Channel 2, Sunday morning, 10:30. x3

### GRASS LAKE

4-BEDROOM, 2-story, 2 baths, stucco, all nice large rooms, gas fired steam heat, hardwood floors with some carpeting, fireplace, screened porch. Terms.

GOOD TWO-UNIT INCOME in the village on two lots with an additional two acres across the street, gas utilities, one bedroom each. A bargain at \$24,500.

6955 NORVELL ROAD - Large 2-unit income with carpeting. Two bedrooms up and one down. Stoves and refrigerators included. About an acre.

MOBILE HOME LOT, No. 23, (75'x150') Cedars subdivision, septic, well, storage building and a new pump. Good terms.

WE HAVE several parcels of land available, excellent building locations from two acres up to seventy. Most with terms.

### Southside Realty

1-517-522-8469

FOR SALE BY OWNER - 2-acre wooded lot, electricity available on property. Ph. (517) 851-7497. x4









**PET OF THE WEEK** is an 8-month-old female fox terrier puppy named "Boomer." She is a medium-sized dog, with a short, wiry coat and long tail. She has had her shots for distemper and rabies. She is good with children and other dogs. She is used to being inside and is housebroken. If you might be interested in Boomer or a dog similar to her, please call the Humane Society of Huron Valley at 662-5585 between 10 a.m. and 5 p.m. Monday through Saturday with the exceptions of Wednesday and Sunday when the shelter is open between 1 and 5 p.m. There are currently several beautiful, pedigreed German Shepherds at the shelter, also a dog that appears to be an Elk-hound, and an adult. So if you are looking for a pet, please make the Humane Society's shelter

your first stop as there are many beautiful animals in need of love and a home there including rabbits, guinea pigs, kittens, puppies, and, of course, adult cats and dogs. The Humane Society attempts to make sure that animals adopted at its shelter receive good homes and families adopting pets there must agree to have the animal spayed or neutered when it is seven months old. Spay clinic services are available at the shelter and the clinic is open to the general public as well as to persons adopting pets at the shelter. Appointments to have animals spayed or neutered can now be made one week in advance. The only requirement is that the animal must be six months of age.

## CPR Classes Set in Dexter Township

A class in the technique of cardio-pulmonary resuscitation (CPR) will be offered to all Dexter Township area residents by the Michigan Heart Association. Sessions will be held June 27, June 28, and July 6, at 7 p.m. in Dexter Township Hall.

Mark Champion, a certified CPR instructor, will conduct the classes, and all those who complete the three-session class will be certified to administer CPR. Because enrollment in the class is limited, anyone wishing to participate should register as soon as possible. To register, call Carolyn Pryor, 878-9312, or Marth Egan, 426-4887.

**Please Notify Us of Any Change in Address**

**FARLEY CONSTRUCTION**  
522 HOWARD RD.

ADDITIONS - REMODELING  
REPAIRS  
NEW HOMES

75-8265 or 475-7643

**BUSINESSMEN'S LUNCHEON**  
Served from 11:30 to 1 Daily  
**MARK IV LOUNGE**  
PHONE 475-1951  
1180 M-52 CHELSEA

**OPEN BOWLING EVERY DAY**  
(thru Aug. 15)

**MONDAY thru FRIDAY**  
11 a.m. to 11 p.m.  
**SATURDAY**  
11 a.m. to 12 midnight  
**SUNDAY**  
2 p.m. to 10 p.m.

**CHELSEA LANES, Inc.**  
1180 M-52 Ph. 475-8141

## AGRICULTURE IN ACTION

MICHIGAN FARM BUREAU

### ★ A Lot at 'Steak'

A big, juicy steak sizzling on the grill, ready to join forces against the battle of the "hungries" with a baked potato crowned with sour cream, corn on the cob dripping with melted butter, a tall, refreshing glass of milk, hot apple pie topped with a generous chunk of cheese. Or, if you prefer, a roast pork turning on the spit, and a picnic tablecloth anchored down by dishes of potato salad, deviled eggs, baked beans, sliced cucumbers and onions, a pitcher of ice-cold cherry punch, and cantaloupe ready to be cut and filled with scoops of ice cream.

Scenes such as these, with a wide variety of menus to suit the taste of individual families, are a traditional part of Michigan summers. Their uniqueness lies in the fact that all the food products used to prepare these tasty, wholesome meals — unless you've got a confirmed coffee-drinker in the crowd — could have been grown within the borders of our own state. That's pretty unique — few states can lay claim to that fame — and Michigan consumers have been as proud as Michigan farmers of their "meal in a mitten" capabilities.

Farmers are still proud of their ability to produce such a wide variety of high-quality food, but they are concerned that those backyard picnics this summer might not feature as many all-Michigan menus as in the past. They're worried that uninformed and misinformed consumers might be influenced by the political antics that have kept the PBB agricultural tragedy of four years past in the public limelight, creating completely unnecessary concern regarding Michigan's food supply. They're frustrated by signs that proclaim "non-Michigan" meat for sale. Michigan has the highest meat standards in the nation, standards which farmers supported. If you doubt that these standards make a difference in quality — just try a non-Michigan hot dog.

It's not only the dairy and meat producers who question the destructive pathway of those motivated by goals other than consumer safety. Fruit and crop farmers, who could be considered untouched by the PBB problem, view the emotional issue as only the beginning of pressures for completely "pure" food, a situation that would mean less quantity, poorer quality and higher prices.

Michigan's diverse agriculture brings an estimated \$3.5 billion into the state's economy each year. The shopper in the supermarket, the supermarket manager, the businessman down the street, the worker in the factory that manufactures the equipment the farmer uses to produce food — all have a big stake in a healthy Michigan agriculture. The only "allmen" it has today is the loss of confidence by some consumers who have not listened to the repeated scientific assurances that Michigan's food supply is safe.

Farmers believe consumers know that their all-Michigan meals are the best in terms of taste, variety and nutritional value, and that they are anxious to be reassured of their safety. The best way to do that, they've decided, is simply to tell them, farmer-to-consumer. They'll be "leaving their plows in the fields" temporarily throughout the summer to do just that, at fairs and mail promotions or just on a one-to-one basis. It's a busy time of year for farmers but they believe this is a job they must do themselves.

Cat feces and raw red meat have this in common: they may harbor toxoplasmosis. If acquired during pregnancy, this infectious agent can cause brain damage in the child. The March of Dimes urges pregnant women to avoid handling cat litter, and to eat only meat that is well cooked.

Michigan's estimated population is 9,098,000, according to the U.S. census.

Telephone Your Club News  
To 475-1271

Thinking **CARPET?**  
Think **SCHNEIDER'S**

Visit the wonderful world of carpeting at Schneider's, one of the area's finest, full-service carpet stores, conveniently located in West Ann Arbor on Wagner Road between Jackson and Liberty.

Schneider's carries a broad selection of quality, name-brand carpets at prices consistently among the lowest in the entire area. Try us.

662-9332

OPEN MON & TUE  
NIGHTS TIL 8:00 PM

**SCHNEIDER CARPET CO., INC.**

745 S. WAGNER RD. ANN ARBOR

## Planning Session Set By Service Agency

More than 50 people are expected to attend the Dexter-Chelsea "Community Together '77," a public planning meeting, sponsored by Washington County Community Services Agency (CSA), June 27, 1 to 3:30 p.m., in Sylvan Township Hall, 112 W. Middle, Chelsea.

The community meeting will be the first stage in establishing CSA goals for the 1977-78 program year.

The Agency is soliciting community participation in determining the priority needs of low-income people.

Ideas generated by the meeting will be the foundation for planning and developing CSA programs for low-income people, created and staffed by low-income people. Nancy Margolis, CSA deputy director, explained "The goal of this agency is to assist the self-determination and self-development of low-income people. CSA hopes that 'Community Together '77' will bring out the folks CSA serves. The best way to determine the needs of low-income people is to ask the people themselves."

Tim Simpson, CSA, Neighborhood Action Center Supervisor, is co-ordinating the meeting.

The nucleus of the meeting will be small group discussions designed to generate program ideas. Topics of discussion will include Housing, Social Service Resources, Education-Job Training, Employment, Special Project, Proposals, and Strengthening Community-Based Programs. Participants are encouraged to voice all areas of concern. Reports from the group discussions will be followed by an open question and answer session. Refreshments will be served.

Everyone concerned with the needs of poor people is welcome to attend. CSA staff have made a concentrated effort to get out the community. Special invitations have been sent to elected public officials and public and private social service organizations. Attending also are CSA Executive Director Peter Yelorda, Deputy Direc-

tor Nancy Margolis, the CSA Administrative Board, and the Neighborhood Action Centers' (N.A.C.) Advisory Boards.

The Chelsea-Dexter meeting is one of four being sponsored by CSA throughout the county. Mrs. Marylou Stoddard, N.A.C. Advisory Council Chair, will act as chairperson of the Chelsea-Dexter meeting.

Persons in need of transportation should call Chelsea-Dexter N.A.C. at 426-8196. For more information contact CSA headquarters, 662-3172.

CSA is the county's umbrella anti-poverty agency. Programs sponsored by CSA include four Neighborhood Action centers, Emergency Services, Head Start, Senior Citizen Nutrition Program, Foster Grandparent Program, and a Winterization Program.

Every Heart Beats True Under . . . Red, Green and Yellow?

Congress adopted the stars and stripes as the official U.S. flag on June 14, 1777. Before that, banners of many colors had flown over the Colonies — among them, the British Union Jack, the green pine tree, a coiled snake on a yellow ground and the cross of St. George.

Some of these once-official flags and others which trace our star-spangled banner's history from 1607, line the mall approach to the Independence Hall entrance of Henry Ford Museum in Dearborn.

**You've probably got two lamps that need new shades.**

We've got the shades.

**Top of the Lamp**

217 North Main Tel. 769-7019  
Across from a.a. old post office

## ENERGY SAVING 3-BEDROOM HOME FOR SALE

Located in area of fine homes at edge of Chelsea, 11 Maple Court, Chelsea. Shown by appointment.

**J. T. BUILDING CO.**  
Ph. 475-2419

**FEEDS**

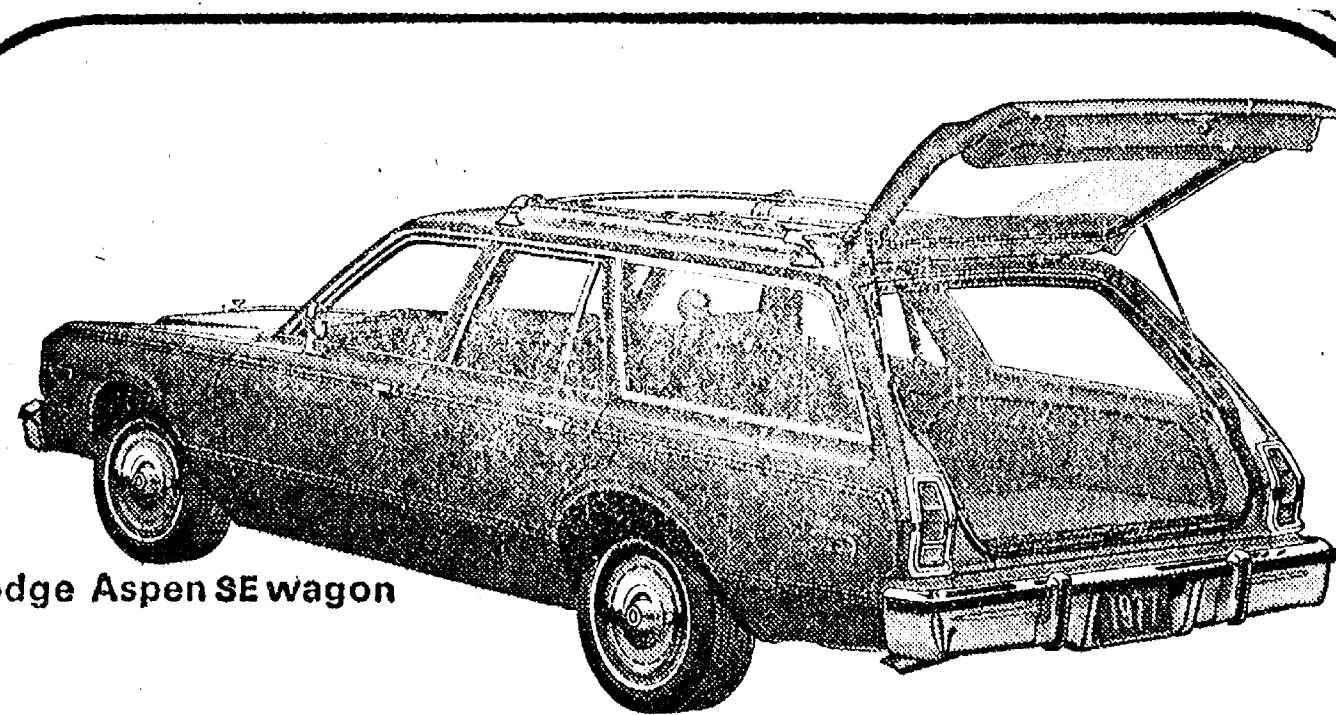
Calves get growing and gaining faster, on our balanced, fortified Calf Feed . . . enriched with needed vitamins, minerals.

Complete feeding rations for all your livestock, poultry.

**FARMERS' SUPPLY CO.**  
PHONE 475-1777

A Standard Want Ad Gets Results!

## AT VILLAGE MOTORS SERVICE IS EVERYBODY'S DEPARTMENT.



Dodge Aspen SE wagon

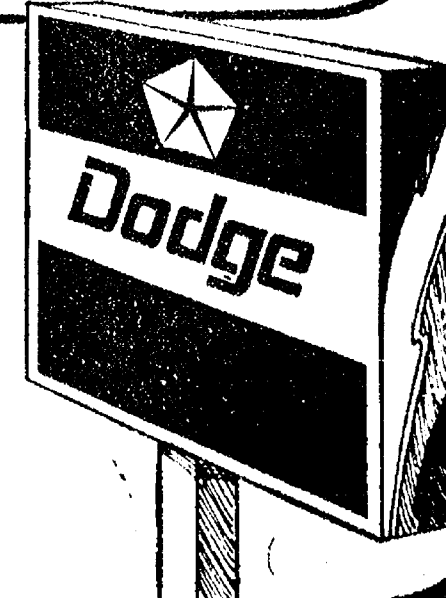
Service is what it's all about. And that means more than a smile when you come in and a handshake to close the deal. Service means making it as easy as possible for you to buy that new Dodge. And to keep it new as long as you own it. These are just some of the areas in which we'll serve you:

- An efficient service department that will get the job done right, on time.
- On-the-spot financing.
- Friendly, courteous sales and service personnel.
- Immediate delivery on any new Dodge in our large inventory.

**VILLAGE MOTOR SALES, INC.**

1185 MANCHESTER ROAD

CHELSEA, MICHIGAN





### Linda Stokes Ray Earns Degree at Purdue

Linda A. Stokes Ray of 14103 degree in humanities during the Wagon Wheel Ct., was one of 3, University's 125th commencement 841 students who completed degree exercises. requirements at Purdue University, West Lafayette, Ind., in May. Telephone Your Club News She was awarded a bachelor's To .75-1371.

CUSTOM

## BUMPING and PAINTING

FREE ESTIMATES - ALL MAKES

Get the Best for Less!

## FRANK GROHS CHEVROLET

Phone 426-4677

Dexter, Mich.

## BICYCLE LICENSES

Bicycle licenses are now on sale at the Chelsea Police Station.

Old bicycle licenses expire July 1, 1977, and new licenses must be displayed by that date.

## POLICE DEPARTMENT

VILLAGE OF CHELSEA

### Tonight and Every Thursday THE CAPTAINS TABLE ROAST BEEF BUFFET



"Carved Before Your Eyes"

Serving from 4:30-9:30 p.m.

The Captains Table - 8093 Main St., Dexter

## DUNBAR'S DEXTER LOCKER

PAUL DUNBAR, OWNER

8083 Main St., Dexter

Ph. 426-8466

## Fresh Frozen Berries & Fruit

By Order Only

30 lbs. STRAWBERRIES . \$16.90

28 lbs. RASPBERRIES . \$25.20

30 lbs. CHERRIES (Watch Further Ads)

30 lbs. PINEAPPLES . . \$21.50

32 lbs. APRICOTS . . . \$19.98

32 lbs. PEACHES . . . \$16.50

and More!

- Also Featuring -

## BEEF SIDES lb. 93¢

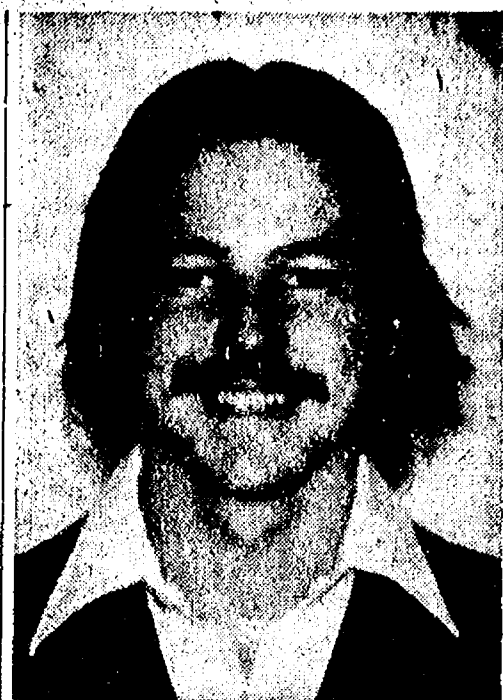
Cut and Ready for Your Freezer

(Cutting statement furnished)

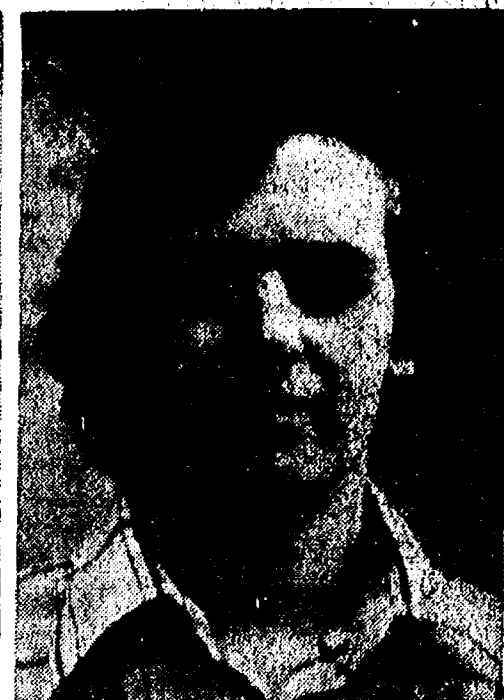
HICKORY SMOKED SLICED BACON CENTER CUT	HICKORY SMOKED Hams	Skinless Wieners	Sliced Bologna
\$1.29 lb.	\$1.19 lb.	79¢ lb.	79¢ lb.
PORK LOINS CUT TO ORDER	Breakfast Sausage Patties	ROASTING PIGS	FARM EGGS
\$1.29 lb.	98¢ lb.		75¢ doz.

Discount to Civic Groups - We Accept Federal Food Stamps

Custom Slaughtering & Processing



BRAD GLAZIER



DALE HEYDLAUFF

## Chelsea Youths Help Win Title for EMU

In a four-day intercollegiate forensic competition, held April 22-25 on the campus of George Mason University in Fairfax, Va., Eastern Michigan University's forensics team won its second consecutive national championship with the help of two students from Chelsea.

Brad Glazier, a sophomore studying speech at the University, gave speeches in Rhetorical Criticism and Informative Speaking and finished in the top 24 in the nation in After Dinner Speaking. He is the son of Stan and Janice Glazier of 575 Glazier Rd., and is a graduate of Chelsea High school.

Dale Heydlauff, a sophomore studying speech and political science at EMU, was also a big talker in the tourney. Heydlauff delivered speeches in the categor-

ies of After Dinner, Informative, Poetry and Persuasive Speaking, and finished in the top 24 in Rhetorical Criticism. He is the son of Jerald and Shirley Heydlauff of 11340 Dexter-Chelsea Rd., and is also a graduate of Chelsea High school.

Coach of the EMU forensics squad, Dennis Beagen, noted that Eastern has finished in the first or second-place slot in national competition for the past four years. This year's team also set new records. Eastern had the highest number of points for one school (366), the most points by a pentathlon winner (82), a student who competed in five events and the most individual titles by one person (4). Second-place school in the tournament was rival Ohio University, with 274 points. The host school, George Mason University, finished third.

## Ask Project COPE

During the past school year, Project COPE, a federally-funded outreach-childfind program designed to find pre-schoolers who have handicaps or special needs, has been operated by Special Education Region V for the Chelsea, Manchester, and Whitmore Lake School Districts.

Various activities have been undertaken in order to reach parents, physicians, clergy, teachers, and others within the community who have contact with children in the birth-to-five age range. Early Warning Signs brochures have

been widely distributed in order to help sensitize people to possible budding problems. A twice-monthly question-answer column which has appeared in various area newspapers has helped to trigger referrals. Frequent speaking engagements by the Project COPE staff to service clubs, social groups have aided in alerting people to the rights and services under the Mandatory Special Education Act to which they and their children are entitled.

Those who would like to receive an Early Warning Signs brochure or who wish to ask questions or discuss concerns are urged to call Dr. Henry DeYoung, director of Special Education, at 475-9131, Extension 48 in Chelsea.

Very few other school districts in the State of Michigan are waging Region V's type of thorough, aggressive outreach-childfind program so that pre-school children with special needs are identified and helped early. Thus far, 35 children have been referred to Project COPE. Charles Cameron, superintendent of schools in Chelsea, and the other Region V superintendents are to be commended for their interest, concern, and foresight in recognizing the need for an outreach project and in helping to make it strong and effective in serving the needs of the community.

## Area Students Make WMU Honor List

Three Chelsea students and two from Dexter were among more than 1,600 students named to the Dean's List at Western Michigan University, Kalamazoo, upon completion of the winter semester.

To be eligible for the distinction, a student must have compiled a 3.5 grade point average or higher on a 4.0 scale in 14 hours of graded work.

Students from Chelsea, honored for their academic achievement, are Kevin E. Schmitke, son of Mr. and Mrs. Earl J. Schmitke of 14440 Stofer Ct.; Brian D. Smith, son of Mr. and Mrs. Laverne F. Smith of 7876 Werkner Rd.; and Norman W. Schafer, son of Mr. and Mrs. Robert Schafer of 1575 Pierce Rd.

Dexter students included on the Dean's List are Barbara A. Gray, daughter of Mr. and Mrs. James D. Gray of 9160 Island Lake Rd.; and Mary A. Kaercher, daughter of Mr. and Mrs. Robert J. Kaercher of 12190 Island Lake Rd.

Two of the students, Schafer and Miss Gray, received all-A grades for the semester. Only 401 students among those named to the Dean's List earned an all-A average.

trying to  
get it together?

free counseling:

★ Youth advocacy

★ runaways

★ families

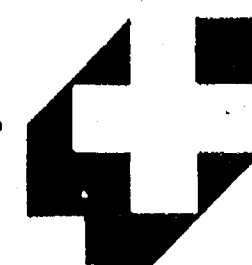
662-2222

ANN  
ARBOR

HOUSE

# CHELSEA AUTOMOTIVE

1414 S. MAIN ST.  
CHELSEA



Parts  
Plus

Phone

475-9106

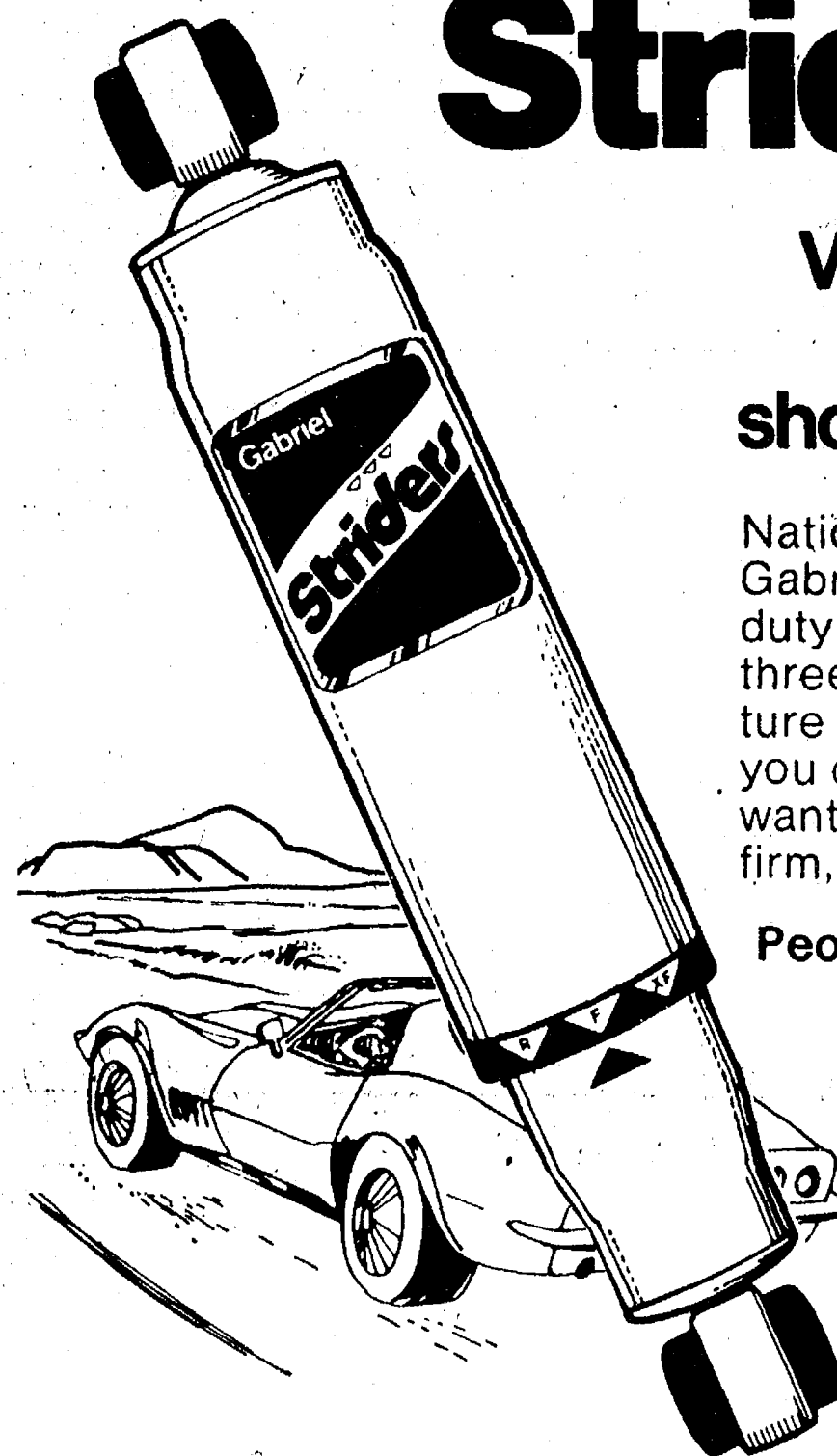
Open Mon. thru Thurs., Sat., 8 a.m. to 6 p.m. Friday 8 a.m. to 7 p.m. Sunday, 10 a.m. to 2 p.m.

## Gabriel® heavy-duty Striders®

Versatile, 3-way  
adjustable  
shock absorbers.

Nationally advertised  
Gabriel Striders. A heavy-duty shock with a versatile three-way adjustability feature and a 1 1/8" piston. Lets you choose the ride you want. Adjusts to regular, firm, or extra firm.

People who know shocks,  
go Gabriel.



ONLY  
\$11.95

Plus Installation  
\$23.95 VALUE

## CHELSEA AUTOMOTIVE SAYS: For a "SHOCKING DEAL"

See us if you intend to install them yourself at the low price of \$13.50 or for a small installation charge see your local dealer listed below.

IN CHELSEA:

RALPH FLETCHER'S MOBIL  
FRED'S UNION 76 GARAGE  
ROMINE'S QUALITY SERVICE  
NORTH LAKE SALES & SERVICE  
MAUZY'S MOBIL  
GLENN'S SERVICE

IN ANN ARBOR:

PARTIN MOBIL  
Zeeb Road and I-94

IN MANCHESTER:

GERRY MANN'S STANDARD

IN PLEASANT LAKE:

DAN'S SERVICE

IN STOCKBRIDGE:

SCHULTZ ENTERPRISES





**Polly's** MASTER  
MARKETS

1101 M-52

**CHELSEA, MICH.**

(Corner M-52 and Old U.S. 12)

Supplement to Ann Arbor News, Chelsea Standard

**get to know us...**

**WE CAN HELP YOU SAVE ON YOUR FOOD BILL!**

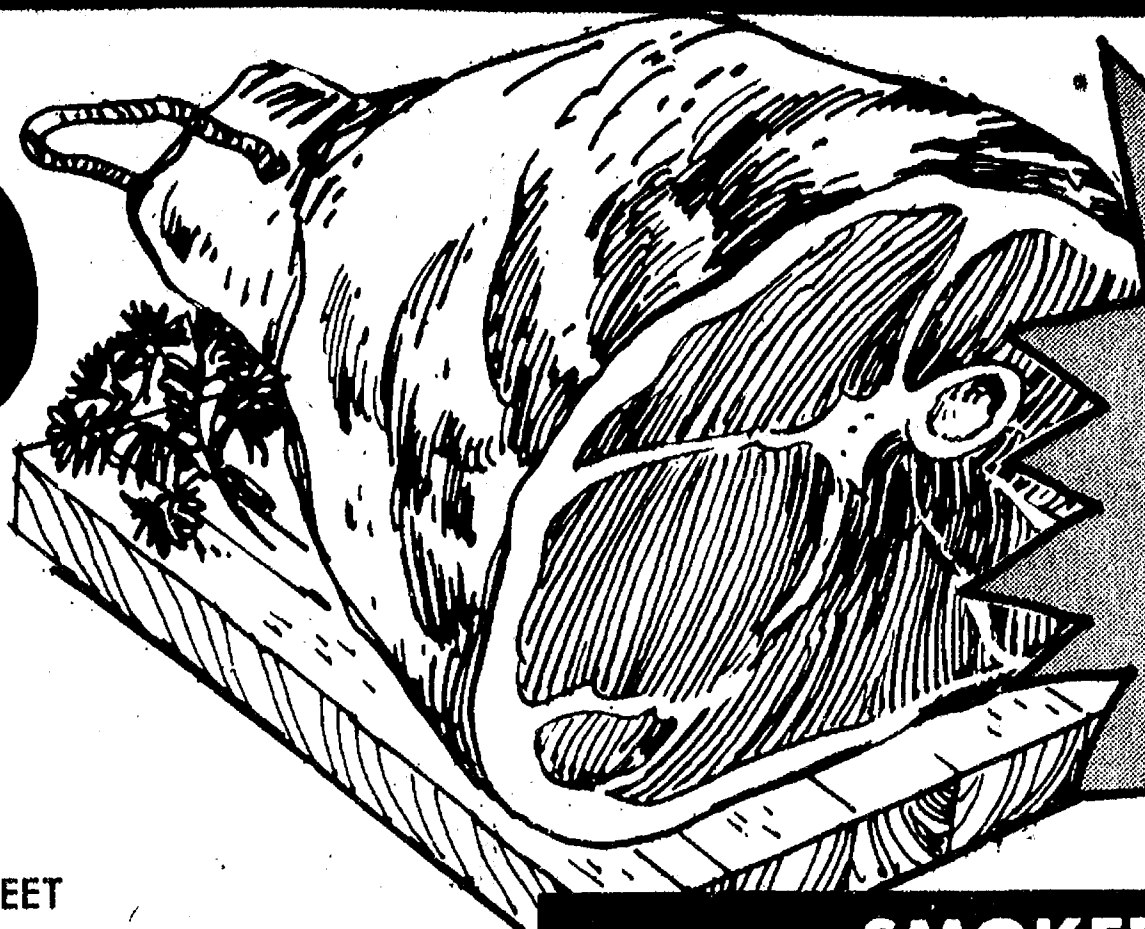
**Open Daily 8 to 10  
Sunday 9 to 9**

- ★ **QUALITY PRODUCE**
- ★ **QUALITY MEAT**
- ★ **COLD BEER, WINE, LIQUOR**
- ★ **LOTTERY TICKETS**
- ★ **SIDES OF BEEF**
- ★ **FRUIT BASKETS**
- ★ **DRY CLEANING**
- ★ **PHOTO PROCESSING**
- ★ **VARIETY AT LOW PRICES**





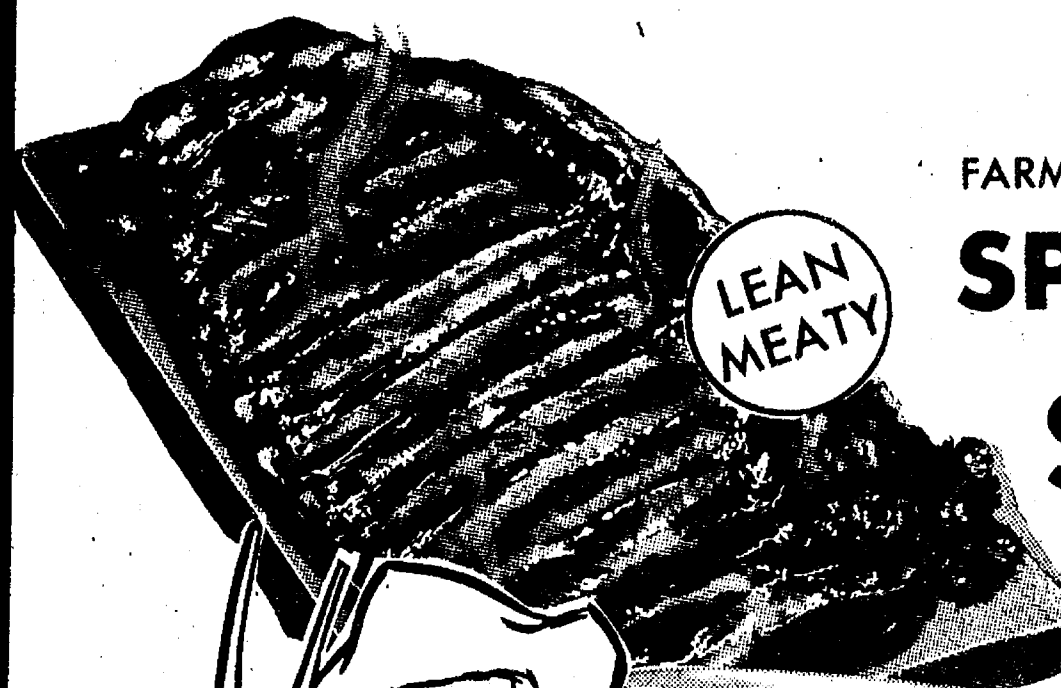
**Polly's** MASTER MARKETS  
1101 M-52  
**CHELSEA, MICH.**  
(Corner M-52 and Old U.S. 12)



FARMER PEET  
**SMOKED HAM**

SHANK  
PORTION  
WATER ADDED

**79¢**  
LB.



LEAN  
MEATY

FARMER PEET

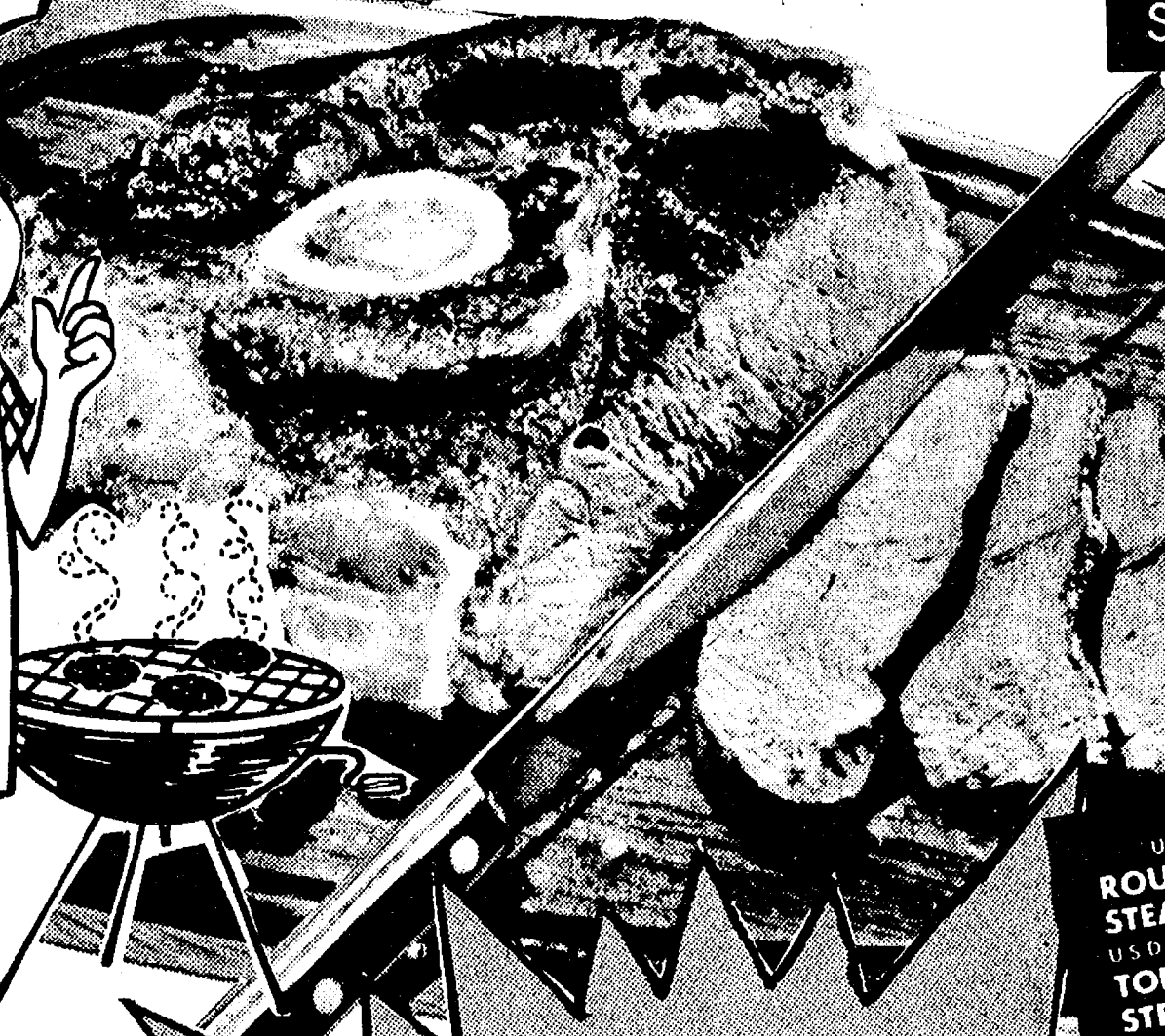
**SPARE RIBS**

**\$1.29**  
LB.

**Farmer Peet SMOKED HAM**  
(Water Added)

WHOLE	LB.	<b>99¢</b>
BUTT	LB.	<b>89¢</b>
PORTION	LB.	<b>89¢</b>
CENTER	LB.	<b>\$1.59</b>
SLICES	LB.	<b>\$1.59</b>

ARMOUR STAR BONELESS CANNED PICNICS	3-lb.	\$3.69
FRESH LAMB SHOULDER CHOPS	LB.	\$1.59
FRESH LAMB SQUARE CUT SHOULDER ROAST	LB.	\$1.29
WHOLE LEG of LAMB	LB.	\$1.69
FRESH VEAL SHOULDER CHOPS	LB.	\$1.39
FRESH VEAL ROUND STEAK	LB.	\$2.49
SQUARE CUT VEAL SHOULDER ROAST	LB.	\$1.29
WISCONSIN LONGHORN CHEESE	LB.	\$1.39



**USDA CHOICE**

**Swift Premium Beef**

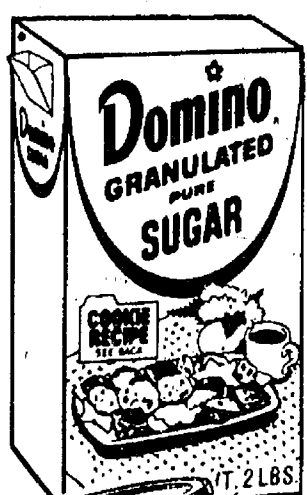
U.S.D.A. CHOICE BONELESS  
ROUND STEAK LB. \$1.49  
U.S.D.A. CHOICE BONELESS  
TOP ROUND STEAK LB. \$1.69

U.S.D.A. CHOICE WESTERN  
**ROUND STEAK**

**\$1.19**  
LB.

U.S.D.A. CHOICE WESTERN  
**ROUND or RUMP ROAST**  
**\$1.49**  
LB.

U.S.D.A. CHOICE EYE of ROUND STEAK	LB.	\$1.99
U.S.D.A. CHOICE CHUCK STEAK	LB.	99¢
U.S.D.A. CHOICE BONELESS CHUCK STEAK	LB.	\$1.29
POLLY PRIDE QUALITY CUBE STEAK	LB.	\$1.59
SWIFT PREMIUM SLICED BEEF LIVER	LB.	69¢



SAVE 27¢  
with in-store coupon

DOMINO GRANULATED  
**PURE SUGAR**

2-LB. BOX **38¢**



SAVE 50¢  
with in-store coupon

HAWAIIAN PUNCH  
**DRINK MIX**

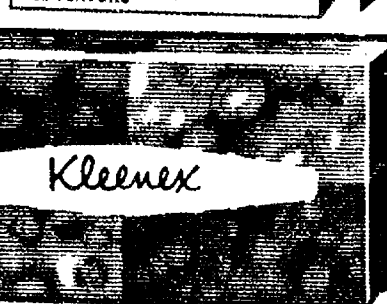
MAKES 8-QTS. **\$1.09**



SAVE 25¢  
with in-store coupon

ROYAL  
**GELATIN DESSERT**

6 3-oz. for **89¢**



SAVE 37¢  
with in-store coupon

KLEENEX  
**FACIAL TISSUES**

2 200-ct. Boxes for **89¢**

SAVE 20¢ WITH IN-STORE COUPON  
**BORON CHARCOAL LIGHTER**  
64-OZ. **79¢**

SAVE 13¢ WITH IN-STORE COUPON

**AURORA TOILET TISSUE**

2-ROLL  
PAK

**39¢**

SAVE 16¢

**FAYGO**

64-OZ. **59¢**



FRENCH'S PURE PREPARED  
**MUSTARD** 24-oz. **49¢**

SEALTEST  
**SOUR CREAM** 8-oz. **35¢**



WELCH'S GRAPE JAM or  
**JELLY** 32-oz. **79¢**

DEANS  
**CHIP DIPS** 4 8-oz. for **\$1**



RED RIPE

# WATERMELON



EACH  
**\$1.69**  
 20-POUND AVERAGE

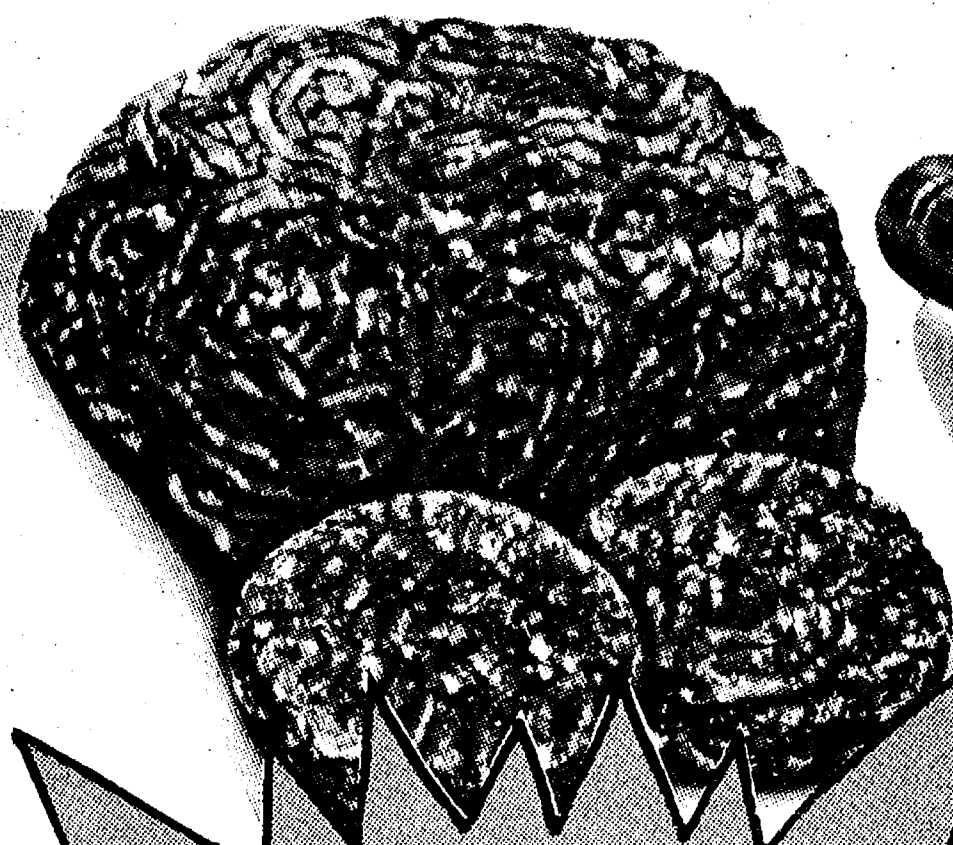
**Polly's** MASTER MARKETS  
 1101 M-52  
**CHELSEA, MICH.**  
 (Corner M-52 and Old U.S. 12)



SEEDLESS  
**WHITE GRAPES** ..... LB. **79¢**  
 SNO-WHITE  
**MUSHROOMS** ..... LB. **99¢**  
 CRISP CELLO-PAK  
**CARROTS** ..... 2-LB. **39¢**  
 VINE RIPE  
**TOMATOES** ..... 8 for **99¢**

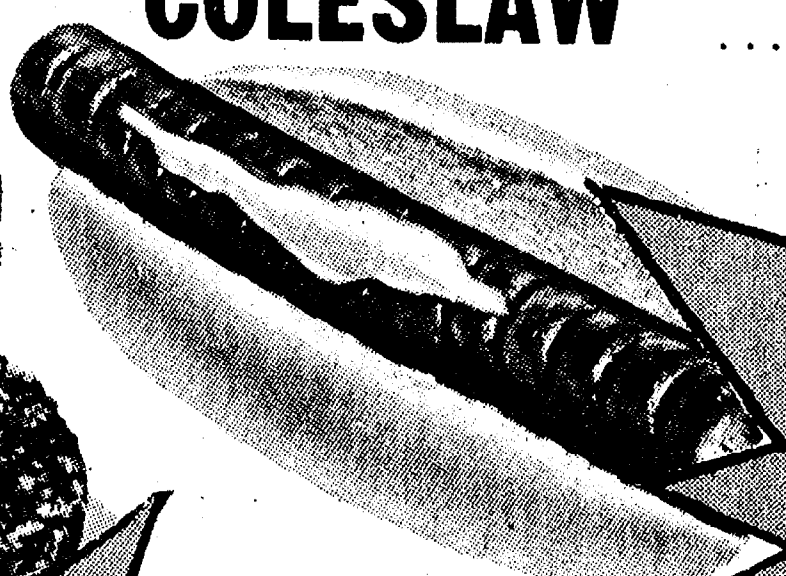
LEONS  
**COLESLAW** ..... LB. **59¢**

MIX or MATCH  
**5 for \$1**  
 • CUCUMBERS  
 • GREEN ONIONS  
 • GREEN PEPPERS  
 • RED RADISHES



80% LEAN  
**GROUND BEEF  
 CHUCK**

LB. **89¢**



BUY 3 • SAVE 63¢ WITH IN-STORE COUPON  
 FARMER PEET ALL BEEF

**FRANKS**  
**78¢**  
 1-LB. PKG.

ECKRICH REGULAR or JUMBO  
**FRANKS** ..... LB. **\$1.19**  
 ECKRICH SLICED  
**BOLOGNA** ..... LB. **\$1.39**  
 ECKRICH FRESH PORK  
**SAUSAGE LINKS** ..... 12-oz. **\$1.29**  
 ECKRICH SLENDER  
**SLICED MEATS** ..... 3-oz. **49¢**

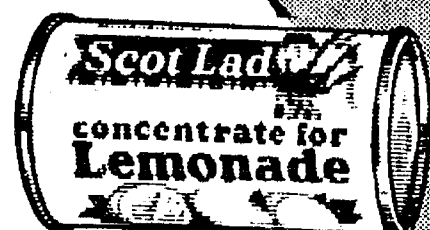
BUY 2 • SAVE 60¢ WITH IN-STORE COUPON

FARMER PEET  
**RE-PEETER  
 BACON** ..... 1-LB. PKG. **\$1.19**

BOB EVANS  
**PORK  
 SAUSAGE** ..... 1-lb. Roll **\$1.29**  
 FARMER PEET A.C.  
**BRAUN-  
 SWEIGER** ..... LB. **69¢**  
 FRESH FROZEN  
**LAKE  
 SMELT** ..... LB. **79¢**  
 FRESH FROZEN  
**CAT  
 FISH** ..... LB. **\$1.59**  
 FRESH FROZEN  
**SNAPPER  
 FILLET** ..... LB. **\$1.99**  
 FRESH FROZEN  
**TURBOT  
 FILLETS** ..... LB. **\$1.19**

SCOT LAD CREAMSTYLE  
 OR WHOLE KERNEL  
**CORN** ..... 4 16-oz. cans for **\$1**

RIPPLED PRINGLES  
**POTATO CHIPS** ..... 9 OZ. **88¢**  
 AMOCO 10W30  
**MOTOR OIL** ..... 2 QTS. FOR **99¢**  
 KRAFT SLICED  
**AMERICAN SINGLES** ..... 12 OZ. **99¢**  
 VLASIC  
**SWEET RELISH** ..... 32 OZ. **77¢**  
 HOLSUM LIGHT or DARK  
**RYE BREAD** ..... 2 16-oz. for **89¢**  
 KEEBLER  
**DELUXE GRAHAMS** ..... 13½ oz. **89¢**  
 KEEBLER  
**FUDGE STRIPES** ..... 12½ oz. **89¢**  
 12-PAK  
**COKE** ..... 12-oz. cans **\$2.39**



SAVE 25¢ WITH IN-STORE COUPON  
 SCOT LAD

**LEMONADE**  
**6 6-oz. cans for 89¢**

Scot Lad  
**MARGARINE** ..... 1-lb. qtrs. **39¢**  
 Scot Lad  
**MUSTARD** ..... 16-oz. **39¢**  
 Scot Lad  
**GRAPE JUICE** ..... 24-oz. **49¢**  
 Scot Kitchen Brown or  
**POWDER SUGAR** ..... 32-oz. **59¢**  
 Scotlad Strawberry  
**PRESERVES** ..... 32-oz. **99¢**  
 Scot Lad Instant  
**ORANGE DRINK** ..... 27-oz. **99¢**  
 Scot Lad 12-inch  
**ALUMINUM FOIL** ..... 75 Ft. **77¢**  
 Scot Lad  
**SHORTENING** ..... 3-lb. **\$1.38**  
 Scot Lad  
**SALAD DRESSING** ..... 32-oz. **69¢**  
 Scot Lad  
**MAYONNAISE** ..... 32-oz. **88¢**  
 Scot Lad  
**TOMATO JUICE** ..... 2 for **\$1**  
 QUEEN of Scot EXTRA LARGE  
**RIPE OLIVES** ..... 8-oz. **49¢**

SCOT LAD 16-oz.  
 PEAR HALVES  
 SCOT LAD 17-oz. WHOLE  
**PURPLE PLUMS**  
 SCOT LAD 14-oz.  
**CATSUP**  
 SCOT LAD 16-oz.  
**TOMATOES**  
 YOUR CHOICE!!  
**3 for \$1**



SAVE 58¢ WITH IN-STORE COUPON...BORDENS

**Old  
 Fashioned**  
 BRAND

**ICE  
 CREAM**

HALF  
 GALLON  
 ROUND

**99¢**

PLANTERS  
**COCKTAIL PEANUTS** ..... 24-oz. **\$1.99**  
 OCEAN SPRAY  
**CRANBERRY JUICE** ..... 48-oz. **99¢**  
 KRAFT JET PUFF  
**MARSHMALLOWS** ..... 16-oz. **59¢**  
 VLASIC  
**DILL PICKLES** ..... 32-oz. **89¢**  
 WIN SCHULERS  
**BAR SCHEEZE** ..... 8-oz. **79¢**  
 B and M OVEN BAKED  
**BEANS** ..... 18-oz. **65¢**  
 MAMAS 2 IN 1  
**SANDWICH COOKIES** ..... 2-LB. **99¢**  
 PRINGLES RIPPED  
**POTATO CHIPS** ..... 8-oz. **88¢**  
 FIRESIDE  
**COOKIES** ..... 3 8-oz. for **\$1**  
 Mr. Peanut  
**CIRCUS PEANUTS** ..... 10-oz. **49¢**



SAVE 59¢

**SEVEN-UP**  
 DIET 7-UP or 3 FLAVORS CRUSH

6-PAK  
 12-OZ.  
 CANS

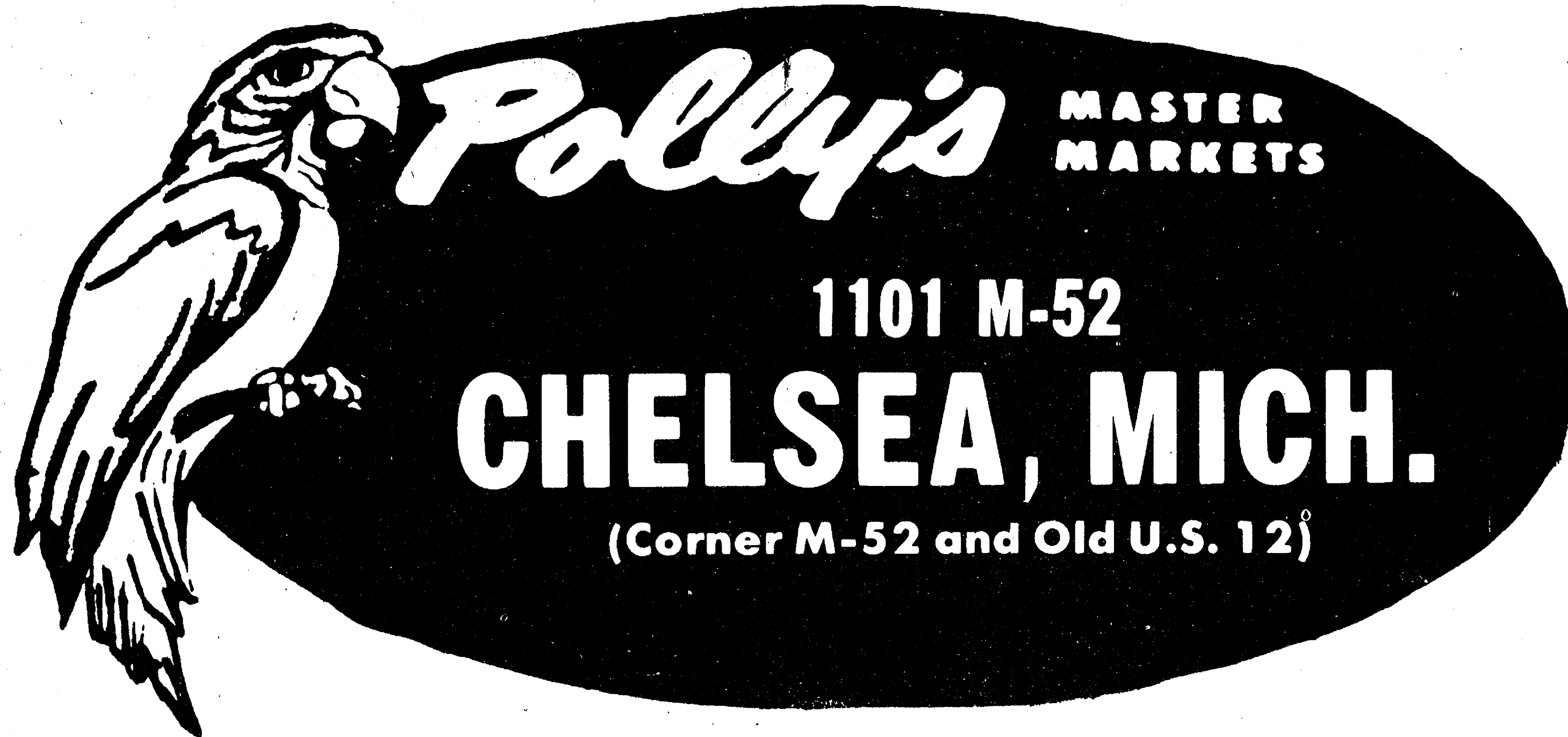
**95¢**

ORE-IDA  
**ONION RINGS** ..... 7-oz. **29¢**  
 ORE-IDA  
**HASH BROWNS** ..... 32-oz. **49¢**  
 SCOT LAD  
**WAFFLES** ..... 6 5-oz. for **\$1**  
 TOWN SQUARE STRAWBERRY  
**SHORTCAKE** ..... 29-oz. **\$1.19**  
 BANQUET  
**COOKIN' BAGS** ..... 3 5-oz. for **79¢**  
 BORDEN  
**SUNDAE CUPS** ..... 6-Pak **69¢**  
 NEWI TONY'S BEST CHOICE  
**SUPREME PIZZA** ..... 22-oz. **\$1.59**



# Thank You

FOR SHOPPING AT...



WHERE WE ARE  
HAPPY TO.....

**save** YOU MONEY!