

WEATHER

	Min.	Max.	Precip.
Thursday, March 10	40	60	0.00
Friday, March 11	42	60	0.02
Saturday, March 12	39	72	0.00
Sunday, March 13	50	68	0.02
Monday, March 14	43	50	0.06
Tuesday, March 15	37	54	Trace
Wednesday, March 16	36	71	0.00

The Chelsea Standard

QUOTE

"Lots of people have great aims in life, but never get around to pulling the trigger."
—Anonymous.

ONE HUNDRED-SEVENTH YEAR—No. 40

12 Pages This Week

Plus 4-Page Supplement

CHELSEA, MICHIGAN, THURSDAY, MARCH 17, 1977

15c per copy

SUBSCRIPTION: \$6.00 PER YEAR

High School Youths Face Bomb Charge

Two Chelsea youths, a 16-year-old and 17-year-old boy, were arrested by local police this week following a bombing at Chelsea High school on Monday afternoon, March 14. Under questioning, both boys told police their violence had not been premeditated and there was no reason for their actions.

The bombing was discovered by DiAnn L'Roy, chorus teacher at the high school, when she came into room 117 at 12:55 p.m. to open the room for class. In the center of the floor, Miss L'Roy found the remains of the school's piano which had been blown apart by an explosive device. Piano keys were scattered in all directions.

Miss L'Roy immediately notified high school principal Dwight Smith, who called Chelsea police to report the incident. Officers responded to the principal's call, and were taken to the scene of the crime to collect evidence.

Officers found pipe bomb fragments strewn among the rubble from the destroyed piano, and removed the fragments from the scene for examination by the state crime lab. Bomb experts from the Washtenaw County Sheriff's Department were also called in to aid local police in their investigation.

Later in the afternoon, Smith again contacted police to report one of the suspects had been seen with a pipe bomb during lunch period at the high school. Police then questioned the suspect, who admitted his guilt and implicated an accomplice. The accomplice was subsequently questioned and arrested.

Both boys were arraigned in court Tuesday on charges of placing an explosive with damage resulting. If found guilty of that charge by the court, each faces a maximum penalty of 25 years in jail.

Swim Club Ready for State Championships

Chelsea Aquatic Club will crown its first season this week-end, when 36 qualifying members travel to the Michigan Team Swimming Championships in Midland and Ann Arbor. On Saturday, March 19, 20 area boys will participate in the Midland meet, while 16 local girls will compete in the Ann Arbor meet on Sunday, March 20. Those qualifying are Jennifer Cattell, Melanie Gunn, Kris Mattoff, Shelly Boham, Paula Colomso, Amy Oxner, Danny Degener.

Margie Rowson, John Hoffman, Richard Slater, Marty Steinhauer, Ted Merkel, David Steinhauer, Eric Schaffner, Rick Sweet and Amy Hume.

Also, Kristin Thomas, John Robbins, Dave Nicola, Dave Mason, Sean Oxner, Kirk Hawks, Patti Hume, Shannon Springer, Sara Bgrders, Nancy Heller, Patti Schumann, Jan O'Berg, Tom Gaunt, Peter Beaudoin, Tom Rudd, Phil Hoffman, Mike Mason, Todd Oxner, Kirk Meyers and Shelly Springer.

Bicentennial Benefit Dance Slated April 2

Generous contributions from various community business firms and organizations have succeeded in reducing Chelsea's \$15,000 bicentennial celebration debt by more than half that amount. Currently, only \$6,000 remains outstanding. To further reduce this deficit, the Chelsea Fair Board has decided to sponsor a Bicentennial Benefit Dance.

The event is slated for April 2, 3 p.m. to 2 a.m., in the Fairgrounds Service Center. Live entertainment will be provided by the Lorenz Wackenhut Band, and free popcorn will be furnished. Beer and mixed drinks will be sold at the bar. Cost of the dance is \$7 per couple.

According to Fair Board representative Pat Merkel, the board hopes to realize \$1,000 in proceeds from the dance. All proceeds will be donated to the Chelsea Bicentennial Committee.

Tickets to the benefit may be purchased at Ann Arbor Federal Savings in Chelsea, Chelsea State Bank, Streiter's, and Pierson and Riemenschneider Realty.

Alcoholism Seminar Set For March 27

Developed as an outgrowth of a drug seminar held last year, the Social Concerns Committee of First United Methodist church will present a two-hour seminar on alcoholism, Sunday, March 27, 7 to 9 p.m. in the basement social center of the church.

Barry Kistner, director of the Washtenaw Council on Alcohol Problems, will discuss alcoholism as a disease. His presentation will be followed by a discussion on teen-age and adult alcoholism and its effect on other family members. As part of the evening's program, several guest participants will share their experiences. Everyone, including teen-agers, is invited to attend.



SERVICE AWARD: Sam Johnson (right) accepts the Distinguished Service Award plaque from Chelsea Jaycee President Bill Tudor (left) at a banquet in his honor March 10 at Chelsea Fairgrounds Service Center. Johnson was selected to receive the award from a field of eight finalists. He has played an important role in many recent civic projects and has been active in local politics as a member of the Chelsea Village Council.



ANNE STEINAWAY (right) accepts a certificate of appreciation from Chelsea Jaycee Auxiliary President Sue Zink (left) for her many contributions to the service organization. Mrs. Steinaway was chosen as this year's Outstanding Jaycee Auxiliary Member by Jaycee Auxiliary representatives, and was publicly honored at the Jaycee Distinguished Service Award Banquet last Thursday.

Sam Johnson Receives JC Service Award

A new twist was introduced to the annual Chelsea Jaycees Distinguished Service Award Banquet this year as Jaycees offered participation in the banquet to other local organizations and their members for the first time.

Winner of the 1977 Distinguished Service Award is Sam Johnson, who received a warm round of applause from some 43 area residents attending the event last Thursday evening at the local Fairgrounds Service Center.

Nominated by Dave Rowe, Johnson was one of eight finalists in the competition. Other finalists included Dr. William Hawks, Mrs. Eugene Malott, Mac Packard, Bill Pierce, Linda Ormsby, Byron E. Smith and Mrs. Mildred Smith. All nominations were submitted by the public.

Johnson was recognized for his multiple contributions to the Chelsea community. He was an instrumental figure in Chelsea's railroad depot renovation project and helped to institute passenger train service to Chelsea. For his efforts in that area, he received special commendation from Penn Central.

While serving as president of the Chelsea Kiwanis Club last year, Johnson "turned the club into a real service organization," according to Rowe, his nominator. Rowe also cited Johnson's dual role as organizer and co-ordinator behind Chelsea's new reserve-call bus service (CATS), as a basis for his nomination.

Currently Johnson is engaged in

establishing a Chelsea Senior Citizens Center, an undertaking which involves creating a fund to support that endeavor and finding a property site for the project. The center will be built by Chelsea High's Building Trades class.

Johnson's other civic contributions have included serving on the Chelsea Village Council for the past four years; two years as a Recreation Council representative; and two years as the Village Council's representative to the Village Planning Commission.

In addition to Johnson, two other Chelsea residents received special recognition during the service award banquet. Dave Rowe was presented with the Outstanding Young Man Award, and Anne Steinaway was selected Outstanding Jaycee Auxiliary Member. Award candidates in all categories were judged by a panel of Chelsea Jaycee members.

Prior to revealing the name of this year's Distinguished Service Award winner, banquet moderator Art Steinaway gave a detailed listing of the contributions of each nominee. Announcement of the award winner was followed with entertainment by The Harmony Hounds, a comical barbershop quartet.

Bob Ponte, Chelsea Jaycee administrative vice-president, rated the banquet as highly successful and added, "All award recipients were greatly applauded, and the quartet providing entertainment was also well-received."

Election Workers Hit By 67-Vote Deluge

Clear skies and mild temperatures were apparently not a factor in bringing out a poor voter turnout Monday, for Chelsea's annual village election. Out of a total of \$25 registered voters, 67 cast ballots in unopposed battles for the office of village clerk, three trustee seats, and two vacancies on the Library Board.

"Of the last three elections in which I have personally been involved, the total number of those voting was highest in Monday's election," newly re-elected township clerk, Thomas Neumeyer said Tuesday.

Neumeyer, who entered the race as an incumbent, received 64 votes

to return to his post for a second two-year term.

Elected to serve two-year terms as village trustees were Diane Borton with 58 votes; appointed incumbent Lyle Christwell with 63 votes; and Mike Sweet with 62 votes.

Library Board candidates Robert Merkel and Katherine Wagner received 62 votes and 64 votes, respectively. The new board members will hold office for a period of three years.

Only two write-in votes were recorded by village election officials, but both were later declared void since the votes were cast by unqualified electors. No spoiled ballots were received.

Chelsea Hospital Fund Tops \$300,000 With Limited Contacts

"The Chelsea Community Hospital, with only limited contacts being made has topped the \$300,000 mark towards its \$1.2 million goal," reported Jim Daniels, campaign chairman.

Will Johnson, the hospital administrator, reported that the Hospital Employees Section of the campaign has topped its \$60,000 objective with \$62,384. This section of the campaign was directed by Linda Macleod and Bob Pawlowski.

Bod Ludwig, member of the Hospital Board of Governors, and Commerce and Industry chairman, reported that "one major gift has been received for \$50,000 from a local firm, and a number of other major gifts are expected by the end of the month." The goal for this section is \$400,000. Bob is being assisted by Jim Daniels, Paul Mann, Sheridan Springer, Walter Hamilton, Dave Little, Jim Englund, John Check, Dr. Michael Papo, and Will Johnson.

Early reports from the Medical Segment of the campaign show six

gifts for \$93,000. "This speaks well for the importance that the medical community places on this hospital," said Daniels. This section of the campaign is under the direction of Doctors Jim Shadoan and Bruce Stubbs.

Dan Murphy, chairman of the Retail Section of the campaign, met with his team members on Wednesday, March 16, to discuss the Retail Phase of the campaign.

Paul Schabbe, Special Gifts chairman, reported that "Members of this section are making contacts with individuals within the Chelsea area requesting that they also take part in this vital community project." Paul is being assisted by Arlene Howe, Katherine Wagner, Jim Daniels, Larry Dietle, Weldon Harbaugh, Dave McLaughlin, Paul Mann, George Palmer, John Pierson, Bob Thornton, Dr. Clare Warren, Helen Lancaster and Dr. William Hawks.

"One of the most important ingredients in the success of the campaign is the fact that it is a

pledge-type program with gifts being requested over a five-year period. Only through such a program can we hope to secure \$1.2 million," Daniels concluded.

Chrysler Drivers Go Back to Work Friday

More than 470 driver-mechanics, maintenance men and stock workers at Chelsea's Chrysler Proving Grounds were back on the job Friday morning following ratification of a new local contract last Thursday, which ended an eight-day strike over issues of job security and shift overlaps. Both issues were covered in the settlement.

Chrysler Corp. and UAW Local 1234, which represents the workers, reached tentative agreement on the new contract late Wednesday evening. The two sides had been at the bargaining table since 10 o'clock that morning. The pact was approved by a 77 percent majority of union members.

Joseph Parker, personnel and employment representative at the proving grounds, reported an orderly return to work Friday with

minimal absenteeism. Of those few who failed to appear, most stated they had been unaware of the settlement.

The strike began March 3 when union members staged a walk-out to protest unresolved issues in the contract dispute. Members of Local 1234 had been working without

(Continued on page five)

School Opinion Survey Starts

The Chelsea School Opinion Survey, announced last week in The Chelsea Standard, was launched yesterday when the first group of questionnaires was distributed to volunteer workers. 800 school district residents have been selected



4-H ACHIEVEMENT SHOW: A combination of skill and creativity characterizes the entries of these Freer Acres 4-H Club members in the Spring Achievement Show to be held Saturday at Saline High school. Modeling their sewing projects are first row, from left, Tylene Greenleaf, Amy Lisenbels, Sandra Young and Becky Finch. Second

row, from left are Susie Young, Brenda Hoelzer, Laura Ratzlaff and Lisa Headrick. Third row, from left are Jane Wood, Angela Richardson, Denise Robbins and Bethel Snyder. Absent from the photo are Kathy Hearst and Kathy Burns. Leaders of the Freer Acres 4-H group are Gloria Greenleaf and Kay Heller.

CANCER QUILT: Marge Daniels, co-chairman of the Chelsea Chapter of the American Cancer Society, displays the quilt she weaved in a recent drawing sponsored by the local Cancer Society. Proceeds from ticket sales for the drawing will be donated to a fund for cancer research. Creators

of the quilt survey their handiwork from the rear of the photo. Seated with Mrs. Daniels in the front row is Nancy Duhn (right), the other co-chairman of Chelsea's American Cancer Society chapter. Back row, from left are Barbara Branch, Diane Borton, Ann Schaffner and Carol Kvarnberg.

Cancer Society Members Finish Project at Annual Quilting Bee

Some 40 village residents attended Chelsea's third annual Cancer Quilting Bee last Thursday, March 10, at the home of Mrs. Duane Branch. The event was organized by committee members Mrs. Richard Borton, Mrs. Duane Branch, Mrs. Don Kvarnberg and

Mrs. Jon Schaffner, who also pieced the quilt together.

Winner of the 1977 Cancer Quilt was Marjorie Daniels, designer of the 1976 Washtenaw County Cancer Society Christmas card. Coincidentally, Mrs. Daniels is also co-chairperson of the Chelsea Chapter of the American Cancer Society.

Money raised by ticket sales for the quilt drawing will be donated to a fund for cancer research. Yarn and needles used in tying the quilt were donated by Grove's Store.

Area residents may view the quilt at Country Craftique, where it is currently on display.

Established 1871 **The Chelsea Standard** Telephone 475-1371
 Excellence Award By Michigan Press Association
 1951-1952-1960-1964-1965-1966
 Walter P. Leonard, Editor and Publisher



Published every Thursday morning at 300 North Main Street, Chelsea, Mich. 48118, and second class postage paid at Chelsea, Mich., under the Act of March 3, 1879.

Subscription Rates (Payable in Advance)
 In Michigan: One Year \$8.00, Six Months \$3.50, Single Copies \$.20
 Outside Michigan: One Year \$8.50, Six Months \$3.75, Single Copies \$.25

MEMBER **NATIONAL NEWSPAPER ASSOCIATION** - Founded 1885
 National Advertising Representative: MICHIGAN NEWSPAPERS, INC., 257 Michigan Ave., East Lansing, Mich. 48823

JUST REMINISCING

Items Taken from the files of The Chelsea Standard

4 Years Ago...

Thursday, March 22, 1973—

James H. Maurice, 26, of Ann Arbor, was in police custody less than eight hours after robbing the Chelsea branch of Ann Arbor Federal Savings last Friday. Most of his \$5,000 take was recovered, Chelsea Police Chief George Mer-nauk disclosed.

Last week-end a howling blizzard dumped approximately 16 inches of snow on the Chelsea area. Many homes lost power and were evacuated, while Chelsea police, County Road Commission employees, Jaycees, and hordes of volunteers labored to provide food and shelter for more than 1,000 stranded travelers.

For nearly 4½ hours, Thursday, opponents and advocates of the Mill Creek Park project explained their hopes and fears to William Laycock, Department of Natural Resources regional manager, who led the public hearing. The DNA is expected to weigh public opinion in making its decision on an application for federal funding of the park.

14 Years Ago...

Thursday, March 21, 1963—

Approximately 475 persons attended the eighth annual Washtenaw County Dairy Banquet held Saturday evening at the Chelsea High school cafeteria. The banquet was sponsored by the Washtenaw County Dairy Council and the Co-operative Extension Service.

Howell Livestock Auction

Starts 1 p.m. Every Monday
 Mason 676-5400
 The Wise Owl Says Ship to Howell
 Phone 546-2470. **Bina Franklin**
 Market Report for March 14

CATTLE—
 Bulk Gt.-Choice Steers, \$36.50 to \$38
 Few High Choice Steers, \$38 to \$39
 Cull-Choice Heifers, \$33 to \$36.50
 Fed Holstein Steers, \$30 to \$34
 UL-Std., \$29 and down.

COWS—
 Heifer Cows, \$31 to \$32
 UL-Commercial, \$27 to \$31
 Canner-Cullers, \$22 to \$27
 Fat Beef Cows, \$25 to \$29

BULLS—
 Heavy Bologna, \$30 to \$35
 Light and Common, \$29 and down.

FEEDERS—
 400-600 lb. Good-Choice Steers, \$34 to \$40
 600-800 lb. Good-Choice Steers, \$32 to \$35
 300-600 lb. Good-Choice Heifers, \$25 to \$30
 300-500 lb. Holstein Steers, \$24 to \$30
 500-800 lb. Holstein Steers, \$24 to \$27

CALVES—
 Prime, \$50 to \$70
 Good-Choice, \$40 to \$50
 Heavy Deseons, \$30 to \$40
 Cull & Meat, \$10 to \$20
 Calves going back to farms sold up to \$40

SHEEP—
 Shorn Slaughter Lamb: Choice-Prime, Good-Utility,
 Woolled Slaughter Lamb: Choice-Prime, \$50 to \$53.75
 Good-Utility, \$48 to \$50
 Slaughter Ewes, \$10 to \$20
 Feeder Lambs, All Weights, \$50 to \$53

HOGS—
 210 to 290 lbs., No. 1, \$38 to \$39.70
 200-280 lbs., No. 2, \$36 to \$38
 Heavy Hogs, 250 lbs. up, \$34 to \$36
 Light Hogs, 200 lbs. down, \$30 to \$36

SWINE—
 Fancy Light, \$30 to \$32
 300-500 lb., \$33 to \$34
 500 lbs. and up, \$30 to \$33

Boars and Stags:
 All Weights, \$25 to \$28

Feeder Pigs:
 Per Head, \$25 to \$40
 Est. 40 lb. pigs, \$34 to \$37

HAY—
 1st Cutting, per bale, 60¢ to \$1.20
 2nd Cutting, per bale, \$1.20 to \$2

STRAW—
 Per Bale, 40¢ to 60¢

COWS
 Tested Dairy Cows, \$300 to \$600
 Tested Beef Type Cows, \$250 to \$350

MICHIGAN MIRROR

By Warren M. Hoyt, Secretary, Michigan Press Association

Gas Conservation Planning Begins

It's an intriguing thought: Installing insulation on all gas-heated Michigan homes that lack it and equip all gas furnaces with gas-saving devices. Then watch the state save nine percent or more of its former gas use.

That's what state Public Service Commission Chairman Daniel Demlow says can be done with the co-operation of Michigan gas utilities. And although the price of a unit of gas would go up, usage would go down and the average homeowner could save as much as \$80 a year, he says.

But though state and federal energy experts have endorsed the concept, there are opponents. They are people who say that it's unfair for those whose homes already are insulated to pay through higher gas rates for the insulation of others.

The opposite argument is that conservation benefits everyone in the long run.

Specifically, the plan would have gas utilities install furnace devices and insulation in homes that wanted it, with no direct charge to the customer. Estimates are it would take most utilities several years to reach all their homes, and that the annual cost to them would be about \$117 million total.

But customers would eventually pay that expense through higher gas rates over a 15-20 year period. The gas savings, Demlow says, could heat another 400,000 homes or 27,000 businesses.

Hearings began last week (March 1) on the idea. PSC hopes are to get the plan going by next fall.

Damman Defends Integrity

"Don't question my integrity," Lt. Gov. James Damman has told the state chairman of the Democratic Party who earlier said he hopes Damman is not the 1978 gubernatorial ticket.

Uncle Lew from Lima Says:

DEAR MISTER EDITOR:

The fellow that runs the country store put hisself on the agenda Saturday night. The floor had just been open for discussion when he come over and says he'd appreciate gitting his two cents worth on the record, and he allowed that nobody knows any better than him how little two cents are worth. As a rule, he puts up with the fellers and don't say much unless he gits ready to go home afore we do, but he was chomping at the bit last week.

The bur under his saddle was paperwork. He said he has spent ever spare minute fer the past two months filling out forms fer one government agency or another. He said matters is worse than when the OPA was setting prices. He recalled that after the war the OPA sent him a list of items it had took price control off of, and it included cocktail shakers. He told em he didn't have no cocktail shakers, and they told him to git some to comply with the order. Now, he says, he's got all that and more. If it ain't figgering the increase in Social Security, he said, it's reporting to the emergency fuel coordinator on what's he's used and what he figgers he'll need next winter.

For all the endless forms he fills out fer everybody from the IRS to the EPA, the store feller said he took time the other day to read about Midland's Revenge. He said the story give him heart to carry on through the red tape it takes to live in this land of the free and brave, not to mention run a business. The U.S. HUD ask Midland,

a West Texas town of 70,000, for a parking space at the airport. When HUD's request come in the town council was meeting, and the members had just gone through a 10-month hassle of asking for a federal housing grant. In a moment of inspiration, the council turned the tables.

Midland ask HUD fer ever form in the book. The request fer the parking space come in last October, the store feller reported, and HUD still is filling out forms trying to qualify fer the Midland grant. They're having to tell everything about why they want the space, what they'll park in it, who'll drive the car when and where, who'll keep the space clean and safe and who'll keep up the car to make sure it don't pollute the air. All on different forms. To HUD's credit, at last report it still was trying to comply, which says them agencies at least know how to take their own medicine.

Ed Doolittle thanked the store feller fer his report. He said he wish the IRS would ask him fer somepun besides money so he could try fer some Doolittle De-light by making that outfit fill out some forms. It ain't no wonder, Ed said, that Americans give up doing this work themselves and hire lawyers and other specialists to do it.

Ed said he saw where in North Carolina they got a new service that will buy your car tags fer you fer \$4. A lot of people that put off everthing figger that beats standing in line at the last hour of the last day.

Yours truly,
 Uncle Lew.

Random School Survey Underway...

(Continued from page one)

randomly to receive questionnaires.

Those contacted are urged to take advantage of this opportunity to express their opinions regarding local schools by answering the 25 multiple choice questions presented. An 85 percent response

hoped for to insure a statistically accurate tabulation.

Results of this survey will have a major impact on the recommendations the Citizen's Advisory Committee makes to the Board of Education.

Telephone Your Club News To 475-1371.

WESLEYAN CIRCLE

Wesleyan Circle of Chelsea United Methodist church met Tuesday, March 15, at the home of Irene Proctor.

Minnie Erskine had devotions and Peggy Millemann presented a program from a book on the life of Helen Keller.

Next meeting of the group will be April 19 at the home of Shirley Smith.

Beef Sale!

BEEF SIDES . . . Avg. Wt. 300-350 lb. **85¢**

Standard Cut includes:
 10 Round Steaks
 8 Sirloin Steaks
 6 Porterhouse Steaks
 12 T-Bone Steaks
 4 Sirloin Tips
 3 Swiss Steaks
 6 Chuck Steaks
 12 Rib Steaks
 2 Rib Roasts
 4 Rump Roasts, boneless
 4 Chuck Roasts
 1 Sirloin Tip Rolled Roast - boneless
 2 Arm Round Roasts
 2 English Roasts
 6 2-lb. Short Ribs
 6 1-lb. Boneless Beef Stew
 80 lbs. Hamburger

After processing \$1.10 lb.

BEEF HIND QUARTERS . . . Avg. Wt. 150-170 lb. **lb. 98¢**

8 Sirloin Steaks
 12 T-Bone
 6 Porterhouse
 8 Round Steak
 4 Rump Roast
 4 Sirloin Tip Steak
 1 Sirloin Tip Roast
 6 lbs. Stew Beef
 30 lbs. Hamburger

After Processing: \$1.25 lb.

BEEF FRONT QUARTERS . . . Avg. Wt. 170-200 lb. **lb. 69¢**

6 Chuck Roasts
 4 Chuck Steaks
 2 Swiss Steaks
 2 Arm Round Roasts
 2 English Roasts
 14 Rib Steaks
 1 Rib Roast
 6 lbs. Stew Beef
 12 lbs. Short Ribs
 50 lbs. Hamburger

After Processing: 89¢ lb.

SLAB BACON in chunk, lb. 79¢
PORK LOINS . . . lb. \$1.19
BOLOGNA WIENERS Michigan Made **lb. 69¢**

CUSTOM SLAUGHTERING and PROCESSING LOCKERS AVAILABLE

BANK AMERICARD - PHONE 426-8466 - MASTER CHARGE

DUNBAR'S DEXTER LOCKER

8083 MAIN ST., DEXTER

PAUL DUNBAR, OWNER

Your 1977 Tax Break

Save up to \$1500 each year, defer the taxes until you re-tire.

If you do not now participate in a qualified private or government pension plan, you may be eligible to start saving for your retirement and at the same time reduce your taxes. You may deposit up to 15% of your earned income (maximum of \$1500 annually) in an IRA tax deferred retirement account at Ann Arbor Federal Savings. Deposits may be deducted from your current income when you compute your income taxes. You pay income tax only on withdrawals made after retirement at which time you probably will be in a lower tax bracket. Interest earned is also tax deferred.

The tax shelter can increase your retirement fund substantially.

Funds in a tax sheltered account grow much faster than funds in a non-sheltered savings account. The chart below provides an example of this difference assuming that you deposit \$1500 on the last day of each year. The second column shows

AT THE END OF	WITH TAX SHELTER	WITHOUT TAX SHELTER	YOUR GAIN WITH TAX SHELTER
10 Years	\$21,762	\$14,844	\$6,918
20 Years	\$68,881	\$41,488	\$27,393
30 Years	\$170,903	\$89,308	\$81,595

how your interest accumulates with the help of our tax sheltered plan. The third shows how your interest accumulates without the help of a tax sheltered plan and the fourth shows the difference.

The figures in the above chart assume that the total contribution of \$1500 is made on the final business day of each year, and that the tax payer is in the 25% tax bracket. The current annual interest rate used is 7 1/2%.

You can start making withdrawals at age 59½. Earlier withdrawals, unless you are permanently disabled, are subject to penalties. With

drawals must begin the year in which you reach age 70½. Deposits in excess of \$1500 are also subject to penalty.

You can open your retirement account at any Ann Arbor Federal Savings office. For tax or legal advice consult your attorney or tax advisor.

Send for FREE literature

Please send free literature upon full details on the tax deferred retirement plan.

Name _____
 Street _____
 City _____ Zip _____

ANN ARBOR FEDERAL SAVINGS, 401 East Liberty
 Ann Arbor, Michigan 48108 769.8300

NOTICE

Due to impaired health, I will discontinue shoe repair service to Chelsea and Dexter areas. I wish to thank the personnel of Hackney Hardware and Parish Dry Cleaners for their kind assistance.

BUD'S SHOE REPAIR
 GREGORY, MICHIGAN

AAFS

ANN ARBOR FEDERAL SAVINGS

11 OFFICES TO SERVE YOU IN ANN ARBOR, BRIGHTON, CHELSEA, DEXTER, MANCHESTER, SALINE, YPSILANTI
 Member FDIC



PAST PRESIDENTS HONORED: Members of Chelsea's Kinder Klub celebrated the 20th anniversary of their organization Tuesday evening by honoring all past presidents of the club. Carnations were presented to each of the former officers pictured above, along with certificates to two past presidents who are now honorary members of the club. Front row, from left are Laura Downer,

Carol Marshall, Jeanette Sweet, Veretta Whitaker, Jean Hafner, Nadine Koch and Therese Doll. Back row, from left are Nell Rooke, Carol Hoffman, Delores Notten, Clara Ewald, Betty Murphy, Agnes Boylan, Winona Landwehr, Sharon Robards and Marylou Bower.

Kinder Klub Observes 20th Anniversary

Tuesday, March 15, Kinder Klub celebrated its 20th anniversary at the McKune Memorial Library by honoring the women who have served as president since the club was organized in 1957.

From a table decorated in the club colors, highlighted by a centerpiece of red carnations and white daisies, punch was served as the group gathered and friendships were renewed.

Master of Ceremonies Therese Doll welcomed everyone and then turned the program over to Nadine Koch. Nadine introduced each past president and read a brief resume of the activities that occurred during the year that they were in office.

President Jean Hafner presented each past president with a carnation. Receiving red and white carnations were Agnes Boylan, Marylou Bower, Nell Rooke, Winona Landwehr, Delores Notten, Betty Murphy, Jeanette Sweet, Sharon Robards, Carol Marshall, and Laura Downer.

Red carnations were presented to Clara Ewald, Therese Doll, Carol Hoffman, Veretta Whitaker, Nadine Koch, and Jean Hafner as past presidents who are still active members of the club. The rest of the club members received white carnations.

Clara Ewald and Therese Doll were presented with certificates as honorary charter members who are still active in the club.

Kinder Klub members put on a

skit entitled "The Most Important Day in Your Life," narrated by Veretta Whitaker.

Therese Doll ended the program with a thank-you to all those who had shared in the celebration of the club's 20th anniversary.

The evening closed with refreshments, warm fellowship, and the hope that Kinder Klub will continue for another 20 years.

Helen Bulick was awarded the centerpiece as a door prize.

Fluoride Treatment Still Has Openings

Topical fluoride applications will again be offered this summer in Chelsea. The fluoride program, which is supervised by the Michigan Department of Public Health, consists of four appointments. On the first visit the teeth are cleaned and a fluoride solution is applied directly to the surfaces of the teeth. On the three succeeding visits the fluoride application is then repeated. This fluoride application has been shown to reduce 40 percent of new tooth decay.

This program is primarily offered to pre-school, kindergarten, 2nd, 5th and 8th grades, but any child may be treated if a parent requests it. Cards with appointment times will be mailed to parents around the end of May.

There are still a few openings available for the fluoride clinic. If any parents wishes to have their child's teeth treated please fill out

the form printed elsewhere in this edition of The Standard and mail it with the \$4.75 fee to Carol Smith, 19890 Old US-12, Chelsea. Please make any checks payable to Chelsea Fluoride Program.

Companions Offered To Help Care for Older Adults in Family

Child and Family Service of Washtenaw County offers a respite service for families who have the 24-hour responsibility for an older adult who cannot be left alone.

Trained companions are available through the Home Companion Service to stay with an elderly person to enable other family members to accomplish their own business or recreational activities. The companion caters completely to the needs and interests of the older person including visiting, preparation of meals, physical assistance and, if desired, outings.

Payment for companion services is arranged between the individual family and the companion, based on agency-suggested guidelines. A companion may be sought for just one occasion, or on a more on-going part-time basis.

For further information, contact Nancy Kehoe, Home Companion Coordinator, at Child and Family Service in Ann Arbor on Tuesday or Thursday afternoons, phone 971-6520.

Magic Mirror Beauty Salon

Open Tuesday thru Friday
9 a.m. to 9 p.m.
Saturday, 8 a.m. to 3 p.m.

PHONE 665-0816

**For St. Patrick's Day
GREEN
CARNATIONS
FREE to First
150 Ladies
who come in on
Thursday, March 17
Red's Standard**

PHONE 475-2804

889 S. MAIN ST.

CHELSEA

VFW Auxiliary Plans Spring Events

The regular business session of Chelsea VFW No. 4073 Ladies Auxiliary was held Monday, March 14 with 12 members in attendance. Lucy Platt, Gertrude O'Dell and Eulabee Packard were named to a committee which will work with post members on their May 7 blood bank clinic, to be held at the fairgrounds.

A rummage sale is slated for April 22-23 at the VFW Hall. Proceeds will be donated to the post's relief fund.

In other business, one dollar per member was voted out to help support this year's nine Michigan graduates at the National Home, and the Auxiliary is ordering grave flags and replacement markers for all deceased VFW members. These items will be placed in respective cemeteries by Memorial Day.

Tentative house rules were read and accepted with minor changes. Then members voted to disburse \$1 per member for the outgoing district president's gift. Presentation of the gift will be made at the sixth district meeting in May. Lucy Platt, Buddy Poppy chairman, reminded the assembly of the upcoming Poppy Day, stating volunteers are needed to sell flowers. Tentative date for Poppy Day in Chelsea is May 20.

Sixth district dues were voted out by the group at 10 cents per member, and members were notified that election of district officers will be held at the May meeting.

Election of officers for the local auxiliary will be held at the next business session on April 11, along with the election of district delegates.

Town & Country Woman's Club Hears Child Guidance Talk

On Tuesday, March 8, Town & Country Woman's Club met at the home of Wanda Conner. Co-hostess for the evening was Judy Syria.

After a brief business meeting, Vivian Michaelson spoke on "Child Guidance." Mrs. Michaelson, a teacher for many years, shared her experiences with club members and their guest.

Next meeting will be March 22, 7:30 p.m. at the home of Bobbie Hoffenbecker. Program will be "Women in Our Medicated Society."

Business Women's Association Reports On Enrollment Tea

Chelsea chapter of the American Business Women's Association will meet March 22, 7 p.m., in the Chelsea Community Hospital dining room.

On the agenda will be an orientation by executive officers, followed with an address by vocational speaker, Suzanne Morrison.

The club's Enrollment Tea, held March 10, was deemed very successful by Jackie Schiller, substitute chairman, who gave an informative explanation of ABWA to the nine prospective members who attended.

Styles Demonstrated At Hair Dressers Training Session

Among participants in the Sunday, March 13 Educational and Training Seminar and Technique session held at the Omega Cosmetology Institute in Ann Arbor were stylists directors Fran Coy of Magic Mirror Beauty Salon on Jackson Rd. and Richard Reid of Mr. Reid's Hair Fashions in Ann Arbor.

Mrs. Coy and Mr. Reid acted as guest artists during the all-day event, which was sponsored by the Coiffure Committee of the Washtenaw County Hairdressers Affiliate. Slides were shown demonstrating the various techniques of hairdressing, and the two directors participated in exhibitions in which their talents were applied to live models.

KINDER KLUB

The March 10 meeting of Kinder Klub was held at the home of Connie Robertson. Vice-President Jean Haab read a note from Meribeth Soule sending her regrets that she will be unable to attend the club's 20th anniversary gathering. Veretta Whitaker read a description of the plays to be given at the dinner theater. Following practice on the skit, dessert was served by Elaine Stahl.

Telephone Your Club News
To 475-1371.

GOSSO Carpet Cleaning

If March weather and muddy feet have soiled your carpeting, it's wise to give it some attention now. We recommend Host, the new method of cleaning carpets without water. The carpet is dry and ready to walk on immediately. Use our Host Electric Up-Brush. It's easy. Clean 40 sq. yds. only \$9.95. Phone for information.

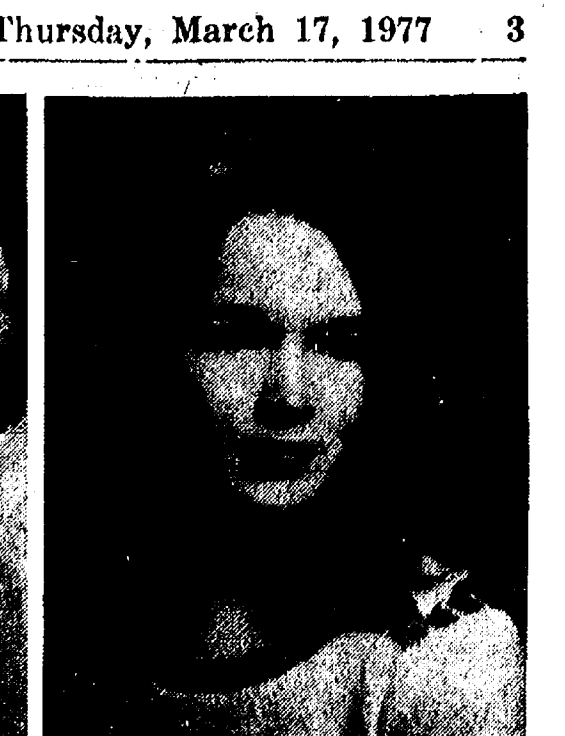
MERKEL BROTHERS



HOULE-MONTANGE: Mr. and Mrs. Raymond Houle of 310 Taylor Lane, have announced the engagement of their daughter, Marie, to Gary Montange, son of Mr. and Mrs. Stanley Montange of 19640 Ivey Rd. The bride-elect is a graduate of Chelsea High school and Washenaw Community College, where she received an associate degree in dental assistance. She is presently employed by Gloria Kerry, DDS MS and William P. Sorensen, DDS MS, Ann Arbor. Her fiancé is also a graduate of Chelsea High school. He is employed by Dana Corp. of Chelsea, and will be attending Eastern Michigan University in the fall to complete degree requirements in bio-chemistry. A May wedding is planned.



MCCALLA-POWERS: Mr. and Mrs. Ralph L. McCalla of 12875 Old US-12 have announced the engagement of their daughter, Kathryn Lynne, to Roderick Charles Powers, son of Mr. and Mrs. Harold C. Powers of 12930 Scio Church Rd. The bride-elect is a graduate of Chelsea High school and is employed by Chelsea Community Hospital. Her fiancé also graduated from Chelsea High school and has attended Michigan State University. Currently, he is a self-employed farmer. A Sept. 10 wedding is planned.



PIERCE-WINANS: Mr. and Mrs. Donald Pierce of 12172 Jackson Rd., have announced the engagement of their daughter, Kathryn Diane, to Robert George Winans, son of Mr. and Mrs. George Winans of 164 Park St. A 1976 graduate of Chelsea High school, the bride-elect is presently studying psychology at Michigan State University. Her fiancé is also a 1976 graduate of Chelsea High school, and is currently studying gemology through the Gemological Institute of America. He is employed by Litho-Crafters of Ann Arbor. An October wedding is planned.

LESSONS

- ★ ORGAN
- ★ PIANO
- ★ DRUMS
- ★ GUITAR — Folk, Electric, Classical
- ★ ALL BAND INSTRUMENTS

All Strings—Buy 1 Reg. Price - Next Set at 1/2 Price
LP's - TAPES - REPAIR - PHONO NEEDLES
CB REPAIR NOW AVAILABLE

THE MUSIC HUTCH

8407 MAIN ST., DEXTER PH. 426-4380
OPEN FRIDAYS 'TIL 8 P.M.

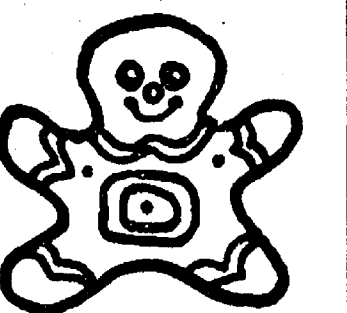
CARPET REBIRTH

Give your carpet a new lease on life
by cleaning it regularly.

JET SPRAY CARPET CLEANING

Use Your BankAmericard Phone 761-3025 or 475-1509
Ask for John Lixey.

SPRING CLASSES



Beginning Week of March 21

NEEDLEPOINT - CROCHET
QUILTING - MACRAME

Please call and sign up.

COUNTRY CRAFTIQUE

Phone 475-2512
103 N. MAIN ST. CHELSEA

Merkel
HOME FURNISHINGS

SAVE 20% on WALL PAPER

NOW THROUGH MARCH 31st GRAPHICS, AMERICAN COLONIAL, STRIPES & PLAYROOMS, HANDPRINT MURALS, TRADITIONAL LOOKS, TEXTURES, VINYLs AND MORE! OPEN 'TIL 9 MONDAY & FRIDAY. MAIN STREET CHELSEA. PHONE: 475-8621.



A. Stainless steel. Black cell strap, \$99.
B. Goldtone finish. Flat link band, \$140.
C. Trapezoid design. Stainless steel, \$175. To goldtone finish, \$180.

We have them. The exciting, new quartz digitals from Bulova. Advanced technology watches that tell the hour, minute, second, month and date. Self-set for months of 28, 30 and 31 days.

With automatic sensors that adjust numeral brightness for easy reading, day or night... simplified one-button setting controls... scratch resistant mineral crystals that keep readings sharp and clear.

We have them in all the dynamic, new styles. Fine jewelry fashions, capable of accuracy to within a minute a year. From \$99 to \$180.

Try one on today.

BULOVA COMPUTRON® QUARTZ WATCHES
WINANS JEWELRY



DAVE ROWE (right) is congratulated by Chelsea Jaycee President Bill Tudor after winning the Jaycee Outstanding Young Man Award last Thursday at the organization's annual Distinguished

Service Award Banquet. Presented annually to an area individual between the ages of 18 and 36, the award is made in recognition of the recipient's contributions to the local community.

4-H Spring Achievement Show Slated

"Room to Bloom" in 4-H is the theme of the county's annual 4-H Spring Achievement. More than 500 4-H youth will present their projects to the public to illustrate the possibilities of "Room to Bloom." This annual 4-H event will be held Saturday, March 19 at Saline High School.

Spring Achievement is highlighted by two style revues. More than 300 members will model their projects, with the younger models, ages 7 to 12, featured at 2 p.m. The style revue for the older models will be held at 7:30 p.m. and more than 600 people are expected to attend this revue.

Leathercraft, photography, and woodworking projects will also be on display during the event. There will also be slide presentations and video tapes shown continuously from 10 a.m. to 9 p.m.

The Washtenaw County 4-H Youth Program welcomes the public. Spring Achievement is fun experience for the entire family and there are no admission charges.

County Livestock Banquet Slated March 26 in Saline

Washtenaw county annual Livestock Banquet will be held Saturday, March 26 at Saline High School. The evening will begin with a full course roast beef dinner served at 7 p.m. Dr. Harold Heneman, Michigan State University Animal Husbandry Specialist will be the keynote speaker. Entertainment will be provided by the Budd Todd Family from Albion, Ind. The Todd Family, six of them, will provide a wide range of music, including country-western and gospel. They are provided through the courtesy of John Marion, Inc., of Saline, a local grain, fertilizer and equipment dealer. The evening festivities will close with the drawing for flowers and prizes.

Tickets may be obtained from any Livestock Council member or by calling the county Co-operative Extension Service office, 973-9510.

G. Grohnert Marking 50th Year As Attorney

Dexter attorney, Gerald D. Grohnert, 74, is celebrating his 50th anniversary as a member of the Michigan State Bar today. Grohnert was admitted to the bar on St. Patrick's Day, March 17, 1927, and has practiced at his Dexter office, 3212 Alpine, since 1930. He is the senior partner of Grohnert and Giardina, Attorneys.

Born in Chelsea in 1902, Grohnert moved to Detroit with his family in 1916. He received his law degree from University of Detroit in 1926, and began practicing in the Detroit area following admittance to the state bar in 1927.

Some years later, Grohnert returned to Chelsea and set up a law office in his home. After practicing from his home for 10 years, he moved the law firm to Dexter where he has remained since that time.

Married to Rita D. Grohnert since 1955, Grohnert is the father of two children, a daughter, Rita, and a son, Francis (Frank). His son, who apparently plans to follow in his father's footsteps, is currently a second-year pre-law student at the University of Detroit.

That Handy Safety Pin First Patented in 1849

Buttons would never be blase, it's true, but two April inventions at least gave them a run for their money. On April 10, 1849, Walter Hunt received a patent on the safety pin—helpful for those quick repairs. An improved closing device, the zipper, took its rightful place in American fashion after Gideon Sundback of Hoboken, N. J., received a patent for his "separable fastener" on April 29, 1913.



"The simpler your return, the less we charge."

Reason No. 2 why H&R Block should do your taxes.

Block didn't become America's largest income tax preparer by charging high prices. For example, if you qualify for the short form, we charge a very low price. Even if your return is more complicated, Block's fee is still very reasonable.

H&R BLOCK
THE INCOME TAX PEOPLE

118 N. MAIN, CHELSEA - PH. 475-2752
Evenings By Appointment
Our offices are open 9 a.m. to 6 p.m.

★ District Court Proceedings ★

Week of March 8-14

Russell Lindemann pled guilty to charges of failing to yield right of way. Fines and costs, \$35.

Terrance Robison pled guilty to charges of driving with expired plates. Fines and costs, \$20.

Mark Masterka pled guilty to charges of no registration. Fines and costs, \$15.

Gerald Mauzy pled guilty to charges of illegal possession of open intoxicants. Fines and costs, \$35.

Gerald Mauzy pled guilty to charges of no proof of insurance. Fines and costs, \$10.

Douglas Taylor pled guilty to charges of disobeying a stop sign. Fines and costs, \$25.

Lyle Zurlfleur pled guilty to charges of driving on expired plates. Fines and costs, \$20.

George Darrow, Jr., pled guilty to charges of impaired driving and driving with a mutilated license. He was referred to probation and will be sentenced April 26.

Thomas G. Horvath pled guilty to charges of transporting open intoxicants in a motor vehicle. Fines and costs, \$35.

Kurt Stivers pled guilty to charges of mutilated license. The case was dismissed on costs of \$10.

Eugene Wilson pled guilty to charges of driving under the influence of liquor. He was referred to probation and will be sentenced April 26.

Henry W. Loyd, Jr., was found guilty on charges of speeding. Fines and costs, \$35.

Brian M. Auten failed to appear in court on charges of defacing public property. A bench warrant was ordered for his arrest.

Michael Sheats pled guilty to charges of making an improper left turn. Fines and costs, \$22.

Stephen Speer pled guilty to charges of no operator's license on his person. Fines and costs, \$45.

Stephen Speer pled guilty to charges of defective equipment. Fines and costs, \$30.

Stephen Speer pled guilty to charges of improper registration. Fines and costs, \$30.

Katherine Hennigan pled guilty to charges of failing to stop and identify at the scene of an accident. Fines and costs, \$75.

William Russell pled guilty to charges of disorderly person and obscene conduct. He will be sentenced April 25.

Patrick Joseph Leads pled guilty to charges of hunting rabbits during closed season. Fines and costs, \$30.

Walter Melville Jones pled guilty to charges of hunting rabbits during closed season. Fines and costs, \$30.

James Lewis Bemankowski pled guilty to charges of transporting a loaded gun in his vehicle. Fines and costs, \$30.

Henry Orbring pled guilty to charges of false pretenses under \$50. He was sentenced to 30 days in jail.

Attention All Golfers!

PRE-SEASON SALE

TOP LINE BALLS \$11.95

Blue Max - Top Flite - Titlistdoz.

MAX FLY CLUBS \$249

3 woods, 8 ironsset

Also, Putters, Gloves, Shoes, Bags, Carts

MORNING and AFTERNOON
LEAGUE TIME AVAILABLE

PIZZA SHOP OPENS MARCH 18, 5 to 10 p.m.

WILLOW CREEK GOLF CLUB

3252 HEENEY RD., STOCKBRIDGE (517) 851-7856

ABC CASH & CARRY & AUTOMOTIVE

7130 DEXTER ROAD
426-4618

DOMESTIC VEHICLES
and
LIGHT TRUCK REPAIR

specializing in
GM - SAAB - VOLVO

General Certified Mechanic
Formerly J & E Automotive

GOODYEAR TIRES
OIL BY THE CASE
MAJOR BRAND GAS

Legion Auxiliary Poppy Day Sale Set for May 20

The regular meeting of Herbert J. McKune Unit No. 31, American Legion Auxiliary, was held Tuesday, March 1 at St. Mary school hall.

It was announced that Poppy Day will be May 20. Members were urged to help sell poppies.

A report of the Second District meeting was given concerning a change in the flag code. Next district meeting will be March 20 at Luna Pier.

Roxie Maroney, child welfare chairman, reported members are saving cancelled stamps and coupons.

There will be a recognition ceremony at Weber's Inn May 15 for all volunteers at Ann Arbor Veterans' Administration Hospital. 170 volunteers will be receiving awards.

Next regular meeting will be April 5 with a pot-luck at 6:30 p.m. Mrs. Dorothy Trapp, district president, and Mrs. Helen Bird, district secretary, both of Temperance, will be attending this meeting.

FURNITURE
GLASSWARE
PRIMITIVES
GENERAL LINE

SCHAULES
ANTIQUES

Dick & Bertie Schauls

We Buy and Sell
Appraising

14450 Island Lake Rd., Chelsea
Phone 475-7362

STOP. DETOUR

Unless you're crazy about the drive, there's no real reason to drive into Detroit looking for new car bargains. Rampy Chevrolet in Ann Arbor is a lot closer and you'll get the same low prices you find in Detroit—maybe even lower. At Rampy you'll also find the kind of careful, competent, come again service you expect from small town folks who know their neighbors.

You see, Rampy's not just the biggest Chevrolet dealer in Washtenaw County, he's got the biggest dealership of any kind in the country. That means that he's governed by the same kind of high volume economics you've been driving all the way into Detroit to find.

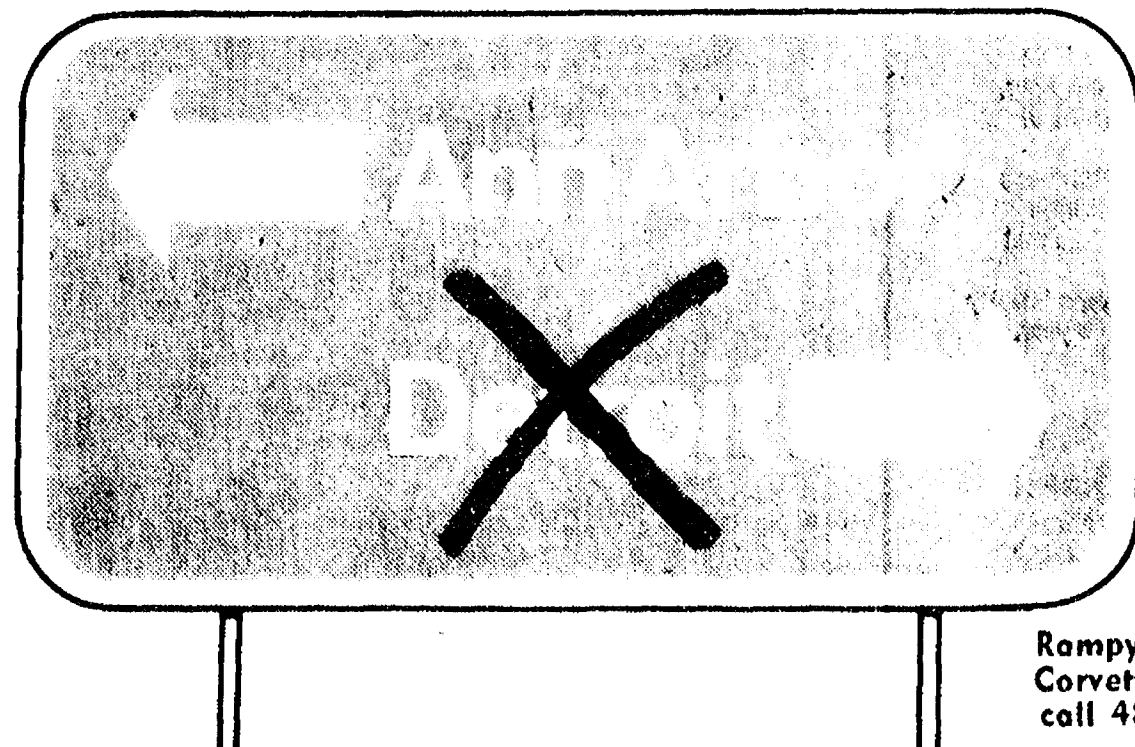
On the other hand, Ann Arbor is a town where people do know each other. Word gets around. And the word is that Rampy gives good service after the sale. As a matter of fact, Rampy's service department has been used as a model for training other Chevrolet dealers.

Isn't it time you took a detour?

Before you drive all the way into Detroit looking for a new car... stop at Rampy. We don't think you'll go any further.

Rampy
CHEVROLET

CORNER JACKSON & WAGNER RDS., ANN ARBOR, PHONE 663-3321



Rampy sponsors the Huron Valley
Corvette Club. For information
call 482-3303.

ST. PATRICK'S DAY SPECIALS

MARCH 17, 1977 - 11 a.m. to 9 p.m.

CORNEB BEEF and CABBAGE

Buttered Carrots - Lime Jell-O - Hot Roll

\$1.89

MULLIGAN STEW

Cole Slaw - Hot Roll

All You Can Eat - \$1.69

WOLVERINE TRUCK PLAZA

I-94 and BAKER RD.

Flaming Pit

dinner specials:

SUNDAY - MONDAY - TUESDAY

COUNTRY STYLE CHICKEN

Salad Bar - Potato or Vegetable

All You Can Eat!

ADULTS, \$3.15 CHILDREN under 12, \$1.75

WEDNESDAY - STEAK NIGHT

7-OZ. STEAK or SHISHKABOB - \$4.45

Salad Bar - Potato or Vegetable

FRIDAY - SATURDAY

Wide Open Selections for Your Pleasure

FISH FRY THURSDAY - All You Can Eat

ADULTS, \$3.15 CHILDREN under 12, \$1.75

Try Our Alaskan King Crab Longhorn Lounge

1750 Washtenaw, Ann Arbor 971-1500

R. Steinbach Named to Sylvan Planning Comm.

Raymond J. Steinbach of Cedar Lake, former township zoning inspector, was appointed to membership on the Sylvan Township Planning Commission following a 2-2 vote by the township board at their March 1 meeting. Steinbach will replace former planning commission member John Pearson, whose resignation was accepted by the board at their February meeting.

Steinbach's name was presented before the board by Sylvan township supervisor, Don Schoenberg. He also submitted the name of Dale Messing, president of the Sylvan Township Taxpayers Association, to the board for consideration. In the subsequent vote, Messing lost to Steinbach by one vote.

In other new township developments, a letter addressed to Schoenberg from township attorney Peter Flintoft, was received by the local governing board early this month.

Advisory in nature, the letter refers to the mounting demands of township residents for board action on two petitions, filed with the township clerk, which request a referendum vote on recent township board rezoning decisions. Flintoft stated that a 1974 decision by the Michigan Supreme Court ruled against the use of a referendum to overturn zoning changes properly authorized by a township board. According to Flintoft, the court held that zoning changes were the subject of administrative, and not legislative authority. Advocates of the referendum

contend more recent judicial precedents and legislative interpretations have since undermined that ruling.

Dan Murphy, Sylvan township clerk, states the board has brought the problem to the attention of the Michigan Townships Association, and is waiting for the association's reply and recommendations. Discussion of the referendum controversy is expected to be an item on the agenda at the Sylvan Township Annual Meeting to be held Saturday, April 2, in Sylvan Township Hall.

Final Sale Slated for CHS Yearbook

Chelsea High school yearbook staff has announced the final sale of 1977 Barkers on Tuesday and Wednesday, March 22, 23, 1977. Barkers may be ordered outside the cafeteria during all three lunch hours. The price of the book is \$8 and a plastic cover may be purchased for an additional 50 cents.

Students are reminded that this will be the final sale of yearbooks and very few extra books will be ordered.

Any other persons wishing to order a yearbook may do so by sending a check to the Chelsea High school yearbook staff. Books will be delivered when they arrive next fall.

Legion Post To Show U-M, U-D Game

Building rivalry between No. 1 rated University of Michigan and 12th ranked University of Detroit basketball teams will climax tonight as both teams meet for the first time in four years in the NCAA Midwest Regional play-offs at Lexington, Ky. The game will be televised at 8 p.m.

Billed as the biggest battle of the basketball season, the game is expected to attract a record number of viewers. Among those will be a strong contingent of Chelseaites, many of whom will be watching the game in the American Legion Hall.

Chelsea's Herbert J. McKune Post 31 has invited the public to their hall to view the contest on a large-screen color television. The hall will be open at 7 p.m. and refreshments will be available. Organized by Legion member Larry Gaken, the post anticipates a large gathering.

Signs of Spring Bustin' Out All Over

Although spring does not officially begin until March 20, winter appears to have departed from the area rather abruptly. With temperatures hovering in the mid-60's and low 70's last week, the first signs of spring were clearly in the air.

Mrs. Charles Risner of 204 South St. called The Standard Thursday, March 10 to report the presence of 11 robins in her backyard.

Spring will arrive at 12:43 this Sunday. That's when the sun reaches the vernal equinox, crossing the equator on its way north.

According to astronomers, on the day of the equinox, the sun will rise and set almost exactly at the east and west points of the horizon, for a day and night of equal length.

Film Night Slated By LaMaze Group

Prospective parents and other interested people are invited to attend a free film night and bake sale sponsored by the LaMaze Childbirth classes and Dexter-Chelsea LaLeche League on Friday, March 18 at 7:30 p.m. in the Chelsea Community Hospital cafeteria.

For further information, call 426-3181.

Firemen Called Out for Burning Van, Grass Fires

A burning van and several grass fires kept Chelsea firemen on the run this week. Although no injuries resulted from any of the fires, property damage was sustained in at least one blaze.

According to Chelsea Fire Chief Jim Gaken, two fire trucks were dispatched to the home of Matthew Wengren, 12780 Luick Dr., at approximately 7:18 p.m. Wednesday, March 9. Wengren had been working on a Dodge van when gasoline in the vehicle's gas tank accidentally ignited. Firemen quickly snuffed out the flames, but the van was damaged beyond repair.

A grass fire which burned for nearly two hours on four acres of property off Harker Rd. last Thursday, was followed by another grass fire in the Queen Oaks Dr. area Friday afternoon, March 11. Local fire officials speculate the latter fire was caused by a piece of burning rubbish which was carried to the dry field by gusting winds.

The Queen Oaks Dr. grass fire was reported to the fire department at approximately 2:30 p.m., but it was nearly three hours before firemen were able to put out the blaze.

"We couldn't get at it with our trucks," Chief Gaken said. "Our men had to walk one-quarter to one-half a mile with five-gallon pump tanks on their backs to get to the fire." A nearby creek was then used to refill the tanks as each man's limited water supply was exhausted. In the fire, which burned over a considerable area, several trees were damaged.

Only two minutes after the fire department responded to Friday's Queen Oaks Dr. fire, a second call summoned firefighters to the vicinity of 235 Luick Dr., where yet another grass fire was progressing. This fire, believed to have been started by a burning cigarette butt, lasted only a short while before firemen were able to extinguish the flames.

New Johnny Cash Film At North Lake Church

The story is old, but the perspective is up-dated and brought into sharp focus by the film "The Gospel Road" to be shown Sunday, March 20, at North Lake United Methodist church, 1411 N. Territorial Rd. The showing will begin at 7 p.m.

"The Gospel Road," distributed by World Wide Pictures, was conceived and produced by Johnny Cash and his wife, June Carter Cash.

The film is a unique blend of scripture-based narrative, an abundant supply of specially written songs, and a series of in-depth character portrayals, with Israel itself as the mixing bowl.

You are there, walking beside the Jordan and the Sea of Galilee; you are there, seeing Him in many human situations that establish a practical and personal rapport with every viewer.

You are there, being introduced to the disciples, and gaining insights into their varied personalities. You are there, experiencing the highly charged emotional impact of the trial before Pilate, and becoming so personally involved that you feel sympathetic pain when Robert Elfstrom, in an out-

standing portrayal of Christ, suffers the physical attack that precedes the Crucifixion.

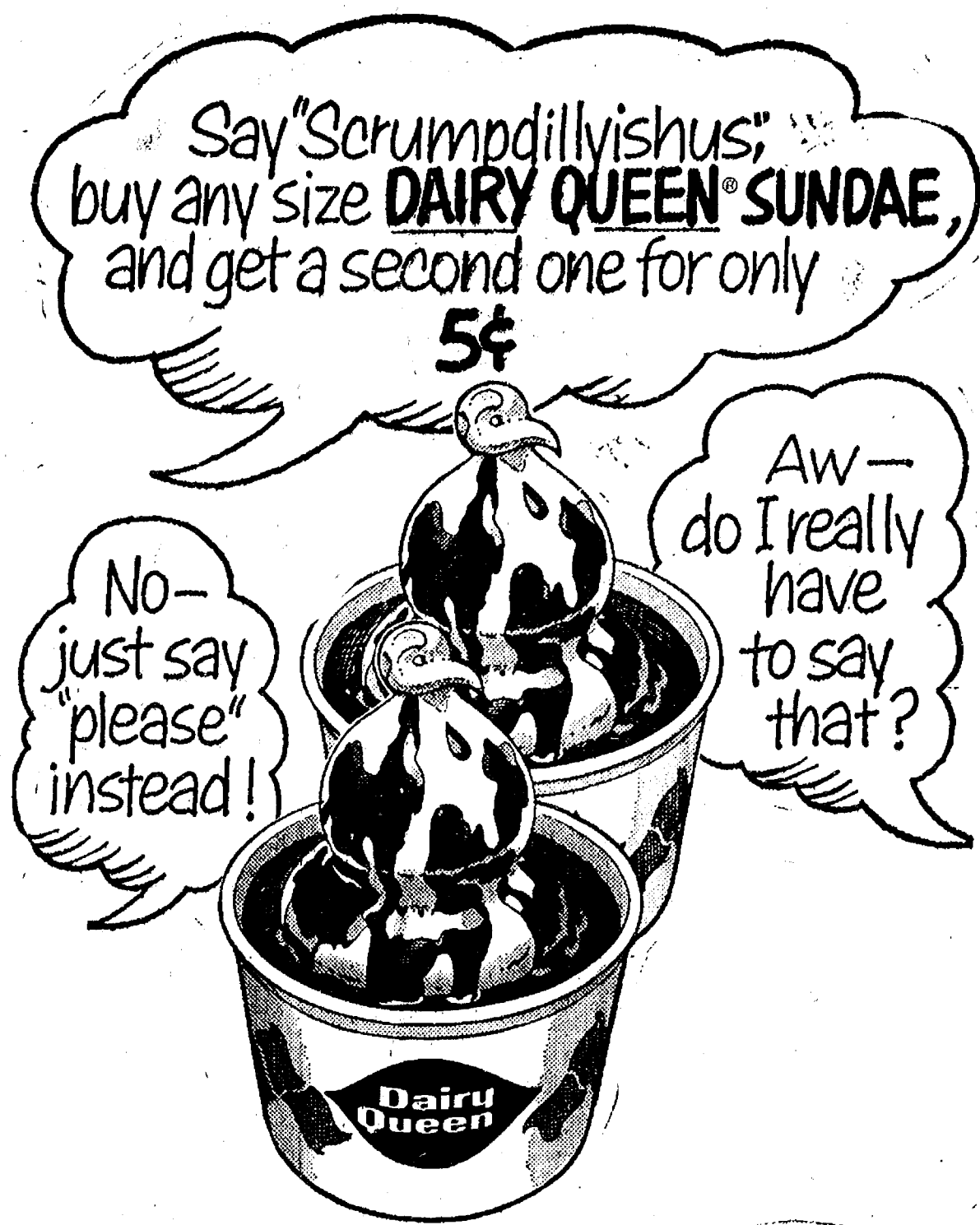
Adding to the effectiveness of "The Gospel Road" in its endeavor to convey reality for this day are: the fascinating treatment of the Crucifixion, making this tragedy an event of significance that reaches from its own time across the years to take on meaning for all men of all ages; and the songs and background music of Johnny Cash and other outstanding musicians, whose contemporary style is not out of keeping with the story... a story that reveals that His darkest day has become our brightest.

Chrysler Strike ...

(Continued from page one)

out a local pact since last September.

In November, union president Nelson Rooke and two stewards led a two-day strike after the national Chrysler contract expired, but UAW national officials refused to sanction the strike and drivers were ordered back to work. However, the March 3 walk-out had UAW authorization.



SUNDAE SALE

Buy one and get a second one for only

5¢

Thursday-Friday, March 17-18

Just choose your favorite topping. And we'll pour it over our famous DAIRY QUEEN® soft serve, for a taste treat that can't be found anywhere else. So come surprise a friend with one (or two), during our Special Offer. At participating DAIRY QUEEN® stores.



SOUTH MAIN ST., CHELSEA

©Reg. U.S. Pat. Off., Int. D.O. Corp. (C) Copyright 1977, Am. D.Q. Corp.

FRESH MEATS

U.S.D.A. CHOICE BEEF

Jiffy market

Big Enough To

Serve You . . . Small Enough To Know You!

HOURS: 7 DAYS A WEEK
7 a.m. to 10 p.m.

WE ACCEPT
U.S.D.A. FOOD STAMPS

SALE PRICES EFFECTIVE
Thurs., Mar. 17 thru Sun., Mar. 20

COMPLETE SUPERMARKET

COLD BEER
WINE - LIQUOR

U.S. GOVT. INSPECTED CHOICE BEEF

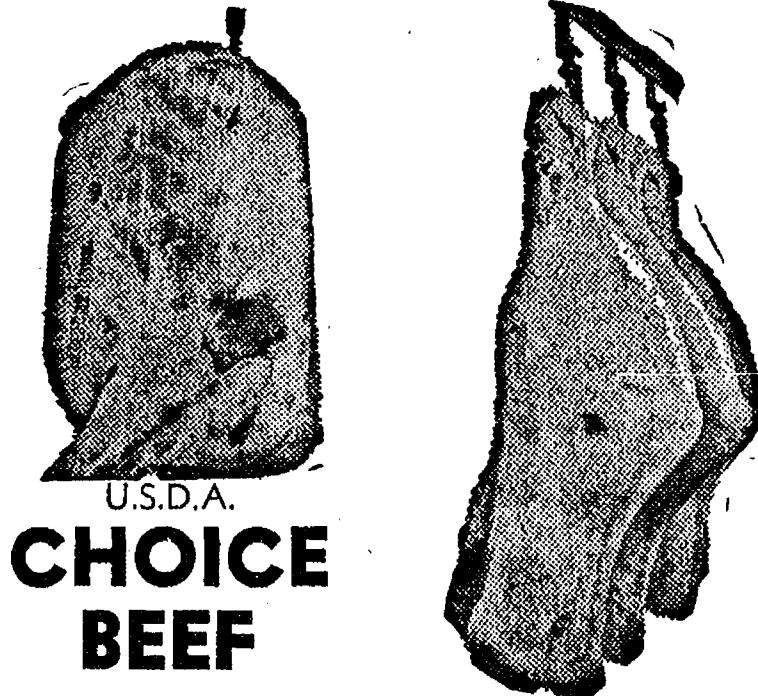
U.S.D.A. CHOICE

ROUND STEAK lb. \$1.39

RIB STEAK lb. \$1.39

SHORT RIBS OF BEEF . . . lb. 59¢

JIFFY MARKET MEAT SERVICE



U.S.D.A. CHOICE BEEF

SIDES - FRONTS - HINDS
WHOLE RIBS - WHOLE LOINS

CUSTOM CUTTING - WRAPPING - FREEZING
QUICK SERVICE ON BUTCHERING
YOUR BEEF OR OURS

YOUNG, TENDER, LEAN PORK

PORK STEAK.. 98¢ lb.

FRESH PORK ROAST Boston Butt Lb. 89¢

FRESH PORK CUTLETS lb. \$1.19

FRESH PORK SAUSAGE Market Made Lb. 99¢

FRESH SPARE RIBS lb. 98¢

PEET'S RE-PEETER
SLICED BACON

1-Lb. Pkg. \$1.19

Young, Tender, Sliced
BEEF LIVER

39¢ lb.

FARMER PEET'S
CHUNK BOLOGNA

79¢ lb.

FARMER PEET'S
ALL-BEEF FRANKS

1-Lb. Pkg. 89¢

MARHOEFER
LARD

2 lbs. 77¢
Reg. 97¢

ECKRICH
SMOKY-LINKS

10-Oz. Pkg. 89¢

SPECIAL - WHOLE PORK LOINS
AVERAGE WEIGHT - 15 LBS.

Just Cut \$1.05 lb. OR Sliced, Freezer Wrapped, \$1.15 lb. Quick Frozen

Wonder Country Style WHITE BREAD
3 1/4-Lb. Loaves \$1.00

FARM MAID Homogenized FRESH MILK
\$1.39
Gal. Crtn. or Plastic

DELICIOUS or McIntosh APPLES
3-Lb. Bag 79¢

FARM MAID FRESH ORANGE JUICE
1/2 gal. 49¢

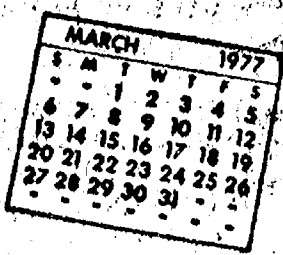
FISHER'S SALTED PEANUTS
IN SHELL - BULK 59¢ lb.

HOLSUM DARK BREADS
WHEAT - RYE CRACKED WHEAT
1-Lb. Loaf 49¢

FARM MAID COTTAGE CHEESE
1-Lb. Crtn. 59¢

AS PUMPS & STORE OPEN 7 a.m. to 10 p.m. 7 Days a Week — U. S. Authorized Food Stamp Store — Daily & Sunday Papers

Community Calendar



Western Washtenaw Democratic Committee, Tuesday, March 22, 1 p.m. in the Ann Arbor Bank meeting room. Dexter: Peter Eckstein will speak on crime. Refreshments will be served.

Help your loved ones at a time of need. Join our Friendship Group. Limited membership. Irene Henderson, 3620 Central St., 426-8319. advx40

Woman's Club of Chelsea, March 22, 8 p.m. at McKune Memorial Library. Bring scissors and a brown bag dessert.

North Lake Co-operative Nursery, Inc., parents' meeting, Thursday, March 17, 7:30 p.m. Mary Sexton, project co-ordinator for the Family Planning Project, Washtenaw County Health Department, will speak on "Sex Education for Pre-Schoolers."

Paper drive, sponsored by Our Savior Lutheran Church Youth Group, March 19-20. Call 475-2649 or 475-8041 for pick-up, or bring papers to church parking lot on Sunday, from 9 a.m. to 12 noon.

VFW Post 4076 annual Blood Drive, May 7, 9 a.m. to 3 p.m. at Chelsea Fairgrounds Service Center. Appointments for donations may be made in advance by calling Bill Pierce, 475-2911.

Weight Watchers, April 7, 7:30 p.m. at Chelsea United Methodist church. Speaker will be Don Stewart, loser of 185 pounds. Guests welcome.

Waterloo Village UMW Father and Son Banquet, March 28, 7 p.m. at Waterloo Township Hall.

OES Card Party, March 19, 8 p.m. at the Masonic Temple, 113 W. Middle. Public invited. adv. 40

Young Homemakers, March 24, 8 p.m. at the home of Arlene Grau. Speaker will be Gerald Plinn. Bring children's bingo prize.

Lyndon Township Board regular meetings the third Tuesday of each month, 7 p.m., in Lyndon Town Hall.

Parents Special Education group, fourth Monday of each month, 7:30 p.m., room 204, Chelsea High school.

Child birth preparation classes, LaMaze method, are being held at Chelsea Community Hospital Tuesday evenings. Contact Dee Burkel, 475-9316, for information.

Lima Township Planning Commission regular meeting the third Tuesday of every month, 8 p.m. at the Township Hall.

Inquiries regarding the Chelsea blood bank may be directed to Harold Jones in the event that Mrs. Dudley Holmes is unavailable, or to Cornelia Fry, American Red Cross in Ann Arbor, 971-5300.

Chelsea Child Study Club, March 22, 8 p.m. at the home of Mary Jo Miller, 422 Madison. Mr. Versie Fraleigh will speak about "Landscaping Your Home." Guests are welcome.

Chelsea Home Meal Service delivers one hot meal a day to elderly and disabled living in the Chelsea area. For information, call Carolee Hoffmeyer, 475-8014, or Barbara Branch, 475-7644.

Lyndon Township Planning Commission meets the second Thursday of the month at the Township Hall at 8 p.m.

Alcoholism Seminar to be presented by Social Concerns Committee of First United Methodist Church, Sunday, March 27, 7 to 9 p.m. in the church basement Social Center. Barry Kistner, director of Washtenaw Council on Alcohol Problems, will discuss alcoholism as a disease. Discussion on teenage and adult alcoholism will follow. Public invited.

Waterloo Golf Course has an opening for men's league Monday night. Ph. (517) 522-8893 for further information. Watch for adv. next week. adv. 40

McKune Memorial Library hours are Monday, 10-5 and 7-9; Tuesday, 12-5; Wednesday, 12-5 and 7-9; Thursday, 10-3; Friday, 12-5 and 7-9; and Saturday, 12-5.

Sylvan Township Board meeting the first Tuesday of the month at 7 p.m., at Sylvan Township Hall.

Chelsea Area Historical Society membership drive is now underway. Membership applications may be obtained at McKune Memorial Library, or contact Katie Chapman, 475-7558.

Huron Valley Mothers of Twins Club, Monday, March 21, 8 p.m. at Westminster Presbyterian church, 1914 Greenview, Ann Arbor. Speaker will be Alice Carter from Huron Valley Guidance Clinic. For further information, call Karen Koch, 475-2874.

Lamaze Childbirth Classes and Dexter-Chelsea LaLeche League, free film night and bake sale, March 18, 7:30 p.m. in Chelsea Community Hospital Cafeteria. All prospective parents and other interested persons welcome. For further information, call 426-3181.

Chelsea Child Study Club, Mar. 22, 8 p.m. at the home of Mary Jo Miller, 422 Madison. Versie Fraleigh will speak on "Landscaping Your Home." Guests are welcome.

Sharon Township Board regular meeting first Thursday of each month, 1 p.m.

Chelsea Athletic Boosters Club, fourth Monday of every month, 8 p.m., in high school board room.

Lyndon Township Board meets the third Thursday of the month at the Town Hall at 7 p.m.

Winter meeting schedule for Chelsea Senior Citizens, beginning January and continuing through March. First Friday of the month, business meeting and cards, 7:30 p.m.; third Friday of the month, potluck and cards, 6:30 p.m. All meetings in St. Mary school hall on Congdon St.

Chelsea Rebekah Lodge No. 130 regular meetings the first and third Tuesday of every month, 7:30 p.m.

Chelsea Social Service hours are Thursday, 10 a.m. to 4 p.m., or call 475-1581, or 475-1012.

Humane Society of Huron Valley has dogs and cats for adoption. Owners may reclaim their lost pets. Phone 662-5585. Open from 9 a.m. to 5 p.m. daily; Sunday, 1 p.m. to 5 p.m. 100 Cherry Hill Rd., one-fourth mile south of Plymouth Rd. at Dixboro.

Remember to apply for a social security number several weeks before you need it. Call social security first to find out what proofs you'll need.

DEATHS

Mrs. John G. Klink
Long-Time Chelsea Resident
Dies Wednesday at 94 Years

Ma hilda Keck Klink, 94, of 18028 Bush Rd., died Wednesday, March 16 at her home. Born in Wildbad, Germany on Jan. 11, 1883, she married John G. Klink in 1911. He preceded her in death in 1945.

Mrs. Klink immigrated to the United States in 1904 and came to the Chelsea area shortly thereafter. She was a member of St. Paul United Church of Christ. Only recently, Mrs. Klink had received a letter of congratulations from President Gerald R. Ford and his wife, Betty, on the occasion of her 94th birthday.

Survivors include four sons, Fred, Carl, Albert and John Klink, all of Chelsea; two daughters, Mrs. Ray (Louise) Altenberndt of Chelsea and Mrs. William (Pauline) Hawkins of Ann Arbor; 13 grandchildren; and 22 great-grandchildren.

Information on funeral services was incomplete at press-time. Arrangements are being made by Staffan Funeral Home.

Rose Ann Gimney
Dies Tuesday from Injuries
Suffered in Auto Accident

Rose Ann Gimney, 40, of 221 Railroad St. died Tuesday, March 15 from injuries suffered in a automobile accident. She was born May 18, 1936, to Joseph A. and Rose Zink Ball.

A lifelong resident of Chelsea, Mrs. Gimney was employed by Chelsea's Chrysler Proving Ground at the time of her death. She was active in local bowling leagues and was well-known by residents throughout the community.

Survivors include her mother, three children, Shannon and Robert Gimney at home, and Steven Gimney of Ohio; one granddaughter; two sisters, Mrs. Arthur (Mary) Schiller of Chelsea, and Mrs. Harold (Dorothy) Hunawill of Dexter; and five brothers, Edward Ball of Dexter, Thomas Ball of Bridgewater, and David, Robert and Richard Ball of Chelsea. She was preceded in death by a brother, Duffield Ball; a sister, Mrs. Alberta Slane; and an infant brother and sister.

Funeral services will be held Friday, March 18, 11 a.m. at St. Mary Catholic church with the Rev. Fr. David Philip Dupuis officiating. Burial will follow in Mt. Olivet Cemetery. Rosary will be recited 6:30 p.m. this evening at Staffan Funeral Home where friends may call after 3 p.m. today.

SCHOOL LUNCH MENU

Week of March 21-25

Monday—Hot dogs on a bun, trimmings, baked beans, potato sticks, chocolate pudding, milk.

Tuesday—Turkey and noodle casserole, green beans, biscuit, butter, ginger bread with topping, milk.

Wednesday—Submarine sandwich with sauce, tossed salad with french dressing, potato chips, fruit cocktail, milk.

Thursday—Savory beef over mashed potatoes, corn, bread and butter, chilled fruit, milk.

Friday—Pizza slice, wax beans, one-half of a peanut butter sandwich, orange juice, peach dessert, milk.

The College of Urban Development at Michigan State University, begun in 1973, was one of the nation's first undergraduate programs devoted to solving urban problems.

FFA membership reached an all-time high of 500,385 last year.

BIRTHS

Matthew Eric Mann, Feb. 15, in Riverside, Calif., to Mr. and Mrs. Eric L. Mann. Maternal grandparents are Mr. and Mrs. Arthur Collins of Ann Arbor, and maternal great-grandparents are Mr. and Mrs. Walter Harper of Chelsea.

Most area residents are less than an hour's drive from their favorite Metropark, including such well-known sites as Metro Beach Metropark near Mt. Clemens, Stony Creek Metropark near Rochester-Utica, Kensington Metropark near Milford, Hudson Mills Metropark near Dexter, and Lower Huron Metropark near Belleville.

New Spring Courses Offered By Rec. Dept.

Chelsea Recreation Department's Spring Program is scheduled to get underway shortly, according to recreation director Janet Ross. Registration for all courses must be made in advance of the first class session.

While most course offerings have already been organized, a few will remain on the drawing board. Information on pending courses will be published in the March 24 issue of this newspaper.

Spring program participants are reminded that all recreation classes will be suspended for spring break, April 8-17.

Spring course offerings are as follows:

CHILDREN'S CLASSES

Course: Magic for Young People, Intermediate.
Instructor: Bob Hodder.
6 weeks, Tuesday, beginning March 22.

Time: 7 to 8:30 p.m.
Place: High School room 118.
Fee: \$7.
Pre-requisite: Must have completed beginning Magic or have the approval of the instructor.

Course Description: Showmanship, ethics, sleight of hand card magic and other tricks will be taught. To register, phone 475-7238 after 5 p.m.

Course: Drawing.
Instructor: Jan Ferrero.
6 weeks, Wednesday, beginning March 30.

Time: 6:30 to 8:30 p.m.
Place: to be announced.
Fee: \$5.

Course Description: Will learn the basics of drawing, using charcoal and pastels. To register, phone 475-9206.

ADULT CLASSES

Course: Tennis.
Instructor: Terry Schreiner.
6 weeks, Monday, beginning March 21.

Times: 6 to 7 p.m., 7-8 p.m., or 8-9 p.m.
Place: Beach Middle School Gym.
Fee: \$10.

Course Description: One hour lessons for beginners and intermediates. Practice balls will be

provided, but you must have your own racquet. To register, phone 475-2536.

Course: Golf.
Instructor: Pat Wade.
3 weeks, Tuesday, beginning April 19.

Time: 7 to 9 p.m.
Place: Beach Middle School Gym.
Fee: \$14.

Course Description: A beginner's class in the use of clubs and the game of golf. Individuals must provide their own clubs. To register, phone 475-7965.

Don Morrison Receives Good Citizen Award

Don E. Morrison, son of Mr. and Mrs. Thomas Morrison of Queen Oaks Dr., was one of eight high school seniors throughout Washtenaw county honored as good citizens by Ann Arbor's Sarah Casswell Angell Chapter of the Daughters of American Revolution.

Morrison, the only male member of the eight-member group, received a pin and certificate during a recent ceremony at the University of Michigan's Bentley Library.

DAR leaders stated the students were chosen by their schools on the basis of dependability, leadership, service and patriotism. Morrison, who was co-captain of Chelsea High's varsity basketball team this season, is also active in baseball and the Key Club at the high school. He is currently senior class treasurer, and was a leading figure in a student support group to save extra-curricular activities at Chelsea High last fall.

Following graduation, Morrison plans to attend a Michigan college in September where he will pursue studies leading to a career in business.

Michigan State University is the state's only educational institution to operate two separate public radio broadcasting facilities—WKAR-AM and WKAR-FM.

SODIUM FLUORIDE APPLICATION FORM

Child's Name _____ (last) _____ (first) _____ (initial)

School _____ Grade _____ Age _____

Dear Parent: Sodium fluoride applied to the teeth to reduce the amount of new tooth decay, is now available through a community dental program. The treatment has no effect on decay already present and is not a substitute for regular care by your dentist, but is valuable for the partial control of dental decay.

If you wish your child to receive this service, please complete and return this form and \$4.75 to Mrs. Carol Smith, 19890 Old US-12, Chelsea, postmarked no later than March 1, 1977. Make checks payable to Chelsea Fluoride Treatment.

(Signature of parent or guardian)

(Mailing address)

(City)

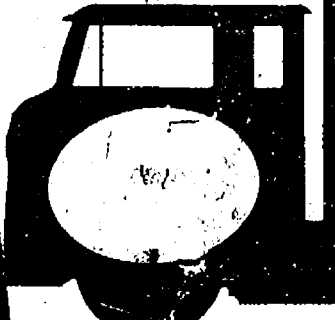
(Zip Code)

Thank You...

Thanks to you, our fellow citizens, who came out to cast your ballot in support of the Independent candidates for election to Village office. Your vote of confidence in Independent candidates is very much appreciated.

Independent Party

SAVE UP TO 46%



FAMOUS MAKER UPHOLSTERED FURNITURE TRUCKLOAD SALE

COME IN! COMPARE!
• SOLID OAK HARDWOOD FRAMES
• PATENTED SOFT-EDGE SPRINGING
• FULLY PADDED SELF DECKS
• DELUXE PRIME POLYURETHANE CUSHIONS
• DESIGNER SELECTED DURABLE FABRICS

39 BIG HOURS

8:30 a.m. to 5:30 p.m.
Wed., Thurs. & Sat.
Friday, 8:30 a.m. to 8:30 p.m.

CHARGE IT!

Credit terms available on our Family Purchase Plan.



FREE! FREE!

Grand Saturday Prize

LOVE SEAT AVAILABLE

SAVE 81.50

Early American 2-PC. SUITE \$388

Reg. \$459

Rich maple finished wing and arm trim. Reversible cushions.

Mediterranean 4-Pc. Bedroom

SAVE 70.95

\$299 REG. 369.95

Oak finish with plastic protected tops. Includes mirror, dresser, headboard and chest.

NIGHT STAND 59.95

SAVE \$91

Deluxe Americana 2-PC. SUITE \$368 REG. \$419

LOVE SEAT, FULL-SIZE AND QUEEN-SIZE SLEEPERS AVAILABLE!

Hand crafted tailoring. Pillow arm with maple finish trim.

SAVE 91.50

Traditional 2-PC. SUITE \$388

REG. \$459

High quality set at special low truckload sale price.

SAVE 51.50

2-IN-1 SOFA SLEEPER \$258

Reg. \$299

Full-size: Hercules "olefin" cover, 4" urethane foam mattress, 56-1876-7

SLEEPS TWO

SAVE 71.50

Contemporary 2-PC. SUITE \$388

Reg. \$459

Quality construction and craftsmanship at a low budget price.

Room-Size Remnants

\$48

Giant savings on plushes, shags, hillo's and level loop remnants. Hurry!



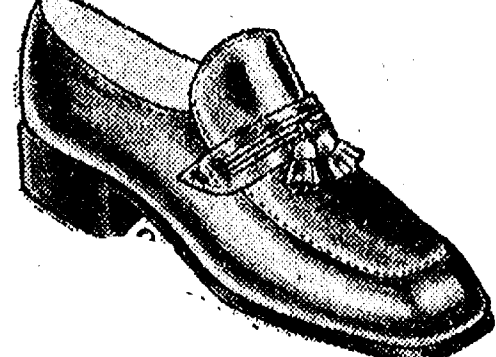
Modern Hollywood Bed Set

You enjoy restful comfort of coil spring mattress, matchmate box spring with corner guards. Textured plastic headboard on steel bed frame with casters.

\$108

Reg. \$139.95

Save men's shoes



Slip-Ons
Tie Oxfords
Loafers

By Bates and City Club

Reg. \$25 to \$30 NOW \$14.00

STORE HOURS: Mon. thru Sat., 8 a.m. to 5:30 p.m.

STRIETER'S MEN'S WEAR

"The Place To Go for Brands You Know"

Go Gambles

110 N. MAIN ST., CHELSEA
PHONE 475-7472



Real Estate

By PAUL FRISINGER

REALTOR

LET A "PRO" SELL IT

Selling your home yourself is no easy undertaking. Basically, it means attracting the right prospects — people who are ready, willing and financially able to buy. Not those who are curious to see what your furniture looks like from the inside.

You can attempt to make this sale yourself, or you can have someone else handle the difficult negotiations. Frankly, the best way to market your home — probably your most valuable asset — is the professional way. Just as you would go to a doctor or a lawyer for medical or legal aid, you will want to go to a Realtor for assistance in selling your home.

His technical skill, business experience, list of bona fide prospects, contacts with financial institutions, and professional reputation are all at your disposal to expedite the sale of your home at the best possible price. This is the reason why — nationally — 75 percent of all homes are sold through professionals.

If there is anything we can do to help you in the field of real estate, please phone or drop in at FRISINGER REALTY CO., 935 S. Main St., Chelsea. Phone: 475-8681; evenings 475-2621. We're here to help!



JON M. OESTERLE

J. Oesterle Becomes Newest Eagle Scout

Jon M. Oesterle, 16, son of Mr. and Mrs. Sumner Oesterle of 564 Chandler, received his Eagle Scout Award last Saturday, March 12, during Court of Honor Ceremonies at St. Paul United Church of Christ. Oesterle is a member of Joy Scout Troop 476.

To qualify as an Eagle Scout, candidates must have had perfect attendance throughout their scouting years. They also are required to have participated in all Boy Scout and troop functions; earned a minimum of 24 merit badges; and completed an Eagle Scout project.

A Boy Scout for the past five years, Oesterle easily meet attendance requirements for the award. He surpassed the minimum merit badge requirement having earned a total of 26, and completed his Eagle Scout project last spring when he cleaned up litter on road sides and parking lots throughout the Chelsea area.

Oesterle is a junior at Chelsea High school.

Children's Theatre Workshop Dates Scheduled in July

Friends of the Chelsea Players met at the home of Ann Lee on March 10 to set dates for this year's children's workshop. The workshop is slated to begin Tuesday, July 5, and continue through Saturday, July 23.

Registration will be held one week in advance of the first class meeting. Fee for the three-week session will be \$20 per student.

Next meeting of the Friends will be Monday, March 21, 7:30 p.m. at the home of Gail Bauer, 19817 Waterloo Rd. All interested persons are invited to attend.

Subscribe today to The Standard!

Residential - Commercial

REMODELING

FREE ESTIMATES

Ib V. JENSEN

and SON

LICENSED BUILDER

378 Spring Lake Drive

Chelsea, Mich.

PHONE 475-1820

THE CHELSEA STANDARD

Second Section

CHELSEA, MICHIGAN, THURSDAY, MARCH 17, 1977

Pages 7-12



INDIAN ARTIFACTS TO BE PRESERVED: Tuesday evening, March 8, Chelsea's Modern Mothers Child Study Club presented a check in the amount of \$500 to the Waterloo Nature Center. The contribution will be used to help finance the construction of a museum where the Burg collection of Indian artifacts will be displayed. Accepting the check on behalf of the nature center were Tom Hodgson of the State Conservation Department at Waterloo

Recreation Area and Chelseale Vincent Burg. The gift represented a portion of the proceeds from the sale of a craftbook compiled by members of Modern Mothers. In the photo, from left, are Lois Garman, craftbook illustrator; Gloria Greenleaf, craftbook chairman; Hodgson, recognized for his work as a naturalist; Burg, with a shield from his artifacts collection, and Sandie Mayer, typing coordinator of the craftbook.

Modern Mothers Child Study Club Funds Help Display Burg Indian Artifacts

Long-time area residents may remember the many arrowhead plaques and other native artifacts that were once on display at Chelsea Drug Store. They were the culmination of a life-long interest of the pharmaceutical firm's owner, J. V. (Vince) Burg, Sr.

Burg moved to Chelsea from Ohio at the age of 10. It was then he found his first "arrowhead" while hunting and fishing in the area. By the time Burg opened the drug store, his interest in native artifacts was well known.

Saturdays were big bartering days at Chelsea Drug Store. Burg's son, J. V. Burg, Jr., of Chandler St., recalls, "Farm boys from all over the area would bring arrowheads to the store and Dad would trade them for candy and ice cream cones. He even accepted them in payment for medicines on occasion."

The collection gradually grew to more than 2,000 pieces, including stone and copper arrowheads, knives and spear points, axes, hide scrapers, drills, grinding stones and jewelry. Some of the artifacts were fashioned by native Americans that lived in the Chelsea area in a post-ice age era some 11,000 years ago.

In 1954 the collection was moved to "The Pub," then owned by the senior Burg's daughter and son-in-law, Dud and Ang Foster. In

1958 a fire severely damaged "The Pub," and the collection. Mr. and Mrs. Burg, Sr., painstakingly cleaned and restored the artifacts in time to display them in the drug store for Chelsea's 125th anniversary in 1959.

J. V. Burg, Sr., died in 1963. Shortly thereafter, the collection was removed from the drug store when the new owner remodeled, and was stored in the attic of the Burg family home on Wilkinson St. until Mrs. Burg's death in 1972.

At that time the home was to be sold and the fate of the collection was uncertain.

Vince Burg, Jr., and his sisters wanted the collection to remain in the area where it could be displayed for the education and enjoyment of all area residents.

Department of Natural Resources officials agreed to accept the collection and exhibit it in the new nature center under construction in the Waterloo Recreation Area. "Unfortunately funds have run out," says Park Naturalist Tom Hodgson. "If it had not been for the generous contribution of \$500 from the Modern Mother's Child Study Club, construction of the

artifact display would have been postponed indefinitely. "As it is, the display will not be ready for the opening of the center this summer. We hope to have the display completed and installed by the end of the calendar year," he added.

Theme of the display will be "Waterloo's Native Americans — Man in harmony with his environment." Representative pieces from various pre-historic periods will be on exhibit, while remaining pieces will be used as teaching aids for educational programs relative to the display theme.

RICK'S MARKET

20490 M-52

"The Store with the Spartan on the Door"

Phone 475-2898

DEL MONTE
FRUIT
COCKTAIL

30-Oz. Can 71¢

LOG CABIN
SYRUP

12-Oz. Bottle 69¢

SALADA
4-MIN. FUDGE

Home-made taste... easy and fun to make.

10.5-Oz. Box 95¢

MUELLER'S EXTRA THIN
SPAGHETTI

16-Oz. Box 49¢

10-Oz. No-Return Bottles

PEPSI-COLA

8 pak \$1.21

ECKRICH

BEEF
FRANKS

1-Lb. Pkg. 99¢

NORTHERN
TOILET
TISSUE

4 2-Ply Rolls 71¢

HEFTY 30"x37"
TRASH BAG
LINERS

Pkg. of 20 Bags \$1.59

MARDI GRAS
PAPER
TOWELS

125-Ct. Roll 51¢

LA CHOY
SHRIMP
CHOW MEIN

Without Noodles 28-Oz. Can \$1.53

TUESDAY BAKERY SPECIAL:

FRESH FROM THE OVEN AT RICK'S... OUR OWN

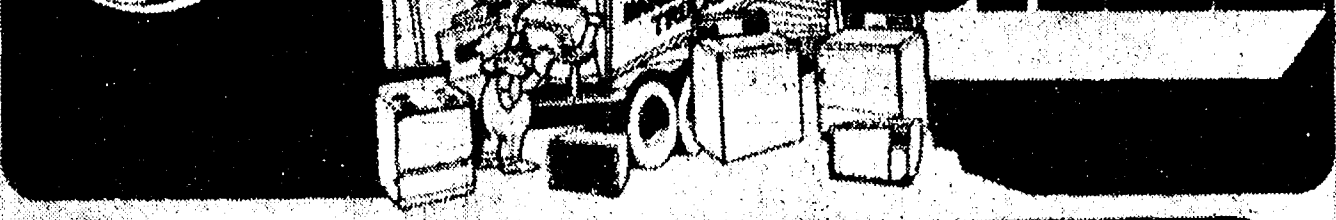
WHITE BREAD... loaf 49¢

RICK'S HOT BREAD DAILY

Weekdays by 3:30 p.m. Sat. & Sun., by 10:30 a.m.

(QUANTITY RIGHTS RESERVED)

GREAT ANNUAL GENERAL ELECTRIC TRUCKLOAD SALE



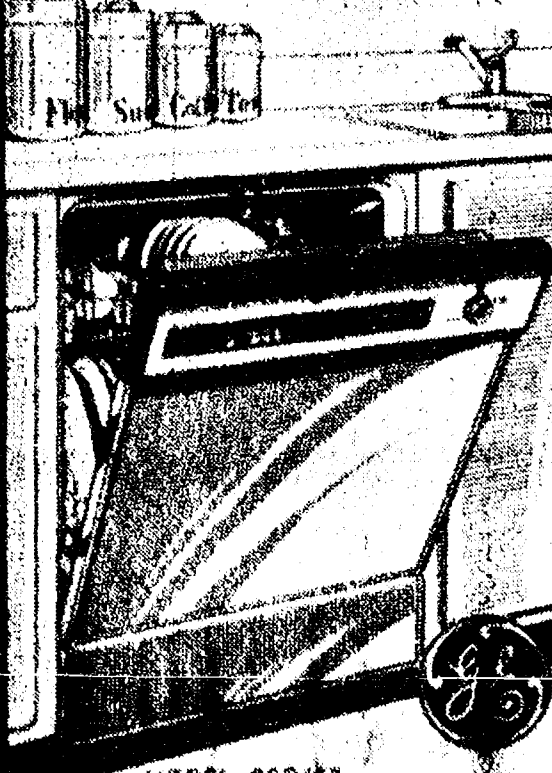
SAVE \$50!



30" RANGE WITH P-7® SELF-CLEANING OVEN
• Cleans entire oven interior electrically • Beautiful glass control panel with full fluorescent cooktop lamp • Clock, oven timer, reminder timer
Regular Price \$449.95
LESS SALE \$50.00 DISCOUNT
YOU PAY \$399.95

SAVE \$30!

OVER ONE MILLION POTSCRUBBER DISHWASHERS SOLD



BUILT-IN FIVE CYCLE POTSCRUBBER® DISHWASHER
• Normal Power Saver cycle for economical no-heat drying
• Reversible 5-color panels in The New Naturals™ colors
• Powerful 3-level Wash Action
• Built-in with soft food disposer
Regular Price \$329.00
LESS SALE \$30.00 DISCOUNT
YOU PAY \$299.00

carpenter's choice



Famous Red Wing fit and cellulose cushion insole make these the most comfortable boots you can wear. Inch-wide steel shank and choice of cushion crepe sole and heel or tough Neoprene sole and heel. Try a pair today.

RED WING

FOSTER'S
MEN'S WEAR

Ph. 475-1606 Chelsea, Mich.

HEYDLAUFF'S

113 North Main Street, Chelsea

Phone 475-1221

PUT IT IN THE WANT ADS FOR RESULTS!

Ad Taken
Fill 1 p.m.
Tuesday

Just
Phone
475-1371

WANT ADS

The Chelsea Standard

WANT AD RATES
PAID IN ADVANCE—All regular ads, 75 cents for 25 words or less, each insertion. Count each line as 25 words. For more than 25 words add 3 cents per word for each insertion. "Blind" ads or box number ads, 50c extra per insertion.
CHARGE RATES—Same as cash in advance, with 25 cents bookkeeping charge if not paid before 1 p.m. Tuesday preceding publication. Pay in advance, send cash or stamps and save 25 cents.
DISPLAY WANT ADS—Rate, \$1.40 per column inch, single column width only. 3-point and 14-point type only. No borders or boldface type. Minimum 1 inch.
CARDS OF THANKS or MEMORIALS—Single paragraph style, \$1.50 per insertion for 50 words or less; 9 cents per word beyond 50 words.
COPY DEADLINE—1 p.m. Tuesday week of publication.
ERRORS—Advertisers should check their ads at the first publication. This newspaper will not be liable for failure to publish an ad, or for typographical errors in publication except to the extent of the cost of the ad for the first week's publication. Adjustment for errors is limited to the cost of portion of the ad wherein the error occurred.

FOR RENT—Fair Service Center for meetings, parties, wedding receptions, etc. Weekdays or week-ends. Contact John Wellnitz, phone 475-1518. x31f

SAND GRAVEL

KLINK EXCAVATING

Bulldozer - Backhoe
Road Work - Basements
Trucking - Crane Work
Top Soil - Demolition
Drainfield - Septic Tank
Trenching, 5' up
Industrial, Residential, Commercial
CALL 475-7631 13f

HORSESHOEING - Experienced
horseshoer now shoeing in area.
Bob Smithers (517) 851-8479. x45f

J. R. CARRUTHERS

LICENSED
RESIDENTIAL BUILDER
CUSTOM HOMES
ADDITIONS/FIREPLACES
PATIO
ROOFING/SIDING/REPAIRS
475-7234
CHELSEA 30f

CAR RENTAL by the day, week-end, week or month. Full insurance coverage, low rates. Call Lyle Christwell at Palmer Motor Sales. 475-1301. 25f

Fireplace Builder

Field stone mason, block and brick mason, tuck pointing.
FREE ESTIMATES
Call 475-8025 after 3 p.m.

Patrick Grammatico 740f

Kitchen Help - Wanted

From 7 a.m. to 1 p.m.
Mon. thru Friday.
Apply in person.

Chelsea Restaurant 34f

119 S. Main, Chelsea
NURSERY SCHOOL teacher wanted, beginning September, 1977. For appointment call 475-3094. x40f

WANT ADS

HILLTOP, INC.

8316 WERNER RD., CHELSEA
We Do It All!
PLUMBING
HEATING
ELECTRICAL
SEPTIC TANKS & DRAINFIELDS
REPAIR - REMODELING
CONTRACTING
BY
"THE SPECIALISTS"
Robert Shears, Master Plumber
Gail Shears, Journeyman
Call 475-2949
FREE ESTIMATES x31f

73 PLYMOUTH SUBURBAN - 9

passenger, no rust, good condition. \$2,000. Ph. 995-2003 or 822-1771. x24f

FOR SALE - Iron kettle, c.o.d.

shells, barrel, and blacksmith's bellows. Ph. 426-3805. x40

VACANT LAND

WE LIST and sell vacant land and desirable building sites in Chelsea and Dexter area. We now have several 1- and 2-acre building sites, starting at \$8900, with excellent land contract terms.
MANCHESTER schools, 10-acre site, \$15,900, land contract terms.

Chelsea Schools

2-BEDROOM home, lake access to Half Moon Lake, 1,300 square feet, 1-car garage, \$32,900.
5-BEDROOM home, 2 1/2 baths, 3 fireplaces, horse barn and corral, 10 acres, \$106,800.

Dexter Area

3-BEDROOM, 1 1/2 bath ranch, 2 1/2-car garage, \$39,900.
5-BEDROOM home, 2 1/2 baths, 3 fireplaces, horse barn and corral, 10 acres, \$106,800.

ED COY REALTY

426-3948
Ed Coy, Broker
Ted Picklesimer, Salesman
ROOFING SPECIALIST—All types of roof repairs, homes, barns, commercial. Insurance repairs. Asphalt shingles, hot built-up roofing, cedar-slate tile-asbestos. Awnings and porch enclosures. Siding and storm windows. Call Joe Hayes for free estimates. Manchester, 426-8520. x39f

WE HAVE all-purpose lime for gardens and lawns. Can be used in your lawn spreader. Cole's Elevator Co., Gregory. Ph. (313) 498-2735. x49

FORD '75 F-250 3/4-ton Super Cab pick-up. V-8, automatic, power, excellent 1-owner condition. Palmer Ford, Chelsea, (313) 475-1301. x38f

RESPONSIBLE ADULT would like full or part-time baby-sitting in her Chelsea village home during the day. Ph. 475-1295. x41

Complete Professional

Real Estate Services

Call

Robert H. Thornton, Jr.

P.C. Realtor

Evenings & Weekends

Pat Starkey 475-9544

Dolly Alber 475-2801

Mike McPhillips 517-467-7992

Peg Hamilton 475-1870

Lang Ramsay 475-8183

Chuck Walters 475-2808

Helen Lancaster 475-1198

x40

WANT ADS

LEONARD REITH

Master Plumber
Licensed Electrician
Hot Water Heat
18238 N. Territorial Rd.
Chelsea, Mich. 48118
Phone: 475-2044 52f

Music Machines

Juke Boxes
for Parties,
Receptions or
Any Special Gathering.
CALL
Zemke
Operated Machines
Days 662-1771/ x38f

FIRST CUTTING HAY - \$1 per

bale. Second cutting hay, \$1.25 per bale. Ph. Joe Hayes, 428-8520. x42

FOR RENT - American Legion

Hall, \$50. Call 475-7521. 40f

WATERLOO REALTY

BEAUTIFUL SPOT for retirement - lovely, low-maintenance home in A-1 condition, 2 bedrooms. Fully insulated. Natural gas forced air furnace. Close access to Patuxent Lake, sandy beach with docking space for two boats, \$29,000. Land contract possible with \$5,000 down.
VILLAGE OF CHELSEA - Good condition 3-4-bedroom home, plumbing and wiring updated 1972, new furnace, new water heater, fully carpeted, large kitchen, 15'x15' dining room. Garage, fenced kennel area, large back yard, \$31,500.
SPACIOUS 4-BEDROOM bi-level home, 2 1/2 baths, deck off dining room, fireplace in large family room. Central air. Abundant storage. Fully carpeted, 2-car garage. Nice corner lot in excellent neighborhood. Village of Chelsea. \$82,500.
LARGE 3-BEDROOM ranch home, 16'x24' living room, spacious dining room, U-shape kitchen, two full baths, full basement. On one country acre. Near Chelsea Proving Ground. \$42,500.
2.3 ACRES, heavily wooded, surveyed, blacktop road, Waterloo Rec. Area. \$7,300. Land contract possible.
10 ACRES, surveyed, all high land, blacktop road. Waterloo-Mt. Air, \$15,000. Land contract possible.
100 ACRES recreation land, woods, some pasture, hills, two ponds, winding river, 600 ft. frontage on secluded lake. A beautiful retreat. \$75,000.
EXCELLENT INVESTMENT and income - 22-acre resort, wooded, rolling, 550 ft. frontage on spring fed lake. 12 cabins (sleep 8 each) large kitchen-dining hall, arts and crafts center, huge new recreation hall with fireplace, small mobile home park. Waterloo Rec. area with good access to I-94.

WATERLOO REALTY

355 Clear Lake

JOANN WARYWODA, BROKER

Phone 475-8674

Evenings:

Jerry Gondek 475-8285

Paul Erickson 475-1748

Sue Lewie 475-2377

Carol Lakatos 475-1729

x40

FORD '76 CARGO VAN—Automat-

ic and power, stunning, excellent condition. Used by dealer. Palmer Ford, Chelsea, 475-1301. x40f

PATCHING and PLASTERING

Call 475-7489. 33f

MAUSOLEUMS ★ MONUMENTS

BRONZE TABLETS ★ MARKERS

BECKER

MEMORIALS

6033 Jackson Road

ANN ARBOR, MICHIGAN

Service on all TV

makes and models.

Antenna Sales & Installation

CALL 475-8380

MALE SAMOYED for sale - 7

months, beautiful, good natured, loving, all shots and licensed. Needs a good home with all day attention. Ph. 475-2846. x41

FORD '75 LTD 2-door hardtop. Air

and low mileage. Easily mistaken for a new car. Palmer Ford, Chelsea, 475-1301. x40f

WATERLOO REALTY

355 Clear Lake

JOANN WARYWODA, BROKER

Phone 475-8674

Evenings:

Jerry Gondek 475-8285

Paul Erickson 475-1748

Sue Lewie 475-2377

Carol Lakatos 475-1729

x40

FORD '76 CARGO VAN—Automat-

ic and power, stunning, excellent condition. Used by dealer. Palmer Ford, Chelsea, 475-1301. x40f

PATCHING and PLASTERING

Call 475-7489. 33f

MAUSOLEUMS ★ MONUMENTS

BRONZE TABLETS ★ MARKERS

BECKER

MEMORIALS

6033 Jackson Road

ANN ARBOR, MICHIGAN

Service on all TV

makes and models.

Antenna Sales & Installation

CALL 475-8380

MALE SAMOYED for sale - 7

months, beautiful, good natured, loving, all shots and licensed. Needs a good home with all day attention. Ph. 475-2846. x41

FORD '75 LTD 2-door hardtop. Air

and low mileage. Easily mistaken for a new car. Palmer Ford, Chelsea, 475-1301. x40f

WANT ADS

VACUUM CLEANERS

Authorized Electrolux
sales and service.
James Cox
428-8444, or 428-8688
118 Riverside Dr., Manchester 48f

Complete

Body Repair

Service

Bumping - Painting

Windshield and Side Glass

Replacement

Free Pick-up & Delivery

Open Monday Until 9

CONTACT DON KNOLL

FOR FREE ESTIMATE

Village

Motor Sales, Inc.

CHRYSLER - DODGE

PLYMOUTH - DODGE TRUCKS

Phone 475-8661

1185 Manchester Rd., Chelsea

Hours: 8 a.m. to 5:30 p.m.

Tues. thru Fri. Until 9 Monday.

9 a.m. to 1 p.m. Saturday x14f

Headquarters for

RED WING

WORK SHOES

Foster's Men's Wear 40f

STEP UP TO

KOZMA

CONSTRUCTION

And

Step

Down

In

Price

LICENSED

BUILDER

FREE ESTIMATES

COMPLETE

CONSTRUCTION

SERVICES

CALL

LEN KOZMA

475-7452 29f

WANTED

BUS DRIVERS

Morning and Night,

Regulars and Subs.

Apply at

Chelsea

Bus Garage

475-7647 x40

BODY SHOP

COMPLETE FULL TIME

Estimates Available

PALMER FORD

222 S. Main 475-1301

40

MALE SAMOYED for sale - 7

months, beautiful, good natured, loving, all shots and licensed. Needs a good home with all day attention. Ph. 475-2846. x41

FORD '75 LTD 2-door hardtop. Air

and low mileage. Easily mistaken for a new car. Palmer Ford, Chelsea, 475-1301. x40f

WATERLOO REALTY

355 Clear Lake

JOANN WARYWODA, BROKER

Phone 475-8674

Evenings:

Jerry Gondek 475-8285

Paul Erickson 475-1748

Sue Lewie 475-2377

Carol Lakatos 475-1729

x40

FORD '76 CARGO VAN—Automat-

ic and power, stunning, excellent condition. Used by dealer. Palmer Ford, Chelsea, 475-1301. x40f

PATCHING and PLASTERING

Call 475-7489. 33f

MAUSOLEUMS ★ MONUMENTS

BRONZE TABLETS ★ MARKERS

BECKER

MEMORIALS

WANT ADS

Automotive

Rust Proofing

Cars and Trucks

Village

Motor Sales, Inc.

CHRYSLER - DODGE

PLYMOUTH - DODGE TRUCKS

Phone 475-8881

1185 Manchester Rd., Chelsea

Hours: 8 a.m. to 5:30 p.m.

Tues. thru Fri. Until 9 Monday

9 a.m. to 1 p.m. Saturday 21f

ROOM FOR RENT in quiet south-

west Ann Arbor residential area.

Ph. 994-6194. x24f

HOUSE FOR SALE

Clardale Ct., Chelsea

3-BEDROOM, living, family, din-

ing rooms, fireplace, 1 1/2 baths,

first-floor laundry, partial base-

ment, attached garage, aluminum

siding, double lot, \$49,900, terms.

475-8544 evenings and week-ends.

x35f

FRISINGER

NEW LISTING - 4-bedroom Colon-

ial overlooking Cedar Lake, din-

ing room, family room, fireplace,

3-car garage, 5.6 acres, Chelsea

schools. x35f

NEW LISTING - Farm, 204 acres,

beautiful remodeled farm home,

barn, out-buildings, Fowlerville

+ Services in Our Churches +

CONGREGATIONAL CHURCH
(United Church of Christ)
The Rev. Carl Schwarm, Pastor
Sunday, March 20—
10:30 a.m.—Worship, church school, "More Than Bread," one hour of shared offering.
7:30 p.m.—Couples Club at church to plan Easter Breakfast and Annual Night Out.
Wednesday, March 23—
7:30 p.m.—Lenten worship.

NORTH SHARON BIBLE CHURCH
Sylvan and Washburne Rds.
The Rev. Ronald C. Purkey, Pastor
Every Sunday—
10:00 a.m.—Sunday school. (Nursery available). Junior church classes.
11:00 a.m.—Worship service.
6:00 p.m.—Senior High Youth meeting. Youth Choir.
7:00 p.m.—Evening worship service. (Nursery available.) All services interpreted for the deaf.
Every Wednesday—
7:00 p.m.—Bible study and prayer meeting. (Nursery available.)
Bus transportation available; 428-7222.

ST. THOMAS EVANGELICAL LUTHERAN
Ellsworth and Haab Rds.
The Rev. Jerome Dykstra, Pastor
Sunday, March 20—
9:30 a.m.—Sunday school, Bible class, Confirmation class.
10:45 a.m.—Worship with Holy Communion.
7:30 p.m.—Lenten service.
Tuesday, March 22—
7:30 p.m.—Christian Faith class.
Wednesday, March 23—
10:00 a.m.—Bible study.
8:00 p.m.—Choir.

ST. PAUL UNITED CHURCH OF CHRIST
The Rev. R. J. Ratzlaff, Pastor
Saturday, March 19—
9:00 a.m.—Confirmation class.
10:15 a.m.—Confirmation class.
Sunday, March 20—
9:00 a.m.—Church school.
10:30 a.m.—Worship service, church school, Chancel Choir sings.
Tuesday, March 22—
3:30 p.m.—Joyful Noise.
Wednesday, March 23—
3:30 p.m.—Junior Choir.
7:30 p.m.—"Cottage" meeting.
8:00 p.m.—Chancel Choir.
Thursday, March 24—
1:30 p.m.—Lenten "Cottage" meeting.
7:30 p.m.—Lenten "Cottage" meeting.

BETH EL EVANGELICAL AND REFORMED CHURCH
(United Church of Christ)
Freedom Township
The Rev. Roman A. Reineck, Pastor
Every Sunday—
10:00 a.m.—Worship service.
9:45 a.m.—Sunday school.
11:00 a.m.—Worship service.
6:00 p.m.—Evening worship.
Every Wednesday—
7:00 p.m.—Christ's Ambassadors. Missionettes. Bible meditation and prayer.

NORTH LAKE UNITED METHODIST CHURCH
The Rev. David Stiles, Pastor
Every Sunday—
8:30 and 10:00 a.m.—Worship service.

FIRST UNITED METHODIST CHURCH
The Rev. Marvin H. McCallum, Pastor
Saturday, March 19—
8:30 p.m.—Christian Home Group at the home of Mr. and Mrs. Paul Weber.
Sunday, March 20—
10:00 a.m.—Worship service (nursery provided).
10:20 a.m.—Church school, 4-year-olds through 6th graders.
11:00 a.m.—Junior high church school, coffee and punch hour.
11:10 a.m.—Senior high and adult church school.
Wednesday, March 23—
12 noon—Brown Bag Communion.
1:00 p.m.—Bible Study on the Book of Mark.
3:30 p.m.—KINDER Choir.
4:15 p.m.—PRAISE Choir.
8:00 p.m.—Chancel Choir.
Thursday, March 24—
9:00 a.m.—Literature Group in the Litteral Room.
7:30 p.m.—Retirement Home meeting.

FIRST UNITED METHODIST PARKS AND TERRITORIAL RDS.
The Rev. Glenn Kjellberg, Pastor
Every Sunday—
9:15 a.m.—Morning worship.
10:00 a.m.—Sunday school.
METHODIST HOME CHAPEL
Chaplain Ira Wood, Pastor
Every Sunday—
8:45 a.m.—Worship service.
CHELSEA BAPTIST CHURCH
377 Wilkinson St.
The Rev. James Stacey, Pastor
Every Sunday—
9:45 a.m.—Sunday school for the whole family.
11:00 a.m.—Morning worship service and children's church.
6:00 p.m.—Evening service, informal singing, sharing, study and discussion. (Nursery care provided for all services).
Home Bible Studies each week in the homes of the elders.
For information, call 475-8323.

ST. BARNABAS EPISCOPAL CHURCH
20550 Old US-12
The Rev. Fr. Jerrold F. Beaumont B.S.P.
Every Sunday—
10:00 a.m.—Holy Communion first, third, and fifth Sundays, and 7:30 p.m. every Wednesday.
10:00 a.m.—Morning prayer. Second and fourth Sundays. Church school and nursery every Sunday.
Every Wednesday—
8:15 p.m.—Bible study and discussion groups.
First Wednesday of every month—Bishop's Committee.
Third Thursday of every month—Episcopal church women.

OUR SAVIOR LUTHERAN CHURCH
1515 S. Main, Chelsea
The Rev. William H. Keller, Pastor
Friday, March 18—
Luke 15:13, 11-32.
Saturday, March 19—
Paper drive.
Sunday, March 20—
9:00 a.m.—Sunday school and Bible classes.
10:30 a.m.—Worship service, Holy Communion.
Paper drive.
Tuesday, March 22—
9:30 a.m.—Bible Study, Parson.
Wednesday, March 23—
4:00 p.m. to 5:30 p.m.—Confirmation I, II and III.
7:30 p.m.—Lenten service.

FIRST CHURCH OF CHRIST SCIENTIST
1883 Washtenaw Ave., Ann Arbor
Every Sunday—
10:30 a.m.—Sunday school, morning service.

ZION LUTHERAN CHURCH
Corner of Fletcher, Waters Rds.
The Rev. John R. Morris, Pastor
Saturday, March 19—
9:00 a.m.—8th grad Youth instruction.
10:30 a.m.—7th grade Youth instruction.
1:00 p.m.—96th birthday of Lydia Zahn with Senior Citizens party in her honor.
Sunday, March 20—
9:00 a.m.—Sunday school.
10:15 a.m.—Worship.
Roller Skating at Adrian.
Monday, March 21—
7:00 p.m.—Junior Choir.
8:00 p.m.—Senior Choir.
Tuesday, March 22—
7:30 p.m.—Shuffleboard, last game for winter.
Wednesday, March 23—
7:30 p.m.—Fifth Lenten Devotional.

ST. JOHN'S UNITED CHURCH OF CHRIST
Rogers Corners
Every Sunday—
10:30 a.m.—Worship service.

IMMANUEL BIBLE CHURCH
145 E. Summit St.
The Rev. LeRoy Johnson, Pastor
Every Sunday—
9:45 a.m.—Sunday school, nursery provided.
11:00 a.m.—Morning worship, nursery provided.
6:00 p.m.—Evening worship.
Every Wednesday—
7:00 p.m.—Family hour, prayer meeting, and Bible study.

SALEM GROVE UNITED METHODIST CHURCH
3320 Notten Rd.
The Rev. Gerald R. Parker, Pastor
Every Sunday—
9:30 a.m.—Sunday school.
10:30 a.m.—Worship service.

BAHA'I FIRESIDE
Every Thursday—
8:00 p.m.—At the home of Toby Peterson, 705 S. Main St. Anyone wishing to learn about the Baha'i faith is welcome.

FIRST UNITED PRESBYTERIAN CHURCH
Unadilla
The Rev. T. H. Liang, Pastor
Every Sunday—
9:45 a.m.—Sunday school.
11:00 a.m.—Worship service.

ST. JACOB EVANGELICAL LUTHERAN CHURCH
12501 Riethmiller Rd., Grass Lake
The Rev. Andrew Bloom, Pastor
Every Sunday—
9:00 a.m.—Worship service.
10:15 a.m.—Divine services.

CHURCH OF JESUS CHRIST OF LATTER-DAY SAINTS
Meetings at
Church of Jesus Christ of Latter-Day Saints
2141 Brockman, Ann Arbor
Every Sunday—
9:30 a.m.—Sunday school.
5:00 p.m.—Sacrament meeting.

ST. JOHNS EVANGELICAL AND REFORMED CHURCH
(United Church of Christ)
Francisco
The Rev. Virgil King, Pastor.
Every Sunday—
10:30 a.m.—Church services.

WATERLOO VILLAGE UNITED METHODIST CHURCH
8118 Washington St.
The Rev. Glenn Kjellberg, Pastor
Every Sunday—
10:00 a.m.—Sunday school.
11:15 m.—Worship service.

GREGORY BAPTIST CHURCH
The Rev. Paul White, Pastor
Every Sunday—
9:45 a.m.—Sunday school.
11:00 a.m.—Morning worship.
6:00 p.m.—Young people.
7:00 p.m.—Evening worship.
7:30 p.m.—Thursday mid-week worship service.

ST. MARY CATHOLIC CHURCH
The Rev. Fr. David Philip Dupuis, Pastor
Mass Schedule:
Every Saturday—
4:00-5:00 p.m. Confession.
7:00 p.m.—Mass.
Immediately after 7 p.m. Mass, Confession.
Every Sunday (winter schedule)—
8:00 a.m., 10:00 a.m., 12:00 noon—Mass.

CHURCH OF CHRIST
13661 Old US-12, East
Evangelist John M. Hamilton
Every Sunday—
10:00 a.m.—Church school.
11:00 a.m.—Worship service.
Nursery will be available.
6:00 p.m.—Worship service.
Every Wednesday—
7:30 p.m.—Bible study.

ANNUAL REPORT McKUNE MEMORIAL LIBRARY February 1, 1976 to January 31, 1977	
RECEIPTS—	
Balance February 1, 1976	\$ 3,912.53
Village Taxes	\$12,437.18
Township Gifts	3,323.75
State Aid (2 years)	2,314.80
Penal Fines	2,832.40
Book Fund	858.47
Non-resident fees	349.00
Gifts	2,378.95
Book fines	737.35
Miscellaneous	2,852.15
Total	\$28,102.05
Total Handled	\$32,014.58
*includes Kellogg Grant \$700.00 transferred to Huron Valley Library System.	
DISBURSEMENTS—	
Salaries	\$10,167.57
Books	5,470.51
Magazines and Records	69.21
Binding	63.34
Library Supplies	892.70
Utilities	2,262.18
Furniture	1,623.47
Cleaning Supplies	280.04
Petty Cash	240.00
Maintenance	1,205.85
Miscellaneous	1,347.46
Total	\$23,622.33
Balance January 31, 1977	\$ 8,392.25
*Includes unpaid repair bills and painting library Respectfully submitted, KATHERINE A. WAGNER, Treasurer RICHARD J. KERN, Notary Public, Washtenaw County My commission expires March 13, 1978.	

ANNUAL REPORT McKUNE MEMORIAL LIBRARY February 1976 - February 1977	
CIRCULATION	26,588
Books loaned	23,693
Adult	16,002
Juvenile	7,691
Magazines loaned	2,079
Records loaned	708
Puzzles loaned	108
INVENTORY	
Total number of books	20,317
Adult	14,033
Juvenile	6,284
Books added this year	785
Adult	582
Juvenile	203
Books withdrawn	642
Lost	137
Adult	114
Juvenile	23
Discarded	505
Adult	238
Juvenile	267
Records	441
Adult	320
Juvenile	121
Records added this year	27
Adult	17
Juvenile	10
Records withdrawn (discarded or lost)	15
Adult	0
Juvenile	15
Total number of puzzles	76
Magazines subscribed to	31
Newspapers subscribed to	3
SPECIAL COLLECTIONS	
Listening Library	16
Books in large print	39
Memorial Books	1,020
Adult	725
Juvenile	295
Michigan historical books	154
Chelsea Standards bound	87
Picture collection	1,664
Cemetery file listings	41,400
Chelsea Standards on microfilm	40
REGISTERED BORROWERS	2,977
New registrations	514
Village residents registered	1,449
Participating township residents	951
Non-residents	63

Hi-Flyer Sunday Services Slated
More than 500 people are expected to attend "Hi-Flyer" Sunday school services on March 20, 10 a.m. at North Sharon Bible church, Washburne and Sylvan Rds., Near Grass Lake.
Every child attending will receive a hi-flyer kite from the church. Also a super kite will be given to the boy and girl bringing the most visitors.
The adult accompanied by the most visitors will receive a free dinner for two at Ponderosa Steak House.
Pastor Purkey will teach adult Sunday School classes in the auditorium at 10 a.m. His lesson will be from Timothy.
A morning message, from the Apostle Peter, entitled "The Bible Answer for Sin" will be followed by a 7 p.m. message from the Apostle Peter entitled "A Lesson on the True Service".

ANNUAL TOWNSHIP MEETING	
NOTICE IS HEREBY GIVEN,	
That the next Annual Township Meeting of the Electors of the	
TOWNSHIP OF SYLVAN	
County of Washtenaw, State of Michigan	
will be held at	
Sylvan Township Hall	
Beginning at 1:00 o'clock P.M., Eastern Standard Time on	
Saturday, April 2, 1977	
At such time in addition to other regular business and in accordance with the law, a budget covering proposed expenditures and estimated revenues of the Township shall be submitted for consideration.	
Signed: DANIEL MURPHY	
Township Clerk.	
Dated: March 17, 1977.	

NOTICE
ANNUAL TOWNSHIP MEETING
NOTICE IS HEREBY GIVEN,
That the next Annual Township Meeting of the Electors of the
TOWNSHIP OF LIMA
County of Washtenaw, State of Michigan
will be held at
Lima Community Hall
Beginning at 1:00 o'clock P.M., Eastern Standard Time on
Saturday, April 2, 1977
At such time in addition to other regular business and in accordance with the law, a budget covering proposed expenditures and estimated revenues of the Township shall be submitted for consideration.
Signed: LEILA BAUER
Township Clerk.
Dated: March 17, 1977.

NOTICE
ANNUAL TOWNSHIP MEETING
NOTICE IS HEREBY GIVEN,
That the next Annual Township Meeting of the Electors of the
TOWNSHIP OF LIMA
County of Washtenaw, State of Michigan
will be held at
Lima Community Hall
Beginning at 1:00 o'clock P.M., Eastern Standard Time on
Saturday, April 2, 1977
At such time in addition to other regular business and in accordance with the law, a budget covering proposed expenditures and estimated revenues of the Township shall be submitted for consideration.
Signed: LEILA BAUER
Township Clerk.
Dated: March 17, 1977.

NOTICE
ANNUAL TOWNSHIP MEETING
NOTICE IS HEREBY GIVEN,
That the next Annual Township Meeting of the Electors of the
TOWNSHIP OF LIMA
County of Washtenaw, State of Michigan
will be held at
Lima Community Hall
Beginning at 1:00 o'clock P.M., Eastern Standard Time on
Saturday, April 2, 1977
At such time in addition to other regular business and in accordance with the law, a budget covering proposed expenditures and estimated revenues of the Township shall be submitted for consideration.
Signed: LEILA BAUER
Township Clerk.
Dated: March 17, 1977.

Citizens Advisory Committee Plans Benefit Special Dinner
Chelsea area residents will have the opportunity to enjoy an excellent dinner in the unusually elegant dining room of the Chelsea Community Hospital and support the efforts of the Citizens Advisory Committee for better schools at the same time.
The full course sit-down dinner featuring roast prime rib of beef will be served at 7 p.m. on Thursday, March 24. Tickets are priced at \$10 per person which includes a \$4 donation to the Citizens Advisory Committee.
The Committee is charged with the task of examining the quality of the Chelsea School System, surveying public opinion regarding local schools, and recommending to the Chelsea Board of Education any operating changes deemed necessary.
Proceeds from the dinner will be used to defray the cost of tabulating the opinion survey and producing a newsletter to be sent to households in the Chelsea School District. Tickets are available from members of the Citizens Advisory Committee.
Reservations may be made, calling Dale Schumann at Chelsea Pharmacy, 475-9103. Where tickets may be picked up. Immediate reservations are recommended because only 100 persons can be accommodated.
Telephone Your Club News To 475-1371.

SETTLEMENT DAY MEETING
TUESDAY, MARCH 22, 1977
7:30 p.m.
DEXTER TOWNSHIP HALL
6880 Dexter-Pinckney Rd.
DEXTER TOWNSHIP
WILLIAM EISENBEISER, CLERK

NOTICE
ANNUAL TOWNSHIP MEETING
NOTICE IS HEREBY GIVEN,
That the next Annual Township Meeting of the Electors of the
TOWNSHIP OF DEXTER
County of Washtenaw, State of Michigan
will be held at
Dexter Township Hall
6880 Dexter-Pinckney Road
Beginning at 2:00 o'clock P.M., Eastern Standard Time on
Saturday, April 2, 1977
At such time in addition to other regular business and in accordance with the law, a budget covering proposed expenditures and estimated revenues of the Township shall be submitted for consideration and approval. A copy of the budget will be open for inspection at the office of the Clerk. A public hearing on the proposed annual budget for the fiscal year 1977-1978 will be held at 1:30 p.m.
Signed: WILLIAM EISENBEISER
Township Clerk.
Dated: March 17, 1977.

LIMA TOWNSHIP BOARD OF REVIEW
NOTICE IS HEREBY GIVEN to all persons liable to assessment for taxes in
LIMA TOWNSHIP
that the Board of Review will meet at the
LIMA TOWNSHIP HALL
11452 Jackson Road, Chelsea, Michigan
to hear appeals to the Assessment Roll on
MONDAY, MARCH 14, 1977
9 a.m. to 12 Noon and 1 p.m. to 4 p.m.
TUESDAY, MARCH 15, 1977
9 a.m. to 12 Noon and 1 p.m. to 4 p.m.
THURSDAY, MARCH 24, 1977
Evening Session—7 p.m. to 9 p.m.
at which time, upon request of any person, or his or her agent, who is assessed on this tax roll and if sufficient cause is shown, this Board of Review will correct the assessment on the property in question in a manner that will, in their judgment, make the valuation relatively just and equal. The assessment tax roll, after being reviewed and approved by the Board of Review, will be the assessment roll of LIMA TOWNSHIP for the year 1977.
The County Board of Commissioners of Washtenaw County has proposed the following starting ratios for Lima Township for the year 1977: Real Property Ratio 47.70, Factor 1.05; Personal Property Ratio 49.21, Factor 1.00.
ROBERT D. MUSOLF, Supervisor
Dated: Feb. 24, 1977.

NOTICE
ANNUAL TOWNSHIP MEETING
NOTICE IS HEREBY GIVEN,
That the next Annual Township Meeting of the Electors of the
TOWNSHIP OF LYNDON
County of Washtenaw, State of Michigan
will be held at
Lyndon Township Hall
(Corner of North Territorial Road and Townhall Road)
Beginning at 1:00 o'clock P.M., Eastern Standard Time on
Saturday, April 2, 1977
At such time in addition to other regular business and in accordance with the law, a budget covering proposed expenditures and estimated revenues of the Township shall be submitted for consideration. A copy of the budget will be open for inspection at the annual township meeting.
Signed: DORIS FUHRMANN
Township Clerk.
Dated: March 17, 1977.

ANDY FLETCHER
CONTRACTOR
Licensed and Insured
NEW CONSTRUCTION - REMODELING - ROOFING ADDITIONS
Free Estimates
Ph. 428-8569

GARBAGE CUSTOMERS WANTED!
— ALL AREAS —
Is your garbage a mess? Does it smell?
Don't be in distress, just call Schnell.
American Disposal
Basic price is \$3.50 per month for once a week pick-up
HUDSON, MICHIGAN 448-8555
For more information, please fill out this coupon and mail to: American Disposal, Box 6, Hudson, Mich. 49247
Name _____
Address _____
Phone _____

BOWLING NEWS

Chelsea Women's Bowling Club

Standings as of March 9

	W	L
Jiffy Mixes	68 1/2	41 1/2
Chelsea Milling	66	42
Washenaw Engineering	65	43
Heller Electric	63	45
Mark IV Lounge	61	47
Parish Cleaners	60	48
The Print Shop	58	50
Palmer Ford	56 1/2	51 1/2
Norris Electric	55 1/2	52 1/2
Wolverine Bar	55	53
Amway	54 1/2	53 1/2
Thompson's Pizza	52	56
Laura's Beauty Salon	50	58
Lloyd Bridges Chevrolet	48	60
Chelsea Grinding	44	64
Klink Excavating	44	64
Chelsea Card & Gift	40	68
Gambles	33	75

500 series and over: N. Packard, 580; D. Judson, 530; P. Shoemaker, 528; J. Schleede, 521; S. McCalla, 514; S. Klink, 509; D. Fouty, 503; J. Norris, 502.

450 series and over: C. Bradbury, 499; J. Fouty, 498; A. Fahrner, 493; M. E. Sutter, 489; B. Diefenbaugh, 488; B. Fritz, 478; P. Fitzsimmons, 475; C. Powell, 474; N. Smith, 473; D. Alber, 472; D. McCalla, 464; D. Rudnicki, 462; L. Orlowski, 460; B. Gross, 457.

150 games and over: N. Packard, 205, 215, 170; D. Judson, 222, 160; P. Shoemaker, 180, 167, 179; J. Schleede, 177, 169, 175; S. McCalla, 161, 184, 169; S. Klink, 164, 165, 180; D. Fouty, 180, 177; J. Norris, 168, 204; C. Bradbury, 181, 172; J. Fouty, 169, 184, 165; A. Fahrner, 155, 172, 166; M. E. Sutter, 182, 172; B. Diefenbaugh, 155, 191; B. Fritz, 160, 170; P. Fitzsimmons, 161, 167; C. Powell, 193; N. Smith, 153, 174; D. Alber, 174, 182; D. McCalla, 175, 157; D. Rudnicki, 150, 156, 156; L. Orlowski, 184; B. Gross, 181; M. Fahrner, 169, 150; G. Wireman, 150, 154; S. Heim, 151, 158; B. Bush, 151, 151; D. Verwey, 158; B. Stahl, 177; S. Ratzlaff, 174; K. McCalla, 171; R. Whitaker, 187; L. Hafner, 166; D. Frisbie, 164; H. Morgan, 163; J. Mock, 161; D. Fortner, 161; P. Poertner, 161; A. Boham, 160; B. McGuire, 159; M. McGuire, 158; B. Larson, 158; A. Grau, 158; J. Rowe, 157; M. Thompson, 156; J. Alber, 155; C. Scherdt, 154; A. Sindlinger, 155; D. Rosentretter, 154; T. Kenney, 153; R. Hummel, 152; C. Marshall, 150; R. Lutovsky, 150; N. Kern, 150.

Peppermint Patties Peanut League

Standings as of March 12

	W	L
Cool Cats	40	26
Red Barons	38 1/2	27 1/2
Super Strikers	31	35
Hot Shots	22 1/2	33 1/2

Games 70 and over: C. Schulze, 88, 75; T. Anderson, 75; S. Poquette, 81; C. Hegadorn, 92; T. Harok, 100, 115; C. Alexander, 72, 77; L. Kaiser, 111, 103; E. Zink, 93; M. Monroe, 86, 89.

Series 100 and over: C. Schulze, 168; L. Anderson, 100; Tim Anderson, 196; S. Poquette, 146; C. Hegadorn, 161; T. Harok, 215; C. Alexander, 149; L. Kaiser, 214; E. Zink, 153; M. Monroe, 175; D. Alexander, 114.

Chelsea Suburban

Standings as of March 9

	W	L
Dairy Queen	127	69
Waterloo Garage	116	80
Dancer's	106	90
Chelsea Drug	103	93
State Farm	102	94
Mark IV Lounge	100	96
Chelsea Assoc. Bldrs.	95	101
Dana Dee Lites	91	105
Fletcher Mobil	88	108
Ricardo's	86	110
Frisinger Realty	81	115
Chelsea State Bank	81	115

150 games and over: V. Weber, 157, 171, 175; J. Huston, 168, 150; K. Chapman, 154; F. Cole, 168; E. Figg, 157, 151; J. Buku, 163; A. Copperton, 159, 150; T. Monroe, 157, 179; M. Fahrner, 158, 159; N. Packard, 193, 161; E. Schulz, 181; S. Nicola, 153, 154, 163; W. Hafner, 161; E. Neibauer, 161, 160; M. Vassas, 181, 156; A. Hocking, 154, 175; S. Moore, 169; E. Miller, 167, 160; A. Fahrner, 167, 180; N. Collins, 171, 190, 188; D. Keezer, 158; C. Peterson, 150; B. Hatley, 176, 198, 179; M. Neal, 170; R. West, 156; R. McGibney, 156; B. Robeson, 153, 185; N. Prater, 164; G. Baczyński, 172, 166; D. Hawley, 152, 185, 169; S. Bowen, 180, 167; P. Harok, 166, 165; B. Kunzelman, 179, 151; S. Miller, 155; M. Bollinger, 161; A. Bohne, 170, 154; J. Schulze, 155, 187, 160; D. Vargo, 170; L. Beeman, 161.

450 series and over: B. Hatley, 553; N. Collins, 547; D. Hawley, 506; V. Weber, 503; J. Schulze, 502; N. Packard, 491; T. Monroe, 483; M. Vassas, 485; G. Baczyński, 480; S. Bowen, 478; S. Nicola, 470; E. Neibauer, 470; E. Schulze, 450; M. Fahrner, 465; A. Bohne, 438; J. Huston, 452; P. Harok, 439; B. Robeson, 461; A. Hocking, 465.

Senior House League

Standings as of March 14

	W	L
S. J. Custom Service	134	55
Frank Grohs Chevrolet	122	67
Mark IV Lounge	119	70
Luke's Sporting Goods	114	75
Schneider's Grocery	114	75
Dana Corp.	112	77
Chelsea Grinding	109 1/2	79 1/2
Washenaw Crop Service	104	85
Bauer Builders	100	89
Village Motor Sales	99	90
Gambles	97	92
Chelsea Lumber	96	93
Sylvan Center	93 1/2	95 1/2
Walt's Barber Shop	84	105
Seitz's Tavern	83	106
Dexter Automatics	71	118
Sarns, Inc.	43	146
Deansburro	6	145

600 series: W. Hartman, 615; G. Knickerbocker, 615.
525 and over series: J. Lyerla, 562; G. Beeman, 571; G. Packard, 552; G. Lawrence, 548; G. Burnett, 581; W. Brown, 582; M. Sweet, 589; J. McAllister, 529; W. Beeman, 549; W. Westphal, 544; P. Kelly, 596; D. Pasquantonio, 567; D. Hatley, 530; J. Fortner, 539; J. Collins, 583; D. Buku, 572; M. Poertner, 554.
210 and over games: W. Hartman, 214, 120; J. Fortner, 222; J. Collins, 214; D. Buku, 214; P. Kelly, 214; D. O'Dell, 212; G. Burnett, 223; W. Brown, 214; G. Lawrence, 213; G. Beeman, 221; G. Knickerbocker, 215, 223.

Kahunas Mixed

Standings as of March 13

	W	L
Maybe's	63	35
Untouchables	63	42
The Ruby Hunters	63	42
The Surf Riders	62	43
All Stars	60	45
The Boozers	55	50
Menephunes	55	50
The Ups and Downs	52	53
Sunday Funnies	52	53
Whitealoes	50	55
The Hotshots	49	49
The Foursomes	49	56
Four on the Floor	49	56
Alley Runners	47	58
The K & P's	46	59
Flying Dutchmen	45	60
Herr-Bares	42	63
The Alley Cats	36	69

Women, games 150 and over: E. Clark, 169, 164, 160; J. Barkley, 181; B. Beeman, 177, 165, 152; S. Steele, 177, 161, 159; F. Ferry, 179; J. Brown, 152; M. Northrop, 162; K. Vandemark, 172, 154; J. Musbach, 154; D. Wisniewski, 157; M. Vassas, 163; J. Sweet, 157; J. Toibin, 161, 155; G. Church, 166; L. White, 153; M. Miller, 168.
Men, games 180 and over: B. Clark, 168, 165; F. Barkley, 186; T. Steele, 194, 189; G. Beeman, 215; D. Buku, 202, 187; J. Vandemark, 190; F. Northrop, 224, 189; C. Staphish, 222; E. Vassas, 180; E. Vassas, 201, 184; M. Sweet, 201, 191; E. Greenleaf, 215; G. White, 186; T. Dault, 223, 190.

Junior Springers

Standings as of March 12

	W	L
Boone's Farm Five	7	25
The Wild Bunch	66	31
Team No. 6	63	48
The Bowling Wizards	62	42
Cool Company	60	44
The Unbeatable	56	48
S.W.A.T.	53	51
The Striking Five	47	53
Wileysgumwily	46	58
Crazy Fives	33	71
The Rookies	29	71
Team No. 12	28	78

Girls, high games: M. Mepvans, 181, 136, 134; D. Steinaway, 169, 124; C. Schulze, 165, 127; D. Buchholz, 157, 151, 125; C. Fahrner, 158; J. Liebeck, 154; S. Miller, 152, 124; C. Collins, 142, 136; T. Alexander, 141, 136; K. Milliken, 139; D. Thompson, 138; R. Alexander, 137, 122; M. Hanna, 120.
Boys, high games: J. Push, 206, 203, 172; D. McGill, 196; D. Thompson, 195, 178, 174; C. Sannes, 184, 178; S. Hegadorn, 184; J. Stock, 179, 166, 158; J. Fouty, 177; S. Wilson, 176, 151; J. Alexander, 172, 167; M. Schanz, 166; M. Sweeney, 162, 156; C. Tobin, 161; J. Sweet, 159, 150; R. Stoddard, 159; C. Heaton, 155.

Charlie Brown Prep

Standings as of March 10

	W	L
Pin Crackers	51	24
Pin Dusters	50 1/2	24 1/2
Alley Runners	44 1/2	30 1/2
Super Pros	37	38
Pin Pirates	35	40
Pinball Gang	32 1/2	42 1/2
Pinball Wizards	28 1/2	46 1/2
Team No. 8	21	54

Girls, high games: L. Mepvans, 150, 140; A. Aeillo, 139, 107; T. Fletcher, 128, 116; B. Behnke, 125, 113; S. Messner, 108; K. Walldyke, 112; M. Petsch, 106, 101; J. Lucas, 106.
Boys, high games: A. Fletcher, 163, 141; G. Greenleaf, 144, 130; J. Preston, 140, 123; T. Greenleaf, 134, 130; R. Krichbaum, 132; M. Selwa, 126, 102; J. Rowe, 126; D. Kleis, 124, 117; R. Robeson, 119, 107; M. Stebelton, 119, 105; T. Lucas, 118; D. Hermon, 118; R. Bentley, 113; D. Gipson, 112.

Rolling Pin

Standings as of March 10

	W	L
Kookie Kutters	72 1/2	39 1/2
Jolly Mops	71 1/2	40 1/2
Beaters	71	41
Grinders	64	48
Blenders	62	60
Spooners	60 1/2	51 1/2
Poachers	60 1/2	51 1/2
Pots	56	56
Mixers	55 1/2	56 1/2
Egg Beaters	53 1/2	58 1/2
Brooms	53 1/2	58 1/2
Dish Rags	52	60
Coffee Cups	52	60
Sporadic Spatulas	51	61
Kitchen Kapers	51	61
Sugar Bows	44 1/2	67 1/2
Jelly Rollers	41	71
Moppper Uppers	35	77

425 and over series: E. Heller, 441; P. Harok, 486; G. Clark, 463; E. Whitaker, 495; R. Musbach, 457; P. Wurster, 448; J. Edick, 436; E. Williams, 470; P. Borders, 430; S. Parker, 468; V. Stewart, 426; P. Goins, 467; D. Anderson, 453; B. Roberts, 437; D. Spalding, 447; R. Foster, 445; M. Kolander, 430; D. Alber, 451; D. Thompson, 474; K. Hamel, 430.
150 and over games: N. Hill, 150; D. Butler, 150; E. Heller, 156; M. Gross, 160; P. Harok, 156, 165; D. Klink, 173; G. Clark, 153, 176; G. Klink, 156; E. Whitaker, 150, 155, 190; W. Jackson, 153; T. Jarvis, 154; D. Lechtanski, 160; B. Wolfgang, 157; B. Halst, 156; R. Musbach, 152, 168; P. Wurster, 154; J. Edick, 194; E. Williams, 155, 152, 163; P. Borders, 155; S. Parker, 165, 184; R. Cook, 168; V. Stewart, 161, 151; P. Smith, 157; P. Goins, 198; D. Anderson, 164, 153; B. Roberts, 159; D. Spalding, 162; N. Hahn, 165; R. Foster, 167; J. Shepherd, 161; M. Kolander, 160, 167; L. Volta, 160; D. Alber, 161, 162; D. Bell, 179; D. Thompson, 161, 164; J. Ferry, 154; K. Hamel, 157.

Charlie Brown & Snoopy Peanut League

Standings as of March 12

	W	L
Dana Chargers	54	12
Bowling Bulldogs	40 1/2	25 1/2
Bullpups	34	32
Fonzie's Friends	32	34
Jaws	25	41
Bronco Bowlers	16 1/2	49 1/2

Games 70 and over: J. Tobin, 100, 82; K. Kiles, 74, 71; D. Thompson, 83, 122; J. Walldyke, 79, 76; D. Baker, 78, 73; D. Cox, 70; J. Toon, 88, 101; B. Robeson, 75; C. Bollinger, 79, 70; C. Bollinger, 79, 70; M. Stebeleton, 87, H. Morrell, 96, 119; D. Collins, 139, 101; P. Fletcher, 76, 117; K. Fletcher, 80, 88; D. Walldyke, 87, 77; C. Baker, 103, 79.
Series 100 and over: S. Carpenter, 110; J. Tobin, 192; K. Kiles, 145; D. Thompson, 205; J. Boyer, 102; J. Walldyke, 155; D. Buku, 151; C. Fuaers, 130; Debbie Cox, 127; J. Toon, 149; J. Petsch, 113; B. Robeson, 144; C. Bollinger, 149; M. Stebeleton, 151; H. Morrell, 215; D. Collins, 240; P. Fletcher, 193; K. Fletcher, 168; D. Walldyke, 164; C. Baker, 182; David Cox, 122.

Sunday Come-Ons

Standings as of March 6

	W	L
Holy Rollers	58	33
Dittos	52	39
Jamison's Spoilers	52	39
Bowl Dozers	51	40
The Pinsplitters	49	42
Put Together	47	44
Gutter Dusters	43	48
D D D	41	50
Part-time Bowlers	41	50
43-9ers	41	50
Gutter Busters	38	53
Independence 76	38	53

500 series, men: P. McGibney, 535; L. Tennant, 534; L. Herter, 544; K. Norris, 506; S. Gasper, 505.
175 games, men: K. Norris, 202; L. Herter, 194; S. Gasper, 190; L. Tennant, 193, 186; J. Shadley, 189; P. McGibney, 184, 179; D. Keezer, 180.
450 series, women: R. McGibney, 501; N. Keezer, 498; C. Gyde, 493; A. Dowhal, 476; K. Hamel, 470; C. Shadley, 468.
150 games, women: R. McGibney, 208; N. Keezer, 201, 166; K. Hamel, 195; A. Dowhal, 191, 170; C. Gyde, 154, 159, 160; D. Indland, 171; C. Shadley, 165, 168; C. Tennant, 165; B. Bower, 158, 162; B. Herter, 160; T. Sanderson, 160.

Unknowns League

Standings as of March 9

	W	L
Shady Ladies	104	85
Independents	103	86
Streakers	97	92
Pin Dusters	91	98
Strikers	87	102
Fascinating "5"	85	104

Games of 140 and over: H. Horning, 142; D. Weiss, 142; C. Salyer, 163, 140; J. Sweeny, 162; J. Sweet, 144, 158; R. Beeman, 144, 150; C. Fleischmann, 156, 140; J. Tuttle, 164; B. Check, 141; M. J. Gipson, 146, 149; B. Oesterle, 148; P. Rowton, 150; M. Adams, 147; S. Steele, 153, 160, 169; K. Greenleaf, 140; P. Hesson, 163; K. Hanke, 149; J. Murphy, 182, 148.
Series of 425 and over: J. Sweet, 427; S. Steele, 482; J. Murphy, 458.

Leisure Time League

Standings as of March 10

	W	L
Misfits	60 1/2	39 1/2
Four Stoges	60	40
Crackpots	55	45
Unpredictables	53 1/2	46 1/2
Sugar Loafers	53 1/2	46 1/2
Lady Bugs	50	50
Roadrunners	47	53
Afternoon Delights	46	54
Day Dreamers	46	54
Holy Rollers	44 1/2	55 1/2
Slowpokes	44 1/2	55 1/2
The Lakers	39 1/2	60 1/2

500 series: R. Forner, 527; M. Usher, 585.
200 games: R. Forner, 200; M. Usher, 207.
400 series: S. Bowen, 412; K. Herman, 444; E. Williams, 422; D. Thompson, 428; S. Friday, 492; G. Wheaton, 436; P. Whitesall, 416; S. Centilli, 437; B. Marsh, 411; A. Grau, 406; J. Fidh, 471; E. Heller, 464; B. Robinson, 425; C. Hoffman, 413; S. Weber, 410; B. Tison, 443; M. O'Donnell, 441.
Games 140 and over: S. Roehm, 148; S. Bowen, 145, 146; K. Herman, 146, 153, 145; E. Williams, 141, 143; D. Thompson, 149, 172; S. Friday, 185, 153, 154; K. Haywood, 145; G. Wheaton, 164; J. Riemenschneider, 153; D. Messing, 141, 143; P. Whitesall, 156; S. Centilli, 157, 150; M. Schrauer, 143; B. Marsh, 151; J. Delagrang, 143; L. Haller, 173; A. Grau, 148; J. Barkley, 149; J. Fidh, 158, 178; J. Staphish, 143; R. Forner, 200, 157, 170; E. Heller, 149, 143, 172; B. Robinson, 161; C. Hoffman, 143, 154; S. Weber, 162; B. Tison, 144, 167; N. Primrose, 140; M. O'Donnell, 144, 162; M. Usher, 207, 183, 185.

Junior House

Standings as of March 10

Graduating from Patricia Stevens School

Lois Ann Koch of Chelsea is one of the mid-year graduates who will receive diplomas from Patricia Stevens Career College of Milwaukee in commencement exercises held on Saturday, March 28, at Bradley Pavilion of the Performing Arts Center in Milwaukee.

The commencement address will be delivered by the Honorable Christ T. Seraphim, Circuit Court Judge of Milwaukee county. Miss Koch is the daughter of Mr. and Mrs. Paul F. Koch, 120 S. Fletcher Rd. She will graduate from a nine-month Public Relations Course.

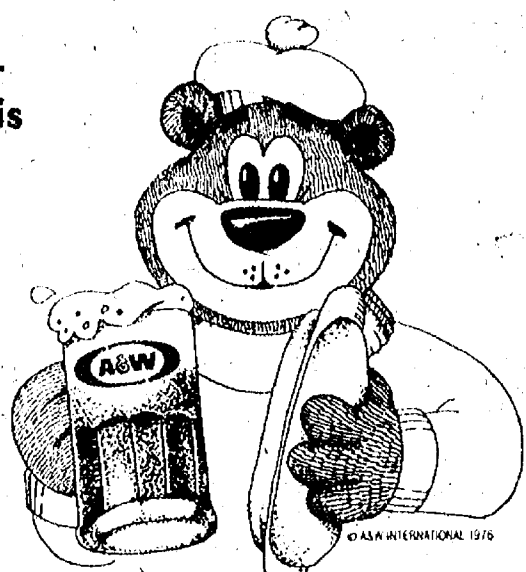
A & W CHELSEA

1-94 and M-52
REMEMBER—
Every Tuesday is
CONEY DAY

**CONEY
DOGS**

39¢ ea.

Save Time - Call in
Orders Ahead
475-2055



Feeder Cattle & Farm Machinery Sale

SATURDAY, MARCH 19
Beginning at 12:30 p.m.

Located 3 miles north of Grass Lake on Mt. Hope Rd. to Morrissey Rd., east 1 1/2 miles, or take Exit 150 off I-94 1/4 mile to Morrissey Rd., east 1 1/2 miles on Morrissey.

40 HEAD OF FEEDER CATTLE

Weighing 300-500 lbs.

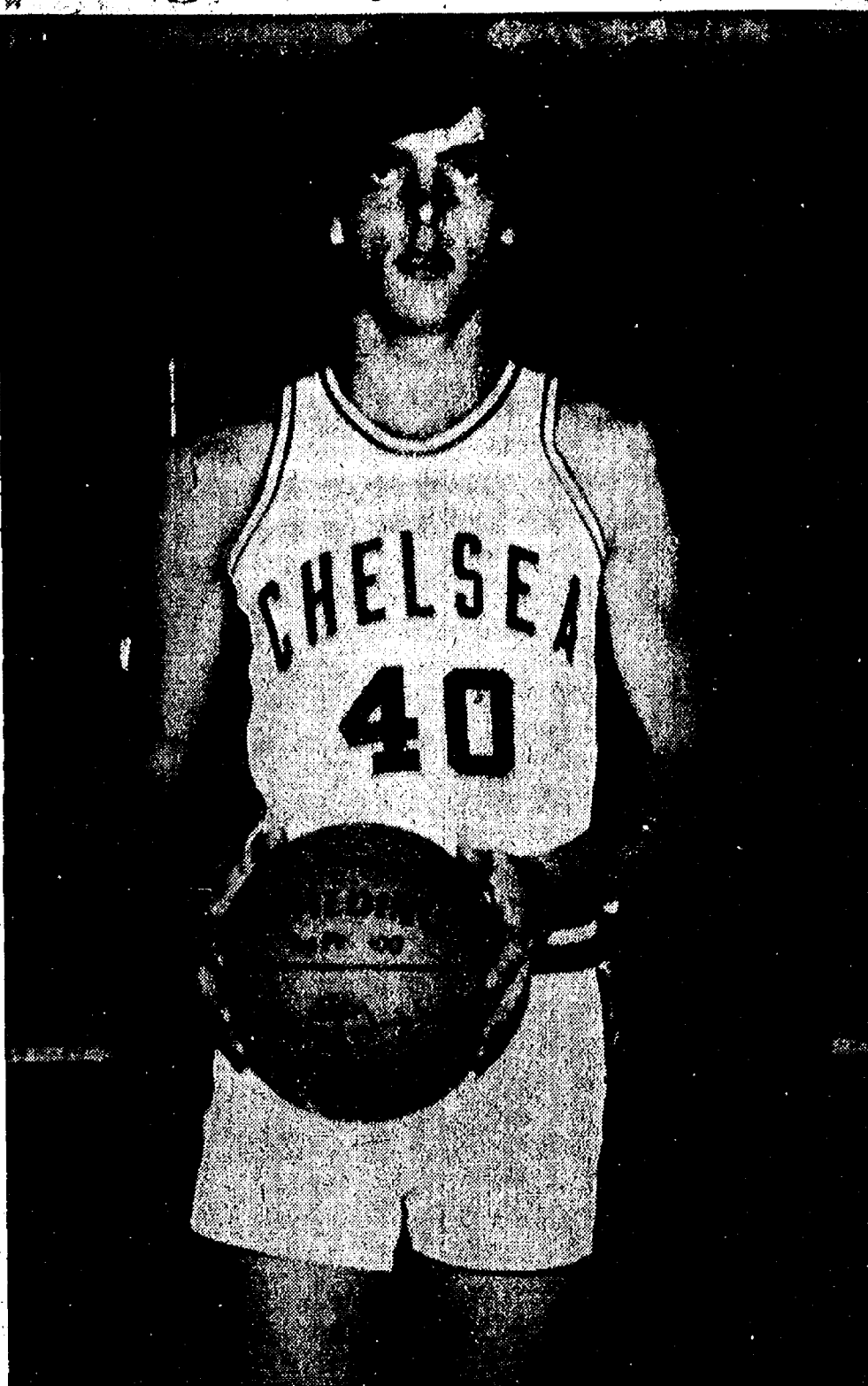
1973 Oliver 1755 diesel tractor with wide front 18.4x34, 1400 hrs.
John Deere 2020 gas tractor with loader No. 47, duals.
Oliver plow, 5-16.
John Deere wheel disc, 12-ft.
New Holland baler 273 with ejector.
New Holland No. 469 haybine.
New Holland No. 256 rake.
John Deere hay elevator, 40-ft.
2 bale wagons.
John Deere grain drill, 17-hole.
John Deere No. 494 corn planter.
Oliver cultivator, 3-pt., 4-row.
John Deere cultipacker.
Arts-Way No. 425A feed grinder.
TERMS: Cash day of sale. Check accepted with I.D. Not responsible for accidents day of sale. Lunch on grounds.

ROBERT MAUTE, Owner

Grass Lake, Mich. (517) 522-4649

Sale Mgr. & Auctioneer: Charles "Chuck" Chestnut
Williamston, Mich. (517) 521-3555

Cager of the Week



CHRIS SMYTH (40), a first-year member of the varsity squad this season, began his basketball career in 7th grade. At that time, because of a height advantage, he was positioned as a center for his team. In 9th grade, the 6'2" junior was drafted as a forward, a position he has continued to play since that time. Although the Bulldogs failed to rank as titlist contenders this year, Smyth had the following post-season observations to offer. "I thought we all played well as a team; our problem was keeping our efforts together at the right times. Our play was inconsistent at the beginning of the year, but then we won 5 of 7 games after Christmas. Unfortunately, we started to lag again in our last few games." In Smyth's opinion, Chelsea's second contest with South Lyon was the scene of the Bulldogs' best performance. "We were trailing South Lyon at the end of a couple of quarters, but we still came out from behind to win," the cager said. On an individual level, Smyth's best game was against Napoleon where he was responsible for making several key rebounds. According to Smyth, his attraction to basketball is grounded in the challenge of the sport. "Basketball is mainly a team effort," he added. "If you don't have five guys playing together, there is no way you'll win." An example of successful teamwork this winter was Chelsea's highly effective use of their "opal Las Vegas" defensive pattern, Smyth said. "Our tactics depended on the way our opponents passed the ball, so they were unable to predict our reaction. Ultimately it gave us an advantage," the cager concluded. Along with basketball, Smyth has played football for Chelsea High for the past three years and ran track in his younger years. He has one sister and two brothers, and is the son of Mr. and Mrs. Gerald Smyth of Waterloo Rd.

Please Notify Us of
Any Change in Address

Beach School Bands Rate High in Festival

Beach Middle school's 7th and 8th grade bands received a I and II rating, respectively, following highly commendable performances in the District 12 Junior High School Band and Orchestra Festival at Saline Middle school last Saturday. A total of 68 students currently participate in the 7th grade band program, while 57 musicians are members of the 8th grade band.

Chelsea's 7th graders entered the festival at the Class C level. They received a I-II-I in performance, followed by a II in sight reading for an over-all I rating. Competing at the Class B level, Beach school 8th graders received straight II's, or a II in each of four categories.

"The attitude and performance of both bands at the festival were something the community can be proud of," said 8th grade band director Warren Mayer following the event.

Festival judges had lofty praise

for Chelsea's 7th grade band in particular, stating the band gave a performance equal to that which would normally be expected of an older group of students with more musical experience. They concluded their critique with several more favorable comments on both the band and its director, Steve Bergmann.

However, it was the 8th grade band's performance which provoked the most response from Bergmann and Mayer. "Out of all the bands in the Chelsea School System, the 8th graders have improved the most," Bergmann stated. "Personally, I'm extremely proud of the 8th grade band; they worked exceptionally hard and have come a long ways," Mayer added.

With their I-rating Beach school's 7th grade band is now qualified to participate in the State Junior High School Band and Orchestra Festival to be held May 7 in Lansing. Plans are currently underway to organize the trip.

Forensics Team 3rd In Tough Tourney

If Chelsea's performance in the Kalamazoo Invitational Forensics Tournament last Saturday is a forecast of the future for the CHS forensics team, members of the squad can look forward to a championship season this spring.

Billed as the largest and toughest of all state tournaments, the Kalamazoo Invitational attracted 35 predominantly Class A schools from throughout Michigan. Chelsea devastated most of the competition with a resounding third-place finish.

Placing in the top 10 along with Chelsea were Portage Northern, 1st; Birmingham Seaholm, 2nd; Ann Arbor Huron, 4th; Albion, 5th; Marshall, 6th; Ann Arbor Pioneer, 7th; Wayne Memorial, 8th; Dearborn Edsel Ford, 9th; and Lansing Waverly, 10th.

"The high quality of the tournament can be underscored with the following fact," Chelsea High forensics Coach William Coelius said. "Of those students who will eventually make it to the state finals, 85 percent were entered in the tournament last Saturday."

Chelsea entered a team of 51 students in nine tournament events. After running a three preliminary round gambit in the day-long event,

only eight CHS forensics team members had advanced to the semi-finals. Chelsea's semi-finalists included Kim Brown, Tom Severn, Liz Schwarze, Doug Foreman, Dana Murphy, Julie Prohaska, Mary Beth McGinn and Carolyn Schardein.

As the competition stiffened, the eloquence of three local semi-finalists prevailed. Qualifying for the tournament finals were Kim Brown, Liz Schwarze and Doug Foreman.

Among Chelsea's three finalists, Foreman captured the highest honors with a third-place trophy in Humorous Speaking. Some 48 students had been entered in that event. Placing high were Kim Brown, 6th in Women's Extemporaneous Speaking; and Liz Schwarze, 7th in Serious Reading.

"I thought we were very successful," Coach Coelius remarked following the tournament. In addition to contestants, Chelsea also provided the tournament with seven local judges.

For a follow-up performance Chelsea High will return to the public speaking arena on March 30, when the forensics team travels to Napoleon for district competition. Open to the public, the event is slated to begin promptly at 1:45 p.m.

CATS

CHELSEA AREA

TRANSPORTATION SYSTEM

Transportation for the Senior Citizens,
65 years and Older,
and the Handicapped.

CALL 475-9494

between 9 to 11 a.m. or 1 to 3 p.m.

Service hours are 9 a.m. to 4:30 p.m. daily; Thurs., 9 to 1

Thursday Night THE CAPTAINS TABLE

ROAST BEEF BUFFET



"Carved Before Your Eyes"

Serving from 4:30 - 9:30 p.m.

The Captains Table Mon.-Wed., 6 a.m. - 9 p.m.
Thurs.-Fri., 6 a.m. - 10 p.m.
Sat., 7 a.m. - 9 p.m.

8093 MAIN ST., DEXTER

Standard Want Ads Will Sell Your Unwanted Items

The Peak of Excellence

Wickes Buildings

Who else has built So many...

So well.

Who else but Wickes Buildings has erected so many beautiful new garages, workshops and utility storage buildings for so many thousands of satisfied customers. Every one an attractive, professionally-engineered structure, built to strict quality standards by skilled Wickes Buildings crews. Rugged, dependable poleframe construction with maintenance-free exteriors of color steel or aluminum. Attractively priced too, with a choice of extended payment plans for qualified buyers.

**RURAL AMERICA'S LEADING BUILDER OF
UTILITY STORAGE BUILDINGS, GARAGES AND WORKSHOPS**

**W Wickes
Buildings**
A Division of The Wickes Corporation

Napoleon, Ohio, Box 62 • (419) 592-0966
STATE ROAD 424

Suicide Death Probable in Traffic Fatality

Sheriff's Department police are investigating the probability of suicide as cause in the death of Rose Ann Gimney, 40, of 221 Railroad St., Tuesday night. Mrs. Gimney died from injuries sustained in an automobile accident which occurred at approximately 9:45 p.m. on Baker Rd., just north of the I-94 overpass.

According to police reports, Mrs. Gimney was northbound on Baker Rd. when she attempted to hit a tree alongside the road. Her vehicle failed to make contact with the tree, so she abandoned the car and walked onto the southbound lane of Baker Rd.

She then proceeded to lay down on the pavement and was struck moments later by a 1971 Chevy driven by a Dexter man. The man told police he failed to see Mrs. Gimney until he was nearly upon her prone figure. Dark clothing worn by the victim further disguised her visibility to the driver.

FFA Slave Auction Set

With the prospect of cheap labor their bait, 40 members of Chelsea High's Future Farmers of America (FFA) are hoping to attract a large turnout at their annual "Slave Sale" slated for April 5, 8 p.m. in the high school cafeteria. Conducting the human auction will be FFA alumnus Loren Heller.

The public is invited to attend the sale where they will be able to purchase high school boys and girls for eight hours of work around a home or farm. Proceeds from the auction will be used to finance yearly FFA activities.

Helping FFA members organize the upcoming sale is Chelsea High FFA advisor Dave Nicewicz.

FARLEY CONSTRUCTION

522 HOWARD RD.

ADDITIONS • REMODELING
REPAIRS
NEW HOMES

475-8265 or 475-7643

Parts Plus

Open Monday thru Thursday
and Saturday 8 a.m. to 6 p.m.
Friday, 8 a.m. to 7 p.m.

CHELSEA AUTOMOTIVE

"Your Automotive Specialist"

1414 S. MAIN ST., CHELSEA

PHONE 475-9106

SALE - MARCH 17-18-19

USE YOUR MASTER CHARGE OR BANKAMERICARD

CYCLONE HEADERS

First in Headers

\$59⁹⁵ Most Applications

CHERRY BOMB HEADER MUFFLERS

Reg. \$15.95 **\$11⁹⁵**
NOW ONLY

LOOK FOR HI-PERFORMANCE HEADQUARTERS OPENING

We will have a **BIG SALE** on the following, starting March 24-25-26

Featuring CYCLONE HEADERS • CRANE CAMS • MR. GASKET
HOLLEY CARBS & MANIFOLDS • ACCEL IGNITION • SUPERIOR
SUN TACHS & GAUGES • OHM'R IGNITION CABLES



Polly's MASTER
MARKETS

1101 M-52

CHELSEA, MICH.

(Corner M-52 and Old U.S. 12)

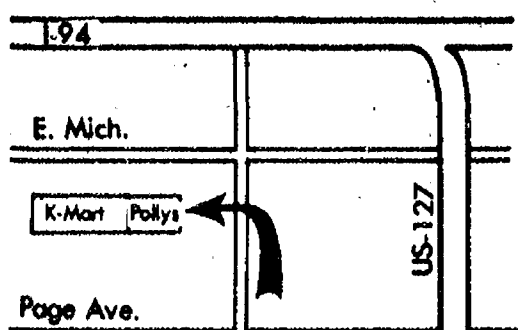
Supplement for Ann Arbor News, Chelsea Standard

get to know us...
WE CAN HELP YOU SAVE ON YOUR FOOD BILL!

Open Daily 8 to 10
Sunday 9 to 9

- ★ **QUALITY PRODUCE**
- ★ **QUALITY MEAT**
- ★ **COLD BEER, WINE, LIQUOR**
- ★ **LOTTERY TICKETS**
- ★ **SIDES OF BEEF**
- ★ **FRUIT BASKETS**
- ★ **DRY CLEANING**
- ★ **PHOTO PROCESSING**
- ★ **VARIETY AT LOW PRICES**

Polly's New Location
3001 E. Michigan Ave.
Open 8 till 10 Daily
and Sunday 9 till 6



WE GLADLY ACCEPT
FOOD STAMPS

ALL SALE PRICES
THRU SATURDAY

**Save over
\$8.50**
WITH ALL POLLY'S
COUPONS

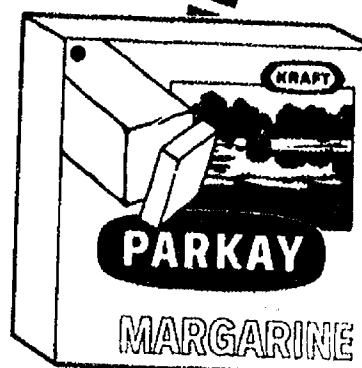


Polly's MASTER
MARKETS
1101 M-52
CHELSEA, MICH.
(Corner M-52 and Old U.S. 12)

**Save 50¢
WITH COUPON**

DEMINGS
PINK SALMON

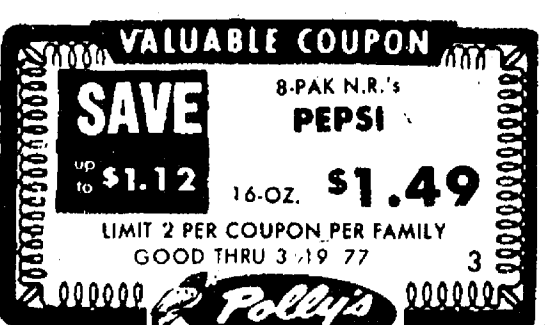
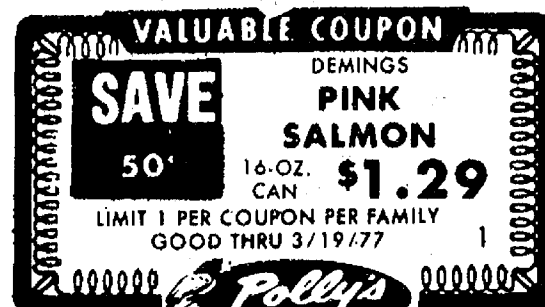
16-OZ. **\$1.29**



1-LB.
QTRS.

**KRAFT
PARKAY
MARGARINE**
39¢

**Save 14¢
WITH COUPON**

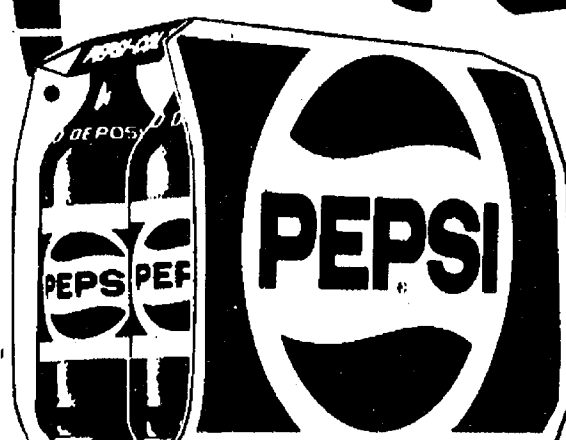


**BUY 2
Save \$1.12
WITH COUPON**

8-PAK 16-OZ.
NO-RETURN

• DIET PEPSI • PEPSI LIGHT
• MOUNTAIN DEW

PEPSI
\$1.49



5-OZ. DIXIE REFILLS	100 CT.	89¢
FAMILY SCOTT TOILET TISSUE	4 PAK	69¢
HUNTS SLICED or HALVED PEACHES	29 OZ.	49¢
GREEN GIANT SWEET PEAS	17 OZ.	29¢
JIF PEANUT BUTTER	40 OZ.	\$1.89
SEVEN SEAS VIVA ITALIAN	16 OZ.	79¢
CARNATION COFFEE MATE	22 OZ.	\$1.39
HERSHEYS CHOCOLATE SYRUP	2 16-OZ.	85¢
DERMAGAGE DISH SOAP	32 OZ.	99¢
JIFFY PIE CRUST MIX	4 9-OZ.	\$1
GOLDEN SUN "PURE" ORANGE JUICE	32 OZ.	33¢
PILLSBURY FUDGE BROWNIE	22 OZ.	69¢

Green Giant
12-OZ. NIBLETS CORN
16-OZ. FRENCH GREEN BEANS
4 for \$1

Sealtest LIGHT n' LIVELY
YOGURT
3 16-OZ. for **\$1**

HOLSUM REGULAR or CRACKED
WHEAT BREAD 16-OZ. LOAF **2/\$1**



SHAMROCK DAYS

**SAVE MORE ON
PRIVATE BRANDS!!**
CHECK AND COMPARE THESE EVERYDAY LOW PRICES

SCOT LAD TOMATO JUICE	46 OZ.	57¢
SCOT LAD CANNED TOMATOES	29 OZ.	49¢
SCOT LAD TOMATO CATSUP	32 OZ.	79¢
SCOT LAD TEA BAGS	100 CT.	\$1.59
MEADOWBROOK ORANGE JUICE	64 OZ.	94¢
QUEEN OF SCOT COFFEE CREAMER	22 OZ.	\$1.07
SCOT LAD SALAD OIL	38 OZ.	\$1.35
SCOT LAD 5-POUND FLOUR	32 OZ.	59¢
SCOT LAD FABRIC RINSE	10 CT.	51¢
SCOT LAD TRASH BAGS	12 OZ.	\$1.05
SCOT LAD BAKING CHOCO' CHIPS	12 OZ.	79¢
CARRIER MILL EGG NOODLES	1-LB.	55¢
SCOT FARM SHREDDED MOZZARELLA	4 OZ.	59¢
SCOT LAD COCONUT FLAKES	14 OZ.	99¢

MANUFACTURERS
**CENTS
OFF
DEALS ...**

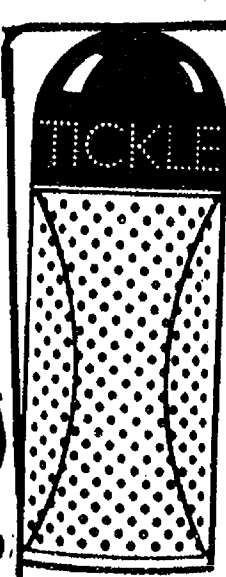
4' OFF DOWNY	17 OZ.	51¢
20' OFF LIQUID PALMOLIVE	32 OZ.	\$1.14
25' OFF LIQUID ERA	64 OZ.	\$2.23
5' OFF BATH DIAL	7 OZ.	40¢

FOR A COOL BURST OF FRESHNESS

TRY NEW
GLEEM



5-OZ. WT. **79¢**
W/IN-STORE COUPON



staying drier is
nicer with a little
TICKLE
ROLL-ON ANTI-PERSPIRANT DEODORANT

4 fresh
fragrances-
including
unscented

2-OZ.
WT.

\$1.29
W/IN-STORE COUPON

**SAVE
OVER
\$7.00**
WITH POLLY'S
IN-STORE COUPONS

Check Your Needs

SAVE 24¢	PURE WESSON OIL	48-OZ.	\$1.59
SAVE 35¢	9-LIVES ASSORTED CAT FOOD	5 6-OZ. for	\$1
SAVE 80¢	CARNATION INSTANT MILK	20-QT.	\$3.99
SAVE 62¢	HEAVY DUTY WISK DETERGENT	64-OZ.	\$1.99
SAVE 30¢	EASY-OFF OVEN CLEANER	16-OZ.	99¢
SAVE 14¢	JIFFY BAKING MIX	40-OZ.	59¢
BUY 3 SAVE \$1.20	KRAFT PIMENTO, SWISS or AMERICAN SINGLES	12-OZ.	89¢
SAVE 54¢	NEW!! TICKLE ROLL-ON DEODORANT	2-OZ.	\$1.29
BUY 2 SAVE 24¢	GLEEM TOOTH PASTE	5-OZ.	79¢
SAVE 40¢	FREEZE-DRIED TASTERS CHOICE	8-OZ.	\$3.99
BUY 2 SAVE 80¢	ELSIE VANILLA ICE CREAM	1/2-GAL.	99¢
BUY 3 SAVE 30¢	HERRUD SLICED LUNCH MEATS	12-OZ.	89¢
BUY 3 SAVE 60¢	HERRUD REGULAR or BEEF FRANKS	1-LB.	89¢
BUY 3 SAVE 90¢	SWIFT Brown n' SERVES	8-OZ.	79¢

Leggs PANTYHOSE
3 \$3.33
PAIR FOR
ON SPECIAL DISPLAY
SHEER ENERGY PANTYHOSE
2 \$5.50 4 \$2.20 KNEE HIGHS

Swift Premium

U.S.D.A. CHOICE

BEEF SALE

CORNERED BEEF ROUNDS

99¢

SWIFT OVEN ROAST CORN BEEF



\$1.39 LB.

GOVERNMENT INSPECTED MIXED FRYER PARTS **49¢**

SPECIAL

ARMOUR

SWIFT PREMIUM BONELESS CHUCK ROAST	89¢
SWIFT PREMIUM T-BONE STEAK	1.79
SWIFT PREMIUM PORTERHOUSE STEAK	1.89
SWIFT PREMIUM SIZZLE STEAK	1.79
SWIFT PREMIUM CUBE STEAK	1.59
SWIFT PREMIUM RUMP ROAST	1.43
SWIFT PREMIUM CHUCK STEAK	79¢
ARMOUR CUT SWISS STEAK	1.19
SWIFT PREMIUM RIB STEAK	1.59
POLLY PRIDE GROUND BEEF CHUCK	89¢

SWIFT PREMIUM **ROUND STEAK** **\$1.39**

SWIFT PREMIUM **SIRLOIN STEAK** **\$1.49**



SEAFOODS for LENT

TURBOT FILLETS	LB.	99¢
OCEAN PERCH FILLETS	LB.	1.19
CAT FISH	LB.	1.59
SMELT	LB.	79¢
RED SNAPPER FILLETS	LB.	1.29
HADDOCK FILLETS	LB.	1.49
SOLE FILLETS	LB.	1.09
POLLOCK FILLETS	LB.	69¢
FROG FILLETS	LB.	1.89

*ALL FISH FRESH FROZEN

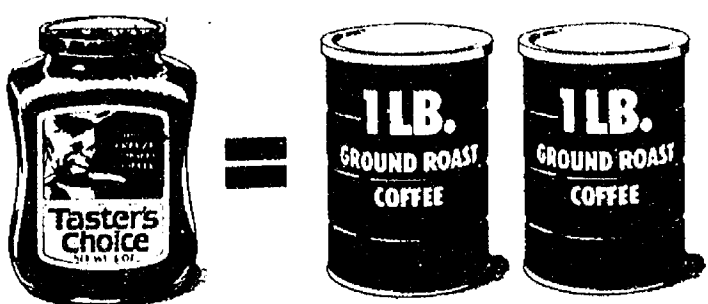
ECKRICH REGULAR or BEEF FRANKS	LB.	1.09
ECKRICH SMORGAS PAC	LB.	1.59
ECKRICH REGULAR or THICK SLICED BOLOGNA	LB.	1.39
ECKRICH SMOKED or POLISH SAUSAGE	LB.	1.39
HYGRADE WEST VIRGINIA SLICED BACON	LB.	1.49
HYGRADE SLICED BOLOGNA	LB.	89¢
HERRUD BRAUNSWEIGER	LB.	59¢
SCOT PRIDE SMOKY LINKS	10-OZ.	89¢
SLICED BACON	LB.	1.29

ARMOUR STAR PORK SAUSAGE	LB.	79¢
ARMOUR STAR PORK SLICED BACON	12-OZ.	1.09
ARMOUR STAR SPICED LUNCHEON	3-LB. CAN	2.79
ARMOUR STAR DELITE	LB.	1.59

LUCK OF THE IRISH BAKERY

FRESH PEACH PIE	8-IN.	99¢
FRESH BAKED CINNAMON ROLLS	6 for	69¢

DECORATED CAKES, CUPCAKES AND COOKIES, GREEN BREAD AVAILABLE FOR ST. PATS



A half-pound of Taster's Choice makes as much as two pounds of ground roast.

Taster's Choice **\$3.99**
100% FREEZE-DRIED COFFEE
8 OZ. = 120 CUPS W/IN-STORE COUPON
GROUND ROAST **\$5.58**
TWO 1 LB. CANS = 120 CUPS
YOU SAVE \$1.59
...and you get Ground Roast Flavor!

QUEEN OF SCOT
• PEAS
• CORN
• MIXED VEGETABLES

32-OZ. POLY BAG

79¢

SHOESTRING POTATOES

20-oz. Poly Bag

49¢

ICE CREAM

1/2-GALLON

99¢

WITH IN-STORE COUPON

ELSIE (3 FLAVORS) **SUNDAE BEST ICE CREAM** **\$1.09**
1/2-GAL.

PRODUCE

U.S. NO. 1 MICHIGAN Red Delicious

APPLES **79¢**

3-LB. BAG

PASCAL CELERY

EA.

49¢



CRISPY RED RADISHES	1-LB. BAG	29¢
FLORIDA PINK OR WHITE GRAPEFRUIT	5-LB. BAG	99¢
FRESH ASPARAGUS	LB.	99¢
FRESH GREEN ONIONS	2 for	29¢

RICHS WHITE BREAD DOUGH	6 PAK	99¢
MORTON T.V. DINNERS	11 OZ.	48¢
VAN DEKAMP BATTERED HALIBUT	8 OZ.	1.29
VAN DEKAMP FISH KABOBS	16 OZ.	1.29
BORDEN SUNDAE CUPS	6 PAK	69¢

While Supply Lasts LIVE!! **SHAMROCK PLANTS** EA. **59¢**
GREEN MUMS EA. **\$1.29**

Polly's MASTER MARKETS

1101 M-52 CHELSEA, MICH.
(Corner M-52 and Old U.S. 12)



Thank You

FOR SHOPPING AT...



WHERE WE ARE
HAPPY TO.....

save YOU MONEY!