

JAYCEES WE SALUTE YOU

JANUARY 16-22 NATIONAL JAYCEE WEEK

WEATHER

	Min.	Max.	Precip.
Thursday, Jan. 13	10	11	0.00
Friday, Jan. 14	9	21	0.07
Saturday, Jan. 15	4	8	0.04
Sunday, Jan. 16	5	10	Trace
Monday, Jan. 17	6	5	Trace
Tuesday, Jan. 18	4	11	0.02
Wednesday, Jan. 19	3	12	0.03

The Chelsea Standard

QUOTE

"Night makes a weird sound of its own stillness."
—P. B. Shelley.

ONE HUNDRED-SEVENTH YEAR—No. 32

12 Pages This Week

Plus 4-Page Supplement

CHELSEA, MICHIGAN, THURSDAY, JANUARY 20, 1977

15c per copy

SUBSCRIPTION: \$6.00 PER YEAR

Youth Centers Offer Activities For Young Set

Two new youth recreation centers in the Chelsea area soon hope to eliminate the widely voiced complaint of local adolescents, that "there's nothing to do in Chelsea."

One of these, now open, is Allen's Recreation Center at 2416 W. Old US-12. Operated by Garland Allen, the center offers a variety of games and a lounge area to entertain local youths. Service hours are from 10 a.m. to 10 p.m., Mondays through Saturdays, and 12 noon to 10 p.m. on Sundays.

Utrog's Fun World, which expects to open shortly on Park St., will operate under the direction of owners Karen Johnson and her husband, Chelsea Village Council recently invoked a temporary halt to the facility's initial scheduled opening in January, under force to review a request for a zoning variance which would accommodate the center.

Although the site of Utrog's is currently zoned commercial, a village ordinance states all new commercial businesses must provide one parking space for every 100 sq. ft., to be used in the establishment's operations. Sufficient parking space, as defined by yet another village ordinance, currently does not exist at the commercial site.

Pending the council's decision, Mrs. Johnson expects the center to open in February. The proposed

hours of operation will be 3 p.m. to 9 p.m. daily.

"Utrog's will be a place for the kids to come into from out of the cold, where they may play pool, or try their skills on our pinball machines," Mrs. Johnson explained. Also on the premises will be a jukebox and snack bar.

The facility will be governed by rules which will be strictly enforced, according to Mrs. Johnson. The rules are designed to assure the safety of everyone who will patronize the establishment.

In addition to rules, adult supervision will be provided at all times. "We need everyone's co-operation to make this a successful, well-run amusement center for our youth," Mrs. Johnson stated. "We are not opening a breeding place for trouble, as some people think. Kids need a place they can go for small talk and fun."

All ages will be welcome at Utrog's. Sisters, brothers, mothers, and fathers are all invited to participate in the center's activities. For habitual game players, weekly and monthly prizes will be awarded for the highest game scores.

When asked what prompted her venture into the youth recreation center area, Mrs. Johnson replied, "We're betting this is just what our Chelsea youths need and want, and we're willing to take a chance for them. We're thinking of our youths. Let's hope everyone else is too."



WINNING WRESTLERS: Led by Mike Young's title winning performance, these Bulldog matmen grappled their way into a third-place tie with state-ranked Okemos while competing in the Mason Invitational Tournament last Saturday, Jan. 15. Kneeling, in the front row, from left, are Bruce Bennett, 2nd place, 187 lbs.; Joe Branham, 4th place, 155 lbs.; titlist Mike Young, 132 lbs.; and

Bryan Van Reesema, 4th place, 180 lbs. Standing, in the back row, from left, are Coach Richard Bareis, Rick Beeman, 4th place, 145 lbs.; Leon Brown, 2nd place, heavyweight; Todd Headrick, 2nd place, 193 lbs.; and Coach Sam Vogel. A mixed class of teams from eight Michigan schools competed in the tournament.

Jaycee Week Observed Here

Jaycee Week, Jan. 16-22, is nearing its end today, but there is no end to the good deeds and civic commitment which have characterized this group locally since its initial date of charter many years ago.

Appropriate with the passing of Jaycee Week is a recollection of the organization's past year of achievements in Chelsea. At the forefront of the list was the Jaycee campaign in support of Proposal A, banning non-returnable beverage containers, which won heavily in the Nov. 2 election.

The Jaycees were responsible for organizing the distribution of 1,500 pro-Proposal A circulars door-to-door and person-to-person in Chelsea.

Other memorable projects this past year included the Jaycee Chicken Barbecue, which sold out 1,500 chicken dinners, along with fall color tour maps of the Chelsea area.

Some 150 community residents

attended the pre-election "Candidates Night" of lively debate between Washtenaw county sheriff-elect Tom Minick and the then incumbent Sheriff Frederick Postill.

Hundreds upon hundreds of local youngsters shivered through chilling experiences at the Jaycee Haunted House on Park St. this Halloween.

Earlier last year Jaycees sponsored "Everything Goes" competition in which Chelsea ignominiously dumped the best contestants Dexter had to offer.

The Jaycee-Red Cross blood drive for holiday accident victims secured 89 pints of blood at the time of year they are most sorely needed.

Jaycee projects also included efforts seldom recognized by anyone beyond those immediately affected. Such were the Christmas Trees for Fatherless Boys project, and the Needy Kids Christmas Shopping, co-ordinated through Linda Ormsby, director of Chelsea Social Services.

Jaycee projects often have a role in developing the leadership abilities of young Chelsea men between the ages of 18 and 36. Chairing these projects fosters management and organizational skills. Jaycees also conduct internal seminars specifically directed toward these goals.

Beyond their dedication to service, the Jaycees are also a social organization, with general membership meetings the first Tuesday of every month at the meeting room in Chelsea Lanes. Jaycees hold family picnics in summer, and dinner meetings in winter, attended by wives. The Jaycee wives Auxiliary is a separate, related organization which conducts countless community-help projects, whether alone or together with the Jaycees.

Altogether, the Jaycees provide many community services, large and small, which are too numerous to list.

And, if the past is any indication of the future, 1977 promises to fill many more pages in the story of this active community organization.

Matmen Place 3rd In Mason Tourney

An outstanding performance by Bulldog Mike Young paced a fine performance by Chelsea High's varsity wrestling squad in the high-powered Mason Invitational Tournament last Saturday, Jan. 15.

By the end of the day, the Bulldogs had grappled their way to a third-place tie with state-ranked Class B Okemos.

In addition to Chelsea and Okemos, other schools competing in the event included two strong Class A teams from Lansing-Everett and Holt; two more state-ranked Class B teams from Mason and Ovid-Elsie; and two highly visible Class B contenders from Marshall and St. John.

Final tournament standings were Lansing-Everett, 133; Mason, 118; Chelsea and Okemos, 97 each; Marshall, 86; Holt, 81; Ovid-Elsie, 77; and St. John, 72.

Mike Young provided Chelsea's only title winning effort. According to Coach Richard Bareis, Young's display of talent on the mats "was a fine thing to watch as he scored a 10-3 landslide decision over St. John, a 4-1 decision win over Mason, and then tore up a fine Lansing-Everett wrestler, 11-1, in the finals."

Taking second-place honors for Chelsea were Bruce Bennett, 167 lbs.; Todd Headrick, 193 lbs.; and Leon Brown, heavyweight. They

were followed by fourth-place medalists Rick Beeman at 145 lbs., Joe Branham at 155 lbs., and Brian Van Reesema at 180 lbs.

Other Chelsea wrestlers who gained single victories in the tournament were Dan Wilson at 190 lbs., a pin; Jim Stahl at 128 lbs., a pin; and Chuck Young, who won with a 10-2 decision.

"Over-all, the wrestling competition was strong and in most cases, our wrestlers did as much as could be expected," said Coach Bareis. "We are gaining valuable experience. Our heavier weights are starting to show more poise even though they have been unable to win in the finals, and we are still very young in the light weight divisions although we hope to see those fellows improve by league meet time."

"Saline was extremely hot from the line, making 11 of 14," Coach Balistrere explained.

At the wire, with only a few seconds left on the clock, Chelsea

Cagers Lose To Saline in Final Seconds

Battling hard to break a three-game losing streak which has marked their return to the courts following a short holiday recess, Chelsea High's varsity cagers once again engaged in a neck-to-neck contest, this time with league leading Saline last Friday, Jan. 14. The upshot of the showdown was yet another anti-climactic sting for the Bulldogs, 47-53.

"While I was disappointed we lost, I have nothing but praise for the team's fine hustle and determination," said Coach Tom Balistrere following the contest. "Our club doesn't quit, and I'm very proud of them, all of them," he added.

The game was close the whole way, with neither team managing more than a seven-point lead. At the end of the first period, the score was tied, 10-10. Highlighting first period action for Chelsea were Randy Sweeney with six points, and Dean Thompson with four.

In the second quarter, Saline outscored the Bulldogs, 20-13, for a 30-23 half-time lead. Leading Chelsea's attack on the Hornet's nest that period were Pete Feeney, Randy Sweeney, Don Morrison, Jerry Benjamin, and Dean Thompson.

A half-time recharge brought the Bulldogs fighting back in the third quarter to outscore Saline, 24-23. Don Morrison collected seven points, Randy Sweeney had five and Dean Thompson, Anthony Houle, and Jerry Benjamin were close behind with four points each.

Tensions mounted as visions of an upset came into perspective in the bottom of the fourth period. With only 1 minute, 40 seconds remaining in the game, the Bulldogs were at the foul line for a 1 and 1.

The 1 and 1 attempt was made, Chelsea missed, and Saline came down to score on a three-point play, tying the game. Several crucial turnovers ensued which gave Saline the ball. The Hornets capitalized on the situation, scored two baskets, and took a four-point lead, 51-47. A Bulldog press to regain control of the ball resulted in a foul, which Saline promptly changed into two more points.

"Saline was extremely hot from the line, making 11 of 14," Coach Balistrere explained.

At the wire, with only a few seconds left on the clock, Chelsea

was fouled, but failed to sink the free throws. Adding insult to injury, a big-man tip-play at the end of the game missed, leaving Saline on top in the final score, 53-47. "I felt the boys did an excellent job with our game plan, and played well enough to win," Coach Balistrere observed. "We were a little shaky in the beginning against the Saline press, but we adjusted fairly well."

In singling out his players, Coach Balistrere stated Randy Sweeney had a particularly fine game. "He kept us in there on the boards and did a fine job scoring. He led the team both at the basket and in the air, sinking 15 points and grabbing 20 rebounds, 50 percent of the team's total."

After Pete Feeney was dismissed from play in the third quarter, having drawn his fourth foul, Coach Balistrere inserted Anthony Houle in Feeney's place. "Anthony did a fine job, coming in and settling us down," the coach said. "He also hit for some key baskets and made several fine assists. In that area, he was the team leader, recording a total of five."

Summarizing his team's performance thus far, Coach Balistrere reiterated many of his former comments. "We have been strong contenders in every game so far this year. To come so close without a victory is very frustrating. But again, the boys are hustling, playing with enthusiasm and drive. We'll simply have to work harder, and just hang in there."

In addition to Randy Sweeney's 15 points in Friday's game, other high scoring Bulldogs were Dean Thompson and Don Morrison with 9 points each; Jerry Benjamin, 6; and Anthony Houle and Pete Feeney, 4 each. Chelsea had a final tally of 40 rebounds, and 8 assists. Houle's 5 assists were nearly matched by 3 from Dean Thompson.

Statistically, Chelsea shot 18 of 48 from the floor for a 37 percent average, and 11 of 19 from the foul line for a 57 percent average. Not surprisingly, the crux of their problems turned out to be turnovers. The Bulldogs finished the game with 22.

Following a week of rest, the Bulldogs will resume play next Tuesday, Jan. 25, at Manchester.

Swim Club Edged By Ranked Okemos

Chelsea Aquatic Club swam against Okemos Swim Club in a Michigan Team Swim League meet Saturday, Jan. 15, and lost by a score of 478-503.

"Okemos has a fine swim program as shown by their high school team finishing second in last year's state meet," said Larry Reed, director of the local club.

"The CAC coaching staff was pleased with the club's ability to keep the final score close," he added.

The swimmers will host their next meet Saturday, Jan. 22 at 9 a.m. in the Beach pool.

Finishing first for Chelsea were Ted Merkel, Marty Steinhauer, Richard Slater, John Hoffman, Sean Oxner, Dave Mason, Dave Nicola, John Robbins, Kathy Brown, Patti Hume, Nancy Heller, Teresa Tudor, Sandy Shadoan, Sue Inglis, Shelly Springer, Mary Stoll, Margie Rawson, Paula Beaudoin,

Shannon Springer, Anne Schabbe, Jennifer Cattell, Amy Hume, Colleen Stubbs, Melanie Lee, Paul Woods, Craig Wirtz, Mark Brosnan, Kirk Hawks, Annette Kuhl, Sara Borders, Michelle Clark, Dawn McDowell, Jerry and Tony Hammerschmidt, Melanie Gunn, Cheissy Favors.

Others who placed for Chelsea were Wayne Smith, Julie Koch, Mary and Missy Lazarz, Paul and John Robbins, Susan Gunn, Trisha, Kris and Tanya Matloff, Stirling Vorus, Sue Heller, Betsy Kolander, Christie Fahrner, Lisa Smith, Kathy Degener, Patti Schumann, Ken Roskowski, Mary Eisele, Mike and Dave Mason, Kathy Slater, Laurie Heller, Carol Palmer, Pete and Don Beaudoin, Ann and Pete Eisele, Don Buckenberger.

Also, Brent Martin, Jane Wood, Jason Schutte, Tom Rudd, Michelle Alexander, Paula and Kevin Co-

(Continued on page three)



BLOOD DONORS: Just last month, the Chelsea Jaycees conducted their annual Blood Drive in the local UAW Hall. Some 88 pints were collected to aid in saving lives throughout the community.

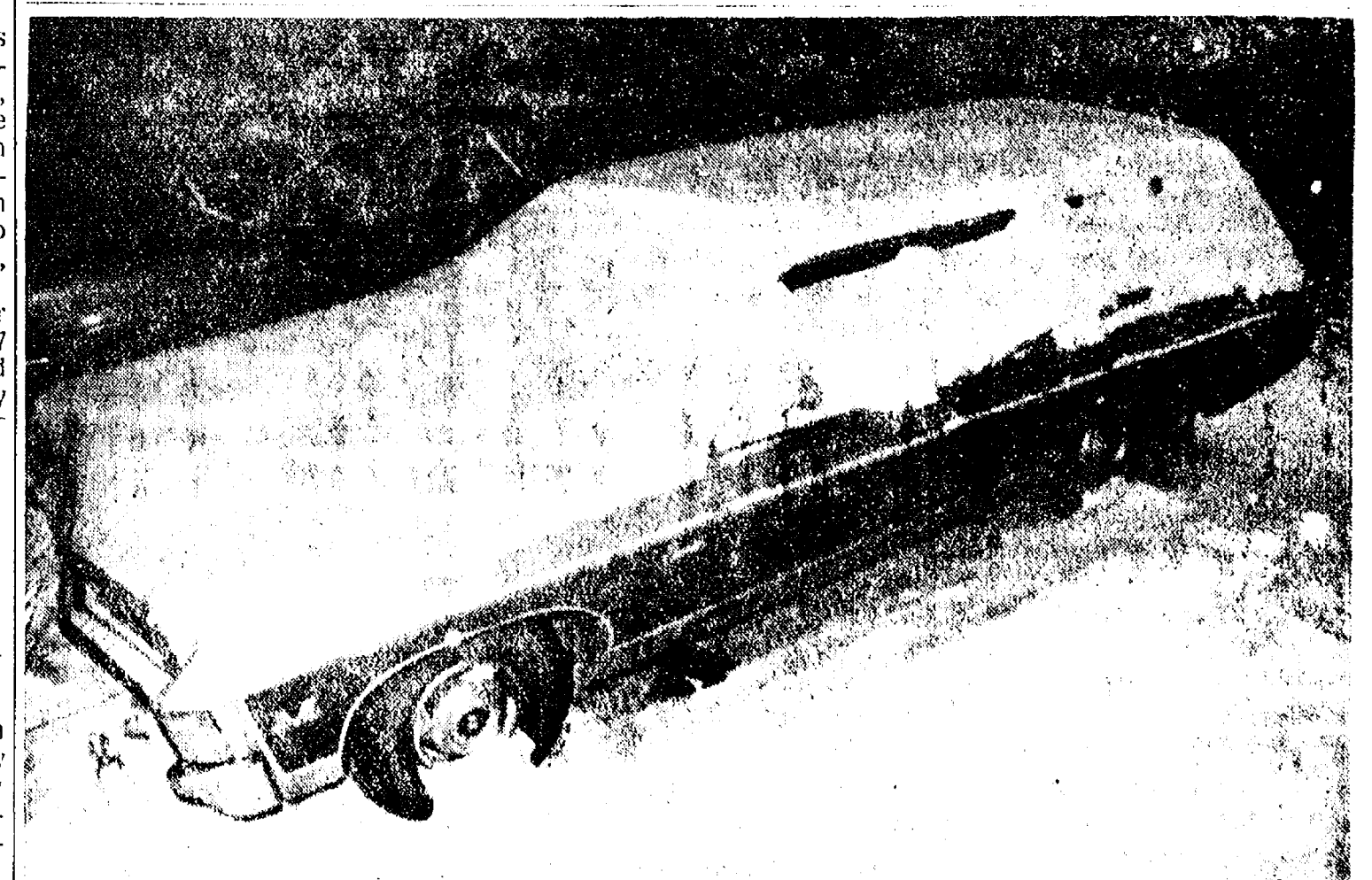
Donating their blood in the presence of two Red Cross nurses are Norm Colby (left) of the Chelsea Jaycees, and Ann Steinaway (right) of the Chelsea Jaycees Auxiliary.

Safety Patrol Girl Attacked By Three Men

An assault and battery complaint was filed with Chelsea police on behalf of an 11-year-old safety patrol girl who was attacked by three men while guarding a corner crossing at Dewey and McKinley Sts., Wednesday afternoon, Jan. 5. Although she was badly frightened, the youngster escaped the incident unharmed.

According to police reports, the girl was at her post at approximately 12:30 p.m. when a yellow Dodge pickup, carrying the three men, came to a halt nearby.

A man seated in the center, described by police in his 30's, wearing a red and blue plaid shirt, a yellow hardhat, dark complected, dark haired, with medium length sideburns, and starting to grow a moustache, called to the youngster. (Continued on page three)



SOME SAY IT'S WINTER: Cars, buried in snow like the one above, were an often too familiar sight to area auto owners this past week as a winter storm, which fashed Chelsea Jan. 10, left behind a low pressure area which continued to ravage the area. Intermittent snowfalls, coupled with below-zero temperatures, brought about an electric power shortage in Washtenaw county Monday, Jan. 12. To avoid blackouts, several heavy users of electricity cut back on their consumption. Elsewhere on Monday, Consumers Power Co. reduced voltage on their co-ordinated system five percent for the second time in less than a week, and Michigan

Consolidated Gas Co. shut off natural gas service to interruptible customers Sunday, under provisions of state energy conservation rules. A broken water main at Chelsea High school Monday, forced a cancellation of classes for that day. By late evening, repairs were complete, and the school resumed operations Tuesday morning. A temperature drop to -9 degrees Monday established a record low for the area, and was reportedly lower than temperatures in Alaska that day, according to one weathercaster. Some respite is in sight, however, as meteorologists are predicting a warming trend scheduled to begin tomorrow.

The Chelsea Standard
Established 1871 Telephone 475-1371
Excellence Award By Michigan Press Association
1951-1952-1960-1964-1965-1966
Walter P. Leonard, Editor and Publisher

Published every Thursday morning at 300 North Main Street, Chelsea, Mich. 48118, and second class postage paid at Chelsea, Mich., under the Act of March 3, 1879.

Subscription Rates (Payable in Advance)
In Michigan: One Year \$6.00, Six Months \$3.50, Single Copies \$.20
Outside Michigan: One Year \$8.50, Six Months \$4.50, Single Copies \$.25

MEMBER National Advertising Representative: MICHIGAN NEWSPAPERS, INC.
257 Michigan Ave.
East Lansing, Mich. 48823
Association - Founded 1885

Uncle Lew from Lima Says:

DEAR MISTER EDITOR:

Always with the start of a year the papers have a run on round-ups. It is a time for closing books and starting new accounts. It is a time when some of us have to face the sad fact that football is not going to be on television forever without end, amen, so we feel like we can't stand to miss one minute of one game until the two month break between the last live one and the first of the reruns and specials reviewing last season's highlights. This is the time we learn that life goes on without football.

Mister Editor, there is just so many ways one bunch can run into another bunch, so I'm ready for football to go long before it does. There must be a few other folks that agree with me, cause I saw that creating the NFL didn't even make the top 20 stories in America's history.

The year that's now history called for special roundups, and one I saw put together the biggest news in the last 200 year. Newspaper editors were asked to name the No. 1 story in this country's history, and nearly all of you said the Revolution that started it all. To top that off, you put the writing of the Constitution in second place, and the coming of television was down at No. 12. Gitting to the moon ranked fifth, three places ahead of all the problems we have come to group under the name Watergate. I think the order of the list shows a solid understanding of what has gone into the making of this country, and the list makes a feller try to imagine what the next 200 year will bring.

I mentioned the top stories round-up during the session at the country store Saturday night, and the fellers commented on some that made the list and some that didn't. They were full agreed that, taking the long view, one thing America never has been is dull. Somepun is allus going on, Zeke Grubb said, and if you don't like it you don't have long to wait for a change. Where else in the world, Zeke wanted to know, can you go from stories of men on death row trying to git off to three months of headlines about one killer trying to git

the state to keep its promise to kill him?

It takes all kinds of folks to make up this country, Mister Editor. In the same paper last month, I saw where a postman that makes \$16,000 a year has been giving practical ever cent to needy people for the last several years, and I read about how schools in some cities have closed because folks won't vote enuff taxes on their selves to keep em going.

I saw where a feller in Michigan talked a bank teller into trading him \$99,709 for a 100,000 German mark bill that ain't worth the paper it's printed on, and how a woman in North Carolina stole a pickup load of old newspapers from a civic club paper drive and told police she did it so she could cut out all the discount coupons in the papers. Just like in America's history, truth is stranger than fiction.

Yours truly,
Uncle Lew.

Dial-A-Garden Topics Listed

Dial-A-Garden, the system of pre-recorded daily gardening tips is sponsored by the Washtenaw County Co-operative Extension Service. The system is in operation 24 hours per day, 7 days per week. Interested persons are invited to call 971-1122 at their convenience and receive timely, up to date gardening information.

Next week's Dial-A-Garden topics are beginning a series of plant propagation which will continue two weeks.

Friday, Jan. 21—"Start Giving Poinsettias A Rest."
Monday, Jan. 24—"Multiplying Your Plants—Getting Ready."
Tuesday, Jan. 25—"Leaf Cuttings."
Wednesday, Jan. 26—"Stem Cuttings."
Thursday, Jan. 27—"Rhizomes and Tubers."

One of three veterans pursuing a college degree part time under the GI Bill, complete their training, the Veterans Administration reported.

MICHIGAN MIRROR

By Warren M. Hoyt, Secretary, Michigan Press Association

Bang, Bang
Things are not looking up for gun-toting felons.

Starting Jan. 1, under a new law, anyone committing a felony with a firearm must be sentenced to two extra years in prison, in addition to a term for the felony itself. For repeat offenders, the extra sentence jumps to five and then 10 years.

Proponents of the mandatory

sentencing law claim it will deter crime, while opponents charge the new law won't make any difference to someone bent on crime.

Perhaps most concerned about its effects is state corrections director Perry Johnson, who fears the law will merely send more people to Michigan's already overcrowded prisons.

In Florida, where a similar law has been on the books for more

than a year, gun crimes have dropped significantly. Armed robberies with guns, for example, fell 36 percent in 1976 over the year before.

But it will be many months before Michigan officials know whether the law deters Michigan criminals or simply worsens the problem of prison over-population.

"Check Off" \$3.4 Million
Again this year, Michigan taxpayers will notice that they can check a box on their state income tax forms that will put \$2 of state tax revenues into a special fund for financing gubernatorial election campaigns.

The same checkoff was on 1976's tax forms. But the 1975 law that provided for partial public funding of the campaigns was struck down as unconstitutional on a technicality by the State Supreme Court. So the tax money stayed in the state treasury.

Late in its 1976 session, the legislature approved a new political reform law that supporters promise will meet any legal challenges.

Besides tightening requirements on candidates for reporting campaign contributions, the new law resurrects the tax checkoff system.

Officials estimate that taxpayers will "check off" as much as \$3.4 million a year in state tax revenues to finance gubernatorial campaigns, the next one coming up in 1978. Under the law, candidates will be eligible for the "public" funds under a formula that requires them to collect many small private contributions as well.

The system is the first in the country to provide any public money for state-wide candidates. It was patterned after the plan that gave federal tax dollars to presidential candidates this year for the first time.

Politicians of both parties say Michigan's law is one of the best in the country for making campaigns more ethical and open.

Pest May Be Zapped
Many aerosol sprays may get

Help for the Unemployed

The Out County Mental Health Program, in co-operation with local community groups is looking for people interested in a job search project.

This project will have two parts: 1) a survey studying ways people job hunt and the consequences and impact of unemployment, and 2) a job-finding club, giving training and support to persons seeking employment. Some participants will be involved in one part, others in both.

To be part of this project, you must live in Washtenaw county (outside Ann Arbor and Ypsilanti). You must be the primary wage earner for yourself or your family. You must have left a job permanently in the last five months and be actively job-hunting now. If you take part in this project, you will be eligible for participation in a job finding club, though enrollment for this is limited.

For more information about the Job Search Project, please call Mrs. Elaine Alexander, Jay Haire, or Gene Uike, at the Out County Program (665-4163), preferably in the early morning between 9 and 11 a.m.

More than half of college-level trainees under the GI Bill received bachelor's degrees, the Veterans Administration reported.

zapped from Michigan store shelves if a ban on fluorocarbon-propelled sprays is enacted under a law signed by Gov. William Milliken last week.

The law, hotly debated for over a year, would authorize a ban on the aerosols beginning in 1978. But state health officials would first have to decide that the fluorocarbon-propellants, often known as Freon, are indeed dangerous to human health.

The invisible gases are believed to damage the earth's ozone layer. Harmful ultraviolet radiation from the sun can then penetrate the atmospheric layer and reach the earth, causing skin cancer and other problems.

JUST REMINISCING

Items Taken from the files of The Chelsea Standard

4 Years Ago...

Thursday, Jan. 25, 1973—

After a year of set-backs, legal problems, and disappointments, the Chelsea Youth Center finally became a reality. The center will be headquartered in the old United Methodist church parsonage.

After Jan. 27, Chelsea one- and two-party telephone customers will be able to dial their own long distance telephone calls without the assistance of an operator.

The Chelsea Education Association and the Board of Education settled on a teacher contract agreement following an eight-month labor dispute which culminated in a teacher's strike three days ago.

Conrad Hainer was elected president of the 1973 Chelsea Community Chest. He will take over from 1972 president Robert Thornton.

Dr. Michael Papo was selected to receive the Chelsea Jaycees Distinguished Service Award for his many contributions to the community. Dr. Papo developed the Chelsea Medical Center, considered a prototype for future centers in other areas of the country.

14 Years Ago...

Thursday, Jan. 24, 1959—

Lewis Renz, 81-year-old retired farmer, died Saturday afternoon when fire destroyed his home on Steinbach Rd., near Liberty Rd., in Lima township.

Larry Chapman was presented with a Michigan United Fund pin for his outstanding community service as general chairman of the Chelsea Community Chest campaign. A total of \$15,400 was collected up to date.

The annual March of Dimes Mother's March will be held in Chelsea next Tuesday, Jan. 29, under the direction of chairman Mrs. Karl Riegger. The March is traditionally the highlight of the Chelsea campaign for funds.

James McGauley was honored Thursday at Central Fibre Products in recognition of his 10 years of accident-free driving of the firm's large semi-trailer truck in all kinds of traffic, city and country.

Although some area thermometers registered from 10 to 12 degrees below zero in Chelsea Monday, and drifting snow made bus runs impractical, Mrs. Frank Reed reported two robins were in her yard Tuesday morning.

24 Years Ago...

Thursday, Jan. 22, 1953—

A quiet investigation carried on Friday and Saturday by Police Chief George Doe resulted in the apprehension of a group of young people believed responsible for a number of break-ins in the community and pilfering of parked cars.

A new Farm Bureau group was organized Jan. 12 at the Allen Albert home, choosing the name of Sharon Tower Farm Bureau.

Total of all donations for the March of Dimes fund as tabulated here at the close of the second week of the campaign amounted to \$747.40 as compared to \$800 for the same period last year.

Dr. William Baber, professor of Economics at the University of Michigan, addressed Library Lecture Series members Monday after a return trip from Washington, D.C., where he served as chairman of the Advisory Board on Labor Security. His topic was "What's Ahead in Labor Relations."

34 Years Ago...

Thursday, Jan. 24, 1943—

Chelsea Public Library has received a check for \$71.90, Mrs. W. H. Kusterer, treasurer of the library board announced. The check is the first half of a grant from the State Aid to Libraries Fund for which the library qualified this year.

Last Monday evening, the Chelsea Kiwanis Club honored the 1942 football team at the annual Football Banquet which was held at St. Paul's church this year instead of in the high school gymnasium as in previous years.

Michigan Bell announced that, because of war restrictions, new installations of telephones in Chelsea can now be made only on a temporary basis, except for service essential to the direct war effort or to public security.

The federal Office of Price Administration is moving to force conversion of all oil heating units in buildings other than private homes, Luella Smith, chairman of the Washtenaw County War Price and Rationing Board announced. A serious shortage in oil was cited as the reason.

Beginning Feb. 1, any man in Chelsea between the ages of 18 and 45 who does not have in his possession his Selective Service classification card and his certificate of registration will be liable for a fine or imprisonment, or both.

Howell Livestock Auction

Starts 1 p.m. Every Monday
Mason 676-5400
The Wise Owl Sows Ship to Howell
Phone 546-2470, Jim Franklin
Market Report for Jan. 17

CATTLE
Bulk Gd. Choice Steers, \$37 to \$39.50
Few High Choice Steers, \$39.50 to \$40.50
Gd. Choice Heifers, \$34 to \$37
Fed Holstein Steers, \$30 to \$34
Ut. Std., \$30 and down.

COWS
Heifer Cows, \$30 to \$32
Ut. Commercial, \$28 to \$31
Canner-Cutter, \$18 to \$26
Fat Beef Cows, \$24 to \$27

QUILTS
Heavy Bologna, \$30 to \$34.50
Light and Common, \$29 and down.

FEEDERS
400-600 lb. Gnd-Choice Steers, \$34 to \$38
600-800 lb. Gnd-Choice Steers, \$30 to \$34
300-400 lb. Gnd-Choice Heifers, \$22 to \$28
300-500 lb. Holstein Steers, \$22 to \$24
500-800 lb. Holstein Steers, \$20 to \$24

WOLVES
Prime, \$60 to \$72
Good-Choice, \$40 to \$60
Heavy Decreas, \$30 to \$39
Cull & Med, \$10 to \$20
Calves going back to farms sold up to \$35

SHEEP
Shorn Slaughter Lambs:
Choice-Prime, \$18 to \$19
Good-Utility, \$16 to \$18

WOOLLED Slaughter Lambs, Spring:
Choice-Prime, \$30 to \$32
Good-Utility, \$28 to \$30
Slaughter Ewes, \$8 to \$15
Feeder Lambs, All Weights, \$15 to \$30

WAGS
210 to 230 lbs., No. 1, \$41 to \$42.10
200-250 lbs., No. 2, \$39 to \$41
Heavy Hogs, 250 lbs. and up, \$37 to \$39
Light Hogs, 200 lbs., \$25 to \$33

Cows:
Fancy Light, \$33 to \$34
300-500 lbs., \$33 to \$34
500 lbs. and up, \$30 to \$33

Heats and Steers:
All Weights, \$21 to \$30

Feeder Pigs:
Per Head, \$15 to \$31
Est. 40 lbs. pigs, \$22 to \$26

WAGS:
1st Cutting, per bale, 45¢ to \$1.00
2nd Cutting, per bale, \$1.00 to \$1.50
STRAW:
Per Bale, 20¢ to 60¢

COWS:
Tosied Dairy Cows, \$200 to \$250
Tosied Beef Type Cows, \$200 to \$300

NOW OPEN!
ALLEN'S RECREATION CENTER
2416 W. OLD US-12
CHELSEA

10 a.m. to 10 p.m. daily Monday thru Saturday
12 noon to 10 p.m. Sunday

Advertise Your Auction in The Standard!

"Dad, why do people take drugs?"

To most people who have used drugs all of their lives, it seems like it has a simple answer. But to a 4-year-old boy who has never seen the inside of a hospital or a medical doctor, or had as much as a half an aspirin or a teaspoon of cough syrup, the answer takes on a definite change of meaning.

"People take drugs, because they don't know about Chiropractic... no one tells them so they think they have to take poison. We have to tell them," I said.

"... and when I get big I'm going to tell people that they should get adjustments and then they won't need drugs," he said.

As strange as Chiropractic may seem to many people... medicine seems just as strange to our kids and our patients' kids. They see our patients and their friends getting well under Chiropractic and can't understand why everyone doesn't try it. We can't understand it either.

This morning, Jason, our 4-year-old, got dressed and asked me if he could talk to the patients about Chiropractic! So if you see him... he'll talk your ear off on why you and your family should be under Chiropractic care if you are not already.

Maybe some day, if enough Jasons tell enough people... your grandchildren or great-grandchildren may say to you... "grandma, why did people used to take drugs?"

Dan Elwart, SPECIFIC Chiropractor

7970 Clark Lk. Rd., Chelsea, Michigan 48118

Call 475-7633

Open Mon., Wed., & Fri. 9-1 & 3-7

Tues., Thurs., & Sat. By Appointment only.

SPECIAL

Reduced Interest Rates on Home Improvement Loans for Energy Conservation

The cost of heating a home has gone up an average of 76.3% in the last five years, and it is predicted to go up an additional 21.1% in the next ten years. This means the average monthly \$30.00 heating bill you were paying five years ago is now \$52.89. If these dire predictions are true, by 1987 you could be paying as much as \$164.65 per month for the same amount of heat.

What can you do about it? For one thing, you can insulate your house. It is a lot cheaper than gas, electricity or oil.

To help conserve energy, Ann Arbor Federal Savings is now offering a special reduced rate on Home Improvement Loans, through March 31, 1977, for any approved home energy conserving program. Maximum loan \$5,000, up to 60 months to repay.

This low rate would put energy conserving within your budget. For example: a \$500 loan with term of 24 months would cost \$23.33 per month an annual percentage rate of 11.13%, and with term of 36 months \$16.38 per month, an annual percentage rate of 11.08%.

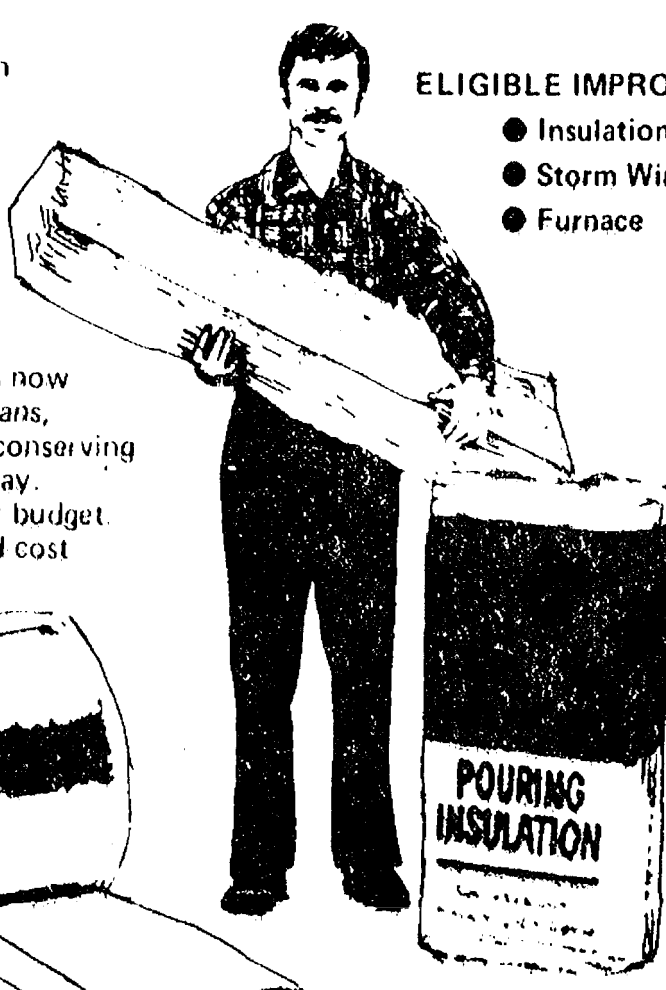
Full details at all AAFS offices.

you can depend on us!

ANN ARBOR FEDERAL SAVINGS

11 OFFICES TO SERVE YOU IN ANN ARBOR, BRIGHTON, CHELSEA, DEXTER, MANCHESTER, SALINE, YPSILANTI

MEMBER FSILC



SPECIAL SALE

Beef Front Qtrs. Beef Hind Qtrs.

69¢ lb. 98¢ lb.

- | | |
|------------------------|----------------------|
| 6 pcs. CHUCK ROAST | 8 pcs. SIRLOIN STEAK |
| 4 pcs. CHUCK STEAK | 12 pcs. T-BONE |
| 2 pcs. SWISS STEAK | 6 pcs. PORTERHOUSE |
| 2 pcs. ARM ROUND ROAST | 8 pcs. ROUND STEAK |
| 2 pcs. ENGLISH ROAST | 4 pcs. RUMP ROAST |
| 14 pcs. RIB STEAK | 4 SIRLOIN TIP STEAK |
| 1 pc. RIB ROAST | 1 SIRLOIN TIP ROAST |
| 6 lbs. STEW BEEF | 6 lbs. STEW BEEF |
| 12 lbs. SHORT RIBS | 30 lbs. HAMBURGER |
| 50 lbs. HAMBURGER | |

After Processing 89¢ lb. After Processing \$1.25 lb.

ALL-BEEF HAMBURGER . lb. 69c

BOLOGNA - Mich. Made . lb. 69c

WIENERS - Mich. Made . . lb. 69c

YOUNG STEER

BEEF LIVER lb. 39c

OX TAIL lb. 39c

CUSTOM SLAUGHTERING and PROCESSING LOCKERS AVAILABLE

PHONE 426-8466

DUNBAR'S DEXTER LOCKER

808 1/2 MAIN ST., DEXTER Paul Dunbar, Owner

Biddy Basketball Teams All in Action

More biddy basketball was played last Saturday, Jan. 15, with members in all three leagues once again testing their shooting ability and ball handling skills.

In the WBA, the Supersonics grounded the Hawks, 20-14; the Trailblazers kicked the Spurs, 20-16; the Rockets sailed past the Celtics, 14-8; and the Knicks dumped the Generals, 14-10.

Beginning at 9:05 a.m. this Saturday, Jan. 22, more WBA game action is scheduled as the Rockets prepare to launch an attack on the Generals, and the Supersonics face the Knicks. At 9:47 a.m., the Spurs will play the Hawks, and the Celtics will challenge the Trailblazers.

Final scores in the ABA last week put five teams in the winner's circle. The Bullets whizzed by the Capitols, 32-24; Jazz syn-

chronized to defeat the Warriors, 26-18; the Pistons blasted the Nuggets, 26-8; the Lakers drowned the Cavaliers, 22-14; and the Suns sat on the Bulls, 20-19.

The ABA will also resume play Saturday, Jan. 22, with the Bulls to play Jazz, and the Lakers preparing to storm the Capitols, at 10:30 a.m. Commencing at 11:12, the Suns will take on the Nuggets, and the Cavaliers will duel with the Warriors, followed by the Pistons steered for action against the Bullets.

In the NBA series last Saturday, the Nets tangled with the Pacers to win, 24-22, and the 76ers massacred the Braves, 27-15. All four NBA teams will be back on the courts this Saturday as the Braves battle the Nets at 11:45 a.m., and the 76ers meet the Pacers at 12:32 p.m.

4th, 7th Graders Score High in Assessment Tests

As a group, Chelsea students in the 4th and 7th grades who took the Michigan Educational Assessment (MEA) test last September, achieved a record high district scoring average, and performed well above the state-wide average when compared with students in other Michigan school districts.

These results were confirmed by a report sent to the local district by the state which evaluated each student's individual performance, and summarized classroom, school, district, and state-level achievement.

In both the 4th and 7th grades, Chelsea had a much higher percentage of students at the 75 to 100 percentile, and a much lower percentage of students scoring below 50 percent than other state school districts. This gave Chelsea a 15 percent to 20 percent higher average than other schools.

"It is commendable that we have no scores lower than the average for the state, and that our scores are so much higher in most areas," said Susan Harding, Chelsea's MEA test co-ordinator.

Furthermore, a look at the state's over-all scoring median in areas judged most important by Michigan educators, revealed that Chelsea students once again were above that average.

MEA test results have a broad range of applications. On the 7th

grade level, junior high school principal Alan Conklin reviews the results to determine if there are any seriously deficient performance areas. Should any appear, he then develops a program to generate improvement.

Teachers receive a report of each student's test scores, and a summary of the general performance of each class. From these reports, teachers are informed of their students' weakest areas, and can then proceed to emphasize these areas in their classrooms, or help individual students who scored low in specific areas.

In both Chelsea elementary schools, principals Robert Benedict and Sylvester Wojcik analyze test results with their teachers. They pinpoint problem areas, re-examine test questions, and refer their findings to 1st, 2nd, and 3rd grade teachers, as well as the North school reading teacher. The teachers then attempt to eliminate weak areas, should there be any.

Over the past four years, both 4th and 7th graders in Chelsea schools have progressively improved their test scores in all areas.

"It's extremely encouraging to see the excellent results of our students' tests, which are reflective of our community and our fine educational system," Miss Harding concluded.

JV Cagers Pull Upset Over Saline

Chelsea High's JV basketball squad gave Saline their first taste of defeat this season as they upset the league leading Hornets, 60-57, last Friday, Jan. 14.

"It was our best game of the year," said Coach Paul Terpstra. "We bounced back in style after our heavy loss to Jackson Northwest on Jan. 11."

Chelsea dominated the scoring throughout most of the game, leading, 32-21, at half-time, and 46-32 at the end of the third period. A Hornet rally in the fourth gave Saline a meager one-point advantage which was quickly toppled by a series of key foul shots by the Bulldogs.

First to score from the line was Don Schrotenboer, who put one through the hoop to move Chelsea ahead once again, 57-56. He was followed by Jesse Coburn, Gary Dils, and Matt Feeney, who each tossed in yet another point to oust Saline from their undefeated spot with a stunning Bulldog victory.

Chelsea out-rebounded Saline, 41 to 26, and charted their best shooting night from the floor this season with a powerful 44 percent average.

In Friday's action, leading scorers for the Bulldogs were Gary Dils with 23 points; Jesse Coburn, 13; Don Schrotenboer, 9; Charlie Bridges, 7; Matt Feeney, 5; and Al Augustine, 3.

Outstanding rebounders in the game were Bridges and Augustine with 10 each, and Schrotenboer with 8.

Chelsea's triumph over Saline raises the Bulldogs' season record to 4-6.

SCHOOL LUNCH MENU

Week of Jan. 24-28

Monday—Goulash with cheese, corn, bread and butter, apple-sauce, cookie bar, milk.

Tuesday—Toasted cheese sandwich, tomato soup, crackers, baked dessert, milk.

Wednesday—Country-style steak with onion gravy, whipped potatoes, mixed vegetables, bread and butter, cherry cake, milk.

Thursday—Sloppy joe with cheese slice, french fries and catsup, celery sticks, pears, coffee cake, milk.

Friday—Pizza slice, vegetable, one-half of a peanut butter sandwich, orange juice, ice cream, cookie bar, milk.

Soil Conservation District Receives Newsletter Award

The Washtenaw County Soil Conservation District has been selected second-place national winner in the 1976 Newsletter Contest sponsored jointly by National Association of Conservation Districts and the Farm and Industrial Equipment

Institute. The contest is open to the 3,000 plus soil and water conservation districts throughout the nation.

A representative of the district has been invited to attend the NACD's 31st Annual Convention on

Feb. 7, in Atlanta, Ga., to be recognized for the district's efforts in communicating the soil and water conservation message in Washtenaw county.

Each district that publishes a Conservation Newsletter is judged on readability, regularity, subject matter and circulation. It not only matters what the Newsletter says; it is equally important that it reaches a broad cross-section of our citizens.

The Chelsea Standard, Thursday, January 20, 1977 5

The Washtenaw County SCD is continually striving to better inform our readers of soil and water conservation activities in Washtenaw county. If you are interested in learning about the activities of the WSCSD and would like to receive their monthly Conservation Newsletter, contact the district office at 6101 Jackson Rd., Ann Arbor 48103, phone 761-6721.

Unlike people who wear eyeglasses to compensate for their visual handicaps, hearing loss victims often refuse to seek the help available to improve their ability to hear. As a result, only one out of six Americans who could be helped by wearing a hearing aid has one, hearing specialists report.

Silence is an undisputed virtue.

\$300⁰⁰ ALLOWANCE

FOR ANY CAR!! \$300.00 ALLOWANCE Regardless of Age, Make or Model. If need be, we will even tow. This is the minimum. Hundreds more depending on year and condition.

SALE LIMITED TIME ONLY

SALE BEGINS FRIDAY, JANUARY 14, 1977 AT 8:30 A.M. AND ENDS WEDNESDAY, FEBRUARY 9, 1977 AT 6:00 P.M.

'76 CHEV Camper Spec.\$5295
Minimum Allowance ..\$ 300
\$4995

'73 MAVERICK 4-Dr.\$1695
Minimum Allowance ..\$ 300
\$1395

'72 CHEV SPORTVAN\$2295
Minimum Allowance ..\$ 300
\$1995

'71 BUICK Wagon\$1595
Minimum Allowance ..\$ 300
\$1295

'75 GRANADA 4-Dr.\$3395
Minimum Allowance ..\$ 300
\$3095

'73 FORD 1-Ton Platform ..\$2995
Minimum Allowance ..\$ 300
\$2695

'72 DODGE Pick-Up\$1695
Minimum Allowance ..\$ 300
\$1395

'71 PLYMOUTH DUSTER ..\$1295
Minimum Allowance ..\$ 300
\$995

'75 PLYMOUTH 8-Pass. Bus \$4695
Minimum Allowance ..\$ 300
\$4395

'75 GRANADA 2-Dr.\$3095
Minimum Allowance ..\$ 300
\$2795

'71 FORD Pick-Up\$ 995
Minimum Allowance ..\$ 300
\$ 695

'71 FORD CREW CAB\$1795
Minimum Allowance ..\$ 300
\$1495



LYLE
CHRISWELL

JOHN
POPOVICH

RON
SCHUYLER

JOHN
HAHER

BENNIE
HAYES

'75 MUSTANG GHIA\$2895
Minimum Allowance ..\$ 300
\$2595

'73 PINTO 2-Dr.\$1495
Minimum Allowance ..\$ 300
\$1195

'71 FORD Pick-Up\$ 995
Minimum Allowance ..\$ 300
\$ 695

'70 DODGE 2-Dr.\$1095
Minimum Allowance ..\$ 300
\$ 795

'73 RANCHERO\$2295
Minimum Allowance ..\$ 300
\$1995

'73 TORINO WAGON\$2395
Minimum Allowance ..\$ 300
\$2095

'71 LTD 4-Dr.\$ 995
Minimum Allowance ..\$ 300
\$ 695

'70 MERCURY 4-Dr.\$ 795
Minimum Allowance ..\$ 300
\$ 495

ONCE IN A LIFE
TIME VALUES



PALMER MOTORS

CHELSEA (313) 475-1301

ONLY MINUTES FROM ANN ARBOR OR JACKSON

OPEN MONDAY THRU THURSDAY, 8:30 a.m. TIL 9:00 P.M., FRIDAY TIL 6, SATURDAY, ALL DAY



FRESH MEATS

U.S.D.A. CHOICE BEEF

Jiffy market

Big Enough To

Serve You . . . Small Enough To Know You!

HOURS: 7 DAYS A WEEK
7 a.m. to 10 p.m.

WE ACCEPT

U.S.D.A. FOOD STAMPS

SALE PRICES EFFECTIVE

Thurs., Jan. 20 thru Sun., Jan. 23

COMPLETE SUPERMARKET

COLD BEER

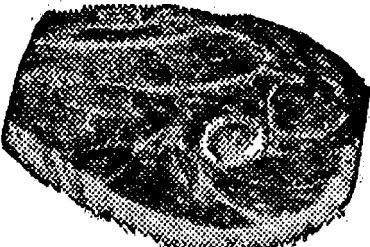
WINE - LIQUOR

YOUNG, TENDER LEAN PORK

**PORK
STEAK...**

Cut
from
Lean
Butts

98^c
lb.



PORK ROAST

Boston
Butt
Lb. **89^c**

PORK CUTLETS

Lb. **\$1¹⁹**

YOUNG - LEAN - TENDER 9-11 CHOPS PKG.

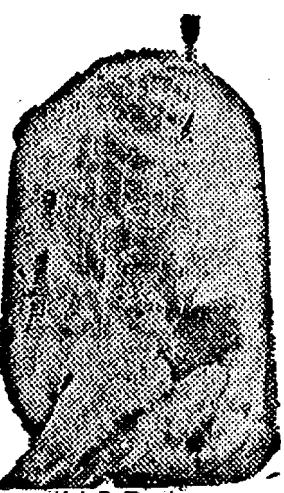
PORK CHOP, Quarter Loin

Lb. **\$1²⁷**

SPARE RIBS

Lb. **\$1⁰⁹**

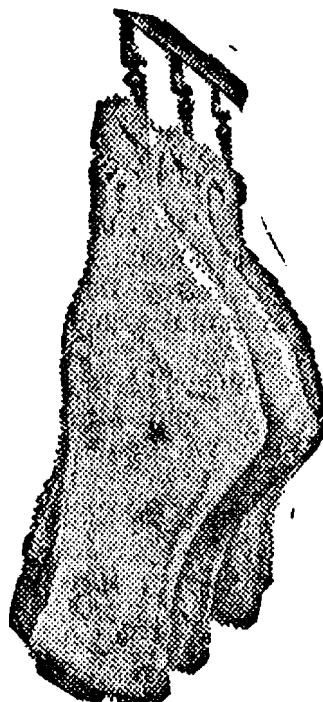
JIFFY MARKET MEAT SERVICE



U.S.D.A.
**CHOICE
BEEF**

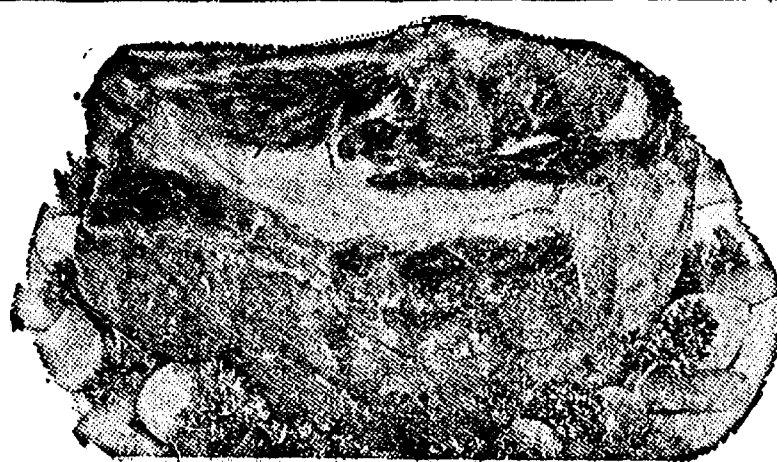
SIDES - FRONTS - HINDS
WHOLE RIBS - WHOLE LOINS

CUSTOM CUTTING - WRAPPING - FREEZING
QUICK SERVICE ON BUTCHERING
YOUR BEEF OR OURS



U.S.D.A. CHOICE

**RIB
STEAK** **\$1³⁹**
lb.



U.S.D.A. CHOICE BEEF BLADE CUT

CHUCK ROAST lb. **69^c**

U.S.D.A. CHOICE BEEF

CENTER CUT CHUCK ROAST Lb. **79^c**

U.S.D.A. CHOICE BEEF

ENGLISH OR ARM ROAST Chuck
Cut Lb. **\$1⁰⁹**

U.S.D.A. CHOICE BONELESS

BEEF STEW Pre-Diced
Lb. **\$1⁰⁹**

PEET'S RE-PEETER
**SLICED
BACON**

1-Lb.
Pkg. **\$1¹⁹**

Young, Tender, Sliced
**BEEF
LIVER**

49^c lb.

FARMER PEET'S
**CHUNK
BOLOGNA**

79^c lb.

FARMER PEET
**LINK
SAUSAGE**

\$1.19 lb.

FARMER PEET'S
**ALL-BEEF
FRANKS**

1-Lb.
Pkg. **89^c**

U.S.D.A. CHOICE
**SHORT RIBS
BEEF**

59^c lb.

ARMOUR
LARD

2 lbs. 77^c
Reg. 97c

ECKRICH
**SLENDER
SLICES**

**2 3-Oz.
Pkg. 89^c**

FARM MAID
**COTTAGE
CHEESE**

1-Lb.
Ctn. **59^c**

**Wonder
Country Style
WHITE BREAD**
3 1 1/4-Lb.
Loaves **\$1⁰⁰**

**FARM MAID
Homogenized
FRESH MILK**
\$1³⁹
Gal. Ctn.
or Plastic

**FARM MAID
Chocolate Milk**
3 qts. **\$1⁰⁰**

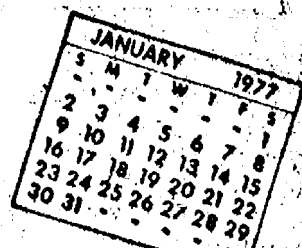
**GOLD WEATHER SPECIAL
DURAFLAME
2-HOUR LOG**
69^c Log

**MAZOLA
MARGARINE**
1-Lb.
Quarters **59^c**

**DEL MONTE
CATSUP**
12-Oz.
Bottle **29^c**

GAS PUMPS & STORE OPEN 7 a.m. to 10 p.m. 7 Days a Week — U. S. Authorized Food Stamp Store — Daily & Sunday Papers

Community Calendar



Chelsea Child Study Club, Jan. 25 at the home of Nita Mills, 228 Washington St., 8 p.m. Dr. James Driver, psychiatrist, will speak. Guests welcome.

North Lake Co-Operative Nursery, Inc., parents meeting Thursday, Jan. 20. Pot-luck supper at 6:45 p.m. Bring dish to pass and own tableware. Business meeting and program on "How TV Affects Your Children."

Special education parents meeting, Monday, Jan. 24, 7:30 p.m. in Room 204, Chelsea High school.

Young Homemakers, at Beach Middle school pool, 9:30 p.m., Jan. 27.

Chelsea Jaycee Auxiliary Annual Cribbage Tournament, Jan. 17, 24, 31 and Feb. 7 at Chelsea Lanes. Participants must register at 6:30 p.m. Jan. 17. Play begins at 7 p.m.

Sharon Township Board regular meeting first Thursday of each month, 1 p.m.

Lyndon Township Board regular meetings the third Tuesday of each month, 7 p.m., in Lyndon Town Hall.

Parents Special Education group, fourth Monday of each month, 7:30 p.m., room 204, Chelsea High school.

Child birth preparation classes, LaMaze method, are being held at Chelsea Community Hospital Tuesday evenings. Contact Dee Burkel, 475-9316, for information.

Inquiries regarding the Chelsea blood bank may be directed to Harold Jones in the event that Mrs. Dudley Holmes is unavailable, or to Cornelia Fry, American Red Cross in Ann Arbor, 971-5300.

Lima Township Planning Commission regular meeting the third Tuesday of every month, 8 p.m. at the Township Hall.

Chelsea Social Service hours are Thursday, 10 a.m. to 4 p.m., or call 475-1581, or 475-1012.

AA and Al-Anon meeting, Monday evenings at Chelsea Hospital, 8:30 p.m. Closed meetings.

Chelsea Jaycees general membership meeting first Tuesday of each month, 7:30 p.m. at Chelsea Lanes. Monthly board meeting last Tuesday of each month, 7:30 p.m. at Inverness Inn.

McKune Memorial Library hours are Monday, 10-5 and 7-9; Tuesday, 12-5; Wednesday, 12-5 and 7-9; Thursday, 10-5; Friday, 10-5 and 7-9; and Saturday, 12-5.

Modern Mothers Child Study Club, 8 p.m. Jan. 25, at the home of Lenore Matloff. Speaker: Julian Moody from Appleton Health Food Store, Ann Arbor. Guests invited.

Chelsea Athletic Boosters Club, Inc., Monday, Jan. 24, 8 p.m. in the School Board room at Chelsea High school.

Washtenaw County Comprehensive Health Planning Council, Thursday, Jan. 27, 7:30 p.m., in the Chelsea Community Hospital Cafeteria. Group meets regularly to review new project proposals and health programs. Citizens of Western Washtenaw county interested in health facilities and treatment urged to attend.

Dexter-Chelsea LaLeche League, 7 p.m. Jan. 24 at the home of Linda Dufek, 3561 Rentz Rd., Ann Arbor, phone 475-8187. Topic: "Advantages of Breastfeeding to Mother and Baby." All interested women welcome.

Chelsea Rebekah Lodge No. 130 regular meetings the first and third Tuesday of every month, 7:30 p.m.

Chelsea Home Meal Service delivers one hot meal a day to elderly and disabled living in the Chelsea area. For information, call Caralee Hoffmeyer, 475-8014, or Ginny Wheaton, 475-7412.

Olive Lodge No. 156 F&AM annual banquet Saturday, Jan. 22. Deadline for reservations is Jan. 15. Call 475-8846.

Winter meeting schedule for Chelsea Senior Citizens, beginning January and continuing through March. First Friday of the month, business meeting and cards, 7:30 p.m.; third Friday of the month, pot-luck and cards, 6:30 p.m. All meetings in St. Mary school hall on Congdon St.

Lima Township Board regular meeting the first Monday of the month, 8 p.m. at Lima Township Hall.

CORRECTION

In the Jan. 13 issue of The Chelsea Standard, a front page story on an easement agreement between the Merkel family and the Village of Chelsea, misquotes a statement made by attorney Daniel F. Giardina. Giardina's statement should have read, "Mistakes like that hardly ever happen," which was in direct conflict with his partner's statement, attorney Gerald D. Grohner, who said, "Mistakes like that happen all the time."

Telephone Your Club News To 475-1371.

DEATHS

J. Oscar Lindauer

Lima Township Resident Dies at Saline Hospital

J. Oscar Lindauer, 84, of 11111 Jerusalem Rd., Lima township, died Sunday, Jan. 16 at Saline Community Hospital after a brief illness. He had been in poor health for some time. Mr. Lindauer had retired to the above address on Jerusalem Rd. five years ago, after farming at 10725 Jerusalem Rd. for the previous 42 years.

Born in Lima township on Feb. 6, 1892, he was a son of George and Rosina Klein Lindauer. On Sept. 28, 1923 he was married to Milda Faust. She survives. Also surviving is a daughter, Mrs. Veryl (Kathryn) Steinaway of Ann Arbor; four grandchildren, Gary, Keith, Karen and Jeanine Steinaway, all of Ann Arbor; a brother, Alfred Lindauer of Chelsea; a niece, Mrs. Don (Loretta) Eder, and a nephew, Arthur Lindauer, both of Chelsea, as well as several cousins.

Mr. Lindauer was a member of St. Paul United Church of Christ, a life member of Olive Lodge No. 156, F&AM, Olive Chapter No. 108, OES, as well as of the Royal Arch Masons, Chapter No. 140. Funeral services were held at 1:30 p.m. on Wednesday, Jan. 19 at the Burghardt Funeral Home with the Rev. Ralph J. Ratzlaff officiating. Burial followed in Oak Grove Cemetery.

Louis C. Ramp

Had Operated Mink Ranch In Waterloo Until Retiring

Louis C. Ramp, 72, of 8051 Washington St., Waterloo township, Jackson county, died Monday, Jan. 17 at Chelsea Community Hospital. He had been a resident of the area since 1937, owning and operating a mink ranch in Waterloo until his retirement in 1960.

Mr. Ramp was born in Pennsylvania on March 2, 1904, a son of Augustus and Rose Paternoster Ramp. He spent his early life in Lead, S. D.

On June 6, 1931 he was married to Jessie Hitchcock. They had lived in South Dakota and in Illinois before coming to Michigan in 1937. Mrs. Ramp preceded him in death on Aug. 2, 1976. He was a member of St. Barnabas Episcopal church of Chelsea and was a director of the Sparcraft Corp. of Jackson.

Surviving are two brothers, Wallace Ramp of Jackson and Adolph Ramp of Antioch, Calif.; two sisters, Mrs. James (Mary) Foster of Rapid City, S. D., and Mrs. Lena Garry of Yankton, S. D., as well as several nieces and nephews. Two brothers preceded him in death, August in 1968 and Henry in 1966.

Funeral services will be held at 2 p.m. on Friday, Jan. 21 at St. Barnabas Episcopal church with the Rev. Jerrold Beaumont officiating. Burial will follow in Mt. Hope Cemetery, Waterloo.

Contributions in Mr. Ramp's memory may be made to St. Barnabas Church Memorial Fund or the Michigan Heart Association. Envelopes are available at the Burghardt Funeral Home, where friends may call until 11 a.m. on Friday, and from noon until time of service at the church.

Game Rescheduled

Chelsea High's freshman basketball game with Saline has been rescheduled from Tuesday, Feb. 1 to Monday, Jan. 31, 7 p.m. in the Chelsea High school gymnasium.

Never take yourself too seriously. The world is too vast.

Residential - Commercial

REMODELING

FREE ESTIMATES

Ib V. JENSEN

and **SON**

LICENSED BUILDER

378 Spring Lake Drive

Chelsea, Mich.

PHONE 475-1820

Mrs. Carl L. Reynolds

Dies Friday at Hospital Following Long Illness

Dolores E. Reynolds, 48, of 6945 Werkner Rd., died Friday, Jan. 14 at Chelsea Community Hospital following an extended illness. Born Aug. 26, 1928, in Charleston, W. Va., she was the daughter of James and Dora Parrish Weyer.

She married Carl L. Reynolds on Feb. 4, 1950, in Lawrenceburg, Ind. He survives.

Mrs. Reynolds was a member of Church of Christ, Chelsea. She was employed by Chelsea Community Hospital at the time of her illness, and previously had been employed by Minnesota Fabrics, Ann Arbor.

In addition to her husband, she is survived by two sons, Jeffrey Allen Reynolds and Jonathan M. Reynolds, both of Chelsea; six daughters, Mrs. William (Joy Elaine) Lounsberry and Mrs. Thomas (Linda E.) Lukasiak, both of Munith, Karen Lynn, Donna G., Almee V., and Stephanie G. Reynolds, all of Chelsea; and six grandchildren. Other survivors include two sisters, Mrs. James (Patricia) Spoonamore of Ypsilanti and Joyce Spoonamore of Cleveland, O.; and several step-sisters and step-brothers of West Virginia.

Funeral services were held Monday, Jan. 17, 1 p.m. at Burghardt Funeral Home, with the Rev. John M. Hamilton officiating. Burial followed in Washtenaw Memorial Park, Ann Arbor.

Carl Loeffler

Tops Cribbage Tournament

Although the atmosphere was lighthearted as the annual Jaycee Auxiliary Cribbage Tournament got underway Monday, Jan. 17, there were contestants who played with brows furrowed in concentration, and those who played with the poker face of a professional.

By the end of the night, Carl O. Loeffler was the confirmed leader of the four-game series opener. He sported a nearly perfect 9-1 record, and a total of 108 points. Trailing behind him were 13 other tournament contenders.

Their results are as follows: Gary Radke, 6-4, 433 points; Ginny Wheaton, 6-4, 430 points; Carl Loeffler, Jr., 6-4, 418 points; Sue Walton, 6-4, 417 points; Rheta Collins, 6-4, 401 points; Fred Brede, 5-5, 561 points; Tom Penhallegon, 5-5, 500 points; Art Jarve, 4-6, 647 points; Anne Steinaway, 4-6, 607 points; Rodney Houle, 4-6, 545 points; Dan Shirilla, 3-7, 728 points; Skip Schluppe, 3-7, 724 points; and Richard Glasson, 3-7, 723 points.

More cribbage play is scheduled for Monday, Jan. 24, 7:30 p.m. at Chelsea Lanes as the contestants return to challenge Loeffler's lead in the second game of the series.

BIRTHS

A daughter, Shannon Michelle, to Janna and Darrell Williams of Stockbridge on Jan. 7 in St. Joseph Mercy Hospital, Ann Arbor. Maternal grandparents are Mr. and Mrs. William Wade of Chelsea, and paternal grandparents are Mr. and Mrs. Forest Williams of Stockbridge.

A son, Jeremy Greg, to Kevin and Mary Bradbury of Dexter on Jan. 4 in St. Joseph Mercy Hospital, Ann Arbor. Maternal grandparents are Mr. and Mrs. Grover Colby of Dexter, and paternal grandparents are Mr. and Mrs. Keith Bradbury, also of Dexter.

A son, Clinton Nathan, to Gail and Linda Shears of Gregory on Jan. 11 in St. Joseph Mercy Hospital, Ann Arbor. Maternal grandparents are Mr. and Mrs. Ismael Picklesimer of 400 W. North St., and paternal grandparents are Robert Shears of 8344 Werkner Rd., and Mrs. and Mrs. Garland DeYoe of 19495 W. Old US-12.

A good neighbor knows how to live and let others alone.

PROCLAMATION

WHEREAS, the Civic Bodies and Service Organizations of our community and the Departments of the Local Government recognize the great service rendered to this community by the Chelsea Jaycees, and

WHEREAS, The United States Jaycees, the Michigan Jaycees, and its affiliated local organizations have set aside the week of January 16-22, 1977, to observe the founding of the JAYCEES and

WHEREAS, this organization of young men have contributed materially to the betterment of this community throughout the year,

THEREFORE, I, Don Wood, president of the Village of Chelsea, do hereby proclaim the week of January 16-22 as JAYCEE WEEK and urge all citizens of our community to give full consideration to the future services of the JAYCEES.

Dated: January 18, 1977.

Don Wood
President, Village of Chelsea



RUTH HARBAUGH

JIM SPENCER

Real Estate Firm Expands Sales Staff

Pierson & Riemenschneider Realtors of Chelsea have announced the addition of Ruth Harbaugh and James Spencer to their full-time sales staff.

Mrs. Harbaugh resides at 117 W. Summit St. with her husband, Weldon, and their two children, while Spencer resides at 3814 Musbach Rd. with his wife, Marty, and their three children. Both newcomers to the staff have been accepted for membership in the Ann Arbor Board of Realtors, the Michigan

Association of Realtors, and the National Association of Realtors. Realtors Pierson & Riemenschneider are quoted as saying, "Both Ruth and Jim are extremely capable and qualified individuals, and are the type of people that are needed in our industry to maintain a high degree of professionalism. We feel very fortunate to have them as members of our staff."

Since the latest heating bill came in last summer's air conditioning bill doesn't seem so bad after all.

FRIDAY SPECIAL ALL THE FISH YOU CAN EAT \$2.75 PER PERSON

We offer complete dining facilities and carry-out service.

HOME-MADE PIZZAS after 5

COMPLETE DINNERS - SNACKS - SANDWICHES

HOURS: Tuesday thru Thursday, 4 p.m. to 10 p.m.
Friday, Saturday, Sunday, 11 a.m. to 10 p.m. Closed Mondays.

LITTLE ROOSTER RESTAURANT

Phone 426-8668

11485 N. Territorial Rd.

Our great Heritage Sale on Maytag

Brand New Maytag Washers, Dryers and Dishwashers at Sentimental Prices



Maytag Heavy Duty Washers

- Dependable heavy-duty construction
- All fabric cycle selections • Energy-saving • Long life quad coat steel cabinet
- Fabric softener dispenser • Tough poly pump • Underwater lint filter • Self-cleaning porcelain enamel wash basket

sale!



Maytag Big Load Dryers

- 26% more capacity • Exclusive low-temp, steam-of-heat drying • Multi-cycle selection
- Fast, efficient energy-saving operation
- Efficient drum size • Unique air-ride drying system • Than previous models

Save like the good old days during sale!

A Heritage Days Special For Limited Time Only

HEYDLAUFF'S

113 North Main St., Chelsea

Phone 475-1221

GO GAMIBLES

APPLIANCE CLOSEOUT!

Check These Prices & Save!

SPEED QUEEN ELECT. DRYER \$239⁹⁵

White only. Reg. \$289.95. You Haul

SPEED QUEEN GAS DRYER \$289⁹⁵

Reg. \$379.95. You Haul. Now only

CORONADO COMPACT ELEC. DRYER

Heavy duty, 4 temperature.

White & Harvest Gold. Reg. \$179.95 **\$129⁹⁵**

You Haul

CORONADO 21 CU. FT. REFRIGERATOR

White only. Reg. \$504.95.

U-Haul. Priced Now at **\$429⁹⁵**

SHOP NOW & SAVE!

Quantities limited to stock on hand.

GAMIBLES

110 N. MAIN ST.

475-7472

SALE

SUITS - SPORT COATS
SLACKS - LEISURE SUITS
LEATHER JACKETS
SWEATERS - TOPCOATS

20% Off

STRIETER'S MEN'S WEAR

"The Place To Go for Brands You Know"

STORE HOURS: Mon. thru Sat. 8 a.m. to 5:30 p.m.



ALLEN-THOMPSON: Mr. and Mrs. Norman Allen of Stockbridge have announced the engagement of their daughter, Wendy, to Roger Thompson, son of Mr. and Mrs. Norman Thompson of Stockbridge. An early May wedding is planned.

Waterloo Methodist Women Get Together

On Jan. 12, the Waterloo Village United Methodist Women met at the home of Zella LaVan for a potluck dinner at noon. Attending the event were nine members and two guests.

The meeting was opened with a prayer recited by president Eloise Schulz. Bessie Barber read a letter from the Youth Haven near Rives Junction, and the group voted to give them a gift.

Following the business session, a program was presented entitled "I'm Talking to Myself." It was read by Shirley Case, Ruth Kjellberg, and Eloise Schulz.

Two thank-you notes, recently received by the club, were read to the group and the meeting closed with a benediction.

Next meeting will be Feb. 9 at the home of Mary Clark. The study for next month is Amos.

Memorial Contribution Made to Athletic Fund

The family and friends of the late John Simpson Collins and Mark Dalton recently donated a generous sum of money to the Chelsea High School Athletic Fund in memory of the two youths who were both very active in Chelsea school athletic programs.

The contribution will be used to subsidize both boys' and girls' athletics.

Collins and Dalton were fatally injured in a tragic automobile accident Dec. 29, which also claimed the life of their close friend, Melissa Turner.

RICARDO'S Professional Hair-Styling Men and Women

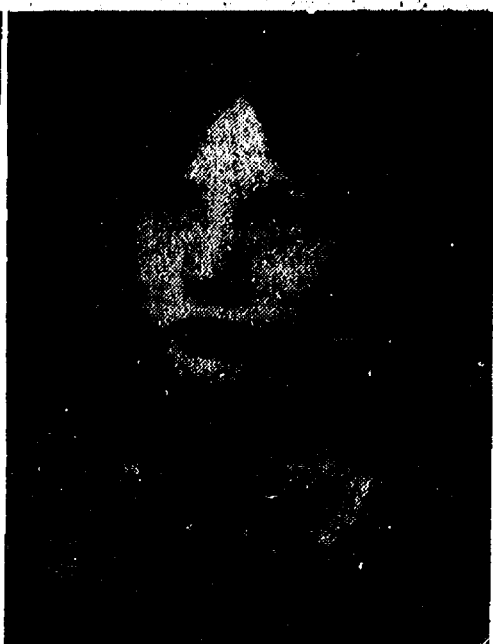
Thursday and Friday evening appointments.

475-1671

107 N. Main Chelsea



LAKATOS-KOERNKE: Mr. and Mrs. Joseph T. Lakatos of 4780 Clear Lake Shores, have announced the engagement of their daughter, Dawn Carol, to Airman Michael Kevin Koernke, son of Mr. and Mrs. Albert O. Koernke of South Lyon. The future bride is a 1975 graduate of Chelsea High school. Her fiancé is a 1975 graduate of Pioneer High school, Ann Arbor. A February wedding is planned.



SALYER-RAINEY: Mrs. Verglenda Salyer of 18504 M-52 has announced the engagement of her daughter, Karen Denise, to Charles Ray Rainey, Jr., son of Mr. and Mrs. Charles Rainey of Britton. The future bride is currently a senior at Chelsea High school and is employed part-time by Weber's Inn, Ann Arbor. Her fiancé is a graduate of Britton High school and is employed by Raycon Corp., Ann Arbor. A September wedding is planned.

Train Ticketed For Blocking Crossing

Numerous vocal complaints from both pedestrians and irate motorists bombarded the Chelsea Police Department Friday, Jan. 14, as an eastbound Con-Rail freight train blocked traffic for nearly an hour at the Main St. railroad crossing.

According to railroad representatives, the incident was caused by a brake failure aboard the passing train. Con-Rail officials told police they were aware of the train's defective brakes prior to the failure and were in the process of scheduling a repair.

In the past, the railroad company has been cited for malfunctioning train warning obstacles several times. Once again on Friday, Con-Rail received a ticket for blocking traffic in excess of five minutes.

Later that evening, at 2:30 a.m. on Saturday, Jan. 15, Con-Rail was again ticketed, this time for blocking the Main St. railroad crossing for 25 minutes.

Sonny Eliot Judges Scout Joke Contest

"What do you get when you cross King Kong with a Girl Scout cookie? A vanilla gorilla!"

This joke and others were cited by Detroit television personality Sonny Eliot as he announced winners of the Huron Valley Girl Scout Council Joke Contest at a luncheon for 100 volunteers Wednesday, Jan. 12 at Win Schuler's restaurant in Ann Arbor.

Eliot judged 78 entries written by Girl Scouts from throughout Washtenaw, Livingston, western Wayne and northern Monroe counties.

The contest was held to acquaint girl members with council financing prior to the 1977 Girl Scout Cookie Sale which will be held Feb. 1-14 under the chairmanship of Mrs. Jean Spence of Ann Arbor.

The sale annually provides about one-third of the operating budget of the Huron Valley Council which serves more than 17,000 girls each year. Sale profits also fund capital improvements of the Council's three camps, Camp Linden in Livingston county, Camp Hilltop near Ann Arbor and Camp Crawford in eastern Washtenaw county.

Profits from last year's sale totaled \$221,190, an increase of 21 percent over the previous year.

Attending the luncheon were newly-appointed area cookie sale chairmen and troop leaders who will direct the efforts of Girl Scouts ages 10 through 17 in some 300 troops in taking cookie orders. Brownies do not participate in the sale.

Eliot is widely known as the entertaining weathercaster of WWJ-TV's "News-4" and a host of Channel 4's "At the Zoo" series. He has long been active in promoting

community organizations such as the Detroit Police Department, the Detroit and Windsor Symphony Orchestras and the Detroit Tigers. "We are enormously grateful to Mr. Eliot," Mrs. Spence commented. "His participation in the joke contest has given our cookie sale a real boost."

The Huron Valley Council, a United Way agency, is authorized by the State of Michigan to conduct the 1977 Cookie Sale under license No. 9054.

Safety Patrol Girl Escapes Muggers

(Continued from page one)

As she approached the truck, he asked her "Where town was."

At this time, a man described by police as having curly blond hair and a large build, grabbed the girl around the neck and attempted to hit her head against the side of the truck.

She was resisting her assailant when she heard one of the men shout that the mailman was coming. Upon hearing the warning, the blond-haired man released the girl and the truck sped off, turning left off Dewey St. onto McKinley St., where it continued in a northbound direction.

No description of the driver could be obtained, nor was the license number of the vehicle recorded. Chelsea police later searched the area with negative results.

As of this date, no suspects have been named in the case. Anyone with information relating to the incident is asked to contact the Chelsea Police Department.

The temporary hearing loss suffered by individuals exposed to intense noise may become permanent after long or repeated exposure, hearing specialists report.

HELEN'S BEAUTY SHOP

8845 Dexter-Chelsea Rd.

Call Now

PHONE 426-2241

DAYS AND EVENINGS

BY APPOINTMENT

Senior Citizens

Discount 20%

Fire Destroys New Home in Scio Township

A \$75,000 home, its entire household furnishings, the garage and two cars were completely destroyed in an early morning fire Monday Jan. 17, in Scio township.

The home of Leonard Young, an Ann Arbor attorney, at 5118 Green Knoll Lane, was gutted by the blaze which apparently started in the family room, according to Dexter Fire Chief Keith Hoatlin. The Dexter Fire Department responded to the call at 2:34 a.m.

Young and his wife were asleep in their bedroom when he awoke to the sound of breaking glass, according to the fire chief. When Young looked out of the bedroom door, the entire family room area was engulfed in smoke. Mr. and Mrs. Young escaped through a glass sliding door in their bedroom and are staying with their daughter nearby.

Hoatlin said there had been a fire in the fireplace during the evening and the Youngs retired about 1:10 a.m.

The blaze had already reached the roof of the home by the time the fire trucks arrived. Called to the scene to assist were the Chelsea and the Ann Arbor township fire departments.

Firemen worked on the blaze for 8½ hours in 14 below zero weather. Hoatlin estimates 11,000 gallons of water were poured on the flames before the fire was completely extinguished. He said frozen valves on the fire trucks and water from the hoses which froze unless it was directly on the flames hampered the work of the firemen.

Girl Scout Association Winter Meet Scheduled

Western Washtenaw Area Association of Huron Valley Girl Scouts will hold its winter meeting at Klager Middle school, 405 Ann Arbor St., Manchester, on Thursday, Jan. 27, at 7:30 p.m.

Carpools will leave Wylie Middle school in Dexter at 6:45 p.m. In Chelsea area, those needing a ride should call Nadine Koch, 475-Senior Scouts, Julie Koch, and Jill Piper, Dexter, will share their 1976 Winter-Opportunity trip with the group. Julie went to New York, New Jersey, and Pennsylvania: "Spinning Wheels to Other Big Deals in New York." Jill attended "Try it Now" at Buckeye Trails Council in Dayton, O.

Vicky Hicks, Saline, will discuss the revision of the association bylaws. Joan Gunther, Dexter, will tell the group about the up-coming cookie-sale.

CHICKEN is still SPECIAL on TUESDAY NIGHTS at the

CAPTAINS TABLE



All you can eat of Deep-fried Chicken, French Fries, Biscuits and Honey, plus a trip to our delicious Salad Bar.

\$2.95

The Captains Table

8093 Main St., Dexter

426-3811

Mon.-Wed. 6 a.m.-9 p.m.

Thurs., Fri., 6 a.m.-10 p.m.

Saturday, 7 a.m.-9 p.m.

NOW SERVING

EACH SATURDAY EVENING

Spaghetti and Meat Ball Dinners

Includes Salad and Roll

Psychology Award

The final recipient of the Psychology Student of the Fortnight award is fourth-hour psychology student, Liz Schwarze.

She was nominated for the honor by her classmates, who based their decision on class participation, attentiveness in class, and the ability to question and understand the principles of psychology. Miss Schwarze has also achieved high academic standards in the class, maintaining an A-average throughout the semester.

According to Miss Schwarze, she is very interested in psychology, and plans to continue her studies in the field at either Kalamazoo College or Duke University following graduation.

A Chelsea High senior, Miss Schwarze is the daughter of Mr. and Mrs. Fred Schwarze of 14300 Jerusalem Rd.



LIZ SCHWARZE

Hockey Team Slugs Win Over Tecumseh

Chelsea's Bulldog hockey team had a slugfest last Sunday with Tecumseh, but came out on top of a 4-3 score.

Tecumseh scored first at 1:23 of the first period when Dave Perry took the first shot on goal and scored. Chelsea fought back and at 2:35 Greg Hastings took a beautiful pass from Harold Vandervoort and put the puck into the net for Chelsea. Along with Vandervoort, Bob Fischer got an assist on that goal.

Joe Marentette took a rebound from a shot by Pete Huston and slapped it into the net to end the first period with the score 2-1, Chelsea.

The second period saw only one scoring play. At 13:53 Steve Check scored a powerplay goal for Chelsea when he picked up the rebound from Greg Hastings' shot and punched it into the net.

Coach Jerry Ringe lifted goalie Mike Check in the third period and put Dave Baldwin in the nets for Chelsea. Jerry McFadden welcomed Dave to the game when he slapped a shot from just in front of the goal and beat Dave for the score. At 10:47 of the period Jason Lindauer saw Steve Check break into the open and passed the puck to him. Steve took the puck in all alone and easily beat the Tecumseh goalie for his second goal of the game and made the score 4-3, Chelsea.

An unfortunate thing happened in the third period. At 14:40, with just 20 seconds left in the game, Joe Marentette got into a fight with a Tecumseh player. The referees just broke up that fight when Steve Check got into the action and started exchanging blows with

another Tecumseh player. The referees quickly calmed things down and all four players went off the ice with double minor penalties.

With just seconds left on the clock now, the puck was faced off, but Mark Stevenson started a pushing contest with a Tecumseh player. Referee Darrel Clute came over and pushed Mark out of the action, but Mark took offense at Clute's action and he took a swing at him. Before it was over both referees and Coach Phil Boham had to subdue Mark and take him off the ice. Mark got a 5-minute penalty for slashing and a 10-minute misconduct and a one game suspension.

Next week Chelsea is scheduled to play an exhibition game against Grand Ledge at 6 p.m. in Jackson.

Even though hearing loss victims are suffering from a very real physical disability, they seldom are shown the concern extended to individuals with other types of handicaps, point out hearing specialists. This is because there are no visible impairments connected with a hearing loss.

CAROL'S CUTS

328 WILKINSON

475-7094

Appts. Only

Carol Collins, Stylist

"Personalized Styling"

Fuslier Named County Delegate To SEMCOG

Wallace Fuslier, Lima township trustee and former township supervisor, was recently elected as a delegate to the executive committee of the Southeast Michigan Council of Governments (SEMCOG) by Washtenaw county townships. SEMCOG is a water quality management planning body formed by Michigan Gov. William Milliken.

SEMCOG basically functions as a watchdog on community development. The agency has decisive powers over such issues as the Mill Creek Park proposal and sewage treatment plant expansion.

Fuslier, who has been active in local township government for the past two years, will serve a one-year term. He resides at 9200 Dexter-Chelsea Rd.

Please Notify Us

In Advance of

Any Change in Address

Swim Club...

(Continued from page one)

lombo, Eric Inglis, Kirk Stubbs, Kristin Thomas, Kent Noll, Amy Oxner, Don Buckenberger, Kathy Brown, Lori Volta, Phil Hoffman, Sue Cobb, Traci Bunter, Lisa Radke, Cinda Thornton, Janine Hoffman, Beth Heller, Nancy Hastings, Kathy Slater, Becca Lee, Brenda Hoelzer, Todd Oxner, Amy Hume, Shannon Springer, Mike Muck, Craig Leach, Kirk Hawks, Phil Sweet, Tim Perrington and Beth Fahey.

Subscribe today to The Standard!

Magic Mirror Beauty Salon

Open Tuesday thru Friday

9 a.m. to 9 p.m.

Saturday, 8 a.m. to 3 p.m.

PHONE 665-0816

CARPET REBIRTH

Give your carpet a new lease on life

by cleaning it regularly.

JET SPRAY CARPET CLEANING

Use Your BankAmericard

Phone 761-3025 or 475-1509

Ask for John Lixey.

CATS

CHELSEA AREA

TRANSPORTATION SYSTEM

Transportation for the Elderly and Handicapped

CALL 475-9494

between 9 to 11 a.m. or 1 to 3 p.m.

Service hours are 9 a.m. to 4:30 p.m. daily; Thurs., 9 to 1

Markel

A CONTINUATION OF OUR

STOCK REDUCTION SALE

10% TO 50% OFF

- Chairs
- Sofas
- Sofabeds
- Loveseats
- Tables
- Desks
- Mattresses
- Lamps
- Bedrooms
- Dining Sets
- Accessories
- Carpeting

A PARTIAL LISTING OF THE MANY MANY SALE ITEMS!

LADDER-BACK ROCKER

DARK PINE FINISH

\$89

Reg. \$114.95. Colonial styled. Hand rubbed finish. Hand painted design.

FRUITWOOD FINISHED

CURIO CABINET

\$179

3 sides of glass, mirror in back. Traditional style. Regularly \$277.50.

MODERN OCCASIONAL

CHAIRS IN LIME STRIPE

\$99

Reg. \$109. Lime green self stripe, pecan wood frame.

DOOR CHEST IN

PECAN 40x60

\$249

Reg. \$459.95. Lots of storage space. Traditional design.

WINGBACK ROCKER

AND OTTOMAN

\$249

Regularly \$409. Colorful patchwork covering in nylon.

BROCADE LOVESEAT

IN GREEN AND GOLD

\$399

Regularly \$549. Firm comfort. Elegantly covered. Save.

10 TO 50% OFF ON CARPETS

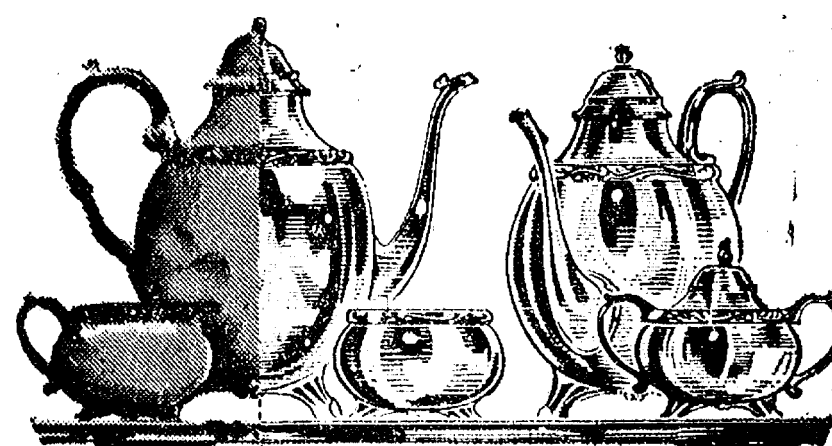
15% OFF ON PADDING

20% OFF ON INSTALLATION

Chelsea: Main St. • Open Monday and Friday Evenings Until 9 • 475-8621

ALL SILVER REPLATING REDUCED 20%

No charge for straightening* DURING JANUARY ONLY



Make this YOUR Silver Investment for the Future!

Every Item Replated at Sale Prices

Since the value of old silverplated items continues to soar... this is an excellent time to take advantage of these low prices to have your worn silverware, antiques and family heirlooms replated like new. These pieces are now more valuable than ever and make wonderful gifts. All work HEAVILY SILVERPLATED by our skilled silversmiths and Sale prices apply to ALL pieces.

For Instance

Article	Reg. Price	Sale Price
Teapot	\$46.95	\$37.56
Creamer	24.50	19.60
Candlestick (per inch)	2.65	2.12
Sugar bowl	26.95	21.56
Trays (per sq. in.)	.210	.168

OUR NEW REPAIR POLICY

*FREE DENT REMOVAL and straightening on all items we silverplate.

*ONLY \$12.95 FOR ANY AND ALL ADDITIONAL REPAIRS, no matter how extensive, on any piece we silverplate. Includes soldering broken handles, legs, knobs, etc. (Only exceptions are for furnishing new parts).

SALE ENDS JANUARY 31 BRING IN SILVER TODAY!

WINAN'S JEWELRY

+ Services in Our Churches +

FIRST UNITED METHODIST CHURCH

The Rev. Marvin H. McCallum, Pastor

Saturday, Jan. 22—9:00 a.m.—Quest Team in the Education Building.

Sunday, Jan. 23—10:00 a.m.—Worship service (nursery provided).

10:20 a.m.—Church school, 4-year-olds through 6th graders.

11:00 a.m.—Junior high church school, coffee and punch hour.

11:10 a.m.—Senior high church school, adult church school.

7:30 p.m.—Ushers and greeters meeting.

Tuesday, Jan. 25—9:30 a.m.—Charismatic Bible Sharing Group.

1:00 p.m.—Social Services Talk and Craft Group.

Wednesday, Jan. 26—3:30 p.m.—Kinder Choir.

4:00 p.m.—Praise Choir.

8:00 p.m.—Chancel Choir.

ST. THOMAS EVANGELICAL LUTHERAN

Ellsworth and Haab Rds.

The Rev. Jerome Dykstra, Pastor

Friday, Jan. 21—5:00 p.m.—Spaghetti supper at St. Paul's, Ann Arbor, begins.

Sunday, Jan. 23—9:30 a.m.—Sunday school, Bible classes, and Confirmation classes.

10:45 a.m.—Worship with special Communion.

Tuesday, Jan. 25—7:30 p.m.—Sunday school teachers meeting.

Wednesday, Jan. 26—10:00 a.m.—Bible study.

8:00 p.m.—Choir rehearsal.

CHELSEA BAPTIST CHURCH

377 Wilkinson St.

The Rev. James Stacey, Pastor

Every Sunday—9:45 a.m.—Sunday school for the whole family.

11:00 a.m.—Morning worship service and children's church.

7:00 p.m.—Evening service, informal singing, sharing, study and discussion. (Nursery care provided for all services).

Home Bible Studies each week in the homes of the leaders.

Teen Ministry, Sunday at 6 p.m. and study groups during the week.

ST. BARNABAS EPISCOPAL CHURCH

20550 Old US-12

The Rev. Fr. Jerrold F. Beaumont, B.S.P.

Every Sunday—10:00 a.m.—Holy Communion first, third, and fifth Sundays, and 7:30 p.m. every Wednesday.

10:00 a.m.—Morning prayer. Second and fourth Sundays Church school and nursery every Sunday.

Every Wednesday—8:15 p.m.—Bible study and discussion groups.

First Wednesday of every month—Bishop's Committee.

Third Thursday of every month—Episcopal church women.

FIRST UNITED METHODIST

Parks and Territorial Rds.

The Rev. Glenn Kjellberg, Pastor

Every Sunday—9:15 a.m.—Morning worship.

10:00 a.m.—Sunday school.

CONGREGATIONAL CHURCH

(United Church of Christ)

The Rev. Carl Schwarm, Pastor

Friday, Jan. 21—Pastor's day off.

Sunday, Jan. 23—10:30 a.m.—Worship and church school. Coffee hour, trustees meeting, and commentary articles due.

Monday, Jan. 24—Pastor's day off.

Tuesday, Jan. 25—7:30 p.m.—Bible study.

ST. PAUL UNITED CHURCH OF CHRIST

The Rev. R. J. Ratzlaff, Pastor

Saturday, Jan. 22—9:00 a.m.—Confirmation.

10:15 a.m.—Confirmation.

Sunday, Jan. 23—9:00 a.m.—Church school.

10:30 a.m.—Worship service and church school.

Tuesday, Jan. 25—3:30 p.m.—Joyful Noise.

Wednesday, Jan. 26—7:30 p.m.—Building and Grounds meeting.

8:00 p.m.—Chancel Choir.

Thursday, Jan. 27—7:30 p.m.—Stewardship meeting.

ST. MARY CATHOLIC CHURCH

The Rev. Fr. David Philip Dupuis, Pastor

Mass Schedule: Every Saturday—4:00-5:00 p.m. Confession.

7:00 p.m.—Mass. Immediately after 7 p.m. Mass, Confession.

Every Sunday (winter schedule)—8:00 a.m., 10:00 a.m., 12:00 noon—Mass.

CHURCH OF JESUS CHRIST OF LATTER-DAY SAINTS

Meetings at St. Barnabas Episcopal Church.

20500 Old US-12

Every Sunday—11:00 a.m.—Priesthood meeting.

12:30 p.m.—Sunday school.

METHODIST HOME CHAPEL

Chaplain Ira Wood, Pastor

Every Sunday—8:45 a.m.—Worship service.

IMMANUEL BIBLE CHURCH

145 E. Summit St.

The Rev. LeRoy Johnson, Pastor

Every Sunday—9:45 a.m.—Sunday school, nursery provided.

11:00 a.m.—Morning worship.

6:00 p.m.—Evening worship.

Every Wednesday—7:00 p.m.—Family hour, prayer meeting, and Bible study.

FIRST UNITED PRESBYTERIAN CHURCH

Unadilla

The Rev. T. H. Liang, Pastor

Every Sunday—9:45 a.m.—Sunday school.

11:00 a.m.—Worship service.

BAHA'I FRESIDE

Every Thursday—8:00 p.m.—At the home of Toby Peterson, 705 S. Main St. Anyone wishing to learn about the Baha'i faith is welcome.

ZION LUTHERAN CHURCH

Corner of Fletcher, Waters Rds.

The Rev. John R. Morris, Pastor

Sunday, Jan. 23—9:00 a.m.—Sunday school.

10:15 a.m.—Worship.

OUR SAVIOR LUTHERAN CHURCH

1515 S. Main, Chelsea

The Rev. William H. Keller, Pastor

Friday, Jan. 21—Luke 4:14-21.

Sunday, Jan. 23—9:00 a.m.—Sunday school and Bible classes.

10:30 a.m.—Worship service.

3-5 p.m.—Adult Information classes.

Wednesday, Jan. 26—4:00 to 6:00 p.m.—Confirmation classes.

Thursday, Jan. 27—7:30 p.m.—Choir.

FIRST CHURCH OF CHRIST SCIENTIST

1883 Washtenaw Ave., Ann Arbor

Every Sunday—10:30 a.m.—Sunday school, morning service.

SALEM GROVE UNITED METHODIST CHURCH

3320 Notten Rd.

The Rev. Gerald R. Parker, Pastor

Every Sunday—8:30 a.m.—Sunday school.

10:30 a.m.—Worship service.

BETHEL EVANGELICAL AND REFORMED CHURCH

(United Church of Christ)

Freedom Township

The Rev. Rowan A. Reineck, Pastor

Every Sunday—10:00 a.m.—Worship service.

ST. JACOB EVANGELICAL LUTHERAN CHURCH

12501 Riethmiller Rd., Grass Lake

The Rev. Andrew Bloom, Pastor

Every Sunday—9:00 a.m.—Worship service.

10:15 a.m.—Divine services.

NORTH LAKE UNITED METHODIST CHURCH

The Rev. David Stiles, Pastor

Every Sunday—8:30 and 10:00 a.m.—Worship service.

CHURCH OF CHRIST

13661 Old US-12, East

Evangelist John M. Hamilton

Every Sunday—10:00 a.m.—Church school.

11:00 a.m.—Worship service.

Nursery will be available.

6:00 p.m.—Worship service.

Every Wednesday—7:30 p.m.—Bible study.

WATERLOO VILLAGE UNITED METHODIST CHURCH

8118 Washington St.

The Rev. Glenn Kjellberg, Pastor

Every Sunday—10:00 a.m.—Sunday school.

11:15 m.—Worship service.

ST. JOHNS EVANGELICAL AND REFORMED CHURCH

(United Church of Christ)

Francisco

The Rev. Virgil King, Pastor

Every Sunday—10:30 a.m.—Church services.

GREGORY BAPTIST CHURCH

The Rev. Paul White, Pastor

Every Sunday—9:45 a.m.—Sunday school.

11:00 a.m.—Morning worship.

6:00 p.m.—Young people.

7:00 p.m.—Evening worship.

7:30 p.m.—Thursday mid-week worship service.

NORTH SHARON BIBLE CHURCH

Sylvan and Washburne Rds.

The Rev. Ronald C. Purkey, Pastor

Every Sunday—10:00 a.m.—Sunday school.

(Nursery available). Junior church classes.

11:00 a.m.—Worship service.

8:00 p.m.—Senior High Youth meeting. Youth Choir.

7:00 p.m.—Evening worship services. (Nursery available.) All services interpreted for the deaf.

Every Wednesday—7:00 p.m.—Bible study and prayer meeting. (Nursery available.)

Bus transportation available: 428-7222.

ST. JOHN'S UNITED CHURCH OF CHRIST

Rogers Corners

Sunday, Jan. 16—Noon—Annual Congregational meeting, pot-luck dinner.

Tuesday, Jan. 18—10:00 a.m.—Sewing Day.

FIRST ASSEMBLY OF GOD

The Rev. Richard Coury, Pastor

Every Sunday—9:45 a.m.—Sunday school.

11:00 a.m.—Worship service.

6:00 p.m.—Evening worship.

Every Wednesday—7:00 p.m.—Christ's Ambassadors. Missionettes. Bible meditation and prayer.

Man's first powered flight was made by the Wright Brothers at Kitty Hawk, N. C., on Dec. 17, 1903. Orville Wright was the first to soar over the sand dunes on that morning, managing to stay aloft for 12 seconds. Later that day, his brother Wilbur kept the new flying machine in the air for 59 seconds. The brothers practiced their early aerodynamic experiments and made many of the parts for that historic airplane in their bicycle shop in Dayton, O. That shop now stands in Greenfield Village, Dearborn. Next door is the house, also from Dayton, where the Wright Brothers lived at the time of their first flight.

It takes courage to admit that someone else is smarter than you are—even in just some little insignificant thing.

ANDY FLETCHER CONTRACTOR Licensed and Insured

NEW CONSTRUCTION REMODELING - ROOFING ADDITIONS

Free Estimates Ph. 428-8569

Ask Project COPE

Question: I have a 3½-year-old child who stutters. He seems to be talking faster than he is thinking, so I have told him to slow down when he is talking to me. This hasn't helped much, is there anything else I can do?

ANSWER: It is common for young children to repeat sounds and words when talking. It's very possible your child is progressing normally through his speech development and isn't really stuttering at all.

There are some things you can do that will help any pre-school (or school age) child who is having trouble "getting his words out." When your child is excited and seems to be having trouble saying words do not tell him to slow down or calm down; instead change the excited conversation to a calm conversation by changing your own speech to be very calm and relaxes. It is also important to focus on what your child is trying to tell you and not how he is saying it. Drawing attention to his manner of speaking by either interrupting him or instructing him to take a deep breath and start over, may cause him to be self-conscious about his speech. This could increase his difficulty in talking.

When a child is showing signs of being non-fluent, it is best to direct your full attention to him when he is talking; provide a calm, relaxed environment; eliminate any stress or strain which seems to increase non-fluent speech; and work toward increasing his self confidence. If your pre-school child seems to become more non-fluent, begins to struggle when he speaks, or seems upset

about his speech, the special education office should be contacted so that the speech therapist in your school district can advise you. If the problem is still present when he begins school, you should definitely contact the speech therapist so that you - as a team - can take appropriate action.

(Project COPE is a federally funded program which is being operated during the current school year by Special Education Region V for Chelsea, Manchester, and Whitmore Lake School Districts. Its aim is to inform the community about the special problems and needs of pre-school children. Those who have questions, concerns, or who wish to refer a child for diagnostic services can contact Ellen Eagan, Project COPE Director, at 475-9131, ext. 50 or Dr. DeYoung at ext. 48.)

Special Ed. Parents To Meet New Teacher

On Monday, Jan. 24, 7:30 p.m., a special education parents meeting will be held in Room 204 of Chelsea High school to give parents an opportunity to become acquainted with the new junior high special education teacher, Lynn Zander.

Also on the agenda will be a presentation by High School Educable Mentally Impaired instructor, Nancy Oswald. All parents are encouraged to attend.

Anyone with questions is directed to call Gladys Buck, 475-2609, or George Winans, 475-1119.

Subscribe today to The Standard!

President Ford Proclaims National Blood Donor Month

President Gerald Ford has proclaimed January as National Blood Donor month. The official announcement reads:

"Blood Donor Month gives all Americans an annual opportunity to honor the fellow citizens who have voluntarily given blood so that others might live. Their gift is easy and painless. Yet it represents one of the supreme acts of human compassion and generosity. It has earned them the thanks of many grateful recipients and of a nation whose well-being they have saved."

"I urge every American to join in building an all-voluntary system of blood donation. It is in the finest American tradition of humanitarian concern for those in need."

Area residents may donate at the Red Cross chapter at 2729 Packard Rd., Ann Arbor, on Jan. 14, from 1 to 7 p.m. or on Jan. 21, from 10 to 4 p.m.

Genealogical Society Will Meet Sunday

January meeting of the Genealogical Section of the Washtenaw County Historical Society will be held Sunday, Jan. 23 at the home of Mr. and Mrs. Leigh Anderson, 1120 Lincoln Ave., Ann Arbor, beginning at 2:30 p.m. Anyone who has problems or wishes to use library books, should come between 1 p.m. and 2:30 p.m.

Speaker of the day will be James W. Craven who is the book curator for the University of Michigan. His topic will be "How To Preserve Materials." Coffee will be served.

School Board Briefs

At a regular meeting of the Chelsea Board of Education Monday, Jan. 17, present were Haselschwardt, Hodgson, Feeney, Daniels, Tobin, Stirling, Superintendent C. Cameron; Business Manager Mills; Principals Benedict, Conklin, Wojcik and Smith; Assistant Principal Schave. Guests present were Sue Harding, Charles Kelly and Pat Clarke.

Meeting called to order at 7:15 p.m. by President Haselschwardt. The minutes of the meeting of Jan. 3, were approved as read.

Sue Harding, counselor, reported to the board on the 4th and 7th grade State Assessment Tests in math and reading. The district scored well above the state averages in both areas. An article regarding the results is published elsewhere in The Standard.

Mrs. Charles Murphy was appointed to serve on the Washtenaw County Parent Advisory Committee on Special Education.

The board met with the Ad Hoc Citizens Advisory Committee from

8:30 to 9:30 p.m. The next meeting is scheduled for Jan. 31.

The board approved the early graduation of Rene Papp, Harold Vandervoort and Mark Warren as provided by board policy.

Principal Smith and Assistant Principal Schave discussed the attendance of some students at the high school who will not be receiving credit in one or more classes because they have not been in attendance the 75 days required.

The Master Contract with the CEA was signed.

The application of the Dana Corp. and Lithocrafters, Inc., to the Village of Chelsea to establish a Plant Rehabilitation District and an Industrial Development District for their Buchanan St. property, under Act 198, Michigan Public Acts of 1974, was discussed.

Meeting adjourned at 11:45 p.m.

Telephone Your Club News To 475-1371.

HOLY LAND TOUR

12 days - Leisurely visiting the Land of the Bible

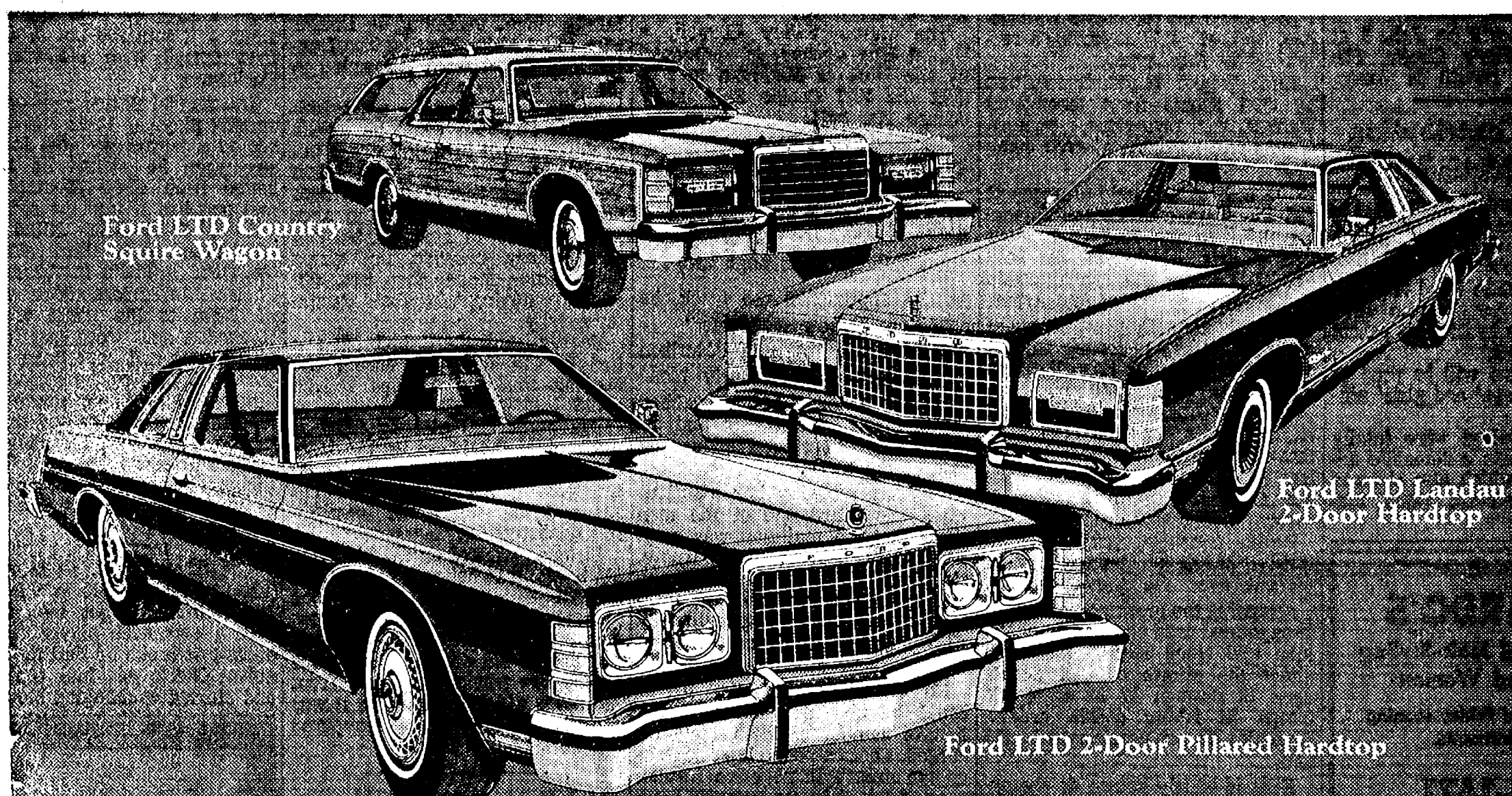
May 23 - June 3 from Detroit

Price: \$1,070 all expenses

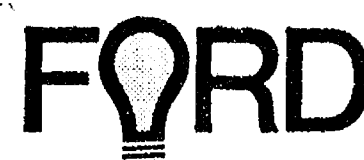
THE REV. ROMAN REINECK, TOUR HOST

Manchester, Michigan 48158

Ph. 428-8000



No matter how you look at it
**YOU REALLY GET MORE
IN A FORD.
BECAUSE THERE'S MORE
TO START WITH.**



When America needs
a better idea,
Ford puts it on wheels.

Check the box at right and see for yourself that Ford LTD offers you more of what you want in a full-size car than its down-size competition. Then check out LTD at your Ford Dealer and find out what LTD's extra dimensions can mean to you. We think you'll conclude: you really get more in a Ford. And when you talk over the deal, we're sure you'll also agree: you really get more at your Ford Dealer. See the Ford LTD in your future today.

4-DOOR		CAPRICE/IMPALA	CADILLAC DEVILLE	FORD LTD
LENGTH		212.1"	221.2"	224.1"
WIDTH		76.0"	76.4"	79.5"
WHEELBASE		116.0"	121.5"	121.0"
HIP ROOM	FRONT	55.0"	55.4"	57.8"
	REAR	55.3"	55.4"	58.0"
SHOULDER ROOM	FRONT	60.8"	60.6"	61.3"
	REAR	60.8"	60.6"	61.4"
TRUNK SPACE		20.2 cu. ft.	19.6 cu. ft.	21.9 cu. ft.
MAXIMUM TOWING RATING		6,000 lbs.	6,000 lbs.	7,000 lbs.
STANDARD ENGINE		250-1V 6 cyl.	425-4V V-8	**351-2V V-8
11EPA MPG	CITY	15 (8 cyl.)	15 (8 cyl.)	**19 (8 cyl.)
ESTIMATE	HIGHWAY	20 (360-4V) 22 (250-1V)	18 (425-4V) 20 (8 cyl.)	**19 (351-2V) 21 (8 cyl.)

NOMINATION FORM

for CHELSEA JAYCEE

DISTINGUISHED SERVICE AWARD

The Jaycee Distinguished Service Award is now open to any age, man or woman, who has given service to this community. We would greatly appreciate all nominations for this award. The nomination may be made by an individual or a group.

Please send nomination form to Chelsea Jaycees, P. O. Box 277, DSA Awards Chairman, Chelsea, Mich. 48118.

I Nominate _____ (name)

of _____ (address) for the Chelsea

Jaycee's Distinguished Service Award.

Signed _____

Phone No. _____

To Assure A Good Attendance!
Advertise Your Auction
in The Standard



Real Estate

By PAUL FRISINGER

REALTOR

REAL ESTATE VS. DOW JONES

When we compare the results over the past decade between stock market profits and real estate increases, we'll see quite a dramatic difference in dollars. In the decade from January 1960, to January 1970, the Dow Jones Industrial average jumped from 688 to 800 — an increase of 16 percent in ten years. During the same ten-year period, the average home price increased from \$18,307 to \$27,022 — an appreciation of 48 percent or triple the Dow.

No matter how you slice the cake, an investment in real estate over the past decade had proven to at least double the stock market increase. And the trend is widening in favor of real estate.

If there is anything we can do to help you in the field of real estate, please phone or drop in at FRISINGER REALTY CO., 935 S. Main St., Chelsea. Phone: 475-8681; evenings 475-8621. We're here to help!

Hospital Volunteers Hold Annual Meeting

On Tuesday, Jan. 11, the annual luncheon and meeting for Chelsea Community Hospital volunteers was held in the hospital dining area. Approximately 30 women were present to hear the remarks and words of appreciation from Mrs. Gene Jordan, volunteer president; Willard Johnson, administrator; and Alice Tice, director of volunteer activities.

New board officers and members for 1977 elected are Mrs. Gene Jordan, president; Mrs. Dwight Barstow, vice-president; Mrs. Pat Turcott, treasurer; Mrs. George Staffan, record secretary; Mrs. Paul Schable, corresponding secretary; Mrs. Charles Sing, Mrs. Albert Doll and Dorothy Eiseleman.

Newer volunteers who received pins for 40 hours of service were Mrs. William Briston, Mrs. Dale Claire, Mrs. Charles North, Peggy Osborne, Mrs. Louis Schneider,

Mrs. Arthur Schleede and Mrs. David Streiter.

Mrs. Katherine Kusterer received a five-year pin for continuous service and those receiving an award pin for 500 or more hours of accumulated service were Mrs. Dwight Barstow, Mrs. Jerry Beaumont, Mrs. Gene Jordan, Mrs. Dorothy Miller, Mrs. Bea Read, Mrs. Paul Schable, Mrs. Lawton Steger, Mrs. Pat Turcott and Mrs. Wallace Wood.

The CCH volunteers are on duty six days a week and some of their duties include visiting with patients, providing cart service for books and small sundries and snacks, delivering mail and flowers, assisting patients to different areas of the hospital, providing movies, bingo games, music programs and a twice-monthly newsheet, picking up and assisting with menus, helping in arts and crafts and decorating for various seasons.

Historical Society Seeks Members

Chelsea Area Historical Society launched its 1977 membership drive recently under the direction of Katie Chapman, campaign chairman.

All currently active members are asked to complete and return the membership application forms which they will be receiving shortly. Anyone else interested in joining the group may obtain a membership application form from Mrs. Chapman at 629 N. Main, or by calling 475-7558.

According to Mrs. Frederick Petsch and her board members, who comprise the Historical Society program planning committee, inclement weather forced the cancellation of their scheduled board meeting to approve an agenda for the coming year. However, the committee expects to finalize the program before the next Historical Society meeting in February.

Among the varied and informative activities under consideration is a review of the early history of the Chelsea area which will be taped in interviews with longtime area residents. The review will be used at future meetings.

CHELSEA, MICHIGAN, THURSDAY, JANUARY 20, 1977



COOKIE SALE CHAIRMEN: Chelseaites Barbara Seabury (center) receives an affectionate pat on the cheek from glib-tongued WWJ-TV "News-4" weathercaster, Sonny Eliot (left). Eliot was at Win Schuler's, Ann Arbor, on Jan. 12 to judge the 1977 Huron Valley Girl Scout Council Joke Contest. The contest served to kick-off this year's annual Girl Scout Cookie Sale. Mrs. Seabury, along with Barbara Wolfgang (right), also of Chelsea, will head cookie sale efforts locally.

Lee Thornbury Wins State Championship

Lee Thornbury, daughter of Dr. and Mrs. John Thornbury of Trinkle Rd., won the 1976 Hunter-Jumper Association of Michigan championship for limit equitation on the flat with her horse, High-Time. In honor of the achievement, she was presented with an award last Saturday, Jan. 15, at the Association's annual banquet in Farmington.

Championships are earned by the accumulation of points during show season. Miss Thornbury, who was also ranked fourth in the state in limit equitation over fences, shares the championship with Karen Kluge of Ann Arbor. Both girls are trained by Cindy Carlson at Everett Stables in Ann Arbor.

R. V. Worden Promoted With Corrections Dept.

On Jan. 8, R. V. Worden, 57, of 718 Taylor St., was promoted from sergeant to lieutenant in the Department of Corrections at Cassidy Lake Technical School, deputy superintendent, Bruce Cummings announced last week.

Worden was cited for having an outstanding record of service, for responding well to inmate's needs, and for knowing his job well.

Worden first began working as a corrections officer at Cassidy Lake in September, 1964. As lieutenant, his new duties will include responsibility for supervising the entire staff and facility during the afternoon shift.

A graduate of Grass Lake High school, Worden served as a technical sergeant in the U.S. Army during WW II. He and his wife, Doris, have two sons.

Local Girl Scout Cookie Sale Chairmen Named

Mrs. Barbara Wolfgang of 2340 S. Fletcher Rd., and Mrs. Barbara Seabury of 2150 S. Fletcher Rd., have been appointed local chairmen for the 1977 Girl Scout Cookie Sale, slated to get underway shortly.

Mrs. Wolfgang and Mrs. Seabury will direct the sale efforts of 165 girls in six troops from the Chelsea school area.

"What do you get when you cross King Kong with a Girl Scout cookie? A vanilla gorilla!"

This joke and others were cited by Detroit television personality Sonny Eliot as he announced winners of the Huron Valley Girl Scout Council Joke Contest at a luncheon for 100 volunteers Wednesday at Win Schuler's restaurant in Ann Arbor.

Eliot judged 78 entries written by Girl Scouts from throughout Washtenaw, Livingston, western Wayne and northern Monroe counties.

The contest was held to acquaint girl members with Council financing prior to the 1977 Girl Scout Cookie Sale which will be held Feb. 1-14 under the chairmanship of Mrs. Jean Spence of Ann Arbor.

The sale annually provides about one-third of the operating budget of the Huron Valley Council which serves more than 17,000 girls each year. Sale profits also fund capital improvements of the Council's three camps, Camp Linden in Livingston county, Camp Hilltop near Ann Arbor and Camp Crawford in eastern Washtenaw county.

Profits from last year's sale totaled \$221,190, an increase of 21 percent over the previous year.

Attending the luncheon were newly-appointed area cookie sale chairmen and troop leaders who will direct the efforts of Girl Scouts ages 10 through 17 in some 300 troops in taking cookie orders. Brownies do not participate in the sale.

Eliot is widely known as the

Swim Lessons Still Available

Registration is still open to anyone interested in enrolling in children's Saturday swimming lessons, 2 to 4 p.m. Classes will include swimming and diving instruction for age groups from infants on up. Also still accepting registrations are Thursday night Ladies Swim and Trim classes. Two sessions are currently being offered, 7:30 p.m. to 9 p.m., and 8:15 p.m. to 9:45 p.m.

Enrollment for both children's swimming lessons and Ladies Swim and Trim will be taken by phone at 475-1425. Aside from Ladies Swim and Trim, adult classes have been cancelled because of a lack of interest.



dinner specials:

SUNDAY - MONDAY - TUESDAY
COUNTRY STYLE CHICKEN
Salad Bar - Potato or Vegetable
All You Can Eat!
ADULTS, \$3.15 CHILDREN under 12, \$1.75

WEDNESDAY - STEAK NIGHT
7-OZ. STEAK OR SHISHKABOB - \$4.45
Salad Bar - Potato or Vegetable

FRIDAY - SATURDAY
Wide Open Selections for Your Pleasure
FISH FRY THURSDAY - All You Can Eat
ADULTS, \$3.15 CHILDREN under 12, \$1.75

Try Our Alaskan King Crab Longhorn Lounge
1750 Washtenaw, Ann Arbor 971-1500

RICK'S MARKET

20490 M-52 "The Store with the Spartan on the Door" Phone 475-2898

ECKRICH
SLICED
BOLOGNA
Thick Sliced or Reg.

1-Lb. Pkg. **\$1.09**
SAVE 40¢

OREO
COOKIES

19-Oz. Pkg. **95¢**

KLEENEX
TISSUE

Boutique Pkg. 2-Ply. **47¢**

BORDEN GLACIER CLUB

ICE CREAM . . . 1/2 gal. **89¢**

RICK'S HOT BREAD DAILY

Weekdays by 3:30 p.m. Sat. & Sun., by 10:30 a.m.

(QUANTITY RIGHTS RESERVED)

BANQUET
BUFFET
SUPPERS

Turkey - Chicken and Dumpling
Noodle and Beef - Salisbury Steak
Beef Chop Suey

2-Lb. Pkg. **\$1.19**

BANQUET
PIES

Macaroni & Cheese
Turkey - Beef - Chicken

3 8-Oz. Pkgs. **79¢**

KEEBLER ZESTA
SALTINE
CRACKERS

1-Lb. Box **49¢**

SPARTAN
VEGETABLE
OIL

38-Oz. Jar **\$1.31**

HARTLAND
NATURAL
CEREAL

Plain 16-Oz. Box **87¢**

DANCER'S JANUARY CLEARANCE SALE CONTINUES THIS WEEK

MEN'S & BOY'S
WINTER JACKETS - FLANNEL ROBES
LEISURE TOPS - KNIT SHIRTS

1/2 OFF

DACRON VEST & UNDERWEAR
HUNTING COAT & PANTS
COVERALLS (not Carhart)

1/2 OFF

WINTER CAPS & HATS
LEISURE JACKETS

1/2 OFF

INFANTS & CHILDREN'S
MIX & MATCH SLACKS & TOPS

Up to 1/2 OFF

DANCER'S WHITE SALE IS NOW UNDERWAY

WOMEN'S
WINTER COATS & JACKETS
PANT SUITS & DRESSES
PURSES, BELTS & SCARFS

1/2 OFF

SKIRTS - SLACKS - JEANS
SWEATERS - SMOCKS - PJ's
BLOUSES - GOWNS - ROBES

1/3 OFF

INFANTS & GIRLS 7-14

SNOW SUITS - JACKETS
SNOWMOBILE SUITS
GIRLS & BOYS PJ's & GOWNS
GIRLS TOPS

1/3 OFF

ALL GIRLS COATS 1/2 OFF

Ads
Taken
fill 1 p.m.
Tuesday

PUT IT IN THE WANT ADS FOR RESULTS

Just
Phone
475-1371

WANT ADS

The Chelsea Standard

WANT AD RATES

PAID IN ADVANCE—All regular advertisements, 75 cents for 25 words or less, each insertion. Count each line as a word. For more than 25 words add 3 cents per word for each insertion. "Blind" ads or box number ads, 50c extra per insertion.

CHARGE RATES—Same as cash in advance, with 25 cents handling charge if not paid before 1 p.m. Tuesday preceding publication. Pay in advance, and cash or stamps and save 25 cents.

DISPLAY WANT ADS—Rate, \$1.40 per column inch, single column width only. 2-point and 14-point light type only. No borders or headlines type. Minimum 1 inch.

CARDS OF THANKS or MEMORIALS—Single paragraph style, \$1.20 per insertion for 10 words or less; 5 cents per word beyond 10 words.

COPY DEADLINE—1 p.m. Tuesday week of publication.

ERRORS—Advertisers should check their ads and the first publication. This newspaper will not be liable for failure to publish an ad or any typographic errors in publication except to the extent of the cost of the ad for the first week's insertion. Adjustment for errors is limited to the cost of portion of the ad wherein the error occurred.

FOR RENT—Fair Service Center for meetings, parties, wedding receptions, etc. Weekdays or week-ends. Contact John Wellnitz, phone 475-1516. x31tf

Sand Gravel

KLINK EXCAVATING

Bulldozer - Backhoe
Road Work - Basements
Trucking - Crane Work
Top Soil - Demolition
Drainfield - Septic Tank
Trenching, 5" up

Industrial, Residential, Commercial
CALL 475-7631 13tf

HORSESHOEING—Experienced horseshoer now shoeing in area. Bob Smithers, (517) 851-8479. x45tf

J. R. CARRUTHERS

LICENSED
RESIDENTIAL BUILDER
CUSTOM HOMES
ADDITIONS/FIREPLACES
PATIO
ROOFING/SIDING/REPAIRS

475-7234
CHELSEA 30tf

CAR RENTAL by the day, week-end, week or month. Full insurance coverage, low rates. Call Lyle Chriswell at Palmer Motor Sales, 475-1301. 25tf

Fireplace Builder

Field stone mason, block and brick mason, tuck pointing.
FREE ESTIMATES
Call 475-8025 after 3 p.m.

Patrick Grammatico x40tf

RN's

ARE YOU INTERESTED in contributing to a progressive and educational nursing care environment? Immediate openings—permanent evenings, nights, or rotating positions available on a gynecology-oncology in-patient unit. Previous experience in gynecology is not necessary. Excellent fringe benefits. Contact nursing personnel, University of Michigan Medical Center, 1405 E. Ann St., Ann Arbor, Mich. 48109. Ph. 313-763-3010. A non-discriminatory affirmative action employer. 32

WANT ADS

Custom Built Homes

O—hi We Remodel too

U—can count on us

N—o Job Too Small

T—rim Inside & Out

R—ough-in Only If

Y—ou Want to Finish

S—iding Aluminum, 5" Gutters

I—mmediate Attention

D—ALE COOK & CO.

E—stimates, Free

BUILDERS

Please Call

475-8863

DALE COOK. 17tf

HILLTOP, INC.

8316 WERKNER RD., CHELSEA

We Do It All!

PLUMBING
HEATING
ELECTRICAL

SEPTIC TANKS & DRAINFIELDS

REPAIR - REMODELING

CONTRACTING

BY

"THE SPECIALISTS"

Robert Shears, Master Plumber

Gail Shears, Journeyman

Call 475-2949

FREE ESTIMATES x31tf

Willis Real Estate

DESIRABLE 2-story 4-bedroom home for sale. 13'x22' living room with fireplace, 14'x10' dining room, 19'x10' kitchen, adjoining family room. All nicely carpeted. Roof and siding only two years old. Gas furnace, 3 years old. Located in the village of Grass Lake, 10 miles west of Chelsea. \$40,000.

FOR SALE—An enchanting property in an exclusive neighborhood, 35 acres with 2-story brick colonial, with 4 bedrooms, 3½ baths, etc., etc. 3,812 sq. ft. of living space, 4-car brick garage. Swimming pool with dressing quarters. A large corral, beautifully landscaped. 10 miles west of Chelsea. \$225,000.

Willis Real Estate

(517) 522-8481 x32

NOW

Full Time

Complete

Body Shop

Service

Stop In For An Estimate

PALMER FORD

222 S. Main St.

475-1301 27tf

WANT ADS

LEONARD REITH

Master Plumber

Licensed Electrician

Hot Water Heat

18238 N. Territorial

Rd.

Chelsea, Mich. 48118

Phone: 475-2044 52tf

STUDENTS

BEAT THE RUSH for summer jobs. McDonald's will need 25 more employees this summer. You can train now, working only one day or night per week-end and be assured of summer employment without competing your present school schedule. x34

FOR RENT—American Legion Hall. \$50. Call 475-7521. 40tf

STEP UP TO

KOZMA

CONSTRUCTION

And

Step

Down

In

Price

LICENSED

BUILDER

FREE ESTIMATES

COMPLETE

CONSTRUCTION

SERVICES

CALL

LEN KOZMA

475-7452 29tf

Special of the Week

1976 BUICK CENTURY

Custom 4-dr. Sedan

Air Cond., 4,600 Miles

\$4795

USED CARS

1975 OLDS Vista Cruiser wagon,

3-seat, air cond. \$4295

1973 OLDS 98 LS 4-dr. hardtop, air

cond. \$2895

1973 CHRYSLER Newport 4-dr. sedan,

air cond. \$1895

1972 OLDS Custom Cruiser Wagon,

2-seat, air cond., 45,000 miles

\$2195

1972 OLDS Delta 88 4-dr. sedan,

air cond., 45,000 miles

\$1995

1972 BUICK Electra 225 4-dr. hard-

top, air cond. \$1995

1971 CHEVROLET Camaro 2-dr.

hardtop, automatic \$1895

1970 BUICK LeSabre 4-dr. hardtop

\$295

1969 CHEVROLET Impala 4-dr.

hardtop \$395

HOURS

Tues., Wed., Fri. 8:00-5:30

Mon., Thurs. 8:00-9:00

Closed Saturdays

SPRAGUE

Buick-Olds-Opel, Inc.

1500 S. Main St., Chelsea

Ph. 475-8664 30tf

1-MILES from Dexter High

school, \$9,300 & \$9,800. Have

health permits. Will build to suit.

Call WEBER HOMES

475-2828 x30tf

PORTER'S TV

SALES and SERVICE

QUASAR DEALER

Service on all TV

makes and models.

Antenna Sales & Installation

CALL 475-8380

MAUSOLEUMS * MONUMENTS

BRONZE TABLETS * MARKERS

BECKER

MEMORIALS

6033 Jackson Road

ANN ARBOR, MICHIGAN

WANT ADS

VACUUM CLEANERS

Authorized Electrolux

sales and service.

James Cox

428-8444, or 428-8688

118 Riverside Dr., Manchester 4811

Complete

Body Repair

Service

Bumping - Painting

Windshield and Side Glass

Replacement

Free Pick-up & Delivery

Open Monday Until 9

CONTACT DON KNOLL

FOR FREE ESTIMATE

Village

Motor Sales, Inc.

CHRYSLER - DODGE

PLYMOUTH - DODGE TRUCKS

Phone 475-8661

1185 Manchester Rd., Chelsea

Hours: 8 a.m. to 5:30 p.m.

Tues. thru Fri. Until 9 Monday.

9 a.m. to 1 p.m. Saturday x14tf

Headquarters for

RED WING

WORK SHOES

Foster's Men's Wear 40tf

For Rent

OFFICE SPACE

IN DEXTER

NEW, carpeted, air-conditioned,

up to 800 sq. feet. Reasonable.

Call 428-3933, 9 a.m.-5 p.m. 11tf

ALBER FARMS

Orchard & Cider Mill

Sweet cider, maple syrup, barrels

and kegs. Apples, now picking

Jonathan, Red and Yellow Del-

icious, Northern Spy, Winesap.

Hours: 9 a.m. to 6 p.m.

13011 Bethel Church Rd.

428-7758 x11tf

Chelsea Greenhouses

7010 Lingane Road

Chelsea, Mich.

Phone 475-1353 or 475-1354

EVERGREEN WREATHS &

BLANKETS—Made fresh daily

in our greenhouses. Two-foot plain

wreath, \$3; three-foot trimmed

wreath, \$7.50; four-foot trimmed

wreath, \$12.50; six-foot trimmed

wreath, \$17.50; three-foot trimmed

baby-blanket, \$7.50. Evergreen pine

and cedar roping, 50c per yard.

Hours: Mon.-Sat. 8 to 5; Sundays,

noon to 5 until Christmas.

Charter Member of FTDA

Teleflora Wire Services x32tf

Experienced

Handyman

Some odd jobs accepted. Please

call 475-8743. 32

WANTED HAY—First and sec-

ond-cutting hay. Must be well

baled. Charles Trinkle, call 475-

7798, evenings. x15tf

1-Acre Lots For Sale

Scio Township

1½ MILES from Dexter High

school, \$9,300 & \$9,800. Have

health permits. Will build to suit.

Call WEBER HOMES

475-2828 x30tf

PORTER'S TV

SALES and SERVICE

QUASAR DEALER

Service on all TV

makes and models.

Antenna Sales & Installation

CALL 475-8380

MAUSOLEUMS * MONUMENTS

BRONZE TABLETS * MARKERS

BECKER

MEMORIALS

6033 Jackson Road

ANN ARBOR, MICHIGAN

WANT ADS

Automotive

Rust Proofing

Cars and Trucks

Village

Motor Sales, Inc.

CHRYSLER - DODGE

PLYMOUTH - DODGE TRUCKS

Phone 475-8661

1185 Manchester Rd., Chelsea

Hours: 8 a.m. to 5:30 p.m.

Tues. thru Fri. Until 9 Monday.

9 a.m. to 1 p.m. Saturday 21tf

SPECIAL PRICE on 500-lb. lots of

hog feed, steer feed, dairy feed,

horse feed, egg mash. Cole's

Elevator Co., Gregory on M-36. Ph.

(313) 498-2738. x32

ASHLEY WOOD STOVES

3 Models

priced from \$189.95

HACKNEY HARDWARE

8105 Main St., Dexter Ph. 486-4009.

NOTICE

LYNDON TOWNSHIP TAXPAYERS

I will be at my home at 9508 Beeman Rd. to collect Lyndon Township taxes and issue dog licenses every Monday and Friday between 10:00 a.m. and 5:00 p.m. during December, January, and February, and at the Chelsea State Bank, Saturdays, February 19 and 26 between 9:00 a.m. and 12:00 noon.

Those who wish may send check or money order in payment of taxes and dog licenses. Enclose complete tax notice. Receipts will be returned by mail.

All dog licenses must be paid to the Lyndon Township Treasurer before March 1, 1977 to avoid penalty.

ALL DOG LICENSES \$4.00

Unexpired Rabies Vaccination Papers must be presented to obtain license.

BARBARA RODERICK

LYNDON TOWNSHIP TREASURER

9508 Beeman Rd., Grass Lake, MI 49240 Ph. 475-7056

A Standard Want Ad Gets Results!

NOTICE

DEXTER TOWNSHIP TAXPAYERS

I will be at Dexter Township Hall, 6880 Dexter-Pinckney Rd., Dexter, to collect Dexter Township taxes on the following days: every Wednesday afternoon 1 to 4 p.m., and Friday, 9 a.m. to 4 p.m. through February 28.

Those who wish may send check or money order. Receipts will be returned by mail.

All dog licenses must be paid to the Dexter Township treasurer before March 1, 1977 to avoid penalty.

ALL DOG LICENSES \$4.00

Rabies vaccination papers must be presented in order to obtain dog licenses.

LORINDA JEDELE

DEXTER TOWNSHIP TREASURER

NOTICE

Lima Township Taxpayers

I will be at Chelsea State Bank to collect Lima Township taxes and issue dog licenses on the following Fridays: Jan. 7-14-21-28; Feb. 4-11-18-25, 1977, from 9:00 to 11:30 a.m. and 1:00 to 5:00 p.m. Those who wish may send check. Receipt will be returned by mail.

All Dog Licenses must be paid to Lima Township Treasurer before March 1, 1977, to avoid penalty.

ALL DOG LICENSES \$4.00

Rabies Vaccination Papers must be presented in order to obtain dog license.

JEAN TILT

LIMA TOWNSHIP TREASURER

—NOTICE— Sylvan Township Taxpayers

Sylvan Township Treasurer will be at Sylvan Township Hall, 112 W. Middle St., Chelsea, to collect Sylvan Township Taxes every Wednesday and Friday from 1 to 5 p.m., and Saturdays from 10:00 a.m. to 3:00 p.m. during the months of Dec., Jan., and Feb.

CHECKS WILL BE ACCEPTED BY MAIL

All Dog Licenses must be paid to Sylvan Township Treasurer before March 1, 1977, to avoid penalty.

ALL DOG LICENSES \$4.00

Rabies Vaccination papers must be presented in order to obtain license.

FRED W. PEARSALL

SYLVAN TOWNSHIP TREASURER

Phone 475-7251

Letters to the Editor

To the Residents of the Chelsea School District:

On Monday, Jan. 24, you will be asked to vote on a millage request from the Washtenaw Intermediate School District. This board, of which I am a member, is seeking approval of a 1.5 mill increase for Special Education in our county. This special education is that education that is mandated by the state for children with special needs, including the deaf and hard of hearing, the orthopedically handicapped, the mentally and/or emotionally impaired, and those persons with learning disabilities.

The State of Michigan requires that the Intermediate District help the local districts to provide these programs for the handicapped persons from birth through 25 years of age. It is a fact that there were 11,367 persons served between September 1975 and June, 1976, here in Washtenaw county.

In addition to programs provided locally or jointly by two or more districts, there are 162 persons who are bused to High Point, our facility on Wagner Rd. Because of the nature and severity of the difficulties, this building was designed to meet these many special needs. You are welcome to stop by and visit this facility.

The purpose of this increase is to reimburse the local school district at a higher rate than is now possible, and to meet the increased costs of these services that are provided to all the districts from the Intermediate District staff.

The majority of us in the county felt that Special Education was important in 1959 when the millage was originally approved, and again in 1969 when a small increase was voted. The numbers of persons receiving the services and the costs of them have increased substantially. I urge your approval of this millage request.

Sincerely,

Elvira Vogel,

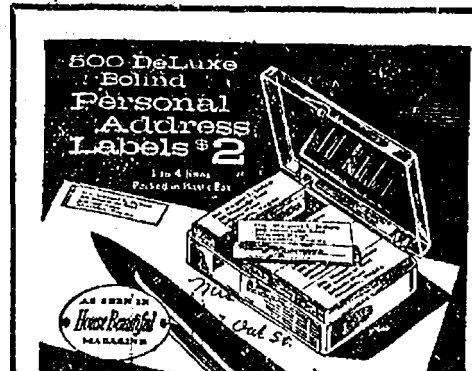
Pleasant Lake Rd.

Michael Giffin Earns Masters at Purdue

Michael G. Giffin, son of Mr. and Mrs. Gerald Giffin of 19995 Old US-12, recently completed graduate work at Purdue University, West Lafayette, Ind., and was awarded a Master of Science and Civil Engineering Degree.

Upon receiving his degree, Giffin accepted a position with Daniel International Corp., Charleston, S. C. He and his wife, Janet, will be residing in Muskogee, Okla., for the next year, where Giffin has been sent by his employer to work as schedule co-ordinator in construction of a paper recycling plant for The Fort Howard Paper Co.

A 1971 graduate of Chelsea High school, Giffin is a member of The Engineering Society of Detroit, American Concrete Institute, American Institute of Architects, and Sigma Pi fraternity.



The Chelsea Standard

Ph. 475-1371
300 N. Main Chelsea

To the Editor:

The voters in Lima township are in turmoil and unrest and rightly so. Never before has this writer witnessed such unnecessary and crude management of a sensitive yet not complicated issue.

When the polls opened on Nov. 2, the machines were set with names of nominees who had been properly selected by the voters through the primary process in August 1976. On the Nov. 2 election, day the greater percentage of voters were not aware that a fine gentleman, Walter Wolfgang, whose name appeared uncontested on the ballot had died some 36 hours earlier. 586 people voted for Mr. Wolfgang; some because they believed he could serve and they wanted him to, others voted for him that day out of respect for his memory and yet others continued to vote for him as a fellow Republican whose term could be filled by the democratic process following the general election.

There were a minority who, evidently out of their ambition to have office or in an effort to control the Lima government, felt they needed to grab this opportunity to win and they did. On the morning following the election we awoke to learn that a legal election had ended with a man, whom all respected, having obtained 586 votes and yet that election was won by Mr. Fusiller with 22 votes. This was because Mr. Fusiller and a small group knew the system and we, the majority, were naive—had respect and faith in the democratic process—and were not so anxious about Mr. Wolfgang's position that we could not wait until after his funeral to take up the matter.

If Mr. Fusiller wants to be a Lima township board member after displaying this kind of "manners" and "ability to work the system" then let the people acclaim that for him by a real election. Then let's go back to good, fair and clean government in Lima.

Linda L. Ormsby

10220 Trinkle Rd.

Adult Basketball Teams Complete Second Round

Dexter's Adult Basketball League played its second round of ball games Thursday, Jan. 3.

IPSCO beat the Dexter REP's, 57 to 49. For the IPSCO team Charlie Cameron scored 19 points and Art Davis, 17, to lead the winners. Ed Spehar scored 13 points for the Dexter REP's.

Dexter Dairy Queen team won its first game of the season defeating Dunlavy Farms, 74 to 53. Scoring in double figures for the Dexter Dairy Queen were Mike Kinaschuk, 30; Ron Klumpp, 18; and Mark Welch, 12. Duane Clark had 17 and Ken Knieper had 12 for Dunlavy Farms.

Freeman Machine took a forfeit from Mark IV Lounge in the final game.

Standings as of Jan. 15			
	W	L	
Freeman Machine	2	0	
IPSCO	2	0	
Dexter Dairy Queen	1	1	
Dexter REP's	1	1	
Dunlavy Farms	0	2	
Mark IV Lounge	0	2	

Any Change in Address
Please Notify Us of
Any Change in Address

VILLAGE OF CHELSEA ELECTRIC & WATER DEPT. DEPOSIT POLICY

All new electric customers, after this date, will be required to pay a deposit of \$50.00 for residential service and \$100.00 for commercial service, unless the Chelsea Electric and Water Department has had one (1) year of previous satisfactory credit experience with the proposed new customer. (This policy applies whether or not the proposed customer is a home owner or a renter.) Said deposit will be refunded upon completion of one (1) year of satisfactory credit experience. (Satisfactory credit shall be defined as follows: The monthly bill must be paid by the last business day of the month in which it is received.) A refund will also be automatic if a customer terminates residency within the service area and pays his final bill in full.

Any non-deposit customer whose credit experience with the Electric and Water Department becomes unsatisfactory, will be required, at the discretion of the Office Supervisor and/or the Superintendent of the Department, to pay the required deposit to the Electric and Water office and meet the one (1) year satisfactory credit requirement before a refund is granted.

If a customer fails to meet the deposit requirement, a letter will be sent notifying him of his neglect. If there is still no response from the customer, another letter will be forwarded to him stating that his service will be terminated unless he pays the necessary deposit fee.

Adopted by Village Council: January 4, 1977

★ District Court Proceedings ★

Week of Jan. 11-17

Ralph Fleckinger pled guilty to charges of driving under the influence of liquor. He will be sentenced Feb. 22.

Donald C. Smith was sentenced to pay fines and costs of \$150, to six months probation, and to the Alcohol Safety Action Program on charges of drunk and disorderly.

Charles Edwards was sentenced to pay fines and costs of \$150 on charges of impaired driving.

Charlene A. Vukin pled guilty to charges of speeding. Fines and costs, \$38.

Ellen Sprentale Sutton pled guilty to charges of speeding. Fines and costs, \$60.

Gary Roe Korth was sentenced to pay fines and costs of \$100, to one year probation, and to 10 days on the probation department work program on charges of receiving and concealing stolen property valued under \$100.

Luther Thomas, Jr., was found guilty on charges of driving with license suspended. He was sentenced to pay fines and costs of \$50, and to three days in jail suspended.

Elias P. Hoddad failed to appear in court on charges of running a stop sign. A bench warrant was

ordered for his arrest.

Roy Elden Wise failed to appear in court on charges of possession of open intoxicants. A bench warrant for his arrest was issued.

Michael Markewicz pled guilty to charges of careless driving. Fines and costs, \$75.

Dale Nothnagel pled guilty to charges of drunk and disorderly. Fines and costs, \$50.

Darin Nothnagel pled guilty to charges of driving under the influence of liquor. He was referred to probation, to the Alcohol Safety Action Program, and will be sentenced Feb. 28.

Ronald Schwartz was found guilty on charges of possession of an unlicensed gun. Fines and costs, \$50.

Phillip Shingledecker pled guilty to charges of driving under the influence of liquor and possession of open intoxicants. He will be sentenced March 1.

Daniel Wolf pled guilty to charges of impaired driving. He will be sentenced Feb. 17.

Joseph Baltach was found guilty on charges of disobeying a red light. Fines and costs, \$22.

William Wortley pled guilty to charges of driving under the influence of liquor. He will be sentenced March 4.

Barry Rohde was found guilty on charges of drunk and disorderly. Fines and costs, \$50.

Camille Cowles pled guilty to charges of speeding. Fines and costs, \$50.

Kurt Wagner pled guilty to charges of no insurance and no mirror. He will be sentenced Feb. 4.

Kyle Meeks pled guilty to charges of defective equipment. The case was dismissed.

Darrell Leleszi was sentenced to pay fines and costs of \$250 on charges of impaired driving.

Gordon Parshall was sentenced to pay fines and costs of \$250, and to the Alcohol Safety Action Program on charges of impaired driving.

Leon J. Seitz was sentenced to pay fines and costs of \$360, and to the Alcohol Safety Action Program on charges of impaired driving.

William Sprentall was sentenced to pay fines and costs of \$250 on charges of impaired driving.

Ralph Baker was sentenced to pay fines and costs of \$250, to the Alcohol Safety Action Program, and to two years probation or 30 days in jail on charges of impaired driving.

Robert N. Lau was sentenced to pay fines and costs of \$500, to one year probation, to the Alcohol Safety Action Program, and to 15 days in jail on charges of impaired driving.

Ricky Davis pled guilty to charges of obscured vision. Fines and costs, \$30.

George Nelson pled guilty to charges of drunk and disorderly. Fines and costs, \$50.

Willard Gieske pled guilty to charges of drunk and disorderly. Fines and costs, \$50.

Gene DePriest pled guilty to charges of driving under the influence of liquor. He was referred

to probation and will be sentenced April 18.

Charles Munn pled guilty to charges of fleeing a police officer and impaired driving. He was referred to probation and will be sentenced March 14.

TYPIST

Full- or part-time,
accurate and efficient.

Apply to W. P. Leonard

THE CHELSEA STANDARD
300 N. Main, Chelsea

GARBAGE CUSTOMERS WANTED!

— ALL AREAS —

Is your garbage a mess? Does it smell?
Don't be in distress, just call Schnell.

American Disposal

Basic price is \$3.50 per month for once a week pick-up
HUDSON, MICHIGAN 448-8558

For more information, please fill out this coupon and mail to: American Disposal, Box 6, Hudson, Mich. 49247

Name _____
Address _____
Phone _____

Notice of Time and Place of Meetings of the Chelsea Planning Commission

NOTICE is hereby given that for the calendar year 1977, the regular Chelsea Planning Commission meetings will be held on the 2nd Tuesday of each month at 7:30 o'clock p.m. in the Council Room on the second floor of the Municipal Building, 104 East Middle Street, Chelsea, Michigan.
Dated: January 11, 1977.

CHELSEA

PLANNING COMMISSION

Louise Ponte, Secretary

ADVERTISEMENT FOR BIDS

1. SEALED BIDS for the furnishing of the necessary materials and construction of

SEWERAGE IMPROVEMENTS

SECTION B - TRUNK SANITARY SEWERS
FOR THE VILLAGE OF CHELSEA, MICHIGAN

will be received by the Village of Chelsea, Michigan at the office of the Village Clerk in the Village Hall, Chelsea, Michigan until

12:00 O'CLOCK, NOON,
EASTERN STANDARD TIME
THURSDAY, FEBRUARY 10, 1977

and at that time and place will be publicly opened and read aloud.

2. The proposed work consists of the construction of approximately 3,688 lineal feet of sewers ranging from 6-inches to 42-inches in diameter together with manholes and all appurtenances.

3. The contract documents, including plans and specifications, are on file at the office of the Village Clerk in the Village Hall, Chelsea, Michigan and at the office of Finkbeiner, Pettis & Strout, Limited, Consulting Engineers and Planners, 4405 Talmadge Road, Toledo, Ohio 43623. A set may be obtained by depositing \$15.00 with said Consulting Engineers. Checks shall be made payable to the Village of Chelsea, Michigan.

The full amount of the deposit for the first set of documents obtained will be refunded to each bona fide bidder or vendor who returns the complete documents in good condition within 10 days after the opening of bids. The full amount of the deposit will be returned to each non bidder who returns the documents in good condition prior to the bidding date.

Additional copies (in excess of one) of the contract documents may be purchased at \$15.00 per set. No refund will be allowed for the return of said additional copies.

4. All bids shall be signed and submitted on the blanks which are bound in the specifications and shall be secured from the Consulting Engineers. Bid blanks shall not be removed from the specifications. Bids shall state the lump sums or unit prices and item totals on the blanks provided therefor; shall be enclosed in a sealed envelope marked "Bid for Sewerage Improvements, Section B - Trunk Sanitary Sewers," and addressed to said Village Clerk, Chelsea, Michigan.

5. Each bid shall contain the name of every person, firm or corporation interested in the same, and must be accompanied by either a bid bond to the satisfaction of said Village or a certified check on a solvent bank, in the sum of 5% of the amount of the bid, made payable to the Village of Chelsea, Michigan, as a guaranty that if the bid is accepted, a contract will be entered into and its performance properly secured.

6. The Village of Chelsea, Michigan reserves the right to reject any or all bids and to waive any irregularities in bidding.

7. No bidder may withdraw his bid for a period of 60 days after the scheduled closing time for the receipt of bids.

By Order of the Council of the
Village of Chelsea, Michigan

Tom Neumeyer, Clerk



TROOP 247—

At our last meeting, Brownie Troop 247 played two games and had Oreo cookies for a snack. We also sang songs and we plan to go swimming at Beach Middle school.

Beth Paddock, scribe.

TROOP 729—

On Jan. 6, the Brownies of Troop 729 started making aprons which we finished at our Jan. 13 meeting. On Jan. 20, we will have a Crazy Socks Day. We will also be going ice-skating.

Tracy Harook, scribe.

TROOP 82—

Girl Scout Troop 82 studied about Mexico, and sampled some Girl Scout cookies. We also played a game called "Fruit Basket."

Linda Wiedmayer, scribe.

TROOP 145—

This week Brownie Troop 145 went sliding at the Columbo house. We had two visitors who came with us. They were Mrs. Coffman and Mrs. Wolfgang. After sliding, we enjoyed our treats brought by Annette Duhamel. We plan to make macrame next week.

Michelle Kuhl, scribe.

Telephone Your Club News
To 475-1371.

VILLAGE OF CHELSEA Electric & Water Department Discontinuance of Service Policy

Electric bills shall be considered delinquent if full payment is not submitted by the last business day of the month in which they are received and shall be handled in the following manner:

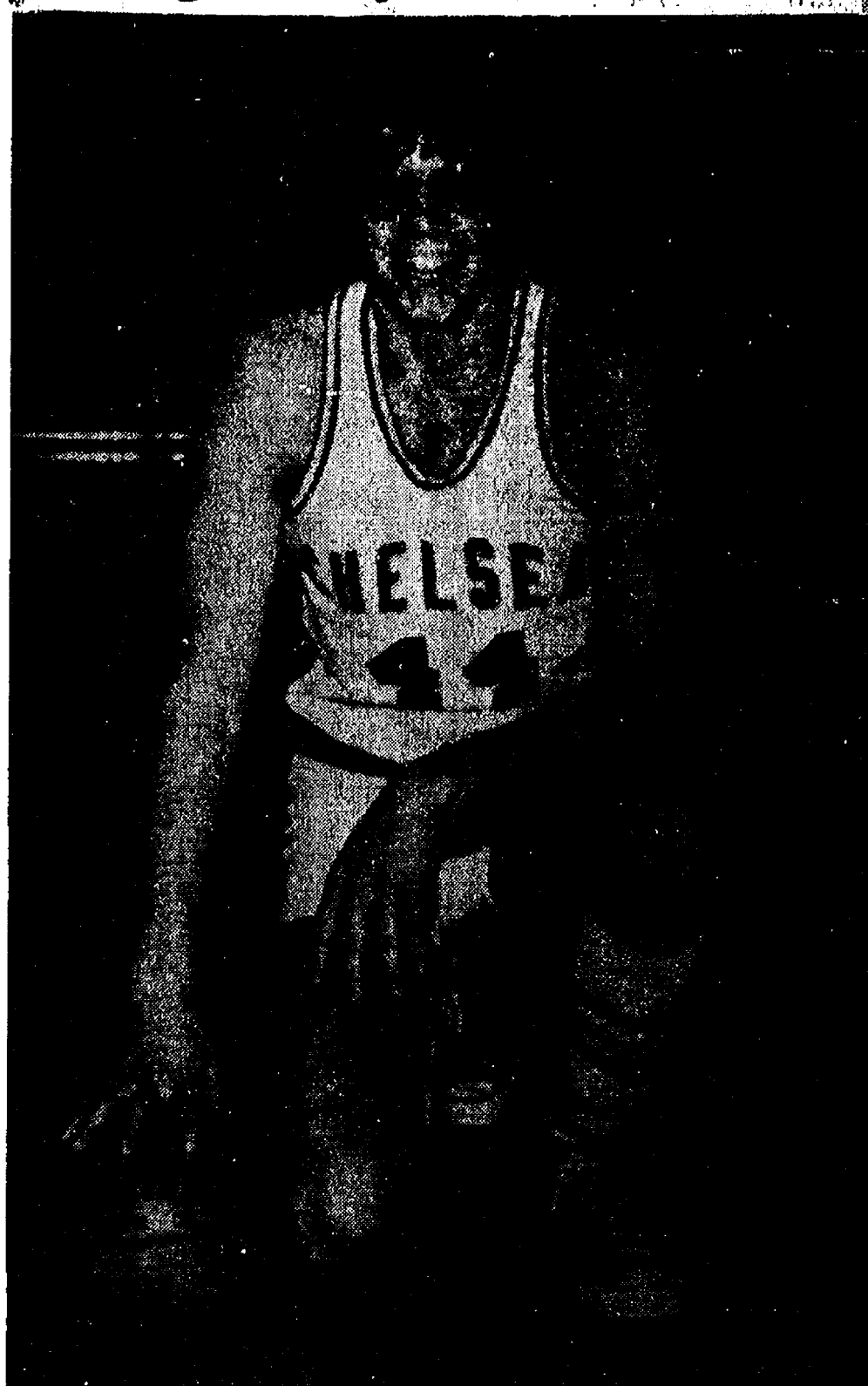
- 1) The 15th day of the month, in which bills become delinquent, a discontinuance notice will be mailed to the customer.
- 2) The customer is allowed five (5) business days to pay the outstanding bill in full.
- 3) If the bill remains unpaid following the allotted five (5) day period, and if there has been no attempt on the part of the customer to contact the Office Supervisor of the Electric and Water Department, an effort will be made by the utility office personnel to reach the customer by phone.
- 4) If no contact is made by phone, the Superintendent of the Electric and Water Department will make a field call to the customer's home.
- 5) If, at the time of the field call, the Superintendent is unable to find anyone at home, he will then leave NOTICE in a conspicuous place notifying the customer of our repeated attempts to reach him.
- 6) The customer will be granted two (2) business days to issue payment in full of the delinquent utility bill.
- 7) If, following the two (2) day period, no effort is made by the said customer to clear his delinquency, a second field call will be made by the Superintendent. At that time, even if no one is at home, the Superintendent will discontinue the electric service. He will also leave another NOTICE in a conspicuous place stating that a shut-off has occurred and also the name, address and phone number of the electric office.
- 8) Following payment of the delinquent bill, in order to reinstate the service, a \$20.00 reconnection fee must be paid to the Electric and Water Department.

The Electric and Water Department will not discontinue service on a day preceding a day in which the office is not open for business.

The electric service may also be disconnected if a new customer fails to pay the required \$50.00 deposit for residential service or the \$100.00 deposit for commercial service. A letter will be sent prior to such discontinuance notifying the customer of his neglect and also as to the date the shut-off will occur.

Adopted by Village Council: January 4, 1977.

Cager of the Week



RANDY SWEENEY (44), now serving his second year on the varsity squad, has been playing basketball since 7th grade. The 6'2½" senior forward comes from a family laced with cagers as all of his four brothers have spent time on the courts. Currently Sweeney's younger brother, Rod, also plays for Chelsea's varsity team as a forward. The familial ties do not overlap into competition, according to Sweeney, who claims he regards his brother "as just another player." "We've been out there together a lot though," the cager added. In his junior varsity year of play, Sweeney was voted Most Valuable Player for his skill in basketball. This year, he has continued to substantiate that recognition as one of Chelsea's leading scorers. While the Bulldogs have failed to win most of their games this season, "because we haven't been concentrating on the floor," Sweeney explained, the team expects a reversal in the trend when they resume play in January. A sample of their capabilities was demonstrated in their recent game with Brighton. Although Chelsea lost by one point "it was a close game and we played better than we have in any game this season," Sweeney said. Chelsea came within reach of the victory following a tremendous rally in the second half. "It was one of those last second jobs," Sweeney reported. In addition to basketball, Sweeney is a member of Chelsea High's track team. He is the son of Mr. and Mrs. Franklin D. Sweeney of Jerusalem Rd.

Mercantile Guardian

If you have a store, take just a minute for two questions:

Is your commercial insurance specially rated by zone, to give you a price break because you are not in a big city or urbanized area?

Have you reviewed your coverage and your potential loss exposure with a commercial insurance specialist in the past year?

If "no" or "not sure" on either question, please call me at 475-8065



Dave Rowe

FARM BUREAU
INSURANCE
GROUP

Farm Bureau Mutual • Farm Bureau Life • Community Service Insurance

Ask the Governor...

Question: Governor Milliken, this is the time of year you usually issue your State of the State Message and list priorities for the next year. Before you even tell me your new plans, I want to know whether there will be a tax increase to pay for them?

Governor: I am very pleased to report that the budget I will submit for 1977-78 fulfills my commitment of nearly a year ago for program improvements and meets the objective of providing an adequate level of general fund programs within available resources. I will not be asking for a general income tax increase and will not support such a proposal.

In a few weeks, I will detail my plans for a comprehensive state-wide transportation program. But any new funding sources to help pay for such a plan will be related to transportation users.

The new budget, which is also due soon, will represent the first good opportunity for program improvements in three years. But I remain convinced that any general tax increase would retard Michigan's economic recovery.

Question: How does a senior citizen or a person with a low income find housing when moving into Michigan? I am moving into the state and have no idea how to go about locating senior citizen housing for my parents. Can you give me some direction?

Governor: The State of Michigan's Office of Services to the Aging does not compile a list of available senior citizen and low-income housing. However, some of the area Offices of Services to the Aging may have such a list or could direct you to the proper source for information. Often, the local unit of government, City Housing Authority has a list of senior citizen and low-income housing. These units of government do not, as a rule, maintain a listing of private senior citizen housing. A local realtor could put you in contact with private senior citizen housing. Good luck and welcome to Michigan.

Question: My husband and I are thinking of purchasing life insurance. There seem to be so many different types, companies and kinds, how can we be sure we will get a policy that meets our needs?

Governor: The Insurance Bureau, under the Department of Commerce, publishes a booklet entitled "Consumer Guide to Life Insurance in Michigan." It explains the difference between whole life and term insurance, participating and non-participating policies, double indemnity and waiver of premiums. The booklet offers guidelines on how much and what type of insurance you might need to fit your specific situation. Once you have decided what kind of insurance you should buy and what amount you need, the booklet ranks the policies written by various companies. These rankings should help you determine which company to buy the policy from. I think this booklet will provide most of the information needed before choosing a life insurance company.

You may obtain a free copy by contacting: Insurance Bureau, P. O. Box 30220, Lansing 48909. Phone 373-0220.

Question: I want to take my family on a winter vacation in Michigan. Can you tell me about skiing and snowmobiling in Michigan?

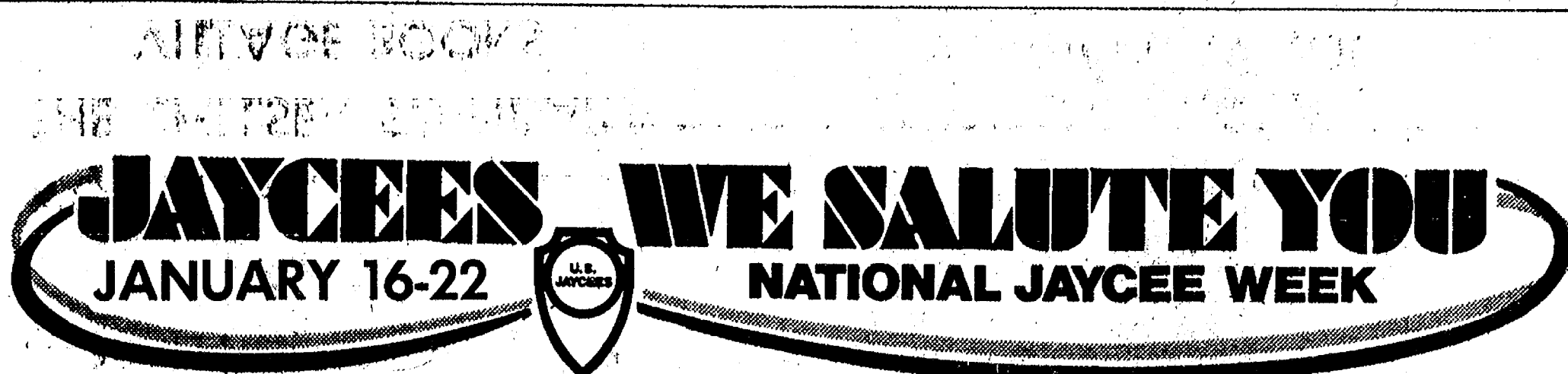
Governor: The Michigan Travel Commission distributes, in co-operation with Michigan's four regional tourist associations, a Michigan Winter Sports Guide. It lists the various ski areas, their facilities, locations, hours of operation and phone numbers. The map is arranged into the four regional areas of Michigan. The guide gives the address and phone number of the regional tourist association, which you can write for further information on lodging facilities and special events in a specific area.

On the other side of the map, snowmobile facilities are described with information concerning the length and type of trails available.

For a copy of the guide contact: Michigan Travel Commission, 300 S. Capitol, Lansing. Phone: (517) 373-1165.

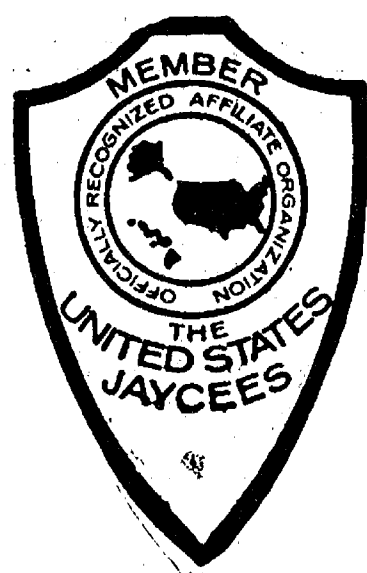
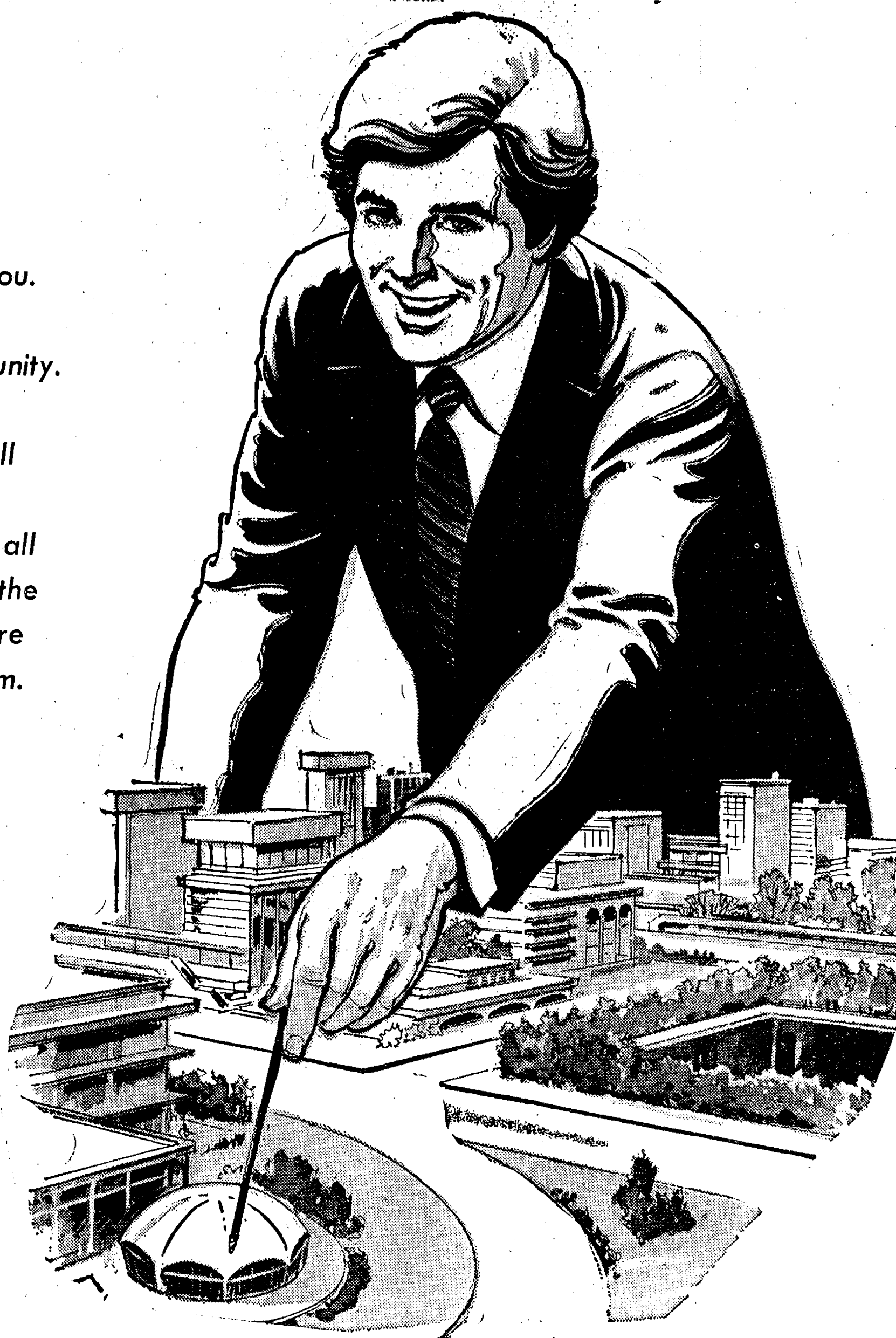
Anytime you need information concerning the snow conditions, you may call toll free: Instate: 800-292-2520; Outstate: 800-248-5456.

Telephone Your Club News To 475-1371.



Our Jaycees — Their Actions Speak Louder Than Words

Just take a look around you.
They've had a hand in the
development of this community.
And with their bright new
ideas and hard work, they'll
achieve a whole lot more
tomorrow too! Let's honor all
of these young people for the
fine job they're doing. We're
truly fortunate to have them.



PALMER FORD
CHELSEA DRUG
CHELSEA LUMBER
HARPER PONTIAC
MERKEL HOME FURNISHINGS
BOYER AUTOMOTIVE
GAR-NET'S FLOWER SHOP
& GREENHOUSE
CHELSEA HARDWARE
WINANS JEWELRY STORE
DANCER'S
NORMA'S BEAUTY SHOP
THE CHELSEA STANDARD
VILLAGE BOOKS

GAMBLES
DAVE ROWE, Farm Bureau Ins.
WALLACE WOOD, State Farm Ins.
WINANS OPTICAL
FOSTER'S MEN'S WEAR
STRIETER'S MEN'S WEAR
VOGEL'S DEPARTMENT STORE
GROVE 5c to \$1
RICK'S MARKET
INVERNESS INN
JIFFY MARKET
CHELSEA LANES &
MARK IV LOUNGE

TRUCKLOAD STEAK SALE

Truck will be at

CHELSEA TOWER SHELL - 1630 M-52 at I-94 exit - Chelsea

Friday, Saturday, Sunday - Jan. 21, 22, 23

10 a.m. till Dark

- ★ LOCKED-IN FRESHNESS
- ★ EASY HOME STORING
- ★ NO RE-WRAPPING NECESSARY
- ★ LEAN TRIM CUT
- ★ FLASH FROZEN FRESH

- ★ PACKED IN 4-10 LB. BOXES
- ★ 100% FULLY GUARANTEED
- ★ SOLD RIGHT OFF THE TAILGATE
- ★ DIRECT FROM PACKER

SPECIAL PURCHASE SAVINGS - TENDERIZED - USDA INSPECTED
NON-MICHIGAN BEEF

WE FEATURE A WIDE VARIETY OF STEAKS

Presented by FARMHOUSE NO. 3

Polly's MASTER MARKETS
1101 M-52
CHELSEA, MICH.
(Corner M-52 and Old U.S. 12)

"Bring Del Monte Home"
SWEEPSTAKES
WIN THE \$1,000 COUPON



Enter the "Bring Del Monte Home" Sweepstakes and you may be a winner bringing home one of these 4,820 prizes:

- 20 First Prizes**—\$1,000 coupons redeemable for cash to buy groceries.
- 50 Second Prizes**—\$500 coupons redeemable for cash to buy groceries.
- 75 Third Prizes**—\$250 coupons redeemable for cash to buy groceries.
- 175 Fourth Prizes**—\$100 coupons redeemable for cash to buy groceries.
- 4,500 Fifth Prizes**—\$10 coupons redeemable for cash to buy groceries.

Official Rules. No purchase required.

- On an official entry form or plain piece of 3" x 5" paper, hand print your name and address and the name and location of your favorite grocer. Mail your entry to: "Bring DEL MONTE Home" Sweepstakes, P.O. Box 8011, Blair, Nebraska 68009.
- Each entry must be accompanied by three (3) labels from any size DEL MONTE product featured in this sweepstakes—or three (3) plain pieces of paper on which you have hand printed the words "DEL MONTE"—or any combination of labels and hand printed pieces of paper totaling three (for example, 2 labels and 1 hand printed piece of paper).
- Enter as often as you wish, but each entry must be hand addressed and mailed separately. Entries must be received by March 31, 1977.
- Winners will be determined in random drawings conducted by the O. L. Blair Corporation, an independent judging organization whose decisions are final. Limit one (1) prize to a family. Taxes on any prize are the sole responsibility of the winner. No substitution will be made for any prize offered. All prizes will be awarded in coupons immediately redeemable for total cash value.

5. Sweepstakes open to residents of the United States, except employees of Del Monte Corporation, its advertising and sweepstakes agencies, and the families of each. This sweepstakes is void in the state of Missouri and wherever prohibited by law. Sweepstakes participation via entry blanks distributed through retail stores is void in Wisconsin and Maryland. All Federal, State and local laws and regulations apply.

6. For a list of winners, send a separate, stamped, self-addressed envelope to: "Bring DEL MONTE Home" Winners List, P.O. Box 7079, Blair, Nebraska 68009.

OFFICIAL ENTRY FORM

Mail to: "BRING DEL MONTE HOME" Sweepstakes, P.O. Box 8011, Blair, Nebraska 68009.

Enclosed are: (check one) ☐ 3 labels from any of the featured Del Monte products listed below. ☐ 3 pieces of 3" x 5" paper hand printed with the words "Del Monte." ☐ A combination of the above totaling three.

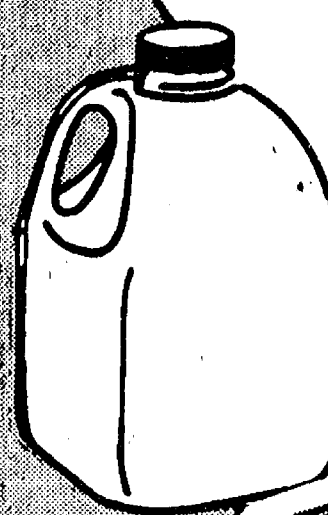
Featured Del Monte Products • Corn • Pineapple • Catsup • Peas • Green Beans • Pears • Tuna • Juice Drinks • Tomato Sauce • Fruit Cocktail

Name _____
Please print
Address _____
City _____ State _____ Zip _____
My favorite grocer is:
Store Name _____
Store Location _____ City _____

Entries must be received by March 31, 1977.



**BUY 2
SAVE 60¢
w/coupon**

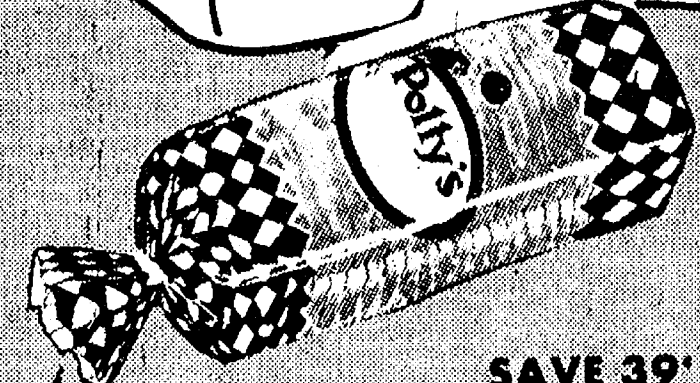


SEE NEXT PAGE
FOR GIGANTIC
SAVINGS ON
ALL YOUR FAVORITE
Del Monte
FRUITS AND
VEGETABLES



SEALTEST 1/2% LO-FAT

MILK
GALLON **99¢**



**SAVE 39¢
w/coupon**
Polly's King Size

**BRING HOME THE BREAD
VALUES**



**BUY 2
SAVE \$1.20
W/COUPON**

DIET • RITE OR

**RC
COLA**

99¢
8 • PAK
16 • OZ.
RETURNABLE
BOTTLES



PLUS
DEPOSIT

3 \$1
24-oz.
LOAVES
for



**BUY 2
SAVE 60¢
w/coupon**



KEEBLER

ZESTA
SALTINE CRACKERS

39¢
1 • LB.
BOX



**BUY 2
SAVE 60¢
w/coupon**

Polly Grade A

EGGS
Large
DOZEN **69¢**



Fresh!! BAKED GOODS
From Polly's Alpine Bakehaus

- Fresh CUSTARD PIE 8-in. **99¢**
- FRESH APPLE PIE 8-in. **\$1.09**
- Chocolate CHIP COOKIES DOZEN **79¢**

FOODS

DELMONTE
FRUIT COCKTAIL
 DELMONTE SLICED
FREESTONE PEACHES
 DELMONTE SLICED
YELLOW CLING PEACHES
 DELMONTE SLICED OR
PEAR HALVES

4

\$1

8-oz. BUFFET CANS

24-PAK CASE \$6.00

DELMONTE
PEAS
 DELMONTE
SPINACH
 DELMONTE
W. K. CORN
 DELMONTE FRENCH
GREEN BEANS
 DELMONTE CUT
GREEN BEANS
 DELMONTE
CREAM CORN

Mix or Match

5

\$1

8-oz. BUFFET CANS

24-PAK CASE \$4.80

DELMONTE HALVED OR SLICED Y.C. PEACHES DELMONTE	29 oz.	49¢
PEAR HALVES DELMONTE	29 oz.	59¢
FRUIT COCKTAIL DELMONTE	30 oz.	58¢
APRICOT HALVES DELMONTE	30 oz.	78¢

DELMONTE HALVED OR SLICED FREESTONE PEACHES	29 oz.	64¢
FRUIT SALAD DELMONTE TROPICAL	16 oz.	44¢
APRICOTS DELMONTE DRIED	6 oz. bag	99¢
MIXED FRUIT DELMONTE DRIED	8 oz. bag	59¢

DELMONTE CREAM
 • **CORN**
 DELMONTE WHOLE KERNEL
 • **CORN**
 DELMONTE
 • **LEAF SPINACH**

27¢

16-oz. CANS

24-Pak CASE \$6.48

DELMONTE 14-oz.
 • **CATSUP**
 DELMONTE 17-oz.
 • **FRUIT COCKTAIL**
 DELMONTE SLICED OR HALVES 16-oz.
 • **YELLOW CLING PEACHES**
 DELMONTE X-ICE PAK 12-oz.
 • **PINEAPPLE**

37¢

Year Choice

24-PAK CASE \$8.88

DELMONTE
TOMATO JUICE 46-oz. **49¢**
PEAS 17-oz. **29¢**
SPINACH 15-oz. **26¢**
GREEN BEANS 16-oz. **25¢**
PUDDING CUPS 4-PK. **69¢**
GREEN BEANS 16-oz. **25¢**
CATSUP 38-oz. **88¢**
CATSUP 26-oz. **66¢**

KRAFT
MIRACLE WHIP 32-oz. **99¢**
SWISS MISS 12-oz. **89¢**
CAKE MIXES 18-oz. **49¢**
CHEERIOS 15-oz. **79¢**
FROSTING MIX 16-oz. **69¢**
MOZZARELLA 4-oz. **49¢**
VANISH 16-oz. **49¢**
COFFEEMATE 11-oz. **79¢**
CRANBERRY JUICE 32-oz. **59¢**
HARD CANDY 8-oz. **39¢**

DELMONTE
ZUCCHINI 16-oz. **34¢**
GREEN BEANS 16-oz. **29¢**
GREEN BEANS 16-oz. **25¢**
ITALIAN BEANS 16-oz. **29¢**

DELMONTE DICED
Y.C. PEACHES 16-oz. **33¢**
PEAR HALVES 16-oz. **38¢**
SLICED PEARS 16-oz. **38¢**
APRICOT HALVES 8-oz. **29¢**

MINUTE MAID 100% PURE
ORANGE JUICE 12-oz. **49¢**
 CHEF PIERRE
APPLE PIE 9-in. **\$1.19**
 MORTON COUNTRY TABLE
DINNERS 15-oz. **69¢**
 BORDENS
ICE MILK STIX 12-PK. **89¢**
 LIQUID
WISK 32-oz. **99¢**

VLASIC SWEET
BUTTER CHIPS 22-oz. **59¢**
 VLASIC
KOSHER CHIPS 32-oz. **59¢**
 VLASIC
SAUERKRAUT 32-oz. **49¢**
 KING SIZE
DOWNY 64-oz. **\$1.59**
 KRAFT
VELVEETA 16-oz. **89¢**

BORDENS
ICE MILK \$1.49
 GALLON

VALUABLE COUPON
 SAVE UP TO 40¢
 POLLY'S GRADE A LARGE EGGS 69¢
 LIMIT 2 PER COUPON PER FAMILY*
 GOOD THRU 1-22-77

VALUABLE COUPON
 SAVE UP TO 60¢
 SEALEST 1/2% LO-FAT MILK 99¢
 GALLON
 LIMIT 2 PER COUPON PER FAMILY*
 GOOD THRU 1-22-77

VALUABLE COUPON
 SAVE 39¢
 POLLY'S QUALITY WHITE BREAD 3 24-oz. \$1
 Loaves
 LIMIT 3 PER COUPON PER FAMILY*
 GOOD THRU 1-22-77

VALUABLE COUPON
 SAVE UP TO 60¢
 KEEBLER ZESTA SALTINES 1 lb. 39¢
 LIMIT 2 PER COUPON PER FAMILY*
 GOOD THRU 1-22-77

VALUABLE COUPON
 SAVE UP TO \$1.20
 DIET RITE or R.C. COLA 99¢
 8-PK 16-oz.
 LIMIT 2 PER COUPON PER FAMILY*
 GOOD THRU 1-22-77

PRODUCE

SAVE 20% W/IN-STORE COUPON

U.S. NO. 1 MICHIGAN
ONIONS
 3-LB. BAG **49¢**

TEMPLE ORANGES
 DOZEN **69¢**

Polly's MASTER MARKETS
 1101 M-52
CHELSEA, MICH.
 (Corner M-52 and Old U.S. 12)

SAVE 30%...FLORIDA 100 CT.

FLORIDA WHITE or PINK GRAPEFRUIT 5-lb. bag **79¢**
 SAVE 30%...24-size
CALIFORNIA AVOCADOES 3 for **89¢**
 SAVE 20%...CALIFORNIA
RED GRAPES lb. **49¢**

SAVE 30%...FANCY
RED RADISHES 3 1-LB. for **\$1**
 SAVE 10%...FRESH
PARSNIPS or TURNIPS lb. **29¢**
 SAVE 10%...FANCY
SALAD SLAW lb. PKG. **39¢**



MEATS

SWIFT PREMIUM BONELESS

CHUCK ROAST

LB.

89¢

SWIFT PREMIUM BONELESS

CHUCK STEAK

LB.

99¢

SWIFT PREMIUM BONELESS

ENGLISH POT ROAST

LB. **\$1.09**

POLLY PRIDE BONELESS

BEEF STEW

LB. **\$1.29**

SWIFT PREMIUM

SIRLOIN TIP STEAK

LB. **\$1.79**

SWIFT PREMIUM SLICED

BEEF LIVER

LB. **69¢**

POLLY PRIDE BONELESS ROUND or

RUMP ROAST

LB. **\$1.59**

POLLY PRIDE QUALITY

CUBE STEAK

LB. **\$1.59**

SWIFT PREMIUM BEEF

SHORT RIBS

LB. **89¢**

SWIFT PREMIUM

BEEF HEART

LB. **59¢**

SWIFT PREMIUM CAN

HAM

5-LB.

\$7.49

POLLY PRIDE QUALITY

PORK STEAK

LB.

89¢

POLLY PRIDE QUALITY

PORK BUTT ROAST

LB.

79¢

LEAN and MEATY

SPARE RIBS

LB.

99¢

POLLY PRIDE QUALITY

PORK CUBE CUTLETS

LB. **\$1.29**

POLLY PRIDE LEAN PORK

CHOP SUEY MEAT

LB. **\$1.29**

HICKORY SMOKED BONELESS

HAM SLICE

LB. **\$1.69**

SWIFT PREMIUM

SLICED BACON

LB. **\$1.29**

GOVERNMENT INSPECTED SWIFT EMPIRE

Young

TURKEYS

LB.

59¢

While Supply Lasts!

NEW YORK BRAND

CORN BEEF

BRISKETS

FOR EVANS ROLL

PORK SAUSAGE

FOR EVANS ROLL

PORK SAUSAGE

SWIFT PREMIUM

BEEF FRANKS

ECKRICH REGULAR or

BEEF FRANKS

12-oz. pkg. **69¢**

LB. **\$1.09**

GOVERNMENT INSPECTED WHOLE

CHICKEN LEGS

LB. **69¢**

GOVERNMENT INSPECTED

CHICKEN THIGHS

LB. **75¢**

GOVERNMENT INSPECTED

CHICKEN DRUMSTICKS

LB. **79¢**

ECKRICH

SMORGAS PAC

LB. **\$1.39**

ECKRICH SLENDER

SLICED MEATS

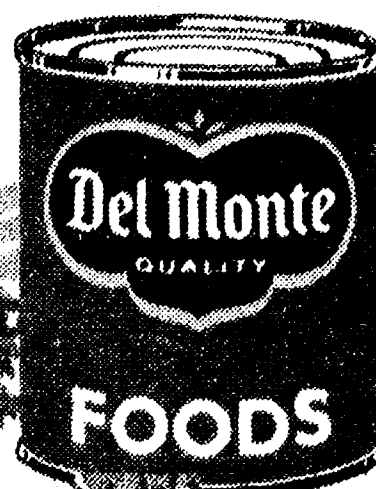
2 3-oz. Pkgs. **89¢**

Polly's MASTER MARKETS

-1101 M-52

CHELSEA, MICH.

(Corner M-52 and Old U.S. 12)



SAVE UP TO \$6.80
WITH POLLY'S IN-STORE COUPON

CHECK YOUR NEEDS

<input type="checkbox"/>	SAVE 9¢	ASSORTED HI-C	46-oz.	39¢
<input type="checkbox"/>	SAVE 30¢	SMUCKERS STRAWBERRY JAM	32-oz.	\$1.19
<input type="checkbox"/>	SAVE 26¢	MIRACLE WHITE SUPER CLEANER	32-oz.	79¢
<input type="checkbox"/>	SAVE 39¢	BATH SIZE JERGEN SOAP	6 for	99¢
<input type="checkbox"/>	SAVE 30¢	LIQUID DRANO	32-oz.	59¢
<input type="checkbox"/>	SAVE 26¢	KRAFT SLICED DELUXE AMERICAN	12-oz.	89¢
<input type="checkbox"/>	SAVE 54¢	HUNGRY JACK INSTANT POTATOES	32-oz.	99¢
<input type="checkbox"/>	SAVE 50¢	DURKEE CHILI POWDER	4-oz.	59¢
<input type="checkbox"/>	BUY 2 SAVE 62¢	LISTERINE MOUTHWASH	18-oz.	99¢
<input type="checkbox"/>	SAVE 20%	20% OFF ANY DRY CLEANING WHEN PRESENTED WITH COUPON		
<input type="checkbox"/>	BUY 3 SAVE 90¢	30% OFF ON ANY 17-OZ. PAN STYLE TONY'S PIZZAS		
<input type="checkbox"/>	SAVE 20¢	U.S. NO. 1 MICHIGAN YELLOW ONIONS	3-LB.	49¢
<input type="checkbox"/>	BUY 2 SAVE 82¢	HERRUD SLICED BOLOGNA	1-LB.	88¢
<input type="checkbox"/>	BUY 2 SAVE 62¢	HERRUD BEEFEATER FRANKS	1-LB.	88¢
<input type="checkbox"/>	SAVE \$1.00	\$1.00 OFF ON ANY 14-LB. & UP GOLD CREST TURKEY		

BUY 2 - SAVE 82¢
W/ IN-STORE COUPON

HERRUD SLICED

BOLOGNA

LB. PKG.

88¢

BUY 2 - SAVE 62¢
W/ IN-STORE COUPON

HERRUD BEEFEATER

FRANKS

LB. PKG.

88¢

Thank You

FOR SHOPPING AT...



Polly's

MASTER
MARKETS

1101 M-52

CHELSEA, MICH.

(Corner M-52 and Old U.S. 12)

WHERE WE ARE
HAPPY TO.....

save

YOU MONEY!