

# Bus Secured To Provide Transportation for Elderly

CATS, Chelsea Area Transportation System, Inc., is an abbreviation for an elderly and adult handicapped transit system that will soon become reality for area residents.

More specifically, CATS is the name which has been given to a separate non-profit corporation which will provide point-to-point transportation within a 54 square mile radius for elderly and adult handicapped with limited means of transportation.

The CATS system is expected to be in effect at the end of April, provided that the state and federally funded vehicle arrives on time.

Instrumental in bringing CATS to Chelsea, is the Chelsea Kiwanis Club. In December of

1974, Chelsea Kiwanians submitted an application for monies to be used for purchase of a transit vehicle to government representatives at the state and federal levels. Last summer, Kiwanis was notified that the grant had been approved.

Together with the co-operation of the Village Council, Sylvan township, Community Chest, Methodist Home and Chelsea Jaycees, a system designed to give elderly and adult handicapped an economical and practical means of transportation that will free them from reliance upon friends and relatives for transit has been developed.

All six of the organizations were able to come up with the

necessary funding to operate CATS.

Sam Johnson, past president of Chelsea Kiwanis Club and one of the key men involved in securing federal and state monies for purchase of a van for Chelsea, said he is "very enthusiastic" about CATS. Johnson stressed that the system will afford independence to elderly residents that will permit them to schedule their appointments and shopping at their discretion with respect to transportation. "No longer will they have to depend on friends, neighbors and relatives to take them everywhere."

The van unit, purchased with \$15,800 of federal and state monies, will carry a total of 12 persons, two of which may be

in wheel chairs. The van will come complete with a lift for handicapped riders that will be operated by the driver.

Riders will be charged 25 cents for point-to-point transportation within a 54 square mile radius servicing the area south to Scio Church Rd., north to Werkner Rd., east to Fletcher Rd., and west to Loveland Rd. The system will also hook-up with Ann Arbor's wide area transit system, AATA. However, this hook-up will not be in effect until June. Also built into the system will be a round trip Chelsea-Ann Arbor-Chelsea fare for \$1.50. Once in Ann Arbor point-to-point transportation may be had for the price of 25 cents

by riding Dial-A-Ride vans and line buses.

The van will serve the Chelsea area Monday, Tuesday, Wednesday and Fridays from 9 a.m. to 4 p.m. and Thursday mornings from 9 a.m. to noon. Thursday afternoons have been reserved for any maintenance the van may require and for special trips to such events as the Ice Capades, the circus, to area museums and to Detroit, Johnson said.

CATS service to the rural areas will be available to persons living east of M-52 on Mondays and Wednesdays. Those living west of M-52 may use CATS on Tuesdays and Fridays. Sunday morning the van will be used to transport the elderly and

adult handicapped to their local church services.

Service will be based on a 12 hour in advance reserve call system. Persons desiring transportation will telephone a specified number the evening before desired morning rides and early in the morning for same day afternoon transportation.

Calls will be dispatched from a separate phone line hooked up in the Methodist Home. A two-hour morning and evening time slot will be set up for making reservations. Reservations may also be made two to three days, even up to one week in advance of desired transportation.

A typical ride might work like this. Mrs. Smith of 302 W. Middle St. has a dental appointment

at 2 p.m. Wednesday at the Chelsea Medical Clinic. Mrs. Smith will telephone the CATS number as late as Wednesday morning to secure transportation for her appointment. She will be picked up at her home in plenty of time to arrive at the Medical Center for her 2 p.m. appointment. She may also make arrangements to be picked up from the Medical Center and returned to her home that afternoon. Price for the round trip will be 50 cents as Mrs. Smith requested transportation to the Medical Center from her home and from the Medical Center to her home.

The non-profit organization is operated by a Board of Directors composed of members of

organizations which contributed to bringing CATS to Chelsea and which funded the implementation of the system here. The Village Council will also be represented on the board.

According to Johnson, the board is looking for a woman to complete the governing organization. Johnson requested interested candidates to contact him.

Applications for drivers, a full-or part-time position, are also being taken. Persons with good knowledge of surrounding highways and roads who would enjoy working with elderly persons and adult handicapped are invited to submit applications to Kiwanis Club, P. O. Box 61, Chelsea.

**WEATHER**

	Min.	Max.	Temp.
Wednesday, Feb. 25	31	55	0.00
Thursday, Feb. 26	33	62	Trace
Friday, Feb. 27	34	61	0.06
Saturday, Feb. 28	33	63	0.00
Sunday, Feb. 29	36	57	0.03
Monday, March 1	27	57	0.65
Tuesday, March 2	29	32	0.60

ONE HUNDRED-SIXTH YEAR—No. 38

12 Pages This Week

Plus 4-Page Supplement

CHELSEA, MICHIGAN, THURSDAY, MARCH 4, 1976

15c per copy

SUBSCRIPTION: \$6.00 PER YEAR

## Independents Uncontested in Monday's Vote

Six unopposed Independent Party candidates are seeking offices in the village election scheduled for this Monday, March 8 in the Sylvan Town Hall.

Candidates include Donald Wood, nominee for village president; Wallace Wood, nominee for village treasurer; Judson Göltra, nominee for village assessor; and Walter J. Brown, Robert A. Schaeffer and James L. Schardein for the three open trustee positions. All offices are two-year terms.

In addition, Jean Eaton and William Chandler are running for three-year terms as library board trustees. Mrs. Eaton is an incumbent.

The Independent party stress the following points in their campaign platform:

- To continue to promote well qualified candidates for public office.
- To continue to work for the improvement of the present sewer system. The party believes that the improvement of the present system is the responsibility of the residents of the village but that the extension of the system is the responsibility of the developer.
- In favor of a co-operative approach to the problems of recreation and supports the village's participation in the co-ordinated group effort to draw together all

of the local groups and agencies interested in recreation for Chelsea area residents.

—Opposition to the proposed Mill Creek Metropolitan Park as now proposed by Huron-Clinton Metropolitan Authority. The party cites that the park offers little if any benefits to the local area residents and believes it will probably cause many problems for the area and added costs to the local taxpayers.

—In favor of continued support of the Village Planning Commission.

—Of all the candidates, the three nominees for trustees are new to village politics.

Born in Mt. Ayr, Ia., James L. Schardein is 42 years of age. He received a bachelor of arts degree from the State University of Iowa in 1956 and a master of science from the same school in 1958. Schardein is employed by Park-Davis and Co. in Ann Arbor as a research scientist. He has been a member of the Library Board for the past five years serving as treasurer and as vice-president. He has also been a member of the Chelsea Village Planning Commission since 1974. Schardein, his wife and three children are members of the First Congregational church where he has served as

(Continued on page three)

## Bicentennial Mementoes Now Available

Paul Frisinger, chairman of souvenir distribution, announced the sale of several commemorative items by local businesses. Wooden dimes, flag lapel pins and Western Washtenaw Bicentennial Boosters Badges were accepted for sale by local retail stores, beauty and barber shops as well as the taverns.

The Booster Badge is a 2"x3" rectangle naming the four participating communities, Dexter, Manchester, Saline and Chelsea, and in addition, those for sale here in Chelsea will specify "Chelsea Booster," celebration Aug. 13-28. The committee suggests they be worn by Chelseaites during inter-community activities, such as the caravans.

The traditional "wooden nickel" moves over to be replaced by the "wooden dime". During the 125th anniversary celebration, these coins were used freely in town as money but to avoid the complications this could cause, the 1976 wooden dimes may be purchased and saved as souvenirs, or traded at the Official Bicentennial Headquarters for other souvenirs.

The first issue of the wooden dimes will have the Chelsea seal and all other printing done in red but each new rendering will be in a different color. This could suggest a collection of these coins of many colors to be mounted, framed and added to other Bicentennial commemoratives to be enjoyed now by Chelsea families, and for years to come by their children.

The more expensive metal coins and the commemorative plates will be available for sale within the next two or three weeks.



**STATE WRESTLERS:** Four Chelsea wrestlers, from left, Jim Stahl, 112 pounds; Dale Schoenberg, 119 pounds; Dennis Bauer, 155 pounds; and Sam Vogelt, 185 pounds, returned with state honors. Pictured from left to right: Jim Stahl, 112 pounds; Dale Schoenberg who placed fourth at 119 pounds; Dennis Bauer who took a third place at 155 pounds; and Sam Vogelt, assistant wrestling coach, Chelsea wrestlers placed 10th out of 84 schools participating in the tournament.

## Two Wrestlers Earn Honors in State Tourney

Two Chelsea high school wrestlers earned state honors last weekend as the Bulldog grapplers finished 10th in the state wrestling tournament. Wrestlers from Mt. Pleasant High school returned home with the first place ranking.

Dennis Bauer and Dale Schoenberg both earned medals in the finals held at Kentwood High school last Friday and Saturday where wrestlers from 84 Michigan high schools gathered.

Bauer placed third, winning his first two matches before losing, 3-2, in the semi-finals. He then came back to win two matches in the consolation finals for his third place. Bauer's final season with the Bulldogs left a posted record of 35-2.

Finishing fourth in the state was Dale Schoenberg who posted two wins before losing to the three-time state champ in the semi-finals. Schoenberg wound up his season, 36-7.

Tim Reed rolled to win his first match, only to run into the wrestler who would become the state champ in the second round. Coach Richard Bareis said that Reed wrestled well, only giving up the win, 8-7. Reed posted a 36-6-1 season record.

Jim Stahl lost his first match, 1-0, and then won his first match in the consolation finals before losing his third and final match, 6-4. Stahl's final record is recorded at 31-10-2.

"In all, we wrestled well," remarked Bareis. "Even our losses looked good. I am pleased with our wrestlers' performances," he concluded.

Finishing ahead of the Bulldogs were Mt. Pleasant, 107; Muskegon Catholic Central, 57; Grand Rapids Catholic Central, 45; Leland, 44; Lakeshore, 38; Albion, 36½; Cedar Springs, 35; Holt, 34; Orchard View, 33; and Chelsea, 31½.



**SWING INTO SPRING** by attending the Chelsea Cancer Crusade Fashion Show and Luncheon Benefit Saturday, March 13 at Schumm's restaurant. Local models will show fashions from Vogel's as patrons lunch in the comfort of Schumm's. Pictured here are three of the models to be featured in the showing, from left, Carol Palmer, Mrs. Edwin Vaught and Trisha Matloff. Tickets for the fashion show and luncheon are \$7.50 and may be purchased by telephoning Mrs. Charles Matloff, \$1 from each ticket purchase will go to the Cancer Crusade.

## CHS Cagers Earn All-League Honors

Two Chelsea High school basketball players have received All Southeastern Conference honors.

Named to the Southeastern Conference team is senior guard and Bulldog captain Randy Guenther. Forward and center Tony Robards was named honorable mention.

Guenther, who undeniably led his team this season in all categories, was commended by his coaches, Tom Balistrere, as an "outstanding competitor, team leader and ball player." Balistrere added that Randy, because of his competitive spirit, never once thought of letting his team down. Guenther, Balistrere said, was in there all the way. He was the team's leading scorer, averaging 17.8 points in each league game and more in non-league play. He also took

honor for being the leading rebounder.

The six-foot, 175-pound guard was the team's sole senior and the only starting guard off last year's 16-5 team.

Talking to Balistrere, it is evident that the coach cannot give Randy enough praise and credit for what he has accomplished in a season wrought with almost total loss.

Robards, a junior on the team was credited by Balistrere as being the key factor in keeping the team's attitude and spirit up throughout the year. "He had great team spirit and enthusiasm," Balistrere said and continued to praise Tony on his aggressive qualities and love of competition.

Next to Guenther, Robards posted the second highest scores and number of rebounds.

## Bulldog Cagers Trampled By Saline, 98-46

The Bulldogs were down and out last Friday evening as the Hornets from Saline practically bounced them right off the courts for a 98-46 victory.

Under the weather with the flu, Randy Guenther took to the court but could only manage to rally for 13 points. High scorer for the Bulldogs was Jerry Benjamin who put in 15 points, his second time in the double figures this season. Also scoring was Tony Robards with seven points, Randy Sweeney with six, Dean Thompson with three and Jeff Sweet with two.

Coach Tom Balistrere said that the Bulldogs simply could not put the ball in the hole, shooting a poor 30 percent from the floor and 10 for 30 from the foul line. In the first half of play, they scored

(Continued on page three)

## Hearing Set Monday On Homicide Charge

Kevin L. Dorer, who has been charged with negligent homicide in the traffic death of five-year-old Eric Hafner, was arraigned at Friday morning in 14th District Court on the charges.

Dorer was released on \$2,000 personal recognizance after requesting preliminary examination on the charges.

The examination has been set for Monday, March 8 at 9:30 a.m. in 14th District Court, Chelsea.

The Hafner boy was killed late Tuesday afternoon, Feb. 24 when Dorer who was driving east on Luick Dr. struck the child as he was riding his bicycle in front of the Hafner home.

Washtenaw County Sheriff's police contend that Dorer was speeding at the time of the accident.

## Beach Bands Plan Pre-Festival Concert

Beach Middle school's 7th and 8th grade bands will present a pre-Festival concert Tuesday evening, March 9 at 7:30 p.m. in the middle school cafeteria.

According to Warren Mayer, who will conduct the 8th graders the "dry-run" will give the musicians a chance to perform the numbers they will play in the Festival Mar. 13 before an audience.

In addition to performing three selections, the 8th graders will be asked to sight read. Mayer will lead them through the "Hammerfest Concert March," by Ployhar, the "Kensington Overture," by Whear, and "Two Contemporary Dances," by Johnson.

Ronald Harris will conduct the 7th grade bands in the "Little Champ March," by Mesang, "Portrait for Band," by Tschalkovsky, and "The Court of Henry VIII," by Cacavas.

The public is encouraged to attend.

## World Day of Prayer Service Set Friday

Chelsea's World Day of Prayer will be celebrated Friday, March 5 by Church Women United who will join in a chain of prayer with millions of people in 189 countries.

The world-wide service is sponsored by the International Committee for World Day of Prayer which has appointed Church Women United as the official sponsor of the Celebration in this country.

Here in Chelsea, Church Women United invite the community to join this world-wide fellowship at the First United Methodist church. The service will be held at 1 p.m. In addition, the Methodist Home will offer a separate service at 7 p.m. for persons in the home and community members who were not able to attend the afternoon prayer.

Participating in the service at the Methodist church is Karol Morris, Lynn Enderle, Betty Hopkins and Lois Voita. The Junior Choir from Zion Lutheran church will sing hymns. Skits will be performed by Sandy Weber and her daughter, Gertrude Kern, Katherine Staffan and the Rev. Marvin McCallum.

Babysitting service for the afternoon service will be available at the church.

(Continued on page four)



**WHAT'S YOUR BLOOD PRESSURE?** Jan Pratt, member of the Chelsea Jaycee Auxiliary lets Elizabeth Carroll, RN, from the Chelsea Community Hospital check her blood pressure. Jan was just one of 117 area residents whose blood pressure was checked free last Saturday as the Jaycee Auxiliary held their first Blood Pressure Clinic. Looking on from left, Mary Lou Tudor, chairman of the clinic, and Pat Brooks, auxiliary committee member and RN from the Chelsea Community Hospital. The Auxiliary feels the clinic was a success as 38 persons discovered they had high blood pressure. Twelve of those were totally unaware of their condition.

**QUOTE**

"Books are the legacies that a great genius leaves to mankind."  
—Joseph Addison



# Independents Uncontested in Monday's Vote

(Continued from page one) moderator and as a deacon. He participated last year on the Ad Hoc Citizens Committee for the School Board dealing with school discipline. The Schardeins live at 345 Washington St. Age 44, Robert A. Schaeffer was born in Detroit and graduated from high school in Roscommon. He attended Lawrence Institute and was graduated from Milwaukee School of Engineering. He also attended Cleary College for

one year. Schaeffer is employed at Rockwell International where he is manager of Quality Control. He has been a member of the Chelsea Industrial Development Commission for the past two years and also was on the Western Washtenaw Regional Planning Commission for two years. He is a member of the Chelsea Masonic Lodge and has been active in the Boy Scouts as a leader for many years. He was in the U. S. Army Signal Corps for two years, serving in Germany with the rank of corporal.

The father of five children, Schaeffer and his family live at 20450 Old US-12 W. They are members of the Chelsea Methodist church where Schaeffer has been chairman of the education committee, a member of the trustees and a member of the finance committee. Walter J. Brown, 37, was born in Little Falls, N. Y. He graduated from Little Falls High school. He received his bachelor of science

degree from Rochester Institute of Technology. He has been employed by Xerox for the past 18 years. He is the manager of facilities at Xerox University Microfilms in Ann Arbor. Brown has been an active Jaycee for 10 years, holding offices from director through president at the local level and was a national director from 1972-1973, Michigan Jaycee administrative executive vice-president 1973-74 and Michigan JCI senate president 1974-75. He was awarded the JCI Senatorship 14156 in 1972 and the Clint Dunagan Award as Outstanding U. S. Jaycee Director in 1973.

He has been active in the United Way in Chelsea, Ann Arbor and at the University Microfilms plant. Brown was the secretary of the Board of Directors 1971-73. He has been a member of the Chelsea Planning Commission from 1970 to 1976, serving part of that time as chairman. He was a member of the Regional Planning Commission in 1970 and 1971. He also has served on the Vocational Study Committee for Chelsea High school as well as having been active in Boy Scouting for three years. Walter is married and the father of four children. The Browns are members of St. Mary church. They live at 18 Chestnut Drive.

Nominee for President, 34-year-old Donald Wood was born in Chelsea and graduated from Chelsea High school. He received his bachelor of arts degree from Cleary College in Business Administration. Don has been a member of the Chelsea Village Council for the past four years, serving as trustee. He is on the State Board of Directors of the Michigan Alliance of Small Communities. He has served as the village's representative to the Regional Planning Commission. For the past six years, Wood has been employed at St. Joseph Mercy Hospital where he is a senior systems analyst. He is married and resides with his two children and wife, Sue, at 307 Taylor Lane. Village treasurer for the past 17 years, Wallace C. Wood is running for another two-year term.

Wood, who is 59 years old was born in Wayne county and graduated from Chelsea High school. He attended Ypsilanti Normal. Wood is a Charter Life Insurance Underwriter and has been the local agent here for State Farm Insurance for the past 27 years. He has been active in the Methodist church, holding lay offices. He is a member and past president of the Chelsea Kiwanis Club and past president of the Chelsea Community Fair. He has been active in the Community Chest, the March of Dimes, Boy Scouts and the County Democratic party. For 1976, he is Chelsea's over-all Bicentennial Celebration chairman. He and his wife reside at 620 Flanders St. The couple has two children and two grandchildren.

Judson Goltra, candidate for village assessor, was born in Detroit in 1904. He has spent most of his adult life as a millwright and carpenter, working at plants in Detroit, Ypsilanti, Adrian and Chelsea. He is a member of the Christian Scientist church of Detroit, the Dexter F&AM No. 65 and the Eastern Star of Chelsea. Goltra and his wife have two children. The couple live at 508 Arthur St. Three trustees remain to complete the second year of their term. They are David Rowe, Sam Johnson and Richard Borton. The clerk's position filled by Thomas Neumeyer is not up for election this year. Polls at Sylvan Town Hall will open Monday morning at 7 and close at 8 p.m.

**NEW LISTING**  
Quality built home in Lanewood. Excellent terms to qualified buyer. Early occupancy. Call 475-7322 for showing.

**Real Estate Co.**  
OF WASHTENAW  
REALTORS  
AL KLEIS 475-7322 1196 M-52, Chelsea 475-8693

## After-Inventory SALE!

Everything Must Go To Make Room for New Spring Fashions

TOPS, BLOUSES . . . . .	Values to \$24	\$5.00-\$7.00
SWEATERS . . . . .	Values to \$18	\$4.50-\$7.00
JEANS, SLACKS . . . . .	Values to \$29	\$5-\$7.99
DRESSES . . . . .		60% to 70% Off
ROBES . . . . .		60% Off
ALL JEWELRY . . . . .	Including Indian Jewelry & Imports	30% Off

**Hurry In! All Sales Final!**  
BANK AMERICARD MASTER CHARGE

# KAREN'S BOUTIQUE

119 S. MAIN ST.

## Old Fashioned Living Shown in Kitchen Utensils

The Chelsea Area Historical Society has been successful because of the desire of area residents to preserve the richness of its heritage and because people are genuinely interested in reminiscing about a less complex, less mechanized way of life.

The Chelsea area is rich in resources to demonstrate old fashioned living. Diane Borton and Alice Thornton have displayed and explained the uses of antique kitchen utensils for local classrooms and are now officially available to area schools for this purpose, under the auspices of the Historical Society. There are several families in this community who maintain an extensive collection of antiques and some of these items will also be used in these presentations.

Mrs. Borton may center her presentations on a primitive kitchen or may explain the uses of now obsolete household items and tools, or even just decorative artifacts.

Teachers or other youth leaders who think their group would benefit from such a presentation, especially during this special year, may call Mrs. Richard Borton, 475-7305, or Mrs. Robert Thornton, 475-8857 to make arrangements.

### Cagers Lose Again

(Continued from page one)

ed five successful field goals scoring a total of 18 in the game. Their shooting could not begin to compare with that of the Hornets who simply ran circles around the Bulldogs, putting in baskets and watching their score mount up in lights.

The Bulldogs concluded the season with one win in conference play and two in non-conference games.

A little politeness goes a long way and is usually repaid two-fold.

Telephone Your Club News To 475-1371.

## SOUTHERN BOY MANOR MOTEL

Efficiency Units - By Day, Week, or Month

13190 M-52  
PHONE (517) 851-4213  
(2 miles south of Stockbridge)

## GIFTS for All OCCASIONS

- ★ Diamonds
- ★ Opals
- ★ Hallmark Cards
- ★ Watches
- ★ Clocks

★ Expert Watch, Ring Repair

**20% OFF On All Jewelry**

# LEWIS JEWELERS

Maple Village Shopping Center  
Maple and Jackson Rds., Across from Fox Theatre  
Mon., Thurs., Fri., 9:30 to 9  
Tues., Wed., Sat., 9:30 to 6  
Free Parking Ann Arbor 994-5111

Full Line Supermarket  
MARATHON GAS PUMPS  
LOTTERY TICKETS  
BEER - WINE - LIQUOR  
U.S.D.A. CHOICE BEEF  
AUTHORIZED FOOD STAMP STORE

# Jiffy market

Big Enough To Serve You . . . Small Enough To Know You!

Open 7 Days A Week  
7 a.m. to 10 p.m.  
Corner Werkner & Sibley Rds. PHONE 475-1701  
Sale Prices Effective Thursday, March 5 thru Sunday, March 7

## Guaranteed Satisfaction - Courteous Service - U.S.D.A. Choice Meats

HOLSUM	1		
<b>DARK BREAD</b>	Cracked Wheat, Whole Wheat, Rye	1-Lb. Loaf	<b>49¢</b>
CAMELOT			
<b>SALTINES</b>		1-Lb. Box	<b>39¢</b>
MEDIUM			
<b>FRESH EGGS</b>		Doz.	<b>59¢</b>
CALIFORNIA			
<b>HEAD LETTUCE</b>		Head	<b>29¢</b>
MEADOWDALE			
<b>MARGARINE</b>		1-Lb. Crtn.	<b>29¢</b>
IDA RED			
<b>APPLES</b>		5-Lb. Bag	<b>69¢</b>
BREAST O' CHICKEN			
<b>TUNA</b>		6 1/2-Oz. Can	<b>47¢</b>
FLAVOR OF THE MONTH - WESLEY'S QUAKER MAID			
<b>MINT CHIP ICE CREAM</b>		1/2-Gal. Crtn.	<b>97¢</b>
PURINA WHISKER LICKINGS			
<b>CAT FOOD</b>		6-Oz. Box	<b>35¢</b>
CAMELOT			
<b>WINDSHIELD WASH</b>		1 Gal.	<b>69¢</b>

### BASKART SPECIALS

**BREAD and MILK**

WONDER	FARM MAID
COUNTRY STYLE	HOMOGENIZED
1 1/4-Lb. Loaf <b>29¢</b>	Gal. <b>\$1.29</b>

**FARMER PEET RING BOLOGNA . . . lb. 89¢**

**COCA-COLA or 7-UP**

8 1 Pint N.R. Bottles **\$1.29**  
EQUALS ONE GALLON

### JIFFY MARKET MEAT DEPT.

U.S.D.A. CHOICE

Blade Cut Chuck Roast . . . . .	lb. <b>79¢</b>	
Center Cut Chuck Roasts . . . . .	lb. <b>89¢</b>	
ARM CHUCK ROAST	English Roast	SHORT RIBS
\$1.19 lb.	\$1.19 lb.	59¢ lb.
BEEF STEW	Ground Chuck	Ground Round
\$1.19 lb.	\$1.19 lb.	\$1.29 lb.

FRESH GROUND, LEAN  
**HAMBURGER . lb. 79¢**

### JIFFY MARKET MARATHON GAS

REGULAR  
**GAS 55.9**

Gal. Including All Taxes

MINIMUM SALE \$3.00

### CHOICE BEEF

SIDES - FRONTS - HINDS  
WHOLE RIBS, WHOLE LOINS

CUSTOM CUTTING  
WRAPPING - FREEZING  
QUICK SERVICE ON BUTCHERING  
— YOUR BEEF OR OURS

### JIFFY MARKET SPECIAL!

U.S.D.A. CHOICE BEEF

## STEAK SALE

T-Bone Steak . . . <b>\$1.98</b> lb.	Sirloin Steak . . . <b>\$1.69</b> lb.
Club Steak . . . <b>\$1.98</b> lb.	Porterhouse Stk. <b>\$2.08</b> lb.
Sirloin Tip Stk. . . <b>\$1.98</b> lb.	Rib Steaks . . . <b>\$1.49</b> lb.

Tender, Delicious Steak that you can enjoy!

## World Day of Prayer Service Set Friday

(Continued from page one)  
 Friday evening, Mrs. Annabelle Closson will lead the fellowship at the Methodist Home. Mrs. Solomonson, a resident of the Home, will play the organ for the service. Other residents participating are Mrs. Radcliff, Mrs. Sexton, Mrs. Stanford, Mrs. Schweitzer and Mrs. Mumford who will give scripture readings and lead in prayer. Performing skits will be Mrs. Pearson, Mrs. White, Mrs. Weiss, Mrs. Neuman, Mrs. Closson and Mrs. Karcher.

Collections from both services will be used for "Wells Without Walking," a program begun last fall by Church Women United at their November celebration. "Wells Without Walking" will provide funds to create wells closer to people who now have to walk many miles daily for their water supply.

The worship service prepared by women in Latin America reflects their concern for "Education for All of Life." The narrow bonds surrounding the word "education" have been released, and the definition spills out into every area of life. Concrete situations, common to the lives of some Latin American women, form an integral part of the worship experience of World Day of Prayer. On this day Protestant, Catholic and Orthodox women of many races and languages seek to make visible their unity in Christ and to share in an offering that will bring hope and aid to thousands around the globe.

Here in the United States the offerings go into a fund administered by the Intercontinental Mission Committee of Church Women United. Education has been a concern of participants in the World Day of Prayer from its beginning. Two dynamic church women established a day of united prayer after a visit to the Orient where they saw the great need of educating women and for Christian literature. In the early 1900's they raised \$3 million to strengthen existing Christian colleges and to found new ones for women in the Orient. Women's colleges in Asia and the Middle East continue to receive an annual grant from World Day of Prayer offerings. The Committee on Christian Literature for Women and Children, founded with World Day of Prayer gifts, also receives an annual grant. In recent years emphasis has been placed on writers' workshops where women are trained to

prepare literature related to their special needs in the areas of faith, family life, nutrition and development.

Annual gifts from the offerings are also made for a Christian ministry in our national parks; for scholarships for women through the World Council of Churches and to the International Committee for the World Day of Prayer for leadership training.

Offerings also make possible gifts for short-term projects often related to the celebration theme.

This year gifts are being made through Church World Service and UNICEF for projects in Niger, Malagasy Republic, and Bolivia to provide a safe and accessible water supply and a source of protein. Contributions are being made for legal defense and family assistance for political prisoners under repressive regimes; for political refugees from Latin America who need physical, psychological, and economic rehabilitation; and to projects helping women make their full contribution in their communities and nations; through programs such as the one in Goa, India, which enables rural women to articulate their needs, to seek and suggest solutions, and to receive training which will help them earn a living.

## Youth Charged With Contributing To Delinquency

Stephen Howard Lyerla of 15 Sycamore Dr. appeared in 14th District Court Monday where he pled guilty to charges of contributing to the delinquency of a minor.

The charges were pressed by Mr. and Mrs. Charles Miller of 711 W. Middle, who contend that Miller assisted their step-daughter in unlawfully leaving the Chelsea area.

According to Chelsea police, a missing persons report was filed with them last Thursday when the Millers' daughter did not return from school.

Lyerla and the youth were picked up in St. Joseph by St. Josephs police. A sentencing date of April 12 has been set.

## Girl Scouts

**TROOP 98**—Chelsea Cadette Girl Scout Troop 98 is planning a trip to Chicago in June.

In order to earn travel expenses, the girls will be babysitting for 75 cents an hour and \$1 an hour after midnight. A percentage of the earned monies will go to the troop. The girls will retain the rest.

Persons who need babysitters and wish to support the Girl Scouts are asked to contact a member of Troop 98.

## ST. LOUIS SCHOOL FOR EXCEPTIONAL BOYS ST. PATRICK'S DANCE

MARCH 13, 1976

8:00 p.m. 'til 1:00 a.m.

ST. LOUIS SCHOOL  
 16195 Old US-12 West, Chelsea, Mich.

GENE JONES ORCHESTRA

Free Refreshments \$10.00  
 B.Y.O.B. (Set-Ups Furnished) Per Person

RETARDED CHILDREN CAN BE HELPED

## INTRODUCING BARGAIN DEN SAVE 50-75% WE ARE OVERSTOCKED - MUST REDUCE INVENTORY

<b>KNITS</b> Polyester double knits - single knits. 45" - 60" Wide <b>99¢</b> yd.	<b>MENSWEAR</b> Also metallics, velvets, upholstery, pastels, etc. <b>\$1.89</b> yd.
<b>NEW MENSWEAR SHIRTING</b> 60" Wide Reg. \$2.98 <b>\$1.29</b> yd.	<b>MISC. BARGAINS</b> Chiffons, tie fabric, bonded - wools, poly / cotton blends, seersucker. as low as <b>19¢</b> yd. minimum 5 yds. purchase
<b>UPHOLSTERY REMNANTS</b> misc. lengths as low as <b>5¢</b> ea.	<b>RIBBING</b> Poly/cotton, Nylon Minimum 10 Inches <b>3¢</b> in.
<b>TRIMS and LACES</b> . . . . . 10c yd. <b>BUTTONS</b> . . . . . 5 cards for \$1.00 <b>ZIPPERS</b> . . . . . 1/2 OFF MANY OTHER UNADVERTISED SPECIALS	

OPEN: Mon.-Wed.-Fri. 9:30 to 8  
 Tues.-Thurs.-Sat. 9:30-6:30

## COFFMAN'S SEWING MACHINE & FABRICS

1011 Lansing Ave. Jackson 787-4264

A Standard Want Ad Gets Results!

# BEEF SALE

**98¢** lb.  
**HIND QTRS.**

150-180 Lb.

Approx. Yield on Std. Cut

- INCLUDES ALL PROCESSING -

- 10 round steaks
- 8 sirloin steaks
- 6 porterhouse steaks
- 12 T-bone steaks
- 4 sirloin tips
- 1 sirloin tip roast
- 4 rump roasts - boneless
- 6 lb. stew beef - boneless
- 35 lb. hamburger

And More!

ESTIMATED TAKE HOME PRICE - \$1.24

**85¢** lb.  
**FULL SIDES**

300-350 Lb. Approx. Yield on Std. Cut

- INCLUDES ALL PROCESSING -

- |                          |                                    |
|--------------------------|------------------------------------|
| 10 round steaks          | 12 rib steaks                      |
| 8 sirloin steaks         | 2 rib roasts                       |
| 6 porterhouse steaks     | 1 sirloin tip roast                |
|                          | 4 rump roasts - boneless           |
| 12 T-bone steaks         | 5 chuck roasts                     |
| 4 sirloin tips           | 3 arm round roasts                 |
| 3 Swiss steaks           | 2 English roasts                   |
| 6 chuck steaks           | 2/1 lb. pkgs. stew beef - boneless |
| 6/1 lb. pkgs. short ribs | 80 lbs. hamburger                  |

And More!

ESTIMATED TAKE HOME PRICE - \$1.08

**75¢** lb.  
**FRONT QTRS.**

160-180 Lb.

Approx. Yield on Std. Cut

- INCLUDES ALL PROCESSING -

- 12 rib steaks
- 3 swiss steak
- 6 chuck steaks
- 5 chuck roasts
- 2 rib roasts
- 3 arm round roasts
- 2 English roasts
- 6/2 lb. pkgs. short ribs
- 6/1 lb. pkgs. Stew beef - boneless
- 50 lb. hamburger

And More!

ESTIMATED TAKE HOME PRICE - \$.95

## NO WAITING - ORDERS READY TO TAKE HOME

Discount to Civic Groups - We Accept Food Stamps

## CUSTOM SLAUGHTERING & PROCESSING

# DUNBAR'S DEXTER LOCKER

PAUL DUNBAR, OWNER

8033 MAIN ST., DEXTER

PHONE 426-8466



**SAVE 20% to 25%**

ON SEVEN

## LEES FINE CARPETING

Color splashed textured nylon. Highly durable, resists surface soiling.

**SALE 8.99**

Super dense tight twist in fashion multi-colors.

**SALE 9.99**

Subtle tracery pattern in multi-colored yarns for a sophisticated look.

**SALE 9.99**

A hint of pattern gives this heavy carpet a quiet elegance.

**SALE 10.99**

The elegant look of the finest carpets is captured in this soft, shimmering, silky texture.

**SALE 10.99**

Extra hard twist in this abrasion resistant carpet of bold sparkling colors.

**SALE 7.99**

Rich, exciting hues in this multi-colored super twist.

**SALE 8.99**

*Markel*

HOME FURNISHINGS

# Board Holds Millage Request To Renewal of Current Levy

On March 22 voters of the Chelsea School District will be asked to approve a request for renewal of the 12.5 operational mills last approved in 1974. This request will be for five years.

Board of Education President, Howard Haselschwardt, emphasized that it could become necessary sometime during the next five years to ask for additional millage. He stated that present state legislation guarantees school districts a 6 percent increase in income

per student for the coming school year, but he warned that future year's income and expenses are impossible to predict. Since these 13.5 mills represent more than one-half of the district's income for operations, acceptance by the voters will provide the schools with a stable income over these years.

The board will do everything it can to keep expenses at a level so that future requests for added millage will be made only if absolutely necessary. For the coming Haselschwardt pointed out that the

board felt it was especially important that only a renewal millage be requested.

When asked if the school would be able to assume the added costs of operating new buildings that are just now being completed, he expressed confidence "that with some belt tightening, with the fact that it will not be necessary to purchase any new buses this year and with the anticipated receipt of \$24,000 in federal funds, we will be able to continue the present school program, and also operate these new facilities."



**SULLIVAN-BIRD:** Mr. and Mrs. Charles E. Sullivan of 19380 Lehman Rd., have announced the engagement of their daughter, Karen Cecelia, to David Bird of Mt. Clemens. Mr. Bird is the son of Mr. and Mrs. David Bird of Mt. Clemens. The bride-elect is a 1973 graduate of Chelsea High school. She attends Lake Superior College. Mr. Bird graduated from Mt. Clemens High school in 1972. He also attends Lake Superior College. A September wedding is planned.

## Cub Scout Awards Given At Blue & Gold Banquet

Cub Scout Pack 415 held their 12th annual Blue and Gold banquet in the Chelsea High school cafeteria at 2 p.m. Sunday, Feb. 29.

A Bicentennial color scheme replaced the traditional blue and gold. Red, white and blue streamers ran full length of all tables. Placemats, name cards and nut cups were designed with the Spirit of '76 in mind. They were made by Cub Scouts of each den with the help of the den mothers.

Welcome the guests as they arrived was Bill Green. The opening ceremony was presentation of the colors by Herbie Pierson, Den 2 chief, and Cliff Merkel, den chief for Den 6. The pledge of allegiance to the flag was then recited by everyone present.

Cubmaster Gilbert Trevino, who acted as master of ceremonies, introduced the special guests: Mr. and Mrs. Charles Cameron, Munhac district chairman John Gillespie and his wife, long-time area scout, Bill Baker, and the Rev.

T. B. Thodeson, former pastor of the Assembly of God church, and his wife.

Following the invocation given by the Rev. Thodeson, a pot-luck dinner was served.

Gilbert Trevino introduced committee members, den mothers and Webelos leaders. He presented certificates of appreciation for dedicated service to Pack 415 to retiring committee members Norma Seyfried, Herbert Pierson, Sr., and Bill Greene.

Awards to Cub Scouts were silver arrow, bear rank to Jerry Hammerschmidt, a wolf patch to Steve Kropf, Alan Kuhl, Mike Coffman and Anton Hammerschmidt. Potawottami Trail Hiker patches were given to those Cub Scouts who had earned them.

Entertainment was by magicians Jeff Boyer and Jim Fitzsimmons. The banquet closed with the singing of two verses of "America."



**THE NETS:** Members of the team, kneeling from left, Vaughn Mills, Garland DeYoe, Tom Mull, Kuhl, Charlie Koehn and Scott Jones. Standing, Coach Mike Sweet, Marty Steinhauer and Tim Dnoch.

## Biddy Basketball Skills Contests Set Saturday To Close Season

Biddy Basketball players shot their last baskets of the 1975-76 season Saturday, Feb. 28 as all 22 teams rallied for their final games. According to director of the program, Jon Schaffner, 220 boys and girls participated in the program. Schaffner said it was a "great success."

In the WBA league the Bullets conquered the Kings, 18-10; the Hawks ran around the Rockets, 30-4; the Capitols knocked the Knicks, 18-10, and the Suns swung an overtime victory of 16-14 defeating the Lakers.

In ABA games played at the high school, the Squires sunk the Sails, 24-10; the Pacers defeated the Spurs, 12-14; the Nets nipped the Warriors, 12-10, and the Colonels bumped the Braves, 38-10.

In the NBA the Jazz killed the Cavaliers, 29-22; the Pistons banked the Bucks, 15-10, and the Celtics bombed the Bulls, 15-11.

Speaking in general about games played Schaffner said that only two of the 22 teams had an undefeated season. He also added that this year's program did not lean heavily on competitive aspects, but primarily stressed learning skills and having a good time.

This Saturday, March 6, players are invited to participate in skill contests. Ribbons will be given for first, second and third places for individual performances in speed dribbling, 40-second bounce pass, 40-second shooting (shoot as many baskets as possible in 40 seconds) and seven free throws. Every participant will receive a ribbon.

Players who are seven, eight, nine and 10 years old are to meet

in the high school gymnasium at 10 a.m. Eleven and 12-years-olds will play-off in the gym at Beach Middle school at the same time. Schaffner noted that ages are based on registration forms completed early last December. Birthdays celebrated between that time and now are disregarded for contest purposes only.

**YOUNG HOMEMAKERS**  
The February meeting of the Young Homemakers was held at the Lima Town Hall with Lilla Bauer and Marie Colombo as hostesses. A sewing and crafts demonstration was presented to members and their guests by Minnesota Fabrics.

**CARPET REBIRTH**  
Give your carpet a new lease on life by cleaning it regularly.

**JET SPRAY CARPET CLEANING**  
Use Your BankAmericard Phone 761-3025 or 475-1509 Ask for John Lixey.

**GET READY FOR SPRING CUSTOM DRAPERY SALE SAVE 20%**

**NOW THRU MARCH 10 SKLARE CUSTOM DRAPERY SIZED TO FIT ANY WINDOW PERFECTLY WIDE SELECTION OF FABRICS Bring in Measurements for Estimate HOME MEASURING & INSTALLATION SERVICE**

**Merkel HOME FURNISHINGS**

**We're take a pineapple-picking vacation March 8-28**

See you on the 29th!

**Village Books of Chelsea**  
105 1/2 S. Main St. 475-9260  
Alan & Jaynar Johnston

**GIRL SCOUTS**

**TROOP 148**  
Brownie Troop 148 made red, white and blue flowers for our centerpiece. We celebrated "Thinking Day" by having a cake with outline of the world on it.  
Jennifer Kopolka, scribe.

*Letters to the Editor*

To the Editor:  
Thank you, the estimated 40,000 Vietnam era veterans who have not yet applied for your bonus. This means that an estimated \$18 million will not remain a millstone of debt at interest around the necks of you, your children and your children's children and forever.

Think about it. You are the patriotic ones.  
Ray Coulter  
Grass Lake  
Telephone Your Club News To 475-1371.

**SCHOOL LUNCH MENU!**

Week of March 8-12  
Monday—Chicken and noodle casserole, buttered peas, bread and butter, dessert and milk.  
Tuesday—Hotdogs with trimmings, coney island sauce, buns, baked beans, fruit, cake and milk.  
Wednesday — Submarines with sauce, soup of the day, package crackers, Jell-O with fruit and milk.  
Thursday—Sloppy Joes on buns, slice cheese, french fries, harvard beets, dessert and milk.  
Friday—Baked lasagne, buttered creamed peas, bread and butter, chocolat eclair and milk.

**Magic Mirror Beauty Salon**

Open Tuesday thru Friday 9 a.m. to 9 p.m.  
Saturday, 8 a.m. to 3 p.m.  
PHONE 665-0816

**HOUSE OF ORIENT BEAUTY SALON**  
107 W. MIDDLE PH. 475-8196

**Due to Popular Demand!**  
We Are Now Taking Appointments for Our **MARCH PERM SPECIAL!**  
\$17.00 includes Your Cut and Set (Reg. \$22.00)

Our REDKEN TRICHO PERM IS NOW \$25.00 (Reg. \$30.00)

**Get Ready for Spring!**  
Our Precision and Geometric Cuts Are Only \$8.00 (Tuesday thru Saturday)

**CAROLYN, CATHY & CHARLOTTE**  
Also  
On Display at our Salon will be Hand-Painted Jewelry by Barbara Lyke.

**Bulova Trade-in Sale**

Bring in any old watch—any age, any make, any condition—and we'll give you a surprising allowance towards a new Bulova.

Let's make a deal! For just a short time, your old watch takes on real value again... if you trade it in towards the purchase of a bright and accurate new Bulova. We have a huge selection of ladies' and men's models to choose from. And a great trade-in offer to make on each of them.

A. Day/date automatic with full moon and day, 12 jewels, stainless steel, \$80.  
B. A sporty line, diamond set, 12 jewels, a red and black dial, 17 jewels, \$95.  
C. All stainless steel, calendar automatic, with blue and silver dial, 17 jewels, \$95.  
D. Daily fashion, casual watch with that simple, one-piece look, 17 jewels, \$110.

**WINANS JEWELRY**

**FACTORY AUTHORIZED SALE FRANKLIN FURNITURE SAVE 20% IN MARCH**

**CHOOSE FROM STOCK OR HAVE UPHOLSTERED TO ORDER**

TRADITIONAL • COLONIAL • CONTEMPORARY  
SOFAS • CHAIRS • LOVESEAT • SLEEPERS

**Merkel HOME FURNISHINGS**  
Main Street in Chelsea. Open Monday and Friday nights until 9:00 phone 475-8621  
Chicago Blvd. in Tecumseh, Open Friday nights until 9:00 phone (517) 423-2205  
Professional design consulting

# Community Calendar



VFW Auxiliary regular business meeting March 8 at 8 p.m. in the VFW Hall.

Pioneer Arts and Crafts Fair, Saturday, March 20, 10 a.m. to 4 p.m., Dexter High school gym. More than 500 artists and craftsmen. Luncheon available. Bake sale. Adults, \$1; students, grades 9-12, 50 cents; grades 1-8, free. x40

Lima Center Extension Study group, March 10, 10:30 a.m., Lima Center Hall. Lessons: Foods, Fact and Fiction. Hostesses, Margaret Sias and Jane Schairer.

North Lake Co-Op Nursery is now taking applications for 3- and 4-year-olds for 1976-77 school year. Contact Sherri Plank, 475-7351.

Chelsea Rebekah Lodge No. 130, first and third Tuesday of each month at 7:30 p.m.

PNG Club of Rebekah Lodge, at the home of Mrs. Marian Pickell March 9 at 7:30 p.m.

VFW Post 4076, Wednesday, March 10 at 8 p.m., 105-B N. Main.

Regular meeting Herbert J. McKune Post 31, American Legion, Thursday, March 4 at 8 p.m., 1700 Ridge Rd., Cavanaugh Lake. Free keg night.

Past Matrons Club, OES, pot-luck March 11, 12:30 p.m. at the home of Hazel Wacker.

Ann Arbor Saturday Nite Singles, March 6. All singles, widowed or divorced, 25 years and over, invited to a dance at the Ann Arbor "Y," 350 S. 5th Ave., from 9 p.m. to midnight. Dancing to the music of Mike and Tom. For further information phone 663-6068.

Registered Nurses of Washtenaw-Livingston-Monroe district of the Michigan Nurses Association will meet for dinner at the Briarwood Hilton, Ann Arbor, at 5 p.m. Monday, March 8. Business meeting at 6 p.m., followed by program at 7 p.m. at Community Room A, Briarwood Mall, Ted Saines, R.N., nurse administrator of Metropolitan Hospital, Detroit, will speak about "HMO, (Health Maintenance Organization) . . . A New Term An Old Concept." No reservations necessary. Non-members welcome.

Inverness Country Club men's league annual golf meeting, March 16, 7:30 p.m. at the Inverness Club House.

Family Safety Seminar, Monday, March 15, 7:30 p.m., Dexter High school library. Special emphasis on babysitting. Everyone interested urged to attend.

Chelsea High school scholarship committee, Monday, March 8, at 8 p.m., in the Home Economics center.

Chelsea Community Farm Bureau, Thursday, March 11, at the home of Mr. and Mrs. Carl Heller, beginning with a pot-luck supper at 7 p.m. Marjorie LaRose co-hostess.

Chelsea Area Historical Society, Monday, March 8 at 8 p.m. in the First Congregational church. Program, "Oral History Panel Discussion." Public welcome to attend.

Kinder Klub, Tuesday, March 9. Visit to Louie Decorating store on Jackson Rd. Members or guests who wish to go please meet at Jean Hafner's home at 7 p.m.

Tuesday Nite Singers, Briarwood Community Room, at 1-94 and State St., Ann Arbor, near Sears. Dancing Tuesday, March 9 from 9 p.m. to midnight to the music of the "Merrimans." All singles 25 years and over invited.

Washtenaw County Medical Care Auxiliary Board meeting, Wednesday, March 17, 9:30 a.m. at Zion Lutheran church, 1501 W. Liberty, Ann Arbor.

Regular meeting of Herbert J. McKune Unit Unit 31 American Legion Auxiliary Tuesday, March 2, 8 p.m., at McKune Memorial Library.

Limaneers, at the home of Mrs. Alfred Lindauer Thursday, March 4, 12:30 p.m., for a pot-luck dinner.

Chelsea Area Historical Society is taking 1976 annual memberships. Applications for membership may be picked up at McKune Memorial Library, or write Box 334, Chelsea 48118, or telephone 475-8968 for more information.

Lyndon Township Planning Commission meets the second Thursday of the month at the Town Hall at 8 p.m.

Chelsea Co-op Nursery applications for 1976-77 classes are now being taken. For information, call Leslie Bowers, 475-1401. xadv1217

# DEATHS

## Mrs. Oscar Donaldson Former Ohio Resident Dies at Methodist Home

Mrs. Oscar (Bessie Lee) Donaldson, age 94, died at the Chelsea United Methodist Home March 1. She was born July 6, 1881 in Scioto County, the daughter of David and Emma Barker Ashbaugh. She came to the Methodist Home from Portsmouth, O., Nov. 2, 1965. She is survived by one son, Wayne Donaldson of Ann Arbor, and a daughter, Mariam Northway of California, and one granddaughter.

Mrs. Donaldson was taken to Portsmouth where funeral services and burial will be held Friday, March 5.

## John McEachern Waterloo Area Resident Dies at Chelsea Hospital

John Milton McEachern of 1214 Clear Lake Rd., Grass Lake, died at the Chelsea Community Hospital March 2 at the age of 59. He was born Aug. 5, 1916 at Stoney Plains, Alberta, Canada, the son of Neil and Annie Jones McEachern.

He is survived by his widow, Amelia, two sons, John of Novi, Lee of Plymouth and a daughter, Jill, of Grass Lake, and seven grandchildren.

There will be no funeral services. Arrangements were by the Staffan Funeral Home.

## Hockey Team Blasts Western With 7-1 Win

Bob Fisher scored two goals to lead Chelsea High Schoolers hockey team to a one-sided 7-1 win over Western Sunday, Feb. 29.

Western's only goal came with less than two minutes remaining and spoiled goalie Mike Check's bid for a shut-out.

Other Chelsea goals were scored by Andy Fisher, Greg Hastings, Kurt Owings, Andy Quackenbush and Steve Check.

Chelsea will wind up the regular season against undefeated Parkside Sunday, March 7 at 7:30 p.m. in the Jackson Ice Arena.

The regular season ending will be followed by the league championship series which will get underway the following week-end.

Did you ever stop to think how bad the situation would really be if everyone agreed with you?

## Mrs. Vincent Koneski Native of Poland Dies Tuesday at Dewey St. Home

Mrs. Mary Koneski of 224 Dewey St., died March 2 at her home. She was 86 years of age. She was born Feb. 15, 1890 in Poland the daughter of Mr. and Mrs. Peter Kletski. She was married to John Volak. The couple came to the United States in May, 1909. Mr. Volak died in 1914. She then married Vincent Koneski. He died May 28, 1926. She lived in the Chelsea area most of her married life.

She is survived by two sons, Peter Volak and Stanley Koneski, both of Chelsea; four daughters, Mrs. Harry (Anne) Donner of Oscoda; Mrs. Robert (Mary) Gauss of McClanahan of Chelsea and Mrs. Florence Ludtke of Gregory; nine grandchildren, eight great-grandchildren and a brother, Michael Kletski of Poland.

Funeral services will be held Friday, March 5 at 1 p.m. at the Staffan Funeral Home with the Rev. Fr. Phillip Dupuis officiating. Burial will follow in Mt. Olivet Cemetery.

Memorial contributions may be made to the St. Louis school.

## Mrs. Frank Licht Former Warren Resident Dies at Methodist Home

Mrs. Frank (Margaret) Licht died Monday, March 1 at the Chelsea Methodist Home. Mrs. Licht was 89 years of age.

Mrs. Licht was born June 21, 1886 in Warren, the daughter of John C. and Annie E. Flynn. She married Mr. Licht Sept. 2, 1908. He died Jan. 24, 1970. Mrs. Licht came to the Home July 25, 1973 from Warren.

She was a member of the First United Methodist church of Warren.

She is survived by one daughter, Enace Holmes of Warren, and two granddaughters.

Funeral services will be held today (Thursday) at 1:30 p.m. at the Lyle Elliott Funeral Home in Warren with the Rev. Davis officiating. Burial will follow in Roseland Cemetery, Berkley.

## CHS Special Olympians Teach Gymnastics At St. Louis School

On March 1, Special Olympians Patty Brady and Kathy Buck went to St. Louis School to teach gymnastics. They were accompanied by Lary Hafner, Olympics coach, and Dave and Nancy Porath.

Twenty boys were taught various balance beam routines and some tumbling was worked on. Floor exercise was demonstrated by Lary Hafner and Kathy Buck. The five will be returning soon to work with individual boys and write out their routines for the County Olympics on April 30.

Mrs. Porath noted that there was much potential in the St. Louis boys. With coaching and a little time they should do very well in the Special Olympics.

## Rear Window of Car Shattered By Vandals

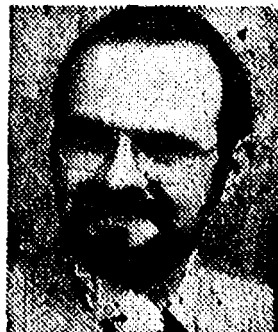
The rear window in a 1973 Volvo valued at more than \$100 was reported shattered to Chelsea police last week-end by its owner, William L. White.

White, of Munith, told police his car was parked near the gymnasium at North school while he was attending a class in the building. He said that at 9 p.m. when he returned to his car he noticed the damage.

Police contend that it was done with a sharp object, BB or pellet gun.

## You and Your HOME

... one of the reasons we're in business . . . with automatic snowmobile, outboard motorboat and swimming pool liability protection at no extra cost in every Homeowners policy. Check the facts



## DAVE ROWE

107 1/2 S. Main  
Chelsea, Mich.  
Ph. 475-8065

FARM BUREAU  
INSURANCE  
GROUP

Member of Farm Bureau Mutual & Farm Bureau Life Insurance Companies

## Legion Post Adds Five New Hospital Beds to Loan Supply

American Legion Post 31 recently purchased five new hospital beds to add to their existing supply of hospital equipment which includes wheelchairs, crutches, bedpans and walkers.

As a community service, this equipment is available to both veterans, their families and non-veterans.

For further information persons interested in borrowing the equipment should contact Guy Freysinger at 475-1961.

## Cub Scouts . . .

DEN 15, PACK 435—Den 15, Pack 435 began our meeting Thursday, Feb. 26 with a flag ceremony. Rick Stofflet brought treats. Dominos grand champion was Mike Wynn. We began our bicentennial iron-ons for t-shirts. Andy Martin, scribe.

## Faculty, Student Basketball Game Scheduled Friday

This Friday, March 5, Chelsea High school's chapter of the National Honor Society is sponsoring a faculty-student basketball game.

The game, which will be played on the court at Chelsea High school, will start at 6:30 p.m. Playing for the faculty are such well-known "all-star" athletes as Paul Terpstra, Chuck Kelly, Tom Balistrere and Phil Bareis. Student players have not yet been determined.

Tickets for the evening may be purchased for \$1, adults and high school students, and 50 cents for children. They will be available at the door.

All proceeds will go to the NHS scholarship fund.

Many a man is proud of his father and mother simply because they are the parents of a fine fellow like himself.

## March 15 Deadline For April ACT Tests

Junior High students who wish to register for the Michigan Competitive Scholarship exams are reminded of the March 15 deadline for registration for April 10 ACT tests. The ACT must be taken in order to be considered for the MCS.

According to CHS counselor George Bergman, April 10 is the first of three test dates for the ACT. The April 10 test center is Chelsea High school.

Juniors who wish to register may pick up forms in the counselor's office.

What has become of the idea that our winters are getting warmer?

## JV Volleyball Posts 2-5 League Record for Season

Chelsea's JV volleyball team played their last league game on Friday against a tough, undefeated Saine JV team.

The Bulldogs lost, 1-15, 3-15. What the score does not show, however, is that the girls maintained many long volleys and displayed marked improvement in their own play over the last few weeks.

This gave the JV team a 4-7 overall record and a 2-5 league record. One game remains in the season.

## CHAIN SAW CLOSE-OUT

### REMINGTON CHAIN SAW

# SAVE \$15.00

EASY TO HANDLE, FUN TO USE  
1975 MODELS!!  
CLOSE-OUT PRICED

## SHOP NOW & SAVE!

## JACK RISNER

HAS WORKED ALL WINTER  
IN OUR LIGHT FIXTURE DEPT:

★ ADDING NEW LIGHTS

★ SLASHING THE PRICE  
ON EVERYTHING 6 MONTHS OLD

IF YOU NEED A NEW FIXTURE  
ANYWHERE IN THE HOUSE -  
COME SEE WHAT JACK'S GOT!

# 25% to 60% Off List

YEAR 'ROUND - COMPARE ANYWHERE!

## CHELSEA LUMBER

THE HOME CENTER

(Political Advertisement)

# VOTE THE INDEPENDENT PARTY

## VILLAGE ELECTION—MONDAY, MARCH 8

**DON WOOD**  
for PRESIDENT  
(2-Year Term)

**WALLACE WOOD**  
for TREASURER  
(2-Year Term)

**JUDSON GOLTRA**  
for ASSESSOR  
(2-Year Term)

**WALTER BROWN**  
for TRUSTEE  
(2-Year Term)

**ROBERT SCHAEFFER**  
for TRUSTEE  
(2-Year Term)

**JAMES SCHARDEIN**  
for TRUSTEE  
(2-Year Term)

## LIBRARY BOARD MEMBERS

(3-Year Terms)

Jean Eaton

William Gandler

# INDEPENDENT PARTY PLATFORM

- To continue to promote well qualified candidates for public office.
- The Independent Party will continue to work for the improvement of the present sewer system. We continue to believe that the improvement of the present system is the responsibility of the residents of the Village but that extension of the system is the responsibility of the developer.
- The Independent Party is in favor of a cooperative approach to the problems of recreation and supports the Village's participation in the coordinated group effort to draw together all of the local groups and agencies interested in recreation for the Chelsea area residents.
- The Independent Party is in opposition to the proposed Mill Creek Metropolitan Park as now proposed by Huron-Clinton Metropolitan Authority. This park offers little, if any, benefits to the local area residents. It will probably cause many problems for the area and added costs to the local taxpayers.
- The Independent Party is in favor of continued support of the Village Planning Commission.

## VOTE INDEPENDENTLY—VOTE INDEPENDENT

## DEPENDABILITY MAKES THE GREAT MAYTAG A606 and Matching Dryer Your Best Buy!

Maytag Automatic Washer. 2 speeds for all-fabric washing. Automatic fabric softener dispenser. Power-Fin Agitator for washing action that's gentle, thorough. Special soak cycle makes really dirty clothes a cinch to get clean.

Maytag Electronic Control Dryer. Fast dry clothes in gentle, low temperatures while electronic sensors constantly "feel" moisture in clothes. Shuts off when clothes are dried just right. One setting — no guessing for time and temp. Permanent press setting removes wrinkles.

## HEYDLAUFF'S

113 N. MAIN ST.  
PHONE 475-1221

An eight percent increase in monthly rates and a \$300 increase in annual income limits for pensioners on VA roles became effective Jan. 1. The action parallels a similar increase in social security benefits effected last June. There are about one million veterans and 1.6 million veterans' survivors receiving VA pensions. Veterans receiving disability pensions received an increase last August.

## Volleyball Team Fourth In Conference Tourney

CHELSEA, MICHIGAN, THURSDAY, MARCH 4, 1976

The Chelsea varsity volleyball team fell victim to the first-place Saline team on Friday. It took three games and many long volleys but the Hornets came out on top, 15-2, 12-15 and 15-6. The game placed the Bulldogs tied for third with Novi going into the League Tournament on Saturday.

### JV Cagers Close Season In 4th Place

In JV basketball action last Friday evening the junior cagers played their final game for a 58-47 loss to Saline.

The junior Bulldogs managed to keep the game within their reach during the first three quarters, leading 25-23 at the half. Saline jumped ahead by two points at the end of the third quarter and held the lead, outscoring the Bulldogs, 20-11, in the final quarter of play. The Bulldogs could only manage to shoot 28 percent from the floor while the Hornets shot a strong 51 percent.

Leading scorers for the JV cagers were Rod Sweeny who dropped in 16, Chris Smyth who racked up 11 points, and Dave Schrottenboer who put in 8. Smyth was high rebounder with 13 snagged during play while Schrottenboer dragged down 11.

Coach for the team, Paul Terstra, recognized his leading all-season scorer as Chris Smyth who led the way with 150 points; an average of 8.3 per game. Rod Sweeny, who played in 11 of the 18 games, posted a 9.5 scoring average. High season rebounder was Dale Schrottenboer with 179. Smyth tagged closely behind with 174.

The team concluded their season, taking fourth place in the league on a 7-7 record. Over-all they posted eight wins and 11 losses.

#### CORRECTION

In the obituary for Eric Hafner printed in last week's issue of The Standard a line was inadvertently missing from the copy. The list of survivors should have read: He is survived by his parents and a brother, Randal, at home; his maternal grandparents, Mrs. Mary Harris and Mr. Robert Stoffer; his paternal grandparents, Mr. and Mrs. Vincent Hafner; a maternal great-grandmother, Mrs. Helen Pauly; and a paternal great-grandfather, George Hafner, all of Chelsea.

The girls have a 4-3 league record and an 8-3 over-all record with one game left plus regionals. Chelsea drew Novi to play on March 9 at 7 p.m. in Novi for pre-regionals.

All teams in the conference went into the league tournament fairly even with everyone having losses to different teams. Chelsea was seeded to play Dexter first, which they lost, 4-15, 15-10 and 15-6.

The girls then defeated Lincoln, 15-12, 9-15 and 15-3. South Lyon was topped next, 15-5, 15-3, before Chelsea fell to Novi, 15-2, 15-11, placing the girls fourth in the tournament.

Saline fell to Brighton twice during the day, making Brighton the winner of the tournament. The final league standings for volleyball are as follows:

DUAL MEETS	
W	L
Saline	6
Brighton	5
Chelsea	4
Novi	4
South Lyon	3
Lincoln	2
Dexter	2
Milan	2

TOURNAMENT STANDINGS	
1. Brighton	5. South Lyon
2. Saline	6. Dexter
3. Novi	7. Lincoln
4. Chelsea	8. Milan

FINAL STANDINGS		
W	L	Pts.
Brighton	6	24
Saline	5	24
Novi	4	18
Chelsea	4	16
South Lyon	3	12
Dexter	2	8
Lincoln	2	6
Milan	2	4

### Girl Scouts Enlisting Dads As Advisors

Chelsea Girl Scouts are seeking a helping hand from their dads by forming a "Fathers Advisory Committee." Their goal is one father elected (with Dad's approval) from each of the 12 Chelsea troops.

The committee will perform two functions: Supervise the use and maintenance of tents and camping equipment owned jointly by Chelsea Troops; and give advice and help in setting up activities that may be shared by fathers and their daughters such as the Father-Daughter Banquet, service projects, or encampments.

At present, the Chelsea Girl Scout program is totally a women's organization. It is hoped that the new "Fathers Advisory Committee" will help find ways in which the girls and their dads can work, learn and have fun together. Members of the committee will be introduced at the annual Father-Daughter Banquet to be held Sunday, March 7, 6 p.m. at Chelsea High school.

Subscribe today to The Standard!



**GIRLS VARSITY VOLLEYBALL TEAM:** Coached by Cheryl Turner (standing right), members of the girls' varsity volleyball team are, kneeling from left, Lesley Clark, Brenda Augustine, Sue Skittenhelm, Marie Fahrner and Kim Moore. Standing, from left, Sue Schulze, Karen Tobin, Jolande Koole and Karen Ottoman.



**JV VOLLEYBALL:** Chelsea High school's JV volleyball team recently completed their 1975-76 season. Members of the team, kneeling from left, are Alison Hovater, Diane Ottoman, Dawn Boyer, Colleen Collins, Denise Robbins and Bonnie Boyer. Standing, from left, coach Cheryl Turner, Debbie Schantz, Thea Pickelsimer, Juli Pennington, B. J. Parks and Dawn Kilpatrick.

### Openings Still Remain in Tennis Classes

Openings still remain for persons interested in taking beginning and intermediate tennis lessons through the Chelsea Recreation Council. The lessons which will be given under the instruction of Miss Terry Schreiner, will begin Thursday evening, March 11 and continue for six one-hour sessions each week. Fee for the course is \$8. Participants are asked to provide their own racquets. Practice balls will be provided by the Rec Council. All classes will be held in the Beach Middle school gymnasium. Beginners will meet from 6:30 p.m. to 7:30 p.m. and from 7:30 p.m. to 8:30 p.m. A single intermediate class is offered from 8:30 to 9:30 p.m. Registration is completed by telephoning Miss Schreiner at 475-2536. Most people get a terrific shock when they see what the camera often does to their "beauty."

Ask About Dancer's Dinbed Drilhenseh Patentmaid

**PUT SOME SPRING IN YOUR BUDGET.**

**SHOES-SHOES SHOES**

Complete new line of shoes for every member of the family.

Featuring Men's Winthrop Shoes  
Women's Connie and Charm Step Shoes

Come in and see the new styles.

**NEW SPRING FASHIONS ARRIVING EVERY DAY**

From Bobby Brooks, Pandora, Red Eye, Russ, Donovan, Galvani, Aileen and other famous names.

Watch for **Dancer's All-New SUIT and SPORTCOAT SHOP** Featuring Styles from Levi, Kazoo, Sam Hootstein and many more!

Men's New Levis Dress Slacks and Jeans Have Just Arrived

**DANCER'S**  
Chelsea's Friendly Dept. Store

**COUPON**  
BUY 1 PAIR LEVI JEANS  
Get 25% Off  
on LEVI'S JACKET

**RICK'S MARKET**  
20490 M-52 "The Store with the Spartan on the Door" Phone 475-2898

**RICK'S HOT BREAD DAILY**  
Weekdays by 3:30 p.m. Sat. & Sun., by 10:30 a.m.

HANS ALL-MEAT BOLOGNA <b>99<sup>c</sup> lb.</b>	Borden's Homo MILK Plastic Gal. <b>\$1.30</b>	<b>CIGARETTES</b> ALL BRANDS <b>\$3<sup>79</sup> ctn.</b>
HANS ALL-MEAT Skinless Frankfurts <b>99<sup>c</sup> lb.</b>	SPARTAN FRENCH FRIES 9-Oz. Pkgs. <b>\$1.00</b>	<b>PEPSI-COLA</b> 16-Oz. No-Return Bottles <b>8 pak \$1<sup>39</sup></b>

**- SATURDAY SPECIAL -**  
**BAKED CINNAMON ROLLS**  
**6 for 89<sup>c</sup>**

**SOMETHING NEW!**  
**BAKERY SPECIAL ON TUESDAY**  
**GLAZED RAISED DONUTS**  
**\$1.39 doz.**

(QUANTITY RIGHTS RESERVED)

## FRIDAY NIGHT SPECIALS

**6:00 TO 8:30 P.M. ONLY - FRIDAY, MARCH 5**

<b>COUPON</b> GE SOFT WHITE LIGHT BULBS 4-pac \$1.00 Coupon good only Fri. night, March 5, 1976 from 6 to 8:30 <b>CHELSEA HARDWARE</b>	<b>COUPON</b> TALL TABLE LAMPS 20% OFF WITH COUPON <b>GROVE'S 5¢ to \$1 STORE</b>	<b>COUPON</b> NO. 303 CAN HART Whole Kernel CORN 5 cans 99c <b>KUSTERER'S Food Market</b>	<b>COUPON</b> 6-Pc. Screwdriver Set \$1.79 <b>GAMBLES</b>
<b>COUPON</b> WINDSHIELD WASHER FLUID 79c gal. Reg. \$1.19 gal. <b>GAMBLES</b>	<b>COUPON</b> WIL-MOR TOOTH BRUSHES Reg. 49c 9c <b>CHELSEA PHARMACY</b>	<b>COUPON</b> 10% OFF on all SPRING GARLAND JUNIOR FASHIONS <b>DANGER'S</b>	<b>COUPON</b> FREE MICHIGAN LOTTERY TICKET With Purchase of \$5.00 or more <b>CHELSEA CARD and GIFT</b>

# Advertise the Action Way! The Want Ad Way!

Ads Taken till 1 p.m. Tuesday

Just Phone 475-1371

### WANT ADS

**The Chelsea Standard**  
**WANT AD RATES**  
 PAID IN ADVANCE—All regular advertisements, 70 cents for 25 words or less, each insertion. Count each figure as a word. For more than 25 words add 3 cents per word for each insertion. "Blind" ads or box number ads, 50c extra per insertion.  
 CHARGE RATES—Same as cash in advance, with 25 cents bookkeeping charge if not paid before 1 p.m. Tuesday preceding publication. Pay in advance, send cash or stamps and save 25 cents.  
 DISPLAY WANT ADS—Rate, \$1.40 per column inch, single column, with only 5-point and 10-point light type only. No borders or boldface type. Minimum 1 inch.  
 CARDS OF THANKS or MEMORIALS—Single paragraph style, \$1.50 per insertion for 50 words or less; 3 cents per word beyond 50 words.  
 COPY DEADLINE—1 p.m. Tuesday, week of publication.

PIANO TUNING, Chelsea and area. Facilities for reconditioning and rebuilding. Used piano sales; reconditioned grands and verticals. E. Ecklund, 426-4429. x50ft

**J. R. CARRUTHERS**  
 LICENSED RESIDENTIAL BUILDER  
 CUSTOM HOMES  
 ADDITIONS/FIREPLACES  
 PATIO ROOFING/SIDING/REPAIRS  
 475-7234  
 CHELSEA 80ft

**KLINK EXCAVATING**  
 Bulldozer - Backhoe  
 Road Work - Basements  
 Trucking - Crane Work  
 Top Soil - Demolition  
 Drainfield - Septic Tank  
 Trenching, 5' up  
 Industrial, Residential, Commercial.  
 CALL 475-7631 13ft

STEP UP TO  
**KOZMA CONSTRUCTION**  
 And Step Down In Price  
 LICENSED BUILDER  
 FREE ESTIMATES  
 COMPLETE CONSTRUCTION SERVICES  
 CALL **LEN KOZMA**  
 475-7452 29ft

FOR SALE—3-bedroom ranch with 2-car attached garage on 2.22 acres in Chelsea School District. Now under construction. For additional information, call Farley Construction, 475-7643. 32ft  
 FOR RENT—Commercial building on Jackson Rd. Offices or store. About 650 sq. ft. Ph. 665-0816 for appt. x40

### WANT ADS

**PATCHING and PLASTERING**  
 Call 475-7489. 88ft

**CLOGGED SEWER**  
**Reynolds Sewer Service**  
 We Clean Sewers Without Digging  
 Drains Cleaned Electrically  
 FREE ESTIMATES  
 2-YEAR GUARANTEE  
 Phone Ann Arbor NO 2-5377  
 "Sewer Cleaning Is Our Business—Not a Side-Line" 88ft

C—ustom Built Homes  
 O—h! We Remodel too  
 U—can count on us  
 N—o Job Too Small  
 T—rim Inside & Out  
 R—ough-In Only If  
 Y—ou Want to Finish  
 S—iding Aluminum, 5" Gutters  
 I—mmediate Attention  
 D—ALE COOK & CO.  
 E—stimates, Free  
 BUILDERS  
 Please Call  
 475-8863  
**DALE COOK**  
 17ft

**BOB'S LOCK & KEY**  
 Complete Locksmithing Service  
 Commercial, Residential, Automotive  
 Luggage locks repaired.  
 475-9071 41ft

**GEORGE W. SWEENEY HEATING**  
 Licensed Contractor  
 Furnaces, air conditioning, and sheet metal work.  
 Phone 475-1867 20ft

**CUT FOOD COSTS**  
 GROW YOUR OWN vegetables and fruit with new Stark Bro's vegetable seeds and famous Stark Bro's dwarf, semi-dwarf, and standard fruit trees.  
 Special early order discounts and free strawberry plants or vegetable seeds.  
**Elson Bettner**  
 15700 Cassidy Rd.  
 475-9223 32ft  
 FREE PUPPIES—German Shepherd-Doberman, 10 weeks old. Black and tan. Have had first shots and wormed. Excellent family dogs. Ph. 475-7021. 38

### WANT ADS

**CHELSEA SCHOOLHOUSE APARTMENTS**  
 Applications being taken for Building No. 2 to be open by Jan. 15. Phone R.E.T.S. Enterprises at 761-3035 or 475-1509 for further information. 25ft

**LEONARD REITH**  
 Master Plumber  
 Licensed Electrician  
 Hot Water Heat  
 18238 N. Territorial Rd.  
 Chelsea, Mich. 48118  
 Phone: 475-2044 52ft

**THORNTON**  
 SPACIOUS RANCH—Open living area for entertaining, fireplace, large bedrooms and 2 1/2 baths. On 2 1/2 acres near town. \$69,000.  
 \$38,500—Comfortable 3-bedroom home with study, large kitchen, basement and attached garage. Chelsea schools.  
 ENTERTAIN—At the lake in this large 3-bedroom home. 2 fireplaces, huge family room area. 2 full baths. Chelsea schools. \$50's.  
 PORTAGE LAKE—Convenient access. Year-round home, fireplace, 2 bedrooms. 2-car garage. \$34,900.  
 WATERLOO TOWNSHIP—Lower level of this 3-bedroom home is finished for separate apartment. On 5 acres with storage shed and garage.  
 POTENTIAL SHOWPLACE—This huge older home needs restoration and repair. On 10 acres at edge of village. \$80,000.  
 VACANT LAND  
 WOODED—Two 1-acre parcels in area of quality homes, Chelsea schools.  
 LOT—In Chelsea Village.  
 3 ACRES—High and rolling, near town.  
**ROBERT H. THORNTON**  
 JR., P.C.  
 REALTOR  
 CHELSEA 475-8628  
 Peg Hamilton 475-1870  
 Helen Lancaster 475-1198  
 Dolly Alber 475-2801  
 Mark McKernan 475-8424 38

**Public Stenographer**  
 Individual and Business  
**Barbara Burda**  
 429-9286  
 1966 FORD FAIRLANE. Needs work. \$50. Ph. 475-2817. 40

**YES WE ARE MAKING LONG-TERM FARM REAL ESTATE LOANS**  
 SEE US  
**Federal LAND BANK Association**  
 P. O. Box 7006  
 Ph. 769-2411 3645 Jackson Rd.  
 Ann Arbor, Mich. 48103

### WANT ADS

**VACUUM CLEANERS**  
 Authorized Electrolux sales and service.  
**James Cox**  
 428-8444, or 428-8686  
 118 Riverside Dr., Manchester. 48ft

**KNAPP SHOES**  
 For Cushion Comfort  
**Robert Robins**  
 475-7282 48ft  
 FOR RENT—American Legion Hall. \$50. Call 475-1824. 40ft

**Complete Body Repair Service**  
 Bumping - Painting  
 Windshield and Side Glass Replacement  
 Free Pick-up & Delivery  
 Open Monday Until 9  
 CONTACT DON KNOLL  
 FOR FREE ESTIMATE

**Village Motor Sales, Inc.**  
 IMPERIAL - CHRYSLER  
 DODGE - PLYMOUTH  
 Phone 475-8661  
 1185 Manchester Rd., Chelsea  
 Hours: 8 a.m. to 6 p.m.  
 Tues. thru Fri. Until 9 Monday.  
 9 a.m. to 1 p.m. Saturday. x14ft

**CHELSEA**  
 STRIKING COLONIAL—4 bedrooms plus study, dining room, family room, 3 baths, 20'x40' in-ground pool, 30'x50' barn, 7 acres, 1/2 mile from the Village of Chelsea.  
 VILLAGE OF WATERLOO—Completely remodeled 2 1/2-bedroom home with small study, dining cl, new roof, new furnace, new well, Chelsea schools. \$34,900.  
 GRASS LAKE—3-bedroom ranch, 1 1/2 baths, large lot, \$35,500. Excellent condition.  
 ACCESS TO NORTH LAKE—3-bedroom ranch, 2-car garage, Chelsea schools, large lot, \$38,000.  
 DEXTER SCHOOLS—Brick 3-bedroom ranch, dining room, family room, fireplace, 2 1/2 baths, unique tilework, 5 acres.  
 DANSVILLE SCHOOLS—Ingham county, 320 acres.  
 MANCHESTER SCHOOLS—20 acres with well and septic tank, mobile home included, \$29,000.  
 SPACIOUS, quality-built brick, 5 bedrooms, study with warm paneling, dining cl, family room, 2 fireplaces, 2 1/2-car garage, excellent location.  
**FRISINGER REALTORS**  
 Chelsea 475-8681  
 Eves:  
 Toby Peterson 475-2718  
 Paul Frisinger 475-2821  
 Herman Koenn 475-2813  
 Mary Ann Rickerman 475-1432  
 Bob Koch 428-4754 x36ft

Headquarters for  
**RED WING WORK SHOES**  
 Foster's Men's Wear 40ft  
 REWARD—Lost red Irish Setter, 11 1/2 months, in vicinity of North St. on Saturday, Feb. 23. No collar or tags. Call Bob or Vicki Elliott, 475-9077, or 475-9373. x38

### WANT ADS

FOR SALE—Key 5-string banjo, like new. \$100 or best offer. Ph. 475-8148. x38

**Pole Buildings**  
 By Huskee-Bilt  
 Farm, urban, commercial. Call Jan Warren for information, 916 W. Michigan Ave., Ypsilanti, Mich. 48197. 482-3894. x48

**Pickup Caps & Covers**  
 For all makes and models. Standard and custom-designed. From \$147.00. Free brochure.  
**PIONEER COACH MANUFACTURING CO.**  
 3496 Pontiac Trail  
 Ann Arbor, 668-6785 x42ft

**Pierson & Riemenschneider**  
 GO JUMP IN A LAKE—Joslin Lake is just outside your door. Lakefront home with beautiful beach, 3 bedrooms, large lot, fireplace and garage. Priced in the mid 40's.  
 OUTDOOR FUN—Custom built home with access to Joslin Lake. Only 2 years old, 3 bedrooms, dining room, family room, fireplace, 2 baths, 2-car attached garage. Large lot and short distance to private park. Stockbridge schools. Low 50's.  
 MAINTENANCE FREE—All brick ranch, 3 bedrooms, 1 1/2 baths, fireplace, dining room, 2-car garage. Walk to elementary school and shopping. \$51,500.  
 A LOT FOR A LITTLE—Older 4-bedroom home. Over 1,700 sq. ft. dining room, 1 1/2 baths, 2 1/2-car garage, family room. Realistically priced at \$38,500.  
 NEW ON THE MARKET—3-bedroom home in the village, 2 baths, dining room, 2-car garage. Close to all city conveniences. Only \$34,900.  
 IMAGINATION is what it takes—Small home on 1.53 acres with excellent expansion possibilities. 2 miles east of Chelsea. Chelsea Schools. \$21,000.  
 LOVELY TREES surround this 3-bedroom home on 2 acres. Family room, recreation room, dining room, fireplace, 2 baths, full basement. Chelsea schools. Mid 70's.  
 CRAMPED FOR SPACE? This home has plenty of elbow room. Spacious 4-6 bedroom home, 3 baths, family room, wet bar, plus many more features. All this on 1-plus acre. Priced in 70's.

**Pierson & Riemenschneider REALTORS**  
 Office: 475-9101  
 Eves. call:  
 Jeanene Riemenschneider 475-1469  
 Bob Riemenschneider 475-1469  
 Pat Merkel 475-1824 38

**WALLPAPER**  
 We are headquarters for wallpaper. 150 sample books to select from.  
**DUTCH BOY**  
 Paints, enamels, stains (interior and exterior).  
 The quality of Dutch Boy will be remembered long after the price is forgotten.  
**MERKEL Home Furnishings**  
 73 BRONCO—351 V-8, auto., p.s., radio, 11-in. Tru-Trac tires on 10-in. Ansen Sprint wheels (4). Brown color with new black convertible top. Ranger package, eight Gabriel series shocks, super-duty suspension. Accel ignition and headers, complete roll cage. Excellent condition, loaded with off-road extras. Ph. 871-7678. Priced to sell. x38  
**MCDONALD'S**  
 ZEEB RD., ANN ARBOR  
 Male or female, Monday thru Friday. Full- or part-time, preferably mornings or afternoons. Good benefits. Above average wages. Uniform included. Contact Vesta Smith or Jim Brisson. x38  
 DRY cleaning carpets is easier, faster, and safer with HOST. Rent our machine. Merkel Home Furnishings, Chelsea 475-8621. x38  
 WANTED—Mature adult to drive elderly and handicapped van in Chelsea area. Knowledge of area desirable. Full- or part-time. Submit qualifications to Kiwanis Club, P. O. Box 61, Chelsea. x40

### WANT ADS

FOR RENT—Fair Service Center for meetings, parties, wedding receptions, etc. Weekdays or week-ends. Contact John Wellnitz, phone 475-1518. x31ft

**Fireplace Builder**  
 Field stone mason, block and brick mason, tuck pointing.  
 FREE ESTIMATES  
 Call 475-8025 after 3 p.m.  
**Patrick Grammatico**  
 x40ft  
 FOR SALE—Gas hot water boiler. 4 years old. 80,000 BTU input. All copper pipe and radiation included. \$275. 426-8356. x38

**Once-A-Year Sale!**  
 New Cars & Trucks, Demos, at Tremendous Savings!  
**DEMOS**  
 First come, first served!  
 Stock No. 894—'75 Dodge Coronet Custom 4-dr. sedan, 360, auto., p.s., p.b., air cond., AM-FM, radials, 2-tone, etc. Was \$5837.80. NOW \$4735  
**Used Trucks**  
 '75 DODGE W-200 Sno-Fitor, 360, auto., p.s., p.b., Meyers snow plow, low mileage \$4995  
 '73 CHEV 1/2-ton pickup, 307 V-9, auto., step bumper \$1995  
 '72 GMC Suburban 4-wheel drive, 350, 3-speed, p.s., p.b. \$2695  
 '72 DODGE W-300, 4-wheel drive dump, 318, 4-speed \$3395  
 '68 DODGE 1/2-ton pickup, 6-cyl., 3-speed \$395

**Quality Used Cars**  
 '75 PLYMOUTH Gran Fury Custom 4-dr. hardtop, 318, auto., p.s., p.b., air cond., speed control, AM-FM, rear defogger \$3495  
 '73 CHARGER SE, 318, auto., p.s., p.b., air cond., AM-FM, radials \$2595  
 '72 VW Bus, good condition \$1995  
 '71 VALIANT 4-dr., 6-cyl., auto., p.s., good transportation \$1095  
 '71 MERCURY Monterey station wagon, V-8, auto., p.s., p.b. \$895  
 '70 PLYMOUTH Satellite 2-dr. hardtop, 318, auto., p.s., 29,000 miles \$1195  
 '70 PLYMOUTH Satellite 4-dr., 318, auto., p.s. \$485  
 '69 DODGE Coronet 4-dr. sedan, 318, auto., p.s., p.b. \$795  
 '66 MUSTANG, 289 V-8, auto. \$295

**Village Motor Sales, Inc.**  
 IMPERIAL - CHRYSLER  
 DODGE - PLYMOUTH  
 Phone 475-8661  
 1185 Manchester Rd., Chelsea  
 Hours: 8 a.m. to 6 p.m.  
 Tues. thru Fri. Until 9 Monday  
 9 a.m. to 1 p.m. Saturday x38ft

### WANT ADS

**HOUSE & BARN ROOFING**—All types of roof repairs. Hot built-up roofing. Aluminum storm windows and doors, aluminum siding, and seamless aluminum gutter, awnings and porch enclosures. Call Joe Hayes for free estimates, Manchester, 428-8520. x28ft

**Special of the Week**  
 1973 OLDSMOBILE 98 LS  
 4-dr. hardtop (air cond.)  
 18,000 miles  
 \$3395  
**USED CARS**  
 1975 OLDS Cutlass Supreme wagon, 2-seat, air cond. \$4395  
 1974 OLDS Delta 88 4-dr. hardtop, air cond. \$3295  
 1973 FORD Pinto runabout, automatic, 28,000 miles \$1995  
 1972 CHEVROLET 1/2-ton C-10 pickup, automatic \$1995  
 1972 BUICK LeSabre Custom 2-dr. hardtop, air cond. \$1995  
 1972 PONTIAC Catalina 4-dr. sedan, air cond. \$1895  
 1972 CHRYSLER Newport Royale 4-dr. sedan, air cond. \$1395  
 1972 CHEVROLET Biscayne 4-dr. sedan \$895  
 1971 PONTIAC Ventura II 2-dr. hardtop, 45,000 miles \$1795  
 1971 BUICK LeSabre Custom 4-dr. hardtop, air cond. \$1495  
 1971 BUICK LeSabre Custom 2-dr. hardtop \$1495  
 1971 OLDS Delta 88 4-dr. hardtop, air cond. \$1495  
 1971 FORD LTD 2-dr. hardtop, air cond. \$1495  
 1971 FORD Pinto 2-dr. sedan, 4-speed, 47,000 miles \$1295  
 1970 OLDS Delta 88 4-dr. sedan, 51,000 miles \$1195  
 1970 FORD Galaxie 500 Country Sedan station wagon, air cond. \$695  
 1966 BUICK LeSabre 4-dr. sedan \$195

**FINE SELECTION OF USED SNOW TIRES AVAILABLE**  
 Mon. - Tues. - Fri., 8:00-5:30  
 Thurs., 8:00-9:00  
 Sat., 8:00-1:00  
**SPRAGUE**  
 Buick-Olds-Opel, Inc.  
 1600 S. Main St., Chelsea 38ft

**R. L. BAUER Builders**  
 LICENSED & INSURED  
 Custom Building  
 Houses - Garages  
 Pole Barns  
 Roofing - Siding  
 Concrete Work  
 FREE ESTIMATES  
 Call 475-1218 50  
 WANTED TO RENT—Responsible couple with school-age child needs 2 or 3-bedroom house in country or quiet neighborhood. Conscientious, will care for your house. References. Ph. 769-3798. x38  
 1973 CHEVY NOVA, 2-dr. coupe, small V-8, automatic transmission, p.s., AM-FM radio, rear speakers, under-coated, no rust, snow, burglar alarm. Must see. \$1800 or best offer. Ph. 475-2940 after 6 p.m. and week-ends. x38  
 FOR SALE—2 ladies golf clubs, 1 and 3. Like new, \$10. Call 475-8323. x38

### WANT ADS

**NOW Full Time Complete Body Shop Service**  
 Stop in For An Estimate

**PALMER FORD**  
 222 S. Main St.  
 475-1301 27ft  
 '71 DODGE 1/2-ton pickup, slant-six, 8-ply tires on rear and overloads; tool chest. Sound mechanically. \$975. Call 475-7643. x36ft

**Real Estate One Of Washtenaw**  
 1196 M-52  
 Chelsea, Mich. 48118  
 We Make Things Simpler For You!  
 SECLUDED 3-BEDROOM ranch home on 16 acres. For the sportsman, private stocked pond and excellent hunting. \$48,200.  
 A BEAUTIFUL 3-BEDROOM home fully carpeted. Home situated 2 miles north of Chelsea. Chelsea schools. Basement fully carpeted and partitioned. Priced to sell.  
 DAYS - 475-8693  
 Evenings—  
 Ted Picklesimer 475-8174  
 Joe O'Connor 894-1223  
 Steve Flint 475-1423  
 Jean Tschirhart 475-2722  
 Al Kleis 475-7322  
 Evelyn White 475-7551  
 Jerry Stein 475-2162 38

NEEDED TO RENT—Cabin or small house, any condition, Dexter, Chelsea, Piquette area. Experienced in repairs and renovation. Employed County Parks Dept. 434-2417 evenings. 39  
 COTTAGE FOR RENT at Cavanaugh Lake, 1 (517) 522-8759. 39  
 WANTED—Used canoe. Ph. 475-8130 after 6 p.m. 38  
 APT. FOR RENT—3 rooms. Utilities furnished. Partly furnished. \$150 a month. Ph. 475-2916. 39  
 WANTED—Small outboard motor, 3-7 h.p., in good condition. Ph. 475-7701. 38  
 FOR SALE—1973 Gremlin X, three-speed; beautiful condition, \$2185. Ph. 428-8962. 39  
 1968 HOLIDAY TRAILER, 8'x35", in good condition. Furnished. \$2,500. Ph. 665-9023. 39  
 POTTERY CLASSES after school Wednesdays, two hours, 4 to 6 p.m. 8-week class beginning March 10. Ages 8-14. \$85. All materials included. Call Carol Stoll Saturday morning for class registration, 475-7424. 38  
 HAY FOR SALE—Good second cutting alfalfa and clover, \$1.50 bale. Ph. Grass Lake 522-4154. 38  
 SORRY SAL is now a merry gal. She used Blue Lustre rug and upholstery cleaner. Rent electric shampooer, \$1. Chelsea Hardware. 38  
 APARTMENT in duplex, 2-bedroom, stove and refrigerator furnished, fully carpeted, full basement. No children, no pets. Available April 1. Four miles north of Chelsea. Ph. 426-3737. 38ft  
 FOR RENT—New fully carpeted 3-bedroom apartment, Mt. Hope Rd. near expressway. No children or pets. Appliances furnished. Grass Lake 522-4150. 38ft

*Your Opinion of Us is our most valued asset.*

**Staffan Funeral Home**  
 "Funeral Directors for Four Generations"  
 124 PARK STREET PHONE GR 5-1444

**SCHNEIDER'S GROCERY**  
 CHOICE MEATS - FINE FOODS

GRADE A Large Eggs . doz. 69c	1-LB. PKG. FARMER PEET'S RE-PEETER Sliced Bacon . . \$1.29
16-OZ. NO-RETURN BOTTLES Coke . . 8 pac \$1.39	ALL-BEEF Hamburger . . . . 3 lbs. \$2.09
10-OZ. NO-RETURN BOTTLES 7-Up . . 8 pac 99c	MCDONALD'S ALL FLAVORS (Except Premium) Ice Cream, 1/2 gal. 99c
3-LB. BAG Yellow Onions . . . 33c	10-OZ. PKG. ECKRICH Smok-y-Links . . . 89c
24-COUNT Pascal Celery . . . 39c	TONY'S 15-OZ. PEPPERONI Pizza . . . . \$1.09

121 S. MAIN ST. PHONE 475-7600  
 Your Store for Alexander & Hornung's Smoked Meats  
 We Accept U.S.D.A. Food Coupons



WANT ADS

FOR RENT—APARTMENT, 1-bed-room, all utilities, stove, refrigerator. Available immediately. No pets or children. 426-8119 or 426-8393. x24lf

BUILDING SITE—10 acres between Chelsea and Dexter about one mile from I-94, with man-made lake suitable for trout. \$18,000 or best offer. Call 426-8119 or 426-8393. x24lf

— YOUNG — We list and sell lake, country and town properties. Eugene Young, Real Estate & Builder, 878-3792, 11596 Dexter-Pinckney Rd., Pinckney 48169. x341f

CAR & TRUCK LEASING. For details see Lyle Chriswell at Palmer Motor Sales, 475-1301. 491f

COMPLETE ALUMINUM SERVICE Siding - Awnings - Repairs Gutters - Storm Windows Remodeling Free Estimates Call 475-9209 Camelot Construction Chelsea, Mich. x121f

CUSTOM BUILDING LICENSED & INSURED FREE ESTIMATES TOTAL CONSTRUCTION SERVICES residential, commercial and industrial —Garages —Remodeling - Additions —Aluminum Siding —Roofing —Trenching

SLOCUM CONTRACTORS & BUILDERS Serving Washtenaw County For Over 20 years 20700 OLD US-12 CHELSEA Phone 475-8321 or 475-7611 x21f

ROOMS by day, week or month. Excellent for the single man or retiree. Sylvan Hotel, Chelsea, Ph. 475-2811. x311f

DO YOU RUN OUT OF MONEY BEFORE YOU RUN OUT OF MONTH? WANTED — Licensed babysitter, four days a week. Ph. 475-2572 after 5 p.m. x38

WANTED — Licensed babysitter, four days a week. Ph. 475-2572 after 5 p.m. x38

WANT ADS

FOR SALE — Indian cents, post-cards, books, foreign coins, Australian opals and other articles. Will treat you fine. Lawrence B. Guinan, Sylvan Hotel, 114 N. Main St., Chelsea. x21f

WEDDING STATIONERY — Prospective brides are invited to see our complete line of invitations and accessories. The Chelsea Standard, Ph. 475-1371. x41f

FOR REAL DOLLAR SAVINGS be sure and see us before you buy any new or used car. Palmer Motor Sales, Inc. Your Ford Dealer for over 60 years. 21f

NEED A ROOF? Call Toth Building & Remodeling, (313) 498-2178. x41f

A fine selection of New and Used Cars for immediate delivery Harper Pontiac Sales & Service 475-1306 Evenings, 475-1608 401f

GAR - NETT'S Flower & Gift Shop Your Friendly Florist 112 E. Middle St., Chelsea PHONE 475-1400 Funeral Flowers Wedding Flowers Cut Flowers (arranged or boxed) Potted Flowering Plants Green Plants - Corsages WE DELIVER x21f

Old Orchard Furniture Refinishing ANTIQUES RESTORED Old finish removed from wood or metal safely and economically. 513 Old Orchard Stockbridge, Michigan 49285 (517) 851-8713 101f

Turn the tables with extra income from interesting part-time work. Local Amway Distributor assists you for splendid opportunity. 683-4538. x40

HAY FOR SALE—200 bales alfalfa and timothy, \$1.50 bale. Other mixed hay, \$1 bale. Ph. 426-2473. x39

FOR RENT—2-bedroom house in Dexter, Baker Rd., furnished, \$310 including utilities. 426-3407. x40

SEE Geo. Palmer John Popovich SEE Lyle Chriswell Bennie Hayes We're in business to make you smile PALMER Since April 1912 FORD

WANT ADS

CERAMIC TILE — Reasonable prices. Excellent work. Ph. 426-2280. x241f

BRICK MASON — Brick work, block work, fireplaces, chimney repairs, homes and additions. Ph. 475-2584. x441f

PAINTING—Exterior and interior. Quality workmanship, free estimates, references, reasonable rates. Ph. (517) 851-7055. x481f

SEE US for transit mixed concrete. Klump Bros. Gravel Co. Phone Chelsea 475-2530, 4920 Loveland Rd., Grass Lake, Mich. x401f

TRAVEL TRAILERS — 13-ft. and up; 10x55 ft. trailers. John R. Jones Trailer Sales, Gregory, Mich. Phone 498-2855. x31f

KETO USED CARS 6020 GRAND - DEXTER 426-4535 CARS BOUGHT AND SOLD x381f

MUNITH AUCTION—100 Main St., Munith, Mich. Auction every Sunday, 6 p.m. Danny Fleming, auctioneer. x121f

STOCKBRIDGE, 13 acres, commercial, on M-52. (517) 851-8144. x31f

FOR SALE — Joslin Lake, 2-acre building site, with lake privileges. Call 475-9209. x301f

RODNEY SEED OATS, Vernal alfalfa. All kinds of clovers, brome grass. We will be cleaning and treating seed oats. Fertilizer, bagged or bulk. Cole's Elevator Co., Gregory, phone (313) 498-2735. x43

BECKER MEMORIALS 6033 Jackson Road ANN ARBOR, MICHIGAN MAUSOLEUMS \* MONUMENTS BRONZE TABLETS \* MARKERS

WANT ADS

SEAMLESS ALUMINUM eaves-troughs, roofing, siding, and carpentry work of all kinds. Experienced installers. All work guaranteed. For free estimate, call R. D. Kleinschmidt Co., 428-8836. x311f

FOR SALE—Tenor sax, Buscher Aristocrat, like new. Best offer. Ph. 475-8681. 131f

COINS FOR SALE — Lawrence Guinan, at the Sylvan Hotel. We'll treat you fine. 301f

ALTERATIONS—Excellent work at reasonable prices. Ph. 475-9075. x38

36-ACRE FARM 4-BEDROOM remodeled farmhouse, 2 baths, new kitchen, well, drainfield, furnace, and more. 40' x 60' barn, good tool shed, and other outbuildings, 30 acres are fenced, has a stream and woods on property, eight miles west of Chelsea, only \$54,900. Call Spear & Associates Manchester 428-8388 Evenings call Jim Mann, 428-8074 38

HILLTOP, INC. Robert Shears, Master Plumber PLUMBING HEATING ELECTRICAL We have the parts - We do the work REPAIR - REMODELING & CONTRACTING Also: Septic Tanks and Drain Fields Call: 475-2949 Come: 8316 Werkner Rd., Chelsea x15

REAL ESTATE FOR SALE—Used 275 gal. oil tanks, \$15 ea. 475-2419. x40

COMPACT NEW 2-bedroom lake-front home with window walls overlooking Clear Lake. Swedish fireplace, 2-car garage, good beach. Chelsea schools. x30

EAST OF GRASS LAKE, spacious 4- or 5-bedroom farm home. Formal dining room, 1 1/2 baths, new wiring, beautiful oak woodwork; large barn in good condition, garage, on 3 pretty acres. Grass Lake schools. \$50,000. x35f

ALMOST NEW 3-bedroom L-shaped ranch. Large living room with huge fireplace. Full walk-out basement. 2-car attached garage on 5 acres. \$53,900. Chelsea schools. x35f

ON 10 BEAUTIFUL scenic acres next to state land, 3-bedroom older home, completely new interior with large kitchen, field stone fireplace. \$59,500. Chelsea schools. x35f

4-BEDROOM RANCH, aluminum siding, on crawl space. Oil forced air furnace. On one acre. Munith schools. \$17,500. x35f

Chelsea State Bank Team Leads Recreation League

CHELSEA STATE BANK ... BT Nine teams in the Chelsea Men's Recreation Basketball league continue play. The following is a list of game scores and standings. Results of Feb. 25 Play— Captains Table 39, Mark IV 38, Dunlavy Farms 38, Dana Corp. 32. Results of March Play— Mark IV 55, Wolverine 51, Captain's Table 47, Rockwell 39.

Chelsea Students Above Average in State Test

Again for the seventh year, 4th and 7th graders in the Chelsea Public schools took the Michigan Assessment test of academic skills. These test results are reported for the district, teachers, and individual students. These tests are designed to help teachers improve each student's educational standing.

WOMAN'S CLUB The Woman's Club of Chelsea met in the McKune Library club room Tuesday, Feb. 24. Following the business meeting, the program on "America's History Lands" was presented by Mrs. Albert Werdehoff, illustrating with slides taken on her different trips to historical landmarks. Mrs. Werdehoff recalled events and personalities of our early American history. 23 members were present. Hostesses for refreshments were Mrs. William Briston and Shirley Smith. The next meeting will be held on March 9 in the McKune Library club room. The program will be on Glazier history.

TOWN & COUNTRY CHILD STUDY CLUB Town and Country Child Study Club met Tuesday at the home of Judy Syria. Guest speaker was Mrs. Helen Fairman of the Washtenaw County Extension Service who spoke on freezing and canning. After a brief lecture she answered questions and handed out consumer bulletins. Guests were Sue Callus, Sue Teare, Liz Prentiss and Wanda Walz. Three new members were also introduced, Wanda Conner, LuAnn Kozma and Diane Weid. The next meeting will be March 9 at the home of Carol Benedict for election of officers.

MODERN MOTHERS Modern Mothers Child Study Club met Tuesday evening at the home of Nancy Sprague. Co-hostesses were Lavonne Harris, Sherri Plank and Pat Whitesall. As moderator for a panel discussion entitled, "Changing Values in the Home," Jane Lehmann asked each of the panel members to elaborate on a few of the values important to them and how they might be instilled in our children. Representing a cross section of interests from high school to grandparent, the panel included Dr. Robert Ward, Ruth Cameron, William Wescott, Brenda Shadoan and June Warren. Guests for the evening were Mary Baker, Peggy Moore, Joann Carruthers and Judy Ward.

FOR the next meeting on March 9, members will meet in small groups for demonstration of an art or craft.

Cards of Thanks CARD OF THANKS Thank you. A grateful thanks to my friends, relatives and the Rev. Schwarm for the calls, cards, flowers and prayers during my stay in the hospital and since my return home. A special thanks to Dr. Burke and the people at the Chelsea Community Hospital. Their kindness will always be remembered. Mary Ethel Vickers. CARD OF THANKS The family of Eric Hafner cannot find sufficient words to express our thanks to our wonderful relatives, friends and neighbors for their prayers, kind words, flowers, food and contributions to the library fund. A special thank you to the Home-Vinson Ambulance Service, the Chelsea Medical Emergency Staff and Mr. and Mrs. G. L. Staffan. Also a special thank you to Father Wawoniak of Charlotte and Father Dupuis of St. Mary's Parish. Your kindness shall not be forgotten. John, Shari and Randy Hafner Vincent and Willetta Hafner and family Fred and Mary Harris and family Bob and Marcia Stofer and family Helen Paul.

Cards of Thanks CARD OF THANKS We wish to express our appreciation to everyone for all acts of kindness shown to our mother while at the Chelsea Community Hospital. Special thanks to Dr. Krause, nursing staff and Limaners. Mabel Lounsbury and family.

Cards of Thanks CARD OF THANKS We wish to express our appreciation to everyone for all acts of kindness shown to our mother while at the Chelsea Community Hospital. Special thanks to Dr. Krause, nursing staff and Limaners. Mabel Lounsbury and family.

Cards of Thanks CARD OF THANKS We wish to express our appreciation to everyone for all acts of kindness shown to our mother while at the Chelsea Community Hospital. Special thanks to Dr. Krause, nursing staff and Limaners. Mabel Lounsbury and family.

Cards of Thanks CARD OF THANKS We wish to express our appreciation to everyone for all acts of kindness shown to our mother while at the Chelsea Community Hospital. Special thanks to Dr. Krause, nursing staff and Limaners. Mabel Lounsbury and family.

Cards of Thanks CARD OF THANKS We wish to express our appreciation to everyone for all acts of kindness shown to our mother while at the Chelsea Community Hospital. Special thanks to Dr. Krause, nursing staff and Limaners. Mabel Lounsbury and family.

Cards of Thanks CARD OF THANKS We wish to express our appreciation to everyone for all acts of kindness shown to our mother while at the Chelsea Community Hospital. Special thanks to Dr. Krause, nursing staff and Limaners. Mabel Lounsbury and family.

Cards of Thanks CARD OF THANKS We wish to express our appreciation to everyone for all acts of kindness shown to our mother while at the Chelsea Community Hospital. Special thanks to Dr. Krause, nursing staff and Limaners. Mabel Lounsbury and family.

CHILDS STUDY CLUB Chelsea Child Study Club met Feb. 24 at the home of Barbara Branch. Following a short business meeting, Thomas Killelea spoke on handwriting analysis. Guests were Nancy Erickson and Mary Degener. Co-hostesses were Betty Cox and Marian Sprague. The next meeting will be at the home of Mary Jo Miller. Topic, "Environmental Preservation." If you think well of those who think well of you the score is quite well evened.

MARCH SPECIALS: LITTLE ROOSTER RESTAURANT Phone 426-8668 11485 N. Territorial Rd. THURSDAY, 5 to 9 p.m. - SPAGHETTI DINNER ALL YOU CAN EAT - \$2.35 per person FRIDAY, 5 to 9 p.m. - OCEAN PERCH DINNER All the Perch You Can Eat - \$2.45 per person In addition to our regular menu, we are now serving our own HOME-MADE PIZZAS after 5 p.m. Open Tues., Wed. & Thurs., 4 to 10 p.m. Fri., Sat. & Sun., 11 a.m. to 10 p.m. Closed Mondays

SPECIALS ECKRICH SMORGAS-PAC Lunch Meat \$1.25 46-OZ. CAN HUNT'S Tomato Juice 49c 6 1/2-OZ. CAN CHICKEN OF THE SEA CHUNK Tuna Fish 56c 40-OZ. PKG. JIFFY Baking Mix 55c 12-OZ. CAN VERNORS Ginger Ale 6 pac 95c KUSTERER'S FOOD MARKET DIAL 475-2721 WE DELIVER

Symphony Band To Perform in District Festival The Chelsea High school Symphony Band will perform Saturday, March 6 in the Dexter High school gymnasium for the District Band Festival. According to Myles Mazur, director of bands at CHS, the band will play three prepared pieces as well as sight read for their rating. The festival will last from 8 a.m. to 5 p.m. Saturday with some 15 bands participating. The Chelsea band is expected to play at 9:40 a.m. with the bands from Dexter, Saline and Ypsilanti preceding them. All bands perform and are judged within their particular classification; Class A, Class B schools, etc. The festival is open to the public at no charge. Area residents are encouraged to attend.



Sometimes we can't help BUT Most of the time we can! "We try harder because we care" 35 1/2 CUSTOMER HOURS 305 S. MAIN Mon.-Thurs. 9-3 Ph. 475-1355 Fri. 9-5:30 Sat. 9-12

A1 USED CARS AT OUR TRIANGLE LOT M-52 and Old Manchester Road '75 LTD COUNTRY SQUIRE WAGON \$4995 '73 FORD 8-PASS. WAGON, factory air... \$2495 '74 PINTO WAGON \$2695 '72 DODGE CHARGER \$1795 '74 THUNDERBIRD \$5495 '72 MUSTANG MACH 1 \$2195 '74 TORINO 2-DR. \$2695 '68 PONTIAC 4-DR. \$395 '74 MAVERICK 2-DR. \$2895 '65 VW 2-DR. \$395 '74 GRAN TORINO 4-DR. \$2795 '74 PINTO 2-DR. \$2395 '74 FORD 1/2-TON \$2995 '74 MONTEGO 2-DR. \$3495 '74 FORD ECONO VAN \$3295 TRUCKS SEE The Happyface Place SEE Lyle Chriswell Bennie Hayes We're in business to make you smile PALMER Since April 1912 FORD Mon., Tue., Wed., Thurs. 9 p.m. Fri. 6 p.m.; Sat. 11 a.m. - 4 p.m.

WATERLOO REALTY 355 Clear Lake JOANN WARYWODA, BROKER Phone 475-8674

BECKER MEMORIALS 6033 Jackson Road ANN ARBOR, MICHIGAN MAUSOLEUMS \* MONUMENTS BRONZE TABLETS \* MARKERS

CUSTOM BUMPING and PAINTING FREE ESTIMATES - ALL MAKES Get the Best for Less! FRANK GROHS CHEVROLET Phone 426-4677 Dexter, Mich.





# BOWLING NEWS



## Chelsea Lanes Mixed

Standings as of Feb. 29

W	L
Nunero Unos	115 60
Doug's Painting	104 71
Mark IV Lounge	100 75
Hook, Line & Stinkers	100 75
Torrice & Rawson	99 76
Countryside Builders	94 81
Adamson & Henson	89 86
The Hopefuls	87 88
Floyd's Gang	86 89
Bollinger's	82 93
DJ's	81 94
Federal Screw Outlaws	76 99
Rushing's Temp. Help	75 100
Ann Arbor Centerless	68 107
Harmon & Cook	62 113

Women, 150 games or better: L. Behr, 150; D. Keezer, 167, 165, 154; J. Norris, 171; L. Alexander, 167; M. Henson, 164; D. Cozzens, 165; E. Harmon, 168, 158; D. Wisniewski, 155; A. Rawson, 152; B. Wisniewski, 175; D. Sannes, 163, 204; R. Dils, 173, 156; D. Judson, 172, 170.

Women, 450 series or better: D. Keezer, 486; L. Alexander, 460; E. Harmon, 451; D. Sannes, 511; R. Dils, 467; D. Judson, 475.

Men, 175 games or better: E. Keezer, 200; D. Gibb, 186; D. Longworth, 193; D. Alexander, 192; V. Henson, 184; J. Harmon, 181; E. Vasas, 175; B. Rawson, 201; T. Wisniewski, 176, 195; D. Scott, 200; A. Sannes, 188; F. Northrop, 184, 200, 226; A. Dils, 240; R. Johnson, 191; H. Johnson, 187, 209; D. Ellenwood, 196; G. Popp, 179, 186, 197.

Men, 500 series or better: D. Longworth, 537; J. Harmon, 501; R. Rawson, 521; T. Wisniewski, 530; D. Scott, 507; F. Northrop, 610 A Dils, 543; H. Johnson, 588; G. Popp, 562.

## Nite Owl League

Standings as of March 1

W	L
McCalla Feeds	120 62
Hanco Sports Center	119 63
Southern Boy Take-Out	108 74
Steele's Heat & Cool	105 77
Bollinger's Sanitation	105 77
Norm's Body Shop	104 78
VFW 4076	103 79
Mich. Kitchen & Bath	100 82
Chelsea Finance	97 85
Cavanaugh Lake Store	90 92
Wahl's Oil	85 97
Ted's Standard	81 101
Associated Spring	81 101
LithoCrafters No. 1	73 109
LithoCrafters No. 2	72 110
LithoCrafters No. 3	71 111
Belser's Construction	71 111
The Odd Team	54 128

200 games and over: R. Baries, 201; G. Beeman, 222; T. Steele, 215, 212, 214; O. Hansen, 229; E. Buku, 200; J. Hughes, 215; A. Gieske, 200; C. Clouse, 200; A. Kuhl, 202; J. Torrice, 203.

500 series and over: L. Grau, 508; G. Beeman, 561; O. Hansen, 551; J. Elliott, 551; G. Ahrens, 538; E. Buku, 529; J. Richmond, 548; J. Hughes, 522; D. Buku, 518; A. Gieske, 512; R. Headrick, 516; J. Torrice, 593; A. Kuhl, 519; F. Petsch, 534; J. Borders, 508; D. Wutke, 510.

600 series and over: T. Steele, 641.

## Senior House League

Standings as of March 1

W	L
Mark IV Lounge	127 54 1/2
S. J. Custom Leather	126 56
Dana's Top Five	120 62
Luke's Sporting Goods	118 63 1/2
Syl'an Center	101 81
Village Motor Sales	95 87
Village Books	92 90
Bauer Builders	91 91
Gambles	91 91
Schneider's Grocery	87 95
Chelsea Lumber	85 97
Frank Grohs Chevrolet	81 94
Sarns, Inc.	78 97
IPSCO	76 106
Walt's Barber Shop	71 111
Washtenaw Crop Serv.	66 116
Seitz's Tavern	63 119
Dexter Automatics	62 120

525 and over series: V. Schwartzberger, 525; G. Linebaugh, 522; W. Sisco, 549; J. Eder, 563; G. Packard, 566; O. Cavender, 561; T. Fortner, 550; P. Fletcher, 555; L. Salyer, 581; J. Emmert, 596; J. Ladley, 537; J. Lyerla, 552; R. Leitz, 550; A. Sannes, 537; G. Beeman, 552; M. Sweet, 548; J. Wilkerson, 563; R. Maurer, 532; R. Kelly, 527; J. Harok, 550; D. Hafley, 574; V. Hafley, 545; J. Parks, 540.

210 and over games: W. Sisco, 211; G. Packard, 214; T. Fortner, 210; L. Salyer, 234; J. Lyerla, 219; M. Sweet, 210; L. Sanderson, 222; J. Wilderson, 223; M. McAllister, 213, 252; D. Hafley, 224; B. McGibney, 226.

## Rolling Pin League

Standings as of March 2

W	L
Pots	62 42
Sporadic Spatulas	61 43
Kookie Kutters	61 43
Poachers	56 47 1/2
Grinders	56 48
Spooners	56 48
Egg Beaters	53 51
Kitchen Kapers	53 51
Moppper Uppers	52 51 1/2
Jolly Mops	52 51 1/2
Mixers	51 53
Coffee Cups	50 54
Sugar Bowls	50 54
Jelly Rollers	48 56 1/2
Beaters	47 57
Dishrags	45 58 1/2
Blenders	45 59
Brooms	35 69

500 series: P. Harok, 515.

425 and over series: L. Volta, 434; E. Neibauer, 493; B. Torrice, 467; G. Klink, 431; C. Shepherd, 467; R. Musbach, 427; S. Ringe, 443; M. Gross, 490; D. Butler, 427; P. Smith, 437; B. Halst, 428; A. Chitwood, 465; M. Ringe, 432; N. Hohn, 432; D. Dirlam, 438; A. Rivord, 427; R. Dils, 443.

150 and over games: P. Borders, 153; D. Dirlam, 157; R. Cook, 155; A. Rivord, 150, 165; R. Dils, 175; M. Ringe, 181; N. Hohn, 168; A. Chitwood, 157, 206; E. Williams, 151; J. Perry, 151; P. Smith, 154, 162; P. Noll, 159; B. Wolfgang, 154, 158; M. Gross, 165, 155, 170; P. Harok, 169, 178, 168; D. Bable, 155; D. Butler, 152, 168; C. Shepherd, 161, 177; J. Shepherd, 151; R. Musbach, 154; S. Ringe, 152; G. Klink, 153; L. Keezer, 153; E. Neibauer, 185, 168; B. Torrice, 170, 151; L. Volta, 155, 151; A. Foster, 153.

## Chelsea Women's Bowling Club

Standings as of Feb. 25

W	L
Jiffy Mixes	75 29
Chelsea Milling	70 34
Thompson's Pizza	68 35 1/2
Washtenaw Engineering	63 40 1/2
Parish's Cleaners	61 39
Palmer Ford	59 41 1/2
Norris Electric	58 42 1/2
Larry's Roadside Mkt.	54 49 1/2
Niles' Arway	50 54
Mark IV	50 54
Chelsea Grinding	47 57
Nord's Barber Shop	45 59
Lloyd Bridges Chevrolet	44 60
Wolverine Bar	43 61
Klink Excavating	42 62
Rushing's Temp. Help	37 63
Joe & Judy's	31 73
Glen's Mobil	26 76

450 series and over: K. McCalla, 553; B. Fritz, 537; P. Fitzsimmons, 527; L. Niles, 524; N. Kern, 507; R. Hummel, 492; L. Bradbury, 489; P. Wurster, 481; S. Settle, 475; D. Alber, 474; N. Smith, 473; D. Judson, 471; A. Dowhal, 468; D. Frisbie, 467; S. Klink, 465; D. Fouty, 464; L. Orlovski, 462; N. Packard, 454; D. Eisenbeiser, 453.

150 games and over: K. McCalla, 203, 178, 172; B. Fritz, 160, 196, 182; P. Fitzsimmons, 157, 174, 196; L. Niles, 173, 197, 154; N. Kern, 166, 212; R. Hummel, 177, 168; L. Bradbury, 180, 175; P. Wurster, 176, 182; S. Settle, 159, 171; D. Alber, 165, 162; N. Smith, 188, 152; D. Judson, 157, 154, 160; A. Dowhal, 203; D. Frisbie, 185, 155; S. Klink, 177; D. Fouty, 170; L. Orlovski, 160, 156; N. Packard, 168; D. Eisenbeiser, 164, 153; A. Judson, 152, 152; R. Whitaker, 184; B. Armstrong, 168; D. Norris, 156; C. Powell, 168; D. Sweet, 164; D. Jarvis, 199; I. Fouty, 158, 159; L. Hafner, 170; B. Larson, 160; G. Wireman, 153; J. Hafner, 151; D. Fortner, 166; E. Whitaker, 156, 191; G. Klink, 155; T. Kenney, 154; S. Ringe, 192; M. Grissom, 168; S. McCalla, 157, 157; R. Bush, 150; A. Fahrner, 150, 155; J. Weir, 165; B. Bridges, 154.

## Junior House League

Standings as of Feb. 26

W	L
Jim Bradley Pontiac	111 64
Mac Tools	107 68
Smith's Service	106 69
Boyer Automotive	102 73
Mark IV Lounge	96 79
Dana Demons	94 81
Ypsi Asphalt Paving	90 85
Chelsea Lanes	88 87
Dana Maintenance	86 89
Wolverine Bar	85 90
Solcum Construction	83 92
Ann Arbor Kirby	81 94
Fearless Five	80 95
Washtenaw Engineering	78 97
Delf's Paints	71 104
Rockwell Int. No. 1	70 105
Rockwell Int. No. 2	55 120
600 series: T. Dittmar, 643; P. Kelly, 603; J. Toma, 600.	

525 or over: A. Sannes, 591; G. Beeman, 570; T. Steele, 535; R. Worden, 525; A. Fletcher, 571; D. Allen, 560; L. Salyer, 588; O. Cavender, 545; K. Barksdale, 525; P. Fletcher, 528; E. Vasas, 569; J. McAllister, 577.

210 or over: P. Kelly, 210; T. Dittmar, 227, 213; A. Fletcher, 214; L. Salyer, 233; J. Toma, 214, 212; E. Vasas, 233; J. McAllister, 213; H. Pennington, 213.

## Peppermint Patties Peanut League

Standings as of Feb. 28

W	L
Super Stars	45 24
Red Barons	41 28
The Pros	38 30 1/2
Blue Streaks	34 34 1/2

Games 70 and over: K. Centilli, 78; G. Greenleaf, 146, 121; D. Buku, 70; D. Rowe, 113, 119; P. Rowe, 73, 100; T. Loucks, 88, 72; D. Waldyke, 95, 85; C. Hegadorn, 81; M. White, 70, 75.

Series 100 and over: K. Centilli, 143; T. Harok, 112; G. Greenleaf, 267; D. Buku, 126; D. Rowe, 232; P. Rowe, 173; E. Zink, 101.

C. Loucks, 180; D. Waldyke, 180; T. Hegadorn, 134; M. White, 146.

## Sunday Swingers

Standings as of Feb. 29

W	L
Town Clowns	66 25
C & A	62 29
T & M	58 33
Go-Ups	54 37
Bottoms-Up	53 38
Spuds & SUDS	48 42 1/2
Need-N-Luck	46 45
Friday Funny Farm	44 47 1/2
Pin-Pals	43 48 1/2
Irvalls	42 49
Handicapps	40 51
Pin-Ups	39 52
Extrajer's	39 52
Sour Krauts	38 53
The Innates	37 57
Rockin-Pins	36 55
Sidekicks	35 58
Pin-Problems	33 58

Men, over 175: R. Knowlton, 228; W. Brown, 191, 188, 179; P. Case, 185; A. Steinaway, 185; K. Brown, 181, 179; C. Ward, 199; W. Schultz, 177; G. Parkina, 177; J. Arnold, 200; D. Cumper, 204, 253; J. Quackenbush, 180; A. Chritz, 178; L. Hawker, 183, 183; D. Anderson, 176.

Men, over 500: R. Knowlton, 537; W. Brown, 567; P. Case, 519; K. Brown, 526; J. Arnold, 501; D. Cumper, 623; L. Hawker, 532.

Women, over 150: S. Brown, 154; E. Neibauer, 171, 168; S. Arnold, 155, 196, 203; L. Kinsey, 162; M. Quackenbush, 155, 187, 168; S. Centelli, 167, 173; A. Caritz, 155; C. Engeler, 152; J. Anderson, 177.

Women, over 450: E. Neibauer, 459; S. Arnold, 554; M. Quackenbush, 483; S. Centelli, 477.

## Junior Swingers

Standings as of Feb. 28

W	L
Boone's Farm Five	58 23 1/2
Rods IV	58 34
Team No. 2	54 37 1/2
Women Libbers	51 40 1/2
Fantastic Five	46 42
Alley Runners	48 44
Team No. 10	43 48 1/2
Born Losers	38 50
The Strikin' Five	39 53
Boyer Automotive	32 60
Team No. 9	27 61

Girls, high games: R. Alexander, 171; C. Miller, 159; P. Greenleaf, 158; D. Wilson, 149.

Boys, high games: D. Thompson, 193, 191, 181; R. Weiner, 194, 190, 171; D. Craft, 183, 173.

Girls, high series: P. Greenleaf, 460; R. Alexander, 448; M. Northrop, 398; C. Miller, 364; S. Miller, 345.

Boys, high series: D. Thompson, 565; D. Craft, 513; R. Weiner, 510; S. Hegadorn, 495; S. Lyerla, 493.

## Charlie Brown & Snoopy Peanut League

Standings as of Feb. 28

W	L
Bowling Green	40 23
Bulldogs	40 29
Snoopies	31 37 1/2
Super Strikers	26 42 1/2
Super Stars	24 45
Pinwheels	19 50

Games 70 and over: B. Roberson, 78; C. Bollinger, 78, 90; B. Fouty, 93; C. Schulze, 72, 82; S. Lorenzen, 75; E. Brown, 77, 81; K. Fletcher, 70; D. Dettling, 110, 113; K. Nadeau, 72, 111; D. Collins, 73, 121; H. Morrell, 89, 115; P. Fletcher, 73, 72; J. Morgan, 87, 99; D. Settle, 98, 126; G. Bollinger, 157.

Series 100 and over: B. Roberson, 139; J. Schaefer, 180; C. Bollinger, 168, B. Fouty, 152; C. Schulze, 184; S. Lorenzen, 132; L. Kaiser, 110; B. Trimble, 102; E. Brown, 158; K. Fletcher, 108; D. Dettling, 223; K. Nadeau, 183; D. Collins, 194; H. Morrell, 204; P. Fletcher, 147; A. Marton, 115; J. Morgan, 186; D. Settle, 224; G. Bollinger, 157.

110; D. Thompson, 131; C. Fahrner, 125; M. Alexander, 122.

Boys, high games: K. Hegadorn, 178; J. Dils, 159; D. Alber, 152; J. Rowe, 148; B. Bentley, 135.

## Kahuna Sunday Mixed

Standings as of Feb. 29

W	L
Golden Triangle	35 21
Whiteleafs	34 22
Flying Dutchmen	33 23
Untouchables	32 24
Sunday Funnies	32 24
Hotshots	31 24 1/2
Spuds & Suds	31 25
Foursomes	29 27
Bitter End	29 27
Four on the Floor	28 28
Cladams	28 28
Barflies	27 29 1/2
Menhunes	26 29 1/2
Four M's	26 30
Moondoggies	23 33
Young Century	22 34
Fox Fires	20 36
Maybe's	16 39 1/2

Men, 500 series: G. White, 540; E. Greenleaf, 575; B. Clark, 528; F. Barkley, 510; M. Tobin, 540; M. Sweet, 548; E. Church, 503; R. Foytik, 542.

Women, 400 series: E. Tindall, 400; N. Clark, 405; J. Buchingham, 457; J. Barkley, 464; A. VanderWard, 426; M. Miller, 408; J. Tobin, 425; M. Adams, 413; J. Staphish, 403; R. Roberts, 404.

## Chelsea Suburban

Standings as of Feb. 25

W	L
Dancer's	118 64
Waterloo Garage	111 71
Dairy Queen	110 72
Chelsea Drug	108 76
State Farm	88 94
Fletcher Mobil	87 95
Mark IV Lounge	86 96
Chelsea Assoc. Builders	85 90
Cavanaugh Lake Store	82 100
Frisinger Realty	79 96
Dana Dee-Lites	72 110
Chelsea State Bank	61 121

150 games and over: V. Weber, 182, 180, 167; J. Buku, 202, 191; N. Collins, 200, 191, 183; P. Elliott, 171, 161, 168; N. Packard, 178, 178, 160; D. McAllister, 201, 159; S. Ratzlaff, 178; E. Miller, 167; K. Chapman, 157; M. Inbody, 176; J. Huston, 157; B. Robeson, 188; P. Schoff, 150; E. Figg, 182, 157; H. Harrison, 155; B. Hafley, 197, 158; R. West, 174; R. McGibney, 165; A. Copperroni, 152; D. Keezer, 155; J. Schulze, 175, 160; B. Beeman, 178; C. Stoffer, 165; D. Hawley, 150; S. Bowen, 168, 160; P. Harok, 156, 183; V. Stewart, 182, 167; B. McGibney, 156, 152; R. Babie, 171; A. Hocking, 150, 168.

## Leisure Time

Standings as of Feb. 26

W	L
Misfits	58 34
Unpredictables	58 38
Rug Rats	50 41
Sugar Loafers	50 42
Highly Hopefuls	47 45
Slowpokes	46 45

**Girls Volleyball Schedule**

Mar. 4—Stockbridge ..home 4:00  
Mar. 13—Regional  
Mar. 20—State Finals.

No argument is ever answered by an epithet.

**COMFORT PLUS**  
BY HAGGAR



A texturized woven Avant Gab's gabardine of machine washable, 100% Dacron® polyester.

The \$22.50 top comes in cool pastels and darker shades designed to mix and match with a variety of Haggar slacks.

Featured \$14 matching slacks have a thin European fit with a narrow belted waistband and wide flare bottoms.

Slacks, \$14.00  
Top, \$22.50  
Complete Suit for only \$36.50

**STRIETER'S Men's Wear**

"The Place To Go For Brands You Know"

**Rev. John Morris Named To Head Church Council**

Zion Lutheran church, became president of the official Huron River Conference Council and its official representative to the Michigan District Council Feb. 1.

Morris was formerly vice-president of the council. He assumed the presidency when council's former president resigned because of illness.

Eighteen congregations in the conference convention approved the appointment.

Religion is the possession of the human race; no small group of any faith has exclusive possession of divine resources.

Follow THIS BOY to paint headquarters!



You will remember the quality of Dutch Boy paints long after the price is forgotten.

**MERKEL Home Furnishings**



THE SQUIRES: Members of this team pictured kneeling, from left, are Eric Green, Paul Buntin, Craig Hinz, Jeff Kitchen and Eddie Brosnan. Standing, from left, Tim Farr, David Kiel, coach Paul Buntin, Brent Bauer and David Steinhauer. Not present for the photo was Peggy Seyfried.

**SEC ROUND-UP:**

**Lincoln, Milan Share Conference Crown With 12-2 Season Records**

The Lincoln High and Milan high school basketball teams each chalked up victories last Friday evening to share the 1975-76 Southeastern Conference championship.

For Lincoln, it is the closest they have gotten to the title in nearly 10 years. It was the Big Reds second consecutive cage crown. Each team completed the season with 12 and 2 standings.

At the bottom of the standings are our own Bulldogs and South Lyon's Lions. Neither team was able to capture more than one SEC victory. Each incurred 13 losses in conference play.

**Milan 66, Dexter 43—**  
Breaking open a close game in the second half of play last Friday evening was the key to the Big Red victory. Milan hit a good percentage of their shots from the field, shooting 26 of 68 while their opponents could only manage 19 of 69. The Big Reds near topped the 50 percent mark from the foul line; the Dreadnaughts scored a mere five of 15. Leading the shooters for Milan was Eric Wurster who put in 20 points and snagged 22 rebounds. Kurt Dingman and Jim Dutton each chalked up 13 points. For Dexter, Dave Sing shot for eight points and Bill Musio canned seven. Milan's club concluded the season with 16-4. The Dreadnaughts played for 11-9.

**Lincoln 61, Brighton 52—**  
Lincoln High school's now famous fourth quarter charge captured the team's 12th victory and a share of the SEC crown last Friday evening as they bumped off Brighton, 61-52. Down by one point going into fourth quarter play, the Railsplitters put together a 21-point quarter on their home court. Linard Wesley came off the

bench to get three clutch field goals in the fourth quarter. The performance of Johann Barbour added three points in the final minutes of the game. Barbour was high man for the Splitters with 22 points. Dean Clark led Brighton with 18 points.

**Novi 76, South Lyon 67—**  
An incredible 47 points sunk by Wildcat player Scott Parsons not only established a varsity scoring record for the team, but may have been put in the books as the most points scored by a single player in a Southeastern Conference basketball game. Moreover, Parsons' scoring probably did more than any other factor to can the victory for his team last Friday night. Following first quarter play, the score was tied 14-14; however, the Wildcats exploded for 31 points to the Lions' 17. The second best scorer for Novi was Dave Pisha with eight points. Kevin Balze led South Lyon, sinking 24 points, while teammate Rob Jorae tallied 21.

**Saline 98, Chelsea 46—**  
It didn't look too bad for the Bulldogs Friday evening as they completed first quarter play only seven points behind the Hornets. However, Saline blasted away in the next three quarters to score more than 20 points in each. High scorers for the Hornets were Mike McGuire who sunk 18 points, Craig Kivi and Jay Jahnke with 17 each and Tom Mitchell who put in 16. For the Bulldogs, Jerry Benjamin led with 15 points, his highest scoring effort all season, followed by Randy Guenther's 13.

You can recognize your friends by the fact that they sometimes have no favors to ask.



There's more to you than meets the eye

We specialize in individual and family portraits that are as unique and sensitive as their subjects. In-studio or on location, we'll work with you to create a portrait that's honestly you. So get your family together. Or get yourself together. Stop in today and let's talk about your portrait.

**PHOTO DEPOT**

475-1687  
107 1/2 S. MAIN • ABOVE VOGEL'S

**Cagers Lose in First District Tourney Game**

Chelsea High school's Bulldog cagers were put out of action Monday in their first and last evening of district competition. The varsity cagers met Jackson Lumen Christi in the opponent's court for a 71-46 defeat.

The game was put out of reach in the first quarter, remarked Bulldog coach Tom Balistrere. The tall Lumen Christi team pressed the Bulldogs, 20-4, in first quarter play and then let up until the fourth quarter when they pressed again to light up the score board in their favor.

The Bulldogs, who were working without their number one man Randy Guenther (who was out with the flu) Monday evening, still managed to have two players score in double figures. Pete Feeney and Randy Sweeny each put in 13 points for the Bulldogs.

Other Chelsea scorers were Jerry Benjamin with six points, Tony Robards and Dean Thomson with five and Anthony Houle and Jeff Sweet with two points each.

**Special Ed Students**

**Need New Balance Beam**

Chelsea High school special education students have an unusual request for the community. They need a balance beam that measures 4"x4"x12'.

The beam is a necessary part of the students' Special Olympics routine. According to Nancy Porath, the students must carry their balance beam with them wherever they go as most schools do not have one of the height required in the Special Olympics Rules, 12 inches off the floor.

The beam the class presently has is badly warped.

Persons who know where the class might secure another beam, should contact Mrs. Porath at the high school. "We would be exceedingly grateful," she remarked.

**FARLEY CONSTRUCTION**  
522 HOWARD RD.

ADDITIONS - REMODELING  
CONCRETE WORK  
REPAIRS

475-8265 or 475-7643

	SOUTHEASTERN			ALL		
	SEC	W L Pct.	ALL	W L Pct.	ALL	Pct.
Lincoln	.12	2 .857	15	2 .882		
Milan	.12	2 .857	16	4 .800		
Saline	.11	3 .766	15	3 .845		
Dexter	.07	7 .500	11	9 .550		
Novi	.07	7 .500	10	8 .556		
Brighton	.05	9 .357	8	12 .400		
Chelsea	.01	13 .071	3	17 .158		
S. Lyon	.01	13 .071	3	17 .150		

SCORES	
Milan 66, Dexter 43	
Lincoln 61, Brighton 52	
Novi 76, South Lyon 69	
Saline 98, Chelsea 46	

If somebody would accuse you of being a Communist sympathizer, how would you prove the allegation untrue?

**This beautiful new Limited Edition Ford Torino**



**\$159 off total retail value at your Ford Dealer Limited Edition Sale.\***

You've never been able to buy a Torino like this before: with distinguished half-vinyl roof, opera windows, sport wheel covers, dual racing mirrors, selected matching cloth and vinyl interiors... and more. Quantities are limited.

Plus all these other standard Torino features: • 351 CID V-8 engine • Automatic transmission • Power steering • Power front disc brakes • Steel-belted radials • Solid state ignition... and more.



Buy now for extra value at your Ford Dealer Limited Edition Sale.

**SEE YOUR LOCAL FORD DEALER**

**VILLAGE ELECTION**

To the Qualified Electors:

NOTICE IS HEREBY GIVEN, That an Annual Village Election will be held in the

**VILLAGE OF CHELSEA**

State of Michigan

at  
**SYLVAN TOWNSHIP HALL**  
112 W. Middle St.

Within said Village on

**Monday, March 8, 1976**

FOR THE PURPOSE OF VOTING FOR THE ELECTION OF THE FOLLOWING OFFICERS, VIZ:

- One Village President for Two Years
- One Village Treasurer for Two Years
- Three Trustees for Two Years
- One Village Assessor for Two Years
- Two Library Trustees for Three Years

**Notice Relative to Opening and Closing of Polls**  
ELECTION LAW, ACT 116, P. A. 1964

SECTION 720. On the day of any election the polls shall be opened at 7 o'clock in the forenoon, and shall be continuously open until 8 o'clock in the afternoon and no longer. Every qualified elector present and in line at the polls at the hour prescribed for the closing thereof shall be allowed to vote.

The POLLS of said election will be open at 7 o'clock a.m. and will remain open until 8 o'clock p.m. of said day of election.

**THOMAS NEUMEYER, Village Clerk**



**Polly's** MASTER MARKETS

1101 M-52

**CHELSEA, MICH.**

(Corner M-52 and Old U.S. 12)

**get to know us...**  
**WE CAN HELP YOU SAVE ON YOUR FOOD BILL!**

**OPEN . 8 A.M. TO 10 P.M.**  
**DAILY.**

**OPEN 9 A.M. TO 9 P.M.**  
**SUNDAY:**

- ★ **QUALITY PRODUCE**
- ★ **QUALITY MEAT**
- ★ **COLD BEER & WINE**
- ★ **LOTTERY TICKETS**
- ★ **SIDES OF BEEF**
- ★ **FRUIT BASKETS**
- ★ **DRY CLEANING**
- ★ **PHOTO PROCESSING**
- ★ **VARIETY AT LOW PRICES**

**Polly's** MASTER MARKETS  
 1101 M-52  
**CHELSEA, MICH.**  
 (Corner M-52 and Old U.S. 12)



POLLY PRIDE QUALITY  
**ROUND STEAK**  
 \$1.23  
 LB.

the **Big** SAVINGS  
 ON WEEKLY BONUS and IN-STORE COUPONS Plus MANY BIG FEATURE ITEMS!  
 and the **Small** PRICES  
 ON EVERYDAY LOW, LOW GROCERY, MEAT, DAIRY, PRODUCE, BAKERY and FROZEN FOODS!  
 Lower TOTAL FOOD BILL!

POLLY PRIDE QUALITY BONELESS  
**RUMP ROAST** LB. \$1.37

POLLY PRIDE BONELESS  
**SIRLOIN TIP STEAK**  
 \$1.77  
 LB.

QUARTER PORK LOIN	Ends & CENTERS	\$1.39
MIXED PORK CHOPS	LB.	
CENTER-CUT RIB PORK CHOPS	LB.	\$1.69
CENTER CUT LOIN PORK CHOPS	LB.	\$1.79
RIB-HALF PORK ROAST	LB.	\$1.59
LOIN-HALF PORK ROAST	LB.	\$1.69
LEAN & MEATY PORK NECK BONES	LB.	59¢

**SEAFOOD SPECIALS**

THURBOT FILLETS	LB.	89¢
OCEAN PERCH FILLETS	LB.	99¢
SEA TROUT	LB.	99¢
BAG SMELT	LB.	79¢
RED SNAPPER FILLETS	LB.	\$1.29
HADDOCK FILLETS	LB.	\$1.39

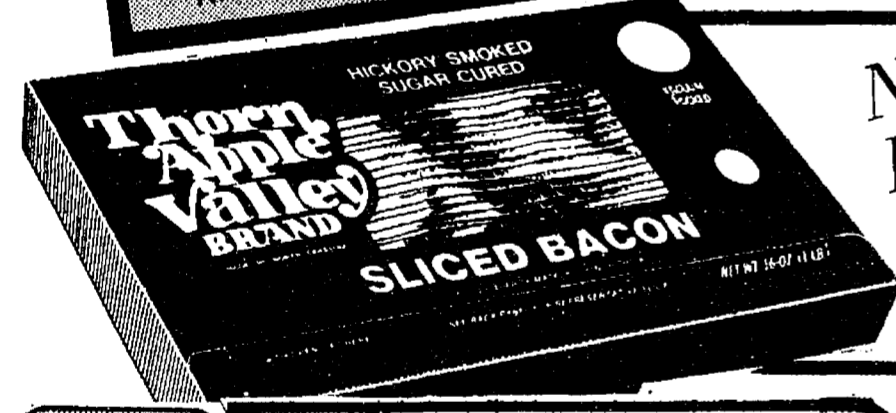
LIVE LOBSTERS AVAILABLE AT OUR SPRING ARBOR STORE

in **75**

HYGRADE  
**SMOKED PORK CHOPS**  
 \$1.69  
 LB.

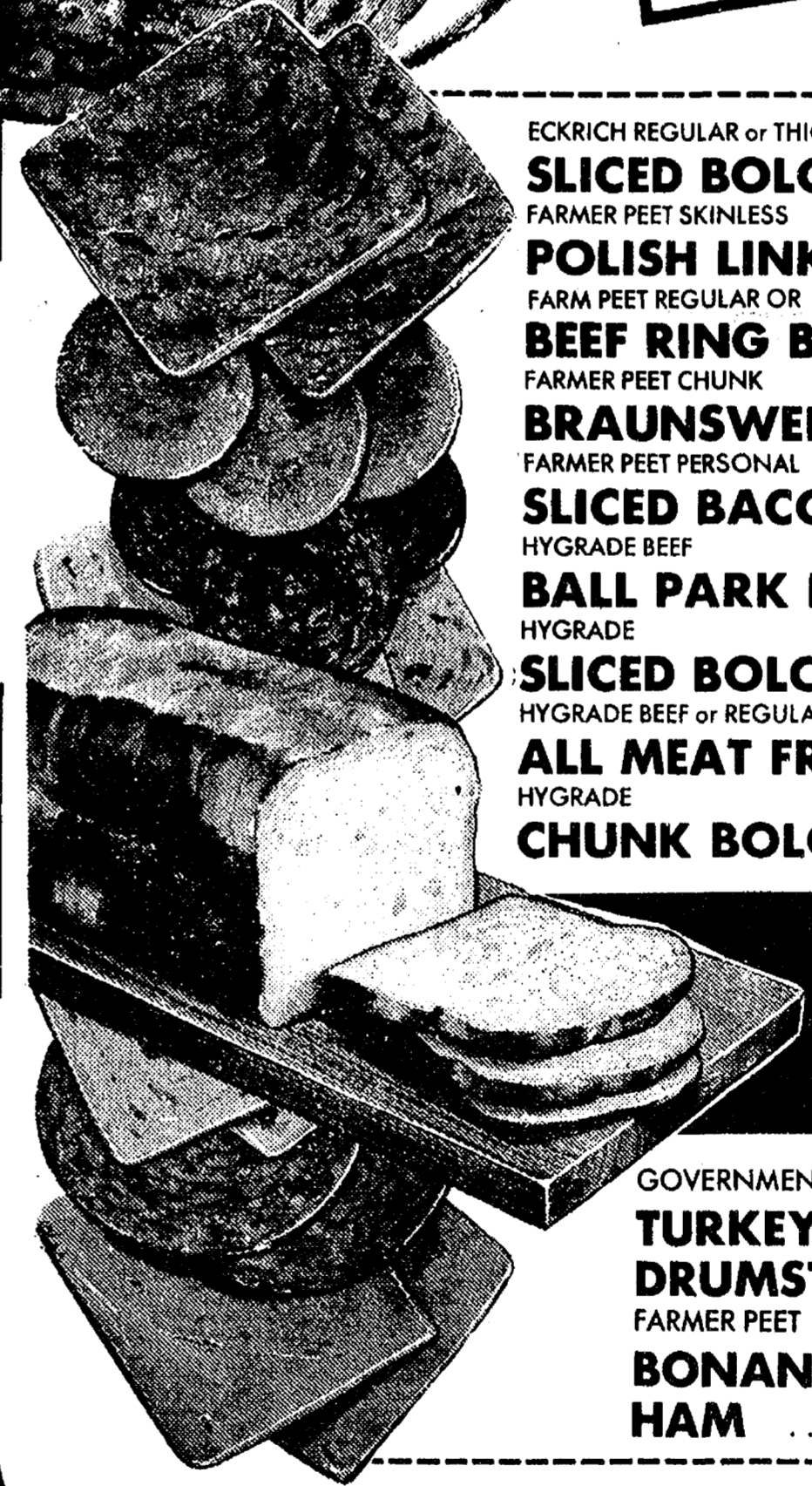
POLLY PRIDE QUALITY BEEF

<b>GROUND CHUCK</b>	LB.	87¢
POLLY PRIDE QUALITY <b>CUBE STEAK</b>	LB.	\$1.47
POLLY PRIDE QUALITY BONELESS <b>BEEF STEW</b>	LB.	\$1.19
SWIFT SLICED <b>BEEF LIVER</b>	LB.	59¢



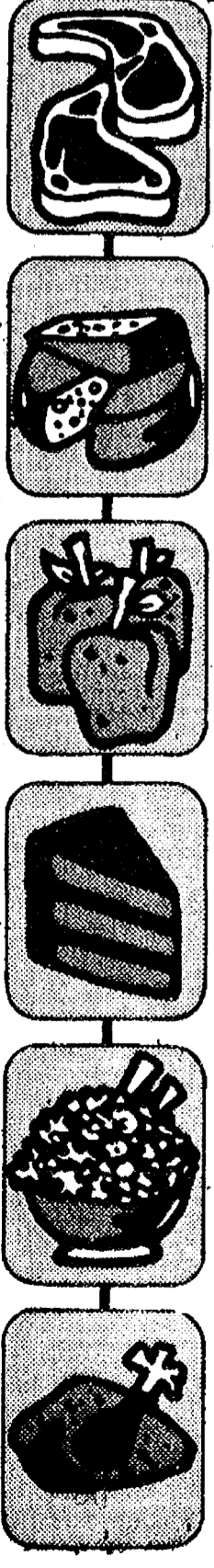
New From Herrud!  
 Thorn Apple Valley  
**BACON**  
 12-OZ. \$1.29  
 16-OZ. \$1.69  
 20-OZ. \$1.99

ECKRICH REGULAR or THICK <b>SLICED BOLOGNA</b>	LB.	\$1.29
FARMER PEET SKINLESS <b>POLISH LINK SAUSAGE</b>	LB.	\$1.29
FARM PEET REGULAR OR <b>BEEF RING BOLOGNA</b>	LB.	99¢
FARMER PEET CHUNK <b>BRAUNSWEIGER</b>	LB.	69¢
FARMER PEET PERSONAL <b>SLICED BACON</b>	12-OZ.	\$1.19
HYGRADE BEEF <b>BALL PARK FRANKS</b>	LB.	\$1.19
HYGRADE <b>SLICED BOLOGNA</b>	LB.	89¢
HYGRADE BEEF or REGULAR <b>ALL MEAT FRANKS</b>	LB.	79¢
HYGRADE <b>CHUNK BOLOGNA</b>	LB.	69¢



10' OFF HOLSUM  
**HONEY MEAL BREAD** 20-OZ. LOAF \$56¢

GOVERNMENT INSPECTED  
**TURKEY DRUMSTICKS** LB. 39¢  
 FARMER PEET **BONANZA HAM** LB. \$1.69



**Facts About Food**  
 SHOPLIFTING & BAD CHECKS

Today I would like to talk about two serious problems grocers are trying to solve.

First...shoplifting. The estimated cost to a retailer is 1% to 2% of sales. One study showed that in 1971 shoplifting losses for all types of retailers ran to almost \$3 billion.

Shoplifting is not limited to less affluent neighborhoods. It occurs with alarming frequency in the wealthy areas as well. Shoplifting according to the FBI increased 174% during the period from 1960 to 1970. The average cost per shoplifting incident in a supermarket is about \$3.50.

Second problem. Have you ever stopped in at your friendly neighborhood bank to buy a loaf of bread? Of course you haven't. But have you ever stopped in at your friendly neighborhood supermarket to cash a check? Of course you have.

The fact is that supermarkets cash a lot more checks than banks these days, not all of which...the checks, not the supermarkets...are good.

This is why supermarket managers have to be ever more careful about cashing checks. We try not to offend our customers with our check cashing policies, and hope you agree.

Security measures are improving in both areas. However, at this point the problems are causing increased prices for customers. The average supermarket still operates on a net profit of about 1% and cannot absorb the loss. He must add it to the cost of operations.

Different stores use different methods to discourage shoplifting and bad checks. But we at Polly's think we have the best method of all. We simply price our items so low that it's a crime not to shop here.

GARDEN FRESH  
**Produce**  
 CALIFORNIA  
**HEAD LETTUCE**  
 3 HEADS FOR 99¢

CALIFORNIA 72 SIZE  
**NAVEL ORANGES**  
 DOZEN 99¢

FRESH <b>PARSNIPS</b>	LB.	19¢
FRESH <b>TURNIPS</b>	LB.	19¢
FRESH <b>RHUBARB</b>	LB.	39¢

SAVE 40' W/ IN-STORE COUPON  
 Michigan  
**POTATOES**  
 20-LB. BAG \$1.99

SAVE UP TO 90' W/ IN-STORE COUPON  
 Assorted Foliage  
**PLANTS**  
 30¢ OFF ON ANY SIZE



SAVE UP TO \$1.89 WITH BONUS COUPON

8-Pak  
**COKE**  
TAB or SPRITE

16-OZ. RETURNABLE BOTTLES

**88¢ 99¢**

plus deposit

SAVE UP TO 52¢ WITH BONUS COUPON

Sealtest 1/2% Lo-Fat  
**MILK**

GALLON



**Polly's** MASTER MARKYS

1101 M-52  
**CHELSEA, MICH.**

(Corner M-52 and Old U.S. 12)

Polly's on Spring Arbor  
**OPEN 24 HOURS**

All Other Polly's Open  
DAILY 8 A.M. TIL 10 P.M.  
SUNDAY 9 A.M. TIL 9 P.M.

SAVE 18¢ WITH BONUS COUPON

Sealtest

**COTTAGE CHEESE**

12-OZ.

**39¢**

SAVE 11¢...FRANCO AMERICAN

**SPAGHETTI**

in tomato sauce with cheese

**5 99¢**

15-OZ. CANS

SAVE 11¢...RED

**HAWAIIAN PUNCH**

**2 99¢**

46-OZ. CAN



SAVE 10¢...DELSEY TOILET TISSUE

4-Pak

**69¢**

SAVE 17¢...KLEENEX FACIAL TISSUE

2 200-CT. BOXES

**89¢**

SAVE 10¢...VLASIC HAMBURG DILL SLICES

16-OZ.

**49¢**

SAVE 10¢...KRAFT ORANGE JUICE

1/2-GAL.

**99¢**

SAVE 10¢...KRAFT GRAPEFRUIT JUICE

1/2-GAL.

**99¢**

SAVE 20¢...SUNSHINE CHIP-A-ROO COOKIES

14-OZ.

**69¢**

SAVE 14¢...SUNSHINE HYDROX COOKIES

15-OZ.

**69¢**

SAVE 30¢...DURKEE PURE VANILLA

4-OZ.

**99¢**



SAVE 10¢...TUFFY'S DOG FOOD

4-LB.

**99¢**

SAVE 10¢...TUFFY'S DOG FOOD

6-LB.

**\$1.97**

SAVE 60¢...TUFFY'S DOG FOOD

20-LB.

**\$3.99**

SAVE 10¢...ITALIAN STYLE CREAMETTE LASAGNA

16-OZ.

**59¢**

SAVE 10¢...SMUCKERS GRAPE JELLY

2-LB.

**99¢**

SAVE 16¢...WIZARD AIR FRESHENER

6-OZ.

**49¢**

SAVE 4¢...HERSHEY'S CHOCOLATE SYRUP

1-LB.

**39¢**

SAVE 26¢...FOULDS ELBO MACARONI

5 7-OZ. FOR

**99¢**

**EVERYDAY LOW PRICES**

Kraft MAYONNAISE 32-OZ.	<b>\$1.19</b>	SOY SHORTENING 42-OZ.	<b>\$1.29</b>	CRISCO SHORTENING 1-LB.	<b>55¢</b>	WALTON'S FAYGO 32-OZ.	<b>37¢</b>	SCOT LAD SLICED CARROTS 16-OZ.	<b>17¢</b>
Pillsbury 100% BISCUITS 11-OZ.	<b>45¢</b>	Vegetable WESSON OIL 16-OZ.	<b>57¢</b>	CRISCO SHORTENING 3-LB.	<b>\$1.43</b>	Shelby SLICED CARROTS 16-OZ.	<b>23¢</b>	SCOT LAD W.K. CORN 16-OZ.	<b>24¢</b>
Pillsbury CRESCENT ROLLS 8-OZ.	<b>49¢</b>	Vegetable CRISCO OIL 12-OZ.	<b>43¢</b>	Gold Medal FLOUR 10-LB.	<b>\$1.69</b>	Shelby PURPLE PLUMS 16-OZ.	<b>39¢</b>	SCOT LAD Early Ams PEAS 16-OZ.	<b>23¢</b>
The Light Dessert JELLO 3-OZ.	<b>21¢</b>	SCOT LAD SALAD OIL 24-OZ.	<b>65¢</b>	SCOT LAD MARGARINE 1-LB.	<b>31¢</b>	Quaker CORN MEAL 5-LB.	<b>85¢</b>	SCOT LAD SWEET PEAS 16-OZ.	<b>23¢</b>
SCOT LAD FLOUR 10-LB.	<b>\$1.29</b>	Vegetable WESSON OIL 24-OZ.	<b>79¢</b>	Novelty SCOT MARGARINE 1-LB.	<b>29¢</b>	Atty FROSTING MIXES 7-OZ.	<b>29¢</b>	SCOT LAD WHOLE or Sliced IRISH POTATOES 16-OZ.	<b>23¢</b>
Kraft VARIETY PAK 65¢		Vegetable CRISCO OIL 24-OZ.	<b>79¢</b>	Imperial MARGARINE 1-LB.	<b>59¢</b>	Atty CAKE MIXES 9-OZ.	<b>25¢</b>	Chiffon Soft STICK MARGARINE 1-LB.	<b>52¢</b>
Shorts CHUNK LT. TUNA 6.5-OZ.	<b>53¢</b>	Vegetable WESSON OIL 58-OZ.	<b>\$1.25</b>	Imperial SOFT MARGARINE 1-LB.	<b>65¢</b>	SCOT LAD Cut GREEN BEANS 16-OZ.	<b>19¢</b>	Chiffon Family Brand SOFT MARGARINE 1-LB.	<b>63¢</b>
Chicken of the Sea CHUNK LT. TUNA 6.5-OZ.	<b>53¢</b>	Vegetable CRISCO OIL 28-OZ.	<b>\$1.25</b>	SCOT LAD PANCAKE SYRUP 16-OZ.	<b>53¢</b>	SCOT LAD RED BEANS 16-OZ.	<b>25¢</b>	Chiffon WHIPPED MARGARINE 1-LB.	<b>63¢</b>
Kraft AMERICAN CHEESE 1-LB. BOX	<b>\$1.63</b>	SCOT LAD SALAD OIL 38-OZ.	<b>\$1.05</b>	SCOT LAD PANCAKE SYRUP 32-OZ.	<b>87¢</b>	SCOT LAD Red KIDNEY BEANS 16-OZ.	<b>25¢</b>	Hellman SPIN BLEND DRESSING 32-OZ.	<b>89¢</b>
Land O Lakes MARGARINES 1-LB.	<b>54¢</b>	SCOT LAD SALAD OIL 48-OZ.	<b>\$1.29</b>	SCOT LAD LONG GRAIN RICE 2-LB.	<b>59¢</b>	SCOT LAD WHOLE BEETS 16-OZ.	<b>25¢</b>	Seahart 1% LO-FAT MILK GAL.	<b>\$1.25</b>

**Save UP TO \$7.67**  
WITH POLLY'S BONUS & IN-STORE COUPONS



SAVE 15¢ WITH IN-STORE COUPON

Seven Seas  
**SALAD DRESSING**

**2 8-OZ. BOTTLES 99¢**

SAVE 14¢ WITH IN-STORE COUPON

Soft Blue Bonnet  
**WHIPPED MARGARINE**

**1-LB. 49¢**

SAVE 20¢ WITH IN-STORE COUPON

**MR. COFFEE FILTERS** 50-CT. **49¢**

SAVE 19¢ WITH IN-STORE COUPON BETTY CROCKER

**CAKE MIXES** 2 18.5-OZ. **99¢**

SAVE 30¢ WITH IN-STORE COUPON GLAD

**SANDWICH BAGS** 50-CT. **49¢**

SAVE 22¢ WITH IN-STORE COUPON POLLY'S GRADE A

**MEDIUM EGGS** DOZEN **59¢**

SAVE 50¢ WITH IN-STORE COUPON NEW FREEDOM

**MAXI-PADS** 30-CT. **\$1.39**

SAVE 30¢ WITH IN-STORE COUPON LIQUID

**WISK DETERGENT** 64-OZ. **\$1.99**

SAVE 20¢ WITH IN-STORE COUPON SANI-FLUSH

**BOWL CLEANER** 22-OZ. **69¢**

**Frozen Food**

**FARMERS BRAND VEGETABLES**  
PEAS • CORN • MIXED  
**3 \$1**  
16-OZ. BAGS

PEELED & DEVEINED  
**FISHER BOY SHRIMP** 24-OZ. **\$4.99**

OCEAN SPRAY  
**CRANAPPLE JUICE** 6-OZ. **8 \$1**

QUEEN OF SCOT  
**BRUSSEL SPROUTS** 10-OZ. **3 \$1**

QUEEN OF SCOT  
**CAULIFLOWER** 10-OZ. **3 \$1**

**FRESH Bakery**  
from the ALPINE BAKEHAUS

SAVE 50¢ WITH IN-STORE COUPON  
**CUSTARD PIE** 8-INCH **89¢**

Fresh Baked  
**WHITE BREAD** 16-OZ. **39¢**

Fresh Yeast Raised  
**GLAZED DONUTS** 6-Pak **89¢**



**POLLY'S Snack Bar**  
LOCATED AT POLLY'S ON SPRING ARBOR RD.

MONDAY	Chicken Ala King & Tossed Salad	99¢
TUESDAY	Spaghetti, Cole Slaw & Garlic Toast	\$1.09
WEDNESDAY	Meat Loaf, Mashed Potatoes, Cole Slaw	\$1.29
THURSDAY	Broasted Chicken, Mashed Potatoes, Cole Slaw	\$1.29
FRIDAY	Macaroni & Cheese and Tossed Salad	99¢
SATURDAY	Sloppy Joes, French Fries, Cole Slaw	99¢

# Thank You

FOR SHOPPING AT...



*Polly's*

MASTER  
MARKETS

1101 M-52

**CHELSEA, MICH.**

(Corner M-52 and Old U.S. 12)

WHERE WE ARE  
HAPPY TO.....

**save**

**YOU MONEY!**