

Basketball Team Boasts Fine 16-5 Over-all Record for Season

(Continued from page one)
Rick Robbins, a first year varsity man, was described by Coach Ballstrere as a player with "tremendous spirit, hustle, and enthusiasm, qualities that were always present throughout the season for us. Rick didn't play very much during this season, but it was his unselfishness and willingness to help the team in any capacity that were his greatest assets."
"Our best board man" was the description Coach Ballstrere tagged onto Ron Kiel, and then continued: "Ron played consistently throughout the year for us—but his best game came against Brighton when he scored 26 points and had 17 rebounds. He also had an exceptional game against Saline, when he scored 18 points and pulled in 12 rebounds. Ron is very physical and aggressive under the boards, and is another big factor in our 16-5 record."

Randy Musbach, the coach noted, "played well throughout the year, and started more than half our games for us. He was instrumental in the Bulldogs' early six-game winning streak. Randy ended the season shooting 71 percent from the foul line, second highest on the team, and 59 percent from the floor, and he finished third on the team in assists."
"Randy's hard work and unselfishness have helped steady our club throughout the year," Coach Ballstrere concluded.
Randy Davis, who received the "most improved player" rating from his fellow players, "truly deserved the award," the coach said. "Randy hustled constantly throughout the season, and was a key factor in several of our ball games. He played as a back-up man to Kiel and Sweeney, and we could always count on him to come in and do a good job on the boards and on our press."
"Randy finished second on the team in aggressive floor play, and he always gave us the added lift that we needed," Ballstrere said.
Of Jack Hackworth, Coach Ballstrere said, "Jack is an outstanding competitor who made a fine contribution to the team by working his way up from the injured list to a starting position."
"Jack was instrumental in our overtime win over New Boston Huron, in which he scored 14 points. He is a cool and steady ball-player, and really fun to work with."

Most rebounds: Sweeny, 185; Alber, 176; Kiel, 166; Guenther, 72; Wonders, 54.
Most assists: Wonders, 104; Alber, 53; Musbach, 40; Guenther, 28; Sweeny, 19.
Most steals: Alber, 61; Sweeny, 36; Wonders, 33; Guenther, 23; and Kiel, 18.
Most scramblers: Wonders, 18; Davis, 11; Alber, 10; Kiel, 10; Guenther, 6.
Most turnovers: Wonders, 126; Alber, 61; Kiel, 34; Sweeny, 33; Musbach, 31.
Most shots attempted: Alber, 325; Wonders, 237; Sweeny, 219; Guenther, 141; Kiel, 115.
Most shots made: Alber, 151; Sweeny, 138; Wonders, 94; Kiel, 89; Guenther, 59.
Best percentage (over 40 shots): Sweeny, 62; Kiel, 60; Musbach, 59; Alber, 46; Guenther, 44.
Most foul shots attempted: Alber, 82; Wonders, 82; Sweeny, 59; Kiel, 47; Guenther, 41.
Most foul shots made: Alber, 57; Wonders, 57; Sweeny, 35; Kiel, 29; Hackworth, 20.
Best percentage: Hackworth, 80; Musbach, 71; Alber, 70; Wonders, 70; Kiel, 62.
Total points (with per-game average): Alber, 362 (18.1); Wonders, 247 (12.4); Sweeny, 241 (12.0); Kiel, 160 (9.0); Guenther, 136 (6.8).
Most awards: Alber, 59; Wonders, 30; Sweeny, 41; Kiel, 37; Guenther, 24.
Most points single game: Alber, 35 against New Boston Huron, Feb. 4; Wonders, 26 against Lincoln Dec. 6; Kiel, 26 against Brighton Dec. 14; Sweeny, 25 against Lincoln Dec. 6; and Guenther, 17 against Dexter Feb. 18.

Infant Featured in Swim-Gym Class

Aaron Schrader, 11-month-old son of former Chelsea residents Mr. and Mrs. Michael Schrader, was in the news last month in Rockford, Ill., when a local newspaper featured a series of photos of Aaron and Mrs. Schrader during a swimming excursion in the Diaper Swim and Gym classes at Rockford's YMCA.
The Schraders currently reside at 4519 Highcrest Rd., Rockford. Michael Schrader is a hospital planner at a Swedish-American hospital there.

STATISTICS

Season Final Totals

Player	MS	St	Asst	Pts
Dave Alber	176	61	53	362
Randy Davis	31	15	2	24
Randy Guenther	72	23	28	136
Ron Kiel	166	18	8	160
Bill Rademacher	5	2	0	0
Steve Lyerla	26	7	1	18
Dave Watson	3	0	2	10
Jack Hackworth	28	7	16	60
Tom Hafer	6	1	1	10
Howard Salyer	7	0	3	9
Randy Musbach	19	17	40	80
Rick Sweeny	185	36	19	241
Rick Robbins	4	0	1	2
Gary Wonders	54	33	104	247

Total shots attempted from the floor, 1,234; total shots made, 588; percentage, 48.
Total shots attempted from the foul line, 407; total shots made, 259; percentage, 64.

Area Bowlers Qualify in Midas Bowl-Off

Local resident Doug Weatherwax, 605 Grant St., was one of five league bowlers at Chelsea Lanes who qualified for the Midas Open Bowl-Off by virtue of his pins-over-average recorded Feb. 3-9.
Weatherwax recorded a total of 125 pins-over-average. Other qualifiers from Chelsea Lanes, now in the running for five national championships, were Mike Fox of Ann Arbor, 14; Robert Rawson of Pinckney, 116; Sam Beal of Manchester, 140; and Dick Rang of Brooklyn, 119.
Qualifiers will have their scores compared to other top-scored bowlers at participating bowling centers to determine the five national Midas Open Bowl-Off winners, who will win all-expense-paid trips to the \$100,000 Midas Open in Windsor Locks, Conn., for themselves and a guest; bowl in the Midas Pro-Am; be a member of the TV audience when tournament finals are televised; and receive trophies.
The Chelsea segment of the tournament was sponsored locally by the Midas shop at 3170 Washtenaw, Ann Arbor.

Area Bowlers Qualify in Midas Bowl-Off

Over-confidence is the ally of the enemy.



CREATIVE CENTERPIECES for their annual Father-Daughter Banquet March 16 will be the back, from left, are Lisa Hurd, Robin Doll, Dawn Hammel, Dawn Owens, and Amy Eisenbeiser; in front, from left, are DeeDee Murphy, Kim O'Quinn, and Mrs. William Eisenbeiser, troop leader.

Snowmobile Club Joins County Disaster Team

Inverness Snowmobile Club has joined 14 groups from Washtenaw county who are already members of the Red Cross County-Wide Disaster Team. Inverness, designated Disaster Team No. 9 by the Red Cross will cover part of Washtenaw and Livingston counties in event of disaster due to weather conditions, including big snowfalls, floods, tornadoes, etc.
Two-thirds of Inverness Snowmobile Club's members will be participating as volunteers in the Red Cross Standard Multi-Medium Course this Thursday, March 6, and Wednesday, March 12, from 7 to 10 p.m. at Inverness Country Club, where Washtenaw county's Red Cross director, Don Peak, will head the volunteer course, with Chuck Moler from Dexter as instructor. Cost of the course is \$2.60, which includes the cost of four books.
The course, according to Moler, consists of a film demonstrating four ways to stop bleeding, mouth-to-mouth resuscitation, how to stop choking, bandages, splinting, poison control, heat exhaustion, heart attack, fainting, and improvising emergency equipment, and cold exposure, such as frostbite.
Volunteers' participation after each film will be conducted with the assistance of Chuck Moler's 16-year-old son, Charlie, and Kathy Jensen of Ann Arbor.

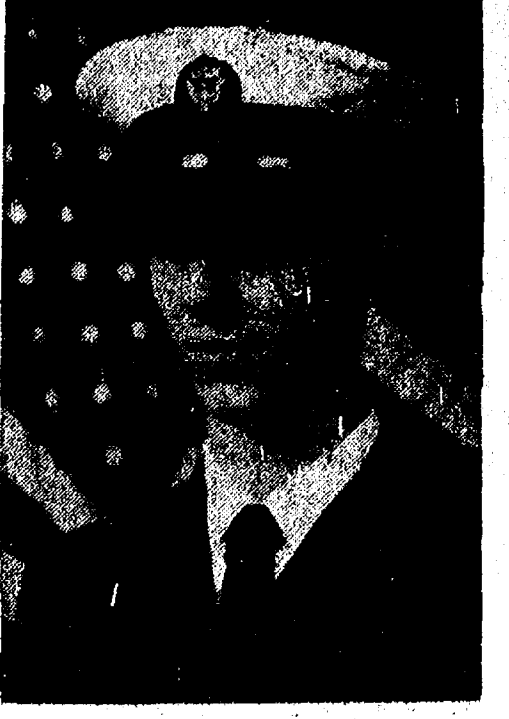
YOU & YOUR CAR

New Life for Engines Through Rebuilding

Your automobile engine is capable of operating efficiently for more than 100,000 miles if properly maintained. And when an engine does give out it is still possible to restore new car performance by having it rebuilt or by purchasing a mass-produced remanufactured engine.
These engines retain the original cylinder block and other expensive internal components such as the crankshaft and camshaft which are remachinable. All other moving parts such as pistons, rods and bearings are replaced with new components.
The result is an engine that is equal to, or in some cases better than a new engine. A new engine block may sometimes warp slightly in service as it "seasons." The remanufactured engine has a seasoned block from which internal stresses have been relieved. Imperfections that may have developed in the block are corrected by precision machining, performed either by custom engine rebuilders—usually found in automotive wholesale establishments—or by production engine remanufacturers.
The primary attraction of a rebuilt engine is price. Since the most expensive engine components are retained, the total cost is less than a comparable new engine.
While the need to have an engine rebuilt is not common among new car owners because they usually sell or trade their vehicles before the engine is worn out, used car owners who purchase high mileage cars can obtain new engine performance by having the engine rebuilt. Rebuilding is essential for

Letters to the Editor

To the Editor:
This is to alert the citizens of Chelsea and Sylvan and Lima townships. What is being proposed by Michael Papo for my neighborhood on East Old US-12 will have far-reaching effects, way beyond the confines of my backyard.
Michael Papo's request to rezone some 27 acres from R-C Recreational Conservation to a lesser land use, namely Multiple Family to accommodate hundreds of rows and apartment housing units, requires the attention of all village and township taxpayers, citizens and school children of the age of reasoning.
Please do not think you are safely tucked away in your little corner of the world, too far removed for the results of such rezoning to effect you and yours. Do not be uninformed and above all else, do not be naive. After Michael Papo, who will be next, when and where? Other investors and developers will follow only too quickly and will or cannot be denied rezoning privileges on request once the door has been opened.
Attend the Monday, March 24, 8 p.m. meeting at the Sylvan Township Hall, W. Middle St. Hear what is being planned for your future and the immediate and long range effects on your sewer and water services, school system, fire and police services and protection, garbage and pest control, health services, library, public parks and recreation facilities and your property values.
Change is inevitable but only desired and controlled growth can be called progress.
Ethel Pfeifer



RANDY C. BUCKINGHAM
Randy Buckingham Completes Navy Recruit Training
Navy Seaman Recruit Randy C. Buckingham, son of Mr. and Mrs. Ray Buckingham of 760 N. Main St., graduated from recruit training at the Naval Training Center, Great Lakes, Ill.
He is scheduled to report to Machinist Mate School, Great Lakes. The training included instruction in seamanship, military regulations, fire fighting, close order drill, first aid and Navy history.

3-in-1 Sale...

(Continued from page one)
The three-in-one sale will open at 9 a.m. Saturday at Sylvan Township Hall. Baked goods may be delivered to the hall after 8:30 a.m., Mrs. Riemenschneider said, while other items to be sold may be deposited at the hall between 10 a.m. and 2 p.m. Thursday and Friday.
Those needing pick-up of items they wish to contribute to the sale may call Mrs. Riemenschneider at 475-1469 or Bobbie Johnson at 475-9365.
All proceeds from the sale will go to the March of Dimes.

Beach Bands...

(Continued from page one)
is composed of "Introduction and Dance," by Purcell, "Sarabande," by Lawes, and "Ronda," by Croft; and "Water Music" including the Air and Finale, by G.F. Handel.
Time schedule for the 8th grade band has the musicians loading buses at Chelsea High school at 11:45 a.m., departing at 12 noon, and returning at 5:30 p.m.
commercial vehicle operators such as taxi fleet owners who consistently coax up to 200,000 miles from their engines despite the severe punishment of city stop-and-go driving. The real mileage champs, however, are the trucking fleets that regularly obtain more than a million miles from an engine that has been rebuilt several times.

Village Election...


(Continued from page one)
offices in Chelsea Jaycees, Chelsea Fair Board, Cub Scout Pack 445, and Chelsea United Way. He is also a nine-year member of Washtenaw Association of Life Underwriters.
Polls at Sylvan Township Hall will be open from 7 a.m. to 8 p.m. on Monday, March 10.


Jiffy market

Big Enough To Serve You . . . Small Enough To Know You!

CORNER OF SIBLEY & WERKNER RDS. . . CHELSEA, MICHIGAN PHONE 475-1701

HOURS: Sun. thru Fri., 8 to 8 Sat., 8 to 10 WE ACCEPT U.S.A. FOOD STAMPS SALE PRICES EFFECTIVE Thurs., Mar. 6 thru Sun., Mar. 9

U.S. GOVT. INSPECTED CHOICE BEEF U.S.A. CHOICE BEEF BLADE CUT CHUCK ROAST . 69¢ lb. U.S.A. CHOICE BEEF 7-BONE CHUCK ROAST . 79¢ lb. U.S.A. CHOICE BEEF ENGLISH OR ARM ROAST . . . \$1.09 lb. U.S.A. CHOICE BONELESS BEEF STEW \$1.09 lb. U.S.A. CHOICE BEEF LEAN SHORT RIBS OF BEEF 59¢ lb.		BEEF FRONT QUARTER  BEEF HIND QUARTER  U.S.A. CHOICE BEEF SIDES - FRONTS - HINDS WHOLE RIBS - WHOLE LOINS CUSTOM CUTTING - WRAPPING - FREEZING QUICK SERVICE ON BUTCHERING YOUR BEEF OR OURS	YOUNG, TENDER LEAN PORK PORK STEAK 89¢ lb. FRESH PORK ROAST 79¢ lb. FRESH PORK CUTLETS \$1.19 lb. FRESH PORK SAUSAGE 89¢ lb. FRESH SPARE RIBS 98¢ lb.
---	--	---	--

MEADOWDALE SLICED BACON 1-Lb. Pkg. \$1.19	Young, Tender, Sliced BEEF LIVER 49¢ lb.	CAMELOT CHUNK BOLOGNA 79¢ lb.	CAMELOT SKINLESS WIENERS 2-Lb. Pkg. \$1.49	FARMER PEET'S ALL-BEEF FRANKS 1-Lb. Pkg. 79¢	U. S. CHOICE RIB STEAK \$1.39 lb.	FRESH GROUND - LEAN HAMBURGER 79¢ lb. Satisfaction Guaranteed!	KNEIP CORNED BEEF ROUND \$1.19 lb.	HILLBILLY OLD-FASHION BREAD Large 1-Lb., 8-Oz. Loaf 49¢
KLEEN - MAID WHITE BREAD 1 1/2-Lb. Loaf 39¢	FARM MAID Homogenized FRESH MILK Gal. Crtn. or Plastic \$1.27	U. S. NO. 1 MICHIGAN POTATOES 8-Lb. Bag 59¢	MARATHON GAS REGULAR 49.9 PREMIUM 53.9 LEAD-FREE 52.9 Incl. All Taxes Cold Weather Gas You Can DEPEND ON			A BEST BUY 		

GAS PUMPS & STORE OPEN SUN. thru FRI., 8 to 8 Sat., 8 to 10 - U. S. Authorized Food Stamp Store - Daily & Sunday Papers

Community Calendar



Inverness Golf Club, Wednesday, March 18, 7:30 p.m., at the clubhouse.

Washtenaw County Democratic Committee VI, Tuesday, March 11, 7:30 p.m., Ann Arbor Bank, Dexter. For more information, call 665-3804 or 475-1873.

Lima Extension Study Group, Wednesday, March 12, 10:30 a.m., Lima Center Hall, Lesson: "Think Metric" and "Women's Rights Under the Law." Hostesses: Mrs. James Rainey and Mrs. Walter Breuninger.

Stretch and Sew fashion show, Ann Arbor Marriott Inn, Friday, March 8, 7 p.m., to benefit the local American Cancer Society drive. For ticket information, contact Marge Daniels at 475-1784 or Nancy Dunn at 475-7281.

Chelsea Scholarship Fund Committee, Monday, March 10, 7:30 p.m., home economics center at Chelsea High school.

Waterloo Village United Methodist church, Friday, March 14, 1 p.m., the Rev. and Mrs. Richard Church, Cherokee Indians, will speak. Light refreshments served at the church house.

Chelsea Child Study Club, Tuesday, March 11, 8 p.m., Chelsea High school cafeteria, fashion show sponsored by Woman's Club of Chelsea. Guests welcome.

Past Noble Grands Club with Mrs. Mac Packard, Tuesday, March 11 at 7:30 p.m. Come prepared to sew.

Young Homemakers Husbands' Night, Saturday, March 22, 8 p.m., home of Mr. and Mrs. Merritt Kalmbach.

Young Homemakers Easter Egg Hunt, home of Jill Bauer, Friday, March 28, 4 p.m.

OES special meeting honoring county officials, Wednesday, March 12, 8 p.m., Masonic Temple. The country store is the project for these county officials. All contributions are appreciated.

Chelsea Area Historical Society is still taking 1975 annual memberships. Applications for membership may be picked up at McKune Memorial Library, or write Box 334, Chelsea 48118, or telephone 475-7290 for more information.

RAM Masons, regular communication, Thursday, March 6, 7:30 p.m.

Art Contest. Chelsea Area Historical Society sponsoring contest for Society Emblem. Submit black and white entries to Mrs. Yelski at Junior High or Mrs. Borton at 475-7305. There will be \$10 prize.

Limaneers, home of Mrs. Alfred Lindauer, Thursday, March 6, potluck dinner at 12:30 p.m.

Inverness Snowmobile Club, hot dog roast at Park Lyndon, Sunday, March 9, instead of the regular club meeting.

Senior Citizens social card party, Thursday, March 6, 7:30 p.m., at 140 Park St., the former Methodist parsonage. No lunch.

Chelsea Area Historical Society, Monday, March 10, 8 p.m., McKune Memorial Library.

Chelsea Community Fair in Bureau, Thursday, March 13, Sylvan Township Hall, with potluck supper at 7 p.m. Hosts are Mr. and Mrs. Roy Kalmbach and Christine Heydlauff.

Story, Wednesday, April 2, 1:30 and 3 p.m., Beach Middle School auditorium. Tickets, 50 cents, available from members of Modern Mothers Child Study Club.

Woman's Club of Chelsea will sponsor a style show by Karen's Boutique, Tuesday, March 11, 8 p.m., Chelsea High school cafeteria. All child study clubs are invited.

Humane Society of Huron Valley has dogs and cats for adoption. Owners may reclaim their lost pets. Phone 662-5585. Open from 9 a.m. to 5 p.m. daily; Sunday 1 p.m. to 5 p.m. 100 Cherry Hill Rd., quarter-mile south of Plymouth Rd. at Dixboro.

Pap tests are free for all area women, Tuesday mornings, at St. Joseph Mercy Hospital, Ann Arbor. Call American Cancer Society office, 668-5857 for appointment.

Chelsea Band Boosters meet second Thursday of every month, Chelsea High school band room, 8 p.m. All band parents are members.

Inquiries regarding the Chelsea blood bank may be directed to Harold Jones in the event that Mrs. Dudley Holmes is unavailable, or to Robert Moyer, American Red Cross, in Ann Arbor, 971-6300.

American Legion and Auxiliary, hospital equipment available by calling Bill Coltre at 475-2724.

AA and Al-Anon meeting, Monday evenings at Chelsea Hospital, 8:30 p.m. Closed meetings.

Chelsea Co-op Nursery applications for 1975 classes are now being taken. For information, call Jearl Mull, 428-8822. xady121

Chelsea Home Meal Service delivers "one hot meal a day" to elderly and disabled living in the Chelsea area. For information call 475-8014 or 475-2923.

Sylvan Township Board meeting the first Tuesday of the month, at 7 p.m., at Sylvan Township Hall.

Senior Citizen Fun Nite every Friday evening at 7:30.

Lamaze Association of Ann Arbor

DEATHS

Mrs. David Lixey Dies Last Friday at Chelsea Community Hospital

Mrs. David (Lois) V. Lixey, 100 Jahner Rd., died Friday, Feb. 28, at Chelsea Community Hospital.

Born Nov. 2, 1899, at Clearfield, Pa., she was the daughter of Archer and Blanche Ogden Spence. She was married to David Lixey May 29, 1944. He died Nov. 12, 1970.

She is survived by two step-sons, Harvey Lixey of Chelsea and Robert Mitchell of Ann Arbor; two step-daughters, Dorothy Lixey of Ann Arbor and Ruth Flood of Columbia, Mo.; one half-brother, Earl Maines of Clearfield, Pa.; one sister, Mrs. Hazel Graham of Clearfield, Pa.; two half-sisters, Mrs. Lona Conaway and Mrs. Stella Williams, both of Clearfield, Pa.; and several nieces and nephews.

Funeral services were conducted Monday, March 3 at 11 a.m. at the Staffan Funeral Home by the Rev. Fr. Phillip Dupuis. Burial followed in Mt. Olivet Cemetery. Memorial contributions may be made to the McKune Memorial Library Fund.

Clarence McBride Former Chelsea Resident Dies Feb. 24 at Wayland

Clarence McBride, a resident of Hopkins and a former resident of Chelsea, died Monday, Feb. 24, at Sandy Creek Nursing Home in Wayland.

Born in Hopkins township on Aug. 5, 1896, he was the son of George and Ida McBride.

He was employed by the Michigan Department of Conservation and also worked in the Hopkins Bank for many years. He was a member of the Hopkins Community Reformed church, Hopkins Lodge 432 F&AM, and OES Hopkins Chapter No. 499. He was a past president of the Hopkins Lions Club and was a past district governor of the Lions Club International. He was a former member of the First Congregational church of Chelsea.

Surviving are four children, C. Royal, of Ypsilanti; Mrs. Vivian Lovall of Hopkins; Bernath of Plainwell, and Mrs. Robert (Doris) Schwartz of Hopkins; 11 grandchildren; 11 great-grandchildren; one brother, Russell of Princeton, Mo.; and many nieces and nephews.

Funeral services were conducted Thursday, Feb. 27, at the Hopkins Chapel of the Garden Funeral Residence by the Rev. Sanford Morgan. Burial followed in Maplewood Cemetery in Hopkins township.

is now holding classes at the Chelsea Community Hospital. If interested, call 761-4402, or 475-8316.

Weekly Ann Arbor Saturday night singles dance, live band, YM-YWCA, 350 S. Fifth, Ann Arbor, 9 p.m. to 12 midnight.

Weekly Tuesday Nite Singles Club, dance, 9 p.m. to midnight, Ann Arbor YM-YWCA, with live band.

School Board Briefs

Present at the Board of Education meeting March 3 were President Haselschwardt, Trustees Strling, Tobin, Hodgson, Daniels, Irving, and Schafer, Superintendent Cameron, Business Manager Mills and Principals Lane, Conklin, Wojcik, and Benedict. Also present was Jerry Quillmore of Construction Co-ordinators, Inc., and guest Barbara Wenk, Kurt Allshouse, Mark McKernan, Dave Nicewicz and William Chandler.

Meeting was called to order at 3 p.m. by President Haselschwardt. Minutes of the meeting of Feb. 17 were approved as presented.

The board received and discussed a report from the curriculum committee, which resulted in the following points:

- automotive mechanics will be offered in the 1975-76 school year.
- the agriculture program was approved as submitted.
- Beach Middle school's principal will attempt to implement a reading enrichment program without additional staff.
- high school science and biology I will be available to 9th graders who qualify.
- a geology course will be offered.
- foreign language program offerings will remain the same.

The contract with E & L Painting to paint North and South Elementary schools, Chelsea High school, and the bus service garage, for a total of \$51,794, was rescinded at their request.

The board awarded the contract for painting the same sites to Delf Painting and Wallpaper of Ann Arbor for \$51,700.

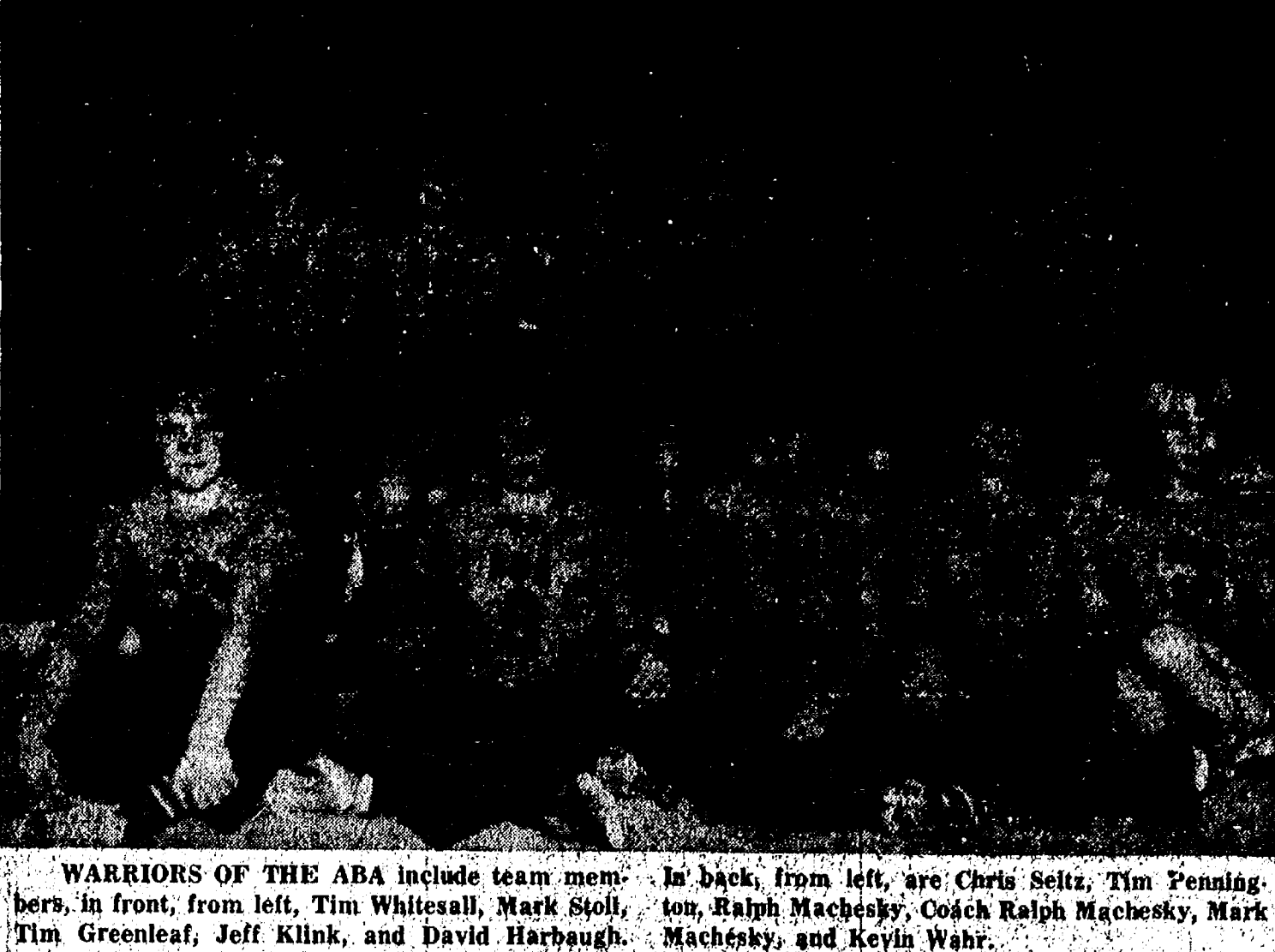
The board directed Business Manager Mills to study a report at a later date regarding folding fabric partitions for two rooms at North Elementary school.

The board granted the request of a maternity leave for Mrs. Judy Parker for the 1975-76 school year.

The board adopted a resolution authorizing the president and the secretary to sign the sales agreement for the purchase of the Reuben A. and Esther B. Lesser property.

President Haselschwardt called a special board meeting for 8 p.m. in the board room in the administration building at Chelsea High school for March 17.

Meeting was adjourned at 1:30 a.m.



Senior Citizen Meat Package Offered for Group Purchases

Dunbar's Dexter Food Locker has initiated a special "senior citizen" unit of meat for purchasers of food through the meat co-op organized locally, Mrs. Kathy Gonyon, co-ordinator of the effort, said Monday.

Mrs. Gonyon reports that a 10-pound unit priced at \$10.50 and a 20-pound unit costing \$20 will now be available through the co-op, beginning with this week's orders.

Included in the 10-pound packages, Mrs. Gonyon said, are two packages of pork chops totaling four cuts of meat; two T-bone steaks, two boneless beef roasts; and four packages of hamburger patties, totaling 16 patties.

The 20-pound unit includes three packages of pork chops, totaling six cuts; two T-bone steaks; four packages of chopped steak, totaling eight cuts; three packages of hamburger patties, totaling 12 patties; two packages of beef liver, totaling four slices; four boneless beef roasts; and four packages of chicken, cut into one-quarter chicken in each package.

Still available from Dunbar's Dexter Food Locker, Mrs. Gonyon adds, is the one-sixth steer arrangement which produced so many delighted co-ops in the first delivery of meat and also the food provided by the co-op's other two sources, Federation Warehouse, which will make a grain delivery for the first time this Saturday, and the Ann Arbor Veggie Co-op, which offers fresh fruits and vegetables.

In addition, Mrs. Gonyon reports that she has contacted a representative of the U. S. Department of Agriculture, who expects that she should be able to complete application forms to allow the co-op to accept food stamps.

Placement of orders for the three co-ops is scheduled for every Wednesday between 7 and 9 p.m. at Mrs. Gonyon's home at 303 Railroad St.; delivery is between 3 and 5 p.m. every Saturday, also at Mrs. Gonyon's home. Meat orders must be picked up by the purchaser; however, special arrangements may be made for senior citizens or those unable to pick up their orders.

Those interested in more information about the food co-op may call Mrs. Kathy Gonyon at her home or call Mrs. Katie Harat at the OEO office, 475-1580.

Cub Scouts Hold Blue, Gold Banquet

Cub Scouts of Pack 415 held their annual Blue and Gold Banquet Sunday, Feb. 23, at Chelsea High school cafeteria. Tables were trimmed with blue and gold crepe paper runners and official scout place mats, and programs were painted especially for Pack 415. Guests of the Cub Scouts were their families, who all enjoyed a planned pot-luck dinner.

Special guests were the Rev. and Mrs. Jerrold Beaumont of St. Barnabas Episcopal church; retired Cubmaster Gene Ahrens and family; Charles Burgess, vice-chairman of the newly organized district 1 of the Wolverine Council; and Otis Titus, Webelos leader.

Following dinner, Cubmaster Gilbert Trevino and Assistant Cubmaster Herbert Pearson received thank-you gifts from the pack in appreciation for their services of the past year.

New committee members for the pack are Bill Greene, chairman, and Mrs. Pat Wirth, treasurer and awards chairman.

Awards were then presented to Cubs who had earned them. Guests then inspected craft items made by scouts, as well as the re-assembled display which had been in the State Farm Insurance Office window for Scout Week, Feb. 3-8.

Entertainment was provided by Alohak Lodge No. 88, Order of the Arrow, Indian dancers.

Pack meeting was closed with a candlelight ceremony, with each Cub Scout repeating the Cub Scout Promise.

Telephone Your Club News To 475-1371.

Churches Join In Hymn Sing At St. Paul's

All churches of the community have been invited to share in a hymn sing at St. Paul United Church of Christ, scheduled for Wednesday, March 12, at 7 p.m. The sing is sponsored by Chelsea Ministerial Fellowship.

Churches have been asked to submit two hymns to be sung at the hymn sing, as well as special musical selections such as solos, choir, duets, and instrumental numbers.

Churches should contact the Rev. Ralph Ratzlaff, at St. Paul United Church of Christ by Monday, March 10, with their selections.

Fair Book Going to Press In Two Weeks

While the rest of the village is only wishing for spring weather to begin, Chelsea Community Fair Board is currently finalizing programs and premiums for the Chelsea Community Fair that concludes the summer months.

New for the fair this year will be a compact fair book, to be printed by Chelsea High school's graphic arts classes. Because the book will be "going to the presses" soon—nearly six months in advance of the Aug. 28-30 fair, groups or individuals wishing to sponsor a fair event should contact fair manager Earl Heller within the next two weeks with information regarding their event. Information may also be sent to the Chelsea Fair Board, P.O. Box 240, Chelsea 48118.

Other possible new items to be offered for this year's fair include a tricycle-pulling contest, sponsored by North Lake Co-op Nursery; a horse-shoe pitching contest, initiated by Jim Daniels; an expanded craft division; a pony-pulling contest; a team of hogs in the fair parade; and what the Fair Board calls "a more authentic demolition derby."

Board members have expressed their appreciation for increased community involvement in the annual fair, and report that they are "anxious to hear from anyone wishing to contribute to the 38th annual Chelsea Community Fair."

Warrants Issued for Arrest in Theft Case

Two warrants have been issued to the Chelsea Police Department for the arrest of Bobby Dean Akers, 25, of Chelsea, in connection with last Tuesday's theft of a snowmobile suit from a car parked in the Chelsea Milling Co. parking lot and the theft of a car from Lloyd Bridges Chevrolet, Chelsea Police Chief George Meranuck said Monday.

The warrants are for larceny under \$100 and unlawfully driving away an auto.

BIRTHS

A daughter, April Lynne, Feb. 14, at St. Joseph Mercy Hospital in Ann Arbor, to Mr. and Mrs. Dennis Carpenter of Chelsea. Paternal grandparents are Mr. and Mrs. Zephyr Carpenter of Chelsea; maternal grandmother is Mrs. Mildred Barth of Pinckney.

You and Your FAMILY

... one of the reasons we're in business... with life insurance that helps your family when you die, you and your family in financial emergencies or when you retire. Check the facts

DAVE ROWE
107 1/2 S. Main
Chelsea, Mich.
Ph. 475-8065

FARM BUREAU INSURANCE GROUP

Deepfreeze
made only by **Amana**

Model C-23
23 cu. ft. Holds 805 pounds

For freezer living at its best! Check these quality features

- More capacity — less floor space with new efficient foam insulation.
- More convenience — removable baskets for organized storage, light in lid, Defrost drain, Lock • Keeps Foods Better. Freezing coils on all four walls and bottom. Adjustable temperature control.

Deepfreeze The finest name in home freezers.

HEYDLAUFF'S
113 N. Main St., Chelsea Phone 475-1221

GAMBLE'S

Tire Close-Out Specials

SHOP NOW and SAVE

PRICED TO SELL

Complete Line of Tires Marked Down!

SAVINGS UP TO 50%

FOR EXAMPLE:

G78-13 B and W Reg. \$33.90 - NOW **\$26.50**

F78-14 B and W Reg. \$36.11 - NOW **\$28.25**

Prices Include Federal Excise Tax

All Sizes On Sale

HURRY - DON'T WAIT!

Limited Quantities on Some Sizes

BUY NOW - PAINT LATER!

NOBODY ELSE is selling Custom-Tinted Spread Satin at this Low Price!

\$6.88 Gal.

Any Color You Want!

Spread Semi-Gloss Quart ... \$2.88

Both prices in effect thru Sat., March 8

WHY PAY MORE?

CHELSEA LUMBER

CHELSEA, MICHIGAN, THURSDAY, MARCH 6, 1975



NBA CELTICS pictured above are, in front, left, are Mark Barnes, Steve Hawker, Coach A. I. Meyer, Steve Graun, Andy Ahrens, Dick Pfeiffer, Anderson, Paul Anderson, Troy Hosier, Vince Sal Brian Koeppler, and Mike O'Quinn. In back, from left, are Tom Mull, Steve Whitesall, Chris Heater, Tom Mull; Coach from left, Kevin Morris, Mark Bentley, Garland Dennis, Mull, Mark Mull, and Dan Pennington. Not present for photo was Todd Kuhl.

Biddy Basketball Hit By Rash of Upsets

Last Saturday's Biddy Basketball play turned into upset city, as three previously-undefeated teams suffered losses, while three winless teams recorded their first victories.

WBA's two leading teams, the Capitols and the Suns, both of whom had boasted perfect records prior to Saturday's action, were edged out Saturday afternoon, Capitols losing to the Hawks, now 2-2, by an 18-16 count, and Bullets squeaking past the Suns, 8-6 to earn a share of first place with a 3-1 record.

Previously winless Kings topped the Nicks, 20-18, to put both squads at 1-3 for the season, while Lakers founced the Rockets, 16-8, for their first season victory. Rockets are now all even at 2-2, while Lakers stand at 1-3.

Only Warriors remain undefeated in the ABA, as Colonels, who had held a 3-0 record prior to Saturday's contest, were dumped by the Braves, 20-15. Braves and Colonels now share the second-place slot with 3-1 records. Warriors, meanwhile, victimized the 1-3 Nets, 21-17.

In a battle at the lower depths of the league, Squires downed the winless Pacers, 21-18, to record their first season victory.

Only in the NBA did standings continue basically the same, as the Celtics ran their win streak to four, with a 13-10 triumph over the Pistons, now 1-3 on the season.

ABA's second-place Bulls, now 3-1, bounced past the cellar-dwelling Bucks, 23-19.

WBA BASKETBALL
Standings as of March 1

Team	W	L
Capitols	3	1
Suns	3	1
Bullets	3	1
Hawks	2	2
Rockets	2	2
Nicks	1	3
Kings	1	3
Lakers	1	3

ABA BASKETBALL
Standings as of March 1

Team	W	L
Warriors	4	0
Colonels	3	1
Braves	3	1
Nets	1	3
Squires	1	3
Pacers	0	4

NBA BASKETBALL
Standings as of March 1

Team	W	L
Celtics	4	0
Bulls	3	1
Pistons	1	3
Bucks	0	4

BIDDY BASKETBALL
Games March 6

WBA Games—
Capitols vs. Kings, 10 a.m.
Rockets vs. Bullets, 10 a.m.
Lakers vs. Hawks, 10:40 a.m.
Suns vs. Nicks, 11:20 a.m.
ABA Games—
Braves vs. Squires, 10 a.m.
Colonels vs. Warriors, 10:40 a.m.
Nets vs. Pacers, 11:20 a.m.
NBA Games—
Pistons vs. Bulls, 10:40 a.m.
Celtics vs. Bucks, 11:20 a.m.

A Standard Want Ad Will Get Results!

EARLY BIRDS GET THE JUMP ON SPRING

WE ARE OFFERING DEALS on 1974 model compact lawn tractors and riding mowers that puts a rebate to shame. Compare them with 1975 prices!

OFFER GOOD UNTIL MARCH 15, 1975 or until those in stock are sold.

P.S.—\$10 will hold a rototiller until April 10. See our selection of Simplicity, Gilson, Ariens, Gardenmaster.

GARD 'N SAW ANNEX

CHELSEA HARDWARE

118 S. MAIN ST. PHONE 475-1121

Area Men's Bowling Tourney Underway

A Chelsea man managed to land in first place in the singles-with-handicap category in the first week of bowling this past week-end at Chelsea Lanes in the City Tournament of the Men's Ann Arbor Men's Bowling Association.

Steve Knepper, rolling a 590 actual with 101 handicap for a 691 total, led all bowling in the singles-with-handicap category. Also placing in the top 10 in that category was David Longworth, with a 561 actual, and 95 handicap, to total 657.

Knepper also rated in the top 10 competitors in the all-events with a 1,605 actual and 303 handicap, to total 1,908.

Other local men scoring highly in that category were Russ Walker of Dexter, with a 1,684 actual and 222 handicap, to total 1,906; Harold Hansen of Dexter, with a 1,543 actual and 303 handicap, to total 1,846; and Fred Harrison of Dexter, with a 1,506 actual and 249 handicap, to total 1,755.

Local entries are well-represented in the team event with handicap. Dexter's Nite Outers are currently in second place; Dana Maintenance No. 1 of Chelsea, in third; School Calendar Co. of Dexter in fourth; Smith AAA of Chelsea in sixth; and Sales & Service of Chelsea in seventh.

Local pairs also scored highly in the first week of competition in the doubles-with-handicap category. In second place was a team of Arthur Potter and Herbert Scheffer of Dexter; in sixth were Ronald Hansen and Fred Harrison of Dexter; in seventh were Jim Lyerla and Miller Ford of Chelsea; and in eighth are Frank Hutchinson and Bill Ratliff of Chelsea.

The City Tournament, scheduled at Chelsea Lanes for the first time in eight years, will continue each week-end through April 6, with team events scheduled Saturday and doubles and singles events on Sunday.

A total of 302 teams are entered in the competition from Ann Arbor, Dexter, Pinckney, Brighton, Howell, Chelsea, and Belleville.

A team of 1,327 Veterans Administration representatives worked last fall on campuses of nearly 2,000 colleges and universities, resolving pay and other problems of veterans training under the GI Bill.



WBA HAWKS team members include, in front, Steve Whitesall, Chris Heater, Tom Mull; Coach from left, Kevin Morris, Mark Bentley, Garland Dennis, Mull, Mark Mull, and Dan Pennington. Not present for photo was Todd Kuhl.

IPSCO Retains Two-Game Lead In Recreation Basketball Action

IPSCO continued its perfect season with a relentless abusing of Rockwell International last Thursday night, 64-24, to remain two games ahead of the closest contenders for the league lead, Heydlauff's and the Independents, who remain at 2-2.

Leading scorers for IPSCO in their triumph were B. Davis, who hit for 14 points, C. Farley with 12; and A. Farley with 10. Rockwell's only double-figure scoring came from D. McLaughlin, who was good for 10 points.

In other Thursday contests, Chelsea Lumber clouted 3-D Sales, 55-33; led by 22 points from L. Lande and another 11 from B. Murphy. High point man for 3-D was D. Parsons who scored 13 points.

D & D Lanes took a drubbing from Pinckney's Independents Thursday night, 47-17, which dropped the Lanes' record back to 2-7 for the season.

Independents were paced by three scorers: G. Eddings, who recorded 19 points, T. Trumble, who was good for 12, and J. Pine, who hit for 11.

D & D's offensive effort was spearheaded by R. Owen with 12 points and C. Collins with 10.

Monday night, Rockwell International took a king-sized beating at the hands of the rampaging Independents, 93-41. F. Frederick was the sole Rockwell player to manage to score in double figures, with 14 points. Independents, however, listed four players in double figures: R. Budd with 22 points; T. Breneman with 17; D. Douglas with 14; and T. Trumble with 13.

Heydlauff's maintained its second place status in the league Monday by bouncing past Southern Boy Take-Out, 60-45. B. Riemenschneider paced Heydlauff's with 18 points, followed by R. Miller with 11 and D. McCalla with 10.

High scorers for Southern Boy were R. Risner with 14 points and G. Allen with 13.

Although boasting a 30-point scorer, Tom Ballstrene, Chelsea State Bank fell to Dunlavy Farms Monday, 69-63. Pacing Dunlavy's effort were C. Elliott with 22 points, R. Mull with 13, and D. Clark with 10.

Other scoring leaders for the bank were S. Flint with 13 points and L. Kozma with 12.

In last Wednesday's contest, D & D Lanes managed to land in the winning column for only the second time this season by breezing past Rockwell International, 56-43. R. Owen led D & D scorers in the win, with 15 points, followed by C. Collins and A. Johns with 12, and P. Weiss with 11. F. Frederick was top scorer for Rockwell, with 10 points.

Chelsea Lumber made short work of Chelsea State Bank Wednesday, 75-60, led by five players in double figures: L. Lande with 16; J. Thoss with 14; D. Garrett with 12; G. Agen with 10, and B. Murphy with 10.

Pacing the Bank were L. Kozma with 21, W. Welton with 18, and R. Brier with 14.

Pinckney's Independents spared no mercy on Southern Boy in their Wednesday meeting, 90-42, when six Independent players hit for double-figure scoring efforts.

Big Independent scorers were S. Bishop with 18 points, D. Douglas with 16, G. Eddings with 12, J. Pine with 11, and T. Trumble and T. Breneman with 10 each. No Southern Boy players scored in double figures.

MEN'S RECREATION BASKETBALL
Standings as of March 3

Team	W	L
IPSCO	10	0
Heydlauff's	8	2
Independents	8	2
Chelsea Lumber	7	3
A.W. Brown Drug	6	3
Mark IV Lounge	5	3
Chelsea State Bank	5	5
Dexter Rabble	4	5
Rockwell International	3	7
Southern Boy Take-Out	3	7
D & D Lanes	2	7
Dunlavy Farms	2	8
3-D Sales	0	9

MEN'S RECREATION BASKETBALL
Games week of March 6-12

No games scheduled.

Monday, March 16—
IPSCO vs. A. W. Brown Drug
3-D Sales & Service vs. Mark Lounge
Independents vs. Chelsea Lumber

Wednesday, March 12—
Chelsea State Bank vs. Heydlauff's
Southern Boy Take-Out vs. Rockwell International
D & D Lanes vs. Dunlavy Farms

Although only 299 of the 29 million living American veterans have been awarded the Medal of Honor, 33 of them work for the Veterans Administration in 27 installations in 22 states, the agency reported recently.

Subscribe today to The Standard!

MILK
THIS WEEK, BORDEN gal. \$1.29

MEAT
REG. BOLOGNA lb. 95c
THURINGER lb. 99c
...from Hans Sausage House

CHEESE
MOZARELLA lb. \$1.49
FRENCH BRIE lb. \$3.59

PEPSI
10-oz. NO-RETURN BOTTLES . . 8 pac \$1.29

BAKED GOODS
Try 'Em, You'll Like 'Em... We make everything here

RICK'S MARKET - Just North of Chelsea on M-52
"The store with quality you can afford"

Step ahead in style with the hardy Wellington by Wolverine®

Built to stand up to any job, styled to look sharp for sport or leisure wear. One of the most practical all around boots you can buy. Try 'em on for size.

Wellington Truly elegant, this 10" tan Mustang Wellington features side pull straps, inside reinforced backstay, sturdy steel shank, cement construction and link tread outsole and heel.

\$29.95

Wolverine® Boots

STRIETER'S MEN'S WEAR
1914 - Our 60th Year - 1974

SPECIAL SALE

ALL MEN'S DRESS SHOES
From Our Regular Stock

25% Off

Thurs., Fri., Sat., March 6-7-8 Only

Save on This Special Event!

ALSO BIG SELECTION OF Shoes for the Entire Family 1/2 and More Off On the Bargain Floor

DANCER'S
Chelsea's Friendly Dept. Store

Legals

MORTGAGE SALE
Default has been made in the conditions of a mortgage made by Tracy Blackburn and Agnes Blackburn...

MSU Market-to-Table Meat Series Looks at Prices for 1975

To make better decisions at the meat counter and in your kitchen, clip and save this weekly MSU Market-to-Kitchen Meat Series...

Documents from America's Past Listed in Booklet

Many of us tend to take our national history for granted. However, the activity generated by the Bicentennial seems to make us more aware of the events we studied as school kids and then tucked away in a memory drawer...

LAND WANTED
Any size parcel in the Chelsea area. Property is selling. I can help you with the many details. Real Estate One, OF WASHENAW REALTORS

A Standard Want Ad will get you quick results!

POLE BUILDINGS
(GO UP EASILY, ECONOMICALLY)
ANY TYPE - ANY STYLE - ANY SIZE Residential - Agriculture - Commercial PROMPT CONSTRUCTION DATES Low prices and high quality workmanship.

Want to sell a car? Try a Standard Want Ad!

MICHIGAN DEPARTMENT OF NATURAL RESOURCES NOTICE OF PUBLIC HEARING
Take Notice that the said Department proposes to hold a hearing at Dexter Township Hall located in the County of Washtenaw, Dexter, Michigan at 7:00 p.m. on the 10th day of March, 1975.

CRIBLEY DRILLING, INC. OF DEXTER Announces A WINTER SPECIAL
Check with us on our conditions of well drilling NOW until MARCH 21, 1975
A 4-inch WELL - submersible pump and pitless adapter installed by us WILL GET YOU FREE a 202 WELL X TROL PRESSURE TANK (List price \$82.70)

VILLAGE ELECTION
To the Qualified Electors: NOTICE IS HEREBY GIVEN, That an Annual Village Election will be held in the VILLAGE OF CHELSEA (Precinct No. 1 and 2) State of Michigan at SYLVAN TOWNSHIP HALL Within said Village on Monday, March 10, 1975

and LORETTA V. HAYES, his wife to CAPITAL MORTGAGE CORPORATION, dated December 1, 1971, and recorded December 10, 1971 in Liber 1380, page 828, Washtenaw County Records...

MORTGAGE SALE
Default has been made in the conditions of a mortgage made by GLENN W. MARSHALL and MARGARET M. MARSHALL...

QUALITY Wedding Stationery
FINEST QUALITY Wedding Stationery can be yours at no extra cost. We invite you to come in and plan with us in advance of your wedding.

Don't anticipate lower-priced beef at the meat counter in 1975, even though there will be more cattle available for slaughter, advises George Dike, Michigan State University agricultural economist.

NOTICE OF PUBLIC HEARING BY THE LIMA TOWNSHIP PLANNING COMMISSION
A public hearing shall be held by the Lima Township Planning Commission on the application of the Chelsea School District for a Conditional Use Permit to use certain lands as hereinafter described for a service facility for the storage of school buses and other school equipment...

Higher-priced film wrap for packaging, salary increases, higher transportation costs and other cost increases all make their way into the price you pay for a pound of ground round or that infrequent sirloin.

THINKING OF BUILDING A NEW HOME BUT AFRAID YOU CAN'T AFFORD IT?
Before giving up, let us give you a complete estimate. FARLEY CONSTRUCTION CO. Phone 475-7643

THINKING OF BUILDING A NEW HOME BUT AFRAID YOU CAN'T AFFORD IT?
Before giving up, let us give you a complete estimate. FARLEY CONSTRUCTION CO. Phone 475-7643

BOWLING NEWS

Chelsea Lanes Mixed Standings as of Feb. 28

Table with columns W, L, listing bowling teams and scores for Chelsea Lanes Mixed.

Chelsea Suburban Standings as of Feb. 28

Table with columns W, L, listing bowling teams and scores for Chelsea Suburban.

Chelsea Women's Bowling Club Standings as of Feb. 28

Table with columns W, L, listing bowling teams and scores for Chelsea Women's Bowling Club.

Women, 150 games or better: J. Norris, 172, 157; D. Sannes, 150; R. Harook, 156; J. Stoll, 185, 207...

Leisure Time League Standings as of Feb. 27

Table with columns W, L, listing bowling teams and scores for Leisure Time League.

Hi-Point Mixed League Standings as of Feb. 25

Table with columns W, L, listing bowling teams and scores for Hi-Point Mixed League.

Women, high game, 150 and over: S. Hopkins, 153; D. Landwehr, 189; M. Morton, 180; M. Paul, 195; D. Oliver, 164, 163...

Men, high series, 425 and over

P. Schardt, 498; E. Williams, 443; M. O'Donnell, 423; M. Miller, 487; G. Tallman, 406...

Women, high series, 425 and over

P. Schardt, 512; E. Williams, 443; D. Oliver, 440; G. Desmitther, 427; M. Paul, 451...

Men, high series, 450 and over

W. Teachworth, 475; G. Cook, 505; O. Inbody, 486; S. Hopkins, 527; M. Fox, 470...

Charlie Brown's Peanut League Standings as of March 1

Table with columns W, L, listing bowling teams and scores for Charlie Brown's Peanut League.

Charlie Brown & Snoopy's Friends Prep Division Standings as of March 1

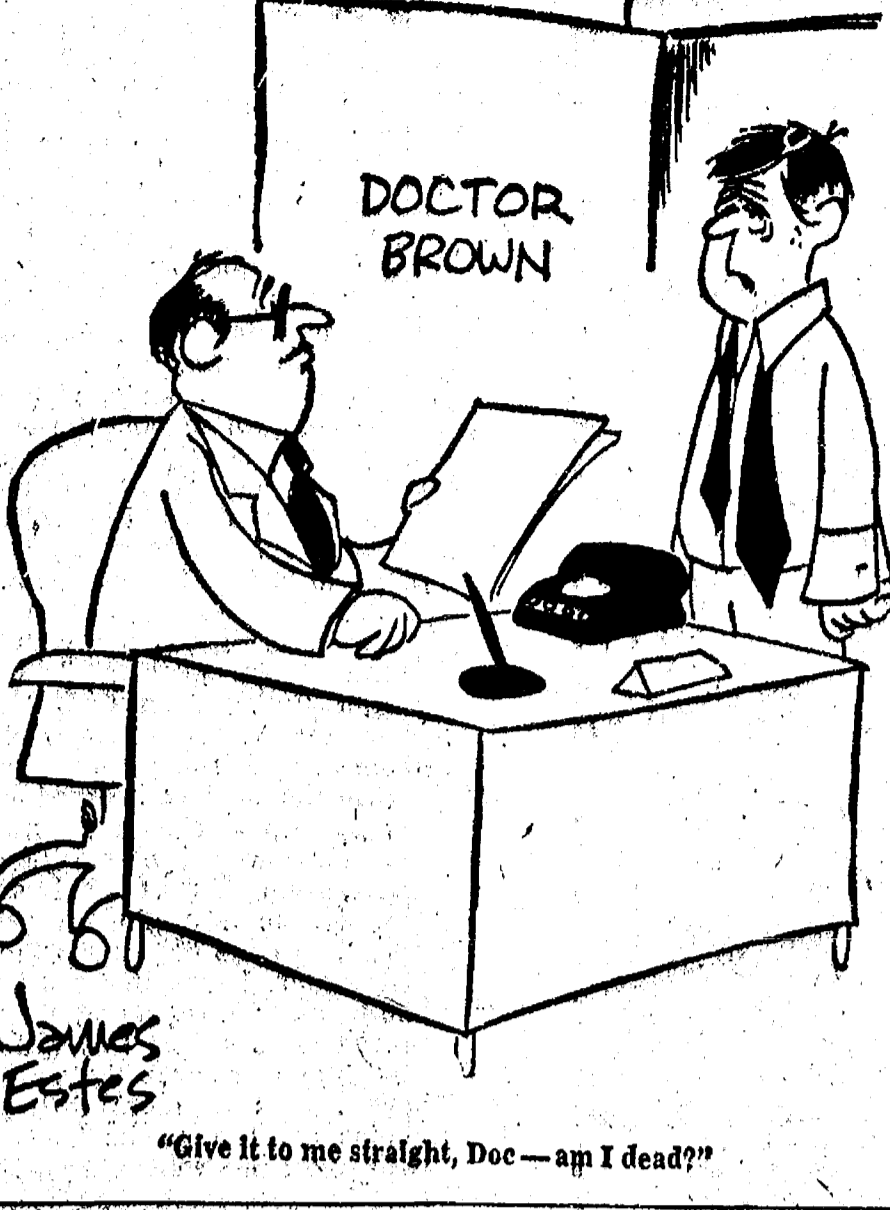
Table with columns W, L, listing bowling teams and scores for Charlie Brown & Snoopy's Friends Prep Division.

Bulldog Mixed League Standings as of Feb. 27

Table with columns W, L, listing bowling teams and scores for Bulldog Mixed League.

Wayne Dari-Blen Rations... 'New Concept' Feeds of the 70's. When a Wayne Dari-Blen ration starts working in the rumen, it keeps right on working... hours and hours longer than ordinary dairy feeds...

CLAFF OF THE WEEK



Chelsea Industrial Suburban

Table with columns W, L, listing bowling teams and scores for Chelsea Industrial Suburban.

Thompson Lounge, 16 8; Double A No. 99, 15 9; Ann Arbor Hyd., 15 9; Harvey's Tavern, 12 12; The Other Team, 11 13; Double A No. 2, 10 14; Mark IV Lounge, 9 15; Dana PTO, 8 16; High single game: B. Ahrens, 242; D. Cumper, 225; J. Graham, 574...

Chelsea Nite Owl League

Table with columns W, L, listing bowling teams and scores for Chelsea Nite Owl League.

Charlie Brown's Snoopy's Friends Prep Division Standings as of March 1

Table with columns W, L, listing bowling teams and scores for Charlie Brown's Snoopy's Friends Prep Division.

Junior Swingers

Table with columns W, L, listing bowling teams and scores for Junior Swingers.

Tri-City Mixed League Standings as of Feb. 28

Table with columns W, L, listing bowling teams and scores for Tri-City Mixed League.

Craft Appliance Co., 116 68; Jiffy Mixes, 110 72; F. P. Smith Pallet Co., 103 79; Real Estate One, 103 79; Stivers, 103 79; Jerry & Doug's Quality, 101 81; Portage Hardware, 99 83; Chelsea Cleaners, 97 85; Mel's Roofing, 97 85; McEwan & Robinson, 92 90; Sprague Buick & Oids, 89 93; R. L. Bauer Builders, 86 96; 3-D Sales & Service, 84 98; Hoover's Hustlers, 80 102; Take Seven, 76 106; Euler & Swersky, 74 108; 4-B's, 65 117; Chelsea Glass Works, 63 119...

210; C. Robinson, 204; A. Sannes, 204; B. White, 218. 450 series, women: M. Ashmore, 574; A. Hocking, 555; B. Parish, 528; D. Swersky, 504. 150 games, women: M. Ashmore, 201, 195, 178; C. Baker, 150; L. Behnke, 156; B. Fike, 186; K. Fletcher, 168; D. Fouty, 181; A. Hocking, 155, 232, 168; J. Kaiser, 152; K. Lentz, 157; M. Maier, 151; B. Parish, 155, 191, 180; M. Stafford, 188; D. Swersky, 157, 188, 159; E. Tindall, 160; M. Westcott, 160; M. Weston, 150, 159.

Rolling Pin League Standings as of March 4. Table with columns W, L, listing bowling teams and scores.

50 and over series: C. Shepherd, 481; J. Shepherd, 448; M. Vavas, 435; P. Goinis, 431; G. Clark, 406; M. Ringe, 459; K. Harris, 493; J. Buku, 447; E. Kalfbleisch, 429; P. Wurster, 428; S. Ringe, 458; J. Edlick, 435; E. Neibauer, 438; T. Doll, 437.

150 and over series: B. Torrice, 153; C. Shepherd, 158, 176; R. Foster, 152; J. Shepherd, 158, 166; S. Bowen, 159; M. Vavas, 170; S. Nixon, 150; P. Harook, 156; P. Goinis, 174; D. Anderson, 160; G. Clark, 153, 183; B. Marsh, 159; M. Ringe, 198, 153; N. Keezer, 159; K. Harris, 208, 155; J. Buku, 154; E. Kalfbleisch, 171; M. Wojcik, 151; P. Wurster, 151, 152; S. Ringe, 176; D. Butler, 152; J. Edlick, 155, 159; E. Williams, 178; E. Neibauer, 150; G. Brier, 157; K. Ryan, 157; P. Borders, 160; S. Parker, 172; D. Dirlam, 155; T. Doll, 159, 152.

Junior House League Standings as of Feb. 27. Table with columns W, L, listing bowling teams and scores.

200 games and over: G. Beeman, 203; A. Peterson, 209; T. Steele, 211; G. Ahrens, 202; E. Buku, 219; J. Richmond, 206; D. Buku, 246, 210, 225; R. V. Worden, 207; D. Foytich, 213; J. Dault, 204; L. McGowen, 209; M. Ford, 229; J. Elliott, 211; S. Vogel, 208; W. Bohne, 209; T. Crispin, 215; D. Wutke, 213; J. Borders, 209.

500 series and over: G. Beeman, 552; A. Peterson, 562; T. Steele, 568; R. Herrst, 523; G. Ahrens, 521; L. Sanderson, 505; E. Buku, 552; J. Richmond, 526; K. Hartke, 540; R. V. Worden, 538; J. P. Borders, 543; M. Leidner, 511; D. Foytich, 523; J. Dault, 539; L. McGowen, 550; J. Elliott, 563; M. Ford, 546; S. Knepper, 515; W. Bohne, 544; T. Crispin, 548; D. Wutke, 566.

Men, 600 series and over: D. Buku, 681.

The Veterans Administration reminds that direct loans up to \$600 per academic year are available under some circumstances to eligible veterans, wives, widows and children training on a half-time or more basis at undergraduate colleges and certain other schools.

Subscribe today to The Standard!

Senior House League Standings as of March 3. Table with columns W, L, listing bowling teams and scores.

Walter's Barber Shop, 120 108; Ben's Arco, 62 120; 600 series: R. Walker, 601; J. Harook, 601; N. Fahrner, 608; B. Gibney, 525 and over series: R. Lentz, 523; G. Rouse, 213; R. Walker, 225; G. Burnett, 212; H. Burnett, 210; J. Harook, 210; N. Fahrner, 214; B. McGibney, 226; E. Mumme, 212.

Addresses Listed For Elected Govt. Officials

Table listing addresses for elected government officials.

Sixth U.S. Congressional District - U.S. Senator Phillip Hart

Table listing addresses for U.S. Senator Phillip Hart.

18th Senatorial District - Senator Gilbert E. Bursley

Table listing addresses for Senator Gilbert E. Bursley.

23rd State Congressional District - Rep. Michael Conlin

Table listing addresses for Rep. Michael Conlin.

Cross-Country Ski Program Over for 1975

The cross-country ski season is over for the Washtenaw County Parks and Recreation Commission (WCPARC). After many weeks of postponement due to inclement weather, all but one of the seven scheduled cross-country ski instruction sessions were held. Of the 781 Washtenaw county residents who registered for the program, 575 participated. The ski clinics, which began on Jan. 7, were held in Ann Arbor, Ypsilanti and Saline. Raupp Campfires, The Peak and The Bivouac provided equipment for the skiers free of charge. The skis were taken to the sites each evening by Soybean Cellars Natural Foods. A \$2 registration fee was charged for instruction. WCPARC is planning to hold the instruction clinics again next season. A few of this year's cross-country ski directories are still available from the WCPARC office free of charge. Some ski program shoulder patches are also available for \$1. Interested persons should write or telephone WCPARC at Box 645, Ann Arbor 48107, telephone: 994-2578.

ONE-MINUTE SPORTS QUIZ

- 1. What was the score of the recent USC-Notre Dame gridiron clash?
2. Who was the winner of the U.S.-Japan pro golf tee mmatch?
3. John Riggins plays pro football for what team?
4. Who was named American League Rookie of the Year?
5. Who is the winner of the Heisman Trophy?

Sports Quiz Answers...

- 1. USC 55-Notre Dame 24.
2. The United States.
3. The New York Jets.
4. Mike Hargrove, Texas Rangers.
5. Archie Griffin, Ohio State.

EARLY DRAFT LETTER

Aberdeen, S.D. - Ernie Hoff got a government letter recently telling him to register with his draft board. Ernie's mother called local draft officials and they apologized for the trouble - Ernie is 8 years old.

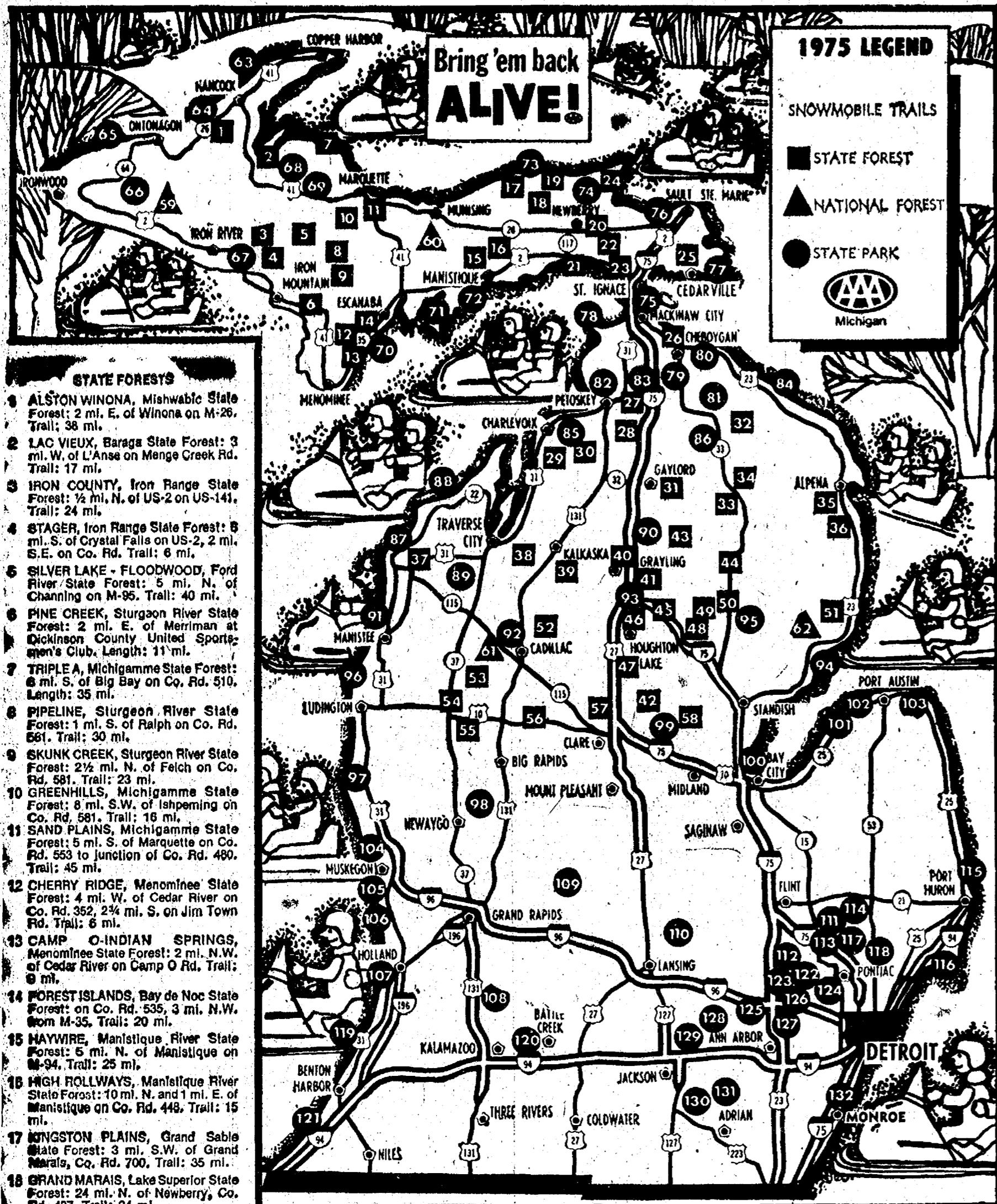
SOUTHERN BOY MANOR MOTEL. Efficiency Units - By Day, Week, or Month. 13190 M-52. PHONE (517) 851-4123 (2 miles south of Stockbridge)

He's only 30 and he just bought a \$50,000 life policy. Sure, a \$50,000 life policy could cost a lot of money... but it doesn't when it's "altogether"! When we say "altogether" we mean Permanent - permanent and term insurance combined to avoid those big premiums, but still deliver the big protection young family men need. It means you could have a \$50,000 policy which lets you build up a retirement income at the same time! Yes, Perma-Term's easier on the budget, but please remember that costs go up as you grow older. So give us a call now - before another birthday gets past you altogether!

CHELSEA GLASS WORKS. WORKMANSHIP AND MATERIALS FULLY GUARANTEED. Open Daily 8 a.m. to 5 p.m.; Sat., 8 a.m. to 1 p.m. 140 W. Middle, Chelsea Phone (313) 475-8667. WE REPAIR AND REPLACE: STORE FRONTS, FURNITURE TOPS, SHOWER DOORS, THERMOPANES, AUTO GLASS - Including Windshields. Free Pick-up and delivery on auto work. Storm Door & Window Reglazing & Screens. COMMERCIAL BUILDINGS OR RESIDENTIAL. PROMPT SERVICE. REASONABLE PRICES.

MARK IV LOUNGE. PHONE 475-8141. 1198 M-52 CHELSEA. TRY OUR INFLATION BUSTING BOWLING RATES. From 11:30 p.m. Until Closing Monday thru Friday. BOWLING BALLS, BAGS, SHOES NOW IN STOCK. CHELSEA LANES, Inc. 1189 M-52 CHELSEA. PHONE 475-8141

A. D. MAYER AGENCY, INC. 115 PARK ST., CHELSEA BOB BARLOW, AGENT PHONE 475-2030. Auto-Owners Life Insurance Company



Michigan Leads the Nation With 400,000 Registered Snowmobiles

Michigan continues to be the most popular state in the nation for snowmobiling, with the number of registered snowmobiles approaching the 400,000 mark as the 1974-75 season gets underway, according to Automobile Club of Michigan.

Minnesota, the state with the second largest number of registered snowmobiles, trails far behind Michigan, Auto Club notes. Michigan currently has 392,000 snowmobiles registered as compared to 276,000 in Minnesota.

"Just 10 years ago, there were fewer than 1,500 snowmobiles operating in Michigan," said Joseph Ratke, Auto Club touring manager. "Now the number of registered snowmobiles surpasses the total of licensed motorcycles in Michigan by more than 83,000 vehicles."

The Auto Club official said that despite a decline in sales related to fears of gas shortages last winter, Michigan's snowmobile industry is expecting an improved sales season this winter. Michigan snowmobilers will have access to more than 6.3 million acres of public land for their sport this winter. Available land includes more than 100,000 acres at 70 state parks and recreation areas, 58 marked trails covering 1,500 miles in state forests and more than six million acres of state and national forest open country.

In addition, seven Department of Natural Resources (DNR) public game areas will have trails and acreage open to snowmobilers from Jan. 1 to March 31, 1975.

Auto Club notes that due to poor public response, the DNR is not leasing any private land in southern Michigan for open country snowmobiling as it has done during the two previous seasons. A DNR spokesman said the department is conducting a pilot project near Grand Rapids to determine the feasibility of renting private land for trail use.

The accompanying Auto Club map pinpoints the locations of 132 marked snowmobile trails—eight more than last winter—at

Michigan state parks and state and national forests.

Snowmobilers will not be allowed to run on state lands unless four or more inches of snow are on the ground. Vehicle entrance permits, costing \$5, must be obtained for snowmobiles to be operated in sections of state parks and recreation areas designated for their use. The annual permits also are required for cars, trucks and other vehicles used to bring snowmobiles into these public areas.

New public snowmobile trails, Lower Peninsula—Gladwin all in state forests, are: Refuge in the Tittabawassee River State Forest near Meredeth; Chandler Hills, Jordan River State Forest, near Boyne Falls; East Devils Lake, Alpena State Forest, near Alpena; North Branch, Ontonagon State Forest, near St. Helen; Bear Lake, Kalkaska State Forest, near Kalkaska; North Missaukee State Forest, near Lake City; and Silver Creek, Black Lake State Forest, near Millersburg.

Upper Peninsula—Greenhills, Michigan State Forest, near Ishpeming. Pigeon River State Forest near Gaylord, has been closed.

Ratke noted that last winter, when a record 33 persons died in Michigan snowmobile accidents, 23 of the fatalities occurred on highways or highway shoulders and primarily involved collisions with other motor vehicles.

As these figures show, snowmobiling is much safer if enjoyed on trails and open areas specially designated for the sport," the Auto Club official said.

Ratke added that darkness also was a factor in more than 75 percent of last season's fatal snowmobile accidents. Twenty-five fatalities occurred between 6 p.m. and 6 a.m.

"Based on the 1973-74 death toll, the most potentially dangerous situation for a snowmobile is to be operating his machine on or near a highway from 9 p.m. to 3 a.m.," the Auto Club official said. "Of the 17 fatalities recorded during that time period, all but one were highway-related."

Auto Club reminds snowmobilers that according to state law, children under 12 cannot operate a snowmobile on public property without adult supervision. Youngsters aged 12 to 15 must pass an eight-hour DNR snowmobile safety course to drive on public property without adult supervision. Specific information on where these courses are offered may be obtained at DNR regional offices.

Michigan state parks and state and national forests.

PESTICIDES REBUILT IN SOIL Plant pathologists at Michigan State University have found tiny forms of soil life that both break down and rebuild the pesticide Chlorobex. The pesticide is broken down into less toxic chemicals by some microbes, but others then synthesize the original compound, according to the scientists. This means complete detoxification of environments treated with Chlorobex may be impossible.

The Veterans Administration approved 108,000 GI home loans during the first four months of fiscal year 1975, a 5.4 percent increase over the same period in fiscal year 1974.

LIMA TOWNSHIP BOARD OF REVIEW

Notice is hereby given to all persons liable to assessment for taxes in the

TOWNSHIP OF LIMA

County of Washtenaw, State of Michigan

That the Assessment Roll of said Township as prepared by the undersigned will be reviewed by the Board at

LIMA COMMUNITY HALL

Jackson Road

On Tuesday, March 5, 1974

Appeals and Conferences with Taxpayers will be heard on

MONDAY and TUESDAY MARCH 10-11, 1975

at which time the Board of Review will be in session from 9 a.m. to 4 p.m. on Monday, March 10, and 10 a.m. to 6 p.m. on Tuesday, March 11, at which time upon request of any person who is assessed on said tax roll or of his or her agent and upon sufficient cause being shown, said Board of Review will correct the assessment as to such property in such manner as will in their judgment make the valuation relatively just and equal.

Such assessment tax roll as reviewed and approved by said Board of Review will be the assessment roll of said Township of Lima for the year 1975.

The County Board of Commissioners of Washtenaw County has proposed the following starting ratios for Lima Township for the year 1975: Real Property Ratio 48.38, Factor 1.04; Personal Property Ratio 49.54, Factor 1.00.

EDWIN J. GOY, Supervisor

Dated: Feb. 24, 1975.

CONSUMERS' CORNER

- 133 250 acres. 134 250 acres. 135 250 acres. 136 250 acres. 137 250 acres. 138 250 acres. 139 250 acres. 140 250 acres. 141 250 acres. 142 250 acres. 143 250 acres. 144 250 acres. 145 250 acres. 146 250 acres. 147 250 acres. 148 250 acres. 149 250 acres. 150 250 acres. 151 250 acres. 152 250 acres. 153 250 acres. 154 250 acres. 155 250 acres. 156 250 acres. 157 250 acres. 158 250 acres. 159 250 acres. 160 250 acres. 161 250 acres. 162 250 acres. 163 250 acres. 164 250 acres. 165 250 acres. 166 250 acres. 167 250 acres. 168 250 acres. 169 250 acres. 170 250 acres. 171 250 acres. 172 250 acres. 173 250 acres. 174 250 acres. 175 250 acres. 176 250 acres. 177 250 acres. 178 250 acres. 179 250 acres. 180 250 acres. 181 250 acres. 182 250 acres. 183 250 acres. 184 250 acres. 185 250 acres. 186 250 acres. 187 250 acres. 188 250 acres. 189 250 acres. 190 250 acres. 191 250 acres. 192 250 acres. 193 250 acres. 194 250 acres. 195 250 acres. 196 250 acres. 197 250 acres. 198 250 acres. 199 250 acres. 200 250 acres. 201 250 acres. 202 250 acres. 203 250 acres. 204 250 acres. 205 250 acres. 206 250 acres. 207 250 acres. 208 250 acres. 209 250 acres. 210 250 acres. 211 250 acres. 212 250 acres. 213 250 acres. 214 250 acres. 215 250 acres. 216 250 acres. 217 250 acres. 218 250 acres. 219 250 acres. 220 250 acres. 221 250 acres. 222 250 acres. 223 250 acres. 224 250 acres. 225 250 acres. 226 250 acres. 227 250 acres. 228 250 acres. 229 250 acres. 230 250 acres. 231 250 acres. 232 250 acres. 233 250 acres. 234 250 acres. 235 250 acres. 236 250 acres. 237 250 acres. 238 250 acres. 239 250 acres. 240 250 acres. 241 250 acres. 242 250 acres. 243 250 acres. 244 250 acres. 245 250 acres. 246 250 acres. 247 250 acres. 248 250 acres. 249 250 acres. 250 250 acres. 251 250 acres. 252 250 acres. 253 250 acres. 254 250 acres. 255 250 acres. 256 250 acres. 257 250 acres. 258 250 acres. 259 250 acres. 260 250 acres. 261 250 acres. 262 250 acres. 263 250 acres. 264 250 acres. 265 250 acres. 266 250 acres. 267 250 acres. 268 250 acres. 269 250 acres. 270 250 acres. 271 250 acres. 272 250 acres. 273 250 acres. 274 250 acres. 275 250 acres. 276 250 acres. 277 250 acres. 278 250 acres. 279 250 acres. 280 250 acres. 281 250 acres. 282 250 acres. 283 250 acres. 284 250 acres. 285 250 acres. 286 250 acres. 287 250 acres. 288 250 acres. 289 250 acres. 290 250 acres. 291 250 acres. 292 250 acres. 293 250 acres. 294 250 acres. 295 250 acres. 296 250 acres. 297 250 acres. 298 250 acres. 299 250 acres. 300 250 acres. 301 250 acres. 302 250 acres. 303 250 acres. 304 250 acres. 305 250 acres. 306 250 acres. 307 250 acres. 308 250 acres. 309 250 acres. 310 250 acres. 311 250 acres. 312 250 acres. 313 250 acres. 314 250 acres. 315 250 acres. 316 250 acres. 317 250 acres. 318 250 acres. 319 250 acres. 320 250 acres. 321 250 acres. 322 250 acres. 323 250 acres. 324 250 acres. 325 250 acres. 326 250 acres. 327 250 acres. 328 250 acres. 329 250 acres. 330 250 acres. 331 250 acres. 332 250 acres.

Food scientists at Michigan State University have isolated a new protein concentrate from alfalfa juice. It provides better nutrition than similar soybean protein products (commonly used as meat extenders and in artificial meat products). Yields of alfalfa protein are higher, on a per acre basis, than those of soybean protein.

Deafness, in varying degrees, is Michigan's No. 1 physical disability, according to the Michigan Association for Better Hearing and Speech, a United Way of Michigan member service. More than 750,000 Michigan residents have suffered a hearing loss. The Association, which is financed through contributions to local United Ways, says the best way to protect your hearing is to have it tested by a doctor or professional audiologist.

Chelsea High School Notes

MRS. WOTILA By Beth Tobin Energy, excitement, and enthusiasm; these are the three words that best describe Mrs. Rosie Wotila, Spanish teacher at Chelsea High School. Mrs. Wotila's latest project is the Honduran Relief Mission. Over the week-end, students in her classes collected clothing and food for the victims of Hurricane Fifi. It was a great success, especially because of the work and abilities shown by the students. The success was the students' interest in International affairs and travel has also

of the Ann Arbor Tennis Championship. After graduating from J. W. Sexton High School in Lansing, Mrs. Wotila attended Hope College and in 1967 went to South America for the first time. She and her husband have been married for four years and have traveled in Central and South America several times since then. Mrs. Wotila was a part of the 60's culture where students were very concerned about politics and world affairs and thought they could change things. Even though she is not as "concerned" or "idealistic" now, she feels people can still do things. Students are pretty idealistic she says but their energies need to be directed. She enjoys working with young people but is concerned about

CHELSEA FINANCE CORP. \$25 to \$1,500 For Any Worthwhile Purpose See or Call FRANK HILL at 475-8631 111 PARK STREET CHELSEA, MICH.

Distinctive WEDDING ANNOUNCEMENTS INVITATIONS INVITATIONS or ANNOUNCEMENTS... Let us provide you with the very finest printed or engraved invitations and announcements. Make certain that your wedding stationery is of top quality and conforms to correct social requirements. We can advise you on these important details. THE CHELSEA STANDARD Social Printing Department 300 NORTH MAIN ST. PHONE 475-1371

CHELSEA VILLAGE COUNCIL PROCEEDINGS

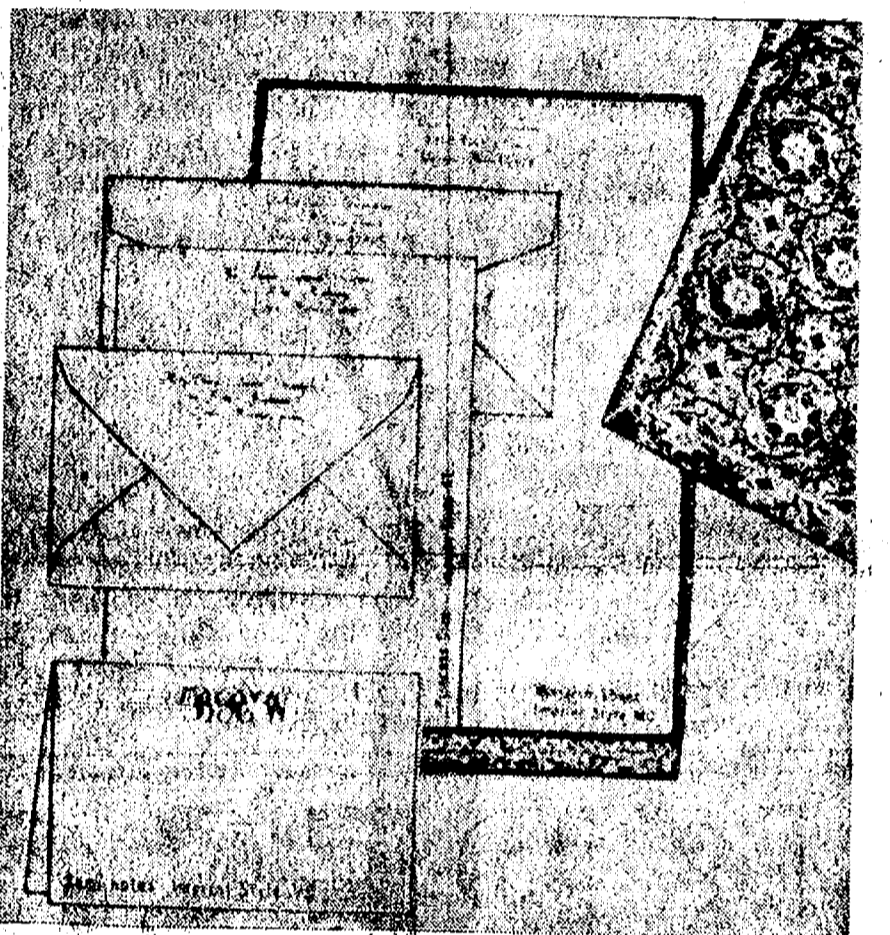
March 4, 1975
 Johnson, to hold a special meeting, Thursday, March 13, 1975 at 7:30 p.m. in the Council Chambers for the purpose of certification of the election. Roll call: Yeas all. Motion carried.
 Information was presented from the Washtenaw County Drain Commissioner on a proposed Chapter 20 Mill Creek Drainage District. No action was taken at this time.
 President Pennington appointed Rolly Spaulding to serve as the representative to the Western Washtenaw Bicentennial Commission.
 Motion by Dmoch, supported by Galbraith, to pay dues of \$50.00 to the Michigan Alliance of Small Communities. Roll call: Yeas all. Motion carried.
 Motion by Gorton, supported by Johnson, to authorize payment of bills as submitted. Roll call: Yeas all. Motion carried.
 Motion by Gorton, supported by Galbraith, to adjourn. Roll call: Yeas all. Motion carried. Meeting adjourned.
 Thomas Neumeyer, Clerk.
 Telephone Your Club News To 475-1371.

Regular Session.
 This meeting was called to order at 7:30 p.m. by President Pennington.
 Present: President Pennington, Administrator Weber, and Clerk Neumeyer.
 Trustees Present: Wood, Galbraith, Dmoch, Gorton, Borton and Johnson.
 Others Present: Police Chief Meranuck, Civil Defense Director William Wade, Art Schiller, Lawrence Dietle, Fire Chief Gaken Bud Hankard, and James Grau.
 The minutes of the February 18, 1975 meeting were read and approved.
 Art Schiller voiced concerns of his about the congestion on Book Street especially during school and recreation functions. He suggested that the west side of Book Street be made a "no parking" zone. No official action was taken at this time.
 James Grau discussed the sewer extension along Old US-12. Preliminary work is proceeding as planned.
 Fire Chief Gaken discussed a requested increase in firemen's pay. No action was taken by the Council at this time.
 Motion by Wood, supported by Dmoch, to accept and approve the new personnel policies as presented. Roll call: Yeas all. Motion carried.
 Motion by Wood, supported by Gorton, to accept the new pay rate schedule effective March 1, 1975. Roll call: Yeas all. Motion carried.
 The 1975-76 General Fund Budget was discussed. No action was taken at this time.
 Motion by Dmoch, supported by

Magic Mirror Beauty Salon

Open Tuesday thru Friday 9 a.m. to 9 p.m.
 Saturday, 8 a.m. to 3 p.m.
 PHONE 665-0816

The Chelsea Standard



40% OFF MARCH ONLY
 Rytex Antique Vellum Personalized Stationery
 Sale Price \$5.95 (100'01\$ 4yrd165a)
 traditional lettersheets & new semi-notes
 This luxurious vellum paper with its subtle laid-mark pattern assures good taste for all your writing needs. A perfect setting for your 3-initial monogram or name and address printed in blue, dark grey or raspberry red ink. Select your paper color in creamy white, soft blue or colonial grey.
 Our new semi-note in Antique Vellum is a full-size princess sheet which folds to show your imprint on the front. So stylish, and versatile for all your casual correspondence.
 150 princess sheets & 100 envelopes or 100 monarch sheets & 100 envelopes or 100 semi-notes & 100 envelopes.
Bonus Value
 An additional 50 matching un-printed sheets for use as second pages (regularly \$1.50) now only \$1 with your order.

MAIL ORDER COUPON
THE CHELSEA STANDARD
 CHELSEA, MICH. 48118
 ANTIQUE VELLUM: _____ boxes (double quantity) at \$5.95 a box
 INCLUDE BONUS: (check) 50 extra plain (unprinted) sheets at \$1.00 a box
 Imprint Name or Monogram: _____
 Street: _____
 City: _____ State: _____ Zip: _____
 Check choice:
 PRINCESS SIZE: White (3500) Blue (3550) Grey (3560)
 MONARCH SIZE: White (3600) Blue (3650) Grey (3660)
 SEMI-NOTES: White (N3500) Blue (N3550) Grey (N3560)
 Imprint Style: MC AL VS (monogram with PLAIN envelopes)
 Color Ink: Blue Grey Raspberry
 Ordered by: _____
 Street: _____ Apt. _____
 City: _____ State: _____ Zip: _____
 Account No. _____ Phone _____
 Charge Check or M.O. enclosed \$_____

Census Bureau Issues 1972 Michigan Business Statistics

The 30,853 retail trade establishments in the Detroit Metropolitan Statistical Area (metro area) in 1972 had sales of almost \$10.5 billion. In the same year the 4,476 such establishments in the Grand Rapids area had sales of approximately \$1.4 billion.
 These statistics appear in the final report on retail trade for Michigan in 1972 just issued by the Bureau of the Census, part of the U.S. Department of Commerce's Social and Economic Statistics Administration. The report which, for the first time, presents 1972 retail trade data for metro areas, cities, counties and smaller places, also updates preliminary state-wide figures for '72 which appeared in a release issued late last year. The new report shows the 71,795 retail establishments in the state in 1972 had sales of over \$20.6 billion in that Economic Census year.
 The report is one of three final reports on the state's business activities in 1972 just issued by the Bureau containing "local area" data. The other two cover wholesale trade and selected service industries. Preliminary reports on these two categories of business also were issued last fall.
 The retail report shows food stores in the Detroit area had the largest volume of sales \$2.3 billion—with automotive dealers in second place with \$2.2 billion. Similar businesses in the Grand Rapids metro area had sales of \$346 million and \$302 million, respectively.
 The state's final wholesale trade report shows the Detroit metro area's 6,180 wholesale establishments had '72 sales of \$18.5 billion as against sales of \$2.3 billion for the 1,123 establishments in the Grand Rapids area in that year.
 The report also shows sales of the 12,827 wholesale establishments throughout the state totaled over \$26.5 billion in 1972. This total includes \$4.9 billion in sales by "motor vehicles" and automotive parts and supplies' wholesalers, the largest category, and over \$3.8 billion by wholesalers of "Groceries and related products," in second place.
 The 26,877 service establishments in the Detroit metro area included

Cerebral Palsy is everybody's problem, says the Michigan Cerebral Palsy Association, a member service of the United Way of Michigan. The persons who have cerebral palsy have the biggest problem because they have to live with it all their lives. However, the Association, which is supported by donations to local United Ways, says the rest of us have the problem of increasing our understanding of cerebral palsy so that we can help the 12,000 Michigan residents who have it.
 Telephone Your Club News To 475-1371.

CARPET REBIRTH
 Give your carpet a new lease on life by cleaning it regularly.
JET SPRAY CARPET CLEANING
 Use Your BankAmericard Phone 761-3025 or 475-1509 Ask for John Lixey.

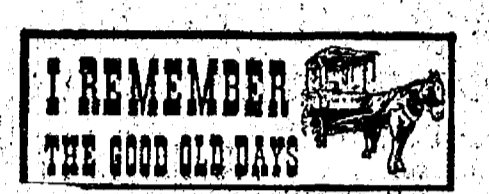
Club and Social Activities

ALTAR SOCIETY
 St. Mary's Altar Society held its monthly meeting Monday, March 3, with 19 members and two guests present.
 Reports were given by the standing committees. Mrs. Agnes Guinan reported the annual Antique Sale held in Ann Arbor was a great success.
 Church Women United are to have a gathering at St. Mary's church, Friday, March 7 from 1 to 2:30 p.m.
 The Parish Cookbook is being assembled, and will be printed soon.
 John Hayes was the guest speaker for the evening. His topic being Catholic Social Service.
 April 2 is the date for the Spring Conference for the Lansing Diocese to be held at St. Louis School. Reservations are to be made by March 25.

YOUNG HOMEMAKERS
 Seventeen members answered roll call bingo at the Feb. 27 meeting of the Young Homemakers Club, held at the home of Arlene Grau. Bingo prizes will be presented to the Chelsea Community Hospital.
 Mrs. Marge Plumb was guest for the evening and Mrs. Kay Heller was co-hostess.
 Plans were made for the remaining activities for the year. Barbara Wolfgang reported on a tour open to the group to the Tulip Festival, and Jean Satterthwaite reported on the fashion show open to the group.
 After the meeting, members made Easter favors for St. Louis school.



FALL WEDDING: Mr. and Mrs. Robert K. Schneider of 6880 Conway Rd., announce the engagement of their daughter, Robin Marie, to Joseph David Aspiranti, son of Mr. and Mrs. Joseph Aspiranti of Parkview Dr., Gregory. The prospective bride will be a 1975 graduate of Chelsea High school; her fiancé is a 1972 graduate of Chelsea High school who is employed at the Little Rooster Restaurant. The couple plan a fall wedding.



From Wilfred Beaver, Sparta, Wis.: One of my favorite childhood memories is the old horse-drawn circuses that plied the small towns before they became motorized and merged into a two-name circus with three rings full of performers. This was the time circuses moved by railroad flat cars from long distances to play one night or longer to county fairs and political gatherings. There were always free passes handed to town merchants and church elders who had to approve the appearance of the scantily-clad aerialists and bareback riders who were mostly females.
 After getting approval of town council and church elders, advance men would arrange to rent some cow pasture or open area near town and then hire us kids to paste circus posters around on telephone poles and fence posts. We would get free passes to the circus, usually matinees, and could roam about watching the circus people set up tents and arrange for the feeding of lions, elephants and people.

Merchants welcomed the circus as "it meant free advertising for them and the extra revenue the circus people brought in when they bought supplies helped them pay their taxes. A "circus town" was among the first to build libraries, town halls and police stations with the money the circus brought forth.

Jane Mann Named to Honor Roll at Texas Woman's University

Jane Mann, daughter of Mr. and Mrs. Paul Mann, 637 Flanders St., has been placed on the semester's special honor roll for the first semester of the 1974-75 year at Texas Woman's University.
 Jane, a senior in the school's physical therapy program, has completed her work at the Texas Medical Center in Houston, and is now undergoing training at Baylor Medical Center in Dallas. She will also be completing hospital affiliations in San Antonio and Roswell, N. M., before her graduation in May.

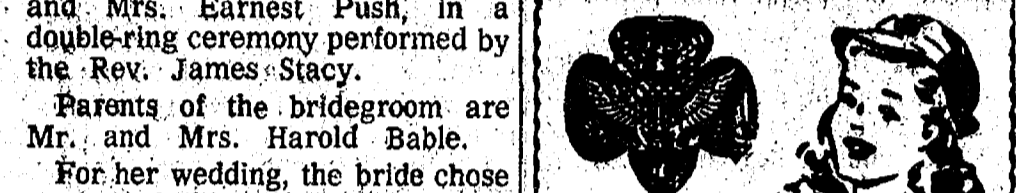
EMU GRAD SCHOOL GROWS

Eastern Michigan University's Graduate School, created in 1963, opened with an enrollment of 125 grad students. Graduate School enrollment at the Ypsilanti university reached 4,191 in the 1973-74 school year.



Mr. and Mrs. David Lee Bable
Vicki Carol Push, David Bable Wed Friday in Home Ceremony

Vicki Carol Push and David Lee Bable were united in marriage at 7 p.m. Friday, Feb. 14, at the home of the bride's parents, Mr. and Mrs. Earnest Push, in a double-ring ceremony performed by the Rev. James Stacy.
 Parents of the bridegroom are Mr. and Mrs. Harold Bable.
 For her wedding, the bride chose a gown fashioned of sheer white organza with high neckline, long sleeves touched with lace, and empire-waist. Venise lace drifted over a sheer bodice and highlighted the A-line skirt, while a Juliet cap with lace appliques held her sweeping chapel train. She carried a bouquet of red and white roses sprayed with baby's breath.
 Acting as maid of honor was Miss Cindy Giffin, and bridesmaid was Miss Karen Romine.
 Tom Dorser served as best man, and Tom Pizon acted as an usher.
 For her daughter's wedding, Mrs. Push wore a floor-length gown of mint green double knit with matching lace jacket. Her corsage was white carnations, tipped in green.
 The bridegroom's step-mother chose a floor-length multi-colored doubleknit for the occasion, and wore a corsage of white carnations.
 A reception followed the ceremony at the UAW Hall in Chelsea. Assisting at the reception were Mrs. Pat Schmeil, who cut the cake; Mrs. Gisela Push and Miss Lisa Bauer, who served coffee and punch; Miss Beth Hoover, who was in charge of the guest book; and Mrs. Inez Hopkins, Mrs. Esta Bayer, Mrs. Janice Hardy, and Mrs. Lois Salyer, who assisted with serving.
 For her going-away outfit, the bride chose a light blue double-knit pantsuit and wore the white center rose from her bridal bouquet.



TROOP 442
 Monday Troop 442 planned and made centerpieces for the Father-Daughter Banquet. We also painted a hill that Mr. Boyd made for us to put in a store window for Girl Scout Week. DeeDee Hammel brought treats. We broke up into our patrols and also had pictures taken.
 Penny Syria, scribe.

TROOP 169
 Troop 169 has made plans to go to the Ice Capades March 22 in Ann Arbor. Today we discussed plans for the Ice Capades, our Father-Daughter Banquet, and Girl Scout and Brownie days. We made posters titled "Be Ready Helpers," "Be Friend Makers," and "Be Discoverers." Also today we played four games.
 Mary Beth O'Quinn, scribe.

TROOP 145
 We talked about bringing in the crafts we have made for our window display. They should be brought to the meeting but if they aren't take them either to Mrs. Heller's or Mrs. Koch's by Friday, March 7. We started egg shell pictures. Treats were brought by Pheobe Strong.
 Joyce Robards, Laurie Heller, scribes.

SCHOOL LUNCH MENU

Week of March 10-14
 Monday—Baked lasagna, buttered peas, bread and butter, chocolate eclairs, and milk.
 Tuesday—Hot dog with coney sauce on buns, baked beans, fruit, cake, and milk.
 Wednesday—Submarines with sauce, soup of the day with crackers, Jell-O with fruit, and milk.
 Thursday—No lunch.
 Friday—Fish burgers on buns with tartar sauce, cole slaw, potato chips, cherry dessert, and milk.

Fashion Show Benefits Cancer Society

A Stretch and Sew Fashion Show is scheduled for this Friday, March 7, at 7 p.m. at the Marriott Inn to benefit the local American Cancer Society drive.
 Ticket information is available by contacting area Cancer Crusade co-chairmen Marge Daniels at 475-1784 or Nancy Dunn at 475-7281.
 Telephone Your Club News To 475-1371.

OSO Carpet Cleaning

If March weather and muddy feet have soiled your carpeting, it's wise to give it some attention now. We recommend Hot, the new method of cleaning carpets without water. The carpet is dry and ready to walk on immediately. Use our Hot Electric Upholstery. It's easy. Clean 48 sq. yds. only \$9.95. Phone for information.

ARTIQUE STYLE

 by **WYLER**
 Raised coin-struck POCKET WATCH
 Vests are in style! Pocket watches are fun... worn with or without chains.
 But his Signal/Wyler is more than fun/fashion. It's a superb timekeeper you can rely on and show off.
 Spring-open cover reveals a smart Victorian face with classic arabic numerals and a second dial.
 Shows: fishing scene, also available hunting scene. Both deeply die-struck. In white or yellow. True beauty for ONLY \$65.00
WINANS JEWELRY
MERKEL BROTHERS

FRANKLIN FURNITURE SALE
SAVE 15% THRU MARCH 15
SPECIAL ORDER OR STOCK

Our fine Franklin line now at a special 15% discount. Sofas, chairs and loveseats in traditional, contemporary and colonial designs. Buy from our stock or have your selection covered-to-order in just a few weeks, and save 15%. Stop in today or anytime before March 15.

Merkel Home Furnishings

Study Group Eyes Three Problem Areas

Discussion of youth recreation needs, the possible establishment of an education-recreation director position for Chelsea, and concern for problems relating to area unemployment were the topics on the agenda for last Thursday's second "area meeting" of local and county social agency and education representatives.

Initial meeting of the area representatives was Jan. 31, a meeting that acted primarily as an introduction to all the assorted social agencies and "helping" positions around the county as they deal with Chelsea.

Chelsea School District social worker Nina Scheider, one of the organizers of the series of meetings, reports that Thursday's meeting turned into more of a small group affair, with each group studying one of the three items on the agenda.

One group attempted to define the recreational needs of the community, and continued discussion of the idea of a youth board to "act as a clearing house to co-ordinate youth activities and encourage participation."

Another group, directed by Superintendent of Schools Charles Cameron, discussed the possible employment of an education-recreation director, and sources of funding for such a project. Suggestions were also made of land which possibly might be available to a recreation group for a building, and a Kiwanis Club representative noted that the possibility for a building for recreation is being investigated by his group.

A third group geared its discussion toward steps needed to assist local residents in dealing with unemployment. A suggestion was made to take an informal survey in the Chelsea area to discover approximately the number of people actually unemployed.

Further discussion involved the use of extra time available, that as related to the fact that those with more time on their hands due to unemployment probably would be seeking more recreation. The group hopes to pursue the problem of unemployment further with Child and Family Services of Washtenaw County, and also by establishing discussion-type groups designed to allow the unemployed to discuss their problems with each other.

Next meeting of the group is scheduled for Friday, March 21 at 12 noon for a brown bag lunch in the Village Council Chambers, second floor, Municipal Building.

Hockey Club Loses Game To Tecumseh

Chelsea High school's Hockey Club dropped a game to Tecumseh Sunday, 4-2, at Jackson Ice Arena.

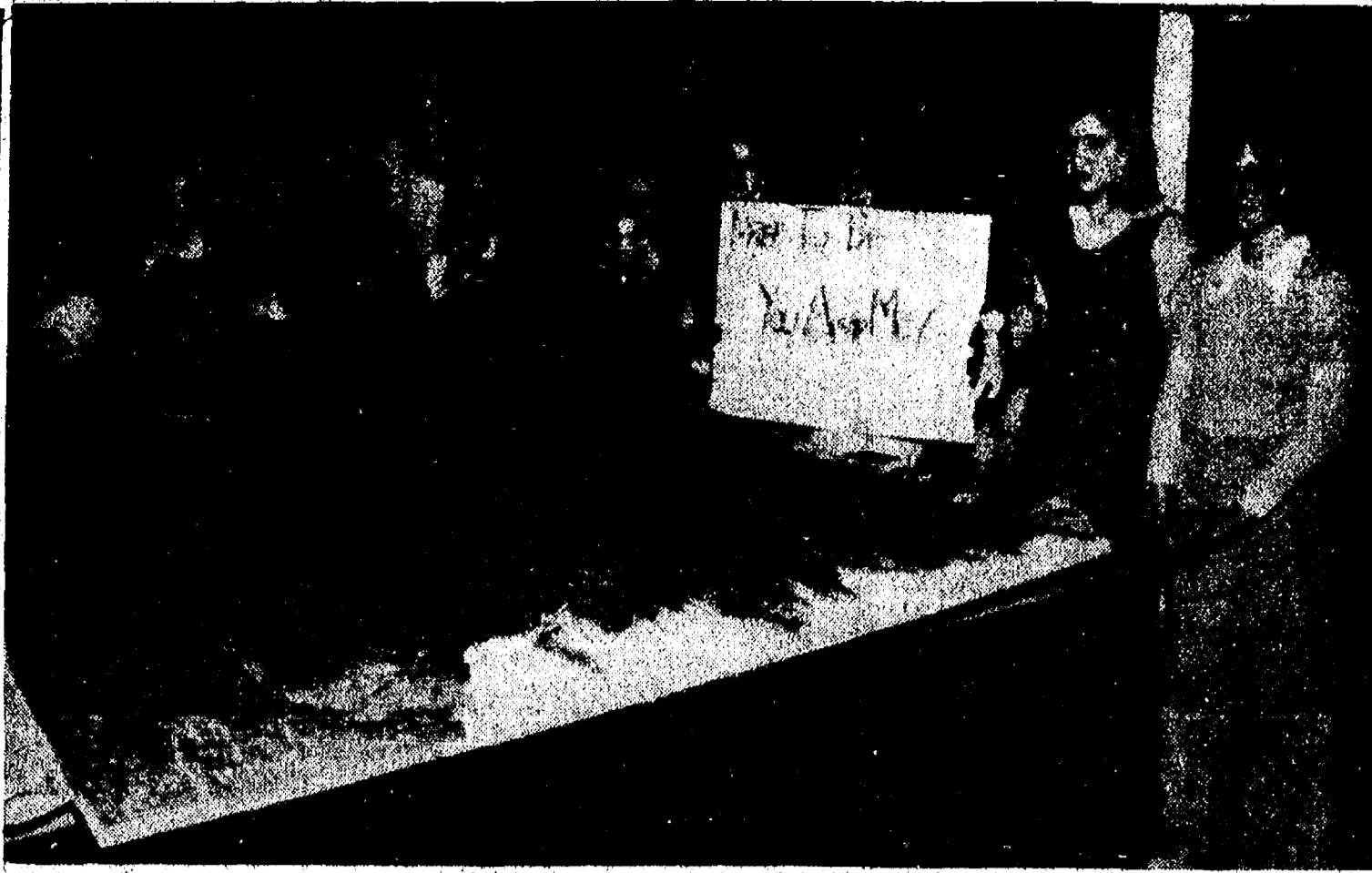
All-stars for the game for Chelsea, as chosen by the referees, were Mike Check, goalie, who saved 24 shots, and Keith Cockerline, captain, who scored one of Chelsea's goals with an assist from Brian Hosler.

Also scoring for Chelsea was Harold Vandervoort, with an assist by Mike Hastings.

Chelsea Hockey Club will complete its league season this Sunday, March 9, with a match-up against Napoleon at Jackson Ice Arena at 7:30 p.m.

All-star game for the participating hockey teams is scheduled for Saturday, March 8, from 7 to 9 p.m. Admission for the all-star contest is \$1 for adults and 50 cents for students.

EMU APARTMENTS
Apartments for married students were first offered at Eastern Michigan University in 1955. Apartments for single students were opened on the Ypsilanti campus in 1973.



"FREE TO BE, YOU AND ME" is the theme of Girl Scout Troop 442's window display, a ski slope, which is getting finishing paint touches from will be placed in a local business window in observance of Girl Scout Week, March 9-16. Penny Syria, Jennifer Cox, Susan Ford, Kim Boyd, Linda Wilson, and Chris Kvarnberg. The display will be placed in a local business window in observance of Girl Scout Week, March 9-16.

MCRC Replies to BOR Metropark Impact Statement

Mill Creek Research Council representatives and other concerned area residents have presented a 560-page statement of opposition to the Bureau of Outdoor Recreation's environmental impact statement on the proposed Mill Creek Metropark, which was released in January, to the Washtenaw County Planning Commission.

MCRC's statement was also sent to the Bureau of Outdoor Recreation, the Department of Natural Resources, Governor Milliken, and state and federal senators and representatives.

The environmental impact statement on Mill Creek will be reviewed by various governmental agencies and interested parties before the final impact statement is issued.

In a related announcement, the annual meeting of the Mill Creek Research Council is scheduled for Tuesday, March 25, at 8 p.m. at Lima Town Hall.

East Lansing—The top post in the National Collegiate Athletic Association (NCAA) has been given Michigan State University's Dr. John Fuzak, associate dean of MSU's College of Education.

Dr. Fuzak, who has been involved at the policy level in Big Ten and NCAA affairs, is also chairman of MSU's Athletic Council and is MSU's Big Ten faculty representative.

CHS Students in International Music Group

Five Chelsea High school students will appear as members of Musical Youth International when the group presents its first 1975 pre-season concert, opening its 11th season at Francoeur Theater, Siena Heights College, in Adrian on March 9.

Chelsea MYI members are Suzanne Hafer, 8912 Werker Rd.; Duane Luick, 12980 Old US-12; Susan Palmer, 665 Mayer Dr.; Cindy Turcott, 25 Sycamore; and Dale Heydlauff, 11340 Dexter-Chelsea Rd.

Bruce Galbraith, 56 Chestnut St., will act as MYI band conductor. Musical Youth International's 1975 tour will include five European countries, opening with a performance at The Hague, where the group will join forces with the Hague Youth Symphony, now in its 62nd season. MYI will proceed to the Saar Valley, Germany, Switzerland, and Italy; then, returning to Germany, members will be featured performers at the Gersthoven International Festival and will open an international teachers' conference in Berlin. MYI will conclude its tour with a gala performance in the concert hall of Tivoli Gardens, in Copenhagen.

Other pre-tour concerts will be scheduled in the near future in Monroe, Grosse Ile, Saline, and Chelsea.

Parent Effectiveness Course Planned at Our Savior Church

Information regarding a Parent Effectiveness Training course to be offered soon in the Chelsea area will be presented at a meeting Sunday, March 9 at 7:30 p.m. at Our Savior Lutheran church, 1515 S. Main St.

Effectiveness training is an educational program for people interested in learning the communication skills necessary to improve relationships with both children and adults.

Group members learn by observing and practicing skills that aid them in listening to others more effectively; that help them confront others with their own personal feelings; and that help them resolve conflicts without giving in or resorting to power.

Parent Effectiveness Course Planned at Our Savior Church

Information regarding a Parent Effectiveness Training course to be offered soon in the Chelsea area will be presented at a meeting Sunday, March 9 at 7:30 p.m. at Our Savior Lutheran church, 1515 S. Main St.

Effectiveness training is an educational program for people interested in learning the communication skills necessary to improve relationships with both children and adults.

Group members learn by observing and practicing skills that aid them in listening to others more effectively; that help them confront others with their own personal feelings; and that help them resolve conflicts without giving in or resorting to power.

CORRECTION
In last week's edition of The Standard, the date of a puppet show planned by Modern Mothers Child Study Club was incorrectly reported as April 1. The correct day is April 2, with tickets available for 50 cents from club members. The show, entitled "The Caveman Story," is scheduled for 1:30 and 3 p.m. at Beach Middle school.

Mobil-Toons
By GLENN

"Sure there's a gas war on... but we don't fight with prices!"

Service that satisfies!

GLENN'S MOBIL SERVICE
1627 M-52 & I-94
CHELSEA, MICHIGAN
Phone 475-1767
GLENN HEIM
PROP.

District Court Proceedings

Week of Feb. 25-March 3
Monard Adkins pled guilty to driving under the influence of liquor, second offense, and will be sentenced April 9.
William Smedley was fined \$250, placed on one year probation, and ordered to participate in the Alcohol Safety Action Program for driving under the influence of liquor.
Lewis Lindsey was fined \$200, to be paid by March 12, for driving under the influence of liquor.
Penn Central Railroad changed its plea to no contest to a charge of blocking a crossing and was fined \$100.
Thomas Lounsbury was fined \$200 and ordered to participate in the Alcohol Safety Action Program for impaired driving.
Brian Geer pled guilty to possession of open intoxicants in a motor vehicle and was fined \$35.
Mark Slower waived examination on charges of escape from prison and receiving and concealing stolen property, and was bound over to circuit court for arraignment March 7.
Dwight Barstow pled guilty to careless driving and was fined \$38.
Ralph Wallace pled guilty to a reduced charge of impaired driving and will be sentenced April 9.
Charles Baize pled guilty to a reduced charge of impaired driving and will be sentenced April 9.
Eugene Durosh did not appear on a charge of possession of open intoxicants in a motor vehicle and bench warrants were issued.
Bobby Akers was found guilty of a charge of failure to stop on a police signal and was fined \$125 and placed on six months probation.
James Gullet was found guilty of possession of open intoxicants in a motor vehicle and was fined \$38.
Kay Fauber did not appear on a charge of driving under the influence of liquor and a bench warrant was issued.
Gordan Meloche was found guilty of allowing his dog to run at large and was fined \$10, to be suspended.
Douglas Hunt was found guilty of speeding and was fined \$48.

Lols Kuntz pled guilty to passing a school bus and was fined \$75.
Max Gornely pled guilty to making an improper U-turn and was fined \$21.
Kirk Randall pled guilty to possession of open intoxicants in a motor vehicle and was fined \$35.
Kurt Randall pled guilty to possession of open intoxicants in a motor vehicle and was fined \$35.
Mark Krzyaniak pled guilty to possession of a mutilated operator's permit and was fined \$16.
Timothy Ahrens was fined \$200 and ordered to participate in the Alcohol Safety Action Program for driving under the influence of liquor.
Bradley Frey pled guilty to driving without an operator's permit on his person. The charge was dismissed on \$6 costs.
Dennis Gorte was fined \$75 for possession of marijuana.
Donald Radtke was fined \$75 for possession of marijuana.
Theodore Westfall pled guilty to speeding and was fined \$25.
Michael Fitzgerald was brought in on a bench warrant, and \$15 was added to his original fine, to total \$65, or 10 days in jail.
John P. Stout changed his plea to guilty of a charge of driving under the influence of liquor and will be sentenced April 11.
Allison Heber pled guilty to speeding and was fined \$27.
Dale Katopal pled guilty to careless driving and was fined \$45.
Ricky V. Hanlon was fined \$50, placed on six months probation, and ordered to participate in the Alcohol Safety Action Program for drunk and disorderly.
James Wilkerson pled guilty to speeding and was fined \$23.
Ray L. Bowers was fined \$200 and ordered to participate in the Alcohol Safety Action Program for driving under the influence of liquor.
John Schumacher pled no contest to driving with a suspended license. He was found guilty of driving under the influence of liquor and will be sentenced April 11.
James Myers pled guilty to driving with a suspended license and was fined \$75 plus three days in jail, or fifteen days total.
Janice Simonson was found guilty

of larceny under \$100 and will be sentenced March 31.
James Witherbee pled guilty to drunk and disorderly and was fined \$75 and placed on six months probation.
John L. Lyons was brought in on a bench warrant for violation of probation. For failing to report and failing to pay fines, he was found in contempt, and \$75 was added to his original fine, to total \$175, or 20 days in jail.
Richard Page was brought in on a bench warrant for failure to pay fines and costs, and \$25 was added to his original fine, to total \$50, or 15 days.
Frederick and Lonnie Charles were bound over to circuit court for arraignment March 28 on charges of carrying concealed weapons.
Maxine Franklin was fined \$200 and ordered to participate in the Alcohol Safety Action Program for driving under the influence of liquor.
Malcomm Jones changed his plea to guilty of a charge of driving under the influence of liquor and will be sentenced April 14.
Gregory Smith was found guilty of violation of the basic speed law and was fined \$35.
William B. Travis was found guilty of speeding and was fined \$31.
Thomas Greenway was found guilty of allowing his dog to run at large and was fined \$50 and placed on six months probation.

Windows Broken

An outside storm window and a small inside window at a McKinley St. residence were damaged Saturday, apparently by a stone propelled by either a wrist rocket or strong slingshot, according to Chelsea police.

Officers have no suspects in the case, which resulted in unknown damage to the Dave Colquhoun home at 505 McKinley. Colquhoun told police that his insurance will cover the damage.

Schenectady, N.Y.—Alice Scudder, 86, who may be the nation's oldest college student, has returned for another term at Schenectady County Community College.

VOTE THE INDEPENDENT PARTY VILLAGE ELECTION - MONDAY, MARCH 10

RICHARD BORTON
for TRUSTEE
(2-Year Term)

SAM JOHNSON
for TRUSTEE
(2-Year Term)

DAVE ROWE
for TRUSTEE
(2-Year Term)

LIBRARY BOARD MEMBERS
(3-Year Term)

ANNE BELSER

SHIRLEY SCHAIBLE

TOM NEUMEYER
for CLERK
(2-Year Term)

INDEPENDENT PARTY PLATFORM

1. To continue to promote well qualified candidates for public offices.
2. The Independent Party will continue to work for the improvement of the present sewer system. We continue to believe that the improvement of the present system is the responsibility of the residents of the Village but that extension of the system is the responsibility of the developer.
3. The Independent Party is in favor of a cooperative approach to the problems of recreation and supports the Village's participation in the coordinated group effort to draw together all of the local groups and agencies interested in recreation for the Chelsea area residents.
4. The Independent Party is in opposition to the proposed Mill Creek Metropolitan Park as now proposed by Huron Clinton Metropolitan Authority. This park offers little, if any, benefits to the local area residents. It will probably cause many problems for the area and added costs to the local taxpayers.
5. The Independent Party is in favor of continued support of the Village Planning Commission. In order to promote orderly growth of Northwestern Washtenaw and Northeastern Jackson Counties, we also support active participation in the Chelsea Area Regional Planning Committee consisting of the surrounding townships and the Village.

VOTE INDEPENDENTLY - VOTE INDEPENDENT

KRESGE'S

EARLY SPRING SAVINGS

Thurs., Fri., Sat., Sun., March 6-9 Only

KRESGE COUPON

GIRL'S JEANS

Our Reg. \$2.96 **2 for \$5**

KRESGE COUPON

DOOR MIRRORS

Our Reg. \$4.22 **\$3.43**

KRESGE COUPON

26-INCH **Girl's 10-Speed BICYCLE**

Our Reg. \$79.97 **\$59.97**

KRESGE COUPON

DESK-TOP TERRARIUMS

Our Reg. \$2.47 **\$1.99**

KRESGE COUPON

IRREGULAR **BLANKETS**

Our Reg. \$2.97 **2 for \$5**

KRESGE COUPON

20-INCH **SPORT BIKE**
Girl's model only

Our Reg. \$49.87 **\$36.88**

KRESGE COUPON

KITCHEN **TERRY CLOTH TOWELS**

Our Reg. 49c **36c**

KRESGE COUPON

TERRARIUM PLANTS

Our Reg. 47c **3 for \$1**

OPEN 9:30 to 9 DAILY; 12 to 5 SUNDAY
KRESGE'S WESTGATE ONLY
2511 JACKSON RD., ANN ARBOR



Polly's MASTER MARKETS

1101 M52
CHELSEA

201 PARK
VANDERCOOK LK.

1621
Spring Arbor Rd.
JACKSON

960
N. WEST AVE.
JACKSON

115
W. PROSPECT ST.
JACKSON

1809
E. MICH. AVE.
JACKSON

get to know us...

WE CAN HELP YOU SAVE ON YOUR FOOD BILL!

OPEN . 8 A.M. TO 10 P.M.
DAILY.

OPEN 9 A.M. TO 6 P.M.
SUNDAY.

- ★ **QUALITY PRODUCE**
- ★ **QUALITY MEAT**
- ★ **COLD BEER & WINE**
- ★ **LOTTERY TICKETS**
- ★ **SIDES OF BEEF**
- ★ **FRUIT BASKETS**
- ★ **DRY CLEANING**
- ★ **PHOTO PROCESSING**
- ★ **VARIETY AT LOW PRICES**

EVERYBODY'S TALKING ABOUT...

Polly's MASTER MARKETS

1101 M52 CHELSEA	201 PARK VANDERCOOK LK.	1621 Spring Arbor Rd. JACKSON
960 N. WEST AVE. JACKSON	115 W. PROSPECT ST. JACKSON	1809 E. MICH. AVE. JACKSON

WE ACCEPT U.S.D.A. FOOD STAMPS

Made on The FARM in WISCONSIN

hillshire FARM

PRE-COOKED SMOKED SAUSAGE

\$1.29 LB.

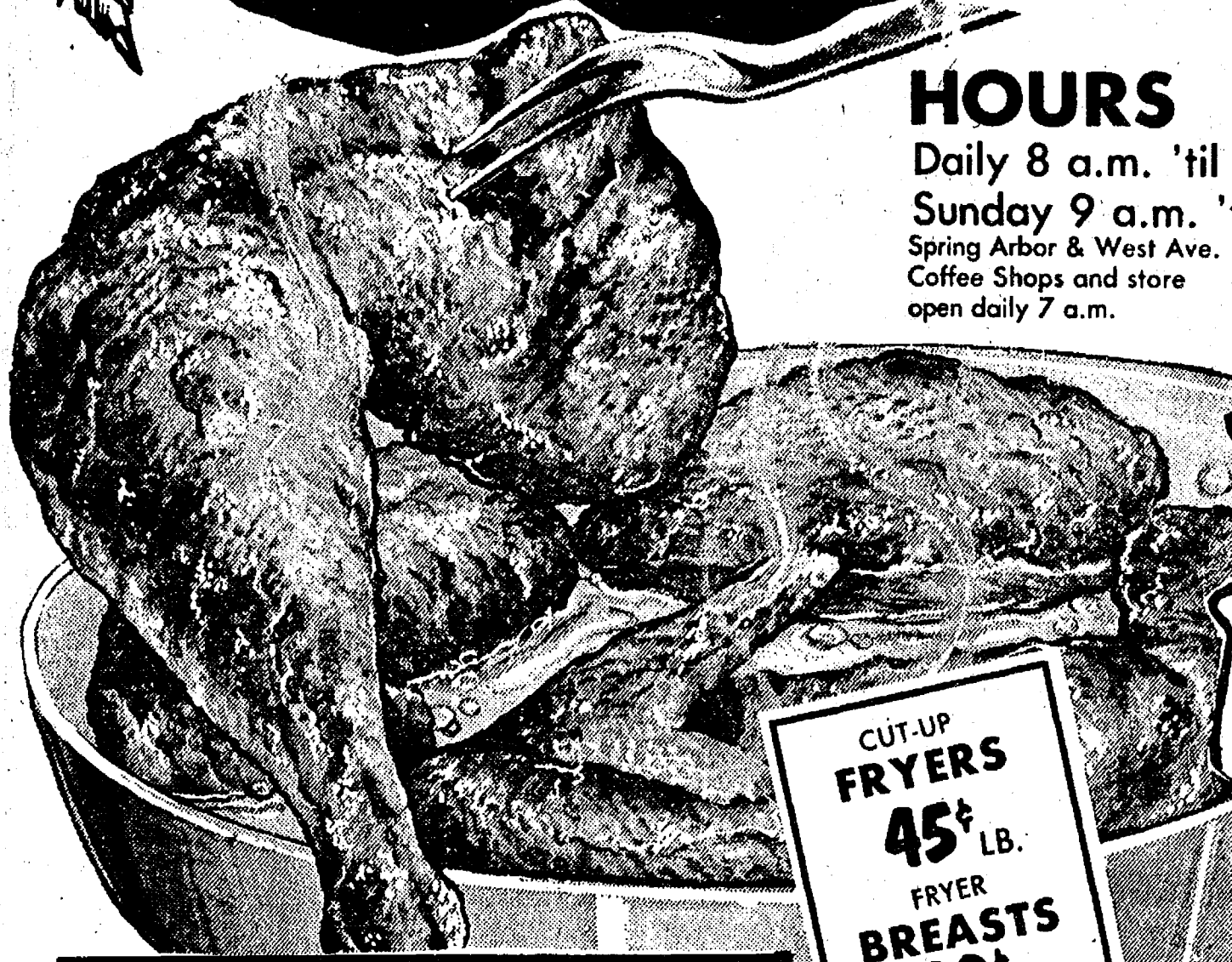
It's Delicious!

SWIFT'S

EVERSWEET BACON

LB. PKG. **89¢**

HOURS
Daily 8 a.m. 'til 10 p.m.
Sunday 9 a.m. 'til 6 p.m.
Spring Arbor & West Ave.
Coffee Shops and store
open daily 7 a.m.



GRADE A WHOLE

Fryers **39¢** LB.

WHOLE BEEF LOINS	COST AFTER CUTTING	\$1.29
WHOLE BEEF RIBS	COST AFTER CUTTING	\$1.19

CUT-UP FRYERS **45¢** LB.

FRYER BREASTS **69¢** LB.

THIGHS **59¢** LB.

FRYER LEGS **59¢** LB.

FARMER PEETS WHOLE BONANZA HAMS	WATER ADDED	\$1.39
FARMER PEETS ASSORTED LUNCH MEATS		\$1.09
FRESH PORK HOCKS		59¢
SALT PORK		69¢
ARMOUR STAR CANNED PEAR HAM		\$4.59
TENNESSEE PRIDE SAUSAGE		\$1.29

Fresh Fish

FLOUNDER FILLETS	99¢
COOKED PERCH	89¢
SMELT FILLETS	79¢

SAVE UP TO \$6.43

WITH IN-STORE COUPONS, PLUS COUPONS IN THIS AD

JARRON DRIED NORTHERN BEANS	CRISCO SHORTENING	SMUCKERS STRAWBERRY JAM	DEMING SOCKEYE-RED SALMON	VAN CAMPS GRATED LIGHT TUNA
1-LB. 25¢	3-LB. \$1.79	2-LB. \$1.29	16-OZ. \$1.89	6.5-OZ. 39¢

BUY 10 LB. SAVE \$1.00	10-LBS. HAMBURG	\$4.49
BUY 1 SAVE 10¢	ON ANY 1/2-LB. ECKRICH LUNCH MEAT	10¢ OFF
BUY 1 SAVE 20¢	THICK OR REG. ECKRICH BOLOGNA	\$1.25
BUY 1 SAVE 12¢	LIQUID IVORY SOAP	79¢
BUY 1 SAVE 15¢	ENDUST SPRAY	76¢
BUY 1 SAVE 20¢	CHOCOLATE or MALT OVALTINE DRINK	99¢
BUY 1 SAVE 20¢	LIQUID DRANO	67¢
BUY 1 SAVE 30¢	3 PAK PRINGLES POTATO CHIPS	\$1.17
BUY 2 SAVE 30¢	POLLY'S HOMOGENIZED MILK	59¢
BUY 2 SAVE \$1.00	REGULAR or SUPER TAMPAX TAMPONS	\$1.29
BUY 2 SAVE 12¢	ROYAL SCOT MARGARINE QUARTERS	39¢
BUY 1 SAVE 20¢	GORDEN GLACIER CLUB	79¢
BUY 1 SAVE 30¢	SANDERS CURLY-Q FRIED CAKES	89¢
BUY 3 SAVE 10¢	POLLY'S QUALITY WHITE BREAD	3 for 99¢
BUY 2 SAVE 74¢	RISF SHAVE CREAM	79¢

CAMPBELLS PORK & BEANS 16-OZ

4 for \$1

SAVE 10¢ LIBBY'S

TOMATO JUICE 46-OZ.

49¢

SAVE 10¢ W/IN-STORE COUPON POLLY'S QUALITY

WHITE BREAD 20-OZ. LOAVES

3 for 99¢

PRINGLES POTATO CHIPS 3 PKG.-13.5 OZ.

\$1.07 W/COUPON

SAVE 12¢ W/IN-STORE COUPON

LIQUID 20¢ OFF

IVORY 32-OZ.

79¢

Chase & Sanborn COFFEE

VALUABLE COUPON

SAVE 50¢ CHASE & SANBORN COFFEE 3-LB. \$2.65

LIMIT 1 PER COUPON PER FAMILY GOOD THRU 3-9-75

SAVE 13¢ W/IN-STORE COUPON

POLLY'S HOMO. MILK 1/2-GAL.

59¢

7UP

VALUABLE COUPON

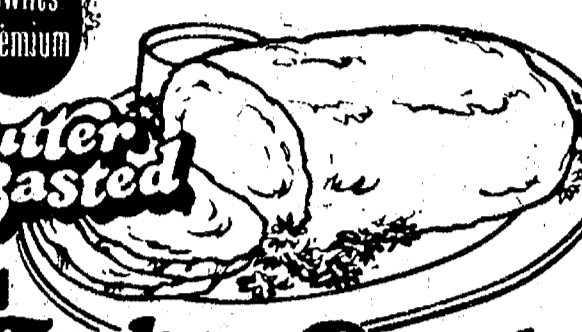
SAVE 30¢ NO-RETURN 8-PK. 7-UP

10-OZ. \$1.39 10-OZ. DIET \$1.07

LIMIT 1 PER COUPON PER FAMILY GOOD THRU 3-9-75

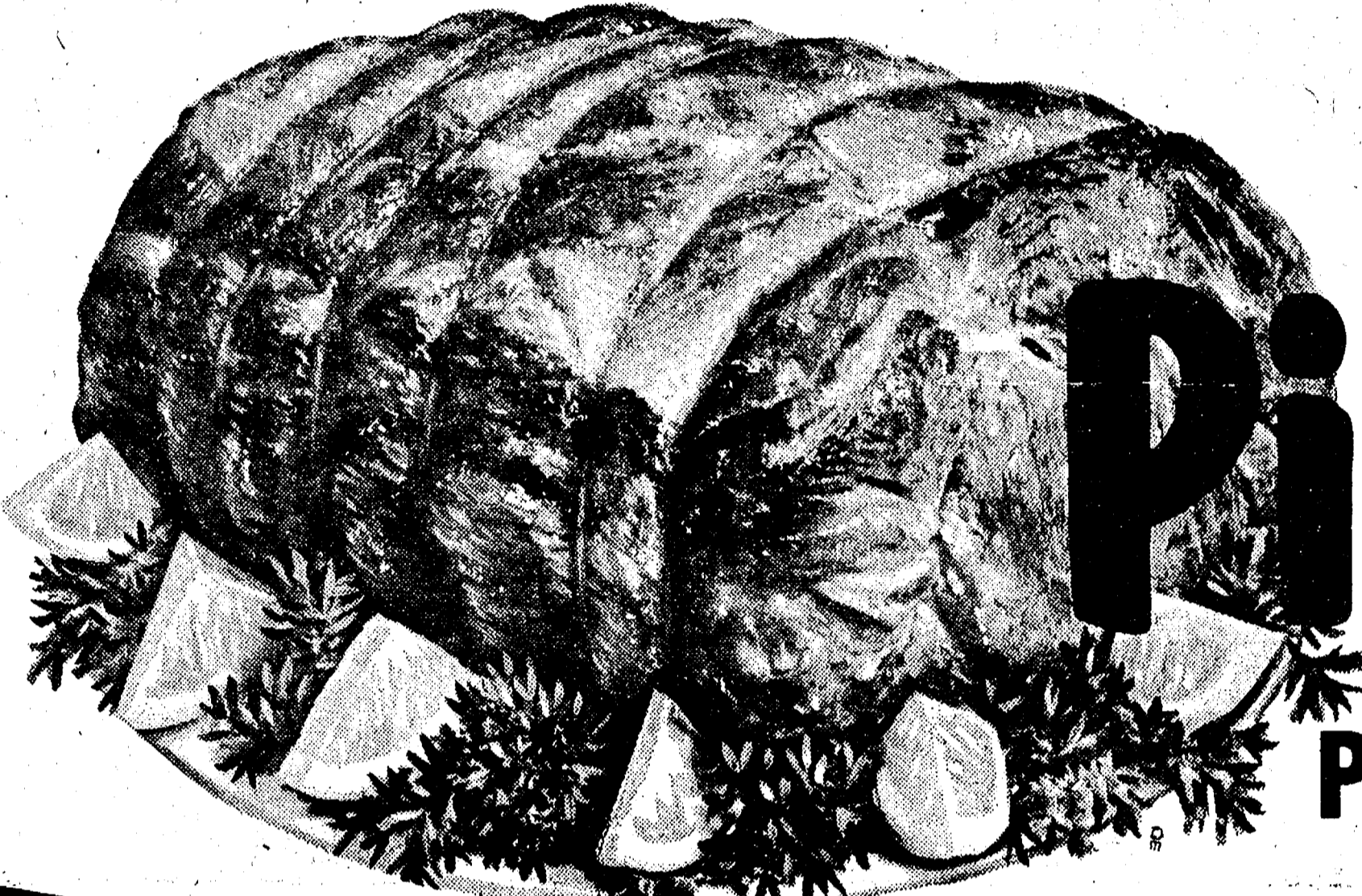
BEFORE INFLATION PRICES...

The Lowest Prices in Town. Check and Compare, You'll Save More on Your "Total Food Bill" at Polly's!

Swifts Premium
Butter Basted

Turkey Roast 2-LB. COMBINATION **\$2.49**
2-LB. WHITE **\$2.99**

FARMER PEETS
PLAYTIME FRANKS 1-LB. PKGS.
Your Choice! **79¢**
FARMER PEETS V.C.
SLICED SAUSAGE


ARMOUR ALL BEEF
HOT DOGS 12-OZ. PKG. **59¢**



FRESH

LB.

Picnic 55¢

PORK ROAST

"EVERYDAY LOW PRICES"

SAVE 3 KLEENEX FACIAL TISSUE 200-CT. 44¢	SAVE 20' DEMING KING CRABMEAT 7½ OZ. \$2.29	SAVE 20' KRAFT MAXI-CUP PARKAY 16-OZ. 59¢
SAVE 10' SUNSHINE HYDROX COOKIES 15-OZ. 59¢	SAVE 10' DEL MONTE CHUNK LT. TUNA 6½ OZ. 47¢	NEW TEXAS STYLE HOT DOGGERS 8-OZ. 37¢
SAVE 6' PARAMOUNT TASTY PRETZELS 15-OZ. 49¢	SAVE 4' KEYLESS SARDINES 25-OZ. 25¢	5½-OZ., 6½-OZ. SUN VALLEY COOKIES 3 for \$1
SAVE 3' PUSSY' BOOTS CAT FOOD 15-OZ. 5 for \$1	SAVE 10' GULF BELLE TINY SHRIMP 4.5-OZ. 69¢	TWIN PAK BOUNTY TOWELS 68¢

VLASIC DILLS 32-OZ. **69¢**
*NO-GARLIC
*POLISH
*KOSHER

SEALTEST LIGHT N'LIVELY
COTTAGE CHEESE 12-OZ. **39¢**

Frozen Food Specials

 **FISH STICKS** 8-OZ. **39¢**

 **FRESH FRIES** 32-OZ. **59¢**
• REGULAR
• CRINKLE CUT

BANQUET
MACARONI & CHEESE 32-OZ. **79¢**

BOOTH
I.Q.F. SOLE 14-OZ. **\$1.19**

SARALEE ASST.
COFFEE CAKES 12-OZ. **\$1.05**

NICKERSON
TURBOT 1-LB. **69¢**

QUEEN OF SCOT
MIXED VEG. 32-OZ. **79¢**

QUEEN OF SCOT
CORN on the COB 8-PKG. **79¢**

SCOT LAD
ORANGE JUICE 12-OZ. **39¢**

ON-COR
DINNERS 32-OZ. **\$1.19**

Health & Beauty Aids

SAVE 20¢

 **SECRET DEODORANT** 13-OZ. SUPER SPRAY **\$1.39**

 **MENNEN** 6-OZ. SKIN BRACER **\$1.17**

 **TRAC II** BY GILLETTE **\$1.57** 9-CT.

10 ounce Twin Pack
Regular and Mint **\$1.19** \$1.78 Value

 **RISE SHAVE CREAM** Regular, Menthol, Lime **79¢** W/COUPON

POLLY'S SUNSHINE FRESH
Fruits and Vegetables

CAL. NAVEL
ORANGES DOZ. **59¢**

BEAUTIFUL RED
CHERRY TOMATOES 59¢ PT.

LUSCIOUS AN JOU
PEARS LB. **33¢**

TROPICAL SWEET
PINEAPPLES EA. **49¢**


TANGY
GREEN ONIONS 2 for **29¢**


CELLO
RED RADISHES 2 for **25¢**


5-LB. BAG
RED POTATOES **59¢**

SNO-WHITE
MUSHROOMS LB. **89¢**

FRESH Baked Goods!

 **FRESH 8-IN. BLACKBERRY PIE** **99¢**

 **DOZEN CHOCOLATE CHIP COOKIES** **79¢**

 **SINGLE LAYER GERMAN CHOCOLATE CAKE** **98¢**

**Thank
You**

FOR SHOPPING AT...



**WHERE WE ARE
HAPPY TO.....**

save YOU MONEY!