



HORSE LOVERS CLUB of Beach Middle school sponsored a clinic Saturday at Botsford's which included halter, beginning western equitation, advanced western equitation, and hunt seat equitation. Listening to instructions from Judy Ward, Beach school

teacher, are, from left, Sharon Kropf, Lucy Bott, Chris Ford, Julie Botsford, Debbie Harrison, Dawn Roderick, Lisa Hurd, and Ann O'Hagan.



INSTRUCTION IN HUNT SEAT equitation at Beach Middle school's clinic from Beach teacher Judy Ward is directed to, from left, Julie Tite, Marti Hense, Lee Thornbury, Laura Hense, and

Ann O'Hagan. The clinic was sponsored by the Beach Horse Lovers Club.

WEATHER

	Min.	Max.	Precip.
Wednesday, April 24	32	57	0.00
Thursday, April 25	29	62	0.00
Friday, April 26	35	72	0.00
Saturday, April 27	35	77	0.08
Sunday, April 28	62	77	0.08
Monday, April 29	61	75	0.03
Tuesday, April 30	47	68	0.03

By H.K.L.

The Chelsea Standard

ONE HUNDRED-FOURTH YEAR—No. 46

14 Pages This Week

THE CHELSEA STANDARD, THURSDAY, MAY 2, 1974

15c per copy

SUBSCRIPTION: \$4.00 PER YEAR

QUOTE

"Every noble activity makes room for itself."
—Ralph Waldo Emerson.

Kindergarten Registration Set for May 9

Next Thursday, May 9, is registration day for all pupils in the Chelsea School District who will enter school for the first time in September, 1974.

Rural parents will meet from 8:30 a.m. to approximately 10 a.m.; town parents will meet from 1:30 p.m. to approximately 3 p.m. in the all-purpose room at South Elementary school.

Parents unable to attend the May 9 meeting are urged to call South school before May 9 or some day as soon as possible after that date to register their children by telephone (475-2913). The school requests that parents do not call to register children on May 9, as that is expected to be a busy day.

Children must be five years of age on or before Dec. 31, 1974, to register for the coming school year. The school must see the child's birth certificate at the meeting, or not later than the opening day of school. This is required by the State of Michigan.

Also no later than the opening day of classes, the school must be provided with a statement from (Continued on page eight)

Golf Team Runs Season Record to 5-0

Chelsea golfers ran their record to 5-0 this week by defeating both Saline and Dexter last Thursday and Dexter again Monday night.

Led by medalist Dan Shirilla, who shot a 40, Chelsea defeated Saline, 163-177, and Dexter, 163-178. Mike Fouty, Chris Rabbitt, and Victor Steinbach also each shot a 41 in the contest.

Monday the Bulldog linksmen edged past Dexter, 172-177. Medalist Mike Fouty shot a 37 to lead the Chelsea attack, aided by Jeff Policht, who shot a 43, Chris Rabbitt, 46, and Roger Policht, 46.

This afternoon (Thursday) Chelsea will meet Brighton and Saline at Saline.

Girls JV Softball Team Pounds Grass Lake, 24-8

Teri Lutovsky pitched a two-hitter and her teammates pounded out 18 hits to lead Chelsea's junior varsity girls' softball squad to a 24-8 trouncing of Grass Lake Tuesday afternoon.

The team was led by Karen Kaiser and Laurie Klink, who each were good for three hits. Apache Hitting, Diana Fletcher, Dana Clifton, Lesley Clark and Kyle Parker contributed a pair of hits to the Chelsea cause.

In the second JV game, Chelsea downed Dexter, 21-16, led by Sue Schultze's home run and double.

Junior varsity girls will meet Saline Friday at 4 p.m. at South school field.

Girls Track Team Downs Stockbridge

Chelsea's girls track squad upped its record to 2-1 Monday with a 64-20 trouncing of Stockbridge, led by Sue Frisbie's three firsts, in the 100 and 220-yard dashes and long jump.

Frisbie turned in a 12.4 in the 100; a 29.0 in the 220; and a jump of 13 ft., 5 1/2 in. in long jump.

Winners and placers for the meet were:

80-yard hurdles: 1st, Nancy Wonders, 14.2; 2nd, Kathy Treado, 14.6.

Medley relay: 1st, Chelsea (Hanker, Hanna, Gaken, B. Pearson), 2:15.6.

880 run: 1st, Judy Powers, 2:55.8; 2nd, Julie Proctor, 3:04.

100-yard dash: 1st, Sue Frisbie, 12.4; 3rd, Kathy Treado, 13.3.

1 mile run: 1st, Jan Downing, 6:47.9.

220-yard dash: 1st, Sue Frisbie, 29.0; 2nd, Nancy Wonders, 30.5; 3rd, Lou Ann Hanker, 31.9.

440 run: 1st, Judy Powers, 1:11.9; 3rd, Julie Proctor, 1:17.

440 relay: 1st, Chelsea (Wonders, Treado, Gaken, Frisbie), 59.5.

Long jump: 1st, Sue Frisbie, 13 ft., 5 1/2 in.; 3rd, tie, Lou Ann Hanker and Sandy Lingerfelt, 12 ft., 4 1/2 in.

(Continued on page three)

Tennis Team Posts Season's First Victory

Chelsea's varsity netters recorded their first win of the season last Friday, edging past Stockbridge, 4-3.

Results of the match were as follows.

1st singles: Bill Zick (Stockbridge) defeated Debbie Bertke (Chelsea), 6-8, 6-4, 6-4.

2nd singles: Jane Belser (Chelsea), defeated Charlie Schriver (Stockbridge), 6-1, 6-3.

3rd singles: Dan Hagen (Chelsea) defeated Dan Dancer (Stockbridge), 6-4, 6-0.

4th singles: Duane Luick (Chelsea), won on a forfeit.

1st doubles: Porszolt and Lehman (Stockbridge) defeated Verchereau and Umstead (Chelsea), 11-9, 6-1.

2nd doubles: McKune and Bailey (Stockbridge) defeated Heydlauff and Quakenbush (Chelsea), 6-4, 6-1.

3rd doubles: Gellstrom and Boylan (Chelsea), defeated Camp and Barry (Stockbridge) 6-3, 6-4.

This afternoon the team will meet Haslett.

Bulldog Nine Squeaks Past Dexter, 11-10

Chelsea put a tough one into the win column Tuesday afternoon, edging the Dexter nine, 11-10.

The game saw Chelsea ahead, 11-4 as the two entered the bottom of the seventh inning. Dexter came alive after remaining relatively docile since the first inning to score seven runs—yes, seven—and tie the game at 11-11.

The game was awarded to Chelsea, however, when Bulldog players appealed that a Dreadnaught runner had failed to tag a base.

The runner, who had scored the tying run, was called out to end the game.

Coach Phil Bareis noted briefly, "That's baseball."

Leading hitter for the Bulldogs was Dave Tucker, who clubbed a home run, double, and a single. Adding two hits each were Todd

(Continued on page eight)



FOREIGN EXCHANGE STUDENT from Argentina, Maria Antonia Kovacevich, left front, is currently spending this term at Chelsea High school and living with the E. Russell Severn family on Butternut Ct. Above, seated with Maria, is the Severns' daughter, Karen; in back are Mr. and Mrs. Severn. Maria arrived in Chelsea in December, at the beginning of what was her summer vacation.

Argentina Exchange Student Finds America Thrilling

Since the first day Maria Antonia Kovacevich stepped off an airplane in Michigan, it seems that her life has been one continuous thrilling experience—or maybe she just is one person who has the aura of authenticity being thrilled with life.

At any rate, things began for Chelsea's Argentine foreign exchange student when she discovered snow at Metropolitan Airport on Dec. 29.

"When I left Buenos Aires, it was so hot—we were carrying all my luggage, and it was so hot!" she exclaims, rolling her eyes at the memory of the cold she then encountered. "It is cold in Argentina in the winter, but December is summer, and I was wearing sandals when I got off the plane. My feet were so cold..."

After the snow, there were more surprises to contend with—notably the fact that Americans she met did not speak English the way she did. After studying English since first grade, she found herself replying "oh, yes" and "oh, no" to most questions, and asking "what?" too many times to suit herself.

"I was so tired of saying 'what?' after that first day," she recalls grimly. Now she says, after thinking and speaking English so much, it is hard to revert to Spanish.

In a remarkable, but unintended, imitation of a midwesterner employing a small amount of Spanish accent, she says her name, the way she says it now. The "r" is unextended; the "o's" are flat. Then, with what seems real effort, she says it the way

"we really say it" — the "r" rolled magnificently, the "o's" sounded more like a flat "a". More things than mere accents fascinate her, however. First, there is the American greeting, "hi," which apparently is unheard of in an English language class.

"I came here, and all these people say 'hi.' I think, what is this 'hi'?" And in Argentina, we kiss people—it is a greeting," she continues. "But here— one lady came here, and I kissed her (motioning to her cheek) and she said, 'oh, you are so sweet.' A kiss is like a hello. Sometimes when people come here, I lean forward to get the kiss, but then... they say 'hello.'"

She has found that her preconceptions of America have often been as far away from reality as some of the things her Chelsea schoolmates believe about her country. "People told me before I came here, 'America is great—it has huge highways and two story buses...' but that isn't true. At home I can take a taxi or a bus to get anywhere, where, but here, if you don't have a car, you are not able to go anywhere."

Americans, she says, often express surprise at her appearance. "Some people said they thought I would have dark hair and skin and eyes. But most people in Argentina have dark hair—but not very dark. Everyone in my family has blue eyes."

Mention of her family brings her to some interesting insights about her peers in Chelsea.

"My family and I are—friends," she says, searching for the correct word to explain the relationship.

"We do things together, and have fun, and we are friends," she repeats for emphasis. Some of my friends here are surprised when I tell them that I talk to my father about my problems. If a boyfriend calls, or something good or bad happens, I tell him as I would tell a friend.

"Some here have said, 'You tell your father?'" she continues. "But we tell each other everything. When we have a problem, everyone talks about it together. My parents not long ago thought about leaving Argentina, but we talked about it, and decided not to go."

"I think what is most important about coming to this country is that I have learned to... Appreciate my family. When I was getting ready to come here," she says, "I was so excited that I really didn't think about what was happening. I like America, though."

Maria's six-month stay in Chelsea covers her summer vacation, which stretches from January to mid-March, and the beginning of her school year. Life during that vacation, it seems, is a good one—she and her family travel alternately to the mountains, or to the seashore, or to a summer home, with her father, an engineer who now owns a factory, flying in to be with them on week-ends.

Her mother, she notes, should be currently buying books and (Continued on page three)

Track Team Tops Section in Albion Relays

There's nothing but good news from Chelsea's varsity track team this week—although in both cases the outcome could have been bad.

In Saturday's Albion Relays, Bulldog trackmen repeated as Section III winners with a total of 47 points by edging out Niles Brandywine in the final event of the afternoon.

In Thursday afternoon's encounter with the Novi Wildcats, Chelsea prevailed, 35-28, although the meet featured a Bulldog disqualification and a trio of local runners falling.

Final standings in the Albion relays showed Chelsea on top, followed by Niles Brandywine with 41 1/2 points; Albion, 36 1/2; Jackson Lumen Christi, 31; Royal Oak Shrine, 24; and Battle Creek Harper Creek, 27 1/2.

Chelsea pulled into a tie with Brandywine in the second-to-last event of the relays, when the 440-relay team earned a third. The meet was then decided by the pole vault, which had been continuing for six hours. Don Pierson took first in the crucial event with a 12 ft. vault while the Brandywine vaulter managed only a fifth place.

Coach Bert Kruse termed a number of his players' performances "very gutsy" and noted that "some of these key performances produced the points that won this meet." Balance again played a significant role in the Bulldog finish, as Chelsea scored in 12 of 15 events.

The winning combination of Craig Coltre and Karl Gauss again led the way to victory—Coltre took both the high and low hurdles, placed second in long jump and ran in the third-place 440 relay team. His efforts accounted for some 16 1/2 of the team's 47 points.

Gauss earned a second in the 100-yard dash, third in the 220 and ran in the third-place 880-relay team.

Other placers included: 440-yard dash: Howard Salyer, 53.0;

Shot put: 2nd, Ismael Picklesimer, 45 ft., 8 in.; High jump: 2nd, Rick Sweeney, 5 ft., 10 in.

880-relay: 3rd, Chelsea (Howard Salyer, Dale Poertner, Dennis Bauer and Karl Gauss); 1:36.4.

440-relay: 3rd, Chelsea (Don Pierson, Dale Poertner, Curt Winans, Craig Coltre), 46.8.

1 mile relay: 5th, Chelsea (Jeff Marshall, John Tandy, Dennis Bauer, Howard Salyer).

In their league encounter with Novi Thursday, Coach Kruse noted pointedly that "Novi was fortunate to score as many points as they did." Even aided by the disqualification of the Bulldog 440-relay team for two false starts, the failure of two pole vaulters to make opening heights near what they had cleared, and falls by three runners, Novi was unable to make much headway against the Bulldog tide.

"Fortunately," Coach Kruse commented, "these mistakes were made against a weak team, or they could have proven very costly."

Craig Coltre was again the big winner, chalking up three firsts, in low and high hurdles and long jump. In addition, Rick Sweeney took high jump and placed second in both hurdles in his first participation to finish as second highest point-getter.

Chelsea winners and placers were:

Shot put: 1st, Ismael Picklesimer (Continued on page five)

Rules Established for Using Tennis Courts

At a meeting last Tuesday to adopt policies and programs for tennis in the Chelsea area, Chelsea Tennis Commission also announced

extensive tennis instruction and competition planned for this summer.

A new eight week session of adult tennis instruction, taught by high school physical education teacher Terry Schreiner, will begin June 13. Tennis lessons for children will be offered this summer during the day.

In addition, it was announced, area tennis players will have the opportunity to play weekly in a men's or women's league, which will conclude with Labor Day weekend tournaments, including competition in men's and women's singles, men's and women's doubles, and "moonlight" mixed doubles. Further details on these programs will be available at a later date.

Other decisions revolved around procedures and regulations for Chelsea's courts.

Availability for both sets of courts (two at North school and two at Chelsea High school) was specifically defined. At the high school, Chelsea students and varsity tennis players have priority during school hours and until 6 p.m., April 2 through May 20. At North school courts, varsity

tennis players have priority from 4 to 6 p.m. from April 1 through May 20.

Chelsea High school's varsity tennis team has priority on all four local courts when hosting home matches on May 7, 9, 13, and 15.

What are basically behavior regulations established by the Commission are primarily matters of common sense. "To insure that the community's considerable investment" in its tennis program is not abused, restrictions state:

—no bicycles are allowed on the courts.

—participants must wear tennis shoes.

—court area should be kept free of debris; use trash receptacle.

—participants should not adjust, lean, sit on, or jump nets.

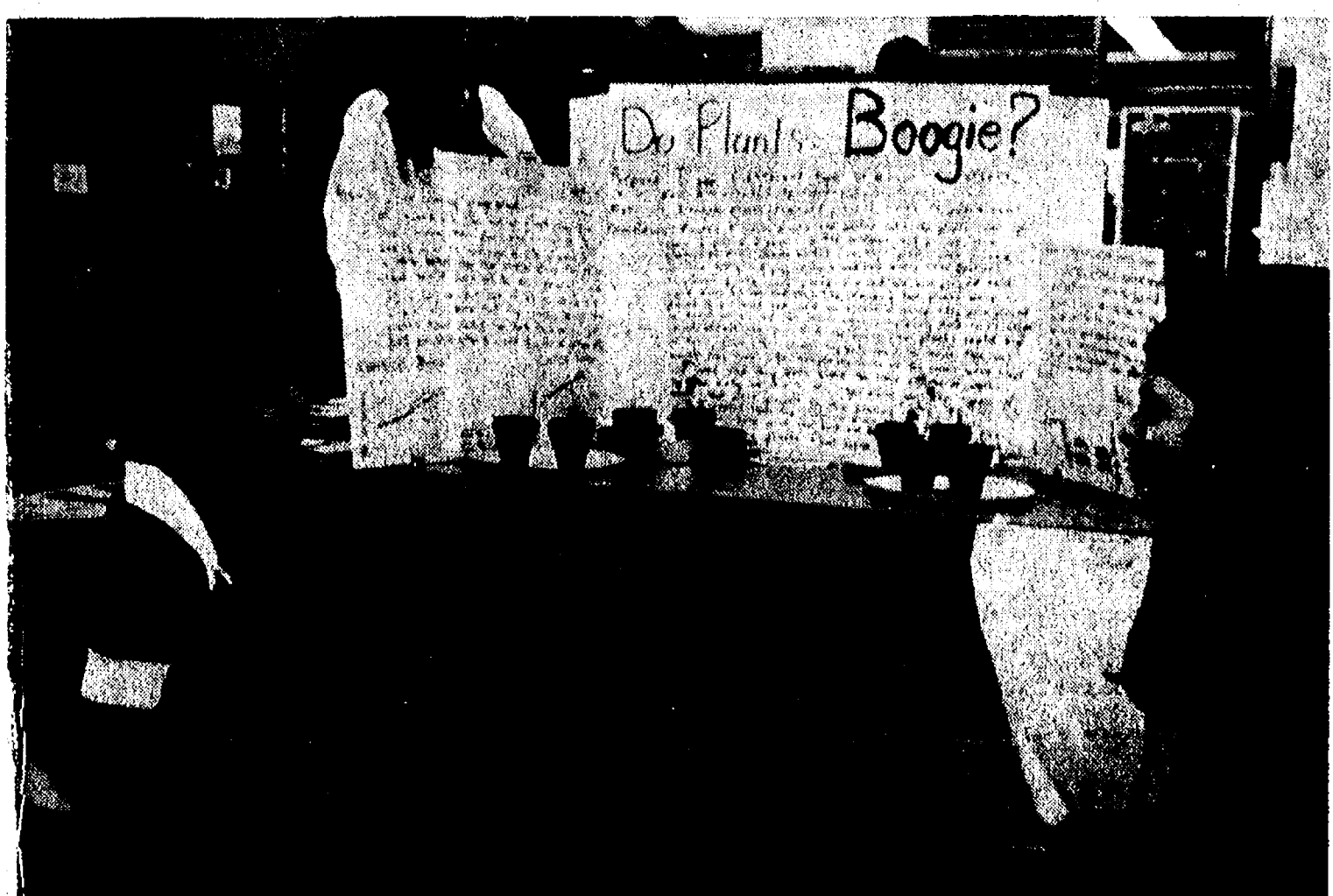
—participants should refrain from using abusive language.

—participants should not use the practice board earlier than 7 a.m.

Failure to observe the rules, the Commission stresses, will result in loss of use of the courts.

A system for reserving courts which has reportedly proven "very fair and effective" in various communities was adopted by the Commission to insure that the courts will be available to all residents.

(Continued on page six)



"DO PLANTS BOOGIE?" was the captivating question posed by Tom Boylan's experiment entered in Chelsea High school's science fair, held last Thursday evening for earth science and biology students. Inspected here by Jennifer Tandy (left) and Theresa Ottoman, Boylan's experiment explored the effects of playing varying types of music, from classical to hard rock, on the growth

of plants. Boylan expected the plants to flourish under classical and perish under hard rock; in actuality, growth varied but little between classical music and more traditional rock and roll. The plants subjected to hard rock (Jimi Hendrix) died, however, which probably confirms a lot of parents' suspicions.

Uncle Lew from Lima Says:

DEAR MISTER EDITOR:

The tellers still had taxes on their minds Saturday night at the country store. Client Webster said April 15 came and went and in spite of what taxpayers predict every year, the country kept right on rolling along. Client said about the only thing that made this year year unusual at income tax time was the bed of snakes they plowed up about President Nixon's back taxes.

It's a sight in this world, allow-

ed Clem, that we got \$40,000 a year congressmen with nothing better to do than flog how much it cost extra to carry a 25-pound dog from Washington to California. Clem said he is for Nixon paying ever cent of income tax he owes, but it's got to where that 1,000-page report on his tax records that sells for \$6.50 is a bigger light than that picture show about the devil getting into some little girl.

Actual said Zeke Grubb, people allus is fascinated by what they're afraid of, and for striking fear deep in the hearts of Americans, you just can't beat taxes and Ol' Beelzebub. Zeke said for what we pay our congressmen, he'd rather see them working on ways to change the tax laws so the working man in the middle wouldn't be keeping up the rich on one end of the income scale and the pore on the other end. Zeke has saw where Senator Mondale said thousands of people with huge incomes pay the little end of nothing, and that 402 Americans that made \$100,000 or more in 1972 paid no income tax at all that year.

Ed Doolittle said where a column writer reported that the 16th Amendment that gave the Federal Government the right to tax income was only 31 words. That was in 1913, and since then laws covering collection of taxes runs to more than a million words. And Ed said a good loop-hole lawyer can do more for his client today with them million words than the 31 did for the country.

Back when that Amendment was wrote, Ed allowed, you could take yore gal to the county fair and buy her pink lemonade. All the reward you got and all you expected was to take her home, set in the front porch swing and squeeze your lemonade. Nowadays, he said, you can charge the lemonade to operating expenses get depreciation on the swing and come out ahead of the game.

Yours truly,
Uncle Lew.

4-H Exploration Days Registrations Due By May 10 Deadline

Friday, May 10 is the deadline for 4-H Exploration Days on June 20-22 at Michigan State University. The purpose of this program is to strengthen local 4-H Youth programs, according to Duncan Sanford, 4-H Youth Agent.

This is not to be confused with the May 17 and 18 Expo Days at Eastern Michigan University, he said. See your leader for details.

For those attending the MSU event, there will be an orientation meeting the week of June 10. All interested participants will like to East Lansing, departing on June 18, camping that night in Brighton and ride on to MSU on Wednesday.

FAST TALKER?
Don't talk too fast, you might say something you haven't thought of yet.

Three's company ... four's a crowd?



MICHIGAN MIRROR

By Elmer E. White, Secretary, Michigan Press Association

Shortage Drastic?

A giant question mark hangs over what's described as Michigan's second largest industry: agriculture.

The problem is fertilizer, its availability and price. Estimates of the shortage caused because natural gas, itself at a premium, is the main ingredient for nitrogen—very widely.

The U.S. Department of Agriculture, for instance, has projected a 5 percent fertilizer shortfall across the country. But many consider that estimate extremely conservative, including the fertilizer industry, which pegs the national shortage at 15 percent.

Michigan's shortage is bound to be tighter than some other areas, explains John Calkins, chief deputy director for the Michigan Agriculture Department. That's because Michigan is far from the nitrogen fertilizer supply, most of which is in the deep south, close to natural gas sources.

Another reason is increased ac-

creage planned for Michigan this year. About 11 percent more acreage, or half a million acres, are expected to be planted this year than in 1972.

Some of that land was released for planting by the federal acreage reserve program, while another portion has been added by farmers who might see the increase in food prices as an inducement to increase their own farms' output.

Then what is Michigan's situation?

Estimates of the state shortage vary widely too, but they're much higher than what the USDA and fertilizer industry project for the nation. One survey of state fertilizer dealers, completed by the Michigan Agricultural Stabilization and Conservation Service, shows the state faces a 51 percent shortage of nitrogen fertilizer.

Another survey, conducted by the Michigan Crop Reporting Service, went directly to some 4,000 farmers to ask their predictions. Finding: Michigan farmers say they are still unsure of 80 percent shortage this summer.

Comments from individual farmers answering the survey are as widely divergent as the various projections by agencies.

One says he expects to plant most crops as usual. But another reports: "If the fertilizer price goes up and the grain price goes down, I won't need any." He's ready to throw in the rake.

How many Michigan farmers will react that way is anybody's guess, of course. But it's safe to assume that higher prices for fertilizer will have some ramifications for the consumer—like higher prices next year.

A recent report that the state had located sources of nitrogen fertilizer "sufficient to cover Michigan's anticipated 1974 farm shortage" may have been misinterpreted by those not in the know. The announcement did not mean that all is well.

It does mean that farmers who want to pay much higher prices for fertilizer can get it from overseas sources. And those prices are in some cases at least double domestic prices.

Baring the Facts

Some lawmakers are taking it upon themselves to tell the voters what they're worth and how much they're spending of taxpayers' money.

Most recent among those making disclosures are Rep. John R. Otterbacher, D-Grand Rapids, and Rep. Michael A. Dively, R-Tri-verse City.

For the second year in a row, legislation that would require regular financial reports from many elected and appointed officials—reported his personal assets and liabilities. The lawmaker lists his more than \$22,000.

Dively detailed his postage, telephone and travel expenses for the last two years. That information is public record, but Dively says, "Like a lot of other public information, it is sometimes difficult if not impossible for most people to find."

"Public officials have a responsibility to make it as easy as possible for citizens to find out how their tax money is being spent."

Strong Words

Gov. William Milliken predicts—not surprisingly—that voters will make their ballot decisions on the basis of which candidate is the "best," not on the basis of party and political repercussions from such happenings as Watergate.

The prediction is no surprise because that's been a basic Milliken tack for some time: Look to the man or woman, not just affiliation. (At least one of his closest aides was a Democratic official before joining the Republican governor.)

Milliken's recent prediction, however, included some strong words.

Milliken said: "In the face of all efforts to blame the Republican Party for the actions of a few Arab leaders, for world-wide inflation that no country has been able to reverse, for the stupid and criminal activities of a few zealots who were not even part of the regular Republican organization—in the face of all these things, the people will decide in November that the real issue which are the best candidates."

JUST REMINISCING

Items Taken from the Files of The Chelsea Standard

4 Years Ago...

Thursday, April 30, 1970—

James R. Mshar, son of Mr. and Mrs. Alex Mshar, 742 Book St., has been awarded registration as a progression engineer in the state of Wisconsin. Registration requirements involve a combination of experience in the field and comprehensive examinations.

Chelsea High school ran its track record to 5-0 in the dual meet season and 3-0 in the conference by trouncing Milan Thursday night, 70-39.

Four Chelsea high candidates for Carnival Queen include Eileen Evans, a 9th grader; Ann Thomson, an 11th grader; Pam Czarniecki, a 12th grader; and Pat Pottner, a 10th grader. The girls have been nominated in conjunction with the Nickel Carnival scheduled for Saturday at the high school gym.

First-place winner in Cub Scout Pack 455's annual pinewood derby was Scott Otto, son of Mr. and Mrs. Vernon Otto. Placing second and third, respectively, were Mike Bowen, son of Mr. and Mrs. Tony Bowen, and David Baldwin, son of Mr. and Mrs. David Baldwin.

14 Years Ago...

Thursday, May 5, 1960—

Richard Kern, Jack Dettling, and Elmer Kiel are on a committee for a men's supper meeting at Stivers this evening for the purpose of hearing representatives from the Inkster Lions club explain procedures for possible formation of a Lions club in Chelsea.

An incomplete total of \$1,010 is reported in the Cancer fund, including a \$500 donation from Donald Bacon and Central Fibre Products Co. Bacon was co-chairman of the Chelsea cancer drive with Mrs. John Chaplin.

Dave McLaughlin was Chelsea's only individual winner, as he took first in his specialty, the 120-yd. high hurdle, as the Bulldogs finished fifth in a 14-team field at the second annual Tecumseh Relays last Saturday.

In a special observance of Arbor Day, sixth grade students at North Elementary school, under the leadership of their teacher, Jack Good, planted approximately 85 Norway spruce trees Friday at the west end of the school playground. Chosen to present the first tree to school superintendent Charles Cameron was Danny Sawyer.

24 Years Ago...

Thursday, May 4, 1950—

Robert Daniels, a member of the class of '31 in the School of Business Administration at the University of Michigan, has been named business manager of the Michigan Daily for the school year 1950-51. Daniels, who graduated from Chelsea High school as salutatorian in 1947, is an economics student and has pledged Delta Sigma Nu business fraternity.

Included in the cast of 14 of "Lunatics at Large," presented by the H-Y, will be seven of the most glamorous damsels ever to come out of the ranks of the group, namely: John Pepp, Corkey Beavers, George Heydlauff, Don O'Dell, Richard Seely, Ronnie Eder, and Ralph Guenther. Playing more conventional men's parts will be Stanley Knickerbocker, Cal Summers, Bob Toney, Red Fischer, Marty Tobin, Bill Koselka, and Norman O'Connor.

Donna Kaimbach, daughter of Mr. and Mrs. Oscar Kaimbach, is one of 35 inductees into Tower Guard, women's sophomore honor society at Michigan State College. Top scholarship and outstanding record of service in extra-curricular activities is required for entrance into the honorary group.

34 Years Ago...

Thursday, May 2, 1940—

A large construction program which will add approximately 20,000 square feet of floor space to the Chelsea Spring Co. has been

announced. Three new buildings are included in the expansion program, which is to be completed by Aug. 1.

Eva Harris, an 8th grade student who was champion of the Chelsea public school spelling bee, won the district spelling championship by correctly spelling the word "definitely." She will go to Detroit on May 17 as champion of District No. 5 to compete with champions of other districts for the state championship.

William C. Pritchard spent three days last week in St. Paul, Minn., where he attended a meeting of farmers interested in formulating legislative proposals to be submitted to the Federal Government.

Mr. and Mrs. J. N. Streller attended the Honors Convocation of the University of Michigan on Friday evening at Hill Auditorium, where their son, Frederick, a senior in the engineering school, was one of the 500 students who were honored for scholastic achievements.

Vintage Car Collector's Club Seeks Members

Anyone interested in vintage cars is invited to the open meeting on Thursday, May 2, 7:30 p.m. in the community room of the Ann Arbor Bank, Dexter.

The Dexter Vintage Car Collector's Club is newly organized and is seeking an interested membership. President Gary Gould urges anyone who is at all interested to attend.

Founders of the club are C. Pete Walker, Joseph Schnebelt and Gary Gould.

— OFFICIAL NOTICE —

REGULAR MEETING OF THE DEXTER TOWNSHIP BOARD

will be held

TUESDAY, MAY 7, 1974 - 8 p.m.

at the Township Hall, 6880 Dexter-Pinckney Rd.

Items to be considered:

- 1) Accept bids to mow Town Hall lawn and cemetery.
- 2) Road Commission agreement, 1974.

WILLIAM EISENBEISER
Dexter Township Clerk

WASHTENAW COMMUNITY COLLEGE

SHORT TERM MECHANIC TRAINING PROGRAM

THIRD QUARTER

SATURDAY'S MECHANIC FOR MEN AND WOMEN 059

Meets Saturdays, Starting May 4, 1974, Six (6) Weeks, 9:00 - 12:00 Noon

An introduction to the basic principles of operation and service of today's automobiles (NOT TO INCLUDE TUNE UP). Students will be able to perform service operations on their own vehicles, such as lubrication, safety inspection and general vehicle upkeep.

ADVANCED TUNE-UP 043A

Meets Saturdays, Starting May 4, 1974, Six (6) Weeks, 9:00 - 12:00 Noon

Class will be involved with the proper procedure for tuning up of emission controlled vehicles. A basic understanding of the ignition system and engine is necessary for this course. The equipment required for these procedures will be introduced as needed.

ANYONE INTERESTED IN ENROLLING IN THESE CLASSES MUST CALL THE AUTOMOTIVE CENTER AT 434-1555 AND PRE-REGISTER ON THE APPROPRIATE CLASS LIST. CLASS SIZE WILL BE LIMITED TO 18. YOU MUST BE PRE-REGISTERED TO BE IN THE CLASS.

LOCATION

WASHTENAW COMMUNITY COLLEGE

Phone
434-1555

Automotive Service Center

5115 Carpenter Road, Ypsilanti, Michigan

Phone
434-1555

COST: \$2.00 per course

ROCKCRETE PRODUCTS

TRANSIT - MIXED CONCRETE

WASHED SAND & STONE - ROAD GRAVEL
LIMESTONE

Rite-Way Mixers

475-2848

6991 CHELSEA-MANCHESTER RD., MANCHESTER

"Come and see our Expansion Program"

INVERNESS INN

Your Innkeepers: Matt and Marge
13996 North Territorial Rd., North Lake

YOUR FAVORITE MEALS
SHRIMP, CHICKEN & FISH DINNERS

BEER - WINE - LIQUOR - PIZZAS
LUNCHEON SPECIALS

Established 1871 The Chelsea Standard Telephone 475-1371

Excellence Award By Michigan Press Association
1951-1952-1960-1964-1965-1966
Walter P. Leonard, Editor and Publisher

Published every Thursday morning at 800 North Main Street, Chelsea, Mich. 48118, and second class postage paid at Chelsea, Mich., under the Act of March 8, 1879.

Subscription Rates (Payable in Advance)
In Michigan: One Year \$4.00, Six Months \$2.50, Three Months \$1.25
Outside Michigan: One Year \$6.00, Six Months \$3.50, Three Months \$1.75
Single Copies .15
Delivery rates on women, anywhere, 1 year \$4.00

National Advertising Representative:
MICHIGAN NEWSPAPERS, INC.
10000 E. Grand Ave., Detroit, Mich. 48202

The Army has selected a Revolutionary War Drummer as its official emblem for its Bicentennial which coincides with the Nation's. Above the Drummer are the words "Vanguard of Freedom," the Army's Bicentennial theme.

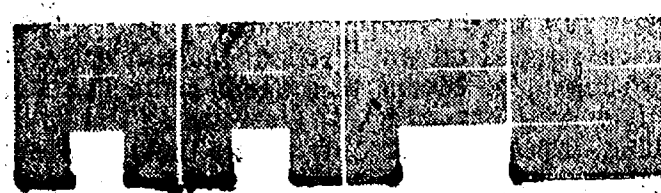


Here's how to be a Smart Buyer!

- we deliver anywhere in the state.
- we trade anything of VALUE.



• Corsair Travel Trailers
• 8th Wheel • Country Squire
• Sprinter • Titlist
• Journey Motor Homes
• Sales • Service
• Parts • Accessories
We're Jackson's largest dealer because we care about you!
Phone (517) 787-3830 (313) 498-2655
2501 Lansing Ave., Jackson, Michigan 49201
1/2 mile North I-94
Open 8 a.m. Monday thru Saturday



SHORT TERM, SOLID RETURN PASSBOOK CERTIFICATE

ANN ARBOR FEDERAL SAVINGS

7 OFFICES TO SERVE YOU IN ANN ARBOR, CHELSEA, DEXTER, AND YPSILANTI
Member: Federal Home Loan Bank System • Federal Savings and Loan Insurance Corporation

SINCE 1890

Beach School Horse Lovers Club Sponsors Instruction Clinic

"Horsing around" is definitely not an adequate description of Beach Middle School's Horse Lovers Club this year.

Club members, who take their interest seriously, last Saturday sponsored a horse clinic at Botsford in halter, beginning western horsemanship, advanced western horsemanship, and hunt seat equitation.

Such a clinic, it was decided, would be beneficial for instruction in safe horsemanship, familiarizing horses and ponies with new surroundings, and obtaining a glimpse at what would be expected of both horse and rider at a small horse show.

In the first semester of the club, members worked toward horsemanship ribbons by passing a

test in the care of horses and turning in projects. Some of the projects were presented at last Friday's Beach school carnival, ranging from displays of parts of the horse and breeds of horses, to a model of a trail horse class. Proceeds from the carnival have been donated to the Chelsea Community Fair horse show.

In addition, activities included field trips to Stoney Ridge Farm and to the farm home of Bill and Julie Tite. At Stoney Ridge, the horse lovers were instructed in the care of horses and hunt seat equitation. The Tites showed the club training methods for a young colt and western horsemanship.

Girls Track Team Downs Stockbridge

(Continued from page one)

High jump: 1st, Kathy Treado, 4 ft., 6 in.
Shot put: 3rd, Annette Gaken, 26 ft., 11 in.

Saturday the team will travel to Grass Lake for competition in the Grass Lake Invitational. Monday they will meet Grass Lake.

R. Riemenschneider Attends Classes in U-M Real Estate Training

Robert Riemenschneider of Chelsea was among 60 persons attending Real Estate Institute III held in Ann Arbor, April 15.

The Institute is one of a series presented during the year throughout the state by the Real Estate Program of the University of Michigan Extension Service and Graduate School of Business Administration. Courses in the program lead to a certificate in real estate which is approved by the National Association of Realtors and the Michigan Association of Realtors as meeting the academic qualification toward the Graduate, Realtors Institute (GRI) designation. These courses also provide preparation for the licensing examinations for salesmen and brokers administered by the Michigan Department of Licensing and Regulation.

WORK DAY AT THE FARM MUSEUM at the old Jacob Reilly homestead was aided by a "work-day pot-luck dinner" provided by these women associated with the Waterloo Area Historical Society: from left, Mrs. Joe Hanna, with daughter Jennifer, Mrs. Sidney Beckwith, Jr., with son Sidney, III, Mrs. Bradley Dyer (back to camera), Mrs. Milton Gruner, and Mrs. Henry Kuehling.

Volunteers Preparing Waterloo Farm Museum for June Opening

Signs of spring at the Jacob Reilly homestead, more familiarly known as the Waterloo Farm Museum, involve some cleaning, polishing, repairing and planning for the opening of the museum June 1.

A work session conducted two weeks ago by the building committee for the museum resulted in a painted, scrubbed and polished inside of the museum. The following Saturday, Mrs. Joan Hertzler and 12 Girl Scouts of Ann Arbor spent the entire day in raking and cleaning up trash and debris in the Spring for the Waterloo Area Historical Society also means two educational meetings, the first of which Saturday, May 4 at the Farm Museum at 1:30 p.m., will be for anyone interested in guiding at the Museum this summer.

The second meeting is scheduled for Wednesday, May 8 at 7:30 p.m. in the Education Building of the Stockbridge Presbyterian church.

Restoration, stabilization and care of antiques will be the subject of this meeting. Six table displays — one each for leather, including book bindings, harnesses, brass and copper, silver and pewter, iron and tools, painted wooden pieces, and china and glass — will be manned by people who will explain how to care for the items displayed on their particular tables, including polishes and cleaners which have restorative qualities and others which are not advisable for use because of possible injury to metal or other materials.

Historical Society members remind the community that it was only community spirit and enthusiasm that turned this farm house, about to be razed, into a National Historic Site. There are all kinds of jobs to be done at the museum, is something for everyone.

Anyone interested in helping at the Museum in any capacity should contact Joe Hanna, president of the Historical Society, in Stockbridge.



AL KLEIS
475-7322

FOR QUICK ACTION List Your Home With Us

Our track record proves we get results.
Call me personally, 475-7322

Real Estate One.
OF WASHTENAW

REALTORS
1196 M-52, Chelsea 475-8693

CHS Golf Schedule

May 2—Brighton, Saline...Saline
May 6—Milan, S. Lyon...S. Lyon
May 10—Lincoln, Novi...Novi
May 13—Lincoln, Brighton...Home
May 17—Novi...Novi
May 21—League Meet...S. Lyon
May 24—Willow Run Invitational

CORRECTION

In last week's issue of The Standard, it was unintentionally omitted that Mrs. Bette Engelhart wished to thank friends, relatives and neighbors for the food sent in to her home during her bereavement, in addition to other things that were mentioned in her card of thanks. The Standard regrets the omission.

Chess Tournament

Reaches Half-Way Mark

Midway through Chelsea Recreation Council's four-week chess tournament, three participants are tied for first place in the senior division, David Eason, W. Uhl, and Marlis Williams. Douglas Pichlik leads the junior division. Tournament play is scheduled for Tuesday evening.

For the dog that needs...
EXTRA GO Energy



Feed him Wayne's Tail Waggers, developed to supply extra energy for all types of active dogs. Tail Waggers is the dry dog food that has added palatability and is ideal for the higher energy needs of hunting dogs, working dogs, show dogs or home dogs. Tail Waggers' bite-sized expanded chunks are easy to get at and stay crisp even when moistened... a truly rich, meaty flavor.

Now Available - Ground Corn Cobs

McCalla Feed Service

PHONE 475-8153
12875 OLD US-12 CHELSEA

Also from Wayne
Ask about Wayne's complete canned dog food line. A nutritious and convenient daily ration.



EXPERT BUMPING and PAINTING

FREE ESTIMATES - ALL MAKES

LLOYD BRIDGES CHEVROLET
475-1373 CHELSEA, MICH.

BURN WOOD-SAVE FUEL



From hearth to Chimney Top

Always wanted a fireplace? Then look at wood-burning Majestic fireplaces. They're factory built, even the flue and chimney top included! Easy, safe installation directly on the floor against any wall in the room. No masonry required also models for in or on a corner. Custom trim any style — and ENJOY FOR YEARS.

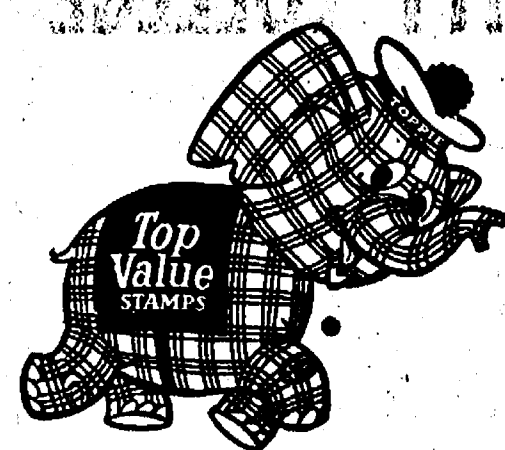
WE WILL INSTALL ANY FIREPLACE WE SELL
\$50.00
for only normal installation

A Complete Wood Burning Fireplace from

\$299.00

Storey STONE CO.
3904 Francis St. 782-0433

ALL SIZES IN STOCK



Full Line Supermarket
BEER - WINE - LIQUOR
AUTHORIZED
FOOD STAMP STORE
LOTTERY TICKETS
MARATHON GAS PUMPS
2-CYCO GAS PUMPS

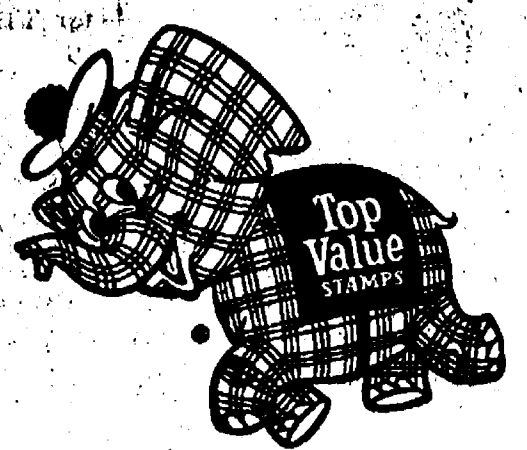
Jiffy market

Big Enough To

Serve You . . . Small Enough To Know You!

Open 7 Days A Week
7 a.m. to 10 p.m.
Corner Sibley & Wacker Rd.
PHONE 475-1701

Sale Prices Effective
Thurs., May 2 thru Wed., May 8



JIFFY MARKET'S 7-DAY SALE

SPECIAL - Sale Prices Effective May 2 thru May 8 - 7 Days (Not just 4) - SPECIAL

WAY BAKING CO.

KLEEN-MAID BREAD 3 1/4-Lb. Loaves **\$1**

CRISPY FLAKE
POTATO CHIPS . . . 13-Oz. Pkg. **45¢**

USDA GRADE A SMALL
FRESH EGGS Doz. **49¢**

GOLDEN RIPE
BANANAS 2 lbs. **29¢**

CALIFORNIA
HEAD LETTUCE **29¢**

NEW SIZE
COCA-COLA 1/2 Gal. 64-Oz. **69¢**

HUDSON FARMS STEMS & PIECES
MUSHROOMS 5 4-Oz. Cans **\$1**

STAR-KIST
TUNA 6 1/2-Oz. Can **39¢**

CAMELOT IODIZED OR PLAIN
SALT 1-Lb., 10-Oz. Box **10¢**

RISON'S CARTON OR PLASTIC

Homogenized MILK . . . Gal. **\$1.19**

BORDEN'S
Jumbo Ice Cream . . . Gal. **\$1.29**

IT'S GOT A LOT TO GIVE—COME AND
PEPSI-COLA . . . No-Return 10-Oz. 8 pac **98¢**

MEADOWDALE
CORN CURLS 1-Lb. Bag **39¢**

NEW TEXAS CROP
Large Spanish Onions . . . Lb. **10¢**

LADY CAMELOT 200-CT., 2-PLY
FACIAL TISSUES . . . 4 boxes **\$1**

50-COUNT
BOOK MATCHES **12¢**

STALEY'S
SYRUP 1-Pt., 8-Oz. 24 Fl. Oz. **49¢**

BROOKS TANGY
CATSUP 12-Oz. Bottle **19¢**

JIFFY MARKET'S FRESH MEATS FEATURING USDA CHOICE BEEF

USDA CHOICE
ROUND STEAK . . . Full Cut Lb. **\$1.29**

USDA CHOICE
CUBE STEAKS . . . Lb. **\$1.49**

FRESH DAILY
GROUND ROUND . . . Lb. **\$1.39**

TENDER, SLICED
BEEF LIVER Lb. **79¢**

YOUNG, TENDER, LEAN
WHOLE PORK BUTTS . . . 5 to 7-Lb. Avg. **59¢**

YOUNG, LEAN, TENDER
PORK STEAKS . . . Lb. **79¢**

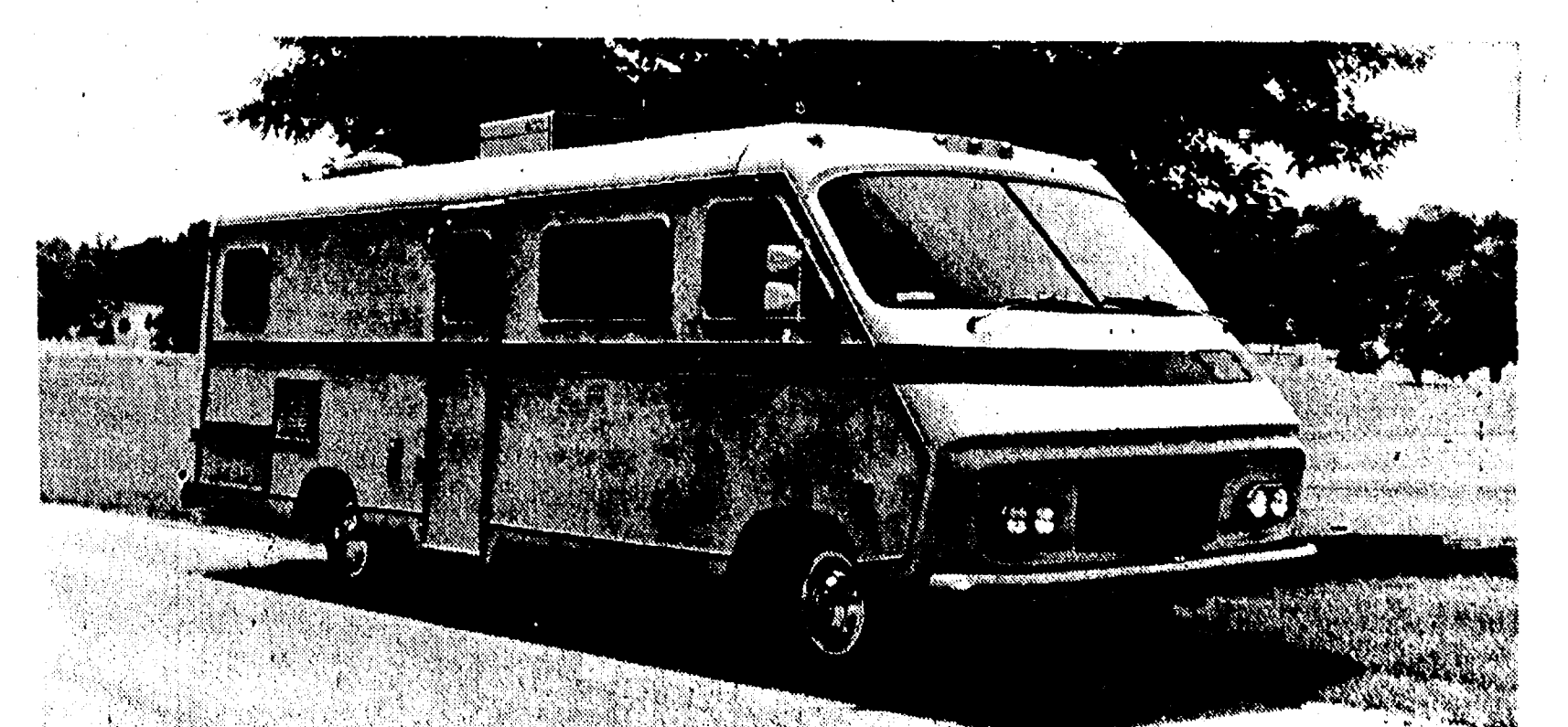
HOME-MADE PLAIN, SEASONED OR GARLIC
PORK SAUSAGE . . . Lb. **89¢**

ECKRICH
ALL-MEAT FRANKS . . . 12-Oz. Pkg. **69¢**

TOP VALUE NEW MOBILE ORDER CENTER

At JIFFY MARKET Thurs., May 2, Fri., May 3, and Sat., May 4, from 10 a.m. to 4 p.m.

Here's your chance to turn in your filled books or just get rid of your damn stamps without leaving Chelsea. Take advantage of this and order the gifts you have been saving for.



IT'S A ROLLING PHONE ORDER CENTER...IT'S A TRAVOY MOTOR HOME...THE TOP OF TOP VALUE'S LINE OF OVER 3500 ITEMS OF THE FINEST MERCHANDISE

By Giving
Top Value
Stamps
We Share!

FREE
100 TOP VALUE STAMPS
WITH THIS COUPON AT JIFFY MARKET
Or the Top Value Motor Redemption Center
Thursday, May 2 thru Saturday, May 4, 1974

Jiffy Market - A One-Stop Store - Gas - Fresh Meats - Produce - Supermarket Groceries - Beer - Wine - Liquor

from HISTORY'S SCRAPBOOK

DATES AND EVENTS FROM YESTERYEARS

Over 150,000 German soldiers surrendered to the Allies at the Elbe River, May 3, 1945.
Peter Minuit arrived on Manhattan Island, May 4, 1624.
On May 6, 1847, the American Medical Association was organized.
The American Bible Association was organized on May 6, 1816.
Johannes Brahms, world famous composer, was born on May 7, 1833.
On May 8, 1541, Hernando de Soto discovered the Mississippi River.
The first Nazi book burning took place on May 9, 1933.

INVITATION TO BID

You are invited to bid to cut weeds on 150 lots more or less in the platted subdivisions in the Charter Township of Pittsfield. Bids must be for two cuttings per year (beginning July 1 and September 1) and must cover a 2 year period. Bidders must furnish their own equipment and liability insurance. Township Board reserves the right to reject all bids. All bids must be postmarked not later than May 11, 1974. For more information call 313-866-8866.

Signed: James D. Reader, Treasurer
Charter Township of Pittsfield
701 W. Ellsworth Road, Ann Arbor, Michigan 48104

POLE BUILDING CONTRACTORS

Producers of Better Built Pole Buildings

THE STANDARD OF EXCELLENCE IN POLE STRUCTURES

- ★ We have many designs to choose from.
- ★ We will blueprint a building to your exact specifications at no charge.
- ★ Prompt quotes with scale drawings.
- ★ Building "specials" is our standard form of pricing on all structures.
- ★ Immediate construction dates at all times.

For A Free Estimate Call (517) 589-8600, Anytime

SPECIAL SCHOOL ELECTION

NOTICE OF SPECIAL ELECTION OF THE QUALIFIED ELECTORS OF

Chelsea School District

WASHTENAW AND JACKSON COUNTIES, MICHIGAN

TO BE HELD

Wednesday, May 15, 1974

TO THE QUALIFIED ELECTORS OF SAID SCHOOL DISTRICT:

Please Take Notice that a special election of the qualified electors of Chelsea School District, Washtenaw and Jackson Counties, Michigan, will be held in the Large Group Instruction Room of the Dwight E. Beach School on Wednesday, May 15, 1974.

THE POLLS OF ELECTION WILL OPEN AT 7:00 O'CLOCK, A.M., AND CLOSE AT 8:00 O'CLOCK, P.M.

The following proposition will be submitted to the vote of the electors qualified to vote thereon at said special election.

TAX RATE LIMITATION INCREASE PROPOSITION FOR OPERATING PURPOSES

Shall the limitation on the amount of taxes which may be assessed against all property in Chelsea School District, Washtenaw and Jackson Counties, Michigan, be increased by 13.5 mills for a period of two (2) years, 1974 and 1975, for the purpose of providing additional funds for operating expenses (10.98 mills of the above increase is a renewal of 10.98 mills for operating purposes which expired with the 1973 tax levy and 2.52 mills is additional operating millage)?

All school electors who are registered with the township clerk or the township in which they reside are eligible to vote at this election.

COUNTY TREASURER'S STATEMENT

(As required by Act 293, Public Act of Michigan 1947)
I, Hilary E. L. Goddard, County Treasurer of the County of Washtenaw, State of Michigan, do hereby certify that, according to the records of this office, as of April 22, 1974, the total of all voted increases over and above the tax rate limitation established by the constitution of Michigan, in local units of government, affecting the taxable property in Washtenaw County, State of Michigan, in said County, is as follows:

By Washtenaw County	NONE
By Sylvan Township	NONE
By Sharon Township	NONE
By Freedom Township	NONE
By Lima Township	NONE
By Dexter Township	NONE
By Lyndon Township	NONE
By the School District	NONE

HILARY E. L. GODDARD
Washtenaw County Treasurer

COUNTY TREASURER'S STATEMENT

I, Marilyn E. Johnson, Treasurer of Jackson County, Michigan, hereby certify that, as of April 17, 1974, the records of this Office indicate that the total of all voted increases over and above the tax limitation established by the Constitution of Michigan, in any local units of government affecting the taxable property located in Chelsea School District, Washtenaw and Jackson Counties, Michigan, is as follows:

Jackson County	NONE
Grass Lake Township	3.00 Mills 1973
Washtenaw Township	NONE
the School District	2.18 Mills 1973 unlimited
Jackson Community College	1.50 Mills 1973 unlimited
Jackson Intermediate Special Education	2.50 Mills 1973 limited
Jackson Intermediate Vocational Tech.	2.50 Mills 1973 limited

Marilyn E. Johnson, Treasurer
Jackson County, Michigan

This Notice is given by order of the Board of Education of Chelsea School District, Washtenaw and Jackson Counties, Michigan.

ROBERT N. SCHAFER

+ Services in Our Churches +

FIRST UNITED METHODIST CHURCH

The Rev. Clive Dickens, Pastor

Thursday, May 2—

1:00 p.m.—Literature Group, home of Mrs. Paul Weber.

Friday, May 3—

12:00 noon: May Fellowship Day

Salad Buffet Pot-luck, sponsored by Church Women United, social center of the church.

Saturday, May 4—

8:30 a.m.—Cluster Breakfast at North Lake United Methodist church.

10:00 a.m.—Cherub Choir.

10:30 a.m.—Junior Choir.

Sunday, May 5—

9:00 a.m.—Church school, nursery through adult.

10:00 a.m.—Worship service.

11:15 a.m.—Youth Choir.

Wednesday, May 8—

7:00 p.m.—Membership Instruction Class in the Educational Unit.

8:00 p.m.—Chancel Choir.

Thursday, May 9—

9:00 a.m.—United Methodist Women's Executive Committee, home of Mrs. James Gaunt.

ST. THOMAS

EVANGELICAL LUTHERAN

Ellsworth and Haab Rds.

The Rev. Daniel L. Mattson, Pastor

Thursday, May 2—

8:00 p.m.—"The Child in Home and Church," Sharon Methodist church.

Sunday, May 5—

9:45 a.m.—Sunday school and Bible class.

11:00 a.m.—Worship with Holy Communion.

Monday, May 6—

8:00 p.m.—Church Council, home of Wally Haab.

Wednesday, May 8—

10:00 a.m.—Women's Bible Study.

7:00 p.m.—Sunday School teachers.

8:30 p.m.—Choir rehearsal.

Thursday, May 9—

8:00 p.m.—"The Child in Home and Church," Sharon Methodist church.

ST. MARY CATHOLIC CHURCH

The Rev. Fr. David Philip Dupuis, Pastor

Mass Schedule

Every Saturday—

4:00-5:00 p.m.—Confessions.

7:00 p.m.—Mass.

Immediately after 7 p.m. Mass—Confession.

Every Sunday—

Winter schedule

8:00, 10:00, 12:00 noon.—Mass.

Summer schedule

7:00, 9:00, 11:00 a.m.—Mass.

FIRST ASSEMBLY OF GOD

The Rev. Thomas P. Thode, Pastor

Every Sunday—

9:45 a.m.—Sunday school.

11:00 a.m.—Worship service.

6:00 p.m.—Youth service.

7:00 p.m.—Evangelistic service.

Every Tuesday—

9:30 a.m.—Ladies Bible study.

Every Wednesday—

7:00 p.m.—Midweek services.

ST. JOHN'S

(UNITED CHURCH OF CHRIST)

Rogers Corners

The Rev. Richard Campbell, Pastor

Every Sunday—

10:00 a.m.—Sunday school.

11:00 a.m.—Worship service.

CHELSEA BAPTIST CHURCH

337 Wilkinson

The Rev. James Stacey, Pastor

Every Sunday—

9:45 a.m.—Sunday school.

11:00 a.m.—Worship service.

Nursery care available during all services.

6:00 p.m.—Junior and Senior Baptist Youth Fellowship.

7:00 p.m.—Evening service.

Every Wednesday—

7:00 p.m.—Bible study and prayer meeting.

FIRST CHURCH OF CHRIST, SCIENTIST

1883 Washtenaw Ave., Ann Arbor

Every Sunday—

10:30 a.m.—Sunday school; morning service.

CONGREGATIONAL CHURCH (United Church of Christ)

The Rev. Carl Schwarm, Pastor

Friday, May 3—

12:00 noon—Pot-luck luncheon, May Fellowship day at First United Methodist church. Guest speaker: Ruth Cadwalder.

Sunday, May 5—

10:00 a.m.—Sunday school.

11:00 a.m.—Worship service.

Teachers recognition Sunday and presentation of Bibles.

6:00-7:30 p.m.—Junior Pilgrim Fellowship.

Monday, May 6—

7:00 p.m.—Trustees.

Wednesday, May 8—

1:00 p.m.—Rachael Chapter.

ST. PAUL UNITED CHURCH OF CHRIST

The Rev. John Rinehart, Interim Pastor

Thursday, May 2—

7:30 p.m.—Women's Fellowship Board.

7:30 p.m.—Pastoral Search Committee.

Saturday, May 4—

9:00 a.m.—Junior high confirmation.

JYF Work Day.

Sunday, May 5—

9:00 a.m.—Adult Confirmation Class.

9:00 a.m.—Church school.

10:30 a.m.—Worship service.

2:30 p.m.—AAJ Association.

Spring meeting, Bethel United Church of Christ, Manchester.

7:00 p.m.—SYF.

Monday, May 6—

8:00 p.m.—Board of Christian Education.

Wednesday, May 8—

3:30 p.m.—Junior Choir.

7:30 p.m.—Chancel Choir.

Thursday, May 9—

6:30 p.m.—Mother and Daughter Banquet.

NORTH SHARON BIBLE CHURCH

Sylvan and Washburne Rds.

The Rev. William Enslin, Pastor

Every Sunday—

10:00 a.m.—Sunday school.

(Nursery will be available.) Junior church classes.

11:00 a.m.—Worship service.

6:00 p.m.—Senior High Youth meeting. Youth Choir.

7:00 p.m.—Evening worship services. (Nursery available.)

Every Wednesday—

7:00 p.m.—Bible study and prayer meeting. (Nursery available.)

Bus transportation available: 428-7222.

BETHEL EVANGELICAL AND REFORMED CHURCH (United Church of Christ)

Freedom Township

The Rev. Roman A. Reineck

Every Sunday—

10:00 a.m.—Worship.

METHODIST HOME CHAPEL

The Rev. R. L. Clemans, Pastor

Every Sunday—

8:45 a.m.—Worship service.

BAHA'I FIRESIDE

Every Thursday—

8:00 p.m.—At the home of Toby Peterson, 705 S. Main St. Anyone wishing to learn about the Baha' faith is welcome.

ST. JOHN'S EVANGELICAL AND REFORMED CHURCH (United Church of Christ)

Francisco

The Rev. J. P. Goebel, Pastor

Every Sunday—

9:30 a.m.—Sunday school until 10:30 a.m.—Confirmation classes, seventh graders and up. Children's Choir Practice. Adult Bible Study.

10:30 a.m.—Worship service until 11:30 a.m.—Nursery available for pre-schoolers during worship service.

WATERLOO

FIRST UNITED METHODIST

Parks and Territorial Rds.

The Rev. Altha Barnes, Pastor

Every Sunday—

9:15 a.m.—Morning worship.

NORTH LAKE

UNITED METHODIST CHURCH

The Rev. J. William Todd, Pastor

Every Sunday—

9:45 a.m.—Worship service.

11:00 a.m.—Sunday school. Nursery available.

Every Wednesday—

4:00 p.m.—Children's Choir.

7:00 p.m.—Adult Choir.

ST. JACOB EVANGELICAL LUTHERAN CHURCH

12501 Rietmiller Rd., Grass Lake

The Rev. Andrew Bloom, Pastor

Every Sunday—

9:00 a.m.—Worship service.

10:15 a.m.—Divine services.

WATERLOO VILLAGE

UNITED METHODIST CHURCH

8118 Washington St.

The Rev. Altha Barnes, Pastor

Every Sunday—

10:00 a.m.—Sunday school.

OUR SAVIOR LUTHERAN CHURCH

The Rev. William H. Keller, Pastor

1515 S. Main, Chelsea

Every Sunday—

9:00 a.m.—Sunday school.

9:00 a.m.—Adult Bible class

10:30 a.m.—Worship service.

CHELSEA MEDICAL CENTER

Every Other Wednesday—

1:30 p.m.—Worship service.

CHURCH OF JESUS CHRIST OF LATTER-DAY SAINTS

Meetings at

St. Barnabas Episcopal Church

20500 Old US-12

Every Sunday—

11:00 a.m.—Priesthood meeting.

12:30 p.m.—Sunday school.

5:30 p.m.—Sacrament meeting.

SALEM GROVE

UNITED METHODIST CHURCH

3320 Notten Rd.

The Rev. J. William Todd, Pastor

Every Sunday—

10:00 a.m.—Sunday school.

11:00 a.m.—Worship service.

IMMANUEL BIBLE CHURCH

145 E. Summit St.

The Rev. LeRoy Johnson, Pastor

Every Sunday—

9:45 a.m.—Sunday school, nursery provided.

11:00 a.m.—Morning worship, nursery provided.

7:30 p.m.—Family hour, prayer meeting and Bible study.

First Sunday of Month—



BOWLING NEWS



Chelsea Lanes Mixed

Standings as of April 26

W	L
Fitzsimmons Excavator's 148	90
Bushwackers 142	96
Meabon's 133 1/2	104 1/2
Locitoe 129 1/2	108 1/2
Chelsea Lanes 129	109
Ann Arbor Centerless 127 1/2	110 1/2
The B's & D's 127	111
Wilson & McDonald 127	111
Happy-4 124	114
Marsh & Verwey 122	116
Doug's Painting 122	118
Four Roses 122	118
Hopelufs 115 1/2	122 1/2
Bollinger's Sanitation 100	138
Jarvis & Newman 98	140
G. & J. Ranch 97	141
The Four of Us 92	146
Ann Arbor Eagles 88	152

High team series: Doug's Painting, 2,379.

High game, women: J. Norris, 195.

High game, men: D. Williams, 221.

Women, 150 games: J. Norris, 151, 156, 195; R. Crawford, 166; 183; D. Alber, 158, 169; B. Torrice, 166; B. Makowski, 156; D. Speer, 158; M. Sutter, 187, 168, 179; N. Keizer, 160; D. Keizer, 158; T. Steinaway, 169, 168; J. Stoll, 169; L. Gilmore, 172; D. Verwey, 164, 161; A. Carpenter, 166.

Men, 175 games: D. Williams, 221; J. Norris, 179; D. Alexander, 186; S. Wilson, 183, 180; D. Ellenwood, 175; A. Torrice, 195, 189; L. Keizer, 187; E. Keizer, 197, 176; W. Steinaway, 179, 201, 177; R. Gilmore, 182; T. Marsh, 175; J. Verwey, 190; T. Wisniewski, 198, 183; W. Bolanowski, 201.

Women, 425 series: J. Norris, 502; R. Crawford, 486; D. Alber, 451; B. Torrice, 433; M. Sutter, 434; N. Keizer, 445; D. Keizer, 431; T. Steinaway, 479; L. Gilmore, 454; D. Verwey, 451.

Men, 500 series: D. Williams, 529; D. Alexander, 513; S. Wilson, 523; A. Torrice, 542; L. Keizer, 507; W. Steinaway, 557; T. Wisniewski, 502.

Chelsea Industrial Suburban

Final Standings

W	L
Double A No. 99	89
Local 157	81
Harvey's Tavern	78
Rejects	75
The Other Team	73 1/2
Pasanti Ski Boat	68
Chelsea Lanes	64
Dana P.T.O.'s	60 1/2
Double A No. 2	60
Bob Pancher's	54
Mack IV Lounge	47
Joel Arnolds	38

High singles game: Duane Simerson, 221.

High singles series: Dean Anderson, 583.

High team series: Double A No. 99, 2,502.

NEXT TOWN, NEW LANGUAGE!

In India, even men from neighboring villages may not understand one another. Indians speak more than 800 languages and dialects.

PIERSON & SONS
LICENSED GENERAL CONTRACTORS
475-8750
New Construction, Remodeling, Siding.

WASTE HUMAN ENERGY
(While Having Fun)
and
CONSERVE NATURAL RESOURCES
Bowl at
CHELSEA LANES
18 Astroline Lanes - Billiards & Air Hockey
LOUNGE
CHELSEA LANES, Inc.
PHONE 475-8141
1198 M-52 CHELSEA

Rolling Pin League

Final Standings

W	L
Egg Beaters 84	48
Coffee Cups 77	55
Spooners 74	58
Kookie Kutters 73 1/2	58 1/2
Dish Rags 71	61
Grinders 70 1/2	61 1/2
Brooms 70	62
Pots 69	63
Kitchen Kapers 56 1/2	75 1/2
Moppper Uppers 51 1/2	80 1/2
Mixers 51	81
Jolly Mops 50	82

425 and over series: D. Dirlam, 462; J. Edick, 460; M. Ringe, 465; C. Shepherd, 478; J. Shepherd, 432; J. Priest, 431; D. McAllister, 449; J. Weir, 441; K. Van Demark, 503; P. Patterson, 435.

145 and over games: P. Borders, 157; D. Anderson, 152; D. Dirlam, 174, 156; K. Del Prete, 145, 149; J. Edick, 153, 183; M. Ringe, 149, 188; J. Tobin, 162; M. Ringe, 159, 145; 161; C. Shepherd, 169, 171; R. Foster, 146; J. Shepherd, 166; J. Sweet, 154; P. Harook, 149; J. Priest, 182; 149; D. McAllister, 160, 154, 253; J. Weir, 173; J. Roe, 168; K. Van Demark, 185, 156, 162; J. Johnson, 152; V. McNutt, 170; M. Gross, 147; M. Vassas, 174; P. Patterson, 149, 156; G. Brier, 147; E. Reynolds, 151.

Chelsea Women's Bowling Club

Final Standings

W	L
Jiffy Mixes 85 1/2	45 1/2
Washenaw Engr. Co. 86	46
Chelsea Lanes 89	47
Parish's Cleaners 84 1/2	51 1/2
Arbon Advertising 80 1/2	54 1/2
Chelsea Milling 78 1/2	57 1/2
Chelsea Grinding 78 1/2	57 1/2
Norris Electric 73 1/2	62 1/2
Thompson's Pizza 72	64
Schneider's Grocery 64 1/2	71 1/2
Wolverine Lounge 61 1/2	74 1/2
Joe and Judy's 60 1/2	75 1/2
United Oil Co. 56	80
Bridges Chevrolet 56	80
Heydlauff's 52	84
Larry's Roadside Market 49 1/2	86 1/2
Rockwell International 46	90
Mark IV 41	95

450 series and over: D. Verwey, 539; R. Hummel, 537; J. Koch, 536; I. Fouty, 534; J. Hafner, 531; J. Schleede, 526; D. Alber, 497; D. Judson, 493; T. Steinaway, 488; S. Klink, 486; P. Strickland, 484; B. Bridges, 479; P. Fitzsimmons, 473; R. Lutovsky, 472; N. Kern, 472; B. Noll, 467; G. Kuhl, 463; E. Wiard, 464; D. Eisenbeiser, 462; L. Bradbury, 461; L. Behnke, 454; N. Popovich, 452; R. Bush, 452.

150 games and over: D. Verwey, 166, 200, 173; R. Hummel, 166, 179; 152; J. Koch, 167, 178, 191; J. Fouty, 181, 210; J. Hafner, 208, 176; J. Schleede, 162, 197, 167; D. Alber, 192, 168; D. Judson, 153, 177, 163; T. Steinaway, 192, 150; S. Klink, 175, 179; P. Strickland, 185, 152; B. Bridges, 174, 180; P. Fitzsimmons, 151, 152, 170; R. Lutovsky, 176, 154; N. Kern, 153, 179; B. Noll, 159, 161; G. Kuhl, 166, 156; E. Wiard, 152, 154, 158; D. Eisenbeiser, 170, 163; L. Bradbury, 167; L. Behnke, 170; N. Popovich, 157, 159; R. Bush, 158; K. Faber, 153; M. Eder, 151, 156; S. Ringe, 164; A. Boham, 181; B. Fritz, 151, 156; A. Sindlinger, 169; L. Orlovski, 150; D. Frisbie, 165; B. Larson, 153; M. Kruse, 178; P. Wurster, 162; M. Thompson, 150; J. Panfil, 165; A. Fahrner, 157, 151; J. Salver, 170; M. Kozminski, 157; R. Whitaker, 151.

There is now a \$1,500 a year educational loan program for the eligible dependent children to active, retired, and deceased Army personnel. Run by the Army Emergency Relief (AER) it guarantees loans up to \$1,500 per academic year at 7 percent interest.

Leisure Time League

Standings as of April 25

W	L
Slowpokes 84	44
Four Stooges 79	49
Misfits 74	54
Unpredictables 73	55
Roadrunners 68	62
Highly Hopefuls 68	62
Rug Rats 56	72
Sugar Loafers 54 1/2	73 1/2
The G's 49	79
The Lakers 38 1/2	89 1/2

Games 140 and over: D. McAllister, 141; M. O'Donnell, 145; M. Dault, 157; D. Dault, 150, 172, 158; B. Robinson, 182; J. Staphish, 147; M. Usher, 190, 171; D. Thompson, 177; Sharon Friday, 147, 152; G. Wheaton, 152, 142; D. Hafner, 165, 151; B. Mull, 183, 140, 143; M. Smith, 140; L. Hartka, 140; S. Huettner, 144; C. Engler, 184; Shirley Friday, 148, 180.

200 games and over: M. Miller, 202; M. Usher, 210.

400 series and over: M. O'Donnell, 400; M. Miller, 439; M. Dault, 422; D. Dault, 480; B. Robinson, 443; J. Staphish, 403; D. Thompson, 409; Sharon Friday, 438; G. Wheaton, 407; D. Hafner, 448; B. Mull, 446; C. Engler, 440; Shirley Friday, 458.

500 series and over: M. Usher, 571.

Tri-City Mixed League

Final Standings

W	L
Real Estate One 85 1/2	50 1/2
Craft Appliance Co. 77	59
Sprague Buick & Olds 75 1/2	60 1/2
Jiffy Market 75	61
Portage Hardware 75	61
Jiffy Mixes 73	63
S-D Sales & Service 71	65
E. P. Smith Pallet Co. 70 1/2	65 1/2
Chelsea Cleaners 70	66
Bauer Builders 70	66
Jim's Taxidermy 70	66
Village Motor Sales 70	66
Schneider's Grocery 70	66
Washenaw Crop Serv. 70	66
Wal's Barber Shop 70	66
Linear Corp. 70	66
Dexter Automatics 70	66
Chelsea Lumber 70	66

600 series: J. Harook, 620.

525 and over series: V. Hatley, 538; R. Reason, 565; J. Collins, 578; D. Bauer, 576; A. Sannes, 591; H. Burnett, 572; J. Toma, 584; G. Allen, 581; M. Ford, 546.

210 and over games: J. Toma, 216; D. Bauer, 237; R. Sampson, 212; A. Sannes, 223; J. Harook, 235; J. Collins, 211; N. Fahrner, 222; R. Reason, 216; J. Krichbaum, 215.

Junior Swingers

Standings as of April 27

W	L
Super Stars 90	48
Rods II 86	50
Pinu Smokers 84	52
The Alley Cats 80	56
The Good Guys 78	58
Y.B.A. Scorers 64	72
Hush Puppies 63	73
The Freaks 50 1/2	85 1/2
Team 10 16 1/2	119 1/2

Girls, games over 120: B. Lovely, 139, 125, 128; S. Schulze, 121, 128.

Charlie Brown & Snoopy's Friends Peanut League

Standings as of April 27

W	L
Super Strikers 41 1/2	26 1/2
Pin Pushers 36	32
Sore Thumbs 33 1/2	34 1/2
All Stars 31 1/2	36 1/2
Fire Balls 31	37
Pin Crackers 28 1/2	39 1/2

Games 70 and over: J. Marshall, 71, 111; E. Bristle, 92, 88; J. Packard, 104, 75; L. Miller, 76; D. Rowe, 72; J. Brown, 85, 79; J. Owings, 125, 121; R. Robinson, 95; D. Dettling, 130, 100; J. Verwey, 75, 72; D. Marsh, 75, 99; T. Greenleaf, 92, 90; R. Krichbaum, 101, 103; J. Rowe, 125, 100; J. Krichbaum, 90; B. Behnke, 80; R. Lorenzen, 115, 112; D. Alexander, 70; A. Fletcher, 139, 82; K. Fletcher, 78; J. Hoffman, 71; M. Petsch, 96, 108; P. Hoffman, 100, 86; K. Tobin, 80.

Series 100 and over: B. Behnke, 128; R. Lorenzen, 227; D. Alexander, 136; C. Schulze, 113; A. Fletcher, 221; K. Fletcher, 104; J. Hoffman, 119; M. Petsch, 204; P. Hoffman, 186; K. Tobin, 134; D. Wal-dyke, 113; J. Marshall, 182; E. Bristle, 178; J. Packard, 179; L. Miller, 113; D. Rowe, 137; P. Rowe, 114; J. Brown, 164; J. Owings, 246; R. Robeson, 154; M. Bullick, 130; D. Dettling, 230; K. Noll, 128; J. Verwey, 147; D. Marsh, 174; T. Greenleaf, 182; R. Krichbaum, 204; J. Rowe, 225; J. Krichbaum, 157.

CHELSEA FINANCE CORP.

\$25 to \$1,500

For Any

Worthwhile Purpose

See or Call

FRANK HILL

at 475-8631

111 PARK STREET

CHELSEA, MICH.

Phone 475-8621

SPORTS CORNER



ONE OF HOCKEY'S MOST DURABLE VETERANS, **MILES GILBERT (TIM) HORTON** WAS KILLED IN LATE FEBRUARY WHEN HIS SPORTS CAR CRASHED NEAR ST. CATERINES, ONT. AS HE WAS RETURNING TO BUFFALO FOLLOWING A GAME IN TORONTO.

NATIVE OF COCHRANE, ONT., GILBERT BEGAN WITH PITTSBURGH FARM TEAM AND PLAYED WITH TORONTO MAPLE LEAFS ITSEASON BEFORE BEING TRADED TO NEW YORK RANGERS IN 1970. BUFFALO SABRES DRAFTED HIM IN 1972. HE RETIRED IN 1969 AFTER AN UNSUCCESSFUL TRY FOR SALARY INCREASE. WAS ESTIMATED TO BE \$40,500 TO \$45,000 WHEN HE RETURNED TO THE ICE. WAS ESTIMATED TO BE \$100,000 PER YEAR MAN DURING CURRENT SEASON. WHILE AT BUFFALO HE LEFT HIS HOME AT TORONTO, WAS OWNER OF CHAIN OF DONUT SHOPS IN ONTARIO.

Senior House League

Final Standings

W	L
Mark IV Lounge 145	93
Seitz's Tavern 131	102
Palmer Motor Sales 131	107
Chelsea Grinding 128 1/2	109 1/2
Sylvan Center 126	112
Ben's Arco 125	113
Lloyd Bridges Chev. 119 1/2	114 1/2
Oddballs 121	117
Chelsea Cleaners 119	119
Bauer Builders 118	120
Jim's Taxidermy 116	122
Village Motor Sales 115	123
Schneider's Grocery 114	124
Washenaw Crop Serv. 111	127
Wal's Barber Shop 109	129
Linear Corp. 105	133
Dexter Automatics 104	134
Chelsea Lumber 100	138

600 series: J. Harook, 620.

525 and over series: V. Hatley, 538; R. Reason, 565; J. Collins, 578; D. Bauer, 576; A. Sannes, 591; H. Burnett, 572; J. Toma, 584; G. Allen, 581; M. Ford, 546.

210 and over games: J. Toma, 216; D. Bauer, 237; R. Sampson, 212; A. Sannes, 223; J. Harook, 235; J. Collins, 211; N. Fahrner, 222; R. Reason, 216; J. Krichbaum, 215.

Junior Swingers

Standings as of April 27

W	L
Super Stars 90	48
Rods II 86	50
Pinu Smokers 84	52
The Alley Cats 80	56
The Good Guys 78	58
Y.B.A. Scorers 64	72
Hush Puppies 63	73
The Freaks 50 1/2	85 1/2
Team 10 16 1/2	119 1/2

Girls, games over 120: B. Lovely, 139, 125, 128; S. Schulze, 121, 128.

WASH THIS PAINT RIGHT OUT OF YOUR HAIR!



Dutch Boy Latex SATIN GLOSS ENAMEL

Clean up spills, spatters, brushes & rollers with soap and water.

Flows on easily with roller or brush—no runs or sags.

Fast, fast dry.

Non-yellowing.

Enamel-scrubbability.

Odorless.

Ideal for kitchens, bathrooms, cabinets, woodwork, and many more.

Ask us for Dutch Boy Latex Satin-Gloss Enamel today!



MERKEL BROS.

Phone 475-8621

Hi-Point Mixed League

Final Standings

W	L
Road Runners 768	631
Zip 631	631
River Rais 635	635
Flat Tires 605	605
Faber Fabrics 584	584
Leptheusers 584	584
Rowe Plumbing 576	576
4 D's 575	575
Dexter Gear & Spine 569	569
Heavy Traffic 552	552
Ding A Lings 548	548
Hit & Missers 481	481

Women, high game, 150 and over: D. Lucas, 160; M. Scott, 188; P. Scherdt, 186; C. Klapperich, 159, 184; D. Hansen, 156; S. Sortor, 182; B. Stauch, 168, 164; S. Walton, 224; G. DeSmith, 190; E. Williams, 183; P. Patterson, 152; E. Harmon, 151, 150; W. Landwehr, 157, 164.

Women, high series, 425 and over: W. Landwehr, 454; B. Stauch, 460; S. Walton, 503; G. DeSmith, 464; S. Sortor, 428; P. Scherdt, 463; C. Klapperich, 454; M. Scott, 444.

Men, high game, 160 and over: V. Jeffers, 182; H. Morton, 205; D. Carpenter, 207, 208, 211; W. Teachworth, 192, 208; A. Hansen, 186, 189; M. Fox, 181; K. Garrott, 164; G. Inbody, 166, 176, 162; W. Beuerle, 166.

Men, high series 450 and over: W. Beuerle, 455; G. Inbody, 504; M. Fox, 480; D. Carpenter, 626; W. Teachworth, 546; A. Hansen, 519; H. Morton, 512.

SOUTH ELEMENTARY SCHOOL NOTES

FOURTH GRADE—

Room 24
Teacher: Mrs. Huebner
Reporters: Diane Bareis, Charly Clemons and John Allen
Some of the people in our class wrote a story for a creative writing contest. The winners will go to a convention in Dexter. The winners are Diane Bareis and Michelle Hellner.

We have books called, *Detecting the Sequence*, and it takes a lot of skill to do. It helps us learn the sequence of events in a story. We have a *Night Time Readers Chart*. It's for people who like to read at night. The people who read 30 nights received a pen for a reward. Those students are: John Allen, Diane Bareis, Shawn Blough, Danya Bohl, Carol Hafner, Sandy Hellmann, Michelle Hellner, Terry McInnis, Cathy Pearson, Howard Whitaker, Tim Whitesell and Peter Worden. Now we have started a new chart.

Room 20
Teacher: Mrs. Lazo
Reporter: Beth Snyder
We're having a lot of fun in science. We're planting marigolds not just for fun but to experiment with them.

In social studies we're studying Belgium and the Netherlands. Some of us like, and some don't. In math we are using deductive reasoning in figuring out our math problems. Next week we will begin addition, subtraction, multiplication and division of fractional numbers.

In gym we ran the 800.

Room 22
Teacher: Mr. Ticknor
Our class is relearning about safety. It is something that we should always be aware of, but this is not always the case. We are becoming safety conscious. There are many different kinds of safety we hope to cover such as: 1. bike safety; 2. safe walking; 3. electrical safety; 4. climbing safety. This is only a small list of what we are talking about. We want to become aware of safety in everything we do and hope to become truly safety conscious.

AUTO RESEARCH
With the concern about energy and pollution, little publicity has been given to this innovation they are working on in Detroit: a windshield wiper that won't hold parking tickets!

Free Boating Safety Course Starts May 6

U.S. Coast Guard Auxiliary Flotilla 12-19, Ann Arbor, is offering a free boating safety course designed especially for youngsters between the ages of 12 and 16. "Youngsters in the 12-16 age group are legally permitted to operate a motor boat only after completing the course," according to Mrs. Ara Walker, Vice-Flotilla Commander of Flotilla 12-19.

Mrs. Walker is a certified instructor who has taught this course to more than 1,000 young students during the last five years. She is currently public education officer for the local flotilla.

"Mrs. Walker points out that, 'If youngsters 12-16 have not earned the state registration card awarded upon completion of the course, they must be accompanied by someone over 16 when operating a boat with a motor of five horsepower or more.'"

The free state boating course will consist of three classroom sessions, from 7:30 to 9:30 p.m. on consecutive Mondays—May 16, 13, and 20 in the west cafeteria of Ann Arbor Pioneer High School.

The state of Michigan furnishes the course materials and the registration card awarded after successful completion of the course. The class will cover such topics as: rules of the road, required safety equipment, owner responsibility and liabilities.

Students who are 11 years old must reach their 12th birthday by July 1 in order to take the course. Their state registration cards will be mailed to them upon reaching 12.

Boaters over 16 who are interested in boating safety are also welcome to attend the classes.

Further information on the course may be obtained by calling Louise Walker, after 7 p.m. at 434-0052.

Federated Women's Clubs Encourages Voter Participation
Leaders of women's clubs throughout Washtenaw county were guests this week of the 20th Century Club of Manchester.

Morning session of the annual spring meeting of the Washtenaw County Federation of Women's Clubs was highlighted by a discussion of public electorate woes and possible remedies.

The need for responsive action co-operatively undertaken stresses the importance of more active participation in recognized and firmly established group forms such as local clubs and their strengthening agents for influencing public events, the general, state, and county federations, notes Washtenaw Federation President Mrs. Stanton G. Roesch of Manchester.

Mrs. Roesch commented that solutions to these problems may be undertaken by concerted action and cited the Washtenaw Federation as a vehicle.

She reminds members of innovations this year: open-forum format of meetings and the real exchange of ideas which has resulted; the new service of factual civic information via the "Leader Information Letter."

Then Mrs. Roesch challenged the members to spark matching vigor among their membership with lagging club rolls throughout the country. She said of the Federation "That future... lies solely with you, the membership, and I so challenge you!"

Afternoon speaker was Mrs. Mary McGregor, director of Girls' Town. Hostess club members were complimented by the purchase by guests of colorful "birds" in straw nests artfully arranged on twigs and branches as favors and centerpieces.

Pvt. E. J. Markiewicz Serving in Germany as Field Radio Mechanic

U. S. Army, Germany—Army Private Edward J. Markiewicz, 18, son of Mrs. Louise A. Markiewicz, 533 N. Main St., Chelsea, Mich., is assigned to the 3rd Armored Division in Germany.

He is a field radio mechanic in Company A, 3rd Battalion of the Division's 12th Cavalry in Budingen.

His father, Gerald D. Markiewicz, lives at 7504 N. Ardmore, Jackson, Mich.

HOSSO Carpet Cleaning
May is spring cleaning time! Your carpeting deserves special attention. We recommend Host, the new method of cleaning carpets without water. The carpet is dry and ready to walk on immediately. Use our Host Electric Up-Brush. It's easy. Clean 40 sq. yds. only \$9.95. Phone for information.

MERKEL BROTHERS

★ District Court Proceedings ★

Week of April 23-30
Kim Saxton was charged with driving without a cycle endorsement. The charge was dismissed on \$6 costs.

Donald Cordway pled guilty to driving without a chauffeur's license and was fined \$25.

Charles Hough was fined \$200 and ordered to participate in the Alcohol Safety Program for driving under the influence of liquor.

Mark Balze pled guilty to careless driving and was fined \$30.

Bobbie Sencor did not appear on a charge of driving with a suspended license and a bench warrant was issued.

John H. Schlaff was fined \$200 and sentenced to 23 days in jail, with credit for time already spent, for drunk and disorderly.

Thomas Popkey and Jim Jones were found guilty of assault and battery and were fined \$50 and placed on six months probation.

Tula Wade did not appear on a charge of driving with a suspended license and a bench warrant was issued.

David Farrington pled guilty to driving without registration or proof of insurance. The charge was dismissed on \$6 costs. He pled guilty to driving with a suspended license and will be sentenced May 20.

David Gainsley pled guilty to failure to allow another vehicle to overtake him and was fined \$21. He pled guilty to careless driving and was fined \$34.

Donald Daus pled guilty to speeding and was fined \$23.

Charles Helgren pled guilty to driving under the influence of liquor and will be sentenced May 31.

Tim Ahrens pled guilty to careless driving and was fined \$30.

Donald Bell pled guilty to driving with defective equipment and was fined \$16.

Kevin Ormsby pled guilty to driving without due care and caution and was fined \$16.

Mark Malinczak pled guilty to driving without a cycle endorsement. The charge was dismissed on \$6 costs.

Donna Johnston was charged with driving without a cycle endorsement. The charge was dismissed on \$6 costs.

Michael Kirby pled guilty to speeding and was fined \$31.

Ann Barguin was charged with driving with an expired operator's permit. The charge was dismissed on \$6 costs. She pled guilty to driving with expired license plates and was fined \$6. The charge was dismissed.

Connie Young pled guilty to allowing an unlicensed person to drive and was fined \$50.

Lawrence Uphams was charged with excessive noise. The charge was dismissed on \$6 costs.

Phillip Foley pled guilty to speeding and was fined \$25.

Herbert Hasenfratz pled guilty to speeding and was fined \$33.

William Watson was fined \$200 and instructed to participate in the Alcohol Safety Program for impaired driving.

Vincent Depaulis was found guilty of speeding and was fined \$21.

Benjamin Powell was found guilty of speeding and was fined \$36.

Harold Trinkle was charged with driving without an operator's permit on his person. The charge was dismissed on \$6 costs.

Dennis Ball pled guilty to disregarding a stop sign and was fined \$16.

Issam M. Salek was found guilty of speeding and fined \$23.

Mitchell Picklesmer, Jr., was found guilty of speeding and fined \$30.

James Navess pled guilty to driving without proof of insurance and was fined \$26.

Edith Robinson pled guilty to drunk and disorderly and was fined \$30.

Jeffrey Savage was fined \$75 for possession of marijuana.

Mary Duey was charged with driving without a cycle endorsement. The charge was dismissed on \$6 costs.

Circuit Court Proceedings

Kenneth W. Wyers, 26, of Grass Lake, was sentenced to 15 months to seven years at a penal facility to be determined by the Michigan Corrections Commission for delivery of LSD.

Robert S. Shaffer, 20, of Cassidy Lake Technical School was sentenced to serve from one to five years consecutive with his current sentence for escape from prison.

John D. Valentine, 22, of Cassidy Lake Technical School was sentenced to serve from one to five years consecutive with his current sentence for escape from prison.

Raymond G. Baldridge, 24, of Cassidy Lake Technical School, was sentenced to a charge of escape from prison. Sentencing is set for May 17.

Leonard Wooster, 20, of Cassidy Lake Technical School, was sentenced to serve six months consecutive with his current sentence for escape from prison.

Tennis Rules...

(Continued from page one)

The system utilizes a pegboard, mounted at each court, on which the player places his racquet to reserve the court for the next odd or even hour—left side for odd hour play and right side for even hour play.

Playing time will be limited to one hour when others are waiting for courts. In addition:

—courts may not be racqueted more than two hours prior to the time wished for play.

—only one court may be racqueted at a time.

—an individual playing may not re-racquet a court until all persons who have already racqueted courts and are waiting to play have taken possession of their courts, and those waiting to racquet courts have had opportunity to do so.

North school courts, which were expected to open last week, are still without lines. Recreation Council expects them to be finished "very soon," however.

THINK ABOUT IT

Jet Spray Carpet Cleaning

Phone John Lixey 761-3025 or 475-1509

YOUR BANKAMERICARD ACCEPTED

COMPLETE HOME REMODELING FREE ESTIMATES

ALUMINUM SIDING ROOFING
EAVESTROUGHS KITCHENS
ADDITION REC ROOMS
AWNINGS GARAGES

CAMELOT CONSTRUCTION 475-9209
14034 N. Territorial

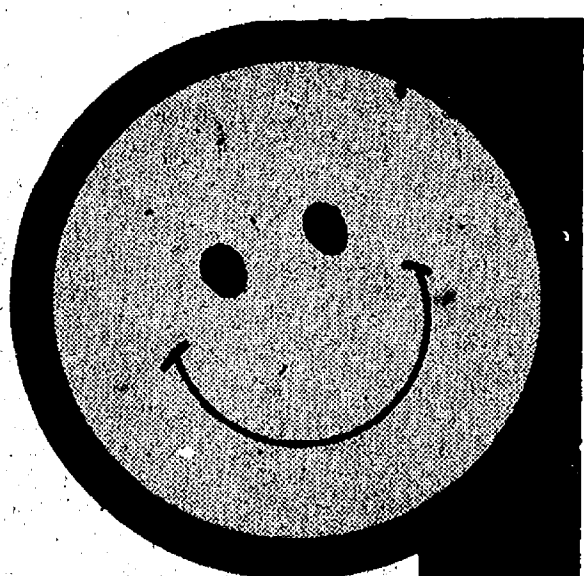
Proudly Presenting Our New FORMAL WEAR LINE

OVER 40 DIFFERENT STYLES
From \$16.95 to \$50.00

CHELSEA HIGH PROM ORDER DEADLINE
SATURDAY, MAY 4th

STRIETER'S MEN'S WEAR

"The Place To Go For Brands You Know"



No matter what states you visit on vacation "no fault" insurance is no problem.

If your vacation this year takes you through states with "no-fault" insurance laws, you have no problem — If your auto is protected by Auto-Owners Insurance. Your Auto-Owners policy provides altogether protection automatically under its bodily injury and property damage liability coverages if you become subject to the laws of a no-fault state. Have a good vacation!

it's better altogether

A. D. MAYER AGENCY, INC.

115 PARK ST., CHELSEA
BOB BARLOW, AGENT
PHONE 475-2030

Auto-Owners Insurance
Lifetime Car Business

SPRING RUMMAGE SALE

FRIDAY, MAY 3-9 a.m. - 5 p.m.

DEXTER UNITED METHODIST CHURCH
Central and Fourth St.

Clothing, books, toys, dishes, jewelry, household goods.
NO furniture.

CALL OR STOP IN

CHELSEA GLASS WORKS

WORKMANSHIP AND MATERIALS FULLY GUARANTEED.

Open Daily 8 a.m. to 5 p.m.; Sat., 8 a.m. to 1 p.m.

140 W. Middle, Chelsea Phone (313) 475-8667

WE REPAIR AND REPLACE:

★ STORE FRONTS ★ MIRRORS
★ FURNITURE TOPS ★ PATIO DOORS
★ SHOWER DOORS ★ TUB ENCLOSURES
★ THERMOPANES
★ AUTO GLASS - Including Windshields
Free Pick-up and delivery on auto work.

Storm Door & Window Reglazing & Screens

COMMERCIAL BUILDINGS OR RESIDENTIAL
PROMPT SERVICE REASONABLE PRICES

Auction of New England

ANTIQUES

Saturday, May 4, 1974

10:00 a.m.

Chelsea Fairgrounds, Chelsea, Michigan

INSPECTION: 8:00 a.m. to time of sale.

Chairs, Tables, Cupboards, Leads, Amberina, Silver, Indian Pottery, Clocks, Toys, Rugs, and much much more.

SARA ELLEN WHITE

AUCTIONEER

Bolton, Massachusetts (617-779-2238)

Lakes Region Agent, Ms. Peggy Geer. (313-426-3357)

SEATS - REFRESHMENTS - FREE PARKING

AUCTIONEERS NOTE: This is a sale of over 250 lots of prime New England Antiques. Well worth attending. NOTE: No Reserves.

Mobil Tire Inventory Sale



Mobil Cushion 78 Belted

\$13¹⁰

Suggested selling price, plus \$1.00 Fed. Tax and your old tire. (B78x13 Tubeless)

Mobil Cushion 78 Belted
Suggested selling prices.

SIZE	REG. PRICE	SALE PRICE	FED. TAX
F78x14	\$40.95	\$22.00	\$2.50
G78x14	\$42.95	\$26.00	\$2.67
H78x14	\$44.95	\$27.10	\$2.94
G78x15	\$43.95	\$25.60	\$2.73
H78x15	\$45.95	\$28.30	\$2.96

All dealers reserve the right to establish their own prices and discounts.

Save Now...Pay Monthly

You can charge your tires to your Mobil Credit Card and take advantage of convenient budget terms. We also honor Master Charge, BankAmericard, American Express and Carte Blanche.

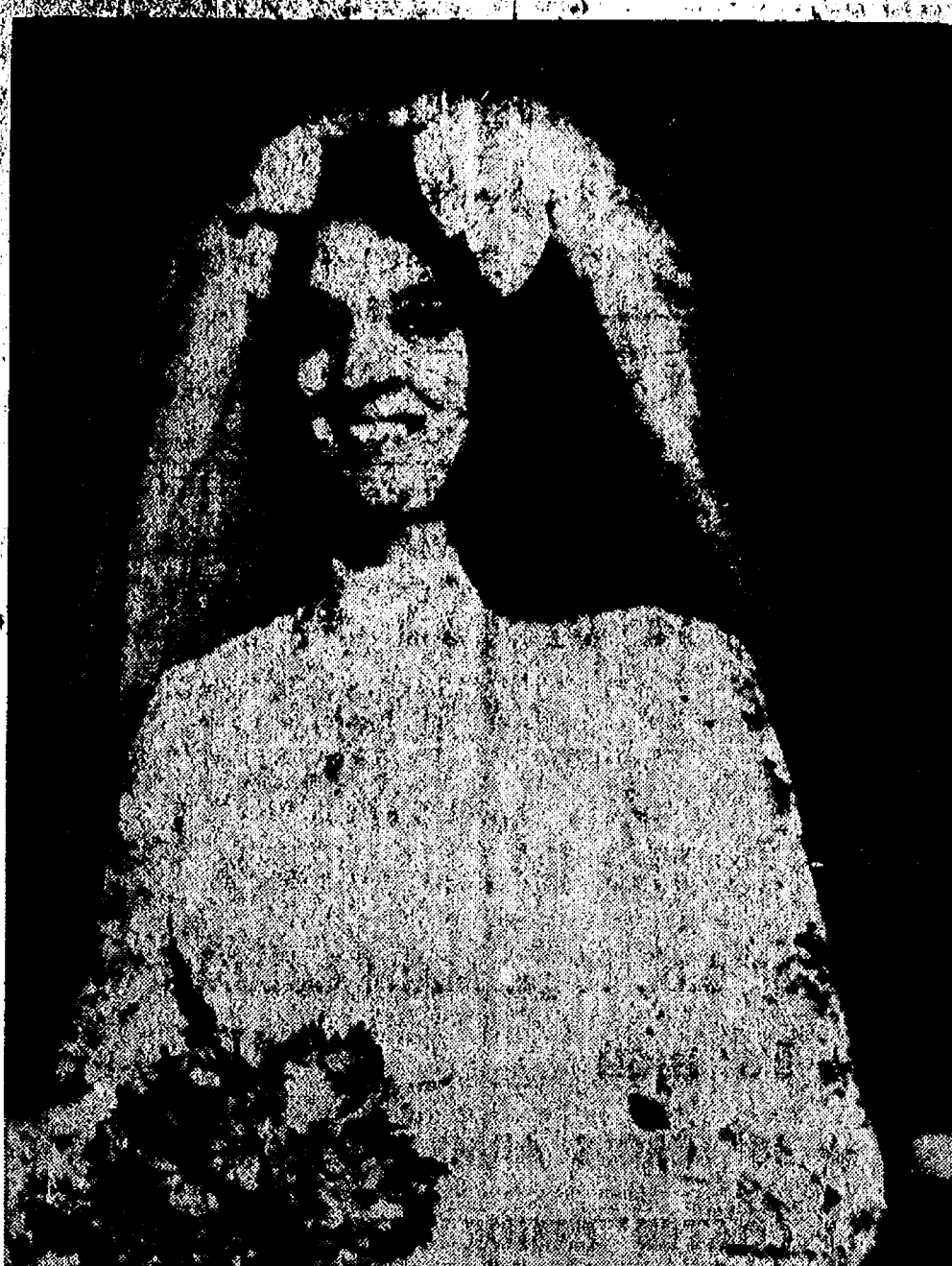
Mobil®

GLENN'S MOBIL SERVICE

1629 M-52 at I-94, Chelsea

MOBIL'S LARGEST TIRE SALES

Phone 475-1767



Mrs. Douglas Ray Flint

Nancy I. Kennedy, Douglas Flint Wed at Sharon Methodist Church

Nancy Irene Kennedy and Douglas Flint were united in marriage Saturday, April 20, at Sharon United Methodist church in a ceremony officiated by the Rev. Michael Petterlin.

Parents of the couple are Mr. and Mrs. Douglas Kennedy and Mr. and Mrs. James Ray Flint, all of Manchester.

For the ceremony, the bride appeared in an empire-waisted gown with bodice of lace over satin with long full sleeves and cuffs. The slightly gathered skirt was of satin, covered with chiffon and lace appliques. The train, also of satin, was covered with chiffon with lace appliques.

Her bouquet was a cascade of white roses and white miniature carnations and baby's breath.

Maid of honor was Miss Karen Kennedy, a sister of the bride. Bridesmaids were Miss Susan Westfall and Mrs. Gary Blossom, a sister of the bridegroom.

The costumes of the maid of honor and bridesmaids were of the same style as that of the bride, except for short puffed sleeves and braid encircling the empire waist. They were made of dotted Swiss over taffeta in green, blue, pink, and yellow.

Bridesmaids carried similar bouquets of miniature carnations and daisies.

Acting as best man was Richard Kennedy, a brother of the bride. David Jose and Gary Blossom, brother-in-law of the bridegroom, served as ushers. Robert Hartmann, a nephew of the bride, served as ring bearer.

A reception followed at Freedom Township Hall. Cutting the wedding cake were Mrs. Ronald Mast and Mrs. Dennis Trinkle. Pouring punch and coffee were Miss Carol Clark and Miss Barbara Hinderer; attending the guest book were Miss

Cathy Clark and Miss Mary Wahl. All are cousins of the bride. The couple will reside at 6481 M-52, Manchester.

Kinder Klub Receives Award For Book Cover

Chelsea's Kinder Klub has received an honorable mention from the Michigan Child Study Association, of which it is a member, for the cover of the group's book for 1973-74.

The award was presented to Mrs. Veretta Whittaker at the organization's Spring Planning in Greenville last Saturday by MCSA president Mrs. George Trask.

Theme for the book is "Rx: Family Understanding." The cover done in red and white, which are also the club's colors, was a product of Cheryl Ziegler, who did the art work, and Carol Marshall, who submitted the design. Contents of the book was the combined product of the committee.

Kinder Klub has won two previous awards from the MCSA: one in 1967-68 for the theme, "Families in Focus," and one in 1970-71 for the theme "Into the Looking Glass."

BRUNCH PARTY
Mrs. Barbara Roderick had a brunch party April 25. Guests were Mrs. Sylvia Bettner, and son, Mrs. Carla Cherry, Mary Ann Meyers, Marilyn Lewis, Pat Russell, Helen Balmer, Sharon Hoffman and two daughters, Mrs. Mary Hurd and son, Mrs. Anne Sherbak, Mrs. Jodi Platt, Mrs. Betty Hayden, and Mrs. Mary Clark.

Subscribe today to The Standard!

Modern Mothers Elect Officers For Coming Year

Modern Mothers Child Study Club met Tuesday, April 23, at 2 p.m. at the home of LaVonne Harris. During the business meeting, officers for next year were elected.

Club officers for 1974-75 are: president, Sherri Plank, first vice president, Jeanene Riemenschneider; second vice-president, Barbara Brown; secretary, Janet Rossi; treasurer, Sue Kett; financial chairperson, Sharon Hodgson; parliamentarian, librarian, auditor, Dottie Riemenschneider; hospitality hostess, Amy Vaught.

"Make Your Own Kind of Music" was the program for the evening, featuring LaVonne Harris and four of her students playing the piano. The recital began with Christopher Tobin playing "Swanee River" and "Left-Right March." Sarah Haselschwardt played two numbers entitled "Habenera" from Carmen and "Swing the Blues." "Valse No. 1, Op. 63" and "Shades of Blue" were the selections Liz Haselschwardt chose to play. The young people ended their portion of the program with Lisa Schrader playing "Prelude in C Minor" and "Cat and Mouse."

LaVonne Harris explained and demonstrated various parts of a console organ and how they operate. "Praeludium" was the selection she played on the organ and on the piano she played a piece entitled "Toccato."

LaVonne also informed club members about the various aspects of piano lessons and the discipline involved with music. She also played several piano requests from the five guests and 28 members in attendance. Guests included Linda Mayer, Sandy Knapp, Marie Colombo, Anne Feeney and Nancy Sprague.

Refreshments were served by the co-hostesses, Pat Coelius and Lois Garman.

Club and Social Activities

YOUNG HOMEMAKERS
Sixteen members of the Young Homemakers group gathered at the home of Mrs. Michael Feldkamp for their April meeting.

After a brief business meeting, Mrs. Robert Heller illustrated transferring pictures to domes and Mrs. Ronald Satterthwaite demonstrated the making of cone puppets. Each member made a puppet and a plaque.

Mrs. Robert Heller and Mrs. David Rouhm won the door prize for each, a plate of cookies. Mrs. Donald Laier was co-hostess for the evening.

CHILD STUDY CLUB
Chelsea Child Study club met Tuesday, April 23, at the home of Mrs. Brian French.

Attending as guests were Mrs. Thomas Neumeyer, Mrs. Charles Pax, Mrs. Marvin Brightwell, Mrs. William Ryan, Mrs. Gerald Schultz, and Mrs. Robert Stafford.

Julian Moody, owner of Apple-rose, a natural foods store in Ann Arbor, spoke to the group about choosing foods wisely for better health.

At the annual meeting which followed the regular meeting, Mrs. Thomas Bust was chosen for honorary membership because of her many years of service to the club. Mrs. Jerry Waldeck and Mrs. Thomas Dmoch served refreshments.

PAST NOBLE GRANDS
Past Noble Grands club met Tuesday, April 23 at the home of Marian Pickell with Helen Harris assisting as co-hostess.

A letter was read from Mrs. McCall from Ypsilanti State Hospital of a list of 14 women whom the group may remember with gifts. This project will begin immediately and these gifts will be wrapped at the June meetings.

Kooks' night out is scheduled for May 14, leaving Chelsea at 5:30 p.m.

The evening was spent playing cards, with Ida Nixon winning the door prize. Next meeting will be at the home of Edith Hoffman at Cavanaugh Lake.

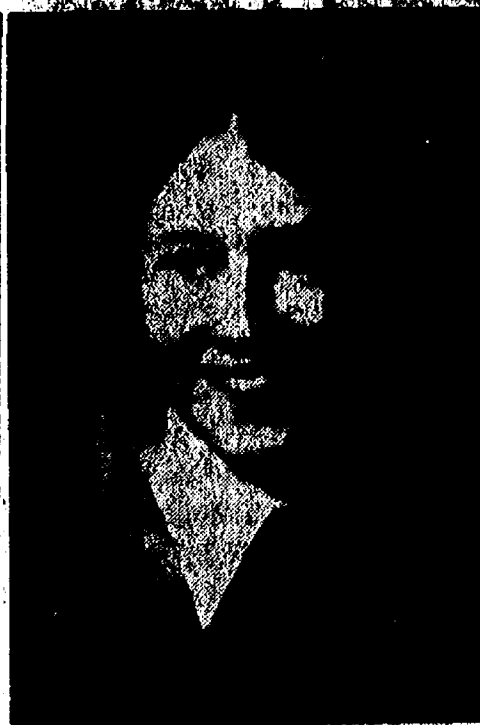
MYI Correction

In last week's issue of The Standard, the name of Dale Heydlauff, son of Mr. and Mrs. Jerald Heydlauff of 11340 Dexter-Chelsea Rd. was unintentionally omitted from the list of participants in the Music Youth International program. The group presented a concert in Monroe last week-end, and will tour Australia from July 5 until Aug. 9.

BROWNIE TROOP 145
The girls of Brownie Troop 145 met at St. Mary school and walked to Pierce Park for some spring planning. They then went to the Dally Queen for ice cream. Amy Hume, scribe.

Magic Mirror Beauty Salon

Open Tuesday thru Friday
9 a.m. to 9 p.m.
Saturday, 8 a.m. to 3 p.m.
PHONE 665-0816



RICKELMANN-McDONNELL
Mr. and Mrs. Thomas Rickelmann of Gregory announce the engagement of their daughter, Carol Ann, to Thomas Bradley McDonnell, son of Charles McDonnell of Ann Arbor and Donna McDonnell of Ypsilanti. The prospective bride is a graduate of Pioneer High school and is employed by Ann Arbor Federal Savings; her fiancé, also a graduate of Pioneer High school, has completed service in the U.S. Navy and is presently employed by Malloy Lithographing, Inc. The couple plan a Sept. 6 wedding.

Woman's Club Elects Officers For Coming Year

Chelsea Woman's Club held its annual meeting for the year on Tuesday, April 23. Officers and committee chairmen presented their summaries of the year's activities in the form of annual reports.

The program for the 1974-75 year was presented by program chairman Mrs. Thomas McClear. The 1974-75 slate of officers was approved as: president, Mrs. Robert Allhouse; vice-president, Mrs. Robert German; secretary, Mrs. Gifford Johnson; treasurer, Mrs. Stephen Powowski; parliamentarian, Mrs. Jeremiah McDougall.

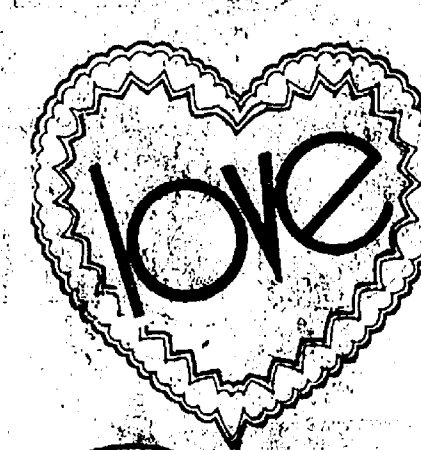
The club expressed appreciation to the outgoing officers: president, Mrs. Richard Schmidt; vice-president, Mrs. Thomas McClear; secretary, Mrs. Anthony Raduaz; treasurer, Mrs. Patrick Turcott; parliamentarian, Mrs. Lynn Blecha.

Hostesses for the evening were Mrs. William Hayes and Mrs. Ralph Oestrie.

Next meeting will be the annual dinner, held at Weber's Inn on May 14, with cocktails at 6 p.m. and dinner at 7 p.m. Members are reminded to enter through Weber's motel entrance.

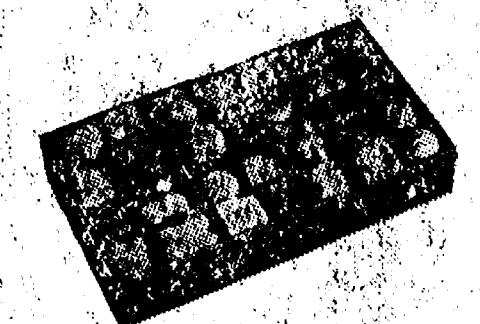
What can happen if you're always being called on the carpet? Answer: You're apt to have a rug pulled out from under you.

Mothers

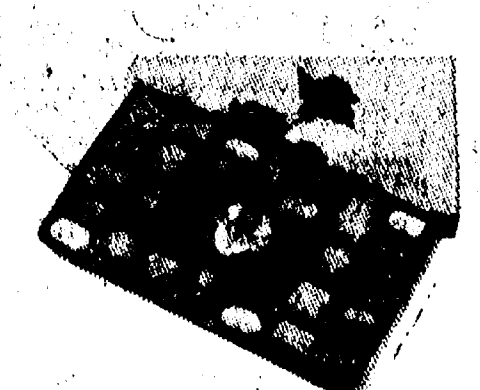


**Sanders
Candy**
from

**CHELSEA CARD
& GIFT SHOP**
116 S. Main Ph. 475-7501



FAMILY ASSORTMENT
Everyone loves this delicious Sanders assortment! The assortment, mostly chewy and nutty pieces including caramels, chips, clusters, coconut and many more milk and dark chocolate-coated candies, 1, 2, 3 and 4-pound boxes.



SPRINGTIME ASSORTMENT
One sweet surprise after another! Favorite Sanders milk and dark chocolate-coated centers. Colorful decorated chocolate. Flavors decorated chocolate mint.

Church Women Join In Fellowship Day

With a theme of "Explore New Paths," Chelsea Church Women United will meet tomorrow, Friday, at the First United Methodist church for the annual observance of May Fellowship Day.

Guest speaker for the program will be Mrs. Ruth Cadwalder, president of Ypsilanti Church Women United and editor of the group's state publication, "The Michigan Church Women." Her topic will be "Women Around the World."

As part of a long tradition of meeting on the first Friday in May for May Fellowship Day, Chelsea Christian women, along with church women across the country, meet to emphasize the creative relationships that are possible among people in every community.

Through this year's observance of May Fellowship Day, church women will seek significant ways of stimulating new careers for women in their local communities, as part of the group's commitment in the 1970s "to share in shaping new social patterns that will assure a fuller life for all people."

Encouraging women to enter new vocations to meet personal needs and the needs of society, the group feels, can make possible a new quality of life.

The church women plan specifically to analyze the things that need to be done in their respective communities. They will search for ways to make available community resources which can enhance the special skills and experience of women capable of developing new careers.

Such concern stems from the fact that women often have not held clear objectives when they began to seek employment, the group explains, since most women's motivation involves economic necessity of some form and not always creative fulfillment. As more women turn to employment and become a larger part of the work force, as is currently the case, the need grows for career guidance in a variety of situations.

Attention needs to focus upon, first, the quality of career counseling provided for the young women at the high school level; second, a special kind of support

and guidance that should be available to women over 30 years who are re-entering the job market and desire to re-train themselves; and finally, encouragement to further training and education in women working as paraprofessionals as finances and situations permit.

Among women who are locked into unsatisfying jobs that are not challenging to their interests or skills, many have begun work as volunteers or taken second jobs to gain the satisfaction lacking in their primary employment, Church Women United notes.

Through this volunteer work, a new brand of volunteer has emerged: the one who transforms her volunteer work into paid employment by turning to formal education for specific training and qualifications in her field. Others become "paid volunteers" receiving a stipend in lieu of salary.

Planning committee for this year's May Fellowship Day includes Annabelle Closson, who planned the worship presentation; Nita Mills, who contacted churches; and Lorrie Rady and Donna Gaunt, who managed lunch, decorations, and physical arrangements.

For the salad buffet planned for the program, participants are asked to bring a salad and their own table service. Fellowship day is scheduled from 12 noon to 2:30 p.m.

Participating churches are First United Methodist church, First

Letters to the Editor

To the Chelsea Jaycees:

Our family wants to thank your organization for making possible the annual Easter egg hunt at the high school. We have three small children, and they all find such enjoyment in the occasion.

We know it must be a lot of work for you, and we want you to know that your efforts have not gone unappreciated.

Occasions such as this that promote family outings are to be lauded—many thanks again, especially from our three little ones.

A Chelsea Family.

The breadth of one's view is the chief difference between being "in the groove" and being "in a rut."

Congregational United Church of Christ, St. Paul United Church of Christ, St. Barnabas Episcopal church, Zion Lutheran church, St. Mary Catholic church, and North Lake United Methodist church.

Attending Dedication At Spring Arbor College

Mr. and Mrs. James Sprague of 3490 Clear Lake Rd. will attend on May 17 the dedication of the college commons of Spring Arbor College to the memory of Mrs. Dorrice Ogle, to be known as the Dorrice Ogle College Commons. Mrs. Ogle was an aunt of Mr. Sprague.

The dedication will be part of the Faculty, Staff, Board Appreciation Dinner at the college. Spring Arbor College, founded in 1873, is a small private liberal arts college of 700 students.

Men and women with civilian-acquired technical skills are being offered accelerated promotion opportunities to enlist in the Army under the new "Stripes for Skills" program. The program applies to more than 160 military specialties related to civilian occupations.

DEFINITION
Middle Age is when someone says to pull in your stomach and you already have.

LAURA'S BEAUTY SALON

LAURA DOWNER, Owner - Formerly Tina's Beauty Salon
116 S. MAIN ST. PHONE 475-7677

LAURA - TINA - MADELINE - ANGIE

OPEN MONDAY THRU SATURDAY
9 a.m. to 5 p.m.
EVENINGS BY APPOINTMENT

GIFTAMERICA®

© 1974 GIFTAMERICA

CHELSEA CARD & GIFT SHOP

116 S. MAIN ST. PHONE 475-7501

VILLAGE BEAUTY SALON

101 N. MAIN PHONE 475-1671

LORETTA
CHEYL - JANICE - CAROL - ARLENE - JANIE

OPEN TUESDAY THRU SATURDAY
Tuesday and Thursday Evenings

Make Mother's Day even more special

Bulova Accutron® for women

Give mother the time of her life: Bulova Accutron. The tuning fork movement gives her precision no conventional watch can match... guaranteed accuracy to within a minute a month. We have a wealth of styles. From \$96 to \$1500.

Goldtone bracelet watch with champagne dial, \$129.

Boldly fashioned in all stainless steel, \$169.

Sweep second precision with full numeral dial, \$139.

*We will adjust to this precise tolerance, if necessary. Guarantee is for one year.

WINANS JEWELRY

WE WILL REPAIR ANY WATCH OR JEWELRY. WE WILL CLEAN AND POLISH ANY JEWELRY. WE WILL REPLATE ANY JEWELRY.

FREE NIGHTSTAND

WITH PURCHASE OF ANY
3-PIECE BEDROOM SUITE

10-DAY SPECIAL
TODAY THRU
SAT., MAY 11

You'll find just the bedroom suite you've been looking for, in stock now during our 10-day FREE NIGHTSTAND special. Each 3-pc. suite includes: dresser and mirror, chest of drawers, bed. Select from a wide variety of styles, sleek, modern, Early American, dramatic Mediterranean.

Merkel Home Furnishing

Community Calendar

Modern Mothers Child Study Club, Saturday, May 4, 10 a.m. to 12 noon, "family swim" at Forsythe Junior High school in Ann Arbor. Guests may be invited.

Regular communication, Olive Lodge No. 156 F&AM, Tuesday, May 7, 7:30 p.m.

Next meeting of Lima Study Group May 8, 10:30 a.m. at the Lima Township Hall. Hostesses: Mrs. Irving Hollis and Mrs. Gerald Quackenbush.

Chelsea Rebekah Lodge No. 103, regular business meeting, Tuesday, May 7, 7:30 p.m., at the Rebekah Lodge. First nominations of representatives.

VFW Post No. 4076, regular meeting, Wednesday, May 8, 8 p.m. at the Post home, 105-B N. Main. Agenda: Inspection of the Post.

Chelsea Community Farm Bureau, Thursday, May 9, 8 p.m. Sylvan Township Hall. Hosts: Mr. and Mrs. Anton Nielsen and Alan Broesamle.

Chelsea Co-op Nursery is now taking applications for 1974-75 classes for three and four-year olds, both mornings and afternoons, assist and non-assist. Anyone interested in receiving an application, call Phyllis Muncer, 475-1751 adv50.

Ruth Circle May tea, May 15, 1 p.m., at the Crippen Building.

Women's Society of United Methodist Church, Mother-Daughter, p.m., in social center of the Methodist church. Program: "Love Story," will feature brides of yesterday, followed by a dessert smorgasbord. Tickets available from Women's Society leaders, or by calling 475-2197 evenings.

Sylvan Township Board meeting the first Tuesday of the month, at 7 p.m., at Sylvan Township Hall.

Chelsea Rebekah Lodge, Tuesday, May 7, 7:30 p.m. First nominations to assembly for representatives and alternates.

Monetary donations for Home Meal Service of Chelsea should be sent to Mrs. Helen Pearson, 725 W. Middle St.

Open meeting of Advisory Committee on the Status of Women, first and third Monday of every month, 7:45 p.m., room 117A Washenaw County Building, corner of Huron and Main, Ann Arbor.

Pap tests are free for all area women, Tuesday mornings, at St. Joseph Mercy Hospital, Ann Arbor. Call American Cancer Society office, 668-8857 for appointment.

Parents Anonymous cares about parents who lose their cool with their children. Weekly meetings, no fees. Call Sandy, 475-7519.

Cavanaugh Lake-North Sylvan Grange, Tuesday, May 7, 7:30 p.m., home of Mr. and Mrs. Roy Kalmbach, 17518 Fahrner Rd. Bring own dishes and either sandwiches, cake, or Jell-O.

American Legion Auxiliary Mother-Daughter banquet, Tuesday, May 7, 6:30 p.m., Legion Home, Cavanaugh Lake. Regular meeting to follow banquet.

American Legion and Auxiliary hospital equipment records were destroyed. Anyone having equipment is kindly asked to call Pat Merkel at 475-1824.

Due to fire, the American Legion hospital equipment records were destroyed. Anyone having equipment is kindly asked to call Pat Merkel at 475-1824.

Senior Citizen Fun Nite every Friday evening at 7:30.

Opening of Ladies Day at Inverness Country Club, Thursday, May 2. Business meeting discussing year's program; golf. Hostesses for day: Lorna Eberts, Madeline Keusch.

Beach Middle school art show, Tuesday, May 14, 7 to 9 p.m., Beach art rooms. On show and for sale: pottery, paintings, plaster sculptures, water colors, oil and pop art, still life sketches and more!

Olive Chapter No. 108, OES, regular meeting, Wednesday, May 8, 7:30 p.m.

Kindergarten...

(Continued from page one)
A doctor verifying that children entering kindergarten have been immunized against diphtheria, tetanus, whooping cough, smallpox, polio, measles, rubella, and have had a TB test. Forms for such verification will be available at registration.

Since these future kindergartners have been allowed to visit school this spring, the schools have planned no activities for them at this meeting, and parents are asked not to bring their children.

ADOPTION

Mr. and Mrs. Donald Atkinson of Brownsburg, Ind., have adopted a daughter, Melissa Sue, born April 2. She came home with the Atkinsons on April 16. Maternal grandparents are Mrs. and Mrs. Donald Carlson of Manistique; paternal grandparents are Mrs. George W. Atkinson and the late Mr. Atkinson.



DEATHS

William Skittenhelm Infant Dies at Hospital Shortly After Birth

William W. Skittenhelm, 163 E. Summit, died shortly after birth Tuesday, April 30 at St. Joseph Mercy Hospital in Ann Arbor.

Surviving are his parents, Thomas and Colette Wright Skittenhelm of Chelsea; maternal grandparents, Mr. and Mrs. Gary Wright of Chelsea; paternal grandparents, Mr. and Mrs. John Skittenhelm of Chelsea; great-grandparents, Mr. and Mrs. Walter Skittenhelm of Grass Lake, William Underwood of Lexington, Ky., Mrs. Elnora Wright and Mrs. Freda Howe, both of Chelsea; and several aunts, uncles, and cousins.

Graveside services will be conducted this afternoon, Thursday, May 2, at Oak Grove Cemetery by the Rev. Charles Hurd.

Exchange Student

(Continued from page one)
preparing for Maria Antonia's return to school in June, when, she notes, she will be in the midst of tests.

"I think I will tell them I need a vacation," she says, "but I will have to study." Although now a senior at Chelsea High school (after some trials and tribulations between Chelsea counseling office and Youth for Understanding), when she returns to her home in suburban Buenos Aires, she will have one and one-half years of school remaining before college.

She thinks now that she might like to study nuclear engineering. "It is so strange, here in America you have so many engineers and few doctors. In Argentina we have so many doctors—none of them can make any money—and few engineers. And here doctors go to college for six years and engineers for four—in Argentina doctors go for four years and engineers for five, six, seven."

She wonders, though, about the length of time involved in nuclear engineering education.

"My father says that nuclear engineering is too long for a girl to go to school. I might never work, at all," she says, noting that her mother, who is trained in a profession similar to that of a lawyer that Maria says lacks a corresponding English phrase, has never worked.

"My friends and I never work. I told my father that I had worked once here babysitting, and he was worried—he was afraid that I needed money," she laughs. "But it is so nice to earn your own money."

Other aspects of life in a small town as familiar as baby-sitting seem to rouse delight in her. She reports that people are "so friendly" and recalls an elderly woman whom she helped across a street telling her that she "had a granddaughter just like me."

And at a wedding with her host family, the Russell Severns of Butternut Ct., she discovered another tiny "difference."

"I said, 'oh, there are two weddings going on here at the same time,'" she remembers. "And someone said, 'no, those are the ... attendants.' I didn't know what that other man and woman were doing there. We have people to help them dress and such, but no one is standing up with them."

"I like America," she says positively, "but I appreciate my home now, too."

CHS Juniors Chosen in Exchange Plan

Two Chelsea High school juniors, Merry Hoffmeyer and Mary Beth Chandler, have been announced as foreign exchange students for the summer months by Youth for Understanding.

Merry, the daughter of Mr. and Mrs. James Hoffmeyer of 146 Orchard, will spend the eight weeks from June 21 to Aug. 22 in Switzerland. As yet, she has received no notification regarding the family with whom she will stay.

Switzerland, Merry reports, was her "first choice" country for placement. She has completed three years of French and German in high school, which some preparation in itself.

At Chelsea High school, she is a member of the high school band, playing French horn, a member of Chelsea's National Honor Society, and a member of the forensics team, in the storytelling category.

Mary Beth Chandler, daughter of Mr. and Mrs. W. D. Chandler of 765 Howard, will journey to Norway. Although she says that her first choice would have been to go to Switzerland, she was told that she needed a further background in languages than she currently possesses.

She will be living with a family whose home is in Asker, but expects that they will spend most of their time along the west coast of the country.

At Chelsea High school, Mary Beth is editor of the annual.

Baseball Win...

(Continued from page one)
Ortbring, Mike Nadeau, and John Houle.
Starting pitcher Houle was relieved by Ortbring in the seventh but recorded the win.
Friday the Bulldogs will tangle with Saline's Hornets in Saline.
Line score:
Chelsea 002-030-4-11
Dexter 310-000-6-10
Chelsea: Houle, Ortbring (7), and Nadeau.
Dexter: Toma, Peters (5), and Darr.

Tag Days To Benefit Scholarship Fund

With all the formality rightly due such an auspicious occasion, village President Harold Pennington has declared tomorrow, Friday, and Saturday to be Tag Days for Chelsea High school's National Honor Society, in conjunction with the Chelsea Scholarship Committee.

Funds raised from Tag Day will aid the Scholarship Committee in providing funds to further training and education of graduating seniors.

Mrs. June Winans will supervise the venture, assisted by Mrs. Robert German, Captain of Tag Day, is National Honor Society president Dave Klemmer.

NHS members will be stationed on the main corners of Chelsea, at the bank corner and at Polly's on Friday from 3 to 5:30 p.m., and Saturday from 9 a.m. to 12 noon.

The proclamation reads: WHEREAS, The National Honor Society, in conjunction with the Scholarship Committee, recognizes the need of deserving Chelsea High seniors, and

WHEREAS, The National Honor Society and the Scholarship Committee wish to aid their graduating seniors in their first year of college education,

NOW, THEREFORE BE IT RESOLVED, we declare Tag Day in Chelsea this coming Friday, May 3, and Saturday, May 4, and urge all citizens to help us in providing scholarships for our deserving seniors.

Harold L. Pennington, President Village of Chelsea

Sponsored by the Dexter Chamber of Commerce, the dinner will be served by the Gilded Belles chapter.

Special guests will arrive from the village of Byron who are also celebrating their Sesquicentennial this year. Everyone is asked to wear old-time dress.

Dick McNis will provide organ music during dinner and a guest speaker is from the Michigan State Historical Society.

Knick's Kicking for U-M

In the annual Blue-White intra-squad game between first and second string members of the University of Michigan football team, Chelsea's Steve Knickerbocker, on the white team, kicked a 44-yard field goal the last play of the game.

The Blues prevailed, however, 41-7. Knickerbocker attended Olivet College his freshman year. Steve is the son of Mr. and Mrs. George Knickerbocker, 1221 N. Freer Rd.

Girls Softball Schedule Girls Baseball League Will Be Organized

May 3-Sallpe Home
May 7-Lincoln Away
May 8-Stockbridge Home
May 10-Novl Away
May 14-Brighton Home
May 16-A.A. St. Thomas Away
May 20-Stockbridge Away
May 21-Dexter Away

An organizational meeting for women's and girls' baseball is scheduled for Monday, May 6, at 7:30 p.m., second floor of the Municipal Building. Anyone interested in playing on a team is invited to attend.

CLOTHESLINE POSTS

NO. 1000 WHITE BEAUTY

★ 3" O.D., 16-ga. MAIN COLUMN

★ 8'6" HIGH

★ 48" CROSS ARM (4-hook)

★ COATED INSIDE AND OUTSIDE

★ 25 lbs. NET WEIGHT, EACH

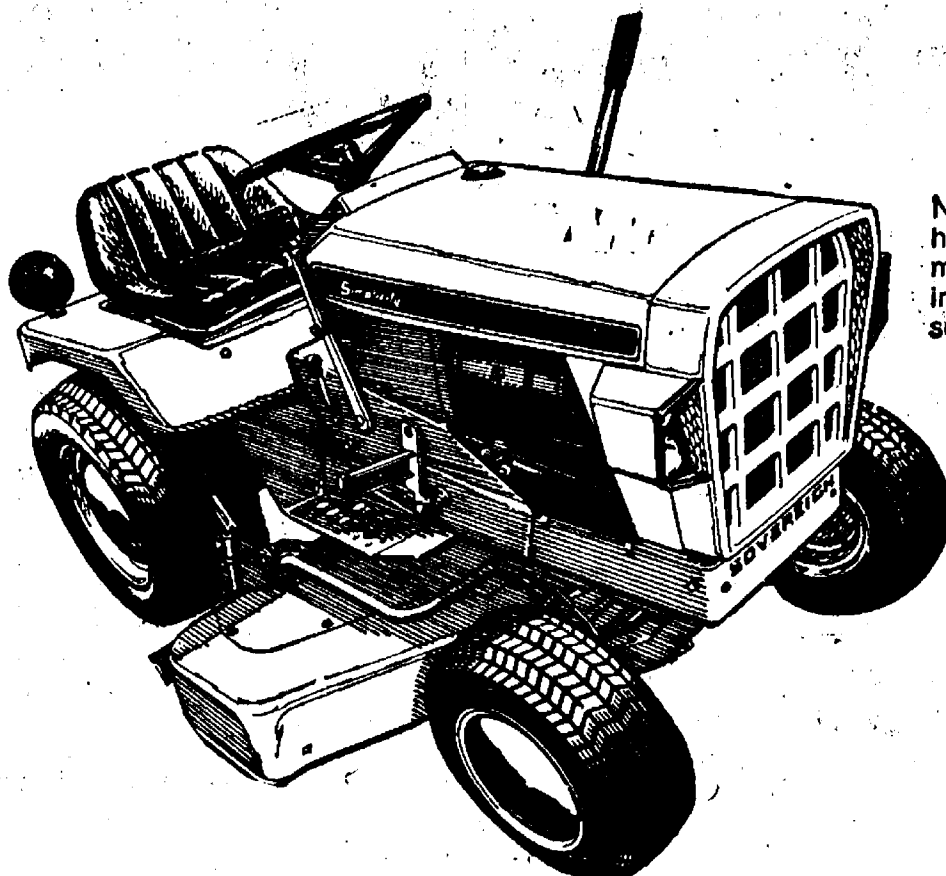
\$985 ea.

in carton
Cash-n-Carry

CHELSEA LUMBER

HAMILTON REFRIGERATION and AIR CONDITIONING SERVICE COMMERCIAL SYSTEMS Installation and Repair CALL GARY HAMILTON Manchester 428-7600 Evenings 428-8232

POWER EQUIPMENT HEADQUARTERS

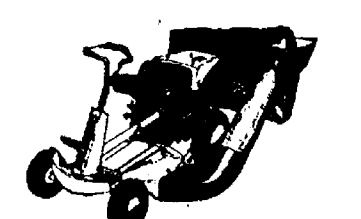


New Simplicity Sovereign® with 16 hardworking horses. 48" rotary mower follows the ground. Instead of the tractor. Detaches in seconds without tools.

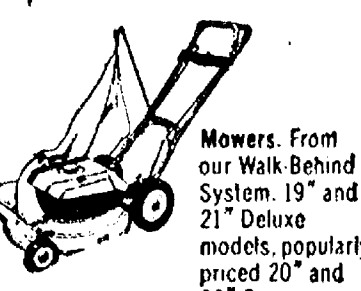
There's a Simplicity System sized for you. Priced for you.



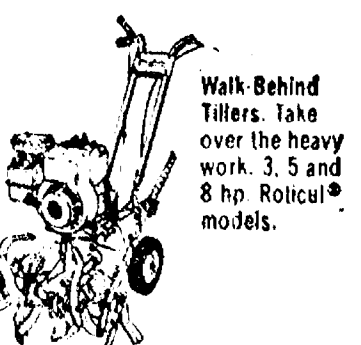
Tractors and Attachments. Choose from 8, 10, 13, 16 or 19-1/2 hp. tractors. And a wide range of attachments...



Aiding Mowers. Four models, 5 and 8 hp. For yards that are mostly lawn. Free-floating mower avoids scalping.



Mowers. From our Walk Behind System. 19" and 21" Deluxe models, popularly priced 20" and 22" Zippers.



Walk Behind Tillers. Take over the heavy work. 3.5 and 8 hp. Roticut® models.

Father Nature's right-hand man.

SPECIAL OFFERING!
Get a large, rear-mounted Grass Catcher FREE with purchase of Wonder-Boy 808 Riding Mower or 8 h.p. 'Grabber' Riding Mower

This Is ROTO-TILLER Time!

We Have Them:
SIMPLICITY - GILSON - AIRENS

Come in and see our show room and power equipment service facility.

This is the week to apply SCOTTS TURF BUILDER PLUS 2 for maximum dandelion kill. You still have time to apply HALTS-PLUS for crabgrass control.

CHELSEA HARDWARE
110 South Main St. Phone 475-1121

INTRODUCING THE 1974 A, B, C, D SERIES OF TRACTORING-FROM...

WHEEL HORSE

PRICES START \$825

D-200 Automatic

C-160 Automatic

A-800 Ranger

We offer four series of tractors because some people have different size lawns and lots... some have gardens... some do not. So why buy more or less garden tractor than you really need? We're confident you'll find the right lawn and garden tractor among 11 different models for 1974. We'll recommend either an 8, 10, 12, 16, 18 or 19.9 HP tractor that you really need. Come in and let's talk about A, B, C, D's of Tractoring.

GAMBLES

110 N. MAIN ST. PHONE 475-7472

WHEEL HORSE lawn & garden tractors

SPRING TUNE-UP TIME

TOWER SHELL
6-CYLINDER \$35.00 8-CYLINDER \$40.00

Price Includes ALL PARTS and LABOR PLUS - Our 10-POINT ANALYZER CHECK-UP

- 1.—TIMING
- 2.—DWELL
- 3.—CARB. ADJ.
- 4.—IDLE SPEED
- 5.—PCV VALVE
- 6.—ALTERNATOR
- 7.—BATTERY
- 8.—LIGHTS
- 9.—FUEL FILTER
- 10.—AIR FILTER



475-2691



40th

ANNIVERSARY SALE!

FREE! DOOR PRIZES

AT ALL SIX STORES . . . COME IN AND REGISTER!

GRAND PRIZE

\$500

Worth of Groceries

Drawing May 11th at 5 o'clock at Polly's on N. West Ave. in Jackson.

WEEKLY DRAWINGS

- 2 Gift Certificates Worth \$50 in Groceries
 - 2 Gift Certificates Worth \$25 in Groceries
 - 6 Gift Certificates Worth \$10 in Groceries
 - 8 Gift Certificates Worth \$5 in Groceries
- All weekly winners will be notified by mail!

POLLY'S 20-OZ.

Quality Bread . . . 4 for \$1

BORDEN'S GLACIER

1/2 gal. Ice Cream . . . 59¢

VALUABLE COUPON
PILLSBURY
FLOUR
5-Lb. Bag **89¢**
SAVE 14¢ WITH COUPON
LIMIT 1 EXPIRES MAY 5, 1974

VALUABLE COUPON
KRAFT
MIRACLE WHIP
Qt. Jar **79¢**
SAVE 18¢ WITH COUPON
LIMIT 1 EXPIRES MAY 5, 1974

VALUABLE COUPON
MAXWELL HOUSE
INSTANT COFFEE
10-Oz. **\$1.69**
SAVE 30¢ WITH COUPON
LIMIT 1 EXPIRES MAY 5, 1974

VALUABLE COUPON
DUNCAN HINES
CAKE MIXES
18-Oz. **3 for \$1.00**
SAVE 35¢ WITH COUPON
LIMIT 3 EXPIRES MAY 5, 1974

VALUABLE COUPON
25% OFF
ANY DRY CLEANING
LIMIT 1 EXPIRES MAY 5, 1974

VALUABLE COUPON
15¢ OFF
THE PURCHASE OF TWO
PACKAGES OF HOLLAND BULBS
LIMIT 2 EXPIRES MAY 5, 1975

VALUABLE COUPON
16-OZ. NO-RETURN
COCA-COLA
8 pac **99¢**
SAVE 54¢ WITH COUPON
LIMIT 1 EXPIRES MAY 5, 1974

VALUABLE COUPON
SEALTEST LO-FAT
MILK
1/2 Gal. **2 for 89¢**
SAVE 45¢ WITH COUPON
LIMIT 1 EXPIRES MAY 5, 1974

VALUABLE COUPON
FRESH!! MINT
VEL DISH SOAP
22-Oz. **39¢**
SAVE 24¢ WITH COUPON
LIMIT 1 EXPIRES MAY 5, 1974

USDA GOVT. INSPECTED
FRESH WHOLE
Fryers
36¢ Lb.
Limit 4 Please

FRYER PARTS SALE!
FRYER LEGS (backs on) . . . lb. 59¢
FRYER BREASTS (ribs & backs on) . . . lb. 69¢
DRUMSTICKS . . . lb. 89¢
FRESH DRESSED
CUT-UP FRYERS . . . lb. **41¢**

FRESH GROUND
ALL-BEEF
Hamburger **88¢** lb.

FRESH FROZEN
TURKEY
DRUMSTICKS . . . lb. **33¢**
FARMER PEET'S WHOLE OR HALD
BONANZA
HAM . . . lb. **\$1.29**
HERRUD'S CHUNK STYLE
BRAUN-
SCHWEIGER . . . lb. **49¢**
HERRUD'S BULK
RING
BOLOGNA . . . lb. **89¢**
RED SNAPPER
FILLETS . . . lb. **\$1.09**

SWIFT'S PREMIUM
SLICED
BACON **89¢** Lb.

USDA CHOICE
ENGLISH CUT
CHUCK ROAST . . . lb. **89¢**
SWIFT'S TENDER 'N LEAN
SPARE
RIBS . . . lb. **98¢**
FRESH PICNICS SLICED INTO
PORK
STEAK . . . lb. **59¢**
15-LB.
BEEF
BUNDLE . . . lb. **\$14.99**
TURBOT
FILLETS . . . lb. **69¢**

SWIFT'S PREMIUM
ALL-MEAT
Franks
69¢ Lb.

USDA CHOICE
BLADE CUT
Chuck
Steaks . . . **69¢**

8-OZ. PKG.
BALLARD
BISCUITS . . . **10¢**
4-OZ. PENN. DUTCHMAN
Stems and Pieces
MUSHROOMS . . . 4 for **\$1**
20-OZ.
SPRAY
WINDEX . . . **39¢**
2 - 1/2-LB. TUBS
SOF-SPRED
IMPERIAL . . . **59¢**

SEALTEST
LO-FAT
Milk
1/2 Gal.
2 for 89¢
With Coupon

3 PAK . . . 4-OZ.
Pringles
99¢

16-OZ. NO-RETURN
Coke
8 pac
99¢
With Coupon

10-OZ. SMUCKERS
GRAPE
JELLY . . . 3 for **\$1**
KRAFT MINI 16-OZ.
MARSH-
MALLOWS . . . **29¢**
V-FORM REG. OR SUPER
40-CT.
MODDESS . . . **\$1.29**
10-LB. BAG
TIDY
CAT . . . **49¢**

OPERATION DEEP FREEZE!!

SWANSON 7- 9-OZ.
ENTREES . . . **49¢**
SCOT LAD 12-OZ.
LEMONADE . . . **19¢**
SWANSON 11-OZ.
DINNERS . . . **59¢**
★ Chicken ★ Turkey ★ Meat Loaf
RICH'S 10-OZ.
WHIPPED
TOPPING . . . **39¢**
LaCHOY 6-OZ.
EGG ★ LOBSTER
ROLLS ★ CHICKEN
BOOTH 16-OZ.
FISH ★ SHRIMP
STICKS . . . **89¢**
BRIDGEFORD 3-PAK
BAKE-IN-BOX
BREAD . . . **39¢**
HOLLOWAY STUFFED 12-OZ.
POTATO w/cheese
or Sour Cream . . . **39¢**
BORDEN'S 12 PAK
SKI
ROCKETS . . . **79¢**

JOHN'S 14-OZ.
Pizzas
69¢
★ Cheese
★ Pepperoni
★ Hambr.

FRESHER BY FAR PRODUCE!!

FIRM, FRESH HEAD
LETTUCE . . . **25¢**
GARDEN FRESH
BROCCOLI . . . **55¢**
GARDEN FRESH CELLO
SPINACH . . . **39¢**
GOLDEN D'ANJOU
PEARS . . . lb. **35¢**
125-CT. FLORIDA
ORANGES . . . doz. **59¢**
RED RIPE
WATER-
MELONS . . . lb. **15¢**
TENDER, SWEET GOLDEN
CORN . . . 8 Ears for **89¢**
LUSCIOUS RED
CALIFORNIA
Strawberries
69¢

Ads
Taken
Fill 1 p.m.
Tuesday

USE ACTION-PACKED WANT ADS

Just
Phone
475-1371

WANT ADS

The Chelsea Standard

WANT AD RATES
PAID IN ADVANCE—All regular advertisements, 75 cents for 25 words or less, each insertion. Count each figure as a word. For more than 25 words add 3 cents per word for each insertion. "Biting" ads or box numbers add 35¢ extra per insertion.
(CHARGE RATES—Same as cash in advance, with 25 cents bookkeeping charge if not paid before 1 p.m. Tuesday preceding publication. Pay in advance, send cash or stamps and save cents.)
DISPLAY WANT ADS—Rate, \$1.40 per column inch, single column width only. 8-point and 14-point light type only. No borders or boldface type. Minimum 1 inch.
CARDS OF THANKS or MEMORIALS—Single paragraph style, \$1.50 per insertion for 50 words or less; 3 cents per word beyond 50 words.
COPY DEADLINE—1 p.m. Tuesday of publication.

FORMAL WEAR

RENTAL SERVICE
Proms - Weddings - Special Events
9 different colors.

Foster's Men's Wear

CAR & TRUCK LEASING. For details see Lyle Christwell at Palmer Motor Sales, 475-1301. 49tf

C—Custom Built Homes
Q—Hi We Remodel too.
U—Can count on us
N—Job Too Small
T—rim Inside & Out
R—ough-In Only If
Y—ou Want to Finish
S—iding Aluminum, 5" Gutters
I—mmediate Attention
D—ALE COOK & CO.
E—stimates, Free

BUILDERS

Please Call
475-8863

DALE COOK

WANTED TO RENT — Working couple desires to rent small farm or home in country. Will improve. References, lease, damage deposit. Ph. 783-0472, evenings. x44tf

"HILLTOP"

PLUMBING, HEATING & ELECTRICAL CONTRACTING
Robert Sheats, Master Plumber
NO JOB TOO LARGE OR TOO SMALL
We sell
Sun Pool Chemicals
1114 S. Main St., Chelsea
475-2949 x45tf

SALE!

PANTY HOSE
Real Bargain
3 prs. \$1.00

MAIN FLOOR

DANCER'S

WANT ADS

CALL NOW

SAVE \$\$\$
Greenwood
for
Siding - Remodeling
FREE ESTIMATES
Call
Chelsea 475-2400

REAL ESTATE

COUNTRY LIVING at its finest! 3-bedroom home, fully carpeted, large airy kitchen, formal dining room, 2-car garage, small apartment on 2 beautiful acres. Chelsea schools. x21tf

WATERLOO RECREATION AREA
80 ACRES — Rolling hills and woods. Land contract terms.

3-BEDROOM ranch home with many extras, fireplace in family room, overlooking in-ground swimming pool, attached garage, on 1.2 acre, Stockbridge schools. \$36,000! x21tf

WATERLOO Recreation Area — A beautiful, rolling, 13-acre building site. \$1,500 per acre, land contract. Chelsea schools.

CHELSEA SCHOOLS, 2 & 10-acre bldg. sites. Trout stream borders one parcel near Joslin Lake. 7% land contract.

VILLAGE OF STOCKBRIDGE — Nice, older 2-family home, new furnace, city water and sewer, \$25,500. Terms possible.

CAMBRIDGE ranch type home, 3 bedrooms, plus 2 mobile homes on three acres. Black-top road. \$28,500. Stockbridge schools.

6.8 ACRES overlooking Joslin Lake. Private easement to lake. 4 in. well, Chelsea schools.

NORTH TERRITORIAL ROAD, excellent 10-acre building site. Wooded. Dexter schools. Land contract terms.

ON 2 ACRES, 3-bdrm. ranch, 2 1/2 baths, dining room, full walk-out basement equipped for living quarters. 2-car garage. \$38,000. Stockbridge schools.

SPARKLING CLEAN spacious 2-story house — 4 1/2 bdrms., hwd. floors. In village of Stockbridge. \$35,000.

WATERLOO REALTY

355 Clear Lake
JOANN WARYWODA, BROKER
Phone 475-8674

Evenings:
Steve Sullivan, salesman and licensed broker, 475-1748
Sue Lewis, 475-2377. x46

We Have Dahlia and Gladioli Bulbs

Chelsea Hardware
Phone 475-1121 x46

TWO PONIES for sale. Make offer. Ph. 475-2503. x46

WANT ADS

KNAPP SHOES

For Cushing Comfort
Robert Robbins
475-7282

FOR SALE — French horn, good condition. Call 475-1198. x46

Pickup Caps & Covers

For all makes and models. Standard and custom-designed. From \$147.00. Free brochure.

PIONEER COACH MANUFACTURING CO.
3496 Pontiac Trail
Ann Arbor, 683-6785 x42tf

Roofing & Repairs

Fully licensed and guaranteed. FREE ESTIMATES
Phone 475-2722 x44tf

FOR SALE—1965 Chevy Impala, \$200. 475-1172. x46

Presently in Stock,

Best Selection

of New

Vqijants, Darts,

Dusters and

Dart Sports

in Washtenaw County.

20 in Stock

To Choose from.

'74 DEMO

DUSTER Sport Coupe, 318, auto., p.s., p.b., air cond.

New '73s Available

'73 DODGE D-200 Camper Special. Quality Used Cars

'72 OLDS Delta 88 4-dr. sedan, V-8, auto., p.s., p.b., rear defogger. \$1295

'73 PONTIAC Catalina 4-dr. sedan, V-8, auto., p.s., p.b., air cond., vinyl roof. \$1495

'72 PINTO Runabout 2000 cc. engine, 4-speed, new tires, \$1895

'71 DUSTER Twister, 318, 3-speed, rallye wheels, black and sharp. \$1695

'70 FORD 1/2-ton pickup, 302 V-8, 3 speed. \$1195

'69 IMPERIAL LeBaron 4-dr. hardtop, full power, AM-FM stereo, air cond., radial tires. \$1095

'68 FORD LTD 4-dr. sedan, V-8, auto., p.s., p.b., air cond., 3-speed. \$795

'69 CHEVY van, 407 V-8, 3-speed, new paint, excellent rubber. \$1195

'69 ROADRUNNER, 389, auto., p.s. \$695

'69 BUICK Sport Wagon, V-8, auto., p.s., p.b., air cond. \$1295

'68 FORD 1/2-ton pickup, 6-cyl. 3-speed. \$795

'68 CHEVY 1/2-ton, 6-cyl., 3-speed, low mileage. \$895

'67 VALIANT Signet 4-dr. sedan, 225, auto., p.s., AM radio. 2 to choose from. \$895

'67 FORD Econoline Van, 6-cyl., 3-speed. \$495

Village

Motor Sales, Inc.
IMPERIAL - CHRYSLER
DODGE - PLYMOUTH
Phone 475-8861
1185 Manchester Rd., Chelsea
Hours: 8 a.m. to 6 p.m.
Tues. thru Fri. Until Monday.
9 a.m. to 1 p.m. Saturday x48tf

CLEARANCE

SALE!

1 ea. 3'0" x 6'8" x 1 1/2 3-lite birch ext. door. Reg. \$38.50. Sale \$19.25

2 ea. 3'0" x 6'8" x 1 1/2 3-lite Luan ext. door. Reg. \$33.50. Sale \$16.75

1 ea. 2'8" x 6'8" x 1 1/2 3-lite Luan ext. door. Reg. \$25.25. Sale \$12.63

1 ea. 2'8" x 6'8" x 1 1/2 solid core flush ext. door. Reg. \$21.20. Sale \$10.60

4 ea. 2'8" x 6'8" x 1 1/2 hollow core flush ext. door. Reg. \$18.85. Sale \$9.43

CASH & CARRY

Chelsea Lumber Co.

BROWN IRONSTONE service for 12, 52 pieces, \$35. Brown Melamine service for 8, 44 pieces, \$5. 44 1/2 fruit jars. Other miscellaneous items and glassware. Friday and Saturday, 9 a.m. to 5 p.m. May 31, 210 Washington St. x46



"I'm teaching my wife to drive the car we got in the Standard Want Ad—and she's teaching me not to criticize!"

WANT ADS

13 ACRES with flowing stream. Terms.

List your property with us for fast, efficient service.

R. D. MILLER

REAL ESTATE
Real Estate Broker
475-7311
15775 Cavanaugh Lake Rd.
Chelsea, Mich.

EVELYN WHITE
475-7551 21tf

SNOWMOBILE TRAILERS, tilt and swing, \$139.95. Snowmobile sleds, \$39.95. Two-piece snowmobile suits, regular \$79.95, special \$41.95. Snowmobile boots, regular \$15.95, children's, \$8.95. Ladies, \$8.95. Men's, \$9.95. Coffman's Sport Center, 1011 Lansing Rd., Jackson. Open 9-9 daily, Sundays, 12-6. x23tf

McCulloch

Chain Saws
WE SELL, SERVICE,
SHARPEN AND TRADE.

Chelsea Hardware

PIANO TUNING and repair. Call Ray Hutchinson, 685-3901. x39tf

Real Estate

For Sale

ON 3 ACRES, remodeled 3-bedroom home. Large barn. 1 1/2 miles east of Chelsea.

LISTINGS OF ALL KINDS

NEEDED

Give Kern Real Estate a Ring.

LYNN KERN - 475-8563

TOM KERN - 475-2403 x46

A&K MOWER SERVICE — Lawn mower repairs and sharpening. Free pick up and delivery and free estimates. 2761 McKinley Rd. Ph. 475-2923 after 5 p.m. x45tf

REAL ESTATE

PRICE REDUCED — One block from elementary school, Chelsea. Nice older home. See this one.

BRICK RANCH 2-bedroom home on N. Territorial. 3 acres. Country living at its best. Priced below 50s.

MOBILE HOME on private lake, 1 1/2 acres, many extras.

3 BEDROOM RANCH 4 miles east of Jackson, full basement, large lot. Priced in mid 20s.

Eibler & St. Amour

Realtors
8047 Main, Dexter 426-4659
Eves.: George Beltz 685-5419
Eves.: Dave Murphy 475-1274 x46

Be Sure To Visit Our New Infant's, Boys' and Girls' Dept.

BASEMENT

DANCER'S

WANT ADS

1974 DIAL AND STITCH \$57.50 — Left in layaway. Sews stretch material. Comes with a walnut sewing table. Beautiful pastel color. Full size head, all built-in to Zig-Zag, buttonholes, overcast, makes fancy stitches. Only \$57.50. Cash or terms arranged. Trades accepted. Call Ypsilanti collect, 483-0815, 9 a.m. to 9 p.m. Electro Grand. x46

THORNTON

JUST LISTED—3- or 4-bedroom home with family room. Skating pond and play area on large lot.

MODERN 4-bedroom home in the Village. Designed for comfortable family living with family room and 2 1/2 baths.

2 HOUSES for the price of one. Enjoy access to Patterson Lake and use the 2nd house for a guest cottage or rental unit.

COUNTRY RANCH on 3 plus acres. Swimming pool and front ponds make this a beautiful location. 3 bedrooms, 2-car garage.

NORTH LAKE — Don't miss the summer fun this location provides. Entertaining in the cathedral ceilinged living room with huge fireplace. 3 bedrooms.

3 BEDROOM Ranch in the Village. Fireplace and basement add to the comfort of this home.

BUILT-IN CONVENIENCES — With lake access. 4-bedroom split level with family room, study and 3-car garage. At Half Moon Lake.

STOCKBRIDGE SCHOOLS—3-bedroom ranch with full basement on 1 1/2 acres.

DEXTER SCHOOLS—Immaculate home with family room, laundry room and attached 2-car garage. 3 bedrooms.

ROBERT H.

THORNTON

JR. PC
REALTOR

323 S. Main St., Chelsea 475-8628

John Pierson 475-2004

Helen Lancaster 475-1198

Bob Riemenschneider 475-1469

Mark McKernan 475-8424

Bob Thornton 475-8857 x46

CHELSEA

\$33,500 — 2.7 acres, 2-bedroom home, garage, barn and workshop.

\$27,900 — Bass Lake, 2-bedroom, fireplace, screened porch.

\$44,900 — Whitewood Lake, 3-bedroom, 1 1/2 baths, roughed-in family room.

\$29,500 — 380' feet deep lot, 3-bedroom, dining room, 1 1/2-car garage.

\$24,900 — 2 acres, 5-bedroom home, 1 1/2 baths, dining room, Stockbridge schools.

\$36,400 — Half Moon Lake, 4-bedroom, dining room, 2 baths, family room, fireplace, new roof.

\$38,900 — 3-bedroom brick ranch, dining area, full basement, 1 1/2 baths, insulated and heated garage. Pinckney schools.

VACANT PARCELS — Many to choose from.

FARMS—115 acres, 119 acres, 204 acres, plus 115 vacant acres.

FRISINGER

REALTORS
Chelsea 475-8681

Evenings:
Paul Frisinger 475-2621
Toby Peterson 475-2718
Hope Bushnell 475-7180
Herman Koehn 475-2613
Bob Koch 426-4754
Mary Ann Staebler 475-1432 x45tf

WANT ADS

CLOGGED

SEWER

Reynolds Sewer Service
We Clean Sewers Without Digging
Drains Cleaned Electrically

FREE ESTIMATES
2-YEAR GUARANTEE
Phone Ann Arbor NO 2-5277
"Sewer Cleaning Is Our Business—Not a Side Line" 38tf

EARL KEIM

REALTY

The helpful people.
REALTORS*
23 offices to serve you.
Resident associates in seven southeastern Michigan counties, including Washtenaw and Jackson.

Nationwide affiliates throughout the United States and Canada.

THE WIND WHISPERS gently through the trees on these 15 acres where a large 3-bedroom home overlooks the Huron River. Country living just 14 miles from Ann Arbor.

Call 662-2571

PINCKNEY — Reduced to \$23,900. Big new kitchen, new roof, and aluminum siding.

BUILD YOUR new house on this lakefront lot at Crooked Lake.

ONE ACRE holds this fine 5-bedroom house with lots of space.

WASHTENAW COUNTY building sites in the country and near the city. From 3 to 33 acres.

Call 662-2571

EVENINGS:

Carol Lakatos 475-7129

Shirley Yengoyan 663-1351

Jean Moneriff 668-0668

Ken Harvey 429-4072

Kelley Newton 662-0110

Barbara Plekes 439-7511

Pat Krian 481-0676

Fred Moneriff 663-0663

Bart Hamilton, realtor

Maynard Newton 971-8870

Jean Tangalakis 662-9456

Carolyn Lewis 769-4251

Anne Duffendack 973-9897

Betty Jo Kolb 971-7132

Patricia Smit 769-0919

Katherine Stephens 994-4018 x46

Big Selection

Men's

SHORT SLEEVE

SPORT SHIRTS

Prices Start at

Only \$3.44

DANCER'S

MAIN FLOOR

4-1974 VACUUM CLEANERS, \$27.50—Four store floor demonstrators and salesman's samples, cannot be told from new. Comes with all cleaning tools and even a FOR SALE—Sofa and matching chair, green. Good condition. Ph. 426-4287. x46

WANT ADS

FATCHING and PLASTERING.
Call 475-7489. 38tf

A fine selection of

New and Used Cars

for immediate delivery

Harper Pontiac

Sales & Service
475-1308
Evenings 475-1608

SMALL CAR

HEADQUARTERS

NOW OPEN

SATURDAYS,

WANT ADS

SECURITY GUARDS

Chelsea, Manchester
Whitmore Lake areas.
Phone 761-5315
for appointment,
or apply at
290 S. Wagner Rd.
Ann Arbor
SANFORD SECURITY SERVICE,
INC.

- YOUNG -

We list and sell lake, country and town properties. Eugene Young, Real Estate & Builder, 878-7922, 11596 Dexter-Pinckney Rd., Pinckney 48169.

Roofing, Aluminum
& Vinyl Siding
Gutters, Storms
& Window Trim

For Free Estimate
Call (517) 851-8657

Mills
Construction Co.
3986 M-52, Stockbridge

Automotive
Rust Proofing
Cars and Trucks

Village

Motor Sales, Inc.
IMPERIAL - CHRYSLER
DODGE - PLYMOUTH
Phone 475-8661
1185 Manchester Rd., Chelsea
Hours: 8 a.m. to 6 p.m.
Tues. thru Fri. Until 9 Monday.
9 a.m. to 1 p.m. Saturday

Plumbing, Heating &
Electrical Contracting

HILLTOP

1414 S. Main St. - Chelsea

The Day of the
Ugly Bath Is Dead!

Yesterday's most functional of all rooms in your house has been changed in ways that five years ago would have been impossible. Bathroom design has exploded in an array of dazzling colors and materials.

Come See the
Bath People!

Phone 475-2949

The
Bargain Floor
Is Loaded!
1/3 - 1/2 and more off
DANCER'S

ESTATE—Chelsea: 3 or 4 bedroom, 1-car garage, quite new gas furnace, water softener and heater. Older home, aluminum siding, on small lot. 475-7239, or 475-8218, 50

WANT ADS

LEHMAN WAHL

Land Appraisal

Residential

and Farm

17087 West Austin Rd.
Manchester, Mich.
Area Code 313
428-8886

CALL FRANK for all your carpet cleaning jobs, morning or week-end. Needs only 3 hours to dry. Only 10¢ per square foot. Phone now for free estimate, 761-4328. All work guaranteed.

Fireplace Builder

Field stone mason, block and brick mason, tuck pointing.
FREE ESTIMATES
Call 475-8025 after 3 p.m.

Patrick Grammatico

HAMMOND ORGAN REPAIRERS wanted to teach in their own homes. Call Grinnell Brothers, Ann Arbor, 662-5687.
SPECIALIZING in chain link fence, A-1 work. Guaranteed. Free estimates. Any size, residential, commercial repairs. Call Herb, 475-1716.

\$50 REWARD

for information leading to the rental of a house in Dexter area. References, security deposit. Experienced (with references), electrical, plumbing, carpentry work. 428-2212.
1972 PINTO, 1600 cc. 4-speed, good condition, \$1695. Ph. 475-2073.

Furniture Bargains

SOFA—Rowe, brown Herculon. Was \$299.95. Sale \$199.95.
SOFA—Thomasville, green and white print. Was \$519.00. Sale \$329.00.
LOVE SEAT—Kaylyn, gold and green stripe. Was \$329.95. Sale \$229.95.
SOFA—Used. Excellent condition. Sale \$89.95.

CHAIR (2)—Montgomery, yellow velvet occasional. Was \$129.95. Sale \$83.00.

CHAIR—Lewittes, gold vinyl. Was \$159.95. Sale \$106.95.

CHAIR—Plycraft, black vinyl. Was \$336.00. Sale \$225.00.

CHAIR—Franklin, gold and brown print. Was \$215.00. Sale \$115.00.

BUFFET—Thomasville, fruitwood. Was \$289.95. Sale \$159.95.

SWIVEL OFFICE CHAIR—La-Z-Boy, black vinyl. Was \$399.95. Sale \$219.00.

DINING TABLE—Founders, par-kay finish, 40"x64", 2-20" leaves. Was \$340.95. Sale \$219.95.

DINING TABLE—Broyhill, fruitwood, oval, 42"x62", 1-18" leaf. Was \$199.95. Sale \$130.95.

HEADBOARDS—Queen size. 1/2 to 1/3 off.

BACHELOR CHEST—Dixie, walnut. Was \$199.95. Sale \$139.95.

BACHELOR CHEST—Drop lid desk, bookcase unit. Was \$279.95. Sale \$139.95.

DINING ROOM CHAIRS—Contemporary. 40% - 50% off.

Merkel

Home Furnishings

BASSET MODERN BEDROOM set, like new. Bookcase headboard, double bed, chest, double dresser, mirror. \$175. Friday and Saturday, 9 a.m.-5 p.m., May 3-4, 210 Washington St.

BUSHER CORNET, like new condition. Ph. 878-6997.

WANT ADS

NOW

Full Time

Complete

Body Shop

Service

Stop in For An Estimate

PALMER FORD

222 S. Main St.
475-1301

CUSTOM BUILDING

LICENSED & INSURED
FREE ESTIMATES

TOTAL CONSTRUCTION SERVICES

—Residential, commercial and industrial.
—Garages
—Remodeling - Additions
—Aluminum Siding
—Roofing
—Trenching

SLOCUM

CONTRACTORS & BUILDERS

Serving Washtenaw County

For Over 20 years

20700 OLD US-12

CHELSEA

Phone 475-8331 or 475-7611

Pine Haven Saddlery

4534 Dexter Townhall Rd.
Phone Dexter 424-4268

Complete line of English and Western equipment. 10% discount to all 4-H Club members.

Store Hours: Mon.-Sat., 9-9
Sunday, 10-9

NEW and REMODELING

Residential

Carpenter Contractor

M. A. LAWRENCE

1-517-522-4364

BUILDERS—House and barn roofing, all types of roof repairs, aluminum storm windows and doors, aluminum siding and gutters, awnings, porch enclosures, garage and room additions, cement work. Call Joe Hayes for free estimates, Manchester 428-8520.

SEAMLESS ALUMINUM Eaves-troughs installed and guaranteed. White and colors available. For free estimates, call Rick Kleinschmidt, R. D. Kleinschmidt Co., 428-8836.

Sand

Gravel

KLINK

EXCAVATING

Bulldozer - Backhoe

Road Work - Basements

Trucking - Crane Work

Top Soil - Demolition

Drainfield - Septic Tank

Trenching, 5' up

Industrial, Residential, Commercial

CALL 475-7631

Headquarters for

RED WING

WORK SHOES

Foster's Men's Wear

MUNITH AUCTION—100 Main St., Munith, Mich. Auction every Sunday, 8 p.m. Danny Fleming, auctioneer.

STOCKBRIDGE, 18 acres, commercial, on M-52. (517) 851-8144.

Fry Cook Wanted

11 a.m. to 5 p.m.

See Mrs. McMillan at

Chelsea Restaurant

from 8:30 a.m. - 1:30 p.m., or after 5 p.m.

FOR SALE - Banner 22 tandem

travel trailer, excellent condition. Ph. 475-7284.

WHY CLUTTER your valuable space? Store your snowmobile with us when you can't use it. Call Stockbridge 1-517-851-8835.

GARAGE SALE - Paper backs, child's bicycle seat, Bell helmet, 2 army coats, snare drum, baby bed, furniture, clothing, appliances, dishes, evening gown, size 12, vintage radio cabinet, swing set and more. 7535 Jackson Rd. at Baker Rd., May 3, 4, 5, Friday, 4 to 8, Saturday and Sunday, 8 to 4.

WANT ADS

Gem Travel Trailers

and Campers

PICK UP OWNERS

4' ————— \$100.00

28' ————— \$179.00 and up

Triangle Sales

Chelsea 475-4802

CAR RENTAL by the day, week-

end, week or month. Full insurance coverage, low rates. Call Lyle Christwell at Palmer Motor Sales, 475-1301.

FOR RENT - American Legion Hall, \$50. Call 475-1824.

SHOES FOR REPAIR picked up and delivered every Saturday at Parish's Cleaners, 113 Park St., Chelsea, Mich.

D&G Allen Excavating

Septic Tanks and Drainfields

Back Hoe and Dozing

Sand, Gravel and Topsoil Hauled

Phone (517) 851-8886

or (517) 851-8278

OFFICE SPACE for rent, Morkel Home Furnishings. Ph. 475-8821.

FIREWOOD for sale, \$15 per cord. Easy access. Ph. 475-8827.

WEDDING INVITATIONS—Traditional and modern. Social and business stationery. John's Shop. Call 475-7500 after 5 and week-ends.

FOR SALE—1971 Ford 4-door sedan, loaded with extras. Well maintained and driven discreetly. Come see and make an offer. Call Clint Melvin at 475-8633.

CHUCK SELESKA - Bulldozing, backhoe, trucking. Reasonable prices. Call after 5:30 p.m. 426-4746.

Complete

Body Repair

Service

Bumping - Painting

Windshield and Side Glass

Replacement

Free Pick-up & Delivery

Open Monday Until 9

CONTACT DON KNOLL

FOR FREE ESTIMATE

Village

Motor Sales, Inc.

IMPERIAL - CHRYSLER

DODGE - PLYMOUTH

Phone 475-8661

1185 Manchester Rd., Chelsea

Hours: 8 a.m. to 6 p.m.

Tues. thru Fri. Until 9 Monday.

9 a.m. to 1 p.m. Saturday

MARSHALL REALTY

(813)

878-3182

440 Dexter Rd.

Pinckney, Mich. 48169

VERY SHARP 3-bedroom brick home, stone fireplace, enclosed porch overlooking living room. Extra lot with large shade trees. \$21,500.

3-BEDROOM fully carpeted ranch style home, wealth of closets, cyclone fenced, back yard, 2 1/2-car garage, in a quiet neighborhood, Village of Pinckney.

ON 1 ACRE—3 bedroom, 1 1/2 baths, dining room, family room, carpeted, completely fenced, on East M-36.

3-BEDROOM HOME for the horse track fan, 2 baths, fireplace, full basement, 8-stall horse barn and your own private 4-10 mile race track, all this on 14 acres. Priced to sell on land contract.

NICE ROLLING 9 acres on good black-top road, Stockbridge schools. \$2,900 land contract.

10-ACRE PARCEL, 660x660 in the Pinckney School District. Land contract available.

5 ACRES off East M-36 on a private drive, with natural gas and driveway to property. \$12,500 with \$5,000 down, 7% land contract.

NICE LOTS with easements to Joslin Lake. \$500 down on land contract.

ALPENA—40 acres with 3-bedroom home and 2-car garage.

SHARP 2-BEDROOM home, fully carpeted, 2-car garage with 220 wiring, on 100x100 lot. Easement to lake. Stockbridge schools.

ON ONE ACRE a 3-bedroom home, family room, in the Stockbridge schools.

EVENINGS:

Evelyn Rosentreter (813) 475-8583

Norma Castle (517) 228-9573

Call or Write for Free Brochures.

GARAGE SALE—Furniture, appliances, books, toys, kitchenware, antiques, clothes, etc. Friday and Saturday, 9 a.m. to 5 p.m., May 3-4, 210 Washington St., Chelsea.

BE GENTLE, be kind, to that expensive carpet, clean with Blue Lustre. Rent electric shampooer, \$1. Dancer's.

FOR SALE—8-inch table saw cabinet, includes 4-foot saw extensions, 1 h.p. motor, \$135. Scampers sailboat, 11-foot, vinyl clad, \$75. 1968 Suzuki 50, good condition, \$135.

428-3749.

WANT ADS

ELECTRICAL WIRING of all

types New and rewiring. Ph. 426-4855.

EVINGER REAL ESTATE, Alpine St., Dexter. Phone 426-8318.

SEE US for transit mixed concrete. Klump Bro. Gravel Co. Phone Chelsea 475-2530, 4920 Loveland Rd., Grass Lake, Mich. 49021

TRAVEL TRAILERS—13-ft. and up; 10x55 ft. trailers. John R. Jones Trailers Sales, Gregory, Mich. Phone 488-2655.

WANTED - Carpentry work, any type. Charles Romina. Ph. 475-7474.

PIANO TUNING, Chelsea and area. Facilities for reconditioning and rebuilding. Used piano sales; reconditioned grands and verticals. E. Ecklund. 426-4429.

ASPHALT PAVING

Driveways - Parking Areas

Landscaping - Site Work

PREVO EXCAVATING CO.

(517) 851-8603 or (813) 458-1027

FOR SALE - Indian cents, postcards, books, foreign coins, Australian opals, and other articles. Lawrence E. Guinan, 1571 Sugar Loaf Lake. Call 475-2317.

FOR SALE—Phillip Carey roofing shingles, \$9 per square (4 squares available, tan). R. Laban, 475-2362, after 5:30.

SEAMLESS ALUMINUM EAVES-TROUGHING—White & brown. Wilson Metal Shop, Manchester. 428-8468.

\$80 A WEEK, guaranteed job training, and a scholarship worth \$5,000, all for a two-year Army enlistment. Grads and non-grads may apply. Call 665-3751 today.

Toy Demonstrators:

Be fair to yourself. Talk to us before signing with anyone. Commissions up to 25%. Many positions open. Hiring now. Welcoming gift.

Call 699-9036

or write to Box 6, Ypsilanti 48197.

Shoppers Shows, Inc.

The reliable company that cares about its dealers.

Camelot

Construction Co.

Aluminum Siding - Additions

Garages - Home Repairs

Ph. 475-9209

DIG YOUR OWN

Fine quality evergreens: Spreading and Hicks yews, Pyramid and Globe Arbor Vitae, Pfitzers, also Birch Clumps, Mountain Ash, Flowering Crab, Norway, Crispin King and Royal Red Maples.

ALL State Inspected

FREE ESTIMATES

FAIST'S

Evergreen Nursery

11362 Trist Road

GRASS LAKE

Phone (517) 522-4588

MACHINIST

Experienced only. Bridgeport mill, light machining instrument parts. Good wages and benefits

For interviews, call Dexter 426-3655.

WILL DO baby-sitting in my home;

prefer 2-year-old or older. Call 475-1407, Kathy Foster Snyder.

FOR SALE—French horn, excellent condition, \$175. 426-3390 after 5:30 p.m.

CARPENTRY WORK WANTED - 10 years experience around Chelsea. New homes. All remodeling. Call Bud, Gregory 498-2631, 6 p.m.

FOR SALE—1967 Comet, Ph. 475-3381, after 5 p.m. weekdays, anytime weekends.

FOR EARLY SALE—Horses, colts, ponies. \$100 and \$200. Sharon Hills Ranch 428-7558.

FOR SALE—Used King French horn, excellent condition. Ph. 475-2972.

FOR SALE: French horn, King, one owner, excellent condition. Ph. 475-8429.

High School Honor Roll

9th GRADE—

Lisa Allhouse, Julie Barnes, Robert Blank, Kimberly Brown (all A), Jerry Bullock, Diane Burg, Robert Burgess (all A), Kathy Burns, Julia Chapman (all A), Anthony Clark, Lesley Clark, Neil Cockerline (all A), Victoria Downer, Kimberly Dresch, Susan Fahrner, Peter Feeney, Robert Fischer, Phillip Frame, Cynthia Fredley, Susan Frisbie, Annette Gaken, Rickie Guenther, Richard Haller, Barbara Hinderer (all A), Morris Johnson, Karen Keiser, Dawn Kilpatrick, Susan Leach, Carol Linebaugh, Sandy Lingerfelt, Tammy Lorenz, Michelle MacCollum, Susan Mann, Linda Meyer, Don Morrison, Scott Owens, Rene Papo, Constance Pearson, Dennis Peisch, Susan Pfeifle, Diana Pletcher, Judith Powers, Laura Rademacher, Diana Roy, Brenda Salver (all A), Janet Schenk, Kathy Schmitke (all A), Delany Seitz (all A), Linda Shaw, Karen Simon, Wendy Smith, James Stahl, Michael Stoner, Ellen Straub, Robert Swenberg, Tracey Thomas, Karen Trinkle, Chris Vanderwaard, Lisa Wallworth (all A), Mark Warren, Faye Williams, Nancy Wonders, Gail Wooster, Charles Wortley (all A), Diane Zeeb.

10th GRADE—

Laura Aldrich, Dora Alexander, Kurt Allhouse (all A), Mark Armstrong, Brenda Augustine, Kimberley Balliet, Dennis Bauer, Martha Blanchard, Michelle Blanchard, Jenny Bott, Steven Bowen, Patty Brady, Michelle Bridges, Mark Burnett, Lois Butler, Alan Clark, Elizabeth Clark, Thomas Clemons, Colleen Coomes, Sandra Crouch, Kristy DelPrete (all A), Susan Dowdall, Heidi Enderle, Elizabeth Fahrner, Kathy Fairbanks, David Frame, Richard Gaunt (all A), Cynthia Giffin, Randy Guenther, Cathy Hamilton, Gregg Harook, Elizabeth Haselschwardt, Erin Headrick, Nancy Heppburn, Mary Hume, Annette Hutting, Sara Johnson (all A), Terri Knickerbocker, Mike Kozminski, Steven LaBarbara, Mary Landwehr, Teri Lutovsky (all A), James Marshall, Paul Marshall, Suzanne Morrison, Cindy Morton, Donald Oesterle, Lynn Olson, Karen Ottoman, Theresa Ottoman, Deborah Packard, Michelle Papo, Daniel Pfeifle, Kathy Pierce, David Pletcher (all A), William Rademacher, Jennifer Rady (all A), Timothy Reed, Karin Roskowski, Barbara Roy, David Schabbe, Carol Schirrmacher, Dale Schoenberg, Susan Schulze, Mark Seyfried, Brenda Shadoan, George Shirilla (all A), Susan Skittenhelm, Bradley Smith, Lynn Smith, Craig Sprague, John Storey, Julie Tite, Karen Tobin, Dianne VanGorder, Linda Wahr, Dave Watson, Robert Wenk, Anne Williams.

11th GRADE—

David Alber, Susan Allen, Glenn Alter, Julie Amussen, Bonnie Augustine, Lola Augustine, Dan Barnes, Karen Bassett, Steven Bennett (all A), Pamela Blackwell, Ellen Bonus, Gregg Burg, Leslie Bury, Cheryl Cantrell, Mary Beth Chandler, Keith Cockerline, Jodi Daniels, Paul Dowhal, Paul Dowhal, Kathy Dunn, Tim Eder, Terry Ellenwood, Dawn Frey, Cindy Frisbie, Linda Fulcher, Karl Gauss, Teresa Gilbreath, Bradley Glazier, Francis Grohnert, Suzanne Hafer (all A), A. J. Hale, Gregg Halter, Cindy Harook (all A), Brenda Hawley,

Dale Heydlauff, Merry Hoffmeyer, Janis Hopkins, Terri Jones, Ann Kalmbach, Ronald Kiel, Marilyn King, Jane Knott, Vickie Koch, Antonia Kovacevich, Kathy Kuhl, JoAnn LaPointe, Teresa Lewis, Kim Longworth, Richard Lutovsky, Tres MacCollum, Laurie Mann (all A), Donald Messner, Donald Murray, Randy Musbach, Todd Ortring, Brian Owings, Cheryl Pawlowski, Mark Pennington, Donald Pierson, Joanne Popovich, Shelly Porath, James Powers, Chris Rabbitt, Douglas Reed, Richard Robbins, Valerie Robertson, Debra Rossbach, John Schafer (all A), Laura Schardein, Elaine Schenk, Sharon Schiller, Kevin Schmitke (all A), Robin Schneider, Lori Schrader, Carol Schroen, Basil Scott, Linda Shadoan, Susan Shaw, Linda Simon, Brian Smith (all A), Denise Smyth, Stephen Snyder, Shawn Spaulding (all A), Virginia Spears, Carol Spencer (all A), Victor Steinbach, Cheryl Stepp, Jull Steward, Elizabeth Tobin, Anne Treago, Cindy Turcott (all A), Duwana Villeneuve, John Wagner, Larry Wahr, Sandra Walker, Faye Williams, Alan Werdehoff, Daniel Williams, Paul Wood.

12th GRADE—

Donna Alber, Carol Avishay, Colleen Balliet, John Beeman, Jane Belser, Neil Bollinger, Pamela Boyer, Thomas Boylan, John Brauning (all A), Vicki Burnett, Jane Buxton, Paul Case, Debra Clark (all A), Mary Clark, Ronald Clark (all A), David Clemans, Charles Clemons, Ronald Collins, Craig Coltre, Catherine Crouch, Lawrence Doll, Debbie Duffey, Janis Eismann (all A), Amy Enderle, Ruth Freeman, Lori Fritz, Nancy German, MaryHelen Gilday, Douglas Glowicki, Bridget Grohnert, Marvin Guster, Gail Haas, Linda Hafner, Barbara Hardy, Edwin Hartmann, Howard Haselschwardt, Margaret Haworth, Audrey Heard, Mark Heydlauff, Randy Hillman, Loretta Hiltz (all A), John Houle, Charlene Jarvis, Phyllis Jeele (all A), Nancy Jennings, Vickie Joseph, William Kalmbach, Dennis Kipmiller, David Klemmer (all A), David Klink, Patricia Knickerbocker, Dale Koch (all A), Elaine Kohr, Ronald Landwehr, Jennifer Lane (all A), Joseph Lantieri (all A), David Laubon, Mary Linebaugh, Karen Lingerfelt (all A), Jeffrey Barshall (all A), Kathy McCalla, Michelle McClean, Ann Merkel (all A), Richard Miller, Michael Murphy, Elmor Musolf, Michael Nadeau, Deborah Orlovski, Susan Ostenski, Susan Ottoman, Margery Parsons, Juha Paunonen (all A), Jill Quackenbush, Marlene Raney, Darlene Robbins (all A), Diane Robbins, Debra Rooke, Lynn Roskowski, Kathryn Rybka, Gary Sanderson, Trudi Sanderson, Kathryn Sannes, Henricta Schroeder, Suzanne Schroe, Karen Sevrn (all A), Gena Shoemaker, Julie Smith (all A), Kevin Smith, Jackie Spade (all A), Patricia Spencer (all A), Jeffrey Sprague (all A), Barbara Stahl, Mark Staphis, Waldo Steinaway, Leona Stewart, Kathleen Stoll (all A), Susan Stoner, Stephen Straub, Jennifer Tandy, John Tanly, Roben Terns, David Tucker, Polly VanBrock, Keith Vassas (all A), Mary Verchereau, Lynette Villeneuve, Laurence Wacker, Carol Wyoda, Debbie Watson, Kevin Weir, Collette Wright, Kathy Young.



A WINNING COMBINATION of Brenda Shadoan and Brad Glazier earned honors in Thursday's regional forensics competition at Pioneer High School in Ann Arbor and will continue to competition in the state meet in Ann Arbor this Saturday. Brenda rated first in women's extemporaneous speaking; Brad placed third in men's oration.

Two Qualify for State Forensics Competition

Two members of Chelsea's forensics squad earned berths in the state forensics meet scheduled for Saturday by virtue of winning performances in last Wednesday's regional meet at Pioneer High School in Ann Arbor.

Brenda Shadoan, a sophomore, earned a first place in women's extemporaneous speaking, "quite an accomplishment for a sophomore," according to forensics coach William Coelius. Brenda, who was also active in the debate team, is participating in her first year of forensics.

Brad Glazier, junior, earned a third place in men's oratory. Last year he was a member of the

forensics squad in the declamation category, which differs from oratory in that it involves writing one's own speeches; declamation does not. Brad was also a member of the debate squad.

Other individuals who were entered in the regional competition were Jane Buxton, serious reading category; Kurt Allhouse, men's extemporaneous; Greg Haller, men's extemporaneous; and Merry Hoffmeyer, storytelling. Groups that participated were "The Jukes Family" (Sue Ottoman, Jan Powers, Craig Johnson, Dale Poertner, Dave Clemons, and Tom Boylan), and "Himself" (Larry Doll, Bill Kalmbach, Dan Leonard, and Doug Schrotenboer.)

County Tax Sale Scheduled May 7

Tuesday, May 7, is the date for this year's annual Tax Sale by the county, county officials have announced. At that time, all property covering delinquent taxes spread the third year prior to date of the sale will be offered to the general public.

According to Hilary E. L. Goddard, county treasurer, at a tax sale, the unpaid taxes of the various properties are offered individually and bid competitively by individuals for the amount of taxes and fees. The highest bidder then holds what is called a "lien" on the property. He must offer a bid that covers the cost of the taxes, and charges, and take the smallest unindivided interest in the parcel offered. He is then given a Certificate of Purchase against payment of the purchase price.

Any party with equity in the property which was sold may redeem that equity within the following year by paying to the county treasurer the amount adjudged together with interest at one percent per month since the month of sale.

If the tax is not redeemed within one year following the sale, the individual purchaser may obtain a Tax Deed from the Auditor General for that particular year's lien. To have a right to the property, the purchaser must then complete certain rights of possession.

Rights of possession include serving notice to all parties of interest who are on record through the sheriff. Within six months time after the time of filing of the proof of serving this notice with the county clerk, the owner or other party of interest may then still redeem the property by paying to the tax sale purchaser or the county clerk of Washtenaw county, the amount of tax sale bid, plus an additional 50 percent of this amount, and a \$5 fee.

If the owner or the interested parties have failed or neglected to redeem such lands within six months, the purchaser may obtain from the county clerk a certified copy of said notice with proof of service. The purchaser must then register these certified papers, and the tax deed with the register of deeds, and he is at that time owner of said land under said purchase.

It is, needless to say, a complicated but cheap way to buy land! A complete list of the entire tax sale properties which will be offered at the May 7 auction was printed in three consecutive issues of The Standard during February. A limited number of those papers are still available at The Standard upon request.

The tax sale will be held at the County Building on May 7 beginning at 10 a.m. Land available are lands that are delinquent in payment of property taxes since March 1, 1972.

Within Washtenaw county, townships, and villages collect current taxes at different times. Township treasurers collect the taxes from the first of December to March 1 of the following year for that coming year.

Villages of Chelsea and Dexter collect taxes from July 1 to Oct. 20 of the current year.

On March 1 of each year, all unpaid real property taxes become delinquent, and the treasurers of the townships and cities return them to the county treasurer for collection. Village treasurers return all delinquent real property taxes Oct. 20 for each year.

The county treasurer then adds a four percent collection fee, and interest at the rate of one-half percent per month, starting when taxes are returned delinquent on March 1.

Local treasurers continue, however, to collect unpaid personal taxes, even after the filing of their return of unpaid taxes with the county treasurer, as the collection and responsibility for same remains with the local treasurers.

Baseball Team Loses Three Home Games

Phil Barels, never a man for excuses, says simply, "We just can't win at home."

His Bulldog nine wrestled with this annoying stigma three times this past week and ended up on the short end in each, falling to Milan, 7-4 Friday, and dropping a pair to Ann Arbor St. Thomas Saturday afternoon, 10-2 and -4.

"We're doing what the Tigers were doing—giving up a lot of runs in the early innings and then having to pay catch-up ball the rest of the game," the coach reports.

Friday against the Big Reds, Chelsea gave up "too many base hits and errors in the first three innings," according to Coach Barels, that gave Milan a 6-4 lead at the end of three. Perry Johnson suffered the loss.

John Houle relieved Johnson in the third and earned a rating of "quite a creditable job" from Coach Barels, as he gave up but one run in the final four innings, but the Milan lead was by then too much for the Bulldogs.

Good for two hits for the local squad was Tres MacCollum.

It was much the same story in the opener of the twin bill with St. Thomas Saturday morning. St. Thomas jumped to a quick 5-0 lead in the second, and Chelsea again was forced to nip at the opposition's heels for the rest of the contest.

Howard Haselschwardt started and received the loss. Todd Ortring took over for Haselschwardt in the second and finished the game.

Big hitter for the Bulldogs was Mike Nadeau, who clubbed a pair of doubles.

The second game of the doubleheader was "I hate to say it—a repeat of the first game," lamented Coach Barels.

Bill Clark pitched a complete game, but gave up five big runs in the second on only two hits, combined with four walks and a hit batsman.

Although the Chelsea bats were booming to some degree—Bulldogs racked up 10 hits to St. Thomas' seven—the local attack once again was a one-run-an-inning affair.

Four players, Randy Guenther, Todd Ortring, Tres MacCollum, and Paul Wood, were each good for a pair of hits.

The losses put Chelsea's overall record into a nosedive to 5-9. They are 2-3 in the Southeastern Conference.

Line Scores:

Milan312-000-1-7
Chelsea301-000-0-4
St. Thomas350-003-0-10
Chelsea000-020-0-2
St. Thomas051-002-0-7
Chelsea010-110-1-4

CONFERENCE STANDINGS As of April 30

Brighton6	0
Lincoln4	1
Saline3	2
Milan3	3
Chelsea2	3
Novi1	3
South Lyon1	3
Dexter0	5

Edward Guljas Granted Award By School of Natural Resources

Edward Guljas, 215 W. Summit, was one of 12 University of Michigan students in the School of Natural Resources to receive awards recently at the school's annual honors banquet.

Guljas received the Howard M. Wight Award, which recognizes "high scholarship and prospects of accomplishments" in wildlife management. The award is in memory of a U-M professor and was established in 1943 by alumni of the School of Natural Resources.

The Army will celebrate its 200th birthday on June 14, 1975 and is planning to co-ordinate its activities to complement the American Revolution Bicentennial which will extend through 1976.

Canoeing Course To Be Offered Beginning May 2

Both a basic canoeing course and a training course for those wishing to become instructors are being offered in May through the co-operation of the Washtenaw county chapter of the American Red Cross, the Ann Arbor Parks Department and the Huron Valley Girl Scout Council.

The Red Cross instructors' course is open to canoeists 17 years and older who meet swimming qualifications. Sessions will be held from 5 to 8 p.m. on May 2 and 3 and May 6 through May 10, at Argo Park Canoe Livery. There will also be a pool session on Sunday, May 5, from 1 p.m. till 4:30 p.m. at Ypsilanti High school pool.

The basic course is open to anyone who can demonstrate sufficient swimming ability for canoeing. The minimum age is 13. Dates for the basic course are May 3 through 10, with a pool session from 1 to 5 p.m. at Ypsilanti High school on Sunday, May 5, and the other sessions from 5 to 8 p.m. at the Argo Park Canoe Livery at the foot of Longshore Dr., Ann Arbor. There is no charge for the course, but the textbook, Red Cross Basic Canoeing is 50 cents.

Enrollment is limited by the canoes available. To register for either course, call the Red Cross at 871-5300 Monday through Friday from 8:30 a.m. until 5 p.m. Mrs. John Dice, canoeing instructor-trainer for the Red Cross is co-ordinator.

Bursley Bill Asks For State To Pay On Late Refunds

Senator Gilbert E. Bursley (R-Ann Arbor), assistant majority leader and chairman of the Senate Education Committee, has introduced legislation which would require the State of Michigan to pay interest on all tax refunds not paid within 20 days of receiving the income tax reform.

The bill, with 12 co-sponsors, states that: "After the 30 days, interest would be paid to the refund applicant at the rate of 1/2 of 1 percent of the unpaid refund amount for each month or part of a month it remains unpaid." This amounts to a 6 percent annual percent interest rate.

Senator Bursley stated, "When the taxpayer is delinquent the state charges him interest at an annual rate of 6 percent. We are saying that when the state is slow on a refund, it shall pay interest to the taxpayer at the same rate."

"In a sense, the state is borrowing tens or hundreds of millions of interest-free dollars from these funds in high-interest short-term equities while the tax reforms are slowly being processed. Maybe this legislation will step up refunds," Senator Bursley concluded.

Army researchers are working on a process to make waste water from laundries, showers and kitchens reusable. The process frees the polluted water of bacteria and solids, making it safe for non-drinking purposes.

AUSTRALIA'S MANY MAMMALS

Australia numbers more than 120 varieties of marsupials among some 230 species of mammals.

LOSE UGLY FAT OR PAY NOTHING

Start losing weight today ON MONEY BACK. MONADEX is a tiny tablet that will help curb your desire for excess food. Eat less-weigh less. Contains no dangerous drugs and will not make you nervous. No strenuous exercise. Change your life... start today. MONADEX costs \$3.00 for a 20 day supply and \$5.00 for twice the amount. Lose ugly fat or your money will be refunded with no questions asked by... CHELSEA DRUG STORE Chelsea - Mail Orders Filled

Bible 'Creationism' Program Slated at Immanuel Church

Pastor Marvin L. Lybenow, of the First Baptist church in Wayne, will present a program using twin projectors and screens to teach Bible creationism and to demonstrate the scientific validity of this subject on Saturday, May 4, at 7 p.m. at Immanuel Bible church on E. Summit St.

Through years of effort, Dr. Lybenow has assembled color slides from such sources as the National Aeronautics and Space Administration, Mt. Wilson, Palomar, and other astronomical observatories, and the world's leading natural history museums. He also uses slides from his own travels, geological field trips and photographic expeditions to museums and scenic points of interest to illustrate the external truth of God's Word in its relationship to the world in which we live.

Among his subjects are "The Grandeur of Creation," which is a dramatic pictorial presentation of Genesis 1, centering on the Biblical six days of creation and the sequence of events in each of those six days.

Then follows "Creation, Evolution, and the Fossils," which compares evolutionary theory with creation concepts as related to the fossil record.

He then progresses to "Stones, Bones, and Crania," which demonstrates fossil evidence for man which supports the concept of special creation rather than evolution.

The "Genesis Flood" is explored graphically, illustrating the history of the early earth from the fall to the flood.

Dr. Lybenow has studied at five Christian colleges and two state universities. He holds a bachelor of arts degree from Bob Jones University and a master of theology degree from Dallas Theological Seminary.

Eleven 4-H Members Chosen To Participate In County Teen Quest

Through the Ann Arbor-Ypsilanti Teen Quest program of the Washtenaw county 4-H, a number of area teens will observe juvenile and circuit courts, county jail and Ozone house in action. In the evening, the youth will attend and participate in the Ypsilanti Township Board of Trustees meeting. Among the 11 participants are Alice Juergens and Karen Ottoman of Chelsea and Terri Bradbury of Dexter.

At the conclusion of the program, a maximum of 10 teens from this group and a similar Detroit Teen Quest program will be chosen to attend the Washington, D. C., trip the week of Aug. 18.

Telephone Your Club News To 475-1371

EVERYWHERE IN MICHIGAN

Real Estate One.

ASSOCIATE

WHY LIST WITH REAL ESTATE ONE?

OUT OF STATE BUYERS—We maintain a separate salaried department which specializes in contacting transferees and large and small corporations.

cal Seminary. His scientific background includes graduate courses in both earth and life sciences.

A member of the Evangelical Theological Society, the Bible Science Association, an associate member of the American Scientific Affiliation, and a sustaining member of the Creation Research Society, he has given leadership in efforts to have scientific evidence for special creation presented along with evolution in the private schools of Michigan.

Sonic

HIGH QUALITY TIRES AT DISCOUNT PRICES

- ★ STEEL RADIALS ★
- ★ STEEL BELTS ★
- ★ Fibreglass BELTS ★
- ★ 4-Ply POLYESTER ★
- ★ NYLONS ★
- ★ MUD & SNOWS ★

OVER 200 CAR AND TRUCK TIRES IN STOCK AT ALL TIMES

WE HONOR MASTER CHARGE STANDARD OIL BANK AMERICAN EXPRESS DINERS CLUB CARTE BLANCHE CHARGE CARDS

Ask about our Free Replacement Guarantee

Little Profit
The Little Profit saves you more than anything you ever bargained for

COMPARE WITH ANN ARBOR PRICES

PALMER FORD
61 Years in Chelsea Since April 1912

Sonic

DAVE'S SIDING CO.

FREE ESTIMATES on Aluminum Siding and Custom Trim Aluminum Gutters, Doors and Windows

Call Gregory 498-2423

GREGORY, MICHIGAN

FOR PROFIT

FEED

Feed Formulas Tested, Proved To Get Results

Extra proteins, vitamins and minerals in proper balance, scientifically blended, make our feeds real profit producers for you.

Farmers' Supply Co.

Phone GR 5-5511

We're Celebrating 3 Years in Dexter With An

Anniversary Special

FREE INSTALLATION OF SHOCK ABSORBERS

MAY 1 THRU 8

Stop in Today!

SCHUYLER'S ARCO

7910 Main St., Dexter Ph. 426-3138

DEXTER LOCKER

DUNBAR MEATS

1431 E. MICHIGAN YPSILANTI 483-7466

FILL YOUR FREEZER NOW

WE HAVE SIDES - HINDS - FRONT BEEF SIDES — 76¢ lb.

WE SELL IN SMALL QUANTITIES, TOO . . .

Bologna79c lb.	Pork Chops98c lb.
Hot Dogs79c lb.	Bulk Hamburger89c lb.
Slab Bacon79c lb.	Hamburger Patties98c lb.

(Above in 10 lb. lots only)

CUSTOM SLAUGHTERING & PROCESSING

Buffet Dinner Starts Sesquicentennial Fun

A Kick-Off Buffet Beef dinner on Monday, May 6 will officially start the festivities of Dexter's Sesquicentennial celebration with the month of May filled with activities leading up to the big week of celebration in June.

Served by the Gilded Belles chapter and sponsored by Dexter's Chamber of Commerce, the dinner begins at 6:30 p.m. in Wylie school cafeteria.

Guests from the village of Byron have been invited to attend this first day of activities which will set the mood for the coming events. All guests are urged to wear Sesquicentennial dress for the occasion.

Richard McInnis will provide organ music during the dinner hour and a guest speaker from the Michigan State Historic Division will speak about the preservation of historic sites following dinner.

Tickets may be obtained by calling Mary Kay Ray, Delhi Dolls chapter, 665-9072, Sesquicentennial headquarters, 426-4033, or Waggoner Real Estate, 426-8381. A limited number of 200 tickets will be sold.

SCHOOL LUNCH MENU

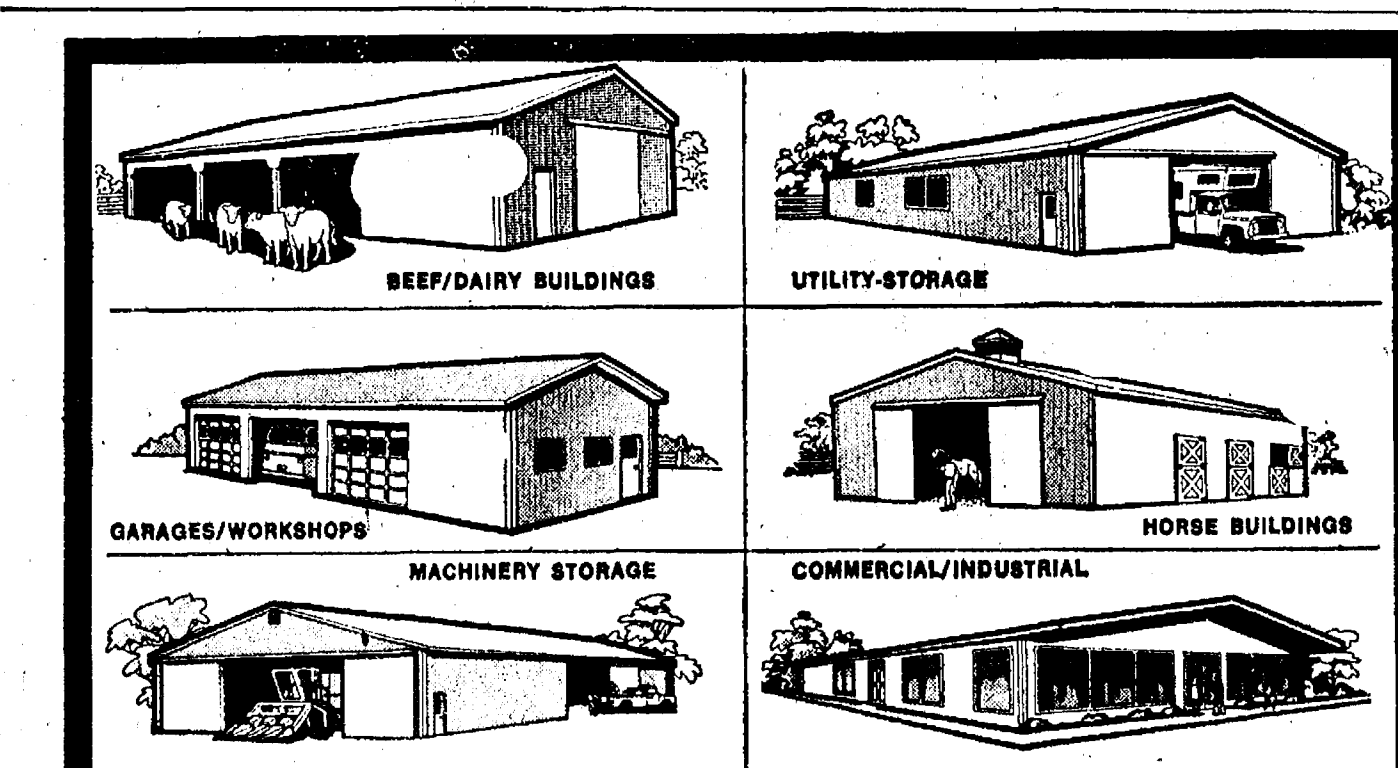
Week of May 6-10
Monday—Hamburgers on buns with trimmings, tatar tots with catsup, apricots, cookie, and milk.
Tuesday—Goulash, buttered corn, corn bread and butter, apple cobbler, and milk.
Wednesday—Creamed turkey over biscuits, buttered green beans, bread and butter, Jell-O with pineapple, and milk.
Thursday—Ham sandwich with mustard or catsup, buttered peas, chips, fruit compote, and milk.
Friday—Fish sandwich on buns with tartar sauce, French fries with catsup, cole slaw, cake and milk.

EXTRA GAS!

Custom installed fuel tanks for all makes of pickups, vans and motor homes.

26 to 50 gal. additional fuel tanks installed from \$155.

CALL FOR APPOINTMENT
475-1347
LLOYD BRIDGES
TRAVELAND
M-52 and I-94 - Chelsea



'It takes all kinds of buildings'

When you buy a new building you want it to meet your special needs. At Wickes Buildings we know this, so we offer a great variety of buildings—farm, commercial, utility-storage, horse barns, garages, workshops—in many plans and sizes to meet those needs.

All professionally engineered clear-span structures with beautiful color exteriors of steel or aluminum. Erected on your land by skilled Wickes crews. Backed 100% by Wickes. And priced to save you money. Call today.

and we have them.

YES, WE HAVE MATERIALS TO BUILD NOW

Wickes Buildings
 A Division of The Wickes Corporation

Stockbridge, Mich.
 Box 515 • Highway M-52
 (517) 851-4530

Call collect or mail coupon for more information

Name _____
 Address or R. R. _____
 Town _____
 State _____
 County _____
 Tel: _____

Beach Track Team Sets 2 New Records

Beach Middle School's track squad set two school records this week, in the 880-yard run and the mile, and Scott Stafford came up with a pair of victories in the 100- and 75-yard dashes in Beach's 78-64 defeat of Dexter Wylie.

New records were set by Todd Weber, who placed first in the 880 run with a time of 2:20.3, and David Dawson, who charged to first in the mile run with a time of 5:14.4.

Another point of interest came in the 220-yard dash, when Coach Pat Clarke was "a little short-handed" and entered Carolyn Scharden, a member of the girls track squad, in the event. She took first place with a time of 2:28.6.

Beach winners in the various events were:

Shot put: 1st, Tim Welshans, 42 ft., 4 in.; 2nd, Leon Brown, 42 ft., 2 1/2 in.

High jump: 1st, Chris Smyth, 4 ft., 10 in.; 2nd, Todd Weber, 4 ft., 10 in.; 3rd, Randy Harris, 4 ft., 10 in.

Long jump: 3rd, Scott Stafford, 14 ft., 8 in.

Pole vault: 1st, Greg Reed, 8 ft., 6 in.; 2nd, Steve Pennington, 8 ft.

880-yard relay: 1st, Beach (Brian Lewis, Randy Harris, Pat Stevenson, Chris Smyth), 1:49.4.

880-run: 1st, Todd Weber (new school record), 2:20.3.

60-yard high hurdles: 2nd, John Daniels, 10.5; 3rd, Jason Lindauer, 10.6.

Mile run: 1st, David Dawson, (new record), 5:14.4; 3rd, Chris Munick, 5:46.

100-yard dash: 1st, Scott Stafford, 11.6; 3rd, Pete Hamilton, 12.3.

440-run: 2nd, Chris Smyth, 61.3; 3rd, Pat Stevenson, 63.5.

100-yard low hurdles: 3rd, John Daniels, 13.4.

60-yard dash: 1st, Brian Lewis, 07.2; 3rd, Greg Ringe, 07.6.

75-yard dash: 1st, Scott Stafford, 08.9; 2nd, Tim Welshans, 09.2; 3rd, Alan Augustine, 09.6.

220-dash: 1st, Carolyn Scharden, 28.6; 3rd, Jeff Smith, 29.5.

The Beach squad met Brighton last night (Wednesday) in a meet that occurred after press-time. Tuesday they will meet Saline, rated by Coach Clarke "a pretty good team—they're undefeated." Beach, meanwhile, has chalked up 18 straight wins.

Elected President of Group Specializing in Learning Disabilities

Elected president of the International Association for the Study of Perception (ASP-I) at the group's convention in Ann Arbor April 5 was John Mandola, a learning disabilities consultant for the Ann Arbor School District who is the son-in-law of Mr. and Mrs. Jay Curry, 252 Harrison.

Basic Sailing Course Offered in Ann Arbor By Coast Guard Unit

A basic sailing course, entitled will be presented at Ann Arbor "Introduction to Safe Sailing" will be presented at Ann Arbor Pioneer High's West cafeteria, from 7:30-8:30 p.m., Mon. May 6. The course, designed for the novice sailor, will deal with the knowledge and skills which make for safe and pleasurable boating.

Host Families Sought For Exchange Students

"It's a wonderful experience that I wouldn't have missed for anything," is the way Judy Eubanks describes her last-waning year as "mother" to Chelsea High school foreign exchange student Henriette Schroder.

This year Chelsea has four foreign exchange students staying with local families through the Youth for Understanding program—Henriette, staying with Judy and her husband, Mike; Per Gellstrom, living with the Donald Kvarnberg family; Juha Pantonen, staying with the Ronald Harris family; and Maria Antonia Kovacevich, a six-month—December to June—YFU student staying with the E. Russell Severn family.

"A really common error that people who might want foreign students make is that they think they must have a son or daughter the same age as the foreign student," Judy mentions. "This isn't true—I have a three-year-old and a six-year-old, and Henriette is 19."

Judy currently has files concerning exchange students available for possible host families in the Chelsea area. "Anyone interested in hosting a YFU student should come and look at the files—there's absolutely no pressure involved to become part of the program."

While living with their American family, YFU students attend local high schools, take part in school and community activities, and generally become part of the family. Host families are not provided support for their exchange students through the program, as it is stipulated that the family must be able to "take the student into its family." Students receive allowances from their families, and many hold part-time jobs while in this country.

Youth for Understanding, in a recent press release noting the need for host families, says that "host families provide the key to international understanding. The daily living experience encountered by the student through his new family gives him an insight and awareness of the U.S. that is difficult to duplicate."

Families interested in sharing their homes with a high school exchange student from Europe, Central or South America, or the Philippines, should contact, in Dexter, Barb Parker, at 426-4839, or Judy Eubanks in Chelsea at 475-2382.

SHORT WINTER?

Have you ever noticed how short the winter seems when you have a bank note due in the spring?

Barn Dance Set for June 14 At C. Trinkles

When is the last time you attended a real, old-fashioned hoe-down? Set aside Friday, June 14 and plan to attend the barn dance in the barn of the Charles Trinkles, 9631 Trinkle Rd. Luke Schaible will be caller for the evening beginning at 9 p.m.

Planned by the Lima Liberty Belles and the Lima Brush Kateers, all proceeds will go to the Sesquicentennial fund.

There will be square dancing, round dancing and polkas with refreshments provided. Everyone is invited to come and have a good time. For ticket information call Mrs. Charles Trinkle, 475-7798, Mary Ann Moore, 426-4162, or stop at McLeod's Drugstore. Sesquicentennial Headquarters also has tickets.

CHS Varsity Baseball Schedule

May 3—Saline A-4
May 4—Open	
May 7—Lincoln H-4:15
May 9—Novi H-4:15
May 11—Open	
May 14—Brighton A-4
May 17—South Lyon H-4:15
May 21—Milan A-4
May 24—Dexter H-4:15
May 25—Pre-District	
June 1—District Tourney H

UNDERWATER PHOTOS
 Underwater photography got its start in 1882, when Frenchman Louis Boutan photographed a Mediterranean spider crab. Unlike today's hand-held cameras, Boutan's camera was in a copper and iron box weighing several hundred pounds, buoyed by an empty wine cask.

Temper has a way of getting you into trouble and pride has a way of keeping you there.

ANNUAL SPRING RUBBISH PICK-UP MONDAY, MAY 6th

Rakings and other items not covered by regular garbage and refuse pick-up.

HAVE IT OUT EARLY MONDAY, 7 a.m.

Anything you can carry to the curb, we will pick up.

CHELSEA PUBLIC WORKS DEPT.

General Electric's NATIONAL SALE DAYS!

From now until May 31, 1974, General Electric is offering the appliances and televisions shown, plus some others, to its dealers at prices reduced from previous levels, and has also lowered its suggested retail prices. See your participating dealer for his prices and terms.

GE 14.2 cu. ft. NO-FROST REFRIGERATOR-FREEZER with 4.58 cu. ft. FREEZER

- Only 28" wide
- 3 full-width shelves
- Large freezer can mean fewer trips to the market

\$299⁹⁵*

GE 18-1b CAPACITY 2-SPEED FILTER-FLO WASHER with MINI-BASKET™

- Big capacity helps save energy—wash one large load instead of several smaller loads
- 5 wash-rinse combinations (including cold) let you save hot water
- Variable water level and Mini-Basket features let you save hot water

\$229⁹⁵*

GE CONVERTIBLE POTSCRUBBER™ DISHWASHER...

- Portable now, built-in later
- No pre-rinsing needed—thus saving hot water, energy... (just tip off large or hard scraps)
- 2 Cycles including Power Scrub™ cycle for pots, pans
- 3 Level wash action
- Woodworktop

\$219⁹⁵*

GE DRYER with AUTOMATIC SENSOR CONTROL

- Stops automatically when clothes are dry... helps save energy by not running on needlessly
- 3 Cycles
- 3 Temperature selections including Permanent Press/Poly-Knit Extra Care

\$179⁹⁵*

Gas Model DDG 7280P \$600.00*

GE HI-EFFICIENCY 5500 BTU-H ROOM AIR CONDITIONER

- 115 V., 5.5 Amp., 625 Watts
- 8.8 Energy Efficiency Ratio—more cooling per watt than many models of comparable capacity
- 3-Speed cooling or ventilation
- Easy-Mount Insulation
- 10 Position thermostat—set lower to save money

\$199⁹⁵*

GE RANGE with P-7 SELF-CLEANING OVEN SYSTEM...

- Oven cleans itself electrically, including inner oven door, racks, surface unit reflector pans
- Automatic oven timer, clock, & signal buzzer
- One-Touch Color™ System
- Black Matrix Spectra-Brite™ IV Picture Tube
- 70-Position "Click-In" UHF Tuning
- GE Cable Ready™ antenna mounting

\$319⁹⁵*

GE 25" Diagonal 100" SOLID STATE MODULAR COLOR TV

- Can use up to 43" less power than 25" "tube" sets
- One-Touch Color™ System
- Black Matrix Spectra-Brite™ IV Picture Tube
- 70-Position "Click-In" UHF Tuning
- GE Cable Ready™ antenna mounting

\$588⁰⁰*

Contemporary, Early American, and Traditional colors available at same low prices.

See these Appliance and TV Values at your participating General Electric Dealer.

HEYDLAUFF'S

113 N. Main St., Chelsea Phone 475-1221