

# WEATHER

Monday, Aug. 16	51	77	0.08
Tuesday, Aug. 17	50	85	0.54
Wednesday, Aug. 18	56	88	0.32
Thursday, Aug. 19	63	84	0.00
Friday, Aug. 20	60	82	0.05
Saturday, Aug. 21	50	84	0.00
Sunday, Aug. 22	58	88	0.50

By H. K. L.

HUNDRED-THIRD YEAR—No. 10

14 Pages This Week

THE CHELSEA STANDARD, THURSDAY, AUGUST 24, 1972

15c per copy

SUBSCRIPTION: \$4.00 PER YEAR

# The Chelsea Standard

## QUOTE

"Next thing, we suppose, will be that the fishermen will ask the government for a guaranteed annual catch."

—Dick Conway.

# FAIR CONTINUES 3 MORE DAYS

## Chest Board Sets \$27,000 Campaign Goal

Chelsea Community Chest board members have announced a \$27,000 goal for the 1972 campaign, to be held this October.

This goal is a new high in the history of the Community Chest. Totals of the previous three years were \$24,225, \$24,850, and \$25,007.

If this goal is reached, contributions to the member agencies will be as follows: Salvation Army, \$1,000; Chelsea Social Services, \$1,000; Catholic Social Services, \$1,000; Girl Scouts, \$2,300; Boy Scouts, \$3,500; Washtenaw Association for Retarded Children, \$350; Huron Valley Child Guidance Clinic, \$400; Child and Family Service, \$600; Chelsea Band, \$300; Chelsea Recreation Council, \$7,000; American Red Cross, \$3,500; and United Fund, \$4,450.

## Baseball Field Has New Infield Lights

Chelsea Recreation Council, which has worked to provide better recreation opportunities for the community, has completed another project under the joint agreement between the Village Council and the Chelsea School Board.

The local baseball field is now sporting new infield lights similar to the lights placed at the football field a few years ago by the Kiwanis Club. As funds become available in the future, the outfield lights will be replaced, giving Chelsea a softball diamond second to none.

The Chelsea Recreation Council wishes to express its appreciation to the individuals and groups for their donations of equipment and labor free of charge: Earl Heller of Heller Electric, and his crew, for ordering and helping to install the lights, the men at the village light & water department who donated their time after regular working hours to install the lights, and finally to the Michigan Electric Co., which donated their equipment to help with the project.

## Community Chest Funds Distributed

The Chelsea Community Chest has distributed checks for the amounts pledged to member agencies from funds collected during the past year in the 1971-72 campaign. The distribution of checks was one item on the agenda at the regular board meeting held Wednesday, Aug. 16.

Checks were distributed to the following agencies: the Salvation Army, \$1,100; Chelsea Social Services, \$2,500; Catholic Social Services, \$1,000; Girl Scouts, \$2,120; Boy Scouts, \$3,250; Washtenaw Association for Retarded Children, \$350; Huron Valley Child Guidance Clinic, \$300; Child and Family Service, \$500; Chelsea Band, \$400; Chelsea Recreation Council, \$6,000; American Red Cross, \$4,000; and the Michigan United Fund, \$4,487.

Total of the checks was \$26,007, which was last year's campaign goal. Board members add that this does not mean that anyone should stop paying on a current pledge, as it needs contributions so that the annual income will meet annual expenses.

The board also announced that each agency received extra funds during the year when a surplus was determined in the treasury from previous collections. The Red Cross also received an additional \$500 to aid flood victims.

The board approved a special (Continued on page eight)

## St. Mary School Leased for Use By Kindergarteners

One hundred seventy-five Chelsea kindergarteners will have a school all to themselves this fall as a result of the Board of Education's decision to lease four classrooms, the office and the gymnasium of St. Mary's school.

The students will also have use of the playground.

The board approved the action Monday, Aug. 7, at a cost of \$6,500 for a one-year period.

The school will be equipped with four teachers and all the kindergarten apparatus now contained in the North and South Elementary schools. The office staff is undetermined at this time.

"Children who would attend

North school will meet at the school and be bused to school so they won't have to cross the railroad tracks," said school Business Manager Fred Mills. "The children who would normally attend South school will walk to the St. Mary's building."

St. Mary's parish will use the school building for religious instruction after school hours and on week-ends.

**Fair Attraction**  
As an extra attraction for the Chelsea Community Fair, Hattie Brown will sing and play the guitar Saturday, Aug. 26, at 9 p.m.



FAIR QUEEN FOR 1972: Judi Blaess, Kiwanis Club entrant, will reign over the Chelsea Fair as its Queen. She was chosen Tuesday, Aug. 22 at the

## Judi Blaess Chosen Queen

The 1972 Chelsea Community Fair has its Queen, Judi Blaess, Kiwanis club entrant, will reign over the Fair activities as the Queen. She was chosen Tuesday, Aug. 22, over four other contestants.

Runner-up was Ann Merkel, the junior class representative. Judi presented "Special Friend," a one-act play which she wrote about how sad it is to grow up. Ann sang and played "Scarlet Ribbons" on the piano.

Other contestants for the title

of Queen were Martha Blanchard, freshman class representative, Margaret Lancaster, senior class representative, and Susan Shaw, candidate from the sophomore class.

Paul Frisinger served as Master of Ceremonies for the Pageant activities, which took place after the Children's Parade. A program was presented to the audience by the Queen Court, Mrs. M. Eubanks, Cathy Clark, Mrs. P. Flintoff, Mrs. A. Musbach, Mrs. R. Owings, and Jane Mann.

The evening was capped off with music by the Lake Valley 4.

## Pair of Armed Robbers Hit Shell Station

The Chelsea Shell service station, 1630 M-52, was again the victim of an armed robbery on Saturday, Aug. 12, at 4:55 a.m.

Patrolman Robert Browning arrived at the station at 5:05 a.m. and was met by Robert Elliott and Dean Schoenberg, attendants, and Charles Emerich of the Sylvan Hotel, who found them.

The attendants stated that at approximately 4:50 a.m. two suspects, both Negro males, 18-22 years old, with medium Afro haircuts and clean shaven, came off eastbound I-94, drove into Schumm's, and then drove behind the station, where they got themselves a cup of coffee.

The suspects, one 5'9" and wearing a green knit shirt and brown pants and the other 6' and wearing a red knit shirt and brown pants, were driving a 1961 or 1962 dark green four-door Cadillac.

(Continued on page three)

## Cheryl Trinkle Has Champion Hereford Steer

Cheryl Trinkle is the owner of the 1972 Chelsea Community Fair Grand Champion steer. She is the daughter of Mr. and Mrs. Charles Trinkle, 9970 Trinkle Rd.

Her champion Hereford steer, weighing 1,025 lbs., was purchased Nov. 6, 1971 for the Chelsea Steer Club from Calderone-Curran Ranch near Grass Lake.

Larry Hopkins, son of Mr. and Mrs. Jay Hopkins, 16975 M-52, owns the 950-lb. reserve champion steer.

All animals raised and shown by members of the Chelsea Steer Club will be sold at the fat stock sale tonight (Thursday), beginning at 7:30 p.m. at the Fairgrounds arena. Price Bros. auctioneers, will again handle the auction, as they have for many years.

## Livestock Sale Is Scheduled Thursday Night

Come to the Fair! There's still a lot of fun and activities available for you to enjoy.

Today, Thursday, is Chelsea Day, and is set for the small tractor pull. The weighing of small compact tractors (garden-size) will begin at the Chelsea Milling Co. at 1 p.m., and is expected to be finished at 3 p.m.

The tractor pull begins at 3 p.m. There will be four categories: lightweight, middleweight, light-heavy, and the heavyweight class. Prizes of \$20, \$15, \$10, and \$5 will be awarded in each class.

The Chelsea, Dexter, and Ann Arbor fire departments will compete for the large "Water Polo" trophy at approximately 6:30 p.m. The sale of livestock by Price Bros. Auctioneers begins at 7:20 p.m. and the small tractor pull resumes at approximately 8:15 p.m.

Friday has been designated Farmers Day. Don Johnson and Bill Ames will serve as Masters of Ceremonies for the day.

The tractor pulling contest starts at 10 a.m., beginning with the lightweight classes. Prizes of \$20, \$15, \$10, and \$5 will be awarded in each class: lightweight, middleweight, light-heavy, and heavyweight. \$200 in all will be awarded.

Meanwhile, the rides and concessions operated by Ingalls Amusement Co. will be open for enjoyment by all. Exhibits will also be on display.

At 6:30 p.m., the 1972 Queen and court will be introduced at the grandstand area. At 6:45 p.m., the tractor pull for the heavyweight classes will resume.

Saturday has been set aside as Queen's Day. A horse show will take place at 9 a.m. Rides and concessions will be operated in the morning. A parade will march through town to the fairgrounds at 1 p.m. The horse show activities will resume at the grandstand area at 2 p.m.

Entertainment will begin at 7 p.m. At 8 p.m., the 1972 Fair Queen will present the bicycles to their winners. The bicycles, donated

by Ingalls Amusement Co. and the Fair Board, are now on display at Dancer's and Foster's Me's Wear. Tickets for these bicycles are given at the rides.

Dance festivities by the Stockbridge Squares will commence at 8 p.m., and Hattie Brown will sing and play the guitar, folk songs, country, and western, at 9 p.m. on the stage.

## Children's Parade Opens Fair Tuesday

Despite a late afternoon shower Tuesday, the Chelsea Community Fair went on as planned. The Children's Parade started at 6:15 p.m. and made its way to the Fairgrounds, where village president A. E. "Mac" Fulk, Fair president Allen Broesamle, and 1971 Fair Queen Cathy Clark officially opened the Fair with a ribbon-cutting ceremony at the gate of the Fairgrounds.

The Children's Parade prizes were awarded by Kiwanis Club to three floats in each of four categories: ages 3-5, ages 6-8, ages 9-12, and mixed ages.

Winners in the 3-5 age group were: "Dish Ran Away With the Spoon," Peggy Lovely and Brian Donovan, first; "Horse," Greg Stoddard, second; and "Rubber Ducky," Sharyl Hankard and Jennifer Ducey, third.

Taking awards for the 6-8 age group were: "Chelsea Fair Wagon," Todd Griffie, Andy Gulgas, Stan Gulgas, and Martha Gulgas, first; "Ice Cream Man," Tim Whitesall, second; and "Grand Piano," Sara Merkel, third.

Winners in the 9-12 age group included: "Jack-in-the-Box," Mark Juergens, first; "Clown," Debbie Steinaway, second; and "Mr. Drill-tooth," Marsha Warren, third.

In the mixed ages, first prize (Continued on page eight)



FAIR QUEEN JUDI BLAESS poses with her court shortly after her crowning Tuesday evening. Members of the court, each a queen in her own right, from left to right, are Cathy Clark, 1971 Fair Queen; Margaret Lancaster, representing the senior class;

Runner-up Ann Merkel, junior class; Queen Judi Blaess, representing the Kiwanis Club; Susan Shaw, sophomore class; and Martha Blanchard, freshman class. The Queen and her court will be introduced from the stage again Friday evening.



"TREE OF LIFE": This float won a tie for first place in the mixed ages division of the Children's Parade Tuesday, Aug. 22. Pictured, left to right, are its entrants: Troy, Carol, Darin, Valerie, and Scott Hosler.



"WORLD": This is the other float that tied for first place in the mixed age division in the Children's Parade Tuesday. Pictured, left to right, are Carmen, Dawn, Dale, and Becky Scripser, being pulled by a garden tractor driven by Mrs. Richard Scripser.





## Washington Report by Congressman MARVIN L. ESCH

The House of Representatives has just approved major environmental legislation to protect the coastal areas of the nation. Michigan with over 2,200 miles of shoreline is vitally concerned with the effort to protect and preserve this great national resource.

Over 65 percent of the people of this nation live within the coastal zones. The coastal areas have become vital areas of recreation and enjoyment. At the same time, they are important to the economic well being of the nation as hundreds of industries have sprung up along the shores providing jobs.

There is an inherent conflict between the interests of the economic development and of environmental preservation of these areas. We have, at long last, come to realize that this conflict must be planned and overall management. The Coastal Zone Management Bill creates such a planning system.

There are presently a myriad of overlapping local state and federal laws regulating development in coastal areas. Frequently these laws are in conflict with one another. There has been almost no over-all co-ordination so that a decision to create a park and recreation area in one community may not be destroyed by a decision in a neighboring community to allow an industrial development which would seriously pollute the water in the recreation area nearby.

This legislation authorizes \$145 million over the next three years and brings all the planning under the oversight of the Department of the Interior. The primary planning role would be undertaken by the states with coordination between the states and technical assistance from the federal government.

I was particularly pleased that this legislation contains a recommendation which I made more than 18 months ago—the establishment of protected estuary sanctuaries for scientific research and wildlife preservation. If we are to plan intelligently for the overall use of our coastal areas, it is essential that we have full scientific understanding of the effect any changes

will have on the overall environment.

Michigan was uniquely blessed with great water resources. It has, however, seen what happens when over-all planning is not enforced. Lake Erie is almost dead. Lake Michigan is dying. Lake Huron is in trouble. Few states in the union have as much to gain as Michigan from the intelligent management of our water and coastal areas. This bill is a major step in that direction.

## Radio WKAR Celebrating 50th Year

East Lansing-Michigan's first educational radio station, celebrated its golden anniversary Aug. 18. WKAR, Michigan State University's radio station, received its license on that date in 1922, becoming only the fourth radio station in the state.

The station evolved from an un-station, 8YG, which broadcast the official, unregulated student-run first play by play of a college sports event in January of 1922—a basketball game between Michigan Agricultural College (now MSU) and Mt. Pleasant Normal School (now Central Michigan University).

Today, WKAR-AM and FM can be heard by more than seven million of the state's population. The AM schedule includes 80 percent news, education, agriculture and public affairs and 20 percent music. WKAR-FM devotes 70 percent of its air time to fine arts programming, 12 percent to light entertainment and 18 percent to news and public affairs.

## Poisonous Spider Peril Exaggerated

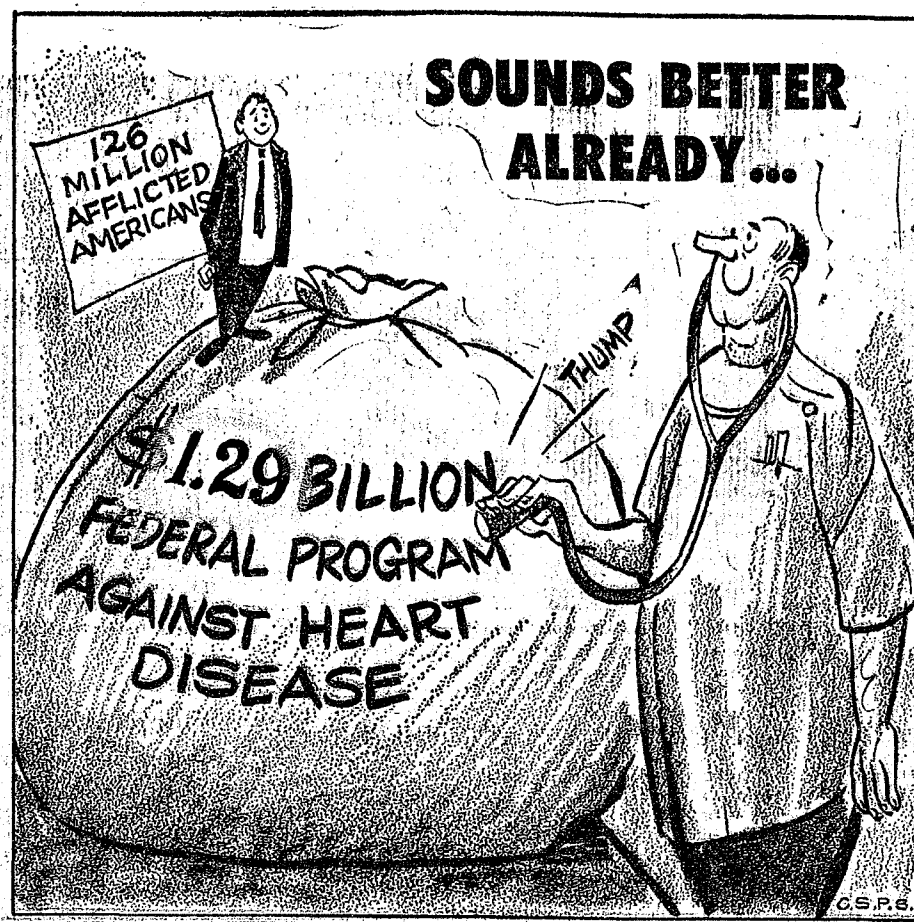
East Lansing—Rumors of poisonous spiders in Michigan, like the reports of Mark Twain's death, have been greatly exaggerated. According to Michigan State University entomologist Dr. Richard J. Sauer, the only known harmful spider in the state is the Northern Widow. If extremely provoked, the female of this nocturnal species may inflict a painful bite that is rarely, if ever, fatal. The bite of the male is harmless.

## GOLD HISTORY

The amount of gold hoarded by ancient civilizations probably tallied not much more than the output of the Witwatersrand district of South Africa in a single year.



It's Time  
To Think  
About  
NEW  
GLASSES  
FOR SCHOOL  
WINANS  
OPTICAL  
(In Sylvan Hotel)  
Phone 475-1233  
114 N. Main St.  
CHELSEA, MICH.  
DAVID WINANS  
OPTICIAN  
APPOINTMENTS  
NOT NECESSARY



## MICHIGAN MIRROR

by Elmer E. White, Secretary, Michigan Press Association

**Issues Abound**  
The participatory democracy concept is having one of its brightest moments in Michigan this year.

Michigan voters, in addition to all the usual offices they vote for, have petitioned for four different proposals on the November ballot for a final decision by the electorate. Each one is an attempt to do something the Legislature could not reach agreement or an attempt to override the Legislature.

The four proposal vote becomes even more fascinating when it is known that less than one-third of the states even allow their citizenry access to the ballot through the petition route.

Most recent arrivals to the ballot are two proposals contained in a joint petition drive launched by Gov. William G. Milliken and the Michigan Education Association (MEA).

The first of these would virtually wipe out the property tax as a means of financing schools. The second would allow the legislature to levy a graduated state income tax rather than the flat rate tax it now levies on personal income.

The joint petition drive was launched following the failure of efforts to achieve some sort of legislative agreement on property tax relief. Milliken has been working since 1969 to find some sort of program which both Republicans and Democrats could

buy but to no avail. He finally decided to go over the legislature to the people to see if they would approve his program.

The Governor calls the proposal for property tax relief "the single most important state-wide issue for Michigan voters and taxpayers in November—a means of assuring quality and equality in the education of our children."

Probably the most controversial item is abortion law reform which also was put on the ballot through the petition route.

The proposal would give Michigan one of the most liberal abortion laws in the country. It would permit a woman to have an abortion for any reason during the first 20 weeks of her pregnancy. Current Michigan law allows an abortion only to save the life of the mother.

The abortion petition drive also began as the result of legislative inaction and stalemate. An abortion liberalization bill passed the Senate in early 1971, but never got anywhere in the House, due mainly to the fervent opposition of House Speaker William Ryan, D-Detroit.

When it became obvious the House would never approve an abortion bill, the petition drive was launched.

The final item, petitioned onto the ballot by the people deals with time (DST). It is the latest step

in a series of actions which have been taken in Michigan on a sometimes controversial issue.

Michigan, along with three other states, originally exempted itself from the uniform time law passed by Congress which calls for observance of DST unless the state specifically exempts itself. The exemption, originally voted by the legislature, was upheld in a 1968 state-wide vote by a margin of less than 500 votes.

Backers of DST soon went the petition route again and were able to put together the signatures needed to put the issue on the ballot once more.

In addition to the four petition proposals, one proposal from the legislature will be on the ballot. That calls for a \$266 million bonding program to finance a combination bonus-educational aid program for Michigan's Vietnam Era veterans.

The veteran's proposal was put on the ballot by the legislature when sudden agreement was reached by both houses late in June.

Along with the issues which made the ballot were three which made a try but couldn't get the signatures they needed.

The most far-reaching of these would have given Michigan a one-current two-house setup.

The drive was launched in 1971 and appeared for a while as if it might really take off, especially when the legislature dawdled through the summer of 1971 without accomplishing much on the budget. But it never was able to develop the money or the organization it needed, due in part to the fact no pressure group working with the current legislature wanted to be identified with a drive which would cut a lot of legislators out of jobs.

A proposal to legalize possession of marijuana died on the vine, too. Backers of the drive made a late start and also lacked the organization and money needed to collect the 200,000 or 300,000 signatures needed to put a proposal on the ballot.

The final issue not on the ballot was a drive to give the people, rather than a state commission, the power to set legislative salaries. People behind the drive felt Michigan legislators are overpaid for the work they turn in.

Yours truly,  
Uncle Lew.

## Uncle Lew from Lima Says:

DEAR MISTER EDITOR:

Sometime it looks like the framework of America is coming unglued and they ain't nothing we can do to put it together again. That was the feeling I got, Mister Editor, after listening to the fellows at the country store Saturday night. I am convinced that what this country needs is somebody to figure out what this country needs, cause we can't come up with the answers the way we're going.

For instance, Ed Doolittle reported where the federal government is studying how to provide national health insurance that would cost ever family \$1,000 a year. This plan would give the family the same benefits they can get now from private companies for \$400 a year. Ed said a fellow that can see the benefits in that probable can see why, after 200 years as a public service, the post office now is supposed to be a profit-making outfit.

There don't seem to be no solid ground anymore, went on Ed. He said laws that has been on the books in this country for 100 year sudden ain't fit to use. Ed said he was full agreed with the senator that said most of the rulings handed down by the courts in this country is "protecting the wolf from Little Red Riding Hood." The idea of right and wrong ain't changing, declared Ed, but the courts is. The rights of the criminals now is give more guarantees than the rights of the victims, was Ed's words.

Bug Hookum recalled the discussion the other week about airplanes hijacking, and he said it had been on his mind. He said he first figured the remedy was to have everybody go naked on the planes, but, like Ed said, that would be taking away everybody's right to wear clothes. Bug said the best deal would be to have two hijackers on the same plane wanting to go to different places, then they could shoot one another.

Zeke Grubb's preacher stopped by the store, and he said he was agreed with Ed that what folks don't expect the Government to give em they try to gouge out of each other. He said he had been trying to get two Sunday school rooms built on the church, and he could see how brickmasons and plumbers is making \$80,000 a year

jest in overtime, like he saw in this magazine piece. The preacher said he ain't accusing nobody of shoddy work, but he said this fellow in his church had a new house, and he was putting the cat in the basement at night and letting her out of the attic in the morning.

Personal, Mister Editor, I find it hard to find hope, but it's still there. I see where this college student took a shower for 169 hours to set a new record, so I know there's at least one clean young man left. And this fellow in Illinois that runs a railroad with 20 miles of track gives me hope. He says he ain't as long as the Santa Fe, but he's jest as wide.

Yours truly,  
Uncle Lew.

## JUST REMINISCING

Items Taken from the Files of The Chelsea Standard

### 4 Years Ago...

Thursday, Aug. 29, 1968—

Twelve new teachers joined the Chelsea High school faculty: Mrs. Charlene Balistrere, English; J. Thomas Balistrere, English; Donald Fedor, chemistry and biology; Stuart Glazer, assistant band director; Mrs. Nancy Hay, Latin and English; Burley Hendricks, journalism and shop; Kenneth Larson, history and mathematics; D. Keith Lawson, head band director; William Moore, art; Jon Schaffner, oggy; and Paul Terpetra, English mathematics; Thomas Scott, Biol.

Aug. 19 meeting at Sylvan Town Woman's Relief Corps held their Hall. The following officers were installed: president, Miss Nina Greening; senior vice-president, Mrs. Joseph Laban; junior vice-president, Mrs. Harold Knott; secretary-treasurer, Mrs. Ruth Christwell; conductor, Mrs. Loretta Doll; and patriotic instructor, Mrs. Watson Hart.

Two Chelsea residents topped the Dean's List at Washtenaw Community College for the spring semester. Kinyon J. Gorton, 507 Glazier Rd., and Elsie A. Swanberg, 1847 Cavanaugh Lake Rd., were among the 10 students to earn an "A" average.

Gearge Cameron, son of Superintendent and Mrs. Charles Cameron, 615 Freer Rd., and Alfreda and William Harrison, daughter and son of Mrs. Harold Harrison, 1185 Old Manchester Rd., were among 409 junior and senior high school students who attended Northern Michigan University's 18th-annual summer music camp this month.

Russell Beeman, son of Mr. and Mrs. Don Beeman, 16610 Waterloo Rd., returned home from the State 4-H Show at Michigan State University with top honors. He entered the Flower Arranging and Demonstration categories to receive "Best of Show."

Chelsea people who attended the 35th annual Artz family reunion Saturday, Aug. 21, were Mr. and Mrs. Fred Artz, Mr. and Mrs. Fred Notten, E. J. Notten, Mrs. Lina Whitaker, Mr. and Mrs. Dorri Whitaker and son, Edson, and Mrs. Earl Wolfinger.

Mr. and Mrs. J. A. Parks, who have been residents of Chelsea for more than 25 years, are leaving next Thursday for Florida, where they will make their home in the future.

Miss Nedra Moyer is being accompanied by Miss Pauline Klink and Miss June Seils on an eight-

day trip to Niagara Falls, Quebec, and other points of interest. At the SLS Cactus Club were Miss Helen Sias, Mrs. Arthur Kuhl, Mrs. Rudolph Zahn, Mrs. Alvin Toney, Mrs. Nagel, Mrs. Edna Love, Mrs. Paul Maeder, Mrs. Erwin Haist, Mrs. Ruth Collyer, and Mrs. Harold Shepard.

### 24 Years Ago...

Thursday, Aug. 26, 1948—

Ownership and management of the Chelsea Cleaners changed Monday, Aug. 30, when C. A. Parker assumed the business from William Pruner.

The Michigan Collegians took it on the chin in the double elimination National Baseball Congress at Wichita, Kan., last weekend as they lost their first two ball games. Local players on the squad are Leon Marsh, Blane McClanahan, and Bill Beeman from the Independents, and Jim Carraher from Chelsea Milling.

Norine Packard, Shirley Bair, and Gloria White returned Sunday from the Odd Fellow and Rebekah camp at Big Star Lake near Baldwin.

Chelsea people who attended the 35th annual Artz family reunion Saturday, Aug. 21, were Mr. and Mrs. Fred Artz, Mr. and Mrs. Fred Notten, E. J. Notten, Mrs. Lina Whitaker, Mr. and Mrs. Dorri Whitaker and son, Edson, and Mrs. Earl Wolfinger.

Mr. and Mrs. J. A. Parks, who have been residents of Chelsea for more than 25 years, are leaving next Thursday for Florida, where they will make their home in the future.

Miss Nedra Moyer is being accompanied by Miss Pauline Klink and Miss June Seils on an eight-

day trip to Niagara Falls, Quebec, and other points of interest.

At the SLS Cactus Club were Miss Helen Sias, Mrs. Arthur Kuhl, Mrs. Rudolph Zahn, Mrs. Alvin Toney, Mrs. Nagel, Mrs. Edna Love, Mrs. Paul Maeder, Mrs. Erwin Haist, Mrs. Ruth Collyer, and Mrs. Harold Shepard.

### 34 Years Ago...

Thursday, Aug. 25, 1938—

While fishing in Cavanaugh Lake, Nick Panarites hooked a fish which had such great strength that it pulled him into the lake. Nick was rescued by his fishing companions, Duane Winans, Raymond Dancer, and Bob Brown, and the only damage done was loss of a pair of glasses and the great big fish.

The Misses Helen Baxter, Mildred Goodell, and Luella Huston will receive their diplomas from the Mercy College of Nursing in Detroit at the commencement exercises which will be held 2:30 p.m. Tuesday, Aug. 30.

H. L. Bleecker, superintendent of the Chelsea public schools for the past five years, presented his resignation to the Board of Education last Thursday. Albert C. Johnson was named superintendent of schools to succeed him.

Thirty-six Girl Scouts left Sunday for a week's outing at Camp Birkett, Silver Lake. In charge of the activities are Mrs. John L. Fletcher, captain; Miss Helen Hindelang, sports; Miss Anne Schneider, General duties; and Miss Florence Laird, head worker.

A family gathering on Sunday at the home of Mr. and Mrs. Glenn H. Harbour in Lima township celebrated the 85th birthday of her father, John Koch. Covers were laid for Mr. and Mrs. Koch, daughter Amanda, the Rev. and Mrs. P. H. Grabowski, Mrs. C. M. Kraft, Mr. and Mrs. E. J. Bahnmiller and daughter, Loretta, and Mr. and Mrs. Paul Barbour, all of Chelsea.

## MEET YOUR FRIENDS AT INVERNESS INN

Your Innkeepers: Matt and Marge  
13996 North Territorial Rd. - North Lake

YOUR FAVORITE MEALS  
SHRIMP, CHICKEN & FISH DINNERS

BEER - WINE - LIQUOR Open Mondays  
LUNCHEON SPECIALS

Sing-A-Long Saturday Evenings  
with Marion at the Organ.

## WESTERN AUTO

MOVED TO  
NEW LOCATION

1178 S. Main, Chelsea  
(Next to Chelsea Lanes)

OPEN FOR BUSINESS

DON'T DELAY - DO IT TODAY!

# REGISTER

for the

# FALL SEMESTER

at

## WASHTENAW COMMUNITY COLLEGE

Some classes are already filled. ACT NOW to guarantee  
your place in the program of your choice.

for BLACK STUDIES  
CAREER TRAINING  
JOB UPGRADING  
COLLEGE TRANSFER

Hours of Registration: Daily—8:30-11:30 a.m.  
1:00-4:00 p.m.

Evening Registration on Wednesday, August 23  
6:30-8:30 p.m.

Classes Start Wednesday, August 30

For further information, call 971-6300, Ext. 402

Established 1871 The Chelsea Standard Telephone GR 6-3581  
Excellence Award By Michigan Press Association  
1951-1952-1960-1964-1965-1966  
Walter P. Leonard, Editor and Publisher

Published every Thursday morning at 800 North Main Street, Chelsea, Mich. 48118, and second class postage paid at Chelsea, Mich., under the Act of March 3, 1879.

Subscription Rates (Payable in Advance)  
In Michigan: One Year \$4.00 Six Months \$2.25 Single Copies \$ .15  
Outside Michigan: One Year \$6.00 Six Months \$3.50 Single Copies \$ .20  
Service men or women, anywhere, 1 year \$4.00

MEMBER  
NATIONAL  
NEWSPAPER  
Association - Founded 1888  
National Advertising Representative:  
MICHIGAN NEWSPAPERS, INC.  
257 Michigan Ave.  
East Lansing, Mich. 48823

## Big H August Specials

ALL CALF RAISERS  
100 lbs. Calf Starter Flakes  
FREE with purchase of  
200 lbs. Calf Topper or Calf Raiser

See or Contact

## FARMERS' SUPPLY CO.

Chelsea - Phone 475-5511

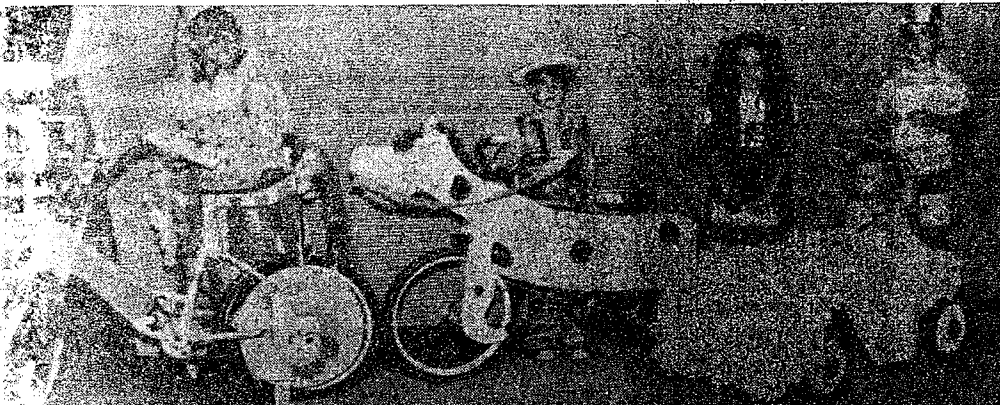
## HONEGGERS & CO., INC.

Chelsea - Phone 475-3611





CHILDREN'S PARADE WINNERS: Pictured, first in ages 9-12; Marilyn Cobb, Mark and Terri Neff, "Airplanes," third in mixed ages.



THE YOUNGER SET: Pictured are some of the winners in the Children's Parade Tuesday evening. To right, are Debbie Steinaway, "Clown," second in ages 9-12; Greg Stoddard, "Horse," second in ages 3-5; Sharyl Hankard and Jennifer Ducey, "Rubber Duck," third in ages 3-5; and Tim Whitesall, "Ice Cream Man," second in ages 6-8.



"COVERED WAGON": This float won second prize in the mixed ages category in the Children's Parade Tuesday evening. Pictured, left to right, are DeeDee, Hale, and Dennis Petsch, and Robert Annabel.

### Michigan Peaches Are Scarce

Don't hold out for home-grown peaches this year, cautions a Michigan State University consumer marketing information agent.

"Southern peaches have arrived in Michigan markets," reports Miss Ada Shinabarger, "and prices are especially attractive at many supermarkets."

"Since 80 percent of Michigan's peach crop was a victim of the weather, peach lovers should probably act now."

"When selecting peaches, look for plump, smooth skinned fruit. The color underneath should be creamy white or yellow, blushed with red. Most southern varieties have much less blush than many of the Michigan varieties."

Another way to beat the Michigan peach shortage is to buy nectarines. Miss Shinabarger suggests. The nectarine is smaller and sweeter than a peach, and can be used in any recipe that calls for peaches.

Select nectarines with color and plumpness and a slight softening along the stem. Most varieties have an orange-yellow color between the red areas, but some varieties have a slight greenish ground color.

Bright-looking fruits which are firm to moderately hard will probably ripen to eating stage within two or three days at room temperature. They will ripen faster in the overwrapped package.

### Dave Burg Injured In Fall from Treehouse

Twelve-year-old Dave Burg, son of Mr. and Mrs. J. V. Burg of 418 Chandler, is back home and getting around fine after falling from a tree while building a treehouse Saturday, Aug. 12.

He was operated on at St. Joseph Mercy Hospital, Ann Arbor, Sunday, Aug. 13 for a ruptured spleen. He also suffered two broken arms in the fall.

He returned home Friday, Aug. 18, and was able to attend the Burg family reunion Sunday.

Mrs. Iza Carly of 140 Park St., is in room 653, bed 1, at St. Joseph Mercy Hospital, Ann Arbor, recuperating from an operation.

### CHS Fall Sports Season Tickets On Sale Monday

Despite the belief that this hot, muggy weather will never go away, before you know it there will be a crisp, fresh tang in the air, the leaves will begin changing colors, and football time will be here.

Athletic director Richard Lapkowski has announced that season tickets for both varsity football and basketball will go on sale Monday, Aug. 28, at the high school office.

Season football tickets for five home games will be \$5. Tickets for 10 home basketball games will be \$10.

### New Yearbook Of Agriculture Has Answers

Whether you're one of the estimated 80 million people who garden as a hobby in the United States, or whether you're one of the environmentally concerned persons who has discovered gardening as a way of improving and enhancing your own personal environment, you'll welcome the recent release of *Landscape for Living*, the 1972 Yearbook of Agriculture.

Just in time for fall planting, this 416-page hardbound book can give you tips on how to garden better and how to improve your surroundings with plants. How-to-do-it chapters cover shrubs, perennials, annuals, lawns, vegetables, fruits, herbs, plant propagation, greenhouses, fertilizing, mulching, and composting. Other chapters deal with container gardening, landscaping limited areas, ground covers, minimum care plantings.

Are you worried about visual pollution? Want to know how to use plants as climate changers? Interested in urban landscaping? Like to rent a garden? The new book can answer all of your questions. It will also tell you about "plants in action" — plants helping raise the spirits of inner city residents, teaching youth about the environment, aiding the handicapped, and providing new vistas for senior citizens.

Copies of *Landscape for Living*, the 1972 Yearbook of Agriculture, are available from the Superintendent of Documents, U. S. Government Printing Office, Washington, D. C. 20402 for \$3.50 each.

### Armed Robbery

(Continued from page one)

The men asked to see the attendants' stereo tapes, and as they began to show them, both men pulled two snub-nosed blue steel revolvers and announced a hold-up. The attendants told the suspects that they had no money, but when threatened with the guns went to the back room where the till was hidden to start the day shift.

The attendants report that one of the suspects tied them up and the other one cleaned out the till. The men took \$100 from the till, the attendants said, and \$3 from Schoenberg and \$19 from Elliott, \$11 of his own and \$8 belonging to the station.

The two reported that they were tied from 5 to 10 minutes before being discovered. The suspects reportedly used rags so as to leave no prints.

GROCERIES  
FRESH MEATS  
VEGETABLES  
BEER - WINE  
LIQUOR

OPEN  
7 DAYS  
A  
WEEK

# Jiffy market

COMPLETE  
SUPER  
MARKET

Big Enough To Serve You . . . Small Enough To Know You!

CORNER OF SIBLEY & WERKNER RDS. . . CHELSEA, MICHIGAN

PHONE 475-5701

HOURS: 7 a.m. to 10 p.m. DAILY  
7 DAYS A WEEK

WE ACCEPT  
U.S.D.A. FOOD STAMPS

SALE PRICES EFFECTIVE  
Thurs., Aug. 24 thru Sun., Aug. 27.

## TOP QUALITY MERCHANDISE

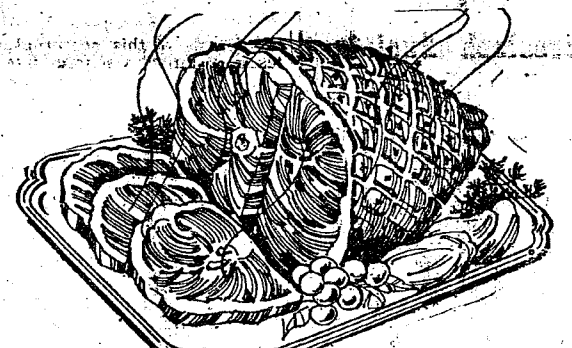
No Stamps - No Coupons  
Just Friendly Service  
From Friends  
and a Thank You!!



U.S.D.A. CHOICE  
**ROUND STEAK**  
Full Cut Round \$1<sup>19</sup> lb.  
Top Round \$1<sup>29</sup> lb.

YOUNG - LEAN - TENDER  
**PORK BUTTS**  
4 to 6-Lb. Average 69¢ lb.  
**Boneless Pork Butt**  
4 to 6-Lb. Average 79¢ lb.

FARMER PEET'S  
**HI-STILE HAM**  
Semi-Boneless De-Fatted Smoked Fully Cooked 79¢ lb.  
Whole or Half



HOME-MADE  
**PORK SAUSAGE**  
69¢ lb.

BALL PARK  
**FRANKS**  
1-Lb. Pkg. 89¢

GOOD OLD FASHION  
**SLAB BACON**  
Chunk 59¢ lb.

HERRUD'S  
**Chunk Bologna**  
49¢ lb.

ECKRICH  
**SMOK-Y-LINKS**  
All Beef Smokettes 10-Oz. Pkg. 69¢

U.S.D.A. CHOICE  
**CUBE STEAK**  
\$1<sup>29</sup> lb.

U.S.D.A. CHOICE  
**RIB ROAST**  
Middle Cut 5 & 6 Ribs \$1<sup>19</sup>

LONGHORN - COLBY  
**CHEESE**  
Chunk 69¢ lb.

14-Oz. Bag Sunshine  
**Potato Chips** . . . 69¢

8-Oz. Box Jiffy Honey Date, Blueberry Like  
**Muffin Mix** . . . 9¢

1 Pt., 8-Oz. Bottle  
**Aunt Jemima Syrup** . . . 59¢

4-Oz. Can Camelot  
**Black Pepper** . . . 29¢

6 1/2-Oz. Can South Pacific  
**Bonita Tuna** . . . 19¢

12-Ct. Box  
**Overnight Pampers** . . . 79¢

1-Lb., 1-Oz. Jar Hanover Old Fashion  
**Three Bean Salad** . . . 39¢

4-Roll Pack  
**Bathroom Tissue** . . . 37¢

1-Lb., 5-Oz. Can Wilderness  
**Cherry Pie Filling** . . . 39¢

10 1/2-Oz. Campfire  
**Miniature Marshmallows**, 19¢

35-Ct. Box Hefty Double-Wall  
**Quilted Food Bags** . . . 35¢

U. S. Grade A White, Small  
**Eggs** . . . 3 doz. 79¢

BORDEN'S SPECIAL PRICE FOR THE CHELSEA FAIR!

LADY BORDEN'S  
**ICE CREAM** 59¢ qt.  
BORDEN'S IS THE FINEST ICE CREAM!

Large Assortment  
of Flavors

Chocolate  
Butter Pecan  
French Vanilla  
Tin Roof Swirl  
Cherry Almond  
Pistachio Nut  
Coffee  
Double Strawberry Swirl



FAIR TIME or ANY TIME!  
12-OZ. CANS

**PEPSI-COLA**  
8 pac 98¢



**Elsie TWIN POPS**  
12 Pac 49¢

NEW IN CHELSEA!

VOORTMAN'S  
DUTCH STYLE  
**COOKIES**  
3 pkgs \$1<sup>00</sup>

FAIR TIME SPECIALS



Miracle Whip . . . qt. 49¢  
Michigan Butter . . lb. 69¢  
1 PINT CRTN.  
Michigan Sour Cream . 39¢  
Fresh Orange Juice  
1/2 gal. plastic . . . 59¢  
2-LB. BOX  
Velveeta Cheese . . . 98¢

FRESH PRODUCE

CALIFORNIA  
**HEAD LETTUCE** . . . . . 29¢  
MICHIGAN  
**PASCAL CELERY** . . . . . 29¢  
MICHIGAN  
**VINE-RIPE TOMATOES** . . lb. 19¢  
MICHIGAN  
**GREEN ONIONS** . . . . . bunch 10¢  
MICHIGAN  
**RED RADISHES** . . . . . pkg. 10¢  
THE HONEY-SWEET MELON - MICHIGAN  
**HONEY ROCK MELONS** . . ea. 49¢

1 Pt., 1-Oz. Jar Doiley's  
**Kosher Dill Spears** . . 49¢

12-Oz. Can  
**Vernor's Ginger Ale**, 6 pac 69¢

1 1/2-Lb. Loaf  
**Kleen-Maid Bread** . . . 19¢

3-Lb., 1-Oz. Box  
**Cold Water Surf** . . . 69¢

1 Gal. Rison's  
**Homogenized Milk** . . . 89¢

Strained Fruits - Vegetables  
**Gerber's Baby Food** . . jar 8¢

Paw Paw  
**Cider Vinegar** . . . gal. 69¢

Domino 10X Powdered or  
**Light Brown Sugar** . . lb. 19¢

15-Oz. Jar Camelot  
**Apple Sauce** . . . . . 15¢

8-Oz. Pkg.  
**Philadelphia Cream Cheese**, 29¢

8-Oz. Jar Farmers  
**Horseradish** . . . . . 19¢

Wind-Proof  
**Cigarette Lighter** . . 49¢



Ads  
Taken  
till 5 p.m.  
Tuesday

# IT'S EASY TO BUY-SELL-RENT- HIRE & FIND WITH



Just  
Call  
GR 5-3581

## WANT ADS

### The Chelsea Standard

#### WANT AD RATES

PAID IN ADVANCE—All regular advertisements, 50 cents for 25 words or less, each insertion. Count each figure as a word. For more than 25 words add 2 cents per word for each insertion. "Blind" ads or box number ads, 35c extra per insertion. CHARGE RATES—Same as cash in advance, with 15 cents bookkeeping charge if not paid before 5 p.m. Advance payment required. Pay in advance, send cash or stamps and save 15 cents. DISPLAY WANT ADS—Rate, \$1.10 per column inch, single column, with only 5 spots and 14-color high type only. No borders or halftone type. Minimum 3 inches. CARS OF FRANKS or MEMORIALS—Single paragraph style, \$1.00 per line for 50 words or less; 2 cents per word beyond 50 words. COPY DEADLINE—5 p.m. Tuesday week of publication.

### KNAPP SHOES

For Cushion Comfort  
Robert Robbins  
475-7282

### FORMAL WEAR

RENTAL SERVICE  
Proms - Weddings - Special Events  
6 different colors.

### Foster's Men's Wear

Seamless  
Aluminum Gutters  
White, brown, black or green.  
WILSON METAL SHOP  
428-8468, Manchester

Headquarters for  
RED WING  
WORK SHOES  
Foster's Men's Wear

Pine Haven Saddlery  
4534 Dexter Townhall Rd.  
Phone Dexter 486-4268

Complete line of English and Western equipment. 10% discount to all 4-H Club members.  
Store Hours: Mon.-Sat., 9-9  
Sunday, 10-9

1963 DODGE 2-ton dump. Very good condition. 7 yd. capacity, 5-speed with 2-speed. Gold Crest warranted (12 mos., no limitation on mileage). Devon Lincoln-Mercury, 2100 W. Stadium, Ann Arbor. Ph. 362-5555.

### Gem Travel Trailers and Campers

PICK UP COVERS  
4" ————— \$100.00  
26" ————— \$179.00 and up

### Triangle Sales

1967 FORD 1/2 ton pickup, 8-cyl., 4-speed, Red. \$1000. Gold Crest warranted (12 mos., no limitation on mileage). Devon Lincoln-Mercury, 2100 W. Stadium, Ann Arbor. Ph. 662-5555.  
WAITRESSES WANTED—Must be at least 18. Apply in person. Chelsea Restaurant.

## WANT ADS

### ALCOA SIDING SPECIALIST

Since 1988. Service and workmanship guaranteed. William Davis, Ph. Ann Arbor 668-6635. -x22

### LEHMAN WAHL

Land Appraisal  
Residential  
and Farm  
17087 West Austin Rd.  
Manchester, Mich.  
Area Code 313  
423-8886

FOR SALE—1972 Plymouth Satellite Custom 4-dr. sedan, 318 engine, power steering, manual brakes, radio, heater. Mileage, 5,000. \$2750. Reason for selling, death in family. Ph. 475-8218. -x12

PATCHING AND PLASTERING  
Call 475-7488

### CLOGGED SEWER

Reynolds Sewer  
Service  
We Clean Sewers Without Digging  
Drains Cleaned Electrically  
FREE ESTIMATES  
2-YEAR GUARANTEE  
Phone Ann Arbor NO 2-5277  
"Sewer Cleaning Is Our Business"  
Not a Siding! -x24

WANTED TO BUY—White oak, burr oak, red oak, red elm, hard maple, tulip poplar, and walnut trees. We pay in advance. Small acreage or large tracts. Contact American Veneer Co., collect, 1-517-782-1080, or write Box 584, Leslie, Mich. 49251. -x11

### Special of the Week

1972 Electra 225 2-dr., air cond., vinyl top, 5,000 miles. Like new. \$4995

### USED CARS

1971 Custom Electra 225 4-dr., air cond. \$3895  
1971 Custom LeSabre 4-dr. hardtop, air cond. Clean \$3495  
1971 Mustang hardtop, sport roof. \$2695  
1970 LeSabre 4-dr. hardtop (air cond.) \$2895  
1970 Ford 4-dr. hardtop LTD Brougham. Air cond. \$2895  
1969 Olds 98 Luxury Sedan. Loaded, (air cond.) \$2295  
1969 Dodge Monaco 4-dr. Brougham, full power (air cond.) \$1695  
1968 Buick LeSabre 2-dr. Vinyl top. Clean \$1495  
1967 Electra 225 4-dr. Vinyl top. Air cond. \$1295  
1967 Mercury 2-dr. hardtop \$ 895  
1967 Delmont Olds 88 4-dr. \$795  
1965 Olds 98 Luxury Sedan, full power, (air cond.) \$ 795  
1966 Plymouth station wagon \$ 495  
1966 Olds Custom Vista. Cruiser \$895  
1963 Ford Galaxie 500 4-dr. One owner. Clean. \$ 495  
1965 Chev station wagon — \$195  
1962 Olds 88 2-dr. hardtop \$ 95

### SPRAGUE

Buick-Olds-Opel, Inc.  
1500 S. Main St., Chelsea  
Phone 475-8664

## WANT ADS

### HAMMOND ORGAN teachers

wanted to teach in their own homes. Call Grinnell Brothers, Ann Arbor, 662-5667. 34tf

CALL FRANK for all your carpet cleaning jobs, morning or week-end. Needs only 8 hours to dry. Only 10c per square foot. Phone now for free estimate. 761-4328. All work guaranteed. 82tf

### PIANO TUNING, Chelsea and area.

Facilities for reconditioning and rebuilding. Used piano sales, reconditioned grands and verticals. E. Eklund. 426-4429. -x50tf

### Contractor Servicing Chelsea, Dexter and Manchester Areas

Complete Home Remodeling  
Inside and Outside  
Specializing in extra living space, recreation rooms, kitchens and paneling. Installing all aluminum products, 5" eavestroughs, custom-made awnings, windows and doors, aluminum siding in many selected colors and styles.

Please Call

DALE COOK  
Chelsea 475-8863

### NOW

Full Time  
Complete  
Body Shop  
Service

Stop in For An Estimate

PALMER FORD  
222 S. Main St.  
475-3271

KITCHEN HELP WANTED. Apply in person. Chelsea Restaurant. FOR REAL DOLLAR SAVINGS be sure and see us before you buy any new or used car. Palmer Motor Sales, Inc. Your Ford Dealer for over 50 years. 2tf

### G. G. HOPPER

Building Contractors  
Phone GR 5-5581  
Gregory 498-2148

OLDER HOME—Built in kitchen, 3-bedroom, bath and one-half family room, patio with gas grill. Boat dockage at back door overlooking private area beach. For more information phone. Evinger Real Estate, 426-3286 or 426-8518. -x10

FOR SALE—Plute, good condition. Ph. 475-2018. -10

### Low Low Down Payment

On New  
GOLD KEY  
MORTGAGES  
For information ask your Realtor or call 668-7555.

Ann Arbor Federal  
Savings  
Equal Housing Lender

### Wedding or Anniversary?

Wedding and reception invitations available in wide range of styles and prices.  
10% DISCOUNT  
on all list prices  
for wedding stationery.

Come in and let us advise you on your needs.

The Chelsea Standard  
300 N. Main Ph. GR 5-3581

### CALL NOW

SAVE \$\$\$  
Greenwood

for

Siding - Remodeling  
FREE ESTIMATES  
Call  
Chelsea 475-2400

### ELEOTROLUX VACUUM CLEANERS

SALES and SERVICE

JAMES COX  
Ph. 428-2931 or 428-8221

124 PARK STREET PHONE GR 5-4417

## WANT ADS

### DIAMOND ROOFING, reroofing and repairing. Roof louvers in stalled. Gutters cleaned. Licensed roofer. Call 475-1129. x45tf

### A fine selection of

### New and Used Cars

for immediate delivery

### Harper Pontiac

Sales & Service  
475-5311  
Evenings, 761-2999

### 2-CYCO FUEL

For All 2-Cycle Engines

### WHITE GAS

Available at

### Gateway

Sports Centre, Inc.

XEROX COPIES made. Merkel Brothers. 41tf

ROBERT A. ALDER, licensed contractor. Residential building, remodeling. No job too small. 18200 Boyce Rd., Gregory, Mich. 48137. Phone 498-2539. -47tf

TOYS & GIFTS PARTY PLAN! Highest Commissions - Largest Selection! Fantastic Hostess Awards. No Cash Outlay. Call or write "Santa's Parties," Avon, Conn. 06001. Phone 1 (203) 673-3455.

### ALSO BOOKING PARTIES

### CHICKEN BARBECUE

Sunday, Sept. 10

Serving 11 a.m. to 3 p.m.  
Chelsea K. of C. Parking Lot  
(Between Wolverine and  
K. of C. Hall)

\$1.75 per serving

Sponsored by

Chelsea K. of C.

Council 3092

### M & M GRAVEL CO.

PAUL MOFFAT

7 miles north of Chelsea, corner of

M-52 and Roe Rd.

498-2866, home phone

475-1941, pit phone

Processed road and driveway gravel, fill dirt, washed sand, pea stone, top soil, drainfield stone

Mason sand available for our own deliveries only. Loading 5 days from 6 a.m. to 6 p.m. F.O.B. or delivery. Free estimates on road and driveway building.

FOR SALE—Apt. size gas stove, \$35; double bed, springs and mattress, \$45; small table with 2 chairs, \$20. See at 420 Chandler. 10

LADY TO DO ALTERATIONS—Fittings in my home in Chelsea area. Knits, woolen, dresses, suits, coats. Mostly hems and shoulder alterations. Phone evenings, 475-8989 steady work. 10

POTATOES—Quality, seconds, \$1.50 bushel. 7 a.m. to 8 p.m. No Sunday sales. Carl Schoonover, 9 miles northwest of Chelsea on M-52, right on Boyce Rd., left to 15557 Farmworth Rd. 9tf

CASHIER WANTED, female. Must be over 18. Call 475-2898. 10

WANTED—Housekeeper for elderly man. Ph. 475-4191 after 6 p.m. 9tf

### Sold Out Again!

List your property with us for fast, efficient service.

R. D. MILLER

REAL ESTATE

Real Estate Broker

475-7811

15775 Cavanaugh Lake Rd.

Chelsea, Mich.

See or Call

Kern Real Estate

or phone 475-8568 or 475-2403

616 S. Main -10tf

FOR RENT—Two apartments. Available Sept. 1. 552 McKinley, Upstairs is furnished. 10

### Listen to that "all's-well" purr

Your car's engine will "purr" with contentment after our experts change the oil and give it a good lubrication.

Sweet music to your ears is the purr of your engine, sure promise of pep, power and performance after our servicemen drain the sludge and fill with pure oil.

PURE OIL PRODUCTS

### Jim's Union 76 Service

Tires - Batteries - Tune-Ups - Brake Service - Wheel Alignment

PHONE 475-2822

501 SOUTH MAIN

## WANT ADS

1969 MERCURY 4-dr. sedan, p.s., p.b., auto, gold with black top, \$795. Gold Crest warranted (12 mos., no limitation on mileage). Devon Lincoln-Mercury, 2100 W. Stadium, Ann Arbor. Ph. 662-5555. 2tf

### Hearthside Yarn Shop

5450 Conway Road

Yarns, needles, accessories

Free instructions in knitting and crocheting with follow-up assistance.

Orders taken for hand-made items.

Ph. 475-2014

88tf

CAR RENTAL by the day, week-end, week or month. Full insurance coverage, low rates. Call Lyle Christwell at Palmer Motor Sales GR 5-3271. 25tf

### ALLSTATE INSURANCE

AUTO - BOAT - COMMERCIAL  
LIFE - HEALTH - HOME

Phone Even. or Week-ends for

N. H. MILES, Agent

GR 5-8334

44

FOR RENT—Fair Services Center for meetings, parties, wedding receptions, etc. Weekdays or week-ends. Contact John Wellnitz, phone 475-4431. 28

### FRISINGER

COUNTRY SETTING adjacent to Cavanaugh Lake. 2-bedroom quaint year-round log home. Would make a good starter or retirement home. Priced to sell at \$17,900.

CLOSE to the Village of Chelsea, located on black-top road. 3-bedroom brick ranch, 1 1/2 baths, recreation room, enclosed breezeway with attached 2-car garage, storage above garage, marble window sills. Above garage, 3-bedroom ranch close to schools, 2 baths, fenced-in yard. All grapes and carport included. Recreation room, lots of storage. Priced to sell at \$25,900.

HILLTOP country setting on 3.3 acres. Located west of the Village of Chelsea. 3,000 sq. ft. of brick ranch living, with 5 bedrooms, 2 1/2 baths, dining room, 26' family room, fireplace, full black-top driveway, open basement. Suitable for large family or growing family.

1,200 SQ. FT. brick 3-story older home, located in the Village of Chelsea, close to shopping and schools, 3 bedrooms, 1 1/2 baths, 3-car garage, study, dining room. Priced to sell at \$37,900.

BUILDING SITES—Vacant parcels available for building on the following roads:

Grass Lake Rd. — Fahrner Rd.

McKinley Rd. — Curtis Rd.

Old US-12 (14 to choose from)

M-52 — Reithmiller Rd. — Huttenlocker Rd.

Holmes Rd. — S. Lima Center Rd.

Evenings:

Mary Ann Staebler - 475-1432

Herman Koenn - 475-2613

Paul Frisinger - 475-2021

George Frisinger - 475-2908

Hope Bushnell - 475-7180

FOR SALE—1969 Allstate motorcycle, 125 cc. Excellent condition. Two helmets. \$250. 475-8328. 10

### Real Estate For Sale

2-FAMILY APT. — 5 rooms and bath in each apt. Full basement, attached garage.

3-BEDROOM home, ranch type, full basement, 1 1/2-car garage, black-top drive, new modern kitchen.

See or Call

Kern Real Estate

or phone 475-8568 or 475-2403

616 S. Main -10tf

FOR RENT—Two apartments. Available Sept. 1. 552 McKinley, Upstairs is furnished. 10

## WANT ADS

### MARY WOLTER REAL ESTATE

7421 Dexter-Pineknay Rd.

Dexter, Mich.

Phone 426-8188 or 426-8160

PATTERSON LAKE-FRONT on the point, 2-bedroom summer cottage. Extra lot on both sides, beautiful lake view.

NEAR GREGORY—12'x55' mobile home on 1/4 acre. 2-car garage with heated workshop. Fenced back yard. \$15,000. Terms.

STRAWBERRY LAKE-FRONT — Good location and beach. Interlock log. Full bath, 2 bedrooms and sleeping porch. Best condition. Nicely furnished. Could be year-round. \$27,000.

PATTERSON LAKE-FRONT on large lot. Beautiful setting. Patio, aluminum siding, fireplace, large addition needs some inside finish but liveable while doing. Attached garage. Only \$27,000.

STRAWBERRY LAKE-FRONT — Year-round remodeled finished 2 bedrooms. Full bath, good beach, trees. \$24,000.

PATTERSON LAKE PRIVILEGE — Year-round remodeled, 2-bedroom, 1,000 square feet, carpeted, paneled and papered. Very nicely done. Range, refrigerator, washer and dryer included. Good buy at \$19,000.

JOSLIN LAKE-FRONT — Year-round home on 8 acres. Quiet location. \$29,900.

HALF MOON LAKE-FRONT — Attractive year-round 3-bedroom. Aluminum siding, attached garage, gas furnace, fireplace, bath and 1/2, quiet extra large area on point with frontage on 2 lakes. Lovely lawn and landscaping. By appointment only. Make us an offer on this one.

JOSLIN LAKE-FRONT — 2-bedroom, part insulated, aluminum siding, on 1 acre. \$24,000. Also, 1 acre vacant with lake privileges if wanted.

JUST REDUCED—Portage Lake privilege, large building site close to private beach. Suitable for walk-out lower level home. \$8,500.

NEAR PINKNEY — 6-acre parcel at \$900 per acre. Near M-36.

### MARY WOLTER REAL ESTATE

Phone 426-8188 or 426-8160

FOR SALE — 5-pc. chrome dinette set, excellent condition. Accordion, good buy. 475-2242. 1036 Guinan Rd., Sugar Loaf Lake. -x10

IRISH SETTER PUPS for sale. Male and female. Born July 31st. Take your pick now. Call 475-8795 after 5 p.m. -12

### LADIES

Tired of sitting at home?

Want a steady year-round job?

K-Mart, 215 N. Maple,

Ann Arbor, Mich.

has positions open in retail sales.

Many company-paid benefits.

Apply in person

Monday, Wednesday, Thursday

and Friday, 10 a.m. to 4 p.m.

10

BABYSITTER WANTED — Monday-F



## WANT ADS

E — Chain link or redwood e. all sizes. Material sold for installation or we will install. 475-8147 or (517) 522-4337 ee estimate. 52tf

SALE — Inlaid vinyl and lin. Also tile. Armstrong and leum. Nalin. Installed by craftsmen. Estimates, terms. 1 Bros. 475-8621. 82tf

RT PATRICK for home iment, building and maine. Ph. 428-8601. 45tf

CE EXCESS FLUIDS with dex \$1.09 — Lose weight safe. Dex-A-Diet, \$1.98 at Chelug. -12

IR SERVICE for household igerators, freezers and garisposers. Call Bill, 426-8314. -x1tf

SITTING in my home. Ph. 7368. 8tf

## LAY-AWAY NOW for Back-To-School DANCER'S

## OPEN HOUSE

Saturdays & Sundays 2 to 5 p.m.

of the hustle and bustle of living? Come to

## DALT ACRES

at Michigan Center

see our furnished model at

\$26,500

Only 20 minutes west of Chelsea.

to Race Rd. Exit, left on Race to Ann Arbor Rd., right on Arbor Rd. 1/2 mile to Portage left on Portage Rd. 5 1/2 ml. e. Rd., right on Leeb Rd. 1/2 to Dalt Acres.

you're inspecting our modsign up for a drawing on a trip to Disneyworld for you family.

ave W. G. Best homes starting

\$20,500

Complete.

Wm. R. Snyder

Center St., Michigan Center Ph. (517) 764-0267

ilder of W. G. Best Homes

NTED — Used wood turning she. Ph. 475-8270. x10

## WANT ADS

PROFESSIONAL CARPET clean- service, expanding to Wash- tenaw county. All sizes and types of carpets cleaned, day or night. Call 428-7269 or (517) 522-4337 for free estimate. 52tf

CAR & TRUCK LEASING. For details see Lyle Chiswell at Palmer Motor Sales, GR 5-3271. 49tf

SKIN DISORDERS? Try Toco- Derm Vitamin E Cream, 1260 IU per tube at Chelsea Drug. -16

LOVE TO SEW? Become a demon- strator for Creative Directions. Teach others the fun of sewing with knits. Receive free fabrics and com- missions. For further details, call Tysilanti, 1-434-3538. x11

WEDDING, ANNIVERSARY, so- cial or business. John's Shop can furnish the printing. Ph. 475-7500 even on week-ends. -17

WE NEED OATS and hay. Sharon Hills Ranch, Call after 6 p.m. 428-9452. 8tf

MY GARAGE won't hold it all. Would like to rent storage space in or near Chelsea. Ph. 475-8173 or 475-5601. 4tf

WANTED — Two or three bee hives with bees and super. Phone Chelsea 475-2715, ask for Wilson Elwood. Call after 6 p.m. any day. -18

## NEW FOR FALL Good Selections DANCER'S

CLARINET — LeBlanc Vito. Must sell. 475-2895. x11

FOR SALE — 71 Mansion mobile home, 60'x12'. Skirted, complete- ly furnished. Excellent condition. Call 663-1087. x11

HORSE FOR SALE — Experienced hunter-jumper, 16 hands, dark bay gelding. Needs good rider. \$700. 669-2064. x10

EARN \$15 CASH for 2 hours pleas- ant work in your home. Ph. 475-7310. x10

WANTED — SMALL OR MEDIUM SIZED FARM — Would consider land without buildings. Prefer Dex- ter, Chelsea, Manchester or Pinck- ney area. Have Dearborn client who has just sold his house. Please call 426-4377, Oril Ferguson, Real Estate Broker. x02

WANTED TO BUY standing tim- ber. Call 1-432-3723. x12

YARD SALE — 10 a.m. on Sat. and Sun., Aug. 18-19. Dishes, appli- ances, furniture, kitchenware. Col- lectibles and useable items. 6704 Clear Lake Rd. 10

FOR SALE — Dresses, sizes 5 and 7. Ph. 475-7613. 10

## All Insurance Needs

In the convenience of your own home — or mine

N. H. Miles, Allstate

Call GR 5-8334 after 6 p.m. 45tf

## Fight Pollution! SHAKLEE PRODUCTS Organic Cleaners

Basic: H'ousehold, L'undry, D'ishes

Food supplements, skin care prod- ucts.

Sandy Bradbury 475-7614

Arlene Schroen. Ph. 475-4866 -12

FULL-CHARGE Bookkeeper need- ed from 9-4, Monday-Friday. For interview call Weber Construction Co. at 475-1397. x10

## WANT ADS

DADS & MOMS — Register your sons, ages 8 thru 13, for Fun- Pass & Kick at Palmer Ford today. 10

FOR SALE — 86 283 Chevrolet Im- pala. Makes excellent second car. 428-2101. 9tf

WANTED — House to rent. Trans- ferred family of 4 needs 3- or 4-bedroom house to rent immedi- ately. Please call anytime (313) 399-3957. x10

## HELP WANTED

ADMINISTRATIVE ass't. Book- keeping duties, training program, \$600; fee paid.

SECRETARY, responsible person. Will assume personnel duties. \$550; fee paid.

CLERK-TYPIST, accurate typist. Accounting duties. \$450.

MEDICAL SECRETARY, doctor needs person with good skills. Medical background helpful. \$6,000- \$7,000. 4tf

WANTED — Two or three bee hives with bees and super. Phone Chelsea 475-2715, ask for Wilson Elwood. Call after 6 p.m. any day. -18

## Personnel Systems Agency

1945 Pauline 761-5252 x10

DADS & MOMS — Register your sons, ages 8 thru 13, for Fun- Pass & Kick at Palmer Ford today. 10

## CHICKEN BARBECUE

Sunday, Sept. 10

Serving 11 a.m. to 3 p.m. Chelsea K. of C. Parking Lot (Between Wolverine and K. of C. Hall)

\$1.75 per serving

Sponsored By Chelsea K. of C. Council 3092

FOR RENT — 3-bedroom; full base- ment; 2-car garage, 5 miles from Chelsea. Available Sept. 1. Phone 475-2471 after 1 p.m. Sunday. -x10

WANT TO START car pool to Ann Arbor. Please call 475-2285 after 5:30 p.m. -11

CLEANING LADY WANTED — Mondays. Own transportation. Ph. 475-8566. 10

HELP WANTED — Dog sitter. Ref- erences exchanged. Ph. 475-8892. 10

FOR SALE — 21" console GE TV. Black and white. Excellent condition. Make offer. Ph. 475-8005. 10

IT'S inexpensive to clean rugs and upholstery with Blue Lustre. Rent electric shampooer \$1. Dancer's 10

## Country Auction

Antiques, household and garden equipment, Ford tractor.

Thursday, Aug. 24

1:00 p.m.

Located 1 mile west of Northville, south of 7 Mile.

Owner: MORRIS KLOPFENSTEIN

Lloyd R. Braun

Jerry L. Helmer Auctioneers x10

FOR RENT to married couple, no children, first-floor apartment. Stove, refrigerator, heat furnished. Full basement, yard. Ph. 475-8469 after 6 p.m. -10tf

WILL BABYSIT in my home for one child. 475-8491 or 475-2239. -10

## WANT ADS

WILL DO BABYSITTING in my home. Ph. 475-7095. 12

FOR SALE — 68 Firebird. Auto- matic, V-8, excellent condition, new tires and spare, with pair of studded snow tires. 429-2101. 9tf

## CLARENCE WOOD REAL ESTATE

CAVANAUGH LAKE — Year around 2-bedroom home. Full basement. All rooms newly de- corated and carpeted. Oil furnace. Laundry area. A real buy at \$19,500.

BRICK COLONIAL — 4 bedrooms, 3 baths, family room with brick fireplace, finished rec. room, Spot- less.

2.9 ACRE BUILDING SITE — High, dry, wooded. A perfect spot for your dream home. \$13,500. -x12tf

## CLARENCE WOOD BROKER

Efficient PERSONAL Service 646 Flanders St., Chelsea Phone 475-8033 or 475-8217. -x0tf

FOR SALE — 13 ft. aluminum travel trailer. Stove, ice box, lots of storage space. Excellent condition. \$500. Call 475-8757. -x10

## SOMETHING NEW

We now have special trained crews for

## ALL TYPES of SIDING and ROOFING

"GET OUR FREE ESTIMATE" PHONE 475-1389

## LaFontaine Construction & Development Corp.

LICENSED BUILDERS Chelsea

RESPONSIBLE COUPLE seeks home or farm in country within 30 mile radius of Ann Arbor, start- ing in Sept. or Oct. All house sizes and price ranges considered. Lease or option acceptable. Mr. Symonds, days: 761-4700, ext. 349. Nights or week-ends: 227-6887. x12

## THORNTON

BRAND NEW — Beautiful 3 bed- room, rustic ranch-home situated on 1 1/2 wooded acres. Formal dining room, 2 fireplaces, carpeted. A great spot.

JUST LISTED — Brick California ranch home in Village, 5 bed- rooms, fireplace, lots of living area. Close to high school. A warm cozy home.

GOLF COURSE FRONTAGE — 3- bedroom brick ranch, fireplace, dining room, only one year old. Anxious owner transferred.

WOODED TRI-LEVEL — 4 bed- rooms, recreation room, study, 2 fireplaces, lots of space, lots of view.

NEAR GRADE SCHOOL — Tri- level, 4 bedrooms, dining room, family room. A very "nice" home in the village.

JUST REDUCED — 4 bedrooms, older home, nice location near elementary school. \$25,900.

LARGE — OLDER "QUALITY" HOME: Close to Village center. Could be 2-family or an ideal spot for large family. Lovely large private yard. You must go thru this one.

CALIFORNIA STYLE — Custom- built all-brick and redwood home is a one of a kind, designed for family with 3 or 4 children. A magnificent home in a lovely set- ting.

HALFMOON LAKE RANCH — Ultra sharp, 3 bedrooms, beautiful kitchen, attached 2-car garage. \$35,900.

TRI-LEVEL — Lots and lots of liv- ing area, very sharp, carpeted, great spot for large family; even includes an in-law apartment. \$49,900.

JUST REDUCED — Ranch home with above ground swimming pool situated on over an acre lot, five bedrooms, fireplace. Great fam- ily location. \$38,500.

HORSE? Your own horse barn; close to private beach and this beautiful 4 or 5 bedrooms ranch home. Fully carpeted, recreation room, nice kitchen, and lots of state land near by for wandering. \$47,500.

LAKEFRONT — Cottage, 2-bed- room, lovely porch, nice yard with shade trees; dock included. Just listed at \$19,900.

## THORNTON

Realtor - 475-8628 - Chelsea

Eves: John Pierson 475-8064

Helen Lancaster 475-1198

Bob Riemenschneider 475-4121

Bob Thornton 475-8857 10

KITCHEN HELP WANTED — Must be at least 18. Apply in person. Chelsea Restaurant. 10tf

1972 SELECT-O-STITCH \$46.50. Sew Machine still in original fac- tory carton. Sewa stretch material. No attachments needed as all con- trols are built-in. Sew with one of two needles. Makes buttonholes, sew on buttons, monograms, and makes fancy stitches. Comes with a beautiful walnut sew table. Full cash price \$46.50 cash or terms available. Trade-ins accepted. Call Gregory collect 1-313-498-2539 9 a.m. to 9 p.m. -10

FOR SALE — Nylon rug 9' x 15' with pad, 2-pc. living room suite. All good condition. Ph. 475-2412. -x10

## WANT ADS

FOR RENT — 1-bedroom apartment 6 miles north of Chelsea. Call 475-7013. No children or pets. -11

HELP WANTED — Male or female. 11 jobs. 7 a.m. Housekeeping department. Chelsea United Metho- dist Home. Ph. 475-8633, ask for Mrs. Kish. 10

## REAL ESTATE

2-STORY HOME just being com- pleted with channel rights to Wolf Lake. Spacious kitchen and living room, 2 baths and walk-out basement. Could be used as a 2- unit property. Asking \$22,000. Ex- ceptional low down financing to qualified buyer. 15 miles west and south of Chelsea.

7 WOODED ACRES with 228 ft. frontage on Norvell Lake. Land has been surveyed for 16 lots at least 115'x125' in size. Great invest- ment. Land contract terms. 10 miles west and 5 miles south of Chelsea.

## Willis Real Estate

Ph. (517) 522-8481 10

WILL HAUL rubbish and clean out garages. Call 475-7257. -x12

KIRBY CLEANER \$38.50. With power buffer, polisher and cleaning tools available to re- sponsible party for only \$38.50 cash or terms. Call Gregory collect 1-313-498-2539 9 a.m. to 9 p.m. 10

## CHICKEN BARBECUE

Sunday, Sept. 10

Serving 11 a.m. to 3 p.m. Chelsea K. of C. Parking Lot (Between Wolverine and K. of C. Hall)

\$1.75 per serving

Sponsored By Chelsea K. of C. Council 3092

## GOOD BUYS

New and Used

## LAWNMOWERS

Season-End Clearance

## Chelsea Hardware

Phone 475-1121 10

FOR SALE — Farmall M tractor, \$950 Ph. 426-4583 after 5:30 p.m. or 475-8994. 10

FOR SALE — Grade and quarter horses. Phone 426-4568 after 5:30 p.m. or 475-8994. -10

FOR SALE — 2 twin beds with mat- tresses and box springs. Good condition. Ph. 428-8895. 10

HELP WANTED — Lady between 25 and 40 to work in Bake Shoppe, 107 W. Middle. Apply in person between 8 and 6 p.m. 11

FOR SALE — New Moon mobile home, 12'x60', reasonable, 2 yrs. old. Call 426-8968 after 4:30 p.m. 10

BABYSITTING in my country home. Cavanaugh Lake Rd. Ph. 475-8033. -19

SICK SEW MACHINE WE FIX — EM. Expert sewing machine re- pair. Clean, oil, and adjust tension only \$4.99. Call Gregory collect 1-313-498-2539 9 a.m. to 9 p.m. 10

## HELP NEEDED

For Fall Rush

Packaging and assembly. 18 or older.

## RAY WEINER

UNICOLOR 426-4646 x10

NEW 3-BEDROOM on water. Dock your boat at your new home on Portage chain of lakes. Oversized lot, ready for your personal touch in landscaping. Beach nearby. \$34,500. For more information phone Evinger Real Estate, 426-3286 or 426-8518. x10

FUNT PASS & KICK — Ages 8 thru 13, register today at Palmer Ford. 10

FREE TO GOOD HOME — Part- Collie puppies, five males, two females. Ph. 426-3649. x10

## REAL ESTATE

FAMILY RESTAURANT in Dex- ter. Clean, neat, reasonably priced.

10 ACRES on the Huron River. Land may be divided. Small home ideal for club or rental.

For more information, phone Evinger Real Estate

Dexter, Michigan 426-3286 - 426-8518 x10

## CHelsea FINANCE CORP.

\$25 to \$1,500

## For Any Worthwhile Purpose

See or Call FRANK HILL at 475-8631

111 PARK STREET CHELSEA, MICH.

## WANT ADS

WANTED TO BUY — Authentic American Indian artifacts — ar- rowheads, pipes, birdstones, ban- nerstones, weaving apparatus. G. Steinhauer, 1100 Sugar Leaf Lane, Chelsea. Ph. 475-2907. -x10

## SHOP NOW

for Fall and Winter Wear at DANCER'S

## FARM AUCTION

FARM ANTIQUES — HOUSEHOLD MISCELLANEOUS

Having sold my property, I will sell the following at public auc- tion. Located at 2494 N. Lima Con- ter Road, off Dexter-Chelsea Road, 4 miles east of Chelsea

## Sunday, August 27

at 1:00 p.m.

2 wauwat cape bottom chairs, an- tique dishes, end tables, dressers, misc. toys, electric train, dayenport chair, bar stools, crock, jug, child's roll-top desk and chair, duck and goose decoys, oak desk and swivel chair, antique picture frames, old clocks, broad axe, 8 wood planes, Vivitar 84 P Super 8 electric movie camera, Sylvania stereo console, DeJaur Grundig stenorette dicta- phone, Mail Call tape recorders, court recorder, 3 camp stoves, an- tique sled, gas heater, Remington trap (clay pigeon), 22 bolt action, double barrel, 12 ga. hammer, old target rifle, muzzle loader, 30-06 Enfield, Kenmore dishwasher, gas range, electric stove, Coldspot re- frigerator.

John Deere 420 wide front, John Deere A (overhauled), old Oliver tractor, 1963 Chevy pick-up, Suzuki 50 cc motorcycle, 3-pt. cycle bar Dearborn mower, Dexter Sweep- star, New Idea manure spreader, hay rake, small disc, small disc, 1-bottom plow, Allis-Chalmers 3-14 mtd. plow, Allis-Chalmers trailer plow 2-16, Allis-Chalmers 5' Ford plow 2-14 3-pt., 2-wheel utility trailer, pony chariot, 2 outdoor motors, electric arc welder, plat- form scales, fence stretcher, mor- car box, horse drawn plow, horse drawn mower, plunger's furnace and pot, Dearborn buzz saw 3-pt., lawn roller, 5 cord hardwood fire- place wood.

Inspection day of sale. Terms: Cash or Check. Nothing removed until settled for. Not responsible for accidents. Lunch on grounds.

OWNER: RAY PORTER

Lloyd R. Braun

Ann Arbor 665-9646

Jerry L. Helmer

Plymouth 453-4109

AUCTIONEERS

Max Ziegler, Jr., Clerk x10

## MARSHALL REALTY

(313) 878-3182

440 Dexter Rd., Pinckney

CHELSEA — 5-bedroom, former centennial home on 6 acres in Waterloo Recreation Area, has new pole barn with coral, other out- buildings, \$40,000. Chelsea schools.

CHELSEA — Beautiful, high and rolling 10-acre building site on hardtop road 3 1/2 miles north of Chelsea.

PORTAGE LAKE — 70 ft. on water, 3-bedroom contemporary home, cross ventilation, lots of storage, beautifully landscaped, lovely se- cluded patio. Pinckney schools.

CHELSEA — 6-acre rolling build- ing site north of town, 1/2 mile to M-52 in Waterloo Recreation Area. On Land Contract with \$2,500 down.

PINCKNEY — 4-bedroom brick home in village with central air conditioning, dishwasher, fully car- peted, 1-car garage on 2 lots, fenced yard. \$3,500 will move you in.

STOCKBRIDGE — 4-bedroom home on one level, on 1 acre, needs work has good possibilities. \$18,000. Make an offer.

GREGORY AREA — 21.5 acres, nice building site 1/2 mile to black top road. Owner anxious to sell.

STOCKBRIDGE — 4-bedroom home on 17 1/2 acres with large barn, \$45,000. Terms available.

WE HAVE many 5- and 10-acre building sites in Chelsea, Dexter, Gregory, Pinckney, Stockbridge area.

## MARSHALL REALTY

440 Dexter Road Pinckney, Mich. 1-313-878-3182

Evelyn, 475-8583 Dave 475-7275 JoAnn, 475-7483 x10

## R N





MARVIN GUSTER, son of Mr. and Mrs. Carl Simpson, Sr., 3250 McKinley Rd., killed this two-foot-long rattlesnake in their driveway Tuesday. The young rattler had eight small button rattles on his tail which gave the unmistakable danger signal as Marvin and his dog Muffet walked down the driveway.

## WANT ADS

GARAGE SALE — Friday and Saturday, Sept. 1-2, 13204 E. Old US 12, Chelsea. x11  
 FOR SALE — Two-family, located side-by-side, Hudson and Ann Arbor Sts., Dexter. For details, call 878-6622. x10  
 POTATOES FOR SALE — 11296 Island Lake Rd., Martin-Ruhlig Jr. x15  
 WANTED — Two elderly ladies to care for in a three-bed care new country home west of Stockbridge. Ph. 851-8696. x10

## WANT ADS

BRITTANY SPANIELS — Purebred, 8 weeks, \$20, 680 W. Middle, Chelsea. Ph. 475-7636. x11  
 FOR SALE — 6 oak ladder-back kitchen chairs, \$45. Ph. 426-8363. x10  
 DINING ROOM TABLE for sale. Nice, handmade, 5 ft. diameter, octagonal. Ph. 475-2284. x10  
 YOUNG MOTHER with 2-yr.-old daughter would like to care for 1 or 2 children in her home. Kathy Foster Snyder, 475-8781. x10

## WANT ADS

BEAUTICIAN WANTED — Excellent job opportunity for someone interested in making money. Salary plus commission with many fringe benefits. Experience preferred but not necessary. Ph. 665-0816. x10  
 PIANO LESSONS in your home by experienced teacher with master's degree. Beginners to advanced. Theory and ear training also taught. 662-5850 before 10  
 FOR SALE — About 50 acres Reel-Canary grass near Lima Center. Ph. 475-8469 after 6 p.m. x11

## Kiwanis Club Travel Series Announced

Chelsea Kiwanis club has announced its program for its 12th series of "Travel and Adventure" films.

Each of the films will be shown at 8 p.m. at the Chelsea High school auditorium. All proceeds from the series are used to expand the community-area projects of the Kiwanis club.

Leading off the series will be Thayer Soule, who will present "I Love Mexico" on Saturday, Oct. 21. Soule will take the viewers to Mexico City and other parts of the country, and reveal the variety of the land—the seascapes, tropical jungles, mountains, and deserts.

Robert Brouwer will present "Rio Colorado" Saturday, Nov. 18. This film will trace the river from its source, and glimpse the sights and sounds that surround it.

"Norwegian Panoramas," by Joe Adair, on Saturday, Jan. 13, will feature the fragrant fjords of springtime Norway, just the antidote for the mid-winter blues.

Romantic Spain, with its strange mixture of the old and the new will be the subject of Walter S. Dodson's "Serenade to Spain," Saturday, Feb. 17.

Viewers will travel by boat and bicycle with Stan Midgley Saturday, March 17, in "British Columbia Chucklelogue."

James Metcalf will round out the series with "Washington, D. C.," on Saturday, April 14. Metcalf and viewers will tour the most influential city in the U. S., a city where government is the prime business. He investigates the sights that have made Washington the shrine of America's heritage.

Some of the projects that will be aided by the proceeds of the series are Boy Scouts, Interlochen scholarships, Boys' State sponsor, Emergency Aid, Student citizenship program, Athletic field lighting, Kids Halloween party, Farmers' Night, Octogenarian program, Kids' Day at the Chelsea Community Fair, and co-sponsor of the 4th of July fireworks display.

Tickets may be purchased from any Kiwanian or at Chelsea Drug, Chelsea Lumber Co., Chelsea State Bank, Foster's Men's Wear, Gambles, Heller Electric, Haydauff's, Heller Electric, Heydauff's Appliances, Kusterer's Grocery, Merkel Bros., Michigan Consolidated Gas Co., Palmer Motor Sales, Village Motor Sales, Wallace Wood Insurance, and Western Auto Store.

The program was arranged through Ralph Windoes Travelogues, Inc., of Grand Rapids.

For further information, phone 475-5341.

**Two Chelsea Students Attend WMU Orientation**

Dana K. Check and Barbara M. Duerr were among the final group of freshmen students at Western Michigan University, Kalamazoo, who have completed their summer orientation program.

In groups of approximately 140 each, the new students visited the WMU campus for three days of counseling, testing, registration, and learning the way to various university buildings.

All students return to campus on the week-end of Aug. 27 for the opening of classes on Wednesday, Aug. 30.

**Light Wine Sales Up**

Lansing—Sale of light wines in Michigan totaled 5,240,262 gallons during the first six months of this year, up 11.6 percent compared to the same period last year, Michigan Commerce Department's Liquor Control Commission reports.

Light wines are table and dessert wines that have an alcoholic content of less than 16 percent.

## County Library Open House Scheduled Today, Aug. 24

The Washtenaw County Library will soon join with a growing number of other libraries over the United States which provide special services for those with visual handicaps or those whose physical impairments prevent their management of reading materials.

Persons who have lost the use of their arms or hands through accidents, strokes, cerebral palsy, multiple sclerosis, or other crippling diseases are not forgotten in today's libraries.

Four Dexter residents have already inquired about the new service, says Mrs. Katherine McKillen, librarian of the Dexter District Library. She adds that although the new materials will be available only at the Washtenaw County Library, the Dexter Library will be happy to assist patrons in any way possible.

The designation of the Washtenaw County Library as the sub-regional agency for the Michigan State Library will become official today, Aug. 24, when an Open House will be held at the County Library from 1 to 4 p.m. with a program at 3.

The Michigan State Library was a pioneer in service to the blind and handicapped when it began providing this service in 1928. It was not until 1931 that Congress passed the Pratt-Smoot Act which authorized the Library of Congress to establish such a service, and to set up regional centers in each of the then 48 states.

Until 1966, the emphasis was on the blind, but in that year the law was amended to include anyone unable to read ordinary printed materials because of physical or visual limitations. This latest action also authorized the establishment of

subregionals to place these materials plus the machines on which to play them within easy reach of the persons desiring to use them.

Approximately 172 blind and physically handicapped persons in Washtenaw and Livingston counties are receiving reading materials from the Michigan State Library. It is not presently known just how many eligible persons in the two-county area would make use of the service were it more convenient, but at least 25 new patrons have been added within the past few weeks. The subregional hopes to double the present number of users by next year.

In preparation for the beginning of the special service, Mrs. Ruth Marshall, Community Services Librarian, has been busy for several weeks. Efforts have been made to contact social workers, school officials, church groups, service organizations, hospital volunteers and others who have been urged to put eligible persons in direct contact with the library. A special section of the library has been set aside for those who visit the library. Over 900 titles of talking books and about 500 titles in the large print collection have been assembled.

A talking book is simply a recording which has been made to be played on a specially designed machine which can be easily manipulated. The machines and records are available free of charge. Even the mailing is free so there is no expense to the reader. A catalog of available titles is used to assist the reader in making his selections and with the new subregional library, needed help is as close as the telephone.

Though application for the serv-

## MSU Students Staff Veterans Help Bureau

East Lansing—A Veterans Outreach Program at Michigan State University, staffed by four MSU students who are themselves Vietnam veterans, has helped nearly 100 returning service men and women iron out problems involving education, employment, medical, dental and pension benefits. The program has been in operation only since June.

ice is necessary, Lawrence B. Daventport, library director, points out that this is not as obstructive as it may seem on the surface. The visiting librarian, a member of the family, a member of the medical profession or a teacher may assist the patron and certify their need for the service.

All patrons and interested persons are invited and urged to attend the Open House on Aug. 24, at the Washtenaw County Library located at 4133 Washtenaw Ave., Ann Arbor.

## Servicemen's Corner

**Pvt. William J. Stahl Completes Army Basic Training at Ft. Knox**

Ft. Knox, Ky. — Army Private William J. Stahl, son of Mr. and Mrs. Vincent P. Stahl, 13862 Lake View, Pinckney, Mich., recently completed eight weeks of basic training at the U. S. Army Training Center, Armor, Ft. Knox, Ky.

He received instruction in drill and ceremonies, weapons, map reading, combat tactics, military aid, and army history and traditions.

Pvt. Stahl received training with Company C, 10th Battalion, 5th Brigade.

He is a 1971 graduate of Chelsea High school.

Telephone Your Club News To GR 5-3581.

## NOW OPEN for Business

WE REPAIR AND REPLACE:

- ★ STORE FRONTS
- ★ FURNITURE TOPS
- ★ SHOWER DOORS
- ★ THERMOPANES
- ★ AUTO GLASS — Including Windshields
- ★ MIRRORS
- ★ PATIO DOORS
- ★ TUB ENCLOSURES

Free Pick-up and delivery on auto work.

Storm Door & Window Reglazing & Screens

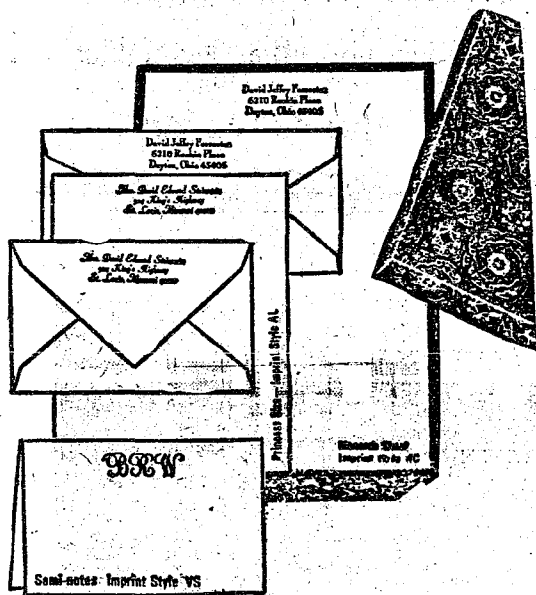
COMMERCIAL BUILDINGS OR RESIDENTIAL

PROMPT SERVICE CALL OR STOP IN REASONABLE PRICES

**CHELSEA GLASS WORKS**

WORKMANSHIP AND MATERIALS FULLY GUARANTEED.  
 PHONE (313) 475-1147 - OPEN 8 a.m. to 5 p.m.  
 140 WEST MIDDLE ST. CHELSEA, MICH.

## The Chelsea Standard



### 1/2 PRICE SALE

Rytex Antique Vellum  
 Personalized Stationery

Sale Price **\$5.00** (regularly \$10.00)  
 traditional lettersheets & new semi-notes

This luxurious vellum paper with its subtle laid-mark pattern assures good taste for all your writing needs. A perfect setting for your 3-initial monogram or name and address printed in blue, dark grey or raspberry red ink. Select your paper color in creamy white, soft blue or colonial grey.

Our new semi-note in Antique Vellum is a full-size princess sheet which folds to show your imprint on the front. So stylish, and versatile for all your casual correspondence.

150 princess sheets & 100 envelopes or 100 monarch sheets & 100 envelopes or 100 semi-notes & 100 envelopes

### Bonus Value

An additional 50 matching unprinted sheets for use as second pages (regularly \$1.50) now only \$1.00 with your order.

MAIL ORDER COUPON

**THE CHELSEA STANDARD**  
 CHELSEA, MICHIGAN 48118  
 ANTIQUE VELLUM: \_\_\_\_\_ boxes (double quantity) at \$5.00 a box  
 INCLUDE BONUS: ☐ (check) 50 extra plain (unprinted) sheets at \$1.00 a box

Imprint Name or Monogram: \_\_\_\_\_

Street: \_\_\_\_\_

City: \_\_\_\_\_ State: \_\_\_\_\_ Zip: \_\_\_\_\_

Check choice:

Princess Size: ☐ White (3500) ☐ Blue (3550) ☐ Grey (3660)  
 Monarch Size: ☐ White (3600) ☐ Blue (3650) ☐ Grey (3560)  
 Semi-Notes: ☐ White (N3500) ☐ Blue (N3550) ☐ Grey (N5360)  
 Imprint Style: ☐ MC ☐ AL ☐ VS (monogram with PLAIN envelopes)

Color Ink: ☐ Blue ☐ Grey ☐ Raspberry

Ordered by: \_\_\_\_\_

Street: \_\_\_\_\_ Apt. \_\_\_\_\_

City: \_\_\_\_\_ State: \_\_\_\_\_ Zip: \_\_\_\_\_

Account No. \_\_\_\_\_ Phone: \_\_\_\_\_

☐ Charge ☐ Check or M.O. enclosed \$ \_\_\_\_\_

Sorry, no C.O.D.'s (Please include sales tax)

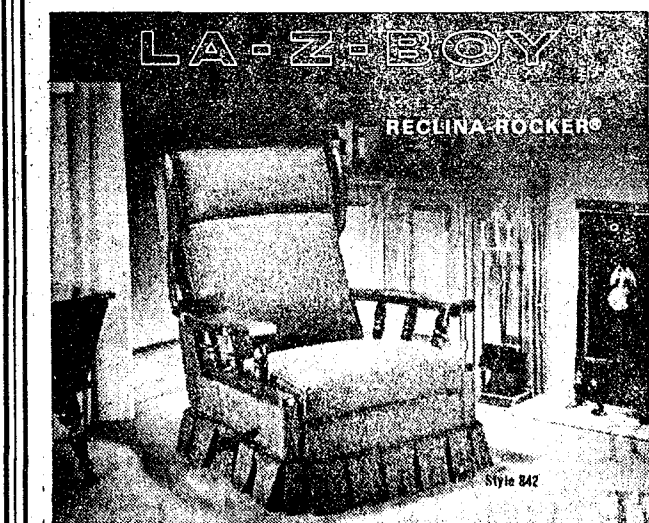
**CARD OF THANKS**

I wish to thank all my friends, OES and Limanear friends, and relatives who sent flowers, gifts, and cards, and who called on me while I was hospitalized at St. Joseph Mercy Hospital and since my return home.

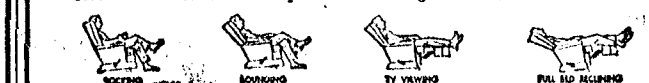
Mary Ethel Vickers.



**BECKER MEMORIALS**  
 6033 Jackson Road  
 ANN ARBOR, MICHIGAN



This chair is destined to be bought after by every member of your family. The generous proportions are enhanced by the finished dark pine finish of the wood accents. It is fully reclining. It's the rocker that doesn't look like a rocker. La-Z-Boy's exclusive Comfort Selector's three-position



**Merkel Home Furnishings**  
 Open Mon. & Fri. Until 9 Ph. 475-8621

## Simmons Authorized Clearance!

# Final Offer to buy a Beautyrest at \$89.95

### Beautyrest Capri

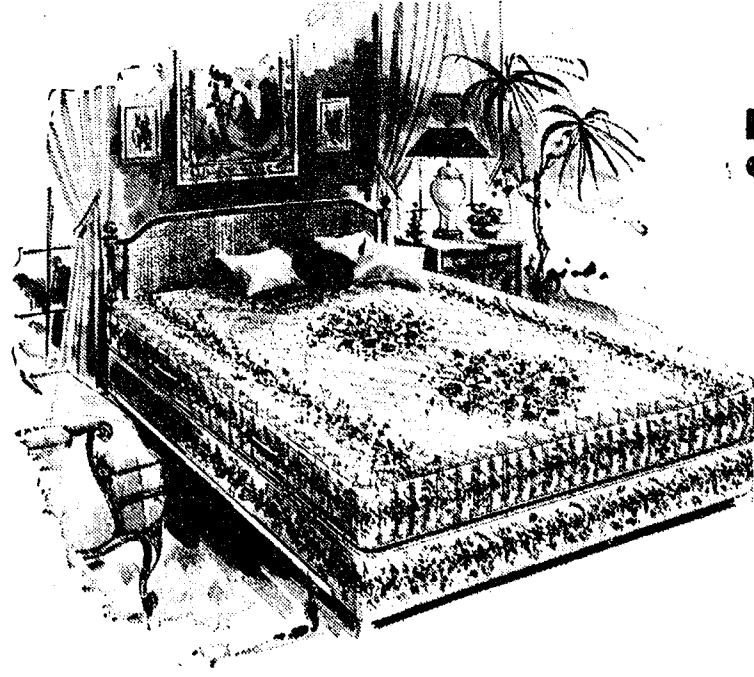
Once our present inventory of famous Beautyrest Capri mattresses is gone, there will be no more. Never again will you be able to spend so little yet get so much comfort and support. A lot of folks will be sad that rising costs have forced Simmons to discontinue the Capri. But you can be glad of this Last Chance to buy a Beautyrest at \$89.95, hurry!

Your most economical route to exclusive individual coil construction...separate coils that act independently of each other. You get support when, and where, you need it most. And comfort all over, all the time. Come in today and buy a Beautyrest at \$89.95.

Twin mattress or matching foundation. Super sizes also available.



## Other Beautyrest models start at \$99.95



### Beautyrest Supreme or Back Care I

Enjoy the luxury of an overnight vacation, every night! That's what you get with either of these superb Beautyrest mattresses. Choose the support your own back needs...and deserves! Beautyrest Supreme, with firm construction that is so good for you. Or Beautyrest Back Care I, with support that's a little more firmer than firm. You'll know when you've made the right choice, because your back won't have any morning message for you anymore!

Twin mattress or foundation. Super sizes are available.

**Merkel Home Furnishings**  
 Open Mon. & Fri. Until 9 p.m. Phone Chelsea 475-8621



## Proctor - Sweet Vows Spoken in Jackson Church

Calvary Methodist church in Jackson was the setting for the marriage of Mrs. Jeanette Proctor and Michael Sweet Saturday, Aug. 19. The Rev. Wilbur Silvernail officiated.

The bride is the daughter of Mrs. Delphine Erickson of Chelsea. The bridegroom is the son of Mr. and Mrs. Edgar Sweet of Stockbridge.

Mrs. Betty Eder attended as matron of honor, and Dave Murphy served as best man. Lori, Julie, Janis, and Barbara Proctor, and Margaret Sweet, children of the couple, were attendants. Phillip Sweet and Richard Proctor, also children of the couple, carried the rings.

The bride was escorted to the altar by her son, David Proctor. Dave Sweet, brother of the bridegroom, seated guests.

A reception immediately following the ceremony was held at the couple's home on S. Main St. Mrs. Stanley Hoard, sister of the bridegroom, cut the cake, and Mrs. Dave Sweet, sister-in-law of the bridegroom, served the punch.

Out-of-state guests were the bride's sisters, Mrs. Wilbert Lindwall of San Diego, Calif., and Mr. and Mrs. Walter Hasenbus and family of Lyndonville, N.Y. The couple left for a short trip to northern Michigan.

## Miller Reunion Draws 92 Relatives

Ninety-two kissing cousins signed the register for the 47th annual Miller reunion, held Sunday, Aug. 20 at Karel Hall, 4-H Building, in Charlotte.

Those attending from this area were Mr. and Mrs. Mao Packard and Miss Nadine Packard, Mr. and Mrs. Duane Boyer and four children, Mrs. Jack Collins and children, Mrs. Roy Greenleaf and children, Mr. and Mrs. A. Giest and daughter, Fremont Boyer and children from Baldwin, and hosts Mr. and Mrs. John Chaplin and family, formerly of Chelsea.

Approximately 30 family members attended breakfast as well as dinner, making it an all-day affair for some.

After dinner, a lengthy and interesting program was performed. Members voted to hold the 48th reunion at the same place on the third Sunday in June.

Mrs. Packard resigned as secretary after seven years, and Mrs. Susan Thompson (Chaplin) accepted the job.

Two of the remaining Miller family were present from Hillman, leaving home at 5:30 a.m. to be present for the affair.

Baseball and reminiscing followed dinner. Most of the relatives attending from Chelsea are fourth and fifth generations of the founders, David and Laura Miller of Caton county, in 1926.



Mrs. Philip C. Musolf

## Connie Fletcher, Philip Musolf Will Make Home in Manchester

Miss Connie Fletcher became the bride of Philip C. Musolf Saturday, Aug. 12 at an 11 a.m. ceremony at St. John Baptist church in Ypsilanti.

Edward Jennings of Detroit performed "One Hand, One Heart," "A Time for Us," and "We've Only Just Begun."

The bride is the daughter of Mr. and Mrs. Charles Fletcher of 428 W. Middle St. The bridegroom is the son of Mr. and Mrs. Robert Musolf of 12535 Scio Church Rd. The bride chose an A-line gown with Chantilly lace and full lace sleeves. A bonnet served as her headpiece with Chantilly lace flowing to form the veil. She carried a bouquet of white roses and daisies.

Miss Molly Foster of 431 W. Middle St. attended as maid of honor. She wore a floral gown with rainbow colors. She carried a bouquet of yellow daisies.

Miss Sue Cobb of Chelsea and the Misses Elinor Musolf and Elaine Musolf, sisters of the bridegroom, were bridesmaids. They were attired in floral print dresses with different colored bodices. Miss Cobb's was blue. Miss Elinor Musolf's was yellow, and Miss Elaine Musolf's was pink.

For her daughter's wedding, Mrs. Fletcher wore a blue A-line dress.

The bridegroom's mother was attired in a pink A-line dress. Miss Kelly LeeLoy of Dexter

was flowergirl and Danny Salyer of Chelsea was ring-bearer.

Gary Winters of Whitmore Lake attended as best man. Glen Musolf, brother of the bridegroom, and Doug Schrader and Korit Winters seated guests.

A reception immediately following the ceremony was held at the Moose Lodge in Ann Arbor for 200 guests. Mrs. Sharon Fletcher of Chelsea, sister-in-law of the bride, cut the cake. Miss Kathy Aalto of Manchester, cousin of the bridegroom, attended the guest book. Mrs. Tootsie Barth of Dexter, sister of the bride, served punch and coffee.

The couple traveled for one week through the Upper Peninsula. For her traveling costume the bride chose a pink dress with white trim.

The couple will reside at 129 C Clinton St., Manchester.

## Club and Social Activities

### BRUNCH PARTY

Mrs. Larry Joseph hosted a brunch party Tuesday, Aug. 22 at her home in honor of Mrs. John (Beverly) Yelzix, who will be an art teacher in Chelsea High school this fall.

Guests were Mrs. Herbert Gaudet and six children, Mrs. Gary Roderick and two children, Mrs. John McBlain and two children, Mrs. Gerald Schultz and one son, Mrs. Thomas Lancaster, and Mrs. Mary Clark.

### BURG FAMILY REUNION

The fourth annual Burg family reunion was held Sunday, Aug. 20 at the Donald Doll family farm at 17410 Heim Rd. Four generations were present. Among the 75 members attending were relatives from Sylvania, O., Chicago, Ill., St. Louis, Mo., Bay Village, O., Detroit, Berkeley, Adrian, Ann Arbor, Jackson, and Chelsea.

### LYNDON EXTENSION CLUB

Lyndon Extension Study Club met at the home of Mrs. Norman (Wilma) Kaiser Thursday, Aug. 17 with a pot-luck dinner at 1 p.m. Twelve members were present.

At the business meeting, members were told of the District Four at St. Andrew's church in Dexter, which will be Tuesday, Sept. 26 with a 6:30 dinner. Reservations must be in to the chairman, Mrs. Robert Bassett, by Sept. 18.

The next meeting will be held at the home of Mrs. Norman Kaiser Sept. 21 with a pot-luck dinner, weather permitting.

The trouble with many interviews is that the politician rarely says what he really thinks—or so it seems.

## W. Gochanours Enjoy Circle Trip Around Lake Superior

Mr. and Mrs. Walter Gochanour returned home recently following a circle trip around Lake Superior.

Highlights of the trip were many, including the Centennial at Baldwin, where their grandchildren, Christine and Matthew Boyer, marched in the parade as playing members of "Alley Cats" band of the Baldwin schools. One of the main features of the day was a sky jump by three parachutists, two of whom landed within a marked spot on the main street of Baldwin. The third parachutist landed about a block away, due to air currents he said. Another feature of the day was the band concert by the "Super Cats" of the Baldwin schools. These two bands have been participating in concerts and parades all summer long in various communities surrounding the Baldwin area.

After spending the week-end with their daughter, Mrs. Fremont Boyer and family, the Gochanours left, going to the Soo and crossing over into Canada early Tuesday morning to begin their trip around Lake Superior, stopping at many points of interest along the way.

Of special interest was the "goose" at Wawa, weighing 4,000 lbs. and standing 30 ft. high. It was built to commemorate the opening of Highway 17 in 1960. Wawa is an Ojibwa Indian name meaning "Wild Goose."

White River, Canada, known as the coldest spot in Canada where the temperature at one time registered 72 degrees below zero, was also visited by the Gochanours. Many beautiful waterfalls were observed along the way as were

many other beautiful and picturesque spots.

Another highlight of the trip Amethyst mine five miles off Highway 17. The trip back to the mine was an experience in itself, driving on a narrow, winding, ever-climbing dirt road until reaching the mine, and where sightseers were allowed to pick up all the amethyst they wished for a nominal fee.

The region, now known as Thunder Bay, was once the cities of Port Williams and Port Arthur. They amalgamated Jan. 1, 1970 and have a population of 111,492.

Some rain was encountered on the trip as well as some rather cold weather.

The trip was concluded by a visit to Grand Marais and another short visit with the Boyers at Baldwin.

This trip was especially interesting to Mrs. Gochanour, having previously taken the trip with her parents, the late Mr. and Mrs. Walter Vicary, in August of 1961. Many changes having taken place. In '61 one had to make a reservation for a place to stay or one was just out of luck. Now there are many motels and camping facilities, restaurants, and gas sta-

tions. But when one sees a sign "Last chance for gas for 55 miles" one best take heed.

The Gochanours also found that the U.S. dollar is worth 97 cents in Canada. One is only allowed to take \$20 worth of food into Canada. Above that a duty is charged. A U. S. citizen is allowed to purchase goods to the value of \$100 per person, duty free, if remaining in Canada for a period of 48 hours or more. If remaining less than 48 hours purchases of only \$10 is allowed.

## Vacation Bible School Closing Thursday at Our Savior Lutheran

Our Savior Lutheran church will hold a closing service of praise for its first Vacation Bible school at 7:30 p.m., Thursday, Aug. 24.

Main participants in the service will be the nearly 60 children and 20 staff members who have been involved in the two-week Bible school.

Many samples of the art projects prepared by the children during sessions will be on display.

A coffee hour will be served after the service by members of the local branch of Aid Association for Lutherans. The public is welcome to attend and take part in this service, says the Rev. William H. Keller.

## GROHNERT'S FARM MARKET

Corner of Waterloo and Bush Rds.  
(1/2 mile west of Cassidy Lake School)

CORN for Eating, Freezing and Canning  
HUCKLEBERRIES from the Grohnert Marsh  
TOMATOES and other Vegetables & Fruit

Also: BLACK DIRT

## Magic Mirror Beauty Salon

Open Monday thru Friday  
9 a.m. to 9 p.m.  
Saturday, 8 a.m. to 3 p.m.  
PHONE 665-0816

## LOSE UGLY FAT

You can start losing weight today. MONADEX is a tiny tablet and easy to take. MONADEX will help you to lose weight. Contains no dangerous drugs and will not make you nervous. No strenuous exercise. Change your life today. MONADEX costs \$3 for a 20 day supply. Lose ugly fat or your money will be refunded with no questions asked. MONADEX is sold with this guarantee by:

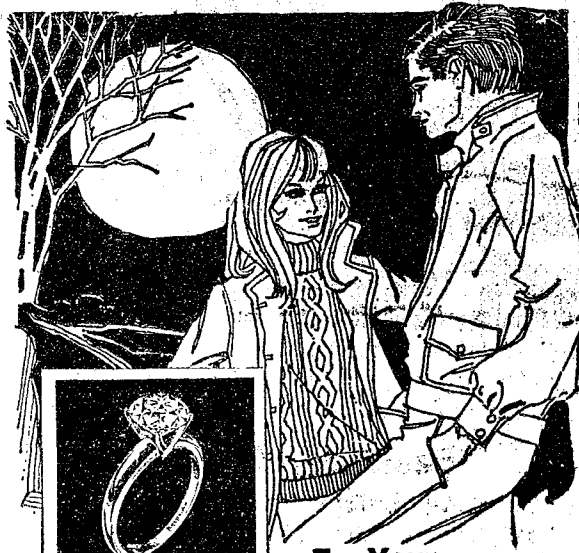
CHELSEA DRUG STORE  
Chelsea - Mail Orders Filled

## VILLAGE BEAUTY SALON

LORETTA - CINDY - EULA  
ARLENE - JANICE - JANET

107 N. MAIN PHONE 475-5421  
Evenings By Appointment

OPEN MONDAY THRU SATURDAY  
NOW OPEN MONDAYS



## For Your Engagement

Choose a Keepsake diamond ring. Keepsake's famous guarantee of perfect quality, permanent registration and protection from loss assures you lasting satisfaction. Your Keepsake will be the perfect symbol of the love you share... for all time.

REGISTERED  
Keepsake  
DIAMOND RINGS

## WINANS JEWELRY

Rings enlarged to show detail. Trade-Mark Reg.

## Thought For Food

Have you tried consommé on the rocks? For a cooling first course, mix equal parts of consommé and apple juice and serve over ice cubes. The melting cubes will dilute to the desired potency. For another summer starter, chill cans of consommé thoroughly and serve jellied in bowls.

A constant summer diet of cold meals can dull a family's interest in dining. It's best to intersperse cold meals with hot ones. Although cold meat platters zoom in popularity when the sun is high and hot, an active family can yearn for a hot roast, stew or casserole dish. A good well-balanced diet, including meat, is just as important in the summer as any other season.



In case of fire do you have  
"ready money" to rebuild?  
Better get

Auto-Owners

Fire  
Insurance

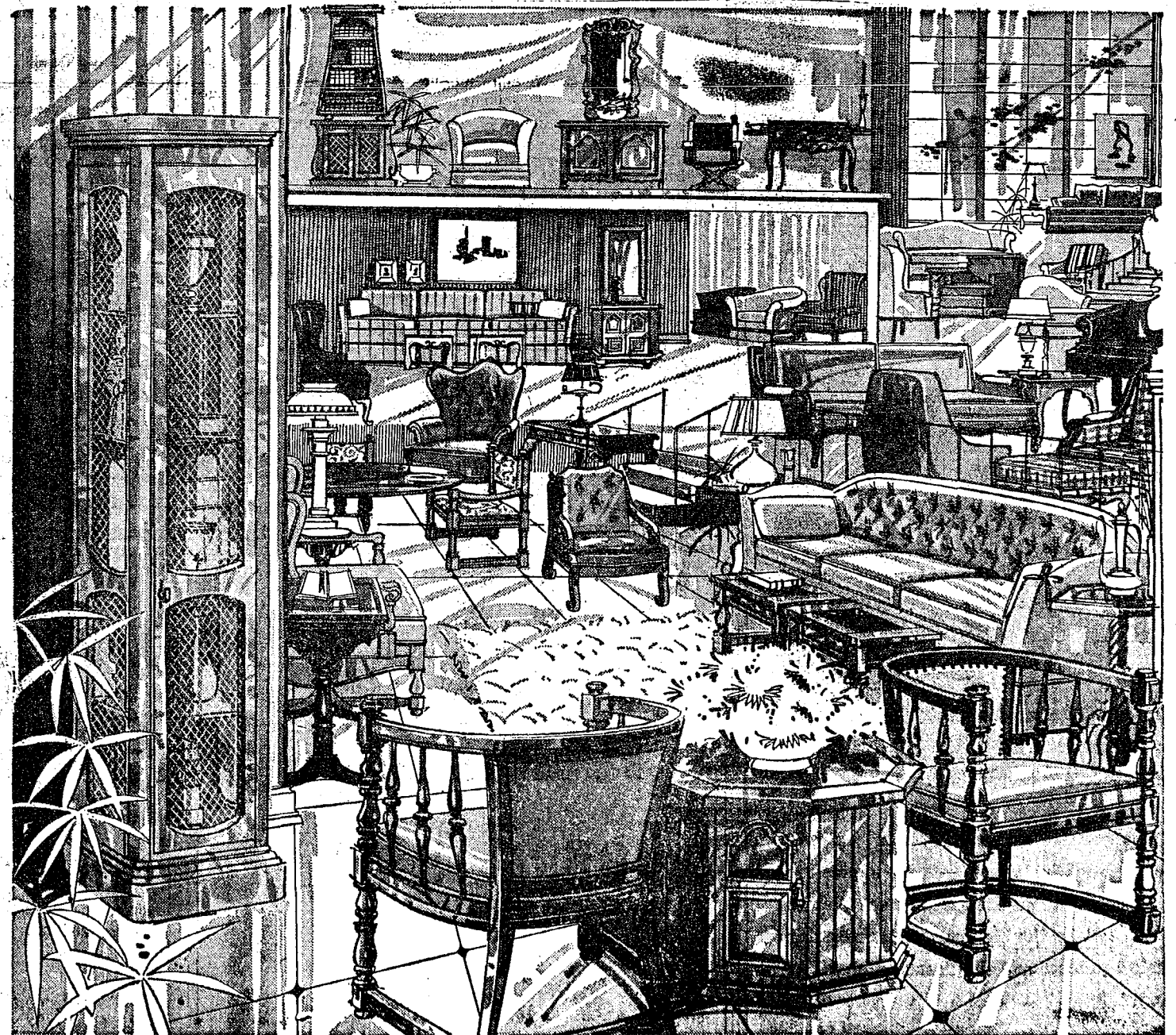
See your A-D Man

A. D. MAYER  
AGENCY, INC.

"Your Protection Is Our Business"

115 Park St. Chelsea  
Phone 479-5061

Auto-Owners  
INSURANCE COMPANY  
Member since 1901, Licensed in Michigan



## Factory-Authorized Semi-Annual 20% OFF UPHOLSTERY SALE

Here's your chance to take advantage of important savings...semi-annual savings on our entire gallery of Burlington House Furniture upholstered pieces. Choose from hundreds of items! This special sale event is sponsored by the factory only twice yearly with authorized price reductions of 20% off the regular everyday low prices. Come in now during this FACTORY-AUTHORIZED SEMI-ANNUAL 20% OFF SALE of Burlington House Furniture and really save!

AUGUST ONLY - FINAL WEEK TO SAVE

## MERKEL Home Furnishings



Burlington House Furniture  
Since 1900



## Community Calendar



The sophomore class of '75 is starting to decorate the float for the Chelsea Community Fair. It is being decorated in the garage of David Leach at 1313 Freer Rd., from 9 a.m.-12 noon, 1-4 p.m., and 7-10 p.m., any day, unless otherwise posted. All members are urged to attend.

Ann Arbor Saturday Night Singles Club dance for single adults 25 years and over every Saturday from 9 p.m. to midnight at the YM-YWCA, 350 S. Fifth Ave., Ann Arbor. Met-G-Tones Orchestra. For information phone 663-6068.

Teens wishing to become volunteers at St. Joseph Mercy Hospital, Ann Arbor, should apply now for orientation classes Sept. 18-22, 7-9:30 p.m. Work permit, chest x-ray, doctor's and parent's permission required. Ph. 665-4141 for further details.

First United Methodist all-church breakfast Sunday, Aug. 27, 7:30 a.m. at Crooked Lake. Tickets from Foster's Men's Wear or church office.

Mouthpiece impressions for all football players Thursday, Aug. 24 1 p.m., Dr. Miller's and Dr. Bor-ton's offices.

Chelsea Rebekah Lodge No. 130 is on vacation until September. Members are asked to notify Nadine Packard of any sick or in distress members.

American Legion and Auxiliary hospital equipment available by contacting Don O'Dell at 475-8249.

Pap tests are free for all area women, Tuesday mornings, at St. Joseph Mercy Hospital, Ann Arbor. Call American Cancer Society office, 668-8857, for appointment.

Chelsea Social Service, second floor of the Municipal Building, is open each Tuesday and Thursday afternoon from 2 p.m. to 5 p.m. to assist persons with problems, either through counseling, or referral to other agencies, when indicated. Limited financial help may be given. The office also maintains a clothing depot for new and used clothing and bedding which is given without charge.

Inquiries regarding the Chelsea blood bank may be directed to Harold Jones in the event that Mrs. Dudley Holmes is unavailable, or to Mrs. Pauline McKenna, American Red Cross in Ann Arbor, 871-5300.

American Legion Auxiliary past presidents pot-luck dinner Tuesday, Aug. 28 at the home of Madelyn Weber. Bring a passing dish and table service.

Chelsea school band will meet at 12:30 p.m. at the old junior high school parking lot Saturday, Aug. 26, for the Chelsea Community Fair parade.

Chelsea High school marching band will rehearse Wednesday, Aug. 30, from 8-8 p.m. at the high school.

Senior Citizens regular business meeting Tuesday, Aug. 29 at 7:30 p.m. at the Korner House.

No August meeting of Limabears.

## DEATHS

### Mrs. Alvin Eschelbach

Life-Long Area Resident Dies at Ann Arbor Hospital

Mrs. Alvin (Ruth) Eschelbach, 63, of 234 Harrison St., died Wednesday, Aug. 9 at St. Joseph Mercy Hospital, Ann Arbor, after a short illness.

Born Feb. 7, 1909 in Lodi township, Washtenaw county, she was the daughter of Christian and Martha Jedehe Hirth. She was married July 31, 1937 to Alvin Eschelbach in Detroit. He survives. They lived all of their married lives in Chelsea. She was a member of Zion Evangelical Lutheran church of Rogers Corner. Surviving, in addition to her husband, are one brother, Howard Hirth of Ann Arbor; and one sister, Mrs. Ernest (Lucille) Kugler of Allen Park.

Funeral services were held Saturday, Aug. 12 at 2 p.m. at the Zion Evangelical Lutheran church with the Rev. Jay Halte officiating. Burial followed in the church cemetery.

Arrangements were made by Staffan Funeral Home.

### Library Sponsoring Movie for Children

McKune Memorial Library is sponsoring a movie, "The Winter of the Witch," Tuesday, Aug. 29 at 2 p.m. for those youth who participated in the summer reading program.



QUEEN AND RUNNER-UP: Ann Merkel, left, Tuesday, Aug. 22. Chosen Queen for the 1972 Fair representative of the junior class, was chosen as Is Judi Blaess, Kiwanis Club entrant, runner-up to the Chelsea Community Fair Queen.

## Stolen Pick-Up Truck Found In Allen Park

A 1966 Chevrolet pick-up belonging to Gary Ferry of 9700 Bee-man Rd., Grass Lake, was stolen some time between 6:45 a.m. and 9:45 a.m. Wednesday, Aug. 9.

Ferry, who works at Central Fibre Products Co., stated that he left his pick-up parked on N. Main St. across from the Floyd Bridge Chevrolet agency.

His wife passed the area at 9:45 a.m. and noticed that the vehicle was not on the street. Her father told her that he had seen the vehicle at 3 p.m. in Mason, and was sure that it was the same vehicle because it was damaged on both sides and has a cracked windshield. The owner kept a key under the floor mat.

Police put out a LEIN, reporting that someone had unlawfully driven away a motor vehicle, and at 6:15 the Allen Park Police Department contacted the Chelsea Police Department to report that they had recovered the vehicle, and that it was in their parking lot, ready for the owner. They believe that a Camp Waterloo escapee had taken the vehicle.

Prints were found in the vehicle, and were forwarded to Lansing.

### Personal Notes

Dave Knickerbocker of California was visiting friends and relatives in Chelsea with his two children, Tommy and Sally, while his wife and third child visited with her mother in Detroit. Knickerbocker stayed with his brother, George, at 1221 Freer Rd., during his stay from Aug. 4-15. Knickerbocker, who left Chelsea 16 years ago, was in Chelsea after a four-year absence.

## LIBERTIES

A daughter, Deanna Kay, Sunday, Aug. 13 at St. Joseph Mercy Hospital, Ann Arbor, to Darryl and Gay Bolanowski of Grass Lake. Maternal grandparents are Mr. and Mrs. Joseph Kosiba, and maternal great-grandmother is Mrs. Phoebe Mason of Detroit. Paternal grandparents are Mr. and Mrs. Walter Bolanowski of Chelsea, and paternal great-grandmother is Mrs. Hornata Bolanowski of Warren.

A son, Trevor Christopher, Wednesday, Aug. 16 at St. Joseph Mercy Hospital, Ann Arbor, to Mitchell and Rhoda Zink of 13382 North Lake Rd., Gregory. Maternal grandparents are Mrs. Geraldine Arnott of Ann Arbor and William Vogel of Chelsea, and paternal grandmother is Mrs. Albert Zink of Chelsea.

Mrs. Robert (Josephine) Hochrein is improving at St. Joseph Mercy Hospital, Ann Arbor, from an automobile accident three and one-half weeks ago. She is in room 358, bed 2, and will be there for several more weeks.

## Schedule Told For Distributing Band Uniforms

Band director Warren Mayer has announced a schedule of times that band members may pick up their uniforms at the high school band room.

11th and 12th graders will be given their uniforms Tuesday, Aug. 29, from 9 a.m. to 12 noon; 10th grade students may pick up their uniforms Thursday, Aug. 31 during the same time. Freshmen band members will pick up their uniforms Tuesday, Sept. 5, also from 9 a.m. to 12 noon.

Director Mayer reminds students that there is a \$1 spat rental fee and a \$1 fee if new gloves are needed.

### Community Chest Funds

(Continued from page one)

grant of \$1,000 to Spaulding for Children to be remitted before the end of the year, and rejected Spaulding's application for member agency status.

## Char Powers Describes Life On Greek Tobacco Farm

Editor's Note: Our fourth letter from Charlene Powers is dated Aug. 10, and is postmarked Messolongi, Greece.

It's hard to imagine taking a shower under a hose—but it happens every day in Greece. My third host family in Messolongi doesn't have any indoor plumbing—like most homes in the village. Needless to say, the water is cold and you don't last for very long.

My family has a small tobacco farm of 15 acres. Harvesting tobacco lasts about two months, with the entire family working night and day.

My two host sisters would rise at 2 a.m. every morning to go to the fields and pick the green tobacco leaves. As soon as the sun rises, they raced to get the baskets full of produce home under the shade. We'd spend the rest of the day stringing the leaves on a five-foot string to be hung out to dry.

Most farmers arranged a plastic cover to put their tobacco under—when the leaves are dried in the shade it's of a better quality. Prices are good for their efforts. Market price is .35 drachmas per kilo—about \$1.05 for two pounds of produce.

I visited the extension office in Messolongi. It's easy to notice the change from American offices. No one has a secretary, which means that the men all do their own paperwork. And typewriters are scarce. Most graphs, memos, etc., are all written out in longhand, which makes progress very slow.

And to clip papers together, Greeks use straight pins instead of paper clips. Office hours are 8 a.m. to 1:30 p.m., but the Greeks work six days a week with only Sunday off.

We've eaten dinner out every night for three weeks now. Meals are very reasonable here. A fish dinner with salad, bread, and a bottle of wine for two people will only cost a couple of dollars. And in the summer, all the restaurants serve meals out.

side; under the stars. Greeks never eat until 10 p.m.

Tomorrow I go to Lamia for two weeks. The bus ride from here is five hours long—it's not really that far, but the roads are only gravel and it's very mountainous.

Weather here has been hot—in the 100 plus degrees, but no humidity, so it's bearable, especially with the Greek habit of naps every afternoon!

Char.

## Salvation Army Provides Many Services in Community

Editor's Note: This is the fourth of a series of articles describing the functions and services to Chelsea by Community Chest member agencies.

The Salvation Army does more than march through town with its band. Located at 9 S. Park, Ypsilanti, the organization has a Red Shield store located at 105 E. Ann, Ann Arbor.

The Salvation Army offers many services to Chelsea citizens. It offers youth activities for recreation and character building. For the transient family or individual, the Salvation Army offers meals, clothing, and lodging.

The organization is active in family service activities. It provides food, clothing, and furniture, as well as caseworkers to aid families with their internal and external problems.

The Salvation Army sponsors League of Mercy, whose individ-

uals visit shut-ins or the ill. It also works with senior citizens through the Chelsea Social Services.

At Easter, the Salvation Army also works with senior citizens, it distributes clothing to individuals for 40 families in Chelsea.

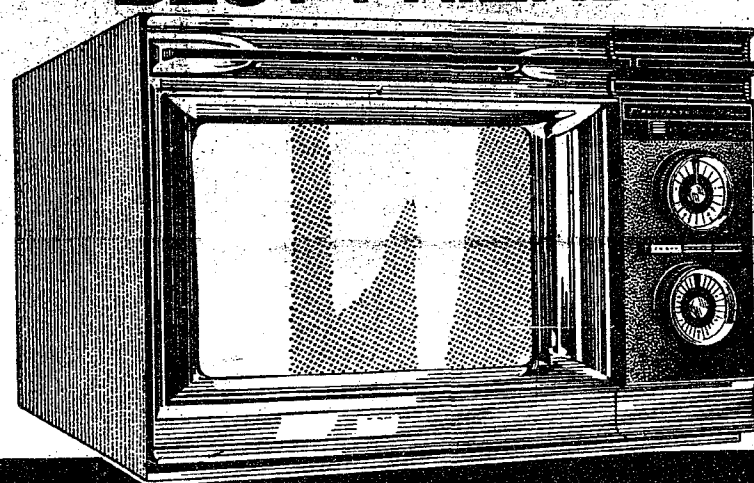
The organization also provides other services for teens and up- wed mothers.

## Kids Parade

(Continued from page one)

was a two-way tie between "Tree of Life," Troy, Darin, Scott, Carol and Valerie Hosler and "World," Carmen, Dale, Dawn, and Becky Dee, Dale, and Dennie Petsch and Scriber; "Covered Wagon" - Dee, Robert Annabei, second; and "Airplanes" - Marilyn Cobb, Mark and Terri Neff, third.

## THE WORKING GIRL'S BEST FRIEND:



Make the greatest cooking discovery since fire.

Roast Beef (5-lb.) - 35 minutes Baked Potato - 4 minutes Green Beans - 8 minutes  
Ham & Eggs - 3 minutes Hamburger - 60 seconds  
Hot Dog - 20 seconds Baked Apple (4) - 4 minutes

**Radarange**  
MICROWAVE OVEN

made only by **Amana**.

Why spend hours cooking for the family and cleaning up afterwards? You shouldn't have to... not after spending a day in an office. And now there's no need to.

The Amana Radarange microwave oven lets you cook everything in a fraction of the normal time. Meals that used to take an hour take 15 minutes in the Radarange oven. You'll cut most cooking times by 75%, and defrost frozen foods in minutes.

But cooking is only half the battle. You have to clean up, and the Radarange oven makes that easy too. There's no heat to bake on cooking juices, so the oven wipes clean with a damp cloth. And you cook on paper or glass—right on your dinnerware, if you like. No more pots and pans to scrub.

Tomorrow, on your lunch hour, drop by for a free—and enlightening—demonstration of the Radarange microwave oven.

If it doesn't say **Amana**,

it's not a **Radaraner**.  
MICROWAVE OVEN

This will be demonstrated at the Chelsea Fair by an Amana representative.

**HEYDLAUFF'S**  
113 North Main, Chelsea Phone 475-1221

DATELINE: AUGUST, '72

## Top Modular House Firm Bankrupt

"Of some 200 companies that jumped into the Modular Housing Field in the last few years, dozens have already dropped out."

"Many producers discovered that the cost savings promised by assembly-line manufacture were now smaller than anticipated. Such savings are often offset by the high cost of transporting the finished product and the financing of unsold inventory."

When YOU Think 'New Home' - Come to Where the Savings Are!

**Chelsea Lumber**

## ORDER NOW! BOWLING SHIRTS

By Service and Hilton

**STRIETER'S MEN'S WEAR**

"The Place To Go for Brands You Know"

## Labor Day Week-End PAINTER'S SPECIAL

HOUSE PAINT \$7<sup>13</sup> gal.

Standard White and Colors in your choice of oil or latex

Interior Flat Latex, gal. . . . . \$6.19

Interior Lo-Lustre Enamel, gal. . . . \$9.42 (Latex or Oil Base)

Paint Thinner, gal. . . . . 99c

**CHELSEA HARDWARE**

Your Pittsburgh Paint Dealer

110 S. Main St.

Phone 475-1121





1101 M-52 CHELSEA

## FAIR WEEK BONUS!

★ THURSDAY  
★ FRIDAY  
★ SATURDAY

OUR EXCLUSIVE POPULAR

**10<sup>c</sup> HOT DOGS**

SERVED FROM FARMER PEET'S LI'L RED BARN

**VERNORS** CUP **5<sup>c</sup>**

SERVED 12:30 TO 6 P.M. IN  
POLLY'S PARKING LOT BY STORE ENTRANCE

## Plan To Attend the Chelsea Fair

### U.S.D.A. CHOICE BEEF SALE! YOUR FINEST

U.S.D.A. CHOICE BEEF CENTER CUT

**CHUNK STEAK** lb. **79<sup>c</sup>**

U.S.D.A. CHOICE BEEF FULL SLICES

**ROUND STEAK** lb. **\$1.29**

U.S.D.A. CHOICE BEEF BONELESS

**ROUND STEAK** lb. **\$1.39**

U.S.D.A. CHOICE BEEF BONELESS ROLLED

**RUMP ROAST** lb. **\$1.39**

U.S.D.A. CHOICE BEEF BONELESS

**SIRLOIN TIP STEAK** lb. **\$1.59**

U.S.D.A. CHOICE BEEF

**SIRLOIN STEAK** lb. **\$1.49**

U.S.D.A. CHOICE BEEF CLUB OR

**T-BONE STEAK** lb. **\$1.59**

U.S.D.A. CHOICE BEEF

**Porterhouse Steak** lb. **\$1.69**

FRESH GROUND

**Beef Chuck** . . . lb. **99<sup>c</sup>**

FARMER PEET'S REPEATER

**Bacon** . . . lb. **89<sup>c</sup>**

FARMER PEET'S CHUNK

**Braunschweiger** . . lb. **69<sup>c</sup>**

FRESH GROUND ALL BEEF

**Hamburger** . . . lb. **69<sup>c</sup>**

FRESH GROUND

**Beef Round** . . . lb. **\$1.09**

FARMER PEET'S BABY BONANZA

**Hams** . . . lb. **\$1.19**

FARMER PEET'S LINK

**Sausage** . . . lb. **99<sup>c</sup>**

JACKSON COUNTY FAIR 4-H

### LAMB SALE

OUR ANNUAL BLUE RIBBON 4-H LAMB SALE

Shoulder Rib Cut  
**Roast** . . . lb. **89<sup>c</sup>** **Chops** . lb. **\$1.59**

Leg O' Lamb . lb. **\$1.19** **Chops** . lb. **\$1.79**

Shoulder Blade Cut Boneless  
**Chops** . . lb. **99<sup>c</sup>** **Patties** . lb. **99<sup>c</sup>**

Shoulder Round Bone Tender Cuts for  
**Chops** . lb. **\$1.19** **Stew** . . lb. **69<sup>c</sup>**

All especially purchased by our Meat Supervisor for this Special Once-A-Year Event.

12-Oz. Pkg.

**Hot Dogs** . . . **69<sup>c</sup>**

3-Lb. Can Armour Canned  
**Picnics** . . **\$2.79**

Fresh Dressed Cut Up  
**Stewers** . . lb. **49<sup>c</sup>**

Eckrich All Meat Fun  
**Franks** . . lb. **89<sup>c</sup>**

12-Oz. Pkg.

**Bacon** . . . **79<sup>c</sup>**

1 1/2-Lb. Armour Star Club  
**Braunsweiger** **99<sup>c</sup>**

Eckrich  
**Bologna** . lb. **\$1.09**

10-Oz. Pkg. Eckrich  
**Smokylinks** . . **79<sup>c</sup>**

CLIP & SAVE

SAVE 16c WITH COUPON  
DETERGENT

**LIQUID JOY**

22-Oz. **39<sup>c</sup>**

With \$3.00 Purchase  
EXPIRES AUG. 26, 1972

CLIP & SAVE

SAVE 40c WITH COUPON

**KOTEX**

40-Ct. Box **\$1.25**

With \$3.00 Purchase  
EXPIRES AUG. 26, 1972

CLIP & SAVE

SAVE 15c WITH COUPON  
CONTADINA

**TOMATO PASTE**

3 6-Oz. Cans **36<sup>c</sup>**

With \$3.00 Purchase  
EXPIRES AUG. 26, 1972

CLIP & SAVE

SAVE 10c WITH COUPON  
WEIGHT WATCHERS

**Sugar Substitute**

102 Ct. Packets **69<sup>c</sup>**

With \$3.00 Purchase  
EXPIRES AUG. 26, 1972

CLIP & SAVE

SAVE 40c WITH COUPON

**NESTEA**

3-Oz. **63<sup>c</sup>**

With \$3.00 Purchase  
EXPIRES AUG. 26, 1972

DETERGENT

**LIQUID JOY** 22-Oz. **39<sup>c</sup>**

**KOTEX** 40-Count Box **\$1.25**

CONTADINA

**TOMATO PASTE** 3 6-Oz. Cans **36<sup>c</sup>**

WEIGHT WATCHERS

**SUGAR SUBSTITUTE** 102 Ct. Packets **69<sup>c</sup>**

**NESTEA** 3-Oz. **63<sup>c</sup>**

DETERGENT

**OXYDOL** 84-Oz. Box **\$1.17**

Flavorite Soft Bowl

**MARGARINE** 1-Lb. Ctns. **\$1.00**

ELF FROZEN

**French Fries** 9-Oz. Pkg. **10<sup>c</sup>**

POLLY'S

**ICE CREAM** 2 1/2-Gal. Cartons **89<sup>c</sup>**

**CREAM PIES** 14-Oz. **19<sup>c</sup>**

**COCA-COLA** 8 Pak 16-Oz. N.R. Bottles **89<sup>c</sup>**

10-OZ. PKG. MADE RITE

**Corn Puffs** . . . **49<sup>c</sup>**

10-OZ. SMUCKER'S

**Mint Jelly** . . . **31<sup>c</sup>**

40-OZ. SHEDD'S

**Prune Juice** . . . **55<sup>c</sup>**

THANK YOU CHERRY

**Pie Filling** . . . 3 20 Oz. **\$1.00**

75-CT. CUT RITE

**Sandwich Bags** . . . **17<sup>c</sup>**

12-OZ. SPLIT

**Cashew Nuts** . . . **79<sup>c</sup>**

11-OZ. FLAVORITE

**Cookies** . . . **29<sup>c</sup>**

46-OZ. RED HAWAIIAN

**Punch** . . . **32<sup>c</sup>**

1/2-GAL. ELF FABRIC

**Softener** . . . **49<sup>c</sup>**

WHITE OR PINK

**Lozenges** . . . 3 Pkgs. **\$1.00**

CLIP & SAVE

SAVE 30c WITH COUPON  
DETERGENT

**OXYDOL**

84-Oz. Box **\$1.17**

With \$3.00 Purchase  
EXPIRES AUG. 26, 1972

LIMIT 1

POLLY'S

OPEN

24

HOURS  
A DAY

7 DAYS A  
WEEK

GOLDEN RIPE CHIQUITA

**BANANAS**

Lb.

**12<sup>c</sup>**

Calif. Red or White

**Grapes** . . . lb. **39<sup>c</sup>**

Sweet Purple Prune

**Plums** . . . lb. **39<sup>c</sup>**

Tender Michigan

**Gelery** . . stalk **29<sup>c</sup>**

Long Green

**Cucumber** 2 for **29<sup>c</sup>**

HOME-GROWN

**CANTALOUPE** . ea. **39<sup>c</sup>**

HOME-GROWN

**TOMATOES** . . . lb. **33<sup>c</sup>**

Calif. Bartlett

**Pears** . . . lb. **29<sup>c</sup>**

Calif. 113 Size

**Oranges** . doz. **69<sup>c</sup>**

2 1-Lb. Cello Bags Sweet

**Carrots** . . . **29<sup>c</sup>**

Meaty Green

**Peppers**, 2 for **29<sup>c</sup>**

## AGRICULTURE IN ACTION

by Carl P. Kentner

MICHIGAN FARM BUREAU

### ★ Inconsistency

While the Secretary of Agriculture is proudly proclaiming that American farm exports reached a new record high in the past year, the Administration announced action to restrict the export of U. S. cattle hides.

The recent action of restricting exports of cattle hides will seriously reduce farmers' income opportunities and is not in accord with the nation's efforts to increase exports, according to William J. Kuhfuss, president of the American Farm Bureau Federation, the nation's largest farm organization.

The intention of the government in restricting hide exports is to force down the price of hides available to domestic tanners and shoe manufacturers. Such action is not expected to have much impact on the retail price of shoes since hide price is an exceedingly small factor in the over-all cost of a pair of shoes.

The importance of farm exports to the nation's balance of payments is seen in the fact that an increase in our farm exports for the fiscal year ended June 30 partially offset a large U. S. trade deficit in non-farm products.

Farm exports for the fiscal year were \$2 billion larger than agricultural imports. This favorable farm trade balance is the highest in five years. The accomplishment in farm trade held the nation's over-all balance of trade to a \$5.1 billion deficit, the largest in history.

Government officials have also expressed concern over beef prices and have rightly pointed out that one reason for higher meat prices is rising consumer demand. The best way to satisfy demand is to increase production. But how do export controls on hides encourage farmers to produce more cattle?

While export controls have been initiated in an effort to reduce shoe prices, it is farmers' income opportunity which will decline, not shoe prices.

Telephone Your Club News  
To GR 5-3581.

A  
QUALITY  
PAINT  
SAVES  
YOU  
MONEY!



COVERS MORE!  
LOOKS BETTER!  
LASTS LONGER!

Quality Dutch Boy® House Paint saves you money because its superior hiding power helps you cover more surface area.

• Its tough, lustrous finish wears slowly, evenly.

• Flows on smoothly, easily.

Get Dutch Boy House Paint from us today!

If there's quality on the inside, there's a Dutch Boy® on the outside.



**MERKEL  
BROS.**

Open Mon. & Fri. Til 9  
Phone Chelsea 475-8621









JIFFY MARKET softball team, the first-place team in the National League, defeated the Wolverine Bar team, 2-1, in the All-City Championship game Wednesday evening. Pictured here, front row, left to right, are members of the championship team: Mark Hartsuf, Harold Kunzelman, and Louie Fee-

subscribe Today to The Standard!

## '73 Wheat Allotment Notices Mailed to County Producers

Notices of 1973 wheat allotments and on official explanation of the 1973 Wheat Set-Aside Program were mailed Friday, Aug. 18, to producers in Washtenaw county, according to Raymond Girbach, chairman of the County Agricultural Stabilization and Conservation (ASC) Committee.

All participants will set aside an acreage equal to 86 percent of their farm domestic allotment, will earn wheat certificate payments based on their domestic allotment, and will be eligible for loans on wheat grown on participating farms.

An additional set-aside option also is offered, Girbach said. Contingent upon their 1972 wheat acreage, producers may set aside an additional acreage up to 150 percent of their domestic wheat allotment in return for a payment of 88 cents a bushel times established yield times acres of additional set-aside.

A producer who accepts the additional set-aside option also agrees to limit his production of 1973 wheat. The limitation is determined by the formula: 1972 spring and winter wheat planted acreage on the farm plus any 1972 additional set-aside, minus the 1973 additional set-aside.

"The big point to make at this time is that a wheat grower in the 1973 Wheat Program can go one of two ways: One—maintain required set-aside and conserving base acreages with no limit on his wheat acreage. Two—maintain required set-aside, additional set-aside, and conserving base acreages and limit his wheat acreage," the ASC Committee Chairman said. "He should check with the County ASCS Office for full details."

A number of other important items are covered in the official explanation, including a reminder that 1973 is the year when a farmer who did not plant a program crop during the past two seasons can lose his allotment if he fails to plant for a third successive year.

Substitution provisions are spelled out. Soybeans, corn, grain sorghum, and barley may be substituted for wheat to preserve allotment history.

"Then, too, I want to remind producers that set-aside acreage—both the required and any additional set-aside—must be of the same average quality as the other cropland on the farm," Girbach said.

Producers may ask for set-aside inspection and measurement service from the County ASCS Office in order to assure themselves well ahead of time that set-aside land is acceptable. This service is offered at cost.

Allotment notices to wheat producers are sent several months before sign-up, at which time farmers give official notice of their intent to participate in the set-aside programs and designate their set-aside acreage. The official sign-up period has not yet been announced.

### U. S. - NUMBER 1

Tornadoes occur more often in the United States than anywhere else in the world.

## Softball Results

### FAST PITCH RESULTS

The first game of the city playoffs Thursday, Aug. 17 was won by Wolverine Bar, who defeated Dunlavy Farms by a score of 12-9. Wolverine Bar will play the winner of the Jiffy Market and St. Paul's for the city championship Wednesday, Aug. 23.

### SLOW PITCH FINAL STANDINGS

	W	L
North American Rockwell	12	0
Chelsea Teachers	8	4
Methodist church	2	10
Chrysler Prov. Grounds	2	10

### HOME RUNS

Week of Aug. 17  
Jim Wojcicki, Wolverine Bar; Calvin Poe, Wolverine Bar; and Dick McCalla, Methodist church.

### WINNING PITCHERS

Week of Aug. 17  
Bar; and Warren Porath, Methodist church.

## Inverness Golf League

Standings as of Aug. 21

	Pts.
Stan's Flower Shop	56½
Seitz's Tavern	52½
Chelsea Lanes	49½
Central Fibre	48½
Chelsea Milling	47½
3-D Sales	46½
Dana Corp.	44
Dancer's	42
Longworth Plating	41
Meabon's	40½
Lindell Forging	36½
Delf's Paint	35½
Palmer's T-Birds	35
A. D. Mayer Ins.	33
Inverness Inn	32½
Schumm's	30½
The Pub	25
Chelsea Lumber	23½

## Hearings Scheduled On Consumer's Power Rate Increase Request

Lansing—Public hearings on an application by Consumers Power Co. of Jackson for authority to increase its rates by \$56 million annually will start on Sept. 11, the Michigan Public Service Commission reports.

The Commission also announced that it will hold hearings Sept. 20 and 21 on the utility's request for a \$34.2 million interim rate increase. Consumers Power has asked that the interim rate increase be put into effect immediately pending a final decision on its application for a \$56 million rate hike.

### EXPANSION!

Some 8,000 miles of new roads—enough to girdle the Nation—are added annually to the United States highway system.

## HELLER ELECTRIC & INSULATING

Now  
Edison Trained  
Electric Heat  
Dealer

Call us for estimates on all types of wiring.

We insulate old or new homes with Thermo-tron insulation and install electric heating systems.

CALL 475-7978  
or 475-2096

## BOWLERS

TEAMS, MEN, WOMEN NEEDED  
For the Following League Times:

SUNDAY NIGHT, 8 p.m.	Mixed
MONDAY, 6:40 p.m. and 9 p.m.	Men
TUESDAY, 8:30 p.m.	Men
WEDNESDAY, 6:30 p.m. and 9 p.m.	Women
THURSDAY, 6:40 p.m., Men; 9 p.m.	Mixed
FRIDAY, 6:50 p.m. and 9 p.m.	Mixed
SATURDAY, 9 a.m. to 2 p.m.	Children

18 ASTROLINE LANES • BILLIARDS

CHELSEA LANES, Inc.

PHONE 475-8141

1189 M-52

CHELSEA

**SPORTS CORNER**

THE YOUNG CATCHER HIT .275 LAST YEAR, SHOULD TOP .300 THIS SEASON.

THE CLEVELAND INDIANS SHOULD FINISH HIGHER THIS YEAR IN THE AMERICAN LEAGUE AS

**RAY FOSSE**

HANDLES PITCHERS, THROWS OUT RUNNERS AND DIRECTS THE 'CHARGE'!

## Cub Scout Pack 415 Taks Part In Special 'Olympic' Games

Jack Sprague was activity leader for Pack 415's meeting Sunday, Aug. 20, at Waterloo.

Cub and Webelos scouts, their families, pack committee people, den mothers, and Cubmaster Gene Ahrens all gathered for the Cub Scout Olympics, which included nine different activities.

First, second, and third-place ribbons were awarded to the winners of the following activities:

basketball shooting accuracy—David Seyfried, first; Kelly Krieger, second; and Peter Beaudoin, third; water carrying race—Kelly Krieger, first; Andy Ahrens, second; and Tony Klobuchar, third; wheelbarrow race teams—Toddy Sprague and Peter Beaudoin, first; Andy Ahrens and Barry Hinz, second; and Herbert Pierce and Tony Klobuchar, third; high jump—

Kelly Krieger, first; Herbert Pierce, second; and Brian Hughes, third; 50-yard dash—Kelly Krieger, first; Toddy Sprague, second; and Tony Klobuchar, third; distance run—Kelly Krieger, first; Larry Cameron, second; and Tony Klobuchar, third; rope climb—Kelly Krieger, first; Toddy Sprague, second; and Andy Ahrens, third; basketball distance throw—David Seyfried, first; Kelly Krieger, second; and Andy Ahrens, third; football pass accuracy—Steve Adkins, first; Kelly Krieger, second; and Andy Ahrens, third.

Toddy Sprague was awarded two silver arrow achievements, and Kelly Krieger advanced into the Boy Scouts.

Afterwards, all present enjoyed a hot dog roast and picnic.

## Visit the MARK IV LOUNGE

Now Serving  
Your Favorite Beverages

Lunches Starting at 11 a.m.

LOCATION: 1180 M-52, CHELSEA  
AT CHELSEA LANES

## OPEN

and expanding to serve you even better. Watch for the opening of our New Dining Room.

DELICIOUS FRIED CHICKEN, SHRIMP  
and OCEAN PERCH DINNERS

Individual Chicken Dinners  
Includes cole slaw, french fries  
BUCKET OF CHICKEN

GURB SERVICE and CARRY-OUT SERVICE  
Six Days a Week, 10 a.m. to 10 p.m. Closed Mondays.

ROOT BEER BY THE GALLON

ALSO: SANDWICH & FOUNTAIN MENU

L & R DRIVE-IN

11485 NORTH TERRITORIAL RD.  
PHONE 426-8668



## PROBLEMS??

That's why we're here!

Trust us. We're the guys who know the inside story... and our shop is equipped for any car emergency. Service is our specialty. So bring your problems to us.

TIRES - BATTERIES - ELECTRONIC TUNE-UPS  
BRAKE SERVICE - WHEEL ALIGNMENT - WRECKER SERVICE

Fred's Standard Service

889 S. Main, Chelsea

Phone 475-2804

## FALL TERM STARTS SEPTEMBER 25

★ GRADUATES ARE PLACED  
Job Opportunities

★ STUDENT LOANS  
Many Work Part Time

★ We FILE FORMS FOR  
TRAINING OF VETERANS

★ EXECUTIVE SECRETARIAL SCIENCE! ACCOUNTING; MANAGEMENT MAJORS; BUSINESS SUBJETS.

★ REQUEST CATALOG. VISIT J.B.U. I WILL COME TO YOUR HOME. NO OBLIGATION.

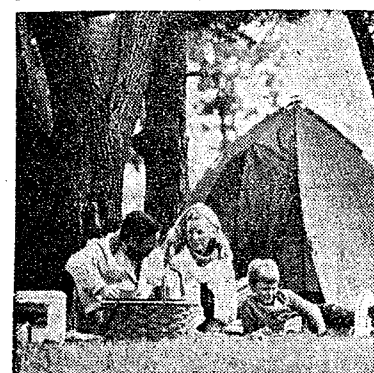
STEPHEN FAIRBANKS,  
SECRETARY

JACKSON  
BUSINESS UNIVERSITY

234 S. Mechanic Street

789-6123

Let our final clearance prices  
put more joy into your  
Summer of '72



## CHRYSLER NEWPORT ROYAL



FINAL  
CLEARANCE  
\$2000

Chrysler  
Newport Royal  
2-Door Hardtop

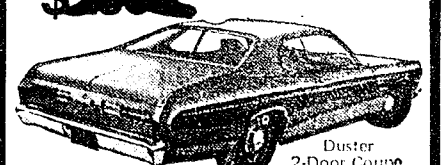
## PLYMOUTH FURY FINAL CLEARANCE \$2000



Plymouth Fury III  
4-Door Sedan

Joy is knowing you did the right thing in The Summer of '72

## PLYMOUTH DUSTER FINAL CLEARANCE \$2000



Duster  
2-Door Coupe

AUTHORIZED DEALERS CHRYSLER  
MOTORS CORPORATION

Final clearance  
joy to you from...

VILLAGE MOTOR SALES, INC.

1185 MANCHESTER ROAD

CHELSEA, MICHIGAN



# Come to the FAIR

## TUESDAY, WEDNESDAY, THURSDAY, FRIDAY, and SATURDAY

### 5 DAYS - AUG. 22-23-24-25-26

### Community Fair Restaurant

FAIR KITCHEN PHONE: 475-1270

Meals and Short Orders will be served at the Community Fair Service Building between the hours of 8 a.m. and midnight of each day. Co-chairmen of this project are Bill and Pat Robbins (Phone 475-2590).

They are assisted by and ask for the support of all ladies in the surrounding community. Any lady who wishes to contribute time or food should contact any of the chairmen. All profit from the Fairgrounds cafe goes to defray fair expenses. Your patronage is needed and will be greatly appreciated.

Dear Friends in the Community:

We need your help. Only with the support of each one of you, can the Fair Kitchen be a success. Anything you donate will be greatly appreciated, especially pies. Sorry, no cream pies—rules from the Health Dept. Further information may be obtained by calling Marg Robbins, 475-7282, or Bernadine Koch, 475-7918. Thank you.

Bill and Pat Robbins

#### SHORT ORDERS

Available at All Times

Hamburgers, Cheeseburgers, Fishburgers, French Fries, Potato Salad, Baked Beans, Cole Slaw, Cottage Cheese, Home-made Pies, Ice Cream, Coffee, Iced Tea, Milk, Chocolate Milk, Orange and Fruit Drinks, Diet Pop.

#### BREAKFASTS

Breakfast Menu Same Each Morning  
Serving from 7 a.m. until 10:30 a.m.

Bacon - Ham - Eggs - Toast  
Pancakes  
French Toast - Breakfast Sweet Rolls  
Coffee - Milk - Hot Chocolate

#### LUNCHES

Every Day, 11:30 a.m. to 1:30 p.m.

Hot Beef or Hot Pork Sandwich  
with Mashed Potatoes and Gravy  
Vegetables and Coffee

#### TUESDAY DINNER

Zion Luther Ball Club Serving  
in afternoon  
Kiwanis Club Serving in Evening  
Roast Beef - Roast Pork - Meat Loaf

#### WEDNESDAY DINNER

K. of C. Serving

Roast Beef - Roast Pork  
Baked Ham and Sweet Potatoes

#### THURSDAY DINNER

St. Paul Church Serving

Roast Turkey and Dressing  
Roast Beef - Roast Pork

#### FRIDAY DINNER

Zion Lutheran Church Serving

Swiss Steak  
Roast Beef - Roast Pork  
Fish Sandwich

#### SATURDAY DINNER

Zion Lutheran Ball Club Serving

French Fried Chicken  
Roast Beef - Roast Pork

### ★ CHILDREN'S DAY

TUESDAY, AUGUST 22

Program sponsored by Chelsea Kiwanis Club which is providing all prize money.

Chairman: John Morris

#### AFTERNOON:

- ★ All exhibits on display.
- ★ Rides and concessions by Ingalls Amusement Co. All children's rides at reduced rates 1:00 p.m. to 5:00 p.m.
- ★ Live radio broadcasts from fairgrounds.

#### EVENING:

- ★ Master of Ceremonies: Paul Frisinger
- ★ 6:00 P.M.—Children's parade from the municipal parking lot downtown to the fairgrounds. Sponsored by the Chelsea Kiwanis Club.
- ★ 6:45 P.M.—Ribbon Cutting Ceremony at the gate of the fairgrounds with Village President A. E. "Mac" Fulk, Fair President Allen Broesamle and 1971 Fair Queen Cathy Clark.
- ★ 7:00 P.M.—Live Radio interview with Fair Queen Court and Radio WPAG personalities Frank Giegler and Howard Heath.
- ★ 7:25 P.M.—Selection of Queen Candidates with Paul Frisinger acting as the M.C. of the evening. There will be a program by the Queen Court, Mrs. J. Eubanks, Cathy Clark, Mrs. P. Flintoft, Mrs. A. Musbach, Sherry Owens, Jane Mann.
- ★ 8:15 P.M. or Later—Music by the Lake Valley 4.

### ★ DEXTER DAY

WEDNESDAY, AUGUST 23

#### MORNING:

- ★ 9:00 A.M.—Judging of Exhibits.
- ★ 10:00 A.M.—Judging of Livestock (Dairy, Sheep, Swine).

#### AFTERNOON:

- ★ Continued judging of the horses.
- ★ All exhibits on display i.e. flowers, corn, vegetables.
- ★ Live radio broadcasts from the fairgrounds.
- ★ Rides and concessions by Ingalls Amusement Co.

#### EVENING:

- ★ Master of Ceremonies: Ned Palmer
- ★ 6:45 P.M.—Festivities by the "Stockbridge Squares" dance group.
- ★ 7:20 P.M.—Presentation of Showmanship awards by the 1972 Queen and court.
- ★ 7:30 P.M. to 9:00 P.M.—Livestock Judging at the Grandstand area for the public.

### ★ CHELSEA DAY

THURSDAY, AUGUST 24

#### AFTERNOON:

- ★ Weighing in of small compact tractors (garden) at Chelsea Milling Co. beginning at 1 p.m. and ending at 3 p.m.
- ★ 3:00 P.M.—Tractor pulling for the small tractors.

#### EVENING:

- ★ Master of Ceremonies: Herman Koenn
- ★ 6:30 or 6:45 P.M.—CHELSEA-DEXTER-ANN ARBOR Fire Departments will compete for the large "Water Polo" Trophy.
- ★ 7:20 P.M.—Sale of Livestock by Price Bros. Auctioneers.
- ★ 8:15-8:30 P.M.—Resumption of Small Tractor Pull.

### ★ FARMER'S DAY

FRIDAY, AUGUST 25

Masters of Ceremonies: Don Johnson and Bill Ames

#### MORNING:

- ★ 8:00 A.M.—Weighing in of tractors at the Chelsea Milling Co.
- ★ 10:00 A.M.—Tractor pulling contest beginning with the light-weight classes.

#### AFTERNOON:

- ★ Rides and concessions by the Ingalls Amusement Co.
- ★ All exhibits and displays will be open to the public.

#### EVENING:

- ★ 6:30 P.M.—1972 Queen and Court will be introduced at the grandstand area.
- ★ 6:45 P.M.—Resumption of Tractor Pulling contest for the "Heavyweight" classes.

### ★ QUEEN'S DAY

SATURDAY, AUGUST 26

#### MORNING:

- ★ 9:00 A.M.—Horse Show. Mrs. J. Botsford, chairman.

#### AFTERNOON:

- ★ Rides through the morning by Ingalls Amusement Co.
- ★ 1:00 P.M.—Parade through the town to the fairgrounds.
- ★ 2:00 P.M.—Resumption of Horse Show activities at the grandstand area.

#### EVENING:

- ★ Master of Ceremonies: William Rademacher
- ★ 7:00 P.M.—Entertainment.
- ★ 8:00 P.M.—Queen will give away the bicycles. Tickets will be given away throughout the week.
- ★ 8:00 P.M.—Dance Festivities by the Stockbridge Squares.

#### PARADE FLOAT PRIZES

\$25.00 - \$15.00 - \$10.00

Duplicate prizes in each of 2 categories  
No. 1, Schools, Youth Organizations  
No. 2 Civic Organizations and Manufacturers  
Each float entitled to one entry in Queen of the Fair Contest.

#### TWO FREE BICYCLES

Either Boys' or Girls' Depending on Winners  
Donated by Ingalls Amusement Co. and Fair Board. Bikes are on display at Dancer's and Foster's Men's Wear. Tickets for these bikes are given at the rides. Bikes are to be given away at 8:00 p.m. Saturday, Aug. 26.

#### Tractor Pulling Contest

Prizes for each lightweight, middleweight, light-heavy and heavyweight classes donated by local oil distributors. Prizes of \$20.00, \$15.00, \$10.00 and \$5.00 in each class. \$390 in all.

#### GARDEN TRACTOR PULL

THURSDAY AFTERNOON AND EVENING

Prizes will be awarded in each of 4 classes. \$1.50 Entry fee. 1st, \$20.00; 2nd, \$15.00; 3rd, \$10.00 4th, \$5.00.

#### FREE ENTERTAINMENT AT GRANDSTAND ARENA

## ENTERTAINMENT EXHIBITS SHOWS - PRIZES

#### FAIR ENTRY CARDS

Available from all Fair Officials or Board of Directors, Committee Chairmen, Chelsea State Bank, Chelsea Hardware, Chelsea Drug, and Farmers' Supply. Check the Premium List on pages 11 and 12 of the July 20 issue of The Chelsea Standard.

#### HORSE SHOW PRIZES

Ribbons and Trophies for all Events.

Daily Helicopter Rides IN THE AFTERNOONS

#### ADMISSION

ADULTS: 50c CAR PARKING: 25c  
Season Admission Tickets, \$2.50 (Includes Free Parking)  
Children Under 12 Admitted Free

BUY A SEASON TICKET FOR ONLY \$2.50 AND USE IT AS OFTEN AS YOU WISH.

This Advertisement Sponsored in the Interest of the Fair by the Following Chelsea Business Firms:

Rick's Market  
Al Nalli Music  
Meabon's TV, Furniture & Appliance  
Chelsea Restaurant  
Kern Real Estate  
Chelsea Service Co., Laundromat  
Dave Rowe Agency  
Doug's Ashland Service  
Sylvan Hotel & Motel  
Clarence Wood Real Estate  
Little Flower Shop  
A. D. Mayer Insurance Agency

Polly's Master Markets  
Farmer's Supply Co.  
W. E. Farrell Sheet Metal  
McCalla Mobile Feed Service  
Honegger's & Co., Inc.  
Chelsea Associated Builders, Inc.  
Chelsea Lanes, Bowling and Billiards  
Wolverine Bar  
Rowe & Son Plumbers, Duane Rowe, Owner  
Chelsea Greenhouses  
Paul Bollinger, Sanitation Services  
The Pub

Ralph Fletcher's Foor's Mobil Service  
Leonard Reith, Plumbing & Heating  
Grove 5c to \$1.00 Store  
Ashland Oil Co., Jerry Satterthwaite  
Dairy Queen Brazier  
Jim's Pure Oil Service Station  
Cavanaugh Lake Store  
Schumm's Restaurant  
Chelsea State Bank  
Chelsea Finance Corp.  
Gallup-Silkworth Pump & Pantry  
Frisinger Realtors

Palmer Motor Sales, Inc.  
North Lake Store  
Stiwers Bar and Restaurant  
Village Motor Sales, Chrysler Products  
Jiffy Market  
Lloyd Bridges Chevrolet  
Patty Ann Shoppe  
Sprague Buick-Olds-Opel  
Wallace Wood, State Farm Insurance  
A & W Drive-In  
Harper Pontiac Sales & Service  
Thompson's Pizza



## Don Turner Visits Valdez, Rebuilt After '64 Earthquake

Editor's Note: This is our fifth letter from Don Turner in Alaska. It reads as follows:

Dear Readers:  
In my last article I included fishing with Jack and Dorothy Fowler and Mr. and Mrs. Earl Pettibone of Dexter, at the stream north of Palmer, Alaska, in the heart of the Matanuska Valley.

I have been trying some things recommended by the Fowlers, including the ferry trip from Whittier to Valdez. This is a very pleasant trip aboard the MV Bartlett, which takes your car or camper to Valdez, affording a scenic drive back over the Richardson Highway to the Glenn Highway at Glennallen.

Forty-eight miles south of Anchorage, Alaska, on the Anchorage Seaward Highway, is the place of debarkation for the trip. It is called "Portage," and by placing your camper on a freight car of the Alaska RR, you are introduced to a 35-minute train ride to Whittier, going through two tunnels and coming onto some beautiful scenery.

There is a deserted U. S. Army camp that dates back to World War II. Here you board the MV Bartlett for the seven-hour scenic ride to Valdez, Ala., stopping at the bird rookery on the cliffs of mountains, then on to Columbia Glacier, one of the prettiest and most active glaciers that comes to salt water in Alaska's coastal area.

The ferry stops and sounds the whistle, which usually dislodges huge blocks of ice that drop into the bay with a tremendous splash, to the delight of all aboard.

The MV Bartlett is part of the Alaska Marine Highway System, serving towns and ports above the southeast Alaska Marine Highway, but is a much smaller ship.

The scenery is much the same as seen in Southeast Alaska, and I would recommend it to anyone coming to Alaska and not having time to return on the southeast Alaskan ferries.

Many people enjoy the scenery and activities aboard the MV Bartlett. Our group included some people from Japan, who posed for pictures for me and spoke very good English.

Valdez, Alaska, is known as the "Switzerland of America." It is located on the arm of Prince William Sound, and gets its name from a Spanish explorer, Captain Fedalga. Fedalga explored these parts of the hemisphere the same time that Captain Cook left his mark on the Cook Inlet of Alaska, the end of which is now the site of Anchorage.

Captain Fedalga named the port "Puerto de Valdez," from which it was shortened when the townsite was established in Valdez in 1898.

In reference to this area, read Rex Bloche's novel, "The Iron Wall," which depicts it as the site of the first attempt to build a railroad to the copper country of Alaska.

Valdez was hit hard during the 1964 earthquake when a 32-foot tidal wave hit, destroying the old town with 32 lives lost. Today a new town site is established four miles from the old site, with all modern facilities. On the old town site today

stands part of the 800 miles of pipe, the Alaska Pipe-Line upon which so much controversy has centered. Builders hope to build a pipe line from Alaska's east slope at Prudhoe Bay in the Arctic to Valdez.

It is estimated that 10,000,000,000 barrels of crude oil can be produced on the north slope of Alaska's Arctic and sent to Valdez by pipe-line. I predict that even when the ecology people have their say, the pipe-line will still be built. It will have a tremendous effect upon Alaska's economy for some time to come.

I recommend this trip from Whittier to Valdez to anyone coming to Alaska, as it is well worth the price of \$32 charged for the cruise.

From Valdez, I traveled the Richardson Highway to Glenn Highway at Glennallen, where I again headed for McKinley Park over Highway 3. After three days of rain in Mt. McKinley, I gave up. You see, I wanted to do more wildlife photography in the park, which I did, but the light was not good enough and I ran out of time, so I ran 11 miles up to Fairbanks and took a river cruise on the Discovery II, a new stern wheeler river

boat owned and operated by a good friend of mine, Captain Jim Brinkley.

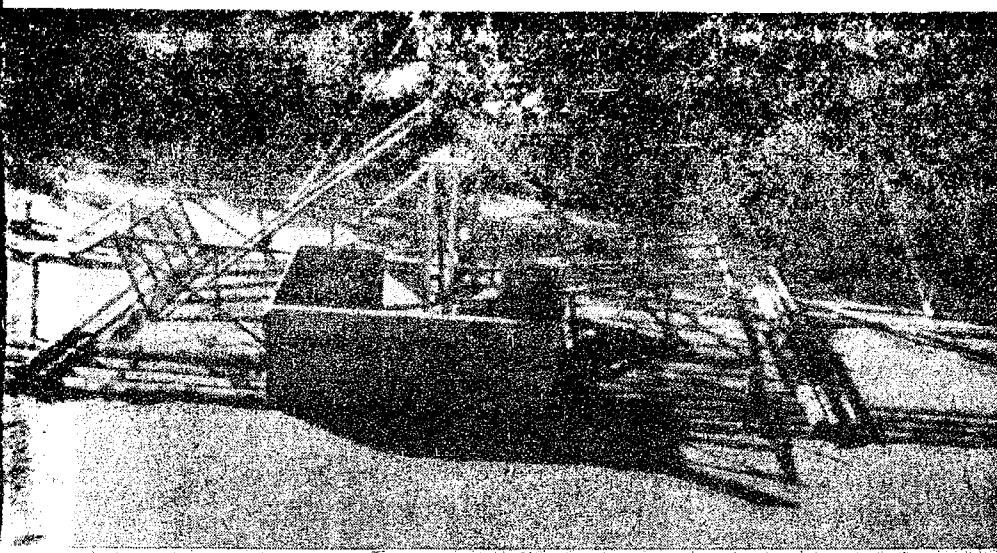
I wrote about Captain Brinkley on my first trip to Alaska, when he operated a smaller stern wheeler. But with the great demand for his services by the many tourists coming here today, he built the new ship, Discovery II.

The cruise from Fairbanks on the Chena River to the Tana River and back takes a total of four hours, and I recommend this to all who have time for an afternoon cruise.

Captain Brinkley's Discovery takes you to many interesting places along the river, including an Indian village with fish wheels, where salmon are caught for winter food by the natives, who dry it over racks. Captain Brinkley is continuing boat service to many out-of-the-way places on the river chain, which ends at the Yukon River, flowing to the Bering Sea. Captain Brinkley's father serviced this area by stern wheeler at the turn of the century, and this is a modern-day service to let the tourists see a little of the ways of the past.

I must be running along to more adventure. Will be sending back more of my adventures in traveling in the great land of Alaska.

Don Turner.



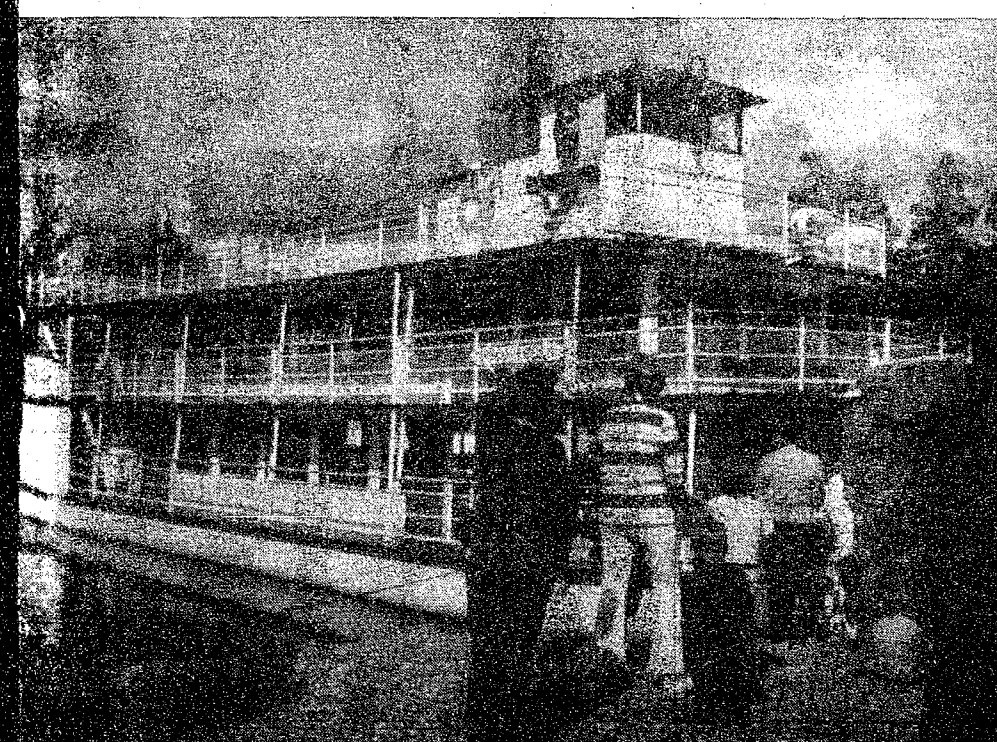
**FISH WHEEL ALONG THE TANANA RIVER:** Turner viewed this wheel from aboard Discovery II, another part of native life seen on the river cruise. Turner reports that the fish wheel is a unique device constructed by the natives to catch

salmon on the river. He reports that the Tanana River looks like a huge cement mixer, due to the glacier's deposit in its waters. But the salmon run here enroute to their spawning areas.



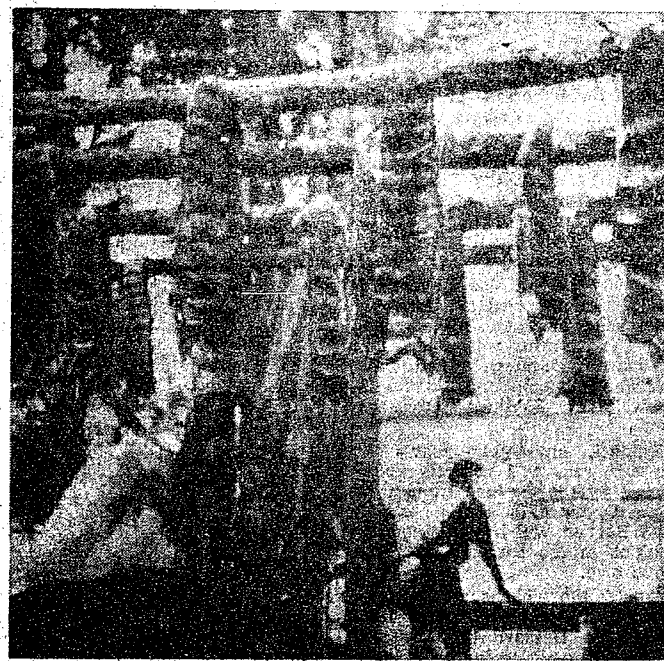
**FOR THE PIPE LINE:** These four-foot pipes, 10 feet long and 1/2 inch thick were made in one of Japan's large steel mills and shipped over to Valdez. Turner says that more than 400 miles of pipe are

stored there, awaiting the decision to be made regarding the feasibility of building 800 miles of pipe line from Alaska's north slope to the port of Valdez.



**BAND CAMP BOUND:** Among the colorful crowd of young musicians who boarded Dexter buses Sunday noon for the Smith-Walbridge

Camp at Syracuse, Ind., were Sue Stahmen, left, and Jean Brooks. Both these young ladies are DHS sophomores this fall.



**DRIED FISH:** This method of preparing fish for the winter was glimpsed by Turner at an Indian village, one of the stops on the Discovery II's river cruise. The Indians are of the Pascan tribe.



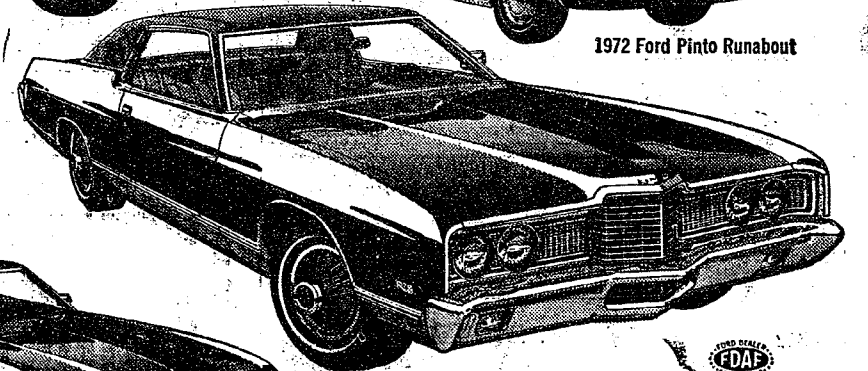
**HOW TO WARD OFF STARVATION:** An Indian woman lectured on the techniques of preparing soup from moose leg, to ward off starvation during the long absence of the trapper from his wife and family. The cruise sported many other demonstrations, as Discovery II made its way through the waters of the Tanana River.



1972 Ford Maverick 2-Door Sedan



1972 Ford Pinto Runabout



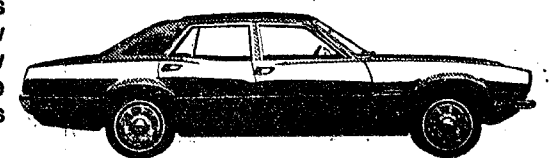
1972 Ford LTD 2-Door Hardtop



1972 Ford Gran Torino 2-Door Hardtop

## We've got too much of a good thing.

Our '72s from Ford are the best buys we've offered and our hot sales show that buyers appreciate that fact. But now it's clearance time... we've got to make way for the '73s. So our deals on '72s make 'em better buys than ever! But act now—while selection's good.



1972 Ford Maverick 4-Door Sedan



1972 Ford LTD Country Squire

## FORD DEALER '72 CLEARANCE SALE

Nobody outdeals a Ford Dealer now that year-end clearance time is here!

## PALMER MOTOR SALES, INC.

CHELSEA, MICHIGAN

# COME SEE THE MICHIGAN STATE FAIR

## ON NOW THRU SEPT. 10th

All FREE entertainment

- SONNY & CHER • BOBBY VINTON
- AUTO THRILL SHOW • THE STAMPEDERS SHOW • THE CONTI FAMILY • CHARLEY PRIDE • DANNY DAVIS & HIS NASHVILLE BRASS
- BUGS BUNNY SHOW
- KENNY ROGERS & THE FIRST EDITION
- MAC DAVIS • THE GOLDDIGGERS • DAVE MERRIFIELD HELICOPTER SHOW • GLADYS KNIGHT & THE PIPS • FREDA PAYNE
- BOB HOPE

- AGRICULTURE EXHIBITS • LIVE-STOCK SHOWS • HORSE SHOWS • PULLING CONTESTS • ETHNIC FESTIVALS • BEAUTY PAGEANT • MARCHING BANDS • HOME ARTS EXHIBITS • YOUTH EXHIBITS • ART SHOW • FLOWER & GARDENING • EXHIBITS
- FAMOUS SPORTS • PHOTO CONTEST • CELEBRITIES • BROADCAST CELEBRITIES • ART DISPLAYS • COMMERCIAL EXHIBITS • INDUSTRIAL EXHIBITS • PRODUCT DISPLAYS



## it wouldn't be a fair without you

Woodward at 8 Mile

Jersey Lewis Muscular Dystrophy Telethon will be broadcast live from the Fairgrounds on Labor Day.





**COMMUNITY CHEST DIVISION LEADERS:** The Community Chest has named its division leaders for the 1972 campaign, which has a \$27,000 goal. Pictured left to right are: Conrad Hafner, industrial; Paul Frisinger, commercial; Mrs. Timothy

(Pat) Whitesall, general campaign chairman; Jeanene Riemenschneider, residential; Barbara Wenk, schools; Marquita Satterthwaite, rural; and James Hoffmeyer, promotions.

## Dexter - Chelsea Rd. Receives Sealcoat Job

County Road Commission crews were busy Friday, Aug. 18 to Monday, Aug. 21, seal-coating the Dexter-Chelsea Rd., from the village of Dexter to Freer Rd.

The area was wedged up last year with a coat of asphalt to improve the "rideability" and wear of the road. The seal-coating, which is a different type of asphalt imbedded with gravel, will protect the road further.

A crew was also at work Tuesday on Huron River Dr., off Mast Rd., seal-coating that area. The coating will extend from the village to Maple Rd.

## Our Savior Lutheran Church Plans Outdoor Worship, Family Picnic

The 10:30 a.m. worship service of Our Savior Lutheran church will be held outdoors at the farm of Mr. and Mrs. Elmer Lindow, 600 S. Freer Rd., Sunday, Aug. 27.

A pot-luck picnic will follow the service at 12:00 noon. After the picnic, games and activities will be provided for all present.

In case of inclement weather, the service and picnic will be held at the church, 1515 S. Main St.

## JUST RIGHT

It has been said a dress should be tight enough to show there's a woman inside of it—but loose enough to show that she's a lady.

## Antique Bottles Stolen from Triangle Sales

Forty-five Jim Beam liquor bottles of regal china, considered collectors' items, were taken from Triangle Sales on 20416 Old US-12 sometime between 11:55 p.m. Sunday, Aug. 13 and 9 a.m. Monday, Aug. 14.

All the bottles were decorative, and valued at \$15-\$20 each. The approximate value of the theft was \$787.

Patrolman Bruce Sibert responded to the call at 4:45 p.m. He was met by Douglas Liebeck, owner, who showed him how entry to the building was gained through the window on the east side of the building. The screen was removed and the window was forced up, breaking the latch. The screen was later replaced and the window closed.

Exit was made through a garage door located on the middle west side of the building. The suspect then fled through the rear fence gate.

The bottles were taken from some shelves located on the east wall of the office area. A cardboard box was put in front of the east side window in an effort to prevent detection.

John Wilson, an employee, had discovered that the bottles were gone when he came to work in the morning, but assumed that the owner had taken them.

Liebeck arrived about noon, noticed that the bottles were gone, but assumed that a relative had taken them. At 4:30 p.m. he discovered that persons unknown had taken the bottles, and a search revealed that the window to the office had been forced. Liebeck was in the building the previous night and not noticed that the bottles were gone.

Neither 75 similar bottles nor anything else in the store was taken or disturbed. The case is still open.

## Granddaughter Tours Europe with YFU Musical Group

Luanne Dreyer, daughter of Mr. and Mrs. Louis Dreyer of Ann Arbor, returned Thursday, Aug. 17 from seven weeks in Europe. She is a violinist with the Youth for Understanding string ensemble.

The players gave concerts in Germany and Yugoslavia. Their home concerts will be at Hill Auditorium in Ann Arbor and Meadowbrook at Oakland University, Rochester. Luanne is the granddaughter of Mr. and Mrs. Jay Weinberg and Mrs. Joseph Dreyer of Chelsea. Luanne, 16, is a junior at Huron High School in Ann Arbor.

## Gary Larson Granted Degree at WMU

Gary Larson, son of Mr. and Mrs. Darryl Larson of 325 W. Middle St., was awarded a bachelor of science degree from Western Michigan University, Kalamazoo, Friday, Aug. 18. Larson, who majored in chemistry, received his degree for work completed during the summer term. He will begin graduate studies at Western in the fall term, and will have a teaching assistantship. He has been doing cancer research.

## School Board Briefs

At a regular school board meeting held Monday, Aug. 21, present were: Storey, Haselschwerdt, Irwin, Smith, Schafer, Superintendent; Cameron, Business Manager; Mills, Principals Lane, Wojcicki, Benedict, and Conklin, Assistant Principal Lapanowski, and several guests.

Signed administrative contracts were accepted for the 1972-73 school year as follows: Superintendent Cameron, \$25,500; Principal Lane, \$20,600; Assistant Principal Lapanowski, \$16,600; Principal Wojcicki, \$19,311; Principal Conklin, \$19,960; Principal Benedict, \$19,311; and Business Manager Mills, \$20,600.

Bid from Standard Oil Co. for oil for school use during the 1972-73 school year was accepted at 11.73 cents per gallon.

Bid from McDonald's Dairy for milk for school use during the 1972-73 school year was accepted at .0635 cents per one-half pint.

Bus fleet insurance from David Rowe Insurance Agency was accepted at \$2,522. Insurance for Driver Education cars from David Rowe Insurance Agency was accepted at \$230.82.

Three more teachers were placed under contract: Susan Craig, Lois Maitland, and Jo Lawver.

The MASB (Michigan Association of School Boards) convention will be held Nov. 1-3.

The next meeting is scheduled for Tuesday, Sept. 5.

## School Crossing Guards Needed By Police Dept.

Chelsea Police Department is taking applications for school crossing guards. Anyone between the ages of 21 and 65, physically fit, and able to be out in all kinds of weather conditions may apply at the Police Station.

Chief George Meranuck reports that there are openings for three guards.



**ATTEND MAJORETTE CAMP:** Five members of the 1972-73 Chelsea High school majorette squad, bottom, left to right: Sue Morrison and Vicki Push, freshmen; and standing, left to right: Kathy Stoll and Jennifer Lane, juniors, and Lori Schiller, sophomore, attended Smith-Walbridge Majorette Camp in Syracuse, Ind., July 16-21. All girls received financial assistance from the Chelsea Band Boosters. While at the camp, the girls earned a total of five ribbons: one white, three red, and one blue. They received a squad rating of excellent, and were members of the grand champion class.

## Stoney Ridge Horses Win At Two Shows

Chelsea riders from Stoney Ridge Farm, 9970 Liberty Rd., were among the contestants in the 19th annual Dixboro Horse Show Sunday, Aug. 20.

Lee Thornbury, riding her horse Mr. Peabody, won a sixth in Junior Hunter under saddle.

Scott Alder, on Alley Oop, received a sixth in Equitation on the flat, 13 and under. He also placed sixth in Open Working Hunter.

Kelly Alder, on War Dance, placed first in Open Jumper, second in Open Working Hunter, fifth in Warm Up, and sixth in Equitation over fences, 13 and under.

Kim Alder, riding at Battle Creek Hunt Club, won a fifth in the national qualifying ASPCA Maclay class. She also received a first on her horse, Baccardi, in the junior Hunter class at the Detroit Horse Show, one of the largest in the country.

why someday?

why not now

IMPALA

VEGA

Want luxury? Economy? The new cars from Chevrolet are ready to roll... at special clear-out prices!

**Lloyd Bridges CHEVROLET**  
475-1373 CHELSEA

**LaFONTE**  
Construction & Development Corp.  
GENERAL CONTRACTORS  
Will Build To Your Specifications

**CUSTOM BUILDER - Residential, Commercial, Industrial**  
COMPLETE HOME MODERNIZATION SPECIALISTS

★ Additions	★ Rec. Rooms	★ Cement Work
★ Family Rooms	★ Roofing	★ Kitchens
★ Attics	★ Siding	★ Patios

FREE ESTIMATES  
LICENSED BUILDERS

**PHONE 475-1389**  
525 N. MAIN, CHELSEA

**Count on Milk!**

For a real energy pick-up whenever you need it... for the enjoyment that comes from a drink that tastes great as it refreshes you... count on milk! Make it a delicious part of your day, every day. Call us for regular home delivery.

**Hickory Ridge Farm Dairy**  
(Successor to Weinberg Dairy)  
Stockbridge, Mich. Phone (517) 851-3000

**SPECIAL**  
Thurs., Fri. & Sat., Aug. 24-25-26 Only

**MR. MISTY FLOAT**  
**29¢**

Coming Soon!  
CRISPY FRIED CHICKEN

(None of fine Brazier foods)

**Dairy Queen**

**brazier**

901 S. MAIN ST., CHELSEA PHONE 475-2677

**YOU'RE MONEY AHEAD**  
WHEN YOU USE  
**SHERWIN-WILLIAMS**  
HOUSE PAINT

GIVES YOUR HOME  
EXTRA YEARS OF  
BEAUTY AND  
PROTECTION

**Gambles**

**6%**  
passbook accounts

This is the one investment that you can depend on to make money. It pays an annual effective rate of 6.13% and the principal is not subject to fluctuating market conditions.

The 6% Passbook Certificate Account should be the first step in your investment program. It is a rock solid base from which you can build and is available in amounts of \$5000 or more with 3, 4, or 5 year maturity. (Also available are 5-3/4% Passbook Certificate Accounts with 2 year maturity and 5-1/4% with one year maturity.)

This is a safe investment. It is insured to \$20,000 with FSIC. Moreover, when you invest at AAFFS you are investing with the largest financial institution in Washtenaw County... the leader in savings and mortgages.

**THE DEPENDABLE INVESTMENT**

**ANN ARBOR AAFFS**  
**FEDERAL SAVINGS**  
the savings and loan specialists

ANN ARBOR OFFICES: Downtown Liberty at Division, Westside, Pauline at Stadium, Eastside, Huron Parkway at Platt, Northside, Plymouth at Niles. CHELSEA: Main Street near Old Chelsea. Member: Federal Home Loan Bank System • Federal Savings and Loan Insurance Corporation