

WEATHER

	Min.	Max.	Precip.
Wednesday, Oct. 28	51	60	0.02
Thursday, Oct. 29	50	55	0.39
Friday, Oct. 30	41	61	0.04
Saturday, Oct. 31	42	53	0.00
Sunday, Nov. 1	43	58	0.08
Monday, Nov. 2	43	54	0.42
Tuesday, Nov. 3	40	46	Trace

ONE HUNDRED-FIRST YEAR—No. 20

12 Pages This Week

CHELSEA, MICHIGAN, THURSDAY, NOVEMBER 5, 1970

15c per copy

SUBSCRIPTION: \$4.00 PER YEAR

The Chelsea Standard

QUOTE

"Abandon all local animosities and make your sons Americans."
—Robert E. Lee.

Bulldog Gridders Win Third Consecutive League Championship

Preparing Now for Battle Against Arch-Rival Dexter

Chelsea Bulldogs downed a tough Hornet team Friday evening, Oct. 30, 20-6, to clinch the Southeastern Conference Championship for the third successive season.

The ball game started out a defensive battle, with both teams hitting low and hard. Saline was the first team to break open, when they recovered a fumble on Chelsea's 40-yard line.

Chelsea reciprocated when Mark Collins intercepted a Saline pass on Chelsea's 37-yard line. At that time, the offense started to roll.

Lary Gorton, Tim Ortbring, and Mark Collins, took turns running for good yardage. The drive bogged down on the Saline 24-yard line. Wayne Walton dropped back and threw a touchdown pass to Tom Lukasik for the first score of the night.

The Bulldogs went for the two-point conversion, and failed. Chelsea then led by a score of 6-0.

Saline came right back with a drive to attempt a score. They got to the Chelsea seven-yard line, with a first down and goal to go, when the Bulldogs dug in and held for three downs. They stopped Saline's fullback twice for no gain, and Saline's quarterback twice for a net three-yard gain.

On the last down, Jack McClellan and Tom Lukasik made key tackles, tackling the quarterback to stop Saline's threat. Saline scored later and tied the game in the third quarter. Bulldogs came right back to drive 60 yards, with ball control offense. Lary Gorton ran a 13-yard key play on the third down with 10 to go. From that point, the Bulldogs bucked over with Gorton going the final one yard.

Tim Ortbring kicked the extra point, and the score was Chelsea 13, Saline 6.

Final touchdown was a carbon copy of the last one, as the Bulldogs covered 54 yards in 10 plays. Lary Gorton went the final yard,

and Ortbring kicked the extra point.

Both offense and defense units played well. Blocking was by Tom McKernan, Duane Bycraft, Tom Harmon, and Howard Treado who led the offensive unit. Gorton gained a total of 115 yards, Ortbring, 40 yards, Mark Collins and Bob Salyer ran 40 and seven yards, respectively. Quarterback Wayne Walton completed three of five passes for a total of 57 yards.

Defensively, Mitch Heard again had a good game, recovering a fumble and making eight tackles. Randy Seitz and Mike Powers each had seven tackles. Seitz also recovered a fumble. Defensive ends Jeff Hughes and Tom Lixey, along with linebacker Rick Westcott and Jeff Bust, contained Saline's track-style running backs. Safety Jack McClellan and Halfback Tom Lukasik did a fine job against Saline's passing game.

Chelsea plays Dexter in its final league game at Chelsea Friday night, Nov. 6. Dexter sports a fine 4-2-1 record, and is generally considered a tough team.

Junior High Gridders Post Perfect Record

Chelsea Junior high football squad closed out their season Wednesday, Nov. 4, by defeating Lincoln, by a score of 27-0. This gives Chelsea a 5-0 record for the year, and marks the fifth year out of the last six that the junior high squads have gone undefeated. Over this period, the record has been 26 wins, and one loss. This year's game scores have been: Chelsea 20, Milan 8; Chelsea 22, Dundee 12; Chelsea 20, Dundee 11; Chelsea 6, Saline 0; Chelsea 27, Lincoln 0.

This year, 100 boys reported (Continued on page five)

Annual World Community Day Set Friday

1970 has been designated by the United Nations as International Education year. In every country there are people who are still denied adequate education, and are thus forced out of the mainstream of modern life.

Frustrated dreams, and unfulfilled hopes become explosive. The past few years have seen disturbances at every level of education. Peace can never be realized until injustices are set right.

Theme for this year's World Community Day is "A Key for Tomorrow: Education."

Services for the day will be held at the United Methodist Church of Chelsea at 1 p.m. on Nov. 6. Women of the Congregational United Church of Christ will present the program. There will be a nursery provided, and a coffee hour will proceed directly following the service.

Combined offerings of all the World Community Day services will be contributed to Intercontinental Mission, part of which maintains a program of volunteers in adult basic education, Christian Causeways, and the program and presence of church women at the Church Center of the United Nations.

This year, the goal has been enlarged to help with the continuing education of women in Kenya, by supporting a school for those who have never had an opportunity for education.

Speaker at the church services in Chelsea will be a representative of the Washtenaw Intermediate School District, who will speak on the Head Start program in Chelsea.

All church women of Chelsea are invited to participate in this service.



CONGRESSMAN MARVIN ESCH addressed Chelsea Kiwanians Monday evening. Esch spoke on such issues as Vietnamization, and violence in America. He is shown, following the session, with Kiwanians William Rademacher, left, and program chairman Louis Burghardt.

Cong. Esch Addresses Kiwanians

Congressman Marvin Esch addressed Chelsea Kiwanians at their regular meeting Nov. 2, at the Congregational church.

Esch related some of the accomplishments of the United States in its efforts to "Vietnamize" the war. Newspapers and tele-

vision accounts are sadly lacking information, which the Congressman saw himself on his tour of the war area last spring. Examples which the Congressman related concerning letting the South Vietnamese help themselves involved economic backing for schools, projects, gifts to individual families, and other tangible evidences that Americans care.

The Congressman emphasized

Halloween Party Draws 800 Children

Rain, and a change in date did not detract from this year's Halloween festivities. Dr. Richard Borton, chairman of the Kiwanis-sponsored activities commented. More than 800 children attended the event which was held Thursday evening, Oct. 29.

The activities started on time, with no unpleasant incidents, Borton reported.

Those who were awarded prizes for costumes in the event were Chris, Nancy, and Susan Ford, who were in first place with the most original costumes. Debbie Gorman was in second place, and Susan Marie Cobb received third-place honors.

Spookiest costume award was given to Jon Oesterle, while Kimberly Boyd and Mark McMullin were second and third, respectively.

Cindy Pierce won the prize for the funniest costume, while Todd Weber and Joe Ewald won second place for their "team" costume.

Cristie Centelli was in third place. Carla Dawn was the over-all grand prize winner, while Becky Kraaj was runner-up.

Judges of this year's event were Peter Flintoft, Louis Burghardt, and V. O. Johnson.

Debate Team Scores First Shut-Out

Chelsea's Novice debate team had their first shut-out on record at Saturday's debate tournament held at Pioneer High in Ann Arbor. Mike Hergert, Sue Stock, Janice Schramm, Dan Gaunt, and Bob Mester attended the event, according to coach William Coetius, and defeated every team they met.

The five-man team came up against teams from Parma Western, Pontiac Northern, Plymouth (previously undefeated), Fenton, Rochester, and Bay City.

Chelsea didn't place first, however, as there were three other teams at the meet which were also undefeated. The final decision was made by tallying speaker points. Chelsea placed third at the conclusion of the tournament, out of a field of 35 schools.

Coelius indicated that this first shut-out is a very good sign for Chelsea debaters.

This week, the debate team begins their league meets. Nov. 3 is their first league meet in the ABC meet. On Nov. 5, Chelsea will compete for the first time in the state league. Those schools which Chelsea will meet in that league are Brighton, Adrian, Parma Western, Catholic Central (Monroe), Ann Arbor Greenhills, and Romulus.

Chest Fund Nears Goal At 88 Percent

Chelsea's Community Fund drive, which officially ended Oct. 31, reports that 88 percent of the Chest goal has been reached to date. Approximately \$22,457 has been collected thus far, with the remaining monies still trickling in, Chest officials report.

Breakdowns by the separate divisions are as follows. In the Chelsea schools, collections, which were headed by James Hoffmeyer, \$1,131 was collected. Industrial solicitations jumped to \$16,075, according to Chairman Calvin Summers, Jr.

Robert Thornton, who was the head of the rural solicitations, reported \$500 collected. Among Chelsea's professionals, Wallace Wood, and his committee, collected \$1,200.

Mrs. Jon Schaffner, chairman of the committee to contact local clubs and organizations, claims \$187 collected.

Mrs. Basil Greenleaf, who headed the massive residential campaign reports that \$1,806 was donated.

Residential area collected an amount which exceeds the totals of the past years. Mrs. Greenleaf and her solicitors, showed a substantial gain.

Residents of Washington St. contributed the largest amount of any of the town areas this year.

Contributions are still being accepted—to bring the 1971 drive to its goal. With 12 percent of the goal unachieved at the end of the campaign, there is still work that must be done by Community Chest officials.

Contributions may be sent to the Chelsea Community Chest, Box 176.

Chelsea Police Nab 3 Youths For Coin Theft

Patrolman Peebles of the Chelsea Police Department, used fast judgment in an arrest involving three young men on Wednesday morning, Oct. 28.

Peebles, who was on duty in the early morning hours, heard a car description over the radio of a vehicle that was suspect in a breaking and entering charge of a coin machine at the Car Wash in Dexter.

When a car passed of the same description as that given over his radio, Peebles followed it, and eventually stopped it, and confronted the young men in the car.

Peebles asked the young men to identify themselves, and summoned Dexter police officials. (Continued on page three)

Governor Race Still Undecided In Heavy Vote

Controversial Proposal C Wins Across Washtenaw County, State

With what officials term as one of the heaviest turn-outs in years, local voters cast their votes Tuesday, Nov. 3, for state, national, and county officials. Local townships also elected a complete slate of officers to serve their communities for the next four years.

The governor's race is, at the time The Standard went to press, still undecided. With 86 percent of the Detroit vote uncounted, Milliken leads Levin by a margin of 126,000 votes.

On the state and legislative races, however, unofficial reports indicate that most incumbents were being returned to office by good margins.

Detroit, which has punch card computer voting, has as yet not reported their results because of a failure at some point along the way. Those may take quite some time to tabulate, but are not expected to change the issues.

Proposals at the state level were soundly decided, with the defeat of Proposal A, the bonding issue for low income housing, the defeat of Proposal B, that amendment which would give the vote to 18-year-olds, and the adoption of Proposal C, which constitutionally forbids such laws as the present Parochial bill.

Washtenaw Community County millage proposition was also adopted.

Lima township's slate was unopposed. Edwin Coy, republican candidate for township supervisor, was elected with 401 votes. Lella C. Bauer, (R), had 415 votes to gain her position of township clerk. Hilda Pierce (R) received 432 votes for township treasurer, while Harold L. Gross, (D), received 213 votes for township trustee. Ralph J. Stoffer, (D), received 214 votes for constable.

Sylvan township voters cast 936 votes for Democratic candidate Maurice Hoffman for supervisor. He was unopposed. Daniel Murphy, township clerk, was re-elected with 965 votes. He also is Democratic. Fred Pearsall, GOP candidate for township treasurer, received 915 votes, over his opponent, Barbara Dresch, (D) who had 585.

Reuben Lesser, GOP candidate for trustee beat out Democrat Lyle Chriswell by a margin of 786-597. While John Pierson and Howard Walz, both Republican candidates for constable, were elected with 940 and 901 votes, respectively.

Lyndon township incumbent supervisor George Bauer, republican, was re-elected over Democratic challenger Orson Beeman, Jr., by a wide margin of 146-19. Doris Fuhrmann, Democratic candidate for clerk, was elected with 189 votes. She was unopposed. Nancy White was elected treasurer with 147 votes, over Teresa Bott, Democratic candidate, who had 139 votes. Norman Kaiser, who was unopposed in his race for trustee, received 137 votes. He is a Republican, while Republicans Jay Hopkins, and Donald Beeman were elected constables with tallies of 155 and 158, respectively. Democratic candidate George Paxton received 143 votes.

Sharon township's only contest

was between Allen Alber, (R), and Russell Fuller (D), for the position of township supervisor. Alber was the winner of that contest with 180 votes.

Duane Haselschardt, who was unopposed in his campaign for the position of township clerk, received 220 votes. He, and all of Sharon's newly-elected officials are Republican. Herbert Jacob won 222 votes for township clerk, while Max Roedel had 216 votes for township trustee. Walter Boike and Floyd Proctor were both elected township constables with 212 and 217 votes, respectively.

Freedom township, who re-elected their former officials running without opposition, cast 342 votes for John Miller for township supervisor, and 346 votes for Harold Eiseaman, for clerk. Walter Heiber received 347 votes for the position of treasurer, while Luckhardt had 350 votes for township trustee. Candidates Nagel and McKeever were both re-elected constables of the township with 335 and 340 votes respectively.

For County Commissioner from District 2, Neil Mast (R), polled 3,808 votes to Mrs. Dorothy Hunawill's (D), 598. District 2 includes the townships of Webster, Dexter, Scio and Lodi.

Jay Bradbury (R), incumbent District 1 commissioner, had no opposition and polled 2,476 votes from the District which includes Lyndon, Sylvan, Lima, Sharon, Freedom, Manchester and Bridgewater townships.

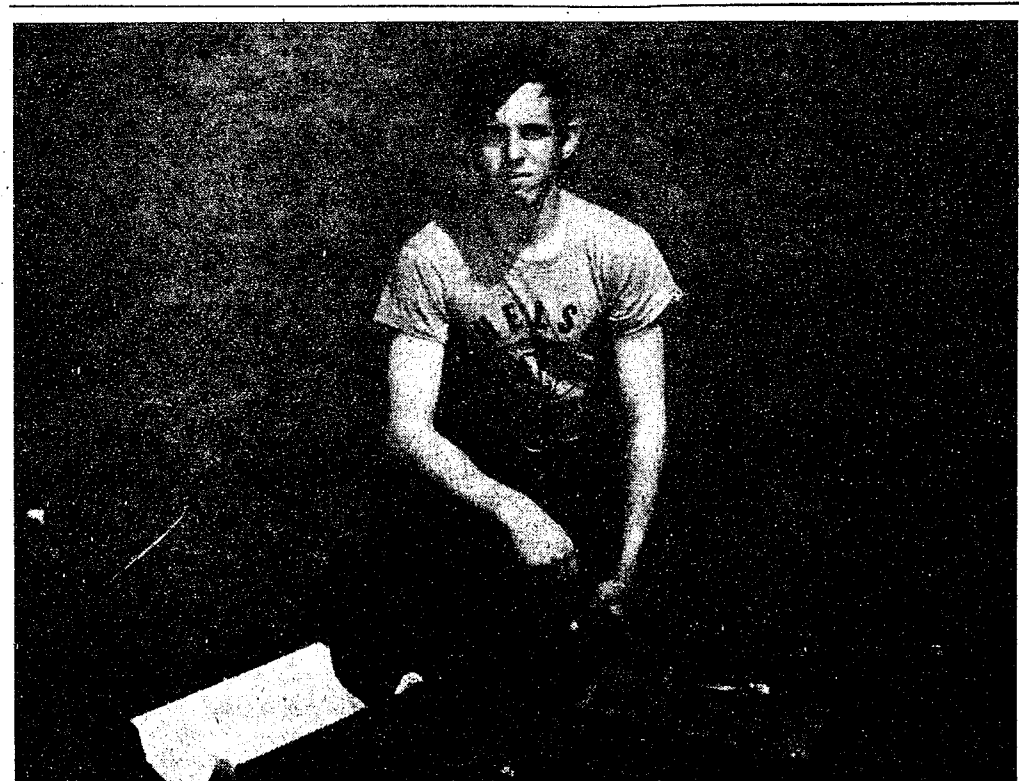
Election Box Score On Page 10

Blood Bank Gains 139 Pints For Local Use

In spite of a high incidence of colds, viruses, plant lay-offs due to the GM strike, and personnel directors' attention being divided between Community Chest, labor negotiations and the blood bank drive, the Chelsea Blood Bank registered 180 prospective donors last Wednesday. Of that number, 35 were rejected for medical reasons, six pints were delegated to other banks or to private individuals, and the Chelsea Blood Bank was credited with 139 pints of blood for use in the next year.

"It was a pretty average turnout, though well under the response we had last January when 241 registered," commented Mrs. George Palmer, co-ordinator of the drive. "Any lay-off in the local plants hurts. The men in the factories are the backbone of our blood clinic. Of the 180 who registered, there were only seven businessmen, eight housewives, two teachers and two ministers. It would be wonderful if the rest of the community would take an hour off and come to the clinic. Two local housewives who donated for the first time gleefully exclaimed 'There's nothing to it!'"

(Continued on page six)



CHARLES BELSER, Chelsea High school senior, and trainer for the Championship Bulldogs, displays the "kits" that he has with him at all times, when traveling with a Chelsea team. Belser makes it a point to accompany each Chelsea football team when they are on the road. If he is unable to attend a game, he fixes up his "doctor's bag" and sends it along with the coaches. He is, according to Coach Phil Bareis, "a very dependable young man."

Bulldogs Have Faithful Trainer

Charles Belser, son of Mr. and Mrs. Frederick Belser, 216 Park St., has been a trainer and a manager of Chelsea High school football teams since 1967. Belser, who is a senior, was JV football trainer in 1969, and 1970.

As a trainer, Belser is responsible for the up-keep of the training room, inventory of training supplies, and care of minor football injuries. Coach Phil Bareis indicated that Belser spends a minimum three-quarters of an hour each day in the training room, taping

wrists, fingers, and ankles, fixing blisters, and doing the necessary work that a busy football team requires.

In addition, he travels with each Chelsea football team when they go on the road. This includes the JV and the freshman team. He takes with him supplies, and is on standby for any minor injury that may require looking into. He is, according to Coach Bareis, a very important member of the football team.

Chuck, as he is called, has attended various clinics on training and care of football

injuries, while he has worked for the Chelsea teams. He attended the Cramer Athletic Training Course in 1969, and again this year. He also has attended the University of Michigan Athletic Clinic, and the Ferris State College Athletic Training School, both this year.

This outstanding member of the Chelsea teams is an avid hunter, and fisherman. He intends to enter the profession of forestry following his graduation from school, although he hasn't yet decided which college he would like to attend for that purpose.



ALVIN REINHARDT, Joslin Lake Rd., Chelsea, shows the Silver Beaver award, which he received Oct. 24, at the Annual Appreciation Dinner of Portage Trails Council Boy Scouts, to his wife, seated, left front. Citation was made by William Baker, right, while Frank Weber, of Ann Arbor, chairman of the Silver Beaver Ceremony, looked on.

Established 1871
The Chelsea Standard
 Telephone GR 5-3581
 Excellence Award By Michigan Press Association
 1951-1952-1960-1964-1965-1966
 Walter P. Lechard, Editor and Publisher

Published every Thursday morning at 800 North Main Street, Chelsea, Mich. 48118, and second class postage paid at Chelsea, Mich., under the Act of March 3, 1879.

ADDRESS CORRECTION REQUESTED

Subscription Rates (Payable in Advance)
 In Michigan: One Year \$4.00
 Six Months \$2.25
 Single Copies \$.15
 Outside Michigan: One Year \$6.00
 Six Months \$3.50
 Single Copies \$.20
 Service men or women, anywhere, 1 year \$4.00

MEMBER
NATIONAL PAPER
 Association - Founded 1885

National Advertising Representative
MICHIGAN NEWSPAPERS, INC.
 257 Michigan Ave.
 East Lansing, Mich. 48823

High School Honor Roll

A and B List

GRADE 12—
 Theda Allen, Pamela Arnett, Virginia Ball, Connie Balogh, Charles Belser, Cathy Benjamin, John Bennett, Michael Bentley, Susan Blaess, Douglas Brink, Eileen Bristle, Rayle Buckingham, Elaine Burnett, Jeffery Bust, Barbara Cavender, Bruce Clark, Laura Clemans, Tonya Clemons, Kim Corser, John Dettling, Michael Eismann, Martha Ewald, Mary Flintoft, Milton French, Mark Fuhrmann, Mary Kay Gaken, Dorothy Gauss, Earl GeBott, Michael Giffin, (all A), Janice Guenther (all A), Kathryn Hafner (all A), Jane Haselschwardt, Howard Hercules, David Heydlauff, Sharon Heydlauff, Ernest Hinderer, Carol Hulett, Richard Jennings, Marlin Johnson, Shelley Johnson, Jill Kipfmiller, (all A), Laurel Lancaster, Patricia Laraway, Thomas Lukasiak, Jane Mann, Jackie McClain (all A), John McClear, Mary Lu McClear, Betty McNutt, Sherri Navin, Jo Nevill (all A), Tina Orbring, Pamela Parnell, Jeffrey Parsons, Norman Passow, Lisa Peffer, Delorah Pierson, Patrick Pluck, Michael Powers, Susan Rasmussen, Dale Robbins, Neil Rothfuss, John Sacher, Denise Salyer, Cynthia Sawyer, Robert Schaefer, John Schmidt, James Schmitt, Denise Slusser, Rebecca Smith, Steven Smith, Susan Stock,

GRADE 11—
 Lu Ann Strieter, Rebecca Taylor, Howard Treado, Rosamar Valencia, Rebecca VanRiper, Carol Weir, Jack Wellnitz, James Wencel, Gayle Winans (all A), James Wojcicki, Joan Yocum, Patricia Young.

GRADE 10—
 Debra Barker, Terri Blacklaw, June Blalock, Dwight Bolanowski, Mary Jo Bott, Melvin Buss, David Buxton, Cynthia Chandler, Catherine Clark (all A), Garry Collins, Mark Collins, Mona Dillon, Susan Dirlam (all A), Pat Eisele, Terri Eismann, Steven Flint, Daniel Gaunt (all A), Greta Graham, Judith Gray, Houston Hardy, Derick Harris, J. Haselschwardt, Michael Heggert, Rudy Hertlein, David Hersh, Kathy Hopkins, Larry Hopkins, Lynn Houle, Thomas Hubert, Marsha Johnson, Larry Jones, Karlene Kargel, Karen Kelemen, Janice King, Edwin Koengster, Vicki Kuhl, Dennis Landwehr, Charles Lane (all A), Kathy Leach, Ann Lewandowski, Thomas Lixey, Sherry McClain, Janice McGaw, Anne McKernan, Jerry McPeake, Mary Nishaus (all A), Joseph O'Neill, Connie Orlovski, John Platt, Pat Poertner, David Porath, David Powers, Laurel Prinzinger, Chris Rasmussen, (all A), Cynthia Reynolds, Gayle Robbins, Michael Rossbach, Karen Schafer (all A), Kathryn Schaefer, Janice Schenk, Kathy Schiller, Janice Schramm, Danny Schuelke, Janet Sibley, Betty Snyder (all A), Todd Sprague, Martin Straub, Floyd Tanner, Thomas Thornton, T. Van Slambrouck, Ruth Verchereau, Norbert Weber, Wayne Welton, Tom Winans, Robert Wojcicki, Mark Wright.

Howell Livestock Auction

The Wise Owl Says Ship to Howell
SALE EVERY MONDAY, 2 p.m.
 Phone 546-2470, Jim Franklin
 Mason 677-8941

Market Report for Nov. 2

CATTLE—

Steers and Heifers:

Choice, \$28.50 to \$30
 Good, \$26 to \$28
 Utd., \$24 to \$26
 Fed Holsteins, \$25 to \$27.50

Cows:

Heifers, \$22 to \$24
 Utd., \$20 to \$22
 Canner-Cutters, \$16 to \$20
 Fat Yellow Cows, \$17 to \$19

Bulls:

Heavy, \$26 to \$28.50
 Light and Common, \$22-\$26

Calves:

Prime, \$42 to \$48
 Good-Choice, \$36 to \$42
 Cull-Med., \$25 to \$30
 Heavy Deacons, \$35 to \$38
 Light Deacons, \$30 to \$35

Feeders:

Good-Choice, \$30 to \$36
 Common-Med., \$22 to \$30
 Dairy Cows, \$240 to \$380

HOGS—

Butchers:

190-lb. to 240-lb., No. 1, \$16.50 to \$17.50
 190-lb. to 240-lb., No. 2, \$15.50 to \$16.50
 240-lb. and up, \$14 to \$15.50

Sows:

Fancy Light, \$13 to \$14
 300-lb. to 500-lb., \$12 to \$13
 500-lb. and up, \$11 to \$12

Born and Stags:

All Weights, \$11 to \$14.60

Feeder Pigs:

Per Head, \$9 to \$14

SHEEP—

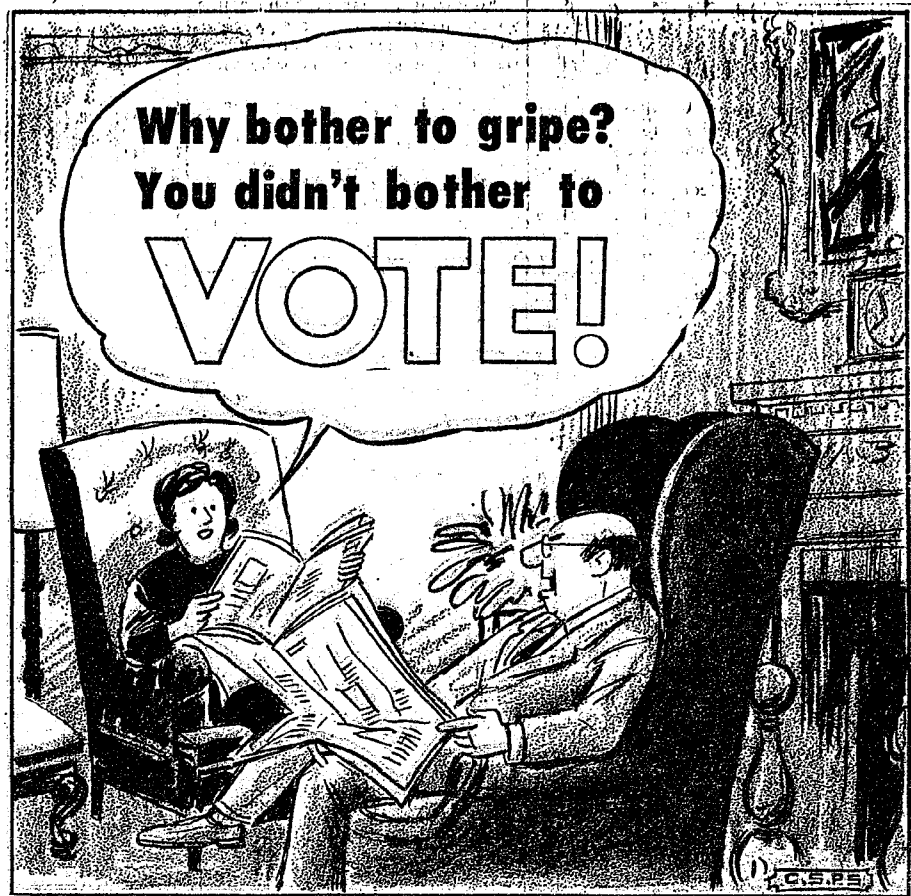
Woolled Slaughter Lambs:
 Choice-Prime, \$26 to \$28
 Good-Utd., \$22 to \$26

Ewes:

Slaughter, \$8.50 to \$10

Feeder Lambs:

All Weights, \$22 to \$26



MICHIGAN MIRROR

By Walter E. White, Secretary, Michigan Press Association

Balance Better

State government, which is looked to by many as a pacesetter in many areas, has been making significant strides in recent years in hiring members of minority groups.

A study released by the Michigan Civil Service Department shows that while 8.6 percent of the total state work force was non-white in 1964, that total has increased to 12 percent—a figure reflecting the general population of the state.

In fact, the report said, "It appears at the present time that non-white representation in the state service is slightly higher—1 percent—than that prevailing in the general state population."

The report noted the non-white work forces of major state departments ranged from highs of 54.4 percent in civil rights offices and 26.6 percent in labor to lows of 0.9 percent in the State Police and 0.4 percent in natural resources.

The report found most non-whites in such jobs as attendant nurse, typist-clerk, institution worker, general clerk, public welfare worker and janitor-watchman.

It also said the white civil service employee averages more than \$1,000 a year in salary above the average non-white worker.

The average for white employees is \$7,767 per year while the average for non-whites is \$6,718.

On the whole, however, the report said an examination of the record "indicates some rather substantial improvement in the direction of upward mobility. Non-whites are represented in greater numbers in the beginning professional and middle managerial classes."

The breakdown shows more than 88 percent of Michigan's non-white state employees work in six counties—Calhoun, Ingham, Kalamazoo, Oakland, Washtenaw and Wayne—which have high non-white populations.

Ten state agencies accounted for 77.4 percent of all non-white employees with the Department of Social Services employing the most—1,061. The Michigan Employment Security Commission was second highest with 991 and the Plymouth State Home was third with 531 non-white employees.

Other major agencies listed with low non-white employees

were the State House of Correction with none, and the Department of Natural Resources, with 4 percent of its total staff non-white.

Hart Hits Autos

Despite the fact he is from Michigan—the car supplier of the nation—Sen. Philip A. Hart plunged full speed ahead recently when he held hearings on rising auto insurance rates, and began receiving testimony that auto manufacturers bear much of the blame for rising insurance rates. Most car owners must applaud.

Testimony before Hart's Senate Antitrust and Monopoly Subcommittee showed the cost of repairing cars involved in low-speed accidents is skyrocketing because the cars just can't take it.

Among the main causes of the high damages is the fragility of auto bumpers, according to the testimony.

For example, four medium priced 1969 standard cars, when driven into a concrete barrier covered with plywood, received average damage of \$200 at only 5 mph.

When the speed was increased to 10 mph, a rate of less than many collisions which occur between humans without injury on a football field, the average cost rose to \$552 per car.

When backed into the barrier, the damages in a 5-mph. collision averaged \$214.

For 1970 models, the same tests showed an average \$215 damage at 5 mph. forward, \$514 at 10 mph. and \$218 when backed into the barrier at 5 mph.

campaign to get the manufacturer costs, as mentioned previously, is higher insurance rates.

The insurance companies, obviously feeling the squeeze between disgruntled stockholders noting lower profits and disgruntled policyholders noting higher rates, are beginning a campaign to get the manufacturers to stiffen the bumpers on their cars and make the cars more injury resistant.

And State Farm, the country's largest insurer, has been circulating copies of full testimony before Hart's committee around the nation in hopes of raising some public support for more crash-proof cars.

Uncle Lew from Lima Says:

Dear Mister Editor:

Saturday night at the country store the fellers pooled their ignorance and sorter took turns about commenting and predicting on the elections held across the country this week. I say sorter took turns cause Ed Doolittle was of a mind that it was his turn all the time, and Clem Webster took up more of the session hollering fer equal time than in discussing the issues.

Mr. Republican Ed got the floor first, and he allowed he was worried about this session of Congress coming up between elections and the seating of the winners in Congress in January.

Ed said he saw by the papers they is calling it a lame duck session, but he figgers it to be a cripple Democrat session. All them losers, Ed said, will be fast asleep, investigating all the fancy hotels in the South Seas at taxpayers expense, or busy trying to wreck everything to make the Administration look bad.

Clem butted in to say they ain't no chanct the Republicans will take over the Congress, so the Democrats is going to have their way one time or another. With everything but the Vietnam war going from bad to worst under Nixon, Clem went on, the voters ain't about to give him a Congress that he can boss around.

But Clem was agreed they ain't much chanct of gitting work out of the winners or losers during the holiday season. They put off all the tough stuff until after the election, Clem said, fer fear of

losing a few votes, so it looks like the next Congress will have to do a lot of their work all over again.

Bug Hookum said Congress has got to git moving on some things, dead ducks or not. Fer instant, he was of the mind that somepun ought to be done quick on welfare reform, afore the federal Government and the separte states is flat broke. The post office reform so fer is jest talk, Bug went on, and the only change he has saw in the past 10 year is turning the horse around on them mailmen sholder patches so the pony express ain't riding backwards. They is talk now of replacing the horse with a jet plane, allowed Bug, but that's too much progress to hope fer in one generation. The only advances we can be shore of, Bug said, is in postal rates, with first class to go to eight cent by spring and probable a dime afore the end of next year.

Some time pritty soon, Clem said, Nixon is going to come out and tell us what we already know, that his budget this fiscal year is going to be \$10 billion in the red, and that in spite of all his talk he can out-spend the Democrats without trying.

Final, Mister Editor, it were Zeke Grubb that allowed he ain't worried about lame ducks voting too much spending cause shortly they will be out here helping us pay fer it.

Yours truly,
 Uncle Lew.

OUR CLOTHES are NOT EXPENSIVE

THEY JUST "LOOK" THAT WAY

PANTS ENSEMBLES • DRESSES • SUITS • COCKTAIL

\$45.00 UP

HOURS: 9:30 to 5:30 Mon. thru Sat. Drop in any time.

MAURICE COUTURIER

LAMP POST PLAZA

ANN ARBOR

Washtenaw at Stadium

JUST REMINISCING

Items Taken from the Files of The Chelsea Standard

4 Years Ago . . .

Thursday, Nov. 10, 1966—
 Chelsea Community Chest, in its fourth week of the drive, reports that 80 percent of its total goal has been reached. The Chelsea drive hopes to be able to exceed its goal this year, and thus be able to pay all participating agencies extra monies. This is the final week of the drive.

James M. Breakey, Jr., was unopposed in his bid for Judge of Circuit Court. Marvin L. Esch defeated Congressman Weston E. Vivian by an unofficial margin of 2,672 votes.

Former Governor G. Mennen Williams was defeated in his bid for the U. S. Senate seat, as Robert P. Griffin won that contest.

A surprise storm dumped 8.9 inches of snow, ice and sleet on Chelsea Wednesday and Thursday of last week, leaving area residents in what the U.S. Weather Bureau described as the earliest heavy snow in southern Michigan since they began keeping records in 1899.

The final football game of the season, a non-conference encounter between Chelsea and Blissfield, was postponed from 8 p.m. Friday evening until 6 p.m. Monday evening. By Monday, much of the snow had melted, leaving large puddles of water throughout the countryside.

The Rev. James Craig has been elected president of the Chelsea Ministers Association. The Rev. Robert A. J. Livingston was elected secretary and the Rev. Warner Siebert is new treasurer of the group. The election of officers took place Nov. 8.

14 Years Ago . . .

Thursday, Nov. 8, 1956—
 President Dwight D. Eisenhower was re-elected for a second term of office by a majority which yesterday afternoon reached 7,000,000 over Adlai Stevenson, the Democratic candidate. Stevenson had only 74 electoral votes compared with Eisenhower's 457. It was believed that final tabulation of the vote would give Eisenhower a popular vote majority of 10,000,000, for one of the most sweeping victories any presidential candidate has ever been awarded.

The 1956 campaign for funds for the Chelsea Community Chest has reached a total of \$12,500, or 14 percent above the total set as this year's goal, according to an announcement by Mrs. Walter Mohrlock, campaign chairman.

In observance of American Education Week, Nov. 12-16, parents of elementary school pupils invited to visit the schools at their convenience, Arthur Schmunk, Elementary principal announced.

At Chelsea High school, grades 7 through 12 are holding open house for their parents Wednesday, Nov. 14, beginning at 7 p.m.

Martin Miller, Civil Defense director for Zone VI, has announced that the first class in home nursing, instituted here for emergency preparation in case of disaster, was completed Monday evening. Instructor for the six-week course was Mrs. William Bossemeyer, assisted by Mrs. Carl

Benjamin. Both are registered nurses. Also an assistant was Mrs. Ruth Ella Smith of Ann Arbor.

Benjamin. Both are registered nurses. Also an assistant was Mrs. Ruth Ella Smith of Ann Arbor.

Benjamin. Both are registered nurses. Also an assistant was Mrs. Ruth Ella Smith of Ann Arbor.

Benjamin. Both are registered nurses. Also an assistant was Mrs. Ruth Ella Smith of Ann Arbor.

Benjamin. Both are registered nurses. Also an assistant was Mrs. Ruth Ella Smith of Ann Arbor.

Benjamin. Both are registered nurses. Also an assistant was Mrs. Ruth Ella Smith of Ann Arbor.

Benjamin. Both are registered nurses. Also an assistant was Mrs. Ruth Ella Smith of Ann Arbor.

Benjamin. Both are registered nurses. Also an assistant was Mrs. Ruth Ella Smith of Ann Arbor.

Benjamin. Both are registered nurses. Also an assistant was Mrs. Ruth Ella Smith of Ann Arbor.

Benjamin. Both are registered nurses. Also an assistant was Mrs. Ruth Ella Smith of Ann Arbor.

Benjamin. Both are registered nurses. Also an assistant was Mrs. Ruth Ella Smith of Ann Arbor.

Benjamin. Both are registered nurses. Also an assistant was Mrs. Ruth Ella Smith of Ann Arbor.

Benjamin. Both are registered nurses. Also an assistant was Mrs. Ruth Ella Smith of Ann Arbor.

Benjamin. Both are registered nurses. Also an assistant was Mrs. Ruth Ella Smith of Ann Arbor.

Benjamin. Both are registered nurses. Also an assistant was Mrs. Ruth Ella Smith of Ann Arbor.

Benjamin. Both are registered nurses. Also an assistant was Mrs. Ruth Ella Smith of Ann Arbor.

Benjamin. Both are registered nurses. Also an assistant was Mrs. Ruth Ella Smith of Ann Arbor.

Benjamin. Both are registered nurses. Also an assistant was Mrs. Ruth Ella Smith of Ann Arbor.

Benjamin. Both are registered nurses. Also an assistant was Mrs. Ruth Ella Smith of Ann Arbor.

Benjamin. Both are registered nurses. Also an assistant was Mrs. Ruth Ella Smith of Ann Arbor.

24 Years Ago . . .

Thursday, Nov. 7, 1946—
 A new grocery store, with all new modern equipment and featuring either self-service or service by a clerk as preferred by the customer, will be opened at 111 S. Main St. on Saturday, Nov. 9, by Waldo Kusterer and his son, Luther, who was honorably discharged some time ago after 27 months in the service, 18 of which were spent overseas.

The first department was called out about 5 p.m. last Wednesday when neighbors noticed that Mrs. Rosa LaBarge's house on Taylor St. was afire, while she was visiting at the home of her son in Grayling. Neighbors succeeded in keeping the fire from spreading to the rest of the house until the firemen arrived, the damage being confined mostly to the kitchen where the walls and ceiling were burned through. Investigation showed that the fire was started when something went wrong with the electric refrigerator, which is about 10 years old, but the exact cause has not yet been determined. Mrs. LaBarge returned about an hour after the fire.

Teachers of Washtenaw county held their first meeting of the year at Milan on Wednesday, when a combined dinner, business and lecture meeting occupied their attention.

34 Years Ago . . .

Thursday, Nov. 5, 1936—
 Tuesday's election, results of which re-elected President Roosevelt by an overwhelming majority over his opponent, Gov. Alfred M. Landon of Kansas, also carried the Democratic ticket in Michigan to victory, according to avail-

able information on Wednesday. Frank Murphy was leading Gov. Frank D. Fitzgerald by a majority amounting to several thousand votes, and Prentiss M. Brown has a big lead over Wilber M. Brucker in the senate race.

At the regular meeting of the common council on Monday evening, bids were opened which will be used for the construction of a sewage treatment works in Chelsea. It was voted to accept the bid of Stranahan, Harris & Co., of Toledo, O., whose bid was at an interest rate of 2 1/2 percent, with accrued interest, and a premium of \$189.24. The bond issue is for \$29,000.

Hundreds of Chelsea citizens and friends from many other Michigan and out-state cities were present at funeral services held Sunday afternoon to pay their respects to Howard S. Holmes, who was instantly killed in a fall at the Chelsea Milling Co. last Thursday forenoon. Holmes was president of the Chelsea Milling Co. and the Michigan Millers Association. He was director of the Chelsea State Bank and a former member of the board of education. He was also joint owner of the Chelsea Lumber, Grain & Coal Co. He was a member of the Masonic orders of Chelsea, Knights Templar, the Mystic Shrine and the Barton Hills Country Club of Ann Arbor, and the Chelsea K. of C. Lodge. He was also a member of the First Congregational church and of the board of trustees.

Anything can be funny when it happens to someone else.

MONEY TROUBLE?
ONE PLACE TO PAY!
Credit Management Service
 662-2565
 215 South Fifth Ave.
 Ann Arbor
 State Licensed and Bonded

Fine Furniture and Appliances

FRIGIDAIRE - ZEINTH - KROEHLER
 BERKLINE - TELL CITY - CARPETING BY DOWNS

These and Other Famous Name Brands in Our Floor Stock

Drastically Reduced to Make Room for New Winter Merchandise Arriving Daily.

Come in and see us today for real savings!

MEABON'S TV,

Furniture & Appliances

1170 M-52 South, Chelsea Phone GR 5-5191

Washtenaw Community College
 ALL CLASSES ON NEW HURON CAMPUS

Announcing . . .

A Course in **GROUNDS MAINTENANCE FOR HOME & INDUSTRY**

to be offered by **Washtenaw Community College**

and held at Chelsea High School in the Vo-Ag Room.

This course will cover the practical aspects of growing and care of home, apartment, and industrial grounds. Topics to be covered include trees, shrubs, flowers, soils, watering, lighting and exposure, fertilizing, pruning, equipment selection and maintenance, and developing a maintenance schedule. The 1-credit course will run for 6 weeks, starting Nov. 9, on Mondays, from 7-9 p.m. In-district cost is \$12.50, and registration will take place at the first class meeting.

For further information, please call: **Mr. Robert Paulson, 971-6300, Ext. 384.**

SEAMLESS ALUMINUM GUTTERS
 Also: Barn Eavestroughing

— ★ —
 CALL
WILSON METAL SHOP
 Phone 428-8468 Manchester, Mich.

Many Clubs Available to CHS Students

Club news at Chelsea high school is the main feature on the horizon this week. To continue with last week's outline of the various clubs offered to high school students, the first club to consider this week, in the light of Chelsea High's varsity championship football team, is the Varsity Club.

Varsity Club, which is sponsored by Coaches Bareis, and Kelly, is for all men in Chelsea athletics who have won a letter.

GAA, or Girls Athletic Association, is for women students who are sports minded. It is sponsored by Miss Schriener.

Health Careers, a club which deals with different careers available to both men and women in the world of health, public health, disease control, drugs and drug research, and medicine, is sponsored by George Bergman.

Golf Club, sponsored by Patrick Wade, is for all students who play golf, or who would like to learn. Student Council, an elected position, attracts those students who are interested in changing the way things are at the school, voicing opinions, and learning the art of power politics. Its advisors for this year are Miss L'Roy, Mrs. Colin, and Mr. Bergman.

Key Club, sponsored by the Kiwanis Club, is for young men. Emphasis of the club is better citizenship.

Cathy Crouch and Doris Beeman, High School reporters.

Gridders of the Week



DALE ROBBINS, senior (left) is a guard on offense, and defensive linebacker. Following an injury during Chelsea's game against South Lyon, Dale was hospitalized, and had surgery on his knee. He is consequently out of action for the balance of the season. An avid athlete, he has played football for Chelsea for six years. This is his second year on the varsity team, even though a similar injury to his other knee occurred two years ago. Dale has wrestled, and is on the track team. He is a member of the Key club, Varsity club, Senior Trip club, and the Student Council. He is in National Honor Society, band, and the Methodist church youth group. Following high school, Dale would like to go to Albion College, specializing in pre-medical studies. He would ultimately like to be an M.D. His major interest is in family medicine. Dale

lives at home with his parents, Mr. and Mrs. Robert Robbins, two sisters, Darlene, and Denise, and one brother, Duane. JACK McCLEAR, (No. 12) also a senior, plays safety on defense, and offensive halfback. He has played on Chelsea teams for five years. This is his second year on the varsity team. Jack also enjoys sports, and is on the baseball and basketball teams. He golfs, swims, and hunts. Following high school, he would like to attend Michigan State University, where he is considering majoring in biology. He would ultimately like to teach biology. Jack has worked both this past summer, and the year before for John Eisenbeiser, laying sod. He lives at home with his parents, Mr. and Mrs. Thomas McClear, at 705 Howard Rd. His older brother, Mike, is married and lives in Chelsea.

Jayvees Win Again for 7-0 Season Record

Chelsea Junior Varsity gridgers did it again! The JV team romped over Saline Thursday evening, Oct. 29, by a score 20-6, to bring their season's record to 7-0.

In the first quarter, Saline scored first on a three-yard run, bringing the score to 0-6. The try for extra point was not good, and the score remained the same.

Bruce Guster scored on a 15-yard dive, making the score 6-6. Tim Lancaster wrapped up the two-point conversion on a power play, to increase Chelsea's lead to 8-6.

In the second quarter, John Mann scored on a quarterback sneak, to give Chelsea a lead of 14-6. The extra point pass was incomplete, and the score remained the same.

Tim Lancaster scored again in the fourth quarter on a one-yard dive. That made the score 20-6, giving Chelsea our final points in the game, as the extra point attempted pass was incomplete.

Also in the fourth quarter, Don Bertke intercepted a Saline pass. Defensively, Chelsea was led by Jeff Marshall who had 12 tackles, followed by Don Houle and Tim Lancaster, with 10 each. Jeff Van Riper and Mark Grambeau had nine and seven tackles, respectively.

Victory was a great team effort, as everyone did a fine job. Saline was a good football team, and the game was played under very wet and sloppy conditions, as it rained during the entire game. Wet conditions have a tendency to equalize the difference between two teams, but Chelsea still managed to dominate the statistics. They out-gained Saline by 227 yards to 87.

Boy Scout Troop Plans Paper Drive

Boy Scout Troop 476 will be having a paper drive on Nov. 14. Those who have papers may call Merle Leach, 475-7329; Charles Stoner, 475-2380; Willis Heydlauff, 479-7191; or Charles Hafner, 475-8491.

It takes a wise man to be satisfied with what he deserves.

Why is it that tomorrow is so full of good working hours?

Youths Arrested

(Continued from page 1)

Following a search of the young men's persons, and the vehicle, enough evidence was found to arrest the young men, and take them to Dexter.

Arrested were Charles Dennis Scully, 23, 9310 McGregor Rd., Pinckney, Lee Schultz, Central St., Dexter, and John Allen Ledwidge, 17, 5780 Joy Rd., Dexter.

Scully admitted that the youths had broken into the coin machine, and that he had broken into the same machine on Oct. 25.

Snow, which is pretty in November, soon loses its charm.

The best way to get along with people is to smile, be friendly, and seldom say what you think.

The law should know no favorites; when this is the case, the law has no excuses to make.

WANTED CEMENT & BLOCKWORK

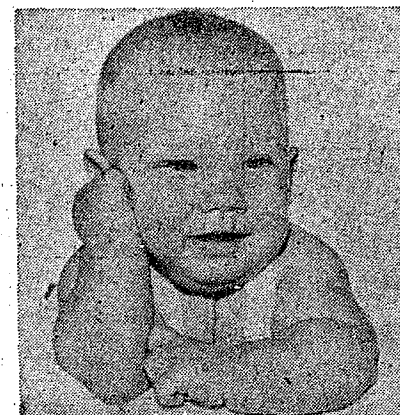
All types—Poured walls, floors, drives and foundations.

CECIL CAUDILL

(517) 851-3847

CHILDHOOD RADIANCE LIVES FOREVER

FULL LIVING COLOR!



ONE
8 x 10
PROFESSIONAL
PORTRAIT
only

99¢
Plus 50c Handling

NO APPOINTMENT NECESSARY
EXPERIENCED PROFESSIONAL PHOTOGRAPHER
ASSURES NATURALLY EXPRESSIVE POSES
CAPTURED FOREVER—A heartwarming gift
for Grandpa, for Dad, and for Relatives.

Naturally there is no obligation to buy additional photographs; however, extra prints are available in various sizes and styles at reasonable prices.

Friday, Nov. 13
10 a.m. to 6 p.m.

DANCER'S

Chelsea's Friendly Dept. Store

STOP FROZEN PIPES!
Use **WRAP-ON** ELECTRIC HEAT TAPES
NO TIME LIMIT
FREE REPLACEMENT GUARANTEE!

GAMBLES
110 N. Main St.



Hunting?
YOU NAME IT... WE'VE GOT IT!

See Our Selection of

- ★ DEER RIFLES
- ★ SLUG GUNS - COMPASSES
- ★ RIFLE AMMUNITION
- ★ SLUGS - BUCKSHOT
- ★ HANDWARMERS
- ★ SOREL INSULATED BOOTS
- ★ GLOVES & HATS
- ★ RED SWEAT SHIRTS
- ★ WOOL SOX
- ★ BUCK STOP LURE

We Still Have A Few

WINCHESTER MODEL 94 30-30 RIFLES

Only **\$77.77**

Chelsea Hardware
110 S. Main St. Phone GR 9-6311

Frosh Grid Team Stopped

Chelsea freshmen ended their football season on a low note Tuesday night, dropping a hotly contested game to the Saline Hornets, 22-20.

Saline drew first blood in the first half with a short TD pass. A run netted the extra point. Both teams moved the ball well, but mistakes kept Chelsea from scoring before intermission.

Saline scored again with a 55-yard run on the third play of the second half. Again the conversion was good, and Saline led, 16-0. Chelsea tallied in the third on a short dive by John Tandy, and the period ended, 16-6, Saline.

Chelsea threatened early, and often in the fourth stanza, but couldn't put the ball in. Keith Kargel finally broke the ice, by tackling a Saline player in the end zone, after Chelsea had been stopped inside the one-yard line. This made the score 16-8. Chelsea took the kick and drove deep again, but again were held.

Saline scored again on a long run which has hurt Chelsea all year, but they missed the extra point attempt. Chelsea scored on a short pass from John Houle to Mike Nadeau.

Chelsea took the ball again deep in their territory with less than a minute to play. On the third down, John Houle threw an 85-yard touchdown pass to Mike Na-

deau. A pass for the extra point was just tipped away from the intended receiver. With 20 seconds left, the score stood 22-20. Chelsea attempted an inside kick, but Saline got the ball, and killed the final seconds, handing Chelsea a heartbreaking defeat.

The young Bulldogs finished the season with a 4-3 record.

We know a man who finds it hard to work. His office is too hot in the summer and too cold in the winter.



MAUSOLEUMS ★ MONUMENTS
BRONZE TABLETS ★ MARKERS

BECKER MEMORIALS

6033 Jackson Road
ANN ARBOR, MICHIGAN

St. Mary's Annual

ROAST BEEF DINNER

SUNDAY, NOV. 8

Chelsea High School Cafeteria

Servings at 12:30, 1:30, 2:30 p.m.

Take-Outs Available

Tickets: Mrs. Hal Pennington, 475-5592
Adults, \$2.00 - Children, \$1.00

Jiffy market COMPLETE SUPER MARKET
BIG ENOUGH TO SERVE YOU.....SMALL ENOUGH TO KNOW YOU!
Corner of SIBLEY & WERKNER RDS....CHELSEA, MICHIGAN
SALE PRICES EFFECTIVE THURSDAY, NOV. 5 THRU SUNDAY, NOV. 8, 1970.

HAM Center Slices
Smoked, Boneless **99¢ lb.**

AND EGGS Shamrock Grade A
Medium Size **39¢ doz.**

BUNNY POP POPCORN 2-Lb. Pkg. 19¢	JONATHAN APPLES 3-Lb. Bag 39¢	KLEEN-MAID BREAD 2 1-Lb., 4-Oz. Loaves 49¢	Mich. U.S. No. 1 POTATOES 10-Lb. Bag 49¢
---	--	---	---

CANADA DRY SODA POP

1 Pt., 12 Oz. No-Deposit, No Return

CACTUS COOLER
CALIF. STRAWBERRY
TAHITIAN TREAT
VANILLA CREAM

24¢ bottle
WILD CHERRY

JAMAICA COLA
SUN RIPE ORANGE
PURPLE PASSION
CONCORD GRAPE

OPEN 7 A.M.-10 P.M. DAILY	FULL LINE GROCERIES MEATS PRODUCE	CIGARETTES Your Choice \$3.39 Crtn.	What You Want When You Need It at FAIR Supermarket Prices.
---------------------------------	--	--	---

JIFFY MARKET REGULAR 33.9¢ Per Gallon Includes All Taxes	MARATHON EVERYDAY LOW GAS PRICES TOP QUALITY GAS AT FAIR SUPERMARKET PRICES! Open 7 a.m. to 10 p.m. Daily for Your Convenience.	GAS PUMPS PREMIUM 37.9¢ Per Gallon Includes All Taxes
---	---	--

Ads
Taken
Till 5 p.m.
Tuesday

IT'S EASY TO
BUY-SELL-RENT-
HIRE & FIND WITH

WANT ADS

Just
Call
GR 5-3581

WANT ADS

The Chelsea Standard

WANT AD RATES

PAID IN ADVANCE—All regular ad-
vertisements 50 cents for 25 words
or less, each insertion. Count each
figure as a word. For more than 25
words add 2 cents per word for each
insertion. "Blind" ads or box num-
ber ads, 35c extra per insertion.
CHARGE RATES—Same as cash in
advance with 10 cents bookkeeping
charge if not paid before 5 p.m. Tues-
day preceding publication. Pay in ad-
vance, send cash or stamps and save
10 cents.
DISPLAY WANT ADS—Rate, \$1.10
per column inch, single column width
only. 2-point and 4-point light type
CARDS OF THANKS or MEMOR-
IALS—Single paragraph style, \$1.00
per insertion for 10 words or less; 2
cents per word beyond 10 words. Min-
imum, 1 inch.
COPY DEADLINE—5 p.m. Tuesday
week of publication.

CAR RENTAL by the day, week-
end, week or month. Full insur-
ance coverage, low rates. Call Lyle
Christwell at Palmer Motor Sales,
GR 5-3271. 25tf

WORK SHOE HEADQUARTERS

Famous Red Wing Brand
\$12.95 to \$26.95

Foster's Men's Wear

USED TRACTOR TIRES—Large
inventory, hand, also used
passenger - truck - grader tires,
Jackson Tire Brokers, M-106, Mu-
nith, Mich. Ph. 596-2925. 32tf

ALLSTATE INSURANCE

AUTO - BOAT - COMMERCIAL
LIFE - HEALTH - HOME
LIABILITY.
Phone Eves. or Week-ends for
N. H. MILES, Agent
GR 5-8334 44

For Sale in Chelsea

3-BEDROOM ranch type home, car
and a half garage, FHA ap-
proved.

3-BEDROOM home on one acre,
four miles from Chelsea.

HAVE NICE VACANT parcels in
Chelsea-Dexter area.

Marshall Realty

878-3182, or call agent
Evelyn Rosenreiter 20

CARPET CLEANING by Burke. 12
cents a square foot, needs over
night to dry. In Chelsea call Merkel
Brothers, 475-8621. 38tf

NO HUNTING SIGNS

Now available

Chelsea Standard

300 N. Main St.
Chelsea, Mich.

Men Needed To Train As Semi Drivers

Train now to drive semi tractor
trailers, local and over the road.
You can earn high wages after
short training. For application,
call 419-243-4053, or write Safety
Dept., United Systems, Inc., c/o
Duff Terminal Bldg., 215 City
Park Avenue, Toledo, Ohio, 43602.
Training will be on the actual
equipment. 20

WANT ADS

BOARDING, trimming, training.
Town and Country Kennels,
Jackson Rd. at Baker. NO 3-7200.
7tf

MOR HEATING & Cooling Co.—
Air conditioning, hot water,
steam boilers, warm air furnaces.
Sales and service. Ph. 496-2853.
Gregory. 47tf

Gem Travel Trailers and Campers

PICK UP COVERS
4" ————— \$100.00
26" ————— \$179.00 and up

Triangle Sales

Chelsea 475-4302 40tf

FARMS RESIDENTIAL LAKE PROPERTY

for
QUALIFIED RELIABLE SALES
PERSONNEL
CONTACT

Carole Bell, 426-8892
Kathryn Smith, 426-8380
Janice Foutch, Saline, 429-4114
Wendel Foutch, Saline, 429-4114

YPSILANTI OFFICE
Arthur Kane, 482-6655
Virginia Oakes, 482-6655

Evinger Real Estate

426-3286
Dexter, Mich. 36tf

Talent Not Necessary

Play "Melodies in Minutes"
on the new

Wurlitzer Organs

Full-size Spinets

\$659.00 up

EASY TERMS

Al Nalli Music

Phone 475-7215 20

PONTIAC

Now is the time
on these Specials:

1968 Ford Custom, 4-dr.

1967 Pontiac Bonneville

1967 Ford Fairlane GT

1965 Chevy Impala Supersport,
convertible

Harper Pontiac Sales & Service

CHELSEA

Phone 475-5311 or 475-5451 days,
761-2999 evenings.

Open evenings by appointment 19tf

TRAVEL TRAILERS — 13-ft. and

up; 10x55 ft. trailers. John R.
Jones Trailer Sales, Gregory, Mich.
Phone 498-2655. 45tf

Quality Evergreens

Spreading, upright, and Hicks
Yews, Pyramid and Globe Arbor
Vitas, Pfizers and Blue Spruce.
Now is the time to select your
Crimson King and Norway Maples.
All State Inspected. Faist's Ever-
green Nursery, 11362 Triest Rd.,
Grass Lake. Phone Grass Lake 522-
4588. 20

WANT ADS

Contractor Servicing Chelsea, Dexter and Manchester Areas

Complete Home Remodeling
Inside and Outside

Specializing in extra living space,
recreation rooms, kitchens and
panelling. Installing all aluminum
products, 5" eavestroughs, custom-
made awnings, windows and doors,
aluminum siding in many selected
colors and styles.

Please Call

DALE COOK

Chelsea 475-8863 20tf

HAMMOND ORGAN teachers
wanted to teach in their own
homes. Call Grinnell Brothers, Ann
Arbor, 682-5687. 34tf

HORSE SHOEING — Experienced,
corrective trimming and shoeing
prompt service. Buck Myer, 2800 W.
M-59, phone (517) 546-1510 Howell
48848. 23

Real Estate

BEAUTIFUL BUILDING SITE at
Loch Alpine. Large lot with
view of lake on hillside.

BASS LAKE, canal front 3-bed-
room cottage, shower, hot water,
open planning living room and
kitchen, furnished. Only \$18,900.00,
terms.

EXECUTIVE TYPE HOME on
3-acre lot. Ceramic tile
swimming pool, 3 bedrooms, 2
baths, carpeted. Basement, paneled
floors, fireplace, could have
extra bedroom, and extra kitchen.
\$35,000, terms.

80-ACRE FARM with older home,
barns, and extra buildings, all
habitable. Stockbridge schools.
\$55,000, terms.

20 ACRES gently rolling land in
Unadilla Twp. frontage on 2
roads, \$17,000.

HALF MOON LAKEFRONT cot-
tage. 75-ft. water front, house
24x32 with 24x16 front wood
\$22,000, terms.

LOVELY HILAND LAKE front
year-round, 2-bedroom home.
Terraced to lake. Perfect condi-
tion. Furnished. \$23,500, terms.

220-ACRE FARM, 7-room house,
many buildings, needs some re-
pair. Stockbridge schools. Only
\$150,000, terms, 7% interest.

CHARMING 3-BEDROOM home
with 120-ft. frontage on golf
course. Walkout lower level with
patio; open planning living room,
kitchen and dining with brick di-
vider fireplace, carpeted, two
baths, many trees, hillside view
at back. Country Club membership,
with golfing and beach. Just re-
duced for fall sale.

REAL ESTATE Mary Wolter

7421 Dexter-Pineckey Road
Dexter, Michigan 48130

Phone 426-8188 21

WANTED—Farmers to go with us
on a bus to Chicago Nov. 30 to
the National Live Stock Expon-
sition. Contact Honeyeggers at Chel-
sea 479-8511 for details. 21

ROOM FOR RENT with private
bath and parking space, 163
Orchard St. 20tf

FOR SALE — 7-year-old flashy
gold, part Tennessee Walker.
Must sell, \$150. Ph. 522-5640. 20

LOST DOG — Please return the
Weimeraner, which I borrowed
from Mt. Clemens. Drop off at
Trinkle Rd. 20

WANTED—Used rear tractor tire
size 11.0-28. Call 475-4792. 20

DEXTER FOOD LOCKER

announces

they are sorry

not to be able

to dress-out deer

this season. x23

WEAR BEAUTIFUL CLOTHES.
Make new friends. Earn money
at same time. Become a Beeline
stylist. For information call Betty
Pelkey, 229-6192 collect or 229-8448
x20

Arnie's Roofing

All types of shingle work, repairs,
new and old homes, barns, etc. Free
estimates.

Phone 662-1753 x21tf

G. G. HOPPER

Building Contractors

Phone GR 5-5581

Gregory 488-2148 40tf



"This is the last of that quarter of beef we got
in the Standard Want Ads!"

WANT ADS

APPLES — Jonathon, Spies and
Delicious. 3 miles west of Grass
Lake, Addison Orchard, 7534 E.
Michigan Ave. 21

BRONZE BABY SHOES, mounted
on picture frame, ash-trays,
book ends, etc. \$12 complete.
Nagy's Bronzing, 715 S. Division,
Ann Arbor. Phone 761-0491, any
time. 21

DOMINION ELECTRIC hair set-
ter and dark brown frosted wig-
let for sale. Phone 475-7595. 20

Remember

Chelsea's Fox Farm?

We've spent a lot of money, and
a lot of time, to divide the former
fox farm into four of the most
beautiful 2-acre building sites that
ever overlooked Chelsea. \$7,800
each. Land contract available.

Gerald Roberts

475-8904 21

Real Estate For Sale

FAMILY HOME—4-bedroom older
home. Near business district. 2-
car garage. \$14,000. Land contract
possible.

INVEST FOR THE FUTURE—
7½ acres. Has village water,
electric and gas. 745 ft. of R.R.
frontage. 3-bedroom home to pro-
vide current income. \$30,000 with
terms.

SPOTLESS—2 bedrooms, separate
dining room, 1½-car garage.
Aluminum siding. Ideal for a
couple. \$22,000.

BUILDING LOT — One mile east
on Old US-12. 135 feet of front-
age. 1¼ acres. \$40,000.

10 ACRE LOTS—Several to choose
from. 2¼ miles out. From \$7,500
up.

CLARENCE WOOD BROKER

646 Flanders St.

Phone 475-2033 18tf

Linoleum - Tile

Sales and Installation

Samples in your home

For Free Estimate
Call 475-7180

Clark Bushnell Floor Covering Service

16tf

PEOPLE ENJOY ALOUETTE.
Now is the time to buy the
reliable ones. 12-60 h.p. ALOUETTE
Snowmobiles. Complete line of
accessories. See Gus Hansen at
15901 Seymour Rd., or call 475-
7212. Also two used machines, 1969
Ski-Doo, and 1968 Johnson Ski-
Horse.

ALUMINUM SIDING, custom trim,
and gutters. Dave's Siding Co.
Phone 498-2423. 15tf

Always at Your Service on the Double Quick!



Looking for heads-up
auto service? Look no
further. That's us! Always
on our toes to serve you
promptly, efficiently,
courteously!

PURE OIL PRODUCTS

JIM'S PURE SERVICE

PHONE 475-2822 501 SOUTH MAIN

Tires — Batteries — Tune-Ups — Brake Service — Wheel Alignment

WANT ADS

PIANO TUNING, Chelsea and area.
Facilities for reconditioning and
rebuilding. Used piano sales; re-
conditioned, grand and verticals.
B. Eklund. 426-4425. 50tf

For Low Cost Floor Covering

We have small and large pieces,
ends of rolls, etc., of linoleum
and carpeting at close-out prices.

Many sizes and colors to select
from.

MERKEL BROS.

x40tf

Willis Real Estate

\$13,800 — three bedrooms, family
room, very modern kitchen,
farmers home loan approved. \$300
down to qualified buyer. Just off
I-94, near Win Schuler's Restau-
rant.

LAKE RIGHTS—3-bedroom ranch
in pleasant location. Owner
transferred, quick possession. Near
Grass Lake exit off I-94.

60 ACRES—Near Stockbridge, ex-
cellent investment property. 2-
bedroom home, \$880 A/C payment.
\$150 oil lease. Trailer park po-
tential. Very attractive square
parcel of land, with woods and
small stream. \$32,000.

COMMERCIAL or light industrial,
eight-year-old country building
with brick front. Paneled offices,
13,280 square feet, located on 4.9
acres lot with 600 feet frontage
on black-top road, near US-127,
Jackson. Immediate possession,
\$30,000.

Willis Real Estate

Ph. Grass Lake (517) 522-8121 20

\$18,621.03 is the nationwide aver-
age commission earnings of our
full-time men. We need same type
man in the Chelsea area. Take
short trips. Cash bonuses, fringe
benefits, expense-paid vacations,
insurance, retirement program.
Airmail A. O. Pate, Texas Refin-
ing Corp., Box 711, Fort Worth,
Texas 76101. 20

FEMALE PUPPIES free to good
homes, 475-8881. 20

S A L E

Employees' Cars

1970 BUICK LeSABRE CUSTOM

4-dr. hardtop (air cond.)

\$3775

USED CARS

1968 Pontiac LeMans, 2-dr. hard-
top (sharp) \$1895

1967 Rambler Rebel 2-dr. hardtop
\$895

1966 Chev Impala 2-dr. hardtop
\$1095

1966 Ford Station Wagon 9-pass.
V-8, power steering \$695

1965 Buick Wildcat 2-dr. hardtop
\$795

1965 Ford 2-dr. sedan V-8, auto
trans, power steering \$595

1965 Mercury Station Wagon \$495

1964 Buick LeSabre 4-dr. hardtop
\$595

1964 Valiant 2-dr., auto trans.
\$495

1964 Falcon Futura 4-dr. sedan,
auto trans. (nice car) \$495

1964 Dodge 330 4-dr. sedan, auto
trans, power steering, power
brakes. (nice) \$495

\$395.00 Lot

Rear of Building

1966 Chev II Station Wagon \$395

1965 Mercury Comet 2-dr. \$395

1962 Volkswagen (as is) \$150

Sprague

Buick-Olds-Opel, Inc.

1500 S. Main St., Chelsea

Evening 475-6271 or 475-8240

Phone 475-8664

Open evenings by appointment. 19tf

FOR RENT—Clean, unfurnished
2nd floor apartment. Stove, re-
frigerator and heat furnished. No
pets, no children. Phone 475-8469
after 6 p.m. and 475-2018 week-
ends. 19tf

FOR SALE—Dynel fur coat.
Gray, size 16-18, \$8. 429 W.
Middle St. 20

PRINTING—from John's Shop for
the wedding, anniversary, show-
er, etc. Also, large selection of
Christmas cards. Discount prices.
Phone 475-7500. 23

WANTED TO BUY—Home in the
Chelsea area. Small down pay-
ment, good references. Reply to
Box OC 29, The Standard. 22

WORK SHOE

HEADQUARTERS

Famous Red Wing Brand

\$12.95 to \$26.95

Foster's Men's Wear 34tf

ELECTRIC HEATER for sale.

Like new. Call 479-6961. 20

WANT ADS

Formal Wear
RENTAL SERVICE
Prom - Weddings - Special Events
6 different colors.

Foster's Men's Wear

PROMPT TREE REMOVAL, top-
ping and cabling. Free esti-
mates, fully insured. Phone 475-
8035. x2

Formal Wear RENTAL SERVICE

Prom - Weddings - Special Events
6 different colors.

Foster's Men's Wear

CAR & TRUCK LEASING. For
details see Lyle Christwell at
Palmer Motor Sales, GR 5-3271. 49tf

KNAPP SHOES

For Cushion Comfort

Robert Robbins

475-7282 48tf

FOR SALE—8-acre farm with

2 houses close to North Eleme-
ntary school, Chelsea. Immediate
possession. Call Chelsea 475-2597.
x18tf

FOR REAL DOLLAR SAVINGS
be sure and see us before you
buy any new or used car. Palmer
Motor Sales, Inc. Your Ford Deal-
er for over 50 years. 2tf

TREE REMOVAL DONE — Also
buyers of standing timber and
walnut trees. Chelsea 475-7631. 34tf

CLEANING LADY WANTED for
gentleman's small home. Seven
miles north of Chelsea. Must have
transportation. Bi-weekly. Call
475-7178 after 5 p.m. 20

FOR SALE — 8-track stereo, 5
tapes, \$50 or best offer. Oil
tank. 240 gal. with legs, \$15. Phone
475-7298. 20

BABYSITTING—Would like to
care for one or two children
in my home. 475-7418. 20

Fire Place Grates

24" steel, for burning wood...\$5.89

WANT ADS

VACUUM CLEANERS — Electro-lux, authorized sales and service. James Cox, Manchester, Ph. 428-2931 or 428-8221. 42tf

CUSTOM BUILDING
and
REMODELING

Chelsea Associated
Builders, Inc.
Phone 475-8182 38tf

ROBERT PATRICK for home improvement, building and maintenance. Ph. 475-7460. 45tf

LOT FOR SALE — Middle St. at Grant, 100 feet frontage. Ph. 475-7638. 12tf

XEROX COPIES made. First 20 at 20 cents each. Over 20, special prices. Merkel Brothers. 25tf

HELP WANTED — Part-time mature, saleslady for downtown Chelsea store. Give age and qualification in reply. Write Box OC-15, care of Chelsea Standard, Chelsea, Mich. 48118. 20tf

HUNTERS — 1967 Ford 4-wheel drive, half-ton pick-up. 21,000 actual miles. Real nice, for \$2200. Call Dave, 475-3211. x21

HOST — Black male Labrador, last seen Saturday near Oak Grove Cemetery. Wearing collar, tags. Answers to "Skip." Child's pet. Please call 475-2941. 20

FREE to a good home, nice four-month old, calico kitten named Candy. Phone 475-8933. -20

LOVELY HOME in Manchester. Walking distance of school, library and church. Large lot with beautiful trees. Call Sue Shafter, 761-2716, or Elsie, Frisinger & St. Amour 665-8663. 20

FOR SALE — Heavy type roasting chickens, alive or dressed. Phone 475-2212. 20

WANT ADS

AKC POODLE PUPS — 2 left. 20100 Old US-12. Ph. 475-8784. -21

FREE — Beautiful kittens to good homes. Part Persian. Phone 475-8087. x21

FOR SALE — Filled Hereford, spring bull calves. HA 6-2256. -x20

FURNISHED OR UNFURNISHED 1-bedroom apt. for rent, utilities included, adts. Phone 475-7660. x20tf

FOR SALE — 36" General Electric stove, in good condition. George Burke, 479-7062. x20

HOUSE FOR RENT — 3-bedroom, ranch-type home, in Chelsea, call agent 475-8583, mornings, and after 5 p.m. x20

NOV. 30 we at Honegger's of Chelsea will be taking a bus load of farm people to the National Livestock Exposition in Chicago. Contact Ron Satterthwaite for details. Ph. 479-6611. x21

HAVE CLIENTS for land, all sizes with or without buildings. Need farm land, wild land, commercial land, recreational land and land near free-ways. Please call Oril Ferguson, broker. Phone 426-4377 (Dexter). -x23

FOR SALE — 2' swing basket chairs, imported from Philippines, \$30 each. One western saddle, \$50. One Walton belt vibrator, \$40. One Beck electric shoe shiner and buffer, \$4. Two male beagle pups, 4% mo. old, AKC registered, father field champ, \$25 each. Call 475-4981, or 354 Washington, Chelsea. -x20

FOR SALE — Year-round two-bedroom, attic finished for third bedroom, Patterson Lake. On chain of five lakes. All indoor-outdoor carpeting, natural gas heat, two car garage, school bus. (313) 498-2785. -x20

FOR SALE — 2-wheel utility trailer, 14" wheels, 4x7 box, \$75. Phone 475-8942. -20

FOR SALE — Gas dryer, excellent condition. Speed Queen. \$60. 475-7701. -x20

Start Teacher
Aid Program
At South School

One of the more important aspects of the newly-formed South School Association, is the prospective Teacher Aid program which it is sponsoring.

Teacher Aid is the name of a committee, chaired by Mrs. Francis Lorenz, and assisted by Linda Ames, which is trying to recruit parents, mothers in particular, of school-age children, to volunteer to come on a regular basis into the schools to assist teachers and students with the learning process. People, not necessarily parents, are needed to give an hour or two a week to do such tasks as helping out in an art course, tutoring a child with a special learning problem, story telling, or such office duties as helping with bulletin boards, displays, and so forth.

Teacher Aid is a very rewarding job. There is no requirement for experience, education, or knowledge of schools, as there is a job for almost anyone.

At the Nov. 12 meeting of the South School Association, parents will be asked to volunteer their services. Notes from school will be sent home to parents, asking for help.

All Chelsea residents who enjoy young people and have a bit of spare time are encouraged to contact Mrs. Lorenz, or attend the meeting at South School on Nov. 12 for more information.

IN MEMORIAM
The family of John Hartmann wishes to extend our thanks and appreciation to our neighbors, friends, and relatives for their many acts of kindness, and messages of sympathy during the recent illness and death of our father and grandfather. We especially thank the Rev. Robert Townley for his visits and prayers in our time of need.

Helen and Merle Sibley and children.
Mariann and Chuck Winkle and children.
Elmer and Elsie Hartmann and children.

THANK YOU
As newly-elected clerk of Lima township, I wish to thank the township residents for this opportunity. I shall serve the township to the best of my ability and personally invite all residents to contact me if I can be of any assistance.

Respectfully,
Lella C. Bauer.

CARD OF THANKS
I wish to thank my neighbors, friends, and church folks who called, sent cards, and flowers, while I was in the hospital. It was much appreciated.

Adrian Craven.

Junior High
Gridders Post
Perfect Record

(Continued from page one)

for the eighth and ninth grade squads. There are still more than 85 boys on those squads at the season's end. This is the first year that there have been two complete schedules, one for the eighth grade team, and one for the seventh grade. Both games were played on the same day, with the seventh grade games following the eighth.

Unfortunately, the seventh grade team has not fared as well as the eighth, and has a record of wins and losses, ties. However, several key seventh graders have been used on the eighth grade team, and this has taken away some of their offensive punch.

Players who have seen considerable action on the eighth grade team include the offensive unit of Paul Wood, and Roger Stewart at end, Ismael Picklesiemer, and Ron Kiel at tackle, Darryl West, and Jack Hackworth at guard, John Coley at center, seventh grader Randy Guenther at quarterback, Karl Gauss, a tailback, Don Bollinger at fullback and Ron Collins, Tim Eder, and Don Piercollins, alternating at wingback.

On defense, Terry Ellenwood is in at end, Mike Grambeau at guard, Todd Orbring is linebacker, and Curt Winans and David Keizer are defensive halfbacks.

Appearing on specialty teams have been Randy Musbach and Howard Schenk.

Other members of the team are Tom Ball, Dennis Barker, James Barnes, Ron Boham, Steve Cantrell, William Clark, A. J. Hale, Mark Pennington, Mike Pratt, Jim Powers, David Proctor, Chris Rabbitt, Randy Romine, Terry Satterthwaite, Bob Sawyer, Victor Steinback, Rick Sweeney, John Wagner, Jeff Weber, Gary Wellnitz, Dan White, and Dan Williams.

This year's eighth grade squad has the best overall size we have ever had, and also good team speed. They have been an aggressive group who on times have displayed some excellent football.

If they have one weakness it has been consistency, but with time and a responsibility for staying with the sport, they should develop into another good group of football players to fur the winning tradition developed at Chelsea. Coach Kruse said of his men:

Coaches for this year have been Bert Kruse, in his ninth year at the junior high. He is eighth grade coach. Coaching the seventh grade has been Randy Johnson, who is in his first year of coaching junior high.

CHS Band Plans
Half-Time Show
For Dexter Game

Chelsea High school band traveled to Saline for the Friday night, Oct. 30 game, against the Hornets.

The band performed a pre-game show, with Saline, and then each band did a half-time show during the half.

A reception was held for Chelsea band members during the fourth quarter. The party was sponsored by the members of the Saline band.

This week, at Friday night's game against Dexter, the band will perform a half-time show featuring their favorite character, Maxwell Smart. Topic for the evening is "Maxwell Smart Encounters Pollution." Tunes featured in the show will be "Mountain Greenery," "Everything Is Beautiful," "Bridge Over Troubled Waters," and "Those Were the Days."

Cub Scouts

DEN 3, PACK 455—

Cub Scout Den 3 of Pack 455 met at the home of Den Mother, Mrs. Vernon Otto, Oct. 27. Meeting opened with the flag ceremony. Flags were carried by Steve Kvamberg, and Stratton Rademacher.

Cubs bobbed for apples and had a balloon race. There was also a Halloween picture drawing contest which was won by Todd Otto.

Five new Cubs were welcomed into the den. They are Paul Hoffmeyer, Lucas Lovely, Steve Kvamberg, Chris Umstead, and Stratton Rademacher.

Lucas Lovely was elected new denner; Mark Foster, assistant denner. Treats were furnished by Lucas Lovely. Meeting closed with the wolf howl.

Steve Kvamberg, scribe.

DEN 5, PACK 415—

Cub Scout Den 5, Pack 415 met Tuesday, Nov. 3 at the home of Mrs. Richard Seyfried of Waterloo Rd. We opened the meeting with the living circle. We talked about election day and our right to vote.

We held election of officers. Bobby Aldrich, denner; Tom Gilbreath, assistant denner; scribe, Randy Ellis. We then made get-well cards for Brian Herick who is in the hospital. We played "My Little Bear" game. We closed with the den yell. Treats were furnished by Eric Case.

Randy Ellis, scribe.

DEN 1, PACK 415—

Den 1, Pack 415, met at the home of Den Mother Alice Atkinson, Nov. 3. Brian Herrick is in the hospital.

Don Hewlett was absent. Elections were discussed. The Cubs voted "yes" for the 18-year-old vote.

Thomas Slocum, scribe.

CARD OF THANKS
We wish to express our deep appreciation for the many acts of kindness and expressions of sympathy and condolences extended to us by our many friends and neighbors in the recent loss of our beloved one.

The family of the late
Albert S. Penhalligon.

SEE ME
for low-cost auto, home, life, accident and sickness, boatowners, and business insurance.

N. H. MILES
Phone Chelsea, GR 5-8334
20735 Scio Church Road
You're in good hands with

ALLSTATE INSURANCE
Companies
HOME OFFICES: SKOKIE, ILL.

FARMERS' SUPPLY CO.
PHONE GR 5-5511

Complete feeding rations for all your livestock, poultry.

Milk-making, money-making FEEDS

Step up milk production, with Dairy Feeds, scientifically formulated, balanced and blended to make more milk, and more profits.

Dairy Queen

brazier

901 S. MAIN ST., CHELSEA PHONE 475-2677

School
Board
Briefs

At the board of education meeting Monday evening, Nov. 2, present were President Irwin, members Smith, Koenn, Hopkins, Haselschwardt, Storey, Powers, Supt. Cameron, Business Manager Mills, and Principal Benedict. Guests were Edward Lewis, and Mr. Scripp.

Budget hearing was called to order by President Irwin at 7:45 p.m.

Copies of the budget were made available to those in attendance and discussed.

Motion by Storey, supported by Powers, to adjourn the Budget Hearing at 8 p.m.

Regular board meeting called to order by President Irwin at 8:20 p.m.

Motion by Haselschwardt, supported by Storey to approve the minutes of the Oct. 19 meeting as read. All ayes.

Motion by Haselschwardt, supported by Hopkins to adopt the agenda as amended. All ayes.

Motion by Powers, supported by Smith to pay general fund bills of \$42,437.57.

Financial report reads as follows, balance as of Nov. 2: General fund, \$287,913.37; 1956 Debt Retirement fund, \$5,095.09; 1965 Debt Retirement, \$316.67; Building and Sites, \$247.

Motion by Koenn, supported by Haselschwardt, to adopt the operating budget of \$2,020,947 for 1970-71 as recommended by the Finance Committee. All ayes.

Trustee Storey reported that the Curriculum Committee will meet at 3:30 p.m. on Wednesday, Nov. 11.

Motion by Powers, supported by Smith, to sign the contract of Miss Kathleen Jacobson as a Beach school math teacher. All ayes.

Letters from two fifth grade classes at North school regarding sidewalks were read. President Irwin instructed the building and grounds committee to investigate and answer the letter.

Enrollment figures for the last six years were presented. The enrollment has grown approximately 20 percent over the last five years. 1970-71 enrollment is: high school, 761; Beach school, 621; North school, 442; South school, 590. Total enrollment is 2,414.

A wrestling mat has been ordered with no funding from the general fund. The Varsity Club and other interested groups and individuals are underwriting the purchase.

Business Manager Mills reported that the new boilers are installed and operating in the Beach school.

Motion by Powers, supported by Koenn, to pay the overtime differential to the W. A. Brown Corp. of \$176.09 for installation of the Beach school boilers.

The bus parking area at the high school is graded and buses will be moved as soon as lighting is completed.

Business Manager Mills reported that one of five new buses has been received and put into service.

The board authorized the business manager to sell bus number six to the best interest of the school district.

Blacktopping at the high school is nearly completed.

Trustee Hopkins reported on the Drug Education meeting held at the Beach school. A discussion was held regarding the desirability of a similar meeting at the high school. Supt. Cameron will investigate the possibility of a meaningful meeting.

Park Proposal To Be Studied

David O. Laidlaw, director of Huron-Clinton Metropolitan Authority, and Robert Bryan, Park Authority Chief Planner, will make a public presentation of the Authority's proposal for a new major metropolitan park on Mill Creek, Thursday evening, Nov. 12 at 8 p.m. at the Lima Community Hall.

Washtenaw County's delegate to Huron-Clinton, James Chaffers, is also expected to attend.

Others expected are members of the Washtenaw County Recreation Advisory Committee, Miss Genevieve Gillette and Douglas Fulton; Ray Koch and Donald Wier from the Washtenaw County Road Commission; members of the County Planning Commission and the Board of Commissioners. These two latter governmental bodies have already requested that the Park Authority locate a major metropolitan park in this county.

It has been learned that consideration of Arms Creek, north of Dexter, has been dropped and that the Mill Creek basin has been given much study.

Everyone interested is welcome to come to the park proposal presentation and question period. It is hoped by the Mill Creek Research Council that local citizens will take advantage of this excellent opportunity to hear more about the park plans.

MID-STATE
FINANCE CORP.

\$25 to \$1,000

For Any
Worthwhile Purpose

See or Call

FRANK HILL
at 475-8631

111 PARK STREET
CHELSEA, MICH.

TODAY'S THOUGHT

By LOUIS BURGHARDT

Veteran's Day . . . November 11 . . . A day to review the inexorable march of history . . . A day for ALL of us to realistically control our minds and imagination . . . A day to commemorate thoughts of the past and prayers for the future . . . A day to concern ourselves how and why nations appear more interested in flexing their missiles instead of muscles . . . A day to honor those who, on battle-torn fields, faced difficult combat and crisis conditions . . . A day on which to recall brilliant and fabulous victories; also a day to retain memories of dismal defeat . . . A day to honor those who, in dreadful moments, faced a date with death in far away, remote parts of the world . . . A day to dignify the memory of all who fought and endured the hazards of war so that our nation might endure . . . A day on which we should make sure we do NOT lose respect for our uniformed men and the symbols they represent . . . A day to disavow those who disdain our American heritage . . . A day to scorn those who scorn our symbols . . . A day to disclaim the cynics, rebuke and repudiate their flippancies . . . A day on which all of us should rightfully be proud to say — "I am an American" . . . BURGHARDT FUNERAL HOME, 214 East Middle Chelsea, Mich. Phone GR 5-4141.

—SPECIALS—

NO. 2 1/2 CAN HUNT'S SLICED OR HALVES
Peaches 2 for 61c

ECKRICH SLICED
Bologna . . . 1-lb. pkg. 69c

NO. 2 CAN WILDERNESS APPLE OR LEMON
Pie Filling 2 for 55c

NO. 2 1/2 CAN DEL MONTE
Pumpkin 2 for 41c

VELVET PLAIN OR CRUNCHY
Peanut Butter, 2-lb. jar 81c

KUSTERER'S
FOOD MARKET
DIAL 475-2721 WE DELIVER

SPECIAL
thru Wednesday, November 11, 1970

**BRAZIER
CHEESEBURGER
& SHAKE**

91¢

WE NOW HAVE CHILI - 40c

Home of fine Brazier foods

Dairy Queen

brazier

901 S. MAIN ST., CHELSEA PHONE 475-2677

HAVE YOU TRIED A
THOMPSON'S PIZZA?

SMALL - 12" MEDIUM - 14" LARGE - 16"

Our Pizza Dough is made FRESH DAILY and consists of Thompson's Secret Sauce and Cheese.

Other Topping Items Include

PEPPERONI - HAM - SAUSAGE - HAMBURGER - OLIVES
MUSHROOMS - ONIONS - GREEN PEPPERS

We Also Have Delicious Dinners & Sandwiches

DINNERS
CHICKEN - SHRIMP - FISH

These include French Fries, Cole Slaw and Rolls.

SANDWICHES
FRESH FRIED ONION RINGS
FRESH DEEP FRIED MUSHROOMS
SUBMARINES - SOFT DRINKS

FOR FASTER SERVICE CALL AHEAD — 475-7605

Open Tues., Wed., Thurs. and Sun., 4 p.m. to 11 p.m., Fri. & Sat., 4 pm to 1:30 a.m.
Closed Mondays.

Don and Denise Thompson would like to meet you. Bring in this coupon for our drawing which will be held Nov. 12. The winner will receive a gift certificate good for \$5.00 on any of our items.

COUPON
THOMPSON'S PIZZA
20700 OLD US-12, CHELSEA

Name _____
Address _____
Phone _____

Coupon Good Until Nov. 11, 1970
COUPON

THOMPSON'S PIZZA
20700 OLD US-12 (Just West of S. Main St.)
PHONE 475-7605

Community Calendar

Kinder Klub Nov. 10 at 7:15 p.m. at the home of Mrs. Tony Bowen. Program will be a field trip to the Ypsilanti State Hospital. Guest night.

Jerusalem Farm Bureau, Nov. 12, 8:30 p.m. at the home of Mr. and Mrs. Dave Pastor. Bring pie for refreshments.

Organization meeting of Brownie Troop 169, Monday, Nov. 9, at the First Congregational church, 3:30 p.m. Mothers and daughters urged to attend.

Gingham Belles 4-H club, group 3, regular work meeting, Tuesday, Nov. 10, 6:30 p.m., home of Mrs. W. Clark.

Modern Mothers Child Study Club at Michigan Consolidated Gas Co., Ann Arbor, Tuesday, Nov. 10, for a demonstration on holiday foods. Note change of time. Car pools will leave at 6:45 p.m.

VFW Auxiliary, regular business meeting, Monday, Nov. 9, at 8 p.m. in the Rebekah Hall.

OES annual Rummage Sale, Masonic Temple, W. Middle, Nov. 13, 9-3, Nov. 14, 9-1. For pickup 479-6591 or 479-6581. adv21

Any former western square dancers interested in getting back into the swing, come and have some brush-up lessons at Stockbridge Town Hall Sunday nights, 7 to 9:30 p.m. Sponsored by the Stockbridge Squares. adv 19

Inquiries regarding the Chelsea blood bank may be directed to Harold Jones in the event that Mrs. Dudley Holmes is unavailable.

General meeting of the Association of Children with Social and Learning Difficulties, Nov. 5, 8 p.m. at Zion Lutheran church, Ann Arbor. James Danielski, child psychologist, Wayne County Child Development Center will speak on "Diagnosis and Education Planning," also, information about W-CCDC.

Chelsea Community Fair Board meeting, Nov. 10, at 8 p.m. at the library. This is the annual meeting. Public invited.

Ladies of First United Methodist Church Christmas bazaar and luncheon, Thursday, Nov. 5 at church. Luncheon 11 a.m. to 1 p.m. bazaar 10 a.m. to 5 p.m. Advance tickets are to be purchased at either Foster's Men's Wear or Winans Jewelry. adv20

Boy Scout Troop 476 paper drive Saturday, Nov. 14. Those who have papers may call Merle Leach, 475-7329; Charles Stoner, 475-2890; Willis Heydlauff, 479-7191; or Charles Hafner, 475-8491.

Lima Center Extension Study Group, Wednesday, Nov. 11, 11:30 a.m. Lesson: "Meal, Sense, or Cents." Hostess: Mrs. Carrol Ordway.

Regular meeting of American Legion, Herbert H. McKinn Post No. 31, at the Legion Home, Nov. 5 at 8 p.m.

Limoneers at the home of Mrs. Elmer Pierce, Nov. 5, at 12:30 p.m.

Past Matrons OES at the home of Mrs. Martin Steinbach, Nov. 5, at 12:30 p.m. Please note the date.

Chelsea Social Service will assist families within the Chelsea School District who are in temporary, emergency need with food, clothing, fuel, transportation or medical care. Call at the office on the second floor, Municipal Building, any Tuesday or Thursday between 2 and 5 p.m. for consultation on economic or social problems. Phone 475-4881. 18tf

Nov. 10, 50th year in the Rebekahs party for Mrs. Wilbur Breitenwischer and Mrs. Al Hinz. Potluck at 6:30 p.m. for their family members' husbands and guests.

American Legion and Auxiliary hospital equipment available by contacting Loren Kecker at 475-2766 or 475-8491.

TOPS Club at library, Wednesday afternoon group, 12:30 p.m.

For information call 475-4549. Thursday evening group, 7 p.m. For information call 475-8720.

Sewing every Tuesday afternoon at Korner House.

St. Mary's annual Roast Beef Parish Dinner, Nov. 8, at Chelsea High school cafeteria. Servings at 12:30 p.m., 1:30, and 2:30 p.m. For reservations please contact Mrs. Hal Pennington, 409 S. Madison, phone 475-5592. adv 20

Singles, 25 and over, dance and mingle, every Tuesday, 9 p.m., YMCA, Ann Arbor. Live music.

Fun night every Friday night at 7:30 p.m. at Korner House.

The wise merchant is he who puts the "ad" in trade.

DEATHS

Lynn A. Main
Former Chelsea Resident
Dies Monday in Jackson

Lynn A. Main, 819 James R. St., Jackson, died Monday afternoon, at Northlawn Hospital, Jackson, at the age of 76. Born July 31, 1894, he was the son of Dewitt Main, and Nettie Hildebrand Main.

Surviving are his widow, Emma M., one son, Gerald (George) Main, of Jackson, three grandchildren, Terry Main, and Douglass Main, both of Jackson; and Virginia Main, of Chicago. Also surviving are two great-grandsons, and one sister, Mrs. Emily Kinart, Horton.

He was a member of the Citizen Patriot Golden Wedding Club. Mr. Main lived in Chelsea from 1942-1966.

Friends may call at the Weatherly Chapel, 402 Wildwood Ave., Jackson, where services will be held, Thursday, 1 p.m., the Rev. Lyle J. Weible officiating. Interment will be at the Woodland Cemetery, Jackson.

BIRTHS

A son, Robert James, Monday, Oct. 26, to Mr. and Mrs. James Lyster, Cedar Lake. Grandparents are Mr. and Mrs. Clifford Lyster, 15 Sycamore Dr., and Mr. and Mrs. Harry Hadley. 18tf

A daughter, Beth Marie, Oct. 31, to Mr. and Mrs. Gerald W. Kenney.

A son, Michael Robert, Nov. 1, to Mr. and Mrs. Robert C. Parker.

A daughter, Laura Lynn, Tuesday, Nov. 3, at St. Joseph Mercy Hospital to Mr. and Mrs. Duane Boyer, 240 Park St. Grandparents are Mr. and Mrs. Emmet Harker of 1223 Meadow Lane and Mr. and Mrs. Alpha Sanders, Charlot.

A daughter, Julie Irene, Sunday, Nov. 1 at St. Joseph Mercy Hospital, Mt. Clemens, to Sgt. and Mrs. Jack Shaninger of Selfridge AFB. Mrs. Shaninger is the former Joyce Mshar. Grandparents are Mr. and Mrs. Alex Mshar, 742 Book St., and Mr. and Mrs. Vincent P. Angelucci, Fort Lauderdale, Fla.

ADOPTION

A daughter, Sarah Stillwell, Oct. 23, at the age of six months, by Mr. and Mrs. Thomas Donkin. Paternal grandparents are Mr. and Mrs. H. Hildebrand, Bradenton, Fla. Maternal grandmother is Mrs. C. R. Harris, Menlo Park, Calif. The Donkins have three other children, Thomas, Jr., Catherine and Antonio.

Halloween Vandalism Reported Very Minor

Chelsea Police chief George Meranuck reported that there was very little vandalism in Chelsea during the "three day holiday" this past week-end. The police chief indicated that the presence of the Chelsea Jaycees on every street corner did much to cut down the vandalism in town, which he said was less than last year's.

Blood Bank Nets 139 Pints For Local Use

(Continued from page one)

It's great! And it is. It is truly a time when it more blessed—and easier—to give than to receive."

The Red Cross Mobile Blood Unit commented that they were told how fortunate they were to be going to Chelsea. One of the nurses explained: "When you do this five days a week, week in, week out, it becomes as boring and monotonous as any job. A volunteer unit can make or break us. The Chelsea volunteer group is just about the best one we've ever worked with. And the luncheon was terrific. We really enjoyed it and hope we can come back."

Volunteer professional people on duty were Dr. Gary Maynard of Ann Arbor, Dr. Jerry Waldyke of the Chelsea Medical Center, Miss Gertrude Young, R.N., Mrs. James (Phyllis) Daniels, R.N., and Mrs. John (Julie) Thornbury, R.N.

Volunteer registrars and staff aides were Mrs. Al Penhallgren, Mrs. Robert Crawford, Mrs. Thomas Slater, Mrs. Olive Dickins, Mrs. William Rademacher, Mrs. Chester Keezer, Mrs. Warner Siebert, Mrs. Jess Meininger, Mrs. Donald Eder, Mrs. Toivo Riihimaki, Mrs. Gerald Linebaugh, Mrs. Erwin Haist, and Mrs. Norman Hinderer.

Helping Mrs. Warren Eisenbeiser in the canteen were Mrs. Roland Spaulding, Mrs. Thomas McClear, Mrs. Richard Ringe, Mrs. William Eisenbeiser, Mrs. Les Eisenbeiser and Mrs. Lawrence Wacker.

Mrs. Lawrence Dietle was in charge of the luncheon served to the entire staff. She was aided by Mrs. Paul F. Neihaus, Mrs. Robert Taylor, Mrs. Robert Daniels, Mrs. Jack Merkel, Mrs. George Knickerbocker, Mrs. Paul Belser, Mrs. Richard Kern, Mrs. Margaret Dietle, Mrs. L. G. Palmer and Mrs. Floyd Doyle.

Donald E. Baldwin Named to Board of Spring Manufacturers

Donald E. Baldwin, assistant plant manager of the Mechanical Spring Operation of North American Rockwell Corp., has been elected to the board of directors of the Michigan Association of Spring Manufacturers.

This association is affiliated with the Spring Manufacturers Institute, a national association of spring manufacturers, with a membership in excess of 200 spring plants. In Michigan, there are 26 separate member plants. Baldwin's term of office will be two years, expiring Nov. 1, 1972. Michigan Association of Spring Manufacturers meets quarterly, at various places within the state.

William M. Marsh, general manager of the Mechanical Spring Operations of North American Rockwell, is a former member of the board of directors of this organization, and a past president.

HOSPITALIZED

Eugene Martin, 17603 Old US-12, is in room 290, bed 1, of St. Joseph Mercy Hospital, where he is recuperating from surgery.

GAMBLES

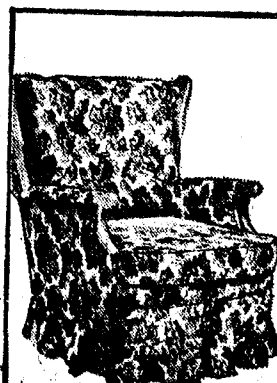
FURNITURE SPECIALS



Deep Tufted
Traditional
Swivel Rocker

\$129⁹⁵

Handsomely tailored in brown or blue/green nylon matelasse. Semi attached back, reversible foam latex cushion. 33-3339/40



Colonial
Gold Print
Swivel Rocker

\$89⁹⁵

Authentic Early American styling! Wide wing back welcomes comfort—reversible Stylefoam T-cushion. Maple tone trim. 33-3339

Lay-Away Now for CHRISTMAS



RICHARD H. MILLER

Commendation Is Received By Richard H. Miller

Airman Richard H. Miller, son of Mr. and Mrs. Henry Miller, graduated from Air Force Technical School at Chanute AFB, Ill., in August. He is presently stationed at Phu Cat Vietnam, where he received honors and a certificate from the commander in Vietnam on Sept. 29.

Miller is a 1968 graduate of Chelsea High school. His address is presently A-1-c Richard H. Miller, 385563352, 12th Transportation Sq., PSC Box 608, APO San Francisco, Calif. 96368.

Schools Closing at Noon Next Thursday

School will be dismissed Thursday, Nov. 12, at 11:30 a.m., Business Manager Fred Mills announced this week, for parent-teacher conferences. Afternoon kindergarten classes will not meet on that day, although morning classes will be held, he indicated.

You may not know it but your dog can sense your thoughts and moods before you announce them.

SEAL OUT WINTER With Aluminum Storm Sash from Chelsea Lumber

Sturdy EXTRUDED ALL ALUMINUM Construction Can't Rot, Rust, Warp—NO PAINTING Ever Needed Year 'round SELF-STORING Convenience All Glass Panes CUSHION-SEALED in super-tough plastic Bigger Glass Areas for EXTRA LIGHT and visibility Easy to Remove and WASH from INSIDE at any time Rustproof ALUMINUM SCREENS Last Longer Switch Screen and Glass in ONLY 10 SECONDS Between Seasons

2 Track or 3 Track

\$13⁹⁵ Mill Finish
WHITE - \$16.95

ALUMINUM STORM DOORS

★ FULL 1" ★ TOP QUALITY **\$28⁴⁵** 2-8 & 3-0
WHITE - \$36.95

DIAL 475-3391

Chelsea Lumber Co.

Marty Straub Solos at 16

Marty Straub, son of Mr. and Mrs. Jerry Straub, 6969 Madden Rd., performed his first solo airplane flight at the Willow Run Airport Sunday afternoon, Nov. 1. The occasion was the youth's 16th birthday. It is forbidden to fly alone in the state of Michigan, without a student's license, at least. To obtain such a license, one must be 16 years old. Straub, who has been taking flight lessons all summer, just could not wait to take over the controls himself.

Marty's interest in flying stems in part from his father's interest. The elder Straub has a pilot's license, and has been flying for several years. In late August, the family purchased a small private airplane. The plane, a Luscombe 8-A, is kept at the Ann Arbor Airport. Marty plans to spend many hours in the air, now that he is of age, learning the many things one must know to be a good pilot. He intends to achieve his pilot's license, at the least, and will probably go on for further training, to achieve his instrument classification.

The young man has no particular career plans at the time concerning a career in flying. He just enjoys it thoroughly. He cannot receive a pilot's license until he is a year older, and he can't take a passenger with him until that time, so family vacations to exotic places are ruled out for the time being.

Straub, who is a junior at Chelsea High school, and who is active in FFA, band, and debate, is planning to spend the next months "toggling up the hours in what air people call "cross country" flights, which is one way of saying, flying from one place to another.

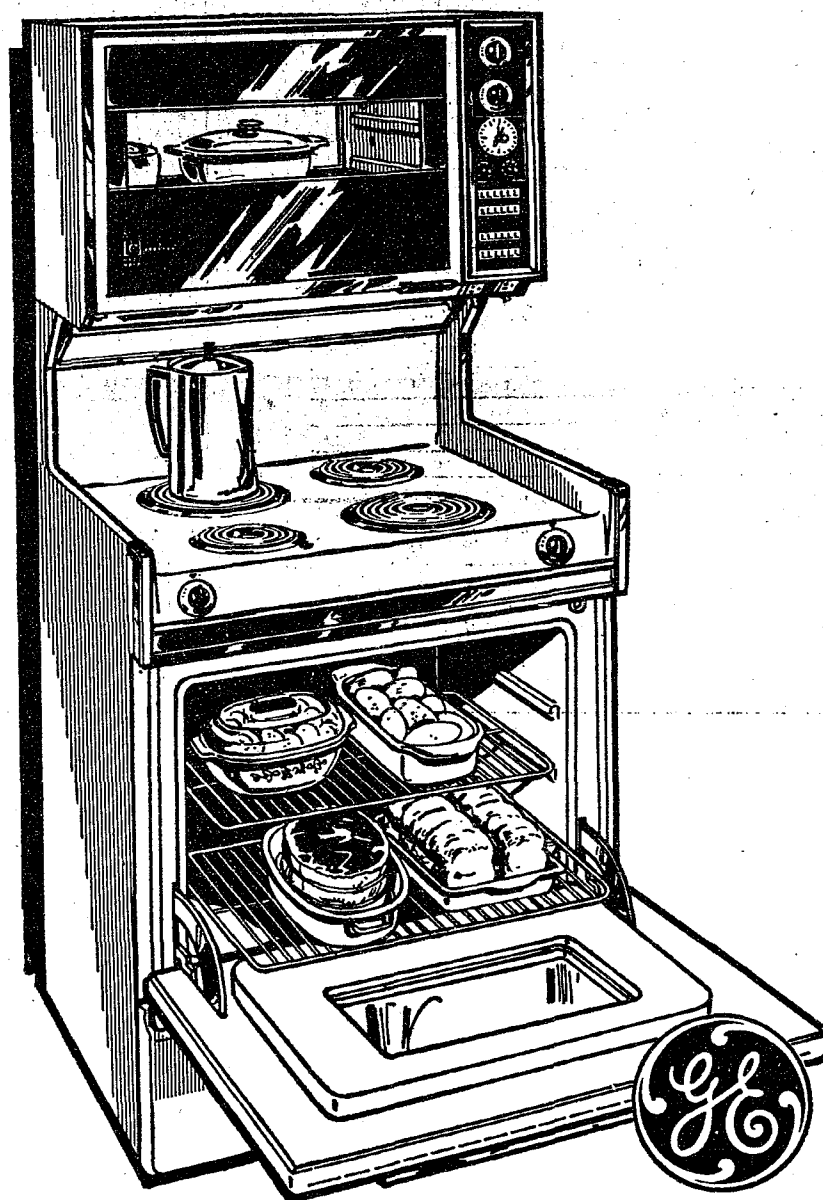
Dexter American Legion ANNUAL HUNTER'S BALL SATURDAY, NOV. 7 FUN - MIDNIGHT SNACK

Music By Dick McInnis
Featuring Dick - Steve - Mike
Organ - Sax - Drums

ADMISSION: \$1.50 per person
PRIZES - PRIZES - PRIZES

Members and Guests

HELLER ELECTRIC & INSULATING
Licensed Electrical Contractor
ALL TYPES OF WIRING
THERMTRON INSULATION
Call After 5 p.m.
475-7978
20640 Sager Rd., Chelsea



- Double-Oven Cooking Center In Just 30-Inch Width
- Eye-High Companion Oven With Panorama Picture Window Door
- Spacious Lower Oven With Removable Picture Window Door for Easier Cleaning
- Automatic Oven Timer, Clock and Minute Timer—Times Both Ovens
- Accurate Pushbutton Controls for Hi-Speed Calrod Surface Units
- Removable Surface Unit Reflector Pans
- Illuminated Cooktop
- Two Convenience Outlets, One Timed
- Recessed Cooktop Catches Spillovers
- Removable Storage Drawer
- Both Ovens Floodlighted
- Porcelain Enamel Broiler Pan and Chrome Rack
- Available as J792L In Vented 2 Level Exhaust Version

General Electric AMERICANA DOUBLE-OVEN RANGE

in only 30" of space for only

\$349⁹⁵ W.T.

FRIGID PRODUCTS

LLOYD and GEORGE HEYDLAUFF

N. Main St., Chelsea

Phone GR 9-6651

Tradition Takes a Turn For Tomorrow VAN HEUSEN® 417

Van Heusen turns the clock ahead to a great classic with contemporary flair. Famous "417" dress shirt now with dual-button cuff, new Brooke collar with narrower thrust that can be pinned or unpinned at will. Excellently crafted in 55% Dacron® polyester, 35% cotton broadcloth in a fine color assortment. \$8.00



STRIETER'S MEN'S WEAR

"The Place To Go For Brands You Know"

AGRICULTURE IN ACTION

by GARY A. KLEINHENN
Michigan Farm Bureau

★ 'Hay There!'

The next time some fellow says, "Now that's a lot of hay," you should hold him up a minute and ask just what he really means. At least that's one school of thought which pushes the principal, "Say what you mean, and mean what you say."

It is the double meanings that get you into a jam. A "lot of hay" could be many things—a lot of money, a lot of good luck, and a lot of—"Uh... 'hay' there's" for the misplaced names file. At any rate it can be agreed that it is a lot of something. If we take the statement at dollar value, a lot of hay is not a lot of money. A pound of hay, if you haven't caught it on special lately, is running for around a cent and a quarter a pound. But since, who wants a pound of hay, USDA figures say farmers will get about \$25 a ton for it. It might just be worth more if the farmer just kept it for around the farm. A farm wouldn't be a genuine farm without a hay-loft, without kids rollicking in it, or without hay folks could never lose their needles. And the hay-rides during the current harvest moons in the chilled nights of the fall, if missing, would steal away some glamour from the countryside. You know really there's a lot to be said for hay.

And collectively speaking, there is "a lot of hay," in talking about hay. How many folks know hay is the nation's second biggest crop? It is valued at about \$3 billion for the current harvest year. That's second only to the corn crop. And a lot of this hay never gets off the farm—reports of the USDA say, only 15 to 20 percent ever leaves. The rest is used for several things but, primarily as feed for livestock.

Michigan does its share of hay production. Every county in the state gets into the act. Even Detroit dominated Wayne county raises about 3,000 acres. However, the big producing county in the UP is Menominee, and in the lower peninsula county leaders are Sanilac, Lapeer, Huron, Washtenaw and Isabella, to name a few.

And when it comes to pitching hay in Michigan, we raise a million and a half acres of the crop—3,207,000 tons! Nationally, we raise 125 million acres. And brother that's a lotta hay!

Servicemen's Corner

Kris J. Brier

Promoted in Vietnam

Phouc Vinh, Vietnam—Kris J. Brier, son of Mr. and Mrs. Ralph W. Brier, 111 Watt Rd., Gregory, Mich., recently was promoted to army specialist five while serving with the 1st Cavalry Division (airmobile) near Phouc Vinh, Vietnam.

Specialist Brier is assigned as a mechanic with Battery B, 2d Battalion of the Division's 20th Artillery.

He entered the army in April 1968, completed basic training at Ft. Leonard Wood, Mo., and was last stationed at Ft. Gordon, Ga.

The 23-year-old soldier is a 1965 graduate of Ann Arbor High school.

Advertising is the servant of those who know how to use it. You can't always tell what some think by hearing what they say. People rarely get mad with anybody who says good things about them.

WEDDING Invitations



ASK FOR
Forever Yours
NATIONAL

- INVITATIONS
- ANNOUNCEMENTS
- ACCESSORIES

You may select your needs with confidence as to quality and correctness of form.

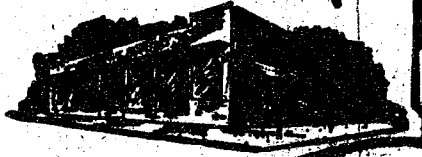
- COMPLETE SELECTION
- PROMPT DELIVERIES

THE
CHELSEA
STANDARD

THE SUPERMARKET THAT'S JUST A LITTLE BIT BETTER

Stop & Shop

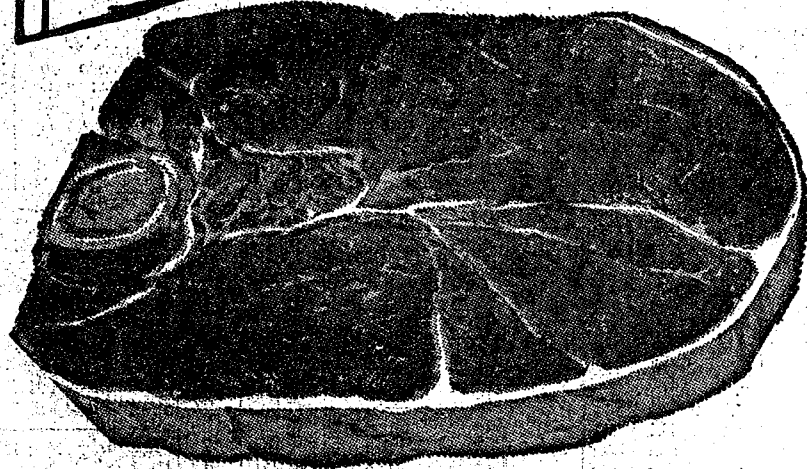
14901 Old U.S.-12
Corner at M-52
Chelsea



THE KNOW HOW OF INTELLIGENT MEAT BUYING IS REALLY THE 'KNOW WHERE'

Our customers have learned to depend on the outstanding quality of Stop & Shop meats — unfailing satisfaction with every cut they purchase. The finest quality, together with the expertise of our meat cutting experts, makes an unbeatable combination.

Prices effective Wednesday, November 4 through Tuesday, November 10, 1970.



"Triple R Farms" U.S.D.A. Choice

ROUND STEAK 99^c lb.

"Triple R Farms" U.S.D.A. Choice

Sirloin Steak \$1²⁹ lb.

"Triple R Farms" U.S.D.A. Choice

Rib Steaks 89^c lb.

Tender, Delicious

Cube Steaks \$1¹⁹ lb.

"Triple R Farms" U.S.D.A. Choice Rump or Sirloin Tip

Roast \$1¹⁹ lb.

Lean, Tender, Boneless & Cubed

Breaded Veal Cutlets . . . 99^c lb.

"Triple R Farms" Mich. Grade 1

Skinless Wieners 59^c lb.

Stop & Shop's Fresh, Lean, All American Beef

Hamburger 59^c lb. (5-Lb. Units or More)

"Triple R Farms" U.S.D.A. Choice

Ground Round Steak . . . 99^c lb.

Carnival
ICE CREAM

Assorted Flavors 38^c LIMIT 2 PLEASE
Half Gal.

Household Cleanser
ROMAN BLEACH

Gallon Plastic Jug 39^c

Kellogg's
CORN FLAKES

1-Lb., 2-Oz. Box 35^c

Canned Pop
FAYGO

12-Oz. Can 8^c Assorted Flavors
Case of 24 Cans - \$1.89

Our Favorite
SWEET PEAS

1-Lb., 1-Oz. Can 9^c

Stokely's
TOMATO CATSUP

14-Oz. Bottle 15^c

Tast-D-Lite
TOMATO JUICE

1-Qt., 14-Oz. Can 22^c

Lucky
DAY FOOD

15-Oz. Can 7^c

We Accept
U.S.A.D.
FOOD
STAMPS

Stop & Shop
WHITE BREAD

20-Oz. Loaf 2 for 49^c

Jack O' Lantern
CUT YAMS

2-Lb., 8-Oz. Can 39^c

Lemon Fresh
JOY

22-Oz. Plastic 29^c

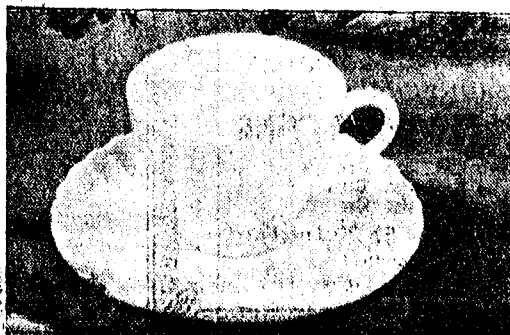
Golden Ripe
BANANAS

9^c lb.

SPECIAL OFFER

For the next eight weeks you may purchase a 4-piece place setting of English Swirl, Fine Ironstone Dinnerware for only \$1.29 and a \$5 purchase. All complete pieces are \$1.29 with no purchase required. An exceptional fine value—and just in time for Christmas.

YOUR FIRST SET FREE WITH COUPON!



VALUABLE COUPON

ENGLISH SWIRL IRONSTONE
DINNERWARE

4-PIECE PLACE SETTING

FREE

With Coupon and a \$5.00 Purchase

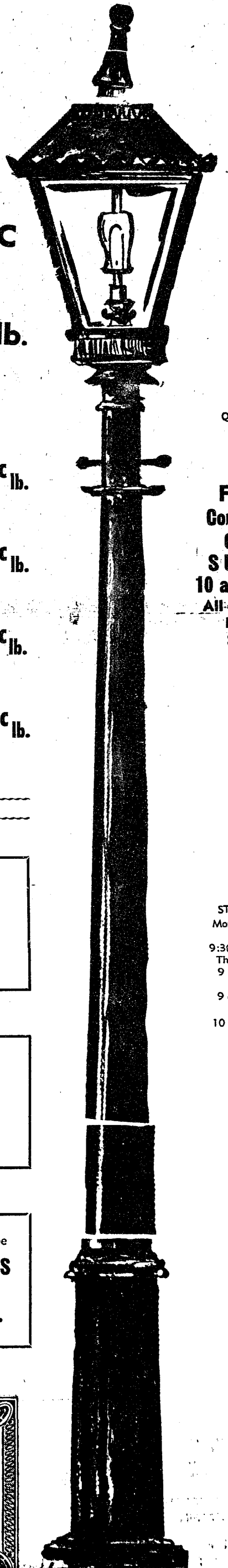
(Excluding Beer, Wine, Cigarettes)
LIMIT 1 PER FAMILY Expires End of Sale

WE
RESERVE
THE
RIGHT
TO
LIMIT
QUANTITIES

For Your
Convenience
**OPEN
SUNDAY**
10 a.m. - 4 p.m.
All Sale Prices
Effective
Sundays

Sorry,
No Sales
To Dealers

STORE HOURS:
Monday, Tuesday,
Wednesday
9:30 a.m. - 6 p.m.
Thursday, Friday
9 a.m. - 9 p.m.
SATURDAY
9 a.m. to 6 p.m.
SUNDAY
10 a.m. to 4 p.m.



Ordered by: _____
Street: _____
City: _____ State: _____ Zip: _____
☐ Charge ☐ Payment enclosed (Sorry, no C.O.D.'s)
(Please include sales tax) 181

Ordered by: _____
Street: _____
City: _____ State: _____ Zip: _____
☐ Charge ☐ Payment enclosed (Sorry, no C.O.D.'s)
(Please include sales tax) 181



BOWLING NEWS

Tri-City Mixed League

Standings as of Oct. 30

	W	L
Jiffy Mixers	24	12
Trail Blazers	22	14
Chelsea Cleaners	21	15
Wolverine Early Birds	21	15
Smith's Mobil	18	18
Silver's Odd Balls	18	18
Detting & Detting	18	18
Wolverine Tall & Small	17	19
Foor Mobil	16	20
Sprague Buick & Olds	15	21
3-D Sales & Service	15	21
4-W's	11	25

500 series, men: B. Cruise, 527; R. Fike, 541; A. Fouty, 509; R. Fouty, 525; E. Harok, 519; H. Kunzelman, 556; G. Miller, 500; D. Scott, 537; T. Wisniewski, 555.

200 games, men: R. Fike, 204; 247; H. Kunzelman, 240; G. Miller, 207; D. Scott, 202; T. Wisniewski, 205.

450 series, women: V. Allen, 471; G. Detting, 499; D. Fouty, 468; B. Parish, 494; C. Stoffer, 456.

150 games, women: V. Allen, 164; 172; M. Ashmore, 161; G. Detting, 164, 156, 179; E. Detting, 152; B. Fike, 160; D. Fouty, 155; D. Fouty, 168, 160; R. Harok, 151; B. Kunzelman, 168; E. Miller, 163; N. Miller, 151; B. Parish, 189, 171; M. Reagle, 154; C. Stoffer, 170, 153; M. Weston, 151.

Senior House League

Standings as of Nov. 2

	W	L
Chelsea Cleaners	25	7
Sylvan Center	18	14
Wolverine Tavern	18	14
Dana's No. 1	18	14
Spaulding Chevrolet	18	14
Seitz Tavern	17	15
Schneider's Grocery	17	15
Sam's Barbers	16	16
Dana No. 2	16	16
The Pub Bar	14	18
Chelsea Grinders	10	22
Murphy's Barber Shop	5	27

200 games and over: D. Weatherwax, 268; G. Burnett, 255; G. Padgham, 226; O. Johnson, 223; J. Myers, 223; W. Moss, 220; R. Fike, 213; S. Dyer, 216; A. Sannes, 215; A. Clemes, 214; E. Harok, 210; T. Wisniewski, 209; S. Haydock, 209; C. Genske, 207; D. McKinley, 208; 208; J. P. Jones, 207, 200; G. Knickerbocker, 204; V. Hailey, 203; D. White, 201; G. McAtee, 200; J. Toma, 200, 200; D. Hailey, 200.

600 series and over: G. Burnett, 640; D. Weatherwax, 616.

500 series and over: R. Fike, 593; A. Sannes, 582; S. Dyer, 574; O. Johnson, 572; C. Genske, 572; G. Padgham, 561; S. Hopkins, 561; D. McKinley, 560; J. Toma, 560; A. Clemes, 557; T. Wisniewski, 556; J. P. Jones, 553; V. Hailey, 553; W. Moss, 551; J. Myers, 548; D. Coppernoll, 547; N. Packard, 536; G. Knickerbocker, 546; S. Haydock, 522; G. McAtee, 520; D. Larson, 519; D. Hailey, 519; J. Collins, 519; W. Griffith, 516; M. Poertner, 514; E. Harok, 510; P. Gee, 506; L. Hailey, 504; A. Blackwell, 503; R. Spaulding, 530; D. White, 524.

Leisure Time League

Standings as of Nov. 3

	W	L
Gutter Cats	7	1
Three Misses	5	3
Bowling Bags	4	4
Throw Outs	4	4
Dead Balls	3	5
Rug Rats	1	7

400 series: P. Huston, 406; P. Elliott, 460; S. Greenleaf, 422; P. Wurster, 483.

140 games and over: K. Haywood, 145; S. Greenleaf, 162; E. Swanson, 140; P. Huston, 145; P. Elliott, 143, 156, 160; P. Wurster, 172, 159, 152.

It's all right to work by a schedule if you can keep up with the schedule.

Charlie Brown & Snoopy's Friends

Prep Division

Standings as of Oct. 31

	W	L
The Pin Fighters	17	4
Pink Panthers	15	6
The Bully Brothers	15	6
Competitor	15	6
Creators	12	8
Strikers	10	11
Tremendous Strikers	10	11
The Monkeys	9	12
Good Guys	8	12
Red Barons	6	15
Groovy Fruitie Tooties	4	16
The Brains	3	17

Games of 100 and over: J. Sweet, 116, 118; S. Lyster, 164, 116; D. Morrison, 108; J. Toon, 138, 109; D. Alber, 148, 173; B. Kalshek, 101; A. Kalshek, 137; J. Spaulding, 121; B. Rosenkreter, 102, 125; J. Milliken, 105, 102; D. Eisels, 102; K. Milliken, 118; M. Fahrner, 107; S. Schulze, 118; D. Craft, 136; D. Alexander, 101; S. Palmer, 113; S. Bowen, 114; J. Boyer, 111, 107; J. Collins, 131, 123; D. Beaumont, 110; C. Sannes, 115; B. Lewis, 120, 142; M. Schnaidt, 112, 115; D. Thompson, 104, 108; A. Houle, 101; J. French, 117.

Series of 200 and over: D. Craft, 207; S. Palmer, 211; J. Boyer, 218; J. Collins, 254; K. Milliken, 201; M. Fahrner, 200; S. Schulze, 209; J. Milliken, 267; A. Kalshek, 202; J. Spaulding, 212; B. Rosenkreter, 227; J. Sweet, 234; S. Lyster, 280; J. Toon, 247; D. Alber, 321; C. Sannes, 207; B. Lewis, 262; M. Schnaidt, 227; D. Thompson, 212.

Chelsea Suburban

Standings as of Oct. 28

	W	L
Dancer's	25	11
Foor Mobil	24	12
State Farm	19	17
Waterloo Garage	19	17
Dana Corp.	18	18
G. A. Sales	18	18
Dairy Queen Braizers	17	18
Chelsea Lanes	17	18
Artex Roll-Ons	17	19
Chelsea State Bank	15	21
Pittsfield Plastics	14	22
Patty Ann	12	24

150 games and over: E. Williams, 153; M. Westcott, 167, 191; E. Yocum, 169, 152; A. Hocking, 181, 158; M. Picklesimer, 161; J. Fitzsimmons, 164, 165; B. Smith, 167, 178; D. Cozzens, 167; G. Baczynski, 162, 190; M. Olson, 169; D. Kinsey, 158; J. Buku, 170; L. Jarvis, 153, 154, 161; D. Keizer, 158, 164, 164; R. McGibney, 156; M. DeLaTorre, 150; M. Abdon, 168, 176; G. Wilkerson, 152; B. Eder, 153, 162; S. Bowen, 157, 176.

425 series and over: B. Eder, 459; S. Bowen, 478; R. West, 486; M. Abdon, 486; D. Kinsey, 491; L. Jarvis, 468; N. Packard, 447; B. Smith, 465; D. Cozzens, 444; G. Baczynski, 500; E. Yocum, 450; A. Hocking, 483; J. Fitzsimmons, 461; M. Westcott, 496.

Nite Owl League

Standings as of Nov. 2

	W	L
Steele's Heating	23	8
Mid-State Finance	21	11
Cavanaugh Lake Store	19	13
Foster's Men's Wear	17	14
Smith's AAA	17	15
Waterloo	17	15
Jack & Son Barbers	16	16
Wahl's Arco Sparks	14	18
Gallup-Silkworth	14	18
Heller Electric	13	19
The Prof's	11	21
McCalla Mobile Feeds	9	23

500 series: O. Hansen, 574; D. Alexander, 551; C. Stapish, 550; T. Steele, 505; M. Packard, 503; G. Packard, 502.

200 games: C. Stapish, 215; O. Hansen, 214; J. Waldyke, 200.

Guys & Gals

Mixed League

Standings as of Oct. 29

	W	L
Pub No. 1	28	8
Wolverine Bar	24	12
Chelsea Lanes	20	16
Four D's	19	16
Pleasant Lake Resort	18	18
Losers	17	18
Pub No. 2	17	18
Norris Electric	17	19
Team No. 4	14	21
Grass Lake	14	22
Steele Heating & Cool	13	23

Team high game: Pub No. 1, 2,069.

Women's high game: N. Packard, 201.

Women's high series: N. Packard, 615.

Men's high game: J. Eder, 231.

Men's high series: A. Sannes, 597.

Women's 150 and over games: J. Mock, 160; D. Sannes, 155; P. Elliott, 167, 166; S. Greenleaf, 170, 177; B. Smith, 152, 164, 171; N. Packard, 178, 201; N. Collins, 200, 150; M. Randall, 181; S. Walton, 181, 176; B. Fritz, 163.

Women's 450 or over series: S. Walton, 490; N. Packard, 515; N. Collins, 494; B. Smith, 487; S. Greenleaf, 475; P. Elliott, 468.

Men's 175 or over games: A. Sannes, 198, 189, 210; J. Elliott, 208; D. Fritz, 200, 186; J. Romine, 210; V. Cozzens, 175; J. Eder, 194, 231; J. Collins, 179.

Men's 500 or over series: A. Sannes, 597; J. Elliott, 538; J. Eder, 562.

Junior House League

Standings as of Oct. 29

	W	L
Chelsea Drug	41	22
Inverness Inn	41	22
Smith's AAA Service	41	22
The Pub	38	25
Palmer T-Birds	38	25
Wolverine No. 2	30	33
J & S Tool	29	34
Gambles	28	35
Boyer Automotive	26	37
Jiffy Mix	24	39
3-D Sales & Service	23	40
Wolverine No. 1	19	44

Over 200 games: R. Kite, 201, 220; A. Sannes, 209; A. Clemes, 214; R. Erskine, 208; D. Casterline, 202; J. Ringe, 206; T. Dittmar, 201; L. Hughes, 209; R. V. Worden, 204; D. Scott, 206; J. Popovich, 253, 205; D. Murphy, 256, 216.

Over 600 series: J. Popovich, 616; D. Murphy, 632.

Over 500 series: M. Sweet, 524; L. Christwell, 517; B. Yocum, 527; R. Worden, 552; P. Maynard, 508; D. Scott, 534; R. Kite, 593; R. Fike, 550; A. Sannes, 510; J. Harmon, 530; A. Clemes, 558; H. Burnett, 514; J. Toma, 500; S. Policht, 538; K. McMannis, 530; O. Johnson, 514; F. Olmstead, 562; W. Brown, 514; R. Casterline, 542; A. Schiller, 562; R. Erskine, 566; J. Ringe, 542; N. Packard, 540; T. Dittmar, 539; W. Beeman, 527; C. Koenigter, 566; J. Hughes, 558; H. Hughes, 512; S. Hopkins, 553; M. Smith, 549; J. Fortner, 502.

Chelsea Women's Bowling Club

Standings as of Oct. 28

	W	L
Chelsea Milling	23	8
Parish's Cleaners	21	10
Jiffy Mixes	20	12
Chelsea Lanes	20	12
Foster's	20	12
The Pub	18	14
Wolverine Bar	14	18
Schneider's	11	21
N. American Rockwell	12	20
The Ugly Ducklings	11	21
Chelsea Grinding	11	21
Norris Electric	10	22

450 series or over: A. Boham, 529; B. Fritz, 529; P. Guest, 517; J. Rowe, 505; M. Sutter, 501; B. Parish, 488; N. Kern, 478; R. Lutovsky, 475; P. Fitzsimmons, 475; C. Bradbury, 474; G. Kuhl, 472; J. Hafner, 471; S. Mahaney, 470; M. Kozminski, 466; P. Poertner, 464; D. Fouty, 456; D. Alber, 456; H. Morgan, 455; H. Rothfuss, 454; B. Mshar, 450.

150 games or over: A. Boham, 180, 188, 161; B. Fritz, 183, 156, 142.



SPORTS CORNER

ONE OF FOOTBALL'S BEST DEEP RECEIVERS IS WARREN WELLS WHO HAS AVERAGED ONE TOUCH-DOWN IN EVERY FOUR CATCHES FOR THE RAIDERS...

WELLS, GIFTED WITH BLAZING SPEED, LED ORLANDO'S EXPOSIVE OFFENSE WITH AN AVERAGE RUN OF 28.8 YARDS PER PASS IN 1969. HE SCORED A TD'S AND GAINED 1260 YARDS...

Charlie Brown League Peanut League

Standings as of Oct. 31

	W	L
Eagles	16	5
Crazy Chryslers	14	7
Wipe Outs	13	8
Road Runners	12	9
Snoopy Stars	7	14
Banana Splits	1	20

Games over 70: D. Wilson, 93; J. Verwey, 100, 71; L. Lovely, 85; K. Steinaway, 70, 87; R. Ostrander, 84; C. Umsted, 77; J. Boyer, 73, 106; D. Bowen, 77, 77; B. Hasler, 101; M. Waldyke, 81; D. Boyer, 84, 80; D. Seyfried, 82, 86; G. Packard, 79; D. Alber, 89, 80.

Old Timers Bowling League

Standings as of Oct. 31

	W	L
Team No. 16	25	11
Dexter Bowl 'n' Bar	23	13
Hotzel Service	22	14
Nelson Realtors	21	14
Sanford Security Serv.	21	15
Colonial Lanes	20	15
Mather Co.	20	16
Sportsman's Bar	19	17
Cloverleaf Lanes	19	17
Team No. 14	19	19
Bob & Otto Standard	16	20
Hartman Ins.	15	21
Stein & Goetz	14	22
Has Beens	13	23
Lucky 13	12	24
Merkel Furniture	10	26

Teams won three games: Mather Co., Team No. 14 and Dexter Bowl 'n' Bar.

High team game and series: Nelson Realtors, 850 and 2,411.

High ind. game: W. Falkenburg, 215.

High ind. series: P. Nass, 202 and 548.

Junior Swingers

Standings as of Oct. 31

	W	L
Team No. 2	16	4
Losers	14	6
Challengers	10	10
Team No. 3	7	12
Team No. 5	7	12
Team No. 4	5	15

Games of 140 and over: R. Collins, 141; M. Murphy, 149, 166; D. Messner, 169; K. Murphy, 149, 146; L. Sannes, 141; M. Pennington, 150; B. McGuire, 157; K. Harris, 180, 188, 161; B. Fritz, 183, 156, 142.

Series over 140: D. Alber, 169; G. Packard, 144; K. Steinaway, 157; D. Wilson, 164; J. Verwey, 171; B. Hasler, 166; D. Boyer, 164; J. Boyer, 178; D. Bowen, 154.

Chelsea Lanes Mixed

Standings as of Oct. 30

	W	L
H. & H.	46	10
Rabbitt & Holloway	40	16
Doody & Turner	35	21
Ann Arbor Centerless	32	24
Devine & Coppernoll	28	28
Chelsea Lanes	26	30
Gephart & Barkley	24	32
Wolverine No. 2	23	33
Sindlinger & Pierce	23	33
Fitzsimmons Excav.	22	34
Heim & Arrington	22	34
Bollinger's Sanitation	15	41

Women's 150 and over: M. Sutter, 223; L. Gimorer, 194; J. Rabbitt, 153, 192, 152; K. Arrington, 156, 153, 189; F. Gephart, 187, 180; L. Doody, 177, 185; A. Turner, 175, 150; H. Morgan, 156, 173; J. Longworth, 166; J. Hutzel, 163, 158; L. Alexander, 159.

Women's 450 and over: J. Rabbitt, 507; K. Arrington, 498; F. Gephart, 497; M. Sutter, 492; L. Doody, 466; A. Turner, 459; J. Hutzel, 458.

Men's 175 and over: B. Harvey, 242; B. Devine, 216; R. Hutzel, 178, 210; M. Rabbitt, 199, 178; M. Packard, 189, 198; D. Alexander, 191; D. Coppernoll, 190; J. Dunn, 186, 170; L. Gephart, 179; G. Heim, 179; B. Robertson, 178; R. Morgan, 175; D. Longworth, 175; J. Turner, 175; E. Keezer, 175.

Men's 475 and over: R. Hutzel, 554; M. Packard, 554; B. Harvey, 539; E. Keezer, 515; J. Dunn, 514; B. Devine, 508; M. Rabbitt, 505; D. Coppernoll, 491; B. Robertson, 485; D. Longworth, 479.

Men's 175 and over: R. Hutzel, 554; M. Packard, 554; B. Harvey, 539; E. Keezer, 515; J. Dunn, 514; B. Devine, 508; M. Rabbitt, 505; D. Coppernoll, 491; B. Robertson, 485; D. Longworth, 479.

Men's 475 and over: R. Hutzel, 554; M. Packard, 554; B. Harvey, 539; E. Keezer, 515; J. Dunn, 514; B. Devine, 508; M. Rabbitt, 505; D. Coppernoll, 491; B. Robertson, 485; D. Longworth, 479.

Men's 475 and over: R. Hutzel, 554; M. Packard, 554; B. Harvey, 539; E. Keezer, 515; J. Dunn, 514; B. Devine, 508; M. Rabbitt, 505; D. Coppernoll, 491; B. Robertson, 485; D. Longworth, 479.

Men's 475 and over: R. Hutzel, 554; M. Packard, 554; B. Harvey, 539; E. Keezer, 515; J. Dunn, 514; B. Devine, 508; M. Rabbitt, 505; D. Coppernoll, 491; B. Robertson, 485; D. Longworth, 479.

Men's 475 and over: R. Hutzel, 554; M. Packard, 554; B. Harvey, 539; E. Keezer, 515; J. Dunn, 51

★ ELECTION BOX SCORE ★

	Dexter Twp.	Freeborn Precinct I	Freeborn Precinct II	Lima	Lyndon	Scioto Precinct I	Scioto Precinct II	Scioto Precinct III	Sharon	Sylvan Precinct I	Sylvan Precinct II	Webster	Sylvan Absentee
GOVERNOR													
Milliken (R)	448	116	144	166	579	568	502	197	375	476	378	116	
Levin (D)	271	62	75	147	271	253	176	71	270	300	157	33	
SECRETARY OF STATE													
Lockwood (R)	401	139	121	131	480	425	382	173	271	382	304	98	
Anglin (D)	285	75	88	191	153	339	288	88	343	351	201	43	
ATTORNEY GENERAL													
Farr (R)	352	135	105	316	123	429	391	375	166	261	343	280	87
Kelley (D)	339	82	104	206	172	390	392	295	92	348	386	231	58
U.S. SENATOR													
Romney (R)	346	121	114	319	127	415	395	354	159	262	336	286	101
Hart (D)	357	190	101	228	180	434	425	321	104	371	423	257	47
CONGRESSMAN, 2nd DIST.													
Esch (R)	484	176	166	415	169	632	590	526	223	390	531	405	119
Stillwagon (D)	210	45	50	117	126	200	219	150	40	221	211	112	26
STATE SENATOR													
Bursley (R)	485	166	163	404	159	600	534	508	207	663	481	374	115
Sallade (D)	243	49	62	124	132	215	254	157	50	241	250	134	31
REP., 51st DIST.													
Thomas Sharpe (R)	472	178	164	400	167	611	525	487	215	378	496	113	
REP., 62nd DIST.													
Roy Smith (R)													856
Susan Freund (D)													115
STATE BOARD OF EDUCATION													
Geske (R)	389	141	126	340	134	499	466	423	174	295	380	318	99
Robinson (R)	387	155	130	346	136	510	489	434	180	307	409	328	107
Brennan (D)	268	87	78	165	146	288	267	210	74	285	306	169	42
Miller (D)	253	62	63	143	136	256	269	190	57	261	278	143	38
BOARD OF REGENTS, U-M													
Goebl (R)	392	151	125	357	136	505	474	451	183	300	400	328	102
Schuler (R)	384	151	126	358	140	498	472	441	180	299	402	320	101
Brown (D)	263	56	71	149	136	288	267	201	63	277	293	159	36
Waters (D)	248	52	71	145	133	254	257	179	58	254	272	143	37
BOARD OF TRUSTEES, MSU													
Deihl (R)	393	154	134	363	136	513	464	429	190	319	415	318	106
Ernst (R)	406	151	136	355	133	518	460	428	189	320	408	331	106
Carrigan (D)	251	47	63	138	134	250	263	205	50	255	278	151	33
Stevens (D)	237	53	62	136	138	245	259	188	53	350	265	136	30
BOARDS OF GOV., WSU													
Hayes (R)	391	156	132	346	143	500	467	428	193	304	407	320	98
Kennedy (R)	387	47	130	354	135	512	453	427	189	313	405	327	104
Atchison (D)	242	155	66	149	129	247	258	195	50	265	273	145	38
Pincus (R)	234	45	65	128	129	231	256	187	50	242	259	134	33
COUNTY COMMISSIONER													
Bradbury (R)	174	153	405	152					207	343	460	107	
No Democratic candidate													
STATE PROPOSALS													
PROPOSAL A													
Yes	153	56	65	129	74	198	195	285	64	211	242	150	73
No	472	104	161	363	180	467	543	398	198	411	354	321	53
PROPOSAL B													
Yes	188	71	76	155	84	233	268	274	91	195	230	152	46
No	482	153	143	330	175	478	485	378	172	323	390	322	94
PROPOSAL C													
Yes	442	158	103	372	184	458	523	414	194	350	457	298	103
No	223	64	65	144	84	294	267	262	74	204	196	194	46
WCC MILEAGE													
Yes	208	66	66	157	53	294	332	272	62	167	248	180	68
No	422	161	144	317	198	447	417	378	206	307	353	286	50
SUPREME COURT JUSTICES													
Dethmers	178	102	77	232	75	295	262	326	107	189	199	221	199
Piggins	210	82	87	250	110	353	369	353	120	182	272	198	272
Swainson	287	134	141	226	146	286	404	311	163	214	300	249	300
Williams	182	72	62	140	93	213	220	226	95	124	186	191	186
COURT OF APPEALS, 2nd Dist.													
McGregor	262	146	143	253	109	324	401	368	160	178	287	287	86
COURT OF APPEALS—													
to fill a vacancy													
Danhof	235	83	91	204	54	293	295	350	101	74	158	142	42
Freeman	90	79	67	94	89	102	220	102	83	256	181	158	50
CIRCUIT COURT JUDGES													
Ager	328	186	170	334	143	453	496	478	187	256	346	344	90
CIRCUIT COURT, vacancy													
Campbell	325	163	157	335	144	446	474	474	178	262	355	334	95
PROBATE COURT													
Hutchinson	323	252	160	310	129	398	452	449	180	246	322	326	94
DISTRICT COURT, vacancy													
Arkinson	289	144	146	260	115	346	410	416	163	227	291	288	89
COMMUNITY COLLEGE TRUSTEES													
White	118	51	41	44	20	52	80	75	42	111	38	78	10
Wiles	72	12	11	25	12	18	26	22	14	73	84	22	3
Williams, Jr.	82	27	25	37	44	156	73	62	33	65	126	54	30
Woolley	55	17	15	30	11	96	152	31	29	43	66	100	12
Heebink	58	16	18	51	13	64	128	148	20	43	55	71	8
Newton	66	39	41	40	24	100	121	121	56	59	65	59	23
Roberts	47	98	112	145	25	95	105	73	108	34	61	54	15
Swainson	51	40	36	125	77	77	88	77	56	50	62	49	23
Walter	36	47	34	85	49	61	68	89	38	37	41	42	16
Wells	34	24	14	50	12	45	62	116	31	18	34	76	13

Halloween Party Given for Boys at St. Louis School

Mr. and Mrs. Ed Beissel, McKinley Rd., sponsored a Halloween party for the boys of St. Louis school, Thursday evening, Oct. 29, at the school. 75 parents, students, staff, and friends from Chelsea, Ann Arbor, Detroit, and Jackson attended the event. Ghosts and goblins were everywhere. Games were played, and the boys dunked for apples. Prizes were awarded for the most original, funniest, and most unusual costumes. Judges were Mrs. Jodi Vitale, Mrs. Trudy Ponca, Mrs. Betty Queen, and Bill Pierce, parents of the boys. Refreshments were donuts, cider, popcorn balls, and candy.

Subscribe today to The Standard!

+ Services in Our Churches +

FIRST UNITED METHODIST CHURCH
The Rev. Clive Dickens, Pastor
Thursday, Nov. 5—
10:00 a.m.—Bazaar opens.
11:00 a.m. to 1:00 p.m.—Lunch-con.

Saturday, Nov. 7—
8:30 p.m.—Christian Home Group No. 1 at home of Dr. Clare Warren.

Sunday, Nov. 8—
9:00 a.m.—Church school (nursery-adult).
10:00 a.m.—Church school (Nursery-2nd grade).
11:15 a.m.—Admin. Board meeting.

6:00 p.m.—Junior and Senior MYF.

8:00 p.m.—Youth Choir rehearsal.

Monday, Nov. 9—
8:00 a.m.—Council on Ministries meeting.

CONGREGATIONAL CHURCH
(United Church of Christ)
The Rev. Daniel Kellin, Pastor
Sunday, Nov. 8—
10:00 a.m.—Church school.
10:00 a.m.—Morning worship.

ST. MARY CATHOLIC CHURCH
The Rev. F. Francis Wahowiak
Saturday, Nov. 7—
7:30 p.m.—Mass.

Sunday, Nov. 8—
Masses at 6:30 a.m., 8:00 a.m., 10:00 a.m., and 11:30 a.m.

OUR SAVIOR LUTHERAN CHURCH
Rebekah Hall, 1194 M-52
The Rev. William H. Keller, Pastor
Sunday, Nov. 8—
9:15 a.m.—Sunday school and Youth Bible Class.
10:30 a.m.—Worship Service.
Every Thursday—
6:00 p.m.—Youth Confirmation Class.

NORTH SHARON COMMUNITY BIBLE CHURCH
Sylvan and Washburn Rds.
The Rev. William Enslen, Pastor
Sunday, Nov. 8—
10:00 a.m.—Sunday school.
11:00 a.m.—Worship service.
6:30 p.m.—Young People's service.
Every Wednesday—
7:30 p.m.—Prayer meeting.

ST. JACOB EVANGELICAL LUTHERAN CHURCH
12501 Reithmiller Rd., Grass Lake
The Rev. Andrew Bloom, Pastor
Sunday, Nov. 8—
9:00 a.m.—Sunday school.
10:15 a.m.—Divine services.

METHODIST HOME CHAPEL
The Rev. R. L. Clemans, Chaplain
V. O. Johnson, Administrator
Sunday, Nov. 8—
8:45 a.m.—Worship service.

FIRST UNITED METHODIST CHURCH OF WATERLOO
Parks and Territorial Rds.
Mrs. Altha Barnes, Pastor
Sunday, Nov. 8—
9:15 a.m.—Morning worship.
10:15 a.m.—Sunday school.

VILLAGE UNITED METHODIST CHURCH OF WATERLOO
8117 Washington St.
Mrs. Altha Barnes, pastor
Sunday, Nov. 8—
10:00 a.m.—Sunday school.
11:15 a.m.—Morning worship.

GREGORY BAPTIST CHURCH
The Rev. Grant Lapham, Pastor
Sunday, Nov. 8—
10:00 a.m.—Worship service.
11:15 a.m.—Church school.
6:30 p.m.—Baptist Youth Fellowship.
7:30 p.m.—Evening worship service.

CHELSEA MEDICENTER
Sunday, Nov. 8—
12:30 p.m.—Sunday worship service.

SALEM GROVE UNITED METHODIST CHURCH
The Rev. Frederick Atkinson, Pastor
Sunday, Nov. 8—
10:00 a.m.—Sunday school.
11:00 a.m.—Worship service.

NORTH LAKE UNITED METHODIST CHURCH
The Rev. Frederick Atkinson, Pastor
Sunday, Nov. 8—
9:30 a.m.—Worship service.
10:30 a.m.—Sunday school.

ST. PAUL UNITED METHODIST CHURCH
The Rev. Warner Siebert, Pastor
Friday, Nov. 6—
World Community Day Church Women United, services at Methodist church.

Saturday, Nov. 7—
9:00 a.m.—12:30 p.m.—Junior High confirmation program.

10:15 a.m.—Youth Choir.
Sunday, Nov. 8—Loyalty Sunday—
9:15 a.m.—Church school.
9:15 a.m.—Worship.

10:15 a.m.—Worship
11:15 a.m.—Worship
Sermon title: "The Peril of Possessing."

Wednesday, Nov. 11—
7:00 p.m.—Spiritual Life.
7:15 p.m.—High school choir.
8:15 p.m.—Chancel Choir.

Thursday, Nov. 12—
9:00 a.m.—Koinonia at Erma Mayers.

3:30 p.m.—Ann Arbor-Jackson Association, Executive Committee.
7:30 p.m.—Board of Christian Education.

CHELSEA BAPTIST CHURCH
537 Wilkinson
Sunday, Nov. 8—
10:00 a.m.—Sunday school.
11:00 a.m.—Worship service.
Nursery care available during all services.

6:00 p.m.—Junior and Senior Baptist Youth Fellowship.
7:00 p.m.—Evening worship.
Every Wednesday—
7:30 p.m.—Bible study and prayer meeting.

FIRST ASSEMBLY OF GOD CHURCH
The Rev. Thode B. Thodeson, Pastor
Sunday, Nov. 8—
9:45 a.m.—Sunday school.
11:00 a.m.—Worship service.
7:00 p.m.—Evangelistic service.
Every Wednesday—
7:00 p.m.—Midweek services.

FIRST CHURCH OF CHRIST, SCIENTIST
1883 Washtenaw Ave., Ann Arbor
Sunday, Nov. 8—
10:30 a.m.—Sunday school.
10:30 a.m.—Morning service.
Lesson-sermon: "Spiritual Discernment."

ST. JOHN'S EVANGELICAL AND REFORMED CHURCH
(United Church of Christ)
Rogers Corners
The Rev. David J. Kleis
Sunday, Nov. 8—
9:30 a.m.—Sunday school.
10:30 a.m.—Morning worship.

School Closing for Parent Conferences

School will be closed the afternoon of Nov. 12, for parent conferences. It is hoped that parents will have an opportunity to meet with teachers and discuss problems their children might be having in school.

Conferences will be limited to 20 minutes in duration. Parents are to contact the school to schedule a specific time. All teachers will be available from 12 to 5 p.m., and whenever possible, multiple conferences will be scheduled consecutively. Parents are urged to contact the high school office, 475-3461, prior to Nov. 11 to arrange appointments.

LOVE AT ANY AGE

Cincinnati — Irene Mosley, 19, said she plans to marry John H. Napier, 71. The couple have known each other for years and she says: "Love is what counts, age doesn't really make any difference." Napier is a retired postal worker.

TIPS for your TOP from



TODDY and FRAN

Looking forward to winter, got you down? There's no blues-chaser like self-improvement. It's fun, of course, to perk up your appearance with an expensive new dress, but not always practical. Something you can more easily afford that will do the same trick is a new hairdo. While it won't last as long as the dress, you can get it anew every week or two — while the dress would be growing older. You keep repeating the pick-me-up until, hopefully, it will become a part of life: the routine of good professional grooming.

Magic Mirror Beauty Salon
Phone 665-0816
5585 Jackson Rd., Ann Arbor

Club and Social Activities

SENIOR CITIZENS

At this evening's social meeting of Chelsea Senior Citizens, two students from the advanced speech class at Chelsea High school will be guest speakers. Arrangements were announced at the Senior Citizens business meeting held at the Kerner House Tuesday evening, Oct. 27.

The committee for the social meeting includes Mrs. Vern List and Mrs. LaRue Shaver.

Other business at Tuesday's meeting included arrangements for Mrs. Mary Wood to buy supplies for making lap robes.

Fifteen members were present for the business meeting.

SARAH CIRCLE

Sarah Circle of the First United Methodist church met Oct. 21 at the home of Mrs. Loren Turner with Mrs. Marvin Salyer as co-hostess.

Mrs. Winston Schenk opened the business meeting with a devotional reading.

Some of the finished bazaar items were shown.

Mrs. John Thornbury presented an interesting program on the "Save the Children Federation" and showed pictures and read letters from an Indian girl the Thornburys "adopted" a few years ago as a birthday present to their daughter, Lee. Mrs. Dorothy Hadley chose a selection entitled "Beauty Abides" for her devotional reading.

Meeting closed with a prayer chain, recognizing the national day of prayer for peace.

AMERICAN LEGION AUXILIARY

The November meeting of the American Legion Auxiliary was held at the home of Mrs. Julius (Alma) Eisele with 18 members present Tuesday evening.

It was announced that the Gift Shop will be held in the Veterans Administration Hospital in Ann Arbor on Dec. 7 and 8. All of those wishing to work are to contact Mrs. Ruth Christwell. Open House to which the public is invited will be held on Dec. 6.

The Christmas party will be held at the home of Mrs. George (Ruby) West with a pot-luck dinner at 6:30 p.m. \$1 gift exchange on Dec. 1.

AVERAGE FAMILY

The Bureau of the Census reported last December that the average American family now numbers 3.6 persons.

Rita M. Jacob, Robert Burkhardt Married at Manchester Church



Mrs. Robert Eugene Burkhardt

Past Noble Grands Marks Halloween At Wolfe Home

Past Noble Grands Club of Chelsea Rebekah Lodge met at the home of Mrs. Clifford Wolfe on Francisco Rd., Oct. 27. Mrs. John Dyvorka acted as co-chairman of the Halloween party.

Guests included: Mrs. Odema Moeckle and Mildred Cogswell, both of Home City Lodge in Jackson.

Ghosts and goblins sat down to a dessert luncheon from a table decorated with the holiday theme and beautiful fall flowers from the hostesses' garven.

Best costume prize was awarded to Mildred Cogswell. The door prize was won by Mrs. Luther Hale.

Games were the evening's diversion, with prizes going to the winners.

Plans were made to assist the lodge with the celebration pertaining to 50 years of membership for Mrs. Wilbur Breitenwischer and Mrs. Alfred Hinz. Mrs. Breitenwischer was the first president of the Past Grands club.

It was announced that there will not be a meeting in November. December meeting will be at the home of Mrs. Geno Colbre. Mrs. Hale will be co-hostess. Date for that meeting has yet to be announced.

Brownie Troop 169 To Organize Monday

Organization meeting of Brownie Troop 169 will be held Monday, Nov. 9, at the First Congregational church in Chelsea. Meeting will begin promptly at 8:30 p.m. Cost of registration is \$1.00 per girl. It is most important that mothers and daughters, both attend this meeting to assure membership.

Housekeeping would be ideal if there really were little fairies to do the work.



BOUTIQUE Opening Nov. 9th Showing

- Complete line of
- ★ yarns & hooked rugs
 - ★ candles
 - ★ holiday centerpieces
 - ★ wicker baskets
 - ★ colored paper plates & napkins
 - ★ gourmet cookware
 - ★ scented soaps
 - ★ stationery & note paper
 - ★ ceramics
 - ★ incense & posters

Do come in & browse.
105 N. Main St.

Miss Rita Marie Jacob, daughter of Mr. and Mrs. Herbert Jacob, 15864 Below Rd., Grass Lake, and Robert Eugene Burkhardt, son of Mr. and Mrs. Lorenze Burkhardt, 14481 Pleasant Lake Rd., were married Saturday, Oct. 24, at the Emmanuel United Church of Christ, Manchester, before associate pastor, Don Gibson.

Roger Morrison of Manchester was organist at the wedding.

Miss Jacob chose a floor-length white satin gown with Victorian styled tulle train. Her finger-tip veil was edged with lace, and she carried a Bible covered with lace, phalaenopsis orchids and stephanotis.

Mrs. Salvatore Vitale, of Auburn, N.Y., sister of the bride, was matron of honor. Her floor-length gown was blue lace. She carried a bouquet of blue tipped carnations, and white fluff.

Bridesmaids included Mrs. Kenneth Roberts, sister of the bride, from Chelsea, and Mrs. Glen Mann and Mrs. Gary Mitchell, sisters of the bridegroom, both of Manchester. They were attired in blue lace floor-length dresses, and carried blue tipped miniature carnations with white fluff.

Mrs. Jacob, mother of the bride, chose a blue dress trimmed with lace for her daughter's wedding. Mrs. Burkhardt was attired in a blue two-piece suit which was trimmed with white.

Lisa Vitale, Auburn, N.Y., niece of the bride, was flower girl.

Glen Mann, Manchester, brother-in-law of the bridegroom, was best man. Gerald Jacob of Grass Lake, cousin of the bride, Gary Mitchell, brother-in-law of the bridegroom, also of Manchester, and William Carothers, of Clinton, ushered.

Immediately following the ceremony, a reception was held in the church hall, after which the party moved to the Manchester Sportsman's Club. Mrs. Anita Jacob poured coffee, while Miss Linda Hoeft served the wedding cake. Mrs. Brenda Hickey of Ann Arbor, cut the wedding cake. Miss Marlene Lefler, Ypsilanti, attended the guest book. Miss Susan Jacob, Manchester, poured punch.

Following a short trip to the southern states, the newlyweds will reside at 505 Ann Arbor Rd., Manchester.

The bride is a graduate of Manchester High school. She has an associate degree from Washtenaw Community College as a radio-logic technologist.

The bridegroom is a graduate of Manchester High school. He is an auto repairman in Burk's Body Shop, Clinton.

4-H Clubs

GINGHAM BELLES

Sharon Schiller, Gingham Belles 4-H club president, opened the Tuesday, Nov. 3 monthly meeting with the pledge of allegiance and the 4-H club pledge. Roll was taken with 18 girls and three leaders present.

Our December bazaar was discussed and girls were notified it would be held Saturday, Dec. 5 at Dancer's Dept. Store. This will be for bazaar items and also baked goods.

Terri Jones and Beth Clark are to head the poster committee and are responsible for putting the posters that the girls make in the stores by Saturday, Nov. 14.

Girls were picked by drawing names to help at the Bazaar.

Members were also reminded to have their 4-H club projects on the material and cut out by Tuesday, Dec. 8 at the very latest.

Girls also voted to try to make arrangements for a Wendy Ward demonstration or its equivalent for later this year.

Next month's business meeting will be at the home of Karen Romine with Julie and Lori Proctor on refreshments. Christmas party will be at the home of Penny Wood with an exchange of a 75 cents to \$1 gift items.

Susie Morrison, assistant secretary.



DECEMBER WEDDING: Mr. and Mrs. Edmund Buku, of 168 East Summit St., Chelsea, announce the engagement of their daughter, Tylene Marie Walz, to Rick Allen, son of Mr. and Mrs. Stephen Allen, of 5204 Sheppen Rd., Stockbridge. A Dec. 12 wedding is planned.

Altar Society Plans Christmas Party

Regular meeting of St. Mary Altar Society was held Monday evening, Nov. 2, in the school gym, with 82 members present.

The Rev. Fr. F. Wahiowski opened the meeting with a prayer. Serving on the November altar committee are Mrs. Leo Helner and Mrs. Charles Williams.

Contact Lady, Mrs. Wayne Harvey, announced that this year was the 50th anniversary of the National Council of Catholic Women. Mrs. Harvey proposed that a \$5 gift be sent to the NCOW as an anniversary token from St. Mary's Parish. The suggestion was heartily approved by the members.

Mrs. L. D. Guinan, Good Samaritan Committee, reported that 50 pounds of clothing was taken to Ann Arbor for the needy.

Refreshment chairman for December is Mrs. James Gaken. Mrs. George Brettschneider reminded the ladies of the Christmas bazaar and bake sale, scheduled for Dec. 12, at the town hall.

The Rev. Fr. Wahiowski announcing that the Bishop's Relief Clothing Drive will take place Thanksgiving week. The used clothing will be sorted and packed Friday evening, Nov. 27, in the school hall. Volunteers are needed to help with the work.

Members decided to hold a Christmas party in the school hall, Monday, Dec. 7. Program chairman will contact the Rev. Fr. Umberto of the St. Louis school regarding the Christmas program.

Each person attending the party is requested to bring a home-made gift for the gift exchange. Also, home-made cookies or candy, brought by the members will be given to the boys from the St. Louis school for their efforts.

The Rev. Fr. Wahiowski closed the meeting with a prayer.

Miss Connie Orlowski, from the Chelsea High school speech department, explained mental telepathy, ESP, re-incarnation and related incidents of each. She also told about experiences that famous people had involving these phenomena.

Refreshments were served by Mrs. August Dorer and her committee.

Mrs. George Young Visits Son in California

Mrs. George Young, Waterloo, has just returned from San Jose, Calif., where she visited her son, Richard Young, and his family, for one week.

While in California, Mrs. Young visited Santa Cruz, the home of a former high school classmate, and the Redwood forest. She also visited San Francisco.

Mrs. Young left Tuesday, Oct. 20, returning Oct. 27.

Her son, Richard, is married, and has three children living in San Jose, where he is an electrical engineer.

A thought to remember: He who lives at high tension usually blows a fuse.

SCHOOL LUNCH MENU

Week of Nov. 9-13

Monday, Nov. 9—Savory beef over mashed potatoes, buttered wax beans, biscuits, butter, chilled fruit, and milk.

Tuesday, Nov. 10—Sloppy Joes on buns, slice of cheese, buttered vegetables, chips, whipped Jell-O cream, and milk.

Wednesday, Nov. 11—Ham loaf, creamed potatoes, buttered peas and carrots, bread, butter, dessert, and milk.

Thursday, Nov. 12—Pretzels on hamburger buns, trimmings, cole slaw, french fries, dessert, and milk.

Friday, Nov. 13—Fish burgers on buns, tartar sauce, polka-dot salad, potato sticks, peach cobbler, and milk.

GIRL SCOUT NEWS



TROOP 58

Girl Scout Troop 58's meeting opened with the flag ceremony, and the Girl Scout Pledge.

Troop scribe elections were held. After three tie votes, Tammy Lorenz was chosen troop scribe.

Troop played games. One game was to pass a balloon under the legs, another was to throw a ball into a basket.

The group broke into patrols to take dues. Candle holders were also made.

Friday, Nov. 6, there will be a hayride and a Wiener roast. Margaret Bennett brought treats which were apple cider and cookies.

Meeting closed with taps, and the squeezer.

Tammy Lorenz, scribe.

Beach School Notes

At Beach Junior High school this week, pictures were taken for the school yearbook, Oct. 29, of those students who were absent the first time they were taken. Students who wanted retakes were also photographed. Lyndon Studios is doing the work.

First issue of The Bullpup, the Beach school paper, came out Oct. 30. The paper sells for five cents, and is written by junior high school students.

Yearbook subscription deadline has been extended to Monday, Nov. 2. To date, 311 books have been sold.

Chelsea Police Department Patrolman Schneider spoke to all the 8th grade science classes on Friday, Oct. 30. His topic was narcotic drugs, and he brought with him his "educational display" of narcotics and drug apparatus.

Mrs. Olive Rogers, sixth grade mathematics teacher, and eighth grade home room teacher, retired Oct. 30. She has taught in the Chelsea schools for 31 years. She will be replaced by Mrs. Jacobson.

—Steve Bennett, Junior High school reporter.

Telephone Your Club News To GR 5-3581.

EDUCATION IS OUR BUSINESS Try It!

WASHTENAW COMMUNITY COLLEGE

May We Propose

CASTLEMAN 8278, ALSO TO 450 WEDDING RING 178

The ring that expresses love in a very special way... a perfect diamond, guaranteed.

WINANS JEWELRY

Rings engraved to show depth of love. Trade-in on old jewelry.

WINANS JEWELRY

101 N. Main St. Phone GR 5-5771

PAT'S CORNER

By PAT DITTMAR
Home Economist
Chelsea Milling Co.

It is a known fact that hamburger is served at our dinner table more than any other meat. Do you sometimes run out of different ways to serve it? Try this clever recipe, really very simple, but looks fancy. It's a nice way of serving bread and meat in one dish.

MEAT ROLL (6 servings)

- 1 1/2 lb. hamburger
- 1 medium onion, thinly sliced
- 1 teaspoon salt
- 1/4 teaspoon pepper
- 2 cups "JIFFY" Baking Mix
- 1/2 cup milk

1. Heat oven to 400°. Grease baking sheet.
2. In large skillet brown hamburger. Add onion, salt and pepper. Cook until onion is tender; drain any excess fat.
3. Blend Baking Mix and milk to soft dough.
4. Turn onto lightly floured surface and roll into rectangle 9x12". Cover with meat mixture. Roll as for jelly roll.
5. Place on prepared baking sheet, seam side down. Slash top several times.
6. Bake 20 to 25 minutes. Serve with gravy, tomato or mushroom sauce.

ROGERS CORNERS STUDY GROUP

Rogers Corners Study Group met Tuesday, Oct. 20, at the home of Alvina Englebert. Lorena Wenk was co-hostess. Sixteen members, and two guests, Mrs. Ray Niles, Sr., and Mrs. Donna Bradbury, attended the meeting.

Meeting was called to order by the chairman, Marian Bristle, and the Women's Creed was read. The secretary's and treasurer's reports were given.

Helen Wolfgang, Marian Bristle and Mildred Huchl, shared the Fall County Tour with the rest of the club.

Members presented Christmas Open House ideas, and projects were chosen for display. Mary Ann Cranerolo, and Judi Sattysiak are to set up the display Monday morning, and Helen Wolfgang and Edna Wenk are to dismantle the display Tuesday evening.

It was decided that members not answering the roll call topic must put a nickel in the Sunshine Fund.

Mrs. Donna Bradbury, senior council member, was a guest and discussed the spring meeting. She also discussed the possibility of a country tour guide, and lessons for 1972 with the club.

Meeting was adjourned, and refreshments were served.

South School Assoc. Will Hear of Services By Intermediate District

South School Association will meet Thursday, Nov. 12, at 8 p.m. in South school gymnasium. Robert Burns, administrative assistant for special education of the Washtenaw Intermediate School District, will present a program that will explain in depth the services of the Washtenaw Intermediate School District, and the function and potential of these as they apply to the children of Chelsea.

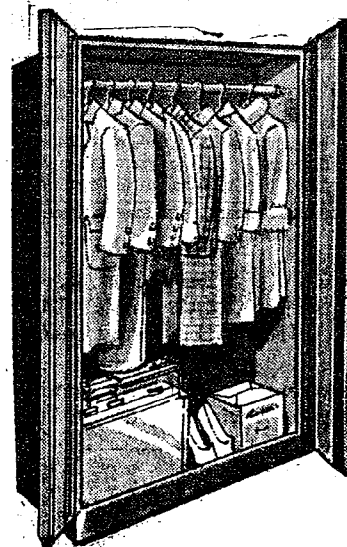
Title of the evening's program is "All of the Children of All the People."

Subscribe today to The Standard!

AUTOMOBILE CLUB OF MICHIGAN

Membership and Insurance JACK SCHLAFF

Ann Arbor 769-5000 Dexter 426-8593



STEEL WARDROBES

- 22" brown enamel\$18.50
- 30" x 66" brown enamel. Double door with hat shelf and door lock\$29.50
- 36" x 68" brown enamel. Double door with hat shelf\$29.50
- 42" x 66" brown enamel. Double door with hat shelf\$38.50

CABINET BASES

- 20" single door, 1 drawer. White enamel\$18.95
- 24" double door, 1 drawer. White enamel\$29.50
- 30" double door, 1 drawer. White enamel\$34.50

UTILITY CABINETS

- 24" white enamel, 5 shelves, double door\$25.95
- 30" white enamel, 5 shelves, double door\$27.50

KITCHEN CABINETS

- 24" white enamel. Reg. \$36.95 value. Now on sale \$27.90
- 42" white enamel. Reg. \$59.50 value. Now on sale \$45.00

MERKEL BROS.

101 N. Main St. Phone GR 5-5771

Monthly News

NOVEMBER 1970

WHAT IS DIABETES?

Normally the foods we eat are converted to a form of sugar called glucose. With the aid of an important substance produced in the pancreas—insulin—the blood stream distributes the glucose to the body cells where it is converted to energy or stored for future use. When the body does not produce enough insulin the sugar-glucose accumulates in the blood.

WHAT ARE DIABETES WARNING SIGNALS?

These are related to the increased amount of sugar in the blood (which can also spill over into the urine). This draws water out of body tissues and results in frequent urination. To replace this loss of water there is excessive thirst. Since sugar from food is not turned into energy there is weakness, fatigue and hunger. Sometimes diabetes is found without any symptoms during a regular physical examination by testing small samples of the blood and urine for sugar.

HOW IS DIABETES CONTROLLED?

Life can go on about the same provided the advice of the physician is followed faithfully as to proper diet, sufficient exercise and, if necessary, insulin injections or oral medication. We of course stock a complete supply of all products that are necessary for a diabetic to have.

WHO MAY GET DIABETES?

Anyone! But those most likely to have diabetes are blood relatives of diabetics, overweight people, middle-aged people, mothers of large babies (over 9 pounds). However, diabetes is not catching.

HAVE YOUR FAMILY TESTED

Most doctors now do this routinely, especially when there is a family history. But there are millions of people who have it and do not yet know they have it.

TAIL FEATHER

CHELSEA DRUG

24-HOUR PRESCRIPTION SERVICE
101 N. MAIN ST. PHONE GR 5-4611

BOUTIQUE

Opening Nov. 9th
Showing

Complete line of

- ★ yarns & hooked rugs
- ★ candles
- ★ holiday centerpieces
- ★ wicker baskets
- ★ colored paper plates & napkins
- ★ gourmet cookware
- ★ scented soaps
- ★ stationery & note paper
- ★ ceramics
- ★ incense & posters

Do come in & browse.
105 N. Main St.

TAIL FEATHER

Count on Milk!

For a real energy pick-up whenever you need it... for the enjoyment that comes from a drink that tastes great as it refreshes you... count on milk! Make it a delicious part of your day, every day. Call us for regular home delivery.

WEINBERG DAIRY

QUALITY PASTEURIZED DAIRY PRODUCTS
Old US-12 Phone GR 5-5771

WINANS JEWELRY

Rings engraved to show depth of love. Trade-in on old jewelry.

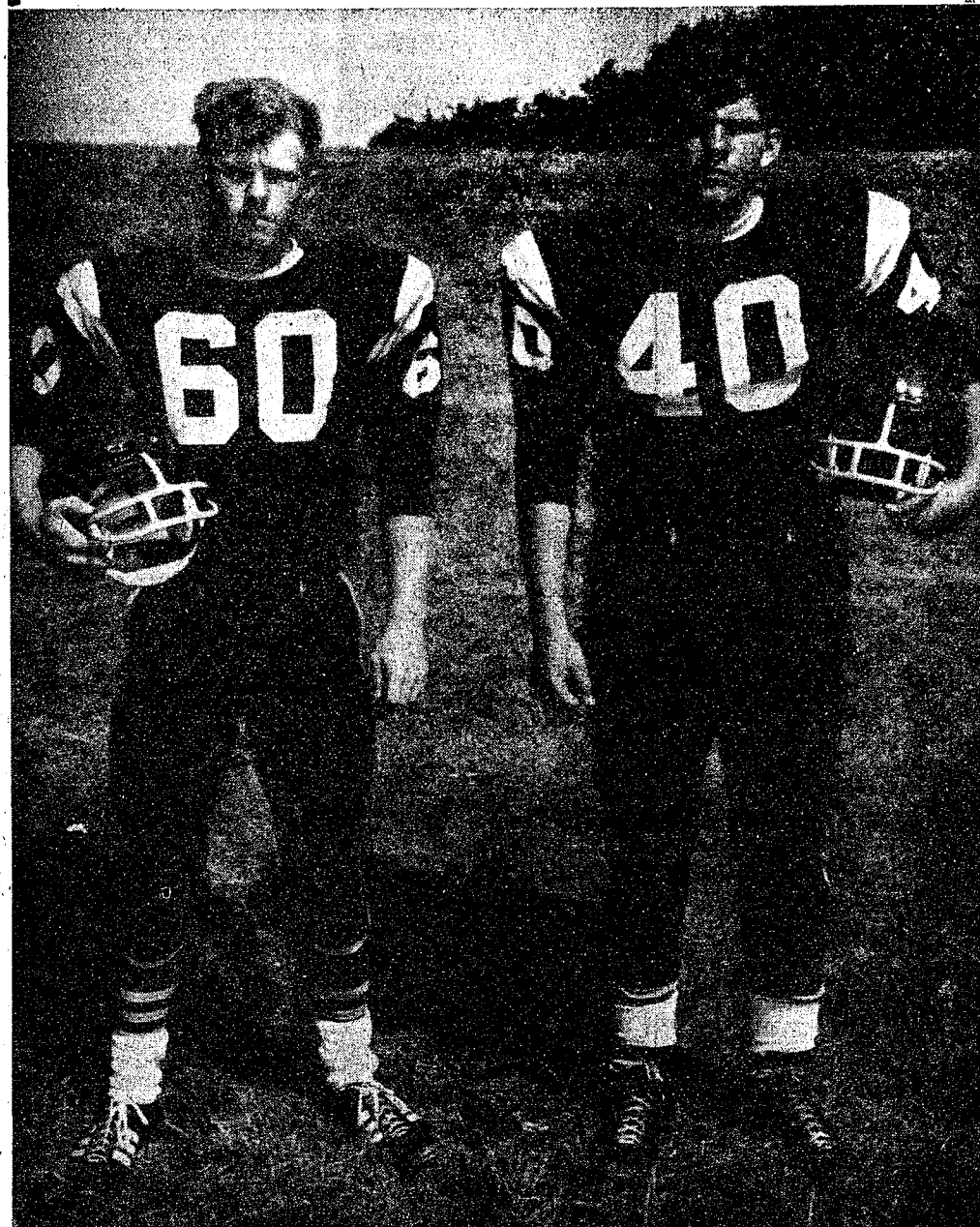
WINANS JEWELRY

101 N. Main St. Phone GR 5-5771

MERKEL BROS.

101 N. Main St. Phone GR 5-5771

Gridders of the Week



MARK SCHULZE, left, No. 60, is a senior member of the Chelsea football team. He plays guard on offense, and tackle and middle guard on the defensive unit. Mark, who has lived in Chelsea most of his life, has played on Chelsea teams for the past three years. This is his first year on the varsity team. Other activities include participation in the local Junior Achievement program. Mark is corporate vice-president of this year's WIA company located at the Chrysler Proving Grounds, Dearborn. Following high school, Mark plans to stay in the area, and make his home here. He is contemplating joining the Navy, indicating that the educational facilities provided in the service appeal to him. Also, he enjoys flying. He lives at home with his parents, Mr. and Mrs. Richard Schulze, at 20086 Brown Dr. He has two brothers, Dan, who is on the JV football team, and Robert, in the second grade, and one sister, Susan, who is a junior.

TOM HARMON, No. 40, is also a senior. This is his sixth year on one of Chelsea's teams, the second year on the varsity. Tom suffered an injury in one of last year's games, a broken knee, which kept him from playing the rest of the season. His positions are middle linebacker, corner linebacker, and tackle. He enjoys football, and has played many positions since he started six years ago, including center, and center guard. He swims, and enjoys deer hunting. Following graduation from Chelsea, Tom would like to go to college, EMU preferably, or into one of the services. Ultimately he would like to teach special education classes, and coach. Tom lives with his parents, Mr. and Mrs. Addison Harmon, 15205 Old US-12, and one of his brothers, Donny. His other brother, John, is married and living in Chelsea. He has a sister, Paula, also.

Robert Foye Family Transferred to Texas

Robert P. Foye, and family, Manager for Chrysler Import Division of Chelsea, have been transferred to Houston, Texas, recovering from injuries received where Foye is Part Operations when struck by a car in May.

CHARM BEAUTY SALON

4396 CLEAR LAKE ROAD
(Formerly of Grass Lake)

Two Operators - Hair Styling and Wig Service
Open on Mondays. Closed Tuesdays.

PHONE 475-2700

Long-Time Former Village Employee Observing 90th Birthday

Miss Grace Ward, who lived at 122 E. Summit for many years and is now a patient at Ranck's Green Meadows Home in Stockbridge, will be 90 years old Nov. 11. Miss Ward, who was an employee of the Village Light & Water Department, handled the billings, and books of the company for more than 30 years. She was approximately 80 years old when she retired.

Miss Ward never told her friends how old she was, but reliable sources say that she will be 90 on Nov. 11.

Chelsea
Jaycee



RICK WALES

Rick was chosen "Man of the Month" for his good job on Fair Kitchen. Rick joined the Jaycees in 1969 and since that time has been a real active member. Rick is married and he and his wife are expecting their first child in January. Rick works at University Microfilms. He has worked there five years. Rick and his wife, Diane live at 221½ Dexter Ave., Ann Arbor. These are some of the reasons and things that make Rick a good Jaycee.

— SPONSORED BY —

FOSTER'S MEN'S WEAR

Man
of the
Month

CHS STUDENTS VOTE:

Democrats Sweep Most Offices in Mock Election

Juniors and seniors at Chelsea High school cast their votes, Thursday morning, Oct. 29, at Sylvan Town Hall, in what is the school's second mock election. Purpose of the election which is sponsored by the government classes, is to educate Chelsea students in both current events, and the very practical use of the voting machine. The practice began in the fall of 1968, when Chelsea High school juniors and seniors voted for their favorites in the local and national elections of the time.

James Bechtelheimer, who is responsible for this venture, indicated that the students have been discussing the political issues, and the campaign, all fall, and that they had been versed in the mechanics of the voting machine prior to their actual encounter with it. Students cast their votes in the following ways:

On the proposals to amend the state constitution, the Chelsea students cast 113 "yes" votes out of 270 on Proposal A, the proposed amendment to issue bonds to provide low-income housing. 83 "no" votes were cast for that amendment.

Proposal B, the amendment to lower the voting age to 18, was favored by Chelsea students, 162-35.

On the Parochial issue, the controversial Proposal C, Chelsea students cast 134 "yes" votes, to op-

porting the millage increase for Washtenaw Community College. 76 young people were in favor of the measure, while 108 opposed it.

In the race for governor, Chelsea students favored Sander Levitt to Milliken by 143-102. Austin posed Parochial, to 44 "no" votes. beat out Lockwood for the position of secretary of state, 186-57. For attorney general, Chelsea students favored Kelley over Farr, 175-98. Senator Hart was the decisive winner in his contest with LeRoy Romney, as the students voted 194-68 in his favor.

In the Congressional race from the second district, Congressman Marvin Esch was re-elected by the youths over candidate Stillwagon by a margin of 141-106.

Bursley narrowly slid by his opponent, Sallade, in his race for the state senate by a close vote of 121-120.

There were no democratic candidates for state representative from the 51st district, to oppose Thomas Sharpe, who won his seat with a vote of 147.

In the contest for the state board of education, Republicans Geake and Robinson received votes of 147 and 93, respectively, while Democrats Brennan and Miller received tallies of 146 and 129.

For the board of regents of the University of Michigan, Democrats Brown with 142 votes, and Wat-

ers, with 138, were sure winners over Goebel with 86 and Schuler, 87.

In the race for the board of trustees of Michigan State University, Democrats Carrigan and Stevens, with tallies of 131, and 128 respectively, beat out Republi-

cans Dehl, with 94 votes, and Ernst, 106.

Wayne State Board of Governors race saw Democrats Atchison, with 127 votes, and Pincus, with 120 votes; the victors over Republicans Hayes, with 95 votes, and Kennedy, who had 110.

As there was no Democratic candidate for county commissioner, Jay Bradbury, Republican, received 123 votes, to clinch his reelection.

In the Sylvan township elections, as there were no candidates from the GOP for township supervisor, or township clerk, Chelsea voters cast 175 votes for Hoffman, Democratic candidate for supervisor, and 178 votes for township clerk Mur-

phy.

Democratic candidate Barbara Dreach was the victor over Republican Pearsall for township treasurer, by a margin of 138-102.

For township trustee, Lyle Christwell received 132 votes, while his Republican opponent, Reuben Lesser had 102.

Since there were no Democratic candidates for township constable, Republicans Pierson, who received 128 votes, and Walz, with 129 were both elected.

Teachers Sam Vogel, government and Fred Elmore, American History, assisted in the mock election. Bechtelheimer indicated that Dan Murphy, township clerk, made arrangements for use of the hall.

NOW YOU CAN RENT SOFT WATER

The Carefree Way!



Now, for the first time, you can rent a famous, multi-purpose Heavy-duty REYNOLDS Fully-Automatic Water Conditioner that removes iron-rust the "CAREFREE" way.

New low rental rates:

Standard size only \$6.00 per mo.

Large size only \$8.00 per mo.

Rentals applied toward purchase, when desired. Investigate the very best in water conditioning... no obligation.

Serving Washtenaw County since 1931

REYNOLDS WATER CONDITIONING CO.

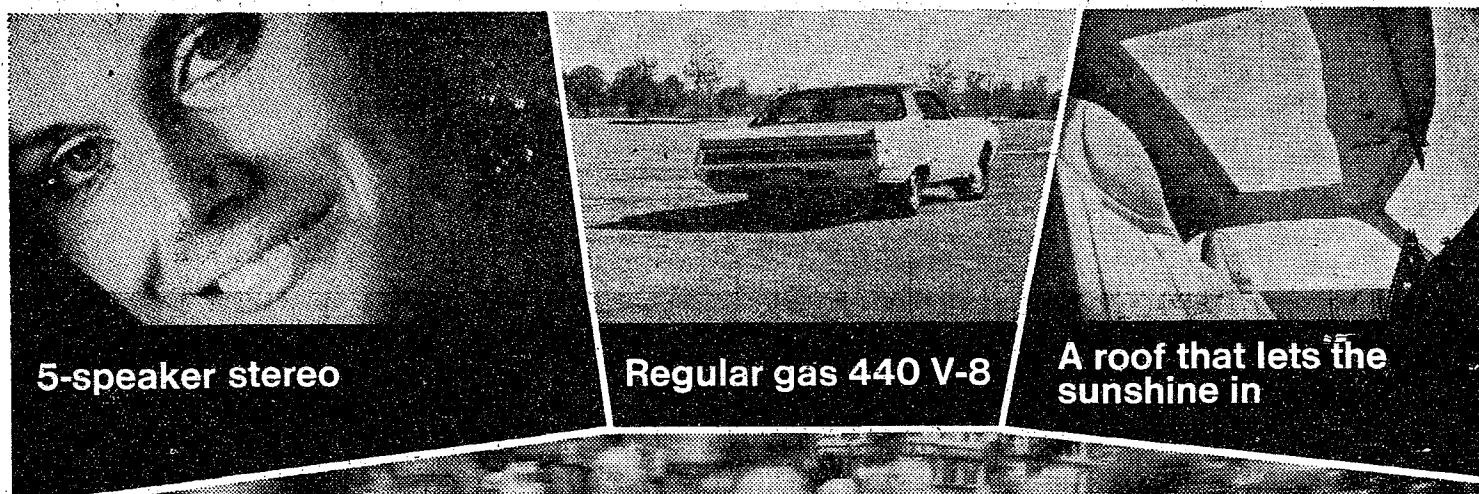
12100 Cloverdale Detroit, Michigan 48204

Michigan's oldest water conditioning company

Call our direct factory line without charge 1-800-552-7717 or call Ann Arbor 662-5676

NOW AT G. A. SALES & SERVICE

New ideas! New features! Yet still priced affordable.



5-speaker stereo

Regular gas 440 V-8

A roof that lets the sunshine in

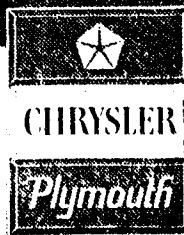


Chrysler Newport! Coming Through

1971 Chrysler Newport. Coming through with brilliant new options like a 4-track stereo cassette with optional microphone that lets you record your own voice, a 440 V-8 that runs on regular gas, and an electric sun roof that opens to the sky (2-Dr.s. only).

Now add a heritage of great engineering, aerodynamic styling, Torsion-Quiet Ride, plus Newport affordability and... step aside high-priced luxury cars, Chrysler Newport's coming through!

AUTHORIZED DEALERS CHRYSLER MOTORS CORPORATION



More than great new cars...

We're coming through, caring about you and the car you drive.

G. A. SALES & SERVICE . 1185 Manchester Road