

WEATHER

	Min.	Max.	Precip.
Wednesday, Oct. 14	50	65	0.40
Thursday, Oct. 15	57	64	0.00
Friday, Oct. 16	50	59	0.00
Saturday, Oct. 17	57	64	0.00
Sunday, Oct. 18	55	65	0.00
Monday, Oct. 19	53	64	0.00
Tuesday, Oct. 20	48	65	0.42

By H. K. L.

The Chelsea Standard

ONE HUNDRED-FIRST YEAR—No. 18

16 Pages This Week

CHELSEA, MICHIGAN, THURSDAY, OCTOBER 22, 1970

15c per copy

SUBSCRIPTION: \$4.00 PER YEAR

Blood Bank Clinic Slated Wednesday

Donors Needed To Replenish Supply Available for All Area Residents

The American Red Cross Bloodmobile will be visiting Chelsea next Wednesday, Oct. 28 at the Congregational church. It will be the 19th visit by the mobile unit.

Blood may be donated that day from 11 a.m. to 1 p.m. and from 2 p.m. to 5 p.m. Mrs. George (Eloise) Frisinger will be contacting factories and other businesses on Monday, Oct. 26 and Tuesday, Oct. 27 to make specific appointments for workers to donate blood.

Other appointments may be made by calling her at her home or at the Chelsea Art Center, or through Mrs. George Palmer, Mayer Dr., co-ordinator of the blood drive.

"It takes just about one hour to donate a pint of blood," according to Mrs. Palmer who is substituting for Mrs. Dudley Holmes this year. "We call ours an open clinic since almost everyone in the Chelsea area is eligible for blood from the Chelsea Blood Bank when they need it. This includes anyone who works or lives in the Chelsea area, and their immediate family. A notice of who to call when blood is needed is always posted in the Community Calendar of The Standard. Blood given during a blood clinic may be credited to an individual patient anywhere in the United States or Canada. Should a Chelsea resident be hospitalized in another part of the country and need blood, it may be transferred from the Chelsea Blood Bank to wherever needed."

The Chelsea Blood Bank is part of a larger organization which collects blood to service hospitals in the area. Detroit is the regional center and services five counties: Macomb, Oakland, St. Clair, Washtenaw, and Wayne.

Bloodmobiles travel out of Detroit every working day of the year. Appointments are scheduled a year in advance. The units travel from area to area collecting blood from groups, clubs, organizations, and/or cities who wish to have blood available to them from the reserve in case of an emergency. 95 percent of the population is covered in this area by blood clubs. The other five percent would have to rely upon individual donors who would have to come into the hospital to donate to a particular patient or pay the price the hospital sets on a pint of blood.

After processing in Detroit, blood is then delivered to the chapter of the American Red Cross from the Washtenaw county hospitals within five counties. A Cross goes to Detroit twice a week to pick up blood to service the seven hospitals in the county.

"Since blood only keeps for 21 days, it is necessary for us to have a constant replenishment of the reserve," according to Mrs. W. Loren (Pauline) McKenna of the Washtenaw County Chapter. "This year's reserve is dangerously low due to the fact that a blood clinic was scheduled at one of the large General Motors plants a few days after the strike began, thus losing approximately 800 pints of blood."

Something new has been added to this year's blood bank, a baby-sitting service will be available at the Congregational church for all parents to use while they are donating blood.

Anyone over 21, and under 65 is eligible to be a donor. Single minors, 18 through 20, years of age must have written permission from a parent or legal guardian. Consent forms may be obtained from Mrs. Palmer. Minors 18 through 20 who are married, divorced, living away from parental household and self-supporting are not required to have parental permission.

Donor requirements include the stipulations that the donor be in good health, weigh at least 110 pounds, not have given blood within the last eight weeks, eat a non-fatty meal within four hours of donating.

Pregnant women not accepted. Wait six months after termination of pregnancy. Persons having had hepatitis, jaundice, malaria or heart surgery are not acceptable.

Please wait until all symptoms (Continued on page three)

Bulldogs Win Over Tough Lincoln Team

Chelsea's Bulldogs defeated a tough Lincoln Ralsplitters football team Friday night, Oct. 16, by a score of 15-7 at Lincoln's Homecoming activities.

All the scoring was packed into the second period, with the Bulldogs coming from behind to win.

Lincoln scored first after they recovered a fumble on the Chelsea 30-yard line. They moved to the Chelsea one-yard line, where Lincoln's flashy halfback, Bruce Acuff carried over for the touchdown. The extra point attempt was good, putting Lincoln ahead, 7-0.

Chelsea came right back, going 70 yards on the ensuing kick-off. Welton passed 13 yards to Howard Treado. Larry Gorton ran 15 yards on a trap up the middle. Then Wayne Welton passed 34 yards to end Tom Lukasiak for the touchdown. Welton then passed to Treado for the two-point conversion, and Chelsea, led, 8-7.

The Bulldog rally continued, with the defense holding Lincoln to three running plays and forcing a punt. The offense took over and behind a fine 19-yard run by Tim Orthing, moved down the field. Quarterback Wayne Welton again passed to Tom Lukasiak for Chelsea's second touchdown. The play covered 20 yards. Tim Orthing kicked the extra point and Chelsea led, 15 to 7.

Chelsea's offensive line of Randy Seitz, Tom Harmon, Dale Robbins, Tom McKernan, Duane Bycraft and center Keith Pfeifle, did a fine job against a rugged Lincoln defense. Chelsea rushed for 194 yards, and passed for 110 on 6 out of 8 attempts, for a total of 304 yards total offense.

Bulldog defense was tested by Lincoln's big offensive line and fast backs. Mitchell Heard again had a fine game, blocking a punt on the Lincoln 20-yard line. Jack McGee, playing safety for the first time had a pass interception. Chelsea plays South Lyon this Friday at Jerry Niehaus Field at the high school. This will be Chelsea's Homecoming game.



HOMECOMING QUEEN for 1970 will be one of these Chelsea High school girls. Elected by their respective classes, candidates this year are, from left, front row, Jan Ewald and Jan Powers, freshmen, Carole Dietle and Debbie Norris, sophomores; back row, Mary Tandy and Jane Haselschwardt, seniors, and Karen Kelemen and Mary Slane, juniors. The final decision rests with the football team, whose decision will be made known Friday night, Oct. 23, at the half-time show. The crowning of the 1970 Homecoming Queen will take place at that time.

Factual Film On Narcotics Shown Tonight

"Narcotics, the Decision," a factual film dealing with narcotic drugs, and their effects, will be shown Thursday evening, Oct. 22 in the Beach school large group instruction room, at 8 p.m. James Hoffmeyer, chairman of the Junior High school science department who is using the film in his science classes, is offering to show the film for area residents who are interested.

Hoffmeyer felt that this is an important enough issue in contemporary America to warrant parental concern. He therefore, is working to initiate a series of meetings, lectures and films of which this would be the first gathering, providing, the turnout indicates community concern.

Hoffmeyer was first made aware of the situation that exists in the country when he attended a workshop on narcotics education at the Chattanooga Institute at Chattanooga, N.Y., this past summer. He therefore, obtained this film and is instituting narcotics education in his junior high school classes. It is his wish to extend the program to include the adult residents of the community.

"Narcotics, the Decision" is one of a series of films, Hoffmeyer indicates, which deal with drugs and drug abuse. This particular film deals with the effects of marijuana and heroin. Other films are obtainable that cover other drugs, and different aspects of the situation.

A teacher in the Chelsea school systems for the past 11 years, Hoffmeyer is married, and has three children. He lives at 146 Orchard, Chelsea.

Children Will Collect Funds For UNICEF

Watch for the orange and black UNICEF boxes on Sunday, Oct. 25 between the hours of 3 to 4 p.m., for that is when area children will be out, combing the streets, collecting for UNICEF.

Originally known as the United Nations Children's Emergency Fund, UNICEF grew out of the aftermath of World War II. The war left millions of children homeless, hungry and ill. With the end of post-war emergency, UNICEF turned its attention to the needs of children in economically less developed countries.

UNICEF helps governments establish long range programs of permanent benefit to children. Most of UNICEF's aid is in the form of supplies and equipment. Projects aided are in the fields of health, disease control, nutrition, education, vocational training, and family and child welfare.

In addition, emergency aid is provided in such catastrophes as civil wars, earthquakes, floods and droughts. During the recent Nigerian emergency, for example, UNICEF delivered more than \$20 million worth of food, medical supplies, and equipment for the (Continued on page three)

Future Farmers Have Organization But No Advisor

Future Farmers of America club at Chelsea High school is presently in a dormant state. Lacking an advisor, they have officers, and approximately 45 members, but cannot meet and plan activities without an adult supervisor. In the past, agriculture teachers at the high school have acted in this capacity. This year, however, there is no permanent, full-time agriculture teacher, so FFA must wait. It is hoped that by Christmas time, they will have an advisor.

Officers for this year are: Bill Kushmaul, president; Ernest Hindner, vice-president; Neil Rothfuss, secretary; and Marty Straub, treasurer.

Tentative plans for this year included competition sponsored by FFA across the nation in the areas of livestock, soils, parliamentary procedure, and so on. These events are scheduled for winter and spring.

Community Chest Fund At 25% of Goal

Chelsea's Community Chest campaign is at the 25 percent mark, on its way toward the \$24,850 goal, Fund officials reported at press time. Approximately \$6,080 of the sum total has been collected thus far.

Residential and rural canvassers are still completing their soliciting, so that in the event a resident hasn't been visited who would like to contribute, canvassers will be coming around.

This year's drive will continue until Oct. 30. Omitted from last week's list of residential canvassers are Mrs. Vernon Woodward, Mrs. Charles Wood, Mrs. Noreen Collings, and Mrs. Robert Schulpe. They will be soliciting within the village.

Pheasant Hunters Report Mostly Good Success

With the opening of pheasant season on Tuesday, Oct. 20, Conservation Officer Don Boyer commented that the hunting pressure is light this year, with fewer hunters, and about as many birds as last year.

Tuesday's weather was perfect for hunting, Boyer commented, although the rain late in the day affected the hunting some. He indicated that those hunters who had dogs were faring best, and that they seemed to be the only ones with kills.

Pheasant season lasts until Nov. 10.

Attending Convention
Fred Mills, business manager of Chelsea schools, is attending the National School Business Officials Convention in Seattle, Wash., this past week. He left early Monday morning, Oct. 19, and is scheduled to return this afternoon, Oct. 22.

Kiwanis Club Hears About New Hospital

Dr. Michael Papo was the speaker at Monday evening's meeting of the Chelsea Kiwanis Club. He spoke on the Chelsea Community Hospital, its origins, and operating structure.

Also featured at the meeting was a visit from the Onsted club. Five men from Onsted attended the inter-club visit.

Plans were made for this year's Halloween party. Reports were received indicating that the noisemakers for the event were on order. This year's party is scheduled for Friday night, Oct. 30.

Leaf Pick-Up By Village Crews Starts Monday

Leaf pickup for Chelsea Village residents is scheduled to begin Monday, Oct. 26, Village Administrator Frederick Weber announced this week.

Village residents are asked to rake their leaves onto the lawn extensions near the curb, so that Village crews may pick them up. Leaves should not be raked into the street.

Homecoming Activities Set At High School

Giant Pep Rally Thursday Night Leads Up to Crowning of Queen

Pep Week, that exciting autumn whirlwind week prior to Homecoming is this week at Chelsea High school. Among the many activities scheduled by Chelsea High school students this week is the decoration of the various corridors of the school by members of the different classes. Each class is given a hall to decorate with a "spirited" theme.

Thursday night is the deadline for all the preparations. At that time, a list of the students who participated in each project must be submitted. The list of participants, along with a tour of the halls by the Pep Week judges, will determine the class with the best spirit. Judges for this year's Pep Week event are the Student Council president, and faculty members of the high school.

Announcement of the winning class will be made Friday evening at the half-time show, just before the name of the 1970 Homecoming Queen is revealed.

Queen candidates for this year's Homecoming activities have been chosen by their respective classes. They are: Jane Haselschwardt and Mary Tandy, seniors; Karen Kelemen and Mary Slane, juniors; Debbie Norris and Carole Dietle, sophomores; and Jan Powers and Jane Ewald, freshmen. The final decision now rests with the football team, who will vote for the queen. Their decision will be made known Friday night at the half-time show at the game.

Anne McKernan, 1969 Homecoming Queen, will crown the new queen.

Highlight of Pep Week will be Thursday night when, starting at 7 p.m., students will assemble at the Municipal Parking Lot and parade through the town. The football team, cheerleaders, and queen candidates will head the procession, as the high school students will snake dance through the streets.

The snake dance will culminate at the high school field, where a giant pep rally will be held. Coaches will address the students, and class competitions will take place.

Powder-Puff football, sponsored by the senior class, senior girls versus junior girls, will fill out the evening's activities.

The football game against South Lyon is, of course, the most important aspect of Homecoming. Jeff Bust, president of the class, announced that the following people have been committee chairmen for this year's event. Joan Schmidt is Pep Week chairman. She was responsible for the hall decoration campaign. She and the cheerleaders worked hard putting the pep fest and snake dance together.

John Bennett, senior at CHS, will be master of ceremonies at the half-time show, coronation ceremonies.

Lisa Peffer secured a band for Friday night's dance, while Mitchell Heard was chairman for decorations.

Student Council established the guidelines for this year's event. As one senior put it, "Homecoming's the best thing that happens all year!"

Attends U. Board Meet
Norman Wenk, 2681 Fletcher Rd., a member of the Capital University Association, has returned from a recent two-day meeting of the group at Capital University in Columbus. Capital University Association is the official governing body of the University. Its members are elected clergy and laymen of the American Lutheran Church's Ohio, Michigan and Eastern Districts with which Capital University is directly affiliated.



UNICEF COLLECTION: Local children representing area churches will be knocking on their neighbors' doors Sunday afternoon, Oct. 25. Shown above, are they received instructions for the event, are, front row, from left, Patricia Villeneuve, St. Mary Catholic Church; Marsha Warren, First United Methodist; and Debbie Kellin, from the Congregational church. In the second row are Sandy Shadon, St. Paul United Church of Christ; Kathy Foreman, North Lake United Methodist church; Doug Beaumont, St. Barnabas Episcopal church; and Matt Hoyland, Zion Lutheran church.



LIBRARY GIFT: Mrs. Russell (Cecil) Bernath, head librarian at the McKune Memorial Library, and Mrs. Frederick (Katherine) Wagner examine the new microfilm reader which Chelsea Jaycee have donated to the library. Walter Brown, Jaycee past president and employee of Xerox University Microfilms, who helped obtain the machine, and Art Steinaway, present Jaycee president, represented the Jaycees in making the presentation. Library visitors may now read past issues of The Standard which has been microfilmed, as well as other materials which may be obtained through microfilm services with this reader.

Established 1871 **The Chelsea Standard** Telephone GR 5-3581
 Excellence Award By Michigan Press Association
 1951-1952-1960-1964-1965-1966
 Walter P. Leonard, Editor and Publisher

Published every Thursday morning at 800 North Main Street, Chelsea, Mich. 48118, and second class postage paid at Chelsea, Mich., under the Act of March 3, 1879.

ADDRESS CORRECTION REQUESTED

Subscription Rates (Payable in Advance)

In Michigan:	Outside Michigan:
One Year \$4.00	One Year \$6.00
Six Months \$2.25	Six Months \$3.50
Single Copies \$.15	Single Copies \$.20

Service men or women, anywhere, 1 year \$4.00

MEMBER **NATIONAL NEWSPAPER**
 Association - Founded 1885

National Advertising Representative
MICHIGAN NEWSPAPERS, INC.
 257 Michigan Ave.
 East Lansing, Mich. 48823



Washington Report by Congressman MARVIN L. ESCH

The defense budget is declining, troop levels are lowering, foreign commitments are receding and the draft is dwindling—in short, for the first time since World War II we have a handle on our defense structure.

In my four years in Congress it has been my consistent goal to bring about a defense establishment that would not unbalance the national ship of state while at the same time developing and maintaining a lean and efficient military force. Actually, we have come to realize that such a force is more

effective and stronger than an over-crowded, corpulent one.

The House last week approved a defense appropriations bill for fiscal year 1971 that is \$2 billion below last year's budget. In addition, I supported an amendment that would have cut the budget further by 2 per cent below the committee recommendation. But, despite support from some of my colleagues, this amendment did not pass.

Troop levels also are heading down, and at a rapid rate. There are now one-half million fewer men in uniform than there were two years ago. By the middle of next year an additional 300,000 men will have been cut—reducing the troop level to that immediate preceding the Vietnam buildup in 1965. By 1972 our troop level will drop still another 300,000 men to bring our military forces to the lowest level since 1960.

Draft calls, steadily declining, will be eliminated by mid-1973, according to plans announced recently by Defense Secretary Melvin Laird. Clearly, we are moving toward an all-volunteer military.

While the budget, troop and draft cuts are encouraging in themselves, the attitude of Congress and the Administration in making these cuts is the key. For too many years the Secretary of Defense and Congress let defense budgets barge through the Pentagon and Capitol with little more than a salute. Now, every proposal, every program, every budget is getting a penetrating look. That's as it should be. There is a lesson for Congress and the nation in all this: to view any program as a sacred cow is to virtually assure unusual waste and inefficiency in that program.

SEAT BELTS

Failure to wear a car seat belt increases your risk of instant death or severe injury by at least 100 percent. It boosts the risk of suffering some less severe injury by at least 40 percent. The figures come from a study of actual accidents and their victims made by the Cornell Aeronautical Laboratory's Automotive Crash Injury Research Program.

Norristown, Pa.—It took a jury 10 minutes to decide Beatrice Moss, divorcee, was guilty on the willful and malicious mischief charge. Her former husband filed a damage suit after she glued shut the windows of his Cadillac.

(Political Advertising)

**RE-ELECT
ESCH**
 Thinks for himself.
 Works for us.

Washtenaw Community College

**ALL
CLASSES
ON
NEW
HURON
CAMPUS**

ALL CLASSES ON NEW HURON CAMPUS

SEAMLESS ALUMINUM GUTTERS

Also: Barn Eavestroughing

— ★ —
CALL

**WILSON
METAL SHOP**
 Phone 428-8468 Manchester, Mich.



**Bearer of good tidings,
please enter first...**

★ MICHIGAN MIRROR ★

By Elmer E. White, Secretary, Michigan Press Association

Overload Cited

A private research firm took a long look at state government's financial condition and came to the conclusion the state has "overloaded the circuits."

It further concludes that the only way out of the current situation is a hefty tax increase.

"About the only solution available next year, short of employing the untold concept of reducing costs and putting the lid on spending, will be insert larger capacity fuses—higher income taxes," the report by the Citizens Research Council said.

The council's annual budget report said the state's \$1.7 billion spending level authorized for fiscal 1970-71 will eat up nearly all of the budget surplus on hand at the close of the last fiscal year.

"Appropriations for fiscal year 1971 outstrip expected income and nearly consume the estimated \$63.7 million surplus of June 30," the report said. "Assuming revenue estimates hold up, fiscal year 1971 would close with a cumulative surplus of just under \$2 million."

The report said a \$2 million surplus comes "too close to comfort" by barely complying with a constitutional mandate that annual appropriations must not exceed available resources.

And it says a "deteriorating

budgetary outlook" puts even that much of a surplus in question, since actual tax collections for fiscal 1970 fell \$26.4 million below original estimates.

Other factors which the council feels foreshadow an income tax hike are:

—State spending leaped 67 percent, or \$701 million, in the fiscal period 1967 to 1971 and increased concentration on such new programs as drug, crime and pollution control are likely to accelerate the spending spiral.

—New features built into state school aid bills increasing available funds for construction, vocational education, transportation and per pupil grants could increase state payments to local districts by \$280 million in fiscal 1972.

—If the legislature moves to replace or reduce local school property taxes with a statewide levy, it could cost the state anywhere from \$200 million to \$480 million per year extra.

Women Win Another

The women's lib movement scored a victory of sorts recently in the Michigan courts.

A woman attorney from Detroit, Miss Sue Weisenfeld, secured a letter from Supreme Court Chief Justice Thomas Brennan saying it's okay with him if women lawyers wear pant suits in court.

Portrait Waits

He's been out of office nearly two years now, but former Gov. George Romney's portrait still hasn't been hung in the Capitol.

There is a long-standing tradition that a life-size portrait of former governors is hung in the capitol shortly after they leave office. The eight most recent governors are displayed around the rotunda just outside the governor's office. The others are spread throughout the building.

For quite a few months now, there has been an empty space along the rotunda wall, with only seven portraits hanging up.

Sources say they hope the portrait of Romney may be ready before the end of the year.

TRADE STAMPS AND DOPE

San Francisco—Trading stamps are being given with marijuana purchases in the Naught-Ashbury district. A state narcotics agent reported bona fide trading stamps were given to an undercover investigator who bought \$30 worth of marijuana.

When an individual offers you something for nothing, it's time to remember that the price is too high.

Yours truly,
Uncle Lew.

Uncle Lew from Lima Says:

Dear Mister Editor:

Did you see where this town in North Carolina was having trouble with their sewage treatment plant? They dumped vanilla plant, so what didn't get the flavoring in the sewage at treated at least would smell nice to folks that live downstream.

The fellers was discussing this kind of thing during the session at the country store Saturday night. They was agreed the town was trying to help out folks that probable would rather smell vanilla than plain sewage, but they was talking about how vanilla flavored you know what is a good example of how things ain't always what they seem.

Clem Webster said younguns are special aware of this situation when they're raised up with their eyes glued to the TV. On the one hand, allowed Clem, they won't believe nothing unless it's on TV. On the other hand, they see a nun fly or a gal fix supper just by wiggling her nose on TV and they don't know whether to believe anything anymore.

Zeke Grubb's preacher set in on part of the session, and he observed that he was having a real problem with his younguns. He said they watch the gangster movies on TV and then the news comes on and they see buildings burning and people tearing up towns and they can't figger what's real and what ain't.

Clem said back afore TV people figgered if it was in the pa-

MIKE'S TV ANTENNA SERVICE

Motorola Automotive
Sound Systems
Winegard Home Electronics
TV Antenna Systems

Insurance Claims

For Free Estimate, Call
Pinckney 878-3258
or 769-0130

The Finest in Snowmobiles

CHAPARRAL

Now Available from

KEN'S SALES & SERVICE

11523 Pleasant Lake Rd., Manchester
PHONE 428-8927

"We Service All Makes"
ALSO: MINIBIKES & SCRAMBLERS

JUST REMINISCING

Items Taken from the Files of The Chelsea Standard

4 Years Ago...

Thursday, Oct. 27, 1966

Steven Slane was appointed to the newly-created position of the department superintendent, mechanical and maintenance of the Dana Corp., Chelsea plant. Slane has been associated with the Chelsea plant since its inception in 1945. Prior to that, he spent 11 years with Central Fibre, where he worked in the development of the PTO product.

Richard Bareis, industrial arts teacher at Chelsea Junior High school has been appointed the new director of the Chelsea area Recreation Commission. He succeeds Alan Conklin, Chelsea Junior High principal who has served in that capacity for 12 years.

The Kiwanis Halloween Party will get underway Monday evening, Oct. 31, beginning at the Junior High school gym, following the 5:30 to 6:30 UNICEF and village trick or treat period. Charles Lancaster will serve as chairman of the 1966 Kiwanis Halloween Party.

Mrs. James Shadon will be chairman of the Chelsea "Trick or Treat for UNICEF" drive. Collection center for the drive will be the foyer of the Methodist church educational unit. Children are to turn in the boxes at the church before reporting to the Junior High school for the Kiwanis sponsored activities.

VFW Post 4076, Chelsea, is announcing a Lite-a-Bike Day to be held Sunday, Oct. 30 from 1 to 5 p.m. at the Fire Hall on W. Middle St. They will be assisted by the firemen and the members of the auxiliary firemen. Reflective tape kits are made available by the Minnesota Mining and Manufacturing Co., and will be given free of charge to all persons with bicycles.

14 Years Ago...

Thursday, Oct. 25, 1956

A. D. Mayer, chairman of the Kiwanis club building project which provided a 24 x 36 foot lodge at Bruin Lake Camp reported at Monday night's regular Kiwanis meeting that considerable volunteer assistance was given by people other than Kiwanis members in providing work and material. He stated that Jack Musser drew the plans for the building which is known as the Chelsea Kiwanis Lodge, Ray Bolinger did the excavating for the footings, Turner Electric Co. furnished electrical material and labor, Hilltop Plumbing contributed material and labor, and Harold Brooks did the laying of the fireplace and chimney. Others who assisted with the project by providing materials or labor are Leonard Eder, Merkel Hardware, Klump Brothers, John Pierson of Associated Builders, and Chelsea Hardware, all of Chelsea and Feiner Glass Co. of Ann Arbor.

The First Michigan Corporation was the successful bidder in the \$2,200,000 Chelsea School District bond issue with the interest rate set at an average of 4.189126 percent. The bid was submitted to the Board of Education at a meeting held Monday night. The bond issue will finance the construction of a new high school and eight additional elementary school class rooms.

Replied Brennan: Your thoughtful and respectful letter is an example of the kind of concern for courtroom decorum which all lawyers should have, and you should be commended for your good judgment and discretion."

Portrait Waits

He's been out of office nearly two years now, but former Gov. George Romney's portrait still hasn't been hung in the Capitol.

There is a long-standing tradition that a life-size portrait of former governors is hung in the capitol shortly after they leave office. The eight most recent governors are displayed around the rotunda just outside the governor's office. The others are spread throughout the building.

For quite a few months now, there has been an empty space along the rotunda wall, with only seven portraits hanging up.

Sources say they hope the portrait of Romney may be ready before the end of the year.

TRADE STAMPS AND DOPE

San Francisco—Trading stamps are being given with marijuana purchases in the Naught-Ashbury district. A state narcotics agent reported bona fide trading stamps were given to an undercover investigator who bought \$30 worth of marijuana.

When an individual offers you something for nothing, it's time to remember that the price is too high.

MONEY

TROUBLE?

ONE PLACE TO PAY!

Credit Management

Service

662-2565

215 South Fifth Ave.

Ann Arbor

State Licensed and Bonded

township clerk, Walter Kantlehner, making it mandatory that the issue be placed on the ballot, the required number of signers for this township being only 290.

A number of other communities in Washtenaw county are also voting on this proposition this fall, and some have already voted. Tecumseh and Clinton voted on the issue on Oct. 22, Deerfield, Oct. 15, Britton will vote Oct. 31, Darian, Hudson, Morenci, and Hudson township Nov. 5, and Onsted on Nov. 6.

Circuit Judge James R. Breakey, Jr., of Ann Arbor was the speaker at the regular Kiwanis Club meeting Monday evening at the Municipal Building. He spoke in the topic: "A Report of the Workings of Circuit Court," which proved to be very interesting.

Chelsea Kiwanis Club has purchased, through the American Red Cross, a specially made wheel chair for a disabled veteran at Percy

Jones Hospital, which will be presented to him at the hospital by a committee of Kiwanians on behalf of the club as soon as arrangements are completed.

Halloween spooks and ghosts were out early and in full swing Monday night, when the Young Mothers Study Club held a Halloween party at Hinchey's old barn. Transportation was by way of a truck, driven by Mrs. Robert Lantis. After being lost a number of times and riding around North Lake, the barn was finally reached. Jack-o-lanterns and corn-stalks with Halloween colors were used as the decorations at the barn.

34 Years Ago...

Thursday, Oct. 22, 1936

Believing that the handling of relief can be more economically administered by local authorities who are acquainted with local conditions and are more in touch with relief clients, a resolution was adopted by the Washtenaw county board of supervisors at their annual meeting, petitioning (Continued on page six)

**McINTOSH
and JONATHAN
APPLES**

Bring Containers - Pick Your Own
\$2.00 per bushel
 or 3 Bu. for \$5.00

BEISIEGEL ORCHARDS
 2645 Peters Rd., Dexter Phone NO 8-7563

**FALL
CLEARANCE**

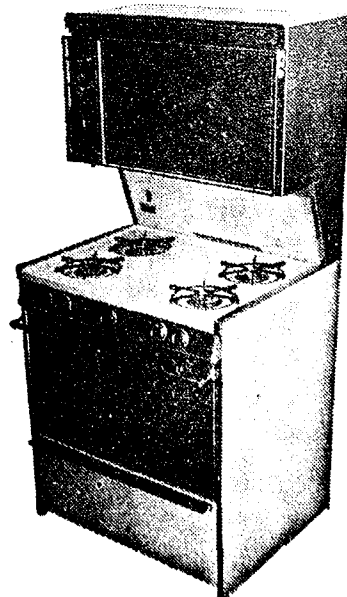
Our Entire Floor Stock
 of
**FINE FURNITURE
and APPLIANCES**
 Drastically Reduced

To Make Room for
 New Fall Merchandise
 Arriving Daily

FRIGIDAIRE - ZENITH - KROEHLER
 BERKLINE - TELL CITY - CARPETING BY DOWNS

MEABON'S TV,
 Furniture & Appliances
 1170 M-52 South, Chelsea Phone GR 5-5191

Recipe for Great Meals. (Take one Gas range.)



Take one Gas range. Add love. And you've got what it takes to make kitchen magic three times a day.

But you've got to start with Gas. Because a Gas range gives you everything you can get in an electric range. Plus a lot of things you can't get in an electric range.

Things like: 1. Smokeless broiling, 2. Speed. Gas has instant-on, instant-off. 3. Complete heat control. At all times.

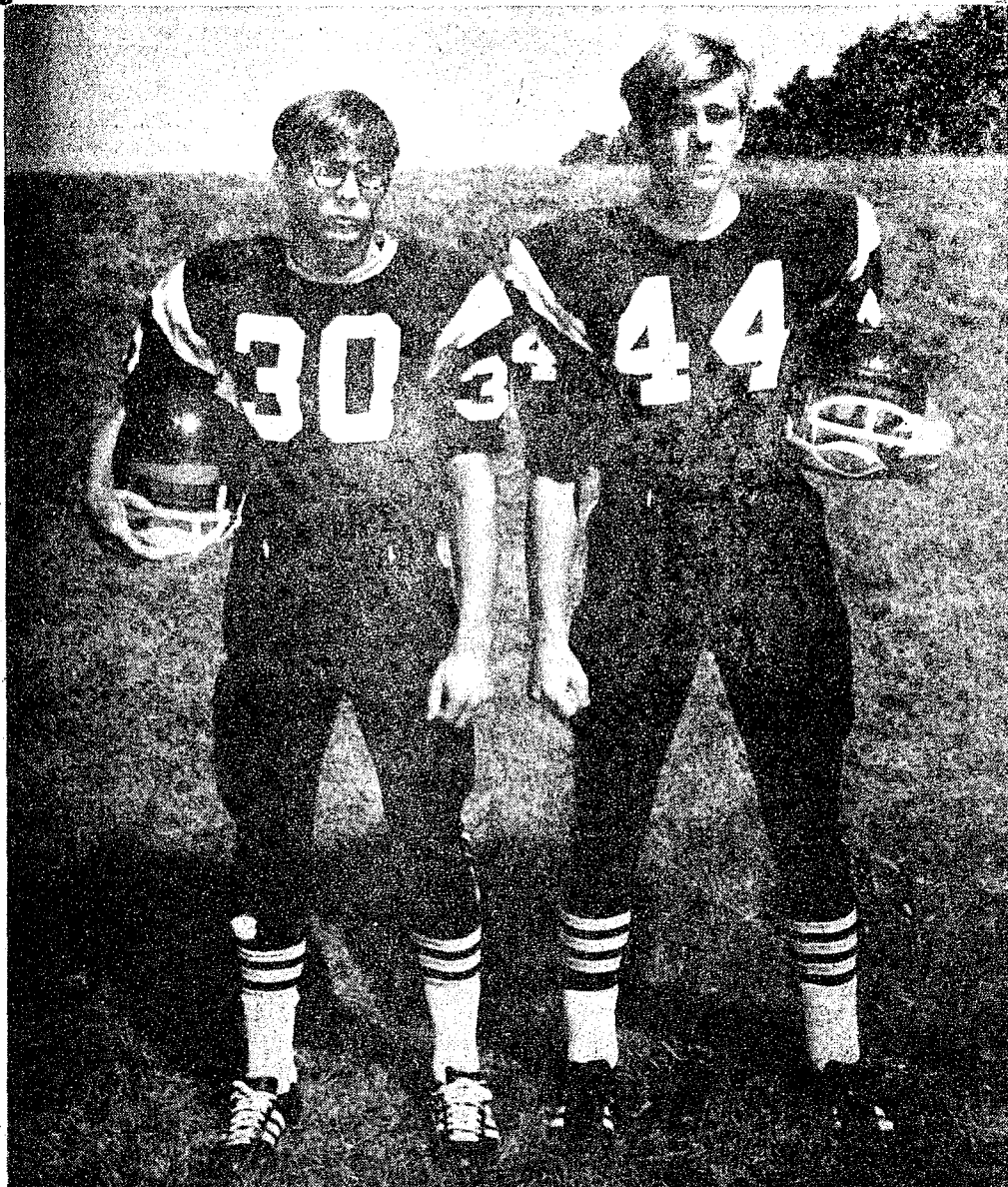
4. The professional touch. Nine out of ten chefs cook with Gas. 5. Low-cost oven cleaning. Gas does the whole job automatically. 6. Total economy. Gas costs one-fourth as much to operate as electric.

Did you ever run across a simpler recipe—or one that had more things going for it?

See the new Gas ranges at dealer or Gas Company showrooms.

MICHIGAN CONSOLIDATED GAS COMPANY

Gridders of the Week



TOM LUKASIAK, left, plays split end and defensive halfback for Chelsea. This is his third year playing football for Chelsea, his second on the varsity team. Tom moved to Chelsea in the 10th grade from Southgate, although he is originally from Wyandotte. He enjoys sports, being a center fielder on the Bulldogs baseball team, and likes to hunt and fish. He works week-ends and after school, when he's not at football practice, at Smith's Mobil in Chelsea. He has no particular plans for after high school, although he indicates he would like to go to college. Tom lives with his parents, Mary and Bob, Aello at North Lake. He has two brothers and two sisters, Dave, Keith, Anna Marie, and Jan. Keith and Jan are married, and the others live at home with Tom and his parents.

BOB SALYER, senior grider for Chelsea, is a wingback and defensive end for this year's team. This is his second year on the team, having played at halfback position for Chelsea last year. Bob has played for Chelsea a total of four years. Sports are a favorite of Bob, also. He is a runner on the Bulldog track team, and hopes to learn to ski this winter, having recently joined the Ski Club. Bob has lived in Chelsea most of his life. After graduation, he wants to go on to EMU, where he hopes to study art and physical education. He would like to be a teacher ultimately, of those two subjects. He lives at home with his mother, Mrs. Roma Salyer, and two sisters, and two brothers, Wanda, Brenda, Howard and Rod.

JV Gridders Walk Over Lincoln, 42-6

Chelsea's junior varsity gridders walked over the Lincoln junior varsity Railsplitters by a score of 42-6, Thursday night, Oct. 15, bringing to 5-0 their year's record.

In the first quarter, Tim Lancaster was the only scorer. He made the first touchdown on a six-yard sweep. The extra point attempt was not good, and the score remained 6-0 at the end of the quarter.

Lancaster scored the second TD on a nine-yard slant in the second quarter. The extra point attempt was good on a pass from John Mann to Dan Bertke, making the score at the half-time, 14-0.

The Bulldogs came alive in the fourth quarter. Bruce Guster scored on a power play, going two yards, to make the score 20-0. The extra points were gained on a sweep by Lancaster. The score was then 22-0.

Lincoln scored on a 50-yard pass play for their only points in the game. Their extra point attempt was not good, and the score was then 22-6.

Bruce Guster came through with a fine catch of a flare pass from John Mann, going nine yards to bring the score to 28-6. John Mann then passed to Dan Bertke for the extra points, bringing the score to 30-6.

Jeff Van Riper hit the Lincoln quarterback hard, causing a fumble which he then picked up and ran 28 yards for a TD. The extra point attempt was not good, but the score was 36-6.

Jeff Marshall scored on a 23-yard counter. His score made the last points in the game, as the extra point attempt was not good. The score was 42-6.

Chelsea's Jeff Van Riper, Steve Worden, and Bob Heydlauff all recovered fumbles in the game. Keith Hume blocked a punt which led to a Chelsea TD.

Offensively Tim Lancaster gained 210 yards, good for two TD's and extra points. John Mann completed seven out of nine passes for one touchdown and two extra points.

Defensively, Chelsea was again led by Tim Lancaster as he had 12 tackles, followed by Jeff Van Riper and Steve Worden with nine tackles each, and Jeff Daniels with eight.

Tim Lancaster played an excellent game as he excelled both on offense and defense. The defense has been outstanding all year as Jeff Daniels, Lancaster, and Jeff Van Riper have been leading tacklers game after game.

The next game for the Bulldogs is at South Lyon, Oct. 22, at 7 p.m.

Council Briefs

At a regular session of the Village Council Tuesday evening, present were President Fulk, Clerk Harvey, Administrator Weber, trustees Miller, Gorton, Musbach, Dmoch, Boylan and Chandler. Also present was Police Chief Meranuck, Civil Defense Director Beach and John Parsons.

Ray Haske of Central Advertising Co., was present and discussed with the council the sign variance request which was denied at the Oct. 6 meeting. No official action was taken.

Bids for the purchase of a police car were requested from local auto agencies and received as follows: Palmer Motor Sales, \$3,043.00; Spaulding Chevrolet Sales, \$2,997.43; G. A. Sales, \$2,882.07.

Motion by Musbach, supported by Dmoch to accept the bid of G. A. Sales for the purchase of a police car in the amount of \$2,882.07. Delivery of the unit to be made in 60 days from the date of order. Roll call: Yeas all. Motion carried.

President Fulk submitted for council approval the names of Dan Ewald, Donna Palmer and Frederick Belser to serve on the Chelsea Village Planning Commission for a period of three years and Steve Haydock to serve on the Commission for a period of two years.

Motion by Chandler, supported by Gorton, to appoint Dan Ewald, Donna Palmer, and Frederick Belser to serve on the Chelsea Village Planning Commission for a three-year term and Steve Haydock for two-year term. Roll call: Yeas all. Motion carried.

Notification was received Oct. 19 that the Village of Chelsea is defendant in a civil suit started in Circuit Court by Dana Corp. in which Dana Corp. is demanding judgment against the Village of Chelsea in the sum of \$28,106.70 together with interest and costs. Dana Corp. is contesting the manner of assessment for their 1970 personal property taxes. The matter was referred to the village attorneys.

Further discussion was held regarding improvements to the electrical distribution system. The village administrator was authorized

to further discuss the improvements with the electrical engineers.

The third quarter budget report was reviewed and discussed.

Trustee Musbach read a summary of the Fire Department activity for the month of August and September as submitted by Fire Chief Gaken.

Motion by Chandler, supported by Gorton to authorize and direct the clerk to issue checks in payment of bills as submitted. Roll call: Yeas all. Motion carried.

Motion by Gorton, supported by Dmoch, to adjourn. Roll call: Yeas all. Motion carried. Meeting adjourned.

Blood Clinic...

(Continued from page one)

of allergy have disappeared; 24 hours after immunizations, excluding oral polio vaccine, two weeks after smallpox immune reaction or two weeks after scab comes off, two weeks after immunization for yellow fever, measles, mumps; one month after receiving penicillin by injection; 24 hours after oral penicillin; six months after receiving a blood transfusion or any human blood product; six months after being tattooed.

Purpose of setting up donor requirements is two-fold: 1) to adequately protect the donor's health and welfare, 2) to provide a safe unit of blood for transfusions.

The span of life is too short for anyone to learn enough to brag about.

North School Boosters Elect Club Officers

During the regular meeting of the North School Boosters, Oct. 15, the Rev. John Norris was elected president of the club. Betty Koch was elected secretary, to serve during the school year 1970-71.

Allan Conklin, principal of Beach school, was guest speaker. He and Mrs. Morgan, second grade teacher at North school, spoke on "Sex Education in Our Curriculum."

Next meeting will be held Nov. 19, in the library of North Elementary school. Mr. Bowen from the Washtenaw Intermediate School District will show movies of the services provided by the district. All parents are invited to attend these meetings.

SCOTTS FALL SALE

SAVE 25% on Scotts

Turf Builder and other lawn products. Buy now and save!

PLANT TULIP BULBS NOW

We have an excellent selection.

CHELSEA HARDWARE

110 S. Main St.

Phone GR 9-6311

Children Will Collect Funds For UNICEF

(Continued from page one)

relief of children and mothers on both sides of the prolonged civil war.

(Political Advertising)

RE-ELECT

ESCH

Thanks for him.
Works for us.

Since UNICEF began, more than 302 million children have been vaccinated against tuberculosis, more than 41 million children have been treated for trachoma and about 24 million for yaws. UNICEF has helped to equip more than 48,000 health centers and sub-centers, 1,400 teacher training schools and 45,000 associated primary schools.

This is the opportunity for both children and adults to help these under-privileged and under-nourished children in this world.

Children are reminded to bring their filled boxes to the Methodist Educational Center at the Methodist church after 4 p.m. Mrs. William Storey will be on hand to serve treats.

There's only one problem hard to solve than making money, and that is keeping it once you have made a little of it.

Commercial License Plates On Sale Oct. 1

Lansing—Michigan vehicle owners do not have to show their vehicle titles when they buy their 1971 license plates if they have a prepared application from the Secretary of State's office.

Plates for commercial vehicles and trailers of all types went on sale at all branch offices of the Secretary of State Oct. 1. Passenger and motorcycle plate sales begin Nov. 15.

According to Secretary of State James M. Hare, all the needed information has already been printed on the prepared application by computers. They are being mailed to owners of commercial and trailer vehicles and will be sent to most other vehicle owners by Nov. 15.

Hare reminded early plate buying commercial and trailer vehicle owners that they needed prepared application OR title, proof of liability insurance, and money for the plates as well as \$1 fee for the Motor Vehicle Accident Claims Fund. As in the previous few years, persons not having insurance have to pay \$35.

HOLE 4 MILES DEEP

Moscow—Tass, the Soviet press agency, reported the Soviet Union had drilled a hole four miles deep north of the Caspian Sea to study the region's oil-bearing strata. The schedule is to drill to the depths of between 9.5 and 11.3 miles.

YES

WE ARE MAKING
LONG-TERM FARM
REAL ESTATE
LOANS

SEE US

Federal
LAND BANK
Association

Ann Arbor, Mich. 48103
P. O. Box 1006
Ph. 769-2411 3645 Jackson Rd.

Jiffy market COMPLETE SUPER MARKET

BIG ENOUGH TO SERVE YOU.....SMALL ENOUGH TO KNOW YOU!

Corner of SIBLEY & WERNER RDS....CHELSEA, MICHIGAN

SALE PRICES EFFECTIVE THURSDAY, OCT. 22 THRU SUNDAY, OCT. 25, 1970.

SHAMROCK
U.S. GRADE A WHITE

EGGS

Med. Size
Dozen **39¢**

WAY BAKING CO.
KLEEN - MAID

BREAD 2 1 1/4-Lb. Loaves 49¢



32-Oz. **COKE**

Your
Choice

32-Oz. **SPRITE**

1-QT. BOTTLE

32-Oz. **FRESCA**

19¢

MICHIGAN U. S. NO. 1

POTATOES

10-Lb. Bag **39¢**

All Favorite Brands
All Lengths
YOUR CHOICE

CIGARETTES 10-Pack \$3.39
Carton

OPEN
7 A.M.-10 P.M.
DAILY

FULL LINE
GROCERIES
MEATS
PRODUCE

PLENTY OF
FREE
PARKING

All
Merchandise
Priced at
Supermarket
Prices

COMPLETE
MAGAZINE
RECORD
STEREO TAPE
DEPARTMENT

LOWEST GAS
PRICES AROUND!

REGULAR 33.9 Per Gallon
Includes All Taxes

TOP QUALITY -
NOT A CHEAP GAS

PREMIUM 37.9 Per Gallon
Includes All Taxes

JIFFY MARKET
MARATHON
GAS PUMPS

Where You Can
Save Some Money!

THIS WEEK'S SPECIAL:

PRESTONE
ANTI-FREEZE

Gallon **\$1.69**

COLD WEATHER
IS HERE!

SOLD!

The Kiwanis Club of Chelsea

Thanks its Season-Ticket Patrons for a

COMPLETE SELL-OUT
of the

1970-71 Travelog Series

Your continuing response to this project enables us to bring the finest travel talent in the country to Chelsea each year.

Thank You!

Ads
Taken
Till 5 p.m.
Tuesday

IT'S EASY TO BUY-SELL-RENT- HIRE & FIND WITH



Just
Call
GR 5-3581

WANT ADS

The Chelsea Standard

WANT AD RATES

PAID IN ADVANCE—All regular advertisements, 50 cents for 25 words or less, each insertion. Count each figure as a word. For more than 25 words add 2 cents per word for each insertion. "Blind" ads or box number ads, \$50 extra per insertion.

CHARGE RATES—Same as each in advance, with 15 cents bookkeeping charge if not paid before 5 p.m. Tuesday preceding publication. Pay in advance, send cash or stamps and save 10 cents.

DISPLAY WANT ADS—Rate, \$1.10 per column inch, single column width only. Spot and 14-point light type. **CARDS OF THANKS or MEMORIALS**—Single paragraph style, \$1.00 per insertion for 50 words or less; 2 cents per word beyond 50 words. Minimum, 1 inch.

COPY DEADLINE—5 p.m. Tuesday week of publication.

CAR RENTAL by the day, week-end, week or month. Full insurance coverage, low rates. Call Lyle Christwell at Palmer Motor Sales, GR 5-3271. 25tf

WORK SHOE HEADQUARTERS

Famous Red Wing Brand
\$12.95 to \$26.95

Foster's Men's Wear

USED TRACTOR TIRES—Large inventory, hand. Also used passenger, truck, grader tires. Jackson Tire Brokers, M-106, Mu- with, Mich. Ph. 596-2925. 32tf

ALLSTATE INSURANCE

**AUTO - BOAT - COMMERCIAL
LIFE - HEALTH - HOME
LIABILITY**
Phone Even or Week-ends for
N. H. MILES, Agent
GR 5-8334 44

10 ACRES—Mostly woods on Waters Rd. Just off Peckins Rd. 8424 or Mr. Harris (517) 592-6934 evenings and week-ends, representing Southside Realty (517) 522-8469. -x18

DEER HUNTER SPECIAL

**WINCHESTER MODEL 194
30-30 CARBINES**
Only \$77.77

See Our Selection of
Deer Rifles and Slug Guns
Chelsea Hardware
GR 9-6311 18

BERKSHIRE PANTY HOSE

Sizes A and B
Special - \$1.29
VOGEL'S STORE 18

CARPET CLEANING by Burke, 12 cents a square foot, needs overnight to dry. In Chelsea call Merkel Brothers, 476-8621. 33tf

NO HUNTING SIGNS

Now available
Chelsea Standard
300 N. Main St.
Chelsea, Mich. 20

WANT ADS

BOARDING, trimming, training.
Town and Country Kennels,
Jackson Rd. at Baker. NO 8-7200.
7tf

MOR HEATING & Cooling Co.
Air conditioning, hot water,
steam boilers, warm air furnaces.
Sales and service. Ph. 498-2853.
Gregory. 47tf

Gem Travel Trailers and Campers

PICK UP COVERS
4" ————— \$100.00
26" ————— \$179.00 and up

Triangle Sales
Chelsea 475-4302 40tf

FARMS RESIDENTIAL LAKE PROPERTY

for
**QUALIFIED RELIABLE SALES
PERSONNEL
CONTACT**

Carole Bell, 426-8892
Kathryn Smith, 426-5830
Janice Foutch, Saline, 429-4114
Wendel Foutch, Saline, 429-4114

YPSILANTI OFFICE
Arthur Kane, 426-6655
Virginia Oakes, 426-6655

Evinger Real Estate

426-3288
Dexter, Mich. 36tf

In Dexter
FOUR-BEDROOM—2½ bath, large
living room with fireplace, recreation
room with fireplace, screened
patio, attached garage, corner lot,
lots of trees. Very Very nice.

On Huron River
THREE-BEDROOM—living room
with fireplace, kitchen with all
building, enclosed porch all
petted, lower level has large work-
shop, laundry room, recreation
room with fireplace, screened porch,
cycloped fence, trees, Dexter schools,
terms.

Call
Bruce Waggoner
426-8387
K. KRULL, Broker -x18

LaFontaine Construction Co.

**GENERAL CONTRACTORS
COMPLETE BUILDING SERVICE**
Residential — Commercial
Emergency Repair Service
FREE ESTIMATES
Phone 475-7494
P. O. Box 160, Chelsea, Mich. -x7tf

TRAVEL TRAILERS—13-ft. and
up; 10x55 ft. trailers. John R.
Jones Trailer Sales, Gregory, Mich.
Phone 498-2855. 43tf

FOR SALE—Six-week-old female
dachshund. Phone 476-8938. 18

FOUND—Small parcel of items,
along Old US-12, in the vicinity
of Freer Rd. Owner may claim
by identifying. Call 476-2592. 18

Quality Evergreens

Spreading, upright, and Hicks
Yews, Pyramid and Globe Arbor
Vitas, Pfitzers and Blue Spruce.
Now is the time to select your
Crimson King and Norway Maples.
All State Inspected. Faist's Ever-
green Nursery, 11362 Trist Rd.,
Grass Lake. Phone Grass Lake 522-
4688. 20

WANT ADS

**Contractor Servicing
Chelsea, Dexter and
Manchester Areas**
Complete Home Remodeling
Inside and Outside

Specializing in extra living space,
recreation rooms, kitchens and
pantries. Installing all aluminum
products, 5" eavestroughs, custom-
made awnings, windows and doors,
aluminum siding in many selected
colors and styles.

Please Call
DALE COOK
Chelsea 475-8863 20tf

HAMMOND ORGAN teachers
wanted to teach in their own
homes. Call Grinnell Brothers, Ann
Arbor, 682-5667. 34tf

Tractor Trailer Drivers Needed

Transport Systems needs men
willing to learn how to drive
Semi-Tractor-Trailers. Wages are
over \$5.00 per hour or mileage.
Experience not necessary. We
train. For application write to:
Semi Drivers Division, Transport
Systems, P. O. Box 68017, Indian-
apolis, Indiana, 46268, or call 317-
547-3483. -x19

HORSE SHOEING—Experienced,
corrective trimming and shoeing,
prompt service. Buck Myer, 2800 W.
M-59, phone (517) 546-1610 Howell
48843. -28

10 Acres of Evergreens, Shrubs and Trees

Blue Spruce and
Japanese Yews
Our Specialty

U Dig or We Dig

Mason's Nursery

8794 Monroe St., Macon Rd.
Saline - Ph. HA 9-5034 19

BRAND NEW 1970 FORD CARS and PICK-UPS

At
**REDUCED
PRICES**

Shop While There
Is Still A Good
Selection

Remember—5-Year
Warranty is Available
On All These Units

Also
1—LTD 4-Dr.
Rental Car At Even
More Savings

USED CAR BARGAINS

'68 Pontiac hardtop ————— \$1695
'67 Galaxie 500 hardtop ————— \$1195

'66 Comet ————— \$695
'66 Ford 4-dr. ————— \$895
'66 Ford 2-dr. ————— \$795

'65 LTD hardtop ————— \$595
'65 Chev 4-dr. ————— \$695
'65 Ford hardtop ————— \$695

Open Mon., Wed., Thurs. Till 9:00
All Day Saturday

PALMER FORD
SINCE APRIL 1912
475-3271 -x17tf

WEAR BEAUTIFUL CLOTHES.
Make new friends. Earn money
at same time. Become a Beeline
stylist. For information call Betty
Pelkey, 229-9192 collect or 229-9448.
-x20

Arnie's Roofing
All types of shingle work, repairs,
new and old homes, barns, etc. Free
estimates.
Phone 682-1758 -x21tf

G. G. HOPPER
Building Contractors
Phone GR 5-5581
Gregory 498-0346 40tf



"Wow! Look who a Standard Want Ad
has sold the house next door to!"

WANT ADS

527 WILKINSON, corner Old US-
12—Three bedroom on crawl
space with utility building. Good
condition, vacant, excellent land
contract terms at very good price.
Phone Mr. McKernan 475-8424
evenings and week-ends, represent-
ing Southside Realty (517) 522-
8469. -x18

DUNCAN PHYFE table with two
leaves. Dinette table and four
chairs. Anderson crank-out win-
dow with 40" x 30" rough opening.
475-8046. -18

1940 CHEVY for sale, all origin-
al. Phone 475-2670. 19

FOR SALE—Camper for pick-up,
2-wheel utility trailer, corn
sheller. Phone 475-8809. 18

EX-NURSE baby-sitting in my
home, best of care, prices you
can afford only \$15 per week for
one, \$25 for two children. Call
now, 475-5811. 18

FOR SALE—John Deere M tractor,
perfect condition. Phone
Gregory 498-2677. -19

Real Estate For Sale
FAMILY HOME—4-bedroom older
home. Near business district. 2-
car garage. \$14,000. Land contract
possible.

INVEST FOR THE FUTURE—
7½ acres. Has village water,
electric and gas. 745 ft. of R.R.
frontage. 3-bedroom house to pro-
vide current income. \$30,000 with
terms.

SPOTLESS—2 bedrooms, separate
dining room, 1½-car garage.
Aluminum siding. Ideal for a
couple. \$22,000.

BUILDING LOT—One mile east
on Old US-12. 135 feet of front-
age. 1¼ acres. \$4000.

10 ACRE LOTS—Several to choose
from. 2¼ miles out. From \$7,500
up.

**CLARENCE WOOD
BROKER**
646 Flanders St.
Phone 475-2033 18tf

**BERKSHIRE
PANTY HOSE**
Sizes A and B
Special - \$1.29
VOGEL'S STORE 18

Linoleum - Tile
Sales and Installation
Samples in your home
For Free Estimate
Call 475-7180

Clark Bushnell
Floor Covering Service
18tf

PEOPLE ENJOY ALOUETTE.
Now is the time to buy the
reliable ones. 12-60 h.p. Alouette
Snowmobiles. Complete line of
accessories. See Gus Hansen at
15901 Seymour Rd., or call 475-
7212. Also two used machines, 1969
Ski-Doo, and 1968 Johnson Ski
Horse. 18tf

FOR SALE—'66 Chevy Impala,
V-8, excellent condition. Phone
475-2820. 18

FOR SALE—Johnson floor waxer,
Westinghouse roaster, 78 rpm
records, White electric sewing
machine, sharks teeth for making
jewelry. Phone 475-8985. -18

**We never get our
signals crossed . . .**
No confused moments here!
We get your instructions right
the FIRST time . . . then hop
to your job.

If this is the kind of prompt, efficient
service you're looking for . . . you're
the kind of customer we're looking for.

PURE OIL PRODUCTS
JIM'S PURE SERVICE
Tires — Batteries — Tune-Ups — Brake Service — Wheel Alignment
PHONE 475-2622 501 SOUTH MAIN

WANT ADS

PIANO TUNING, Chelsea and area.
Facilities for reconditioning and
rebuilding. Used piano sales; re-
conditioned grands and verticals.
B. Eklund, 426-4426. 50tf

**For Low Cost
Floor Covering**
We have small and large pieces,
ends of rolls, etc., of linoleum
and carpeting at close-out prices.
Many sizes and colors to select
from.

MERKEL BROS. -x40tf

**SALE
Employees' Cars**
1970 BUICK LeSABRE CUSTOM
4-dr. hardtop (air cond.)
\$3775

1970 BUICK SKYLARK
2-dr. hardtop, power steering,
auto. trans., vinyl top.
\$3175

USED CARS
1967 Rambler Rebel 2-dr.
hardtop ————— \$ 895
1966 Ford Station Wagon, 9-pass.,
V-8, power steering ————— \$ 695

1965 Buick Wildcat 2-dr.
hardtop ————— \$ 795
1965 Ford 2-dr. Sedan, V-8, auto.
trans. ————— \$ 595
1965 Mercury Station Wagon \$ 495
1964 Valiant 2-dr. ————— \$ 495

**\$395.00 Lot
Rear of Building**
1966 Chev II Station Wagon \$395
1965 Mercury Comet 2-dr. ————— \$395
1962 Volkswagen ————— \$395

**Sprague
Buick-Olds-Opel, Inc.**
1500 S. Main St., Chelsea
Evening 475-6271 or 475-8240
Phone 475-8664
Open evenings by appointment. 18tf

VACANT ACREAGE—32 acres
just west of 17705 Old US-12,
terms available. Phone Mr. Mc-
Kernan 475-8424 evenings and
week-ends, representing Southside
Realty (517) 522-8469. -x18

GARAGE SALE—Two family.
New blue bathroom sink and
black marbled vanity top. Bow-
ling ball, bag, shoes. Antique Ann
Arbor radio, bellows vacuum
cleaner, chime clock. Bird cage.
Misc. household articles, adults',
and children's clothing, toys. 475-
7087, 221 E. Middle, Chelsea. -x18

FOR RENT—Furnished or un-
furnished apartment. One bed-
room, utilities included. \$150 per
month. 475-7680. -x18

FOR SALE—17" Zenith portable
TV. Also, floor lamp. 2 bred
sows for sale, or will trade for
small steers. Phone 475-2709. -x19

FOR SALE—Good looking 8-yr-
old Buckskin gelding, good fam-
ily horse. \$325. Call 662-5896.
-x18

FOR SALE—½ ton '57 Ford pick-
up. Long box, custom cab. It
starts and runs. 475-7828. -x18

WANTED—One or two men to
build fence. Phone 426-8431. -x18

ELDERLY COUPLE interested in
subletting or renting small
apartment or house for winter
only, in or near Chelsea area.
Phone 475-8409. 13

FOR SALE—1958 4-dr. Mercury.
\$75. John Smetana, 13050 Sager
Rd., Chelsea. -18

FOR SALE—W-D Allis-Chalmers
tractor, good condition. Tony
Push, Chelsea-Dexter Rd., phone
479-7934. 19

GRASS LAKE—FHA available on
this nice 3-bedroom ranch style
home. Full basement, attached
garage, lovely lot handy to schools.
Owner out of state and anxious
to sell, take a look and make
your offer. Southside Realty
(517) 522-8469 or (313) 475-8424
evenings and week-ends. -x18

REAL ESTATE
BEAUTIFUL LOCATION, Lake-
land Golf and Country Club, at-
tractive, two level home. Golf
course, front and rear. Fireplace,
divider between living and dining
room. Carpeting, two or three bed-
rooms. Many extra features. Shown
by appointment only.

APPROVED BUILDING SITES
facing golf course. 200'x150' Near
M-36 and Lakeland. Privileges on
small lake. Only \$3,000.

PORTAGE LAKE LAGOON front-
age, charming, 2-bedroom home,
wood paneled. Corner fireplace,
front patio, attached carport in
back, carpeting, draped, range, re-
frigerator and washing machine
included. Only \$24,000, terms.

**Mary Wolter
Real Estate**
7421 Dexter-Pinekey Rd.
Phone 426-8188 for appointment -x18

WANT ADS

**Formal Wear
RENTAL SERVICE**
Prom - Weddings - Special Events
6 different colors.

Foster's Men's Wear 2tf

PONTIAC
The last of the '70's must go.
Shop now for a good selection.

**Harper Pontiac
Sales & Service**
CHELSEA
Phone 475-5311 or 475-5451 days,
761-2999 evenings.
Open evenings by appointment 12tf

TYPING SERVICE Wanted by
Chelsea writer for ad copy, manu-
scripts, proposals, etc. Write to
Box SE-24 at The Standard. 14tf

PROMPT TREE REMOVAL, top-
ping and cabling. Free esti-
mates, fully insured. Phone 475-
8095. -x2

FOUR ACRES—With 2-bedroom
home Southeast of Grass Lake.
\$13,900 total price. Southside
Realty 522-8469. -x18

SMALL HOUSE for rent. Phone
475-2653. -x18

WANTED—Woman to do general
cleaning, ironing, 5 days. Vi-
city of North Lake. \$2 per hour.
Phone 475-7452. -x18

Chelsea Area Homes
COUNTRY SETTING—1.8 acres, 4
years old. 4-bedroom brick, beau-
tiful trees. Located on blacktop
road, 4 miles to Chelsea and 1 mile
to lake and golf course.

LARGE FAMILY HOME—Excel-
lent location for schools, 275 ft.
deep lot, 3 bathrooms, 6 bedrooms
and fireplace.

1.3 ACRES—3-year-old ranch home,
family room, fireplace, 2½ baths,
dining room and 2-car garage.

4-BEDROOM—2 full baths, just
remodeled kitchen. Priced to sell,
\$24,000.

2-FAMILY—Large majestic older
home, new kitchen, large rooms.
3-bedrooms down, 1½ bedroom up.
Excellent location.

5-BEDROOM—2 fireplaces, study,
dining room, recreation room,
family room, open staircase, 2 full
baths. \$33,000.

Building sites, between Dexter
and Chelsea, 10 acres to choose
from.

**Eibler, Frisinger
& St. Amour**
REALTORS
Chelsea 475-8681 Dexter 426-4659

Evenings Call
George Frisinger 479-4161
Paul Frisinger 475-2621
Herman Keen 475-2613
Bob Thornton 475-8857 17tf

**Christmas Bazaar
and Luncheon**
Thursday, November 5
Tickets available at Foster's
Men's Wear and Winans Jewelry
Store.

By Ladies of
CHELSEA METHODIST CHURCH -18

COOK WANTED for four or five
men, approximately 3 hours a
day, Tuesday-Sunday. Good pay.
Many other opportunities if in-
terested. Call Mrs. Alder, Stoncy
Ridge Farm. 663-3509. -x19

GRASS LAKE—FHA available on
this nice 3-bedroom ranch style
home. Full basement, attached
garage, lovely lot handy to schools.
Owner out of state and anxious
to sell, take a look and make
your offer. Southside Realty
(517) 522-8469 or (313) 475-8424
evenings and week-ends. -x18

REAL ESTATE
BEAUTIFUL LOCATION, Lake-
land Golf and Country Club, at-
tractive, two level home. Golf
course, front and rear. Fireplace,
divider between living and dining
room. Carpeting, two or three bed-
rooms. Many extra features. Shown
by appointment only.

APPROVED BUILDING SITES
facing golf course. 200'x150' Near
M-36 and Lakeland. Privileges on
small lake. Only \$3,000.

PORTAGE LAKE LAGOON front-
age, charming, 2-bedroom home,
wood paneled. Corner fireplace,
front patio, attached carport in
back, carpeting, draped, range, re-
frigerator and washing machine
included. Only \$24,000, terms.

**Mary Wolter
Real Estate**
7421 Dexter-Pinekey Rd.
Phone 426-8188 for appointment -x18

WANT ADS

PATCHING and PLASTERING.
Call 475-7489. 33tf

**Formal Wear
RENTAL SERVICE**
Prom - Weddings - Special Events
6 different colors.

Foster's Men's Wear 2tf

WANT ADS

VACUUM CLEANERS — Electro-lux, authorized sales and service. James Cox, Manchester. Ph. 428-2931 or 428-8221. 42tf

CUSTOM BUILDING
and
REMODELING

Chelsea Associated
Builders, Inc.
Phone 475-8182

ROBERT PATRICK for home improvement, building and maintenance. Ph. 475-7480. 45tf

LOT FOR SALE—Middle St. at Grant, 100 feet frontage. Ph. 475-7638. 12tf

TREE REMOVAL DONE — Also buyers of standing timber and walnut trees. Chelsea 475-7631. 34tf

ALUMINUM SIDING, custom trim and gutters. Dave's Siding Co. Phone 498-2423. 15tf

Brilliant New
Admiral Quality TV

Color or black and white, consoles and portables, with automatic fine tuning. 3-year warranty on picture tube. 1-year free service.

Complete antenna sales and installation. Service on all brands TV, radios, stereos.

Porter's TV

212 Buchanan St.
Chelsea Phone 475-8380

FOR RENT—2 apartments. Clean, unfurnished, first floor, carpeted. Second floor, unfurnished, heat furnished for both. For two persons, no children, no pets. Phone 475-8469 after 6 p.m. 15tf

JONATHAN & DELICIOUS Apples for sale. Also sweet cider, made fresh every Friday. Your container, 75¢ per gal.; our container, 85¢ per gal. Czapla's Orchards, 1817 Rank Rd. 7 miles west of Chelsea off of Old US-12. 14tf

WANTED TO RENT—2-bedroom house in the country, \$75-\$90 a month. Call 665-6776. 18tf

POSITIONS AVAILABLE for R.N. and LPN, part-time and full-time. Phone 475-8831, ext. 218 for appointment. 17tf

FARM MACHINERY REPAIR—A friendly reminder from Radiator Repair Service to all farmers that they should have their tractors, or equipment serviced for the winter. Stop by 8510 North Territorial, and see Johnny Boulton. 18tf

FREE REAL ESTATE Classes, Tuesday and Thursday, 7-9 p.m. Call 426-8188. 18tf

SUFFOLK RAM LAMBS for sale. 8 months. Reasonable. Phone 475-8790. 18tf

WANTED—Yardwork, babysitting, odd jobs by 7th graders of St. Paul church. Earnings going to Spaulding for Children. Please call 475-2880 or 475-8780. 18tf

AL'S RADIO & TELEVISION Service at 649 N. Main, or phone 475-8545. Car radios and antenna service. 18tf

FOR SALE — Siegler oil heater. Good condition. Call 479-6961. 18tf

BABYSITTING — Would like to care for one or two children in my home. 475-7418. 18tf

WANT ADS

XEROX COPIES made. First 20 at 20 cents each. Over 20, special prices. Merkel Brothers. 25tf

CLOGGED
SEWER

Reynolds Sewer
Service

We Clean Sewers Without Digging
Drains Cleaned Electrically

FREE ESTIMATES
2-YEAR GUARANTEE

Phone Ann Arbor NO 2-5277

"Sewer Cleaning Is Our Business—
Not A Side Line"

35tf

SIDING SPECIALIST—since 1938
Alcos aluminum siding. Remod-

eling. Finest workmanship. Esti-

mates. William Davis. Ph. (813)

663-6635. 19tf

MEL HARTMAN, residential build-

er. Free estimates: houses, gar-

ages, kitchens. Flat work and roofs.

Call 878-6514. 13tf

SEE US for transit mixed con-

crete. Klumpp Bros. Gravel Co.

Phone Chelsea 475-2530, 4920 Love-

land Rd., Grass Lake, Mich. 41017

HEARTHESIDE YARN SHOP, 6450

Conway Rd. Imported and dom-

estic yarns, needles and instruction

books. Free lessons and assistance.

Open daily except Sunday, 9 a.m.

to 9 p.m. Ph. 475-2014. 19tf

PAINTING AND REPAIRS inter-

ior and exterior, you name it

we can do it. Free estimates,

guaranteed work. Reasonable prices.

Phone 662-0114. 19tf

4 ACRES on share, Helen Valant,

13050 Sager Rd., Chelsea. 18tf

FOR RENT — Irish Hills area,

lake-front, winterized, 2-bedroom

home. Full bath, furnished. \$110 a

month. Ph. 668-7833, evenings. 18

POTATOES, Winter Russet, like

Idaho bakers. Sorry, seconds all

sold. Monday through Saturday,

Carl Schoonover, 9 miles out M-52

northwest to N. Job. Free estimates,

guaranteed work. Reasonable prices.

Phone 662-0114. 19tf

HELP WANTED—Part-time sales-

lady for downtown Chelsea

store. Give age and qualification

in reply. Write Box OC-15, care of

Chelsea Standard, Chelsea, Mich.

48118. 18tf

HELP WANTED, MALE—Mature

shift leader for afternoon shift.

Apply Gallup-Silkworth, 295 S.

Main; see Ed or Harvey. 17tf

FOR SALE—10'x55' Belmont house,

trailer. Everything in good con-

dition. \$1,800. Call 428-8842. 20

GARAGE SALE—Toys and assort-

ed items. Phone GR 5-8377 after

4 p.m. 18tf

FOR RENT—Upstairs apartment,

completely furnished, child ac-

cepted. First and last month's

rent in advance. May be seen

Friday, 3 to 6 p.m. Located at

122 East St., Chelsea. 18tf

LOST DOG—Small, black poodle

dog. Has black collar. Lost in

the vicinity of E. Summit St.

Please call 475-8095. 18tf

ATTRACTIVE 7-room, 3-bedroom,

2-bath ranch. Has formal din-

ing room, plus kitchen eating

space, 2 fireplaces, family room,

rec room, and attached 2-car

garage. A sharp, clean house,

ready to move into. \$34,900. Call

663-9811. Markeson and Zahn,

Realtors, evenings 475-8118 or

665-5452. 18tf

CHELSEA WOMAN'S CLUB an-

nuual rummage sale, Friday, Oct.

23, 9 a.m. to 5 p.m. and Saturday,

Oct. 24, 9 a.m. to 12 p.m. 18

LOST OCT. 11—Male English

Setter. Last seen Chelsea, 4 Mile

area. Family pet. Please call 663-

2377. 18tf

WANTED—10 Blacktop Delaine

ewes. Roy Smith, Coldwater,

Michigan, RR. 8. 19

WANT ADS

WORK SHOE
HEADQUARTERS

Famous Red Wing Brand
\$12.95 to \$26.95

Foster's Men's Wear 34tf

THANK YOU

The family of Henry H. Harat would like to extend its sincerest heartfelt "thanks" to all our friends, and relatives, for the many floral tributes, and masses, for food donations, and those who helped cook, serve, and clean, too numerous to mention individually. Also, to the American Legion for the use of the hall. Our sincerest "thanks." Respectfully,
The Harat Family.

THANK YOU

We would like to thank all our friends and neighbors for the thoughtfulness through flowers, cards and gifts, which helped to make our 50th anniversary one that we will remember for the rest of our lives.
Mr. and Mrs. Lyman Adams.

Reformation
Anniversary
Service Set

Faith Evangelical Lutheran church, 2035 Baker Rd., along with 20 Lutheran churches of south-eastern Michigan will participate in a Reformation Anniversary Service on Nov. 1, at 4 p.m. at Salem Lutheran church in Scio township near Ann Arbor. All of the churches are members of the Wisconsin Evangelical Lutheran Synod.

The special service will commemorate the anniversary of the beginning of the Lutheran Reformation. It was on Oct. 31, 1517, that Martin Luther nailed his now famous "95 Theses" to the door of the Castle church in Wittenberg, Germany, and thus started the Protestant Reformation and eventually the Lutheran Church.

Of special interest this year is the fact that Salem Lutheran church, which is host for the affair is the oldest congregation in the Wisconsin Synod and is presently celebrating the 100th anniversary of its church building. The Rev. Lyle Hallauer, pastor of Salem church, has announced that the sermon for the special service will be delivered by the Rev. Robert Voss. The Rev. Voss is the former president of Wisconsin Lutheran College in Milwaukee and presently serves as executive secretary of the Commission on Higher Education of the Wisconsin Synod.

ON VOLUNTEER ARMY

The Senate has rejected an amendment designed to recruit an all-volunteer, well-paid army and thus pave the way for an end to the draft. The proposal was denounced as untimely and defended as a vitally needed upgrading of the benefits of a military career.



NEIGHBORING LANDLORDS: Luther Kusterer, who owns the Kusterer's grocery business, and Don McKinley, who owns The Pub, have a very unusual relationship. McKinley's store is

The Landlord Is Next Door!

Luther Kusterer, owner of the Kusterer's Food Market at 111 S. Main, and Don McKinley, owner of The Pub at 113 S. Main, are considering trading stores, for a most unusual relationship exists between these two men and their stores.

Kusterer, it seems, is the owner of The Pub building, while McKinley owns Kusterer's building.

The mix-up occurred originally in 1947 when Luther Kusterer and his father, the late Waldo Kusterer, went into business in Chelsea. Waldo Kusterer had formerly owned and operated a grocery store at the corner of Main and Park Sts. At that time, Luther Kusterer bought the building which was then, as now, The Pub. He planned to move his groceries into it. It then came to light that The Pub's beer license was written up containing the address of The Pub. To change locations for the bar could endanger the license, which was a fairly difficult thing to obtain.

A compromise was worked out, where by Kusterer moved into the building next door, and leased the space for The Pub to the owners, Hank and Pat Orbring.

Don McKinley bought the Pub business in 1963. It wasn't until this year, 1970, however, that McKinley purchased the building in which Kusterer's store is located, and a true "swap" could be achieved. This swap has not come about, but the two men are considering it to alleviate the confusion over "his" and "mine."

For the Downtown Improvement program this summer, for example, Kusterer painted and

fixed up the building in which his business is located, not the building he owns. He repainted the front, trimming the windows and the decorative work along the top in blue. He also added a new back staircase at the rear entrance to his store.

McKinley had done extensive remodeling in 1966. At that time he put in the pizza oven, and paneled the top of the barroom. This summer, in co-operation with the Downtown Improvement Project he also had the front of his store painted.

Fruit Cake
Sale Underway

Manor Texas Fruit Cake sale is well underway by the Chelsea bands. The sale, which opened Friday morning, Oct. 16, is off to a healthy start.

Because of a shortage of order blanks, only high school students could take orders for fruit cakes this past week-end. A good supply of order blanks have been ordered, however, and should have been distributed to Beach school students by Thursday.

Supplies of candy bars may be replenished at regular band class, or by calling the following persons: Mrs. Charles Cameron, or Mrs. Howard Flintoft, senior class; Mrs. Thomas McGaw, or Mrs. Arthur Schiller, juniors; Mrs. Carol Buck or Mrs. Melvin Leach, sophomores; Mrs. Claude Arnett or Mrs. Ray Parsons, freshmen; Mrs. Olen Hart or Mrs. Robert Schroen, 8th grade; Mrs. Neil Fahrner, Mrs. Thomas Morrison, or Mrs. Gary Wright, 7th grade; and Mrs. Arthur Paul or Mrs. Frank Sweeney, 6th grade.

The trim for his store front was done in avocado. He also added a new back bar with a marble top, and a refrigerator, and is in the process of moving the men's restroom upstairs. He remodeled the ladies' restroom this summer, adding paneling and a suspended ceiling to the room.

The mix-up still exists between the stores, as the street level areas of each store are reversed, although the upstairs are not. McKinley, for example, retains apartments over Kusterer's store, which he rents out. Kusterer, on the other hand retains control over the Union Hall for Chrysler, which is over The Pub.

The men are friends, and as it is, it's working out. There is, however, hope that the situation will soon be straightened out.



TROOP 82—

Girl Scout Troop 82 has a new leader. She is Mrs. Thomas Klobuchar. Troop assistants are Mrs. Wilfred Lane, Mrs. Keith Schulte, Mrs. Phillip Roy, Mrs. Phillip Hume. The assistants are also committee members.

The troop was assigned into patrols, who then voted for leaders. There are four patrols. Leaders are Carolyn Schardin, Dawn Klobuchar, Linda Brown, and Gayle Hume. Assistants are Donna Bauer, Kim Slocum, Ann Marie Burgess, and Carrie Lane. Troop 82 will have interest groups for working on badges. The troop discussed celebrating the birthday of Juliette Lowe, which is Oct. 29.

The girls in Troop 82 are Dawn Klobuchar, Cindy Klobuchar, Kim Slocum, Laurie Campbell, Gall Erke, Mary Beth Allen, Linda Brown, Ann Marie Burgess, Tammy Collinsworth, Paula Ellenwood, Sheila Erskine, Gayle Hume, Carrie Lane, Mary Lynn Noah, Joan Liebeck, Wendy Meyers, Renee Poisson, Meg Pennington, Diana Pletcher, Julia Worden, Janet Walz, Carolyn Schardin, Karen Toon, Cathy Villemure, and Donna Bauer.

TROOP 58— At the meeting Monday, Oct. 19, of Girl Scout Troop 58, the girls went on a sign game, following road markers and trail signs.

Following the scouts' return, the birthdays of Julie Chapman and Robin Jones were celebrated. The girls learned a new shoe game, and they finished surprise Christmas presents.

Meeting closed with musical Indian Taps. Music was played by Dawn Bucholz, Sue Frisbie, and Susie Leach.

Dawn Bucholz, scribe.

Subscribe today to The Standard!



BECKER
MEMORIALS
6033 Jackson Road
ANN ARBOR, MICHIGAN



Separate one medium head cauliflower, cooked into a shallow baking dish. Blend 1 can condensed Cheddar cheese soup and 1/4 cup milk; pour over cauliflower. Top with 1/2 cup buttered bread crumbs and a sprinkling of paprika. Bake at 350 degrees F. for 30 minutes. Serves 6 to 8.

Most meats for roasting are placed on a rack in an open, shallow pan. The single exception may be a beef standing rib roast since the bones usually form a natural rack for this meat cut. Since these roasts are becoming more compact, or shorter, they may roast more easily when supported on a rack.

The paper-like covering known as the "fell" should not be removed from the leg of lamb before roast-

ing. This covering keeps the meat juicier, helps it to hold its shape and allows it to roast in less time.

CHILI BEEF SANDWICHES
1 pound ground beef
1 cup chopped onion
1/2 cup chopped celery
1/2 teaspoon chili powder
1/2 teaspoon salt
Dash pepper
1/2 tablespoon shortening
1 CAN. (10% ounces)
tomato soup
6 buns, split and toasted
In skillet, cook beef, onion, celery, chili powder, salt, and pepper in shortening until meat is browned; stir to separate meat particles. Add soup; simmer to blend flavors. Serve on buns. Makes 6 servings.

Everyone would like to have a government that can operate without taxes and yet give the people the benefits of modern times.

TODAY'S THOUGHT

By LOUIS BURGHARDT

"Monday Holidays" will be celebrated in 1971 in all states excepting Okla., S. Dak., Wis., La., and W. Va. . . . Cut this from the paper for quick reference if you plan activities for sectional or national holidays in '71. Fri. Jan. 1 New Year — Tues. Jan. 19 Robert E. Lee's birthday — Fri. Feb. 12 Lincoln's birthday — Sun. Feb. 14 St. Valentine's Day — Mon. Feb. 15 Washington's birthday — Wed. Feb. 24 Ash Wednesday — Tues. Mar. 2 Texas Independence Day — Wed. Mar. 17 St. Patrick's Day — Tues. Mar. 30 Seward's Day (Alaska) — Sun. Apr. 4 Palm Sunday — Fri. Apr. 9 Good Friday — Sun. Apr. 11 Easter — Tues. Apr. 13 Thos. Jefferson's birthday — Mon. Apr. 19 Patriot's Day (Maine) — Mon. Apr. 26 Confederate Memorial Day (Ala., Fla., Ga., Miss.) — Sun. May 9 Mother's Day — Mon. May 10 Confederate Memorial Day (N. Car., S. Car.) — Mon. May 31 Memorial Day — Thurs. Jun. 3 Jefferson Davis' birthday — Mon. Jun. 14 Flag Day — Sun. Jun. 20 Father's Day — Sun. July 4 Independence Day — Sat. July 24 Pioneer Day (Utah) — Sat. Aug. 14 Victory Day (Rhode Island) — Mon. Aug. 16 Bennington Battle Day (Vermont) — Mon. Sep. 6 Labor Day — Thurs. Sep. 9 Admission Day (Cal) — Mon. Sep. 20 Rosh Hashana — Wed. Sep. 29 Yom Kippur — Mon. Oct. 11 Columbus Day — Mon. Oct. 25 Veteran's Day — Sun. Oct. 31 Halloween — Tues. Nov. 2 Election Day — Thurs. Nov. 25 Thanksgiving — Sat. Dec. 25 Christmas . . . BURGHARDT FUNERAL HOME, 214 East Middle St., Chelsea, Mich. Phone GR 5-4141.

—SPECIALS—

15-OZ. BAG ADAMS
Potato Chips 55c

10-OZ. PKG. ECKRICH
Smoky-y-Links 63c

QUART SIZE ROMAN
Dish Soap 2 for 49c

BETTY CROCKER WHITE, YELLOW, CHOCOLATE
Cake Mix 2 boxes 63c

HEATH
Ice Cream Bars 10c

KUSTERER'S
FOOD MARKET
DIAL 475-2721 WE DELIVER

CHRISTMAS
CLUB
MEMBERS

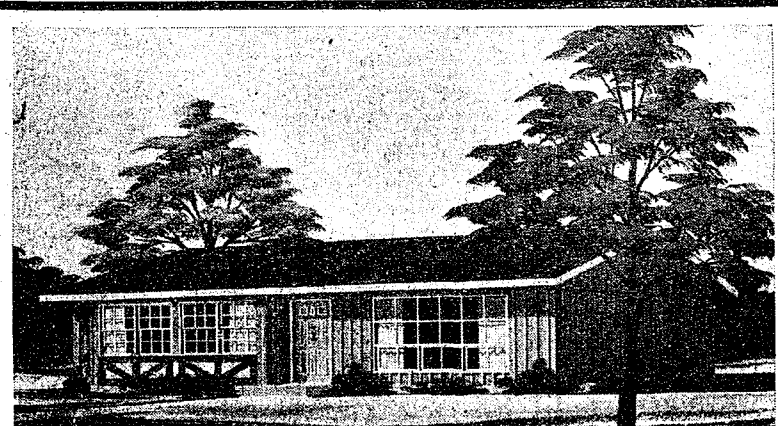
Final payment on 1970 Christmas Club accounts will be accepted only until Saturday, Oct. 31.

Checks will be mailed out Thursday, Nov. 5 and deposits on new 1971 Christmas Club accounts will be accepted starting Monday, Nov. 9.

Now Paying the Highest Interest Rates
On Savings Accounts
Any Bank Can Pay

CHELSEA STATE BANK

Member Federal Reserve System **FDIC** Member Federal Deposit Insurance Corp.



Realistically Priced at \$21,900

Including carpeting, appliances, full basement,
large 2-car garage, on your improved lot.

WE ARRANGE FINANCING
WE HAVE BUILDING SITES AVAILABLE

MODEL OPEN
Saturday and Sunday, Oct. 24-25

1 p.m. to 5 p.m.
Open 5 p.m. to 9 p.m. Monday thru Thursday

5711 DEXTER-PINCKNEY ROAD

(2 1/2 miles northwest of Dexter)

Interior furnishings and decorating by Merkel Bros.

**W. C. WEBER
CONSTRUCTION CO.**

INCORPORATED

12290 JACKSON RD., CHELSEA, MICH.

Office Open Daily from 9 a.m. to 5 p.m.

Phone 475-2828



SPECIAL

thru Wednesday, October 28, 1970

BRAZIER
BURGER
& SHAKE

GENERAL ELECTION

To the Qualified Electors:

NOTICE IS HEREBY GIVEN:

That a General Election will be held in the

TOWNSHIP OF FREEDOM

(PRECINCT NO. 1)

County of Washtenaw, State of Michigan

AT

FREEDOM TOWNSHIP HALL

Pleasant Lake Road at Corner of Lima Center Road

on

TUESDAY, NOVEMBER 3, 1970

FOR THE PURPOSE OF ELECTING THE FOLLOWING OFFICERS, VIZ:

STATE Governor & Lieutenant Governor, Secretary of State, Attorney General, 2 Members of State Board of Education 2 Members of Board of Regents of the University of Michigan, 2 Members of Michigan State University Board of Trustees, 2 Members of Wayne State University Board of Governors.

CONGRESSIONAL United States Senator, Representative in Congress.

LEGISLATIVE State Senator, State Representative.

COUNTY Commissioner.

TOWNSHIP 1 Trustee, 2 Constables, Supervisor, Clerk, Treasurer,

AND ALSO ANY ADDITIONAL OFFICERS THAT MAY BE ON THE BALLOT.

AND ALSO TO VOTE ON THE FOLLOWING NON-PARTISAN OFFICERS, VIZ:

TWO JUSTICES OF THE SUPREME COURT
JUDGE OF THE COURT OF APPEALS (2)
JUDGE OF THE CIRCUIT COURT (2)
JUDGE OF THE PROBATE COURT
JUDGE OF THE 14th DISTRICT COURT
TWO MEMBERS BOARD OF TRUSTEES WASHTENAW COMMUNITY COLLEGE

AND ALSO TO VOTE ON THE FOLLOWING STATE PROPOSALS
Proposal "A" to authorize a bond issue for low income housing.
Proposal "B" to reduce the minimum voting age to 18.
Proposal "C" Anti-parochialism Proposal.

AND ALSO TO VOTE ON THE FOLLOWING COUNTY PROPOSAL:
WASHTENAW COMMUNITY COLLEGE
MILLAGE INCREASE PROPOSITION

"Shall the Tax Limitation on the total amount of taxes which may be assessed against all property in the County of Washtenaw, Michigan, for the operation of Washtenaw Community College be increased, as provided by Section 6, Article IX of the Constitution of Michigan, by one (1) mill of the assessed valuation as equalized, for a period of five (5) years from 1971 to 1975, both inclusive, for the purpose of providing funds for operating expenses and the operation and purchase of equipment for occupational training programs?"

COUNTY TREASURER'S STATEMENT AS REQUIRED BY ACT 293 OF THE PUBLIC ACTS OF 1947 AS AMENDED BY ACT 278, PUBLIC ACTS OF 1964

I, Sylvester A. Leonard, County Treasurer of the County of Washtenaw, State of Michigan, do hereby certify that, according to the records of this office, as of October 1, 1970, the total of all voted increases in the tax rate limitation, above the 18 mills established taxable property in Washtenaw County, State of Michigan in said County, is as follows:

Local Unit	Years	Vote Increase	Effective
County of Washtenaw	1967-1971	1,490,000 unlimited	1967-1971 Incl.
Ann Arbor Township	None	None	None
Augusta Township	None	None	None
Bridgeview Township	None	None	None
Dexter Township	None	None	None
Freedom Township	None	None	None
Lima Township	None	None	None
Lodi Township	None	None	None
Lyndon Township	None	None	None
Manchester Township	None	None	None
Northfield Township	None	None	None
Pittsfield Township	None	None	None
Saline Township	None	None	None
Scioto Township	None	None	None
Sharon Township	None	None	None
Superior Township	None	None	None
Sylvan Township	None	None	None
Webster Township	None	None	None
Ypsilanti Township	None	None	None
Washtenaw Community College	1967-1971	1,490,000 unlimited	1967-1971 Incl.
Oakland Community College	1967-1971	1,490,000 unlimited	1967-1971 Incl.
Schoolcraft Community College	1967-1971	1,490,000 unlimited	1967-1971 Incl.
Washtenaw County Intermediate School District	1967-1971	1,490,000 unlimited	1967-1971 Incl.
Ingham County Intermediate School District	1967-1971	1,490,000 unlimited	1967-1971 Incl.
Jackson County Intermediate School District	1967-1971	1,490,000 unlimited	1967-1971 Incl.
Lenawee County Intermediate School District	1967-1971	1,490,000 unlimited	1967-1971 Incl.
Livestock County Intermediate School District	1967-1971	1,490,000 unlimited	1967-1971 Incl.
Oakland County Intermediate School District	1967-1971	1,490,000 unlimited	1967-1971 Incl.
Ann Arbor Public Schools District	1967-1971	1,490,000 unlimited	1967-1971 Incl.
Ypsilanti Public Schools District	1967-1971	1,490,000 unlimited	1967-1971 Incl.
Lincoln Consolidated School District	1967-1971	1,490,000 unlimited	1967-1971 Incl.
Manchester Public Schools District	1967-1971	1,490,000 unlimited	1967-1971 Incl.
Saline Area Schools District	1967-1971	1,490,000 unlimited	1967-1971 Incl.
Whitmore Lake Schools District	1967-1971	1,490,000 unlimited	1967-1971 Incl.
Willow Run Public Schools District	1967-1971	1,490,000 unlimited	1967-1971 Incl.
Clinton Community Schools	1967-1971	1,490,000 unlimited	1967-1971 Incl.
Columbia School District	1967-1971	1,490,000 unlimited	1967-1971 Incl.
Napoleon Rural Agriculture School District	1967-1971	1,490,000 unlimited	1967-1971 Incl.
Northville Public School District	1967-1971	1,490,000 unlimited	1967-1971 Incl.
Pinckney Community School District	1967-1971	1,490,000 unlimited	1967-1971 Incl.
Plymouth Community Schools District	1967-1971	1,490,000 unlimited	1967-1971 Incl.
South Lyon Community School District	1967-1971	1,490,000 unlimited	1967-1971 Incl.
Stockbridge Community Schools District	1967-1971	1,490,000 unlimited	1967-1971 Incl.
Van Buren Township School District	1967-1971	1,490,000 unlimited	1967-1971 Incl.
Chelsea Schools District	1967-1971	1,490,000 unlimited	1967-1971 Incl.
Ann Arbor, Michigan	1967-1971	1,490,000 unlimited	1967-1971 Incl.
October 2, 1970			

SYLVESTER A. LEONARD, Treasurer
Washtenaw County

ALSO ANY ADDITIONAL AMENDMENTS OR PROPOSITIONS THAT MAY BE SUBMITTED

Notice Relative to Opening and Closing of Polls

ELECTION LAW, ACT 116, P. A. 1954

SECTION 720. On the day of any election the polls shall be opened at 7 o'clock in the forenoon, and shall be continuously open until 8 o'clock in the afternoon and no longer. Every qualified elector present and in line at the polls at the hour prescribed for the closing thereof shall be allowed to vote.

THE POLLS of said election will be open at 7 o'clock a.m. and will remain open until 8 o'clock p.m. of said day of election.

HAROLD EISEMANN, Township Clerk

Attorney General Gives Opinion On Implication of 'Proposal C'

With election time looming, much fuss has been made concerning the controversial Proposal "C", the Parochialism amendment, which if passed, would prohibit the use of public funds for non-public schools.

Proposal C is an extremely complex issue. The wording of the proposal to amend the Michigan State Constitution is such that a voter is hard pressed to figure out just what answer, "yes," or "no," will bring about the voter's desired effects—the passing or the defeat of the proposed amendment to the constitution.

Furthermore, even the attorney general of the state does not know exactly what the effects upon the school systems, and education in the state of Michigan would be in the case that the amendment is adopted.

The result is that many people are truly confused and even the politicians aren't very vocal concerning their stand on the issue.

The wording of the proposal, as it will appear on the ballot is as follows:

"Proposed Constitutional Amendment To Prohibit Public Aid to Non-Public Schools and Students."

"This amendment adds language to the constitution to:

(a) Prohibit use of public funds to aid any non-public elementary or secondary school;

(b) Prohibit use of public funds, except for transportation, to support attendance of any students, or the employment of any person at non-public schools or at any other location or institution where instruction is offered in whole or in part to non-public school students;

(c) Prohibit any payment, credit, tax benefit, exemption or deduction, tuition voucher, subsidy, grant or loan of public monies or property, directly or indirectly, for the above purposes.

"Should this amendment be adopted? Yes. No."

This wording has such a wide range of interpretations that it is not safe to espouse any of them as the "true" meaning of the amendment.

Basically, the issue is: shall the state of Michigan adopt a proposal to ban all monies going to non-public schools? A "yes" vote would do this. That means that all public services, with the exception of police, fire, and sanitation services, would be denied to non-public schools.

A "no" vote would not necessarily mean that Parochialism would continue, it would simply mean that there would not be an amendment on the state constitution which would formally ban all such programs. This would have the effect of leaving the Parochialism issue open, and hopefully, better, more definite, legislation could then be effected.

Many political candidates have shied away from the "Proposal C" issue, many of whom do not condone Parochialism, but who feel that the proposed amendment is too severe.

Attorney General Frank J. Kelley in a recent news release, indicated that the following is his legal opinion, of what the implications of the proposal are.

"1) 'Parochialism' is a term used to describe a law passed this year by the state legislature which grants public money to pay a portion of that salaries of lay teachers who are teaching non-religious subjects in private or parochial schools. The theory is that the state is buying educational services for the benefit of pupils attending non-public schools, but only for subjects that they would receive in public schools. \$22 million was appropriated for this purpose for the fiscal year 1971-72. This law is now in effect in Michigan as of Sept. 1, 1970.

"2) 'Proposition C' is a proposal which will be on the ballot on Nov. 3. It would add a provision to our state constitution which would prohibit public aid to non-public schools and students.

"3) If a majority of the people vote 'yes' on Proposition C, the amendment will become part of our constitution and it will, without question, end the Parochialism law passed by the legislature this year.

"4) If 'Proposition C' passes, it will prohibit assistance in the form of payments or tax benefits to parents, children or persons employed in the teaching of non-public school children.

"5) What else will happen if 'Proposition C' passes? What other laws or rights will be affected? "A) Most auxiliary service here are my legal views:

This is the area of dispute, and dents would be ended and barred. Students would be ended and barred. This would include speech correction services, visiting teachers, remedial reading probers for delinquent and disturbed children, and teachers' counseling services.

(Political Advertising)

ELECT

EARL

DOLETZKY

for

Dexter Township Supervisor

ices, teachers' counseling services, programs for non-public school students, and teachers' counseling services for emotionally and mentally handicapped children. With regard to health services or school crossing guard programs, they could be terminated. However, if a court reviewing the matter found that these latter two programs could be rendered without the supporting the attendance of any student at a non-public school, they might be preserved.

"B) With regard to the language of the amendment dealing with property tax exemptions to non-public schools, this is a closer question. In my judgment, property tax exemptions would not be lost. The Court of Appeals, in ruling on the question of whether the amendment could, go on the ballot, held that the present constitution would not be altered or abrogated by that amendment. However, I am mindful that a literal reading of the amendment enables a valid legal argument to be raised about the loss of these ex-

emptions. This is not to be confused with tax benefits to parents, children, or persons employed in the teaching of non-public school students which would be specifically prohibited by the amendment.

"C) Regular government services, such as, fire, police, sewage, and public sanitation, would not be affected, nor would athletic events between public and non-public schools. The United States Supreme Court has held that the state must furnish its ordinary health and safety services to all on a non-discriminatory basis. In regard to athletic events, it is my view that permitting such events neither 'aids or maintains' the non-public schools, nor does it 'support the attendance' of its students at such schools or elsewhere.

"D) The question of whether federal funds to public school districts providing services to non-public schools could be jeopardized would depend on a federal, not a state, interpretation. The various federal acts require assurances that non-public school children will participate in their programs, but several states which constitutionally restrict public support for non-public schools still receive federal funds. These states' laws are less restrictive, however, than the language of 'Proposition C'. The federal government is empowered to make this decision, and it could go either way.

"E) Shared time or dual enrollment programs would be barred. Under the amendment, public funds could not be used to support the attendance of non-public students at any location or institution where instruction is offered in whole or in part to non-public school students. This would be interpreted by a court to apply to public schools offering curricular programs to non-public school students. By curricular programs, I am referring to such academic subjects as math and science; such technical curriculum as vocational training; and such special or extra curriculum as drivers' training."

The final decision on the public support of "Proposition C" now rests with the voters of the state of Michigan. The ultimate effect, Kelley is quick to point out, will be whatever the United States Supreme Court ultimately rules the amendment to be, if it is passed. It is unfortunate that the wording of the "Proposition C" is as ambiguous, and seemingly harsh, as it is, for there cannot be confidence in a decision that is based on "double negatives."

Tim Doolittle and His Pine Center Gang will appear in Chelsea at the Halloween Dance at the public school auditorium on Wednesday evening, Oct. 28. The event is sponsored by the Kiwanis club and an evening of mirth provoking entertainment is promised by these popular WJR radio entertainers.

Health is very valuable to those who have lost it.

Notice to "HAPPY APPLE" CUSTOMERS

Our misfortune can be your good fortune.

As a result of a serious auto accident in early spring, we have been unable to give our apples the T.L.C. they've become accustomed to.

All apples this year will be sold from the farm wagon—whenever our sign is out (utility grade only).

Please continue to bear with us this season. We offer many varieties. Shop our bargains, or just drop in for a friendly "Hello."

Thank you for your past patronage. Hopefully next year we'll be better.

Maryhelen & Bob Schlupe
8225 Jackson Rd.

School Board Briefs

Board of Education met Monday night, Oct. 19. Present were President Irwin, members Smith, Powers, Haselschwardt, Koenn, Storey, Hopkins, Superintendent Cameron, Principals Conklin and Benedict.

Guests were L. Solomon, M. K. Weber, and B. Welles. Meeting was called to order at 8 p.m. by President Irwin. Minutes of the Oct. 5 meeting were approved as read.

Motion by Powers, supported by Hopkins, to pay general fund bills of \$37,408.50. All ayes.

Motion by Koenn, supported by Smith, to initial the amendments to the master contract. All ayes.

Robert Barlow informed the board that the premium total for the last three years for workmen's compensation was \$12,601.74. In the last three years the rebates totaled \$3,244.34.

Motion by Koenn, supported by Hopkins to grant tenure to Mrs. Alberta Stein. All ayes.

Motion by Haselschwardt, supported by Koenn, to accept the recommendations of the finance committee of the 1970-71 tentative budget of \$2,020,947. All ayes. This is the first budget that exceeds \$2 million.

Motion by Powers, supported by Haselschwardt, that a three-member committee be appointed to study administrators job descriptions, administrators evaluations, and an organization chart and make recommendations to the board. All ayes. Committee members are: Smith, Storey, and Haselschwardt.

Administrator salaries will be reviewed Nov. 2.

Motion by Koenn, supported by Powers, to accept the low bid of the Chelsea State Bank of 4.45 percent on borrowing \$317,600 for general fund operations. All ayes.

Motion by Haselschwardt, supported by Koenn, to approve the Federal regulations regarding free and reduced priced lunches as presented. All ayes.

Meeting adjourned at midnight.

GENERAL ELECTION

To the Qualified Electors:

NOTICE IS HEREBY GIVEN:

That a General Election will be held in the

TOWNSHIP OF SYLVAN

(PRECINCT NOS. 1 and 2)

County of Washtenaw, State of Michigan

AT

SYLVAN TOWNSHIP HALL

on

TUESDAY, NOVEMBER 3, 1970

FOR THE PURPOSE OF ELECTING THE FOLLOWING OFFICERS, VIZ:

STATE Governor & Lieutenant Governor, Secretary of State, Attorney General, 2 Members of State Board of Education 2 Members of Board of Regents of the University of Michigan, 2 Members of Michigan State University Board of Trustees, 2 Members of Wayne State University Board of Governors.

CONGRESSIONAL United States Senator, Representative in Congress.

LEGISLATIVE State Senator, State Representative.

COUNTY Commissioner.

TOWNSHIP Supervisor, Clerk, Treasurer, 1 Trustee, 2 Constables.

AND ALSO ANY ADDITIONAL OFFICERS THAT MAY BE ON THE BALLOT.

AND ALSO TO VOTE ON THE FOLLOWING NON-PARTISAN OFFICERS, VIZ:

TWO JUSTICES OF THE SUPREME COURT
JUDGE OF THE COURT OF APPEALS (2)
JUDGE OF THE CIRCUIT COURT (2)
JUDGE OF THE PROBATE COURT
JUDGE OF THE 14th DISTRICT COURT
TWO MEMBERS BOARD OF TRUSTEES WASHTENAW COMMUNITY COLLEGE

AND ALSO TO VOTE ON THE FOLLOWING STATE PROPOSALS

Proposal "A" to authorize a bond issue for low income housing.
Proposal "B" to reduce the minimum voting age to 18.
Proposal "C" Anti-parochialism Proposal.

AND ALSO TO VOTE ON THE FOLLOWING COUNTY PROPOSAL:

WASHTENAW COMMUNITY COLLEGE

MILLAGE INCREASE PROPOSITION

"Shall the Tax Limitation on the total amount of taxes which may be assessed against all property in the County of Washtenaw, Michigan, for the operation of Washtenaw Community College be increased, as provided by Section 6, Article IX of the Constitution of Michigan, by one (1) mill of the assessed valuation as equalized, for a period of five (5) years from 1971 to 1975, both inclusive, for the purpose of providing funds for operating expenses and the operation and purchase of equipment for occupational training programs?"

COUNTY TREASURER'S STATEMENT AS REQUIRED BY ACT 293 OF THE PUBLIC ACTS OF 1947 AS AMENDED BY ACT 278, PUBLIC ACTS OF 1964

I, Sylvester A. Leonard, County Treasurer of the County of Washtenaw, State of Michigan, do hereby certify that, according to the records of this office, as of October 1, 1970, the total of all voted increases in the tax rate limitation, above the 18 mills established taxable property in Washtenaw County, State of Michigan in said County, is as follows:

Local Unit	Years	Voted Increase	Increase Effective
County of Washtenaw	1967-1982 Incl.	\$1,490,000 unlimited	1967-1982 Incl.
Ann Arbor Township	None	None	None
Augusta Township	None	None	None
Bridgewater Township	None	None	None
Dexter Township	None	None	None
Freedom Township	None	None	None
Lima Township	None	None	None
Lodi Township	None	None	None
Lyndon Township	None	None	None
Manchester Township	None	None	None
Northfield Township	None	None	None
Pittsfield Township	None	None	None
Salmon Township	None	None	None
Saline Township	None	None	None
Scioto Township	None	None	None
Sharon Township	None	None	None
Superior Township	1 1/2 Mills		1969-1970 Incl.
Sylvan Township	None		None
Webster Township	None		None
York Township	None		None
Ypsilanti Township	1 1/4 Mills		1967-1971 Incl.
Washtenaw Community College	2 1/2 Mills		1967-1971 Incl.
Oakland Community College	1 1/4 Mills		1965 & future years
Schoolcraft Community College	1 Mill		1964 & future years
Washtenaw County Intermediate School District	1 Mill		1963-1981 Incl.
Ingham County Intermediate School District	1 Mill		1969 & future years
Jackson County Intermediate School District	3/4 Mill		1959 & future years
Lenawee County Intermediate School District	1 1/2 Mills		1967-1972 Incl.
Livingson County Intermediate School District	3/4 Mill		1969 & future years
Oakland County Intermediate School District	3/4 Mill		1962 & future years
Ann Arbor Public Schools District	1 1/2 Mills		1965 & future years
	10 Mills		1853-1972 Incl.
	3 Mills		1951-1970 Incl.
	11.66 Mills		1968-1972 Incl.
	6.67 Mills		1969-1973 Incl.
	10 Mills		1964-1971 Incl.
	5 Mills		1970-1974 Incl.
	2 1/2 Mills		1966-1970 Incl.
	5 Mills		1968-1972 Incl.
	17 Mills		1970
	9.32 Mills		1968-1972 Incl.
	7 1/2 Mills		1970
	9.3 Mills		1967-1971 Incl.
	9.8 Mills		1967-1971 Incl.
	14.5 Mills		1967-1973 Incl.
	3 Mills		1969-1970 Incl.
	4 Mills		1969-1971 Incl.
	4 Mills		1970-1972 Incl.
	12.75 Mills		1969-1970 Incl.
	8 Mills		1968-1971 Incl.
	3 Mills		1969-1973 Incl.
	10 Mills		1966-1970 Incl.
	7 Mills		1966-1970 Incl.
	14 Mills		1969-1971 Incl.
	2 Mills		1969-1971 Incl.
	5 1/3 Mills		1970-1974 Incl.
	5 Mills		1967-1971 Incl.
	11 Mills		1968-1972 Incl.
	8 1/2 Mills		1969-1973 Incl.
	8 Mills		1968-1972 Incl.
	14 Mills		1970
	5 Mills		1968-1971 Incl.
	4 1/2 Mills		1969-1973 Incl.
	6 Mills		1970-1974 Incl.
	5 1/2 Mills		1968-1972 Incl.
	10.88 Mills		1970-1971 Incl.
Chelsea Schools District			
Ann Arbor, Michigan			
		SILVESTER A. LEONARD, Treasurer.	

Community Calendar



Young Homemakers Study Group Halloween Fun Night Thursday, Oct. 22, 8 p.m. at the home of Mrs. Ronald Satterthwaite. Members are reminded to wear costumes.

4-H younger members (9-14 years) costume party. Prizes, games and refreshments. Oct. 24, Rural Activities Center, 7-9 p.m. Sponsored by Service Club.

Olive Lodge No. 156 F&AM family Night Tuesday, Oct. 27. Dinner at 6:30 p.m. Bring table service and dish to pass. Meat, rolls and beverage furnished. Entertainment following.

Social meeting of the VFW Auxiliary No. 476, Oct. 26, at the home of Mrs. Clyde Matthews at 8 p.m.

Residents of Chelsea United Methodist Home, 805 W. Middle St. will hold an autumn bazaar and bake sale from 1:30 to 4 p.m., Saturday, Oct. 24. Handicraft and gift items made by residents will be on display and available for sale including quilts, dolls, aprons and many choice items in ceramics. Coffee and cookies will be served.

Chelsea Social Service will assist families within the Chelsea School District who are in temporary, emergency need with food, clothing, fuel, transportation or medical care. Call at the office on the second floor, Municipal Building, any Tuesday or Thursday between 2 and 5 p.m. for consultation on economic or social problems. Phone 475-4581.

OES annual Rummage Sale, Masonic Temple, W. Middle, Nov. 13, 9-9, Nov. 14, 9-1. For pickup 479-6591 or 475-6531. adv21

Any former western square dancers interested in getting back into the swing, come and have some brush-up lessons at Stockbridge Town Hall Sunday nights, 7 to 9:30 p.m. Sponsored by the Stockbridge Squares. adv 19

Gingham Belles 4-H club hike and hot dog roast. Note change of time and date to Sunday, Oct. 25, 1 p.m. home of Martha Blanchard, please bring dues and insurance. Tuesday, Oct. 27, Halloween party home of LuAnn Hankerd; wear costume.

Ladies of First United Methodist Church Christmas bazaar and luncheon, Thursday, Nov. 5 at church. Luncheon 11 a.m. to 1 p.m. bazaar 10 a.m. to 5 p.m. Advance tickets are to be purchased at either Foster's Men's Wear or Winans Jewelry.

Young Homemakers Study Group Thursday, Oct. 22, 8 p.m. home of Mrs. Ronald Satterthwaite.

All singles, 25 or over, are invited to the Halloween dance at the YMCA in Ann Arbor, Tuesday, Oct. 27 at 9 p.m. Given by Tuesday's Single's Club. Come in costume.

Past Noble Grands Club at the home of Mrs. Clifford Wolfe on Oct. 27 at 7:30 p.m. Mrs. John Dvorak, co-chairman; dress for Halloween.

St. Mary's annual Roast Beef Parish Dinner, Nov. 8, at Chelsea High school cafeteria. Servings at 12:30 p.m., 1:30, and 2:30 p.m. For reservations please contact Mrs. Hal Pennington, 409 S. Madison, phone 475-5592. adv 20

God's Willing Workers annual meeting and installation of officers, pot-luck salad and dessert smorgasbord. Chelsea Baptist Church, Monday, Oct. 26, 7 p.m. Speaker: Mrs. Char Bothouse.

Older Adult Group of Methodist church to be guests of St. Paul XYZ's Friday, Oct. 23. Pot-luck supper 6:30 p.m. Bring own table service and a dish to pass.

TOPS Club at library, Wednesday afternoon group, 12:30 p.m. For information call 426-4549.

DEATHS

Mrs. William Mooney
Methodist Home Resident
Dies Last Thursday at 94

Mrs. Alta E. Mooney died Oct. 15, at the age of 94. She was born Aug. 10, 1876 near Lincoln, Neb., the daughter of Daniel and Catherine Herring Karcher. She married William Mooney Oct. 10, 1897. He preceded her in death on Feb. 26, 1967.

Mr. and Mrs. Mooney were both admitted to the Chelsea Methodist Home on June 19, 1957.

Mrs. Mooney is survived by one son, the Rev. Lee Mooney of Pompano Beach, Fla.; two daughters, Mrs. H. H. Edwards of Clouston; and Mrs. M. F. White, Ridgecrest, Calif.

Funeral services were held Saturday, Oct. 17, at 2 p.m. at the Chelsea Methodist Home chapel. The Rev. Richard L. Clemens officiated, assisted by the Rev. Edgar M. Wahlberg, and the Rev. Lee Mooney. Burial was in Oak Grove Cemetery. Arrangements were by the Staffan Funeral Home.

Emerick J. Trepp
Dies Last Saturday at Cedar Knoll Rest Home

Emerick James Trepp, 2991 Struthers Rd., Grass Lake, died Saturday, Oct. 16, at the Cedar Knoll Rest Home in Grass Lake, where he had been a patient since May 23.

Trepp was 75 years old. He was born in Hungary, Jan. 18, 1895. He was a superintendent of the laundry at Del-Ray General hospital in Detroit for more than 20 years, retiring in 1956.

Funeral services were held Monday, Oct. 19 at the Staffan Funeral Home, at 2:30 p.m. with the Rev. William D. Enslin officiating. Burial was in the North Sharon Cemetery.

Thursday evening group, 7 p.m. For information call 475-8720.

Sewing every Tuesday afternoon at Korner House.

Inquiries regarding the Chelsea blood bank may be directed to Harold Jones in the event that Mrs. Dudley Holmes is unavailable.

American Legion and Auxiliary hospital equipment available by contacting Loren Keezer at 475-2766 or 475-8431.

BIRTHS

A son, Jeffery Allen to Mr. and Mrs. Norm Parker of Winston-Salem, N. C. Mrs. Parker, the former Ginger Hunter is the daughter of Mr. and Mrs. Ralph Hunter of Portage Lake. Paternal grandparents are Mr. and Mrs. George Parker of Chelsea.

A son, Matthew Scott, Oct. 16, to Mr. and Mrs. A. C. Allen.

More vocational industrial education teachers in Michigan public schools are graduates of Western Michigan University than of all other institutions combined.

John S. Lesser

Dies Thursday Evening at St. Joseph Mercy Hospital

John S. Lesser, 82, of 8040 Fifth St., died Thursday evening, Oct. 15, in St. Joseph Mercy Hospital. He was born Sept. 26, 1888, in Dexter township, the son of August G. and Katie Schmidt Lesser. Mr. Lesser was a life resident of the Dexter area. He married Barbara Pinkheiner Sept. 12, 1917. She preceded him in death March 10, 1966.

Survivors include one son, Leonard N. Lesser of Ann Arbor; four brothers, Alvin W. of Dexter, Emerson H. of Chelsea; Ezra A. of Dexter and Reuben A. of Chelsea; two sisters, Mrs. Adolph (Esther) Gross and Mrs. Clare (Ruth) Gregory both of Dexter; one grandson, James L. Lesser; several nieces and nephews. He was preceded in death by a sister, Mrs. Alfred (Lydia) Gross.

Funeral services were held Sunday, Oct. 18, at 2 p.m. from the Hosmer Funeral Home with the Rev. John F. Roschen of St. Andrew's United Church of Christ officiating. Burial was in Forest Lawn Cemetery. Memorial contributions may be made to St. Andrew's church in Mr. Lesser's name. Envelopes are available at the Hosmer Funeral Home.

Herbert Wallace

Former Chelsea Resident Dies Oct. 21 at Westland

Herbert (Hap) Wallace, of 2211 S. Harvey St., Westland, former resident of Chelsea, died Wednesday, Oct. 21, following a long illness. He was 55 years old.

Born Aug. 23, 1915, the son of John and Bertha Alber Wallace, he had been a resident of Westland for 30 years. He was a member of the Chelsea Masonic Lodge.

Survivors include his widow, Sallie, and daughters, Joyce Ann Wallace, and Mrs. Barbara Ann Hoffmeyer, all of the Westland area. His son, Sgt. Michael Wallace, has been missing in action in Vietnam since April 1968. Also surviving is his mother, Mrs. Bertha Wallace of 634 S. Main St., Chelsea.

Funeral services were held Friday, Oct. 23, at 2 p.m. at the Uht Memorial Funeral Home in Westland, the Rev. Charles Jacobs, officiating. Burial will be in the Glen Eden Memorial Cemetery, Livonia. Graveside services will be performed by the Masonic Lodge.

School Budget Hearing

Final budget hearing for the 1970-71 school year will be on Monday, Nov. 2, at 7:30 p.m. in the high school library. All interested citizens are invited to attend.

ADOPTION

A girl, Edie Lynd, 16-months-old, Thursday, Oct. 1 to Mr. and Mrs. Edward S. Harok, 220 E. North St. Mrs. Harok is the former Rosemary Scherdt. Grandparents are Mrs. Genevieve De Smith and Mr. and Mrs. Elmer Scherdt, Sr.



CHELSEA MARKSMEN display the trophies that a keen eye and steady hand earned them this Sunday, Oct. 18 at the Chelsea Rod & Gun Club shoot-off. Winners, from front row, from left, Jess Marshall, who took first place in the event, and Keith Schuelke, who was second. In the second row, Mel Stephens, left, and Bill Clark tied for third place, although a shoot-off gave the trophy to Stephens.

Jess Marshall Scores First In Trap Shoot

Jess Marshall took the first-place trophy at the Chelsea Rod & Gun club shoot-off held Saturday afternoon, Oct. 18. Wind was once more a problem, causing marksmen to miss perfect scores by a wide margin.

Eighteen shooters competed for the three trophies that culminated this season's shooting. All together, 22 squads shot, in preparation for this week's opening day on pheasant season.

Marshall won the first-place trophy with a shoot-off score of 88 out of 100. Keith Schuelke took second place with a close score of 87. Mel Stephens and Bill Clark tied for third place with scores of 83 out of 100. A shoot-off was held to determine the winner in which Stephens defeated Clark by a score of 23 to Clark's 21.

The trap range will be closed until the Sunday following the close of deer season in December.

Easter Lily Still Blooms

Mrs. Wesley Ellenwood, 201 Buchanan St., reported Friday morning, Oct. 16, that she also has an Easter Lily. The plant, with four blooms lived through the cold night of Thursday, Oct. 15.

Telephone Your Club News To GR 5-3581.

Speakers Bureau Formed By CHS Speech Classes

Advanced speech classes at Chelsea High school have formed a "Speakers Bureau" speech teacher, William Coelius, announced this week.

Each student in the bureau prepares a brief talk, of 15 minutes to half an hour in duration, concerning a particular topic.

These speeches are of a timely topic, or some interest common to a number of people. They are aimed at different age groups, from Girl Scouts to Senior Citizens levels.

Coelius said that the students in the Speakers Bureau will give their speeches, free of charge, to any organization which would be interested in their particular topic.

Some of this year's topics include: "To Eat or Not To Eat," a study of food poisoning; "The Savage Cell," a talk on cancer; "100 Years of Baseball"; "Do It Right and Save Yourself," which is a demonstration speech on exercise; "Path of Destruction," concerning Michigan tornadoes; and many other topics dealing with such items as drugs, epilepsy, popular music, or even Hawaii.

Organizations interested in hearing one of these speeches are urged to contact William Coelius at the high school.

Work is a word misunderstood by many of the younger generation.

Youth Sunday Set at St. Paul's

Sunday, Oct. 25 is Youth Sunday at St. Paul United Church of Christ. This worship service will be presented by the Senior High School Fellowship. The theme is "Putting It All Together for Christ." There will be dramatization showing the need for application of the Christian faith. The order of worship will be changed so that the service may be carried out effectively. The High School and Youth Chorus will sing. One of the anthems is "They Will Know We Are Christians By Our Love," and will include guitar accompaniment.

Youth Sunday is a chance for young people to participate in the worship service and express their ideas and their faith. They take complete charge of the service and present it themselves.

Guiding the youth have been the pastor, Mrs. Toby Butcher, staff assistant, Mr. and Mrs. Tim Whitesall, youth advisors, and Mrs. Linda McCreless, organist and Youth Choir director, and Bruce Galbraith, director of music. Later in the afternoon, the congregation of St. Paul will gather for their Fall Congregational Meeting, in which elections for 1971 offices will take place, and discussion and approval of a budget for 1971 will also be accomplished. The meeting begins at 4 p.m. A nursery, and refreshments will be provided. All members are urged to be present.

Personal Notes

Mr. and Mrs. Frederick Schultz, 20184 W. Old US-12 were visited by Mr. and Mrs. Harold Thompson from Grand Rapids at their home for three days this past week. Mrs. Thompson and Mrs. Schultz are sisters.

The first and only test of one's religion is the kind of life he leads.

(Political Advertising)

RE-ELECT
ESCH
Thinks for himself.
Works for us.

SOME FREE ADVICE ABOUT "FREE ADVICE"

Very often instead of consulting a physician about an ailment people will discuss it with a well-meaning friend, neighbor or relative. This can sometimes lead to serious harm. Because the same symptoms could apply to a great many different problems.

Our "Free Advice" is not to take unnecessary chances with your health or the health of your family. Your physician is an expert on illness and he can prescribe the specific medicine needed to help.

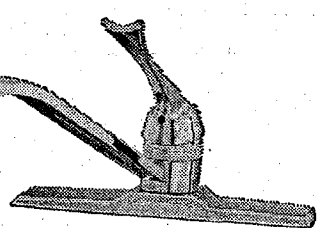
Early diagnosis and treatment of most any illness, even a bad cold, can mean quicker recovery at a relatively lesser cost.

YOU OR YOUR DOCTOR CAN PHONE US when you need a delivery. We will deliver promptly without extra charge. A great many people rely on us for their health needs. We welcome requests for delivery service and charge accounts.

CHELSEA DRUG
24-HOUR PRESCRIPTION SERVICE
101 N. MAIN ST. PHONE GR 5-4611

If you've ever replaced an electrical fixture, you can install a Peerless Faucet.

If you're a do-it-yourselfer but always thought installing a faucet was in another league, forget it.



MODEL 4200

Peerless fixtures are partially pre-plumbed. With common tools (and in some cases with the use of a 66c adapter kit) you can easily update lavatory, bathtub or kitchen sink.

★ Model 4200, Single-lever unit, for 3-hole sinks \$18.25

★ Model 4500, Single-lever unit with spray. For 4-hole sinks . . . \$23.75

★ Model 4620, Single dial faucet for 4" lavatories, complete with pop-up drain assembly \$21.95

★ Model 4730, Combination valve and diverter, for tub & shower . . \$20.95

NEW - AT:

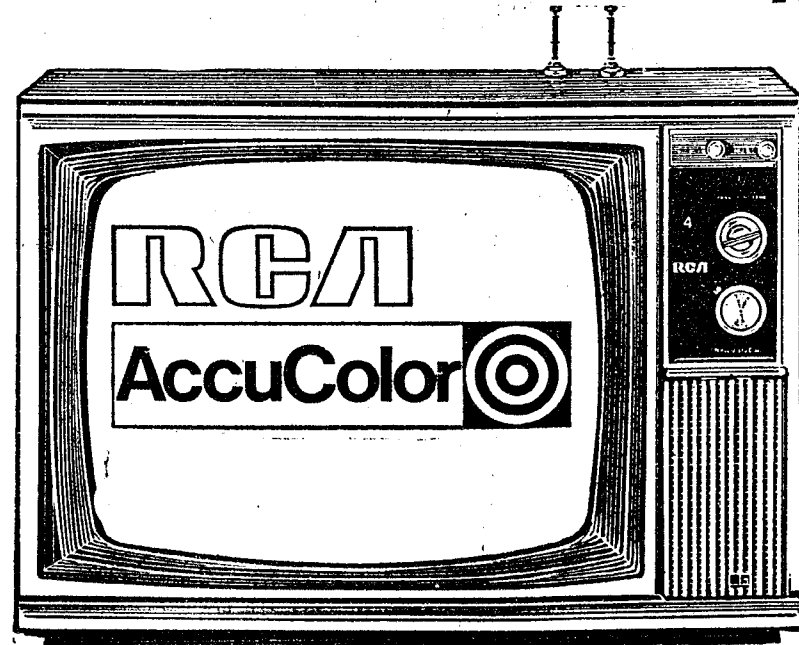
CHELSEA LUMBER CO.

"One-Stop Supply Center for the

Home-Owner

DIAL 475-3391

GAMBLES RCA MONTH



RCA AccuColor performance in table-top TV

Here is vivid, lifelike color—RCA's AccuColor—designed into a compact table model. Computer-designed AccuColor picture tube for sharper, more detailed pictures. Powerful chassis features many solid state components for extra dependability. AccuColor automatic tuning unclutters color because it's a system where critical color controls are automatic.

The BARRIE Model FP-528 20" diagonal picture

\$459⁹⁵

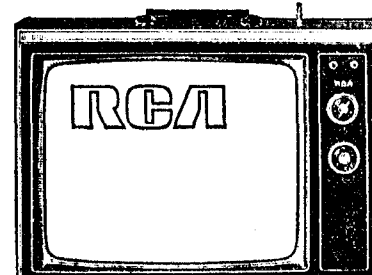


Go stereo module at a budget price—with RCA

Model VS1000

Modular stereo system at a value price. Studiomatic changer, diamond stylus. Duo-cone speakers.

\$99⁹⁵



Big and bright and priced just right Big-screen portable. Famous RCA quality performance. Value priced.

Black & White Portable with stand

\$169⁹⁵

SHOP NOW and SAVE !

REFURBISH for fall

Men . . . be fashionable yet comfortable in this distinctive coat by Pendleton®. With its 100% Alpaca collar and virgin wool outer shell it's the answer for the action man this fall. Available in sizes 38-46 \$55

SPORTSWEAR by the Wool People

HATS by Mallory

THE WEDGE
A magnificently crafted fur felt with handsomely styled lines. Centoford has wide grosgrain band and feather ornament.

Others from \$5.95
\$12⁹⁵

Strieter's Men's Wear
"The Place To Go For Brands You Know"

AGRICULTURE IN ACTION

by GARY A. KLEINHENN

Michigan Farm Bureau

★ Pesticides and Food

At a time when the government seems to cancel the registration or use of some kind of chemical pesticide every few days, there is concern among farm circles that the general public really does not understand how important chemicals are to the production of food.

There appears to be a need to convince the consumer that unreasoned regulation of the pesticide industry is not in his or her best interest.

One of the first approaches needed, say agricultural leaders, is to help people understand that pesticide is a very sophisticated product backed by hundreds of scientific man-years devoted to its safe use. Few people realize that pesticide manufacturers are required by law to produce volumes of sound, scientific proof that the chemical is useful, safe to use, and may be used in growing, storing, or transporting food crops without any ill effect to the consumer when applied as recommended.

City dwellers need to be made aware that pesticides are necessary for an adequate diet, necessary to put food on their tables and necessary for the general health of their children and of themselves.

Farmers feel that the average housewife is unaware that it takes from five to seven years to develop each new pesticide. During this time, the manufacturers must be certain that the new product will protect the environment and not damage it.

The young housewife, under the age of 35, probably can't remember the days when apples had worm holes in them or brown spots on them. They also were not around when the only time we saw oranges was at Christmas time. All this has changed in the past 20 to 30 years. Keeping away the bugs has helped make it so.

In our abundance, it is easy to forget that pesticides have been one of the major reasons for agriculture's phenomenal ability to produce high quality food. Pesticides have also helped rid the world of plagues and continue to control disease. Farmers, in general, have used them judiciously and only in the quantity necessary to assure control of disease and pests that affect agricultural products. Furthermore, many of the pesticides under attack have been used little in recent years.

Pickel Fund Still Receiving Contributions

Donations to the Pickel Fund will be received until Nov. 17, Teresa Abram, service chairman for the Theta Gamma Chapter of the Beta Sigma Phi service organization which is conducting the drive, announced this week.

Pickel Fund is a fund to be given to Mr. and Mrs. Jack Pickel of Pinckney, to alleviate the great costs incurred when their two young sons died in a tent fire this past summer.

All donations are being turned over in their entirety to the Pickel family, Teresa Abram announced, as the service organization is meeting all expenses incurred in conducting this fund campaign.

Donations may be sent to Ann Arbor Bank, Information Desk, 101 S. Main, Ann Arbor 48108.

AGE
23

Married Male Driver

Your A-O man will save you money on your car insurance. No surcharge or higher rate. See your A-O man — he's all out for you.

**A. D. MAYER
AGENCY, INC.**

"Your Protection Is Our Business"
Phone 479-5061

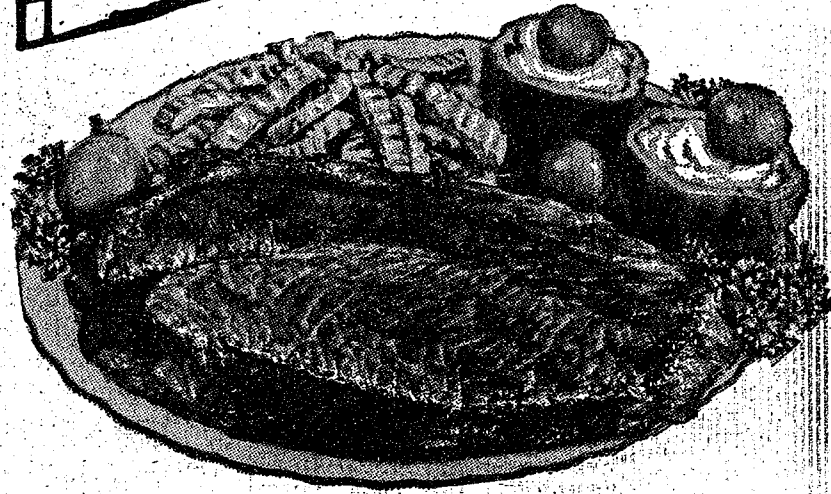
115 Park St. Chelsea

**Auto-Owners
INSURANCE COMPANY**

THE SUPERMARKET THAT'S JUST A LITTLE BIT BETTER

Stop & Shop

14901 Old U.S.-12
Corner at M-52
Chelsea



THE KNOW HOW OF INTELLIGENT MEAT BUYING IS REALLY THE 'KNOW WHERE'

Our customers have learned to depend on the outstanding quality of Stop & Shop meats — unflinching satisfaction with every cut they purchase. The finest quality, together with the expertise of our meat cutting experts, makes an unbeatable combination.

Prices effective Wednesday, October 21,
through Tuesday, October 27, 1970.

"Triple R Farms" U.S.D.A. Choice

BONELESS

ROUND STEAK

\$1.09
lb.

Tender, Delicious

Cube Steaks

\$1.09 lb.

Stop & Shop's All American Beef

Hamburger

5-Lb. Units
or More

59¢ lb.

Swift Premium

Sliced Bacon

1-Lb.
Vacuum Packed
Hickory Smoked

79¢ lb.

"Triple R Farms" U.S.D.A. Choice

Sirloin Steak

\$1.29 lb.

"Triple R Farms" U.S.D.A. Choice

Ground Round Steak

99¢ lb.

Lean, Tender, Boneless and Cubed

Breaded Pork Cutlets

89¢ lb.

Tender, Sliced

Beef Liver

49¢ lb.

"Triple R Farms" U.S.D.A. Choice

Roast

Rump or
Sirloin Tip

\$1.19 lb.

Lean, Tender, Meaty

Pork Steak

69¢ lb.

"Triple R Farms" U.S.D.A. Choice

Chuck Steaks

79¢ lb.

Stop & Shop's Enriched Sliced

White Bread

1-Lb., 4-Oz.
Loaf

19¢

Shamrock Country Fresh

Large Eggs

Grade A
All White

48¢

Dozen
in Carton

Tender Sweet

Carrots

1-Lb.
Pkg.

8¢

McDonald's 2% Low Fat

Fresh Milk

½ Gallon
Carton

3 for \$1.00

Blue Ribbon

Margarine

In ¼-Lb.
Prints

19¢ lb.

Randall's Great Northern

Eatin' Beans

4-Lb.
Jar

37¢

Canned Pop

FAYGO

12-Oz.
Can

8¢

New Green

Cabbage

Solid
Heads

7¢ lb.

Van Camp

Pork & Beans

16-Oz.
Can

10¢

Sunshine

Krispy Crackers

1-Lb.
Box

29¢

Nabisco Oreo Creme Sandwich

Cookies

15-Oz.
Pkg.

39¢

Keebler Town House

Oval Crackers

1-Lb.
Box

39¢

Dutch Maid

Yes Yes Cookies

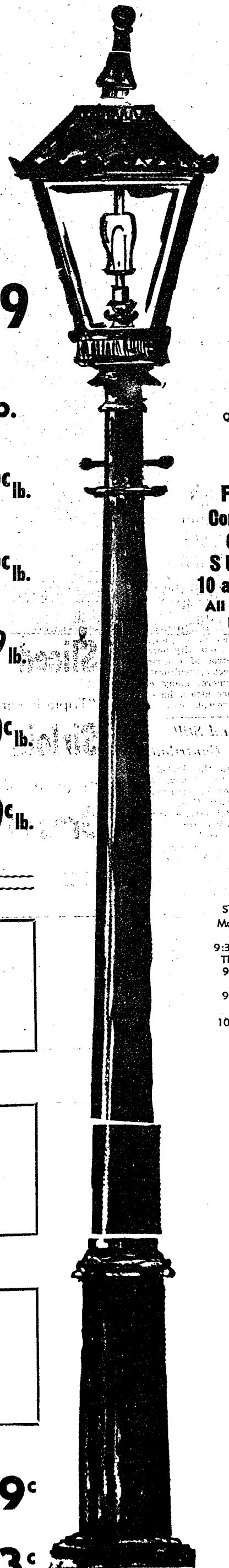
12-Oz.
Pkg.

53¢

WE
RESERVE
THE
RIGHT
TO
LIMIT
QUANTITIES

For Your
Convenience
**OPEN
SUNDAY**
10 a.m. - 4 p.m.
All Sale Prices
Effective
Sundays

STORE HOURS:
Monday, Tuesday,
Wednesday
9:30 a.m. - 6 p.m.
Thursday, Friday
9 a.m. - 9 p.m.
SATURDAY
9 a.m. to 6 p.m.
SUNDAY
10 a.m. to 4 p.m.



Asking the question is much easier than finding the right answer.

There are selfish people in every community who still seem to get along.

FARM AUCTION

**HOLSTEIN DISPERSAL - FARM MACHINERY
HAY - DAIRY EQUIPMENT - TRUCK**

Having decided to quit the dairy business, a public auction will be held, located 1 mile east of Chelsea on Old US-12 to Freer Road, south 1 mile.

1 p.m. Tues., Oct. 27 1 p.m.

Ph. Stockbridge **Price Bros., Auctioneers** Ph. Stockbridge
517-851-8042 517-851-8042

32 REGISTERED & GRADE HOLSTEINS 32
17 mature cows, ages 3-7 years. Some of the cows in this herd have freshened base months and are in good production. Balance of herd due in next 2 months. Cows will produce up to 70 lbs. when fresh. Seven Holstein heifers, 16-18 months old, open; four Holstein heifers 10-12 months old; four Holstein heifer calves, 2-4 months old. This herd M.A.B.C. bred, TB and Bangs tested.

MACHINERY

1968 New Holland model 269 hay baler with bale thrower, long tongue, like new.
1967 New Holland No. 56 hay rake in good condition.
McCormick No. 20C forage harvester in good condition.
New Holland blower unit, rubber belt feed table.
Case wagon with baled hay rack.
Rubber-tired wagon with baled hay rack.
New Idea 201 manure spreader, PTO, good condition.
Feeder rack.
Antique wooden wheel wagon.

DAIRY EQUIPMENT

Craft 250 gallon bulk tank.
Three Surge milker units.
Surge milker pump and 1 h.p. motor, real good.
Stainless steel wash tubs.
Stainless steel strainers.

HAY - STRAW

700 bales alfalfa brome hay.
250 bales straw.

TRUCK

1961 Chevrolet 1 1/2 ton truck with good grain rack.

TERMS: Cash or Check.

**No Goods Removed from Premises Until Settled For.
Not Responsible for Accidents.**

ELMER LINDOW, Owner

Letters to the Editor

To The Editor:

In the matter of the application of the Michigan Livestock Exchange for a conditional use permit in an A-1 Agricultural zone for a livestock auction sales, offices and restaurant on M-52 south of Chelsea, let us consider the following facts:

1. When a company states they are going to move their main operation from the City of Detroit to this location, this removes it from the agricultural class and puts it into the commercial or business class, also the statement has been made, to outside newspapers, by Mr. Walton, of the Michigan Livestock Exchange, that if this facility is approved the Adrian Feeder Yards will be closed. (Reading between the lines, Does this mean this facility will be moved here also?) Yet on being questioned at a public meeting as to the use of the balance of land not used for buildings he states, "Oh, we may farm it or graze a few cattle."

2. The amount of business this will bring to our community is questionable. Specifically what kind of business? Can Michigan Livestock tell us what our tax revenue from them will be? They claim \$68 million dollars worth of business in the entire state last year, but their local taxes would not be based on the amount of business they do per year. The local restaurants would not profit as Michigan Livestock will also operate a restaurant (which is strictly against the Zoning Ordinance). The gas stations will not profit as most of the trucks burn diesel fuel. They only plan on employing 10 full time people. Therefore exactly how will they benefit the community?

Did you know that out of the entire township approximately 18

families' sole income is derived from farming? Therefore, should we allow this to happen so that the rest of southeastern Michigan may benefit?

3. 316 Sylvan township residents have signed a petition against this facility, requesting that it be located elsewhere. (It is hard to believe this is the only suitable location in Washtenaw county). Also various pictures, statements and recordings, from residents at the other four facilities in Michigan giving their objections to locating a livestock yards close to residences have been presented to the Zoning Board? Don't the above facts mean anything to our local Zoning Board? Have we come to the point where economic consideration overrules human rights? Remember, tomorrow it may be YOU that big business tries to move in on if our Zoning Board grants this permit.

N. H. Miles
Margaret Miles
Henry E. Orbring
Patricia A. Orbring
Darrel Satterthwaite
Carol Satterthwaite

To The Editor:

Recently the following petition was presented to the Sylvan Township Zoning Board with 316 signatures of concerned residents:

We, the undersigned, represent that we are residents and/or property owners residing in the Township of Sylvan, County of Washtenaw, State of Michigan and address this Petition to you relative to a request which has been filed with your Board for a conditional use permit by Michigan Livestock authorizing the installation and operation of a livestock marketing facility on premises in Section 35, Sylvan Township, along M-52.

Whereas, we are anxious to make known to this Board our feelings about the proposed location of said facility.

Now, therefore, we do hereby indicate our firm and unequivocal opposition to this request for said conditional use for the following reasons:

(a) It is basically commercial, is not consistent with the zoning area in which it is proposed.

(b) It is inconsistent with the purposes of zoning and is an undesirable instance of "spot zoning."

(c) It will create new and unnecessary traffic congestion and hazards.

(d) It will introduce "around the clock" noises given off by livestock, upsetting the usual residential routine.

(e) It will result in the emission of foul and obnoxious odors attendant upon the presence of livestock.

(f) It will introduce "day and night" trucking operations and the noise, disruption, fumes, pollution and other obvious by-products.

(g) It will pollute the air, land, water and entire area in a fashion contrary to the best interests of the area residents.

(h) It is not necessary that it be located where it is proposed, as sites could be secured which would not have a comparable disrupting effect upon area residents.

(i) It will be, and will continue to be a nuisance which is neither necessary nor desirable.

We, therefore, respectfully request that you hear the pleas of those who now live in Sylvan Township, who pay their taxes, who have invested their earnings and savings in their homes and want only to live the kind of peace and serenity that they felt the zoning ordinance was intended to secure for those who live in this Township.

Your rejection of this request for conditional use permit will avoid the foregoing difficulties, will serve the residents of this Township, will implement the zoning ordinance as it was intended and will frustrate this unnecessary disruption of life in Sylvan Township.

How can the Zoning Board seriously consider this application with this much opposition, along with other letters, pictures and recordings from other residents near installations of this Company, that has been presented to them?

Very truly yours,
Jerry Dresselhouse.

To The Editor:

I recently received The Chelsea Standard from home.

I just finished reading the letter from Gilda Gillespie about the rules of CHS and couldn't help but write.

Half of those kids would complain if they were getting hung with a new rope!

Maybe if the kids at CHS would act like young adults they would be treated like it and not little children that have to be taught.

Look at other schools where the administration doesn't care what you do or look like. Much less care if you learn. You should be glad that people are trying to make something of yourself.

I must admit that when I was going to CHS (I graduated in June 1970) that the tardy rule

(Political Advertising)

RE-ELECT

ESCH

Thinks for himself.
Works for us.

TEACHER TOPICS

By Mary Sapala

High School English Teacher
English may be boring, English may be exciting. The Chelsea High School English department, in hopes of reaching the latter, has re-evaluated its program. The student is our main concern. If we are to improve his ability to think, to learn, and to acquire knowledge, we must start with a way to reach him. Reaching the student is the aim of our new program.

We, the staff of the Language Arts Department, have begun a program that starts with the student's interest. English courses are designed to cover one subject in depth rather than to survey a whole body of material, which is often boring because it is superficial. In this way we hope to create interest in individual areas, hoping that this will in turn lead to a hunger for more in-depth knowledge. Allowing the student to select his own learning area gives us a head start in reaching him.

Individual needs of students are met through a variety of courses. Mass communications, creative writing, publications, short story, American literature and independent reading are just a few of the courses. The courses are one semester in length which allows the student to cover more areas.

Speaking as an individual English teacher of creative writing and humanities, I have noticed a change for the better. I feel that my students are responding in a positive manner to the new program. This change is seen in different ways, through student interest and activity in the classroom and teacher interest. I for one am an enthusiastic supporter of the new program.

The English department presented its proposed curriculum change to the board of education last spring containing the ideas behind the change. I feel that these quotes explain in part the reasons for our change.

"The present English program clumsily lumps students into broad age and emotional groups. Subject matter is then presented on the basis that having attained a certain age and number of years experience in education is the major requisite for learning a certain body of information. Such an approach speaks not at all to the student's interests. The sole purpose for taking one class rather than another is that one takes, for example, English III because he is in the 11th grade, not because one is interested in the subject matter covered in English III."

"The article goes on to read: 'Disregarding student interests would be bad enough without compounding it with disregard for individual needs as does a traditional English program. The proposed Language Arts Program will positively attack the needs of the student body as a whole and the student as an individual. Each student needs, training and exercise in reading and communication skills. However, to what degree varies with the individual. In order to satisfy all needs, a wide variety of courses in conjunction with in depth counseling by the Language Arts teachers will be provided. The result is a relevant program helpful to all students.'

Please address any communications to the CEA as follows: CEA, P.O. Box 141, Chelsea, 48118.

I am going to a university where the rules are much stricter than the rules at CHS but they don't bother me. This university wants you to learn and study like Timothy 2:15 says—read it if you know what the Bible is! I'm thankful that CHS was strict and also for a college like Bob Jones.

I love the Lord maybe that is why things don't bother me as much. God takes care about my problems, who takes care of yours?

Nancy Picklesimer.

(Political Advertisement)



MILDRED HACKNEY
Republican Candidate

For Dexter Township Treasurer

• I have lived in Dexter township for twenty years.

• I have represented Dexter township's interest on the Board of the Dexter Community Library continuously since its founding in 1964.

• I would be pleased to continue to represent Dexter township and to work for its future development with the Republican staff if elected to the office of treasurer.

VOTE THE TANDY TICKET

Vote Republican Nov. 3

GENERAL ELECTION

To the Qualified Electors:

NOTICE IS HEREBY GIVEN,

That a General Election will be held in the

TOWNSHIP OF DEXTER

(PRECINCT NO. 1)

County of Washtenaw, State of Michigan

AT

DEXTER TOWNSHIP HALL

Quigley Road at Dexter Townhall Road

on

TUESDAY, NOVEMBER 3, 1970

FOR THE PURPOSE OF ELECTING THE FOLLOWING OFFICERS, VIZ:
STATE Governor & Lieutenant Governor, Secretary of State, Attorney General, 2 Members of State Board of Education 2 Members of Board of Regents of the University of Michigan, 2 Members of Michigan State University Board of Trustees, 2 Members of Wayne State University Board of Governors.

CONGRESSIONAL United States Senator, Representative in Congress.

LEGISLATIVE State Senator, State Representative.

COUNTY Commissioner.

TOWNSHIP Supervisor, Clerk, Treasurer, 1 Trustee, 1 Constable.

AND ALSO ANY ADDITIONAL OFFICERS THAT MAY BE ON THE BALLOT.

AND ALSO TO VOTE ON THE FOLLOWING NON-PARTISAN OFFICERS, VIZ:

TWO JUSTICES OF THE SUPREME COURT

JUDGE OF THE COURT OF APPEALS (2)

JUDGE OF THE CIRCUIT COURT (2)

JUDGE OF THE PROBATE COURT

JUDGE OF THE 14th DISTRICT COURT

TWO MEMBERS BOARD OF TRUSTEES WASHTENAW COMMUNITY COLLEGE

AND ALSO TO VOTE ON THE FOLLOWING STATE PROPOSALS

Proposal "A" to authorize a bond issue for low income housing.

Proposal "B" to reduce the minimum voting age to 18.

Proposal "C" Anti-parochial Proposal.

AND ALSO TO VOTE ON THE FOLLOWING COUNTY PROPOSAL:

WASHTENAW COMMUNITY COLLEGE

MILLAGE INCREASE PROPOSITION
"Shall the Tax Limitation on the total amount of taxes which may be assessed against all property in the County of Washtenaw, Michigan, for the operation of Washtenaw Community College be increased, as provided by Section 6, Article IX of the Constitution of Michigan, by one (1) mill of the assessed valuation as equalized, for a period of providing funds for operating expenses and the operation and purchase of equipment for occupational training programs?"

COUNTY TREASURER'S STATEMENT AS REQUIRED BY ACT 293 OF THE PUBLIC ACTS OF 1947 AS AMENDED BY ACT 278, PUBLIC ACTS OF 1964

I, Sylvester A. Leonard, County Treasurer of the County of Washtenaw, State of Michigan, do hereby certify that, according to the records of this office, as of October 1, 1970, the total of all voted increases in the tax rate limitation, above the 18 mills established taxable property in Washtenaw County, State of Michigan in said County, is as follows:

Local Unit	Years	Millage Increase	Effective
County of Washtenaw		\$1,480,000 unlimited	1967-1982 Incl.
Ann Arbor Township		None	1967-1971 Incl.
Augusta Township		None	1967-1971 Incl.
Bridgeview Township		None	1967-1971 Incl.
Dexter Township		None	1967-1971 Incl.
Freedom Township		None	1967-1971 Incl.
Lima Township		None	1967-1971 Incl.
Lodi Township		None	1967-1971 Incl.
Lyndon Township		None	1967-1971 Incl.
Manchester Township		None	1967-1971 Incl.
Northfield Township		None	1967-1971 Incl.
Pittsfield Township		None	1967-1971 Incl.
Salem Township		None	1967-1971 Incl.
Saline Township		None	1967-1971 Incl.
Silo Township		None	1967-1971 Incl.
Sharon Township		None	1967-1971 Incl.
Superior Township		1 1/2 Mills	1969-1970 Incl.
Sylvan Township		None	1967-1971 Incl.
Webster Township		None	1967-1971 Incl.
Ypsilanti Township		None	1967-1971 Incl.
Washtenaw Community College		1 1/2 Mills	1967-1971 Incl.
Oakland Community College		1 1/2 Mills	1967-1971 Incl.
Schoolcraft Community College		1 1/2 Mills	1967-1971 Incl.
Washtenaw County Intermediate School District		1 1/2 Mills	1967-1971 Incl.
Ingham County Intermediate School District		1 1/2 Mills	1967-1971 Incl.
Jackson County Intermediate School District		1 1/2 Mills	1967-1971 Incl.
Lapeer County Intermediate School District		1 1/2 Mills	1967-1971 Incl.
Livingston County Intermediate School District		1 1/2 Mills	1967-1971 Incl.
Oakland County Intermediate School District		1 1/2 Mills	1967-1971 Incl.
Ann Arbor Public Schools District		10 Mills	1967-1971 Incl.
Ypsilanti Public Schools District		11.66 Mills	1967-1971 Incl.
Lincoln Consolidated School District		6.67 Mills	1967-1971 Incl.
Manchester Public Schools District		10 Mills	1967-1971 Incl.
Mill Area Schools District		5 Mills	1967-1971 Incl.
Saline Area Schools District		11 1/2 Mills	1967-1971 Incl.
Whitmore Lake Schools District		7 1/2 Mills	1967-1971 Incl.
Willow Run Public Schools District		9.33 Mills	1967-1971 Incl.
Clinton Community Schools		4 Mills	1967-1971 Incl.
Columbia School District		3 Mills	1967-1971 Incl.
Napoleon Rural Agriculture School District		8 Mills	1967-1971 Incl.
Northville Public School District		10 Mills	1967-1971 Incl.
Pineckey Community School District		7 Mills	1967-1971 Incl.
Plymouth Community Schools District		2 Mills	1967-1971 Incl.
South Lyon Community School District		5 1/2 Mills	1967-1971 Incl.
Stockbridge Community Schools District		1 1/2 Mills	1967-1971 Incl.
Van Buren Township School District		8 Mills	1967-1971 Incl.
Chelsea Schools District		14 Mills	1967-1971 Incl.
Ann Arbor, Michigan		4 1/2 Mills	1967-1971 Incl.
October 2, 1970		8 Mills	1967-1971 Incl.
		10.98 Mills	1967-1971 Incl.

SYLVESTER A. LEONARD, Treasurer
Washtenaw County

SALE OF SPIRITS PROPOSAL

DEXTER TOWNSHIP, WASHTENAW COUNTY, MICHIGAN
"Shall the sale of spirits in addition to beer and wine be permitted for consumption on the premises within the Township of Dexter under the provisions of the law governing same?"

YES ☐

NO ☐

ALSO ANY ADDITIONAL AMENDMENTS OR PROPOSITIONS THAT MAY BE SUBMITTED

Notice Relative to Opening and Closing of the Polls

ELECTION LAW, ACT 116, P. A. 1954
SECTION 720. On the day of any election the polls shall be opened at 7 o'clock in the forenoon, and shall be continuously open until 8 o'clock in the afternoon and no longer. Every qualified elector present and in line at the polls at the hour prescribed for the closing thereof shall be allowed to vote.

THE POLLS of said election will be open at 7 o'clock a.m. and will remain open until 8 o'clock p.m. of said day of election.

WILLIAM EISENBEISER, Township Clerk



"If you're unhappy with the phone company, we'll get you action."

"It happens.

"Sometimes people have a legitimate complaint against the phone company.

"But too often they go to someone else for an answer. When we should be the first to hear about it.

"We're service and repair representatives at Michigan Bell, and if you need an answer for a slip up, call one of us first.

"We have a new way to handle complaints and unusual service requests much faster. Now if you should ever have a question for the phone company, you don't have to contact someone else.

"To take care of these hang ups, Michigan Bell has set up 'Special Action

Forces' in its local offices.

"Our 'Special Action Forces' are made up of specially trained people.

"They know the best ways to track down misplaced orders. To answer uncommon questions. To process even the most complicated service and repair requests.

"So if you ever have a telephone repair problem, just dial repair service; for any other service requests, call your service representative at your local Michigan Bell business office. If we can't solve your problem through regular channels, we'll turn it over to our 'Special Action Forces'.

"Now, if you contact us first, you'll get faster action."

Michigan Bell



ROBERT WORTLEY, 15-year-old son of Mr. and Mrs. Dean Wortley, Mesa, Ariz., has been awarded his Eagle Scout badge. The high school sophomore, grandson of Mr. and Mrs. Charles Wortley, 219 Madison St., and Mr. and Mrs. Armin Zinke, 20626 Waldo Rd., has recently moved to Mesa with his parents. Prior to living in Mesa, the Wortleys lived in Battle Creek, where Robert was a member of Boy Scout Troop 5, at St. Joseph Church. He earned all of his badges in Battle Creek.

DEATH FOR BOMBERS
Sacramento, Calif.—A law that could send a person who sets off a bomb to the gas chamber has gone into effect in California. Gov. Ronald Reagan said he hoped this would deter persons from using "this most tragic and senseless form of violence." The statute set the death penalty or life imprisonment—at the discretion of the jury.

HAM DINNER
at St. John's United Church of Christ
Francisco, Michigan
THURSDAY, OCT. 29
Serving at 5:30 p.m. and 7:30 p.m.
FOR TICKETS CALL
CHELSEA 475-8357 or GRASS LAKE 522-8218
ADULTS: \$2.50 CHILD: \$1.00

REVIVAL MEETINGS
with
Evangelists
VAN and BARB
DeKONTY
of Bellevue, Mich.

★ SALVATION
★ BAPTISM OF THE HOLY SPIRIT
★ HEALING
★ SECOND COMING

★
Special Music
VOCAL and INSTRUMENTAL

FIRST ASSEMBLY OF GOD
OF CHELSEA
14900 OLD US-12 T. B. THODESON, PASTOR
OCT. 21 to NOV. 1 except Mon. and Sat.
Nightly at 7 p.m.

+ Services in Our Churches +

CONGREGATIONAL CHURCH
(United Church of Christ)
The Rev. Daniel Kellin, Pastor
Sunday, Oct. 25—
10:00 a.m.—Church school.
10:00 a.m.—Morning worship.

ST. MARY CATHOLIC CHURCH
The Rev. F. Francis Wahowiak
Saturday, Oct. 24—
7:30 p.m.—Mass.
Sunday, Oct. 25—
Masses at 6:30 a.m., 8:00 a.m.,
10:00 a.m., and 11:30 a.m.

FIRST ASSEMBLY OF GOD CHURCH
The Rev. Thode B. Thodeson
Pastor
Sunday, Oct. 25—
9:45 a.m.—Sunday school.
11:00 a.m.—Worship service.
7:00 p.m.—Evangelistic service.
Every Wednesday—
7:00 p.m.—Midweek services.

ZION LUTHERAN CHURCH
Corner of Fletcher, Waters Rds.
(Rogers Corners)
The Rev. John R. Morris, Pastor
Saturday, Oct. 24—
9:00 a.m.—8th grade youth in-
struction classes.
10:00 a.m.—8th grade.
11:00 a.m.—7th grade.
Sunday, Oct. 25—
9:00 a.m.—Sunday school.
10:15 a.m.—Worship service.
7:00 p.m.—Luther League.

Monday, Oct. 26—
7:15 p.m.—Junior Choir.
7:30 p.m.—Planning Committee.
8:00 p.m.—Senior Choir.
Tuesday, Oct. 27—
7:30 p.m.—Women's Shuffle-
board.
Thursday, Oct. 29—
7:30 p.m.—ALCW conference
workshop at Emmanuel, Ypsilanti.

CHELSEA BAPTIST CHURCH
337 Wilkinson
Sunday, Oct. 25—
10:00 a.m.—Sunday school.
11:00 a.m.—Worship service.
Nursery care available during all
services.
6:00 p.m.—Junior and Senior
Baptist Youth Fellowship.
7:00 p.m.—Evening worship.
Every Wednesday—
7:30 p.m.—Bible study and
prayer meeting.

SALEM GROVE UNITED METHODIST CHURCH
The Rev. Frederick Atkinson
Pastor
Sunday, Oct. 25—
10:00 a.m.—Sunday school.
11:00 a.m.—Worship service.

NORTH LAKE UNITED METHODIST CHURCH
The Rev. Frederick Atkinson
Pastor
Sunday, Oct. 25—
9:30 a.m.—Worship service.
10:30 a.m.—Sunday school.

FIRST UNITED METHODIST CHURCH
The Rev. Clive Dickins, Pastor
Thursday, Oct. 22—
8:00 p.m.—Youth Council at
home of Robert Robbins.
Saturday, Oct. 24—
8:30 p.m.—Christian Home
Group No. 2 at home of Robert
Kushmaul.
Sunday, Oct. 25—
9:00 a.m.—Church school (nur-
sery-adult).
10:00 a.m.—Church school (Nur-
sery-2nd grade).
10:00 a.m.—Worship service.
6:00 p.m.—Junior and Senior
MYF.
8:00 p.m.—Youth Choir rehear-
sal.
Wednesday, Oct. 28—
1:00 p.m.—WCS Executive
Committee at home of Mrs. Ar-
thur Schmunk.

ST. BARNABAS EPISCOPAL CHURCH
20500 Old US-12
The Rev. C. Walton Fitch, Vicar
Sunday, Oct. 25—
9:15 a.m.—Holy Communion,
first, third and fifth Sundays.
9:15 a.m.—Morning Prayer sec-
ond and fourth Sundays.

OUR SAVIOR LUTHERAN CHURCH
Rebekah Hall, 1194 M-52
The Rev. William H. Keller, Pastor
Sunday, Oct. 25—
9:15 a.m.—Sunday school and
Youth Bible Class.
10:30 a.m.—Worship Service.
Every Thursday—
6:00 p.m.—Youth Confirmation
Class.

NORTH SHARON COMMUNITY BIBLE CHURCH
Sylvan and Washburn Rds.
William Enns, Pastor
Sunday, Oct. 25—
10:00 a.m.—Sunday school.
11:00 a.m.—Worship service.
6:30 p.m.—Young People's
service.
Every Wednesday—
7:30 p.m.—Prayer meeting.

ST. JACOB EVANGELICAL LUTHERAN CHURCH
12501 Reithmiller Rd., Grass Lake
The Rev. Andrew Bloom, Pastor
Sunday, Oct. 25—
9:00 a.m.—Sunday school.
10:15 a.m.—Divine services.

METHODIST HOME CHAPEL
The Rev. R. L. Clemans, Chaplain
V. O. Johnson, Administrator
Sunday, Oct. 25—
8:45 a.m.—Worship service.

ST. JOHN'S EVANGELICAL AND REFORMED CHURCH
(United Church of Christ)
Rogers Corners
The Rev. David J. Kleis
Sunday, Oct. 25—
9:30 a.m.—Sunday school.
10:30 a.m.—Morning worship.

FIRST UNITED METHODIST CHURCH OF WATERLOO
Parke and Territorial Rds.
Mrs. Altha Barnes, Pastor
Sunday, Oct. 25—
9:15 a.m.—Morning worship.
10:15 a.m.—Sunday school.

VILLAGE UNITED METHODIST CHURCH OF WATERLOO
8117 Washington St.
Mrs. Altha Barnes, pastor
Sunday, Oct. 25—
10:00 a.m.—Sunday school.
11:15 a.m.—Morning worship.

GREGORY BAPTIST CHURCH
The Rev. Grant Lapham, Pastor
Sunday, Oct. 25—
10:00 a.m.—Worship service.
11:15 a.m.—Church school.
6:30 p.m.—Baptist Youth Fel-
lowship.
7:30 p.m.—Evening worship
service.

FIRST UNITED PRESBYTERIAN CHURCH
Unadilla
The Rev. T. H. Liang
Sunday, Oct. 25—
9:45 a.m.—Sunday school.
11:00 a.m.—Worship service.
Every Tuesday—
8:00 p.m.—Choir practice.

ST. THOMAS EVANGELICAL LUTHERAN
The Rev. Daniel L. Mattson,
Pastor
Sunday, Oct. 25—
10:00 a.m.—Worship service.
11:00 a.m.—Sunday school and
Bible study.

ST. JOHN'S EVANGELICAL AND REFORMED CHURCH
(United Church of Christ)
Francisco
The Rev. Robert Townley
Sunday, Oct. 25—
10:00 a.m.—Worship service.
10:20 a.m.—Sunday school.

CHURCH OF CHRIST
18661 Old US-12, East
R. D. Parnell, Minister
Sunday, Oct. 25—
10:00 a.m.—Church school.
11:00 a.m.—Worship service.
6:00 p.m.—Worship service.
Every Wednesday—
7:30 p.m.—Bible Study.

UNITED CHURCH OF CHRIST
The Rev. Warner Siebert, Pastor
Thursday, Oct. 22—
7:30 p.m.—Long range plan-
ning committee at Betty Bust's.
8:00 p.m.—Association Parish
Concerns.
Saturday, Oct. 24—
9:00 a.m.—12:30 p.m.—Junior
High confirmation program.
10:15 a.m.—Youth Choir.
Sunday, Oct. 25—Youth Sunday—
9:00 a.m.—Stewardship counsel-
or training.
9:15 a.m.—Church school.
10:30 a.m.—Worship. Sermon
title: "Youth Theme." Congrega-
tional meeting follow worship.
Counsellors arrive due.
Wednesday, Oct. 28—
11:00 a.m.—5:00 p.m.—Blood
Bank. Congregational church.
6:30 p.m.—Mailing committee.
7:15 p.m.—H. S. Choir.
8:15 p.m.—Chancel Choir.
Thursday, Oct. 29—
9:00 a.m.—Kolonia at Emma
Seitz's.

BERKELEY EVANGELICAL AND REFORMED CHURCH
(United Church of Christ)
Freedom Township
The Rev. Roman A. Rebeck
Sunday, Oct. 25—
10:00 a.m.—Worship.
10:00 a.m.—Sunday school.

FIRST CHURCH OF CHRIST, SCIENTIST
1833 Washtenaw Ave., Ann Arbor
Sunday, Oct. 25—
10:00 a.m.—Sunday school.
10:30 a.m.—Morning service.
Lesson-sermon: "Probate After
Death."

BIBLE VERSE TO STUDY

"By this is my Father glorified, that you bear much fruit, and prove to be my disciples."

1. Who is the author of this statement?
2. To whom was he speaking?
3. What was the occasion of this statement?
4. Where may this verse be found?

(Answers on page 14)

(Political Advertising)

RE-ELECT ESCH
Thinks for himself.
Works for us.

BOOKMOBILE CONTRIBUTORS

I WANT TO THANK YOU FOR YOUR INTEREST AND KIND CO-OPERATION IN GIVING TOWARDS THIS WONDERFUL CHRISTIAN ENDEAVOR.

NO MATTER HOW SMALL YOUR CONTRIBUTION IS, IT ALL HELPS TOWARD THE TOTAL SUM THAT IS NEEDED.

\$1.00 - \$5.00 - \$10.00 will soon total up to the \$2,000.00 that is needed to put this Bookmobile into service to get the word of God to the many wondering souls of the isolated areas, to bring them into the Kingdom of God by our efforts.

PLEASE NOTE: All your contribution is going to finance the bookmobile and the books and bibles and free tracts therein. Because I am self supporting from my Social Security and other income, as the Lord provides, I ask nothing for myself.

And when the Bookmobile is once stocked with books and bibles to sell, the same as out of a permanent book store, it will support itself for gas and oil and mechanical upkeep.

SO THE ONLY NEED IS TO GET IT READY.

Thanking you, I ask for your prayers as others are praying for this GOSPEL WORK to go forward TO THE GLORY OF GOD.

Rev. L. Zimmerman
Your contributions being accepted at
THE CHELSEA STATE BANK.
(This is a paid advertisement)
(See news item in Oct. 15 issue of The Standard.)

GENERAL ELECTION

To the Qualified Electors:
NOTICE IS HEREBY GIVEN:
That a General Election will be held in the
TOWNSHIP OF LYNDON
(PRECINCT NO. 1)
County of Washtenaw, State of Michigan
AT
LYNDON TOWNSHIP HALL
Corner North Territorial Road and Old M-92
on
TUESDAY, NOVEMBER 3, 1970

FOR THE PURPOSE OF ELECTING THE FOLLOWING OFFICERS, VIZ:

STATE Governor & Lieutenant Governor, Secretary of State, Attorney General, 2 Members of State Board of Education, 2 Members of Board of Regents of the University of Michigan, 2 Members of Michigan State University Board of Trustees, 2 Members of Wayne State University Board of Governors.

CONGRESSIONAL United States Senator, Representative in Congress.

LEGISLATIVE State Senator, State Representative.

COUNTY Commissioner.

TOWNSHIP Supervisor, Clerk, Treasurer, 1 Trustee, 2 Constables.

AND ALSO ANY ADDITIONAL OFFICERS THAT MAY BE ON THE BALLOT.

AND ALSO TO VOTE ON THE FOLLOWING NON-PARTISAN OFFICERS, VIZ:

TWO JUSTICES OF THE SUPREME COURT
JUDGE OF THE COURT OF APPEALS (2)
JUDGE OF THE CIRCUIT COURT (2)
JUDGE OF THE PROBATE COURT
JUDGE OF THE 14th DISTRICT COURT
TWO MEMBERS BOARD OF TRUSTEES WASHTENAW COMMUNITY COLLEGE

AND ALSO TO VOTE ON THE FOLLOWING STATE PROPOSALS

Proposal "A" to authorize a bond issue for low income housing.
Proposal "B" to reduce the minimum voting age to 18.
Proposal "C" Anti-parochialism Proposal.

AND ALSO TO VOTE ON THE FOLLOWING COUNTY PROPOSAL:

WASHTENAW COMMUNITY COLLEGE MILLAGE INCREASE PROPOSITION

"Shall the Tax Limitation on the total amount of taxes which may be assessed against all property in the County of Washtenaw, Michigan, for the operation of Washtenaw Community College be increased, as provided by Section 6, Article IX of the Constitution of Michigan, by one (1) mill of the assessed valuation as equalized, for a period of five (5) years from 1971 to 1975, both inclusive, for the purpose of providing funds for operating expenses of the operation and purchase of equipment for occupational training programs?"

COUNTY TREASURER'S STATEMENT AS REQUIRED BY ACT 293 OF THE PUBLIC ACTS OF 1947 AS AMENDED BY ACT 278, PUBLIC ACTS OF 1964

I, Sylvester A. Leonard, County Treasurer of the County of Washtenaw, State of Michigan, do hereby certify that, according to the records of this office, as of October 1, 1970, the total of all voted increases in the tax rate limitation, above the 18 mills established taxable property in Washtenaw County, State of Michigan in said County, is as follows:

Local Unit	Year	Vol. Increase	Unlimited Increase Effective
County of Washtenaw	1965	\$1,490,000	unlimited 1967-1972 Incl.
Ann Arbor Township	None	None	None
Augusta Township	None	None	None
Bridgewater Township	None	None	None
Dexter Township	None	None	None
Freedom Township	None	None	None
Lima Township	None	None	None
Lodi Township	None	None	None
Lyndon Township	None	None	None
Manchester Township	None	None	None
Northfield Township	None	None	None
Pittsford Township	None	None	None
Salem Township	None	None	None
Saline Township	None	None	None
Scio Township	None	None	None
Sharon Township	1 1/2 Mills	1969-1970 Incl.	
Superior Township	None	None	None
Sylvan Township	None	None	None
Webster Township	None	None	None
York Township	1 1/2 Mills	1967-1971 Incl.	
Ypsilanti Township	2 1/2 Mills	1967-1971 Incl.	
Washtenaw Community College	1 1/2 Mills	1965 & future years	
Oakland Community College	1 Mill	1964 & future years	
Schoolcraft Community College	1 Mill	1965-1981 Incl.	
Washtenaw County Intermediate School District	1 Mill	1969 & future years	
Ypsilanti Community Intermediate School District	3 1/2 Mills	1959 & future years	
Jackson County Intermediate School District	1 1/2 Mills	1959-1972 Incl.	
Lawrence County Intermediate School District	1 1/2 Mills	1959 & future years	
Hawthorn County Intermediate School District	3 1/2 Mills	1962 & future years	
Ypsilanti Community Intermediate School District	10 Mills	1965 & future years	
Oakland County Intermediate School District	3 Mills	1961-1970 Incl.	
Ann Arbor Public Schools District	11.66 Mills	1966-1972 Incl.	
Ypsilanti Public Schools District	6.67 Mills	1969-1972 Incl.	
Lincoln Consolidated School District	10 Mills	1964-1971 Incl.	
Manchester Public Schools District	5 Mills	1966-1970 Incl.	
Michigan Area Schools District	2 1/2 Mills	1968-1972 Incl.	
Saline Area Schools District	7 1/2 Mills	1968-1972 Incl.	
Whitmore Lake Schools District	9.35 Mills	1967-1971 Incl.	
Willow Run Public Schools District	14.5 Mills	1967-1971 Incl.	
Clinton Community Schools	3 Mills	1969-1970 Incl.	
Columbia School District	4 Mills	1969-1971 Incl.	
Napoleon Rural Agriculture School District	12.75 Mills	1969-1970 Incl.	
Northville Public School District	7 Mills	1966-1970 Incl.	
Pineckey Community School District	10 Mills	1966-1970 Incl.	
Plymouth Community Schools District	14 Mills	1969-1971 Incl.	
South Lyon Community School District	2 Mills	1970-1971 Incl.	
Stockbridge Community Schools District	5 1/2 Mills	1967-1971 Incl.	
Van Buren Township School District	1 1/2 Mills	1968-1972 Incl.	
Chelsea School District	5 Mills	1968-1972 Incl.	
Ann Arbor, Michigan	4 1/4 Mills	1968-1972 Incl.	
October 2, 1970	8 Mills	1969-1972 Incl.	
	2 1/2 Mills	1970-1971 Incl.	
	10.88 Mills	1970-1971 Incl.	

Sylvester A. Leonard, Treasurer
Washtenaw County

ALSO ANY ADDITIONAL AMENDMENTS OR PROPOSITIONS THAT MAY BE SUBMITTED

Notice Relative to Opening and Closing of the Polls

ELECTION LAW, ACT 116, P. A. 1954

SECTION 720. On the day of any election the polls shall be opened at 7 o'clock in the forenoon, and shall be continuously open until 8 o'clock in the afternoon and no longer. Every qualified elector present and in line at the polls at the hour prescribed for the closing thereof shall be allowed to vote.

THE POLLS of said election will be open at 7 o'clock a.m. and will remain open until 8 o'clock p.m. of said day of election.

Doris M. Fuhrmann, Township Clerk



BOWLING NEWS



Charlie Brown & Snoopy's Friends Prep Division

Standings as of Oct. 17

	W	L
The Bully Brothers	11	4
The Pin Panthers	11	4
Pink Panthers	10 1/2	4 1/2
Computers	10	5
Creamators	9 1/2	5 1/2
The Monkeys	8	7
Strikers	7	8
Tremendous Strikers	7	8
Good Guys	6 1/2	8 1/2
Red Barons	3 1/2	11 1/2
Groovy Fruitie Tooties	3 1/2	11 1/2
The Brains	2 1/2	12 1/2

Games of 100 or over: J. Sweet, 106, 121; D. Morrison, 145; J. Toon, 128, 158; D. Alber, 165, 147; M. Schmidt, 100; M. Foster, 108; S. Bowen, 125; J. Boyer, 120, 117; J. Collins, 103, 115; M. Burnett, 125, 112; L. Schneider, 102; J. Alexander, 115; J. Spaulding, 117; B. Rosenkreter, 104, 138; D. Craft, 123, 105; D. Alexander, 116, 119; P. Greenleaf, 115; D. Beaumont, 108, 108; C. Sannes, 105; B. Bennett, 113; K. Toon, 133; S. Schultz, 102; D. Biele, 188; K. Mshar, 101, 112; J. Milliken, 103, 128.

Series of 200 or over: J. Sweet, 227; D. Morrison, 218; J. Toon, 286; D. Alber, 218; S. Bowen, 213; J. Boyer, 237; J. Collins, 218; M. Burnett, 237; J. Spaulding, 200; B. Rosenkreter, 242; D. Craft, 228; D. Alexander, 235; D. Beaumont, 214; K. Toon, 231; D. Biele, 225; K. Mshar, 218; J. Milliken, 231.

Chelsea Women's Bowling Club

Standings as of Oct. 14

	W	L
Chelsea Milling	19	5
Parish's Cleaners	18	6
Jiffy Mixes	15	9
Foster's	15	9
The Pub	14	10
Chelsea Lanes	13	11
Schneider's	11	13
The Ugly Ducklings	10	14
N. American Rockwell	9	15
Wolverine	8	16
Norris Electric	7	17
Chelsea Grinding	5	19

450 series or over: B. Fritz, 556; N. Kern, 506; G. Kuhl, 505; A. Turner, 504; P. Guest, 485; C. Hafley, 477; L. Orlovski, 477; A. Knickerbocker, 474; M. Sutter, 468; M. Kozminski, 461; A. Boham, 457; G. Stoffer, 455; D. Alber, 454; H. Rothfuss, 453; D. Frisbie, 453; A. Alexander, 450.

150 games or over: B. Fritz, 180, 179, 197; N. Kern, 159, 153, 194; G. Kuhl, 186, 192; A. Turner, 188, 170; P. Guest, 186, 153; C. Hafley, 172, 156; L. Orlovski, 160, 150; 167; A. Knickerbocker, 160, 181; M. Sutter, 176, 157; M. Kozminski, 177, 155; A. Boham, 193; C. Stoffer, 157, 174; D. Alber, 172; H. Rothfuss, 161; D. Frisbie, 170, 182; A. Alexander, 150, 169; P. Fitzsimmons, 158; D. Eisenbeiser, 155; I. Fouty, 152; B. Weeks, 159; R. Lutovsky, 153; K. Covert, 158; J. Hafner, 168; B. Wengren, 154; R. Hummel, 159, 158; A. Eisele, 152; P. Wurster, 158; D. Fouty, 172; S. Klink, 153, 158; D. Eisenman, 179; B. Mshar, 161; J. Hafner, 152; B. Fike, 180, 156; B. Bush, 158; J. Rowe, 152; D. Verwey, 173.

HELLER ELECTRIC & INSULATING

Licensed Electrical Contractor

ALL TYPES OF WIRING

THERMTRON INSULATION

Call After 5 p.m.

475-7978

20640 Sager Rd., Chelsea

Chelsea Lanes Mixed

Standings as of Oct. 16

	W	L
Rabbitt & Holloway	30	12
Doody & Turner	26	16
H. & H.	25	10
Ann Arbor Centerless	23	19
Devine's	23	19
Sindlinger & Pierce	21	21
Chelsea Lanes	19	23
Gephart & Barkley	18	24
Wolverine No. 2	18	24
Fitzsimmons Excav.	17	18
Bollinger Sanitation	13	29
Heim & Arrington	12	30

Men's 175 and over: R. Morgan, 227, 177; E. Keezer, 214, 181; D. Sindlinger, 212; D. Ellenwood, 205; H. Burnett, 193, 178, 175; R. Hutz, 190; B. Devine, 190; T. Bradley, 189; A. Sannes, 182; B. Harvey, 181; M. Rabbitt, 180.

Men's 475 and over: E. Keezer, H. Burnett, 546; R. Morgan, 532; A. Sannes, 520; D. Sindlinger, 516; D. Alexander, 486; D. Ellenwood, 485; F. Barkley, 482; M. Rabbitt, 478; R. Doody, 478; B. Harvey, 477.

Women's 150 and over: L. Doody, 177, 204; F. Gephart, 159, 199; J. Rabbitt, 168, 151, 183; A. Turner, 169, 181; L. Alexander, 181; E. Packard, 168; M. Burnett, 179; V. Harvey, 160; L. Gilmore, 158; A. Sindlinger, 157; J. Hutz, 150.

Women's 450 and over: L. Doody, 529; J. Rabbitt, 502; F. Gephart, 501; A. Turner, 497; L. Alexander, 461.

Senior House League

Standings as of Oct. 19

	W	L
Chelsea Cleaners	17	7
Wolverine Tavern	16	8
Sylvan Center	14	10
Dana No. 1	14	10
Seitz Tavern	14	10
Spaulding Chevrolet	12	12
Schneider's Grocery	12	12
The Pub Bar	11	13
Sant's Barbers	11	13
Chelsea Grinding	10	14
Dana No. 2	10	14
Murphy's Barbershop	3	21

200 games and over: G. Burnett, 247; T. Wisniewski, 238; N. Packard, 236; S. Hopkins, 235; G. Knickerbocker, 222; J. Warmingham, 221; 215; A. Fletcher, 216; L. Hess, 215; T. McClellan, 214; V. Hafley, 213; G. McAtee, 211; F. Gee, 211; D. Basso, 207, 202; R. Bauer, 206; E. Harok, 202; O. Johnson, 202; D. McKinley, 201; G. Lawrence, 201; M. Jones, 200.

600 series and over: J. Warmingham, 614; G. Burnett, 601.

500 series and over: S. Hopkins, 599; N. Packard, 591; T. Wisniewski, 581; A. Sannes, 579; L. Hess, 572; T. McClellan, 568; G. McAtee, 568; D. Basso, 567; W. Moats, 556; O. Johnson, 543; G. Knickerbocker, 540; J. Eder, 535; G. Lawrence, 531; E. Harok, 527; D. White, 526; S. Haydock, 525; L. Keezer, 521; S. Slane, 520; D. Weatherwax, 517; M. Poertner, 517; R. Kiel, 515; V. Hafley, 514; D. McKinley, 514; C. Genske, 512; J. Collins, 511; G. Linebaugh, 510; R. Fike, 509; D. Hafley, 509; S. Dyer, 509; A. Fletcher, 508; R. Bauer, 508; C. Young, 502; F. Gee, 501; J. Jones, 500.

Junior Swingers

Standings as of Oct. 17

	W	L
Challengers	10	2
Team No. 2	8	4
Losers	7	5
Team No. 5	5	7
Team No. 4	5	7
Team No. 3	1	11

Games of 140 and over: M. Murphy, 168; D. Messner, 162, 172; B. Tirb, 144, 144; L. Sannes, 151, 166; C. Burnett, 144; R. Verwey, 169.

Series of 400 and over: M. Murphy, 400; L. Sannes, 447; B. Tirb, 422; D. Messner, 462.

Chelsea Suburban

Standings as of Oct. 14

	W	L
Dancer's	19	9
Floor Mobil	18	10
Dana Corp.	17	11
Waterloo Garage	16	12
G. A. Sales	15	13
State Farm	14	14
Chelsea Lanes	13	15
Artex Roll-Ons	13	15
Dairy Queen Braisiers	12	16
Patty Ann	11	17
Chelsea State Bank	10	18
Pittsfield Plastics	10	18

150 games and over: V. Stewart, 167, 159; C. Peterson, 159; M. L. Westcott, 154; R. Musbach, 202, 151; B. Eder, 184, 200, 189; S. Bowen, 157; P. Harok, 161, 158; D. Kinsey, 172, 150, 157; M. Paul, 177; C. Hansen, 174; L. Beeman, 178, 158; B. Smith, 157, 161; N. Prater, 214; D. Cozzens, 151; G. Baczynski, 154, 172, 159; D. Sannes, 156; M. DeLaTorre, 170; E. Yocum, 151, 151; A. Hocking, 159; J. Baku, 150; D. Keezer, 165; N. Packard, 161; E. Oosterle, 151; B. Hafley, 173; M. Breitenwischer, 155; R. West, 162, 212; R. McGibney, 152, 152; D. Dault, 196; P. Walz, 151, 165; E. Schulz, 154.

425 series and over: B. Hafley, 438; R. West, 519; R. McGibney, 426; D. Dault, 449; P. Walz, 430; E. Schulz, 426; D. Keezer, 440; M. DeLaTorre, 447; M. Adon, 425; B. Smith, 466; N. Prater, 441; G. Baczynski, 484; P. Harok, 431; D. Kinsey, 479; L. Beeman, 482; V. Stewart, 459; C. Peterson, 438; R. Musbach, 481; B. Eder, 573; S. Bowen, 434.

Tri-City Mixed League

Standings as of Oct. 16

	W	L
Jiffy Mixers	18	10
Trail Blazers	18	10
Wolverine Tall & Small	15	13
Wolverine Early Birds	15	13
Chelsea Cleaners	14	11
Detting & Detting	14	11
Smith's Mobil	13	15
Sprague Buick & Olds	13	15
Floor Mobil	13	15
Stiver's Odd Balls	12	16
3-D Sales & Service	12	16
4-W's	11	17

500 series, men: C. Detting, 564; R. Fike, 516; W. Griffith, 530; G. Miller, 517; W. Moats, 561; A. Sannes, 585; D. Scott, 503; J. Stoffer, 501; T. Wisniewski, 673; R. Worden, 520.

200 games, men: C. Detting, 233, 210; A. Sannes, 217, 203; D. Scott, 206; T. Wisniewski, 244, 232.

450 series, women: V. Allen, 463; G. Detting, 519; D. Fouty, 477; B. Parish, 463; C. Stoffer, 525.

150 games, women: V. Allen, 159, 151, 154; M. Ashmore, 153; G. Detting, 156, 180, 183; B. Fike, 160; D. Fouty, 180, D. Fouty, 169, 159; E. Detting, 166; B. Kunzelman, 154; E. Miller, 159; N. Miller, 155, B. Parish, 171; C. Peterson, 167; C. Stoffer, 168, 180, 177; M. Weston, 154.

Guys & Gals

Mixed League

Standings as of Oct. 15

	W	L
Pub No. 1	23	5
Wolverine Bar	18	10
Chelsea Lanes	16	12
Four D's	15	13
Pub No. 2	14	14
Losers	13 1/2	14 1/2
Sandbaggers	13	15
Norris Electric	12	12
Pleasant Lake Resort	11	17
Grass Lake	10	14
Team No. 4	9 1/2	18 1/2
Steele Heat & Cool	9	19

Team high game: Pub No. 1, 700.

Team high series: Pub No. 1, 2,003.

Women's high game: N. Collins, 555.

Women's high series: N. Collins, 555.

Women's 150 or over games: B. Smith, 192, 167; N. Packard, 153; N. Collins, 207, 170, 178; M. Degener, 154; P. Elliott, 154, 172; J. Mock, 159; M. Randall, 154, 167; C. Timmerman, 198; R. Zink, 167; S. Greenleaf, 194, 187; B. Fritz, 167, 152, 204; C. Daniels, 152; S. Taylor, 151.

Women's 450 or over series: B. Smith, 507; N. Collins, 555; P. Elliott, 451; M. Randall, 456; S. Greenleaf, 530; B. Fritz, 523.

Men's high game: B. Knerr, 214; Men's high series: J. Collins, 554.

Men's 175 or over games: J. Trapp, 187; R. Mock, 187; B. Knerr, 214; J. Elliott, 195, 184; J. Collins, 192, 184, 178.

Men's 500 or over series: J. Eder, 506; J. Collins, 554; J. Elliott, 550.

Hi Point Mixed

Standings as of Oct. 20

	W	L
MJH	142	110
Johnston & Johnston	135	117
Holy Terrors	134	118
Turp Abouts	120	132
Dreadnaughts	114	138
Hi Steppers	111	141

Men, 450 series and over: H. Morton, 503; E. Johnston, 474; H. Ratzlaff, 461.

Men, 160 games and over: E. Johnston, 213; H. Morton, 171, 182; H. Ratzlaff, 165, 169.

Women, 425 series and over: C. Klapperich, 442; B. Barth, 433; R. Ruml, 462; G. DeSmither, 429.

Women, 150 games and over: C. Klapperich, 193; P. Guenther, 168; L. Rivers, 168; B. Barth, 170; R. Ruml, 161, 156; G. DeSmither, 150.

Old Timers

Bowling League

Standings as of Oct. 17

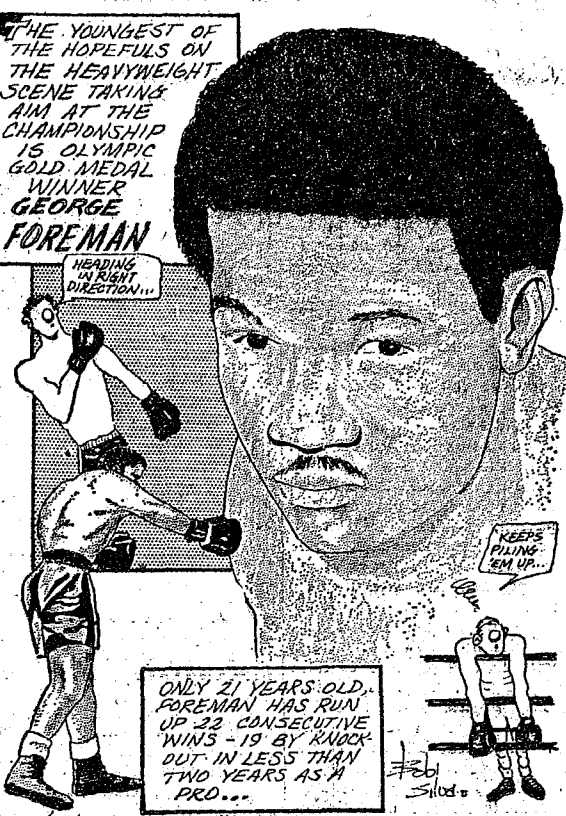
	W	L
Team No. 16	18	10
Hotzel Service	18	10
Sanford Security Serv.	18	10
Nelson Realtors	17 1/2	10 1/2
Colonial Lanes	17 1/2	10 1/2
Sportsman's Bar	16	12
Cloverleaf Lanes	16	12
Hartman Insurance	15	13
Dexter Bowl 'n' Bar	15	13
Mather Co.	15	13
Bob & Otto Standard	14	14
Has Been's	10	18
Lucky 13	10	18
Team No. 14	9	17
Stein & Goetz	9	17
Merkel Furniture	6	22

Team won three games: Sanford Security Service, Cloverleaf Lanes and Colonial Lanes.

High team game: Cloverleaf Lanes, 870.

High team series: Colonial Lanes, 2,473.

SPORTS CORNER



High ind. game and series: F. Meneery, 211 and 550. Other 200 games and 500 series: G. Hepner, 229-518; J. Zucco, 213-534; L. Brousalis, 204-549; P. Grabowski, 202-508; J. and over: G. Hepner, 229-518; J. Zucco, 213-534; L. Brousalis, 204-549; P. Grabowski, 202-508; J.

Rolling Pin League

Standings as of Oct. 20

	W	L
Grinders	18	6
Moppy Uppers	17	7
Coffee Cups	17	7
Kookie Cutters	17	7
Brooms	15	9
Spooners	12	12
Egg Beaters	12	12
Pots	10	14
Jolly Mops	7	17
Dish Rags	7	17
Mixers	7	17
Kitchen Kapers	5	19

400 and over series: C. Shepherd, 409; R. Foster, 405; J. Shepherd, 450; W. Landwehr, 458; G. Brier, 404; J. Rabbitt, 508; H. Ringe, 468; S. Parker, 441; K. Del Prete, 428; D. Kinsey, 487; M. R. Cook, 410; D. Keezer, 446; L. Keezer, 426; A. McGinn, 420; J. Lewis, 414; G. Klink, 435; G. Blass, 480; S. Cattell, 407; E. Miller, 425; A. Steinhaw, 403.

140 and over games: S. Cattell, 190; E. Miller, 160; A. Steinhaw, 148; D. Butler, 150; D. Keezer, 152; L. Keezer, 144-144; A. McGinn, 154, 146; J. Lewis, 174, 141; G. Klink, 156, 147; G. Blass, 175, 157; 148; C. Shepherd, 140; J. Pax, 144; J. Shepherd, 156, 178; W. Landwehr, 140, 179; G. Brier, 157; J. Rabbitt, 148, 171, 189; H. Ringe, 153, 170, 145; A. Ray, 143; F. Steinhaw, 149; D. Kinsey, 154, 192, 141; P. Patterson, 143; M. R. Cook, 156, 141; J. Edick, 148.

Splits converted: G. Blass, 5-10; E. Reynolds, 3-10; H. Ringe, 6-10; M. Holloway, 4-5-7; E. Williams, 3-10; J. Myers, 3-10.

Junior House League

Standings as of Oct. 15

The Pub	36	13
Inverness Inn	34	15
Smith's AAA Service	32	17
Chelsea Drug	31	18
Palmer T-Birds	24	25
Boyer Automotive	28	26
Gambles	21	28
J & S Tool	21	28

GENERAL ELECTION

To the Qualified Electors:

NOTICE IS HEREBY GIVEN,

That a General Election will be held in the

TOWNSHIP OF SHARON

(PRECINCT NO. 1)

County of Washtenaw, State of Michigan

AT

SHARON TOWNSHIP HALL

on

TUESDAY, NOVEMBER 3, 1970

FOR THE PURPOSE OF ELECTING THE FOLLOWING OFFICERS, VIZ:

STATE Governor & Lieutenant Governor, Secretary of State, Attorney General, 2 Members of State Board of Education 2 Members of Board of Regents of the University of Michigan, 2 Members of Michigan State University Board of Trustees, 2 Members of Wayne State University Board of Governors.

CONGRESSIONAL United States Senator, Representative in Congress.

LEGISLATIVE State Senator, State Representative.

COUNTY Commissioner.

TOWNSHIP Supervisor, Clerk, Treasurer, 1 Trustee, 2 Constables.

AND ALSO ANY ADDITIONAL OFFICERS THAT MAY BE ON THE BALLOT.

AND ALSO TO VOTE ON THE FOLLOWING NON-PARTISAN OFFICERS, VIZ:

TWO JUSTICES OF THE SUPREME COURT
JUDGE OF THE COURT OF APPEALS (2)
JUDGE OF THE CIRCUIT COURT (2)
JUDGE OF THE 14th DISTRICT COURT
TWO MEMBERS BOARD OF TRUSTEES WASHTENAW COMMUNITY COLLEGE

AND ALSO TO VOTE ON THE FOLLOWING STATE PROPOSALS
Proposal "A" to authorize a bond issue for low income housing.
Proposal "B" to reduce the minimum voting age to 18.
Proposal "C" Anti-pollution Proposal.

AND ALSO TO VOTE ON THE FOLLOWING COUNTY PROPOSAL:
WASHTENAW COMMUNITY COLLEGE
MILLAGE INCREASE PROPOSITION

"Shall the Tax Limitation on the total amount of taxes which may be assessed against all property in the County of Washtenaw, Michigan, for the operation of Washtenaw Community College be increased, as provided by Section 6, Article 9 of the Constitution of Michigan, by one (1) mill of the assessed valuation as equalized, for a period of five (5) years from 1971 to 1975, both inclusive, for the purpose of providing funds for operating expenses and the operation and purchase of equipment for occupational training programs?"

COUNTY TREASURER'S STATEMENT AS REQUIRED BY ACT 293 OF THE PUBLIC ACTS OF 1967 AS AMENDED BY ACT 278, PUBLIC ACTS OF 1968

I, Sylvester A. Leonard, County Treasurer of the County of Washtenaw, State of Michigan, do hereby certify that, according to the records of this office, as of October 1, 1970, the total of all voted increases in the tax rate limitation, above the 18 mills established taxable property in Washtenaw County, State of Michigan in said County, is as follows:

Local Unit	Years	1967-1971 Inc.	1972-1975 Inc.
County of Washtenaw	18 Mills	1967-1971 Inc.	1972-1975 Inc.
Ann Arbor Township	None	1967-1971 Inc.	1972-1975 Inc.
Augusta Township	None	1967-1971 Inc.	1972-1975 Inc.
Edgewater Township	None	1967-1971 Inc.	1972-1975 Inc.
Dexter Township	None	1967-1971 Inc.	1972-1975 Inc.
Freedom Township	None	1967-1971 Inc.	1972-1975 Inc.
Lima Township	None	1967-1971 Inc.	1972-1975 Inc.
Locust Township	None	1967-1971 Inc.	1972-1975 Inc.
Lyndon Township	None	1967-1971 Inc.	1972-1975 Inc.
Manchester Township	None	1967-1971 Inc.	1972-1975 Inc.
Norfield Township	None	1967-1971 Inc.	1972-1975 Inc.
Pittsford Township	None	1967-1971 Inc.	1972-1975 Inc.
Salem Township	None	1967-1971 Inc.	1972-1975 Inc.
Saline Township	None	1967-1971 Inc.	1972-1975 Inc.
Scio Township	None	1967-1971 Inc.	1972-1975 Inc.
Sharon Township	12 Mills	1967-1971 Inc.	1972-1975 Inc.
Superior Township	None	1967-1971 Inc.	1972-1975 Inc.
Sylvan Township	None	1967-1971 Inc.	1972-1975 Inc.
Webster Township	None	1967-1971 Inc.	1972-1975 Inc.
Ypsilanti Township	None	1967-1971 Inc.	1972-1975 Inc.
Ypsilanti Public Schools District	12 Mills	1967-1971 Inc.	1972-1975 Inc.
Washtenaw Community College	12 Mills	1967-1971 Inc.	1972-1975 Inc.
Oakland Community College	12 Mills	1967-1971 Inc.	1972-1975 Inc.
Schoolcraft Community College	12 Mills	1967-1971 Inc.	1972-1975 Inc.
Washtenaw County Intermediate School District	12 Mills	1967-1971 Inc.	1972-1975 Inc.
Ingham County Intermediate School District	12 Mills	1967-1971 Inc.	1972-1975 Inc.
Jackson County Intermediate School District	12 Mills	1967-1971 Inc.	1972-1975 Inc.
Lenawee County Intermediate School District	12 Mills	1967-1971 Inc.	1972-1975 Inc.
Livingston County Intermediate School District	12 Mills	1967-1971 Inc.	1972-1975 Inc.
Oakland County Intermediate School District	12 Mills	1967-1971 Inc.	1972-1975 Inc.
Ann Arbor Public Schools District	12 Mills	1967-1971 Inc.	1972-1975 Inc.

Local Unit	Years	1967-1971 Inc.	1972-1975 Inc.
Ypsilanti Public Schools District	12 Mills	1967-1971 Inc.	1972-1975 Inc.
Lincoln Consolidated School District	12 Mills	1967-1971 Inc.	1972-1975 Inc.
Manchester Public Schools District	12 Mills	1967-1971 Inc.	1972-1975 Inc.
Saline Area Schools District	12 Mills	1967-1971 Inc.	1972-1975 Inc.
Whitnore Lake Schools District	12 Mills	1967-1971 Inc.	1972-1975 Inc.
Willow Run Public Schools District	12 Mills	1967-1971 Inc.	1972-1975 Inc.
Clinton Community Schools	12 Mills	1967-1971 Inc.	1972-1975 Inc.
Columbia School District	12 Mills	1967-1971 Inc.	1972-1975 Inc.
Napoleon Rural Agriculture School District	12 Mills	1967-1971 Inc.	1972-1975 Inc.
Norville Public School District	12 Mills	1967-1971 Inc.	1972-1975 Inc.
Pinkney Community School District	12 Mills	1967-1971 Inc.	1972-1975 Inc.
Plymouth Community Schools District	12 Mills	1967-1971 Inc.	1972-1975 Inc.
South Lyon Community School District	12 Mills	1967-1971 Inc.	1972-1975 Inc.
Stockbridge Community Schools District	12 Mills	1967-1971 Inc.	1972-1975 Inc.
Van Buren Township School District	12 Mills	1967-1971 Inc.	1972-1975 Inc.
Chelsea Schools District	12 Mills	1967-1971 Inc.	1972-1975 Inc.
Ann Arbor, Michigan	12 Mills	1967-1971 Inc.	1972-1975 Inc.
October 2, 1970			

SYLVESTER A. LEONARD, Treasurer
Washtenaw County

ALSO ANY ADDITIONAL AMENDMENTS OR PROPOSITIONS THAT MAY BE SUBMITTED

Notice Relative to Opening and Closing of the Polls

ELECTION LAW, ACT 116, P. A. 1954

SECTION 720. On the day of any election the polls shall be opened at 7 o'clock in the forenoon, and shall be continuously open until 8 o'clock in the afternoon and no longer. Every qualified elector present and in line at the polls at the hour prescribed for the closing thereof shall be allowed to vote.

THE POLLS of said election will be open at 7 o'clock a.m. and will remain open until 8 o'clock p.m. of said day of election.

Duane Haselschwerdt, Township Clerk

Junior Girl Scout Leaders Plan Activities

Eighteen Girl Scouts and their mothers from Junior Girl Scout Troop 82 enjoyed a pot-luck dinner, Tuesday evening, Oct. 13, at the Congregational church. At the same time, they met their new leader, Mrs. Thomas Klobuchar, and the troop committee. Members of the committee are Mrs. Phil Hume, Mrs. Wilfred Lane, Mrs. Phillip Roy, and Mrs. Keith Schuelke. Each committee member will assist the leader at one meeting, repeating every six weeks.

Mrs. Klobuchar presented some of the new things that the troop will be doing this year to make the Girl Scout program more meaningful to the girls and their families.

An open discussion was held on the problems encountered in the past, the expenses a troop has, the new plans and the desperate need for parental support and participation, without which a troop ceases to function. The mothers were very responsive to hopes expressed for the coming year, and each mother signed to do a specific job for the troop.

Among the new things that the troop will do this year is to hold a Family Night. This is similar to the Boy Scouts' Pack meeting. These will be held every two months. The first Family Night is scheduled for Nov. 17 at which time the troop will hold its Fly-Up and Rededication ceremonies.

Each mother signed to provide treats on a specific date, on the day that she will come to the troop meeting to help the leaders. In this way, there will be three adults at each meeting.

Badge work presentation day will be the first meeting of each month at which time the badge chairman will also attend so that each patrol will have an adult to whom the girls can show their work, who will sign their books.

Troop committee will meet each month with the leader to help in any way needed to carry out plans the girls have made. The committee recognizes and is thankful for the help of mothers for their support of the various committees of the troop: telephoning, transportation, field trips, camping, baby-sitting, chairman for calendars, cookies, badges, scrapbook—and an "emergency" short notice—patrol who will help out as needed.

Each family of a troop member was contacted to come to the registration night, with a second chance to register on the first meeting, which is Thursday, Oct. 15. Any member who didn't register by then will have to go on a waiting list until a leader is found for Junior Troop 47. There is still hope that Troop 47's parents and members can get together to solve the problem, before the troop is dissolved for lack of adult interest. If the troop is dissolved, Troops 58 and 82 will have their memberships filled by the girls of Troop 47.



DEN 1, PACK 415—
Cub Scout Den 1, Pack 415, met Tuesday, Oct. 13, and Tuesday, Oct. 20 at the home of their Den Mother, Mrs. George Atkinson, at Cavanaugh Lake. Don Hewitt rejoined the Pack.

The Scouts started their Halloween party masks on one week, finishing them the next week.

Den Mother announced a football game for November and a special Pack meeting.

Treats were furnished by Bryan Herrick and Kevin Lyle. Meeting closed with the flag ceremony.

Cubs finished up masks they were making for their Halloween party.

They talked about going to a U. of M. football game, Nov. 14, in Ann Arbor.

Meeting closed with a song. Treats were furnished by Robert Aldrich.

David Seyfried, scribe.

Broken Ankle in Fall

Aristides Vrahmedes, 459 North St., fell down an open stairway, Wednesday afternoon, Oct. 14, while he was working at McDonald's on Stadium Blvd., in Ann Arbor. The stairs were being worked on and had been taken out. Vrahmedes opened the door not knowing the stairs were missing, and fell through to the basement, breaking his ankle.

(Political Advertising)

ELECT

EARL DOLETZKY

for
Dexter Township Supervisor



Mrs. Howard Lee McCalla

Doreen M. Kuhl, Howard McCalla Exchange Vows Saturday Evening

A double-ring, candle-light ceremony was the scene for the wedding of Doreen Marie Kuhl and Howard Lee McCalla, Saturday evening, Oct. 17 at 7 p.m. at Emanuel United Church of Christ, Manchester.

The bride is the daughter of Mr. and Mrs. Armin H. Kuhl, 2826 Perkins Rd., while the bridegroom is the son of Mr. and Mrs. Ralph McCalla, 12875 Old US-12.

The Rev. Ralph Kuether officiated at the ceremony. Donald Gibson sang "Entreat Me Not to Leave You," "One Hand, One Heart," and "The Lord's Prayer."

For her wedding, the bride chose a flowing gown of crystaline. The bodice and stand-up collar were covered with lace. Sheer lace sleeves, and an inverted back pleat with a flowing long mantle lace veil, accented with seed pearls, completed the outfit. She carried a bouquet of white Fuji mums and Talisman roses.

Miss Gail Lynn Kuhl, sister of the bride, attended her sister as maid of honor. She wore a dress of antique gold rayon blend, with embossed orange and rust colored design in a princess look floor-length dress with a stand-up collar with inverted back pleat and short sleeves. She carried a bouquet of mint green Fuji mums with fall colored accents. She wore a velvet ribbon in her hair.

Miss Kathy McCalla, sister of the bridegroom, Miss Karen Lehmann, and Miss Verita Scott, all of Chelsea, were bridesmaids. Their gowns and flowers matched those of the maid of honor.

Mrs. Kuhl, mother of the bride, chose a geometric semi-fitted, double breasted knit coat, with a moss green wool dress.

The mother of the bridegroom, Mrs. McCalla, chose a dark teal blue double knit dress with matching lace on the sleeves and at the waist.

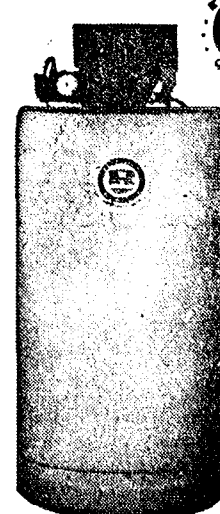
Miss Judy Sanderson, Chelsea, was junior bridesmaid, while Miss Wendy Fargher, Chelsea, was flower girl. They were dressed in costumes similar to those of the bridesmaids, and they carried baskets of flowers matching those of the bridesmaids. Brian Fargher, Chelsea, was ringbearer.

THE 1971 BUDGET

The Nixon Administration plans to send to Congress in January a defense budget of about \$78.6 billion. The budget, the same as this year, was not reduced because it was felt to be unsafe to cut military spending below that figure.

EDUCATION IS OUR BUSINESS

Try It!
WASHTENAW COMMUNITY COLLEGE



Serving Washtenaw County with quality water conditioning products for 38 years

ECW Plan Dinner To Honor New Vicar, Wife

Episcopal church women of St. Barnabas met at the church on Oct. 15. The meeting opened with devotions led by Mrs. Edwin Eaton. Communications included the notice that the regular November meeting will be held as guest of the Wesleyan Service Guild of the First United Methodist church on Nov. 19 at 7:30 p.m. in the Methodist Educational Unit. A special bazaar meeting will be held Nov. 12 at the church for all interested members.

A parish pot-luck in honor of the Rev. and Mrs. Fitch will be held at the church on Thursday, Oct. 22 at 6:30 p.m. Members are asked to bring a dish to pass and their own table service. The choir will entertain with guitar music. Tables will be set up for the dinner on Wednesday, Oct. 21 at 7:30 p.m.

Mrs. Judson Goltra spoke on the meeting she attended of the Pre-Triennial Convention in Brighton. She also reported on a retreat held at Parishfield on Oct. 8.

Mrs. Edwin Eaton reported on the bazaar progress and reported that there will be a boutique table, decorations table, sewing and knitting tables in addition to the baked goods table. There will also be a sandwich lunch served at the bazaar. Members of the committee are Mrs. Harold Waller and Mrs. Louis Ramp.

Mrs. Frank Wojcikowski reported on the sale of church calendars. Mrs. Albert Brown presented the coffee hour list for the coming months. The members are asked to remember that the White Gift Sunday will be the first Sunday in December this year, and that candy, cookies, food, and toys in good repair are requested.

The Rev. C. Walton Fitch attended the meeting and spoke briefly about tentative plans for Lenten services.

The group voted to contribute to the World Community Day pledge sponsored by the Church Women United and this money was taken from the treasury.

Mrs. Albert Brown served refreshments as the meeting adjourned.

FAMILY INCOME

An Institute of Life Insurance analysis recently found that 20 percent of today's teenagers come from homes having incomes exceeding \$15,000. In 10 years, that percentage will be 40 percent, they predict.

HIS & HER FINES

Cincinnati-Common Pleas Court has given "Mr. and Mrs." speeding convictions here in one day. William Weimer, 31, and his wife, Elma, 34 were both found guilty of speeding. They were on their way to a restaurant in separate automobiles when a patrolman flagged them both down. Each paid a \$20 fine.

The individual does not have to advertise his, or her, religion in big type.

PAT'S CORNER

BY PAT DITTMAR
Home Economist
Chelsea Milling Co.

Football season is here! Whether it's the high school team, Michigan games, or our Lions, people are getting together to root for their team. And with good times, there is always food to be served. . . My suggestion this week is Italian Corn Bread. A warm homemade bread made with our "JIFFY" Corn Muffin Mix.

ITALIAN CORN BREAD

- (makes 1 loaf)
- 1 package "JIFFY" Corn Muffin Mix
 - 1 egg
 - 1/4 cup milk
 - 1/4 cup catsup
 - 1/2 teaspoon parmesan cheese
- Heat oven to 400°. Grease loaf pan, 8x4 inches.
 - In small bowl blend corn muffin mix, egg, milk, catsup, and oregano. Pour into prepared pan.
 - Sprinkle with cheese and bake 20 to 25 minutes.

Bible Verse Answers . . .

1. Jesus.
2. To the eleven disciples.
3. After the Last Supper, while Jesus and the eleven were en route to the Garden of Gethsemane.
4. John 15:8.

Miracles rarely boom the growth of towns and cities; it is largely a matter of having some unselfish men who have some unselfish money.

SAVE A LIFE!
Careful habits will often save somebody's life and the interesting part of it is that it might be your own life that is saved.

(Political Advertising)
RE-ELECT ESCH
Thanks for himself, Works for us.

The Chelsea Standard



Pre-Christmas Sale

A. RYTEX ANTIQUE VELLUM: Just in time for Christmas buying . . . luxurious vellum paper with the subtle laid-mark pattern. Paper colors in soft white or pale blue. Name and address, or monogram, printed in blue, dark grey or raspberry red. Handsomely gift boxed.

Man-sized Monarch: 100 sheets & 100 envelopes or Princess-size: 150 sheets & 100 envelopes or Gracious Semi-notes: 100 notes & 100 envelopes **\$4.95** (a \$9.90 value)

B. EMBASSY INFORMALS Always correct for invitations, brief lines, thank-you notes. Raised printing in jet black ink on white, invitation-weight notes. 100 Informals & envelopes **\$5.00** (double quantity only \$2.50 more)

MAIL ORDER COUPON

THE CHELSEA STANDARD
CHELSEA, MICHIGAN 48118

A. ANTIQUE VELLUM: boxes at \$4.95 (check choices below)
INCLUDE BONUS: ☐ (check) 50 extra, unprinted sheets at \$1.00 with order.

Princess Size Monarch Size Semi-Note
☐ White (3500) ☐ White (3600) ☐ White (N3500)
☐ Blue (3550) ☐ Blue (3660) ☐ Blue (N3550)

Ink Color Imprint Style
☐ Blue ☐ MC ☐ AL
☐ Grey ☐ Monogram on sheets
☐ Red & address on envs. (this is \$1.00 extra)

Imprint Name (for monogram) _____
Street _____
City, State, Zip _____

B. EMBASSY INFORMALS: boxes (check choice below)
☐ Regular Qty at \$5.00 (800SR)
☐ DOUBLE QTY at \$7.50 (800SR)

Imprint Name _____
Street _____ Apt. _____
City, State, Zip _____
Account No. _____ Phone _____
☐ Charge ☐ Check or M. O. enclosed \$ _____
Sorry, no C.O.D.'s. (Please include sales tax.)

CHARM BEAUTY SALON

4396 CLEAR LAKE ROAD

(Formerly of Grass Lake)

Two Operators - Hair Styling and Wig Service
Open on Mondays. Closed Tuesdays.

PHONE 475-2700

CLEARANCE SALE

Shoes - Dresses - Skirts
Blouses

Selected Lots at
1/2 and More Off

PATTY ANN SHOPPE

118 South Main St.

SUCCESSOR TO THE AUTOMATIC WATER SOFTENER

THE REYNOLDS SOFT-SENSOR

THE WATER CONDITIONER THAT HAS A MIND OF ITS OWN FOR SOFT, RUST-FREE WATER

THAT'S RIGHT! Every night the Soft-Sensor "takes its own pulse." If it needs recharging, it recharges itself. . . If not, it checks itself the next night.

- The Soft-Sensor recharges itself ONLY when it needs it, and always when it needs it.
- ☐ All the soft water you need
 - ☐ Simple, dependable construction
 - ☐ Saves salt-maintenance cost
 - ☐ "Lifetime" all-fiberglass tanks
 - ☐ It "sleeps" when you're away from home
 - ☐ Remarkably low in cost

PURCHASE OR RENTAL PLAN

Other brands of water softeners can often be converted to the Soft-Sensor. Call our direct factory line without charge 1-800-552-7717 or call Ann Arbor 662-5676

The Reynolds Soft-Sensor is a product of:
REYNOLDS WATER CONDITIONING CO.
12100 Cloverdale Avenue / Detroit, Michigan 48204



Miss David Frank Colliu
**Christine Doll, David Colliu
Married at St. Mary Church**

Miss Christine Doll, daughter of Mr. and Mrs. Donald Doll, 27410 Heim Rd., Chelsea, became the bride of David Frank Colliu, son of Mr. and Mrs. Frank Colliu, 7565 Huron River Dr., Dexter, Saturday afternoon, Oct. 17 at St. Mary Catholic church. The Rev. Fr. Francis Wahowiak officiated at the ceremony which 50 guests attended.

William Hammer was the best man. The bride wore a white gown with long sleeves, a high collar, and a full skirt. She carried a bouquet of white roses and lilies. The groom wore a tuxedo and carried a sword. The ceremony was held at 2:00 p.m. and lasted about an hour.

Following the ceremony, the couple went to the reception at the home of the bride's parents. There were 200 guests in all. The bride and groom were the center of attention throughout the evening. The bride wore a white gown with a high collar and long sleeves. The groom wore a tuxedo. The ceremony was held at 2:00 p.m. and lasted about an hour.

Club, Social Activities

JAYCEE AUXILIARY

Chelsea Jaycee Auxiliary held their annual Halloween masquerade party Tuesday, Oct. 20, at the home of Mrs. Walter Borwn.

The Auxiliary voted to give a donation to the Community Chest fund.

A new project was brought up for discussion, a "smokers withdrawal clinic." This is a clinic where people may go and receive help to stop smoking. The Auxiliary voted that they would like to run this project in Chelsea.

Mrs. Walter Brown received the "girl of the month award" for the month of September.

After the meeting, games were played, and refreshments served.

Next Auxiliary meeting will be held Nov. 1 at the home of Mrs. Ed Greenleaf. All Jaycee wives will be invited.

NEVER REST FARM BUREAU

Never Rest Farm Bureau met Friday night, Oct. 16, at the home of Reuben Lesser, Jr. Meeting was called to order at 8:30 p.m. Minutes from the last meeting were read and approved.

A discussion was held on the proposed Michigan Livestock Building site. The group was unanimously in favor of the project. They felt that the letters in The Saturday and Ann Arbor News were not based on all facts presented. They felt that some of the people that owned small acreages of land in the county feel that they can have country living with city zoning.

Agricultural products that are produced for all people have to be produced and marketed someplace.

The group felt that this would be an asset to the community in many ways, and it wouldn't matter where the site was located that some people would object.

Refreshments and cards followed the discussion. Next meeting will be the third Friday in November. Meeting place is to be announced.

SENIOR CITIZENS

Chelsea Senior Citizens' birthday party for the month was held at the Kottner House Thursday evening. Among those honored in recognition of October birthdays was Mrs. Florence O'Hara who came from Ann Arbor for the occasion.

Hostesses in charge of arrangements for the potluck dinner served at 6:30 p.m. were Mrs. Waldo Kusterer and Mrs. Watson Hart. There were 38 present.

Cards provided the evening's diversion. Tuesday evening, Oct. 27, 7:30 p.m. is the date for the monthly business meeting.

CHILD STUDY CLUB

Spirited bidding marked the Oct. 13 meeting of the Chelsea Child Study Club. Twenty-four members and six guests gathered at the home of Mrs. Arthur Steinauer and participated in a "loud" auction.

Guests present were Mrs. Thomas Dmoch, Mrs. Merle Barr, Jr., Mrs. Arden Mutschbach, Mrs. Bryce Fauble, Mrs. James Sprague, and Mrs. R. Hafner.

Refreshments were served by co-hostesses Mrs. Robert Barlow and Mrs. George Staffan. The next meeting has been changed to Nov. 3. The Husbands' Night dinner will be held at the Chelsea Rod & Gun Club at 6:30 p.m. Dress will be casual.

(Political Advertising)
**RE-ELECT
ESCH**
Thinks for himself
Works for us.

ESTHER CHAPTER

Esther Chapter of the Congregational church met Thursday afternoon, Oct. 15, at the home of Mrs. Laurene White. Mrs. Clarence Vogel, president, asked Mrs. White for devotions. She read an article from a paper called "Progress for Christ and His Church."

A report was given on articles the chapter made for Church World Service.

Mrs. White served lunch to the group following the meeting.

Next meeting will be Nov. 19, the place and the time to be announced later.

KINDER KLUB

Kinder Klub's October meeting was held Tuesday evening Oct. 13 at the home of Mrs. Edson Whitaker.

Guests attending were Mrs. Norman Bauer, and Mrs. Earl Guethier.

Guest speakers were Mrs. Fred Meyer, Co-Op Nursery School teacher, and Mrs. E. S. Michelson, Kindergarten teacher at South school. They presented an enjoyable and interesting program. The topic was the preschooler and kindergarten.

Next meeting of the club will be a field trip to Yorkwood, the children's section of Ypsilanti State Hospital. That will be on Nov. 10.

Co-hostess at Tuesday's meeting was Mrs. Duane Dwyer.

OLDER ADULT GROUP

Older Adult Group of the Methodist church held a regular meeting Saturday afternoon in the church social center.

Following the customary potluck dinner the opening devotion service was in charge of Mrs. Herbert Paul and the program, which included a Bible game, was presented by Mrs. Ella Walker of Ann Arbor.

There were 22 members and guests present.

Christmas Idea Open House Set

Past Chairmen of the Washtenaw County Extension Council are holding a rural-urban Christmas Idea Open House, Monday, Oct. 26, and Tuesday, Oct. 27, at the Rural Activities Center on Saline-Ann Arbor Rd.

Gift ideas, food specialties, holiday decorations, and other items that can be made for Christmas time will be featured at the two-day event.

Open House hours are Monday from 1-9 p.m., and Tuesday, from 10 a.m. to 9 p.m.

Area women's organizations are invited to come and browse. Any group that would like to display items they have made as an idea for another group may call Mrs. John Marshall, 685-3989, or Mrs. Erwin Frederick, 685-9082.

Admission is free at this event.

Home Economics Study Groups Calendar

Week of Oct. 21-28
Monday, Oct. 26—Lodi Plains, Mrs. Merle Simonton, 6099 Saline-Ann Arbor Rd., Saline.
Monday, Oct. 26—Worden, Mrs. Williams Sellers, 8585 Seven Mile Rd., Northville.
Tuesday, Oct. 27—Jolly Arts, Mrs. William Baldus, 6821 Webster Church Rd., Dexter. Co-hostess: Mrs. David Baldus.

TIPS

for your

TOP

from



TODDY and FRAN

It's possible that you enjoy getting your hair done in a formal, stiff atmosphere, strictly business. If so, you won't want to come to us. Ours is the environment of a bridge club without the cards. Our operators are like personal friends who take the same interest in pleasing you that your cohort would. We chat without gossiping. We think you'll feel at home at once. In fact, we like to think of our salon as a little island of refuge for you from the formality of the business world or the isolation of housework without companionship. Won't you come and see if what we say is true?

Magic Mirror Beauty Salon
Phone 685-0816
5585 Jackson Rd., Ann Arbor



Mr. and Mrs. Paul Osinski

Helen Wolski, Paul Osinski Wed Saturday at Riverview Church

Helen Wolski of Sager Rd., Chelsea, and Paul Osinski, W. Middle St., Chelsea, were married Saturday, Oct. 10, at a noon wedding at St. Cyprian Church, 13303 Pennsylvania Rd., in Riverview, before 200 guests. The Rev. Father Osialowski officiated.

The bride was attired in a white satin gown, completely overlapped with lace, which featured long sleeves, and a V-neckline. The gown was gathered at the waist, empire style, and the bride wore a nylon veil, which was edged in scalloped lace. She carried a bouquet of white roses and carnations.

Jill Schwiager, sister of the bride, from Stockbridge, was matron of honor. Her gown was lavender satin. The empire style gown was trimmed in white lace, and featured long organza sleeves, with a stand-up collar. She carried a bouquet of light pink carnations, with roses and daisies.

Karen Heatter, Riverview, Janet LaPalm, Lincoln Park, and Diane Osinski, sister of the bridegroom, were bridesmaids. They wore lavender empire style gowns, with an overlay of nylon, and long sleeves. Their flowers matched those of the matron of honor.

Jane Lantis, sister of the bride, was flower girl. She was dressed in similar fashion to the matron of honor, while Jeff Lantis, brother

Janet Hafner Is Bride of John Norris

Janet Hafner, daughter of Mr. and Mrs. Donald Hafner, 512 Chandler St., and John Norris, son of Mrs. Leva Norris, 170 1/2 Park St., were married Friday evening, Oct. 16, at St. Mary Catholic church, the Rev. Fr. Francis Wahowiak officiating.

The bride wore a street length off-white empire waist dress, with shoulder-length veil. She carried a cascade of white and yellow 'mums.

Mrs. John Hafner, wife of the bride's cousin, was matron of honor. She wore a brown street-length dress, and carried a bouquet of white and yellow 'mums.

For her daughter's wedding, Mrs. Hafner chose a two-piece ensemble of aqua. A corsage of white and yellow 'mums completed her outfit.

Mrs. Norris, mother of the bridegroom, wore a gold dress, accented with a corsage of white and yellow 'mums.

Theodore Norris, brother of the bridegroom, was best man.

A reception was held following the ceremony at Lakes Recreation, Portage Lake, given by the parents of the bride, Mrs. Larry Wengren of Chelsea cut the wedding cake. Mrs. Thomas Kenyon of Ypsilanti, Mrs. James Biranek of Ann Arbor, and Mrs. Robert Steele of Chelsea, assisted.

The bride graduated from Chelsea High school and is employed at Tina's Beauty shop. The bridegroom attended Chelsea High school, and recently retired from the United States Navy. He is presently employed at Norris Electric service in Ann Arbor.

Ann Travis Becomes Olivet Choir Member

Ann Travis, daughter of Mr. and Mrs. William B. Travis, 16 Sycamore, has been elected a member of the Olivet College Choir, at Olivet. Ann is a graduate of Chelsea High school, and is presently a freshman at Olivet, majoring in journalism and history.

VILLAGE BEAUTY SALON

Wash and Set, \$3.50 - Hair Cut, \$2.50

LORETTA PANNONE, Owner - Operator

CINDY KEMNER - EULA MONTGOMERY

JANICE RUDD - SARAH TAYLOR

Open 8:30 a.m. Tuesday thru Saturday

Evenings by appointment. Phone 475-5421

THE STYLE SHOP

207 1/2 S. Main St.

OPEN

Tues. thru Sat.

Call 475-8400

For Appointments

Open Wed. & Thurs. Evenings



Judy Patrick
Pansy Kuhl - Rosemary Klink

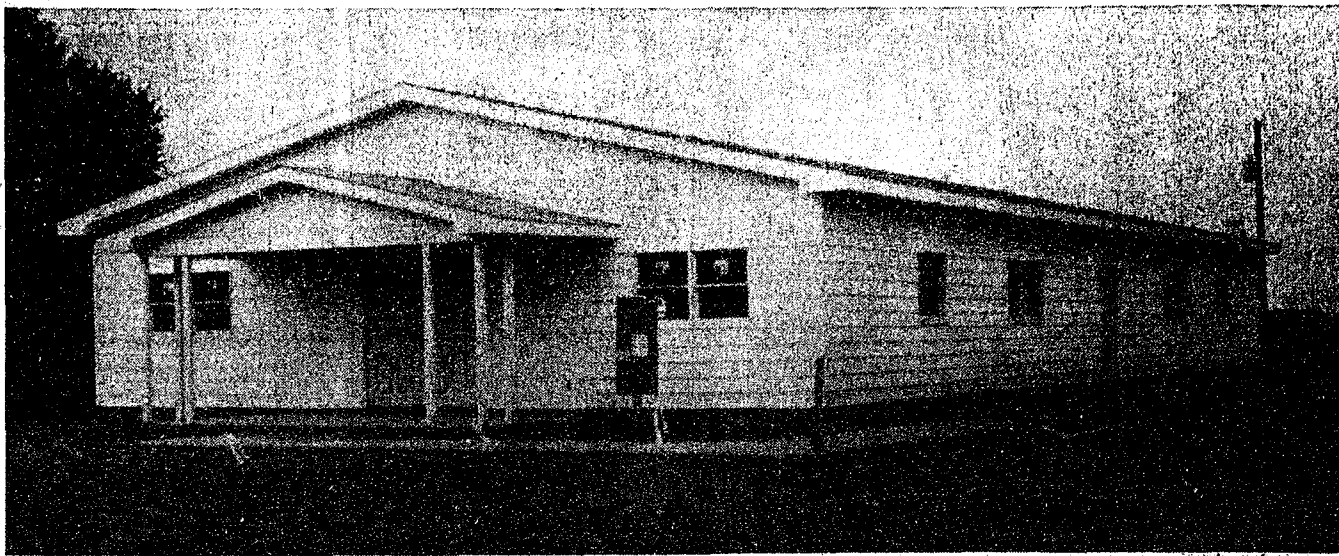
save!
FASHION'S NEWEST
fabrics

Big Selection
in
Basement



DANCER'S

Chelsea's Friendly Dept. Store



THE NEW FREEDOM TOWNSHIP HALL, which stands where the former township hall stood at the corner of Lima Center Rd. and Pleasant Lake Rd., is progressing nicely, according to John Miller, township supervisor. The building which was started this summer, is completed on the outside. It remains to be finished on the inside. The hall, which is 40 feet by 80 feet, one story, frame, has a kitchen, two restrooms, office, and assembly room. The assembly room will seat 100 people at tables, or hold 125 for a meeting. Bridgewater Lumber Co. is contracting the building, which will cost the township approximately \$36,000. Finishing

touches which have been added thus far to the interior include insulation, partitions, heating plant, and some wiring, Miller claims. Vinyl siding covers the exterior of the building. Along the right side of the building a fence using old bricks from the former township hall has been planned. The marble slab that contains the original date and name of the hall, 1878, Freedom Township Hall, has been preserved and will be built into the wall, along with a plaque of some kind that will give the name and date of the new hall. Miller hopes the new hall will be completed in time for the Nov. 3 election.

A Diploma For You NEVER TOO LATE!
WASHTENAW COMMUNITY COLLEGE

Homecoming Is Friday

Chelsea High school football game against South Lyon will be played Friday night, Oct. 23, rather than Saturday, contrary to certain posted schedules in the village. The game, which is Chelsea's Homecoming game, will start at the regular hour, 7:30 p.m.

Give a beggar a quarter a week for five weeks and he will give you a half dozen nasty looks when you skip the sixth week.

NOTICE TO CHELSEA VILLAGE RESIDENTS

Village crews will begin collecting leaves on Monday, Oct. 26, 1970.

Residents are asked to rake their leaves on to the lawn extensions near the curb for Village Crews to pick up. Do not rake them into the street.

VILLAGE OF CHELSEA
FREDERICK WEBER, ADMIN.

Sen. Bursley Predicts Bank Holding Companies in Mich.

"Michigan will have legally authorized bank holding companies within the next year," Senator Gilbert E. Bursley predicted today. Senator Bursley, chairman of the Michigan Senate Corporations Committee which handles all banking legislation, was a guest this past week of the American Bankers Association in Miami where he participated in discussions on pending federal and state bank holding company legislation.

"Properly regulated bank holding companies would be a real economic asset to the state and would benefit the general public," Senator Bursley said. "In Michigan we must pass two laws to achieve this goal. First we must repeal a section of the General Corporation Act which prohibits corporations from owning bank stock. Michigan, incidentally, is the only one of the 50 states with such a restriction. Next we must pass an act limiting the range of activities of bank holding companies that could then be freely organized. It would be desirable to keep them out of non-banking activities."

"Pending in Washington is an amendment to the 1956 Bank Holding Company Act which would extend the present limited coverage of multibank holding companies to a broader base including one bank holding companies and partnership holding groups. This legislation would increase the range of banking facilities available to the general public. The added competition would make credit available more easily and at less cost to the public. It would have a distinct anti-monopolistic effect," Bursley concluded.

"The state would have no need to pass regulatory legislation if Congress acts because the federal legislation would then govern all Michigan banks and I see no necessity for dual regulation by both state and federal governments."

"Basic to this discussion is the promise that bank holding companies would be of real benefit to Michigan. I maintain they would. Bank holding companies would increase the range of banking facilities available to the general public. The added competition would make credit available more easily and at less cost to the public. It would have a distinct anti-monopolistic effect," Bursley concluded.

(Political Advertising)
RE-ELECT ESCH
Thanks for himself. Works for us.



Our new branch office in Chelsea

You can now open a Passbook Savings Account or a Passbook Savings Certificate through any one of our more than 2575 branch offices in Chelsea. In fact, you probably have one of our branch offices in your home. All you have to do is phone us at (313) 663-7555 to open your account. Then you can make regular deposits and withdrawals, by mail, with our pre-paid save-by-mail envelopes.

6% PASSBOOK SAVINGS ACCOUNTS—daily interest paid and compounded quarterly. Effective annual rate is 6.09%.

5% PASSBOOK CERTIFICATE ACCOUNTS—6 month maturity in amounts of \$1000 or more. Effective annual rate is 5.35%.

5% PASSBOOK CERTIFICATE ACCOUNTS—12 month maturity in amounts of \$5000 or more. Effective annual rate is 5.87%.

6% PASSBOOK CERTIFICATE ACCOUNTS—24 month maturity in amounts of \$5000. Effective annual rate is 6.13%.

We like making life a little less complicated for you. And easier, too. Just call Mr. Wild, (313) 663-7555.

All accounts insured to \$20,000 by F.S.L.I.C.

AAFE
the savings specialists

ANN ARBOR FEDERAL SAVINGS

Since 1890

Member: Federal Home Loan Bank System • Federal Savings and Loan Insurance Corporation

Cross Country Wins 3-Team Event Monday

Chelsea's High school's "unloved child," their cross country team, had their first victory of the season Monday night, Oct. 19, as they competed against Dexter and Manchester at the Chelsea High school field. This was the first race that Chelsea had hosted on their new cross country course, and Coach Fred Elmore was quite pleased with their initial race!

The store at the end of the race was: Chelsea 29, Dexter, 37, and Manchester 54. Dave Buxton was the first man to complete the course, and was Chelsea's number one man. George Cameron, finishing third, was the second runner to come in for Chelsea. Jon Lantis, number three man, placed sixth in the race, while Dan Hoover, who was Chelsea's number four man, placed ninth in the race. Chris Phinney was 10th in the race to complete Chelsea's scoring.

Other Chelsea harriers were Larry Jones, and Tom Skittenhelm.

Since this was the first meet held on the Chelsea course, Elmore indicates that there were no records that could be set.

Saturday, Oct. 31, Chelsea cross country runners will travel to Lansing to compete in the regional cross country meet. This meet determines who will run in the state competition. A team may qualify, or a single runner may qualify for this competition, so it should be an exciting race for Chelsea harriers.

Blow Your Horn At Litterbugs

The Family Camping Federation is blowing the horn on litter bugs. FCF is urging motorists to sound "L" in International Morse Code on their horns each time they spot a litterbug committing a no-no. In Morse Code an "L" is dot-dash-dot-dot. FCF hopes that sounding off at a litterbug will persuade him to pick up his trash and err no more. As one wag said, "It sounds like an 'L' of an idea."

The above is from the Conservationist, the magazine published by the newly-formed New York State Department of Environmental Conservation.

In the magazine Environment for July-August is this little gem: "A survey by Crusade for a Cleaner Environment found that consumers could save as much as \$6 million annually by using returnable containers for soft drinks and an additional \$840 million for using reusable beer containers."

Servicemen's Corner

Completes 11-Week Army Lineman Course

Ft. Gordon, Ga.—Army Private First Class Douglas J. Young, son of Mr. and Mrs. Irwin G. Young, 2317 M-52 Chelsea, Mich., completed on Sept. 4 an 11-week lineman course at the U. S. Army Southeastern Signal School, Ft. Gordon, Ga.

His training began with a four-week field wireman course at an Army training center. The remaining seven-week training period was conducted at the Signal School, where he learned to construct and maintain field wire, open wire, and cable communications systems.

Pfc. Young entered the army in April 1970, completed basic training at Ft. Leonard Wood, Mo., and was last stationed there.

The 21-year-old soldier is a 1966 graduate of Chelsea High school. His wife, Linda, lives at 1435 King Wood, Ypsilanti, Mich.

REGISTERED **Keepsake** DIAMOND RINGS



POLYMER \$278 ALSO TO 480 WEDDING RING \$2.75
Keepsake guarantees perfection in value and protection against loss. You can pay more but you can't buy a finer diamond ring.

WINANS JEWELRY
Rings enlarged to show detail. Trade-Mark Reg.

Grant Will Finance Program For Handicapped Children

Title VI of the federal Elementary and Secondary Education Act is one of those grey areas in education that no one really seems to know much about. Money is available for certain "cases" and that is the extent that the average citizen knows about the situation. In Washtenaw county, the Washtenaw Intermediate School District has recently received a three-year grant from the Michigan State Department of Education, under the provisions of Title VI to implement a program for the severely multi-handicapped child.

Such a program is new to Washtenaw county, and very much in need, according to Mrs. Susan Boulter, co-ordinator of the program. A child is considered multi-handicapped when he has two or more handicaps of any type. According to Mrs. Boulter, "Any child who has more than one incapacitating condition in a regular school setting is defined under the program."

An incapacitating condition may be any disability of physical or sensory nature which would severely impede or prevent adaption

and learning within the current educational process. In the past, there were no facilities for such children, even though they have a meaningful level of independence, and can be taught to care for themselves, and ultimately be productive.

The first step in the program is to identify the multi-handicapped child. A committee is presently working within the district to identify such children who come under the clauses of this program and who are not already participating in any corrective program.

Following identification, the primary objective of the program is to initiate and develop educational services for them.

Parental co-operation and involvement will be stressed in the program with home consultation being an integral part of the service.

Phase 1 of the program, identification of the children involved, is scheduled to be completed by February, 1971. Comprehensive planning will take place between February and May, with implementation of the program scheduled to be under way May-September, 1971.

Interested parents and individuals who know of severely multi-handicapped children or are interested in working to establish the programs are urged to contact Mrs. Boulter immediately at 769-6522, ext. 45.

JUNIOR HIGH NOTES

Activity period at the Junior High school was in full swing this week. Every activity group is making plans for the coming year.

Yearbook staff is planning another great yearbook. The editor is Bob Hercules, assistant editor, Steve Bennett; treasurer, Bill Rademacher, and secretary Duwana Villemure.

Congressman's Wife Hits Campaign Trail

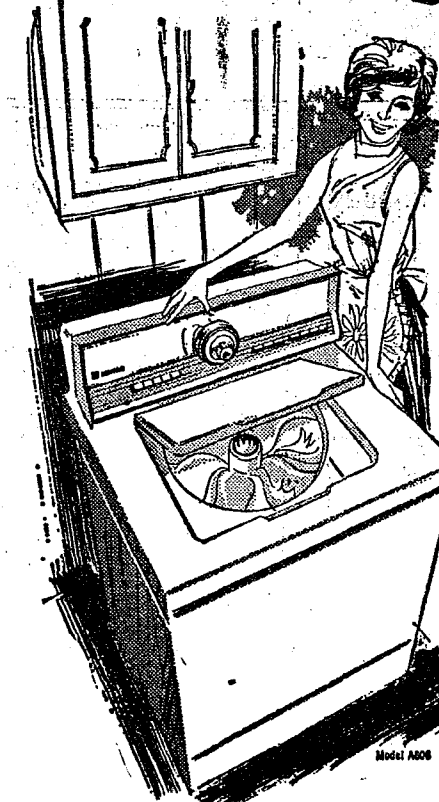
Olga Esch, wife of Congressman Marvin Esch of the Second District will hit the campaign trail this week on behalf of her husband. She will be in the Chelsea-Dexter-Manchester area on Thursday afternoon, Oct. 22, on a tour which will take her to the downtown areas of 11 communities in Washtenaw and Lenawee counties.

Mrs. Esch will be in Chelsea from 1:30 p.m. until 2 p.m. and Dexter from 2:15 p.m. until 2:45 p.m. She will visit Manchester between the hours of 8:15 and 8:45

CEMENT BOATS

A modern fishing industry will soon be established in Jamaica, utilizing deep-sea fishing boats made from ferro-cement.

Modest Priced Maytag Automatics with the Luxury Features



Power-Fin Agitator - Super Capacity - Beautiful Styling - Electronic Drying

LONG-LIFE MAYTAG AUTOMATIC BUILT FOR FAMILIES WITH A LOT OF LAUNDRY TO DO

- Power-Fin Agitator: The Maytag muscle that gets big loads uniformly clean.
- Super Capacity: Giant washing capacity for big, big loads.
- 2 Speeds, 3 Water Levels: Plus Hotter, Cooler, and Special Cold Rinses.
- Underwater Liner: Traps lint and suspended lint. No panel.
- Automatic Water Level Control - Lets you match water use to size of load. Saves gallons of water!
- Great 5-2-5 Warranty - 5 year cabinet warranty against rust - 2 years on complete washer - 5 years on power assembly.

MAYTAG ELECTRONIC CONTROL DRYER RUNS ONLY WHEN CLOTHES ARE WET—SHUTS OFF BY ITSELF WHEN CLOTHES ARE DRY!

Maytag Heat-of-Heat® Dryers: Fast dry clothes in a cycle of gentle low temperature.

4 Settings: Dry all fabrics with Regular setting, Wash 'n' Wear, Damp Dry, plus Air Fluff.

Electronic Control: No timer needed! Takes orders from you, not from a clock!

Plus famous Maytag dependability that keeps them working!

*Free replacement of parts that fail, or cabinet if it rusts, as a result of home use. Labor required for installation of parts is free for one year from date of purchase, thereafter labor is extra.



Maytag Dryer Prices Start as low as **\$115**

FRIGID PRODUCTS
LLOYD and GEORGE HEYDLAUFF

N. Main St., Chelsea

Phone GR 9-6651