

WEATHER			
	Min.	Max.	Precip.
Wednesday, Oct. 7	52	78	0.00
Thursday, Oct. 8	57	78	0.00
Friday, Oct. 9	42	65	0.00
Saturday, Oct. 10	50	60	Trace
Sunday, Oct. 11	57	75	0.00
Monday, Oct. 12	49	58	0.21
Tuesday, Oct. 13	56	68	0.23

The Chelsea Standard

QUOTE
"A free press is the unsleeping guardian of every other right that freemen prize; it is the most Winston Churchill."

ONE HUNDRED-FIRST YEAR—No. 17

12 Pages This Week Plus 8-Page Tab Supplement

CHELSEA, MICHIGAN, THURSDAY, OCTOBER 15, 1970

15c per copy

SUBSCRIPTION: \$4.00 PER YEAR

Bulldog Grid Machine Rolls Back Milan

The Chelsea Bulldogs turned back a tough Milan football team Friday evening by a score of 15 to 6. Milan came into the game with a record of two wins, no losses, and one tie.

Milan scored first when halfback Bill Patterson raced up the middle for a 50-yard touchdown run. The Bulldog defense had five shots at the ball carrier, but were unable to bring the big back down.

The try for extra point was blocked by Rick Wescott. Milan led 6-0 at the end of the quarter.

Chelsea's defense gave the Bulldogs their first break when middle guard Mitchell Heard broke through on the Milan quarterback, and knocked the ball out of his hand. Linebacker Tom Harmon recovered on Milan's 35-yard line.

The offense set up and moved the ball to the 11-yard line with Bob Salyer and Tim Orbring carrying the ball. Larry Gorton then drove off left guard behind breaks by Jeff Bust and Howard Treado for an 11-yard touchdown run. Tim Orbring kicked the extra point and Chelsea led at half-time, 7 to 6.

Milan, which up until this game had been a second half club, came back to kick off to Chelsea in the second half. Both teams played good defense in the third quarter. Tom Lukasiak and Jack McClear did a good job covering the Milan pass receivers. Keith Pfeifle and Tom Lixey worked well to contain Milan's quarterback.

Chelsea scored the only touchdown of the second half when they took over the ball on their own 43-yard line. Then on a sweep of Milan's left end, Larry Gorton, behind blocks by Tim Orbring, Wayne Welton, and Tom McKernan, raced to Milan's five-yard line.

Two plays later, Larry Gorton again scored from one yard out. The two-point extra point attempt scored on a pass from Welton to Rick Wescott. The final score was Chelsea 15, Milan 6.

The Bulldog defense played a stand-out game, with Mitch Heard getting 14 tackles, and Tom Harmon two pass interceptions, and a fumble recovery. Tackles Randy Seitz and Mike Polvers held Milan's strong running backs to very short yardage in the second half.

Chelsea travels to Lincoln next (Continued on page six)

Doug Bowen Second in PP&K Zone Competition

At the zone competition of the Punt, Pass & Kick contest held Saturday, Oct. 10 at Ryerson Field in Ypsilanti, on the EMU campus, Doug Bowen, son of Mr. and Mrs. Tony Bowen, 126 South St., placed second in his age group.

The eight-year-old junior griddier was defeated by one point in the event, and received a certificate for his efforts.

Frosh Grid Team Posts Third Victory

Chelsea freshmen gridders traveled to Lincoln Tuesday, and came home with their third victory of the season. The young Bulldogs combined a strong offensive attack with some aggressive defense to earn a 24-0 victory. This is the most scoring the freshmen have done in any game to date, and is the second shut-out for them.

Chelsea threatened early when Art Paul recovered a fumble on Lincoln's 30-yard line. The threat died on downs deep in Lincoln territory. The Railsplitters could not score against the Chelsea defense and were forced to punt. This time the offense took over and scored. A 25-yard pass from John Houle to Tim Treado got the TD for Chelsea. Mike Nadeau dove for the extra points.

Lincoln fumbled after the kickoff and Chelsea had the ball again with less than two minutes remaining in the half. Houle's fine passing moved the team down the field. John Tandy got the final seven yards for the TD. Marv Guster ran for the conversion, giving Chelsea a 16-0 half-time lead.

Chelsea scored again in the fourth stanza after a sustained drive which featured strong running by Mike Nadeau, John Tandy, Dale Poertner, and Marv Guster. They were greatly aided by fine blocking from the offensive line and quarterback Houle. Guster capped the drive with a six-yard TD dash. Houle passed to Art Paul for the final points.

Chelsea stopped a Lincoln drive on the 20-yard line to end the game. The Bulldog freshman team is (Continued on page six)

Halloween Collection Set For UNICEF

The annual collection for the United Nations Children's Emergency Fund will take place from 3 to 4 p.m. Sunday, Oct. 25.

Chelsea children from the age of 6 to high school will come to local residents' homes to collect for the annual drive.

Containers will be distributed by the Chelsea churches on Sunday, Oct. 17. Anyone wishing to collect for UNICEF, but who is unable to obtain a container through a church, may also pick up a container at the McKune Memorial Library.

Board members of the Church Women United of Chelsea decided to continue the practice of a Sunday collection so the children could still enjoy the fun of Halloween. At 4 p.m., the children are asked to bring their containers to the Methodist Educational Center. The children will be given a treat at that time by Church Women United.

Last year, \$31.97 was collected which represented a 50 percent increase over the year before. It is hoped that through the efforts of the community, and those of the children, that Chelsea will do even better this year.

Mrs. Jerold Beaumont is the chairman of UNICEF in this area this year. Mrs. James Shadoan will be in charge of container distribution and publicity. Planning for the children's treats will be undertaken by Mrs. William Storey. Mrs. Russell Gardner will be on hand at the Methodist church to accept the contributions brought in by the children.

Young People Collecting Bottles For Glass Salvage

The Junior Pilgrim Fellowship of the First Congregational church will be collecting glass bottles on Monday, Oct. 19, to take to the glass collection center in Ann Arbor. Clean glass bottles may be left any morning at the church, 121 E. Middle St., or call Tony Roberts, 475-8267 for pick-up service.

Mrs. Marvin Schiller, 314 Madison, is at University Hospital, Room 9 west, bed 41.



GIVE ENOUGH: Gary Albrecht, chairman of the 1970 United Fund campaign in Chelsea, stood in front of the empty red feather in front of the Post Office at the official start of the campaign and noted that 100% was where he expected the sign to

be painted in before the drive closes. The campaign was officially started Monday morning, Oct. 12, when local volunteers began calling on their neighbors—to help support their neighbors.

JV Gridders Trample Over Milan, 26-20

Chelsea Junior Varsity gridders continued their 4-0 record Thursday night, Oct. 8, by defeating Milan by a score, 26-20.

Chelsea started the scoring in the first quarter on a 90-yard drive, going the last 26 yards on a pass from John Mann to Bruce Guster, to make the score 6-0.

The extra point was gained on a power play to Bruce Guster, making the score 8-0.

Jeff Marshall scored on a four-yard slant towards the end of the quarter to bring the score to 14-0. The try for extra point was not good, and the score at the end of the first quarter remained 14-0.

Chelsea started the second quarter with a score on a pass play from John Mann to Bruce Guster of eight yards, making the score 20-0. The try for extra point failed, and the score remained the same.

Milan scored toward the end of the first half on an 11-yard fake pass play. Their try for extra point was not good, and the score at half-time was 20-6.

In the third quarter, Chelsea scored on the first play from scrimmage, as Bruce Guster went 75 yards on a dive play. The extra point attempt on a pass was not good and the score remained 26-6.

Milan rallied in the fourth quarter scoring again with 1 minute 20 seconds remaining in the game. The extra point attempt was not good, and the score was 26-14.

On the second play after Milan kicked-off, Chelsea fumbled and Milan picked up the ball and ran 50 yards for the final touchdown. The extra point attempt was not good, and the score was 26-20.

With only four seconds left on the clock, Milan tried an onside kick. The kick did not go the required 10 yards, and time ran out for them, bringing to a close an exciting final quarter.

For Chelsea, Bruce Guster had an outstanding game on offense. He gained 274 yards on the ground and 43 more on pass receptions for the game for a total of 317 yards. This breaks the former single game record by 104 yards. John Mann had another good game, completing 7 of 15 passes for two touchdowns.

Defensively the entire team did a fine job. Almost every member of the defensive unit had seven or more tackles. The defensive team consists of Jeff Van Riper, Dan Boham, Steve Worden, Bill Harrison, Dan Schultz, Mike Merkel, Dan Bertke, Tim Johnson, Jeff Daniels, Jeff Marshall, and Bob Elliott.

Chelsea will return home after two weeks away with a game this Thursday, Oct. 15, against Lincoln High school at 7 p.m.

Stinehelfer Hospitalized

Ralph Stinehelfer, 738 S. Main, is in St. Joseph Mercy Hospital, room 307.

Layman's Day Slated Sunday at Methodist Church

Layman's Day at the First United Methodist Church of Chelsea is Sunday, Oct. 18. Guest speaker for the day will be Charles Cox, lay speaker from St. Paul United Church of Christ church in Chelsea. His sermon title, and the theme of the day, will be "Priorities for Living."

Others taking part in the ceremony will be Richard McCalla, who will give the call to worship; Mrs. Charles Cameron, who will give the morning prayers; and Daniel Gaunt, who will take charge of the scripture lesson and the benediction. George Cameron will give the announcements, and take care of the offering.

All Chelsea Schools Closing Next Wednesday

Parents and students of Chelsea public schools are reminded that schools will be closed on Wednesday, Oct. 21, for MEA conferences.

Rules Changed On Blood Bank Year-End Total

Twenty-seven pints of blood are still available for use by Chelsea residents before the Oct. 28 blood clinic.

Under the new Red Cross procedure, no blood will be carried over into next year's bank, nor will any deficits be charged against the Chelsea bank. Mrs. George Palmer, coordinator of the blood bank, announced this week. "In other words," she claims, "we start with a clean slate day of the blood clinic."

Mrs. George Frisinger, who is in charge of the appointments, will be visiting factories next week. Persons not employed in one of the local industries who wish to donate are asked to call Mrs. Frisinger at her home or the Chelsea Art Center. Appointments are not necessary, but they do help to keep time spent by the donor at the clinic at a minimum.

Chest Volunteers Named For Residential Solicitation

Volunteers for Community Chest residential campaign will be calling on local citizens this week, soliciting contributions to the 1971 Chelsea Community Chest. Many hours of effort have gone into obtaining people willing to contribute their time to call on their neighbors to help out this year's drive. The following people will be canvassing the neighborhoods within Chelsea asking for support.

Volunteers under Mrs. Peter Severn will be: Mrs. Tom Eisele who will cover Van Buren St., Mrs. Ted Spence, E. Summit St.; Mrs. Russel Gardner, Clardale Ct.; Mrs. W. W. Griffith, Flanders; Mrs. Paul Maynard, west part of Washington; Mrs. Matthew Villemure, east part of Washington; Mrs. Herbert Hinz, Harrison; Mrs. Fred Belser, Park; Mrs. Timothy Whittall, East St.; Mrs. Hal Pennington, south part of Madison; Mrs. Albert Wisecup, north part of Madison; Mrs. Richard Keizer, Freer Rd.; Mrs. James Centilli, Adams; Mrs. Peter Severn, Jefferson; Mrs. Arden Musbach, Orchard; Mrs. Larry Koch, S. Main; Mrs. Robert Riemenschneider, W. Middle; Mrs. Daniel Kelin, E. Middle; and Mrs. Arthur Schiller, Book Wenley, and Wood.

Workers for Mrs. John Popovich include Mrs. A. T. Hale, Buchanan St.; Mrs. Odis Richardson, North St.; and Mrs. Al Gieske and Mrs. William Henry, N. Main.

Mrs. Don Wood will captain Mrs. Duane Layher, Owens Ct., and Howard Rd.; Mrs. Hugh Weinberg, Arden Lane and McKinley Rd.; Mrs. Clyde Myers, east side of McKinley St.; Mrs. Kenneth Bucholz, west side of McKinley St. E. North St.; Mrs. James Allen, Railroad St.; Mrs. Conrad Con-



RESIDENTIAL CAPTAINS, and chairman, Gloria Greenleaf, meet for last-minute plans before sending their troops out into the town to collect for the 1971 Community Chest fund. Pictured above, they are Mrs. Donald Wood, Mrs. Jack Patrick, and Mrs. Peter Severn; in the second row

Mrs. Basil Greenleaf, chairman, and Mrs. Walter Brown. The main job of these women has been recruiting volunteers to help solicit for the fund, and they will be responsible for the money as it starts to come in. Missing in the above picture is Mrs. John Popovich.

Regional Meet For Teachers Slated at Beach

Teachers from Region Will Meet at Junior High Instead of Ann Arbor

In conjunction with a new policy in teacher conferences, Chelsea is hosting their own CEA teacher conference this year at Beach Junior High school, Wednesday, Oct. 21.

Until this year, regional meetings of teachers were held each year on MEA day, in Ann Arbor. Last year, however, it was decided that schools should open their own schools for conferences and spend time on problems in education more immediate to a local teacher's needs.

Chelsea, in conjunction with this policy, will hold teacher conferences this year for CEA members, and any teachers from regional schools who wish to attend.

Spokesman for this year's event, Jim Thompson, Junior high school counselor, does not know how many teachers from surrounding area schools will attend Wednesday's convention.

The program will begin at 8:15 a.m., when Irene Mann, an elementary teacher from Royal Oak Pub-

lic schools, will address the teachers. She will speak on special activities in elementary levels in which a weekly activity period is established for children to study any skill, or subject that they wish. Teachers, sometimes even Junior high school students, are secured to teach at this period, which would give every elementary student a chance to learn something he may not otherwise learn. The lessons range from knitting to other skills.

At 10 a.m., Micheal Stillwagon, candidate for the House of Representatives from the second district, will address the teachers on his views on education. His opponent, Marvin Esch, has also been invited, but it will not be known until Friday, Oct. 16, if he can attend the session.

There will be a question period following the address for teachers. The remaining conference time will be spent on Department meetings, and rap sessions among the teachers.

Tentative plans have been made to hold the conference at Beach school, pending the situation with the boilers. Beach school has been promised heat by Oct. 19. If, however, there are delays, the teachers will convene elsewhere, most likely at Chelsea High school.

Band Presents Show at Milan Football Game

The Chelsea High school band performed last Friday night, Oct. 9, at the half-time show for the Chelsea-Milan game. Their act was entitled "Another Chapter in the Life of Control's Number One Agent, Everybody's Favorite Spy, Maxwell Smith."

Steve Smith was Maxwell Smith, Connie Wireman played Eleanor Rigby, and Heather Brooks was 99. Dwight Bolanowski was the announcer.

Music featured in the show was the theme song from the popular movie "Goldfinger," and a variety of Beatles tunes which included "Eleanor Rigby," "Come Together," "When I'm 64," as well as the popular song "Ob-la-de Ob-la-da."

On Oct. 23, Homecoming, the band will do an extended pregame show featuring a dance to "Sweet Georgia Brown."

During half-time the queen candidates will be escorted onto the field, while the band will play selections in honor of the crowning of the new 1970-71 Chelsea Homecoming Queen.

Aptitude Tests Set for College Bound Juniors

Preliminary Scholastic Aptitude Tests, or PSAT's as they are commonly known, will be administered at the Chelsea High school library, Tuesday morning, Oct. 20. The exam is for all college bound juniors.

A PSAT is a very accurate measurement of a potential college student's behavior. When administered in the junior year of high school, it not only indicates to a student how he can expect to perform on the SAT, or college board exams, but it gives the student exposure to the kind of test that he will be taking on the college level. It also gives a student some indication of the kind of school he should consider, when considering his college choice.

Most colleges and universities require that a student take either the SAT or the ACT college board exam prior to admission. The PSAT, which is in effect, a mini-SAT, measures, like the SAT and ACT, a student's verbal and mathematical ability. The PSAT test (Continued on page six)



CHELSEA'S NOVICE DEBATERS, in competition for the first time, Saturday, Oct. 10, at John F. Kennedy High school in Taylor, walked off with the third-place trophy. Chelsea's valiant debaters are, from left, front row: Janice Schramm and Sue Stock; back row: Marty Straub, William Coelius, coach, and Mike Hergert. This is the first trophy ever won by a Chelsea debating team, and Coach Coelius has bright hopes for his teams this year. Thirty-three schools participated in Saturday's tournament.

Novice Debate Team Wins First CHS Forensics Trophy

The first trophy ever won by a Chelsea debate team was taken home Saturday afternoon, Oct. 10, following an invitational meet at John F. Kennedy High school, in Taylor, at which 33 schools competed.

Twelve debaters from Chelsea, composing three teams, attended the event, according to the team's coach, William Coelius. This is the fourth season for Chelsea debaters, the first in which there are seniors on the team, Coelius commented. He predicts that this is the strongest team ever at Chelsea. Ironically, it was the novice

debaters, who had never competed before, who won the trophy, third place in their division.

Victory was made sweeter by the fact that the meet, an invitational, featured primarily Class A schools, a class that composes schools that are larger than Chelsea, which is Class B, and therefore, have a larger base from which to attract people, and have consequently more powerful teams.

On the winning team were Janice Schramm, Sue Stock, Marty Straub, and Mike Hergert. They competed against teams from Bull-uck-Creek, Taylor Center, Marshall,

Royal Oak Kimble, Ann Arbor Huron High, and Waverly in Lansing. Waverly was the only team to defeat the Chelsea debaters, and Chelsea was the only team to defeat Ann Arbor Huron High, winners of the contest.

A second novice team from Chelsea had a record of 4-2 for the day, while the varsity debaters suffered a 0-6 defeat.

On this year's team, members include Sharon Heydlauff, Jackie McClain, Patrick Pluck, Cindy Sawyer, Sue Stock, and John Merkel, seniors, and Chick Lane, Dan

(Continued on page five)

Established 1871 **The Chelsea Standard** Telephone GR 5-3531

Excellence Award By Michigan Press Association
1951-1952-1960-1964-1965-1966

Walter P. Leonard, Editor and Publisher

Published every Thursday morning at 300 North Main Street, Chelsea, Mich. 48118, and second class postage paid at Chelsea, Mich., under the Act of March 3, 1879.

ADDRESS CORRECTION REQUESTED

Subscription Rates (Payable in Advance)

In Michigan:	Outside Michigan:
One Year \$4.00	One Year \$6.00
Six Months \$2.25	Six Months \$3.50
Single Copies \$.15	Single Copies \$.20

Service men or women, anywhere, 1 year \$4.00

MEMBER **NATIONAL NEWSPAPER** Association - Founded 1885

National Advertising Representative:
MICHIGAN NEWSPAPERS, INC.
257 Michigan Ave.
East Lansing, Mich. 48823



Washington Report by Congressman MARVIN L. ESCH

Our national heritage of outstanding and beautiful national parks will be enhanced this year by the addition of the Sleeping Bear Dunes National Lakeshore in Michigan. After debate lasting 10 years, the House of Representatives has at last approved legislation adding this fantastic area of natural beauty and shoreline of Lake Michigan to the National Park System. The Senate is expected to take action on an identical proposal in the near future. A generation of interest in the environment has paid off.

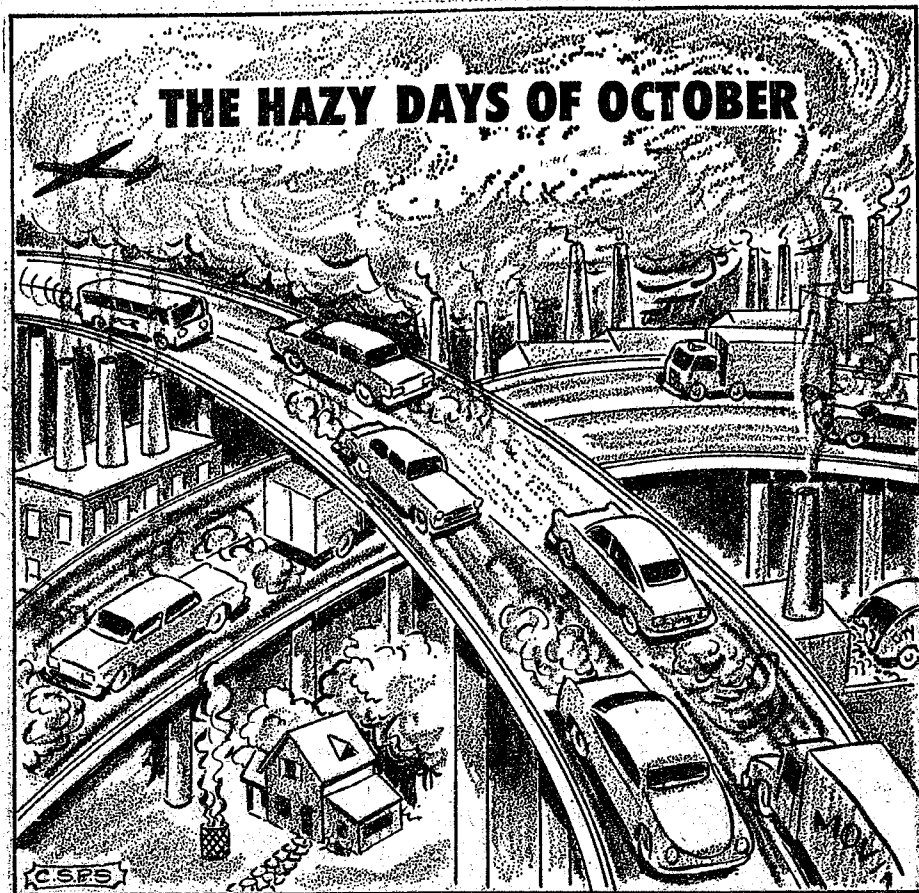
In this time of concern for the environment, it is particularly important that we preserve this unique area for its ecological value. It contains over 60 miles of Lake Michigan shoreline. Lying on the great headlands of Lake Michigan, the ever-shifting winds have shaped a dynamic landscape of dunes. Also included in the park is the nation's largest northern white cedar virgin forest, and many other lovely quiet inland lakes, verdant meadows, and pine forests—all of which are of

inestimable value for future environmental study.

Located near many of the nation's largest inland cities, this park is ideally suited to provide a place of relaxation and recreation for thousands of citizens. Under the unified planning and direction of the National Park Service, its heritage of beauty will be made available to all who come rather than the few who were fortunate enough to be able to buy property. At the same time, the unified planning of Park Service will provide full protection for the natural beauties of the area.

The proposal for a National Lakeshore at Sleeping Bear received the support of every Michigan Congressman and Senator in a rare showing of unanimity. This support was engendered not only serving this lovely area, but because of the painstaking and unique protection which was built into the proposal for those who have made investments in the area. No previous bill creating a national park has been drawn so carefully to assure local property owners a fair deal and to provide full compensation for their investments. Through a close co-operation between the state government and federal officials, local communities will be protected from the loss of their tax base.

For Michigan and for the nation, this park is a wonderful contribution to the quality of our environment, and the beauty of our surroundings, and the enrichment of life.



★ MICHIGAN MIRROR ★

By Elmer E. White, Secretary, Michigan Press Association

Dispute Continues

Legal hassles have a way of dragging over quite a few years. But the states of Michigan and Ohio may be settling a record of some sort with a dispute they are presenting to the United States Supreme Court.

The dispute is 134 years old and involves 200 square miles of water and bottomlands of Lake Erie between Michigan and Ohio. Normally, the area wouldn't attract that much attention, but geologists say it is rich in deposits of gas and oil, and that has perked up interest in both states.

The dispute started back with the "Toledo War"—a difference between Michigan and Ohio over where the boundary between the two states should go.

It was resolved by giving Ohio the land it was claiming as the northern part of it, but which Michigan said should be made the southern edge of Michigan. In return for agreeing, Michigan received what is now known as the Upper Peninsula.

The final boundary was laid out by a captain named Talcott in the U.S. Corps of Engineers in 1836.

The quarrel now involves which way the boundary extends when it reaches Lake Erie.

Ohio claims that it takes a 45 degree turn north and angles out.

The State Highway Department says it deserves part of the credit for the drop in highway traffic.

into Lake Erie to the Ontario border.

Michigan says, however, that the line follows the same direction out into the lake as it does between Ohio and Michigan until it hits the Ontario line.

A retired federal judge, Albert B. Maris of Philadelphia, has been appointed by the U. S. Supreme Court to hear arguments in the case and make a recommendation.

Despite the large influence which labor wields in Michigan, the state is one of a minority of states which have no legal requirement that workers be given time off to vote on election day.

Many employers allow such time off and many contracts with unions call for it, but there is no legal requirement involved.

This means Michigan is in a minority, since 30 of the 50 states require employers to give time off to vote. In 19 of those states, employers are barred from making a deduction from the worker's check for the time off, also.

The polls will be open from 7 a.m. to 8 p.m. in Michigan as usual on election day. Those hours also, as usual, will mean no liquor sales.

Voting Time

One of the programs involves the removal of trees from along major routes. Cooper said a recent study by the department showed a one-year reduction in car-tree fatalities from 28 to eight in areas where roadside trees were removed.

He also said the department is continually reducing the potential for rear-end collisions with the addition of passing lanes, turning lanes and provisions for left-turning vehicles at intersections.

Other programs aimed at reducing highway accidents include:

—Placement of improved guard-rail or special median barriers in the center of divided highways to prevent cross-median accidents.

—Skid-proofing surface applications at locations of high accident percentage on wet pavements.

—Placement of safety devices in front of fixed objects near traffic lanes designed to collapse when struck and producing a softer impact and less damage.

Roads Help

The State Highway Department says it deserves part of the credit for the drop in highway traffic.

Uncle Lew from Lima Says:

Dear Mister Editor:

Ed Doolittle got to talking afore all the fellers got settled at the country store Saturday night, and it was plain from the start that Ed was still worked up over Clem Webster's charge the week afore that the Democrats was making a bigger mess of everything than the Democrats.

Ed, that allus perduces newspaper clippings for evidence to support all his issues that he thinks can stand supporting, waves a handful of evidence to show the plus side of the Republicans. Ed, fer a start, said the post office change had come about under Nixon, and he allowed if the corporation idea ain't better, it shore can't be worse.

We got boys coming home from Vietnam, said Ed fer another instant, and it looks like Nixon was right about his Cambodia plan.

Ed said he weren't prepared to debate inflation, cause in all his years of reading he never had come to understand overheated economies that cool too quick, or bears and bulls in the market, or why a feller that could git more credit than he could use one day can't borrow a dime the next.

Furthermore, went on Ed, the differences between the two biggest political parties actual is our best hope. It might be like Bug Hookum said, that we got problems too big to handle, but it's fer shore, claimed Ed, that by keeping a sharp eye on one another, the two parties is giving the problems a look from all sides.

This column writer said the country is divided today as never afore, Ed reported, and even in the Civil War folks jest had to choose between two sides. Now we got so many angles to so many issues til the same feller might be your friend on one and your enemy on the next. Where can you find two Americans, ask Ed, that agree on how to git out of Vietnam, ways to fight inflation, what to do about student riots and dope pushers, birth control, air and water pollution?

And if we ain't got enuff problems of our own, said Ed, the rest of the world drag us in on theirs. We got the Russians that say they will have enuff missiles by the end of the year to blow us up six times, and we worry cause we can kill all o them only four times, allowed Ed. That bunch in the Middle East has been fighting before, during and since the good Lord walked around over there, went on Ed, but now the "U.S. imperialists" is sudden behind it all.

Mister Editor, I'm shore I ain't put down much of what Ed covered during the session. The fellers never had any doubt, but they learned all over agin that when it comes filli-busting, Ed is the champ on offense and defense. He can pack a 30 minute talk into two hours anytime.

Yours truly,
Uncle Lew.

The Finest in Snowmobiles

MIKE'S TV ANTENNA SERVICE
Motorola Automotive Sound Systems
Winegard Home Electronics TV Antenna Systems
Insurance Claims
For Free Estimate, Call Pinckney 878-3258 or 769-0130

JUST REMINISCING

Items Taken from the Files of The Chelsea Standard

4 Years Ago . . .

Thursday, Oct. 20, 1966—

Groundbreaking for the new Chelsea Medical Center is scheduled for Sunday, Oct. 23, at 4 p.m. Construction of the center, which is to be built on a 37-acre site in Chelsea adjacent to Pierce Park on South Main St., will begin immediately.

Phase one of the construction program includes three buildings—a pharmacy, a dental office building, and a medical office building. Completion date has been set for 270 days from the start of the construction.

Dedication of the new building of St. Paul United Church of Christ, 14600 E. US-12, is set for Sunday, Oct. 23. Two services and two guest speakers are scheduled for the event, which will also feature an open house for all the people of the community. The open house is scheduled to begin at 3:15 p.m.

Chelsea Community Chest kicked off its annual fund raising drive on Tuesday, Oct. 18, with the appearance of Chest officials at the Chamber of Commerce luncheon. Special emphasis will be placed on the industrial divisions of the drive this year. That division will be headed by Donald H. Neff, chairman, and Arden Musbach, co-chairman, of the drive.

Monday evening an ordinance was passed "regulating the keeping, impounding, and disposal of dogs" and fixing the penalty for violation of the ordinance.

The ordinance provides that dogs may not be permitted to run at large, that loud, frequent or habitual "barking, yelping, growling or howling" of dogs is prohibited, that dogs known to be of ugly disposition or dangerous to person or property may not be harbored, and that dogs must not be permitted to become a nuisance by trespassing on the property of others.

On Thursday, Nov. 1, the Chelsea Social Service, an incorporated non-profit organization, will open an office in the Village Council chambers in the Municipal Building with Mrs. Louis Ramp, a highly qualified social worker in charge. Chelsea Social Service is mainly supported by money from the Community Chest, gifts of new clothing from the Needlework Guild, and other gifts such as used garments, staple groceries, and money from individuals and clubs.

Chelsea Social Service has been developed over the past five years as a committee under the Woman's Club of Chelsea with volunteer help.

24 Years Ago . . .

Thursday, Oct. 17, 1946—

About 40 members of the Chelsea Businessmen's Association and several guests heard a discussion of the advantages resulting from a change from an incorporated village to a city form of government at a meeting held in the Municipal Building on Tuesday evening. Mayor Alvin Gross of Saline addressed the group and was enthusiastic in his endorsement of the city government under which Saline has operated for a number of years. Gross was a member of the village council at the time the change was made, and has served continuously since then as a member of the city council and now as mayor.

At the Village Council meeting

34 Years Ago . . .

Thursday, Oct. 15, 1936—

The United States Rubber Products Co., started to move tires into the Tower Building on N. Main St., last Friday, which they have leased for nine months from L. P. Vogel, and Conrad Lehman. According to George Kendrick of Detroit, who has charge of the storage operations, the company expects to place from 75,000 to 100,000 tires in the building. The tires, which contain tubes, are made up for Chevrolet cars and will be kept in storage here until next spring when they will be shipped to Chevrolet branch factories.

Shedd Products Co., which is said to be the largest independent dairy products concern of its kind in the state, is rushing plans for the opening of their milk receiving station on S. Main St., and expect to be taking milk at the location by the last of the week. New equipment is being installed in the building which was formerly used by the Wilson Dairy as a receiving station. Capacity of the receiving plant will be 75,000 pounds of milk a day.

Follow 7-Cent Rule In Buying Fresh Eggs

Follow the seven-cent rule when comparing prices between egg sizes, says Maryann Meldrum, extension consumer marketing information agent in Kalamazoo.

If a dozen is selling for less than seven cents over the next smaller size, the larger-sized eggs are the best value, Miss Meldrum explains. If the difference between the two sizes is more than seven cents, the smaller size is probably the best buy.

Remember that eggs are graded either AA or A, she adds. Grade AA is top quality. Grade A is the next quality designation. When comparing prices, be sure also that you compare like grade—A against A, and AA against AA, Miss Meldrum cautions.

DEXTER K. of C. ANNUAL

CHICKEN BAR-B-Q

Corner of North Territorial Rd. and Dexter-Pinckney Rd.

Saturday, Oct. 17 & Sunday, Oct. 18

11 a.m. to 5:30 p.m. both days - Rain or Shine!

CARRY-OUTS AVAILABLE

This event will take place on the property owned by Jay Ledwidge.

Home Economics Study Groups Calendar

Week of Oct. 14-21
Friday, Oct. 16—Freedom Ideal Homemakers, Mrs. Gilbert Trinkle, 10775 Ellsworth Rd., Ann Arbor.

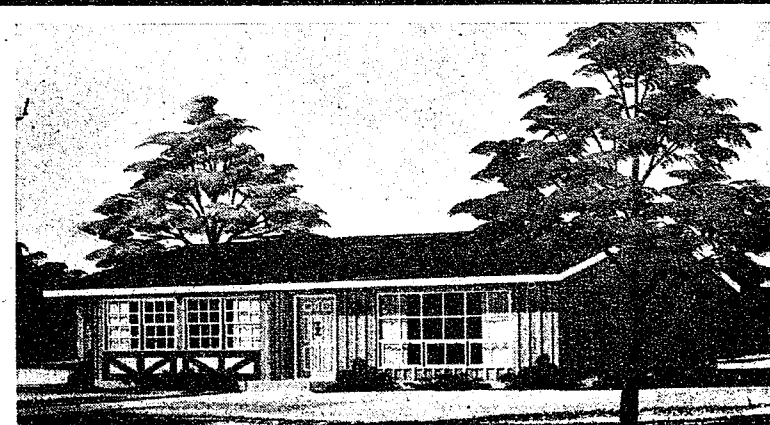
Tuesday, Oct. 20—Rogers Corners, Mrs. Dennis Engelbert, 12035 Ellsworth Rd., Chelsea; co-hostess, Lorena Wenk.

Wednesday, Oct. 21—North Lake, Mrs. Clarence Ottomian, 12835 Waterloo Rd., Chelsea.

(Political Advertising)

RE-ELECT
ESCH
Thanks for himself
Works for us.

MONEY TROUBLE?
ONE PLACE TO PAY!
Credit Management Service
662-2565
215 South Fifth Ave.
Ann Arbor
State Licensed and Bonded



Realistically Priced at \$21,900

Including carpeting, appliances, full basement, large 2-car garage, on your improved lot.

WE ARRANGE FINANCING
WE HAVE BUILDING SITES AVAILABLE

MODEL OPEN
Saturday and Sunday, Oct. 17-18
1 p.m. to 5 p.m.
Open 5 p.m. to 9 p.m. Monday thru Thursday

5711 DEXTER-PINCKNEY ROAD
(2½ miles northwest of Dexter)

Interior furnishings and decorating by Merkel Bros.

W. C. WEBER CONSTRUCTION CO.
INCORPORATED
12290 JACKSON RD., CHELSEA, MICH.

Office Open Daily from 9 a.m. to 5 p.m.

Phone 475-2828

SEAMLESS ALUMINUM GUTTERS

Also: Barn Eavestroughing

CALL

WILSON METAL SHOP

Phone 428-8468 Manchester, Mich.



CHS BARBERSHOP QUARTET featuring high school students entertained Chelsea Kiwanians Monday night, Oct. 12. The group was formed originally to sing in the high school production of "The Music Man," which was produced last year. From left to

right, the singers are: Dave Hess, Keith Pfeifle, Randy Seitz, and Tim Ortring. Jill Flintoft accompanied them. The boys sang "The Whiffenpoof Song" and "Lida Rose."

Beach Junior High Students Have Choice of 21 Clubs

On Tuesday, Oct. 6, the Beach Junior High school held its first activity period of the year. An activity period is a school period in which everyone in the school may go to a particular club. The period is a rotating period, never being held the same day, on the same hour. This year, the activity period will be a weekly affair, instead of bi-weekly, as it has been in the past.

There are 21 clubs at the Junior High school this year. They include the archery club, band, boys

sports, chess club (advanced and beginning), conservation club, dramatics, French club, games club, girls sports, home economics club, horse lovers club, hunters safety (class), industrial arts club, knitting club, journalism club, library club, poetry club, poster club, stillery, student council (by election), and yearbook staff (by selection).

Thursday, Oct. 8 was the day the students had their pictures taken. Every student's picture was taken for use in the yearbook. Those students who wished to keep their pictures had to pay for the pictures in advance, and those shots were taken in color.

Steve Bennet, Junior High school reporter.

Subscribe today to The Standard!

Chelsea Products Credit Union Signs Group Auto Plan

An increasing number of Group Auto plans continue to make mass marketing news. Chelsea Products Employees Credit Union, located at 105 S. Main St., is the latest area organization to adopt a Group Auto plan through the facilities of Farm Bureau Insurance Group. The plan was initiated Sept. 24.

The 250 Chelsea Products Employees Credit Union members will receive auto plan benefits which are similar in concept to group health and group life programs.

Increasing number and expense of auto accidents, coupled with a growing threat of collision with uninsured motorists have created a serious financial and social problem. Group Auto insurance which offers protection to all qualified drivers within an organization, is a big step toward eliminating financial crisis springing from auto accidents. Group rating and administration reduce individual insurance rates, including those for young drivers, while eliminating arbitrary cancellations by the insurer.

Normal car insurance savings can average more than 15 percent. Substantial rate reductions can also be made for groups with good safety records.

4-H Clubs

TERRIFIC TAILORS

Terrific Tailors 4-H club met Oct. 3 at the home of Vicki and Tammy Downer. 4-H pledges were given. Each girl was asked to show her pattern and material. Then a program on zippers was given by leader Mrs. Donna Hughes.

A party for initiation purposes was planned, and a committee was set up to handle details.

The meeting was adjourned and refreshments were served by the hostess followed by recreation planned by the recreation committee.

The next meeting will be held at 1:30 p.m., Nov. 7 at the home of Janet Wackenhut, scribe.

TEACHER TOPICS

By James Hoffmeyer, Chairman Beach School Science Department

The eighth grade this year is using a new textbook, Making Health Decisions, as a basis for discussions for several weeks this fall. The subject matter falls into various categories which, in the hands of our eighth grade teachers, have been developed into a commendable series of weekly topics, complete with "specialists" in each area of study.

The students have already completed a study of communicable diseases with Miss Virginia Rust acting as "expert" in answering the students' questions. Miss Rust is the nurse for the Chelsea schools and was very well prepared to field sincere questions asked by the students. A movie on venereal disease was included in Miss Rust's program.

Another special week was on mental health. The mental health "experts" were Mrs. Susan Harding and James Thompson, Beach school counselors. Mrs. Harding is new to Chelsea this year, and Thompson is serving his second year counseling Chelsea's younger generation. These two people provided very good background knowledge in mental health. After the "experts" in each area had presented their programs to the students in large groups, the students had the opportunity to discuss these topics among themselves and with their classroom teachers during their normally scheduled science classes the following day or days. Some topics will probably continue for more than a week.

Another area of special concern in this year's plan concerns proper teen-age nutrition. The impetus for part of this discussion is being provided by Mrs. Joyce Siebert who is an instructor in the Weight Watchers Program.

The week following weight control emphasis, drugs will be the topic. I will be the "specialist" in this area, having attended in August, a two-week workshop on alcohol and narcotics education at Chautauque, N. Y. A movie will also be included entitled Narcotics: The Decision.

Dr. Michael Papo is helping to plan what will probably be the final week of this series. A field trip to the Chelsea Medcenter and Clinic is being planned, with each class being given a guided tour of the facility.

The eighth grade teachers who planned this series are Mrs. Carol Steiner, Mrs. Alice Steinbach and Pat Clarke. The curriculum will continue to include our established laboratory-centered approach for most of the remainder of the year.

On Oct. 9-10, three of our Beach school science staff attended the Great Lakes Regional Convention of the National Science Teacher Association at Grand Rapids. Purpose of such a meeting was to strengthen the teacher's knowledge and expertise in his subject. There were dozens of sectional meetings from which our teachers could choose. The conferences were considered so worthwhile, that our staff members decided in advance to stay on Saturday at their own expense, since they used up collectively on Friday our allowance of conference days. Those from our building who attended were Alice Steinbach, Carol Steiner, and Paul Simon. Lois Moore from South Elementary school also attended.

I would like to make the drug film (mentioned above) available for public viewing. There are many excellent films available on tobacco, alcohol, and finally in the past year or two, on other drugs. I have selected one which I feel will serve well in the eighth grade lessons, and which will serve equally well in informing adults about some of the problems of drugs. I have reserved the evening of Oct. 29 (Thursday) to show the film at the Beach School's Large Group Instruction Room at 8 p.m. If enough adults are interested in this, perhaps we can at that time begin to plan ahead for several weekly meetings devoted to a study of the "Drug Problem." If you think you would be interested, please mark the date, Oct. 29 on your calendar now!

Please send any correspondence to the CEA in care of P. O. Box 141, Chelsea.

Letters to the Editor

Dear Editor,

I would like to say a word in behalf of Homer and Margaret Kuhl who live on M-52 south of Chelsea and are threatened by the proposed installation of a livestock sales and auction yard by the Michigan Livestock Exchange.

Request has been made to the Sylvan Township Zoning Board for a conditional use permit in an A-1 Agricultural district. Most, if not all, of the houses in Sylvan Township located outside the Village of Chelsea are in a similar district zoning, therefore the matter is of concern to many.

It is unnecessary to mention the odors, noise, congestion and other undesirable consequences which will flow from this facility. People living in the vicinity of other Michigan Livestock facilities are practically unanimous in their indictment of the operation, as indicated by recordings, letters and pictures at the last Zoning Board meeting.

I am not a critic of progress and I am as appreciative as anyone of the desirability of improving the economic capability of the area. However, is the sacrifice of people inevitable? I think not and I refuse to believe that a better effort by the Michigan Livestock Exchange could not secure a site which would not be in the doorway (200 feet) of a well-kept home, but would remain in the Chelsea area. In any event I believe that Homer and Margaret Kuhl should be well compensated if they suffer damage.

Dollars are important but people are more important. Can't we have peaceful co-existence? Can't we preserve the quality of life? Can't we reaffirm the traditional American concept of individuality?

Let us save the Kuhls and perhaps we may, in the process, save ourselves.

Very truly yours,
Donald Schoenberg.

To Mr. Clark,
Thank you for providing us with information on why you wear the flag upside down. The sign of distress in your case is well taken, you do need help.
A Citizen.

Edam and Gouda, Dutch-type cheeses, are readily recognized by their red coatings.

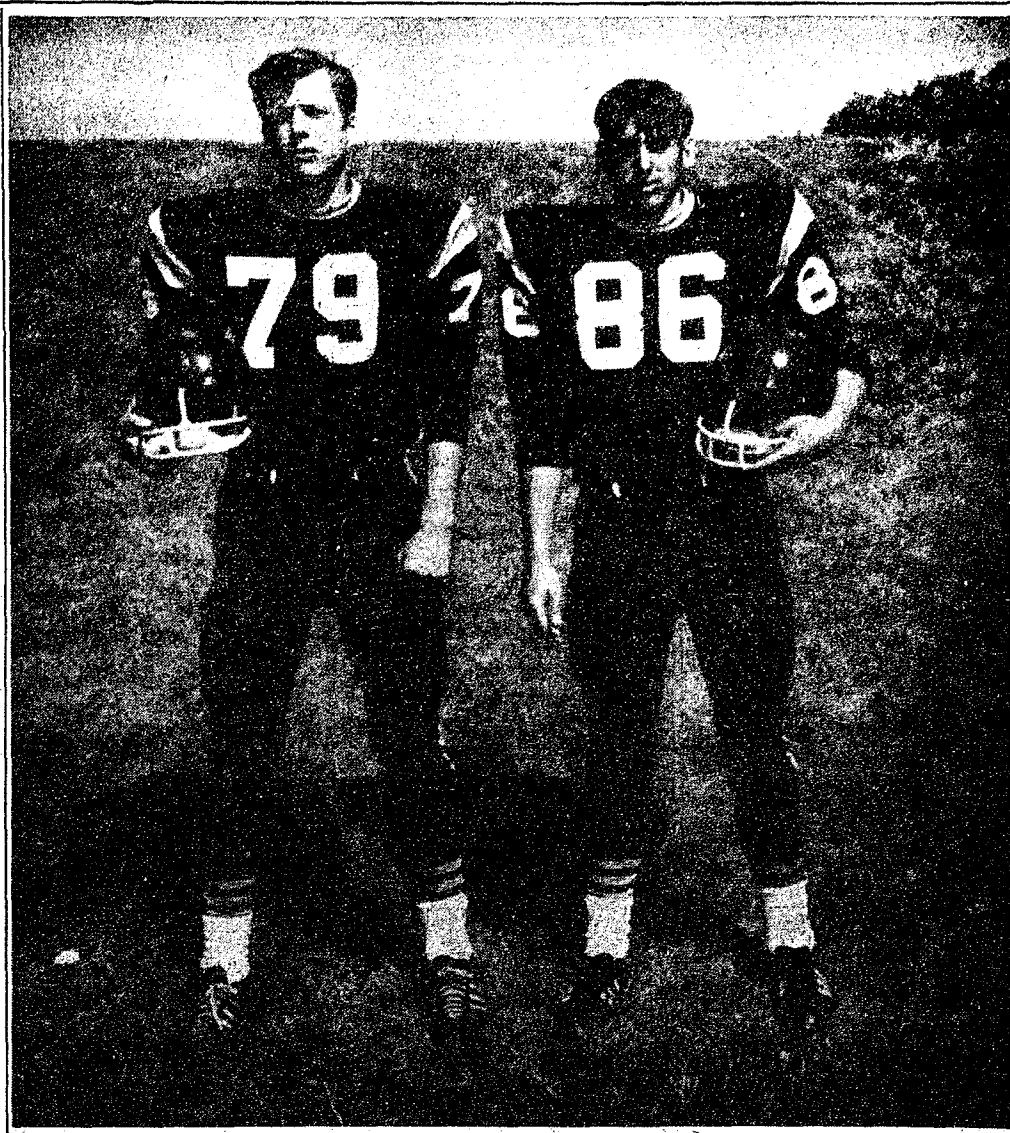
YES

WE ARE MAKING
LONG-TERM FARM
REAL ESTATE
LOANS

SEE US

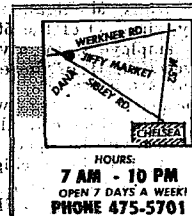
**Federal
LAND BANK
Association**

Ann Arbor, Mich. 48103
P. O. Box 1006
Ph. 769-2411 3645 Jackson Rd.



MIKE GIFFIN, left, senior, is a newcomer to Chelsea, having moved here in the 10th grade from Ferndale. This is Mike's second year on the varsity team, although he played football in Ferndale. Mike is an offensive end, and defensive tackle for Chelsea. Other sports which Mike enjoys are water skiing, and water sports. His family has a summer cottage at Traverse City, where Mike spends most of the summer. He works most of his free time, when not at football practice or at school, at the Gallup-Silkworth Pump and Pantry as a gas station attendant. After high school, he would like to go to college, probably Washtenaw Community College, and then on to Michigan State. He plans to major in civil engineering. Mike lives at 19695 Old US-12 with his parents, Mr. and Mrs. Gerald Giffin, and his sisters, Chris,

HOWIE TREADO plays tight end and defensive end for Chelsea's team. A senior, he has played football for three years, this being the first year on the varsity team. An active sports enthusiast, Howie is co-captain of the basketball team, and is a member of the baseball team. He also belongs to the Varsity club, and the Ski club. After his education in Chelsea ends, Howie would like to go to college at either Central Michigan University, or Marquette University, where he will major in business administration. Howie lives at 129 South St., with his mother, Mrs. H. Treado, who is a librarian at the McKune Library, and his sisters, Reatha, Annie, and Kathleen, and one brother, Timmy.



Jiffy market
BIG ENOUGH TO SERVE YOU.....SMALL ENOUGH TO KNOW YOU!

COMPLETE
SUPER
MARKET

Corner of SIBLEY & WERKNER RDS....CHELSEA, MICHIGAN

SALE PRICES EFFECTIVE THURSDAY, OCT. 15 THRU SUNDAY, OCT. 18, 1970.

RISDON'S
HOMOGENIZED

MILK

Gallon **79¢**

WAY BAKING CO.
KLEEN - MAID

BREAD 2 1 1/4-Lb. Loaves **49¢**

32-Oz. **COKE**
Quart

32-Oz. **SPRITE**
Quart

32-Oz. **FRESCA**
Quart

FREE

1 Quart SPRITE
With Purchase
of Any 4 Quarts
AT SALE PRICE.

YOUR
CHOICE

4 Qts. 99¢

NON-RETURN
BOTTLES



All Favorite Brands
All Lengths
YOUR CHOICE

CIGARETTES 10-Pack Carton **\$3.39**

OPEN
7 A.M.-10 P.M.
DAILY

FULL LINE
GROCERIES
MEATS
PRODUCE

PLENTY OF
FREE
PARKING

All
Merchandise
Priced at
Supermarket
Prices

COMPLETE
MAGAZINE
RECORD
STEREO TAPE
DEPARTMENT

LOWEST GAS
PRICES AROUND!

REGULAR

31.9 Per Gallon
Includes
All Taxes

TOP QUALITY -
NOT A CHEAP GAS

PREMIUM

35.9 Per Gallon
Includes
All Taxes

**JIFFY
MARKET**

MARATHON

**GAS
PUMPS**

Where You Can
Save Some Money!

THIS WEEK'S SPECIAL:

PRESTONE

ANTI-FREEZE

Gallon **\$1.69**

COLD WEATHER
IS HERE!



save!
FASHION'S NEWEST
fabrics

Big Selection
in
Basement

DANCER'S

Chelsea's Friendly Dept. Store

Ads
Taken
Till 5 p.m.
Tuesday

IT'S EASY TO
BUY-SELL-RENT-
HIRE & FIND WITH

WANT ADS

Just
Call
GR 5-3581

WANT ADS
The Chelsea Standard
WANT AD RATES
PAID IN ADVANCE—All regular advertisements, 50 cents for 25 words or less, each insertion. Count each figure as a word. For more than 25 words add 2 cents per word for each insertion. "Blind" ads or box number ads, 85c extra per insertion.
CHARGE RATES—Same as each in advance, with 10 cents bookkeeping charge if not paid before 5 p.m. Tuesday preceding publication. Pay in advance, send cash or stamps and save 15 cents.
DISPLAY WANT ADS—Rate, \$1.10 per column inch, single column width only, 8-point and 14-point type. CARS OF THANKS or MEMORIALS—Single paragraph style, \$1.00 per insertion for 50 words or less; 2 cents per word beyond 50 words. Minimum, 1 inch.
COPY DEADLINE—5 p.m. Tuesday week of publication.

CAR RENTAL by the day, week-end, week or month. Full insurance coverage, low rates. Call Lyle Christwell at Palmer Motor Sales, GR 5-3271. 25tf

WORK SHOE HEADQUARTERS
Famous Red Wing Brand
\$12.95 to \$28.95

Foster's Men's Wear 34tf

USED TRACTOR TIRES—Large inventory on hand. Also used passenger - truck - grader tires. Jackson Tire Brokers, M-106, M-107, Mich. Ph. 596-2925. 32tf

FOR SALE—16½ foot Shasta travel trailer, completely self-contained, sleeps six, good condition. Hitch and brakes included. Phone 426-5791. x17

All Insurance Needs
In the convenience of your own home — or mine

N. H. Miles, Allstate
Call GR 5-8334 after 6 p.m. 45tf

YARN
Good selection

DANCER'S BASEMENT 17

Vacuum Your Leaves Off Your Lawn
Use a Simplicity lawn tractor with a vacuum collector—the fun way to handle leaves and clippings.

Chelsea Hardware
GR 9-6311 17

REWARD
Small black cat lost near former Chelsea State Bank. Child's pet. Please call 475-7685 or 475-2030. 17

CARPET CLEANING by Burke, 12 cents a square foot, needs overnight to dry. In Chelsea call Merkel Brothers, 475-8621. 83tf

NO HUNTING SIGNS
Now available

Chelsea Standard
300 N. Main St.
Chelsea, Mich.

WANT ADS
BOARDING, trimming, training. Town and Country Kennels, Jackson Rd. at Baker, NO 8-7200. 7tf

MOR HEATING & Cooling Co.
Air conditioning, hot water, steam boilers, warm air furnaces. Sales and service. Ph. 493-2883. Gregory. 47tf

Gem Travel Trailers and Campers
PICK UP COVERS
4" ————— \$100.00
26" ————— \$179.00 and up

Triangle Sales
Chelsea 475-4202 40tf

FARMS RESIDENTIAL LAKE PROPERTY
for
QUALIFIED RELIABLE SALES PERSONNEL
CONTACT
Kathryn Bell, 426-8892
Carolyn Smith, 426-8830
Janice Foutch, Saline, 429-4114
Wendel Foutch, Saline, 429-4114
YPSILANTI OFFICE
Arthur Kave, 482-6655
Virginia Oakes, 482-6655

Evinger Real Estate
426-3286
Dexter, Mich. 38tf

In Dexter
FOUR-BEDROOM—2½ bath, large living room with fireplace, recreation room with fireplace, screened patio, attached garage, corner lot, lots of trees. Very nice.

On Huron River
THREE-BEDROOM—living room with fireplace, kitchen with all built-ins, enclosed porch all carpeted, lower level has large work-shop, laundry room, recreation room with fireplace, screened porch, cyclone fence, trees, Dexter schools, terms.

Bruce Waggoner
426-3387
K. KRULL, Broker x18

LaFontaine Construction Co.
GENERAL CONTRACTORS
COMPLETE BUILDING SERVICE
Residential — Commercial
Emergency Repair Service
FREE ESTIMATES
Phone 475-7494
P. O. Box 160, Chelsea, Mich. x7tf

TRAVEL TRAILERS—18 ft. and up; 10x55 ft. trailers. John R. Jones Trailer Sales, Gregory, Mich. Phone 493-2655. 43tf

DON COOPER will be back for this year's Kiwanis Travel Series. "Nuf said!" 17

Quality Evergreens
Spreading, upright, and Hicks Yews, Pyramid and Globe Arbor Vitae, Pfitzers and Blue Spruce. Now is the time to select your Christmas King and Norway Maples. All State Inspected. Faust's Evergreen Nursery, 11862 Trist Rd., Grass Lake. Phone Grass Lake 522-4588. 20

FLUTE FOR SALE—Armstrong, with silver mouthpiece. Used only senior year. \$150. Phone 475-8795. x17

WANT ADS
Contractor Servicing Chelsea, Dexter and Manchester Areas
Complete Home Remodeling Inside and Outside
Specializing in extra living space, recreation rooms, kitchens and paneling. Installing all aluminum products, 5" eavestroughs, custom-made awnings, windows and doors, aluminum siding in many selected colors and styles.
Please Call
DALE COOK
Chelsea 475-8863 20tf

HAMMOND ORGAN teachers wanted to teach in their own homes. Call Grinnell Brothers, Ann Arbor, 682-5687. 34tf

WANTED TO RENT or Lease—Bob Smith's Horsehoeing Farm home with room for horses. 429-4895. x49tf

LOSE WEIGHT safely with Dex-A-Diet and remove excess fluids with Fluidex. Only 98 cents and \$1.89 at Chelsea Drug. -17

FAVOR YOUR FAMILY with some tickets for this year's great Kiwanis Travel & Adventure Series. Buy Now! 17

HORSE SHOEING—Experienced, corrective trimming and shoeing, prompt service. Buck Myer, 2800 W. M-59, phone (617) 546-1510 Howell 48843. -23

10 Acres of Evergreens, Shrubs and Trees
Blue Spruce and Japanese Yews Our Specialty
U Dig or We Dig
Mason's Nursery
8794 Monroe St., Macon Rd. Saline - Ph. HA 9-5034 19

BRAND NEW 1970 FORD CARS and PICK-UPS
At
REDUCED PRICES
Shop While There Is Still A Good Selection
Remember—5 Year Warranty is Available On All These Units
Also
1—LTD 4-Dr.
Rental Car At Even More Savings

USED CAR BARGAINS
'68 Pontiac hardtop \$1695
'67 Galaxie 500 hardtop \$1195
'66 Comet \$695
'66 Ford 4-dr. \$895
'66 Ford 2-dr. \$795
'65 LTD hardtop \$695
'65 Chev 4-dr. \$695
'65 Ford hardtop \$695
Open Mon., Wed., Thurs. Till 9:00 All Day Saturday
PALMER FORD
SINCE APRIL 1912
475-3271 x17tf

WEAR BEAUTIFUL CLOTHES. Make new friends. Earn money at same time. Become a Beeline stylist. For information call Betty Pelkey, 229-9192 collect or 229-9448. x20

Arnie's Roofing
All types of shingle work, repairs, new and old homes, barns, etc. Free estimates.
Phone 682-1758 x21tf

G. G. HOPPER
Building Contractors
Phone GR 5-5581
Gregory 498-2148 40tf

FOR RENT—Furnished, 2-bedroom apartment. Includes utilities, no pets. May be seen at 552 McKinley. x17

WANT ADS
PIANO TUNING, Chelsea and area. Facilities for reconditioning and rebuilding. Used piano sales; reconditioned grands and verticals. E. Eklund, 426-4425. 50tf

For Low Cost Floor Covering
We have small and large pieces, ends of rolls, etc., of linoleum and carpeting at close-out prices. Many sizes and colors to select from.
MERKEL BROS. x40tf

SALE Employee's Cars
1970 LeSabre Custom 4-dr. hardtop (air cond.) \$3775
1970 Skylark 2-dr. hardtop, power steering, auto. trans., vinyl top \$3175

USED CARS
1967 Buick LeSabre 2-dr. hardtop custom, vinyl top \$1495
1967 Chrysler 2-dr. hardtop, air cond., vinyl top \$1495
1967 Rebel 2-dr. hardtop, V-8, auto, power steering \$395
1965 Mercury Wagon \$495
1964 Buick Electra Conv. (air cond.) Nice car \$695

\$395.00 Lot
At rear of Building
1966 Chev II wagon \$395
1965 Ford 2-dr. sedan \$395
1965 Comet 2-dr. sedan \$395
1965 Olds Outlass 4-dr. sedan \$295
1962 Olds Outlass 4-dr. sedan \$295
1962 Olds 88 2-dr. hardtop \$295

Sprague Buick-Olds-Opel, Inc.
1500 S. Main St., Chelsea
Evening 475-6271 or 475-8240
Phone 475-8664
Open evenings by appointment. 14tf

HURRY
Room for few more organ students. Beginners (any age) 6 lessons, \$6
Need not own organ.
Studio practice time available or rental purchase plan.

AI Nalli Music
Chelsea
Phone 475-7215 x17

FOR SALE—Your ticket to a season of travel and adventure is only \$7. Don't miss this year's Kiwanis Travel Series—Buy Now! 17

SELLOUT! For 10 years in a row Kiwanis Travel and Adventure Series has been a sellout. Buy your 70-71 season ticket now. \$7—6 great shows. 17

REAL ESTATE
BEAUTIFUL LOCATION, Lakeland Golf and Country Club, attractive, two level home. Golf course, front and rear. Fireplace, divider between living and dining room. Carpeting, two or three bedrooms. Many extra features. Shown by appointment only.

APPROVED BUILDING SITES facing golf course, 200'x150' Near M-36 and Lakeland. Privileges on small lake. Only \$3,000.

PORTAGE LAKE LAGOON frontage, charming, 2-bedroom home, wood paneled. Corner fireplace, front patio, attached carport in back, carpeting, draped range, refrigerator and washing machine included. Only \$24,000, terms.

Mary Wolter Real Estate
7421 Dexter-Pineknay Rd.
Phone 426-8188 for appointment x18

REWARD
Small black cat lost near former Chelsea State Bank. Child's pet. Please call 475-7685 or 475-2030. 17

TULIP BULBS
—Also—
HYACINTHS
DAFFODIL
CROCUS
Chelsea Hardware
GR 9-6311 17

WANT ADS
Formal Wear RENTAL SERVICE
Prom - Weddings - Special Events 6 different colors.
Foster's Men's Wear 2tf

PONTIAC
The last of the '70's must go. Shop now for a good selection.

Harper Pontiac Sales & Service
CHELSEA
Phone 475-5311 or 475-5451 days, 761-2999 evenings.
Open evenings by appointment. 12tf

TYPING SERVICE Wanted by Chelsea writer for ad copy, manuscripts, proposals, etc. Write to Box SE-24 at The Standard. 14tf

FOR SALE—1970 Mustang, fast-back, 851 V-8 engine, 4 barrel, Hurst 4-speed shift. Posttraction, bright blue metallic finish, 1,700 miles, 3 months old. Has 4 chrome wheels. Must sell for reasons of health. \$3,200 or take over payments. After 3 p.m. call 475-2689. x17

Chelsea Area Homes
COUNTRY SETTING—1.8 acres, 4 years old, 4-bedroom brick, beautiful trees. Located on blacktop road, 4 miles to Chelsea and 1 mile to lake and golf course.
LARGE FAMILY HOME—Excellent location for schools, 275 ft. deep lot, 3 bathrooms, 6 bedrooms and fireplace.
1.3 ACRES—3-year-old ranch home, family room, fireplace, 2½ baths, dining room and 2-car garage.
4-BEDROOM—2 full baths, just remodeled kitchen. Priced to sell, \$24,000.
2-FAMILY—Large majestic older home, new kitchen, large rooms. 3-bedrooms down 1½ bedroom up. Excellent location.
5-BEDROOM—2 fireplaces, study, dining room, recreation room, family room, open staircase, 2 full baths, \$33,000.
Building sites, between Dexter and Chelsea, 10 acres to choose from.

Eibler, Frisinger & St. Amour
REALTORS
Chelsea 475-8681
Dexter 426-4659
Evenings Call
George Frisinger 470-4161
Paul Frisinger 475-2621
Herman Koenn 475-2613
Bob Thornton 475-8857 17tf

Christmas Bazaar and Luncheon
Thursday, November 5
Tickets available at Foster's Men's Wear and Winans Jewelry Store.
By Ladies of CHELSEA METHODIST CHURCH -18

COOK WANTED for four or five men, approximately 3 hours a day, Tuesday-Sunday. Good pay. Many other opportunities if interested. Call Mrs. Alder, Stony Ridge Farm, 663-3509. x19

WEAR BEAUTIFUL CLOTHES. meet new friends, earn money at the same time. Become a Beeline stylist. For information call Brighton 229-9192 or Pineknay 878-5536 collect. Must be 18. 17

WANT ADS
PATCHING and PLASTERING
Call 475-7489. 38tf

Formal Wear RENTAL SERVICE
Prom - Weddings - Special Events 6 different colors.
Foster's Men's Wear 2tf

CAR & TRUCK LEASING. For details see Lyle Christwell at Palmer Motor Sales, GR 5-3271. 49tf

KNAPP SHOES
For Cushion Comfort
Robert Robbins
475-7282 48tf

LOOK!
DEXTER SCHOOLS.
3-bedrooms, family room fireplace and 1½ baths 1.3 acres \$41,500

Open House
10801 N. Territorial Rd. (1½ miles west of Dexter-Pineknay Rd.)
Sunday, October 18 2-4 p.m.
Eibler, Frisinger & St. Amour
426-4659 475-8651 x17

FOR REAL DOLLAR SAVINGS be sure and see us before you buy any new or used car. Palmer Motor Sales, Inc. Your Ford Dealer for over 50 years. 2tf

LOOK!
CHELSEA SCHOOLS
4-bedrooms, family room 2 fireplaces, 2½ baths Village of Chelsea \$42,900.

OPEN HOUSE
12 Sycamore, Chelsea
Sunday, October 18 2-4 p.m.
Eibler, Frisinger & St. Amour
426-4659 475-8681 x17

Hairstylists Wanted
Have openings for 2 or 3 experienced hairdressers. Full or part-time.
Top wages, training programs and fringe benefits.
Call Paul Higgins, 475-8196 for interview appointment. 18

THE LITTLE FLOWER SHOP
Weddings, funerals, arrangements. Flowers for all occasions.
Mildred Fish
3451 Waltrous Rd.
Phone 475-8508 x15

Your Confidence
... base it on our long record of personal service.

Staffan Funeral Home
"Funeral Directors for Four Generations"
124 PARK STREET PHONE GR 5-4417

Rarin' To Go...
Your battery, that is, after our dependable recharging!
We'll put your old battery back into "championship form," ready to give you many months of peppy starts, dependable service.
PURE OIL PRODUCTS
JIM'S PURE SERVICE
Tires — Batteries — Tune-Ups — Brake Service — Wheel Alignment
PHONE 475-2822

Arnie's Roofing
All types of shingle work, repairs, new and old homes, barns, etc. Free estimates.
Phone 682-1758 x21tf

G. G. HOPPER
Building Contractors
Phone GR 5-5581
Gregory 498-2148 40tf

FOR RENT—Furnished, 2-bedroom apartment. Includes utilities, no pets. May be seen at 552 McKinley. x17

Spare Ribs lb. 59c
Eckrich
Smoked Sausage . . . lb. 89c
NEW CROP
Yams 3 lbs. 39c
EMPEROR
Red Grapes lb. 29c
LARGE WHITE
Eggs doz. 53c
6-OZ. CAN MINUTEMAID FROZEN
Orange Juice . . . 5 for \$1.00
SCHNEIDER'S
MEATS - GROCERIES
PHONE 475-7600 121 S. MAIN ST.

REWARD
Small black cat lost near former Chelsea State Bank. Child's pet. Please call 475-7685 or 475-2030. 17

Community Calendar



Young Homemakers Study Group Thursday, Oct. 22, 8 p.m. home of Mrs. Ronald Satterthwaite.

Special communication of Olive Lodge No. 156 F&AM—Tuesday, Oct. 20, 7:30 p.m. F.C. degree.

Olive Lodge No. 156 F&AM family night Tuesday, Oct. 27. Dinner at 6:30 p.m. Bring table service, and dish to pass. Entertainment following.

Chelsea Camera Club, Tuesday, Oct. 20, 7:30 p.m., Sylvan Township Hall. Program: John Ford's pictures of Ireland. Guests welcome.

Membership meeting for Jaycee Auxiliary at the home of Mrs. Walter Brown, 8 p.m., Tuesday, Oct. 20. Masquerade party.

All singles, 25 or over, are invited to the Halloween dance at the YMCA in Ann Arbor, Tuesday, Oct. 27 at 9 p.m. Given by Tuesday's Single's Club. Come in costume.

Past Noble Grands Club at the home of Mrs. Clifford Wolfe on Oct. 27 at 7:30 p.m. Mrs. John Dvorak, co-chairman; dress for Halloween.

Any former western square dancers interested in getting back into the swing, come and have some brush-up lessons at Stockbridge Town Hall Sunday nights, 7 to 9:30 p.m. Sponsored by the Stockbridge Squares. adv 19

St. Mary's annual Roast Beef Parish Dinner, Nov. 8, at Chelsea High School cafeteria. Servings at 12:30 p.m., 1:30, and 2:30 p.m. For reservations please contact Mrs. Hal Pennington, 409 S. Madison, phone 475-5592. adv 20

God's Willing Workers annual meeting and installation of officers, pot-luck salad and dessert smorgasbord, Chelsea Baptist church, Monday, Oct. 26, 7 p.m. Speaker: Mrs. Char Bolthouse.

BIRTHS

Oct. 11, Matthew Raymond, to Mr. and Mrs. Raymond Doering, 2005 Huron Parkway, Ann Arbor.

Oct. 11, Grandchildren are Mr. and Mrs. Don Boyer and Mr. and Mrs. Joseph Doering, both of Chelsea.

A daughter, Amy Elizabeth, Thursday, Oct. 8 to Mr. and Mrs. Emmett Hayes White of College Station, Tex. Maternal grandparents are Mr. and Mrs. Willard Pearson, Chelsea, and Mr. and Mrs. William E. White, Jr., are the paternal grandparents.

(Political Advertising)

RE-ELECT ESCH
Thinks for himself.
Works for us.

DEATHS

Mrs. Floyd Allshouse Dies Sunday at Nursing Home After Brief Illness

Bertha A. Allshouse, 79, of 110 N. East St., died Sunday, Oct. 11 at Huron View Lodge, Ann Arbor. She had been ill for several months, and had entered the nursing home on Sept. 27.

Mrs. Allshouse was born Sept. 14, 1891 in Lenawee county, a daughter of Christian and Wilhelm Tiede Berndt. She was married to Floyd Allshouse on Sept. 27, 1911. He preceded her in death on April 18, 1954. They came to the Chelsea area from Onsted in 1930.

Mrs. Allshouse was a member of the First Congregational Church of Chelsea, the Rebekah Lodge, Olive Chapter No. 108, Order of Eastern Star, Ladies Auxiliary of Rural Letter Carriers Association of Washtenaw county, and a life member of Pythian Sisters of Tipton.

Surviving are two sons, Robert Allshouse of Richmond, Ind., and Leo Allshouse of Grass Lake, two daughters, Mrs. Carl (Lillian) Sanderson of Chelsea and Mrs. Richard (Doris) Rymill of Detroit, 14 grandchildren and nine great-grandchildren. Also surviving is a brother, Fred Berndt of Adrian, several nieces and nephews. A son, George, preceded her in death in January of 1969.

Funeral services were held at 2 p.m. Wednesday, Oct. 14 at the Burghardt Funeral Home with the Rev. Daniel Kelin officiating. Burial followed in Oak Grove Cemetery. Memorial services by Chelsea Rebekah Lodge were held Tuesday at 7:30 p.m. at the funeral home.

Mrs. M. F. Armstrong Methodist Home Resident Dies Following Long Illness

Mrs. Matthew F. (Elizabeth D.) Armstrong, 81, a resident of the Chelsea Methodist Home since Feb. 12, 1960, died there Sunday, Oct. 11 after a long illness.

Mrs. Armstrong was born in Monticello, Fla., July 31, 1889, a daughter of John and Margaret Williams Armstrong. She was married to Matthew Francis Armstrong Oct. 27, 1918. He preceded her in death in 1959.

Surviving is a son, Emmet D. Armstrong of Royal Oak, and a nephew, Sam F. Moore, Jr., of Columbus, Ga. Funeral services were held at 2 p.m. Tuesday, Oct. 13, in the Methodist Home Chapel with the Rev. Richard Clemens, chaplain of the home, officiating. Burial followed in Oak Grove Cemetery. Arrangements were made by the Burghardt Funeral Home.

Pleads Guilty on Bad Check Charge

Vernon Dingman, arrested Sept. 2 in Grand Rapids on a warrant issued in Chelsea for uttering and publishing bad checks, pled guilty Friday, Oct. 9, in Circuit Court on that count. Sentencing was set for Oct. 21.

GINGER ROOT One of the few spices which grow below the ground, ginger is the root of a herbaceous perennial plant that flourishes in tropical and semi-tropical climates.

Bulldog Grid Machine Rolls Back Milan

(Continued from page one)

Friday night to take on the Rail splitters at 7:30 p.m.

Chelsea game films of Friday night's game will be shown on Wednesday, at 7:30 p.m. at the high school. People interested in seeing these films and talking with the coaches are welcome to attend the showing. This year, Chelsea is taking 500 feet of film, and so far, have received very good results.

Aptitude Tests Set for College Bound Juniors

(Continued from page one)

will encompass most of an entire morning, and is a fairly comprehensive exam. There is a charge for the exam of \$1.50. Students will receive their scores around Christmas time.

Chelsea High school will give this exam in the library. They have testing facilities for 100 students. All college bound juniors are urged to take this exam. Students may register for the exam at the main office desk at the high school, and at the same time, pick up their bulletin of information, which will give the student some idea of what kinds of questions he may expect on the test.

There is no alternate date for this test. Also, college bound seniors are urged to take the Michigan Competitive Scholarship exams, which is for any student who may anticipate financial difficulties when going to college.

This exam will be given only once this year in Chelsea. Testing date is set for Nov. 14. There is a registration fee of \$2 for this exam. Forms may be picked up in the counselor's office. There are many fine clauses—situations where a student may be eligible for financial assistance, which many students are unaware of. High school counselor George Bergman claims not to receive any money, the student must make the exam first, as to a competitive scholarship.

Bergman also announced that Chelsea is once again a national testing center for the ACT, as well as the SAT exams, which will be administered to college-bound seniors. The next testing dates for these tests will be in December.

GIRL SCOUT NEWS

TROOP 58—Girl Scout Troop 58 is busy making Christmas presents for their mothers.

They are working on their troop badge, which is a sewing badge. Every Scout is to sew a badge with what the troop decides it wants for a design.

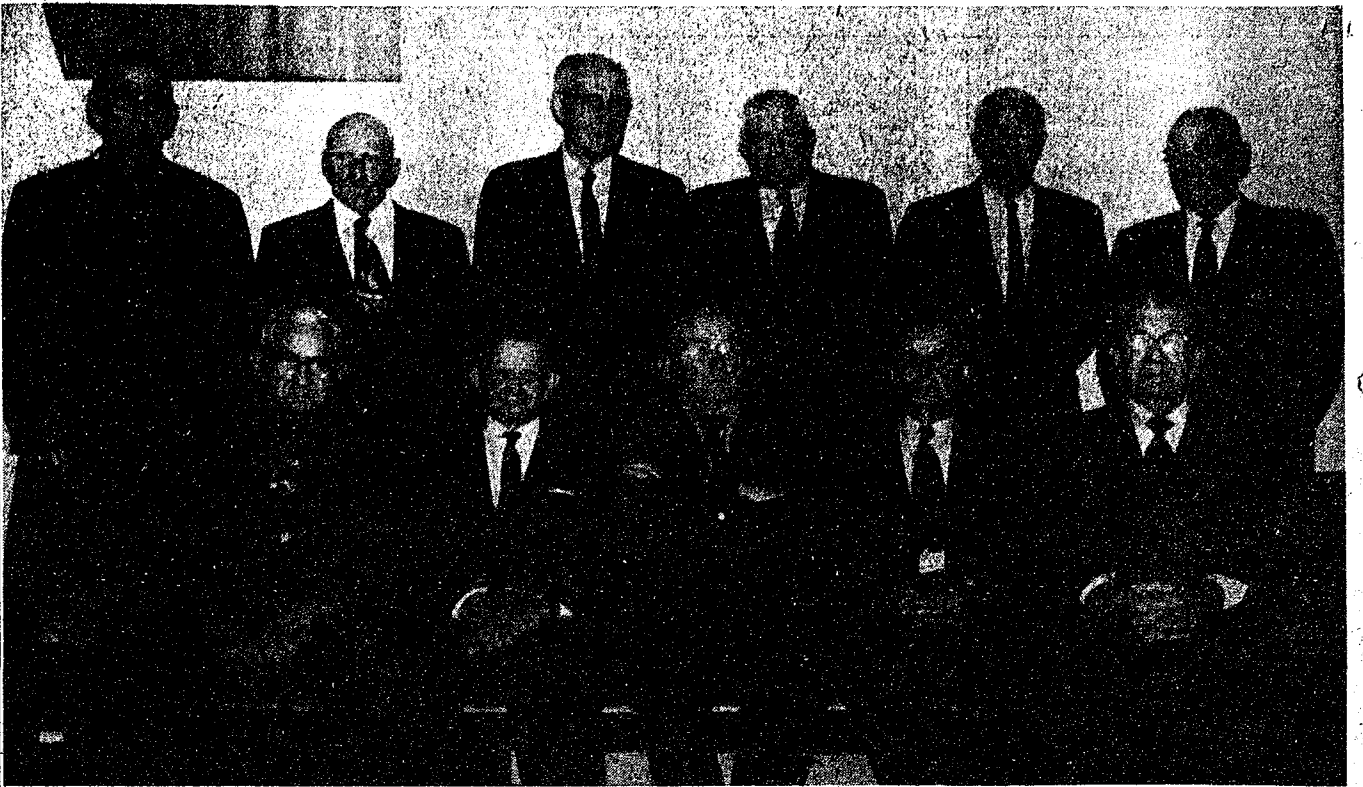
The troop has learned two songs, "My Hat, It Has Three Corners," and "Raindrop."

Dawn Bucholz, scribe.

Frosh Gridders . . .

(Continued from page one)

now 3-1 for the season, with three games remaining. The next game is at Tecumseh, Wednesday, Oct. 21. This is a team that Chelsea scrimmaged with early in the year, and the Frosh gridders are eager to meet them again.



OCTOGENARIANS attending the Monday night, Oct. 12, annual dinner held in their honor by the Kiwanis Club of Chelsea. From left, back row, Rha Alexander, 86 years old; Earl Pettibone, 82; Otto Hinderer, 82; Watson Hart, 81; Elmer Winans, 83; and Irven Weiss, 82. In the front row, they are John Cook, 81; Herman Gross, 83; Dan Denton, 88; Clarence Lehman, 83; and William Hochrein, 81. Each man was introduced to the group and given a few minutes to recall some favorite memories.

Octogenarians Hosted By Kiwanians

Octogenarians and a barbershop quartet were in store for Chelsea Kiwanians at their meeting Monday night, Oct. 12. The event was the annual dinner meeting for Chelsea residents who are more than 80 years old.

A total of 11 octogenarians were hosted at the meeting. Each man was introduced to the members, and gave a brief reminiscence of his life.

Present at the dinner were Rha Alexander, Earl Pettibone, Otto

Hinderer, Watson Hart, Elmer Winans, Irven Weiss, John Cook, Herman Gross, Dan Denton, Clarence Lehman, and William Hochrein.

Also on the program for the evening was a barbershop quartet composed of high school students. Dave Hess, Keith Pfeifle, Randy

Seitz, and Tim Ortbring, accompanied by Jill Flintoft, sang "The Wiffenpoof Song" and "Lida Rose."

Charles Cameron, Superintendent of Chelsea schools spoke at the gathering. His topic was "Parochialism."

(Political Advertising)

RE-ELECT ESCH
Thinks for himself.
Works for us.

Christian Literature Bookmobile Proposed By Dexter Evangelist

A Christian Literature Bookmobile has been proposed by the Rev. Lyman Zimmerman, minister-evangelist with Defenders of the Christian Faith church of Kansas City, Mo.

The Rev. Zimmerman, who is presently a resident of Dexter, has been living in Michigan since 1960, when he moved from Florida, where he was a deacon in the Seventh Day Adventist church. Having resigned the Seventh Day Adventist denominational affiliation, he is devoting his time to inter-denominational ministry and to missionary work.

The Rev. Zimmerman came into the community in 1960. He pastored a church in Rochester, Ind., and was assistant pastor in Marian, Ind. His most recent church was in Lansing.

The Home Missionary Evangelist has tried to secure a bus for the bookmobile for the past three years. He has recently been successful in obtaining a bus from the Lansing school system, on a bid. He will receive the bus in three weeks.

The Rev. Zimmerman will stock his bookmobile with literature from the Defenders Faith, Vander Zaun of Grand Rapids, a religious book printer, and Christian Publishers in Nashville, Tenn., and Dallas, Tex. His bus will contain mostly tracts, books, and of course, Bibles.

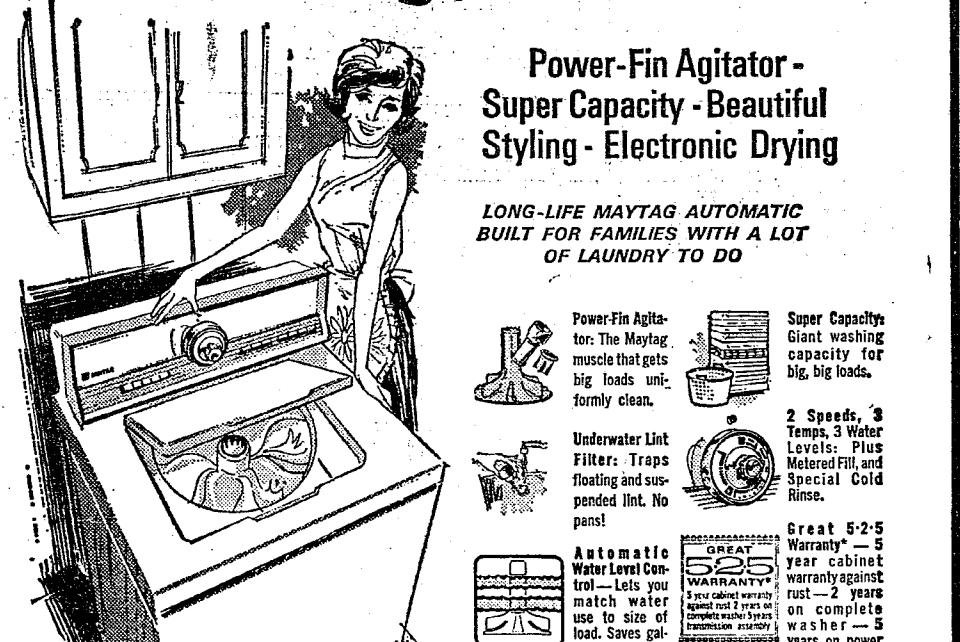
The Rev. Zimmerman, who sponsors a mailing program out of his home, at present, estimates that he mails out more than 1,000 pieces a month.

The bookmobile will also carry an evangelistic program. The program and the Rev. Zimmerman are self-supporting. The missionary states, however, that he is in need of financing for the tracts, and books which he plans to stock in his bus. Contributions may be made to "The Christian

Literature Bookmobile" at the Chelsea State Bank.

The Rev. Zimmerman, who lives at 7940 Grand St., Dexter, will cover the entire state of Michigan

Modest Priced Maytag Automatics with the Luxury Features



Power-Fin Agitator - Super Capacity - Beautiful Styling - Electronic Drying

LONG-LIFE MAYTAG AUTOMATIC BUILT FOR FAMILIES WITH A LOT OF LAUNDRY TO DO

Power-Fin Agitator: The Maytag muscle that gets big loads uniformly clean.

Super Capacity: Giant washing capacity for big, big loads.

2 Speeds, 3 Temp., 3 Water Levels: Plus Metered Fill and Special Cold Rinse.

Automatic Water Level Control - Lets you match water use to size of load. Saves gallons of water!

Great 5-2 Year Warranty - 5 year cabinet warranty against rust - 2 years on complete washer - 5 years on power assembly.

MAYTAG ELECTRONIC CONTROL DRYER RUNS ONLY WHEN CLOTHES ARE WET - SHUTS OFF BY ITSELF WHEN CLOTHES ARE DRY

Maytag Halo-of-Heat® Dries: Fast dry clothes in a circle of gentle low temperature.

4 Settings: Dry all fabrics with Regular setting. Wash in Warm, Damp Dry, plus Air Fluff.

Electronic Controls: No timer needed! Takes orders from you, not from a clock!

Plus famous Maytag dependability that keeps them working!

*Free replacement of parts that fail, or cabinet if it rusts, as a result of home use. Labor required for installation of parts is free for one year from date of purchase; thereafter labor is extra.

Maytag Dryer Prices \$115 Start as low as

FRIGID PRODUCTS LLOYD and GEORGE HEYDLAUFF N. Main St., Chelsea Phone GR 9-6651

RCA BARGAIN BONANZA

COLOR TV VALUE

The CAULFIELD GM-521 20" diag. 227 sq. in. picture

\$399⁸⁸*

Here is your opportunity to put the luxury of RCA console Color TV in your home at an easy to buy price. Space-saving design blends with any modern room decor. Powerful chassis for vivid color performance. Tilt-out control panel for simple stand-up tuning.

SEE THIS VALUE AND MANY MORE NOW DURING RCA'S 7th ANNUAL BARGAIN BONANZA! RCA DIST. CORP.—DETROIT

SAVE DURING RCA MONTH at GAMBLES

Beautiful... Colorful... Do-it-yourself

K-LUX TUB ENCLOSURES

Dramatic beauty, safety, convenience and economy blended in architectural plastic to enhance any decor or color scheme. Anodized aluminum frames and rails. Three doors for wider opening. Fits standard 5' tub. Quick and easy to install. No drilling or anchoring. See them now!

\$39⁹⁵ Reg. \$49.95. Save \$10

CHELSEA LUMBER CO. "Where the Home Begins"

Cross Country Team Seeks Recognition

There is a new and exciting sport on the roster at Chelsea High school, despite the fact that it was left out when the school board passed out the money for athletic teams. Meeting as a club, with no hopes for "Varsity club" glory, the cross country team has diligently been practicing, and competing, in hopes of gaining status, and ultimately attaining "legitimate sport" level in the eyes of the school administration.

A grueling sport, cross country involves running over rough terrain, on different terrains at almost every meet. Unlike track, the sport involves one activity, one race. Everyone competes at the same time. Like track, winners are determined by the sum score of individual efforts. The first five men from each team are scored, their places added together, the team with the lowest number wins.

Chelsea's team this year, which is coached by volunteer Fred Elmore, history teacher at Chelsea High school, is composed of seven young men. They are George Cameron, senior, Dan Hoover, Jon Lantis, and Larry Jones, juniors and Chris Phinney and Tom Skittemhelm, sophomores.

In their four meets thus far this year, Chelsea has finished last three out of four times, and came in a close second in the most recent contest.

Running from the second week in school, Elmore admits is not the best preparation for long distance running, and hopes in future years to get the boys to work out earlier in the season.

Chelsea's most recent contest was Monday evening, Oct. 12, in a meet against Dexter at Dexter. Stockbridge also competed in that event.

Dexter, who had defeated Chelsea by one point the last time Chelsea ran against them, succeeded in defeating Chelsea once more—by one point.

Dave Buxton was in first place for Chelsea, finishing third in the race. George Cameron was second, placing fourth in the race. Dan Hoover, in seventh place was number three man for Chelsea, while Jon Lantis, in ninth place, finished fourth for Chelsea. Number five man, Chris Phinney, who made a great improvement, and really helped the Chelsea team in this contest, finished in 11th place in the race.

Final score for the day was Dexter 33, Chelsea 34, and Stockbridge 55.

In earlier meets, Chelsea finished last every time. On Sept. 29, Chelsea, Stockbridge, and Dexter competed at Stockbridge, where Stockbridge came in first, Dexter second.

On Oct. 1, Chelsea traveled to Dexter to meet Dexter, Saline, and St. Thomas of Ann Arbor. St. Thomas won that meet by a wide margin, with Saline in second place. Dexter scraped by Chelsea by one point in that contest.

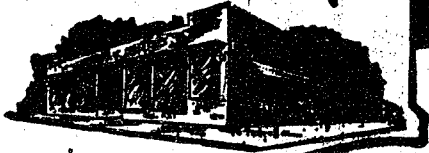
Saturday, Oct. 10, the team traveled to Albion to participate in the Albion Invitational track meet. Fifteen other teams were present for that event. Chelsea placed last.

The next meet for the harriers is Monday, Oct. 19, and it will be at Chelsea. Manchester and Dexter will compete in this event. This should be a very exciting meet, for Manchester defeated Dexter in their most recent competition by two points, while Dexter retains a narrow lead over Chelsea. The race starts at 4:30 in front of the pressbox on the football field. Chelsea residents are invited to come out and see the new team at the high school in what may be their first victory.

THE SUPERMARKET THAT'S JUST A LITTLE BIT BETTER

Stop & Shop

14901 Old U.S.-12
Corner at M-52
Chelsea



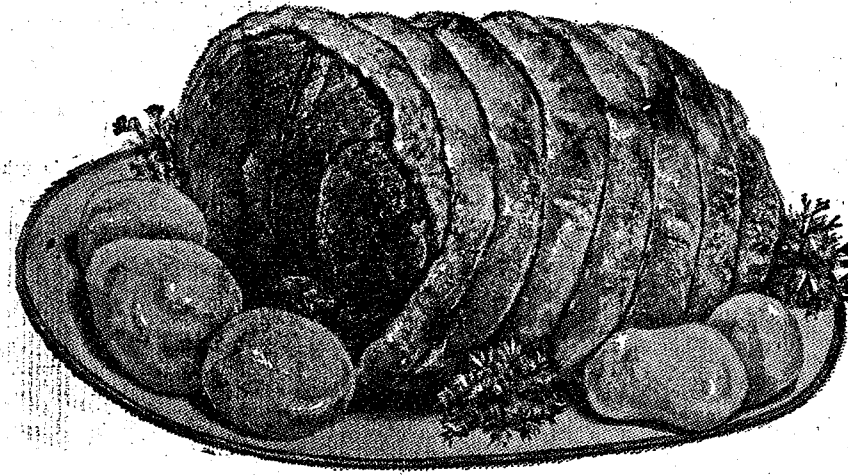
THE KNOW HOW OF INTELLIGENT MEAT BUYING IS REALLY THE 'KNOW WHERE'

Our customers have learned to depend on the outstanding quality of Stop & Shop meats — unfailing satisfaction with every cut they purchase. The finest quality, together with the expertise of our meat cutting experts, makes an unbeatable combination.

Prices effective Wednesday, October 14, through Tuesday, October 20.

"Triple R Farms" U.S.D.A. Choice

FILLET of CHUCK ROAST 89^c lb.



WE RESERVE THE RIGHT TO LIMIT QUANTITIES

For Your Convenience
OPEN SUNDAY
10 a.m. - 4 p.m.
All Sale Prices Effective Sundays

Sorry, No Sales To Dealers

STORE HOURS:
Monday, Tuesday, Wednesday
9:30 a.m. - 6 p.m.
Thursday, Friday
9 a.m. - 9 p.m.
SATURDAY
9 a.m. to 6 p.m.
SUNDAY
10 a.m. to 4 p.m.

"Triple R Farms" Semi-Boneless

Hams 69^c lb.

"Triple R Farms" Fresh Dressed

Fryers 33^c lb.

Fresh, Lean, Center Cut

Pork Chops 89^c lb.

"Triple R Farms" Fresh Dressed

Chicken Legs 59^c lb.

Chicken Breasts 69^c lb.

Stop & Shop's Fresh, Lean, All-American Beef

Hamburger 59^c lb.

Lean, Tender, Boneless & Cubed

Breaded Pork Cutlets 89^c lb.

"Triple R Farms" Mich. Grade 1

Skinless Wieners 49^c lb.

"Triple R Farms" Mich. Grade 1

Sliced Bologna 49^c lb.

Stop & Shop's Homemade

Pork Sausage 69^c lb.

"Triple R Farms" Mich. Grade 1

Liver Sausage 59^c lb.

Domino Pure Granulated

Sugar 48^c

McDonald Fresh Homogenized

Fresh Milk 85^c

Carnival

Ice Cream 38^c

Banquet Frozen

Meat Pies 15^c

Pink or White Florida

Grapefruit 59^c

Facial Tissue

Scotties 15^c

Scott White

Toilet Tissue 10^c

Our Favorite

Sweet Peas 10^c

Be In Auto-Owners "Circle of Protection"

Protect your boat . . . get **Auto-Owners Boat Insurance**

Inboards
Inboard-outboards
Outboards

See your A-O Man

A. D. MAYER AGENCY, INC.

"Your Protection Is Our Business"

115 Park St., Chelsea
PHONE 479-5061

Auto-Owners INSURANCE
Life • Casualty • Fire • Auto



BOWLING NEWS



Old Timers Bowling League

Standings as of Oct. 10

	W	L
Nelson Realtors	17 1/2	6 1/2
Team No. 16	17	7
Hotzel Service	16	8
Sportsman's Bar	16	8
Hartman Insurance	14	10
Sanford Security Service	14	10
Colonial Lanes	13 1/2	10 1/2
Dexter Bowl 'n' Bar	13	11
Mather Co.	12	12
Gloverleaf Lanes	12	12
Bob & Otto	11	13
Has Beens	10	14
Lucky 13	9	15
Team No. 14	7	17
Stein & Goetz	7	17
Merkel Brothers	3	21

Team won three games: Colonial Lanes, Dexter Bowl 'n' Bar, Team No. 16.

High team series: Bob & Otto, 2,439.

High ind. game: B. Elliott, 228-544.

High ind. series: J. Otto, 203-209-575.

Other 200 games and 500 series: G. Lawrence, 224-528; H. Mumery, 222-545; J. Schwartz, 222; W. Finsch, 214-525; L. Brousalis, 213-501; G. Dohde, 209-520; K. Letsinger, 203-528; E. Armbruster, 558; W. Butzin, 558; J. Zucco, 529; R. McCleary, 529; W. Fishlock, 503; F. Menerey, 503; W. Tyrakowski, 502; J. Hinds, 500; R. Kinnel, 533; D. Morton, 524; R. Barsante, 507; R. Carpenter, 504.

Chelsea Lanes Mixed

Standings as of Oct. 9

	W	L
Rabbitt & Holloway	23	7
H. & H.	20	8
Doody & Turner	19	16
Centerless Grinding	18	17
Chelsea Lanes	17	18
Fitzsimmons Excav.	17	11
Wolverine No. 2	16	19
Devine & McGinn	16	19
Sindlinger & Pierce	14	21
Gephart & Barkley	13	22
Bollingers	13	22
Heim & Weiss	12	23

Women's, 150 and over: J. Rabbitt, 169, 193, 212; L. Doody, 176, 189, 180; V. Harvey, 178; J. Gilmore, 174; L. Alexander, 163; A. Troner, 161; J. Hutzler, 155; H. Morgan, 152; B. Pike, 150; D. Keizer, 150.

Women's, 450 and over: J. Rabbitt, 169, 193, 212; L. Doody, 176, 189, 180; V. Harvey, 178; J. Gilmore, 174; L. Alexander, 163; A. Troner, 161; J. Hutzler, 155; H. Morgan, 152; B. Pike, 150; D. Keizer, 150.

Men's, 475 and over: R. Kiehl, 548; M. Packard, 536; R. Fike, 532; B. Devine, 528; R. Morgan, 521; F. McMullen, 514; W. Griffith, 513; R. Hutzler, 480.

TRAP SHOOT

Chelsea Rod & Gun Club Grounds

EVERY SUNDAY THRU OCT. 18

Shooting 9 a.m. to 1 p.m.

PUBLIC INVITED

Prizes

COFFEE and DOUGHNUTS

From 8 a.m. to 10 a.m.

Senior House League

Standings as of Oct. 12

	W	L
Chelsea Cleaners	16	4
Wolverine Tavern	14	6
Sylvan Center	12	8
Dana No. 1	11	9
Spaulding Chevrolet	11	9
Seitz Tavern	11	9
The Pub Bar	10	10
Chelsea Grinders	9	11
Sams Barbers	8	12
Schneider's Grocery	8	12
Dana No. 2	7	13
Murphy's Barber Shop	3	17

200 games and over: G. Burnett, 242; T. Wisniewski, 240; G. Padgham, 233; O. Johnson, 202, 223, 211; G. Knickerbocker, 220; R. Fike, 213; G. Linebaugh, 211; E. Keizer, 210; A. Fletcher, 210; W. Griffith, 210; D. Weatherwax, 209; D. Basso, 208; S. Haydock, 206; H. Burnett, 203; A. Clemes, 201; E. Harook, 201.

500 series and over: G. Burnett, 599; H. Burnett, 572; C. Genske, 572; R. Fike, 566; D. Ritter, 564; D. Basso, 560; E. Keizer, 559; A. Clemes, 556; J. Eder, 552; G. Knickerbocker, 549; N. Packard, 543; G. Lawrence, 543; A. Sannes, 536; G. White, 535; C. Young, 533; S. Haydock, 538; M. Poertner, 533; W. Eisenbeiser, 532; C. LaRoe, 531; D. Weatherwax, 527; J. Warmingham, 526; W. Griffith, 524; L. Hess, 522; D. Coppemoll, 521; G. Linebaugh, 519; F. McMullen, 518; C. Baize, 515; R. Hutzler, 513; E. Harook, 507; R. Kiehl, 505; A. Fletcher, 505; S. Slane, 504; S. Hopkins, 502; G. McAtee, 501; G. Grounds, 500.

Chelsea Women's Bowling Club

Standings as of Oct. 7

	W	L
Parish's Cleaners	17	3
Chelsea Milling	16	4
Jiffy Mixes	14	6
Foster's	11	9
The Pub	11	9
Schneider's	11	9
Chelsea Lanes	10	10
The Ugly Ducklings	9	11
Norris Electric	6	14
No. American Rockwell	6	14
Wolverine	5	15
Chelsea Grinding	4	16

450 series and over: D. Alber, 585; B. Fritz, 545; P. Poertner, 542; R. Hummel, 529; P. Fitzsimmons, 504; C. Stoffer, 494; A. Eisele, 494; N. Popovich, 492; B. Fike, 491; N. Kern, 480; H. Morgan, 477; B. Parish, 477; A. Sindlinger, 476; J. Hafner, 468; B. Bush, 464; D. Frisbie, 460; S. Klink, 455; L. Orlovski, 451; M. Kozminski, 450.

150 games and over: D. Alber, 204, 194, 187; B. Fritz, 217, 172, 157; P. Poertner, 171, 190, 181; R. Hummel, 179, 169, 181; P. Fitzsimmons, 151, 155, 198; C. Stoffer, 159, 183, 152; A. Eisele, 167, 183; N. Popovich, 187, 174; B. Fike, 152, 170, 169; N. Kern, 192, 150; H. Morgan, 154, 190; B. Parish, 156, 156, 165; A. Sindlinger, 158, 156, 162; J. Hafner, 180, 151; B. Bush, 189, 155; D. Frisbie, 168; S. Klink, 157, 155; L. Orlovski, 178; M. Kozminski, 161, 161; A. Alexander, 153; A. Turner, 162; L. Foster, 167; R. Lutovsky, 150; K. Covert, 150; D. Fouty, 157; C. Hafley, 164; C. Newman, 151; C. Bradbury, 160; J. Harvey, 161; A. Fahrner, 152; D. Verwey, 172; S. Mahaney, 169; E. Montgomery, 153; H. Rothfuss, 150; B. Weeks, 150, 186; A. Knickerbocker, 152; A. Boham, 151; D. Eisenman, 163; B. Mshar, 177; J. Hafner, 164.

(Political Advertising)

RE-ELECT

ESCH

Thinks for himself.

Works for us.

Charlie Brown & Snoopy's Friends

Prep Division

Standings as of Oct. 10

	W	L
Creamators	3 1/2	3 1/2
The Bully Brothers	3	4
The Pin Fighters	3	4
Competers	3	4
Pink Panthers	7 1/2	4 1/2
Strikers	7	5
Tremendous Strikes	7	5
The Monkeys	5	7
Good Guys	3 1/2	3 1/2
Red Barons	3 1/2	3 1/2
Groovy Fruitie Tooties	3 1/2	3 1/2
The Brains	2 1/2	9 1/2

Games of 100 or over: S. Bowen, 114; J. Boyer, 123, 150; J. Collins, 134; M. Burnett, 105; B. Bennett, 107; D. Alexander, 108, 106; S. Palmer, 110; P. Greenleaf, 112; J. Sweet, 104, 100; S. Lyerla, 121, 126; D. Morrison, 113, 118; J. Toon, 135; D. Alber, 137, 111; S. Smyth, 104; K. Mshar, 140, 111; M. Fahrner, 177; A. Kalishek, 131; V. Clark, 120; T. Robards, 107; J. Alexander, 107, 120; J. Spaulding, 131, 115; B. Rosentreter, 114; D. Craft, 106, 126; D. Beaumont, 103; C. Sannes, 107.

Series of 200 or over: S. Bowen, 211; J. Boyer, 273; J. Collins, 216; D. Alexander, 214; P. Greenleaf, 209; J. Sweet, 204; S. Lyerla, 247; D. Morrison, 231; J. Toon, 232; D. Alber, 248; K. Mshar, 251; M. Fahrner, 257; A. Kalishek, 212; V. Clark, 207; J. Alexander, 227; J. Spaulding, 246; B. Rosentreter, 213; D. Craft, 282.

Guys & Gals Mixed League

Standings as of Oct. 8

	W	L
Pub No. 1	19	5
Four D's	15	9
Wolverine Tavern	14	10
Pub No. 2	14	10
Chelsea Lanes	12	12
Sandbags	12	12
Norris Electric	12	12
Losers	10 1/2	13 1/2
Pleasant Lake Resort	10	14
Grass Lake	10	14
Steele Heating, Cooling	9	15
Team No. 4	6 1/2	17 1/2

Team high game: Wolverine Tavern, 746.
Team high series: Wolverine Tavern, 2,082.
Women's high game: P. Huston, 203.

Women's high series: N. Collins, 551.
Women's 150 or over games: D. Sannes, 168, 164; P. Elliott, 162, 171, 202; P. Huston, 203, 157; J. Hafner, 163, 152; B. Fritz, 157, 156, 150; S. Greenleaf, 158; N. Collins, 178, 185, 188; M. Randall, 178, 157; B. Smith, 150; C. Daniels, 152; M. H. Degener, 151.

Women's 450 or over series: M. Randall, 484; B. Fritz, 463; N. Collins, 551; P. Elliott, 535; P. Huston, 502; D. Sannes, 477.

Men's high game: J. Elliott, 203.
Men's high series: D. Walton, 551.
Men's 175 or over games: R. Huston, 192; J. Elliott, 189, 203; J. Romine, 188; J. Eder, 200; J. Collins, 197; D. Walton, 191, 199; J. Trapp, 189; J. Degener, 179.

Men's 500 or over series: D. Walton, 551; J. Eder, 523; J. Elliott, 549.

Hi Point Mixed

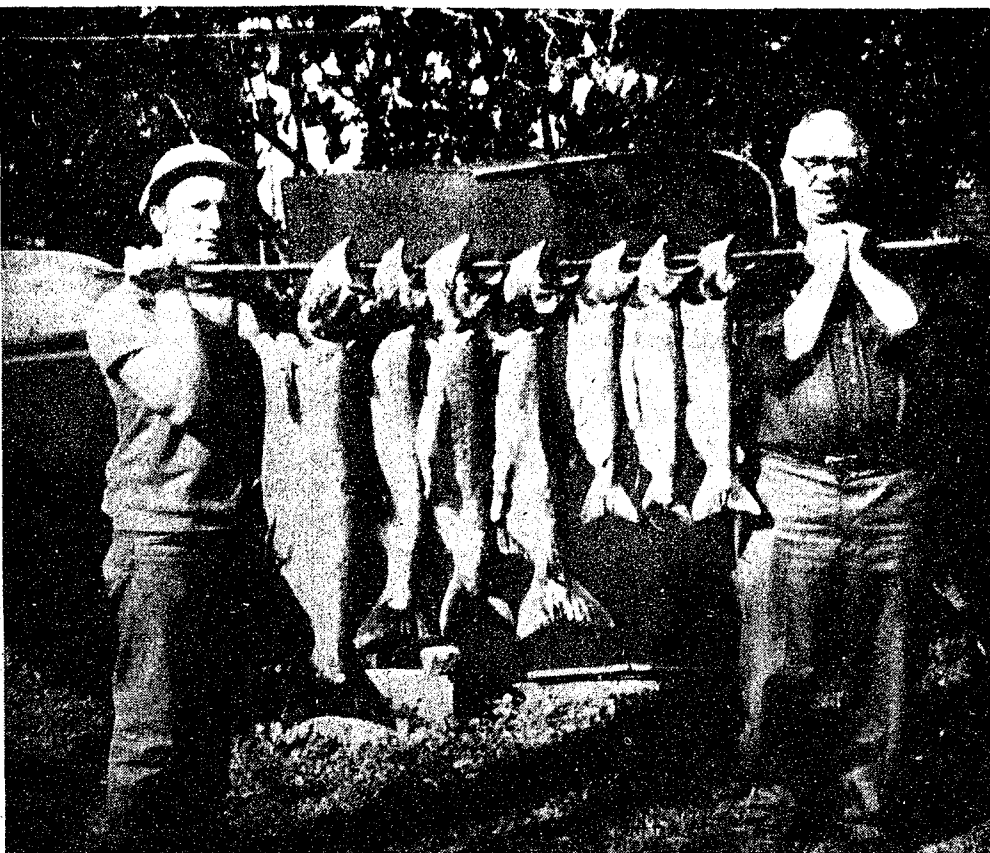
Standings as of Oct. 13

	W	L
Johnston & Johnston	122	94
MJH	119	97
Hi Steppers	105	111
Holy Terrors	104	112
Turn Abouts	100	116
Dreadnaughts	98	118

Men, 450 series and over: H. Morton, 524; E. Johnston, 453; F. Steers, 519.
Men, 175 games and over: F. Steers, 179, 179; H. Morton, 191, 176; T. Rumber, 184.

Women, 425 series and over: M. Morton, 460; J. Shepherd, 442; G. DeSmith, 499.

Women, 150 games and over: C. Klappreich, 152; G. DeSmith, 172, 138; D. Collins, 154; M. Morton, 190; J. Hafner, 151; J. Shepherd, 156.



A GOOD CATCH, for a day's fishing! Al Gieske, 509 N. Main, Chelsea, and his son-in-law, Richard Neff, Dexter, display the Chinook Salmon they caught Saturday, Oct. 10, on the Muskegon River, three miles down river from Gorton Dam. The fish, which weighed well over 80 pounds total weight, ranged in size from about 35 to five pounds. From left to right, they are, 43" long, and 35 pounds, the next three averaged 36" long, and 25

pounds each, and the little fish were five to six pounds each. Gieske is the owner and operator of Gieske's radio shop in Chelsea. Neff, who is married to the former Sandy Gieske of Chelsea, has two children, and is employed by the Mallek's Service Station in Ann Arbor. The men have been fishing a number of times this past year, but this is the first big catch of the season for them.

Rolling Pin League

Standings as of Oct. 13

	W	L
Moppper Uppers	14	6
Grinders	14	6
Coffee Cups	14	6
Kookie Kutters	13	7
Egg Beaters	11	9
Brooms	11	9
Spooners	10	10
Pots	8	12
Dish Rags	7	13
Jolly Mops	7	13
Mixers	7	13
Kitchen Kapers	4	16

400 and over series: J. Lewis, 470; G. Klink, 465; G. Blaess, 457; J. Pax, 407; J. Shepherd, 420; D. Butler, 491; W. Landwehr, 459; E. Reynolds, 409; J. Rabbitt, 498; D. Kinsey, 422; P. Patterson, 409; J. Freeman, 402; D. Dirlam, 418; K. DelPrete, 423.

140 and over games: A. McGinn, 157; J. Lewis, 154, 170, 146; G. Klink, 149, 154, 162; G. Blaess, 167, 159; C. Shepherd, 152; J. Pax, 147; J. Shepherd, 151, 143; J. Johnson, 161; D. Butler, 201, 156; W. Landwehr, 179, 148; E. Reynolds, 153; J. Rabbitt, 172, 139; P. Patterson, 141; D. Kinsey, 165; J. Myers, 148; J. Freeman, 150; H. Ringe, 143; S. Parker, 142, 145; D. Dirlam, 149, 169; K. Del Prete, 154, 145; D. Keizer, 140.

Splits converted: P. Harook, 5-7, 5-6 and 8-6-10; D. Keizer, 3-10; S. Cattell, 5-7; B. Updegraff, 5-7; J. Freeman, 5-10; D. Scott, 5-6-7-10; W. Meranuck, 510; G. Brier, 3-10; G. Klink, 3-10; T. Steinaway, 5-10.

Chelsea Suburban

Standings as of Oct. 7

	W	L
Foor Mobil	15	9
Dancer's	15	9
Waterloo Garage	14	10
Dana Corp.	13	11
State Farm	13	11
G. A. Sales	12	12
Artex Roll-Ons	12	12
Patty Ann	11	13
Dairy Queen Braizer	11	13
Chelsea Lanes	11	13
Chelsea State Bank	10	14
Pittsfield Plastics	7	17

150 games and over: J. Buku, 153; L. Jarvis, 155, 166; D. Keizer, 151, 232; N. Packard, 158, 159; E. Yocum, 150; A. Hocking, 158, 209; V. Stewart, 166; M. L. Westcott, 176, 156, 158; S. Bowen, 160, 155; B. Smith, 152, 150; N. Prater, 158, 160, 161; G. Baczynski, 160, 181; B. Hafley, 171, 173; R. McGibney, 161; C. Hansen, 152; L. Beeman, 159, 172, 156; S. Taylor, 153; P.

Tri-City Mixed League

Standings as of Oct. 9

	W	L
Jiffy Mixers	16	8
Wolverine Early Birds	15	9
Trail Blazers	14	10
Sprague Buick & Olds	13	11
Chelsea Cleaners	12	12
Detling & Detling	12	12
Wolverine Tail & Small	11	13
3-D Sales & Service	11	13
Foor Mobil	10	14
Smith's Mobil	10	14
4-W's	10	14
Odd Balls	9	15

Over 200 games: R. Kite, 207; J. Harmon, 212; J. Harook, 235; N. Fahrner, 213, 207; J. Fortner, 223; D. Scott, 214, 201; G. Burnett, 216; J. Toma, 225; L. Hughes, 202; E. Marshall, 231; F. Dickinson, 215, 200; P. Boham, 223; F. Barkley, 206; W. Beeman, 254; C. Koengeter, 203; B. Johnson, 206; Over 500 series: N. Fahrner, 609; W. Beeman, 600.

Over 500 series: N. Packard, 506; R. Schenk, 518; C. Koengeter, 554; B. Johnson, 501; F. Olmsted, 522; K. Larson, 519; F. Dickinson, 593; P. Boham, 554; D. Casterline, 504; A. Schiller, 554; W. F. Barkley, 562; G. Burnett, 562; D. Coppemoll, 501; J. Toma, 589; J. Hughes, 547; L. Hughes, 517; E. Marshall, 576; E. Buku, 534; J. Harook, 591; G. Weir, 501; S. Hopkins, 537; M. Smith, 504; J. Fortner, 552; D. Scott, 577; J. Popovich, 538; C. Parish, 502; R. Kite, 545; A. Sannes, 504; J. Harmon, 555.

Correct this sentence: "We had an argument over where to spend our vacation and the family will go where father decides."

Nite Owl League

Standings as of Oct. 12

	W	L
Steele's Heating	14	6
Jack & Son Barbers	14	6
Foster's Men's Wear	12	8
Smith's AAA	12	8
Cavanaugh Lake Store	11	9
Waterloo	10	10
The Prof's	10	10
Wahl's Arco Sparks	9	11
Mid-State Finance	9	11
Heller Electric	8	12
Gallup-Silkworth	7	13
McCalla Mobile Feeds	4	16

500 series: A. Peterson, 555; J. Schaffner, 538; E. Buku, 536; G. Miller, 520; Ahrens, 523; W. Watkins, 520; G. Packard, 518; J. Eder, 511; G. Pannone, 508.

200 games: M. Packard, 206; E. Buku, 202; G. Packard, 201; D. Warren, 200.

LAIRD & CAMBODIA
Secretary of Defense Melvin R. Laird suggested the broadest use yet of U. S. air power in Cambodia—in the face of congressional concern over U. S. involvement there—were based on protecting American forces over the border in Vietnam.

TOWING A ROLLS-ROYCE
New York—Patrolman Robert Schruhl, who tows away illegally parked cars, ran into trouble with his first Rolls-Royce job. He called the Rolls-Royce office and they advised him to lift the car from the rear because the rear wheels are locked when the ignition is turned off.

HELLER ELECTRIC & INSULATING

Licensed Electrical Contractor

ALL TYPES OF WIRING THERMTRON INSULATION

Call After 5 p.m. 475-7978



Spiritual Crusade Starts Oct. 21 at Assembly of God

The Fall Spiritual Crusade at the First Assembly of God church, 14900 Old US-12, is scheduled for Oct. 21 to Nov. 1, except Monday and Saturday, according to the Rev. T. B. Thodeson, pastor.

Crusade evangelists are the Rev. and Mrs. Daniel DeKonty of Bellevue. Both are graduates of the church's denominational colleges and have pastored in the state.

The DeKontys are a young couple, so they have a considerable emphasis on youth. They have a musical program of vocal and instrumental music to co-ordinate their crusade messages.

The Rev. DeKonty will cover the basic topics: salvation, the Baptism in the Holy Spirit, Healing, and the Second Coming of Christ.

Services begin at 7 p.m. each evening. Services on Sunday begin with Sunday school at 9:45 a.m., morning worship at 11 a.m., and the evangelistic rally at 7 p.m.

TAXES AND PENSIONS

The Treasury Department has announced that elderly persons and others who receive taxable pensions or annuities will be able to arrange to have their Federal income taxes withheld beginning next year. The pension recipient will indicate, on the form, the amount he wishes withheld for taxes.

(Political Advertising)

RE-ELECT
ESCH

Thinks for himself.
Works for us.

HARVEST BREAKFAST

St. Joseph School Hall

SUNDAY, OCTOBER 25

Serving 8 a.m. to 12 noon

Pancakes - Sausage - Fruit Juice

ALL YOU CAN EAT!

ADULTS: \$1.50

CHILDREN (7 to 12): 75c
Under 5, Free

- Sponsored By -

ST. JOSEPH PARISH COUNCIL

(Political Advertisement)



NEIL A. FRANK
Republican Candidate
for Dexter Township Clerk

I believe that local government must be responsive to the needs of the people. As your Township Clerk I will establish regular scheduled office hours. I will maintain public records in such a manner that they will be available to the public, and will meet all aspects of the law.

To insure a better informed citizenry I pledge that I will inform the residents of Dexter Township, through community newspapers, of the actions of your board.

As a member of the Township Board, in addition to the required administrative duties, I will bring my administrative experience, intelligence and dedicated concern to the solution of our problems.

For dedicated leadership with a proven record of successful achievement—

VOTE THE TANDY TICKET
Vote Republican Nov. 3



Phoebe Circle Hosts WSCS

The Women's Society of Christian Service met in the social center of the First United Methodist church on Oct. 7, with a luncheon hosted by the Phoebe Circle members. The tables were decorated with many interesting far-eastern articles provided by Mrs. Ben Donaldson as mementoes of her tour of these countries which she took this past summer.

During the business meeting, presided over by Mrs. Arthur Schmunk, the following recommendations from the executive board of the Women's Society were read, discussed and approved by the members. They included revision of the Sunshine chairman rules, a continuance of the Circle Companion visitation program revamped by membership chairman Mrs. Ray Schaefer and her committee, and the updating of wedding reception procedures under the direction of Mrs. Robert Daniels.

Announcements were made by Mrs. James Hoffmeyer regarding the placing of orders for Christmas UNICEF cards. She also reported that Spaulding for Children have placed approximately 70 children since its inception.

Mrs. V. O. Johnson spoke on the progress of the newly-formed Tuesday prayer group currently studying "The Will of God" by Leslie Weatherhead. Anyone wishing to attend these meetings is welcome. Mrs. Johnson also advised the group that a proclamation by President Nixon has set aside the day of Oct. 21 as a National Day of Prayer. As most Methodist Churches will be meeting that day, it was suggested that remembrance of the proclamation be observed.

A senate hearing under the auspices of Senator Gilbert Bursley will be conducted Oct. 15 at the Rackham Memorial Building in Ann Arbor. Purpose of the hearing will be to receive testimony and reports on the ecology problems and on population control. All interested members are urged to attend this vital session.

Mrs. Ben Donaldson announced that World Community Day, sponsored by Church Women United, will be held this year in the First United Methodist church on Nov. 6, from 1 p.m. to 3 p.m. The Congregational church women will provide the program. Gift certificates for needy children, a project of this group, will be available from all circle chairmen.

The Christmas bazaar and luncheon to be held Nov. 5 at the church was announced. Hours for this event will be from 10 a.m. to 5 p.m., with a luncheon being served from 11 a.m. to 1 p.m. Many circles are holding work bees for this bazaar. Advance sale of tickets, will be necessary for the smorgasbord luncheon.

A pledge service program held in the narthex, entitled "Rising Resources," was given under the direction of Mrs. Gilford Johnson. A skit was performed by Mrs. James Hoffmeyer, Mrs. Calvin Summers, Mrs. V. O. Johnson, Mrs. Ed Lewis and Mrs. David Luick.

The Nov. 4 program will be led by Mrs. Thomas Slater and is called: "Reality of Scripture." Recognition of new members will be observed. A pot-luck luncheon will be served with Ruth Circle members as hostesses.

HEALTH CARE

Senator Edward M. Kennedy has introduced legislation to create a comprehensive national health insurance program, with benefits effective in mid-1973. The program would cover all citizens, without individual limit, over the entire range of health services except for certain nursing, home care, mental and dental treatment and some medicines and equipment.



METHODIST HOME VOLUNTEERS: Dr. J. V. Fisher at the Chelsea Methodist Home, Thursday, Oct. 8, where he addressed more than 20 volunteers at the first meeting of the volunteer program at the Home. His topic was "Understanding Older Adults".

Volunteers Hear Dr. Fisher Speak at Methodist Home

A number of persons from Chelsea and nearby communities attended the first volunteers meeting of the fall at Chelsea United Methodist Home last Thursday.

Dr. J. V. Fisher, one of the Home doctors for many years, spoke on "Understanding Older Adults." He commented on the wrong attitudes toward aging currently held in our society. He also listed some of the prevalent physical and mental problems facing many older persons.

Following the talk by Dr. Fisher, the Rev. R. L. Clemans and Mrs. V. O. Johnson led a discussion on needed services in which volunteers could assist and help add a needed dimension to the lives of people in the Home, especially those in the Health Care Center. Among these services are visitation, reading and writing letters with individual persons; taking patients on walks and wheel-chair rides; and assisting with group programs of crafts, recreation, music and singing.

At this time many of those attending committed themselves to specific duties on a regular basis. Others were checking their schedules before deciding their participation. Mrs. Evelyn Panone was announced as Volunteer Co-ordinator of the staff of the Home, and should be contacted by persons considering doing volunteer work. The Home telephone number is 475-8633.

Band Boosters Will Sell Candy Bars, Fruit Cakes

The annual fruit cake and candy bar sale will get underway this Friday, Oct. 16, by the Chelsea school bands. This will be the 15th consecutive year that the Chelsea bands have sold these products to the public as a money-making project.

Mothers of students of each grade will distribute candy bars, collect money from students, tabulate sales and follow up on distribution and collection of these two products. It is important that parents of all band students make certain that fruit cake orders are correctly filled out and that the amount of money due from these sales is the correct amount. Students will be informed by the volunteer mothers when orders and money should be turned in.

Chelsea Band Boosters club uses the money obtained from this sale for financing the various "extras" that the band undertakes each year. The major portion of the money goes to pay one-half the cost of each student, and the full cost of counselors, for the week the band spends at band camp every August. The Band Booster bill for band camp this past year was close to \$3,000.

There are approximately 450 members of the Chelsea bands in grades 6 through 12.

SAFER SCHOOL BUSES

The National Transportation Safety Board reports inadequate construction of most school buses unnecessarily endangers children's lives. The board said the use of too few rivets, bolts and screws and welds causes school-bus bodies to disintegrate in crashes, contributing to injuries and deaths. There were some 39,000 school bus accidents in 1969 that killed 30 children, according to a rough estimate.

Dana Corp. Board Declares Dividends

The Board of Directors of Dana Corp. on Oct. 8 declared a dividend of 31 1/4 cents per share on the common stock payable Dec. 15, 1970, to stockholders of record Dec. 1, 1970, and a quarterly dividend of 93 3/4 cents per share on the cumulative preference stock 3 3/4 percent Series A, payable Jan. 15, 1971, to stockholders of record Jan. 2, 1971.

CHARM BEAUTY SALON

4396 CLEAR LAKE ROAD
(Formerly of Grass Lake)

Two Operators - Hair Styling and Wig Service
Open on Mondays. Closed Tuesdays.

PHONE 475-2700

SPECIAL SHOWING OF 1971 MODEL SKI-WHIZ and RUPP SNOWMOBILES

SATURDAY, OCT. 17 and SUNDAY, OCT. 18
from 12 p.m. until 6 p.m.

Cider and Doughnuts Served

NORTH LAKE SALES & SERVICE

MERRITT HONBAUM
14050 North Territorial Rd. Phone 475-7448

FALL CLEARANCE Our Entire Floor Stock

of
**FINE FURNITURE
and APPLIANCES**
Drastically Reduced

To Make Room for
New Fall Merchandise

Arriving Daily

FRIGIDAIRE - ZENITH - KROEHLER
BERKLINE - TELL CITY - CARPETING BY DOWNS

MEABON'S TV,

Furniture & Appliances

1170 M-52 South, Chelsea Phone GR 5-5191

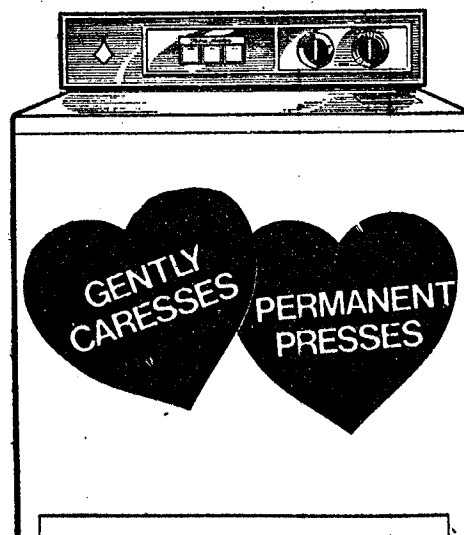
PLAN A CAREER. Take Courses at

Washtenaw
Community College



THE LUV MACHINE

A GAS DRYER



It's love, pure and simple, the first time you use The Luv Machine, a Gas dryer. And why not? A Gas dryer is so good to clothes. Leaves them soft, fresh-smelling. In fact, a special setting gently caresses permanent press things so they don't need any ironing. And there's the way a Gas

dryer saves money. Dries five loads of clothes for the price of one load in an electric dryer. Does a load up to 10 minutes faster, besides. Buy a Gas dryer at your appliance dealer's or Michigan Consolidated showrooms. You'll luv everything about it.

MICHIGAN CONSOLIDATED GAS COMPANY

James Otenbacher, Utica,
Talks About Electric Heat



"As a landlord, I really like electric heat."

Landlord, or lord of your castle, you'll like problem-free electric heat, too. Let us tell you more. Just send us your name and address.

Name _____
Address _____
City _____ Zip _____
180 Service Bldg.
2000 Third
Detroit, Mich. 48226

EDISON



Mrs. Richard G. Pinney

Joan Weinkauff, Richard Pinney Are Wed at St. Mary Church

Miss Joan J. Weinkauff, daughter of Mr. and Mrs. Earl C. Weinkauff, 321 South St., became the bride of Richard G. Pinney, son of Dr. Lewis C. Pinney of Saginaw, and Mrs. Woodrow Fitzpatrick, West Branch, Saturday, Oct. 10, at St. Mary Catholic church. The Rev. Fr. Francis B. Wahowiak officiated at the noon nuptial mass.

The bride was given in marriage by her father, Earl C. Weinkauff. She wore a floor-length colonial style gown of white silk taffeta that was worn by her sister, Mrs. Oscar E. Baris, Jr., when she was married, and a finger-tip veil. She carried a handkerchief that belonged to her grandmother. Her bouquet of white flowers was a surprise from her future husband.

Mrs. Charles Oates, sister of the bride, was matron of honor. She was dressed in a royal blue velvet dress with small stand-up collar, and carried a bouquet of yellow pom-pom mums.

Mrs. Orland Hale, formerly Susan Lounsbury of Chelsea, assisted as bridesmaid. Her dress was royal blue velvet with round neckline. Her flowers were identical to those of the maid of honor's.

For her daughter's wedding, Mrs. Weinkauff chose a pink dress with matching coat. Her corsage was of pink roses.

The mother of the bridegroom wore an aqua dress, accented with a white rose corsage.

Susan Baris, Chelsea, niece of the bride, was flower girl, and Daniel Crawford of Flint, was ring-bearer.

Richard Weinberg of Chicago, Ill., was best man. Joseph Frickey, Williamston, Donald Richardson, brother-in-law of the bridegroom, and Robert Crawford, brother-in-law of the bridegroom, both of Flint, ushered.

At the reception held following the ceremony, the bride's sister, Mrs. Oscar Baris cut the wedding cake. The bride's aunts, Mrs. Robert Farrell of Detroit, and Mrs. Anthony Roulo of Wayne, poured. Miss Patricia Roulo, cousin of the bride, attended the guest book. Punch was served by Miss Nancy Hill of Garden City.

Following a wedding trip of 10 days to Kingston, Ontario, the newlyweds will live at 125 Frenchtown Villa, Newport, and Mr. Pinney will work at Automatic Data Processing in Detroit.

Club and Social Activities

SENIOR CITIZENS

Fourteen members of Chelsea Senior Citizens availed themselves of the opportunity to tour Chelsea Milling Co. Monday afternoon. They were served refreshments and each was presented complimentary packages of Jiffy products at the conclusion of the tour.

BRIDAL SHOWER

Miss Shirley Roehm, bride-elect of Paul Rothfuss, son of Mr. and Mrs. Walter Rothfuss, Liberty Rd., was honored at a bridal shower in her honor Friday night, Oct. 9, Mrs. Robert Kuschmaul, and Mrs. Robert Heller, both of Guenther Rd., hosted the affair, to which friends and neighbors of the bridegroom, from this area, were invited. Approximately 20 guests attended the miscellaneous shower. Cake and ice cream were served as refreshments. A Nov. 7 wedding is planned by the couple.

CHELSEA COMMUNITY FARM BUREAU

Chelsea Community Farm Bureau held their October meeting at Sylvan Town Hall, Thursday evening, Oct. 8. Farm Labor unionization was the topic of the evening. Thirteen families were represented at this meeting.

After the meeting, cards were played with prizes going to Mrs. John Cook, Mrs. Everett Van Riper, John Brooks, and Everett Van Riper. Emmerson Lesser received the traveling prize.

Lunch was served by the hosts, Mrs. Marjorie LaRose, and Mr. and Mrs. Carl Heller.

WOMAN'S CLUB

Chelsea Woman's Club met Tuesday night, Oct. 13, in the McKune Memorial Library.

Two new members were accepted, Mrs. Robert J. Allshouse, and Mrs. Lynn Blecha.

Announcement was made of the rummage sale that will be held Oct. 23-24 at the Sylvan Township Hall.

A program, "America the Beautiful, Part II," was given. A panel composed of Marilyn Wojcik, chairman, Shirley Smith, and Marilyn Peffer, discussed population control. The program was closed with a poem by Art Buchwald entitled "Genesis Redone."

Hostesses for this meeting were Mrs. Richard Schmidt, and Mrs. George Frisinger.

VEW AUXILIARY

Regular monthly meeting of VFW Auxiliary No. 4076 was held Monday, Oct. 12, with nine members present.

LuRetha Hoag was elected into membership.

Americanism chairman Eulalie Packard reported to the group.

A flag was presented to the newly formed 4-H club of Waterloo, Sunday, Oct. 11.

Mr. and Mrs. Mac Packard attended the Sixth District meeting at Erie on Sept. 20. Mrs. Packard gave a report of the meeting. The next Sixth District meeting will be in Adrian, on Nov. 1.

A \$5 donation was voted for the Community Chest fund, and



Mrs. Robert Warren Danforth

Jean M. Wesse, Robert Danforth Wed at Chapel in Ann Arbor

Jean Marie Wesse and Robert Warren Danforth were wed Sunday afternoon, Oct. 11, at the University Lutheran Chapel in Ann Arbor, before approximately 100 guests. The Rev. Richard Kapfer of Ypsilanti officiated.

The bride is the daughter of Mr. and Mrs. Wilmer Wesse of Wayland. The bridegroom is the son of Mr. and Mrs. Albert Genovesi, 249 Park St.

Dan Eversole was soloist at the wedding. He sang "They'll Know We Are Christians By Our Love." Marylys Cole was organist. She played "Trumpet Voluntary" by Clarke processional for the bride.

For her wedding, the bride wore a blouse of sheer luminare, covered by a jumper of ivory velvet that was floor length and gathered at the sides and back. Her veil, which was tulle, was edged with lace. It also was floor-length, and was attached to a

headpiece of white daisy mums, that matched her bouquet, a cascade of white daisy mums and yellow sweetheart roses.

Miss Georgia Richardson, Okla., was maid of honor. She was dressed in a blouse of sheer luminare, which was covered with a jumper of moss green velvet in the same style of the bride's. Her headpiece was moss green, with tulle. She carried a bouquet of yellow daisy mums with gold ribbon.

The bride's mother chose a pale blue shantung with short sleeves, and flowers applied down the left side. She wore a corsage of white mums and sweetheart roses.

The bridegroom's mother was attired in pale gold shantung with embroidered collar and neckline. Her corsage was white mums and yellow sweetheart roses.

Jay Hanks of Jerusalem Rd., was best man. George Katula of Ypsilanti, brother-in-law of the bridegroom, and David Bowman of Ann Arbor, ushered.

A reception was held following the ceremony at the Chelsea Rod and Gun Club, assisted by friends of the couple.

The new Mr. and Mrs. Danforth will live in Ann Arbor.

The bride is a 1970 graduate of EMU. She has a BS degree in biology, and is a member of ADAHI, Senior Women's Honorary Society. She plans to return to EMU in the spring for graduate work.

The bridegroom is a 1970 EMU graduate in chemistry. He is employed by Genovese's Inc., and serves in the U.S. Army Reserve.

(Political Advertising)

RE-ELECT
ESCH
Thinks for himself.
Works for us.

When you know
it's for keeps



Choose Keepsake with confidence and receive the famous Keepsake Guarantee of flawless quality, trade-in value and protection against loss.

REGISTERED
Keepsake
JEWELRY

WINANS JEWELRY

Baby Shower Honors Mrs. J. Shaninger

A baby shower was held Saturday evening, Oct. 10, at the home of Mr. and Mrs. William Clark 26 Sycamore Dr., for Mrs. Jacques Shaninger, the former Joyce Mahar of Chelsea.

Twenty-six guests attended the blue and white shower, honoring Mrs. Shaninger. The blue and white theme predominated at the table which featured a centerpiece of blue and white flowers.

Angel food cake with whipped topping and berries, and chocolate brownie pie with orange sherbet was served with coffee and punch. Games were played that included making names from the letters of the Shaningers' names, naming nursery rhymes, and unscrambling words that are commonly used in a nursery.

A party was also held at the same time in the Clarks' basement for the father-to-be.

The Shaningers live at Selfridge Air Force Base, where Shaninger is a sergeant with the U. S. Army. This will be their first child.



Mrs. Arthur W. Tremper

Lee Spaulding, Dr. A. W. Tremper Exchange Marriage Vows Friday

Lee Suzanne Spaulding, daughter of Mr. and Mrs. Rolland W. Spaulding, 12210 Eisenbeiser Dr., became the bride of Dr. Arthur W. Tremper, Friday, evening, Oct. 9, at St. Mary Catholic church, before 30 guests. The Rev. Fr. Francis B. Wahowiak officiated at the ceremony.

Mary Ann LaRose, classmate of the bride, was organist.

The bridegroom is the son of Mr. and Mrs. Horace W. Tremper, of Wayne, N. J.

The bride wore a street-length dress of white bavarian silk, with shoulder-length veil. She carried a colonial bouquet of white mums.

Mrs. William R. Snyder, 246 1/2 Jefferson St., cousin of the bride, was matron of honor. She wore a gold velveteen velvet dress with v-neck, accented with pearl earrings. She carried a bouquet of assorted fall flowers.

Mrs. Spaulding wore a light blue silk blend ensemble, with a corsage of white mums.

Mrs. Tremper, mother of the bridegroom, chose a lime green lace ensemble. She also wore a corsage of white mums.

James Sexton, friend of the bridegroom, from Chelsea, was best man.

A reception was held following the ceremony at the home of the bride's parents. Carrie Lane, daughter of Dr. and Mrs. Wilfred Lane, and friend of the bride and bridegroom, attended the guest

Subscribe today to The Standard!

WATKINS

Your personal store
at your door
since 1868.

PAT KRONICK
Phone 426-4167

THE STYLE SHOP

207 1/2 S. Main St.

OPEN

Tues. thru Sat.

Call 475-8400

For Appointments

Open Wed. & Thurs. Evenings



Judy Patrick

Pansy Kuhl - Rosemary Klink

Painting this weekend?



Choose the outside paint that lasts, lasts and lasts. Use high quality Dutch Boy. It wears slowly and evenly. Resists cracking and peeling. Keeps maintenance costs way down.



Choose the inside paint that washes, washes and washes. The latex flat wall paint that's odorless, quick drying solid hiding and washable. Colors won't change. Walls stay fresh and bright.

ask us about our
Weekend Special
buy now and save

FREE ROLLER & PAN
With each order of 1 gal. of paint or more

MERKEL BROS.

Open Mon. & Fri. Uptil 9 p.m. Phone Chelsea 475-8621

TIPS

for your

TOP

from



TODDY and FRAN

If there's anything much more discouraging than getting your hair done and having it "blown to pieces" before you get to "use it" . . . well, maybe it's making an appointment and getting caught in traffic, parking blocks away, running in the wind and rain to get to the shop and finding you're so late, the next appointment is already at the shampoo table. At our salon you avoid all this. Drive in pleasant non-traffic-congested peace to the shop outside Ann Arbor, park with ease in our lot adjacent, and after you're "beautified," slip to your car even in wind and rain so quickly no harm is done. If you haven't found out how easy it is to patronize us, won't you take a chance and let us prove it?

Magic Mirror Beauty Salon
Phone 665-0816
5585 Jackson Rd., Ann Arbor

SCHOOL LUNCH MENU!

Week of Oct., 19-23

Monday, Oct. 19—Spaghetti, with cheese, buttered green beans, home-made bread, butter, cream pie, and milk.

Tuesday, Oct. 20—Hamburger with gravy, biscuits, buttered sweet corn, bread, butter, gingerbread with topping, and milk.

Wednesday, Oct. 21—MEA meeting, no school.

Thursday, Oct. 22—Bologna sandwich, mustard, soup and crackers, chips, peach dessert, and milk.

Friday, Oct. 23—Pizza pie with meat and cheese, buttered vegetable, bread and butter, juice, mixed fruit, and milk.

T. Michael Conley
Completes Course at
Naval Training Center

San Diego, Calif.—Navy Petty Officer Third Class T. Michael Conley, son of Mr. and Mrs. Ralph Conley of 21235 Kaiser Rd., Gregory, Mich., was recently graduated from the Interior Communications Electrician School at Service School Command, Naval Training Center, San Diego.

VILLAGE BEAUTY SALON

Wash and Set, \$3.50 - Hair Cut, \$2.50

LORETTA PANNONE, Owner - Operator

CINDY KEMNER - EULA MONTGOMERY

JANICE RUDD - SARAH TAYLOR

Open 8:30 a.m. Tuesday thru Saturday

Evenings by appointment. Phone 475-5421

BUDGET-WISE STORE

Chelsea's First Discount Store

116 South Main Street

Phone GR 9-1611



EVE POLICHT, Manager

MEET

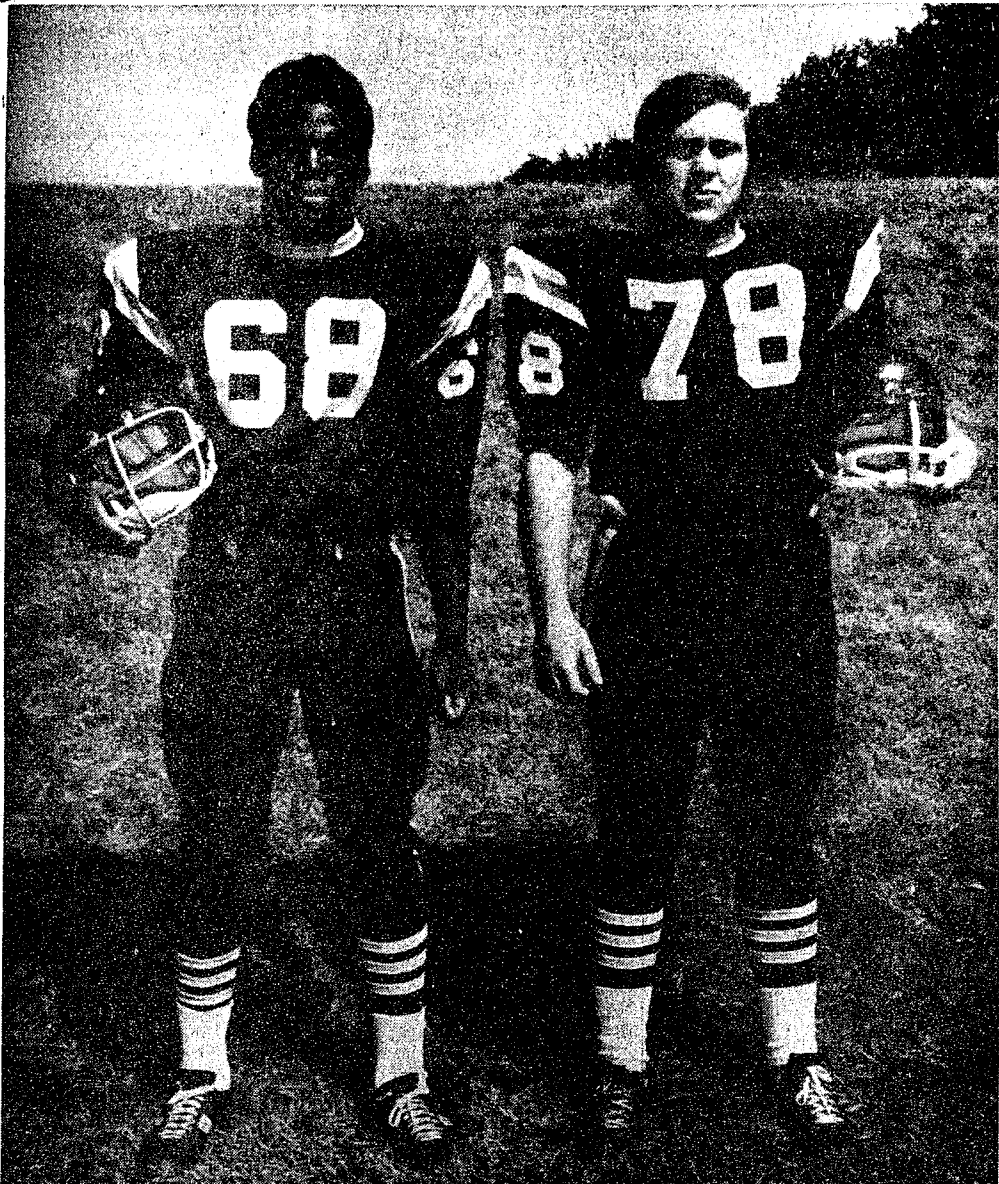
EVE POLICHT

Our New Manager

Eve is co-operative and eager to serve you with the merchandise you need. Stop in and say hello.

\$1.65 VALUE	Head & Shoulders Family Lotion . . .	\$1 ¹⁹
\$1.99 VALUE SUPER SIZE TUBE	Prell Concentrate	\$1 ⁰⁹
OUR REG. 33c BOX OF 200	Puffs Facial Tissues	29 ^c
\$1.80 VALUE	GE Super Flash Cubes	\$1 ⁰⁹
12-OZ. BOTTLE	Maalox Liquid	\$1 ⁰⁹
FOR THE KIDDIES	Round Crayons (in round box) . . .	49 ^c
BE WISE . . . SHOP BUDGET-WISE		

Gridders of the Week



MITCHELL HEARD (68), son of Mr. and Mrs. Hubert Heard, 1478 Chelsea-Manchester Rd., is a senior playing middle guard defense, and offensive tackle on the Chelsea varsity football team. Mitch has played football four years for Chelsea, this being his second year on the varsity team. He is also active in track, having been a hurdler for three years. Mitch, who has lived in Chelsea all his life, goes to EMU every summer, where he attends college preparation courses. His junior year he studied a straight academic program. This past summer he studied modern dancing. He says he enjoyed it very much. He would like to attend EMU following graduation from Chelsea, and hopes to play football for them. Planning to learn how to ski this year, he has joined the ski club. Mitch's father is employed at Dana Corp. He lives at home with his parents, and sisters, Mara and Audrey, and brothers, Kirk and Walter.

MIKE POWERS (78), is a senior at Chelsea. He plays defensive tackle and offensive guard for the Bulldogs. Having played football for three years for Chelsea, this is his second year on the varsity. Mike moved to Chelsea at the end of the seventh grade, from South Bend, Ind., home of Notre Dame. He is the son of Mr. and Mrs. Robert Powers, 1100 Clear Lake Rd. He lives at home with his parents, and three sisters, Kathy, Jan and Judy, and five brothers, Rob, Dave, Jim, Pat, and Phil. Rob and Kathy attend Michigan State. Mike likes to ski and is president of the ski club. He likes sports, and plays golf in the spring, and likes to water ski during the summers. Following high school, he would like to go to Michigan State, where he would like to study veterinary medicine.

Conservation Law Violations Heard

Douglas Braun, 23, Hollywood, Calif., paid \$21 fine and costs for carrying a gun without a hunting license.

John M. Bryson, Belleville, 36, paid \$21 fine and costs for carrying a firearm without a hunting license.

Dale J. Heilmann, Saline, 22, pled guilty to late shooting of ducks. He paid \$21 for late shooting, and \$5 for the duck he killed after hours.

Hugh E. Quinn, 33, Westland, pled guilty to having a gun capable of holding more than three shells when hunting waterfowl. He paid \$21 fine and costs.

Charles Landers, 31, Whitmore Lake, paid \$15 fine and costs for operating a four-wheel drive ATV off roads in the Waterloo Recreation Area.

Michael A. Lucas, Orchard St., 22, pled guilty to having a loaded gun in his pick-up. He was also wanted on a speeding violation in 1969 which he failed to pay. His conservation violation dates from Sept. 16.

Lucas was arrested by Chelsea police officer Peebles at the Wolverine Bar early Saturday morning. He spent two days in jail for his violations.

EASTER LILY BLOOMS

Mrs. William Aldrich 221 E. Middle St., has a blooming Easter Lily! The plant, which was given to her at Easter, was placed out in her garden this summer. Her son, Donald, watered the "corn stalk" all summer, and was finally rewarded this week with blooms. Mrs. Aldrich claims to have done this in the past with plants given her at Eastertime. She says they generally don't bloom again.



OLIN SIEGRIST, 242 E. Middle St. displays the rack from the 1,100-pound bull moose he shot Saturday, Oct. 10 on a hunting trip into Canada. Siegrist, who was accompanied on the trip by three other hunters from Parma, Michigan Center and Ohio, flew into their camp, which was 75 miles north of Armstrong, Ontario. The moose was shot from a canoe on Lake Nipigon, one and one-half hours out of camp on Saturday morning, the first day of the season. The rack measured 50 1/4" when checked at the Canadian border. Siegrist and his companions left Oct. 3 for the trip, returning Monday evening, Oct. 12. This is his third trip hunting moose. Last year, he killed a cow moose.

Windy Day Plagues Trap Shoot Marksmen

Wind plagued shooters at the Push each hit 21, D. Liebeck hit 20. Rod & Gun Club Trap Shoot Sunday, Oct. 11, causing problems for even the best marksmen.

High score for the day went to Mel Stephens who hit 46 out of 50 clay pigeons. B. Risner and H. Bailey were in the second-place position with scores of 22 out of 25. J. Stacey, J. Marshall, and R.

Reports Record High in Sales

Record breaking sales and earnings for Dana Corp., for the fiscal year ended Aug. 31, have been announced by Chairman John E. Martin.

Sales totaled \$668,000,000 compared with \$669,000,000 for the previous year. This was the ninth consecutive year that Dana sales have set records.

The accounts of the Michigan Wheel Co., acquired by Dana during the year, are consolidated for the first time in this report.

Earnings from operations also reached an all-time high of \$35,100,000 or \$2.60 per share. This compares to the previous year's

\$34,200,000 or \$2.50 per share.

Martin further stated that sales and earnings for Dana's first fiscal quarter ending Nov. 30, will be adversely affected by the General Motors strike.

The problem of any problem is to find the facts.

(Political Advertising)

RE-ELECT
ESCH
Thanks for himself.
Works for us.

GAMIBLES

We BUY, SELL and TRADE
GUNS AUTHORIZED BROWNING DEALER

COMPLETE LINE
- of -
HUNTING EQUIPMENT

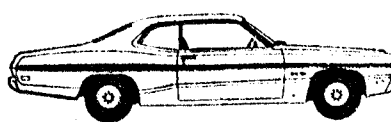
NOW AT G. A. SALES & SERVICE

A whole new idea in 2-door hardtops



PLYMOUTH
Sebring!
Coming Through

At last! A 2-door hardtop designed specifically to be a 2-door hardtop. Satellite Sebring. There's no other car like it. And a swinging compact idea. 1971 Duster.



Duster 2-Door Coupe

Duster. Coming through still big enough inside, still small enough outside. Still giving you more than any mini-car going. They're just two in the great Plymouth lineup for '71. Coming through for you now.

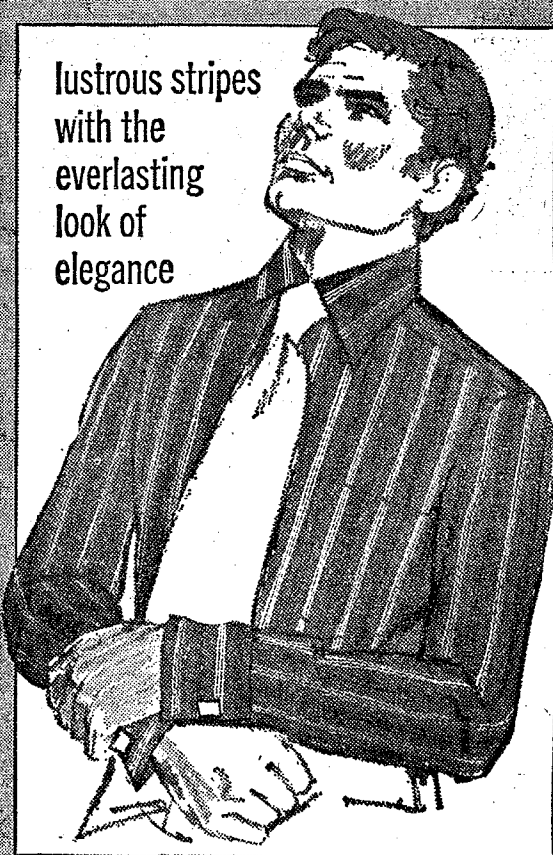
We're Coming Through with more new ideas, more features, more kinds of new cars for you.

AUTHORIZED DEALERS **CHRYSLER** MOTORS CORPORATION

PAA

G. A. SALES & SERVICE . 1185 Manchester Road

lustrous stripes with the everlasting look of elegance



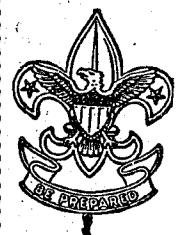
Hampshire House
VAN HEUSEN

New status for stripes. A color-on-color lustrous fabric tailored the Hampshire House way with luxury unlimited. Permanently pressed Vanopress™ 80% Dacron® polyester, 20% cotton broadcloth with elegant satin texture. Bradley long point fashion collar. See our colorful selection now! \$900

STRIETER'S MEN'S WEAR

"The Place To Go for Brands You Know"

©Du Pont reg. l.m.



BOY SCOUT NEWS

TROOP 420—

Boy Scout Troop 420 of Cavanaugh Lake, spent this past week-end, Oct. 9-10-11, at the Charles Burgess farm on Sager Rd. with troops from Chelsea, Saline, Dexter, Manchester, Milan, Whitmore Lake. This was the Iroquois District fall camporee for the Boy Scouts.

Scout troops competed against one another in varied feats of physical fitness. Troop 420's patrol won second-place ribbon in the competition. They also won a first-place blue ribbon for excellence in camping.

The Leaders Committee meeting will be at the Danny Foytik residence on Thursday, Oct. 15 at 7:30 p.m.

Cub Scouts...

DEN 5, PAK 415—

Cub Scout Den 5, Pack 415 met Tuesday, Oct. 13 at the home of Mrs. Richard Seyfried, 19245 Waterloo Rd. The meeting was opened with the flag ceremony.

Cubs worked on their masks which are to be judged at the Halloween party. "Glad to meet you," a game, was played and the meeting was closed with the Den Yell.

Treats were furnished by Tom Gilbreath.

David Seyfried, scribe.

D. EDWARDS & SON
Home Maintenance Service

Vinyl or Aluminum SIDING - WINDOWS DOORS

Roofing - Roof Repair

— ALSO —
Building Maintenance and Supplies

Phone Chelsea 479-4231 or Napoleon 536-4843