

# CHELSEA

# SIDEWALK SALE

## SAVE!

Friday and Saturday, Aug. 14-15

### WEATHER

	Min.	Max.	Precip.
Wednesday, August 6	55	80	0.00
Thursday, August 7	55	81	0.00
Friday, August 8	57	82	0.00
Saturday, August 9	62	84	0.00
Sunday, August 10	66	85	0.00
Monday, August 11	68	84	0.00
Tuesday, August 12	65	89	0.00

## The Chelsea Standard

### QUOTE

A good general not only sees the way to victory; he also knows when victory is impossible.  
—Polybius.

ONE HUNDRED-FIRST YEAR—No. 8

16 Pages This Week

CHELSEA, MICHIGAN, THURSDAY, AUGUST 13, 1970

15c per copy

SUBSCRIPTION: \$4.00 PER YEAR

# FIRE DESTROYS TWO STORES

## Sidewalk Sale Gets Underway Early Friday

Grab your piggy bank, and a big sun hat, and head for Main St. this Friday and Saturday. There will be bargains galore as Chelsea moves into its 14th annual Sidewalk Sale.

## Band Camp Starts Sunday For Bandsmen

Sunday, Aug. 16, the Chelsea High school band will depart for a one-week session of band camp at Camp Maplehurst, in Kewadin. The purpose of the week's stay is to prepare the band for the coming year's activities. While on their trip, the band will prepare and polish up their precision marching, and a pre-game and half-time show, for this fall's football season.

Band directors Warren Mayer and Stuart Glazer are responsible for this trip, and will direct all musical activities at the camp. Also on hand for the trip will be Miss Carol Ann Becker, of Western Michigan University, who will be majorette instructor for the group. Dean Tangalakis, first chair trumpet player at Eastern Michigan University, will also accompany the group as high brass instructor.

Chaperones for the trip are: Mr. and Mrs. Melvin Leach, who will act as Camp Directors; Mr. and Mrs. Ed Akin, who is Band Booster president; Mr. and Mrs. Arthur Paul; Mr. and Mrs. Donald Pierson; Mr. and Mrs. James Sprague; Mr. and Mrs. Duane Landwehr; and Mr. and Mrs. Ray Parsons. Mrs. Jack Merkel, who is a registered nurse, will also accompany the band.

Buses will start loading at 6:30 a.m. and are scheduled to leave (Continued on page three)

## Gambles Store Broken Into, Guns Stolen

Gambles Store, 110 N. Main St., was the subject of a major break-in Monday night, Aug. 10, or very early Tuesday morning, Aug. 11, George Elkins, co-owner of the store, revealed Tuesday. Elkins said that police officials notified his partner, Sam Johnson, 542 McKinley, of the theft at 7 a.m. Tuesday.

More than \$600 worth of firearms were taken from the store, and the thieves broke a heavy plate glass door in entering the store.

## Fair Float Entry Time

Fair parade time is just two weeks away. Enter your float now by calling Dave Longworth, 475-8872; after 6 p.m. call 475-7328.

Frank Reed is being treated in St. Joseph Mercy Hospital for pneumonia. He entered Thursday, Aug. 6, and is in room 583.

Days is one of Chelsea's many links with her historic past, as pioneers a 100 years ago would display their wares under the open sky for any and all buyers. Seasonal merchandise will be greatly reduced, and many new items have been purchased by local merchants especially for this event.

Sale days are Friday, Aug. 14 from 8:30 a.m. until 9 p.m., and Saturday, Aug. 15, from 8:30 a.m. until 6 p.m. So pack a picnic and bring the family, and spend a day or two in Chelsea's streets in search of bargains. There will be something for everyone.

## Youth Claiming To Be Jesus Socks Deputy

Washtenaw County Deputy Sheriff John Dettling, 340 Pierce St., was assaulted Tuesday morning, Aug. 11, by a young man who claimed to be Jesus Christ. The 25-year-old Negro youth was walking along Interstate Highway 94, carrying a Bible in his hand, when Dettling decided to stop the man.

After the young man answered "Jesus Christ" when asked his name, Dettling began to follow him on foot, as the youth continued to stroll casually along I-94.

The young man crossed the highway, amid moderate traffic, without bothering to look either way.

In response to Dettling's admonitions that such conduct is dangerous, the young man answered that he couldn't die. He had died once, and was impervious to death.

At this point, he crossed the highway again, and headed for Dettling. He punched Dettling in the nose, and went for his gun. Two passers-by stopped to assist the officer, and Deputy Green, Dexter, of the Washtenaw County Sheriff's Department, arrived on the scene and apprehended the young man.

The man, Ernest Maurice Holmes, of Detroit, is charged with assaulting a police officer, and resisting arrest. The passing motorists were Robert McDermott, New Brunswick, N. J., and Robert Haehnle of Scio Church Rd.

## Queen Candidates Must Register By Next Monday

Chelsea Jaycees, with the assistance of the Jaycees Auxiliary, will be responsible for this year's Chelsea Fair Queen Pageant. Candidates must register in person at the home of Glenn Weir, 509 Madison St. no later than Monday, Aug. 17. All clubs planning to have a queen candidate are urged to call Weir.

As in the past, the talent portion of the pageant will be held Saturday evening at the grounds, at about 7:30 p.m., following the horse show.



AN EERY LIGHT is cast on Main St. as the fire outshines the traffic lights. This shot is taken from two blocks away from the scene of the fire. (All fire photos by Vern Otto.)



FIRE LIGHTS UP THE SKY, shining through a burned-out door, and broken windows of the Frigid Products building.



DEBRIS SHOOTS OUT of the building, and into the blackness as the fire causes an explosion in the center of the Frigid Products building. Heat damage the plastic ornaments and discolored the hubcaps of George Heydlauff's car, which was parked just beyond the fire trucks, lower right, at the base of the Jiffy grain elevators.

## Frigid Products Store Building Ruined in Friday Night Blaze

### Heroic Efforts of Firemen, Citizens Prevent Entire Block from Burning

It all started Friday night when Virginia Risner, 118 W. Middle St., on her way downtown cut through Heydlauff's parking lot outside the Frigid Products Building. As she passed the repair shop window, she noticed a light, "like a night light," in the window. Suddenly, it flared up and flames became noticeable, a window blew out from the heat, and smoke started pouring out of the window. And Mrs. Risner knew there was a fire going on in the Frigid Products Building.

She ran into Seitz's Tavern and notified people in there of the fire. Russ Moore, had just arrived at the tavern. At Mrs. Risner's request, he put in a call to the fire department. He then got a group of fellows from the tavern together and they went over to the back of Frigid Products and began to move the large bottles of gas that were sitting on the back loading dock to keep them from blowing up from the heat. They also moved the Heydlauff trucks away from the building, down next to the Jiffy Mix grain storage tanks, to protect them.

James Gaken, Chelsea fire chief, says the call from Russ Moore came into the station at about 11 p.m. Within three minutes the first truck arrived at the scene of the fire. They immediately put in a call for a second truck, which arrived within five minutes.

With the arrival of the second truck, it became obvious that the firemen would have to put in a call for more equipment. They immediately called the Dexter and Manchester fire units, and put in a call to Ann Arbor for their deluge pump and aerial truck. Pittsfield township overheard the call to Ann Arbor on their monitor. They responded immediately with a deluge pump, which they put into the trunk of a car and sent out, arriving just before the truck from Ann Arbor. Firemen from the Pittsfield township unit who overheard the call volunteered their services and arrived with other volunteer firemen from the surrounding area.

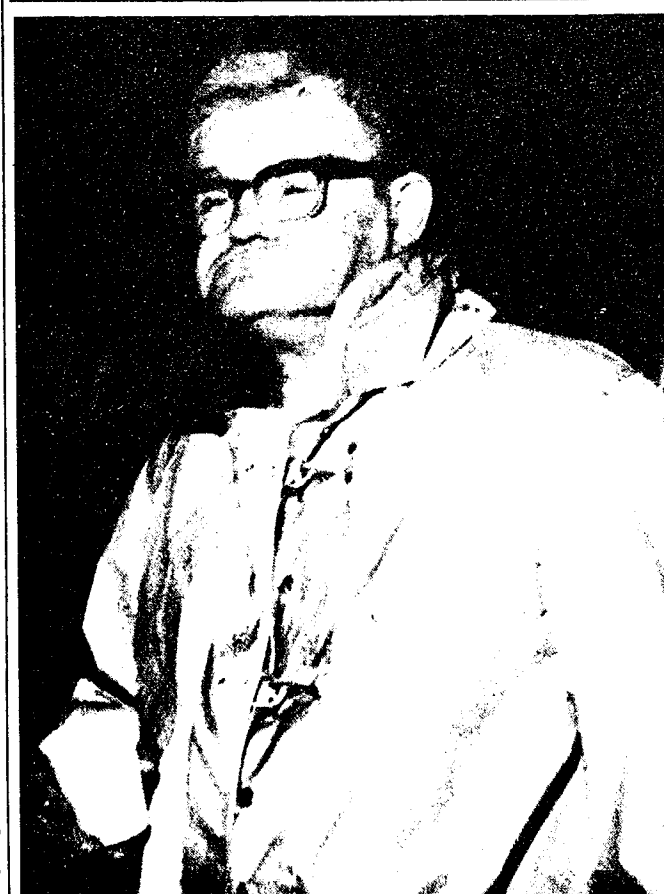
It was at first feared that the fire would spread through the entire block and destroy much of the downtown area of Chelsea. Local merchants began moving their wares that were stored in adjacent buildings out into and across the street. The fire spread to the adjacent building, at 109 N. Main owned by F. W. Merkel, which housed the Village Beauty Salon, owned and operated by Loretta Pannone, 413 Madison. Merkel who learned of the fire when he first saw the flames in the skies, estimates the fire damage to his building amounts to from \$15,000 to \$20,000, and will take approximately two months to restore. Mrs. Pannone, who, returning from visiting some relatives out of town, first learned of the fire as she drove down Main St. on her way home at approximately midnight claims at least \$15,000 damage to her

### Heydlauffs Will Rebuild On Same Site

As a result of the fire last Friday night and Saturday morning, that completely destroyed the Frigid Products building at 113 N. Main, Lloyd Heydlauff has temporarily moved his business into the former Buick-Oldsmobile showroom that is now owned by Longworth Plating. Marion Longworth has offered the use of this space for as long as it takes the Heydlauff business to get underway once again.

George Heydlauff, who is taking the reins for the new business, announced Tuesday that the company plans to rebuild at the old site, topping the now charred brick and stone structure that for many has been a lifetime landmark. The Magnavox section of the business will be restored, and a new building will be built next to it to house Heydlauff's appliance trade.

Appliances from the old depot, and new shipments of goods which arrived Monday, Aug. 10, have been moved into the temporary quarters in the Buick-Olds showroom, and customers may contact the Heydlauffs there for their needs. They are ordering new (Continued on page seven)



MAC PACKARD, Assistant Fire Chief, takes a break in the early morning hours to drink some coffee and contemplate the monstrous blaze.



Established 1871 **The Chelsea Standard** Telephone GR 5-3581

Excellence Award By Michigan Press Association  
1951-1952-1960-1964-1965-1966

Walter P. Leonard, Editor and Publisher

Published every Thursday morning at 300 North Main Street, Chelsea, Mich. 48118, and second class postage paid at Chelsea, Mich., under the Act of March 3, 1879.

ADDRESS CORRECTION REQUESTED

Subscription Rates (Payable in Advance)

In Michigan:	Outside Michigan:
One Year \$4.00	One Year \$6.00
Six Months \$2.25	Six Months \$3.50
Single Copies \$ .15	Single Copies \$ .20

Service men or women, anywhere, 1 year \$4.00

MEMBER **NATIONAL NEWSPAPER** Association - Founded 1885

National Advertising Representative:  
**MICHIGAN NEWSPAPERS, INC.**  
257 Michigan Ave.  
East Lansing, Mich. 48823

## Uncle Lew from Lima Says:

Dear Mister Editor:

You wouldn't believe some of the wild ideas that was kicked around Saturday night at the country store. Then again, you might of, depending on how you feel about believing. They was wide disagreement amongst the fellers, Mister Editor, on jest what is believing.

Zeke Grubb's preacher sort of set the mood for the discussion when he stopped by the store for a few minutes. He was saying he is having a hard time keeping folks still long enough to convince em God ain't changed, it's jest that everything else has.

What the preacher meant was we now live in outer space where we used to think Heaven is, we go inside our bodies and trade around parts where we thought the soul was, and our churches that we used to think was a haven of rest now is being used for everything under the sun but fer rest and quiet.

Furthermore, went on the preacher, folks is called on to believe so much about so many things until they find it hard to pick and choose what to really believe. With all the tramping about of parts and messing about with genes, he said it sometime ain't clear to him who is who and what is what.

Zeke's preacher got talking to the feller, Mister Editor, but the feller set and mull'd over his words. Bug Hookum said he never

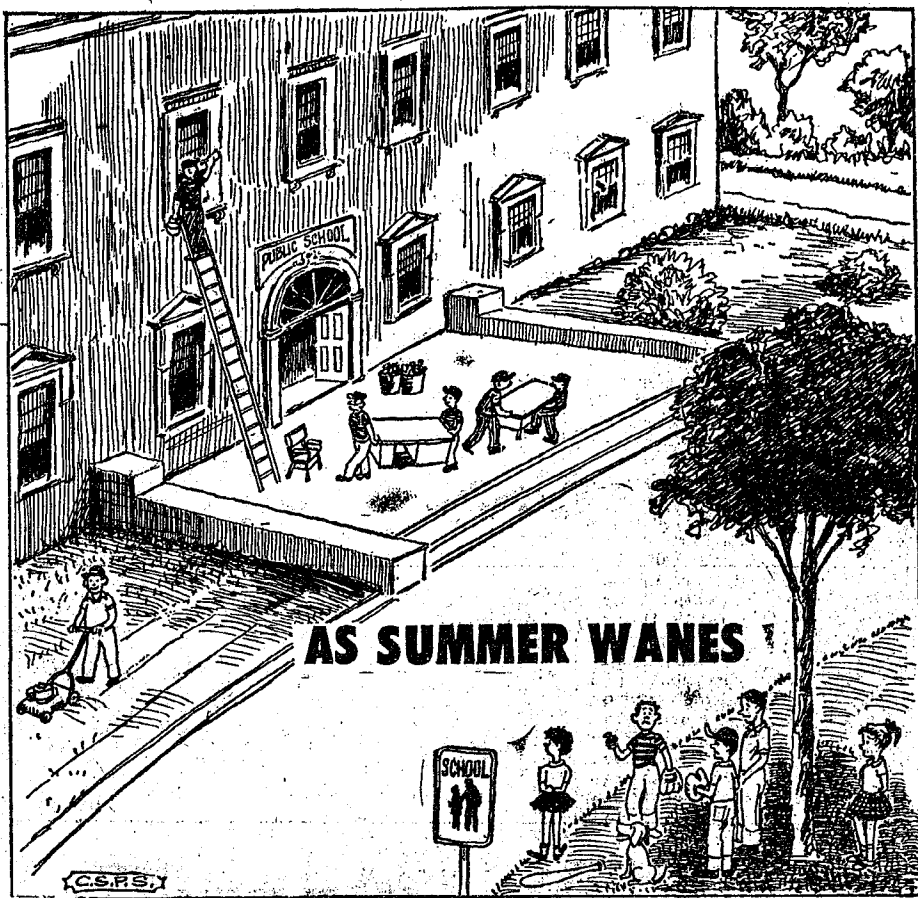
had give much thought to believing lately, but actual he was having a hard time believing these days. What it is, Bug said, is that usual things is so bad folks really don't want to believe em.

Fer instant, said Bug, he saw by the papers where up to 10 per cent of 62,000 school youngsters in Omaha was give drugs regular to keep em quiet. Bug said that was so bad in this day when everybody is preaching agin drugs til he couldn't bring hisself to believe it. It was like that man and woman that was in the papers a few months back fer leaving their little girl on a California freeway, and the little thing stood there holding the rail a hole night.

Bug says when he sees some-thing like that in the papers, he forces hisself not to believe it. He keeps hoping it'll be like that report a couple year ago when this perfessor said six drugged students went blind staring at the sun, and two days later said he lied to scare the students out of taking drugs.

Ed Drouillard said he recalled where Mike Train said once that faith is believing what you know ain't so. Ed said he had thought about that saying a lot, special in recent years, and he has decided that in this day and time it takes more faith to believe what a feller knows is so.

Yours truly,  
Uncle Lew.



AS SUMMER WANES

## MICHIGAN MIRROR

By Elmer E. White, Secretary, Michigan Press Association

### Inflation Hurts

Most people know that inflation has been chipping away at their paychecks for quite a few years at various rates.

But some calculations released by the Michigan Savings and Loan League are enough to give a jolt to even the least concerned person concerning what inflation can do. League figures show that if the current 6 percent inflation rate continues for the next 30 years, a family with an income of \$10,000 per year today will need \$57,435 to maintain a comparable standard of living in the year 2000.

The league based its estimate on a simple statistical calculation in which it adjusted a family's income upward 6 percent each year on a compounded basis to keep pace with the rising cost of living.

In the first four months of 1970, the cost of living increase actually was slightly above 6 percent per year.

There is some complacency about the present rate of inflation," said the league in an accompanying statement. "But the American people ought to understand what the long-run, cat-

astrophic effect of chronic and substantial inflation will be."

"While inflation has squeezed elderly and retired persons the most in recent years, these figures foreshadow the kind of financial chaos that faces young couples if the present inflation trend is not checked," it said.

In a breakdown of smaller items, the league said a \$20 bag of groceries would cost you \$14.87 at the supermarket in 2000. A \$500 color television set would be priced at \$2,871.72.

The \$3,000 "standard" auto of today—and this is nowhere near

a luxury car any more—would cost \$17,220.35 in 30 years if the inflation rate continues.

For the prospective home purchaser, the shock is even greater. Under the 6 percent inflation rate, a home costing \$25,000 today—the median price of all American homes—would go for a whopping \$147,082.

And the house price would not be the only shock.

Based on standard mortgage terms today, you'd have to come up with a \$29,406.40 down payment in 2000, and take out a mortgage for \$117,625.60. If mortgage interest rates stayed pretty much the same for the next 30 years, the monthly payment on a 25-year loan would be \$814.48.

A further breakdown shows that under a 6 percent inflation rate, a \$10,000 income this year would be worth the same as \$13,382 in 1971.

In 1980, it would be up to \$17,000 to purchase the same thing, and by 1995 the amount would have risen to \$23,955. In 1990 it would be up to \$32,071 and in 1995 it would be \$42,918. The prospect is bad enough for someone who would be holding down a job during such a period. But for the poor unfortunate living on a pension or other form of fixed income, it could be disastrous!

### "Distinction Rare"

The Michigan Liquor Control Commission has a distinction which is quite rare in these times of rising inflation and increasing public payrolls.

In 1936 the commission, which controls Michigan's \$1 billion alcoholic beverage industry had nearly 1,100 employees. Today, despite the fact its business has increased eight-fold since 1936, its total employees now number below 800.

The commission was created in 1935 following the repeal of prohibition. It controls the purchase and distribution of all alcoholic beverages—liquor and wine—that have an alcoholic content of 16 percent or greater.

All dealers licensed to sell liquor and wine must purchase it from state stores. The commission operates warehouses at Detroit, Lansing and Escanaba and 90 other liquor stores.

In addition, it licenses 25,000 stores, restaurants, bars, taverns and private clubs where liquor, beer or wine is sold by the bottle or glass, and it enforces all liquor laws.

The commission's Detroit warehouse is the largest of its kind in the country. More than eight million cases of liquor and wine move in—and out—of the 144,000 square foot warehouse annually.

## MONEY TROUBLE?

ONE PLACE TO PAY!  
Credit Management Service  
662-2565  
215 South Fifth Ave.  
Ann Arbor  
State Licensed and Bonded

## SEAMLESS ALUMINUM GUTTERS

Also: Barn Eavestroughing

— ★ —  
CALL

## WILSON METAL SHOP

Phone 428-8468 Manchester, Mich.

## JUST REMINISCING

Items Taken from the Files of The Chelsea Standard

### 4 Years Ago...

Thursday, Aug. 18, 1966—

Special bargains will line the sidewalks of Chelsea's business district tomorrow and Saturday as Chelsea's 10th annual "Sidewalk Day" sales commence. Music will float through the streets from a Baldwin Electric Organ which will be set up on a special stand near Dancer's Department Store.

Mike Punderburgh, son of Mr. and Mrs. R. S. Punderburgh of 421 Glazier Rd., has been selected to play the trumpet in the Honors Band at the Michigan State Fair which opens Friday, Aug. 26, and continues through Labor Day.

The appointment of Conrad M. Hafner as Plant Superintendent of the Chelsea Products Plant, Salisbury Division, Dana Corp., has been announced by J. L. Hess, plant manager.

New sidewalks are planned for portions of E. Middle and East St. The Chelsea Public Works crew tore up the uneven sidewalks and will pour new sidewalks to replace the old.

Keith A. Kleis, son of Mr. and Mrs. Albert Kleis of 634 W. Middle St., is the recipient of an Air Medal and two gold stars for "meritorious achievement" in Vietnam.

David Blaess, 18, son of Mr. and Mrs. William Blaess, suffered minor injuries in a two-car traffic accident on W. Stadium Blvd., in Ann Arbor last Friday evening according to Ann Arbor police.

with 35 years' experience in Detroit, Lincoln Park, Ecorse and Ida, has opened a modernly equipped shoe repair shop in the basement of Glick's Department Store and is now ready to give "while-you-wait" service if necessary, and will try to give 24-hour service as much as possible.

### 34 Years Ago...

Thursday, Aug. 13, 1936—

Chelsea Scout leaders Marion Longworth and Wilbur Riemen-schneider have received word from Scout Executive Walter MacPeck announcing the 13th annual Boy Scout Day at Michigan State College, East Lansing, on Saturday, Sept. 26.

Because of ill health Ransom Lewis has sold his feed mill to the Washtenaw Farmers' Supply Co.

Hart's Garage announces the re-

## BIBLE VERSE

"The grass withereth, the flower fadeth; but the word of God shall stand forever."

1. Who was the author of the above statement?
2. What was his position at the time?
3. To whom was he talking?
4. Where may this statement be found?

## Bible Verse Answers...

1. Isaiah.
2. He was Israel's most outstanding prophet.
3. To the children of Israel.
4. Isaiah 40:3.

Invent something to lessen work or amuse the public and your fortune is practically assured.



## The first couple to invite to your party.

The Gaslight and Gas grill. The perfect party pair. Gaslight. Soft. Romantic. Ever-present. Available in styles from Modern to Early American. In classic black or glossy white. Gaslight—the silent brilliance that operates for pennies a day. And Gas grills, for the most festive feast, that's rich, sizzling, delicious. Permanent briquets insure the authentic charcoal flavor. Instant on, instant off. No ashes. No mess. Gas outdoor grills. Easy, economical and fun. See the perfect party pair at Michigan Consolidated Gas Company or dealer showrooms.

MICHIGAN CONSOLIDATED GAS COMPANY

Norman O'Brien, Hazel Park, Talks About Electric Heat



"...no drafts, no cold spots in your house at all."

Want that nice warm feeling all over your house? Then you need clean, quiet electric heat. Want more information? Just send us your name and address.

Name \_\_\_\_\_  
Address \_\_\_\_\_  
City \_\_\_\_\_ Zip \_\_\_\_\_  
160 Service Bldg.  
2000 Third  
Detroit, Mich. 48226 **EDISON**

**WE'RE OPEN**  
to help you enjoy the  
summer season again.

**DELICIOUS FRIED CHICKEN**

**Individual Chicken Dinners**  
**BUCKET OF CHICKEN, 16-pc. or 24-pc.**  
Coke slaw, french fries, extra

For special occasions let us prepare your chicken dinner for you. Call ahead and your take-out order will be waiting.

**ROOT BEER BY THE GALLON**  
**ALSO: SANDWICH & FOUNTAIN MENU**

**L & R DRIVE-IN**  
North Territorial and Dexter Townhall Rd.  
**PHONE 426-8668**

**THE BOONDOCKS**  
**Summer Shotgun Tournay**  
**SATURDAY, AUGUST 15**

The Most Exciting and Fun Team Event in Golf

Each team plays together as a foursome against the field, selecting preferred shots throughout the round to produce par-breaking team scores.

Each captain will receive a \$2.50 merchandise award upon presenting this coupon when signing up his foursome. Merchandise awards for each member of winning teams.

\$3.50 per man covers 9 holes of golf, prize list entrance fee, and ticket for door prize drawing.

**SPECIAL BONUS OFFER**—Teams may sign up for a second round at a special price of \$2.50 per man—you may win more than one prize. Other competition and awards.

We still have some spots open for individuals to be paired up in groups. Call the Pro Shop to make reservations or for more details, phone (517) 522-4245.

**THE BOONDOCKS GOLF COURSE**  
1302 Curtis Rd., 1/2 mile southeast of Grass Lake Village

**Education Available at Washtenaw Community College**

**Howell Livestock Auction**  
The Wise Owl Says Ship to Howell  
**SALE EVERY MONDAY, 2 p.m.**  
Phone 546-2470, Bim Franklin  
Mason 677-8941

**Market Report for Aug. 10**

**CATTLE—**  
Steers and Heifers:  
Choice, \$29 to \$31  
Good, \$27 to \$29  
Ut.-Std., \$24 to \$26  
Fed Holsteins, \$25 to \$28

**Cows:**  
Heifers, \$22.50 to \$24.50  
Ut.-Comm., \$21 to \$22.50  
Canner-Cutters, \$17 to \$20  
Fat Yellow Cows, \$19 to \$21

**Bulls:**  
Heavy, \$27 to \$29  
Light and Common, \$24-\$27

**Calves:**  
Prime, \$42 to \$46  
Good-Choice, \$38 to \$42  
Cull-Med., \$25 to \$30  
Heavy Deacons, \$40 to \$44  
Light Deacons, \$39 to \$40

**Feeders:**  
Good-Choice, \$32 to \$36  
Common-Med., \$25 to \$32  
Dairy Cows, \$26 to \$38

**HOGS—**  
Butchers:  
190-lb. to 240-lb., No. 1, \$23 to \$24  
190-lb. to 240-lb., No. 2, \$22 to \$23  
240-lb. and up, \$20 to \$22

**Sows:**  
Fancy Light, \$18.50 to \$19  
300-lb. to 500-lb., \$17.50 to \$18.50  
500-lb. and up, \$16 to \$17.50

**Boars and Stags:**  
All Weights, \$14 to \$18.50

**Feeder Pigs:**  
Per Head, \$13 to \$21

**SHEEP—**  
Woolled Slaughter Lambs:  
Choice-Prime, \$28 to \$30  
Good-Utl., \$25 to \$28

**Ewes:**  
Slaughter, \$8 to \$12.50

**Feeder Lambs:**  
All Weights, \$25 to \$27



**Bandmen Leave Sunday for Camp...**

(Continued from page one)

promptly at 8 a.m. There will be a short, non-denominational Protestant church service in the high school auditorium at 7:30 a.m. for those who wish to attend church prior to leaving.

"Band camp is marching"—that's what the booklet reads and on an average day the band members will spend a minimum of six hours in rehearsal. That's a big

dose of music, but well worth it, for Chelsea will probably have the best band in the area when those saints (?) come marching home!

The average Detroit Edison customer used 5,697 kilowatt-hours of electricity in 1969, more than five times as much as the 1940 average customer.

Subscribe today to The Standard!

**SIDEWALK SALE**

Yes, we're moving out onto the sidewalk too. All merchandise at SUMMER CLEARANCE PRICES:

**LAWN PRODUCTS - BAR-B-Q GRILLS  
ICE CHESTS - METAL SHEDS  
WATCHES - HOUSEWARES - GROCERIES**

So, take time to walk up or drive up and go over our large selection and "SAVE- SAVE- SAVE."

**STAMP SPECIAL**

GRADE A MEDIUM

**EGGS** With 4 Pages doz. **19¢**  
Pantry Stamps

OPEN 6 A.M. TILL 11 P.M. EVERY DAY

**GALLUP - SILKWORTH  
PUMP & PANTRY**

295 S. Main St., Chelsea

Phone 475-7501

**Fewer Permits Issued for New Buildings**

A slight downward trend in the number of building permits issued so far this year has been noted by Chelsea Building Inspector Thomas C. Smith.

So far only two permits for new houses have been issued this year in Chelsea out of a total of 40 permits. Last year there was a total of 88 permits issued in Chelsea with six of them for new houses.

The mild downward trend can probably be attributed to the high interest rate on borrowing which makes large new home investments out of reach for the normal income family, according to Smith.

Also labor costs for plumbers, electricians and the like have risen along with everything else.

Painting and redecorating, however, do not require any permit, and many have chosen this alternative to make their old homes "like new."

Director of building inspection for all of Washtenaw County Clarence C. Hanselman thinks that 248 permits allocated so far this year in Washtenaw County is about the same as last year at this time. He also mentioned that a lowering of the interest rate might lead to more permits for new houses than the 80 that have been applied for so far this year.

A record amount of premium money—\$165,000—is being offered to exhibitors at the 1970 Michigan State Fair. The fair will be held Aug. 28 to Sept. 7 at the Fairgrounds in Detroit.

**TEACHER TOPICS**

By Mary Weber and Barbara Brown

Only three more weeks and another school year will begin! We are hopeful that an agreement will soon be reached on the still unresolved issues of the teacher contract. In this week's column, we will explain what those five unresolved issues involve.

Article V, which concerns teaching hours and class size, is one of the more important issues. Last year, junior and senior high school teachers had preparation periods which allowed time to confer with parents, other teachers and the principals, plan lessons, work on classroom records, make arrangements for audiovisual equipment, prepare teaching materials and numerous other tasks. Elementary school teachers need this time too. We feel special teachers in art, music and physical education should be hired not only to broaden the children's educational program, but also to provide this released time for teacher preparation periods. This would eliminate last year's condition which found all the students outdoors at the same time with inadequate supervision and overcrowded playgrounds, while all their teachers had a brief, simultaneous preparation period. We also believe that teacher preparation periods in the junior and senior high schools should be equal for all teachers and that class size in study halls, band and physical education classes should be limited to manageable numbers.

Article VI deals with department chairmen. The English, mathematics, science and social studies department chairmen in the junior and senior high schools have been most effective in the past year. Their duties included directing department meetings, supervising the ordering of teaching materials, re-writing curriculum, revising textbook materials, planning budgets and co-ordinating staff efforts. We still need three new department heads in the areas of vocational arts, physical education and the 6th grade English-Social Studies Bloc. Elementary department heads could also be effective in a system as small as this. Department heads could be a source in structuring and standardizing what is taught within the grades. The left hand would know what the right hand is doing so to speak. At present, the teachers are requesting unpaid department heads as a trial procedure in the elementary schools.

Article IX outlines the usage of professional days. The Board of Education has designated 30 days to the teachers for professional improvement which includes attending conferences, visitations, workshops and training programs. The days should be available to all the teachers. If some departments or grades do not use all of their allotted days, then these days should be available to other teachers in other departments or grades. At present, these conditions do not exist.

The fourth issue is Article XII, the probationary procedure. In the present contract, there is a

procedure to be followed in the evaluation of probationary teachers. This same standardized procedure should be followed for all extracurricular probationary personnel which includes yearbook and newspaper advisors, cheerleading and athletic coaches, musical director, and numerous student club sponsors. The Board of Education contends that the present contract is unclear in this area. In the teacher's proposal placed on the bargaining table for the 1970-71 contract, the teachers have attempted to write out in detail the procedure that should be followed in evaluating this extracurricular probationary personnel. We feel teachers in an extracurricular position for a probationary period should be justly and uniformly evaluated, not arbitrarily dismissed without an evaluation.

At present, there are two grievances awaiting binding arbitration on this very point. The Board's position is that they will wait for the arbitrator's decision on the two pending grievances and abide by that rather than abide by the decisions and rewrite that section of the contract for future clarification. The arbitrator, Mr. Sugerman, from the American Arbitration Board, has tentatively set Aug. 20 as a date for the hearing on these two grievances.

The last of the five unresolved issues is Article XVI—professional compensation. The teachers and the Board have been unable to reach agreement on salaries, steps on the salary schedule, fringe benefits and compensation for extra-curricular personnel.

One possible solution to reaching agreement on these five issues and settling the contract would be to submit these five issues to binding arbitration. The CEA requested this at the July 13 School Board meeting. The Board of Education has not formally answered the CEA's request.

**8 Chelsea People Earn Degrees at Eastern Michigan**

Among those who were awarded degrees by Eastern Michigan University at the conclusion of the spring semester were the following Chelsea residents: Marie Crouch, 801 Flanders; Lois Moore, 128 E. Middle St.; Brandt Young, 1480 Sugar Loaf Lake; and Edwin Brown, 148 Van Buren, all of whom received Masters of Arts Degrees.

Gary Dosey, 125 E. Middle, Janice Koengster, 630 Flanders, and Thomas Wojcicki, 716 Taylor, received Bachelor of Science degrees. Ray Peppers, 15 Chestnut, received a specialist in Education degree.

Detroit Edison, which has one nuclear plant in operation and is building another, said that the U. S. nuclear plant status, as of the last day of 1969, was 16 operable, 48 under construction, 34 planned with reactors ordered, and eight planned with reactors not yet ordered.

Out of every dollar of revenue received by investor owned electric power companies 22 cents is for federal, state and local taxes (Detroit Edison paid \$88 million in taxes in 1969), compared to only 3.5 cents in taxes out of each dollar received by government owned or financed power agencies



JULIETTE

**AM-FM Radio Phonograph.** Originally \$24.95 **\$10.00**  
As is

MODEL 20

**POLAROID CAMERAS . . .** Reg. \$19.95 **\$10.00**  
While They Last

OUR REGULAR \$4.99

**PICNIC COOLERS . . .** Sidewalk Days Special **\$2.99**

PACKAGE OF 50

**PLAID PLASTIC PLACEMATS . . .** **39¢**

98c VALUE

**PLASTIC CLOTHES LINE . . .** **49¢**

REGULAR 97c

**WOODEN SERVING DISHES . . .** **67¢**

**SUN GLASSES . 1/2 Price**

ASSORTED

**PLASTIC WARE . . .** Butter Dishes Sprinkling Bottles **10¢**

49c VALUE

**PLASTIC TABLE CLOTH . . .** **29¢**

REGULAR \$1.50

**ZODIAC PAINT-BY-NUMBER SETS** **75¢**

NESTLE'S

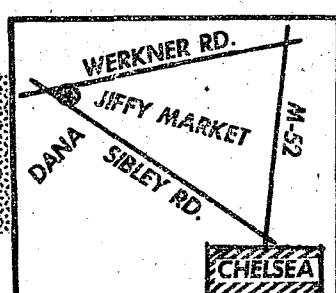
**KEEN CHILLER . . .** With Cyclamates Per Pkg. **1¢**

**BUDGET-WISE STORE**

Chelsea's First Discount Store

116 South Main Street

Phone GR 9-1611



HOURS:

7 AM - 10 PM

OPEN 7 DAYS A WEEK!

PHONE 475-5701

# Jiffy market

**COMPLETE  
SUPER  
MARKET**

BIG ENOUGH TO

SERVE YOU.....SMALL ENOUGH TO KNOW YOU!

**Corner of SIBLEY & WERKNER RDS.....CHELSEA, MICHIGAN**

DAILY and SUNDAY NEWSPAPERS AVAILABLE

Prices Effective Thurs., Aug. 13 thru Sunday, Aug. 16, 1970

Open 7 a.m. to 10 p.m. for Your Shopping Convenience

**FULL LINE  
LUNCH MEATS**

featuring  
**GLENDALE**

**SLICED  
BOLOGNA**

1-Lb. Pkg.

**59¢****COMPLETE DAIRY DEPT.**

THIS WEEK-END SPECIAL

**RISDON'S  
HOMOGENIZED  
MILK**

**1/2 gal. 43¢****1 gal. 85¢****CIGARETTES**

CARTON

**\$3.39****Single Pack - 39¢**

Your Choice  
Popular Brands

LARGE

**SPANISH  
ONIONS**

for

SLICING

**10¢ lb.**

Always  
A Real Treat!  
**BORDEN'S**

**ICE  
CREAM**

Special This Week

**JUMBO TREAT  
GAL. VANILLA**

**\$1.19**

**JIFFY MARKET  
GAS PUMPS**

MARATHON  
REGULAR

**31.9** gal.

MARATHON  
PREMIUM

**35.9** gal.

MARATHON CREDIT CARD APPLICATIONS AVAILABLE

Top Quality Marathon Gas  
Your Choice at Supermarket Prices



Ads Taken  
Ill 5 p.m.  
Tuesday

IT'S EASY TO  
BUY-SELL-RENT-  
HIRE & FIND WITH

WANT ADS

Just Call  
GR 5-3581

WANT ADS

The  
Chelsea Standard

WANT AD RATES

AD IN ADVANCE—All regular ad-  
vertisements, 50 cents for 25 words  
first insertion. Count each line as  
one word. For more than 25  
words add 2 cents per word for each  
insertion. "Block" ads or box num-  
ber ads, 50¢ extra per insertion.  
HARRY RATES—Same as cash in  
advance, with 15 cents bookkeeping  
charge. 10¢ per line per word for each  
insertion. 50¢ per line per word for  
each preceding publication. Pay in ad-  
vance, cash or check or money order.  
CASH—10¢ per line per word. Min-  
imum 1 line.  
OFF DEADLINE—5 p.m. Tuesday  
week of publication.

RENTAL by the day, week-  
end, week or month. Full insur-  
ance coverage, low rates. Call Lyle  
Hawley at Palmer Motor Sales.  
5-3271.

WORK SHOE  
HEADQUARTERS

Famous Red Wing Brand  
\$12.95 to \$26.95

Foster's Men's Wear

34tf

TRACTOR TIRES—Large  
inventory on hand. Also used  
generator, truck, grader tires.  
Koon Tire Brokers, M-106, Mu-  
nich, Mich. Ph. 596-2925.

32tf

RENT—Cottage, lake-front,  
winterized. Full bath, Irish Hills  
a. Phone. 668-7833 evenings, 11

34tf

All Insurance Needs

In the convenience of your own  
home — or mine.

H. Miles, Allstate

Call GR 5-3834 after 6 p.m.

45tf

MINIMUM SINKING—Custom  
rim and gutters. Dave's Siding.  
Ph. Gregory 498-2423.

x10

Unusual Opportunity

International company doing  
business in United States, Canada,  
16 countries in Central and  
South America, request crop-  
representatives in Michigan to  
list in Crop Service Department  
agricultural field. Do not an-  
swer unless you have recent ag-  
ricultural background, are inter-  
ested in growing with a growth  
company, and existing top dollar  
could you qualify, personal in-  
view will be arranged. Apply at-  
tention to Allan L. Farrow, Presi-  
dent, Box 500, Marion, Ohio 43302.

9

TIQUES MARKET—August  
6, Ann Arbor, Michigan. 130  
dealers, 11 a.m. to 6 p.m. Rain  
shine. Sheltered area, Farmers  
Market, Detroit Street. Free ad-  
mission, free parking. Third Sun-  
day of every month.

x8

Temporary Price  
Reduction on  
DUTCH BOY  
Exterior Oil and  
Latex Paint

All colors and white  
per gal. now \$7.59  
ex. per gal. now \$7.79

While our present  
stock lasts.

Merkel Bros.

Open Mon. & Fri. Until 9 p.m.  
Phone Chelsea 475-8621

x8

WANT ADS

BOARDING, trimming, training.  
Town and Country Kennels,  
Jackson Rd. at Baker. NO 3-7200.  
7tf

MOR HEATING & Cooling Co.

Air conditioning, hot water,  
steam boilers, warm air furnaces.  
Sales and service. Ph. 498-2563,  
Gregory.

47tf

Gem Travel Trailers  
and Campers

PICK UP COVERS

4" ————— \$100.00  
26" ————— \$179.00 and up

Triangle Sales

Chelsea 475-4802

40tf

FARMS  
RESIDENTIAL  
LAKE PROPERTY

for

QUALIFIED RELIABLE SALES-  
PERSONNEL  
CONTACT

Carole Bell, 426-3892  
Kathryn Smith, 426-5830  
Janice Foutch, Saline, 429-4114  
Wendell Routh, Saline, 429-4114.

YPSILANTI OFFICE

Arthur Kane, 482-6655  
Virginia Oakes, 482-6655

Evinger Real Estate

426-3286  
Dexter, Mich.

36tf

IN CHELSEA

NEW 3-BEDROOM 1½ bath home  
with 2-car garage and walk-out  
basement under construction. Spori-  
Cavanaugh Lake Rd. \$28,900.

28tf

W. C. Weber  
Construction Co.

Franchised dealer of  
W. G. Best Homes

475-2828, or 475-8904

x8tf

FOR SALE—Household furnish-  
ings: Furniture, dishes, washer,  
etc. Friday, Aug. 14, 8 a.m. to  
5 p.m., 146 Park St. Cash & Carry.

5

SALE

1970 Ford Pick-Ups  
Still On Sale

PRICES START  
AT  
\$1995.00

Palmer Ford

Chelsea, GR 5-3271

x8

LOSE WEIGHT safely with Dex-  
A-Diet, and remove excess fluid  
with FLUIDEX. Only 98¢ and \$1.89  
at Chelsea Drug.

-16

FOR RENT—2 apts, one first  
floor, one second floor. Unfurn-  
ished. For married couples only.  
No children, no pets. Call 475-  
8469 after 5 p.m.

8

Country Home

Excellent condition for family  
or mature adults to share.

2 bedrooms (master one 18 foot),  
and ceramic bath up, 1 bedroom  
and ceramic half bath down. Full  
tiled basement. Paved road near  
lake and I-94. 2-car garage. \$285.  
per month.

Phone 475-2683  
or Detroit 831-1906.

6tf

WANT ADS

Contractor Servicing  
Chelsea, Dexter and  
Manchester Areas

Complete Home Remodeling  
Inside and Outside

Specializing in extra living space,  
recreation rooms, kitchens and  
paneling. Installing all aluminum  
products; 5" eavestroughs, custom-  
made awnings, windows and doors,  
aluminum siding in many selected  
colors and styles.

Please Call

DALE COOK

Chelsea, 475-8863

20tf

FOR SALE—John Deere M tractor  
and trailer with snow blade  
and some attachments. Phone 426-  
3276.

x9

HAMMOND ORGAN teachers  
wanted to teach in their own  
homes. Call Grinnell-Brothers, Ann  
Arbor, 662-5687.

34tf

WANTED TO RENT or Lease —  
Bob Smith's Horseshoeing —  
Farm home with room for horses.  
429-4835.

x49tf

HELP WANTED—Farm labor,  
truck garden, Hector Devulder  
& Sons, 6771 Peckins Rd. Phone  
475-2915.

7tf

\$100 REWARD

For information leading to recovery  
of 480 John Deere fork-lift on  
rubber. Taken from vicinity of  
North Lake. Front plate covering  
hydraulic hose was missing when  
last seen by owner, Sunday, Aug-  
ust 9.

28tf

Max Sellers

Phone Manchester 428-2051

x8

PRINTING for the wedding, anni-  
versary, or any occasion. Large  
selection, 10 percent off of album  
prices. John's Shop, 475-7500.

-15

SIDEWALK SPECIAL

Berkshire Pantie Hose  
\$1.10 pr.

Vogel's Store

IS YOUR INCOME limited to  
your present position? Is your  
promotion frozen? Nation-wide  
company expanding in Michigan.  
Call 456-7375 or 456-3863.

9

LOSE WEIGHT safely with Dex-  
A-Diet and remove excess fluids  
with Fluidex. Only 98 cents and  
\$1.69 at Chelsea Drug.

-17

LaFontaine  
Construction Co.

GENERAL CONTRACTORS  
COMPLETE BUILDING SERVICE

Residential — Commercial

Emergency Repair Service

FREE ESTIMATES

Phone 475-7494  
P. O. Box 160, Chelsea, Mich.

x7tf

Sidewalk Specials

Merkel's will have rug samples,  
odds and ends of carpeting, close-  
out linoleum, discontinued colors  
of flat wall and satin finish enamel,  
gifts and many other items at give  
away prices.

FRIDAY and SATURDAY  
AUG. 14th and 15th  
on Sidewalk Sale

Merkel Bros.

x8

Black Dirt - Top Soil  
Gravel, etc.

FREE ESTIMATES

Ray St. Charles  
TRUCKING

Phone 663-0093 or 449-4179

9

D. EDWARDS  
& SON  
Home Maintenance  
Service

Vinyl or Aluminum  
SIDING - WINDOWS -  
DOORS

Roofing - Roof Repair  
— ALSO —  
Building Maintenance  
and Supplies

Phone Chelsea 479-4231  
or Napoleon 536-4843

6tf

Always at Your Service  
on the Double Quick!

Looking for heads-up  
auto service? Look no  
further. That's us! Always  
on our toes to serve you  
promptly, efficiently,  
courteously!

PURE OIL PRODUCTS

JIM'S PURE SERVICE

PHONE 475-2822 501 SOUTH MAIN

Tires — Batteries — Tune-Ups — Brake Service — Wheel Alignment

7tf

REAL ESTATE  
FOR SALE

55 ACRES — Approved for sub-  
division.

Listings Needed

Kern Real Estate

616 S. Main St., Chelsea  
Phone 475-8563.

-8tf

CLARENCE WOOD  
BROKER

646 Flanders St.  
Phone 475-8217 or 479-4603

7tf

WANT ADS

PIANO TUNING, Chelsea and area.  
Facilities for reconditioning and  
rebuilding. Used piano sales; re-  
conditioned grands and verticals.  
B. Eklund, 426-4426.

50tf

For Low Cost  
Floor Covering

We have small and large pieces,  
ends of rolls, etc., of linoleum  
and carpeting at close-out prices.  
Many sizes and colors to select  
from.

MERKEL BROS.

x40tf

SPECIAL OF WEEK

1967 Rebel 2-dr. hardtop, V-8,  
power steering, auto. trans.

\$995.00

USED CARS

1969 Buick LeSabre 4-dr. hardtop,  
vinyl top (17,000 miles) — \$2795

1968 Buick Electra 4-dr. hardtop  
(air cond.) — \$2695

1967 Chrysler Newport 2-dr. hard-  
top (air cond.) — \$1695

1967 Outclass Station Wagon \$1495

1967 Buick Skylark 4-dr. sedan — \$1495

1967 Buick Special Station Wagon  
V-6 — \$1095

1966 Buick Special Deluxe 2-dr.  
hardtop — \$1195

1966 Comet 2-dr. sedan, 6-cyl.,  
auto. trans. — \$695

1965 Buick Skylark 2-dr. hardtop  
— \$995

1965 Olds Dyn 88 Conv. — \$895

1965 Olds Dyn 88 4-dr. sedan, \$895

1965 Mercury Station Wagon \$695

1966 Dodge Pick-up, blue — \$149.50

1961 Plymouth 4-dr. sedan \$149.50

1963 Buick LeSabre — \$249.50

NOTICE

During the two-day sidewalk  
sale we will deduct \$100 from the  
price of these cars.

Sprague

Buick-Olds-Opel, Inc.

1500 S. Main St., Chelsea  
Phone 475-8864  
Evening 475-6271 or 475-8240  
Open evenings by appointment.

8tf

Maintenance Men  
Wanted

3 years experience as industrial  
millwright or industrial electrician  
necessary. Excellent wages and  
fringe benefits.

APPLY

Hoover Chemical  
Products Division

HOOVER BALL & BEARING CO.  
435 W. 8 Mile Rd.  
WHITMORE LAKE, MICH.

An equal opportunity employer.

x8tf

BABYSITTING done in my own  
home. Phone 479-7078.

8tf

Harper Pontiac  
Sales & Service

Now have a choice selection of  
new Pontiacs to choose from.

SELECT YOURS NOW!

We also have a fine selection of  
one-owner used cars.

Harper Pontiac  
Sales & Service

CHELSEA

Phone 475-5311 or 475-5451 days,  
761-2999 evenings.  
Open evenings by appointment.

6tf

CREDIT  
PROBLEM?  
NO PROBLEM!

CONTACT  
MR. SMALL  
CREDIT ADVISOR  
at  
HENDERSON  
FORD

662-3261  
Ann Arbor.

6tf

WANT ADS

Formal Wear  
RENTAL SERVICE

Prom - Weddings - Special Events  
6 different colors.

Foster's Men's Wear

2tf

Houses For Sale

YEAR-ROUND homes with lake  
rights, closing costs only, very  
low interest rates.

4647 LAKEVIEW, Wolf Lake. Two  
bedrooms, \$13,900.

967 HARRIS RD., Sweezy Lake;  
completely furnished, two bed-  
rooms, \$8,500.

204 RADEY LANE, Portage Lake.  
Two bedrooms, \$8,000.

Willis Real Estate

Grass Lake, Michigan  
(517) 522-8121

8

SIDEWALK SPECIAL

Berkshire Pantie Hose  
\$1.10 pr.

Vogel's Store

ATTENTION Working mothers—  
Will care for your children in my  
licensed home while you work. Mrs.  
Judy Boyer, 475-8055.

29tf

PUBLIC MEETING

Chelsea Residential  
Area Betterment  
Society

Friday, Aug. 14  
8 p.m.

252 Harrison St.

Are you satisfied with  
school bus program?

-8

Chelsea Area Homes

UNIQUE, beautiful year-round  
lake home, 5 yrs. old. Lake front-  
age and private canal. Fireplace,  
family room, 3-bedroom, balcony.  
Located 20 min. from Ann Arbor  
on South Lake, Chelsea Schools.  
Priced to sell. Terms possible.

MODERN, 2-bedroom home located  
at Cavanaugh Lake. Fireplace,  
large lot. Priced to sell at \$19,900.

CHELSEA — Executive's ranch  
home. Beautiful private grounds.  
Priced to sell.

CHELSEA — Remodeled 2-bed-  
room home, located close to  
downtown. Nice screened porch,  
dining room, large kitchen. Priced  
to sell at \$21,500. Terms possible.

CHELSEA — All brick, 3-bedroom,  
3-yr-old ranch home. 2-car at-  
tached garage. Excellent location  
in the Village of Chelsea.

Many Farms and Building Sites  
to Choose From.

Eibler, Frisinger  
& St. Amour  
REALTORS

Chelsea—475-8681  
Dexter—426-4659

Evenings Call:  
Paul Frisinger, 475-2621  
Herman Koenn, 475-2613  
George Frisinger, 479-4161  
Burke Fitzgerald, 878-6603  
Bob Thornton, 475-8857

8tf

SIDEWALK SPECIAL

Berkshire Pantie Hose  
\$1.10 pr.

Vogel's Store

FOR RENT—Nearly new 3-bed-  
room year-around lake-front  
cottage. Walkout tiled basement,  
garage, sugar Lake, ½  
block from Waterloo Rd. \$150  
per month. Ph. 479-7034.

x8

FOR REAL DOLLAR SAVINGS  
be sure and see us before you  
buy any new or used car. Palmer  
Motor Sales, Inc. Your Ford Deal-  
er for over 50 years.

2tf

G. G. HOPPER

Building Contractors

Phone GR 5-5581  
Gregory 498-2148

40tf

Staffan Funeral Home

"Funeral Directors for Four Generations"

124 PARK STREET

PHONE GR 5-4417

Your  
Approval

is the  
cornerstone  
of our  
business.

D. EDWARDS  
& SON  
Home Maintenance  
Service

Vinyl or Aluminum  
SIDING - WINDOWS -  
DOORS

Roofing - Roof Repair  
— ALSO —  
Building Maintenance  
and Supplies

Phone Chelsea 479-4231  
or Napoleon 536-4843

6tf

Always at Your Service  
on the Double Quick!

Looking for heads-up  
auto service? Look no  
further. That's us! Always  
on our toes to serve you  
promptly, efficiently,  
courteously!

PURE OIL PRODUCTS

JIM'S PURE SERVICE

PHONE 475-2822 501 SOUTH MAIN

Tires — Batteries — Tune-Ups — Brake Service — Wheel Alignment

7tf

REAL ESTATE  
FOR SALE

55 ACRES — Approved for sub-  
division.

Listings Needed

Kern Real Estate

616 S. Main St., Chelsea  
Phone 475-8563.

-8tf

CLARENCE WOOD  
BROKER

646 Flanders St.  
Phone 475-8217 or 479-4603

7tf

CREDIT  
PROBLEM?  
NO PROBLEM!

CONTACT  
MR. SMALL  
CREDIT ADVISOR  
at  
HENDERSON  
FORD

662-3261  
Ann Arbor.

6tf

—SPECIALS—

SWIFT'S PREMIUM CANNED  
Hams . . . . 8 lbs. \$5.69

ARMOUR'S MIRA-CURED  
Bacon . . . . 1-lb. pkg. 79c

ECKRICH "ALL-MEAT"  
Franks . . . . 1-lb. pkg. 69c

LARGE SARA LEE  
Pecan Coffee Cakes . . 69c

ARCHWAY  
Cookies . . . 3 pkgs. \$1.09

10-OZ. THROW-AWAY BOTTLES  
Pepsi . . . . 8 pack 79c

Also: Several specials will be on our sidewalk!

SCHNEIDER'S

MEATS - GROCERIES

PHONE 475-7600 121 S. MAIN ST.



## WANT ADS

**VACUUM CLEANERS** — Electro-lux, authorized sales and service. James Cox, Manchester. Ph. 428-81 or 428-8221. 42tf

**HESAPEAKE BAY** Retrievers for sale. AKC, from national champion blood line and Canadian provincial champion. Call 426-88. 43f

**Green Acre Estates** Subdivision between Dexter and Chelsea

If you are planning on buying a home this spring, drive out after Chelsea Rd. to Lima Center St., turn left from Dexter way, near sites with proposed three-bedroom houses; 2-car garage, cement or crawl space; priced in the low 20's. Approximately \$1,500 down, will handle. We help with financing at the lowest interest rates available for those who qualify.

Two small lakes on property, some slightly higher on water. Choose your own house plans from several designs. Model opening on.

**Evinger Real Estate** 426-3286

Dexter, Michigan. 42tf

**RAVEL TRAILERS** — 13-ft. and up; 10x55 ft. trailers. John R. Ravel Trailer Sales, Gregory, Mich. 496-2655. 43f

**AUCTION BARN**, 15000 Herman Rd., Manchester. New and used furniture. Lots of clothes. Open daily for business, 9 a.m. to 6 p.m. Phone 428-3342. 43f

**CUSTOM BUILDING** and **REMODELING**

**Chelsea Associated Builders, Inc.** Phone 475-8182. 33tf

**THE LITTLE FLOWER SHOP**

Weddings, funerals, arrangements. Flowers for all occasions.

**Mildred Fish** 3451 Walbridge Rd. Chelsea, Mich. Phone 475-8588. 43tf

**JUNKETS & TREASURES** Corner M-52 and Pleasant Lake St., Aug. 14-15, from 9 a.m. to 5 p.m. and Aug. 16, from 1 to 5 p.m. Fine antiques, from many families. 43f

OU saved and slaved for wall-to-wall carpet. Keep it new with wall-to-wall Lustrite. Rent electric shaver \$1. Dancer's, Chelsea. 43f

## WANT ADS

**SEE US** for transit mixed concrete. Klumpka Bros. Gravel Co. Phone Chelsea 475-2530, 4920 Loveland Rd., Grass Lake, Mich. 430tf

**WORK SHOE HEADQUARTERS**

Famous Red Wing Brand \$12.95 to \$26.95

**Foster's Men's Wear** 34tf

**CLOGGED SEWER**

**Reynolds Sewer Service**

We Clean Sewers Without Digging. Drains Cleaned Electrically. FREE ESTIMATES. 2-YEAR GUARANTEE. Phone Ann Arbor NO. 2-6277

"Sewer Cleaning Is Our Business—Not a Side Line" 33tf

**TREE REMOVAL DONE** — Also buyers of standing timber and walnut trees. Chelsea 475-7831. 34tf

**XEROX COPIES** made. First 20 at 20 cents each. Over 20, special prices. Merkel Brothers. 25tf

**FOR SALE** — 18-ft. fiberglass racing canoe. \$185. Phone 475-7121. 43f

**ROBERT PATRICK** for home improvement, building, and maintenance. Ph. 475-7400. 45tf

**WANTED** — Bus drivers Chelsea school district. Call 475-8461 or 475-8255. 43f

**FOR RENT** — 3-bedroom, modern farm home. Good location. A good home for a small family. Call VE 7-1988 after 5 p.m. 43f

**FOR SALE** — Electric range. Phone 428-3307. 43f

**HOUSE FOR RENT** — Completely furnished, across from South school. Ideal for married couple. 43f

**FOR SALE** — 64 Olds, 4-door, \$275. '63 Dodge, 4-door, \$175. Ph. 475-7161. 43f

**CARPET CLEANING** by Burke. 12 cents a square foot, needs overnight to dry. In Chelsea, call Merkel Brothers. 475-8821. 45tf

**ROOFING** — Shingle roofing and repairs. Free estimates. Licensed; insured. I perform all labor. References. Annie's Roofing. Ph. 662-1758. 43f

**KITCHEN HELP WANTED** — Chelsea Restaurant. Come to apply in person. 66f

**GERMAN SHEPHERDS** — AKC registered. Ph. 878-3929 or 878-9961. 43f

**AVAILABLE** to do house cleaning job or baby sitting. Reference. 475-2893. 43f

**CARD OF THANKS** — Many thanks to the Rev. Dickson, the Messrs. Eastern Stars and friends for their cards, calls, and flowers while I was in the hospital. They were very much appreciated. Harold Bair. 43f

**THANK YOU** — The family of Orpha (Marie) wish to thank all our friends and neighbors for their kind expressions of sympathy.

## THANK YOU

We would like to thank the neighboring cities and villages of Dexter, Manchester, Pittsfield Township, and Ann Arbor, for their co-operation and equipment during the disastrous fire in the downtown area of the village. Also to the F & M Restaurant for serving coffee and breakfast to the firemen; the firemen who helped make sandwiches and coffee; and all other men who in any way helped in the handling of hose lines, getting gas for the trucks, and the many other tasks that were performed. It is nice to know that when a crisis arises that people will become involved. James Gaken, Chelsea Fire Department Chief.

## THANK YOU

Mrs. Blossom Umstead would like to thank all of her friends for their visits and cards while she was in St. Joseph's Hospital and the Medicenter for the last three and a half months. It was deeply appreciated.

## THANK YOU

We wish to thank all of our friends, relatives and neighbors for the many kind expressions of condolences and floral offerings during our recent bereavement. The Family of Ivy M. Pierce

## THANK YOU

I want to take this opportunity to say thank you to all the wonderful people who offered their assistance during and after the fire. It is certainly gratifying to know that so many people were willing to help in a time of crisis like this. It is so easy to take for granted the existence and workings of our Fire Department and Police Department. But it takes a situation like Friday night to make one realize how important they are. It is with deep appreciation that I say to them, Thank You! Charles Lancaster, Chelsea Drug Store.

## THANK YOU

I wish to express my thanks and appreciation for the assistance of my good neighbors and the many volunteers who offered their help during the disastrous fire Friday night when it appeared the garage and other buildings in the block could not be saved. Thanks to those who provided storage space for the new cars, those who helped move them out, and all who assisted in any way. Sumner Oesterle, Harper Sales & Service.

## A NOTE OF THANKS

Although it was impossible for the many fire departments involved to save the Heydauff building, we wish to express deep appreciation to all the firemen, police, Auxiliary Police and all others who assisted in any way during the fire in the business district last Friday night. Most surely we could have lost the whole block of buildings. The co-operation of the fire departments from the surrounding communities was inspirational. It is gratifying to be part of such a fine community. The Chelsea Businessmen's Assn.

Detroit Edison employees earned \$45,865 last year, outside of their pay envelopes, for ideas that proved profitable to the company, to the tune of \$377,500, under the Employee Proposal Plan.

**NORMA'S BEAUTY SHOP** Will Be Closed Aug. 17 to Aug. 31

# THE LANSING REPORT

FROM senator **GIL BURSLEY**



## Part 1 of 2-Part Series

Having previously served as chairman of the Senate Agriculture Committee, I have been particularly interested in legislation to keep Michigan moving agriculturally. This is the first in a two-part series about Michigan agriculture—its promise, its prospects, its possibilities, and its problems.

Part I deals with current research and legislation, as well as my long-range concerns about the future of our land and its use. Part II deals with the most commonly discussed agricultural problems: pesticides.

## AGRICULTURAL RESEARCH AND LEGISLATION

Historically, the Michigan legislature has generously supported agricultural research. This year, the House and Senate approved a budget of \$5.5 million for the Agricultural Experiment Station at Michigan State University for the 1970-71 fiscal year. This represents a \$500,000 increase in the Experiment Station budget. And it includes \$1.1 million for 10 areas of special concern: beans, vegetables and fruits, pesticides, dairy mastitis, beef cattle and forage, soil white winter wheat, and production, harvest mechanization, extending peach tree life, cattle and swine fertility, fruit and vegetable weather adaptability, and integrated control of fruit pests.

While \$5,588,000 may seem like a lot of money for agricultural research, it should be noted that this represents less than 1/2 of 1 percent of the value of agricultural production in Michigan. Furthermore, this money represents an investment, returning higher incomes to farmers and better quality products for consumers. Some examples are the bean research conducted to date which annually returns thousands of dollars to that industry, the famous Haven peaches which are grown throughout the world and the developments in automation which have kept many portions of Michigan's agriculture competitive, despite being faced with critical labor problems.

Agriculture is our second largest source of income, ranking right behind the auto industry. Michigan agricultural products have a retail value of nearly \$2.5 billion a year. Farmers received only about one-third of the total—\$875 million—in 1969 for the products they sold. The remainder of the \$2.5 billion in retail value was added by transportation, processing, and marketing. It is interesting to note that while 27 percent of Michigan citizens derive some part of their income from agriculture, only one out of 100 Michigan citizens operates a farm.

This last figure, only one farmer in 100 citizens, gives a clue to a problem now and a problem to be faced increasingly in the future. Farmers, through their ingenuity, increasing productivity, efficiency, and zooming investment in land and equipment, are producing Michigan's vast crop yield on fewer and fewer farms each year. The farmer, who works so efficiently to produce food and fiber that allows his urban counterparts to pursue other avenues of profit and pleasure, is faced each year with less representation in the halls of government.

It is important that all citizens—not merely farmers—are aware of issues pertaining to agriculture and take an active interest in this major portion of our economy which so vitally affects each of our daily lives. The food we eat, the clothes we wear, and the homes we live in are basically derived from agricultural production. Much of the life-giving oxygen that we breathe is manufactured in the green and growing plants of our farmlands. Farmland wildlife is a source of much of our outdoor recreation. Michigan meat has been in the news lately and some pending legislation in this area is of vital interest to both Michigan meat eaters and Michigan meat producers.

Five years ago the Michigan legislature provided a law and funding for a state-wide meat inspection program. Meat inspection, administered by the Michigan Department of Agriculture, entails a complete inspection of each animal slaughtered for human consumption in Michigan. In addition to the slaughtering law, the Michigan food laws provide the nation's highest standards for the ingredients of ground meat products, such as sausage, bologna, lunch meats, and hot dogs. Indeed, so high are Michigan ground meat standards that the state is presently being sued by three large interstate meat packing firms, who hope to force Michigan to lower its standards to prevailing federal standards. In other states, "With federal standards as eyes, lips, ears, snout, and under and under ground" into your sausages and hot dogs, Michigan law permits only skeletal meat.

## In the meantime, while Michigan is gearing up this complete, slaughter-house inspection now in effect, the federal Wholesome Meat Act was passed. States with complete meat inspection programs, including full-time inspection at ground meat processing plants, are eligible for 50 percent federal cost share. To gain complete federal cost sharing of its program, Michigan must by December 15 of this year provide full-time inspection in ground meat processing plants, similar to the full-time inspection now provided in slaughtering plants.

House Bill 2190 and the recommended increase of approximately \$250,000 in the budget of the Michigan Department of Agriculture for committed meat plant inspection would accomplish the job and enable Michigan to stay in the meat inspection business and provide consumers the finest meat available in the nation.

If we fail to provide the legislation and the funds, the Michigan meat program will go down the drain and be taken over by the federal government. Then, it would not be necessary for the large meat packers to challenge Michigan's high standards, since federal standards would automatically prevail.

Senate Bill 1416 created a new state Potato Industry Committee within the Michigan Department of Agriculture. This was action requested by the potato industry itself, to provide for an assessment against potatoes grown, to pay for research and market development to benefit the entire potato industry. The previous law creating the Michigan Potato Industry Council provided for an assessment on acreage, and this was ruled unconstitutional by the circuit courts on the basis that it was a land tax. This bill was signed into law by Governor Milliken on June 10, and given immediate effect.

Migrant labor problems have been condemned in lurid press stories, many of them related to agricultural housing for the seasonal workers. The plight of the migrant worker is as much a social problem as it is an agricultural problem. Society has an obligation to bear a portion of the costs of the solutions that are proposed. This is the concept embodied in Senate Bill 1691, which would create a special migratory labor housing fund in the Michigan Department of Public Health. From this \$500,000 fund, an employer of migrant farm workers would receive a grant of not more than 50 percent of the costs of an extensive remodeling project, which costs shall not exceed \$10,000. This bill will not solve all of the problems connected with migrant labor, but it will provide for state participation in solving migrant housing problems.

One of the interesting developments in the migrant labor area is the very rapid shift toward mechanization of the harvest of many Michigan crops. Michigan cherry orchards are being groomed for mechanical harvest, and this type of equipment is rapidly replacing hand pickers in the cherry orchards. Huge rubber-tired blueberry harvesting machines are shaking the bushes to replace hand labor in western Michigan. A new asparagus harvesting machine, called the "asparagus sled" can be driven at upwards of 15 miles an hour through an asparagus patch, replacing a lot of hand labor.

Michigan grown agricultural products are finding world markets in ever increasing volume. Under a Public Act that I introduced in the Senate in 1968, a world trade branch was created within the Michigan Department of Agriculture. This agency was instrumental in working with a number of Michigan growers and processors to develop sales for Michigan surpluses in the European common market. Also, in cooperation with other midwestern agricultural states, the State Agriculture Department has formed an organization, called Mid-America International Agri-Trade Council (MIATOC), which pools the resources, and commodity information from the entire midwest region into a computerized information network capable of giving world customers almost instant information on the availability of agricultural products.

Another boost for the Michigan agricultural economy, which I am proud to have played a part in, is in the establishment of the Institute of International Commerce, within the School of Business Administration at the University of Michigan. The institute is devoted to expanding world markets for Michigan agricultural products.

In conclusion, I'd like to briefly mention some of the great concerns that I have for Michigan's most precious and irreplaceable resource—the land itself. Back in the 1930's, misuse of America's rich soil resources created a major environmental disaster—the "Dustbowl." So serious did the "Dustbowl" become, that the good earth from America's prairies lands darkened the skies in many an eastern seaboard city and fell on the white linen in the dining rooms of ships far out in the Atlantic.

The Dustbowl days spawned disastrous social and economic consequences. But this terrestrial tragedy also spawned one of the greatest conservation movements that America has ever known—soil conservation. Michigan has active soil conservation districts operating in all but one Michigan county (the exception is Oceana county).

Soil conservationists tackled the Dustbowl problem and anchored the soils on the prairies. Techniques were developed that enabled Michigan farmers to crop their lands with a minimum loss of valuable topsoil. Soil conservation techniques have also been extended into urban areas, where major soil and sediment problems have developed as land is converted from agriculture into urban uses.

Yet, while environmental quality rallies young and old in its support today, we have a major environmental quality problem upon us that has largely gone unrecognized. This is the problem of land use. Environmental quality problems such as air pollution, water pollution, and litter have received much attention and many solutions have been proposed and instituted. But consider these facts related to the deterioration in the quality of our land resource: Land, the soil itself, the substance that is capable of producing food and fiber and sustaining life—this land resource is rapidly being bulldozed, blacktopped, and fragmented. Think of good topsoil as an irreplaceable natural resource, which it is. Then consider the fact that a modern highway requires 50 to 60 acres of land per mile, and that one cloverleaf for an expressway requires 40 to 80 acres, some times double this amount. Rich farmland is being built up with houses, crisscrossed with power, sewer, and gas lines, paved for parking lots and airports, and inundated by reservoirs.

It is estimated that this transition of land use reaches about 50,000 acres a year in Michigan alone. What environmental deterioration is more irreversible than misuse of land resource?

Michigan has nearly nine million citizens, and production of their daily bread makes agriculture the state's second largest industry. Let's look ahead a generation and see what might happen to our food supply if we allow indiscriminate butchering of our land resource.

The 15 top agricultural counties in Michigan are located in the southern one-third of the state, generally below a line from Bay City to Muskegon. These are the counties most favored by soil, terrain, and climate for growing food and fiber.

Now, consider a recent population growth study by one of the world's top scientists in this field, that projects the growth of Michigan's "megapolis"—our urban areas—to the year 2000. Dr. Doxiadis' study reveals that at its present rate and pattern of growth, urbanization in Michigan will generally wipe out the major portion of our state's agricultural production. This is a frightening prospect.

## Selenium Proves Beneficial to Hogs In Growth Stage

Proper use of selenium as a swine ration supplement would not endanger hog market values by increasing levels of selenium in meat and bone, a study by the University of Minnesota has shown.

According to Joseph W. Ames, county extension agent, selenium retention in swine fed diets supplemented with 0.1 parts per million of the essential nutrient returns to normal levels within 65 days of the supplement withdrawal.

In the year 2000, some of our infants of today will be raising young families. Our population will have increased tremendously, yet there is a possibility that our sources of food and fiber will have been drastically reduced. And fiber will have been drastically reduced.

This is a major environmental quality problem that has hardly been explored by federal and state government. Yet, I firmly believe that it is one of the most serious pollution problems that we will have to deal with, and that it is time that we tackle the problem of statewide land use planning.

days of the supplement withdrawal.

"This means that, if the Food and Drug Administration approves selenium use as a swine dietary supplement, farmers will be able to prevent selenium deficiency deaths during the critical hog growth stage and still have only normal amounts of selenium in their meat and bone," Ames said. Ames and his colleagues were fed a diet containing 0.1 and 0.5 parts per million of selenium for a period of 14 weeks. Three animals from each treatment were slaughtered at 0, 30 and 65 days after withdrawal of the selenium diet additive, and samples of muscle tissue were analyzed for selenium content.

Results of the experiment indicate that the selenium additive, used at the rate of 0.1 parts per million, would provide protection against selenium deficiency deaths. And this amount would not result in excessive selenium residues in the carcass, provided there was a 65-day withdrawal period between the last additive feeding and slaughter.

A national heavyweight pony-pulling contest will be held during the 1970 Michigan State Fair, which runs from Aug. 28 through Sept. 7.

## TODAY'S THOUGHT

By LOUIS BURGHARDT

You probably have noticed some people at times have peculiar ideas about clergymen. No minister, priest or rabbi is supernatural. They are human beings. The inner voice which beckoned them to their calling usually provides them with patience, tolerance and benevolence. But they are still human and have the same traits of curiosity and anxiety as other people.

We imagine most men of the cloth wonder at times about their adequacy — or inadequacy. Hours of preparation and prayer precede a worship service. Even so, no clergyman can strike a responsive chord to or for every one on every occasion. This is just as impossible as it is for a ball player to hit a home run every time at bat.

But, when a responsive chord is struck, wouldn't it be a good idea—at least once in a while—to write a note and say so? Remember—they're human too. BURGHARDT FUNERAL HOME, 214 East Middle St., Chelsea, Mich. Phone GR 5-4141.

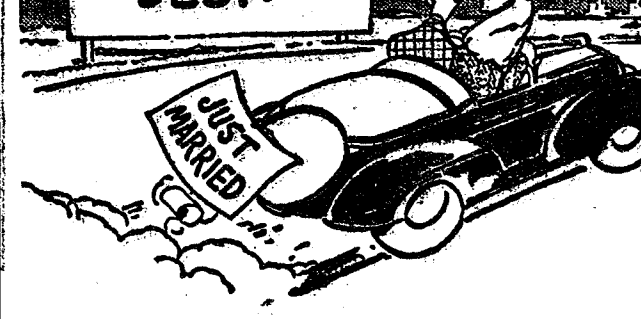
## SIDEWALK DAYS

1-LB. PKG. ECKRICH SMORGAS-PAC Lunch Meat . . . . . 83c  
10-OZ. PKG. FROZEN Strawberries . . . 2 for 45c  
25-OZ. JAR MOTT'S Applesauce . . . . 2 for 63c  
20-OZ. BOTTLE HUNT'S Catsup . . . . . 2 for 59c  
MAXWELL HOUSE Coffee . . . . . 2-lb. can \$1.75

We Have Howell Honey Sweet Melons

**KUSTERER'S FOOD MARKET** DIAL 475-2721 WE DELIVER

## BANK AUTO LOANS ARE BEST!



ANY TRIP YOU MAKE will be more pleasant, if the car you drive is financed the Bank Way—economically, conveniently and with local people.

Now Paying the Highest Interest Rates On Savings Accounts Any Bank Can Pay

## CHELSEA STATE BANK

Member Federal Reserve System **FDIC** Member Federal Deposit Insurance Corp.

**WEALTHY APPLES** Bring Containers - Pick Your Own \$2.00 per bushel **BEISIEGEL ORCHARDS** 2645 Peters Rd., Dexter Phone NO 8-7563

# GREAT 1/2 PRICE SIDEWALK DAYS

Friday - 8 a.m. to 9 p.m.  
Saturday - 8 a.m. to 5:30 p.m.  
A Great Selection of Men's SUITS - SPORT COATS - SLACKS All Reduced to a Fantastic Low 1/2 Price  
Shop Chelsea for Great Values!  
**STRIETER'S MEN'S WEAR**  
The Place To Go for Brands You Know Air-Conditioned for Your Shopping Comfort



## Thank You...

I want to thank all who supported me in the recent primary election and to assure all the citizens of the 51st District that I will continue to provide full-time representation at Lansing.

**Thomas G. Sharpe** State Representative



Drop Whatever You're Doing and APPLY at Washtenaw Community College





MENDENHALL GLACIER near Juneau, the most visited glacier in Alaska, is "beautiful beyond what a camera can do justice to," according to Don Turner.

## Alaskan Fishing Derby Is Exciting Event for D. Turner

Don Turner dates the seventh letter of his Alaskan journey from Juneau, Alaska, July 27, 1970.

Dear Readers, Since my tale of Mt. McKinley, the rain, and the bears, I have traveled some distance and am now at the capital city of Alaska, Juneau. Juneau is a pretty city, although squeezed between the Gastineau channel and the two mountains, Mt. Juneau, and Mt. Roberts, it has some growing pains. The area toward Auk Bay and the Mendenhall Glacier shows a lot of development.

I arrived in Juneau just in time for the Salmon Derby. Alaska's 24th annual golden salmon derby held at Juneau is the largest of all. The derby is sponsored by the communities along the coast. \$32,500 was put up for prizes by the Territorial Sportsmen, Inc., of Juneau. First prize was \$3,000, second prize \$2,500, third prize, \$2,000 and fourth prize, \$1,500. It's quite a competitive event, and people from many parts of the country come here to compete in this annual event.

This year's derby was July 24, 25, and 26. I didn't try for any of the prize money, as I was more interested in learning how the event was handled. I took up a position on the Auk

Bay Dock to see the take off and return of the boats. From this vantage point, I also could learn the rules, and observe the contest in action. I was lucky enough to be on hand to get the picture of the winning contestant, Miss Joyce Woolfolk of Sitka, who took the first prize with a 40-pound, eight-ounce King Salmon.

Prizes for the first fish turned in and many side bets, made for a spectacular show each morning of the derby. Hundreds of boats charged out of the harbor at the sound of the starting guns; some with bets as to who would reach the fishing grounds first, some with the idea that the early bird catches the fish, and some, I imagine, just wanted to show off their modern fishing boats.

The Salmon Derby officials were helpful in letting me get pictures of most of the events. Pete Kline arranged for me to go out in a boat ahead of the starting line to photograph the derby people charging past at full throttle. The bay became so rough from all the boats that it was nearly impossible to take pictures. Ken Wiley of King Radio-TV arranged a free flight in a Piper Cherokee to take pictures of the three points of the derby. All in all, the derby was a thrilling event. My camera and I worked overtime. My

thanks go to Mrs. Barbara Cooper, Marlene Swanson, Pete Kline, and other derby officials.

I met an old friend from Petersburg, Alaska, Carl Straw, who came to Juneau for the derby. Carl is skipper of the Radar, a 50-foot cruiser. I met Carl at Petersburg on my first trip to Alaska. He takes many big game hunters on bear and goat hunts along the coasts of many islands here in southeast Alaska. Carl asked me to come aboard and take pictures of the party fishing on his ship. I met some nice Alaskans, saw a number of salmon caught on other boats, as well as two nice ones that fell to the skilled fishermen of the Radar.

After the derby was over, I chartered a Cessna 280 airplane to fly over the huge Juneau ice cap, the source of the huge Mendenhall glacier. This is really a sight. Snow covers everything as far as the eye can see, with the exception of the steepest peaks. They are so steep that the snow cannot stick to them. The entire trip was too beautiful to describe—and the Polaroid camera just can't do justice to the area!

Mendenhall glacier is the most visited glacier in Alaska. One can drive quite close to this glacier, and a half mile walk will allow one to walk on a portion of it. The glacier is about 15 miles from downtown Juneau, reached by a smooth paved highway. There is a fine visitors center, where one may watch the glacier and see mountain goats on the mountain above it. There is also a fine snack bar, and restaurant here in the visitors center.

If you visit southeast Alaska, make the capital city of Juneau your stop-over point, as there are many points of interest here. I will be running along now, will make Petersburg my next stop, and will tell of events there in the next article.

Your Northern Reporter,  
Don Turner.

### Servicemen's Corner

#### Pvt. David Dietle Training at Ft. Knox

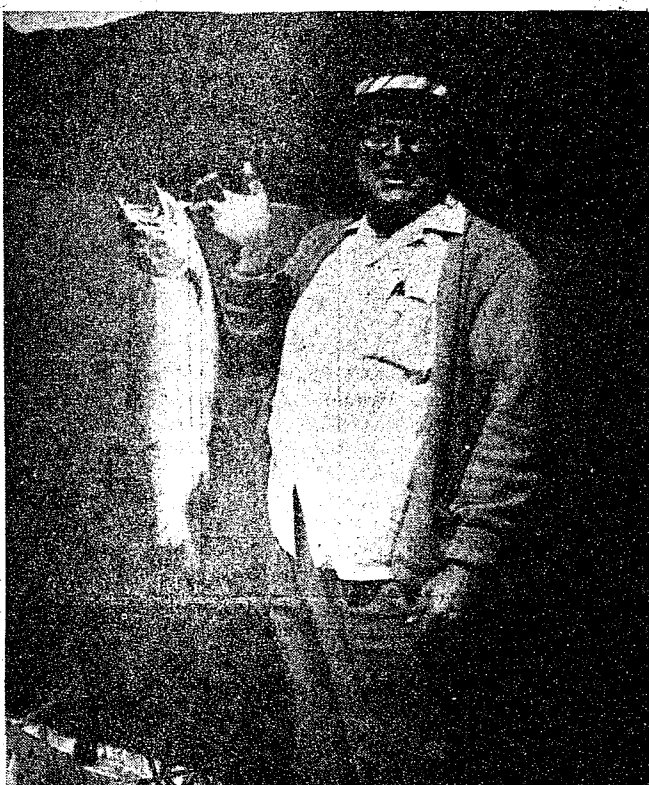
Fort Knox, Ky.—Army Private David Dietle is assigned to Company C, 11th Battalion, 4th Brigade, here in the United States Army Center, Armor.

He will spend the next two months learning the fundamental skills of the soldier in today's modern action Army—firing live ammunition under simulated combat situations, learning protective measures and first-aid for chemical biological and radiological attacks, as well as being schooled in the use of modern arms.

Following the completion of basic training, Pvt. Dietle who is the son of Mr. and Mrs. Lawrence Dietle, 1201 Freer Rd., Chelsea, will receive at least an additional eight weeks of either advanced instruction or on-the-job training to qualify him in a specialized military skill.



A \$3,000 SMILE! Joyce Woolfolk, Sitka, Alaska, displays the 40-pound, eight-ounce King Salmon that took first place in the Juneau based Golden North Salmon Derby. Her prize: \$3,000. At \$74.32 a pound, that's expensive fish!



BARELY A KEEPER: Aboard the Radar, Mike McDonough shows his catch, an eleven pound silver salmon. Not a prize winner, but a lot of fun to catch.

When enameling small pieces first. Then, turn them right side up and finish painting. A bench makes a convenient working makes it easier to do the best height. Place these small pieces possible job of applying the paint. upside down on the bench and And you'll be able to spot drips paint the underneath surfaces and uneven areas quickly.

Mrs. John D. Hamilton  
3240 Maple Leaf Drive  
Corona, Long Island  
New York 11368

**1000**  
BOLIND  
GILT EDGE  
personal  
address  
labels

**\$1.50**

UP TO 26 SPACES PER LINE  
UP TO 4 LINES PACKED  
WITH PLASTIC BOX

— NOW AVAILABLE AT —  
**THE CHELSEA STANDARD**

**FARMERS' SUPPLY CO.**  
PHONE GR 5-5511

Faster gains  
from better  
**FEEDS**

Pounds and profits mount up when you feed our Cattle rations . . . scientifically compounded to promote early weight gains.

Complete feeding rations for all your livestock, poultry.

## Swim Lessons, Little League Play Top Recreation Activities

The five-week summer recreation program this summer was under the direction of Ken Larson. Among the activities provided were Arts and Crafts which turned out to be a very successful program under the direction of Judy Parker, Barb Wenk, and Barb Duerr. Held week-day mornings at South School, approximately 40 children were in attendance each day. Some of the activities offered included copper tooling pictures, raffia baskets, plaster figurines, stone mosaic plaques, braided potholders, and aluminum painted animals.

Swimming was also a very strong program with lessons being offered in the morning to 120 children, and open swimming for about half that number in the afternoon at Half Moon Lake.

The tennis class, taught by Todd Sprague, was attended by an aver-

age of 12 tennis players a day. The morning lessons focused on forehand, backhand strokes, and serving techniques. During the fourth week of the class, a tournament was held with Debbie Berke winning the girls division, and Mark Pennington emerging victorious in the boys division.

Baton class, directed by Sue Blaess, was very successful with about 40 girls attending the beginner, intermediate and advanced sessions.

Young Children's Games, under the supervision of Holly Powers, was a big let-down this summer with only six youngsters attending the game sessions.

Little League and T-Ball morning practice sessions were very beneficial with an average of 45 boys showing up every morning to practice under the direction of Jim Hercules and Ken Larson.

## Tiny Worm Can Control Snow Mosquito Pest

Tiny thread-like worms could soon be used to control the snow mosquito, a serious wood-land pest in Michigan.

These nematodes, as they are called, are natural parasites of the mosquito.

In nature the host and parasite live in a balanced state.

Michigan State University scientists hope to tip this balance in favor of the nematodes, thus removing the snow mosquito from Michigan's major insect pest list.

For cockroach control, use an approved cockroach spray, following cautions and directions on the label. Also, store the insecticide well out of the reach of children and pets.

Participants were instructed in fielding, hitting, base running, and sliding. A vast improvement was shown from the first day's performance to the last day.

# SIDEWALK SALE

**Friday and Saturday August 14-15**

**ALL SWIMWEAR . . . . . 1/2 Off**

**ALL EVENKNIT HOSE**

Regular \$1.00

**66¢ pr.**

**Asstd. MEN'S HATS & CAPS, 1/2 Price**

**Men's Short Sleeve Sport Shirts, 1/2 Price**

Don't Miss the

**GRAB BAGS for . 2 Bits**

1 RACK

**Ladies', Girls' DRESSES, BLOUSES, etc.**

**Only a Buck**

**1 Rack Ladies' Wear . . Only 2 Bucks**

**Asstd. LADIES' SHOES . . For a Buck**

**Be Sure To Shop Our Bargain Floor  
BIG SAVING for SIDEWALK DAYS**

Many, Many Other Items

at Below Sidewalk Prices!

Don't Miss Seeing Our

**NEW FALL FASHIONS**

Shoes . . . By Connie and Charmstep

New Bobbie Brooks Line Just Arrived

DRESSES - JACKETS - SKIRTS

**SEE OUR TOWELS**

Being Modeled by the Dancer Girls!

# DANCER'S

Chelsea's Friendly Dept. Store

## NOW YOU CAN RENT SOFT WATER

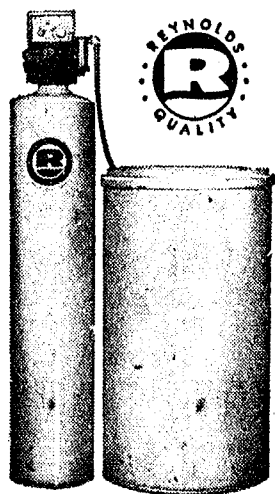
### The Carefree Way!

Now, for the first time, you can rent a famous, multi-purpose Heavy-duty REYNOLDS Fully-Automatic Water Conditioner that removes iron-rust the "CAREFREE" way.

New low rental rates:  
Standard size only \$6.00 per mo.  
Large size only \$8.00 per mo.  
Rentals applied toward purchase, when desired  
Investigate the very best in water conditioning . . . no obligation.

Serving Washtenaw County since 1931  
**REYNOLDS WATER CONDITIONING CO.**  
12100 Cloverdale Detroit, Michigan 48204  
Michigan's oldest water conditioning company

Call our direct factory line without charge 1-800-562-7717  
or call Ann Arbor 662-5676



CARL STRAW, skipper of the Radar, and a modern 'Ahab', in search not of white whales, but winning salmon, contemplates the hectic scene at the salmon derby from Juneau's small boat harbor.



# Disastrous Fire Destroys Store

(Continued from page one)

noon, the building was still smoldering.

Gaken says that the building was totally ruined. Nothing could be salvaged.

By early morning on Saturday, of major concern to firemen was the water level in the city pumps. At one point the city's overhead water tank was within 13 feet of the bottom, and the ground tank within three feet of being emptied. A call came into the firemen, alerting them to the crisis, and Gaken ordered some of the lines cut. Shortly afterwards, the fire was "out" and the firemen could cut all water lines. Within 10 minutes after the lines were shut off, the city was restored to full water power.

Should the tanks be emptied, Gaken claims, the firemen would have taken water from the creek that runs behind Dr. Lane's Animal Clinic. It would mean more hoses, and some time would be lost, but the firemen would still have the necessary water needed to put out the fire.

The biggest help to Chelsea firemen in controlling the blaze Chief Gaken claims, came from the Mutual Aid program that exists between the area fire companies. "Mutual Aid, is the name of a word," of mouth agreement

made about a year and a half ago between area fire chiefs to help one another immediately in case of a bad fire. It was the Mutual Aid agreement that caused Chelsea firemen to rush to the assistance of the Ann Arbor Fire Department in the Applied Dynamics fire of about a year and a half ago.

Mutual Aid is the outgrowth of the Detroit riots a few years ago. The extensive fires that occurred at that time impressed upon the communities of this area the need of one unit for another. As a result, local fire chiefs gather once a month to discuss Mutual Aid, what each new unit is doing, and how it can be of help to another.

Chelsea has 19 volunteer firemen in all. The firemen meet once a month for training. At this month's meeting, which was Monday night, Aug. 10, the firemen planned to relax.

In a moment of reflection, Gaken stated that the Frigid Products fire was the worst fire that he as a fireman had experienced. That and the Central Fibre Products fire in 1947, which precipitated his joining the fire department, was the closest he said he would like to come to the disaster that was so nearly averted last Saturday morning in the wee hours on Chelsea's Main St.

## Citizens Rally Like Brothers To Help at Time of Disaster

Chelsea Citizens pitched in and helped one another like brothers last Friday night, Aug. 7, and early Saturday morning, Aug. 8, at the scene of the big fire that gutted the Frigid Products building at 118 N. Main St. Mrs. Bessie Sharp, owner and manager of the P & M Fine Food, 104 N. Main, was not the least of many people who played dramatic, although, perhaps as yet unlauded, roles.

Mrs. Sharp, had closed up her cafe at 11 p.m. and had just arrived home with her husband when she heard the fire whistles blow. She lives at 310 South St., just three blocks from the scene of the fire, and not far from the Fire Hall. The first set of whistles did not alarm her, but the second and third set of whistles, and the sound of the fire trucks pouring in from the surrounding communities, she became alarmed, and curious. From the sounds of the sirens, she could tell the blaze was downtown. Unable to sleep, she and her husband walked downtown to the scene of the fire.

Standing inside their cafe, from which they could see the action across the street, it occurred to her to turn on the lights so that the firemen could better see what they were doing. She put on some coffee for the men, thinking they might appreciate something to drink, and put out cokes for those not wishing coffee.

The two girls that work for Mrs. Sharp, Kathy Hafner, and Christine Durecki who had worked the closing shift the night of the fire, saw the blaze and heard the fire engines, and came down to watch the proceedings. They came in and helped Mrs. Sharp, staying until after noon the following day.

With extra help, Mrs. Sharp was able to make donuts for the firemen. At 3:30 a.m. they began fixing bacon and eggs for the firemen's breakfast.

By this time, people in the street began drifting in, asking for food, and drink. So Mrs. Sharp, unable to feed only the firemen and close her door to spectators, re-opened her cafe for business.

Bessie Sharp, who has received thanks from Chelsea, and other area firemen, says that one of the nicest thank-you's came from an unidentified Ann Arbor fireman who compared her actions to the action of the restaurant in Ann Arbor that closed its doors last winter when the fire that gutted the Martin-Haller Furniture Store, not wishing to do business with the mess of a fire around. She was pleased to help, adding that she could never have

done it without the help of her two young employees.

Danny Murphy, 227 Washington, pharmacist at Chelsea Drug Store, 101 N. Main, heard of the fire shortly after 11 p.m. from his mother, who lives a few blocks from the scene of the fire and heard the sirens go by. Arriving at the scene, Murphy found Brian French, a part-time pharmacist at Chelsea Drug, and Vince Burg, a former pharmacist at the store, in the midst of moving the money and cash registers from the store, fearing that the blaze would spread to the store. Murphy then decided to move from the store all prescription items, records of prescriptions, and important papers from the store. He also moved his mother's car and some other things out of the store and into the street, pitched in to help move the items across the street to a spot in front of the Senior Citizens Building.

Dr. Blanchard, from the Chelsea Medical Clinic, offered to take charge of any narcotics which may have been on hand. He kept them until all danger of fire was passed and the items were moved back into the store.

Duane Rowe, 18530 Bush Rd., ran into the Chelsea Drug, and other stores in the block, to shut off the gas, to prevent an explosion, should the fire spread. This was something everyone else had neglected to consider, and his quick action was appreciated.

Charles Lancaster, 807 Washington, owner of the store, and his wife and family, started moving products back into the store at around 3 a.m. with the help of employees, Mrs. Jill Seitz, and Miss Karen Lehman. By 5 a.m. all work had been completed, and everyone at the Chelsea Drug went home prior to their usual 8 a.m. opening for business. Only a few minor things were lost, and some packages were damaged in the moving.

## Windows Broken By Heat from Fire

Heat from the fire that gutted the Frigid Products building last week-end was responsible for two broken display windows in the front of the Gamble Store, 110 N. Main, and the window in the front of the Sylvan Hotel, 114 N. Main. Damage to the Gamble Store was estimated at \$500. Sylvan Hotel owner Joe Merkel estimates it will cost \$300 to repair its window.

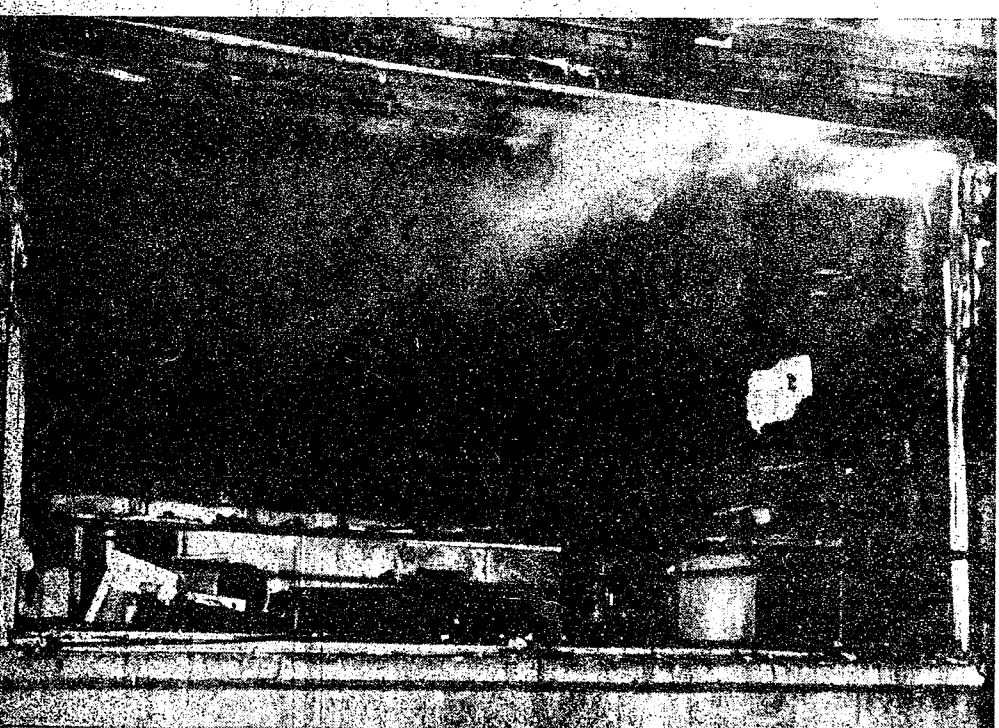
Of the 11,800 Americans killed in home falls last year, 9,900 were 65 years of age and over.



CHELSEA FIREMEN, in the black rubber coats, fight side by side with firemen from the surrounding communities. Mutual Aid, a word of mouth program between area fire chiefs made this possible. Chelsea firemen Steele and Heim, and an unidentified fireman, hold a hose line.



TV CENTER IN RUINS: The front display window of the Frigid Products, Magnavox Stereo and Television Center. George Heydlauff estimates that within about two weeks they should be able to move back into this building.



A GAPING, STEAMING, BLACK HOLE is all that is left of the once shiny, bright appliance store display window. It is over this nightmarish scene that the Heydlauffs plan to immediately rebuild their business.



UNIDENTIFIED CHELSEA CITIZENS, center, help firemen put out the roaring blaze in the back of the Frigid Products building. At the right, on the porch, are tanks of propane gas that did not blow up from the heat.

## Heydlauffs Will Rebuild On Same Site

(Continued from page one)

merchandise and parts, which will arrive soon.

Because their records were destroyed in the fire, the Heydlauffs have no way of knowing how to complete their billings. They ask the citizens of Chelsea to bear with them, as far as billing is concerned and help them if the amounts are incorrect. Also to volunteer any information on accounts, or any copies of bills, or records of scheduled payments which they may have to help them get reorganized.

Loretta Pannone, owner and operator of the Village Beauty Salon, announced that her business is still in operation. The phone is connected up to her home phone, and she is co-ordinating her girls' activities from that end. Customers may call and arrange appointments as usual. Cindy Kemper and Eula Montgomery will be operating out of the House of Orient Beauty Shop, 103 W. Middle, and Sarah Taylor and Janice Rudd will be operating out of The Silver Slipper, which is Loretta Pannone's beauty shop at the Chelsea Medcenter.

Mrs. Pannone estimated that within a month they would be back in their regular place of business, although it will take two months for all of the redecorating and necessary repairs to be completed.

## Stiff Penalty For Experiment

Before being tempted to try smoking marijuana, youth should be informed as to what they stand to lose if arrested for possession of "grass."

In our present system, a person arrested for possession of marijuana stands to lose the right to vote, the right to own a gun, the right to run for public office, the right to become a licensed doctor, dentist, CPA, attorney, architect, realtor, private detective, pharmacist, school teacher, barber, or any of a number of career job opportunities.

He may be forbidden the opportunity to work for the city, state or federal government. He cannot be admitted to West Point, Annapolis or the Air Force Academy. He would be permitted to enlist in the military service, but would not have a choice of service.

It is refreshing to find a person with an open mind, willing to learn. Among adults this species is extremely valuable because of its rarity.

## Previous Fires Have Destroyed Portions of Downtown Area

Chelsea's past has been dotted with dramatic fires, which have set local citizens back a bit, but never seemed to discourage them.

In 1870, for example the entire west block of Main St. between the railroad tracks and W. Middle St., including the land on which the Frigid Products building now stands, burned to the ground, destroying everything. Citizens promptly set out to rebuild the area, this time in brick.

A short one year later, James Hudler's store, in the middle of the block, burned again, prompting the man who wrote the account of the fire to say, fearfully yet proudly: "due to the splendid construction, only one store was destroyed."

Then, in 1894, the block just across the street, from the railroad tracks, down to W. Middle St., burned, destroying the Congregational church and parsonage, and the office buildings and a good deal of the factory of stove tycoon, Frank P. Glazier. Glazier's office was where the Gamble Store now stands.

Undaunted by the disaster, Glazier bought up the land that ran along the railroad tracks from Main St. to East, rebuilding his factory. The Frigid Products build-

ing was built to house his new offices.

Shortly after Glazier's financial failure in 1907, Grant & Wood, Inc., moved into the building and used it for their offices. Grant & Wood originally manufactured automatic metal working machines but they later moved into the production of high grade ball bearings.

In 1911, Grant & Wood were considering a merger with another good size company that would have meant a substantial, and immediate increase in the population of Chelsea. At that time plans were in the air to convert the Frigid Products building into a hotel to house the many people that would have to move into Chelsea to run the plant. Needless to say, those plans never materialized.

In 1913 Grant & Wood moved away from Chelsea and it is not known who occupied the building next. In 1919 the second floor was used by a company called F. S. Goebel from Canton, O., to manufacture dresses and aprons. In 1922 this company moved into the building that is now Dancer's Store, vacating that space.

Central Fibre Co. moved into the building in 1924, and set up their main offices there. They used it for 15 years.

Lloyd Heydlauff purchased the building in 1949 to house his embryonic appliance business, and continued to operate there until last Friday night, when just a 100 years after another fire leveled that part of town, fire destroyed his building.

## Mediator Requested in Contract Talks

Dexter Education Association notified the Michigan Employment Relations Commission in Detroit, Tuesday, Aug. 11, of a request for services of a mediator to assist in negotiations between the Association and the Dexter Board of Education.

Early in June, Leo Cadwell was assigned to assist the Dexter schools if needed.

Negotiating sessions are planned for Monday, Tuesday, and Wednesday, Aug. 17, 18 and 19, and apparently the groups will meet whether or not the mediator arrives by that time.

Also signing the request for mediator was Dexter Schools Superintendent James D. Gray, according to Paul Cousins.

An auto thrill show, Dan Fleenor's Hurricane Hell Drivers, will be a Grandstand feature at the 1970 Michigan State Fair. The fair runs from Aug. 28 through Sept. 7 at the Fairgrounds in Detroit.

Balanced judgment is a rare commodity, and one of the highest forms of human progress.

## Firemen Suffer Injuries in Blaze

Several injuries were sustained in last Friday night's fire, and its aftermath. David Longworth, 9600 Stoffer Rd., was hit by a flying stick very early Saturday morning. The stick scratched his eye, and left a few slivers of wood in it. It was a potentially dangerous accident, but all of the particles of wood have been removed by this time.

David Elkins, 12 Sycamore Dr., had to have stitches in his forehead, and suffered multiple bruises when he fell from a fire truck late Saturday afternoon, on one of the fire department's many trips to the scene of the fire to douse the ruins with water. Elkins was in the process of retrieving some hose lines which had fallen from the truck at the time of the mishap.

Ernie Sadler, of the Dexter fire department, suffered a badly cut hand early in the fire fighting activities, late Friday night. He was taken by ambulance to the Chelsea Medcenter, where he had to have stitches in his hand.

## Thank You

To say "thank you" to everyone who so unselfishly helped us during the fire which destroyed our building Friday night and afterward hardly seems adequate. The tireless efforts of the Chelsea, Dexter, Manchester, Pittsfield Township and Ann Arbor Fire Department personnel can never be fully recognized. They were superb in their efforts at controlling the fire and keeping it from spreading further.

To the hundreds of persons on the scene who volunteered their assistance in many ways, another sincere thank you is offered.

The generous and ready assistance and help of our business associates in Chelsea and neighboring communities is sincerely appreciated. Through the generous offer of Marion Longworth we are now back in business at 118 North Main (the former Buick-Olds showroom), where we hope, to serve you during our rebuilding process.

Only at a time such as this does a person fully begin to realize the loyalties and friendships that exist in our community. We are deeply grateful for everything.

**LLOYD and GEORGE HEYDLAUFF**  
FRIGID PRODUCTS

## To The Heydlauff Families

I am sure that I speak for most everyone in the Chelsea Community area when I express my extreme distress for you after your appalling loss due to the fire. Certainly, few people in the community can feel anything but compassion for you and I know that your customers will remain wholeheartedly behind you until you are again able to serve them.

Speaking for the Businessmen's Association, I wish to express our concern for you and Loretta and Gerry Pannone. I am sure it is the desire of us all that you plan to be back in business as soon as possible. We realize, of course, that it will be impossible for you to replace your handsome stores overnight but we hope that this can be accomplished in the very near future.

If there should be anything we can do to help, I feel sure that you only need to ask.

Sincerely,

**Chelsea Businessmen's Assn.**  
George Winans, President



## Community Calendar



County Farm Bureau Young Farmers family picnic, Sunday, Aug. 23, 12:30 p.m. at the Farm Council grounds on Saline-Ann Arbor Rd. Bring a dish to pass, drink, and table service.

Jaycee Auxiliary membership meeting for new members, Tuesday, Aug. 18 at 8 p.m. at the home of Mrs. Mitchell Zink, 10860 Joslin Lake Rd., Gregory. MOR Chairman Lynn Meservey will speak. Skirt or dress appropriate.

Chelsea Community Fair Board meeting Aug. 18. All committee chairmen asked to attend. Last meeting before fair.

7th and 8th grade bands, report to practice Monday, Aug. 24, at 8 a.m. at the high school, to rehearse for the Chelsea Fair Parade.

Ice cream social by Spaulding for Children Auxiliary Sunday, Aug. 9 or Sunday, Aug. 16 in case of rain from 3 to 8 p.m. at Spaulding Farm, 8600 Waltrous Rd. Menu: Potato salad, baked beans, barbecues, hot dogs, cake and ice cream, hot and cold drinks. Some antiques for sale. adv 8

Chelsea Suburban Women's Bowling League meeting, Wednesday, Aug. 19, 7:30 p.m., Chelsea Lanes.

TOPS Club at library. Wednesday afternoon group, 12:30 p.m. For information call 475-2592. Thursday evening group, 7 p.m. For information call 475-8720.

Fun night every Friday night at 7:30 p.m. at Korner House.

Inquiries regarding the Chelsea blood bank may be directed to Harold Jones at Cavanaugh Lake in the event that Mrs. Dudley Holmes is unavailable.

American Legion and Auxiliary hospital equipment available by contacting either Mr. or Mrs. Eugene Martin, at 475-5887 after 4 p.m.

Chelsea Senior Citizens birthday party, Thursday, Aug. 20. Potluck dinner, 6:30 p.m. at Korner House.

Chelsea Co-op Nursery school still has a few openings in 3- and 4-year-old groups and several openings in the afternoon non-assist groups. Call Mrs. Clark Robinson, 426-4122, for further information.

Sewing every Tuesday afternoon at Korner House.

Public meeting, Chelsea Residential Area Betterment Society, Friday, Aug. 14, 8 p.m., 252 Harrison. Are you satisfied with school bus program?

Olive Lodge No. 156 FAM, OES No. 108 picnic, Thursday, Aug. 20, at 6 p.m. at Pierce Park. Bring table service and a dish to pass.

WRC Monday, Aug. 17, at 7:30 p.m. at the Sylvan Town Hall.

Fall bowling meeting Aug. 18 at 10 a.m. at Chelsea Lanes for Rolling Pin League.

### Letters to the Editor

Dear Editor:

What is becoming of Chelsea? It is not getting any better by knocking down or changing buildings where teens have hopes of going for fun. I have not lived here for an enormous number of years but I am a teen and I always wonder where is there to go for fun? When I first moved to Chelsea I frequently went to the Chelsea Theatre. Many of my friends did too. Well, I never did know the circumstances behind that, but they closed that down. Then when it was just about time for us to enter the new junior high they told us the old one might be turned into a teen center and now they've done away with that.

Where are the kids supposed to go? On the street corners or hanging around the parking lots or loitering in stores? And then the concerned taxpayers have the nerve to openly say how many hoods there are in Chelsea. Well, what do they expect? They aren't going to get rid of them by arresting them or having a curfew, but they could help the situation by having some place for us to go and meet our friends. Just like there are bars for people over "21" there should be a place for the younger set. And remember "the kids of today are the adults of tomorrow."

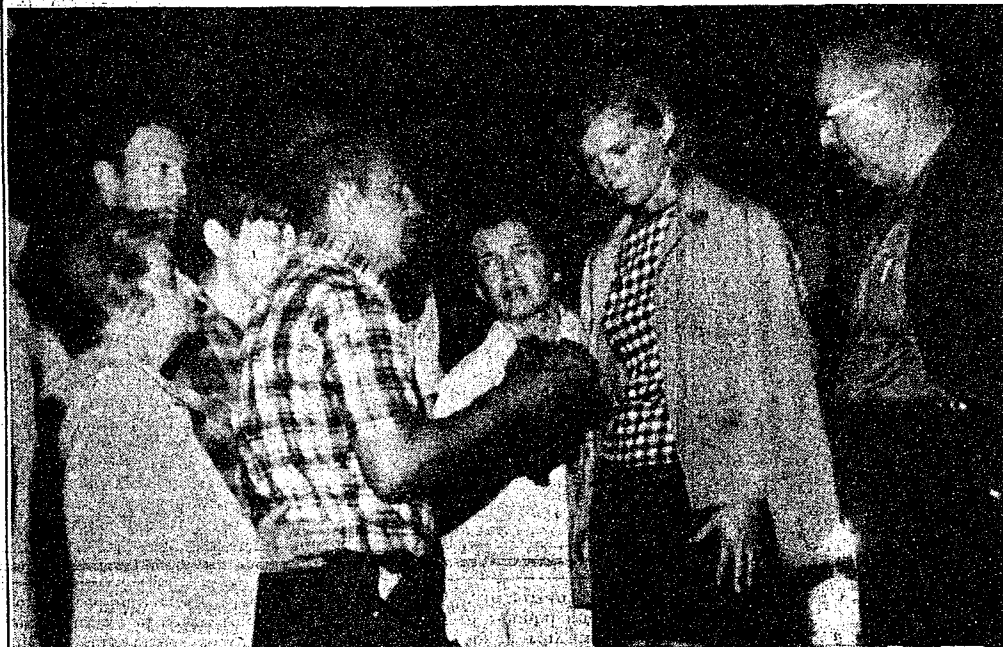
Gilda Gillespie

The most practical packaging materials for freezing vegetables are plastic bags or special bags made of two different wrapping materials. Single thickness bags need an outside cover, usually a cardboard box, to give them a uniform shape and to prevent tearing.



THIRD GENERATION of the Heydlauff family makes their mark for the family business. Shown are Bill Rademacher and Mark Heydlauff, both grandsons of Frigid Products owner, Lloyd Heydlauff. The sign, painted on boards that cover the

gaping holes of what used to be a display window, directs customers across the street to the former Buick-Olds Showroom, now owned by Marion Longworth and loaned to the Heydlauffs for a temporary location.



LLOYD HEYDLAUFF FAMILY gathers as family business goes up in flames. From left to right, Mrs. Lloyd Heydlauff, George Heydlauff, Mrs. William (Marlene Heydlauff) Rademacher, Mrs. George Heydlauff, and Lloyd Heydlauff.

The pressure group, and the highly organized minority, often exert more influence than the unorganized majority.

Gossip spreads much faster than the truth; that's why there is so much talk of scandal and so little about really important matters.

### Baby Photos Now Displayed For Contest

Photos for the Jaycee Auxiliary Baby Contest will be on display at the Stop & Shop Supermarket, Monday, Aug. 10 through Saturday Aug. 22. Of the many photos that were received, 15 finalists have been chosen to be on display.

Voting for one's favorite child may be done by placing cash donations in the canister with that child's picture on it. The total amount of money in each canister will determine the winners. Winners will be notified Monday, Aug. 24.

First prize is a free portrait of the child done at Guenther Studio. Second-place winner will receive a gift from Dancer's Department Store. Third-place winner will receive a gift from Western Auto. All winners will receive a framed certificate of their awards.

The Auxiliary thanks everyone who sent in pictures and wishes to express their regret that every photo could not be used.

### Children's Crusade Starts Monday at Assembly of God

A Children's Crusade begins Monday, Aug. 17, at the First Assembly of God of Chelsea church according to the pastor, the Rev. T. B. Thodeson. Mrs. Edith Tarno of Warren will direct the crusade, with the assistance of Mrs. Dorothy Thodeson.

"Aunt" Edith Tarno's Crusade is action packed: Gospel choruses, films, puppets and dramatic illustrated stories on Scene-o-felt, illuminated by black light. Gospel dollars are earned by bringing friends. The dollar is exchanged at the Country Store, which is filled with attractive awards.

The Crusade begins Monday evening at 7 p.m. Hours are 7 p.m. to 8:30 p.m., and the Crusade will continue through Friday, Aug. 21.

### HELLER ELECTRIC & INSULATING

Licensed Electrical Contractor  
ALL TYPES OF WIRING  
THERMTRON INSULATION  
Call After 5 p.m.  
475-7978  
20640 Sager Rd., Chelsea

## Bicycle Safety Day Slated Aug. 22 by JCs

Chelsea Jaycees are sponsoring a Bicycle Safety Day, Saturday, Aug. 22, at the Beach Junior High school. Starting at 9 a.m., with the licensing and repair of bicycles, the Jaycees will pursue a busy day that promises to be fun and rewarding. Bicycles that have need of repair prior to the day's activities may be brought to the grounds the day of the events. If your bicycle is in need of a part, bring the part along, and local Jaycees will install it. Any bicycle that is registered with the Chelsea Police Department will be repaired free of cost at that time. 12 noon is the deadline for repairs.

Starting at 12:30, the Jaycees will move into a round of contests that will be both challenging and fun.

There are four age groups for the competition: sixth graders, and older, will form one group. A second group will consist of fourth and fifth graders. Second and third graders will be a third group,

and any one who is in the first grade, or younger, may compete in the fourth group. There will be prizes for the winners in each age group.

Contests will be held in each age group, and will include five different activities.

The first contest will be a braking contest. The contestant must coast a bit, and then brake. The shortest stopping distance will win.

A second contest will feature balance. The contestant must balance on his bicycle for a slow ride. It's a real "look ma, no hands!" contest. The person with the longest time wins.

Steering one's bicycle through an obstacle course is the third race. The cyclist who is fastest at this game wins.

And of course, a contest wouldn't be a contest without an old-fashioned, beat 'em to the gate, race. Fastest time wins.

There's even something for the bright, but uncoordinated contestant. A quiz on bicycle safety,

proper signalling, and so forth, will be the last, and not at all the least of the day's activities. There will be a prize awarded to the person who performs best in this category, as well as a prize for the runner-up.

There are 18 prizes in all, so young people are urged to get their cycles shined, and get their 50 cents for a license, and come to Beach Junior High school next Saturday for what promises to be real fun and games.

### HIGHWAY SAFETY ACT

The federal government under the Highway Safety Act of 1966 developed national standards for state and local highway safety programs. The standard dealing with alcohol in relation to highway safety sets the presumptive level of intoxication at a 0.10 per cent blood alcohol concentration. A presumptive level of 0.15 is still kept by 24 states. Three other states have no presumptive level of intoxication.



**INTERIOR DOORS \$5.00**  
VALUES TO \$20.00 Your Pick

1	2/0 x 6/8 x 1 3/4	Birch Hollow Core
3	2/8 x 6/8 x 1 3/8	Beech Hollow Core
1	3/0 x 6/8 x 1 3/8	Mahogany Hollow Core
1	2/0 x 6/8 x 1 3/8	Birch Hollow Core
1	2/0 x 6/0 x 1 3/4	Birch Hollow Core
4	1/6 x 6/10 x 1 3/8	Birch Hollow Core
1	2/6 x 8/10 x 1 3/4	Mahogany Hollow Core
1	2/0 x 6/8 x 1 3/8	5-Panel Colonial
2	2/0 x 7/4 x 1 3/8	Louvered
2	2/6 x 7/4 x 1 3/8	Louvered
2	1/8 x 6/8 x 1 3/8	Louvered
2	2/4 x 6/8 x 1 3/8	5-Panel Colonial
1	2/6 x 6/8 x 1 3/8	5-Panel Colonial
2	2/0 x 6/0 x 1 3/8	Mahogany Hollow Core

**1 ONLY 2/8 x 6/8 MAHOGANY ACCORDION DOOR**  
**1 ONLY 2/6 x 6/8 MAHOGANY ACCORDION DOOR**  
Originally \$43.95 — SALE \$21.95

**2 ONLY 48" x 80" STEEL FOLDING CLOSET DOORS**  
Louvered top, paneled bottom, beige finish, pre-hung, ready to install. Reg. \$34.95. Sale **\$14.95**  
**2 ONLY 48" x 96" STEEL FOLDING CLOSET DOORS**  
Simulated birch grain. Reg. \$47.95. Sale **\$12.95**

**\$7.00 6 only 36" x 80" Aluminum Combination Doors**  
Doors are unsold stock but latches are missing, otherwise OK. Add \$2.98 for new latch.  
WERE \$21.95 (Could be used in tandem for porch enclosure.)

## Random Pre-Finished Panelling

**40 4x8 Panels values to \$12.00 \$1.99 ea.**  
(Most are one of a kind but could be interesting to mix or can be painted.)

### MISFIT WOOD SHUTTERS (ALL NEW STOCK)

**ALL 40% OFF**

Use as Window Blinds or Cabinet Doors

2	15 1/2 x 47 1/4 x 1 1/8	\$4.45 ea.
2	18 x 57 1/2 x 1 1/8	6.60 ea.
4	16 x 55 x 1 1/8	5.60 ea.
2	16 x 51 1/4 x 1 1/8	5.25 ea.
2	16 x 47 1/2 x 1 1/8	4.45 ea.
2	8 x 36 x 3/4	1.75 ea.
2	8 x 20 x 3/4	.95 ea.

Many of our Sidewalk Specials are too bulky to move for this sale only. So drive into our yard and inspect these bargains!

### ALUMINUM STORM SASH

(We mis-measure from time to time!)

**\$5.95 ea.**  
Reg. \$13.95

WIDE HIGH

4 — 29 3/4 x 65 1/4

1 — 30 x 63

2 — 40 x 65

9 — 26 x 67 1/2

(Ideal for porch enclosure)

1 — 20 x 63

1 — 45 x 29

1 — 29 1/2 x 42 1/2

1 — 35 x 58 1/4

1 — 35 1/2 x 26 1/2

**CHELSEA LUMBER CO.**

PHONE 479-4201

In August, 1930, I came to Chelsea and started in the appliance business in a garage on Orchard Street.

During the past forty years you people, in this community have been very kind to me, for that, I owe a great debt of gratitude.

In one short evening of August, 1970, that which you made possible for me to have, went in to the skies.

It shall be rebuilt by a younger generation of Heydlauffs.

For that I am very grateful.

Lloyd Heydlauff.



# AGRICULTURE IN ACTION

by GARY A. KLEINHENN  
Michigan Farm Bureau

## ★ Drop In or Drop Out

Men and women students marched through the heart of the Central Michigan University campus at Mt. Pleasant recently. There were nearly 300 of them.

Heading up the march was the American Flag. It was upright, of all things. Surprised bystanders smiled. The marchers were high school students.

The rural-urban group, from nearly every county in the state, was adjusting to a last-minute classroom change during a week-long Citizenship Seminar on campus in late July and the mini-march seemed like a good idea.

Citizenship for a lot of folks is a vague subject, or a has been; something people used to talk about. But young adults are seriously faced with this issue about the rights, privileges and responsibilities they have in the American system. Involved are decisions only they can make; to drop in or drop out. The seminar presented avenues where youth can get involved and employ its energy.

Top men in their fields talked; a world traveler and philosopher; a natural scientist and biblical expert; a psychologist; an economist; agricultural experts and a college president.

A few thought provokers were: Whoever heard of a riot for peace? If America dies, it will die of silence. The atomic bomb is our greatest guarantee for peace. In our generation 86 countries achieved independence, unmatched in the 6,000 years of man. All people are divided by attitude; the cans and the can'ts. Support your beliefs in the political party of your choice.

Knitting the daily sessions together was student involvement in the American political process; primaries, conventions, campaigning and elections under the two party system. Both parties dueling to win the other's vote and that of the silent majority, a pre-designated group of non-participants. Sound familiar?

Love of country is to be saluted if kept in perspective. History shows the damage extremists can render. To combat any such one-sidedness, the seminar presented multiple aspects of an issue. Capitalism, socialism and communism were all discussed in relation to the degree of personal freedom and economic well-being available to man.

Our youths are tomorrow's leaders. This seed farmers planted through their county Farm Bureaus, it is hoped, will bear fruit. Let's look for a bountiful harvest.

## ONE-MINUTE SPORTS QUIZ

1. Who won the Atlanta Open?
2. How many pro tourneys has this golfer won?
3. Who is the manager of the San Francisco Giants?
4. Who won the second Benvenuti-Bethea fight recently?
5. What team was second in the American League, east, at the end of May?

## Sports Quiz Answers . . .

1. Tommy Aaron.
2. This was his first, in the U.S.
3. Charlie Fox.
4. Nino Benvenuti, to avenge an earlier defeat and retain his middleweight crown.
5. The New York Yankees.

Stolen Credit Cards can be costly. Protect yourself with

**Auto-Owners  
Credit Card Insurance**

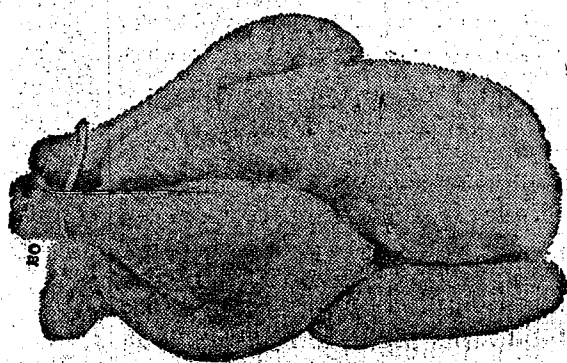
See your A-O Man  
**A. D. MAYER  
AGENCY, INC.**  
115 Park St., Chelsea  
PHONE 479-5061  
"Your Protection  
Is Our Business"

**Auto-Owners  
INSURANCE**  
Life • Casualty • ... to

# THE SUPERMARKET THAT'S JUST A LITTLE BIT BETTER

# Stop & Shop

14901 Old U.S.-12  
Corner at M-52  
Chelsea



THE KNOW HOW OF INTELLIGENT MEAT  
BUYING IS REALLY THE 'KNOW WHERE'

Our customers have learned to depend on the outstanding quality of Stop & Shop meats — unfailing satisfaction with every cut they purchase. The finest quality, together with the expertise of our meat cutting experts, makes an unbeatable combination.

Prices Effective Wednesday, August 12  
through Tuesday, August 18, 1970.

"Triple R Farms"  
FRESH DRESSED

# FRYERS

WHOLE  
FRYERS

# 33<sup>c</sup> lb.

U.S.D.A. GOV'T INSPECTED GRADE A

Stop & Shop's Homemade

"Triple R Farms" U.S.D.A. Choice

Fillet Chuck Roast . . . 99<sup>c</sup> lb.

Lean, Tender Boston Butt

Pork Roast . . . 69<sup>c</sup> lb.

"Triple R Farms" Fresh Dressed

Chicken Breasts . . . 69<sup>c</sup> lb.

Stop & Shop's Fresh, Lean, All American Beef

Hamburger . . . 65<sup>c</sup> lb.

Lean, Tender, Boneless, Cubed & Breaded

Veal Cutlets . . . 99<sup>c</sup> lb.

"Triple R Farms"

FRESH  
DRESSED

# CHICKEN LEGS

# 59<sup>c</sup> lb.

Pork Sausage . . . 69<sup>c</sup> lb.

"Triple R Farms" Mich. Grade 1

Liver Sausage . . . 69<sup>c</sup> lb.

"Triple R Farms" Mich. Grade 1

Skinless Wieners . . . 59<sup>c</sup> lb.

Lean, Tender, Boneless, Cubed & Breaded

Pork Cutlets . . . 89<sup>c</sup> lb.

"Triple R Farms" U.S.D.A. Choice Ground

Round Steak . . . 99<sup>c</sup> lb.

McDonald's Fresh, Delicious

# COTTAGE CHEESE .

1-Lb.  
Carton

# 23<sup>c</sup>

Pure Vegetable Shortening

CRISCO  
3-Lb.  
Can 79<sup>c</sup>

McDonald's Fresh, Delicious

Homogenized  
Milk

Gallon  
Carton 89<sup>c</sup>

Stop & Shop's Enriched, Sliced

White Bread  
1 1/4-Lb.  
Loaf 5 for \$1<sup>00</sup>

Breast O' Chicken Chunk Style

TUNA  
6 1/2-Oz.  
Can 33<sup>c</sup>

Seald Sweet Frozen

Orange Juice  
6-Oz.  
Can 15<sup>c</sup>

# Farm Fresh Produce

U. S. No. Michigan

Potatoes . . . 10-Lb.  
Bag 59<sup>c</sup>

California White Seedless

Grapes . . . 39<sup>c</sup> lb.

# COLD BEER

ALL POPULAR BRANDS

CALIFORNIA

Cooking Onions  
3-Lb.  
Bag 39<sup>c</sup>

Golden Ripe

BANANAS  
10<sup>c</sup> lb.

Campbell's

Pork & Beans  
1-Lb.  
Can 10<sup>c</sup>

Great with  
Hot Dogs

1-Lb. Kraft Jet Puffed

Marshmallows  
29<sup>c</sup>

Salad Dressing

Miracle Whip  
Qt.  
Jar 48<sup>c</sup>

Quart Bottle

Coca-Cola  
4 for \$1<sup>00</sup>

Keebler Town House

Oval Crackers . . . 1-Lb. Box 39<sup>c</sup>

Sunshine

Lemon Coolers . . . 10-Oz. Pkg. 39<sup>c</sup>

Shur-Good

Fudge Cremes . . . 2-Lb. Pkg. 65<sup>c</sup>

Nabisco

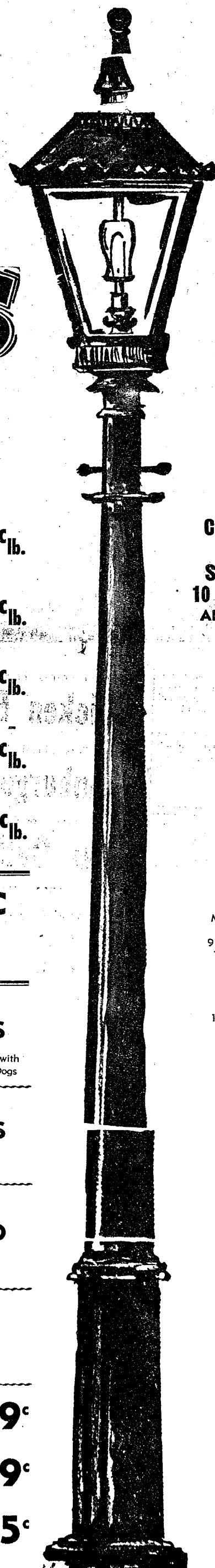
Vanilla Wafers . . . 12-Oz. Pkg. 35<sup>c</sup>

WE  
RESERVE  
THE  
RIGHT  
TO  
LIMIT  
QUANTITIES

For Your  
Convenience  
**OPEN  
SUNDAY**  
10 a.m. - 4 p.m.  
All Sale Prices  
Effective  
Sundays

Sorry,  
No Sales  
To Dealers

STORE HOURS:  
Monday, Tuesday,  
Wednesday  
9:30 a.m. - 6 p.m.  
Thursday, Friday  
9 a.m. - 9 p.m.  
SATURDAY  
9 a.m. to 6 p.m.  
SUNDAY  
10 a.m. to 4 p.m.





---



## Little League All-Stars Down Dana, 3-2, in Final Play-Off

Thursday afternoon, Aug. 6, Dana Corporation, the championship team of the Little League, met the Little League All-Stars at South school. The All-Stars, comprised of the top four players from every team, selected by their coaches, scraped by Dana, who went into the game with a 7-1 won-lost record.

It was a close, hard-fought game all the way. The final score was 3-2, with the winning runs for the All-Stars scored by John Collins in the bottom of the sixth inning.

Dana took an early lead in the first inning when they had the bases loaded with no one out. Moose Murphy bounced a single through the infield, scoring Don Elisele from third. Dave Alber, the All-Star's pitcher, was then able to retire the next three batters to end the Dana rally.

Dana added another run in the third inning off All-Star pitcher Mike Tobin. Mike Fouty was on third base with Joel Sprague at the plate. Sprague placed a bunt single down the third base line scoring Fouty from third and giving Dana a 2-0 lead.

The All-Stars came back in the bottom half of the third inning and scored a run. With Matt Heydlauff on third base, Dave Alber lined a single into left field, scoring Heydlauff from third base. That made the score 2-1 in Dana's favor.

It remained that way until the bottom of the sixth inning when the All-Stars came to bat. With Randy Guenther on second base, and Mike Dalton on first base, John Collins came up to bat. Collins smacked a double into left center field, scoring both Guenther and Dalton, to put the All-Stars ahead, 3-2.

Dana then came to bat in the top of the seventh, needing at least one run to stay in the game. The first batter up, Mike Fouty, was hit by a pitch. Then the All-Star pitcher, Dave Alber, turned on the steam to strike the next batter out. This set up what turned out to be the game's most exciting plays. Moose Murphy came to the plate and blasted a long, high fly ball into deep right field. Matt Heydlauff, the right fielder, raced back and made a fantastic catch.

robbing Murphy of what probably would have been a home run, and would have given Dana the lead. But as it turned out, it was simply a long out, and the All-Stars ended up the winners by a score of 3-2.

All-Star pitchers were Dave Alber, and Mike Tobin. Pitching for Dana were Gary Wellnitz, Don Harmon, and Mike Fouty.

## District Court Proceedings

In the 14th District Court this past week, David E. Schaefer, Ann Arbor, pled guilty to passing in a no-passing zone. He paid \$20 fine and costs.

Casmier S. Pawlowski, Southgate, pled guilty to speeding 55 miles an hour in a 35 mile zone. He paid \$30 fine and costs.

Donald Moore, Detroit, was found guilty of driving on a revoked license. He paid \$50 fine and costs, and three days in jail or five days on the work program. He must interview with the probation officer.

David W. Kivi, Saline, pled guilty to illegal passing. He paid \$25 fine and costs.

John Pointer, Ann Arbor, was found guilty of speeding 90 miles an hour in a 65 mile an hour zone. He was fined \$25 fine and costs.

Saline vs. Hascal Laraway, Dexter, found Laraway guilty on two counts: careless driving, and squealing tires. He was fined \$40 for careless driving, and \$15 for squealing tires, or spend five days in jail.

Donald Walkins, Hillsdale, pled guilty to impaired driving. He paid \$35.

Barbara J. Weir, Ann Arbor, pled guilty to speeding 40 miles an hour in a 25 mile zone. She paid \$25 fine and costs.

Gary Spiegelberg, Dexter, pled guilty to having no tail light over his registration number. Case was dismissed with \$5 costs, with proof of repair.

Marie Danon, Chelsea, was issued a warrant for driving without an operator's license. She showed proof of license but paid \$25 from her bond.

David Martin Terlinkowski, Dexter, pled guilty to reckless driving. He was fined \$75, to be paid prior to Aug. 11, or face 10 days in jail.

Kenneth Knipeper, Dexter, appeared with Attorney Grohmet, who entered a plea of nolo contendere to disorderly conduct. He was sentenced to a \$35 fine, or five days in jail.

James Popa, Ann Arbor, pled guilty to improper parking. He paid \$10 fine and costs.

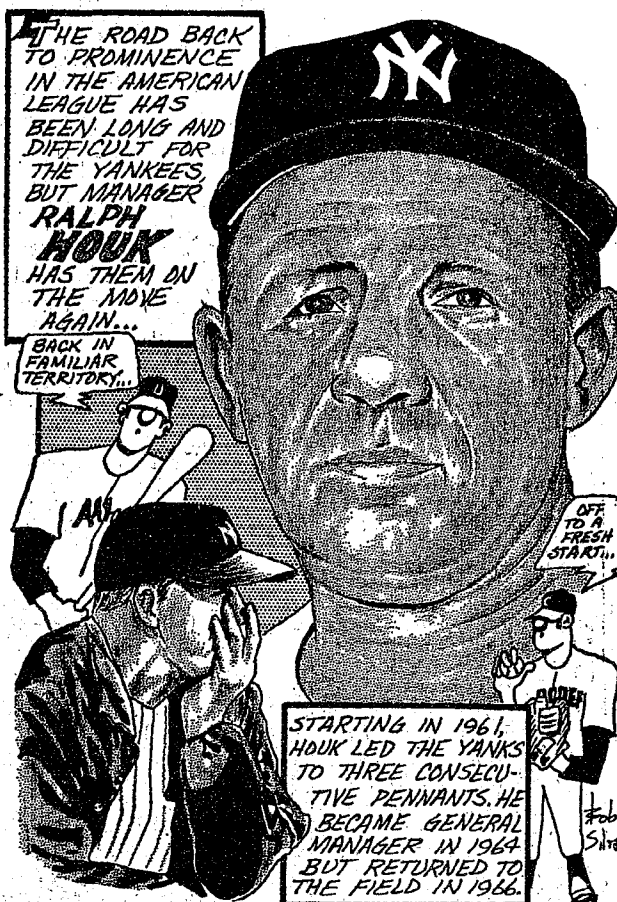
Subscribe today to The Standard!

## WAKE UP!

GET YOUR APPLICATION  
Washtenaw  
Community  
College  
Apply Now!



## SPORTS CORNER



## Hoot Evers Returns to Tigers As Director of Farm System

Walter "Hoot" Evers, a popular player with Detroit from 1946-52, returned to the Tigers as director of player development in July, 1970.

Appointed by Tiger Executive Vice-President and General Manager Jim Campbell to succeed Don Lund in that position, Evers brought impressive credentials to his new post. He had been in baseball for his entire adult life—11 seasons as a player with the Tigers, Red Sox, Giants, Orioles and Indians and the next 14 years as a scout, executive and coach for Cleveland.

Born in St. Louis, Mo. on Feb. 8, 1921, the 6'2", 180-pound former flyhawk was signed out of the University of Illinois by the Tigers in 1941. He appeared in one game for the Tigers late that season, batted .322 with Beaumont (Texas League) in 1942, then spent the next three years in the Army Air Force in Texas.

After his discharge in 1945, Evers joined the Tigers and became a fixture in center field. He hit .314 and made the All-Star team in 1946, hit .303 in 1949 and .323 in 1950, when he made the All-Star team for the second time and set an American League record with a .997 fielding average.

The Tigers barely missed winning the pennant that year, slumped badly in the next two seasons and in the shakeup which followed, Evers was traded to Boston on June 3, 1952 with Dizzy Trout, George Kell and Johnny Ligon for Walt Dropo, Johnny Pesky, Bill Wright, Fred Hatfield and Don Lenhardt. The nine-player swap was one of the biggest in Tiger history.

Waived to the Giants in 1954, Evers returned to Detroit in July of that year, but was sold to the Orioles before the start of the 1955 season. From there he went to the Indians in July, 1955, and back to Baltimore in May, 1956 to wind up his playing days there. In 11 major league seasons, with all but 12 games out of 1,142 in

the American League, Evers batted .278 with 98 home runs and 565 runs batted in.

Hoot became a scout for the Indians in 1957 and the following season was made assistant director of farm clubs. From 1959 through 1963 he was the Indians' farm director, then served as vice-president, assistant to the president and acting general manager at various times in the next three seasons before returning to scouting in 1967. He became a coach in 1970 before accepting the Tiger offer to head the Detroit farm system.

Married on his 48th birthday to Mary Craig of Houston, Evers makes his home in Detroit.

Cheer up your mornings by making your kitchen breakfast area more colorful. Paint table and chairs snappy shades of red, blue, green, yellow or orange. Put your personal stamp on your work by painting flowers or abstract designs on the backs of chairs. Even the legs and spindles of the chairs can be individualized. Band blue chairs in red or white, green chairs in yellow.



MAUSOLEUMS \* MONUMENTS  
BRONZE TABLETS \* MARKERS

## BECKER MEMORIALS

6033 Jackson Road  
ANN ARBOR, MICHIGAN

## BOWL

for the  
fun of it...



Having Fun Lately?  
Bowling Is a Ball!

Put some fun in your life . . . Bowl for laughter and health at our modern, well-equipped lanes with rarely a wait. Bring the gang down!

## CHELSEA LANES

1180 M-52 Phone GR 5-8141



## Washington Report by Congressman MARVIN L. ESCH

Violence as a means of change and expression has rarely been in more favor than now. There is no real way to measure the damage done by such violence although some recent testimony on bombings by the Justice Department give us some indication.

A survey covering an 18-month period ending March of this year showed that 776 bombings and arson attacks resulted in 11 deaths, more than one hundred personal injuries and direct property damage of nearly \$24,000,000. That does not include the tremendous cost of such factors as overtime pay for police. Nor does it include millions of dollars in man hours lost when buildings are evacuated in bomb scares.

The violence that threatens us is not always so physical and so open. It also comes in a subtle form. The provocative confrontation, designed to induce law enforcement bodies into undesirable errors, has been perfected to an art. Challenge any such group often enough and they will surely err no matter their training or dedication.

Perhaps the worse ingredient of all, however, is the exceeding reluctance of many who oppose violence philosophically to do anything about it. Those who commit violence are wrong, it is well agreed during and after many incidents, but the will to execute the next logical step, that of punishment, is sadly lacking.

Against this background it becomes quite clear why violence and the violence-inciting provocative confrontation is so popular. It often gains its goals and more often than not without significant loss to its perpetrators.

For the truth is that a significant number of Americans are frozen into inaction when violence occurs as long as there is a shred of justice to the cause for which the violence is purportedly committed. Such impotence allows violence to run virtually unchecked in some areas.

While the focal point of violence has been on and around college campuses, there was consistent violence, including the use of weapons, surrounding the Teamsters Union illegal strikes in Ohio a few months ago. Violence from established groups is as bad or even worse than violence by the disenfranchised who feel powerless.

With current popularity of violence as a means of correcting injustice, real and imagined, we are more likely to arrive at the ultimate injustice, destruction of our country, before we solve our problems.

Among modern singing groups appearing at the 1970 Michigan State Fair will be the 5th Dimensions, the 3 Degrees, Paul Revere and the Raiders, and the Friends of Distinction. The fair runs from Aug. 28 through Sept. 7 at the Fairgrounds in Detroit.

ALCOHOL CAUSES CRASHES  
Alcohol was a factor in at least half of the 56,400 traffic deaths that took place during 1969. The Department of Transportation's

1968 report to Congress on "Alcohol and Highway Safety" concluded that "alcohol has been the largest single factor leading to fatal crashes."

## LAWN CARE

LAWN MOWING - POWER RAKING  
HEDGE TRIMMING - FERTILIZING  
SNOW REMOVAL

FIREPLACE WOOD - TREE REMOVAL

## FOUR SEASONS LAND CARE

BRIAN FARGHER

PHONE 475-2457

## COULD A 6c STAMP SAVE A LIFE?

6c  
STAMP

## COULD YOU AFFORD NOT to TRY?

MAIL TO: PEACE CENTER  
604 E. HURON  
ANN ARBOR, MICH. 48108

## I WANT TO HELP END THE WAR.

Name \_\_\_\_\_  
Address \_\_\_\_\_  
City \_\_\_\_\_ Zip \_\_\_\_\_ Ph. \_\_\_\_\_

For great  
year-end buys  
on the great cars  
of '70...

"See your  
Chrysler-Plymouth  
Dealin' Man"



Plymouth  
CHRYSLER



Sport Fury  
2-Door Hardtop

### Plymouth Sport Fury

Just one of our Fury models that make it big. Standard features include concealed headlights. Hidden windshield wipers. Bias-belted tires and a standard 318 cubic inch V-8. A big Plymouth year-end bargain from your Dealin' Man!

### Chrysler Newport

Features like the most powerful standard engine in its class. More interior room than any other production car in America. And unsurpassed handling. Thanks to Torsion-Quiet Ride. Make it. See your Chrysler-Plymouth Dealin' Man for a great year-end price on one of the truly great cars of 1970. Chrysler Newport.)

AUTHORIZED DEALERS CHRYSLER  
MOTORS CORPORATION

PAA

CIDAA

G. A. SALES & SERVICE • 1185 Manchester Road

## Fall Term

Starts  
September 8

Not Too Late  
To Enroll



Stephen Fairbanks  
Registrar

Many Benefits: (a) Furnished Dormitory Apartments (b) Employment Placement (c) Financial Aid—Student Loans—Part-Time Work (d) No Previous Business Education Required.

CLASSES OFFERED FOR 'TOP POSITIONS:

- ★ Accounting Management
- ★ Business Management
- ★ Data Processing Management
- ★ Office Accounting
- ★ Executive Secretarial
- ★ Legal Secretarial
- ★ Medical Secretarial
- ★ Secretarial

REQUEST FREE CATALOG. VISIT OUR COLLEGE.

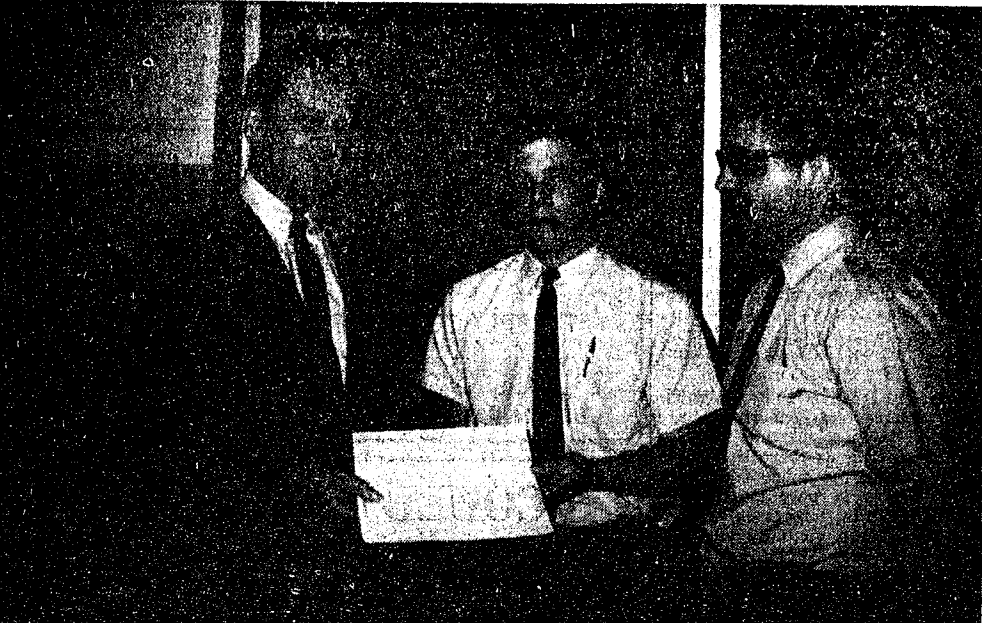
Telephone 789-6123 for more information.

## Jackson Business University

234 So. Mechanic St.

Jackson, Mich.





**J.A. MERITORIOUS SERVICE AWARD:** Phil Boham and Larry Bentley were awarded the South-eastern Michigan Junior Achievement Meritorious Service Award. The Award was given for outstanding achievement as advisors to the Chelsea Plants' Dana-Mite Enterprises by J. L. Hess, plant manager of Dana's Chelsea Power Take-Off plant. Phil who is a cost analyst and Larry, who is a Junior Tool Designer have been Junior Achievement Advisors for the past two years. Dana-Mite Enterprises produced Christmas door decorations, letter files, and sub-contracted work from a local abrasive company. The Dana-Mites grossed \$1,000 in their six-month operation and earned a \$200 profit.

**Bugs Sought To Control Dutch Elm Disease**

Tiny bugs could help stem the 10 million Michigan losses each year due to Dutch elm disease. Michigan State University entomologists are canvassing Europe for strains of elm bark beetles which can easily adapt to Michigan's climate. Parasites on eastern Austria are receiving major attention because weather conditions there are similar to Michigan.

The over-all goal is to develop well-balanced parasite complex Michigan to control the elm bark beetle which transmits the disease.

Toy breakage causes many injuries to children each year. Plastic, glass, and metal toys, which are very sharp edges when broken, are poor choices for the preschool child. You can count on enough treatment of toys from the active age group.

**Experts Warn Against Fertilizing Ponds**

A Michigan State University expert cautions against fertilizing warm water ponds to induce plant growth.

Dr. Eugene Roelofs, professor of fisheries and wildlife, says that plants decompose in the winter and use up the available oxygen under the ice. Fertilization increases plant growth and, as a result, fish do not have enough oxygen during the winter months to survive.

"I do not recommend the use of commercial fertilizer in the north except possibly during the first year," he says.

Roelofs feels the reason for the use of fertilizer in the north is because all of the information concerning the subject is published in the south where, due to the absence of winter ice cover, fertilization can be practiced without the danger of oxygen depletion.

**SUNDAY'S SERMON**

**Watching the World**

Many people spend a lifetime waiting for the time they may "sit by the side of the road and watch the world go by," only to discover that such an idle dream never comes true.

Man is responsive to the environment in which he lives. Unlike the rock that sits for ages on a hillside, mankind feels the heat of summer and the chill of the winter wind. Mankind must respond in some way to the events and happenings of the world in which he lives.

Every man has a responsibility, if not to others, then to himself. A man is never completely able to enjoy the luxury of doing absolutely nothing. He must breathe. He must provide. He must in some way be useful to himself and to others.

Anyone who desires can find the time to sit by the road and watch the world go by. But, it isn't a full-time preoccupation. The business of living requires, in any event, some small amount of effort, some small contribution.

**From Farm Field Fertilizer Run-Off Pollution Low**

Results from Michigan State University research indicate that only very small amounts of fertilizer move from farm fields into other parts of the environment. Soil scientists who conducted the research measured drainage system flow and surface runoff in order to determine the potential hazards of polluting the environment with fertilizers. Testing took place on seven plots that contained all the major soil types found in Michigan.

The MSU scientists examined drainage and runoff samples for nitrogen, phosphorus, calcium, magnesium and potassium content. Nitrogen passed out of the soil more than any other chemical—at a rate of less than 10 pounds per acre per year. Phosphorus was next with a rate of less than one tenth pound per acre per year.

This experiment indicates that agricultural fertilizers make little or no contribution to water pollution problems in Michigan.

Among the show biz personalities who will appear at the 1970 Michigan State Fair are Art Linkletter, James Darren, Oliver, and Arthur Godfrey. The fair runs from Aug. 28 through Sept. 7.

Never offer advice; unsolicited, it goes unappreciated, unheeded.

**+ Services in Our Churches +**

**FIRST UNITED METHODIST CHURCH**  
The Rev. Clive Dickens, Pastor  
Thursday, Aug. 13—  
8:00 p.m.—Youth Council meeting.  
Sunday, Aug. 16—  
10:00 a.m.—Church school, nursery through 4th grade.  
10:00 a.m.—Worship service.  
**ST. MARY CATHOLIC CHURCH**  
The Rev. F. Francis Wahowiak  
Saturday, Aug. 15—  
7:30 p.m.—Mass.  
Sunday, Aug. 16—  
Masses at 6:30 a.m., 8:00 a.m., 10:00 a.m., and 11:30 a.m.

**NORTH LAKE UNITED METHODIST CHURCH**  
The Rev. Frederick Atkinson, Pastor  
Sunday, Aug. 16—  
9:30 a.m.—Worship service.  
10:30 a.m.—Sunday school.

**ST. JOHN'S EVANGELICAL AND REFORMED CHURCH**  
(United Church of Christ)  
Francisco  
The Rev. Robert Townley  
Sunday, Aug. 16—  
10:00 a.m.—Worship service.  
10:20 a.m.—Sunday school.

**WATERLOO VILLAGE CHURCH**  
United Methodist Church  
The Rev. Donald Fry, Pastor  
Sunday, Aug. 16—  
10:00 a.m.—Sunday school.  
11:15 a.m.—Worship service.  
7:00 p.m.—Youth Fellowship.

**NORTH SHARON COMMUNITY BIBLE CHURCH**  
Sylvan and Washburn Rds.  
Sunday, Aug. 16—  
10:00 a.m.—Sunday school.  
11:00 a.m.—Worship service.  
6:30 p.m.—Young People's service.

7:30 p.m.—Evening service. Missionaries from Bolivia, South America, Mrs. Mabel Hurst and Mrs. Minnie Janofski will speak, accompanied by their children, Cameron and Rachel.  
Every Wednesday—  
7:30 p.m.—Prayer meeting.

**FIRST UNITED PRESBYTERIAN CHURCH**  
Unadilla  
The Rev. T. H. Liang  
Sunday, Aug. 16—  
9:45 a.m.—Sunday school.  
11:00 a.m.—Worship service.  
Every Tuesday—  
8:00 p.m.—Choir practice.

**ST. JACOB EVANGELICAL LUTHERAN CHURCH**  
12501 Reithmiller Rd., Grass Lake  
The Rev. Andrew Bloom, Pastor  
Sunday, Aug. 16—  
9:00 a.m.—Sunday school.  
10:15 a.m.—Divine services.

**ST. THOMAS EVANGELICAL LUTHERAN**  
The Rev. Daniel L. Mattson, Pastor  
Sunday, Aug. 16—  
10:00 a.m.—Worship service.  
11:00 a.m.—Sunday school and bible study.

**BETHEL EVANGELICAL AND REFORMED CHURCH**  
(United Church of Christ)  
Freedom Township  
The Rev. Roman A. Reineck  
Sunday, Aug. 16—  
10:00 a.m.—Worship.  
10:00 a.m.—Sunday school.

**ZION LUTHERAN CHURCH**  
Corner of Fletcher, Waters Rds. (Rogers Corners)  
The Rev. John R. Morris, Pastor  
Sunday, Aug. 16—  
9:00 a.m.—Sunday school.  
10:15 a.m.—Worship service.

**FIRST ASSEMBLY OF GOD CHURCH**  
The Rev. Thode B. Thodeson, Pastor  
Sunday, Aug. 16—  
10:00 a.m.—Sunday school.  
11:00 a.m.—Worship service.  
7:00 p.m.—Evangelistic service.  
Every Thursday—  
7:00 p.m.—Midweek services.

**ST. BARNABAS EPISCOPAL CHURCH**  
20500 Old US-12  
Sunday, Aug. 16—  
9:00 a.m.—Regular church services.

**CONGREGATIONAL CHURCH**  
(United Church of Christ)  
The Rev. Daniel Kellin, Pastor  
Sunday, Aug. 16—  
10:00 a.m.—Worship.  
Wednesday, Aug. 19—  
6:30 a.m.—Men's breakfast.

**CHURCH OF CHRIST**  
13661 Old US-12, East  
R. D. Parnell, Minister  
Sunday, Aug. 16—  
10:00 a.m.—Church school.  
11:00 a.m.—Worship service.  
6:00 p.m.—Worship service.  
Every Wednesday—  
7:30 p.m.—Bible Study.

**SALEM GROVE UNITED METHODIST CHURCH**  
The Rev. Frederick Atkinson, Pastor  
Sunday, Aug. 16—  
10:00 a.m.—Sunday school.  
11:00 a.m.—Worship service.

**CHELSEA BAPTIST CHURCH**  
337 Wilkinson  
Sunday, Aug. 16—  
10:00 a.m.—Sunday school.  
11:00 a.m.—Worship service.  
Nursery care available during all services.  
6:00 p.m.—Junior and Senior Baptist Youth Fellowship.  
7:00 p.m.—Evening worship.  
Every Wednesday—  
7:30 p.m.—Bible study and prayer meeting.

**OUR SAVIOR LUTHERAN CHURCH**  
Rebekah Hall, 1194 M-52  
The Rev. William H. Keller, Pastor  
Sunday, Aug. 16—  
9:15 a.m.—Sunday school and Youth Bible Class.  
10:30 a.m.—Worship Service.  
Every Thursday—  
6:00 p.m.—Youth Confirmation Class.

**ST. JOHN'S EVANGELICAL AND REFORMED CHURCH**  
(United Church of Christ)  
Rogers Corners  
The Rev. David J. Kleis  
Sunday, Aug. 16—  
10:30 a.m.—Worship service.  
9:30 a.m.—Sunday school.

**IMMANUEL BIBLE CHURCH**  
145 E. Summit St.  
The Rev. Frank C. Frinkle  
Sunday, Aug. 16—  
9:45 a.m.—Sunday school, nursery provided.  
10:00 a.m.—Morning Worship, nursery provided.  
6:00 p.m.—Evening service.  
Every Wednesday—  
Family hour, prayer meeting and Bible study.

**ST. PAUL UNITED CHURCH OF CHRIST**  
The Rev. Warner Siebert, Pastor  
Thursday, Aug. 13—  
7:30 p.m.—Council meeting.  
Sunday, Aug. 16—  
9:00 a.m.—Family worship.  
Sermon title: "The Power To Become Like Gods."  
9:20 a.m.—Church school.  
Monday, Aug. 17—  
7:00 p.m.—Teachers' meeting.

**CHELSEA MEDICENTER**  
Sunday, Aug. 16—  
12:30 p.m.—Sunday worship service.

**GREGORY BAPTIST CHURCH**  
The Rev. Grant Lapham, Pastor  
Sunday, Aug. 16—  
10:00 a.m.—Worship service.  
11:15 a.m.—Church school.  
6:30 p.m.—Baptist Youth Fellowship.  
7:30 p.m.—Evening worship service.

**METHODIST HOME CHAPEL**  
The Rev. R. L. Clemens, Chaplain  
V. O. Johnson, Administrator  
Sunday, Aug. 16—  
8:45 a.m.—Worship service.

**PREPARE SHOPPING LIST**  
Prepare and follow a shopping list and resist impulse buying and you will stay within your food budget. Know food prices well enough so that you can take advantage of specials that suit your family. Check weekly specials before you go to the store and buy only what you can conveniently store and use within a specified time.

Long-winded talkers are today out of their age.

**FIRST CHURCH OF CHRIST, SCIENTIST**  
1883 Washtenaw Ave., Ann Arbor  
Sunday, Aug. 16—  
10:30 a.m.—Sunday school.  
10:30 a.m.—Morning service.  
Lesson-sermon: "Soul."

Inverness Golf League	
Standings as of Aug. 10	
	Pts.
J & S Tool Co.	51
Central Fibre	49½
Chelsea Milling	43½
Seitz's Tavern	42
Dexter Automatics	41
Dana Corp.	40½
Chelsea Lanes	39
Dancer's	39
Stockbridge State Bank	37
Wolverine Bar	37
Meabon's	36
Schumm's	36
Chelsea Lumber	30
Inverness Tavern	28½
The Pub	25½
Longworth Plating	24½

Subscribe today to The Standard!

**WANTED**  
**CEMENT & BLOCKWORK**  
All types—Poured walls, floors, drives and foundations.  
**CECIL CAUDILL**  
(517) 851-3840

**Friday and Saturday, Aug. 14-15**

**ALL LAWNMOWERS**  
Selling at Cost plus sales tax

**MOTOR OIL (non-detergent) . qt. 23¢**

**ELECTRIC FANS** Limited Quantity **20% OFF**

Numerous Other Items On Sale

**WESTERN AUTO**  
106 N. Main St. "THE FAMILY STORE" Phone 475-4721

**IMPROVE YOUR HOME**  
Local Company — With Service

- ★ Aluminum Siding
- ★ Roofing
- ★ Patio Covers
- ★ Enclosures
- ★ Awnings
- ★ Replacement Windows
- ★ Eaves Troughs
- ★ Storm Windows
- ★ Storm Doors
- ★ Trailer Skirting
- ★ Insulation

**GEORGE MEYER COMPANY**  
3496 Pontiac Rd., Ann Arbor. Telephone 769-7330  
EXTERIOR HOME IMPROVEMENTS  
George Meyer — Bob Behnke

17-10 WHITE

**Dutch Boy**

LATEX HOUSE PAINT  
NEW ACRYLIC FINISH

**Temporary Price Reduction**  
**DUTCH BOY**  
**Outside House Paint**  
Oil Base Paint . . . gal. \$7.59  
Latex Base Paint . . gal. \$7.79  
All colors except trim paints.

WHILE OUR PRESENT STOCK LASTS

**MERKEL BROS.**  
Open Mon. and Fri. Until 9 p.m. Ph. 475-8621

**CANCER MORTALITY RATE IS UP - AND DOWN**

Down in women, due to the dramatic reduction in cancer of the uterus and up in men due to the rapidly increasing cancer of the lung.

The Pap Test, which uncovers cervical cancer at an early stage before it has begun to spread, is the primary reason for the overall decline in the cancer death rate among women. When this cancer is diagnosed early it is almost 100% curable. On the other hand, cancer of the lung has increased more than 15 times over the past three decades. It is considered a largely preventable disease. Has your physician x-rayed your lungs recently?

YOU OR YOUR DOCTOR CAN PHONE US when you need a delivery. We will deliver promptly without extra charge. A great many people rely on us for their health needs. We welcome requests for delivery service and charge accounts.

**CHELSEA DRUG**  
24-HOUR PRESCRIPTION SERVICE  
101 N. MAIN ST. PHONE GR 5-4611

**CHILDREN'S CRUSADE**  
with the  
**Gospel "T-n-T"**

**Scene-o-felt Stories with Blacklight Gospel Films**  
**Gospel Choruses**  
**Gospel Puppets**  
**Susie - the singing puppet**  
**Monday thru Friday, Aug. 17 - 21 — 7 to 8:30 p.m.**  
**FIRST ASSEMBLY OF GOD**  
Old US-12, Chelsea, Mich.  
**Country Store - select your award with Gospel \$ \$**



## Odam-Rollins Vows Spoken At North Lake

Miss Karen Elizabeth Odam, daughter of Mr. and Mrs. W. J. Odam, 12207 Max Dr., Hell, became the bride of Richard Allen Rollins, son of Mr. and Mrs. G. Rollins, Fort Myers, Fla., Saturday, Aug. 15, at North Lake United Methodist church. The Rev. Atkinson of Gregory officiated.

The bride's gown, which she made herself, was of a satin blend, softly gathered above the waistline with a high collar, and leg-of-mutton sleeves. It was trimmed with a lace daisy medallion trim, which matched the trim on her finger-tip veil. She carried a cascade of white rosebuds and daisies.

Pamela Francis Wood, 19923 Burt Rd., Detroit, was the maid of honor. Her gown was yellow, in a similar style to that of the bride's. She carried a nosegay of rosebuds and daisies.

Bruce Orlando Odell of Lowell, was best man. The bride's brothers, Robert Douglas Odam, and William James Odam, Jr., ushered.

After the wedding ceremony, a cake-cutting ceremony was held in the church fellowship hall, followed by an informal reception at the home of the bride's parents at Half Moon Lake.

The bride is a 1969 graduate of Titusville High school, Titusville, Fla., and attended Central Michigan University. The bridegroom is a 1970 graduate of Central Michigan University, with a BS in Education, major emphasis in physical education. He is a member of Delta Sigma Phi fraternity.

The newlyweds will live in Taylor, where the bridegroom will teach industrial arts in the junior high school.

## Two-Year-Old Child Has Real Need for Feeling of Security

Your two-year-old is a bundle of unchanneled energy, which can get channeled in the wrong direction.

"Faced with new-found physical and mental abilities, the two-year-old is ready to charge out and try just about anything," said a Michigan State University family life specialist. "Yet, there's enough 'baby' left to make him want the security of familiar surroundings and people."

Gail Imig said that the youngster's flashes of temper followed by an irresistible grin indicate that he really isn't quite sure how far to go when he makes up his mind and then changes it quickly. And to the exasperation of brothers and sisters, and even parents—he imitates practically everything he sees.

When a two-year-old is changing this fast, he needs security more than anything else, said Mrs. Imig.

"Instead of saying 'naughty' or 'bad' when he does something wrong, make it clear that you don't like what he did but you still like him."

Security comes easier when you set up and stick pretty much to routines—sleeping, eating and reading.

Sometimes it's hard not to keep saying "no" during the entire year he's a two-year-old.

"Instead of merely saying no, provide him with an alternative," said Mrs. Imig. "Suggest that he hit his pounding peg board—instead of the table—with his play hammer."

"The more help he has in his two-year-old stage, the easier it will be for him—and for you—when he's three."

For peach parfait, mash 2 ripe peeled peaches; add ¼ cup sugar and ¼ teaspoon almond extract. Layer peach mixture and 1 can (15½ ounces) chilled canned vanilla pudding into parfait glasses.

For a tasty shrimp sauce, combine 1 can (10 ounces) frozen condensed cream of shrimp soup, ½ cup milk, 2 tablespoons chopped parsley, and ¼ teaspoon grated lemon rind. Heat until soup is thawed; stir often. Serves 4.

Combine several salad greens with sliced avocado, slices of cucumber, tiny tomatoes, and a bit of shredded carrot for color. Chopped black olives may also be added.

Dried fruits lend variety to meals. These fruits can be eaten without cooking if desired. Some dried fruit may need to be washed before using, but they don't need to be soaked before cooking.



ENGAGED: Mrs. Dolores Alber, 11 Sycamore Dr., and Donald C. Alber, Steinbach Rd., Dexter, announce the engagement of their daughter, Christine, to Larry Blackwell, son of Mr. and Mrs. Andy Blackwell, 413 Wellington. Miss Alber, a 1970 graduate of Chelsea high school, will be attending Eastern Michigan University in the fall, where she plans to major in vocal music education. Mr. Blackwell, a 1969 graduate of Chelsea High school, is also attending EMU, where he is majoring in biology. No wedding date has been announced.

## VFW Auxiliary Gains Two Members

The regular monthly business meeting of Chelsea VFW Auxiliary No. 4076 was held Monday, Aug. 10, in the Rebekah Hall. Nine members were present. Miss Annette Ersten was initiated into membership. Joan Lynn Platt was elected to membership. Mrs. Henry Williams was installed as a color bearer for the auxiliary.

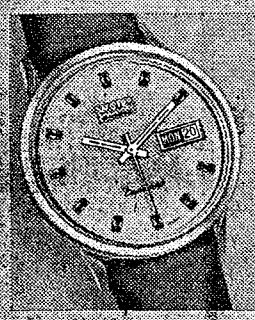
The charter was draped in memory of Mary King Cloon, a past department president, who died recently.

The assembled members were reminded that the district president will hold inspection of the Auxiliary on Sept. 14, the next business meeting. All officers and chairmen are requested to be present with notebooks.

There will not be a social meeting in August due to the Chelsea Community Fair and the participation of Auxiliary members in the fair.

Subscribe today to The Standard!

Quick!  
What day  
is  
today?



Now you know with  
**Wyler**  
Incaflex  
Day/Date Dynawind

Come see this amazing Wyler watch that winds itself and automatically changes the day and date. No more hunting for a calendar every time you write a check. A glance at your wrist tells you.

Like all Wyler watches, the Day/Date has the shock-absorbing Incaflex balance wheel and the shrinkproof crystal case that has led the watch industry to new standards of water protection.

Illustrated model, \$95.00  
Other Wyler watches from \$35.00

## WINANS JEWELRY

## VILLAGE BEAUTY SALON

Wash and Set, \$3.50 - Hair Cut, \$2.50

LORETTA PANNONE, Owner - Operator  
CINDY KEMNER - EULA MONTGOMERY  
JANICE RUDD - SARAH TAYLOR

Open 8:30 a.m. Tuesday thru Saturday  
Evenings by appointment. Phone 475-5421

# SIDEWALK SALE

FRIDAY & SATURDAY, AUG. 14-15

A wildly varied selection of quality merchandise at dramatic discounts. Better hurry down and pick through. We'll have carpets, linoleum, lawn furniture, glassware, china, lamps, pictures, tables, beds, pillows, sofas, loveseats, chairs, paint draperies.

FRIDAY

8:30 a.m. to 9 p.m.

SATURDAY

8:30 a.m. - 5:30 p.m.

## CHAIRS

GROUP OF 15

**\$49<sup>95</sup>**

VALUES TO \$139.95

GROUP OF 10

**\$79<sup>95</sup>**

VALUES TO \$169.95

## LINOLEUM

18" x 18" Sample Pieces

**29<sup>c</sup>**

RUBBER BASE COVE

2 1/2" x 48" - 34<sup>c</sup>

Black, Brown

## SOFAS, LOVESEATS

GROUP OF 4

**\$179<sup>95</sup>**

Original Price \$399.95

## LOVESEATS

CHOICE OF 2

**\$139<sup>95</sup>**

Values to \$289.95

## OAK DOUBLE BEDS

Original Price - \$49.95

**\$19<sup>95</sup>**

## PAINT

Dutch Boy Nalplex  
& Satin Eggshell  
Discontinued Colors

QUART

REG. \$2.50

**98<sup>c</sup>**

GALLON

REG. \$7.65

**\$2<sup>98</sup>**

## CARPET

## ROLL ENDS REMNANTS

Room Size and  
Smaller Pieces

## CARPET SAMPLES

12 x 18 . . . . 19<sup>c</sup>

6 for \$1.00

18 x 27 . . . . 98<sup>c</sup>

3 for \$2.59

27 x 36 ea. . . \$1.99

## LAWN FURNITURE

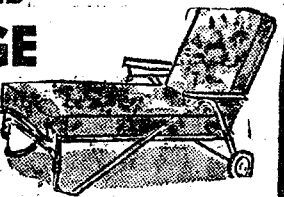
ALL STOCK  
REDUCED

## LOUNGE

REG. \$16.95

NOW

**\$10<sup>90</sup>**



## DECORATIVE ACCESSORIES

Selected Items of  
GLASSWARE

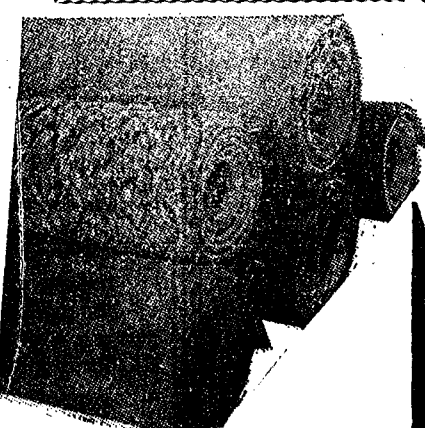
CHINA

METAL

## PICTURES

SPECIAL GROUP

**1/2 price**



# Merkel Brothers

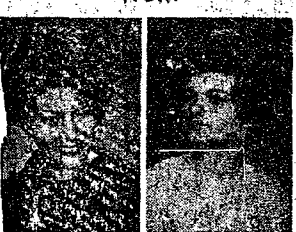
Home Furnishings

## TIPS

for your

## TOP

from



## TODDY and FRAN

"School days, believe it or not, go around the corner—which is a lot of time to think of ending a well-groomed toddler or teenager or co-ed to her fate. With the usual hairdos, you may get the idea that nothing you can do will make them look 'well groomed' but actually a good cut, perhaps a blunt cut, may be all you need for your young lady. Or a body permanent may do the trick. Certainly, just because curls aren't current, it doesn't mean you should give up on girls' rooming. Let us see what we can do to please both you and your daughter before the bell tolls."

Magic Mirror Beauty Salon  
Phone 665-0816  
3585 Jackson Rd., Ann Arbor

## QUALITY Wedding Stationery



Finest quality  
Wedding Stationery  
can be yours at  
no extra cost.

We invite you to  
come in and plan  
with us in advance  
of your wedding.

The  
**Chelsea Standard**

Publishers and Printers

## THE STYLE SHOP

207 1/2 S. Main St.

OPEN

Tues. thru Sat.

Call 475-8400

For Appointments  
Open Wed. & Thurs. Evenings

Judy Patrick

Pansy Kuhl - Rosemary Klink





### Pet Contest Entry Form

Pet's Name \_\_\_\_\_

Category in Which Entered \_\_\_\_\_

Owner's Name \_\_\_\_\_

Address \_\_\_\_\_

Phone \_\_\_\_\_

**INCREASED NITROGEN FIXATION**

little or no pollution potential. Nitrogen fixed by legumes has the advantages of costing nothing, being produced as the plant demands nitrogen and having

Michigan State University crop scientists are trying to minimize the disadvantage; it may not be produced in large enough quantities, thus limiting yields.

## SIDEWALK DAYS

Friday & Saturday, Aug. 14-15

**GRAB BAGS . . . \$1.00**

FIRST QUALITY REVLON

**Manicure Implement Sets 25% Off**

**Lighted Make-Up Mirrors 1/2 Price**

**Men's ELECTRIC SHAVERS Drastically Reduced**

**SUN GLASSES . . 1/2 Price**

**CLAIROL KINDNESS 20 INSTANT HAIR SETTERS**

While They Last **\$15.99**

QUANTITIES LIMITED ON ALL ITEMS

**CHELSEA DRUG**

## CHELSEA'S 14th ANNUAL SIDEWALK DAYS

Bigger and Better Than Ever!

**FRIDAY and SATURDAY AUGUST 14-15**

**Friday - 8:30 a.m. to 9 p.m.**

**Saturday - 8:30 a.m. to 6 p.m.**

Your budget will get plenty of extra mileage at the low bargain prices you'll find on good seasonal merchandise of every kind. Many items have been specially purchased for this big annual bargain day event.



**COME EARLY BOTH DAYS and Bring the family. There are bargains for everyone!**

**Pet Contest Date Changed to Aug. 20**

Hey Kids! The new date for the Jaycee Auxiliary Pet Contest is Thursday, Aug. 20 at the Beach Junior High school parking lot. Prizes will be awarded to the winning pet in the following categories: Biggest pet, smallest pet, best-dressed pet, most unusual pet, funniest pet, and most talented pet. Children are urged to dress up their waltzing Kodiak bear, and put the flea on a leash and come to Beach school and clean up on all the prizes.

**Hog Producers Alerted to Serious Disease Outbreak**

A serious outbreak of vomiting and diarrhea in swine of all ages was reported early this month in Cass county by Dr. George Bergman, district director of the American Association of Swine Practitioners.

The disease, gastroenteritis, affects animals of all ages. Symptoms in animals two weeks of age or less are very much like those of another swine disease, TGE. Symptoms of TGE are vomiting, diarrhea, weight loss and high mortality in the very young.

"Swine producers should tighten up on disease prevention to protect their herds, because there is no effective treatment for enteritis caused by viruses," contends Dr. David J. Ellis, Michigan State University extension veterinarian.

"We want to warn farmers about this disease, but we don't want them to panic," Ellis makes these recommendations:

1. Do not add any new animals to the herd during and immediately following the outbreak for 30 to 60 days depending on the herd and conditions.
2. Allow no visitors in your herd and do not visit other herds.
3. Load finished market hogs away from your hogs and facilities. Haul in your truck if possible. Drive the market hogs to the area for loading on common carriers that will not contaminate the herd. Clean and disinfect the truck if you unload at the yards.
4. Keep the herd together. A natural immunity may be obtained from the outbreak.
5. Do not bring show ring animals home and allow them to run with the herd. It is better disease control to send these animals to slaughter. If you bring them home, keep them separate from your herd for 30 days.

"Remember," says Ellis, "antibiotics are ineffective for treating gastroenteritis caused by viruses."

Quarter horse racing comes to the Michigan State Fair for the first time this year. The fair runs from Aug. 28 through Sept. 7.

**Goose Lake Style**

The sun shines in a deep blue sky, and the green grass in a neighboring field beckons one to roll in it. The good smell of Michigan grass is everywhere. But the crowd isn't interested in the lovely Michigan grass. The crowd is off somewhere chasing dreams, dreams of dried brown Mexican grass. That is Goose Lake, August, 1970.

Lovely grassy campgrounds are shunned by the avid rock fans, who prefer to move into the dusty, carnival-like central bandstand, camping in areas specifically marked "not for camping."

A festival connotes fun. It implies gaiety, mingling, frolic-ing. Yet a peculiar pall hangs over the area. Filthy, dirty young people, sprawled on dusty sleeping bags, stare vacantly off into space, speaking little, if anything, to their neighbors. Animals, dragged to the fete by possessive owners, either wander scared and aimlessly through the crowd in search of those owners, or make the best of their leash and collar prison. Some look pathetically around the squalor in search of a place to hide, others just tremble.

Young men walk around naked, some with girlfriends, others alone. A scantily clad young man passes with a small cardboard sign on which he's scribbled "I wanna ball," meaning he would like to sell, buy,

or give away his sexual prowess to any willing girl.

Farther down the "midway," where the hawkers shout out their wares: "Grass, LSD, Smack, Speed", a nice young girl, clean and neat, with long blond hair, and a blue checked gingham shirt, stops a hawker to ask what kind of LSD he has. Dissatisfied with the answer, she continues down the line. Farther on she finds the kind she is looking for, buys it, and takes it, walking on into the area of the bandstand, becoming lost in the crowd.

No one smiles, no one meets you eye to eye when you look at them. Yet all seem to search the crowd hungrily, looking for something. Looking for what?

The loudspeaker starts up with another message from the promoter. This time it is to warn the kids of some bad drugs that are being circulated; drugs that have been mixed with poison. And to announce the name of the next second-rate act. Most of the promised attractions at the event who were any good did not show up. Instead the promoter placated the kids with second rate music, and some tape recordings.

Wandering into the bathrooms, which are anything but permanent, large, metal tanks with holes in them and a dividing wall in between, nothing in front, one finds that they are in sad need of being emptied. A young woman, seemingly oblivious to the fact that excrement is overflowing the tanks, uses the facilities and leaves, not bothering to try to clean herself afterwards.

Political groups circulate brochures proclaiming the beauty of the festival. Free is a big word with them, free this, free that, free drugs, free food, free love, free anything and everything. The concept of "earned" has been forgotten.

In spite of it all, in spite of the squalor and the bad music, and the drugs, and the mess, and the electric fence that surrounds them, "the People" still believe they groove. That above all is the most disheartening for one to see. Like in the story "The Emperor's New Clothes," no one will admit that Goose Lake is not where it's at.



**ENGAGED:** Mr. and Mrs. Joseph Haiser, Jr., North Fort Myers, Fla., announce the engagement of their daughter, Ruth Ann, to David Howe Priest, son of Mr. and Mrs. Ward Priest, 6700 Lombardy Dr., Chelsea, Miss Haiser, a 1966 graduate of North Fort Myers High school, attended Edison Junior College, and was employed by the Lee County Bank, before entering the U. S. Air Force. She is presently stationed at Hickam Air Force Base, Honolulu, Hawaii. David Priest is a 1965 graduate from Chelsea High school. He was employed by Chelsea Milling Co. before entering the U. S. Air Force. He also is stationed at Hickam Air Force Base, Honolulu. The couple plans an Oct. 17 wedding at Holy Trinity Presbyterian church, North Fort Myers, Fla.

**WINDOW PAINTING**

Before painting your windows, carefully remove any loose putty and apply house paint primer to the wood recesses. After new putty has been applied and dried, you're ready to paint. Use a 1 1/2-inch sash brush, starting with the members which divide the window. Next, paint the frame and finally the trim.

Mrs. Average American is 5' 4" tall, weighs 130 pounds and has two children, walks eight miles a day and doesn't sleep well. About 10,000 thoughts race through her 2-lb. 11-oz. brain daily. She speaks between 4,800 and 5,000 words in a 24-hour period and spends one year of her life on the telephone.

### PAT'S CORNER

By PAT DITTMAR  
Home Economist  
Chelsea Milling Co.

You have to make a spur-of-the-moment supper and you don't know what to serve. May we make a suggestion, Hamburger Casserole with-Corny Dumplings. I am sure you'll have all the ingredients on hand and you will be serving your main dish and bread serving together.

**HAMBURGER CASSEROLE with CORNY DUMPLINGS**  
(4 to 6 servings)

1 1/2 lbs. ground beef	1 teaspoon salt
1 medium onion, chopped	2 teaspoons chili powder
1/2 cup chopped green pepper	1 package "JIFFY" Corn Muffin Mix
1 can (1 lb.) tomatoes	1 tablespoon instant onions
1 can (6 oz.) tomato paste	1 egg
1 can (12 oz.) whole kernel corn, drained	2 tablespoons milk

1. In large skillet brown ground beef and onions, drain.
2. Stir in green pepper, tomatoes, tomato paste, corn, salt and chili powder. Simmer.
3. In small bowl blend Corn Muffin Mix and instant onions. Stir in egg and milk.
4. Drop spoonfuls of dough onto bubbling meat mixture. Cover and simmer 15 to 20 minutes.

**RAINMAKERS**

Rainmaking is becoming an accepted industry, though many questions remain unanswered. Weather modification programs have been carried out in Japan, Mexico, Columbia, Russia, Israel, Australia, and the United States.

**SOILS REMOVE PHOSPHOROUS**

Spreading sewage effluents over soil to remove phosphorous is possible, but few soils will remove more than 3,000 pounds of phosphorous per acre, reports G. Ellis, Michigan State University soil scientist.

**SALT VALUABLE**

Bedouins of the Sahara prize salt as if it were gold and use it as currency.

### CHARM BEAUTY SALON

4396 CLEAR LAKE ROAD  
(Formerly of Grass Lake)

Two Operators - Hair Styling and Wig Service  
Open on Mondays. Closed Tuesdays.

**PHONE 475-2700**

**Troop 476 Wins Honors at Camp Session**

Chelsea Boy Scout Troop 476 joined seven other area troops Aug. 2 to 8 at Wrights Lake Boy Scout Wilderness Reservation for six days of fun and competition. Twenty-two boys and three adults attended the event, according to Charles Stoner, scoutmaster.

Those attending the event in addition to Stoner are Bill Baker, committeeman; Ron Kiel, Sr.; Lloyd Hafner, assistant scoutmaster; David Heydlauff, Jr., assistant scoutmaster; Steve Worden, Jr., assistant scoutmaster; Bill Kalmbach, St. patrol leader; Tom Heppner, assistant senior patrol leader, and scouts Dennis Cosgrove, Ron Kiel, Jr.; Peter Pitzgen, Don Oesterle, Mike Stoner; Doug Kalmbach, Bob Heydlauff, Jon Spaulding, Dan Cobb, Roger Policht, John Coley, Eric Pickell, Mark King, Jim Stahl, and Don Bollinger.

Those receiving special awards were: Merit badge for shooting and riflery went to Tom Heppner; Don Bollinger; Ron Kiel, Jr.; merit badge for canoeing went to Mike Stoner. Merit badge for swimming went to Steve Worden, Ron Kiel, Jr., Don Oesterle, John Coley and Mike Stoner. Roger Policht passed his second class rank. Many other boys passed requirements on the rank in which they were working.

Highlight of the event was the awarding of the Baden-Powell award to the troop. To win the award a troop must attain an "A" rating for four consecutive days. Troop 476 maintained an "A" rating for five consecutive days, losing only three point out of a possible 500.

The troop was also the undisputed winner of the water carnival, winning the six-man canoe race, and the water balloon contest. Also, several boys from Chelsea took part in a one-day canoe trip on the Muskegon River.

Wrights Lake summer camp differs from other camps like it in that all meals for the camp are prepared by the boys in patrols from each unit.

### Fashion Notes

Apron fronts are features of some of the summer dresses. These apron fronts take the form of a panel beginning at the neckline and ending at the bottom of the skirt.

Over blouses with pleated skirts continue to be chic. Some of these are quite long in length, reaching midway of the thigh.

If you order a chicken burger, it must be 100 percent chicken, according to U.S. Department of Agriculture standards. Chicken Chop Suey must contain at least four percent chicken and Chili Con Carne must have at least 35 percent beef and not more than 15 percent fat, according to standards.

### MID-STATE FINANCE CORP.

\$25 to \$1,000  
For Any Worthwhile Purpose

See or Call  
**FRANK HILL**  
at 475-8631

111 PARK STREET  
CHELSEA, MICH.



## GREAT CHELSEA BUYS

### DODGE DART LEADS THE WAY TO TOP SAVINGS

For years, Dodge Dart has been America's biggest compact value. That's because it seats six, is so strong and economical, and has exceptionally high resale value. Right now, you get the lowest price of the year on this roomy compact because we've got to clear out all our 1970

models. So come in and get the year's biggest savings during our summer clearance.

### DODGE POLARA



More room, luxury, savings.

### DODGE CORONET



Big model selection of the car that's very big for its price.

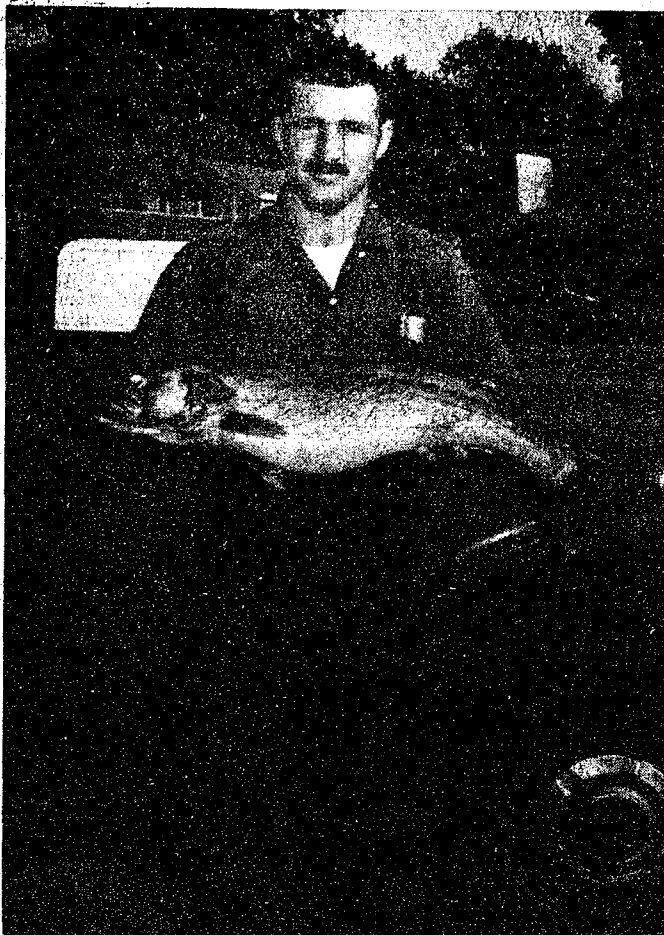
Ya'll hurry in for these Summer Savings.

## G. A. SALES & SERVICE, INC.

1185 Manchester Road  
Chelsea, Michigan







GLENN SCHILLER proudly displays the 12-pound, 31-inch walleye pike he caught by the tail in Manistee Lake. A fluke catch—but no fluke fish!

## Lands 12-Pound Walleye

Fish stories are big this week! Glenn Schiller, 403 W. Middle St., returned Monday from a fishing trip to Manistee Lake, near Ludington, with a 12-pound walleyed pike. The fish, measuring 31 inches

## Partial Eclipse of Moon Visible Sunday Evening

A partial eclipse of the moon and the year's biggest meteor shower are among this month's astronomical highlights, according to University of Michigan astronomer Hazel Losh.

The lunar eclipse, caused when the earth's shadow passes across the moon's surface, will occur on Aug. 16. Only the upper part of the moon will pass through the shadow. The eclipse begins at 9:18 p.m. EST (10:18 EDT) and will reach its peak at 10:24 p.m.

August also marks the annual Perseid shower, this year's most spectacular display of falling stars, Prof. Losh said. "These trails of light may be seen for two or three weeks, but it is around Aug. 10-12 that they reach their peak."

The natural fireworks will amount to about one meteor flash per minute during the peak. These "shooting stars"—some lasting up to five seconds—are caused by bits of stone and iron, often no bigger than a grain of sand. Entering the earth's atmosphere at about 40 miles per second, most of them burn away well before reaching the ground.

## Personal Notes

Mrs. George Knoll, 124 Dewey, was hostess this past week to a visit from her daughter, and son-in-law, Mr. and Mrs. Beecher Risner, Jr., and their family of four, from Trenton, O. The Risners arrived Monday, Aug. 3, and stayed through Thursday, Aug. 6. They visited family and friends in the Chelsea area during their stay.

Mr. and Mrs. Garnett Weir, 302 McKinley Rd., moved to Florida Thursday, Aug. 6. Their new address will be Rt. 1, Box 267, Umatilla, Fla. 32784.

## BUGGING THE ALFALFA WEEVIL

Parasites which attack all life stages of the alfalfa weevil are being released in Michigan fields by Michigan State University entomologists. The parasites are expected to build up to significant levels within a few years and help provide natural control of the weevil population.



FISHERMAN'S DREAM: Who says there's no fish in Half Moon Lake? Certainly not Edward Slumka, age 16, from Shields. This tall, dark-haired young man caught five beautiful Northern Pike fish Wednesday, Aug. 5, while visiting the home of his aunt and uncle, Mr. and Mrs. Jack Hogue, at Half Moon Lake. The five fish weighed in at 36 pounds, total. They were all caught within two and one-half hours. Edward's aunt, Mrs. Hogue is shown above with proof of the catch.

## Congressman M. Esch Releases Area Census Bureau Figure

Congressman Marvin L. Esch last week released preliminary census figures to correct the inaccuracies in the earlier reported 1970 Census Bureau figures. Congressman Esch urged communities which feel residents were missed, to immediately work with the Detroit Census Bureau and Esch's office on the problem.

He also called for a national census every five years rather than 10, extension of the final reporting date for the 1970 census to allow more time for correction of errors, and action by the state of Michigan to "make counts" taken by a "Special Census" (taken by the Census Bureau but paid for by the community involved) to stand as official for all location of funds from state programs to local communities.

The preliminary figures for some townships in Washtenaw county along with the 1960 census figures are as follows. Preliminary 1970 figures for all of Washtenaw county show 230,128, compared with 172,440 in 1960. In Dexter township, 2,351 is the 1970 preliminary figure, with 1,698 reported in 1960. In Freedom township a preliminary figure of 1,226 was counted for 1970, over the 1,095 from 1960.

In Lima township, 1970 preliminary figures indicate a 300-count increase over the 1960 figure of 1,400. The part of Chelsea village in Lima township went from 405 in 1960 to an estimated 422 in 1970, according to Esch's report. In Lodi township increased from 1,411 in 1960 to the preliminary figure of 1,934 for 1970. Lyndon township now has 1,383 according to the preliminary data, compared with 1,037 in 1960.

Manchester township grew from 2,590 in 1960 to 2,739 in preliminary 1970 census count. Manchester

100-BUSHEL OAT YIELDS

More than a half million acres of oats are planted in Michigan each year, according to Michigan State University crop scientists. New varieties, early planting and proper use of herbicides and fertilizer help farmers commonly get yields of 100 bushels per acre.

**GOOD IDEA! Register Now!**

Washtenaw Community College

## Conservation Law Violations Heard In District Court

The following people were arrested this past week on conservation violations, and were arraigned before Judge Patrick J. Conlin in District Court.

Arnold L. Tracht, 22, Ann Arbor, pled guilty to fishing without a license on Little Portage Lake. He paid \$16 fine and costs.

Bruce Bara, 19, Ypsilanti, pled guilty to fishing without a license on Portage Lake. He paid \$16 fine and costs.

Vincent E. Colatriglio, 17, Ann Arbor, pled guilty to fishing without a license on Blind Lake. He paid \$16 fine and costs.

Howard C. Maynard, 25, Ypsilanti, was arraigned Friday, Aug. 7, for failure to appear on a ticket issued April 23, for fishing without a license on the Huron River. He was sentenced to five days in jail, or \$75 fine.

Harley H. Wood, 48, Dearborn, pled guilty to littering Base Lake. He was fined \$25 and costs.

Raymond J. Lipton, 60, Dexter, pled guilty to littering South Lake. He paid \$25 fine and costs.

The world has from 200 to 500 species of oak.

## Bean Field Day Slated Aug. 26 on Huron County Farm

East Lansing—Demonstration plots, harvesting machines and herbicide-fertilizer displays highlight State Bean Field Day, Aug. 26 in Huron county.

This year's Bean Field Day will be held at the Orville Gremel Farm, 5½ miles east and 2 miles south of Sebawaing, at the corner of Riskey and McAlpin Rds.

The tour of the demonstration plot area, beginning at 9:30 a.m., will include research on date and rate of planting, weed and disease control, fertilizers, seed treatment and damaged v.s. undamaged seed.

New varieties, including a bush cranberry-colored bean, will also be discussed.

In the afternoon, various makes of pullers, windrowers and harvesters will be used to harvest beans planted May 19 on the Gremel farm. Bean-raising machinery, fertilizers and chemicals will also be displayed.

A noon program will feature Paul McKrell of H.J. Heinz Co., who will discuss the importance of mechanical damage to the bean industry.

Subscribe today to The Standard!

# MILK

# THE PROTEIN SNACK

## Bring on the Milk! It's snack time!

The call goes out for milk and more milk when the youngsters take time out for an energy-building snack. Be ready!



Milk is Nature's wonder-food. Drink it daily!

## WEINBERG DAIRY

QUALITY PASTEURIZED DAIRY PRODUCTS

Old US-12

Phone GR 5-5771

# CONSIDER YOUR FUTURE . . . WASHTENAW COMMUNITY COLLEGE

## has Career Education Opportunities Available in:

- ☐ Agri-Business
- ☐ Data Processing
- ☐ X-ray Technology
- ☐ Dental Assisting
- ☐ Inhalation Therapy
- ☐ Architectural Drafting
- ☐ Electronics-Engineering Technology
- ☐ Numerical Control Technology
- ☐ Metallurgical Technology
- ☐ Educational Assisting
- ☐ Marketing
- ☐ Management
- ☐ Secretarial Science
- ☐ Food Service Technology
- ☐ Library Technology
- ☐ Medical Office Specialist Program
- ☐ Technical-Commercial Art
- ☐ Auto Body Repair
- ☐ Automotive Technology
- ☐ Industrial Drafting
- ☐ Electro-Mechanical Technology
- ☐ Fluid Power Technology
- ☐ Mechanical-Engineering Technology
- ☐ Toolroom Machine Operation
- ☐ Welding & Fabricating
- ☐ Accounting
- ☐ General Education

Fall Semester Registration: September 2 & 3 (see schedule below)

Place: Exact Science Building, 4800 Huron River Drive

## WEDNESDAY, SEPTEMBER 2

8:20 a.m.	LUD-MARZ	1:00 p.m.	SCH-SHIL
8:40 a.m.	MAS-MEB	1:20 p.m.	SHIM-SOH
9:00 a.m.	MEC-MONZ	1:40 p.m.	SOI-VOK
9:20 a.m.	MOO-NELR	2:00 p.m.	VOL-WAZ
9:40 a.m.	NELS-OR	2:20 p.m.	WB-WHITE K
10:00 a.m.	OS-PES	2:40 p.m.	WHITE L-WIM
10:20 a.m.	PET-PT	3:00 p.m.	WIN-ZZ
10:40 a.m.	PU-RICZ	3:20 p.m.	A-ARZ
11:00 a.m.	RID-RZ	3:40 p.m.	AS-BEA
11:20 a.m.	S-SCG	4:00 p.m.	BEB-BEZ

## EXTENDED DAY REGISTRATION

7:00 p.m.	A-B
7:20 p.m.	C-D
7:40 p.m.	E-F
8:00 p.m.	G-H
8:20 p.m.	I-J
8:40 p.m.	K-L

## THURSDAY, SEPTEMBER 3

8:20 a.m.	BM-BROZ	1:00 p.m.	GOP-HAG
8:40 a.m.	BRP-CAT	1:20 p.m.	HAH-HEA
9:00 a.m.	CAU-CONO	1:40 p.m.	HEB-HOLK
9:20 p.m.	CONP-DAU	2:00 p.m.	HOLL-IR
9:40 a.m.	DAV-DOM	2:20 p.m.	IS-JZ
10:00 a.m.	DON-DZ	2:40 p.m.	K-KIN
10:20 a.m.	E-EM	3:00 p.m.	KIO-KUG
10:40 a.m.	EN-FIS	3:20 p.m.	KUH-LEH
11:00 a.m.	FIT-GAM	3:40 p.m.	LEI-LUC
11:20 a.m.	GAN-GOO	4:00 p.m.	OPEN TO STUDENTS REGISTERING OUT OF SCHEDULE

## EXTENDED DAY REGISTRATION

7:00 p.m.	M-N
7:20 p.m.	O-P
7:40 p.m.	Q-S
8:00 p.m.	T-U
8:20 p.m.	V-W
8:40 p.m.	X-Z

FOR FURTHER INFORMATION:  
Call: 483-5152, Extensions 78-79

or

Mail this ad, after checking the appropriate box. Please include your name and address.

To: Washtenaw Community College  
P. O. Box 345, Dept. X  
Ann Arbor, Michigan 48107

Name \_\_\_\_\_

Address \_\_\_\_\_

Address \_\_\_\_\_

## Price List on Books To Be Purchased By Chelsea High School

Course	Author	Publisher	Title	Edition	Price
Latin I	Ullman	Mac Millan	Latin for Americans Book 1	68	\$3.00
Latin II	Ullman	MacMillan	Latin for Americans Second Book	68	3.00
U. S. History	Todd	Harcourt, Brace	Rise of the American Nation	Rev.	3.70
World History	Black	Ginn	Our World History	65	3.80
Economics	Wilson	South Western	Consumer Economic Problems	7th	2.65
Sociology	Koller	Holt	Modern Sociology	65	4.00
Physics	White	Van Nostrand	Physics	68	5.00
Earth Science	E. S. C. P.	Houghton Mifflin	Investigating the Earth	60	4.20
Biology I	Smith	Harcourt Brace	Exploring Biology	66	3.40
Biology II	B. S. C. S.	Prentice Hall	Biological Science	65	3.50
Algebra I	Dolciani	Houghton Mifflin	Algebra	69	3.75
Geometry	Dolciani	Houghton Mifflin	Geometry	69	3.75
Senior Math.	Kline	Am. Book Company	Advanced Mathematics	2nd	3.50
Statistics	Dolciani	Houghton Mifflin	Modern Introduction to Analysis	67	3.80
General Math.	Lankford	Harcourt Brace	Essential Mathematics	61	1.90
Shorthand	Leslie	Gregg	Gregg Dictation	63	2.60
			Functional Method	68	2.60
Typing I	Wanous	South Western	Personal and Professional Typing	3rd	2.20
Typing II	Rowe	Gregg	Typing — Complete Course	58	2.15
Office Practices	Agnew	South Western	Secretarial Office Practice	6th	2.20
Bookkeeping	Boynnton	South Western	20th Century Bookkeeping & Accounting	23rd	2.40
Electricity	Steinberg	Am. Tech. Soc.	Electricity & Electronics, Basic	2nd.	2.50
Electronics	Geirish	Goodheart	Electricity & Electronics	64	3.25

All prices quoted are maximum prices that will be paid. Prices are quoted from Wilcox and Follett (Chicago) where used books are available to schools.

Books are to be brought to school Tues., Wed., Thurs., Aug. 18-19-20



### DEATHS

#### Mrs. Paul Pierce

**Dies Thursday Morning Following Long Illness**

Ivy M. Pierce, 766 S. Main St., died Thursday morning, Aug. 6, in her home after a lingering illness. She was born June 15, 1910 in Port Arthur, Ontario, the daughter of Peter and Elizabeth Thompson Kinsey. A 1930 graduate of Chelsea High school, she married Paul D. Pierce June 8, 1931. He survives.

She was a member of the First United Methodist church of Chelsea.

Survivors include her husband, and three daughters, Mrs. Lyman (Shirley) Walker of Marquette, Mrs. Kaywood (Lois) Lantis of Grass Lake, and Mrs. Tom (Betty) Ingram of St. Clair Shores; six grandchildren; three brothers, Peter Kinsey of Chelsea, Tim Kinsey of Colorado, and Richard Kinsey of Ann Arbor.

Funeral services were held Sunday at 2 p.m., from the Staffan Funeral Home with the Rev. Clive Dickins officiating. Interment was in Oak Grove Cemetery. Memorials may be made to the Cancer Fund.

### BIRTHS

A girl, Donna Marie, to Mr. and Mrs. David Jervis, 12204 Trinkle Rd., Friday, July 31, at St. Joseph Mercy Hospital.

#### CORRECTION

In the election coverage story last week for Sharon township it was indicated Floyd Proctor defeated Walter Boike for nomination to the constable position. Actually both men were nominated and will appear on the November ballot to fill two constable positions.

Subscribe today to The Standard!



**AUTOMOBILE CLUB OF MICHIGAN**  
Membership and Insurance  
**JACK SCHLAFF**  
Ann Arbor     Dexter  
769-5000     426-8593

## SIDEWALK SALE

Friday and Saturday, Aug. 14-15

1 LOT

**MEN'S SWEATERS**

On Sidewalk **\$5.95** Were to \$13.95

1 LOT

**SWIMWEAR . . . \$1.95**

1 LOT

**MEN'S SANDALS**

On Sidewalk **\$3.95** Were to \$8.95

1 LOT

**SPORT SHIRTS**

On Sidewalk **\$1.95** Were to \$5.95

**MEN'S FELT HATS**

For Dress Wear **\$4.95** Were Reg. \$10.95

**SPECIAL PURCHASE**

**BUCKLE SHOES**

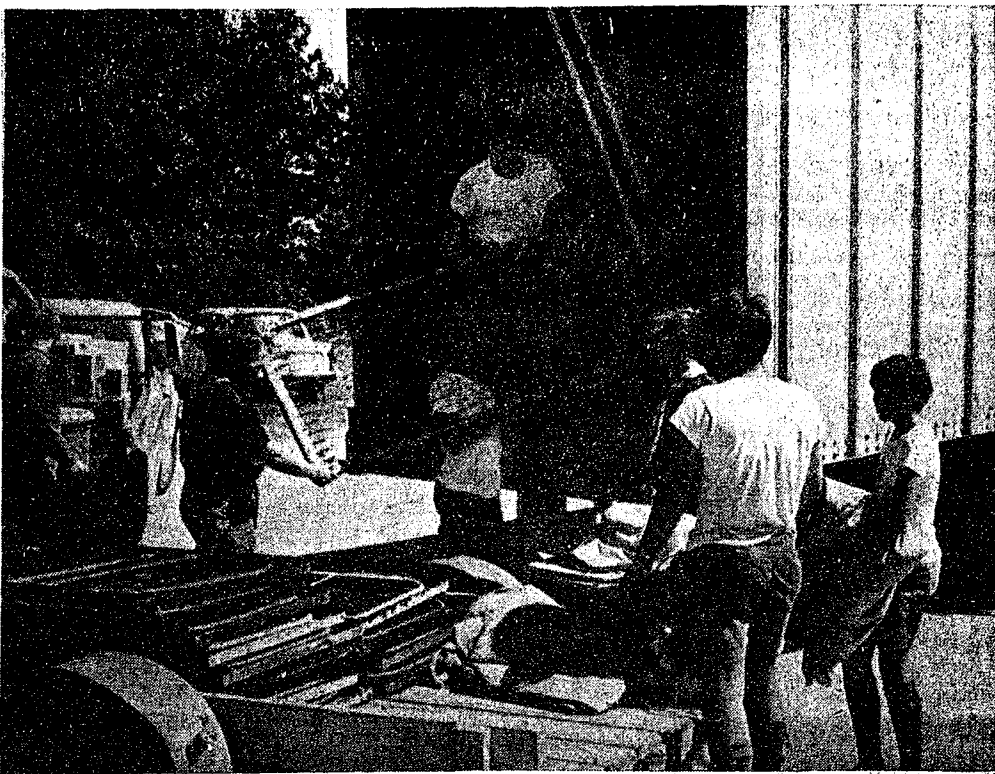
1 Lot New Styles **\$9.95** Reg. \$14.95  
For Back-To-School

**ALL CLOTHING - 20% Off**

**SATURDAY ONLY**

**ALL SHOES REDUCED \$2.00**

**FOSTER' MEN'S WEAR**



**MOVING DAY FOR SCOUTS!** Equipment from the Bruin Lake Scout Camp near Gregory, is moved to the new Wrights Lake Scout Reservation at Sears, by Portage Trails Council Boy Scouts prior to its Aug. 2nd opening. The "semi" was loaned by Associated Truck Lines, of Grand Rapids for the event. The truck driver, in the white shirt, receiving the bedsprings into the van, is Bill Bernard, Dexter. He is Cubmaster of Pack 428, sponsored by the Dexter Kiwanis Club.

### CQE Seeks Persons To Share Unique Hobbies, Travel Experiences

Can you help? Do you have an interesting hobby, or an occupation that perhaps not everyone in the community shares with you? If you do, this is your chance! CQE, or the Citizens for Quality Education, are sponsoring a program whereby people with interesting or unusual hobbies, occupations, or unique travel experiences, will be welcomed into the schools to share their knowledge with Chelsea school children. CQE is setting up a directory, for teachers, of people in the area who have these talents. The teacher could then contact the person with the particular experience, she seeks, and invite that person to bring into the classroom a "first hand" account.

People with skills in the following areas are asked to contact Peg Pennington (475-5592), or Helen Barnes (426-8060): bee-keeping, flower arranging, antique furniture, pet care, understanding foreign customs, pottery making, ceramics, care and growth of un-

usual plants, tree surgery or transplants, or foreign cooking. Or drop a card to Helen Barnes, 13420 Riker Rd., stating your name, address, and phone number, and the particular experience that you have to share.

This is an excellent opportunity for area people to spread a little understanding in the world. Sign up with CQE and show others how you "Do your own thing."

Telephone Your Club News To GR 5-3581.

## Boy Scouts Camping at New Wrights Lake Reservation

The second session of summer camp for Portage Trails Scout Council started Sunday, Aug. 2, with 188 scouts and leaders in attendance at the new Wrights Lake Scout Reservation at Sears.

Wrights Lake, which is in its second summer of use, has a newly completed shower house to offer this year for soiled Boy Scouts. The showers are cold at present, but will be warm as soon as a mixing valve which was lost in shipment arrives.

Also new is a \$6,000 aluminum floating swim dock, as well as new aluminum boats and canoe. Eight troop camp sites with running water, wash stands, and latrines are in operation. The boys are preparing their own meals at the troop camp sites "jamboree" style, with food issued from the modern camp service building erected last year.

Visitation and inspection by Boy Scout officials from the regional office in Oak Brook, Ill., will take place Wednesday, Aug. 19. A picnic for neighbors of the camp will be held that same afternoon.

At an inspection at the Bruin Lake Boy Scout Camp a few days ago, the Council was given the top rating of A-98 for the operation of that camp. This means that it qualified for an "A" rating in 98 out of 100 categories checked. Chelsea Boy Scout Troop 465 is presently at Wrights Lake camp. Troop Leader Bob Snyder, and 11 boys left Sunday, Aug. 9 for a camping session. Those with Snyder from Troop 465 are: Bob Taylor, senior patrol leader, Doug Schrotenboer, assistant patrol leader, Doug Forenz and John Tandy, patrol leaders. Scouts Larry Garlick, Tom Mshar, Tom Leroy, Joe Keezer, Jim Barnes, Dan Atkinson, and Chris Rabbitt, all of Chelsea, are also at Wrights Lake camping session.

## FRIGID PRODUCTS

Now Operating from

### 118 North Main St.

(Former Buick-Olds Showroom)

**PHONE GR 9-6651**

# SIDEWALK BAZAAR

### GATIBLES



**Speci 98¢** **Speci \$1.49**

**Plastic Laundry Basket Sale!**

Match the laundry basket size and shape to your laundry chores! Made of rugged, durable plastic. Lightweight. Assorted colors.

### TABLE LAMPS

LARGE SELECTION

**1/2 Price**

50% Saving



### Tables

Close Out

**\$7.95**

eg.



### TRADITIONAL Lounge Chair

Save \$27.00

Reg. \$76.95

**Now \$49.95**

### Swivel Rocker

Save \$20.00

Reg. \$49.95

**Now \$29.95**

### EXPERT 20-20-5 Lawn Fertilizer

20-Lb. Bag Covers 5,000 Sq. Ft.

**NEVER PRICED LOWER**

**\$1.66**



### Coronado 15 Cu. Ft. Chest Freezer

Priced to fit your budget... designed to fit all your freezer needs! 15 cu. ft. chest holds 526 lbs. Lift-out basket, safety lid, balanced cold control. 4-way warranty.

**\$169.95**

Use Your Credit



### Coronado 23 Cu. Ft. Chest Freezer

Get the most value per cubic foot! Giant 805 lb. capacity freezer boasts 2 lift-out baskets holding 33 lbs. each! Signal light, cold control, lock, drain. 4-way warranty.

**\$239.95**

Use Your Credit



### Coronado 15.5 Cu. Ft. UPRIGHT FREEZER

Use Your Credit

**\$179.95**

A budget price for giant 543 lb. storage. Just 32" width due to new thinwall design. Pantry door, temp control. 4-way warranty.

44-7720



### USED DISHWASHER

Reg. \$189.95. Like new

**\$49.99**

### SHERWIN - WILLIAMS EXCELLO INTERIOR PAINT

Complete Line — Not Discontinued Colors

	REG.	NOW
LATEX WALL PAINT	Gal. \$5.49	\$3.27
	Qt. \$1.99	\$1.19
SEMI GLOSS ENAMEL	Gal. \$6.99	\$4.25
	Qt. \$2.45	\$1.50

### Shop & Save At Our Sidewalk Tables

—★—

**Bargains Too Numerous To List**