

WEATHER

	Min.	Max.	Freez.
Wednesday, April 29	62	75	0.01
Thursday, April 30	62	85	0.00
Friday, May 1	60	80	0.24
Saturday, May 2	60	73	0.00
Sunday, May 3	64	81	0.00
Monday, May 4	48	61	0.00
Tuesday, May 5	48	72	0.00
	58	65	Trace

ONE HUNDREDTH YEAR—No. 46

14 Pages This Week

CHELSEA, MICHIGAN, THURSDAY, MAY 7, 1970

15c per copy

SUBSCRIPTION: \$4.00 PER YEAR

The Chelsea Standard

QUOTE

"If you insist upon receiving powder as tribute, you must expect to receive balls with it."
—Comm. Stephen Decatur.

CHS Bands, Choruses Plan Joint Concert

A joint concert of the Chelsea High School Bands and Choruses will be held Thursday, May 7 at 8 p.m. in the school auditorium.

Featured in the concert will be the Girls' Glee Club, the Concert Choir, the Madrigal Singers, the Symphony Band, the Concert Band, the Dance Band, and others. Tickets for the performance which is under the direction of Miss DiAnn L'Roy are available now or at the door.

Proceeds from the concert will go to the band and choir scholarship funds.

Track Team Is Second in Albion Relays

Chelsea High track team defeated Lincoln Thursday, April 30, with a score of 80½ to 37½.

Karsten Kargel won the high jump at 5' 10". The 880-yd. relay team of Larry Gorton, Mark Collins, Jeff Hughes, and David Porath won in 1:38.5.

The pole vault was won by Jim Wojcicki's 11' 8" and Mike McGinn won the 880-yd. run in 2:09.7.

Jim Wojcicki captured the 120 high hurdles in 17.1 seconds; Dave Buxton won the mile run in 5:17.5; and Kim Aronson won the 440-yd. dash in 54.2 seconds.

The 180 low hurdles was won by Larry Gorton in 21.6 seconds; George Cameron won the two-mile run in 11:42 seconds; and Larry Gorton won the 220-yd. dash in 23.4 seconds.

Saturday, May 2 the Chelsea trackmen were runners-up to Okemos in the Albion Relays and returned home with a runner-up trophy in section 4.

Randy Seitz won the shot put with his throw of 44' 8" while Dale Robbins came in fourth with his throw of 43' 8".

Jim Wojcicki captured the pole vault with his 12' 7½" setting a new school record and breaking the old one of 12' 6¼" set in 1969 by Larry Blackwell.

Roger Fitch earned a place in a four-way tie for fifth place in the high jump.

The 880-yd. relay team earned a fifth place with their time of 1:36.4. Mike McGinn earned a second place in the 880-yd. run with his 2:03.3, while Larry Gorton earned a second in the 180 low hurdles with his time of 22.6 seconds.

The mile relay team of Jim Wojcicki, Dan Hoover, Mike McGinn, and Kim Aronson tied the meet record of 3:35.

Tuesday, May 5, Chelsea defeated South Lyon, 84-34. Randy Seitz won the shot put with 43' 8" while Dale Robbins was second.

Mark Collins won the long jump at 19' 6¼" while Jeff Hughes was second.

Karsten Kargel won the high jump at 5' 10" and Roger Fitch was third.

Jim Wojcicki won the pole vault at 11' while Dan Hoover was third.

The 880-yd. relay was won by the team of Larry Gorton, Mark Collins, Jeff Hughes, and David Porath in 1:36.4.

(Continued on page five)

Kindergarten Registration Slated May 12

Registration for entering pupils—both rural and town—who will enter school for the first time in September of 1970, will be held Tuesday, May 12 at South school between 8:30 and 9:00 p.m.

Since these future kindergartners have been allowed to visit school this spring, no activities have been planned for them at this meeting so parents are asked to not bring the children.

Before school opens in September, the school must have a statement from every entering kindergarten's doctor verifying that the child has been immunized against diphtheria, tetanus, smallpox, and whooping cough; has had his polio injections, and a TB test. These forms will be available at registration time.

Parents who find it difficult to attend this meeting are urged to call the school before May 12 or some day as soon as possible after that date. It is possible to register children by phone (GR 9-5691).

All kindergartners must be registered prior to school opening in order that they may be placed in a classroom by opening day in September.

If your child will be five years old on or before Dec. 1, 1970, be sure to join the school's administration and faculty at this time. It is their hope that both mothers and fathers will attend. Please bring the child's birth certificate to the meeting or not later than the opening day of school. The school must see it. The state is demanding them this year.

Baseball Team Posts 7-2 Win Over Saline

Following their Thursday, April 30 win over Saline, 7-2, the Chelsea High Bulldogs moved a little closer to the top of the Southwestern Conference scoring races. They are now in third place with a win-loss record of 3-2.

In its game with Saline, Chelsea High earned all its runs in the first three innings, capitalizing on wild pitches, passed balls, errors, and some timely pitching.

Randy Brier and Doug Schoenberg, each had a pair of singles for the Bulldogs. "We're back in the groove, maybe," said Coach Genske, referring to his remarks last week concerning a batting slump.

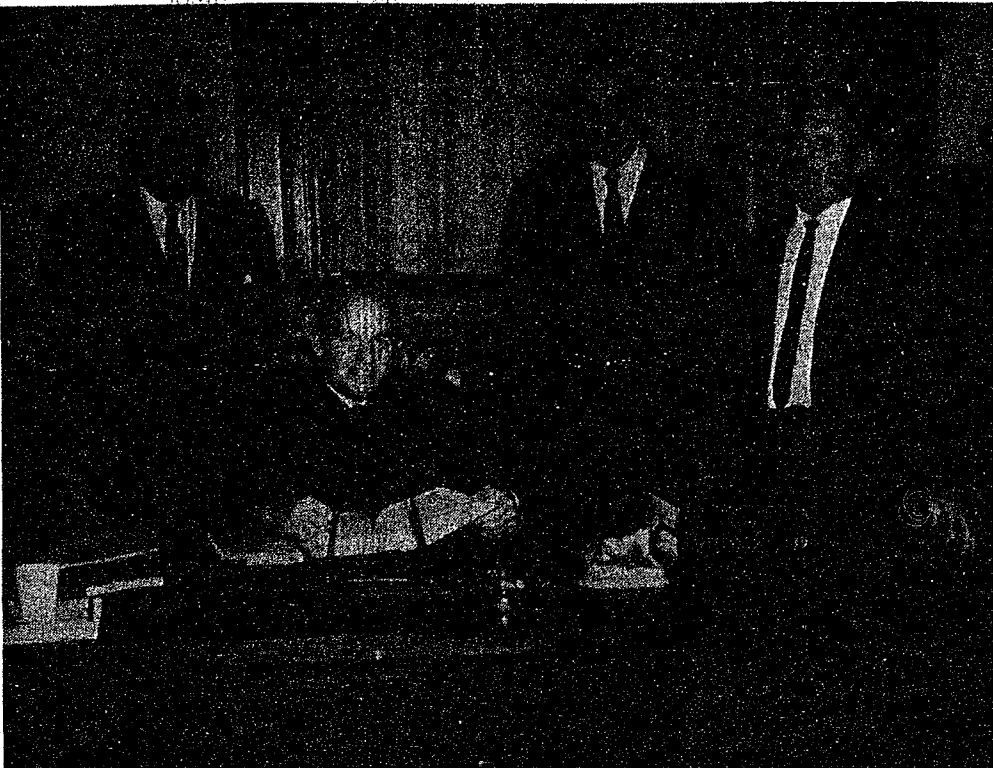
LINE SCORE

Chelsea 313-000-x-7 5 1
Saline 200-000 2 254
Wayne Welton and Len Kozma, Dennis Bishop, Dale Bishop (1), Wes Gall (6), and Glen Burkhardt, Lee Seitz (3).

Register Before May 8 To Vote

Deadline for registering to vote in the June 8 Annual Meeting of the Chelsea School District will be 5 p.m. May 8.

School Board candidates have until May 11 to file for the two available seats. Incumbents H. Charles Powers and Herman L. Koenn have already declared their candidacy.



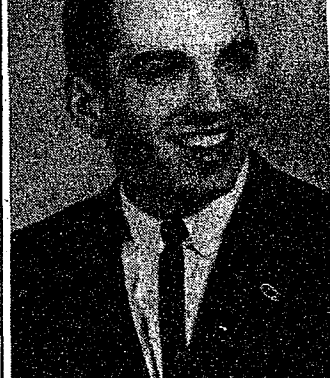
DISTRICT COURT DEDICATION: 14th District Court Judge Patrick J. Conlin is shown with a few of the dignitaries present at Sunday's dedication ceremonies and open house of the court's new quarters in the former Chelsea State Bank building. They are standing, left to right, Washtenaw County Senior Circuit Judge John W. Conlin, Washtenaw County Commissioner Jay Bradbury, and Sylvan Township Supervisor Maurice Hoffman.

Officials Attend Dedication Of District Court Building

Some 300 persons attended the Sunday afternoon official Dedication Ceremony and Open House of the 14th District Court's new quarters in the former Chelsea State Bank building at 122 S. Main St., Chelsea.

Highlight of the afternoon was the 2 p.m. ceremony in which the new quarters were accepted by the Board of Commissioners, dedicated, and presented with an American flag.

William Rademacher, speaking on behalf of the Bar Association of Chelsea, opened the ceremony. District Court Judge Patrick J. Conlin then introduced the afternoon's special guests. They included Washtenaw County's Senior Circuit Judge, John W. Conlin; Probate Judges Rodney Hutchinson and Francis O'Brien; District Court Judge Edward Deaker; former Justice of the Peace Chandler Rogers; and Village President Mac Fulk.



JAMES G. BAXTER

James Baxter Joins Idaho Forest Firm

James G. Baxter, the son of Mr. and Mrs. George Baxter, 1218 Meadow Lane, has joined the data processing and systems staff of Potlatch Forests, Inc., Lewiston, Ida.

Baxter, a Chelsea native, graduated from Chelsea High in 1957 and received his bachelor of science degree in education in 1961. He did post-graduate work in mathematics education at the University of Michigan between 1961-65. He went to Potlatch Forests, Inc., from Seattle where he served since 1966 as systems analyst in computer systems design for Boeing Co. From 1961-66 he taught high school mathematics and coached basketball in the Carmen School District at Flint.

He is a registered basketball referee with the Pacific Northwest Officials Association.

His wife Kathleen, and their two children, Colleen, 6, and Patricia, 2, have joined him in Lewiston, Ida., where the family will reside at 315 16th Ave.

High School Accredited Again By North Central

Word was recently received from the North Central Association of Colleges and Secondary Schools that Chelsea High has been placed on the list of secondary schools that have been approved for the 1969-70 school year.

North Central Accreditation is necessary if the high school's graduates are to be readily accepted into the colleges and universities of their choice.

Council Briefs

Present at a regular session of the Chelsea Village Council Tuesday evening, May 5 were President Fulk, Trustees Miller, Gorton, Musbach, Dmoch, Boylan, Chandler and Clerk Harvey.

A discussion was held with Mrs. Harok and Mrs. Ball regarding truck parking in the area of North American Rockwell and dogs running at large in the neighborhood. It was indicated to the parties that the proper authorities would investigate and take whatever action necessary.

Further discussion was held with representatives of Cummins & Barnard, electrical engineers, and Consumers Power Co., regarding improvements to the village electrical distribution system. Another meeting is planned at a later date.

A letter was read from the village attorney regarding the complaint William Hitchingham conveyed to the council at their meeting of April 7.

The letter indicated the Council had done all that is empowered to them under Ordinance No. 60.

A letter was read from the planning commission regarding the public hearing on a request to rezone property of Richard Machnick and the recommendation of the commission.

A motion was made and approved to accept the recommendation of the Chelsea Planning Commission and deny the request of Richard Machnick to rezone a parcel of property owned by him.

A motion was made and approved to advertise for bids for the purchase or lease of police cars to be used for patrol for the police department. Bids will be accepted until May 13 at 5 p.m., by the village clerk.

A letter from the Michigan Department of Public Health regarding the phosphorus removal program was read. No action was taken.

A motion was made and approved to purchase village emblems for the village vehicles as presented.

A motion was made and approved to adopt Definitions of Authority (Continued on page six)

Infraction of Rules Forfeits Track Wins

State Athletic Commission Rules On Use of One Ineligible Student

Due to an administrative oversight resulting in its use of an ineligible player, the official standing of Chelsea High's track team is now 1-4 in league competition, instead of the previously reported 4-0. Keith Guster, a member of the

team, is in his ninth semester of high school and is therefore not eligible to compete in athletic events. The State Athletic Commission ruled Monday that the scores of any event in which Keith competed must be forfeited.

Cattle Rustlers Hit Dexter Farm Again

Cattle rustlers? Not possible, here in the rural area of Michigan?

Oh, yes! In fact, the rustlers have apparently been making repeat appearances at the Hans Skjaerlund farm on Strawberry Lake Rd.

Most recent visit by the rustlers was Sunday morning, April 26, when deputies from the Livingston County Sheriff's Department were called to investigate the butchering of a 750-lb. steer—right in the Skjaerlund barnyard.

Several men are believed involved in the rustling operation.

The rustlers have displayed "daring" and may have collected more "daring" than they originally bargained for, as many of the cattle at the Skjaerlund farm have received injections, or been fed hormones. Effect of these treatments on would-be consumers of the meat if the cattle are slaughtered prior to the end of the time period allowed for safety following injections or administration of the hormones, may be extremely grave. Since these treatments are not given humans, and since the people giving these to animals are always cautious about observing the time ranges before slaughtering, no real prediction can be made on possible side-effects on people who might eat the bargain-priced "hot meat."

The Skjaerlund family is trying to publicize the potential to the rustlers, and to anyone who might be approached to purchase the meat, since the rustlers may not be as concerned about their buyers as the victims are.

This is the fourth strike by rustlers. The Skjaerlund farm was the scene of a similar type of rustling operation in 1967 and 1968. Then, earlier this year, in (Continued on page five)

FFA Banquet Slated Friday At High School

The Future Farmers of America will hold a parent-son banquet Friday, May 8 at the Chelsea High school cafeteria beginning at 7:45 p.m.

Guest speaker for the evening will be Ralph Guenther.

Installation of officers for the coming year will also take place. Those to be installed include Billy Kushmaul, president; Ernie Hindler, vice president; Marty Straub, treasurer; Neil Rothfuss, secretary; Jim Bauer, reporter; and Duane Bycraft, sentinel.

Chelsea Gains Third Rural Mail Route

Congressman Marvin L. Esch recently received notification from the Post Office Department that effective May 30, Rural Route No. 3 will be established out of the Chelsea Post Office.

The new route will provide relief to present routes and will encompass 41.40 miles. Route No. 3 will serve approximately 313 families and 291 boxes. The area to be served is roughly north of Chelsea in Lyndon township, but will also cover portions of Dexter township. The new route will help to allow for increased future growth in the area.



CARNIVAL QUEEN CHOSEN: Chelsea High's Nickel Carnival Queen and her court include, from left, freshman attendant Eileen Evans; senior attendant Pam Czarnecki; Queen Pat Poertner; and junior attendant Ann Thomason. With them is last year's queen, Debbie Stofor.



"E DAY" POSTER CONTEST winners at Beach school are left to right: Denise Nutt, Mike Keller, Colette Wright, and Julie Tite.

Beach Middle School Pupils Involved in War on Pollution

On April 22, Beach school kicked off what promised to be a campaign for survival. Instead of the usual schedule of classes, faculty and students engaged in activities related to environmental pollution. Class periods were divided into 45 minutes, 90 minutes, 120 minutes, and all-day sessions. Students selected those activities they were most interested in pursuing. Results of some of these activities are evidenced by the posters shown here.

Under the direction of Mrs. Parker, Mrs. Liang, Mr. Matz, and Mr. Hanna, students created posters which communicated their ideas about the environment. Other activities include a "Poetry Section" conducted by Lyman (Continued on page three)

Established 1871 **The Chelsea Standard** Telephone GR 5-3581

Excellence Award By Michigan Press Association
1951-1952-1960-1964-1965-1966

Walter P. Leonard, Editor and Publisher

Published every Thursday morning at 800 North Main Street, Chelsea, Mich. 48118, and second class postage paid at Chelsea, Mich., under the Act of March 3, 1879.

ADDRESS CORRECTION REQUESTED

Subscription Rates (Payable in Advance)

In Michigan:		Outside Michigan:	
One Year	\$4.00	One Year	\$6.00
Six Months	\$2.25	Six Months	\$3.50
Single Copies	\$.15	Single Copies	\$.20

Service men or women, anywhere, 1 year \$4.00

MEMBER **NATIONAL ADVERTISING REPRESENTATIVE:**
NATIONAL NEWSPAPER ASSOCIATION - Founded 1885
MICHIGAN NEWSPAPERS, INC.
257 Michigan Ave.
East Lansing, Mich. 48823

Uncle Lew from Lima Says:

DEAR MISTER EDITOR:

Clem Webster, that still ain't convinced the only thing this country needs is a Republican Administration, give Ed Doolittle a hard way to go during the session at the country store Saturday night. But Ed, that admits Abe Lincoln probably wouldn't recognize his party today, got in a few good licks.

What got Clem started was the raise last month for federal work-

ers. Clem said he couldn't help wondering what folks in this country would say about pore old Lyndon Johnson if he had been President when the mailmen quit work. They would of been after his hide, was Clem's opinion. Clem said what the mailmen done was agin the law in everybody's book, but Nixon rewarded them fer their efforts, and wants to hike postage to pay fer the reward.

What the Administration will do, allowed Clem, is come up with some big word that will make the mailmen strike sound like it was the best interest of the country. Clem said he ain't as worried about the airplane guiders staying out sick, cause not everybody needs airplanes. But stopping the mails is like cutting off the country's air.

Another thing worrying Clem was the report he had saw fer last year's payments fer not farming. That situation ain't progressed none since the Republicans took over neither, allowed Clem. Clem said last year's handouts to farmers fer not farming was up \$93 million over 1968. They was 7,795 farms in this country got at least \$25,000 fer not farming, and hundreds of em got \$100,000 or more.

Nixon come up with idea of putting a \$20,000 limit on payments under this Federal Farm Subsidy Program, but he ain't having no better luck with most of his ideas than he is with his Supreme Court picks, was Clem's words. And as fer calling everything a fancy name, Clem said he hopes the Administration gits on with "duplication" of this country and "vitamination" of Vietnam afore they bite off another mouthful.

Ed fiant got in a word. He said he had saw where the federal Government actual decided agin setting up another federal agency, and that were a good sign in anybody's Administration. Ed reported a few months back where this House committee that hadn't done a lick of work in 15 years was done away with, and he called that to Clem's attention.

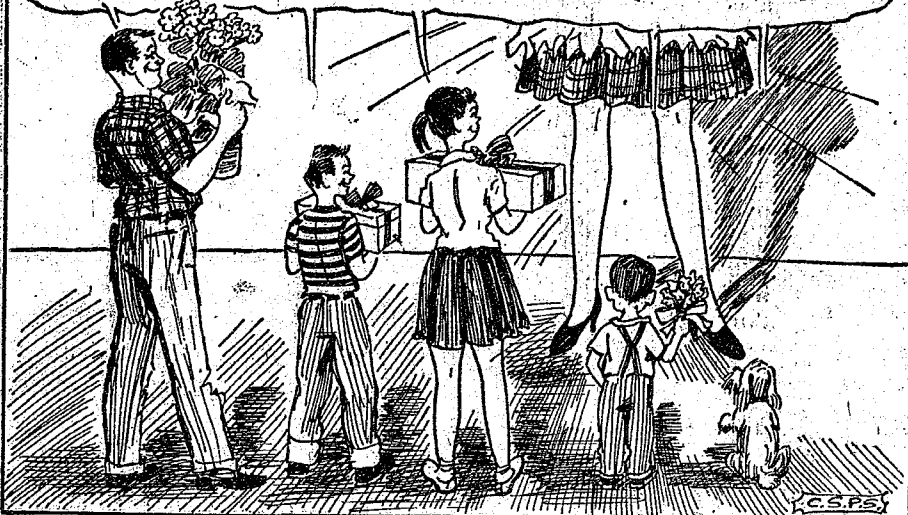
Furthermore, Ed said, the Administration was working to cut down red tape in particular and cost of Government in general. Ed said the General Accounting Office saved taxpayers \$187 million last year, and another outfit is making headway in cutting back the average \$2,800 it cost to process grants that average \$2,500.

The motion was to adjourn and give Ed equal time later.

Yours truly,
Uncle Lew.

THAT 10 FT. TALL FEELING...

HAPPY MOTHER'S DAY



MICHIGAN MIRROR

By Elmer E. White, Secretary, Michigan Press Association

Statistics dealing with motor vehicle crashes usually center on the number of persons killed in a given period of time.

This year, these numbers alone are shocking enough. In 1969, the worst year in Michigan history for traffic deaths, 2,487 persons were killed on the state's streets and highways.

But perhaps more shocking in terms of detailing total involvement of Michigan citizens in these crashes is the fact 175,400 other persons were injured. And a total of 331,223 accidents were reported.

All these figures were new highs, also, surpassing records set the previous year.

Economic loss as a result of these crashes reached a new high: it touched the \$500 million level. This was a rise of 7.3 percent from the \$465 million cost of 1968.

The increase was attributed mainly to the rise in the number of motor vehicles, drivers and miles driven during the year.

Registered motor vehicles rose 5.3 percent to 4.56 million, licensed drivers rose 1.6 percent to 5.1 million and total vehicle miles traveled rose 5.9 percent to 50.9 billion.

The death rate actually dropped during the year, averaging 4.39 deaths per 100 million miles of travel, compared to 4.97 deaths per 100 million miles in 1968.

Counselors Counted

If a recent sample survey of marriage counselors is indicative of the situation now existing in Michigan, more than one-third of the marriage counselors now operating in the state are unlicensed.

The state Auditor's office conducted the survey. It checked a total of 43 counselors who were advertising for business. Of the 43 checked, 16 were not licensed.

The report concluded that procedures need to be established to properly police public advertising of marriage counselors to make sure only licensed counselors advertise.

As of the first of this year, only

No Short Cuts

To Tractor Safety

Constructing a tractor roll-bar or crush-resistant cab is no job for a home workshop, warns Dr. Richard Pfister, Michigan State University agricultural engineer.

"Crush resistant cabs and protective frames are needed, but we do not recommend home-made protective frames, nor do we distribute plans," he comments.

"A farmer might construct the most durable frame possible, and it would still be subject to failure because of improper positioning of the frame and the fastening hardware."

Any adaptations that might weaken the fastening hardware should be avoided, he says.

A farmer can purchase a frame or cab designed to fit the particular tractor make and model he drives, notes Pfister. Manufacturers maintain a list of tractors their frames or cabs fit.

Telephone Your Club News
To GR 5-3681.

MIKE'S TV ANTENNA SERVICE

Motorola Automotive
Sound Systems

Winegard Home Electronics
TV Antenna Systems

Insurance Claims

For Free Estimate, Call
Pinckney 878-3258
or 769-0130

JUST REMINISCING

Items Taken from the Files of The Chelsea Standard

4 Years Ago...

Thursday, May 5, 1966

A dramatic announcement that Mrs. Steven Segal had resigned her South Elementary first grade teaching position, effective immediately and that the movement to recall six of the Chelsea Board of Education's seven members would be stopped, climaxed a school controversy that had spread throughout the community.

Chelsea school district electors will be asked to vote May 16 on a 2.25 operational millage increase. If approved, the increase added to last year's 2.5 millage will bring the total operational millage for this year to 4.75. This increase will be used to pay for additional elementary and secondary teachers, increases in employee salaries, an assistant superintendent, two 60-passenger buses and one 75-passenger bus, a second speech correctionist, additional custodial help, and the cost of operating the addition to the high school and South elementary school.

Cornerstone laying ceremonies for the new St. Mary's Catholic church, being constructed on a 16-acre site on Old US-12, took place Sunday, April 24.

14 Years Ago...

Thursday, May 3, 1956

Charles Lane, principal at Petersburg High school this past year, will become principal of Chelsea High at the end of the present school year, it was announced this week. A former Chelsea resident, Lane graduated from Chelsea High in 1942 and from Michigan State Normal College in 1948. He received his Master's degree from the University of Michigan.

Chandler St., from Grant to Wil-

Ag Grads Get Good Salaries, Non-Farm Jobs

Graduates of Michigan State University's College of Agriculture, and Natural Resources are drawing good salaries, but most of them are reaping the green stuff in jobs other than farming.

A survey of 146 BS graduates of five years ago showed an average salary of \$12,578. The salary range was from \$6,000 to \$50,000, with 15 reporting salaries of \$16,000 and over.

But only 7.5 percent of those surveyed were employed directly in farming. The majority, 44.5 percent, were employed in commercial companies, while another 21.2 percent were working for government agencies.

"We're not surprised at this trend, because only five percent of the people in the nation are living or working on farms," reported Norman A. Brown, co-ordinator of student programs for the college. "Yet, there continues to be a growing number of good paying jobs in the broad field of agriculture."

Brown also noted that about half the students in the MSU college are majoring in natural resources and that job opportunities are good in this area, especially in parks and recreation and resource development.

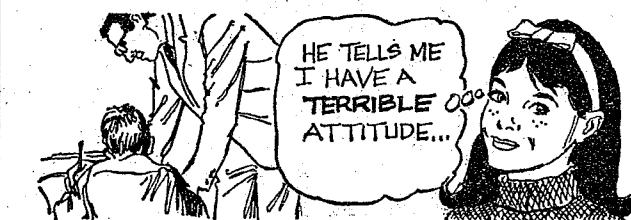
Of the 1964 graduates surveyed, the average beginning salary was \$6,644 and the starting salary range was \$5,000 to \$11,000.

The survey also showed that 31 percent have completed MS degrees and two have PhD's.

MONEY TROUBLE?

ONE PLACE TO PAY!
Credit Management Service
662-2565
215 South Fifth Ave.
Ann Arbor
State Licensed and Bonded

For And About Teenagers



THE WEEK'S LETTER:

"I am 13 and have a serious problem. My teacher, call him Mr. X, is young and doesn't understand me. He is always telling me I have a terrible attitude or he can see why nobody likes me, referring to himself. When I say something he tells me to shut my big mouth. He has pets, but he denies it. He says everything that happens is my fault. He had his pets on his side all the way. He said I just had seven weeks to put up with him and he has seven weeks to put up with me. I like him a lot, except for some of the things he does. How can I solve my problem with my teacher?"

Our reply: If Mr. X is a sincere teacher, he is trying to tell

you that your attitude needs changing. If this is true, and you want him to like you better, then change your attitude. If you say so, do things in class which bring troubles your way, stop these things and concentrate on being a good student. If you are trying to contribute or participate when Mr. X tells you to shut your big mouth, Mr. X is all wrong and should change his own attitude if he hopes to be a successful teacher. In any event, be serious about your studies and your classroom work—Mr. X will have to like you better.

If you have a teenage problem you want to have discussed or an observation to make, address your letter to "For And About Teen-Agers," Community and Suburban Press Service, in care of this newspaper.

Space Age MASS PRODUCED HOMES

FACTORY-BUILT HOMES BY **ACTIVE**

4 MODERN DESIGNS MODERATELY PRICED

BUY NOW for Spring Delivery at Present Prices

Built to Local Specifications

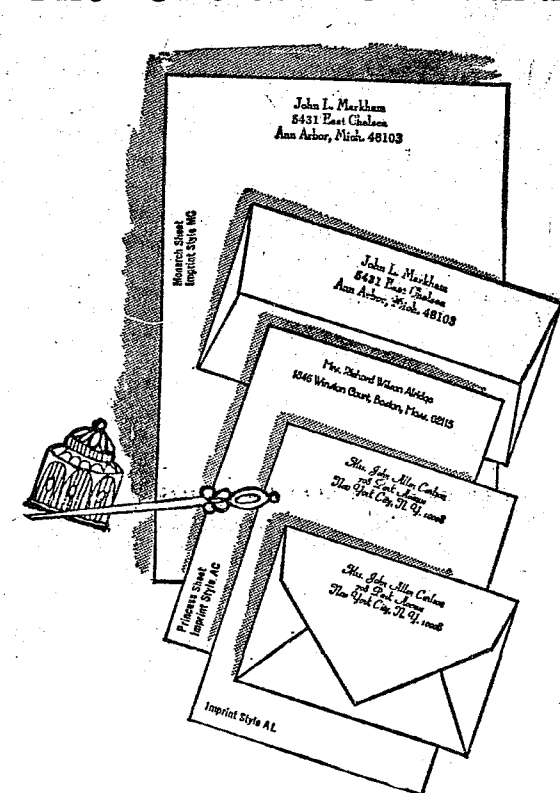
ABSOLUTELY MAINTENANCE-FREE, INSIDE AND OUT, WITH ALUMINUM EXTERIOR AND COMPLETELY paneled INTERIOR WHICH WILL RETAIN ITS BEAUTY FOR MANY YEARS.

TOWN & COUNTRY HOME SALES
2830 East Michigan — Just West of Ridge Road
Ypsilanti, Michigan — Phone 483-7246

ALL THESE BIG FEATURES INCLUDED IN PRICE!

- Spacious Living Room (23' x 14')
- 3 Bedrooms (Master 14' x 12') 1 1/2 Baths Large Cedar Lined Closets Decorator Designed Carpeting and Drapes
- Space Engineered Kitchen with Built-In Appliances
- Also Included... Exterior Aluminum Storm Doors, Storm Windows and Screens, Gutters and Down Spouts. (Basement or Crwp Space Models)

The Chelsea Standard



MAY SALE... SAVE \$4.05

Double the Usual Quantity
Rytex Charter Club Vellum

150 princess sheets,
100 matching envelopes or
100 monarch sheets,
100 matching envelopes

Now **\$4.95**
(regularly \$9.00)

Enjoy the advantage of personalized quality-vellum paper at plain paper prices. Smooth, distinctive sheets in white or blue with your name and address in rich blue, dark grey or black ink. Choice of three smart printing styles.

BONUS VALUE

An additional 50 matching unprinted sheets for use as second pages (regularly \$1.50) now only \$1.00 with your order.

MAIL ORDER COUPON

THE CHELSEA STANDARD
CHELSEA, MICHIGAN 48118

RYTEX CHARTER CLUB VELLUM: double quantity boxes at \$4.95 per box. SPECIAL BONUS ☐ (check) 50 extra Plain sheets (with each box) at \$1.00 per box.

Imprint Name: _____

Street: _____

City: _____ State: _____ Zip: _____

Check ☐ PRINCESS SIZE: ☐ White (7000) ☐ Blue (7050)
choice: ☐ MONARCH SIZE: ☐ White (7100) ☐ Blue (7150)
Imprint Style: ☐ AL ☐ MC ☐ AC Ink: ☐ Blue ☐ Grey ☐ Black

Ordered by: _____

Street: _____ Apt. _____

City: _____ State: _____ Zip: _____

Account No. _____ Tel. _____

☐ Charge ☐ Check or M. O. enclosed

Sorry, no C.O.D.'s Please enclose sales tax.

SPRING CLEARANCE

— of —

Frigidaire Appliances Fine Furniture and Carpeting

A great variety of models
available for immediate delivery.

Our entire floor stock of name-brand furniture and Frigidaire appliances reduced to save you many dollars.

- ★ Living Room Suites
- ★ Washers
- ★ Davenports
- ★ Dryers
- ★ Chairs
- ★ Refrigerators
- ★ Breakfast Sets
- ★ Ranges
- ★ Bedroom Suites
- ★ Dishwashers

MEABON'S TV, FURNITURE & APPLIANCE

1170 S. M-52, Chelsea Phone GR 5-5191

Beach Pupils Fight Pollution

(Continued from page one)

Johnston. Samples of their work are available here.

THE RIDE OF GEORGE REVERE

By Mike Keller

Listen my children and you will hear
Of the daytime ride of George Revere.
Down through the smog and through the haze,
In past the factories, cities, and waste,
Nothing can stop him in all of his haste.
Down by the docks and polluted sea,
His partner will tell him what it must be.
One if by water; two if by air,
Pollution will strike
But who knows where?

THERE ONCE WAS A MAN

By Mike Keller

There once was a man named McLead
Who had a great pain in his head.
He went to St. Clair
And breathed the air
And now the poor guy is dead.

THERE ONCE WAS AN OLD MAN

By Mike Keller

There once was an old man from Ann Arbor
Who took his fine boat to a harbor,
But it was sheer gore to look at the shore
So instead he took a trip to the barber.

THE EARTH

By Jane Belsler

Earth is just a small rest stop
on the highway, out in space.

We're not a place to drink and eat;
We're not a place to rest your feet;
We're not a place where you get drunk;
Cause we're the roadside garbage dump.

POLLUTION

By Pam Boyer

Pollution isn't a friend of mine.
He could kill you any old time.
For a nickel or a dime;
50 cents for overtime.
Gre lit plates
are extra rates.

UGH!

By Howard Salyer

Dirt in the air,
Smog in the streets,
Ducks in the oil,
Trees without leaves;
Oh, where did all this come from?
Oh, where will all this go?

WE WON'T LAST

By David Fletcher

The time that is left
Will soon go fast.
If we don't do something,
We won't last.

WHAT DO YOU CARE?

By David Fletcher

Soap in the sewers,
Smog in the air
Using non-return bottles,
For what do you care?

E DAY QUESTIONNAIRE

The Beach School E-Day Questionnaire, in which approximately 75 students participated, was conducted to sample public aware-

ness of pollution problems. The enthusiastic endeavors of the students allowed coverage of nearly all of the households in Chelsea with 344 families responding. The summary of results of the survey are presented here:

How do you dispose of your fallen leaves? Burn them yourself, 24 percent; have them picked up by the village, 51 percent; let decompose naturally, 16 percent; other, 9 percent.

What year is your car? One year old or less, 8 percent; two years old, 17 percent; three or more years old, 75 percent.

Does your car use regular or premium gasoline? Regular, 70 percent; Premium, 30 percent. (Regular has less lead content).

Does your car have pollution control equipment? Yes, 28 percent; no, 69 percent; don't know, 3 percent.

Do you water your lawn other than during dry periods? Yes, 23 percent; no, 77 percent.

How many persons in your family smoke? 33 percent of the adults.

How many cigarettes per day? 15 per person.

What brand of detergent do you use? Wide variety of answers; only significant fact being widespread use of Tide, which is high in its phosphate content.

Does your detergent have a high, medium, or low percent of phosphate? High, 35 percent; medium, 17 percent; low, 12 percent; no idea, 36 percent.

Do you use either chemical weed killers or chemical insecticides? Yes, 30 percent; no, 70 percent.

Do you use any of the following electric appliances: blender, 54 percent; can opener, 68 percent; mixer, 95 percent; blanket, 31 percent; air conditioner, 24 percent; more than one TV, 43 percent; clothes dryer, 70 percent.

How many adults are in this household? 716; children, 695.

If available would you use returnable containers? Yes, 85 percent; no, 15 percent.

Estimated number of non-returnable used per week? nine bottles per family.

Estimated number of tin cans used per week? 13 per family.

Presently, an environmental newspaper will be prepared by Mrs. Brown's "E-Day" students. The paper will have articles about the day's activities and survey results as well as informative articles about one of man's pollution problems.

The list of activities and projects goes on and one. All teachers, students, and administrators personnel were involved in some way in the planning, executing of the "E-Day" activities. Hopefully, this enthusiasm will grow yearly as it must, if we are to save ourselves from ourselves.

COMPUTER SUB

The Navy is experimenting with a tandem propeller submarine that can hover, turn around on a dime, and even stand on its tail. A Navy commander designed and built a prototype of the ship in his cellar. The sub has twin propellers that spin entirely around the ship's hull; blades on the propellers are regulated by computers.

Tiger infielder Dalton Jones had a .407 pinch hitting average in 1968, second best mark in the league.



WEBELOS LEADER Otis Titus, Donald Hall, with a display of the various projects completed and Den-Mother Mrs. Marion Burgess attended the recent Scout-O-Rama in Ann Arbor and are shown by Pack 455.

Three County Social Agencies Merge Into Single Organization

Three of Washtenaw County's oldest service agencies have merged into a single organization, effective April 28. The three agencies, formerly known as the Ann Arbor Family Service, the Ypsilanti Family Service, and the Washtenaw County Branch of the Michigan Children's Aid Society, will now operate under the title, "Child and Family Service of Washtenaw County."

Purpose of the merger is to strengthen the services offered by the three agencies and provide a unified approach to helping the total family.

In congratulating the board members and staff of the agencies on the unification of their activities, Chris L. McKenny, president of the United Fund and Community Services of Greater Ann Arbor, Inc., stated, "These people have worked and planned together and were willing to sacrifice agency autonomy and self-interest with the intent of better services to people in need. This is no little accomplishment. It was done quietly, voluntarily, and without outside pressure."

Child and Family Service of Washtenaw County will also continue the Homemaker Service for Washtenaw county which has been jointly operated by the two family service units since 1966.

In discussing the merger, Albert Morris, executive director of the state-wide Michigan Children's Aid Society stated, "It is no longer feasible simply to consider segments of the family. There is an obvious need to interrelate the various aspects of family life in programming for social services. Our agency has recognized this need as is evidenced in the past by similar mergers in other parts of the state. Our state-wide agency of 18 branches is looking forward to a rewarding relationship with those who need our help as a result of our expanded branch in this area."

The board of directors of Child and Family Service elected its new officers last week. They are: the Rev. Sidney S. Rood, rector,

St. Luke's Episcopal church in Ypsilanti, president; Robert K. Richards, program manager of the Department of Postgraduate Medicine of the University of Michigan, vice-president; James Lesch, assistant to the vice-president of Academic Affairs at the University of Michigan, second vice-president; Mrs. Donald F. Klassen of Ann Arbor, secretary; and Mrs. Milton Brown of Ann Arbor, treasurer.

Michigan Children's Aid Society is now in its 52nd year in the county. It had an annual budget of \$146,919 in 1969. The agency is primarily concerned with adoptions, foster care, and unwed parents. Last year, the agency served more than 800 families throughout its many programs. A total of 70 adoptions were made in the area and 160 unwed parents were assisted. In addition, 100 youngsters were supervised in their own homes or placed in foster homes.

Family Service of Ann Arbor was founded in 1921 as the Family Welfare Bureau and its present name was adopted in 1946. Today, it is primarily concerned with marriage and family counseling, including parent-child and teen-age problems. A combined total of 846 families representing 2,735 people were helped in 1969. The agency has a total operating budget of \$135,000, including its operation in Plymouth.

In 1919, the Patriotic Service League of Ypsilanti, now the Community Chest, established the Social Service Bureau of that city. In 1945, the name was again changed to the present Family Service of Ypsilanti. During 1969, it served more than 1,800 individuals supported by a budget of \$71,000. Its major services are also concerned with counseling persons and families who are having difficulties in their relationships.

Homemaker Service was ex-

tended to 137 families in 1969 involving children, ailing parents, and senior citizens for a total of 6,500 hours of care. The 1970 Homemaker budget is \$41,000.

The combined staffs of the agencies include approximately 18 professional social workers, seven office employees, and 10 homemakers. With the merger completed after nine months of study and negotiations, plans include greater efficiency of operations through co-ordination of services and program planning.

An Executive Director of the new combined agency will be appointed in the near future. At this time, the Administrative Heads of the three agencies are: Frieda Ramsauer, ACSW, acting director of the Michigan Children's Aid Society of Washtenaw County; Gerald F. Williams, ACSW, executive director of Family Service of Ann Arbor. Mrs. Joan Bowker, MS, supervises the Homemaker Service.

The agencies present locations are: Children's Aid Society at 327 S. Fourth, Ann Arbor; Ypsilanti Family Service at 118 S. Washington, Ypsilanti; Ann Arbor Family Service at 219½ E. Washington, Ann Arbor; and Homemaker Service also at 219½ E. Washington, Ann Arbor.

HOST Carpet Cleaning

May is spring cleaning time! Your carpeting deserves special attention. We recommend Host, the new method of cleaning carpets without water. The carpet is dry and ready to walk on immediately. Use our Host Electric Up-Brush. It's easy. Clean 40 sq. yds. only \$9.95. Phone for information.

MERKEL BROTHERS
Phone 475-8621

CORN PLANTER FOR SALE

John Deere 290, 2-row
with fertilizer spreader.

CALL 475-2238 AFTER 5 p.m.

LEVI'S®
FASHION
JEANS
SHAPE UP IN
STA-PREST®
FABRICS

Real LEVI'S®
jean tailoring
whittles
these
straightleg
jeans into
great shape
for spring.
STA-PREST®
fabrics won't
wilt, never
need ironing,
go the full course
in everneat strict
stripes,
subtle solids,
colorful patterns,
classic plaids.
Jean-tailored,
by LEVI'S®.

Levi's®

DANCER'S
Chelsea's Friendly Dept. Store

Chelsea's Friendly Dept. Store

MOTHERS DAY SPECIAL

MUMS for MOM
\$1.79

Other plants starting at 35c

See us for flower and garden seeds.

Also, seed starters.

OPEN 6 A.M. TILL 11 P.M.

**GALLUP - SILKWORTH
PUMP & PANTRY**

295 S. Main St.

Chelsea

LAST DAY OF REGISTRATION School Election

Notice of the Last Day of Registration
of the Qualified Electors of

Chelsea School District
WASHTENAW and JACKSON COUNTIES, MICHIGAN

**TO THE QUALIFIED ELECTORS
OF SAID SCHOOL DISTRICT:**

Please Take Notice that the Annual Election of said School District will be held on

Monday, June 8, 1970

The last day on which persons may register with the appropriate Township Clerks, in order to be eligible to vote at the Annual School Election called to be held on Monday, June 8, 1970, is

FRIDAY, MAY 8, 1970

Persons registering after 5:00 o'clock p.m., on the said Friday, May 8, 1970, are not eligible to vote at said Annual School Election.

Persons planning to register with the respective township clerks must ascertain the days and hours on which the clerks' offices are open for registration.

This Notice is given by order of the Board of Education.

HERMAN L. KOENY
Secretary, Board of Education.

Dated: April 24, 1970.

Monthly News

MAY 1970

GRADUATION WILL SOON BE HERE

This month all over the country students will be finishing their academic lives. But, even with the greatly increasing numbers graduating, there still will not be enough doctors, dentists, pharmacists and other professional people to handle the health needs of the population.

WHAT WILL HAPPEN?

Of course most everyone will get the health care they need but they may have to wait longer for appointments and for most every health service. Please have patience, for we will all be doing our best to take care of you.

COMPLETE STOCKS WILL HELP.

From our standpoint as a pharmacy, we will try to have on hand everything that your doctor or dentist might prescribe. We will be working closely with them to see that you get your medicines without undue delay. Emergency service is available.

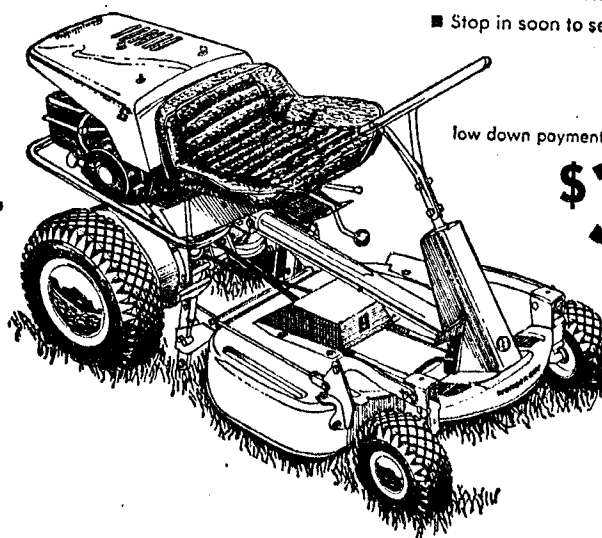
DON'T STOP NOW.

We urge all graduating students to continue their education. We especially would like to encourage more of them to choose the highly satisfying health professions, so that possibly in the future there will be enough people to care for the health of our country. If someone you know is interested in a pharmacy career we will be glad to talk to them.

CHELSEA DRUG

24-HOUR PRESCRIPTION SERVICE
101 N. MAIN ST. PHONE GR 5-4611

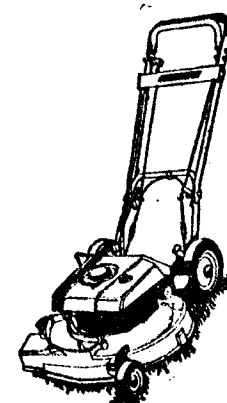
Only
Simplicity
has
Non-Scalp
mowing
plus
Touch-O-Matic
clutching!



low down payments ■ convenient terms
\$359⁰⁰

Simplicity
A great
mower
to have
when
you've
had it
with all
the
others.

Prices as low as
\$104⁹⁵



CHELSEA HARDWARE

110 SOUTH MAIN ST.

PHONE GR 9-6311

Ads
Taken
Till 5 p.m.
Tuesday

IT'S EASY TO
BUY-SELL-RENT-
HIRE & FIND WITH

WANT ADS

Just
Call
GR 5-3581

WANT ADS

The
Chelsea Standard

WANT AD RATES

PAID IN ADVANCE—All regular advertisements, 50 cents for 25 words or less, each insertion. Count each figure as a word. For more than 25 words add 2 cents per word for each insertion. "Blind" ads or box number add 50 extra per insertion. CHARGE RATES—Same as each in advance, with 15 cents bookkeeping charge if not paid before 5 p.m. Tuesday preceding publication. Pay in advance, send each or stamps and save 15 cents. DISPLAY WANT ADS—Rate, \$110 per column inch, single column width only, 8-point and 14-point light type. CARS OR TRUCKS OR MEMORIALS—Single paragraph style, \$1.00 per insertion for 50 words or less; 2 cents per word beyond 50 words. Minimum, 1 inch. COPY DEADLINE—5 p.m. Tuesday week of publication.

CAR RENTAL by the day, week-end, week or month. Full insurance coverage, low rates. Call Lyle Christwell at Palmer Motor Sales, GR 5-3271. 25tf

ALLSTATE
INSURANCE

AUTO - BOAT - COMMERCIAL
LIFE - HEALTH - HOME
LIABILITY
Phone Eves. or Week-ends for
N. H. MILES, Agent
GR 5-8334 44

SIDING SPECIALIST—Serving
Livingston and adjoining counties
since 1938. Alcoa aluminum siding
and other materials. Remodeling,
covering sills, roof overhang, trim.
Finest workmanship. No estimate
service charge. William Davis, Ph.
(313) 663-6685. 49

SAVE Big! Do your own rug and
upholstery cleaning with Blue
Lustre. Rent electric shampooer
\$1. Dancer's, Chelsea. 46

LEASE A

Vacation Special
For As Little As
\$116.00 Per Mo.

'70 Thunderbird\$187.00*
'70 LTD\$123.00
'70 Galaxie\$118.00
'70 Torino\$116.00
'70 Mustang\$117.00

Includes License and Maintenance.

OFFER ENDS JUNE 30

You may have these cars for 6
to 11 months. See us for all types
of renting or leasing of new cars.

PALMER FORD

Chelsea GR 5-3271

*Includes Air Conditioning plus
Sales Tax. x46

Power Equipment

—SIMPLICITY
—LAWN BOY
—JACOBSEN
—PROVEN
—BOLENS

The best buys in the top brands.
Easy Payments.

Special buys on 1969 models.

Chelsea Hardware

Phone GR 9-6311 46

'69 FORD—Good transportation,
\$50. See Bill at the Farmer's
Supply. x46

1965 BLACK CORVAIR convert-
ible. Excellent condition, new
tires. Call 475-2538 after 5 p.m.
x46

WANT ADS

BOARDING, trimming, training.
Town and Country Kennels,
Jackson Rd. at Baker. NO 3-7200.
7tf

Gem Travel Trailers
and Campers

PICK UP COVERS

4"\$100.00
26"\$179.00 and up

Triangle Sales

Chelsea 475-4302 40tf

Quality Evergreens

Spreading, Upright and Hicks
trees. Pyramid and Globe. Arbor
Vita, Pfitzer, Blue Spruce, Nor-
way and Crimson King Maples. All
State Inspected. Free estimates.

Faist's Evergreen
Nursery

11362 Trist Rd., Grass Lake, Mich.
Ph. 522-4688 51

FARMS

RESIDENTIAL
LAKE PROPERTY

for
QUALIFIED RELIABLE SALES
PERSONNEL
CONTACT

Carole Bell, 426-8892
Kathryn Smith, 426-5830
Janice Fouch, Saline, 429-4114
Wendel Fouch, Saline, 429-4114

YPSILANTI OFFICE
Arthur Kane, 482-6655
Virginia Oakes, 482-6655

Evinger Real Estate

426-3236
Dexter, Mich. 36tf

DOLL HOUSE

Immaculate inside and out, new
kitchen and carpeting; garden
space freshly mowed; within walk-
ing distance of shopping. 137 Bu-
chanan St., Chelsea. 46

BRICK BI-LEVEL

With lake rights; 3 bedrooms:
17x11, 17x15, 21x15 and a possi-
ble fourth, 13x15; 20x16 living
room with fireplace; 12x14 dining
area has two walls with Andersen
windows and view of nicely land-
scaped lot. Utility room, recreation
room, attached two-car garage; 20
minutes east of Chelsea. Under
\$30,000.

29 ACRES

With buildings. A very good house
with 30x40 concrete barn. Land
borders on Plum Orchard Creek in
Jackson County. 20 minutes north
and west of Chelsea. \$22,000.

40 ACRES

Mostly tillable with 4 acres of
woods and pond potential. 1320
foot road frontage. 10 miles west
of Chelsea. \$500/acre.

WILLIS REAL ESTATE

Grass Lake, Michigan
(517) 522-8121 46

GARAGE SALE

Dishes, bicycles, antiques, etc.

Saturday, May 9

Home of Jerry Boyd
19945 Old US-12
Chelsea

Proceeds go to Action Group
of First Methodist Church
x46

WANT ADS

WATKINS PRODUCTS—Complete
line famous spices, beauty aids,
home care items. Also Biodegrad-
able laundry and cleaning prod-
ucts. Delivered to your home. 428-
4107. x49

GARAGE SALE—Remington type-
writer, toys, clothing and knick-
knacks. 221 E. Middle St., Che-
sea. Phone 475-7087. x46

FOR SALE—4-room Case corn
planter, \$275; 4-bottom Case
plow, \$250. Both in good condi-
tion. Phone 475-2170 or 475-2613.
x47

Contractor Servicing
Chelsea, Dexter and
Manchester Areas

Complete Home Remodeling,
Inside and Outside

Specializing in extra living space,
recreation rooms, kitchens and
paneling. Installing all aluminum
products, 5" eavestroughs, custom-
made awnings, windows and doors,
aluminum siding in many selected
colors and styles.

Please Call

DALE COOK

Chelsea 475-8863 20tf

WORK SHOE

HEADQUARTERS

Famous Red Wing Brand
\$12.95 to \$26.95

Foster's Men's Wear

34tf

CLEAN BARGAINS

1963 Olds 88 4-dr hardtop\$495
1963 Pontiac Catalina Wagon \$695

USED CARS

1967 Chev Impala 2-dr hardtop
Super Sport\$1495
1967 Pontiac Catalina 2-dr. hardtop
vinyl top\$1495
1967 Chev Malibu Con., 4-speed\$1395

1967 Ford Galaxie 500 2-dr. hard-
top\$1295

1966 Buick LeSabre 4-dr. sedan
hardtop\$1295

1966 Buick LeSabre 4-dr. sedan
hardtop\$1195

1966 Plymouth Sport Fury 2-dr.
hardtop\$1195

1966 Pontiac Catalina Conv.\$1095

1966 Olds 88 4-dr. sedan\$1095

1965 Olds 88 2-dr. hardtop\$ 895

1965 Olds 88 4-dr. hardtop\$ 895

1965 Ford Station Wagon, auto
trans., power steering\$795

1965 Comet 2-dr., V-8, stick shift
.....\$495

1964 Falcon 2-dr.\$175

1962 Corvair, auto trans. (as is)
.....\$150

NOTICE

We have a good selection of new
cars in stock. Come out and
get a deal on one of these cars.

Sprague
Buick-Olds-Opel, Inc.

1500 S. Main St., Chelsea
Phone 475-8864

Evening 475-6271 or 475-8240
Open evenings by appointment.
46tf

STAN'S
WELDING SERVICE

—GAS and ARC—
No Job Too Big or Too Small
4711 DEXTER-PINCKNEY, RD.
Mon.-Fri., 9:00 - 2:00.
Saturdays, 9:00 - 5:00.

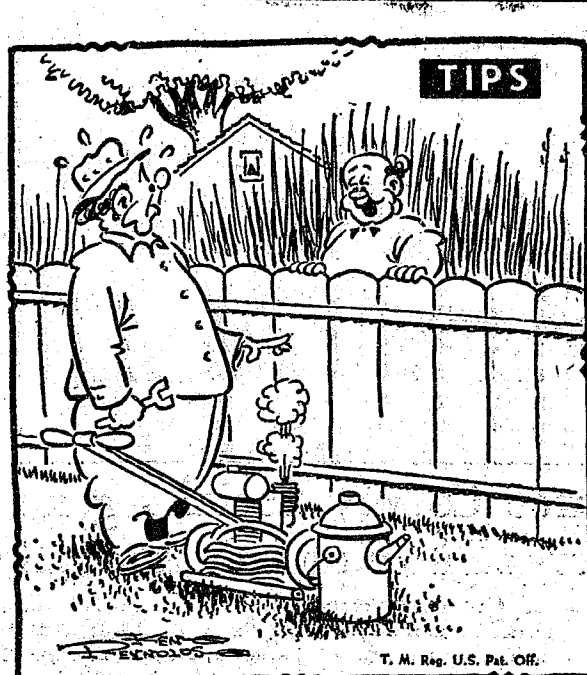
Phone 426-8879 x44tf

D. EDWARDS
& SON
Home Maintenance
Service

Vinyl or Aluminum
SIDING - WINDOWS
DOORS

Roofing - Roof Repair
— ALSO —
Building Maintenance
and Supplies

Phone Chelsea 479-4231
or Napoleon 536-4843



"I'm so glad you go one of those in the Standard Want Ads—
it's just what our neighborhood needs!"

WANT ADS

WANTED—Female companion to
live in with elderly couple. No
lifting. Lovely home. Salary, time
off. Write Box 124, Dexter, Mich.
References required. x46

Formal Wear

RENTAL SERVICE

Prom - Weddings - Special Events
6 different colors.

Foster's Men's Wear

2tf

Men Needed To Train

As Semi Drivers

Train NOW to drive semi tractor
trailers, local and over the road.
You can earn high wages after
short training. For application,
call 419-248-4053, or write Safety
Dept., United Systems, Inc., c/o
Duff Terminal Bldg., 215 City Park
Avenue, Toledo, Ohio 43602. Our
resident training will take place
with actual on the job type train-
ing, originating in Indianapolis,
Indiana. 46

FLOWER BULBS

—GLADS
—DAHLIA
—LILY
—GLOXINIA
—CLEMATIS
—CARNATION

PEAT
MILORGANITE
GARDEN FERTILIZER
PACKET & BULK SEEDS
ORTHO PRODUCTS

Chelsea Hardware

Phone GR 9-6311 46

REAL ESTATE

FOR SALE

LOCATED ON LAKE. — New 2-
bedroom home on 2 lots. This
home is all modern, oil heat. Must
be seen to appreciate.

55 ACRES—Approved for subdi-
vision.

LISTINGS

NEEDED

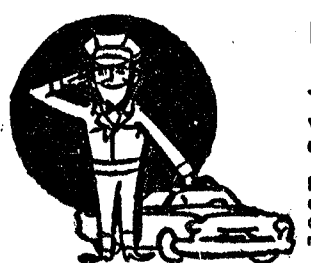
Kern Real Estate

616 S. Main St., Chelsea
Phone 475-8563. 46tf

KNAPP SHOES
For Cushion Comfort

APRIL SPECIALS
K-6 Farm Shoes
\$15.95
Dress Wing Tips
\$18.99

Robert Robbins
475-7282 42tf



PURE OIL PRODUCTS

JIM'S PURE SERVICE
PHONE 475-2822 501 SOUTH MAIN

WANT ADS

PIANO TUNING, Chelsea and area.
Facilities for reconditioning and
rebuilding. Used piano sales; re-
conditioned grands and verticals.
E. Eklund, 426-4425. 50tf

REAL ESTATE

Do you want a home or cottage on
a lake, a farm or country home,
a building site? We have them.

Eugene R. Young,

Broker

Phone 878-3792
Mary Allen, 879-3826
Virginia Visel, 426-4689 30tf

For Low Cost

Floor Covering

We have small and large pieces,
ends of rolls, etc., of linoleum
and carpeting at close-out prices.

Many sizes and colors to select
from.

MERKEL BROS.

USED TRACTOR TIRES—Large
inventory on hand. Also used
passenger - truck - grader tires.
Jackson Tire Brokers, M-106, Mu-
nith, Mich. Ph. 596-2925. 32tf

GOOD WILL

USED CARS

SPRING SPECIALS

'68 Chev. V-8\$1195
'68 Catalina 4-dr. sedan\$1795
'68 Plymouth 3-seat wagon\$1095
'68 Catalina 4-dr. sedan\$995
'68 Catalina 4-dr. hardtop\$995
'68 Chev. 4-dr. hardtop\$895
'68 Impala SS Conv.\$995
'68 Catalina 4-dr.\$495

Custom Slaughtering

By Appointment

Complete Food and Meat
Processing Service.

Frozen Food Lockers

Frigid Products

LOCKER DEPT.

Phone GR 5-8230 15tf

CHELSEA AREA HOMES

(1) 710 North Main St. M-52.
3-bedrooms, brick ranch. FHA
terms. \$34,000.

(2) 23 Chestnut, one blk. east of
M-52.
3-bedrooms, brick ranch.
\$36,000.

(3) 634 Flanders, 1 blk. west of
High school.
6-bedrooms, frame, 3 baths,
walk-out level basement.
\$45,000.

(4) 777 Freer corner Washington
3-bedrooms, Florida room, in-
door swimming pool, 2 1/2 baths,
close to Junior and Senior
High schools.

(5) 11011 Dexter-Chelsea Rd.
On one acre, 3-bedrooms, new
1,800 sq. ft. home with heated
garage under house.

Get directions to see these fine
homes from salesman at 710 North
Main St.

Eibler, Frisinger
& St. Amour
REALTORS

Phone 475-8681
Paul Frisinger, 475-2621
Herman Koenn, 475-2613
George Frisinger, 479-4161

Our New Summer Service Dept.
Hours are:
Mon. thru Fri. 7:30 a.m.-5 p.m.
Saturday - 7:30 a.m.-11:30 a.m.

FOR SALE

at 710 N. Main,

Chelsea

Thursday, Friday, and
Saturday, May 7-8-9

Chest of drawers, gold velvet chair,
kitchen table, white wool blanket
(nearly new), floor lamps, bed
spreads, small rugs, broiler oven,
vaporizer, table lamps, pictures,
wheelbarrow, dishes, 12" table
saw, tilting arbor with motor and
stand, three step ladders, a few
yard tools and many other items.
Blue silk formal, size 14, nearly
new winter coat with mink col-
lar, beaver jacket and hat, mink
fur piece. Moving to Florida. 46

NOTICE

Our New Summer Service Dept.
Hours are:
Mon. thru Fri. 7:30 a.m.-5 p.m.
Saturday - 7:30 a.m.-11:30 a.m.

Palmer Ford

Since April 1912
475-3271 x47

FOR SALE

WASHINGTON STREET, Brick
Ranch—2 or 3 bedroom, recrea-
tion room, fireplace, drapes, new
carpeting. All in excellent condi-
tion. Financing available.

121-ACRE FARM, 3-bedroom
house, oil furnace and bath.
Large barn and other outbuildings.
Price \$44,000, 29% down.

260-ACRE FARM. About 200 till-
able. Live stream and lake shore.
Excellent 3-bedroom house, good
barn. Price \$500 per acre.

10 ACRES, Sharon Twp. Possible
location for trailer.

25 LEVEL ACRES. Ideal for
homes.

NO RENTALS

R. D. Miller

REAL ESTATE

Real Estate Broker
GR 9-5892

H. W. Buss
phone 475-8910

Evelyn White
at 475-7661 after 5 p.m.

15775 Cavanaugh Lake Rd.
Chelsea, Mich.
Post Office Box 381

List your property with Miller—
fast, efficient service. 44tf

WANT ADS

REAL ESTATE

FOR SALE

4 LARGE BEDROOMS — Roomy
kitchen with built-in range and
oven. Gas heat. \$21,000. Terms
available.

SPOTLESS—2 bedrooms, separate
dining room. 1 1/2-car garage.
Aluminum siding. Ideal for a
couple. \$22,000.

BRICK COLONIAL—A home with
everything. 4 bedrooms, central
air conditioning, sauna, large
screened porch, scenic view, etc.
Washington St. address.

INVEST FOR THE FUTURE—
7 1/2 acres. Has village water,
electric and gas. 745 ft. of R.R.
frontage. 3-bedroom house to pro-
vide current income. \$30,000 with
terms.

CLARENCE WOOD
BROKER
646 Flanders St.
Phone 479-4603 42tf

PROMS - WEDDINGS

The New
EDWARDIAN TUXEDO
Also, Regular Black
or White Tux.

STRIETER'S
Men's Wear 47

FREE REGISTERED German
Shepherd. Good tempered, fine
with children, excellent watchdog.
2 1/2 years old. Ph. 475-2926. x44tf

A-1 USED CARS

'70 Ford LTD 4-door
'69 Mustang Mach I
'68 Chevrolet bus

'67 Ford Fairlane wagon
'67 VW 2-door
'67 Mustang hardtop
'67 Pontiac Tempest 2-door

'66 Ford station wagon
'66 Olds 88 - air conditioning
'66 Comet 4-door
'66 Chevrolet Impala hardtop
'66 Mustang hardtop
'66 Ford Fairlane wagon
'66 Ford station wagon
'66 Ford Fairlane wagon
'66 Ford 2-door
'66 Ford 4-door
'64 Ford convertible
'64 Ford 4-door
'63 Ford 4-door</

WANT ADS

EXPERIENCED PAINTER looking for part-time work interior or exterior. Very reasonable, free estimates. 475-7678. 17tf

CUSTOM BUILDING

and
REMODELING

Chelsea Associated
Builders, Inc.
Phone 475-8182 38tf

LITTLE FLOWER SHOP — Beautiful wood-fibre corsages for Mother's Day. Ph. GR 5-8508. x46
SIAMESE Sealpoint kittens, purebred, \$10 each. Ph. 475-7121. x46
FOR SALE — '65 Rambler American. Runs good. No rust. Good gas mileage. Make offer. HotPoint 40" electric stove for sale. Phone 475-8045. x46

Office Help Wanted

Clerk-typist in order dept. Must be able to type accurately and handle phone. Starting rate \$2.70 per hour plus fringe benefits. 40-hour week. Call Mrs. Miles for appointment. Phone 475-8619. 38tf

Fortune Industries,
Inc.
Chelsea-Dexter Rd. x44tf

HELP WANTED, Male—Mature, honest shift leader. Apply in person to Ed Green, 295 S. Main. Gallup-Silkworth Pump & Pantry, Chelsea. 45tf

AUCTION—Every Sunday beginning May 3, 1 p.m. Terms of sale, cash. Not responsible for accidents. New and used furniture. Open for retail sale and consignments, 9 a.m. to 6 p.m. daily. Butch Honnick, 120 N. Main St., Munnich, Mich., 596-2925. 45tf

FOR SALE—15-pc. set of Cook-Wear, new, radio, old Victrola, 8 gal. stone crock, rocking chair, washing machine, new pr. size 5 1/2 shoes, some odds and ends of dishes and 4 traverse curtain rods and pins, electric heater, ice cream freezer, large mirror, 1 room divider. Phone 475-8972. x46

WANT ADS

CARPET CLEANING by Burke, 12 cents a square foot, needs overnight to dry. In Chelsea call Merkel Brothers, 475-8321. 33tf

WORK SHOE HEADQUARTERS

Famous Red Wing Brand
\$12.95 to \$26.95

Foster's Men's Wear
34tf
609 PLYMOUTH Road Runner, 383, 4-speed, bucket seats, tape player, low mileage. \$2,295. Call after 5 p.m. 428-2831. 43tf

CLOGGED SEWER

Reynolds Sewer Service
We Clean Sewers Without Digging
Drains Cleaned Electrically
FREE ESTIMATES
2-YEAR GUARANTEE
Phone Ann Arbor NO 2-5277
"Sewer Cleaning is Our Business—Not a Sideshow" 38tf

XEROX COPIES made. First 20 at 20 cents each. Over 20, special prices. Merkel Brothers, 25tf
WANTED: Part-time work of any kind by 15-yr.-old boy. Call 475-2527. 46

PRINTING for the wedding—One of the largest assortments in this area. Album prices discounted 10%. John's Shop, call 475-7500. x45

AUCTION every Saturday, 7 p.m., 15600 Herman Rd., Manchester. New and used furniture, some antiques. Will sell consignments. Ph. 428-8842. 45tf

WANTED—Interior painting, wall washing, and wall papering jobs. Work guaranteed. Call (517) 788-6857 or (517) 787-4968. 47

ST. BARNABAS LUNCHEON—casserole, salad, roll, cookie. Thurs., May 14, 11 to 1:30. Tickets, \$1.50. Call 475-5301 or 475-5383. 47

HELP WANTED—Vegetable farm. Phone 475-7342, 6771 Peckins Rd., Manchester. 44tf

TRAVEL TRAILERS—13-ft. and up, 10x5 ft. trailers. John R. Jones Trailer Sales, Gregory, Mich. Phone 498-2655. 43tf

VACUUM CLEANERS—Electrolux, authorized sales and service. James Cox, Manchester. Ph. 428-2981 or 428-8221. 42tf

WANT ADS

ATTENTION Working mothers—Will care for your children in any home while you work. Mrs. Judy Boyer, 475-8055. 25tf

FOR SALE—Gas stove, good condition. May be seen at 421 McKinley St. Ph. 475-2884. 45tf

WANTED TO BUY—Household goods or estates. Ph. 428-3842. 45tf

FOR SALE—19' Deep Vee fiberglass boat with 95 h.p. Mercury motor. Real nice at \$1850. Call 475-6661. x46

PAINTING—Interior and exterior, brush and roller. Free estimates. Phone 475-7997. x47

WILL PLOW and fit your garden. Call 475-2508. Don Proctor. 49

Go-Mix Fuel
For All 2-Cycle Engines
White Gas
Available at
Gateway
Sports Centre, Inc. 2tf

FOR SALE—Wurlitzer organ, model 4040W. Phone 475-8363 after 4:30 p.m. x46

COUPLE WISHES TO RENT old farm house or house in country with two bedrooms and fireplace. In Chelsea-Manchester area. Ph. 662-6663. 43tf

LOST—Black Scottie, 1 year old. Best friend of one and one-half year old boy. 426-8050. Reward x46

FOR SALE—1963 Owens 13-ft. ski boat, 50 h.p. Mercury motor and trailer. 426-4989, after 5 p.m. x46

FOR SALE—1969 Ford XL. Private owner. Best offer. Ph. 475-7357. 47

FOR SALE—Mobile home, 1967. Parkwood, 12'x60', 2 bedrooms, unfurnished. Currently situated on rented 1/4 acre near Pinckney and may remain there if desired. Call 665-8089 after 5 p.m. x51

WANTED TO RENT—Professional couple with one child want to rent house in Chelsea-Dexter-Ann Arbor area for June 1 occupancy. Local references available. Phone Dave at 662-6815 days or 483-6441 after 6 p.m. x46

FOR SALE—Magnus Chord Organ, like new. Has bench, \$35. Ph. 475-7195. x46

HAMMOND ORGAN teachers wanted to teach in their own homes. Call Grinnell Brothers, Ann Arbor, 662-5667. 34tf

AIRLESS SPRAY PAINTING—Interior and exterior. Pinckney, 878-9246. 34tf

TREE REMOVAL DONE—Also buyers of standing timber and walnut trees. Chelsea 475-7631. 34tf

FOR SALE—1967 19-ft. Holiday Traveler Trailer. Like new, less than 1,000 miles. Self contained. \$12,800. Call Chelsea 475-8303. 46

FOR RENT—Attractive, partially furnished, second-floor apartment for married couple. No children, no pets. Ph. 479-5441 after 5 p.m. x45tf

FOR SALE—DeKalb sweet corn seed, alfalfa, Sudax, field corn. Phone 426-3565, Lloyd Boyce. x46

ROBERT PATRICK for home improvement, building and maintenance. Ph. 475-7460. 45tf

LOST—Puppy of mixed breed. Black and white with brown facial markings. Face looks like poodle. Answers to name "Melko". Child's pet. Lost from Madison Street, April 22. Reward. Phone 475-2750. 46

WANT ADS

SEE US for transit mixed concrete. Klump Bros. Gravel Co. Phone Chelsea 475-2830, 4920 Loveland Rd., Grass Lake, Mich. x40tf

GARDEN PLOWING and fitting. Phone 475-7557. Clarence Trinkle, 320 East St. 45tf

TOPSOIL, gravel, fill dirt, and bulldozing. Phone: 475-4381. x45

FOR SALE—2 trombones, used. King and new Conn. Phone: 475-8353 after 4 p.m. x45tf

FOR RENT—House trailer, Chelsea district, 1 or 2 adults, year-round occupancy. On 150-acre private estate with private lake. Hunting and fishing privileges. 479-7945. 45tf

FOR SALE—Meat rabbits, live or dressed. Also for pets. Ph. 479-5333. 46

FOR SALE—Strawberry plants. 20387 Old US-12. Phone 475-8366. Call any day except Saturday. Frederick Ewald. x47

ORGAN REPAIRS, piano tuning, hand instruments (rental, purchase plan available). Al Nalli Music, Chelsea Store. 475-7215. x47

FOR SALE—10' Brillion cultipacker. Jay Hopkins, phone 479-6052. x46

FOR SALE—White nurses "Clinic" shoes, size 10 narrow. Brand new, \$12. Phone 475-8576. x46

TOP SOIL
Sand - Gravel
Fill Dirt - Stone
Bulldozing
FELER & SONS TRUCKING
Phone 475-4381 x47

ANNUAL SPRING SALE—Sunday, May 10. Good registered and grade horses. Consignments welcome. White Birch Western Shop and Stable, 1935 S. Meridian Rd., Mason. x46

GOOD \$60 CAR—1959 Ford Galaxie, V-8, automatic, good tires, radio, and clean interior. Call evenings 971-0776. x46

FOR SALE—Used Armstrong flute, \$85. Call after 6 p.m. 475-7239. 46tf

FOR SALE—1962 copperstone drier, natural or bottled gas, \$30. Phone 475-2101. 46

TWO FREE PUPPIES, part Husky, part Shepherd. One black and one tan. 479-7484. 46

FREE—Terrier puppies. Ph. 475-8947. 46

WANTED TO RENT—With option to buy, float boat. Preferably located at North Lake at present. Call 475-8317, between 8:00 and 9:30. Mrs. J. Gilbert. 46

EXPERIENCED DRESSMAKER—Will make formal, also sports wear including bathing suits, hemming and alterations. Beverly Wengren. Phone 475-8768. 49

HORSE SHOEING—Experienced, corrective trimming and shoeing. Prompt service. Buck Myer, Howell, Phone 1-517-546-1510. 46

FOR SALE—One Paradox, A-1 condition, sleeps 6, with floor. Phone 475-8568. 47

FREE KITTENS—4 males, 1 female, to a good home. Phone 475-8066. 46

WANTED TO RENT—House with 2 or more bedrooms in Chelsea or vicinity. 2 adults, 2 children in college, away during school year. Call 475-8724. 47

EXTERIOR & INTERIOR PAINTING and hauling of any type. Reasonable rates. Free estimates. Grass Lake 522-4023. 48

FOR SALE—1968 Dodge Dart, 6-cyl. stick, 28,000 miles. Still under warranty, \$1,200. Ph. 479-4709. 46

FOUND—2 large black dogs. Phone 475-8708. 46

FOR SALE—2 formal, size 5, aqua; size 7, yellow. Both like new. Afternoons phone 475-8061. 46

CARRIER BOY WANTED for Detroit Free Press local route. Good earnings. Call or see Mr. Don Thomas, 215 Madison. Phone 475-8360. 46

FOR SALE—Packwagon wheel camper, has gas, electric, refrigerator, gas stove, with oven, sleeps six, also awning, boat carrier, and gas tank. 114 W. North St. 46

WANT ADS

BICYCLES—1 boys and 1 girls, both 20". Phone 475-8046. 46

FOR SALE—Pink formal, size 10. Also Gambles Farm King 4 h.p. roto-tiller. Call 475-8029. 46

FOR THE BEST DEAL in town see me for rods and reels this week. Randomly priced. Bycraft, Bait, 421 McKinley. 47

GARAGE SALE—Antique dishes, clothing, canning jars, miscellaneous. Friday and Saturday, May 8-9, 9-5 p.m. 14325 Jerusalem Rd. 1 1/2 miles east of Manchester Rd. 46

CARD OF THANKS
I would like to thank all of my friends for the cards, flowers, and gifts sent while I was in the hospital.
Donald Leggett.

Track Team
(Continued from page one)
Mike McGinn won the 880-yd. run in 2:09.7.

In the high hurdles, Jim Wojcicki was second with his 15.7 seconds, while Mitchell Heard was third.

Dave Buxton won the mile run in 4:55.9 and Dan Hoover was second.

Mark Collins captured second place in the 180-yd. dash in 10.5 seconds and Jeff Hughes was third.

Kim Aronson won the 440-yd. dash in 54.0 seconds.

Jim Wojcicki won the 180-yd. low hurdles in 20.5 seconds and Larry Gorton was second.

The two-mile run was won by George Cameron in 11:20 while Larry Gorton placed second in the 220-yd. dash with 22.9 seconds and Jeff Hughes placed third.

The mile relay team of Dan Hoover, Bruce Guster, Mike McGinn, and Kim Aronson won in 3:48.5.

The Chelsea trackmen will participate in the Cardinal Relays Saturday, May 9, at Michigan Center. Starting times are 4 p.m. and 7:30 p.m.

Tuesday, May 12, Chelsea will meet Dexter in a dual meet at home at 4 p.m.

Rustlers...
(Continued from page one)
February, the cattle thieves struck again.

No concern has been shown by the rustlers in handling the meat, and the butchering was done on a well-fertilized barnyard floor.

On one of the four earlier occasions, the thieves stripped and took with them only one huge steak, after slaughtering the animal. After going to the effort of cutting off the animal's feet and head, and rendering the remainder of the steer totally unuseable, the thieves left even the skin right there in the barnyard.

The Skjaerlund and authorities investigating the incidents are hard-pressed to understand the rustler's logic.

Anyone who may have information concerning the incidents, or who has been approached about purchasing bargain-priced fresh beef, of questionable origin, is asked to contact either the Livingston County Sheriff's Department, or to call the Skjaerlund residence, 426-3294. Although the Skjaerlund property lies mostly in Washtenaw county, the portion of the property on which the actual theft occurred is in Livingston county.

CLEAN SLATE
Six Tiger pitchers had perfect 1,000 fielding averages in 1969. The hurlers to go errorless were Bob Reed, Fred Scherman, Gary Taylor, Fred Lasher, Tom Timmerman and Daryl Patterson.

Telephone Your Club News
To GR 5-3581.

School Board Briefs

Chelsea school board members Irwin, Storey, Haselschwardt, Lewis, Hopkins, Superintendent Cameron, Business Manager Mills, Principals Lane, Conklin, Wojcicki, and Benedict, and Assistant Principal Fauble were present at the school board meeting Monday, May 4. Board members Powers and Koenig were absent.

Guests present included Mr. and Mrs. Paul Duckworth, Jesse Duckworth, Paul Terpstra, Sam Vogel, Ray Heller, Jerry Heller, Dennis Raymond, Walter Brauning, Barb Updegraff, DiAnn L'Roy, Paul Simon, Bob Schaffer, Jerry Straub, Karen Fish, Anne Morgan, Nicole Hire, Mary K. Weber, and Jon Schaffner.

The meeting was called to order at 8:15 p.m. by President Irwin.

Motion was made by Haselschwardt, supported by Storey, to adopt the agenda as amended. All ayes.

Minutes of the April 20 meeting were approved as read.

Motion was made by Hopkins, supported by Storey, to pay general fund bills of \$4,200.48. All ayes.

Motion made by Storey, supported by Hopkins, to allow the Chelsea Jaycee Auxiliary to sell identification bracelets and necklaces in the elementary school and junior high. All ayes.

Motion was made by Lewis, supported by Haselschwardt, to hold a special board of education meeting on June 8 in the Beach School following the Annual Election. All ayes.

Motion was made by Lewis, supported by Storey, to retain the firm of Ierman, Johnson & Hoffman to audit the school books for 1969-70.

Charles Powers will award the diplomas at graduation.

Trustee Storey, chairman of the Board Curriculum Committee, reported that the proposal from the Central Curriculum Committee to add a course in Music Theory and Literature in the 1970-71 course offerings, was not approved by the Board Curriculum Committee. However, they did recommend reviewing the proposal for the 1971-72 year.

Motion by Hopkins, supported by Lewis, was made to accept the recommendations of the Curriculum Committee.

President Irwin appointed the Curriculum Committee to meet with the Staff Committee to discuss the Music Theory and Literature proposal.

Trustee Storey also reported that the Policy Committee is reviewing all policies for possible updating and changes.

Trustee Haselschwardt reported that a Shared Facilities Committee meeting was held at 7 p.m. The 6th and 7th graders from St. Mary's will be attending Beach School full-time next year.

Motion by Haselschwardt, supported by Storey, to accept the bid of Humphries-Hanson, Inc., of Jackson, to resurface the high school track at a cost of \$2,880. All ayes.

Robert Benedict reported on a proposed new report card for use in 1970-71. He also reported to

Humble Beginnings
The first budget for the Michigan Agricultural Experiment Station (Feb. 26 to June 30, 1888) was \$15,000—less than 1,600 of what it is today.

The first experiment station director, Edwin Willits, reported that the station had spent the "fantastic" sum of \$2,172.65 for salaries. This paid five heads of departments, five assistants, a secretary-treasurer and a librarian.

Another \$3,000 was spent for buildings, and the rest spent for farm implements.

VERSATILE
Ike Brown played four positions for the Tigers in 1969—second base, shortstop, third base and the outfield.

YES
WE ARE MAKING
LONG-TERM FARM
REAL ESTATE
LOANS

SEE US
Federal
LAND BANK
Association

Ann Arbor, Mich. 48103
P. O. Box 1006
Ph. 769-2411 8645 Jackson Rd.

The Tigers open and close the 1970 home schedule with the Cleveland Indians.

EYES
EXAMINED
and
GLASSES
FITTED

For Appointment

Call GR 5-5431

A. A. PALMER, M.D.

110 E. Middle St.
Chelsea, Mich.

TODAY'S THOUGHT

By LOUIS BURGHARDT

A roving reporter directs questions to people on the street and publishes their answers in an opinion poll in a Mid-West newspaper. He recently asked several people, "Who is the greatest woman who ever lived?" The answers varied of course. One person chose Joan of Arc. Another chose Helen Keller. Another person selected Susan B. Anthony for her work in the emancipation of women. Madame Curie was chosen by another person. One young fellow chose Cleopatra! Three people selected Mrs. Eleanor Roosevelt. Strangely enough, not one of these people mentioned the person, who in our opinion, should have been selected instantly. Who is she?

This woman dedicates her life to the happiness of her family. She suffers most, dreams the most, sacrifices the most. She presides in her sphere of life like a goddess as she teaches the virtues of honesty, cleanliness of body and mind, work and faith in God by her example and counsel. In all these things, she is constant, dependable and unchangeable. She is seen everywhere, on your street and ours. Who is she? She is God's gift to mankind... MOTHER!... BURGHARDT FUNERAL HOME, 214 East Middle St., Chelsea, Mich. Phone GR 5-4141.

—SPECIALS—

FARMER PEET'S RE-PEETER

Bacon . . . 1-lb. pkg. 68c

12-OZ. CAN NIBLETS

Corn 2 for 41c

10-OZ. PKG. BIRDS EYE FROZEN

Peas 3 for 44c

8-OZ. PKG. BALLARD

Biscuits 3 for 25c

50-COUNT

Book Matches . 3 boxes 29c

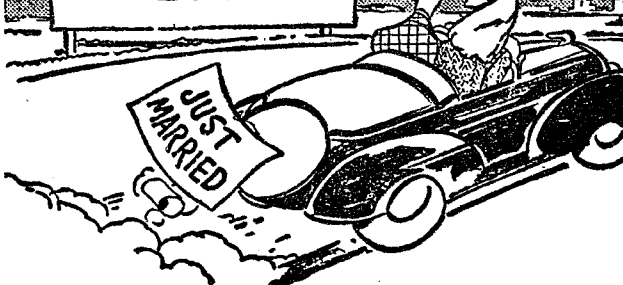
We have bulk and package garden seeds.

KUSTERER'S

FOOD MARKET

DIAL 475-2721

WE DELIVER

BANK AUTO
LOANS ARE
BEST!

ANY TRIP YOU MAKE will be more pleasant, if the car you drive is financed the Bank Way—economically, conveniently and with local people.

Now Paying the Highest Interest Rates
On Savings Accounts
Any Bank Can Pay

CHELSEA STATE BANK

Member Federal
Reserve System



Member Federal
Deposit Insurance Corp.

there's new fashion in our
new *Curlee*
Sport Coats & Blazers

You see it in the STYLE . . . from two and three button single breasted to new double breasted. From classic to shape.

You see it in the PATTERNS and COLORS . . . from rich plaids and stripes to newest solid colors.

You see it in the FABRICS . . . from all wools to polyester blends, from medium lightweights to featherlights.

... you see it all . . . here, now,
in our Curlee collection from

\$10.00

STRIETER'S MEN'S WEAR
"The Place To Go for Brands You Know"

**Mother's
Day
Special
May 9 - 10**

Reg. 35c
Sundaes
Buy 2
Get 1 Free

Shakes - Floats
Sodas
Reg. 35c
29c

HUMDINGER HOT DOGS 35c
HUMDINGER HAMBURGERS 45c

**LOG CABIN LUNCH
& DAIRY BAR**

6714 Clear Lake Rd. Waterloo

YES
WE ARE MAKING
LONG-TERM FARM
REAL ESTATE
LOANS

SEE US
Federal
LAND BANK
Association

Ann Arbor, Mich. 48103
P. O. Box 1006
Ph. 769-2411 8645 Jackson Rd.

Community Calendar



Ladies Auxiliary to VFW Post No. 4076 regular business meeting Monday, May 11 at 8 p.m., Rebekah Hall. Installation of officers.

Jerusalem Farm Bureau with Mrs. F. A. Beutler Thursday, May 14 at 8:30 p.m. Bring cookies for refreshment.

St. Mary Bake Sale, Saturday, May 9 at the K. of C. Hall, 10 a.m. to 1 p.m. adv46

Chelsea Community Farm Bureau Thursday, May 14 at Sylvan Township Hall at 8 p.m. Mr. and Mrs. Roy Kalmbach and Allen Broesamle, hosts.

Smorgasbord, Sunday, May 17, noon to 4 p.m., Dexter Masonic Temple. \$2.75, under 12, \$1.49

Cub Scout Pack 415 committee meeting Thursday, May 7 at 8 p.m., at home of Cas Case.

Boy Scout Troop 425 bake sale at Longworth Plating, Saturday, May 9, 10 a.m. to 2 p.m. adv46

Membership meeting of Kinder Klub Tuesday, May 12 at 8 p.m. at home of Mrs. Justice Marshall. Annual reports and installation of officers.

Faculty Wives planned pot-luck, Friday, May 15 at 6:30 p.m. in Home Ec. room of high school.

Senior Citizens, sewing every Tuesday afternoon at Korner House. Social Party, Thursday evening, May 7 at 7:30 Korner House with Mr. and Mrs. Vern List as host and hostess. Fun Night every Friday night, 7:30 p.m., at Korner House. Pot-luck dinner, May 13, 12 o'clock noon at Korner House. Bring table service and dish to pass.

Band camp applications and fees due May 19 and 20. Senior Citizens sewing every Tuesday afternoon at Korner House. Fun night every Friday night, 7:30 p.m., Korner House.

Boy Scout Troop 425 bake sale at Longworth Plating, Saturday, May 9, 10 a.m. to 2 p.m. adv46

Celebrate Spring at St. Barnabas luncheon: casseroles, salad, roll, cookie Thursday, May 14, 11 a.m. to 1:30 p.m. Tickets, \$1.50. Call 475-5801 or 479-5983. adv 47

Inquiries regarding the Chelsea blood bank may be directed to Harold Jones at Cavanaugh Lake in the event that Mrs. Dudley Holmes is unavailable.

Rachel Chapter of Congregational church May 13, 1 p.m., home of Betty Eder. Work on material aid projects.

Older Adult Group of the Methodist church, with XYZ's of St. Paul church as guests, Saturday, May 16, 12:30 p.m. Pot-luck dinner. Bring own table service and dish to pass.

Chelsea Band Boosters, Thursday, May 14, 8 p.m., at high school band room.

Rogers Corners Farm Bureau, Friday, May 8 at 8:30 p.m., at home of John Niehaus, 3590 Fletcher Rd.

Francisco Church Rummage Sale at Sylvan Town Hall on May 15-16. Hours: 9-9, Friday, May 15 and 9-12 on Saturday, May 16. adv47

Regular meeting of Herbert J. McKune Post No. 31 Thursday, May 7 at 8 p.m. at the Legion Home, Cavanaugh Lake.

Modern Mothers Child Study Club Monday, May 11 at 8 p.m. at the home of Mrs. Paul Weber. Installation of officers and games.

Senior Citizens Fun Night every Friday night at Korner House 7:30 p.m.

Social party, Thursday, May 7 at 7:30 p.m., Korner House.

Limaneers with Mrs. Earl Whitney Thursday, May 7, at 12:30 p.m.

Senior Citizens are serving every Tuesday afternoon at Korner House. Fun night at Korner House, every Friday, 7:30 p.m.

American Legion and Auxiliary hospital equipment available by contacting either Mr. or Mrs. Eugene Martin, at 475-5887 after 4 p.m.

TOPS Club at library. Wednesday afternoon group, 12:30 p.m. For information call 475-2592. Thursday evening group, 7 p.m. For information call 475-8720.

ARMY ENDS WATCH

The Pentagon has released a statement that the Army will no longer keep tabs on peaceful demonstrations or publish a list of individuals who "might be involved." The American Civil Liberties Union filed a suit against the Army recently asking the Federal Court to stop the practice.

DEATHS

Robert M. Crawford Dies Suddenly Monday After Launching Sailboat

Robert M. Crawford, 53, of 150 Cavanaugh Lake Rd., founder of the Airway Insurance group, died Monday near Monroe.

Mr. Crawford, who had just recently moved from Ann Arbor, died at a marina on Lake Erie. He was stricken after launching a sailboat.

Mr. Crawford founded the Airway Insurance group which includes Airway Underwriters of Ann Arbor and Airway Casualty Co. of San Antonio, Tex. He served as president of the Airway organization and executive vice-president of the National Aero Club, a nation-wide association of aircraft owners.

He was born in Wamego, Kan., May 3, 1917, son of John and Nell Crawford. On Sept. 21, 1940, he married the former Marjorie Cross. In addition to his widow, his survivors include three daughters, Mrs. Henry (Jane) Gormain of Norfolk, Va., Mary, a student at the University of Arizona, Tucson, and Ruth, a student at Alma College.

Mr. Crawford was graduated magna cum laude from the University of Southern California in 1938. He was a member of Phi Beta Kappa and a Rhodes Scholar candidate. He received his law degree from the University of Michigan in 1949.

During World War II he served as a lieutenant in the U. S. Navy and captained two different vessels during the war years.

He was a member of LPBA (Lawyers Pilots), American Bar Association, Washtenaw County Bar, and Calvary Presbyterian church of Ann Arbor.

Memorial services are scheduled for 2 p.m. Thursday, May 7, at Westminster Presbyterian church of Ann Arbor. Memorial contributions may be made to the St. Joseph Mercy Hospital Cancer Fund in care of Dr. John C. Nixon.

BIRTHS

A daughter, Jennifer Ruth, April 10 to Dr. and Mrs. Richard K. Borton, 315 Garfield St.

A son, Ernest Michael, Friday, May 1 to Mr. and Mrs. Ernest L. Cameron.

A son, Shane Anthony, Saturday, May 2, to Mr. and Mrs. Tony L. Keizer.

A son, Patrick Allyn, Sunday, May 3, to Mr. and Mrs. John P. Beemer, of Grass Lake.

Subscribe today to The Standard!



CARNIVAL CLOWNS: Three members of Chelsea High's Student Council show off the gigantic stuffed animals that they auctioned off following the Queen Contest at the Nickel Carnival Saturday, May 2.

Council Briefs

(Continued from page one)

Priority To Be Exercised by the Village Administrator as presented.

A motion was made and approved to allow Henry Merkel, Jr., to withdraw his offer pertaining to the widening of Taylor Lane.

A motion was made and approved authorizing the village administrator to direct the firm of Cummins & Barnard, electrical engineers, to proceed with a study of electrical rates for the Electric & Water Department.

A summary of the Fire Department activity for the month of April was read.

A summary of the Police Department activity for the month of April was read.

A motion was made and approved authorizing the clerk to issue checks in payment of bills as submitted.

A motion was made and approved to adjourn.

Michigan Gas Tax Lower Than Most

Thirty-three states have a higher state gas tax than Michigan, the State Highway Commission reports.

Michigan and 11 other states collect six cents a gallon. Five cents are collected by Illinois, Kansas, Missouri, Texas, and Wyoming.

States collecting six cents are Connecticut, Idaho, Indiana, Michigan, Minnesota, Nevada, New Jersey, New York, North Dakota, Oregon, South Dakota and Utah.

It's well to remember that neither wealth nor position makes a gentleman.



Married Male Driver

Your A-O man will save you money on your car insurance. No surcharge or higher rate. See your A-O man — he's all out for you.

A. D. MAYER AGENCY, INC.

"Your Protection Is Our Business"

Phone 479-5061

115 Park St. Chelsea

Auto-Owners Insurance Company
Home office of Auto-Owners Insurance Company

Michael Welch Killed by Train Tuesday Night

The entanglement of a blue Mustang with a speeding Penn Central railroad train just before Midnight Tuesday, May 5 resulted in the death of Michael E. Welch, 21, of 8105 Main St., Dexter, the son of Mr. and Mrs. Leslie L. Welch, of 5640 Jackson Rd., Scio township.

Officers of the Washtenaw County Sheriff's Department said the youth apparently tried unsuccessfully to race a train at the crossing near the intersection of Zeeb Rd. and Huron River Dr.

Following the collision, Welch's car was dragged some 150 feet by the train.

Dr. W. R. Kemp of Dexter was the Medical Examiner called to the scene.

Telephone Your Club News To GR 5-3581.

MSU Had Nation's First Horticulture Lab

The first distinctive horticulture laboratory in the country was established at Michigan Agricultural College (MAC) by Liberty Hyde Bailey.

MAC is now Michigan State University, and the laboratories of Agricultural Experiment Station have been extended to several locations throughout the campus and to MSU substations at South Haven, Sodus, Fennerville, Graham and Laingsburg.

Conducting some of the first research of this kind in the world, Bailey tested the effect of chemicals on seed's germination, selected blueberry bushes and in many other ways aided the development of Michigan's important food industry.

SELF-SACRIFICING

Tiger Pitcher Denny McLain tied for the American League lead in sacrifice hits in 1969. He and Paul Blair of the Orioles had 13 each.

Traffic Toll Hits All-Time High

Michigan's traffic toll in 1969 was the worst in its history, with 2,487 persons killed and 175,400 others injured in 331,223 accidents, all record high totals, according to the State Police traffic division final figures.

Compared with 1968, deaths were up 95 or four percent, injuries increased 14,987 or six percent, and accidents rose by 25,728 or eight percent. Previous records for deaths and injuries were the 1968 totals respectively of 2,392 and 160,417 while the previous high accident mark was 310,598 set in 1965.

The death toll was the sixth in a row and the ninth since records began in 1933 to exceed the 2,000 level.

Michigan's economic loss resulting from traffic accidents approximated half a billion dollars for 1969, up 7.3 percent from \$466 millions the year before.

SPECIAL

thru Wednesday, May 13, 1970

BRAZIER Burger Deluxe & Shake

\$1.09

Home of fine Brazier foods.



901 S. MAIN ST., CHELSEA PHONE 475-2677

WE AT CHELSEA LUMBER CO. THANK YOU FOR THE SUCCESS OF OUR OPEN HOUSE

Following Is A List of the PRIZE WINNERS

- | | | |
|----------------------|---------------------|---------------------|
| Arden Mushbach | Ross Scholtens | Don Johnston |
| Harry Schneider | Linda Fulcher | Ethel Rundon |
| Dahue Riker | F. Schroeter | Lee Mitchell |
| Glen Bennett | Ken Bucholz | John Fulcher |
| R. H. Yost | H. H. Williams | Ed Shippy |
| Mrs. Alfred Lindauer | Mrs. A. J. Hale | Sudie Hoffman |
| Bill Aldrich | Charles Trinkle | Diane Brockway |
| David Baldwin | Mrs. Winifred Wyatt | Edwin Minix |
| Bob Schaeffer | Wm. Blewett | Mildred Collyer |
| Don Arnett | Gary Sweet | Kelly Quigg |
| Richard Doletzky | Paul Minix | Gail Mohn |
| Katherine Minix | Robert Abdon | Paul Hoffman |
| Donnie Fletcher | Peter Jaskot | Jay Curry |
| Mrs. Roy Kalmbach | Jean Williams | Sandy Knickerbocker |
| Glen Williamson | Tom Dmoch | Ron Kiel |
| Mrs. William Harvey | Lillian Sanderson | Mrs. Warren McGuire |
| O. R. Snyder | Bill Watkins | Bruce Budreau |
| Joe Marentette | Edna Sweet | Arlene Grau |
| Frieda Bommer | Arthur Allen | |

Again, May We Say, Thank You, and Hope You Will Stop in Again Soon!

GAMBLES

Spring Best Buys

GREAT RIDER BUY!

Rugged Briggs & Stratton Rear Engine



3 Forward Speeds, Reverse

5-HP, 25-Inch 'Greenkeeper' Riding Rotary Mower

Use Our Budget Payment Plan

\$249

Reg. \$279

Golf cart style—mows your lawn golf-course smooth! 1 lever adjusts cutting height. Blade clutch. Chain drive with differential and clutch-brake pedal. Easy recoil-starting Briggs & Stratton engine at rear for traction, visibility! 36-5077

COMPACT! Priced Low!

3 Forward Speeds and Reverse

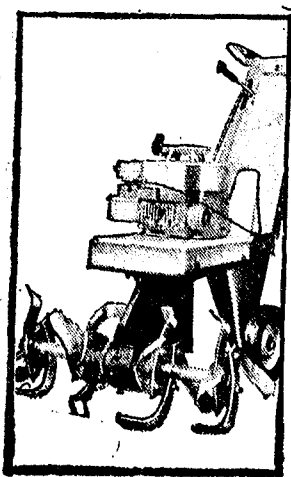


8-HP, 30-Inch 'Superide' Twin Blade Rotary Mower

Use Our Budget Payment Plan

\$399

Easy tractor-style handling at this low price! Differential slows inside wheel on turns, resists, scuffing lawn. 30" twin blade floating deck has 1-lever height adjustment. Clutch/brake pedal. Recoil-starting Briggs & Stratton engine. 36-5078

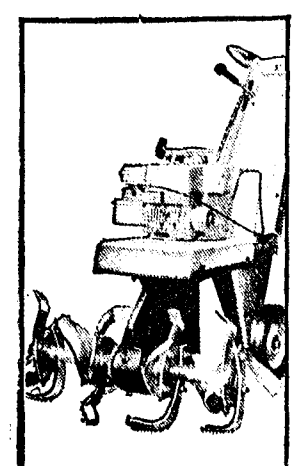


3 1/2-HP 'Soil King' Rotary Tiller with Reverse

Use Your Credit

\$139.95

Low priced, easy handling lightweight, Briggs & Stratton engine drives 6-unbreakable 12" tines. New power takeoff belt reverse. 36-5080



'Power Master' 5-HP Tiller with Power Reverse

Use Your Credit

\$159.95

Vertical Briggs and Stratton engine drives tines in a path 26" wide, 0-8" deep. Power takeoff belt operated reverse. Timken® bearings. 36-5084

See Our Complete Line of Power Mowers, Lawn Tractors Garden Tillers

AGRICULTURE IN ACTION

by GARY A. KLEINHENN
Michigan Farm Bureau

★ The Tasty Twenty

If you are a nut about statistics, the Michigan Department of Agriculture publication "Michigan Food Facts" is chuck full of them. Only one out of 100 Michigan citizens operates a farm today, but interestingly enough, about 27 percent of the people of this state derive some part of their income from agriculture.

Because of the efficiencies in farm operation, Michigan's vast crop production is achieved on the smallest number of acres since 1880. Here in the "Water Wonderland" agriculture is the second largest source of income in Michigan, next to the state's automobile industry. Of course, nationally agriculture is far and away the largest. Our state, among the 50 states is fifth or higher among the states in the production of more than 20 foods.

No one raises more in dry edible beans, red tart cherries, eastern white winter wheat. Furthermore, we're number one in raising cucumbers for pickles, and hothouse rhubarb.

And we are second (we try harder) in blueberries, sweet cherries and prune-plums.

Michigan agriculture is third in carrots, celery, spearmint, and fourth in apples, asparagus, pears, maple syrup, strawberries and red beets. Taking the fifth spot with the production of snap beans (processing), cauliflower, cottage cheese, tomatoes (fresh), grapes and beet sugar. Michigan's diversified farming industry doesn't stop here, we're sixth in cantaloupe, sweet corn, peppermint and onions. We hold three categories in the seventh slot which are milk, ice cream and green peppers.

Honey has a spot of its own, as number eight in the nation, while cabbage heads are 9th—no pun intended.

Tenth place is accredited to snap beans (fresh), slicer cucumbers (fresh), and field corn. The 11th spot is head lettuce, potatoes and butter, while 12th is peaches.

Thirteenth place is held by the twosome of wheat and American cheese, while we can't claim any commodity in 14th or 15th place. In 16th place are eggs, followed by wine in the 17th spot. The next two spots remain unclaimed while Michigan chickens pluck the 20th position in commodity standings among the entire 50 states.

BARREL O'MAIL

Capetown—German sailors sealed their mail in a barrel and threw it overboard in hopes letters would reach family and friends while they were on a three week non-stop voyage. Seven days later the barrel was found. Inside was a note, money and two bottles of liquor asking the finder to mail the letters and enjoy the liquor for their trouble.

The best advice for modern young people, facing all sorts of propaganda, is the single, simple word: Think.

Want corn for thick planting?

PIONEER's got it!

Want corn to combat stalk lodging?

PIONEER's got it!

Want corn for your soil type?

PIONEER's got it!

Want corn for combine harvesting?

PIONEER's got it!

Whatever maturity of corn you want, Pioneer offers varieties with features that match your farm and way of farming. Make Pioneer your corn this year.

See or Call

**BLAESS
ELEVATOR CO.**

Div. of Larrowe Feed Co.
Ph. GR 9-6511 Chelsea, Mich.

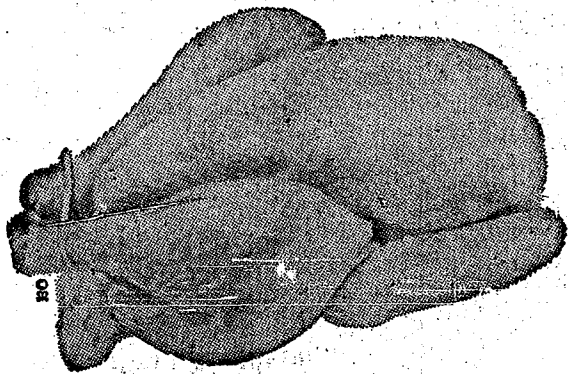


PIONEER.
BRAND
SEED CORN

THE SUPERMARKET THAT'S JUST A LITTLE BIT BETTER

Stop & Shop

14901 Old U.S.-12
Corner at M-52
Chelsea



THE KNOW HOW OF INTELLIGENT MEAT BUYING IS REALLY THE 'KNOW WHERE'

Our customers have learned to depend on the outstanding quality of Stop & Shop meats — unflinching satisfaction with every cut they purchase. The finest quality, together with the expertise of our meat cutting experts, makes an unbeatable combination.

Prices Effective Wednesday, May 6
through Tuesday, May 12, 1970.

"TRIPLE R FARMS" FRESH DRESSED

FRYERS

Grade A
WHOLE
FRYER

33^c lb.

Lean, Tender, Boston Butt

Pork Roast 59^c lb.

Lean, Tender, Boneless and Cubed

Breaded Pork Cutlets 89^c lb.

"Triple R Farms" Michigan Grade 1

Sliced Bologna 59^c lb.

Lean, Tender, Boneless and Cubed

Breaded Veal Cutlets 99^c lb.

"Triple R Farms" Michigan Grade 1

Liver Sausage 69^c lb.

"Triple R Farms"

FRESH DRESSED

CHICKEN LEGS

BREASTS 59^c lb.

Lean, Tender

Pork Chops 99^c lb.

Stop & Shop's All American Beef, Fresh, Lean

Hamburger 65^c lb.

Lean, Tender, Delicious

Cube Steaks \$1³⁹ lb.

Stop & Shop's Homemade

Pork Sausage 69^c lb.

Country Style

Ribs 79^c lb.

McDonald's Fresh, Delicious

COTTAGE CHEESE 19^c

1-Lb.
Carton

Domino Pure Granulated

SUGAR 49^c

WITH COUPON
BELOW

5-Lb.
Bag



McDonald's 2% Low Fat

FRESH MILK

Gallon
Carton **79^c**

Treesweet Fresh Frozen

ORANGE JUICE

6 6-Oz.
Cans **89^c**

Campbell's

TOMATO SOUP

10 3/4-Oz.
Can **10^c**

Meadowdale

POP - 8 Delicious Flavors

1-Pt. Non-Returnable
Bottle **10^c**

Our Favorite

SWEET PEAS

1-Lb., 1-Oz.
Can **15^c**

Mrs. Owens' Old Fashioned

Strawberry PRESERVES

2-Lb.
Jar **69^c**

Finest

PORK & BEANS

2-Lb., 5-Oz.
Can **29^c**

Kraft's Velveeta

CHEESE SPREAD

Plain or
Pimento 2-Lb.
Box **99^c**

Blue Ribbon

MARGARINE

In 1/4-Lb.
Prints

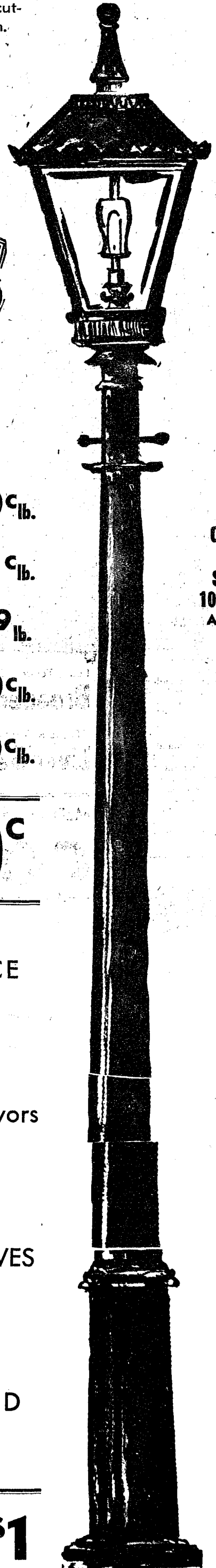
5 Lbs. \$1

WE
RESERVE
THE
RIGHT
TO
LIMIT
QUANTITIES

For Your
Convenience
**OPEN
SUNDAY**
10 a.m. - 6 p.m.
All Sale Prices
Effective
Sundays

Sorry,
No Sales
To Dealers

STORE HOURS:
Monday, Tuesday,
Wednesday
9 a.m. - 6 p.m.
Thursday, Friday
9 a.m. - 9 p.m.
Saturday
8 a.m. - 7 p.m.
Sunday
10 a.m. - 6 p.m.



Today's Answer

BLAESS ELEVATOR CO.
DIV. OF LARROWE FEED COMPANY
PHONE 479-6511 CHELSEA, MICH.

New Pledge Card Now Available for Organ Donors

A new method of pledging kidneys or other organs for scientific purposes has been announced by William J. Oliver, M.D., president of the Kidney Foundation of Michigan.

Under the Uniform Anatomical Gift act, now enacted in Michigan and 43 other states, persons desiring to leave their kidneys to save the lives of others after their own death may sign a new "Uniform Donor Card." Approved by the Scientific Advisory Boards of the National Kidney Foundation and the state organization, the cards are available by writing to the Foundation at 3378 Washtenaw Ave., Ann Arbor, 48104.

Dr. Oliver said that the new pledge card complies with all legal requirements when carried on the person, and is acceptable documentary proof of the prospective donor's intentions.

More than 5,000 Michigan residents already have pledged their kidneys and have been issued "kidney donor" stickers to apply to their driver licenses. New forms will be sent to replace cards they now have, so that they may designate other organs or their entire bodies for donation.

"Instead of many cards of a variety of purposes," said Dr. Oliver, "for eyes, tissues, heart, lungs, kidneys, etc., now there is one card which can mean life for some other man, woman or child. Instead of a different card for each state, impractical for our mobile population, there is now one card good in a total of 44 states."

COIN FOR EISENHOWER?

Washington—Three Republican Congressmen and the Treasury Department have worked out an agreement to produce a dollar coin in honor of the late President Dwight D. Eisenhower. If approved, by both Senate and House, the Mint will produce 150 million uncirculated dollar coins containing 40 percent silver.

DRIVER ELECTRIC

Licensed
Electrical Contractor
CALL JIM
at 426-4936
9920 JOY RD., DEXTER
No Job Too Small

NOTICE

We are happy to announce that Arthur Dolezky of Dexter has joined our sales staff.

EVINGER REAL ESTATE
PHONE 426-3286 DEXTER, MICH.



MUZZLE-LOADERS REHEARSE: Three of the 20 members of the National Muzzle Loader Rifle Association who will be among the 200 cast members in the Re-enactment of the Massacre at Fort Michilimackinac, scheduled for May 29, 30, 31 at Mackinaw City, rehearse with two British officers. The muzzle-loading rifles are made with loving care by

members of the Pine River Long-riflemen of the Midland area and are valued at \$500-\$700 each. Co-Chairmen Raymond Desy, left, and Kenneth Teysen, right, Frank Stevens, left rear, of Mount Pleasant and Robert Tracy of Mackinac City, watch Neil Jenkins of Midland demonstrate his weapon. 15,000-20,000 people are expected at the event this year.

Servicemen's Corner

Sgt. Philip Cross Awarded Air Medal

With U. S. Combat Air Force, Vietnam—U. S. Air Force Staff Sergeant Philip J. Cross, son of Mr. and Mrs. Leonard E. Cross of 139 Dewey St., Chelsea, Mich., has been decorated with his second and third awards of the Air Medal at Phan Rang AB, Vietnam, for air action in Southeast Asia. Sergeant Cross, an aircraft loadmaster assigned at Phan Rang, was cited for his outstanding airmanship and courage on successful and important missions completed under hazardous conditions.

He serves with the 310th Tactical Airlift Squadron, a unit of the Pacific Air Force, headquarters for air operations in Southeast Asia, the Far East and the Pacific area.

The only way to protect yourself against the fast-talker is calm thinking and slow action.

Mackinaw City Preparing for Fort Massacre Re-enactment

Mackinaw City—This village on the Straits of Mackinac is already bracing for the 20,000 people expected to view the annual Re-enactment of the Massacre at Fort Michilimackinac, scheduled for Memorial Day Week-end, May 29, 30, and 31.

A 200-member cast will dramatize the events of two centuries ago when the famous bagatway (lacrosse) game enabled Indians to gain entrance to the fort. The historical spectacle, now in its eighth season as a Memorial Day Week-end attraction, has lured viewers from every part of the United States. Seating capacity is being doubled this year.

The three days will be lived by other events. Members of the National Muzzle Loader Rifle Association will demonstrate their authentic weapons in marksmanship contests. They also participate in one episode of the drama which allows them to demonstrate the loading and firing of their guns as the Indians (and audience) are startled by the blasts.

The "Indians," local school students whose preparation for the re-enactment is part of their study of Michigan history, dance the old ceremonial dances for tourists. 18th century costumes are worn by store clerks. A grand parade is under the honorary direction of a visiting celebrity. Governors, congressmen, legislators, are often guests.

Fort Michilimackinac, near the south end of the Mackinac Bridge, was built by the French in 1715 and occupied by several hundred

men, women, children, soldiers, priests, trappers and traders. In 1750 it was captured by the British but many French sympathizers remained and were tolerated.

In 1763, as one result of Chief Pontiac's plan to capture all Great Lakes area British outposts, about 400 Indians gathered near the fort and announced their intention of playing inter-tribal games of bagatway. They seemed harmless. The British garrison watched, not noticing that blanket-wrapped squaws were near the open gates. On the final day of the games, June 2, 1763, the braves maneuvered the ball closer and closer to the gate. At a signal it was knocked directly toward it. Dashing after the ball, the braves grabbed weapons the squaws had hidden under their robes, entered the fort and quickly killed or captured most of the British. The French inhabitants were not harmed.

Although the British re-occupied the fort a year later, they knew its mainland location would not withstand another attack. In 1780-81 they moved to Mackinac Island, building Fort Mackinac which today is a popular tourist attraction on the high bluff overlooking the historic village and harbor.

In 1959 the State of Michigan, Mackinac Island State Park Commission, in co-operation with Michigan State University and under the direction of historian Dr. Eugene T. Petersen began excavating the site of the decayed Fort Michilimackinac. Archaeologists found the remains of wooden fort walls, foundations of buildings, and thousands of artifacts. Comparing their finds with historical records the Commission and University directed a gradual rebuilding of the fortifications and, up to now, nine of the most important buildings. Archaeologists are still digging. This summer carpenters, using tools of long ago and dressed in work clothes of the 1700's, will be part of the living display as they finish the priest's house and forge-shop started last year. Artists and exhibit builders are adding to the already extensive museum displays. 250,000 people visited the Fort in 1969, and more are expected in 1970.

In 1963 the Mackinac Bridge Authority, eyeing the inevitable increases in bridge-traffic due to the increased number of visitors to the Straits area, spearheaded an all-out effort by Mackinaw City civic leaders in staging the first series of Memorial Day Week-end Massacre re-enactments. The hour-long performances are colored with the bright blue uniforms of French troops and the red of the British. The entire history of the fort is narrated and re-enacted with its suspenseful, climactic hair-raising bagatway game and massacre. Under the blue skies, the fort comes alive with happenings of the 1700's and audiences are carried back to those days even though the modern Mackinac Bridge is in the background.

Co-Chairmen Raymond Desy and Kenneth Teysen, local business men who are also British Officers

Most Drivers Favor Compulsory Auto Inspection

Lansing—A compulsory annual inspection of all automobiles by police and a written test for all drivers at the time of license renewal is favored overwhelmingly in a poll of Michigan motorists, Secretary of State James M. Hare said recently.

The survey, Hare said, was conducted by the Department of State with the assistance of the University of Michigan's Highway Safety Research Institute during a three-month period. A total of 5,365 drivers voluntarily responded to the poll at 16 Department branch offices in 14 counties.

The poll was devised to sound out the attitudes and opinions of motorists toward certain laws and safe driving practices.

"I must admit that some of the attitudes and opinions expressed by a majority of those polled were both surprising and pleasing," Hare said. "In general, the answers reflect a very responsible outlook toward traffic safety by Michigan drivers."

"I was particularly pleased by the 89 percent approval of a compulsory motor vehicle inspection and by the 64 percent endorsement of a written test for drivers renewing their licenses," Hare said.

FRIENDLY CONFINES

The Tigers out-homered every opposing American League club in Tiger Stadium in 1969 except the Baltimore Orioles and Washington Senators.

In the cast, state that "nearly everyone in town is involved."

"It's amazing, the way the village has worked together to build this drama," says Desy. "At first many people, though willing to help, were reluctant to appear in the cast. Now all the adult actors are leading citizens who would be disappointed if they did not play the same roles each year. National attention is focused on this village each Memorial Day Week-end and thousands of tourists are attracted to the Straits of Mackinac area throughout the summer. We try to make them want to keep on coming."

Mackinac Bridge figures show that in the three days of last Memorial Day Week-end 116,000 people in 32,000 vehicles passed through Mackinaw City before or after crossing the span. Thousands more were present in Mackinaw City, but not counted. The drama has also helped lengthen the tourist season. This year, for the first time, Fort Michilimackinac will open for the season May 16.

Red Cross Seeks Youth Volunteers For Hospital Help

Young people for summer volunteer service in hospitals are now being recruited by the Washtenaw County Chapter of the American Red Cross, Donald Peak, executive director, announced today. Co-operating hospitals are St. Joseph Mercy Hospital, Veterans, and Washtenaw County Medical Care Facility.

To serve effectively each Red Cross Youth Hospital Volunteer receives intensive classroom and on the job training. The first meeting will be held Saturday, May 16, 9 a.m. to 2 p.m. at the Red Cross Operations Center, 2729 Packard Rd., Ann Arbor. Any student who will be age 14 by July 1 is eligible. Applications for this service may be obtained by calling the Red Cross.

Red Cross Youth Hospital Volunteers successfully handle such responsibilities as assisting a new patient to the correct ward or room, assisting in occupational therapy and recreation, assisting patients in the dining room, carrying trays for disabled patients, distributing mail, handling in-hospital errands and messenger service, as well as various necessary tasks. Service is rendered only to the general medical and surgical patients, excluding the isolated, the acute psychotic, and the acutely ill patients. Because of the important tasks Red Cross Youth Hospital Volunteers are called upon to accept and for their protection, each Youth Volunteer must have a current physician's certificate and parental consent form.

Further information can be obtained by calling the Red Cross Operations Center, 971-5300.

Servicemen's Corner

Michael Worden Promoted By Army

Fr. Richardson, Alaska—Michael F. Worden, son of Mr. and Mrs. Fred A. Worden, 4221 E. Cedar Lake Dr., Chelsea, Mich., was recently promoted to Army specialist five while serving with the 69th General Support Group at Ft. Richardson, Alaska.

A senior heavy truck driver with the group's 521st Transportation Company, he entered the Army in March 1968 and completed basic training at Ft. Knox, Ky. He was last stationed at Ft. McClellan, Ala.

The specialist's wife, Janet, is with him in Alaska.

Pioneer Scientists

The first Michigan Agricultural Experiment Station Staff included six scientists. Today more than 250 Michigan State University staff members are carrying out experiment station projects.

Those first six scientists were: Robert C. Kedzie, chemist; Albert J. Cook, zoologist; William J. Beal, botanist; Samuel Johnson, agriculturist; E. A. A. Grange, veterinarian; and Liberty Hyde Bailey, horticulturist.

Telephone Your Club News To GR 5-3581.

Subscribe today to The Standard!



AUTOMOBILE CLUB OF MICHIGAN
Membership and Insurance
JACK SCHLAFF
Ann Arbor 769-5000 Dexter 426-8593

Sutan + atrazine lets your corn grow free

Your corn grows free from all major grasses and weeds. Free from the growth stress that weeds cause. Free to develop strong, vigorous roots that reach down to make maximum use of soil nutrients and moisture. Free from extra cultivations, possible root damage and free of trashy fields at harvest time.

This season, use dependable, economical Sutan plus atrazine on all your corn acreage. Stop the toughest grasses and weeds—nutgrass, wild cane, foxtails, fall panicum, Johnsongrass seedlings, crabgrass, annual morningglory, lambsquarters, pigweed, ragweed, nightshade and others that lower your profits. Mix Sutan plus atrazine in the soil as you prepare your seedbed. There's no need to depend on unpredictable rainfall to move the herbicide into the weed seed zone. Sutan and atrazine will be waiting to control weeds as they sprout. Used as directed, Sutan controls weeds without leaving harmful residues in the soil. Free yourself from work and worry...see us today for your supply of Sutan.



SMITH-DOUGLASS WASHTENAW CROP SERVICE

Fertilizer and Farm Chemicals

885 PARKER RD.

PHONE 426-8851

Smith-Douglass makes the growing greater

Everybody is looking for a bargain.

Here's one you can believe in.



What makes the Buick LeSabres we sell such bargains?

We're dealing, for one thing, Spring is here and we're making up for lost time during those cold winter months when everybody stayed home by the fire.

We're going to make it real easy for you to get into a Buick and celebrate Spring. But that's only part of what makes a bargain a bargain.

What about the car? Can you believe it?

Every Buick is built with integrity. You get things like a cooling system that should never overheat, even with air conditioning.

You get Buick's unique suspension system—AccuDrive—that makes this LeSabre one of the best handling Buicks ever.

You can even order a 350 cubic-inch, V8. With four-barrel carburetion. That

delivers 285 horsepower. Yet runs on regular gas.

So, let's put it this way. If you want a bargain, we've got the ingredients. The car. And the deal.

Wouldn't you really rather have a Buick?



Buick Value/Buick Dealers. Something to believe in.

BUICK MOTOR DIVISION

IF YOUR MONEY ISN'T EARNING THE BEST AVAILABLE INTEREST RATES... YOU CAN NOW EARN UP TO

6%
ANNUAL RATE
plus
daily interest

With ANN ARBOR FEDERAL SAVINGS

Do it by mail today. Just send this coupon and we'll send complete details or send your check and your account will be opened immediately.

Your account is safely insured to \$20,000 with F.S.I.C. No depositor has ever lost one penny with Ann Arbor Federal Savings. Total assets are over 119 million dollars.

For answers to any questions, now or later, call Mr. Wild, (313) 663-7555 Collect.

5% PASSBOOK SAVINGS ACCOUNTS
Effective annual interest 5.09%. Deposit any amount.

5 1/4% PASSBOOK CERTIFICATE ACCOUNTS. Six months maturity in amounts of \$1000 or more. Effective annual interest rate is 5.35%.

5 3/4% PASSBOOK CERTIFICATE ACCOUNTS. One year maturity in amounts of \$5000 or more. Effective annual interest is 5.87%.

6% PASSBOOK CERTIFICATE ACCOUNTS. Two year minimum maturity in amounts of \$5000 or more. Effective annual interest rate is 6.13%.

ALL ACCOUNTS INSURED TO \$20,000 BY F.S.I.C.

ANN ARBOR FEDERAL SAVINGS
401 E. Liberty, Ann Arbor, Michigan

Name _____
Address _____
City _____ Zip _____

() Send full details
() Start my 5% Passbook Savings Account with \$_____ enclosed
() Send _____% Passbook Certificate for \$_____ enclosed

Member: Federal Home Loan Bank System • Federal Savings and Loan Insurance Corporation

MID-STATE FINANCE CORP.
\$25 to \$1,000
For Any Worthwhile Purpose

See or Call
FRANK HILL
at 475-8631

111 PARK STREET
CHELSEA, MICH.



BOWLING NEWS

Senior House League

Final Standings

	W	L
Chelsea Grinding	82 1/2	49 1/2
Chelsea Cleaners	77 1/2	54 1/2
Spaulding Chevrolet	76 1/2	55 1/2
Dana No. 1	74	58
The Pub Bar	74	58
Seitz's Tavern	73 1/2	58 1/2
Schneider's Grocery	70	62
Sylvan Center	62 1/2	69 1/2
Wolverine Bar	54 1/2	77 1/2
Murphy's Barber Shop	51 1/2	80 1/2
North Lake S & S	48	84
Dana No. 2	47 1/2	84 1/2

500 series: D. Crosby, 556; D. Basso, 513; B. Moss, 514; R. Pike, 536; W. Moats, 509; W. Griffith, 545; M. Poertner, 520; G. Burnett, 574; A. Clemen, 524; H. Burnett, 546; J. Harook, 542; G. Weir, 587; N. Fahrner, 577; L. Hess, 539; P. Boham, 505; J. Myers, 512; T. Wisniewski, 520; L. Hocking, 512; G. Lawrence, 538; G. Padgham, 550; L. Keezer, 519; R. Bauer, 524; D. Hafley, 508; J. D. West, 515; J. Jones, 514; T. McClear, 536; C. Genske, 521; S. Haydock, 535; R. Spaulding, 500; G. Knickerbocker, 500; O. Johnson, 554.

200 games: O. Johnson, 222; F. Klink, 202; C. Genske, 201; S. Haydock, 201; G. Padgham, 212; N. Fahrner, 205; G. Weir, 200; J. Harook, 204; G. Burnett, 204-239; M. Poertner, 206; W. Griffith, 222; W. Moats, 200; D. Crosby, 211.

Guys & Gals

Mixed League

Standings as of April 30, 1970

	W	L
The Pub. No. 2	80 1/2	47 1/2
Murphy's Barber Shop	79 1/2	48 1/2
The Good Guys	70	52
Team No. 2	65	53
Chelsea Lanes	62	66
The Spoilers	62	66
Karl's Standard Service	61 1/2	66 1/2
Gallup-Silkworth	61 1/2	66 1/2
The Sandbaggers	60	68
The Pub No. 1	57 1/2	71
Nam Quad Corp.	55 1/2	72 1/2
Pleasant Lake Resort	47 1/2	80 1/2

Women, games 150 and over: N. Collins, 213-248; N. Packard, 153; E. Kotar, 197-163-155; L. Knerr, 153; D. Haas, 178; B. Smith, 175-161-168; P. Elliott, 167; S. Walton, 206; E. Koengeter, 174; J. Mook, 174-153; N. Thompson, 165; J. Buku, 159-168; K. Hanke, 187.

Men, games 175 and over: J. Collins, 233-235; J. Eder, 190; E. Greenleaf, 191; D. Hoag, 189; D. Walton, 178; J. Elliott, 211-196; E. Buku, 175-188; E. Green, 175.

Men, series 500 and over: J. Collins, 634; J. Eder, 540; A. Sannes, 509; J. Elliott, 575.

Smart girls spend at least as much money upon culture as upon cosmetics.

Chelsea Suburban

Standings as of April 29

	W	L
Dairy Queen Braizers	79	53
Poor Mobil	76 1/2	55 1/2
Dana Corp.	75	57
Patty Ann	70	62
G. A. Sales	68 1/2	63 1/2
Chelsea Lanes	68	64
State Farm	67	65
Waterloo Garage	68	69
Pittsfield Plastics	61 1/2	70 1/2
G. E. Girls	59	73
Artex Roll-Ons	54	78
Dancer's	50 1/2	81 1/2

150 games and over: B. Hafley, 151-151; R. West, 169-167; V. Stewart, 160; W. Liebeck, 150; C. Peterson, 157; E. Williams, 160-157; J. Akin, 166; R. Musbach, 159; S. Bowen, 153-181; V. Hopkins, 174; B. Smith, 167-155-198; E. Clark, 156-153-163; M. Steele, 156; J. Fitzsimmons, 160; J. Buku, 166; L. Jarvis, 162-160-190; N. Pakard, 162; E. Yocum, 162; M. Leggett, 171; V. Harvey, 157; A. Hocking, 186; P. Walz, 151; P. Harook, 159-185; D. Kinsey, 155; M. DeLaTorre, 152; G. Wilkerson, 168; M. Rush, 155; C. Hansen, 172; L. Beeman, 174.

425 series and over: B. Hafley, 448; R. West, 485; V. Stewart, 454; E. Williams, 460; J. Akin, 446; R. Musbach, 432; S. Bowen, 451; B. Smith, 420; E. Clark, 472; J. Buku, 436; L. Jarvis, 402; N. Packard, 453; A. Hocking, 446; P. Walz, 425; P. Harook, 492; D. Kinsey, 437; M. DeLaTorre, 444; C. Hansen, 432; L. Beeman, 450.

Junior House League

Standings as of April 30

	W	L
Chelsea Drug	159	65
The Pub Bar	152	72
J & S Tool Co.	128	96
3-D Sales & Service	121	103
FireLite Inn	117	107
Boyer Automotive	116	108
Mid-State Finance	99	125
Jiffy Mixers	96	128
Palmer's	96	128
Ann Arbor Centerless	89	135
Gambles	86	138
Wolverine	85	139

Over 200 games: B. Schenk, 234; W. Beeman, 223; R. A. Ringe, 221; M. McClanahan, 221-218; B. Johnson, 204-214; A. Fletcher, 213; J. Popovich, 210; E. Bucko, 206; J. Myning, 205-200; D. Bovin, 203; D. Scott, 202; E. Harook, 201; N. Fahrner, 200.

Over 600 series: B. Johnson, 616; J. Myning, 594; B. McClanahan, 591; D. Bowen, 587; N. Fahrner, 585; B. Schenk, 561; C. Koengeter, 558; A. Sannes, 536; L. Christwell, 535; A. Fletcher, 532; S. Policht, 531; R. A. Ringe, 527; T. Wisniewski, 526; E. Harook, 526; S. Dyer, 525; F. Johnson, 524; R. H. Ringe, 522; S. Hopkins, 521; D. Scott, 513; J. Popovich, 516; E. Buku, 514; L. Salyer, 505; J. Harook, 503; L. Hocking, 501; N. Packard, 501; W. Beeman, 500.

Men, series 500 and over: J. Collins, 634; J. Eder, 540; A. Sannes, 509; J. Elliott, 575.

Each spring is the most beautiful of all.

Junior Swingers

Mixed League

Standings as of May 2

	W	L
Pin Busters No. 1	77 1/2	42 1/2
Pin Busters No. 2	77	43
Sandbaggers	69	51
Waterloo Teens	67 1/2	52 1/2
Team No. 10	67	53
Fritz's Pros	61 1/2	58 1/2
Ball Bearings	60	60
The Sophomores	60	60
Townpeople	61	60
All American Flops	48	68
Bowlers Bazaar	45 1/2	73 1/2
Tangle Foot Trio	33	71

Games over 140: B. Tirb, 140; R. Weiner, 147-147; J. Schiller, 181; B. McNutt, 178-155; J. Murphy, 146; P. Case, 155-152; D. Klink, 158; L. Sannes, 155; B. McGuire, 157; M. Grammatico, 142-147.

Series over 425: B. McNutt, 462; J. Schiller, 425; P. Case, 444.

Chelsea Women's Bowling Club

Final Standings, April 30

	W	L
Jiffy Mixers	83	49
Parish's Cleaners	83	49
Chelsea Milling	82 1/2	49 1/2
Chelsea Lanes	75	57
Wolverine	73 1/2	58 1/2
The Pub	69	63
Foster's	66	66
E & H Builders	62 1/2	69 1/2
Chelsea Grinding	59	73
Dancer's	66	76
Schneiders	44	48
Palmer's	38 1/2	43 1/2

150 games or better: J. Rowe, 156; E. Policht, 152-159; B. Parish, 179-174; R. Hummel, 151-171-168; P. Wurster, 157; A. Knickerbocker, 157-155; N. Kern, 182; S. Klink, 182; L. Orlovski, 155; D. Pouty, 155-157-157; J. Kaden, 158-161; E. Harmon, 165-172; P. Shoemaker, 187-183; P. Poertner, 192-186; G. Kuhl, 168-187; E. Eiseman, 150; A. Boham, 167; E. Koengeter, 151; K. Chapman, 162-170; M. Kozminski, 163; J. Hafner, 192; P. Keeman, 153; A. Turner, 152; H. Morgan, 157-156; M. E. Sutter, 167.

450 series or better: B. Parish, 493; R. Hummel, 490; N. Kern, 454; D. Pouty, 469; E. Harmon, 484; P. Shoemaker, 477; P. Poertner, 524; G. Kuhl, 497; K. Chapman, 454.

1970 Bulldog

Track Schedule

May 7—Saline away, 4 p.m.
May 9—Cardinal Relays
May 12—Michigan Center, 4-7 p.m.
May 12—Dexter home, 4 p.m.
May 16—Regional
May 16—Michigan Center, 10 a.m.-1 p.m.
May 21—Conference Meet
May 21—South Lyon
May 23—State Meet
May 23—East Lansing, 10 a.m.
May 25—Jackson Jaycee Meet
May 25—Jackson, 6:30 p.m.

Chelsea High School

1970 Golf Schedule

May 8—South Lyon, Dexter, at Dexter 4:00
May 11—Pinckney Invitational, at Pinckney 1:00
Make Up Week
May 15—State Regional, All Day
May 18—League Meet, All Day
May 20—Manchester, at Manchester 3:30
May 22—Ypsi St. John, there, 3:30

Chelsea Varsity

Baseball Schedule

May 7—Dundee away
May 12—Novi here
May 14—Milan here
May 19—Lincoln away
May 21—South Lyon here
May 26—Saline away
May 28—Dexter here
All games begin at 4 p.m.

SPORTS CORNER

ACCLAIMED THE BEST SECOND BASEMAN IN THE LEAGUE BY A VOTE OF NATIONAL LEAGUE PLAYERS IS GLENN BECKERT OF THE CUBS...

THE PLAYERS' PLAYER...

IN ADDITION TO HIS FIELDING SKILLS, HE IS A SUPERB NO. 2 MAN IN THE BATTING ORDER WHO RARELY STRIKES OUT. A SOLID HITTER, HIS AVERAGE WAS .291 IN 1969...

HE'S NOTHING THROUGH...

HE'S NOTHING THROUGH...

HE'S NOTHING THROUGH...

HE'S NOTHING THROUGH...

HE'S NOTHING THROUGH...

HE'S NOTHING THROUGH...

HE'S NOTHING THROUGH...

HE'S NOTHING THROUGH...

HE'S NOTHING THROUGH...

HE'S NOTHING THROUGH...

HE'S NOTHING THROUGH...

HE'S NOTHING THROUGH...

HE'S NOTHING THROUGH...

HE'S NOTHING THROUGH...

HE'S NOTHING THROUGH...

HE'S NOTHING THROUGH...

HE'S NOTHING THROUGH...

HE'S NOTHING THROUGH...

HE'S NOTHING THROUGH...

HE'S NOTHING THROUGH...

HE'S NOTHING THROUGH...

HE'S NOTHING THROUGH...

HE'S NOTHING THROUGH...

HE'S NOTHING THROUGH...

HE'S NOTHING THROUGH...

HE'S NOTHING THROUGH...

HE'S NOTHING THROUGH...

HE'S NOTHING THROUGH...

HE'S NOTHING THROUGH...

HE'S NOTHING THROUGH...

HE'S NOTHING THROUGH...

HE'S NOTHING THROUGH...

HE'S NOTHING THROUGH...

HE'S NOTHING THROUGH...

HE'S NOTHING THROUGH...

HE'S NOTHING THROUGH...

HE'S NOTHING THROUGH...

HE'S NOTHING THROUGH...

HE'S NOTHING THROUGH...

HE'S NOTHING THROUGH...

HE'S NOTHING THROUGH...

HE'S NOTHING THROUGH...

HE'S NOTHING THROUGH...

HE'S NOTHING THROUGH...

HE'S NOTHING THROUGH...

HE'S NOTHING THROUGH...

HE'S NOTHING THROUGH...

HE'S NOTHING THROUGH...

HE'S NOTHING THROUGH...

HE'S NOTHING THROUGH...

HE'S NOTHING THROUGH...

HE'S NOTHING THROUGH...

HE'S NOTHING THROUGH...

HE'S NOTHING THROUGH...

HE'S NOTHING THROUGH...

HE'S NOTHING THROUGH...

HE'S NOTHING THROUGH...

HE'S NOTHING THROUGH...

HE'S NOTHING THROUGH...

HE'S NOTHING THROUGH...

HE'S NOTHING THROUGH...

HE'S NOTHING THROUGH...

HE'S NOTHING THROUGH...

HE'S NOTHING THROUGH...

HE'S NOTHING THROUGH...

HE'S NOTHING THROUGH...

HE'S NOTHING THROUGH...

HE'S NOTHING THROUGH...

HE'S NOTHING THROUGH...

HE'S NOTHING THROUGH...

HE'S NOTHING THROUGH...

HE'S NOTHING THROUGH...

HE'S NOTHING THROUGH...

HE'S NOTHING THROUGH...

HE'S NOTHING THROUGH...

HE'S NOTHING THROUGH...

HE'S NOTHING THROUGH...

HE'S NOTHING THROUGH...

HE'S NOTHING THROUGH...

HE'S NOTHING THROUGH...

HE'S NOTHING THROUGH...

HE'S NOTHING THROUGH...

Johnny Cash Makes Dramatic Debut in Story of Cherokees

East Lansing—Singer Johnny Cash makes his dramatic debut in the role of a Cherokee Indian Chief when "NET Playhouse" presents "The Trail of Tears," Sunday, May 10, at 11 p.m. on WMSB (Channel 10), Michigan State University television.

The play, which also stars Jack Palance and is narrated by Joseph Cotton, dramatizes the tragic history of the Cherokee Nation in the 1830's, when the tribe was stripped of its farmlands by the State of Georgia and then forced to migrate westward by the U. S. government. The Cherokees' winter journey cost them some 4,500 lives, and the route they traveled has come to be known as the "trail of tears."

Cash, who is part Cherokee himself, portrays Chief John Ross, while Palance plays the fatally ill President Andrew Jackson, who turns his back on the people who had fought by his side when he was a general.

Cotton, as narrator, plays the role of an unseen newspaper reporter who, in addition to telling the story, is often heard questioning the characters.

Other WMSB highlights include: "HOLLANDER IN THE GHETTO" (Lorin Hollander, 25-year-old classical pianist and one of America's finest concert artists, reaches out to a new audience at Philadelphia's Edison High, a hard-core ghetto school, Sunday, May 10, at 12 noon).

At first unsure of what relevance a classical musician can have to them, the 32 inner-city students speak with surprising candor about creativity and music, ghetto life, American society and man's role in the universe.

Interwoven with this dialogue are Hollander's own compositions, "Up Against the Wall," a Bach Parody, Eric Satie's "Trois Gymnopédies" and an electrifying jam session with an Edison student on saxophone.

Although most of the students are black, while Hollander is white, and although Hollander attended the prestigious Juilliard School of Music, while the students go to school in a neighborhood where gang violence is a familiar terror, the program does not rest on the negative problems of the ghetto, but rather conveys a tone of optimism.

Hollander's sense of commitment, fervor and personal dynamics are conveyed with rare

Wednesday, May 13, at 7 p.m. For this recital, Nojima performs Variations on a Theme of Pagnini, Op. 35, by Johannes Brahms.

Nojima has won numerous prizes in Japan, including the award as outstanding young musician of 1968. In addition to winning the \$6,000 prize in the Van Cliburn Competition, he also received the Neiman-Marcus \$500 gold watch for the best performance of the commissioned work "Capriccio on the Interval of a Second" by Norman Dello Joio.

SWEDEN—
"Focus on Sweden," a series of 13 programs dealing with various aspects of modern Swedish life, premieres Monday May 11, at 1 p.m.

The first program, "Free Hands: An Art School of Tomorrow," visits a Swedish school for training in art. The school differs from most other art schools in that its students are afforded virtually complete freedom. The teachers are not authorities, but advisors.

FRENCH FOLKSINGER—
"Sonia Sings," a series of 13 programs featuring French folksinger Sonia Malkine, who sings and explains the folk songs of her native France, premieres Friday, May 15, at 1 p.m.

Pairs-born, Miss Malkine was first encouraged to sing professionally by Sam Eskin, the American folklorist.

On this series, Miss Malkine samples native French songs, from sea chanteys to children's songs, from drinking songs to love ballads.

SEAMLESS ALUMINUM GUTTERS

Also: Barn Eavestrouthing

CALL

WILSON METAL SHOP

Phone 428-8468 Manchester, Mich.

A car with all this class just naturally comes with the biggest interior of any American production car.

Chrysler Newport is priced just a few dollars a month more than the most popular smaller cars, comparably equipped

GIRL SCOUT NEWS



TROOP 58—

Girl Scout Troop 58 began with the opening, "Arrows" chose the pledge and the Girl Scout Promise. Treats were brought by Margaret Bennett. Today, we had a guest, Connie Risher. We discussed our menu and further plans for our camp-out on June 6. Gifts were made to give to our Moms on Mother's Day. For the closing, the "Mod Squad" chose "Indian Taps." Stars stayed for clean-up. Julie Chapman, scribe.

TROOP 47—

Girl Scout Troop 47 went to Pierce Park for a cookout Monday. We had hot dogs, pop, potato chips, and a marshmallow roast. For enjoyment, we went to the Dairy Queen for dessert. 26 girls attended.

We are planning to go to Sugar Loaf Lake for a weekend in June. Susan Friable, scribe.

BROWNIE TROOP 169—

Brownie Troop 169 met Monday, May 4, at the Congregational church.

Susan Heller brought chocolate cookies. We took dues and sang grace.

We had the flag ceremony. In the Brownie Rite, we learned the last Girl Scout law. We made gifts for our mothers for Mother's Day.

Closing was the squeeze and tape. Gayle Albrecht, scribe.

BROWNIE TROOP 84—

Brownie Troop 84 opened our meeting with a flag ceremony done by Wendy Myers and Mary Haas.

Dues were taken by Beth Merkel and attendance by Gloria Pierson.

We sang songs. Treats were furnished by Mary Haas. Today, Sgt. McCormick gave us a tour of the Police Department. He showed us all the different things in his office, the room where they keep their evidence and the detention room.

Sgt. McCormick was a very nice guide. We closed with taps. In dian style.

Gloria Pierson, scribe.

When shopping for straight chairs, see that they stand level on the floor and don't wobble. Look under the seat to see that bracing and joints are solid and tight. Chairs with upholstered seats are easier to cover if you can remove the seats by taking out the screws.

Generation Gap U.S.A.



CUB SCOUT NEWS

DEN 1, PACK 455—

The April 29 meeting of Cub Scout Den 1, Pack 455 was held at Mrs. Sumner Oesterle's home and opened with the Cub Scout Promise game.

In the flag ceremony Pat Murphy carried the American flag and Doug Nutt carried the den flag. Those assisting were Todd Otto and Jon Oesterle.

Todd Otto brought the refreshments.

After working on Mother's Day presents the boys sang "Taps" and made the living circle before going outdoors to play baseball.

Steve Dresch, scribe.

DEN 1, PACK 415—

Den 1, Pack 415 met at the home of their Den Mother, Mrs. Atkinson, on Tuesday, April 28 and May 5. We opened both sessions with a flag ceremony and then made presents for Mother's Day.

Don Dreiman brought treats. We talked about our trophy books.

Kevin Lyle, scribe.

Personal Notes

Martin E. Miller attended a Memorial Service held May 6 in the Continental Room of the Park Hotel, Grand Rapids, for members and their families who have died during the past year.

Mr. Miller attended in memory of his late wife, Wyola. He also remained to attend the annual banquet held that evening, returning home, Thursday, May 7.

Telephone Your Club News To GR 5-5681.

Brownie Round-up Slated Wednesday

The Brownie Roundup will take place Wednesday, May 13, 8 p.m., at the Congregational church. Parents are asked to use the side entrance. Notices for the scheduled meeting are being sent home with all first grade girls; however, if any second graders are interested in becoming Brownies their parents are also invited to attend the Round-up.

Miss Louise Taylor from the Huron Valley Council will speak on the values of girl scouting.

There is a critical need for leaders at all levels of scouting, including Brownies. Any women interested in helping the Chelsea area Girl Scouts or having questions concerning the Round-up may call Mrs. John Thornbury, Troop Service Director, at 475-2747.

Harpers' Granddaughter Wins State DAR Good Citizen Award

Susan Peterson, daughter of the Honorable and Mrs. William R. Peterson of Cadillac, was named the State Good Citizen of the Michigan DAR at a recent banquet in Detroit. She has been named valedictorian of the 1970 Cadillac Senior High graduating class.

Susan is the granddaughter of Mr. and Mrs. Walter A. Harper of 222 E. Middle St., Chelsea.

Tired of white woodwork? Switch to something different—antique woodwork. There is a wide array of colors from which to choose and the effect is dramatic and different. Just follow directions on the antiquing kit for perfect results.

CHELSEA VILLAGE COUNCIL PROCEEDINGS

April 21, 1970

Regular Session.

This meeting was called to order by President Fuls at 8:00 p.m.

Trustees present: Miller, Gorton, Musbach, Dmoch, Boylan and Chandler. The minutes of the Regular Session of April 7 and Special Session on April 14 were read and approved.

A public hearing as required by law was held regarding the 1970 Village Budget.

BUDGET 1970

RECEIPTS
Village Taxes \$143,112.77
State Shared
Sales Tax 40,000.00
Income Tax 15,000.00
Intangible Tax 4,000.00
Liquor License Fee
..... 1,850.00
State Gas Refund 1,500.00
M-52 Maintenance Contract 5,000.00
Special Assessment -0-
Fire Contracts 25,000.00
Local Licenses 1,000.00
Law Enforcement 3,500.00
Refuse and Landfill 29,000.00
Major Street Maintenance 11,000.00
Electric & Water Department 40,000.00
Miscellaneous
Trailer Fees 600.00
Superior Ambulance 250.00
Village Work 2,000.00
Sewer Taps 5,500.00
Other 4,294.46
Sub Total \$332,547.23
Cash on Hand 26,012.19
Reimbursed Benefits 18,238.04
Payroll Deductions 32,238.00
Total \$409,085.46

DISBURSEMENTS
Administration \$ 30,000.00
Police 70,200.00
Fire 20,000.00
New Street Construction 2,000.00
Public Works Labor 60,000.00
Public Works Maintenance 25,000.00
Sidewalks 8,000.00
Curbing -0-
Sewers 1,000.00
Refuse Removal
Refuse and Garbage Contract 10,000.00
Landfill Operation 12,000.00
Payment to Electric & Water Dept. 5,000.00
Casualty Insurance 10,500.00
Parks 5,000.00
Municipal Building
General and Maintenance 4,000.00
Remodeling 40,708.35
Building Inspection 1,200.00
Library 7,700.07
Capital Fund 15,600.00
Economic Development & Planning Commission 2,000.00
Civil Defense 750.00
Miscellaneous 450.00
Trailer Park 500.00
Trees 2,500.00
Recreation Fund 1,500.00
Other
Employee Benefits 4,250.00
Pension 6,145.00
Hospital Insurance 425.00
Life Insurance 5,125.00
Social Security
Sub Total \$358,559.42
Benefits Paid 50,528.04
TOTAL \$409,085.46

Motion by Miller, supported by Dmoch to accept the 1970 Budget as read. Roll call: Yeas all. Motion carried.

Mr. Thomas Smith, Village Assessor, submitted the following assessments figures for 1970:
Real Property \$13,865,100.00
Personal Property 8,152,250.00
TOTAL \$22,017,350.00

Motion by Chandler, supported by Gorton to accept the 1970 Village Assessments as presented. Roll call: Yeas all. Motion carried.

Motion by Gorton, supported by Dmoch to set the 1970 millage rate as follows:
General Fund \$15 mills
McKune Library Operation 35 mills
Bond and Interest Retirement on the Sewage Treatment Plant 80 mills
TOTAL MILLAGE 7.30 mills
Roll call: Yeas all. Motion carried.

Mr. Bradbury representing the

Washtenaw County Board of Supervisors and Mr. Fegan representing the Washtenaw County Planning Commission was present and discussed with the Council the water availability study now being conducted in Washtenaw County. The commission requested the Village to financially participate in the study on a per capita basis. No official action was taken at this time.

A discussion was held with Mr. Donald Thomas and Mr. Homer Conley regarding the dangerous condition of a building located on the property located at 617 S. Main St. Fire Chief Gaken stated that the building had been inspected and that action was being taken under Ordinance No. 68.

RESOLUTION RE PENN CENTRAL RAILROAD CROSSING ON MAIN STREET, CHELSEA, MICHIGAN

WHEREAS, the Penn Central Railroad crossing on Main Street in Chelsea, Michigan has constituted and continues to be dangerous and defective; and

WHEREAS, said crossing contains defective timbers and protruding spikes which are dangerous to traffic using Main Street (M-52); and

WHEREAS, there have been a number of accidents in the past year caused by the undercarriages of heavy trucks striking the railroad tracks and thereby causing such vehicles to break down on said crossing, thereby blocking both vehicle traffic on M-52 and the railroad right-of-way;

NOW, THEREFORE, BE IT RESOLVED AND IT IS HEREBY RESOLVED that the Village Council of Chelsea, Michigan, hereby directs Frederick A. Weber, Village Administrator, to protect to the Michigan State Highway Department the above described defective and dangerous conditions of said crossing.

Motion by Miller, supported by Gorton to adopt the above resolution as read. Roll call: Yeas all. Motion carried.

RESOLUTION RE PENN CENTRAL RAILROAD CROSSING ON MAIN STREET, CHELSEA, MICHIGAN

WHEREAS, the Penn Central Railroad crossing on Main Street in Chelsea, Michigan has constituted and continues to be dangerous and defective; and

WHEREAS, said crossing contains defective timbers and protruding spikes which are dangerous to traffic using Main Street (M-52); and

WHEREAS, there have been a number of accidents in the past year caused by the undercarriages of heavy trucks striking the railroad tracks and thereby causing such vehicles to break down on said crossing, thereby blocking both vehicle traffic on M-52 and the railroad right-of-way;

NOW, THEREFORE, BE IT RESOLVED AND IT IS HEREBY RESOLVED that the Village Council of Chelsea, Michigan, hereby directs Frederick A. Weber, Village Administrator, to protect to the Michigan State Highway Department the above described defective and dangerous conditions of said crossing.

Motion by Miller, supported by Gorton to adopt the above resolution as read. Roll call: Yeas all. Motion carried.

RESOLUTION REQUESTING TRAFFIC STUDY ON M-52 NORTH

Whereas, the Lanewood Subdivision located on M-52 north of the Let's Creek Bridge is approaching completion; and

WHEREAS, the dwelling houses therein are completely occupied causing a marked increase in traffic on M52 (Main Street); and

WHEREAS, the speed limit on M-52 is dangerously high for the residential character of the area;

NOW, THEREFORE, BE IT RESOLVED AND IT IS HEREBY RESOLVED, that the Village Council of Chelsea, Michigan, hereby directs Frederick A. Weber, Village Administrator, to request the Michigan State Highway Department to undertake a study of vehicular traffic on said section of M-52 and to recommend that the speed limit on said highway be reduced.

Motion by Musbach, supported by Gorton to authorize and direct the Clerk to issue checks in payment of bills as submitted. Roll call: Yeas all. Motion carried.

General Fund: \$14,269.36. Special Fund: Act M-51 Street Fund, \$1,010.82.

Motion by Miller, supported by Dmoch to adjourn. Roll call: Yeas all. Motion carried. Meeting adjourned.

Approved: May 5, 1970.
A. E. Fuls, President.
Richard Harvey, Clerk.

Motion by Boylan, supported by Chandler to adopt the above resolution as read. Roll call: Yeas all. Motion carried.

RESOLUTION CONCERNING STUDY OF INTERSECTION AT M-52 AND OLD US-12 CHELSEA, MICHIGAN

WHEREAS, the Village Council of Chelsea, Michigan, has received numerous complaints from citizens concerning the problems of traffic congestion at the intersection of M-52 (Main Street) and Old US-12; and

WHEREAS, M-52 is the only road between the Village and the Chrysler Proving Grounds and between the Stop & Shop Market, restaurants, gas stations and other businesses between I-94 and said intersection and the downtown business district of the Village; and

WHEREAS, there has been a marked increase in traffic on said M-52 due to the opening of the Medi-Center Extended Care Facility at the Chelsea Medical Clinic; and

WHEREAS, all of the above described facilities, businesses and organizations produce and receive traffic which crosses said intersection; and

WHEREAS, there have been a rash of collisions and accidents at said intersection in the past year;

NOW, THEREFORE, BE IT RESOLVED AND IT IS HEREBY RESOLVED that Council hereby directs Frederick A. Weber, Village Administrator, to request the Michigan State Highway Department to undertake a study of vehicular traffic at said intersection and to recommend to the State Highway Department that a traffic control light be installed at said intersection.

Motion by Dmoch, supported by Musbach to adopt the above resolution as read. Roll call: Yeas all. Motion carried.

Elwyn Beach, area Civil Defense Director reported on a test exercise which was conducted on Sunday, April 18 involving approximately 35 members of the Chelsea Citizens Band Emergency Service and the Chelsea Auxiliary Police.

Trustee Musbach read a summary of the Fire Department Activity for the month of March as submitted by Chief Gaken.

A discussion was held with the administrators of the Chelsea Medical Center regarding billing methods of the Electric & Water Department. No action was taken at this time.

Motion by Chandler, supported by Gorton to authorize the Village Administrator to direct the firm of Ayers, Lewis, Norris & May, water engineers, to submit a proposal on a complete study of the Village water supply and distribution system. Roll call: Yeas all. Motion carried.

Motion by Musbach, supported by Gorton to authorize and direct the Clerk to issue checks in payment of bills as submitted. Roll call: Yeas all. Motion carried.

General Fund: \$14,269.36. Special Fund: Act M-51 Street Fund, \$1,010.82.

Motion by Miller, supported by Dmoch to adjourn. Roll call: Yeas all. Motion carried. Meeting adjourned.

Approved: May 5, 1970.
A. E. Fuls, President.
Richard Harvey, Clerk.

Approved: May 5, 1970.
A. E. Fuls, President.
Richard Harvey, Clerk.

Approved: May 5, 1970.
A. E. Fuls, President.
Richard Harvey, Clerk.

Approved: May 5, 1970.
A. E. Fuls, President.
Richard Harvey, Clerk.

Approved: May 5, 1970.
A. E. Fuls, President.
Richard Harvey, Clerk.

Approved: May 5, 1970.
A. E. Fuls, President.
Richard Harvey, Clerk.

Approved: May 5, 1970.
A. E. Fuls, President.
Richard Harvey, Clerk.

Approved: May 5, 1970.
A. E. Fuls, President.
Richard Harvey, Clerk.

Approved: May 5, 1970.
A. E. Fuls, President.
Richard Harvey, Clerk.

Approved: May 5, 1970.
A. E. Fuls, President.
Richard Harvey, Clerk.

Approved: May 5, 1970.
A. E. Fuls, President.
Richard Harvey, Clerk.

Approved: May 5, 1970.
A. E. Fuls, President.
Richard Harvey, Clerk.

Approved: May 5, 1970.
A. E. Fuls, President.
Richard Harvey, Clerk.

Approved: May 5, 1970.
A. E. Fuls, President.
Richard Harvey, Clerk.

Approved: May 5, 1970.
A. E. Fuls, President.
Richard Harvey, Clerk.

Approved: May 5, 1970.
A. E. Fuls, President.
Richard Harvey, Clerk.

Approved: May 5, 1970.
A. E. Fuls, President.
Richard Harvey, Clerk.

Approved: May 5, 1970.
A. E. Fuls, President.
Richard Harvey, Clerk.

Approved: May 5, 1970.
A. E. Fuls, President.
Richard Harvey, Clerk.

Approved: May 5, 1970.
A. E. Fuls, President.
Richard Harvey, Clerk.

Approved: May 5, 1970.
A. E. Fuls, President.
Richard Harvey, Clerk.

Approved: May 5, 1970.
A. E. Fuls, President.
Richard Harvey, Clerk.

Approved: May 5, 1970.
A. E. Fuls, President.
Richard Harvey, Clerk.

Approved: May 5, 1970.
A. E. Fuls, President.
Richard Harvey, Clerk.

Approved: May 5, 1970.
A. E. Fuls, President.
Richard Harvey, Clerk.

Approved: May 5, 1970.
A. E. Fuls, President.
Richard Harvey, Clerk.

Approved: May 5, 1970.
A. E. Fuls, President.
Richard Harvey, Clerk.

Approved: May 5, 1970.
A. E. Fuls, President.
Richard Harvey, Clerk.

Approved: May 5, 1970.
A. E. Fuls, President.
Richard Harvey, Clerk.

Approved: May 5, 1970.
A. E. Fuls, President.
Richard Harvey, Clerk.

Approved: May 5, 1970.
A. E. Fuls, President.
Richard Harvey, Clerk.

Approved: May 5, 1970.
A. E. Fuls, President.
Richard Harvey, Clerk.

Approved: May 5, 1970.
A. E. Fuls, President.
Richard Harvey, Clerk.

Proper Fitting of Zippers Will Be Demonstrated

Techniques and methods to achieve proper fit by the home seamstress will be the focus of an Extension Service program scheduled for Wednesday, May 13, at 8 p.m. at Ann Arbor Community Center, 625 N. Main St. Ann Arbor. Anyone interested is invited to attend says Mrs. Helen Fairman, extension home economist for Washtenaw, Monroe, and Lenawee counties.

Mrs. Minda, educational representative for Unique Zipper Distributing Service, will present the program. Mrs. Minda is a specialist in clothing techniques and fashion trends, and will demonstrate how to understand fitting standards, use of the basic fitting and altering a pattern, preparing and cutting fabric, and fitting garments during construction.

Because improper fit detracts from the total appearance of a beautifully constructed garment in a quality fabric, all areas covered in the program are designed to assist the home seamstress in making this often difficult part of clothing construction easier.

For variety and interest in the home garden, try planting okra, endive, cos lettuce, buttercrunch lettuce, white radishes, gold nugget bush squash, vegetable oysters, Swiss chard, sweet potatoes and peanuts, suggest horticulturists.

Elwyn Beach, area Civil Defense Director reported on a test exercise which was conducted on Sunday, April 18 involving approximately 35 members of the Chelsea Citizens Band Emergency Service and the Chelsea Auxiliary Police.

Trustee Musbach read a summary of the Fire Department Activity for the month of March as submitted by Chief Gaken.

A discussion was held with the administrators of the Chelsea Medical Center regarding billing methods of the Electric & Water Department. No action was taken at this time.

Motion by Chandler, supported by Gorton to authorize the Village Administrator to direct the firm of Ayers, Lewis, Norris & May, water engineers, to submit a proposal on a complete study of the Village water supply and distribution system. Roll call: Yeas all. Motion carried.

Motion by Musbach, supported by Gorton to authorize and direct the Clerk to issue checks in payment of bills as submitted. Roll call: Yeas all. Motion carried.

General Fund: \$14,269.36. Special Fund: Act M-51 Street Fund, \$1,010.82.

Motion by Miller, supported by Dmoch to adjourn. Roll call: Yeas all. Motion carried. Meeting adjourned.

Approved: May 5, 1970.
A. E. Fuls, President.
Richard Harvey, Clerk.

Approved: May 5, 1970.
A. E. Fuls, President.
Richard Harvey, Clerk.

Approved: May 5, 1970.
A. E. Fuls, President.
Richard Harvey, Clerk.

Approved: May 5, 1970.
A. E. Fuls, President.
Richard Harvey, Clerk.

Approved: May 5, 1970.
A. E. Fuls, President.
Richard Harvey, Clerk.

Approved: May 5, 1970.
A. E. Fuls, President.
Richard Harvey, Clerk.

Approved: May 5, 1970.
A. E. Fuls, President.
Richard Harvey, Clerk.

Approved: May 5, 1970.
A. E. Fuls, President.
Richard Harvey, Clerk.

Approved: May 5, 1970.
A. E. Fuls, President.
Richard Harvey, Clerk.

Approved: May 5, 1970.
A. E. Fuls, President.
Richard Harvey, Clerk.

Approved: May 5, 1970.
A. E. Fuls, President.
Richard Harvey, Clerk.

Approved: May 5, 1970.
A. E. Fuls, President.
Richard Harvey, Clerk.

Approved: May 5, 1970.
A. E. Fuls, President.
Richard Harvey, Clerk.

Approved: May 5, 1970.
A. E. Fuls, President.
Richard Harvey, Clerk.

Approved: May 5, 1970.
A. E. Fuls, President.
Richard Harvey, Clerk.

Approved: May 5, 1970.
A. E. Fuls, President.
Richard Harvey, Clerk.

Approved: May 5, 1970.
A. E. Fuls, President.
Richard Harvey, Clerk.

Approved: May 5, 1970.
A. E. Fuls, President.
Richard Harvey, Clerk.

Approved: May 5, 1970.
A. E. Fuls, President.
Richard Harvey, Clerk.

Approved: May 5, 1970.
A. E. Fuls, President.
Richard Harvey, Clerk.

Approved: May 5, 1970.
A. E. Fuls, President.
Richard Harvey, Clerk.

Approved: May 5, 1970.
A. E. Fuls, President.
Richard Harvey, Clerk.

Approved: May 5, 1970.
A. E. Fuls, President.
Richard Harvey, Clerk.

Approved: May 5, 1970.
A. E. Fuls, President.
Richard Harvey, Clerk.

Approved: May 5, 1970.
A. E. Fuls, President.
Richard Harvey, Clerk.

Approved: May 5, 1970.
A. E. Fuls, President.
Richard Harvey, Clerk.

Approved: May 5, 1970.
A. E. Fuls, President.
Richard Harvey, Clerk.

Approved: May 5, 1970.
A. E. Fuls, President.
Richard Harvey, Clerk.

Approved: May 5, 1970.
A. E. Fuls, President.
Richard Harvey, Clerk.

Approved: May 5, 1970.
A. E. Fuls, President.
Richard Harvey, Clerk.



Spring Peepers

NOISEMAKERS: Pictured here are some of the noisiest residents of Michigan, and depending on how you view them, they may be spoilers of the night's rest, or a musical and friendly addition to a spring evening. Spring peepers are members of the Hylidae, or wood frogs, and are the smallest of that lot of chirrupy creatures. Peepers are found throughout Michigan and make their presence known most forcefully early in April, continuing their rolling chorus of calls until May. How anything so small can make so much noise is sometimes beyond comprehension (thinks the would-be sleeper). And if you try to find the source of all this tumult, look in low moist places, under fallen leaves, or among the mosses. That's where they sit. They stay there in the winter, too, and wait patiently for the first warm days and nights of spring to loose their torrent of sound on the countryside.

Bible Verse Answers . . .

1. John the Apostle.
2. Jesus, himself.
3. In his prayer, just before his arrest in the Garden of Gethsemane.
4. John 17:3.

Reformers are always willing to do good at someone else's expense.

OLD SPUDS

The art of processing potatoes is, perhaps, 1,700 years old. The Incas, cultivators of the first potatoes, devised a method of alternating freezing and thawing them, then expressing the moisture by tramping on them with bare feet.

Sports aren't everything but they provide good competitive training for boys and girls.

+ Services in Our Churches +

FIRST UNITED METHODIST CHURCH
The Rev. Clive Dickens, Pastor
Friday, May 8—
6:30 p.m.—Mother-Daughter Banquet in Social Center.
Saturday, May 9—
Garage sale at home of Jerry Boyd, 19945 Old US-12.
Sunday, May 10—
9:00 a.m.—Church school.
10:00 a.m.—Church school.
10:00 a.m.—Worship service.
Monday, May 11—
7:30 p.m.—The Administrative Board.
8:00 p.m.—Council on Ministries.

ST. PAUL UNITED CHURCH OF CHRIST
The Rev. Warner Siebert, Pastor
Thursday, May 7—
7:30 p.m.—Council.
Friday, May 8—
9:00 a.m.—Confirmation class.
Sunday, May 10—
9:15 a.m.—Church school.
10:30 a.m.—Worship, sermon: "Ordained by God." Sacred design 6:00 p.m.—Junior Youth Fellowship.
7:00 p.m.—Senior Youth Fellowship.
Festival of the Christian Home (Mother's Day) There will be flowers for the ladies.
Tuesday, May 12—
9:00 a.m.—Women's Fellowship annual meeting at Edgewood Church, East Lansing.
Wednesday, May 13—
7:00 p.m.—Spiritual Life.
7:15 p.m.—High School Choir.
8:15 p.m.—Chancel Chori.
Thursday, May 14—
9:00 a.m.—Koinonia at Ruby Strieters.

7:00 p.m.—Board of Christian Education.
8:00 p.m.—Confirmation Examination and Reception.
Friday, May 15—
7:00 p.m.—Buss-LeFurge wedding rehearsal.
Saturday, May 16—
9:00 a.m.—Confirmation class.
12:00 noon—WXYZ at Chelsea Methodist church.
4:00 p.m.—Hass Cozzens wedding.
7:30 p.m.—Buss-LeFurge wedding and reception.
Sunday, May 17—
8:15 a.m.—Early worship.
9:15 a.m.—Church school.
10:30 a.m.—Worship. Confirmation and Holy Communion. Sermon: "The Danger of Going to Church." Sacred design for loving educational sessions.
6:00 p.m.—Junior Youth Fellowship.
7:00 p.m.—Senior Youth Fellowship.

ST. JOHN'S EVANGELICAL AND REFORMED CHURCH
(United Church of Christ)
Francisco
The Rev. Robert Townley
Sunday, May 10—
10:00 a.m.—Worship service.
10:20 a.m.—Sunday school.
NORTH SHARON COMMUNITY BIBLE CHURCH
Sylvan and Washburn Rds.
The Rev. Paul Collins
Sunday, May 10—
10:00 a.m.—Sunday school.
11:00 a.m.—Worship service.
6:30 p.m.—Young People's service.
7:00 p.m.—Evening service.
Every Wednesday—
7:30 p.m.—Prayer meeting.
ST. JOHN'S EVANGELICAL AND REFORMED CHURCH
(United Church of Christ)
Rogers Corners
The Rev. David J. Kleis
Sunday, May 10—
10:30 a.m.—Worship service.
9:30 a.m.—Sunday school.

OUR SAVIOR LUTHERAN CHURCH
Rebekah Hall, 1194 M-52
The Rev. William H. Keller, Pastor
Sunday, May 10—
9:15 a.m.—Sunday school and Youth Bible Class.
10:30 a.m.—Worship Service.
Thursday, May 14—
6:00 p.m.—Youth Confirmation Class.

CHURCH OF CHRIST
13661 Old US-12, East
R. D. Parnell, Minister
Sunday, May 10—
10:00 a.m.—Church school.
11:00 a.m.—Worship service.
6:00 p.m.—Worship service.
Wednesday, May 13—
7:30 p.m.—Bible Study.

ST. MARY'S CATHOLIC CHURCH
The Rev. Fr. Francis Wahowiak
Saturday, May 9—
7:30 p.m.—Mass.
Sunday, May 10—
Masses at 6:30 a.m., 8:00 a.m., 10:00 a.m., and 11:30 a.m.

ZION LUTHERAN CHURCH
Corner of Fletcher, Waters Rds.
(Rogers Corners)
The Rev. John R. Morris, Pastor
Saturday, May 9—
9:00 a.m.—Y.I. Test Day—All classes meet.
Sunday, May 10—
9:00 a.m.—Sunday school.
10:15 a.m.—Worship. Door offering for benevolence.
Monday, May 11—
No choir rehearsals.
Michigan District ALC Convention at Western Michigan University in Kalamazoo.
Wednesday, May 13—
7:30 p.m.—Senior Choir.
8:30 p.m.—Church Council.

CHELSEA BAPTIST CHURCH
The Rev. Elmer S. Steenson, Pastor
337 Wilkinson
Sunday, May 10—
10:00 a.m.—Sunday school.
11:00 a.m.—Worship service.
Nursery care available during all services.
6:00 p.m.—Junior and Senior Baptist Youth Fellowship.
7:00 p.m.—Evening worship.
Every Wednesday—
7:30 p.m.—Bible study and prayer meeting.

FIRST CHURCH OF CHRIST, SCIENTIST
1833 Washtenaw Ave., Ann Arbor
Sunday, May 10—
10:30 a.m.—Morning service.
10:30 a.m.—Sunday school.
Lesson-sermon: "Adam and Fall of Man."

IMMANUEL BIBLE CHURCH
The Rev. Frank C. Frinkle, Pastor
145 E. Summit St.
Sunday, May 10—
9:45 a.m.—Sunday school, nursery provided.
11:00 a.m.—Morning Worship, nursery provided.
7:00 p.m.—Evening service.
Every Wednesday—
Family hour, prayer meeting and Bible study.

FIRST ASSEMBLY OF GOD CHURCH
The Rev. Thode B. Thodeson, Pastor
Sunday, May 10—
10:00 a.m.—Sunday school.
11:00 a.m.—Worship service.
7:00 p.m.—Evangelistic service.
Thursday, May 14—
7:00 p.m.—Midweek Services.

SALEM GROVE UNITED METHODIST CHURCH
The Rev. Frederick Atkinson, Pastor
Sunday, May 10—
10:00 a.m.—Sunday school.
11:00 a.m.—Worship service.

BETHEL EVANGELICAL AND REFORMED CHURCH
(United Church of Christ)
Freedom Township
The Rev. Roman A. Reineck
Sunday, May 10—
10:00 a.m.—Worship.
10:00 a.m.—Sunday school.

ST. JACOB EVANGELICAL LUTHERAN CHURCH
12501 Reithmiller Rd., Grass Lake
The Rev. Andrew Bloom, Pastor
Sunday, May 10—
9:00 a.m.—Sunday school.
10:15 a.m.—Divine services.

GREGORY BAPTIST CHURCH
The Rev. Grant Lapham, Pastor
Sunday, May 10—
10:00 a.m.—Worship service.
11:15 a.m.—Church school.
6:30 p.m.—Baptist Youth Fellowship.
7:30 p.m.—Evening worship service.

CONGREGATIONAL CHURCH
(United Church of Christ)
The Rev. Daniel Kellin, Pastor
Sunday, May 10—
11:00 a.m.—Worship Service.
Holy Communion.
6:30 p.m.—Young People's service.
7:00 p.m.—Evening service.
Tuesday, May 12—
7:30 p.m.—Board of Trustees.
Wednesday, May 13—
6:30 a.m.—Men's Breakfast.
8:00 p.m.—Senior Choir.

ST. BARNABAS EPISCOPAL CHURCH
20500 Old US-12
The Rev. William D. Ladkau, Vicar
Sunday, May 10—
11:00 a.m.—Morning prayer.
11:00 a.m.—Church school and nursery.

NORTH LAKE UNITED METHODIST CHURCH
The Rev. Frederick Atkinson, Pastor
Sunday, May 10—
9:30 a.m.—Worship service.
10:30 a.m.—Sunday school.

CHELSEA MEDICENTER
Sunday, May 10—
12:30 p.m.—Sunday worship service.

ST. THOMAS EVANGELICAL LUTHERAN
The Rev. Daniel L. Mattson, Pastor
Sunday, May 10—
10:00 a.m.—Worship service.
11:00 a.m.—Sunday school and bible study.

WATERLOO VILLAGE CHURCH
United Methodist Church
The Rev. Donald Fry, Pastor
Sunday, May 10—
10:00 a.m.—Sunday school.
11:15 a.m.—Worship service.
7:00 p.m.—Youth Fellowship.

FIRST UNITED PRESBYTERIAN CHURCH
Unadilla
The Rev. T. H. Liang
Sunday, May 10—
9:45 a.m.—Sunday school.
11:00 a.m.—Worship service.
Every Tuesday—
8:00 p.m.—Choir practice.

METHODIST HOME CHAPEL
The Rev. R. L. Clemans, Chaplain
V. O. Johnson, Administrator
Sunday, May 10—
8:45 a.m.—Worship service.

BRIDGE REOPENED
Norfolk, Va.—The Chesapeake Bay Bridge has been reopened following a 42 day shut down after a Navy ship rammed through it. Repairs for the 375-foot gap of the 17.6-mile bridge cost about \$2.5-million.

FAMILY MAN
Tiger Outfielder Willie Horton is the youngest of 21 children.
7th BEST
The Tiger 1969 season attendance total of 1,577,481 was the seventh highest in club history.

CREDIT PROBLEM? NO PROBLEM!
CONTACT
MR. SMALL
CREDIT ADVISOR
at
HENDERSON FORD
662-3261
Ann Arbor

CHARM BEAUTY SALON

4396 CLEAR LAKE ROAD
(Formerly of Grass Lake)

Two Operators - Hair Styling and Wig Service
Open on Mondays. Closed Tuesdays.

PHONE 475-2700



SUCCESSOR TO THE AUTOMATIC WATER SOFTENER THE REYNOLDS SOFT-SENSOR

THE WATER CONDITIONER THAT HAS A MIND OF ITS OWN
FOR SOFT, RUST-FREE WATER

THAT'S RIGHT! Every night the Soft-Sensor "takes its own pulse." If it needs recharging, it recharges itself. . . if not, it checks itself the next night. The Soft-Sensor recharges itself ONLY when it needs it, and always when it needs it.

- ☐ All the soft water you need
- ☐ Simple, dependable construction
- ☐ Saves salt-maintenance cost
- ☐ "Lifetime" all-fiberglass tanks
- ☐ It "sleeps" when you're away from home
- ☐ Remarkably low in cost

PURCHASE OR RENTAL PLAN

Other brands of water softeners can often be converted to the Soft-Sensor. Call our direct factory line without charge 1-800-552-7717 or call Ann Arbor 662-5676

The Reynolds Soft-Sensor is a product of:
REYNOLDS WATER CONDITIONING CO.
12100 Cloverdale Avenue / Detroit, Michigan 48204

Serving Washtenaw County with quality water conditioning products for 38 years

Your Social Security

Robert A. Kehoe, manager of the Ann Arbor Social Security office, is reminding persons age 65 and over that March 31 is the last day of the General Enrollment Period to sign up for Part B, or the Doctor Bill portion, of Medicare.

Whereas Part A, or hospitalization, is virtually automatic for all people 65 or over who receive Social Security checks, and there is no premium payment involved, Part B is strictly voluntary, costs a monthly premium of \$4 (going to \$5.80 on July 1), and you can sign up for it only at certain prescribed times.

A person's initial enrollment period for Part B is a seven-month period—the month he turns 65, the three months before, and

the three months after. To be effective right at 65, you must enroll in the three months before your 65th birthday. If you fail to enroll during your initial enrollment period, the first three months of each new year is an "open season" or General Enrollment Period, during which you may enroll. Each person has three General Enrollment Periods after he is 65, during which he may sign up. Thereafter, if he still fails to participate, he is forever excluded. Persons born prior to Oct. 1, 1901, have no more chance to sign up, not even during the current General Enrollment Period.

The first \$50 in doctor bills or other Part B expenses each calendar year are not reimbursed, and often people who enjoy good health and don't even incur much more than \$50 worth of doctor bills are tempted not to enroll for Part B. Kehoe reminds these persons, however, that it can only take one illness or injury, and they can incur more than \$50 in doctor bills in the first few minutes.

Remember, without Part B, Medicare only takes care of the in-patient hospital expenses. Out-patient hospital expenses like X-rays and laboratory tests, ambulance service and doctor bills are covered only by Part B.

Even people in good health can hardly afford to be without both parts of Medicare. If you are not enrolled for Part B, get in touch

SUNDAY'S SERMON

★ Our World . . .

Admittedly, much is wrong with the world today. But, this is nothing new. Our world has never been perfect. Sin is as old as the Garden of Eden. Temptation reared its ugly head even in the life of Christ.

In early days, Christianity struggled against the forces of oppression and tyranny, a conflict still taking place in some areas of the world. To be a Christian meant to place your life in danger—to invite suffering, even death.

Today, the enemies of Christianity do not wield the sword. Today the enemy is that modern citizen whose words and actions spell out the theory that "God is dead." Today his cohort is the indifferent citizen who concerns himself not with the good or the bad, so long as he is not personally involved or concerned. Today his helper is apathy on the part of good men; men who believe in right against wrong but will not become involved in the struggle against militant forces dedicated to destruction and corruption. Christianity, of course, will survive. But that "good world" of peace and brotherhood shall never come until good men rise up to meet the challenges of the times.

BIBLE VERSE TO STUDY

"And this is life eternal: That they may know thee, the only true God, and Jesus Christ, whom thou has sent."

1. Who recorded the above words?
2. By whom were they spoken?
3. Upon what occasion?
4. Where may they be found? (Answers on page nine)

"You Can't Go Wrong, If You Give Flowers"

THE LITTLE FLOWER SHOP

Live and Artificial flowers, arrangements and corsages.

MILDRED N. FISH
3451 WALTRIOUS RD.
CHELSEA, MICH.
Ph. GR 5-8508

THE STYLE SHOP

207½ S. Main St.

OPEN

Tues. thru Sat.

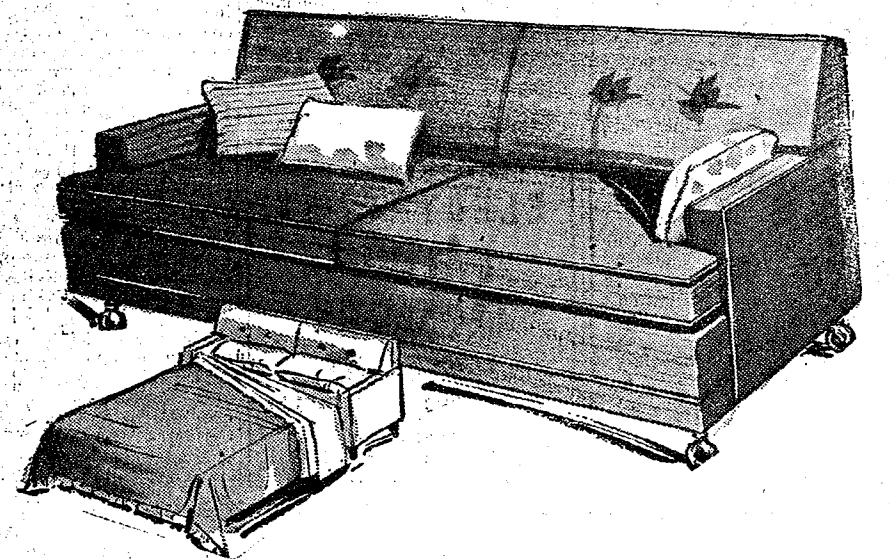
CALL

475-8400

For Appointments

Open Wed. & Thurs. Evenings

Judy Patrick - Pansy Kuhl



SLEEP SOFA SALE

Save Now while our entire stock of Simmons and Rowe Sleep Sofas have been

REDUCED UP TO 25%

for this 10-day event, May 7 thru May 16

LOVE SEAT SIZE, with twin mattress

- \$279.95 Rowe, 50", Lawson style, kick pleat skirt, 100% nylon tweed, bark brown \$199.95
- \$229.95 Simmons 50" Lawson style, olive tweed with black fleck \$169.95
- \$299.95 Rowe, 50" Lawson style, 100% nylon floral print, gold and greens \$219.95

SOFA SIZE, with double bed mattress

- \$295.00 Simmons, 68" T-cushion contemporary, amber gold texture upholstery \$219.95
- \$295.00 Simmons, 69" roll-arm Lawson with skirt, olive green nylon blend tweed \$219.95
- \$329.95 Rowe, 67" Modern, nubby nylon upholstery in gold \$279.95
- \$349.95 Rowe, 70" Lawson style, vectra fabric, soft gold \$269.95
- \$359.95 Rowe, 70" traditional, green and white tapestry, arm covers \$289.95
- \$399.95 Rowe, 76" traditional with end bolsters, floral print in golds and brown \$339.95
- \$459.95 Simmons, 76", high wing back colonial with wood trim. Vectra fabric in red, black and gold check \$399.95

LONG SIZE, with queen mattress

- \$399.95 Rowe, 80" modern, loose back cushions. Brown and gold Vectra upholstery \$339.95
- \$399.95 Simmons, 74", 3-cushion contemporary, Vectra fabric in autumn tones \$339.95
- \$355.00 Simmons, 72" modern 3-cushion modern, black vinyl, ball casters \$299.95

MERKEL BROTHERS

Open Friday Until 9 p.m.

Phone Chelsea 475-8621



Your hostess: Kandie Schultz

MOTHERS DAY,
SUNDAY, MAY 10

As feminine as
she is . . .
Gifts of Lingerie

Mother-Daughter Supper Held Monday Evening

At St. Mary's Mother and Daughter Pot-Luck supper held at the school gym Monday, May 4, Mrs. Harry Lyons was honored as the oldest mother present.

Also honored were Mrs. G. Whitaker as the youngest mother; Mrs. James Gaken and Mrs. George Merkel as the mothers with the most daughters present. Linda Merkel entertained the ladies with her singing and guitar playing.

Mrs. Kathleen Chapman, program chairman of St. Mary's Altar Society, welcomed the guests at the supper and served as toastmistress.

The toast to the daughters was given by Mrs. Howard Treado with a responding toast to the mothers present by her daughter, Retha Treado.

The Rev. Fr. Francis Wahowiak gave the evening's address and extended a special "Thank You" to the co-chairmen of the supper, Mrs. Kathleen Chapman, Mrs. Charles Sullivan, and Mrs. John Koepele.

Telephone Your Club News To GR 5-3581.

TIPS for your TOP from



TODDY and FRAN

If you've done it again: let Mother's Day race in without your giving consideration to the mothers YOU want to make happy, a good way to show each one of them (which includes forgotten aunts) how you feel is to buy a gift certificate from a beauty salon in their city so that at their leisure they can take advantage of your thoughtfulness. Naturally, if they live in the area surrounding you here, we'd like to be the salon to give your mother the kind of service that will assure her you really care. Our operators are friendly and efficient, and they honestly see each lady they serve as an individual whom they aim to please. You'll be happy, and so will your mother, if you buy her a gift certificate from

Magic Mirror Beauty Salon
Phone 665-0816
5585 Jackson Rd., Ann Arbor

Mrs. Eva Dancer Honored Sunday On 85th Birthday

In honor of Mrs. Eva Dancer's 85th birthday, May 10, an open house was held from 2-4 p.m. Sunday, May 3, at Mrs. Dancer's home, 11800 Jackson Rd., by her children: Mrs. Victor (Joy) Hosk of Grand Rapids; Mrs. Edward (Nadine) Leja of Detroit; Donald of Chelsea, Howard of Ann Arbor, and Lynn of Dexter.

Approximately 65 relatives and friends were present to wish Mrs. Dancer a happy birthday. The honored guest's table was covered with a lace tablecloth and centered with a large birthday cake decorated with pink roses and green leaves. The cake was further accentuated with a floral arrangement of fern, baby's breath, white daisies, and deep pink roses with white candles at either end. The arrangement had been made by her daughter, Mrs. Joy Hoek. As the guests arrived they were served punch.

They enjoyed open-faced sandwiches, nuts, and mints. Coffee and tea were served by Carolyn Dancer from a pewter service.

Many cards and gifts were received by Mrs. Dancer. Out-of-town guests were received by Mrs. Dancer's daughters, Joy and Nadine. They were from Grass Lake, Wyoming, Mich., Dearborn Heights, Detroit, Westland, Hastings, Dexter, Belmont, Grand Rapids, and Ann Arbor.

FIRST COMMUNION

Mark Jurgens, son of Mr. and Mrs. Alfred Jurgens, of 125 Fletcher Rd., made his first communion Sunday, May 3 at the 8 a.m. Mass at St. Mary's Catholic church.

Later that afternoon, his parents hosted a celebration dinner for 25 persons.

FIRST COMMUNION

Barbara Proctor, the daughter of Mr. and Mrs. Donald Proctor, of 19275 Old US-12, was a member of the solemn communion class at St. Mary's Catholic church on Sunday, May 3.

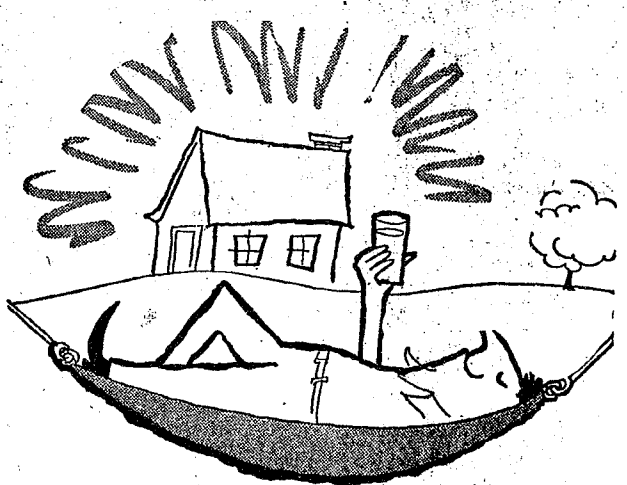
Following 8 a.m. Mass, there was a family breakfast at St. Mary's School Hall. Attending with her parents were her two grandmothers, Mrs. Del Erickson and Irene Proctor.

About 35 friends and relatives attended the afternoon and evening open house. In attendance were Mr. and Mrs. Ken Proctor, Sr. of Dexter, and out-of-town guests from Grass Lake, Williamston, and Detroit.

Telephone Your Club News To GR 5-3581.

ELECTROLUX
VACUUM CLEANERS
JAMES COX
Ph. 428-2931 or 428-8221
Manchester
SALES and SERVICE

Do the job in half the time



with Dutch Boy Latex House Paint

Glides on easily, without lap marks, and dries in an hour; that's how Dutch Boy Latex House Paint cuts your painting time in half. It's pure acrylic latex, too. That keeps it looking good longer so you don't have to paint as often. It'll be the best friend the exterior of your house ever had. Your's too.



MERKEL BROS.
Open Friday Until 9 p.m. Phone Chelsea 475-8621



Mother-Daughter Banquet Held By Legion Auxiliary

The Mother and Daughter Banquet was held Tuesday, May 5 at the Legion Home at Cavanaugh Lake with 31 present.

After a delicious pot-luck dinner, a clown and his friend, Snoopy the dog, arrived. The clown, Robert Geer, went among the children and adults present and made different animals for all while Snoopy just made himself at home. Snoopy was played by Tom Geer, also of Dexter.

A toast to the mothers was given by Katherine Rybka and the response was given by Mrs. Ruth Christwell. Judy Guenther then read a poem and Pamela Boyle played a musical selection on the flute and gave a reading.

Gifts were given in the following categories: oldest mother present with daughters, Mrs. Ernest (Otilia) Gaither; mother with most daughters, Mrs. Frederick (Sandy) Weber with four; youngest mother present with a daughter, Mrs. Merle Bart, Jr. The regular meeting followed with 16 members present and one guest.

Several very interesting committee reports were given including those on the rummage sale, bake-less bake sale, and the party that was sponsored at Ypsilanti, Beyer Hospital.

The annual Poppy Day will be held Friday, May 22 and any member who can work is to contact Mrs. Richard (Norma) Kern. It was announced that the District meeting will be held Sunday, June 7 at the Rose City Post, Jackson, with a memorial to precede the meeting.

The next meeting of the Auxiliary will be the Dues Luncheon to be held at 6:30 p.m. June 2 at the Legion Home.

SCHOOL LUNCH MENU

Monday, May 11—Hamburgers and buns with the trimmings, potato tots with catsup, buttered peas, pink applesauce, and milk.

Tuesday, May 12—Spanish rice, buttered corn, bread and butter, strawberries, and milk.

Wednesday, May 13—Bar-B-Q pork, bun, pickles, hash browns, buttered green beans, fruit compote, milk.

Thursday, May 14—Beer biscuit on a roll, gravy, creamed carrots, bread and butter, Jell-O cubes, Jell-O salad, and milk.

Friday, May 15—Pizzas, burgers, buttered corn, lettuce salad, pudding, cookie, and milk.

Saturday, May 16—Pizzas, burgers, buttered corn, lettuce salad, pudding, cookie, and milk.

Sunday, May 17—Pizzas, burgers, buttered corn, lettuce salad, pudding, cookie, and milk.

Monday, May 18—Pizzas, burgers, buttered corn, lettuce salad, pudding, cookie, and milk.

Tuesday, May 19—Pizzas, burgers, buttered corn, lettuce salad, pudding, cookie, and milk.

Wednesday, May 20—Pizzas, burgers, buttered corn, lettuce salad, pudding, cookie, and milk.

Thursday, May 21—Pizzas, burgers, buttered corn, lettuce salad, pudding, cookie, and milk.

Friday, May 22—Pizzas, burgers, buttered corn, lettuce salad, pudding, cookie, and milk.

Saturday, May 23—Pizzas, burgers, buttered corn, lettuce salad, pudding, cookie, and milk.

Sunday, May 24—Pizzas, burgers, buttered corn, lettuce salad, pudding, cookie, and milk.

Monday, May 25—Pizzas, burgers, buttered corn, lettuce salad, pudding, cookie, and milk.

Tuesday, May 26—Pizzas, burgers, buttered corn, lettuce salad, pudding, cookie, and milk.

Wednesday, May 27—Pizzas, burgers, buttered corn, lettuce salad, pudding, cookie, and milk.

Thursday, May 28—Pizzas, burgers, buttered corn, lettuce salad, pudding, cookie, and milk.

Friday, May 29—Pizzas, burgers, buttered corn, lettuce salad, pudding, cookie, and milk.

Saturday, May 30—Pizzas, burgers, buttered corn, lettuce salad, pudding, cookie, and milk.

Sunday, May 31—Pizzas, burgers, buttered corn, lettuce salad, pudding, cookie, and milk.

Monday, June 1—Pizzas, burgers, buttered corn, lettuce salad, pudding, cookie, and milk.

Tuesday, June 2—Pizzas, burgers, buttered corn, lettuce salad, pudding, cookie, and milk.

Wednesday, June 3—Pizzas, burgers, buttered corn, lettuce salad, pudding, cookie, and milk.

Thursday, June 4—Pizzas, burgers, buttered corn, lettuce salad, pudding, cookie, and milk.

Friday, June 5—Pizzas, burgers, buttered corn, lettuce salad, pudding, cookie, and milk.

Saturday, June 6—Pizzas, burgers, buttered corn, lettuce salad, pudding, cookie, and milk.

Sunday, June 7—Pizzas, burgers, buttered corn, lettuce salad, pudding, cookie, and milk.

Monday, June 8—Pizzas, burgers, buttered corn, lettuce salad, pudding, cookie, and milk.

Tuesday, June 9—Pizzas, burgers, buttered corn, lettuce salad, pudding, cookie, and milk.

Wednesday, June 10—Pizzas, burgers, buttered corn, lettuce salad, pudding, cookie, and milk.

Thursday, June 11—Pizzas, burgers, buttered corn, lettuce salad, pudding, cookie, and milk.

Friday, June 12—Pizzas, burgers, buttered corn, lettuce salad, pudding, cookie, and milk.

Saturday, June 13—Pizzas, burgers, buttered corn, lettuce salad, pudding, cookie, and milk.

Sunday, June 14—Pizzas, burgers, buttered corn, lettuce salad, pudding, cookie, and milk.

Monday, June 15—Pizzas, burgers, buttered corn, lettuce salad, pudding, cookie, and milk.

Tuesday, June 16—Pizzas, burgers, buttered corn, lettuce salad, pudding, cookie, and milk.

Wednesday, June 17—Pizzas, burgers, buttered corn, lettuce salad, pudding, cookie, and milk.

Thursday, June 18—Pizzas, burgers, buttered corn, lettuce salad, pudding, cookie, and milk.

Friday, June 19—Pizzas, burgers, buttered corn, lettuce salad, pudding, cookie, and milk.

Saturday, June 20—Pizzas, burgers, buttered corn, lettuce salad, pudding, cookie, and milk.

Sunday, June 21—Pizzas, burgers, buttered corn, lettuce salad, pudding, cookie, and milk.

Monday, June 22—Pizzas, burgers, buttered corn, lettuce salad, pudding, cookie, and milk.

Tuesday, June 23—Pizzas, burgers, buttered corn, lettuce salad, pudding, cookie, and milk.

Wednesday, June 24—Pizzas, burgers, buttered corn, lettuce salad, pudding, cookie, and milk.

Thursday, June 25—Pizzas, burgers, buttered corn, lettuce salad, pudding, cookie, and milk.

Friday, June 26—Pizzas, burgers, buttered corn, lettuce salad, pudding, cookie, and milk.

Saturday, June 27—Pizzas, burgers, buttered corn, lettuce salad, pudding, cookie, and milk.

Sunday, June 28—Pizzas, burgers, buttered corn, lettuce salad, pudding, cookie, and milk.

Monday, June 29—Pizzas, burgers, buttered corn, lettuce salad, pudding, cookie, and milk.

Tuesday, June 30—Pizzas, burgers, buttered corn, lettuce salad, pudding, cookie, and milk.

Wednesday, July 1—Pizzas, burgers, buttered corn, lettuce salad, pudding, cookie, and milk.

Thursday, July 2—Pizzas, burgers, buttered corn, lettuce salad, pudding, cookie, and milk.

Friday, July 3—Pizzas, burgers, buttered corn, lettuce salad, pudding, cookie, and milk.

Saturday, July 4—Pizzas, burgers, buttered corn, lettuce salad, pudding, cookie, and milk.

Sunday, July 5—Pizzas, burgers, buttered corn, lettuce salad, pudding, cookie, and milk.

Monday, July 6—Pizzas, burgers, buttered corn, lettuce salad, pudding, cookie, and milk.

Tuesday, July 7—Pizzas, burgers, buttered corn, lettuce salad, pudding, cookie, and milk.

Wednesday, July 8—Pizzas, burgers, buttered corn, lettuce salad, pudding, cookie, and milk.

Thursday, July 9—Pizzas, burgers, buttered corn, lettuce salad, pudding, cookie, and milk.

Friday, July 10—Pizzas, burgers, buttered corn, lettuce salad, pudding, cookie, and milk.

Saturday, July 11—Pizzas, burgers, buttered corn, lettuce salad, pudding, cookie, and milk.

Sunday, July 12—Pizzas, burgers, buttered corn, lettuce salad, pudding, cookie, and milk.

Monday, July 13—Pizzas, burgers, buttered corn, lettuce salad, pudding, cookie, and milk.

Tuesday, July 14—Pizzas, burgers, buttered corn, lettuce salad, pudding, cookie, and milk.

Wednesday, July 15—Pizzas, burgers, buttered corn, lettuce salad, pudding, cookie, and milk.

Thursday, July 16—Pizzas, burgers, buttered corn, lettuce salad, pudding, cookie, and milk.

Friday, July 17—Pizzas, burgers, buttered corn, lettuce salad, pudding, cookie, and milk.

Saturday, July 18—Pizzas, burgers, buttered corn, lettuce salad, pudding, cookie, and milk.

Sunday, July 19—Pizzas, burgers, buttered corn, lettuce salad, pudding, cookie, and milk.

Monday, July 20—Pizzas, burgers, buttered corn, lettuce salad, pudding, cookie, and milk.

Tuesday, July 21—Pizzas, burgers, buttered corn, lettuce salad, pudding, cookie, and milk.

Wednesday, July 22—Pizzas, burgers, buttered corn, lettuce salad, pudding, cookie, and milk.

Thursday, July 23—Pizzas, burgers, buttered corn, lettuce salad, pudding, cookie, and milk.

Friday, July 24—Pizzas, burgers, buttered corn, lettuce salad, pudding, cookie, and milk.

Saturday, July 25—Pizzas, burgers, buttered corn, lettuce salad, pudding, cookie, and milk.

Sunday, July 26—Pizzas, burgers, buttered corn, lettuce salad, pudding, cookie, and milk.

Monday, July 27—Pizzas, burgers, buttered corn, lettuce salad, pudding, cookie, and milk.

Tuesday, July 28—Pizzas, burgers, buttered corn, lettuce salad, pudding, cookie, and milk.

Wednesday, July 29—Pizzas, burgers, buttered corn, lettuce salad, pudding, cookie, and milk.

Thursday, July 30—Pizzas, burgers, buttered corn, lettuce salad, pudding, cookie, and milk.

Friday, July 31—Pizzas, burgers, buttered corn, lettuce salad, pudding, cookie, and milk.

Saturday, August 1—Pizzas, burgers, buttered corn, lettuce salad, pudding, cookie, and milk.

Sunday, August 2—Pizzas, burgers, buttered corn, lettuce salad, pudding, cookie, and milk.

Monday, August 3—Pizzas, burgers, buttered corn, lettuce salad, pudding, cookie, and milk.

Tuesday, August 4—Pizzas, burgers, buttered corn, lettuce salad, pudding, cookie, and milk.

Wednesday, August 5—Pizzas, burgers, buttered corn, lettuce salad, pudding, cookie, and milk.

Thursday, August 6—Pizzas, burgers, buttered corn, lettuce salad, pudding, cookie, and milk.

Friday, August 7—Pizzas, burgers, buttered corn, lettuce salad, pudding, cookie, and milk.

Saturday, August 8—Pizzas, burgers, buttered corn, lettuce salad, pudding, cookie, and milk.

Sunday, August 9—Pizzas, burgers, buttered corn, lettuce salad, pudding, cookie, and milk.

Monday, August 10—Pizzas, burgers, buttered corn, lettuce salad, pudding, cookie, and milk.

Tuesday, August 11—Pizzas, burgers, buttered corn, lettuce salad, pudding, cookie, and milk.

Wednesday, August 12—Pizzas, burgers, buttered corn, lettuce salad, pudding, cookie, and milk.

Thursday, August 13—Pizzas, burgers, buttered corn, lettuce salad, pudding, cookie, and milk.

Friday, August 14—Pizzas, burgers, buttered corn, lettuce salad, pudding, cookie, and milk.

Saturday, August 15—Pizzas, burgers, buttered corn, lettuce salad, pudding, cookie, and milk.

Sunday, August 16—Pizzas, burgers, buttered corn, lettuce salad, pudding, cookie, and milk.

Monday, August 17—Pizzas, burgers, buttered corn, lettuce salad, pudding, cookie, and milk.

Tuesday, August 18—Pizzas, burgers, buttered corn, lettuce salad, pudding, cookie, and milk.

Wednesday, August 19—Pizzas, burgers, buttered corn, lettuce salad, pudding, cookie, and milk.

Thursday, August 20—Pizzas, burgers, buttered corn, lettuce salad, pudding, cookie, and milk.

Friday, August 21—Pizzas, burgers, buttered corn, lettuce salad, pudding, cookie, and milk.

Saturday, August 22—Pizzas, burgers, buttered corn, lettuce salad, pudding, cookie, and milk.

Sunday, August 23—Pizzas, burgers, buttered corn, lettuce salad, pudding, cookie, and milk.

Monday, August 24—Pizzas, burgers, buttered corn, lettuce salad, pudding, cookie, and milk.

Tuesday, August 25—Pizzas, burgers, buttered corn, lettuce salad, pudding, cookie, and milk.

Wednesday, August 26—Pizzas, burgers, buttered corn, lettuce salad, pudding, cookie, and milk.

Thursday, August 27—Pizzas, burgers, buttered corn, lettuce salad, pudding, cookie, and milk.

Friday, August 28—Pizzas, burgers, buttered corn, lettuce salad, pudding, cookie, and milk.

Saturday, August 29—Pizzas, burgers, buttered corn, lettuce salad, pudding, cookie, and milk.

Sunday, August 30—Pizzas, burgers, buttered corn, lettuce salad, pudding, cookie, and milk.

Monday, August 31—Pizzas, burgers, buttered corn, lettuce salad, pudding, cookie, and milk.

Tuesday, September 1—Pizzas, burgers, buttered corn, lettuce salad, pudding, cookie, and milk.

Wednesday, September 2—Pizzas, burgers, buttered corn, lettuce salad, pudding, cookie, and milk.

Thursday, September 3—Pizzas, burgers, buttered corn, lettuce salad, pudding, cookie, and milk.

Friday, September 4—Pizzas, burgers, buttered corn, lettuce salad, pudding, cookie, and milk.

Saturday, September 5—Pizzas, burgers, buttered corn, lettuce salad, pudding, cookie, and milk.

Sunday, September 6—Pizzas, burgers, buttered corn, lettuce salad, pudding, cookie, and milk.

Monday, September 7—Pizzas, burgers, buttered corn, lettuce salad, pudding, cookie, and milk.

Tuesday, September 8—Pizzas, burgers, buttered corn, lettuce salad, pudding, cookie, and milk.

Wednesday, September 9—Pizzas, burgers, buttered corn, lettuce salad, pudding, cookie, and milk.

Thursday, September 10—Pizzas, burgers, buttered corn, lettuce salad, pudding, cookie, and milk.

Friday, September 11—Pizzas, burgers, buttered corn, lettuce salad, pudding, cookie, and milk.

Saturday, September 12—Pizzas, burgers, buttered corn, lettuce salad, pudding, cookie, and milk.

Sunday, September 13—Pizzas, burgers, buttered corn, lettuce salad, pudding, cookie, and milk.

Monday, September 14—Pizzas, burgers, buttered corn, lettuce salad, pudding, cookie, and milk.

Tuesday, September 15—Pizzas, burgers, buttered corn, lettuce salad, pudding, cookie, and milk.

Wednesday, September 16—Pizzas, burgers, buttered corn, lettuce salad, pudding, cookie, and milk.

Thursday, September 17—Pizzas, burgers, buttered corn, lettuce salad, pudding, cookie, and milk.

Friday, September 18—Pizzas, burgers, buttered corn, lettuce salad, pudding, cookie, and milk.

Saturday, September 19—Pizzas, burgers, buttered corn, lettuce salad, pudding, cookie, and milk.

Sunday, September 20—Pizzas, burgers, buttered corn, lettuce salad, pudding, cookie, and milk.

Monday, September 21—Pizzas, burgers, buttered corn, lettuce salad, pudding, cookie, and milk.

Tuesday, September 22—Pizzas, burgers, buttered corn, lettuce salad, pudding, cookie, and milk.

Wednesday, September 23—Pizzas, burgers, buttered corn, lettuce salad, pudding, cookie, and milk.

Thursday, September 24—Pizzas, burgers, buttered corn, lettuce salad, pudding, cookie, and milk.

Friday, September 25—Pizzas, burgers, buttered corn, lettuce salad, pudding, cookie, and milk.

Saturday, September 26—Pizzas, burgers, buttered corn, lettuce salad, pudding, cookie, and milk.

Sunday, September 27—Pizzas, burgers, buttered corn, lettuce salad, pudding, cookie, and milk.

Monday, September 28—Pizzas, burgers, buttered corn, lettuce salad, pudding, cookie, and milk.

Tuesday, September 29—Pizzas, burgers, buttered corn, lettuce salad, pudding, cookie, and milk.

Wednesday, September 30—Pizzas, burgers, buttered corn, lettuce salad, pudding, cookie, and milk.

Thursday, October 1—Pizzas, burgers, buttered corn, lettuce salad, pudding, cookie, and milk.

Friday, October 2—Pizzas, burgers, buttered corn, lettuce salad, pudding, cookie, and milk.

Saturday

Committee Heads Named For Michigan Week Events

Governor Milliken has stated that Michigan Week is the state's biggest public relations project.

The week of celebration, covering the eight-day period between May 16-23, will be a climax of the year-long program in which thousands of Michigan citizens have volunteered their efforts toward the betterment of their community and state.

In 1953, an advisory committee to the Michigan Economic Development Commission was initiated by interested businessmen, industrialists, educators, and many others who decided that something big should be done by all the citizens of the state to tell the nation and the world about the assets, advantages, resources, and opportunities that prevail here.

The first Michigan Week was held in 1954. Every year since then, the program has become bigger and more successful in carrying out the objectives.

Each day of Michigan Week has a special designation. Festivities will begin in Chelsea, Saturday, May 16. "Our Community Pride Day" is being headed by Peter Flintoft.

Sunday, May 17 is "Religious Foundations Day." A discussion of the historical background of each Church in Chelsea will be conducted at the Sunday services. The Rev. John Morris is chairman of the day.

Monday, May 18 will be highlighted by a Mayoral Exchange with Milford as part of Government Day. Tom Dmoch is chairman of this day.

Tuesday, May 19 is "Heritage Day." It will be chaired by Jim

Daniels. Local exhibits of many old cars and other early American antiques will be on display.

Wednesday, May 20 is "Our Livelihood Day" and is headed by Sam Johnson. Exhibits of industry will be on display throughout the town.

Thursday, May 21 is "Our Hospitality Day" which is being organized by Walter Brown. A hospitality committee will be on hand this day to serve coffee and doughnuts.

Friday, May 22 has been designated as "Education Day." Bryce Fauble is chairman for the day.

"Youth Day" on Saturday, May 23 is the final event scheduled for the week. The program for the day is being organized by the Chelsea Civitans. Publicity coordinator for this year is Dave Jervis.

14th District Court Proceedings

14th District Court

On April 29, Earl Hendry Cook, of 112 N. Seventh St., Ann Arbor, pleaded guilty to driving while under the influence of liquor. He paid \$150 fine and costs, received six months probation, and was given a 30-day jail sentence, to be suspended if he undergoes anti-buse treatments.

On May 1, Thomas Loop, of 7466 Warren, Ann Arbor, pleaded guilty to larceny under \$100. He paid \$100 fine and costs, made Edison, received a one year suspended sentence, and was placed on probation for one year.

In other court action on May 1, Charles Spence of 7161 Sheldon, Whitmore Lake, pleaded guilty to speeding and was fined \$40 or four days. He also pleaded guilty to driving on a revoked license, paid \$100 fine and costs, received 10 days on the Whitmore Lake work program and six months suspended sentence.

On May 4, Michael Johnson, of 3005 Dancer, Dexter, pleaded guilty to driving while under the influence. He received 90 days probation, 10 days on the Dexter work program, and was fined \$100.

Robert Josephson, of 8081 Dexter-Pinckney Rd., Dexter, also appeared before Judge Patrick J. Conlin on May 4 and pleaded guilty to larceny under \$100. He paid \$100 in fine and costs, received 90 days probation and will serve 10 days on the Dexter work program.

In other cases May 4, Max Mack of 55 Cedar Lake, Chelsea, pleaded

guilty in district court to a charge of being drunk and disorderly, received a sentence of \$35 or five days.

Finally, Eric Hedenskoog, of 1623 S. University, Ann Arbor, was examined by Judge Conlin on a charge of possession of marijuana. The case was adjourned until June 1 at 9 a.m.

James Liebeck Attends UF Fund Budget Sessions

James Liebeck, representing the Chelsea Community Chest, attended the budget meeting of the Michigan United Fund at East Lansing last Tuesday and Wednesday, May 5.

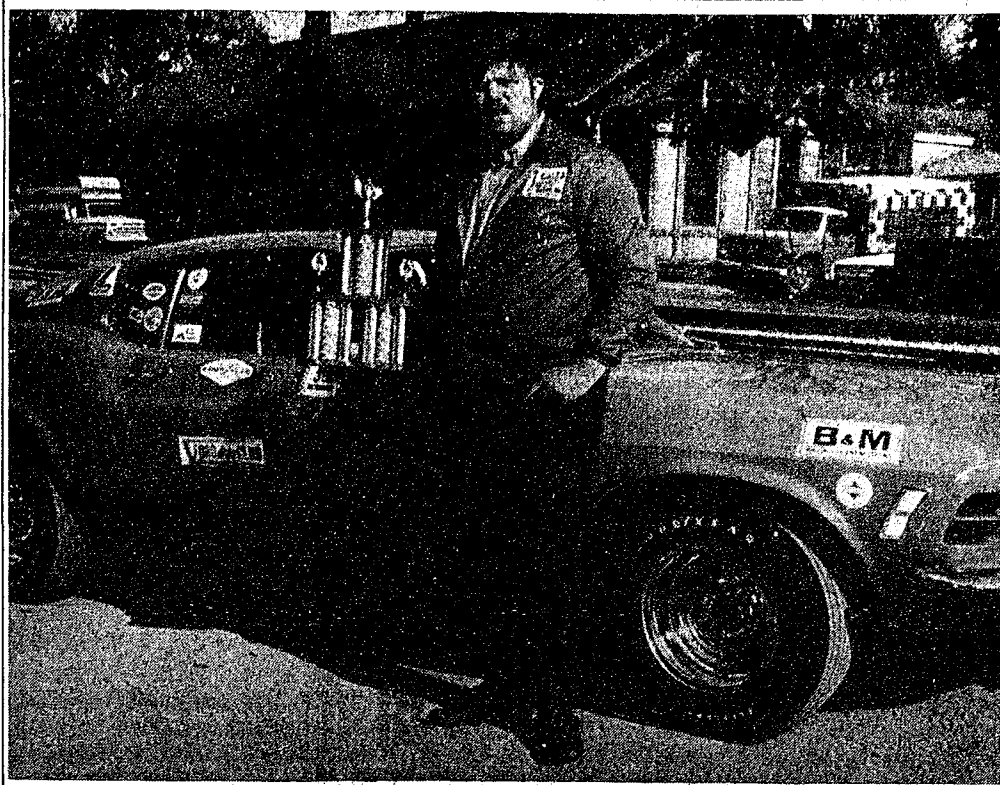
These sessions were attended by representatives of all Community Chests throughout Michigan and were held at the Kellogg Center in East Lansing.

Liebeck was a member of the guests from Reader Dogs for the blind and Children's Leukemia Foundation Agencies.

Michigan United Fund is part of the Chelsea Community Chest Agencies.

Drunk & Disorderly

Charles E. LaRowe, of 303 Railroad St., was arrested April 30 on a charge of being drunk and disorderly. He was arraigned before District Court Judge Patrick J. Conlin on May 1 where he pleaded guilty and received a sentence of \$35 or five days.



DENNIS G. HOOVER of 322½ Jackson St., and his 1970 Mustang 351 two-barrel captured second place as bracket runnerup in the Sunday, May 3 Great Lakes Championships at Milan Speedway. Dennis and the Chelsea Drag Club are sponsored by Palmer Motor Sales. Dennis accelerated to 94 mph from a standing start in the quarter mile race.

Kiwanis International Reports Operation Drug Alert Success

After only seven months, the Kiwanis International program of community education on drugs and drug abuse called OPERATION DRUG ALERT has proved to be one of the most successful undertakings in the organization's history, according to word received here by George Palmer, president of the Kiwanis Club of Chelsea.

Nearly 3,000 Kiwanis clubs in the United States and Canada are participating in the program, Palmer said. Their activities run the gamut of volunteer services. Many of them have organized community action programs aimed at drug education; others have led such programs themselves.

They have operated or sponsored programs for school assemblies, forums, radio and TV "talk shows" on drug abuse. They have set up information centers, "hot line" services in communities and on

campuses, drug clinics, publicity campaigns, and exhibits at municipal, county, and state functions.

One of their activities has revolved around distribution of a booklet prepared for young people of junior high and high school ages entitled "Deciding About Drugs." The booklets have been distributed through schools, churches, youth groups, and police departments. Currently, more than 2,000,000 booklets have been given to young people. The number continues to increase by 100,000 copies per week.

Operation Drug Alert is Kiwanis' first experiment with an organization-wide "major emphasis program." The idea will be continued, Palmer said.

Most adults forget that boys and girls look at everything with a juvenile mind.

Firecrackers May Bring Serious Charge

Chelsea Police Chief George Meranuk is warning residents of Chelsea about the illegality of firecrackers in the state of Michigan.

Within the past two weeks, students at both the junior and senior high schools have been apprehended while selling firecrackers. According to both state law and village ordinance, "conviction of the sale, transportation, possession, or use of firecrackers is a high misdemeanor punishable by a fine of not more than \$500 and a jail sentence of not more than 90 days."

Michael Harvey Starts Military Service

Michael D. Harvey, the son of Mr. and Mrs. William M. Harvey of 13410 Old US-12, Chelsea entered the United States Army on April 21. He is presently undergoing basic training at Fort Knox, Ky.

Trade at home. It pays me, you and everyone else here.

Golf Teams Meet Dexter, Saline Friday Afternoon

Chelsea High golf team improved its season record to the 8-0 level by defeating Hanover-Horton-173-178, at Deer Run on Monday, May 4.

Dave Conklin led the Bulldogs with a 39 while Mike Policht had a 40. Mike and Dave Powers had scores of 45 and 49, respectively.

The Junior Varsity team lost to Hanover-Horton, 201-188.

On Tuesday, May 5, the golf team split a meet with South Lyon and Milan. They defeated South Lyon, 197-212, and lost to Milan, 193-197.

Dave Conklin had a 46; Mark Policht a 53; Mike Powers and Glen Mushoff each a 49.

Medalist award went to Bob Naida of Milan with a 43. The Junior Varsity team defeated Dexter that afternoon by a score of 150-153.

The Bulldogs are next scheduled to meet Dexter and Saline, at Dexter, Friday, May 8.

Subscribe today to The Standard

ANNUAL SPRING RUBBISH PICK-UP

MONDAY and TUESDAY MAY 11-12

PUT ALL RUBBISH AT THE CURB

Rakings and anything else not covered by regular rubbish pick-up contract.

HAVE IT OUT EARLY MONDAY - 7 a.m.

Anything you can carry to the curb, we will haul away.

Chelsea Public Works Dept.

GIFTS THAT SAY

I LOVE YOU MOM

more for Mother!

at **DANCER'S**

Chelsea's Friendly Dept. Store

Sweet as the Thought...

Flowers FOR MOTHER'S DAY

KIWANIS CLUB FLOWER SALE

All profits go for community service projects.

FRIDAY and SATURDAY MAY 8 and 9

Friday, 8 a.m. to Noon, 3 p.m. to 9 p.m. - Saturday, 8 a.m. to 6 p.m.

- at -

Frigid Products Store, 113 N. Main St.

'Remember Her With Flowers'

WIN MOM A GE DISHWASHER LIKE THIS

DURING OUR 'GOOD OL' MOM DISHWASHER SWEEPSTAKES

Come in and see us for full details!

BUY NOW! ...and if you win you get your money back!

A FREE DISHWASHER Will Be Given Away Right Here in the Chelsea Area

Now's the time to save "Mom" from the most monotonous, hand-scalding, dish-breaking, glass-chipping, never-ending, thankless, dirty job in the world. The hours she spends washing dishes are hours that could be spent doing the really important jobs, those of being a wife and mother. Mother's Day prizes on GE top and front loading portable dishwashers are now in effect. And whichever model you choose, GE gives you a Power Arm that washes all around a dish. Not just over and under. GE gives you a Power Tower that thrusts strong jets of water and detergent to the in-between places. It doesn't miss a thing. And GE gives you a built-in Soft Food Disposer that takes soft food scraps and washes them away, so you don't have to rinse dishes first. No wonder more families buy GE than any other dishwasher.

REGISTER HERE! WIN A FREE DISHWASHER during our "Good Ol' Mom" Dishwasher Sweepstakes. Nothing to write! Nothing to buy! Come in and see us for full details.

Good Ol' Mom DISHWASHER SWEEPSTAKES

NAME _____

ADDRESS _____

CITY _____ PHONE _____

G. E. DEALER'S NAME _____

SWEEPSTAKES ENDS MAY 9, 1970

BE A WINNER . . . SEE US TODAY!

FRIGID PRODUCTS

113 North Main St., Chelsea LLOYD R. HEYDLAUFF Phone GR 9-6651