

| WEATHER | | | |
|--------------------|------|------|---------|
| | Min. | Max. | Precep. |
| Wednesday, April 8 | 39 | 73 | 0.01 |
| Thursday, April 9 | 37 | 60 | 0.00 |
| Friday, April 10 | 31 | 46 | 0.00 |
| Saturday, April 11 | 25 | 42 | 0.00 |
| Sunday, April 12 | 25 | 53 | 0.00 |
| Monday, April 13 | 39 | 60 | 0.01 |
| Tuesday, April 14 | 41 | 58 | Trace |

The Chelsea Standard

QUOTE
 "Bliss was it in that dawn to be alive, but to be young was very heaven!"
 —William Wordsworth.

ONE HUNDREDTH YEAR—No. 43

14 Pages This Week

CHELSEA, MICHIGAN, THURSDAY, APRIL 16, 1970

15c per copy

SUBSCRIPTION: \$4.00 PER YEAR

Vandalism at High School Hits New High

The tax dollars of Chelsea area residents are rapidly being eaten up by repairs at the high school necessitated by wanton vandalism," reported Board of Education Business Manager Fred Mills recently.

According to Mills, vandalism at Chelsea High normally runs around \$2,000 a year; however, during the first four months of the present school year, the school district has paid out more than \$4,315 to repair broken windows, re-install ripped-out fire alarms, replace switchplates around electrical fixtures, and restore lost, stolen or damaged school equipment.

"Glass (window) breakage is the most expensive single item," said Mills. "There have been 31 windows of various sizes broken so far this school year. Replacing them has cost us \$1,252." He went on to say that re-installing fire alarms which have been completely ripped out of the walls by malicious vandals is the next most expensive item in repairs. "It costs a minimum of \$500 to replace a vandalized fire alarm and restore it to operational status."

Other problems created by vandals include: writing on the walls, painting on bricks, damaging lockers, stealing school equipment, damaging typewriters, and destroying the fixtures in the restrooms.

"Money for repairing all this damage must come out of the budget," said Mills. "The general

Baseball Team Opens with Win Over Adrian

Chelsea's baseball team opened its 1970 season Friday, April 10 with a win by defeating Adrian, 6-2. Despite the cool weather, pitchers Wayne Welton and Ron Sweeney combined to throw a three-hitter and together struck out 13 batters.

Coach Carl Genske stated, "I was pleased with our hitting despite our having been outside only three days."

Jack McClear, Randy Brier, and Tom Lukasiak were very impressive at the plate, with McClear going two for two, including a home-run, and Randy Brier and Tom Lukasiak each collecting two hits.

The Bulldogs' running game got off to a good start with four stolen bases. "However, there still must be considerable improvement in this department if we are to be serious contenders for the conference championships," said Coach Genske.

LINE SCORE

| | R | H | E |
|---------|---------|----|------|
| Chelsea | 113-010 | —1 | 10 1 |
| Adrian | 200-000 | —2 | 3 3 |

Welton, Sweeney (5), Kozma and Byst (5), Smith, Nieto (5), Rojas.

Sylvan Board Delays Action On Rezoning

At the monthly Sylvan Township Board meeting, April 4, a motion was made to have highlights of future board meetings published in The Chelsea Standard. Following a call to order by Supervisor Maurice Hoffman, the board members present, Rayben Lesser, George Merkel, Fred-Pear-sall, and Daniel Murphy approved the minutes of the March meeting as they were read. The township clerk was then directed to pay all outstanding bills, amounting to \$6,927.04.

The annual report of the Sylvan Township Planning Committee containing a summary of the year's activities was presented and approved. The monthly zoning report was presented by zoning inspector, Harry Mertens.

A motion was made and approved to table the requested zoning change for construction of Harold Ricker's Party Store on M-52 until the next board meeting. The request by Ricker's to construct a party store north of the village limits in an area presently zoned for agricultural use only was originally recommended by the Township Planning Commission. This request was then refused by the County Planning Commission on the grounds that it would be "spot zoning." The matter will now be considered by the township board and a final decision made.

Finally, a motion was made and approved to instruct the township clerk to notify the Washtenaw County Road Commission that several projects have been approved by the board for completion as soon as possible. These include preparation and seal-coating of Sibley Rd. from Wexner Rd. to Bush Rd.; preparation of McKinley Rd. for future seal-coating; spreading of 2,600 cu. yds. of gravel on township roads; the replacing of three solid applications of salt brine on roads; and the replacing of the bridge on Waltrous Rd., sharing the cost with Lima township.

Civitan Club Seeks Talent At Auditions

Last Saturday, the Chelsea Civitans held auditions for their May 23 talent show. Only a handful of prospective contestants showed up for the auditions. Can it be that the Village of Chelsea has so little talent?

Because of the poor turnout last week, auditions will again be held Saturday, April 18 at 10 a.m. at the high school for persons who feel they have a modicum of talent in singing, dancing, instrument playing, or other areas and would like to participate in the May 23 talent show.

There is no age limit as the club has planned two divisions, Junior and senior, and will be awarding cash prizes in each. It is hoped that a real representation of talent can be presented at this year's show so interested persons are asked to attend the auditions.

Further information can be obtained by calling Frank Hill at 475-8631 and after 5 p.m. at 475-7556 or Leon Meabon at 475-5191 and after 5 p.m. at 475-5193.



ART FARLEY, second from left, was presented with the Kiwanis Club's annual scholar-athlete award at Monday evening's All-Sports Banquet. Shown with Farley is Fred Snowden, U-M assistant basketball coach, Jon Schaffner, CHS head basketball coach, and Phil Bareis, Chelsea High's head football coach.

Arthur Farley Wins Athlete Scholar Award

Kiwanis Award Goes to Senior Athlete With High Scholastic Ability

Chelsea High school senior, Arthur H. Farley became the second recipient of the Chelsea Kiwanis Athlete-Scholar Award at the annual athletic recognition dinner held Monday, April 13, at the high school.

Art, 17, the son of Mr. and Mrs. Curtis B. Farley, is a four-letter winner, having received honors for his participation in football, basketball, golf, and baseball. He is a member of the National Honor Society and has maintained a better-than-B average scholastically throughout high school. He belongs to the Varsity and Trip clubs at the high school. College next fall with an eye to plans to enter Flint Junior ward becoming an architect for construction projects.

When questioned about his feelings on receiving the award, Art replied, "I was shocked really, and of course, very pleased. It's a great honor."

The Athlete-Scholar Award is presented annually to a Chelsea High graduating senior, providing one is available, who meets the following qualifications: 1) he must be an active participant in one or more sports; 2) he must maintain at least a B average scholastically; and 3) he must maintain exemplary standards of leadership, citizenship, and dedication.

Donald Harr Killed Sunday In Auto Crash

Donald W. Harr, 43, of 14596 Harr Rd., died suddenly Sunday evening, April 12, following an automobile accident. According to State Police, Harr's car failed to negotiate a curve on Leeke Rd. in Lyndon township and struck a tree.

He was born Sept. 19, 1926, the son of Mr. and Mrs. Walter G. Harr of Stockbridge and attended Stockbridge High school.

On Sept. 26, 1948, he married Joyce Teachout, who survives. Also surviving are his mother, Mrs. Mary (Parks) Harr of Grass Lake and his seven children. They include four daughters: Mrs. John (Lynne) Cripe of Grass Lake, Karen, Mary Kay, and Christine all at home; and three sons: Walter, David, and Stephen, also at home.

Mr. Harr was a member of Local 512 of the Carpenters' Union in Ann Arbor.

Funeral services will be held Thursday, April 16 at 2 p.m. at the Caskey Funeral Home in Stockbridge with the Rev. Donald Fay officiating. Interment will be in Mt. Hope Cemetery, Water- loo.

Beach School Environmental Study Slated

Since last summer, it has been apparent that communities are increasingly determined to do something about environmental problems. There have been symposia, new courses, and new organizations begun in schools around the country. Last September, Sen. Gaylord Nelson proposed a national day of action, and the following month he and Congressman Paul McCloskey suggested April 22.

For the past several weeks, a committee of teachers headed by Science Department chairman James Hoffmeyer and Mrs. Alice Steinbach, has begun planning activities for that occasion—"E Day."

For this one day, regularly scheduled classes at Beach school will not be held. Instead, a special program concerned with "environmental studies" will be substituted. The day will begin with an assembly given by Thomas Hodgson and Glenn Kraai, conservation officers with the Waterloo Recreation Area. They will discuss environmental problems in the Chelsea community.

Following this assembly, students will be able to participate in a number of small group projects dealing with topics of environmental concern such as air pollution, waste disposal, environmental cleanup, and the problems created by the widespread use of detergents.

The day will end with an assembly of skits, songs, and limbo—all composed by the students in their small groups—and all concerned with the problem of environment.

Other members of the student-faculty committee responsible for (Continued on page eight)

Michigan Week Mayor Exchange Is with Milford

Preliminary plans have been completed for Chelsea's annual Mayor Exchange Day to be held Monday, May 18.

This year, the mayor of Milford and several of his councilmen are expected to be the honored guests.

Mayor Exchange Day is scheduled to begin with a morning parade from Pierce Park to the Municipal Building and will be highlighted by tours through the Chelsea Milling plant and the Medicenter. A later afternoon cocktail party and dinner will climax the day's activities.

Michigan Week Has Something For Everyone

"Come back to Michigan" is the objective of planners for the 17th annual Michigan Week, who are presently issuing an invitation to all former residents to join residents in the festivities scheduled May 16-23 by Governor William B. Milliken.

It is hoped that the week-long festivities, sponsored by the Great- er Michigan Foundation, will give Chelsea residents greater knowledge and appreciation of their village and state and will make everyone more aware of their assets and resources for industry, business, education, and recreation.

Michigan Week activities in Chelsea will begin with Community Pride Day on Saturday, May 1. This will be a day devoted to expressing the deep pride which citizens feel for the entire state, especially their own community.

Spiritual Foundations Day, Sunday, May 17 has been set aside for a review by all Michiganders of their religious heritages. For Chelsea residents, it will also be a day to recognize its role in community life, now and in the future.

Our Government Day, Monday, May 18 will focus attention on government work at all levels. The day will be highlighted by a Mayor Exchange with Milford. Thomas Dmoch is chairman of the exchange program.

Our Heritage Day, Tuesday, May 19 will recognize the many contributions made to Michigan's progress and the inventive genius (Continued on page eight)

Chelsea Youths Charged With Sale of Drugs

As the result of a well co-ordinated joint raid on three locations by Ypsilanti city and Michigan State Police officers from the Detroit Investigative Unit Tuesday, April 7, several Chelsea residents were arrested and a quantity of marijuana was confiscated.

Lauren Boyer, 21, of 718 Lowell Pl., Ypsilanti, the son of Laurence H. Boyer of Chelsea, and Mark Lancaster, 19, of 607 Washington, Chelsea, were arrested at the Ypsilanti Lowell Pl. address. They were held in the county jail overnight and then appeared in 15th District Court before Judge Patrick J. Conlin April 8, where they were charged with the sale of marijuana. After both posted \$500 bonds, they were released pending a preliminary hearing April 16.

Also taken into custody during the raid were Mary McIntyre, 20, formerly of Dexter, now of Frankfort; Joan Dietle, 19, of 1201 Freer Rd., Chelsea; Michael Hendricks, 19, of 708 Woody Ct., Ypsilanti, the son of Burley Hendricks of 115 Lincoln, Chelsea, and John McKeighan, 19, of 201 Cedar Lake Rd., Chelsea, the son of Mr. and Mrs. George McKeighan. They were held in jail overnight but were later released without charge.

Girl Scout Cookies Delivery Delayed By Truckers Strike

Girl Scout cookies for the Chelsea and Dexter areas will not be delivered on Wednesday, April 16 as previously reported. Their delivery has been delayed due to the trucking strike and it is not known when they will be received, according to Mrs. Paul Mann, area cookie chairman.

Fire Chief Warns Outdoor Burning Very Dangerous

Fire Chief James Gaken reported that there were three small grass fires reported over the week-end. Damage was minimal, but he cautioned Chelsea area residents to use extra caution when burning outdoors as the grass is very dry in most areas and high winds make for a real hazard.

Gaken also cautioned residents of W. Middle St. to warn their bicycle-riding youngsters not to head for the fire station when the whistle blows. They and their bikes are clogging the street and providing a real problem for the fire trucks as they attempt to leave the station.

Girls Track Meet Slated Monday

A Girls' High school track meet with AAU events will be held Monday, April 20 at 5:30 p.m. at the Chelsea High school athletic field.

Word has been received that members of the U.S. Women's Championship crosscountry team will be running in the 3,000 meter event. (3,000 meters is 238 yards short of two miles.) There is a strong possibility that a new U.S. record may be set in this event.

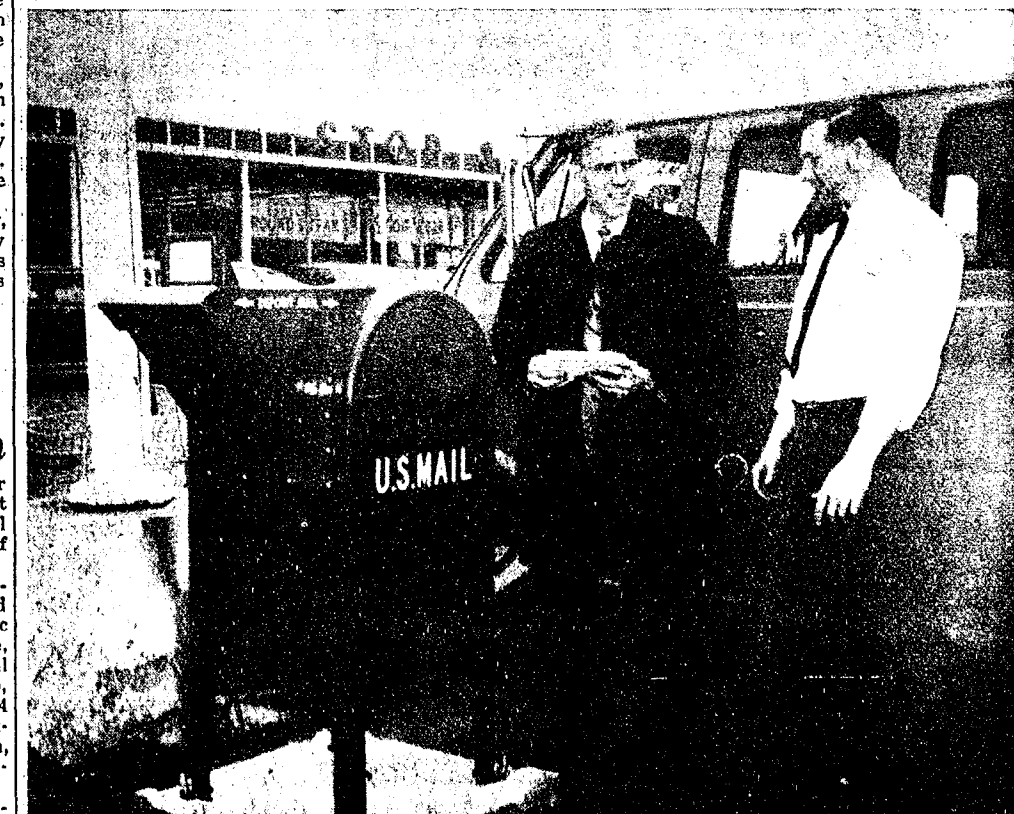
It is also likely that new records in the girls' 100-yard dash may be set as several of the Chelsea High girls have had practice runs of 10.8 and 10.9 seconds.

Elmhurst College Choir To Appear At St. Paul Church

The Elmhurst College Choir from Elmhurst, Ill., will present a special concert Saturday, April 25 at St. Paul United Church of Christ in Chelsea.

The 32-voice choral group under the direction of Dr. T. Howard Krueger, chairman of the Music Department at Elmhurst College, is on its annual spring tour, April 17-26. During their 10-day trip, the choir will be presenting 14 concerts of folk and religious music throughout Illinois, Michigan, New Jersey, New York, Ohio, Pennsylvania and Vermont.

Located 16 miles west of Chicago in Elmhurst, Ill., this private liberal arts college has an enrollment of 1,565 day students and 1,075 evening students. The institution begins its Centennial celebration this September.



RICHARD ASHLEY, assistant postmaster, and Gene Shoemaker, manager of Stop & Shop admire the U. S. Mail drop box installed last Wednesday in the Stop & Shop parking lot. Two pick-ups per day will be made from the box, at 9 a.m. and 2 p.m., to connect with both major mail dispatch schedules from Chelsea. No pick-up will be made on Sundays or holidays.



VARSITY BASEBALL TEAM members for the 1970 Chelsea High squad include, front row, left to right, Mike Griffin, John Bennett, Tod Sprague, Wayne Welton, and Leonard Kozma; second row, from left, Tom Lukasiak, Marlin Johnson, Jim Hercules, Jim Wentel, Jack McClear, and Kim Wilkerson; third row, from left, Gene Smith (student teacher), Howard Treado, Ron Sweeney, Don Schoenberg, Tom Harmon, and Coach Carl Genske. Jeff Bust was absent when photo was taken.

Established 1871 **The Chelsea Standard** Telephone GR 5-3551
 Excellence Award By Michigan Press Association
 1951-1952-1953-1954-1955-1956
 Walter P. Leonard, Editor and Publisher

Published every Thursday morning at 300 North Main Street, Chelsea, Mich. 48118, and second class postage paid at Chelsea, Mich., under the Act of March 3, 1879.
 ADDRESS CORRECTION REQUESTED

Subscription Rates (Payable in Advance)
 In Michigan: One Year \$4.00 Six Months \$2.25 Single Copies \$.15
 Outside Michigan: One Year \$6.00 Six Months \$3.50 Single Copies \$.20
 Service men or women, anywhere, 1 year \$4.00

MEMBER **NATIONAL ADVERTISING REPRESENTATIVE:**
MICHIGAN NEWSPAPERS, INC.
 257 Michigan Ave.
 East Lansing, Mich. 48823

Sheriff To Address Group on Law Enforcement

Beverly Couch, chairman of the Buck-Up Your Sheriff Committee has revealed that plans are being made for a mass rally at Pioneer High school Tuesday, April 28, at 7:30 p.m. The main speakers will be Washtenaw County Sheriff Douglas J. Harvey and Wayne County Sheriff William Lucas. Topic will be "Present Day Law Enforcement." The public is invited to attend.

Mrs. Couch said her group is presently circulating petitions to present to the Washtenaw County Board of Commissioners which would heartily support Sheriff Harvey and applaud his efforts to maintain law and order in this county. Also, Mrs. Couch concluded "we are raising funds which could be used for necessary legal counsel, defense of Sheriff Harvey."

YES
 WE ARE MAKING
 LONG-TERM FARM
 REAL ESTATE
 LOANS

SEE US

Federal LAND BANK Association
 Ann Arbor, Mich. 48103
 P. O. Box 1006
 Ph. 769-2411 3645 Jackson Rd.

MIKE'S TV ANTENNA SERVICE

Motorola Automotive Sound Systems

Winegard Home Electronics TV Antenna Systems

Insurance Claims

For Free Estimate, Call
 Pinckney 878-3258
 or 769-0130



THE APRIL BLUES

DID YOU FILE
 BY THE 15th?

★ MICHIGAN MIRROR ★

By Elmer E. White, Secretary, Michigan Press Association

Control Needed

The first step which must be taken if pollution is really going to be controlled is stabilization of the world's population, according to an environmental expert from Michigan State University.

"And a population is stabilized only when its birth rate matches its death rate," says Dr. William E. Cooper, associate professor in MSU's Department of Zoology.

"If we can't play with death rates—and no one wants to," he says, "then we have to attack the problem at the other end of the scale and bring the birth rates down."

"Contrary to popular belief there is no possible way science can support an ever increasing population," says Cooper.

"The idea is something people resort to who don't want to face

the fact that they have to solve the problem themselves," he said.

"Programs to send food to India, for example, only buy more time to solve the problem," the environmentalist says. "If such countries don't institute wide-scale birth control education programs during that time, we have accomplished nothing."

"We merely have 500 million hungry people instead of 200 million," he adds.

Japan and some of the countries of western Europe have successfully stabilized their populations through free and widespread distribution of birth control materials and liberalized abortion laws, according to the zoologist.

"A major barrier to effective birth control is the United States. It is the fact that our whole social, political and economic system is

built on the premise of an expanding population which supports a burgeoning gross national product," Cooper says.

"Our pollution problems to a great degree are caused by asking industry to supply all sorts of goods at competitive prices to meet the increased demands of 'We must make economists and more and more people' he adds.

businessmen understand that material consumption cannot go on expanding indefinitely. Our environment is telling us it can't," is Cooper's contention.

Action Needed

The so-called "silent majority" is going to have to get vocal if the world's environment is to be saved from pollution, says an ecological expert.

"The silent majority is the key to the problem," Dr. Julian Smith, an outdoor education authority for the National Education Association, told a meeting on the MSU campus.

"A public conscience must be developed," Smith lauded the teachers, which already have started on the nation's campuses concerning pollution.

"We can educate a new generation to be concerned about the outdoors," he said. "The fact these are being held indicates some are already concerned enough to do something about it."

Smith has campaigned for years on benefits of educating people about the need to preserve the environment and the benefits of outdoor recreation.

He says that practically all courses in schools—literature, mathematics and art, as well as science, can teach something about the natural environment and can use the outdoor laboratory to a good advantage.

Smith says teaching an appreciation of outdoor sports such as hunting, fishing, boating, skiing, or even snowmobile driver education, can contribute to the individual's interest in protecting the outdoors.

Among the changes Smith would make in the curriculum in the schools is abolition of current biology texts and introduction of new multidisciplinary tools of education.

"The outdoor laboratory is better equipped for such teaching than the schoolroom," he said. "Here it is, ready-made, and we don't use it much at all."

"It is hard to understand why we have always taught about these things inside a classroom when they are available to us to observe first-hand right outside our door," he said.

Uncle Lew from Lima Says:

Dear Mister Editor:

The feller at the country store Saturday night was counting their blessings and cursing their luck. They was thankful income tax time don't worry em cause they ain't got much income, but they was bad mouthing cause they ain't got enuff income to worry about income tax.

Ed Doplittle said at our age we probable git the long end of the stick, cause he had saw where Social Security checks was fatter by 15 per cent this month, and that Congress will push them up another five per cent in time to catch the old vote in November. But Ed said he can't help wondering where the taxing will stop.

What Congress will do, allowed Ed, is announce the benefits afore the election, and make extra payments start after the vote. But they ain't doing nothing robbing Peter to pay Paul, said Ed, and the taxpayer knows which one he is.

They ain't no way a pore working man can beat the tax system, Clem Webster said. He was agreed with Ed that it cost a feller more to keep up all his Governments than to support his family, and he said the richer a feller is the more shelters he can find to hide from taxes.

Clem had saw by the paper where a man with wife and two younguns and a income of \$9,000 was paying about 34 per cent of that income to support local, state

and federal Governments. A feller with a \$250,000 income, sharp lawyers and countants is paying six per cent to Governments at all levels. Clem, a old New Dealer, said this country still has got to go some to split up the tax load even. The pore feller don't even git to see most of that 34 per cent afore it is took out of his wages and sent to Washington, was Clem's words.

Furthermore, butted in Ed, the feller with the money gets the breaks on investing it. Until per cent, \$1,000 would buy a Treasury bill that pays eight per cent interest, Ed reported, but Treasurer Secretary Kennedy has fixed it so you got to have \$10,000 to buy one. Kennedy said the change saved bookkeeping, but Ed was of a mind the little fellow ought to be give a even chance even if it means more work fer clerks.

Right now, all the Governments we keep up is taking from us \$300 billion a year, and Ed said he had saw some staties that showed that was near a third of the value of everything the country produces. Right now, the country is \$375 billion in the hole.

Mister Editor, I hear tell we operate on a system of checks and balances. It looks to me like we got to cut down on the checks going out afore we can help the balances coming in.

Yours truly,
 Uncle Lew.

JUST REMINISCING

Items Taken from the Files of The Chelsea Standard

4 Years Ago...

Thursday, April 14, 1966—

Chelsea trackmen won their first four meets hands down, when they defeated Stockbridge, 37-22; St. Thomas of Ann Arbor, 77-28; Fowlerville, 66-43; and Pinckney, 83-25. Outstanding team members included Don Salyer, high jump; Larry Blackwell, pole vault; Joe Fisher, shot put; Steve Slane, John Freeman, Kevin Flanagan and Ken Lofquist, 880 relay; Mike Lehman, high hurdles; Larry Porath, mile run; Gary Larson, 880-yard run; Steve Slane, 100-yard dash; Mike Lehman, low hurdles; Slane, 200-yard dash; Larry Porath, Tom Smith, Jim Henry and Ken Blaes, mile relay.

Mary Jill Flintoft, who walked away with top honors at the District Spelling Bee in Chelsea, won with the word "abattoir." She is the daughter of Mr. and Mrs. Howard Flintoft, 610 S. Main.

Fred Mills, Chelsea teacher, was among 45 educators from 40 southeastern Michigan school districts attending a driver education seminar in Ypsilanti.

Carol Ann Mayer, daughter of Carl Mayer and the late Mrs. Mayer, was one of 21 students at the University of Michigan's College of Pharmacy who were inducted into Rho Chi by Dean Tom D. Rowe of the Pharmacy school.

14 Years Ago...

Thursday, April 5, 1956—

Ron Foster, Jerry Slusser, Dick Foster and Mike Murphy, all members of the Chelsea Auto Modifiers club, are preparing for a dance for the public on Saturday night. Police Chief John Carman will be the chaperone at the dance. Club members have requested "no bobby socks, please."

Mr. and Mrs. Walter Schrader, Sr., have received word that their son and his wife, M-Sgt. and Mrs. William Schrader, arrived in Germany with the U. S. Army.

New officers of Chelsea Junior Chamber of Commerce, elected at the March meeting are George Palmer, president; Larry Gahagan, first vice-president; Jack Wellins, second vice-president; Charles Popovich, Jr., treasurer; and Arden Musbach, secretary. Homer Kuhl, John Carman, Robert Anderson and Thomas McClear were elected members of the board of governors.

Coach Alan Conklin has been working with a 25-man squad, the longest in recent years in preparation for baseball season. Lost from last year's team are pitchers Phil Barais and Bruce Hoffman.

Kenneth Haist, is one of the 214 Michigan FFA youths who were presented with the coveted State Farmer awards at the annual FFA convention at Michigan State University last week.

Chelsea Alumni Association officers will begin plans for the alumni banquet. Officers are Charles Slane, president; Mrs. Herbert Howell of Jackson, vice-president; Otto Hart, treasurer, and Mrs. Otto Kruse, secretary. Evelyn Woods is to be publicity chairman.

24 Years Ago...

Thursday, April 18, 1946—

At their meeting, the village named Frank Reed as night marshal, to assume the duties at once.

Sergeant Richard D. Hummel, a former resident of Chelsea, received his honorable discharge on March 29 at Fort Dix, N. J.

Fifty-six members of the Chelsea Businessmen's Association attended the second regular monthly meeting of the organization, led by F. W. Merkel, president. Committee appointments are John Kusch, Harold Jones, Martin Miller, Jylaws; John Glick, Paul G. Schable, E. W. Eaton, membership; A. D. Mayer, Dr. A. L. Brock, Wilbur Hinderer, civic affairs; Lloyd Heydlauff, program; J. N. Strieter, L. G. Palmer, Roy Mayer, business standards; L. Heuer, S. R. Booker, Robert Wagner, manufacturers; G. L. Staffan, James K. Daniels, Don Martin, Walter Mohrlock, H. B. Murphy, housing.

Pupils who have been to school on time every day at Beach school are Philip Barais and Harlan Van Blaricum.

Grade spelling champions were Richard and Oscar Barais. Alta Marshall was the school spelling champion.

34 Years Ago...

Thursday, April 16, 1936—

A committee has been appointed for building and care of the property of the Lafayette Grange for their church. Members are Elmer Pierce, Arthur Sias and Adolph Seitz. The Grange is planning to remodel and repair the building.

Monitors in the sixth grade this week are Earl Grieb, windows; Pearl Alexander, duster; Winifield Schenk, helper; Donald Knoll, shades, plants and heat; Marian Eisele, doors; Gornely Holbrook and Richard Schmidt, reading books; Jack Miller, Edwin Gaunt, bulletin board; Bessie Shinnaberry, daily bulletin board; Bob Fisher, host; and Charles Lane assistant for everything.

Easter Sunday guests at the Emory Runciman home were Mrs. Jane Cooper, Mr. and Mrs. Ed Cooper, Mr. and Mrs. Delancey Cooper, Lavon Winkle and Gladys Runciman.

Jabez Bacon is president of the Central Fibre Products; D. H.

Bacon is secretary-treasurer and E. W. Eaton, production manager of the company, which has purchased of the Houdaille Hershey Corp., the brick building on N. Main St., adjacent to the Chelsea Electric & Water Dept.

MONEY TROUBLE?
 ONE PLACE TO PAY!
Credit Management Service
 662-2565
 215 South Fifth Ave.
 Ann Arbor
 State Licensed and Bonded

Howell Livestock Auction
 The Wise Owl Says Ship to Howell
SALE EVERY MONDAY, 2 p.m.
 Phone 546-2470, Bim Franklin
 Mason 677-8941

Market Report for April 13
CATTLE—
 Steers and Heifers:
 Choice, \$30 to \$32.50
 Good, \$28 to \$30
 Ut.-Std., \$26 to \$28
 Fed Holsteins, \$22 to \$29

Cows:
 Heifers, \$24.50 to \$26
 Ut.-Comm., \$23 to \$25
 Canner-Cutters, \$20 to \$23
 Fat Yellow Cows, \$20-\$23.50

Bulls:
 Heavy, \$27 to \$29
 Light and Common, \$24-\$27

Calves:
 Prime, \$46 to \$50
 Good-Choice, \$42 to \$46
 Cull-Med., \$25 to \$30
 Heavy Deacons, \$38 to \$42
 Light Deacons, \$35 to \$38

Feeders:
 Good-Choice, \$34 to \$40.50
 Common-Med., \$28 to \$34
 Dairy Cows, \$30 to \$400

HOGS—
 190-lb. to 240-lb., No. 1, \$25.50 to \$26.10
 190-lb. to 240-lb., No. 2, \$24.50 to \$25.50
 240-lb. and up, \$23.50-\$24.50

Sows:
 Fancy Light, \$22 to \$23
 300-lb. to 500-lb., \$21.50 to \$22.50
 500-lb. and up, \$20.50-\$21.50

Boars and Stags:
 All Weights, \$20 to \$23
Feeder Pigs:
 Per Head, \$24 to \$29.50

Sheep—
 Shorn Slaughter Lambs:
 Choice-Prime, \$27 to \$29.25
 Good-Util., \$25 to \$27
 Woold Slaughter Lambs:
 Choice-Prime, \$27 to \$29.50
 Good-Util., \$25 to \$27

Ewes:
 Slaughter, \$8.50 to \$12
Feeder Lambs:
 All Weights, \$26 to \$28

CLEARANCE OF FINE FURNITURE & CARPETING

Our entire floor stock of name-brand furniture and Frigidaire appliances reduced to save you many dollars.

- ★ Living Room Suites
- ★ Washers
- ★ Davenports
- ★ Dryers
- ★ Chairs
- ★ Refrigerators
- ★ Breakfast Sets
- ★ Ranges
- ★ Bedroom Suites
- ★ Dishwashers

A great variety of models available for immediate delivery.

MEABON'S TV, FURNITURE & APPLIANCE
 1170 S. M-32, Chelsea
 Phone GR 5-5191

Space Age MASS PRODUCED HOMES

FACTORY-BUILT HOMES BY ACTIVE

4 MODERN DESIGNS MODERATELY PRICED

BUY NOW for Spring Delivery at Present Prices

Built to Local Specifications

ABSOLUTELY MAINTENANCE-FREE, INSIDE AND OUT, WITH ALUMINUM EXTERIOR AND COMPLETELY paneled interior which will retain its beauty for many years.

TOWN & COUNTRY HOME SALES
 2830 E. Michigan — Just West of Ridge Road
 Ypsilanti, Michigan Phone 483-7246

Mr. Grower...
 be as sure as you can be!

for clean CORN
 use **Ramrod®/atrazine**
 by Monsanto

the broad spectrum herbicide mixture that is pre-mixed in the correct ratio in one easy-to-use package; there's no mixing mess, no mixing guesswork.

You get the strengths of two with RAMROD®/atrazine. RAMROD® provides early control of foxtail and other grasses while atrazine kills the difficult broadleaf weeds.



SMITH-DOUGLASS WASTENAW CROP SERVICE
 Fertilizer & Farm Chemicals
 885 PARKER ROAD
 Smith-Douglass makes the growing greater

PHONE 426-8551

Six Area Homes to Be Visited on Child Study Club Spring Home Tour

Ladies, drop that copy of House Beautiful and join the Chelsea Child Study Club on their spring home tour if you are interested in decorating ideas.

The club has completed plans for presenting its spring tour of six area homes on Thursday, April 30 between 10 a.m. and 3 p.m. Available for viewing this year will be the homes of Leonard McCalla, 531 S. Steinbach Rd., William Rademacher, 200 N. Freer Rd., A. W. Vandervoort, 777 S. Main St.; Roger G. Schrotenboer, 7949 Werkner Rd.; Robert M. Merkel, 124 W. Summit St.; and Dr. Gene T. Miller, 160 E. Summit St.

Each home on the tour has been chosen because of its decorator charm.

McCalla Residence
Victorian elegance and detail grace the home of the Leonard McCalla. The structure of this home has remained virtually unchanged through extensive renovation has taken place. Both devotees of farm life, Mr. and Mrs. McCalla purchased their home 10 years ago because of its large rooms, high ceilings, and handsome moldings and have been transforming it ever since.

Blue, white, and gold are the primary decorator colors chosen by the McCallas and appear in various shadings throughout the house.

The country theme begins in the dining room where bronze carpeting covers the floor. A floral wallpaper of blue, white, and bronze covers three walls, out-

lined by white moulding and a chair rail. The fireplace wall is white paneled and serves as a background for the brick fireplace and raised hearth. Bronze tie-back drapes cover all four windows while warm blue cushions provide seating on the hearth. The round oak table, china cabinet, and buffet once belonged to Mrs. McCalla's grandmother. Coordinating Windsor chairs complete the furniture grouping in this room.

Copper tea kettles are the beginnings of a collection and the copper washbasin accommodates logs for the fireplace. Of particular interest is the fact that the reverse side of the fireplace contains an outdoor gas-fired grill for family cook-outs.

The bronze carpet flows into the living room which has repeated blue accents in the upholstery. Mrs. McCalla made the gold and white print drapes that hang at the windows. The long front hall, also done in tones of gold and white, has unusual storage areas beneath the long stairway.

The kitchen welcomes one with its bright blue vinyl floor and gingham-checked wallpaper. Cherry cabinets with porcelain knobs set off the preparation center's modern equipment. The rear entry hall has rough-hewn cedar paneling and a natural brick floor. An old farm bell stands as sentry just outside the door.

Upstairs, the guest bedroom features an heirloom quilt that long ago belonged to Mrs. McCalla's grandmother. Here too, Mr. McCalla has a study that

boasts hardwood floors, paneled walls, beamed ceilings, and 14 feet of book-filled shelves. To the right of the foyer, spanning the house front to back is the long, luxurious living room. The kitchen has built-in appliances, an island sink, and Mrs. Rademacher's desk. A separate pantry is located in one corner for ample storage.

Rademacher Residence
The southern colonial home of Mr. and Mrs. William Rademacher lies in a beautiful wooded setting at 200 N. Freer Rd. The house, which is white brick trimmed with black, was originally designed by Arthur Lindauer, a Chelsea architect.

Inside, the basic color scheme is carried out in shades of green, gold, and white. Coming into the foyer, one sees a gracefully curved stairway that is a "dream come true" for Mrs. Rademacher. This leads upstairs to large bedrooms with closets that span entire walls. Adjoining the master bedroom is a private dressing room and bath.

Off of the front foyer on the main floor is the master study, a warm room characterized by a

downstairs, the children have their play area in the rumpus room. Here, there is a fireplace that overlooks a table built to hold electric trains and other recreational paraphernalia. Throughout, this is a home dedicated to light, airy, and comfortable living.

Vandervoort Residence
Mr. and Mrs. A. W. Vandervoort of 777 S. Main St. have a home that literally radiates old-world charm. The exterior of the home resembles a French country house with its cedar shingles and bat-board siding. Throughout the home, one will find numerous ac-

cents of the Vandervoort's native Holland. All of the interior decorating—the wallpapering, painting, draperies, and silpcovering—was done by the owners.

A fireplace is the focal point of the living room. A brass coal shuttle with blue ceramic handles graces the marble hearth. A shag and hand-hooked rug enhances the hardwood floor. Of special interest is the Zaanse wall clock from Holland. The corridor kitchen is done in walnut and yellow and early morning callers at the windows are the neighborhood squirrels whose antics are enjoyed by the family.

Waiting is used in the combination dining and family room which has a large sliding door leading out to the future patio. A special feature in this room is an interesting cabinet containing a sewing machine that Mrs. Vandervoort brought with her from Holland. The stairway to the second floor has a skylight that is accented by a gold and green leaded light fixture.

The unique sloped roof actually forms the walls of the second floor and has been cleverly used as headboards in the children's rooms. The boys' room has black and white striped wallpaper accented with red and black Mexican bedspreads. Linda's room with its lovely flowered wallpaper is in

yellow and white. Here too, wooden shoes remind one of Holland. The blue and white master bedroom with its sliding doors that open onto a walkout balcony contains furniture antiques by Mrs. Vandervoort.

In his landscaping, Mr. Vandervoort is skillfully blending the gracious home into the natural surroundings.

Schrotenboer Residence
A colonial style home with red brick and white aluminum siding was chosen by the Roger G. Schrotenboer's who live at 7974 Werkner Rd.

Here, antiques are again used for maximum effect. The living room is furnished in Mediterranean against white walls and green carpeting. A large Spanish fan adorns the wall over the multi-print davenport. The formal dining room is done in a striking red and white flocked wallpaper with red carpeting. Mrs. Schrotenboer antiques the 75-year old dining room furniture. The family room, with its rustic "old brick" fireplace, peacock paneling, open beamed ceiling, and mellow tones of gold and brown, displays a zither which once belonged to Mrs. Schrotenboer's great-grandfather.

A door wall in the family room leads past a rose garden to the pool area with its redwood furniture and fencing. The 20' by 40' (Continued on page eight)

PLAYTEX 18 HOUR GIRDLES

REDUCED
\$2.00 Each
7 Styles for Your Selection

ON SALE
FROM APRIL 16 TO MAY 9

DANCER'S
Chelsea's Friendly Dept. Store

GAMBLES

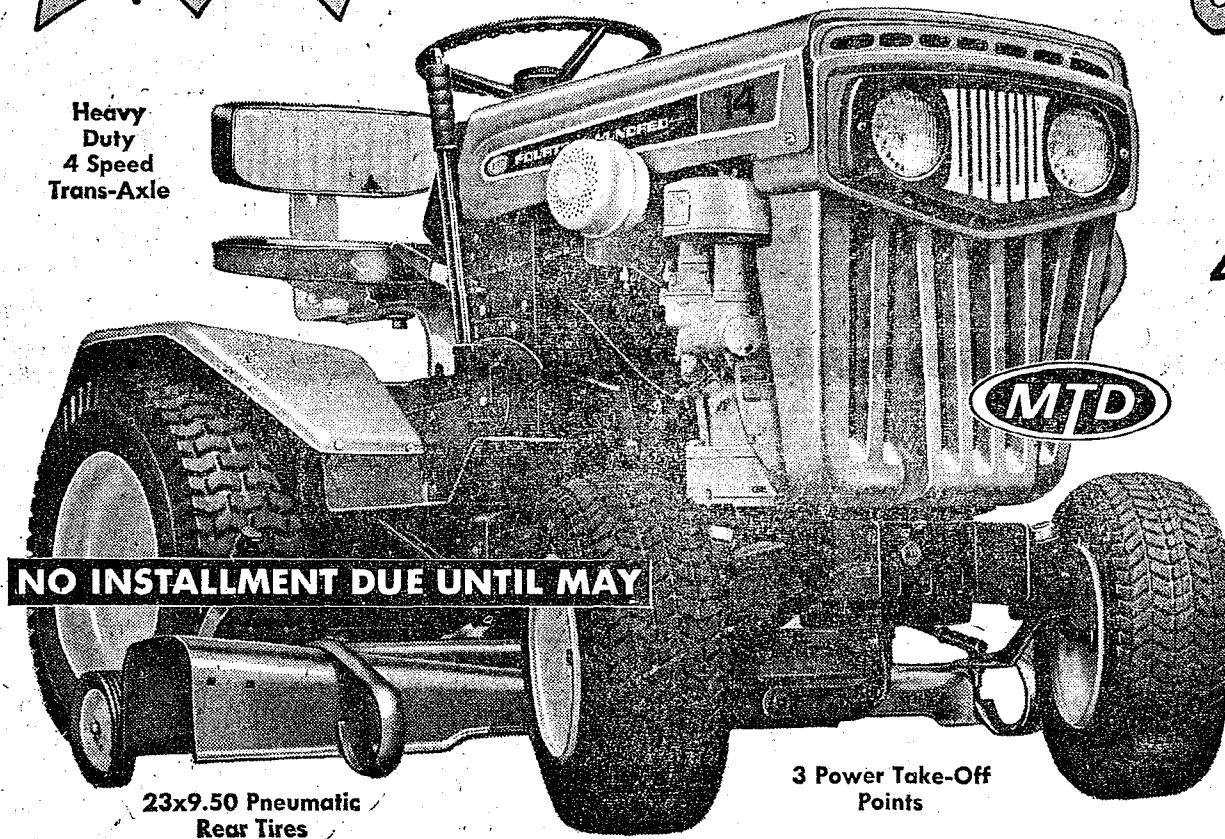
SALE!

MTD Deluxe TRACTORS

All-Purpose
work the year around for you!

12 Volt Electric System
with Key Start

Heavy
Duty
4 Speed
Trans-Axle



NO INSTALLMENT DUE UNTIL MAY

23x9.50 Pneumatic
Rear Tires

3 Power Take-Off
Points

42" 3-Blade Mowing Deck... \$159.00

ELECTRIC
KEY START

14 HP 4-SPEED TRACTOR

Most powerful tractor we've ever sold—now sale priced! Just sit back, turn the key and GO! Synchro-balanced Briggs and Stratton engine's 14 horses handle the toughest jobs. 4 forward speeds, 3/4 mph to 6 1/2 mph, plus reverse. Combination brake-clutch pedal. Easy-turn rack and pinion steering.

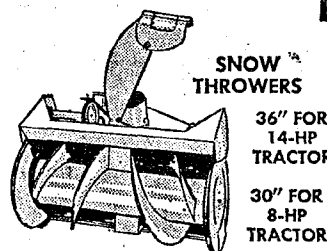
Reg. \$999
TRACTOR ONLY **\$949**

USE OUR BUDGET PAY PLAN

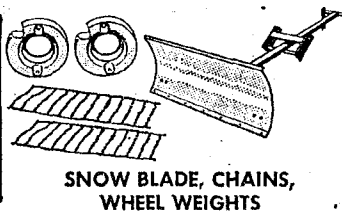
ATTACHMENTS NOT SHOWN BELOW:

- Trailer • 42" Row Crop Cultivator
- 3-Speed Auxiliary Power Take-Off
- 30" Spike Aerator • 30" Lawn Roller

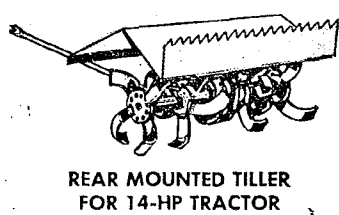
PICK THE TRACTOR ATTACHMENTS FOR YOUR ALL-SEASON NEEDS!



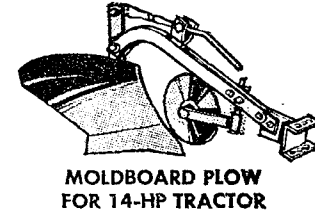
SNOW
THROWERS
36" FOR
14-HP
TRACTOR
30" FOR
8-HP
TRACTOR



SNOW BLADE, CHAINS,
WHEEL WEIGHTS



REAR MOUNTED TILLAGE
FOR 14-HP TRACTOR



MOLDBOARD PLOW
FOR 14-HP TRACTOR



DISC HARROW FOR
14-HP MODEL

SALE PRICED!

Heavy Duty
3-Speed
Trans-Axle



NO INSTALLMENT DUE UNTIL MAY

18x9.50 Pneumatic
Rear Tires

Gear Synchronized
Dual-Blade 32-In. Deck

Single Lever
Cutting Height
Adjustment

ELECTRIC
KEY START

8 HP 3-SPEED TRACTOR

Worthwhile savings on a powerful all-season worksaver! Key-starting Briggs and Stratton engine and trans-axle give you 3 forward speeds up to 6 mph plus reverse. Foot pedal clutch/brake. Floating mower deck pampers your lawn. Big sure-traction tires. Padded seat.

Reg. \$599
TRACTOR WITH
32" MOWER DECK **\$579**

Though some stores may not have space to display these tractors, they are quickly available from our nearby warehouses.

BUY NOW AND USE OUR TIME-PAYMENT PLAN!

SPECIALS

"JIFFY"

Cake & Frosting Mix 3 for 29¢
"STAMP SPECIALS"

46-OZ. CAN Tomato Juice . 19¢
32-OZ. SHURFINE Syrup . 29¢
9 1/2-OZ. CAN SPARTAN Chunk Tuna . 29¢

OPEN 6 A.M. TILL 11 P.M.

GALLUP - SILKWORTH PUMP & PANTRY

295 S. Main St.

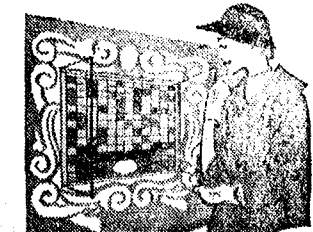
Chelsea



GIVE YOUR ROOMS

Personality!

Smart women have discovered how easy it is to plan and to have colorful, distinguished rooms. At the Dutch Boy Color Gallery you'll find hundreds of preplanned, decorator-inspired color combinations, over a hundred distinctively lovely colors that are available in Dutch Boy Interior Finishes. These fine finishes are as easy to apply as they are to select at the Color Gallery. Why not plan your new rooms now?



SEE THE
Dutch Boy
Color Gallery
AT OUR STORE TODAY!

MERKEL BROS.

Phone Chelsea 475-8621

**Ads
Taken
Till 5 p.m.
Tuesday**

**IT'S EASY TO
BUY-SELL-RENT-
HIRE & FIND WITH**

WANT ADS

**Just
Call
GR 5-3581**

WANT ADS

**The
Chelsea Standard**

WANT AD RATES

PAID IN ADVANCE—All regular advertisements, 50 cents for 25 words or less, each insertion. Count each figure as a word. For more than 25 words add 2 cents per word for each insertion. "Blind" ads or box number, add 50¢ extra per insertion.

CHARGE RATES—Same as each in advance, with 15¢ extra for each day preceding publication. Pay in advance, send each or stamps and save 15¢.

DISPLAY, WANT ADS—Rate, \$1.10 per column inch, single column width only. Single and double line type. CASH—Single, paragraph style, \$1.00 per insertion for 10 words or less. 15¢ per word beyond 10 words. Minimum, 1 inch.

COPY DEADLINE—5 p.m. Tuesday, latest publication.

TWO AMBITIOUS college "short-hairs" seeking exterior painting work for summer. Good work at (hair) cutters. Call for free estimate. We'll do our best to please. 475-2588 or 475-2733. 43

CAR RENTAL by the day, week-end, week or month. Full insurance coverage, low rates. Call Lyle Christwell at Palmer Motor Sales, GR 5-3271. 25tf

FOR RENT—Partially furnished second floor apartment in Chelsea, for married couple. No children or pets. 479-5441, after 5 p.m. 42

All Insurance Needs

In the convenience of your own home—or mine.

N. H. Miles, Allstate

Call GR 5-3334 after 6 p.m. 42

BRACE yourself for a thrill—the first time you use Blue Lustre to clean rugs. Rent electric shampooer \$1. Dancer's, Chelsea. 43

New

Wallpaper Books

Select Now
for Spring

at

DANCER'S

LAWN TRACTORS

7 h.p. electric start \$635
10 h.p. electric start \$965
12 h.p. electric start \$1,170

Prices include mower.

North Lake Sales & Service

(Formerly, Merritt's Service)
14050 N. Territorial Rd., Chelsea
Phone 475-7448 44

FOR SALE—5.9 acres with nearly 400 feet frontage on Old US-12 East, near I-94 exit. Leo A. Guman, Broker. 1478 Sugar Loaf Lake. 479-7034. 43

KNAPP SHOES

For Cushion Comfort

APRIL SPECIALS
K-6 Farm Shoes \$15.95
Dress Wing Tips \$18.99

Robert Robbins
475-7282 42tf

USED TRACTOR TIRES—Large inventory on hand. Also used passenger—truck—grader tires. Jackson Tire Brokers, M-106, Muskegon, Mich. Ph. 596-2926. 32tf

WANT ADS

BOARDING, trimming, training. Town and Country Kennels, Jackson Rd. at Baker. NO 3-7200. 7tf

Gem Travel Trailers

and Campers

PICK UP COVERS

4" \$100.00

26" \$179.00 and up

Triangle Sales

Chelsea 475-4302 40tf

Spring Carpet Sale

Save \$2.50-\$5.00 yd

See display ady. on page

Merkel Brothers

Phone Chelsea 475-8621 44

WANTED TO RENT—1- or 2-car garage. Phone GR 9-7151 after 6 p.m. 43

A-1 BUYS

'69 Ford 4-dr.
'68 Mustang Fastback
'69 Chev Sportsvan
'67 Ford Wagon
'67 Mustang with air
'68 Chev Impala
'67 Pontiac 2-dr. Hardtop
'66 Fairlane 2-dr. Hardtop
'66 Fairlane Wagon
'66 Comet 4-dr.
'66 Ford 2-dr.
'65 LTD 4-dr., with air
'66 Ford Station Wagon
'65 LTD 4-dr. Hardtop
'64 Ford 2-dr.
'64 Ford 4-dr.
'64 Ford Convertible 42

TRUCKS

'67 Ford 1 Ton Pick-up
'66 Chev 1/2 Ton Pick-up
'65 Ford 1/2 Ton Pick-up

PALMER FORD

Open Mon., Wed. & Thur.
Th 9:00
Chelsea GR 5-3271 42tf

FARMS

RESIDENTIAL LAKE PROPERTY

for
QUALIFIED RELIABLE SALES PERSONNEL

Carole Bell, 426-8892
Kathryn Smith, 426-6380
Janice Fouch, Saline, 429-4114
Wendel Fouch, Saline, 429-4114

YPSILANTI OFFICE
Arthur Kane, 482-6655
Virginia Oakes, 482-6655

Evinger Real Estate

426-3286
Dexter, Mich. 86tf

SIDING SPECIALIST

Serving Livingston and adjoining counties since 1938. Alcoa aluminum siding and other materials. Remodeling, covering, sills, roof overhang, trim. Finest workmanship. No estimate service charge. William Davis, Ph. (313) 663-6635. 43

DRIVERS NEEDED

Train NOW to drive semi truck, local and over the road. You can earn high wages after short training. For interview and application, call 419-243-2053, or write Safety Dept., Nationwide Systems, Inc., c/o Duff Terminal Bldg., 215 City Park Avenue, Toledo, Ohio 43602. 43

WANT ADS

Go-Mix Fuel
For All 2-Cycle Engines

White Gas

Available at

Gateway

Sports Centre, Inc.

2tf

Contractor Servicing

Chelsea, Dexter and

Manchester Areas

Complete Home Remodeling

Inside and Outside

Specializing in extra living space,

recreation rooms, kitchens and

paneling. Installing all aluminum

products, 5" eavestroughs, custom-

made awnings, windows and doors,

aluminum siding in many selected

colors and styles.

Please Call

DALE COOK

Chelsea 475-8363 20tf

FOR SALE

WASHINGTON STREET, Brick

Ranch—2 or 3 bedroom, recrea-

tion room, fireplace, drapes, new

carpeting. All in excellent condi-

tion. Financing available.

121-ACRE FARM, 3-bedroom

house, oil furnace and bath.

Large barn and other outbuildings.

Price \$44,000, 29% down.

260-ACRE FARM. About 200 till-

able. Live stream and lake shore.

Excellent 3-bedroom house, good

barn. Price \$600 per acre.

10 ACRES—Sharon Twp. Possible

location for trailer.

3-ACRE wooded lot, excellent build-

ing location. 5 miles west.

SOLD OUT of Chelsea homes. Have

buyers waiting.

NO RENTALS

R. D. Miller

REAL ESTATE

Real Estate Broker

GR 9-5892

H. W. Buss

phone 475-8910

Evelyn White

at 475-7551 after 5 p.m.

15775 Cavanaugh Lake Rd.

Chelsea, Mich.

Post Office Box 381

List your property with Miller—

fast, efficient service. 40tf

WORK SHOE

HEADQUARTERS

Famous Red Wing Brand

\$12.95 to \$26.95

Foster's Men's Wear

34tf

HORSE SHOEING

— Experienced,

corrective trimming and shoe-

ing. Prompt service. Buck Myer,

Howell, Phone 1-547-546-1510. 48

FOR SALE

Use Dutch Boy Block Fill for first

coating over cement blocks or

walls. Gives a smoother finish. Per

gal. \$5.50

RAP Paint and Varnish Remover,

best for fine furniture and wood-

work. Water washable. Qt. \$1.95.

Gallon, \$5.95.

9-inch Paint Roller and Pan, \$1.29

Muriatic Acid. Quarts, 79¢; gal-

lons, \$1.69.

Paint Thinner and Brush Cleaner

Quarts, 59¢; gallons, \$1.29. 43

Merkel Bros.

Furniture - Carpet 43

FOR SALE—Beautiful pink for-

mal, size 10, like new. Also several

women's white uniforms. Call 475-

8035. 43

FOR SALE—10-ft. Pioneer metal

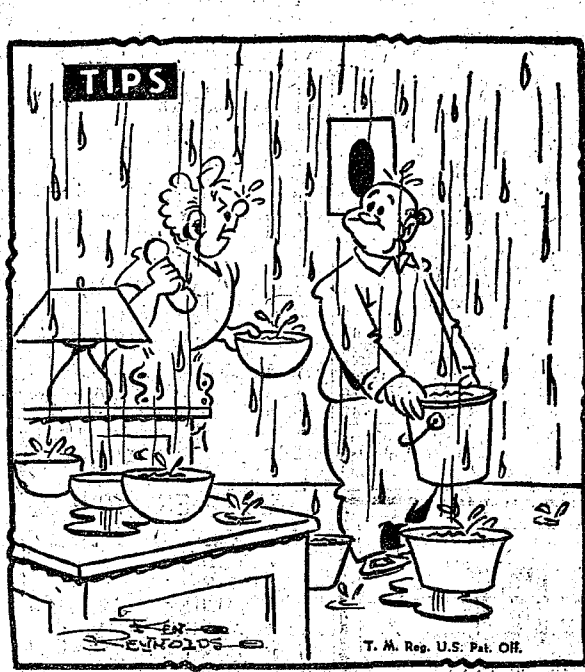
boat, styrofoam, sailboat. Kemp

garden grinder with 1 h.p. elec-

tric motor. Leaf and lawn raker.

Hassock type electric fan. Call 475-

8801. 43



"The roofer in the Standard Want Ads says we should get a new roof—before it becomes serious!"

WANT ADS

FOR SALE—13 ft. camping trail-
er. Sleeps 6. Call 475-8130 after
5:30 p.m. 43

CHELSEA - DEXTER
AREA HOMES

ONE ACRE—New 3-bedroom, five-
place, 2 baths, with a beautiful
view, halfway between Dexter and
Chelsea. Many extras including air
conditioning. SEE THIS HOUSE
TODAY! 16tf

FAMILY SIZE—Six bedrooms,
family room and, recreation
room are all included in this 10-
year-old home located in the village
of Chelsea. Just the home for a
large family!

LAKE-FRONT—3-bedroom beauti-
ful home located on Cordley
Lake, only 4 years old with fire-
place, family room, 2 baths and a
beautiful modern kitchen, located
on a large wooded lot with a sandy
beach. Enjoy this spring!

VILLAGE OF CHELSEA—3-bed-
room, 1 1/2 baths, beautiful kit-
chen and family room with Geor-
gian Marble fireplace, dining room,
carpeted, with full basement. This
home has over 1,700 square feet
and is priced at only \$38,900.

HURON RIVER FRONTAGE—18
acres, half wooded and half
clear field with over 800 feet of
frontage on the river. A rare op-
portunity!

JUST LISTED—4-bedroom older
home in Village of Chelsea, 2
baths, gas heat, in good condition.
FHA terms.

MANY OTHER LAKE HOMES
BUILDING SITES AND FARMS
TO CHOOSE FROM!

Eibler, Frisinger
& St. Amour
REALTORS

Chelsea 475-8681 Dexter 426-4659

Evenings Call

Bob Thornton 475-8857

Burke Fitzgerald, 1-878-6603

Paul Frisinger 475-2621

George Frisinger 479-4161

Herman Koenn 475-2613 42tf

REAL ESTATE

FOR SALE

3-BEDROOM ranch type home.

Very clean, on blacktop street.

Back yard fenced in.

55 ACRES—Approved for subdivi-

sion. 43

LISTINGS

NEEDED

Kern Real Estate

616 S. Main St., Chelsea

Phone 475-8563. 43tf

WANT ADS

PIANO TUNING, Chelsea and area.

Facilities for reconditioning and

rebuilding. Used piano sales; re-

conditioned grands and verticals.

E. Eklund. 426-4425. 50tf

WANT ADS

Home Improvement

—House and Floor Leveling

—Additions

—Roofs and Repairs

—Eavestroughs

—Kitchen Cabinets Installed

—Expert Trim Work

—Door Hanging

—Porches, Patios, Sidewalks

—Complete Garages

—Recreation Rooms

—Dropped Ceilings

Call 475-7460

Patrick, Fletcher & Co. 20tf

WANT ADS

ATTENTION: Morarity erects
buildings all winter if you are
in need of a commercial or agri-
cultural building order before win-
ter and want to save money. Quality
materials and workmanship
guaranteed. Call Petersburg 279-
1855 collect or write to Box 84,
Petersburg, Mich., for all your pole
building needs see Morarity Pole
Builders today. 16tf

Custom Slaughtering

By Appointment

Complete Food and Meat

Processing Service.

Frozen Food Lockers

Frigid Products

LOCKER DEPT.

Phone GR 5-8280 15tf

REAL ESTATE

BASELINE lakefront year-around
home, 3-level, 3-bedrooms, 2
baths, built-in, carpeted, many
extras.

2-BEDROOM year-around, base-
ment garage, view of Joslyn
Lake. Private beach privileges.
\$17,000 with terms.

EXCEPTIONAL VALUE—Small
furnished cottage. Private beach
privileges, carport. Pretty hillside
and trees. \$9,000.

HALF MOON LAKE—75-ft. front-
age beach, 2-bedrooms with bath,
hot water, large deck with sliding
doors, Franklin fireplace. Needs
some inside finish. \$25,000.

PORTAGE LAKE—3 canal lots,
\$4,000 each.

1-ACRE BUILDING SITE, many
trees, small private lake privi-
leges, edge of golf course. \$4,000.

1.5 ACRES, trees; small lakes privi-
leges. Lovely building site.
Natural gas possible. \$4,000.

Mary Wolter
Real Estate

7421 Dexter-Pinekey Rd.

Dexter 48130

Phone 426-8188 43

GARDEN PLOWING and fitting.
Phone 475-7557. 45

Semi Drivers Needed

Over age 21, married or single,
good physical condition, some ex-
perience or willing to learn to earn,
to become tractor-trailer drivers
Midwest, Southern, and Eastern
areas; For application write: c/o
Trucks, 1028 S. Barr, Fort Wayne,
Indiana. A. C. 219-743-4611. 43

HOUSE NEEDED—We would like
to rent a 2- or 3-bedroom home
in Chelsea area June 1. Call collect
(area 216) 282-3957. 43

FOR SALE—Chihuahua puppies;
stud service. AKC registered.
Long coat male pup, no papers, \$36.
Phone 475-7801. 43

FOR SALE—Antique walnut chest
of drawers, maple bedroom suite
and dining room furniture. 139
Orchard St. 43

WANT ADS

WANT ADS

EXPERIENCED PAINTER looking for part-time work. Interior or exterior. Very reasonable, free estimates. 475-7678. 17c

PRINTING for the wedding—One of the largest assortments in this area. Album prices discounted 10%. John's Shop, call 475-7600. 45c

CUSTOM BUILDING

and
REMODELING

Chelsea Associated Builders, Inc.

Phone 475-8182

LOSE WEIGHT safely with Dex-A-Diet, and remove excess fluid with FLUIDEX. Only 98c and \$1.69 at Chelsea Drug. 44c

FOR SALE—Antique satin, custom made drapes and valence. Beige, 82" x 64" and 62" x 64". \$40. Also minibiike, \$55. Ph. 475-4792. 43c

WANT ADS

CARPET CLEANING by Burke. 12 cents a square foot, needs overnight to dry. In Chelsea call Merka Brothers, 475-8621. 33c

WORK SHOE
HEADQUARTERS

Famous Red Wing Brand

\$12.95 to \$26.95

Foster's Men's Wear

CLOGGED
SEWER

Reynolds Sewer Service

We Clean Sewers Without Digging. Drains Cleaned Electrically. FREE ESTIMATES. 2-YEAR GUARANTEE. Phone Ann Arbor 2-5277. "Sewer Cleaning Is Our Business—Not a Side Line" 33c

WANTED—Used 35-mm. projector for Spaulding for Children. 475-7283. 44c

WANT ADS

FOR SALE—4-year-old gelding. Half Arabian, half Apaloosa. Best offer over \$200. Ph. 475-2207. 34c

REAL ESTATE
Outside of Detroit

ATTRACTIVE 3-bedroom ranch home for gracious living in small town within walking distance of all facilities. Tasteful colonial decor, with large garage and sleeping porch on landscaped grounds. \$82,000.

The Abbott Agency
Stockbridge, Michigan
Phone 851-7777 48c

REAL ESTATE

154 acres, \$600 per acre. 200' lake frontage, on West Lake Island Lake Rd.

Silloway Realtors

482-9478

WANT ADS

ATTENTION Working mothers—Will care for your children in my home while you work. Mrs. Judy Boyer, 475-8055. 28c

Colorado
Blue Spruce

6-yr. transplants, 8'-1' high

100 for \$17.50

1,000 for \$125

Hurry for yours!

A. Heise Nursery

Phone 971-2244

CARRIER BOY for Detroit Free Press, resident in Chelsea. Good earnings. Contact Mr. Thomas, 215 Madison. Ph. 475-8360. 43c

COMPANION WANTED for elderly lady. Room and board and pay. Call 522-8551. 43c

WANT ADS

BARGAIN HUNTERS DELIGHT—Rummage Sale April 17 and 18 from 10:00 until 5:00. At Grass Lake's old fire station. 43c

REAL ESTATE
Outside of Detroit

LARGE COUNTRY HOME for sale. 38 acres of fertile land, surrounding a lovely country house, located centrally between Jackson, Lansing, and Ann Arbor. Shade trees in abundance. 20x40 redwood deck with gas grill, large modern kitchen, four bedrooms, large living room with fireplace, dining room, den, and laundry room. Closets galore. A happy home for a family. Perfect for horses and pets. If you like country living, you will fall in love with this. Price \$70,000.

The Abbott Agency
Stockbridge, Michigan
Phone 851-7777 43c

LOST—Gym clothes, green flowered towel, white athletic socks, blue and white striped T-shirt, and navy stretch shorts. If found please call GR 5-2647. 43c

FLOWER BULBS

—DAHLIAS
—GLADS
—LILIES
—PONIES
—GARDEN GLOXINIA

POTTING SOIL
—GLADS
—MILORGANITE
—GARDEN SEED
—SCOTTS LAWN PRODUCTS

Chelsea Hardware
Phone GR 9-6311 43c

GOOD WILL
USED CARS

1968 Catalina 2-seat wagon
1968 Catalina 4-door sedan
1966 Plymouth 3-seat wagon
1966 Catalina 2-door hardtop
1966 Catalina 4-door sedan
1965 Chevrolet Impala 4-door hardtop
1967 Ford Fairlane 2-door hardtop

We have some good transportation cars also.

Harper Pontiac

Sales & Service

CHELSEA
Phone 475-5311 days,
761-2999 evenings. 43c

All Around Machinists

A challenging opportunity if you have a minimum of 3-5 years experience on Mills, Lathes, Drill Presses, and/or Surface Grinders. Must be able to read blueprints, hold close tolerances and work with a minimum of supervision.

We offer comprehensive benefits, including: paid medical insurance, retirement plan, paid vacation and ten paid holidays. If you qualify, call collect or write

EMPLOYMENT OFFICE

Bendix Aerospace
Systems Division

An Equal Opportunity Employer
3300 Plymouth Road
Ann Arbor, Mich. 48107
(313) 665-7766 Ext. 481 43c

Thursday, April 30

THE DAY OF

THE HOUSE TOUR

Salad Bowl Luncheon

Served 11 a.m. to 1:30 p.m.

First Congregational Church

Tickets at: Chelsea Drug Store

or Patty Ann Shoppe.

Donation \$1.50. Nursery available. 44c

1969 FORD X-L, power brakes, power steering, quick sale, \$2,150. Phone 475-7387. 43c

I WILL DO your ironing. 475-2352. 43c

WANT ADS

SEE US for transit mixed concrete. Klumpp Bros. Gravel Co. Phone Chelsea 475-2530, 4920 Loveland Rd., Grass Lake, Mich. x401c

PITTSBURGH
Flat Latex Wallhide

Now \$5.97 gal.

Buy now and save \$2.40

Chelsea Hardware

HAMMOND ORGAN teachers wanted to teach in their own homes. Call Grinnell Brothers, Ann Arbor, 862-5687. 84c

AIRLESS SPRAY PAINTING—Interior and exterior. Pincney, 878-8246. 25c

TREE REMOVAL DONE—Also buyers of standing timber and walnut trees. Chelsea 475-7631. 84c

TRAVEL TRAILERS—13 ft. and up. 10x55 ft. trailers. John R. Jones Trailer Sales, Gregory, Mich. Phone 498-2655. 43c

VACUUM CLEANERS—Electrolux, authorized sales and service. James Cox, Manchester. Ph. 428-2931 or 428-8221. 42c

Clean Up Your Lawn

With Power

Rent our power rakes.
Special on Parker
Trailer-Lawn Sweepers.

Chelsea Hardware

1937 TRACTOR, John Deere, re-conditioned. Must sell. \$100 or best offer. Wringer washer. 475-2598 evenings. 43c

FOR SALE—Two Chevrolets: '62 9-passenger station wagon, 6 cyl. stick shift. '65 Impala 4-dr. hardtop, factory air conditioning, power steering, power brakes, V-8, automatic. Ph. evenings, 426-3383. 43c

Ever see a power equipment

ALLEY SALE

Watch for announcement next week.

Chelsea Hardware

FOR SALE—2 formal, size 5, aqua; size 7, yellow. Like new. Afternoons phone 475-8081. 43c

COUPLE WISHES TO RENT old farm house or house in country with two bedrooms and fireplace. In Chelsea-Manchester area. Ph. 662-9663. 43c

36" GE pushbutton electric range. Good condition, \$25. 475-2887. 43c

'69 PLYMOUTH Road Runner, 383, 4-speed, bucket seats, tape player, low mileage. \$2,295. Call after 5 p.m. 428-2931. 43c

FOR SALE—Dachshund registered female. Very good temperament. Phone HA 6-8984. 43c

FOR SALE—1964 Mallard Canvas back trailer. Sleeps 4. \$800. Phone 475-8963 after 6 p.m. 43c

WANTED—Man or older boy to clean up yard. Want a good job done. Also someone to mow lawn later on. Ph. 475-8981. 43c

SPRING PROM DRESS, like new. Suzuki 120 c.c. very good condition. Call 475-2877. 43c

EXTRA INCOME AVAILABLE, earn while you learn, become a distributor of quality products. Call 426-8266. 44c

FOR SALE—20-ft. Thompson 200 n.p. Fiberglass. May be seen at 14050 N. Territorial Rd. \$4,800. 44c

PAINTING CLASS—New series beginning April 20 & 22. Possible evening classes. 6 weeks \$20. Inquire 478-4181. 43c

FOR SALE—Quantity of used lumber, 2" x 6" x 24, 2x8x16, 8x8x20, old barn siding, 1x6 tongue & groove boards. Ph. 475-8031, or may be seen at 422 W. Middle St., Chelsea. 43c

EARN \$7.50 per hr. selling Beeline fashions part-time. No investment, no canvassing, no collecting. Call Adrian 283-1615 or write Marilyn Beers at 2882 W. Clairview, Adrian, Michigan. 43c

FOR SALE—Tractor, Super C Farmall; 2-bottom plow, mounted; 7-ft. mower; 2-row cultivators with fertilizer attachments; pulley, disk and 3-section drags. May be seen at 422 W. Middle, Chelsea, or Ph. 475-8031. 43c

WANT ADS

FOR SALE—17-ft. Thompson boat, trailer, life jackets, skis, 50-h.p. Evinrude motor. Good for ed. Ph. 475-8031, or may be seen at 422 W. Middle St., Chelsea. 43c

ATTENTION HOMEOWNERS—

Are you going away for a while? Leave your home empty and closed up. Young professional couple desires a home to look after. We will maintain your home and pay your utilities. References furnished. Available May 1. Dexter-Chelsea area. Phone 426-4882 or write box 755, Dexter. 43c

XEROX COPIES made. First 30 at 20 cents each. Over 20, special prices. Merka Brothers. 25c

HOME WANTED—1 1/2-year-old black and silver male French poodle needs a good home. Call before 4 p.m. 475-2887. 43c

BUSINESS OPPORTUNITY—Build your own, become independent, unlimited earnings, no territories. Invest spare time for retirement security. Call 426-8266. 44c

WOMEN'S FARM BUREAU Rumor—Save! April 17-18. Earn money! Building corner of Elm and Lake Rd. and Ann Arbor-Saline Rd. Friday, 9 to 9 and Saturday, 9-5. 43c

WANTED—New employee of Rockwell-Standard desires rural home with 10 acres minimum. Call or write—Don Gillentine, R. Box No. 1, Scotts, Michigan. Phone: (616) 826-8265. 43c

MINIBIKE—8 h.p. Good condition. \$86. Ph. 475-7121. 43c

LOOK MA, NO HANDS! The first satellite which could be restarted after shutting down second stage engine was Navy navigational satellite 1B. This method permitted last-minute refinements in orbital path of the satellite. 44c

TODAY'S THOUGHT

By LOUIS BURGHARDT

A well known encyclopedia firm published a thick book report describing in detail more than 1000 federal programs that are presumed to provide a better life for all of us. In alphabetical arrangement it shows scores of AIDS for individuals and communities, clear through to ZOOLOGICAL assistance. In between the A and Z, it describes hundreds of benefits in Insurance, Social Security, Medicare, Industrial Compensation, Unemployment Compensation, Education from kindergarten through college, etc., etc., etc.

From the cradle to the grave, Americans are given more privileges, more financial security and more service benefits than any people in history. The government policy is, and has been for a long time, the closest approach ever seen to the phrase — "Ask and you shall receive."

Millions of recipients of federal aid know how the policy also contradicts the cliché about "getting something for nothing." Surprisingly, the claim is often heard that those who clamor the loudest for more benefits are those who have done so little and contribute so little to society. Not so surprising, it also seems a long delayed idea is now taking hold that they should ask less of government and do more for themselves. BURGHARDT FUNERAL HOME, 214 East Middle St., Chelsea, Mich. Phone GR 5-4144.

—SPECIALS—

ECKRICH ALL-BEEF
Hot Dogs . . . 1-lb. pkg. 69c

4-OZ. CAN
Dream Whip 34c

NO. 303 DEL MONTE
Cut Green Beans, 2 cans 43c

5-OZ. CAN ARMOUR
Vienna Sausage, 2 cans 43c

28-OZ. BOTTLE DEODORIZING
Lysol Cleaner 61c

KUSTERER'S

FOOD MARKET

DIAL 475-2721

WE DELIVER

BANK AUTO
LOANS ARE
BEST!



ANY TRIP YOU MAKE will be more pleasant, if the car you drive is financed the Bank Way—economically, conveniently and with local people.

Now Paying the Highest Interest Rates
On Savings Accounts
Any Bank Can Pay

CHELSEA STATE BANK

Member Federal
Reserve System



Member Federal
Deposit Insurance Corp.

CHELSEA PRO HARDWARE

110 SOUTH MAIN ST.

PHONE GR 9-6311

INVITES YOU TO COME ON DOWN AND HAVE YOURSELF A REAL SHOPPING SPREE DURING
NATIONAL HARDWARE-HOUSEWARES WEEK (YOU'VE SEEN IT ADVERTISED IN LOOK MAGAZINE)

SAVE AT... PRO HARDWARE STORES

SPRING
HAPPY HOME VALUE
Saleables

SHOP NOW AND SAVE

SALE STARTS THURSDAY, LASTS 9 DAYS ONLY!

| | | | |
|---|---|--|---|
| <p>FESCO TRASH CAN Durable plastic resists cracking in extreme weather conditions. Holds 20 gallons. \$1.99</p> | <p>STEAM'N DRY IRON Automatic temperature settings for all fabrics. Steam and dry iron. \$6.99</p> | <p>ALUMINUM FOIL Saves food, time, work. Big 26 foot roll. Tough yet easy to use. 477c</p> | <p>6 GAL. GARBAGE CAN Has snap lock lid. Easy to clean, water-tight, lightweight. 99c</p> |
| <p>22" ROTARY MOWER Features Air-O-Dynamically designed deck for maximum grass discharge. \$79.95 SPECIAL</p> | <p>VACUUM BAG FREE when you purchase this \$79.95 Rotary Power Mower. FREE</p> | <p>WHEEL BARROW Heavy seamless steel tray that resists rust & corrosion. 3 cubic foot capacity. \$6.99</p> | <p>LAWN FERTILIZER 20-10-5 mixture. Non burning formula. Clean, odorless, 5000 sq. ft. coverage. \$2.99</p> |
| <p>50' 5/8" HOSE Reinforced with high tensile rayon cord. Quality brass couplings. Guaranteed 10 years. \$5.99 Reg. \$11.95</p> | <p>DIAL-A-MATIC SPRINKLER Just set dial and relax. Waters up to 2,200 sq. ft. Corrosion resistant material. \$4.99</p> | <p>7 1/4" CIRCULAR SAW Cuts 2" lumber at 45 degrees. Zips through wood with ease. \$24.88</p> | <p>29 PIECE SOCKET SET Contains all size sockets from 1/4" to 3/8". Includes partitioned metal box. \$17.88 \$26.49 Value</p> |
| <p>YOUR CHOICE LONG HANDLE, LAWN AND GARDEN TOOLS GOOD QUALITY, AMERICAN MADE \$1.99 each</p> | <p>HEDGE & SHRUB TRIMMER Double edge 13" blade, fast cutting for faster and more professional trimming. \$19.99</p> | <p>CLEAN-UP BAGS WITH COUPON PACKAGE OF 10 ONLY 47c</p> | |

APPLY 16-0-24
To Corn Stalks
\$55¹⁰ per ton
Applied

Suspension Liquid Fertilizer
BLAESS ELEVATOR CO.

DIVISION OF LARROW FEED CO.
PHONE GR 9-6511

CHELSEA

High School Honor Roll

FRESHMAN

Debra L. Akin, Stephani Aldrich, Patricia Ball, Janice M. Bauer, Elizabeth Belser, Barbara L. Boylan, Thomas Burnett, Phyllis H. Buss, Kenneth Buxton, Jennell Caudill, Donna M. Clark, David A. Diedrich, Eileen Evans, C. A. Fairbrother, Sally A. Gaken, Ted L. Hinderer, Dennis E. Huehl, Peggy Kraai, Tim Lancaster, Ralph Edward Lee, John K. Mann, Eugene W. Moore, Carolyn O'Connor, Joyce E. Peterson, Bonnie J. Powers, Norman W. Schaefer (all A), Robert Schneider, Stephen Siebert, Karen C. Sullivan, Mary M. Thomson, William H. Tite, Janet Wackenhut, Mary G. Wood, Steven F. Worden, John R. Young.

10th GRADE—

Jeanette Bailey, Debra J. Barker, Mary Jo Rott, Melvin H. Buss (all A), Cynthia Chandler, Catherine Clark, Russel Collins, Mona E. Dillon, Susan Dirlam (all A), Barbara M. Duerr, Patricia Eisele, Terri D. Eismann, Daniel E. Gaunt (all A), Greta J. Graham, J. Haselschwardt (all A), Michael Hergert (all A), Larry J. Hopkins, Lynn Houley, Joel G. Howard, Marsha L. Johnson, Larry E. Jones, Karlene A. Kargel, Janice Lee King, Charles C. Lane, Pamela Laraway, Thomas L. Lixey, David Lukasiak, Janice K. Niehan, Anne McKernan, Mary K. Niehan, Sandra A. Notjen, Joseph O'Neill, Gregory Osborne, Kathy Phinney, David K. Powers, Laurel Prinzing, Chris Rasmussen (all A), Cynthia Reynolds, Gayle Robbins, Michael Rossbach, Karen L. Schaefer (all A), Kathryn Schaefer (all A), Janice L. Schenk, Dean Schoenberg, Janice Schramm, Danny K. Schuelke, Janet M. Sibley, Joan E. Slane, Betty L. Snyder, Todd F. Sprague, John Stineheiser, Barbara Stolkier, Martin L. Straub (all A), Mark J. Thomson (all A), Michael Thomson, Norbert D. Weber, Wayne R. Welton, Thomas D. Winans, Robert Wojcicki, Skeets E. Worden.

11th GRADE

Virginia M. Ball, Connee Baulough, Darlene S. Beeman, Michael Bentley, Susan Blass, Douglas Brink, Eileen R. Bristle, Charles Budreau, Elaine S. Burnett, Jeffery Bust, Barbara Caven-der, Laura Clemons, Tonya R.

Clemons, Jerry L. Collins, John C. Dettling, Annette Eresten, Martha K. Ewald, Mary J. Flint-off, Milton W. French, Mark E. Fuhrmann, Mary Kay Gaken, Lawrence Gorton, Darleen Grunden (all A's), Janice Guenther, Kathryn Hafner, Linda K. Hale, Jane Haselschwardt, Howard Hayduke, Lewis R. Herr, David Hylauuff, Ernest Hinderer, Richard Johnson, Carol Huet, Shelley Hill, Kipmiller (all A's), Laurel Lancaster, Jane Mann (all A's), Jackie L. McClain, John McClellan, Mary Lu McClellan, Jo Nevill, Tina Orbring, Pamela L. Parnell, Norman D. Passow, Lisa R. Peppers, Holly A. Powers, Carl Quigley, Susan Rasmussen, Dale R. Robbins, Rhonda G. Romine, Neil A. Rothfuss, John A. Sacher, Denise D. Salver, Cynthia A. Sawyer, Robert E. Schafer, Denise D. Slusser, Rebecca Smith (all A's), Joann E. Steenson, Lu Ann Strieter, Ann Thomson, Rebecca Van Riper, Carol A. Weir, Gayle Winans (all A's), James P. Wojcicki, Richard H. Worden, Joan Yocum, Patricia A. Young.

12th GRADE

Christine Alber, Ginger Allhouse, Linda D. Bauer, Trena A. Bentley, Floyd S. Boyce (all A's), Laurie Brink, C. M. Buckingham, Barbara L. Bury, David C. Bust, Angela C. Cavadas, Timothy N. Colvia, Claudia S. Devine, Lee A. Dickelman, Jesse Duckworth, Christine Durecki, Roberta G. Dyorak, Stephen Eismann, Terry Freysinger, Beverly A. GeBott, Patricia Gilbert, Kathryn E. Grob, Keith Gustaf, Regina K. Hardy, Diane K. Hart, Barbara Harvey, Tom G. Henricks, Jeanne Hinderer, Crystal Impola, Marsha Johnson, Marcia Kelly, Rhonda Kern, Diana L. King, Martha A. Lewis, Gail A. Machnik, Gail M. Maistre, Karen M. Manzell, Debra L. Maynard, Dennis D. Morgan, Barry T. Novess, Donald D. Nutt, Jane E. Oesterle, John R. Perry, James E. Phinney, Mark W. Robertson, Diane Schneider, Doug Schoenberg (all A's), Diane Schroen (all A's), Brenda Seitz (all A's), Roxanne Shears, Richard L. Slane, Katherine Smith, Dianne L. Snyder, Rita A. Spees, Heidi G. Sprague, Diane J. Steele, Constance Taylor, Steve P. Thomson, Caryl Thornton, Janna Lee Wade, Linda Walker, Debbie A. Weiss (all A's), Ruth M. West, John R. White, Virginia E. White, Vickie Wilkerson, John G. Wood.

Sled dog teams used for delivering emergency equipment in Alaska often travel 60 miles a day.



ENGAGED: Mr. and Mrs. Donald W. Zeeb of W. Joy Rd., Dexter, have announced the engagement of their daughter, Marlene, to Donald F. Henry. Parents of the future bridegroom are Mr. and Mrs. William Henry of Stockbridge. Miss Zeeb, a graduate of Pioneer High School, is a secretary with Veda, Inc., and attends Washtenaw Community College. Her fiancé, a graduate of Chelsea High School, also attends Washtenaw Community College and is employed by the Gamble store in Chelsea.

Conservation Law Violations Prove To Be Expensive

Disobeying local and state conservation laws can be expensive. A local conservation officer Monday said he recounted the penalties handed down by Judge Patrick J. Conlin in two recent cases.

Two men, Alan J. Heffner, 29, Michigan Center, and his brother, Keith E. Heffner, 30, Jackson, both pleaded guilty in District Court to possessing rainbow trout out of season. Alan paid a total of \$100 in fine and costs for possessing 10 illegal trout while his brother paid a \$70 fine and costs for illegal possession of six trout. They learned the hard way that the trout season at the Sylvan Trout Ponds does not open before April 25.

In holdover cases from deer season last fall, Alan B. Burt, 19, and Michael P. Root, 19, both of Ann Arbor, were sentenced by Judge Conlin for carrying illegal firearms during deer season. They each received \$100 fine and costs, a 90-day suspended sentence, and a one-year probation.

Home Economics Study Groups Calendar

Week of April 15 to April 22
Friday, April 17—Freedom Ideal Homemakers, Mrs. Charles Kruger, 8890 Weber Rd., Saline.
Monday, April 20—East Suburban, Mrs. Ray Gerow, 2584 Belwood, Ann Arbor.
Monday, April 20—Milan Study Group, Mrs. Roland Early, 19860 Hickory Rd., Milan.
Tuesday, April 21—Fosdick, Mrs. Webb Harwood, 6356 E. Michigan Ave., Ann Arbor.
Tuesday, April 21—Model Homemakers, Mrs. E. F. Helmer, 1405 Miller, Ann Arbor.
Tuesday, April 21—Friendly Dames, Mrs. Glen Feldkamp, 78-87 Klager Rd., Saline.
Tuesday, April 21—Friendly Corners, Miss Ruth Parker, 2855 Golfside, Ypsilanti.
Tuesday, April 21—Rogers Corners, Mrs. Elmer Bristle, 13271 Scio Church Rd., Chelsea. Co-hostess, Mrs. Walter Soltysiak.
Tuesday, April 21—Lodi, Mrs. Erwin Weber, 4090 Waters Rd., Ann Arbor. Co-hostesses, Mrs. Carl Peck, Mrs. O. D. Hoffman.
Tuesday, April 21—York, Mrs. Ray Cain, 822 Marvin, Milan.
Wednesday, April 22—Beacon Light, Mrs. James Kress, 13450 Pleasant Lake, Manchester.
Wednesday, April 22—Arboret, Mrs. Robert Schulz, 1201 W. Liberty, Ann Arbor.



GIRL SCOUTS

BROWNIE TROOP 145
We opened our April 9 meeting with the flag ceremony. Miss Vibeke Rosenkrands from Denmark, Connie Anderson, and Mary Tomkins were introduced as guests and we greeted them with "Hello, hello, hello." Dues and attendance were taken.

Marleyn Seitz passed cookies and we sang, "Johnny Applesed Game." The meeting was then turned over to our guest, Miss Vibeke Rosenkrands, who had been a Guide and a leader in Denmark. She told us the things that Scouts did in her country. They seemed to be pretty much the same activities that we have.

We sang the "Brownie Smile Song" and closed with "taps and a squeeze."

Sheryl Kiel, scribe.

BROWNIE TROOP 169

Brownie Troop 169 met Monday, April 13 at the Congregational church. Seventeen members were present. We collected dues and had refreshments furnished by Laurie Inbody.

We had the flag ceremony, then went into the "Brownie Ring." In the "Brownie Ring," we learned the seventh Girl Scout law and reviewed the laws that we had already learned.

Some girls punched the holes in their "sit-upons," while others sewed theirs. Mrs. Heller helped us sew today.

Senior Scout Laura Prinzing led games today while our leaders helped individual girls.

We closed with a "squeeze and taps."

Veronica Satterthwaite, scribe.

BROWNIE TROOP 58

We started our meeting with the opening held by the "Stars." We said the pledge followed by the song, "America." Treats were brought by Bonnie Boyer. The girls are to bring their permission slips and pay their dues for the bowling outing on April 25.

Other future plans are a camping trip on June 6 and a hike sometime in May. Games were by the "Arrows," they chose "Musical Chairs." We discussed some more of the "My Troop" badge. Then, we had the closing by "Lucy and Her Gang." "Mod Squad" stayed for cleanup.

Julie Chapman, scribe.

Michigan's western boundary on Lake Michigan includes more than 500 miles of sand beaches, according to the Michigan Tourist Council.

ELECTROLUX VACUUM CLEANERS JAMES COX
Ph. 428-2931 or 428-8221
Manchester SALES and SERVICE

"You Can't Go Wrong, If You Give Flowers"

THE LITTLE FLOWER SHOP
Live and Artificial flowers, arrangements and corsages.

MILDRED N. FISH
3451 WALTRIOUS RD.
CHELSEA, MICH.
Ph. GR 5-8508

BIG NAME for BIG YIELDS

XL

The Modern, Short, Tough Corn that takes Tack Planting and Heavy Fertilization.

LLOYD BOYCE
2791 Dancer Rd., Dexter
Phone 426-3565

DONALD IRWIN
16880 Grass Lake Rd., Grass Lake
Phone 522-4357

CREDIT PROBLEM? NO PROBLEM!

CONTACT MR. SMALL CREDIT ADVISOR at

HENDERSON FORD
662-3261
Ann Arbor

VILLAGE BEAUTY SALON

Wash and Set, \$3.50 - Hair Cut, \$2.50

LORETTA PANNONE, Owner - Operator
CINDY NIEHAUS - EULA MONTGOMERY
JANICE RUDD - SARAH TAYLOR

Open 8:30 a.m. Monday - Saturday
Evenings by appointment. Phone 475-5421

WINANS JEWELRY

Can you tell when a diamond is perfect?

Possibly not... but you don't have to when you choose Keepsake because it's guaranteed perfect (or replacement assured). You can't buy a finer diamond from us. Or, anyone.

Keepsake®
DIAMOND RINGS

WINANS JEWELRY

MILK THE PROTEIN SNACK

Teenagers think that milk tastes "just terrific"

Socializing, alone, or with the gang, anytime is the right time for a teenager to help himself to a delicious glass of healthful milk.

There's a world of health in a glass of milk!

WEINBERG DAIRY
QUALITY PASTEURIZED DAIRY PRODUCTS
Old US-12 Phone GR 5-5771

Helene Curtis Nature Blend™ Wigs
(They'll make your hair jealous)

Beautiful as the most beautiful hair. Permanently curled. Just tease and style yourself. Wash & wear. Never frizzy. Never limp. (The secret's in our special fiber, Modac 53™.) Mix & match 24 fabulous shades. Replacement guarantee for one full year with every wig, wiglette and fall. They're great. Try them and see.

STRETCH WIG \$29.95 / FALL \$17.95 / WIGLETTE \$9.95

McLEOD PHARMACY
PATRICK M. McLEOD, B.S., R.Ph.
"YOUR COMMUNITY HEALTH CENTER"
Dexter, Mich.
Phone HA 6-2471

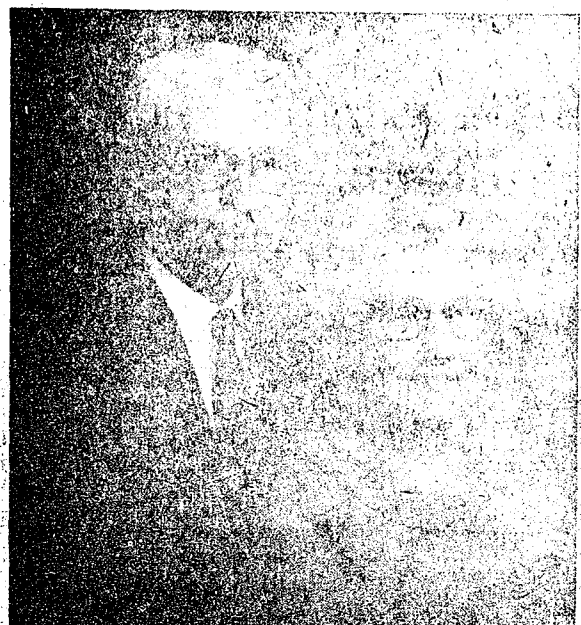
BASEMENT SALE

Pay a visit to our lower level "D" Room. The D is for Discount, Discontinued, Dusty or Damaged. Everything in one big room is 1/3 OFF. Below is a partial list of these outstanding bargains.

| | | | |
|---|----------|---|----------|
| \$169.95 traditional barrel back armchairs. Striped covering in black, brown, beige | \$112.90 | \$299.95 72-inch traditional, loose pillow sofa, gold leaf pattern | \$199.95 |
| \$359.95 40-inch china cabinet. Pecan, transitional style by American of Martinsville | \$239.90 | \$249.95 loveseat to match sofa above | \$166.90 |
| \$229.50 queen size foam rubber mattress and box spring, firm | \$149.90 | \$199.95 high back Spanish chair, gold textured covering | \$139.90 |
| \$179.95 modern 5-drawer chest, pecan, by Thomasville | \$119.90 | \$564.00 Franklin Mayfair sofa, loose pillow traditional, beige/green/melon | \$374.90 |
| \$199.95 5-drawer chest, Mediterranean oak by American of Martinsville | \$133.30 | \$139.95 high back chair, brown velvet tufted seat and back, caned wings | \$93.50 |
| \$169.95 modern walnut chest/desk by Lane | \$112.90 | \$199.90 Queen Anne high back wing chair, floral print on natural | \$133.90 |
| \$109.95 modern pull-up chairs, red wool/nylon fabric | \$69.90 | \$169.95 Chippendale wing chair, brick red quilted print | \$119.90 |
| \$129.95 modern double dresser and mirror; walnut, plastic top | \$86.90 | \$159.95 Franklin barrel back traditional chair, gold stripe | \$109.90 |
| \$134.50 modern bachelor chest with bookcase top | \$89.90 | \$149.95 modern tub chair, print suede cloth fabric | \$99.90 |
| \$159.95 double dresser and mirror, antique white provincial with blue trim | \$99.90 | \$199.95 modern high back lounge chair, olive green nylon | \$133.90 |
| \$154.95 3-drawer chest with hutch top, antique white provincial with blue trim | \$99.90 | \$129.95 Selig modern slipper chairs, lemon yellow, each | \$89.90 |
| \$109.95 Lane modern walnut cedar chest | \$73.40 | \$139.95 traditional armchair in antique gold velvet | \$109.95 |
| \$399.95 Mediterranean love seat, dark wood frame, gold/white brocade | \$266.90 | \$229.95 Franklin Mayfair traditional armchair, blue and green stripe | \$152.00 |
| \$399.95 Mediterranean sofa; loose back pillows, copper brocade | \$266.90 | \$79.95 solid cherry spoon foot square end table with drawer | \$53.40 |
| \$289.90 loveseat, Franklin tufted back, traditional, copper brocade | \$189.90 | \$239.95 Daystrom dinette buffet and china top, pecan | \$179.00 |
| \$369.95 72" Franklin Lawson sofa, gold/white brocade | \$246.90 | \$89.95 square maple cocktail table, converts to game height | \$59.90 |
| \$379.95 modern sofa by Founders. Loose back pillows. Print in green/gold/black | \$353.90 | \$149.95 Simmons queen size mattress and boxspring set | \$99.90 |
| \$399.95 traditional tuxedo sofa, loose back pillows, fruitwood trim, gold/blue brocade | \$266.90 | \$99.95 Simmons twin size mattress and box-spring | \$67.90 |
| \$279.95 buffet; Thomasville, Spanish oak, 64" | \$186.90 | \$189.95 modern lounge chair and ottoman, walnut accents olive green vinyl | \$126.90 |
| \$149.95 24-inch solid maple bachelor chest with bookcase top | \$99.90 | | |

ASSORTMENT OF LAMPS, OCCASIONAL TABLES AND PICTURES

MERKEL FURNITURE & CARPETS
Open Friday Evening Until 9
Phone Chelsea 475-8621



Mrs. Fred Klink Narrow To Head VFW Auxiliary

A regular meeting of the VFW Auxiliary was held at the home of Mrs. Fred Klink, 1835 Bush Rd., Chelsea, Mich. on April 13. The meeting was held at 7 p.m. and 17 members and two guests present.

The business meeting of the Auxiliary was presided over by Gertrude Klink, president. Mrs. Klink reported on the activities of the Auxiliary since the last meeting. A special feature of the meeting was the presentation of a certificate of appreciation to Mrs. Klink for her services to the Auxiliary.

Mrs. Klink was elected to the position of president for the coming year. The following officers were elected: Gertrude Klink, president; Mrs. Fred Klink, vice-president; Mrs. Fred Klink, secretary; Mrs. Fred Klink, treasurer; Mrs. Fred Klink, auditor; Mrs. Fred Klink, member-at-large.

Mrs. Klink was elected to the position of president for the coming year. The following officers were elected: Gertrude Klink, president; Mrs. Fred Klink, vice-president; Mrs. Fred Klink, secretary; Mrs. Fred Klink, treasurer; Mrs. Fred Klink, auditor; Mrs. Fred Klink, member-at-large.

Mrs. Klink was elected to the position of president for the coming year. The following officers were elected: Gertrude Klink, president; Mrs. Fred Klink, vice-president; Mrs. Fred Klink, secretary; Mrs. Fred Klink, treasurer; Mrs. Fred Klink, auditor; Mrs. Fred Klink, member-at-large.

Mrs. Klink was elected to the position of president for the coming year. The following officers were elected: Gertrude Klink, president; Mrs. Fred Klink, vice-president; Mrs. Fred Klink, secretary; Mrs. Fred Klink, treasurer; Mrs. Fred Klink, auditor; Mrs. Fred Klink, member-at-large.

Mrs. Klink was elected to the position of president for the coming year. The following officers were elected: Gertrude Klink, president; Mrs. Fred Klink, vice-president; Mrs. Fred Klink, secretary; Mrs. Fred Klink, treasurer; Mrs. Fred Klink, auditor; Mrs. Fred Klink, member-at-large.

Mrs. Klink was elected to the position of president for the coming year. The following officers were elected: Gertrude Klink, president; Mrs. Fred Klink, vice-president; Mrs. Fred Klink, secretary; Mrs. Fred Klink, treasurer; Mrs. Fred Klink, auditor; Mrs. Fred Klink, member-at-large.

Mrs. Klink was elected to the position of president for the coming year. The following officers were elected: Gertrude Klink, president; Mrs. Fred Klink, vice-president; Mrs. Fred Klink, secretary; Mrs. Fred Klink, treasurer; Mrs. Fred Klink, auditor; Mrs. Fred Klink, member-at-large.

Mrs. Klink was elected to the position of president for the coming year. The following officers were elected: Gertrude Klink, president; Mrs. Fred Klink, vice-president; Mrs. Fred Klink, secretary; Mrs. Fred Klink, treasurer; Mrs. Fred Klink, auditor; Mrs. Fred Klink, member-at-large.

Mrs. Klink was elected to the position of president for the coming year. The following officers were elected: Gertrude Klink, president; Mrs. Fred Klink, vice-president; Mrs. Fred Klink, secretary; Mrs. Fred Klink, treasurer; Mrs. Fred Klink, auditor; Mrs. Fred Klink, member-at-large.

Mrs. Klink was elected to the position of president for the coming year. The following officers were elected: Gertrude Klink, president; Mrs. Fred Klink, vice-president; Mrs. Fred Klink, secretary; Mrs. Fred Klink, treasurer; Mrs. Fred Klink, auditor; Mrs. Fred Klink, member-at-large.

Mrs. Klink was elected to the position of president for the coming year. The following officers were elected: Gertrude Klink, president; Mrs. Fred Klink, vice-president; Mrs. Fred Klink, secretary; Mrs. Fred Klink, treasurer; Mrs. Fred Klink, auditor; Mrs. Fred Klink, member-at-large.

Mrs. Klink was elected to the position of president for the coming year. The following officers were elected: Gertrude Klink, president; Mrs. Fred Klink, vice-president; Mrs. Fred Klink, secretary; Mrs. Fred Klink, treasurer; Mrs. Fred Klink, auditor; Mrs. Fred Klink, member-at-large.

Mrs. Klink was elected to the position of president for the coming year. The following officers were elected: Gertrude Klink, president; Mrs. Fred Klink, vice-president; Mrs. Fred Klink, secretary; Mrs. Fred Klink, treasurer; Mrs. Fred Klink, auditor; Mrs. Fred Klink, member-at-large.



Club and Social Activities

MODERN MOTHERS

Modern Mothers Child Study Club met April 14 at the home of Mrs. Richard Stoll. Mrs. Donald Kvarnburg was co-hostess.

New officers were elected in Mattoff; first vice-president, Mrs. Stoll; president, Mrs. Charles Paul Weber; second vice-president, Mrs. Vern Otto; secretary, Mrs. Walter Brown; treasurer, Mrs. Fred Lewis; auditor, Mrs. Phil Hume; and Remembrance, Mrs. Richard Stoll. The meeting will be held at the May 12 meeting.

A "white elephant" auction provided entertainment for the April 14 meeting. Mrs. Richard Cook, a former member who has recently rejoined and Mrs. Paul Garmon came as guests.

The next meeting on April 28 will be a joint session with other child study clubs in the area. Circuit Court Judge Ross Campbell will be the speaker.

CHELSEA FARM BUREAU

Chelsea Farm Bureau met at the Sylvan Town Hall April 9. Mr. and Mrs. Reuben Lesser and Mr. and Mrs. Anton Nielsen were the hosts. A pot-luck supper was served.

Carl Heller opened the meeting and Minuteman John P. Cook told members to write their congressmen about daylight savings time. Officers Schneider and McDougall presented an interesting talk on drugs and their uses.

Cards were played. The ladies high event prize went to Mrs. Roy Kalmbach and the low to Mrs. Clifford Heydlauff. The men's high went to Clifford Heydlauff and the low to Allan Braesamle. The traveling prize went to Roy Kalmbach.

THANK YOU

Thank you for all the cards and flowers. It was so nice to know that all our friends were so thoughtful during my stay at the hospital and now at home. Special thanks to my family.

Mrs. Bernice Scott.

SEA MERCHANTS

The sun never sets on Britain's merchant fleet, largest in the world. In 1965 British vessels carried nearly 15 percent of the world's shipping tonnage.



MARILYN BAUER

Marilyn Bauer Starts in Position At O'Hare Field

Marilyn Bauer, daughter of Mr. and Mrs. Walter Bauer of near Lansing and granddaughter of Mr. and Mrs. George Bauer and Mrs. Irene Procter of Chelsea and Kalamazoo, recently graduated from Humboldt Travel and Transportation Center in Minneapolis, Minn., after completing a nine-month course in airline training.

Marilyn was home vacationing for a week preparatory to the start April 1 of her new job at Chicago's O'Hare Airport as secretary to the Chief Pilot and Manager of Flight Operations. She recently returned from an all-expense paid round trip to Atlanta, Ga., for a short interview at the Delta Airline employment office.

Ann Arbor School Plans Clothing Sale

Bach school at 600 W. Jefferson, Ann Arbor, will hold their semi-annual clothing sale and bake sale, Thursday, April 23, from 7 to 9 p.m. and Friday, April 24, 9 a.m. to 5 p.m.

Unsold articles and money must be picked up by Saturday noon.

Cuba's flag was originally designed in a New York boarding house.



PAT'S CORNER

BY PAT DITTMAR
Home Economist
Chelsea Milling Co.

This golden corn ring is made in minutes with "JIFFY" Corncake Mix, plus one egg and water. The ring is fine to make with a filling of left over chicken, turkey or roast beef. Or use tuna, salmon, shrimp or chipped beef.

CORN-A-RING
(6 servings)

2 1/2 cups "JIFFY" Corncake Mix
1/2 cup water
1 egg

1. Heat oven to 350°. Grease 5-cup ring mold.
2. Blend in large bowl corncake mix, water and egg.
3. Bake about 20 minutes.

Homemaking Hints

For an outdoor children's party, use pairs of small two or three-inch clay pots as place cards. One can be filled with candy or party favors, the second could contain a small gift plant your young guests may take home to keep and care for.

How does your family compare?

A survey shows that three-fourths of all American families do not eat breakfast together. One-third of all homemakers and a quarter of all husbands eat alone. Ten percent of the men do not eat breakfast at all. In one out of four households, one child eats alone without parental supervision. Six percent of the children go to school without breakfast.

THE STYLE SHOP

207 1/2 S. Main St.

OPEN

Tues. thru Sat.

CALL
475-8400

For Appointments

Judy Patrick Ponsy Kuhl

THANK YOU

I'd like to thank all my friends and dear relatives for the many acts of kindness, flowers, and prayers during my stay at the hospital and since my return home. They will always be remembered. Thank you.

Mrs. Paul Pierce.

SENIOR CITIZENS WATCH OUT!!

As we get older our bodies are not as quick to heal as in early life. A broken bone of any kind becomes more serious when it happens to someone over sixty years old. It often involves a long period of time in a cast, followed by another period during which physical therapy is needed.

An older person must realize that they have to be much more careful in their physical reactions. They must especially watch where they are walking and avoid situations where a fall could be possible. If an older person should fall it is advisable to check with a physician quickly, even if it seems that no injury has occurred.

NEW SUNDAY DRUGS
(Effective April 19, 1970)
9 a.m. to 1 p.m.

For emergency prescription service, call 475-6871 or 475-6861.

CHELSEA DRUG
24-HOUR PRESCRIPTION SERVICE
4 Registered Pharmacists
101 N. MAIN ST. PHONE GR 5-4511

CARD OF THANKS

The family of Mrs. Harold Babbe would like to thank Dr. Charles Kruse, the Rev. Frinkle, the Village President, Councilmen, the Burghardt Funeral Home, and their friends and neighbors for the kind expressions of sympathy during their recent bereavement.

CARD OF THANKS

The family of Mrs. Harold Babbe would like to thank Dr. Charles Kruse, the Rev. Frinkle, the Village President, Councilmen, the Burghardt Funeral Home, and their friends and neighbors for the kind expressions of sympathy during their recent bereavement.

CARD OF THANKS

The family of Mrs. Harold Babbe would like to thank Dr. Charles Kruse, the Rev. Frinkle, the Village President, Councilmen, the Burghardt Funeral Home, and their friends and neighbors for the kind expressions of sympathy during their recent bereavement.

CARD OF THANKS

The family of Mrs. Harold Babbe would like to thank Dr. Charles Kruse, the Rev. Frinkle, the Village President, Councilmen, the Burghardt Funeral Home, and their friends and neighbors for the kind expressions of sympathy during their recent bereavement.

CARD OF THANKS

The family of Mrs. Harold Babbe would like to thank Dr. Charles Kruse, the Rev. Frinkle, the Village President, Councilmen, the Burghardt Funeral Home, and their friends and neighbors for the kind expressions of sympathy during their recent bereavement.

CARD OF THANKS

The family of Mrs. Harold Babbe would like to thank Dr. Charles Kruse, the Rev. Frinkle, the Village President, Councilmen, the Burghardt Funeral Home, and their friends and neighbors for the kind expressions of sympathy during their recent bereavement.

CARD OF THANKS

The family of Mrs. Harold Babbe would like to thank Dr. Charles Kruse, the Rev. Frinkle, the Village President, Councilmen, the Burghardt Funeral Home, and their friends and neighbors for the kind expressions of sympathy during their recent bereavement.

CARD OF THANKS

The family of Mrs. Harold Babbe would like to thank Dr. Charles Kruse, the Rev. Frinkle, the Village President, Councilmen, the Burghardt Funeral Home, and their friends and neighbors for the kind expressions of sympathy during their recent bereavement.

CARD OF THANKS

The family of Mrs. Harold Babbe would like to thank Dr. Charles Kruse, the Rev. Frinkle, the Village President, Councilmen, the Burghardt Funeral Home, and their friends and neighbors for the kind expressions of sympathy during their recent bereavement.

CARD OF THANKS

The family of Mrs. Harold Babbe would like to thank Dr. Charles Kruse, the Rev. Frinkle, the Village President, Councilmen, the Burghardt Funeral Home, and their friends and neighbors for the kind expressions of sympathy during their recent bereavement.

CARD OF THANKS

The family of Mrs. Harold Babbe would like to thank Dr. Charles Kruse, the Rev. Frinkle, the Village President, Councilmen, the Burghardt Funeral Home, and their friends and neighbors for the kind expressions of sympathy during their recent bereavement.

Spring Carpet SALE

STARTS TODAY - ENDS SATURDAY, MAY 2

\$9.95 sq. yd. completely installed
REGULARLY \$12.59

One level, cut and uncut polyester. Thick - Plain and tweed colorings. 12 Colors - Quick delivery.

EXAMPLES:

| | |
|-------------------------|----------|
| 12' x 18' Room, 24 yds. | \$238.80 |
| 15' x 21' Room, 35 yds. | \$348.25 |
| 15' x 30' Room, 50 yds. | \$497.50 |

TERMS
FREE ESTIMATES
Call 475-8621

MERKEL FURNITURE & CARPETS

Open Friday Evenings Until 9
Phone Chelsea 475-8621

Electric heat... the even-tempered heat.

Outside it could be cold on the shady side of the house, colder on the windy side, warmest on the sunny side. But inside—with modern electric heat—you can be cozy and comfortable, just the way you like. All through the house. That's the way it is with electric heat.

Electric heat is the cleanest, quietest, most comfortable heat you can get. For full details, just call Edison or an Edison-Approved Electric Heat Contractor. Or, mail the coupon below. So get electric heat. It's ever-ready, always comfortable. On any side of the house.

EDISON 160 Service Building
2000 Third
Detroit, Michigan 48226

☐ I'm still nervous about the cost. Send the man anyway.

☐ Don't want to talk to anyone. Just send literature 105C.

Name _____
Address _____
City _____ State _____
Zip _____ Phone _____

**TIPS
TOP**

from

Magic Mirror Beauty Salon
Phone 665-0816
5585 Jackson Rd., Ann Arbor

Community Calendar

The Agricultural Entrepreneurs Farm Bureau Thursday, April 16 at the home of Mr. and Mrs. Charles Trinkle, 8:30 p.m. Art Kuhl is to show slides. Bring cake, sandwiches, or Jell-O.

Woman's Relief Corps monthly meeting and pot-luck at Sylvan Town Hall, April 20 at 6:30 p.m. Bring table service and a dish to pass.

Senior Citizens are serving every Tuesday afternoon at Korner House. Fun night at Korner House, every Friday, 7:30 p.m.

April pot-luck dinner Thursday, April 16 at 6:30 p.m., Korner House. Bring table service and a dish to pass. Birthday honorees are Mrs. Ethel Knickerbocker, Mrs. Beulah Knott, Mrs. Lucille Olsen, Mrs. Bertha Kate Riemschneider, Donovan Sweeney, Mrs. Bertha Wallace, Mrs. Harold Warren, and Mrs. Katherine Kusterer. Hostesses are Mrs. Nina Lehman, Mrs. Inez Rank, and Mrs. Myrtle Bidwell.

Older Adult Group of the Methodist church, Saturday, April 18, 12:30 p.m., in the church social center. Pot-luck dinner. Bring own table service and dish to pass.

Boy Scout Troop, 420, paper drive. Bring papers to Stop & Shop parking lot May 2, or contact troop members for pick-up.

Chelsea Businessmen's Association, Monday, April 20, basement of bank, 7:45 p.m. All Chelsea businessmen and property owners welcome.

Esther Chapter Thursday, April 16, 8 p.m., at the church. All ladies of the church invited to attend. We need you and your talents. Program: "Silent Auction."

Beach School 'E' Day...

(Continued from page one) making plans for "E Day" are, from the school staff: Ed Lanhon, Barbara Brown, Charles Waller, Paul Simon, Leonard Solomon and James Thompson; from the student body: Brian Smith, Steven Bennett, Victor Steinbach, Curt Winans, and John Schafer; and from Waterloo Recreation Area: Tom Hodgson and Glenn Kraai.

April get-together pot-luck at Korner House on Wednesday, April 22 at noon. Bring table service and a dish to pass. Mrs. Katherine Dorer and Mrs. Katherine Kusterer are hostesses.

Chelsea Suburbanettes, Thursday, April 16 at 8 p.m., Mrs. Jerry Satterthwaite, hostess. Casual dress. "White elephant" sale.

Annual Egg Supper at North Lake United Methodist church Friday, April 17. Serving from 6 p.m. to 7:30 p.m. adv 43

Washtenaw Association for Retarded Children monthly Chapter meeting Monday, April 20, at 8 p.m., at Trinity Lutheran church, 1400 W. Stadium, Ann Arbor. Program, a demonstration by the Mongoloid Achievement, Inc. of Detroit.

Freedom I-Team Homemakers, April 17, 1:30 p.m., home of Mrs. Charles Kruger, 8890 Weber Rd.

Chelsea Rebekah Lodge No. 130, April 21 at the Rebekah Hall, 8 p.m.

Chelsea Camera Club Tuesday, April 21 at Sylvan Township Hall, 7:30 p.m. Phil Collica of Ann Arbor, will show color slides of European vacation. Public invited. Assignment slides, "Human Interest."

Past Noble Grand Club of Rebekah Lodge No. 130, Wednesday, April 22, home of Mrs. Russell Bernath, 7:30 p.m.

Service Men's Wives Club will meet Monday, April 20 at 7:30 p.m. at the American Red Cross, 2729 Packard Rd., Ann Arbor, to view a film on Interior Decorating. Interested wives may call Mrs. Richard Horning, 662-8885.

OES Rummage sale April 24, 9 a.m. to 9 p.m. at Masonic Temple. To pick up call 475-8258 or 475-6581.

Senior Citizens Fun Night every Friday night at Korner House 7:30 p.m.

Young Homemakers, Thursday, April 23, Merk's Store at 8 p.m. Members bring a guest.

Wesleyan Service Guild, regular meeting, Tuesday, April 21, 7:30 p.m. Lucile Finkbeiner and Irene



BRENDA CLEMANS (first row, left) is one of the 58 choir members participating in Albion College choir's annual spring tour. Brenda, daughter of the Rev. and Mrs. Richard Clemans of Chelsea, is a sophomore at Albion.

Proctor, hostesses to Guild from Ann Arbor First United Methodist church.

Inquiries regarding the Chelsea blood bank may be directed to Harold Jones at Cavanaugh Lake in the event that Mrs. Dudley Holmes is unavailable.

Chelsea Village Planning Commission, Thursday, April 23, Council Chambers, 8 p.m.

VFW 25th anniversary celebration, Saturday, April 18, Chelsea Rod & Gun Club.

American Legion and Auxiliary hospital equipment available by contacting either Mr. or Mrs. Eugene Martin, at 475-5867 after 4 p.m.

TOPS Club at library. Wednesday afternoon group, 12:30 p.m. For information call 475-2592. Thursday evening group, 7 p.m. For information call 475-8720.

Michigan Week Has Something For Everyone

(Continued from page one)

of the men and women who have made possible its continued growth. Our Livelihood Day, Wednesday, May 20 will focus attention on the industry, business, and agriculture which provide a livelihood for the community.

On Education Day, May 21, the entire community should pay tribute to its schools—the pupils, teachers, administrators, and other personnel—who maintain educational excellence in Chelsea.

Hospitality Day, Friday, May 22, will symbolize the theme that Michigan is a land of hospitality all year around and that Chelsea residents are friendly to neighbors and visitors alike.

On Youth Day, Saturday, May 23, Chelsea will point with pride toward the youth of the community.

This year's village chairman will be Charles F. Cox who is employed as an instructor in the U. of M. Dental School. Cox, originally from Adrian, received a Bachelor of Science degree from Wayne State University Medical School. He currently lives at 27 Sycamore Dr., with his wife, Betty, and two sons, Jeffrey and Bradley.

More Federal Funds Made Available for Handicapped Children

Congressman Marvin L. Esch (R-Michigan) said today the Department of Health, Education and Welfare is making available an additional \$10,822,000 nationally for the care of handicapped children. Michigan's share is \$630,000.

The additional \$630,000 for Michigan will go to two departments: \$591,000 to Mental Health and \$39,000 to Education, Esch said.

Chelsea Resident Touring With Albion College Choir

Brenda Clemans, daughter of the Rev. and Mrs. Richard Clemans, 801 Middle St., Chelsea, is participating in Albion College choir's annual spring tour.

The travel schedule of the 58-voice choir will take the young musicians into six Michigan communities during their seven day tour.

Barbara, and the other members of the choir, left Albion for Battle Creek on Tuesday, April 14. They

Track Team Notches Win Over Dundee

Chelsea High school track team opened its season by defeating Dundee High, 92-25, in a South-eastern Conference dual meet at Dundee, Thursday, April 16.

Winning for the Bulldogs were: Randy Seitz, shot put, 42-8; Mark Collins, long jump, 17-10; Jim Wojcicki, pole vault, 10-0; Mike McGinn, 880-yard run, 2:11; Dave Buxton, mile run, 5:01.1; Jeff Hughes, 100 yard dash, 10.6; Kim Aronson, 400-yard dash, 1:55.4; George Cameron, two-mile run, 11:43.3; Dave Porath, 220-yard dash, 24.5.

The 880-yard relay of Larry Gorton, Collins, Hughes, and Porath won in 1:37.9 and the mile relay team of Wojcicki, Dan Hoover, McGinn, and Aronson was first at 3:48.4.

appeared that evening at the First United Methodist church. Other concerts on their itinerary include: the United Methodist Church, Grand Haven, 8 p.m., April 15; First United Methodist Church, Ionia, 8 p.m., April 17; M.J. Memorial Home, Grand Rapids, 8 p.m., April 19; First United Methodist Church, Grand Rapids, 7:30 p.m., April 19; and Goodrich Chapel, Albion, 8 p.m., April 24.

The group's repertoire includes both sacred and secular works from the Renaissance and Baroque periods as well as contemporary selections.

House Tour...

(Continued from page three)

vinyl pool is especially enjoyed by the boys who assisted in this family do-it-yourself project.

On the second level, one is sure to notice the fire-engine red sinks in the double vanity of the bathroom, at the head of the stairs. Each boy chose his own paneling and color scheme for his room.

This warm and comfortable home offers many activities for a family of growing boys. The large building behind the pool houses the family's horses and, in the future, will have bathhouse facilities.

(Editor's Note: The remaining two homes, the Robert Merkel residence and the Dr. Gene Miller home, will be described in next week's issue of The Standard.)

DEATHS

Otto Jedele

Dies Tuesday at Rest Home After Prolonged Illness

Otto Jedele, 78, of 518 Chandler St., Chelsea, died Tuesday, April 14 at Cedar Knoll Rest Home where he had been a patient since last November. He was born Jan. 22, 1892, the son of Mr. and Mrs. George Jedele of Northville.

Mr. Jedele is survived by his widow, May and one daughter, Mrs. Ray (Rita) Bemis of Otsego. He is also survived by two grandsons, Bernard of Otsego and Dale in Vietnam; a brother, Walter, of Hillsdale, and a sister, Mrs. John (Luella) Wuerster of Ann Arbor.

Funeral services will be at 1:30 p.m. Friday at Staffan Funeral Home with the Rev. David J. Kleis officiating. Burial will be in Mt. Olivet Cemetery. Friends may make memorial contributions to Cedar Knoll Rest Home.

John Nelson

Dies Tuesday at Hospital Following Brief Illness

John Nelson, 59, of 3600 Schmitz Rd., Chelsea died Tuesday, April 14 at St. Joseph Mercy Hospital, Ann Arbor, following an illness of three weeks.

Mr. Nelson was born in Cheyboygan, Aug. 18, 1910, the son of Mr. and Mrs. John M. Nelson. Most of his life up until 1956 was spent in the Royal Oak area. On May 18, 1952, he married the former Irene Meyer. She survives. He is survived also by his three sons: John C. of Rochester,

Phillip D. of Troy, and Dennis A. of Belleville; his two brothers, Platen of Southfield, and Raymond Terry of Berkley; four sisters, Mrs. William (Grace) Toothacker of Royal Oak, Mrs. Lawrence (Jennie) Songer of Berkley, Mrs. Donna (Mae) Downing of Clawson, Mrs. Paul (Fay) Street of Glendale Heights, Ill.; and by seven grandchildren and several nieces and nephews.

Funeral services will be held Saturday at 2:30 p.m. at the Staffan Funeral Home with the Rev. David J. Kleis officiating. Burial will be in Mt. Hope Cemetery, Freedom township.

Michigan has 1,400 miles of limited access freeway, affording greater driving ease and safety for visitors, according to the Michigan Tourist Council.

Mrs. Harry Taylor

Former Chelsea Resident Dies at Home in Detroit

Word has been received that Mrs. Mary Merkel Taylor, 82, of Detroit died March 31, at her home, following a brief illness.

Mrs. Taylor was born Sept. 15, 1888 in Chelsea, the daughter of Mr. and Mrs. Peter Merkel. She attended St. Joseph Academy in Adrian. On May 31, 1910, she married Harry B. Taylor of Detroit. He survives.

Other survivors of Mrs. Taylor include two children; a son, Thomas K. of St. Clair Shores and a daughter, Mrs. G. D. (Virginia) Ballard of Detroit. She is also survived by a brother, Leo Merkel of Chelsea, and a sister, Mrs. H. E. (Theresa) McCarthy of Detroit and six grandchildren.

Funeral services were held at St. Gregory's Catholic church at 9 a.m. on Friday, May 8. Burial was in Holy Sepulchre Cemetery, Detroit.

Miss Grace Walz

Graveside Services Here for Former Chelsea Resident

Graveside services were held at Oak Grove Cemetery at 1 p.m. Tuesday for Miss Grace W. Walz of Detroit who died Saturday, April 11. Services had been held at 10 a.m. at the Harper-Mulligan Funeral Home, 19530 W. 7 Mile Rd., Detroit.

Miss Walz was born in Chelsea, Oct. 4, 1885. She was a sister of Mrs. Wilbur (Ruth) Riemschneider, 16744 Rutherford, Detroit, formerly of Chelsea, and Miss Alice Walz, also of Detroit.

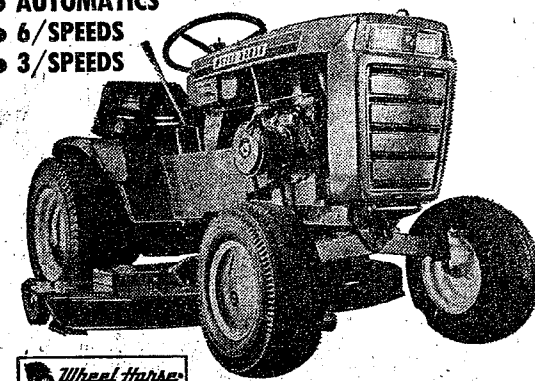
Michigan's state parks, state and national forests offer more than 19,000 campsites, according to the Michigan Tourist Council.

A BRAND NEW WHEEL HORSE GARDEN TRACTOR WITH FREE MOWER

YOUR CHOICE OF 9 ALL NEW 1970 MODELS

7 TO 14 H.P.

- AUTOMATICS
- 6/SPEEDS
- 3/SPEEDS



A HORSE OF A TRACTOR

With 9 models to fit every need and budget—with 42 optional attachments to do every job — 365 days a year.

SAVE UP TO \$225.00

during our limited free mower offer.

SOLD AND SERVICED

GAMBLES

110 N. Main St.

Phone 475-7472

P7 Self-cleaning oven range!... with 2-Unit griddle!

General Electric
30" Automatic Range
with Sensi-Temp® and
Picture Window Door.

• Sensi-Temp® Surface Unit—ordinary pots, pans cook like automatic utensils.
• Automatic oven timer, clock, minute timer.
• Pushbutton controls, convenience outlet.

Model J-345

\$299⁹⁵

Open Friday Until 9 p.m. Close Saturday at 4 p.m.

Frigid Products

LLOYD R. HEYDLAUFF
113 N. Main St., Chelsea Phone GR 9-6651

SHERWIN-WILLIAMS

Excello
LATEX FLAT
WALL PAINT

\$5.49
gal.

GAMBLES

Phone 475-7472

110 N. Main Chelsea

Puritan Full-Fashioned Ban-Lon Brookfair/\$10



Smartly looped, semi-turtleneck with modern, modified Saddle Shoulders! Knit to fit—no underarm bind. Pop it in the automatic for washing and drying. Keeps its shape and color. Solid colors... perfect to mix and match with Puritan tailored walk shorts. Sizes S-M-L-XL.

*Texturized yarn, 100% DuPont Nylon

STRIETER'S MEN'S WEAR

"The Place To Go for Brands You Know"

MAY ALL OF US AT CHELSEA LUMBER CO.

TAKE THIS OPPORTUNITY TO INVITE YOU TO OUR BIG

OPEN HOUSE

FROM

APRIL 25th to MAY 2nd

Over 50 PRIZES To Be Given Away Including an 18" PORTABLE TV SET

REFRESHMENTS FOR EVERYONE

SATURDAYS - APRIL 25th and MAY 2nd
DEMONSTRATIONS ON HOW TO ANTIQUE FURNITURE.

We have completely changed our showroom, adding 3,500 square feet of carpeted display space, and introducing many new product lines for the homeowner. Included in these are our all new light fixture center and our six complete kitchens.

COME AND SEE US!

| | | |
|-----------------|------------------|-------------|
| RAY ALTENBERNDT | FRED SCHULTZ | TOM DUNLAP |
| CHARLES DORR | OAKLEY CRAFT | PHIL HUME |
| DICK McALLA | BILL ALTENBERNDT | BOB DANIELS |
| PAT STOLL | HENRY BUSS | |

CHELSEA LUMBER CO.

"Where the Home Begins"

Phone Chelsea GR 5-3391

AGRICULTURE IN ACTION

by GARY A. KLEINHENN
Michigan Farm Bureau

★ Up with Beans

Someone should start a national society to promote the equality of the bean, the unsung hero of America. For example, it's not often beans make the front page, and it's also a rare day when broadcasters ever rise above, "Hey, don't spill the beans."

Traditionally, the bean has not received its just deserve with maltreatment by such adages as, "not worth a hill of beans," or "the Navy gets the beans," and "I don't know beans about it."

Fresh men collegians sometimes donned beanies to note their inexperience and subservient role on campus. Even Roy Bean, "the law west of the Pecos" (1825-1903), is treated with "light of hand as he is described as an "unorthodox" justice of the peace in Texas. Does anyone suppose there is something in the name?

But beans are as American and as good as apple pie. Historically beans were probably eaten before and after the Boston Tea Party. Who can deny it? Black eyed peas sustained the South during the war, while the Michigan Navy beans sustained the North. And beans "nourished" the cowboy on the range. Of course, our aim isn't to draw up sides, but beans do get beamed often, when really beans are the oldest and the cheapest, and the tastiest of the most wholesome, and nutritious foods.

Out to prove that the quality of great tasting Michigan Navy beans are hard to match, some 13 years ago Gratiot county Farm Bureau Women began promoting the product with a bean smorgasbord. They were so successful that they have been doing it ever since.

This year's gathering included a crowd from all over the state. First time guests found it hard to believe the countless delicious ways beans can be cooked. Of course bean soup, thicker'n quicksand and hmmm... hmmm... good was served; and baked beans too; but there were also bean cookies, cake, rolls, and pies that taste like pumpkin and pecan.

Bean burgers, Hawaiian style baked beans, chocolate bean cookies, bean fudge, raised glazed doughnuts, and numerous and distinct salads are a few of the recipes created and gathered by the experts—the wives of bean farmers.

The county group of ladies even publish their recipes. Their chant is, "Eat More Michigan Beans." Our great state is the largest bean producing state on earth.

Assemblies of God To Meet in Muskegon For District Council

The annual District Council of the Assemblies of God, Michigan district, will convene April 21-24 at the Central Assembly in Muskegon, under the direction of the Rev. Parvin Lee, district superintendent.

The First Assembly of God of Chelsea will be represented by its pastor, the Rev. T. B. Thodeson with Mrs. Dorothy Thodeson as lay delegate.

The Council will seek to strengthen its evangelistic ministry and accept the present world conditions as perilous, and heading into a tragic chapter of history.

The Council is composed of 208 churches and more than 400 ordained and licensed ministers.

Police Report Only Two Arrests for Week

Chelsea police activities this past week seemed rather slow as only two arrests and one accident were reported.

James Douglas, of 10377 Strawberry Lake Rd., Lakeland, was arrested and turned over to Livingston county officers on an old traffic charge.

Verne J. Moerkel of 120 Hiawatha, Munith, was arrested on a drunk and disorderly charge. He pleaded guilty and paid a \$85 fine.

About the only excitement reported was on Monday, April 13 when Charles Smith, 19, of 6693 Lingane Rd., hit a deer while driving his car. Officers responded to assist at the scene.

Port Wilkins at Copper Harbor in Michigan's Keweenaw Peninsula is the only wooden fort east of the Mississippi with its original buildings still standing, according to the Michigan Tourist Council.

If you are planning addition of a powder or mud room, make sure the water closet you choose is a siphon jet. Not only is it easiest to keep clean, it's also the quietest, an especially desirable feature for a first-floor facility.

Special This Week Only! 20% OFF FOAM

For furniture, boats, campers. All sizes.
SAVE WITH CASH & CARRY PRICES
PHONE 662-4706

RENDEL'S UPHOLSTERING

732 Lakeview Ave., off Liberty at Killins Concrete, Ann Arbor

PUBLIC HEARING

A public hearing will be held in the Village Council Room, Tuesday, April 21, beginning at 8:00 p.m. to consider the 1970 Village Budget.

A copy of the budget is available for public inspection in the Office of the Village Clerk, 104 E. Middle St., Chelsea.

Village of Chelsea

Richard Harvey, Clerk

Planned New Subdivision Between Dexter and Chelsea

If you are planning on buying a new home this spring, drive out Dexter-Chelsea Rd. to Lima Center Rd., turn left from Dexter way. One-acre sites with proposed three-bedroom houses; 2-car garage, basement or crawl space; priced in the low 20's. Approximately \$1,600 down will handle. We help with financing at the lowest interest rates available for those who qualify.

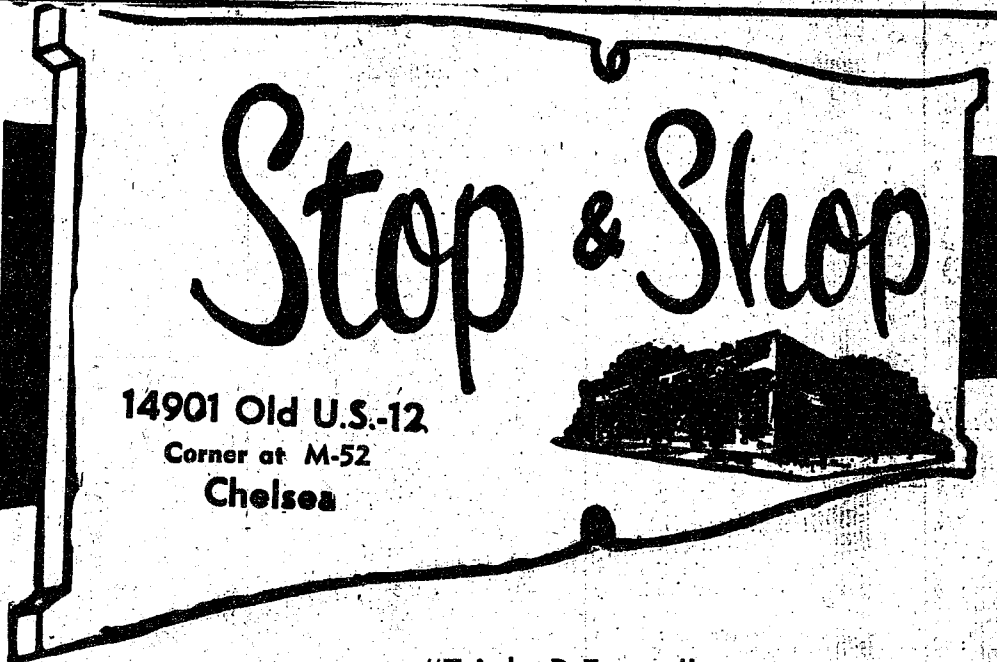
Two small lakes on property. Homes slightly higher on water. Choose your own house plans from several designs. Model opening soon.

EVINGER REAL ESTATE

Phone 426-3286

Dexter, Mich.

THE SUPERMARKET THAT'S JUST A LITTLE BIT BETTER

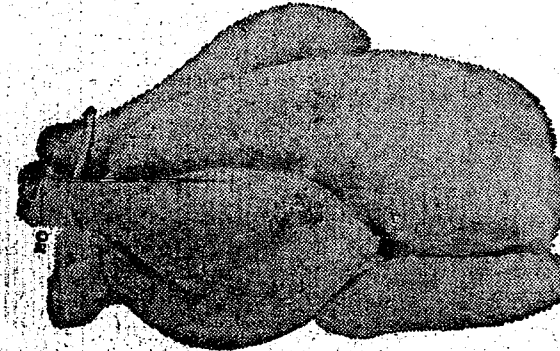


"Triple R Farms"
FRESH DRESSED

FRYERS

Whole Fryer

33¢ lb.



Lean, Tender
PORK CHOPS Center Rib Cut ... **99¢ lb.**

Lean, Tender Boston Butt
PORK ROAST ... **69¢ lb.**

Lean, Tender, Boneless and Cubed
Breaded PORK CUTLETS **89¢ lb.**

Stop & Shop's Fresh, Legn, All-American Beef
HAMBURGER ... **67¢ lb.**

"Triple R Farms" Mich. Grade 1
SLICED BOLOGNA ... **69¢ lb.**

"Triple R Farms" Mich. Grade 1
SKINLESS WIENERS ... **69¢ lb.**

CHICKEN LEGS

BREASTS
59¢ lb.

Country Style
RIBS ... **79¢ lb.**

Lean, Tender
PORK STEAKS ... **79¢ lb.**

Swift's Premium
SLICED BACON 1-Lb. Layer **89¢ lb.**

Lean, Tender, Delicious
CUBE STEAKS ... **\$1³⁹ lb.**

"Triple R Farms" Mich. Grade 1
LIVER SAUSAGE Fresh or Smoked **69¢ lb.**

"Triple R Farms" Mich. Grade 1
PORK SAUSAGE ... **69¢ lb.**

Del Monte Lo-Cal
PEACHES
Sliced 2 1-Lb. Cans **25¢**

McDonald's 2% Low Fat
MILK
Gallon **69¢**

McDonald's Carnival
ICE CREAM BARS
12-Pac **49¢**

Our Favorite
SWEET PEAS
1-Lb., 1-Oz. Can **15¢**

STOP & SHOP'S
Enriched, Sliced
WHITE BREAD
4 1 1/4-Lb. Loaves **88¢**

Nabisco
Ritz Crackers Stack Pack 12-Oz. Box **39¢**
Sunshine
Cheez-Its 10-Oz. Box **35¢**
Keebler Town House
Oval Crackers 1-Lb. Box **39¢**
Shur Good
Almond Delites 14-Oz. Pkg. **39¢**

STOKELY SALE!

Stokely's Rich
TOMATO CATSUP 14-Oz. Bottle **19¢**
Stokely's
TOMATO JUICE 1-Qt., 14-Oz. Can **29¢**
Stokely's Whole Kernel or Cream Style
CORN 1-Lb., 1-Oz. Can **21¢**
Stokely's
CUT BEETS 1-Lb. Can **15¢**
Stokely's Dark Red
KIDNEY BEANS 15-Oz. Can **18¢**



THIS WEEK'S FEATURE!

Genuine Translucent Imported

**PORCELAIN CHINA
BREAD AND BUTTER PLATE**

ONLY 39¢ WITH \$3.00 PURCHASE

WE
RESERVE
THE
RIGHT
TO
LIMIT
QUANTITIES

For Your
Convenience
**OPEN
SUNDAY**
10 a.m. - 6 p.m.
All Sale Prices
Effective
Sundays

Sorry,
No Sales
To Dealers

STORE HOURS:
Monday, Tuesday,
Wednesday
9 a.m. - 6 p.m.
Thursday, Friday
9 a.m. - 9 p.m.
Saturday New Hours
8 a.m. - 7 p.m.
Sunday
10 a.m. - 6 p.m.



Married Male Driver

Your A-O man will save you money on your car insurance. No surcharge or higher rate. See your A-O man—he's all out for you.

**A. D. MAYER
AGENCY, INC.**

"Your Protection Is Our Business."
Phone 479-5051

115 Park St. Chelsea

**Auto-Owners
INSURANCE COMPANY**
Home office at Lansing, Michigan

Farm Fresh Produce

California Fresh Green
LETTUCE 24 Size **19¢**

California
ORANGES Size 138 Doz. **59¢**

**SAVE 20% or More on STOP & SHOP'S
HEALTH and BEAUTY AIDS!**



BOWLING NEWS

Guys & Gals Mixed League

Standings as of April 9

| | W | L |
|---|--------|--------|
| Murphy's Barber Shop | 75 1/2 | 40 1/2 |
| The Pub No. 2 | 73 1/2 | 42 1/2 |
| The Good Guys | 66 | 50 |
| Ken's Standard Service | 59 1/2 | 56 1/2 |
| Team No. 2 | 59 | 57 |
| Chelsea Lanes | 57 | 59 |
| Gallup - Silkworth | 56 1/2 | 59 1/2 |
| The Sandbaggers | 53 | 63 |
| The Spoilers | 52 | 64 |
| Nam Quaker Corp. | 50 1/2 | 65 1/2 |
| The Pub No. 1 | 49 | 67 |
| Pleasant Lake Resort | 44 1/2 | 71 1/2 |
| Women, games 150 and over: | | |
| P. Elliott, 152-179; B. Fritz, 159-157-211; S. Greenleaf, 152; J. Mock, 190; N. Thompson, 155-177-198; T. Walz, 163; B. Smith, 162; D. Sannes, 162; E. Kotar, 160; P. Pardon, 159-167; J. Hoag, 164; K. Hanke, 158; N. Collins, 167-185; N. Packard, 171-186. | | |
| Women, series 425 and over: | | |
| P. Elliott, 457; B. Fritz, 557; J. Mock, 459; N. Thompson, 530; P. Pardon, 489; N. Collins, 490; N. Packard, 479. | | |
| Men, games 175 and over: | | |
| Walton, 194-224-207; J. Elliott, 155; E. Greenleaf, 195-181-189; B. Smith, 185; S. Dyer, 210; A. Sannes, 182; R. Kotar, 188; E. Buku, 177; B. Knerr, 225-206; R. Green, 183. | | |
| Men, series 500 and over: | | |
| Walton, 625; E. Greenleaf, 565; N. Eismann, 502; S. Dyer, 524; E. Buku, 519; B. Knerr, 589. | | |

Chelsea Suburban Standings as of April 8

| | W | L |
|--|--------|--------|
| Foor Mobil | 72 1/2 | 47 1/2 |
| Dairy Queen Braizers | 71 | 49 |
| Dana Corp. | 68 | 48 |
| G. A. Sales | 63 1/2 | 56 1/2 |
| Patty Ann | 62 | 58 |
| State Farm | 61 | 59 |
| Chelsea Lanes | 58 | 62 |
| Pittsfield Plastics | 57 1/2 | 62 1/2 |
| Waterloo Garage | 56 | 64 |
| G. E. Girls | 54 | 66 |
| Artex Roll-Ons | 50 | 70 |
| Dancer's | 46 1/2 | 73 1/2 |
| 150 games and over: | | |
| Torre, 186; J. Buku, 162; N. Packard, 179-159; M. Steele, 160; J. Fitzsimmons, 154; P. Harook, 179-150; V. Stott, 157; G. DeSmith, 156; J. Akin, 152; R. Musbach, 160; M. Rush, 155; V. Higdon, 159; V. Harvey, 192; A. Hocking, 155-158-214; B. Hatley, 154-165-155; M. Neal, 152; R. West, 179; V. Stewart, 162; W. Liebeck, 150-155; E. Williams, 150-150; M. L. Westcott, 199-150; R. Klink, 155; P. Walz, 152; H. Brayton, 150; V. Hopkins, 156; N. Prater, 152-180; B. Smith, 172; C. Hansen, 179; L. Beeman, 158. | | |
| 425 series and over: | | |
| DeLaTorre, 445; J. Buku, 428; L. Keizer, 430; N. Packard, 472; P. Harook, 455; G. DeSmith, 433; J. Akin, 439; V. Harvey, 442; A. Hocking, 527; B. Hatley, 474; R. West, 453; V. Stewart, 429; W. Liebeck, 429; E. Williams, 442; M. L. Westcott, 438; R. Klink, 447; V. Hopkins, 426; N. Prater, 461; C. Hansen, 451; L. Beeman, 425. | | |

Old Timers League

Standings as of April 10

| | W | L |
|---|--------|--------|
| Nelson Realtor | 79 | 49 |
| Colonial Lanes | 71 | 57 |
| Washtenaw Lanes | 69 | 59 |
| Bob & Otto | 67 | 61 |
| Hotzel Service | 62 1/2 | 65 1/2 |
| Chelsea Lanes | 62 | 66 |
| Great Lakes | 62 | 66 |
| Mather Co. | 61 1/2 | 66 1/2 |
| Veterans Cab | 60 | 68 |
| Stein & Goetz | 58 | 70 |
| Cloverleaf Lanes | 46 | 82 |
| Hartman Ins. | | |
| High team game and series: | | |
| Colonial Lanes, 927-2,503. | | |
| High ind. game: H. Mummery, 255-566. | | |
| High ind. series: G. Lawrence, 223-569. | | |

Junior House League

Standings as of April 9

| | W | L |
|--|-----|-----|
| Chelsea Drug | 147 | 56 |
| The Pub Bar | 135 | 68 |
| J & S Tool Co. | 117 | 86 |
| 3-D Sales & Service | 112 | 91 |
| Boyer Automotive | 107 | 96 |
| Fire Lite Inn | 104 | 99 |
| Mid - State Finance | 94 | 109 |
| Jiffy Mixes | 87 | 116 |
| Ann Arbor Centerless | 80 | 123 |
| Palmer T-Bird | 79 | 124 |
| Gambles | 79 | 124 |
| Wolverine | 77 | 126 |
| 200 games and over: | | |
| B. Johnson, 200-238; R. Prater, 232; K. Larson, 224; R. H. Ringe, 215; N. Fahrner, 216; B. McClanahan, 216; S. Dyer, 215; W. Beeman, 215; C. Koengeter, 215; S. Policht, 203; D. Boven, 202; C. Splitt, 202; W. Brown, 201. | | |
| 600 series: B. Johnson, 612. | | |
| 500 series and over: | | |
| 597; S. Dyer, 580; R. H. Ringe, 578; N. Fahrner, 564; J. Hughes, 560; C. Koengeter, 559; R. Prater, 559; S. Hopkins, 559; D. Boven, 557; A. Fletcher, 549; W. Beeman, 544; S. Policht, 535; R. L. Schauls, 534; R. Erskine, 528; W. Brown, 527; D. Buku, 526; P. Boham, 524; L. Hocking, 523; C. Splitt, 522; W. Sprental, 518; A. Walz, 516; F. O. Dickenson, 513; Walz, 516; F. O. Dickenson, 513; W. Guest, 510; E. Greenleaf, 509; B. McClanahan, 508; B. Yocum, 507; N. Packard, 505; E. Buku, 503; L. Salyer, 502. | | |

Junior Swingers Mixed League

Standings as of April 11

| | W | L |
|--|--------|--------|
| Pin Busters No. 1 | 70 1/2 | 38 1/2 |
| Pin Busters No. 2 | 65 | 43 |
| Team No. 10 | 62 | 46 |
| Sandbaggers | 60 | 48 |
| The Sophomores | 58 | 50 |
| Fitz Pros | 56 1/2 | 51 1/2 |
| Waterloo - Teens | 55 1/2 | 52 1/2 |
| Ball Bearings | 53 | 55 |
| Towns People | 50 | 58 |
| All American Fops | 45 | 63 |
| Bowlers Bazaar | 37 1/2 | 59 1/2 |
| Tangle Foot Trio | 33 | 71 |
| Games over 140: | | |
| R. Foytik, 146-146; B. Tirb, 167; K. Reilly, 169; M. Baize, 158-186; J. Bennett, 195-148; M. Murphy, 145; M. Hess, 147-142; L. Sannes, 149; M. Grammatico, 150; B. McNutt, 205-189; J. Schiller, 153-150; K. Murphy, 145-141; B. McClung, 140; B. McGuire, 146; V. Burnett, 149. | | |
| Series over 425: | | |
| R. Foytik, 426; J. Bennett, 463; M. Baize, 456; B. McNutt, 518. | | |

Senior House League

Standings as of April 13

| | W | L |
|--|--------|--------|
| Chelsea Grinding | 81 1/2 | 46 1/2 |
| Chelsea Cleaners | 75 1/2 | 52 1/2 |
| Spaulding Chevrolet | 73 1/2 | 54 1/2 |
| Dana No. 1 | 73 | 55 |
| Seitz's Tavern | 71 1/2 | 56 1/2 |
| The Pub Bar | 71 | 57 |
| Schneider's Grocery | 67 | 61 |
| Sylvan Center | 59 1/2 | 68 1/2 |
| Wolverine Bar | 53 1/2 | 74 1/2 |
| Murphy's Barber Shop | 51 1/2 | 76 1/2 |
| North Lake S & S | 47 | 81 |
| Dana No. 2 | 43 1/2 | 84 1/2 |
| 600 series: | | |
| D. Coppemoll, 693; S. Haydock, 563; C. Genske, 593; T. McClear, 526; R. Spaulding, 509; J.D. West, 536; L. Hess, 534; P. Boham, 529; J. Myers, 507; T. Wisniewski, 583; D. Crosby, 526; B. Smith, 520; G. McAtee, 545; L. Keizer, 516; E. Keizer, 529; O. Johnson, 547; R. Fike, 559; W. Moats, 533; M. Poertner, 569; G. Lawrence, 512; G. Padgham, 531; J. Harook, 515; L. Salyers, 525. | | |
| 200 games: | | |
| D. Coppemoll, 200-256; H. Burnett, 200-209; C. Genske, 202; J. D. West, 211; L. Hess, 205; T. Wisniewski, 226-205; L. Salyers, 212; B. Smith, 201; W. Moats, 202; L. Keizer, 211; D. Crosby, 204. | | |

Chelsea Lanes Mixed

Standings as of April 10

| | W | L |
|---|---------|---------|
| Rabbitt & Althouse | 127 | 90 |
| Devine & Brink | 126 | 91 |
| Chelsea Lanes | 122 1/2 | 94 1/2 |
| Ann Arbor Centerless | 120 | 97 |
| H. & H. | 114 | 96 |
| Lyndon Color Lab | 108 | 109 |
| Wolverine Tav. No. 2 | 107 | 110 |
| Doody & Turner | 101 | 116 |
| Wolverine Tav. No. 3 | 98 | 112 |
| Fitzsimmons' Excav. | 96 | 121 |
| Barkley & Gephart | 91 1/2 | 123 1/2 |
| Heim & Weiss | 82 | 135 |
| Men, 500 series: | | |
| J. Harmon, 567; M. Poertner, 558; E. Keizer, 529; M. Packard, 523; M. Rabbitt, 521; B. Fitzsimmons, 513. | | |
| Men, 200 games: | | |
| B. Fitzsimmons, 232; M. Poertner, 201. | | |
| Women, 450 series: | | |
| F. Gephart, 524; D. Alber, 519; J. Rabbitt, 503; N. Althouse, 499; S. Klink, 491; A. Turner, 477; E. Harmon, 473; H. Morgan, 472; L. Doody, 470; J. Hutzler, 465. | | |
| Women, 150 games: | | |
| H. Morgan, 201; D. Alber, 197-166-158; G. Gephart, 192-167-165; S. Klink, 188-153-152; J. Rabbitt, 184-169-150; A. Turner, 177-164; N. Althouse, 175-171-163; E. Harmon, 171-152-150; L. Doody, 171-151; J. Hutzler, 170-150; L. Alexander, 162; A. Sindlinger, 155; D. Keizer, 154; J. Longworth, 152. | | |

SPORTS CORNER



Nite Owl League

Standings as of April 13

| | W | L |
|--|--------|--------|
| Foster's Men's Wear | 84 | 44 |
| Gallup - Silkworth | 79 1/2 | 48 1/2 |
| Jack & Son Barbers | 69 | 59 |
| Merkel Bros. | 65 | 63 |
| The Profs | 64 1/2 | 63 1/2 |
| Waterloo Garage | 62 1/2 | 65 1/2 |
| Cavanaugh Lake Store | 60 1/2 | 67 1/2 |
| Wahl's Dinos | 60 | 68 |
| Town & Country Shell | 58 1/2 | 69 1/2 |
| Smith - Douglass | 58 | 70 |
| Willie's Five | 55 | 68 |
| Smith's Mobil | 51 1/2 | 76 1/2 |
| 500 series: | | |
| E. Buku, 551; R. Kotar, 544; R. Foster, 541; D. Alexander, 542; T. Garland, 531; K. Kartka, 518; M. S. Lyerla, 111-113; G. Haller, 113; S. Bowen, 132; R. Guenther, 129; D. Alexander, 123-120; C. Snyder, 125-158; C. Steinaway, 104; S. Palmer, 125; C. Miller, 108; J. Alexander, 103-104; A. Houle, 114-108; B. McGibney, 144. | | |

Charlie Brown and Snoopy's Friends

Standings as of April 11

| | W | L |
|---|--------|--------|
| Archies | 50 1/2 | 36 1/2 |
| Groovy Tootie Fruities | 57 | 30 |
| Blue Ribbons | 50 | 37 |
| Mark III | 48 | 39 |
| Merdilizers | 44 1/2 | 42 1/2 |
| Good Guys | 44 | 43 |
| Chargers | 42 | 45 |
| Banana Splits | 40 | 47 |
| Snoopy's | 38 | 49 |
| Purple Passions | 37 1/2 | 49 1/2 |
| Snoopy Stars | 36 | 51 |
| Rolling Stones | 34 1/2 | 52 1/2 |
| 200 series: | | |
| J. Boyer, 233; J. Collins, 238; C. Sannes, 224; M. Bowen, 253; J. Lewis, 234; P. Greenleaf, 260; M. Pennington, 233; D. Seyfried, 236; M. Seyfried, 211; S. Grob, 211; D. Eisele, 222; K. Harris, 228; R. Collins, 200; D. Alber, 224; D. Messner, 276; J. Toon, 236; J. Sweet, 218; S. Lyer- | | |

| | | |
|--|--|--|
| la, 224; G. Haller, 202; S. Bowen, 213; R. Guenther, 223; D. Alexander, 243; J. Spaulding, 207; D. Craft, 233; J. Palmer, 205; C. Miller, 205; J. Alexander, 207; A. Houle, 222; B. McGibney, 238. | | |
| 100 games: | | |
| J. Boyer, 123-180; J. Collins, 133-115-108; M. Bowen, 132-121; B. Lewis, 111-123; M. Cameron, 108; P. Greenleaf, 132-123; D. Beaumont, 110; A. Houle, 110; M. Pennington, 108-125; D. Seyfried, 130-106; M. Seyfried, 131; S. Grob, 119; K. Harris, 114-114; R. Collins, 110; D. Alber, 108-116; D. Messner, 118-155; J. Toon, 124-112; J. Sweet, 124; S. Smyth, 102; S. Lyerla, 111-113; G. Haller, 113; S. Bowen, 132; R. Guenther, 129; D. Alexander, 123-120; C. Snyder, 125-158; C. Steinaway, 104; S. Palmer, 125; C. Miller, 108; J. Alexander, 103-104; A. Houle, 114-108; B. McGibney, 144. | | |

Tri-City Mixed League

Standings as of April 10

| | W | L |
|--|--------|--------|
| 3-D Sales & Service | 72 1/2 | 55 1/2 |
| Sprague Buick & Olds | 72 | 56 |
| Trail Blazers | 70 | 58 |
| Smith's Mobil | 67 | 61 |
| Chelsea Cleaners | 66 1/2 | 61 1/2 |
| Poor Mobil | 66 1/2 | 61 1/2 |
| Wolverine T & S | 64 1/2 | 63 1/2 |
| Wolverine Early Birds | 61 1/2 | 65 1/2 |
| Bibler & Frisinger | 60 1/2 | 67 1/2 |
| Odd Balls | 60 | 68 |
| Jiffy Mixers | 58 | 70 |
| Clear Lake | 48 | 80 |
| 500 series, men: | | |
| C. Detting, 511; D. Fouty, 561; E. Harook, 508; L. Hocking, 520; H. Kunzelman, 506; C. Miller, 543; D. Scott, 505; D. Weston, 505; T. Wisniewski, 548. | | |
| 200 games, men: | | |
| D. Fouty, 206; E. Harook, 207; H. Kunzelman, 202; T. Wisniewski, 201. | | |
| 450 series, women: | | |
| M. Ashmore, 492; C. Detting, 494; D. Fouty, 464; A. Hocking, 455; B. Parish, 475; C. Stoffer, 487. | | |
| 150 games, women: | | |
| V. Allen, 160-150; M. Ashmore, 170-176; G. Detting, 215; D. Fouty, 165-164; D. Fouty, 166; P. Griffith, 153; A. Hocking, 154-170; E. Miller, 160-160; B. Parish, 175-155; C. Peterson, 157-152; M. Reagle, 164; C. Stoffer, 163-153-171; B. Wisniewski, 154. | | |

AUTHORIZED DEALERS

CHRYSLER
MOTORS CORPORATION

The big difference between
Duster & Maverick
is not the \$90.75

Duster has a longer wheelbase

Duster's 108 inch wheelbase is a full 5 inches longer than Maverick's. In overall length, Duster has 9 more inches. Add Duster's greater weight, and the result is a smoother ride, and more stable handling.

Duster has bigger brakes

Bigger brakes mean more stopping power, and Duster's got it. Effective brake lining area for Duster: 153.4 sq. inches. For Maverick: only 106.0 inches. And if you like disc brakes or power brakes, Duster offers those too. Maverick doesn't.

Duster has a bigger engine

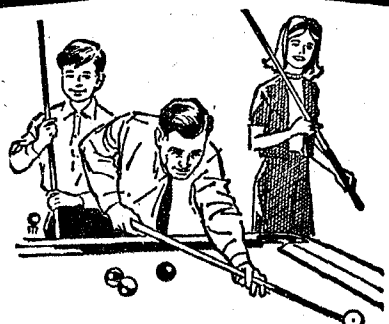
Duster's standard 125 hp Six dusts off Maverick's standard engine by 20 big horses.

Compare price for comparably equipped cars

| | Duster | Maverick |
|--|-------------|-------------|
| Base Car | \$2,172.00 | \$1,995.00 |
| †Engine 200 CID 6 Ford | | 39.00 |
| †198 CID 6 Duster | N.C. | |
| †Automatic Transmission | 175.45 | 201.00 |
| †Tires 6.45 x 14 WSW Ford | | 44.00 |
| †6.95 x 14 WSW Duster | 26.45 | |
| †Radio - AM | 61.55 | 61.00 |
| †Wheel Covers | 21.30 | 26.00 |
| †A majority of people equip their cars with these items. | \$2,456.75* | \$2,366.00* |

*Manufacturer's suggested retail price for standard Duster 2-Door Coupe—and standard Maverick 2-Door Sedan equipped with items listed including Federal excise tax. Price excludes dealer preparation charge, state and local taxes, destination charges and other optional equipment.

Billiards THE FAMILY GAME



New Fun Game, Easy To Play... All Can Learn!

Try billiards for an evening's fun. It's new... exciting... easy to learn... the whole family can play together... great fun, and so inexpensive!

CHELSEA LANES
1180 M-52 Phone GR 5-8141

G. A. SALES & SERVICE. 1185 Manchester Road

Announcing a new difference!

Gold Duster
Special car - Special price

Letters to the Editor

Dear Editor:

Let's all give a hand for the Boy Scouts. It made me feel really good to drive along Old US-12 and M-52 Saturday and see them at work. Such a job—picking up other people's trash—surely wasn't much fun, but they were willing to make some extra effort from which all of us now will benefit.

Maybe next time we are tempted to throw something out of a car window, we can think of those boys picking it up by hand, and save it for a trash container instead. (Or to be very practical, if the Boy Scouts don't do it, the state will—at the rate of 32 cents for each piece of litter—and that's our tax money!)

So thank you, boys, for setting your elders (and your peers) a good example!

Sincerely,
Malinda Warner.

To the Editor:

Last week's article "South School Parents Form Organization" failed to tell the whole truth. Since it was I who made an issue of student rights at the South School meeting, I feel that I should elaborate on the published account.

Quite frankly, interest was not shown in the area of student rights and constitutional freedoms. My impression was that the reaction to my remarks ranged from indifference to outright hostility.

One woman said that high school students are granted too much freedom already and indicated that it is desirable for students to fear their teachers. Another warned against believing your own child's account of his daily school experiences. A third young woman was so disturbed by my concern for student rights that she rose to her feet protesting, "I didn't come here to listen to this." She and her husband pro-

ceeded to leave, but later returned to their seats.

If anyone wonders why youth feels rejected, this meeting provided an answer. It was a perfect example of adults badmouthing kids when they should have been reviewing their attitudes and scrutinizing Sylvester Wojcicki's administration of South School.

South school is the school where two young girls (one of whom was my daughter) were ordered out the back door, without their coats, and compelled to run about one-eighth of a mile over a playground course with the wind chill temperature hovering at minus 10 degrees. Later the same day, this same misguided person struck my daughter on the head with her knuckles, for merely making an error in a square dance routine. South school is also the school where your child may not hold the hand of another child in the hallway, and where she may not go to the restroom with that child.

I could continue ad nauseum, but perhaps I've made my point. There is a problem at South School. Sylvester Wojcicki and the South School PTA aren't the solution; they're part of the problem.

Walter Brauminger.

To the Editor:

Just another correction on your April 9 copy identifying the mystery men of the old Waterford Band. The name of the third mystery man was Reuban Palmer. You had it misspelled. Also, the band director was Aaron Snyder, not Erin Schneider. Also, two other members were Florenz Moeckle and Reuben Moeckle (you had it Nagel).

I knew all these men personally and several were relatives. George W. Beeman, the bass drummer was my father, and Leigh, my brother.

Just thought it would be nice if you ran the picture again with all the names spelled correctly. It would clear up a lot of guessing.

Wish you could print more local neighborhood news. I miss that part so much. I've taken the paper for over 50 years and have lived in Jackson most of that time, so my only contact with Chelsea and vicinity friends was through the local news part.

Wishing you future success, I am

Mrs. John (Nina) Dyke-
master
Jackson, Michigan 48202

P.S.: I believe there is only one living member left in that band and that is Clarence Lehmann. I'm not sure of Reuban Palmer as I don't know where he lived. Dr. A. A. Palmer or one of his family could tell you.

GOVERNOR'S PROCLAMATION ENVIRONMENTAL AWARENESS WEEK

The earth is a self-contained, life sustaining environmental envelope containing a narrow band of useable atmosphere, a thin crust of land, and a supply of useable water. These physical resources are limited in quantity and play an essential role in the chain of life.

Modern society has been altering this environment and the essential ecological balance within it. Residual pesticides, noise, dirty water, excess solid wastes, enlarging population, and diminishing open land and forest areas are forms of man's encroachment upon and destruction of the quality of our environment.

The citizens of our country and state are becoming concerned about the quality and future of their environment, and government, universities, and the Governor's Advisory Council for Environmental Quality are attempting to establish standards, regulations, laws, action programs, and research programs which will effectively reduce the destruction of our environment and preserve its quality.

Certain citizens organizations and student clubs are actively involved in improving our environment by eliminating pollution, educating our citizens, and campaigning for full awareness of these problems.

A national effort to encourage citizen concern, increase citizen awareness, and improve citizen knowledge of environmental importance, problems, and improvement is taking place during April of 1970.

Therefore, I, William G. Milliken, Governor of the State of Michigan, do hereby proclaim the week of April 19 through April 25, 1970 as

ENVIRONMENTAL AWARENESS WEEK

in Michigan and urge all governments and all persons and organizations interested in our environmental quality and in the health and welfare of the people of Michigan and future generations, to mark this week with renewed interest, participation, and effort to learn of our problems and to take active roles in supporting its improvement.

Given under my hand and the Great Seal of the State of Michigan on this eleventh day of March in the year of our Lord one thousand nine hundred and seventy and of the Commonwealth one hundred thirty-fourth.

William G. Milliken
Governor

Producers Can Help Speed Farm Program Payments

With the ending of the sign-up period in the voluntary feed grain and wheat programs, Earl Doletsky, chairman of the Washtenaw County Agricultural Stabilization and Conservation (ASC) Committee, reports many inquiries are being received on what farmers can do to help speed farm program payments.

The U. S. Department of Agriculture plans to begin 1970 farm program payments early in July and complete them by mid-August.

"As soon as the farm operator certifies compliance with program provisions, the county ASCS office will begin processing papers for the payments," said Doletsky.

Of course a farmer must be in the feed grain or wheat program first of all, the ASC committee chairman said. Enrollment in the 1970 farm programs is not automatic; a farmer must be signed up at his county ASCS office in order to participate and become eligible for farm program payments and price-support loans.

When signing up for a program, producers should take into consideration the acreage to be devoted to each crop and land use, including the acreage to be diverted into a conserving use.

Compliance means limiting crop acreages to that indicated in a sign-up intention, Doletsky said, as well as complying with other provisions of the programs. "The

measurement service, offered at cost by the county ASCS office, will help most farmers in this regard," he said. He urged farmers in one or more of the 1970 farm programs to request measurement as soon as possible if they have not already done so.

The ASC committee chairman sign their certification of compliance that farmers should not be until they know their farm is in shape to be checked for compliance. A spot-check can be made at any time after certification—and if a farm is out of compliance, the producer can lose some of his farm payments.

"The best thing a farmer can do to get his payments early in July is get his crop up and his diverted acreage in shape early so he can come in earlier than usual to certify he's doing the job," Doletsky said.

BRUSH PAINTERS

Resourceful aborigine artists of Arnhem Land, Australia, use plant juices for primer and pulverized colored stones for paints to create designs on canvasses of eucalyptus tree bark. Locks of women's hair serve as brushes.

THE LANSING REPORT FROM senator GIL BURSLEY



Lansing—Some legislative eyebrows were lifted this week with the disclosure that increasing numbers of Michigan college students are receiving federal food stamps—normally intended for the poor.

It is all legitimate under the rules of the United States Department of Agriculture, which controls the program. Michigan taxpayers apparently are being tapped only for a portion of the cost of administering the program.

When the question was raised in one county about students receiving food stamps some time ago, the Department of Agriculture sent orders through the Department of Social Welfare that this, indeed, was entirely permissible.

This is the way the program works for students: Married or single students who have cooking facilities off-campus are eligible to purchase food stamps if their income is low—not more than \$125 a month for a single person, \$185 a month for two, \$225 for three, \$265 for four, and so on.

Depending on their income and the number of persons living together (several single students may form a "household"), they are certified to purchase the stamps which may be used to purchase domestically grown food at certain designated stores.

The stamps entitle them to obtain food, whose cost exceeds what they pay for the stamps. For example, in a four-person "household" with a monthly income of not more than \$150, the "family" pays \$37 for stamps and obtains \$106 worth of food coupons. The difference—\$69—is the "bonus" or amount available for free food.

A spot check of counties where several state-supported colleges and universities are located disclosed that students in varying numbers are availing themselves of these stamps.

Said one legislator: "I realize that this is a federal project and we have nothing to say about it. But sometimes I wonder how much more we are going to have to do for our college students—many of whom show their appreciation by smashing property, beating up on police officers and generally disrupting campus operations."

"Through appropriations to our state-supported colleges and universities, we subsidize every student, including hundreds from other states and other countries—by from \$1,200 to \$1,500 or \$2,000, depending on the school."

"Then the state provides hundreds of scholarships—many of which go to students who aren't above stretching the truth about their income."

"Now I find that many of our students are getting free food through the federal government."

"It is no wonder that some students can drive around campuses in \$4,000 and \$5,000 cars."

"I am strongly in favor of helping deserving students within reason—but sometimes I just wonder

er where the taxpayer who has to foot the bill for all this is finally going to wind up."

The Democrat-controlled House of Representatives is working on a series of bills that will, if passed, dip further into Michigan taxpayers' pockets.

The principal tax increase would come from raising the state income tax from 2.6 percent to 3.5 percent.

This would cost a family of two increases ranging from \$14.40 a year to \$158.40 a year on income starting at \$4,000 and going up to \$20,000. The increase for a family of two would be \$50.40 for a family earning \$8,000 and \$86.40 for a family earning \$12,000 a year.

For a family of four, there would be no tax bracket in the \$4,000 a year bracket but it would amount to \$28.80 in the \$8,000 bracket, \$68.40 in the \$12,000 bracket and \$136.80 in the \$20,000 a year level.

The House of Representatives also is considering a plan to lower the credit you now get on your income tax on the property tax or rent you pay.

For the family of two, this would mean an increase in your income tax of \$6.60, \$12, \$20 and \$25 for the four salary brackets mentioned.

Under those same salary classifications, the family of four would not have to pay more in the lowest (\$4,000) bracket but would have to pay \$12, \$20 or \$25 more, depending on which of the other higher brackets they fall in.

An increase in the cigarette tax of four cents a pack will cost \$29 a year for the family that smokes two packages a day.

It is reported that there is considerable opposition to these proposed tax increases in the house. Even if passed by the house, the senate is expected to take a good, long look at them before accepting even a portion of them.

A senate-sponsored bill to raise unemployment compensation benefits by \$7 to \$11 a week has been passed unanimously by the House of Representatives after an attempt by House Democrats to kill the bill and substitute a similar one under their sponsorship.

Even though the senate-passed bill was in the House of Representatives before members of that body started action, some members still insisted that the House bill must have priority over the senate measure.

The wrangle was solved when it was agreed that the bill should be sponsored by members of both political parties from both houses of the legislature.

If approved by the governor,

'My Mean Mother'

"I had the meanest mother in the whole world. While other kids ate candy for breakfast, I had to have cereal, eggs, or bacon. While others had cokes and candy for lunch, I had to eat a sandwich. As you can guess, my supper was different from other kids, too."

"But at least I wasn't alone in my suffering. My sister and two brothers had the same mean mother as I did."

"My mother insisted upon knowing where we were at all times. You'd think we were on a chain gang. She had to know who our friends were and what we were doing. She insisted that if we said we'd be gone an hour, that we were gone an hour or less—not one minute more. I am nearly ashamed to admit it, but she actually struck us. Not just once, but each time we did as we pleased. Can you imagine someone hitting a child just because he disobeyed? Now you can begin to see just how mean she really was."

"Ah, yes, but the worst is yet to come. We had to be in bed by 9 o'clock each night and up early the next morning. We couldn't sleep till noon like our friends did. So while they slept my mother actually made us work. We had to do dishes, make beds, learn to cook, and all sorts of cruel things like that. I even believe she laid awake at night and thought up mean things for us to do."

"She always insisted on our telling the truth, the whole truth, and nothing but the truth, even if it killed us—and it nearly did sometimes."

"By the time we were teenagers, she was much wiser, and

our life became even more unbearable. There was to be none of this tooting the horn of a car for us to come running. She embarrassed us to no end by making our dates and friends come to the door to get us. Oh, yes, I forgot to mention that while my friends were dating at the mature age of 12 or 13, my old-fashioned mother refused to let me date until the age of 15 or 16."

"Fifteen, that is, if you dated only to school functions. And that was maybe twice a year. My mother was a complete failure as a mother—as you can see. None of us ever got into serious trouble—arrested—or anything like that. We graduated from high school and college while many of our friends dropped out to get married in a hurry or to 'find themselves.' And who do we have to blame for the terrible way in which we turned out? You're right—our mean mother. Look at all the things we missed. We never got to march in a spur-of-the-moment protest parade, nor to take part in a riot, or burn draft cards, or any of a million other things that our friends did. In fact, she even made us choose our friends carefully, can you imagine?"

"You see, she forced us to grow up into God-fearing, educated, honest adults—just because she was so mean. But then, I am trying to raise my children using this background, and do you know, I stand a little taller and am filled with pride when my children call me 'mean.'"

"All because, you see, God gave me the meanest mother in the whole world—and I hope I can be just as mean to my children as she was to me."

Best wishes,
(Mrs.) Lindy Rich.

Reprinted from the Michigan State Grange, Lansing.

SEAMLESS ALUMINUM GUTTERS

Also: Barn Eavestroughing

— ★ —
CALL

WILSON METAL SHOP

Phone 428-8468 Manchester, Mich.

Would you
like to hear
a good
clean story?



It goes like this: Buy a new Gas range and forget about oven cleaning, forever. Not bad, huh? And that's not the whole story.

The new Gas self-cleaning oven will clean itself automatically, spotlessly and do the whole job for about 2¢. It's a new way of life for the housewife. No more rubber gloves, strong detergents or harsh cleaning agents.

And while we're on the subject, this new Gas range simply cooks food better than anything you've ever used. It provides complete heat control. At all times. No matter what you're cooking. It will cook faster, Cleaner. And do it all for less money. See the new Gas self-cleaning oven today at dealer or Michigan Consolidated Gas Company showrooms. It's great for women who like to cook, period. Cook with Gas... it'll serve you right.

MICHIGAN CONSOLIDATED GAS COMPANY

A DOZEN "LEAD THE WAY" REASONS TO JOIN



- ☒ Expert Travel Guidance
- ☒ Low Cost Car, Boat, Recreational Vehicle Financing
- ☒ Emergency Road Service
- ☒ Travelers Checks
- ☒ Personal Accident Insurance
- ☒ World Wide Escorted Tours
- ☒ Motor News Magazine
- ☒ World Wide Travel Service
- ☒ \$5000 Bail-Bond Certificate
- ☒ Civic Services
- ☒ Many Other Services

TRIPLE-A... where YOU
can LEAD THE WAY!

RAY JOHNSTON
Phone 665-7701
1200 S. Main Ann Arbor

COMBUSTORIZED SEED CORN



from
TEWELES

Interested in higher yields, better standability and faster drydown? Teweles plant breeders are too!

With the help of electronic computers and modern plant breeding techniques, Teweles now brings you 20 great new seed corn varieties.

Look for these new breeds from Teweles:
SUPER XT — premium single and 3-way crosses that out-perform them all.
BI-CROST — double-crosses for record yields.
SILAGER — superior blends for silo or crib.
Order now; supplies limited.

BLAESS ELEVATOR CO.

DIVISION OF LARROWE FEED CO.

Phone GR 5 9-6511

Chelsea, Mich.



teweles seeds

IF YOUR MONEY ISN'T EARNING THE
BEST AVAILABLE INTEREST RATES...
YOU CAN NOW EARN UP TO

6%
ANNUAL RATE
plus
daily interest

With
ANN ARBOR FEDERAL SAVINGS

Do it by mail today. Just send this coupon and we'll send complete details or send your check and your account will be opened immediately.

Your account is safely insured to \$20,000 with F.S.L.I.C. No depositor has ever lost one penny with Ann Arbor Federal Savings. Total assets are over 119 million dollars.

For answers to any questions, now or later, call Mr. Wild, (313) 663-7555 Collect.

- 5%** PASSBOOK SAVINGS ACCOUNTS Effective annual interest 5.09%. Deposit any amount.
- 5 1/4%** PASSBOOK CERTIFICATE ACCOUNTS. Six months maturity in amounts of \$1000 or more. Effective annual interest rate is 5.35%.
- 5 3/4%** PASSBOOK CERTIFICATE ACCOUNTS. One year maturity in amounts of \$5000 or more. Effective annual interest is 5.87%.
- 6%** PASSBOOK CERTIFICATE ACCOUNTS. Two year minimum maturity in amounts of \$5000 or more. Effective annual interest rate is 6.13%.

ALL ACCOUNTS INSURED TO \$20,000 BY F.S.L.I.C.

ANN ARBOR FEDERAL SAVINGS
401 E. Liberty, Ann Arbor, Michigan



Name _____

Address _____

City _____ Zip _____

() Send full details

() Start my 5% Passbook Savings Account with \$_____ enclosed

() Send _____% Passbook Certificate for \$_____ enclosed

Member: Federal Home Loan Bank System • Federal Savings and Loan Insurance Corporation

+ Services in Our Churches +

ST. PAUL
UNITED CHURCH OF CHRIST
The Rev. Warner Siebert, Pastor
Monday, April 20—
12:00 noon—Ann Arbor-Jackson
Association ministers and wives
at Clinton.

6:30 p.m.—Elmhurst Choir in-
formal dinner.
7:30 p.m.—Church school teach-
ers.

Tuesday, April 21—
1:00 p.m.—Needle & Thread.
Wednesday, April 22—
7:15 p.m.—High School Choir.
8:15 p.m.—Chancel Choir.

Thursday, April 23—
9:00 a.m.—Koinonia Study
Group.
Saturday, April 25—
9:00 a.m.—Confirmation field
trip to Evangelical Home in De-
troit.

8:00 p.m.—Evangelical College
Choir concert.

Sunday, April 26—
9:15 a.m.—Church school.

10:30 a.m.—Worship service.
Sermon: "It Doesn't Matter What
You Believe as Long as . . ." Sac-
red Design for Loving (Sex Edu-
cation).

6:00 p.m.—Junior Youth Fel-
lowship.

7:00 p.m.—Senior Youth Fel-
lowship.

Courier articles due.

ZION LUTHERAN CHURCH

Corner of Fletcher, Waters Rds.
(Rogers Corners)

The Rev. John R. Morris, Pastor

Saturday, April 18—
Youth instructional classes.

Sunday, April 19—
9:00 a.m.—Study in Sunday
school.

10:15 a.m.—Family worship.

Monday, April 20—
7:15 p.m.—Junior Choir.

8:00 p.m.—Senior Choir.

IMMANUEL BIBLE CHURCH

The Rev. Frank C. Frinkle, Pastor
145 E. Summit St.

Sunday, April 19—
9:45 a.m.—Sunday school; nur-
sery provided.

11:00 a.m.—Morning Worship,
nursery provided.

7:00 p.m.—Evening service.

Every Wednesday—
Family hour, prayer meeting and
Bible study.

OUR SAVIOR

LUTHERAN CHURCH
Rebekah Hall, 1194 M-52

The Rev. William H. Keller, Pastor

Sunday, April 19—
9:15 a.m.—Sunday school and
Youth Bible Class.

10:30 a.m.—Worship Service.

4:00 p.m.—Congrega-
tional meetings at 11296 Island Lake
Rd., Dexter.

Thursday, April 22—
6:00 p.m.—Youth Confirmation
Class.

FIRST CHURCH OF CHRIST,

SCIENTIST
1883 Washtenaw Ave., Ann Arbor

Sunday, April 19—
10:30 a.m.—Morning service.

10:30 a.m.—Sunday school.

Lesson-sermon: "Doctrine of
Atonement."

FIRST ASSEMBLY OF GOD

CHURCH
The Rev. Thode B. Thodeson
Pastor

Sunday, April 19—
10:00 a.m.—Sunday school.

11:00 a.m.—Worship service.

7:00 p.m.—Evangelistic service.

CONGREGATIONAL CHURCH
(United Church of Christ)
The Rev. Daniel Keln, Pastor

Thursday, April 16—
8:00 p.m.—Esther Chapter sil-
ent auction at church.

Friday, April 17—
8:30 p.m.—Confirmation class.

Sunday, April 19—
Church school and worship.

4:30 p.m.—Junior PF, no Juni-
or High PF

Wednesday, April 22—
6:30 a.m.—Men's Breakfast.

8:00 p.m.—Senior Choir.

ST. JACOB EVANGELICAL

LUTHERAN CHURCH
12501 Reithmiller Rd., Grass Lake

The Rev. Andrew Bloom, Pastor

Sunday, April 19—
9:00 a.m.—Sunday school.

10:15 a.m.—Divine services.

ST. MARY'S

CATHOLIC CHURCH
The Rev. Fr. Francis Wahowiak

Saturday, April 18—
7:30 p.m.—Mass.

Sunday, April 19—
Masses at 8:30 a.m., 8:00 a.m.,
10:00 a.m., and 11:30 a.m.

CHELSEA BAPTIST CHURCH

The Rev. Elmer S. Steenson, Pastor
337 Wilkison

Sunday, April 19—
9:30 a.m.—Junior Choir.

10:00 a.m.—Sunday school.

11:00 a.m.—Worship service.

Nursery care available during all
services.

6:00 p.m.—Junior and Senior
Baptist Youth Fellowship.

7:00 p.m.—Evening worship.

Every Wednesday—
7:30 p.m.—Bible study and
prayer meeting.

NORTH SHARON

COMMUNITY BIBLE CHURCH
Sylvan and Washburn Rds.

The Rev. Paul Collins

Sunday, April 19—
10:00 a.m.—Sunday school.

11:00 a.m.—Worship service.

6:30 p.m.—Young People's
service.

7:00 p.m.—Evening service.

Every Wednesday—
7:30 p.m.—Prayer meeting.

ST. JOHN'S EVANGELICAL

AND REFORMED CHURCH
(United Church of Christ)

Rogers Corners
The Rev. David J. Kleis

Sunday, April 19—
10:00 a.m.—Worship service.

10:30 a.m.—Sunday school.

GREGORY BAPTIST CHURCH

The Rev. Grant Lapham, Pastor

Sunday, April 19—
10:00 a.m.—Worship service.

11:15 a.m.—Church school.

6:30 p.m.—Baptist Youth Fel-
lowship.

7:30 p.m.—Evening worship
service.

FIRST CHURCH OF CHRIST,

SCIENTIST
1883 Washtenaw Ave., Ann Arbor

Sunday, April 19—
10:30 a.m.—Morning service.

10:30 a.m.—Sunday school.

Lesson-sermon: "Doctrine of
Atonement."

FIRST UNITED
METHODIST CHURCH
The Rev. Dickins, Pastor

Thursday, April 16—
8:00 p.m.—Youth Council at
home of Alvin Hosler.

Saturday, April 18—
12:30 p.m.—Older Adult Group.

Sunday, April 19—
9:00 a.m.—Church school.

10:00 a.m.—Church school.

11:00 a.m.—Reception for the
Rev. and Mrs. Dickins.

6:00 p.m.—Junior and Senior
MYF.

Tuesday, April 21—
7:30 p.m.—Wesleyan Guild in
Educational Unit.

8:00 p.m.—Grace Otto Circle at
home of Mrs. Arthur Schmunk.

FIRST UNITED

PRESBYTERIAN CHURCH
Unadilla

The Rev. T. H. Liang

Sunday, April 19—
9:45 a.m.—Sunday school.

11:00 a.m.—Worship service.

Every Tuesday—
8:00 p.m.—Choir practice.

METHODIST HOME CHAPEL

The Rev. R. L. Clemans, Chaplain
V. O. Johnson, Administrator

Sunday, April 19—
8:45 a.m.—Worship service.

ST. JOHN'S EVANGELICAL

AND REFORMED CHURCH
(United Church of Christ)

Rogers Corners
The Rev. David J. Kleis

Sunday, April 19—
10:00 a.m.—Sunday school.

CHURCH OF CHRIST

13661 Old US-12, East
R. D. Parnell, Minister

Sunday, April 19—
10:00 a.m.—Church school.

11:00 a.m.—Worship service.

6:00 p.m.—Worship service.

Wednesday, April 15—
7:30 p.m.—Bible Study.

ST. BARNABAS

EPISCOPAL CHURCH
20500 Old US-12

The Rev. William D. Ladkau, Vicar

Sunday, April 19—
11:00 a.m.—Morning Prayer.

11:00 a.m.—Church school and
nursery.

ST. JOHN'S EVANGELICAL

AND REFORMED CHURCH
(United Church of Christ)

Francisco
The Rev. Robert Townley

Sunday, April 19—
10:00 a.m.—Worship service.

10:20 a.m.—Sunday school.

SALEM GROVE

UNITED METHODIST CHURCH
The Rev. Frederick Atkinson
Pastor

Sunday, April 19—
10:00 a.m.—Sunday school.

11:15 a.m.—Worship service.

7:00 p.m.—Youth Fellowship.

WATERLOO VILLAGE CHURCH

United Methodist Church
The Rev. Donald Fry, Pastor

Sunday, April 19—
10:00 a.m.—Sunday school.

11:15 a.m.—Worship service.

7:00 p.m.—Youth Fellowship.

BETHEL EVANGELICAL

AND REFORMED CHURCH
(United Church of Christ)

Freedom Township
The Rev. Roman A. Reineck

Sunday, April 19—
10:00 a.m.—Worship.

10:00 a.m.—Sunday school.

NORTH LAKE

UNITED METHODIST CHURCH
The Rev. Frederick Atkinson
Pastor

Sunday, April 19—
9:30 a.m.—Worship service.

10:30 a.m.—Sunday school.

CHELSEA MEDICENTER

Sunday, April 19—
12:30 p.m.—Sunday worship
with the Rev. Daniel Keln, Con-
gregational United Church of
Christ.

ST. THOMAS

EVANGELICAL LUTHERAN
The Rev. Daniel L. Mattson,
Pastor

Sunday, April 19—
10:00 a.m.—Worship service.

11:00 a.m.—Sunday school and
Bible study.



BROWNIES HAVE GUEST: Present at Brownie Troop 145 were, front row, left to right, Dawn Krieger, Karen Liebeck, Terisa Hoffman, Donna Marshall, Kathy Anderson; second row, from left, Loris Miles, Marsha Liebeck, Monica Marques, top row, from left, Miss Vibeke Rosenkrands (guest from Denmark) and Valisa Fletcher.

14th District Court Proceedings

In Saline District Court Pro-
ceedings Danielle Fox (aliam Dan-
ielle DeShannon) of 123 W. Wash-
ington, Ann Arbor, faced exami-
nation on March 31 on a charge of
uttering and publishing a
forged check. She was bound
over to Ann Arbor Circuit Court
until April 24 at 8:30 a.m. and
was released on personal recogni-
zance pending trial.

In another Saline court case
March 31, George Gilbert Black
of 109 W. Henry St., Saline,
pleaded guilty to a charge of driv-
ing on a revoked license. He re-
ceived a \$50 fine and costs, six
months probation, and five days
on the Saline Police work program.
He also pleaded guilty to a
charge of driving while under the
influence of liquor for which he
was sentenced to retake a series
of antitox treatments, placed on
six months probation, and fined
\$150 fine and costs.

Chelsea District Court proceed-
ings April 1 saw Charles Landers
of 126 N. Broad St., Hillsdale ap-
pear in court on a charge of break-
ing and entering and illegal entry
into the J. C. Camper Co. The
first charge was dismissed and he
pleaded guilty to the second. Sen-
tencing will take place April 15
at 10 a.m.

Arthur Elder of 1557 John
Daly, Dearborn Heights, pleaded
guilty to a charge of speeding
(101 mph in 70 mph zone). He
was fined \$52 fine and costs.

Earl Henry Cook of 112 N. Sev-
enth, Ann Arbor, pleaded guilty to
a charge of driving while under
the influence of liquor. He was
referred to the probation depart-
ment for a pre-sentencing inter-
view and will appear April 15 for
sentence on this charge. He was
also cited for driving on a sus-
pended license. He pleaded guilty
and was sentenced to three days
in jail and \$50 fine and costs and
his license was revoked.

Okla Wilder of 461 Hayes St.,
Ypsilanti, pleaded guilty to a
charge of being drunk and dis-
orderly. He was sentenced to a
\$50 fine or five days.

Charolette McMillan of 8602
Rushview Dr., Pinckney appeared
in Dexter District Court April 8
and pleaded guilty to a charge of
speeding (60 mph in 30 mph zone)
for which she paid \$50 fine and
costs. She was also cited for not
having her driver's license on her
person and paid a \$5 fine for that
offense.

James Ziya of 9965 Whittington,
Dearborn appeared in Dexter Dis-
trict Court on April 4 on a charge
of being a minor in possession of
liquor. He was sentenced to \$30
or five days.

James Hassen Morris of 4655
Edgewood, Dearborn Heights,
pleaded guilty to charges of being
a minor in possession of beer and
littering from a car. He pleaded
guilty in Dexter District Court
and was fined \$30 or five days
for the first offense and \$50 fine
and costs for the second offense.

ing drunk and disorderly and was
fined \$35 or five days in jail.

Track Team Wins Double Dual Meet

In a double dual track meet at
the Michigan Center track against
Lumen Christi and East Jackson
High teams, Chelsea's track stars
galloped to a double victory, scor-
ing 68-50 over Lumen Christi and
88-30 over East Jackson.

In the meet against East Jack-
son, Mark Collins won the long
jump, 18' 7 3/4"; Jeff Hughes came
in second. Karsten Kargel won
for high jump, 5' 8"; Roger
Fitch was second. Randy Seitz
came in second in the shot put
while the pole vault was won by
Jim Wojcicki, 12'. Second place
in the pole vault was won by
Bruce Guster and third place by
Tim Lancaster.

The relay team of Larry Gor-
ton, Mark Collins, Jeff Hughes,
and David Porath won in 1:34.8.
Mike McGinn won the 80-yd. run
in 2:03.6 and Jim Wojcicki, the
high hurdles in 16.4 seconds.

Dave Buxton was second in the
mile with a time of 4:49.9 and
Mark Collins won the 100-yd.
dash in 10.75 seconds. David Por-
ath came in second and Jeff Hughes
was third.

In the 440-yd. dash, Jim Aron-
son won in 53.5 seconds and Dan
Hoover was second.

The 180 low hurdles was won
by Larry Gorton in :22.2. Michell
Heard came in second and Mark
Collins, third.

George Cameron came in sec-
ond in the two mile event with
a time of 11:10.7. The 220-yd.
dash was won by Jeff Hughes in
24.1 seconds while Dave Porath
came in second.

In the mile relay, the Chelsea
team of Jim Wojcicki, Don Hoov-
er, Mike McGinn, and Kim Aron-
son won in 3:32.8.

The only major change in the
standings against Lumen Christi
was that Dave Buxton won the
mile event.

Lumen Christi star, Henry
Fry, took three first in the 100
relays, 220 relays, and long jump.

Assembly of God Sponsors Appearance of Outstanding Speaker

David Wilkerson is coming to
the city of Jackson as guest speak-
er at the Jackson High school
auditorium April 24, 7 p.m. for
one night only.

The First Assembly of God of
Chelsea is one of the 50 sponsor-
ing churches for this event. Da-
vid Wilkerson is the author of the
Cross and the Switchblade and
other books.

He is reported to be one of the
outstanding speakers of the pres-
ent; a man who speaks in the lan-
guage of and with the understand-
ing of youth.

Subscribe today to The Standard!

FOR ACTION LINE DETROIT FREE PRESS

City or rural delivery

Call

Mr. Don Thomas

LOCAL DISTRIBUTOR

Phone 475-8360

CHARM BEAUTY SALON

4396 CLEAR LAKE ROAD
(Formerly of Grass Lake)

Two Operators - Hair Styling and Wig Service
Open on Mondays. Closed Tuesdays.

PHONE 475-2700

COMING!! ANTIQUES SHOW and SALE

ALBION, MICHIGAN - NATIONAL GUARD ARMORY

1023 NORTH CLARK STREET

APRIL 17 - 18 - 19

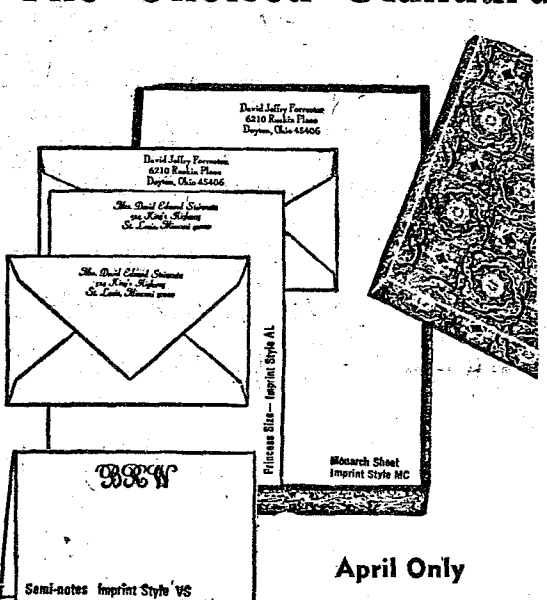
Fri.-Saturday, 12 Noon to 10 p.m.; Sunday, 12 to 6 p.m.

21 QUALITY DEALERS

COFFEE SHOP FREE PARKING

Sponsored By Albion Masonic Building Association

The Chelsea Standard



April Only

1/2 PRICE SALE

Rytex Antique Vellum
Personalized Stationery

Sale Price \$4.95 (regularly

Servicemen's Corner

Chelsea Woman's Husband With Unit Cited By Air Force

North Charleston, S. C.—Sergeant Benjamin J. Capaldi, son of Mr. and Mrs. Benjamin J. Capaldi, Sr., 24215 Prairie Lane, Warren, Mich., is a member of a unit that has earned the U. S. Air Force Outstanding Unit Award.

The 437th Military Airlift Wing at Charleston AFB, S. C., was cited for meritorious service from July 1968 to July 1969 for its support of military operations. This marks the fourth time in five years the wing has been honored as an outstanding unit.

Sergeant Capaldi, a supply specialist in the 437th, will wear the distinctive service ribbon to mark his affiliation with the unit.

The organization is a part of the Military Airlift Command which provides global airlift for U. S. military forces.

The organization is a part of the Military Airlift Command which provides global airlift for U. S. military forces.

The sergeant is a 1965 graduate of East Detroit high school. His wife, Sharon, is the daughter of Mr. and Mrs. Paul Bollinger, 415 W. Middle St., Chelsea, Mich.

Don't end garden planting too early, say horticulturists. Snap beans, spinach, radishes and lettuce may be planted as late as July 1.

HELLER ELECTRIC & INSULATING

Licensed Electrical Contractor

ALL TYPES OF WIRING

THERMTRON

INSULATION

Call After 5 p.m.

475-7978

20640 Sager Rd., Chelsea



ARMY PROMOTION: Company commander, as a result of his recent promotion at the Army Primary Helicopter Center, Ft. Wolters, Tex. Frusha affix new insignia to Sergeant John B. Moore

Chelsea Varsity Baseball Schedule

| | |
|----------------------|------|
| April 10—Adrian | here |
| April 14—Dundee | here |
| April 15—Stockbridge | here |
| April 16—Novi | away |
| April 21—Milan | away |
| April 23—Lincoln | here |
| April 27—Manchester | away |
| April 28—South Lyon | away |
| April 30—Saline | here |
| May 5—Dexter | away |
| May 7—Dundee | away |
| May 12—Novi | here |
| May 14—Milan | here |
| May 19—Lincoln | away |
| May 21—South Lyon | here |
| May 26—Saline | away |
| May 28—Dexter | here |

All games begin at 4 p.m.

Largest all fighting arena in the world is in Mexico City. It seats 47,000 spectators.

John B. Moore, III, in Charge of Army Mess Halls at Ft. Wolters

John B. Moore, III, son of Mr. and Mrs. John B. Moore, Jr., 128 E. Middle St., has been promoted to sergeant at the Army Primary Helicopter Center, Ft. Wolters, Tex., where he is the non-commissioned officer in charge of the Commissary's mess halls.

His company commander, Captain R. B. Travis (left) and Sergeant Major Leonard Frusha of the Center's Finance and Accounting Office affixed the new insignia of rank to his uniform.

Sergeant Moore reported to the Army Primary Helicopter Center last February following a combat tour in Vietnam with the U.S. Army Depot. A 1965 graduate of

Lakeville High school (Ottisville), he attended Flint Junior College prior to entering the army in 1967.

Sgt. W. Schrader Receives Army Commendation

Announcement has been made by Headquarters, Fifth United States Army, Fort Sheridan, Ill., that Staff Sergeant Major William D. Schrader has received the Army Commendation Medal.

The announcement states that "By direction of the Secretary of the Army, the Army Commendation Medal is presented to Staff Sergeant Major William D. Schrader, USA, Fifth United States Army Advisor Group (ARNG) Michigan for exceptional meritorious service while assigned to the U. S. Army Advisor Group, detailed as an Enlisted Advisor to the Second Battalion 128th Infantry, during the period 19 January, 1967 to 15 June 1969."

The period for which he was honored was while he was acting as advisor to the Michigan National Guard 46th Brigade and he and his family lived in Wyoming, near Grand Rapids.

Sergeant Major Schrader is now on his second tour of duty in Vietnam since July, 1969. His wife, the former Leona Moore, daughter of Mrs. Adeline Moore, 1276 Fletcher Rd., is living at the Schrader home in Fayetteville near Fort Bragg, N. C., with their three children Deana, 7, Jason, 5, and Alison, 3.

Sergeant Major Schrader has been in the Army since 1948 and has earned numerous other awards including the Silver Star.

His parents are Mr. and Mrs. Walter Schrader, Sr., 1250 Wilkinson St.

District Court Proceedings

In District Court Proceedings April 7, Alan B. Burt, of 1747 Ivywood, Ann Arbor, pleaded guilty before Judge Patrick J. Conlin on a charge of malicious destruction of property over \$100. He was sentenced to pay restitution of \$806.06, received a suspended sentence of 60 days in the county jail providing restitution is made, was placed on one year probation, and paid \$100 in fine and costs.

In other proceedings, Erma Kelbreth, of 7562 Jackson Rd., Ann Arbor, appeared before Judge Conlin and pleaded guilty to a charge of contributing to the delinquency of a minor. She paid \$50 in fine and costs.

Also, Gerald D. Grant, 3212 E. N. Turner, St., Lansing, pleaded guilty to a charge of driving on a revoked license. He was fined \$25 and sentenced to spend one day on the Whitmore Lake work program.

On April 8, Robert C. Marr, of 303 Railroad St., Chelsea, appeared in District Court on a charge of being drunk and disorderly in a public place. He pleaded guilty and paid \$35 in fine and costs.

In another case that day, Roger Hughes, of 11862 Austin Rd., Manchester, appeared before Judge Conlin on a charge of cruelty to animals stemming from his actions in firing buckshot into a dog. He pleaded guilty and was sentenced to make \$100 restitution to the dog's owner, paid \$50 in fine and costs, and received six months probation.

On April 13 in District Court, Lester Bradshaw of 535 Fairfield, Ypsilanti, pleaded guilty to driving while under the influence of liquor. He paid \$200 in fine and costs and received a 60-day suspended sentence if he participates in the Antibuse program.

Dennis Mudge, 515 W. Main, Manchester, appeared before Judge Conlin on a charge of being drunk and disorderly. He pleaded guilty and paid \$35 in fine and costs.

Finally, Ronald A. Baynton, of waived examination before Judge Conlin on a charge of embezzlement over \$100 from Central Advertising. He was bound over to Circuit Court where he will be arraigned on April 24 and was released on a \$50 bond.

Photographers, sightseers and other visitors find delight in the more than 150 scenic waterfalls in Michigan's Upper Peninsula.

NAT'L GUARD ARMORY 50 EXHIBITORS

ANTIQUE SHOW

S. WASHINGTON LANSING

APRIL 17-19
1 p.m. - 10 p.m.

Local Ford Salesmen Cited

Palmer Motor Sales, Inc., of Chelsea has announced that three area men will be honored at an April 18 banquet of the 300-500 Club, a nation-wide organization of top Ford salesmen, to be held at Detroit's Latin Quarter Restaurant.

Bob Rentschler of Dexter will be honored for his "consistent excellence over a 10-year period as a salesman in the highly competitive automotive business," according to J. Carver Wood, Ford Division Detroit district sales manager.

Chelsea residents John F. Popovich and Lyle Chriswell, also of Palmer Motor Sales, will be likewise honored at the April 18 banquet. Each man will receive his 300-500 membership pin for outstanding sales achievement during 1969. Less than half of Ford's 27,000 salesmen nationally

qualified for membership last year. Wood said that the average 300-500 Club member sold nearly \$500,000 worth of automotive merchandise in 1969 to qualify for the national honor.

PAINTING RIGHT

When painting a rectangular ceiling, work across the width of the room rather than the length. You will be able to paint the second lap before the first has dried and the problem of ridges forming between the laps will be eliminated.

Light frosts usually kill beans, tomatoes, peppers, cucumbers, egg plant, okra, sweet potatoes, squashes, pumpkins, muskmelons and gourds, according to horticulturists.

QUICK SHELTER

When army ants bivouac at night, each ant clings to a neighbor to form a living rope with their tens of thousands of bodies. The mass of bodies, hanging from a vine or log to the ground, makes a snug, safe camp for the queen.

Telephone Your Club News To GR 5-3581.

DRIVER ELECTRIC

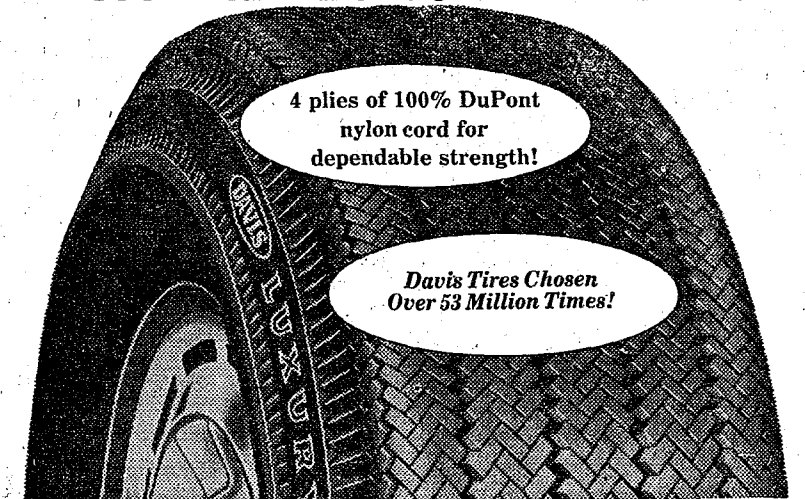
Licensed Electrical Contractor

CALL JIM at 426-4936

4920 JOY RD., DEXTER No Job Too Small

TIRE SALE

Buy 1st Tire at Special Sale Price
Get 2nd Tire at 1/2 PRICE!



Get 4-Ply 100% Nylon Cord Protection!

DAVIS Luxury Premium Sentry®

Wide, deep tread of strong Poly-BD compound rubber!

FREE TIRE MOUNTING! EXPERT WHEEL BALANCING!

\$19.98

Second Tire at \$9.99 plus tax

| Blackwall Tubeless Size | Price | Plus Fed. Excise Tax | Blackwall Tubeless Size | Price | Plus Fed. Excise Tax |
|-------------------------|---------|----------------------|-------------------------|---------|----------------------|
| 6.50x13 | \$19.98 | \$1.78 | 8.85x14# | \$37.48 | \$2.84 |
| 6.95x14 | 25.48 | 1.94 | 7.75x15 | 27.98 | 2.19 |
| 7.35x14 | 26.48 | 2.04 | 8.25x15 | 30.48 | 2.36 |
| 7.75x14 | 26.98 | 2.17 | 8.55x15 | 32.98 | 2.57 |
| 8.25x14 | 29.48 | 2.33 | 8.85x15# | 37.48 | 2.76 |
| 8.55x14 | 32.98 | 2.53 | 9.15x15# | 39.98 | 2.96 |

Prices are plus Fed. Excise Tax & Trade-In Tire. Whitewalls just \$3 more. *Whitewall extra.

106 N. Main St. "THE FAMILY STORE" Phone 475-4721

SPRING RADIO SALE

SHOP NOW FOR GRADUATION!

These Prices Good Thursday, Friday and Saturday, April 16-17-18 Only

KROY
6 Transistor Pocket Radio \$4.99

ITC
10 Transistor AF AC-DC \$9.99

SUN MARK
10 Transistor Radio \$7.99

FOR PRIVATE LISTENING
Head-Phone Radio, 1 only \$15.88

WINDSOR
10 Transistor AM Police Radio . . . \$18.95

SUN MARK
Table Radio, AM, AC \$11.95

GENERAL ELECTRIC
AM Clock Radio \$21.95

SUN MARK
AM Clock Radio \$34.95

SUN MARK
AM Radio Lamp \$22.95

NACO SOLID STATE
AM - FM Radio \$18.95

SUN MARK SOLID STATE
AM - FM Radio \$15.95

SUN MARK SOLID STATE
AM - FM Radio \$37.95

MAYFAIR
Tape Recorder, Model 1600 \$13.99

JULIETTE
Phono - Radio Combination \$24.95

9-VOLT
Transistor Batteries 2 for 25¢

SUPER SPECIAL

MODEL 20, REG. \$19.95

POLAROID SWINGER CAMERA \$10.00

\$2.00 TRADE-IN ALLOWANCE FOR ANY RADIO

In Any Condition on Any of the Above Radios.

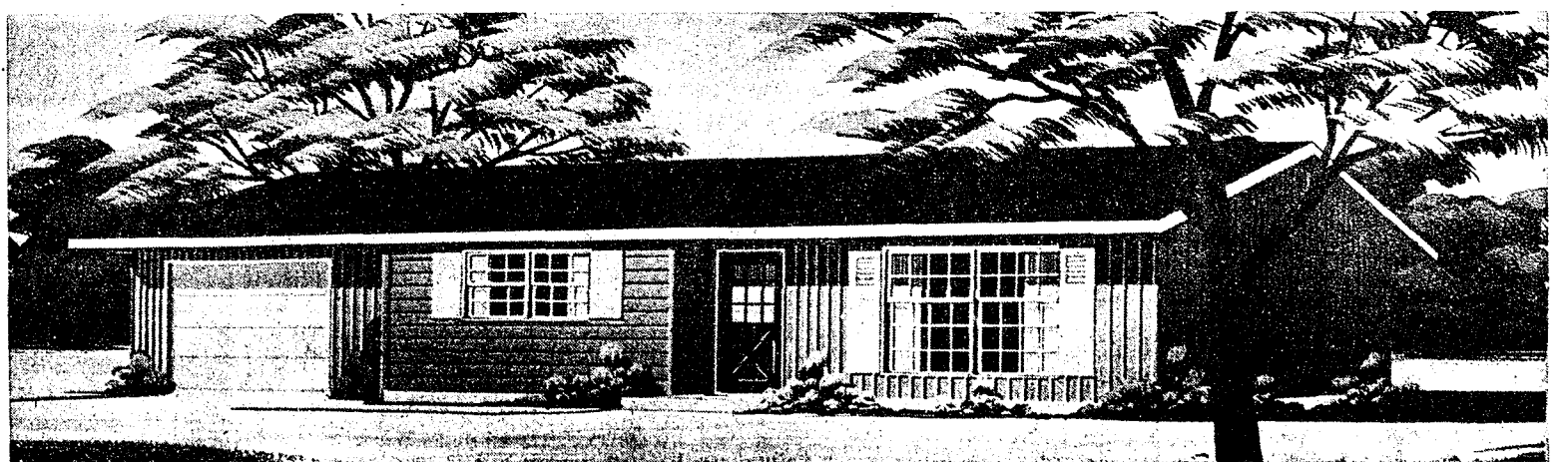
BUDGET-WISE STORE

Chelsea's First Discout Store

116 South Main Street

Phone GR 9-1611

LOT OWNERS



What Makes the LEDO Your Kind of Home?

★ elegant living room ★ guest closet ★ country kitchen ★ Mediterranean styled cabinets, dining space ★ ceramic bath ★ three bedrooms ★ full basement ★ two-car garage ★ all-aluminum exterior ★ stove & refrigerator ★ carpeting throughout.

TOTAL PRICE: \$18,900

(Septic field and well not included)

Call now and beat the summer price increase — you'll be glad you did. We have hundreds of plans to choose from and we can beat anybody's price, offering better quality and professional services.

W. C. WEBER CONSTRUCTION CO.

17 Years of Service to the Chelsea - Dexter - Manchester Area
12290 JACKSON RD., CHELSEA

PHONE 475-2828