

WEATHER

	Min.	Max.	Precip.
Wednesday, April 1	24	45	0.00
Thursday, April 2	27	40	0.00
Friday, April 3	27	40	0.00
Saturday, April 4	27	40	0.00
Sunday, April 5	28	46	0.00
Monday, April 6	33	49	0.04
Tuesday, April 7	37	53	0.00

ONE HUNDREDTH YEAR—No. 42

12 Pages This Week

CHELSEA, MICHIGAN, THURSDAY, APRIL 9, 1970

15c per copy

SUBSCRIPTION: \$4.00 PER YEAR

The Chelsea Standard

QUOTE

"Sir, I had rather be right than president."
—Henry Clay.

Michigan Week Plans Revealed



CHARLES F. COX

Michigan Week "Land of Hospitality" plans are nearing completion. This year's Michigan Week activities for Chelsea area residents are scheduled for May 16-23.

"Come back to Michigan" is the call this year as Michigan Week planners are issuing an invitation to all former residents, sons and daughters from all corners of the globe to join in the giant Michigan Week Homecoming.

Governor William G. Milliken has proclaimed May 16-23 as the 17th annual Michigan Week. Objectives of the week-long festivities, sponsored through the Greater Michigan Foundation, are to give Chelsea residents greater knowledge and appreciation of their village and state; to expand their assets and resources for industry, business, education, and recreation.

Michigan Week activities in Chelsea will begin with Community Pride Day, Saturday, May 16. This is the day when all Michigan gives expression to the deep pride of its citizens in the entire state, particularly to their special pride in their own community.

Spiritual Foundations Day, Sunday, May 17, is a day to review the proud heritage of religion in Chelsea and to recognize its part in community life now and in the future.

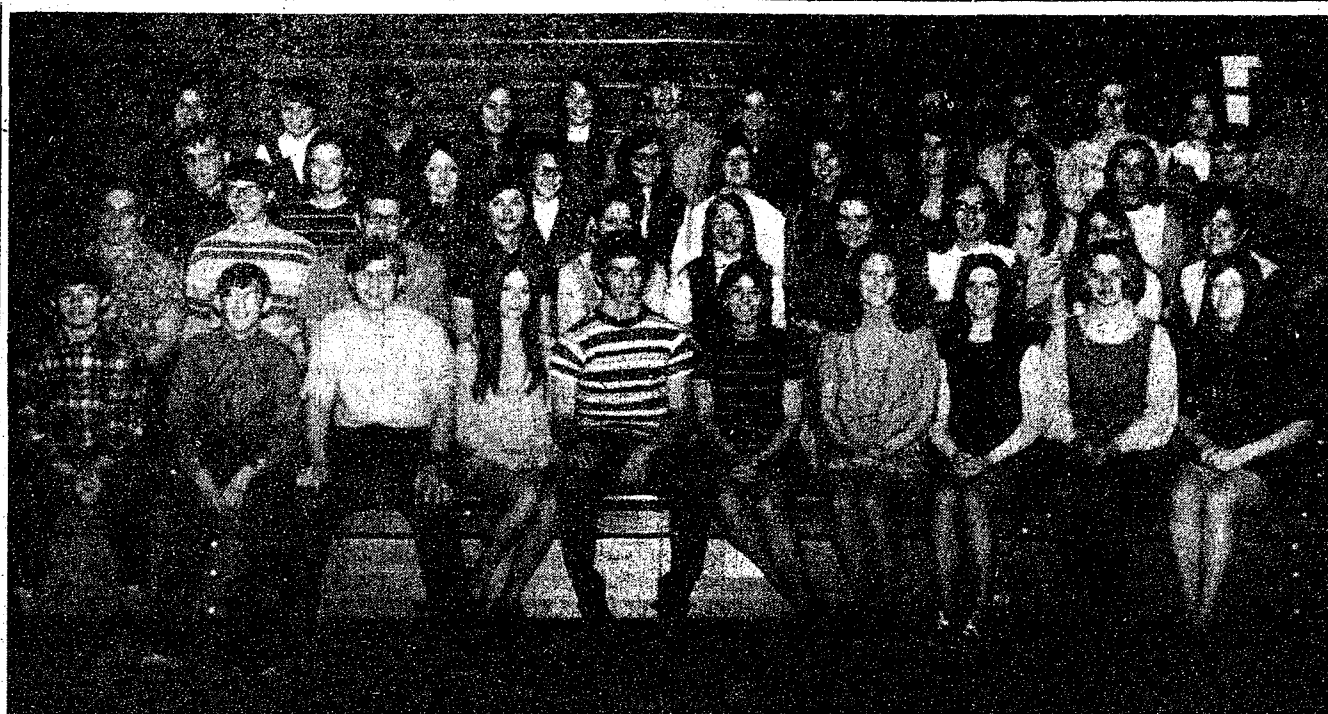
Our Government Day, Monday, May 18, focuses on our government and its work at all levels. The day will be highlighted by a Mayor Exchange with Milford, Thomas Dmoch is chairman for this day.

Our Heritage Day, Tuesday, May 19, is a day to recognize the contributions so many have made to Michigan's progress and the inventive genius of the men and women who make possible its continued growth.

Our Livelihood Day, Wednesday, May 20, is the day we direct our attention to the industry, business and agriculture which provide a livelihood for the community. We, as citizens, should pause a moment to think of how each earns his living. Each community should take stock of how it provides a livelihood for its people.

On Education Day, Thursday, May 21, the entire community should pay tribute to its schools—pupils, teachers, administrators, and other personnel.

Hospitality Day, Friday, May 22, symbolizes the theme of Michigan Week—that Michigan is a land of hospitality all year around. (Continued on page six)



NATIONAL HONOR SOCIETY: Newly inducted members of Chelsea High's National Honor Society include: Front row; left to right, Milton French, Bruce Clark, Ed Wade, Gayle Winans, Larry Gorton, Sue Blaess, Eileen Bristle, Terri Kelly, Jane Haselschwerdt, and Jill Flintoft. Second row, from left, Dale Robbins, Steve Smith, Jane Mann, Martha Ewald, Dorothy Gauss, Carol Weir, Pat Young, Sue Rasmussen, and Jackie McClain. Third row,

from left, Jeff Bust, Lisa Peppers, Tonya Clemons, Beckie Smith, Jill Kipfmiller, Kathy Hafner, Pam Parnell, Sue Stock, Janice Guenther, Laurie Lancaster, and Jim Wojcicki. Fourth row, from left, Diana King, Regina Hardy, Steve Thomson, Diane Schroen, Chris Barnes, Art Farley, Debbie Weiss, Kathy Susner, Sylvie Toimard (honorary member), Ginger Allhouse, Karen Menzell, Denise Thompson (transfer), and Jack Wood.

South School Parents Form Organization

An organizational meeting of 20 interested parents of South School students was held Thursday, April 2, to explore ideas for improving parent-teacher-community communication.

Several ideas for programs were suggested by the parents. Interest was shown in obtaining information about South school and the Chelsea school system, about individual freedoms, and student rights and about child molestation.

On Tuesday, April 14 at 7:30 p.m. at South school gymnasium, parents are invited to view the film being shown to elementary school children during school on child molestation. The title of this film is "The Riddle of the Unfriendly Stranger," featuring Gabby and her friends. At this time, the JC Auxiliary will also present their program, The Helping Hand. Following the programs, there will be a discussion.

Members of the South school parents committee include: Ellis Boyce, Mr. and Mrs. Richard Harvey, Dean Devove, Don Schroeder, Mrs. Gene Miller, and Mrs. Leslie Eisenbeiser.

44 New Members Inducted Into National Honor Society

Forty-four juniors and seniors became members of Chelsea high school's Charles S. Cameron chapter of the National Honor Society during its ninth annual induction held Monday, April 6 at the school.

Nominated for their qualities of scholarship, leadership, character, and service, the new inductees form the largest group of students ever to be so honored at one time.

New members include: Ginger Allhouse, Chris Barnes, Sue Blaess, Eileen Bristle, Jeff Bust, Bruce Clark, Tonya Clemons, Martha Ewald, Art Farley, Jill Flintoft, Milton French, Dorothy Gauss, Larry Gorton, Janice Guenther, Kathy Hafner, Regina Hardy, Jane Haselschwerdt, Jim Hercules, Jack Jennings, Terri Kelly, Jill Kipfmiller, Deana King, Laurie Lancaster, Jane Mann, Karen Menzell, Jackie McClain, Pam Parnell, Lisa Peppers, Susan Rasmussen, Dale Robbins, John Sacher, Diane Schroen, Kathy Susner, Beckie Smith, Steve Smith, Sue Stock, Steve Thomson, Ed Wade, Carol Weir, Debbie Weiss, Gayle Winans, Jim Wojcicki, Jack Wood and Pat Young.

National Honor Society officers and members welcomed the new inductees during an afternoon program and tea which was also attended by the proud parents of the new members. The officers, Claudia Devine, president; Heidi Sprague, vice-president; Barb Harvey, secretary; Connie Taylor, point secretary; and Bobbie Dvorak, treasurer, spoke briefly to the

inductees on the qualities necessary for admission to the society (scholarship, leadership, character, and service).

Continuing members of the Honor Society at Chelsea High include: Jane Oesterle, Chris Alber, Janet Boylan, Floyd Boyce, Carolyn Buckingham, Barb Bury, Dave Bust, Vickie Clemons, Steve Elsmann, Beverly GeBot, Pat Gilbert, Jeanne Hinderer, Pat Hergert, Gail Maistre, Jon Michelson, Don Natt, Doug Schoenburg, Brenda Seitz, Roxanne Shears, Denise Thomson (a recent transfer from Pinckney's chapter), Caryl Thornton, and Anne Travis.

Dr. Joseph V. Fisher, a Chelsea physician, was the main speaker during the induction. He spoke on the significance of high academic standing in the individual's choice of a life occupation and stressed the importance of occupation, citizenship, creativity, and wise use of leisure time.

A final challenge was presented to both new inductees and old members by Chelsea School Superintendent Charles S. Cameron who gave the concluding remarks.

"The present National Honor Society," stated advisor George P. Bergman, "is one of the most active in our history. The students are committed to a number of worthwhile projects such as aiding their parents in the school's scholarship fund drive, and are planning a tag day and a Smorgasbord early next month to raise money for the fund."

In addition to Bergman, advisors to the society include Miss Lynn M. Williams and Joe Rossi.

New Pastor Begins Duties At Chelsea Methodist Church

After eight weeks without a pastor, the First United Methodist Church of Chelsea welcomed the Rev. Clive H. Dickens to its pastorate on Wednesday, April 15.

The Rev. Dickens replaces the Rev. Robert Worgess who left Chelsea, March 15 for Sebawaing. The Rev. Dickens, who graduated from Oberlin Graduate School of Theology in 1959, will preach his first sermon Sunday, April 19.

There will be a reception for the new minister, and his wife Sunday, April 19, from 11 a.m. to 12:30 p.m., following the worship service. All are welcome to attend the event.

The Rev. Dickens graduated from the Detroit Public Schools in 1948, Magna Cum Laude, attended Asbury College in Wilmore, Ky., and graduated in 1953 with a BA, also Magna Cum Laude.

During this time, he was listed in "Who's Who in American Colleges and Universities in 1953."

The Rev. Dickens obtained his teaching certificate from Eastern Michigan University in 1958 and went on to Oberlin for graduate work in Theology. While at Oberlin, he was president of his graduating class; awarded a Monroe Fellowship as that member of the graduating class with the highest academic standing; and awarded the Thomas Graham prize as the outstanding preacher of the senior class.

In 1960, the Rev. Dickens married Susan Alice Maycock. They have two children, Mark Edward and Robert Clive.

The Rev. Dickens has been active in both community and religious life. He has held several district ministerial offices and presently holds the district offices of the Committee on the Ministry, Board of Missions and Church extension, District Council and sub-district leader. He is also involved in the current conference offices of trustee of Michigan Christian Advocate, and a member of the Commission on Minimum Salaries and Sustentation.

Community interests of the new Chelsea pastor have led him to participation in the Sumpter Community chorus, the Belleville Area ministerial fellowship, the Belleville Human Relations council, the Van Buren Public Schools study committee, the YMCA, Indian Guides, the Denton PTO, and the Fowler-Lodge No. 1 164 F&M.

The busy Rev. Dickens does find (Continued on page three)



REV. CLIVE H. DICKENS

Townships OK Higher Budgets For Next Year

Sylvan Adopts \$71,220 Budget But Still Eliminates All Township Tax

Budget considerations and salary hikes highlighted the Saturday, April 4 annual meetings of the Dexter, Freedom, Lima, Lyndon, Sharon, and Sylvan townships.

Freedom Township . . .

Freedom township residents approved a budget of \$19,570 at their annual meeting. The increase of \$4,000 is attributable to salary hikes for township officials and costs for a landfill project which Freedom township is participating in with their neighboring townships.

The township supervisor will receive \$300 for expenses in addition to his present salary. The clerk's salary was boosted from \$1,400 to \$1,600 and the treasurer will receive \$2,500. Up until this year, the treasurer had received a percentage salary on taxes collected.

The township voted to levy one-half a mill to help pay for a new township hall. So far, \$32,000 has been set aside for the hall. A motion was passed to spend a maximum of \$36,500 for the building which will be located on the present site, the corner of Pleasant Lake and Lima Center Rds. Ronald Finkbeiner of Bridgewater Lumber Co., will be the contractor for the new hall.

The township board was authorized to sell and dispose of the old hall and any other assets in the old building not needed in the new hall.

It was announced that the township board will meet at 7:30 p.m. the second Tuesday of every month. The meetings are to be held on April 14, July 14, Oct. 13, and Jan. 12. Sixty-five persons attended the meeting.

Lima Township . . .

At the Lima township meeting, a budget of \$46,000 was adopted. Last year's budget totaled \$38,695. The increase in the new budget is due to the need for additional fire prevention and road improvements. One mill was also approved for township taxes. It was agreed to pay the Village of Chelsea \$2,000 annually for using the village landfill if the village issues permits.

Lyndon Township . . .

Salary increases for the supervisor, treasurer, and clerk of Lyndon township were approved at their annual meeting. The supervisor's pay was hiked from \$2,250 to \$2,350; and the treasurer and clerk both received salary increases from \$1,400 to \$1,450. A budget of \$20,344 was also adopted. The previous budget had been \$22,000. It was approved that the township will pay \$2,000 to the Village of Chelsea for one year for using Chelsea's landfill.

Sharon Township . . .

Sharon township residents voted to continue their road program with the County Road Commission. This will include the spreading of more gravel over township roads.

A 1970-71 budget of \$14,000 was approved after much discussion and the supervisor, clerk, and treasurer received \$100 raises. A 1 percent collection fee will be raised on taxes to provide additional revenue for the general fund.

Sylvan Township . . .

The supervisor, treasurer, and clerk of Sylvan township received pay boosts at their annual township meeting. The supervisor's salary was raised from \$5,520 to \$6,000. He also received an increase from \$900 to \$1,200 for car expenses. The clerk will receive a salary of \$4,000. Prior to this, he was receiving \$2,700. The treasurer's salary was set at \$6,000 instead of his old percentage of the taxes collected, which had been increasing with the higher assessments so it had reached a figure of between \$8,000 and \$10,000 the last two years.

The new budget of \$71,220 was adopted. This includes \$25,000 for road improvements and the purchase of two new voting machines. Last year's budget had been \$53,950. It was announced that the township will levy no millage this year or the 1 percent collection fee for taxes.

Dexter Will Have New Township Hall

Dexter township officials were host to a few more residents than have attended the Annual Township Meeting in past years, at this year's meeting, Saturday, April 4.

A budget totaling \$42,190 was approved for the year, and salary increases were voted for Supervisor Warren Eisenbeiser, Treasurer Mrs. Winifred Aberdeen and Clerk William Eisenbeiser. The increase voted for the supervisor was \$1,000 annually, bringing his annual rate to \$4,500, and the clerk and treasurer were each given \$500 annual increases to bring their salaries to the \$2,500 mark.

Residents anticipate completion of the new township hall, located on Dexter-Pinckney Rd., near North Territorial Rd., in time for the primary election next August.

Following some discussion on whether the township should assume a greater share of the salary expense of township police officer Ralph Parker of North Lake, the citizens decided to continue his employment, even though the township will not be sharing salary costs with the Washtenaw (Continued on page five)



FORENSICS CHAMPIONS: Winners of the District Spring Forensics Speech Contest from Chelsea High include: first row, left to right, Jane Haselschwerdt, Glen Musolf, Larry Jones, Bob Stoffer, Laurie Lancaster, Jane Mann, and Joan Schmidt; top row, from left, William Coelius (coach), Patrick Pluck, Pat Gilbert, Kathy Susner, Chick Lane, Sharon Heydlauff, Mark Thomson, Sue Blaess. Not shown is Annette Ereston.

15 CHS Students Prepare for Regional Spring Forensiss

Fifteen Chelsea High students will go on to the Regional Spring Forensic Contest as a result of their outstanding performance in the March 25 district eliminations held at the high school.

For the first time in the school's history of participating in this event, the students emerged as top scorers in the district, garnering placement in eight of the nine available categories and outperforming students from Saline, Howell, Fowlerville, Brighton, and Ann Arbor Green Hills.

Students who walked off with honors and the areas they competed in include: Mark Thomson, second place in Declamation; Sharon Heydlauff, second place in Serious Reading; Sue Blaess, third place in Women's Oration; Chick Lane, second place in Extemporaneous; Patrick Pluck, first place in Men's Oration; Kathy Susner, first place in Radio News-casting; Pat Gilbert, first place in Humorous Reading; and Jane Mann, Jane Haselschwerdt, Joan Schmidt, Laurie Lancaster, Annet

to Ereston, Glenn Musolf, Larry Jones, and Bob Stoffer, first place in Multiple Readings with a selection entitled "America Hurrah!" Advisor to the Chelsea contest, William Coelius, expressed pride and satisfaction at the performance of his students, stating, "This is a real first for Chelsea High to outperform all the other schools in the district." He also expressed confidence that the students would continue their fine performances in the regional contest to be held April 23 at Ypsilanti High.

Talent Show Auditions Set For Saturday

Chelsea's Civitan club is sponsoring an amateur talent show, which will be held Saturday, May 23 at Chelsea High school auditorium.

The show is open to all interested people, who think that they have a modicum of talent worth displaying.

There is no age limit, but it is planned by the club that there will be two divisions, junior and senior, with cash awards for each.

Auditioning for the show, whose profits will be spent on community projects, will be held Saturday, April 11, at 10 a.m. at Chelsea High school auditorium.

For further information, call Frank Hill at 475-8631 and after 5 p.m. at 475-7556, or Leon Meabon at 475-5191, and after 5 p.m. at 475-5193.

Pre-Kindergarten Children Urged To Visit School

Elementary school principals are reminding parents that children who will be 5 years old by Dec. 1, 1970 and are entering kindergarten in the Chelsea school system are invited to visit a kindergarten class one half day to get acquainted before April 30.

Any parents interested in having their child attend should call South or North school to make arrangements for a specific day. This visit does not necessarily indicate that he will be assigned to that room or school in the fall.



NEW OFFICERS: Chelsea Jaycees elected new officers Tuesday night, April 7, for the coming year. Pictured here, from the left, are Barry Boone, internal director; Glen Weir, external vice-president; Tom Steele, treasurer; Si Hopkins, internal vice-president; Mike Euhanks, membership director; Dick Stoll, internal director; and Art Steinaway, president. Not shown is the new publicity director, Neil Fahrner.

Established 1871 **The Chelsea Standard** Telephone GR 5-3581

Excellence Award By Michigan Press Association
1951-1952-1960-1964-1965-1966

Walter P. Leonard, Editor and Publisher

Published every Thursday morning at 300 North Main Street, Chelsea, Mich. 48118, and second class postage paid at Chelsea, Mich., under the Act of March 3, 1879.

ADDRESS CORRECTION REQUESTED

Subscription Rates (Payable in Advance)

In Michigan:	Outside Michigan:
One Year \$4.00	One Year \$6.00
Six Months \$2.25	Six Months \$3.50
Single Copies \$.15	Single Copies \$.20

Service men or women, anywhere, 1 year \$4.00

MEMBER **NATIONAL NEWSPAPER** Association - Founded 1885

National Advertising Representative:
MICHIGAN NEWSPAPERS, INC.
257 Michigan Ave.
East Lansing, Mich. 48823

Mill Creek Reservoir Called 'Dead' Issue

A declaration that the Mill Creek reservoir is "dead," references to the Talus study, and the hint that the Southeastern Michigan Lake Erie studies would result in the recommendation for a reservoir on Mill Creek, were all part of the fifth annual meeting of the Mill Creek Research Council held Tuesday, March 31 at Lima Community Hall.

Several people, including three Dexter High school students members of PRIDE gathered at the Hall to hear Warren P. Miller, executive secretary of the Huron River Watershed Council speak before the annual meeting.

Miller told those who had gathered that he believes the Mill Creek reservoir as was being planned by the United States Corps of Army Engineers through their Huron River studies was "dead," because at the present time there is no funding for study and no current budget request for further funds.

He continued that one of the principal reasons for the proposed reservoir was low-flow augmentation to dilute the discharge from the Ann Arbor and Ypsilanti sewage treatment plants. Although these cities could, even by providing tertiary treatment to remove phosphates, process their sewage at less cost by continuing use of their individual plants, they will, in all likelihood, be forced to make use of the regional interceptor system which will be built to take all sewage out of the Huron River. In fact, if the Michigan Water Resources Commission sets water purity standards for total bodily contact on Ford Lake and other ponds, then all sewage will have to be removed from the Huron.

Miller commended the Research Council for their efforts with regard to the Mill Creek reservoir proposal. He said that there is a growing need for such citizen involvement in assisting with the decisions that are being made by all levels of government.

Although the reservoir was pronounced dead, it was revealed that there is still the possibility that the Southeastern Michigan Lake Erie studies, which are continuing, may eventually recommend some sort of a reservoir on Mill Creek.

Miller noted that change in the Mill Creek basin is inevitable. The recent Talus study predicted that Chelsea will become a city of 50,

000 persons; that Dexter would become one of Ann Arbor's "bedrooms." Such changes cannot take place without the kinds of land-use decisions now being made in Ann Arbor, Selo and Pittsfield townships, it was asserted.

Further it was presented that the Huron-Clinton Park Authority and the promoters of the "cross-state" canal have considered the natural assets provided by the creek itself. Huron-Clinton has become involved with park development at Belle Isle, but that probably has just put off the decision on another new park west of Ann Arbor in the creek basin or elsewhere, it was conjectured at the meeting.

The cross-state canal would reverse the flow of water up Mill Creek and along its southern branch (Guenther Rd.) across the county to join the upper reaches of the Grand River which flows towards Lake Michigan. Land would be bought for 800 feet on both sides of the water-way to be later resold for private use. This would help provide financing. A bill seeking authorization of such a project has been introduced to the Michigan state legislature this winter.

Both Miller and Mrs. Harry Denham, who is on the executive board of the Huron River Watershed Council, expressed skepticism that the "ditch" would ever be built; however, they felt that not enough is known about all the implications of a project of such magnitude and that it is not too soon for people to try to become informed about it.

The "Berrien County" Conservation Club has already voiced its opposition in an issue of the "Michigan Outdoors" magazine, and on Sunday, March 29, the Detroit Free Press had a letter of opposition from Port Huron, across the state.

Dave Bacon, chairman, presided at the brief Mill Creek Research Council meeting which preceded the talk. After some discussion, dues were left at \$2 initiation fee and \$10 annually. Dues may be sent to William Chandler, treasurer, 765 Howard St., Chelsea.

Mrs. Denham reported that the biggest project of the year was the preparation of a book, "A Summary of the Opposition to the Mill Creek Reservoir." This compilation of research reports, resolutions and statements of opposition, to interested persons, when it was learned that a statement had been made at an appropriation hearing that there had been no opposition to the project. Read during the meeting were letters of acknowledgment of receipt of the summary from Governor William Milliken and Representative Charles Cedarburg.

FAMILY MAJORITY
Of the 202 million Americans, 180 million make up the nation's 49 million families. The remainder either live alone or in homes with others.

The people who live next door to you are just as good as those you will meet on your summer vacation; why not cultivate them a bit?

It's that time again-



MICHIGAN MIRROR

By Elmer E. White, Secretary, Michigan Press Association

Abortion Law Uncertain

Gov. William G. Milliken added his voice to the rising chorus of persons working for reform of Michigan's abortion laws and gave the move for reform a significant push.

The Governor, after studying the issue carefully, came out in support of a law which would allow any woman to receive an abortion during the first three months of pregnancy if she wanted one.

Only qualifications in the proposal Milliken endorsed would be a requirement that any woman receiving such an abortion reside in the state three months before she could receive it.

The Milliken plan is almost identical to one already enacted in Hawaii, except Hawaii does not

have any residency requirement in its law. It does, however, have several thousand miles of ocean between it and any other state which provides a natural barrier to the state becoming an "abortion mill."

"I believe that women, under appropriate conditions, should be permitted to make an individual judgment, and that the result of this judgment should be respected and protected by law," Milliken said.

"Under our present law, there are great excesses and violations through the procurement of illegal abortions in many cases under less than even hygienic or competent circumstances," he said.

"This is the real detriment to the public welfare. Our present

law overlooks it totally."

The Governor said he recognizes "this is a controversial issue." Many people of good will and proper motive support changes in the law; many others of equal good will and proper motive oppose such changes.

"In such circumstances there can be no policy which will satisfy everyone," Milliken concluded. "Accordingly, we must base our policy on the individual conscience of the individual citizen. A law such as I propose cannot compel any persons to take action against their conscience or against their will."

In reply to those who say abortions would be "legalized killing," Milliken said "it is necessary to act at this time so that lives can be saved, much suffering can be prevented, and the illegal abortion trade can be stopped."

"All evidence demonstrates conclusively that our present law does not do what it was intended to do," he said. "It does not prevent abortions. It does contribute to illegal abortions, often performed by unqualified persons, often in unsanitary circumstances."

"All too often, death, sterility, permanent injury or substantial suffering is the result," he said. "Conditions such as these must not be allowed to continue. I propose that we alter them by improving the law."

"He also said, 'Family units would be strengthened if we give to women the decision as to whether or not they shall bear children.'"

Though it has picked up the Governor's support, however, abortion reform is far from being a sure thing during the current legislative session.

There are still many persons, including the Catholic Church, who are devoutly and unalterably opposed to any change in the law. Shortly after Milliken issued his statement, Senate Democratic leader George S. Fitzgerald of Grosse Pointe said passage of any bill to liberalize abortion law would

JUST REMINISCING

Items Taken from the Files of The Chelsea Standard

4 Years Ago . . .

Thursday, April 7, 1966—

Delegates and alternates approved by members to attend the Kiwanis International Convention in Portland, Ore., July 1-5 are Floyd Fowler, president, and Anton Nielsen, past president, as official delegates; and Lloyd Heydlauff, past president, and Clare Warren, second vice-president, as alternate delegates.

An American flag was presented to Girl Scouts of Troop 58 Monday evening by Mrs. Ken Norris, the troop representative in the Chelsea Jaycee Auxiliary.

Congressman Weston Vivian came to Chelsea Friday night to discuss the proposed atomic accelerator.

Unidentified Flying Object sightings slackened off considerably in the Chelsea-Dexter area during the past week.

Philip Spike, of Manchester and Mark Ruhlrig of Dexter, two outstanding 4-H Dairy club members, have been selected to participate in the annual 4-H Milk Marketing Tour in Detroit, April 29 and 30.

An old vacant house located at the corner of Scio Church and Fletcher Rds., burned to the ground early Tuesday morning. Three trucks were dispatched to the scene by the Chelsea Fire Department.

Discussion was held by the Village Council with Jack Merkel regarding the possibility that installation of sanitary sewer facilities in any area of the village can be set at this time.

14 Years Ago . . .

Thursday, March 29, 1956—

Two special meetings have been planned at Zion Lutheran church, Rogers Corners. Miss Olive Brower now a Washnaw county public health nurse, will tell of her experiences in foreign missionary work. A study with the Rev. Robert C. Kaiser will be held.

Girl Scouts and Brownies of Chelsea have delivered some 2,760 boxes of cookies.

Douglas Schneider, a student at Michigan State University, is attending a church work camp in Jacksonville, Fla.

Chelsea's Future Farmers of America parliamentary procedure team was one of the four winners of bronze awards at the state contest. Members of the Chelsea team are James Grau, chairman; James Heydlauff, secretary; Leewellyn Lehman, Kenneth Hais, Tim Schulze, James Klobucher and Reuben Lesser, Jr., with David Wolfgang, Alan LeVan and Melvin

"open the door to euthanasia and mercy killing."

But Fitzgerald said he was speaking only for himself and would not attempt to have Democrats take a stand on the issue because "it's just too emotional."

Most observers doubt it will be possible to pass any significant legislation into law this year.

They think a bill will pass the Senate but won't make it through the House. Any bill sent to the House by the Senate would go to the House Social Services Committee, which is chaired by Rep. Robert D. Mahoney, D-Detroit, another devout Catholic.

It is also felt that it won't be much longer before a significant bill is adopted. The subject, which was almost unmentionable in public just a few years ago, has generated such support that eventual passage of such a bill seems inevitable in the long run.

The real question appears to be not "if" but "when?"

Seltz as alternates. Philip Smith, Chelsea High school agriculture teacher is the FFA advisor.

The Learning By Doing 4-H club, led by Mrs. Clarence Reddeman and Mrs. Lewis Haselchwerdt, Wide-Awake club, led by Mrs. Walter Wolfgang and Mrs. Kathleen Hatt, and the Parkers Corners Woodworkers club, led by Raymond Schairer, will hold a special Lima township 4-H Achievement event in Ann Arbor.

Chelsea's Village president, Anton Nielsen, will exchange in the Mayor's exchange day with St. Johns.

Norman Perkins and Calvin Summers of Federal Screw Works, attended the exposition of the American Society of Tool Engineers in Chicago last week.

24 Years Ago . . .

Thursday, April 11, 1946—

The combined efforts of everyone in Chelsea resulted in a total collection of \$2,702.40 for the Red Cross, according to Mrs. L. J. Paul, chairman; Mrs. E. C. Burns, Mrs. Dorr Rogers, Mrs. Dillon Wolverton, Mrs. M. W. McClure, Mrs. Arnold Steger and Mrs. James Almond.

The old-fashioned auction sponsored by the Grade School PTA will be held tonight. Auctioneer Irving Kalmbach promises to be exceptionally proficient, having practiced his lines for two weeks.

Fred Worden has discontinued operation of the Quality Shoe Repair until he can find a location for his shop. Merkel Bros. will use their building, which has been occupied by Worden, for storage purposes.

T-5 Glen Hafley, son of Mr. and Mrs. Fred Hafley of Sylvan Center, received his honorable discharge at Camp Grant, Ill., on April 8.

Cpl. Richard L. Abdon received his honorable discharge on March 29 at Camp Atterbury, Ind., after serving 39 months in the army, 16 months of which were in the European theatre of operations.

Sgt. Donald West, youngest son of Mr. and Mrs. Harrison West of Sylvan Center, received his honorable discharge from the army at Camp Atterbury, Ind., April 4 and returned to his home Friday.

LaVern Niehaus, son of Mr. and Mrs. Alvin Niehaus, is home after receiving his discharge on March 12 at Camp McCoy, Wis.

North Sylvan Grange was entertained at the home of Mr. and Mrs. P. M. Brosesamle at their regular meeting on Tuesday, April 2.

The Ladies Aid Society of St. Paul's church held their April meeting with the topic "Altars Along Life's Way," presented by the Rev. P. H. Grabowski.

Bruce Clark and Bob White will

provide special music for the Youth for Christ rally Saturday night.

34 Years Ago . . .

Thursday, April 9, 1936—

Dr. Henry W. Schmidt, physician in Chelsea for nearly 50 years, and a life-long resident of Washnaw county, was killed early Sunday while enroute to Ann Arbor to meet his daughter, Doris, who was returning from New York.

Chelsea Scout Troop No. 1 will serve as hosts for the Western district scout rally and court of honor to be held at the Chelsea High school gymnasium Friday evening.

Merkel Brothers unloaded a carload of McCormick-Deering tractors here last Friday. They have sold five tractors this spring and have disposed of five used tractors within the past few weeks.

Theo. H. Bahnmler won the Sylvan Township supervisor's race by three votes over Conrad Lehman. Clerk is Fred G. Brosesamle who won over Robert Wheeler; treasurer is Milton J. Baxter, who won over Chas. Mohrlock; George Zeeb, commissioner of highways, over John Liebeck; Bert B. Turnbull, justice of peace, over Henry Ahnmler; Theo. Riemschneider, member of Board of Review, over Geo. W. Beckwith; Edward Chandler, John Frymuth, Albert Schweinfurth, George A. McClure, Albert Visel, William Schatz, John Doyle, and Patrick Daley, constables.

Lima township's new supervisor is Leigh Beach. Freedom township elected Edwin Schaible as its supervisor; while Lyndon township elected James Howlett, supervisor.

Reading Conference Slated Monday at Pioneer High School

Dr. Roma Gans will keynote a Special Interest Conference on Reading, sponsored by the Washnaw Intermediate School District on Monday, April 13. Dr. Gans, Teacher's College, Columbia University, is known in the publishing world for her popular books, Common Sense in Teaching Reading and Fact and Fiction about Phonics. In addition to these publications she is editor of the Science Series, Let's Read and Find Out.

The Conference will take place April 13, in Pioneer High school, Little Theater, beginning with a display of reading materials at 6:30 p.m. Autographed copies of Dr. Gans' books may be purchased at this time. At 7:30 p.m., Dr. Gans' speech, "Guidelines for Planning Good Reading Programs," will address classroom teachers, administrators, specialists and interested others.

MIKE'S TV ANTENNA SERVICE

Motorola Automotive Sound Systems

Winegard Home Electronics TV Antenna Systems Insurance Claims

For Free Estimate, Call Pinckney 878-3258 or 769-0130

Howell Livestock Auction

The Wise Owl Says Ship to Howell SALE EVERY MONDAY, 2 p.m. Phone 546-2470, Bim Franklin Mason 677-8941

Market Report for April 6

CATTLE

Steers and Heifers:
Choice, \$31 to \$32.50
Good, \$29 to \$31
Ut.-Std., \$26 to \$29
Fed Holsteins, \$26 to \$29.50

Cows:

Heifers, \$25 to \$26
Ut.-Comm., \$23 to \$25
Canner-Cutters, \$21 to \$23
Fat Yellow Cows, \$21-\$22.50

Bulls:

Heavy, \$26 to \$29
Light and Common, \$24-\$26

Calves:

Prime, \$46 to \$53.50
Good-Choice, \$42 to \$46
Cull-Med., \$25 to \$30
Heavy Deacons, \$35 to \$44
Light Deacons, \$28 to \$35

Fedders:

Good-Choice, \$36 to \$42
Common-Med., \$30 to \$36
Dairy Cows, \$300 to \$400

HOGS

Butchers:

190-lb. to 240-lb., No. 1, \$25 to \$25.00
190-lb. to 240-lb., No. 2, \$24 to \$25

240-lb. and up, \$23 to \$24

Sows:

Fancy Light, \$21.75 to \$22.50
300-lb. to 500-lb., \$21.50 to \$22.50

500-lb. and up, \$20 to \$21

Boars and Steers:

All Weights, \$21.50 to \$23

Feeder Pigs:

Per Head, \$22 to \$30

CHEEP

Sheep Slaughter Lambs:

Choice-Prime, \$27 to \$29.50
Good-Utl., \$25 to \$27

Woolled Slaughter Lambs:

Choice-Prime, \$27 to \$29
Good-Utl., \$24 to \$27

Swags:

Slaughter, \$8.50 to \$12

Feeder Lambs:

All Weights, \$26 to \$28

Space Age MASS PRODUCED HOMES

FACTORY-BUILT HOMES BY **ACTIVE**

4 MODERN DESIGNS MODERATELY PRICED

BUY NOW for Spring Delivery at Present Prices

Built to Local Specifications

ABSOLUTELY MAINTENANCE-FREE, INSIDE AND OUT, WITH ALUMINUM EXTERIOR AND COMPLETELY paneled interior which will retain its beauty for many years.

TOWN & COUNTRY HOME SALES

2830 East Michigan — Just West of Ridge Road

Ypsilanti, Michigan Phone 483-7246

CLEARANCE OF FINE FURNITURE & CARPETING

Our entire floor stock of name-brand furniture and Frigidaire appliances reduced to save you many dollars.

- ★ Living Room Suites
- ★ Washers
- ★ Davenport
- ★ Dryers
- ★ Chairs
- ★ Refrigerators
- ★ Breakfast Sets
- ★ Ranges
- ★ Bedroom Suites
- ★ Dishwashers

A great variety of models available for immediate delivery.

MEABON'S TV, FURNITURE & APPLIANCE

1170 S. M-52, Chelsea Phone GR 5-5191

Dura-Stan

Brand 20 ALFALFA THE EXTRA HARDY ONE



Here's the quick recovery alfalfa with extra wilt resistance and hardness to withstand the toughest winters . . . produces high yields of fine quality forage . . . in rotations of 4, 5, 6 years or more. Also recommended for variable soil conditions.

Ask for Dura-Stan today. Available at

BLAESS ELEVATOR CO.

DIVISION OF LARROWE FEED CO. Phone GR 9-651 Chelsea, Mich.

teweles seeds

Teweles and Dura-Stan are brand names. 20 is a variety designation.

President's Proclamation

WHEREAS the strength of America rests in the family as a unit and in the family's health and welfare, and

WHEREAS the cultural and scientific progress of our country and our community has put greater demands on the personal and private lives of each citizen, and

WHEREAS maintaining good health is a necessity for a happier, more productive life for every member of the family and the family unit as a whole, and

WHEREAS back and spinal hygiene is important to good health, and

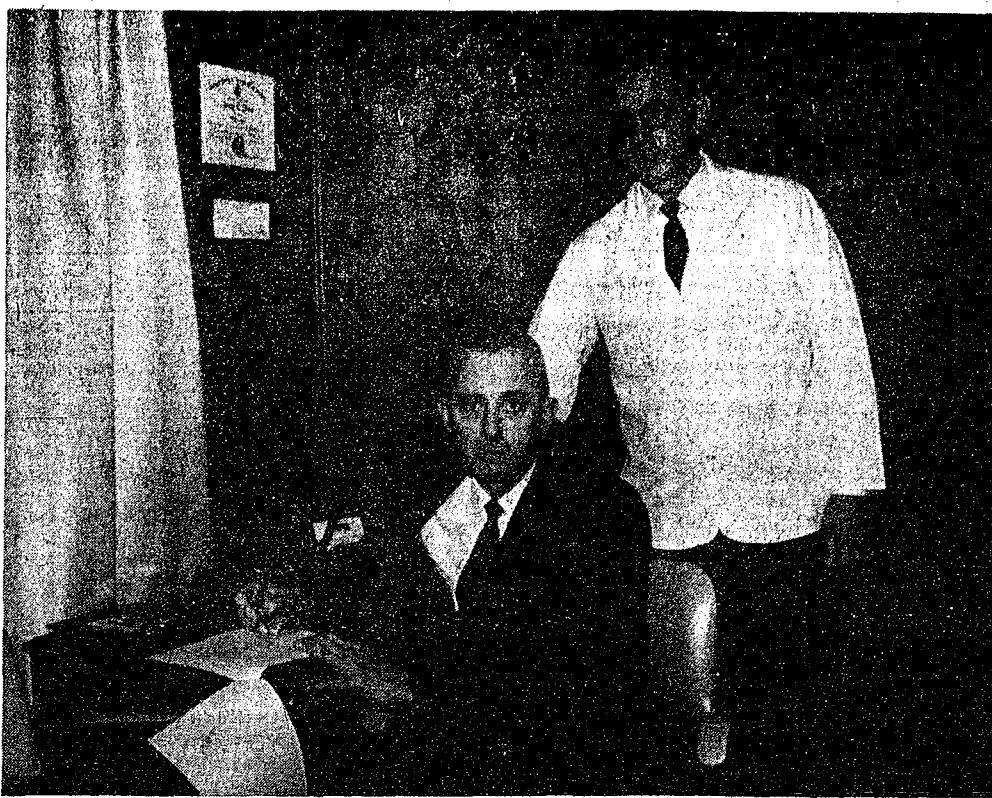
WHEREAS millions of Americans are suffering the pain, inconvenience and loss of income due to back injuries, many of which are the result of negligence and poor judgment, and

WHEREAS the science of chiropractic and the doctors who practice it have contributed greatly to better health of our citizenry by providing health care and consultation, and

WHEREAS the attention of every individual must be brought to the values of learning proper rules for lifting and otherwise protecting the back from injury.

THEREFORE, be it resolved that the Village of Chelsea officially joins with the Michigan State Chiropractic Association to proclaim the week of April 5-11 as "Protect Your Back Week," and urge that this period be dedicated to informing the citizens of this great village of their responsibility, both individually and as a family, to protect their jobs, their income, their leisure activities, their health and their way-of-life by protecting their backs and spines. The Village of Chelsea further commends the doctors of chiropractic and the schools of chiropractic for their efforts in the public's behalf, and specifically the doctors of chiropractic of this village and state for their co-operation in undertaking a public education program for stressing spinal hygiene.

Signed: Athel E. Fuls
Chelsea Village President



"PROTECT YOUR BACK WEEK" has been proclaimed for this week by Village President Mac Fuls (left) in conjunction with the proclamation made by Gov. William Milliken and the Michigan State Chiropractic Association. Observance of the

week which stresses the importance of spinal hygiene runs through Saturday, April 11. Pictured with President Fuls is Dr. Gerald L. Flinn of the Chelsea Chiropractic Center.

School Board Briefs

Chelsea Board of Education met Tuesday, April 6, in regular session.

Present: Irwin, Storey, Powers, Haselschwerdt, Lewis, Koenn and Hopkins, Superintendent Cameron, Business Manager Mills, Principals Conklin, Wojcicki and Benedict, and Assistant Principal Fauble.

Guests present included Mrs. Margaret Senne, Mrs. Vivian Michelson, George Pickell, Robert Pickell, Robert Schafer, Robert Schafer, Jr., Reuben Lesser, Jr., Jerry Straub, Robert Thornton and Leonard Solomon.

Meeting called to order by President Irwin at 8 p.m.

Motion by Storey, supported by Haselschwerdt, to adopt the minutes of the March 16 meeting as read. All ayes.

Motion by Hopkins, supported by Powers, to pay general fund bills of \$23,939.23. All ayes.

Motion by Powers, supported by Lewis, to go into executive session at 8:20 p.m. All ayes.

Meeting called back to order at 9:15 p.m.

Motion by Koenn, supported by Powers, to adopt the resolution calling for the Annual Election to be held June 8, in the Large Group Instruction Room of the Dwight E. Beach school with the polls open from 7 a.m. to 8 p.m. The last day of registration is to be May 8, at 5 p.m. All ayes.

Motion by Haselschwerdt, supported by Powers, to continue 58 teachers on tenure and offer contracts for 1970-71. All ayes.

Motion by Koenn, supported by Lewis, to place 27 teachers on tenure after serving the probationary period and issue contracts for 1970-71. All ayes.

Motion by Hopkins, supported by Powers, to place 22 teachers on a second year of probation after serving one year of probation and issue contracts for 1970-71. All ayes.

Two teachers were not offered contracts for 1970-71 and one was placed on a third year of probation.

Motion by Storey, supported by Lewis, to authorize the purchase of 40 band uniforms for 1970-71 provided that adequate safeguards for the district regarding size, quality and delivery are included in the contract. All ayes.

Motion by Storey, supported by Hopkins, to authorize the business manager to invest part of the current general fund balance to the best interest of the school district until it is needed to meet payroll

sion at 10:50 p.m. Ayes: Irwin, Powers, Storey, Haselschwerdt, Koenn, and Hopkins. Nays: Lewis. Meeting called back to order at 11:30 p.m.

Motion by Haselschwerdt, supported by Storey, to eliminate the summer agriculture program for 1970 upon the recommendation of the administration. Ayes: Storey, Haselschwerdt, Hopkins, Irwin; nays: Lewis, Koenn; abstain: Powers.

Motion by Hopkins, supported by Storey, to go into executive session at 11:30 p.m. All ayes.

Meeting called back to order at 1:15 a.m.

Meeting adjourned at 1:16 a.m.

FASHIONS AFFECT FIGURES

History indicates that the proportions of the body and the posture are affected by the type clothing worn. For example, in recent years, the waistlines of women have increased slightly due to the wearing of waistless dresses.

Some people leave their manners behind when they get into an automobile.

"STAMP SPECIALS"

16-OZ. BOTTLES ALL FLAVORS

FAYGO With 4 pages 6 for 49¢
Pantry Stamps

1-LB., 10-OZ. CAN DEL MONTE

FRUIT SALAD With 4 pages 29¢
Pantry Stamps

GREEN GIANT WHOLE KERNEL OR CREAM STYLE

CORN With 4 pages 9¢
Pantry Stamps

OPEN 6 A.M. TILL 11 P.M.

**GALLUP - SILKWORTH
PUMP & PANTRY**

295 S. Main St.

Chelsea

Area Youth Involved In Anti-Pollution Task

Want to save a life? Young people of the St. Paul church in Chelsea have decided to do their part to save what is a very important life, the life of the earth. The group wishes to save it from pollution by litter.

"We ask your support in a one-day campaign to pick up litter along the roads and highways. On Saturday, April 18, all of us will meet at St. Paul at 9 a.m., divide up, and launch our one-day task force to demonstrate our concern and willingness to do something!" exclaims a news release from the young people.

The youth of St. Paul express that the life of the earth, "needs saving. If it dies, where will you and I be? Yet, every day, we are helping to kill it. We dump polluted water down our drains, we litter the ground with paper, cans and bottles and never think twice about it."

In conjunction with the work day, area ministers will speak in their churches on Sundays, April 12 and 19 on obligations to nature.

The Saturday prior to the St. Paul litter pick-up day, Chelsea area Boy Scouts will hold their postponed street clean-up.

Scouts of Troops 425, 476 and 465 originally planned to clear the roadways coming into Chelsea of debris and paper on Saturday, April 11.

Highways to be cleaned of debris are M-52 north and south; Old US-12, east and west; and Dexter-Chelsea Rd. from the village limits into the village.

Motorists are warned to drive with caution near the areas where the Scouts will be working.

Methodist Pastor . . .
(Continued from page one)

time for hobbies, which he lists as "fishing, fishing and fishing." Interspersed among his fishing the Rev. Dickens includes stamp, coin and rock collecting as special interests, although he adds again to the end of his list of hobbies fishing.

Boy Scouts

TROOP 420—

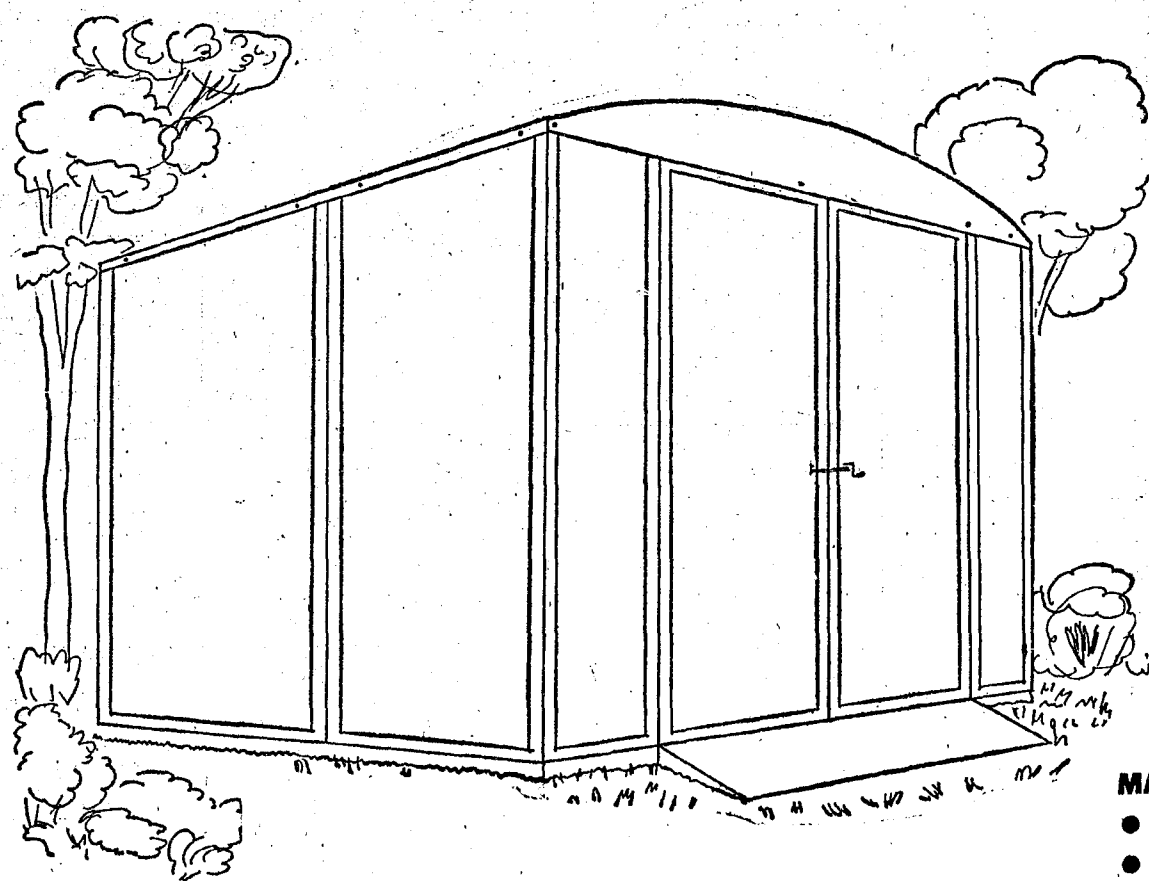
Boy Scout Troop 420 held a spring campout April 4 and 5 at Donald Doll's farm, southwest of Chelsea.

There were 22 Scouts and five adults present and they took advantage of the sunshine that weekend and took a six-mile hike. During the hike, they were able to watch the sap being taken from the trees and boiled down to make maple syrup. Larry Doll explained how this process was carried out to the Scouts.

Troop 420 is still planning to conduct its scrap paper drive on May 2. A trailer will be at the Stop & Shop store if residents have no place in which to store their papers. Residents are asked to contact Scouts at any of the following numbers if they have papers to dispose of: Doug Kansen, 475-7212; Timmy Hinz, 475-8211; Richard Worden, 479-6841; Rick Gaunt, 475-8078; Mark Seyfried, 475-2761; David Stoll, 475-8562; Carmer Sloenn, 475-8186.

Some people give so much time to attending to the business of others they forget their own.

WHAT IS IT? ANYTHING YOU WANT IT TO BE . . .



IT'S ALL SO EASY . . .

- A woman, unaided, can put together a Unit Built doghouse!
- Her husband, son or boyfriend can assemble the Utility House - IN MINUTES! (Only 4 bolts needed) If you move, it dis-assembles equally fast!
- Two-color choice: Rustic Green, Rustic Red

Limited Time Special Offer

You can do it, but from now until April 18, we will deliver and assemble for you. (Within 10 mile area)

UTILITY HOUSE

80" x 80"

(Door Opening 48" x 72")

40" x 80"

(48" x 72")

129.70

120" x 80"

(48" x 72")

229.70

MATERIALS: (Both Buildings)

- Wood
- Aluminum inter-looked and shaped by extrusion
- Heavy vinyl (roof over wood) for Utility House, Vinyl joint for doghouse
- Our know-how and easy-to-follow instructions, your application

WHO MAKES IT?

UNIT BUILT STRUCTURES, Inc.
OF CHELSEA

WHERE DO YOU GET IT? AT

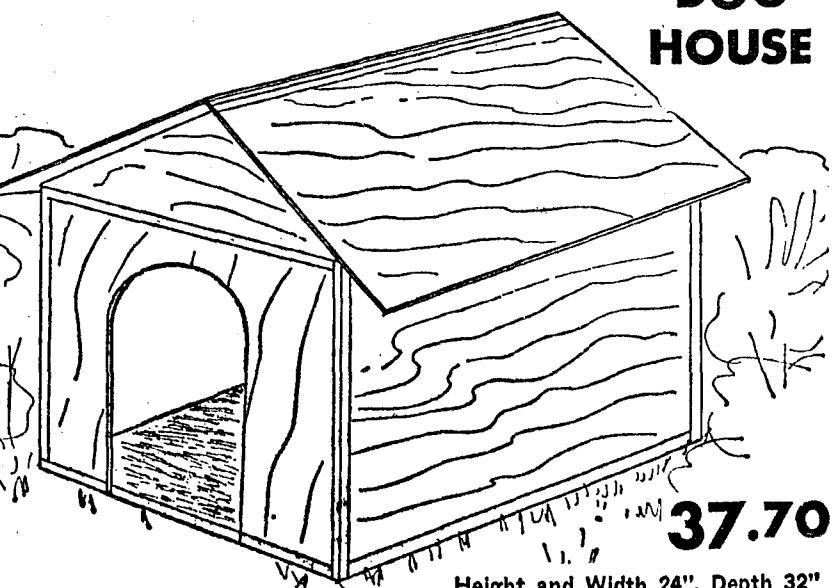
IT'S ALL IN UNIT BUILT'S SOARING '70'S

NEW SYSTEM OF CONSTRUCTION:

SOME USES (depending on size you choose):

- All your tools, including a lawn mower
- Tools plus a garden tractor
- Tools plus (up to) two snowmobiles AND a small riding mower
- As a beach or poolside dressing room (You do your own modifications)
- As a winter fish shanty with do-it-yourself modifications
- and lots of other ways!

DOG HOUSE



37.70

• 16" x 16" x 24" - 27.70; 36" x 36" x 48" - 67.70

USE YOUR CREDIT!

GAMBLES
110 N. MAIN CHELSEA

Ads Taken Till 5 p.m. Tuesday

IT'S EASY TO BUY-SELL-RENT-HIRE & FIND WITH WANT ADS

Just Call GR 5-3581

WANT ADS

The Chelsea Standard

WANT AD RATES

PAID IN ADVANCE—All regular advertisements, 50 cents for 25 words or less, each insertion. Count each figure as a word. For more than 25 words add 2 cents per word for each insertion. "Blind" ads or box number ads, 85c extra per insertion.

CHARGE RATE—Same as cash in advance, with 15 cents bookkeeping charge if not paid before 5 p.m. Tuesday preceding publication. Pay in advance, send cash or stamps and save 15 cents.

DISPLAY WANT ADS—Rate, \$1.10 per column inch single column width only, 8-point and 14-point light type.

CARDS OF THANKS or MEMORIALS—Single paragraph style, \$1.00 per insertion for 50 words or less; 2 cents per word beyond 50 words. Minimum, 1 inch.

COPY DEADLINE—5 p.m. Tuesday week of publication.

WANT ADS

BOARDING, trimming, training. Town and Country Kennels, Jackson Rd. at Baker. NO 3-7200. 7c

Gem Travel Trailers and Campers

PICK UP COVERS

4" ————— \$100.00

26" ————— \$179.00 and up

Triangle Sales

Chelsea 475-4902 40tf

BUILDING SITES NEEDED

IN TOWN AND OUT BY LOCAL BUILDER

W. C. WEBER CONSTRUCTION CO.

475-2828 or 475-2611 x42

A-1 BUYS

WANT ADS

Go-Mix Fuel

For All 2-Cycle Engines

White Gas

Available at

Gateway Sports Centre, Inc.

2c

Contractor Servicing

Chelsea, Dexter and Manchester Areas

Complete Home Remodeling Inside and Outside


Specializing in extra living space, recreation rooms, kitchens and paneling. Installing all aluminum products, 5" eavestroughs, custom-made awnings, windows and doors, aluminum siding in many selected colors and styles.

Please Call

DALE COOK

Chelsea 475-8863 20tf

TIPS



"You can stop worrying about fleas—that veterinarian in the Standard Want Ads says it's termites!"

WANT ADS

MINIBIKE — 3 h.p. Good condition \$85. Ph. 475-7121. x43

WANT ADS

ATTENTION: Morality erects buildings all winter if you are in need of a commercial or agricultural building order before winter and want to save money. Quality materials and workmanship guaranteed. Call Petersburg 278-1855 collect or write to Box 84, Petersburg, Mich., for all your pole building needs see Morality Pole Builders today. 18tf

WANTED — Used aluminum boat, any size. Call 475-2884. 42

1965 BARRACUDA — Needs engine work. Also free poodle-sheep dog combination puppies. Ph. 475-8083. 42

Custom Slaughtering

By Appointment

Complete Food and Meat Processing Service.

Frozen Food Lockers

Frigid Products

LOCKER DEPT.

Phone GR 5-8280 15tf

REAL ESTATE

BASELINE lakefront year-around brick 3-level, 3-bedrooms, 2 baths, built-ins, carpeted, many extras.

2-BEDROOM year-around, "base-ment" garage view of Joslyn Lake. Private beach privileges. \$17,000 with terms.

EXCEPTIONAL VALUE — Small furnished cottage. Private beach privileges, carpet, pretty hillside and trees. \$9,000.

HALF MOON LAKE — 75-ft. frontage beach, 2-bedrooms with bath, hot water, large deck with sliding doors, Franklin fireplace. Needs some inside finish. \$25,000.

PORTAGE LAKE — 3 canal lots, \$4,000 each.

1-ACRE BUILDING SITE, many trees, small private lake privileges, edge of golf course. \$4,000.

1.5 ACRES, trees, small lakes privileges. Lovely building site. Natural gas possible. \$4,000.

Mary Wolter Real Estate

7421 Dexter-Pinckney Rd. Dexter 48180 Phone 426-8188 x43

Semi Drivers Needed

Over age 21, married or single, good physical condition, some experience or willing to learn to earn, to become tractor-trailer drivers Midwest, Southern, and Eastern areas. For application write c/o Trucks, 1028 S. Hwy. Fort Wayne, Indiana, A. C. 219-743-4611. x43

HOUSE NEEDED — We would like to rent a 2- or 3-bedroom home in Chelsea area June 1. Call collect (area 216) 282-8957. x43

FOR SALE — Chihuahua puppies; stud service. AKC registered. Long coat male pup, no papers, \$35. Phone 475-7801. 42tf

WANT ADS

PIANO TUNING, Chelsea and area. Facilities for reconditioning and rebuilding. Used piano sales; re-conditioned grands and verticals. E. Elkind. 426-4425. 50tf

Home Improvement

—House and Floor Leveling

—Additions

—Roofs and Repairs

—Aluminum Siding

—Eavestroughs

—Kitchen, Cabinets installed

—Expert Trim Work

—Door Hanging

—Porches, Patios, Sidewalks

—Complete Garages

—Recreation Rooms

—Dropped Ceilings

Call 475-7460

Patrick, Fletcher & Co.

20tf

WANT ADS

10 Name-Brand Carpet Lines

for your home or business

Phone 313/475-8621

Ask us to show samples at your home or business.

Absolutely no obligation or sales pitch.

Or, see complete selection at store, open Monday and Friday nights until 9:00. Prices are very competitive.

Professional decorating consultation.

Merkel Furniture & Carpet

Main Street in Chelsea, off I-94 34tf

WANT ADS

PATCHING and PLASTERING. Call 475-7489. 28tf

For the Best Coverage You Can Get in Top Rated Insurance Co's.

at Standard Premiums see or call

MARTIN E. MILLER

For Home owners, Farm, Car, Trailer, Cottage, Business and Personal affairs policies.

525 McKinley St., GR 5-5181

Local Representative for Harry Lee French, Inc.

YOUR INDEPENDENT AGENTS 21tf

Formal Wear RENTAL SERVICE

Prom - Weddings - Special Events 6 different colors.

Foster's Men's Wear 21tf

CAR & TRUCK LEASING. For details see Lyle Chiswell at Palmer Motor Sales, GR 5-3271. 49tf

Two Ambitious college "short-hairs" seeking exterior painting work for summer. Good work at (hair) cutrates. Call for free estimate. We'll do our best to please. 475-2588 or 475-2783. 43

CAR RENTAL by the day, week-end, week or month. Full insurance coverage, low rates. Call Lyle Chiswell at Palmer Motor Sales, GR 5-3271. 25tf

FOR RENT — Partially furnished second floor apartment in Chelsea, for married couple. No children or pets. 475-5441, after 5 p.m. x43

AKC REGISTERED St. Bernard puppies. Will consider trade of equal value livestock or poultry preferred. 10871 N. Territorial Rd., Dexter. Ph. 426-2111. x42

All Insurance Needs

In the convenience of your own home — or mine.

N. H. Miles, Allstate

Call GR 5-8384 after 6 p.m. 42

FOR RENT — Furnished clean and warm basement apartment in Chelsea; all utilities furnished. \$95 a month. Adults only, no pets. Call 475-8824. x42tf

TRUCKS

'69 Ford 4-dr.

'68 Mustang Fastback

'68 Chev Sportsvan

'67 Ford Wagon

'67 Mustang with air

'67 Volkswagen

'67 Pontiac 2-dr. Hardtop

'66 Chev Impala

'66 Fairlane 2-dr. Hardtop

'66 Comet 4-dr.

'66 Ford 2-dr.

'65 LTD 4-dr. with air

'65 Ford Station Wagon

'65 LTD 4-dr. Hardtop

'65 Ford 2-dr.

'64 Ford 4-dr.

'64 Ford Convertible

PALMER FORD

Open Mon., Wed. & Thur. 9:00

Chelsea GR 5-8271 x42tf

FARMS RESIDENTIAL LAKE PROPERTY

for QUALIFIED RELIABLE SALES PERSONNEL CONTACT

Carole Bell, 426-8892

Kathryn Smith, 426-5830

Janice Foutch, Saline, 429-4114

Wendel Foutch, Saline, 429-4114

YPSILANTI OFFICE

Arthur Kane, 482-6655

Virginia Oakes, 482-6655

Evinger Real Estate

426-3286

Dexter, Mich. 36tf

SIDING SPECIALIST — Serving Livingston and adjoining counties since 1938. Alcoa aluminum siding and other materials. Remodeling, covering sills, roof overhang, trim. Finest workmanship. No estimate service charge. William Davis. Ph. (313) 663-6655. x49

DRIVERS NEEDED

Train NOW to drive semi truck, local and over the road. You can earn high wages after short training. For interview and applications, call 419-243-4053, or write Safety Dept., Nationwide Systems, Inc., c/o Duff Terminal Bldg., 215 City Park Avenue, Toledo, Ohio 43602. 43

FOR SALE

WASHINGTON STREET, Brick Ranch — 2 or 3 bedroom, recreation room, fireplace, drapes, new carpeting. All in excellent condition. Financing available.

121-ACRE FARM, 3-bedroom house, oil furnace and bath. Large barn and other outbuildings. Price \$44,000, 29% down.

260-ACRE FARM. About 200 tillable. Live stream and lake shore. Excellent 3-bedroom house, good barn. Price \$500 per acre.

10 ACRES, Sharon Twp. Possible location for trailer.

3-ACRE wooded lot, excellent building location. 5 miles west.

SOLD OUT of Chelsea homes. Have buyers waiting.

NO RENTALS

R. D. Miller REAL ESTATE

Real Estate Broker

GR 5-5992

H. W. Buss

phone 475-8910

Evelyn White

at 475-7551 after 5 p.m.

15775 Cavanaugh Lake Rd. Chelsea, Mich.

Post Office Box 381

List your property with Miller — fast, efficient service. 40tf

WORK SHOE HEADQUARTERS

Famous Red Wing Brand

\$12.95 to \$26.95

Foster's Men's Wear 34tf

HORSE SHOING — Experienced, corrective trimming and shoeing. Prompt service. Buck Myer, Howell, Phone 1-547-546-1510. 48

COMING SOON

You've heard of Sidewalk Sales, Basement Sales, Backdoor Sales, Clearance Sales and E.O.M. Sales — Watch for Chelsea's first Alley Sale on Outdoor Power Equipment. We'll let you know when.

Chelsea Hardware 42

Formal Wear RENTAL SERVICE

Prom - Weddings - Special Events 6 different colors.

Foster's Men's Wear 2tf

FOR SALE — 4-year-old gelding. Half Arabian, half Appaloosa. Best offer over \$200. Ph. 475-2207. x43

IT'S inexpensive to clean rugs and upholstery with Blue Lustre. Rent electric shampooer \$1. Dancer's Chelsea. 42

WANTED TO RENT — 1- or 2-car garage. Phone GR 9-7151 after 6 p.m. 43

WANT ADS

CHELSEA - DEXTER AREA HOMES

ONE ACRE — New 3-bedroom, fireplace, 2 baths, with a beautiful view, halfway between Dexter and Chelsea. Many extras including air conditioning. SEE THIS HOUSE TODAY!

FAMILY SIZE — Six bedrooms, family room and recreation room are all included in this 10-year-old home located in the village of Chelsea. Just the home for a large family!

LAKE FRONT — 3-bedroom beautiful home located on Cordley Lake, only 4 years old with fireplace, family room, 2 baths and a beautiful modern kitchen, located on a large wooded lot with a sandy beach. Enjoy this spring!

VILLAGE OF CHELSEA — 3-bedrooms, 1 1/2 baths, beautiful kitchen and family room with Georgian Marble fireplace, dining room, carpeted, with full basement. This home has over 1,700 square feet and is priced at only \$36,900!

HURON RIVER FRONTAGE — 18 acres, half wooded and half cleared, with over 800 feet of frontage on the river. A rare opportunity!

JUST LISTED — 4-bedroom older home in Village of Chelsea, 2 baths, gas heat, in good condition. FHA terms.

MANY OTHER LAKE HOMES BUILDING SITES and FARMS TO CHOOSE FROM!

WANT ADS

REAL ESTATE

Do you want a home or cottage on a lake, a farm or country home, a building site? We have them.

Eugene R. Young, Broker

Phone 878-3792

Mary Allen, 878-3826

Virginia Visel, 426-4589 30tf

For Low Cost Floor Covering

We have small and large pieces, ends of rolls, etc., of linoleum and carpeting at close-out prices. Many sizes and colors to select from.

MERKEL BROS. x40tf

SPRING TIME IS LAWN & GARDEN TIME

—BULK & PACKET SEEDS

—SCOTTS & ORTHO FERTILIZERS & INSECTICIDES

—PEAT MOSS

—MILORGANITE

—POTTING SOIL

—SPRING BULBS

Tuberous Begonia

Glauds

Dahlia

Garden Gloxinia

Lilies

Cannas

Peonies

—RAKES - SHOVELS

—BIRD HOUSES

Rent our power rakes or rototiller to ease your job.

Chelsea Hardware

GR 9-6311 42

SUMMER JOB

Responsible day-sitter to care for 2 children, in our home, from 8 a.m. to 4 p.m., Monday through Friday. Will pay top wage for right person. Call 475-7382 after 5 p.m. 42

FOR SALE — Baby ducklings, 50c each. Also duck eggs for hatching or eating. \$1 per doz. Ph. 475-8241. x42

COUNTRY APARTMENT FOR RENT — Ideal for a couple. No pets inside. Stove and refrigerator available. 3 miles south of Chelsea. Call GR 5-8334 after 6 p.m. x43

FOR RENT — Furnished clean and warm basement apartment in Chelsea; all utilities furnished. \$95 a month. Adults only, no pets. Call 475-8824. x42tf

SPIN DRYER, 2 gas stoves, refrigerator, wringer washer, ironer, dressers. Any reasonable offer. 475-8769 after 5 p.m. x43

WANT ADS

REAL ESTATE

Do you want a home or cottage on a lake, a farm or country home, a building site? We have them.

Eugene R. Young, Broker

Phone 878-3792

Mary Allen, 878-3826

Virginia Visel, 426-4589 30tf

For Low Cost Floor Covering

We have small and large pieces, ends of rolls, etc., of linoleum and carpeting at close-out prices. Many sizes and colors to select from.

MERKEL BROS. x40tf

SPRING TIME IS LAWN & GARDEN TIME

—BULK & PACKET SEEDS

—SCOTTS & ORTHO FERTILIZERS & INSECTICIDES

—PEAT MOSS

—MILORGANITE

—POTTING SOIL

—SPRING BULBS

Tuberous Begonia

Glauds

Dahlia

Garden Gloxinia

Lilies

Cannas

Peonies

—RAKES - SHOVELS

—BIRD HOUSES

Rent our power rakes or rototiller to ease your job.

Chelsea Hardware

GR 9-6311 42

SUMMER JOB

Responsible day-sitter to care for 2 children, in our home, from 8 a.m. to 4 p.m., Monday through Friday. Will pay top wage for right person. Call 475-7382 after 5 p.m. 42

FOR SALE — Baby ducklings, 50c each. Also duck eggs for hatching or eating. \$1 per doz. Ph. 475-8241. x42

COUNTRY APARTMENT FOR RENT — Ideal for a couple. No pets inside. Stove and refrigerator available. 3 miles south of Chelsea. Call GR 5-8334 after 6 p.m. x43

FOR RENT — Furnished clean and warm basement apartment in Chelsea; all utilities furnished. \$95 a month. Adults only, no pets. Call 475-8824. x42tf

SPIN DRYER, 2 gas stoves, refrigerator, wringer washer, ironer, dressers. Any reasonable offer. 475-8769 after 5 p.m. x43

WANT ADS

SHOE BARGAINS

1/3 - 1/2 and More Off Bargain Floor at

DANCER'S 42

REAL ESTATE FOR SALE

4 LARGE BEDROOMS — Roomy kitchen with built-in range and oven. Gas heat. \$21,000. Terms available.

SPOTLESS — 2 bedrooms, separate dining room, 1 1/2-car garage. Aluminum siding. Ideal for a couple. \$22,000.

BRICK COLONIAL — A home with everything. 3 bedrooms, central air conditioning, sauna, large screened porch, scenic view, etc. Washington St. address.

INVEST FOR THE FUTURE — 7 1/2 acres. Has village water, electric and gas. 745 ft. of R.R. frontage. 3-bedroom house to provide current income. \$30,000 with terms.

CLARENCE WOOD BROKER

646 Planders St. Phone 479-4603 42tf

FOR SALE — Hotpoint deluxe electric stove, 40", good condition; old-time phone and radio console, 78 records. 475-8045. 42

FURNISHED APARTMENT for rent, including all utilities. No pets or children. Call 475-8588. 42

FOR SALE — 10-foot aluminum boat, like new. Call 475-7095 or 475-3663. 42

FOUND — Black puppy. For information call 475-2663. 42

FOR SALE — Antique walnut chest of drawers, maple bedroom suite and dining room furniture. 139 Orchard St. 42

WILL DO BABYSITTING in my home. Call Darlene Eder, 475-2663, 151 Jackson St. 45

WANT ADS

SELL YOUR: Home - Farm Vacant Land Business

With the Sales Leader in the Chelsea - Dexter - Ann Arbor Area.

Eibler, Frisinger & St. Amour REALTORS

The Company That Gets Results! Call:

Chelsea - 475-8681

Dexter - 426-4659 36tf

FOR REAL DOLLAR SAVINGS — be sure and see us before you buy any new or used car. Palmer Motor Sales, Inc. Your Ford Dealer for over 50 years. 42tf

ACRE LOT WITH TREES for sale. On paved road 1/2 mile from Dexter, gas available. Call 426-8807. 35tf

CHECK WITH US BEFORE YOU SIGN A CONTRACT FOR THAT NEW HOME!

W. C. WEBER CONSTRUCTION CO.

12290 Jackson Rd. Chelsea 475-2828 or 475-2611 x42tf

COMING SOON

You've heard of Sidewalk Sales, Basement Sales, Backdoor Sales, Clearance Sales and E.O.M. Sales — Watch for Chelsea's first Alley Sale on Outdoor Power Equipment. We'll let you know when.

Chelsea Hardware 42

G. G. HOPPER

Building Contractors

Phone GR 5-5581

Gregory 498-2148 40tf

FOR SALE — Aluminum screens and door for porch, 85" high, 45" wide. 5 panels of screens plus 2 small panels and door. Also roll-up porch shades. One 11' long, two 5' long. In good condition. Phone 475-8240 after 6 p.m. 42tf

AUREOMYCIN CRUMBLES

\$7.35 per 50-lb. bag

We have a complete line of farm supplies.

Blaess Elevator Co.

Div. of Larowe Feed Co.

Phone GR 9-6511 x42

KNAPP SHOES

For Cushion Comfort

APRIL SPECIALS

K-6 Farm Shoes \$15.95

Dress Wing Tips \$18.99

Robert Robbins

475-7282 42tf

New Wallpaper Books

Select Now for Spring at

DANCER'S 42

USED TRACTOR TIRES — Large inventory on hand. Also used passenger - truck - grader tires. Jackson Tire Brokers, M-106, M-107, Mich. Ph. 596-2925. 32tf

TRUCKS

'67 Ford 1 Ton Pick-up

'66 Chev 1/2 Ton Pick-up

'65 Ford 1/2 Ton Pick-up

PALMER FORD

Open Mon., Wed. & Thur. 9:00

Chelsea GR 5-8271 x42tf

FARMS RESIDENTIAL LAKE PROPERTY

for QUALIFIED RELIABLE SALES PERSONNEL CONTACT

Carole Bell, 426-8892

Kathryn Smith, 426-5830

Janice Foutch, Saline, 429-4114

Wendel Foutch, Saline, 429-4114

YPSILANTI OFFICE

Arthur Kane, 482-6655

Virginia Oakes, 482-6655

Evinger Real Estate

426-3286

Dexter, Mich. 36tf

SIDING SPECIALIST — Serving Livingston and adjoining counties since 1938. Alcoa aluminum siding and other materials. Remodeling, covering sills, roof overhang, trim. Finest workmanship. No estimate service charge. William Davis. Ph. (313) 663-6655. x49

DRIVERS NEEDED

Train NOW to drive semi truck, local and over the road. You can earn high wages after short training. For interview and applications, call 419-243-4053, or write Safety Dept., Nationwide Systems, Inc., c/o Duff Terminal Bldg., 215 City Park Avenue, Toledo, Ohio 43602. 43

FOR SALE

WASHINGTON STREET, Brick Ranch — 2 or 3 bedroom, recreation room, fireplace, drapes, new carpeting. All in excellent condition. Financing available.

121-ACRE FARM, 3-bedroom house, oil furnace and bath. Large barn and other outbuildings. Price \$44,000, 29% down.

260-ACRE FARM. About 200 tillable. Live stream and lake shore. Excellent 3-bedroom house, good barn. Price \$500 per acre.

10 ACRES, Sharon Twp. Possible location for trailer.

3-ACRE wooded lot, excellent building location. 5 miles west.

SOLD OUT of Chelsea homes. Have buyers waiting.

NO RENTALS

R. D. Miller REAL ESTATE

Real Estate Broker

GR 5-5992

H. W. Buss

phone 475-8910

Evelyn White

at 475-7551 after 5 p.m.

15775 Cavanaugh Lake Rd. Chelsea, Mich.

Post Office Box 381

List your property with Miller — fast, efficient service. 40tf

WORK SHOE HEADQUARTERS

Famous Red Wing Brand

\$12.95 to \$26.95

Foster's Men's Wear 34tf

HORSE SHOING — Experienced, corrective trimming and shoeing. Prompt service. Buck Myer, Howell, Phone 1-547-546-1510. 48

COMING SOON

You've heard of Sidewalk Sales, Basement Sales, Backdoor Sales, Clearance Sales and E.O.M. Sales — Watch for Chelsea's first Alley Sale on Outdoor Power Equipment. We'll let you know when.

Chelsea Hardware 42

Formal Wear RENTAL SERVICE

Prom - Weddings - Special Events 6 different colors.

Foster's Men's Wear 2tf

FOR SALE — 4-year-old gelding. Half Arabian, half Appaloosa. Best offer over \$200. Ph. 475-2207. x43

IT'S inexpensive to clean rugs and upholstery with Blue Lustre. Rent electric shampooer \$1. Dancer's Chelsea. 42

WANTED TO RENT — 1- or 2-car garage. Phone GR 9-7151 after 6 p.m. 43

WANT ADS

REAL ESTATE

Do you want a home or cottage on a lake, a farm or country home, a building site? We have them.

Eugene R. Young, Broker

Phone 878-3792

Mary Allen, 878-3826

Virginia Visel, 426-4589 30tf

For Low Cost Floor Covering

We have small and large pieces, ends of rolls, etc., of linoleum and carpeting at close-out prices. Many sizes and colors to select from.

MERKEL BROS. x40tf

SPRING TIME IS LAWN & GARDEN TIME

—BULK & PACKET SEEDS

—SCOTTS & ORTHO FERTILIZERS & INSECTICIDES

—PEAT MOSS

—MILORGANITE

—POTTING SOIL

—SPRING BULBS

Tuberous Begonia

Glauds

Dahlia

Garden Gloxinia

Lilies

Cannas

Peonies

—RAKES - SHOVELS

—BIRD HOUSES

Rent our power rakes or rototiller to ease your job.

Chelsea Hardware

GR 9-6311 42

SUMMER JOB

Responsible day-sitter to care for 2 children, in our home, from 8 a.m. to 4 p.m., Monday through Friday. Will pay top wage for right person. Call 475-7382 after 5 p.m. 42

FOR SALE — Baby ducklings, 50c each. Also duck eggs for hatching or eating. \$1 per doz. Ph. 475-8241. x42

COUNTRY APARTMENT FOR RENT — Ideal for a couple. No pets inside. Stove and refrigerator available. 3 miles south of Chelsea. Call GR 5-8334 after 6 p.m. x43

FOR RENT — Furnished clean and warm basement apartment in Chelsea; all utilities furnished. \$95 a month. Adults only, no pets. Call 475-8824. x42tf

SPIN DRYER, 2 gas stoves, refrigerator, wringer washer, ironer, dressers. Any reasonable offer. 475-8769 after 5 p.m. x43

WANT ADS

REAL ESTATE

Do you want a home or cottage on a lake, a farm or country home, a building site? We have them.

Eugene R. Young, Broker

Phone 878-3792

Mary Allen, 878-3826

Virginia Visel, 426-4589 30tf

For Low Cost Floor Covering

We have small and large pieces, ends of rolls, etc., of linoleum and carpeting at close-out prices. Many sizes and colors to select from.

MERKEL BROS. x40tf

SPRING TIME IS LAWN & GARDEN TIME

—BULK & PACKET SEEDS

—SCOTTS & ORTHO FERTILIZERS & INSECTICIDES

—PEAT MOSS

—MILORGANITE

—POTTING SOIL

—SPRING BULBS

Tuberous Begonia

Glauds

Dahlia

Garden Gloxinia

Lilies

Cannas

Peonies

—RAKES - SHOVELS

—BIRD HOUSES

Rent our power rakes or rototiller to ease your job.

Chelsea Hardware

GR 9-6311 42

SUMMER JOB

Responsible day-sitter to care for 2 children, in our home, from 8 a.m. to 4 p.m., Monday through Friday. Will pay top wage for right person. Call 475-7382 after 5 p.m. 42

FOR SALE — Baby ducklings, 50c each. Also duck eggs for hatching or eating. \$1 per doz. Ph. 475-8241. x42

COUNTRY APARTMENT FOR RENT — Ideal for a couple. No pets inside. Stove and refrigerator available. 3 miles south of Chelsea. Call GR 5-8334 after 6 p.m. x43

FOR RENT — Furnished clean and warm basement apartment in Chelsea; all utilities furnished. \$95 a month. Adults only, no pets. Call 475-8824. x42tf

SPIN DRYER, 2 gas stoves, refrigerator, wringer washer, ironer, dressers. Any reasonable offer. 475-8769 after 5 p.m. x43

WANT ADS

REAL ESTATE

Do you want a home or cottage on a lake, a farm or country home, a building site? We have them.

Eugene R. Young, Broker

Phone 878-3792

Mary Allen, 878-3826

Virginia Visel, 426-4589 30tf

For Low Cost Floor Covering

We have small and large pieces, ends of rolls, etc., of linoleum and carpeting at close-out prices. Many sizes and colors to select from.

MERKEL BROS. x40tf

SPRING TIME IS LAWN & GARDEN TIME

—BULK & PACKET SEEDS

—SCOTTS & ORTHO FERTILIZERS & INSECTICIDES

—PEAT MOSS

—MILORGANITE

—POTTING SOIL

—SPRING BULBS

Tuberous Begonia

Glauds

Dahlia

Garden Gloxinia

Lilies

Cannas

Peonies

—RAKES - SHOVELS

—BIRD HOUSES

Rent our power rakes or rototiller to ease your job.

Chelsea Hardware

GR 9-6311 42

SUMMER JOB

Responsible day-sitter to care for 2 children, in our home, from 8 a.m. to 4 p.m., Monday through Friday. Will pay top wage for right person. Call 475-7382 after 5 p.m. 42

FOR SALE — Baby ducklings, 50c each. Also duck eggs for hatching or eating. \$1 per doz. Ph. 475-8241. x42

COUNTRY APARTMENT FOR RENT — Ideal for a couple. No pets inside. Stove and refrigerator available. 3 miles south of Chelsea. Call GR 5-8334 after 6 p.m. x43

FOR RENT — Furnished clean and warm basement apartment in Chelsea; all utilities furnished. \$95 a month. Adults only, no pets. Call 475-8824. x42tf

SPIN DRYER, 2 gas stoves, refrigerator, wringer washer, ironer, dressers. Any reasonable offer. 475-8769 after 5 p.m. x43

WANT ADS

REAL ESTATE

Do you want a home or cottage on a lake, a farm or country home, a building site? We have them.

Eugene R. Young, Broker

Phone 878-3792

Mary Allen, 878-3826

Virginia Visel, 426-4589 30tf

For Low Cost Floor Covering

We have small and large pieces, ends of rolls, etc., of linoleum and carpeting at close-out prices. Many sizes and colors to select from.

MERKEL BROS. x40tf

SPRING TIME IS LAWN & GARDEN TIME

—BULK & PACKET SEEDS

—SCOTTS & ORTHO FERTILIZERS & INSECTICIDES

—PEAT MOSS

—MILORGANITE

—POTTING SOIL

—SPRING BULBS

Tuberous Begonia

Glauds

Dahlia

Garden Gloxinia

Lilies

Cannas

Peonies

—RAKES - SHOVELS

—BIRD HOUSES

Rent our power rakes or rototiller to ease your job.

Chelsea Hardware

GR 9-6311 42

SUMMER JOB

Responsible day-sitter to care for 2 children, in our home, from 8 a.m. to 4 p.m., Monday through Friday. Will pay top wage for right person. Call 475-7382 after 5 p.m. 42

FOR SALE — Baby ducklings, 50c each. Also duck eggs for hatching or eating. \$1 per doz. Ph. 475-8241. x42

COUNTRY APARTMENT FOR RENT — Ideal for a couple. No pets inside. Stove and refrigerator available. 3 miles south of Chelsea. Call GR 5-8334 after 6 p.m. x43

FOR RENT — Furnished clean and warm basement apartment in Chelsea; all utilities furnished. \$95 a month. Adults only, no pets. Call 475-8824. x42tf

SPIN DRYER, 2 gas stoves, refrigerator, wringer washer, ironer, dressers. Any reasonable offer. 475-8769 after 5 p.m. x43

WANT ADS

REAL ESTATE

Do you want a home or cottage on a lake, a farm or country home, a building site? We have them.

Eugene R. Young, Broker

Phone 878-3792

Mary Allen, 878-3826

Virginia Visel, 426-4589 30tf

For Low Cost Floor Covering

We have small and large pieces, ends of rolls, etc., of linoleum and carpeting at close-out prices. Many sizes and colors to select from.

MERKEL BROS. x40tf

SPRING TIME IS LAWN & GARDEN TIME

—BULK & PACKET SEEDS

—SCOTTS & ORTHO FERTILIZERS & INSECTICIDES

—PEAT MOSS

—MILORGANITE

—POTTING SOIL

—SPRING BULBS

Tuberous Begonia

Glauds

Dahlia

Garden Gloxinia

Lilies

Cannas

Peonies

—RAKES - SHOVELS

—BIRD HOUSES

Rent our power rakes or rototiller to ease your job.

Chelsea Hardware

GR 9-6311 42

SUMMER JOB

Responsible day-sitter to care for

WANT ADS

EXPERIENCED PAINTER looking for part-time work. Interior or exterior. Very reasonable. Free estimates. 475-7878.

PRINTING for the wedding—One of the largest assortments in this area. Album prices discounted 10%. John's Shop, call 475-7600.

USED FURNITURE

Mahogany drop leaf table, 42"x30"x98", 6 chairs and table pads, like new \$149.50

Dinetto table, light, formica top, 35"x50" extendable \$29.95

Black lacquer, Parsons table, 34"x60" \$39.50

Two-piece sectional sofa, 100" wide, in good condition \$79.50

Colonial wing back sofa, good condition \$49.95

Colonial sofa, fair condition \$19.95

Sofa bed, ivory leatherette upholstery, wood arms 82" wide. Excellent condition \$69.95

Maple dresser and bed, older style \$39.50

Floral design occasional chair, good condition

Walnut finish coffee table, leather insert top \$19.95

Maple twin bed, like new \$9.98

Two large new table lamps—were \$29.95—now \$14.50

MERKEL BROS.

Phone Chelsea 475-8621

HAMMOND ORGAN teachers wanted to teach in their own homes. Call Grinnell Brothers, Ann Arbor, 662-5667.

AIRLESS SPRAY PAINTING—Interior and exterior. Pinckney, 878-3246.

USED CLOTHING—Good condition, boys and girls, sizes 10-14. Call 475-8759, after 5 p.m.



MAUSOLEUMS ★ MONUMENTS
BRONZE TABLETS ★ MARKERS

BEGGER MEMORIALS

6033 Jackson Road
ANN ARBOR, MICHIGAN

WANT ADS

LOSE WEIGHT safely with Dex-A-Diet, and remove excess fluid with FLUIDEX. Only 98c and \$1.69 at Chelsea Drug.

BARGAIN SPECIALS

1964 Falcon 2-dr. Sedan \$195
1963 Chev II 2-dr. Hardtop \$195
1965 Comet 2-dr. \$495

USED CARS

1968 Olds 4-dr. Sedan \$1895
1967 Chev Impala 2-dr. Hardtop Super Sport \$1495
1967 Pontiac Catalina 2-dr. Hardtop, vinyl top \$1495
1967 Chev Malibu Convertible, 4-speed \$1395
1966 Plymouth Sport Fury 2-dr. Hardtop \$1195
1966 Pontiac Convertible \$1095
1965 Olds 88 4-dr. Sedan \$1095
1965 Chev Impala 2-dr. Hardtop \$995

SPRING SALE
ON NEW CARS

1970 Delta 88 Holiday Coupe Sticker \$4047.60 Sale \$3341.82
1970 Delta 88 Holiday Sedan Sticker \$4580.93 Sale \$3763.86

DEMO

1970 Buick LeSabre 4-dr. Hardtop Custom, air cond., with full power including seats and windows, vinyl top \$4100

Sprague
Buick-Olds-Opel, Inc.
1500 S. Main St., Chelsea
Phone 475-8664
Evening 475-6271 or 475-8240
Open evenings by appointment.

FOR SALE—Oliver 2 14-inch Rader bottom blow, \$50, good condition. Call 428-4403 between 8:30 to 10 morning or evening. Arthur Fehr, Manchester.

FREE PUPPIES—Part Collie, part Husky. Andrew Fleischmann, phone 479-7484.

XEROX COPIES made. First 20 at 20 cents each. Over 20, special prices. Merkel Brothers.

WANT ADS

CARPET CLEANING by Burke. 12 cents a square foot, needs overnight to dry. In Chelsea call Merkel Brothers, 475-8621.

FREE REMOVAL DONE—Also buyers of standing timber and walnut trees. Chelsea 475-7631.

TRAVEL TRAILERS—13-ft. and up; 10x55 ft. trailers. John R. Jones Trailer Sales, Gregory, Mich. Phone 498-2655.

ATTENTION Working mothers—Will care for your children in my home while you work. Mrs. Judy Bover, 475-8055.

1967 OLDS CUTLASS—Bucket seats, manual shift, exceptional clean, one owner car. No rust. Ph. 473-4201 after 6 p.m.

WORK SHOE
HEADQUARTERS

Famous Red Wing Brand
\$12.95 to \$26.95
Foster's Men's Wear

CLOGGED
SEWER

Reynolds Sewer Service
We Clean Sewers Without Digging
Drains Cleaned Electrically
FREE ESTIMATES
2-YEAR GUARANTEE
Phone Ann Arbor NO 2-5277
"Sewer Cleaning Is Our Business—Not a Side Line"

VACUUM CLEANERS—Electrolux authorized sales and service. James Cox, Manchester. Ph. 285-2931 or 428-8221.

CUSTOM BUILDING
and
REMODELING

Chelsea Associated
Builders, Inc.
Phone 475-8182

FOR SALE—Beautiful pink formal, size 10, like new. Also several women's white uniforms. Call 475-8939.

SEE US for transit mixed concrete. Klump Bros. Gravel Co. Phone Chelsea 475-2712, 4920 Loveland Rd., Grass Lake, Mich. 40ft

FOR SALE—1962 set of World Book, one set of Childcraft and about four or five volumes of Science Year. Phone 475-2545.



JAMES H. WALTER



RICHARD F. WINKLE

Two Young Men
Die Saturday in
Head-On Collision

Two Dexter area young men died and three passengers in the two vehicles were injured, as a result of what was termed by investigating officers as a 50-70 percent head-on crash, shortly before 10 o'clock Saturday evening, April 4, on Stinchfield Woods Rd., approximately one mile west of Dexter-Pinckney Rd.

James H. Walter, 24, of 3345 N. Zeeb Rd., Scio township, suffered fatal injuries when the 1966 2-dr. Ford he was driving apparently crossed the center line of the road, near a hillcrest, colliding with a 1965 Mercury sedan driven by Richard E. Winkle, 17, of 7465 Jackson Rd., Scio township.

The Winkle youth died at University Medical Center, Ann Arbor, early Sunday morning, April 5, as a result of injuries received in the accident.

Injured passengers in the Winkle vehicle who were also transported to a hospital by ambulance were John J. Wilkinson, 18, and Clyde Williams, 57, both of 8461 Thurston Rd.

Marcia Lee Minneci, 25, of Stockbridge, a passenger in the Walter car, was also injured in the collision, and taken to University Medical Center where she was reported in good condition early Wednesday morning.

Young Wilkinson's condition was also reported as good, early Wednesday, and Mr. Williams was listed in fair condition.

Funeral services were held for Mr. Walter Wednesday, April 8, at 2 p.m., from the Hosmer Funeral Home with the Rev. Robert Grigoreit officiating. Burial was in Forest Lawn Cemetery, Dexter.

The young man was born March 8, 1946, the son of Harry and Virginia Finkbeiner Walter. He had lived in the Dexter-Chelsea area all his life. A graduate of Chelsea High school, he was attending Jackson Junior College, and was employed by Palmer Motor Sales in Chelsea.

He was a member of the Calvary United Methodist church, Ann Arbor.

In addition to his parents, he is survived by a three-year-old daughter, Lisa Marie of Chelsea, and a brother, Ronald D., also

of Chelsea; a sister, Linda K. of Scio township; his paternal grandmother, Mrs. Nora Hansen of Howell; his maternal grandparents Mr. and Mrs. William Finkbeiner of Ann Arbor, and several aunts and uncles.

Memorial contributions may be made to an educational fund for Mr. Walter's daughter.

Funeral services for the Winkle youth will be held at 10 a.m., Thursday, April 9 (today) at St. Joseph Catholic church, Dexter, with the Rev. Fr. Ted Bozenski officiating. Burial will follow at St. Joseph Cemetery. The rosary was recited at Hosmer Funeral Home Wednesday evening, April 8, at 8 p.m.

He was born April 14, 1952, the son of Robert and Patricia Winkle. He attended St. Joseph school and was a student at Dexter High, and a member of St. Joseph Catholic church.

In addition to his parents, he is survived by two sisters, Diane Lynn and Patricia Kay, of Dexter, his maternal grandparents, Mr. and Mrs. Richard E. Nash of Jackson Rd.; and several aunts and uncles.

THANK YOU
My deepest thanks to all the friends, relatives and neighbors who have remembered me with cards, plants and other kind deeds. A special thanks to Pastor Morris for his many visits and comforting words.

Bertha Horning.

CARD OF THANKS
We would like to thank all our friends, neighbors and relatives for all the kind acts during our sad time; the flowers, food, cards and many visits were greatly appreciated. A special thanks to Father Wahowiak for his comforting words.

The Family of
Charlotte Osinski

THANK YOU
I would like to thank Rev. Steenson and Rev. Finkel for their visits to the hospital and for friends and loved ones who have prayed for me during my stay.

Lawrence McAtee.

Minister Helping Former
Parish Observe Anniversary

The Rev. Warner H. Siebert and his family have been invited back to his former pastorate, St. Mark United Church of Christ in Chicago Heights on the occasion of their 10th anniversary.

The Rev. Siebert, pastor of St. Paul United Church of Christ in Chelsea, was the organizing pastor of the congregation in Illinois beginning back in 1958, leaving in 1965 to assume his present pastorate in Chelsea.

After the Rev. Siebert delivers the morning sermon, entitled "The Blind Spot," he and his family will be honored guests at a catered banquet to be held in honor of the anniversary day.

Assisting the Rev. Siebert at the morning service will be the Rev. Dexter Township . . .

(Continued from page one)

County Sheriff Department, as was the case previously.

Dexter township residents were reminded that the township is participating in the Chelsea Sanitary Landfill program, although earlier publicity regarding a contract which had not yet been signed left some residents in doubt. Yes, say township officials, Dexter township residents may use this area, located on Werkner Rd., and most residents already have tickets for the dump. New residents, or those needing additional tickets, should contact either the township supervisor or the township clerk for further information.

The road maintenance program for the township was discussed at the annual meeting, it was decided to continue the chloride applications as in the past, and more gravel will be spread this season on township roadways.

Residents voted to adopt ordinances to permit enforcement of regulations in the Huron-Clinton Metropolitan Parks within the township, notification regarding these to be published in the near future. Similar ordinances were adopted by Scio township recently.

Residents also acted on a motion to announce each meeting of the township board in advance of the meeting date.

The board met Tuesday evening, April 7, and the next regularly scheduled meeting will be the first Tuesday of June. Dexter township board traditionally meets on alternate months. Until the new township hall is completed, the board plans to meet at the home of the township supervisor.

CUB SCOUT NEWS

DEN 1, PACK 415—

Den 1, Pack 415 met Tuesday April 7 at the home of their den mother, Mrs. George Atkinson. We made plans for the kite derby to be held Sunday. Plans were also made for the Scout-O-Rama.

Bryan Herrick, scribe.

PACK 435—

In spite of the bad weather Pack 435 had a good turn out of Cubs and parents for its pack meeting and rocket race on Thursday, March 26. Opening ceremony was conducted by the Webelos.

Announcements were given by the chairman Roger Schrotenboer. Cubmaster Richard Kalmbach presented Bear books to Gary Kelemen and Joey Marentette.

Boy Scout handbooks were given to Jim Stahl, Doug Eisele, and David Wetzel by the Webelos leader, Clyde Myers.

Assistant cubmaster Les Kelemen presented the Webelos den chief, Bill Kalmbach his 2nd year den chief pin.

After the closing ceremony the rocket race was held. Winners for Cubs were 1st, Gary Kelemen; 2nd, David Schrotenboer; 3rd, Tim Knickerbocker.

For Webelos; 1st, Jeff Branham; 2nd, Doug Eisele; 3rd, Doug Foreman.

Refreshments were then enjoyed by all.

DEN 2, PACK 455—

Cub Scouts of Den 2, Pack 455, met Wednesday, April 1, at the home of their den mother, Mrs. Sumner Oesterle.

They have a new den chief, Tom Forner, and a new Cub Scout member, Todd Otto. They also had a guest at the meeting, Bobby White of Traverse City.

Lance Fletcher brought the refreshments and after the boys had worked on a new project—making kites—they played ping pong.

Jimmy Alexander carried the den banner, Mike Waldyke carried the American flag and Lance Fletcher and Stevia Dresch were the assistants for the opening and closing flag ceremony.

Patrick Murphy, scribe.

DEN 1, PACK 455—

This week Cub Scout Den 1, Pack 455 made kites. We had to bend part of the inside of the kites. David Hall broke his kite. The people who carried the flags were Don Aldrich and Steve Blaess.

Danny Kolin, scribe.

THANK YOU
I wish to thank all my friends, customers and neighbors for their thoughtfulness and kind wishes while I was in the hospital and during my extended recovery at home. Your concern and helpfulness will be long remembered.

Sam Brown.



GUEST MINISTER: The Rev. Barbara Zikmund from Albion will be the guest minister at St. Paul United Church of Christ on Sunday, April 12 during the absence of the Rev. Warner H. Siebert. The Rev. Siebert and his family have been invited to return to his former pastorate, St. Mark United Church of Christ in Illinois for the parish's 10th anniversary. The Rev. Siebert was the organizing pastor of the congregation.

TODAY'S THOUGHT

By LOUIS BURGHARDT

Have you ever thought about the mental make-up of the anti this and anti that fault finders who seem to oppose everything and everybody? Do you wonder if they ever count their blessings? Whether they ever think of the privileges, advantages and benefits they enjoy as Americans?

Actually, all of us have many, many advantages and benefits we enjoy as Americans. More than any other people on earth, now or at any other time. We think every one should realize — and appreciate — that our advantages and benefits outmatch those of any other government at any time in any era.

We will list a few of these advantages and benefits for publication here shortly. It will be interesting. Watch for it. . . . BURGHARDT FUNERAL HOME, 214 East Middle St., Chelsea, Mich. Phone GR 5-4141.

—SPECIALS—

GRADE A LARGE WHITE
Eggs doz. 51c

ECKRICH SMORGAS-PAC
Lunch Meat . . 1-lb. pkg. 79c

46-OZ. CAN STOKELY
Tomato Juice 26c

1-LB. BOX MUELLER'S
Macaroni 21c

NO. 2 CAN WILDERNESS
Apple Pie Filling, 2 for 53c

KUSTERER'S
FOOD MARKET
DIAL 475-2721 WE DELIVER



ANY TRIP YOU MAKE will be more pleasant, if the car you drive is financed the Bank Way—economically, conveniently and with local people.

Now Paying the Highest Interest Rates
On Savings Accounts
Any Bank Can Pay

CHELSEA STATE BANK

Member Federal Reserve System



Member Federal Deposit Insurance Corp.

SALE
PRICED
Now
Through
April 30
Only

\$5.97 gal.

CHELSEA HARDWARE

110 S. Main St. Phone GR 9-6311

SPECIAL
thru Wednesday, April 15, 1970
BRAZIER
BURGER
& FRIES

69¢

Home of fine Brazier foods.

Dairy Queen
brazier
S. MAIN ST., CHELSEA

Community Calendar

Older Adult Group of the Methodist church, Saturday, April 18, 12:30 p.m.; in the church social center. Pot-luck dinner. Bring own table service and dish to pass.

Kinder Klub, Tuesday, April 14, at home of Mrs. Joel Kruse, 8 p.m. Speaker: the Rev. Daniel Kellin.

Senior Citizens, April pot-luck birthday party, Thursday, April 16, Korner House, 6:30 p.m. Bring table service and dish to pass. Hostesses, Mrs. Nina Wahl, Mrs. Inez Rank, and Mrs. Myrtle Bidwell.

St. Mary's Bake Sale, Saturday, April 11, 10 a.m. to 1 p.m. at K. of C. Hall.

Chelsea Band Boosters, High School band room, Thursday, April 9 at 8 p.m.

OES Rummage sale April 24, 9 a.m. to 9 p.m. at Masonic Temple. To pick up call 475-8258 or 475-6531.

Modern Mothers Child Study Club, home of Mrs. Richard Stoll, Tuesday, April 14, 8 p.m. Election of officers and "white elephant" auction.

Chelsea Village Planning Commission, Thursday, April 23, Council Chambers, 8 p.m.

Past Noble Grand club of Rebekah Lodge No. 130, Wednesday, April 22.

Chelsea Community Farm Bureau, Sylvan Town Hall, Thursday, April 9 at 7 p.m. Pot-luck supper. Hosts: Mr. and Mrs. Reuben Lesser and Mr. and Mrs. Anton Nielsen.

Chelsea Businessmen's Association, Monday, April 20, basement of bank, 7:45 p.m. All Chelsea businessmen and property owners welcome.

Marion Simons Circle, Wednesday, April 15 at Mrs. A. W. Wilkinson's.

Spring Achievement, 4-H club members meet Saturday, April 11.

St. Barnabas Episcopal church Women work day, Thursday, April 9, at the church.

Past Noble Grand Club of Rebekah Lodge No. 130, Wednesday, April 22, home of Mrs. Russell Bernath, 7:30 p.m.

Jerusalem Farm Bureau at the home of Mrs. Hilda Stierle, April 9 at 8:30 p.m. Bring cup cakes for refreshment.

Servicemen's Wives Club will meet Monday, April 20 at 7:30 p.m. at the American Red Cross, 2720 Packard Rd., Ann Arbor, to view a film on Interior Decorating. Interested wives may call Mrs. Richard Horning, 662-8835.

Annual meeting of Maple Grove Cemetery Association Wednesday, April 15 at 8 p.m. at the Alfred West home.

VFW Auxiliary, regular business meeting, Monday, April 13, 7 p.m., Rebekah Hall. Election of officers and district delegates.

Rogers Corners Farm Bureau Friday, April 10, 8:30 p.m., home of Mr. and Mrs. John Miller, 10955 Hieber Rd., Manchester.

Esther Chapter Thursday, April 16, 8 p.m., at the church. All ladies of the church invited to attend. We need you and your talents. Program: "Silent Auction."

American Legion Auxiliary Rummage Sale, Saturday, April 11, Sylvan Town Hall. Members for pick-up call Ruth Christwell or Eleanor Hall after 5:30 p.m.

Senior Citizens Fun Night every Friday night at Korner House 7:30 p.m.

Wesleyan Service Guild, regular meeting, Tuesday, April 21, 7:30 p.m. Lucile Finkbeiner and Irene Proctor, hostesses to Guild from Ann Arbor First United Methodist church.

Young Homemakers, Thursday, April 23, Merkels Store at 8 p.m. Members bring a guest.

District IV party, Chelsea Methodist church, Monday, April 13.

Inquiries regarding the Chelsea blood bank may be directed to Harold Jones at Cavanaugh Lake in the event that Mrs. Dudley Holmes is unavailable.

Boy Scout Troop 420, paper drive. Bring papers to Stop & Shop parking lot May 2, or contact troop members for pick-up.

VFW 25th anniversary celebration, Saturday, April 18, Chelsea Rod & Gun Club.

American Legion and Auxiliary hospital equipment available by contacting either Mr. or Mrs. Eugene Martin, at 475-5867 after 4 p.m.

TOPS Club at library, Wednesday afternoon group, 12:30 p.m. For information call 475-2592. Thursday evening group, 7 p.m. For information call 475-8720.

Senior Citizen sewing every Tuesday afternoon at Korner House.

Cub Scout Pack 415 met Sunday April 12 at 2 p.m. at the home of Norm Bauer for a kite-flying contest.

Telephone Your Club News To GR 5-3581.

Jaycees Elect New Officers

Chelsea Jaycees elected a new slate of officers for the coming year at their Tuesday evening, April 7 meeting.

Art Steinaway succeeds Walter Brown as president of the group.

Other newly-elected officers include Glen Weir, external vice-president; St. Hopkins, internal vice-president; Tom Steela, treasurer; Neil Packard, secretary; Mike Eubanks, membership director; Neil Fahrner, publicity director; Barry Boone, internal director; and Dick Stoll, internal director.

Speaker for the evening's meeting was Don Boyer who presented slides of all-easeon hunting and or fishing.

Area Townships All Sign To Use Sanitary Landfill

Township residents will be able to use the Chelsea Sanitary Landfill during the coming year. All townships have now completed written agreements with the Village of Chelsea according to the minutes of the Chelsea Village Council as recorded Tuesday, April 7.

In the near future, residents of the individual townships will be able to pick up sanitary landfill passes from their township officials.

Child Study Club Presenting Tour of Six Area Homes

Chelsea Child Study Club will present its Spring House Tour of six area homes on Thursday, April 30 from 10 a.m. to 3 p.m.

Available this year for viewing are the homes of Leonard McCalla, 481 S. Steinbach Rd.; A. W. Vandervoort, 777 S. Main St.; Roger G. Schrotenboer, 7949 Werkner Rd.; William Rademacher, 200 N. Freer Rd.; Robert M. Merkels, 124 W. Summit St.; and Dr. Gene T. Miller, 160 E. Summit St.

The public is invited to attend. Tickets are available at the Chelsea Drug Store, Merkels Furniture and Carpets, Chelsea Hardware, or from any Child Study Club member.

Michigan Week...

(Continued from page one)

that Chelsea and community residents are friendly to neighbors and visitors alike.

On Youth Day, Saturday, May 23, we point with pride to the youth of our community who not only will be the leaders of tomorrow but also are more and more, today's leaders.

This year's village chairman will be Charles F. Cox. He is employed as an instructor at the U. of M. Dental School. Cox, originally from Adrian, received a Bachelor of Science Degree from Adrian College and a Master's of Science from Wayne State U. Medical School. He currently lives at 27 Sycamore Dr., with his wife, Betty, and two sons, Jeffrey and Bradley.

LITERATE NATION

Iceland is a nation of 100 percent literacy. The per capita publication of new books is almost 20 percent greater than in the United States.

Telephone Your Club News To GR 5-3581.

WANIS CLUB



Kiwanians Hold Mock Trial

Mock court was held at the Monday night, April 6 meeting of the Chelsea Kiwanis club. Involved in the mock trial demonstration for the members of the club included, from the left, Peter Flintoft, Clare Warren, V. O. Johnson, Glen Kraai, Sam Johnson, Eldon Gorton, Charles Cox, Julius Blaess, Anton Nielsen. In the front from the left are William Rademacher, Chandler Rogers, and Police Chief George Meranuck. John Keusch served as prosecutor although the cameraman missed him for the photo.

Kiwanians were entertained Monday evening, April 6, by several of the members who enacted a mock trial.

Prosecutor John Keusch performed nobly for the state in trying to prove that Lu Muck had been driving while drunk.

Defense lawyer, William Rademacher, assisted by Pete Flintoft,

Teacher-Parent Conferences Set At Beach School

Tuesday, April 14, between the hours of 1 p.m. and 5 p.m. and from 6 p.m. to 8 p.m., Beach school will hold 15-minute conferences between parents and classroom teachers.

These conferences are designed primarily for parents whose youngsters are experiencing some school difficulties. However, any parent may request a conference.

Appointments may be made by calling the Beach school office at 475-8601 between 8 a.m. and 3:45 p.m. on April 9, 10 or 13, and indicating to the receptionist the names of teachers with whom a conference is desired.

Appointments will be made on a first-call-first-serve basis.

George Navin Home Hit By Fire Tuesday

Fire trucks were called to a fire at the George Navin residence, 406 Wilkinson, Tuesday afternoon, April 7.

The fire, which was confined to a furnace under the home and to a closet, caused considerable smoke damage to the home.

Chelsea fire trucks were also called to two grass fires during the past week.

H. Koenn Named Secretary to ADA Board of Directors

At the annual meeting of the American Dairy Association held in the latter part of March in Chicago, Herman Koenn was elected secretary of the National Board of Directors.

Koenn, who is in partnership with his son, Charles, in a 450-acre dairy farm, has been active in the association for several years. He is a past president of the State Board of Directors and is presently a member of the executive committee of the State Board. He is also involved in the marketing committee of the Michigan Milk Producers association.

Koenn, who lives with his wife on Hayes Rd., has served on the local school board for a number of years. His term expires this year, and he plans to run again for a four-year term.

Koenn is a real estate agent associated with Eibler, Frisinger & St. Amour in Chelsea.

Howard Holmes Named To Head Millers National Federation

Howard Holmes has been named Chairman of the Board of the Millers National Federation.

Holmes, who has represented the Chelsea Milling Co. Association for many years, has also been active on the association's executive committee.

The association has its offices in Chicago and Washington, D. C.

BIRTHS

A daughter, Megan Peterson, to Mr. and Mrs. Peter Kakela, 6087 Joseph Dr., Oxford, O. Mrs. Kakela is the former Janet Bernath, daughter of Mr. and Mrs. Lewis Bernath, 11220 Meadow Lane.

In most areas of Michigan there is a high demand for pick-your-own strawberries and raspberries each year.

A BRAND NEW WHEEL HORSE GARDEN TRACTOR WITH FREE MOWER

YOUR CHOICE OF 9 ALL NEW 1970 MODELS

7 TO 14 H.P.

- AUTOMATICS
- 6/SPEEDS
- 3/SPEEDS



A HORSE OF A TRACTOR

With 9 models to fit every need and budget—with 42 optional attachments to do every job — 365 days a year.

SAVE UP TO \$225.00 during our limited free mower offer.

SOLD AND SERVICED

GAMIBLES

110 N. Main St. Phone 475-7472

WE PROTEST TOO

OVER HIGH PRICES

BUT ONLY OUR SHIRTS WALK OUT!!

Especially at this SALE PRICE

WHITE ONLY, LONG SLEEVE SHIRTS

By VAN HEUSEN

Regular \$7.50 Now \$5.99 - 3 for \$17.50

Regular \$5.50 Now \$4.39 - 3 for \$13.00

STRIETER'S


121 S. MAIN

"The Place To Go"

MEN'S WEAR

CHELSEA

For Brands You Know"



Executives and Professional people . . . are sometimes victims of million dollar lawsuits. Protect yourself with

Auto-Owners UMBRELLA POLICY

A. D. MAYER AGENCY, INC.

"Your Protection Is Our Business"

115 Park St. Chelsea

Phone 479-5061

Auto-Owners INSURANCE COMPANY

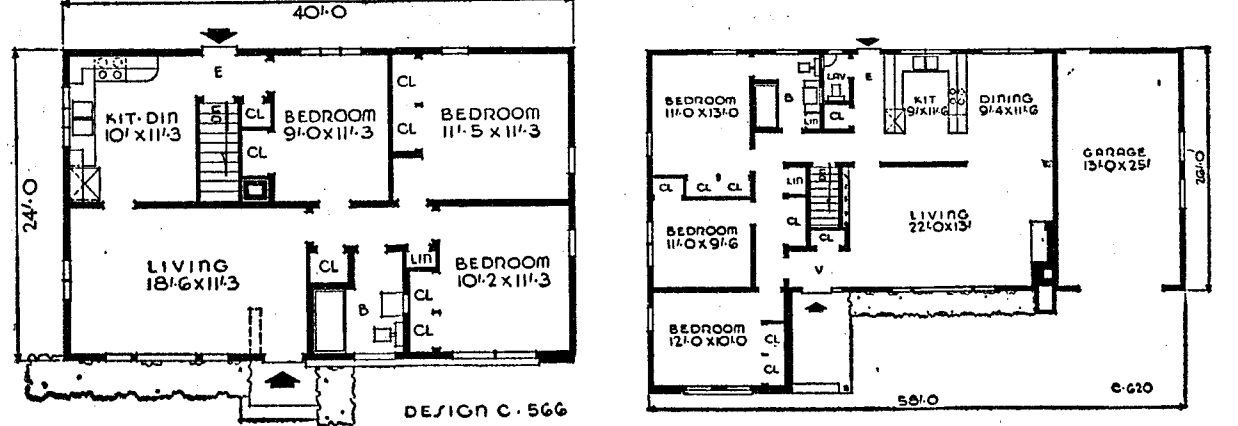
Home office at Lansing, Michigan

Delay May Prove Costly . . .

★ PLAN TO BUILD

★ BUILD FROM A PLAN

Check Our File of More Than 2,000 Designs. From \$9.50 per set.



Compare the Ways To Build . . . You'll Find

You Get More From Each Building Dollar at

CHELSEA LUMBER CO.

DIAL GR 5-3391

May We Bid or Estimate Your Building Costs?

OPEN: Monday thru Friday, 7:30 a.m. to 5:30 p.m.; Saturday, 7:30 a.m. to 3:30 p.m.

AGRICULTURE IN ACTION

by GARY A. KLEINHENN
Michigan Farm Bureau

* A Dream Halted

It probably all started when man tamed the first "Fido" and upset the balance of nature. You see, the two, of them (man and canine) teamed up to improve the odds against the law of the fittest.

The order of things was further upset when a brighter than usual Cro-Magnon man must have discovered the idea of planting seeds of a sort in one limited area. The plan was to cover seeds with the soil and wait for plants to grow to provide edible food that could be gnawed at by pooch and man alike back at the cave.

The unheralded event must have marked the beginning of modern times. No longer would man spend full time roaming the valleys, planes and hillsides searching for that pacifier which would stall off his persistent, growling hunger pains. Now for the first time he had food in his own front yard.

Meanwhile, in the forest, less fortunate creatures were simply overjoyed. They probably figured that with this field of abundant food they could quit traveling and retire to enjoy the fruits of this man's labor.

Mr. Cro-Magnon must have found ways to somehow prohibit animals trespassing and eating up all of his hard work. But his protective methods certainly couldn't keep out the "little guys" like the bugs and insects—all of those nasty little crawling things that plunder and disease food and fiber. For the first time there was an abnormal concentration of food in one spot and the "little guys" took advantage. They multiplied their kind at an abnormal rate, to the point where the "garden party" really got out of control and the work of Mr. Cro-Magnon was in ruin.

Few crops sprouted for harvest and those that did were of immense poor quality, now infested with the pests of nature. Even old Fido suffered, having to put up with pests embedding under his skin, living off his flesh and while he scratched away, the pests took over. A dream was halted.

But our cave man kept planting. Discovering new methods, he progressed out of the cave into the open, and his best friend went with him too. In order for man to survive, better protection was needed for him as well as his food.

Yup, the balance of nature never was too good for man and friend where the quality of living was concerned. In fact, thank goodness for the invention of pesticides which control those pests, or it's a good bet most of us probably wouldn't be here today.

Food prices were up about 5 percent in 1969 over the 1968 levels, but for 1970, the price increase is expected to be only about 3 percent over the entire year.

Want corn for thick planting?

PIONEER's got it!

Want corn to combat stalk lodging?

PIONEER's got it!

Want corn for your soil type?

PIONEER's got it!

Want corn for combine harvesting?

PIONEER's got it!

Whatever maturity of corn you want, Pioneer offers varieties with features that match your farm and way of farming. Make Pioneer your corn this year.

See or call!

**BLAESS
ELEVATOR CO.**

Div. of Larrowe Feed Co.
Ph. GR 9-6511 Chelsea, Mich.

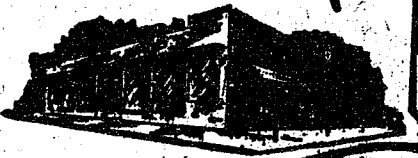


PIONEER.
BRAND
SEED CORN

THE SUPERMARKET THAT'S JUST A LITTLE BIT BETTER

Stop & Shop

14901 Old U.S.-12
Corner at M-52
Chelsea



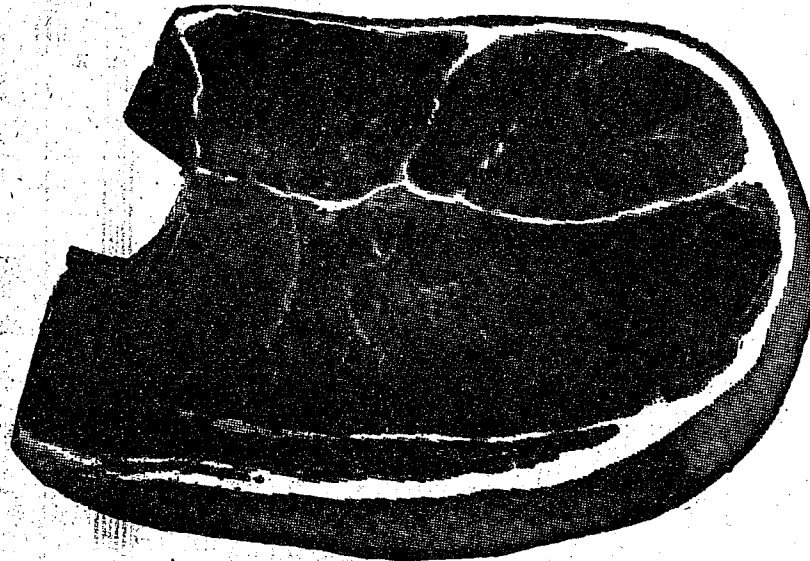
STEAK SALE!

"Triple R Farms" U.S.D.A. Choice

BONELESS

ROUND STEAK

\$1.19 lb.



THE KNOW HOW OF INTELLIGENT MEAT BUYING IS REALLY THE 'KNOW WHERE'

Our customers have learned to depend on the outstanding quality of Stop & Shop meats — unfailing satisfaction with every cut they purchase. The finest quality, together with the expertise of our meat cutting experts, makes an unbeatable combination.

Prices Effective Wednesday, April 8 through Tuesday, April 14, 1970.

"Triple R Farms" U.S.D.A. Choice

Sirloin Steak . . . \$1.29 lb.

Tender, Delicious

Cube Steak . . . \$1.39 lb.

"Triple R Farms" U.S.D.A. Choice

Ground Round Steak . . . 99¢ lb.

Stop & Shop's Fresh, Lean, All-American Beef

Hamburger . . . 67¢ lb. (5 Lb. Units or More)

Lean, Tender, Boneless and Cubed

Pork Cutlets . . . 89¢ lb.

"Triple R Farms" U.S.D.A. Choice
BONELESS

**ROLLED RUMP
SIRLOIN TIP**

OR

ROAST

\$1.29 lb.

"Triple R Farms" U.S.D.A. Choice

Chuck Steak . . . 79¢ lb.

"Triple R Farms" U.S.D.A. Choice

Rib Steak . . . \$1.09 lb.

"Triple R Farms" Michigan Grade 1

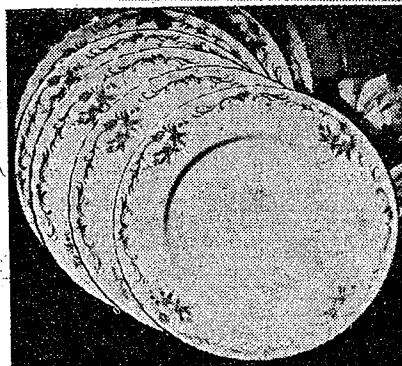
Ring Bologna . . . 69¢ lb. (Garlic or Plain)

Lean, Tender, Meaty

Pork Steak . . . 79¢ lb.

Stop & Shop's Homemade

Pork Sausage . . . 69¢ lb.



This Week's Feature!
Genuine Translucent Imported

Porcelain China

Luncheon Salad Plate

39¢

WITH PURCHASE OF \$3.00

COMPLETE YOUR SET!

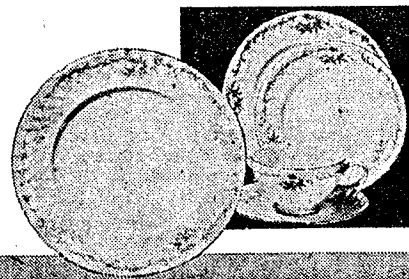
No Limits! These complete units are priced far below those at department and specialty stores. See how easy it is to build a complete service for 6 or 8 or even 12.

FINE PORCELAIN CHINA
FREE DINNER PLATE
with purchase of

4 Piece Place Setting consisting of:

- Luncheon/Salad Plate
- Bread & Butter Plate
- Cup and Saucer

All 5 Pieces Only \$2.29



Farm Fresh Produce

Fresh Green

ASPARAGUS . . . 29¢ lb.

Rome Beauty

APPLES . . . 49¢ 3-Lb. Bag

SAVE 20% or More on STOP & SHOP'S HEALTH and BEAUTY AIDS!

Gorton's Fresh Frozen

Fish Puffs
1-Lb. Pkg. 59¢

Gorton's Fresh Frozen

Fish & Chips
8-Oz. Pkg. 43¢

Gorton's Fresh Frozen

Scallop Crisp
7-Oz. Pkg. 79¢

Pure Vegetable Shortening

Crisco
3-Lb. Can 69¢

Meadowdale Frozen

Orange Juice
6 6-Oz. Cans \$1

Stokley's Rich

Tomato Catsup
14-Oz. Bottle 19¢

Meadowdale Cheese Flavored

Corn Curls
1-Lb. Pkg. 39¢

McDonald's Fresh, Delicious

Cottage Cheese
1-Lb. Carton 25¢

Shamrock Country Fresh

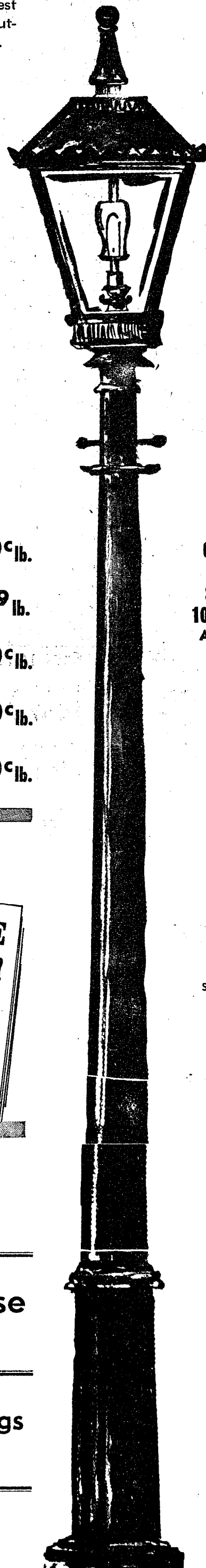
Medium Size Eggs
All White Grade A 43¢ Dozen

WE RESERVE THE RIGHT TO LIMIT QUANTITIES

**For Your Convenience
OPEN SUNDAY
10 a.m. - 6 p.m.
All Sale Prices Effective Sundays**

Sorry, No Sales To Dealers

STORE HOURS:
Monday, Tuesday, Wednesday
9 a.m. - 6 p.m.
Thursday, Friday
9 a.m. - 9 p.m.
Saturday New Hours
8 a.m. - 7 p.m.
Sunday
10 a.m. - 6 p.m.





BOWLING NEWS



Chelsea Lanes Mixed

Standings as of April 3

Devine & Brink	124	86
Chelsea Lanes	122 1/2	87 1/2
Rabbitt & Althouse	122	88
Ann Arbor Centerless	113	97
H. & H.	111	92
Lyndon Color Lab	104	106
Wolverine Tav. No. 2	102	108
Doody & Turner	99	111
Pittsimmons Excav.	96	114
Wolverine Tav. No. 3	95	108
Barkley & Gephart	84 1/2	123 1/2
Helm & Weiss	78	132

Men, 500 series: R. Doody, 570; M. Poertner, 564; M. Packard, 515; R. Brink, 506; R. Weiss, 501; J. Turner, 501; L. Gephart, 500.

Men, 200 games: R. Weiss, 222; R. Doody, 222; M. Poertner, 205.

Women, 450 series: M. E. Sutter, 486; F. Gephart, 477; D. Alther, 466; L. Doody, 464; A. Turner, 463; A. Sindlinger, 461; E. Brink, 456; E. Harmon, 456; J. Hutzler, 452.

Women, 150 games: M. E. Sutter, 182-169; D. Alther, 178-160; A. Sindlinger, 177-153; J. Hutzler, 176; L. Doody, 172-168; F. Gephart, 170-162; E. Brink, 163-155; A. Turner, 162-161; E. Harmon, 160-154; H. Morgan, 156; R. Devine, 155; B. Fike, 155; E. Packard, 154; J. Longworth, 152; J. Rabbitt, 151.

Chelsea Suburban

Standings as of April 1

Foor Mobil	71 1/2	44 1/2
Dairy Queen Braizer	68	48
Dana Corp.	67	49
G. A. Sales	62 1/2	53 1/2
Patty Ann	58	58
Waterloo Garage	58	63
Chelsea Lanes	55 1/2	60 1/2
Pittsfield Plastics	54 1/2	61 1/2
Waterloo Garage	53	63
G. E. Girls	52 1/2	63 1/2
Artex Roll-Ons	49 1/2	66 1/2
Dancer's	45 1/2	70 1/2

150 games and over: L. Jarvis, 157; N. Packard, 152; P. Harok, 161; V. Stott, 167; D. Kinsey, 152; G. DeSmith, 153-151; B. Hafley, 161-171; R. West, 186-182; D. Pouty, 182; R. Klink, 162; P. Walz, 154; W. Hafner, 150; E. Clark, 152-172; K. Dove, 158; H. Harrison, 191; K. Snyder, 158; M. DeLaTorre, 176-158; G. Wilkerson, 162; B. Krichbaum, 157; J. Alkin, 163; S. Bowen, 173-160; A. Bohne, 173; L. Beeman, 157-153; V. Stewart, 154; E. Williams, 156; M. L. Westcott, 175-165-178; D. Haas, 170-160; N. Prater, 160; E. Yocum, 178; A. Woel, 167; V. Harvey, 152-160-153; A. Hocking, 159-171.

425 series and over: D. Haas, 444; N. Prater, 427; V. Harvey, 455; A. Hocking, 458; A. Bohne, 436; L. Beeman, 448; M. L. Westcott, 518; M. DeLaTorre, 482; S. Bowen, 468; E. Clark, 471; H. Harrison, 480; B. Hafley, 472; R. West, 516; D. Fouty, 433; P. Walz, 427; L. Jarvis, 427; N. Packard, 432; V. Stott, 438; G. DeSmith, 485.

Junior House League

Standings as of April 2

Chelsea Drug	142	54
The Pub Bar	133	62
J. & S. Tool Co.	112	84
3-D Sales & Service	111	85
FireLite Inn	102	94
Boyer Automotive	100	96
Mid-State Finance	95	102
Jiffy Mixers	81	115
Wolverine	75	121
Palmer T - Bird	74	122
Gambles	72	117
Ann Arbor Centerless	73	116

200 games and over: C. Koenig, 238-204; A. Fletcher, 227-232; S. Hopkins, 228-203; B. Adams, 223-200; L. Bauer, 216; D. Buku, 216; D. McKinley, 211; K. Norris, 210; E. Buku, 204; L. Christwell, 204; O. Johnson, 202; D. Boven, 201.

600 series: A. Fletcher, 645; S. Hopkins, 618; B. Adams, 609.

500 series: C. Koenig, 595; E. Buku, 569; R. V. Worden, 554; S. Policht, 554; N. Fahrner, 552; K. Larson, 543; D. Buku, 537; L. Bauer, 532; R. McClanahan, 532; B. Yocum, 531; L. Hocking, 530; D. McKinley, 530; K. Norris, 530; W. Beeman, 528; O. Johnson, 526; F. Johnson, 520; C. Staphis, 520; J. Hughes, 519; F. Dickenson, 519; H. Kunzelman, 518; E. Marshall, 516; T. Wisniewski, 516; P. Boham, 515; E. Greenleaf, 515; J. Stoffer, 512; J. Harok, 502.

Guys & Gals

Mixed League

Standings as of April 2

Murphy's Barber Shop	74 1/2	37 1/2
The Pub No. 2	70	42
The Good Guys	62	50
Ken's Standard Service	59 1/2	52 1/2
Gallup - Silkworth	56 1/2	55 1/2
Team No. 2	55	57
Chelsea Lanes	54	58
The Spoilers	50	62
Nam Quad Corp.	50	62
The Sandbaggers	49	63
The Pub No. 1	47	65
Pleasant Lake Resort	44 1/2	67 1/2

Women's games 150 and over: N. Collins, 192-158; N. Packard, 185-159-156; E. Kotar, 177; S. Walton, 179; P. Pardon, 150-162; D. Haas, 171-150; B. Smith, 183-152; B. Fritz, 154-199-162; S. Green Leaf, 171; J. Hoag, 156; L. Knerr, 153.

Women's series 425 and over: N. Collins, 483; N. Packard, 499; S. Walton, 445; P. Pardon, 446; D. Haas, 462; B. Smith, 469; B. Fritz, 515; S. Greenleaf, 460.

Men's games 175 and over: J. Collins, 181; R. Kotar, 201; D. Walton, 180-202; S. Dyer, 181-207-211; D. Buku, 177; K. Pardon, 200-175-205; N. Eisemann, 183; E. Greenleaf, 178.

Men's series 500 and over: J. Collins, 511; R. Kotar, 505; D. Walton, 546; S. Dyer, 509; K. Pardon, 580; E. Greenleaf, 519.

Sunday Swingers

Mixed League

Standings as of April 5

Chargers	39	17
Limelights	33	23
Halfmoons	31	25
Red Barons	30 1/2	25 1/2
Newcomers	29	27
Brand - X	29	27
Rolling Stones	29	27
Odd Couples	27	29
Mark - Mark	25	31
4 - C's	24 1/2	31 1/2
4-K's	22 1/2	33 1/2
Moonshiners	18 1/2	37 1/2

Women, games over 150: E. Seeger, 197; S. Bowen, 160; G. Clark, 160; L. Jarvis, 154-164.

Women, series over 450: L. Jarvis, 457.

Men, games over 175: S. Haydock, 180-180; E. Duhome, 202.

Men, series over 475: J. Krichbaum, 487; S. Haydock, 512; R. E. Kyte, 482; E. Duhome, 542.

Charlie Brown and Snoopy's Friends

Standings as of April 4

Groovy Tootie Fruities	56	28
Archies	48 1/2	35 1/2
Blue Ribbons	48	36
Mark III	45	39
Merdillizers	43 1/2	40 1/2
Good Guys	43	41
Chargers	39	45
Snoopy's	38	46
Banana Splits	38	46
Purple Passions	37 1/2	46 1/2
Snoopy Stars	35	49
Rolling Stones	32 1/2	51 1/2

200 series: S. Lyerla, 277; C. Snyder, 215; R. Heller, 205; J. Spaulding, 204; P. Greenleaf, 229; D. Morrison, 207; D. Eisele, 233; K. Harris, 204; K. Collins, 231; J. Collins, 230; M. Burnett, 289; D. Alber, 319; D. Messner, 243; J. Sweet, 205; J. Toon, 231; M. Pennington, 257; B. Bennett, 214; G. Haller, 234; S. Bowen, 247; R. Guenther, 229; D. Craft, 249; S. Schulze, 228; D. Alexander, 200; M. Bowen, 208.

100 games: S. Lyerla, 106-171; S. Smyth, 107; D. Eisele, 110; M. Boyer, 103; C. Snyder, 106-109; R. Heller, 118; J. Spaulding, 107; D. Craft, 124; P. Greenleaf, 184; D. Eisele, 115-118; D. Morrison, 121; K. Harris, 108; K. Collins, 109-122; J. Collins, 103-127; M. Burnett, 154-115; D. Alber, 164-155; D. Messner, 125-118; J. Sweet, 115; J. Toon, 109-122; M. Schnaidt, 100; M. Pennington, 103-149; B. Bennett, 107-107; G. Haller, 104-130; S. Bowen, 160; R. Guenther, 103-126; D. Murphy, 103; D. Craft, 129-121; S. Schulze, 133; D. Alexander, 101; M. Bowen, 108-100; B. Lewis, 104; K. Toon, 124; T. Greenleaf, 118-108.

Old Timers League

Standings as of April 3

Nelson Realtors	73	47
Bob & Otto	67	53
Washtenaw Lanes	65 1/2	54 1/2
Colonial Lanes	65	55
Hotzel Service	63	57
Great Lakes	61	59
Chelsea Lanes	59 1/2	60 1/2
Mather Co.	58	62
Veterans Cab	57	63
Stein & Goetz	55	65
Cloverleaf Lanes	55	65
Hartman Ins.	41	79

High team game and series: Bob & Otto, Standard, 866-2470.

High ind. game: R. Carpenter, 223-616.

High ind. series: L. Hall, 557.

Other 200 games and 500 series: F. Menery, 222-554; H. Mummery, 208-553; G. Lawrence, 210-544; W. Haythorn, 215-518; D. Peden, 206-538; G. Heppner, 200-525; J. Otto, 551; E. Yek, 518; P. Johnson, 516; G. Rohde, 514; H. Grossman, 506.

Nelson Realtors won three.

Tri-City Mixed League

Standings as of April 3

Sprague Buick & Olds	70	54
3-D Sales & Service	68 1/2	55 1/2
Trail Blazers	67	57
Smith's Mobil	66	58
Foor Mobil	65 1/2	58 1/2
Chelsea Cleaners	64 1/2	59 1/2
Wolverine Tall & Small	64 1/2	59 1/2
Eibler & Frisinger	60 1/2	63 1/2
Wolverine Early Birds	58 1/2	65 1/2
Odd Balls	58	66
Jiffy Mixers	56	68
Clear Lake	45	79

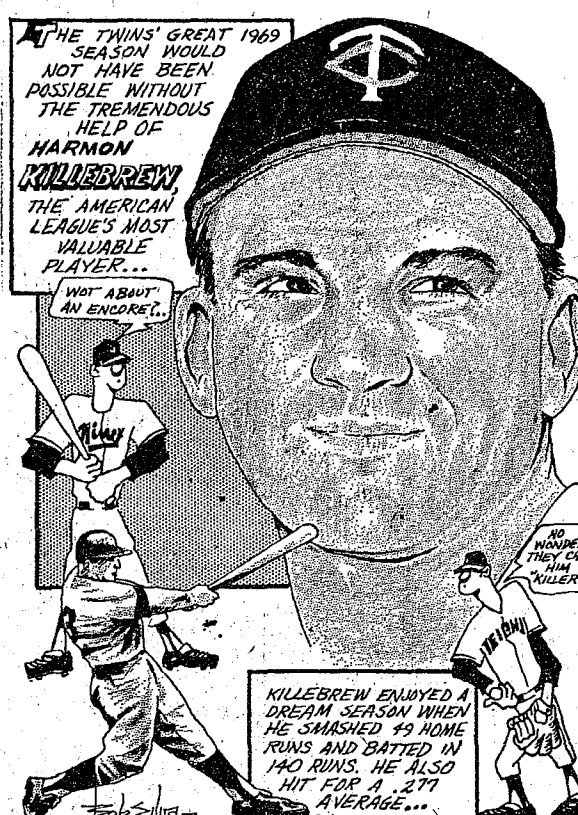
500 series, men: B. Kruse, 501; R. Fouty, 524; W. Griffith, 612; E. Harok, 543; H. Kunzelman, 519; A. Peterson, 512; A. Sannes, 530; T. Wisniewski, 542; R. V. Worden, 521.

200 games, men: R. Fouty, 205; W. Griffith, 225-210; E. Harok, 210; H. Kunzelman, 218; T. Wisniewski, 211.

450 series, women: M. Ashmore, 534; D. Fouty, 513; D. Fouty, 459; B. Parish, 472; C. Stoffer, 514; B. Wisniewski, 460; D. Worden, 480.

150 games, women: M. Ashmore, 171-176-187; G. Dettling, 154-166; D. Fouty, 184-187; G. Dettling, 154-166; D. Fouty, 184-187; D. Fouty, 188; P. Griffith, 156; R. Harok, 158-154; B. Parish, 161-169; M. Reagle, 153-159; M. Rigg, 153; C. Stoffer, 169-210; B. Wisniewski, 151-156; D. Worden, 165-167.

SPORTS CORNER



Nite Owl League

Standings as of April 6

Poster's Men's Wear	81	43
Gallup - Silkworth	75 1/2	48 1/2
Jack & Son Barbers	66	58
Merkel Bros.	63	61
Waterloo Garage	61 1/2	62 1/2
The Prof's	61	62 1/2
Wahl's Dinos	59	65
Town & Country Shell	57 1/2	66 1/2
Cavanaugh Lake Store	57 1/2	66 1/2
Smith - Douglass	56	68
Willie's Five	55	69
Smith's Mobil	50 1/2	73 1/2

500 series: G. Packard, 596; J. Gaken, 558; J. Waldyke, 545; E. Buku, 544; R. Kotar, 541; D. Beeman, 538; G. Pannone, 518; R. Kushmaul, 515; W. Wood, 514; J. Schaffner, 508; G. Rentschler, 505; G. Reithmiller, 506; J. Eder, 505; M. Packard, 505; D. O'Dell, 500.

200 games: J. Gaken, 223; G. Packard, 222-202; J. Schaffner, 209; D. O'Dell, 206; G. Pannone, 201.

Senior House League

Standings as of April 6

Chelsea Grinding	78 1/2	45 1/2
Chelsea Cleaners	71 1/2	52 1/2
Spaulding Chevrolet	71 1/2	52 1/2
The Pub Bar	70	54
Seitz's Tavern	69 1/2	54 1/2
Dana No. 1	67	57
Schneider's Grocery	67	57
Sylvan Center	64 1/2	64 1/2
Wolverine Bar	61 1/2	72 1/2
Murphy's Barber Shop	48 1/2	75 1/2
North Lake S&S	46	78
Dana No. 2	41 1/2	82 1/2

600 series: T. Wisniewski, 610; R. Spaulding, 601.

500 series: L. Hess, 548; T. McClear, 525; S. Haydock, 584; A. Schiller, 507; G. Burnett, 585; A. Clemes, 570; H. Burnett, 563; G. Lawrence, 576; M. Sweet, 518; G. Padgham, 531; C. Baize, 563; R. Knickerbocker, 550; G. Knickerbocker, 554; O. Johnson, 575; R. Fike, 529; W. Motts, 512; W. Griffith, 565; M. Poertner, 575; S. Hopkins, 515; C. Weir, 504; L. Salyers, 520; N. Fahrner, 596; L. Keezer, 514; D. Bauer, 512; R. Bauer, 552; D. Hafley, 520; G. West, 501; N. Hafley, 543; D. Crosby, 506; G. McAtee, 514; B. Moss, 530; J. Jones, 522.

200 games: N. Fahrner, 246; L. Keezer, 207; R. Bauer, 201; G. Lawrence, 238; G. Padgham, 212; C. Baize, 201; G. Burnett, 217; A. Clemes, 201; T. Wisniewski, 237-211; M. Poertner, 233; R. Knickerbocker, 229; G. Knickerbocker, 226; R. Spaulding, 211-201; B. Moss, 201; G. McAtee, 200.

Eggs are practical for weight watchers. Eggs contain protein and iron which is an essential part of the red blood cells. A large egg served without butter or dressing has only 80 calories.

Golf Team Ready To Start New Season

As he announced the 1970 Chelsea High golf team roster, Coach Pat Wade stated, "I feel that we can have another successful year in golf. We have a nucleus of returning players. Dave Conklin, who was the most consistent medalist last spring is ready to go. Some of the new players look good and should make a fine contribution to the team. They way they perform will determine if they will make the starting five."

Returning lettermen include Dave Conklin, Mike Powers, Jim Poertner, Art Farley, and David Powers (JV letterman). New team members are Glen Musolf, Mark Policht, Don Conklin, Bart Wellnitz, and Randy Young.

Coach Wade also stated that the league looks stronger this year and feels that teams like Dundee, Saline, Milan, and Dexter should all be strong contenders. Chelsea is looking forward to the challenge and the members are eager for the season to begin.

First matches of the new season will be Monday, April 13 at Pinckney; Tuesday, April 14 at Dexter; and Thursday, April 16 against Saline and Dundee at Chelsea.

The complete season schedule is printed elsewhere in this issue of The Standard.

Chelsea High School 1970 Golf Schedule

April 13—Pinckney at Pinckney	3:30
April 14—Dexter at Dexter	4:00
April 16—Saline, Dundee, at Chelsea	4:00
April 21—South Lyon, Milan, at Milan	4:00
April 23—Novi, Lincoln, at Chelsea	4:00
April 28—Dundee, Lincoln at Lincoln	4:00
April 29—Stockbridge, at Stockbridge	3:30
April 30—Novi, Manchester, at Chelsea	4:00
May 4—Hanover-Horton, there	3:30
May 5—Milan, South Lyon, at South Lyon	4:00
May 8—South Lyon, Dexter, at Dexter	4:00
May 11—Pinckney Invitational, at Pinckney	1:00
Make Up Week	
May 15—State Regional, All Day	
May 18—League Meet	All Day
May 20—Manchester, at Manchester	3:30
May 22—Ypsi St. John, there	3:30

WEIGHT DIFFERENCE
Most persons differentiate between overweight and obesity. An individual whose weight is 10-20 percent above the "ideal" according to weight tables is considered overweight. Deviations of 20 percent or more are designated as obesity.

During baby's first year, he usually triples his birth weight. This growth is the result of an adequate intake of nutrients and calories.

Six Veterans Bring Baseball Title Hopes

Chelsea High school's baseball coach, Carl Genske, has announced his spring playing roster.

Members of the 1970 Bulldog team include: pitchers Tom Harmon, Jack McLean, Ron Sweeney, and Wayne Walton; catchers Jeff Bust, Leonard Kozma, and Chris Marzec; outfielders Mike Griffin, Dave Heyalaff, Marlin Johnson, and Tim Lukasiak; and infielders John Bennett, Randy Brier, Doug Schoenberg, Todd Sprague, and Howie Treado.

Of the 17 members of the team, six are returning lettermen. Because of the large number of sophomores and junior players, Coach Genske has expressed confidence that the Bulldogs will make a strong showing during the next several seasons.

Servicemen's Corner

Norman D. Walsh Promoted in Army

Norman Donald Walsh, who is with Company A, First Battalion Airborne, 504th Infantry at Fort Bragg, N. C., has been promoted to Sergeant E-5.

Sgt. Walsh is the husband of the former Ruth Green, daughter of Mr. and Mrs. Edmund Green of 128 Jackson St. The couple has two daughters, Michelle and Teresa.

+ Services in Our Churches +

CONGREGATIONAL CHURCH
(United Church of Christ)
The Rev. Daniel Kellin, Pastor
Saturday, April 11—
9:00 a.m.—Confirmation class.
Sunday, April 12—
10:00 a.m.—Church school and
worship service. Sermon: "The
People Worshipers."
6:30 p.m.—Junior High.
6:30 p.m.—Senior High.
Wednesday, April 15—
6:30 a.m.—Men's breakfast.
7:00 p.m.—Board of Deacons.
7:30 p.m.—Senior Choir.
8:00 p.m.—Church Council.

ST. THOMAS
EVANGELICAL LUTHERAN
The Rev. Daniel L. Mattson,
Pastor
Sunday, April 12—
10:00 a.m.—Worship service.
11:00 a.m.—Sunday school and
Bible study.

ZION LUTHERAN CHURCH
Corner of Fletcher, Waters Rds.
(Rogers Corners)
The Rev. John R. Morris, Pastor
Saturday, April 11—
Youth instructional classes.
Sunday, April 12—
9:00 a.m.—Study in Sunday
school.
10:15 a.m.—Family worship.
(Nursery available).
Monday, April 13—
7:15 p.m.—Junior Choir.
8:00 p.m.—Senior Choir.

IMMANUEL BIBLE CHURCH
The Rev. Frank C. Frinkle, Pastor
145 E. Summit St.
Sunday, April 12—
9:45 a.m.—Sunday school, nur-
sery provided.
11:00 a.m.—Morning Worship,
nursery provided.
7:00 p.m.—Evening service.
Every Wednesday—
Family hour, prayer meeting and
Bible study.

GREGORY BAPTIST CHURCH
The Rev. Grant Lapham, Pastor
Sunday, April 12—
10:00 a.m.—Worship service.
11:15 a.m.—Church school.
6:30 p.m.—Baptist Youth Fel-
lowship.
7:30 p.m.—Evening worship
service.

NORTH SHARON
COMMUNITY BIBLE CHURCH
Sylvan and Washburn Rds.
The Rev. Paul Collins
Sunday, April 12—
10:00 a.m.—Sunday school.
11:00 a.m.—Worship service.
6:30 p.m.—Young People's
service.
7:00 p.m.—Evening service.
Every Wednesday—
7:30 p.m.—Prayer meeting.

NORTH LAKE
UNITED METHODIST CHURCH
The Rev. Frederick Atkinson
Pastor
Sunday, April 12—
9:30 a.m.—Worship service.
10:30 a.m.—Sunday school.

**BETHLEHEM EVANGELICAL AND
REFORMED CHURCH**
(United Church of Christ)
Freedom Township
The Rev. Roman A. Reineck
Sunday, April 12—
10:00 a.m.—Worship.
10:00 a.m.—Sunday school.
**ST. JOHN'S EVANGELICAL
AND REFORMED CHURCH**
(United Church of Christ)
Rogers Corners
The Rev. David J. Kleis
Sunday, April 12—
10:00 a.m.—Worship service.
10:20 a.m.—Sunday school.

CHURCH OF CHRIST
13661 Old US-12, East
R. D. Parnell, Minister
Sunday, April 12—
10:00 a.m.—Church school.
11:00 a.m.—Worship service.
6:00 p.m.—Worship service.
Wednesday, April 15—
7:30 p.m.—Bible Study.

ST. MARY'S
CATHOLIC CHURCH
The Rev. Fr. Francis Wahowiak
Saturday, April 11—
7:30 p.m.—Mass.
Sunday, April 12—
Masses at 6:30 a.m., 8:00 a.m.,
10:00 a.m., and 11:30 a.m.

ST. BARNABAS
EPISCOPAL CHURCH
20500 Old US-12
The Rev. William D. Ladkau, Vicar
Sunday, April 12—
11:00 a.m.—Morning Prayer.
11:00 a.m.—Church school and
nursery.

CHELSEA BAPTIST CHURCH
The Rev. Elmer S. Steenson, Pastor
337 Wilkinson
Sunday, April 12—
9:30 a.m.—Junior Choir.
10:00 a.m.—Sunday school.
11:00 a.m.—Worship service.
Nursery care available during all
services.
6:00 p.m.—Junior and Senior
Baptist Youth Fellowship.
7:00 p.m.—Evening worship.
Every Wednesday—
7:30 p.m.—Bible study and
prayer meeting.

CHELSEA MEDICENTER
Sunday, April 12—
12:30 p.m.—Sunday worship
with the Rev. Daniel Kellin, Con-
gregational United Church of
Christ.

**ST. JACOB EVANGELICAL
LUTHERAN CHURCH**
12501 Reithmiller Rd., Grass Lake
The Rev. Andrew Bloom, Pastor
Sunday, April 12—
9:00 a.m.—Sunday school.
10:15 a.m.—Divine services.

**ST. JOHN'S EVANGELICAL
AND REFORMED CHURCH**
(United Church of Christ)
Francisco
The Rev. Robert Townley
Sunday, April 12—
10:00 a.m.—Worship service.
10:20 a.m.—Sunday school.

**FIRST ASSEMBLY OF GOD
CHURCH**
The Rev. Thode B. Thodeson
Pastor
Sunday, April 12—
10:00 a.m.—Sunday school.
11:00 a.m.—Worship service.
7:00 p.m.—Evangelistic service.

WATERLOO VILLAGE CHURCH
United Methodist Church
The Rev. Donald Fry, Pastor
Sunday, April 12—
10:00 a.m.—Sunday school.
11:15 a.m.—Worship service.
7:00 p.m.—Youth Fellowship.

**BETHLEHEM EVANGELICAL AND
REFORMED CHURCH**
(United Church of Christ)
Freedom Township
The Rev. Roman A. Reineck
Sunday, April 12—
10:00 a.m.—Worship.
10:00 a.m.—Sunday school.

**ST. JOHN'S EVANGELICAL
AND REFORMED CHURCH**
(United Church of Christ)
Rogers Corners
The Rev. David J. Kleis
Sunday, April 12—
10:00 a.m.—Worship service.
10:20 a.m.—Sunday school.

**FIRST CHURCH OF CHRIST,
SCIENTIST**
1883 Washtenaw Ave., Ann Arbor
Sunday, April 12—
10:30 a.m.—Morning service.
10:30 a.m.—Sunday school.
Lesson-sermon: "Are Sin, Dis-
ease, and Death Real?"

ST. PAUL
UNITED CHURCH OF CHRIST
The Rev. Warner Siebert, Pastor
Thursday, April 9—
9:00 a.m.—Koinonia.
Study Group.
3:00 p.m.—Ann Arbor-Jackson
Association Executive Council.
7:30 p.m.—Board of Christian
Education.

Saturday, April 11—
9:00 a.m.—Confirmation class.
Sunday, April 12—
9:15 a.m.—Church school.
10:30 a.m.—Worship Service.
Guest Minister: The Rev. Barbara
Zikmand.

6:00 p.m.—J.V.F.
Monday, April 13—
7:30 p.m.—Sacred Design Plan-
ning Committee.
Wednesday, April 15—
1:30 p.m.—World Wide at Eve-
lyn Lippart's.
7:15 p.m.—ABC's.
7:15 p.m.—High School Choir.
8:15 p.m.—Chancel Choir.

**FIRST UNITED
METHODIST CHURCH**
Thursday, April 9—
8:00 p.m.—Youth Council at
home of Alvin Hosler.

Saturday, April 11—
8:30 p.m.—Christian Home
Group at home of James Gaunt.
Sunday, April 12—
9:00 a.m.—Church school.
10:00 a.m.—Church school.
10:00 a.m.—Worship service.
6:00 p.m.—Junior and Senior
MYF.

Monday, April 13—
8:00 p.m.—Council on Minis-
tries Meeting.
Wednesday, April 15—
9:00 a.m.—Marion Simons Cir-
cle at home of Mrs. A. Wilkinson.
1:00 p.m.—Vivian Otto Circle
and Marion Kline Circle as guests
in the Social Center.

**FIRST UNITED
PRESBYTERIAN CHURCH**
Unadilla
The Rev. T. H. Liang
Sunday, April 12—
9:45 a.m.—Sunday school.
11:00 a.m.—Worship service.
Every Tuesday—
8:00 p.m.—Choir practice.

METHODIST HOME CHAPEL
The Rev. R. L. Clemans, Chaplain
V. O. Johnson, Administrator
Sunday, April 12—
8:45 a.m.—Worship service.

**ST. JOHN'S EVANGELICAL
AND REFORMED CHURCH**
(United Church of Christ)
Rogers Corners
The Rev. David J. Kleis
Sunday, April 12—
10:00 a.m.—Sunday school.

OUR SAVIOR
LUTHERAN CHURCH
Rebekah Hall, 1194 M-52
The Rev. William H. Keller, Pastor
Sunday, April 12—
9:15 a.m.—Sunday school.
10:30 a.m.—Worship service.

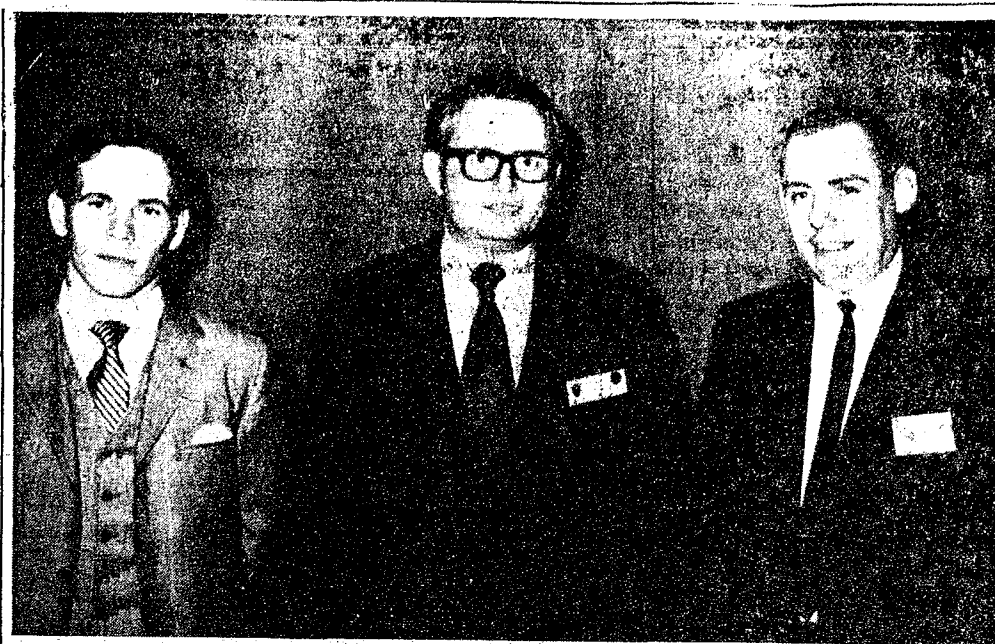
SALEM GROVE
UNITED METHODIST CHURCH
The Rev. Frederick Atkinson
Pastor
Sunday, April 12—
10:00 a.m.—Sunday school.
11:00 a.m.—Worship service.

**2 Detroit-Grand Rapids
Trains To Be Dropped**

Lansing—The State Public
Service Commission has author-
ized Chesapeake and Ohio Railroad
to discontinue two night passen-
ger trains between Detroit, Lan-
sing and Grand Rapids.

The Commission ruled that con-
tinued operation of the two trains
would constitute an undue finan-
cial hardship on C & O.
Chesapeake and Ohio told the
Commission that it has been los-
ing in excess of \$400 a day on the
two trains since the U. S. Post
Office discontinued using the trains
to transport mail last Dec. 31.

At no time during the last three
years, the Commission noted, did
the average number of passengers
on the two trains equal the four-
man crew that was required to
operate the trains.



JAYCEES at the Stockbridge charter banquet included from left, George Lee, Stockbridge charter president; Pat Nowak, State Jaycee president; and Walt Brown, Chelsea Jaycee president.

Stockbridge Jaycee Chapter Gains Charter

Stockbridge Jaycees officially became a member of the Michigan Jaycees Saturday, April 4 when they were presented with their National and JCI Charter.

The Charter Banquet was held at the Anchor Inn, Portage Lake, and was attended by 92 state and local Jaycees. Host chapter for the event was the Chelsea Jaycees who helped organize the new chapter last month.

The evening started off with a buffet dinner. After the intro-
duction of the head table and other
guests, master of ceremonies
by Walt Brown, Chelsea Jaycee
president, the National Charter
was presented to Stockbridge
charter president George Lee by
National Director Dick McClousky.
The JCI charter was presented
next by District 26 Vice-President,
Don Proctor, also of Chelsea.
Induction of the officers and
local charter members was
handled by internal executive Vice-
President Donn Wrench and ex-
ternal executive Vice-President
Larry Wine. Keynote speaker Pat
Nowak, Michigan Jaycee president,
challenged the new chapter to do
all that was possible in the com-
munity of Stockbridge and not
let things go undone that heed
the Jaycees attention.

The evening finished with
Brown speaking on the importance
of the wife in the Jaycee move-
ment. The Stockbridge Jaycees
have 32 members and are
still growing. Charter officers are
president, George Lee; internal
vice-president, Bill Smith; external
vice-president, Roger Myers;
treasurer, Tom Taylor; secretary,
Winifred Williams; directors, Tom
Reynolds, Hardy Williams, Dave
Sweet and Pat Heeneey.

Jaycees Attend District Meet

Chelsea Jaycees took part in
the District 29 meeting hosted by
Pinckney Jaycees, March 31. Jay-
cees from Dexter, Ann Arbor,
Hartman, Howell, Pinckney, Stock-
bridge and Chelsea met to elect
a new District vice-president.

Candidates for the office were
Dick Smith from Howell and
Doug Hartman from Dexter. Ann
Arbor's president placed Doug
Hartman's name in nomination
and Chelsea's president Walt
Brown gave the seconding speech.
The election was won by Dick
Smith in a very close 9-7 vote.

A District Speak-Up Contest
was held and was won by the
Ann Arbor Jaycees. Chelsea's
Tom Thalner was selected as one
of the Speak-Up Judges.
A roast beef dinner was served
for the attending Jaycees by the
Pinckney Jaycee Auxiliary. Mem-
bers attending from Chelsea were
Don Proctor, Walt Brown, Bob
Updegraff, Art Steinaway, Dan
Eder, Mike Eubanks, Allan John-
ston, Vassant Bhurud, John Nei-
haus, Ed Greenleaf, Tom Thalner
and Doug Robison.

Subscribe today to The Standard!



NATIONAL JAYCEE CHARTER was received by Stockbridge president, George Lee (left). The charter was presented to the group by Dick McClousky, national Jaycee director at the Stockbridge Jaycee Charter Banquet held Saturday, April 4.

Police Report Busy Week

Chelsea Police Department officials revealed that the first week in April has been a busy one for them.

Stephen Ersten, 19, arrested earlier on a charge of possessing marijuana was sentenced April 1 by Circuit Judge William Agar to five years probation, \$175 fine and costs, and eight days in the work program.

Pinis E. Bradshaw, 53, 72 Ann Arbor Rd., Dexter, was arrested by Officer McDougall and Deputy Detling while driving under the influence of liquor. He entered a plea of guilty and posted a \$100 bond pending his sentencing April 20.

It was revealed that two Detroit youths, 14 and 15, were arrested April 5 by Officer Ringe and were charged with possession of a stolen car. It was reported that they were "running away from home." They were released to their parents and the case was turned over to the Detroit Police Department.

Doris Carpenter, 51, was arrested April 4 and charged with drunk driving. He pleaded not guilty and a trial date before Judge Patrick Conlin was set. A passenger in his car, Noah Sizmore, 55, 303 Madison, Ann Arbor, pleaded guilty to charges of being drunk and disorderly. He was arraigned April 6 and fined \$35.

Jerry A. Kircher, 19, 2612 Miller Ave., Ann Arbor, was arrested for fleeing police and later cited for ignoring a bench warrant issued earlier for not serving a previous sentence. He was sentenced by Judge Conlin on April 6 to six months in jail.
Finally, Frigid Products, 113 N. Main, Chelsea, reported to police that an electric chain fall was removed April 3 from the exterior of their building. Replacement value was set at \$279. Chelsea police are investigating.

VILLAGE BEAUTY SALON

NOW OPEN MONDAYS
Wash and Set, \$3.50 - Hair Cut, \$2.50
LORETTA PANNONE, Owner - Operator
CINDY NIEHAUS - EULA MONTGOMERY
JANICE RUDD - SARAH TAYLOR
8:30 a.m. - 4:30 p.m. Tuesday - Friday, Saturday until 3 p.m.
Evenings by appointment. Phone 475-5421

Tastes good!

Milk's a taste
treat for the
entire family
to enjoy
daily.



Arrange delivery of our
top-quality milk and other dairy products.

WEINBERG DAIRY
QUALITY PASTEURIZED DAIRY PRODUCTS
20056 W. Old US-12 Phone GR 5-5771

GIRL SCOUT NEWS



BROWNIE TROOP 169—
Brownie Troop 169 met Monday, April 6 at the Congregational church. Seventeen members and one guest, Mary Haas, were present.

We collected dues and then had refreshments which were furnished by Robin Jones. We then went into the Brownie Ring and talked about the sixth Girl Scout Law.

We started our sit-upons. Games were played while the leaders helped each girl with her sit-upon. Our closing was the squeeze and "taps."

BROWNIE TROOP 45—
Brownie Troop 45 met Monday, March 30 and played a dance game called "Ach Ja."

We were introduced to Cathy Meyer's guest, Debbie Elliott. Cathy passed her treats and we talked about our foreign guest for next week.

We took attendance and dues.

Portage, Base Lakes Association Discusses Plans To Control Use

Thursday, April 2, trustees of the Portage and Base Lakes Association hosted a luncheon meeting at the Dexter American Legion Home. Township Supervisors Warren Eisenbeiser and Carl Mast, County Drain Commissioner John Elcock, County Mayor and Deputy Lt. Don Severance, Water Commission member George Taack and DNR representatives Norm Roeske and Don Boyer were present to answer questions.

The Association is to be re-activated with goals to limit the excessive use of the lakes by those not residing on the lakes, secure aggressive enforcement of township and county zoning and health ordinances, and exploring the feasibility of a sanitary sewer system for the Portage and Base Lakes basin as immediate undertakings.

The Cub Scouts invited us to listen to Mr. Boyer, a conservation officer, tell about different kinds of animals and the conservation laws.

We spent the last few minutes sewing on our "sit-upons."

We closed with "taps and the squeeze."

Sheryl Kiel, scribe.

THE STYLE SHOP

207 1/2 S. Main St.

OPEN

Tues. thru Sat.

CALL

475-8400

For Appointments

Judy Patrick - Pansy Kuhl

ENDS OF ROLLS CARPETING SALE

9' x 12' RED, rubber back.	Reg. \$78.00	Sale \$39.98
12' x 14 1/2" GOLD NYLON.	Reg. \$170.00	Sale \$113.60
12' x 17' GREEN GOLD.	Reg. \$247.30	Sale \$180.20
12' x 12 1/2" GOLD and BROWN NYLON, rubber back.	Reg. \$103.00	Sale \$68.98
8 1/2' x 9' GOLD NYLON.	Reg. \$47.84	Sale \$23.84
12' x 12' GOLD NYLON.	Reg. \$95.20	Sale \$63.00
12' x 18' BEIGE TWEED NYLON.	Reg. \$166.30	Sale \$118.80
12' x 15 1/2" LIGHT BEIGE NYLON.	Reg. \$121.50	Sale \$91.50
12' x 19 1/2" GREEN, rubber back.	Reg. \$206.70	Sale \$128.70
12' x 28 1/2" GOLD NYLON.	Reg. \$224.00	Sale \$169.50
9' x 12' GREEN, rubber back.	Reg. \$95.40	Sale \$59.40
12' x 15 1/2" RED INDUSTRIAL.	Reg. \$191.20	Sale \$127.20
15' x 15 1/2" FLOWERED AXMINSTER.	Reg. \$198.75	Sale \$98.75
15' x 17 1/2" FLOWERED AXMINSTER.	Reg. \$227.50	Sale \$105.00
15' x 16 1/2" GOLD, NYLON TWIST.	Reg. \$233.20	Sale \$115.50
12' x 14' LIGHT BEIGE SHAG.	Reg. \$199.00	Sale \$139.00
9' x 12' GREEN, NYLON pattern.	Reg. \$107.40	Sale \$61.40
8 1/2' x 12' INDIAN CORN, rubber back.	Reg. \$87.45	Sale \$65.45
8 1/2' x 12' GREEN, NYLON, rubber back.	Reg. \$90.00	Sale \$56.00
7 1/2' x 12' GREEN SCULPTURED NYLON.	Reg. \$85.00	Sale \$41.50
12' x 16 1/2" HEMP BEIGE NYLON.	Reg. \$178.90	Sale \$111.00
12' x 13 1/2" OLIVE-AQUA NYLON SHAG.	Reg. \$137.80	Sale \$95.50
7 1/2' x 12' AQUA SCULPTURED NYLON.	Reg. \$86.50	Sale \$34.00
12 ft. CARPETING, green.	Reg. \$5.95 sq. yd.	Sale \$4.50
12 ft. GREEN SCULPTURED.	Reg. \$8.95 sq. yd.	Sale \$5.95
12 ft. GREEN NYLON.	Reg. \$5.95 sq. yd.	Sale \$3.98
12 ft. GREEN and GOLD NYLON TWIST.	Reg. \$6.95 sq. yd.	Sale \$4.50
4 1/2' x 12' GOLD, rubber back.	Reg. \$47.70	Sale \$23.70

Many Other Sizes Too Numerous To Mention
At Close-Out Prices

CARPETING SAMPLES ON SALE

Several colors and sizes. All edges serged.

MERKEL
HOME FURNISHINGS

Open Friday Until 9 p.m. Phone Chelsea 475-8521

Special This Week Only!
SAVE 20% ON LABOR
CASH and CARRY
New covers made to order for your bolsters, mattresses, pads, cushions or pillows. Choose from over 300 rolls of fabric.
PHONE 662-4706
RENDEL'S UPHOLSTERING
732 Lakeview Ave., off Liberty at Killins Concrete, Ann Arbor

R DON'T EXPERIMENT WITH YOUR HEALTH
Experiments belong with the researchers in the laboratories, not in your family. Never try to decide for yourself or with the advice of a well meaning friend, how to treat an illness. Leave this to the experts—your physician and his professional aides.
We would never try to create a new medicine in our pharmacy. We rely on the reliable drug firms with their careful, extensive research. Only when a drug is approved for safe use will it get on our prescription shelves.
YOU OR YOUR DOCTOR CAN PHONE US when you need a delivery. We will deliver promptly without extra charge. A great many people rely on us for their health needs. We welcome requests for delivery service and charge accounts.
CHELSEA DRUG
24-HOUR PRESCRIPTION SERVICE
4 Registered Pharmacists
101 N. MAIN ST. PHONE GR 5-4611

SEAMLESS ALUMINUM GUTTERS

Also: Barn Eavestroughing

— ★ —
CALL

WILSON
METAL SHOP

Phone 428-8468 Manchester, Mich.



Mrs. Bondy Edward Dean

Linda Marilyn Marsh, Bondy Dean Wed in Michigan Center Church

United in marriage Saturday, March 14 in Michigan Center at the Christ Lutheran church were Miss Linda Marilyn Marsh and Bondy Edward Dean.

The former Miss Marsh is the daughter of Mr. and Mrs. Duane E. Marsh, 7575 Greenwood Rd., Jackson. The bridegroom is the son of Mr. and Mrs. Jay W. Dean also of Jackson.

The couple was married in an evening ceremony by the Rev. Jacob E. Knoedler of Michigan Center and the Rev. Robert L. Wisheart of Charlotte.

Given in marriage by her father, the bride wore a gown of chantilly lace with a basque bodice, bouffant skirt and a chapel train. Her matching headpiece of lace petals with crystals and pearls was secured with a triple veil of silk illusion.

Assisting the bride as maid of honor was Miss Susan K. Low.

Home Economics Study Groups Calendar

Week of April 8-April 15
Monday, April 13—Friendship, Mrs. Charles Kruger, 8890 Weber Rd., Saline.
Wednesday, April 15—North Lake, Mrs. Irwin Scherdt, 7435 Ann Arbor Rd., Dexter.

Personal Notes

Mrs. O. G. (Esther) May has moved from the Chelsea Medical Center to Cedar Knoll Convalescent home.

Pick Perfection



The center engagement diamond is guaranteed perfect by Keepsake (or replacement assured). Remember, in diamonds, perfection means more brilliance.

REGISTERED
Keepsake
DIAMOND RINGS

WINANS JEWELRY STORE

TIPS for your TOP from



TODDY and FRAN

Last week we granted ourselves a lowly pun and suggested you women would get ahead more effectively if you kept your mind on treating your head of hair as the first important part of your grooming problems. We'll carry it a step further and point out that not only is a weekly trip to your hairdresser the most effective way to keep that head saying good things about the woman whose shoulders it sets on—but she'll do well to have a spare head of hair on her shelves for those days after she's been caught in a spring downpour or some other minor catastrophe: a wig is no more a luxury to the working gal than her weekly trip to the beauty salon. We have some beauties that are so inexpensive, some women take two (or more)!

Magic Mirror Beauty Salon
Phone 665-0816
5585 Jackson Rd., Ann Arbor

Mother-Daughter Supper Planned By Altar Society

The regular monthly meeting of St. Mary's Altar Society was held Monday, April 6 at the school hall with 19 members present.

Mrs. Dennis Guinan of the Good Samaritan Committee reported on the Antique Sale held in Ann Arbor.

The Society's contact lady, Mrs. Wayne Harvey, was not present at the meeting; however, she forwarded her report to the members. It stated there is a need for used Christmas cards for the missions, stamps, eyeglasses, and dentures can also be used by various groups. The southeastern Michigan Red Cross Bloodmobile will be located in Ann Arbor Friday, April 10 at 2729 Packard Rd., between 1-7 p.m. Persons are asked to donate blood if at all possible.

Mrs. George Bretschneider announced that a bake sale will be held Saturday, April 11 at the K. of C. Hall. The annual rummage sale is planned for June 19 and 20.

Serving on the April Altar Committee are Mrs. John Thomson and Mrs. Howard Haselschwardt. Refreshment chairman for May is Mrs. Hal Pennington.

It was agreed that a pot-luck supper for mothers and daughters would be held at the May 4 meeting.

Miss Nina Greening reported on the NCGW Day Convention which she and Mrs. Walter Bolonowski attended at Cobo Hall.

The Rev. Fr. F. Wahowiak announced plans for rosary services each Wednesday evening during the month of May. First Holy Communion Sunday will be May 3 and Altar Society communion Sunday will be May 10.

The Rev. Fr. Wahowiak led the members in prayer at the close of the meeting. Refreshments were served by Mrs. Britton Graham and her committee. Following the meeting, Mrs. James Murphy presented slides of "Our Lady of Fatima."

Best man was Bruce Rudloff, assisted by Loren D. Marsh, brother of the bride; David Schultz, Alan B. Cain, and Ronald G. Reese, as ushers.

Flower girl was Melanie Schneider, cousin of the bride, from Chelsea; ring bearer was Jay Dean, Jr., brother of the bridegroom.

A reception was held for the couple at the Jackson County Sportsman Club.

Relatives, Friends Attend Anniversary Party for Former Chelsea Residents

Several relatives and friends from Chelsea traveled to Mecosta to attend the 50th Wedding Anniversary of former Chelsea residents, John and Fannie Adams on Sunday, April 5.

The Adamses had lived on Orchard St., during the World War II era. Mr. and Mrs. Mac Packard spent the week-end there at the home of one of the Adams' sons, Mr. and Mrs. Perry Adams. He had also lived here, with his parents for a few years, along with his brothers, Jerry, John C., and Edward.

Mr. and Mrs. Gale Gilson, Mr. and Mrs. Duane Boyer and children also attended.

The Adamses are active in the Veterans of Foreign Wars, with Mr. Adams a charter member of the local post, but then transferred to Mecosta, after the work ended on government materials at the shops here.

A pot-luck dinner was held at Mrs. Achash Resiguires home before the Open House for about 75 relatives who had come early. About 250 relatives and friends signed the guest book and the Adamses were presented with many gifts and plants.

Chelsea Students Gain Academic Honors at Ferris

Among the Ferris State College honorees for scholastic excellence are two graduates of Chelsea High school.

Mary M. Baize, daughter of Mr. and Mrs. Charles Baize, is a 1969 graduate of Chelsea High school, enrolled in a four-year business program at Ferris. She is a second quarter freshman, who has maintained a 3.85 average out of a possible 4.0.

Also named among the 1,297 Ferris students on the Winter Academic Honors list is Judy K. Sanderson, the daughter of Mr. and Mrs. Carl Sanderson. Judy is a third term freshman who has maintained a 3.23 average in her two-year business course. She is also a graduate of Chelsea High.

The announcement of those honored was made by Dr. Robert L. Huxol, vice-president for instruction.

To be named to the Academic Honors List, a student must maintain at least a B average while carrying a full academic load.

Other area students named to the list include Sheila M. Baty in General Education, and James H. Ehnis in business, both of Ann Arbor; Sandra J. Roller in General Education, of Manchester; Michael B. Master in Technical and Applied Arts, of Milan; and Neil O. Girbach in technical and applied arts, and David V. Haussler in technical and applied arts, all of Saline.

A special thank you goes to Mrs. Robert Paison for letting the girls work on cards at her home.

The next meeting we are having two speakers, Shelly Johnson on "The Drug Bug" and Anne Thompson on "America's Favorite Past-time—Sleep."

We are going to visit the Fire Department on April 13; Lane's Animal Hospital on April 20; and the Methodist Home on April 27. There will be a bike hike April 18.

We're busy making plans and deciding what gifts to make for our Moms for their visit May 6.

Julia Worden did some requirements for her Pet badge; Diana Pesther told about her pen pal in England; and we played some games.

The meeting closed with "taps" and a squeeze.

Sue Schuelke.

TROOP 58

Troop 58 met April 6, 1970 at the Congregational church. The "Arrows" patrol had the opening ceremony. We then had treats brought by Bonnie Boyer. We discussed the badge requirements 1, 2, and 3 for "My Troop." Lucy and her Gang then did a skit on Cinderella. Mod Squad had the closing and the Stars stayed for clean-up.

Julie Chapman, scribe.

Subscribe today to The Standard! To GR 5-3581.

New Shipment of
SANDALS
Sizes 5 thru 10
\$6.00 and \$7.00

New Cotton Permapress
PAJAMAS, GOWNS
and **ROBES**
from **\$3.50 to \$9.00**

SHOE SALE
\$2.00 Off on All Loafers

PATTY ANN SHOPPE



ENGAGED: Mr. and Mrs. Homer Evans of Ralston, Wash., have announced the engagement of their daughter, Patricia Ann, to James Vining Pearsall, son of Mr. and Mrs. Fred Pearsall of Chelsea. Miss Evans, a 1969 graduate of Riverview High school, is a student at Spokane Community College. Airman first class Pearsall is stationed with the United States Air Force Fighter Intercept Squadron at King Salmon, Alaska. He is a 1967 graduate of Chelsea High school. No date has yet been set for the wedding.



JUNIOR TROOP 82—

Our last meeting, held Wednesday April 1, was conducted by Nancy Hepburn and Sue Morrison and was attended by 29 members.

Anne Schabbe's Banana Splits Patrol opened the meeting with the "Pledge of Allegiance," the "Girl Scout Promise," and a song.

It was Nancy's birthday so she furnished punch and cookies for the troop.

Our leaders will be leaving the troop at the end of the year so we all asked our Moms if they would be a leader for next year. So far, no one wants to! Many have offered to help with outings for which we are grateful.

The troop has received many thank you notes from people who received an Easter Card made by the troop. They were delivered the week before Easter to University of Michigan Medical Center (360), Chelsea Methodist Home (210), Chelsea Medicenter (52), and Mott's Children's Hospital (26). They consisted of felt and yarn pictures, crossword puzzles, maze pictures, and pictures to color.

A special thank you goes to Mrs. Robert Paison for letting the girls work on cards at her home.

The next meeting we are having two speakers, Shelly Johnson on "The Drug Bug" and Anne Thompson on "America's Favorite Past-time—Sleep."

We are going to visit the Fire Department on April 13; Lane's Animal Hospital on April 20; and the Methodist Home on April 27. There will be a bike hike April 18.

We're busy making plans and deciding what gifts to make for our Moms for their visit May 6.

Julia Worden did some requirements for her Pet badge; Diana Pesther told about her pen pal in England; and we played some games.

The meeting closed with "taps" and a squeeze.

Sue Schuelke.

TROOP 58

Troop 58 met April 6, 1970 at the Congregational church. The "Arrows" patrol had the opening ceremony. We then had treats brought by Bonnie Boyer. We discussed the badge requirements 1, 2, and 3 for "My Troop." Lucy and her Gang then did a skit on Cinderella. Mod Squad had the closing and the Stars stayed for clean-up.

Julie Chapman, scribe.

Subscribe today to The Standard! To GR 5-3581.

Club and Social Activities

BETA SIGMA PHI

Xi Gamma Mu chapter of Beta Sigma Phi met at the home of Mrs. Fred Barkley on April 6.

The group welcomed a new member, Mrs. Leonard Reith and the election of officers for the 1970-71 year was held. New officers are: Mrs. Al Hayes, president; Mrs. David Longworth, vice-president; Mrs. Fred Barkley, secretary; Mrs. Ralph Trinkle, treasurer; and Mrs. Alfred Smith, extension officer.

Husbands' night will be April 18 at the home of Mr. and Mrs. Ralph Trinkle.

Three cultural programs were presented: Mrs. Fred Barkley covered "Chile" and "Argentina" and Mrs. Ron Kiel spoke on "Russia." The next meeting will be April 20 at the home of Mrs. Kiel, 6000 Stofer Rd.

LEGION AUXILIARY

The April meeting of the American Legion Auxiliary was held at the Legion Home, Cavanaugh Lake, Tuesday, April 7 with 17 members present.

Discussion was held on the Bakeless Bake Sale now in progress and also on the forthcoming Rummage Sale set for April 11 at Sylvan Town Hall.

President Ruth Christwell gave a report on the District meeting and on the Michigan State trooper who spoke on the use of drugs and their effects on humans.

The Auxiliary is sponsoring a party at the Ypsilanti State Hospital on Tuesday, April 14 and discussion was held on the refreshments and prizes to be furnished. Help is still needed to help put on the party for the patients.

There will be a Mother-Daughter Banquet May 5 at 6:30 p.m. at the Legion Home preceding the regular monthly meeting. It is to be pot-luck.

First Aid Classes

Slated for Housewives

A special daytime First Aid class for housewives and those who work nights has been set by the local Red Cross.

Scheduled to meet Thursday afternoons from 1 to 3, it will start April 9 and run for six weeks. All classes will be held at the Red Cross Operations Center on Packard Rd., Ann Arbor.

Bleeding, artificial respiration, poisoning, burns, as well as accident prevention in the home are among the topics included in the course of instruction.

Other than a 75-cent fee for the textbook there is no charge for the course.

Register by calling the Red Cross at 971-5300.



ENGAGED: Mr. and Mrs. Henry Fletcher of Davison, formerly of Chelsea, announce the engagement of their daughter, Vicki Fletcher, to Randy Rayl of Caro. Miss Fletcher is the granddaughter of Mr. and Mrs. Hershel O'Dell, 125 E. Summit. Randy is the son of Mr. Kenneth Rayl of Traverse City and Mrs. Vinnie Rayl of Caro. Vicki is a senior at Lakeville High school in Davison; her fiancé attended school in Lapeer and is presently employed in Caro. A July 25 wedding date has been set.

Waterloo Historical Museum Plans Exhibit Of Antique Toys

Waterloo Area Historical Society is inviting the public to view an exhibit of early toys and dolls, Wednesday, April 15 at 8 p.m. These treasures, loaned by friends of the Farm Museum, will be displayed in the Christian Education building of the Presbyterian church in Stockbridge. Anyone who has an old toy or doll is urged to bring it.

Of special interest will be a collection of doll dishes and miniature salesmen's sample dishes. This collection is owned by Mrs. Jack Myers of Stockbridge.

Each winter, while the Farm Museum is closed, its active members have concentrated their efforts on a series of public meetings dealing with various aspects of early life in Michigan. Exhibits of early firearms, 19th century glass and china, wooden and metal wares, and a program on early schools in Michigan have drawn capacity crowds.

In its Farm Museum in the summer time and through these meetings in winter, the society strives to preserve a part of the early history of the area.

The man who knows it all is as dangerous to society as the man who knows nothing.

PAT'S CORNER

By PAT DITTMAR
Home Economist
Chelsea Milling Co.



Perk up your regular breakfast using a trick with our mix. Use "JIFFY" Pancake and Waffle mix, add a few extras, and serve a fancy breakfast with no fuss.

Pecan Waffles: Prepare mix as directed on package except stir in ½ cup chopped pecans into batter.

Coconut Waffles: Prepare mix as directed on package except stir in ¾ cup shredded coconut into batter.

Banana Pancakes: Prepare mix as directed on package except stir 1 medium mashed banana into batter.

Pineapple Pancakes: Prepare mix as directed on package except stir ½ cup drained crushed pineapple into batter.

Serve your waffles or pancakes with this tasty

HONEY BUTTER SAUCE

(makes 1½ cups)

½ cup evaporated milk

½ cup honey

½ cup margarine or butter

1. Place ingredients into sauce pan, cook over low heat.

2. Stir occasionally until butter is melted and sauce is smooth.

3. Serve hot or cold.

Manchester Church Plans Card Party

Emanuel United Church of Christ of Manchester has announced that its Youth Fellowship plans a card party Saturday, April 18 in the Church Hall between 8 and 12 p.m.

Further information on the party may be obtained by contacting either Mr. Gibson or Rev. Kuether for details at 428-5671.

Now that the swimming season is near, it might be a good idea for parents to warn their youngsters about dangers that lurk in the water.

One reason most people are half-informed is that they don't know when to listen or whom or what to listen to.

NAT'L GUARD ARMORY 50 EXHIBITORS ANTIQUE SHOW

S. WASHINGTON
LANSING

APRIL 17-19

1 p.m. - 10 p.m.

CHARM BEAUTY SALON

4396 CLEAR LAKE ROAD
(Formerly of Grass Lake)

Two Operators - Hair Styling and Wig Service
Open on Mondays. Closed Tuesdays.

PHONE 475-2700

SALE

Float into slumber!

Superior Sleep Sets
KOYLON
LATEX FOAM MATTRESS
with matching foundation



- Fabulous Koylon Foam cradles every contour of the body
- Unbelievably restful, relaxing all over!
- Marvelous, once-in-a-lifetime value!
- Elegant, quilted satin damask cover

Famous Platinum Set

Twin and Double Size

Reg. \$179.95

SALE

\$139.95

Queen Size

Reg. 259.00

SALE

\$199.00

UNIROYAL

MERKEL FURNITURE & CARPETS

Open Friday Until 9 p.m.

Phone Chelsea 475-8621

Band Concert, Open House Scheduled At St. Louis School

The eighth annual band concert and open house of St. Louis school will be held Sunday, April 12 beginning at 2 p.m.

Included in the program is a skit from the play "Snow White." Tickets are available for a small donation.

Three door prizes, including two paintings by Fr. Germano and a \$50 cash prize, will be offered.

An exhibit of Fr. Germano's work will be available for public perusal during the concert. All paintings will be for sale to interested art patrons.

Everyone is welcome to attend the event.

Open House Slated At Chiropractic Center

An open house at the Chelsea Chiropractic Center will be held Sunday, April 12 from 2 p.m. to 6 p.m.

The center located at 138 Orchard, Chelsea, is manned by Dr. Gerald L. Flinn, who has been in the new center since January.

Dr. Flinn will be on hand to answer questions about chiropractic and to show interested residents around the new office. Refreshments will be served and the public is invited.

And then there is the man who misses his wife's cooking—whenver he gets the opportunity.



SPECIALIST 4 OWEN D. CAVENDER of the 25th Infantry Division relaxes in Vietnam where he is stationed with the army. His wife, Nina, recently spent a Rest and Recuperation leave with him in Hawaii. Cavender is due back in the States in June of this year.

Mrs. Owen Cavender Visits Husband on Leave from Vietnam

"It was really nice," and Nina Cavender smiled as she described her recent visit to the land of palm trees and her husband, Specialist 4 Owen D. Cavender, who is in Vietnam with the 25th Infantry division.

Nina flew to Hawaii to meet her husband during his R and R from March 8 through March 12. Spec. 4 Cavender has been in the Army since January of 1969 and is expected to return from Vietnam to the States in June. He is presently a cannoneer for the 18th Artillery. Spec. 4 Cavender's tour of duty with the Army ends in January of 1971.

Dr. Robert Balmer Awarded Two Education Grants

A former Chelsea resident, Dr. Robert T. Balmer, the son of Mr. and Mrs. Ted Balmer, 115 Summit St., has been awarded two grants to help further his education.

Aid in his studies has been given to Dr. Balmer from the Smithsonian Institution in Washington, D. C., and from the National Science Foundation Engineering Research Initiation Proposal.

Dr. Balmer, who is an assistant professor at the College of Engineering of the University of Wisconsin at Milwaukee, will spend from June 15 to July 24 at the National Museum of History and Technology studying and doing research under his grant from the Smithsonian Institution. He will study under the second grant for 18 months beginning this month.

Dr. Balmer is a 1957 graduate of Chelsea High school and holds three degrees from the University of Michigan. He earned his doctorate from the University of Virginia in June of 1968. He is a member of the honorary societies Pi Tau Sigma, Sigma Xi and was the recipient of the 1966 SAE Young Educator Award. He belongs to the professional organizations S.A.E. and A.S.M.E., having been faculty advisor of the latter in 1965-66 at the University of Virginia.

Dr. Balmer has had four papers published, one in London, England, one in Italy and two in the United States.

Dr. Balmer is presently living in Germantown, Wis.

Education is mainly the process of learning what one doesn't know, of getting the desire for knowledge.

DEATHS

O. G. (Bert) May Dies at Convalescent Center After Lengthy Illness

O. G. (Bert) May, 621 W. Middle St. in the Westland Convalescent Center, Sunday, April 5, where he had been a patient since Jan. 6.

Mr. May, 84, was born Dec. 1, 1885 in Mercer county, O., the son of Byron and Mary Mahoney May. He married Esther Hart June 23, 1920. She survives.

For 38 years Mr. May was employed by the Lewis Frisinger Co. He had been a resident of the Chelsea area since 1935. He was a member of the Fraternal Order of Eagles.

In addition to his widow, he is survived by one son, L. N. (Bert) of Manchester; three daughters, Mrs. David (Ruby) Strieter, Mrs. Richard (Mary) Hoelzer, and Mrs. George (Jeanette) Winans, all of Chelsea; three brothers and two sisters, C. J. May, Chelsea, William of New Smyrna Beach, Fla., James of Shelbyville, Mrs. Kenneth Tingley of Los Angeles, Calif., Mrs. Burle S. Barnes of Elyria, O.; 10 grandchildren also survive. Three brothers preceded him in death.

Funeral services were held Tuesday, April 7 at 3:30 p.m. at the Staffan Funeral Home with the Rev. Warner H. Siebert presiding. Burial was in Vermont Cemetery.

Mrs. Marion Osinski Dies Saturday at Hospital Following Brief Illness

Charlotte Osinski, 1500 Clear Lake Rd., died Saturday, April 4 at St. Joseph Mercy Hospital, where she had been a patient since March 29.

Mrs. Osinski, 44, was born in Ironwood, Nov. 7, 1925, the daughter of John A. and Ella Peterson McMillan.

She graduated from Ironwood High school in 1943 and married Marion Osinski Sept. 21, 1946 in St. Thomas church, Ann Arbor. She is survived by her mother, Mrs. Ella McMillan; her husband; two sons, John T. and William J. at home; four daughters, Mrs. Thomas (Sandra) Houtman of Chelsea, Kimber, Susanne Marie, and Wendy K., all at home; one sister, Mrs. John (Noel) Laraway of Chelsea.

Funeral services were held Tuesday, April 7 at 1:30 p.m. at the Staffan Funeral Home with the Rev. Fr. Francis Wahowiak officiating. Burial followed in Mt. Olivet Cemetery.

Mrs. Charles Ritter, Jr. Dies Suddenly April 1 At Dearborn Medical Center

Mary C. Ritter, 509 Maywood, died suddenly Wednesday, April 1 at the Dearborn Medical Center Clinic in Dearborn.

Mrs. Ritter, 46, was born Dec. 8, 1923 in Chelsea, the daughter of William B. and Margaret Noll Birch, Sr.

She graduated from Chelsea High school in 1942 and was married to Charles S. Ritter, Jr., on Nov. 17, 1945 at St. Mary's Catholic church in Chelsea.

She was a member of St. Mary Catholic church and a member of its Altar Society; a member of the VFW Ladies Auxiliary; and the Ann Arbor Women's Bowling Association.

She is survived by her mother, Mrs. William B. Birch, Sr.; her husband, two daughters, Mrs. Thomas (Margaret) Beller, Ypsilanti, and Miss Cecilia Ritter of Chelsea; one granddaughter, Julie Marie Beller; three brothers, James of Ann Arbor, William B. Jr. of Flint, and Louis V. of Detroit; two sisters, Mrs. Frank (Bernidene) Visel of Chelsea, and Mrs. Cecilia Neale of Dearborn.

Funeral services were held Monday, April 6 at 10 a.m. at St. Mary Catholic church with the Rev. Fr. Francis Wahowiak officiating. Burial followed in Mt. Olivet Cemetery.

A rosary was recited Sunday, April 5 at 8 p.m. at the Staffan Funeral Home.

Mrs. Harold F. Bable Dies Saturday at Hospital After Extended Illness

Mrs. June Bable, 53, of 13495 Old US-12, died Saturday, April 4 at St. Joseph Mercy Hospital, Ann Arbor, after an illness of several months.

Mrs. Bable had operated a variety and antique shop at 935 S. Main St. in Chelsea for six years. Her husband, Harold F. Bable, is superintendent of Chelsea Electric & Water Department. They have lived in Chelsea since 1960, coming here from Jackson.

Mrs. Bable was born Feb. 21, 1917 in Jackson, the daughter of Paul and Agnes Bowman Miller. She and Mr. Bable were married Aug. 20, 1938. He survives, as well as her father, Paul A. Miller of Michigan Center, three sons, J. Bable and David Bable, both of Chelsea, a daughter, Mrs. Roger (Holly) Munchach of Jackson, and nine grandchildren. A stepdaughter, Mrs. Donald (Judy) Bennett of Jackson, also survives. Funeral services were held at 1 p.m. Tuesday, April 7 at the Burghardt Funeral Home with the Rev. Frank Frinkle officiating. Cremation followed.

Paul F. Steeb Chelsea Woman's Father Dies Following Long Illness

Paul F. Steeb, 60, of 756 Patricia Ave., Ann Arbor, died Friday morning, April 3, at St. Joseph Mercy Hospital after a long illness.

He was born Feb. 10, 1910, in Dexter, the son of Frank and Caroline Widmayer Steeb. March 17, 1949, he married Nellie Mason of Dexter. He was a graduate of Dexter High school in 1927, attended the University of Michigan, and served in the U. S. Navy during World War II.

Mr. Steeb was a member of Bethlehem United Church of Christ and a member of the Ann Arbor Elks Lodge No. 325. He has been an attendant at the Maynard St. parking lot.

Survivors, in addition to his widow, are one son, Richard Paul Steeb of Ann Arbor; two daughters, Mrs. Donald F. Pierce of Chelsea and Mrs. Harold W. Stoddard of Toledo; seven grandchildren; five brothers, William G., Roland A., and Lloyd M., all of Ann Arbor, and LeRoy A. of Dexter; Aiton E. of Tucson, Ariz.; one sister, Mrs. Willard (Dorothy) Mann of Manchester; several nieces and nephews.

Funeral services were held at 2:30 p.m. Sunday at Bethlehem church with Dr. Theodore Frost officiating. Burial followed in Bethlehem Cemetery. The family requests that memorial contributions be made to the Bethlehem Church Building Fund. Arrangements were by Muehlig Chapel.

Douglas Schneider Has Two Booklets Published in India

Douglas Schneider, son of Mrs. Lewis Schneider and the late Mr. Schneider, has recently published two booklets in India.

Schneider, who is an agricultural missionary for the United Church Board of World Ministries, is in India with his family at Bhawanipatna, Orissa.

His two publications are "A Short Introduction to the New Testament," and "Dairy Goat Management." Both publications will be used by community developers who are under the management of Schneider, who is director of the Orissa Community Development Program.

Schneider is a member of Chelsea's St. Paul United Church of Christ.

The introduction to the new testament is dedicated by Schneider to the memory of his father, Lewis Schneider.

Dedications in the Dairy Goat management book are to his mother, Mrs. Schneider and to his mother-in-law, Mrs. Milton Daenzler. He also makes mention in the introduction to the book of the assistance he received from, among others, the Rev. Warner Siebert and members of the St. Paul United Church of Christ of Chelsea whose generous gift made the printing of the latter booklet possible.

Adoption Agency Prepares For Annual 'Spaulding Day'

Five Chelsea women spent the better part of the past week-end in doing their part for parentless children.

This civic-minded group, with warm hearts and a special interest in children, prepared 1,400 sets of information materials telling area residents of the work of one of this community's special projects—Spaulding for Children. A special salute goes to these five involved women: Mrs. Fremont Boyer, Mrs. Mercedes Delatore, Mrs. Walter Gochanour, Mrs. Roy Guenther, and Mrs. Norman Wolff.

Spaulding for Children is a Chelsea-based adoption agency which specializes in cases of older, handicapped, and minority children. It operates throughout Michigan from its central office, the Spaulding farmhouse at 3660 Waltrous Rd., about four miles south of Chelsea.

As the Agency's role as a specialist agency serving only hard-to-place children grows, children and families in more than 23 Michigan counties are being served by the group. Artificial barriers of county lines or regional districts are no deterrents to an adoptive placement for a waiting child. A family in Kent county may well adopt a son or daughter from Kalamazoo county.

The third annual Spaulding Day, set for April 26, closely follows the March 1 birthday of the agency's founder, Warren Spaulding, whose life-long interest in children resulted in the gift of his home and property to the organization.

It is the growing demand for service that calls for more and more resources, Robert Daniels and

Mrs. Daniel Kolin, board members from Chelsea said, "We have half the money we need for another trained caseworker. It's the other half we need now to put her to work placing more children with new families."

Daniels, co-ordinator of the agency's unique Child-a-Month Club sponsorship plan said, "Child-a-Month is bringing us help from all over the state, but Chelsea is our home and it is to Chelsea people that we are turning

again for support." Memberships begin at \$5 annually and range upwards to life memberships of \$1,000. The Child-a-Month Club offers donors of \$10 per month a monthly illustrated bulletin to "introduce" them to the child they jointly helped find a permanent family.

WORKING WINDMILL
A 200-year-old working windmill, De Zwaan, dominates the lowlands and tulip fields around Holland. De Zwaan was brought over from the Netherlands and reconstructed and it is open to visitors, according to the Michigan Tourist Council.

APPLY 16-0-24 To Corn Stalks \$55¹⁰ per ton Applied

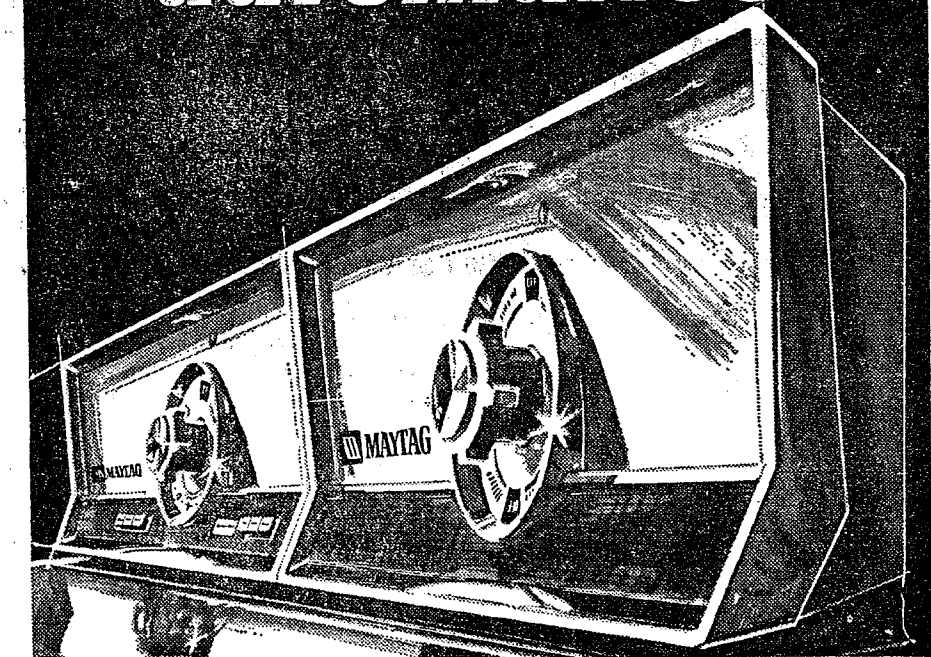
Suspension Liquid Fertilizer BLAESS ELEVATOR CO.

DIVISION OF LAROWE FEED CO. PHONE GR 9-6511 CHELSEA



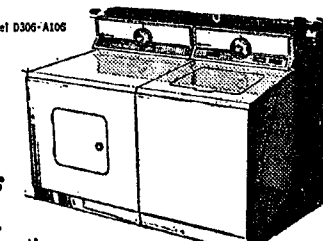
Now - for the young family with a lot of living to do...

New MAYTAG young-family automatics



Dependable new washers and dryers with a lot of life in them...designed and priced for today's young families.

Beautiful new family-size Maytag Washers



Trim New Maytag Halo-of-Heat Dryers

Big-family-size tub for many loads! Automatic metered fill system that ends water pressure problems! Automatic softener dispenser! Maytag's exclusive lint-filter agitator! Special delicate fabric setting! Hot or warm-water wash—water level control! Maytag's rugged "battleship" construction! Choice of colors! Plus the great new 625 warranty*—strongest in Maytag history—applies to all New-Generation Maytag Washers (in case you need it.)

\$238⁵⁰

Priced from

3 inches slimmer than previous models! Yet they'll take on any load a New-Generation Maytag Washer can handle. Maytag's famous circle of heat drying! Forcelain enameled drum and dryer top! A fine mesh Dacron lint filter that traps more lint! A fresh air system that changes and filters the air in the drying chamber every 2 seconds! A special damp-dry setting! Safety door with magnetic latch! And the most priceless feature of all—solid Maytag dependability!

\$169⁹⁵

Looking for value? Come and get it!

*5 years on transmission assembly. 2 years on complete washer. 5 years on cabinet against rust. Free repair or exchange of defective parts or cabinet if it rusts. Free installation of parts is the responsibility of selling franchised Maytag dealer within first year; thereafter installation is extra.

FROM THE NEW GENERATION OF DEPENDABLE MAYTAGS

OPEN FRIDAY UNTIL 9 P.M. CLOSE SATURDAY AT 4 P.M.

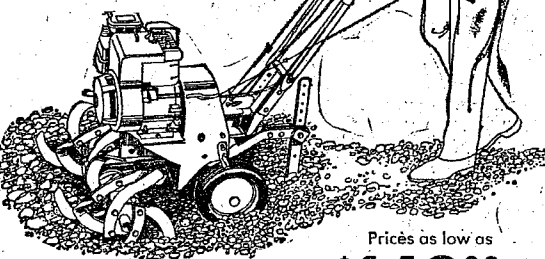
FRIGID PRODUCTS

LLOYD R. HEYDLAUFF

113 N. MAIN STREET

PHONE GR 9-6651

Simplicity Roticul® Tiller: simply the easiest way to condition and cultivate your soil.



Prices as low as **\$149⁰⁰**

- Fingertip controls
- Swing-out handle for close-up work (5 hp.)
- Self-sharpening tines won't throw objects
- Widths from 8 1/2" to 32"
- Powerful Briggs and Stratton engine
- Easy-Spin rewind starting
- 3 and 5-hp. models

Chelsea Hardware

110 S. Main St.

Phone GR 9-6311

A & W ROOT BEER DRIVE-IN NOW OPEN 7 Days Every Week

11 a.m. to 9 p.m.

Phone Ahead for Quick Service—479-4931



CHELSEA A & W ROOT BEER DRIVE-IN

1555 CHELSEA - MANCHESTER RD.

PHONE 479-4931



YES

WE ARE MAKING LONG-TERM FARM REAL ESTATE LOANS

SEE US



Ann Arbor, Mich. 48103 P. O. Box 1006