

# WEATHER

	Min.	Max.	Precip.
Wednesday, Feb. 25	20	35	0.02
Thursday, Feb. 26	26	32	Trace
Friday, Feb. 27	20	34	0.00
Saturday, Feb. 28	25	30	0.00
Sunday, March 1	20	40	Trace
Monday, March 2	22	35	0.01
Tuesday, March 3	32	40	0.01

ONE HUNDREDTH YEAR—No. 37

14 Pages This Week

CHELSEA, MICHIGAN, THURSDAY, MARCH 5, 1970

15c per copy

SUBSCRIPTION: \$4.00 PER YEAR

# The Chelsea Standard

## QUOTE

"With the fearful strain that is on me night and day, if I did not laugh I should die."  
—Abraham Lincoln.

## Bulldogs Win First Tourney Game Tuesday

Chelsea picked up its first tournament victory Tuesday night, March 3, trouncing South Lyon, 87-62.

The Bulldogs used a fast break and hot shooting from both the foul line and floor to defeat the Lions. Chelsea zoomed ahead of South Lyon getting the first five points and having a 9-1 lead midway through the first period.

After one of Chelsea's better first periods, outscoring the Lions by 10, the Bulldogs completed the half by scoring 25 compared to 20 by South Lyon in the second period. Howie Treado tallied 10 points and grabbed six rebounds in the first half while Jim Wojciecki tallied 11 before intermission and Ron Sweeney hit for 8.

Chelsea again outscored the Lions in the third quarter as they stomped out any chances of a South Lyon comeback. Treado tallied 9 and Wojciecki 8 in the period.

Six players scored in the final stanza as the Bulldogs topped the 20 mark for the third time in the contest.

Chelsea used a full court press through most of the game to subdue the Lions' offense. Wayne Welton did a fine job on defense picking up four steals, while handling out five assists on offense. Wojciecki was high scorer, getting 23 points and Treado tallied 23 points and grabbed nine rebounds. Dave Conklin also did a fine job on offense hitting for 11 points while grabbing seven rebounds.

Chelsea plays its next game to night at 7:30 p.m. against Brighton. The game will be held at the CHS gym.

	FG	FT	Re	P	TP
Welton	4-5	0-0	5	2	8
Treado	9-16	5-7	9	4	23
Herrules	0-1	0-0	0	1	0
Sweeney	4-6	0-0	6	4	8
Wojciecki	11-23	6-6	2	3	27
Dave	1-2	2-6	0	3	5
Harley	0-3	0-0	2	0	0
Hugues	0-2	3-4	6	4	3
Conklin	4-6	9-9	7	3	11
Bennett	0-3	0-0	0	0	0
Ward	0-13	0-1	1	2	0
Cameron	0-0	0-0	0	0	0
Howard	0-1	2-2	1	0	2
Schmidt	0-1	0-2	1	1	0

	FG	FT	Re	P	TP
Chelsea	15-25	24-23	87		
South Lyon	5-20	19-18	62		

## CHS Key Club Boys Guests of Kiwanians

Nine Chelsea High school Key Club boys were guests at the regular meeting of Kiwanis Club of Chelsea.

The nine boys, representing the "silent majority" of the high school youth, were guests at dinner and reported as one of their projects a sign posting project to help strangers in locating Chelsea High school.

This is only one of many constructive projects planned and carried out by Key Club boys all over the country.

A very appropriate program was presented by Police Chief George Meranuck. He reported on the various types of crimes over the last three years in this area.

Monday, March 23 has been designated as Birthday Celebration date for Kiwanis of Chelsea's.

(Continued on page three)

## First Grass Fires Signal Approach Of Spring Season

Spring is just around the corner, and one of the least desirable signs of its arrival is the grass fire, which during this dry season can cause so much damage.

Chelsea fire trucks were called out twice during the last few days of February to two grass fires in the area.

The first of the two caused no damage as firemen extinguished a fire on Lima Center Rd. The second on Trist Rd., caused some damage to evergreens in the area.

Fire Chief James Gaken warns of this dry season to come, and suggests that people use extreme caution when burning rubbish or otherwise dealing with fire.

## High Speed Chase Ends With Arrest

Chelsea police were involved in a chase which required the assistance of Washtenaw county sheriff's deputies and took Police Chief George Meranuck and Officer Louis Schneider careening around curves in their police car at speeds of 95 mph.

The subject of the chase was 19-year-old Jerry Kircher of Ann Arbor, who fled from the officers at 8:30 p.m., Wednesday, Feb. 25.

Officers had a bench warrant from Judge Patrick Conlin for the arrest of Kircher, who had failed to complete half of a previous sentence for driving on revoked license. Kircher had been sentenced for six days of work in lieu of being sent to jail for the violation, but had completed only three of those days.

Officer Schneider and Chief Meranuck received the warrant from Judge Conlin on that Thursday, and were waiting for Kircher in the parking lot of a local corporation, where Kircher was employed.

Kircher spotted the officers waiting for him and fled. The officers followed Kircher out Weikert Rd. and North Territorial Rd., having to call for the assistance of the Washtenaw County Sheriff's Department when it appeared that Kircher would escape. At that point the local police were chasing Kircher at approximately 95 mph.

Kircher lost a sheriff's deputy who pursued him, although the deputy was following him around the curves on North Territorial Rd. at speeds of up to 105 mph.

Another sheriff's deputy, however, was waiting for Kircher at his Ann Arbor address, when he arrived there following the chase.

The officer apprehended Kircher, who pled guilty to fleeing from a police officer. Kircher has been scheduled to appear in court Monday, March 23 in Chelsea, in front of Judge Patrick Conlin. He is presently out on \$500 bail.

Kircher's court date has been scheduled late in March due to the absence of Judge Conlin.

## Home from Vietnam

James Meranuck, son of Police Chief and Mrs. George Meranuck, 13333 McKinley, returned home from Vietnam early Tuesday morning, March 3. Meranuck, who received his degree in marketing from Eastern Michigan University before entering the service, has completed his service obligation.

## 10-Cent Theft Brings Youth Stiff Fine

Police arrested three youths involved in a theft from the Stop & Shop supermarket Monday, March 2.

Two of the youths, aged 17 and 18, were charged with simple larceny and fined \$53 each at the district court in Ypsilanti. The youths were taken to Ypsilanti in the absence of District Court Judge Patrick Conlin.

The two youths had stolen a 10-cent item and a 57-cent item from the supermarket.

The third youth will be taken to juvenile court in Jackson.

All three youths were from Grass Lake.

In other police action, two youths were charged with "minors in possession," and "consuming on a public highway," on Friday, Feb. 27. The two, Roger Kushmain, 18, 485 Cavanaugh Lake Rd., and Jeffrey Reynolds, 19, of 506 Arthur, were scheduled to appear before Judge Conlin on March 23.

## CHS Qualifies 4 Wrestlers for State Tourney

Four Chelsea wrestlers will start in the State Finals competition to be held at Okemos High school tomorrow, March 6.

Representing Chelsea will be Karsten Kargel who won the Regional championship at 135, Dennis Brown who finished second in the heavyweight class, and Mark Montagne and Jim Wencel who collected fourth places at 98 and 107, respectively.

Karsten Kargel won his championship by scoring a pin win in his first match, a 3-1 decision win in semi-finals and then a pin win in the finals over Lansing O'Rafferty.

Dennis Brown after scoring a pin win and a 7-1 decision win, lost to Ernst of Saline, 2-1 in the finals.

Mark Montagne lost a tough first match to Starzee of Dexter, 2-1, who was seeded third. Mark then came back and defeated the number two seeded wrestler, 7-1, but then lost his consolation match to finish fourth.

Jim Wencel won his first match on a 3-1 decision, but then lost to the second seeded wrestler from Northville. He then lost in consolation finals and finished fourth.

The regional tournaments were held Saturday, Feb. 28 at Chelsea high.

## Varsity Cagers Lose to Dexter In Final Game

Chelsea Varsity basketball team ended regular season play with a heart-breaking 66-68 loss to Dexter last Friday night, Feb. 27.

The Bulldogs again suffered from a slow start as they were outscored in the first two quarters.

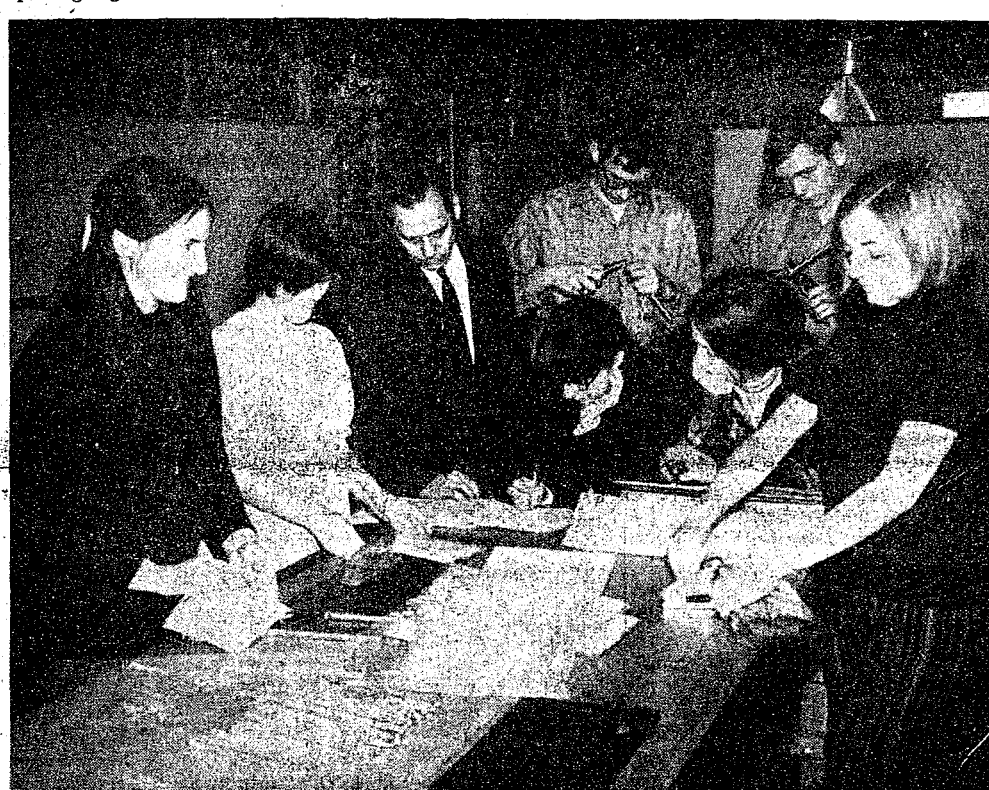
The Chelsea cagers trailed through most of the first half despite five consecutive points at the start of the contest.

The Bulldogs started to look like their old selves again as they came out in the third quarter and outscored the Dreadnaughts.

(Continued on page six)



SPRINGS AND CHAINS are going into the production of Chelsea Junior Achievers' latest project. Calling themselves JACUDACO, the group, sponsored by the Chelsea Proving Grounds, is putting together a trunk lid tie-down device which will be distributed to area merchants for sale.



JUNIOR ACHIEVERS working on their latest product, a trunk lid tie-down device, which will enable a motorist to safely transport bulky items in his trunk, are from the left Mary Slane; Joan Platt; Norman Jacob, advisor; Nola Wackenhut, treasurer; Vicki Clemons, vice-president in charge of sales; and Patty Ball, secretary. Standing in the center are Melvin Buss, vice-president in charge of manufacturing; and Norbert Weber, safety director.

## Junior Achievement Firm Starting Big Sales Promotion

Ever tried moving a large object via your car trunk and worried the entire time about the trunk lid popping open due to the bulky load?

JACUDACO, a junior achievement corporation, has come up with a chain and spring device for holding automobile trunk lids down when a large item precludes locking the lid down.

This is just one of several projects being worked on by the JACUDACO group, which is operated by 16 Chelsea High school students under the sponsorship of the Chrysler Corp. The CUDA in JACUDACO is the name of one of the specialty cars from Chrysler.

Two engineers from the Chrysler Proving Grounds are serving as advisors for the company but all decisions are made by the teenage members, usually by vote following parliamentary procedures.

"These young citizens through JA participation receive a large dose of business, manufacturing and selling insight as they go through the steps of incorporating under Michigan Laws, setting up books and records, selling stock certificates to area residents, then maintaining production and sales levels to keep ahead of rent, salaries and other fixed fees and costs," described Bill Tite, one of the club's advisors.

He continued, "The members pay themselves 35 cents per hour to make the sale articles and collect 10 percent sales commission for the articles they sell. At the end of the school year, the company books must be audited and a report filed for tax purposes. The corporation is then dissolved and the stockholders are paid off, hopefully including a dividend."

President of JACUDACO is Ernie Hinderer with Vickie Clemons vice-president in charge of sales. Pat Ball is the secretary, Nola

## No Contest in Village Voting Next Monday

### Independent Party Presents Full Slate Headed By A. E. 'Mac' Fulks

Chelsea area residents will go to the polls Monday, March 9 for the village election to cast their votes for the offices of village president, treasurer, assessor, three trustees, and two library board members.

Candidates were nominated by the Independent party at the village caucus held Feb. 9.

Nominated for the village presidency is A. E. "Mac" Fulks, 48, who was born in Letham, Mo. Mac graduated from East St. Louis High school and attended the University of Michigan. He served eight years in the U. S. Air Force as a pilot both during World War II and in the Korean conflict.

Fulks attained the rank of captain and received both the Air Medal and the Distinguished Flying Cross. He is married to the former Janet Dancer and they have one daughter, Kathy, a student at Eastern Michigan University.

Fulks is employed as a foreman in the Building Service Plant Department, of the U.M. He is a member of the Methodist church and has been a member of the board of the church. He is a member of the Masonic Lodge, and of Eastern Star. He is presently a trustee on the village council and has served in that job for the past three years.

Wallace C. Wood, 53, is the choice of the Independent party for village treasurer. He was born in Wayne county, graduated from Chelsea High school and attended Ypsilanti Normal. He is married and the father of two grown children; he has two grandchildren. He is a member of the Kiwanis Club and is past president of that organization. He is also a past president of the Chelsea Community Fair Board.

Wood is employed as the local agent of State Farm Insurance Companies and he is also the Branch Manager of the Michigan Secretary of State's office in Chelsea. He is a Charter Life Underwriter.

Other community organizations that he has served include the Community Chest, the March of Dimes, and the Boy Scouts of America. He has been the village treasurer for the past 11 years. He has been active in the Democratic party in the county for the past 18 years.

Village assessor, nominated by the Independent party, is Thomas G. Smith, born in Dansville, and graduated from Hartford High school in Hartford. Smith took courses from LaSalle Extension University in Business Administration. He is married and the father of two grown children. He has been self employed as a builder for many years. He has been active in the Masons, a past master; and Eastern Star past patron. He has also been active in the Exchange Club and in the Kiwanis Club and is a past

## Bands Entered In District Festival Competition

Both Chelsea High school's Concert Band and the Symphony Band will participate in the district competitions Saturday, March 7. The district competition is preliminary to the State Festival.

The concert band will travel to Melvindale, site of the District Concert Band Festival; and the symphonic band will go to Milan for the District Symphonic Band Festival.



GETTING TO CHELSEA HIGH SCHOOL should be much easier, thanks to the efforts of the CHS Key Club, under the direction of Ken Larson. The club has purchased five signs to direct traffic to the school. The signs were presented to the village council at a recent meeting. The signs will be placed along a route to the high school which includes M-52. Permission must be granted from the state to place the signs, and then posts must be acquired to secure the signs. Shown here with one of the signs are from left Lee Dickelman, Key Club vice-president, Ken Larson, faculty advisor, and Dave Bust, Key Club president.



CHELSEA BUSINESSMEN have formed a new Chelsea Area Businessmen's Association for the purpose of co-ordinating the activities of the Chelsea business community. At their initial meeting Monday, March 2 the group elected George Winans as its chairman with Jane Kruse, secretary, and Dave Stricter, treasurer. This executive committee will be meeting sometime in the near future to arrange for a meeting of the entire group of Chelsea Businessmen. Pictured here with the executive committee after the group's organizing meeting are Lou Muck, Winans, Mrs. Kruse, Sam Johnson, George Heydlauff, and Stricter.



World Day of Prayer Slated Here Friday At St. Mary Church

Tomorrow a World Day of Prayer, sponsored by the Church Women United of Chelsea, will be held at St. Mary Catholic church at 1 p.m.

Theme of the service, "Take Courage," was chosen and developed by a housewife from Egypt, a social worker from Guyana, a teacher from India, a church worker from the Philippines and was chaired by a woman in the United States.

Women of the Chelsea area are invited to attend this observance, which is scheduled for Christians in more than 130 countries.



Established 1871 **The Chelsea Standard** Telephone GR 5-3551

Excellence Award By Michigan Press Association  
1951-1952-1953-1954-1955-1956

Walter P. Leonard, Editor and Publisher

Published every Thursday morning at 300 North Main Street, Chelsea, Mich. 48119, and second class postage paid at Chelsea, Mich., under the Act of March 3, 1879.

ADDRESS CORRECTION REQUESTED

Subscription Rates (Payable in Advance)

In Michigan:		Outside Michigan:	
One Year	\$4.00	One Year	\$6.00
Six Months	\$2.25	Six Months	\$3.50
Single Copies	15¢	Single Copies	20¢

Service men or women, anywhere, 1 year \$4.00

MEMBER National Advertising Representative: MICHIGAN NEWSPAPERS, INC.  
257 Michigan Ave.  
East Lansing, Mich. 48823

**NATIONAL NEWSPAPER**  
Association - Founded 1885

## Uncle Lew from Lima Says:

### DEAR MISTER EDITOR:

They allus is a heap of upside down, inside out thinking in Washington, and the fellers looked some of it up one side and down the other during the session at the country store Saturday night. Most of the discussion was about the different kind of math use by Democrats and Republicans.

Clem Webster, that sides with the Democrats whenever he can see his way clear, said the Nixon Administration's \$200 billion budget shows that the two parties don't add the same way. For instant, Clem said, the Republicans took all their income and outgo and come up with a \$1.3 billion surplus, but the Democrats come up with a \$7.3 billion deficit. Clem said Senator Sam Ervin of North Carolina figured the new budget has a lot of stuff in it the President ain't bragging about.

The surplus, Senator Ervin said, is based on another hike in postage rates, another increase in social security payments and a bunch of other taxes. Furthermore, Clem reported, the Democrats didn't include collections from trust funds like highways in their revenues, but the Republicans count \$5.6 billion in trust fund money in the new budget. And they is cutting services too, Clem said.

Practical speaking, Clem said, the Republican economy moves reminded him of the time Hoover got in the White House and he sent Cal Coolidge's riding horse to Ft. Meyer for "economy." When he heard about it, Cal grunted and

ask if the horse would eat less hay at Ft. Meyer.

Ed Doolittle said you can't please some folks. The new budget has less for military spending than any in the past 20 years, he said, and the President has come up with a balanced budget just like he promised. And as for them services, Ed was of a mind trimming was overdue.

Zeke Grubb said money talk in Washington was all wrong. He ask the fellers if they ever saw anything sold for even money. A good salesman, allowed Zeke, puts a \$4 shirt on sale for \$3.94 plus tax, and a 15 cent can of beans is \$1.15 cent for two cans. Instead of \$200,000 to study the mating call of the June bug, Zeke said they ought to call it \$199,999.47 so folks would know they was really watching pennies.

Another thing bothers Zeke is how the Administration can talk about sending \$54 million worth of airplanes to Pomosier and veto the \$20 billion HEW bill at home. And when they hear weapons cost \$20.9 billion more than their contract price, they fire the feller that told em. That's upside down thinking, said Zeke.

Personal, Mister Editor, I figure these party money matters in Government is six of one and half dozen of the other. I recollect once when I told this feller in a cafe the water he give me was muddy, he said the water wasn't muddy, the glass was dirty.

Yours truly,  
Uncle Lew.



## ★ MICHIGAN MIRROR ★

By Elmer E. White, Secretary, Michigan Press Association

### Library Still Temporary

In the sometimes strange world of state government those things which at first appear permanent sometimes become only temporary, and temporary things sometimes become permanent.

One of the more perfect examples of this involves Michigan's State Library. For the past 19 years the library has been housed in "temporary quarters." These quarters are located inside an old farm machinery warehouse which looks like anything but a library.

For the uneducated quarters, the state pays \$229,000 a year. "When you think of the money spent on rents over the years, the state could have built a good building by now," laments State Librarian Francis X. Scannell. "I guess we don't have the pressure going for us like other groups have."

The library lost its home on Feb. 8, 1951, when a 19-year-old state Highway clerk dropped a burning match into a wastepaper bin in the Lewis Cass Building.

He did it, he later testified, because he wanted to establish a minor conviction record to keep him out of the draft.

But the blaze burned for nine days while firemen fought poisonous fumes and 10-degree below zero weather and resulted in nearly complete paralysis of the state government's operation.

It was a miracle of some magnitude that workers were able to salvage the 375,000 volumes which then were in the library. Each of the volumes was soaked with water and damaged by smoke. The first task of the library employees was to move the damaged books to a large gymnasium in the boys' training school in Lansing for a drying-out operation that took nearly a month.

The library's restoration process was ultimately successful and won notice from such national publications as Life and National Geographic.

But 19 years later the library has grown to 1,250,000 volumes without successfully finding a permanent home. "It's a disgrace the way they

Another legitimate concern has been the difficulty of recruiting the highly skilled technicians needed to operate our arsenal of sophisticated weapons. Good pay, improved service conditions, proficiency pay and accelerated promotions for the highly skilled plus a reasonable respect from the American public should take care of that potential problem and produce a military that is more experienced, better motivated and has higher morale.

The military has long served as a place where young men can learn valuable skills, where restless boys can learn discipline and become men, where an opportunity for travel, comradeship and service to country provides a sense of usefulness some men find nowhere else. It will still be that way and even more so.

### MIKE'S TV ANTENNA SERVICE

Motorola Automotive Sound Systems

Winegard Home Electronics TV Antenna Systems

Insurance Claims

For Free Estimate, Call Pinckney 878-3258 or 769-0130

hit us like this," Scannell says. "The State Library is the major depository for books and newspapers in the state."

"Nothing has been done really for the poor state library," he says. "Maybe librarians don't have a good image. I just don't know."

Acting State Superintendent of Public Instruction John Porter he and the state board are all for the idea of a new library. But, he says, any move to new quarters must be to a building suitable for library purposes.

"There is little benefit to the state library in moving from a farm implement warehouse to just another office building that is suitable for office use only," he said.

His department has asked that when the new state capital complex is completed, it include the state library.

But Scannell remains pessimistic when asked about the prospects of securing a new home

for the 1,250,000 books under his care.

"The idea of a new state library isn't burning very bright right now," he says. "I don't expect to know when they finally build a new library."

### Mileage Mounts

Motor vehicles using Michigan streets and highways traveled a record 50.9 billion miles in the state last year, according to the Michigan Highway Commission.

If you think that sounds like a lot, you're right. That same mileage would get you around the world two million times and would be good for more than 100,000 round trips to the moon.

And if you started driving at an even 60 miles an hour and never stopped until you'd completed that distance, it would take you roughly 93,000 years, a period much longer than the recorded history of mankind.

## JUST REMINISCING

Items Taken from the Files of The Chelsea Standard

### 4 Years Ago ...

Thursday, March 3, 1966—The appointment of J. L. (Lee) Hess as plant manager of the Chelsea Products plant of Salisbury Division, Dana Corp., has been announced by Frank Graper, divisional vice-president and general manager. Hess transferred to Dana's Fort Wayne facility in 1960. Since June 1, 1965, he has been assistant plant manager at the Fort Wayne plant.

Approximately 250 persons heard Pat Merkel and Fritz Wagner narrate, colored slides of 15 countries Saturday evening. The travelogue, presented under the sponsorship of the Chelsea Jaycees, netted more than \$360 for the Mabel Fox Scholarship Memorial Fund.

Approximately 1,000 high school and junior high school students will be in Chelsea Saturday for the District Band Festival. Mrs. Andrew Dyson will be in charge of the breakfast and lunch for the judges and the festival workers. Co-chairmen for the luncheon are Mrs. Ross Scholtens, Mrs. Peter Severn and Mrs. Herman Ashley.

Douglas Liebeck, assumed ownership and management on Feb. 28 of the Sinclair Service Station located at 1445 Chelsea-Manchester Rd. The station, owned by Don Schoenberg for nearly three and one-half years, has been known as Schoenberg's Sinclair Service.

### 14 Years Ago ...

Thursday, March 1, 1956—Howard G. Minier, Washtenaw county Road Commission manager, is advising rural residents of the county to lay in supplies of food and fuel in order that they might be prepared for any emergency caused by impassable roads in case of a sudden thaw or heavy rain.

Mr. and Mrs. Burt Taylor spent an enjoyable day Sunday at the home of their son and his wife, Mr. and Mrs. Tom Taylor in Ann Arbor, in observance of their 50th wedding anniversary.

Chelsea and Grass Lake area farms will be visited tomorrow on the 1956 Beef Tour, according to an announcement by Art Doletsky, tour chairman, and Donald R. Johnson, Washtenaw county agricultural agent.

Recall of bonds, as planned by Chelsea's Board of Education, will see the South Elementary school bond issue completely paid off

with receipt of the December taxes, according to figures compiled this week.

Alfred D. Mayer, local insurance agent, attended the mid-winter business meeting of the Michigan Association of Insurance Agents in Detroit last week.

Edward H. Chandler, who officially celebrates his birthday only once every four years since it occurs Feb. 29, was 92 years old yesterday.

### 24 Years Ago ...

Thursday, March 7, 1946—Chelsea's annual village election will be held next Monday, March 11. With two exceptions the candidates for next Monday's election are those nominated at the caucuses on Feb. 19. John J. Alber withdrew as candidate for clerk on the Independent ticket, and Robert G. Foster withdrew as candidate for clerk on the People's ticket. The vacancies were filled by Don Oesterle on the Independent ticket and Willard R. Guest on the People's ticket.

Harry Ned Wellhoff enlisted in the Hospital Ambulance Corps, U.S. Navy and reported in December. Phillip Roy was inducted into the U.S. Navy on Feb. 19.

Chelsea has a new Municipal Building which is ready for occupancy by the various departments of the village government and services.

Charles Sullivan, son of John Sullivan of Lyndon township and the late Mrs. Sullivan, has been awarded the State Farmer Degree by the State Association of Future Farmers of America.

In order to have blood plasma available to doctors and hospitals in this country, the Washtenaw County Red Cross is co-operating

again with the State Department of Health in a blood bank during the week of March 11.

### 34 Years Ago ...

Thursday, March 5, 1936—M.D. Baxter, Sylvan township treasurer, reports that of a total tax roll of about \$25,000, only \$14,000 has been collected.

Several friends of Edward H. Chandler were invited to his home Saturday evening, Feb. 29, as a surprise in honor of his birthday anniversary—the 17th birthday which he has been privileged to celebrate, although he is 72 years of age. Guests were W. Henry Heselshwerdt of Ann Arbor; George Turnbull of Detroit; James Speer, A. E. Wilson, David Mohrlok, Herman Dancer, Charles Clayton, Wesley Smith, Frank Leach and Albert Winans of Chelsea.

Chelsea will have a new creamery, Chelsea Dairy Products, Inc., which is now being organized. The new company has secured a five-year lease on the Tower Building, owned by L. P. Vogel and Conrad Lehman, and it is expected that operations will be started there within a few weeks.

Chelsea's annual village elections will be Monday. The only names on the ballot will be from the independent party: Roy Harris, president; James Munro, clerk; Ed Miller, treasurer; Conrad Lehman, Wilbur Hindler and F. W. Merkel, trustees for two years; Ed Kausch, assessor. Members of the village council whose terms do not expire this year are H. B. Murphy, J. E. Weber, and Ernest Adam.

Last minute preparations are under way for the three-day Michigan Centennial Celebration to be held at Chelsea public school.

As a courtesy and an act of appreciation the members of Salem M. E. church tendered a surprise dinner for Theo. G. Riemen-schneider at the close of church (Continued on page three)



## Washington Report by Congressman MARVIN L. ESCH

The conclusion by the President's special commission that an all-volunteer army is both desirable and feasible is the best sort of news for every family in the nation. Although it will take two years to implement the commission's recommendations, the draft, one of the most inequitable features in all of American life, is hopefully headed for abolition.

This recommendation is particularly satisfying to me since I have been working for the acceptance of a voluntary military ever since I came to the Congress. I am convinced that a return to an all-volunteer force will strengthen our freedoms, promote the efficiency of the armed forces and enhance their dignity. The United States has relied throughout its history on a voluntary armed force except during major wars and since 1948. It is the system which minimizes government interference with the freedom of the individual to do with his values.

For the advance we will make in ending the draft, except in emergencies, there will be a price to pay. To attract and retain the high caliber young men we need for the common defense we will have to pay more salaries and benefits. I believe the gain is worth the price. It will, for instance, be necessary to pay recruits more than the paltry \$180 a month they receive today—far below the minimum wage. This change should be undertaken whether or not the full recommendations of the commission are accepted.

The commission rejected certain well-meaning criticism that has been directed at the concept of a volunteer Army. There has been fear that a voluntary military would become a separate entity of American life, cut off from public influence, which could pose a threat to our public institutions.

In my view, and the view of the commission, this is extremely unlikely. The belief in and traditions of civilian control of our military forces is firmly established both among the public and the military. American life is diverse enough and mobile enough and our communications systems pervasive enough so that a subtle slippage over time into an estrangement between military personnel and civilians will not occur. Historically, voluntary service and freedom have gone hand in hand.

## MONEY TROUBLE? ONE PLACE TO PAY!

Credit Management Service  
662-2565  
215 South Fifth Ave.  
Ann Arbor  
State Licensed and Bonded

## Howell Livestock Auction

The Wise Owl Says Ship to Howell  
SALE EVERY MONDAY, 2 p.m.  
Phone 546-2470, Bim Franklin  
Mason 677-8941

### Market Report for March 2

#### CATTLE—

Steers and Heifers:  
Choice, \$20 to \$22  
Good, \$22 to \$30  
Ut-Std., \$24 to \$27  
Fed Holsteins, \$25 to \$28

#### Cows:

Heifers, \$28 to \$25  
Ut-Comm., \$22 to \$23.50  
Canner-Cutters, \$19 to \$22  
Fat Yellow Cows, \$19 to \$21

#### Bulls:

Heavy, \$26 to \$28.50  
Light and Common, \$28-\$26

#### Calves:

Prime, \$46 to \$50  
Good-Choice, \$40 to \$46  
Cull-Med., \$25 to \$30  
Heavy Deacons, \$36 to \$42  
Light Deacons, \$30 to \$35

#### Feeders:

Good-Choice, \$34 to \$38.50  
Common-Med., \$28 to \$34  
Dairy Cows, \$270 to \$385

#### HOGS—

Butchers:  
190-lb. to 240-lb., No. 1, \$28 to \$29  
190-lb. to 240-lb., No. 2, \$26.50 to \$28

240-lb. and up, \$25 to \$26.50

#### Sows:

Fancy Light, \$24.50 to \$25.50  
300-lb. to 500-lb., \$23.50 to \$24.50

500-lb. and up, \$22 to \$23

#### Pigs and Stags:

All Weights, \$23 to \$24.50

#### Feeder Pigs:

Per Head, \$24 to \$28.75

#### SHEEP—

Shorn Slaughter Lambs:  
Choice-Prime, \$23 to \$29.50  
Good-Utl., \$26 to \$28

Wooled Slaughter Lambs:  
Choice-Prime, \$28 to \$29.75  
Good-Utl., \$26 to \$28

Ewes:  
Slaughter, \$8.50 to \$11

Feeder Lamb:  
All Weights, \$27 to \$28.75



# BOAT SHOW

## SATURDAY, MARCH 14 and SUNDAY, MARCH 15

See the Boat Line for 1970  
FISHING - SAILBOATS - CANOES  
RUNABOUTS - PONTOONS

## DOOR PRIZES!

Including a \$295.00 Value

## 8-FT. "MERIT" HYDROPLANE

No purchase required. Come in and register.

See the New 1970

JOHNSON SEA-HORSE MOTORS  
from 1½ h.p. to 115 h.p.

## SIERRA TRAIL BOSS on Display

NEW Top of the Line All-Terrain Vehicle.

Factory representative will be demonstrating this amazing new vehicle. Come in and take a ride!

# Gateway SPORTS CENTRE

"Your Sports Equipment Centre"

1603 MANCHESTER ROAD

PHONE 475-8676

CHELSEA, MICH.





**CUB SCOUT BANQUET:** Dinner committee members and den chiefs for the Cub Scout Pack 455 Blue and Gold Banquet are shown here following the dinner at Beach school. In the last row, from the left, are dinner committee members Mrs. Sumner Oesterle, den mother; Mrs. Charles Burgess, den mother; Duane Hall, cubmaster; Dave Elkins, Webelo leader; the Rev. Dan Keim, pack committee chairman; Otis Titus, Webelo leader; Mrs. Haskell Worden, den mother; and Haskell Worden, Webelo leader. Middle row dinner committee members from left are Mrs. Jerry Waldyke; Mrs. Dave Elkins; Mrs. Vern Otto, chairman of the dinner; Mrs. Louis Schneider; Mrs. Donald Baldwin; and Mrs. Joel Kruse. Pictured in the front row, from the left, are the den chiefs, Tony Hefner, Tim Hinz, Steve Schanz, Skeets Worden, and Don Oesterle.

## Chelsea Jaycees Successful in Starting Stockbridge Chapter

After months of meeting, membership drives and Jaycee orientation, the Chelsea Jaycees have been successful in starting a new Jaycee chapter in the community of Stockbridge, it was announced by St. Hopkins, extension chairman. The Stockbridge chapter has a total membership of 28 young men for their charter membership, and have approved their constitution, by-laws, policies, dues, and year's planned program. On March 3, the Stockbridge Jaycees

Michigan, National and JCI this week to insure approval by these groups in time for Charter Night, which is planned for April 4. The Chelsea Jaycees extension committee was made up of the following local Jaycees: St. Hopkins, extension chairman; Walt Brown, Art Steinaway, Ed Greenleaf, and Mike Eubanks, committee members. These same men will be responsible for providing guidance and advice for the first year.

## School Board Adopts Policy On Retirements

Retirement of school employees received attention Monday night, March 2, at the Chelsea Board of Education meeting, when the board approved administrative rules and regulations relating to the retirement of schools employees. The board approved the following: "Upon petition of the employee, the administration may recommend to the board of education the extension of the retirement date, but no more than five annual deferrals will be granted, provided that such a petition is supported by a statement from a qualified physician acceptable to the administration certifying that on the basis of a thorough physical examination of the employee he has been found physically competent to do the work called for by the job without hazard to his safety or health, or that of the students. "The administration reserves the right to require of any employee a physical examination and/or a psychological examination by a certified physician, acceptable to the administration, at school district expense, whenever, in the opinion of the administration such examination or examinations are warranted."



**PARLIAMENTARY PROCEDURE TEAM** from Chelsea High school won a first-place gold award in the District Leadership Contest, Parliamentary Procedure division, held in Manchester Thursday, Feb. 12. Pictured here, standing from left, are Steve Keiser; Ted Hinderer; and Jon Schenk, second-place winner of the public speaking division, who participated with the Parliamentary Procedure team in regional competition. Shown in the front row, from the left, are Dan Gaunt; Marty Straub, chairman, and secretary of the Future Farmers of America; and Larry Hopkins. Missing from the team picture is Chris Marzec. The team entered the Regional Leadership contest on Thursday, Feb. 26, in which 10 schools participated. Chelsea's team was awarded a silver medal.



**CHELSEA FARM FORUM TEAM** placed second and received a gold award in the District Leadership contest held Feb. 12 in Manchester. Four schools participated in the various divisions of the contest. Chelsea placed first in the Parliamentary Procedure division, second in the Public Speaking division and third in the Demonstration division. The Farm Forum team shown here, standing, from left, are Duane Bycraft, Jim Bauer and Mike Bristle. Seated from left are Bill Kushmaul, Neil Rothfuss, Ernie Hinderer, and Dale Robbins.

## Township Boards of Review Schedule Conference Dates

Notice has been given to persons in Lima, Dexter, Scio, Webster, Sharon and Freedom townships liable to assessment for taxes in the townships that the assessment roll of the townships will be reviewed by the boards of the townships during the beginning of March. In Lima township, appeals and conferences with taxpayers will be heard on Monday and Tuesday, March 9 and 10 from 9 a.m. to 4 p.m. at the Lima Community Hall on Jackson Rd. Dexter Township Board reviewed the tax rolls on Tuesday, March 3 from 9 a.m. to 3 p.m. at the Dexter Township Hall at the corner of Dexter Township and Quigley Rds. Appeals and conferences

with taxpayers will be heard on Monday and Tuesday, March 9-10 at the hall. Residents of Scio township will take appeals to the board for review at the Township room of the Fire Hall at 8150 Main St., Dexter, on Monday, March 9 from 9 a.m. to noon, and 1 p.m. to 5 p.m. on Tuesday, March 10 from 1 p.m. to 6 p.m. and from 7 p.m. to 9 p.m. at the Fire Hall. Webster Township's Board of Review will meet at Webster Township Hall at the corner of Scully and Gregory Rds. on Monday and Tuesday, March 9-10 from 9 a.m. to noon and from 1 p.m. to hear any appeals from taxpayers. Sharon township will hear appeals and hold conferences with taxpayers on Monday, March 9 from 9 a.m. to 3 p.m. in the Township Hall. Freedom Township's Board of Review will hear appeals and conferences with taxpayers on Monday and Tuesday, March 9 and 10 from 9 a.m. to 4 p.m. at the Freedom Township Hall, corner of Pleasant Lake and Lima Center Rds.

## Village Election

(Continued from page one) ber of the council from 1959 to 1963 and a member and secretary of the Chelsea Village Planning Commission from 1966-1969. Each of these is a two-year office term, except for the library board trusteeships which are three-year terms, and the assessor for a one-year term. Telephone Your Club News To GR 5-3581.



**MAUSOLEUMS ★ MONUMENTS  
BRONZE TABLETS ★ MARKERS**  
**BECKER MEMORIALS**  
6033 Jackson Road  
ANN ARBOR, MICHIGAN



**Take Time Out for a Milk "Pick-Up"!**  
When you need new "get-up-and-go" . . . take a milk break!

When you "raid the ice box" at evening's end, reach first for milk . . . and pour yourself a glass full of good health!  
**WEINBERG DAIRY**  
QUALITY PASTEURIZED DAIRY PRODUCTS  
OLD US-12 PHONE GR 5-5771

**AGE 23**  
**Married Male Driver**  
Your A-O man will save you money on your car insurance. No surcharge or higher rate. See your A-O man — he's all out for you.  
**A. D. MAYER AGENCY, INC.**  
"Your Protection Is Our Business"  
Phone 479-5061  
115 Park St. Chelsea  
**Auto-Owners INSURANCE COMPANY**  
Home office at Lansing, Michigan

**"STAMP SPECIAL" FAYGO-Qts.**  
**9c** with 4 pages stamps  
**Everyday Low Price**  
OVEN-FRESH  
**Donuts . . . . . doz. 37c**  
WILSON  
**Milk . . . . . 1/2 gal. 49c**  
**Bread . . . . . 2 for 49c**  
OPEN 6 A.M. TILL 11 P.M.  
**GALLUP - SILKWORTH PUMP & PANTRY**  
295 S. Main St. Chelsea

For a lawn that would look good in your living room  
**Simplicity**  
No-scalp mowing!  
Everyone talks "no-scalp" but only Simplicity delivers with this patented No-Scalp rotary mower. Attached to the tractor at the front axle (not to the frame like other tractors) this unique free-floating mower swivels over every contour on your lawn—side to side, front to rear—without scalping or missing. See it in action on every Simplicity tractor from 5-hp up to 12-hp. Discover the difference quality makes.  
• Cutting widths up to 48"  
• Hitches to tractor in seconds—without tools!  
• Extra deep design gives clean, even cut  
• Strong enough to stand on  
Tractor-Mowers from \$505. Easy terms.  
**CHELSEA HARDWARE**  
110 SOUTH MAIN ST. PHONE GR 9-6311

**Junior Achievers 34 Years Ago . . .**  
(Continued from page one) profit to date and it is hoped by the advisors that a major sales push with their best item, a novel trunk lid tie down, will put them solidly in the black by the end of the school year.  
Membership in the JACUDACO includes Hindeereer, Clemons, Buss, Cameron, Ball, Wackenhut, Teed, Joan Piatt, Mary Slain, Lewandowski, Joan Sacher, Mark Schulze, Norbert Weber, Skeets Worden, Bill Tite, and Steve Norton.  
**Kiwanis Club . . .**  
(Continued from page one) 46th birthday. A ladies night will be held at the Methodist church with guests from Jackson, Dexter, and Pinckney expected.

**Get A LOOK At Spring**  
**NEW ARRIVALS . . .**  
★ CLARE TIFFANY DRESSES  
★ QUEEN'S CASUAL SLACKS, SKIRTS, SHELLS, DRESSES  
★ BOBBIE BROOKS WEAR  
Good selections.  
**MORE NEW ARRIVALS . . .**  
**Big Selection of Levi Jeans for Gals**  
All new colors. Sizes 5 thru 8 Petite, 9-11-13 Junior, 10 thru 20 Misses.  
**BIG ASSORTMENT PANTY HOSE**  
Navy - Black - Go Brown - Go Tawny  
**\$1.25 - \$1.75 - \$1.99 - \$2.50**  
Shop Now for Spring at  
**DANCER'S**  
Chelsea's Friendly Dept. Store

**VILLAGE ELECTION**  
To the Qualified Electors:  
NOTICE IS HEREBY GIVEN, That an Annual Village Election will be held in the  
**VILLAGE OF CHELSEA**  
(Precinct No. 1 and 2)  
State of Michigan  
— at —  
**SYLVAN TOWNSHIP HALL**  
Within said Village on  
**Monday, March 9, 1970**  
FOR THE PURPOSE OF VOTING FOR THE ELECTION OF THE FOLLOWING OFFICERS, VIZ:  
ONE VILLAGE PRESIDENT (2 years)  
ONE VILLAGE TREASURER (2 years)  
THREE TRUSTEES (2 years)  
ONE ASSESSOR (1 year)  
TWO LIBRARY BOARD TRUSTEES (3 years)  
Notice Relative to Opening and Closing of Polls  
ELECTION LAW, ACT 116, P. A. 1964  
SECTION 720. On the day of any election the polls shall be opened at 7 o'clock in the forenoon, and shall be continuously open until 8 o'clock in the afternoon and no longer. Every qualified elector present and in line at the polls at the hour prescribed for the closing thereof shall be allowed to vote.  
The POLLS of said election will be open at 7 o'clock a.m. and will remain open until 8 o'clock p.m. of said day of election.  
**RICHARD HARVEY, Village Clerk**







## WANT ADS

**HAMMOND ORGAN** teachers wanted to teach in their own homes. Call Grinnell Brothers, Ann Arbor. 682-5687. 34tf

**ATTENTION Working mothers**—Will care for your children in my home while you work. Mrs. Judy Boyer, 475-8055. 29tf

## WORK SHOE HEADQUARTERS

Famous Red Wing Brand  
\$12.95 to \$26.95

## Foster's Men's Wear

FOR SALE—Three Good Lad toddler suits, size 2, like new. Ideal for Easter. Phone 475-8192. 37

## NEW HOME

1 mile east of Chelsea  
13537 Old US-12

- 3 bedrooms, decorated
- Ceramic bath with marble topped vanity.
- Full basement.
- 2-car attached garage.
- All rooms carpeted.
- Stove and refrigerator.
- 1-acre lot.
- Natural gas heat.

Ready To Move In.  
Total price \$25,900  
(\$3,000 down)

Payment Schedule—  
Principal and Interest \$185  
Property Taxes \$37  
Home Owners Ins. \$6

Estimated Total \$228

Call  
**W. C. WEBER**  
Construction Co., Inc.  
475-2828 or 475-2611 37tf

**Band Instruments**  
Rental-Purchase plan available  
Also private lessons  
(by music major)

**Al Nalli Music**  
Chelsea  
Phone 475-7215 35tf

WOULD LIKE to care for one or two children week-days. Ph. 475-7418. 37

FOR SALE—Clover and timothy hay, mixed, 40 cents a bale. Ph. 428-4734. 37

FOR SALE—Hoover spin dry washer. 946 Ridge Rd. or phone 479-4491. 37

FOR SALE—Seasoned firewood. Phone GR 9-7261. 38

## INCOME TAX SERVICE

Call for Appointment  
426-4888

## Alexander Zangara

2081 Baker Road  
Dexter, Mich.

## IMPROVE YOUR HOME

Local Company — With Service

- ★ Aluminum Siding
- ★ Roofing
- ★ Patio Covers
- ★ Enclosures
- ★ Awnings
- ★ Replacement Windows
- ★ Eaves Troughs
- ★ Storm Windows
- ★ Storm Doors
- ★ Trailer Skirting
- ★ Insulation

## GEORGE MEYER COMPANY

3496 Pontiac Rd., Ann Arbor. Telephone 769-7330  
EXTERIOR HOME IMPROVEMENTS

George Meyer — Bob Behnke

## WANT ADS

**EXPERIENCED PAINTER** looking for part-time work. Interior or exterior. Very reasonable, free estimates. 475-7678. 34tf

**BILLY WALKER**—Popular, powerful Evangelist at the Faith Community church, 8400 Sharon Hollow Rd., Manchester. March 8-15, 7-30 p.m. 37

**PRINTING for the wedding**—One of the largest assortments in this area. Album prices discounted 10%. John's Shop, call 475-7600. 45

**WISH to baby-sit in my home.** Phone 475-7607. 42tf

## WANT ADS

**LOSE WEIGHT** safely with Dex-A-Diet, and remove excess fluid with FLUIDEX. Only 98c and \$1.69 at Chelsea Drug. 44

**WANTED**—All kinds of standing timber. Will pay top prices. Call (517) 287-5765 or write Al Fee Hillsdale, Mich., RFD, 5, 327 Ball Rd. 37

## CLOGGED SEWER

**Reynolds Sewer Service**  
We Clean Sewers Without Digging  
Drains Cleaned Electrically  
FREE ESTIMATES  
2-YEAR GUARANTEE  
Phone Ann Arbor NO 2-5277  
"Sewer Cleaning Is Our Business—Not a Sideshow" 38tf

**AIRLESS SPRAY PAINTING**—Interior and exterior. Pinckney, 878-3246. 25tf

**VACUUM CLEANERS**—Electrolux authorized sales and service. James Cox, Manchester. Ph. 328-2931 or 428-8221. 42tf

**FREE REMOVAL DONE**—Also buyers of standing timber and walnut trees. Chelsea 475-7631. 34tf

**TRAVEL TRAILERS**—18-ft. and up; 10x55 ft. trailers. John R. Jones Trailer Sales, Gregory, Mich. Phone 498-2655. 43tf

**CARPET CLEANING** by Burke. 12 cents a square foot, needs over night to dry. In Chelsea call Merkel Brothers, 475-8621. 33tf

**PIANO INSTRUCTION** now being offered to beginners. Call 475-7649. 38

**FOR SALE**—1 ton, '62 International truck, stock and grain rack. Donald Beeman. Call 475-2897. 38

**HOUSE TRAILER** for sale or rent. 8'x35', near Chelsea, reasonable. Call 475-7486. 37

**WANTED**—Bartender, male or female to work in local tavern. Write Chelsea Standard, Box 133. 38

**BABY SITTING**—Will baby-sit for your child or children in my home. Phone 475-2893. 38

**FOR SALE**—'65 Ford Falcon, 6-cyl. auto, good condition, \$500. Call 475-2976 after 5:30 p.m. 37

**FOR SALE**—1 Hampshire boar or York boar. Phone after 5 p.m. GR 5-2709. 37

**FOR SALE**—Outdoor motor, good condition; antique desk, recently refinished; covered car-top carrier, brand new. Call 475-7261 and make an offer. 37

## THANK YOU

The Community Fair Officers and Board wish to thank Wallace Wood for his preparing the Annual Financial Report and papers for the Internal Revenue Service. Also thanks to John Wellnitz for making the President's gavel which was engraved free by George Winans. John Wellnitz presented the gavel to Allen Broesamle, current president, during the February meeting held in the Library Feb. 24. 35tf

**MARCH 9 - MARCH 14**—Chelsea Al Nalli Music Store will be closed. May phone Ann Arbor store, 663-2866 or 663-4757. 37

**ALASKAN MALAMUTE** sled dog puppy. Good with children, excellent watch dog. Loves out-doors. \$25. Tom Coy, Ph. 426-3359. 37

**BLUE Lustre** not only rids carpets of soil but leaves pile soft and lofty. Rent electric shampooer \$1. Dancer's, Chelsea. 36

## THANK YOU

Gingham Belles, what a fantastic production you staged. We were bursting with pride as we watched you display your much-worked-upon projects in such clever surroundings during your Family Fashion Show. A special thanks to the commentators Barb Duerr, Cathy Clark and Donna Clark for their poised presentation of each model. We were delighted with our corsages. We congratulate you on your cleverness and thank you for your thoughtfulness. 35tf

Co-leaders Nancy Mshar, Grace Penhallegon, and Mrs. William Clark.

## THANK YOU

I would like to thank all my friends and relatives for their visits, cards and gifts while in the hospital and since my return home. Special thanks to the Rev. Kueher and Christine. It means so much to be remembered at a time like this. Thanks again. Gertrude Kuhl. 35tf

## CARD OF THANKS

Junior High Pilgrim Fellowship group of the Congregational church wishes to thank all the members of the community who helped to make their bake sale such a success. Your support is greatly appreciated. Florence Fox. 35tf

## WANT ADS

**EXPERIENCED PAINTER** looking for part-time work. Interior or exterior. Very reasonable, free estimates. 475-7678. 34tf

## WORK SHOE HEADQUARTERS

Famous Red Wing Brand  
\$12.95 to \$26.95

## Foster's Men's Wear

FOR SALE—Three Good Lad toddler suits, size 2, like new. Ideal for Easter. Phone 475-8192. 37

## NEW HOME

1 mile east of Chelsea  
13537 Old US-12

- 3 bedrooms, decorated
- Ceramic bath with marble topped vanity.
- Full basement.
- 2-car attached garage.
- All rooms carpeted.
- Stove and refrigerator.
- 1-acre lot.
- Natural gas heat.

Ready To Move In.  
Total price \$25,900  
(\$3,000 down)

Payment Schedule—  
Principal and Interest \$185  
Property Taxes \$37  
Home Owners Ins. \$6

Estimated Total \$228

Call  
**W. C. WEBER**  
Construction Co., Inc.  
475-2828 or 475-2611 37tf

**Band Instruments**  
Rental-Purchase plan available  
Also private lessons  
(by music major)

**Al Nalli Music**  
Chelsea  
Phone 475-7215 35tf

WOULD LIKE to care for one or two children week-days. Ph. 475-7418. 37

FOR SALE—Clover and timothy hay, mixed, 40 cents a bale. Ph. 428-4734. 37

FOR SALE—Hoover spin dry washer. 946 Ridge Rd. or phone 479-4491. 37

FOR SALE—Seasoned firewood. Phone GR 9-7261. 38

## INCOME TAX SERVICE

Call for Appointment  
426-4888

## Alexander Zangara

2081 Baker Road  
Dexter, Mich.

## IMPROVE YOUR HOME

Local Company — With Service

- ★ Aluminum Siding
- ★ Roofing
- ★ Patio Covers
- ★ Enclosures
- ★ Awnings
- ★ Replacement Windows
- ★ Eaves Troughs
- ★ Storm Windows
- ★ Storm Doors
- ★ Trailer Skirting
- ★ Insulation

## GEORGE MEYER COMPANY

3496 Pontiac Rd., Ann Arbor. Telephone 769-7330  
EXTERIOR HOME IMPROVEMENTS

George Meyer — Bob Behnke

## WANT ADS

**EXPERIENCED PAINTER** looking for part-time work. Interior or exterior. Very reasonable, free estimates. 475-7678. 34tf

**BILLY WALKER**—Popular, powerful Evangelist at the Faith Community church, 8400 Sharon Hollow Rd., Manchester. March 8-15, 7-30 p.m. 37

**PRINTING for the wedding**—One of the largest assortments in this area. Album prices discounted 10%. John's Shop, call 475-7600. 45

**WISH to baby-sit in my home.** Phone 475-7607. 42tf

## WANT ADS

**LOSE WEIGHT** safely with Dex-A-Diet, and remove excess fluid with FLUIDEX. Only 98c and \$1.69 at Chelsea Drug. 44

**WANTED**—All kinds of standing timber. Will pay top prices. Call (517) 287-5765 or write Al Fee Hillsdale, Mich., RFD, 5, 327 Ball Rd. 37

## CLOGGED SEWER

**Reynolds Sewer Service**  
We Clean Sewers Without Digging  
Drains Cleaned Electrically  
FREE ESTIMATES  
2-YEAR GUARANTEE  
Phone Ann Arbor NO 2-5277  
"Sewer Cleaning Is Our Business—Not a Sideshow" 38tf

**AIRLESS SPRAY PAINTING**—Interior and exterior. Pinckney, 878-3246. 25tf

**VACUUM CLEANERS**—Electrolux authorized sales and service. James Cox, Manchester. Ph. 328-2931 or 428-8221. 42tf

**FREE REMOVAL DONE**—Also buyers of standing timber and walnut trees. Chelsea 475-7631. 34tf

**TRAVEL TRAILERS**—18-ft. and up; 10x55 ft. trailers. John R. Jones Trailer Sales, Gregory, Mich. Phone 498-2655. 43tf

**CARPET CLEANING** by Burke. 12 cents a square foot, needs over night to dry. In Chelsea call Merkel Brothers, 475-8621. 33tf

**PIANO INSTRUCTION** now being offered to beginners. Call 475-7649. 38

**FOR SALE**—1 ton, '62 International truck, stock and grain rack. Donald Beeman. Call 475-2897. 38

**HOUSE TRAILER** for sale or rent. 8'x35', near Chelsea, reasonable. Call 475-7486. 37

**WANTED**—Bartender, male or female to work in local tavern. Write Chelsea Standard, Box 133. 38

**BABY SITTING**—Will baby-sit for your child or children in my home. Phone 475-2893. 38

**FOR SALE**—'65 Ford Falcon, 6-cyl. auto, good condition, \$500. Call 475-2976 after 5:30 p.m. 37

**FOR SALE**—1 Hampshire boar or York boar. Phone after 5 p.m. GR 5-2709. 37

**FOR SALE**—Outdoor motor, good condition; antique desk, recently refinished; covered car-top carrier, brand new. Call 475-7261 and make an offer. 37

## THANK YOU

The Community Fair Officers and Board wish to thank Wallace Wood for his preparing the Annual Financial Report and papers for the Internal Revenue Service. Also thanks to John Wellnitz for making the President's gavel which was engraved free by George Winans. John Wellnitz presented the gavel to Allen Broesamle, current president, during the February meeting held in the Library Feb. 24. 35tf

**MARCH 9 - MARCH 14**—Chelsea Al Nalli Music Store will be closed. May phone Ann Arbor store, 663-2866 or 663-4757. 37

**ALASKAN MALAMUTE** sled dog puppy. Good with children, excellent watch dog. Loves out-doors. \$25. Tom Coy, Ph. 426-3359. 37

**BLUE Lustre** not only rids carpets of soil but leaves pile soft and lofty. Rent electric shampooer \$1. Dancer's, Chelsea. 36

## THANK YOU

Gingham Belles, what a fantastic production you staged. We were bursting with pride as we watched you display your much-worked-upon projects in such clever surroundings during your Family Fashion Show. A special thanks to the commentators Barb Duerr, Cathy Clark and Donna Clark for their poised presentation of each model. We were delighted with our corsages. We congratulate you on your cleverness and thank you for your thoughtfulness. 35tf

Co-leaders Nancy Mshar, Grace Penhallegon, and Mrs. William Clark.

## THANK YOU

I would like to thank all my friends and relatives for their visits, cards and gifts while in the hospital and since my return home. Special thanks to the Rev. Kueher and Christine. It means so much to be remembered at a time like this. Thanks again. Gertrude Kuhl. 35tf

## CARD OF THANKS

Junior High Pilgrim Fellowship group of the Congregational church wishes to thank all the members of the community who helped to make their bake sale such a success. Your support is greatly appreciated. Florence Fox. 35tf

## WANT ADS

**EXPERIENCED PAINTER** looking for part-time work. Interior or exterior. Very reasonable, free estimates. 475-7678. 34tf

## WORK SHOE HEADQUARTERS

Famous Red Wing Brand  
\$12.95 to \$26.95

## Foster's Men's Wear

FOR SALE—Three Good Lad toddler suits, size 2, like new. Ideal for Easter. Phone 475-8192. 37

## NEW HOME

1 mile east of Chelsea  
13537 Old US-12

- 3 bedrooms, decorated
- Ceramic bath with marble topped vanity.
- Full basement.
- 2-car attached garage.
- All rooms carpeted.
- Stove and refrigerator.
- 1-acre lot.
- Natural gas heat.

Ready To Move In.  
Total price \$25,900  
(\$3,000 down)

Payment Schedule—  
Principal and Interest \$185  
Property Taxes \$37  
Home Owners Ins. \$6

Estimated Total \$228

Call  
**W. C. WEBER**  
Construction Co., Inc.  
475-2828 or 475-2611 37tf

**Band Instruments**  
Rental-Purchase plan available  
Also private lessons  
(by music major)

**Al Nalli Music**  
Chelsea  
Phone 475-7215 35tf

WOULD LIKE to care for one or two children week-days. Ph. 475-7418. 37

FOR SALE—Clover and timothy hay, mixed, 40 cents a bale. Ph. 428-4734. 37

FOR SALE—Hoover spin dry washer. 946 Ridge Rd. or phone 479-4491. 37

FOR SALE—Seasoned firewood. Phone GR 9-7261. 38

## INCOME TAX SERVICE

Call for Appointment  
426-4888

## Alexander Zangara

2081 Baker Road  
Dexter, Mich.

## IMPROVE YOUR HOME

Local Company — With Service

- ★ Aluminum Siding
- ★ Roofing
- ★ Patio Covers
- ★ Enclosures
- ★ Awnings
- ★ Replacement Windows
- ★ Eaves Troughs
- ★ Storm Windows
- ★ Storm Doors
- ★ Trailer Skirting
- ★ Insulation

## GEORGE MEYER COMPANY

3496 Pontiac Rd., Ann Arbor. Telephone 769-7330  
EXTERIOR HOME IMPROVEMENTS

George Meyer — Bob Behnke

## WANT ADS

**EXPERIENCED PAINTER** looking for part-time work. Interior or exterior. Very reasonable, free estimates. 475-7678. 34tf

**BILLY WALKER**—Popular, powerful Evangelist at the Faith Community church, 8400 Sharon Hollow Rd., Manchester. March 8-15, 7-30 p.m. 37

**PRINTING for the wedding**—One of the largest assortments in this area. Album prices discounted 10%. John's Shop, call 475-7600. 45

**WISH to baby-sit in my home.** Phone 475-7607. 42tf

## WANT ADS

**LOSE WEIGHT** safely with Dex-A-Diet, and remove excess fluid with FLUIDEX. Only 98c and \$1.69 at Chelsea Drug. 44

**WANTED**—All kinds of standing timber. Will pay top prices. Call (517) 287-5765 or write Al Fee Hillsdale, Mich., RFD, 5, 327 Ball Rd. 37

## CLOGGED SEWER

**Reynolds Sewer Service**  
We Clean Sewers Without Digging  
Drains Cleaned Electrically  
FREE ESTIMATES  
2-YEAR GUARANTEE  
Phone Ann Arbor NO 2-5277  
"Sewer Cleaning Is Our Business—Not a Sideshow" 38tf

**AIRLESS SPRAY PAINTING**—Interior and exterior. Pinckney, 878-3246. 25tf

**VACUUM CLEANERS**—Electrolux authorized sales and service. James Cox, Manchester. Ph. 328-2931 or 428-8221. 42tf

**FREE REMOVAL DONE**—Also buyers of standing timber and walnut trees. Chelsea 475-7631. 34tf

**TRAVEL TRAILERS**—18-ft. and up; 10x55 ft. trailers. John R. Jones Trailer Sales, Gregory, Mich. Phone 498-2655. 43tf

**CARPET CLEANING** by Burke. 12 cents a square foot, needs over night to dry. In Chelsea call Merkel Brothers, 475-8621. 33tf

**PIANO INSTRUCTION** now being offered to beginners. Call 475-7649. 38

**FOR SALE**—1 ton, '62 International truck, stock and grain rack. Donald Beeman. Call 475-2897. 38

**HOUSE TRAILER** for sale or rent. 8'x35', near Chelsea, reasonable. Call 475-7486. 37

**WANTED**—Bartender, male or female to work in local tavern. Write Chelsea Standard, Box 133. 38

**BABY SITTING**—Will baby-sit for your child or children in my home. Phone 475-2893. 38

**FOR SALE**—'65 Ford Falcon, 6-cyl. auto, good condition, \$500. Call 475-2976 after 5:30 p.m. 37

**FOR SALE**—1 Hampshire boar or York boar. Phone after 5 p.m. GR 5-2709. 37

**FOR SALE**—Outdoor motor, good condition; antique desk, recently refinished; covered car-top carrier, brand new. Call 475-7261 and make an offer. 37

## THANK YOU

The Community Fair Officers and Board wish to thank Wallace Wood for his preparing the Annual Financial Report and papers for the Internal Revenue Service. Also thanks to John Wellnitz for making the President's gavel which was engraved free by George Winans. John Wellnitz presented the gavel to Allen Broesamle, current president, during the February meeting held in the Library Feb. 24. 35tf

**MARCH 9 - MARCH 14**—Chelsea Al Nalli Music Store will be closed. May phone Ann Arbor store, 663-2866 or 663-4757. 37

**ALASKAN MALAMUTE** sled dog puppy. Good with children, excellent watch dog. Loves out-doors. \$25. Tom Coy, Ph. 426-3359. 37

**BLUE Lustre** not only rids carpets of soil but leaves pile soft and lofty. Rent electric shampooer \$1. Dancer's, Chelsea. 36

## THANK YOU

Gingham Belles, what a fantastic production you staged. We were bursting with pride as we watched you display your much-worked-upon projects in such clever surroundings during your Family Fashion Show. A special thanks to the commentators Barb Duerr, Cathy Clark and Donna Clark for their poised presentation of each model. We were delighted with our corsages. We congratulate you on your cleverness and thank you for your thoughtfulness. 35tf

Co-leaders Nancy Mshar, Grace Penhallegon, and Mrs. William Clark.

## THANK YOU

I would like to thank all my friends and relatives for their visits, cards and gifts while in the hospital and since my return home. Special thanks to the Rev. Kueher and Christine. It means so much to be remembered at a time like this. Thanks again. Gertrude Kuhl. 35tf

## CARD OF THANKS

Junior High Pilgrim Fellowship group of the Congregational church wishes to thank all the members of the community who helped to make their bake sale such a success. Your support is greatly appreciated. Florence Fox. 35tf

## WANT ADS

**EXPERIENCED PAINTER** looking for part-time work. Interior or exterior. Very reasonable, free estimates. 475-7678. 34tf

## WORK SHOE HEADQUARTERS

Famous Red Wing Brand  
\$12.95 to \$26.95

## Foster's Men's Wear

FOR SALE—Three Good Lad toddler suits, size 2, like



## Community Calendar



Lima Center Extension Study Group, Wednesday, March 11, 10:30 a.m. Lima Community Hall. Hostess, Mrs. Emma Seitz. Lesson: "German Foods."

Spaulding for Children, 8 p.m., Monday, March 9, Spaulding farm in Chelsea. For additional information call Chelsea, 475-7233.

Regular meeting of Herbert J. McKune Post No. 31 Thursday, March 5, at 8 p.m. at the Legion Home.

Chelsea Scholarship Committee, Thursday, March 12, 7:30 p.m., Home Ec. room.

Senior Citizens fun night, every Friday night at Korner House at 7:30 p.m.

Differential Aptitude Test, Wednesday, March 11, all day, for 10th graders.

Past Noble Grand Club of Rebekah Lodge, Thursday, March 12 at home of Mrs. Steven Slane, 7:30 p.m. Mrs. Gilson, co-hostess.

**More people decorate with Super Kem-Tone® than any other wall paint in the world**



Super Kem-Tone is the easiest way to level rooms. One coat covers and one gallon does the walls of an average room. Guaranteed washable.

WE HAVE ALL THE NEW COLORS Come in and see them!

**GAMBLES**

110 N. Main  
475-7472

## DEATHS

### Mrs. Allan Malan

Chelsea High Teacher Dies After Brief Illness

Betty Jane Malan, 12807 Top-hill Rd., Grass Lake, died Thursday, Feb. 26 at St. Joseph Mercy Hospital after a brief illness.

Mrs. Malan was a school teacher at Chelsea High school, where she taught English and History to the 11th grade.

Mrs. Malan, 44, was born Jan. 28, 1926 in Detroit, the daughter of David and Elizabeth Neville Van Allen.

She graduated from McKenzie High school in Detroit in 1943 and from Wayne State University in 1949.

She married Allan Malan; and they have one daughter, Karen, and three sons: Andrew, Jack, and Robert, all at home. They survive.

Also surviving is Mrs. Malan's mother, Mrs. Elizabeth Van Allen.

Mrs. Malan was a member of the Unitarian Universalist Church of the Greater Fellowship, the Michigan Education Association, and the Waterloo Historical Society. She was a 4-H leader of the Busy Beavers club and was a past president of the PTO at Katz Elementary Stockbridge Community school.

Memorial Services were held Saturday, Feb. 28 at 5 p.m. at the Caskey Funeral Home in Stockbridge with the Rev. Ruth Smith, pastor of the First Universalist Church of East Liberty officiating.

**Personal Notes**  
Rose Chase, formerly of Rose Beauty Salon, is in the McPherson Memorial hospital in Howell. Her room number is 212N.

Eugene Martin, at 475-5887 after 4 p.m.

Gospel Trio, featuring Stubb brothers and Karen, North Sharon Bible church, Saturday March 7, 7:30 p.m. Everybody invited.

**TOPS Club at library.** Wednesday afternoon group, 12:30 p.m. For information call 475-2592. Thursday evening group, 7 p.m. For information call 475-8720.

Inquiries regarding the Chelsea blood bank may be directed to Harold Jones at Cavanaugh Lake in the event that Mrs. Dudley Holmes is unavailable.

Spring Salad Luncheon, March 18, Congregational church. Serving 11 a.m. to 1 p.m. Men's dining room, bake sale, nursery. Tickets: Patty Ann Shoppe, Murphy's Barber Shop, Gambles' from Mrs. Collins, Chelsea Drug Store. Donation: \$1.50. adv. -38

Senior Citizens, sewing at Korner House every Tuesday afternoon. Also, every Friday night at 7:30 p.m. is Fun Night.

Association for Children with Social and Learning Difficulties Thursday, March 5, 8 p.m. at Zion Lutheran church, W. Liberty, Ann Arbor. Guest speaker will be D. Leslie Hefner, clinical psychologist in private practice and lecturer in psychology at the U. of M. Her topic: "Evaluation and Planning for the Child Who is Different." Results of the February workshop discussions will be available at the meeting.

### Edward P. Baczynski

Dies Thursday at Hospital Following Brief Illness

Edward P. Baczynski, 137 Island Lake Rd., died Thursday, Feb. 26 at St. Joseph Mercy Hospital, Ann Arbor. He had been a patient at the hospital since Feb. 19.

Baczynski, 50, was born Oct. 24, 1919 in Detroit, the son of Joseph and Frances Turek Baczynski. He married Genevieve Wheeler, April 20, 1968 in Chelsea.

Mr. Baczynski was employed by the Dana Corp., beginning in 1948. Surviving are his widow; his mother; a brother, Joseph of Detroit; two sisters, Mrs. Genevieve Martin, of Dearborn, and Mrs. William (Rose McBride), of San Diego, Calif.

Funeral services were held at 10 a.m. Monday, March 3 at St. Mary church with the Rev. Fr. Francis Wahowski officiating. Burial was in Mt. Olivet Cemetery. The Rosary was recited at 8 p.m. Sunday, March 1 at Staffan Funeral Home.

### Bethel Howard

Former Chelsea Resident Dies Sunday in Stockbridge

Bethel Howard, 34, of Stockbridge, formerly of Chelsea, died suddenly Sunday, March 1.

She was born July 26, 1935 in Chelsea, the daughter of Walter and Frances Fausk Howard. She married Levi Howard in Indiana in 1955.

Survivors include her husband; two daughters, Debbie and Vicki; three sons, Joe, Danny and Donnie, all of Stockbridge; three sisters, Mrs. Betty Easterday of Ypsilanti, Mrs. Mary Ward of Stockbridge, and Mrs. Denise Stull of Stockbridge; 10 brothers, Richard of Dearborn, Jerry of Stockbridge, Jim of Wayne, Jack of Stockbridge, Kenneth of Munich, David of Ypsilanti, Larry of Stockbridge, Terry of Jackson, Michael of Stockbridge, and Dennis of Munich; and her mother, Mrs. Frances Joseph of Stockbridge.

A son, Jerry Howard, preceded her in death.

Funeral services were held yesterday, March 4, at 2 p.m. from Caskey Funeral Home in Stockbridge.

### Lloyd J. Collins

Employed at Federal Screw Works Before Retirement

Lloyd J. Collins, 319 Madison, died at the University of Michigan Hospital Friday, Feb. 27. He had been in the hospital since Feb. 6.

Mr. Collins, 73, was born Dec. 31, 1886 in Scott county, Va. He married Vera Kuster Sept. 6, 1922 in Ann Arbor.

He had been employed at Federal Screw Works for more than 23 years, retiring in 1968.

He is survived by his widow, Vera; two sons, Nathan and Edwin, both of Chelsea; three daughters, Mrs. Richard (Ruth) Dawson of North Ridge Calif., Mrs. Mauroudis (Margaret) Antoniou of Ann Arbor, and Mrs. Dennis (Barbara) Moffat of Ypsilanti; a son, Lloyd, died March 2, 1968. He had 14 grandchildren and one great-grandchild. He had two brothers, Leonard and Carl, both of Kingsport, Tenn.; and two sisters, Mrs. William (Viola) Lunsford, and Mrs. B. (Stella) Oliver of Kingsport.

Funeral services were held Tuesday, March 3, at 2 p.m. at the Staffan Funeral Home with the Rev. George T. Nevin officiating. Burial followed in Oak Grove Cemetery.



PIE IN THE EYE was given to Walt Brown, Jaycee president, from St. Hopkins, internal vice-president. The "reward" was the result of a challenge to the membership issued by Brown for membership growth during the months of January and February. The local chapter increased its membership from 47 to 60 men during that period of time.

## JC's Entertain Fathers

Father's Night was held Tuesday night, March 3, by the Chelsea Jaycees at the K. of C. Hall for approximately 45 Jaycees and their fathers.

The night was held to better acquaint the fathers with the local Jaycee organization and its value to the individual members.

(Continued from page one)

Howie Treado led the Bulldogs' effort, hitting four out of five from the line while scoring 10 points.

Chelsea looked as if they might pull through with the victory as they took the lead away from Dexter in the final period. However, any hope of victory for Chelsea diminished at the free throw line as the Bulldogs connected on only one charity toss while missing on four; one on a shot in the closing minutes of play.

Dexter took full advantage of this as they hit for 100 percent from the charity stripe.

Both teams had chances to break the game open in the second half, but neither could connect on three or four baskets in succession to give them the needed advantage.

Jim Wojcicki again paced the Bulldogs' balanced scoring attack, hitting for 21 points, including 10 in the final period.

Howie Treado tallied 13 points and grabbed 13 rebounds while Ron Sweeney totaled 10. Sweeney and Dave Conklin each dropped in 10 counters.

Art Farley scored 8 points and Jeff Hughes grabbed 9 rebounds.

Treado 4-10 5-7 13 3 3 13  
Sweeney 4-8 2-5 10 2 2 10  
Welton 1-1 0-0 1 2 0 2  
Hughes 0-4 2-3 9 1 4 2  
Farley 3-13 2-2 3 1 2 8  
Wojcicki 10-23 1-1 2 2 1 21  
Conklin 4-15 2-5 3 2 2 10  
Totals 26-75 14-23 41 13 14 66

Score By Quarters—  
Chelsea 13-16-20-17—66  
Dexter 17-17-16-18—68

The meeting began with a personality adjustment hour and continued with a meat loaf dinner served by the Chelsea Jaycee Auxiliary.

A short business meeting was held which was followed by a program on police protection by the Washtenaw County Sheriff's Department. The officers in charge of the program were Officer White and McDuggle. Officer White brought his police dog and demonstrated the 15 commands and training the dogs are put through. He summarized his program by relating to his involvement in the recent Ann Arbor student unrest.

Highlight of the evening was the presentation of Jaycee awards for activities during the month of February. Awards were presented to St. Hopkins for his involvement in the Stockbridge expansion, and to Tom Steele and Chuck Matloff for their involvement in the District and State basketball tournaments. Chelsea Jaycees placed second in the state.

A total of four new Jaycees were accepted for membership in the local organization. They are John Niehaus, Mike Slane, Dick Loring, and Rick Wales. This brought the membership total to 60 men, which is the second largest membership ever for the chapter. The evening ended with Walt Brown, president, receiving six-throw cream "pies in the eye" for membership growth on the local level.

## BIRTHS

A boy, Daniel Scott, to Mr. and Mrs. D. Daniel Robbins, 13200 Trist Rd., Grass Lake, Tuesday, March 3 at St. Joseph Mercy Hospital. Maternal grandparents are Mr. and Mrs. C. R. Huntwork of East Lansing and the paternal grandparents are Mr. and Mrs. P. G. Robbins of Ann Arbor.

To Dr. and Mrs. Robert S. Walters of Pittsburgh, Pa., a son, Christopher Scott, Feb. 17. Mrs. Walters is the former Linda Fisher. Grandparents are Mrs. Eugene Fisher of Freer Rd., and Mr. and Mrs. Robert K. Walters of Houston, Tex.

A son, Jeffrey Lawrence, Sunday, March 1 to Mr. and Mrs. Larry Hackworth.



IS THIS YOUR New Home?  
DESIGN NO. 6118

**Please! Don't Grow Old Renting A House or Making Those Payments on a 60-year old relic LIVE A LITTLE!**

### ★ For those with a Sizeable Down Payment

✓ You are in a position to command the LOWEST PRICES available anywhere—and we can give them to you. Our Cash and Carry prices will compete with any lumber yard within 50 miles.  
✓ We deliver FREE at these prices on orders of \$100 or more.

### ★ For those with a Minimum Down Payment, but who possibly may own a lot

✓ You must be willing to work, and with our help, to plan the construction of YOUR NEW HOME.  
✓ Any work you feel you cannot do can be hired done, but you must contribute enough hours to offset the shortage in down payment.  
✓ We will finance all of your construction costs and will guarantee you enough materials to build your new home.

**COMPARE THIS "Package House" Plan WITH ANY OTHER AND YOU'LL BELIEVE**

✓ We finance it during construction.  
✓ You make no payments until the house is completed.  
✓ You choose your own subcontractors.  
✓ We furnish the materials.  
✓ Our staff will advise you and answer all of the questions that will come up during the construction.

### ★ BUT... A FEW WORDS OF CAUTION...

✓ You must contribute some value—either a moderate down payment, or some equity in an older home, or a lot on which to build the house.  
✓ You must be ambitious and willing to work.

### ★ OUR "PACKAGE HOUSE" INCLUDES

ALL of the materials you will need... from basement blocks to door knobs... from floor beams to kitchen cabinets, and to make the work easier for you,

**we furnish:**  
✓ 2x4 studs all pre-cut to length.  
✓ Thermopane window units pre-assembled, ready to set in.  
✓ Pre-cut roof trusses—ready to set in place.  
✓ Pre-hung doors.  
✓ Factory-made kitchen cabinets and counter tops.

**Come in and Plan with Us So You, Too, Can Be Ready This Spring**

**CHELSEA LUMBER CO.**

"Where the Home Begins" Phone GR 5-3391

**RCA...it's the Color you want!**

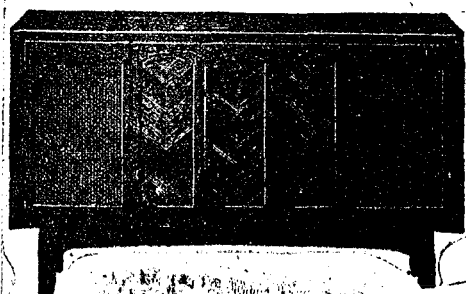


Color console with fiddle-free fine tuning!  
RCA's advanced Automatic "Looked-In" Fine Tuning (A.F.T.) pinpoints the correct signal electronically. Tilt-out control panel for easy access. Come in and see it.

The INDICOTT Model GM-547 23" diag., 225 sq. in. picture

**\$559<sup>95</sup>**

**RCA Computer Crafted Stereo**



RCA Stereo with Computer Crafted Tuner

**\$299<sup>95</sup>**  
Reg. \$319.98

**Shop & Save AT**

**GAMBLES**

**STRIETER'S has the SLACKS**

**FARAH with FaraPress®**

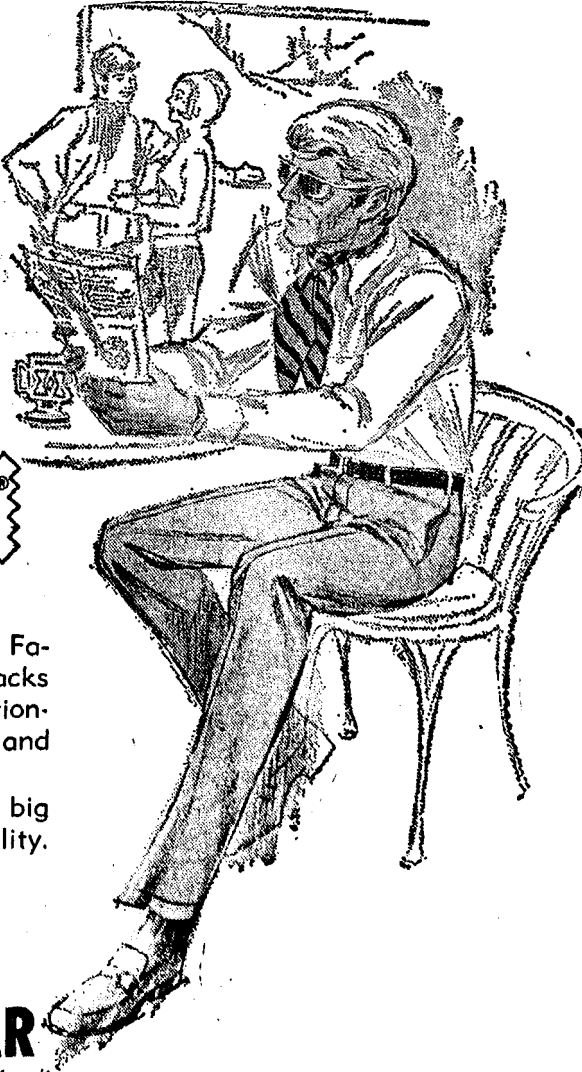
A fantastic selection of Farah Permanent Press Slacks—both slims and traditional—plaids, stripes and solids.

FARAH, one of the big names in style and quality.

From \$9.00

**STRIETER'S MEN'S WEAR**

"The Place To Go for Brands You Know"





## County Dairy Day Stated Tuesday

Three Michigan State University extension specialists will join Dr. Donald R. Johnson, county extension director as featured speakers at the Washtenaw County Dairy Day to be held Tuesday, March 10 at the Farm Council Activities Center, Saline-Ann Arbor Rd., it has been announced by the Co-operative Extension Service.

The day-long event will begin at 9 a.m. and run until 4 p.m. Johnson will speak at 2 p.m. on alfalfa weevil. Johnson is joined on the roster of speakers by Dr. Donald Murray, MSU extension specialist in dairy; Dr. Donald Hillman, dairy specialist; and Dr. Robert Maddax, MSU engineering specialist.

Murray will speak at 10 a.m. on dairy sanitation as it affects milk marketing requirements; Hillman, who is scheduled to speak at 11 a.m., will discuss the latest recommendations on dairy herd nutrition; and Maddax will present a picture illustrated talk at 1 p.m. on materials handling in a dairy farm operation.

The day-long conference will be punctuated with two opportunities for participants to view and discuss displays set up for the conference by area farm dealers. A free hour at 9 a.m. and one at 3 p.m. has been set up for this purpose.

Luncheon will be served from noon to 1 p.m. by the Washtenaw County Farm Bureau Women.

For further information call the county extension service at 663-7511, ext. 227.



### \* Pesticide Control

The hottest political issue of 1970 is air, land and water pollution and use of farm chemicals, particularly pesticides.

Concern over our environment was a major topic of President Nixon's State of the Union message.

The major national weekly news magazines recently carried cover stories on the subject.

Politicians of both parties are clamoring for a front-running position as champions against the enemies of our environment.

Students have more or less abandoned the Vietnam War controversy in favor of the pollution and pesticide issue.

Even mother's milk has become suspect because of evidence of DDT.

In this national atmosphere of political and emotional pressures, it is going to be difficult to maintain a calm, reasoned and factual approach to the use of farm chemicals.

Some of those who have been caught up in the wave of mass hysteria are demanding a complete ban on the use of pesticides.

Most of those advocating such an extreme measure know little if anything about the stringent state and federal controls on the use of farm chemicals or of the continuing testing and research to assure the American consumer of a safe food supply.

These people seem to forget that farmers are consumers too and are well aware of the dangers involved in the improper use of farm chemicals on their crops.

Farmers themselves, through their own organizations, have supported biological pest control research to determine where biological control measures can be used as a practical and feasible substitute for chemical controls.

Until such substitutes are found, it would seem reasonable that continued use of farm chemicals be based on a product-by-product and use-by-use basis with continued emphasis on their proper use.

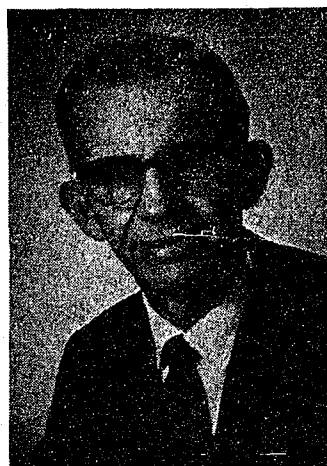
### MOTHER CALLING

A child about to receive an injection put on a bold front until the very last minute, when he saw the approaching needle. Then he leaned over and whispered to the doctor, "I think I hear your mother calling you."

**EYES  
EXAMINED  
and  
GLASSES  
FITTED**

For Appointment  
Call GR 5-5431

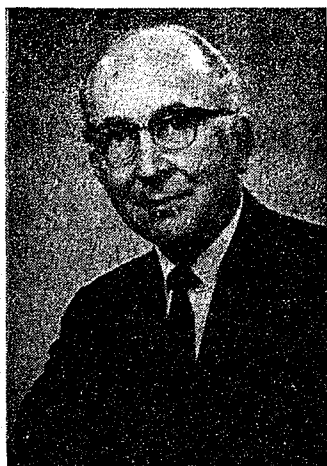
**A. A. PALMER, M.D.**  
110 E. Middle St.  
Chelsea, Mich.



DR. ROBERT MADDAX



DR. DONALD HILLMAN



DR. DONALD MURRAY

### Auto License Plate Sale Scheduled in Dexter, Manchester

Wallace Wood will be in Manchester on Saturday, March 7 to issue 1970 license plates on behalf of the Michigan Secretary of State.

Wood will be at Tom Marshall Ford March 7; at Tibb Chevrolet in Manchester on March 21; and at Frank Grohs Chevrolet in Dexter on March 14.

Each of these Saturdays, Wood will issue plates from 1 to 4 p.m. Wood, who issues plates in Chelsea at 105 S. Main St., during the week, travels to Manchester and Dexter to facilitate the issuance of plates in areas which do not have a regular office of the Secretary of State.

In order to obtain the 1970 plates, applicants must have with them their car title and proof of insurance.

### Frosh Cagers Win Brighton Tournament

Chelsea freshman basketball players ended their season winning the Brighton invitational tournament.

In their first game of the tournament the Bulldogs easily defeated Muir, 67-44. The Chelsea cagers scored more than 18 points. Jeff Schmidt and Jeff Daniels each tallied 13 and John Mann tossed in 10 counters. Dan Bertke totalled 8 points and Don Conklin hit for 4.

After a close first quarter the Frosh went on to post a 63-42 victory over Clarkston. Chelsea turned on the defense, holding Clarkston to six points in the second period and five in the third, while the Bulldogs scored 11 and 20.

The Chelsea Frosh again relied on fairly balanced scoring. Schmidt was high man hitting for 17 points while Mann and Guster tallied 13 and 12, respectively. Other scorers for Chelsea were

Bertke with 9, Daniels 5, Bill Tite 3, Keith Hume 2, and Mark Policht and Jeff Van Riper each with 1.

### Rod & Gun Club Annual Meeting Slated Tuesday

Chelsea Rod and Gun Club will hold its annual meeting Tuesday, March 10. The annual meeting is for members only.

To maintain membership, dues must be paid before or at the next meeting of the group to Carl Benjamin, according to club secretary Douglas Warren.

### SPORTS DEFINED

Bob Hope has been quoted as saying: If you watch a game, it's fun. If you play it, it's recreation. And if you work at it, it's golf.

Schmidt grabbed 16 rebounds and Bertke 9 to lead the Bulldogs.

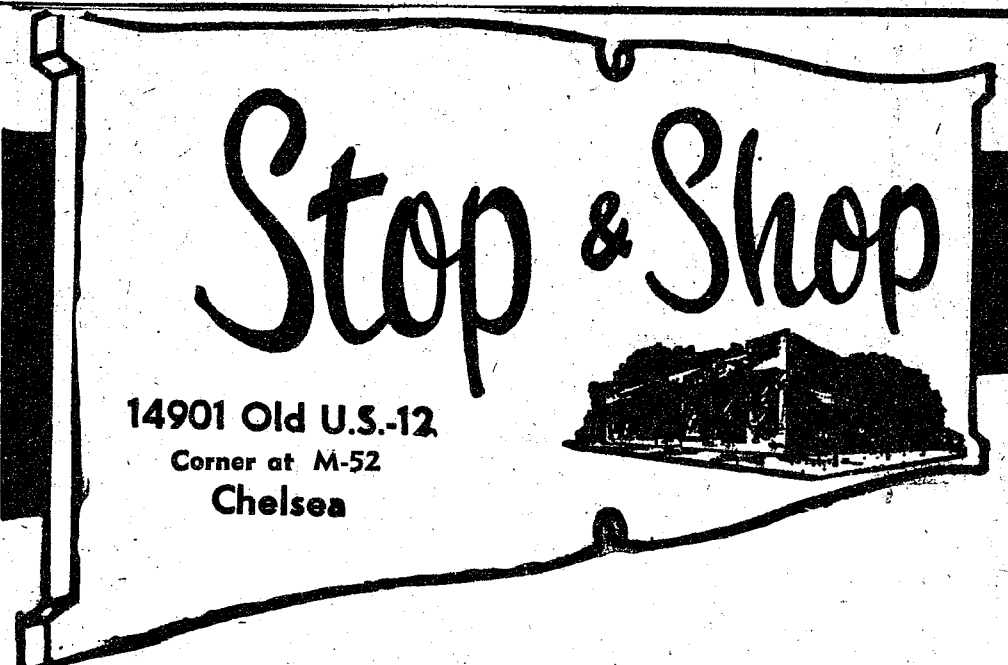
Chelsea's Frosh clinched their tourney title with a 76-59 win over Sashaw. It was a closely fought game through the first three periods, as Chelsea carried a four-point lead into the final stanza, but the Bulldog Frosh scored 23 points in the last period to turn the game into a runaway.

Chelsea scoring was led by Schmidt and Guster, scoring 26 and 22 points for the Frosh. Mann also hit double figures, scoring 10 counters. Conklin tallied 6, Policht 5, Bertke and Tite, each 3, and Hume 1.

### BIBICAL LEARNING

A teacher asked if there was a Commandment like "Honor Thy Father and Thy Mother" which taught how to treat brothers and sisters. One pupil from a family of seven blurted, "Thou Shalt Not Kill."

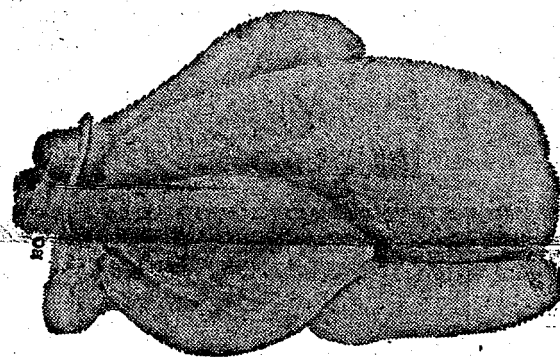
## THE SUPERMARKET THAT'S JUST A LITTLE BIT BETTER



### THE KNOW HOW OF INTELLIGENT MEAT BUYING IS REALLY THE 'KNOW WHERE'

Our customers have learned to depend on the outstanding quality of Stop & Shop meats — unfailing satisfaction with every cut they purchase. The finest quality, together with the expertise of our meat cutting experts, makes an unbeatable combination.

Prices Effective Wednesday, March 4, through Tuesday, March 10, 1970.



"Triple R Farms" Fresh Dressed Grade A  
**WHOLE FRYERS 33¢ lb.**

Stop & Shop's Fresh, Lean, All-American Beef  
**Hamburger 3-Lb. Units or More 59¢ lb.**

"Triple R Farms" Mich. Grade 1  
**Skinless Wieners 59¢ lb.**

"Triple R Farms" Mich. Grade 1  
**Polish Sausage 69¢ lb.**

Stop & Shop's Homemade  
**Pork Sausage 69¢ lb.**

"Triple R Farms" Mich. Grade A  
**CHICKEN LEGS and BREASTS (Ribs Attached) 59¢ lb.**

"Triple R Farms" Boston Butt  
**Pork Roast 69¢ lb.**

Lean, Tender, Boneless and Cubed  
**Pork Cutlets 89¢ lb.**

Lean, Tender, Meaty  
**Pork Steaks 79¢ lb.**

"Triple R Farms" Mich. Grade 1  
**Sliced Bologna 59¢ lb.**

Very Fine McIntosh  
**Apple Sauce 3-Lb., 2-Oz. Jar 49¢**

Campbell's  
**Pork & Beans 1-Lb., 5-Oz. Can 19¢**

New From Shedd's  
**Peanut Butter in Marshmallow 12-Oz. Jar 49¢**

Treesweet Fresh Frozen Florida  
**Orange Juice 6 6-Oz. Cans \$1**

Our Favorite  
**Sweet Peas 2 1-Lb., 1-Oz. Cans 25¢**

Kraft's Margarine  
**Soft Parkay 1-Lb. Pkg. 39¢**

Duncan Hines  
**Deluxe Cake Mixes 1-Lb., 2 1/2-Oz. Box 3 for \$1**

Hart's  
**Tomato Juice 1-Qt., 14-Oz. Can 19¢**

McDonald's  
**Fudgesicles 3 Delicious Flavors 12-Pack Carton 59¢**

**Farm Fresh Produce**

Florida Seedless	5-Lb. Bag	<b>79¢</b>
Florida Sweet Juice	5-Lb. Bag	<b>69¢</b>
California Sunkist	5 for	<b>39¢</b>
U. S. No. 1 Fresh Texas	1-Lb. Cello Bags	<b>29¢</b>

**7th WEEK**

**LUNCHEON PLATE ONLY 39¢**  
With \$3.00 Purchase

McDonald's 2% Low Fat

**FRESH MILK Gallon Carton 69¢**

**PILLSBURY'S BEST ALL - PURPOSE FLOUR 5-Lb. Bag 39¢**

WITH THIS COUPON

Good Only at STOP & SHOP  
Coupon Expires March 10, 1970

WE RESERVE THE RIGHT TO LIMIT QUANTITIES

For Your Convenience  
**OPEN SUNDAY 10 a.m. - 6 p.m.**  
All Sale Prices Effective Sundays

Sorry, No Sales To Dealers

**STORE HOURS:**  
Monday, Tuesday, Wednesday  
9 a.m. - 6 p.m.  
Thursday, Friday  
9 a.m. - 9 p.m.  
Saturday New Hours  
8 a.m. - 7 p.m.  
Sunday  
10 a.m. - 6 p.m.



Legal Notices

**MORTGAGE SALE**  
Default having been made in the terms and conditions of a certain mortgage made by THOMAS P. ATWOOD and MARGARET L. ATWOOD, his wife, of Ann Arbor, Michigan, to the National Bank of Detroit, a Michigan corporation, dated the 26th day of October, A.D. 1962, and recorded in the office of the Register of Deeds for the County of Washtenaw, State of Michigan, on the 2nd day of November, A.D. 1962, in Liber 1007 of Washtenaw County Records, page 541, which said mortgage was thereupon, on to-wit the 9th day of January, A.D. 1963, assigned to a Michigan National Bank, a National Banking Association, and recorded on January 11, 1963 in the office of the Register of Deeds for the County of Washtenaw, State of Michigan, in Liber 1014 of Washtenaw County Records, on page 484, on which mortgage there is a certain sum of TWENTY THOUSAND AND NINE HUNDRED DOLLARS (\$20,900.00) and SEVENTY TWO CENTS (\$12.90/100). No suit or proceedings at law or in equity having been instituted to recover the debt secured by said mortgage, or any part thereof. Now, therefore, by virtue of the power of sale contained in the mortgage, and pursuant to the statute of the State of Michigan in such case made and provided, notice is hereby given that on Friday, the 21st day of May, A.D. 1970, at 10 o'clock A.M., Local Time, said mortgage will be foreclosed by a sale at public auction to the highest bidder, at the west entrance of the Washtenaw County Building, in the City of Ann Arbor, Michigan, (that being the building where the Circuit Court for the County of Washtenaw is held), of the premises described in said mortgage, or so much thereof as may be necessary to pay the amount due, as aforesaid, including the interest thereon at 5 1/2% per annum and all legal costs, charges and expenses, including the attorney fees allowed by law, and also any sum or sums which may be paid by the undersigned, necessary to protect its interest in the premises. Which said premises are described as follows: All that certain piece of land, situated in the City of Ann Arbor, in the County of Washtenaw, and State of Michigan and described as follows: Subdivision No. 1, City of Ann Arbor, Washtenaw County, Michigan, according to the plat thereof recorded in Liber 1014 of Washtenaw County Records, page 41, Washtenaw County Records, dated at Detroit, Michigan February 26, 1970.

**MICHIGAN BANK NATIONAL ASSOCIATION, A National Banking Association, Mortgagee.**  
TRAVIS, WARREN, NAYEN & RICHARDSON, Attorneys for Assignee of Mortgage, 2665 Penobscot Bldg., Detroit, Michigan 48226  
Feb. 26-May 21

**B-45100 MORTGAGE SALE**  
Default has been made in the conditions of a mortgage made by MIDLAND BUILDING CORPORATION, a MICHIGAN CORPORATION, to MIDLAND MORTGAGE CORPORATION, a MICHIGAN CORPORATION, Mortgagee, dated March 9, 1967, and recorded on March 9, 1967, in Liber 1178, on page 530, Washtenaw County Records, Michigan, on which mortgage there is a certain sum of Forty Two Thousand Nine Hundred Twenty and 60/100 (\$42,920.60) Dollars, including interest at 6% per annum. Under the power of sale contained in said mortgage and the statute in such case made and provided, notice is hereby given that said mortgage will be foreclosed by a sale of the mortgaged premises, or some part thereof, at public venue, at the West entrance to the County Building in Ann Arbor, Michigan, at 10:00 o'clock A.M., on Wednesday, May 27, 1970.

Said premises are situated in City of Ypsilanti, Washtenaw County, Michigan, and are described as: Lot 16, R. S. Gerganoff Subdivision, No. 2, City of Ypsilanti, Washtenaw County, Michigan, according to the plat thereof as recorded in Liber 1177 of Plats, Page 32, Washtenaw County Records.

The length of the period of redemption from such sale will be six months.  
Dated: Feb. 19, 1970.

**MIDLAND MORTGAGE CORPORATION, MORTGAGEE.**  
HYMAN, GURWITZ, NACHMAN, FREEDMAN & WEINBERG, Attorneys for Mortgagee, 1400 First National Building, Detroit, Michigan 48226  
Feb. 26-May 21

**B-46424 MORTGAGE SALE**  
Default has been made in the conditions of a mortgage made by NORTH-LAND BUILDING CORPORATION, a MICHIGAN CORPORATION, to MIDLAND MORTGAGE CORPORATION, a MICHIGAN CORPORATION, Mortgagee, dated October 1, 1966, in Liber 1178, on page 200, Washtenaw County Records, Michigan, and Mortgagee dated 1967, recorded on Dec. 5, 1967, in Liber 1227, on page 311, Washtenaw County Records, Michigan, on which mortgage there is a certain sum of Forty Two Thousand Nine Hundred Seventy Nine and 80/100 (\$42,979.80) Dollars, including interest at 7% per annum.

Under the power of sale contained in said mortgage and the statute in such case made and provided, notice is hereby given that said mortgage will be foreclosed by a sale of the mortgaged premises, or some part thereof, at public venue, at the West entrance to the County Building in Ann Arbor, Michigan, at 10:00 o'clock A.M., on Wednesday, May 27, 1970.

Said premises are situated in City of Ypsilanti, Washtenaw County, Michigan, and are described as: Lot 19, R. S. Gerganoff Subdivision, No. 2 of Ypsilanti, Washtenaw County, Michigan, according to the plat thereof as recorded in Liber 1177 of Plats, Page 32, Washtenaw County Records.

The length of the period of redemption from such sale will be 6 months.  
Dated: Feb. 19, 1970.

**MIDLAND MORTGAGE CORPORATION, MORTGAGEE.**  
HYMAN, GURWITZ, NACHMAN, FREEDMAN & WEINBERG, Attorneys for Mortgagee, 1400 First National Building, Detroit, Michigan 48226  
Feb. 26-May 21

NORTH ELEMENTARY SCHOOL NOTES

**THIRD GRADE—**  
Teacher: Mrs. Edmonds  
Reporters: Billy K. Lois and Marcie

This week we are studying about the use of the telephone. Yesterday we saw a film about why the telephone is important to us. We will see a film every day this week and Friday Mrs. Edmonds will teach us how to use the telephone. We will have our own book and we will find real people's phone numbers.

In Social Studies we are studying about Montana. Do you know that sheepherders lead a very lonely life? They spend much of their life on the range. We are having a speaker come in and show us how to shear a sheep and also to show us some tools.

In science we are growing our own plants from seed. Jane, Annie and Lois have already brought their plants to class so we can watch them grow.

In arithmetic, we learned how to tell time using Roman numerals. We also learned why the Romans wrote their numbers this way. Now we're studying about measurement. We have a measuring man and we're using our milk cartons to help us.

**FIFTH GRADE—**  
Teacher: Mrs. Paplawsky  
Reporters: Debbie Haworth and Sue Tompkins

Some of the boys in our class made models for the model car contest. Doug Eisele came in first place, Chris Bennett second place, David Steinbach, third place, Dickie Gillespie, fourth place. We also did limmericks. Here are some of them for you to read.

There once was a young boy named Joe,  
He went to his mother  
To ask for another  
Blue pill to make him still bluer.  
—by Kim Brown.

There once was a miller, who  
Dived with a killer.  
Who had a sharp knife and  
Slept with his wife.  
Who looked like Phyllis Diller.  
By Debbie Haworth.

There once was a boy named Joe,  
Who hated to use a hoe,  
He called to Jane, in the rain  
Let's go get Flo.  
—by Carol Linebaugh.

**Teacher: Mrs. Winkle**  
Reporters: Karen Salyer and Dawn Albrecht

In science we have been studying weather and clouds. Wednesday we made a science chart. Every hour we would write up the temperature, wind direction, sky condition, precipitation, barometer, and kinds of clouds. The clouds were mostly cumulus. There was precipitation but not when we were recording the weather.

In English we have been giving oral reports on "Americans All" and "Foreign Lands."

Two high school boys came over to North school last Friday. They visited in each room awhile. When they came to our room we were giving our reports.

In Math we are studying plane geometry. We are learning about triangles, line segments, angles, congruent line segments, congruent angles, and rays. We are having a test on geometry too.

In Social Studies we are going into a new unit. We are going to have a test today on the previous unit, which was about the Civil War.

Carol Linebaugh in Mrs. Paplawsky's fifth grade room won the school championship in the Detroit News Metropolitan Area Spelling Bee. She will receive a bronze medal, a Papermate automatic pen, and a certificate of championship. Julie Proctor was the runner-up in the school contest. The winner will compete in the District Spelling Bee to be held next month.

**ECUMENACLED**  
During an inter-denominational Church Unity Week dinner, two prominent political opponents were seated across the table from each other. Their heated debates were now replaced by stilted formalities. As one left, he muttered to his wife, "I would have to get ecumanacled to him!"

CHELSEA VILLAGE COUNCIL PROCEEDINGS

February 17, 1970  
Regular Session  
This meeting was called to order by President Pennington at 8 p.m.  
Trustees present: Gorton, Musbach, Fulk, Clark and Chandler. Trustee absent: Miller.  
The minutes of the regular session of February 3 were read and approved.  
Two representatives from Manchester High School toured the Civil Defense Control Center and were present at the Council meeting.  
Trustee Clark read a summary of the Police Department activity for the month of January as submitted by Chief Meranuck.  
Representatives of Chelsea High School "Key Club" were present and showed the five signs which the club purchased directing traffic to the high school. The Department of Public Works was instructed to work with the club erecting the signs.  
A discussion was held regarding remodeling a portion of the Municipal Building. Trustees Clark and Gorton were appointed to a committee to work with the Administrator and investigate plans for the remodeling.  
Further discussion was held regarding the financing of the sewer expansion program. The clerk was instructed to contact the firm of Miller, Canfield, Paddock and Stone and arrange a meeting with the firm for the near future.  
Bids were requested for the purchase and installation of dump box for the Department of Public Works. Bids were received from: Automotive Service Co., in the amount of \$1,095.00; Daybrook Speedfill, in the amount of \$1,239.00; Eltons, Inc. in the amount of \$1,219.00; and Superior Equipment Co. in the amount of \$1,415.00.  
Motion by Gorton, supported by Chandler to accept the bid of Automotive Service Co. in the amount of \$1,095.00 for the purchase and installation of one (1) dump box per our specifications. Roll call: Yeas all. Motion carried.  
Motion by Musbach, supported by Fulk to authorize the Administrator to prepare specifications and request bids for two (2) 1/2 ton pickups. One pickup to be used by the Department of Public Works and one to be used by the Electric and Water Dept., with a trade-in of one (1) heavy Van from the Electric and Water Dept. Bids to be submitted to the Administrator by 4:30 p.m., Tuesday, March 3, 1970. Roll call: Yeas all. Motion carried.  
Motion by Fulk, supported by Gorton, to approve the Election Board as submitted by the Village Clerk for the Annual Village Election as follows: Mrs. George Palmer, chairman, Mrs. Steve Clark, Mrs. Fred Harris, Mr. John Wellnitz, and Mr. Frank Sweeney. Roll call: Yeas; Musbach, Gorton, Fulk, and Chandler. Nays: none. Abstained: Clark. Motion carried.  
Motion by Musbach, supported by Gorton to appoint Mr. Charles Cox as Chelsea Michigan Week Chairman for 1970. Roll call: Yeas all. Motion carried.  
Motion by Chandler, supported by Clark, to accept the recommendation of the Sanitary Landfill Committee and establish rates for Village Landfill users that are considered in excess of normal residential usage as follows: Rate I: \$25.00 monthly for semi-trailer in excess of three times per month. Rate II: \$10.00 per month for pickups, stake trucks and dump trucks in excess of three times monthly. Rate III: \$5.00 per month for users in excess of normal residential usage but not in excess of Rate I or II. Any Village user allowed entrance to the Landfill on days not open to the public will be charged \$15.00 per every hour the operator spends in accommodating said user. The above rates to be effective April 1, 1970. Roll call: Yeas: Gorton, Musbach, Clark, and Chandler. Nays: None. Abstained: Fulk. Motion carried.

CROSSWORD PUZZLE

**ACROSS**  
1. Put in a place  
5. Clever as a trick  
9. Minute groove  
10. It's—cause (hopeless)  
12. "Cheers"  
13. Saclike cavity  
14. Land measure  
15. Spread glass  
17. Stag guests  
18. Bone  
20. Jacob's eldest son and others  
23. Shift  
25. My try  
26. Old Norse works  
28. Pointers on a dial  
32. Eat late  
34. East Indian tree  
35. Flon baskets  
39. A mold  
40. According to  
41. Caesar, for one  
43. First article  
44. Chop finely  
47. Derivish  
49. See 12  
50. Makes an attempt  
51. Sea eagles  
52. Reads the alarm clock

**DOWN**  
1. Celebrated in history or legend  
2. Constellation  
3. Tightwad  
4. Trencherman  
5. Wheels for rainy day  
6. Eskimo knife  
7. The Velvet Fog  
8. Ruhr metropolis  
9. Go hungry  
11. Hostelry  
12. English river  
19. Flower pot  
21. Exclamation expressing aversion  
22. Watercraft  
24. Scrape  
27. Sun-bonnet girl  
29. A shake of the head  
30. Small lace mats  
31. Smiles scornfully  
33. Cousin; abbr.  
35. Radio buffs  
36. Similar  
37. Nobleman's estate  
38. Puts through a sieve  
42. Defiance  
45. Food container  
46. Passe transportation  
48. Tool case

**Today's Answer**

1	2	3	4	5	6	7	8	9	10
11	12	13	14	15	16	17	18	19	20
21	22	23	24	25	26	27	28	29	30
31	32	33	34	35	36	37	38	39	40
41	42	43	44	45	46	47	48	49	50
51	52	53	54	55	56	57	58	59	60

No American Family Can Be Termed Ideal

East Lansing—There is no universally suitable model of the American family, says a professor of sociology at Michigan State University.

"We once thought that American society had a unity," says Dr. James McKee, "but now we have to see it as a great many different kinds of societies with many old traditions as well as emerging new patterns."

"We have self-consciously invented adolescence as a stage of life," he says. "We've educated and nurtured youth so they are physically and mentally very competent but we've postponed their entrance into the occupational world." He says that adolescence has become a distinct stage of life in which the young people depend on each other to learn and cope with their problems.

**DEFINITION**  
Hypochondriac: one with an ill for all cures.

BUILDING FOR SALE

Sealed proposals will be received by the undersigned at 1750 Guardian Building, Detroit, Michigan 48226, until 2:00 p.m., E.S.T., on Tuesday, March 24, 1970 for the sale and removal from the premises of a log house located at 9223 West Huron River Drive, Dexter, Michigan 48130.

A Certified or Cashier's Check in the amount of ten percent (10%) of the bid price must accompany the proposal. The successful bidder will be required to remit the balance of the Bid Price within seven (7) days of being notified of the award. The successful bidder must also deposit Fifty Dollars (\$50.00) to assure cleanup of the site after removal of the building.

Envelope containing proposal should be plainly marked as follows:

"Building Proposal"

The Authority reserves the right to reject any or all proposals, to waive irregularities and/or formalities in any proposal and to make the award in any manner deemed for the best interest of the Authority.

Proposal forms may be obtained at the offices of the Authority, 1750 Guardian Building, Detroit, Michigan 48226, or at the park office of the Authority at 8801 North Territorial Road, Dexter, Michigan 48130.

**Huron-Clinton Metropolitan Authority**  
P. K. McWethy, Secretary

SHARON TOWNSHIP BOARD OF REVIEW

Notice is hereby given to all persons liable to assessment for taxes in the

**TOWNSHIP OF SHARON**  
County of Washtenaw, State of Michigan

That the Assessment Roll of said Township as prepared by the undersigned will be reviewed by the Board at

**SHARON TOWNSHIP HALL**  
on

**TUESDAY, MARCH 3, 1970**  
from 9 a.m. to 3 p.m.

**Appeals and Conferences with Taxpayers will be heard on**

**MONDAY, MARCH 9, 1970**  
at which time the Board of Review will be in session from 9 a.m. to 3 p.m. of said day, at which time upon request of any person who is assessed on said tax roll or of his or her agent and upon sufficient cause being shown, said Board of Review will correct the assessment as to such property in such manner as will in their judgment make the valuation relatively just and equal.

Such assessment tax roll as reviewed and approved by said Board of Review will be the assessment roll of said Township of Sharon for the year 1970.

**RUSSELL FULLER, Supervisor**  
Dated: Feb. 17, 1970.

NOTICE OF MEETING OF SYLVAN TOWNSHIP ZONING BOARD

Notice is hereby given that a special meeting of the Township Zoning Board of Sylvan Township will be held in the Sylvan Township Hall, located in the Village of Chelsea, on March 11, 1970, at 7:30 o'clock p.m.

At the meeting the Zoning Board will conduct a special hearing on the petition of Harold W. Rickerman and Ruth E. Rickerman, husband and wife, for the rezoning of the following parcel from "A-1" Agricultural, to either "B-1" or "B-2" General Business:

"Commencing at the center of Section 1, Town 2 south, Range 3 east, Sylvan Township, Washtenaw County, Michigan; thence along the north and south quarter line of said Section north 0° 41' 10" west 135.5 feet to the north line of the southeast quarter of the northwest quarter of said section for a Place of Beginning; thence along said north line north 88° 20' 40" west 400.65 feet to the east line of M-92 relocation; thence along said east line, 151.51 feet in the arc of a circular curve concave to the southwest, radius 3804.83 feet, chord south 34° 59' 30" east 151.5 feet; thence south 88° 20' 40" east 315.3 feet to the north and south quarter line of said section; thence along said quarter line north 0° 41' 10" west 121.7 feet to the place of beginning, being a part of the southeast quarter of the northwest quarter of said section, Sylvan Township, Washtenaw County, Michigan." (The above described parcel is located within the vicinity of the intersection of M-52 and Werkner Road.)

Any party having an interest in said township, or his duly appointed representative or attorney, shall be heard at such meeting as to any matters which shall come before said board.

**SYLVAN TOWNSHIP ZONING BOARD**  
James P. Liebeck, Secretary

**FOR PROFIT**

**FEED**

Get Fortified Feeds . . .  
Step Up Egg Production

Prove it to yourself. Our Fortified Feeds are just the rations your hens need to produce more eggs, more profits for you.

**Farmers' Supply Co**  
Phone GR 5-5511

**Keep up on current affairs the easy way**

Read the Pulitzer Prize winning Christian Science Monitor. Rarely more than 20 pages, this easy-to-read daily newspaper gives you a complete grasp of national and world affairs. Plus fashion, sports, business, and the arts. Read the newspaper that 91% of Congress reads.

Please send me the Monitor for  
☐ 1 year \$26 ☐ 6 mos. \$13  
☐ 3 mos. \$6.50  
☐ Check or money order enclosed  
☐ Bill me

Name \_\_\_\_\_  
Street \_\_\_\_\_  
City \_\_\_\_\_  
State \_\_\_\_\_ Zip \_\_\_\_\_

**THE CHRISTIAN SCIENCE MONITOR**  
Box 125, Auditor Station  
Boston, Massachusetts 02123





**TIME TO EAT:** Pondering over the delicious food at the Pack 455 Blue and Gold banquet are these guests, who came to witness the awarding of honors.

## Cub Pack 455 Holds Blue & Gold Banquet

Cub Scout Pack 455 held its Blue and Gold banquet Thursday evening, Feb. 26, at Beach school cafeteria. Meat (turkey and ham) milk, coffee, ice cream and buns were furnished by the pack committee and the remainder of the meal, described as "excellent" was brought in by mothers of Cub Scouts. Reports of the dinner included appreciation to Mrs. Vernon Otto and her committee for their planning which provided the lavish banquet.

Special guests at the banquet were Sylvester Wojcik, South elementary school principal, and Ralph Frisch, neighborhood Cub Scout committeeman.

Cubmaster Duane Hall presented awards as follows: Leon Wheeler and Donald Aldrich of Den 1, a gold arrow each; Steven Dresch of Den 2, wolf badge, one gold and three silver arrows; Douglas Nutt of Den 2, bear badge; Billy Burgess of Den 1, and Thomas Owens of Den 3, each a bobcat pin; Pat Murphy of Den 2, denner's badge; Jamie Bollinger of Den 2, bear badge and a gold and silver arrow; and Webster Den 2, the showmanship award for Robert Annabel, Robert Burgess, Jeff Eder, Jeff Elkins, Donald Hall and Robert Liebeck.

Mrs. Charles Burgess, of Den 1, was specially recognized for her three successive years as a den mother and she and all den mothers, Webelos leaders and den chiefs were presented "thank you" certificates. Cubmaster Hall also was presented a "thank you" certificate.

Table centerpieces, showing much originality, were all made by Cub Scouts of the various dens from "genius kits" that they had been given for the purpose some time ago, the kits including mainly a single block of wood and a few odds and ends.

Vernon Otto, assistant Cubmaster



**LET'S EAT!** Ready for the Blue and Gold banquet to begin are the Dick Schanze family (seated on the left), the Skip Wheeler family (seated right center), and the Charles Burgess family (seated down right). Boys and their families from Pack 455 held the Blue and Gold awards banquet last Thursday, Feb. 26.

## VFW Post, Auxiliary Plan 25th Birthday Observance

A combined celebration in honor of the 25th anniversary of the founding of the Chelsea chapter of the Veterans of Foreign Wars (VFW) and the Ladies Auxiliary is being planned for Saturday, April 18.

Plans for the dinner-dance are under the general chairmanship of Mac Packard, with Ren Hutzler and Lawrence Boyer as committeemen. Representing the auxiliary on the committee will be Mrs. Carl Lenz, Mrs. Mary Kmiss, Mrs. Packard, president Mrs. Fred Klink, Sr., vice-president Mrs. Alex Ersten, and junior vice-president Mrs. Frank White.

Notices of the celebration, to be held at the Chelsea Rod & Gun club, will be mailed this

or, concluded the evening's entertainment with the showing of movies of Cub Scouts' recent ice fishing contests and two hikes.

week to all charter members, past commanders, past presidents, present membership and several honored guests.

The local VFW Post was chartered April 20, 1945 with the Ladies Auxiliary receiving their charter on July 10, 1945.

Charles Ritter was the first commander of the Post, and Mrs. Magdalen Weber the first Auxiliary president.

History of the local organizations is being gathered by Mrs. Carl Lenz for the Auxiliary and Ren Hutzler for the Post.

## Personal Notes

Mr. and Mrs. Donald Bauer are leaving today for the sunny south. The couple plans a week's vacation in Tampa and Ft. Myers, Fla., where they intend to visit with Mr. and Mrs. David Polley of Ft. Myers.

## + Services in Our Churches +

**CONGREGATIONAL CHURCH**  
(United Church of Christ)  
The Rev. Daniel Keln, Pastor  
Saturday, March 7—  
9:00 a.m.—Confirmation class.  
9:30 a.m.—Junior Choir rehearsal.  
Sunday, March 8—  
10:00 a.m.—Morning worship and church school.

**ZION LUTHERAN CHURCH**  
Corner of Fletcher, Waters Rds.  
(Rogers Corners)  
The Rev. John R. Morris, Pastor  
Saturday, March 7—  
Youth instructional classes.  
Sunday, March 8—  
9:00 a.m.—Study in Sunday school.  
10:15 a.m.—Family worship.  
(Nursery available.)  
Holy Communion first Sunday each month.  
Monday, March 9—  
4:15 p.m.—Junior Choir.  
8:00 p.m.—Senior Choir.  
Tuesday, March 10—  
7:30 p.m.—Women's shuffleboard.

**FIRST UNITED PRESBYTERIAN CHURCH**  
Unadilla  
The Rev. T. H. Liang  
Sunday, March 8—  
9:45 a.m.—Sunday school.  
11:00 a.m.—Worship service.  
Every Tuesday—  
8:00 p.m.—Choir practice.

**CHELSEA BAPTIST CHURCH**  
The Rev. Elmer S. Steenson, Pastor  
Sunday, March 8—  
10:00 a.m.—Sunday school.  
11:00 a.m.—Worship service.  
Nursery care available during Sunday school and worship service.  
6:00 p.m.—Junior and Senior Baptist Youth Fellowship.  
7:00 p.m.—Evening worship.  
Every Wednesday—  
7:30 p.m.—Bible study and prayer meeting.

**FIRST ASSEMBLY OF GOD CHURCH**  
The Rev. Thode B. Thodeson, Pastor  
Sunday, March 8—  
10:00 a.m.—Sunday school.  
11:00 a.m.—Worship service.  
7:00 p.m.—Evangelistic service.

**WATERLOO VILLAGE CHURCH**  
United Methodist Church  
The Rev. Donald Fry, Pastor  
Sunday, March 8—  
10:00 a.m.—Sunday school.  
11:15 a.m.—Worship service.  
7:00 p.m.—Youth Fellowship.

**FIRST UNITED METHODIST CHURCH**  
The Rev. Robert Worgess, Pastor  
Saturday, March 7—  
8:30 p.m.—Christian Home Group at home of Robert Benedict.  
Sunday, March 8—  
9:00 a.m.—Church school.  
10:00 a.m.—Church school.  
10:00 a.m.—Worship service.  
6:00 p.m.—Junior and Senior MYF.  
Monday, March 9—  
8:00 p.m.—The Administrative Board meeting.

**ST. BARNABAS EPISCOPAL CHURCH**  
20500 Old US-12  
The Rev. William D. Ladkau, Vicar  
Sunday, March 8—  
11:00 a.m.—Morning Prayer.  
11:00 a.m.—Church school and nursery.

**ST. THOMAS EVANGELICAL LUTHERAN CHURCH**  
Cor. Ellsworth and Haab Rds.  
The Rev. Daniel L. Mattson, Pastor  
Saturday, March 7—  
Confirmation class.  
Sunday, March 8—  
10:00 a.m.—Worship service.  
11:00 a.m.—Sunday school and Bible study.

**IMMANUEL BIBLE CHURCH**  
The Rev. Frank C. Frinkle, Pastor  
145 E. Summit St.  
Sunday, March 8—  
9:45 a.m.—Sunday school, nursery provided.  
11:00 a.m.—Morning Worship, nursery provided.  
7:00 p.m.—Evening service.  
Every Wednesday—  
Family hour, prayer meeting and Bible study.

**ST. JACOB EVANGELICAL LUTHERAN CHURCH**  
12501 Reithmiller Rd., Grass Lake  
The Rev. Andrew Bloom, Pastor  
Sunday, March 8—  
9:00 a.m.—Sunday school.  
10:15 a.m.—Divine services.

**NORTH LAKE UNITED METHODIST CHURCH**  
The Rev. Frederick Atkinson, Pastor  
Sunday, March 8—  
9:30 a.m.—Worship service.  
10:30 a.m.—Sunday school.

**GREGORY BAPTIST CHURCH**  
The Rev. Grant Lapham, Pastor  
Sunday, March 8—  
10:00 a.m.—Worship service.  
11:15 a.m.—Church school.  
6:30 p.m.—Baptist Youth Fellowship.  
7:30 p.m.—Evening worship service.

**ST. JOHN'S EVANGELICAL AND REFORMED CHURCH**  
(United Church of Christ)  
Francisco  
The Rev. Robert Townley  
Sunday, March 8—  
10:00 a.m.—Worship service.  
10:20 a.m.—Sunday school.

**FIRST CHURCH OF CHRIST, SCIENTIST**  
1883 Washtenaw Ave., Ann Arbor  
Sunday, March 8—  
10:30 a.m.—Morning service.  
10:30 a.m.—Sunday school.  
Lesson-sermon: "Man."

**ST. MARY'S CATHOLIC CHURCH**  
The Rev. Fr. Francis Wahowiak  
Saturday, March 7—  
7:30 p.m.—Mass.  
Sunday, March 8—  
Masses at 6:30 a.m., 8:00 a.m., 10:00 a.m., and 11:30 a.m.

**ST. JOHN'S EVANGELICAL AND REFORMED CHURCH**  
(United Church of Christ)  
Rogers Corners  
The Rev. David J. Kleis  
Sunday, March 8—  
9:30 a.m.—Sunday school.  
10:30 a.m.—Church service.

**NORTH SHARON COMMUNITY BIBLE CHURCH**  
Sylvan and Washburn Rds.  
The Rev. Paul Collins  
Sunday, March 8—  
10:00 a.m.—Sunday school.  
11:00 a.m.—Worship service.  
6:30 p.m.—Young People's service.  
7:00 p.m.—Evening service.  
Every Wednesday—  
7:30 p.m.—Prayer meeting.

**ST. PAUL UNITED CHURCH OF CHRIST**  
The Rev. Warner Siebert, Pastor  
Sunday, March 8—  
9:15 a.m.—Church school.  
10:30 a.m.—Worship service.  
Tuesday, March 10—  
1:00 p.m.—Needle and Thread.  
7:30 p.m.—Spiritual Life.  
Wednesday, March 11—  
7:30 p.m.—Board of Christian Education.

**METHODIST HOME CHAPEL**  
The Rev. R. L. Clemans, Chaplain  
V. O. Johnson, Administrator  
Sunday, March 8—  
8:45 a.m.—Worship service.

**OUR SAVIOR LUTHERAN CHURCH**  
Rebekah Hall, 1194 M-52  
Sunday, March 8—  
9:15 a.m.—Sunday school.  
10:30 a.m.—Worship service.

**SALEM GROVE UNITED METHODIST CHURCH**  
The Rev. Frederick Atkinson, Pastor  
Sunday, March 8—  
10:00 a.m.—Sunday school.  
11:15 a.m.—Worship service.

**CHURCH OF CHRIST**  
18661 Old US-12, East  
R. D. Farnell, Minister  
Sunday, March 8—  
10:00 a.m.—Church school.  
11:00 a.m.—Worship service.  
6:00 p.m.—Worship service.  
Wednesday, March 11—  
7:30 p.m.—Bible Study.

**BETHEL EVANGELICAL AND REFORMED CHURCH**  
(United Church of Christ)  
Freedom, Township  
The Rev. Roman A. Reineck  
The Rev. William H. Keller, Pastor  
Sunday, March 8—  
10:00 a.m.—Worship.  
10:00 a.m.—Sunday school.  
Telephone Your Club News  
To GR 5-3581.

## SUNDAY'S SERMON

### \* Persistence

Persistence is an admirable quality, most of the time. Every one admires the individual who "puts his nose to the grindstone," who "works at the problem," who "just won't quit."

Persistence is not to be admired when it is of an unreasonable nature, when it is born of pure obstinateness or the determination merely to have one's way, without deference to others.

If you would lead a proper life, always strive to do everything well. Be diligent in seeking to gain the things in life that you want and need. Yet, always consider the cost to yourself and to others. A gain or a profit that is ill-gotten, that disadvantages someone else, should be little source of satisfaction.

Let your persistence be reasonable as well. Don't set yourself up for a disappointing failure by refusing to believe that you will always win if you try hard enough and long enough. Oftentimes, what one man considers impossible is achieved by someone else who persists, who works harder and longer. But such a man is usually wise enough to know that he cannot reach out and touch the moon with his fingertips.

### DEFINITION

Adolescent: person who, when not treated like an adult, acts like an infant.

## Mrs. L. Chapman Enjoys Jet Trip To West, Hawaii

Jetting to several interesting areas in the United States, and then island hopping in the Pacific is the way that Mrs. Leon Chapman of N. Main St., spent the past two weeks.

Mrs. Chapman took a charter flight from Metropolitan Airport in Detroit through the American International Travel Service, which took her to Las Vegas, Colo., several islands of Hawaii, and San Francisco.

Mrs. Chapman and her traveling companion, Mildred Ashmore of Munith, began in Las Vegas with a glimpse of the gambling casinos and a peek at the "Jimmy Dean" and "Merv Griffin" shows.

After a look at Boulder Dam, the group was off to Honolulu.

The nearby islands afforded many opportunities for luaus, night club hopping, a look at Diamond Head mountain, an excursion to Pearl Harbor, and a glance at an erupting volcano.

Mrs. Chapman reported that the last leg of the journey was a visit to San Francisco and Chinatown. The stop included dining at Fisherman's Wharf and a shopping trip through San Francisco's shops.

To protect your fine china, stack plates with separating pads. Paper napkins will do the trick if you don't have pads.

## CHARM BEAUTY SALON

4396 CLEAR LAKE ROAD  
(Formerly of Grass Lake)

Two Operators - Hair Styling and Wig Service  
Open on Mondays. Closed Tuesdays.

PHONE 475-2700

(Political Advertisement)

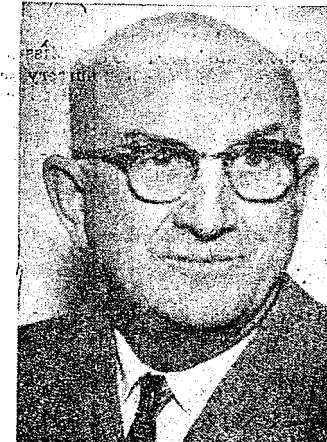
## VOTE THE INDEPENDENT PARTY VILLAGE ELECTION—MONDAY, MARCH 9



**A. E. 'Mac' FULKS**  
for PRESIDENT  
(2-Year Term)



**WALLACE WOOD**  
for TREASURER  
(2-Year Term)



**THOMAS SMITH**  
for ASSESSOR  
(2-Year Term)



**KEITH BOYLAN**  
for TRUSTEE  
(2-Year Term)



**WILLIAM CHANDLER**  
for TRUSTEE  
(2-Year Term)



**THOMAS DMOCH**  
for TRUSTEE  
(1-Year Term)

## INDEPENDENT PARTY PLATFORM

1. To continue to promote well qualified candidates for public office.
2. The Independent Party is convinced that sound and efficient Village government requires a full time administrator. Therefore, we will continue to support the concept and the present administrator.
3. Recent events have made it obvious that major revitalization of the Village electric system is necessary, now! The Independent Party is in favor of a planned program of improvement and expansion of the electric system, financed as much as possible with existing Electric and Water reserve funds.
4. The Independent Party is in favor of improvement of the existing sewer system to relieve present potential overloading and to make possible the removal of the present moratorium on sewer extensions. Improvement of the present system is the responsibility of the residents of the Village. Extension of the system is the responsibility of the developer.
5. The Independent Party is in favor of continued support of the Village Planning Commission, to aid in the planned and orderly growth of the Village.
6. The Independent Party is in favor of a cooperative approach to the problems of recreation and supports the Village's participation in the coordinated group effort in trying to draw together all of the groups and agencies interested in recreation for the Chelsea area residents.

**VOTE INDEPENDENTLY—VOTE INDEPENDENT**

## LIBRARY BOARD MEMBERS

(3-Year Terms)

**MRS. JEAN EATON**  
**MRS. JOHN THOMSON**



INVITATIONS or  
ANNOUNCEMENTS...

Let us provide you with the very finest printed or engraved invitations and announcements. Make certain that your wedding stationery is of top quality and conforms to correct social requirements. We can advise you on these important details.

**THE CHELSEA STANDARD**  
Commercial Printing Department

**0000 Carpet Cleaning**  
If March weather and muddy feet have soiled your carpeting, it's wise to give it some attention now. We recommend Host, the new method of cleaning carpets without water. The carpet is dry and ready to walk on immediately. Use our Host Electric Up-Brush. It's easy. Clean 40 sq. yds. only \$9.95. Phone for information.

**MERKEL BROTHERS**  
Phone 475-8621





## BOWLING NEWS

### Chelsea Lanes Mixed

Standings as of Feb. 27

	W	L
Devine & Brink	109	66
Chelsea Lanes	104 1/2	70 1/2
H. & H.	101	74
Rabbitt & Althouse	96	79
Ann Arbor Centerless	96	79
Lyndon Color Lab	91	84
Wolverine T.V. No. 3	88	87
Doody & Turner	82	93
Wolverine T.V. No. 2	79	96
Elizsimmons Exco.	77	98
Barkley & Gephart	73 1/2	101 1/2
Heim & Weiss	53	122

Men, 500 series: R. Hutzel, 578; D. Alexander, 553; M. Packard, 549; M. Rabbitt, 546; J. Harmon, 545; M. Poertner, 540; R. Brink, 528; B. Devine, 513; C. Ritter, 509; F. Klink, 502.

Men, 200 games: D. Alexander, 244; R. Hutzel, 224; C. Ritter, 207; M. Packard, 206.

Women, 450 series: J. Rabbitt, 491; L. Doody, 488; H. Morgan, 483; F. Gephart, 478; P. Poertner, 454.

Women, 150 games: J. Rabbitt, 188-189; F. Gephart, 180-182; A. Sindlinger, 180; J. Hutzel, 172; L. Doody, 170-161-157; H. Morgan, 169-169; L. Gilmore, 166; P. Poertner, 162-154; M. Robertson, 160; A. Turner, 159; E. Brink, 157; L. Alexander, 156; S. Klink, 154; M. Ritter, 150; E. Harmon, 150.

### Charlie Brown

Standings as of Feb. 28

	W	L
Groovy Tootie Fruities	41	28
Mark III	39	30
Blue Ribbons	38	31
Archies	37 1/2	31 1/2
Merdilizers	37 1/2	35 1/2
Purple Passions	33 1/2	35 1/2
Barana Splits	33	36
Chargers	33	36
Good Guys	33	36
Snoopy's	33	36
Snoopy Stars	32	37
Rolling Stones	24 1/2	44 1/2

200 series: J. Boyer, 265; M. Foster, 223; M. Burnett, 232; J. Collins, 305; S. Schulze, 213; D. Craft, 254; S. Lyerla, 252; J. Sweet, 214; D. Alber, 205; D. Messner, 236; S. Bowen, 203; D. Morrison, 242; D. Eisele, 273; K. Harris, 258; K. Collins, 234; D. Akin, 200; S. Palmer, 218; T. Greenleaf, 210; A. Houle, 228; D. Beaumont, 216; P. Greenleaf, 212; C. Snyder, 213; J. Spaulding, 222; D. Craft, 213; M. Bowen, 228; B. Lewis, 243; M. Pennington, 261.

100 games: J. Boyer, 107; J. Boyer, 132-133; M. Foster, 103-120; M. Burnett, 102-130; J. Collins, 150-155; S. Schulze, 133; D. Craft, 131-123; D. Popovich, 100; S. Lyerla, 141-111; S. Smyth, 102; S. Klink, 107; J. Sweet, 110-104; D. Alber, 107; D. Messner, 124-112; K. Guenther, 106; S. Grob, 116; S. Bowen, 114; D. Morrison, 129-113; D. Eisele, 137-136; K. Harris, 122-136; R. Collins, 128; D. Akin, 102; S. Palmer, 141; T. Greenleaf, 113; A. Houle, 120-108; D. Beaumont, 128; P. Greenleaf, 116; C. Snyder, 106-109; J. Spaulding, 110-112; D. Craft, 114; C. Sannes, 110; M. Bowen, 108-120; B. Lewis, 141-102; M. Pennington, 143-118; B. Rosentreter, 118; T. Marsh, 113.

### HELLER ELECTRIC & INSULATING

Licensed Electrical Contractor  
ALL TYPES OF WIRING  
THERMTRON INSULATION  
Call After 5 p.m.  
475-7978  
20640 Sager Rd., Chelsea

### Tri-City Mixed League

Standings as of Feb. 27

	W	L
Smith's Mobil	58	46
3-D Sales & Service	56 1/2	47 1/2
Trail Blazers	55	49
Sprague Buick & Olds	54 1/2	49 1/2
Foor Mobil	54 1/2	49 1/2
Chelsea Cleaners	53 1/2	50 1/2
Wolv. Tall & Small	53 1/2	50 1/2
Jiffy Mixers	52 1/2	51 1/2
Wolv. Early Birds	50 1/2	53 1/2
Eibler & Frisinger	49 1/2	54 1/2
Old Balls	46	58
Clear Lake	40	64

500 series, men: G. Allen, 531; R. Pike, 524; A. Fouty, 513; E. Harook, 552; L. Hocking, 531; O. Johnson, 530; H. Kunzelman, 548; A. Peterson, 521; A. Sannes, 549; R. Sawdy, 513; A. Wisniewski, 556; R.V. Worden, 567.

200 games, men: E. Harook, 200; L. Hocking, 201; H. Kunzelman, 206; A. Peterson, 201; A. Sannes, 221; A. Wisniewski, 223; R. V. Worden, 210.

450 series, women: G. Detting, 498; A. Hocking, 461; N. Miller, 475.

150 games, women: L. Cole, 168; G. Detting, 153-161-164; D. Fouty, 159-162; D. Fouty, 155; A. Hocking, 158; B. Kunzelman, 156; N. Miller, 167-169; B. Parish, 155-156; M. Reagle, 150; M. Sawdy, 158; B. Scott, 167; A. Wahl, 151; M. Weston, 153.

### Senior House League

Standings as of March 2

	W	L
Chelsea Grinding	67	37
Schneider's Grocery	61 1/2	42 1/2
The Pub Bar	60	44
Chelsea Cleaners	57 1/2	46 1/2
Spaulding Chevrolet	56 1/2	47 1/2
Seitz's Tavern	56	48
Dana No. 1	53	51
Sylvan Center	46 1/2	57 1/2
Murphy's Barber Shop	44 1/2	59 1/2
North Lake S & S	44	60
Wolverine Bar	41	63
Dana No. 2	36 1/2	67 1/2

600 series: J. Warmingham, 500; G. Burnett, 501; D. Coppernoll, 515; A. Clemes, 589; H. Burnett, 557; D. Crosby, 587; G. McAtee, 520; W. Griffith, 578; M. Poertner, 502; E. Keezer, 502; J. Schiabe, 502; D. Harley, 511; V. Hafley, 505; G. Padgham, 532; M. Sweet, 511; C. Baize, 527; L. Hess, 535; R. Maurer, 521; R. Knickerbocker, 576; R. Hutzel, 509; O. Johnson, 570; S. Haydock, 515; R. Spaulding, 553; J. Harook, 556; S. Hopkins, 542; L. Salyers, 547; N. Fahrner, 591; N. Moats, 523.

200 games: J. Warmingham, 235; G. Burnett, 204; D. Coppernoll, 213; A. Clemes, 225-211; H. Burnett, 212; W. Moats, 205; W. Griffith, 213; G. Padgham, 202; R. Knickerbocker, 204; S. Haydock, 206; R. Spaulding, 217; J. Harook, 202; S. Hopkins, 207; N. Fahrner, 212.

### Old Timers League

Standings as of Feb. 27

	W	L
Nelson Realtors	62	42
Colonial Lanes	58	46
Bob & Otto	56	48
Washtenaw Lanes	55 1/2	48 1/2
Great Lakes	53	51
Hofzel Service	53	51
Veterans Cab	53	51
Mather Co.	52	52
Chelsea Lanes	49 1/2	54 1/2
Stein & Goetz	49	55
Cloverleaf Lanes	48	56
Hartman Ins.	35	69

High team game: Colonial Lanes, 781.

High team series: Bob & Otto, 2,292.

High ind. game: John Hinds, 203.

High ind. series: Emil Yek, 515; Jonas Otto, 511; Floyd Menery, 503.

Nelson Realtors and Hofzel Service won three.

### Nite Owl League

Standings as of March 2

	W	L
Foster's Men's Wear	65	39
Gallup-Silkworth	60 1/2	43 1/2
Jack & Son Barbers	58	46
Merkel Bros.	55	49
Smith - Douglass	54	50
The Profs	52 1/2	51 1/2
Waterloo Garage	51 1/2	52 1/2
Wahl's Dinos	48	56
Town & Country Shell	46 1/2	57 1/2
Cavanaugh Lake Store	46 1/2	57 1/2
Willie's Five	44	60
Smith's Mobil	42 1/2	61 1/2

600 series: P. Smith, 629; 500 series: E. Buku, 595; J. Hughes, 546; G. Packard, 542; D. Alexander, 540; P. McGibney, 538; J. Waldyke, 530; L. Grau, 529; R. Kotar, 527; R. Herrst, 509; P. Barais, 505.

200 games: P. Smith, 248-226; E. Buku, 232; J. Waldyke, 223; J. Hughes, 217; D. Alexander, 208; G. Packard, 204; G. Rentschler, 208; R. Foster, 203.

### Rolling Pin League

Standings as of March 3

	W	L
Jolly Mops	61	43
Kopple Kutters	59	45
Kookie Kutters	59	45
Grinders	55 1/2	48 1/2
Spoozers	55 1/2	48 1/2
Kitchen Kapers	52 1/2	51 1/2
Egg Beaters	52	52
Mixers	49	55
Dish Rags	47	57
Coffee Cups	46 1/2	57 1/2
Brooms	45 1/2	58 1/2
Pots	43 1/2	60 1/2

140 games and over: J. Lewis, 194; G. Klink, 171-160; G. Blaess, 152; J. Priest, 154; H. Ringe, 149; E. Miller, 151; T. Steinaway, 151-150; J. Hafner, 146-159; E. Williams, 154; R. Barstow, 147; D. Keezer, 154; P. Pierce, 141; P. Harook, 154-153; G. Weiner, 150; K. Brett Schneider, 144; Polly Patterson, 156-161; E. Harmon, 140; Pat Patterson, 142-164; P. Bordars, 143; S. Parker, 156-140; D. Dirham, 149; A. Steinaway, 176; D. Butler, 165-157; W. Landwehr, 163.

400 series and over: J. Lewis, 456; G. Klink, 438; G. Blaess, 408; J. Priest, 411; T. Steinaway, 418; J. Hafner, 425; E. Williams, 400; R. Barstow, 402; P. Harook, 433; G. Weiner, 401; Polly Patterson, 434; Pat Patterson, 437; P. Bordars, 413; S. Parker, 419; A. Steinaway, 418; D. Butler, 440; W. Landwehr, 402.

Splits converted: A. Eliola, 2-10; B. Updegraff, 5-7; I. Nixon, 8-7; P. Harook, 8-10; E. Whitaker, 5-8-10; E. Harmon, 5-7; Polly Patterson, 5-10; A. Steinaway, 3-10.

### Chelsea Suburban

Standings as of Feb. 25

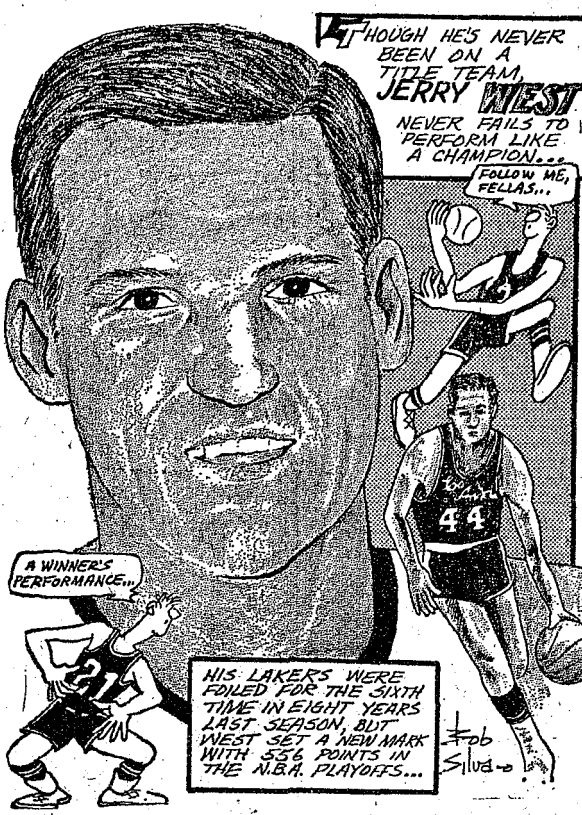
	W	L
Foor Mobil	62 1/2	38 1/2
Dana Corp.	56	40
Dairy Queen Braizers	56	40
Patty Ann	52 1/2	43 1/2
G. A. Sales	51 1/2	44 1/2
Pittsfield Plastics	46 1/2	49 1/2
Artes Roll-Ons	44 1/2	51 1/2
G. E. Girls	42 1/2	53 1/2
State Farm	42	54
Chelsea Lanes	41 1/2	54 1/2
Waterloo Garage	41	55
Dancer's	39 1/2	56 1/2

150 games and over: P. Harook, 173-157; V. Stott, 160; D. Kinsey, 158; G. DeSmither, 154; C. Hansen, 160; L. Beeman, 157; M. Steele, 160; J. Fitzsimmons, 152; J. Akin, 163; S. Bowen, 165-166; J. Haas, 166-157; V. Hopkins, 179; N. Prater, 204; B. Smither, 159-188-172; B. Hafley, 175-160; M. Neal, 166; R. West, 170-182; R. McGibney, 156-156; E. Williams, 163; M. L. Westcott, 156-215; L. Jarvis, 208-167; N. Packard, 178; W. Hafner, 190; D. England, 152; M. DeLaTorre, 176-157-165; G. Wilkerson, 164-151; M. Rush, 154; A. Hocking, 168.

425 series and over: E. Yocum, 425; A. Hocking, 446; W. Hafner, 437; M. DeLaTorre, 498; G. Wilkerson, 460; M. L. Westcott, 514; L. Jarvis, 508; J. Akin, 435; S. Bowen, 477; D. Haas, 459; N. Prater, 438; V. Hopkins, 428; B. Smith, 519; B. Hafley, 468; M. Neal, 440; R. West, 501; R. McGibney, 459; P. Harook, 468; V. Stott, 437; D. Kinsey, 439.

### FISHING REPORT

Bystander to fisherman: "It seems to me the overshoe put up a better fight than the boot."



### Auto License Plate Sale Slow

Lansing—Current new license plate sales lagged 355,000 behind 1969 plate sales, according to reports from Secretary of State James M. Hare.

"An extra month was added to eliminate traditional long lines... but apparently thousands of auto owners are still waiting until the last second to buy plates."

This year's deadline for buying new passenger and motorcycle plates was changed from the end of February to March 31. Commercial and trailer plates still expire Feb. 28.

HOME EC TRAINING  
Overheard: "My wife is going to school. She's majoring in defrosting."

### Sheep Day Slated at MSU Farmers' Week

Three Michigan sheep growers are featured speakers on the Sheep Day Program at the Michigan State University Farmers' Week, Wednesday, March 25.

Clayton Wells, Mason, will tell how he handles a purebred sheep raising program as a part-time enterprise. Arnold Parsons, Evart, will relate experiences of combining 160 commercial ewes with a 60-cow dairy herd. A full-time farm operation of 600 commercial ewes will be described by Charles Miles, Metamora.

Graydon Blank, veteran MSU extension livestock specialist and sheep authority, will preside at the afternoon meeting in Room 103 Anthony Hall.

Fred Black, Fairgrove, is president of the state association.

## YES

WE ARE MAKING  
LONG-TERM FARM  
REAL ESTATE  
LOANS

SEE US

**Federal  
LAND BANK  
Association**

Ann Arbor, Mich. 48103  
P. O. Box 1006  
Ph. 769-2411 3645 Jackson Rd.

## Tiger Spring Exhibition Games on Air

Detroit—Eight week-end games on the Tigers' spring exhibition schedule will be broadcast play-by-play by Station WJR (760) and stations of the Tiger radio network.

The Saturday-Sunday broadcast schedule will include three games with the Cincinnati Reds, two with the Boston Red Sox and one each with the New York Yankees, Minnesota Twins and St. Louis Cardinals.

The Tigers' regular radio broadcast of Ernie Harwell and Ray Lane will air the action for Station WJR and the network.

Because of earlier schedule commitments, three Saturday afternoon games on Station WJR only will be delayed until 7:15 p.m. Otherwise, all games will be heard as they are played—on both Station WJR and the network stations.

The spring broadcast schedule:

Sunday, March 8—Tigers vs. Twins at Orlando, 1:30 p.m.

Sunday, March 15—Tigers vs. Red Sox at Lakeland, 1:30 p.m.

Saturday, March 21—Tigers vs. Red Sox at Lakeland, 1:35 p.m. (delayed until 7:15 p.m.)

Sunday, March 22—Tigers vs. Yankees at Ft. Lauderdale, 1:30 p.m.

Saturday, March 28—Tigers vs. Red Sox at Winter Haven, 1:30 p.m. (delayed until 7:15 p.m.)

Sunday, March 29—Tigers vs. Cardinals at Tampa, 1:00 p.m.

## State Registers Thousands of Snowmobiles

Lansing—More than 92,000 snowmobiles now have been registered in Michigan, representing an increase of approximately 32,000 over the total registered one year ago, Secretary of State James M. Hare has disclosed.

Within the next few months, the figure is expected to be about 114,000, he said.

A breakdown of snowmobile registrations by counties shows that the vehicles are largely concentrated in the areas of greatest population, with more than 38 percent of the state total registered in only 10 counties.

Despite the abundance of snow in the Upper Peninsula and the open spaces that make for most enjoyable snowmobile operation, the 14 counties of that section account for only 15 percent of the total state registration.

Genesee county has the largest number of registered snowmobiles with a current total of 5,965. Keeweenaw county is last on the list with a mere 73 vehicles registered. Washtenaw county registered 770 and Jackson county listed 1,214.

Cardinals at Lakeland, 1:30 p.m.

Saturday, April 4—Tigers vs. Reds at Tampa, 1:30 p.m. (delayed until 7:15 p.m.)

Sunday, April 5—Tigers vs. Reds at Tampa, 1:00 p.m.

## SCHOOL LUNCH MENU

Monday, March 9—Barbecued beef with a bun, buttered corn, potato sticks, a dish of fruit, cookie, and milk.

Tuesday, March 10—Beef over noodles, buttered peas, fruit juice, hot roll and butter, plums, and milk.

Wednesday, March 11—Meat loaf, potato, spinach, fruit mix, French bread and butter, and milk.

Thursday, March 12—Submarine sandwich, beef with vegetable soup, crackers, apple crisp, and milk.

Friday, March 13—Wiener on buns, Boston baked beans, chef's salad, 1000 Island dressing, fruit Jell-O, and milk.

## MID-STATE FINANCE CORP.

\$25 to \$1,000

For Any  
Worthwhile Purpose

See or Call  
FRANK HILL  
at 475-8631

111 PARK STREET  
CHELSEA, MICH.

## YOU CAN JOIN THE AUTO CLUB—Even if Your Brother-in-Law Sells Insurance!

Some of our nicest members have to buy their car insurance from other friends. We understand.

We also understand that these folks also want the advantages that only the Auto Club can offer. The world's finest travel information. The readiness of 22,000 Emergency Road Service Garages. The new, Broad Family Protection of the Club's Personal Accident Insurance Policy, Bail Bond Protection, Camping and Boating Guides, and countless additional aids for carefree traveling around the block or around the world.



### RAY JOHNSTON

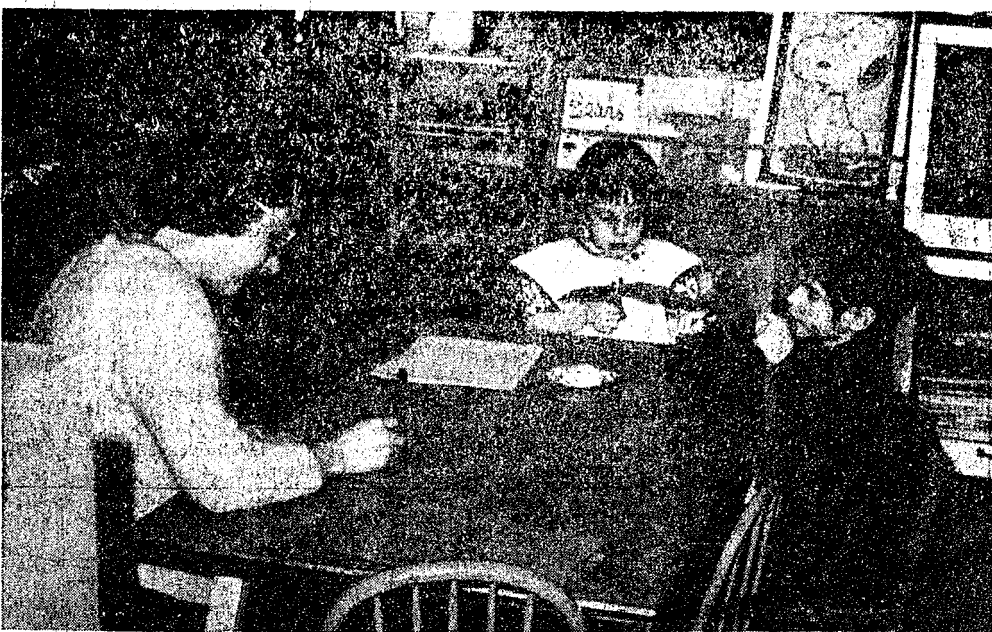
Phone 769-5000

1200 S. Main St. Ann Arbor, Mich.

Join the Auto Club, today, and LEAD THE WAY WITH TRIPLE A!







CUTTING AND PASTING are all part of learning to work and play well with others. Pictured here with Kathryn Bradbury, permanent assistant at Chelsea Co-Op nursery's non-assist group of youngsters, are Chris Staffan (white apron) and Chris Breuninger. These youngsters are working at the 'project table' where youngsters work on cards for their parents and other paper projects.

## Co-Op Nursery Open House Slated Sunday for Public

Chelsea's Co-Op nursery is holding an open house for the public on Sunday, March 8 from 2 to 4 p.m. at the school on the Chelsea-Dexter Rd., mid-way between Chelsea and Dexter.

Area residents will be given an opportunity to visit the school, which was begun in 1957 through the joint efforts of the Modern Mothers Child Study Club, and the Chelsea Child Study Club with Mrs. Raymond ("Miss Jane") Schairer as teacher.

After its first year in the Municipal Building, the nursery moved to its present location. The building, then known as Beach school, was later purchased through the efforts of interested local citizens. The purchase was financed with contributions to a \$2,500 fund started with a substantial donation by Donald Bacon in honor of Mrs. Florence Howlett, a Chelsea school teacher for 30 years before her retirement in 1932.

This site has been used for the purpose of teaching children since the first log cabin was erected by the Lima Township District No. 2 in the year 1854. The first building was entirely constructed by the parents of the students and this same method was used to construct its frame replacement some time before 1881.

Lima No. 2 school had no name until the first financed building was erected in 1916. It was called

"Beach school" in honor of the family who had lived longest in the school district. Following consolidation with the Chelsea School District, the Beach school was used for elementary classes until 1956 when it was given rent-free by the Board of Education for use by the non-profit Chelsea Co-Op Nursery.

In 1959 the school board sold the property to Mr. and Mrs. Charles Powers who continued to reserve it for use by the nursery at a nominal rental fee.

On Nov. 21, 1964 it was announced that the building fund goal had been reached and that the former Beach school was officially designated as the Florence Howlett Memorial Building.

Many improvements have been made on both the building and grounds since this became Nursery School property. New equipment has been added both indoors and out for the children's enjoyment. Funds have been raised for equipment and improvements by such projects as "hobo" breakfasts, fashion shows, guided home tours and a baked goods and candy booth at the Chelsea Fair.

"Miss Jane" Schairer, retired as nursery school teacher in June of 1967. The 1967-68 school year was started with an interim teacher until the present teacher, Mrs. Fred (Virginia) Meyer assumed the duties of regular nursery school teacher. Also during the

'67-68 school year, the non-assist session was introduced to benefit the children of working mothers or those unable to take part in the regular assist duties.

Originally classes were held two days a week for 8- and 4-year-olds. Currently there are three separate classes with 3-year-olds meeting Tuesday and Thursday mornings, 4-year-olds Monday, Wednesday and Friday morning; and non-assist for 3- and 4-year-olds Monday, Wednesday and Friday afternoons.



### CUB SCOUT NEWS

#### DEN 2, PACK 455

Wednesday, Feb. 25, Cub Scouts of Den 2, Pack 455 held a regular meeting at the home of Mrs. Sumner Oesterle. Den Chief Tony Hafner was in charge of games played at the beginning and closing of the meeting.

Pat Murphy carried the American flag and Stevie Dresch carried the den banner for the opening flag ceremony.

Cubs practiced their skit for the Blue and Gold banquet at Beach school Thursday, Feb. 26 and had refreshments brought by Jon Oesterle. They began work on shields they are making.

Jimmy Alexander, scribe.

#### DEN 1, PACK 455

Den 1, Pack 455 had their meeting with Mrs. Burgess on Wednesday, Feb. 25.

We finished our place favors for the Blue and Gold banquet. The favors were pieces of real logs with an American flag, hatchet and name card.

Our den chief, Steve Schanz, helped us play hangman.

Treats were brought by Don Aldrich.

We closed with the living circle. On Thursday, Feb. 26 we had fun with our families at the Blue and Gold banquet.

David Baldwin, scribe.

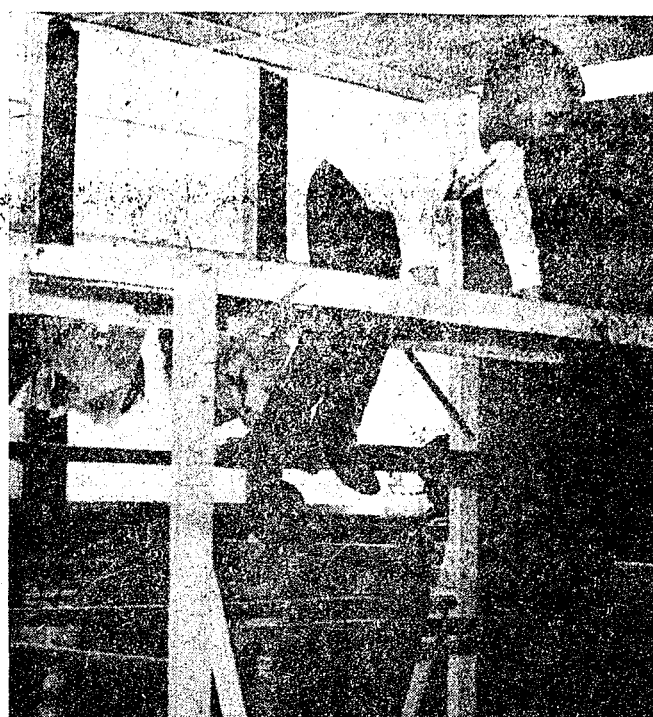
#### DEN 6, PACK 415

We opened our den with the flag ceremony. Then we talked about the skit and what we are going to do and we played a game called balloon boxing.

We had crackers and Kool-Aid for refreshments and our meeting was closed at 5 p.m.

Mark Shippey, scribe.

Sixty major national college fraternities have nearly 5,000 campus chapters in the United States and Canada, and more than 3 million members.



MONKEYING AROUND on the monkey bars is nursery schooler Edmund Eisner. The bars are one of the teaching aids used by Chelsea's Co-Op Nursery school to develop muscle co-ordination and control in the pre-school youngsters.



FATHERS came to the Chelsea Co-Op Nursery during the third week in February to participate in a regular session of the school. Fathers took over the assisting jobs, which are usually the mother's responsibility. This gives the fathers a chance to see the program in action and to meet the teacher, Mrs. Fred (Virginia) Meyer. Pictured here in the back row from left are John Koepel, Sarah van Roosevelt, Frans van Roosevelt, Mrs. Meyer and Scotty Koepel. In the front row from the left are Thomas Donkin and Tommy, Jean Ann Griffith, and Kelly Griffith.

### Census Workers Being Hired at Jackson Office

Jay F. Fleming, district manager of the 1970 Census of Population and Housing, has put out an urgent appeal to residents of the area for help in taking the census.

Census takers are needed: people who can work from three to five weeks in April and May visiting homes and interviewing some member of the household. The district manager says that every effort will be made to assign census takers to their own neighborhoods or those nearby.

Pay will be on a piece rate basis, designed to average \$2 an hour, but as the district manager pointed out, earnings will vary depending largely on the diligence of the individual census takers. Some will earn well above average, while others who work less effectively will earn less.

Census takers must be U.S. citizens, 18 or older, and must pass a written test demonstrating their ability to understand and follow printed instructions, and do simple arithmetic. It is desirable but not required that applicants have available a home telephone and a car.

The Census Bureau is an equal opportunity employer.

If you would like to help take the "big count" of the nation, see the U.S. Census Office, 2nd Floor 2301 East Michigan, Jackson 49202.

### St. Louis School Participating in Cage Tournament

St. Louis school will participate in a state-wide basketball tournament Saturday, March 7 at St. Thomas High school in Ann Arbor. There are two games scheduled, St. Thomas vs. St. Mary's at 1 p.m.; and the St. Louis "Roosters" against St. Francis at 3 p.m. So far this year, the "Roosters" from Chelsea have recorded five wins and one loss.

The championship game will take place at 3 p.m. Sunday, March 8 at St. Thomas between the winners of Saturday's contest. Referees will be coming from Lansing for the tournament.

This is the first year that St. Louis has been in the basketball competition. The public is invited.

### CHELSEA CO-OP NURSERY OPEN HOUSE Sunday, March 8

2 to 4 p.m., at Nursery School on Dexter-Chelsea Rd., midway between Dexter and Chelsea.

Public invited. Bring children to give them an opportunity to see our facilities. Refreshments will be served.

### JV Cagers Down Dexter At Foul Line

Nothing is sweeter than a victory over Dexter, and that's exactly how the Chelsea Junior Varsity ended their season, defeating the Dreadnaughts, 83-76, last Friday, Feb. 27.

The Bullpups used a fast-breaking, running type offense for the first time this year to run the Little Dreadnaughts off the court.

Chelsea really won the game at the free throw line as the Bullpup cagers hit a fine 35 of 53 shots from the line for a solid 66 percent.

Co-captain Greg Howard hit for a JV season-high of 30 points, including 12 out of 12 from the line; and Todd Sprague hit for 22 points, including 12 out of 17 at the line.

Mike Thompson tallied 10 counters as he and Sprague both did a fine job of playmaking. The Bullpups came up with balanced rebounds, led by Chick Lane, who grabbed 13 and Greg Howard and Steve Flint, each with 11.

The victory left the Bullpups with an 11-3 win-loss record in conference play, good for a tie for the top spot in the conference.

BOX SCORE				
Howard	30	12-12	11	30
Koenigster	17	4-8	8	6
Lane	4	1-6	13	9
Sprague	22	12-17	7	25
Thompson	3	4-4	3	10
Hergert	0	0-0	0	0
Buxton	0	0-0	0	0
Flint	2	2-7	11	6
Totals	24-61	35-53	53	83

### PAT'S CORNER

By PAT DITTMAR  
Home Economist  
Chelsea Milling Co.



Cookies are always popular. They are a favorite dessert for the lunch box crowd or with milk after school. And no one cookie is more popular than 'Chocolate Chip Cookies'.

Also the nice thing about this recipe is that you can make it into a bar cookie by preparing the same recipe and baking it in a 9-inch square pan. So turn on your oven and start baking.

#### CHOCOLATE CHIP COOKIES (3 dozen)

- 1/2 cup margarine
- 1/2 cup brown sugar
- 1 egg
- 1 teaspoon vanilla
- 1 package "JIFFY" Yellow Cake Mix
- 1 package (6 oz.) semi-sweet chocolate pieces
- 1/2 cup chopped nuts
- 1. Heat oven to 350°.
- 2. Cream margarine, sugar, egg and vanilla.
- 3. Blend in cake mix; stir in chocolate pieces and nuts.
- 4. Drop dough by teaspoon onto ungreased baking sheet.
- 5. Bake 10 to 12 minutes.

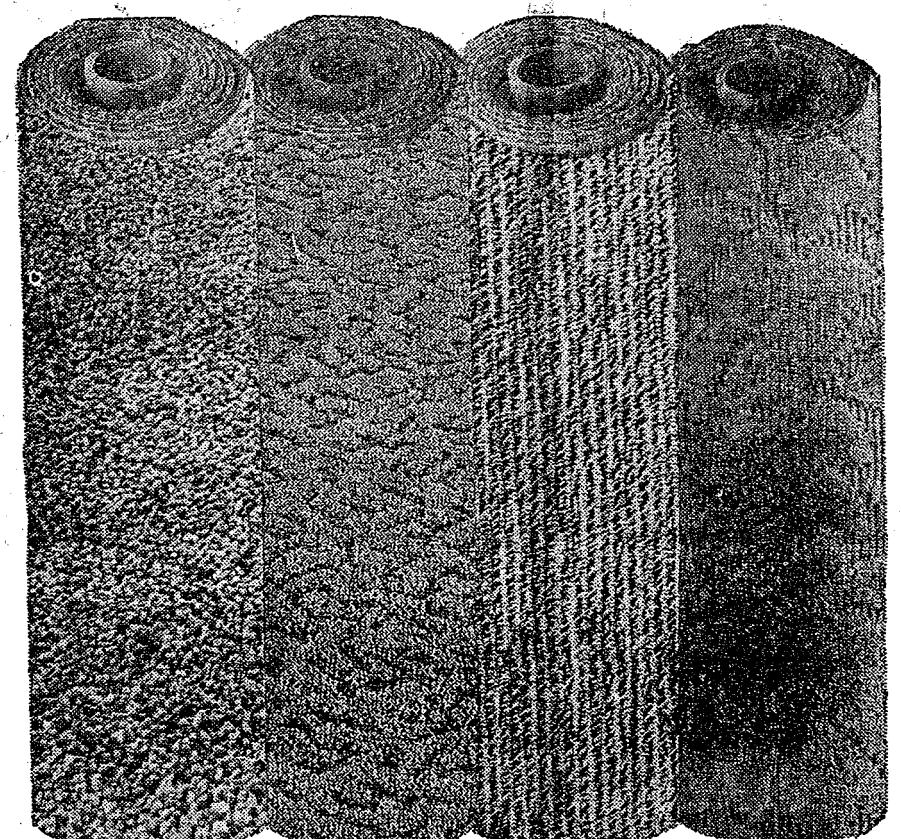
For that real "quickie" prepare the same recipe except spread dough in greased square, 9x9x2 inch pan. Bake about 30 minutes.

#### IRONING RATED LOW

Most homemakers consider ironing the most unpleasant household task. One survey showed other disliked tasks to include cleaning the range, scrubbing floors, cleaning closets, washing windows and scrubbing bathrooms.

#### MAJOR MILITARY

The headquarters of the world's mightiest military machine, as most Americans know, is the Pentagon. The five men who make decisions that might cost billions of dollars and affect billions of lives are the Joint Chiefs of Staff. It



## SALE — RUG SAMPLES

### Friday and Saturday, March 6-7

SERGED EDGES, 13" x 18"	18c, 7 for \$1.00
SERGED EDGES, 18" x 18"	20c, 6 for \$1.00
SERGED EDGES, 18" x 27"	89c, 3 for \$2.00
SERGED EDGES, 27" x 36"	\$2.95, 3 for \$7.00
RUBBER BACK, 18" x 27", suitable for door mats	89c ea., 3 for \$2.00
NYLON CARPET RUNNER, latex back, 27 inches wide, running foot	74c

### We Have Another Lot of Close-Outs and Ends of Rolls of Carpeting at Money-Saving Prices

9' x 12' RED RUBBER BACK, 12 sq. yds.	\$46.50
12' x 14'3" GOLD NYLON, 19 sq. yds. Reg. \$208.00	\$161.00
12' x 16'10" HEMP BEIGE NYLON. Reg. \$178.90	\$111.00
12' x 31' GREEN NYLON, per sq. yd. Reg. \$8.95	\$5.95
12' x 25'4" GOLD NYLON, per sq. yd. Reg. \$6.95	\$4.49
12' x 18' BEIGE NYLON TWEED, 24 sq. yds. Reg. \$166.80	\$118.80
12' x 15'3" BEIGE NYLON TWIST, 20 1/2 sq. yds. Reg. \$121.00	\$91.50
12' x 12'8" GREEN, COMMERCIAL GRADE Acrilan Tweed. Reg. \$220.00	\$152.00
12' x 19'5" GREEN NYLON, Rubber back. Reg. \$206.70	\$128.70
15'3" x 16'7" GOLD NYLON TWIST. Reg. \$199.00	\$139.00
12' x 12' LIGHT GOLD NYLON. Reg. \$95.20	\$63.00
15' x 15'6" AXMINSTER. Reg. \$198.75	\$109.50
12' x 15' GOLD NYLON. Reg. \$149.00	\$99.00
9' x 12' GREEN NYLON. Reg. \$107.00	\$61.40
9' x 12' CANDY STRIPE. Reg. \$71.40	\$47.40
7'10" x 12' GREEN SCULPTURED NYLON. Reg. \$83.50	\$41.50
8'5" x 12' GREEN MOTTLED, rubber back. Reg. \$90.00	\$56.00
6'4" x 9'4" GREEN MOTTLED, rubber back. Reg. \$44.80	\$28.50

Several Area Rugs Reduced Up to 50% Off Reg. Prices

## MERKEL BROTHERS

PHONE CHELSEA 475-8641

"You Can't Go Wrong,  
If You Give Flowers"

### THE LITTLE FLOWER SHOP

Live and Artificial  
flowers, arrangements  
and corsages.

MILDRED N. FISH  
3451 WALTRIOUS RD.  
CHELSEA, MICH.  
Ph. GR 5-8508

### Home Economics Study Groups Calendar

Week of March 4-March 11

Thursday, March 5—Mrs. Morley Durston, 1845 E. Joy Rd., Ann Arbor.

Monday, March 9—Friendship, Mrs. Aldean Jedele, 8668 Austin Rd., Saline.

Wednesday, March 11—South Superior, Mrs. Fred Meyer, 8615 Cherry Hill Rd., Ypsilanti.

Wednesday, March 11—Merry Ann, Mrs. William Kulenkamp, 1202 Meadowbrook, Ann Arbor.

## Save Up to 60% Now!

Over 5,000 yards of fabrics  
\$1.88 per yard and up

PHONE 662-4706

### RENDEL'S UPHOLSTERING

732 Lakeview Ave., off Liberty at Killins Concrete, Ann Arbor

## Space Age MASS PRODUCED HOMES

### FACTORY-BUILT HOMES BY ACTIVE

4

MODERN  
DESIGNS  
MODERATELY  
PRICED

BUY NOW  
for  
Spring  
Delivery  
at  
Present  
Prices

Built to  
Local Specifications

ABSOLUTELY MAINTENANCE-FREE, INSIDE AND OUT, WITH ALUMINUM EXTERIOR AND COMPLETELY PANELED INTERIOR WHICH WILL RETAIN ITS BEAUTY FOR MANY YEARS.



THE STYLISH CHATEAU DESIGN 31 Feet x 24 Feet (1207 Square Feet)  
ALL THESE BIG FEATURES INCLUDED IN PRICE!

- Spacious Living Room (23' x 14')
- 3 Bedrooms (Master 14' x 12')
- 1 1/2 Baths
- Large Cedar Lined Closets
- Decorator Designed Carpeting and Drapes
- Space Engineered Kitchen with Built-In Appliances
- Also Included . . . Exterior Aluminum Storm Doors, Storm Windows and Screens, Gutters and Down Spouts. (Basement or Crawl Space Models).

### TOWN & COUNTRY HOME SALES

2830 East Michigan — Just West of Ridge Road  
Ypsilanti, Michigan Phone 483-7246





**AUGUST WEDDING:** The engagement of Sharon Louise to James Wheeler has been announced by her parents, Mr. and Mrs. Leory H. Wing of Dexter Rd. The bridegroom-to-be is the son of Mrs. Charles Wiedman, Sr., of Madden Rd., and the late Ray Wheeler. Miss Wing is a graduate of Dexter High school and is attending Washtenaw Community College. Her fiancé, also a Dexter High school graduate is employed with Cribbley Drilling Co. An August wedding is planned.



**TROOP 82—**  
Girl Scout Troop 82 held their Feb. 25 meeting with 31 present and two guests.

For the opening we said the pledge and sang "Girl Scouts Together."

Joan Schmidt told us about spot shaping for you. We learned special exercises for different parts of the body.

We are to bring our posters this week that we have been working on. We talked about things we would like to do for Easter.

There were two girls with birthdays. Renee Raison and Gail Erke.

Treats were brought by Nancy Knott. Closing was taps and squeeze.

Barbara Roy, scribe.

**BROWNIES TROOP 84—**

Brownie Troop 84 opened our meeting with the flag ceremony. Donna Bauer took dues. Marilyn Hafner took attendance.

We made a poster to go in Dancer's window. We played games and practiced our skit for the Father-Daughter night.

We had treats furnished by Libby Pfeiffle.

We closed our meeting with taps.

Marilyn Hafner, scribe.

**BROWNIE TROOP 247—**

Cathy V. brought treats to our Feb. 25 meeting. We painted boxes for our Lowe fund pennies.

We made change purses to carry our dues to scouts in.

We sang "I did What I Could."

We did the Brownie squeeze.

Cathy Roy, scribe.

**TROOP 58—**

Our troop met Monday, March 2 at the Congregational church. We opened with the pledge of allegiance and the Girl Scout promise.

We had our treats and sang our grace.

Mrs. Lorenz asked us who needed the troop crest, the World Association pin and the Girl Scout pin.

Next week our meeting is at the Junior High in the cafeteria at the regular meeting time.

We practiced a new song called, "O Beautiful Banner."

We are going on a hike on Silver Lake Trail on March 14.

Cookie sheets are due at our meeting next week. Sunday we are supposed to wear our uniforms to church.

Debbie Packard, scribe.

**BROWNIE TROOP 169—**

Brownie Troop number 169 met Monday, March 2 at the Congregational church.

Dues were taken, then we had refreshments furnished by Karen Keller.

We had the flag ceremony, then went to Brownie Ring to practice our songs for Father-Daughter night to be held Thursday, March 12 at 7 p.m. at Beach school.

We made invitations and name tags for our dads. We also discussed items for a window display. We closed with a squeeze and taps.

Karen Keller, scribe.

Mixes are handy and convenient, whether for cake or soup, but mixes have a limited shelf life. Buy often to assure freshness always.

#### CHELSEA CO-OP NURSERY

#### OPEN HOUSE Sunday, March 8

2 to 4 p.m., at Nursery School on Dexter-Chelsea Rd., midway between Dexter and Chelsea. Public invited. Bring children to give them an opportunity to see our facilities. Refreshments will be served.

## CHS Speakers Give Talks to Girl Scouts

For the past few weeks, speakers from the new service offered by the Chelsea High School Speech Department have given talks to Girl Scout Junior Troop 82.

The troop's leader, Mrs. Keith Schuelke, chose topics which would benefit the girls in their badge work and be enjoyable additions to the weekly meetings.

The series began Feb. 4 with, "Know About Your Town" by Becky Barkley. This was a brief history of Chelsea and its beginning. Other topics included: "Opportunities in Volunteer Services" by Jane Haselschwardt; "Alaska—The Last Frontier" by Sharon Heydlauff. (Sharon gave a summary of the Heydlauffs' experiences during a nine-week family va-

cation); "Great Pianists on Records" by Patrick Pluck.

In the weeks to come, the following subjects will be presented: "Things that go Bump in the Night" by Kathy Susner; (This one will be a goose-bump producing commentary on ghosts); "Is She or Isn't She" by Pat Gilbert, which tells of the Loch Ness Monster; "Yoga and You" by Theda Allen; "Spot Shaping for You" by Joan Schmidt, which coincides with the arrival of trim-up time and is sure to be of interest; "America's Favorite Pastime—Sleep" by Ann Thomson; "The Drug Bug" by Shelley Johnson; and "Cigarette Smoking Endangers Your Life" by Alfretha Har-

Mrs. Schuelke mentioned that the speakers are knowledgeable in their presentations and the troop has been looking forward to the variety of subjects.

William Coelius, of the High School Speech Department, is in charge of the newly-created Speech Bureau.

#### SLOWED DOWN

On July 1, 1969, the U. S. population totaled about 203 million after a year with the lowest rate of growth—one percent—since 1940. Main reason for the slowing down was the declining birth rate, which fell from 25.2 per 1,000 population in 1957 to 17.4 in 1968.

## Council Briefs

At a regular session of the Chelsea Village Council Tuesday evening a summary of Police Department activity for the month of January was read.

A letter was received from the Chelsea Planning Commission recommending the re-zoning request of Richard Machnick be denied.

A discussion was held with Machnick who stated that the procedures for re-zoning as adopted by the Planning Commission and approved by the Council was not followed.

A motion was made and approved instructing the Planning Com-

mission to hold another hearing on the re-zoning request.

A motion was made and approved authorizing the Administrator to instruct the Clerk to advertise for bids for Cleaning and Repairing of one 0.2 MMG ground and one 0.1 MMG elevated water storage tank.

A request was received from Thompson Sign Co. to vary from Ordinance No. 55 in the erection of a sign. The request was referred to the Chelsea, Planning Commission for a recommendation.

Bids were requested from local

automobile agencies for two pickup trucks.

A motion was made and approved to accept the low bid of Spaulding Chevrolet Sales & Service for two pickup trucks with one trade-in.

The Village has been notified that the City of Milford has been matched with Chelsea for Mayors Exchange Day.

A motion was made instructing the Municipal Building Committee to authorize Arthur Lindauer to proceed with preliminary plans for remodeling the Municipal Building.

Further discussion was held regarding the Proposed Subdivision Ordinance. The ordinance was referred to the village attorney for an opinion.

The Council on behalf of the Economic Development Corporation extend their thanks to The Chelsea Standard for their help in printing the new EDC brochure.

A motion was made and approved to authorize and direct the Clerk to issue checks in payment of bills as submitted.

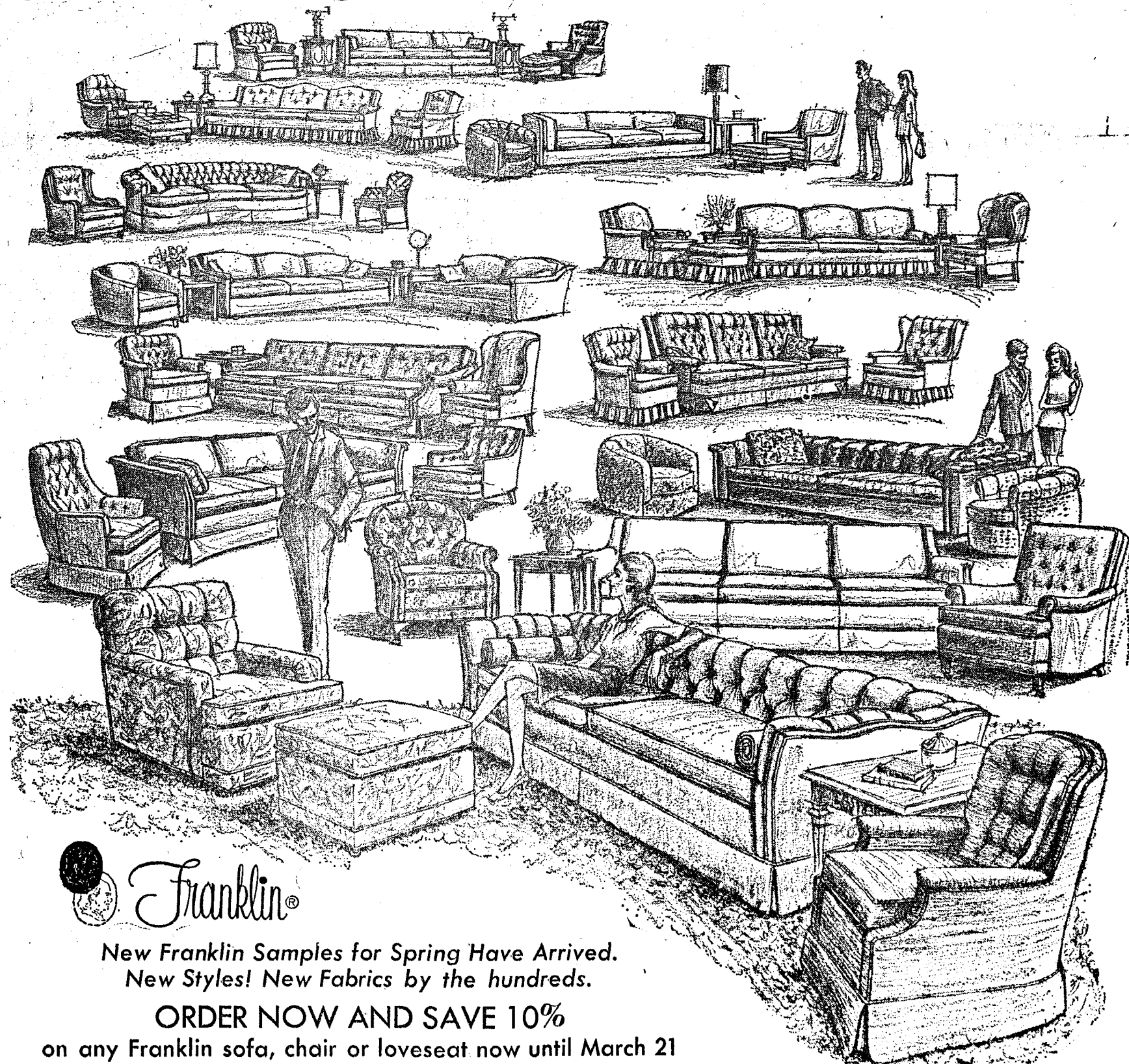
A motion was made and approved to adjourn.

#### PAINT IRON FURNITURE

Unpainted iron or steel furniture must be painted to avoid corrosion. Galvanized steel furniture should receive a coat of a special primer to insure proper adhesion of the colored enamel coat. Zinc dust-zinc oxide type primers are excellent on galvanized steel.

# Franklin Furniture Sale

## SAVE 10% ALL SPECIAL ORDERS UNTIL MARCH 22



New Franklin Samples for Spring Have Arrived.  
New Styles! New Fabrics by the hundreds.

ORDER NOW AND SAVE 10%  
on any Franklin sofa, chair or loveseat now until March 21

# Merkel Home Furnishings

Open Friday  
Until 9 p.m.

Phone  
Chelsea 475-8621





### Suggestions for Publicity Chairmen

At the beginning of every club season, the editor receives calls about how to handle publicity. For the benefit of those who are new at the job, we have compiled a list of suggestions which will make your job and that of the club easier:

1. Your stories should be type written or neatly written on one side of the sheet only and double-spaced between lines.
2. Send stories in a few days prior to the event when possible or immediately after the event. Don't wait until deadline time to submit your copy or a week or two after an event and expect it to be used.
3. When listing names, please use this form: Mrs. William W. Brown or Mrs. W.W. Brown—not Mrs. Mary Brown.
4. Don't forget to include the hour, day and place of the event and the phone number of someone who may be reached for further information.
5. If your item has a release date for publication, write the release date at the top of the page.
6. When including the name of a speaker, be sure to identify him or her.
7. Keep in mind that editors will use material of interest to all readers; omit routine details. Mail or bring your club announcements to The Standard as early as possible during regular business hours.
8. If you have feature or picture possibilities make your suggestions either by mail or telephone and we will be pleased to follow them up.

**COMMERCIAL KILL**  
The annual big-game kill on U.S. commercial lands exceeds 175,000.

**RUBBLE HILL**  
Trummerberg, a hill rising 377 feet at the edge of the Grunewald Forest park in West Berlin, is composed entirely of bulldozed rubble from World War II bombing of Berlin.



Mrs. Orland Hale

### Susan Lounsbury, Orland Hale Wed at Zion Lutheran Church

United in matrimony Saturday, Feb. 28 at 4 p.m. were Susan Lounsbury of Ann Arbor, the daughter of Mr. and Mrs. E. J. Lounsbury, 1191 Waters Rd., and Orland Hale of Lansing, Hale is the son of Mr. and Mrs. Lorn Hale of Harrison.

The couple were married at the Zion Lutheran church, Rogers, Corners, by the Rev. John R. Morris, who officiated at the ceremony which was graced by the singing of the hymns, "Oh, Perfect Love," and "The Lord's Prayer." The bride, who was given away by her father, wore a white gown trimmed with French lace at the bottom and matching lace at the sweetheart neckline. The princess-style dress was gathered at the sides, with a pleat in the back. There were satin buttons on the back and on each of the pointed, fitted sleeves.

The bride's floor-length veil was trimmed in French lace. She carried her satin bible and a small bouquet of white and red roses.

Sister-in-law of the bride, Mrs. James Lounsbury, Sr., of Ann Arbor, was the matron of honor. Her costume was of red velvet with a high neck band. The princess styled dress was complemented by matching red velvet shoes.

Serving as bridesmaids were Mrs. Larry Miller, sister of the bridegroom of Mason, and Miss Sandy Weeks of Ann Arbor. They were both attired in princess style dresses of red with matching shoes.

All of the attendants were crowned with red velvet bows and veils.

The mother of the bride walked down the aisle in a light blue A-line dress of La Rose brocade with a light blue veil and bows to match the dress. Her shoes and gloves were also of light blue.

The bridegroom's mother was

outfitted in a deep tan with brown hat, shoes, gloves and a yellow corsage.

Lorel Hale, the bridegroom's niece, from Gladwin, was the flower girl, with Steven Hale, nephew of the bridegroom, of Gladwin, acting as the ring bearer.

Attending the bridegroom were Larry Miller of Mason, brother-in-law of the bridegroom; James J. Lounsbury, brother of the bride, of Ann Arbor; and Larry Hale of Gladwin, brother of the bridegroom.

Assisting as ushers were brothers of the bridegroom, Donald and Richard Hale of Gladwin, and Thomas Lounsbury, brother of the bride, who is presently serving with the United States Navy.

Following the ceremony, a dinner reception was held at the Manchester Sportsman Club with Mrs. H. Thompson, of Ann Arbor; Mrs. E. "Phyllis" of Saline; and Mrs. A. J. Schneider, Mrs. L. Koenigter, and Mrs. E. Wenk, all of Chelsea, presiding.

Miss Joy Reynolds of Chelsea was at the punch bowl. Mrs. R. Richardson of Lansing, and aunt of the bride, presided at the guest book. The cake was served by Mrs. J. Cobb of Ann Arbor, cousin of the bride.

Guests danced to the music of the Lorenz Wackenhurt band.

The bride, who worked for two and one-half years at the Conduccion Corp. in Ann Arbor, has been elected queen of the Lansing Chapter of the National Association of the Physically Handicapped. She will go to Detroit to compete in the State competition.

The bridegroom, who spent four years at Plainwell as the treasurer of the NAPH, has been employed for the past three years at Sloan Heating and Air Conditioning.

The couple is now at home at 309 Normandy Dr., in Lansing.

### Club and Social Activities

#### AMERICAN LEGION AUXILIARY

American Legion Auxiliary met Tuesday, March 3, at Sylvan Township Hall with seven members present.

Various committee chairman reported on their committee activities, including the Poppy Day to be held May 22 and that all members are urged to give one hour of their time to sell the poppies.

Discussion was held on the rummage sale and voted to hold it on April 4 at the Town Hall. As many members as possible are also urged to help with this program and to save and contribute their rummage.

Meeting closed and a social hour was enjoyed. The next meeting will be at the Legion Home at Cavanaugh Lake on April 7.

#### ROGERS CORNERS EXTENSION STUDY GROUP

Rogers Corners Extension Study Group met Thursday, Feb. 26 at the home of Mrs. Norman Wenk. The meeting was called to order after a German dinner was served to the 19 members present and two guests, Mrs. Ruth Niles and Mrs. Lois Niles.

The minutes of the last meeting were read and approved. The treasurer's report was given.

Under new business, a motion was made and approved to give the four women \$1 each for the veal cutlets. It was reported that at the Spring Festival corsages need to be made, entertainment furnished, and clean-up arranged. The Spring Festival will be held Monday, April 13.

Helen Wolfgang will be in charge of entertainment, Mildred Buch, Almira Engelbert, Ruby Loeffler and Barbara Schable are to make corsages.

The lesson was given by Mrs. Gladys Hines and Mrs. Karol Morris.

The roll call topic at the next meeting to be held at the home of Mrs. Harold Powers will be "How You Met Your Husband." Co-hostess will be Mrs. Elmer Bristle.

The lesson will be given at the Tuesday, March 17 meeting by Mrs. Judy Soltysiak on "Safety First with Power Machinery and Equipment."

#### YOUNG HOMEMAKERS

Young Homemakers met at the home of Arlene Honbaum on Thursday, Feb. 26. Elsie Heller was co-hostess.

16 members heard Mrs. Lindow speak on Spaulding for Children. The group will make favors for the Chelsea Clinic Hospital Unit for Easter.

The next meeting will be March 19 at the home of Shirley Trinkle on Scio Church Rd. Each member was reminded to bring a dish to pass for the International Dinner.

Door prizes were won by Bea Ann Lesser and Barb Haist.

### Holdridge-Rinesmith Vows Spoken Feb. 14 At Whitmore Lake

Laura Harrington Holdridge and William W. Rinesmith were married at Calvary Baptist church in Whitmore Lake on Saturday, Feb. 14.

The bride is the daughter of Mr. and Mrs. Jack Harrington, 1992 Hoppe Rd. The bridegroom is the son of Mrs. Erma Davy of 260 Glenmoor, Whitmore Lake, and the late Cecil Rinesmith.

Telephone Your Club News To GR 5-3581.

### Clarence Trinkles' 45th Anniversary Honored Sunday

After the morning church service, held in their honor at St. John's church, Rogers Corners, a dinner for Mr. and Mrs. Clarence Trinkle, 320 S. East St., was held at Stiver's restaurant Sunday, March 1 in honor of their 45th wedding anniversary, which was Feb. 19.

The celebration was planned by the couple's children, and observed by Mrs. Trinkle's sisters and brothers and Mr. Trinkle's brother and sister-in-law. (Feb. 19 is also Mr. Trinkle's birth date.)

Guests gathered from Ypsilanti, Ann Arbor, Saline, Manchester, Dexter and Chelsea to the family dinner and later open house for friends and neighbors held at the home of the Trinkles' daughter and son-in-law, Mr. and Mrs. Donald Bauer, Scio Church Rd.

Decorations of saffire and white adorned the open house. Corsages of that color were worn by Mrs. Trinkle and her honor attendant, Mrs. Alma Wahl of Saline.

Mr. Trinkle's attendant, 45 years ago, was Alton Trinkle of Springfield, O.

A wedding cake of saffire and white was served to the guests.

### Altar Society Hears Guest Speaker from Consumers Power

St. Mary Altar Society met Monday, March 2 at the school hall with 29 members and eight guests present.

The meeting opened with a prayer led by the president, Mrs. Carl Lentz. Serving on the March altar committee are Mrs. Alfred Smith and Mrs. Vincent Stahl.

Mrs. Dennis Guinan, Good Samaritan Committee, reported that the Antique Show will be held March 21-23 at the Kiwanis Building in Ann Arbor.

Contact Lady, Mrs. Wayne Harvey, announced that the next general meeting of the Deaconsry will be held April 12 at 2 p.m. at St. Anthony's in Belleville.

Program Committee announced plans for the April meeting which include a film presentation, "Our Lady of Fatima" to be shown by James Murphy.

Refreshment chairman for April is Mrs. Britton Graham.

Mrs. George Bretschneider reminded the ladies of the bake sale to be held Saturday, March 14 at the K. of C. hall.

Mrs. John Thomson reminded members of the United Church Women's World Day of Prayer to be held Friday, March 6 at 1 p.m. at St. Mary church.

At the conclusion of the meeting, Earl Hill of Consumers Power Co., spoke to the ladies about personality development and winning ways with people. Hill related a number of humorous stories gathered from his experiences as a public speaker.

Refreshments were served by Mrs. Edward Orlovski and her committee.

#### SOUTHERN SAGA

The origin of Spanish moss, which hangs in 30-foot streamers from trees throughout the South, is explained by an Indian legend. According to the legend, a young chief mourned his dead bride and buried her beneath an oak tree. To mark the spot, he tied her braids to a limb. As time passed, the hair turned gray, and was blown from tree to tree until the forests were covered with it.

#### CONSUMPTION COMPARISON

If adults were to duplicate a baby's food intake in proportion to body weight, they would have to drink nearly four gallons of milk a day.

### TIPS

for your

### TOP

from



### TODDY and FRAN

We didn't pull the name "Magic Mirror" out of a hat—it's significant of our belief in our profession: beauticians are magicians. They, with the flick of a curler, turn gloomy days into sunshine; discouraged dispositions into good cheer; unconfident women into positive personalities. Of course, we all know that they also do little tricks like turning black hair into blonde or vice versa; straight hair into curly or the reverse if you prefer; short into long (with a fall) and obviously, long into short, at the snap of the scissor's click or a razor blade. Now isn't our magic as impressive as any Houdini you know?

**Magic Mirror Beauty Salon**  
Phone 665-0816  
5585 Jackson Rd., Ann Arbor

BEAUTIFUL, COLORFUL,  
GO EVERYWHERE  
WUNDA WEVE  
NYLON SHAG

CARPET

# SALE

ONLY

# 899

Sq. Yd.

Complete With 62-Oz.  
Sponge Rubber Waffle Pad  
and Tackless Installation

Regularly 11.59

SALE STARTS TUESDAY, FEB. 17  
ENDS SATURDAY, MARCH 7

We have it . . . the Wunda Weve shag carpet that'll make a showcase of your home.

Rich, cuddlesome Showcase carpet . . . It'll turn you loose from carpet cares, it'll set a mood you'll want to keep.

Easy to clean, easy to keep, colorfast . . . this is the carpet that lives up to its name.

Sunset reds and rouge, Mediterranean blues, desert golds, a Scottish highland's misty hue. Color comes to Wunda Weve, naturally.

LOOK!

SHOWCASE PRICES  
MAKE IT BEAUTIFUL

	INSTALLED
9 x 12 ROOM . . . . .	\$107.88
(12 SQUARE YARDS)	
9 x 15 ROOM . . . . .	\$134.85
(15 SQUARE YARDS)	
12 x 12 ROOM . . . . .	\$143.84
(16 SQUARE YARDS)	
12 x 14 ROOM . . . . .	\$179.80
(20 SQUARE YARDS)	
15 x 24 ROOM . . . . .	\$359.60
(40 SQUARE YARDS)	

DIAL 475-8621 (313)

Our Shop-At-Home Service  
lets you see  
luxurious Wunda Weve carpeting  
on your own floors  
before you buy.

Call now for free estimate  
during this two week period.

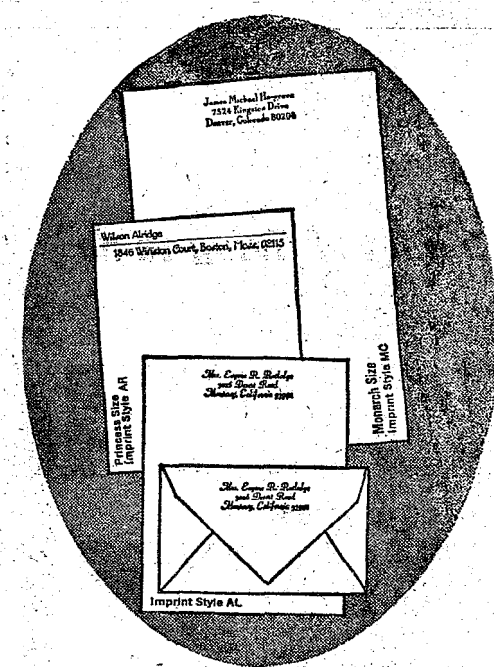
Budget terms,  
no down payment,  
3 years to pay

MONTHLY PAYMENT ON  
40 SQ. YDS. FOR 36 MONTHS  
APPROXIMATELY \$12.50

*Markel*  
FURNITURE  
and CARPET

MAIN ST. IN CHELSEA TELEPHONE 475-8621  
Open Friday evenings until 9 p.m.

## 1/2 Price Sale



Rytex Personalized Stationery  
Double the Usual Quantity  
Hand Craft Vellum

... this month only **\$4.95**  
(regularly \$10.00)

The versatile letterpaper.  
Ideal for the full range  
of correspondence—from  
warm-hearted notes to  
formal letters. This quality  
paper suits pen or typewriter.  
Popular with men and women.

Paper Color Choice:  
white, blue or grey.  
Imprint Styles: AL, AR  
or MC in blue or  
grey ink.

150 princess sheets,  
100 matching envelopes  
or 100 monarch sheets,  
100 matching envelopes.

### BONUS VALUE

An additional 50  
matching unprint-  
ed sheets for use  
as second pages  
(regularly \$1.50)  
now only \$1.00  
with your order.

## The Chelsea Standard

MAIL ORDER COUPON

THE CHELSEA STANDARD  
CHELSEA, MICHIGAN 48118

VERSATILE HAND CRAFT VELLUM: double quantity boxes at \$4.95 per box  
SPECIAL BONUS (check) 50 extra Plain sheets (with each box) at \$1.00 per box.

Imprint Name \_\_\_\_\_  
Street \_\_\_\_\_  
City \_\_\_\_\_ State \_\_\_\_\_ Zip \_\_\_\_\_

Princess Size Sheets:  
☐ White (1000) ☐ Blue (1050) ☐ Grey (1060)  
Monarch Size:  
☐ White (1200) ☐ Blue (1250) ☐ Grey (1260)

Check Choice:  
Imprint Style ☐ AL ☐ MC ☐ AR.  
Ink Color ☐ Blue ☐ Grey

Ordered by: \_\_\_\_\_  
Street \_\_\_\_\_ Apt. \_\_\_\_\_  
City \_\_\_\_\_ State \_\_\_\_\_ Zip \_\_\_\_\_  
Account No. \_\_\_\_\_ Tel. \_\_\_\_\_

☐ Charge ☐ Check or M.O. enclosed \$\_\_\_\_\_  
Please include sales tax.

daily interest +

# 6%

PASSBOOK  
CERTIFICATE  
ACCOUNTS  
Two Year Maturity  
In Amounts of  
\$5,000 or More

5%  
5 1/4%  
5 3/4%  
PASSBOOK SAVINGS ACCOUNT  
Deposit any amount, any time. Daily  
interest paid and compounded quarterly.  
PASSBOOK CERTIFICATE ACCOUNTS  
Six Months Maturity in Amounts of  
\$1,000 or More  
PASSBOOK CERTIFICATE ACCOUNTS  
One Year Maturity in Amounts of  
\$5,000 or More

All accounts insured to \$20,000 with F.S.L.I.C.

# RAFE

the savings specialists

Liberty at Division, West Stadium at Pauline,  
Huron Parkway at Platt, Plymouth at Nixon.

ANN ARBOR FEDERAL SAVINGS

Member: Federal Home Loan Bank System • Federal Savings and Loan Insurance Corporation





SCHOOL SPELLING CHAMPIONS, who will compete in district competition to be held Wednesday, April 1, were selected Friday, Feb. 27 at area schools. Pictured from left, standing, are Barbara Hinderer, winner from South school; Karin Eisemann, runner-up from South; Carol Linebaugh, winner from North school; and Julie Proctor, runner-up from North. Seated from left is Pam Sie-

## Spelling Champions Named

"A-D-A-G-E"  
With the correct spelling of the word, Pam Siebert, daughter of the Rev. and Mrs. Warner Siebert, became the champion speller of Beach Junior High school.

Pam and Beach school runner-up Brian Smith, son of Mr. and Mrs. Laverne Smith, and the winners from the North and South Elementary schools will compete in the district spelling bee competition to be held Wednesday, April 1. The district competition is the prelude to the Metropolitan Area Spelling Bee to be held Wednesday, May 6 in Detroit. The winner of that bee will be placed in national competition in Washington, D. C., in June.

Winners from the North Elementary school are Carol Linebaugh, daughter of Mr. and Mrs. Gerald Linebaugh, and runner-up Julie Proctor, daughter of Mr. and Mrs. Donald Proctor. Representing the South Elementary school in the district competition will be first-place winner Barbara Hinderer, daughter of Mr. and Mrs. Loren Hinderer, and runner-up Karin Eisemann, daughter of Mr. and Mrs. Donald Eisemann.

The contest, sponsored by the Detroit News, is open to all pupils in the fifth through eighth grades in public, private and parochial schools in Wayne, Oakland, Macomb, Livingston, and Washtenaw counties. The contest is to determine the best grade-school speller in this metropolitan area; and to encourage correct spelling.

Each grade was encouraged to hold contests on Wednesday, Feb. 11 to determine the best speller in each grade. The results of that contest follow.

Beach Junior High: grade 6 winner, Renee Schneider; grade 7 winner, Brian Smith; and grade 8 winner, Jon Lewis.

North Elementary school: Nancy Rossbak was the 5th grade winner with Diane Pletcher, runner-up.

South Elementary school: Linda Sliv was the grade 5 winner.

These grade winners were awarded an inscribed copy of Webster's New Collegiate Dictionary, and were, along with the last nine standing in each grade bee, eligible to compete in the school spelling bee, held in the respective schools on Friday, Feb. 27.

The winning word at the Beach school contest was "Adage," spelled

correctly by Pam Siebert after Brian Smith faltered on "acoustic." Pam was required to spell "acoustic" correctly also.

The words in the Beach bee, given by the Rev. Daniel Kellin, were judged by Superintendent Charles Cameron, Mrs. Douglas Lange, and Mrs. Charles Lancaster.

North Elementary school winner, Carol Linebaugh, was required to spell "butcher," before the judges, Mrs. Robert (Creda) Winkles, Mrs. Peter (Cara) Paplawsky, and Mrs. Steven (Cynthia) Carpmann declared her the winner.

At South Elementary school the judges were Mrs. Steven Carpmann and Principal Sylvester Wojcicki, who declared Barbara Hinderer

the winner after she spelled "allegory" correctly.

Winners from the schools, (Pam, Carol, and Barbara), will each receive a bronze medal, a Papermate automatic pen, and a certificate of championship. They will be eligible to compete in the district competition, for which the award is a certificate of championship. They will be eligible to compete in the district competition, for which the award is a certificate of championship and a copy of Webster's Geographical Dictionary.

National awards consist of \$2,500 in cash, a trophy cup, and a plaque for the school, as well as a week-end in New York City.

## Hornings Named Top Young Dairy Couple

Mr. and Mrs. Earl Horning, 11834 Pleasant Lake Rd., will be introduced and officially recognized as the Outstanding Young Dairy Couple at the Michigan Milk Producers Association annual meeting Tuesday, March 24, on the Michigan State University campus.

The Hornings were chosen as the Outstanding Young Dairy Couple by the MMPA as part of an annual event designed to develop future leadership in the association.

Runners-up are Mr. and Mrs. Remus, Rigg of Coldwater.

Horning, 30, graduated from MSU in 1963 with a degree in animal husbandry; Mrs. Horning received her degree in 1964 in education from MSU. She has taught for three years in the Chelsea school system's North School. She taught first grade from 1964-1967 and part of 1968.

They operate a 300-acre dairy farm in partnership with his father, Alton. They milk approximately 55 cows and their dairy herd numbers about 110. The farm operation also includes about 100 head of sheep.

The Hornings have two children, Jeffrey, 2, and Tricia, 10 months, and are members of Zion Lutheran church, Rogers Corners.

## Potato Production Total Stays Same on Far Fewer Acres

Michigan's total potato production in 1968, was about the same as in 1960. But the more than eight million hundredweight came from only one-eighth as many acres in 1968. Yields per acre went up from 38 hundredweight in 1960 to 211 in 1968.

The average price the farmer received for each hundredweight of potatoes increased only from \$1.88 in the near-depression year of 1930 to \$2.22 in the inflated price period in 1968.



Mr. and Mrs. Earl Horning

## GLAMOUR PLANTS

Many foliage and flowering plants are suitable for glamorizing the decor of modern bathrooms. Such clay-potted flowering plants as orchids, begonias, fuchsias, anthuriums, African violets and gardenias will enhance any bathroom color scheme. And, to change the pace with greenery, try dracaena, maidenhair ferns, ivy and peperomia.

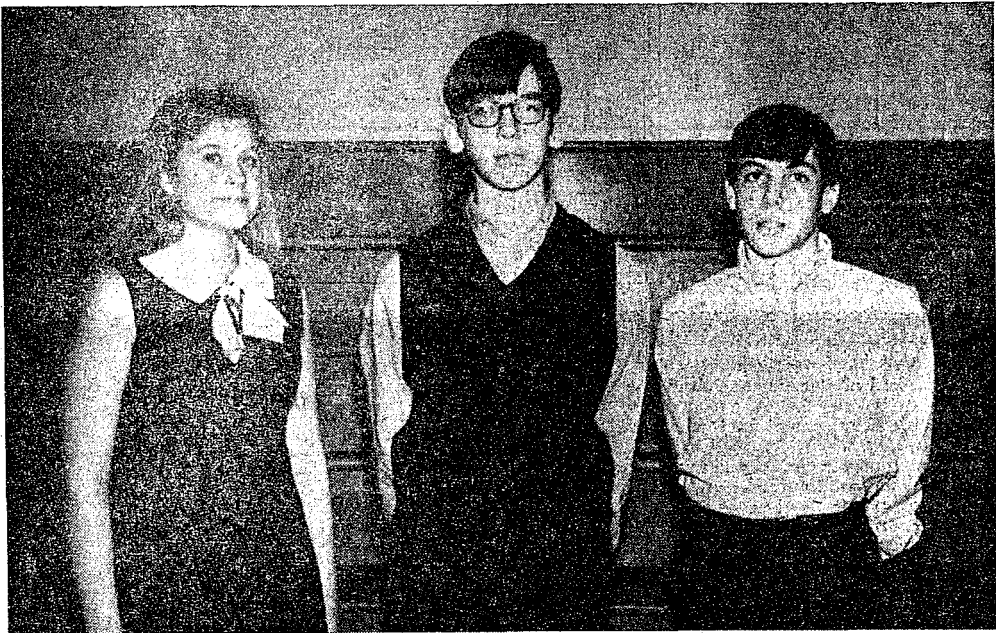
## MODERN SELLING

Pet Food Label: "Our new formula doggie meal tastes just like a mailman's ankle!"

## County Livestock Tour Takes Place Today

Washtenaw county Livestock Tour on Thursday, March 5 will begin at the Caldron-Curran Ranches on Willis Rd., near Grass Lake, at 10 a.m. It will then move to Sweden House in Jackson for lunch, and, on to Marlye Farms on Little Rd., near Concord.

Anyone interested should be at Caldron-Curran at 10 a.m. on March 5. For directions on how to get to the ranch, call the Extension Office at 663-7511, ext. 227.



GRADE WINNERS from Beach Junior High school grades 6, 7 and 8 in the Detroit News sponsored Metropolitan Area Spelling Bee are from left, Renee Schneider, grade 6 champion; Brian Smith, grade 7 winner; and Jon Lewis, winner from the

## Maj. S. Toney Awarded 8 Decorations

U. S. Air Force Major Stanley C. Toney, son of Mrs. Lewis Haseleswerdt, 884 Steinbach Rd., and the late Mr. Toney has been decorated with eight military medals for action in Southeast Asia.

Major Toney was awarded the Distinguished Flying Cross (DFC) and seven Air Medals.

He received the DFC for heroism as an O-2 Super Skymaster pilot directing a series of specialized missions and air strikes while under heavy antiaircraft fire.

Major Toney's Air Medals were for outstanding airmanship and courage during the successful accomplishment of important missions under extremely hazardous conditions.

The major attended Chelsea High school and St. John's Military Academy, Delafield, Wis. He studied at the University of Michigan, where he became a member of Theta Xi. He received his BS degree from the U. S. Military Academy in 1958.

Major Toney is now assigned as a data processing analyst at Strategic Air Command (SAC) Headquarters at Offutt AFB, Neb. SAC is America's long-range nuclear bomber and missile force.

The major's wife, Joan, is the daughter of Mr. and Mrs. Carl Mast, 5680 Mast Rd., Dexter.

## TEST OF FAITH

Rejoinder to an atheist: give him a good dinner and ask him if he believes there is a cook.

## Gerald Straub Named Vice-President of Ypsilanti Chamber of Commerce

Gerald Straub, 6969 Madden Rd., Dexter, has been elected vice-president of the Ypsilanti area chamber of commerce board of directors, it was announced by the chamber of commerce board of directors.

Straub, who has been active in the Chelsea area, is president of Superior Equipment Co., 5800 Cherry Hill Rd., Ypsilanti.

Other officers newly-elected are president Zack Gerganoff, vice-president Richard Kerr, vice-president Johnny Barfield, treasurer Francis Griffin.

**POTENCY IS AN IMPORTANT QUALITY**

No medicine can be really effective in curing an illness, if it has, by the time it reaches your home, lost its potency. Just as certain foods can deteriorate if not kept properly, so can medicines.

Some drugs must be refrigerated to retain their powers — such as insulin, certain eye drops and many types of vitamins. With other medicines exposure to light is the culprit and special containers must be used to keep light out. Every manufacturer of drugs supplies us with detailed instructions on how best to preserve the potency of their products, and we carefully follow their directions.

**YOU OR YOUR DOCTOR CAN PHONE US** when you need a delivery. We will deliver promptly without extra charge. A great many people rely on us for their health needs. We welcome requests for delivery service and charge accounts.

**CHELSEA DRUG**  
24-HOUR PRESCRIPTION SERVICE  
4 Registered Pharmacists  
101 N. MAIN ST. PHONE GR 5-4611

**SPECIAL**  
thru Wednesday, March 11, 1970  
**BURGER  
FRIES  
& SHAKE  
99¢**

Home of fine Brazier foods.

**Dairy  
Queen<sup>®</sup>  
brazier.**  
S. MAIN ST., CHELSEA

For the family with a lot of living to do

# Trim, New MAYTAG "Timer-Less" Dryer

Takes orders from you — not from a clock!

Model D806

This Maytag makes clock timers old-fashioned. Now you can dry a variety of clothes together without under-drying some fabrics and over-baking others. Maytag's Electronic Control senses the moisture in your clothes and keeps the drying process going only until the clothes reach the degree of dryness you want: Air Fluff, Damp Dry, Wash 'n' Wear or Regular. Then it shuts itself off. Your clothes, dried in a gentle circle of heat, are exactly as you prescribed.

New-Generation Maytag Dryers (like new Maytag Washers) have tremendous load capacity. Yet, the new dryers take up 8 inches less floor space than previous models. They carry

the strongest warranty\* in Maytag's history, too. And it's with any New-Generation Dryer you buy.

Pick one out today — any model, any color — for gas or electric operation. Either way, you're ahead with a Maytag!

\* Maytag's new acrylic finished zinc-coated steel cabinet warranted 5 years against rust. Complete dryer warranted 2 full years. Free repair or exchange of defective parts or cabinet if it rusts. Free installation of parts is the responsibility of selling franchised Maytag dealer within first year; thereafter installation is extra.

**MAYTAG**

SEE THE NEW GENERATION OF DEPENDABLE MAYTAGS

Available in either Gas or Electric Models

OPEN FRIDAY UNTIL 9 p.m. CLOSE SATURDAY AT 4 p.m.

# FRIGID PRODUCTS

113 N. Main St., Chelsea

LLOYD R. HEYDLAUFF

Phone GR 9-6651