

face, not good shoes? Com wrinkles for you bend leather.

WEATHER

| | Min. | Max. | Precip. |
|---------|------|------|---------|
| July 16 | 70 | 91 | 0.00 |
| July 17 | 73 | 86 | 1.14 |
| July 18 | 67 | 80 | 0.00 |
| July 19 | 67 | 82 | 0.00 |
| July 20 | 67 | 80 | Trace |
| July 21 | 68 | 85 | 0.00 |
| July 22 | 66 | 83 | 0.00 |

HUNDRETH YEAR—No. 5

The Chelsea Standard

This Week

CHELSEA, MICHIGAN, THURSDAY, JULY 24, 1969 10c per copy

SUBSCRIPTION: \$3.00 PER YEAR

QUOTE
"A joy that's shared is a joy made double."
—John Ray.



FEATURED SOLOIST: To be featured in the band concert at the downtown parking lot is Byron Pearson, accomplished trumpet player. Pearson will play "A Trumpeter's Lullaby" by Anderson and conduct a portion of the concert.

Band Concert Related Friday

Opening of old-fashioned entertainment will be presented by Chelsea High school and Community Band Friday at 7:30 p.m. in downtown parking lot. Traditional summer band concert under the direction of Warren Mayer, and will feature a solo by Byron Pearson, who also conducts a portion of the concert.

Pearson, 28, is a 1968 graduate of Chelsea High school, and has a background in music. He has performed at the University of Michigan band on their tour of Russia. Previous to enlisting in the Marine Corps, he played trumpet for the U. S. Marine Band and was a member of "The Star's Own" in the trumpet section. He has performed at the New Orleans Symphony and has also studied with Johnson, who performed trumpet with the Philadelphia Symphony.

He is presently residing with his parents, Mr. and Mrs. Willard Pearson, 13940 Old US-12, and has been attending the University of Michigan to complete his education. Friday's concert, Pearson will play "A Trumpeter's Lullaby" by Anderson.

The band will present marches, waltzes, show tunes, and popular music. Some of the selections are "Suite of Spirited Dances" from Broadway play, "Fanny," a special trombone solo, and the popular "Spanish

The entertainment will be performed by a small but very enthusiastic group. The director, Warren Mayer, has requested the help of more instrumentalists. Final rehearsal will be this evening at 7:30, and anyone who would like to perform with the group is welcome.

Friday's concert will be the band's only performance this summer.

7 from Chelsea Place in State JC Track Meet

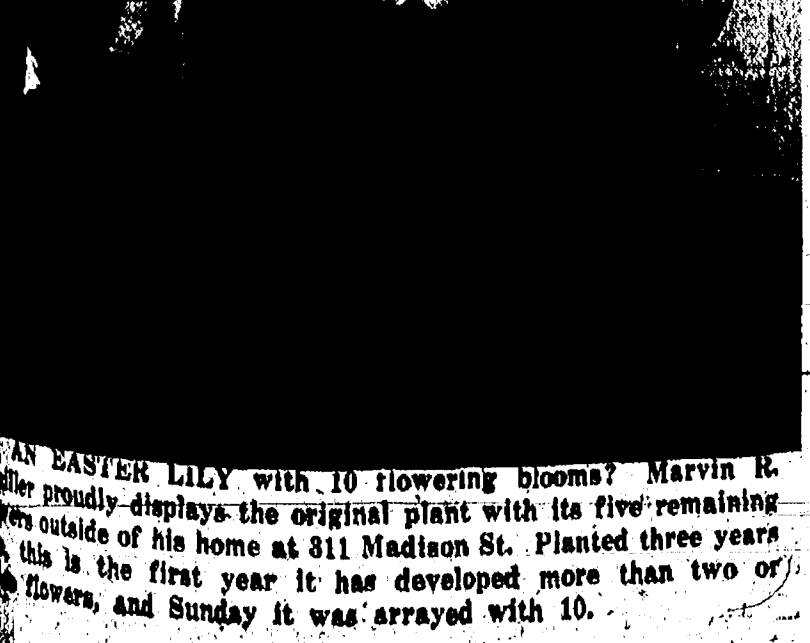
Seven Chelsea representatives placed in the Jaycees State Junior Champ track meet Saturday. The meet began at 9 a.m., and was held at Wayne State University's track. It was sponsored by the Detroit Jaycees.

Jean Wenk finished second in the 220 run in her 17-18 age group, and Terri Fuller took second place in the 100-yard dash, and third place in the 220 run.

Larry Gorton got as far as the semi-finals in the high hurdles, and Dave Porth-van to the semi-finals in the 100-yard dash.

Roger Fitch placed high in the high jump, and Dan Schuelke won mention in the mile run. Mike Bassett also placed in his popular division.

A final report will be sent to the Chelsea Jaycees later this week.



AN EASTER LILY with 10 flowering blooms? Marvin R. Miller proudly displays the original plant with its five remaining flowers outside of his home at 311 Madison St. Planted three years ago, this is the first year it has developed more than two or three flowers, and Sunday it was arrayed with 10.

Freedom OK's Building New Township Hall

A decision has been made by the Freedom Township Board to erect a new Township Hall at Lima Center and Pleasant Lake Rds.

The decision passed with a majority of 36 to 26 at a special July 17 meeting, with an allotment of \$32,000 for the construction.

The new hall will serve as a community center as well as a place for township meetings. Construction will take place as soon as possible, but because it is a public building, the township must advertise for bids and wait for estimates.

At a special meeting Wednesday evening, the board appointed a committee to organize the procedures. Those appointed are Supervisor John Miller, Neil Stierle, Armin Haussler, Clarence Schneider, and Luther Schible.

The present township hall is an old brick structure without plumbing, built in 1878.



Sgt. G. Kuhl Chosen Airman Of the Month

Former Chelsea resident, Sgt. Gregory A. Kuhl, has been selected as Minot Air Force Base "Airman of the Month."

Sgt. Kuhl, 882 Supply Squadron, attended Chelsea High school and was employed with Chrysler Corporation Proving Grounds before entering the Air Force in April, 1966. He is the son of Mr. and Mrs. Homer A. Kuhl, 4902 M-52.

His wife is the former Diane Solper of Bottineau, N. D., and they have two children, Alan Lee, 2 years old, and Michelle Renee, 5 months.

In charge of individual equipment issue unit, Equipment Management Branch at the Base in North Dakota, Sgt. Kuhl works in a unit which supports 5,100 military personnel in their clothing requirements.

He is responsible for maintaining personal clothing records for each item of apparel issued and insuring that everyone assigned to Minot AFB has adequate gear.

In addition, he has the demanding job of supplying all tactical crew members with adequate flying clothing and appropriate protective clothing and appropriate flying gear.

A three-year Air Force veteran, he is completing his fourth year at Minot, having been assigned to his basic training at Lackland AFB, Texas in 1966.

Colonel George E. Porter, 882 Combat Support Group, noted of the sergeant, "He accepts all assignments and insures that his subordinates complete their work thoroughly and in the shortest possible time."

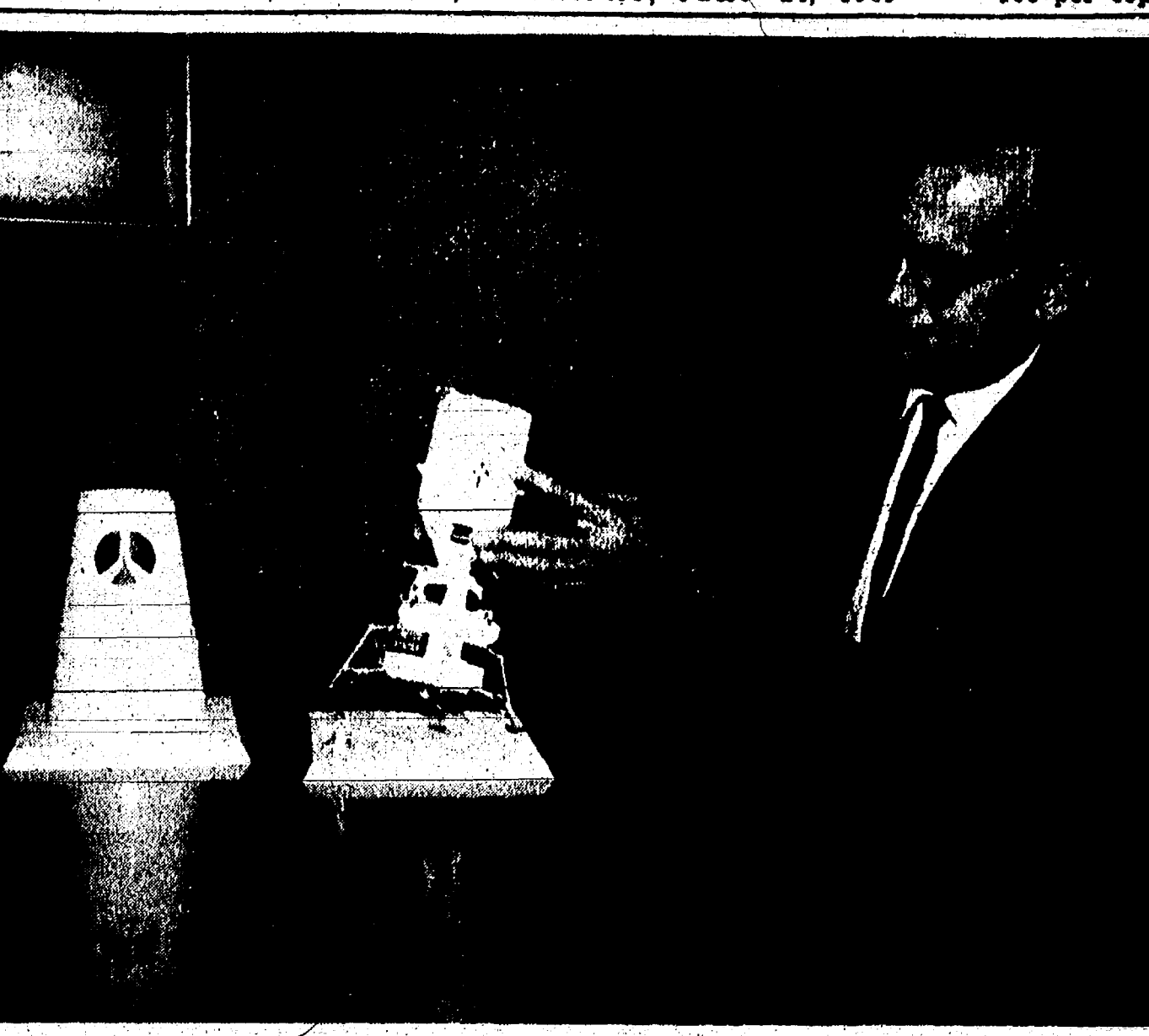
"Sergeant Kuhl," he also states, "performs duties that are certainly demanding and require constant hard work and sacrifice on his part."

The "Airman of the Month" program was instituted in February by Brig. Gen. Ralph T. Holland, 810th Strategic Aerospace Division commander.

"It means a lot to airmen at Minot," commented Sgt. Kuhl, "it lets them know someone cares about the job that we're doing."

"It makes them want to excel in their duties and I personally received great incentive in striving to be selected," he concluded.

As July's "Airman of the Month," he will receive four certificates from businessmen in Minot, a pen and pencil set engraved with his accomplishment, a week-end trip to a bridal suite for himself and his wife, a week-end trip to a cinema for two, \$10 in cash, \$50 government savings bond, and free use of an automobile with reserved parking for a month.



LUNAR LANDING—A 21-inch scale model of Apollo 11 was put together by Robert D. Rudd, a local space buff who has a more than passing interest in this week's voyage to the moon. Rudd is plant manager at the North American Rockwell Corp. here, whose sister firm in California assembled the Apollo 11 command module, which is seen in the top half of the photo. At bottom is the lunar module, which reached the moon last Sunday.

Chelsea Residents Voice Approval of Lunar Voyage

Chelsea residents — most of them glued to their television screens during the historic moon landing of Apollo 11 astronauts earlier this week — shared in the nation-wide excitement over the 500,000-mile space voyage, which is scheduled to end with a splashdown in the Pacific sometime today.

Most local residents interviewed by the Chelsea Standard this week expressed wonderment over the successful space odyssey of U.S. astronauts Neil A. Armstrong, Edwin Aldrin and Mike Collins. Several residents here spoke of the long-range scientific benefits of the voyage, and only a few mentioned the tremendous cost of financing the mission.

Mrs. Daisy Freeman of 805 W. Middle St., said the lunar voyage was "almost beyond belief."

"I can't understand how they did it," she declared, "but I guess nothing is unbelievable with modern science."

At North American Rockwell Corp., a local automotive spring manufacturing company whose sister firm in El Segundo, Calif., assembled the command module which will return the astronauts to earth, plant manager Robert D. Rudd called the venture a "great step into space."

"It's probably too early to tell of the scientific benefits of the voyage," he said, "but the mission could be considered a stepping-stone" to similar trips to other celestial bodies.

Rudd, a space buff last winter had constructed a 21-inch model of the lunar module and the command ship used in this week's voyage.

Chelsea Village Administrator Frederick A. Weber called the lunar voyage "tremendous," adding that he and his wife sat in their back yard watching the moon at the time of the lunar landing Sunday night. "It seemed impossible," he said, "that men had actually landed there."

Gen. Dwight Beach, who returned to his home at 14350 Jackson Rd. several weeks ago after 36 years with the U.S. Army, hailed the lunar landing as the "start of a new era" in technology and space exploration.

He remarked that although there might not be any immediate gains from this and other space ventures, the long-range effects of the U.S. space program — which is costing about \$24 billion a year — will be "well worth it."

Alex Mshar of 742 Bond St., an employee of Federal Screw Works here, called the lunar voyage the "best thing the U.S. has ever done" and added that he was "thrilled to pieces" by the mission.

"Quite a few people are concerned about the money expended for the trip, but I think it was worth it," he said.

Mrs. E. W. Eaton of 160 E. Middle St., a senior citizen who serves as president of the Chelsea Library Board, had this to say about the voyage:

"Of course, at my age, I don't expect to see many of the benefits. But I think it will be a great thing for future generations."

Another local resident commented that there were two ways of looking at the voyage. On the one hand, he said, the trip will supply scientists with valuable information about the moon and the balance of the solar system. But on the other hand, he said, "it's an awful price to pay for a bunch of rocks."

Baby Contest Photos Now On Display

Photos for the Jaycee Auxiliary baby contest were on display in local stores and were to remain until July 22.

Winners will be notified July 25, with prizes awarded to first, second, and third-place winners.

Kusterer's Food Market is displaying pictures of Brenda Hoelzer, Schneider's Store has photos of Norman Weber, Robert Abdon, Becky Foster, Shari Lee Rowe, Dancer's are displaying photos of Joey Merkel, Valleen Crow, Gary Johnson, Heather Ann Holdridge, and Shannon Carpenter. At Budget-Wise Store there are photos of Michael Merkel, Marvin Howard, II, and Sharon LaFontaine, with pictures of Carol Gakken and Tracie Harok at Winans Jewelry Store.

Patty Ann Shoppe is showing William Joseph Rickenman, Filicia Passow, and Shelley Neeley. Stop & Shop is presenting Latriah Richardson, Glenn Paul Boyer, Yvonne Gaken, and Jeff Salyers. Todd Michael Bauer and Carla Sears have their pictures on display at Chelsea Lanes. At Chelsea Hardware, Mike Bareis and Janine Warner's photos are presented.

Chelsea Drug is presenting Robert Paul, Brian Ackley and Larry Sneker. Finally, Grove 5 & 10 Store is displaying the picture of Nad Ride.

All the pictures sent to the contest were used. Anyone may vote for their favorite child by placing donations in the canister designated with the child's picture. The total amount of money in each canister will determine the winner.

First prize will be a free portrait of the child done at Guenther Studio. Second place will receive a gift from Grove 5 & 10 Cent Store, and third place will receive a gift from Winans Jewelry Store.

Aug. 4 Election Date Near for Millage Vote

School Personnel Busy Trying To Explain Needs for Coming Year

Chelsea residents will vote Aug. 4 on a revised 1969-70 education budget that would hike the local school tax by 2.83 mills over taxes last year.

Local education officials say this tax increase — which would bring in a total of about \$195,000 in additional revenues for the coming school year — will be spent largely for increases in teachers' salaries, the purchase of two new school buses, and a general increase in school operating costs.

Voters will also be faced with a separate ballot item calling for a school board's capital improvement budget. This item, if approved by the voters, will finance the demolition of the old Junior High school and the paving of the Chelsea High school parking lot, and elementary school playgrounds.

In two previous budget referendums — both of them rejected by Chelsea voters — costs for capital improvements were included in the total school budget package, bringing the proposed tax hike to 3.83 mills.

According to Frederick A. Mills, school business manager, projected increases in salaries for teachers and other school personnel (including administrators, bus drivers, custodians, cafeteria personnel, and secretaries) account for most of the requested budget hike. Recent statistics reveal that staff salaries comprise about 82 percent of the Chelsea School District's operating expenses.

Teachers' salaries, now the subject of negotiations between the school board and the local teachers' union, the Chelsea Educational Association (CEA), are likely to be settled before the opening of the school term in September.

If approved by the voters next month, the proposed 2.83 millage increase will bring local school taxes to 27.70 mills. This means Chelsea property owners will pay \$27.70 in school taxes for each \$1,000 worth of assessed property value (the assessed value of a property is set by law at 50 percent of its market value).

If the capital improvements budget item is also approved by the voters, school taxes here will reach 28.70 mills, or \$28.70 for each \$1,000 worth of assessed property valuation.

Under last year's school tax rate, home owners paid 24.87 mills or \$24.87 on property with an assessed value of \$1,000.

According to this school tax formula, approval will mean that a Chelsea resident whose property is assessed at \$10,000 will be paying \$277 in school taxes this year, compared to the \$248 he paid during 1968-69, approximately 11 percent increase.

Business manager Mills and other school officials who have been explaining their revised tax proposal to local discussion groups recently say the total school income, including state aid, will amount to \$1.6 million for 1968-70, an increase of \$195,000 over last year's budget.

School officials note that Chelsea, in comparison with the nine other school districts in Washtenaw county, ranks eighth in the amount of revenue spent for the education of each pupil.

Voting will take place Aug. 4 at the Dwight E. Beach Junior High school from 7 a.m. to 8 p.m. Absentee ballots are available at the high school administrative offices.

Dexter Boy Wins Soap Box Derby

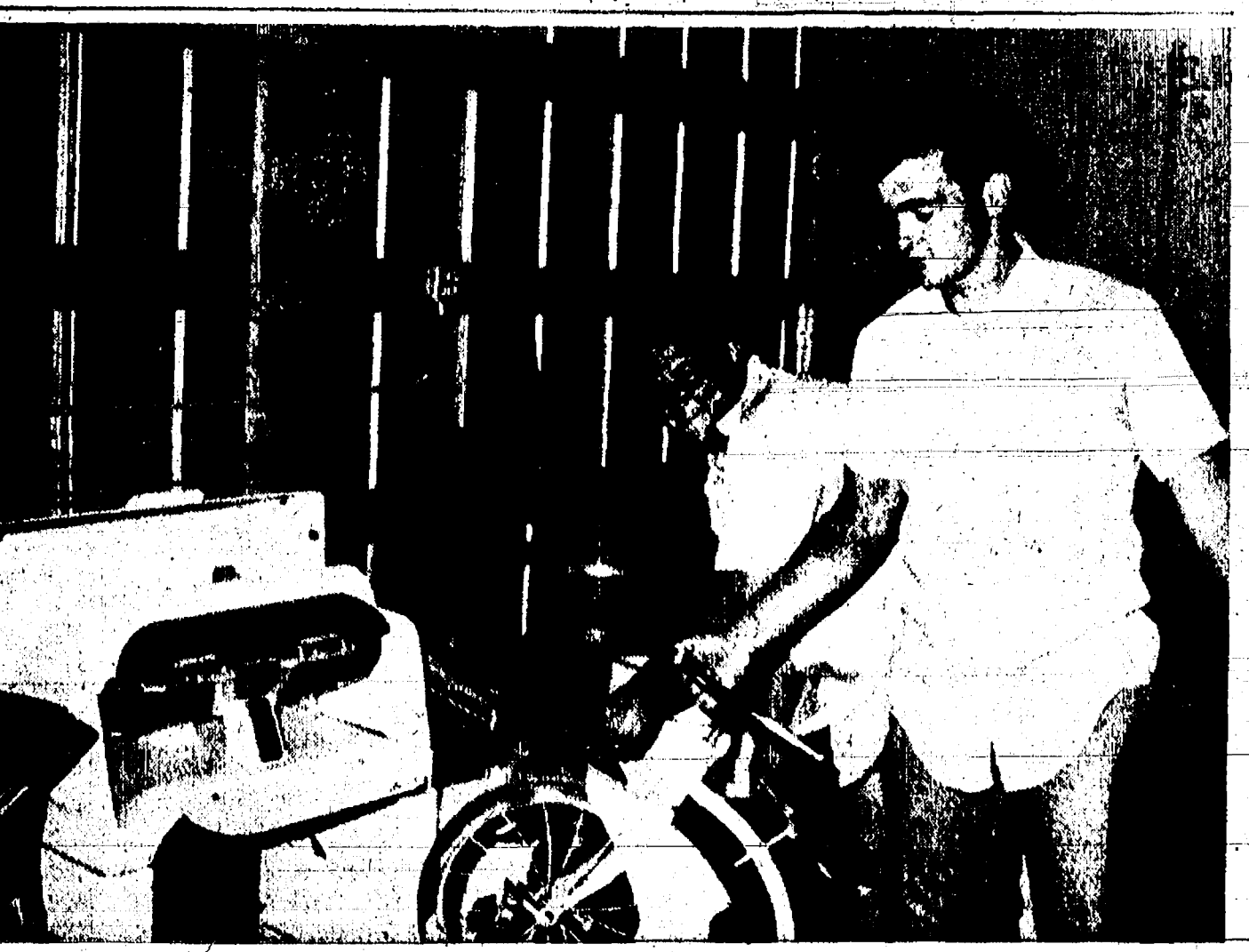
A 14-year-old Dexter boy streaked across the finish line in the 80th and final heat of the Ann Arbor Soap Box Derby Sunday and captured first place.

David Kemble, son of Mr. and Mrs. Edward Klinke, 3638 Inverness, received a \$500 savings bond, a first-place trophy, a plaque, and an all-expense-paid trip to Akron, O., to compete in the national derby Aug. 23.

David has competed in derby races since 1966, and the car he raced for the win is the same one he used last year except for a few modifications.

Chelsea boys participating in the race were Ken and David Buxton, 8405 Werkher Rd., and William Aldrich, 221 E. Middle St.

Mrs. Charles Allen is a patient at St. Joseph Mercy Hospital, Ann Arbor, room 722. She had major surgery on Monday, July 14.



DAN EDER and Mike Eubanks, foreground, have been devoting much of their spare time lately to picking up, sorting and preparing useable materials contributed for the Jaycees Auction Rummage Sale. The annual fund-raising event of the Jaycees will be held Saturday, Aug. 9, at Chelsea Fairgrounds.

Jaycees Gathering Useable Items for Rummage Sale

Chelsea Jaycees are urging all residents to look through their closets, to clean out garages and attics of all unneeded but useful articles, then give them a call. The articles will be picked up and used for their annual Auction Rummage Sale Aug. 9.

To arrange for a pick-up, anyone of the following persons may be called — Mike Eubanks at 479-7187, Dan Eder at 475-2668, or Mitchell Zink at 479-6540.

The rummage sale is the solution to the problem of what to do with those articles no longer needed, but which could be used by others.

The Jaycees hope to have a successful sale, as the proceeds are used to support projects for the community, but they need more articles than what have already been collected.

Pick-ups will be made until Aug. 6, so residents are urged to sort out their items as soon as possible.

The Auction Rummage Sale will be held at the Chelsea Fairgrounds on Aug. 9, only three weeks away. George Staffan has been appointed auctioneer.

The Chelsea Standard
 Established 1871
 Excellence Award By Michigan Press Association
 1951-1952-1953-1954-1955-1956
 Witter P. Leonard, Editor and Publisher

Published every Thursday morning at 800 North Main Street, Chelsea, Mich. 48118, and second class postage paid at Chelsea, Mich., under the Act of March 3, 1879.

ADDRESS CORRECTION REQUESTED

Subscription Rates (Payable in Advance)
 In Michigan: One Year \$3.00, Six Months \$1.75, Single Copies \$1.10
 Outside Michigan: One Year \$4.00, Six Months \$2.25, Single Copies \$1.40
 Service men or women, anywhere, 1 year \$3.00

MEMBER
NATIONAL NEWSPAPER
 Association - Founded 1885

National Advertising Representative:
MICHIGAN NEWSPAPERS, INC.
 257 Michigan Ave.
 East Lansing, Mich. 48823



Washington Report
 by Congressman
MARVIN L. ESCH

The American public is becoming increasingly concerned about rising taxes—federal, state, and local. There is also, quite appropriately, increasing interest in precisely how the tax dollar is allocated.

It is surprising to many persons to learn that 53 percent out of every federal tax dollar goes directly for defense purposes. This amounts to more than \$80 billion annually, which is a sum greater than the total federal expenditures for the first 135 years of our country's existence. This is more money than is spent for all other government programs together.

Another 11 cents goes to pay the interest on the national debt, most of which debt was accumulated for defense spending during World War II.

The other figures, compared to defense spending, are low. For natural resources we spend 1 cent. For housing and community development we spend 2 cents. Education receives 4 cents. Health programs such as Medicare and Medicaid—so vital for our older citizens—account for 5 cents of our federal tax pie. Other social services receive just 1 cent. This includes 64 cents for juvenile delinquency programs and 61 cents for mental retardation programs.

Our foreign assistance programs, including defense-related military assistance, cost 2 cents. Of this amount, 1 cent goes to the Peace Corps, which has done so much to spread good will for the United States in underdeveloped countries.

Space efforts cost 3 cents, agricultural programs another 2 cents, and 6 cents goes for commerce and transportation programs. Veterans receive 3 cents of the tax dollar.

I believe those figures indicate that the priorities of this nation are in need of critical review. There is no question that we must maintain the military strength needed to provide national security, but I have serious reservations about the rapid growth of the military budget in recent years and recent reports of inefficiency in defense contracting.

Too often in the past military appropriations have sailed through Congress, almost without question. I think it is time for the same scrutiny by Congress that is given to all other programs. Waste and inefficiency are no more excusable in defense programs than in any other type of public spending.

I strongly support efforts in Congress to cut back non-essential defense outlays, so that a larger percentage of the federal tax dollar may be channeled into programs designed to meet the crucial environmental, educational, and social problems that are facing this nation today.

Too Much Sun Worsens Many Skin Diseases

Ann Arbor—Grandma may have looked silly, but she wasn't stupid.

On hot summer days, she wore a sunbonnet or wide-brimmed hat, a veil, and long sleeves. Grandfather donned a straw hat, a banana around his neck, and a long-sleeved work shirt.

But today's sun-bronzed gods and goddesses eagerly seek the tanning rays of the sun without stopping to consider that by middle age they may be wrinkled as a prune or covered with blemishes.

Dr. William Taylor, professor of dermatology at the University of Michigan, says sunlight causes a host of troubles. Strong sunlight exposure may cause severe sunburn, hives, itchy bumps, pre-malignant horny excrescences, pigmented spots, white thickened spots on the lips, wrinkled degeneration of the skin, and cancer of the lip. Sunlight provokes lupus erythematosus, porphyria cutanea tarda, Dühring's disease, pellagra and other diseases.

Without going into details, it may be said that all these medical names stand for unpleasant or dangerous afflictions.

Sunlight is generally beneficial for some skin diseases such as psoriasis, acne, seborrheic dermatitis, paronychia, eczema, and pityriasis, said Dr. Taylor. However, 10 percent of psoriasis are made worse by sunlight, and tropical acne is the worst kind of acne.

Certain drugs are notorious for producing light-sensitive eruptions, according to Dr. Taylor. The wonder drug Chlorothalazine, which makes thick-legged women in the United States take in the belief that it will thin their legs, frequently causes eruptions on the areas exposed to sunlight. Pregnant women and those taking birth-control pills get brindle-brown patches around their faces wherever exposed to sun.

Often locally applied perfumes, face cream, or certain plants and drugs cause brown stains in light-exposed areas. These brown spots usually last up to six months before they disappear by themselves.

And, finally, there is cancer of the skin.

"The cancer-causing effects of sun on skin is cumulative over a lifetime," said Dr. Taylor. "It is not only how much exposure you acquire in one year, but how much you have had since childhood."

In the United States, the incidence of skin cancer varies directly with the amount of sunlight in the area. The susceptibility coincides with every 250 miles as one approaches the equator.

People with fair skin, fair or red hair, and freckles are particularly vulnerable to the cancerous effects of a glaring sun. Black or dark-skinned people, except for albinos or those with vitiligo (white spot disease), seldom develop cancer of the skin.

Wimmin may be natural longer-livers than men, Bug said, but that don't make no case for so many 35-year-old widows, cause most husbands make it to 50 or so. Bug figured the piece didn't consider men that has buried one wife and married another one. General, Bug said, wimmin ain't as likely to get married again as men.

Clem Webster said in the first place he couldn't see why Bug was so concerned about the report, and in the second place the reason for the 35 year old age was simple. That was as old as any of the wimmin would say they is. In the third place, Clem allowed, he personal was more worried about wimmin of all ages taking over everything in this man's world.

For instant, Clem saw where this woman in New York had gone to court cause she couldn't get hired for a baseball umpire. Clem said that was as far as wimmin could go in the wrong direction. He said if it took his old lady as long to call a ball or strike as it does to pick which hat to wear to church, they never would get a ball game played.

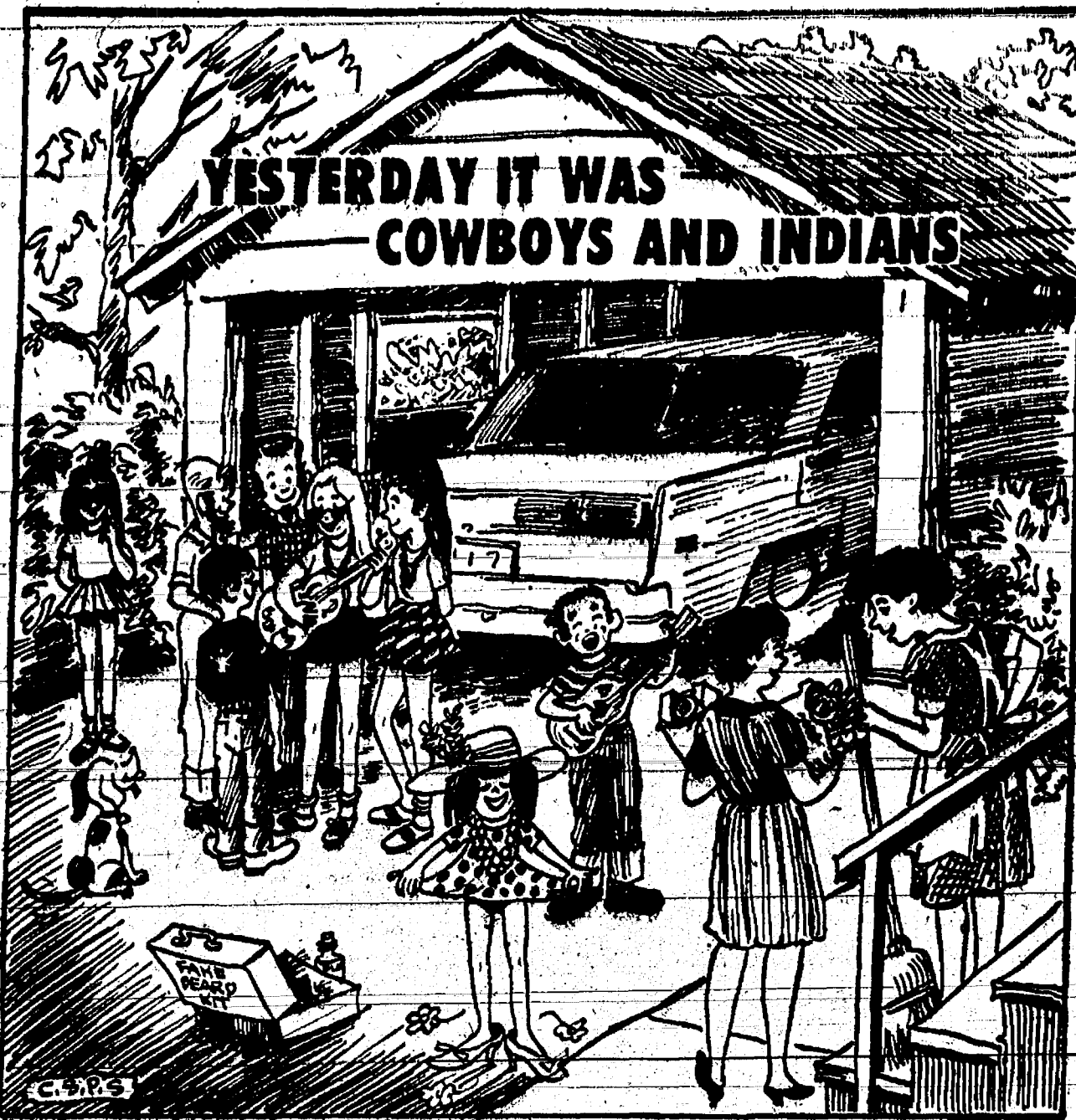
For instant, Clem saw where this woman in New York had gone to court cause she couldn't get hired for a baseball umpire. Clem said that was as far as wimmin could go in the wrong direction. He said if it took his old lady as long to call a ball or strike as it does to pick which hat to wear to church, they never would get a ball game played.

For instant, Clem saw where this woman in New York had gone to court cause she couldn't get hired for a baseball umpire. Clem said that was as far as wimmin could go in the wrong direction. He said if it took his old lady as long to call a ball or strike as it does to pick which hat to wear to church, they never would get a ball game played.

For instant, Clem saw where this woman in New York had gone to court cause she couldn't get hired for a baseball umpire. Clem said that was as far as wimmin could go in the wrong direction. He said if it took his old lady as long to call a ball or strike as it does to pick which hat to wear to church, they never would get a ball game played.

For instant, Clem saw where this woman in New York had gone to court cause she couldn't get hired for a baseball umpire. Clem said that was as far as wimmin could go in the wrong direction. He said if it took his old lady as long to call a ball or strike as it does to pick which hat to wear to church, they never would get a ball game played.

For instant, Clem saw where this woman in New York had gone to court cause she couldn't get hired for a baseball umpire. Clem said that was as far as wimmin could go in the wrong direction. He said if it took his old lady as long to call a ball or strike as it does to pick which hat to wear to church, they never would get a ball game played.



MICHIGAN MIRROR

By Elmer E. White, Secretary, Michigan Press Association

"More Curb Possible"
 Cigarette advertising and the regulation of it has been the concern of Congress and the Federal government—up to now.

But a member of the Michigan Senate says he is going to attempt to impose a partial ban on the advertising of cigarettes in Michigan when the legislature convenes again next January.

William Faust, a non-smoking Democrat from Westland, notified his fellow-senators of his intentions during a recent Senate debate of a bill to outlaw advertising indicating discrimination in the sale or exchange of real estate.

Faust proposed an amendment to the bill to require cigarette advertising to describe the "harmful effects of smoking" as well as urging customers to purchase the particular brand being advertised.

The proposal received instant support from another non-smoking senator, Anthony Stamm, a Republican from Kalamazoo, who said it was a "progressive step."

But the manager of the bill being considered, Coleman Young, a Democrat from Detroit, told Faust he didn't want to lose the bill because of the amendment and told him to wait until next January.

Immediately Faust withdrew his proposal, saying "I didn't want it to come to a vote yet, so I withdrew it." But the Westland lawmaker said "I am serious, though."

and this serves notice on everyone that next January I will sponsor a bill.

The proposal to have such advertising tell the "harmful effects" of smoking would be an effort to comply with federal regulations, he said. In that way, the media wouldn't be deprived of freedom of speech, but no positive advertising would take place, he said.

If Faust is successful in his attempt, Michigan would be the first state to impose restrictions on the advertising of cigarettes, a subject which has received much attention from Congress and several regulatory agencies up to now.

At present, the only restriction on the sale or advertising of cigarettes is a requirement that each pack sold in the United States include the statement: "Caution, Cigarette Smoking May Be Hazardous to Your Health."

The Federal Communications Commission has ruled that broadcast stations must also give time to anti-smoking commercials sponsored by the American Cancer Society and other national health groups.

Other proposals include such extreme measures as a complete ban on cigarette advertising, a step which has been taken in several European countries.

The National Association of Broadcasters' Television Code Review Board recently made a voluntary recommendation that all cigarette ads be eliminated from television by Sept. 1, 1973. The

Board also recommended prohibiting cigarette commercials in or adjacent to any program primarily directed to young audiences.

A gradual phase-out of the advertising to be in next January was included in the recommendation.

"Unsolicited Goods"
 Michiganders who have been unsure of how to handle unsolicited goods they receive by mail now have some guidance in the matter from the state's lawbooks.

Gov. William G. Milliken recently signed into law a measure providing that unsolicited goods which come in the mail will be considered unconditional gifts from now on. The law says the recipients may either refuse to accept delivery, may refuse to accept any obligation for returning them or may dispose of them any way he wants to.

Ladies Everywhere
 SEAM, The Society for the Emancipation of the American Male, is a new organization in Ann Arbor. According to a story in the New York Times, the group has as its purpose: "to restore the American patriarchy" and return men to their positions as heads of their families.

Guess what the organization has picked up already? A ladies auxiliary.

State Urges Care In Surfacing Lots
 Lansing—Owners of property along state highways are urged to use care in applying oil or other surfacing materials to their parking lots and driveways so that the materials can't be "tracked" onto the highways.

The Department of State Highways said the materials can cause slippery conditions on the highways, a potential hazard for motorists.

Lansing—Owners of property along state highways are urged to use care in applying oil or other surfacing materials to their parking lots and driveways so that the materials can't be "tracked" onto the highways.

The Department of State Highways said the materials can cause slippery conditions on the highways, a potential hazard for motorists.

Lansing—Owners of property along state highways are urged to use care in applying oil or other surfacing materials to their parking lots and driveways so that the materials can't be "tracked" onto the highways.

JUST REMINISCING

Items Taken from the Files of The Chelsea Standard

4 Years Ago . . .

Thursday, July 23, 1947—The peak of the 1904 wheat harvest here was reached last week-end, but the customary long lines of trucks waiting to unload were not in evidence as in former years. At Blass Elevator at Four Mile Lake, all committed storage wheat is already stored or in the process of being stored. Many farmers are holding their wheat, apparently following a wait and see policy in hopes that the price will reach a higher level than the present quotation, \$1.82 for No. 1 wheat.

Pancho Lopes was one of the featured midget wrestlers at the all-sports events at Chelsea High school Saturday evening. The program was sponsored by the Chelsea fire and police departments.

Monday night at the regular meeting of the board of education the position of the group was affirmed in regard to the 10-classroom addition to the high school. They decided to present the same issue for approval as soon as the law allows.

At the pet show held at the South Elementary school playground Friday in connection with the Chelsea Recreation Commission summer recreation program Betsy Bolser was awarded first place for having the largest pet. Brian McGibney placed first for exhibiting the smallest pet.

The Rev. and Mrs. Donald Baacke and daughter, formerly of Sugar Grove, O., are now living at 158 Park St. Mr. Baacke has enrolled at the University of Michigan for graduate study and Mrs. Baacke, the former Audrey Haab, will teach at North Elementary school in the fall.

A scale model replica of a famous circus side show and menagerie tent are on display at Palmer Motor Sales this week and next. The display was constructed by Charles Spencer of Chelsea, a member of the National Circus Model Builder's Association.

A dinner Sunday welcomed the new pastor of Salem Grove church, the Rev. George Nevin, and honored a former pastor, the Rev. George Nordhuft of Muskegon.

John D. McGill today announced his candidacy for the Democratic nomination for Washtenaw County Clerk. McGill has lived in the county since 1955. He presently teaches physics and math at Chelsea High school where he has been a member of the faculty since 1950.

24 Years Ago . . .
 Thursday, July 26, 1945—Manufacturing facilities in Chelsea's factories will be by more than 60,000 feet of space within the next few weeks with the addition of space by two local industries, which were started by the construction of the additional building of the Chelsea Co., with a new building, 42,000 square feet of space. The addition will be a one-story brick structure, brick and steel. Central Fibre Co. also started construction of a new building this week, 20,000 square feet of space. Located on N. Main St., the street and the new building will be one-story brick with a steel frame.

Captain Kenneth O. B. killed in action in the area on Dec. 15, while he was on a mission. He was taken prisoner by the Japanese on May 7, 1942. His mother, Mrs. D. B. Reach and David A. Reach, Highway M-52, is being damaged during the project under the direction of the Highway Department. The way from Lyndon Center to Highway M-52 is also being with some relocation.

William M. Rademacher, recently discharged from the General Hospital and has to Chelsea after serving in the Army.

The board of education played Russell Alstetter today in action in the local area of Chelsea public to fill the vacancy caused by resignation of Ed. Gentz. Members of the Boarding assembly on Sunday at the turn-over park for a reunion, with 35 from Dexter, Ann Arbor, Gregory and Pleasant Lakes, and Henry Buss, president.

(Continued on page 1)

14 Years Ago . . .
 Thursday, July 21, 1937—Joyce Eismann suffered a double fracture of the wrist and elbow, and her mother, Mrs. Paul Eismann, sustained four fractured ribs in an automobile accident on Chelsea Manchester Rd. at 8:30 a.m. Wednesday of last week. Her father, driver of the pick-up in which they were riding, was not injured.

During the past week Chelsea police were notified by a North Lake area resident that marijuana was growing wild on his property.

The growth was destroyed by sheriff's department officers. Police Chief John Carman said yesterday that farmers in the Chelsea area were cooperating by reporting suspected growth of the weed.

Mr. and Mrs. Tolle Fletcher of 9834 North Territorial Rd., were killed Friday in a head-on collision in front of the Lloyd Miner home. Driver of the other car was Albert C. Sully of Munith.

SAVE 50% Double Quantity Sale
Rytex Deckle Edge Vellum Personalized Stationery
 Sale Price \$4.95 (regularly 10.00)
 Such Good Taste . . . Such Good Value
 Your name and address custom-printed on genuine vellum paper that is subtly deckled in the manner of fine books. Paper choice of Windsor White, Antique Grey, Wedgewood Blue. Choice of print styles shown with ink color of black or blue.

150 Princess sheets, 100 envelopes or . . . 100 King size sheets, 100 envelopes

***SPECIAL BONUS VALUE:**
 50 extra, unprinted, sheets for use as second pages . . . only \$1.00 with order.

THE CHELSEA STANDARD
 CHELSEA, MICHIGAN 48118
 DECKLE EDGE VELLUM . . . boxes at sale price of 4.95 per box
***SPECIAL BONUS:** (check) Includes 50 matching unprinted sheets for only \$1.00 more

CHECK ☐ Princess White (9400) ☐ King White (9100)
YOUR ☐ Princess Blue (9450) ☐ King Blue (9150)
CHOICE ☐ Princess Grey (9460) ☐ King Grey (9160)
 Ink: ☐ Black Ink ☐ Blue Ink ☐ Imprint MC ☐ Imprint AR

Imprint Name _____
 Street _____
 City _____ State _____ Zip _____

Ordered by _____
 City _____ State _____ Zip _____
☐ Charge ☐ Payment enclosed Please include sales tax

enjoy yourself AND LET THE CATERING DO THE WORK

PHONE 426-8668
 Call ahead and your take-out order will be waiting.

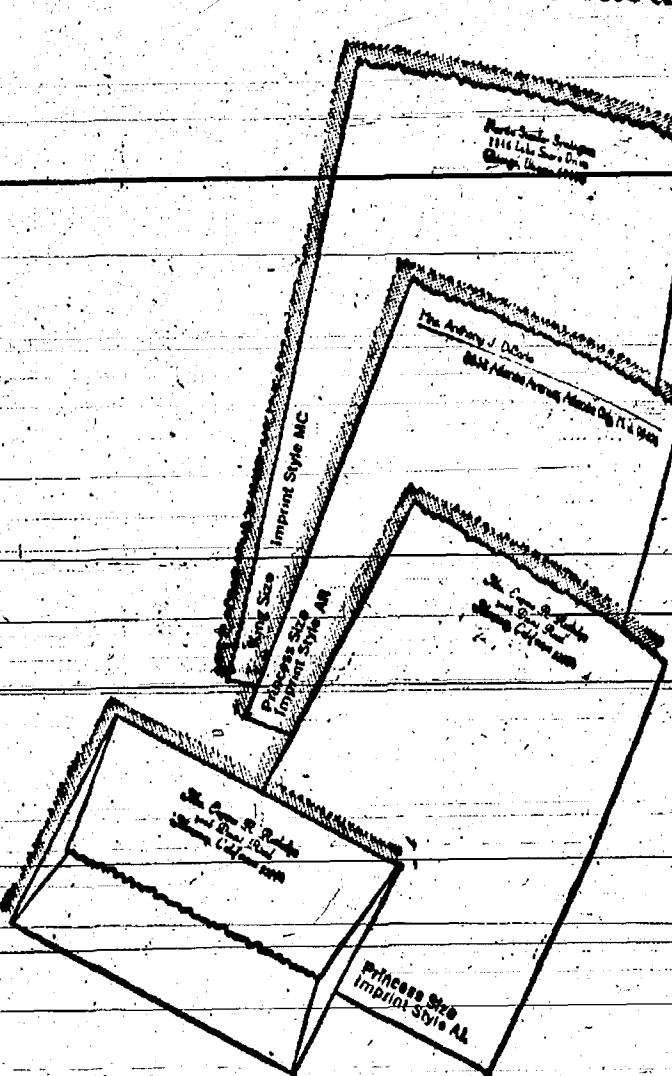
Individual CHICKEN DINNERS or buckets 16 pcs. & 24 pcs.

Family Reunion in July or August?

Root Beer by the gallon
 Also a Complete Sandwich and Fountain Menu.

L & R DRIVE-IN
 Corner of N. Territorial and Dexter Twnhall Rd.

The Chelsea Standard



SAVE 50% Double Quantity Sale

Rytex Deckle Edge Vellum Personalized Stationery

Sale Price \$4.95 (regularly 10.00)

Such Good Taste . . . Such Good Value

Your name and address custom-printed on genuine vellum paper that is subtly deckled in the manner of fine books. Paper choice of Windsor White, Antique Grey, Wedgewood Blue. Choice of print styles shown with ink color of black or blue.

150 Princess sheets, 100 envelopes or . . . 100 King size sheets, 100 envelopes

***SPECIAL BONUS VALUE:**
 50 extra, unprinted, sheets for use as second pages . . . only \$1.00 with order.

THE CHELSEA STANDARD
 CHELSEA, MICHIGAN 48118
 DECKLE EDGE VELLUM . . . boxes at sale price of 4.95 per box
***SPECIAL BONUS:** (check) Includes 50 matching unprinted sheets for only \$1.00 more

CHECK ☐ Princess White (9400) ☐ King White (9100)
YOUR ☐ Princess Blue (9450) ☐ King Blue (9150)
CHOICE ☐ Princess Grey (9460) ☐ King Grey (9160)
 Ink: ☐ Black Ink ☐ Blue Ink ☐ Imprint MC ☐ Imprint AR

Imprint Name _____
 Street _____
 City _____ State _____ Zip _____

Ordered by _____
 City _____ State _____ Zip _____
☐ Charge ☐ Payment enclosed Please include sales tax

enjoy yourself AND LET THE CATERING DO THE WORK

PHONE 426-8668
 Call ahead and your take-out order will be waiting.

Individual CHICKEN DINNERS or buckets 16 pcs. & 24 pcs.

Family Reunion in July or August?

Root Beer by the gallon
 Also a Complete Sandwich and Fountain Menu.

L & R DRIVE-IN
 Corner of N. Territorial and Dexter Twnhall Rd.

Pub Team Grabs Adult Softball Title

The Pub team and its captain, Dave Murphy, came out on top in the final standings of the adult fast pitch softball league, with a final record of 9 wins and 3 losses.

Second-place team was Dana with 8 wins and 4 losses, their captain was L. M. Rappette. Third-place went to the Wanderland Lumber team, captain Bill Pidd. Their final record was 7 wins and 5 losses.

Grohnert & Dunlavy took fourth-place with 4 wins and 8 losses. Their captain was Ron Satterwhite. Final standing: Dexter, captain Eldon Jones, had a score of 2 wins and 10 losses.

League director Robert Draper announced that all the teams in the league have been invited to play in the State Tournament. They are also looking forward to an All-Star game near the end of the summer.

Final standings were determined after the final games Monday evening. Dana defeated Dexter, and Wanderland Lumber defeated Grohnert & Dunlavy.

Draper made special mention of Matt Murphy, 415 S. Madison, of the Pubs, in their game with Dana on July 16. Murphy was at his best. His excellent batting earned him a single, a double, a home run, and a sacrifice for the Pubs. He also stole two bases in the game. The winning pitcher, Don McKinley, 4130 Storer, was also outstanding, and very relaxed throughout the game.

Final standings of the slow pitch league will be released after the final game scheduled for July. At the present there is a three-team race for first place. St. Paul Church is ahead of Rockwell Standard and Xenox by one game.

The day's troubles are usually such trifles you can't remember them a day later. If you don't think so, what bothered you so much yesterday?



THREE CHELSEA RESIDENTS help break ground for a new \$1,000,000 factory and office for Federal Screw Works to be built in Romulus township, a Detroit suburb. Pictured with B. Lorain Norton, left, president of Federal Screw Works, are left to right, Merle S. Barr, Jr., of 206 Congdon, purchasing director for Federal Screw Works; Law-

Patrolman Nabs Cassidy Lake Escapee

An escaped prisoner from Cassidy Lake Technical School was apprehended with the help of a local citizen Monday evening.

Robert Browning, Waterloo Rd., phoned the Chelsea Police Department at 7:10 p.m. to report an inmate walking along M-52 near the Sinclair gas station. Browning recognized the prisoner because he works at Cassidy Lake as a guard.

Alvin Thomas Biniacki, 21, was heading south toward I-94. His escape had not yet been observed by the officials at Cassidy Lake. Browning's call to the police was the first notification of the escape to the school.

Patrolman Louie F. Schneider picked up Browning at the gas station, and they began driving in the direction Biniacki was headed. After driving about three miles out of town, they turned around and headed back.

It was then that Biniacki was observed climbing under the bridge that crosses I-94 at M-52. Patrolman Schneider called the Washtenaw County Sheriff to assist in search.

After searching the area, and observing footprints and signs, Patrolman Schneider came upon Biniacki and apprehended him without resistance.

He was taken immediately back to Cassidy Lake, and on the way he told Schneider that he'd been planning his escape for two days and had a duffle bag in the weeds across from the school.

The duffle bag was picked up, and he was checked in at Cassidy Lake. He will be transported to the Washtenaw County Jail where a warrant will be issued. He will probably be sent to Ionia or Jackson with extra time added to his original sentence.

Patrolman Schneider described Biniacki when apprehended as being scared, wearing a black shirt and dark blue trousers. He had a short mustache, and rather long hair.

One of these days some people are going to learn that hard work only teaches a real appreciation of values.

Funds Sought for Law Enforcement

(Continued from page one)

nedy, Martin Luther King and Robert F. Kennedy, and others who were lynched in broad daylight, to their graves," Byrd said.

The one-fourth mill for developing park and recreation facilities was brought before the board by Supervisor William Lands of Ann Arbor, who said that pleasant living in the Washtenaw area depends greatly on adequate park lands and scenic spots.

Lands also noted that immediate steps should be taken to obtain state and federal aid to supplement limited local funds for increasing water purity and recreational facilities.

Leaders get credit for the work that they can persuade others to do.

Delicious Milk

There's thirst - quenching goodness in every glass, so serve the family milk with meals and as a real snack time treat. Call us today for regular home delivery.

Milk is Nature's wonder-food. Drink it daily!

WEINBERG DAIRY

QUALITY PASTEURIZED DAIRY PRODUCTS
OLD US-12 PHONE GR 5-5771

SYPHILIS AFFECTS THE WHOLE BODY

The first signs usually develop within 10 to 30 days after contact. A painless, but ulcerating sore can appear anywhere on the body. Untreated, Syphilis may result in paralysis, insanity, blindness, heart disease and death.

YOU OR YOUR DOCTOR CAN PHONE US when you need a delivery. We will deliver promptly without extra charge. A great many people rely on us for their health needs. We welcome requests for delivery service and charge accounts.

CHELSEA DRUG

24-HOUR PRESCRIPTION SERVICE
PHONE GR 5-4611
4 Registered Pharmacists
101 N. MAIN ST. CHELSEA

Federal Screw Works Starts New Plant, Office in Romulus

Ground has been broken in suburban Romulus, for a \$1,000,000 manufacturing and office facility for Federal Screw Works, a manufacturer of fasteners, screw machine products and cold-chamber extrusion parts, largely for the automotive industry.

The building will be the second built for the company in about 30 years on a 38-acre site at Goddard and Wayne Rds., and I-94 near Detroit Metropolitan Airport. The structure will be part of a \$3,500,000 expansion program that also will include purchase of a large amount of new machinery for the firm's main Detroit plant.

Like Federal Screw Works Steel Processing Division, which opened last year in Romulus, the new 100,000-square-foot facility is being built by the H. F. Campbell Co., Detroit-based international building firm. Both buildings were designed by Campbell Engineering Inc., of Detroit, an independent design firm.

Deane Baker, president of the H. F. Campbell Co., said the new plant will be constructed with a steel framework and masonry walls topped by a distinctive blue enamel-coated metal siding. Included in the building will be an enclosed truck well to facilitate shipping.

B. Lorain Norton, president of Federal Screw Works, said the new facility will be used to produce torque prevailing lock nuts and will house a greatly expanded product and engineering activity. The adjacent Steel Process Division spheroidizes anneals hot rolled rods.

Federal Screw Works, which has its headquarters and main plant at 3401 Martin Ave., Detroit, was founded in 1919 and has grown to employ about 600 persons. The company has about 1,100 stockholders, with its securities being traded over the counter.

The firm's Detroit Division produces fasteners and cold upset parts for automobiles, agricultural implements, off-highway vehicles and business machines.

Federal Screw Works also has a Screw Machine Division headquartered in Chelsea. Norton said the plant in Chelsea is one of the largest non-captive screw machine operations in the United States and produces screw machine parts ranging in size from miniscule to 2 1/2 inches in diameter.

SOLID VINYL or ALUMINUM SIDING

VINYL PRIME or REPLACEMENT WINDOWS

STORM WINDOWS and DOORS

Deal Direct.
No Outside Commissions.

CALL
DARE EDWARDS
Chelsea 479-4231
Between 6 and 9 p.m.

SUNDAY'S SERMON

★ Happiness Is ...

Happiness can never be measured in dollars and cents. The luxuries and conveniences of this modern world can make living more enjoyable, yet they can never make life completely perfect.

It has been said that happiness is a state of mind. Yet, it is much more. Happiness abounds where there is love, understanding and togetherness.

Love of God requires that we love all which God has created, even that which is different. Understanding requires that we recognize the rights and privileges of others, including the right to be different.

Togetherness implies not merely unity within the family circle; but acceptance of the fact that we are all children of God.

Happiness is recognition of God's world that inspires one to live according to God's will.

NO GROUNDS FOR DIVORCE

London—Mrs. Doreen Baker sought a divorce on grounds that her husband did all the cooking, cleaning and shopping. For the 13 years of her marriage her husband had let her go shopping one time and had checked her purchases. The judge turned down her request.

Dr. J. L. Flinn Dr. G. N. Koffeman
IT IS NO WONDER THAT YOU ARE TIRED

Busy little machine—the human heart. You pay little attention to it; you take it for granted. Its days work is startling! Someone has figured out the following accomplishments of a human body in twenty four hours of functioning; your heart beats 103,689 times, your blood travels 168,000 miles, you breathe 28,240 times, you turn in sleep twenty five to thirty five times, you eat 8 1/2 pounds of food, you speak 4,800 words, you exercise 7,000,000 brain cells and you are capable of exercising millions more.

All this spent energy is normally replaced if the nerves carrying the brain impulses are not interfered with. If you are unduly tired or weak, interference with normal mental impulse flow might be your trouble, if so, the services of a Chiropractor becomes necessary to restore normal function.

DR. G. N. KOFFEMAN - DR. J. L. FLINN
CHIROPRACTIC PHYSICIANS
138 E. Middle St. Chelsea, Mich. 48118
PHONE 479-5241

| | |
|---|---|
| DR. FLINN CHELSEA OFFICE HOURS MONDAY AND WEDNESDAY 9:30 a.m. - 12:30 p.m. 1:30 p.m. - 7:00 p.m. FRIDAY 9:30 a.m. - 12:30 p.m. 1:30 p.m. - 8:00 p.m. Hours by Appointment | DR. KOFFEMAN CHELSEA OFFICE HOURS TUESDAY AND THURSDAY 11:00 a.m. - 7:00 p.m. SATURDAY 9:00 a.m. - 2:30 p.m. |
|---|---|

UP TO 30% OFF on FILM DEVELOPING

| | |
|--|----------------------------|
| BLACK & WHITE PRINTS REG. PRICE 12¢ Slight Additional Charge for Reprints | 8¢ Our Price |
| KODACOLOR PRINTS REG. PRICE 29¢ Slight Additional Charge for Reprints | 18¢ Our Price |
| MOVIES and SLIDES REG. PRICE \$2.10 (20 EXPOSURE) Slight Additional Charge for Reprints | \$1.29 Our Price |

BUDGET-WISE STORE
116 S. Main St. Phone GR 9-1611

ONE DAY ONLY RUMMAGE SALE

FRIDAY, JULY 25

From 9 a.m. to 9 p.m.

ST. MARY'S SCHOOL GYM

CHELSEA, MICH.

July Clearance Sale

The SALE Is ON!

Big Savings in All Departments

LADIES' · MEN'S · BOYS' · GIRLS'

SUMMERWEAR and SHOES

(Also, many items in Household Dept.)

1/4 Off — 1/3 Off

Some as Much as 1/2 Off

Shop Now for Big Savings at

DANCER'S

Chelsea's Friendly Dept. Store

Ads
Taken
Till 5 p.m.
Tuesday

IT'S EASY TO
BUY-SELL-RENT-
HIRE & FIND WITH

WANT ADS

WANT ADS

**The
Chelsea Standard**

WANT AD RATES

PAID IN ADVANCE—All regular advertisements, 50 cents for 25 words or less, each insertion. Count each line as 25 words. For more than 25 words add 3 cents per word for each insertion. "Blind" ads or box numbers add 50 cents per insertion.

CHARGE RATES—Same as cash in advance, with 15 cents bookkeeping charge if not paid before 5 p.m. Tuesday preceding publication. Pay in advance, sent cash or stamps and save 15 cents.

DISPLAY WANT ADS—Rate: \$1.10 per column inch, single column, width only, 8-point, and 14-point light type. CARS OF CHAIRS or MEMOIRS—Single paragraph style, \$1.00 per insertion for 50 words or less; 2 cents per word beyond 50 words. Minimum, 1 inch.

COPY DEADLINE—3 p.m. Tuesday, week of publication.

SIDING SPECIALIST with remodeling. Since 1938. Also siding with workmanship guaranteed. William Davis, Phone 313-663-8635, 324 Stinson, Ann Arbor. 12

CULLIGAN

There are 2 young, strong men who will hire for healthy, fresh air jobs. (Not salesmen.) In return for a day's labor, we give high wages, uniforms, insurance, profit sharing, pension, bonus, and commission, etc. It adds up to an immediate, responsible opportunity.

2921 Jackson Ave.
Across From Veterans Park

PATRICK & COOK

Free estimates on aluminum siding, gutters, awnings, additions, roofing and general maintenance. Porch railing, aluminum storm windows and doors installed. Please call Chelsea 479-4533. 11tf

SEE US for transit mixed concrete.

Klump Bros. Gravel Co.
Phone Chelsea 479-2712, 4920 Loveland Rd., Grass Lake, Mich. 40tf

WORK SHOE HEADQUARTERS

Famous Red Wing Brand
\$12.95 to \$28.95

Foster's Men's Wear

47tf

ATTENTION: Morality erects buildings all winter if you are in need of a commercial or agricultural building, order before winter and want to save money. Quality materials and workmanship guaranteed. Call Petersburg 279-1285 collect, or call Bob Petersburg, Mich. for all your pole building needs. Morality Pole Builders today. 18tf

FOR SALE—Lakefront property

half-way between Dexter and Chelsea. One acre and ten acre parcels. Restricted. Low down payment. 475-8979. 6

1969 Model Zig Zag Sewing Machine

Plus a desk type cabinet, used very little. Looks new. Just turn dial for button-hole and fancy sewing. Will sell for 7 payments of \$7.50 each. For a free trial in your home, call 663-7940. 5

Rugs - Carpets

CLOSE-OUT—Small wool and nylon rugs, 18" x 27", suitable for door mats, car mats or small rooms. Each, 98¢; 3 for \$2.69.

ARMSTRONG Quakerstone floor

covering in 9- and 12-ft. widths. Any length you need, \$1.39 per sq. yd.

SEVERAL CLOSE-OUT pieces and

ends of rolls of carpeting in large and small sizes, many at 1/2 regular price, and lower.

Merkel Bros.

5

WANT ADS

HAMMOND ORGAN teachers wanted to teach in their own homes. Call Grinnell Brothers, Ann Arbor, 682-6667. 34tf

KNAPP SHOES

For Cushion Comfort

for Men, Women and Children

Specials every month

Robert Robbins

475-7282

Authorized Representative

21tf

Buying or Selling

Commercial - Residential

Lakes - River - Farms

Call

Carole Bell, 426-8892

Katherine Smith, 426-5830

Art Kane, 482-6655

Evinger Real Estate

Ph. 426-3286 Dexter, Mich. 4tf

FOR SALE—Playpen, high chair,

sofa, Hotpoint electric stove. Very reasonable. 475-7606. 5

Formal Wear RENTAL SERVICE

Prom - Weddings - Special Events

6 different colors.

Foster's Men's Wear

2tf

FOR RENT—3 rooms and bath

Furnished, practically all new furniture. No children or pets. No single men. 475-8819, 128 Lincoln. 5

1969 DODGE CAMPER special, 800

miles. Automatic transmission, auxiliary fuel tank, 10 ply tires. Retain cost \$3,500. Make offer. 10 ft. camper also available. 479-4299. 5tf

1961 DODGE CAMPER, 4-wheel

drive, heavy duty, 4-speed transmission. Warm hubs, auxiliary fuel tank, with or without 10-ft. camper. Make offer. 479-4299. 5tf

FOR RENT—4-room unfurnished

apartment near Dexter. No children. \$125 includes utilities. 662-5896. 5

FOR SALE—'60 Mercury good

condition. \$200. Ph. 426-4716. 5

COMBINATION TV-STEREO

set. RCA. Television needs repair. 375-8764 before 5 p.m. 5

FOR SALE—'64 Chrysler in good

condition. Phone 475-8054. 5

FOR SALE—4 13-inch chrome

wheels. Ph. 475-7530. 5

FOR SALE—1962 Volant, 6 cylinder,

3-speed m. Good condition. Ph. 475-75. 5

FOR SALE—5 helpers.

Artificially bred. 111. 5

WANTED—House in Chelsea

area. Call 475-8042. 2tf

Gem Travel Trailers and Campers

PICK UP COVERS

4" \$100.00 and up

28" \$179.00 and up

Triangle Sales

Chelsea 475-4302 40tf

REAL ESTATE

Need Listings

Lake Property - Farms

Vacant Parcels

LOCAL SALESMAN

H. T. HAYNES

18835 Sauer Drive, North Lakes

Phone 475-7157

EDWARDS REAL ESTATE

AND INSURANCE

Phone 482-8570 31tf

WANT ADS

JAYCEES AUCTION Rummage Sale, Aug. 9. If you have items to contribute call any of the following for pick-up. 479-7137, 475-3683 or 478-6540. 6

A-1 USED CARS

'68 Volkswagen

'67 Toyota 4-Dr.

'67 Mustang Convertible

'67 Fairlane 500 4-Dr.

'67 Ford Station Wagon

'66 Valiant Convertible

'66 Rambler 4-Dr.

'65 Galaxie 500 4-Dr.

'65 Ford 2-Dr.

'65 Galaxie 500 LTD 2-Dr. Hardtop

'65 Galaxie 500 2-door Hardtop

'64 Ford 4-Dr.

'64 Olds 2-Dr. Hardtop

'63 Thunderbird

'63 Chev 4-Dr.

'62 Plymouth Wagon

'62 Ford 2-Dr.

'61 Ford 2-Dr.

Trucks

'65 Chev Pick-up 1/2 ton

'66 Ford 1/2 Ton Pick-Up

'62 Chev Pick-Up

'50 Ford Stake

BEST SELECTION IN TOWN

PALMER FORD

Phone GR 5-3288

Open Mon., Wed. & Thur. Till 9:00

WANTED TO RENT—Lake cottage

for 6, close to Chelsea for Aug. and Sept. Call 665-3636 after 6 p.m. 5

REAL ESTATE FOR SALE

3-BEDROOM ranch type home, 1 1/2-

car garage. FHA approved.

4-ACRE—3 bedrooms, 1 1/2 bath, 2-

car garage. On Old US-12 West.

92-ACRES vacant land on Old US-12

West. 5

Kern Real Estate

Phone 475-8588 5tf

FOR SALE—Coldspot refrigerator

Phone GR 9-7123. 5

SMALL FARMS—Room for horses

and kids. Art Daniels, 426-4695. 5

WOULD LIKE TO RENT 20-50

acre farm with house and buildings. Call 682-9235 any day after 3 p.m. 7

FOR SALE—12-ft. Aero Craft

aluminum boat, Mercury Mark 30 motor with Ward's tilt-trailer. Phone 479-5961 or 475-7691. 5

FOR SALE—Ford transmission, 4-

speed. Call 475-8120. 5tf

'66 CHEVROLET Impala convert-

ible, Maroon with white top, 327 with 4-bbl., 4-speed, automatic, radio, new whitewalls. Sharp inside and out. Call 426-8686 after 1 p.m. 5

CLOGGED SEWER

Reynolds Sewer Service

76 Clean Sewers Without Digging

Drains Cleaned Electrically

FREE ESTIMATES

2-YEAR GUARANTEE

Phone Ann Arbor NO 2-2777

'Sewer Cleaning Is Our Business—

Not a Sideshow' 38tf

FOR SALE

1-ACRE building lot, well-located,

in Sharon Township. To be available.

2 LOTS on Spring Lake.

MODERN 4-bedroom Chelsea home,

2-car garage. Excellent condition.

11 ACRES, partly wooded, Chelsea

schools, price \$10,000 part down.

NO RENTALS

Buyers waiting.

R. D. Miller

Real Estate Broker

GR 9-5892

Evlyn White

at 475-7551 after 5 p.m.

15775 Cavanaugh Lake Rd.

Chelsea, Mich.

Post Office Box 381

List your property with Miller—

fast, efficient service. 2tf

USED TRACTOR TIRES—Large

inventory on hand. Also used passenger - truck - grader tires. Jackson Tire Brokers, W-106, Munnich, Mich. Ph. 596-2925. 32tf

I WISH to baby-sit in my home. Phone 475-8101. 42tf

REAL ESTATE

Do you want a home or cottage on a lake, a farm or country home, a building site? We have them.

Eugene R. Young, Broker

Phone 878-3792

Mary Allen, 878-3826

Virginia Vinel, 426-4559 30tf



"The doctor blamed it all on the car you got in the Standard Want Ads—it was going too fast!"

WANT ADS

HOUSE WANTED — 2 or 3-bedroom on land contract with low down payment. Willing to make repairs. Area resident for 30 years. Good job. Phone Ann Arbor 271-4316. 3tf

Eibler, Frisinger & St. Amour REALTORS

3-BEDROOM—Very clean bungalow type house, walking distance to downtown. Chelsea. Fireplace, carpeting, kitchen built-ins, full basement, porch and extra large 2 car garage. \$25,900.

BRAND NEW HOME—3-bedroom, 2 baths, fireplace, full basement, carpeting, all brick and located on large lot within Village of Chelsea. Two to choose from. Prices start at \$35,900.

JUST LISTED—Sharp 3-bedroom home in Chelsea, carpet, nice lot, \$21,900.

DEXTER SCHOOLS—2 or 3-bedroom, 2 baths, carpeting, nice lot, with garage. \$19,900.

2-BEDROOM—Sharp rustic starter home overlooking Inverness golf course. Chelsea schools. \$12,000.

BUILDING SITES—1 1/2, 2 1/2 and 10 acre parcels.

Eibler, Frisinger & St. Amour REALTORS

Chelsea 475-8081 Dexter 426-4059

Evenings call toll free from Ann Arbor

Paul Frisinger, 475-2621

Bob Thornton 475-8857

Helen Weiss 683-9160

Herman Koenig 479-7252

George Frisinger 479-4161 5tf

FOR SALE—Rose beige living

room suite, portable record player, hassock. Ph. GR 9-2752. 5

VOCO FARM INTERIOR WHITE,

Barn Spraying, Dyeing 2-E in seclude fly control. John L. Bird, 517-547-5447. 10

RADIO FOUND at Cedar Lake,

July 12. Contact 479-5942. 5

FOR SALE—1 bottom plow, set of

cultivators, both lever action, both for Allis-Chalmers B tractor, \$25 each. Del Reiniche, 90 Glacier Lake, Chelsea. Ph. 479-5338. 5

POOL FOR SALE—12x3-ft. with

new cover. Also filter flow model 300 with hose ladder, and vacuum cleaner. 479-5411. 5

FOR SALE—Metal bunk beds,

black, complete, \$25. 479-4537. 5

WANTED—16- or 21-quant pressure

cooker suitable for canning. 479-4085. 5

FOR SALE—First and second-cut-

ting hay. GR 5-8338, 6710 Werkner Rd. 5

For Sale

6 ACRES with nearly 400 feet of frontage on Old US-12 East, 2 miles out.

HAVE OTHER ACREAGE on Waterloo Road near Sugar Loaf Lake.

Leo A. Guinan, BROKER 479-7034 5

Personnel Secretary

Work with insurance policies, industrial relations and personnel. Typing required, shorthand helpful but not necessary. Excellent opportunity for the right girl.

Apply

Hoover Chemical Products Div. WHITMORE LAKE

An equal opportunity employer. 4tf

Always at Your Service on the Double Quick!

Looking for heads-up auto service? Look no further. That's us! Always on our toes to serve you promptly, efficiently, courteously!

PURE OIL PRODUCTS

JIM'S PURE SERVICE

PHONE 479-3541 501 SOUTH MAIN

Tires - Batteries - Tune-Ups - Brake Service - Wheel Alignment

80tf

WANT ADS

HORSE SHORING, training, showing. By appointment. Phone 426-8431, 6380 Daly Rd., Dexter. 9

G. G. HOPPER

Building Contractors

Phone GR 5-5581

Gregory 498-2148 40tf

ALLSTATE INSURANCE

AUTO • BOAT • COMM

WANT ADS

WANTED - Steady employment driving ice cream truck and part-time plant work. Fine working conditions, good opportunity for advancement or one looking for change. Write Box 52, care of Chelsea Standard.

SINGER

sewing machines, reconditioned, and up. Also Singer repositioned machines. Call NO 2-5569. This is a Singer authorized ad.

Singer Company

114 S. Main St.
Ann Arbor, Mich.

FREE REMOVAL DONE - Also buyers of standing timber and cut trees. Chelsea 475-7631.

Pole Buildings

Call time to get your hay storage built. All colors of steel or wood. Call to choose from.

Sharon Valley Builders

521
(517) 522-8258

MOUSE CLASSES now forming. Reserve your place now for an exciting career in COSMETOLOGY. Call or stop by for further information. Mrs. Preston's Beauty Academy, 300 S. State St., Ann Arbor, Mich. and Mrs. Arthur Trimble, new phone 761-9410.

WORK SHOE HEADQUARTERS

Famous Red Wing Brand \$12.95 to \$20.95

Foster's Men's Wear

FOR SALE - Honda bike. Will trade for truck. Call after 3:30 p.m. 475-7058.

REMOVE excess body fluid with FLUIDEX tables, only \$1.49 at Chelsea Drug.

WANT HOUSE TO RENT in Chelsea area. Jerry Satterthwaite, call 475-8041.

CARPETS a fright? Make them a beautiful sight with Blue Lustre. Rent electric shampooer \$1.14. Pavers, Chelsea.

WANT ADS

Seamless Aluminum Gutters

Installed

Wilson Metal Shop

Manchester, Ph. 428-8468

Announcing

We are pleased to announce an addition to our sales force

Three qualified salesmen to serve you. For listings and sales, contact Carole Bell, 428-8892, Kathryn Smith, 428-8830 and Arthur Kane, 428-8856.

Evinger Real Estate

Dexter, 428-5833

THE amazing Blue Lustre will leave your upholstery beautifully soft and clean. Rent electric shampooer \$1.14. Dancer's, Chelsea.

THANK YOU

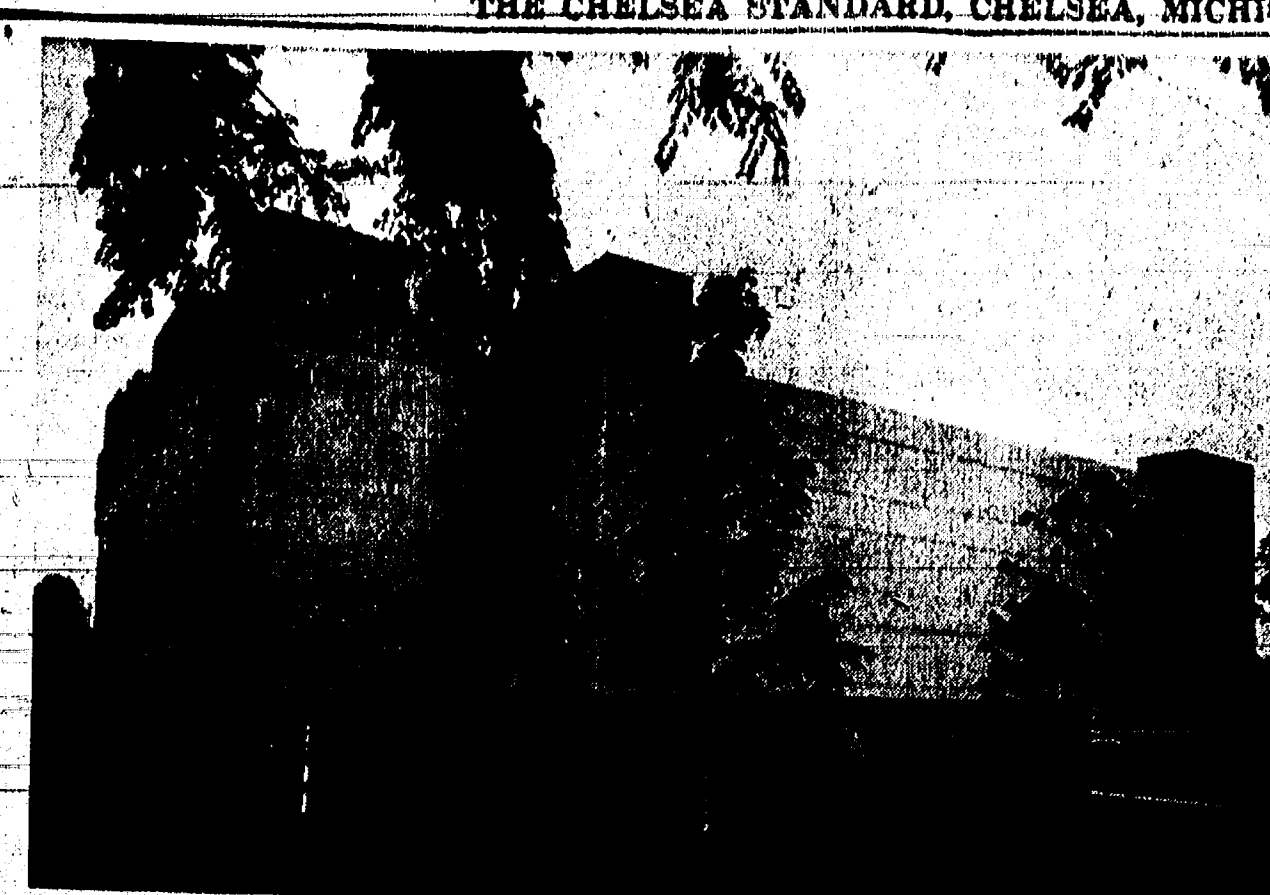
I wish to thank all those who sent flowers, cards and visits during my stay at the hospital. Also, a special thanks to the Chelsea Fire Dept., Rockwell-Standard employees and Mr. and Mrs. Frederick Belser for the flowers.

CARD OF THANKS

My sincere thanks to neighbors and relatives and friends during my stay in St. Joseph Mercy Hospital.

REGIONAL OFFICES NAMED

President Nixon has relocated government regional offices handling urban and social problems making it possible for citizens as well as state and local officials to go to central offices for help with problems involving the national government. Each office will handle from two to eleven states.



NEW SWITCHING CENTER: Michigan Bell Telephone Co. began using a new "satellite" switching center housed in this three-story "bomb resistant" concrete building Sunday at Plymouth. The giant switching machine handles long distance calling for more than 370,000 phone customers in Plymouth, Ann Arbor, Ypsilanti and areas west and southwest of Detroit. By fall, when fully placed in

Michigan Bell Starts Using New Long Distance Switching Center

The new Plymouth long distance switching center is virtually a small, self-contained city. Robert E. Morrison, district switching systems manager, estimates that employees could remain in the three-story building for two weeks or more if the need ever arose. The windowless building, which is "bomb resistant," is constructed of monolithic concrete.

The primary function of the building is to house a huge long distance switching machine that will handle the long distance calling needs of more than 370,000 telephone customers in the area. Later this year the installation

of 124 consoles of a new Traffic Service Position Systems (TSPS) will begin. These new cordless positions feature pushbutton operation and will gradually replace conventional switchboards in the future. The TSPS units permit operators to speed the handling of such special calls as person-to-person, credit card and conference calls.

By 1971, the Plymouth building will house about 400 employees, including several hundred additional operators and some Port division administrative personnel. Included in the building at 1300 Ann Arbor Road near Sheldon Road are a kitchen and cafeteria. Sufficient provisions will be kept on hand to last two weeks, and longer with rationing.

The building, measuring 204 by 156 feet, contains 118,000 square feet of space. Architectural design was by Smith, Hinchman & Grylls Associates, Inc., of Detroit. Davis & Armstrong, Inc., of Detroit was the general contractor.

The entire switching system project, including long distance circuitry and connecting cable, represents an expenditure of nearly

Rejection of DST Reduces Michigan Deer-Car Crashes

Ann Arbor—One benefit Michigan may have reaped by rejecting daylight saving time is a reduction in car-deer crashes.

A University of Michigan graduate student, analyzing figures for 10 southern Michigan counties, found that such crashes increased by 104 from 1966 to 1967.

Ninety-seven of those 104 additional crashes—83 percent—came during the six months of daylight saving time in 1967. In 1966 Michigan was on standard time. This year the state returned to standard time.

The increase in 1967 "is attributed to increased traffic volume following the supper hour which carries over into the twilight period when deer activity is greatest," according to scholar Ross E. Allen.

Allen, of Northwood, N.H., has just earned a master's degree in wildlife management from U-M's School of Natural Resources, while working under a fellowship from the University's Highway Safety Research Institute.

In writing his thesis he examined the police records of 2,506 car-deer collisions in the counties of Barry, Calhoun, Eaton, Ingham, Ionia, Jackson, Kent, Livingston, Tuscola, and Washtenaw. These counties have only 15 percent of Michigan's deer population, but account for half of the car-deer crashes.

In 1966 there were 1,231 deer killed by cars in the 10 counties, and in 1967 there were 1,335 killed. In the six months of DST in 1967 there were 509 killed; in the corresponding period a year earlier 412 were killed.

Although he didn't examine this closely in his study, Allen noted in an interview that in the southern part of Michigan's lower peninsula, "it would appear that deer-car crashes kill more deer than hunters do."

In this region, deer-car crashes have increased greatly in the past few years, reflecting increases in both traffic volume and the number of deer.

"Most accidents occur in the evening hours," Allen said, "rising just prior to sunset and reaching a peak two to three hours afterward. The number of car-deer accidents correlates directly with traffic volume between 6 p.m. and 7 a.m., indicating that deer activity is relatively constant throughout this period of the day. Accident numbers are low during the day (8 a.m. to 4 p.m.) even though traffic volume is high."

Most of the crashes occur in fall, he reported, as the early arrival of dusk—a rising period of deer activity—coincides with peak homebound-bound traffic. Also at this time, deer are stirred by hunting activities and the rutting season.

Contrary to popular belief, Allen found "most deer-car crashes occurred in areas of crops and fields—not woods. Only six percent of the crashes in these 10 counties occurred in wooded areas."

"Most accidents occurred during the night in the fall season," Allen said, "indicating that putting and hunting activities make the deer more active during the day and more at night."

"Power accidents occurred during the late spring and summer, even though traffic volume is highest at this time of year. This is probably due to the good food supply and adequate cover as well as the small amount of human disturbance."

He found accidents high on Saturday and Sunday and low on Monday, probably because of the relatively high traffic volume in the evening hours of the week-end compared to the volume on Monday.

Allen found more accidents occurred in the speed range between 50 and 60 miles an hour than any other 10 mph speed range—probably, he said, because 70 percent of the deer-car crashes occurred on two-lane paved roads where speed ranges are likely to average 50 mph or more.

But on divided highways, accidents were few in relation to traffic volume. Besides the heavier flow of traffic, fencing along such roads was believed to be a factor in keeping the deer crash rate lower.

Of the 2,506 accidents he studied, Allen said one-fourth of the cars involved had to be towed from the scene. In spite of this, there were relatively few personal injuries—just under four percent.

deer is blinded by headlights. When he finally jumps, he's likely to jump into the only area he can see—that lighted area directly in front of the car.

"If the deer jumps in front of you, it could be more dangerous to swerve to avoid it than to hit it. The fatal accidents occurred when people lost control of the car trying to avoid the deer," Allen said.

"The deer weighs only about 100 pounds," he noted. "If you hit him, he'll move. If you hit a tree, it won't."

Allen noted that under Michigan law, car owners may keep deer they kill with their cars, if they obtain a permit from the local conservation officer. But with damage to cars costing \$500 or more, that's a pretty expensive meat.

FREWAYS LOADED

Michigan's 1,382 miles of freeway can be deceptive to the average motorist. The freeways constitute only about 15 percent of Michigan's state highway system, but they carry 35.5 percent of the traffic.

TODAY'S THOUGHT

By LOUIS BURGHARDT

We have an abundance of federal, state and municipal laws with unimaginable numbers of litigants and lawyers seeking restrictions or permissions in almost every phase of present day living. . . . Naturally, no society of people would be safe or able to live in reasonable harmony without a system of law—but—

We wonder whether the laws of man will ever be put in proper perspective. We wonder why people think man-made laws can ever control, or even partially control man's thinking, his behavior and conduct. We wonder why people think the CHANGEABLE laws of man can ever be as meaningful or as effective as the UNCHANGEABLE laws of God. We wonder if man will ever realize that when he increases his desire to adhere and live by the UNCHANGEABLE laws, he will minimize his need for man-made changeable laws. Yes, we wonder . . . and wonder how many other people wonder too. . . .

BURGHARDT FUNERAL HOME, 214 East Middle St., Chelsea, Mich. Phone GR 5-4141.

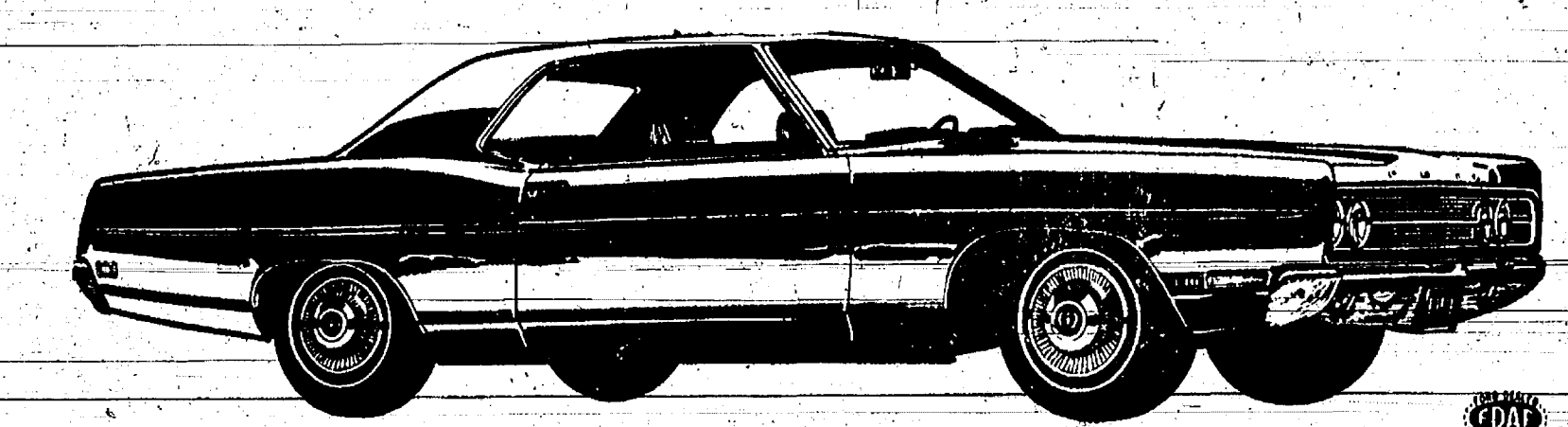
SCIO DRIVE IN
1-94 EXIT 160 JACKSON ROAD
WEST OF ZEEB ROAD

Jack Lemmon and Walter Matthau
are
The Odd Couple

THE GREATEST DOUBLE FEATURE

Mike Farrow
Hogwarts Baby

FORD DEALER IMPOSSIBLE SALE



Impossible—to have year-end prices right now?
With us it's possible!
Prices now reduced up to \$144 on Galaxie 500's.

Well make your impossible dream come true.

OFFICIAL '69 FORD DEALER CLEARANCE

\$1995

They said it couldn't be done—but we did it with Maverick... first car of the 70's

Now impossible year-end price cuts on all '69 Fords!

PALMER MOTOR SALES, INC.
Chelsea, Michigan

24 Years Ago...

(Continued from page two)

dent; Miss Irma Bollinger, secretary-treasurer; Mrs. Hannah Bollinger, Lee Arthur, Mrs. Rosemary Reinhardt, entertainment committee. Mrs. Carrie Smith was the oldest member present. Patricia Meyjans was the youngest.

20 members of Chelsea FFA, accompanied by their advisor, Marshall Richards, and superintendent A. C. Johnson and Morris Alpert, leave tomorrow for a week's trip.

34 Years Ago...

Thursday, July 25, 1935

Village President Roy Harris and Peter Boehm, manager of the Chelsea Electric & Water Dept., were in Ann Arbor Friday evening where they made definite application for work-relief projects for the village. Projects applied for include lowering the water main on Madison St., and installing copper service pipe, installation of a new surface sewer on N. Main St., to Mill Creek and cleaning out of Mill Creek for approximately 4,000 feet.

At the monthly meeting of the board of directors of the Washtenaw Gas Co., held Friday, Charles R. Henderson, formerly vice-president and general manager of the company, was elected president.

At the organization meeting of the Board of Education, School District No. 3 Fr. Sylvan and Lima, held at the high school building on Tuesday evening, all officers were re-elected, as follows: president M. J. Dunkel; secretary, George W. Watworth; treasurer, J. N. Strietter; trustees J. L. Fletcher and J. N. Dancer.

The experiment which has been tried by the village to chase starlings from trees on Congdon St., has proved very successful. In addition to electric lights placed in the trees a noisemaker was fixed up with a small motor and chains and tin can. The birds have practically all vanished from the trees on Congdon and so far no complaints have been heard from residents in other parts of the village.

Paul C. Maroney of Chelsea was elected commander of the Second District American Legion at their quarterly meeting Sunday. The district includes Washtenaw, Lenawee, Jackson and Monroe counties. More than 100 delegates from the four counties attended the meeting.

IMPROVE YOUR HOME

Local Company — With Service

- ★ Aluminum Siding
- ★ Roofing
- ★ Patio Covers
- ★ Enclosures
- ★ Awnings
- ★ Replacement Windows
- ★ Eaves-Troughs
- ★ Storm Windows
- ★ Storm Doors
- ★ Trailer Skirting
- ★ Insulation

GEORGE MEYER COMPANY
3160 PLATT ROAD • ANN ARBOR • TELEPHONE 971-5200
EXTERIOR HOME IMPROVEMENTS
George Meyer — Bob Bohls — Ray Peterson

BANK AUTO LOANS ARE BEST!

ANY TRIP YOU MAKE will be more pleasant, if the car you drive is financed the Bank Way—economically, conveniently and with local people.

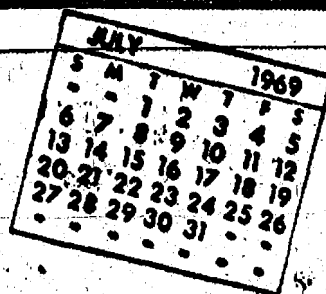
5% on Certificates of Deposit
4% on Savings Passbook Accounts

CHELSEA STATE BANK

Member Federal Reserve System

Member Federal Deposit Insurance Corp.

Community Calendar



VFW Auxiliary social meeting Thursday, July 24, 6:30 p.m. Pot-luck supper at Pierce Park. Present and past members, and families. Bring dish to pass and table service. 24th anniversary of installation.

Chelsea Woman's Bowling Club Aug. 6-8 p.m. at Chelsea Lanes. Have openings on this shift, start bowling at 9 p.m.

Washtenaw County League for Planned Parenthood clinic session Thursday, July 24 at 116 Park, from 7 p.m. to 9 p.m. No appointment necessary for consultation with medical staff. For further information, call Mrs. Floyd Reithmiller at 475-4087.

Past Presidents of the American Legion Auxiliary hot-luck dinner, Tuesday, July 29, at 6:30 p.m. at the home of Magdalene Weber, Crooked Lake.

TOPS club every Wednesday from 12:30 to 2:30 p.m. in the Reheka hall. Call GR 5-2930. For night meeting call GR 5-2931.

Final date for Chelsea band campers to sign in health forms at Stricker's Men's Wear is the week of Aug. 4-9.

Farmers Guild Picnic, Aug. 3, Lima Community Hall. Pot-luck. Pop, coffee, ice cream furnished.

Ann Arbor Chapter of "Parents Without Partners" monthly meeting Friday, July 25, at St. Andrews Episcopal church, N. Division St., Ann Arbor, at 8:15 p.m. All single parents are invited.

Requests for information and applications for the fall term of Chelsea Co-Op Nursery School should be directed to Mrs. David Martin, 475-4100 or Mrs. Dennis Mull, 426-4426.

Past Noble Grand Club of Chelsea Lodge No. 130 7:30 p.m. July 24 at home of Evelyn Hale, 1550 Cavanaugh Lake.

Inquiries regarding the Chelsea blood bank may be directed to Harold Jones at Cavanaugh Lake in the event that Mrs. Dudley Holmes is unavailable.

American Legion and Auxiliary hospital equipment available by contacting either Mr. or Mrs. Eugene Martin, at 475-5867 after 4 p.m.

Gospel Singer Will Appear at Immanuel Church

Gospel singer Jim Miller, and his guitar, will be featured all day Sunday at Immanuel Bible Church. Miller is from Trenton and has played at the church before. He was enthusiastically received.

The Rev. and Mrs. Frinkle will join him in some combinations at the evening service at 7 p.m.

Following the service at 8:30 p.m. the Area Singers will perform the month with refreshments and fellowship following that.

Seven area churches participate in this monthly gathering, and everyone is welcome.

An honest man, after reviewing his own life, will be inclined to let youth chart its own course.



ATTEND NATIONAL JAMBOREE: Two high ranking members of Chelsea Scouting, Harold "Bill" Baker, and Peter Stahl represented Chelsea at the 7th National Boy Scout Jamboree, July 16-22 in Idaho. They are members of a group of 26 Scouts from Washtenaw and Livingston counties who attended the Jamboree.

Two from Chelsea Attend National Scout Jamboree

Two members of the Portage Trails Council of the Boy Scouts represented Chelsea at the 7th National Boy Scout Jamboree, July 16-22, at Farragut State Park in Idaho.

Harold "Bill" Baker, 1875 Lakeview Dr., was selected Scoutmaster for the Jamboree troop from the Troquois district. Assisting him were Robert Armentrout of Manchester, and Harold West of Saline.

Peter Stahl, Eagle Scout of Troop 476 also represented Chelsea. Peter is the son of Mr. and Mrs. Vincent Stahl, 13862 Lakeview Dr.

Outstanding scouts from all over the United States were selected to attend the Jamboree, and display projects representing their regions of the country and the work of their troops.

The purpose of the Jamboree is to demonstrate the wide movement of Scouting to the boys attending, and to instill enthusiasm to be brought home.

Baker is a representative of the Portage Trails Council, and has been active in Scouting for more

H. Carpenter Sought on Bench Warrant

The Chelsea Police Department has issued a bench warrant for Hilbert Carpenter, 19, sentenced by Judge Patrick Conlin Monday.

Escorted to Ann Arbor's American Legion Hall Wednesday, July 16, for preliminary induction into the U. S. Army, Carpenter completed it and took the bus to Fort Wayne for official induction.

He never appeared at Fort Wayne, and was not heard from until Tuesday, when the Ann Arbor Draft Board received a phone call requesting that he be allowed to return to Chelsea and pick up his belongings without being arrested. In return for this privilege, he said he would report to Fort Wayne and complete his induction.

The draft board called Chief Meranuck and asked if this was possible. According to the chief, with a bench warrant issued, if Carpenter is seen in Chelsea he will be arrested immediately and will have to serve his six-month sentence.

Carpenter is expected to report to Fort Wayne regardless on Friday at 9 a.m. If he is not there, the matter will be immediately turned over to the FBI and he will be considered draft delinquent.

Chief Meranuck said that one man in jail with Carpenter told the police that Carpenter had said he had no intention of going through with his induction in the first place.

Because Hilbert did not fulfill the requirements set by Judge Conlin when he was sentenced by reporting to the draft board and going through induction proceedings, he is now considered in contempt of court.

Originally his sentence would have been suspended had he complied with these requirements. Now, even if he is inducted in the Army, and even if he is discharged honorably he will have to appear before Judge Conlin when his service time is over for a review of his sentence and his case.

Elaine Bristle Receives Wings as Stewardess

A Chelsea High school graduate received her wings, and is now officially an airline stewardess, Elaine Bristle, 19, daughter of Mr. and Mrs. Leroy Bristle of 19020 Old US-10, graduated July 11 from the American Flyers Airlines at Harrisburg, Pa.

Miss Bristle graduated from Chelsea High school in 1968 and received her preliminary training for the airlines from McConnell Airlines in Minnesota.

She will now be a stewardess on chartered flights in the United States and in Europe.

The criminal is a criminal whether he is rich or poor, and regardless of what society failed to do for him when he was young.

SEE US

WE ARE MAKING LONG-TERM FARM REAL ESTATE LOANS

SEE US

YES

WE ARE MAKING LONG-TERM FARM REAL ESTATE LOANS

SEE US

YES

WE ARE MAKING LONG-TERM FARM REAL ESTATE LOANS

SEE US

YES

WE ARE MAKING LONG-TERM FARM REAL ESTATE LOANS

SEE US

YES

DEATHS

Mrs. E. W. Chatterton

Chelsea Woman's Mother Dies Saturday in Quebec

Mrs. E. W. Chatterton (Margaret), mother of Mrs. James Almond, 400 Washington St., died Saturday, July 19, in Roxboro, Quebec.

Mrs. Chatterton resided at 4 Grant St., in Roxboro. She was born March 2, 1874 on the Gaspe Coast, the daughter of Daniel and Ann McGuire.

On July 10, 1890, she married Elias W., who died in September, 1952.

She is survived by one sister, five daughters, four sons, 18 grandchildren and 26 great-grandchildren.

Burial took place Tuesday, on the Gaspe Coast.

Mrs. Lola Belle Huber

Chelsea Woman's Sister Dies in New York Hospital

Mrs. Lola Belle Huber, sister of Mrs. Guy P. Murphy, of Chelsea, died Wednesday, July 23, at a hospital in Ticonderoga, N. Y.

Mrs. Huber resided at Crown Point, N. Y.

She was the twin sister of Lula May Scripps, who passed away Jan. 9, 1960, and was the daughter of James and Franetta Moorehouse Eldridge.

She is survived by Mrs. Guy Murphy, her sister, and several nieces and nephews.

Services will be held Saturday at 1 p.m. at the Burghardt Funeral Home in Chelsea, with the Rev. Robert Worgess officiating.

Never expect good luck to make up for loafing.

Mrs. Emil Allgaier

Chelsea Woman's Mother Dies at Hospital in Germany

Mrs. Emil Allgaier, the former Magdalena Maass, of Lorch, Wuertemberg, Germany, died Friday, July 18, at a hospital in Stuttgart following a long illness.

Mrs. Allgaier, 77, was the mother of Mrs. Lina Duerr, 204 N. East St., who, with her daughters, Barbara and Christine, have been in Germany the past several weeks and plan to return home Aug. 3.

Mrs. Allgaier was born March 21, 1892, and had made her home in Lorch for many years.

Survivors are two sons, Hermann and Hans; two daughters, Mrs. Pauline Fritz and Mrs. Duerr; nine grandchildren and one great-grandchild. All live in Germany with the exception of Mrs. Duerr, her two daughters and another granddaughter, Inge Allgaier in Florida, who formerly made her home for some time with Mrs. Duerr in Chelsea.

Mrs. Allgaier was preceded in death by her husband and her eldest son, Emil.

Funeral services and burial took place in Lorch Tuesday afternoon, July 22.

There is no substitute for intelligence applied to whatever is before you. So use what you have.

SAVES FOR FUNERAL

Cincinnati—A 78-year-old spinster school teacher lived in poverty to save for her funeral. Miss Ruth Hooke's will revealed she wished that all but \$7,000 of her estate be spent on her funeral—she wanted an innergarment mattress in her casket and \$5,000 for a memorial window.

After completing his leave, Mrs. Taylor will continue to live with her parents and finish her courses at Alexandra School Cosmetology.



PFC. ROBERT H. TAYLOR

Pfc. Robert Taylor Leaving Aug. 3 For Vietnam Duty

A Chelsea soldier and his wife are spending the remainder of their leave in the Chelsea area, prior to his assignment in Vietnam.

Pfc. Robert H. Taylor and his wife, Janice, are staying with their parents, Mr. and Mrs. Charles Stephens, until his leave is over.

On Aug. 3, Pfc. Taylor completed his training at Fort Knox, Ky., and was sent on to Fort Benning, Ga., for "on-the-job training" as a combat engineer and plumber. His training was completed June 30.

After completing his leave, Mrs. Taylor will continue to live with her parents and finish her courses at Alexandra School Cosmetology.

There is no substitute for intelligence applied to whatever is before you. So use what you have.

There is no substitute for intelligence applied to whatever is before you. So use what you have.

Announcing!!

PAINT POT PARTY

At CHELSEA LUMBER CO.

GUARANTEED
IN WRITING TO
SATISFY YOU

Featuring
GLIDDEN'S
SPRED SATIN

"The Paint Recognized for Its Quality"

NOW \$6.95 gal.

SPRED HOUSE PAINT

"The New Latex Cover-Anything-Paint"

NOW \$7.75 gal.

Endurance House Paint

"Just Good Old-Fashioned Quality House Paint"

NOW \$7.42 gal.

Royale Brilliant White

"The House Paint Built To Stay and Stay"

NOW \$11.95 gal.

CHELSEA LUMBER CO.

DIAL GR 5-3391

GAMBLES

TRADE & SAVE ON CORONADO REFRIGERATOR - FREEZER SALE

Coronado 12.1 Cu. Ft. Refrigerator

Choice of White or Copertone!

\$189⁹⁵

Spacious storage at a budget price! Slide-out shelves, crisper, door storage, 15-lb. chiller drawer. Only 28" wide.

Coronado 18.4 Cu. Ft. Side-By-Side

Choice of Avocado, Copertone or White!

\$399⁹⁵

Full size refrigerator next to big capacity freezer you never need to defrost. Cabinet is only 31" wide. Ice Maker Model \$30 More!

Coronado 17 Cu. Ft. Refrigerator-Freezer

Your choice of Avocado or White!

\$339⁹⁵

Eye-level refrigerator has slide-out shelves, twin crispers, 11-lb. meat keeper. Roomy bottom freezer, glide-out basket.

Coronado Refrigerator-Freezer

Avocado, Copertone, Harvest Gold, White!

\$319⁹⁵

Frost-free top to bottom and loaded with deluxe features! Twin crispers, 11-lb. meat keeper. Ice Maker Model \$30 More!

Depend On Coronado for Quality, Value & Savings!

AGRICULTURE
in
ACTION

by M. L. Wood

On Dad

... chorus of student
... reached such a pitch
... that nearly everyone
... concerned causes
... cures. Dr. Abraham
... president of the American
... Association calls stu-
... denters, "members of the
... Buddy-club."

... usually the case, the na-
... tional reflects the tension
... times. A Wisconsin indus-
... tries a new building should
... be on every college cam-
... pus. A current joke
... State University con-
... sidered the oddest couple causing
... to stare as they walk
... Union building. The girl
... wearing a dress and the boy
... both have neatly cut

... rental permissiveness is
... often pinpointed as the
... cause of campus disorder.
... Charles in the home
... frustration

... from home where every
... is not met and where new
... conduct are encountered
... first time.

... who swing sticks in cam-
... puses had parental switches
... at the proper time and
... in their childhood," states
... Jack Hutches, who sug-
... gests that instead of wringing our
... hands and crying "where did we
... go?" we need to assume
... the prerogative of the
... "strong" adult majority
... in even this late date to
... set our youth instead of de-
... with them.

... too often confrontation on
... campus has ended with con-
... flict and compliance with stu-
... dent demands. In many cases
... school college professors
... administrators have become
... actors instead of instruc-

... tively for America, firm
... in decency continues
... our academic system as
... this time of year in
... (Future Farmers of America)
... leadership training ses-
... sions. Newly-elected officers
... high schools in all parts of
... country display respect for
... authority, and pledge
... toward high ideals.

... attitudes gave us this
... and all its opportunities.
... refreshing thought that
... America continues to pro-
... duce moral and ethical rules
... that which once made Amer-
... model of social order and

... offered for weed
... on lawn site

... during the site of weeds and
... and weeds grasses should be
... first step in establishing a
... lawn. "Weedy grasses, such
... as crabgrass or bentgrass, should
... be controlled before tilling the
... says James Beard, MSU turf-
... researcher. "Use dalapon or
... T when it is 10 inches
... of growth are present."

... says the ground should be
... within 10 to 14 days to
... sure the grasses have been
... If should then be tilled
... four to six weeks depending
... on herbicide used.

... with weed control recom-
... mendations are available from your
... relative Extension Service of-

... phone Your Club News
... To GR 8-3581.

... AGE
23

... Married
Male Driver

... for A-O men will save
... you money on your car
... insurance. No sur-
... charge or higher rate.
... See your A-O man -
... he's all out for you.

... D. MAYER
AGENCY, INC.

... Protection is Our Business
Phone 479-5061
Park St. Chelsea

... Auto Owners
INSURANCE COMPANY

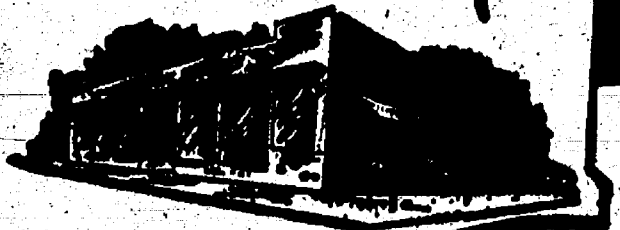
THE SUPERMARKET THAT'S JUST A LITTLE BIT BETTER

THE KNOW HOW OF INTELLIGENT MEAT BUYING IS REALLY THE 'KNOW WHERE'

Our customers have learned to depend on the outstanding quality of
Stop & Shop meats - Unfailing satisfaction with every cut they purchase.
The finest quality, together with the experienced expertise of our meat
cutting experts, makes an unbeatable combination!

Stop & Shop

14901 Old U.S.-12
Corner at M-52
Chelsea



Prices Effective Wednesday, July 23
through Tuesday, July 29, 1969



"Triple R Farms" U.S.D.A. Choice Boneless

ROUND STEAK \$1.19 lb.

WE
RESERVE
THE
RIGHT
TO
LIMIT
QUANTITIES

| | |
|--|------------|
| "Triple R Farms" U.S.D.A. Choice | \$1.29 lb. |
| Sirloin Steak | |
| "Triple R Farms" U.S.D.A. Choice BONELESS | \$1.19 lb. |
| Rolled or Sirloin Tip Roast | |
| Stop & Shop's Fresh, Lean, All-American Beef | 65¢ lb. |
| Hamburger | |
| Tender, Delicious | \$1.39 lb. |
| Cube Steaks | |
| Lean, Tender, Meaty | 79¢ lb. |
| Pork Steak | |

| | |
|-----------------------------------|------------|
| "Triple R Farms" U.S.D.A. Choice | \$1.29 lb. |
| Rib Steak | |
| Lean, Tender, Boneless & Cubed | 89¢ lb. |
| Pork Cutlets | |
| Tender, Sliced | 49¢ lb. |
| Beef Liver | |
| "Triple R Farms" Michigan Grade I | 49¢ lb. |
| Sliced Bologna | |
| "Triple R Farms" Michigan Grade I | 59¢ lb. |
| Skinless Wieners | |

McDonald's

POPSICLES Package of 12 49¢

| | | |
|--------------------------|------------------------------|-----|
| One Way Bottles | 1 Gal. 8 Pack 16-Oz. Bottles | 99¢ |
| Meadowdale Frozen | 6-Oz. Can | 9¢ |
| Great American | 14 3/4-Oz. Can | 19¢ |
| Open Pit Original Recipe | 1-Lb., 12-Oz. Bottle | 59¢ |
| Campfire | 1-Lb. Pkg. | 22¢ |
| Kraft's Philadelphia | 8-Oz. Pkg. | 25¢ |
| Cream Cheese | | |

Farm Fresh Produce

Fresh, Crispy

| | | |
|----------------------|---------|-----|
| Head Lettuce | 24 Size | 19¢ |
| Southern Grown | | |
| Peaches | 2 Lbs. | 19¢ |
| Long, Green, Slicing | | |
| Cucumbers | 2 For | 19¢ |

| | | |
|---------------------------------------|------------------------|--------|
| Ocoma | | |
| Fried Chicken | | |
| In-A-Basket | Heat & Serve 2-Lb. Box | \$1.89 |
| McDonald's Fresh, Delicious | | |
| Cottage Cheese | 1-Lb. Ctn. | 23¢ |
| B & M | | |
| Baked Beans | 1-Lb., 6-Oz. Jar | 29¢ |
| Beautiful Plastic Container, Krunchee | | |
| Potato Chips | 1-Lb. Pkg. Both for | 99¢ |
| New Miracle | | |
| Tide | 3-Lb., 10-Oz. Box | 73¢ |

| | | |
|--|--------------------------|-----|
| Shur Good | | |
| Fig Bars | 2-Lb. Pkg. | 45¢ |
| Nabisco | | |
| Chips Ahoy Cookies | 14 1/2-Oz. Pkg. | 45¢ |
| Sunshine | | |
| Vanilla Wafers | 12-Oz. Pkg. | 39¢ |
| Keebler's Town House | | |
| Crackers | 1-Lb. Box | 43¢ |
| Quilted, Extra Strength, Extra Thickness | | |
| Northern Towels | Roll of 150 2-Ply Towels | 29¢ |
| Van Camp's Red | | |
| Kidney Beans | 15-Oz. Can | 17¢ |

Sorry,
No Sales
To Dealers

STORE HOURS:
Mon., Tues., Wed.,
9 a.m. - 6 p.m.
Thursday, 9 a.m. - 9 p.m.
Friday, 9 a.m. - 9 p.m.
Saturday, 8 a.m. - 9 p.m.
Sunday,
10 a.m. to 6 p.m.

+ Services in Our Churches +

ST. PAUL
UNITED CHURCH OF CHRIST
The Rev. Warner Siebert, Pastor
Sunday, July 27—
9:00 a.m.—Worship service.
10:10 a.m.—Church school.

METHODIST HOME CHAPEL
The Rev. R. L. Clemans, Chaplain
V. O. Johnson, Administrator
Sunday, July 27—
8:45 a.m.—Worship service.

ST. BARNABAS
EPISCOPAL CHURCH
20500 Old US-12
The Rev. William D. Laskau, Vicar
Sunday, July 27—
11:00 a.m.—Morning prayer.

FIRST CHURCH OF CHRIST—SCIENTIST
1893 Washtenaw Ave., Ann Arbor
Sunday, July 27—
10:30 a.m.—Sunday school.
10:30 a.m.—Morning service.
Lesson-sermon: "Truth." "For I have not spoken of myself, but the Father which sent me, he gave me a commandment, what I should say, and what I should speak."

WATERLOO VILLAGE CHURCH
United Methodist Church
The Rev. Donald Fry
Sunday, July 27—
10:00 a.m.—Sunday school.
11:15 a.m.—Worship service.
7:00 p.m.—Youth Fellowship.

ST. THOMAS
EVANGELICAL LUTHERAN
Cor. Ellsworth and Haab Rds.
The Rev. Daniel L. Mattson, Pastor
Sunday, July 27—
9:00 a.m.—Sunday School.
10:15 a.m.—Church service.
12:15 a.m.—Waltzer League meeting.

CONGREGATIONAL CHURCH
(United Church of Christ)
The Rev. Daniel Kellin, Pastor
Sunday, July 27—
10:00 a.m.—Worship Service.
The Congregational church has announced that Vacation Bible School will be held on four consecutive Thursdays in July and August.

According to the revised schedule, the school will be held July 31, Aug. 7, 14, and 21 from 7 to 8:30 p.m.
A church service will be held for adults from 7:30 to 8:30 p.m. these same evenings. In addition, the church will sponsor a nursery for infants. The school sessions and church services are open to the public.

FIRST UNITED METHODIST CHURCH
The Rev. Robert Worgess, Pastor
Sunday, July 27—
10:00 a.m.—Church school.
10:00 a.m.—Worship service.

ST. JACOB EVANGELICAL LUTHERAN CHURCH
12501 Reithmiller Rd., Grass Lake
The Rev. Andrew Bloom, Pastor
Sunday, July 27—
8:45 a.m.—Worship service.
9:45 a.m.—Sunday school.

FIRST UNITED PRESBYTERIAN CHURCH
Unadilla
The Rev. T. H. Liang
Sunday, July 27—
9:45 a.m.—Sunday school.
11:00 a.m.—Worship service.
Every Tuesday—
8:00 p.m.—Choir practice.

ST. JOHN'S EVANGELICAL AND REFORMED CHURCH
(United Church of Christ)
Rogers Corners
The Rev. David J. Kleis
Sunday, July 27—
9:30 a.m.—Church school.
10:30 a.m.—Church service.

GREGORY BAPTIST CHURCH
The Rev. Grant Lapham, Pastor
Sunday, July 27—
10:00 a.m.—Worship service.
11:15 a.m.—Church school.
6:30 p.m.—Baptist Youth Fellowship.
7:30 p.m.—Evening worship service.

CHURCH OF CHRIST
18681 Old US-12 East
R. D. Farnell, Minister
Sunday, July 27—
10:00 a.m.—Church school.
11:00 a.m.—Worship service.
6:00 p.m.—Worship service.
Every Wednesday—
7:30 p.m.—Mid-week bible study.

ZION LUTHERAN CHURCH
Corner of Fletcher, Waters Rds.
(Rogers Corners)
The Rev. John R. Morris, Pastor
Sunday, July 27—
9:00 a.m.—Sunday school.
10:15 a.m.—Worship. Guest preacher.

NORTH SHARON COMMUNITY BIBLE CHURCH
Sylvan and Washburn Rds.
The Rev. Paul Collins
Sunday, July 27—
10:00 a.m.—Sunday school.
11:00 a.m.—Worship service.
6:30 p.m.—Young People's service.
7:00 p.m.—Evening service.
Every Wednesday—
7:30 p.m.—Prayer meeting.

ST. MARY'S CATHOLIC CHURCH
The Rev. Fr. Francis Wahowiak
Saturday, July 26—
4:00-5:00 p.m.—Confessions.
7:30-8:30 p.m.—Confessions.
Sunday, July 27—
Masses at 8:30 a.m., 8:00 a.m., 10:00 a.m. and 11:30 a.m.

IMMANUEL BIBLE CHURCH
The Rev. Frank C. Frinkle, Pastor
145 E. Summit St.
Sunday, July 27—
9:45 a.m.—Sunday school, nursery provided.
11:00 a.m.—Morning Worship, nursery provided.
7:00 p.m.—Evening service.
Every Wednesday—
7:30 p.m.—Family Hour.

ST. JOHN'S EVANGELICAL AND REFORMED CHURCH
(United Church of Christ)
Francisco
The Rev. Robert Townley
Sunday, July 27—
10:00 a.m.—Worship service.
10:20 a.m.—Sunday school.

SALEM GROVE UNITED METHODIST CHURCH
The Rev. George Woerner
Sunday, July 27—
10:00 a.m.—Sunday school.
11:15 a.m.—Church school.

FIRST ASSEMBLY OF GOD CHURCH
The Rev. Stephen J. Vaudrey, Pastor
Sunday, July 27—
10:00 a.m.—Sunday school.
11:00 a.m.—Worship service.
7:00 p.m.—Evangelistic service.

NORTH LAKE UNITED METHODIST CHURCH
The Rev. George Woerner
Sunday, July 27—
9:30 a.m.—Worship service.
10:30 a.m.—Sunday school.

CHELSEA BAPTIST CHURCH
The Rev. Elmer S. Steenson, Pastor
Sunday, July 27—
10:00 a.m.—Sunday school.
11:00 a.m.—Worship service.
Nursery care available during Sunday school and worship service.
6:00 p.m.—Junior and Senior Baptist Youth Fellowship.
7:00 p.m.—Evening worship.
Every Wednesday—
7:30 p.m.—Bible study and prayer meeting.

BETHEL EVANGELICAL AND REFORMED CHURCH
(United Church of Christ)
Freedom Township
The Rev. Roman A. Reineck
Sunday, July 27—
10:00 a.m.—Worship.
11:00 a.m.—Sunday school.

LET'S LOOK AT THE RECORDS
BY LINDA NORRIS
One of the most popular modes of music these days is captured on the star, an Indian instrument of intriguing and oft weird overtones. There are a number of famous interpreters of this quaint instrument, probably the most well-known of whom is Ravi Shankar, due to his many television appearances. Ravi's latest LP is Six Ragas, in which he does (if you follow) Kaushi Bhairav, Khamach, Janasamohini, Mishra Gara, Nand Anandi and Megh. The titles mean little, actually, but the sound is quite pleasant.

Not as known are Ustad Vilayat Khan India's master of the star, and Jnan Prakash Ghosh who heads a percussion ensemble. Khan has a new album out under his name in which he does a two-part raga entitled "Darbari Kanada," each part on one side of the disc. Ghosh and his ensemble have recorded some Indian music in Drums of India, which is well worth investigating. Side one has Pakhawa, Khol and Tabla and the flip side has seven hymns. Again, the titles do not tell the story—only the soft and soothing strains of the star does that properly.

An Album of romantic music is offered by Line Renaud in Line Renaud's In Love. Included in the repertoire are Majorca, Isle of Love, Goodbye, My Souvenirs, Teach Me French, La La La Song, Love Is The Little Things, It's Over, Summer Love, To You My Love, Roses of May, If I Love, I'd Love to Fall Asleep and Can't Take My Eyes Off You.

The Iowa Free Fair was organized in 1916 by former Michigan Governor, Fred W. Green, and his business partner, Fred A. Chapman.

MAUSOLEUMS * MONUMENTS
BRONZE TABLETS * MARKERS
BECKER MEMORIALS
6033 Jackson Road
ANN ARBOR, MICHIGAN

THE LANSING REPORT

FROM

senator
GIL BURSLEY



Around 2 a.m. on Friday, July 18, the legislature passed the last of the major budget bills and recessed until Oct. 6. At that time there will be a full session devoted primarily to questions of educational financing.

Although cold statistics don't make interesting reading I feel nonetheless that a summary of your legislature's appropriations should be presented.

Letters to the Editor

To the Editor:
The most disgusting money-raising venture that I have had the misfortune to come upon, was in fact brought to my attention today. The so-called "baby contest" which the daycares are exploiting to raise funds for various purposes, is done at the expense of, and use of, several youngsters who deserve a better opportunity to display their beauty, than at the hands of mercenary demons.

The winner is obviously selected, for not any natural physical attributes or charm, but selected rather for the amount of cash kick-back contained within a capsule. A contest using four-legged creatures would serve the same purpose. The cliché, "money talks," is most appropriate. In an exploitation of this type, perhaps the innocent victims should all receive something of monetary value for the role which they must play, and for the price which they will pay for losing, because they do not all have followers endowed with money.

The proposed use of funds received may be for the good, and indeed legitimate, I do not dispute this point; however, the next time a baby contest is considered, it may be beneficial to consider these facts.

Joanna C. Johnson,
Cavanaugh Lake, Chelsea.

To the Editor:
Last spring term, Chelsea area was fortunate in having Washtenaw Community College teach a pilot "Psychology" course at our high school. Though this was given on some publicity, the class was composed of one-third Chelsea area people and the balance from Ann Arbor, Ypsilanti and even Wayne and Detroit.

The reason I say "pilot" is that this was an experiment to see how much interest there was among Chelsea, Dexter and Manchester people in establishing of a permanent branch of the college in Western Washtenaw county, here in Chelsea. In the past month, they sent out samplings of letters throughout the area to gauge the amount of interest in establishing such a branch here.

Don't let this opportunity slip away! Let them know, by mail or phone, right now, if you wish to see this implemented.

I certainly enjoyed it and would hate to see it terminated. Tell a neighbor!

Mrs. Jack Gilbert.

Grade A Dairy Herds
Mostly Concentrated
In Southern Counties
Some 85 percent of Michigan's Grade A dairy herds are located in the southern counties, according to Michigan State University dairy specialists.

Sanilac, Huron and Lapeer counties, all in Michigan's "thumb" area, rank one, two, three respectively, in the number of Grade A herds. Allegan, Ottawa and Kent counties, on the opposite side of the state, rank fourth, sixth and seventh. St. Clair county is fifth.

FOR PROFIT

FEED

Get Fortified Feeds . . .
Step Up Egg Production
Prove it to yourself. Our Fortified Feeds are just the rations your hens need to produce more eggs, more profits for you.

Farmers' Supply Co.
Phone GR 5-5511

Saturday Is 4-H Day At Tiger Stadium

4-H members from all parts of Michigan are expected to attend 4-H Day at Tiger Stadium on July 26.

The 4-H members will see the Detroit Tigers play the Kansas City Royals in a Saturday afternoon game.

This is the third annual 4-H Day at Tiger Stadium. Last year the 4-H members saw Denny McLain win his 30th game.

BRIDGE FARES SLASHED
Fares on the Mackinac Bridge linking Michigan's upper and lower peninsulas were slashed 60 percent on Jan. 1, 1969. The cuts were possible because of a \$3.5 million annual appropriation from the state's Motor Vehicle Fund to help pay for the bridge.

VA Hospital Bans Sale of Cigarettes

The Ann Arbor VA Hospital has eliminated cigarettes from its Canteen Retail Store effective July 18. However, it was emphasized that smoking is not prohibited nor is the sale of other tobacco products.

The reasons for this policy change was that it was felt inconsistent for a health institution to condemn cigarette smoking as hazardous to health and at the same time sell the same product which is clearly marked with health warnings on each package. The Ann Arbor VA Hospital is one of four VA hospitals in the country participating in this test effort. One of the principal reasons it was selected was the strongly endorsed recommendations of its physician staff.

THURSDAY EVENING VACATION CHURCH SCHOOL

7 to 8:30 p.m.

THURSDAY EVENING SUNDAY WORSHIP SERVICE

7:30 to 8:15 p.m.

Thursday, July 31, Aug. 7-14-21

First Congregational Church

Everyone Is Invited!



No Secret

Nearly all of us like to tell everybody. Let 'em get share secrets. We feel pretty good when someone "confides" in us. We feel even better because we have the opportunity to "confide" in someone else.

Nothing wrong with letting out a little secret now and then. Some things just shouldn't be kept secret anyway. Take for instance the savings some folks realize day to day by doing their buying and trading in the local community. They like to share secrets. We feel pretty good when someone "confides" in us. We feel even better because we have the opportunity to "confide" in someone else.

Give local merchants a try. Then, you'll have some good word to pass along to someone else.

Trade at Home for Your own sake and community progress

CHELSEA MERCHANTS

HOUSEHOLD

AUCTION!

The following household goods will be sold at public auction, located 1 1/2 miles northwest of Chelsea on M-52 to Wexner road, north on Wexner road (stay on blacktop) to Territorial road, east to Riker road to corner of Riker and Territorial road; or 1/4 mile east of North Lake Store to house number 11277.

1 p.m. SAT., JULY 26 1 p.m.

Phone Stockbridge 517-851-8042 **PRICE BROTHERS AUCTIONEERS** Phone Stockbridge 517-851-8042

NICE CLEAN HOUSEHOLD GOODS

- | | |
|---|--|
| Zenith Portable TV with space command. | Two Philco electric blankets. |
| Frigidaire window air conditioner, thermostat controlled, like new. | Sunbeam covered rotisserie. |
| Castro convertible davenport with double bed, cost \$500 new. | Ash tray stands. |
| Two swivel rockers. | Manning 20-cup electric coffee urn. |
| Two matching swivel rockers. | Sunbeam fry pans. |
| Red plastic arm chair. | Electric coffee grinder. |
| Corner china cabinet. | Electric heater. |
| Two maple bookcases. | China dishes. |
| Two Hollywood head boards. | Electric hair dryer. |
| Two box springs. | Three electric fans. |
| Two chests. | Electric paint sprayer. |
| Two drum tables. | Student's desk. |
| Dining room chairs. | Throw rugs. |
| Table lamps. | English dinnerware, open stock. |
| Formica-top round kitchen table and 4 chairs. | Woolen blankets. |
| 4-speed record player & speaker. | Parrot cage. |
| Two small rockers. | Four pairs of twin bed spreads. |
| New tape recorder. | Salt and pepper collection. |
| Olivetti typewriter, like new. | Assorted glasses. |
| Picnic table. | Wooden coat hangers. |
| Round lawn table & lawn chairs. | Assorted chairs. |
| Ping pong table. | Large amount of electrical appliances and kitchenware, like new. |
| Woodworking tools. | Quantity of medical books. |
| 2-wheel trailer with metal box. | Personal collection of record albums of Mr. Collins. |
| | Two new saw horses. |
| | Ladders. |
| | Mixed items galore, all real nice. |

Terms: Cash or check. Not responsible for accidents.

— A NICE CLEAN SALE —

Helen Collins, Owner



INVITATIONS or ANNOUNCEMENTS . . .

Let us provide you with the very finest printed or engraved invitations and announcements. Make certain that your wedding stationery is of top quality and conforms to correct social requirements. We can advise you on these important details.

THE CHELSEA STANDARD
Commercial Printing Department

High School League Baseball Schedule

Thursday, July 24—
Chelsea vs. Mast Shoes
at Veterans Field 5.
Tuesday, July 29—
Chelsea vs. South Lyon
at Veterans Field 1 (8 p.m.)
Thursday, July 31—
Chelsea vs. Godfrey's Movers
at Veterans Field 5.
All games not otherwise designated will begin at 8 p.m.

Babe Ruth League Baseball Schedule

Monday, July 28—
Chelsea C vs. Norvell (H)
Wednesday, July 30—
Chelsea B vs. Dexter (T)
Chelsea A vs. Chelsea C (H)
Monday, Aug. 4—
Manchester B vs. Chelsea A (T)
Wednesday, Aug. 6—
Chelsea A vs. Chelsea B (H)
H—here
T—there.

About Your Social Security

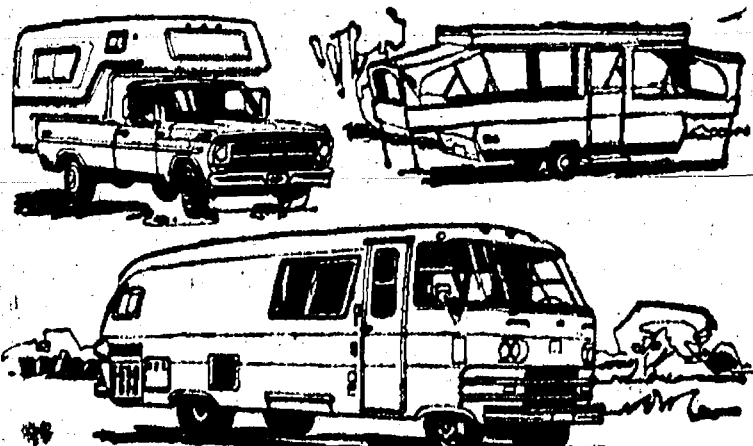
By Robert A. Kehoe
Social Security District Manager
Q. My wife is almost 82 and will be applying for benefits on my social security record. Will this mean my check will be less?
A. No, the amount of your benefit check will remain the same.
Q. I will be 72 in August. I am not now receiving social security because I have never worked or paid social security contributions. Will I be eligible for social security at 72?
A. No, a person who reaches 72 this year needs social security credit for at least six calendar quarters—a year and one-half—to receive the special age 72 benefits.
Q. I am working and earn about \$3,500 a year. I will be 65 this year. Will I be eligible for social security?
A. You will be eligible for hospital and medical insurance under Medicare. You may also receive some cash benefits. However, this will depend on the amount of your benefits as well as your earnings and how steadily you work. Be sure to visit your social security office two or three months before you are 65 to discuss your situation.

Michigan Among Leaders in Total Highway Travel

Michigan is one of nine states in which motorists drove in excess of 30 billion vehicle miles in 1968, the Department of State Highways reports.
The nine states accounted for half of all highway travel in the United States, which for the first time exceeded one trillion vehicle miles.
Motorists drove a record 48 billion miles in Michigan, seventh in the nation. California led the 30 billion plus states with 106 billion, followed by New York, 62.3 billion; Texas, 62.2 billion; Pennsylvania, 56.9 billion; Ohio, 52.8 billion; Illinois, 52.1 billion; Michigan, 48 billion; New Jersey, 37.7 billion; and Florida, 34.8 billion.
Alaska, with 908 million, was the only state below a billion miles. Vermont had the least number of miles among the 48 contiguous states with 2.4 billion.

Audrey Furman, Queen of the 1968 Ionia Fair, is employed during the summer as the secretary in the fair's publicity department.

CAMPERS: INSURE AND FINANCE YOUR VEHICLES AT AAA



INSURE your vehicle with the new Outdoor Living Package that offers broader and better comprehensive and collision coverage on owned, rented or borrowed motor homes, campers and trailers. For example, camper units on pickup trucks insured through the Exchange are covered up to \$500 if owned by the insured. Additional coverage to insure full value can be purchased from the Exchange. If the camper, motor home or trailer is borrowed or rented for 30 days or less, the units are automatically covered up to full value.

FINANCE your new recreational vehicle with AAA Member Loan and save money, compared to usual bank rates. Available at all 57 Auto Club offices, through special arrangement with several leading Michigan banks. Member Loan is one of the most valuable benefits of Triple-A membership. Member Loan helps AAA members save money on cars, boats and snowmobiles, too.

TRIPLE-A...WHERE YOU CAN LEASE THE WAY

RAY JOHNSTON
PHONE 665-7701

1200 S. MAIN ST. ANN ARBOR
Detroit Automobile Inter-Insurance Exchange Automobile Club of Michigan

SPORTS CORNER



SCIENCE TOPICS

★ UFO Expert Raps 'Saucer' Writers . . .

FLYING SAUCERS ARE serious business—for charlatans. "who profess belief in order to collect royalties from writing and fees from lecturing," says a scientist at the University of Colorado. He said a recent Air Force-sponsored study of unidentified flying objects found "no evidence of their extra-terrestrial origin." He also assailed teachers who encourage their pupils to believe in flying saucers, noting that in the last three years more than 40,000 school children had written to the Air Force asking for UFO data.

INSECT HORMONES may one day be used to control the same cotton pests they now enable to grow into maturity. A team of Louisiana State University entomologists have found that laboratory-produced juvenile hormone substances can prevent worms from reaching maturity. By applying minute drops of this material to the larva, the entomologists cause the formation of a larval-pupal stage in which the insect lies dormant and eventually dies.

A NEW TECHNIQUE that is said to show promise in controlling leukemia has been developed by researchers at the University of Utah and will be tried for the first time on humans later this year in Mexico City. This method attempts to "trick" the cancer cells in the blood into "synchronizing" cell division, and then destroys them with drugs during their most vulnerable period.

SUPPLEMENTAL OXYGEN systems in single- and twin-engine

aircraft help keep the pilot and his passengers alert and allow them to fly at higher altitudes, reports Zep Aero, El Segundo, Calif. The company says that today's high-performance private aircraft are flown at altitudes of 8,000 feet or more to obtain maximum flying efficiency, specifically greater speed, distance and smoothness, and less fuel consumption.

BRIGHT'S DISEASE, an inflammation of the kidney's filtering system, may be caused by an immune reaction reports a Stanford University medical research team. Experiments have shown that the kidney disease is caused in rats by an antibody directed against the specific streptococcus protein that has been associated with the disease in humans. They say it may be possible to synthesize that protein and use it as a vaccine to stimulate antibody response to prevent the disease. However, this is a step that will require further research, the investigators said.

ONE OF THE LONGEST and most accurate "rulers" in existence will attempt to measure the distance from the earth to the moon. The ruler is actually a laser beam that will be bounced off a reflector to be placed on the moon's surface by Apollo 11 astronauts Neil A. Armstrong and Edwin E. Aldrin Jr. July 20. Instruments for generating the beams are now being installed at the University of Texas' McDonald Observatory, atop Mount Locke in west Texas. Co-operating in the experiment are the NASA Goddard Space Flight Center and the University of Maryland.

March of Dimes' Birth Defects Centers provide patients with early, expert diagnosis, prompt medical care and long-term rehabilitation at 103 hospitals across the country.

Senior Citizens Awards Slated By State Fair

It's time to enter the competition for the two Senior Citizen Awards to be presented by the Michigan State Fair. E. J. (Jeff) Keirns, general manager, said that entry blanks and guidelines have already been sent to more than 450 senior organizations throughout the state.

One award will be given for outstanding leadership in the organization of senior citizen groups and activities and one for the senior citizen who has given outstanding community service during the past year. The two winners will be selected by a committee of Directors of Senior Citizen groups. The awards will be presented on Old-Timers Day, Monday, Aug. 25.

Nominations are to be made through a Senior Citizen organization. Anyone who believes he is qualified must contact his local organization and ask that a nomination be submitted. All entries must be sent to the State Fair by Friday, Aug. 8.

The State Fair opens Friday, Aug. 22, and continues through Labor Day, Sept. 1.

Highway Travel Higher Than in '68 Throughout State

Lansing—Travel in Michigan in the first third of 1969 increased 7.6 percent over the same period of 1968, the Department of State Highways reports.

The biggest gain was 10.6 percent in the eastern half of the Upper Peninsula, due in part to reduced fares on the Mackinac Bridge. Other increases by region were 10.5 percent in southeastern lower Michigan, 8.7 percent in the south central and Thumb area, 4.7 percent in the western half of the Upper Peninsula, 3.9 percent in northern lower Michigan, and 3.2 percent in southwestern lower Michigan.

By the month, travel was up 3.4 percent in January, 15.3 percent in February, 3.3 percent in March and 6.7 percent in April.

The Department's travel reports are based on gasoline tax collections, and on traffic counts at 52 permanent locations on state and local highways.

Highway Patrolled By Man, Horse

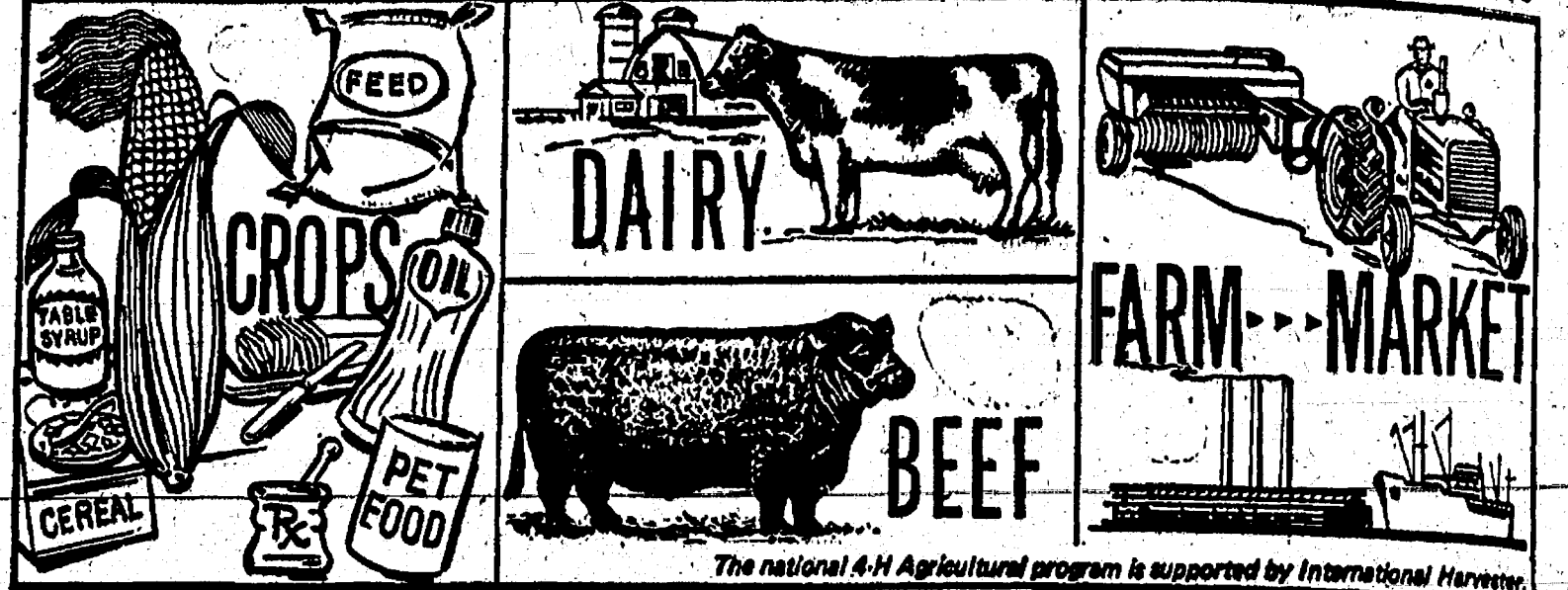
Mackinac Island—You will not find their names in any guidebooks, but Mervin Morrow and his friend Hecktor (cq) should be mentioned as one of the attractions of historic Mackinac Island. Morrow is the only hostler employed by the Department of State Highways. Hecktor is his horse, the last vestige of a highway maintenance force that relied heavily on horse power in its literal sense when the automotive age was just beginning.

Autos are banned on Mackinac Island, a refuge of peace and quiet far from the din of the cities. There's a need, nonetheless, for a highway to accommodate the horde of vacationers who walk, pedal bicycles or ride in horse-drawn carriages around the eight-mile circumference of the island.

M-185 is the only state highway that excludes motor vehicles, and therefore the only one not maintained with gas and weight taxes. The narrow, blacktop road is important enough to tourism, Michigan's No. 2 industry, to rate the modest expense it requires.

Every day during the tourist season, Morrow and Hecktor patrol M-185. Morrow repairs washouts and picks up trash, manure and stones, piling them onto the rubber-tired wagon drawn by Hecktor.

4-H YOUTHS IN AGRICULTURE NEAR MILLION MARK



The national 4-H Agricultural program is supported by International Harvester.

Dana, Frigid Products Teams Battle for Little League Title

The baseball teams sponsored by the Recreation Department, under the direction of program manager Paul Giever, are looking forward to the last few games of the season, and that important All-Star Game July 31.

Little League has two games left. Tonight Palmer Motors vs. Murphy Barber Shop will be at Field A at South school. On Field B at the high school tennis court the Chelsea Jaycees will be playing Frigid Products. At the high school football field, Field C, North American Rockwell will play Dana Corp.

There is a close race for first between the Dana Corp. team and Frigid Products. The outcome will be decided at the final games. These games will be played Tuesday evening, with North American Rockwell hosting Frigid Products on Field A. Dana Corp. will play Murphy Barber Shop at Field B, and on Field C, there will be a game between Palmer Motors and Chelsea Jaycees.

Throughout the summer the Arts & Crafts department has experimented with many different art forms. The children have done plaster sculpture, montage work, collages, and sand casting. They have also experimented with a number of watercolor techniques, and have made paper mache jewelry.

Future plans include decorating stones for paper weights, mobiles, and creative work with the new dipity-glass, a liquid plastic that has a glass-like quality when dried.

On Monday the T-Ball league will play their last games, and

Mastitis Control Best Effectuated In Dry Period

The best time to control mastitis in dairy cattle is during the dry period, according to Don Johnson, Washburn county extension agent. He says that if a cow freshens with a healthy udder and is properly protected, mastitis likely can be controlled throughout her milk production period. The agricultural authority recommends that a veterinarian be called to check animals that are constantly having problems with mastitis.

The procedure that has resulted in good control, the agent says, is to treat the animal 10 days after she has been "dried up" from her lactation preparatory to calving. The animal should then be treated again 10 days before calving.

After the animal is put into the milking good milking and sanitation should be followed to insure the animal in good health.

Health Career Awards offered by many March chapters as "starter" for careers in medicine, therapy, nursing, medical work and occupational.

**ELECTROL
VACUUM
CLEANER**
JAMES CO.
Ph. 428-2931 or 428-
Manchester
SALES and SERV

CHELSEA ASSOCIATE BUILDERS, INC. GENERAL CONTRACTORS

Custom Building and Remodeling

PHONE 475-8182

DON EDER 475-824
LEON KOCH 475-826
JOHN PIERSON 475-583

HELLER ELECTRIC

Licensed Electrical Contractors

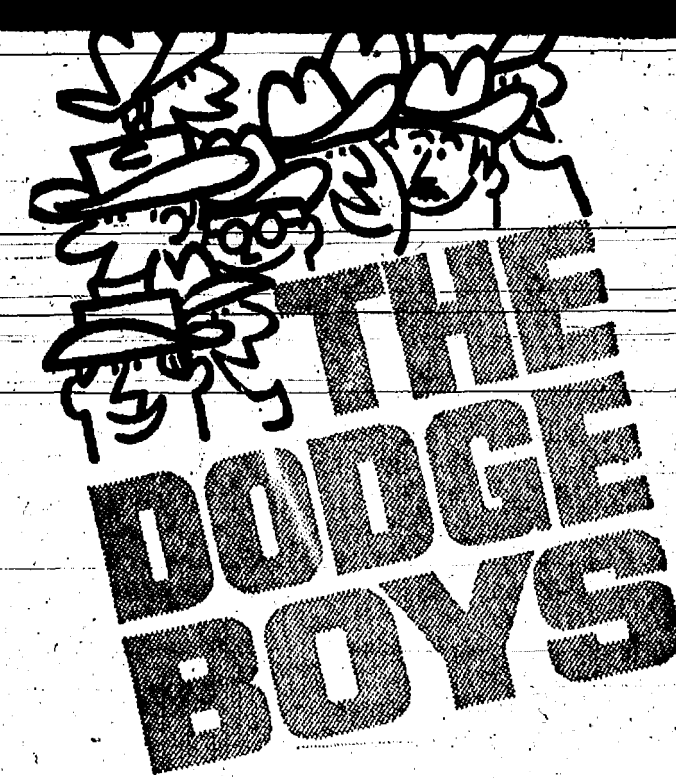
ALL TYPES OF WIRING

(No job too big or too small)

DAY OR NIGHT

CALL GR 9-3816

20640 Sugar Rd., Chelsea



**Sale
Blazers**
Now,
big savings for
outdoor fun
at the Trail-
blazing
Good Guys!



**Special Low Prices on
Specially Equipped Dodge Trucks**
Available with a wide choice of camper bodies



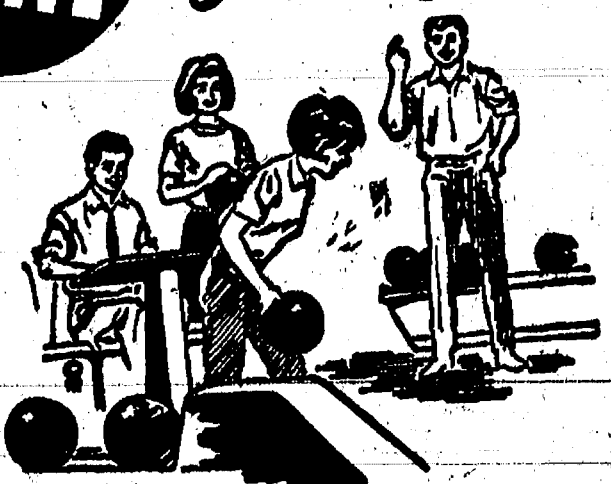
**HURRY IN FOR THESE CAMPING SPECIALS.
Special Low Prices on Camping and Outdoor Gear, Too.**

G. A. SALES & SERVICE

1185 Manchester Road

Chelsea, Michigan

BOWL for the fun of it...



**Having Fun Lately?
Bowling Is a Ball!**

Put some fun in your life . . . Bowl for laughter and health at our modern, well-equipped lanes with rarely a wait. Bring the gang down!

CHELSEA LANES
1180 M-52 Phone GR 5-8141

Spectrums TV Program Reports Results of Planned Exercise Test

East Lansing—"Spectrum" reports on an experiment to determine whether exercise can reduce the chances of heart disease on "Running for Life," Sunday, July 27, at 4:30 p.m. and Tuesday, July 29, at 11:30 a.m. on WMSB (Channel 10), Michigan State University television.

In the experiment, hundreds of middle-aged men prone to heart ailments participated in a two-year program of planned exercise, which proved helpful to their overall physical condition.

The experiment was undertaken jointly by the University of Minnesota, the University of Wisconsin and the University of Pennsylvania.

Other WMSB highlights include: **CONCERT**—Soloist Andre Watts prepares and performs Mozart's Piano Concerto No. 24 in C Minor with the Los Angeles Philharmonic, under the direction of Zubin Mehta, on "NET Festival," Sunday, July 27, at 1:30 p.m.

On the first half of the 90-minute special, the 22-year-old Watts, described by The New York Times as an "extraordinary young pianist," discusses the interpretation.

New Radar Units Accurately Check Highway Speeds

Lansing—Two radar detectors, capable of determining vehicle speeds at distances up to one-quarter of a mile, have made Michigan motorists honest and have taken Department of State Highway speed survey crews out of hiding.

Motorists usually slow down at the sight of speed survey vehicles bristling with radar. To counteract this, and obtain reliable speed data, the survey crews have camouflaged or hid their vehicles and equipment.

The new detectors fit unseen in the back window of a car and pick up speeds long before drivers are aware they are being checked.

In use about six months, the detectors show above normal increases of one to more than three miles an hour for passenger cars. They also show that 16 percent of the autos on freeways exceed the 70-mile-an-hour limit.

The Ionia Free Fair is one of the 25 largest fairs in North America.

tions of the concerto with conductor Mehta.

They then prepare the work together and rehearse it with the orchestra, ending the program with a complete performance at the Los Angeles Music Center.

WARFARE—"NET Journal" reports on the disturbing and little-known development of chemical and biological weapons and their awesome potential on "A Plague on Your Children," Friday, Aug. 1, at 7 p.m.

The avowed purpose of this program is to publicize research and developments in chemical and biological warfare being undertaken in virtual secrecy by many nations, including all of the leading powers. These weapons have an awesome potential for killing incredible numbers of people and also for leaving large areas contaminated and uninhabitable for centuries.

Cameras visit defense laboratories in England and Sweden for a painful look at the effects of nerve and psychochemical gases and anthrax germs on animals, including dogs and rabbits.

DRAMA—"The Idealists," the second in Ken Taylor's dramatic trilogy, "The Seekers," on the theme of man and his beliefs, appears on "NET Playhouse," Sunday, July 27, at 12 midnight.

The play is set during the French Revolution and deals with the rising of La Vendee (a counter-revolutionary insurrection) against the Republican government. Actor Michael Bryant stars as Gerard, a young captain, who has a terrible decision to make about the 200 prisoners under his surveillance.

Gerard is an idealist who cannot square his conscience either with the decisions of the Republic or with the principles of his time, the "Age of Reason."

MUSIC—Tenor Patrick Gallo and bass-baritone Edward Crafts, accompanied by pianist Craig Sheppard, perform on "Young American Musicians," Wednesday, July 30, at 7 p.m.

The three young musicians are former students at the Curtis Institute of Music, where Gallo and Crafts studied with noted French-American baritone, Martial Singier, and Sheppard with Mme. Eleanor Sokoloff.

The recital includes operatic duets and songs by Verdi, Tosti, Thomas and Bizet.



WILD BLUEBERRIES like these shown may be found in blueberry bogs throughout the Waterloo Recreation Area.

Waterloo Wilderness Adventure

Blueberry Season Arrives

Mid-July is the beginning of the wild blueberry season in southern lower Michigan. From now until mid-August blueberries will be ripening. Or perhaps you know them as huckleberries. For many, the two terms are interchangeable.

Both blueberries and huckleberries are edible. Huckleberries look and taste like blueberries, but contain many hard seeds like those found in raspberries or blackberries. Blueberry seeds are small and soft, and are unnoticed when eaten.

In southern lower Michigan wild blueberries are most common in swamps, bogs and old lake beds. Collecting them often means wading into shallow water.

Collecting equipment should therefore include hip boots, or a pair of tennis shoes that you can afford to get wet.

During my wandering through the Waterloo Recreation Area I have found several good blueberry bogs. A blueberry picker's guide, pointing out these areas, will be posted on the bulletin board at the Area Headquarters on McClure Rd. The office is open from 8 a.m. to 5 p.m. Monday through Friday and 8 a.m. to 4 p.m. on week-ends.

Poison-sumac is often found in blueberry bogs. To help you identify and avoid it, photographs of poison-sumac will be displayed in the office at the Area Headquarters.

With all the rain we've had this summer, the wild berries are nearly as large as commercial varieties, and in my opinion, better tasting. My wife and I picked 10 pounds of blueberries in about an hour; enough for a pie, three loaves of blueberry applesauce bread, a dozen jars of blueberry jam and blueberry pancakes.

All the blueberries you pick need not be used immediately. There are many ways to preserve them. Blueberries gather-

ed on a dry day, packed, still dry, in fruit jars and placed in the refrigerator, will last a month or more. If you pick more than you can eat in a month, they are easy to can or freeze.

To freeze, simply pack them dry in covered containers and place them in the freezer. Frozen berries, when defrosted may be used exactly as you would the fresh fruit.

Canning is almost as simple as freezing them. Pack the berries in jars, cover them with syrup made from four parts water to one part sugar, seal and process in boiling water for 20 minutes. Check the seals and store them away.

Blueberries are delicious in pies, bread, muffins, pancakes, waffles, jam, and a host of other foods. Enough to keep you busy experimenting until the next blueberry season comes along.

4-H Clubs

GINGHAM BELLES

Gingham Belles 4-H club met Thursday, July 17 after raking the Rev. Father Francis Wabowak's lawn. The girls raked the lawn as their community project.

The club discussed their plans for their float in the Chelsea parade, and Aug. 11 was set as the date for their softball game with the Wide Awake chapter.

Preparations were made for the cook-out held today.

Terry Lutovsky and Lou Ann Harkend then gave a demonstration on measuring, and the lesson was studied.

The next meeting, July 24, will be a 6:30 p.m. cook-out at Proctor's.

Donna Clark, secretary

There are three full-time and 350 part-time employees of the Ionia Free Fair.

Bats Found In County With Rabies

A second case of rabies in bats has been discovered in Washtenaw county within the past few weeks.

Dr. Otto K. Engelke, county health director, has been notified by the Michigan Department of Public Health-Laboratories that bats submitted from the Whitmore Lake (Northfield township) and Ann Arbor township areas were found positive for rabies.

The seriousness of this discovery lies in the possibility of transmission of rabies from bats to domestic animals, especially dogs. An unvaccinated dog may become rabid and bite human beings. Rabies in humans can result in painful death.

Dr. Engelke asks that all known bat roosts be reported to the health department and cautions parents to make sure that their children are instructed not to handle bats if they are found. If a bat is discovered and it acts peculiar or becomes involved with other animals it should be carefully captured in order to avoid the risk of bite and placed in an escape proof container. The animal may then be submitted for laboratory analysis.

'Cushions' Being Tested To Reduce Injuries In Case of Accident

Lansing—The use of "cushions" to reduce injuries and deaths in traffic accidents is being studied by the Department of State Highways on northbound US-10 at M-102 in Detroit.

A cluster of the cushions, each measuring six inches in diameter and up to 40 inches high, and filled with a salt water solution, has been attached to the base of a bridge abutment, scene of numerous accidents.

If everything goes as planned, the year-long study should prove that the cushions will soften the blow for errant vehicles.

The March of Dimes works with health departments and civic organizations in many communities to establish or improve neighborhood prenatal care clinics.

School Signs To Be Erected On Main St.

School crossing signs with flashing caution lights will be installed soon on M-52 in the vicinity of St. Mary's and South Elementary schools.

The signs will serve to alert motorists that they are approaching a school crossing, while a crossing guard will continue to assist pupils at Pierce St.

The sign for southbound traffic will be about 250 feet north of Summit St., approximately at the Chelsea State Bank. The sign for northbound traffic will be about 250 feet south of Pierce St.

The cost of installation will be divided equally between the State Highway Department and the village. The total cost is estimated at \$1,110. The State Highway Department will provide all mechanical and routine maintenance, while the village will pay for the operating costs.

Operating costs will include a Bell System lease line which is proposed as a means of coordinating both signs. The cost of this line would run the village \$5.80 per month. The purpose of it is to enable both signs to be turned on by the same signal.

Costs will also include a minor sum for the electricity to operate the signs.

The village administration hopes to have the signs installed before school begins, dependent upon the schedule of the Highway Department installation crews.

Teen Band Contest Slated At State Fair

The "Battle of the Bands" will be in full swing again this year at the Michigan State Fair. And teen visitors to the fair will love every minute of it.

E. J. (Jeff) Keirns, general manager, announces that any Michigan teen-age group is eligible to audition for the band contests. Competition will be divided into two groups, Rock and Soul. Entries must be received by Aug. 1. Auditions will be held the week of Aug. 4 at the Fairgrounds.

36 bands will be selected to compete in the contests which will be held during the fair in the "Teen Scene" area. Trophies and cash prizes will go to first and second place winners.

Groups wishing to try out for the competition should contact Cleighton Melin, supervisor of entertainment and special events, at the Michigan State Fair, Detroit 48203, or telephone (813) 368-1000.

The fair opens Friday, Aug. 22, and continues through Labor Day, Sept. 1.

FREeways EXPENSIVE

Because of priorities established by the Federal Highway Administration, the lion's share of roadbuilding income available to Michigan between now and the mid-1970's will be spent to complete the Interstate freeway system.

Never swim alone, caution water safety experts. Half of all pool accidents and fatalities occur when the victim is not following the "buddy system." When it comes to swimming safety, think in terms of two's.

from HISTORY'S SCRAPBOOK DATES AND EVENTS FROM YESTERYEARS

Netherlands declared independence from Spain, July 25, 1581. King Victor Emmanuel of Italy proclaimed the resignation of Mussolini, July 25, 1943. The Continental Congress established postal service for the thirteen colonies, July 26, 1775. Benjamin Franklin was named Postmaster general on this same date. The purchase of Alaska was completed, July 27, 1868. The Band of England was incorporated, July 27, 1894. Peru declared independence from Spain, July 28, 1821. The U.S. Senate ratified the United Nations charter, July 28, 1945. U.S. troops fired on the "bonus army" in Washington, July 29, 1932. Thirteen people died as a plane hit the Empire State Building in New York City, July 29, 1945. The House of Burgesses, gathering at Jamestown, Va., July 30, 1619, was the first representative assembly in America. The first automobile securities were listed on the New York stock exchange, July 31, 1911.

Motorcyclist Dies In Collision With Pick-Up Truck

A motorcyclist was killed instantly Saturday evening, July 12, when a pick-up truck collided with the motorcycle at the intersection of M-52 and North Territorial Rd. Kenneth D. Conn, 22, of Grosse Ile, received fatal injuries when his helmet was knocked off.

The driver of the truck was James A. Grob, 29, of Ann Arbor.

An investigation at the scene, officers said, indicated Grob's truck crossed the center line some distance before the impact with Conn's cycle.

Conn was pronounced dead on arrival at University Hospital.

A passenger in Grob's truck, John Max, 39, of Superior township, was treated in Chelsea for bruises. Grob declined treatment.

Freshman Grid Coach Hired

Chelsea High school's championship football team of last fall was headed by a strong team of coaches. This year the team will be backed up by the same staff, with the exception of a new freshman coach.

James Tallman of Clinton has been appointed coach of the 1968 football team. He was graduated from Michigan State University, and this is his first year of teaching.

Along with his coaching, he will be instructing Industrial Arts classes.

Head coach again this fall will be Phil Barrels, who has been with the coaching staff for the last four years. Assisting him will be Richard Barrels and Robert Pires.

Returning as a junior varsity coach will be John Schaffner, assisted by Tom Morrison.

Cultivated Blueberries

PICK YOUR OWN every day except Friday

From Dexter take Dexter-Pinckney Rd. 1/2 mile west to Island Lake Rd. to Dancer Rd., left on Dancer Rd. to Beach Rd., right to first house right side. Take lane next to the house 1/2 mile. Bring your own drinking water.

10804 BEACH ROAD

3/4 Mile East of Four Mile Lake Ph. Vermont 7-2879

Applications Available Friday and Saturday

Male or Female

Full- or Part-Time

May be picked up at

DAIRY QUEEN

under construction near Pierce Park

Ask for Robert Niehaus

Standard Ads Are a Good Shopping Guide!



FARAH

Slacks

with FaraPress®

Great Slacks! Colorfully "out-of-the-ordinary" and very much a part of this year's fashion scene. Great Slacks! Farah makes them exciting and makes them right. Permanently pressed to never wrinkle and "Never Need Ironing."



\$7.50 to \$12.00

STRIETER'S MEN'S WEAR

"The Place To Go For Brands You Know"

CHELSEA JAYCEES AUCTION RUMMAGE SALE

SATURDAY, AUG. 9

STARTING AT 12 O'CLOCK

at CHELSEA FAIRGROUNDS

Sporting Goods - Shoes - Clothing - Bikes - Hardware
Furniture - Giftware - Housewares
and many other articles too numerous to mention.

For Pick-Up of Anything You May Wish To Contribute
Call Any of the Following Persons:

Mike Eubanks, 479-7137

Dan Eder, 475-2663

Mitchell Zink, 479-6540.

JUST RECEIVED!
2 Solid Truck-Loads of GE Appliances
Get Extra Trade-In Allowances
At Our Annual

MICHIGAN CONVOY SALE

Check Our Low, Low Prices!

GE Refrigerators \$169⁹⁵
Priced from

GE Can Fill All Your Refrigeration Needs!

Open Friday until 9 p.m. Close Saturday at 4 p.m.

FRIGID PRODUCTS

LLOYD R. HEYDLAUFF

113 N. Main St., Chelsea

Phone GR 9-6651