

WEATHER

Min.	Max.	Precip.
45	65	0.00
45	65	0.00
45	65	0.00
45	65	0.00
45	65	0.00
45	65	0.00
45	65	0.00
45	65	0.00

The Chelsea Standard

SEVENTH YEAR—No. 48

16 Pages This Week

CHELSEA, MICHIGAN, THURSDAY, MAY 22, 1969

10¢ per copy

SUBSCRIPTION: \$8.00 PER YEAR

QUOTE

"A hero cannot be a hero unless in an heroic world."
Nathaniel Hawthorne.

Public Meeting Set Monday on School Millage

Session Slated To Inform Voters of Critical Need for Additional Funds

A public meeting will be held at the High School Auditorium, Monday, May 26 at 8 p.m. to discuss the present millage crisis. The Board of Education decided to hold a second millage election on Monday night, meeting at approximately 100 in the millage request at 11.98, the same as the proposal on the current plan to place the millage on the ballot June 9.

The board must know how much money is available as soon as possible, so that teachers may be retained and hired for 1969-70 and so that bargaining may be continued in good faith.

The passage of the 11.98 mills on June 9 will provide \$550,000 in operating money and will buy the following programs and personnel:

Kindergarten, full day sessions in the elementary schools, noon playground supervision at the elementary schools, vocal music, library services and books, art, home economics, band, French, Latin, agriculture, physical education, counseling, industrial arts, athletics, driver education, shared facilities program, five additional teachers to handle increased enrollment and full bus services.

The board is most eager to have all interested citizens attend the information meeting to be held in the high school auditorium Monday, May 26, at 8 p.m. The board has expressed the desire to conduct an information campaign adequate to answer all questions raised by the residents to insure a vote in favor of the proposal.

Memorial Day Parade Plans Completed

Plans are set for the annual Memorial Day parade and ceremony sponsored by the Herbert J. McKune Post No. 31, American Legion.

The traditional commemorative activities are scheduled to begin at 10 a.m. May 30 with a parade through downtown Chelsea. The parade line-up will be forming in the Municipal parking lot at approximately 9:30 a.m. Scout units are invited to join veterans of all wars, American Legion and VFW members in the parade. The high school band will provide music.

The parade will end at Oak Grove Cemetery where Pat Merkel will be master of ceremonies. The Rev. Fr. Francis Wahowiak will give the invocation and benediction, and the Rev. Daniel Kelin will give the address. William Blaess will act as parade master and Alex Ersten will be officer of the day.

After the parade a pot-luck dinner will be held at the Legion Home for all Legion and Auxiliary members and their guests.

South School Choruses Plan Public Concert

The South Elementary school fourth and fifth grade choruses will present a concert at 7:30 p.m. May 27 in the Chelsea High school auditorium.

The choruses, composed of all students in the two grades, will combine to present several songs after performing their individual numbers, including singing and square dancing.

The program will feature such (Continued on page two)



V. O. JOHNSON

THE REV. JOHN FALL

New Administrator Named For Chelsea Methodist Home

V. O. Johnson will replace the Rev. John Fall as administrator of Chelsea Methodist Home, June 1, according to an announcement by the Board of Trustees of the Retirement Homes of the Detroit Annual Conference of the United Methodist Church.

The Rev. Fall, who began as assistant administrator in 1963 and became administrator in 1966, has been appointed administrator of the 275-bed Franklin, Ind., United Methodist Home.

Johnson, who has been assistant administrator and business manager of the Oklahoma Methodist Manor, Tulsa, for the past five years, began duties as associate administrator March 15 to insure a smooth transition.

Johnson had extensive experience with the 152-bed Tulsa home, which is similar in function, although newer in structure, to the Chelsea Methodist Home.

Prior to that position Johnson served as business administrator of Austin Avenue Methodist church, Waco, Tex., from 1962 to 1964, and Trinity Methodist church, El Paso, Tex., from 1958 to 1962. He received his college education at West Texas State Teachers College and has extensive business experience.

Johnson, his wife, has been the organizing force and president of the ladies auxiliary at the Oklahoma Methodist Manor. They have two sons, John-Ron, a student at Northern Michigan University and Donald T., a Methodist pastor at Blanchard, Okla. Their grandson, Thomas L. Hubert, will live with them in the administrator's residence on the grounds of the home and will be a sophomore at Chelsea High school in the fall.

Johnson has been familiarizing himself with the Home by performing the varied administrative functions including staff direction, purchasing, general interviewing of personnel, admission work, evaluating the staff and reviewing uncompleted projects.

He is also becoming familiar with his new home, at 803 W. Middle, where he has been staying with the Rev. and Mrs. Fall.

Although Johnson will have a number of pending projects to keep him busy, including the apartments scheduled for completion in July, he has several ideas for the home.

He said he would attempt to expand the crafts program and investigate adding more active games to the program. Another possible expansion would be in the field of occupational therapy, where he hopes to find trained personnel to teach handicapped residents new activities.

In general, the ideas of the two men seem to be in harmony. Johnson indicated his respect for the achievements of his predecessor by commenting, with a chuckle, "You don't fill John Fall's shoes—you just become the next administrator." The Rev. Fall expressed confidence in Johnson by saying that he thought "V. O. Johnson is the

finest administrator we could find to take charge of the Home. While we regret leaving Chelsea, we know the Home is in capable hands."

The Home has been in capable hands for the past three years, as a glance at Fall's numerous achievements will indicate. Fall came to Chelsea directly from graduate work in theology and church social work at Oberlin, with only a one-week short course in administration for fortification.

He worked as assistant administrator under the Rev. Edwin J. Wells and moved to the administrative top spot in 1966. Some achievements accomplished under his guidance include the air conditioning of the boiler plant, expansion of the program including the addition of a full-time program director, and what he considers his most important project, the planning and development of apartment units for independent aged persons.

Johnson, his wife, has been the organizing force and president of the ladies auxiliary at the Oklahoma Methodist Manor. They have two sons, John-Ron, a student at Northern Michigan University and Donald T., a Methodist pastor at Blanchard, Okla. Their grandson, Thomas L. Hubert, will live with them in the administrator's residence on the grounds of the home and will be a sophomore at Chelsea High school in the fall.

Johnson has been familiarizing himself with the Home by performing the varied administrative functions including staff direction, purchasing, general interviewing of personnel, admission work, evaluating the staff and reviewing uncompleted projects.

He is also becoming familiar with his new home, at 803 W. Middle, where he has been staying with the Rev. and Mrs. Fall.

Johnson, his wife, has been the organizing force and president of the ladies auxiliary at the Oklahoma Methodist Manor. They have two sons, John-Ron, a student at Northern Michigan University and Donald T., a Methodist pastor at Blanchard, Okla. Their grandson, Thomas L. Hubert, will live with them in the administrator's residence on the grounds of the home and will be a sophomore at Chelsea High school in the fall.

Track Team Runs Away With Regional

Entire Team Gives Top Performance To Outdistance Field of 17 Schools

The Chelsea track team claimed their biggest victory of the year Saturday as they ran away with the State Regional III Class "B" trophy on the local track.

Chelsea piled up 54 points, trailed by Michigan Center, a distant second with 33 points. 15 other teams in Class B were left even farther behind as Chelsea sped to a victorious finish.

Chelsea shot off to a good start in the morning event when Larry Blackwell and Jim Wojciecki finished one-two in the pole vault for trophy on the local track.

Chelsea piled up 54 points, trailed by Michigan Center, a distant second with 33 points. 15 other teams in Class B were left even farther behind as Chelsea sped to a victorious finish.

The Chelsea win was attributed to all team members coming up with a top performance at the same time. As a result the team was able to win by a comfortable margin and nine Bulldogs qualified for the state meet Saturday in Ann Arbor.

The afternoon events started in good style when the 880 relay team of Larry Gorton, Jim Wojciecki, Ted Bennett and Mike Schnaidt won with a time of 1:34.4 to set a new varsity record. From that point on numerous fine performances were turned in.

Grass Lake won the Class D Regional title in competition here with 59 points, far ahead of second place Detroit St. Agatha, 30; and Ypsilanti Roosevelt, 29. The remaining contenders in the Class D competition managed to secure from three to 16 points.

The Chelsea win was attributed to all team members coming up with a top performance at the same time. As a result the team was able to win by a comfortable margin and nine Bulldogs qualified for the state meet Saturday in Ann Arbor.

The first three trackmen to finish in each event from each regional in Michigan qualified for Chelsea competition. Representing Chelsea will be Larry Blackwell and Jim Wojciecki in the pole vault, Rick Slane in the 100- and 220-yard dashes, Doug Weatherwax in the mile, Mike McGinn in the 880-yard run, Mike Bassett in the 120-yard high hurdles, Larry Gorton in the 180-yard low hurdles, the 880-relay team of Larry Gorton, Jim Wojciecki, Ted Bennett and Mike Schnaidt, and the mile-relay team of Jim Wojciecki, Mike Schnaidt, Doug Weatherwax and Mike McGinn.

The afternoon events started in good style when the 880 relay team of Larry Gorton, Jim Wojciecki, Ted Bennett and Mike Schnaidt won with a time of 1:34.4 to set a new varsity record. From that point on numerous fine performances were turned in.

Officer Sibert Commended By Council

Chelsea patrolman Bruce Sibert was awarded a citation by the village council upon recommendation of police commissioner Steve Clark for work performed April 9.

The citation reads in part, "Officer Sibert's alertness, good judgment and courage in this matter are in the best tradition of police work and are a credit to him and the department."

High School Choir Concert Slated Sunday

The Chelsea High school choir, under the direction of DIAnn L'Roy, will present a concert at 3 p.m. May 25.

The choir will be accompanied by Jill Flintoft for the public performance. The program has been divided into two parts. In the first section the entire choir will sing a wide range of pieces including "Kum-Bayah," "I Know Where I'm Going," an Irish Folk Song, "Sanctus" and "Hosannah" by Haydn, "Psalm 150" by Franck, "Michigan Morn Creed" in honor of Michigan Week, "Alleluia" by Thomson and selections from "My Fair Lady" by Lerner-Lowe.

While on patrol duty alone on midnight tour April 9, Sibert noticed two men crouched in a car which suddenly sped away from him. He pursued the fleeing car and after a high-speed chase arrested two men who had escaped from Ionia State Prison and had stolen two cars since their escape.

The citation will be entered on the police record of Sibert, who will leave his position in Chelsea to become a lieutenant in the military police July 21. He is scheduled to graduate from Eastern Michigan University in business the first week in June.

The second part will feature two staged numbers presented by small groups of choir members. The first group will use "Sound of Silence" by Simon and Garfunkle as the basis of their presentation.

The Madrigal Singers will do their version of "The Telephone Hour" from "Bye Bye Birdie," using the set of last year's Chelsea High school production to add interest.

The public is invited to attend. A free-will offering will be taken.



MAYOR'S EXCHANGE: The visiting delegation from Pinconning arrived in Chelsea Monday morning for a parade, tour of the village and numerous other scheduled activities on Government Day of Michigan Week. The touring group paused at the Municipal Building, above, before embarking on the day's activities. They are, from left, Pinconning Councilman Robert Hartly and Mrs. Hartly,

Pinconning Councilman Ben Krupa and Mrs. Krupa, Chelsea Village Clerk Richard Harvey and his wife, Chelsea Councilman Eldon Gorton, Pinconning Mayor John Erdody, Chelsea chairman of Michigan Week, Conrad Hafner, Mrs. Arden Musbach, Chelsea Councilman Arden Musbach and Chelsea Councilman Steve Clark.

Chelsea Has New Mayor for One Day Exchange

Chelsea president Hal Pennington traded visits with the mayor of Pinconning Monday in observance of Government Day.

Mr. and Mrs. Pennington and Mayor Administrator Frederick Erdody and his wife met a delegation from Pinconning in Flint, the halfway point between the two communities.

The Penningtons and Webers greeted with a selection of women were presented with bouquets. Two councilmen and the touring chief of police escorted visitors on a tour of city facilities and two industrial plants.

Meanwhile Mayor John Erdody, Councilman Ben Krupa and his wife and Councilman Robert Hartly and his wife toured village and industrial facilities in Chelsea, escorted by a group of Chelsea officials and their wives.

Pennington enjoys the reputation of being Chelsea capital of Michigan. "You can get any size, shape or taste you'd like... they come imported cheese too," he says. Unfortunately, he is not a cheese lover.

Other features of the little city of 1,450 are two fabrication plants where exhaust systems for General Motors, International and other trucks are made. Mag Line, a magnesium plant where parts for conveyors for airports, loading docks and other similar places are made, and where panels used in the space program are manufactured from the durable, light metallic element, is another Pinconning industry.

At a Gross Electric plant nearby, starters, generators and brakes are manufactured. The city's working population finds employment in these industries or in Bay City, 20 miles south. There a ship building company that constructs ships for the U. S. and Australian navies, provides employment. Ocean freighters come to Bay City through the St. Lawrence Seaway and south through Lake Huron to Saginaw Bay which laps at the edges of Bay City and Pinconning.

Pinconning has a city type government. Residents voted to have the community incorporated in 1981. Several major bonding issues have been approved recently by the residents. In 1962 a \$250,000 bonding proposal for a

new \$500,000 water plant was approved and the plant is now completely installed and working. Last fall a \$230,000 sewer expansion program to run sewers to all parts of the city was completed.

This spring the city bonded \$180,000 for a new city municipal building, including city offices, fire department, library, police department. Bidding has not yet been completed. The library, which will move to the new building upon completion, is supported by a one-mill allotment. City residents and those living in surrounding townships use the library facilities.

The city valuation is just over \$8 million, compared to just over \$20 million for Chelsea. Their \$101,000 budget is approximately half of that drawn up for Chelsea this year, but is operating on 13 mills taxation, compared to 8.30 for Chelsea. However, Mayor Erdody said this millage level is two mills below the limit.

The mayor, just beginning his second term and third year in office, describes his city as "a typical farm area" and said farming supports many of the families living in the area.

(Continued on page three)

Melvin Lamb Is Victim of Kidney Illness

Melvin E. "Red" Lamb, Chelsea barber who received a kidney transplant in December, 1966, died Tuesday at the Cleveland Clinic after a series of illnesses that began last October.

Lamb had been home to see his family in Manchester Mother's Day week-end and returned May 12, one day before he lost consciousness.

Death was attributed to a multitude of causes, according to his sister, Mrs. Victor Wurster.

He had lived at home in Manchester for most of the two and one-half years since receiving the kidney, returning to the Cleveland Clinic each month for a check-up. His condition gradually weakened from October to his death. After returning to the Clinic for removal of a growth on his hip, he contracted a type of meningitis. He stayed at the Clinic for intensive administration of medication and returned home on weekends.

(Continued on page three)

Open House in Beach School Arts, Home Ec

Displays and demonstrations of student work in the Art, Industrial Arts and Home Economics Departments will be among the attractions at the open house tonight at Beach school.

Physical Education class members will give exhibitions demonstrating skills learned during the past year. In addition, the Beach school select choir will present a half-hour concert. The program will begin at 7:30 p.m. in the cafeteria. The open house will end at 9:30 p.m.

Poppy Sale Slated Friday

Poppies will be popping up all over Chelsea tomorrow, when the American Legion Auxiliary and the Veterans of Foreign Wars Auxiliary join forces in the annual poppy sales campaign.

Headquarters will be the Senior Citizens' Korner House at Main and Middle Sts. Members of the two organizations will also be stationed at various locations in Chelsea from 9 a.m. to 9 p.m.

The poppies are made by disabled veterans. The purpose of Poppy Day is to remind Americans of the sacrifices of life and health made by men in the armed forces. In addition, it provides an opportunity for all those wishing

(Continued on page two)



VICTORY SMILES: A smiling group of Chelsea trackmen surround the latest trophy to be added to the high school trophy case Saturday after they outdistanced Michigan Center, 54-33, and 15 other schools. In center Regional Manager Bruce Galbraith awards the trophy to Coach Bert Krupa (pleated shirt) before he was carried off to a quick dousing in the showers by the celebrating winners.

Established 1871 **The Chelsea Standard** Telephone GR 6-3581

Excellence Award By Michigan Press Association
1951-1952-1960-1964-1965-1966

Walter P. Leonard, Editor and Publisher

Published every Thursday morning at 300 North Main Street, Chelsea, Mich. 48118, and second class postage paid at Chelsea, Mich., under the Act of March 8, 1879.

ADDRESS CORRECTION REQUESTED

Subscription-Rates (Payable in Advance)

In Michigan:		Outside Michigan:	
One Year	\$3.00	One Year	\$4.00
Six Months	\$1.75	Six Months	\$2.25
Single Copies	\$.10	Single Copies	\$.10

Service men or women, anywhere, 1 year \$3.00

MEMBER **NATIONAL NEWSPAPER** Association - Founded 1885

National Advertising Representative:
MICHIGAN NEWSPAPERS, INC.
257 Michigan Ave.
East Lansing, Mich. 48823



Washington Report by Congressman MARVIN L. ESCH

The question of who shall serve in the armed forces when not all persons must serve has been a troublesome one. For one person to be required to spend two years and perhaps risk his life, while another stays home to begin a career, marriage and family is unfair. There is no completely "fair" way to draft men into military service.

The present Selective Service system is riddled with inequities and uncertainties. Two boys in exactly the same circumstances may be treated very differently by their local draft boards. States in which draft boards are efficient, such as Michigan, consistently draft more than their share of draftees. Every young man is liable for the draft over a period of seven years—making it impossible for him to make national career and educational plans. No man is secure in making commitments or planning his future until his 24th birthday.

The President this week, proposed a major change in the Selective Service System which would select those who are to serve in random order. All young men would be included in the prime age group of 18 to 24, and will be vulnerable for the draft during one year. Although the draft is for college students, they will be placed in the prime age group immediately upon graduation. College will not provide a haven from military responsibility.

The order for call up will be determined on a national basis. The selection will be made on a random basis with every person bearing an equal chance for induction.

I was disappointed that the President did not include in his recommendations a program of national standards for deferment. I will strongly push for an amend-

ment of his proposal to insure that all draft boards in the Nation apply standard considerations for deferment purposes.

As the President said in his message to the Congress "any system which selects only some from a pool of many will inevitably have some elements of inequity." However, I believe that this proposal will reduce the inequities to a minimum and I am hopeful that it will be promptly adopted by Congress.

Choral Concert...

(Continued from page one)

selections as "Do Re Me," "This Is My Country," "Supercalifragilisticexpialidocious," "Chim Chim Chere," "This Train," "God Bless America," and other familiar songs.

The choruses are directed by Miss Connie Bauer, elementary music teacher, and Tom Nikke, high school teacher at South school. The public is invited to the program.

Poppy Sale...

(Continued from page one)

to contribute to the rehabilitation of disabled veterans and to child welfare to make an offering.

The contributions are devoted entirely to these two projects and most contributions remain in the area in which they are made. The "Buddy Poppies" of the F.V.W. and the crepe paper poppies of the American Legion are sold nationwide once a year to offer the average person to contribute to the welfare of men in uniform.

LEADER IN TART CHERRIES

Michigan leads the nation in the production of tart cherries. Red, yellow, blueberries, cucumbers for pickles and eastern white winter wheat.

Cleary College is accepting applications from those who want to specialize in business

Cleary College offers one, two and four-year programs leading to a diploma, associate degree or bachelor's degree. At Cleary you learn more so you can earn more upon graduation. And the prestige of a Cleary business education assures you of a more rewarding future. Because Cleary College specializes in training you for a successful management, accounting or secretarial career, more jobs are available than Cleary can supply graduates to fill.

When terms start:

Summer.....June 23, 1969
Fall.....September 22, 1969

Day and Evening Classes—8 a.m. through 9 p.m. daily; evening class hours available Monday through Friday for one, two or three nights a week.

If you think you can cut it...
CUT IT.

Please send me your free catalog. I am interested in the _____ term.

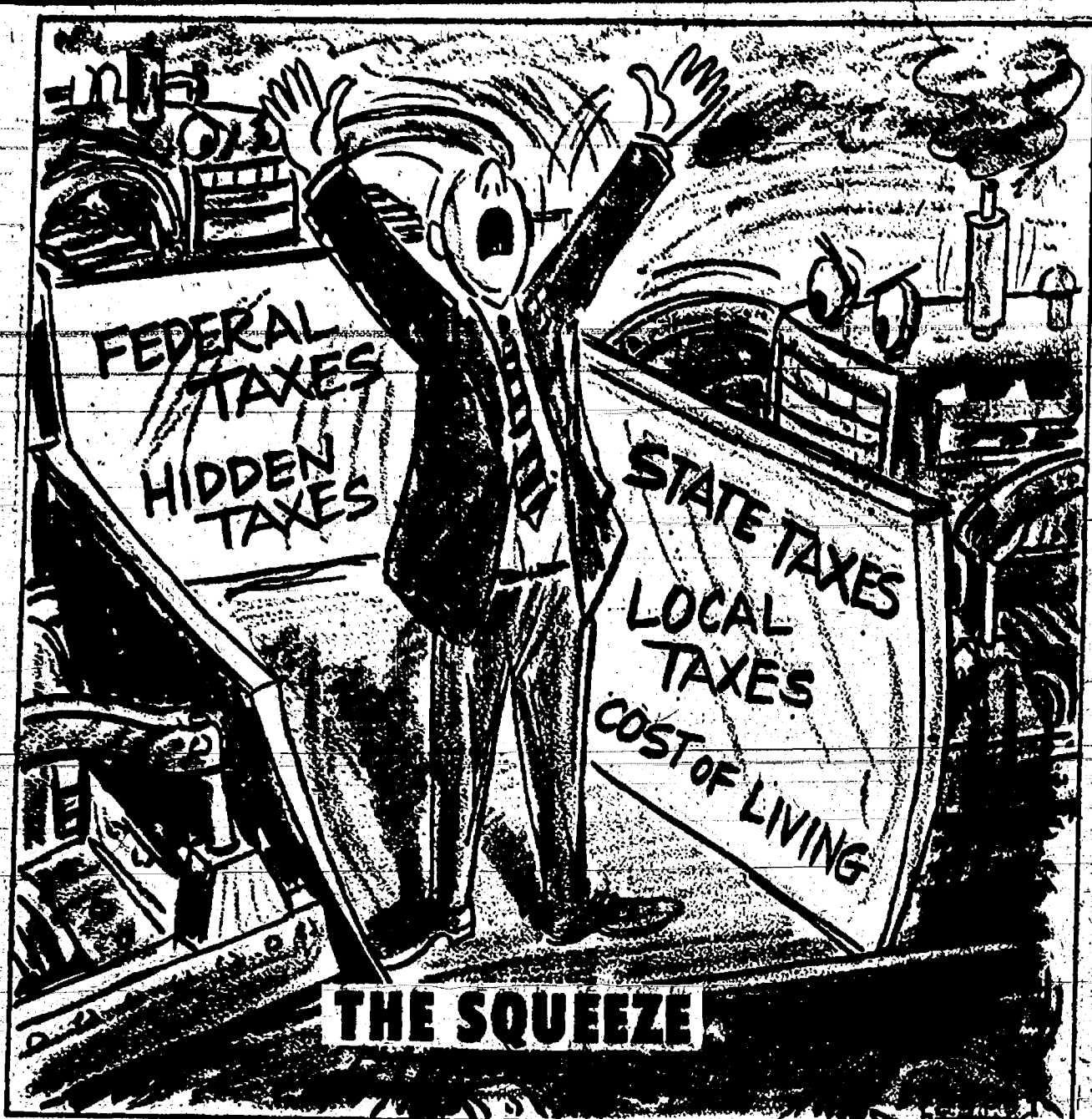
Name _____

Address _____

City _____ State _____

Zip Code _____ Phone _____

CLEARY COLLEGE
SPECIALISTS IN BUSINESS EDUCATION SINCE 1883
2178 Washtenaw, Ypsilanti, Michigan 48197 Phone HU 3-4400



★ MICHIGAN MIRROR ★

By Elmer E. White, Secretary, Michigan Press Association

Cities Department

A proposal for a new department of state government to deal exclusively with the problems of Michigan's cities is gaining support in the legislature and may get Gov. William G. Milliken's nod.

Sen. Emil Lockwood, R-St. Louis, and Rep. J. Robert Traxler, D-Bay City, are sponsoring identical bills to create a state department of community affairs.

Milliken asked an advisory committee of legislative leaders recently to study the feasibility of such a department. Lockwood, as Senate majority leader, is a member of the unit.

An executive office aide said the Governor apparently anticipated no legislative action this year when he suggested the need for an urban affairs department in a message to the legislature.

However, the aide added, introduction of the Lockwood and Traxler bills means the "whole timetable might be pushed forward" by Milliken this year.

Under the Lockwood-Traxler plan, the proposed department would co-ordinate state and federal programs in such urban fields as housing, mass transportation, outdoor recreation, water resources, employment, poverty, and health services.

The department would be the 20th and final one permitted under the 1963 state constitution. The present 19 principal departments were set up four years ago.

Competition for the 20th spot is increasing. Some lawmakers want a new department of youth services; others are demanding that the liquor control commission be made a separate agency.

Traxler and Lockwood said the pressing needs of Michigan's cities underscore the reasoning for a department to administer and develop urban programs.

"Seventy-five percent of our citizens live in urban areas, and yet we do not have a state department that is primarily concerned with the quality of life in our urban areas," Traxler said.

"Events in the cities during the past several years have exposed conditions of disadvantage and social failure of a depth previously unrecognized."

The two legislators propose that the State Housing Development Authority, now attached to the Department of Social Services, be transferred to the new agency. Enforcement of state housing codes would be shifted from the Department of Health.

Lockwood said the community affairs department would also be given responsibility for the resettlement of persons displaced because of public works projects. That job is now handled by the State Administrative Board.

Park Problems

Continued bickering within Michigan's congressional delegation has resulted in an impasse over creation of Sleeping Bear Dunes National Park, a conservation

Douglas W. Scott of the Wilderness Society of Michigan said the differences of opinion concern ways of protecting private property in the Benzle-Lelanau area where the park would be located.

He urged the State Natural Resources Commission to petition President Nixon, Congressmen and cabinet members to support Michigan's Sen. Philip A. Hart's bill to create the 61,000-acre park along Lake Michigan in the northwest part of the state.

Scott said an intensive information campaign should be launched by the Department of Natural Resources to alert Michigan residents to the "great importance" of the issue.

Federal action is vital, he said, because "with every passing day unplanned, uncontrolled development, rampant subdivisions of more cottages and summer homes, and honk-y-tonk encroachments are taking their toll."

Mrs. Virginia L. Prentice, chairman of the State Sierra Club, suggested the state donate the land to the federal government for park development.

Since purchasing the land "may be of more than usual significance" during this session of Congress, Michigan should show "good faith" by making a gift of the Dunes area she said.

Uncle Lew from Lima Says:

DEAR MISTER EDITOR:

Zeke Grubb brung this newspaper clipping to the session at the country store Saturday night. It was a piece about this new Michigan law that says words like "jumbo pint" and "giant quart" can't be used on jugs, jars, bottles or cartons. The law, Zeke allowed, is saying there is only one kind of pint and quart, and they can't be more or less.

Zeke told the feller he was strong for the law, but he was worried cause folks in this country need that kind of law. We have got to the place where we can't say what we mean, Zeke allowed, so we use words that cover up what we say.

Fer instant, Zeke said, he had saw where the National School Public Relations Association was agin calling a youngun dumb, but say he "is capable of doing better." If a student is selfish, just say he "seldom shares with others." And if he lies, you explain to him and pa that he "has a tendency to stretch the truth." A youngun that cheats "depends on others to do his work."

Zeke said he is in favor of calling a spade a shovel. One of the big problems in this country, he allowed, is that the Government speaks one language and the people another. Some time back, this Government worker was fired cause the Federal Aviation Administration said he couldn't communicate. The feller-just-and-got his job back. The court ruled he hadn't been give a chance to learn how to communicate by taking the FAA writing course.

Zeke allowed he ain't heard any more about that feller, but he figgers he is somewhere writing in FAA to people that read Eng-

lish. He is telling them their requests has been give "maximum deliberation with optimal consideration," declared Zeke, and they never know the FAA is thinking about their request, but ain't done nothing.

Ed Doolittle was full agreed with Zeke, and thanked Zeke fer gitting reading and writing on the agenda. The only Government agency that writes clear is them that writes to folks that already has the message, said Ed. Fer instant, he has saw where this OEO legal aid outfit in California put out a book of instructions for people wanting welfare. The book said "if you don't want to work, welfare cannot force you to work."

Personal, Mister Editor, I know you try to use the best word you can find to inform folks as clear as you can. I recollect it was you that said once a good rule fer writing is the same as few carpentering, measure twice and saw once.

Yours truly,
Uncle Lew

MIKE'S TV ANTENNA SERVICE
Motorola Automotive

Sound Systems
Winegard Home Electronics
TV Antenna Systems

Insurance Claims
For Free Estimate, Call
Pinckney 878-3258
or 769-0130

BARBERS
for
MEN
WOMEN
and
CHILDREN

Welcome Students!
says Dom Dascala, M-36

DASCOLA BARBERS
THREE SHOPS:
Arborland 971-9975
Maple Village 761-2733
Hours: Mon., Thurs., Fri.—10 a.m. to 9 p.m.
Tues., Wed., Sat.—9 a.m.-6 p.m.
ON CAMPUS: 688-9329 Daily 8:30-5:30

JUST REMINISCING

Items Taken from the Files of The Chelsea Standard

4 Years Ago...

Thursday, May 18, 1965—

While police held back hundreds of spectators, more than 50 firemen from local and outside departments battled a raging blaze at Chelsea Heat Treating, Inc. for more than an hour Saturday before bringing it under control. Damages were estimated at approximately \$120,000.

Four girls from Chelsea won Michigan Higher Education Authority scholarships. It was announced last week. They are Jane M. Faust, Sandra D. Osborn, Linda M. Sanders and Kristina Kayser.

The first three plan to attend Michigan State University and Kristina will enroll at the University of Michigan.

The adoption of a constitution and election of officers took place at a recent meeting of the newly organized Chelsea Education Association, a chapter of the Michigan Education Association. Officers are Gary Jackson, president; Mrs. Robert Winkie, vice-president; Mrs. King Hanna, secretary, and Mrs. William Hine, treasurer.

Chelsea's observance of the 12th annual Michigan Week will be highlighted by the annual exchange of mayors and correlated with the dedication of Sugar Loaf Lake Campgrounds Monday. Village President Howard Haselschwardt and Mayor Ross Lower of Sturgis will exchange municipal responsibilities.

Money to run the schools for the 1965-66 school year will be voted on at the annual operational millage election Monday. The 2.5 mill levy to be voted on Monday will increase the total by 1.22 mills over the 1964-65 year.

Douglas Warren, specialist 4 in the U. S. Army, has returned to Chelsea after two years of military service. He is again associated with his father at Jack's Barber Shop. He received the Army's Good Conduct award and was discharged from his latest assignment at Ft. Hood, Tex.

Winning trophies were presented to Local 487 No. 2 team in the Junior Boy's League which battled each Saturday morning at Chelsea Lanes. Getting awards were Jack Risner, Mike Roark, John Freeman, Bob Taylor and Norman Green.

14 Years Ago...

Thursday, May 12, 1955—

John Carman, sergeant in the police department at Sylvan Lake, near Pontiac, is to be assistant Chelsea chief of police. Action on his appointment to the post was taken at Monday night's special meeting of the Village Council on recommendation of the police committee. He will serve as an understudy to Police Chief George Doe for a month, in preparation for his eventual appointment as police chief July 1.

In keeping with a custom of several years standing, Central Fibre Products Co. employees and management made another substantial contribution to the American Cancer Society at the annual company dinner for plant and office employees, officers and guests. Total contribution was \$1,487. Special guests included Dr. Harry Nelson, former national president of the American Cancer Society, Dr. Alexander Ruthven, former U. of M. president and

Dr. A. C. Furstenberg, dean of the University of Michigan Medical school.

Ted Pearson, Jr., president of Oxford, who will be in Chelsea Monday for Michigan Week's Exchange of Mayors Day, will be entertained at a business luncheon in the Knights of Columbus hall.

The Village Council approved a budget of \$100,000 for the general fund, believed to be the highest in the history of the village. Usually the annual figure is approximately \$100,000. Village taxes will remain at the present 10-mill rate.

John Warren's car was stolen from the garage at the rear of his home Saturday night. Police theorize that it was taken by an escapee from Cassidy Lake Technical school who was reported missing at the school Saturday.

Dr. J. V. Fisher and Earl Besman, whose terms as members of the Chelsea Agricultural Schools Board of Education expire this year, have indicated they will seek re-election at the annual election June 13. A petition has also been circulated to have the name of George Knickerbocker placed on the ballot.

At 11 p.m. Saturday, at the Methodist Home crossing, a west-bound freight train collided with a car which had stalled on the track. Two men and a woman had managed to get out before the collision which pushed the car from the track and severely damaged it.

24 Years Ago...

Thursday, May 17, 1945—

Chelsea high school is presently accredited for a two-year period and is visited by a representative of the Bureau on alternate years. The visitor for the Chelsea high school was Dr. Michael Pargment, who recently spent a day in our school. In his report to Superintendent Johnson and the Board of Education, he indicated that he found the school operating in a satisfactory manner, and was impressed with the calibre of teachers. He added that a number of classes were too large, with 30 to 40 students in many.

Plans were made Tuesday evening to start remodeling the Municipal Building on E. Middle St. The Lydia I. Jones scholarship has been awarded to Wilma Schweinfurth for the coming year. This scholarship, based on participation in campus activities and on school ratings is awarded to two students each year. She will be a Junior at MSNC next year.

Mr. and Mrs. Julius Eisele have received word that their daughter, Marion Eisele, of the U. S. Naval Repair Base, San Diego, Calif.,

MONEY TROUBLE?
ONE PLACE TO PAY!
Credit Management Service
662-2565
215 South Fifth Ave.
Ann Arbor
State Licensed and Bonded

has been advanced to the rank of Yeoman Third Class.

Mr. and Mrs. Don Martin, owner of the Gamble store, announced Grand Opening sale at their store where they have redecorated, scaled new fixtures and rearranged their store for customer convenience. On March 1 they took possession of the Quality Shoe Store adjacent to their original store and connected the two buildings.

On Friday, May 18 the Chelsea High School Concert Band will present its annual spring concert under direction of Henry E. Busch with Rollin Tuttle as guest conductor. John Wellnitz will be director.

Clifford Haydlauff was president of the 20-30 club Friday evening. Others elected were William Henry Setz, secretary, Doris Whitaker, treasurer, and Reuben Hartmann, corresponding secretary.

34 Years Ago...

Thursday, May 16, 1935—

Because of difficulties anticipated in the construction of the sewer project planned by village officials as a work relief project the plan has been abandoned. A replacement work relief project has been approved by the county. (Continued on page five)

Howell Livestock Auction

The Wise Owl Says Ship to Howell
SALE EVERY MONDAY, 2 p.m.
Phone 546-2470, Elm Franklin
Mason 677-8941

Market Report for May 1

CATTLE

Steers and Heifers:
Choice, \$31 to \$34
Good, \$28 to \$31
Ut. Std., \$24 to \$26
Fed-Holsteins, \$26 to \$29

Cows:
Heifers, \$24 to \$26.10
Ut. Comm., \$22 to \$24
Canners-Cutters, \$20 to \$22
Fat-Yellow-Cows, \$22 to \$24

Bulls:
Heavy, \$25 to \$27.25
Light & Common, \$22 to \$24

Calves:
Farms, \$40 to \$45
Good-Choice, \$38 to \$42
Cull-Med., \$34 to \$38
Heavy-Deacons, \$40 to \$43
Light-Deacons, \$36 to \$40

Feeders:
Good-Choice, \$30 to \$36.50
Common-Med., \$26 to \$30
Dairy Cows, \$27 to \$35

HOGS

Bushers:
180-lb. to 240-lb., No. 1, \$25 to \$25.50
190-lb. to 240-lb., No. 2, \$24 to \$24.50
240-lb. and up, \$22 to \$23

Sows:
Fancy Light, \$20.50 to \$21
300-lb. to 500-lb., \$20 to \$20.50
500-lb. and up, \$19 to \$20

Beers and Stegs:
All Weights, \$17 to \$20.50

Feeder Pigs:
Per Head, \$17.50 to \$24

SHEEP

Wooled Slaughter Lambs:
Choice-Prime, \$29 to \$32
Good-Utl., \$20 to \$29

Ewes:
Slaughter, \$8 to \$10.50

Feeder Lambs:
All Weights, \$26 to \$29

GERANIUMS

35¢
or 3 for \$1.00



69¢
or \$7.50 doz.

POTTED PLANTS

Hardy Mums 35c ea. or \$3.00 doz.
Tuberous Begonias 69c, \$7.50 doz.
Hanging Baskets of Ivy, Geraniums
or Hanging Begonias \$3.00

FLOWERING PLANTS

Flowering Plant Flat, 4 doz. plants, \$1.75
Flowering Plant Flat, 8 doz. plants, \$3.50

★ Petunias
★ Zinnias
★ Astors
★ Marigolds
★ Moss Rose
★ Phlox
★ Pansies

★ Salvia
★ Snapdragons
★ Carnations
★ Alyssum
★ Delphinium
★ Ageratum
★ Dwarf Dahlias

All Vegetable Plants 50c per doz.

VEGETABLE PLANTS

Vegetable Flat of 4 doz. plants \$1.50
Vegetable Flat of 8 doz. plants \$3.00

★ Tomatoes
(Most popular varieties)
★ Peppers
★ Cabbage
★ Brussel Sprouts

★ Broccoli
★ Sweet Onions
★ Egg Plant
★ Head Lettuce
★ Cauliflower

All Flowering Plants 50c per doz.

OPEN EVERY DAY
from 8 a.m. to 9 p.m.

CHELSEA GREENHOUSE
MEMBER FTD — WE TELEGRAPH FLOWERS ANYWHERE
7010 LINGANE ROAD, CHELSEA

PHONE GR 6-6071

Council Briefs

A motion made and approved Tuesday evening's regular Village Council meeting that the Council commend Patrolman Robert S. Sibley for his excellent work April 9.

A motion made and approved the Johnson & Lillard to do work necessary to convert the Sibley station to a pumping station per engineer and specifications.

A motion made and approved to adopt a resolution that a public hearing be had on the application of Mobil Oil Corp. for a new 100-gallon storage tank at 1-94 and 1-94 and 1-94.

A motion made and approved to present the present billing matter in the Electric and Water department to Chelsea High School after the new equipment arrives.

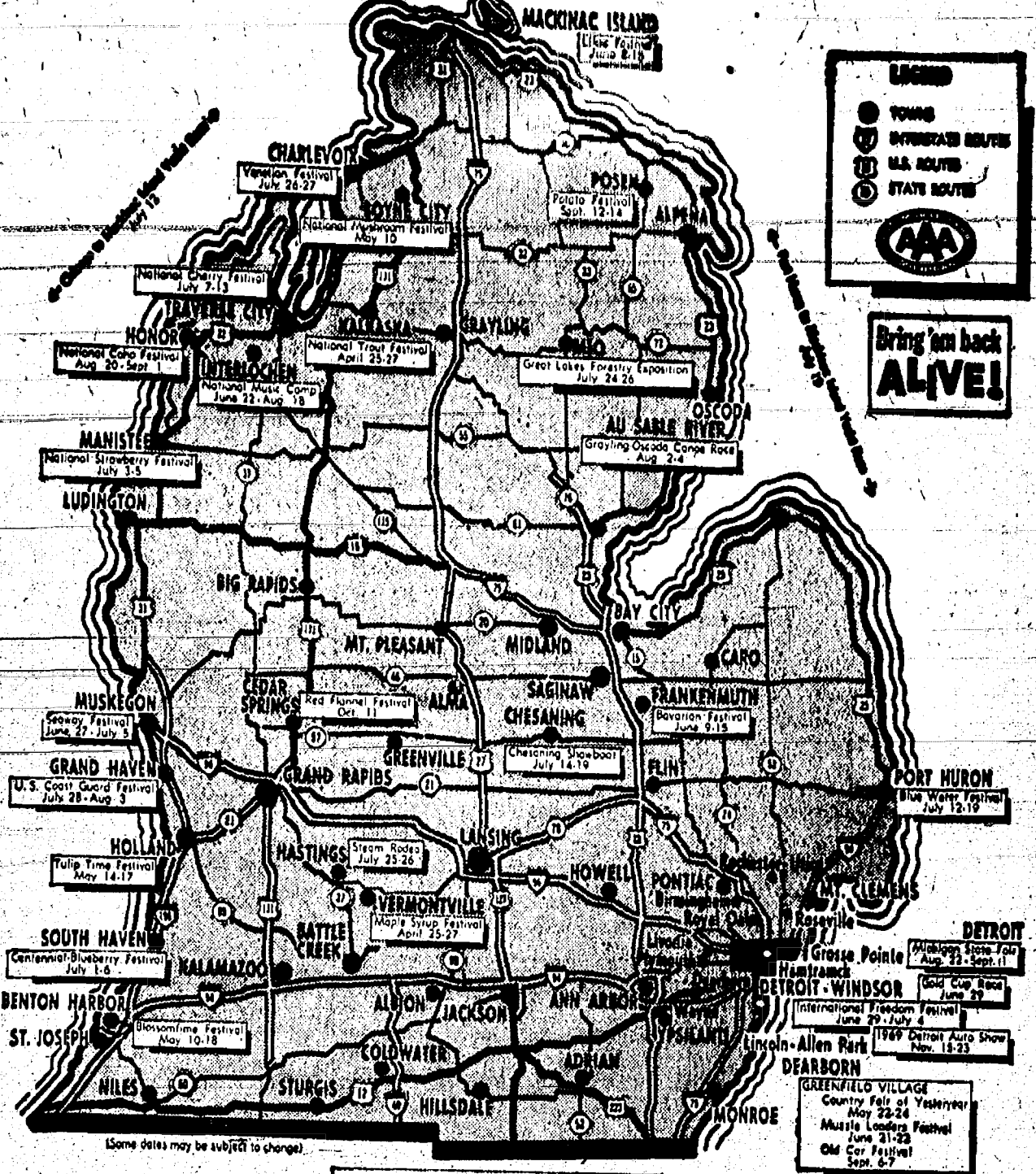
Detailed accounts of the activities at Pinconning and Chelsea Mayor Exchange Day were given.

A discussion was held regarding the need of new restrooms at the Park. The matter was tabled for further study.

A motion was made and approved to make payment to the American Legion Post 81 for the large share of Memorial Day expenses.

A motion made and approved to purchase equipment necessary for the Sewage Treatment Plant to make phosphorus testing.

Michigan Events - 1969 Highlights



Methodist Home Names Administrator

(Continued from page one)

The first two buildings of the five-building set, scheduled for completion this summer and will provide eight living units and a new type of service at the Home. The project will eventually provide 24 living units for active retired persons who are able to care for themselves.

During the time the Rev. Fall was administrator the activities program flourished and expanded to the point that the residence council pointed out a need for careful budgeting of time to enable residents to take advantage of all the activities available. This was not a problem when the Rev. Fall first came to the Home.

The residence council itself was organized in February, 1967, as a representative group of members who plan activities and allow residents to have a larger voice in the functioning of the home.

Other program additions include group discussions and shopping and cultural trips in the new Checker bus.

The Rev. Fall plans to remain in the field of retirement homes, which he describes as an "exciting field. I feel called to this type of work."

He is aware of a few problems facing retirement homes, mainly financial. One problem that has already pinched homes in some areas, especially newer ones that have not had time to establish a clear record of community service, taxation, Chelsea Methodist Home, and most others, enjoy a tax-exempt status, but recent governmental searches for new sources of revenue have caused this status to be eyed carefully in places.

The Rev. Fall also describes the kind of homes find themselves in when rising labor wages and other operating costs cannot be offset by increasing fees, since pensions and social security do not vary with the cost of living.

This has created a need for new labor-saving methods.

Fortunately, Chelsea Methodist Home is supported by church benevolent funds, endowment funds and gifts which enables program improvement and additions to facilities.

The home shares a \$1 million fund with another home and an executive office. The Rev. Fall feels one of the prime functions of the home administrator is to "be aware of finances" that is, find a qualified firm to supervise funds.

In addition to his responsibilities at the Home, the Rev. Fall became the first president of the recently organized Michigan Non-Profit Homes Association, comprised of administrators of the 130 non-profit homes in Michigan.

He has also been director of the Michigan Gerontology Society, a state-wide organization of persons in all branches of service to the aged.

Exchange Mayor

(Continued from page one)

Area residents like to fish, "can hardly wait for deer season" and frequent golf courses. Erdody enjoys bowling, as do many other Pinconning persons, and averages 168. The state government has purchased land for development of a park a mile and a half from Pinconning. The park, expected to be developed in the near future, will provide additional recreation for the community.

One of Erdody's big projects was the establishment of a volunteer ambulance service for five townships and the city. A dollar was collected for each person to be served by the ambulance and \$4,000 was used to purchase a 1966 ambulance this spring. The remaining \$2,800 will pay for gas and training for the 20 volunteers. The men have already completed training and are certified by the Red Cross.

In the past the service was provided by undertakers, but when the new state law requiring two men at all times became effective, the undertakers could no longer afford to supply the service.

The visiting mayor was quite interested in Superior Ambulance Service and the presence of a unit in Chelsea for this reason. He was also impressed with Pierce Park, "a nice little park," where he first stopped as he came to Chelsea in the morning, and the cleanliness of the streets.

He said spring has arrived here approximately two weeks before arrival in Pinconning.

Pinconning has one of the largest high schools in the area—approximately 2,000, fed into by three junior high schools in the surrounding townships. Two elementary schools start the education for the youngest generation in Pinconning. Their mayor enjoyed his visit to Chelsea High school, where he admired the campus-type design.

FASHION RULES FOR MEN

There are a few basic rules for the well-dressed man or boy should follow. Socks should match shoes or trousers in color. The necktie should harmonize or complement the suit in color. If the jacket or suit is patterned, the tie should be plain.

Subscribe Today To The Standard!

MICHIGAN'S TOP DAIRY HERD

Michigan's top dairy herd for 1968 produced an average of 19,781 pounds of milk and 708 pounds of butterfat. The milk production average produced by the Holstein herd of Howard Schliker, Route 1, Bay City, was the highest in the 60-year history of the Michigan Dairy Herd Improvement Association.

Michigan Week SPECIALS

- at -

DANCER'S

BLOUSES . . . Only \$1.19

Plain and patterns.
Perma-Press, of course.

LADIES SLACKS

10% OFF

(For Michigan Week Only)
10% reduction on ANY Ladies Slacks in our entire stock. SAVE!

CONNIE SHOES

A select group on our main floor.

Reduced one-third

MEN'S SWEATERS

REDUCED 10%

To Celebrate Michigan Week
Save 10% on any man's sweater—pull-over or cardigan. New styles and colors.

New Opaque Pantie Hose

Chocolate-brown, navy.
They're new at Dancer's.

DANCER'S

Chelsea's Friendly Dept. Store

"MILK helps me make Food that's nutritious As well as delicious!"

"I use milk to bake A really scrumptious Pie, muffin or cake! I always win all My family's praise With milk . . . It's so Good so many ways!"

WEINBERG DAIRY

QUALITY PASTEURIZED DAIRY PRODUCTS
OLD US-12 PHONE GR 5-5771

Kiwanians Attend Reception in Jackson for International President

Mr. and Mrs. Floyd Fowler and Don Turner attended a dinner meeting and reception for the International President of Kiwanis at Jackson Thursday evening. The honored guest, Harold M. Heinbaugh, was the principal speaker at the meeting. Also present were his wife and the president-elect and wife, Mr. and Mrs. Robert P. Weber, from Detroit.

Harry Young, the oldest living charter member of Kiwanis-Club, was also present.

Jackson, the host club, is also the parent club of Chelsea Kiwanis.

At the regular dinner meeting Monday night Chelsea Kiwanis Club members discussed the caucus scheduled for Tuesday night, where Division 10 officers were elected. Two voting members from Chelsea attended and Chelsea Kiwanis Club secretary Floyd Fowler supervised elections.

Nominated as Lieutenant governor was Walter Henne, past president of the Ann Arbor Eastern Kiwanis Club. For the past two years he has been chairman of the Division 10 Circle K committee. Under his leadership the Circle K club was organized at the University of Michigan, as an organization for college age students similar to Key club.

Also nominated was Martin Belser, past president of the Brighton Kiwanis club as Lieutenant Governor-elect, a new office. These two men will take office in October.

Melvin Lamb Is Victim of Kidney Disease

(Continued from page one)

His weakened condition steadily worsened from then on with the onset of bronchitis and blood infection.

Lamb, 34, received the kidney from a young boy in late December, 1966 after waiting at the clinic for eight months for a suitable donor. During that time he used a kidney machine twice a week to stay alive. Both of his diseased kidneys had been removed in May, 1966. He had been hospitalized intermittently since October, 1965 for the kidney ailment.

During Lamb's treatment several local groups gave money to help the family pay for some of the medical expenses. "Red Lamb Funds" were established in Chelsea State Bank and Manchester Union Savings Bank.

Lamb was employed as a barber by his uncle, Sam Brown, in Chelsea, before his kidney ailment forced him to stop working.

34-year-old Lamb lived at 20533 Logan Rd., Manchester.

He was born April 30, 1935 in Manchester to LeRoy and Goldie Brown Lamb. He married Jeanette Guenther Sept. 20, 1956. He was a member of Immanuel United Church of Christ, Manchester, and Wastewick County Barber's Association.

Survivors include his widow; a son, William John at home; a daughter, Jackie Ann, at home; parents Mr. and Mrs. LeRoy Lamb of Manchester; a brother, Eldon, and sister Mrs. Victor (Irene) Wurster of Manchester; several nieces, nephews, aunts and uncles. He was preceded in death by a sister.

Funeral services will be at 1:30 p.m. Friday at Immanuel church. The Rev. Ralph Kuether and the Rev. William Prager will officiate. Burial will be in Oak Grove Cemetery, Manchester.

The body will lie in state at the church from noon until the services. Friends may call at the Jenter Funeral Home, Manchester.

More than 100,000 French parasites have been propagated at Michigan State University and released throughout Michigan and the northeastern states as a possible "natural" control of the Dutch elm beetle. In an effort to find more parasites to control the disease-producing beetle, MSU is co-operating in research in Austria, France, Germany, Holland, Switzerland and Yugoslavia.

Jaycees Start Campaign for School Election

Chelsea Jaycees made plans Tuesday night for a five-point "Get Out and Vote" campaign for the June 9 school board and millage election.

The Jaycees will not show support or non-support as a chapter for the issues to be decided by the balloting. Their five-sided program includes—posters and articles in The Chelsea Standard urging people to vote;

—taxi service to be provided free by Jaycee members for voters needing transportation to and from the polls;

—signs and maps giving directions to the polls;

—an informational pamphlet explaining what the millage is in dollars and cents and a workable formula so each voter can calculate his and her tax for the coming year based on the proposed millage;

—babysitting service provided at no cost by the Jaycee Auxiliary for persons with small children at home.

"We feel strongly that an issue as large as the one before the public should not be decided by a few voters as decided the last election." The issues affect all people in the school district and they should make their feelings known, Jaycees believe.

BURRON ROUNDUP PLANNED

Death Valley, Calif.—Since gold rush days herds of wild burros, ranging freely through desolate Death Valley, are eating themselves out of a home. The National Park Service is planning a roundup—and anyone that can catch one can have it.

Be Budget Wise . . . Go Budget-Wise

MAY DISCOUNTS

FREE Wastepaper basket

WITH THE PURCHASE OF EACH FAMILY SIZE

89¢

BUDGET-WISE STORE

Chelsea's First Discount Store
116 South Main Street Phone GR 9-1611

Head & Shoulders

SAVE ON Head & Shoulders

AMERICA'S FAVORITE SHAMPOO

YOU PAY ONLY \$1.32 in the tube.

NEW! Secret SUPER ANTI-PERSPIRANT SPRAY DEODORANT

5 oz. Size \$1.35

YES

WE ARE MAKING LONG-TERM FARM REAL ESTATE LOANS

SEE US

Federal LAND BANK Association

Ann Arbor, Mich. 48103
P. O. Box 1006
Ph. 769-2411 8645 Jackson Rd.

for a lawn that would look good in your living room...

Only Simplicity gives you No-Scalp mowing!

Look at the mower in this picture. It's actually following the ground and not the tractor. This is the way Simplicity's patented free-floating mower swivels over your lawn—never scalping, never missing. It's exclusive on every Simplicity tractor from 5-hp up to 12-hp. And every tractor and every attachment has rugged, reliable Simplicity construction designed to give you years of service. Don't buy any power mower or garden tractor until you've seen the full Simplicity line. Visit the dealer nearest you. He'll do wonders for your lawn—and maybe your living room! Simplicity Manufacturing Company, Port Washington, Wis.

Simplicity

CHELSEA HARDWARE

110 SOUTH MAIN STREET PHONE GR 9-6311

**Ads
Taken
Till 5 p.m.
Tuesday**

**IT'S EASY TO
BUY-SELL-RENT-
HIRE & FIND WITH**

WANT ADS

Just
Call
GR 5-3381

WANT ADS

**The
Chelsea Standard**

WANT AD RATES

PAID IN ADVANCE—All regular advertisements, 50 cents for 15 words or less each insertion. Count each figure as a word. For more than 25 words add 2 cents per word for each insertion. "Blind" ads or box number ads, 50c extra per insertion. CHARGE RATES—Same as cash in advance, with 10 cents bookkeeping charge if not paid before 5 p.m. Time day preceding publication. Pay in advance! Each ad stamped and save 10 cents. DISPLAY WANT ADS—Rate, \$1.10 per column 1 inch, single column with only one, two and three line type. CARDS OF THANKS or MEMORIALS—Single paragraph style, \$1.00 per insertion for 10 words or less; 1 cent per word beyond 10 words. Minimum, 1 inch. COPY DEADLINE—5 p.m. Tuesday week of publication.

FOR SALE—1965 Kenmore dryer, copertone, good condition. Ph. 475-5473 after 4 p.m. 46tf

"HOMES"
"It takes a heap of living to make a house a home."
Will Rogers

It also takes a lot of experience, talent, and money to make a dream home a reality.

W. C. Weber
Construction Co.

—16 Yrs. Experience.
—Large choice of Designs and Plans.
—F.H.A. Financing.
—Our property or yours.
12290 Jackson Rd., Chelsea 475-2828 or 475-2611 46tf

FOR SALE—F-100 Ford pickup, 1962; New Idea manure spreader. Good running. GR 9-5941. 48

USED EQUIPMENT

TORO PONY Riding Mower
SIMPLICITY 600 WONDERBOY With 32" Rotary Mower
HUFFY Roamer Rider
GOODALL Self-Propelled 32" Rotary Mower
SIMPLICITY 9-hp Landlord with 42" Mower
SPRINGFIELD 7-hp with 38" Mower, Snow Blade and Chains
SEARS 6-hp. Reel Rider
4-hp. SIMPLICITY Rider with 30" Reel

Chelsea Hardware
Phone GR 9-8311. 48

RUMMAGE ITEMS wanted for St. Mary's Building Fund sale, June 20-21. For pick-up phone 479-8377 any time. 50

WORK SHOE HEADQUARTERS

Famous Red-Wing Brand
\$12.95 to \$28.95

Foster's Men's Wear
34tf

I WISH to baby-sit in my home. Phone 475-8101. 42tf

ATTENTION: Morality erects buildings all winter if you are in need of a commercial or agricultural building order before winter and want to save money. Quality materials and workmanship guaranteed. Call Petersburg 278-1855 collect or write to Box 84, Petersburg, Mich., for all your pole building needs see Morality Pole Builders today. 18tf

VOCO FARM INTERIOR WHITE, Barn Spraying, Cygon 2-B insecticide fly control. John L. Bird, 517-547-5447. 10

WANT ADS

FOR RENT—Modern farm house, convenient location to Chelsea, Manchester, Saline, Ann Arbor. Write letter with references to James C. Hendley, Box 206, Chelsea, 48106. 685-5687. 84tf

HAMMOND ORGAN teachers
wanted to teach in their homes. Call Grinnell Brothers, Ann Arbor, 685-5687. 84tf

KNAPP SHOES
For Cushion Comfort
for Men, Women and Children

Specials every month
Robert Robbins
475-7282
Authorized Representative 21tf

FOR RENT—Country setting beautiful new duplex, furnished, one bedroom, dining, kitchen, living room, the bath. Utility sliding glass doors to lovely patio at back. No children or pets. Ph. 428-8188. 27tf

Rent a Jaycee

To help with your odd jobs, too heavy for available school-aged help, funds will be used for the Jaycees Community Development projects. The amount of donation will be left up to the individual. Business jobs, the donation will be negotiable. Dates are May 17 to 24. Call 475-7325 or 475-7684. 48

FOR SALE—30" Norge gas range. Phone 479-2461. 49

FOR SALE—B-flat trumpet, \$35. Call 475-7118. 48

WANTED—Lady for light housework and assist blind lady, after June 18th. 475-8511. 48

Four Slide

Four Slide Tool and Die Makers and set-up men.

Leading established company, top wages, excellent fringe benefits, permanent positions, overtime.

Associated Spring Corporation

PLYMOUTH DIVISION,
40300 Plymouth Rd., Plymouth, Mich. 48170

An Equal Opportunity Employer

Gem Travel Trailers
and Campers

PICK UP COVERS
4" \$100.00
26" \$179.00 and up

Triangle Sales
Chelsea 475-4302 40tf

HOUSE TRAILER for sale. Reasonable. 475-5533. 44tf

REAL ESTATE
Need Listings

Lake Property - Farms
Vacant Parcels

LOCAL SALESMAN
H. T. HAYNES
18835 Sauer Drive, North Lake
Phone 475-7157

EDWARDS REAL ESTATE
AND INSURANCE
Phone 482-8570 81tf

WANT ADS

WANTED—Apartment or house to rent. Two children. About \$85 a month. Call 475-2884, from 6 a.m. to midnight. 49

UPSTAIRS APARTMENT for rent in Chelsea—One bedroom, young couple with small child. Reply to Box MA-22 Chelsea Standard. 48

FOR SALE—Own type win-dows one 12-foot unit with storm and screen, one 6-foot unit with same; also two outside birch doors with storms and screens. Call 475-8846 after 5 p.m. 48

SCENIC TRAIL RIDES at the Sharon Hills Ranch. Riding daily, 428-9452, after 4 p.m. 48

FOR SALE—Modern 3 bedroom ranch home, breezeway, attached garage, full basement. Ideally located at 410 Waverly. Will be shown 10:00 a.m.-5:00 p.m. on May 24, 25, 30, 31 and June 1, or phone for appointment. Mr. Keck, Warren, Mich. 765-7148. 49

CUSTOM FRAMING for paintings and photos. Reasonable prices. Weekly service. Also will do portraits in pastel or oil. Call for appointment. Chelsea Art Center, phone 475-8681. 48

FOR SALE by owner—New 3-bed-room home in Chelsea. Call after 7 p.m. GR 9-5091. 48

PATCHING and PLASTERING. Call 479-1801. 38tf

MRS. PALMER

Reader and Advisor

on all reading problems

Readings are private and confidential in her home located at 2488 Washtenaw Rd., Ypsilanti, Michigan. Phone 434-3177. Open 9:00 a.m. to 10:00 p.m. daily, including Sundays. 48

Formal Wear
RENTAL SERVICE
Prom - Weddings - Special Events
6 different colors.

Foster's Men's Wear

USED TRACTOR TIRES—Large inventory on hand. Also used passenger - truck - grader tires. Jackson Tire Brokers, M-109, Muskegon, Mich. Ph. 898-2925. 82tf

FARM FENCING—Cedar line and end posts, steel line and end posts, 4-point barbed wire, and woven wire stock fence. Gregory Farmers Elevator Co., Gregory, Phone 1-813-488-2755. 48

A-1 USED CARS

'68 Thunderbird Landau
'67 Toyota 4-Dr.
'68 LTD 2-Dr. Hardtop
'67 Mustang Convertible
'67 Mercury 4-Dr.
'67 Chevy Chevelle
'68 Corvair Monza
'68 Galaxie 500 Convertible
'68 LTD 2-Dr. Hardtop
'68 Rambler 4-Dr.
'68 Chev Hardtop
'68 Galaxie 500 4-Dr. (2)
'68 Ford 2-Dr.
'68 Galaxie 500 2-door Hard Top
'64 Chevrolet 4-Dr.
'64 Ford 4-Dr.
'64 Ford 4-Dr. Hardtop (2)
'62 Ford 4-Dr.

and ALL have the best motorcycle warranty — 12 months of 12,000 miles!

SUZUKI
ANN ARBOR

At US-28 and Washtenaw

Stop in and see the new 1969 Suzukis.

—NEW 5-Speed 500cc.
—NEW 6-speed 350cc.
—NEW 6-speed 250cc.

SUZUKI
ANN ARBOR

At US-28 and Washtenaw

Stop in and see the new 1969 Suzukis.

—NEW 5-Speed 500cc.
—NEW 6-speed 350cc.
—NEW 6-speed 250cc.

and ALL have the best motorcycle warranty — 12 months of 12,000 miles!

SUZUKI
ANN ARBOR

At US-28 and Washtenaw

Stop in and see the new 1969 Suzukis.

—NEW 5-Speed 500cc.
—NEW 6-speed 350cc.
—NEW 6-speed 250cc.

and ALL have the best motorcycle warranty — 12 months of 12,000 miles!

SUZUKI
ANN ARBOR

At US-28 and Washtenaw

Stop in and see the new 1969 Suzukis.

—NEW 5-Speed 500cc.
—NEW 6-speed 350cc.
—NEW 6-speed 250cc.

and ALL have the best motorcycle warranty — 12 months of 12,000 miles!

SUZUKI
ANN ARBOR

At US-28 and Washtenaw

Stop in and see the new 1969 Suzukis.

—NEW 5-Speed 500cc.
—NEW 6-speed 350cc.
—NEW 6-speed 250cc.

and ALL have the best motorcycle warranty — 12 months of 12,000 miles!

SUZUKI
ANN ARBOR

At US-28 and Washtenaw

Stop in and see the new 1969 Suzukis.

WANT ADS

LONG HAIR—Long haired calico cat, vicinity of Pierce Rd. and I-94. Ph. 475-5473. 46tf

WANTED—General office girl. Must be able to type and work with figures accurately. Wages commensurate with ability. Fringe benefits. No phone calls please. Send complete resume to Fortune Industries, Inc., 11770 Dexter Rd., Chelsea, Mich. 48118. 39tf

JANITOR—Full or part-time. Industrial Plastics Specialties, 20401 Old US-12 West, Chelsea. Apply between 8 a.m. and 5 p.m. 48

FOR SALE—Used lawn mower, needs some repair, \$10 or reasonable offer. 435 North St. 48

WANTED—Elderly woman between 55-65 to live in and take care of blind woman. Salary, room and board. Phone between 9 and 10 p.m. weekdays. 498-2415 Gregory. 49

We Love
Used Bikes!

4040 Washtenaw

SUZUKI
ANN ARBOR

At US-28 and Washtenaw

Stop in and see the new 1969 Suzukis.

—NEW 5-Speed 500cc.
—NEW 6-speed 350cc.
—NEW 6-speed 250cc.

and ALL have the best motorcycle warranty — 12 months of 12,000 miles!

SUZUKI
ANN ARBOR

At US-28 and Washtenaw

Stop in and see the new 1969 Suzukis.

—NEW 5-Speed 500cc.
—NEW 6-speed 350cc.
—NEW 6-speed 250cc.

and ALL have the best motorcycle warranty — 12 months of 12,000 miles!

SUZUKI
ANN ARBOR

At US-28 and Washtenaw

Stop in and see the new 1969 Suzukis.

—NEW 5-Speed 500cc.
—NEW 6-speed 350cc.
—NEW 6-speed 250cc.

and ALL have the best motorcycle warranty — 12 months of 12,000 miles!

SUZUKI
ANN ARBOR

At US-28 and Washtenaw

Stop in and see the new 1969 Suzukis.

—NEW 5-Speed 500cc.
—NEW 6-speed 350cc.
—NEW 6-speed 250cc.

and ALL have the best motorcycle warranty — 12 months of 12,000 miles!

SUZUKI
ANN ARBOR

At US-28 and Washtenaw

Stop in and see the new 1969 Suzukis.

—NEW 5-Speed 500cc.
—NEW 6-speed 350cc.
—NEW 6-speed 250cc.

and ALL have the best motorcycle warranty — 12 months of 12,000 miles!

SUZUKI
ANN ARBOR

At US-28 and Washtenaw

Stop in and see the new 1969 Suzukis.

—NEW 5-Speed 500cc.
—NEW 6-speed 350cc.
—NEW 6-speed 250cc.

and ALL have the best motorcycle warranty — 12 months of 12,000 miles!

SUZUKI
ANN ARBOR

At US-28 and Washtenaw

Stop in and see the new 1969 Suzukis.

—NEW 5-Speed 500cc.
—NEW 6-speed 350cc.
—NEW 6-speed 250cc.

and ALL have the best motorcycle warranty — 12 months of 12,000 miles!

SUZUKI
ANN ARBOR

At US-28 and Washtenaw

Stop in and see the new 1969 Suzukis.

—NEW 5-Speed 500cc.
—NEW 6-speed 350cc.
—NEW 6-speed 250cc.

WANT ADS

HORSE FEED — \$3.65 per cwt. Gregory Farmer Elevator Co., Gregory, Phone 1-518-498-2735. 48

Rent a Jaycee

To help with your odd jobs, too heavy for available school-aged help, funds will be used for the Jaycees Community Development projects. The amount of donation will be left up to the individual. Business jobs, the donation will be negotiable. Dates are May 17 to 24. Call 475-7325 or 475-7684. 48

SMALL FARMS, room for horses and kids. Buy, sell or trade with Art Daniels Realty, 7030 Dexter-Pinckney Rd. HA 6-4896. 48

REAL ESTATE WANTED—Cash for houses, lots, farms or property, even if behind in payments. Art Daniels Realty, 7030 Dexter-Pinckney Rd. HA 6-4896. 48

FOR SALE — Plymouth station wagon, 6-cyl., excellent condition; five extra tires, 8 of them mounted. 124 Lincoln St. 48

FOR SALE—Nearly new 12 h.p. garden tractor with 42-in. mower, tiller and snowblower, also new heavy duty metal building 10' x 10' x 10'. Phone 475-7118. 48

FREE PUPPIES. Call 475-7233. 48

FOR SALE — Assorted wooden storms and screens, women's English bike, 2 tank-top vacuum sweepers. Al Cattell, Phone 475-8488. 48

NOTICE—Jack & Son Barber Shop, Chelsea, will be open Thursday, May 23 only till 8 p.m. 48

FOR SALE — Spotted mare and colt, '61 Falcon, Philco refrigerator, Stevens double barrel shotgun, 475-8484, any time. 48

TRENCHING—Footings, drain tile, water lines, etc. Four to 14 inches wide, 6 foot deep. Call Slocum Trenching Service. GR 5-7611. 49

COOKWARE — 13-pieces stainless steel, waterless, brand new; room divider, large mirror; 18-piece set of crystal, brand new; 8-piece china tea set; 8 cocktail glasses, brand new. Phone 475-8972. 48

FOR SALE—Hydraulic shop chair and shampoo bowl, like new. Phone 475-8792 after 6 p.m. 49

JOSEPH L. FRONZ year-round home on one acre. Two bedrooms, furnace heat, garage, \$19,900, terms. Mary Wolter, broker, 428-8188. 49

RUMMAGE SALE—Love seat and chair to match, marble top chest, old rocker, some old books and cards with 10 stamps, Webster dictionary, almost new. General Electric fry pan, some clothes and dishes, etc. Thursday and Friday, 9 a.m. to 6 p.m., 204 South St. Phone 475-7858. 48

TRI-LEVEL, \$18,900 on your lot. Art Daniels Realty, 7030 Dexter-Pinckney Rd. HA 6-4896. 48

FOR RENT — Second-floor apartments, one furnished; one unfurnished, except has stove and refrigerator. Phone 475-8489, after 6 p.m. 48tf

I WILL NOT be responsible for debts incurred by anyone other than myself, William L. Wilkerson, 8317 Clear Lake Rd., Grass Lake, Mich. 49061. 48

FOR SALE—New porcelain double well sink, antique clock, porcelain lamp, coal flat irons. 475-7415. 48

REAL ESTATE

Do you want a home or cottage on a lake, a farm or country home, a building site? We have them.

Eugene R. Young,
Broker

Phone 678-3792
Mary Allen, 678-3826
Virginia Visel, 428-2224 80tf

CUSTOM SPRAYING — Voco Interior white farm painting, J. L. Bird, Phone 517-547-5447, Manly Beach. 82tf

For the best coverage you can get in top rated insurance Co's. See

MARTIN E. MILLER
Home Owners, Farm, Car, Trailer, Cottage, Business & Personal Affairs.

680 Mackinac St. GR 5-5181
Local Representative of
Harry Lee French, Inc.
Your Independent Agents. 44tf

MALE AND FEMALE help wanted. Free Real Estate classes, earn while you learn. Art Daniels Realty, 7030 Dexter-Pinckney Rd. HA 6-4896. 48

Sprague
Buick-Olds-Opel, Inc.

Phone 475-8864

Open evenings by appointment. Phone Evenings: 475-8271 or 475-8240 48tf

Help Wanted

Truck driver and mill hand. Apply in person at 3515 Central St. Dexter Co-op 48tf

NEW
DRAPERIES

Nice Selection

Now

at

DANCER'S

48

ELECTROLUX
VACUUM
CLEANERS

SALES and SERVICE
JAMES OOX

Ph. 428-2921 or 428-2221
Monmouth

WANT ADS

Design Draftsman

Full time. Must be able to do board work. Salary commensurate with experience. Full benefits. Call 475-8619 for appointment.

Fortune Industries
INC.

11770 Dexter Rd.
Chelsea, Mich. 48118

WANT ADS

SALESWOMAN — No experience necessary, highest pay or part-time. Phone 478-5551 or 478-5552. No fee for personal.

CULLIGAN

A young, strong man with a college education, looking for a job in the field. We give high wages, insurance, profit sharing, and immediate, regular opportunity.

1000 Jackson Ave.
From Veterans Park

1000 Jackson Ave.
From Veterans Park

1000 Jackson Ave.
From Veterans Park

1000 Jackson Ave.
From Veterans Park

1000 Jackson Ave.
From Veterans Park

1000 Jackson Ave.
From Veterans Park

1000 Jackson Ave.
From Veterans Park

1000 Jackson Ave.
From Veterans Park

1000 Jackson Ave.
From Veterans Park

1000 Jackson Ave.
From Veterans Park

1000 Jackson Ave.
From Veterans Park

1000 Jackson Ave.
From Veterans Park

1000 Jackson Ave.
From Veterans Park

1000 Jackson Ave.
From Veterans Park

1000 Jackson Ave.
From Veterans Park

1000 Jackson Ave.
From Veterans Park

1000 Jackson Ave.
From Veterans Park

1000 Jackson Ave.
From Veterans Park

1000 Jackson Ave.
From Veterans Park

1000 Jackson Ave.
From Veterans Park

1000 Jackson Ave.
From Veterans Park

1000 Jackson Ave.
From Veterans Park

1000 Jackson Ave.
From Veterans Park

1000 Jackson Ave.
From Veterans Park

1000 Jackson Ave.
From Veterans Park

1000 Jackson Ave.
From Veterans Park

1000 Jackson Ave.
From Veterans Park

1000 Jackson Ave.
From Veterans Park

1000 Jackson Ave.
From Veterans Park

1000 Jackson Ave.
From Veterans Park

1000 Jackson Ave.
From Veterans Park

1000 Jackson Ave.
From Veterans Park

1000 Jackson Ave.
From Veterans Park

1000 Jackson Ave.
From Veterans Park

1000 Jackson Ave.
From Veterans Park

1000 Jackson Ave.
From Veterans Park

1000 Jackson Ave.
From Veterans Park

1000 Jackson Ave.
From Veterans Park

1000 Jackson Ave.
From Veterans Park

1000 Jackson Ave.
From Veterans Park

1000 Jackson Ave.
From Veterans Park

1000 Jackson Ave.
From Veterans Park

1000 Jackson Ave.
From Veterans Park

1000 Jackson Ave.
From Veterans Park

1000 Jackson Ave.
From Veterans Park

1000 Jackson Ave.
From Veterans Park

1000 Jackson Ave.
From Veterans Park

1000 Jackson Ave.
From Veterans Park

1000 Jackson Ave.
From Veterans Park

1000 Jackson Ave.
From Veterans Park

1000 Jackson Ave.
From Veterans Park

1000 Jackson Ave.
From Veterans Park

1000 Jackson Ave.
From Veterans Park

1000 Jackson Ave.
From Veterans Park

1000 Jackson Ave.
From Veterans Park

1000 Jackson Ave.
From Veterans Park

1000 Jackson Ave.
From Veterans Park

1000 Jackson Ave.
From Veterans Park

1000 Jackson Ave.
From Veterans Park

1000 Jackson Ave.
From Veterans Park

1000 Jackson Ave.
From Veterans Park

1000 Jackson Ave.
From Veterans Park

1000 Jackson Ave.
From Veterans Park

1000 Jackson Ave.
From Veterans Park

1000 Jackson Ave.
From Veterans Park

WANT ADS

VACUUM CLEANERS — Electro-lux authorized sales and service. James Cox, Manchester, Ph. 478-5551 or 478-5552.

REAL ESTATE

We buy and sell farms or city property. Also, cash for equities, even though delinquent. Free appraisal. Call 478-5551. H. Bushnell (Tasch Realty).

478-5551

478-5551

478-5551

478-5551

478-5551

478-5551

478-5551

478-5551

478-5551

478-5551

478-5551

478-5551

478-5551

478-5551

478-5551

478-5551

478-5551

478-5551

478-5551

478-5551

478-5551

478-5551

478-5551

478-5551

478-5551

478-5551

478-5551

478-5551

478-5551

478-5551

478-5551

478-5551

478-5551

478-5551

478-5551

478-5551

478-5551

478-5551

478-5551

478-5551

478-5551

478-5551

478-5551

478-5551

478-5551

478-5551

478-5551

478-5551

478-5551

478-5551

478-5551

478-5551

478-5551

478-5551

478-5551

478-5551

478-5551

478-5551

478-5551

478-5551

478-5551

478-5551

478-5551

478-5551

478-5551

478-5551

478-5551

478-5551

478-5551

WANT ADS

FOR SALE — Very clean 1964 Oldsmobile four-door sedan. 478-5570. 478-5571.

Custom Slaughtering

By Appointment
Complete Food and Meat Processing Service.

From Food Lockers

478-5551

478-5551

478-5551

478-5551

478-5551

478-5551

478-5551

478-5551

478-5551

478-5551

478-5551

478-5551

478-5551

478-5551

478-5551

478-5551

478-5551

478-5551

478-5551

478-5551

478-5551

478-5551

478-5551

478-5551

478-5551

478-5551

478-5551

478-5551

478-5551

478-5551

478-5551

478-5551

478-5551

478-5551

478-5551

478-5551

478-5551

478-5551

478-5551

478-5551

478-5551

478-5551

478-5551

478-5551

478-5551

478-5551

478-5551

478-5551

478-5551

478-5551

478-5551

478-5551

478-5551

478-5551

478-5551

478-5551

478-5551

478-5551

478-5551

478-5551

478-5551

478-5551

478-5551

478-5551

478-5551

478-5551

478-5551

478-5551

WANT ADS

TRAVEL TRAILERS — 12-ft. and up; 10,555 ft. trailers. John R. Jones Trailer Sales, Gregory, Mich. Phone 478-2665.

Evinger Real Estate

Phone 478-5553
or call Janice Foutch 478-4751.

478-5553

478-5553

478-5553

478-5553

478-5553

478-5553

478-5553

478-5553

478-5553

478-5553

478-5553

478-5553

478-5553

478-5553

478-5553

478-5553

478-5553

478-5553

478-5553

478-5553

478-5553

478-5553

478-5553

478-5553

478-5553

478-5553

478-5553

478-5553

478-5553

478-5553

478-5553

478-5553

478-5553

478-5553

478-5553

478-5553

478-5553

478-5553

478-5553

478-5553

478-5553

478-5553

478-5553

478-5553

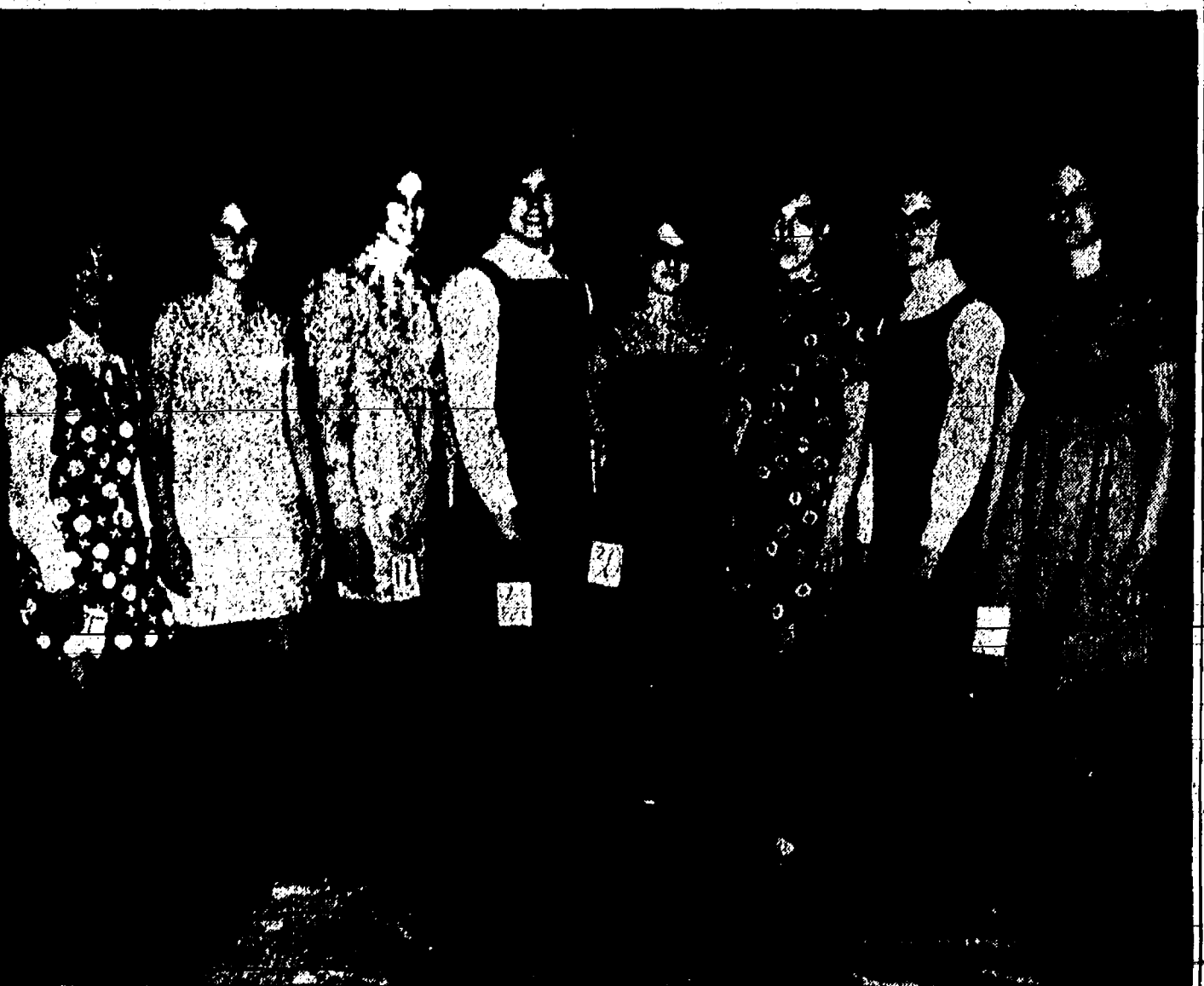
478-5553

47



HOME ECONOMICS TEACHER Mrs. Katherine Reddeman was surprised with a gift of roses and carnations from two Home Economics III classes at "Our Spring Thing" dress revue and program Tuesday. Mrs. Reddeman hopes to make the revue an annual event. Pictured above are

the winners of the wool outfit category for Home Economics II students, from left, Joan Stegenson, Denise Slusser, Retha Spees, Mrs. Reddeman, Anita Martin, Holly Powers and Jean Wenk. Approximately 125 persons, largely parents, gathered for the fashion show.



BRIGHT COLORS and cheerful patterns typified many of the Home Economics I students' cottonwear garments selected as winners at the Dress Revue Tuesday night. From left, Connie Orlovski, Sue Dirlam, Janet Sibley, Mary Nicholas, Pat Eisele, Barbara Duerr, Sherre Freeman and

Jeanne Haeuschwardt pose in their cotton dresses constructed in Home Economics classes this year. They were selected as winners on the basis of construction, fit, satisfactory color and design choice, and poise, personality and grooming of the girl.

USE RIGHT PAINT BRUSH

The right brush is as important as the right paint when redecorating. When antiquing, a wide, flat brush is perfect for applying the undercoat and toner. Just use long, smooth strokes and brush with the grain of the wood. In this way, you will be sure of covering the surface evenly.

U.S.—SOVIET CONSULATE

The State Department has reported preliminary discussions about the possible opening of a U.S. consulate in the Soviet Union and a Russian consulate in this country. The two countries signed a consular convention June 1, 1964. It was ratified by the U.S. in 1967 and Russia in 1968.



Dr. J. L. Flinn



Dr. G. N. Koffeman

CHIROPRACTIC ADJUSTMENTS HAVE SOOTHING EFFECT ON NERVOUS TENSION

The sale of tranquilizer drugs has become very big business. It is evident from this that the effects great many people desire. There must be a reason for this. Possibly the high speed of our modern way of produced from the drugs used is something that a life plays a part in producing nervous tension.

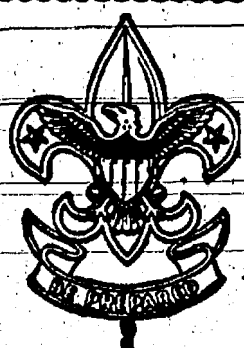
It has been found through Chiropractic research that pressure upon certain groups of nerves produces muscle contraction (tension) and through chiropractic adjustments the pressure is relieved with a soothing and tranquilizing effect.

DR. G. N. KOFFEMAN - DR. J. L. FLINN
CHIROPRACTIC PHYSICIANS
138 E. Middle St. Chelsea, Mich. 48118
PHONE 479-5241

DR. FLINN
CHELSEA
OFFICE HOURS
MONDAY AND WEDNESDAY
9:30 a.m. - 12:30 p.m.
1:30 p.m. - 7:00 p.m.
FRIDAY
9:30 a.m. - 12:30 p.m.
1:30 p.m. - 8:00 p.m.

DR. KOFFEMAN
CHELSEA
OFFICE HOURS
TUESDAY AND THURSDAY
11:00 a.m. - 7:00 p.m.
SATURDAY
9:00 a.m. - 2:30 p.m.

Hours by Appointment



BOY SCOUT NEWS

TROOP 425—

Scoutmaster Paul Garman and three Boy Scouts of Troop 425 were inducted into the Order of Arrow, Boy Scout Honor Camping Society, at tap-out ceremonies Saturday night at the Iroquois District Spring Camporee at Crooked Lake in the Pinckney Recreation Area. The three Boy Scouts so honored are Jeff Marshall, Jon Schenk and Bill Harrison.

Activities at the camporee which began Friday night and ended Sunday morning included obstacle courses and demonstrating skills.

Fourteen Boy Scouts of Troop 425 attended the week-end event.

TROOP 420—

Boy Scout Troop 420 met Monday, May 12. They finished discussing the needs for the camping trip, on May 16, 17 and 18. They also received the "Keep America Beautiful" note stationary cards. Each boy received a box of 10 to sell. Monday, May 19 the camping trip turned out well. Seven fathers and 20 boys showed up for the trip. The troop won a blue ribbon and the patrols each won a second place ribbon. At the meeting the boys worked on their second class and Charles Foytik received his second class badge. The meeting was closed with a song.

Richard Worden, scribe.

Michigan was the first state to establish roadside picnic tables.

HELLER ELECTRIC

Licensed Electrical Contractors
ALL TYPES OF WIRING
(No job too big or too small)
DAY OR NIGHT
CALL GR 9-3816
20640 Seger Rd., Chelsea

Sunday TV Feature Discusses Earthquakes, Seismologists

East Lansing—"Book Beat" offers a lively look at the literary world, premiering Sunday, May 25, at 2:30 p.m. on WMSB (Channel 10), Michigan State University television.

Series host is Robert Cromie, veteran reporter, college graduate and, currently, Chicago Tribune book editor. On the first telecast, he interviews British journalist Allister Cooke about Cooke's essays, "Talk About America." Originally written for British readers, the topics covered in the book include McCarthyism, race relations and Robert Kennedy's assassination.

"Book Beat" has been called "easily the most civilized and by far the best of TV programs dealing with books." The widely acclaimed author-interview series has become virtually a must for the writers and readers of currently popular books.

Other WMSB highlights include:

KENNEDY—"NET Journal" presents a documentary, filmed by French photographer Andre Gazut, following "The Last Campaign of Robert Kennedy," Friday, May 30, at 7 p.m.

Exclusive films show Sen. Kennedy on his campaign in California, leading up to his moment of triumph at the Ambassador Hotel and culminating in the tragic shooting seconds later.

SATIRE—Twentieth century scientific detachment is the target of "Let Me Hear You Whisper," a tart comedy on "NET Playhouse," Sunday, May 25, at 11:30 p.m. Helen, a lowly scrubwoman in a research laboratory, is the only person an experimental dolphin will talk to, even though the animal's stubbornness places its life in danger. Helen is determined to save her friend, but will she be able to defy the cold aloofness of the scientific establishment?

The dolphin's character is brought to life by puppeteer Bill Baird, who created the dolphin puppet and speaks its lines. Helen, the indomitable scrubwoman, is portrayed by Ruth White.

EARTHQUAKES

"Spectrum" examines a topic of current interest—the earthquake—on "The Trembling Earth," Sunday, May 25, at 4:30 p.m. and Tuesday, May 27, at 12:30 p.m.

In the wake of recent predictions prophesying California's imminent danger of sliding into the Pacific, the term "San Andreas fault" has frequently been used. "Spectrum" visits this area and the other major fault line in North America—the Denali in Alaska.

The work of seismologists, both in the field and in their electronically augmented observatories, is studied. At the Lamont Geological Observatory, Dr. Jack Oliver comments on the various seismic phenomena and the methods used to observe them.

BALLET

The Illinois Ballet, one of Chicago's outstanding ballet companies, appears on "Chicago Festival," Sunday, May 25, at 4 p.m. and Tuesday, May 27, at 12 noon.

Two original compositions written by the troupe's choreographer, Dom Orejudos, are performed. "The Stone Medusa" is drawn from the myths of Pygmalion and Medusa, and "Spanish Suite. . . and Short" features a process of continually changing dance patterns.

LAW ENFORCEMENT

"PBL" presents its widely acclaimed portrait of big-city police operations, "Law and Order," Sunday, May 25, at 10 p.m.

The role of the policeman in our contemporary society is a subject of deep concern to many Americans. To shed light on an already heated topic, PBL com-

missioned lawyer-filmmaker Frederick Wiseman to compile a documentary program on the policeman and his job. Wiseman is well known for his documentary film on conditions in a Massachusetts hospital for the criminally insane, a film which has been banned throughout that state.

"Law and Order" is the result

of 250 hours of riding in patrol cars, covering the toughest part of Kansas City, Mo. The portrait of the cop is not the only picture painted; the people with whom he deals also are vividly sketched. New York City, Los Angeles and Baltimore refused to allow their police forces to participate in the film.

HARDIN ON FOOD MON

Secretary of Agriculture Edward M. Hardin stated hopes it will be possible to more funds for the food program to feed hungry cans in the year ahead. Stamp authorization in the which begins next July 1, million.

FREE SHOW WED 5-11 PM

SCIO DRIVE-IN
668-7083
1-94 EXIT 169 JACKSON ROAD
WEST OF ZEEB ROAD

YVETTE MIMIEUX IN
CHRISTOPHER JONES
3 IN THE ATTIC

FREE SHOW!
WED MAY 28th
1-94 EXIT 169

Where Were YOU When The Lights Went Out?

THE SPIRIT IS WILLING

SCIO DRIVE-IN
668-7083
1-94 EXIT 169 JACKSON ROAD
WEST OF ZEEB ROAD

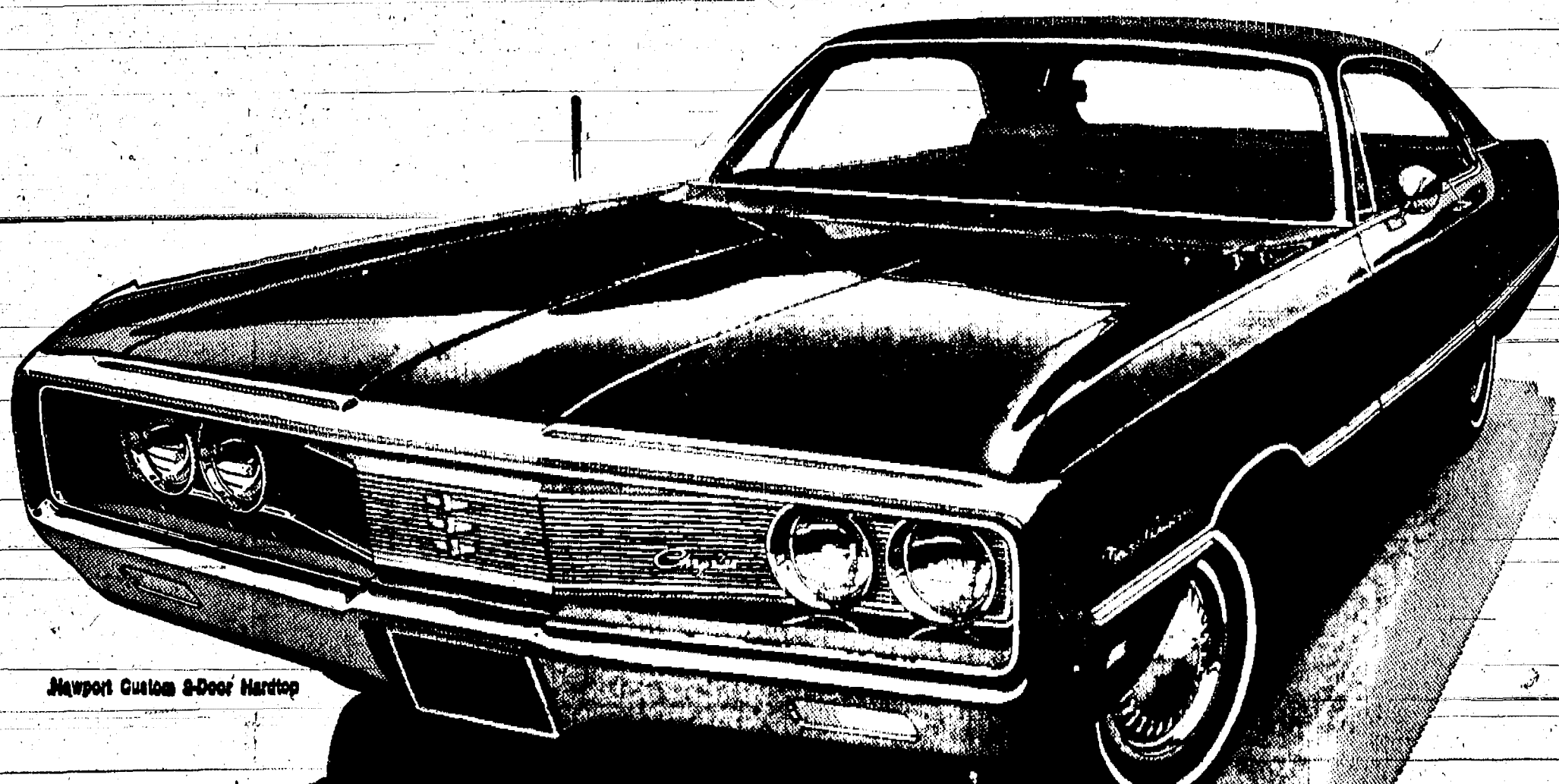
FREE SHOW!
WED MAY 28th
1-94 EXIT 169

Where Were YOU When The Lights Went Out?

THE SPIRIT IS WILLING

The Affordable Dream

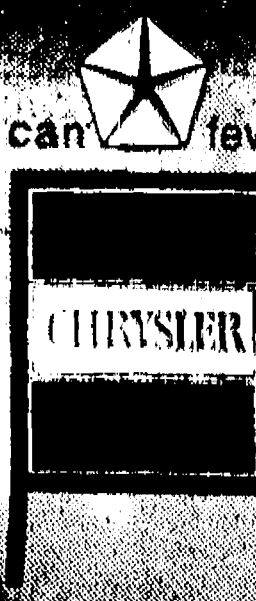
Your next car: Chrysler 1969.



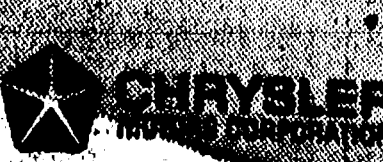
Newport Custom 2-Door Hardtop

Affordable dreams are dreams that can become realities. We have plenty of dreams available now. All affordable and within your reach. In fact, if you are currently driving one of the most popular smaller cars, then for only a

few dollars a month more in price, you can move up to a new 1969 Chrysler Newport, comparably equipped. Full-size Chrysler luxury at an affordable price. Stop in today and let us show you exactly what we mean.



AUTHORIZED DEALERS



G. A. SALES & SERVICE . 1185 Manchester Road

Community Calendar



Requests for information and applications for the fall term of Chelsea "Co-op Nursery" School should be directed to Mrs. David Martin, 475-7106.

Kinder Klub May 27, spring dinner, at home of Mrs. Edson Whitaker, 6:20 p.m.

Beacon Light Study Group at home of Mrs. Jack Barkley on May 29 at 8 p.m.

Installation of officers VFW auxiliary May 26 at 8 p.m. at the Rebekah Hall. All elected and appointed officers should attend.

Modern Mothers Child Study Club May 27, at Bill Cone's Restaurant, Jackson, 7:30 p.m.

Freedom Evangelical Memorial Cemetery Association annual meeting at cemetery Sunday, May 25 at 3 p.m.

Chelsea Fair Board May 27, 8 p.m., Fair grounds. Important meeting for chairmen and committees on premium list changes and ordering ribbons.

Olive Chapter No. 108 pot-luck 6:30 p.m. May 24, Masonic Hall. Honoring past Matrons and Past Patrons.

No fun night at Korner House Friday, May 23. Michigan Week displays at Korner House all week.

Chelsea Community Chest budget meeting at Congregational church Wednesday and Thursday, May 21 and 22 at 7 p.m.

Rummage items wanted for St. Mary's Building Fund sale, June 20-21. For pick-up, phone 475-3377, any time.

Inquiries regarding the Chelsea blood bank may be directed to Harold Jones of Central Fibre Products in the event that Mrs. Dudley Holmes is unavailable.

American Legion and Auxiliary hospital equipment available by contacting either Mr. or Mrs. Eugene Martin, at 475-5867 after 6 p.m.

Cards every Thursday afternoon at Korner House.

TOPS club every Wednesday from 12:30 to 2:30 p.m. in the Rebekah hall. Call GR 5-8352. For night meeting call GR 9-3261.

Memorial Day to be observed at Waterloo Village church June 1. Program features the Waterloo Band. Gordon Riechmiller, president of Olivet College will speak.

Council on Adoptable Children (COAC) annual meeting at 8 p.m. Friday, May 23, at Church of the Good Shepherd, 2145 Independence Blvd., Ann Arbor. Ronald Edmunds, Director of Human Relations for the Ann Arbor public schools, and Harold Lockett, psychiatrist, will discuss "Racial Identity in Adolescents." Election of officers for 1969-70. Coffee hour will follow.

Parent's Without Partners: having their monthly meeting. Friday, May 23, at St. Andrew's Episcopal church, N. Division St., Ann Arbor, at 8:15 p.m. Speaker will be the Rev. Harold S. Horan.

Cub Scout Pack 455 meeting Thursday, May 22.

Past Presidents of Woman's Relief Corps dinner meeting with Miss Nina Greening at Clear Lake May 26, 6:30 p.m.

WCC Surveying Area for Interest in Local Classes

Washtenaw Community College is conducting a survey by mail to determine what interest Chelsea, Manchester and Dexter area residents have in the college providing courses in the area.

The random survey was designed to determine how specific interests are and what fields would be most appropriate. Questionnaires were mailed out two weeks ago, and collect officials expect to have the results analyzed in June. If sufficient interest is found, WCC will prepare to offer courses here in fall, 1969, according to David Pollock, Dean of Special Projects for WCC.

The courses would be regular college courses with the same credits as those earned on the central campus. If interest is discovered in a subject not offered at present, that would be provided if possible. Although courses would probably meet at night, a day course could be arranged for an interested group.

15 persons enrolled in the evening psychology course offered here by WCC this year.



TOP AWARD at the Iroquois District Spring Camporee was claimed by Chelsea Boy Scout Troop 476. The event was held May 16 to 18 at Crooked Lake State Park. The President's Award for outstanding ability in scoutcraft and outdoors skills was given to Troop Senior Patrol Leader Jeff Daniels by the district camping chairman, James Branham. Members of the troop, sponsored by Chelsea Kiwanis Club, are, front, left to right, Steve Schanz, assistant senior patrol leader Lee Hafner, Don Osterle, Steve Bowen, assistant patrol leader Tony Hafner and Tom Forner; second row, from left, patrol leader Peter Stahl, patrol leader Dennis Cos-

Recreation Program Has Some Changes

The 1969 Chelsea summer recreation program will show several changes from the program offered last summer, according to tentative plans described by Director Paul D. Giever.

An outdoor teen dance will be added to the schedule of events. The dance will be at the Chelsea High school parking lot and feature a live band, probably local talent. If response to the dance is sufficient, three additional ones will be planned.

There is a possibility that an all-star game for little league

players will be held at the end of the baseball program, where the champion team will play all stars.

All arts and crafts will be at the junior high school, rather

than at North and South schools as they have been previously.

This will enable the two teachers and two assistants to supervise and instruct the entire group taking arts and crafts.

A junior olympics might provide a finale to the program at the end of the summer.

Other plans show continuation of former programs. Tennis and instructional swimming will be held Monday mornings, with afternoons for recreational swimming. One payment of 30 cents each day will cover morning and afternoon swimming. Monday night Babe Ruth teams will play both home and away. On Monday and Wednesday evenings adult fast ball softball will be held. Tuesday mornings baseball instruction will be offered for 11 to 13 year old boys at Chelsea High school. Six Little League teams will play Tuesday and Thursday evenings.

Wednesdays will offer the same activities as Mondays, except six T-Ball teams will also play. Tuesday and Thursday will be men's slow pitch softball in the evenings. Friday track for boys and girls ages 7-13 will replace baseball instruction.

The program will begin Monday, June 23. Final plans will be announced at a later date.

William Brewer Home After Service in Vietnam

William Brewer, husband of the former Judy Bollinger, returned recently from an eight-month tour of duty in Vietnam. Naval Petty Officer Brewer was a See Bee with a mobile construction battalion. He and his wife will stay with their parents, Mr. and Mrs. Lee Bollinger and Mr. and Mrs. Clarence Brewer, until the end of May, when they will leave for San Juan, Puerto Rico for a three-year tour of duty.

Personal Notes

Charles Bycraft, 421 McKinley, returned to St. Joseph Mercy Hospital, Ann Arbor, Sunday. He is in Room 610, bed 2.

Three of America's billion-dollar industrial corporations and 18 of its 100-million-dollar businesses are headquartered in Michigan.

School Board Briefs

At a Board of Education meeting Monday, May 19, present were Irwin, Lancaster, Powers, Taylor, Lewis, Koenn, Hopkins, Superintendent Cameron, Business Manager Mills, Principals Lane, Conklin, Wojcieki, and Benedict. Many guests attended.

Meeting was called to order at 8 p.m. by President Irwin. A motion by Powers supported by Hopkins to recess the meeting at 8:04 p.m. and reconvene in the high school cafeteria, received all ayes.

Meeting called back to order at 8:10 p.m. Minutes of the May 5 meeting were approved as read. A motion by Lewis, supported by Powers, to pay general fund bills of \$7,978.43 received all ayes.

An extended discussion was held regarding the resubmission of the operational millage proposition.

A motion by Lancaster, supported by Taylor, to hold an operational millage election June 9 received all ayes. A motion by Koenn supported by Taylor to review the proposed budget and set a millage after the board had reviewed the budget. Ayes: Taylor, Koenn, Hopkins, and Powers; Nays: Lewis, Lancaster, and Irwin. Motion carried.

Nature Center Work Bee Scheduled Sunday

The Chelsea Nature Center work bee originally scheduled for last Sunday has been rescheduled for Sunday, May 25.

The cancellation was caused by rain. Persons interested in contributing to the development of the center should meet at the Beach Junior High school parking lot between 1 and 1:30 p.m. Sunday. The only tools needed are power saws and manpower; others will be furnished.

Conference Champions For Golf Te

Chelsea's third-place finish in the conference golf meet gave them enough points to win the Southwestern Conference championship trophy for a second consecutive year.

Milan finished first, followed by Dundee, 383, 384, Saline and Dexter at fourth at 375, South Lyon 417, and Psi-Lambda 455.

Medalist for the men's team was Dundee, edged by medalist Dave Conklin, 84. Chelsea's 14-4 conference record and third-place finish combined to give them 28 points off Dexter's championship by one point.

Dave Conklin, Tom Dan Spaulding, Mike M. and Mike Powers represented Chelsea Monday. Others who contributed to the winning season were Ned Blacklaw, Art Farley, Powers and Jim Poertner. This was the final match year for the team.

Area Persons Will Appear on Drug Use Panel

"Drug Use and Abuse" will be discussed by Dean Martin Barr of Wayne State University's College of Pharmacy Wednesday for alumni and friends of WSU at a dinner meeting in the Ambassador Inn, Ann Arbor.

The event will include a 6:30 p.m. reception followed by a dinner.

This year alumni will hear about developments of the past year through a screen presentation introduced by Dr. Charles A. Lewis, Assistant Director of University Relations. Judge S. J. Eldon of the 15th District Court in Ann Arbor, is chairman of the event. The 15 other committee members include Leonard K. Stark, brother of Douglas H. Stark of Chelsea; and James Tryand of Loch Alpine.

Personal Note

The father of N. H. Jerry B. Miles, 87, of 5100 Son Rd., Ann Arbor, underwent surgery Monday night for appendicitis. He is expected to return home soon if no complications arise. He is in room 2 at St. Joseph Mercy Hospital, Ann Arbor.

Sunday guests at the home of Mr. and Mrs. Frederick were her mother, Mrs. A. C. Budres; sister-in-law, Mrs. V. Budres; sister-in-law, Mrs. Joseph B. and Mr. Schultz; sister, Mrs. J. McCullough and her daughter, Mary. The visitors are from Grand Rapids.

... still one of the world's great bargains

building a home

Under most circumstances it's actually cheaper than renting. come in and talk it over.

FROM PLANNING TO COMPLETION YOUR NEW HOME HEADQUARTERS

There's no reason to deprive yourself of the comfort and security of a home of your own. Stop in now and learn how easily and quickly you can get just the home that's right for you. We offer financing assistance, contractor services and a selection of home plans from which you can select the home that fills your every want and need.

This lovely four bedroom home can be yours for an amazingly low price and terms well within most any family budget. Complete plans and blueprints readily available in our home planning department.

CHLSEA LUMBER CO. "Where the Home Begins" Phone GR 5-3391

Easiest Way to Lovelier Rooms

QUICK! EASY! INEXPENSIVE!

NEW Improved Formula

Kem-Tone

Kem-Glo

We Have All The New Colors! Gambles

VAN HEUSEN 417 OXFORD

\$6.00

Pick A Strip and You Pick A Winner!

The man's gift, whether he be a Graduate or a Dad, in pleasing shades... and all permanently-pressed. And to please him ever more, we'll add his monogram FREE.

Strieter's Men's Wear "The Place To Go for Brands You Know"

New LOW COST MAYTAG with Lint-Filter Agitator and Family Capacity Tub

New Maytag washpower Automatics built for families with a lot of laundry to do...

From the New Generation of long-life Maytags

Get these plus features with your New Generation Maytag—Full-cycle safety lid stops action in seconds • Swirlaway draining action in lint remover tub • Automatic unbalance load protection • Rust-proof lid ball hinges • Rugged proven helical drive • Virtually indestructible pump • Strong ad-

2 years on transmission assembly, 2 years on complete washer, 5 years on cabinet against rust. Free repair or exchange of defective parts or cabinet if it rusts. Free installation of parts is the responsibility of selling franchised Maytag dealer within first year; thereafter installation is extra.

Open Friday Till 9 p.m. Close Saturday at 4 p.m.

FRIGID PRODUCTS LLOYD R. HEYDLAUFF 113 N. MAIN STREET PHONE GR 9-44

AGRICULTURE
Action
by M. L. Wolf

Pollution Everywhere
Recently farmers were asked to go around and list the sources of pollution visible within their communities.

There is a partial list of pollution sources listed from more than 700 Michigan communities: creek, river and roadside trash dumping; mosquito spraying into water by village, city and state departments; trash burners both in home and industrial use; work and carelessly tapping oil and machine lines near areas of flow; water; improperly (shallow) constructed sewage systems in resort areas; city sewage and storm outlets.

Oil and gas in a variety of forms were blamed for many pollution problems. Wrote one reporter, "Pollution of air and water in my area is caused by the dumping of many gallons of oil waste and by the sulphurous fumes and smoke caused by oil and well burnoff." Many people mentioned the use of high salt as a major problem, including the observation that salt-laden snow was shoveled onto frozen lake beds.

One person reported the illegal dumping of a well-hidden gravel pit and the dumping of septic tank materials by a commercial trucking company. Another told of the illegal disposal of offal on back road by a local butcher. The erosion of topsoil caused by highway and subdivision building projects was frequently mentioned with many reports of heavily eroded streams and dust-laden fields of grain and vegetables—while the burning of rejected industrial rubber from one factory and paint from another, were other pollution sources listed.

Many of those reporting cited industries by name, with almost every type of industry involved. A partial list includes paper mills, cement plants, chemical and plastic manufacturers, a color company foundry, food processing factories, a pallet shop, a waste factory, sugar refinery and plating plant.

Serious as was the subject of the survey's one observation by an Eaton county farmer is too humorous to ignore. When asked to pinpoint sources of air pollution he wrote, "Air pollution—via radio and television networks."

James Bauer Gains Junior Membership in Holstein Association
James Bauer of Chelsea has gained the junior membership in the Holstein-Friesian Association of America. Nearly 13,800 members are now actively enrolled in the breed organization's program.

To qualify, member candidates must be under 21 years of age and have successfully completed one year's work in a 4-H or vocational agriculture dairy project. Individual ownership of at least one registered Holstein is also required.

Junior members of the national association are entitled to all privileges except voting. They may register and transfer their animals, at member rates and receive regular reports of breed and registration progress.

Nearly 47,000 young Holstein breeders have participated in the program since its start in 1923.

AGE 23
Married Male Driver
Your A-O man will save you money on your car insurance. No surcharge or higher rate. See your A-O man—he's all out for you.

A. D. MAYER AGENCY, INC.
"Your Protection Is Our Business"
Phone 479-5061
115 Park St. Chelsea

Auto-Owners INSURANCE COMPANY

THE SUPERMARKET THAT'S JUST A LITTLE BIT BETTER

Stop & Shop

14901 Old U.S.-12
Corner at M-52
Chelsea

"Triple R Farms" U.S.D.A. Choice
CHUCK ROAST Blade Cut **59¢ lb.**

"Triple R Farms" U.S.D.A. Choice
Ground Round Steak **89¢ lb.**

Fresh Frozen, Genuine Spring
LEG O' LAMB **79¢ lb.**

Fresh, Tender Boston Butt
Pork Roast **59¢ lb.**

"Triple R Farms Mich. Grade 1"
Sliced Bologna .. **49¢ lb.**

Lean, Tender
Pork Steak **69¢ lb.**

"Triple R Farms Mich. Grade 1"
Ring Bologna **59¢ lb.**

Fresh Frozen Genuine Spring
Lamb Shoulder Roast **49¢ lb.**

Lean, Tender, Boneless and Cubed
PORK CUTLETS **69¢ lb.**

"Triple R Farms" U.S.D.A. Choice
GROUND ROUND STEAK **89¢ lb.**

Stop & Shop's Fresh, Lean, All-American Beef
HAMBURGER **63¢ lb.**

"Triple R Farms" Mich Grade 1
SKINLESS WIENERS **49¢ lb.**

Del Monte Cream Style or Whole Kernel
Corn .5 **\$1.00**

Del Monte Delicious
Sweet Peas . . . **19¢**

Del Monte Rich Tomato
Catsup . . . **17¢**

Velvet
Peanut Butter 2-Lb. Jar **69¢**

Mrs. Owen's Old Fashioned
Strawberry Preserves 1-Lb., 4-Oz. Jar **49¢**

Delicious
Hawaiian Punch 1-Qt., 14-Oz. Can **33¢**

Carnival - Assorted Flavors
ICE CREAM **59¢**

Van Camp's
Pork & Beans . . 2 **27¢**

Maxwell House
COFFEE **\$1.19**

Campbell's
Chicken Noodle Soup 10 1/2-Oz. Can **12¢**

Treesweet Fresh Frozn Florida
Orange Juice .. **15¢**

Nabisco
Premium Saltines 1-Lb. Box **33¢**

Cinnamon Crisp
Keebler Cookies 14 1/2-Oz. Pkg. **43¢**

Sunshine
Hydrox Cookies 1-Lb. Pkg. **47¢**

Shurgood Cookies
Choc. Chix & Nut 12-Oz. Pkg. **39¢**

Farm Fresh Produce

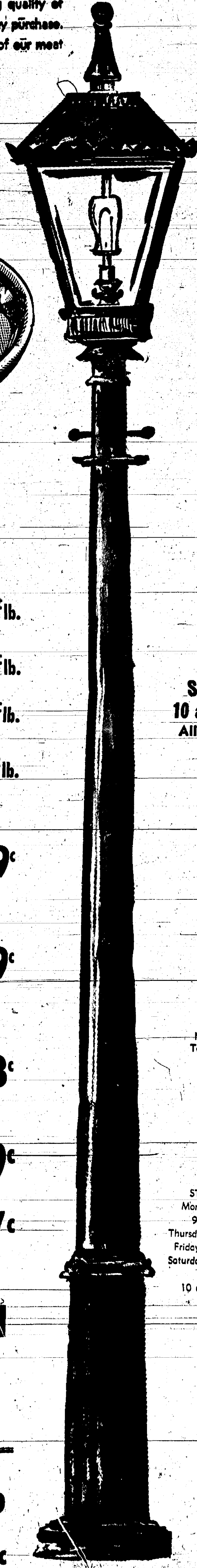
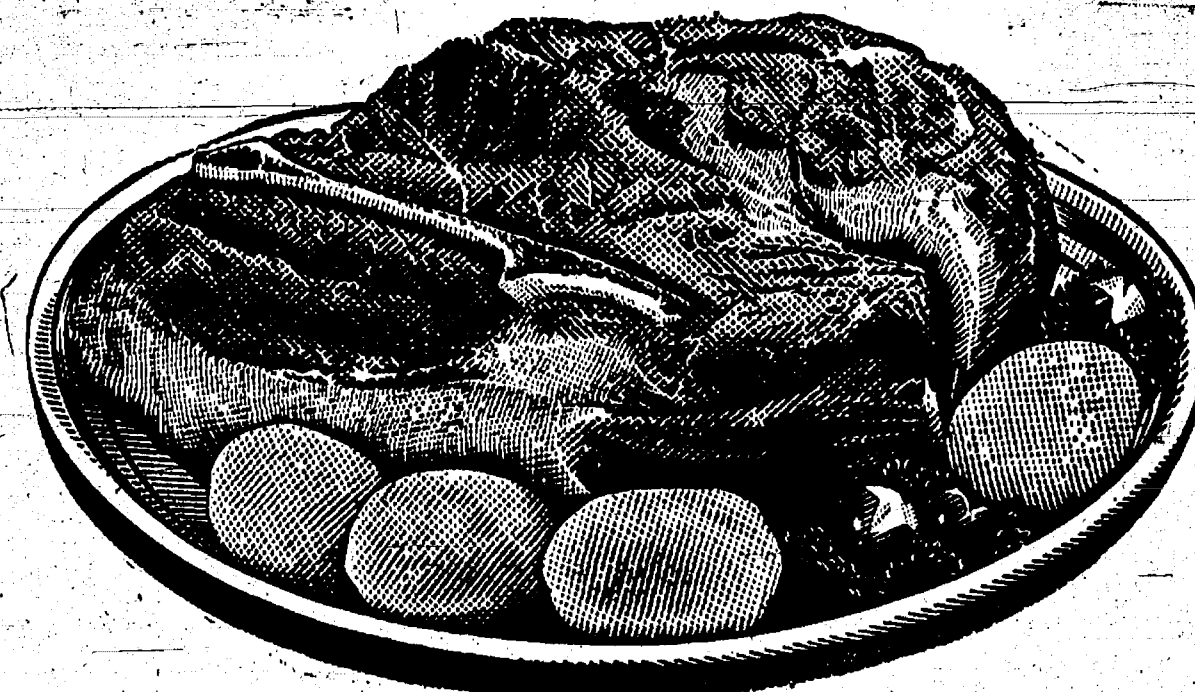
U.S. No. 1 New Texas	3-Lb. Bag	39¢
Fresh, Nutritious	1-Lb. Pkgs.	25¢
Carrots	2	12¢
Golden Ripe	Lb.	12¢
Bananas	Lb.	10¢
Fresh, Green	Lb.	10¢
Cabbage	Lb.	10¢

MANDARIN ORANGES

11-Oz. Can **19¢**

FAYGO POP

6 **59¢**



WE RESERVE THE RIGHT TO LIMIT QUANTITIES

OPEN SUNDAY
10 a.m. - 6 p.m.
All Sale Prices Effective Sundays

Sorry, No Sales To Dealers

STORE HOURS:
Mon., Tues., Wed., 9 a.m.-6 p.m.
Thursday, 9 a.m.-9 p.m.
Friday, 9 a.m.-9 p.m.
Saturday, 8 a.m.-9 p.m.
Sunday, 10 a.m. to 6 a.m.

CHELSEA VILLAGE COUNCIL PROCEEDINGS

April 15, 1969, for the principal and interest due on the bonds sold for the addition to the Sewage Treatment Plant with no increase in the millage rates over 1968. Roll call: Yeas all. Motion carried.

Further discussion was held regarding the installation of "School Crossing" signs on Main St. No official action was taken.

Bids for police patrol cars were requested from local automobile agencies, to be submitted to the Village Clerk by 6:00 p.m. May 1, 1969. Bids were received from G. A. Sales & Service in the amount of \$191.00 per month and Palmer Motor Sales in the amount of \$189.00 per month.

Motion by Clark, supported by Miller, to accept the bid of Palmer Motor Sales for police patrol cars. One 1969 Ford to be delivered June 1, 1969 and one 1970 Ford to be delivered Dec. 1, 1969 in the amount of \$2,208.00, payable in 12 monthly installments of \$189.00 per month. Roll call: Yeas all. Motion carried.

Bids for a front end loader for use at the landfill were requested. Bids were received from Miller Equip. Co. and from Wolverine Tractor Co.

Motion by Fuiks, supported by Musbach, to accept the bid of Wolverine Tractor & Equipment Co. for a Hough Pay Loader, Model H50 Series C in the amount of \$20,000.00. Roll call: Yeas all. Motion carried.

A request was received from Mobil Oil Corp. for a Special Use Permit for their station located on the North-East corner of M-52 at I-94. The request was referred to the Planning Commission for their recommendation.

Motion by Musbach, supported by Miller, to appoint Conrad Hafner Chairman of "Michigan Week" May 17 through May 23. Roll call: Yeas all. Motion carried.

Pres. Pennington submitted for council consideration the name of Walter Brown to fill the vacancy on the Village Planning Commission created by the resignation of William Chandler because of his appointment as Trustee on the Village Council.

Motion by Miller, supported by Clark, that Walter Brown be appointed to fill the unexpired term of William Chandler on the Village Planning Commission. Roll call: Yeas all. Motion carried.

A letter was received from the Chelsea Planning Commission as follows:

April 3, 1969
Village Council
Village of Chelsea
Chelsea, Michigan 48118
Gentlemen:

At a special meeting of the Planning Commission held on April 2, 1969, the plot plan of Mr. Clark Bushnell for a six-unit apartment on Wilkinson Street was reviewed and the following

motion made.
Motion by Chandler, seconded by Barr, that the Commission recommend to the Village Council approval of the plot plan of Mr. Clark Bushnell for a six-unit apartment building on Wilkinson Street. The one stipulation is that the building be relocated on the lot so as to provide a rear lot of 25 feet. When this is done the plan then conforms to the requirements of Ordinance 55 as amended. Yeas all. Motion carried.

Sincerely,
Chelsea Village Planning Commission
William D. Chandler, Sec.

Motion by Chandler, supported by Clark, to accept the recommendation of the Planning Commission and approve the plot plan of Mr. Clark Bushnell as read. Roll call: Yeas all. Motion carried.

Village Administrator, Frederick Weber, showed that an investigation showed the water problem on the property of John Edor was due to natural run off water and that a private ditch and drain was not functioning adequately.

Administrator Weber informed the council that a permit had been issued and the pumps for the Flanders St. ejector station were on order and delivery could be expected in from 6 to 8 weeks.

Motion by Chandler, supported by Miller, to increase the Treasurer's Burglary Ins. of Village Funds to \$10,000 for the months of July, Aug., and Sept. and \$1,500 for the balance of the year. Roll call: Yeas all. Motion carried.

Motion by Clark, supported by Fuiks, to increase the Police Dept. Sgt. rank salary by 24 cents per hour to be effective April 1, 1969. Roll call: Yeas all. Motion carried.

Motion by Clark, supported by Fuiks, to increase the Police Dept. two part-time patrolmen wage by 15 cents per hour effective April 1, 1969. Roll call: Yeas all. Motion carried.

Motion by Chandler, supported by Clark, to create a \$100.00 petty cash fund for the Village Administrator. Roll call: Yeas all. Motion carried.

Motion by Musbach, supported by Miller, to authorize and direct the clerk to pay bills as submitted. Roll call: Yeas all. Motion carried.

General Fund \$22,337.70.

Motion by Fuiks, supported by Chandler, to adjourn. Roll call: Yeas all. Motion carried.

Meeting adjourned.
Approved: May 6, 1969.
Harold Pennington, President.
Richard Harvey, Clerk

May 6, 1969
Council Room
Regular Session.
This meeting was called to order by Pres. Pennington at 8:00 p.m. Trustees present: Miller, Gorton, Fuiks, Clark, and Chandler. Absent: Musbach.

The minutes of the Regular Session of April 15, 1969 were read and approved.

Specifications for a new Civil Defense generator were reviewed and discussed. Administrator Weber and Trustee Miller were authorized to purchase a generator according to the specifications presented.

Discussion was held regarding the need of repair or replacement of the present fluoridation machine. Possible solutions are being studied.

RESOLUTION AUTHORIZING EXECUTION OF AGREEMENT WITH MICHIGAN STATE HIGHWAY DEPARTMENT FOR INSTALLATION AND LOCATION OF TWO SCHOOL FLASHING SIGNALS.

BE IT RESOLVED, AND IT IS HEREBY RESOLVED that the Village of Chelsea execute an Agreement with the Michigan Department of State Highway providing for the installation and maintenance of two (2) W-2-38 (SCHOOL CROSSING) signs with alternately flashing yellow beacons, one of which is to be located on M-52 north of Summit Street for southbound traffic and the other located south of Pierce Street for northbound traffic, the cost thereof to be born equally by the Village and the State Highway Department, the total cost being estimated at eleven hundred ten (\$1,110.00) dollars; the State Highway Commission to provide mechanical and routine maintenance and the Village of Chelsea to pay the entire cost of energy billings and the proposed charge for Michigan Bell Telephone lease line of five and 80/100 (\$5.80) dollars per month.

BE IT FURTHER RESOLVED that the Village Administrator is hereby authorized and empowered to execute the proposed Agreement.

Motion by Miller, supported by Chandler, to approve the above resolution as read. Roll call: Yeas all. Motion carried.

Administrator Weber reported that the new pumps for the Flanders St. ejector station are on schedule and work is expected to begin in the near future.

Motion by Chandler, supported by Clark, to accept a bid in the amount of \$2,450 from Data Machines for a billing machine for the Electric and Water Dept. Roll call: Yeas all. Motion carried.

A summary of the Fire Department activity for the month of April was read.

PROCLAMATION
Fire Service Recognition Day
Saturday, May 10, 1969
WHEREAS: THE fire service of our Village performs many public services in addition to the suppression of fire, such as inspections, pre-fire planning, and furnishing speakers to various groups; and

WHEREAS: Today's fireman is a technically trained and highly skilled professional public servant;

NOW, THEREFORE, I as President of the Village of Chelsea, do hereby proclaim "Saturday, May 10, 1969 as Fire Service Recognition Day, and I urge all citizens to visit their nearest fire station and become acquainted with these men, their apparatus and equipment, and the professional type service they provide today as contrasted with yesteryear.

Harold L. Pennington
Village President

The council acknowledged a request from Mr. Walter Harper to withdraw his application for variance.

A discussion was held regarding constructing a driveway to the rear of the McKune Library. No official action was taken at this time.

RESOLUTION FOR DESIGNATION OF STREET ADMINISTRATOR
Councilman Gorton offered the following resolution and moved its adoption.

Whereas, Section 13 (c) of Act 51, Public Acts of 1961 provides that each incorporated city and village to which funds are returned under the provisions of this section, that "the responsibility for all street improvement, maintenance and traffic operation work shall be co-ordinated by a single administrator to be designated by the governing body who shall be responsible for and shall represent the municipality in all transactions with the State Highway Commission pursuant to the provisions of this Act."

Therefore, be it resolved, that this Honorable Body designate Frederick Weber as the single Street administrator for the Village of Chelsea in all transactions with the State Highway Commission as provided in Section 13 of the Act.

Supported by the Councilman Fuiks, Yeas: Miller, Gorton, Fuiks, Clark, and Chandler. Nays: None. Absent: Musbach.

Trustee Clark read a summary of the Police Department Activity for the month of April as submitted by Chief Meranuck.

A discussion was held regarding parking problems on the drive entering the high school, the area around the circle drive, and on Book and Wendley Streets. Chief Meranuck recommended changes as follows: "No Parking At Any Time" signs in the high school circle drive will be enforced at all times.

East side of Book St.: North

from school service drive. "No Parking At Any Time." South of the service drive. "Two-hour parking 8:00 a.m. to 4:00 p.m." during school days.

West side of Book St.: "No Parking here to Corner" placed thirty (30) feet south of Wendley St. From this sign south, "Two-hour parking 8 a.m. to 4:00 p.m. during school days."

South side of Mandley St.: "Two-hour parking 8:00 a.m. to 4:00 p.m. during school days."

North side of Wendley St.: Pres. only posted "No parking at any time" no changes to be made.

Motion by Clark, supported by Fuiks, to amend the present policy of parking restrictions on the High School Circle Drive, Book St. and Wendley St. as presented. Roll call: Yeas all. Motion carried.

Motion by Fuiks, supported by Clark, to continue the tap-in charges on Taylor Lane as previously established. Roll call: Yeas all. Motion carried.

Motion by Gorton, supported by Clark, to transfer \$20,000 from the Electric and Water Department to the General Fund. Roll call: Yeas all. Motion carried.

The clerk was directed to write a letter to the Washtenaw County Board of Supervisors regarding the second patrol car which had an emergency call and was blocked by a Superior Ambulance vehicle, which was unmaned in the Municipal Building garage.

Motion by Miller, supported by Clark, to authorize and direct the clerk to pay bills as presented. Roll call: Yeas all. Motion carried.

General Fund: \$16,612.61.

Motion by Fuiks, supported by

Clark, to adjourn. Roll call: Yeas all. Motion carried.

Meeting adjourned.
Approved: May 20, 1969.
Harold Pennington, President.
Richard Harvey, Clerk.

BRITISH STAMP
The British postal system was introduced to Bermuda by William B. Parot. In 1848, he and his friend J. B. Heyl made the first penny postage stamp. Its present value is in the neighborhood of 6,000, and it is among the rarest of collector's items.

STARTED WINNERS
The Cincinnati Red Stockings enjoyed a phenomenal season of 50 victories and one tie in 1869, their first year as a professional baseball team.

LEASE A BRAND NEW FORD FOR 6 MONTHS AT SPECIAL LOW-LOW INTRODUCTORY RATES

Most people have heard of car leasing but for various reasons have considered it impractical for themselves. Now Palmer Leasing offers an opportunity to lease a brand new Ford fully equipped (even air conditioning) at our "rock bottom" introductory rates. You make only six low monthly payments; then in six months return the car clean and undamaged without further obligation. All mechanical repairs included in these rates.

THUNDERBIRDS \$139.00
(Air Conditioning)

FORD COUNTRY

SQUIRE \$129.00
(10 Passenger Wagon)

LTD \$119.00

GALAXIE 500 \$109.00

TORINO \$99.00

MUSTANG \$95.00

ALL CARS EQUIPPED WITH:
V-8 Engine, Automatic Transmission, Power Steering, Radio, White Sidewalls

CALL TODAY FOR FULL DETAILS
ASK FOR LYLE CHRISWELL, LEASING MANAGER
(OFFER EXPIRES JUNE 30, 1969)

PALMER LEASING DIVISION
PALMER MOTOR SALES, INC.
CHELSEA FORD DEALER SINCE APRIL, 1912 475-3271

CHELSEA'S FIRST AUTOMATIC

CAR WASH

**BRUSH CLEANING
FREE WAX**

**2-MINUTE SERVICE
STAY IN YOUR CAR**

\$1.00

CAR WASH OPEN 8 a.m. till 9 p.m.

OPENING SPECIAL

Friday, May 23, Saturday, May 24

YOUR CHOICE

1/2 GAL MILK or 6 12-Oz. R.C. COLA

FREE

With Each Car Wash

GALLUP-SILKWORTH PUMP & PANTRY

295 SOUTH MAIN ST., CHELSEA

STATION OPEN 6 a.m. TILL 11 p.m.

Starts FRIDAY 9 a.m.

Ends THURSDAY 6 p.m.

HARRY'S STOREWIDE

LIVING ROOMS

\$289. "INTERNATIONAL" 97" Traditional Sofa. Gorgeous quilted matelasse fabric. Shepard's casters. **\$186**\$249. "MEDITERRANEAN" 91" Sofa, loose cushion back with 2 matching bolsters. Lovely quilted matelasse, high density foam cushions. **\$188**\$259. "CALIFORNIA-MODERN" 109" Sofa with built-in walnut micarta end tables, heavy duty performance tested tweed fabric. **\$196**\$249. "FRENCH PROVINCIAL" Quilted Sofa. Beautiful Scotchguaranteed quilted matelasse. Pincore rubber cushion. **\$199**\$429. "TRADITIONAL" 2-Pc. Living Chair. Sofa in lovely print. Chair in correlated Nylon Nub. Tremendous buy!! **\$299**\$469. "SCHWIEGER" 3 Pc. Modern Living Room. Channel Back Sofa in heavy duty-tweed, Mr. & Mrs. Chairs in tweed & print combination. **\$313**\$559. "CALIFORNIA MODERN" 4 Pc. Living Room, 86" Sofa, Mr. & Mrs. Chairs and Ottoman, rubber reversible cushions, Scotchguard fabric, arm mittens and expensive self-decking. **\$399**

BEDROOMS

\$289 "EARLY AMERICAN" Nutmeg Maple 4-Pc. Suite with lovely "Westinghouse" Micarta tops. Includes 6-drawer double dresser, framed mirror, chest, panel bed. **\$119**\$279 "CONTEMPORARY" Walnut 4-Pc. Suite with "Wardite" tops. Features 9-drawer triple dresser, framed mirror, chest and panel bed. **\$188**\$299 "FRENCH PROVINCIAL" Antique White and Gold, Micarta tops. Includes triple dresser, mirror, chest and panel bed. **\$199**\$349 "BROYHILL" Contemporary Medium Walnut 4-Pc. Bedroom with oversized 9-drawer triple dresser, framed mirror, large 5-drawer chest and decorator bed. **\$248**\$379 "MEDITERRANEAN" Tawny Oak 4-Pc. Bedroom by American-Drew, beautiful 6-drawer double dresser, framed mirror, chest and full or queen-size bed. **\$284**\$439 "SPANISH" Dark Oak 4-Pc. Bedroom, 9-drawer triple dresser, cathedral framed mirror, 5-drawer chest, panel headboard, floor sample. **\$287**\$499 "LANE" Lovely Pecan 4-Pc. Bedroom, 6-drawer double dresser, framed mirror, 5-drawer chest, panel headboard, floor sample. **\$333**SPECIAL
BUDGET
TERMS for
THIS GREAT
EVENT!SAVE
20%
to
50%
and MORE!!SALE OF
FLOOR
SAMPLES

EARLY AMERICAN

\$299. "COLONIAL" 2-Pc. Sofa and Chair. Lovely print upholstery and correlated tweed. Semi-attached pillow backs, reversible foam zippered cushions. **\$194**\$339. "COLONIAL" 2-Pc. Living room. Pine wings with knuckle arm. Long wearing performance tested tweed fabric. Reversible urethane foam zippered cushions. **\$218**\$359. "COLONIAL" 2-Pc. Living room, upholstered arms and wings, semi-attached pillow backs. High performance tested tweed upholstery, arm mittens included. **\$227**\$369. "COLONIAL" Sofa and matching chair. Lovely quilted Scotchguard fabric, poly-dacron wrapped cushions. Expensive self-decking. First class comfort. **\$255**\$529. "COLONIAL" 3-Pc. Living room. Sofa in Scotchguaranteed print, 2 chairs in long-wearing tweed, rubber reversible cushions, covered platforms and arm mittens. **\$399**

FLOOR COVERING

\$8.95 Continuous Filament Nylon Pile Broadloom, installed over rubber sponge padding, 12-ft. widths only. 10 colors to select. **\$5.99**\$10.95 "Cumuloff" continuous filament nylon pile broadloom. F.H.A. approved, installed over sponge rubber padding. 12- and 15-ft. widths. 16 colors to select. **\$7.99**

Quality Chairs

\$39. "COLONIAL" Cricket Rocker. All maple with foam padded seat and back. Lovely Scotch-guarded print. **\$22**\$59.95 "TUB" Style chair, all heavy duty supported vinyl with walnut legs. 1 Only. **\$25**\$69.95 "TRADITIONAL" Goose Neck Style Platform Rocker. Ideal ladies chair. Choice of print or tweed. **\$43**\$99. "CALIFORNIA" Modern Chair. Loose cushion back and seat. Gorgeous "velvety" red. **\$44**\$109 "STRATFORD" Contemporary "pull-up" Chair. Beautiful Scotchguaranteed print. Arm mittens **\$55**\$99. "MAN-SIZE" Recliner in glove soft supported vinyl. Foam padded back and seat. **\$68**\$169.95 "TRADITIONAL" high back lounge chair, in performance tested tweed, reversible rubber cushion. Real deep comfort. **\$84**\$139. "BERKLINE" Recliner with massaging vibrator and relaxing heat. Heavy-duty supported vinyl. **\$97**\$239.95 "STRATFORD" Modern Mr. and Mrs. Chairs and Ottoman. Lovely Scotchguaranteed print. Arm mittens. Choice of color. **\$148**\$299. "DOUGLAS" Mr. and Mrs. Chair and Ottoman. Pedestal style. Rocks and swivels. In Enka nylon velvet. **\$166**

DINING ROOMS

\$479. "COLONIAL" Honey Maple 8-Pc. Dining Room. Open hutch top china, 48x48 round mar-proof top table extends to 72", 4 mates chairs, 2 captain's chairs. **\$299**\$519 OIL WALNUT 8-Pc. Suite, 54" glass door hutch, base, oval mar-proof top extension table with 2 leaves, 6 hi-shaped back chairs (4 side - 2 arm). **\$369**\$559 "FRENCH PROVINCIAL" Fruitwood 8-Pc. Suite with serpentine front glass door china, oval extension table, leaf, 5 side - 1 arm upholstered chairs. **\$393**

DINETTE SETS

\$99.95 "MODERN" 7-Pc. Dinette Set with decorator inlay mar-proof top extension table with leaf (opens to 60"), plus 6 patterned vinyl upholstered chairs. **\$57**\$99.95 "MODERN" 7-Pc. Family-size Dinette. Big 36x48 table extends to roomy 60"; has stain-proof plastic top, 6 comfortable sturdy chairs. Bronzetone finish. Self edge table. **\$77**\$199.95 "FRENCH PROVINCIAL" Buffet, 62-in. wide, in beautiful fruitwood, silver drawer, etc. Discontinued—priced below our cost. **\$87**\$149.95 OVERSIZED 9-Pc. Dinette, lovely walnut wood grain mar-proof top 72-in. Extension Table with leaf, 8 rugged vinyl upholstered side chairs. **\$97**\$199.95 "EARLY AMERICAN" 7-Pc. Dinette, beautiful maple wood grain "Micarta Top" 60-in. Extension Table with leaf, 6 durable vinyl upholstered chairs with maple trim. **\$127**

BEDDING

Special "BERTA" QUILT Top Mattress or Box Springs . . . non-sag Dura-flange border, edge-guards, hundreds of heavy innercoils. Full size only! **\$39**\$79 "SOFA-BED," sofa by day, bed by night, bedding-box in heavy duty performance tested tweed. **\$59**\$99.95 Hollywood Bed-Outlet, by Serta. Quality top button-free mattress, matched box spring; 4 legged, canter frame and choice of headboard. **\$77**\$129.95 Insta-bed, by Serta, with deep concealed bedding compartment. Opens to a full length bed for 2. Heavy duty vinyl upholstery. Choice of color. **\$82**\$149.95 Colonial Maple 8-Pc. Bunk Bed, 24-in. heavy posts, can be used as two 39" Twin Beds with ladder, guard rail. Has 2 Serta reversible bunkettes. **\$118**\$479 "COLONIAL" Queen-size Fold-O-Bed, by Serta. Lovely Scotchguaranteed print, separate queen-size mattress. **\$321**Homemaker Special for This Sale Only
3 COMPLETE ROOMS OF
DISTINGUISHED FURNITURE

Includes "Famous" 8-Pc. Living Room, (92" sofa, Mr. and Mrs. chairs, rubber cushioned, self-decked) plus 2 step-end tables, cocktail table and 2 table lamps . . . 6-pc. modern bedroom (double dresser, mirror, chest, panel bed, all dust-proofed and drawer-guided) PLUS "Serta" innerspring mattress and box spring . . . 5-pc. "Duchess" dinette set.

Reg. \$895 **\$577** PAY \$5.00 WEEKLY

Budget Terms Arranged

All Merchandise Subject to Prior Sale

Use Our Convenient Lay Away Plan

HARRY'S
FURNITUREOver An Acre Of Name Brand Furniture, Carpet & Appliances On Display
Just Halfway Between Saline and Clinton on US-12
"A Little Bit Out of the Way . . . But a Whole Lot Less to Pay"

NEW STORE HOURS:

MON.
FRI.
SAT. } 9 to 9TUES.
WED.
THURS. } 9 to 6 SUNDAY 12 to 6

Track Team Outdistances Dexter, 68-50

Chelsea track team finished their dual meet season in style Tuesday as they outdistanced Dexter, 68-50. They closed the season with a 7-0 dual meet record and a 4-2 conference dual meet record.

The highlight of the meet was the breaking of the two mile record by Doug Weatherwax, who ran the event for the first time. His 10:35.1 snapped the old 10:49 record set by Larry Porath in 1967.

This meet was the final tune-up for the conference meet to be held Thursday at Dundee, and many Chelsea runners were shifted to events other than those they normally run to sharpen them up for the state meet.

The conference meet at Dundee Thursday begins at 1 p.m. with field events. The preliminaries in hurdles and dashes will begin at 2:30 and the final running events begin at 4 p.m. Chelsea will challenge Saline, South Lyon, Dundee, Lincoln, Milan and Dexter. If Chelsea can win the meet and Saline finishes fourth or worse Chelsea will win the title outright; if Chelsea wins and Saline finishes third the two will tie.

In the Tuesday meet, Jim Boylan finished first in shot put with 42' 6" and Kerry Kargel took third.

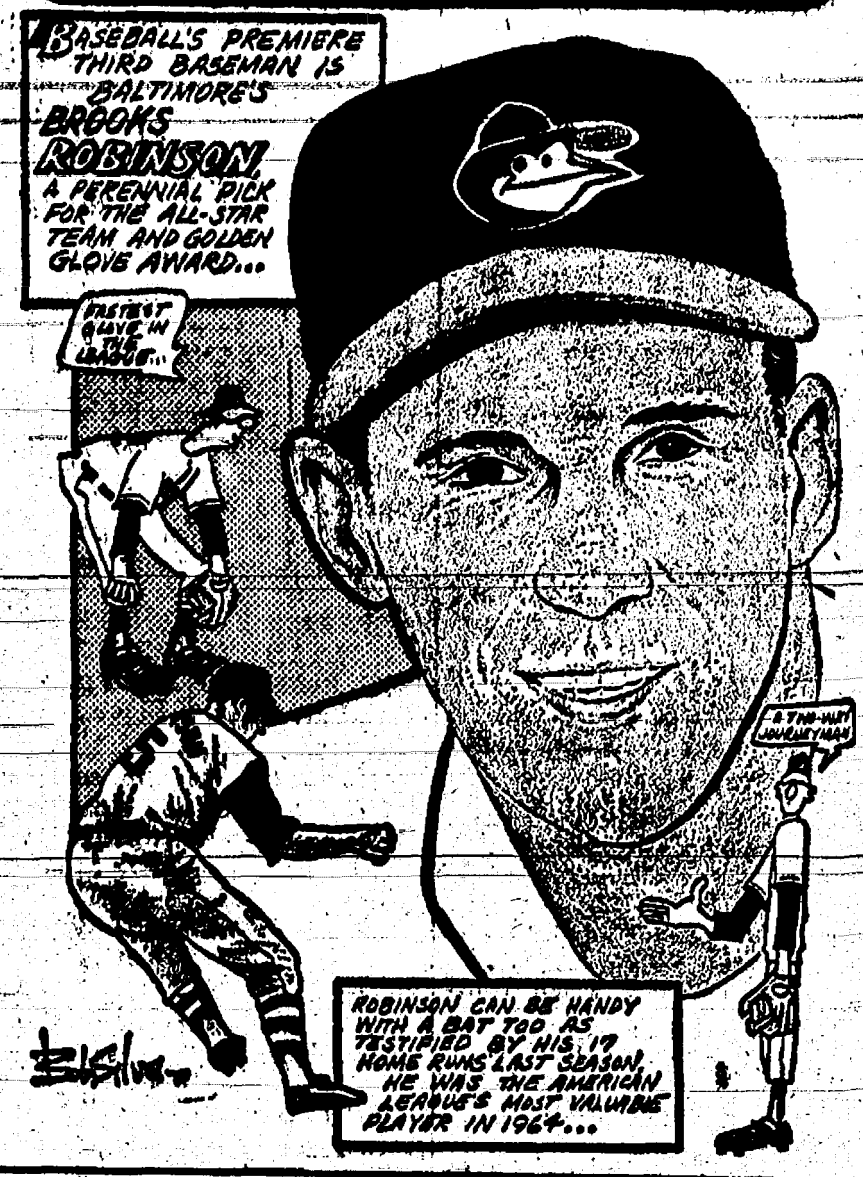
Larry Blacklaw's 12' pole vault took a first and Jim Wojcik won third.

Karsten Kargel won the high jump by clearing 5' 9 1/2". The 880 relay team of Larry Gorton, Mark Collins, Dave Porath and Ted Bennett finished first with 1:56.7.

George Cameron won third in the mile; Mike Bassett won the high hurdles in :50.9; Larry Gorton was second.

John Hepburn won the 880-yard run in 2:10.9. Mike McGinn finished second in the 440-yard run. Schmidt won the 100-yard dash in :10.2, followed by Ted Bennett with :10.2. Larry Gorton ran the low hurdles in :20.6 and Mike Bassett was second. Ted Bennett won the 220 dash in :22.9 with Mike Schmidt second.

SPORTS CORNER



Michigan ranks first in 19 manufacturing categories including motor vehicles and cereals. Few states equal Michigan in per capita support of higher education.

FREE LUBRICATION

With Purchase of
Oil Change and Filter
(Offer good May 1 thru May 31, 1969)

SPENCER'S SINCLAIR

1445 South Main St. Phone 475-8810

IMPORTANT IN AGRICULTURE
Michigan has played an important role in the American agricultural success story. Increased farm efficiency combined with a progressive system of marketing, processing and merchandising have stocked the nation's dinner tables with a wider variety of nutritious food, and with the lowest food bills relative to income of any country at any time in history.

No matter how you cut Michigan's economic pie, agriculture represents a \$880 million dollar annual income to producers. The retail value of these products would be \$2 billion to \$2 1/2 billion.

Subscribe Today to The Standard!

1969 POOL SALE

CASH & CARRY COUPON

18' MUSKIN PACKAGE	\$199
18' ...	\$209
18' ...	\$219
18' ...	\$229
18' ...	\$239
18' ...	\$249

VISCOUNT POOL & SPORTS

BOWL for the fun of it...

Having Fun Lately?
Bowling Is a Ball!

Put some fun in your life... Bowl for laughter and health at our modern, well-equipped lanes with rarely a wait. Bring the gang down!

CHELSEA LANES

1180 M-52 Phone GR 5-8141

For And About Teenagers



TEEN'S LETTER:
I have a problem I would like you to help me with. I am a boy, 19, and I'm having trouble just trying to get a date. This bothers me a lot because all my friends are either going steady or married. Two of them are married. Anytime I take a date, I always hear her friends say she's a date with someone else who she doesn't like. I don't know why this always happens. I do not consider myself aggressive. Also, at times I get a date, I get into a friend who gives me a remark which makes me wonder what he is thinking. Sometimes I get strange remarks from my friends. I would like to know how to handle these things. I would like to know how to get a date. I would like to know how to handle these things. I would like to know how to get a date. I would like to know how to handle these things.

Baseball Team Recovers To Down Lincoln

Chelsea came back from a 6-1 loss May 15 to Milan to defeat Lincoln, 4-3 Tuesday. Led by Greg Stephens and Tim Colvia with two for three each and a triple by Craig Houle, Chelsea peaked away inning by inning to give Lincoln the defeat.

Gaken did a good job pitching, according to Coach Carl Genske, who sent Wayne Walton in as relief pitcher in the fifth inning to put out Lincoln batting fire. Chelsea 1-11-010-4-8-9-4 Lincoln 000-030-0-8-8-2 Mike Gaken, Wayne Walton (5), Jeff Bust, Mike Harvey (6), Nick Roe, Terry Woods

MILAN 6, CHELSEA 1
The only bright spot in the Milan game last Thursday was Craig Houle's beautiful homer hit across the street and between two houses. Milan "just put a few hits together with a few walks and Chelsea couldn't get back at them," according to the Coach. Chelsea 000-001-0-1-6-1 Milan 100-040-6-8-1 Wayne Walton, Craig Houle (3), Mike Harvey, Jeff Bust (6), Eugene Schultz, Les Pulver.

Tennis Team Entering Regional Meet at Albion

Chelsea's 10-member tennis club will travel to Albion Friday and Saturday for the regional meet, a preliminary to the state meet at Kalamazoo June 6 and 7. Singles and doubles winners and runners-up will qualify for state competition. Team members are Tom, Steve, Mike and Mark Thomson, Steve Knickerbocker, Rick Dellinger, Mike Hergert, Lynn Houle and Dave Conklin. Terry Pokela acts as advisor. The team has won matches with Jackson Parkside and Albion and lost to Huron and Pioneer High schools in Ann Arbor. Michigan grows almost all of the country's navy beans.

Junior Champ Track Meet Set for May 28

Plans are now complete for the 1969 Chelsea Junior Champ track and field competition slated for 4 p.m. May 28 at the high school track.

The Jaycee-sponsored meet will feature 11 events for persons between the ages of 13 to 18. Local Junior Champ winners may qualify to participate in state competition Saturday, July 19 in Detroit. Senior division boys' and girls' winners in the state meet will represent the Michigan Jaycees at the national track and field meet in Minneapolis, Minn., July 31 to Aug. 2. For additional information and entry forms contact assistant track coach Robert Pursel or junior champ chairman Glenn G. Weir, 509 Madison, or phone 475-7609.

Thomas Thomson Wins Scholarship from Elks

Thomas Thomson received a \$75 savings bond as a second-place scholarship winner from the Lodge of Elks No. 825, Ann Arbor. The national Elks scholarship program provides local, state-wide and national competition for scholarships ranging from \$25 to \$1,000. Tom plans to attend Kalamazoo College in the fall.

Nearly 100,000 men, women and children donate a day of their time and effort each year to conducting the VFW Buddy Poppy sale.

HARM BEAUTY SALON

4396 CLEAR LAKE ROAD
(Formerly of Grass Lake)

Two Operators • Hair Styling and Wig Service

PHONE 475-2700

Anchor Yourself To Some Summer Fun!

Time for fishin' fun with a Sea Nymph boat powered by the smooth and quiet Sea-Horse Motor. Also headquarters for the fishing tackle to go with it. Sailing, canoeing, ski-ing, fishing, hunting or plain old horse-shoes we've got it, whatever your pleasure. So, come on in!

OPEN:
Tuesday - Friday 8:30 to 5:30
Friday until 8:00 p.m.
Sunday noon to 4:00 p.m.
Closed Monday.

Gateway SPORTS CENTRE

"Your Sports Equipment Centre"
103 S. Main St. Chelsea, Mich. Phone 475-8676

Sunday, May 18 SPECIALS

BAKED CHICKEN and Dressing \$1.85

SWISS STEAK ROAST POTATO \$2.10
Includes trip to the salad and bread table

FRIDAY NIGHT SPECIAL MAY 23
Fish and Chips \$1.49

PAUL BUNYAN Family Restaurant
Jackson St. & 1st St. SUNDAY CONTINUES

THE DODGE BOYS ARE MAKING CONFETTI OUT OF PRICE STICKERS! NOBODY OUTDEALS THE GOOD GUYS

THE DODGE BOYS

GREAT PRICES. GREAT SERVICE. GREAT GUYS TO DO BUSINESS WITH.

SEE US NOW AND SAVE

G. A. SALES & SERVICE
1185 Manchester Road Chelsea, Michigan

FARES SLASHED 60%!

MAIL THIS AD FOR FREE INFORMATION

100 extra miles of travel for you with just \$5.00! Now you can cross the country in style and comfort! A thrilling 10-mile round trip of breathtaking scenery and excitement! A thrilling 10-mile round trip of breathtaking scenery and excitement! A thrilling 10-mile round trip of breathtaking scenery and excitement!

MAIL TO: LANTA, P.O. Box 1188, Dept. W-69, Iron Mountain, Mich. 49801

FOOD BUY-WAYS

More and more, salads are coming out of the side-dish or secondary course place, and constituting the principal dish in the meal. Salads make particularly good meals for luncheon, especially for business men and women who have to return to a desk and do an afternoon's work. They are, I believe, less likely to cause that sleepy feeling, than a heavy luncheon.

Almost any restaurant menu now offers salads of cottage cheese; fruit, shrimp, crab, tuna, lobster, or tossed vegetables, with a choice of dressing, and stripplings of cheese, ham, chicken, turkey, or corned beef, or with hard-cooked egg wedges, and anchovies to give that extra zipp to the taste.

When one stops to think about it, such a salad isn't a bad description of a balanced array of nutrients from the four basic food groups—and a lot more tempting than some listings of these dietary essentials.

Add a glass of milk and some whole grain or enriched bread, rolls or wafers, and you can return to your desk with your dietary conscience at rest, knowing that you have done well by your nutrition, and probably have avoided the calorie excess which some other food selection might have involved.

There are many interesting variations of the salad menu, originating in various parts of the world. In France one meets a salad which contains an almost incredible variety of foodstuffs—boiled potatoes, tuna fish, black olives, anchovies, olive oil, parsley, celery, green peppers and tomatoes; seasoned with garlic, chervil, pepper and wine vinegar, and decorated with hard-cooked eggs.

Molded aspic or gelatin with mixed vegetables, or fruits in gelatin molds, also make excellent salads, and ingenious things can be done with chicken or duck or turkey in gelatin. Large ripe tomatoes stuffed with cottage cheese or a variety of fish, meat or poultry combinations also make tasty light luncheons or snacks.

Speaking of salads generally, there's a lot to be said for the simple mixed vegetable salad, with or without fancy additions, and with dressing of oil and vinegar, French, thousand island or garlic, or with Roquefort or bleu cheese either in luscious lumps or smoothly blended. Use of salad greens need not be limited. How about trying spinach, escarole, endive, bibb lettuce, romaine, or a combination of all these greens for a change in taste and pace from the traditional head lettuce variety.

Rice, macaroni, and other pasta forms may also be added to salads or their greens. These Cantonese vegetable dishes which are in effect

Early First Cutting Key to Alfalfa Plan

Note: This is the second in a series of five articles on improving yields of alfalfa in Michigan.

Early first cutting of alfalfa is the key to success in getting higher yields and control of the alfalfa weevil, according to Don Johnson, Washtenaw County extension agent.

He cites these advantages to early cutting:

(1) Higher quality hay or silage with less stem, more leaves.

(2) Better chances of avoiding rain damage.

(3) Increased chance of three cuttings instead of only two.

(4) More protein which cuts cash outlay for high-priced protein supplement.

(5) Better animal intake and more milk (or meat) produced per acre.

(6) Possibility of being able to spray for alfalfa weevil immediately after first cutting. Treatment when plant is not at full growth can bring more effective control at possibly less cost.

"Early cutting is described as the 'late bud or early flowering stage,' says Johnson. In a good year this can be several weeks earlier than in a slow crop year," he added.

"The important thing is to be ready when the crop is ready. All harvest equipment should be checked and ready to roll when the alfalfa buds start to open."

Spring Means Time To License, Launch Boats

Lansing—Even with the vacillations of Michigan's changing weather patterns still much in evidence, one incontrovertible fact stands out. It's officially Spring and a good time of year to be thinking about boats and boating.

Secretary of State James M. Have said this is the best time to get license plates for your boat if it qualifies under Michigan law. Sale of 1969 Michigan boat license plates began recently at selected branch offices of the Secretary of State.

Boat plates must be purchased each year. The boat plate law must not be confused with motorboat registration and numbering which is set up in three-year cycles. Have said about 40,000 boat licenses were issued in 1968.

All boats—even sailboats 16 ft. or longer and which get into the Great Lakes or connecting waters must have boat plates. The only exceptions to the boat plate law are canoes of any length with motors of less than two horsepower. These units do not have to have boat plates.

If you are not sure if your boat qualifies for boat plates, you can measure it yourself.

well into the summer in susceptible hilly and mountainous areas of California, says the U. S. Department of Interior. It points out: "long after the rains stop, water slowly seeps down into the ground, and the likelihood of landsliding increases. Additional rains or earthquakes could trigger widespread, disastrous slides during this critical period."

ADVANCED welding techniques and equipment are important factors in our ability to design and fabricate many of the sophisticated products of the space age. They make it possible to join dissimilar metals, a procedure that's important in production of missiles, rockets and jet planes, reports P&H Welding Products, Milwaukee.

APES AND MONKEYS evidently are physically unable to make the sounds that humans use in speech, says Dr. Philip Lieberman of the University of Connecticut. The results of his research appear to contradict the prevailing belief that human speech is produced solely by organs that have evolved for breathing and eating. They suggest instead that man's vocal apparatus is unique and evolved in part for talking.

Time To Spare

By GERALD ANDREWS - Retirement Adviser

Writing For Fun And (Maybe) Profit

Some advertising has just reached me concerning a school for writers. The text sounds persuasive, and the students are all pleased with their experience, judging from the photos that accompany the text.

You'd guess that all one has to do is take the course and— presto!—his pen will bring him fame and fortune.

Advertising like this leaves me in two minds. Undoubtedly benefit from this kind of instruction. The growth of summertime liter-

ary workshops seems sufficient proof. And I know individuals who have learned by mail, and swear by it.

But others think you only waste time and money when you pay to learn how to write.

My own feeling is that only the individual can decide for himself. Still, if you want a capsule verdict, here it is.

A writer with some competence can benefit from discussing his work with professionals.

A beginner might be better off

any workshops seems sufficient proof. And I know individuals who have learned by mail, and swear by it.

But others think you only waste time and money when you pay to learn how to write.

My own feeling is that only the individual can decide for himself. Still, if you want a capsule verdict, here it is.

A writer with some competence can benefit from discussing his work with professionals.

A beginner might be better off

Extra Highway Patrols Set for Holiday Period

Special patrol attention will be devoted by the State Police to Michigan highway traffic over Memorial Day week-end as the season of increased recreational travel gets underway in the state.

Col. Frederick E. Davids, department director, noted that accidents during the Memorial period killed 40 persons last year and 43 in each of the years 1967 and 1968.

If the holiday toll is to be effectively reduced this year, Davids emphasized that motorists must be especially vigilant in obeying rules for safety in traffic. He added that the continuing increase in vehicle registrations and travel mileage serve to keep the accident potential high in warm weather months.

The State Police patrols will begin at noon Thursday, May 29 and continue through to midnight Sunday, June 1. District commanders have been advised to use their traffic safety officers, detectives and post-commanders as patrol conditions warrant.

State Police vehicle check lane officers and the three department planes, weather permitting, also will participate in the patrolling.

Maximum coverage will be provided from 3 to at least 9 p.m. daily during the holiday period with special consideration given to sections of highways having bad accident experience.

RAPID GROWTH Kenya's capital, Nairobi is today one of Africa's biggest cities. Yet, it began only 70 years ago as a makeshift camp of the pioneering Kenya-Uganda Railroad. Today it has a population of 350,000.

Tourism brings more than thirteen million travelers to Michigan each year.

You can't miss with electric heat.

For openers, it comes with a three-year operating cost guarantee. That's in writing. And is issued only by Edison-Approved Electric Heat Contractors.

If the operating cost doesn't live up to the guarantee, Edison will work with your contractor to see that it does. If things still don't work out, the equipment will be removed and your money will be refunded.

If you'd like to know more about clean, quiet, flameless electric heat, we'll have an Edison-Approved Electric Heat Contractor call on you. Naturally, there's no obligation.

Convert your house to the home of your dreams with modern electric heat.

"The operating cost of our electric heating system is guaranteed in writing," says Cecil Hanes

EDISON

Factory-To-You Prices

LUMBER - BUILDING SUPPLIES

SPECIAL ON RAILROAD TIES

3-ft. Ties, \$4.00 ea. Larger sizes, 50c per ft.

New 8-ft. Ties, \$6.50 ea.

Inventory Clearance Sale on Paneling 2 WEEKS ONLY

ROSS GREEN, 4' x 8' sheet \$5.58

ADANA BROWN, 4' x 8' sheet \$5.58

CLASH OAK, 4' x 8' sheet \$5.15

BARBOARD, 4' x 8' sheet \$5.15

MANILA, LAUAN LUZON, 4' x 8' sheet \$4.95

TIAGO GOLD, DESERT SAND, ANDARA WHITE, 4' x 8' sheet \$5.45

PECAN, ACE PECAN, 4' x 8' sheet \$4.65

CH 4' x 8' sheet, seconds \$4.50

4' x 8' sheet, was \$7.95, Now \$6.95

PINO OLIVE, 4' x 8' sheet \$5.40

ANA SPLICED, 4' x 8' sheet \$3.95

SPECIAL ON STORM DOORS

All Sizes—\$24.95

4 x 8, per ft. 12c

Flush Mahogany and Birch Doors

2/0 - 3/0 \$5.25 to \$6.95

Special on Bi-Fold Doors—\$13.95

Any size. Freight damaged.

Ready-Mix Cement & Mortar, bag \$1.49

STORE HOURS EFFECTIVE FRIDAY, MARCH 14
Thursday and Saturday, 8:30 a.m. to 5:30 p.m.
Friday, 9 a.m. to 9 p.m. Sundays, 10 a.m. to 3 p.m.

DEXTER PLYWOOD FACTORY OUTLET

(DIVISION OF TUMECUM PLYWOOD)
Ann Arbor Rd. Phone 426-4738 Dexter, Mich.
Former Location of Al Gross Ford Sales & Service

TAMARACK
6520 CLEAR LAKE ROAD

Family Recreation and Beach Club

- Sandy Beaches
- Shaded Campsites
- Children's Playground
- Swimming Facilities
- Cottages For Rent
- Canoe and Canoe For Rent
- Life Guards On Duty
- Picnic Areas
- Boat Docks
- Trailer Park
- Trading Post
- Canoe Trails
- Hiking Trails
- Good Fishing

Annual dues of only \$50 give your family unlimited year round use of this 200-acre Cooperative Recreation Club on Clear Lake near Chelsea.

NUMBER OF MEMBERS LIMITED TO AVOID OVERCROWDING. WAITING LIST WILL BE ESTABLISHED WHEN MEMBERSHIP ROLLS ARE FILLED.

OPEN DAYS

Saturday and Sunday, May 24 & 25, 2:00 p.m. to 6:00 p.m.

Visit on one of our Open House Days or call 475-7245 for information

JUST MINUTES AWAY

Take I-94 expressway to the Clear Lake Road exit (exit No. 153) 5 miles west of Chelsea. Drive north on Clear Lake Road approximately 3 miles to the private road marked "Tamarack Recreation Club."

AVOID THOSE OVERCROWDED PUBLIC BEACHES JOIN TAMARACK INSTEAD.

DEXTER CO-OP

3515 Central St., Dexter Phone 426-4621

COMPLETE FARM SERVICE

FEED - SEED - FERTILIZER

FENCING - FENCE POSTS

LAWN & GARDEN EQUIPMENT

GOOD BUYS ON CHAIN SAWS

Insecticides - Weed Killers - Pesticides

ALL GARDEN PLANTS

TOMATOES - CABBAGE - PEPPERS, ETC

BULK GARDEN SEEDS



BREAKING THE TAPE and a school record is the last member of the Chelsea mile relay team, Mike McGinn, at the Regional track meet Saturday. Team members Jim Wojcicki, Mike Schnaidt, Doug Weatherwax and McGinn finished in a record 3:32.3, to outdistance five other schools in this event and 16 other schools in the meet. Trailing far behind is the Coldwater runner who finished second. By this stage in the meet Chelsea was well on the way to cinching their overwhelming victory. McGinn is one of the Chelsea men who qualified for the state meet Saturday in Ann Arbor.

The Veterans of Foreign Wars Buddy Poppy sale has been conducted nation-wide since 1922. Proceeds are used exclusively for the aid, relief and comfort of disabled and needy veterans, and the widows and orphans of deceased veterans.

CREDIT PROBLEM? NO PROBLEM!

CONTACT
MR. SMALL
CREDIT ADVISOR
at
HENDERSON FORD
665-0871
Ann Arbor

BIRTHS

A daughter, Michele Teresa, May 17, to Mr. and Mrs. James R. Mshar, Milwaukee, Wis. Grandparents are Mr. and Mrs. Alex Mshar, 742 Book St., Chelsea and Mrs. C. Ciardo of Milwaukee.

A daughter, Lisa Lynn, May 16 to Mr. and Mrs. Douglas R. Hamilton.

A daughter, Kyle Jo, Monday, to Mr. and Mrs. Donald Puckett of Pinckney. The paternal grandparents are Mr. and Mrs. Andy Puckett of Chelsea and the maternal grandparents are Mr. and Mrs. Carl Nelson of Gaylord.

A son, William Joseph Riekerman, born May 10 to Mr. and Mrs. Terry Riekerman of Chelsea. Paternal grandparents are Mr. and Mrs. Harold Riekerman and maternal grandparents are Mr. and Mrs. Paul Kalmbach.

Nina Greening Attends EMU Alumni Program

Nina M. Greening was one of six Eastern Michigan University alumni from the class of 1919 who attended the all-day alumni program Saturday.

Mrs. Walter Bolanowski also attended as a guest of Miss Greening. Miss Greening received training for her 43 years of teaching at Michigan State Normal College, forerunner to Eastern Michigan. She was among fewer than 400 graduates in 1919.

Assistance in establishing disability claims or gaining other veterans benefits is available without charge to any veteran through a nation-wide system of veterans service officers maintained by the Veterans of Foreign Wars. A portion of the cost is contributed by the public through their purchase of VFW Buddy Poppies.

A daughter, Erin, May 6, to Mr. and Mrs. Michael S. McCormick, Chelsea.

+ AREA DEATHS +

Clare A. Walz

Dies Sunday at Hospital Following Long Illness

Clare A. Walz, 70, of 327 W. Middle St., died Sunday, May 18 at St. Joseph Mercy Hospital, Ann Arbor, after a long illness of several months. He had retired in October, 1966, after 35 years of employment as a machinist for Federal Screw Works.

Mr. Walz was born Sept. 20, 1895 in Waterloo township, Jackson county, to John and Mabel Harvey Walz, and was a life-long resident of this area. He married Ethel Roberts Jan. 17, 1920 and they lived at the West Middle St. address for 42 years. She survives.

Also surviving is a daughter, Mrs. Kenneth (Ruth) Leader of Plymouth; a son, Robert Walz of Chelsea; two grandchildren, Mark Leader of Plymouth and Janet Walz of Chelsea; two brothers, Floyd and Howard Walz, both of Chelsea and several nieces and nephews.

Funeral services were held at 1:30 p.m. Wednesday, May 21 at the Burghardt Funeral Home with the Rev. Robert Worgess officiating. Burial followed in Oak Grove Cemetery.

Donald S. Adam

Dies Tuesday at U-M Following Heart Attack

Donald S. Adam, 55, of 185 Clairmont, Dearborn, formerly of Chelsea, died Tuesday, May 13, after suffering a heart attack following a lunch hour swim at the U. of M. Intramural Sports Building. He was employed as a certified public accountant by the University in the University's Internal Auditing Department.

He joined the U. of M. staff in March after having been associated with Price, Waterhouse & Co., in Detroit. He was past president of the Detroit Chapter of the Institute of Internal Auditors and a member of several state and national auditor's associations.

Born Feb. 15, 1914, he was the son of Ernest and Mary Schaumloeffel Adam. He attended Chelsea schools, graduating with the class of 1932.

Survivors are his widow, Marna; a son and daughter, Donald S., Jr., and Mrs. Mary Kay Andersen; two grandchildren, Cindy K. and Kristen Andersen; and two sisters, Mrs. W. Kelly Goss (Verna), of Ann Arbor, and Mrs. M. B. O'Neill (Eileen), of Santa Monica, Calif.

Funeral services were held at 11 a.m. Friday at the Guardian Lutheran church in Dearborn.

Mrs. John Lyons

Long-Time Chelsea Resident Dies Monday at Hospital

Harriet M. Lyons, of 616 Grant St., died Monday, May 19 at St. Joseph Mercy Hospital, Ann Arbor, where she had been a patient since April 21.

She was born Oct. 19, 1893 to Louis and Mary Hare Burg, in Dover, O. She married John Lyons June, 1908 at St. Mary's Catholic church, Chelsea.

She lived her entire married life in the Chelsea area. She was active in church work. Her family sang in the St. Mary's choir for many years.

She belonged to the LCBA and the Altar Society. Mr. Lyons died April 22, 1955.

She is survived by a daughter, Mrs. Mary Gakle and one grandchild, Mrs. Russell (Serene) Shaneyfelt, Ann Arbor; and a grandson, John Gakle, Ann Arbor; and six great-grandchildren; four sisters, Mrs. Helen Lyons, Chelsea, Mrs. Pauline Etienne, Jackson, and Mrs. Stanley (Margaret) Niskoski, Highland Park and Mrs. Wilamine Lonsway, Adrian. Two brothers and one sister preceded her in death.

Funeral services will be Thursday at 10 a.m. at St. Mary's church with the Rev. Fr. Francis Wahowiak officiating. Burial will take place in Olivet cemetery. Rosary was recited at 8:30 p.m. Wednesday at Staffan Funeral Home.

Mrs. Joseph Protz

Dies Friday Morning At Ann Arbor Hospital

Mrs. Joseph W. (Mary S.) Protz, 75, of 13525 Old US-12, Chelsea, died Friday morning at St. Joseph Mercy Hospital, Ann Arbor. She was born Nov. 21, 1893 in Hungary. Mrs. Protz lived at her present home for the past five years and previously lived on Freer Rd., near Chelsea.

She married Mr. Protz July 19, 1913; he died May 19, 1957.

Survivors include: a son, Edward H. of Ann Arbor, one grandson, John E. of Midland; three sisters and two brothers in Europe.

Funeral services were held at 1 p.m. Monday from the Mushig Chapel. Burial followed in Wash-ton Memorial Park, Ann Arbor. Memorial contributions may be made to the Michigan Heart Fund.

SPEEDIEST ONE

Flying at speeds in excess of Mach 2, the F-106 Delta Dart is the fastest and highest flying interceptor in the Aerospace Defense Command.

Victor B. Miller

Retired Road Commission Employee Dies Sunday

Victor B. Miller, 711 W. Middle St., died Sunday, May 18. He was 69 years old.

Mr. Miller was born in Fulton, July 21, 1899, to Chester T. and Mary L. Mello Miller. He married Zelma R. Hepburn Sept. 29, 1928 in Chelsea. She died Sept. 21, 1958.

Mr. Miller was a heavy equipment operator for the Washtenaw County Road Commission for 35 years, retiring in 1964. He was a member of the Chelsea Methodist church.

Survivors include two sons, George and Charles of Chelsea; two brothers, Vern, of Boynton Beach, Fla., and Joseph of Burlington; three sisters, Mrs. Helen (Pierce) of Grass Lake, Mrs. Lloyd (Marie) Corwin, Ann Arbor, and Miss Ruth Miller from North Carolina; and five grandchildren. A daughter, Margaret, preceded him in death April 16, 1960.

Funeral services were Wednesday at 2 p.m. at the Staffan Funeral Home with the Rev. Matthew J. Betz officiating. Burial was in Oak Grove Cemetery.

Mrs. Edmund Frymuth

Dies Thursday at Hospital Following May 5 Auto Crash

Mrs. Marjorie M. Frymuth, of 1129 S. Harris St., Ypsilanti, died May 15 at St. Joseph Mercy Hospital. She was injured in an automobile accident in Chelsea May 5.

She was 72 years old. Mrs. Frymuth was a former Chelsea resident and sister of Deam Hepburn of Chelsea.

She was born July 21, 1896 in Chelsea to Herbert E. and Myra Hunter Hepburn. She graduated from Chelsea High school in 1915 and married Edmund J. Frymuth May 19, 1918 in Chelsea.

She was secretary of Huron Temple No. 66 Pythian Sisters; member of the Past Chiefs club, and a member of Herbert J. McKune Unit No. 31, American Legion Auxiliary.

Mr. Frymuth died April 4, 1967. Survivors include her daughter, Mrs. William (Rowena) Griffin of Ypsilanti; and brother Dean Hepburn of Chelsea. She was preceded in death by a son and a daughter.

Funeral services were Sunday, May 18 at 2 p.m. from Staffan Funeral Home with the Rev. William Johnson officiating. Interment was in Oak Grove Cemetery.

Charles A. Leitch

Former NYC Telegraph Operator Dies in Monroe

Charles A. Leitch, 79, of 7930 Lighthouse Rd., Avalon Beach, Monroe, formerly of Chelsea, died Friday at Monroe Convalescent Center of a heart condition. He had been in poor health and had been seriously ill since May 10, 1969.

He was born July 14, 1897 in Oakland City, Ind., the son of Joseph and Phoebe Jane Scott Leitch. Mr. Leitch moved to Monroe from Chelsea in 1941.

He was married to Mary Louise McLean who died in 1928. On June 28, 1938, he married Ruth Ann Foster of Chelsea in Angola, Ind.

Mr. Leitch was a telegraph operator for New York Central, retiring in 1953.

He was a member of Olive Chapter No. 140 RAM of Chelsea, Prairie Lodge F&M of Paris, Ill., honorary member of R&R Chapter No. 22 K.T. No. 19, R&R Council No. 4, Ancient Accepted Scottish Rite of Detroit.

Surviving are: his widow; a son, Charles A., III, of Michigan State University, East Lansing; three daughters, Mrs. Robert B. (Marceline) Clark of Santa Clara, Mrs. Ellsworth (Betty) Hennes of Dexter, Wanda Lee Leitch of Vanderbilt University; three brothers, Ira A. of Springfield, Benjamin F. of Dearborn, William H. of Charleston, Ill.; four grandchildren.

Funeral services were held at 10:30 a.m. Monday at the Earl

Little Funeral Home

with the Rev. Paul Marzofficiating. Masonic services and burial took place at Woodland Cemetery, Monroeville, Pa.

Mrs. Angus McIntosh

Former Chelsea Resident Dies Thursday in F

Mrs. Angus McIntosh, member of Zion Lutheran Church, Rogers Corners, who was lived in this area as a Thursday in Winter Park, born July 5, 1887, she former Eva Katherine daughter of George and Jane Snyder Barela. She in Flint for many years. Survivors are her husband, Orlando, Fla.; a daughter, William Carroll of Flint, Fla.; three sisters, Miss Clara and Amanda Barela, Detroit; three grandchildren, one great-grandchild. Funeral services were held Monday at 1 p.m. at the Staffan Funeral Home in Flint with the Rev. John A. Betz officiating. Burial took place at Bethlehem Cemetery, Ann Arbor.

Court Proceeds

A bench warrant was issued by Judge Patrick Conlin for the arrest of Herbert Lynn May 18 after he failed to appear in court as scheduled. Carpenter was released on personal bond after being arrested with fleeing a police simple larceny and reckless driving.

You Are Invited . . . Yes, Urged To Attend PUBLIC MEETING MONDAY, MAY 26 - 8 P.M.

CHELSEA HIGH SCHOOL AUDITORIUM

To Discuss With Interested Citizens the Problem of Tax Millage

We understand your Board is faced with the loss of over a half million dollars in operating funds for next year as a result of the defeat of the 11.98 mill proposal several days ago.

The question now seems to be: Where do we go from here . . . make another attempt or cut the program?

We believe that you, as concerned parents and citizens of the community, will want to attend this meeting so that you fully understand what the choice means and what affect the latter course of action would have upon our school district.

(This Advertisement Paid For By Representatives of Chelsea Business and Industry)