

WEATHER		
Min.	Max.	Precip.
48	60	0.00
47	59	0.00
46	58	0.00
45	57	0.00
44	56	0.00
43	55	0.00
42	54	0.00
41	53	0.00
40	52	0.00
39	51	0.00
38	50	0.00
37	49	0.00
36	48	0.00
35	47	0.00
34	46	0.00
33	45	0.00
32	44	0.00
31	43	0.00
30	42	0.00
29	41	0.00
28	40	0.00
27	39	0.00
26	38	0.00
25	37	0.00
24	36	0.00
23	35	0.00
22	34	0.00
21	33	0.00
20	32	0.00
19	31	0.00
18	30	0.00
17	29	0.00
16	28	0.00
15	27	0.00
14	26	0.00
13	25	0.00
12	24	0.00
11	23	0.00
10	22	0.00
9	21	0.00
8	20	0.00
7	19	0.00
6	18	0.00
5	17	0.00
4	16	0.00
3	15	0.00
2	14	0.00
1	13	0.00
0	12	0.00

The Chelsea Standard

SEVENTY-NINTH YEAR—No. 46

14 Pages This Week

CHELSEA, MICHIGAN, THURSDAY, MAY 8, 1969

10c per copy

SUBSCRIPTION: \$3.00 PER YEAR

QUOTE

"Who'er excels in what we prize Appears a hero in our eyes."
Jonathan Swift.

Spring Concert Slated Monday By CHS Bands

Chelsea High School Symphony Concert Bands will present a band concert Monday, May 12, at 8 p.m. in the high school auditorium. The program, set for 8 p.m. in the high school auditorium, will feature Heidi Sprague as soloist. She will play Cecile Chaminade's Concertino for flute, accompanied by a section of the band.

Other program items will include: "Amorita" (Spanish March) by Texidor; Finale from Symphony No. 1 in G-minor by Kallinikov; Beguine for Band by Oasser by the Symphony Band, directed by D. Keith Lawson.

Undergarten Round-Up at South School

Undergarten Round-up will be at South Elementary school, May 16. Rural children are asked to come to school at approximately 10 a.m. and town children and parents from 1:30 to approximately 3 p.m.

Open House Slated for Art, Home Ec

The Art and Home Economics Departments at Chelsea High school are sponsoring an Open House Tuesday, May 20 from 7 to 9 p.m.

Men Answer to Calls in Week

Chelsea firemen answered two calls during the past week. An abandoned schoolhouse on Hadfield, owned by Robert Ferrell, burned to the ground Thursday.

Committees Named for Michigan Week

Michigan Week has been described by one of America's leading advertising agencies as "Michigan's biggest public relations program."

While the actual celebration covers eight days beginning the Saturday preceding the third Sunday in May every year, it is actually the climax of a year-long program in which thousands of Michigan citizens volunteer their time and effort for the betterment of their communities and state, the objectives of Michigan Week.

Back in 1953 a group of Michigan businessmen, industrialists, educators and others decided that something big should be done by all the people of Michigan to tell the nation and world about the assets, resources, advantages and opportunities here.

This group was first an advisory committee of the Michigan Economic Development Commission. After recommending to the commission a citizen-state promotion program to be called Michigan Week, the group formed a non-profit association, Greater Michigan, Inc., to join the state government in sponsoring Michigan Week.

Each day of Michigan Week has a special designation. Michigan Week activities in Chelsea begin with Spiritual Foundation Day, Sunday, May 18. Mrs. Kathleen Chapman is chairman of the day's events which will include a moment of thanksgiving to God for our privilege of religious freedom. Each church will discuss the historical background of their denomination in Michigan.

Our Government Day, Monday, May 19, will be headed by Arden Musbach. The day's activities will be highlighted by Mayor's Exchange with Hudson.

Tuesday, May 20, will be Our Heritage Day, planned by the Chelsea Woman's Club. There will be displays and exhibits in local store windows. The McKune Memorial Library will open its historical room to the public during the afternoon.

(Continued on page two)

Nature Center Suffering from Motor Vehicles

Beach Junior High Nature Center is suffering from the same problems that Waterloo Recreation Area and other local nature centers complain of—motorized vehicles driving overland.

Snowmobiles during the winter, and motorcycles and minibikes are among the culprits that disturb nesting birds and flatten or uproot vegetation.

The area is not posted with warning signs since school personnel felt that they would not be necessary. However, Chelsea police will be asked to keep an eye on the area.



CRITICALLY INJURED after noon Monday was 71-year-old Marjorie Mae Frymuth, 1129 S. Harris, Ypsilanti. Mrs. Frymuth drove from the Oak Grove Cemetery entrance into the path of an oncoming car and collided with several trees before her car was brought to a halt

by a large tree on Madison St. Chelsea Police Chief George Meranuck and Village Clerk Richard Harvey investigated and waited with Mrs. Frymuth (in driver's seat) for an ambulance which arrived approximately 25 minutes after being called.

Chelsea Lumber Showroom Space Being Increased

An addition now being constructed at Chelsea Lumber Co. will increase display showroom space from 1,700 to 4,000 square feet. The increased space will enable owner Robert Daniels to have more complete coverage of lines now handled and add new lines.

Light fixtures, an extensive kitchen-cabinet-bathroom-vanity-section and more hardware items of building nature are some of the additions foreseen.

Construction should be completed by late summer.

Director Hired For Summer Rec Program

A Grass Lake fifth-grade teacher and artist, Paul D. Giever of Ann Arbor, has been appointed the new director of Chelsea Recreation Association.

Giever originally signed as an arts and crafts teacher for the summer program and filled the director's position when Tom Balistrere resigned to move away from Chelsea.

Giever, a fifth grade teacher at George Long-Grass Lake Elementary school holds an art and education degree from Eastern Michigan University, where he received a bachelor's degree in January, 1969. He also attended El Camino Junior College, El Cerrito, Calif. He graduated from Ann Arbor High school in 1961.

He coached baseball, mostly little league, in Ann Arbor and California.

The summer recreation program schedule will be completed by next week, he reports. Included will be track, tennis, baseball, swimming and arts and crafts. The new director is also searching for someone to sponsor an outdoor summer dance.

(Continued on page six)

Ypsilanti Woman Critically Injured Here in Auto Crash

A 71-year-old Ypsilanti woman remains in critical condition after an automobile accident on Madison near Oak Grove Cemetery Monday.

Marjorie Mae Frymuth, 1129 S. Harris St. Ypsilanti, is in the intensive care unit of St. Joseph Mercy Hospital with internal injuries, a fractured hip, injured shoulder and facial injuries, according to a brother, Dean Hepburn of Chelsea. One leg, fractured in four places, was amputated.

Mrs. Frymuth was driving out of Oak Grove Cemetery shortly after noon Monday when she made a left turn at Madison into the path of a vehicle traveling south on Madison. The car, driven by Katherine Eisele, 44, of 616 Flanders, struck the passenger door of Mrs. Frymuth's Rambler at an angle.

When the car driven by Mrs. Frymuth hit a tree to the right of the road, police believe her ankle might have been jammed

down on the accelerator and injured. The car then shot across the road, careened off two trees and slammed head-on into a large tree between the left sidewalk and curb.

Police say two large stone posts at the Oak Grove entrance might have obstructed vision of one of both drivers. Mrs. Eisele was ticketed for failing to carry her driver's license with her.

Mrs. Frymuth remained in her car for a half hour before an ambulance arrived, since one had to be sent from I-94 and Zeeb Rd. The two Chelsea Superior Ambulance attendants were removing a body in another vehicle and were not available at the Superior ambulance in Chelsea.

Area Boy Scout Funds Drive Underway

The annual Boy Scout sustaining membership enrollment of the parents and friends of scouting is underway, according to Sylvester "Vet" Leonard of Milan, chairman for this year's enrollment in Iroquois District.

The annual scouting project is the method whereby opportunity is given to parents and friends of scouting, to assist directly in meeting the opportunity costs of the scouting program in the area.

A major part of the support comes from the United Fund and Community Chests, but part of it comes from sustaining members.

Last year the sustaining enrollment needs were included in the capital funds campaign. This was done in order to approach friends of scouting with one package covering both needs. This year the council is organizing only for its annual operating needs for 1969.

Leonard stated that Iroquois District is divided into six communities. (Continued on page six)

School Electors Turn Down Funds Request

One-Third of All School Funds Eliminated By Only 724 Voters

Chelsea School District voters overwhelmingly defeated a school millage proposal that would have increased school taxes by 3.83 mills for the 1969-70 school year at the annual millage election Monday.

Final figures showed 441 yes votes, 724 no votes and 10 spoiled ballots. The voter turnout was the highest since 1,804 persons voted in the Aug. 8, 1968 balloting, when the millage request had been defeated twice and finally reduced by the Board of Education by one-half mill.

The board is now faced with a dilemma. It can pare down the budget and requested increase or hold another election for the same amount.

"The voters said no to one-third of the budget," according to Business Manager Fred Mills. "As it stands now, we're down to the 11.22 allocated millage from the county."

Voters were asked to renew the 7.65 mills voted last year plus an increase of 4.33 mills. However, a debt retirement fund reduction from 6 to 5.5 mills reduced the total increase to 3.83.

JC Auxiliary Coupon Drive Nears Goal

Chelsea Jaycee Auxiliary will be turning in nearly 18,000 Betty Crocker coupons collected in Chelsea plus 33,000 they counted for the Kidney Foundation on Friday at the annual State Jaycee Convention in Lansing.

Among those collected in Chelsea were generous contributions of 2,098 from St. Mary's church and 1,887 from the WSCS of the United Methodist church.

At a recent district meeting in Tecumseh Mrs. Lee Formicola, state auxiliary president, announced that 450,000 of the needed 600,000 coupons have been collected.

Members believe that the total will be near the required amount, or possibly exceed it, when a final count is made after the state convention.

The coupon campaign will continue until June, 1970. Canisters now in Dancer's, Chelsea Drug and Stop & Shop will remain there and all Betty Crocker coupons collected after May 10 will be turned in to the Michigan Jaycees later to help purchase another kidney machine.

Dates on the coupons do not make any difference. Betty Crocker has told the Jaycees that all coupons will be redeemed.

Persons needing further information should call Mrs. Robert Updegraff at 475-7481.

Mills said that the schools could not operate at the 1968-69 level next year with the same funds they had available at that time. Supply costs have increased and wages, which comprise 80 percent of the operating budget, will have to be increased.

He said the board hesitated to single out one reason for the defeat, but mentioned the increased millage, recent disputes over resignation of a guidance counselor and recent criticism of board policies as three possible contributing factors.

School millage requests are often defeated in Chelsea School District. In 1968 the millage issue was passed in the first election, but no millage increase was requested. However, three elections each were needed to pass the 1966 and 1967 millages.

This election differs from others in the large number of negative votes—a cause of concern for the school board. School Board members say that Chelsea school would have to be stripped of all extras and offer only the minimum requirements if some extra millage is not approved. Michigan state law prohibits closing public schools for lack of funds, as has happened in other states. The amount voted down Monday would cut \$500,000 from the \$1.5 million budget.

Willow Run is the only other school district in the Intermediate School District to have held millage elections yet. The millage request was initially voted down by a 4-to-1 ratio. During the two months lapse between the first and second election, a citizen's committee worked to encourage voters to inform themselves and then vote—and the millage request passed by a comfortable margin.

This would be one way to help pass the millage, according to Mills. "We can't do it alone. We're going to need co-operation from citizens to pass the request."

School Board President Irwin said in a statement approved by the Board Monday night that they "... do not believe that only 411 people want to keep our schools turning out students who are well prepared for their futures."

The decision will be made at the next board meeting, May 19.

Open House Set at Fire Department

An open house at Chelsea Fire Department from 1 to 4 p.m. Saturday, will highlight "Fire Service Recognition Day."

Firemen will be available to explain operations of the department, show equipment to visitors and answer questions.



IT WASN'T DOGHATCH, but Daisy Mae and Amber were everywhere, as "everyone" reported in the last day of Sadie Hawkins at Chelsea High school Friday. Bare feet, tailed, unsuspended and dotted figures above are, straw hats, ragged shirts, cut-offs and corn cobs from left, Pat Gilbert, Debi Stoker, Tim Orthing, Gayne Winans and Lynn Ferguson.

Weatherwax Sets Record In Mile Run

The Chelsea High track team won another big relay meet Saturday knocking aside 12 other schools in Section IV of the All-Bien Relays.

75 schools competed in the six sections of the relays. Chelsea scored 40 points to outdistance runner-up Battle Creek Harper Creek by six points. Harper Woods was third with 21½ points, and Okemos fourth with 21.

Following the pattern set in the previous week's win at the Parkside Relays, Chelsea's individual strength played a key role as four firsts and three seconds were registered.

First-place winners were Doug Weatherwax in the mile run, winning in 4:38.9. He set a new school record in the process, breaking the old record of 4:40.5 held by Scott Smith since 1965. Mike McGinn won the 880-yard run in 2:02.6 and Rick Slane won the long jump with 20' 11", to tie the meet record. Slane also won the 220-yard dash in 23.5.

Second places were won by Slane in the 100-yard dash; the 880-yard relay team of Larry Gorton, Jim Wojcik, Ted Bennett and Mike Schnaidt; and the mile relay team of Jim Wojcik, (Continued on page six)

Walt Disney Movies Will Be Shown Friday By Recreation Dept.

An all-Walt Disney movie night Friday will feature all those favorite Disney cartoon characters in a half-hour of color cartoons, and a 90-minute feature-long movie, "The Sign of Zorro."

The program, sponsored by Chelsea Recreation Association, will begin at 7 p.m. in the Chelsea High school auditorium. A 50-cent donation will be taken.

This will be the last official act of Tom Balistrere, who resigned as Recreation Director in preparation for moving away from Chelsea this summer. He encouraged parents to attend with their children. "It's an excellent movie for all ages."



CHELSEA NATURE CENTER SIGNS across from Beach Junior High school represent the efforts of a number of individuals. The redwood signs were designed by Pat Gilbert. Materials were donated by Chelsea Conservation Club and Finkbeiner Lumber Co. Richard Barelis, industrial arts teacher, constructed them, and Lawrence Lonsway, vocational agriculture instructor at Chelsea High school, and his students, installed them. Pictured are, kneeling from left, Paul Wenk, Ed Beeman, Walt Harry, standing from left, Lonsway, Wayne Stahl, Bob Koenigter, Rodney Service and Barelis.

WED, MAY 8, 1969

AND F.B.I. The Federal Bureau of Investigation's information has been hailed as the biggest breakthrough in the history of fingerprinting since the discovery of fingerprints. The F.B.I. said in one 24-hour period the computer received and transmitted 72,618 messages in servicing local state and Federal law enforcement agencies.

MILK

Milk has what it takes
"power" a boy

your junior space-
rocket-ready and
to go by giving him
of healthy, delicious



Milk is Nature's wonder-food. Drink it daily!

WEINBERG DAIRY

QUALITY PASTEURIZED DAIRY PRODUCTS
US-12 Phone GR 5-5771

OPEN
MAY 9
DOG CABIN
LUNCH &
DAIRY BAR

In Waterloo
Recreation Area
CLEAR LAKE ROAD
Across from
Lake County Park

MOTHERS' DAY SPECIAL

2 Sundaes - Get 3rd One FREE!
(Friday, Saturday and Sunday, May 9-10-11)

It's a really delicious treat made of mouth-watering
serve, fresh from the freezer. You'll enjoy the at-
tastic plastic glass it comes in. Take it home! Collect
for an extra set of glasses.

ALSO: COFFEE, FRIES, SANDWICHES, SHRIMP
FRESH-BAKED PIES

FREE POTATO CHIPS TO ALL KIDS

Junior High Track Team Splits for Week

Chelsea junior track squad lost a close meet to Saline Monday, 58½ to 50½, and ran over Pinckney, 87-21, last Wednesday.

In the Saline meet, Steve Bergman "did an excellent job" in winning both high and low hurdles according to Coach Robert Pursel. He defeated Johnson of Saline, a trackman who downed him in both events in a previous meet. Bergman also took a third in the shot put. Tom Skittenhelm made a good showing by taking a third in shot put. Tom Skittenhelm won the 60-yard dash and anchored the 880 relay team to come from behind to victory. Bruce Gustafson again won the pole vault, vaulting eight feet, and Chris Tompkins took three second places, in long jump, 75-yard dash and 220-yard dash.

In the Pinckney meet Chelsea took first in all 13 events. Double winners for Chelsea were Chris Tompkins in the long jump and 220, Steve Bergman in the high and low hurdles. Jeff Daniels won the high jump. Tom Skittenhelm won the 60-yard dash and Lee Ferguson won the 75-yard dash. Each of these three men ran on a winning relay team.

Other winners were Ron Gauss in the 100-yard dash and Bruce Gustafson in the pole vault, vaulting 8' 8", a "remarkable" height, according to the coach. Jeff Daniels, Rod Salyer, John Mann and Tom Skittenhelm combined to win the 880 relay. Tim Lancaster, Doran, Randy Norton and Lee Ferguson won the 440 relay.

Beach Choir Competing in District Meet

Beach school Seventh and Eighth Grade Choir will participate in the Michigan School Vocal Association District II Choral Festival at Adams Junior High School, Dearborn, tomorrow.

The 62 choir members will leave Chelsea at 11 a.m. and return at approximately 3:30 p.m. The group will sing "Three Folk Songs" by Brahms as a required selection, and "Some Sirrah," a madrigal by Weelkes.

In addition the choir will sight-read a selection they have not prepared. Evaluating will be by a group of educators and others in the field of music.

Chelsea will be judged together with a number of suburban Detroit schools. Most schools competing will have ninth grade students in their choirs, according to director Miss DiAnn L'Roy. Chaperones will be Mrs. Eileen Boyer, Mrs. Gerald Giffin and Mrs. William Tite.

The University of Michigan Hospital is celebrating its centennial in 1969.



CHELSEA GIRL SCOUTS and their dads participated in a day-long picnic at the Dads and Daughters Fun-In at Camp Linden last Sunday.

Girl Scouts, Dads Picnic Sunday at Camp Linden

On Sunday, May 4, beautiful Camp Linden was introduced to some pretty distinguished people—Girl Scouts! Nature, frivoli-ous lady that she is, was on her best behavior. The pines never smelled better and the birches were paper white in the warm sun. It was a great day for three-legged races, baseball and just plain rambling.

The tour began at the entrance on Hogan Rd. A caretaker's residence and garage will be built here. The troop houses in Units D and E will be winterized for year-round use. Each unit will house 32 girls and four staff members in ten 12' by 4' platform tents.

Until a new dining hall is built the troop house in Unit A is used for dining. It is also winterized and used for year-round troop camping.

The shower house is used only during the summer resident camp. There is no roof over the shower room so the sun dries the floor. Laundry facilities for the staff are located here.

The "monkey bridge" is used by campers going into the wilderness zone and up to the old barn on the northern boundary of the camp. Beyond this point the camp will be kept in a wilderness-state for hiking and out-post camping.

The waterfront area includes a proposed boat house and shower house as well as swimming and boat launching areas. A small island was made by dredging the area between it and shore. Scouts with good swimming ability swim to the island and dive off it.

There is even a real tree house in a large oak built by a group of girl Scouts a few years ago.

Comments by the dads were enthusiastic. Most of them agreed that the 400-acre camp has great potential as a recreational paradise.

The biggest problem in Camp Linden's development is money. Lots of it is needed. Unless someone comes up with a "monkey's paw," wishing won't do any good. It has been estimated that it will take 30 years of selling Girl Scout cookies to supply the funds necessary to complete the camp.

By that time most of the parents won't have any teeth left to eat them. Men are needed on Camp Linden's financial program. They have a talent for coming up with money-making ideas. Girl Scout dads can help by coupling their natural talent with interest to make the Camp Linden dream come true for their daughters rather than granddaughters.

Chelsea dads who want to help may contact the leaders or Mrs. Jo Stevens at the Girl Scout Office, Box 417, Ypsilanti.

WATERLOO BEAUTY SHOP

Operated By Rosemary Klink.

Open Tues. thru Sat., 8 a.m. to 6 p.m.

475-8895

CALL FOR APPOINTMENT

CLUB HELP WANTED

Reliable woman to open Club and clean, 8 to 12 a.m.

Part-time grill cook - Waitress

Part-time bartender

CALL 426-4303

GIFTS FOR MOM



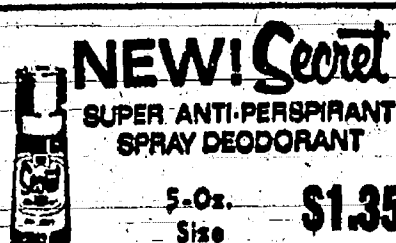
Our Sales Clerks
will be happy
to help you select
just the right gift
for mom.

Free Gift Box With Purchase.

DANCER'S

Chelsea's Friendly Dept. Store

Be Budget Wise ... Go Budget-Wise MAY DISCOUNTS



Give Mother A Box of
MRS. McDONALD'S FINE CANDIES
Butter Creams Fruit and Nut Assorted Chocolates

BUDGET-WISE STORE

Chelsea's First Discount Store
116 South Main Street Phone GR 9-1611

Mason, Chelsea Kiwanis Clubs Trade Presidents

Mason Kiwanis Club President Don Edgington presided over the Monday night Chelsea Kiwanis Club meeting.

Four other Mason representatives, Mac McDowell, James Armstrong, Clarence Abloy and Emory Jewett, visited Chelsea. McDowell narrated moving pictures he took during his trip to Africa last year.

Tuesday evening Chelsea Kiwanis President William Rademacher returned the visit with several other members of the Chelsea club. Rademacher presided over the Tuesday night Mason meeting, and Don Turner showed a short film about Great Bear Lake, taken during his recent Alaskan travels.

In Michigan you are never more than six miles from a lake or a stream.

PLANNED FAMILY SECURITY with Farm Bureau Life Insurance

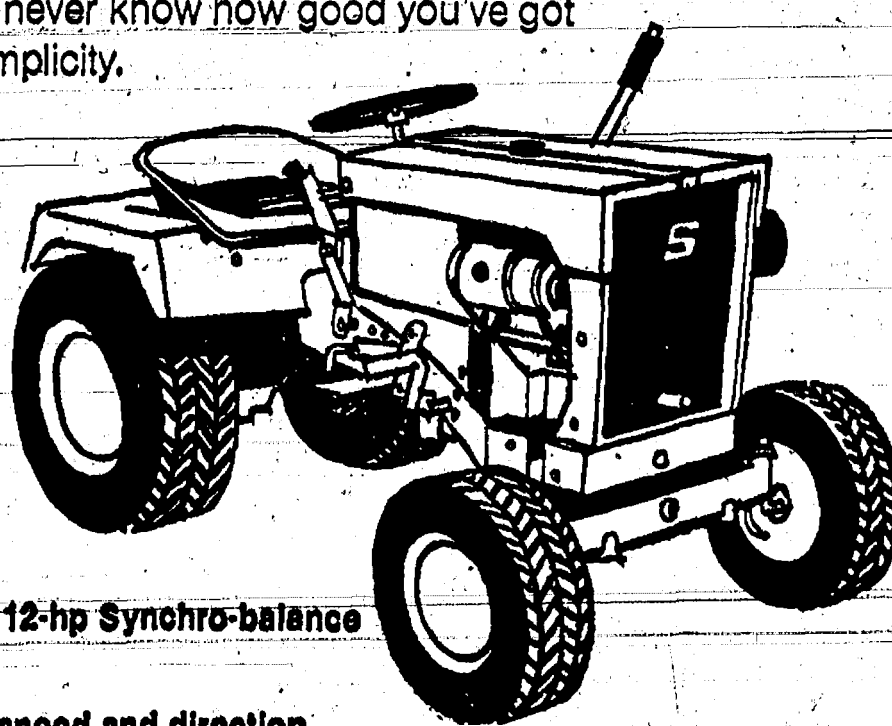
- mortgage protection
- education funds
- family income
- retirement plans
- savings plans

Contact me today!
DAVID D. ROWE
157 E. Summit St., Chelsea
PHONE 475-8063
FARM BUREAU INSURANCE

Companies of Michigan

This **Simplicity** tractor with Hydrostatic Drive wants to be compared.

Test us against any other hydrostatic drive tractor. The Simplicity will operate continuously at full tractive effort (tilling, cultivating, etc.) without overheating. The Simplicity starts smoothly and runs quietly in any weather and with any attachment. Gone forever are the jerky starts and whining gears that plague some other units. As a matter of fact, if you don't try some other hydrostatic tractor, you'll never know how good you've got it with Simplicity.



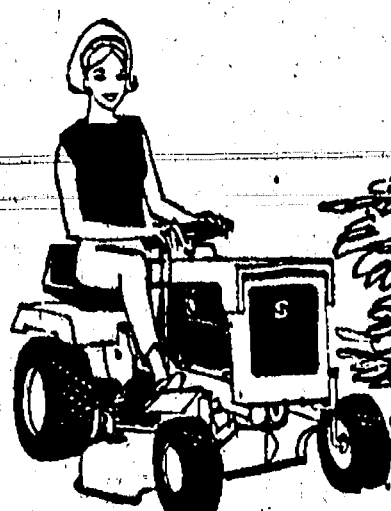
- Rugged 12-hp Synchro-balance engine
- Change speed and direction with one lever
- Optional 48-inch No-Scalp mower
- Change attachments in minutes—without tools

Cut corners
on your budget
and your lawn
with this
Simplicity
5-hp Serf

Here's a versatile tractor with a riding-mower-price. No compromise in quality; however, for this rugged power partner will work with the stamina of much larger tractors. Its 28-inch rotary mower will groom your lawn with patented No-Scalp mowing action. See and drive this one soon. At this price they won't be around long.

- Rugged 5-hp engine
- 3 speeds forward plus reverse
- Turns in a tight 20-inch circle
- 7 optional custom-matched attachments
- Stores in coaster wagon space

tractor/mower



CHELSEA HARDWARE

110 SOUTH MAIN STREET

PHONE GR 9-6311

Ads
Taken
Till 5 p.m.
Tuesday

IT'S EASY TO
BUY-SELL-RENT-
HIRE & FIND WITH

WANT ADS

Just
Call
GR 5-3500

WANT ADS

The Chelsea Standard

WANT AD RATES

PAID IN ADVANCE—All regular advertisements, 50 cents for 25 words or less, each insertion. Count each figure as a word. For more than 25 words add 2 cents per word for each insertion. "Blind" ads or ads numbered ads, 50c extra per insertion.

CHARGE RATES—Same as cash in advance, with 10 cents bookkeeping charge if not paid before 5 p.m. Five day preceding publication. Pay in advance, send cash or stamps and save 15 cents.

DISPLAY WANT ADS—Rate, \$1.10 per column inch, single column width only. Booklets and 1-column light type.

CARDS OF THANKS or MEMORIALS—Single paragraph style, \$1.00 per insertion for 10 words or less. 15 cents per word beyond 10 words. Minimum, 1 inch.

COPY DEADLINE—5 p.m. Tuesday week of publication.

PARADISE FOR SALE—Very good condition. Call 475-8180 after 5:30 p.m. 46tf

FOR SALE—44 acres, double frontage, Cooper and Zion Rd. Ideal for convalescent home or subdivision. 6 miles from Jackson. Phone 704-4111. 48

FOR SALE—Singer treadle sewing machine, cabinet style, good running condition. Call after 4 p.m. 479-2081. 46

Mothers Day

May 11

Give her a gift

from

DANCER'S

DOG FREE to good home German Shepherd mix, has all shots. Profer older, couple with some acreage. Ph. 479-3919. 46

Make 1969

Your Year of

Decision

Obtain a Skogmo Franchise Clothing Store. Achieve success in a business of your very own.

Invest \$25,000 to \$35,000 depending upon location.

The Skogmo Franchise Plan provides a complete program of advertising, display, accounting and field assistance.

Opportunities in retail clothing field have never been greater.

For information on the Skogmo Franchise Plan and an interview with a company representative (confidential of course) contact

Mel Diede

GAMBLE SKOGMO, Inc., 1121 N. Otter Creek Rd., Streator, Ill. 61364 47

MALE AND FEMALE HELP WANTED—Five real estate classes, earn while you learn. Art Daniels Realty, 1230 North Milford Rd., MU 5-1567, 7030 Dexter-Pinckney Rd., HA 6-4696. 46

RUBBISH HAULING

Write

BILL MOUCH

1971 Doyle Rd., Gregory, Mich. Phone Gregory 489-2652 32tf

FOR SALE—Excellent converted furnace, with conversion kit, 100 gals. of oil in 275-gal. tank. You move it. Ph. HU 3-2130. 31tf

WANT ADS

NEEDED IMMEDIATELY—2 or 3-bedroom house or main floor apt. Have one child, 2 1/2 yrs., excellent references. Call Saline, 429-5573 collect, after 5 p.m. 46tf

FOR SALE—1965 Kenmore dryer, copper-tone, good condition. Ph. 475-5473 after 4 p.m. 46tf

SECRETARY
FOR SALES OFFICE

Must be a good typist, shorthand required. Excellent job for qualified person. Fringe benefits include large medical and life insurance programs, vacation, and an income retirement plan.

Apply

Hoover Chemical Products Division
Whitmore Lake, Mich.

An Equal Opportunity Employer 47

Need Financing?
It's already arranged!

BRAND NEW
COLONIAL HOME
FOR SALE

This fully carpeted home on a 100-foot lot in the city limits of Chelsea, professionally planned on a walk-out basement, offers a generous amount of living space. The upper floor on the street level provides three bedrooms, living room, kitchen with separate dining area, 1 1/2 baths, 2-car garage and an 8'x30' wood deck for the sunbathers. The lower level has been prepared for a future fourth bedroom, second full bath, and a family room. The neighborhood and location to schools and churches are excellent.

For appointment call
W. C. Weber
Construction Co.
475-2828 or 475-2811 40tf

REAL ESTATE

We buy and sell farms or city property. Also, cash for equities, even though delinquent. Free appraisals. Call 475-7180, H. Bushnell (Tasch Realty). 41tf

LOST—Long haired calico cat, vicinity of Pierce Rd. and I-94. Ph. 475-5473. 46tf

HORSE FEED—\$3.65 per cwt. Gregory Farmer Elevator Co., Gregory, Phone 1-313-498-2735. 48

SHOES

for the

Entire Family

1/3 - 1/2 Off

Many even more

than 1/2 off

DANCER'S

BARGAIN FLOOR

HOUSES FOR SALE—Ranch, \$12,500 on your lot. Art Daniels Realty, 1230 North Milford Rd., MU 5-1567, 7030 Dexter-Pinckney Rd., HA 6-4696. 46

WANTED—Steady employment driving ice cream truck and part-time plant work. Fine working conditions, good opportunity for veteran or man looking for change. Write Box SE 5, care of Chelsea Standard. 10tf

WANTED TO RENT—4-bed-room home with at least one year lease. Call Donna Tremble, at 701-0410. 46

WILL MAKE home-made pretzels for your wedding parties or your family. Call 479-1763 or 475-8869. 45

HAMMOND ORGAN teachers wanted to teach in their own homes. Call Grinnell Brothers, Ann Arbor, 682-5667. 34tf

WANT ADS

FARM FENCING—Cedar line and end posts, steel line and end posts, 4 point barb wire, and woven wire stock fence. Gregory Farmers Elevator Co., Gregory, Phone 1-313-498-2735. 48

BIG SELECTION
of

Notions - Zippers

Thread - Tapes

Yard Goods

DANCER'S

BASEMENT

PRIME DOWNTOWN commercial building, ideal for restaurant or store. Basement and upstairs apartment, \$23,000 cash. Fixtures and inventory available. Barton Real Estate, 483-0808, evenings, Mrs. Stamm, 483-2222. 46

SUMMER WORK wanted by ambitious 14-year-old boy. Dan Bertke, Phone 475-7270. 47

A-1 USED CARS

'68 LTD 2-Dr. Hardtop
'67 Mustang Convertible
'67 Mercury 4-Dr.
'67 Chevy Chevelle
'68 Corvair Monza
'68 Galaxie 500 Convertible
'68 LTD 2-Dr. Hardtop
'68 Club Wagon Bus
'68 Rambler 4-Dr.
'65 Chev Hardtop
'65 Galaxie 500 4-Dr. (2)
'65 Ford 2-Dr.
'65 Galaxie 500 2-door Hard Top
'64 Ford 4-Dr. Hardtop (2)
'63 Thunderbird Landau
'62 Ford 4-Dr. 46

Trucks

'65 Chev Pick-up 1/2 ton
'60 Ford Stake 46

BEST
SELECTION
IN TOWN

PALMER FORD

Phone GR 5-3286
Open Mon., Wed. & Fri. Till 9:00 46

G. G. HOPPER

Building Contractors
Phone GR 5-5581
Gregory 498-2148 40tf

LOST—12-week old Irish Setter, male, lost Sunday morning in Main St. area. Wearing brown collar. Call Bill Niehaus, 512 S. Main, 475-2501. 45

Kern's
Rubber Stamp Shop
Phone 475-8522 after 5 p.m.
580 Chandler St., Chelsea, Mich.
48-Hour Service 46

Open House
TAMARACK
RECREATION
CLUB
5000 Clear Lake Rd.
Invites you to their open house
Saturday and Sunday
May 10 and 11
May 17 and 18
May 24 and 25
2 p.m. to 6 p.m. 48

There will be displays of camping and boating equipment.

Tamarack is a year-round membership club with swimming beaches, picnic areas and campsites located 6 miles west of Chelsea on Clear Lake. 48

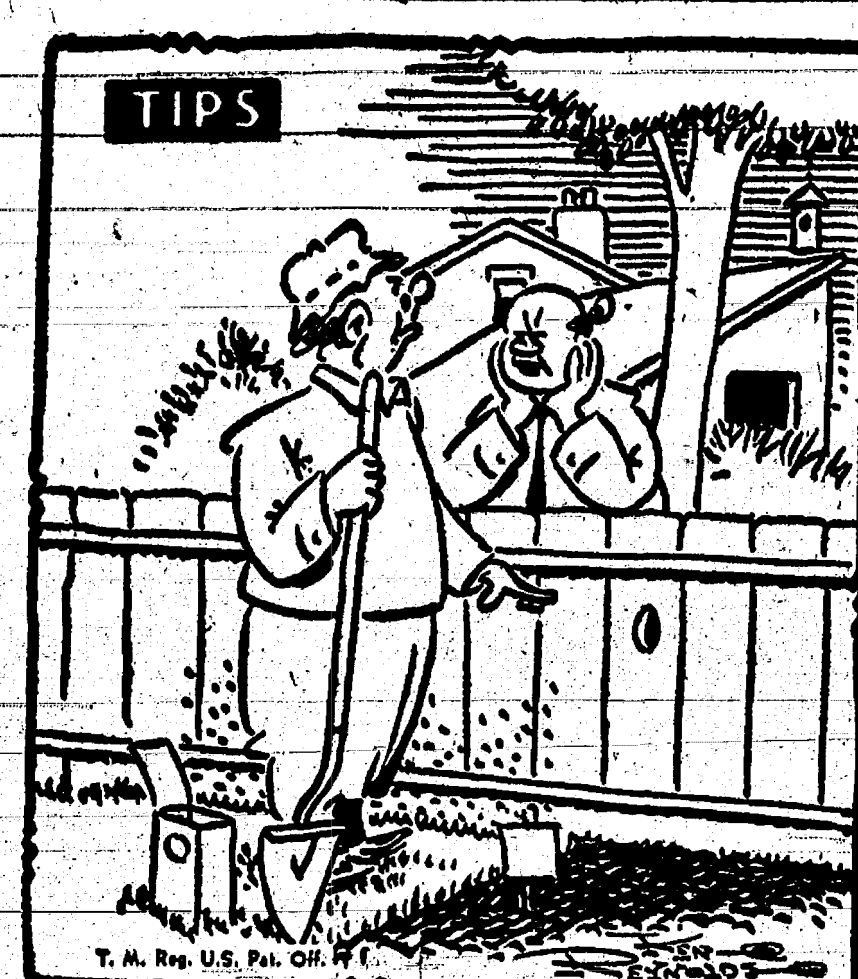
Help Wanted

Man with maintenance or electrical experience, high school graduate. Full-time auto mechanic.

APPLY AT

Office of Village Administrator
Municipal Building 47

CAR RENTAL by the day, week-end, or month. Full insurance coverage, low rates. Call Lyle Chiswick at Palmer Motor Sales, GR 5-8271. 36tf



"My wife found a bargain for 50 cents in the Standard
Want Ads—and it's gonna have puppies!"

WANT ADS

HOUSES FOR SALE—2, 3, and 4-bedroom, new and used, low down payments. We buy homes. Art Daniels Realty, 1230 North Milford Rd., MU 5-1567, 7030 Dexter-Pinckney Rd., HA 6-4696. 46

MEN'S
WORK SHIRTS
PANTS
COVERALLS
OVERALLS
DANCER'S
BASEMENT

THINKING ABOUT buying a chain saw? Stop out for a free demonstration of the powerful, light-weight Pioneer. District Sales and Service, 18100 M-52, Chelsea, 475-8120. 21tf

VACUUM CLEANERS—Electrolux authorized sales and service. James Cox, Manchester, Ph. 428-2381 or 428-8221. 45tf

TREE REMOVAL DONE—Also buyers of standing timber and walnut trees. Chelsea 475-7631. 84tf

FOR SALE

1-ACRE building lot, well-located, in Sharon Township. Terms available. 46

2 LOTS on Spring Lake. MODERN 4-bedroom Chelsea home, 2-car garage. Excellent condition. NO RENTALS. Buyers waiting. 46

R. D. Miller
Real Estate Broker
GR 9-5892
Evelyn White
at 475-7551 after 5 p.m.
15775 Cavanaugh Lake Rd.
Post Office Box 381
List your property with Miller—fast, efficient service. 34tf

GARDENS PLOWED and fitted. Contact Don Proctor at 479-5451. 51

WORK SHOE
HEADQUARTERS
Famous Red Wing Brand
\$12.95 to \$28.95
Foster's Men's Wear 34tf

SINGER
Sewing machines, reconditioned. \$19.95 and up. Also Singer repossessed machines. Call NO 2-5569. This is a Singer authorized ad 48

Singer Company
114 S. Main St.
Ann Arbor, Mich. 87tf

We never get our
signals crossed . . .
No confused moments here!
We get your instructions right
the FIRST time . . . then hop
to your job.

If this is the kind of prompt, efficient service you're looking for . . . you're the kind of customer we're looking for.

PURE OIL PRODUCTS
JIM'S PURE SERVICE
Tires - Batteries - Tune-Ups - Brake Service - Wheel Alignment
PHONE 479-3541 501 SOUTH MAIN

WANT ADS

WOODEN BOOKCASE bed, chest of drawers and mirror, \$25. Lawn roller \$8. 435 North St. after 4 p.m. 46

Spring Time
Is Planting Time

—DAHLIA TUBERS.
—GLADIOLI
—CLEMANTIS
—GARDEN GLOXINIA
—LILIES
—CANNAS
—DRICORURE
—MILORGANITE
—PEAT MOSS
—BONE MEAL
—ROSE FOOD
—VERMICULITE
—RAPID-GRO
—LAWN SEED
—GARDEN SEEDS
—GARDEN FERTILIZER.

Chelsea Hardware
Phone GR 9-6311 45

GARAGE SALE—Antique furniture, adult and children's clothing and miscellaneous. 240 Washington St. May 9 and 10. 46

Chelsea 4-Bedroom
FHA Approved

Delightful 4-bedroom home, neat as a pin outside and in. Modern kitchen and dining area, 2 baths, plenty of closets and storage, large recreation room, gas heat, fenced lot, plenty of fruit and loads of flowers. Two blocks to Chelsea elementary school. 46

Great Lakes
Real Estate

Dial 475-2682,
428-8120 or 769-5620 45

FOR SALE—Roto-bales second cutting alfalfa brome hay, Denn Schweinfurth, 1225 Notten Rd. Ph. GR 9-6461. 45

Chelsea and Dexter
Area Homes

COUNTRY ESTATE—Four bedroom, brick Cape Cod home. Fireplace, study, modern kitchen, built-in range and oven, disposal, two-way fireplace in kitchen and living room, 2-car attached garage. Located on 1 acre in the Chelsea school district. 46

GET-AWAY COTTAGE—Year-round located on two wooded lots near Half Moon Lake. Lake access, excellent swimming. Terms available. 46

DREAM COTTAGE—3-bedroom, completely carpeted, study, dining room, 2 full baths, rec room, laundry room, 100 frontage, trees. On Cavanaugh Lake. 46

DEXTER TRI-LEVEL—3-bedroom brick home with beautiful view. 1 1/2 baths, family room, recreation room, built-in range and oven, disposal in kitchen, 1 1/2-car garage. Excellent location in Dexter. 46

6-ACRE FARM—3-bedroom Cape Cod home, 3-car garage, fireplace, dining room, modern kitchen, full basement. Very nice location on a hill 1 mile west of Chelsea. 46

Eibler, Frisinger
& St. Amour
REALTORS

Corner Old US-12 and Main St., Chelsea - 475-8881
Dexter - 428-4659 45

Evenings:
Herman Koenig 475-7252
Paul Frisinger 475-2621
Helen Weiss 683-9160
Bob-Thomson 475-5557
George Frisinger, 479-4101 45

YOUNG APPLE TREES, three to four foot size, your choice \$2.50; young evergreen trees, \$1 your choice. We still have some dormant and regular season spray at 15 percent off. Inquire at Caspary's Orchard, 1817 Bank Rd., Grass Lake, from 9 a.m. to 1 p.m. weekdays, 9 a.m. to 6 p.m. weekends. 46

CLOGGED
SEWER

Reynolds Sewer Service
7e Clean Sewers Without Digging
Drains Cleaned Electrically
FREE ESTIMATES
2-YEAR GUARANTEE
Phone Ann Arbor NO 2-3277
Sewer Cleaning Is Our Business—Not a Side-Line 88tf

FEMALE HELP WANTED—Domestic help needed for middle-aged woman from 11 a.m. to 5 p.m. North Lake Area. Call after 7:30 p.m. 475-8988. 87tf

ELECTROLUX
VACUUM
CLEANERS

SALES and SERVICE
JAMES COX
Ph. 428-2931 or 428-8221
Manchester 46

WANT ADS

FOR SALE—Shotgun, L. C. Smith, 12 gauge, 28 inches, hammer on both sides. Bennie Fletcher, 475-7874. 46

FHA APPROVED
MODULE-CONSTRUCTED
\$22,900.00
(on your lot)

CHECK OUR SPECIFICATIONS
1,200 square feet of living space, three bedrooms and 1 1/2 bathrooms, hot water baseboard heat, aluminum siding, wood windows with insulating glass, ceramic tile tub recess, slate foyer, full basement and carpeting throughout. 46

W. C. WEBER
CONSTRUCTION CO.

475-2828 or 475-2811 44tf

FORD TRACTOR manure loader, brand new, never used, make offer. 14340 North Lake Rd., Gregory, Chelsea, 475-7286. 46

IN CHELSEA—Income property for sale. Call for appointment. 475-7058. 49

REGISTERED PONY of America Good 4-H gelding, broke to pleasure and drive, priced right. 19850 Old US-12, Chelsea. Phone 475-7168. 46

LOST—Boy's class ring, 1969, blue stone, "GS" initials. 475-8115. 46

Formal Wear

RENTAL SERVICE
Prom - Weddings - Special Events
6 different colors. 46

Foster's Men's Wear

USED TRACTOR TIRES—Large inventory on hand. Also used passenger truck tires. Jackson Tire Brokers, 406 N. Main, Mich. Ph. 586-2925. 32tf

Corrections Officer

MALE ONLY
Salary \$9.08-\$9.56 per hour. All Michigan Civil Service benefits, including an out-standing state contributory insurance program, excellent retirement plan, longevity bonus, unlimited opportunities for personal advancement, and liberal vacation and sick leave allowance plus Social Security. Must be over 21 and have graduated from high school. An equal opportunity employer. Cassidy Lake Technical School, Waterloo Road, Chelsea, Michigan. 46

Design Draftsman

Full time. Must be able to do board work. Salary commensurate with experience. Full benefits. Call 475-8619 for appointment. 46

Fortune Industries
INC.

11770 Dexter Rd., Chelsea, Mich. 41tf

SEE US for transit mixed concrete. Klump Bros. Gravel Co. Phone Chelsea 479-2712, 4920 Loveland Rd., Grass Lake, Mich. 401f

WANTED—General office girl. Must be able to type and work with figures accurately. Wage commensurate with ability. Fringe benefits. No phone calls please. Send complete resume to Fortune Industries, Inc., 11770 Dexter Rd., Chelsea, Mich. 48115. 39tf

ATLASS SPRAY PAINTING—Interior and exterior. Pinckney, 878-3246. 25tf

WANTED TO BUY or rent or lease with option to buy, year-around lake-front cottage with good beach, for local family. Write KM-28, care of Chelsea Standard, Chelsea, Mich. 38tf

SPRING HOUSE CLEANING—needs, many items on sale. Call your Bulter Brush Dealer, 475-7130, and 428-8319. 46

WANT ADS

PIANO TUNING, Chelsea and facilities for reconditioning, rebuilding. Used piano sales, conditioned grands and vertos. B. Ekland, 426-4429. 46

Seamless
Aluminum Gutters

Installed

Wilson Metal Shop

Manchester, Ph. 428-8469

FOR SALE—Suntan 30" stove, nearly new, \$125. Re-moving. Call 475-8037 after 4 p.m. 46

GERMAN SHEPHERD puppy AKC registered, shots, Gregory 488-2107. 44tf

LANE OILED walnut room divider, sliding glass doors, glass, mirrors, shelves, mica table, two leaves, 4 chair walnut finish. Call 475-7208. 46

FOR SALE

Used Clark floor sander and floor edger and a stock of sand and edger paper, all for \$150.00. 46

Used Furniture

42"x65" Maple drop leaf table, 4 chairs. 46

Maple twin bed, Metal storage cabinet 24"x36"x18" shelves. 46

4 used table lamps. 46

48" Maple coffee table, good condition. 46

New pattern Armstrong 3'x6' Inlaid rug. 46

On Sale during May

Merkel Brothers

By Appointment
Complete Food and Meat Processing Service.

Frozen Food Lockers

LOCKER DEPT.
Phone GR 5-8280

CAR & TRUCK LEASING

details see Lyle Chiswick, Palmer Motor Sales, GR 5-8271. 46

Pole Buildings

Still time to get that hay up; six colors to choose from. We introduce you to our customers. 46

Sharon Valley Builders
JOHN LIVERMORE

517-522-8256

HORSE SHOEING, training, ing. By appointment. Phone 8431, 6830 Daly Rd., Dexter. 46

MID-STATE
FINANCE CORP.

\$25 to \$1,000

For Any
Worthwhile Purpose

See or Call
FRANK HILL
at 475-8631

111 PARK STREET
CHELSEA, MICH.

—SPECIALS—

ALL REG. FLAVORS McDONALD'S
Ice Cream . . . 1/2 gal. 79

FRESH, CRISP
Head Lettuce . . . 2 for 49

Community Calendar



Kinder Klub 8 p.m., Tuesday, May 13 at home of Mrs. Robert Headrick. Installation of officers.

Rummage items wanted for St. Mary's Building Fund sale, June 20-21. For pick-up phone 479-3377 any time. adv50

The Agricultural Entrepreneurs Farm Bureau at 8:30 p.m., Thursday, May 15 at Lima Community Hall. Bring cake, sandwiches or Jell-O. Speaker from Michigan Crop Reporting Service, Lansing.

St. Mary's Bake Sale Saturday, May 10, from 10 a.m. to 1 p.m. at Knights of Columbus Hall. adv40

Past Matrons pot-luck May 15, 12:30 p.m. at home of Mrs. J. Paul church as guests, Saturday, May 17, 12:30 p.m. in Methodist church social center. Pot-luck dinner. Rolls, coffee, cream, butter and sugar furnished by committee.

Older Adult Group of the Methodist church, with XYZ's of St. Paul church as guests, Saturday, May 17, 12:30 p.m. in Methodist church social center. Pot-luck dinner. Rolls, coffee, cream, butter and sugar furnished by committee.

Faculty Wives May 12 at home of Mrs. Charles Lane.

Spaulding for Children Auxiliary at 8 p.m. Monday, May 12 at the Spaulding Farm.

BIRTHS
A boy, Patrick Dennis, born Tuesday to Mr. and Mrs. Paul D. Giever of Ann Arbor. Giever is the new director of Chelsea Recreation Association.

A daughter, Carol Anderson, May 3 to Mr. and Mrs. George L. Palmer, 665 Mayer Dr. Grandparents are Mr. and Mrs. L. G. Palmer of Cavanaugh Lake and Mrs. John L. Anderson and the late Mr. Anderson of Manistee.

American Legion and Auxiliary hospital equipment available. Contacting either Mr. or Mrs. Dudley Holmes is unavailable.

Rummage sale at Sylvan-Town Hall Friday, May 9 and Saturday, May 10 by Rebekah Lodge. For pick-up phone 475-8893. adv46

Inquiries regarding the Chelsea blood bank may be directed to Harold Jones of Central Fibre Products in the event that Mrs. Dudley Holmes is unavailable.

Good Samaritans, Auxiliary to the Catholic Social Services of Washtenaw county, Tuesday, May 13 at 8 p.m. at St. Patrick church, Whitmore Lake Rd.

Bake Sale May 17 at 10 a.m. at Patty Ann Shoppe by American Legion Auxiliary.

Chelsea Community Farm Bureau at McKune Memorial Library May 8, 8 p.m. Mr. and Mrs. Oscar Kalmbach and Allen Broesamle will host.

Jerusalem Farm Bureau will meet May 15, 8:30 at Lima Community Hall, bring sandwiches, cake or Jell-O.

Esther Chapter of Congregational church Thursday, May 15 at 8 p.m. at the home of Mrs. Darwin Downer with Mrs. Elba Gage as co-hostess.

Chelsea Community Farm Bureau at McKune Memorial Library May 8, 8 p.m. Mr. and Mrs. Oscar Kalmbach and Allen Broesamle will host.

Jerusalem Farm Bureau will meet May 15, 8:30 at Lima Community Hall, bring sandwiches, cake or Jell-O.

Esther Chapter of Congregational church Thursday, May 15 at 8 p.m. at the home of Mrs. Darwin Downer with Mrs. Elba Gage as co-hostess.

Chelsea Community Farm Bureau at McKune Memorial Library May 8, 8 p.m. Mr. and Mrs. Oscar Kalmbach and Allen Broesamle will host.

Jerusalem Farm Bureau will meet May 15, 8:30 at Lima Community Hall, bring sandwiches, cake or Jell-O.

Esther Chapter of Congregational church Thursday, May 15 at 8 p.m. at the home of Mrs. Darwin Downer with Mrs. Elba Gage as co-hostess.

Chelsea Community Farm Bureau at McKune Memorial Library May 8, 8 p.m. Mr. and Mrs. Oscar Kalmbach and Allen Broesamle will host.

Jerusalem Farm Bureau will meet May 15, 8:30 at Lima Community Hall, bring sandwiches, cake or Jell-O.

Esther Chapter of Congregational church Thursday, May 15 at 8 p.m. at the home of Mrs. Darwin Downer with Mrs. Elba Gage as co-hostess.

Chelsea Community Farm Bureau at McKune Memorial Library May 8, 8 p.m. Mr. and Mrs. Oscar Kalmbach and Allen Broesamle will host.

Jerusalem Farm Bureau will meet May 15, 8:30 at Lima Community Hall, bring sandwiches, cake or Jell-O.

Esther Chapter of Congregational church Thursday, May 15 at 8 p.m. at the home of Mrs. Darwin Downer with Mrs. Elba Gage as co-hostess.

Chelsea Community Farm Bureau at McKune Memorial Library May 8, 8 p.m. Mr. and Mrs. Oscar Kalmbach and Allen Broesamle will host.

Jerusalem Farm Bureau will meet May 15, 8:30 at Lima Community Hall, bring sandwiches, cake or Jell-O.

Esther Chapter of Congregational church Thursday, May 15 at 8 p.m. at the home of Mrs. Darwin Downer with Mrs. Elba Gage as co-hostess.

Chelsea Community Farm Bureau at McKune Memorial Library May 8, 8 p.m. Mr. and Mrs. Oscar Kalmbach and Allen Broesamle will host.

Jerusalem Farm Bureau will meet May 15, 8:30 at Lima Community Hall, bring sandwiches, cake or Jell-O.

Esther Chapter of Congregational church Thursday, May 15 at 8 p.m. at the home of Mrs. Darwin Downer with Mrs. Elba Gage as co-hostess.

Suburban Mother Child Study Club Tuesday, May 13 at home of Mrs. Norman Houk. Installation of officers and annual reports.

Bake Sale at Chelsea Greenhouse, sponsored by Junior High French Club, Saturday, May 10 at 10 a.m. Help finance trip to French Restaurant. adv46

Kindergarten children from South school will sing for Senior Citizens at Korner House at 1 p.m. Thursday, May 8. All are invited to come and hear them.

Jerusalem Farm Bureau will meet May 15, 8:30 at Lima Community Hall, bring sandwiches, cake or Jell-O.

Esther Chapter of Congregational church Thursday, May 15 at 8 p.m. at the home of Mrs. Darwin Downer with Mrs. Elba Gage as co-hostess.

Chelsea Community Farm Bureau at McKune Memorial Library May 8, 8 p.m. Mr. and Mrs. Oscar Kalmbach and Allen Broesamle will host.

Bake Sale May 17 at 10 a.m. at Patty Ann Shoppe by American Legion Auxiliary.

Good Samaritans, Auxiliary to the Catholic Social Services of Washtenaw county, Tuesday, May 13 at 8 p.m. at St. Patrick church, Whitmore Lake Rd.

Rummage sale at Sylvan-Town Hall Friday, May 9 and Saturday, May 10 by Rebekah Lodge. For pick-up phone 475-8893. adv46

Inquiries regarding the Chelsea blood bank may be directed to Harold Jones of Central Fibre Products in the event that Mrs. Dudley Holmes is unavailable.

American Legion and Auxiliary hospital equipment available. Contacting either Mr. or Mrs. Dudley Holmes is unavailable.

Rummage sale at Sylvan-Town Hall Friday, May 9 and Saturday, May 10 by Rebekah Lodge. For pick-up phone 475-8893. adv46

Inquiries regarding the Chelsea blood bank may be directed to Harold Jones of Central Fibre Products in the event that Mrs. Dudley Holmes is unavailable.

Good Samaritans, Auxiliary to the Catholic Social Services of Washtenaw county, Tuesday, May 13 at 8 p.m. at St. Patrick church, Whitmore Lake Rd.

Bake Sale May 17 at 10 a.m. at Patty Ann Shoppe by American Legion Auxiliary.

Chelsea Community Farm Bureau at McKune Memorial Library May 8, 8 p.m. Mr. and Mrs. Oscar Kalmbach and Allen Broesamle will host.

Jerusalem Farm Bureau will meet May 15, 8:30 at Lima Community Hall, bring sandwiches, cake or Jell-O.

Esther Chapter of Congregational church Thursday, May 15 at 8 p.m. at the home of Mrs. Darwin Downer with Mrs. Elba Gage as co-hostess.

Chelsea Community Farm Bureau at McKune Memorial Library May 8, 8 p.m. Mr. and Mrs. Oscar Kalmbach and Allen Broesamle will host.

Jerusalem Farm Bureau will meet May 15, 8:30 at Lima Community Hall, bring sandwiches, cake or Jell-O.

Esther Chapter of Congregational church Thursday, May 15 at 8 p.m. at the home of Mrs. Darwin Downer with Mrs. Elba Gage as co-hostess.

Chelsea Community Farm Bureau at McKune Memorial Library May 8, 8 p.m. Mr. and Mrs. Oscar Kalmbach and Allen Broesamle will host.

Jerusalem Farm Bureau will meet May 15, 8:30 at Lima Community Hall, bring sandwiches, cake or Jell-O.

Esther Chapter of Congregational church Thursday, May 15 at 8 p.m. at the home of Mrs. Darwin Downer with Mrs. Elba Gage as co-hostess.

Chelsea Community Farm Bureau at McKune Memorial Library May 8, 8 p.m. Mr. and Mrs. Oscar Kalmbach and Allen Broesamle will host.

Jerusalem Farm Bureau will meet May 15, 8:30 at Lima Community Hall, bring sandwiches, cake or Jell-O.

Esther Chapter of Congregational church Thursday, May 15 at 8 p.m. at the home of Mrs. Darwin Downer with Mrs. Elba Gage as co-hostess.

Chelsea Community Farm Bureau at McKune Memorial Library May 8, 8 p.m. Mr. and Mrs. Oscar Kalmbach and Allen Broesamle will host.

Jerusalem Farm Bureau will meet May 15, 8:30 at Lima Community Hall, bring sandwiches, cake or Jell-O.

Esther Chapter of Congregational church Thursday, May 15 at 8 p.m. at the home of Mrs. Darwin Downer with Mrs. Elba Gage as co-hostess.

Chelsea Community Farm Bureau at McKune Memorial Library May 8, 8 p.m. Mr. and Mrs. Oscar Kalmbach and Allen Broesamle will host.

Jerusalem Farm Bureau will meet May 15, 8:30 at Lima Community Hall, bring sandwiches, cake or Jell-O.

Esther Chapter of Congregational church Thursday, May 15 at 8 p.m. at the home of Mrs. Darwin Downer with Mrs. Elba Gage as co-hostess.

Chelsea Community Farm Bureau at McKune Memorial Library May 8, 8 p.m. Mr. and Mrs. Oscar Kalmbach and Allen Broesamle will host.

Jerusalem Farm Bureau will meet May 15, 8:30 at Lima Community Hall, bring sandwiches, cake or Jell-O.

Esther Chapter of Congregational church Thursday, May 15 at 8 p.m. at the home of Mrs. Darwin Downer with Mrs. Elba Gage as co-hostess.



FRENCH III STUDENTS planning their trip to Montreal next Tuesday through Sunday examine maps and literature during class Tuesday. Those taking the trip will be, seated from left, Diana King, Claudia Devine, Diane Schroen, Chris Alber, Pat Hergert; second row from left, Debbie Weiss, Vickie Wilkerson, Barb Bury, Gail Maistre, Brenda Seitz, Caryl Thornton and Mrs. Ed Lauthon, French teacher and chaperone for trip; back, from left, John Eder, Barry Novess and Jack Wood, Claude Sportis, French exchange student at Chelsea High school, will also take the trip.

No Classes Friday Afternoon at CHS

There will be no classes after 1 p.m. Friday at Chelsea High school due to a teachers' workshop. A movie will be provided at the high school for students who wish to stay until 3:15 p.m. Students who wish to leave after 1 p.m. may do so, although busses will follow their regular schedule.

Eugene Martin, at 475-5887 after 4 p.m.

Rummage sale at Sylvan-Town Hall Friday, May 9, 9 to 10, and Saturday, May 10, 9 to 10, by Rebekah Lodge. For pick-up phone 475-8893. adv46

Inquiries regarding the Chelsea blood bank may be directed to Harold Jones of Central Fibre Products in the event that Mrs. Dudley Holmes is unavailable.

American Legion and Auxiliary hospital equipment available. Contacting either Mr. or Mrs. Dudley Holmes is unavailable.

Rummage sale at Sylvan-Town Hall Friday, May 9, 9 to 10, and Saturday, May 10, 9 to 10, by Rebekah Lodge. For pick-up phone 475-8893. adv46

Inquiries regarding the Chelsea blood bank may be directed to Harold Jones of Central Fibre Products in the event that Mrs. Dudley Holmes is unavailable.

Good Samaritans, Auxiliary to the Catholic Social Services of Washtenaw county, Tuesday, May 13 at 8 p.m. at St. Patrick church, Whitmore Lake Rd.

Bake Sale May 17 at 10 a.m. at Patty Ann Shoppe by American Legion Auxiliary.

Chelsea Community Farm Bureau at McKune Memorial Library May 8, 8 p.m. Mr. and Mrs. Oscar Kalmbach and Allen Broesamle will host.

Jerusalem Farm Bureau will meet May 15, 8:30 at Lima Community Hall, bring sandwiches, cake or Jell-O.

Esther Chapter of Congregational church Thursday, May 15 at 8 p.m. at the home of Mrs. Darwin Downer with Mrs. Elba Gage as co-hostess.

Chelsea Community Farm Bureau at McKune Memorial Library May 8, 8 p.m. Mr. and Mrs. Oscar Kalmbach and Allen Broesamle will host.

Jerusalem Farm Bureau will meet May 15, 8:30 at Lima Community Hall, bring sandwiches, cake or Jell-O.

Esther Chapter of Congregational church Thursday, May 15 at 8 p.m. at the home of Mrs. Darwin Downer with Mrs. Elba Gage as co-hostess.

Chelsea Community Farm Bureau at McKune Memorial Library May 8, 8 p.m. Mr. and Mrs. Oscar Kalmbach and Allen Broesamle will host.

Jerusalem Farm Bureau will meet May 15, 8:30 at Lima Community Hall, bring sandwiches, cake or Jell-O.

Esther Chapter of Congregational church Thursday, May 15 at 8 p.m. at the home of Mrs. Darwin Downer with Mrs. Elba Gage as co-hostess.

Chelsea Community Farm Bureau at McKune Memorial Library May 8, 8 p.m. Mr. and Mrs. Oscar Kalmbach and Allen Broesamle will host.

Jerusalem Farm Bureau will meet May 15, 8:30 at Lima Community Hall, bring sandwiches, cake or Jell-O.

Esther Chapter of Congregational church Thursday, May 15 at 8 p.m. at the home of Mrs. Darwin Downer with Mrs. Elba Gage as co-hostess.

Chelsea Community Farm Bureau at McKune Memorial Library May 8, 8 p.m. Mr. and Mrs. Oscar Kalmbach and Allen Broesamle will host.

Jerusalem Farm Bureau will meet May 15, 8:30 at Lima Community Hall, bring sandwiches, cake or Jell-O.

Esther Chapter of Congregational church Thursday, May 15 at 8 p.m. at the home of Mrs. Darwin Downer with Mrs. Elba Gage as co-hostess.

Chelsea Community Farm Bureau at McKune Memorial Library May 8, 8 p.m. Mr. and Mrs. Oscar Kalmbach and Allen Broesamle will host.

Jerusalem Farm Bureau will meet May 15, 8:30 at Lima Community Hall, bring sandwiches, cake or Jell-O.

Esther Chapter of Congregational church Thursday, May 15 at 8 p.m. at the home of Mrs. Darwin Downer with Mrs. Elba Gage as co-hostess.

Chelsea Community Farm Bureau at McKune Memorial Library May 8, 8 p.m. Mr. and Mrs. Oscar Kalmbach and Allen Broesamle will host.

Jerusalem Farm Bureau will meet May 15, 8:30 at Lima Community Hall, bring sandwiches, cake or Jell-O.

Council Briefs

A regular meeting of the village council was held May 8. Specifications for a new generator for Civil Defense were reviewed. Weber and Miller were authorized to purchase a generator according to specifications presented.

Discussion was held regarding the need of repair or replacement of the flouridation machine. Possible solutions are being studied.

A motion was made and approved to install "School Crossing" signs on M-52 per specifications by the state.

The village administrator reported that the work on the Planders St. sewer station is expected to begin in the near future.

A motion was made and approved to purchase billing equipment for the Electric & Water Department.

A summary of activity of the Fire Department for the month of April was read. President Pennington proclaimed Saturday, May 10, as "Fire Service Recognition Day."

The council acknowledged a request from Walter Harper to withdraw his application for variance.

Discussion was held regarding constructing a driveway to the rear of McKune Library, but no official action was taken.

A motion was made and approved to authorize and direct the clerk to pay bills as presented.

A motion was made and approved to adjourn.

Old Photos Wanted For Michigan Week Display in Library

Those old photographs of former days in Chelsea that lie ignored in desk drawers throughout area homes can be put to good use during Michigan Week.

The Woman's Club of Chelsea, Heritage Day planners, are searching for pictures of old-time Chelsea for a display in McKune Memorial Library during Michigan Week.

Persons who have suitable photographs should drop them off, labeled with donor's name, at the library before May 18.

Photographs borrowed for the display will be returned in good condition.

Michigan's population is officially estimated at 8,600,000. It was 7,829,000 when the 1960 census was taken.

Brand-new WHEEL HORSE tractor with FREE MOWER

YOUR CHOICE OF 10 ALL-NEW 1969 MODELS

1 TO 14 HP
• Automatic
• 3/Speeds
• 6/Speeds

A Size for Every Need

A Price for Every Budget

OFFER LIMITED ACT NOW!

Low Down Payment EASY TERMS

GAMBLES

MAINTENANCE / BLOOD THINNING / BURNING

GAMBLES

GAMBLES

GAMBLES

GAMBLES

Track Team Runs Over Lincoln, 94-24

(Continued from page one)

Doug Weatherwax, Mike Schnaidt and Mike McGinn.

Other vital points were picked up by Jim Boylan, fourth in shot put at 45' 4", Jim Wojcicki, fourth in the pole vault at 12', Larry Blackwell, fifth in pole vault, also at 12', and Ted Bennett, third in the 220-yard dash.

With two remaining events, Chelsea was trailing, but a one-three finish by Slane and Bennett in the 220-yard dash and a second-place finish by the mile relay team clinched the victory.

Last Thursday, the team ran their league dual meet record to 3-0 and their over-all record to 6-0 by running over Lincoln, 94-24. Lincoln's team, though out-manned in this contest, was made up largely of underclassmen and shows future promise, according to track coach Bert Kruse.

Placing for Chelsea were Jim Boylan, first in shot put with 44' 8", and Randy Seitz, third. In the pole vault, Jim Wojcicki finished first by clearing 11', with Larry Blackwell finished second.

Rick Slane was first in the long jump with 19' 11 1/2", with second and third taken by Mike Schnaidt and Jim Wojcicki. In the high jump Mike Bassett took first place with 5' 8", and Karsten Kargel was second.

John Lantis finished second in the two-mile run. Larry Gorton, Dave Forath, Ted Bennett and Mike Schnaidt finished the 880 relay in 1:35.6 to win. In the mile run, Doug Weatherwax finished first with a time of 4:49.8, followed by second-place George Cameron.

Larry Gorton won the 120-yard high hurdles with 17.2, and Mike Bassett and Steve Ersten tied for second. Mike McGinn's 2:09 won the 880-yard run and Jim Wojcicki finished second. In the 440-yard run, Mike Schnaidt finished second and Dan Hoover took third.

Rick Slane finished first in the 100-yard dash with 10.5, followed by third-place Ted Bennett. In the 180-yard high hurdles, Larry Gorton finished first with 2:24, followed by Mike Bassett and Steve Ersten in second and third.

Ted Bennett won the 220-yard dash with 23.8, and Dave Forath finished third. In the mile relay, John Hepburn, Mitchell Heard, Dan Hoover and Doug Weatherwax joined forces to win in 3:43.7.

The team will travel to South Lyon today for a conference-dual meet. Saturday they will enter the Michigan Center Relays for the first time. Field Event Relays will begin at 4 p.m. and running events at 7:30 p.m.

The dual meet next Tuesday, May 13, against Saline shapes up to be an important one since both teams are undefeated in league dual meet competition. This will be a home meet and will start at 4 p.m. Also coming up on the local track will be Class "B" and "D" Regionals on Saturday, May 17. Approximately 40 schools will take part.

Youth Suffers Freak Injury in Phys Ed Class

A muscle in the leg of Chelsea High school freshman Mike Rossbach pulled a piece of bone from his hipbone while he was running during physical education at CHS.

The condition did not result from a fall or other accident during the class. The bone is expected to mend without a cast or traction.

He is expected to be out of school for several weeks.

Stand anywhere in Michigan and you are within 85 miles of one of the Great Lakes.

Brand-new WHEEL HORSE tractor with FREE MOWER

YOUR CHOICE OF 10 ALL-NEW 1969 MODELS

1 TO 14 HP
• Automatic
• 3/Speeds
• 6/Speeds

A Size for Every Need

A Price for Every Budget

OFFER LIMITED ACT NOW!

Low Down Payment EASY TERMS

GAMBLES

MAINTENANCE / BLOOD THINNING / BURNING

GAMBLES

GAMBLES

GAMBLES

GAMBLES

GAMBLES

GAMBLES

GAMBLES

GAMBLES

GAMBLES

PROCLAMATION

FIRE SERVICE RECOGNITION DAY SATURDAY, MAY 10, 1969

WHEREAS: The fire service of our Village performs many public services in addition to the suppression of fire, such as inspections, pre-fire planning, and furnishing speakers to various groups; and

WHEREAS: Today's fireman is a technically trained and highly skilled professional public servant;

NOW, THEREFORE, I, as President of the Village of Chelsea, do hereby proclaim Saturday, May 10, 1969, as Fire Service Recognition Day, and I urge all citizens to visit their nearest fire station and become acquainted with these men, their apparatus and equipment and the professional type service they provide today as contrasted with yesterday.

Harold L. Pennington, Village President.

Parking Restrictions To Be Enforced on High School Drives

Effective June 1, the parking restrictions on the road entering the high school, and on the area around the flag-pole will be enforced and violators will be ticketed.

In addition, there will be restrictions set up on Book and Wendley Sts., in the near future. The Chelsea Police Department will enforce these restrictions.

Boy

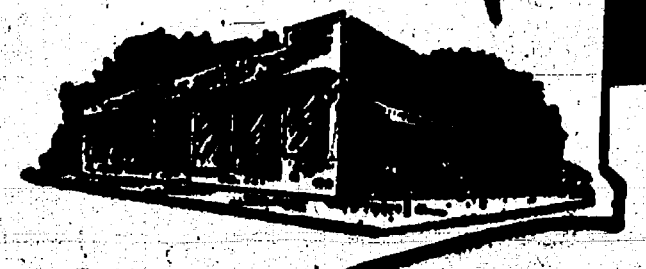
Y. MAY 8
TIO
DAY
9
lage perform
suppression
ning, and
d
ically train
servant;
the Village
May 10, 1969
urge all
n and becom
tus and equ
they provi
nnington,
dent,
eam
Second
ference
eam complet
with a
ference mak
winning a
iday and lo
y. He sneak
id wallowed
Dave Conkle
defeated Ch
Bill Meyers
adulterist hom
ace Stockhol
atch today
chools will
/ 16 for the
a league to
Southeastern
ess Monday
in the con
In the elim
t he world's
paining-vo
S
DEN
RS
ver
Trade
E-Z
ntrol,
66-1971
y-Duty
nission
9
for
move
IS
DTM-3
E. S
\$2
\$3
\$4
ble

AGRICULTURE
Action
by M.L. Wolf
Smokescreen
Organized labor has its eyes on the farms of our state. Right now these in-
dustries are some what in-
the California grape boycott
smokescreen, but they are becom-
more obvious daily. They are
this in union attempts to use
and press to legitimate place-
farmers under provisions of
National Labor Relations Act
are they will be vulnerable to
organizational tactics.
Michigan farmers are amazed
the actions of a congressman
from our state—Rep. James O'
—(9-12th District) as prin-
cipal sponsor of a House bill
to amend the Labor Act apply-
ing to farmers. He has ignored
the fact that the NLRA was
passed to fit industrial con-
ditions. His apparent unconcern
for the future of a labor-domi-
nated agriculture is only topped
by his unconcern for the impact
the Act on consumer prices.
Under the Act, farmers would
be uniquely vulnerable to labor
unions. Most other businessmen
close down to sit out a strike,
shut out or toy parts do not
shut to rot the day they are
imprisoned in bins or baskets
of tomatoes. Even a short
stop in agriculture at harvest-
time can bring farmers to their
knees. A farm strike can mean
loss of a complete year of
income and total loss of invest-
ment—often including borrowed
money. Unions understand this
all too well.
But consumers may not un-
derstand how such strikes or
boycotts must at once
reflected in higher prices for
lesser quality as farm-
ers suffer from labor-caused
delays or switch to ma-
chine harvest to bypass union
boycotts.
Not repugnant to farmers is
idea of a closed-shop contract
imposed under harvest-time
and then used to compel
workers to join the union; to
limit hours, slow down
actual production or stop it
for penalty of union fines.
It is an extraordinary and po-
tential power—and deadly when it
takes a nation's food supply.
Promoting this bill (and S-8,
twin in the U. S. Senate),
O'Hara says that it will
be order where there is now
chaos.
But the public must understand
that the farmer already knows
order—or rather these orders,
which come to agriculture direct
from labor union headquarters.
Increased Numbers
Travel Information
Visitor Centers
—The visitor count at
travel information centers op-
erated by the State Highway Com-
mission is running well ahead of
last year's record pace.
Only 42,000 persons stopped
at April 12, up 18,250 over a
year ago. About 46 percent of the
increase is attributed to opening of
new Coldwater center in Jan-
uary; the balance to increases at
other centers.
In 1968, 166,200 persons were
served in 1968 and the 42,000
in 1969 was reached May 6.
In addition to Coldwater, the
commission operates travel infor-
mation centers at New Buffalo,
Port Huron, Monroe, Mack-
inawick and Ironwood.

THE SUPERMARKET THAT'S JUST A LITTLE BIT BETTER

Stop & Shop

14901 Old U.S.-12
Corner at M-52
Chelsea



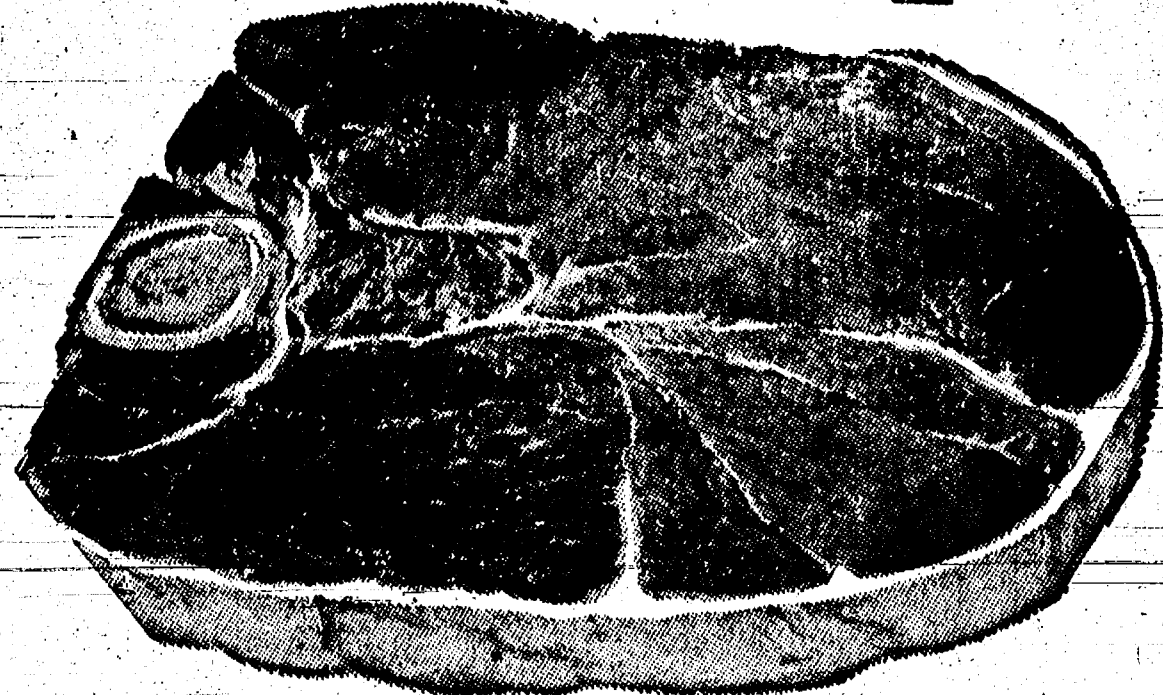
"Triple R Farms" U.S.D.A. Choice

THE KNOW HOW OF INTELLIGENT MEAT BUYING IS REALLY THE 'KNOW WHERE'

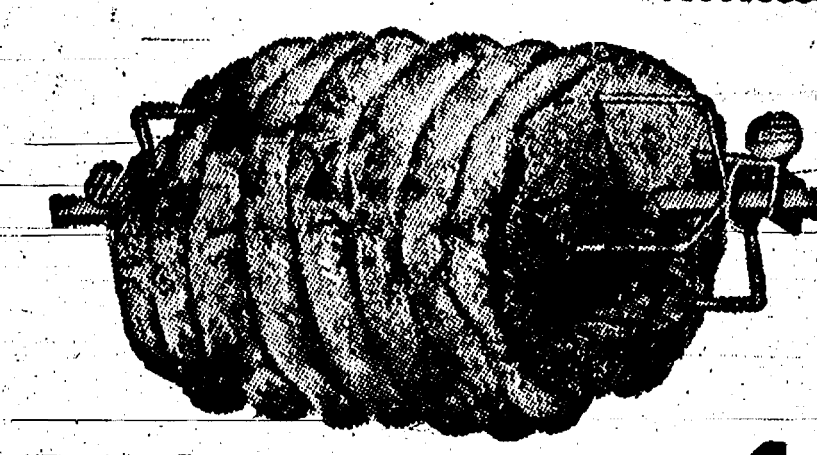
Our customers have learned to depend on the outstanding quality of
Stop & Shop meats — unfailing satisfaction with every cut they purchase.
The finest quality, together with the experienced expertise of our meat
cutting experts, makes an unbeatable combination!

Prices Effective Wednesday, May 7
through Tuesday, May 13, 1969

ROUND STEAK \$1.09 lb.



- | | | |
|--|-----------------------|-------------------------------|
| "Triple R Farms" U.S.D.A. Choice | Sirloin Steak | \$1.19 lb. |
| "Triple R Farms" U.S.D.A. Choice | Chuck Steak | 79¢ lb. |
| "Triple R Farms" U.S.D.A. Choice | Rib Steak | \$1.09 lb. |
| Tender, Delicious | Cube Steaks | \$1.29 lb. |
| Stop & Shop's Fresh, Lean, All-American Beef | Hamburger | 63¢ lb. (3-Lb. Units or More) |
| "Triple R Farms" Mich. Grade 1 | Skinless Pork Cutlets | 49¢ lb. / 79¢ lb. |
| "Triple R Farms" Mich. Grade 1 | Ring Bologna | 59¢ lb. (Garlic or Plain) |
| "Triple R Farms" Mich. Grade 1 | Liver Sausage | 49¢ lb. (Fresh or Smoked) |



"Triple R Farms" U.S.D.A. Choice
Bonless Rolled Rump or Sirloin Tip Roast \$1.19 lb.

THE COLUMBIA ENCYCLOPEDIA
NEW SECTIONALIZED EDITION

Only 7 weeks left to complete your

on sale this week section 13

THE COLUMBIA ENCYCLOPEDIA

All previous sections available **only 99¢ each**

- | | | | |
|---------------------------|-----------------|--------------------|-----|
| Maxwell House | Coffee | 1-Lb. Can | 69¢ |
| Pure Granulated | Pioneer Sugar | 5-Lb. Bag | 55¢ |
| Stokely's | Diced Beets | 1-Lb. Can | 15¢ |
| Old London Toasted | Bread Crumbs | 10-Oz. Can | 19¢ |
| Hunt's Tomato | Catsup | 14-Oz. Bottle | 19¢ |
| Meadowdale Pink or White | Frozen Lemonade | 6-Oz. Can | 10¢ |
| Meadowdale Frozen, Sliced | Strawberries | 10-Oz. Pkg. | 24¢ |
| Stokely's - Del Monte | Corn | 1-Lb., 15-Oz. Cans | \$1 |

Farm Fresh Produce

Golden Ripe	Bananas	Lb.	12¢
Fresh, Crisp	Sweet Corn	5 ears	49¢
Sweet, Ripe	Cantaloupes	Each	49¢
Florida	Oranges	5-Lb. Bag	59¢

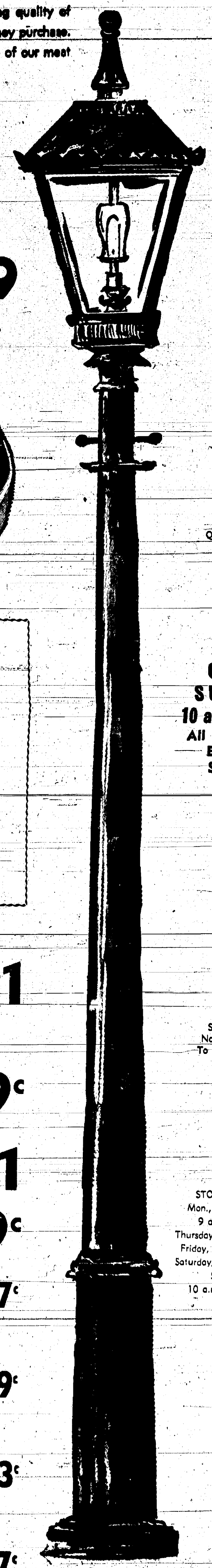
- | | | | |
|-----------------------|--------------------------|------------------------|-----|
| McDonald's 2% Low-Fat | Fresh Milk | 3 1/2 Gal. Ctns. | \$1 |
| Crispy Flake | Potato Chips | 14-Oz. Pkg. | 49¢ |
| Van Camp's | Pork 'n Beans | 4 1-Lb., 15-Oz. Cans | \$1 |
| Enriched Flour | Gold Medal | 5-Lb. Bag | 49¢ |
| Nabisco | RITZ CRACKERS | 12-Oz. Stacked Pak Box | 37¢ |
| Shur-Good | RASPBERRY SUNDAE COOKIES | 14-Oz. Pkg. | 39¢ |
| Keebler | SALTINE CRACKERS | 1-Lb. Box | 33¢ |
| Sunshine | HYDROX COOKIES | 16-Oz. Pkg. | 47¢ |

WE RESERVE THE RIGHT TO LIMIT QUANTITIES

OPEN SUNDAY
10 a.m. - 6 p.m.
All Sale Prices Effective Sundays

Sorry, No Sales To Dealers

STORE HOURS:
Mon., Tues., Wed., 9 a.m.-6 p.m.
Thursday, 9 a.m.-9 p.m.
Friday, 9 a.m.-9 p.m.
Saturday, 8 a.m.-9 p.m.
Sunday, 10 a.m. to 6 p.m.



NORTH ELEMENTARY SCHOOL NOTES

Last Week's

WORD PUZZLE

Last Week's
Answer

11. Annoys	QUARANT	BACK
12. Strange	CHINLOP	ARMED
13. Arrang	CHINLOP	ARMED
14. City	CHINLOP	ARMED
15. In the Netherlands	CHINLOP	ARMED
20. Fleer	CHINLOP	ARMED
21. French	CHINLOP	ARMED
22. satiated	CHINLOP	ARMED
23. Copy	CHINLOP	ARMED
24. Consumed	CHINLOP	ARMED
25. Discom-	CHINLOP	ARMED
26. modes	CHINLOP	ARMED
27. Couples	CHINLOP	ARMED
28. abbrev	CHINLOP	ARMED
31. Passageway	CHINLOP	ARMED
34. Fat	CHINLOP	ARMED
35. Sweetcap	CHINLOP	ARMED
36. Merry	CHINLOP	ARMED
38. Honech Bay	CHINLOP	ARMED
40. Verb form	CHINLOP	ARMED

33							
					34	35	36
			39	40			
			42				
			44				

Warm weather is Pimiento Dip season for sandwiches, for serving with crackers as an appetizer while steaks sizzle on the outdoor grill. Using electric mixer, beat together 1 1/2 cups creamed cottage cheese, 1/2 teaspoon instant onion flakes, 1 large pimiento, diced and salt to taste. Serve with celery or carrot sticks or potato chips.



Marjoram gives an extra touch of flavor to cheese and egg dishes.

When using a meat thermometer, be sure to place it in the thickest part of the meat with the bulb centered, resting neither in fat nor on bone.

Because food spoilage bacteria thrive at 40 degrees and above, cooked meats should be kept at room temperature for the shortest time possible. Cool leftover meat

PINEAPPLE DIP
 1 can (1 lb. 14 oz.) pineapple)
 chunks, drained
 Combine sour cream, honey
 and ginger. Pour into serving
 dish. **Plunge** long wooden picks
 into pineapple chunks and at-

VICTORY CAR SOLD
Vernon, Calif.—The railroad car from which Harry S. Truman conducted his 1948 whistle-stop campaign, for the presidency has been sold at auction. It was sold for \$77,000 by one businessman, and another, and may be placed in an industrial park near Kansas City.



the natural way to health

N. Koffeman
C PHYSICIAN
Tues., Thurs.:
2 p.m. to 7 p.m.
Sat.: 2 p.m. to 4:30 p.m.
Mon., Wed., Fri.:
2 p.m. to 7 p.m.

**MANIPULATION
SPECIFIC ADJUSTING**

person. No obligation.

Michigan Has Worst Traffic Toll on Record

Michigan experienced its worst traffic casualty year in 1968 with 168 persons killed and 180,413 injured in 305,495 accidents, final figures of the State Police traffic division show.

Deaths and injuries both hit new highs. Fatalities surpassed the old mark of 2,298 set in 1966. The injury total was 180,413, more than the previous record of 168,924 also in 1966.

The accident count was second on record, being only 5,108 less than the high of 310,598 set in 1966.

Compared with 1967, the 1968 statistics showed increases of almost 12 percent in deaths, six percent in injuries and just over two percent in accidents. There were 168 persons killed and 180,413 injured in 305,495 accidents in 1967. The death toll last year was the highest in a row — and the eighth year record-keeping began in 1938 to pass the 2,000 mark in Michigan.

The economic loss from traffic accidents was estimated at \$465 million, an increase of 12 percent over \$415 million in 1967.

ATTENTION

Our Telephone Number Has Been Changed to

(517) 764-3019

METRO ASPHALT SEALCOATING

5999 Mt. Hope Rd., Grand Lake, Mich.

IMPROVE YOUR HOME

Local Company — With Service

- ★ Aluminum Siding
- ★ Roofing
- ★ Patio Covers
- ★ Enclosures
- ★ Awnings
- ★ Replacement Windows
- ★ Eaves Troughs
- ★ Storm Windows
- ★ Storm Doors
- ★ Trailer Skirting
- ★ Insulation

GEORGE MEYER COMPANY

3100 PLATT ROAD • ANN ARBOR • TELEPHONE 971-5200

EXTERIOR HOME IMPROVEMENTS

George Meyer — Bob Behnke — Roy Peterson



PROTESTERS: Approximately 300 "protesting" students seized control of Beach Junior High school property Friday. The students, protesting littered outdoor lab and school grounds, "demonstrated" that they were willing to help clean up by donating their activity period Friday to the campaign, headed by the Junior High Conservation Club. Workers, pictured above with assorted objects collected during the clean-up period, are, from left, David Bauer, Mark Balze, Stephen Straub, Paul Brown, Joe Lantis, Gloria Fish, Janis Blumman, Cathy Crouch, Mark Stapish and Dale Koch.

WAXED FLOORS

You can prolong the new appearance of a just-finished floor with a coat of wax. The wax protection will last as long as the wax finish is intact. The floor should have at least two coats of wax—but if you use a liquid wax, you have to apply additional coats to build up an adequate film. Paste wax is best on a floor finished with shellac.

The Serviceman's Corner

Donald Dickelman
Aboard Destroyer in South China Sea

USS Henry W. Tucker—Yeoman Third Class Donald L. Dickelman, USN, son of Mr. and Mrs. Edwin M. Dickelman of 258 Harrison St., Chelsea, Mich., is serving aboard the destroyer USS Henry W. Tucker with Task Force 71 in the South China Sea.

The task force was established immediately upon notification of the shooting down of a Navy EC-121 reconnaissance aircraft by the enemy over North Korea.

Task Force 71 comprises more than 20 ships including four aircraft carriers, two guided missile cruisers, a heavy cruiser and a number of frigates and destroyers.

Thomas Lounsbury
Promoted With Navy

USS George Washington at sea—Machinist Mate Third Class Thomas D. Lounsbury, USN, son of Mrs. and Mrs. Elliot J. Lounsbury of 11911 Water Rd., Chelsea, Mich., was advanced to his present rate while serving aboard the nuclear powered submarine USS George Washington.

He is currently serving as a member of the Blue Crew of the USS George Washington.

Sgt. Roy Wentz
At Utah Air Base After Service in Orient

Sgt. and Mrs. Roy Wentz were recently transferred to Hill Air Force Base, Ogden, U., after returning from a 16-month tour of duty in Okinawa and Japan. Sgt. Wentz will be stationed at Hill for his remaining two years of service as a missile mechanic. His wife is the former Jackie Hoover, 1962 Chelsea High School graduate and daughter of Mr. and Mrs. Warren Hoover of Chelsea.

Pvt. Don Cubberly
Now at Ft. Lee, Va.

Pvt. E-2 Don Cubberly is now stationed at Ft. Lee, Va., while receiving Unit Organizational Supply-Armor training. Pvt. Cubberly entered the U.S. Army Jan. 6 and completed basic training at Ft. Knox, March 7. He received four weeks additional training at Radio School, Ft. Knox, before he was sent to Ft. Lee. He will receive Airborne Training at Ft. Benning, Ga. in three weeks. Cubberly, son of Mr. and Mrs. O. H. Armstrong of 1420 Manchester Rd., is a former Chelsea High school student.

Telephone Your Club News To GR 5-3581

School Board Briefs

At a Board of Education meeting May 5, present were Irwin, Lancaster, Powers, Hopkins, Lewis and Koenn, Superintendent Cameron, Business Manager Mills, Principals Lane, Wojcik, Benedict and Conklin and Assistant Principal Galbraith. Guests included Alice Steinbach and Darrell K. Larson.

The meeting was called to order by president Irwin at 8:10 p.m. Minutes of the April 21 meeting were approved as read. Treasurer's report was approved as presented.

A motion by Hopkins supported by Lancaster to pay general fund bills of \$1,835.99 received all ayes. A motion by Powers supported by Lewis to retain the firm of Iccerman, Johnson & Hoffman, certified public accountants, to audit the school district books for 1968-69, received all ayes.

Motion by Lewis, supported by Powers, to recess the board meeting at 8:45 p.m. and reconvene in the large group instruction room of the Beach school received all ayes. Motion by Lewis, supported by Koenn, to certify the results of the special millage election of 11 you and 794 no and 10 spoiled ballots. All ayes.

Motion by Powers, supported by Lewis, to accept the resignation of Mrs. Nancy May effective June 11 received all ayes. Motion by Lancaster, supported by Powers, to accept the resignation of Miss Betty Olaner effective May 2. Ayes: Lancaster, Powers, Koenn, Hopkins, Irwin; abstained: Lewis.

Conklin presented a report on the shared facilities program with recommendations for 1968-70. Action was tabled on these recommendations.

Motion by Koenn, supported by Lewis, to go into executive session at 10:00 p.m. received all ayes. Meeting was called back to order at 11:25 p.m.

Motion by Koenn, supported by Lewis, to support the statement of board President Irwin received all ayes. In Monday's school millage election, the people of Chelsea school District voted against the 7.85 millage from the 1968-69 school year when they voted down the 11.98 mills, it was pointed out by School Board President Don Irwin.

"This means that at least \$500,000 must be cut from approximately one and one-half million dollars—a one-third reduction. Another possibility would be to

hold another election for the same amount, because we do not believe that only 411 people want to keep out schools turning out students who are well prepared for their futures, said President Irwin.

"The decision will be made at the next board meeting, May 19, whether to accept the mandate and cut the budget by one-third."

Meeting adjourned at 11:30 p.m.

The three-speed blender will do the same jobs that the deluxe multi-speed blender will do. The secret to the blender's effectiveness is the skill in using it rather than its multiplicity of speeds.

COLLISION SERVICE

LOW COST RENTALS AVAILABLE
EXPERT BODY & FENDER REPAIRING

Featuring INFRA-RED AUTO BAKE OVEN

Call PO 4-0050 • Free Estimates

DIETZ PAINT & BODY, INC.
3400 Ann Arbor Rd., Jackson
At US-127 Interchange

Standard Ads Are a Good Shopping Guide!

HOUSEHOLD AUCTION

Having sold my home, a public auction of household goods will be held, located at 204 Park Street, village of Chelsea, Michigan, or 1 block east of Main Street on Park Street.

1 P.M. **FRIDAY, MAY 9** 1 P.M.

Ph. Stockbridge 517-851-2172 **PRICE BROTHERS, AUCTIONEERS** Ph. Stockbridge 517-851-2172

FURNITURE — HOUSEHOLD GOODS — ANTIQUES

Westinghouse refrigerator
Kitchen table and 4 chairs.
Hardwick gas stove.
Maytag washing machine.
Four cane bottom chairs.
Drop-leaf table. 3-pc. bedroom suite.
12x15 wool rug. Walnut chest of drawers.
Black walnut Captain's chair.
Two antique highboy dressers with drawers.
Old sewing machine. Antique cane rocker.
Three maple single beds and mattresses, nearly new.
Occasional chairs. Oak music cabinet.
9x18 red rug. Leather bottom chairs.
Floor lamps. 10x15 wool rug.

Two matching antique leather chairs.
End tables. Antique wall mirror.
Occasional rocker. Old wall cupboard.
Wrought iron plant stand. Bird cages.
Eureka sweeper and attachments, nearly new.
9x12 rug. Telephone stand.
Chime clock. Silver coffee set.
Folding cot. Quantity of nice blankets.
Pictures. Cooking utensils.
Some antique dishes. Step ladder.
Lawn mower. Umbrella clothes line.
Garden tools. 50-ft. garden hose.
Quantity of small articles to be sold.

EVERYTHING IN NICE CONDITION

TERMS: CASH Not Responsible for Accidents

MRS. MARCIA McCLAIN
OWNER

A Delightful Decision.



1969 Buick LeSabre.
What makes it such a Delightful Decision? Just price one and see.

You heard us right. It's Delightful Decision time, an event at your Buick dealer's designed to make buying a Buick right now a very delightful decision. Even this beautiful 1969 Buick LeSabre 2-door hardtop is easy to own. And look what you get in addition to an impressive list of standard equipment that begins with a 350-cubic inch V-8.

You get AccuDrive, Buick's new suspension that makes steering over bumpy, winding roads so easy your wife may never let you have the car.

You get Buick's new upper level ventilating system. It does away with the need for vent windows as well as wind noise and uncomfortable drafts.

You get Buick's new ignition, steering and transmission control lock that lets you lock your ignition, steering column and transmission controls when you turn off the key. And that's just a quick look at the new Buick LeSabre. Why don't you take a long look at your Buick dealer's soon.

We know you'll make a decision that will delight you.

It's Delightful Decision time at your Buick dealer's now.



New season, new reason why
"You'll like yourself in a
Curlee suit - and so will she!"
Come in soon and see yourself in a whole new
light—a new lightweight suit from Curlee!

CURLEE CLOTHES
\$75.00
Other Curlee Suits
\$50.00 to \$80.00
Strieter's Men's Wear
"The Place To Go for Brands You Know"



GIVE YOUR ROOMS
Personality!

Smart women have discovered how easy it is to plan and to have colorful, distinguished rooms. At the Dutch Boy Color Gallery you'll find hundreds of preplanned, decorator-inspired color combinations, over a hundred distinctively lovely colors that are available in Dutch Boy Interior Finishes. These fine finishes are as easy to apply as they are to select at the Color Gallery. Why not plan your new rooms now?

SEE THE
Dutch Boy
Color Gallery
AT OUR STORE TODAY!

MERKEL BROS.

+ Services in Our Churches +

FIRST UNITED METHODIST CHURCH
The Rev. Robert Worgess, Pastor
Friday and Saturday, May 9-10—
Council on Ministries Workshop
at Port Huron.
Sunday, May 11—
9:00 a.m.—Church school
(Third through senior high).
10:00 a.m.—Church school (Nursery through fifth).
10:00 a.m.—Worship service.
11:05 a.m.—Adult Study class.
7:00 p.m.—Senior MYF.
Monday, May 12—
8:00 p.m.—Official Board Meeting. Movie: "Agenda for a Journey" will be shown.
Wednesday, May 14—
8:30 a.m.—Chelsea Ministerial Association will meet at First Congregational church.

ST. MARY'S CATHOLIC CHURCH
The Rev. Fr. Francis Wahowiak
Saturday, May 10—
4:00-5:00 p.m.—Confessions.
7:30-8:30 p.m.—Confessions.
Sunday, May 11—
Masses at 6:30 a.m., 8:00 a.m., 10:00 a.m. and 11:30 a.m.
Monday, May 12—
10:45 a.m.—Mass in School Hall.
Tuesday, May 13—
7:30 p.m.—School Board meeting.
Wednesday, May 14—
4:00-5:00 p.m.—Confessions.
7:30 p.m.—May Devotions.
8:00-8:30 p.m.—Confessions.
Thursday, May 15—Ascension.
Masses at 5:30 a.m., 8:00 a.m. and 8:00 p.m.

ST. BARNABAS EPISCOPAL CHURCH
20500 Old US-12
The Rev. William D. Laskau, Vicar
Sunday, May 11—
11:00 a.m.—Morning Prayer.
11:00 a.m.—Church school and nursery.
Thursday, May 15—
8:00 p.m.—ECW meeting.

ST. THOMAS EVANGELICAL LUTHERAN
Cor. Ellsworth and Haab Rds.
Freedom Township
The Rev. Daniel L. Mattson, Pastor
Saturday, May 10—
9:00 a.m.—Confirmation class.
Sunday, May 11—
10:00 a.m.—Church service.
11:00 a.m.—Sunday school.

CONGREGATIONAL CHURCH
(United Church of Christ)
The Rev. Dagist Kellin, Pastor
Saturday, May 10—
9:00 a.m. to 11:00 a.m.—Confirmation class.
Sunday, May 11—
10:00 a.m.—Worship, followed by coffee hour.
Wednesday, May 14—
6:30 a.m.—Men's breakfast.
8:30 a.m.—Chelsea Ministerial Association meeting at Congregational church.

FIRST CHURCH OF CHRIST, SCIENTIST
1863 Washburn Ave., Ann Arbor
Sunday, May 11—
10:00 a.m.—Morning service.
Lesson—Sermon: "Adam and Fallen Man."
10:30 a.m.—Sunday school.

ST. JOHN'S EVANGELICAL AND REFORMED CHURCH
(United Church of Christ)
Rogers Corners
The Rev. Robert Townley
Sunday, May 11—
9:30 a.m.—Church service.
10:30 a.m.—Sunday school.

IMMANUEL BIBLE CHURCH
The Rev. Frank C. Frinkle, Pastor
145 E. Summit St.
Sunday, May 11—
9:45 a.m.—Sunday school, nursery provided.
11:00 a.m.—Morning Worship, nursery provided.
7:00 p.m.—Evening service.
Every Wednesday—
7:30 p.m.—Family Hour and Junior Choir.

GREGORY BAPTIST CHURCH
The Rev. Grant Lapham, Pastor
Sunday, May 11—
10:00 a.m.—Worship service.
11:15 a.m.—Church school.
6:30 p.m.—Baptist Youth Fellowship.
7:30 p.m.—Evening worship service.

ST. JOHN'S EVANGELICAL AND REFORMED CHURCH
(United Church of Christ)
Francisco
The Rev. Robert Townley
Sunday, May 11—
9:45 a.m.—Sunday school.
11:00 a.m.—Church service.

ST. PAUL UNITED CHURCH OF CHRIST
The Rev. Warner Siebert, Pastor
Thursday, May 8—
6:30 p.m.—Mother-Daughter banquet.
Saturday, May 10—
9:00 a.m.—Confirmation.
11:00 a.m.—Youth Choir.
Sunday, May 11—
9:15 a.m.—Church Choir.
10:30 a.m.—Worship.
Tuesday, May 13—
Men's Work Night.
Wednesday, May 14—
7:15 a.m.—High School Choir.
8:15 p.m.—Chancel Choir.

NORTH LAKE UNITED METHODIST CHURCH
The Rev. George Nevin, Pastor
Sunday, May 11—
9:30 a.m.—Worship service.
10:30 a.m.—Sunday school.

FIRST UNITED PRESBYTERIAN CHURCH
Unadilla
The Rev. T. H. Liang
Sunday, May 11—
9:45 a.m.—Sunday school.
11:00 a.m.—Worship service.
Every Tuesday—
8:00 p.m.—Choir practice.

NORTH SHARON COMMUNITY BIBLE CHURCH
Sylvan and Washburn Rds.
The Rev. Paul Collins
Sunday, May 11—
10:00 a.m.—Sunday school.
11:00 a.m.—Worship service.
6:30 p.m.—Young People's service.
7:00 p.m.—Evening service.
Every Wednesday—
7:30 p.m.—Prayer meeting.

METHODIST HOME CHAPEL
The Rev. John Fall Administrator
The Rev. Wm. Johnson, Chaplain
Sunday, May 11—
8:45 a.m.—Worship service.

ZION LUTHERAN CHURCH
Corner of Fletcher, Waters Rds.
(Rogers Corners)
The Rev. John R. Morris, Pastor
Thursday, May 8—
7:45 p.m.—Pastor's Adult class.
Friday, May 9—
6:30 p.m.—Mother-Daughter banquet.
Saturday, May 10—
8:30 p.m.—Ninth Grade Youth Instruction class.
10:00 a.m.—Seventh Grade Youth Instruction class.
Sunday, May 11—
9:00 a.m.—Sunday school.
10:15 a.m.—Worship.
Monday, May 12—
7:15 p.m.—Junior Choir.
8:00 p.m.—Senior Choir.
Wednesday, May 14—
8:00 p.m.—Church Council.
Thursday, May 15—
7:45 p.m.—Pastor's Adult Class.

CHURCH OF CHRIST
13661 Old US-12, East
R. D. Parnell, Minister
Sunday, May 11—
10:00 a.m.—Church school.
11:00 a.m.—Worship service.
6:00 p.m.—Worship service.
Every Wednesday—
7:30 p.m.—Mid-week bible study.

ST. JACOB EVANGELICAL LUTHERAN CHURCH
12501 Rothmiller Rd., Frass Lake
The Rev. Andrew Bloom, Pastor
Sunday, May 11—
8:45 a.m.—Worship service.
9:45 a.m.—Sunday school.
10:45 a.m.—Worship service.

FIRST ASSEMBLY OF GOD CHURCH
The Rev. Stephen J. Vaudrey, Pastor
Sunday, May 11—
10:00 a.m.—Sunday school.
11:00 a.m.—Worship service.
7:00 p.m.—Evangelistic service.

CHELSEA BAPTIST CHURCH
The Rev. Elmer S. Steenson, Pastor
Sunday, May 11—
10:00 a.m.—Sunday school.
11:00 a.m.—Worship service.
Nursery care available during Sunday school and worship service.
6:00 p.m.—Junior and Senior Baptist Youth Fellowship.
7:00 p.m.—Evening worship.
Every Wednesday—
7:30 p.m.—Bible study and prayer meeting.

SALEM GROVE UNITED METHODIST CHURCH
The Rev. George Nevin, Pastor
Sunday, May 11—
10:00 a.m.—Sunday school.
11:15 a.m.—Church school.

Michigan Dentists Honor Rep. Sharpe

Detroit—Rep. Thomas G. Sharpe (R-Howell) has received the Michigan Dental Association's 1969 Public Service Award for his efforts in behalf of good dental health. The presentation was made during the more than 4,000-member Association's four-day Annual Meeting in Detroit's Statler Hilton Hotel.

MDA members at the business session paid tribute to Rep. Sharpe for his leadership in the campaign to improve the dental health of Michigan's children. A Lansing woman, Mrs. Carl Heinowski, was similarly honored.

Dr. William E. Brown, MDA president, singled out Rep. Sharpe's influential role in fashioning the state-wide fluoridation law passed by the Michigan legislature in 1968.

Citing the lawmaker's "intensity and effectiveness," Dr. Brown added, "The beneficiaries of his efforts will be the children in those communities which initiate fluoridation as a result of Rep. Sharpe's diligence."

BETHEL EVANGELICAL AND REFORMED CHURCH
(United Church of Christ)
Freedom Township
The Rev. Roman A. Reineck
Sunday, May 11—
10:00 a.m.—Worship.
11:00 a.m.—Sunday school.

WATERLOO VILLAGE CHURCH
(Evangelical United Brethren)
The Rev. Wilbur Sivernail, pastor
Sunday, May 11—
10:00 a.m.—Sunday school.
11:15 a.m.—Worship service.
7:00 p.m.—Youth Fellowship.



"THE GREEN TOMATO WORM," as it's called at the Methodist Home, is ready to transport a group of Chelsea Methodist Home Residents to Jackson for a weekly shopping trip Friday afternoon. The Checker Aerobus with air conditioning, power steering and power brakes, is described by the Rev. John Fall (holding door) as "the best driving vehicle I've ever used." The four-seat aerobus will hold comfortably 12 persons, including the driver, and a maximum of 15 persons. It is used for long shopping trips, excursions, concerts and other outings, and driven by the Rev. Fall, Kelli Allen or Carl Craft.

Spaulding Agency Needs Volunteer Help

Spaulding for Children needs volunteers to help as emergency typists, babysitters and telephone receptionists.

There is an urgent need for women who can give an afternoon a week to answer the telephone at the farm.

Persons able to help on a regular basis or as a substitute should contact Mrs. Daniel Kellin at 479-4091 and leave their name and telephone number.

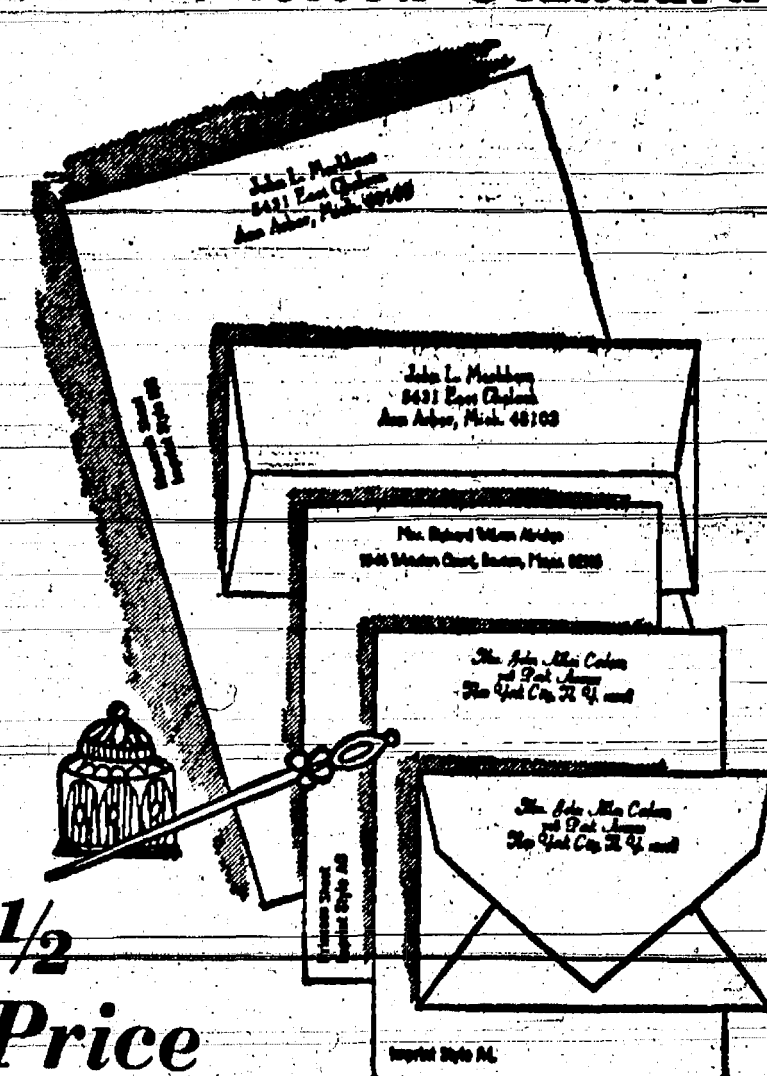
Why is it that ladies are usually so impressed with other people, other clothes, and other husbands?

WESTMORELAND ON VIETNAM

Atlantic City, N.J.—Army Chief of Staff Gen. William C. Westmoreland has predicted the Communists will probably mount another offensive in Vietnam, but is confident the U.S. will crush it. The former commander of U.S. Troops in Vietnam said it was important that the enemy has come to the conference table.

FTC ON DRUGS
The Federal Trade Commission has proposed tough new lines to prevent untruthful in-advertisement of action drugs. As an example cannot say one brand is superior to another unless it is.

The Chelsea Standard



Double the Usual Quantity
Rytex Charter Club Vellum

150 princess sheets,
100 matching envelopes
or
100 monarch sheets,
100 matching envelopes
Now \$4.50
(regularly \$9.00)

Enjoy the advantage of personalized quality vellum writing paper at plain paper prices. Smooth, distinctive sheets in white or blue with your name and address in rich blue, dark grey or black ink. Choice of three smart printing styles.

BONUS VALUE

An additional 50 matching unprinted sheets for use as second pages (regularly \$1.50) now only \$1.00 with your order.

MAIL ORDER COUPON

THE CHELSEA STANDARD
CHELSEA, MICHIGAN 48118
Rytex Charter Club: double quantity boxes at \$4.50 a box. ALSO INCLUDE ☐ (check) 50 extra unprinted sheets at \$1.00 a box.
Imprint Name: _____
Street: _____
City: _____ State: _____ Zip: _____
Check Choice:
PRINCESS SIZE: ☐ White (7000) ☐ Blue (7500)
MONARCH SIZE: ☐ White (7100) ☐ Blue (7150)
Ink: ☐ Blue ☐ Grey ☐ Black
Imprint Style: ☐ AL ☐ MC ☐ AC
Ordered by: _____
Street: _____ Telephone: _____
City: _____ State: _____ Zip: _____
☐ Charge ☐ Check or M.O. enclosed Please include sales tax

YES

WE ARE MAKING
LONG TERM FARM
REAL ESTATE
LOANS

SEE US

Federal LAND BANK Association

Ann Arbor, Mich. 48108
P. O. Box 1006
Ph. 769-2411 2645 Jackson Rd.

Spicer helps make Dana a growing force in agriculture.

Tractor clutches, agricultural shafts, universal joints, power take-offs: these are some of the Spicer® brand products from Dana that make an important contribution to the workaday needs of farmers.

There are 14 million tractors operating in the U.S. Besides Spicer products, many of them use piston rings and engine parts made by Dana's Perfect Circle divisions; sealing products from our Victor divisions.

When you consider that agriculture is just one part of the total transportation picture, and that Dana is

the world's largest independent supplier of transportation components, then you realize there is no limit to the growth possibilities of Dana.

If you would like to know more about us, send for a copy of our annual report. Write: Office of the President, Dana Corporation, Toledo, Ohio 43601.



Con-Vel
Parish
Perfect Circle
Spicer
Victor

Cheltenham Lodge No. 130 was hostess to the 12th District Rebekah Lodges Saturday, May 3. Lodges from Parma, Springfield, Hanover, Vandrook Lake, Brooklyn, and two from Jackson joined Cheltenham.

Members of Order of Eastern Star served the noon luncheon at the Masonic Temple.

Mrs. Carmen Johnston from Mead, president of the Assembly of Michigan, was the guest of honor, with Mrs. Lorena Knight, Inside Guardian from Grand Rapids.

The morning session was attended by 84 Rebekahs and more than 100 were counted at the afternoon session. District President Mrs. Ann Yoell of Chelsea presided over the meeting. Introductions and presentation of gifts were conducted by Chelsea.

Mrs. Jacques Beyer, vice-grand, read the address of welcome. Response was given by Mrs. Martha Farrell of Brooklyn. A prayer for peace was read by Mrs. Ruby Johnson of Jackson.

All members who died during the past year were remembered at a memorial service. Checks were presented to Mrs. Doris Warren, and the administrators of the Odd Fellow and Rebekah Home in Jackson. Funds had been collected in the various lodges during the past year for this purpose.

Entertainment included several song selections by Miss Linda Merkel and two readings by Mrs. Donovan Sweeney.

Elected to offices were Mrs. Farrell, from Brooklyn No. 473, as president; Mrs. Leone Hall, of Home City No. 228 in Jackson, as vice-president; Mrs. Ida R. Meyer, of Martha No. 2 of Jackson, as secretary; and Mrs. Frances Layman from Parma as treasurer.

Guests from outside the district came from Dexter, Tecumseh, Charlotte, Ypsilanti, Milan and Eaton Rapids.

25th ANNIVERSARY
Mr. and Mrs. Vergil Hines celebrated their 25th wedding anniversary Sunday, May 4 with an open house at their home, 2594 Looffler.

The open house was given by their daughter and son-in-law, Susan, and Rodney Craig, and daughter, Laura. Ann Hines, 65 guests were present from Michigan Center, Tecumseh, Saline, Ann Arbor, Manchester and Chelsea. The couple received many gifts.

The correct way to hold a paint brush is to grasp the brush comfortably, near the base of the handle, and to hold it loosely. Do not grip it too hard on a brush, but exert only enough pressure to make the bristles flex slightly toward the tip.

When skirts begin to get longer we hope that the style of frills around the hemline will still be in style. This can add inches to a skirt's length.

Yours forever

REGISTERED
DIAMOND RINGS
For perfection in your engagement diamond, choose Keepsake... The center gem is guaranteed perfect or replacement assured. Always get the best. 75% off retail.

WINANS JEWELRY STORE

MOTHER-DAUGHTER BANQUET HELD BY LEGION AUXILIARY

The American Legion Auxiliary Mother and Daughter Banquet and monthly meeting was held May 6 at the Legion Home with approximately 50 present. After a delicious pot-luck dinner a program was held.

Gifts were given to the youngest grandmother present, Mrs. Laurene White; the youngest mother present, Mrs. Weber; mother with the oldest daughter present, Mrs. Blagom Ume; mother of Mrs. Harry Burgett; oldest mother, Mrs. J. V. Burg; mother with most sons, Mrs. Robert Freysinger.

After the banquet the monthly meeting was held with 25 members and guests present. It was reported that the handkerchiefs were purchased and delivered with cards to the Veterans Hospital in Ann Arbor for Mothers' Day. They are for the men in the hospital to send to their loved ones.

It was announced that the next District meeting would be held at Ida June 8-11. It will be preceded by a memorial service for departed members.

An interesting talk was given by special guest Doris Dishrow, second district president, regarding the work and aims of the auxiliary for this year. After her talk she was presented with a gift from the president, Mrs. Lyle Christwell.

Beta Sigma Phi Elects Officers

New officers of Beta Sigma Phi Chapter X, 3045 of Chelsea for the coming year will be Mrs. C. E. Snyder, 5840 Stoffer Rd., president; Mrs. Aldwyn Hayes, 5800 Stoffer Rd., vice-president; Mrs. Alfred Smith, 5529 Hanker Rd., recording secretary; Mrs. Ronald Kiel, 6000 Stoffer Rd., treasurer; Mrs. David Longworth, 3000 Stoffer Rd., extension officer.

Members met with eight chapters in Jackson April 28 in honor of Founder's Day, the 38th celebration of the founding of Beta Sigma Phi. 100 members were present and enjoyed an impressive ceremony and banquet at Schuler's restaurant.

The April 21 meeting was held at the home of Mrs. Hayes. Mrs. Hayes presented a program on "High Moments of Art," through the efforts of her daughter, Mrs. Daniel Meyer, of Orono, Minn. She visited the National Gallery of Art in Washington, D. C. and composed some highlights from artists such as Michelangelo, D. Vinci and Raphael. She sent slides, small print and booklets for members.

At a previous meeting April 7 two new members, Mrs. Smith and Mrs. Frederick Barkley, were given the "Ritual of Jewels," and Mrs. Richard McUmber gave their pledge training. The "Exemplar Degree" was presented to Mrs. Snyder for four years good standing, and participation in regular chapter activities. The "Order of the Rose" was given to Mrs. Longworth for 15 years service.

Home Economics Study Groups Calendar

Week of May 7-14

Thursday, May 7—Geddes, home of Mrs. Paul Wesenberg, 1213 Island Dr., Apt. 104, Ann Arbor.

Friday, May 8—Whitmore Lake, home of Mrs. Glenna Santure, 95 Margaret St., Whitmore Lake.

Saturday, May 9—Webster, group tour to Maxey Training School for Boys; meet at home of Mrs. J. E. Burnett at 8:30 a.m.

Sunday, May 10—Merry Anns, home of Mrs. Theo. Koehle, 1405 Wakefield, Ann Arbor.

Monday, May 11—South Superior, home of Mrs. Arlie Hickman, 622 Manhattan St., Ypsilanti.

Tuesday, May 12—Lima Center, Lima Community Hall, Hostess, Mrs. Earl Pettibone.

TIME SAVER
The automatic dishwasher is a time-saver. It is estimated to save as many as 28 eight-hour days in a year for the average homemaker.

Just for Mom

On Mothers' Day - Sunday, May 11

INTRODUCING ONE OF THE GREATEST WIFE-SAVERS YOU MAY EVER FIND!

It's a work, hand, health, water, time and frown-saver, too. It's the new Frigidaire Custom Imperial Dishmobile that ends hand rinsing... washes pots and pans... and holds a big 16 table-setting capacity (NEMA). It also provides 5-way Super-Surge Washing Action at the touch of a button... rolls easily... features five versatile cycles plus 150° water temperature booster... and offers extra counter-work surface. Drop in today. Ask for a demonstration. The wife it saves can be you!

NEW FRIGIDAIRE CUSTOM IMPERIAL SUPER SURGE DISHMOBILE

Many Models To Choose From.

MEABON'S TV, FURNITURE & APPLIANCE

1170 S. M-52, Chelsea Phone GR 5-5191



DEATHS

Mrs. Joseph Policht

Dies Sunday at Rest Home After Prolonged Illness

Mrs. Agnes Policht, 84, of 421 North St., died Sunday, May 4 at Cedar Knoll Rest Home, Grass Lake. She had been a patient there since March 13, 1967.

She was born Oct. 16, 1884 in Galicia, Poland. The former Agnes Jankowski, she was married May 19, 1900 in Poland to Joseph Policht. They came to the United States in 1913 and settled in Chelsea in 1918. Mr. Policht died Nov. 13, 1957.

Surviving are four sons, Joseph, Stanley and Andrew Policht, all of Chelsea, and Louis Policht of Columbia, Calif.; three daughters, Mrs. Elwood (Mildred) Nahmens of Inglewood, Calif., Mrs. Reginald (Rose Ann) King of Fountain City, Calif., and Mrs. Joseph (Mary) Herde of Anchorville, Mich.; 17 grandchildren and five great-grandchildren. She was preceded in death by a son, Alojzy (Liza) Policht on April 30, 1968, and a grandson, Larry Policht, also in 1968.

Requiem Mass was offered at 10 a.m. Wednesday, May 7 at St. Mary's Catholic church, with the Rev. Fr. Francis Wahowiak officiating. Burial followed at Mt. Olivet Cemetery. The Rosary was recited at 7 p.m. Tuesday at the Burghardt Funeral Home.

LAWRENCE GAKEN, son of Mr. and Mrs. James Gaken of 310 Pierce St., is now stationed at Ft. Sill, Okla., while taking a nine-week course in radio repair. Pvt. Gaken, a 1968 Chelsea High school graduate, entered the Army Jan. 22 and took basic training at Ft. Knox, Ky. He was employed at Chelsea Milling Co. before entering the Army. His present address is: Pfc. Lawrence J. Gaken, US 54992361, "B" Btry Enl Stu Bn USAAMS, FRMC-36, Ft. Sill, Okla. 73503.

It's good to have a slogan, but it's better to perform.

Gruff talk usually reveals gravel in the brain.

CHELSEA ASSOCIATED BUILDERS, INC.

GENERAL CONTRACTORS

Custom Building and Remodeling

PHONE 475-8182

BON EDER 475-8243
LEON KOCH 475-8269
JOHN PIERSON 479-5831

At L & R DRIVE-IN

We'll help treat your Mother
On Mothers' Day - Sunday, May 11!
We pay the first 25¢ on her dinner that day.

Delicious
INDIVIDUAL CHICKEN DINNERS at \$1.50
or **BUCKET OF CHICKEN:**
16 pcs. at \$3.95 or 24 pcs. at \$5.95
Includes rolls, cole slaw and french fries.

Complete Sandwich and Fountain Menu
OPEN WEEK-ENDS thru MEMORIAL DAY
11 a.m. to 10 p.m.

L & R DRIVE-IN

North Territorial and Dexter Townhall Rd.

PHONE 426-8668

(Call ahead and your take-out order will be waiting.)

SUMMER FUN AHEAD!



Rivera Cruisers

FLAGSHIPS of the FUN FLEET
for families and their guests

NEW STORE HOURS:

Tues. thru Sat., 8:30 a.m. to 5:30 p.m.
Friday, 8:30 a.m. to 8 p.m.
Sunday, Noon to 4 p.m. - Closed Mondays

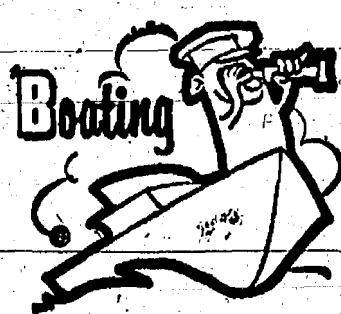
Gateway SPORTS CENTRE

1603 S. Main St.

"Your Sports Equipment Centre"

Chelsea, Mich.

Phone 475-8676



ARROW GLASS

SEA NYMPH

CORE CRAFT CANOES

JOHNSON MOTORS

Now Available:
GO-MIX FUEL
FOR 2-CYCLE ENGINES

Bear Archery - McGregor
Cypress Gardens
Coleman

C. Russell Altstaeter

Former Local Businessman Dies Unexpectedly Friday

C. Russell Altstaeter, 65, died unexpectedly at his home, 522 McKinley St., Friday, May 2. He had been employed by the Village of Chelsea as a custodian since 1963.

He was born Sept. 5, 1903 in Columbus Grove, O., to Charles and Clara Belle Hood Altstaeter. He was married April 4, 1926 to N. Lucile Taylor at Corunna. They came to Chelsea in 1935. Mr. Altstaeter had operated a shoe repair and men's clothing store on Main St. until 1945, when he became school custodian. He served the Chelsea school system until 1963.

Mr. Altstaeter attended the Chelsea United Methodist church and was a member of Olive Lodge No. 155, F&AM, and of Olive Chapter No. 140, RAM.

Surviving are his widow, Lucile; two daughters, Mrs. David (Leola) Brennan of Chelsea, Mrs. Loren (LaDonna) McKee of Utica; and five grandchildren. Also surviving are two sisters, Mrs. Joseph (Eva) Hoffman and Mrs. Kenneth (Clara) Thompson, both of Lansing; several nieces and nephews. One sister and one brother preceded him in death.

Funeral services were at 1:30 p.m. Monday, May 5 at Burghardt Funeral Home, with the Rev. Robert Worgess officiating. Burial followed in Vermont Cemetery, Sylvan township. Masonic Memorial services were conducted at the funeral home Sunday at 8 p.m. by Olive Lodge No. 155, F&AM.

Mrs. F. Armstrong

Was Associated With Greenhouse for Many Years

Mrs. Fremont Armstrong, 90, 16891 Waterloo Rd., Chelsea, died Friday, May 2, at Cedar Knoll Rest Home, Grass Lake.

She was born March 2, 1879 at Victor, Kan., to Joseph and Harriet Donaldson Brownell.

She married Fremont Armstrong Dec. 5, 1926 at Toledo, O., and he survives. She had lived all of her married life in this area. The couple were associated with and were owners of Chelsea Greenhouse from 1929 to 1960.

She was a member of the Macabees.

Funeral services were Monday May 5 at 2 p.m. at Staffan Funeral Home with the Rev. Wilbur Silvernail officiating. Burial was in Oak Grove Cemetery.

Eugene P. Anderson

Personnel Director at Proving Grounds Dies

Eugene P. Anderson, personnel director of Chrysler Proving Grounds, Chelsea, died Saturday, May 3 at Foote Hospital in Jackson.

Anderson, 55, had been employed at Chrysler Proving Grounds for 17 years. He was a member of the First Presbyterian church and F&AM, Grass Lake and is a former Grass Lake village president.

He lived in Chelsea and Grass Lake before moving to 1734 Kirby Rd., Jackson.

Survivors include his widow, Jennifer, and one daughter, Mrs. Roy (Barbara) McPherson of Dinuba, Calif.; one son; and one sister, Mrs. Charles Minton.

Funeral services were Tuesday from Patience-Montgomery Chapel in Jackson. Burial was in Roseland Memorial Gardens, Jackson.



THE CONNECTING LINK between Chelsea vocational agriculture students as a civic project. High school property and Beach property was approximately 20 boys built the stairs, including, achieved through a 10-foot right-of-way through a. From left, Ron Herrist, Howard McCalla, Richard Schenk, Loren Heller and Rod Powers.



GIRL SCOUTS

TROOP 82

Girl Scout Troop 82 opened the April 30 meeting with a flag ceremony and 27 were present at the meeting.

We made Mother's Day presents for our mothers. We used macaroni, sea shells, glue, rice and gold spray paint. We had cookies and milk for our treat.

Dusan Fahrner, Vickie Walz, scribes.

BROWNIE TROOP 169

Brownie Troop 169 met Tuesday, May 6 at the Congregational church. 19 members and one guest, Judy O'Connor, attended.

We made plans for next week to have our mothers come and made cards with invitations and potscrubbers to put on the front. Some of the girls finished their nosebags.

Bonnie Boyer, scribe.

BROWNIE TROOP 145

Brownie Girl Scout Troop 145 met May 6. First we finished the pins we were making for Mother's Day. Some of us practiced our square knots and learned the clove hitch. We then opened our Brownie Ring with the flag ceremony. Marcia Prinzing and Denise Robbins took the dues and attendance. We sang the "Johnny Applesseed" grace and Dana Murphy passed cookies. We elected Laurie Werner treasurer and Penny Collingsworth assistant treasurer. Dana Murphy and Roberta Toon were elected scribes. We talked about the fun-in-at-Linden. Seems everyone had fun on the monkey bridge they crossed on the hike around Linden. Karen liked the "smores" and square knot relays played with their dads. We closed with "tape" and "squeeze". Penny Collingsworth, Laurie Werner, scribes.

TROOP 77

Girl Scout Group 77 met at the Penthouse and discussed plans for May activities. Scheduled are: May 13, roller skating at 8 p.m.; May 23-25, camping at Bear Lake; and May 27, horseback riding.

All dues must be paid before attending these activities. The Washington Trip report was made out.

SNEAK THIEF

Glaucoma is called the "sneak thief of sight" causes blindness unless detected early and treated continuously. It is estimated more than 1,702,000 Americans over age 35 have glaucoma and half of them do not know it.

EYES EXAMINED

and

GLASSES FITTED

For Appointment Call GR 5-5431

A. A. PALMER, M.D.

110 E. Middle St. Chelsea, Mich.



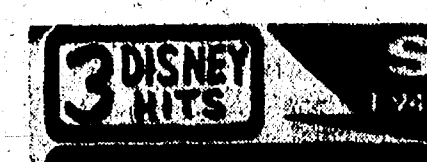
CUB SCOUT NEWS

DEN 13, PACK 435

Cub Scout Den 13, Pack 435 met at the home of Mrs. Art Steinaway Wednesday, April 30. We walked down to the creek and saw the frogs before we opened the meeting with a discussion of our pet show at the last Pack meeting. We began our Mother's Day gift by planting grass seeds in paper cups as part of the decoration. Mark furnished treats. Douglas Foreman, scribe.

DEN 1, PACK 415

Den 1, pack 415 met Tuesday, May 6 at the home of the den mother, Mrs. George Atkinson. After dues were collected, we finished our Mother's Day presents. We closed our meeting with the cub scout promise. Jerry LaFontaine, scribe.



3 DISNEY RITES

SCIO DRIVE-IN

668-7081
124 EXIT 169 JACKSON ROAD
WEST OF ZEEB ROAD

WALSH'S DRIVE-IN

WALSH'S DRIVE-IN
WALSH'S DRIVE-IN
WALSH'S DRIVE-IN

WEALTHY VAGRANT
St. Petersburg, Fla.—Police charged a man, with no money, who asked him to empty his pockets. Joseph Dunbar Wright, by pulling \$187,118.62 out of his pockets, came from Baltimore and was the member of an inent Maryland distilling sive. The bill-paying habit is sive.

HELLER ELECTRIC

Licensed Electrical Contractor

ALL TYPES OF WIRING

(No job too big or too small)

DAY OR NIGHT

CALL GR 9-3811

20640 Seger Rd., Ch

ANNUAL SPRING RUBBISH PICK-UP

MONDAY and TUESDAY

MAY 12-13

PUT ALL RUBBISH AT THE CURB

Rakings and anything else not covered by regular rubbish pick-up contract.

HAVE IT OUT EARLY MONDAY - 7 a.m.

Anything you can carry to the curb, we will haul off.

Chelsea Public Works Dept.

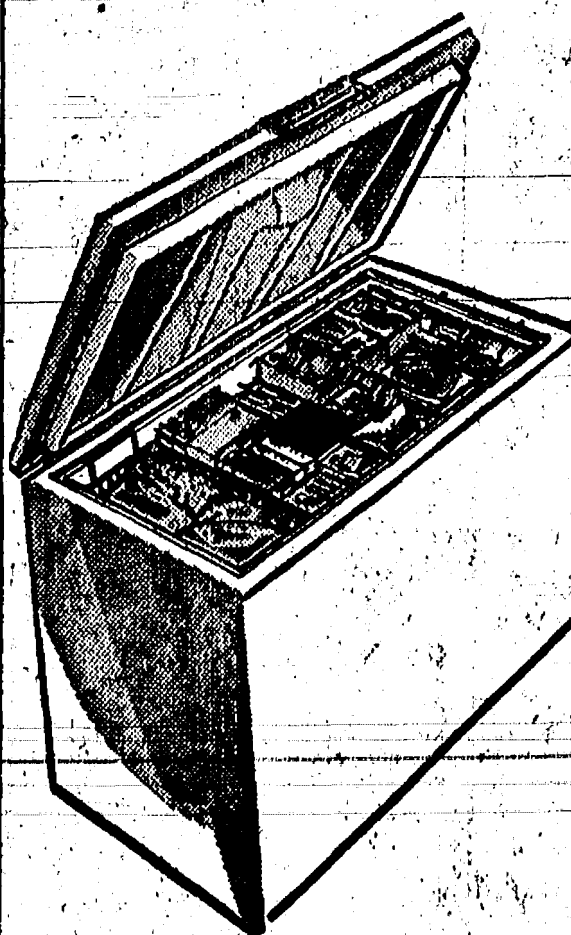
TRUCK LOAD FREEZER SALE

SAVE UP TO \$30.00

ON THIS

SPECIAL PRE-SEASON FREEZER SALE

(CHEST AND UPRIGHT MODELS AVAILABLE)



Many Models To Choose From



OPEN FRIDAY UNTIL 9 p.m. CLOSE SATURDAY AT 4 p.m.

FRIGID PRODUCTS

113 N. Main St., Chelsea

LLOYD R. HEYDLAUFF

Phone GR 9-665