

Min.	Max.	Precip.
20	27	Trace
18	25	0.00
16	23	0.00
14	21	0.00
12	19	0.00
10	17	0.00
8	15	0.00
6	13	0.00
4	11	0.00
2	9	0.00
0	7	0.00

The Chelsea Standard

NINETY-NINTH YEAR—No. 35

14 Pages This Week

CHELSEA, MICH., THURSDAY, FEBRUARY 20, 1969

per copy

SUBSCRIPTION: \$3.00 PER YEAR

QUOTE

"The defect of equality is that we only desire it with our superiors."
—Henry Becque.

Junior High Music Festival Slated Saturday

District Contest at Beach School Has New Event Each Seven Minutes

Music lovers will have the opportunity to view their choice of approximately 2,500 junior high music students performing 1,018 scheduled events from 8 a.m. to 5 p.m. Saturday at Beach Junior High School.

The Junior High Michigan School and Orchestra Association District 22 promises to be even better than the high school district performances last Saturday. In fact, new events will begin every seven minutes rather than merely every eight minutes as before.

Seventh, eighth and ninth grade students from Washtenaw, Lenawee, Wayne and Monroe counties will perform solo or ensemble selections with a maximum of eight students in each group. They will be evaluated by 18 adjudicators from the field of instrumental music. Some of the judges were among those who rated six Chelsea entries in the first division last week.

Chelsea students who rated first division medals and qualified to participate in the state festival last March are Jeff Parsons, cornet solo; Heidi Sprague, flute solo; Crystal Impola, oboe solo; Heidi Sprague and Gina Funderburg, flute duet; Sarah Lindauer and Lynn Ferguson, flute duet; and Jill Plintoff, piano solo. 26 Chelsea students received second division ratings.

Lunch will be served by Chelsea Band Boosters again Saturday.

Chelsea morning solo entries in the Junior High festival will be Susan Beaumont, flute; Debi Shaheen, flute; Darlene Robbins, clarinet; Phyllis Buss, clarinet; Dale Kohn, trombone; Sandy Dellinger, clarinet; Harold Allen, cornet; Carol Dietz, French horn; David Lauson, trombone; Mary Beth Dellinger, cornet; Ronald Landwehr, trombone; Randy Young, cornet; Jim Storey, French horn; Jennifer Lane, flute; Debbie Akin, alto sax; Gary Thomson, clarinet; Kathy Hall, cornet; Dan Merkel, snare drum; Bob Heydlauff, tuba; Bill Schaefer, trombone; Jon Lewis, cornet; Robert Schneider, trombone; Robert Taylor, cornet; Margery Parsons, clarinet; Cindy Baird, clarinet; Audrey Heard, clarinet; Patti Knickerbocker, flute; Lee Ferguson, trombone; Jeff Sprague, clarinet.

Scheduled morning ensembles are Com Skitenhelm, Dennis Huehl, David Layher and Doug Hansen, clarinet quartet; Barton Wellnitz and Robert Schneider, trombone duet; Marilyn Peffers and Carole Dietz, French horn duet; Craig Coltre and Doug Simon, trombone duet; David Lauson,

Council Briefs

At a regular Village council meeting Feb. 18, 1969, a discussion was held with Fred Ewald regarding his request for consideration of a water main along Gene Dr. Trustee Pennington said the light and water planning committee will meet with interested parties.

Specifications will be obtained for the purchase of a new, larger payload for landfill use.

Motion was made and approved to authorize installation of two well submersible pumps into the Flanders St. ejector station instead of a full lift station as previously planned.

A discussion was held with Mr. and Mrs. Bernard Herwig regarding possible damages to their property and crops from construction of the Freer Rd. sewer and lift station. A further investigation will be conducted.

Motion was made and approved to transfer the balance of \$9,500 from the Fire Department truck fund into the general fund.

Motion was made and approved to pay bills and adjourn.

Saturday Recreation Classes Canceled for Next Two Week-Ends

All recreation classes scheduled for Saturday, Feb. 22 and Sunday, March 1 have been cancelled due to wrestling district and regional tournaments at Chelsea.

Regular Saturday meetings March 8.



HONOR SOCIETY INITIATES: Inducted into National Honor Society Friday were 30 Chelsea High school students chosen by faculty and administration for excellence in scholarship, character, service and leadership. Parents and CHS students attended a capping ceremony and reception Friday afternoon to recognize the new members. They are, from front row, left to right, Doug Schoenberg, Ann Travis, Roxanne Shears, Vickie Clemons, Bobbie Dvorak, Pat Hergert, Heidi Sprague, Barb Harvey, Jeanne Hinderer; second

row, from left, Bob Brassow, Connie Taylor, Chris Alber, Bev Gebott, Jannet Boylan, Floyd Boyce, Pat Gilbert, Don Nutt, Barbara Bury; top row, from left, David Bust, Carolyn Buckingham, Caryl Thornton, Gail Maistre, Lance Burghardt, Chris Frinkle, Mike Schmidt, Brenda Seltz, Jan Oesterle, and Claudia Devine. All new members except seniors Lance Burghardt, Chris Frinkle and Mike Schmidt are juniors at Chelsea High School.

30 New Members Join Honor Society

Thirty new members joined the Charles S. Cameron Chapter of the National Honor Society Friday in an assembly-initiation program.

Parents and fellow students gathered in the auditorium for the program, music provided by the Chelsea Band, and tapping ceremony.

Steve Dietrich, NHS president, discussed one criterion for membership, service. Other members enumerating qualifications of leadership, scholarship

and character were Doreen Kuhl, Denise Hafner and Marilyn Hinderer.

Senator Gilbert Bursley presented a Michigan flag to Chelsea High school and gave a brief presentation about its history.

Gary Evans, instructor at Eastern Michigan University, and Chelsea Schools Superintendent Charles S. Cameron were speakers. A reception for NHS members, parents and faculty followed the program.

The new members were selected by a seven-member faculty committee, Principal Charles Lane and Guidance Counselor

George Bergman. Students were required to have a minimum of 3.0, or B, scholastic average to be eligible for consideration. Other qualifications were character, leadership in class, extra-curricular and non-school activities and service to school and community. The selection committee asked for recommendations from various teachers familiar with qualified students.

Coupon Campaign for Kidney Machine Progressing Very Well

Chelsea Jaycee Auxiliary reported that 3,025 coupons had been contributed to date in response to their request for Betty Crocker coupons to help purchase a kidney machine.

The coupons are being collected by Michigan Jaycee chapters and Auxiliaries. When the goal, 600,000 coupons, has been reached they will be redeemed at General Mills for a kidney machine worth \$3,100. This machine will be placed upon recommendation of the Michigan Kidney Foundation. If the response to date is indicative of state-wide contributions, the 600,000 coupon goal will have been passed.

In this case, Michigan Jaycees will renegotiate with General Mills for another machine. Auxiliaries in District 29

Dexter, Hudson, Adrian, Ypsilanti, Ann Arbor, Augusta township, Tecumseh, Saline, Monroe, Milan and Dundee are hoping to gather enough coupons to be able to request that the purchased machine be placed in University Hospital, Ann Arbor.

Warren H. Newton, field representative for the Michigan Kidney Foundation, said at a recent meeting in Southfield, that he hoped a "loan closet" could be established with the machine. This would enable kidney patients in any part of Michigan who have completed the home care program to rent a kidney machine and remain at home instead of traveling once or twice each week to established clinics.

Newton mentioned that the movie, "Everyone's Problem" is considered very interesting and is available to the public upon request. Chelsea organizations interested in showing the film should contact Mrs. Robert Updegraff for information.

Top Spellers Chosen from Each Grade

Chelsea fifth graders participated in preliminary competition for the Detroit News Metropolitan Spelling Bee last Thursday.

Students joined in the grade-wide matches in North and South schools. The best spellers will test themselves in a school spelling bee next month.

The winning work was "exclaim" for Kathy Fairbanks at North school. She spelled down runner-up Dawn Robards and the 88 other fifth graders in 90 minutes to win a copy of Webster's New Collegiate Dictionary. The 18 additional top spellers were Mike Billingsley, Renee Schneider, Glen Risner, David Meyer, Lynn Smith, Dale Schoenberg, Kyle Corser, Kathy Pierce, Don White, Myra Gadberr, Mark Seyfried, Sue Schuelke, John Elliot, Lori Proctor, Lynn Olson, Michele Papo, Anita Harat, Kitty Gullett.

Matt Merkel spelled "solid" correctly to defeat runner-up Annette Houle and 90 other fifth grade students at South school. Other top spellers were Yvonne Clark, Sherry Conley, Jean Norton, Bill Rademacher, Paul Marshall, Randy Guenther, Mark Dalton, Tom Clemons, Tammy Stepp, Teri McDonald, Penny Kincer, Dora Alexander, Pamela Greenleaf, Jerry



Bonnie Parnell Named DAR 'Good Citizen'

Bonnie Parnell was chosen by classmates and faculty advisors to receive the competitive Good Citizens Award given annually by the Daughters of the American Revolution to an outstanding senior girl.

Bonnie, 17-year-old editor of the Bulldog Barks, high school newspaper, publicity chairman for "Music Man," member of National Honor Society and former editor of the Accolade, a CHS literary art magazine, attended Freed-Hardeman College, Henderson, Tenn., last summer under the early admission program. She made the Dean's List while taking 14 semester hours, concentrating on English and psychology. Bonnie plans to major in journalism at the two-year school next fall.

Bonnie enjoys writing, especially poetry, and traveling. She moved from Chattanooga, Tenn., to Chelsea at the end of her freshman year when her father, the Rev. R. D. Parnell, took over the pastorate of the Church of Christ. She has a brother, Jeff, 6; and sister, Pam, 18 yesterday.

The Good Citizens Award is granted on the basis of dependability, including truthfulness, loyalty and punctuality; service, including co-operation, courtesy and consideration of others; leadership, which includes personality, self-control, ability to assume responsibility; and patriotism, unselfish interest in family, school, community and nation.

The national contest is open to all girls in senior classes of accredited public high schools in the U. S. Each local chapter of DAR awards contestants in their area with a pin and certificate of award with approval of the National Association of Secondary School Principals.

Bonnie will attend a tea honoring award recipients from Ann Arbor, Dexter, Chelsea, Manchester, Milan and Saline sponsored by the Sarah Caswell Angell chapter.

Police Report Four Juvenile Shoplifters

The January summary of Chelsea Police work activity submitted to Police Commissioner George Heydlauff by Chief George Meranuck indicated the arrest of three adults on miscellaneous charges and four juvenile female shoplifters.

Crimes reported included one grand larceny, \$282 taken from a private home and recovered; six simple larcenies; one forged prescription case involving a 30-year-old woman; two cases of bad checks; a stolen car, later recovered in Detroit; and two missing persons.

Tickets were issued for 18 moving violations and 44 parking violations. Fourteen accidents were reported inside the village limits. 4,300 miles were added to car number one and 323 miles were added to car number two.

Wrestlers Bid For Title in District Meet

Over-Confidence Permits Dexter Team To Slip in for Conference Tie

The Bulldog wrestling team will seek a district title Saturday prior to defense of the regional championship one week later.

The Bulldogs, tormented again by a Dexter team that gained a share of the conference championship, will host the eight-team district tournament Saturday and the regional one week later.

Dexter, Saline, Lincoln and South Lyon are the other conference teams to compete here Saturday. Northville, Willow Run and Pinckney complete the field.

Chelsea coaches Burley Hendricks and Doug Matz said that the Bulldogs are regarded as the "team that has to be beaten" despite a disappointing second place finish in the conference tournament.

After a rousing dual meet performance last Thursday night in which the Chelsea wrestlers thrashed the Dexter team, 28-22, the Bulldogs stumbled in the Con-

ference tournament at Dexter Saturday. A second-place finish behind Dexter pushed the Bulldogs down to a co-championship—after defeating every team in the league during the dual meet season.

The result of league competition was a duplicate of last year when the undefeated Bulldogs dropped one-half the title when Dexter took the tournament title.

"There was a definite letdown—an attitude of being over the hump after the big win over Dexter Thursday night," coach Hendricks said.

"Coach Matz and myself were aware of the danger in the heady atmosphere that prevailed Friday. We did not recover quickly enough—until the second round of wrestling Saturday. It came too late. In a few key matches Dexter moved men into the championship flight where there was no strength in the league to turn them back."

Pointing to an unusual balance of weak and strong teams in the conference, the coaches claimed that the Bulldogs have a better chance in tournaments such as the district Saturday. The Bulldogs did finish ahead of Dexter in the Howell Invitational, which offered a much tougher group of teams.

The Bulldogs placed 11 of the 12 men squad high in the tournament standings. Co-captains Mike Gaken and Kerry Kargel were joined in the champions row by Tim Colvia who won his 165-pound title by pinning three opponents. Colvia had a fairly easy championship match, pinning Saline's Bob Girbach who scored a narrow victory over Colvin in a dual meet earlier.

Grass Fires Mean Danger In Burning

Six grass fires and a burning chimney kept Chelsea firemen busy during the past week.

The rash of fires began Sunday, with a grass fire of unknown origin behind the Dana Corp. plant. Later a grass fire from a runaway campfire was doused on Joslyn Lake Rd. Monday, burning rubbish started a grass fire on the property of James Dettling, 14300 Old US-12 east.

A report turned in by a pilot about a fire burning out of control Monday proved to be a controlled burning.

In the only non-grass fire of the week, a chimney burned out Tuesday, causing no damage to the home of Harold Russ, 13571



CO-OP TRAINEE: Taking advantage of the work-study program that places high school girls in business offices is 17-year-old Helen Wolek, a senior Chelsea High school student. Helen works under the co-op program at the Chelsea plant of North American Rockwell Corp. Her daily schedule of regular classroom routine in the morning and office work in the afternoon enables Helen to gain a full year's experience before entering the working world next year. This is the fourth consecutive year that Rockwell-Standard has participated in Co-Op.

They find the program benefits the company and gives the participant excellent work experience. Helen arrives at her job at 1:10 p.m. and works until 5 p.m., but still finds time for outside activities. One activity claiming much of her time is 4-H. Helen performs a variety of duties in the accounting department, including filling invoices, using an adding machine and sorting and reconciling checks. Helen says she enjoys working very much and plans to continue throughout the summer and next year.



A QUICK REVIEW of cookie-sales procedures is given to Susanne Barlow, left, and Susan Mann, new Junior Girl Scouts selling cookies for the first time this year. Mrs. Paul Mann, West Washtenaw Cookie Chairman and Chelsea Cookie Chairman, instructs the pair in preparation for taking cookie orders from Feb. 21 to March 8. All Chelsea Girl Scouts will take orders during this period from homes located near their own as part of the Huron Valley Girl Scout Council program.

The Chelsea Standard
 Established 1871
 Excellence Award By Michigan Press Association
 1951-1952-1953-1954-1955-1956
 Walter P. Leonard, Editor and Publisher

Published every Thursday morning at 800 North Main Street, Chelsea, Mich. 48118, and second class postage paid at Chelsea, Mich., under the Act of March 3, 1879.

ADDRESS CORRECTION REQUESTED

Subscription Rates (Payable in Advance)

In Michigan:	Outside Michigan:
One Year \$3.00	One Year \$4.00
Six Months \$1.75	Six Months \$2.25
Single Copies \$.10	Single Copies \$.10

Service men or women, anywhere, 1 year \$3.00

MEMBER
NATIONAL NEWSPAPER
 Association - Founded 1885

National Advertising Representative
MICHIGAN NEWSPAPERS, INC.
 257 Michigan Ave.
 East Lansing, Mich. 48828

THE LANSING REPORT
 FROM
 senator
GIL BURSLEY

Michigan tourism will be given a big shot in the arm if many proposals in the works are approved by the legislature and adopted by state departments.

It isn't that Michigan isn't well supplied with tourists. Last year an estimated 13 million tourists spent \$1.17 billion, of which more than \$75 million was for such tax-producing items as meals, rooms, gasoline, cigarettes and liquor.

But tourism is becoming an increasingly competitive thing and, unless progress is made constantly, Michigan could slide backward in the field.

Hopes are high—and preliminary indications seem to back them—that the recently reduced Mackinac bridge tolls will stimulate tourist traffic. January traffic, the first under the \$1.50 cent toll, showed an increase of 14.3 percent over the previous January. Tourist officials are hopeful this increase will be even more when summer traffic reaches its peak.

The legislature, which last year passed legislation making reduced bridge tolls possible, this year will consider a bill to reduce the daily park fee for non-residents from \$2 to \$1 in hopes of encouraging more non-residents to visit Michigan and its state parks.

The legislature will be asked to set broad guidelines for distribution and use of money from the \$100 million recreation bond issue approved by Michigan residents last November. This money, along with federal and city matching funds, will be used to expand and improve recreational facilities at all levels of government.

The Highway Department is making legislation to prohibit camping, organized group meetings, and picnics in highway parks and rest areas. This is primarily to avoid congestion for tourists. The department reports increasing heavy use of the state's 57 highway rest areas and 100 roadside parks.

A mover is under way to broaden present industrial development bond act provisions to include development of tourist and resort

recreational facilities and attractions.

Another move is on in the legislature to establish Washington's and Columbus' birthdays, Memorial Day and Veterans' Day as week-end holidays to coincide with federal law, which goes into effect in 1971. This is expected to stimulate tourist traffic through long week-ends.

In an effort to make highways more attractive (and save taxpayers' money), the highway department also is seeking legislation to ban throwaway beer bottles.

The Tourist Council is seeking legislation to allow it to review applications for resort liquor licenses and to require council approval before such licenses are approved.

Because of the state's tight financial situation, the Tourist Council has not requested an increase in its budget for the next fiscal year, asking that its present budget of \$1,054,563 be continued. But council officials are considering some structural changes which they hope will bring more tourists to Michigan.

Farm Calendar

There will be five meetings on "Affairs and the Weevil" throughout the county. They will be at the following times and places:

Thursday, Feb. 20, 8 p.m.—Manchester High school.

Tuesday, Feb. 25, 8 p.m.—Saline High school.

Thursday, March 6, 8 p.m.—Cape Henry-Gym, Bates Elementary school, Dexter.

Thursday, March 13, 8 p.m.—South Lyon High school.

Wednesday, March 20, 8 p.m.—Room 117A, County Building, Ann Arbor.

Wednesday, Feb. 26—Washtenaw County Livestock Tour to the Kruger Processing Plant, Livonia. Reservations are due in the Co-operative Extension Office by Feb. 24.

Thursday, Feb. 27—Washtenaw Annual Livestock Banquet, Chelsea High school, 7:30 p.m. Tickets are available from the members of the Livestock Council, Co-operative Extension Service and some of the agri-businesses. Tickets will not be sold at the door.

Howell

Livestock Auction
 The Wise Owl Says Ship to Howell
SALE EVERY MONDAY, 2 p.m.
 Phone 546-2470, Jim Franklin
 Mason 677-8941

Market Report for Feb. 17

CATTLE
 Steers and Heifers:
 Choice, \$28 to \$29.50
 Good, \$25 to \$28
 Lt.-St., \$20 to \$23
 Fed-Holsteins, \$22 to \$25.50

Cows:
 Heifers, \$21 to \$22
 Lt.-Comm., \$19.50 to \$21
 Canner-Cutters, \$16 to \$18
 Fat Yellow Cows, \$16 to \$18.50

Bulls:
 Heavy, \$23-\$24.75
 Light and Common, \$21 to \$23

Calves:
 Prime, \$40 to \$44
 Good-Choice, \$36 to \$40
 Cull-Med., \$25 to \$32
 Heavy Deacons, \$38 to \$42
 Light Deacons, \$34 to \$38

Fedders:
 Good-Choice, \$28 to \$33.50
 Common-Med., \$24 to \$28
 Dairy Cows, \$250 to \$385

HOGS
 Butchers:
 100-lb. to 240-lb., No. 1, \$21 to \$22
 100-lb. to 240-lb., No. 2, \$20 to \$21
 240-lb. and up, \$19 to \$20

Sows:
 Fancy Light, \$17.50 to \$18
 300-lb. to 500-lb., \$17 to \$17.50
 500-lb. and up, \$16 to \$17

Boars and Stags:
 All Weights, \$14 to \$18.50

Feeder Pigs:
 Per Head, \$12.50 to \$19.50

SHEEP
 Shorn Slaughter Lambs:
 Choice-Prime, \$26 to \$28.50
 Good-Utl., \$24 to \$26

Woolled Slaughter Lambs:
 Choice-Prime, \$27 to \$28.50
 Good-Utl., \$25 to \$27

Ewes:
 Slaughter, \$7 to \$10.50

Feeder Lambs:
 All Weights, \$25 to \$27

...that Thou wilt most graciously be pleased to dispose us ALL to do Justice, to Love Mercy..

George Washington-1783

★ MICHIGAN MIRROR ★

By Elmer E. White, Secretary, Michigan Press Association

"Slice House"
 A proposed constitutional amendment to reduce the size of the Michigan House of Representatives and revamp the state's legislative reapportionment machinery has been submitted to state lawmakers. Understandably, it faces an uphill struggle.

Key provisions include restructuring the controversial state apportionment commission and designating the State Court of Appeals as an arbiter of haggles which are sure to develop.

The measure was sponsored by 16 Republicans and three Democrats. It takes a two-thirds vote of both chambers to get the proposal on the general election ballot.

Under the amendment, House membership would be limited to four times the number of Congressmen from Michigan. This would put the House total at 76 instead of the present 110 as Michigan has 19 U. S. Representatives. Senate membership would be

continued at 38, though any increase in congressional representation would boost the number of senatorial districts.

The apportionment commission, the unit which must realign the legislature after every federal census, would be appointed by the Governor and Secretary of State rather than the political parties. The partisan breakdown, though, would continue at four Democrats and four Republicans.

Michigan's 1963 constitution created the first commission. Its initial effort at reapportioning the legislature resulted in a deadlock, and the State Supreme Court ended up doing the job.

The proposed amendment, sponsored chiefly by Senate Majority Leader Emil Lockwood, would provide that the Court of Appeals would reapportion the legislature if the commission failed to do so.

And if the Appellate Court could not agree on proposals within 90 calendar days, then the Supreme Court would again inherit the task.

Uncle Lew from Lima Says:

DEAR MISTER EDITOR:
 It was past regular closing time at the country store Saturday night afore the fellers was able to draft a majority report on the best way to spend \$16 billion, but they was full agreed it was their duty to help Congress clear up the matter.

Incidental, Mister Editor, Ed Doolittle put in a amendment to the report. He said that after considering all the evidence up one side and down the other, his committee decided they might be some hope for this old world, but on the other hand they might not be.

Actual, Ed got the whole thing started when he bring in this newspaper clipping—that showed

one of the big problems in the Congress is what to do with all the money this country will have when the Vietnam war ends. The report claimed \$80 billion a year is being spent over there, and with out the war the military won't be able to use but half that much.

According to Ed's figgers, that would leave \$16 billion to be spent somewhere else. And doing away with that kind of money is not a job you take on without some study, was Ed's words. Ed was of the opinion finding holes to pore \$15 billion in ever year will take a teamwork in Congress. He allowed they might even have to give some of it to the post office, but he was confident good old American know how would come through without having to reduce taxes.

The school people will be glad to help out, and education is shore to get a heap of the money, cause voters always go along with money for schools. The welfare outfit is sure to be standing in line for more money, Ed said. All to cities is a winner with some Congressmen cause that's like dumping money down a bottomless well.

was Ed's words. They is so many agencies dealing with cities money it sinks out of sight and nobody is held direct responsible.

Clem Webster said air and water pollution can use the entire \$15 billion, and at least another \$15 billion can go to feed people that now is starving. And if they is money left, allowed Clem, somebody ought to work on cutting down on the fertilizer nitrogen that is upsetting the chemic balance and fixing to poison everybody.

But it were Zeke Grubb that closed out the report on a happy note. He saw two good signs, one that since Congress is working on how to spend that extra \$15 billion they don't think the Vietnam war will go on forever and, too, that Congress is working on spending most of the money here and not giving it all in foreign aid.

Yours truly,
 Uncle Lew.

BRAG ENTERPRISES

MODERNIZATION DIV.

SPECIALISTS IN—

- ★ ALUMINUM SIDING
- ★ ROOM ADDITIONS
- ★ MODERN BATHS
- ★ WET & WARM AIR HEATING
- ★ KITCHENS
- ★ RECREATION ROOMS
- ★ GUTTERING
- ★ ROOFING
- ★ BLOWN INSULATION
- ★ FIREPLACES

CALL 426-4798 FOR FREE ESTIMATES

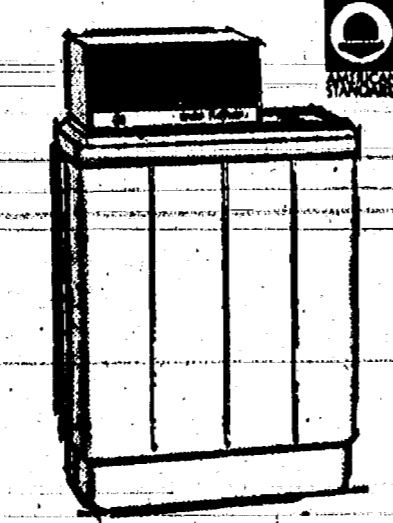
SPECIAL INTRODUCTORY OFFER:

Hands tied by
STRINGY HAIR?

Shampoo it back to a soft, manageable crown of beauty with soft water—from this American-Standard water softener!

- fully automatic
- beautiful, sturdy cabinet
- only one moving part
- completely non-corrosive

Call today for free estimate
 • standard inline installation



AMERICAN-STANDARD water softeners

only \$299.00 installed

easy terms, low-cost lease available for F.H.A. financing

MONEY TROUBLE?

ONE PLACE TO PAY!

Credit Management Service

662-2565

342 Municipal Court Bldg. Ann Arbor

State Licensed and Bonded

JUST REMINISCING

Items Taken from the Files of The Chelsea Standard

4 Years Ago...

Thursday, Feb. 11, 1965—

Linda Marie Blaess, 18, daughter of Mr. and Mrs. William Blaess and a student at Foote Hospital School of Nursing, received her nurses cap Sunday, Feb. 7.

Five Chelsea FFA members representing Washtenaw county at home with first-place team honor a livestock judging contest at Michigan State University came off. Team members are Don Hindorfer, Doug Young, Bill Wenk, Bob Kushnau and Dick McCallie.

The Cold Extrusion Division of Federal Screw Works is building an addition to their existing facility located at 816 Congdon St. This 9,000 square foot addition will more than double the division's manufacturing space.

Jane E. Scott is this year's Betty Crocker Homemaker of Tomorrow for Chelsea High school. She is the daughter of Mr. and Mrs. Joe Scott of 415 North St.

Julius Kaescher, retired last week from the William A. Thomas Co., after 17 years of service. A testimonial dinner was given him Thursday at Schumm's restaurant.

Scouts Robert Miller, Kenneth Reinhardt and Ray Worden will receive their Eagle awards in an appropriate ceremony Saturday. Members of Boy Scout Troop 476 plan to have the Eagle Court of Honor at the Congregational church.

Dan Parsons was high scorer for the JV Bulldogs as they defeated Brighton 87-55, last week.

24 Years Ago...

Thursday, Feb. 15, 1945—

Fire of undetermined origin did considerable damage to the Masonic hall on Wednesday evening. The blaze, which was discovered about 7 p.m., destroyed most of the furniture in the lounge room, while the lodge room was badly damaged by smoke.

More than 1,000 people attended the performances of the Masonic Minstrel Jamboree Friday and Saturday nights. The flawless manner in which the show was produced reflected the fine talent of the cast, as well as the tireless efforts of Paul F. Niehaus, director, with the able assistance of Mrs. Niehaus. The dance number by the one-and-only inimitable Tom Tucci deserves special mention.

The annual Washtenaw County Teachers' Institute will be held at the Manchester high school Friday, Feb. 18. This is the first time that the Institute includes the public school teachers of the villages as well as of the rural schools. Julius W. Haab, Washtenaw County Commissioner of Schools, will be the general chairman of the Institute.

MM-3C Donald Houle, who recently returned from overseas, has been spending a 30-day leave with

his brother, Reynold Houle, at the home of Mr. and Mrs. Dale Keenan also visiting her parents in Escanaba.

Chelsea grabbed a four-point lead to open the first period of the Saline game, but failed to keep it and were defeated, 35-24. Chelsea's Carragher led the team with 18 points in a previous game with Manchester. However, Manchester defeated Chelsea, 47-41, before the largest crowd of the year. Chelsea's reserves were able to win the visiting reserves, 28-8, with Vogel leading with 13 points.

Sylvan Center school pupils have organized a 4-H Victory club which they named "Bulldoze Victory Club." The following officers were elected: Donna Kalmach, president; Paul Kalmach, vice-president; Mabel Hale, secretary-treasurer.

Mr. and Mrs. Norman Schmidt and daughter, Eleanor, and Mr. and Mrs. Ed Miller attended a Cap Night exercises for Cadet Nurses at Deconess Hospital. Their daughters, Elaine Schmidt and Virginia Miller received caps.

34 Years Ago...

Thursday, Feb. 14, 1935—

Unemployed men of the community who have not availed themselves of the opportunity to register will be given one more chance to do so, according to J. E. McKuna, village president. H. E. Spangler, in charge of the National Reemployment Service office in Ann Arbor, will again be in Chelsea Friday to receive applications for employment on the US-12 highway relocation project.

The local fire department was called Tuesday afternoon to extinguish a blaze at the home of Bert Hupburn on W. Middle St. believed to have started from a spark from the chimney.

Alex C. Fisher, shoe merchant in Chelsea for nearly 11 years, died Sunday after taking ill last Wednesday with a cold that developed into pneumonia.

A .32 caliber automatic pistol which was used by Clarence Freshette of Kalamazoo to kill Robert Brown of Kalamazoo was stolen (Continued on page five)

NOTICE Lima Township Taxpayers

Lima Township Treasurer will be collecting Lima Township taxes at her home, 12200 E. Jackson Rd., R.R. No. 1, Dexter, Mich. 48130; any day until further notice. Those who wish may send check or money order. Receipt will be returned by mail.

All Dog Licenses must be paid to Lima Township Treasurer on or before March 1, 1969, to avoid penalty.

MALE AND UNSEXED, \$3.00 - FEMALE, \$5.00

Rabies Vaccination Papers must be presented in order to obtain dog license.

HILDA PIERCE
 LIMA TOWNSHIP TREASURER

YOU GET MORE WITH Clovamor II. Brand 54 RED CLOVER

Want more clover hay the second cutting year? In tests at Teweles Experiment Station, Clovamor II averaged 1 1/4 tons more hay per acre the second cutting year than common red clover. Clovamor II delivers more forage the first cutting year too... up to 1/2 ton more per acre. Means greater profits for you.

Get the red clover that gives you more — get Clovamor II — available now from...

BLAESS ELEVATOR CO.
 Division of Lamson Feed Co.
 Phone GR 9-8911 Chelsea, Mich.

Teweles and Clovamor II are brand names. 54 is a variety designation.

DEXTER TOWNSHIP BOARD OF REVIEW

Notice is hereby given to all persons liable to assessment for taxes in the

TOWNSHIP OF DEXTER
 County of Washtenaw, State of Michigan

That the Assessment Roll of said Township as prepared by the undersigned will be reviewed by the Board at

DEXTER COMMUNITY HALL
 Corner Dexter Townhall and Quigley Roads

Appeals and conferences with taxpayers will be heard on

MONDAY and TUESDAY, MARCH 10-11 1969

from 9 a.m. to 3 p.m. of said day, and upon request of any person who is assessed on said tax roll or of his or her agent and upon sufficient cause being shown, said Board of Review will correct the assessment as to such property in such manner as will in their judgment make the valuation just and equal.

Such assessment tax roll as reviewed and approved by said Board of Review will be the assessment roll of said Township of Dexter for the year 1969.

WARREN EISENBEISER, Supervisor
 Dated: Feb. 14, 1969.

WARE

Phone GR 9-6311

Ads
Taken
Till 5 p.m.
Tuesday

IT'S EASY TO
BUY-SELL-RENT-
HIRE & FIND WITH

WANT ADS

Just
Call
OR 5-3591

WANT ADS

**The
Chelsea Standard**

WANT AD RATES

PAID IN ADVANCE—All regular ads, 10 cents for 10 words or less, each insertion. Count each figure as a word. For more than 10 words, add 2 cents per word for each insertion. "Billed" ads or ads on a "pay as you go" basis, add 50% extra per insertion.

DISPLAY RATES—Same as each in advance, with 15 cents bookkeeping charge if not paid before 5 p.m. Tuesday preceding publication. Pay in advance, seal cash or stamps and save 10 cents.

DISPLAY WANT ADS—Rate, \$1.10 per column inch, single column width only, 4-point and 10-point light type. CLOSING OF ORDERS FOR DISPLAY ADVERTISING—10:00 a.m. on the day of publication. For insertion for 10 words or less, 1 cent per word beyond 10 words. Minimum, 1 inch.

COPY DEADLINE—5 p.m. Tuesday week of publication.

WANTED TO BUY—Tractor with 8-pt. hitch. Prefer Ferguson or Ford. Call even, 428-8811. -35

Real Estate

18 ACRES only 3 miles out, large family country home. Modern, full basement, good land, reasonable, terms.

191 ACRES, 12 miles from Ann Arbor. Large modern home, full basement, two large barns, tool shed, garage. Some of the best land in Freedom township, terms.

25 ACRES fine home, completely modern kitchen, ceramic tile bath, large living room, 4 bedrooms, good land, terms.

40 ACRES near Manchester. Modern kitchen, new bath, many extras. 2 large barns, good land, beautiful setting.

Great Lakes

Real Estate

Dial 479-5742

428-8120 Manchester

789-5630 Ann Arbor

REAL ESTATE

Do you want a home or cottage on a lake, a farm or country home, a building site? We have them.

Eugene R. Young,
Broker

Phone 878-3742

Mary Allen, 879-8896

Virginia Vise, 428-2224

CUSTOM SPRAYING—Voco interior white farm painting, J. L. Bird, phone 517-547-5447, Manistow Beach. 31f

QUALITY INSURANCE by QUALITY COMPANIES—at QUALITY PRICES—See

MARTIN E. MILLER

for all your home, business, and Personal Insurance Needs.

525 McKinley GR 5-5181

resident representative for Harry Lee French, Inc. 331f

WANTED—Vacant lake property. Prefer small private lake. Write Box F-23, care of Chelsea Standard, Chelsea, Mich 48118. -36

LIVE

IN THE

COUNTRY

—2 acres of land—abundance of trees—located on lovely hill—adjacent to woods, lake and golf course

\$7,200

CALL 688-8957

KEEP carpet cleaning problems small—use Blue Lustre wall to wall. Rent electric shampooer \$1. Dancer's, Chelsea. 35

NEW! Used welders. Do you need a welder to run low hydrogen rod? Free trial. Gambles. -25

FOR SALE—York stock hog. Call 475-4921. -35

WANT ADS

WANTED—Part-time work for carpenter, week-ends and nights. Call 475-5689, after 6 p.m. -35

FOR RENT—Country setting beautiful new duplex, furnished, one bedroom, dining, kitchen, living room, tile bath. Utility sliding glass doors to lovely patio at back. No children or pets. Ph. 428-8188. 271f

77-ACRE FARM

Between Ann Arbor and Milan, 2 miles off US-23. Beautiful rolling ground. Possibility of lake. Larger older home and barn.

Evinger Real Estate

Phone 428-8889, Dexter, Mich. 35

FACTORY HELP WANTED—All categories. Apply in person. Fortune Industries, 11770 Dexter-Chelsea Rd., Chelsea. 421f

NEW

MATERIALS

for

SPRING

Thousands

of Yards

Just in Time

for

Spring Sewing

at

DANCER'S

Tuberous Begonia

Bulbs

Start them in Peat pots now for early blooming

Chelsea Hardware

Ph. GR 9-6311

WOULD LIKE to buy good used clarinet. Please call 478-8933. -36

REAL ESTATE

FOR SALE

4-BEDROOM HOME with basement, gas heat. On large lot. 2-car garage.

1 ACRE with 3-bedroom home. Modern kitchen, 1 1/2 bath, 2-car garage. Well landscaped. Aluminum siding. On black-top.

3 ACRES with 4-bedroom modern home. Needs some repairs and decorating. On black-top.

RANCH TYPE 8-bedroom home, 1 1/2 car garage. In Chelsea.

VACANT LAND

10 ACRES joining Village of Chelsea.

82 ACRES on Old US-12 west, joining Village of Sylvan.

Kern Real Estate

Phone 475-8563

or ROBERT BARLOW

479-5061

KNAPP SHOES

For Cushion Comfort

At Factory to You Savings

For Appointment Call

Robert Robbins

475-7282

Authorized Representative

211f

WANT ADS

USED TRACTOR TIRES—Large inventory on hand. Also used passenger, truck, grader tires. Jackson Tire Brokers, M-106, Munith, Mich. Ph. 588-3825. 321f

AIRLESS SPRAY PAINTING—Interior and exterior. Pinckney, 878-3246. 251f

THINKING ABOUT buying a chain saw? Stop out for a free demonstration of the powerful, light-weight Pioneer. District Sales and Service, 18100 M-52, Chelsea, 475-8120. 211f

WILL DO babysitting in my home. For sale: Men's brown leather jacket, size 44. Phone 475-8508. -35

VACUUM CLEANERS—Electrolux, authorized sales and service. James Cox, Manchester, Ph. 428-2931 or 428-2221. 421f

A-1 USED CARS

'68 Ford Custom 500 4-door

'67 Fairlane 500 2-Dr. Hardtop

'66 Club Wagon Bus

'66 Plymouth Station Wagon

'66 Chev Carry-All Wagon

'66 Fairlane 500 XL Hard Top

'66 Galaxie 500 Convertible

'66 Thunderbird Hard Top

'65 Galaxie 500 4-door

'65 Mercury 2-door

'65 Ford 4-door

'65 Galaxie 500 2-door Hard Top

'64 Buick Convertible

'64 Ford 4-Dr. Hard Top

'64 Fairlane 4-door

'63 Fairlane 500 2-door

'63 Ford 2-door

'63 Falcon Wagon

'60 Ford 4-door

Trucks

'65 Chev Pick-up 3/4 ton

'65 GMC Handivan

'60 Jeep with snow plow

'60 Ford Stake

'60 Chev Stake

BEST SELECTION IN TOWN

PALMER FORD

Phone GR 9-8286

Open Mon., Wed. & Fri. Till 9:00

FOR SALE—Ziegler space heater. 550. Call 475-8120. 35

TRAIL RIDERS

It's saddle trading time in our second-floor tack shop. Bring in your old saddle. See the new spring values. While here place your order for Omeline. If hay is about gone, try Purina's Horse Chow Checks.

Washtenaw

Farm & Garden Center

(Next to Farmers Market)

Phone 682-4417

407 N. Fifth Ave., Ann Arbor

ALLSTATE INSURANCE

AUTO • BOAT • COMMERCIAL

LIFE • HEALTH • HOME

LIABILITY

Phone Even, or Week-ends for

N. H. MILES, Agent

GR 5-8334

Brand New Home

For Sale

Located at 545 Taylor Lane, Chelsea, Michigan. This home features 3 bedrooms, 1 1/2 baths and full basement. The kitchen includes a built in dishwasher and garbage disposal. The finish floors are carpet. F.H.A. financing is available. For an appointment call W. C. Weber Construction Company 475-2828 or 475-4842. 38

DANCER'S

FEBRUARY

CLEARANCE

Save 1/3 to 1/2

REAL ESTATE

Need Listings

Lake Property - Farms

Vacant Parcels

LOCAL SALESMAN

H. T. HAYNES

13835 Sauer Drive, North Lake

Phone 475-7157

EDWARDS REAL ESTATE

AND INSURANCE

Phone 482-8970

311f

WANTED

Girl for Typing

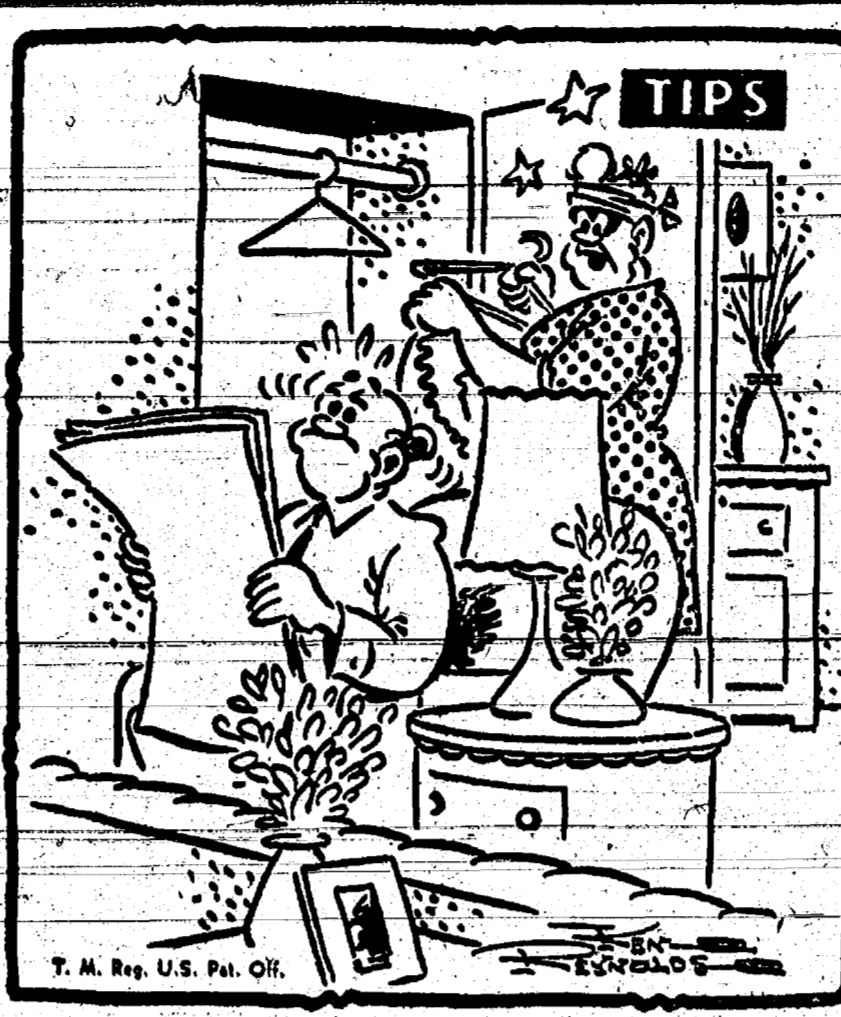
and

General Office Work

Apply in Person

Chelsea Standard

800 N. Main St. Ph. GR 5-3561



"Look for another car in these Standard Want Ads—yours did it again!"

WANT ADS

FOR SALE—Excellent converted furnace, with conversion kit, 100 gals. of oil in 275-gal. tank. You move it. Ph. HU 8-2130. 311f

FOR REAL DOLLAR SAVINGS be sure and see us before you buy any new or used car. Palmer Motor Sales, Inc. Your Ford Dealer for over 50 years. 21f

George's

Shoe Repair Shop

(Above Hilltop Plumbing)

Mon. thru Friday

8 a.m. to 4:45 p.m.

Closed Saturday

HALF SOLES — HEELS

INSIDE STITCHING

-36

HAMMOND ORGAN, teachers

wanted to teach in their own

homes. Call Grinnell Brothers, Ann

Arbor, 682-6667. 341f

CAR & TRUCK LEASING. For

details see Lyle Chriswell at

Palmer Motor Sales, GR 5-3271.

491f

PATRICK & COOK — Free esti-

mates on aluminum siding, gut-

ters, awnings, additions, roofing

general maintenance. Porch

raising, aluminum storm windows

and doors installed. Please call

Chelsea 479-4533. 111f

Chelsea and Dexter

'Ared Homes

2-YEAR-OLD Quad level home in

better than new condition. 2-bed-

room; family room, built-in oven

and range, and dishwasher. 2 1/2

baths, 1 full ceramic tile bath. 2-car

garage with electric door opener.

Very nice lot with many young

trees, Maple, Spruce, Linden, Rus-

sian oak, Cotton, Elder, and Birch

plus 200 Tulips. Excellent location

for schools. 301f

9-MONTH-OLD brick ranch in ex-

cellent new condition. Georgian,

Marble fireplace, 3-bedroom, family

room, dining room, 2-car garage,

built in oven, range and dishwasher.

Nice location for elementary school.

Lake Front Year-Round Homes

Cavanaugh Lake

Cedar Lake

Hiland Lake

FARMS

10 ACRES—100-year-old remodeled

home.

6 ACRES—Cape Cod—3-bedroom

home.

3 ACRES—4-bedroom home, Dexter

schools.

130 ACRES—Excellent buildings, 2

miles out of Chelsea.

113 ACRES—4-bedroom home, ex-

cellent location.

140 ACRES—Large majestic farm

home.

LAND-BUILDING SITES

1 1/2 acres, 2 acres, 10 acres,

20 acres, 40 acres. Many to choose

from.

Eibler, Frisinger

& St. Amour

REALTORS

Corner Old US-12 and Main St.

Chelsea - 475-8681

Dexter - 426-4659

Evenings:

Paul Frisinger 475-4864

Herman Koenn 479-7252

351f

WANT ADS

FREE REMOVAL DONE—Also buyers of standing timber and walnut trees. Chelsea 475-7681. 841f

CUSTOM DRAPERIES—One-week service. Ph. 475-8944. -35

Wool Twine

2 lbs. and 25 lbs.

Chelsea Hardware

Phone GR 9-6311

-35

FOR SALE—30-gallon hot water heater; 2 Surge 90-lb. milkers; 2 milk strainers; double stainless steel rinse tubs; stanchions; four-cup drinking cup. Size 20 student medium green suit; good condition. Paul Kalmbach, 475-5171. -35

FOR SALE

80 ACRES, very modern 3-bedroom home, 2 baths, oil furnace, large barn, 2-car garage. Very productive land. \$48,000, part down.

1-ACRE building lot, well-

Lloyd Hafner Will Attend Eagle Scout Recognition Dinner

signed to the Ann Arbor Work Unit Office of the U. S. Soil Conservation Service. In this capacity he directs the work of the Ann Arbor Work Unit office and provides technical assistance to the Washtenaw County Soil Conservation District.

The Ann Arbor Work Unit office is located at 6101 Jackson Rd. John Layher of Saline is also on the staff at this office and serves as Soil Conservation Technician.

Eacker is a 1964 graduate of Northern Michigan University and

has been with the U. S. Soil Conservation Service since that time. Previous to coming to Ann Arbor he was District Conservationist at Gaylord. He has also served at other locations with the Soil Conservation Service in Michigan including Adrian, Stanton and Grand Rapids.

Clark, his wife Ruth, and their two children, Clark, Jr., and Rhonda, live at Dixboro.



**S
PROT**

**AAA PERSONAL
SURANCE** protect
and-in a wide ran
accidents with ca
\$1,000. Hospital exp
(up to 10 weeks) a
addition, cash ben
protect you while t

Skiing, hunting
as a Triple-A n
protected with A
dent Insurance.

JOIN THE ONE ...

Recognition Dinner
Thursday evening, Feb. 21, Chesapeake Eagle Scout Lloyd Hafner, son of Mr. and Mrs. Charles Hafner, will be honored at the annual Portage Trails Council, Boy Scouts of America, Eagle Recognition Dinner at the North Campus Commons of the University of Michigan.

Each of the young men will spend part of the day preceding the banquet with an adult expert in the vocational interest field selected by the Eagles.

Featured speaker at the dinner will be William Francis Moore, who is flying in for the occasion from Washington, D. C. Moore is assigned to the National Aeronautics and Space Council in the Executive Office of the President, as the professional Aerospace Advisor on the National Manned Space Flight Program.

Nothing is more costly, nothing is
Let's look at his words in connec-

although they seem to have little
pressed soldiers, I feel superabundant,
I pity those miseries, which it
save or prevent."


... 2 pts. 33c

e lb. 55c

. 30c

26 55


... 2 for 55c
... 43c
ERER'S
MARKET
WE DELIVER



MAKE will be more
car you drive is fi-
Way—economically,
d with local people.

4% On Savings
per annum Passbook
Accounts

STATE BANK

 Member Federal
Deposit Insurance Corp.

elli; the Spanish Dance, Romanza Andaluza, Op. 22, No. 2, by Pablo de Sarasate; and Trizgane by Maurice Ravel.

FILM AND MUSIC—

Films based on music are featured on the "NET Festival" presentation of the "Film Generation on Music" Sunday, Feb. 23, at 1:30 p.m.

Many young filmmakers of today no longer see the role of music in cinema as that of non-

34 Years Ago . . .
(Continued from page two)

from George F. Raviler at the Dixie service station, corner of S. Main St. and US-12, according to Frechette's confession. He had been in the habit of stopping his truck at intervals for tires and gas and called at the station Jan. 18, the night before the pistol was missing. He later charged a tank of gas to Brown's account there

while Brown lay dead in the trunk.

Annual election of IOOF was held last week and the following officers were re-elected for the ensuing year: noble grand, Russ Munro; vice-grand, Hazen Lehman; recording secretary, J. J. Munro; financial secretary, C. McBride; treasurer, B. H. Gray; and trustee for three years, L. W. Kern.

In an effort to secure Chelsea's share of the huge relief funds which will no doubt be available from the federal government, local officials—both village and township, have listed and presented to the Michigan State Planning Commission definite projects for community betterment. They include storm sewer extensions, cleaning Mill Creek, dump clearances, public playground—and, interior repairs for Sylvan Town Hall.

TICE—

Ship Taxpayers

...aurer will be at 103 N.
...ollect Sylvan Township
...h Friday, 8 a.m. to 5
...69

ACCEPTED BY MAIL


must be paid to
Treasurer on or before
to avoid penalty.
\$3.00 - FEMALE, \$5.00
only to the County Treasurer
\$5.00 penalty added.
presented in order to obtain license.

PEARSALL
SHIP TREASURER

5% on Certificates of Deposit

CHELSEA S

Member Federal
Reserve System



ACCEPTED BY MAIL


must be paid to
Treasurer on or before
to avoid penalty.
\$3.00 - FEMALE, \$5.00
only to the County Treasurer
\$5.00 penalty added.
presented in order to obtain license.

PEARSALL
SHIP TREASURER

5% on
Certificates
of Deposit

CHELSEA S

Member Federal
Reserve System




... 2 pts. 33c

e lb. 55c

. 30c

26 55


... 2 for 55c
... 43c
ERER'S
MARKET
WE DELIVER



MAKE will be more
car you drive is fi-
Way—economically,
d with local people.

4% On Savings
per annum Passbook
Accounts

STATE BANK

 Member Federal
Deposit Insurance Corp.

Sporting Goods Store Entered

Eight rifles of large calibre type with a total value of over \$1,000 were taken by unknown persons from the Mill Creek Sporting Goods Store late Saturday afternoon, Feb. 15.

Dexter police officers passed the scene at approximately 6:20 p.m., and within the next 15 to 20 minutes the culprits smashed the large window, packed away eight rifles and disappeared.

Detectives from the Washtenaw County Sheriff's Dept. are continuing investigation and it is understood that they have an excellent lead with description of possible suspects.

COSTLY COUNSEL

A visitor to Hong Kong was told that she would not need to declare her jewelry purchases if she wore them upon returning to the United States. It turned out to be poor advice, for Customs seized the jewelry. It had a value of \$1,303.

We know old men who remember the compliments that came to them as little boys.

NOTICE

Lyndon Township Taxpayers

Lyndon Township Treasurer will be at Chelsea State Bank to collect Lyndon Township taxes all day Friday, Jan. 31 and Friday, Feb. 28, only, from 9 a.m. to 5 p.m., and on any other day, at my home, 11437 Boyce Road, R.F.D. 2, Grass Lake, Mich. Those who wish may send check or money order by mail. Receipt will be returned by mail.

LAST DAY SATURDAY, MARCH 1

All Dog Licenses must be paid to Lyndon Township Treasurer on or before March 1, 1969, to avoid penalty.

MALE AND UNSEXED, \$3.00 FEMALE, \$5.00
Rabies Vaccination papers must be presented in order to obtain license.

MARY CLARK
LYNDON TOWNSHIP TREASURER

LIMA TOWNSHIP BOARD OF REVIEW

Notice is hereby given to all persons liable to assessment for taxes in the

TOWNSHIP OF LIMA

County of Washtenaw, State of Michigan

That the Assessment Roll of said Township as prepared by the undersigned will be reviewed by the Board at

LIMA COMMUNITY HALL

Jackson Road, on

TUESDAY, MARCH 4, 1969

from 9 a.m. to 12 Noon and 1 p.m. to 4 p.m.

Appeals and Conferences with Taxpayers will be heard on

Monday and Tuesday, March 10-11, 1969

at which time the Board of Review will be in session from 9 a.m. to 4 p.m. of said days, at which time upon request of any person who is assessed on said tax roll or of his or her agent and upon sufficient cause being shown, said Board of Review will correct the assessment as to such property in such manner as will, in their judgment, make the valuation relatively just and equal.

Such assessment tax roll as reviewed and approved by said Board of Review will be the assessment roll of said Township of Lima for the year 1969.

KENNETH HAIST, Supervisor

Dated: Feb. 20, 1969.

TEWELES SEED DAY

THURSDAY, FEB. 27

9 a.m. to 5 p.m.

Free Coffee and Sweet Rolls Served All Day

FREE OIL LAMP To Each Person Attending

Your opportunity to talk with outstanding seed experts and discuss your problems.

BLAESS ELEVATOR CO.

Division of Larowe Feed Co.

Phone GR 9-6511

Chelsea, Mich.

Service Men's Corner

Pfc. Jacques Shaninger Completes Army Ammo Course With Honors

Redstone Arsenal, Ala.—Army Private First Class Jacques J. Shaninger, son of Mrs. Ruth M. Shaninger, 522 Allen St., Allentown, Pa., completed with honors an ammunition storage course at the Army Missile and Munitions School, Redstone Arsenal, Ala., Dec. 13.

During the 10-week course, he was trained to supply and maintain ammunition and other explosives under battlefield conditions. He also learned the methods of destroying unserviceable ammunition and explosives.

His wife, Joyce, (the former Joyce Mehr) lives at 742 Book St., Chelsea, Mich.

Michael D. Slattery Promoted in Vietnam

Pleiku, Vietnam—Michael D. Slattery, 20, son of Mrs. Muriel V. Slattery, 4241 Hampton Blvd., Royal Oak, Mich., was promoted to Army specialist 4th Dec. 25 near Pleiku, Vietnam, where he is serving with the 4th Infantry Division, as a mortarman.

His father, Dennis W. Slattery, lives at 24 Cedar Lake, Chelsea.

Ronald K. Bollinger Nominated for Study at Merchant Marine School

Ronald K. Bollinger, Chelsea High school senior, received a congressional nomination to the Merchant Marine Academy at Kings Point, Long Island, N. Y.

Bollinger, the son of Mr. and Mrs. Lee A. Bollinger of 2811 Peckins Rd., was nominated by Congressman Marvin L. Esch on the basis of academic records and test scores, extra-curricular interests and activities, interest in military career and maturity.

He took a Designation Examination and appeared before an academy board for interviews prior to nomination.

Each Congressman nominates a maximum of 10 men for each vacancy in the Air Force Academy, Military Academy, Naval Academy and Merchant Marine Academy. After nomination, the academy administrator physical and mental examinations and make final selections.

Bollinger hopes to study mechanical engineering at the academy. He is active in Chelsea and regional Future Farmers of America, Rogers Corners 4-H Club, Key Club, Luther League and Steer Club.

Area Conservationists Schedule Championship Snowmobile Races

Area snowmobile owners and winter sports enthusiasts will gather at Belleville Saturday and Sunday for Huron Valley Conservation Association Championship Snowmobile Races, a fund-raising project for sportsmen.

Rules and regulations sanctioned by the Michigan Snowmobile Association will govern the 34 races, including half-mile oval track and cross country courses. Trophies and points will be awarded to first, second and third place winners in each event.

Overnight storage of all machines will be provided. All area members of MSA are eligible for the races, scheduled to begin at 10 a.m. each day.

Refreshments and snowmobile rides will be available.

SHARON TOWNSHIP BOARD OF REVIEW

Notice is hereby given to all persons liable to assessment for taxes in the

TOWNSHIP OF SHARON

County of Washtenaw, State of Michigan

That the Assessment Roll of said Township as prepared by the undersigned will be reviewed by the Board at

SHARON TOWNSHIP HALL

on

TUESDAY, MARCH 4, 1969

from 9 a.m. to 12 Noon and 1 p.m. to 4 p.m.

Appeals and Conferences with Taxpayers will be heard on

TUESDAY, MARCH 11, 1969

at which time the Board of Review will be in session from 9 a.m. to 3 p.m. of said day, at which time upon request of any person who is assessed on said tax roll or of his or her agent and upon sufficient cause being shown, said Board of Review will correct the assessment as to such property in such manner as will, in their judgment, make the valuation relatively just and equal.

Such assessment tax roll as reviewed and approved by said Board of Review will be the assessment roll of said Township of Sharon for the year 1969.

RUSSELL FULLER, Supervisor

Dated: Feb. 20, 1969.



VOLUNTARY STUDENTS and teacher Joseph Stanley worked together to learn original songs for a Valentine's day program at St. Mary's parochial school. The students meet during recess or after school for two half-hour sessions each week for the non-credit course. Stanley, a volunteer teacher, received his musical training at St. Mary's Industrial Training School, Baltimore, and has tutored music students and belonged to traveling orchestras. The fourth grade class is, from left, Karen Kelsner, Steve Pennington, Alan Roskowski, James Stahl, Bruce Stubbs; second row, Mike Rybka, Kurt Kargel, Angie Merkel, Harold Vandervoort, Kathy Treado; third row, from left, Tim Stubbs, William Paul, Annette Gaken, Gale Gilbreath, Laurie Klink; row four, Anthony Houle, Brian McGibney, Mike Newcome, Susan Frisbee, Connie Pearson, Matt Tobin, Dianne Burg, Dale Headrick; top row, Sister Ann Clare and Stanley.



REPORT from LANSING

State Representative

Thomas G. Sharpe

As most of you realize there are many "ups and downs" in being a state representative. In this week's report I'd like to talk to you about circumstances of the past week which will exemplify my point.

One of the high points was the stand of our new Governor in regards to the problems on our college campuses. Governor Milliken has taken a firm, yet responsible position toward the "disruptive minority" on the university campuses. He realizes the problems that can result from permitting our students to live under two sets of standards; i.e., one on the campus and one for real life. Governor Milliken has shown the people of Michigan his acute awareness and concern for the problems of higher education.

The effects of having someone take a positive stand on the issue at hand was obvious at Michigan State University. In his farewell address President John Hannah, even though he is leaving this month, echoed many of the positions taken by Governor Milliken. It should be noted that this was one of the few times that a high ranking university official has taken a corrective stand on the disruptive issues.

Now for the low point, I was shocked and deeply concerned after reading the Feb. 12 issue of Michigan State University's newspaper. In this issue of The State News there were verbal atrocities too obnoxious to be repeated. These offensive "quotes" leave me with just one impression. They were an exhibitionist's attempt at sensationalism.

It's time for those who are paying for higher education to take a stand. No one cares to have their children stopped from going to classes by the "radical few," no one wants to live with the fear that the children will be exposed to pot parties and orgies, and no responsible parents desire to have their son or daughter subjected to this abusive language. It seems to this legislator that there is much to be learned and a great deal to be gained from a college education—without this kind of thing being exploited.

With this idea in mind, I sincerely hope that our dynamic new Governor will extend this "college crusade" to these university publications.

Federal Agency Urged To Assure Safe Used Cars

Lansing—Secretary of State James M. Hare urged the federal government to make sure buyers of used cars are assured of reliable safety equipment when they purchase cars . . . and not at their own expense.

"I don't like the federal government employing the caveat emptor . . . let the buyer beware . . . concept in its safety standard on used vehicles," said Hare. "The seller should be held responsible and financially liable for any repairs to the safe operation of a vehicle."

Hare said this would exert control over some "fly-by-night" used car operations.

The Secretary of State made the recommendation to a nine-man national study committee.



Time To Spare

By GERALD ANDREWS - Retirement Adviser

You and Your Lawyer

All of us need the services of a lawyer at some point in our lives—and one of the most important of these times is when we retire.

How we handle our affairs is apt to have a great deal to do with our enjoyment of the years ahead.

Usually there are a number of hard decisions to make. Whether to sell the family mansion and move to a cottage. How to arrange income to best advantage. Should insurance policies be revised? And what about a will?

Inevitably you'll be consulting experts in these matters, and somewhere along the line you're sure to need a lawyer.

So if you don't already have a good lawyer, or if you've decided to move to a new part of the country, it's only sensible to think about finding one.

The best way to do this is not to pick up the phone book and choose a name at random. There are institutions such as your State Bar Association, the Lawyer's Referral Service or the Legal Aid Society, all of which can give you advice. Your banker is another possible source of information. So is your labor union or alumni association.

Once you've found your lawyer, give him your confidence. If you don't, you'll get less than the service you need. With the best will in the world he can't operate successfully unless he knows all the facts.

Whatever you tell him is privileged under the law, and he cannot be forced to disclose this information to anyone. No honest lawyer would ever do so.

Look upon your lawyer as you do your doctor. You wouldn't dream of telling your doctor how to take out your appendix. So

when your lawyer is presenting a case on your behalf, follow his advice. He knows what he's doing and after all that's what you're paying him for.

If you want a concise discussion of aspects of the law that are likely to concern you as a senior citizen, Harvest Years Magazine puts out a useful report on the subject. You can obtain a copy by sending your name, address and 50 cents to Law, Harvest Years Publishing Co., 104 East 40th St., New York, N. Y. 10016.

1968 Was Bad Year For Traffic Offenders

1968 Was Bad Year For Traffic Offenders

Lansing—For Michigan offenders, 1968 was a very bad year.

Secretary of State James M. Hare said that more than 100,000 Michigan motorists had taken against their licenses by the Michigan Department of State.

The 60,520 drivers discipline cancellation, revocation, suspension, and license marked a hike over 1967 of 9,000—and a 13,000 increase 1968 totals.

While listing the action driving privilege, Hare also an upward trend in other improvement activities such as instructions, multiple interview warning letters, sent out to drivers at the seven-point level.

Nearly 93,000 of these were counted, a 6,000 hike 1967.

Mandatory suspensions under state's financial responsibility held about even with last

Faster gains from better FEEDS

Pounds and profits mount up when you feed our Concentrations . . . scientific compounds to promote early weight gains.

Complete feeding rations for all your livestock, poultry.

FARMERS' SUPPLY CO.
PHONE GR 5-5511

FARMERS' SUPPLY CO.
PHONE GR 5-5511

FREEDOM TOWNSHIP BOARD OF REVIEW

Notice is hereby given to all persons liable to assessment for taxes in the

TOWNSHIP OF FREEDOM

County of Washtenaw, State of Michigan

That the Assessment Roll of said Township as prepared by the undersigned will be reviewed by the Board at

FREEDOM TOWNSHIP HALL

on

Tuesday and Wednesday, March 4-5, 1969

from 9 a.m. to 12 Noon and 1 p.m. to 4 p.m.

Appeals and Conferences with Taxpayers will be heard on

Monday and Tuesday, March 3-4, 1969

at which time the Board of Review will be in session from 9 a.m. to 4 p.m. of said day, at which time upon request of any person who is assessed on said tax roll or of his or her agent and upon sufficient cause being shown, said Board of Review will correct the assessment as to such property in such manner as will, in their judgment, make the valuation relatively just and equal.

Such assessment tax roll as reviewed and approved by said Board of Review will be the assessment roll of said Township of Freedom for the year 1969.

JOHN C. MILLER, Supervisor

Dated: Feb. 14, 1969.

FREEDOM TOWNSHIP BOARD OF REVIEW

Notice is hereby given to all persons liable to assessment for taxes in the

TOWNSHIP OF FREEDOM

County of Washtenaw, State of Michigan

That the Assessment Roll of said Township as prepared by the undersigned will be reviewed by the Board at

FREEDOM TOWNSHIP HALL

on

Tuesday and Wednesday, March 4-5, 1969

from 9 a.m. to 12 Noon and 1 p.m. to 4 p.m.

Appeals and Conferences with Taxpayers will be heard on

Monday and Tuesday, March 3-4, 1969

at which time the Board of Review will be in session from 9 a.m. to 4 p.m. of said day, at which time upon request of any person who is assessed on said tax roll or of his or her agent and upon sufficient cause being shown, said Board of Review will correct the assessment as to such property in such manner as will, in their judgment, make the valuation relatively just and equal.

Such assessment tax roll as reviewed and approved by said Board of Review will be the assessment roll of said Township of Freedom for the year 1969.

JOHN C. MILLER, Supervisor

Dated: Feb. 14, 1969.

Now Is A Good Time to SUBSCRIBE TO THE CHELSEA STANDARD

FILL OUT AND MAIL THE COUPON BELOW—TODAY!

Here's What You Get for Less Than 6c per Week:

- + Community News
- + Church News
- + Social Events
- + Farm News
- + Local Sports News
- + Dollars Saved

by shopping Advertised Specials and by following the Want Ads for your needs.

Please send me THE CHELSEA STANDARD for one year, for which I enclose \$3.00.

Name _____

Address _____

City _____ State _____

I wish my subscription to start with the issue of _____

Date _____ Signed _____

RY 20.
d Year
chigan
a Ver
ate Jam
re than
ts had
licen
th at
discip
on on
cove
1987
in cre
actio
are als
es such
intervi
out to
nt level
these
100, hika
ions with
onal bll
th last
gains
etter
DS
ts mou
our Cat
ntific
omot
HIP
EW
to
M
eparat
rd at
ALL
196
layer
1969
e upo
roll o
show
as to
dgim
ved b
of sol
viso
1
7
:



Mrs. Philip C. Weitlauf

Geraldine Heard, Philip Weitlauf Wed Friday at Baptist Church

A wedding in West Virginia... The bride wore a white velvet empire waist gown with long sleeves and long veil. White carnations with green ferns completed the outfit.

TIPS for your TOP from



ODDY and FRAN

In these dreary days when... The bride's traveling costume was a pink A-line dress with matching accessories.

SAVE 25% on BABY SHOE BRONZING DURING FEBRUARY

Now is the time to really save on bronzing baby's precious shoes. With every adorable foot and crease preserved forever in solid metal they make priceless gifts.

BRONZING SHOE

ALL STYLES AND FINISHES REDUCED 25%

Style	Reg. Price	Sale Price
45 Portrait Stand	\$19.95	\$14.98
50 Bookends	17.95	13.48
62 Oval Midstern	14.95	11.21
82 Ashtray	9.95	7.46
81 Unmounted Shoe	4.95 each	3.71 each

PLUS MANY MORE... Ask for Free Folder

Engraving only 10c per letter

BRING SIDES IN NOW... SALE ENDS MARCH 1

CAN'T COME IN? Fill out and Mail Coupon Today

Just send for free, handy baby shoe mailing bag. Write or phone on card.

Name _____

Address _____

City _____ State _____



Style	Reg. Price	Sale Price
45 Portrait Stand	\$19.95	\$14.98
50 Bookends	17.95	13.48
62 Oval Midstern	14.95	11.21
82 Ashtray	9.95	7.46
81 Unmounted Shoe	4.95 each	3.71 each

PLUS MANY MORE... Ask for Free Folder

Engraving only 10c per letter

BRING SIDES IN NOW... SALE ENDS MARCH 1

CAN'T COME IN? Fill out and Mail Coupon Today

Just send for free, handy baby shoe mailing bag. Write or phone on card.

Name _____

Address _____

City _____ State _____

Older Adults Entertained By Action Group

Older Adult Group of the Methodist church, with 41 members present, was entertained at a dinner meeting Saturday afternoon at the church social center by the Action Group of the church.

The Action Group provided and served the entire dinner and had the Valentine day theme with bouquets of red and white flowers.

The group also provided carnations and roses for prizes in the games which were played following the program period.

The after-dinner program at Saturday's meeting included prayer by the Rev. William Johnson; group singing with Mrs. Clara Warren playing the piano accompaniment; and a devotional service led by Mrs. Herbert Paul.

The next meeting of the Older Adult Group is scheduled for March 15 at 12:30 p.m. It will include a pot-luck dinner and members are to bring their own table service as well as a dish to pass.

Two Chelsea Women Earn Scholastic Honors at CMU

Two Chelsea women earned places on the scholastic honors list at Central Michigan University. The scholastic honors list is a cumulative average of "B" or better for their entire college career.

Barbara J. Doyle, daughter of Mr. and Mrs. Emmett Harker, 1223 Meadow Lane, is a senior English major scheduled to graduate this spring.

Patricia Kay Guest, daughter of Mr. and Mrs. William R. Guest, 148-E Summit, is a junior English and speech major scheduled to graduate a year from June.

The 1,343 students named to the list were among 11,600 enrolled at the University for the semester ending Jan. 24, 1969.

One attractive outfit is navy and made of linen-like rayon and is piped in crisp white material.

Club and Social Activities

KINDER KLUB
Kinder Klub met at the home of Mrs. Fred Hoffman Jan. 29. Two films about cancer were shown and a "white elephant" sale was held. Mrs. Fred Hoffman was co-hostess. On Feb. 11 members met for a Valentine party at the home of Mrs. Duane Downer. They played games and had a gift exchange. Mrs. Ron Eder was co-hostess for the evening. The next meeting will be at the home of Mrs. Dan Ewald, 8 p.m. Feb. 25.

CHELSEA COMMUNITY FARM BUREAU GROUP
Chelsea Community Farm Bureau met at Sylvan Township Hall Feb. 13. Mr. and Mrs. Duane Rowe, and Mrs. Mary Burg were hosts. A pot-luck supper was served. Carl Heller called the meeting. Mrs. George Brettschneider read the minutes. The group discussed the discussion of the supreme court changes.

Cards were played and Mrs. George Brettschneider won high. Mrs. Leon Sanderson was low. Men's high went to John Brooks and low to Allen Broesamle. Mrs. Carl Heller won the traveling award.

PAST NOBLE GRANDS
The Past Noble Grand Club of Chelsea met at the home of Mrs. Gale Gilson for a pot-luck supper Feb. 13. Mrs. Donley Boyer was co-hostess for the evening. A Valentine's day theme was used. A hand-made pot-holder was given to each member as a table favor. A letter was read from Mrs. Joyce Dietle, now living in Dundee, Ill. Cards were signed by members to be sent to out-of-state members.

New officers for 1969 were elected as follows: Mrs. John Dvorak, president; Mrs. Thomas Harris, vice-president; Mrs. Clifford Wolfe, secretary; Mrs. Donley Boyer, treasurer.

Members' husbands hospitalized are Gale Gilson and Russel Allstaetter.

Games provided entertainment for the evening with Mrs. Anna McDonald, Mrs. Alfred Hinz and Mrs. Dvorak winning. Mrs. Harris won a home-made coffee cake made by Mrs. Boyer for a door prize.

JAYCEE AUXILIARY
Three guests and 11 members of the Chelsea Jaycee Auxiliary met at the home of Mrs. Tom Thayer Tuesday night. Final reports on March of Dimes campaign showed a Chelsea total of \$2,526.29. 4,000 Betty Crocker coupons have already been collected in "Operation Purchase." A total of 800,000 coupons are needed to purchase a kidney machine. Members agreed to purchase materials, construct and erect a road direction sign for Spaulding for Children. Meals for the March and April Jaycee



ENGAGED: Mr. and Mrs. Glen Wiseman announced the engagement of their daughter, Judith Ann, to Robert Tefft, son of Mr. and Mrs. Robert Tefft, Sr., Saline. The couple both attend Eastern Michigan University, Ypsilanti. Robert is affiliated with Delta Sigma Phi social fraternity, Hillsdale College. The prospective bride is a member of Sorority Society, Olivet College. An Aug. 16 wedding is planned.

membership meetings will be prepared and served by auxiliary members. Mrs. Dan Eder was installed and welcomed as a new member.

SUBURBAN MOTHERS
Suburban Mothers Child Study Club members met at the Burghardt Funeral Home Feb. 11. Eight members and one guest, Mrs. Norman O'Connor, were present. Mrs. Burghardt presented an interesting and informative program and served refreshments.

TWO FOR THE PRICE OF ONE
When asked to open the trunk of his car at San Ysidro, Calif., a driver turned tail and fled to Mexico, leaving a hitchhiker stranded in the vehicle. Customs found nearly 207 pounds of marijuana plus an assortment of other drugs and a hypodermic kit concealed in the car. The hitchhiker said he had no knowledge of the contraband but he was found to be in possession of false immigration documents. He was held for further investigation.

CHARM BEAUTY SALON
4396 CLEAR LAKE ROAD
(Formerly of Grass Lake)
Two Operators - Hair Styling and Wig Service
PHONE 475-2700



TROOP 58
Girl Scout Troop 58 opened the Monday meeting with the flag ceremony, then discussed business. We are planning a camp-out in April. We are bringing pennies for "Thinking Day." We will start selling Girl Scout Cookies Friday. Mrs. Lorenz brought treats. We played "Little Man" and broke into patrols to collect dues. Meeting closed with "Taps." In a Feb. 10 meeting we discussed business and had refreshments. Patrol 3 put on a Valentine's skit and a skit to welcome our guests, Brownie Troop 169. Dues were collected, we played "Musical Rug" and closed the meeting with "Taps." Jane Knott, scribe.

TROOP 47
Girl Scout Troop 47 met Tuesday at the Congregational church. We opened with the flag ceremony presented by patrol No. 3. We worked more on our window display and on badges. Susan Mann brought treats.

Members went to St. Louis school with the sister Cadette troop Feb. 13. We played games and square danced. The 12 girls that attended agreed they had a good time.

1-94 Traffic Barriers
Removed at Repair Site West of Ypsilanti

No further restrictions on traffic are planned on Interstate 94 west of Ypsilanti during construction of the Huron-Whittaker interchange, the Department of State Highways said today.

The last barrier was removed a week ago when the eastbound lanes were re-opened to traffic. Traffic has been restricted at the site since construction of the interchange was started two years ago. The project includes construction of two bridges and four viaducts, and the bridge work is scheduled for completion in late 1970.

Rep. T. Sharpe Receives Committee Assignments

State Representative Thomas G. Sharpe (R-Howell) has received his committee assignments for the next two years in the Michigan House.

Sharpe will serve as a member of the House State Affairs, Economic Development, and Public Utilities committees.

Rep. Sharpe has served on all three of his committees during the past session, and was chairman of the State Affairs Committee.

In addition to his permanent committee responsibilities, Sharpe is chairman of the House Republican Campaign Committee and vice-chairman of the new policy-shaping House Republican Advisory Committee.

The Howell Republican is now in his fourth two-year term in the House.

Dairy Expert To Speak
The headline speaker for the Michigan Holstein-Friesian Association meeting during the Michigan State University Farmers' Week will be Gene Nelson, Union Grove, Wis., brother of Dr. Ronald Nelson, chairman of the MSU Department of Animal Husbandry. Nelson operates the family enterprise, Gray View Farms, which has one of the most honored Holstein herds in the world. He will speak on Monday, March 17, at 1:30 p.m. in the Kellogg Center Auditorium on "Choosing the Next Herd Sire."

Subscribe Today to The Standard!

About Your Social Security

By Robert A. Kehoe
District Social Security Manager
Q. I have been receiving Social Security retirement checks since 1966, when I reached age 62. I worked last year and want to know whether I have to make a report to the Social Security office.

A. If your gross earnings from employment and/or self-employment exceeded \$1,680 between Jan. 1 and Dec. 31, 1968, you are required to file an annual report with the Social Security Administration. Under the law, the deadline for filing this report is April 15, 1969. This requirement applies to those beneficiaries who were under age 72 at least one full month during the year 1968 (that is, those born after Feb. 1, 1960).

Q. I am collecting Social Security benefits for my son. In 1968, he worked part-time while attending college and full-time during the summer months. His total wages were \$2,326.15. I returned his checks for the months he earned over \$140. Am I still required to complete a Social Security report on his earnings?

A. Yes, a report of his earnings must be filed by April 15, 1969. This report is required even though the beneficiary has returned the Social Security checks for the months in which he (or she) earned over \$140.

Count on Milk!

For a real energy pick-up whenever you need it... for the enjoyment that comes from a drink that tastes great as it refreshes you... count on milk! Make it a delicious part of your day, every day. Call us for regular home delivery.

WEINBERG DAIRY

QUALITY PASTEURIZED DAIRY PRODUCTS
Old US-12 Phone GR 5-5771

SATIN ELEGANCE & SHEER ELEGANCE SALE

SAVE 20% on draperies made just for you!

You can depend on us! We understand your goal is a home that reflects your imagination and own good taste. Walking into any house, you know you see the difference... between draperies that are just "alright," and draperies that are personalized (made just for that particular room!).

This is your practical, "be thrifty" week! During our 20% OFF SALE you can order **DI "MADE-TO-YOUR-MEASURE-DRAPERIES"** from our remarkable assembly of decorative fabrics and colors. Tailoring will be to our high standards and your exact measurements. We'll deduct 20% from the price so you can see your savings; probably enough to buy a lamp or celebrate with an exotic plant!

Made-to-Your-Measure Draperies

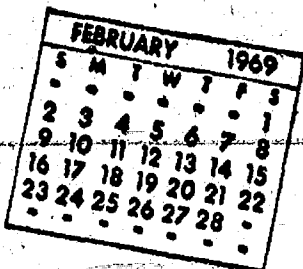
Choose from more than 60 COLORS in rich Antique Satin and 20 SHADES of sheer Dacron Batiste

**2 WEEKS ONLY
FEB. 13 to FEB. 29**

HOW TO MEASURE (USE RIGID RULE)
Width of rod, end-to-end.
Desired length, rod down.
Bring us your measurements.

MERKEL BROTHERS

Community Calendar



Association for Children With Social and Learning Difficulties, Zion Lutheran Church, Ann Arbor, March 6, 8 p.m. Public welcome.

Yearly meeting of the Mt. Hope Cemetery of Freedom Township, Monday, Feb. 24 at 8 p.m., St. John's United Church Hall, Rogers Corners.

Special Communication Olive Lodge No. 156, F&AM, P.C. degree, Tuesday, Feb. 25, 7:30 p.m.

Free public CHS symphonic and concert band performance Sunday, March 2, 3:30 p.m., at Chelsea High school gym. Bands will play material to be used in festival March 8.

Kinder Klub 8 p.m., Feb. 25, at home of Mrs. Dan Ewald, co-hostess, Mrs. Blaine Lyle.

Beacon Light Study Group at the home of Mrs. Ruth Solt Wednesday, Feb. 26 at 8 p.m.

VFW auxiliary social meeting Monday, Feb. 24, 8 p.m., in the Rebekah Hall.

MWRC Benefit Coffee Break originally scheduled for second week of April has been postponed. Possibly held at later date.

Modern Mothers Child Study Club Tuesday, Feb. 25 at home of Mrs. Charles Mattoff, co-hostess Mrs. James Hagemel and Mrs. Vera Goss. Program: "Gardening" with speakers from Kincardin Nursery. Guests welcome.

Esther Chapter of Congregation at Church Feb. 20, 8 p.m. at home of Mrs. Richard Smith, 24 Sycamore.

TOPS club every Wednesday from 12:30 to 2:30 p.m. in the Rebekah hall. Call GR 5-9352. For night meeting call GR 9-3261.

Inquiries regarding the Chelsea Blood Bank may be directed to Harold Jones of Central Fibre Products in the event that Mrs. Dudley Holmes is unavailable.

WCS meeting and pot-luck 11:30 p.m. Feb. 27, Salem Grove Methodist church.

Special meeting of Olive Chapter No. 103, Wednesday, Feb. 26 at 8 p.m., honoring Washtenaw county officers.

Chelsea Con Club, Sylvan Township Hall, Friday, Feb. 21 at 7:30 p.m. Auction and meeting, refreshments. Visitors welcome.

Chelsea State Bank and Chelsea Post Office will be closed Saturday, Feb. 22 in observance of the birthday of George Washington, a legal holiday.

Chelsea Co-op nursery applications being accepted for next year. Mrs. Doug Stark, 475-5604; Mrs. Tom Donkin, 475-7261.

Father and Son Banquet at Salem Grove Methodist church, 7 p.m., March 1.

Chelsea Suburbanettes 8 p.m., Feb. 21 at home of Mrs. Robert Hendrick.

American Legion and Auxiliary hospital equipment available by contacting either Mr. or Mrs. Eugene Martin, at 475-5867 after 4 p.m.

Carols every Thursday afternoon at Korner House.

DEATHS

Clark A. Parker

Operated Cleaning Plant In Chelsea for 15 Years

Clark A. Parker, owner and operator of Parker's Chelsea Cleaners for 15 years, died Monday at St. Joseph Mercy Hospital after a short illness.

Parker, 65, of 1223 Edgewood Ave., Ann Arbor, retired Jan. 1, 1965.

He was born Sept. 9, 1903 in Ann Arbor to Alonzo and Lois Olivia Bond Parker. He married Mildred H. Schenk of Ann Arbor March 6, 1937.

He was a member of Zion Lutheran church where he served on the Church Council for a number of years. For the past 3 1/2 years he was a teacher in the Adult Program in Bethel Series. Mr. Parker was also a member of Elks Club 325.

Survivors include his widow; one brother, Floyd B. of Milwaukee, Wis.; one sister, Mrs. John (Hildy) Lathrop of Torch Lake; two nephews and one niece.

Funeral services will be held 1 p.m. Thursday from the Muehlhagen Chapel, Ann Arbor, with the Rev. David F. Bracklen officiating. Burial will follow in Bethlehem Cemetery. Friends may call at the funeral home.

Memorial contributions may be made to the Zion Lutheran Church Debt Retirement Fund or the Williston Home of Mercy, Williston, O.

Mrs. V. Dumouchel

Dies Feb. 11 in Florida

Former Chelsea resident Mrs. Veronica Dumouchel, 183 Park Ave., Melbourne, Fla., died Feb. 11 at Orange Memorial Hospital, Orlando, Fla. She was 78. Mrs. Dumouchel, a Chelsea resident for 25 years, moved to Florida after her husband's retirement. She was a member of Our Lady of Lourdes Church, Melbourne, and American Legion Auxiliary, Chelsea.

She is survived by one daughter, Mrs. Mary Margaret Hall, Melbourne, formerly of Chelsea; and four grandchildren. Services were held Monday at St. John's church, Jackson. Interment was at St. John's cemetery.

Library Reports New

Metal Bookshelves

In Children's Section

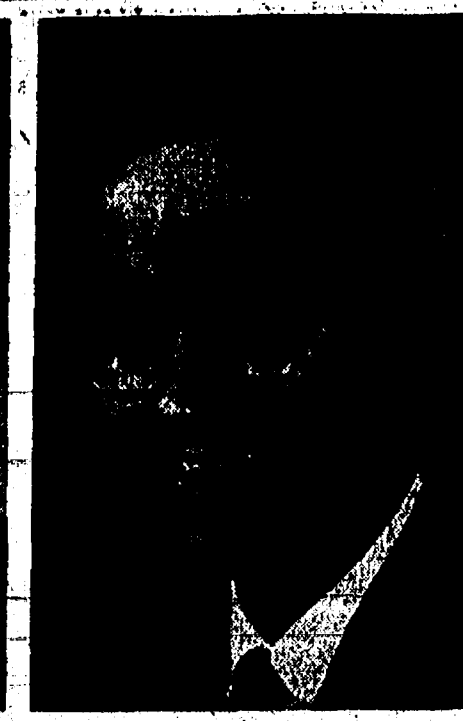
A five-year wish of the McKim Memorial Library Board was fulfilled recently with the installation of new blue metal bookshelves to replace the old carpenter-built shelving in the children's section of the library.

The public is invited to view the redecorated and newly-painted section which is open for library use.

Contributions from Child Study Club, Friends of the Library, Women's Club of Chelsea and other miscellaneous sources made the improvement possible.



RICHARD BOSS



HAROLD DENNIS

Boss Transferred to Ft. Wayne Plant, Dennis Becomes Dana Controller Here

Richard Boss, former Controller of the Dana Corp. Power Take-Off Division in Chelsea, has been appointed Division Controller for the Perfect Circle Division in Hagerstown, Ind. Chelsea plant manager Lee Hess announced the appointment of Harold "Gene" Dennis to fill the position vacated by Boss, who left last week.

Dennis started with Dana at the Fort Wayne plant in 1950. He was transferred to Chelsea in 1963

as a general accountant and assistant plant controller. Dennis was active in community life at Ft. Wayne and served as assistant scout master and explorer advisor for 10 years. He is now serving as deacon in the Trinity Lutheran Church, Ann Arbor.

Dennis and his wife, Myra, have three children and live in Ann Arbor.

Livestock Tour, Banquet Slated Next Week

The Washtenaw Livestock Tour and annual Livestock Banquet, sponsored by the Washtenaw Livestock Council, have been scheduled for next week.

The tour, slated for 10 a.m. Feb. 26, will be through the meat and dairy sections of Kroger Processing Plant, 12701 Middlebelt Rd., Livonia. The livestock council believes this will help farmers understand what happens to livestock after leaving the farm and familiarize them with problems of agribusiness.

After touring the plant, arrangements have been made for dinner at The Skipper, 33201 Plymouth Rd. A smorgasbord lunch will be served for \$2 per person.

Reservations must be made by Monday to allow food planning. The tour will be limited to the first 100 persons contacting Joseph W. Ames, extension agricultural agent, 683 W. Middle St., Chelsea.

Persons wishing to share transportation with others should meet at Stop & Shop in Chelsea or Vesco's Market in Saline at 9 a.m. No transportation arrangements will be made by the council.

Feb. 27 the annual banquet will be held at Chelsea High school, featuring rolled rib roast. Tickets are available from members of the council or at the Co-operative Extension Office and at some agribusinesses. Tickets will not be available at the door.

Sandra Lee Knoll Finalist for Title 'Miss Ann Arbor'

Sandra Lee Knoll was selected as one of 12 finalists in the Ann Arbor Jaycee-sponsored Miss Ann Arbor pageant Saturday at Woodland Hills Club House.

Sandra, daughter of Mr. and Mrs. Donald R. Knoll, 1220 Manchester Rd., was selected "Miss Congeniality" during the finals in the same competition last year.

This 5' 2", 105-pound brunette is a 1968 Chelsea High school graduate, part-time bookkeeper at Spaulding Fibre Co., Ann Arbor, and business major at Washtenaw Community college. She plans to transfer to Patricia Stevens Finishing and Occupational College, Milwaukee, in preparation for a modeling career.

The finalists were selected on the basis of poise, personality and attractiveness from a group of 24 entrants by Mrs. J. A. Geiser, Mrs. Andrew Lindstrom, Dick Roslien and David Simanek after interviews.

Finals, scheduled for 7:30 p.m. March 22 in Ann Arbor Pioneer High school, will include swimsuit and evening gown appearances and a talent display, which will count 50 percent in selection of a winner.

Sandra's talent will be a piano recital. The Miss Ann Arbor title is a preliminary to Miss Michigan and Miss America pageants.

Soil Conservation Districts To Meet In Grand Rapids

Dale Lindemann, vice-chairman of the Washtenaw County Soil Conservation District, announced that the Michigan Association of Soil Conservation Districts will hold its annual convention Feb. 21-22 at the Pantlind Hotel in Grand Rapids.

Kenneth Grant, Administrator of the Soil Conservation Service from Washington, D.C., will deliver an address Friday evening. His topic will be "Opportunities and Challenges in Conservation."

The meeting convenes at 9:30 a.m. Friday, Feb. 21, with the president's report. Wilma Garman, Ladies Auxiliary president, will also make her report at the initial session.

In the afternoon, Joe Fendt, Kent County Planning Director, will speak on "Land Use Planning and Zoning in the 70's." Dr. Ray Cook, Chairman, Soil Science Department, Michigan State University, will discuss "Soil Conservation in the 70's" at the same session.

Other speakers in the two-day meeting include Dale Ball, Director of the Michigan Department of Agriculture, speaking at a luncheon Saturday. His topic will be "A Forward Look."

Directors from the Washtenaw County Soil Conservation District will be attending the meeting. According to Lindemann, those interested in a part or all of the program are invited to attend.

Auto Stolen When Left To Warm Up With Motor Running

A Chelsea woman who left her car's motor running in the Van Buren Apts. parking lot Monday morning returned 20 minutes later to find it gone.

Glenadine Maistre, 148 E. Van Buren, said she started her 1969 Chevrolet Impala at 7:35 a.m., then returned to her apartment while it warmed up. When she returned at 7:55 a.m. the light green car with dark green vinyl top had disappeared.

Police suspect a 20-year-old Ann Arbor man who escaped from Cassidy Lake Technical school Feb. 18. A man fitting his description was seen in the parking lot by a neighbor during the 20 minutes when the car was stolen.

Good Citizen Award

(Continued from page one)

DAR, tonight at the Woman's City Club, Ann Arbor.

Other recipients include Michelle Bertoni, Nan Hutchings and Barbara Patton, Ann Arbor; Teri Virginia Krull, Dexter; Sandra Walter, Manchester; Rosemary Kanitz, Milan; Kathy Mader, Saline.

The program will feature Washtenaw County Assistant Prosecutor Thomas F. Shea, Dexter. His topic will be "Citizenship, USA."

Music Man Play Tickets Now Available

This year's staging of the Broadway musical "The Music Man" at Chelsea High School continues in the school's tradition beginning in 1965, with "Oklahoma." Paul Schultz, now teaching at Mt. Pleasant High school, co-ordinated and directed the CHS musicals for the first two years.

Sold-out performances have characterized the musicals since the beginning. Standing ovations accompanied the favorable reception of "Brigadoon," "Annie Get Your Gun," and "Bye-Bye Birdie" the following years.

The March production of Meredith Wilson's delightful "Music Man" will be the most ambitious production yet at CHS, according to Dr. Ann L. Roy, director of the vocal music department in Chelsea. She has co-ordinated and directed the musicals since 1967, including directing the orchestra and co-ordinating all student chairmen involved with the musical.

An aspiring stage crew, under the direction of Mike Schnadt, has constructed a revolving stage turntable. This 24-foot diameter construction will stage the entire production. The turntable is divided into three parts, each serving for a different setting. Scenes will continue into succeeding scenes by revolving the table, thus eliminating curtain breaks during the production.

"Music Man" will be highlighted by a large cast, realistic costumes and a spectacular ending.

Tickets for the March 13-15 performances, scheduled for 8 p.m. in the CHS auditorium, are available but must be obtained early as all seats will be reserved. Tickets may be purchased from a student selling tickets at the ticket office at the high school, by calling Sarah Lindauer at the school week days 11:30-1:00 or 2:15-3:15. Tickets may also be ordered by sending a stamped, self-addressed envelope containing full payment to Tickets for The Music Man, Chelsea High School.

EYE SURGERY

Surgery is the only known cure for cataract and is more than 95 percent safe and successful.

Kiwanians Help First-Hand Report On New Zealand

Highlighting the Chelsea Kiwanis Club dinner meeting Monday night was a slide display by Dr. Alastair Goss, dentist, who is a native of New Zealand.

Dr. Goss, now attending the University of Michigan, was introduced by Charles Cox. He described his native country.

Guests included Steven Priski, owner of Chelsea Club, and Staff Sgt. Muck, USAF. Sgt. Muck returned from Vietnam and is stationed at Holloman Air Force Base, N. M.

WHISTLE STOPPER

Canada's Polar Bear stops anywhere, any time, one who flags is down. The runs 186 miles north from rane, Ontario. Engineers orders to pick up the str who could easily perish in food in this rugged region.

The word "witches" derives the Anglo-Saxon word, "wise ones."

Farm Bureau's HOMEOWNERS Policy...

Costs Less, Covers More

Protects:
• Home and farm
• Personal property
• Theft
• Personal liability

Contact me today!

DAVID D. ROWE

157 E. Summit St., Chelsea

PHONE 475-8065

FARM BUREAU

INSURANCE

Companies of Michigan

ATHLETIC EVENTS OF THE WEEK FOR CHELSEA HIGH SCHOOL

Thursday, Feb. 20—
Freshman Basketball Dundee, at home, 7 p.m.
Friday, Feb. 21—
JV and Varsity Basketball at Saline, 6:30 p.m.
Saturday, Feb. 22—
District Wrestling Tournament, at Chelsea
Preliminaries 12:30 p.m., finals 7:30 p.m.
Monday, Feb. 24—
Seventh and Eighth Grade Basketball South Lyon, at home, 4 p.m.
Freshman Basketball Tournament
Opening game
Wednesday, Feb. 26—
Freshman Basketball Tournament at Brighton

Gambles
The Friendly Store

STOP FROZEN PIPES!
use **WRAP-ON** ELECTRIC HEAT TAPES

NO TIME LIMIT
FREE REPLACEMENT GUARANTEE!

Sold at **GAMBLES**

best/prest
GUARANTEED PERMANENT CREASE

No More Ironing!

Try something new! Try Oshkosh Best-Prest work pants and shirts. They never need ironing! Sure, they cost a bit more! But you get more! You get wrinkle-free, permanently pressed work wear that's guaranteed by Oshkosh B'Gosh. You'll like that neater look of 50% Fortrel Polyester and 50% cotton twill. And your wife will love the "no ironing" feature. In fact, in Oshkosh Best-Prest matched shirts and pants.

OSHKOSH B'GOSH

Pant - \$5.50 Shirt - \$4.50
Short Sleeve Shirt - \$3.50

Colors: Grey, Black-Olive, Dark Green.
Sizes: Pant, 30 to 46 waist, 28 to 24 inseam.

Strieter's Men's Wear
"The Place To Go for Brands You Know"

GAMBLES

WIFE-SAVER SALE
Hurry! **STARTS TODAY** Hurry!

SAVE \$41.95
CORONADO Side-By-Side Frost-Free
18.4 Cu. Ft. Refrigerator-Freezer

Choice of WHITE, COPPERTONE or AVOCADO

\$358

Real family size food storage and all frost-free! You'll find a place for everything in the 217-lb. freezer and 12.2 cu. ft. refrigerator. Food selection's easy with slide-out shelves, pantry doors. Favorite fashion colors brighten any space 31". Automatic Ice Maker Model. Only \$30 More.

SAVE \$41.95
Coronado 15.5 Cu. Ft. Refrigerator-Freezer

HARVEST GOLD • AVOCADO
COPPERTONE • WHITE

Reg. \$319.95 **\$278**
With Working Trade

10% Down

All frost-free with new features, colors for 1969! Roomy slide-out shelves, Touch-Away doors on butter and cheese compartments, 11-lb. meat keeper, ice bucket and more!

10% Down

IT COSTS YOU LESS TO SHOP GAMBLES FOR EVERYDAY NEEDS!



CHS SWEETHEARTS: Shelley Baize and Mike Gaken were reigning sweethearts at the student council dance Valentine's day, after they were chosen the favorite couple of CHS students during balloting in English classes Thursday. Shelley, the daughter of Mr. and Mrs. Charles Baize, is a CHS senior, central treasurer, member of National Honor Society, band, annual staff and "Music Man." Mike is an athletic senior, claiming membership on the varsity baseball, football and wrestling teams. He is co-captain of the wrestling squad with an undefeated seasonal record. Mike, son of Mr. and Mrs. James Gaken, is also a member of Varsity Club and student council.

WATERLOO BEAUTY SHOP
Operated By Rosemary Klink.

Open Tues. thru Sat., 8 a.m. to 6 p.m.

475-8895

CALL FOR APPOINTMENT

JV's Squeak By South Lyon

A torrid fourth quarter scoring rally by South Lyon JV cagers nearly toppled a previously comfortable Chelsea lead Friday night as Chelsea won by a narrow 41-38 margin.

Chelsea Coach Paul Terpstra said an eight-point half-time lead was lost when field and free throw points dropped off during the second half.

Chelsea averaged a 30 percent free throw and 54 percent foul average, compared to 23 and 45 for the Lions. Top scorers were Taylor, with 17, and Cameron, who netted 12 points. Leading in the rebounding department was Taylor, 12, Hughes and Cameron, 8, and Hercules, 6.

Telephone Your Club News To GR 5-3581.

Merger OK'd By Seamless Tube, Fortune

Final closing of the planned Fortune Industries-Michigan Seamless Tube Co. merger took place Feb. 13 in the South Lyon offices of Michigan Seamless.

The former name, Fortune Industries, Inc., will be retained by the newly-acquired subsidiary. All assets of the ceramic and plastic abrasive products manufacturers located at 11770 Dexter-Chelsea Rd. have been purchased by agreement of stockholders from both companies.

Leonard L. Fortune, founder of Fortune Industries, will now be president of the subsidiary. Other officers include William W. Wellborn, vice-president; C. R. Haldy, treasurer of Michigan Seamless and Fortune; James D. Tracy, secretary, Detroit; and Eunice B. White, assistant treasurer.

According to Fortune, the merger took place to give Fortune Industries additional capital to carry out plans for doubling the sales outlet. "We are proceeding immediately with the changes, which will include payroll, building and equipment expansion."

This will be the eighth expansion for the Chelsea manufacturing firm. The most recent increase sporting a \$250,000 price tag, doubled capacity in 1966.

Two Men Held For Break-in at Rick's Market

Two Ypsilanti men are being held for investigation by the Washtenaw County Sheriff's Dept. for burglarizing Rick's Market, 6065 Old M-52, between 2 and 3 a.m. Wednesday.

Detective Harold Kerr said that an undetermined amount of beer, liquor and cigarettes were taken by thieves gaining entry by breaking a front window of the grocery store.

The pair were apprehended by Michigan State Police in Ypsilanti on another charge and have been turned over to the Sheriff's Department in connection with the burglary. Kerr said he "expects that they will be arrested" following investigation.

ARRIVAL IN MIAMI
When a boat arriving at Miami, Fla., was searched by Customs, 60 cases of whiskey were found hidden in burlap bags. The liquor, valued at \$3,600, was seized.

Chelsea Will Host District Wrestling Tourney Saturday

Chelsea grapplers will host the eight-team District Wrestling competition Saturday, Feb. 22.

Chelsea, Dexter, Northville, Pinckney, Saline, South Lyon, Lincoln, and Willow Run will begin preliminary matches at 12:30 p.m. and finals at 7:30 p.m.

Top two wrestlers in each weight class will compete in the regional competition March 1 at Chelsea High school.

Frosh Cagers Warming Up For Tourney

Chelsea freshmen cagers tackle Dundee, their final regular opponent of the season tonight in the Chelsea High school gym to protect their 11-2 record and warm up for a formidable Clarkson squad in the opening rounds of the Brighton Freshman Tourney Monday.

Clarkston, a tough class A school with an excellent 10-1 record, will be a "challenging" opponent for the successful Chelsea Frosh at 8:30 p.m. Monday.

Dexter was the Thursday night victim of Chelsea's winning freshman team as they settled for a 64-27 defeat. Randy Seitz led the scoring list with 10 points, and five rebounds. Scoring was fairly evenly distributed. Todd Sprague netted nine points, followed by Greg Howard, Ed Koenigster, Steve Flint and Dave Porath, eight each; and Mark Collins, seven. Top rebounders were Mark Collins, 10; Dave Porath, 7; Roger Fitch, Dave Buxton, Chick Lane, and Steve Flint.

The less work some laborers perform the more pay they expect.

Second Section

The Chelsea Standard

Pages 9-14

CHELSEA, MICHIGAN, THURSDAY, FEBRUARY 20, 1968



CO-OP POPS accompanied their four-year-olds to Chelsea Co-Op Nursery Saturday morning as part of a "father's night" series in which dads were invited to observe a short session of school. Each nursery session had their fathers' night at a different time during the past two weeks. Fathers watched their children demonstrate painting skills and sing songs. They were offered the luxuries of crackers and juice and nursery-size chairs while becoming familiar with the children's daily activities.

Fathers of the Monday-Wednesday-Friday "assist" group, standing behind their children, are, from left, Nelson ones behind daughter Holly; Galan behind daughter Christi; Vern Otto behind son Troy; Mrs. Fred Meyer, teacher; Jim Wilderom behind daughter Lanie; Robert Thornton behind daughter Cynda; John Miller behind daughter Jennifer; Robert Updegraff behind son Randy; and Robert Schmidt behind daughter Amy.

Beissels Host Party for Boys at St. Louis School

Mr. and Mrs. Ed Beissel entertained the boys at St. Louis School Friday evening. Present were the fathers and sisters at St. Louis, and other guests from Chelsea, Dexter, Jackson and Detroit.

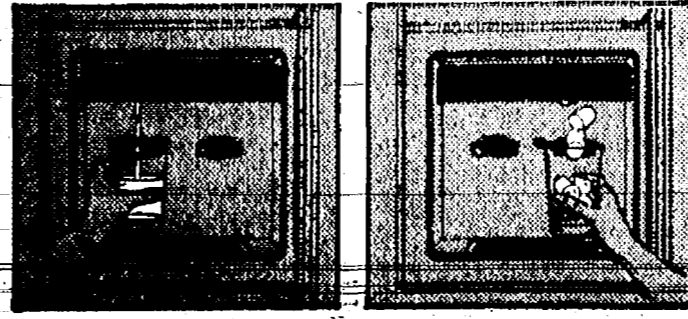
Refreshments included ice cream, sundaes, cupcakes, punch and candy. The Rev. Fr. Germano played records and the boys played games and passed out Valentines.

The school had the boys present Mrs. Beissel with a heart-shaped box of chocolates and Fr. Umberto and his band played "Let Me Call You Sweetheart." The school staff and boys expressed gratitude to the Beissels for the enjoyable evening.

NOW - General Electric delivers ice right to your door!



Side-by-side refrigerator with Custom Dispenser. Automatically fills your glass with ice or chilled water at a touch!



Instant water, instant ice - without opening the doors!

Just press glass against ice cradle. Ice tumbles out, two cubes at a time until cradle is released. For water, press glass against the water cradle. Release to stop. You can even use both dispensers at the same time!



23.5 cu. ft. Americana Refrigerator-Freezer
Less than three feet wide! And no defrosting - ever!
Automatic icemaker stores 10 lbs., about 260 cubes.
■ Freezer holds up to 295 lbs. ■ Tempered glass shelves, 3 slide out, 1 adjustable. ■ Convertible meat pan, keeps meat fresh up to 7 days - flip lever for extra vegetable storage.
■ Six full-width door shelves, 4 adjustable ■ Butter Conditioner with temperature control ■ Cheese Keeper
■ Rolls out on wheels for easy cleaning ■ 35 3/4" wide, 66" high ■ Harvest, Avocado, Coppertone or White.

Come in and see it today!

Open Friday Evening Until 9. Close Saturday at 4 p.m.

FRIGID PRODUCTS

113 N. MAIN STREET

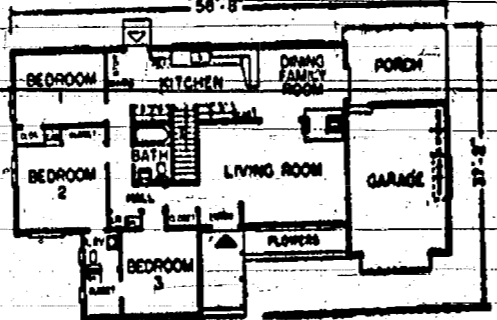
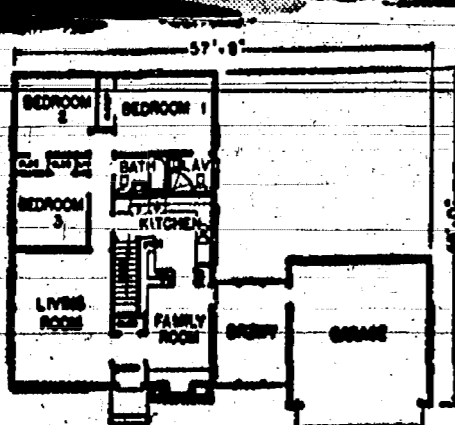
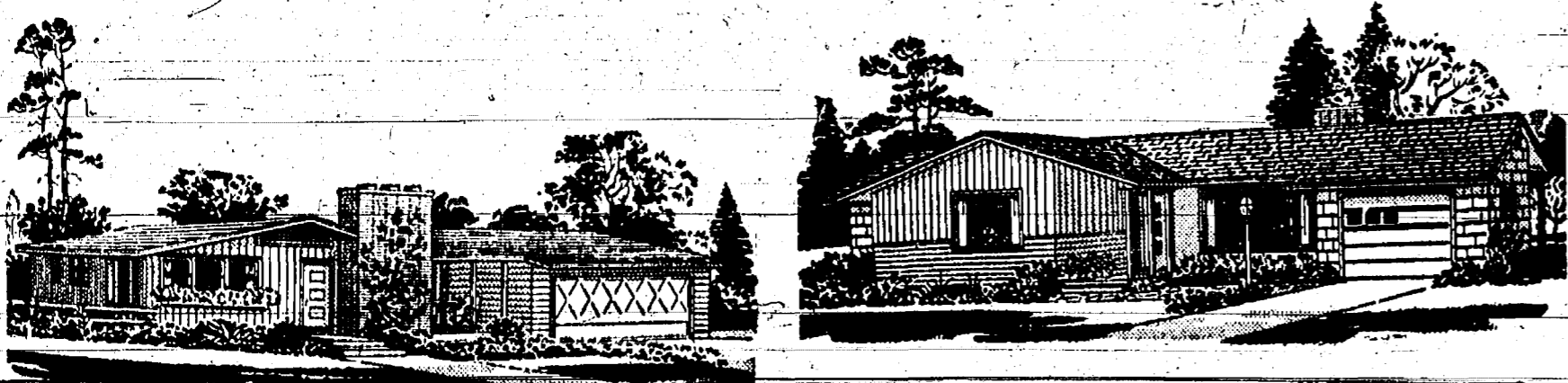
LLOYD R. HEYDLAUFF

PHONE GR 9-6651

Delay May Prove Costly . . .

★ PLAN TO BUILD ★ BUILD FROM A PLAN

Check Our File of More Than 2,000 Designs. From \$9.50 per set.



Compare the Ways To Build... You'll Find
You Get More
From Each Building Dollar
at

CHELSEA LUMBER CO.

DIAL GR 5-3391

May We Bid or Estimate Your Building Costs?

OPEN: Monday thru Friday, 7:30 a.m. to 5:30 p.m. Saturday, 7:30 a.m. to 3:30 p.m.



Girl Scouts To Have Local Day Camp

Western Washtenaw county Girl Scouts will have a day camp in their own area this summer.

"Gypsy Glade Day Camp," planned to serve Brownies, Cadets, Junior and Senior Girl Scouts from Chelsea, Dexter and Saline, will be located on wooded farm property on Park Rd., one-half mile south of the intersection of Baker and Jackson Rd., southwest of Dexter. Use of the 50-acre site was donated by Phil Jenkins of Jenkins Equipment Co., Dexter.

Mrs. Louis Galan, Dexter, camp director, said a regular eight-day session will be held in June with an option to add another session in early August if need is sufficient. Mrs. Galan said no limit has been set for camp capacity but estimated that 100 girls could participate at one time.

The establishment of a local camp is expected to encourage area girls to attend day camp, since they will not have to travel long distances each day. Previously the Girl Scouts could go to any day camp within the Huron Valley Girl Scout Council and attend Hilltop, Ann Arbor, and Hudson Mills Park. Since the park is public land the Scouts had to remove all equipment each night, an inconvenience that will be solved by donation of the private land.

A "fake day" camp session was held in Dexter-Saturday in which camp personnel and Girl Scouts met to discuss what the camp will offer and what Scouts are interested in doing at a day camp.

Similar "talk-alongs" will be held in Beach school, Chelsea, March 1 and in Saline March 8. Scouts and camp personnel will exchange ideas and girls will receive a general orientation to the new camp prior to the distribution of camp folders and registration forms during Girl Scout Week, beginning March 9.

Mrs. James Barden, Dexter, will serve as assistant to Mrs. Galan. A staff will be recruited from the three participating communities.

Expectant Parents Series Starting for Two New Class

Two new series of classes for expectant parents, sponsored by the Ann Arbor Visiting Nurse Association and the Washtenaw County Health Department, will begin on Monday and Thursday.

Both series consist of seven weekly classes, beginning at 7:30 p.m. in Room 117-A of the Washtenaw County Building.

Parents-to-be may register in the half-hour period preceding the first class in each series. Registration fee is \$5 per couple.

A special class for expectant fathers, and lessons on labor and delivery will be included.

Instructors will be two registered public health nurses, Mrs. Susan Noble and Mrs. Nancy Thompson.

Further information is available from the Washtenaw County Health or the Visiting Nurse office. (The Visiting Nurse Association is a United Fund agency).

Home Economics Study Groups Calendar

Week of Feb. 19-26

Thursday, Feb. 20—Young Homemakers, home of Mrs. Mary Koch, Jerusalem Rd., Chelsea.

Friday, Feb. 21—Freedom Ideal Homemakers, home of Mrs. Irma Grau, 3380 Fletcher Rd., Chelsea.

22—West Bridge Hall, Hostesses, Haisdel, Mrs. Marvin Breitenwischer.

Monday, Feb. 24—Lodi Plains, home of Mrs. Marie Pratt, 4100 Saline Ann Arbor Rd., Saline.

Tuesday, Feb. 25—Jolly Arts, home of Mrs. William Steptoe, 7250 Dan Hwy Rd., Dexter.

Tuesday, Feb. 25—Arboret, home of Mrs. Herman Sell, 422 W. Madison, Ann Arbor.

Wednesday, Feb. 26—Beacon Light, home of Mrs. Ruth Solt, 6123 Hasley Rd., Nantchester.

YES

WE ARE MAKING
LONG-TERM FARM
REAL ESTATE
LOANS

SEE US

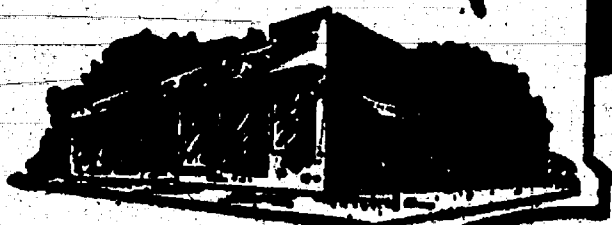


Ph. 665-6139 2221 Jackson Ave.
Ann Arbor, Mich. 48106
P. O. Box 1454

Come Celebrate Our 20th Anniversary

Stop & Shop

14901 Old U.S.-12
Corner at M-52
Chelsea



THE KNOW HOW OF INTELLIGENT MEAT BUYING IS REALLY THE 'KNOW WHERE'

Our customers have learned to depend on the outstanding quality of Stop & Shop meats—unfailing satisfaction with every cut they purchase. The finest quality, together with the experienced expertise of our meat cutting experts, makes an unbeatable combination!

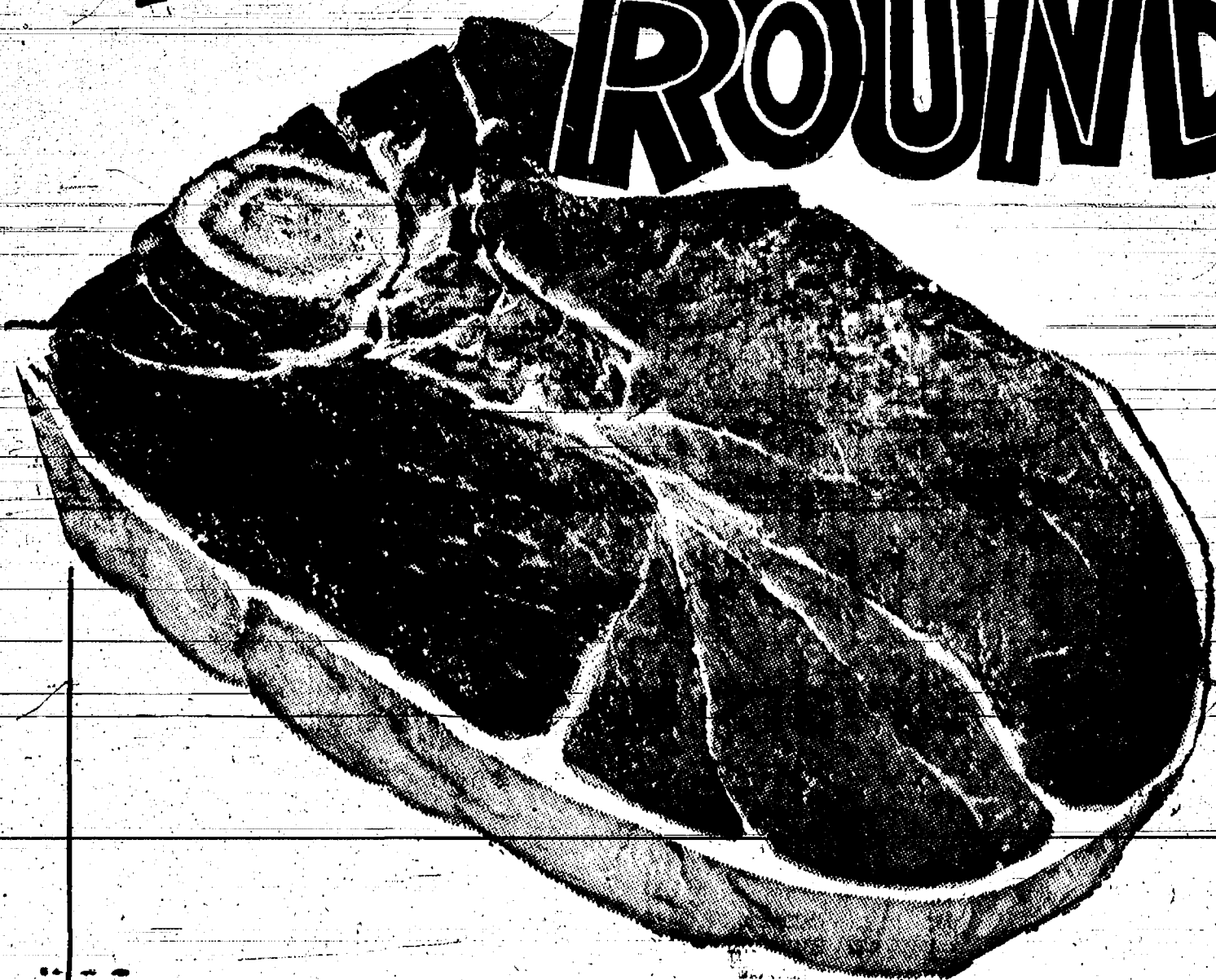
Prices Effective Wednesday, February 19
through Tuesday, February 25, 1969

"TRIPLE R FARMS" U.S.D.A. CHOICE

ROUND STEAK

"Ideal for Swissing"

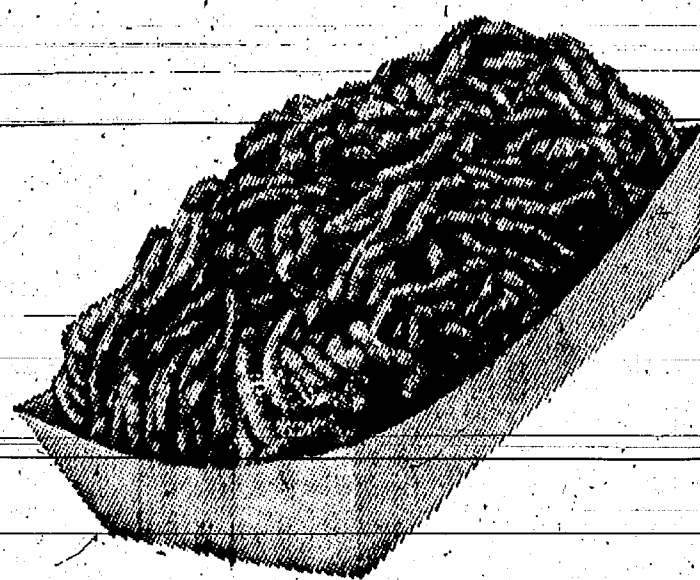
89^c Lb.



"TRIPLE R FARMS" U.S.D.A. CHOICE

Boneless ROUND OR SIRLOIN STEAK

Your **\$1⁰⁹** Lb.
Choice



"Triple R Farms" U.S.D.A. Choice

RUMP or SIRLOIN TIP
ROASTS

\$1⁰⁹ Lb.

"A Sunday Favorite"

"Triple R Farms" Lean, Tender, Delicious
CUBE STEAKS

\$1⁰⁹ Lb.

"From the Heart of the Sirloin"

"Triple R Farms" U.S.D.A. Choice
RIB STEAKS

99^c Lb.

"Triple R Farms" U.S.D.A. Choice
CHUCK STEAKS

69^c Lb.

Stop & Shop's Fresh, Lean, All American Beef
HAMBURGER

59^c Lb.

3-Lb. Units
or More

Fresh, Lean, Ideal for Low Fat Diets

GROUND ROUND
STEAK

89^c Lb.

Lean, Tender, Boneless & Cubed

Pork Cutlets

79^c Lb.

Lean, Tender, Boneless Rolled

Pork Loin Roast

\$1²⁹ Lb.

Tender, Sliced
Beef Liver

39^c Lb.

"Triple R Farms" Mich. Grade 1
Skinless Wieners

49^c Lb.

"Triple R Farms" Mich. Grade 1
Sliced Bologna

49^c Lb.

Morrell's Original Chef Brand
Boneless Ham

\$1²⁹ Lb.

Fully
Cooked

Williams - Whole Hog

Pork Sausage

79^c Lb.

1-Lb.
Bag

Swift's Premium

Sliced Bacon

69^c Lb.

1-Lb.
Pack

Lean, Tender, Meaty

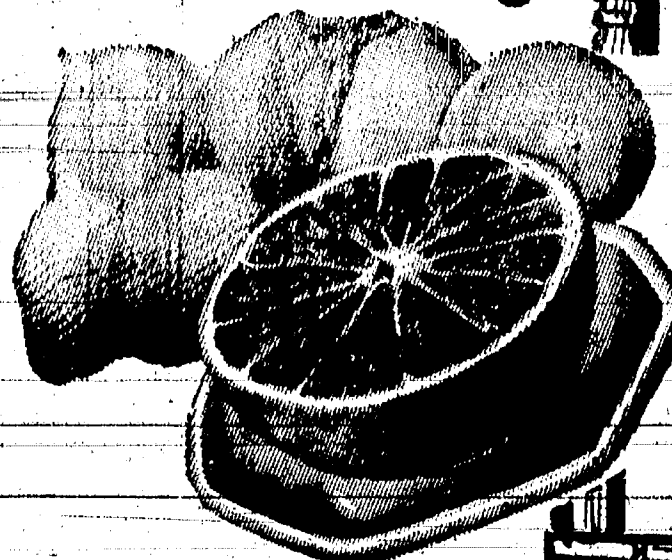
Pork Steaks

69^c Lb.

Tender, Lean, Boneless

Stewing Beef

89^c Lb.



FARM FRESH PRODUCE

GOLDEN RIPE

BANANAS

10^c Lb.

California Iceberg

HEAD

LETTUCE

19^c each

Solid
Head

Florida Seedless

GRAPEFRUIT

49^c

5-Lb.
Bag

U. S. No. 1 Michigan

POTATOES

49^c

10-Lb.
Bag




Stop & Shop Is Celebrating Its


20th Anniversary

Sale

To Our Many Friends, Thank You!



Join Us for
Coffee & Cake
Thursday-Friday-Saturday
Feb. 20-21-22



You are
Invited!

20 YEARS SERVING YOU		
BILL ROCZ	Plymouth
BUD SINGLETON	Plymouth
THELMA CUSHMAN	Plymouth
EDNA WILLOUGHBY	Plymouth
JOE H. RUCKER	Chelsea-Plymouth
ANDY ZELINSKI	Chelsea-Plymouth
10 OR MORE YEARS		
GENE SHOEMAKER	Chelsea
CLEM PLACIDO	Plymouth
GERRY HAMMERSCHMIDT	Plymouth

"Gifts for Everyone"

KRAFT'S SALAD DRESSING

MIRACLE WHIP

Quart Jar

48^c

Ice Cream	Half Gallon	45 ^c	Jiffy Biscuit Mix	2-Lb., 8-Oz. Box	29 ^c
Spicy Flake			Stokely's Rich Tomato Catsup	14-Oz. Bottle	19 ^c
Potato Chips	14-Oz. Bag	39 ^c	Stokely's Corn	1-Lb., 1-Oz. Cans	5 ^c
Our Favorite Sweet Peas	1-Lb. Can	15 ^c	Mrs. Owens' Old Fashioned Grape Jam	2-Lb. Jar	59 ^c
On Camp's Pork & Beans	2 1-Lb. Cans	29 ^c			

KRAFT'S VELVEETA CHEESE

American or Pimento

2-Lb. Loaf

88^c

Cleaned Shrimp	4 1/2-Oz. Can	79 ^c	Breast O'Chicken Tuna, Chunk Style	6 1/2-Oz. Can	27 ^c
Chocolate Chip Cookies	14 1/2-Oz. Pkg.	45 ^c	Sunshine Hydrox Cookies	1-Lb., 9-Oz. Pkg.	69 ^c
Tricidilly Cookies	11-Oz. Pkg.	39 ^c	Keebler Club Crackers	1-Lb. Box	41 ^c

FROZEN FOODS

Mrs. Smith's Deluxe Apple Pies

2-Lbs., 11-Oz. Pie

79^c

Treesweet-Fresh, Frozen Florida Orange Juice

6 6-Oz. Cans

\$1

FRESH DAIRY PRODUCTS

McDonald's 2% Low Fat Fresh Milk

Half Gallon Ctns.

3 \$1

McDonald's Fresh, Delicious Cottage Cheese

1-Lb. Ctn.

23^c

McDonald's Fresh Vitamin Rich Orange Juice

Half Gallon

59^c

McDonald's "For the Kiddies" Chocolate Milk

Pint Carton

10^c

McDonald's Low-Fat Fruit Flavor Yogurt

8-Oz. Ctn.

25^c

THE BEST ONE VOLUME ENCYCLOPEDIA... SAYS LIFE NOW YOU CAN GET SECTION ONE FREE

THE COLUMBIA ENCYCLOPEDIA

NEW SECTIONALIZED EDITION

Bring this coupon in! Section One of the Columbia Encyclopedia is yours free with this coupon and any grocery purchase.

FREE Store Coupon

Festive Imitation Chip Dip

8-Oz. Ctn.

15^c

FREE Store Coupon

AGRICULTURE

in ACTION

by M. L. Wood

A Decisive Defeat

Among facts which should not be ignored in the daylight saving time recount controversy is that most voters in Michigan's large cities voted against fast time—and, an "indecisive" victory remains no less a real victory than one in which one side has many thousands of votes over the other.

Following the announcement that daylight saving time had lost in the state by 490 votes, State Representative Thomas Brown (Republican, Lansing) has suggested that this action by the people of Michigan should be declared not valid, in that the vote margin was too thin to be regarded as decisive.

Were the assumption valid, that a close election does not represent the will of the people, thousands of elections over the past 100 years (many of them won by a one-vote majority) would have been thrown out.

Representative Brown said that since daylight saving time lost by a margin "amounting to only about one-tenth of a vote, per precinct" he was introducing a bill to place the state on fast time in spite of the vote of the people. This would be done by repealing the action of the legislature in 1987 when that body exempted the state of Michigan from the Federal Uniform Time Act.

Yet, it should be remembered that President Kennedy won over candidate Nixon by a margin amounting to only about one-tenth of one percent of the vote, per precinct. This fact did not make Kennedy any less the President of the United States. Nixon, in turn, failed to have a "mandate" of the people, but his scant margin was still almost three times the popular vote-edge held by Kennedy when he won the Presidency in 1960.

Daylight saving time was not defeated by the votes of farm people, even though they have long opposed the idea and voted almost solidly against it. Daylight Saving Time was decisively defeated by the voters in a majority of Michigan's cities, with the exception of Detroit, where it was almost exactly a 50-50 stand-off. Of Michigan's 83 counties, only 16 voted for fast time, while residents of 67 counties, (more than 80 percent) voted against it.

Champion Dairy Cows To Be Exhibited at MSU Farmers' Week

Visitors to 1969 Farmers' Week can see the "grand champion dairy animals of Michigan in 1968" along with exhibits and demonstrations showing the latest in dairy feeding, breeding and management research.

The grand champion dairy cows of the 1968 State Fair will be exhibited at the Dairy Cattle Research Center on College Rd., two miles south of the main campus. They include the Holstein owned by Apache Ranch, Lapeer; Brown Swiss from the Gottfredson Farm, Grass Lake; a Jersey from the Conrad Clark Farm at Eaton Rapids and a Guernsey from Lockshore Farm, Hickory Corners.

Regular and frequent bus service between the main campus and the Dairy Research Center will be provided for the farmers according to Michigan State University dairy department officials.

One of the mysteries of life is why people with brains are too lazy to use them.

OUR FINEST INTERIOR PAINT



Available in White and Custom Colors.

Finkbeiner Lumber Co.



PHONE CHELSEA GR 9-3881 On 04 US-12 Just Off S. Main St. MARTIN STEINBACH, Owner

WE RESERVE THE RIGHT TO LIMIT QUANTITIES

OPEN SUNDAY 10 a.m. - 6 p.m. All Sale Prices Effective Sundays

Sorry, No Sales To Dealers

STORE HOURS: Mon., Tues., Wed., 9 a.m.-6 p.m. Thursday, 9 a.m.-9 p.m. Friday, 9 a.m.-9 p.m. Saturday, 8 a.m.-9 p.m. Sunday, 10 a.m. to 6 p.m.

HORIZONTAL

1. Clubs
2. Vibe
3. Vibe
4. "The Red"
5. Poem
6. This place
7. Asked with authority
8. Stom
9. Fish eggs
10. King of the
11. Dinner course
12. Lump of earth
13. Semic
14. Wrinkling
15. A beverage
16. Slope
17. Female ruff
18. Powerless
19. Greatest
20. Arrived
21. Pennies
22. Chamber
23. The urial
24. Spoken
25. Song-

VERTICAL

1. Cough
2. Land
3. Measure
4. Tiny
5. Bottle
6. A dipper
7. Fruit drink
8. Fragrant
9. Tattlers
10. Shakes
11. Season
12. Item
13. Wading bird
14. A room
15. Press
16. Cross place
17. Obtain
18. Asterisk
19. Spotted cat
20. Spant
21. Chinese tea
22. Wind
23. Italian
24. River
25. Small rug
26. Cripple
27. Bottle
28. Girl's name
29. Son of God
30. Free

Last Week's Answer

SKIP	SHA	GORA
HATE	USB	EPIC
OVER	TAB	GUIN
BARON	THATERS	
INN	ODE	
EYE	EVIDENCE	
TAPA	RANC	CUR
DENTISTS	PEER	
SER	EME	
CLINKS	READER	
LOON	TAT	NIRA
AGNI	ICE	BRIN
MOSS	RED	DESK

We also made some cute animals out of heart shapes.

We listened to some stories about Abraham Lincoln, then drew some pictures about him.

THIRD GRADE—

Teacher: Mrs. Edmonds
Reporters: Craig Ferguson
Tommy Young, Alfred Schmidt

We are studying about Science in unit four. We are having a science quiz today. Today we are going to the gym and play games because tomorrow is Valentine's Day. We are studying about Texas in social studies.

Every Thursday we are going to the gym if we are good. We made Valentine animals. We covered a box with Valentines. We put our Valentines in the box.

We are having a social studies test in a week. Group three is having a reading test today. We are collecting news articles about Chelsea for our booklet.

* * *

Teacher: Mrs. Lees
Reporter: Lisa Scott

We are going to have a Valentine's party on Valentine's Day. We will pass out treats and Valentine's cards.

We are going to make things for Valentine's Day. We have finished our reading books and we are going to start another reading book. Feb. 22 is Lisa Scott's birthday. Jerard Benjamin and Gail Erke's birthdays are Feb. 27 and 28.

FOURTH GRADE—
Teacher: Mrs. McCullough
Reporters: Larry Cross
Kirk Steinway
Mrs. McCullough's class has been sewing on burlap for a little while and are almost done. We have done science experiments for a few weeks also.

A few weeks ago we got a new boy. His name is Bill Edwards. We have a new music teacher, her name is Miss Bauer.

Teacher: Mr. Schmunk
Reporters: Patricia Salyer
Marcia Therrien
In social studies we have been studying about the nomads. The song "Hush" by the Shubert Deacons

Since Abraham Lincoln's birthday was Feb. 12, we have been studying about him. He had a very hard life. From when he lived in the log cabin, till he was a president of the White House. (He was our 18th President)

We are having a very good time in music. We are square dancing once a week. We are learning about the time signatures of notes.

In health we have been learning about tonsils and adenoids. In English we have been pairing off to write stories.

FIFTH GRADE—
Teacher: Mrs. Graybill
Reporters: Sue Schuelke,
Nathaly Pierce

Today we had a Spelling Bee. All of the fifth graders went into the gym. The

The fifth-graders were Kathy Fairbanks. The runner-up was Dawn Robards. Tomorrow, Feb. 11 we have our Valentine's party in school. We made Valentine's cards to put our Valentine's cards in. We are having treats and games. We are also square dancing tomorrow.

We are studying the solar system in science. Mrs. Graybill has put up a couple of posters.

Teacher: Mrs. Heller
Reporter: Michele Papo

Our class made animals out of hearts. They are for our Valentine's Party.

In social studies we read that the colonists after the Revolutionary War had trouble making laws. Today we are going to have a

Spelling-Bee.

For English we write letters to pen pals in England. We have just gotten our third set of letters.

Teachers: Mrs. Winkle
Reporters: Beth Hoover,
Lynn Smith

Mrs. Winkle is very sorry she forgot to put Lynn's name on the B honor roll.

Steve Grob has a cast on his leg from sliding on the ice at school, when he wasn't supposed to.

We are getting ready for our Valentine's Day Party on Feb. 14.

When replacing a blown-out fuse be careful to use the right size. A fuse that is too large may allow a conductor to carry an overload.

which could create a fire when the wire becomes too hot.

or Remodel Your Home

ESTIMATES OR BIDS

PLUMBING and HEATING

with 1 Year Free Service

WE WILL SAVE YOU MONEY

Monday, 8 a.m. to 8 p.m.

CALLS: GR 9-5948

PLUMBING, HEATING

CONTRACTORS

Phone, write or call in person. No obligation.

+ Services in Our Churches +

CONGREGATIONAL CHURCH (United Church of Christ) The Rev. Daniel Kellin, Pastor Saturday, Feb. 22— 9:00-11:00 a.m.—Confirmation class. Sunday, Feb. 23— 10:00 a.m.—Morning worship; Sunday school. 7:30 p.m.—Couples class. Tuesday, Feb. 25— 7:30 p.m.—Bible Study at home of Lauryn White. Wednesday, Feb. 26— 8:30 a.m.—Men's breakfast. 7:30 p.m.—Lenten service. Thursday, Feb. 27— 5:00 to 7:00 p.m.—Spaulding Auxiliary spaghetti dinner at church.	FIRST UNITED METHODIST CHURCH The Rev. Robert Worgess, Pastor Sunday, Feb. 23— 9:00 a.m.—Church school (3rd- senior high). 10:00 a.m.—Church school (nursery-5th grade). 11:00 a.m.—Worship service. 11:05 a.m.—Adult Study Class. 7:00 p.m.—Senior MYF. Monday, Feb. 24— 8:00 p.m.—Nominating Commit- tee meeting; Jean Lewis, Edith Gorton, June Warren, Robert Daniels, Helen Gadbey and Ar- thur Stoll. Tuesday, Feb. 25— 7:00 p.m.—Confirmation Class. Wednesday, Feb. 26— 1:00 p.m.—W.S.C.S. Executive Committee meeting at home of Mrs. Clara Warren. 4:00-4:45 p.m.—Primary Choir. 4:45-5:30 p.m.—Junior Choir. 8:00 p.m.—Youth and Senior Choirs combined.	ST. PAUL UNITED CHURCH OF CHRIST The Rev. Warner Siebert, Pastor Friday, Feb. 21— 8:00 p.m.—Baptismal Orienta- tion. Saturday, Feb. 22— 6:30 p.m.—XYZ pot-luck. Sunday, Feb. 23— 9:00 a.m.—Confirmation. 11:00 a.m.—Youth Choir. Sunday, Feb. 23— 9:00 a.m.—Confirmation. 11:00 a.m.—Youth Choir. Sunday, Feb. 23— 9:15 a.m.—Church school. 10:30 a.m.—Worship. Congrega- tional meeting. Monday, Feb. 24— 7:30 p.m.—Church school tea- chers. Wednesday, Feb. 26— 8:45 p.m.—High School Choir. 7:30 p.m.—Lenten service. 8:30 p.m.—Chancel Choir. Thursday, Feb. 27— 9:00 a.m.—Koinonia.
ST. MARY'S CATHOLIC CHURCH The Rev. Fr. Francis Wahowiak Friday, Feb. 21— 7:30 p.m.—Lenten devotions. Saturday, Feb. 22— 4:00-5:00 p.m.—Confessions. 7:30-8:30 p.m.—Confessions. Sunday, Feb. 23— Masses at 6:30 a.m., 8:00 a.m., 10:00 a.m. and 11:30 a.m. Wednesday, Feb. 26— 7:30 p.m.—Mass.	ST. THOMAS EVANGELICAL LUTHERAN Cor. Ellsworth and Haab Rds. Freedom Township The Rev. Daniel L. Mattson, Pastor Saturday, Feb. 22— 9:00 a.m.—Confirmation class for 6th and 7th graders. Sunday, Feb. 23— 10:00 a.m.—Church service. 11:00 a.m.—Sunday school. SALEM GROVE METHODIST CHURCH The Rev. George Nevin, Pastor Sunday, Feb. 23— 10:00 a.m.—Sunday school. 10:15 a.m.—Worship. 7:00 p.m.—Luther League. Monday, Feb. 24— 7:15 p.m.—Junior Choir. 8:00 p.m.—Senior Choir. Tuesday, Feb. 25— 7:30 p.m.—Women's shuffleboard. Wednesday, Feb. 26— 7:30 p.m.—Second Lenten ser- vice.	ST. BARNABAS EPISCOPAL CHURCH 20500 Old US-12 The Rev. William D. Ladkau, Vicar Sunday, Feb. 23— 11:00 a.m.—Morning Prayer. 11:00 a.m.—Church school and nursery. NORTH SHARON COMMUNITY BIBLE CHURCH Sylvan and Washburn Rds. The Rev. Paul Collins Sunday, Feb. 23— 10:00 a.m.—Sunday school. 11:00 a.m.—Worship service. 6:30 p.m.—Young People's service. 7:00 p.m.—Evening service. Every Wednesday— 7:30 p.m.—Prayer meeting.
ZION LUTHERAN CHURCH Corner of Fletcher, Waters Rds. (Rogers Corners) The Rev. John R. Morris, Pastor Saturday, Feb. 22— 9:00-11:30 a.m.—Seventh grade youth instruction class. Sunday, Feb. 23— 9:00 a.m.—Sunday school. 10:15 a.m.—Worship. 7:00 p.m.—Luther League. Monday, Feb. 24— 7:15 p.m.—Junior Choir. 8:00 p.m.—Senior Choir. Tuesday, Feb. 25— 7:30 p.m.—Women's shuffleboard. Wednesday, Feb. 26— 7:30 p.m.—Second Lenten ser- vice.	CHELSEA BAPTIST CHURCH The Rev. Elmer S. Steenson, Pastor Sunday, Feb. 23— 10:00 a.m.—Sunday school. 11:00 a.m.—Worship service. Nursery care available during Sun- day school and worship service. 6:00 p.m.—Junior and Senior Baptist Youth Fellowship. 7:00 p.m.—Evening worship. Every Wednesday— 7:30 p.m.—Bible study and prayer meeting.	ST. JACOB EVANGELICAL LUTHERAN CHURCH 12501 Reithmiller Rd., Grass Lake The Rev. Andrew Bloom, Pastor Sunday, Feb. 23— 8:45 a.m.—Worship service. 9:45 a.m.—Sunday school. 10:45 a.m.—Worship service. ST. JOHN'S EVANGELICAL AND REFORMED CHURCH (United Church of Christ) The Rev. Robert Townley Sunday, Feb. 23— 9:45 a.m.—Sunday school. 11:00 a.m.—Church services.
IMMANUEL BIBLE CHURCH The Rev. Frank C. Frinkle, Pastor 145 E. Summit St. Sunday, Feb. 23— 9:45 a.m.—Sunday school, nur- sery provided. 11:00 a.m.—Morning worship, nursery provided. 7:30 p.m.—Evening service. Every Wednesday— 7:30 p.m.—Family Hour and Junior choir.	FIRST CHURCH OF CHRIST, SCIENTIST 1883 Washtenaw Ave., Ann Arbor Sunday, Feb. 23— 10:30 a.m.—Morning service. Lesson-Sermon: "Mind." 10:30 a.m.—Sunday School. METHODIST HOME CHAPEL The Rev. John Fall Administrator The Rev. Wm. Johnson, Chaplain Sunday, Feb. 23— 8:45 a.m.—Worship service.	WATERLOO VILLAGE CHURCH (Evangelical Union Brethren) The Rev. Wilbur Silvernail, Pastor Sunday, Feb. 23— 10:00 a.m.—Sunday school. 11:15 a.m.—Worship service. ST. JOHN'S EVANGELICAL AND REFORMED CHURCH (United Church of Christ) Rogers Corners The Rev. Robert Townley Sunday, Feb. 23— 9:45 a.m.—Church service. 10:30 a.m.—Sunday school.
CHURCH OF CHRIST 13001 Old US-12 East R. D. Farnell, Minister Sunday, Feb. 23— 10:00 a.m.—Church school. 11:00 a.m.—Worship service. 6:00 p.m.—Worship service. Every Wednesday— 7:30 p.m.—Mid-week bible study.	FIRST UNITED PRESBYTERIAN CHURCH Unadilla The Rev. T. H. Liang Sunday, Feb. 23— 9:45 a.m.—Sunday school. 11:00 a.m.—Worship service. Every Tuesday— 8:00 p.m.—Choir practice.	BETHEL EVANGELICAL AND REFORMED CHURCH (United Church of Christ) Freedom Township The Rev. Roman A. Reineck Sunday, Feb. 23— 10:00 a.m.—Worship. 11:00 a.m.—Sunday school.
NORTH LAKE METHODIST CHURCH The Rev. George Nevin, Pastor Sunday, Feb. 23— 9:30 a.m.—Worship service. 10:30 a.m.—Sunday school.	FIRST ASSEMBLY OF GOD CHURCH The Rev. Stephen J. Vaudrey, Pastor Sunday, Feb. 23— 10:00 a.m.—Sunday school. 11:00 a.m.—Worship service. 7:00 p.m.—Evangelistic service.	GREGORY BAPTIST CHURCH The Rev. Grant Lapham, Pastor Sunday, Feb. 23— 10:00 a.m.—Worship service. 11:15 a.m.—Church school. 6:30 p.m.—Baptist Youth Fel- lowship. 7:30 p.m.—Evening worship service.



MAUSOLEUMS ★ MONUMENTS
BRONZE TABLETS ★ MARKERS
**BECKER
MEMORIALS**
6033 Jackson Road
ANN ARBOR, MICHIGAN

LYNDON TOWNSHIP BOARD OF REVIEW

Notice is hereby given to all persons liable to
assessment for taxes in the

TOWNSHIP OF LYNDON
County of Washtenaw, State of Michigan

That the Assessment Roll of said Township as prepared
by the undersigned will be reviewed by the Board at

LYNDON TOWNSHIP HALL

Corner of Old M-52 and North Territorial Road, on

TUESDAY, MARCH 4, 1969

from 9 a.m. to 12 Noon and 1 p.m. to 4 p.m.

Appeals and Conferences with Taxpayers
will be heard on

TUESDAY, MARCH 11, 1969

from 9 a.m. to 12 Noon and from 1 p.m. to 4 p.m. of
said day, at which time upon request of any person
who is assessed on said tax roll or of his or her agent
and upon sufficient cause being shown, said Board of
Review will correct the assessment as to such property in
such manner as will in their judgment make the valuation
relatively just and equal.

Such assessment tax roll as reviewed and approved by
said Board of Review will be the assessment roll of said
Township of Lyndon for the year 1969.

GEORGE F. BAUER, Supervisor

Dated: Feb. 20, 1969.

SUNDAY'S SERMON

★ The Challenge

Every day life presents a chal-
lenge. Sometimes it is welcomed,
for it adds a bit of zest to living.
But, some are inclined to ignore
and to turn away.
The real challenge is to live
the good life and to indulge in
some fruitful labor. It is through
labor that man accomplishes, that
a house is raised, a crop is grown,
and a clean landscape opens be-
fore the eyes. Idleness, on the
other hand, tends to erode the
mind and the spirit.

Thoughtful labor brings the
award of achievement, in whatever
measure.
Every man leaves some foot-
prints along the trail of life. Great
men are remembered in the pages
of history and in legends passed
from generation to generation.
What the rest of us accomplish
is as well something of value—
for we are marked in the minds
of those we help, and those we
serve, along the way.

So it is that one challenge of
life becomes relatively simple—it
is simply that we DO.

PIETY DOESN'T PAY
Search of shipment of chairs at
Detroit, by Customs, revealed 18
pounds of hashish concealed in the
seats. A couple of days later,
Customs examined a mail package
addressed to the same party. The
package contained six religious
paintings on wooden slabs. Each
slab contained two pounds of hash-
ish.

MIKE'S TV ANTENNA SERVICE

Motorola Automotive
Sound Systems

Winegard Home Electronics
TV Antenna Systems

Insurance Claims

For Free Estimate, Call
Pinckney 878-3258
or 769-0130



RARE BIRD IN THE HAND: State game biologist Keith Heezen prepares to send an immature golden eagle on its way back to the wild after the bird was given a clean bill of health at the Department of Natural Resources' Rose Lake Wildlife Research Laboratory. The bird, rare to Michigan, was earlier picked up on a farm near Perry where it was found unable to fly because of ice coating its wings. At first, DNR game men thought the bird was a bald eagle, whose immature offspring it resembles. However, when they saw the bird's legs were feathered down to its toes, they were able to positively identify it as a golden eagle. Feathers only extend halfway down the legs of bald eagles. A thorough examina-

Former All-American Football Star Featured at Youth for Christ Rally

Former All-American Bob Davenport will be featured at the March 1 rally of Huron Valley Youth for Christ. The rally will be held at Ann Arbor High school, Saturday, March 1, at 7:15 p.m. Bob Davenport presently is a football coach at Taylor University, Upland, Ind. after a brilliant college and professional playing career. The former two-time All-American was acclaimed by his coach the late Henry Red Sanders of UCLA as the greatest fullback he had ever coached. Bob began his athletic career at Long Beach, Calif., where he was named back of the year and elected student body president during his senior

year. As a sophomore at UCLA he was chosen rookie of the year in 1953 and was the starting fullback in the Rose Bowl. Look magazine named him to the All-American squad in his junior year 1954 where he helped to lead UCLA to the national championship. During his senior year, Davenport won the Pop Warner trophy as the most valuable player on the West Coast. The Associated Press, United Press, Collier's magazine, and other publications selected him to All-American teams. Following graduation he joined the Senior All-Stars in the battle against the pros in the Hula Bowl, and was there named the most valuable

player. For the next two years he played Canadian professional ball with the Winnipeg Blue Bombers. Davenport is the founder of Wandering Wheels, a bicycle touring program which travels coast to coast during the summer. Over the last two years Wandering Wheels has escorted 105 young men across America. Wandering Wheels is an attempt both to demonstrate the vitality of the Christian life.

With Bob Davenport will be no less than three collegiate musical groups. From Taylor University will come the Sands of Time, from Detroit Bible College the Collegiate Choroists, and from Spring Arbor College will come The Mystics. The public is invited to the program.

Letter to Parents

Dear Parents:

Now that I am on my own, I'd like to ask you a few questions. Why didn't parents insist on knowing where I was when I left home evenings or afternoons? I knew Mom always knew where Dad was, if she needed him. Dad's boss always knew where Dad was if he needed him. But I didn't want you and Dad to know where I was. Was I ashamed of some of the things I was doing? Was I ashamed of some things I was doing? Yes, I was. I got mixed up with "pot", a mind-destroying drug. My studies weren't important. All I wanted was to be "in" with a group of other pot users. I even got others to buy and use it. Now I know that over half of "pot" users go on the heroin and other dope. I'll write you next week for some more answers. Your (now) grown-up child.

SWEATER CARE

After each wearing, air a sweater thoroughly, then fold and put it in a drawer. Never hang a sweater on a hanger between wearings.

Serviceemen's Corner

**Airman Clifton Loveland
With Air Force Unit
Based in Thailand**

U. S. Air Force, Thailand—man First Class Clifton D. Loveland of 1001 Grass Lake, Mich., is on duty with the 424th Strategic Wing, Air Command radio repairers which daily attack Viet targets and KC-135 Stratofor- which provide refueling to fight bomber and reconnaissance craft conducting the air war in Vietnam.

He was assigned at Fairchild AFB, Wash., before arriving Thailand.

The airman attended Grass Lake Junior-Senior High School, attended Jackson (Mich.) Community College.

His wife, Hazel, is the daughter of Mr. and Mrs. Virgil F. Fugle of 211 North Lake St., Grass Lake.

VETERANS and SENIOR CITIZENS

HOMESTEAD TAX EXEMPTION forms have been mailed to those who qualified for the exemption last year. If you have not received your form, you may call Thomas Smith, Village Assessor, 479-3291.

New applicants will need (1) Social Security Number, (2) Proof of ownership, (3) Proof of age.

In order to qualify for the Homestead Tax Exemption, senior citizens must have an income for 1968 of not more than \$5,000; they (or their spouse) must be 65 years of age or older; assessed valuation of their real estate property must not exceed \$10,000.

Veterans or widows of veterans must show the VA claim number, date of entry into the service, discharge date, title to the homestead and also those veterans who are disabled and receiving compensation therefrom must show the check number and the percentage of disability.

Assessor Tom Smith will be at Sylvan Town Hall Friday, Feb. 21 from 9 a.m. to 4 p.m. to assist those who qualify.

Your next car: Chrysler.



The possible dream can mean a great deal to you. The Great New Chrysler.

The Great New Chrysler is a possible dream and it can easily come true. Full-size Chrysler luxury is not at all beyond your reach. In fact, if you drive one of the most popular smaller cars, a 1969

Newport is priced only a few dollars a month more than what you're driving now. See for yourself. See your dealer. He'll show you how a great deal can make your dream possible.

AUTHORIZED DEALERS **CHRYSLER**
MOTORS CORPORATION

G. A. SALES & SERVICE • 1185 Manchester Rd.