

WEATHER

High	30	Low	18
Wind	10-15	Dir.	70
Humid.	60	Vis.	10
Clouds	10-15	Bar.	30.0
Forecast	10-15	Temp.	30.0

The Chelsea Standard

QUOTE
"This is not a sick society, but is a society sick of what has been going on in this nation."
—Ronald Reagan, Governor of California.

NINETY-NINTH YEAR—No. 29 12 Pages This Week CHELSEA, MICHIGAN, THURSDAY, JANUARY 9, 1969 10c per copy SUBSCRIPTION: \$3.00 PER YEAR

Bulldog Cage Team Wins at South Lyon

Aggressive Team Play Accounts for 4 Wins in Last 5 Games

The Bulldogs took a good bite out of the South Lyon Lions and chewed out an 81-71 victory in the Southeastern Conference to place them in a second-place tie with a host of other teams in the league.

The Chelsea squad jettied out to a quick lead in the first quarter on some fine shooting by Jim Wojcik, Mike Schmidt and Dave Conklin. Half-time score found Chelsea with a 43-42 lead.

The game resumed back and forth in the third and fourth quarters until the score was tied, 68-68, with 90 seconds remaining in the fourth quarter. The Bulldogs spurred to take a commanding lead in the closing seconds of the ball game.

The tough Chelsea offense was paced by Dave Conklin, who tallied 22 points; sophomore Jim Wojcik who netted 17 points; Lance Burghardt, who added 16; and Mike Schmidt who dumped in 12.



JERRY PICKLESIMER, son of Mr. and Mrs. Ishmael Picklesimer of 460 North St., departed early Monday morning for Detroit, where he was assigned to Ft. Knox, Ky., for basic training in the U. S. Army. Jerry graduated from Chelsea High school in 1968 and was employed at North American Rockwell Corp. while attending Washtenaw Community College, before enlisting. He was assigned to paratrooper training.

Recreation Classes Start Next Week

Persons planning to enroll in Chelsea Recreation Commission courses may register at the first course meeting, according to Director Tom Ballistrere.

The hand and machine sewing course scheduled for Monday nights has been cancelled due to lack of interest. Any other program not showing sufficient participation will be dropped.

The series will begin with boys' basketball Saturday, and other classes will begin next week on their regularly scheduled meeting date and time.

Available courses are: Complete knitting instruction courses for beginners and experienced knitters, Mondays, 7:30-9 p.m.—Instructor is Mrs. Clara Ewald. Fee is \$10 for the 15-week course.

Judo courses will include the history and origin of Judo, learning to fall, learning front, hip, reverse hip, leg whip, and shoulder throws and learning how to subdue attackers.

(Continued on page three)



March of Dimes Drive Begins Across Nation

Washtenaw County Volunteers Attend Kick-Off Dinner Monday

Washtenaw March of Dimes campaign workers gathered enthusiastically Monday night at the kick-off dinner at the Moose Lodge in Ann Arbor.

Dr. David Dickinson, professor of pediatrics at the University of Michigan Medical Center, showed a film "They Must Not Be Forgotten," and spoke about various types of birth defects. Some of the information he relayed included:

- 250,000 U. S. babies are born with birth defects each year.
- One birth defect occurs every two minutes.
- 80 percent of the defects can be treated and often cured.
- Birth defects are the second most frequent cause of death in the U. S.
- 100 birth defects centers exist in the U. S., including one at University Hospital in Ann Arbor.

A member of Chelsea campaign workers attended the dinner. Chelsea campaigners include chairman Mrs. Gerald Blough; publicity, Mrs. Tom Dunlap; treasurer, Mrs. Art Steinaway; teens, Mrs. Tom Thalner; howling, Mrs. Silas Hopkins and Mrs. Dorlene Haas; special events, Mrs. Robert Updegraff; mailers, Mrs. Walter Brown; gift letters, Mrs. Fred Patterson; peanut sales, Mrs. Roy Greenleaf; canisters, Mrs. Don Proctor; Mother's March, Mrs. Charles Koenig, Mrs. Richard McUmber and Mrs. Don Proctor.

Wrestling Team Finishes Close Behind Two Class A Schools

The Bulldogs Wrestling team heads for the big 18-team Parma tournament Saturday after a rugged three rounds of wrestling that brought four tough squads together to inaugurate the Chelsea Holiday wrestling tourney.

The Belleville Tigers carried off the team trophy after defeating the three teams entered in Chelsea's first invitational wrestling tournament. The Chelsea crew emerged with three individual champions as the Bulldogs dominated the field in the upper-weight brackets.

Bulldog co-captains Kerry Kargel and Mike Gaken extended season winning streaks to 8-0 with three victories. Heavyweight Jim Boylan also took a first place medal with three wins. Karsten Kargel, 165, and Steve Ersten, 120, grabbed second-place medals on the strength of two wins and one loss.

On a team basis, the Bulldogs made an excellent showing in the first round when they lost by only two points to the eventual champions from Belleville. On a day when Chelsea had little to cheer about in the early matches, Steve Ersten put the Bulldogs on the scoreboard with three points for a decision win over the Tigers' 120-pound man.

Wayne Stahl, 145, posted Chelsea's second win with a close two-point margin over a tough, skillful Tiger co-captain. Stahl, not yet at full strength after a bout with the flu, was withdrawn from competition, giving up a chance for a first-place medal. Coach Burley Hendricks said that Stahl was withdrawn because of the importance attached to having him in the line-up at full strength for the Parma Western tournament next Saturday.

After Karsten Kargel posted the third decision win against Belleville, brother Kerry had a close contest with a Tiger who interrupted Kargel's pinning streak at six. "Smooth-working" Mike Gaken then posted his first of three pins for the day. He was followed by heavyweight Jim Boylan who celebrated his return to the line-up with good execution of take-down and hard ride that terminated in a pin for Boylan.

The quality and equality of the competition was evident at the end of the first round as Adrian High battled at a 27-19 win over Haslett in the second round match. Belleville moved close to the team trophy by defeating Adrian while the Chelsea crew came from way behind to edge out Haslett. Again it was a long dry spell for the Bulldogs until the 120-lb. match when Steve Ersten provided a ray of hope with his second win of the day. The hopes were subdued as Haslett won at 127-133, and 135 to pile up what seemed an insurmountable lead.

Then the Bulldog strength at the upper weights came to bear on the Haslett men. Beginning with Dale Robbins, substituting at 145 for Wayne Stahl, the Bulldogs posted five pins in a row as Kerry and Karsten Kargel, Mike Gaken and Jim Boylan brought Chelsea (Continued on page five)

Canisters for March of Dimes Contributions

Canisters have been placed in approximately 70 factories, businesses and other public places in Chelsea by Mrs. Don Proctor, center, chairman of canister committee; and Mrs. Art Steinaway, left, president of Jaycee Auxiliary and committee member. Mrs. Robert Updegraff is the committee's third member. Accepting a canister and display to be placed in Chelsea Drug Store is Pharmacist Danny Murphy. The Jaycee Auxiliary is sponsoring the annual January drive to help raise funds for local and national birth defects research, prevention and treatment. Funds will be collected through mailed contributions, canister donations, the Mothers' March and other activities.

Council Briefs

In regular session Tuesday, Jan. 7, of the Chelsea Village Council, a discussion was held regarding the Flanders St. ejector station. A malfunction in the station caused flooding of some basements in the Flanders St. area. Village engineers were authorized to investigate the need for a replacement of the present ejector station. Trustee Weber was authorized to investigate the need for an improved storm sewer system in the area. President Baldwin was authorized to contact the Bell Telephone Co. in regards to a cost analysis for the installation of a warning alarm system which would be installed from the Flanders ejector station to the Village dispatchers office.

Motion was made and approved to authorize the firm of Icermain, Johnson & Hoffman to audit the (Continued on page six)



ROBERT BROUWER uses his electrical training to advantage in his presentation of "Welcome to Michigan" through the use of three large screens, dynamic stereo music, controlled lighting and blending and multiple projectors. Many years ago, Brouwer embarked on the hobby of photography and gave his first slide shows to friends and neighbors. The encouragement of these friends and experts alike, prompted him to begin producing travelogues. His first production, "America—Of Thee I Sing," was awarded a Freedom Medal for distinguished service in promoting the American way of life. He was commissioned by the National Tourist Agency of the Netherlands, to produce a similar travelogue on the Netherlands—an unprecedented arrangement in the travelogue field.

School Board Budgets Funds For Demolition

A motion to include funds in the 1969-70 school budget for demolition of the former junior high building, unanimously passed by the School Board at a regular meeting Monday night, does not necessarily indicate a decision to demolish the old building, according to Business Manager Fred Mills.

Mills said that this motion will merely make funds available if the school board decides to have the building demolished. No final figure was given for the funds provision, or for cost of demolition.

The School Board still has a host of options for action on the property since no decision has been made as to the disposal or use of the property.

Bids from the Village Council, and William Freeman were submitted last year. The \$15,000 village bid, lower of the two, was considered since sentiment was expressed to have the land remain in public hands for future use.

The School Board voted Monday to return the \$1,600 good faith check, which the village deposited on the property, upon request from the Village Council that their bid be withdrawn.

Village President Don Baldwin explained that the \$15,000 plus an estimated \$10,000 demolition cost (Continued on page five)

Chelsea Crime Rate Reduced During 1968

FBI reported crimes in the village decreased during 1968, according to Chelsea Police Chief George Meranuck.

Reported crimes, which do not include malicious destruction of property, drunkenness or disorderliness, decreased from 94 in 1967 to 74 in 1968.

Two categories showed increases during 1968. Larceny increased from 41 in 1967 to 43 in 1968; one criminal homicide occurred during 1968, when a man died from a shotgun blast in the stomach, while no criminal homicides occurred in 1967.

"It was a good year," according to Meranuck. "Decrease occurred in most categories including assaults, burglaries and auto theft."

Records show a total of eight assaults, compared to 10 in 1967. Burglaries decreased from 28 to 18, and auto thefts decreased substantially from 14 to four.

No robberies or forcible rapes occurred during either year.



WELCOME, JUDGE: Judging from the smiles, everyone is happy at the induction ceremony for the new district court judges at Ypsilanti, Jan. 2. Chelsea's Judge Patrick J. Conlin, right, is congratulated by Chelsea attorney William Rademacher, son, Bill, and nephew, Mark Heydlauff. Present at the ceremony were Washtenaw county's two probate judges and three circuit court judges, members of the bar, clerks and county officers. Judicial robes were presented to the newly-inducted district court judges by William F. Ager, Jr., circuit judge, followed by remarks by James R. Breakley, Jr., presiding circuit court judge. Inducted were Conlin, Edward Deake, S. J. Elden, Rodney Hutchinson and Peter Thomassen.

JV Cagers Swarm Over South Lyon

Chelsea JV cagers trampled the South Lyon Lions Friday night, 62-32, to bring their season record to 5-3.

There was little doubt that Chelsea planned to inflict a painful defeat upon the visitors and make South Lyon their third consecutive victim. By half-time the scoreboard showed Chelsea licking the Lions, 25-12.

Rebounding leaders proved to be Taylor, 14; Sweeney, 11; Hercules, 7; and Bower, 6. Offensively, Sweeney and Taylor kept the scorekeeper busy with 24 and 17 points, respectively.

The Lions managed to accumulate their 32 points while shooting at approximately 30 percent accuracy, compared with Chelsea's 34 and 65 percent floor and foul attempts accuracy.

Coach Terpstra commented that Sweeney did an excellent defensive and offensive job, boasting 11 rebounds and 24 points. Cameron, in his first starting assignment, received favorable comments from Terpstra.

Red Cross Unit Has Urgent Need for Blood

Depleted supplies of blood due to holiday decreases and the epidemic of influenza have caused the American Red Cross to appeal to healthy persons between the ages 18 to 61 to donate blood during the special clinic in Ann Arbor Friday, Jan. 10.

Red Cross officials say that hospitals in southeastern Michigan have agreed to perform only emergency operations until the blood supply is increased. At present the Ann Arbor office has only 200 pints on their shelves, compared to the 1,000 pints they attempt to stock.

Collections have dropped at least 50 percent during recent weeks and officials are counting on the clinic, to be held at the Red Cross Operation Center, 2729 Packard Rd. from 1 to 6:30 p.m., to build up supplies.

Donations will be credited to specific clubs at the donor's request. Any healthy person between 18 and 61 may donate. A doctor on the premises will inspect donors and insure safe, hygienic conditions for donors and recipients. Unmarried dependent persons between 18 and 21 must have written permission from parents.

One group who has volunteered to hold a special clinic to help relieve the shortage is the Cassidy Lake Vocational-Technical school. A clinic is scheduled for Jan. 20, to be staffed by Chelsea Red Cross volunteers. Ann Arbor (Continued on page five)

Farewell Reception Sunday To Honor Retiring Pastor

The Rev. and Mrs. Theophil W. Menzel will be honored Sunday, Jan. 12, at a farewell reception to be held at Bethel United Church of Christ on Bethel Church Rd., where the Rev. Menzel has been pastor the past 20 years. That day will be his final service at the church prior to his retirement which he had announced in May when he submitted his resignation with the provision he would remain until his successor was named.

The new pastor will be the Rev. Roman Reinick of Fort Atkinson, Wis., who will come to the church in February.

The Rev. Menzel was ordained in his home church, now Concordia United Church of Christ, in Washington, D. C., following his graduation from Yale Divinity School in 1925. He then went to Germany for two years of study and in 1927 returned to the United States and became pastor of St. Peter's Evangelical church in North Tonawanda, N. Y., remaining there five years. For eight years following that he taught a course on the history of religion at Eden Seminary, Webster Groves, Mo., and then became affiliated with Elmhurst College, Elmhurst, Ill., where he taught another eight years in the religion department before accepting the pastorate of Bethel church here in 1948.

In 1965 Bethel church observed its 125th anniversary. An educational unit was added to the church during the Rev. Menzel's (Continued on page three)



REV. T. W. MENZEL

District Court Meets in Council Chambers

Chelsea District Court Judge Patrick J. Conlin has temporarily set up shop in the council chambers of the Municipal Building while waiting for the former Chelsea State Bank building, and while waiting for the office next to the chambers to be cleared of Christmas decorations.

Until the bank building has been completed court will be held in the chambers and Conlin will be housed in the office nearby.

One additional clerk will be added to his staff, which now includes Clerks Mrs. Louis Dunlavy and Mrs. William Hitchingham and Bailiff Maurice Hoffman. Hoffman is presently being trained by Circuit Court bailiffs in Ann Arbor.

Conlin will work in conjunction with Architect Linden C. Petye to formulate plans for renovation of the court's permanent site.

The court's jurisdiction will include all county areas north and west of Ann Arbor, including Saline.

The five county District Court Judges were sworn in Jan. 2 by Circuit Court Judge John W. Conlin, father of Patrick Conlin.

Abdons Observe 67th Anniversary

Mr. and Mrs. Frank Abdon celebrated their 67th anniversary Sunday with a family gathering at their home, 447 Railroad St.

Present were their daughters Mrs. Floyd Gentner and Mrs. Burton Wright and two sons, Robert and Russell Abdon. Others enjoying the celebration were Burton Wright, Mrs. Russell Abdon and grandchildren Mr. and Mrs. Donald Wright, Mark Wright, and Teresa Abdon.

Frank Abdon came to the Chelsea area from Kentucky to work on a farm in 1900. He returned to Greenup, Ky., to marry Myrtle Craft Jan. 8, 1903. The couple have lived in the Chelsea area since their marriage.

The Chelsea Standard
Established 1874
Excellence Award By Michigan Press Association
1951-1952-1960-1964-1965-1966
Walter P. Leonard, Editor and Publisher

Published every Thursday morning at 300 North Main Street, Chelsea, Mich. 48118, and second class postage paid at Chelsea, Mich., under the Act of March 3, 1879.

ADDRESS CORRECTION REQUESTED

Service men or women, anywhere, 1 year \$3.00
In Michigan: Outside Michigan:

One Year \$3.00	One Year \$4.00
Six Months \$1.75	Six Months \$2.25
Single Copies \$.10	Single Copies \$.10

Subscription Rates (Payable in Advance)

NATIONAL NEWSPAPER National Advertising Representative
MICHIGAN NEWSPAPERS, INC.
257 Michigan Ave.
East Lansing, Mich. 48828

REPORT from LANSING

State Representative

Thomas G. Sharpe

★ SDS Influence Dwindling Significantly ...

Having sounded a needed note of alarm about the activities of the so-called Students for a Democratic Society (SDS) on several occasions in the past, I am only too happy to report several recent signs that strongly indicate the disruptive and destructive power of this "New Left" group is diminishing significantly, on our Michigan campuses in particular and throughout the nation in general.

I am only too happy, as well, to report that the basic common sense and intelligence of the very great majority of our college students is the chief reason for this development.

Some time ago, it may be remembered, the SDS held an extremely disorderly convention on the campus of Michigan State University. Representatives of the news media were subjected to both physical and verbal abuse. Workshops of a violent revolutionary nature were conducted, including even seminars on the building of bombs and Molotov cocktails.

Very recently, by way of contrast, an SDS convention on the University of Michigan campus passed comparatively unnoticed by the news media. Although the young radicals had vowed in advance to bar both the police and the "unfriendly" press, their leaders seemed very eager for any and all opportunities to get their names in the newspapers. It was obvious to reporters that the SDS members were sharply divided between "anarchists" (those opposed to organized government in general), another major group following a Chinese Communist line, and several minor factions. It was just as obvious that these young extremists were bitterly fighting among themselves, and were able to agree on practically nothing.

One major reason for their lack of unity and their confusion was

FARM CALENDAR

Jan. 9—Sheep Short Course at Manchester High School. Registration at 7 p.m., program at 7:30 p.m.

Jan. 14—Beef Short Course at the Tecumseh Grange Hall. Registration 8:30 a.m. to 9:30 a.m., program 9:30 a.m. to 3:30 p.m. Contact County Extension Office by Jan. 11 if you plan to attend.

BIGGEST CLOCK

The world's largest indoor clock is located in New York's Grand Central Station. It has a 15-foot face and the minute hand is 7 feet long.



★ MICHIGAN MIRROR ★

By Elmer E. White, Secretary, Michigan Press Association

"Flaw Found"

A major flaw has been detected in Michigan's new motor vehicle impoundment law: no one is specifically empowered to do the impounding.

The defect was discovered by State Police Lt. Matt Hrebec and announced publicly by Secretary of State James M. Hare.

Under the law, a car owned in whole or in part by a person convicted of driving with a suspended, revoked or denied license may be impounded from 30 to 120 days.

However, the act says nothing about who should do the impounding—the judge, prosecutor or police.

Hrebec said at least two attempts to apply the law, in effect since Nov. 15, have gone for naught because no one ordered the vehicles put away.

"If the courts would issue orders, we would pick the cars up," he said. "But they are reluctant to do this."

In the two cases, where the law might have been applied, Hrebec added, the owners simply picked up their cars after being released from jail.

Hrebec said a solution to the problem may be found when the new district courts are under full operation. He said the judges may take it upon themselves to do the impounding.

Hare said another answer is an amendment to the law in 1969 to spell out who shall be responsible for ordering a vehicle off the street and into temporary storage.

Capitol Improvements

Growing pains of an expanding government may result in a two-story addition to Michigan's 90-year-old state Capitol.

Rep. William A. Ryan of Detroit said a proposal for an office building to adjoin the House chambers on the west side of the statehouse is under "serious consideration."

The Democratic House leader said the structure would cost about \$250,000 and could be erected in a year, providing space-patched legislators with extra offices and hearing rooms.

Ryan said the addition plan may be the least costly and most practical answer to house space problems for the immediate future.

Alternative proposals under study include purchase or lease of the old Roosevelt Hotel; purchase of the Masonic Temple, purchase of the Piquette Building, leasing floor space in the Jack Tar Hotel.

Plans for a new state Capitol have been in the talking stage for several months, but no formal decision has been reached on when or where to build it. A handful of legislators and assorted antiquity lovers have questioned the need for the project.

In any case, Ryan said, it is certain the existing Capitol is going to be used for some years to come, even after a new statehouse is built.

Grand Jury Handcuffed

The Grand Juror investigating alleged corruption in Michigan's multi-million dollar highway construction program has called for legislation to permit full disclosure of his findings.

Judge Marvin J. Salmon of Lansing says under present law he's restricted to returning indictments in office.

He said the statute should be broadened to allow disclosure of all grand jury findings dealing with public officials and agencies.

Salmon said he was "glittering, paid near snuff, and the board decided on a pay scale that would give these workers more than Congressmen is making after four years. So, the Congressmen now is studying about raising their pay from \$30,000 to \$50,000 just to keep ahead of the spending game."

Ed was of the mind that instead of looking for more pay, those Congressmen and Cabinet members ought to pay the Government. Ed said he sees by the papers where some of them fellows that worked under President Johnson is now getting six times what they was making before they went in Government.

For instant, Ed said this fellow Jack Valenti that used to work for Johnson at \$25,000 a year now gets \$100,000 a year to tell folks what kind of moving pictures is fit to see. Job that ain't took high paying job is writing books and they had ought to pay the Government for the book material, was Ed's thinking.

Mister Editor, the fellows was general agreed with Ed's resolution to cut deadwood out of the Government tree, and they was full agreed with Clem Webster to adjourn afore the feller that runs the store locked up for the night.

Yours truly,
Uncle Lew.

Howell
Livestock Auction
Every Monday at 2 p.m.

Southeastern Michigan's largest and most complete Auction Market.

For Trucking Information
Call Howell 546-2470

JUST REMINISCING

Items Taken from the Files of The Chelsea Standard

4 Years Ago ...

Thursday, Dec. 31, 1964

Adult education classes in agriculture are being held again this year, as announced by Gary Jackson, Chelsea agriculture teacher.

The Rev. E. E. Jones of Jackson will be at the First Assembly of God church on Thursday, Dec. 31 at 8:30 p.m. to show and narrate films of the Holy Land, Egypt, Rome, and the Dead Sea. A film of war damage and concentration camps of post-war Germany also will be shown.

Mr. and Mrs. Clarence N. Preston were honored on the occasion of their 50th wedding anniversary with an open house from 2 to 5 p.m. Sunday at the Ann Arbor VFW home. Mr. and Mrs. Preston were married Dec. 23, 1914 at the home of the bride's parents in Hartland township. Mrs. Preston, 38, is the former Margaret Wilson. The late Rev. G. A. Beacock performed the wedding ceremony.

Nancy Fairbrother left Sunday, with a group of students, from the U. of M. to attend the Rose Bowl game New Year's day in Pasadena, Calif.

CAP, Inc. will touch off the drive for \$200,000 in funds to build a new factory and enter into another phase of the business of employing handicapped persons at a banquet next Wednesday. CAP is located at 2 Enterprise Dr. in Selo township. Donald Bacon of Central Fibre Products in Chelsea is one of the 35 board members.

The 38 candidates for Board of Trustees running in the Jan. 15 Community College special election represent a varied cross section of businesses and professions. Mr. Florence Mayer of Chelsea, one of the candidates, is a former teacher and businesswoman.

14 Years Ago ...

Thursday, Dec. 30, 1954

Representatives of all units of Mercy School of Nursing at a meeting Dec. 14, elected Shirley Ann Kolb to serve on the executive board of directors of the school. Miss Kolb is a daughter of Mr. and Mrs. William G. Kolb.

David E. Bertke, United States Naval Academy midshipman, arrived home Sunday to spend a Christmas leave with his parents, Mr. and Mrs. Roy Bertke and his sisters, Barbara and Marjorie.

Joe Ann Osterle, six-year-old daughter of Mr. and Mrs. Ray Osterle, 110 W. Middle St., was the winner of a pedal pusher fire engine which was this year's gift to a child of the community from businessmen.

The Norman Perkins family enjoyed a lemon pie last week made with a large lemon, almost as large as a grapefruit, grown on their own lemon tree. Mrs. Perkins brought the lemon to the office of The Standard, and said it weighed a little more than, one pound on her home scale.

Kiwanis Sixth District Lieutenant-Governor A. D. Mayer installed Charles Cameron as president of the Chelsea Kiwanis club at the regular dinner meeting in the Methodist church social center Monday. Also installed were James Liebeck, treasurer; Paul F. Niehaus, secretary; John Alber, second vice-president; and Paul Mann, first vice-president.

Sheriff-Elect Erwin Klager, who

24 Years Ago ...

Thursday, Jan. 4, 1944

After several weeks of preliminary planning, the Chelsea Kiwanis club announced a drive to raise funds for the installation of floodlights at the public school athletic field. R. A. McLaughlin has been named general chairman of the drive, assisted by Lt. Geo. F. Parish and H. T. Moore.

Among the county registrants who reported at the Detroit induction center Tuesday was Richard Harold Bauer, son of Mr. and Mrs. Edwin Bauer of Lyndon township.

Robert L. Barry, youngest son of Mrs. Guy Murphy, enlisted in the Navy Dec. 18, his 17th birthday. He left for Great Lakes, Ill., on Dec. 22 to start training.

The executive committee of the local council of Veterans Affairs—W. G. Kolb, chairman, Albert Johnson and Florence Mayer—have been steadily working on the organization of the Council's sub-committees and a Veterans' Counseling Center for the Village of Chelsea and vicinity.

Mrs. Andy Policht has received word that her husband, who is on

active duty with the Navy in the Pacific, has been promoted to W-3C.

Pvt. Waldo C. Horning arrived on Thursday to spend a 30-day furlough with his parents, Mr. and Mrs. Chris Horning. Pvt. Horning has spent the past three years in the South Pacific. He participated in the invasion of Gilbert Islands and has seen much action during service.

Chelsea exceeded its total quota of 6th War Loan purchases by \$45,208.

The farm home of Mr. and Mrs. Floyd D. Rowe on Bush Rd., Sylvan township with its entire contents, was completely destroyed by fire Monday night. Mr. and Mrs. Rowe had just retired when they thought they heard a rat rustling among some papers. When Rowe investigated, he found the basement in flames.

Fire of undetermined origin destroyed the farm residence of Mr. and Mrs. Elsie McDaid on Deckert Rd. about 2 o'clock Tuesday afternoon. Theodore Quigley, a neighbor, discovered the fire as he was driving to town.

Lois Elsie celebrated her 11th birthday on New Year's day by entertaining six girls at a supper and theater party. The guests were her classmates in the sixth grade at St. Mary's parochial school.

34 Years Ago ... Thursday, Jan. 3, 1934

The Chelsea Boxing club, under training of Morry Hoffman, will be well represented during the Golden Gloves Tournaments held in the various cities of this district. Boys-in-training are John Dvorak, 112 pounds; Eddie Daniels, 135 pounds; Ralph Holbrook, 155 pounds; Bob Schultz, 175 pounds; Leon Rameris, 147; Fidel Fernandez, 148; Andy Garza, 121; Jim Brown, 127; and Ray Schmanski, 100.

The following pupils in St. Paul's Sunday school will receive awards for perfect attendance: Philip Novess, Paul Elsie, Harold Harrison, Donald Adams, Willis Mayer, Earl Grieb, David Streiter.

(Continued on page five)

Friday Only
Dinners 6:00-10:00STEAKS
CHICKEN
SEA FOOD

DANCING

EVERY FRIDAY AND SATURDAY NIGHT
TO

THE CORALATIONS

No Cover Charge at 9:00

LARGEST DANCE FLOOR IN THE AREA

We Cater Parties and Banquets

11980 MCGREGOR RD. (Portage Lake) 426-8183

MONEY TROUBLE?
ONE PLACE TO PAY!
Credit Management Service
662-2565
342 Municipal Court Bldg.
Ann Arbor
State Licensed and Bonded

BRAG ENTERPRISES
MODERNIZATION DIV.

— SPECIALISTS IN —

- ★ ALUMINUM SIDING
- ★ ROOM ADDITIONS
- ★ MODERN BATHS
- ★ WET & WARM AIR HEATING
- ★ KITCHENS
- ★ RECREATION ROOMS
- ★ GUTTERING
- ★ ROOFING
- ★ BLOWN INSULATION
- ★ FIREPLACES

CALL 426-4798 FOR FREE ESTIMATES

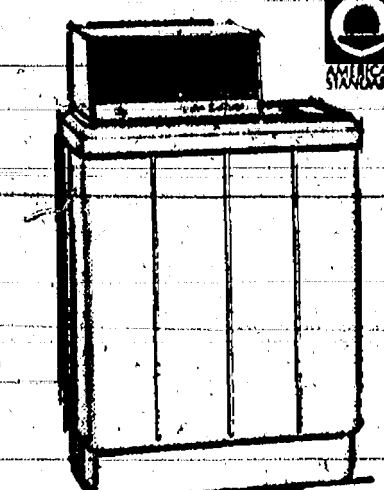
SPECIAL INTRODUCTORY OFFER:

Hands tied by
STRINGY
HAIR?

Shampoo it back to a soft, manageable crown of beauty with soft water—from this American-Standard water softener!

- fully automatic
- beautiful, sturdy cabinet
- only one moving part
- completely non-corrosive

Call today for free estimates
• standard inline installation

AMERICAN-STANDARD
water softeners

only \$299.00 installed

easy terms, low cost loans
quantities for P.O.

Uncle Lew from Lima Says:

DEAR MISTER EDITOR:

Seeing as how we are getting a Republican Administration, Ed Doolittle that carries a picture of Abe Lincoln in the back of his watch, was extra careful in wording-up his New Year resolutions. Saturday night during the session at the country store, Ed brought up his list of promises to himself and he told the fellows he was running late with 'em on account of the change in the Government outlook.

Usual, Mister Editor, when the Democrats was in charge, Ed's resolutions sounded more like announcing the end of the world. One year I recollect, Zeke Grubb's preacher was in the store when Ed got wound up on his promises and the preacher said Ed was a profit of doom. Saturday night, Ed called for a slowdown in Government build-up everywhere but efficiency in the post office and they was a few signs of hope scattered in his list.

The first resolution that Ed says he is sending along to President Nixon is for a cutback in them agencies that tell the President and the Congress how to spend our money. Ed had saw this report by Congressman Goodling of Pennsylvania that had looked up the number of advising boards started in the last four years. They is 150 more than they was in 1965, reported Ed, and they is costing taxpayers \$1 billion a year. Ed said he would advise as a advising board without pay to advise Mr. Nixon to do away with most of them paid ones.

Ed said it was his opinion that them advising boards natural come up with the advise they was named to give in the first place. For instant, one advising board studied wages for Government workers, and Ed said it didn't surprise him none when this board found out that high level workers wasn't

getting paid near snuff, and the board decided on a pay scale that would give these workers more than Congressmen is making after four years. So, the Congressmen now is studying about raising their pay from \$30,000 to \$50,000 just to keep ahead of the spending game.

Ed was of the mind that instead of looking for more pay, those Congressmen and Cabinet members ought to pay the Government. Ed said he sees by the papers where some of them fellows that worked under President Johnson is now getting six times what they was making before they went in Government.

For instant, Ed said this fellow Jack Valenti that used to work for Johnson at \$25,000 a year now gets \$100,000 a year to tell folks what kind of moving pictures is fit to see. Job that ain't took high paying job is writing books and they had ought to pay the Government for the book material, was Ed's thinking.

Mister Editor, the fellows was general agreed with Ed's resolution to cut deadwood out of the Government tree, and they was full agreed with Clem Webster to adjourn afore the feller that runs the store locked up for the night.

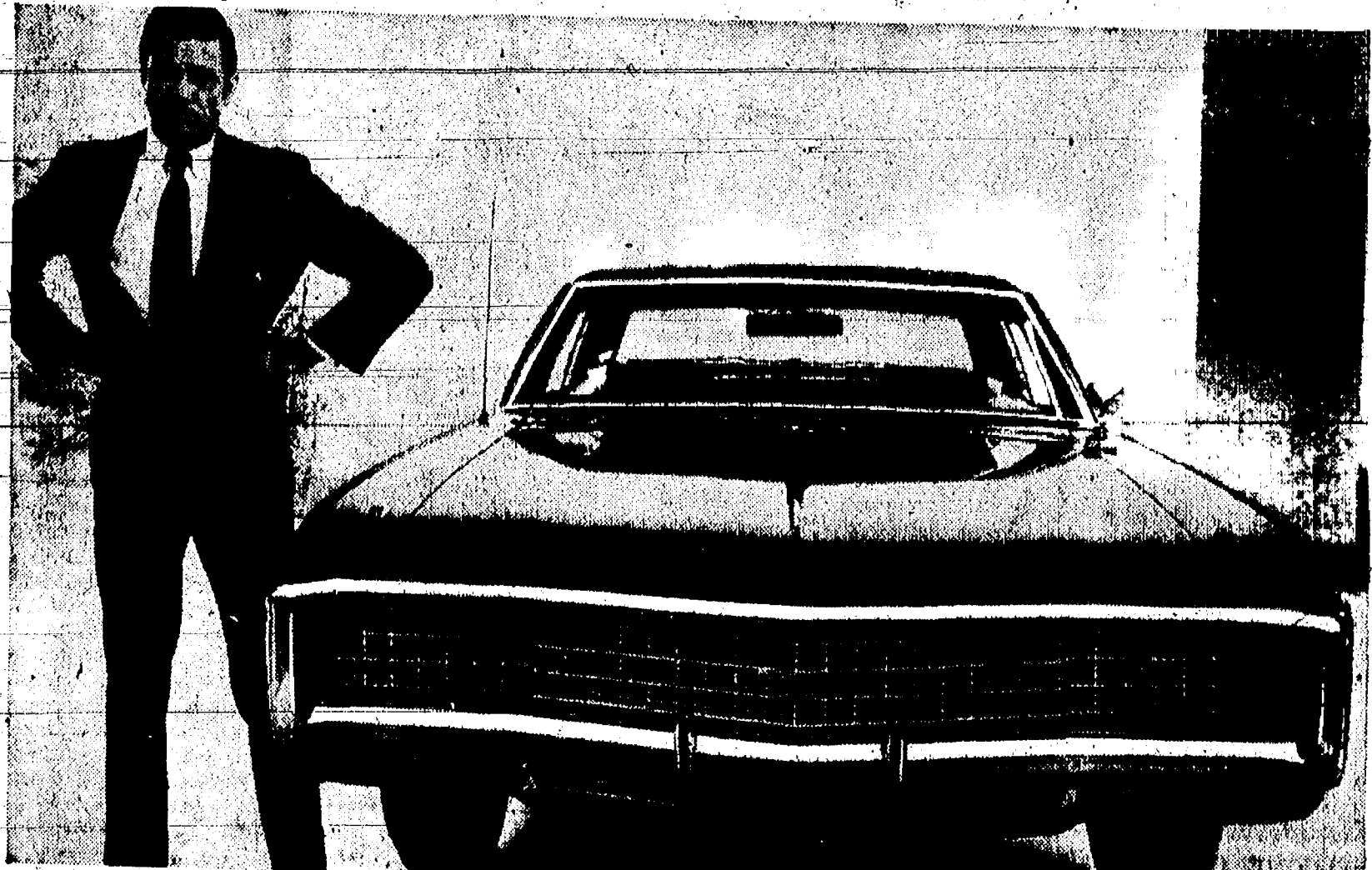
Yours truly,
Uncle Lew.

Howell
Livestock Auction
Every Monday at 2 p.m.

Southeastern Michigan's largest and most complete Auction Market.

For Trucking Information
Call Howell 546-2470

1969 Caprice Coupe



No clowns. No hoopla. No funny hats.

This is an event for the serious car buyer. The man who has X number of dollars to spend and is determined to get his money's worth and maybe more.

Come to a Chevrolet Showroom during our Value Showdown. Ask the man to show you, on paper, how you can order most any

1969 Chevrolet with a big V8 and automatic transmission for less than you could last year.

Come in and spend some time. Dig, probe, ask questions, take notes. You owe it to yourself to be thorough. Go for a drive.

Get a free sample of Chevrolet's luxurious full-cushioned ride. Shut the windows and see how fresh the interior stays, thanks to Astro

Ventilation. Feel the kick of the biggest standard V8 in our field.

Then go down the street or across town and see how we stack up against Those Other Cars.

We think you'll wind up with a Chevy. More people do, you know.

Putting you first, keeps us first.

The Chevrolet Value Showdown is on.



MARCH OF DIMES VOLUNTEERS met Tracy Greenwood, 5, victim of birth defects known as open spine and water on the brain. Tracy, the 1969 March of Dimes National Poster Child, recently attended a National Foundation program orientation meeting in Chicago. Others attending included, from left, Mrs. Charles Koenn, Chelsea; Mrs. Michael Braun, Milan; and Mrs. James Keller, Saline. The National Foundation, financed by the annual January March of Dimes campaign, is the largest single national source of private support for basic and clinical research in the field of birth defects. Chelsea's annual March of Dimes campaign, operated this year by 14 members of the Jaycee Auxiliary and under chairmanship of Mrs. Gerald Blough, has mailed information to each household in the village. Mailed donations plus contributions during the Mothers' March Jan. 30 will be included in Chelsea's donation to the national movement. In successful years, Chelsea has donated as much as \$2,500 to fight the birth defects that afflict 250,000 U. S. babies each year. Approximately 18,000 of these children die during their first year of life. Approximately 500,000 fetal deaths directly result from birth defects each year.

Recreation Dept. Classes Starting Next Week

(Continued from page one)

Judo courses for boys, groups I and II, will be 7:30-8:15 p.m. Mondays at the high school gym. Instructors will be Doug Matz and Tom Balistrere. Fee is \$3 for the 15-week course.

Judo for men, group III, 8:30-9:15 p.m. Mondays at the gym. Instructor is Doug Matz. Fee is \$3 for the 15-week course.

Judo for girls, group II, will be 7:30-8:15 p.m. Thursdays at the gym. Instructors are Doug Matz and Tom Balistrere. Fee is \$3 for the 15-week course.

Judo for women, group III, will be 8:30-9:15 p.m. Thursdays at the gym. Instructor is Doug Matz. Fee is \$3 for the 15-week course.

Judo groups are: Group I, ages 10-13; Group II, ages 14-18; and Group III, 19-adult.

Men's Recreation Night will be 8:30 p.m. Thursdays at the high school gym. Volleyball leagues will include a weight and conditioning program. Co-ordinator for the program will be Tom Balistrere. Fee is \$2 for the 15-week program.

Boys basketball, group I, for fourth through sixth graders and group II for seventh and eighth graders, will be 10-12 noon Saturdays at the high school gym. Shooting, passing and defense fundamentals will be taught in drills and games with 8-foot baskets. Instructors will be Howard Treado and Arden Musbach. Fee will be \$2 for the 15-week program.

Games and gymnastics for girls, age 10 through senior high school, will be 2-4 p.m. Saturdays in the high school gym. Instructor will be Sherri Navin supervised by Mrs. Tom Balistrere. Fee is \$1 for the 15-week course.

Indoor tennis will be held Mondays and Wednesdays from 7 to 9 p.m. Dr. Fisher and John Thompson will be the instructors.

Beginning April 29 will be first aid instruction, 7:30-8:30 p.m. Mondays in room 113 of Chelsea High school. Instructor will be Tom Balistrere. Fee will be \$1 for the five-week course.

Movies will be held on convenient dates when there is no conflict with other activities.

School Board Briefs

At a Board of Education meeting Jan. 6, present were Irwin Lancaster Powers, Taylor, Lewis, Koenn and Hopkins, Superintendent Cameron, Business Manager Willis, Principals Benedict, Wojcik, and Conklin and Assistant Principal Galbraith.

The meeting was called to order by President Irwin at 8 p.m. Minutes of the Dec. 16 meeting were approved as read.

A motion by Koenn, supported by Powers, to pay general fund bills of \$8,152.35 received all ayes.

A motion by Lewis, supported by Koenn, to return the \$1,500 good faith check which the village of Chelsea deposited on the old Junior High building received ayes from Lancaster, Taylor, Lewis, Koenn, Hopkins and Irwin; nay from Powers.

Motion by Lewis, supported by Taylor, that in preparing the 1969-70 operating budget, money be put into the budget for demolition of the old Junior High. All ayes.

Motion by Lancaster, supported by Taylor, to adopt the State Department of Education criterion for free or reduced price hot lunches for persons qualifying on the basis of family income. All ayes.

Meeting was adjourned at 10 p.m.

Farm Bureau Membership Drive At 83% of Goal

The annual Washtenaw County Farm Bureau membership campaign had a kick-off roll call meeting Monday with noon luncheon for 30 members.

Principal speaker was Larry Ewing, head of field services from Lansing. Other attending representatives were Don Ruhlig, regional representative; Armin Weidmayer, Washtenaw county chairman; David Rowe, insurance representative; and Ed Coy, roll call chairman.

Also attending were six township captains with their workers. Captains present were Robert Tefft, David Wolfgang, Maynard Kidd, Paul Geiger and Jay Hopkins.

The county stands at approximately 83 percent of the 1,701 goal at the opening of the annual campaign. New members may sign up at any time, but renewals must register by Jan. 15 if they wish to receive or continue the auto and Blue Cross insurance, with a free accidental death and dismemberment provision.

Charles Slane Home After Duty in Germany

Charles Slane, son of Mr. and Mrs. Robert L. Slane of 11213 Chelsea-Dexter Rd., is home on furlough from the U. S. Army. Charles attended Chelsea High school until enlisting Oct. 31, 1967. He received basic training at Ft. Knox, Ky., and was stationed in Germany as a UHF repairman until returning home Dec. 24.

During his tour of duty in Germany Charles re-enlisted and will be stationed near Saigon as a helicopter gunner after returning to service Jan. 10.



You and your business could be wiped out... Get **Auto-Owners Multi-Peril Protection**. See your A-O Man.

A. D. MAYER AGENCY, INC.

"Your Protection Is Our Business" 115 Park St. Chelsea Phone 479-5061

Auto-Owners INSURANCE COMPANY

Bethel Pastor Retiring...

(Continued from page one)

pastorate and the parsonage has been extensively remodeled.

Mrs. Menzel has been active in the music department of the church. She has served as choir director for the three choirs—children's, youth and adults—throughout the years she has been here and for the past 15 years has also served as church organist.

The Rev. Menzel's preparation for his life work began with graduation from Elmhurst College (which then was a junior college) and earning his AB degree at George Washington University in Washington, D. C. He followed that with two years of study at Eden Seminary, enrollment at Washington University in St. Louis, Mo., where he earned a master's degree in sociology, and his studies at Yale University and in Germany.

The Rev. Menzel is the author of the 1969 Lenten booklet, "Fellowship of Prayer" which has a circulation of approximately one-

half million. It is used not only in the United States but in the United Church of Canada, by the National Council of Churches, the UWC and YMCA and other.

For 30 years he has contributed to publication of Sunday school studies for teachers and is co-editor of the Daily Devotional Guide for the United Church of Christ.

The Menzels plan to attend the wedding of their son, Paul, later this month at Nashville, Tenn., where he is a student at Vanderbilt University in preparation for eventual college teaching. The Menzels also plan to do some leisurely traveling.

In addition to the son, their family includes two daughters, Mrs. Raymond Whitehead (Rhea) wife of the Rev. Whitehead stationed at Hong Kong as a missionary and teacher, and Mrs. James Helm (Anne) of Oberlin, O., where her husband teaches at Oberlin College. They also have five grandchildren, three granddaughters in-

BIBLE VERSE TO STUDY

"Bear ye one another's burdens, and so fulfill the law of Christ."

1. Who was the author of the above advice?
2. To whom was he writing at the time?
3. How can one obey the command?
4. Where may these words be found?

(Answers on page five)

Hong Kong and two grandsons at Oberlin.

Everyone in the community is invited to attend the farewell reception for the Menzels Jan. 12. Special guests will be conference personnel and pastors and congregations of the Ann Arbor-Jackson Association of the United Church of Christ. Reception hours are 8 to 5 p.m.

The Menzels are now living at 310 Brierwood, Ann Arbor.

Cast Rehearsing...

(Continued from page one)

tion, which the River City librarian took figures out. The musical ends on a happy note as everyone rushed on stage to sing together.

Critics praised "Music Man" for its warm humor and gentle satire on small town ways.

Leading roles in the musical will be: Charlie Cowell, Neal Pring; Harold Hill, Steve Diedrick; May: Shinn, Ben Bower; Ewart Dunlop, Mike Bassett; Oliver Hix, Randy Seitz; Jacey Squires, Ken Pfeiffer; Olin Britt, Tim Orthing; Marcelus Washburn, Ron Wengren; Tommy Dillas, Larry Blackwell.

The cast continues with, Marian Paroo, Chris Alber; Mrs. Paroo, Denise Salyer; Amariyllis, Susie Leuch; Wintrop Paroo, Matt Merkel; Eulaline McKecknie Shinn, Pat Gilbert; Zaneeta Shinn, Karen Leach; Alma Hix, Laurie Lancaster; Maud Dunlop, Chris Barnes; Ethel Toffelmier, Judy Sanderson; Mrs. Squires, Doreen Kuhl.

The weather is still the best mystery of all time.

CLEARANCE

1/3 OFF

on all Men's and Boys' WINTER JACKETS FLANNEL SHIRTS FLANNEL PAJAMAS ROBES

Long Sleeve Turtle Neck SWEATER SHIRTS

CARHART LINED JACKETS and BIB OVERALLS 1/4 OFF

SNO SUITS - SNO PANTS PRAM SUITS

Infants' and Girls' Headwear

1/3 OFF

YARD GOODS SALE

DUCKERY, value \$1.49 yd. SALE, per yd. 98¢

CANVAS PRINT, value \$1.49 yd. SALE, per yd. 98¢

PETTI POINT, value \$1.49 yd. SALE, per yd. 98¢

BON JUR CLOTH, per yd. 77¢

ALL COTTON & ACETATE LINING MATERIAL, yd. 62¢

BONDED MATERIALS A real bargain, per yd. \$2.66

SAVE - Now Is the Time To Buy DIAPERS!

IDEAL BIRDSEYE, per doz. \$1.87

IDEAL 20x40 GAUZE, per doz. \$2.97

IDEAL PREFOLD 6 for \$1.97

LADIES' and GIRLS' SKI JACKETS - SLACKS CAR COATS

Wool, Corduroy, Winter Knits.

1/3 OFF

Ladies' and Girls' SKIRTS

Wool, Corduroy, Winter Knits.

SAVE at 1/3 OFF

LADIES' ALL-WEATHER COATS

Zip-Out Lining.

SALE at \$13.77

LADIES' SWEATERS - BLOUSES

DRESSES

WINTER SUITS

SLAX SETS

1/3 OFF

GIRL' DRESSES and SKIRTS

1/3 OFF

Ladies' Flannel Pajamas 1/4 OFF

Ladies' and Girls' ROBES

Quilts Fleece Flannel

1/3 OFF

JANUARY WHITE SALE

SPRING MAID SHEETS AND CASES

MUSLIN

81x108 SALE \$2.67

Fitted Full SALE \$2.67

81x99 SALE \$2.47

72x108 SALE \$2.47

Fitted Twin SALE \$2.47

PILLOW CASES

Per Pair \$1.27

MATTRESS PADS

Full Bed Size

Sale at \$3.17

Twin Bed Size

Sale at \$2.37

PERCALE

81x108 SALE \$3.17

Fitted Full SALE \$3.17

72x108 SALE \$2.87

Fitted Twin SALE \$2.87

PILLOW CASES

Per Pair \$1.57

BED PILLOWS

Greatly Reduced

Save Now on

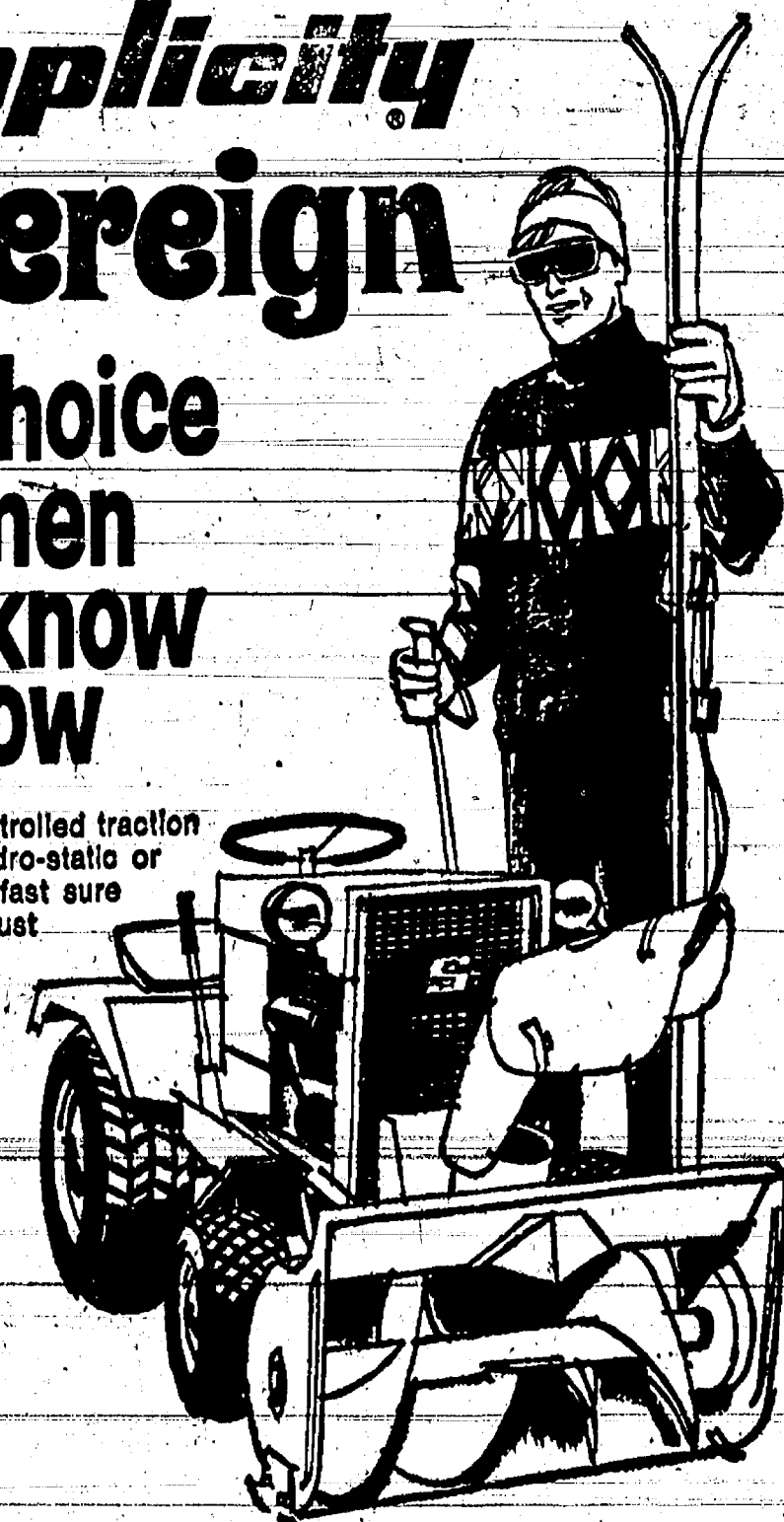
DISH TOWELS

SHOP **DANCER'S** NOW AND SAVE!

Simplicity Sovereign

the choice of men who know snow

Big 12 hp engine, controlled traction differential, either Hydro-static or Vari-matic drive, and fast sure electric starting are just some of the features behind this the 42" snow thrower on this Simplicity Sovereign tractor. See this work horse or the 10 hp Landlord, with blades or snow throwers. They make short work of the big jobs all year 'round.



CHELSEA HARDWARE 110 South Main Street Phone GR 9-6311

Ads
Taken
Till 5 p.m.
Tuesday

IT'S EASY TO
BUY-SELL-RENT-
HIRE & FIND WITH

WANT ADS

Just
Call
GR 5-3441

WANT ADS

The Chelsea Standard

WANT AD RATES

PAID IN ADVANCE—All regular advertisements, 50 cents for 25 words or less, each insertion. Count each figure as a word. For more than 25 words add 2 cents per word for each insertion. "Blind" ads or box number ads, 50c extra per insertion.

CHARGE RATES—Same as cash in advance, with 15 cents bookkeeping charge if not paid before 5 p.m. Tuesday preceding publication. Pay in advance, sent in cash or stamps and save 15 cents.

DISPLAY WANT ADS—Rate, \$1.10 per column inch, single column width only, 8-point and 14-point light type. CARDS OF THANKS or MEMORIALS—Single paragraph style, \$1.00 per insertion for 50 words or less; 2 cents per word beyond 50 words. Minimum, 1 inch.

COPY DEADLINE—5 p.m. Tuesday week of publication.

CAR RENTAL by the day, week, end, week or month. Full insurance coverage, low rates. Call Lyle Chriswell at Palmer Motor Sales, GR 5-3271.

REAL ESTATE Need Listings

Lake Property - Farms Vacant Parcels

LOCAL SALESMAN

H. T. HAYNES

13835 Sauer Drive, North Lake
Phone 475-7157
EDWARDS REAL ESTATE
AND INSURANCE
Phone 482-8970

OUT WITH THE OLD, in with the new—furniture, that is, during Merkel's great clearance. Big Savings now thru Jan. 18.

SORTEN THE NOISE, make it warmer, give it one fifth as much attention by carpeting your floor. See the latest styles from the best manufacturers at Merkel Brothers. Five credit plans.

SIMPLICITY SNOW BLOWER for sale, 6-h.p., 2-speed. Phone 479-4451.

FOR SALE—Cutting and welding torches, complete with gauges, \$55, or best offer. Call evenings, 475-8258.

REAL ESTATE

Do you want a home or cottage on a lake, a farm or country home, a building site? We have them.

Eugene R. Young, Broker

Phone 878-3702
Marj Allen, 878-3824
Virginia Visel, 428-2224

JOHN WELSH was appointed "SPECIAL AGENT" for Metropolitan Insurance in November, 1968. Over 30 years experience. Telephone 475-4431.

CASH FOR HOUSES, lots, farms or any property. Art Daniels Realty, 7030 Dexter-Pinckney Rd. 428-4606.

FOR SALE—King throne in good condition. Ph. 479-3451.

FURNITURE SALE

Entire Stock Reduced
10% to 40% Save Now
Merkel Bros.

CLEAN rugs, like new, as easy to do with Blue Lustre. Rent electric shampooer \$1. Dancer's Chelsea.

Lessons for All Band Instruments

Now available at

Al Nalli Music

Chelsea
475-7215

WANT ADS

KNAPP SHOES

For Cushion Comfort

At Factory to You Savings

For Appointment Call

Robert Robbins

475-7282

Authorized Representative

TRAVEL TRAILERS—18 ft. and up, 10x56 ft. trailers. John R. Jones Trailer Sales, Gregory, Mich. Phone 488-2655.

SEE US for transit mixed concrete. Klumpp Bros. Gravel Co. Phone Chelsea 479-2712, 4950 Love, and Rd., Grass Lake, Mich. 401

FURNITURE SALE

Entire Stock Reduced
10% to 40% Save Now

Merkel Bros.

POLE BUILDINGS

We have received from our suppliers that the price of steel and treated lumber will be increased January 1st. We will be forced to increase our prices no later than January 15th. However, all buildings contracted for by that date will be erected at present prices. For the best building at a fair price call collect.

Sharon Valley Builders

16500 Washburne Rd.
Grass Lake, Mich.
Phone (517) 622-8258

RUBBISH HAULING

Write

BILL MOUGH

19711 Doyle Rd., Gregory, Mich.
Phone Gregory 488-2852

OUT WITH THE OLD, in with the new—furniture, that is, during Merkel's great clearance. Big Savings now thru Jan. 18.

CUSTOM SPRAYING—Voco interior white farm painting. J. L. Bird, phone 517-547-5447, Manitou Beach.

For your household and cosmetic needs call your

Fuller Brush Dealer

475-7180
426-8319

CLOGGED

SEWER

Reynolds Sewer

Service

We Clean Sewers Without Digging
Drains Cleaned Electrically
FREE ESTIMATES
2-YEAR GUARANTEE
Phone Ann Arbor NO 2-5277
Sewer Cleaning Is Our Business—
Not a Side Line

VACUUM CLEANERS—Electrolux authorized sales and service. James Cox, Manchester, Ph. 428-2831 or 428-8321.

PIANO TUNING, Chelsea and area. Facilities for reconditioning and rebuilding. Used piano sales; reconditioned grands and verticals. E. Eklund, 424-4429.

BRIGHTEN YOUR KITCHEN and make cleaning easier with a new Armstrong Castilian vinyl floor. A 6x12 completely installed for \$85.00. See this new 12 ft. material at Merkel's.

All Insurance Needs

In the convenience of your own home — or mine.

N. H. Miles, Allstate

Call GR 5-8334 after 6 p.m.

WANT ADS

PATRICK & COOK—Free estimates on aluminum siding, gutters, awnings, additions, roofing and general maintenance. Porch railing, aluminum storm windows and doors installed. Please call Chelsea 478-4583.

FACTORY HELP WANTED—All categories. Apply in person. Fortune Industries, 11770 Dexter-Chelsea Rd., Chelsea.

FOR RENT—Country setting beautiful new duplex, furnished, one bedroom, dining, kitchen, living room, tile bath. Utility sliding glass doors to lovely patio. No children or pets. Ph. 426-8188.

A-1 USED CARS

'67 Mercury Wagon

'68 Fairlane 500 XL

'68 Galaxie 500 Convertible

'68 Thunderbird Hard Top

'65 Galaxie 500 4-door

'65 Mercury 2-door

'65 Ford 4-door

'64 Buick Convertible

'64 Ford 4-Dr. Hard Top

'63 Ford 6-Pass. Wagon

'63 Galaxie 500 2-door Hard Top

'63 Ford 2-door

'63 Falcon Wagon

'60 Ford 2-door

Trucks

'67 Chev. 1/2 Ton

'65 GMC Handivan

'60 Jeep with snow plow

'50 Ford Stake

'46 Chev Stake

BEST

SELECTION

IN TOWN

PALMER FORD

Phone GR 5-3286

Open Mon., Wed. & Fri. Till 9:00

YOUR

OFFICE

SKILLS

not your age . . .

are IMPORTANT

at

MANPOWER

Maybe it's ten . . . fifteen . . . even twenty years since you left the business world to raise your family. And now that they've grown, maybe you'd like to return to the stimulation of a satisfying job. There is such a job for you at Manpower where the emphasis is on how your skills are, not how long you've had them. Come in and let us test them. If you can type, take dictation or run an office machine, we have a job for you . . . on the days you choose.

MANPOWER

111 Miller, Ann Arbor 665-9157
Equal Opportunity Employer
Reg. T.M.

WANTED—Farm Bureau members. Contact Ed Coy at 428-8255, or County Office, 663-3141.

LOST—Female Alaskan Husky, black, silver gray and white. Reward. Answers to name of Crescent. Call Frank White, 475-2896.

OUT WITH THE OLD, in with the new—furniture, that is, during Merkel's great clearance. Big Savings now thru Jan. 18.

FOR SALE

1-ACRE building lot, well-located, in Sharon Township. Terms available.

2 LOTS on Spring Lake.

MODERN 4-bedroom Chelsea home, 2-car garage. Excellent condition. NO RENTALS

SOLD OUT OF FARMS

Buyers waiting.

R. D. Miller
Real Estate Broker
GR 5-5892

15775 Cavanaugh Lake Rd.
Chelsea, Mich.

Post Office Box 381

List your property with Miller—fast, efficient service. Call Evelyn Abdon at 475-7551 after 5 p.m.

FURNITURE SALE

Entire Stock Reduced
10% to 40% Save Now

Merkel Bros.

TAKE soil away the Blue Lustre way from carpets and upholstery. Rent electric shampooer \$1. Dancer's Chelsea.

HELLER

ELECTRIC

Licensed Electrical Contractor

ALL TYPES OF WIRING

(No job too big or too small)

DAY OR NIGHT

CALL GR 9-3816

20640 Sager Rd., Chelsea



"I saved \$35 shopping in the Standard Want Ads—and we sure can use the money!"

FOR REAL DOLLAR SAVINGS. Be sure and see us before you buy any new or used car. Palmer Motor Sales, Inc. Your Ford Dealer for over 50 years.

OUT WITH THE OLD, in with the new—furniture, that is, during Merkel's great clearance. Big Savings now thru Jan. 18.

Real Estate

Listings Wanted
FARMS, HOMES and LAKE PROPERTY
GREAT LAKES
REAL ESTATE
Ph. 769-5630, Ann Arbor
Ph. 428-8120, Manchester

HOUSES FOR RENT—Free rental service to landlords. Reliable tenants waiting. Art Daniels Realty, 7030 Dexter-Pinckney Rd., HA 6-4096.

OUT WITH THE OLD, in with the new—furniture, that is, during Merkel's great clearance. Big Savings now thru Jan. 18.

APTS. FOR RENT—Second-floor apt., furnished, for 2 persons; also very nice first-floor apt., with full basement, heat furnished, 479-5441 after 6 p.m. or all day weekdays.

WANTED TO BUY, spruce trees. Call 475-8120.

REAL ESTATE
FOR SALE
4-BEDROOM HOME, 2 1/2 baths, large basement, gas heat. Large lot. 2-car garage.

4-BEDROOM HOME with basement, gas heat. On large lot. 2-car garage.

1 ACRE with 3-bedroom home. Modern kitchen, 1 1/2 bath, 2-car garage. Well landscaped. Aluminum siding. On black-top.

3 ACRES with 4-bedroom modern home. Needs some repairs and decorating. On black-top.

RANCH TYPE 3-bedroom home, 1 1/2 car garage. In Chelsea.

VACANT LAND
10 ACRES joining Village of Chelsea.

32 ACRES on Old US-12 west, joining Village of Sylvan.

Kern Real Estate
Phone 475-8563

CAR & TRUCK LEASING. For details see Lyle Chriswell at Palmer Motor Sales, GR 5-3271.

FURNITURE SALE
Entire Stock Reduced
10% to 40% Save Now
Merkel Bros.

WANTED TO BUY—Balsam and Douglas fir for cut Christmas trees. Call 475-8120.

FURNISHED 2-bedroom apt. with utilities. May be seen at 562 McKinley St.

FURNITURE SALE
Entire Stock Reduced
10% to 40% Save Now
Merkel Bros.

MEN'S
Clothing Sale
Sport Coats
Suits - Dress Slacks
20% Off
During January
Foster's Men's Wear

FOR SALE—Zenith console TV, black and white, like new. \$75. Ph. 479-4660.

FOR SALE—1950 4-wheel drive Chev. New engine, 4-ton PTO winch. Ph. 470-1473.

TREE REMOVAL DONE—Also buyers of standing timber and walnut trees. Chelsea 475-7691.

Headquarters for Ball Band
Rubber Footwear
Foster's Men's Wear

FOR SALE—Acreage on W. Old US-12, Chelsea. Call 475-7569 weekdays.

Rarin' To Go . . .
Your battery, that is, after our dependable recharging!

We'll put your old battery back into "championship form," ready to give you many months of peppy starts; dependable service.

PURE OIL PRODUCTS
JIM'S PURE SERVICE
Tires - Batteries - Tune-Ups - Brake Service - Wheel Alignment
PHONE 479-3541

WANT ADS

FOR SALE—One used 1968 Ski-Doo snowmobile, perfect condition. District Sales and Service, 18100 M-52, Chelsea. Phone 475-8120.

AIRLESS SPRAY PAINTING—Interior and exterior. Pinckney, 878-3246.

SOLID VINYL or aluminum siding. Aluminum gutter systems, storm windows & doors. Awnings. Call for free estimate including custom application. New or old homes. Curtail home-maintenance cost. Dave Edwards 5450 Conway Rd., Chelsea. Ph. 479-4381 9 to 9 p.m.

FURNITURE SALE
Entire Stock Reduced
10% to 40% Save Now
Merkel Bros.

Headquarters for Ball Band
Rubber Footwear

Foster's Men's Wear

WANT TO RENT—Young man requires room or apartment from Jan. 20 on, with garage if possible. Call Mr. Lake 761-4063, evenings.

HAMMOND ORGAN teachers wanted to teach in their own homes. Call Grinnell Brothers, Ann Arbor, 662-5667.

THINKING ABOUT buying a chain saw? Stop out for a free demonstration of the powerful, light-weight Pioneer. District Sales and Service, 18100 M-52, Chelsea. 475-8120.

WANTED—Steady employment—driving ice cream truck and part-time plant work. Fine working conditions, good opportunity for veteran or man looking for change. Write Box SE 5, care of Chelsea Standard.

FOR SALE OR TRADE—Two-year-old Guernsey heifer, call 475-8120.

G. G. HOPPER
Building Contractors
Phone GR 5-5581
Gregory 498-2148

Custom Slaughtering
By Appointment
Complete Food and Meat Processing Service.

Frozen Food Lockers

Frigid Products
LOCKER DEPT.
Phone GR 5-8280

MEN'S
Clothing Sale
Sport Coats
Suits - Dress Slacks
20% Off
During January
Foster's Men's Wear

REAL ESTATE
FOR SALE
OWNER ANXIOUS TO SELL—Family home. Living room with fireplace, separate dining room, new kitchen, utility and 1/2 bath, all on first floor. 4 large bedrooms and full bath on second floor. Full basement. New gas furnace. \$23,000.

60-ACRE FARM with live stream. 4-bedroom house. Has bath and is structurally sound but needs some work. Cut stone smokehouse, barn and tool sheds. Good tillable land, \$80,000.

FURNITURE SALE
Entire Stock Reduced
10% to 40% Save Now
Merkel Bros.

MEN'S
Clothing Sale
Sport Coats
Suits - Dress Slacks
20% Off
During January
Foster's Men's Wear

CLARENCE WOOD
BROKER
546 Flanders St.
Phone 479-4603

YES
WE ARE MAKING
LONG TERM FARM
REAL ESTATE
LOANS
SEE US
Federal Land Bank
Ann Arbor

Ph. 665-6159 2221 Jackson Ave.
Ann Arbor, Mich. 48106
P. O. Box 1206

WANT ADS

FURNITURE SALE

Entire Stock Reduced
10% to 40% Save Now

Merkel Bros.

Septic Tanks

and Drain Fields

INSTALLED TO COUNTY CODE SPECIFICATIONS

Septic tanks from 300 gal. to 2,000 gal. available for prompt installation.

HILLTOP PLUMBING

BOB SHEARS
201 S. Main
Phone 479-5851

OUT WITH THE OLD, in with the new—furniture, that is, during Merkel's great clearance. Big Savings now thru Jan. 18.

USED TRACTOR TIRES—Large inventory on hand. Also used passenger truck - grader tires. Jackson Tire Brokers, M-106, Manistich, Mich. Ph. 526-2825.

Chelsea Area Homes
Eibler, Frisinger & St. Amour, Realtors

NEEDED—3 and 4-bedroom homes in Chelsea and Dexter school districts.

TWO FAMILY HOME—Near downtown Chelsea, two to choose from. Both rented, no lease at present. Well cared for properties. Apartment sizes range from one to four bedrooms. Priced under \$20,000.

HALF MOON LAKE—Three bedroom modern home with small 3-room apartment upstairs. Family room, fireplace, beautiful kitchen and dining room. Three car garage, large lot and lake privileges.

CEDAR LAKE—Nice 2-bedroom year around home on 1/2 acre lot, lake frontage \$17,000.

HI LAND LAKE—Sharp 2-bedroom year around home, beautiful view, lake frontage, \$18,900.

Multiple Listing Service with Ann Arbor Board of Realtors

Eibler, Frisinger & St. Amour, REALTORS
Corner Old US-12 and Main St.
Chelsea - 475-8883
Dexter - 426-4659

Evenings:
Robert Thornton 475-8857
Herman Koern 475-7252
Paul Frisinger 475-4664

DAYTIME CHILD CARE, by the hour or by the week. Phone 475-4795.

WANT ADS

Winter Supplies

WILD BIRD FEED

SUNFLOWER SEED

SUET CAKES

WANT ADS

FOR RENT—3 rooms and bath, apt. and floor downtown location. Unfurnished, separate utility. Phone 475-8341.

WILL THE PERSON who got the sleeping bag on the front seat of their Dodge call 475-8068. 29

CHRISTMAS please call 475-8068. 29

WILL CLEAN sidewalks and driveways in town for a reasonable price. Call 470-8864 and 475-7653.

LOST—Child's pet Siamese male cat, sable color. In North Lake area. Phone 475-7121. 30

FOR SALE—Boy's figure ice skates, sizes 2 and 7, good condition. Call 479-0342. 29

HELP WANTED, male and female. Free Real Estate classes. Art Daniels Realty, 7030 Dexter-Pinckney Rd. HA 6-4898. 29

FREE PUPPIES—Cross between registered English Pointer and German Shorthair. Make good hunting dogs. Ph. 475-7473. 29

FOR SALE—Small horse with saddle, bridle and other accessories, \$125. Call 475-7551 after 5 p.m. 29

WANT ADS

FURNISHED 2-bedroom apt. with utilities. May be seen at 552 McKinley St. 29

HOUSES FOR SALE—New homes, down payment on your lot. Models open daily. Art Daniels Realty, 7030 Dexter-Pinckney Rd. HA 6-4898. 29

GOOD HOMES are needed for 8-month-old part-Siamese kittens. The kittens are very healthy and completely housebroken. Call 475-8891. 29

FOR TRACTORS and equipment. Also New Holland machinery. Sales and service. Cobb & Schreier, Stockbridge. Ph. Ulysses 1-4525. 49c

FOR SALE—Electric chain saw, 18" cut, new chain, \$65. Domestic sewing machine, \$50. Phone 470-8821. 29

WRINGER TYPE Speed Queen washers, white enameled wood-burning kitchen range. Phone Manchester GA 2-3941. 29

GOOD DEPENDABLE man or boy to work in grocery store, 6 to 9 p.m. Call 475-8912 after 5 p.m. 29

WANT ADS

FOR RENT—3 rooms, 1 full bath. No children, no pets. Partly all new furniture. 128 Lincoln. Phone 475-8819, Chelsea. 29

FOR SALE—Royal portable typewriter, green, red case—used. Call between 1 and 9 p.m. 475-2020. 29

WANTED—Babysitting in my home, weekdays. Ph. 475-7895. 30

IMMEDIATE OPENING for general office girl, typing and filing required. Shorthand helpful. Write Box 9916 in care of Chelsea Standard. 29

BABYSITTING WANTED, full-time, days. Joyce Criswell, phone 475-5441. 30

CARD OF THANKS

We wish by this means to express our grateful thanks to all the friends and neighbors who came to our aid New Year's Eve to prevent a disastrous fire in our home. Special thanks are extended to Bill Koernke, a neighbor, and to the Chelsea Fire Dept. for their immediate response to our call.

Clarence and Katherine Reddeman.

THANK YOU

Our thanks and appreciation are extended for the splendid response to our request for new material. We have now completed a large number of lap robes for contribution to Washtenaw County Hospital and no longer need more material.

Senior Citizens Sewing Club.

IN MEMORIAM

In loving memory of Lula Scribner, who passed away nine years ago today.

Nine years ago you left us. But we will never forget the touch of your hand. Your loving smile. They linger even yet. Sadly missed by her sisters, Children and Grandchildren.

34 Years Ago...

(Continued from page two)

Helen Grabowski, Marjorie Schaefer, and Norman Niehaus.

The new term of the local Freshmen College will open Jan. 14. Prof. Wm. McClure will be at the high school Jan. 8, 9, and 10 to accept enrollments.

The Utica Sentinel tells of an order which has been definitely approved by the state administrative board which will give Chelsea a paved highway, a link in the Chicago-Montreal route.

Wm. Rademacher, who for the past two months has been case worker for the Manchester-Bridge-water district for the Washtenaw County Emergency Relief Commission, was given the Chelsea district in addition to his former district, effective Jan. 1.

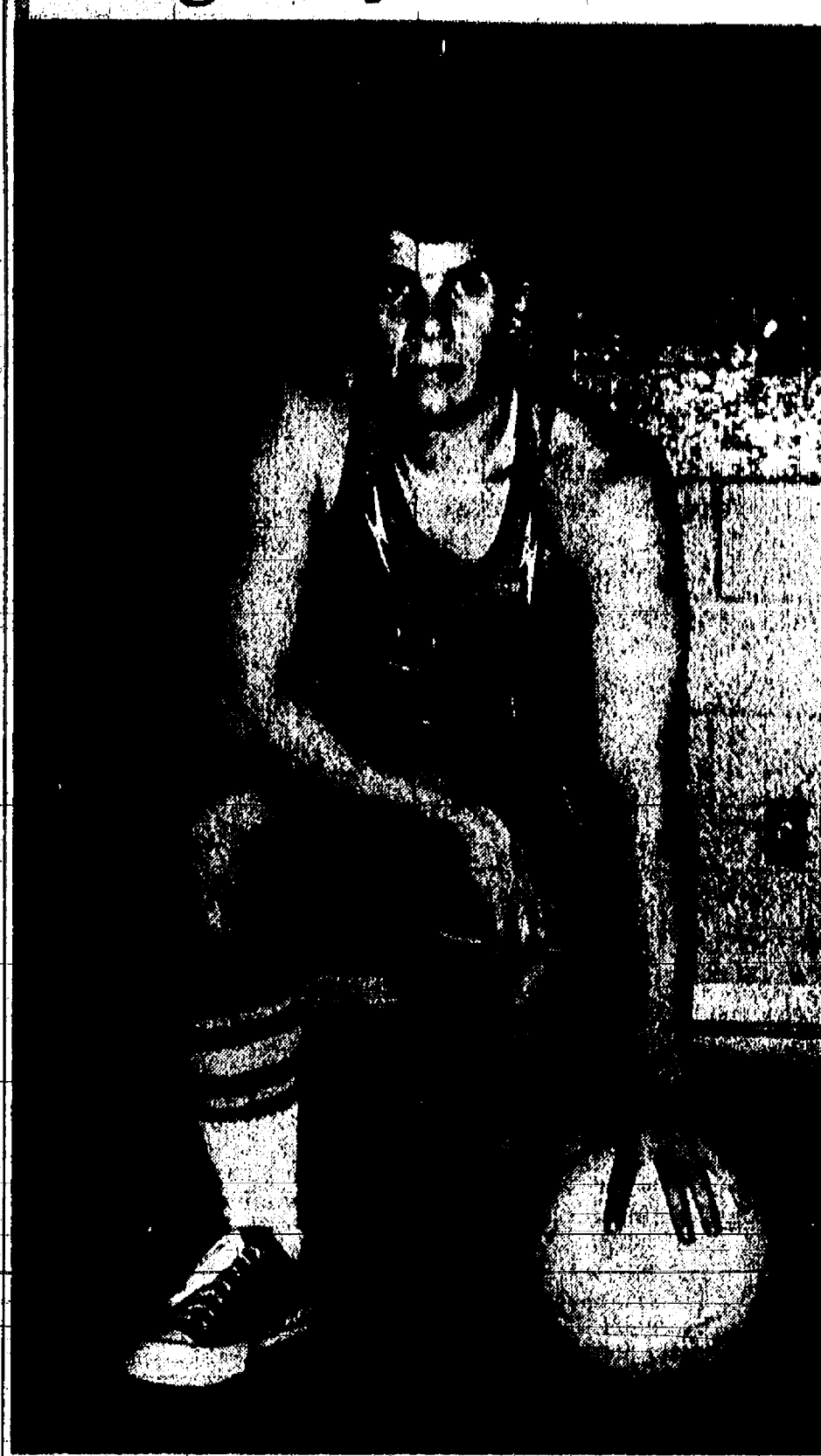
The Knights of Pythias, at their recent annual meeting elected the following officers for the year 1968: C. C. Otto D. Luick; V. C. Louis T. Freeman; prelate, Dahue A. Rieker; M.A. John L. Kilmer.

Mr. and Mrs. Max Hoppe entertained the Saturday Night Strollers club at a New Year's Eve party at their home west of town.

Progressive Pedro was the diversion of the evening, with high honors going to Mrs. Ralph Kalmbach and Penrose Weinhold and consolation honor going to Mrs. George Hemminger and Joe Weinhold.

Duane Bohne, younger son of Mr. and Mrs. Walter Bohne, was badly burned on his leg, necessitating a daily visit to the physician for a week.

Cager of the Week



MIKE SCHNAIDT, senior forward and co-captain of the Chelsea Bulldogs, recently returned to active participation after an ankle injury earlier in the season. Mike has two years of JV and one other year of varsity basketball behind him. He played varsity football for three years and JV football during his freshman year.

This versatile athlete also sprints for the track team, an activity he hopes to continue this year. Mike enjoys most outdoor sports. A week-end job at Schumm's occupies any remaining time. His artistic interest and talent will be expressed through his position as set designer for "Music Man." Mike hopes to follow up this artistic and athletic interest at Adrian next year, where he plans to try out for the football team. He is the son of Mr. and Mrs. James Schnaidt of 650 Island Lake, Chelsea. Brother Jim, Chelsea High school sophomore, plays baseball. Mike also has a sister, Pat, in seventh grade, and a brother, Matt, in third grade.

Wrestling Team Finishes Close Behind Two Class A Schools

(Continued from page one)

Its first, and only team victory for the day by a narrow two points.

In the evening round, while Belleville was looking up the trophy with a surprisingly easy win over a Haslett team that the Bulldogs had shocked with their five closing pins, Adrian was taking retribution for a defeat they suffered from the Bulldogs last year. The dry spell extended to the 154-lb. match when Kerry Kargel got his second pin of the day. After Gaken worked to his third pin of the day, Jim Boylan had to come from behind to take a decision win from a fired-up Adrian-heavyweight who was ardently seeking satisfaction for a disheartening pin Boylan handed him last year.

After losing the takedown, Boylan tied the match with a reversal, then took the decision with a three-point near pin just as time ran out.

In reviewing the results, of the day's action coach Hendricks said that he counted the day a success despite the losses to Belleville and Adrian.

"These were quality teams, offering our men as tough competition as they're likely to encounter all season. I'm confident our lightweight men will benefit from it and will start winning. It also served to give our best wrestlers some stiff competition similar to what they will meet in the final rounds at Parma, Howell, and conference and state tournaments."

Hendricks singled out Tom Trib 112, and Jim Wenel, 103, for giving a good effort against formidable opponents. "The 112 weight was probably the toughest weight in the field. Tom wrestled against the captain from each of the three teams, an unusual situation that he probably won't encounter again."

Wenel is improving with every match and because of Saturday's three matches won't have to yield so much in experience again."

Hendricks also called attention to a gritty but losing performance by Bill Stahl who was placed in the tough quadrangular to get his first varsity experience. Stahl helped out in the 138 class which has been a troublesome weight to fill since the season began.

Blood Donors Needed

(Continued from page one)

Officials said Cassidy Lake has held clinics in previous years, including one Dec. 20, 1967 during a less crucial depletion.

Why is it we find it so easy to mind other people's business, especially if they live in another section of the country?

Service Men's Corner

Arman Douglas Barker Serving as Electrician With Unit in Vietnam

With U. S. Combat Air Forces. Arman Douglas Barker, son of Mr. and Mrs. Dale D. Barker, 19819 Old U. S. 12, is on duty at Phan Rang AB, Vietnam. Arman Barker, an aircraft electrician, is a member of the 355th Tactical Fighter Squadron at Myrtle Beach, S. C.

He is a graduate of Chelsea High school.

The airman's wife, Sheila, is the daughter of Mr. and Mrs. Vernon Rheart of Loda, Ill.

Pvt. Jim Meranuck Returns to Fort Sill After Holiday Leave

Pvt. Jim Meranuck, son of Mr. and Mrs. George Meranuck of 13333 McKinley, was home for a two-week furlough before departing Sunday to resume artillery duties with the U. S. Army at Fort Sill, Okla.

Jim graduated from Eastern Michigan University with a BA in Marketing in June, 1968. He entered the Army in July and was sent to Ft. Knox, Ky., for basic training.

S-A David Nyles Completes Navy Basic

Great Lakes, Ill.—Seaman Apprentice David D. Nyles, USN, son of Mr. and Mrs. Martin J. Nyles of 17300 Waterloo Rd., Chelsea, Mich., has been graduated from nine weeks of Navy basic training at the Naval Training Center here.

In the first weeks of his naval service he studied military subjects and lived and worked under conditions similar to those he will encounter on his first ship or at his first shore station.

In making the transition from civilian life to Naval service, he received instruction under veteran Navy petty officers. He studied seamanship, as well as survival techniques, military drill and other subjects.

Personal Notes

Mr. and Mrs. Elton K. Musbach spent the holidays with Mrs. Musbach's son, Llewellyn, and family at Ft. Worth, Tex.

Mrs. Clarence Fleming, 148 Van Buren, was visited over New Year's by her sister, Josette LaCroix and friend Helen Elliott, of Detroit.

Guests at the home of Mr. and Mrs. Ross Munro for several days over the New Year's week-end were their daughter, Karen Munro Yourmakis, with her husband, John, and six-year-old son Chris. They had just returned from a six-month European tour, following Vaoumakis' graduation from Cornell University, where he received his Ph.D. They were in Czechoslovakia for six weeks during the Russian occupation. Dr. Yourmakis began work this week in Boston, Mass., where he is engaged in medical research projects. Mrs. Yourmakis and son returned to their home in Ithaca, N. Y., until arrangements are completed for moving to Boston.

BIG LAKES

The world's largest lake is the Caspian Sea, a salt lake lying between Iran and Russia. The area of the Caspian Sea is 163,800 square miles. World's largest man-made lake is the 175-mile-long reservoir created by the Kariba Dam on the Zambezi River in Rhodesia. When full, it holds 130 million acre-feet of water.

CHECK ALL THE MANY UNIQUE



MEMBERSHIP SERVICES

- ✓ Expert Travel Guidance
- ✓ Low Cost Car Financing
- ✓ Emergency Road Service
- ✓ Travelers Checks
- ✓ Personal Accident Insurance
- ✓ World Wide Escorted Tours
- ✓ Motor News Magazine
- ✓ World Wide Travel Service
- ✓ \$5000 Bail-Bond Certificate
- ✓ Auto Services
- ✓ Many Other Services

You Lead the Way with Triple-A

RAY JOHNSTON
1200 S. Main • Ann Arbor
Phone 685-7701

Demolition Budgeted

(Continued from page one)

was more than the Village had planned to spend.

"We wanted the property, although no concrete plans had been made," he said, adding that the \$10,000 estimate for demolition, given to the School Board in the past, did not agree with three more recent estimates given to the village. The smallest estimate was \$19,000. The combined cost of purchase and cost of demolition is more than the village is willing to spend.

The School Board has a number of options now, including selling the property, having the building demolished and holding the property, demolishing parts and using parts of the building, if feasible, and others.

Box Car Derailed On Freight Train

A boxcar on an eastbound Penn Central freight train was derailed when it derailed at the McKinley St. crossing and was damaged. The response to a citizen's report of a loud noise from the train at McKinley St., Chelsea, Pa. B. G. Sibert joined the conductor in an examination of the train.

The boxcar derailed, an unusual occurrence according to Chelsea Police Chief George Meranuck, was caused by a defect in the boxcar.

No injuries or damage to property other than that belonging to the railroad occurred, according to Sibert.

Repairs, made by a work train from Jackson, were completed by 6 a.m.

GOING UP

The St. Lawrence Seaway stretches 189 miles and climbs seven locks between Montreal and Lake Ontario. Ships traveling the Seaway ascend 221 feet.

TODAY'S THOUGHT

By LOUIS BURGHARDT



Confucius says—(and this is an actual quote)—"The men of old, when they wished their virtues to shine throughout the land, first had to govern their states well. To govern their states well, they first had to establish harmony in their families. To establish harmony in their families, they first had to discipline themselves. To discipline themselves, they first had to set their minds in order. To set their minds in order, they first had to make their purpose sincere. To make their purpose sincere, they first had to extend their knowledge to the utmost. Such knowledge is acquired through careful investigation of things. For with things investigated knowledge becomes complete. With knowledge complete the purposes become sincere. With the purpose sincere, the mind is set in order. With the mind set in order there is real self-discipline. With real self-discipline the family achieves harmony. With harmony in the family the state becomes well governed. With the state well governed there is peace throughout the land."

We wonder what Confucius would say... what his philosophy would be... what sort of wisdom he would impart... if he were here today... BURGHARDT FUNERAL HOME, 214 East Middle St., Chelsea, Mich. Phone GR 5-4141.

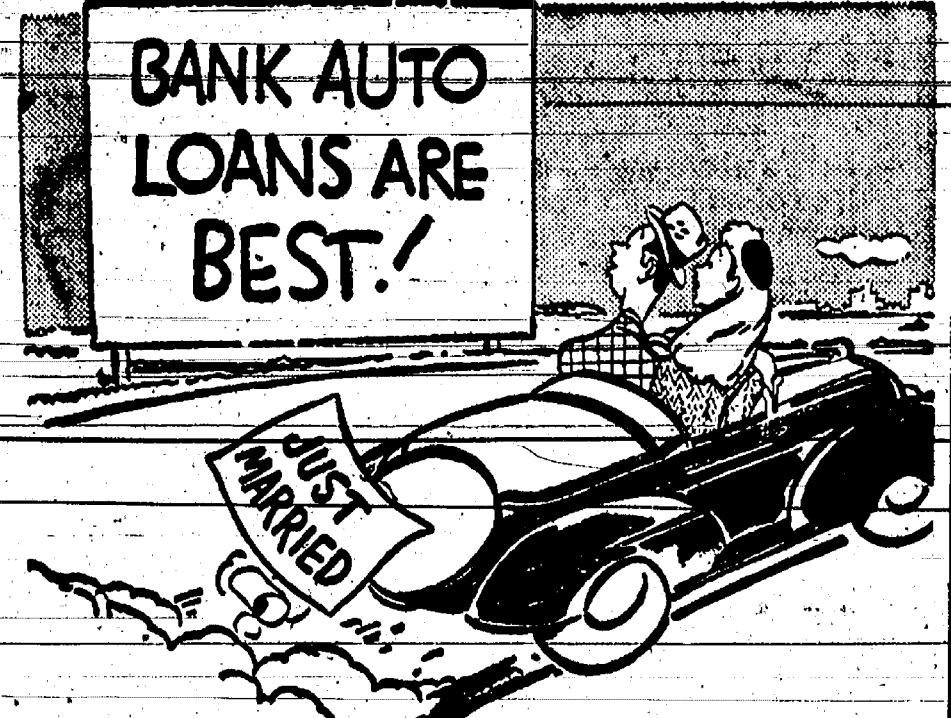
SPECIALS

- ECKRICH SLICED
- Bologna . . . 1-lb. pkg. 63c**
- PREMIUM SALTINE
- Crackers . . . 1-lb. box 27c**
- 6 1/2-OZ. CAN CHICKEN OF THE SEA
- Tuna Fish . . . 2 for 59c**
- 24-OZ. JAR SHEDD'S
- Peanut Butter . . . 58c**
- WRIGLEY
- Gum . . . 6 pkgs. 19c**

KUSTERER'S

FOOD MARKET

DIAL GR 9-3331 WE DELIVER



ANY TRIP YOU MAKE will be more pleasant, if the car you drive is financed the Bank Way—economically, conveniently and with local people.

5% on Certificates of Deposit
4% on Savings Passbook Accounts

CHELSEA STATE BANK

Member Federal Reserve System
Member Federal Deposit Insurance Corp.

Lyndon Township Zoning Ordinance PUBLIC HEARING

Pursuant to the requirement of Section 138, Act. 184, P. A. 1948, as amended, the Township Zoning and Enabling Act, notice is hereby given that there will be a public hearing held by the Lyndon Township Zoning Board on Jan. 22, 1969, at 8 p.m. in the Lyndon Township Hall on North Territorial Rd. east of M-52 Highway in Lyndon Township, Washtenaw County, Michigan, for the purpose of hearing all persons interested in "General Land Development Plan" and proposed permanent "Zoning Ordinance" and "Official Zoning District Map" of Lyndon Township.

A copy of the zoning ordinance, map and plan, is available for inspection at the Chelsea State Bank and the Washtenaw County Metropolitan Planning Commission office, Room 308, Washtenaw County Building, Main and Huron Streets, Ann Arbor, Michigan.

Lyndon Township Zoning Board

CLARK BUSHNELL, CHAIRMAN

Lyndon Township Planning Board PUBLIC HEARING

Pursuant to the requirement of Act 168, P. A. 1959, as amended, Township Planning Commission Act, notice is hereby given that there shall be a public hearing held by the Lyndon Township Board on Jan. 22, 1969, at 8 p.m., in the Lyndon Township Hall on North Territorial Road, east of M-52 Highway in Lyndon Township, Washtenaw County, Michigan, for the purpose of hearing all persons interested in the General Land Development Plan, proposed Permanent Zoning Ordinance, Official Zoning District Map and the creation of a Planning Commission for Lyndon Township.

Copies of the resolution creating a planning commission, the zoning ordinance text, official zoning ordinance map and general land development plan are available for inspection at the Washtenaw County Metropolitan Planning Commission Office, located in Room 306, Washtenaw County Building Huron and Main Streets, Ann Arbor, Michigan.

LYNDON TOWNSHIP BOARD

MRS. DORIS FUHRMANN, CLERK

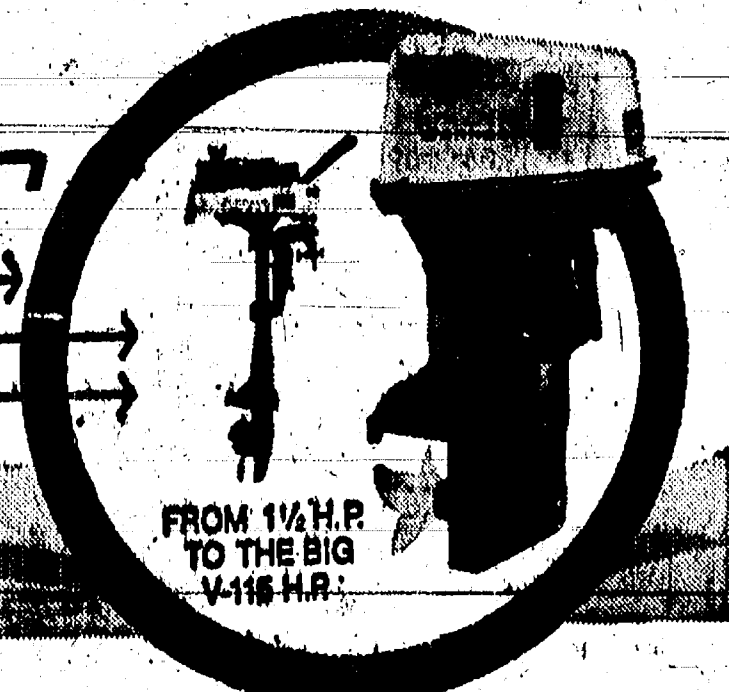
SNO-MOBILES

Arctic-Cat & Skee Horse

Drop in for a Free Demonstration Ride

Johnson MOTORS

for 1969



Arrow Glass - Sea Nymph

Gateway SPORTS CENTRE

"Your Sports Equipment Centre"

1603 S. Main St. Chelsea, Mich. Phone 475-8676

MILK makes the meal But Good!



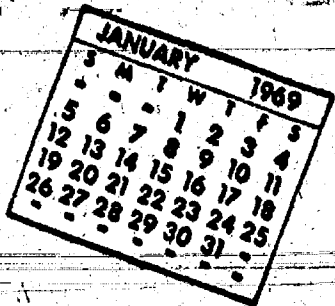
Serve glassfuls of goodness every day

Milk's a treat that can't be beat at breakfast, lunch or dinner. Make sure there's always plenty on hand by arranging for our regular delivery service.

WEINBERG DAIRY

QUALITY PASTEURIZED DAIRY PRODUCTS
OLD US-12 PHONE GR 5-5771

Community Calendar



Rogers Corners Farm Bureau Friday, Jan. 10, at 8 p.m. at Mr. and Mrs. John Miller, 10955 Hieber Rd.

Chelsea Nature Center committee meeting scheduled for Thursday, Dec. 9, has been cancelled.

Easter Chapter of the Congregational church Thursday, Jan. 16, at 8 p.m. at the home of Mrs. Lorraine White, on Harrison St.

Suburban Mothers Child Study Club at home of Mrs. Donald McKinley, Jan. 14, 8 p.m.

Gingham Belles 4-H club meetings have been changed from Monday to Thursday nights at 6:30 p.m. beginning Thursday, Jan. 9. Karen Tobin will supply refreshment.

North Lake Extension Study Group, Jan. 15, 12:30 at home of Mrs. Ezra Lesser, 9221 Island Lake Rd.

Band Boosters, Chelsea High school band room Thursday Jan. 9, 8 p.m.

Senior Citizen's social party Jan. 16 at 7:30 p.m. Birthday party with pot-luck supper, 6:30 p.m., Jan. 22. Business meeting Jan. 28.

Kinder Klub Child Study club 8 p.m. Jan. 14 at the home of Mrs. Don Proctor. Co-hostess Mrs. Dan Ewald and speaker Phil Hume from Chelsea-Lumber on "antiquing."

Past Matrons pot-luck Jan. 16, 12:30 p.m., home of Mrs. Carl Stevens. Bring dish to pass and own dishes.

Jerusalem Farm Bureau with Mr. and Mrs. David Wolfgang Jan. 8, 8:30 p.m. Bring pie for refreshments.

Modern Mothers Child Study Club Jan. 14 at home of Mrs. Errol Jones; co-hostesses, Mrs. Richard Harvey and Mrs. LeRoy Rappette.

Chelsea Community Farm Bureau Jan. 9, 7 p.m., Sylvan Town Hall. Pot-luck dinner. George Brettschneider and Erwin Trinkle hosts.

Cards every Thursday afternoon at Korney House.

Inquiries regarding the Chelsea blood bank may be directed to Harold Jones of Central Fibre Products in the event that Mrs. Dudley Holmes is unavailable.

TOPS club every Wednesday from 12:30 to 2:30 p.m. in the Rebekah hall. Call GR 5-8352. For night meeting call GR 9-3261.

American Legion and Auxiliary hospital equipment available by contacting either Mr. or Mrs. Eugene Martin, at 475-5867 after 4 p.m.

Wide-Awake 4-H club Saturday, Jan. 11, 1:30 p.m. at home of Nola Wackenhut.

Regular business meeting of VFW auxiliary Jan. 13, 8 p.m. at the Rebekah Hall.

Faculty Wives Monday, Jan. 13 at 8 p.m. at home of Mrs. George Prinzing. The Rev. Warner Siebert, representing Spaulding for Children, will speak.

Spaulding for Children Auxiliary 8 p.m. Monday, Jan. 13 at the Spaulding home.

Parents of children with learning and/or social disabilities meeting Monday, Jan. 13, 8 p.m. at the Zion Lutheran church (Senior Room), 1501 W. Liberty, Ann Arbor. Speaker, Dr. Richard B. Stuart from the School of Social Work; his topic is "Behavior Modification." Anyone wishing more information, please call Mrs. Jean Crawford at 663-9605.

Council Briefs

(Continued from page one)

books of the Village and the Light & Water Department.

A discussion was held with Charles Ritter regarding the burning of refuse and garbage at the South Elementary school. President Baldwin advised that the school will be contacted.

William Rademacher spoke to the council regarding the old Junior High school property.

A summary of the police activity for the month of December and a yearly analysis of the 1967-1968 crime comparison was read by trustee Heydlauff. A council decision was made to publish the monthly police report.

Motion was made and approved to transfer \$247.45 from the General Fund to the Public Works equipment fund.

Motion was made and approved to transfer \$10,000 from the Light & Water Department to the general fund.

Motion made and approved to pay the bills.

Motion made and approved to adjourn.

BIRTHS

A son, Bradley Austin, to Mr. and Mrs. Charles F. Cox, 27 Sycamore Dr.

PROCLAMATION

WHEREAS, the objective of The National Foundation-March of Dimes is to prevent birth defects and their mentally or physically disabling aftermath, and

WHEREAS, birth defects strike more than 250,000 babies in the United States every year, and

WHEREAS, research financed by the March of Dimes and others points the way toward prevention, and

WHEREAS, more than 100 March of Dimes Birth Defects Treatment Centers across our nation demonstrate that mounting numbers of young birth defects victims can be returned from hospitals to their loved ones to lead useful lives, and

WHEREAS, this outstanding voluntary health organization, which led the way to conquer polio, places unrelenting stress on preconceptional and prenatal public education programs for the well-being of future mothers and their infants, and

WHEREAS, our community of enlightened citizens cannot in good conscience close its eyes to a continuing tragedy of such magnitude,

NOW, therefore, I, Donald E. Baldwin, President of the Village of Chelsea, do hereby proclaim January 1969 as MARCH OF DIMES MONTH, and call upon and appeal to all our thoughtful citizens to contribute generously to this fight against birth defects.

DEATHS

Antonios Grapsas

Had Moved to Chelsea After Retirement in Ann Arbor

Antonios Grapsas, 79, died suddenly Friday afternoon, Jan. 3 at his home at 128 W. Middle St. Mr. Grapsas was born March 25, 1889 in Lefkas, Greece. He was a member of St. Nicholas Greek Orthodox church in Ann Arbor, operated a pool room in Ann Arbor and was janitor of his church before moving to Chelsea upon retirement several years ago.

He is survived by one brother, James, of Ypsilanti.

Prayer services were held at the Ann Arbor Stefan Funeral Home Sunday night. Funeral services were Monday afternoon at St. Nicholas church and burial followed in Fairview Cemetery, with the Rev. John F. Kamelakis officiating.

Memorial contributions may be made to St. Nicholas church.

Firemen Answer Three Calls for Minor Blazes

Chelsea firemen were called out three times last week for minor fires.

A heating tape, used to prevent water pipe and drain freezing, burned back to the plug in a trailer on Dec. 4, causing minor damage to the wall and cabinet door under a sink.

An overheated furnace at the home of Clarence Reddeman, 10395 Jerusalem Rd., ignited a wooden ceiling beam at 8 p.m., Dec. 31. The fire was confined to the beam.

A light bulb under the hood of a car belonging to James F. Markle ignited gas on oil on the engine, causing considerable engine damage Sunday afternoon.

Chelsea Fire Chief Jim Gaken said the use of electric bulbs under the hood of vehicles for warmth during cold weather is a frequent cause of fires and not recommended as a cure for hard-to-start engines. Another dangerous practice is the use of torches to thaw frozen pipes. Gaken said fires have resulted in houses and well pits from these attempts in Chelsea.

To safeguard against ignited heating tapes, they should be connected to a circuit with a 15-amp fuse. If a short circuit occurs, the fuse will blow before fire starts.

CeCe Ritter in Cast of EMU Stage Production

CeCe Ritter is one of the mourners in "Bernarda Alba," a drama of contemporary Spain scheduled for performance at Eastern Michigan University next week.

CeCe, a freshman arts major, is the daughter of Mr. and Mrs. C. S. Ritter, Jr., 509 Maywood.

The cast of 36 make this one of the largest all-girl casts to perform at Eastern. Performances are scheduled for 8 p.m., Jan. 15, 16, 17 and 19; and 7 and 10 p.m., Jan. 18.

The man who talks the most about what he is willing to do is not always the man who reaches in his pocket when the call for cash for a worthy cause is heard.

Adolph Steinaway

Lima Township Farmer Dies Following Long Illness

Adolph B. Steinaway, 83, of 11350 Jackson Rd. Lima township, died Sunday, Jan. 5 at Whitehall Convalescent Home, Ann Arbor, after a long illness.

Born Aug. 18, 1885 in Freedom township, he was a son of Frederick and Bernadine Meyer Steinaway. He was married to Anna Louise Esch on March 6, 1918. She survives. They had farmed at the Jackson Rd. address for 46 years.

Also surviving are two sons, L. Dean Steinaway and Veryl Steinaway, both of Ann Arbor, a daughter, Mrs. Frank (Edna) Gucker of Dexter and eight grandchildren. Five brothers and a sister preceded Mr. Steinaway in death.

He was a member of St. Paul United Church of Christ of Chelsea, and had served two terms on the church council. He had been a member of the Farmers Guild, and was a former director of the Lima Center School District and had served several years as Justice of the Peace of Lima township.

Funeral services were held at 1 p.m. Wednesday, Jan. 8 at the Burghardt Funeral Home, with the Rev. Warner H. Siebert officiating. Burial followed in Mt. Hope Cemetery, Freedom township. The family suggests that those desiring to do so may make contributions in Mr. Steinaway's memory to the Memorial Fund of St. Paul church. Cards are available at the funeral home.

Gordon Grey Enlists

Gordon Grey, 17, left for Ft. Knox, Ky., where he will receive basic training after enlisting in the U. S. Army last week. Gordon, the son of Mr. and Mrs. Bob Armstrong of 1420 Old Manchester Rd., is a former student at Willow Run High school and was employed at Waterloo Recreation Area.

Telephone Your Club News To GR 5-3581.

NOTICE

The Annual Meeting of Members of the CHELSEA COMMUNITY CHEST Will Be Held

WEDNESDAY, JANUARY 15th, 1969 at 7:30 p.m. in the Second Floor Council Room of the Municipal Building, Chelsea, Mich.

Business of this meeting will include:

* Election of 7 Directors

* Presentation of the annual reports and any other business that may come before the meeting.

Everyone who made a contribution during the 1968 campaign for funds is considered a member eligible to vote and is urged to attend.

MRS. JOHN DETTLING, President
MRS. DONALD BALDWIN, Secretary

CLOTHING SALE

SUITS-SPORT COATS-TOPCOATS

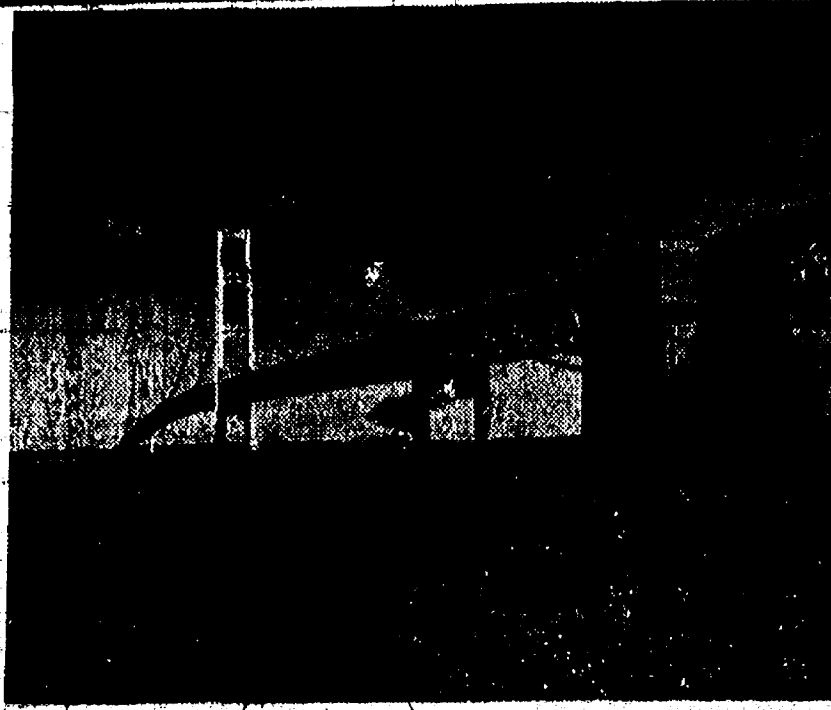
20% OFF

SPORT SHIRTS-S-M-L-XL

ONE GROUP REG. \$6.00 and \$7.00

NOW \$4.00

Strieter's Men's Wear



THE MACKINAC BRIDGE spans one of Michigan's myriad of waterways. The network of lakes, striated with churning rivers, fishing villages, picturesque waterfalls that decorate Michigan all contribute to the vacation fun and outdoor recreation available in our state. Robert Brouwer's unique presentation of this winter-water wonderland at 8 p.m. Saturday will acquaint Chelsea residents with the vacation opportunities nearby.

'Welcome to Michigan' Film Will Be Shown at Travelogue

Introducing the impressive past of the Forts of Mackinaw, Michigan's scenic timbered valleys, golden beaches and tumbling waterfalls, Robert Brouwer will present "Welcome to Michigan," at 8 p.m. Saturday, at Chelsea High school, Chelsea-Kiwanis Club's third of six travelogues this winter. This unusual presentation, shown in some of the largest auditoriums in the country is a must for Michigan residents who enjoy history, travel and vacationing or those who would like to become better acquainted with their state. Michigan, with its 8,200 miles of beach varying from soft, rolling dunes to Maine-like rugged shores, lends itself easily to the triple screened, four projector and stereo sounds of Brouwer's travelogues. Brouwer takes the viewer to quaint fishing villages with a New England atmosphere and investigates Michigan's history that dates back to before the arrival of Pilgrims at Plymouth Rock when French explorers scouted the Great Lakes and the Upper Peninsula for a route to the Orient. Pre-historic Indian paintings and the haunts of Hiawatha are presented. Modern Michigan's natural wealth of spring cherry blossoms, sculptured rocks and rugged forests are investigated by the curious camera of this Grand Rapids resident.

Spaulding for Children Board Member Appointed to National Post

The chairman of the Spaulding for Children public relations and development committee has been appointed to serve on a national advisory board for the Adoption Resources Exchange of North America (ARENA), sponsored by Child Welfare League America. Peter W. Forsythe, Ann Arbor attorney, is the only non-professional and the only Michigan person serving on the national board of 20 people from the United States and Canada. He has served as the liaison between the Michigan Department of Social Services and CWA during the last year.

The Child Welfare League is the standard-setting body to which private agencies across the continent may belong if they merit membership. ARENA attempts to break down barriers between geographic regions and increase the placement of adoptable children in permanent homes. For too long geography has been a barrier to youngsters obtaining a family of their own. When the child is in one city and state and the family in another, the child has too often had to grow up without permanent parents. ARENA is proving that this is not necessary. Somewhere there are parents for these children and all resources possible need to be developed to exchange both families and children to increase placements. Mrs. Kathryn Haar Donnelly, director of Spaulding for Children, is using ARENA to help children find parents. There is no charge for these services, yet few other Michigan agencies have yet used this resource. Miss Clara Swan, director of ARENA, recently in Michigan at the invitation of the Lansing Committee on Foster Care and Adoption which advises the Michigan Department of Social Services, reported that Michigan agencies had never listed children with ARENA. She feels that this is perhaps due to a lack of clear agreement on procedures between agencies. ARENA and other interprofessional groups are working to improve methods for inter-agency co-operation within and between states. The ARENA Advisory Board meets semi-annually in New York City.

Making plans for the future is often a way to escape work in the present. Your success, if you are wise, does not depend upon someone else.

ATHLETIC EVENTS OF THE WEEK FOR CHELSEA HIGH SCHOOL

Friday, Jan. 10—JV, Varsity Basketball Saline, at home, 6:30 p.m.
Saturday, Jan. 11—..... at Parma Western, All Day Wrestling
Monday, Jan. 13—Freshman Basketball at Grass Lake, 7 p.m.
Tuesday, Jan. 14—..... at Adrian Madison, 7:30 p.m. Wrestling
Wednesday, Jan. 15—Junior High Basketball Milan, at home, 4 p.m.
Thursday, Jan. 16—Freshman Basketball Milan, at home, 7 p.m.

JANUARY CLEARANCE

- on all -

FURNITURE & APPLIANCES

Our entire floor stock of fine furniture, refrigerators, ranges, televisions offered at

HUGE SAVINGS

for a limited time only!

MEABON'S TV, Furniture & Appliances

1170 S. M-52, Chelsea

Phone GR 5-5191

Gambles

They Bite and Grip While Others Slide and Slip!

CREST FULL 4-PLY NYLON CORD

ICE 'N SNOW TIRES

Brand New!

Not Recaps or Seconds!

While Stocks Last! No Trade-Ins Needed

13⁹⁵ 650x13 Blackwall Plus \$1.01 F.E.T.

With Steel Studs Only \$5 More!

Give you SUPER GO in Ice, sleet or snow. Start when you want to—stop when you have to! Optional tungsten steel studs improve traction even more!



GUARANTEED

Without limit as to months or miles against defects in materials and workmanship... and against failure due to road hazards for life of original tread.

Should defect or failure occur, we repair or replace tire, charging only for treadwear used on pro-rated basis.

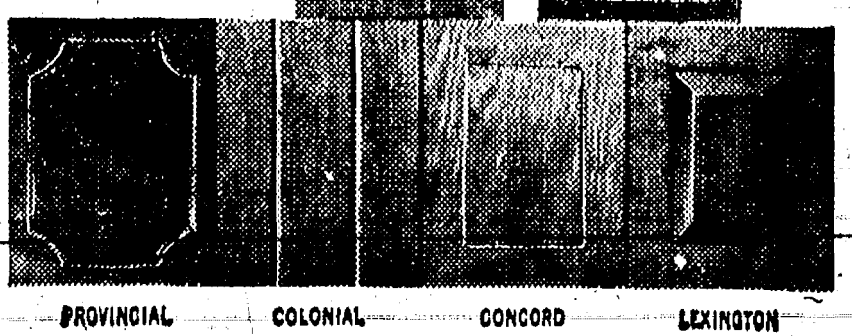
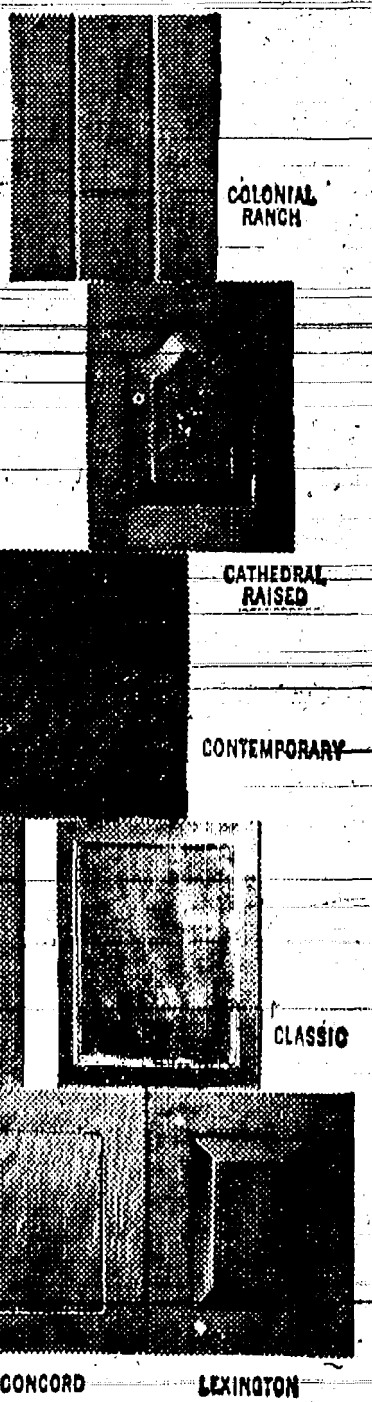
TIRE SIZE	Without Studs EACH	TAX	With Studs EACH	TAX	WHITEWALL
750/775x14	\$16.95	\$2.19	\$21.95	\$2.19	ONLY \$1.99
800/825x14	\$17.95	2.35	\$22.95	2.35	MORE
670/775x15	\$16.95	2.21	\$21.95	2.21	(Black Only)

Always Better Buys at GAMBLES

Wood-Mode the only kitchens in 9 styles

Here's where you'll find your idea of an ideal kitchen among Wood-Mode's nine styles. Wood-Mode's distinctive cabinet styles range over all periods of interior design. You can visualize them by the names.

If you're thinking about a new kitchen, come in and see our Wood-Mode styles. No other kitchen line can offer this wide selection.



CHELSEA LUMBER CO.

Dial GR 5-3391 "Where the Home Begins"

Authorized dealer for Wood-Mode

Custom Designed, Custom Built Kitchens

FREE KITCHEN PLANNING SERVICE

AGRICULTURE In Action

by K.L. Voss

★ Getting Through To Katmandu . . .

Compared to most American students, Shyamanand Das Suman might be considered backward. For example, at 23 years of age, he has never driven a car. On the other hand, he has driven and ridden elephants hundreds of times, and thinks little of walking across mountain foot-bridges loosely slung over gorges of terrifying depth.

Das Suman comes from Katmandu—in the tiny monarchy of Nepal, in Katmandu Valley. His family are farmers, tilling the fertile soil with oxen as has been done from the beginning of the valley's recorded farm history. There is no electricity, television, or telephone, and other than simple plows which the oxen pull, no machinery.

Best of all, there are no toothaches, little disease of any kind, no food shortages and the average person lives longer than anywhere else in the world.

One of eight children of an illiterate father, Shyamanand is the second to win college degrees, first in nearby India, and now, with the aid of a Fulbright Scholarship, here in the United States.

From his studies in Kansas, he came to Michigan on another "scholarship" offered through the World Adventure in Understanding supported by such alert groups as the Women's Committee of the Michigan Farm Bureau. The Adventure, a unique Christmas and New Year program, gives foreign students direct contacts with host American families.

American farming methods are a revelation to Shyamanand, who is most intrigued by the efficiency which comes with the size of our operations. Back home, one team of oxen handle about 20 acres, and that is the size of legal land ownership per farmer—so decreed by the Department of Land Reform, Agriculture and Food.

Seeing the freedom of decision enjoyed by American farmers, such limitations worry Shyamanand, who although loyal to his government, wants his country to become more than an agrarian society where 90 percent of its people are now tied to the soil. Efficiency of farm production releases people to other pursuits Shyamanand notes. "When I return, I shall once more be an official of my government and I shall oppose policies of restriction."

Sounds like we're getting through to Katmandu!

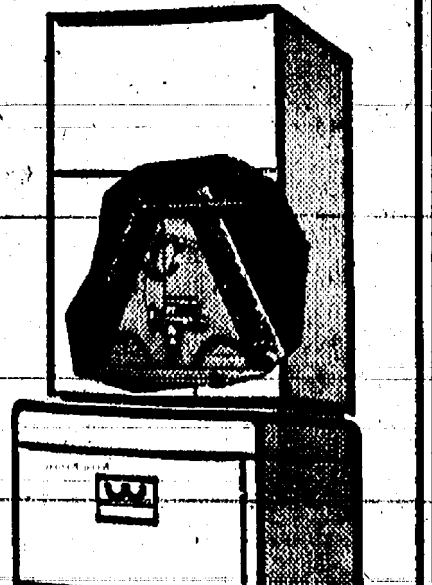
Exhibition Basketball Game Scheduled Here

Basketball fans with a comical bend will enjoy the half-serious encounter between the Harlem Hawks and New York Stars basketball teams Jan. 24.

These teams, a traveling duo, will be on tour in the area and were signed to perform at Chelsea High school by the Athletic Board.

Bruce Galbraith, Chelsea High school vice-principal described their performance as "in the Harlem Globetrotter style."

**YOU CAN GET
YOUR BEST BUY
IN CENTRAL
AIR CONDITIONING
RIGHT
NOW!**



If you've been planning to air condition your home, you couldn't pick a better time than right now. Don't postpone action until a hot, humid, summer day when the mood strikes you—and everybody else.

If you already have a good warm air furnace, adequate duct work and proper house wiring, you probably already have half of a year-round heating/cooling system.

John W. Steele
PHONE GR 9-4451
13877 Old US-12

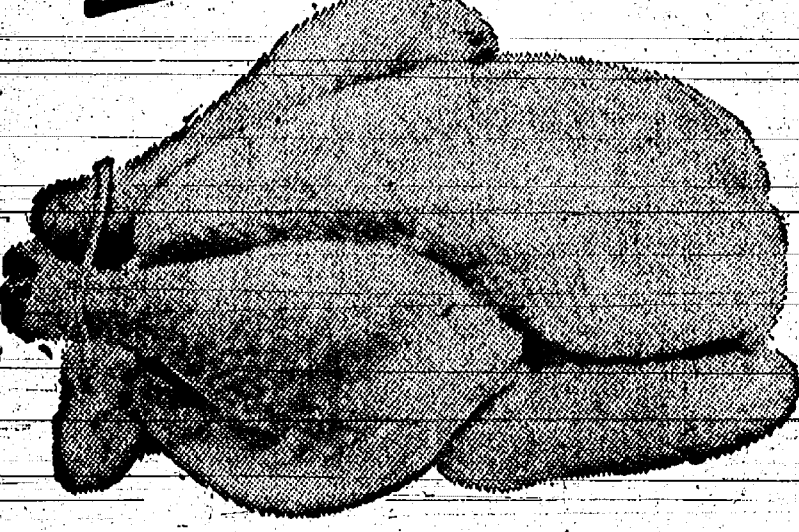
THE SUPERMARKET THAT'S JUST A LITTLE BIT BETTER



THE KNOW HOW OF INTELLIGENT MEAT
BUYING IS REALLY THE 'KNOW WHERE'

Our customers have learned to depend on the outstanding quality of Stop & Shop meats—unfailing satisfaction with every cut they purchase. The finest quality, together with the experienced expertise of our meat cutting experts, makes an unbeatable combination!

Prices Effective Wednesday, January 8 through Tuesday, January 15, 1969.



"Triple R Farms" Fresh-Dressed
U. S. Gov't. Inspected Grade 'A'
FRYERS

Whole Fryer

33^c
lb.

Country Style
Spare Ribs 69^c lb.

Stop & Shop's Homemade
Pork Sausage 49^c lb.

"Triple R Farms" Fresh or Smoked
Liver Sausage 39^c lb.

"Triple R Farms" Fresh Dressed
Chicken Legs or Breasts . . . 59^c lb.
(Ribs Attached)

"Triple R Farms" U.S.D.A. Choice
Chuck Roast 59^c lb.
Center Cut

Stop & Shop's Fresh, Lean, All American Beef
Hamburger 59^c lb.
3-Lb. Units or More

"Triple R Farms" Mich. Grade 1
Skinless Wieners 49^c lb.

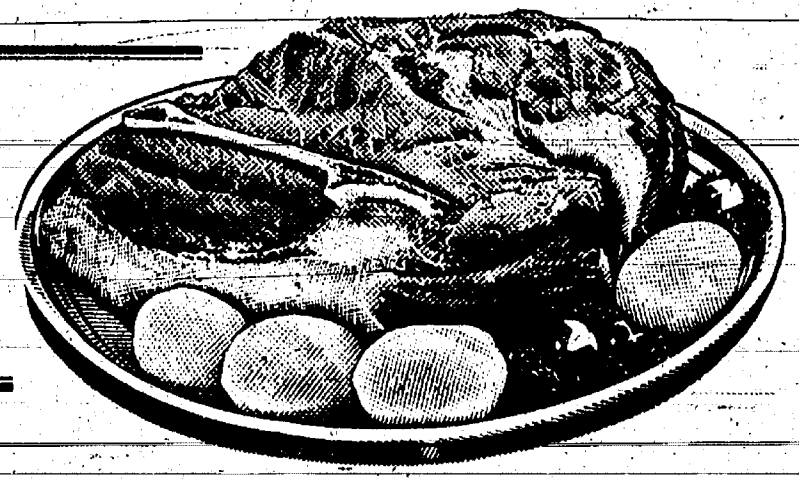
Lean, Tender, Boneless & Cubed
Pork Cutlets 79^c lb.

"Triple R Farms" U.S.D.A. Choice

CHUCK ROAST

Blade Cut

49^c
lb.



Farm Fresh Produce

U. S. No. 1 Michigan
Potatoes . . . 10-Lb. Bag 49^c

Florida
Grapefruit . . . 5-Lb. Bag 59^c

U. S. No. 1 Michigan
Yellow Onions . . . 2-Lb. Bag 29^c

California Navel
Oranges . . . 138-Size Dozen 59^c

MAXWELL HOUSE

COFFEE

1-Lb. Can

69^c

B & M Brick Oven
Pork & Beans . . . 1-Lb., 6-Oz. Glass 33^c

Vlasic
Sauerkraut 1 Quart Glass 33^c

Stokely's
Tomato Juice 3 1-Qt., 14-Oz. Cans 89^c

Del Monte Yellow Cling
Peaches 3 1-Lb., 13-Oz. Cans \$1⁰⁰

Kraft's Plain or Pimento
Velveeta Cheese 2-Lb. Loaf 88^c

Charmin Assorted Colors
Bathroom Tissue 4-Roll Pack 39^c

Kleenex or Puffs
Facial Tissue 2 200 Count Box 49^c

The Washday Miracle
Tide 3-Lb., 1-Oz. Box 69^c

Hawaiian Punch 3 1-Qt., 14-Oz. Can \$1⁰⁰

Cypress Gardens
Grapefruit Juice 3 1-Qt., 14-Oz. Cans 89^c

Gold Medal FLOUR 5-Lb. Bag 49^c

WE
RESERVE
THE
RIGHT
TO
LIMIT
QUANTITIES

**OPEN
SUNDAY
10 a.m. - 6 p.m.**
All Sale Prices
Effective
Sundays

Sorry,
No Sales
To Dealers

STORE HOURS:
Mon., Tues., Wed.,
9 a.m.-6 p.m.
Thursday, 9 a.m.-9 p.m.
Friday, 9 a.m.-9 p.m.
Saturday, 8 a.m.-9 p.m.
Sunday,
10 a.m. to 6 p.m.



BOWLING NEWS

Chelsea Nite Owl League

Standings as of Jan. 6

	W	L
Silvers	42	30
Waterloo Garage	40	32
Wahl's Dinos	39	33
Cavanaugh Lake Store	38	34
Cavanaugh's Men's Wear	38	34
Posters Tavern	35	37
Team No. 12	35	37
Don's Barber	35	37
Jack & Son Barbers	34	38
Don's Barber	34	38
Palmer's Mustangers	34	38
Palmer's Drug	33	39
Chelsea-Crop Service	33	39
500 series: J. Packard, 578; R. Kotar, 570; J. Gaken, 559; J. Elliott, 546; D. Scott, 545; J. Herriok, 548; M. Gage, 545; D. Eder, 543; B. Fletcher, 530; R. Smith, 528; C. Packard, 527; E. Green, 526; C. Gonske, 524; J. Bergman, 521; C. Thomas, 517; D. Fritz, 514; O'Dell, 508; W. Steinaway, 505; R. Green, 502; P. Rothfuss, 502; G. Schiller, 501.		

Chelsea Lanes Mixed

Standings as of Jan. 8

	W	L
Triangle Trailer Sales	41	27
Post-Fitz	40	28
Doody & Turner	40	28
Chelsea Lanes	39 1/2	28 1/2
H. & H.	39	29
Lyndon Color Lab	36	32
Johnson's Tool Shop	36	32
Wolverine No. 2	34	34
Rabbit & Althouse	28	40
Wolverine No. 3	26 1/2	41 1/2
Wolverine No. 1	25	43
Gephart & Barkley	24	44

Chelsea Industrial League

Standings as of Jan. 8

	W	L
Dana Corp.	30	14
Fearsome Four	25	19
Chelsea Lanes No. 2	23	21
Chelsea Lanes No. 1	21	23
Central Fibre	17	27
Cook's Store	16	28
Series over 500: P. Kelly, 558; M. Manville, 528; W. Steinaway, 521; W. Whitaker, 518; D. McUmber, 515; B. Schenk, 504; L. Bauer, 501.		

Junior House League

Standings as of Jan. 2

	W	L
Wolverine	80	39
Mid-State Finance	75	44
Pub Bar	72	47
Gambles	69	50
3-D Sales & Service	60	59
Wonder Bar	59	60
Jiffy Mixes	55	61
Boyer Automotive	57	62
Parish Cleaners	55	64
N. Am. Rock Corp.	44	75
Palmer T-Birds	43	76
Dirty Dozens	40	79

Mike's TV Antenna Service

Motorola Automotive Sound Systems

Winegard Home Electronics TV Antenna Systems

Insurance Claims

For Free Estimate, Call

Pinckney 878-3258

or 769-0130

The crop of beauty queens is beginning to mature and, as always, the new crop looks good.

Bowl for the fun of it...

Having Fun Lately?

Bowling Is a Ball!

Put some fun in your life... Bowl for laughter and health at our modern, well-equipped lanes with rarely a wait. Bring the gang down!

CHELSEA LANES

1180 M-52 Phone GR. 5-9141

Guys and Gals Mixed League

Standings as of Jan. 2

	W	L
Wonder Bar	43	25
Chelsea Lanes	38	30
Pleasant Lake Resort	37 1/2	30 1/2
Pub No. 1	36 1/2	31 1/2
Ken's Standard Service	35 1/2	32 1/2
Dana No. 2	35	32 1/2
Team No. 9	35	33
Strikers	33	35
Murphy's Barber Shop	32	36
Recreation Tavern	29 1/2	38 1/2
Challengers	29	39
Pub No. 2	23 1/2	44 1/2

Team high game: Chelsea Lanes 769.

Women's high game: P. Elliott, 197.

Women's 150 or over games: N. Collins, 154; P. Elliott, 197; D. Haas, 165-167; P. Pardon, 158-161; C. Kielwasser, 154; E. Koengeter, 153; R. Fritz, 167-167-174; P. Huston, 166; D. Sannes, 176.

Women's 425 or over series: D. Sannes, 436; B. Fritz, 498; P. Huston, 439; E. Koengeter, 435; D. Haas, 457; P. Pardon, 458; N. Collins, 448; P. Elliott, 459.

Men's high game: K. Pardon, 279.

Men's 175 or over games: O. Timmerman, 174; A. Sannes, 177; H. Kunzelman, 207; R. Kotar, 192-192; E. Buku, 200-193; D. Fritz, 212; R. Huston, 184; R. Kielwasser, 191; K. Pardon, 180-279-208; D. Green, 195; J. Collins, 184-184; J. Elliott, 177-187-234.

Men's 500 or over series: D. Green, 529; J. Collins, 506; J. Elliott, 518; K. Pardon, 505; D. Fritz, 517; E. Buku, 547; A. Sannes, 504; R. Kotar, 537.

Junior Swingers

Standings as of Jan. 4

	W	L
Pin Busters	44	12
Sweet Suzie's Swingers	38	18
Gutter Guys	39	15
Blue & Gold	24	32
B. B. & B.	15	41
The Bombs	3	53
Games of 130 or over: Kelly Murphy, 133; Kathy Sannes, 135; Jackie Murphy, 147; Betty McNutt, 136-166; Dan Adams, 164; Mike Murphy, 133-161.		

Senior House League

Standings as of Jan. 8

	W	L
Parish Cleaners	15 1/2	20 1/2
Seitz's Tavern	45	27
G. E. Boys	43 1/2	28 1/2
Chelsea Grindings	42	30
Spaulding Chevrolet	42	28
Wolverine Tavern	37	35
Schneider's Market	31 1/2	40 1/2
Dana No. 1	31	41
Dana No. 2	30	42
Sylvan Center	29 1/2	42 1/2
Murphy's Barber Shop	26	42
Wonder Bar	19	53

200 games and over: N. Fahrner, 245-237; R. Hutzler, 220; J. Harok, 213; A. Clemes, 215-222-213; W. Griffith, 210; R. Fike, 243; M. Poertner, 210; T. Wisniewski, 220; S. Hopkins, 233; H. Pennington, 200; R. Maurer, 225; O. Kruse, 206; T. McClear, 223; J. P. Jones, 214; V. Hafley, 214; D. Hafley, 201; G. Padgham, 203; M. Sweet, 201; G. Miller, 200; L. Hocking, 200-212.

600 series and over: N. Fahrner, 660; A. Clemes, 650; R. Fike, 621; L. Hocking, 600.

500 series and over: J. Harok, 560; R. Hutzler, 571; R. Knickerbocker, 521; G. Burnett, 552; W. Griffith, 554; G. Parish, 603; W. Moats, 526; M. Poertner, 531; T. Wisniewski, 579; E. Dennis, 531; L. Hess, 577; S. Hopkins, 575; A. Harmon, 500; R. Maurer, 587; L. Keazer, 533; R. Bauer, 542; O. Kruse, 567; T. McClear, 568; R. Spaulding, 531; J. D. West, 502; J. P. Jones, 584; D. Hafley, 532; G. Padgham, 514; M. Sweet, 525; C. Schneider, 508; J. Stoffer, 544; G. Miller, 578; C. White, 518; A. Peterson, 506.

SPORTS CORNER



Need A Room? A Standard Want Ad Can Help!

Charlie Brown and Snoopy's Friends

Standings as of Jan. 4

	W	L
Strikers	31	20
Road Runners	28	23
Tigers	28	23
Snoopy's Stars	27	24
Ringers	27	24
S.M.K.D.J.'s	26	25
Lions	26	25
Charlie Brown All-Stars	24	27
Super B's	23	28
Boppers	23	28
Red Barons	22	29
Born Losers	21	30

Games of 100 and over: Doug Craft, 171-135; Vicki Burnett, 147-133; Jon Lewis, 136-107; Jamie Boyer, 131-125; Mark Pennington, 127; John Simpson, 125; Kathy Reilly, 124; Brian McGibney, 113-101; Linda Hafner, 112-100; Lori Fritz, 111-100; Brian Lewis, 111; Jeff Sweet, 109; Don Eisele, 107; Susie Schulze, 105; Steve Lyster, 104; Matt Schnaidt, 104; Dale Poertner, 104; Robert Rosentretter, 101-100; John Elliott, 101; Donna Craft, 101.

Tri-City Mixed League

Standings as of Jan. 3

	W	L
Cavanaugh-Lake	43	29
Wolverine Early Birds	42	29
Chelsea Cleaners	40 1/2	31 1/2
Odd Balls	39 1/2	32 1/2
Sprague Buick & Olds	38	34
3-D	37	31
Flinstone's	36	32
Clear Lake	33 1/2	34 1/2
Wolverine No. 1	31 1/2	40 1/2
Eibler & Frisinger	31	41
Don's Standard	26 1/2	45 1/2
For's Mobil	25 1/2	46 1/2

Women's high games: B. Parish, 220-153; M. Reagle, 184; L. Cole, 174; R. Schrader, 160-167; A. Hocking, 162-152; D. Sannes, 160-178; M. Weston, 152; D. Worden, 151.

Women's high series: B. Parish, 425; A. Bucholz, 428; D. Haas, 428; M. Abdon, 471; V. Hopkins, 443; G. Wilkerson, 438; B. Harok, 472; R. West, 438; N. Packard, 442; R. McGibney, 530; N. Collins, 476; L. Jarvis, 450; A. Bohne, 488; G. DeSmith, 493; L. Beeman, 458; V. Finch, 459; M. Westcott, 530; J. Buku, 437; P. Elliott, 468; B. Fritz, 499; N. Keller, 427; S. Bowen, 454.

150 games and over: D. Sannes, 176-169-160; M. Abdon, 173-156; B. Hafley, 151; G. Wilkerson, 167; R. West, 157-155-156; M. Breitenwischer, 152; R. McGibney, 174-157-169; L. Jarvis, 178-162; Klink, 157; G. DeSmith, 181-162-150; A. Hocking, 156; W. Liebeck, 166; V. Finch, 164-159; M. L. Westing, 162-152; D. Sannes, 160-178; P. Elliott, 165-165; P. Huston, 159; B. Fritz, 161-158-180; N. Keller, 161; S. Bowen, 161-157; D. Haas, 165; V. Hopkins, 171; N. Prater, 169; R. Harok, 162-178; N. Packard, 178; N. Collins, 150-174-152; A. Bohne, 162; L. Beeman, 168-150; J. Riethmiller, 170; W. Hafner, 166; K. Snyder, 155.

Old Timers League

Standings as of Jan. 3

	W	L
Great Lakes	48 1/2	23 1/2
City Bus	42	30
Washtenaw Lanes	41 1/2	30 1/2
Bob & Otto	40	32
Chelsea Lanes	39	33
Hotzel Service	37	35
Mather Co.	36	36
Stein & Gutz	36	36
Colonial Lanes	34 1/2	37 1/2
Hartman Ins.	27	45
Nelson-Restor	26 1/2	45 1/2
Ypsi-Arbor	24	45
Team won three: Great Lakes and Hotzel Service.		
High team game and series: Washtenaw Lanes, 829 and 2,338.		
High ind. game: Wallace Wysocki, 207-507.		

High ind. Series: 204-572.

Other 200 games and 500 series: George Haines, 516; Larry Dann, 200-505; Russell Carter, 213-575; Roy Carpenter, 511.

Most reformers are satisfied with themselves.

VACUUM CLEANERS

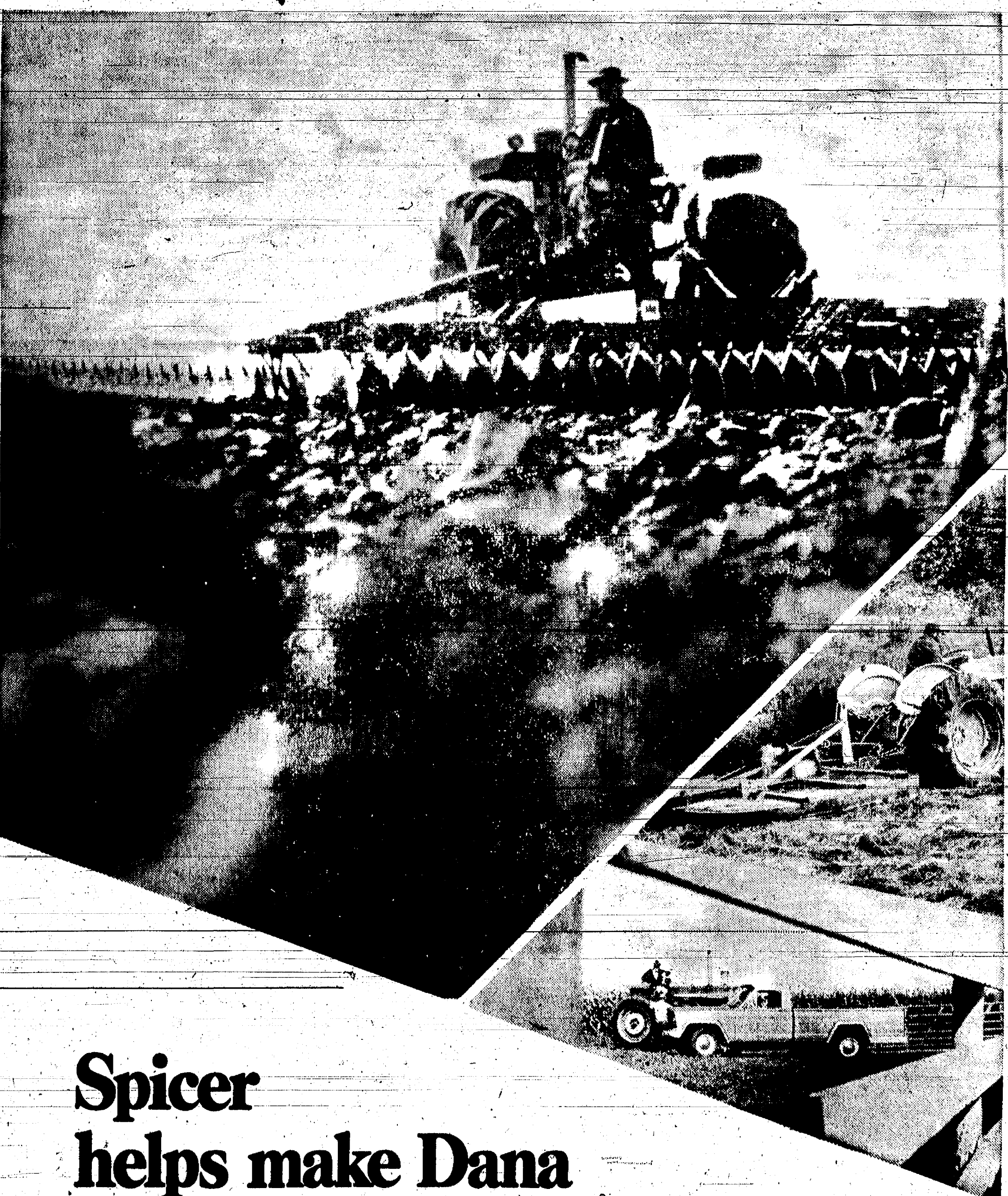
ELECTROLUX

SALES and SERVICE

JAMES COX

Ph. 428-2931 or 428-8221

Manchester



Spicer helps make Dana a growing force in agriculture.

Tractor clutches, agricultural shafts, universal joints, power take-offs: these are some of the Spicer® brand products from Dana that make an important contribution to the workaday needs of farmers.

There are 14 million tractors operating in the U.S. Besides Spicer products, many of them use piston rings and engine parts made by Dana's Perfect Circle divisions; sealing products from our Victor divisions.

When you consider that agriculture is just one part of the total transportation picture, and that Dana is

the world's largest independent supplier of transportation components, then you realize there is no limit to the growth possibilities of Dana.

If you would like to know more about us, send for a copy of our annual report. Write: Office of the President, Dana Corporation, Toledo, Ohio 43601.



Con-Vel
Parish
Perfect Circle
Spicer
Victor

SAFE DRIVERS SAVE

with Community Service Auto Insurance

Contact us today!

DAVID D. ROWE

157 E. Summit St., Chelsea

PHONE 475-8065

FARM BUREAU INSURANCE

Companies of Michigan

Chelsea School District Annual Financial Report

GENERAL FUND — Receipts and Disbursements 1967-68

Balance on hand — July 1, 1967	102,211
Receipts:	
Property taxes (Current and Delinquent)	\$ 716,877
Interest on delinquent taxes	941
Coach Park fees	438
Tuition — Summer School	720
Net revenue from revolving funds	22,304
Rent from school facilities	840
Refunds	3,594
State Aid	527,387
Driver Education	4,431
Vocational Education — Federal	5,745
Conservation Land grant	2,683
National Defense Education Act	4,891
County Special Education	4,890
Vocational Rehabilitation	225
Total Receipts	\$1,398,247
Expenditures:	
Instruction (Elementary)	
Salaries:	
Principals	\$ 24,794
Teachers	293,493
Playground Supervision	1,582
Substitutes	4,547
Clerical	6,909
Textbooks	6,142
Teaching Supplies	5,943
Library	2,900
Conference and Travel	607
Miscellaneous	213
Total	\$ 352,190
Instruction (Secondary)	
Salaries:	
Principals	\$ 29,108
Teachers	432,282
Driver Training Teachers	4,035
Substitutes	8,081
Clerical	6,486
Textbooks	10,720
Teaching Supplies	27,432
Library	5,085
Office Supplies	440
Driver Education Car Expenses	136
Travel	2,183
Miscellaneous	1,468
Total	\$ 527,414
Instruction (Special Education)	
Salaries:	
Teachers	\$ 23,592
Substitutes	297
Textbooks	65
Teaching Supplies	614
Library	21
Travel	136
Miscellaneous	415
Total	\$ 25,140

Administration:	
Salaries:	
Superintendent	\$ 17,940
Business Manager	12,840
Board of Education	960
Clerical	10,968
Elections	585
Census	805
Office Supplies	785
Miscellaneous Supplies & Expenses	2,115
Travel	2,318
Audit	1,591
Data Processing	4,510
Total	\$ 55,492
Transportation:	
Salaries:	
Supervisor	\$ 9,800
Drivers	38,419
Gasoline, Grease and Oil	5,309
Tires, Tubes and Batteries	582
Repair Parts	4,728
Replacement of Vehicles	29,644
Bus Fleet Insurance	1,919
Miscellaneous Expenses	239
Miscellaneous Supplies	10
Total	\$ 93,615
Operation of Plant:	
Salaries:	
Heating Fuel	\$ 79,948
Water & Sewage	21,588
Electricity	2,913
Gas	19,068
Telephone	67
Custodial Supplies	8,019
Supplies for grounds	7,284
Landfill	5
Mileage	50
Miscellaneous Expenses	340
Total	\$ 134,350
Maintenance:	
Contracted Maintenance	\$ 15,198
Replacement of Equipment	840
Miscellaneous Supplies & Expenses	55
Total	\$ 16,093
Fixed Charges:	
Insurance	\$ 9,070
Interest on Loan	2,758
Total	\$ 11,828
Miscellaneous:	
Health Services	\$ 46
Capital Outlay	104,523
Transfer to 1965 Debt Retirement Fund	21,104
Transfer to Building and Site Fund	32,500
Excess of Title I Expenditures over income	5
Total	\$ 158,178
TOTAL DISBURSEMENTS	\$1,374,300
Chelsea School District Balance June 30, 1968	\$ 3,911
Reserve from Cassidy Lake State Aid	20,036
1966 Debt Retirement Fund	
Bal. 7-1-67	\$1,063
Receipts	\$142,982
Disbursements	\$131,088
Bal. 6-30-68	\$13,857
1965 Debt Retirement Fund	
Bal. 7-1-67	\$1,649
Receipts	\$105,737
Disbursements	\$142,113
Bal. 6-30-68	\$25,173
Building and Site Fund	
Bal. 7-1-67	\$1,149,254
Expenditures	\$1,069,585
Bal. 6-30-68	\$79,669

+ Services in Our Churches +

ST. MARY'S CATHOLIC CHURCH
The Rev. Fr. Francis Wahowiak
Saturday, Jan. 11—
4:00-5:00 p.m.—Confessions.
7:30-8:30 p.m.—Confessions.
Sunday, Jan. 12—
Masses at 8:30 a.m., 8:00 a.m.,
10:00 a.m., and 11:30 a.m.
Monday, Jan. 13—
10:45 a.m.—Mass in school hall.

CONGREGATIONAL CHURCH
(United Church of Christ)
The Rev. Daniel Kellin, Pastor
Sunday, Jan. 12—
10:00 a.m.—Church and Sunday school.
6:00 p.m.—Pot-luck supper.
7:00 p.m.—Annual meeting.
Tuesday, Jan. 14—
7:30 p.m.—Bible class at Parks' residence.
Wednesday, Jan. 15—
8:30 a.m.—Men's breakfast.
3:30 p.m.—Junior Choir.
7:30 p.m.—Senior Choir.
7:30 p.m.—Deacons.

ZION LUTHERAN CHURCH
Corner of Fletcher, Waters Rds.
(Rogers Corners)
The Rev. John R. Morris, Pastor
Thursday, Jan. 9—
8:00 p.m.—Brotherhood, wives invited.
Saturday, Jan. 11—
9:00-11:30 a.m.—Seventh grade youth instruction class.
Sunday, Jan. 12—
9:00 a.m.—Sunday school.
10:15 a.m.—Worship.
Monday, Jan. 13—
7:15 p.m.—Junior Choir.
8:00 p.m.—Senior Choir.
Wednesday, Jan. 15—
8:00 p.m.—Annual congregational meeting.

CHURCH OF CHRIST
13681 Old US-12, East
R. D. Parnell, Minister
Sunday, Jan. 12—
10:00 a.m.—Church school.
11:00 a.m.—Worship service.
6:00 p.m.—Worship service.
Every Wednesday—
7:30 p.m.—Mid-week bible study.

NORTH LAKE METHODIST CHURCH
The Rev. George Nevin, Pastor
Sunday, Jan. 12—
9:30 a.m.—Worship service.
10:30 a.m.—Sunday school.

ST. JOHN'S EVANGELICAL AND REFORMED CHURCH
(United Church of Christ)
Rogers Corners
The Rev. Robert Townley
Sunday, Jan. 12—
9:30 a.m.—Church service.
10:30 a.m.—Sunday school.

CHELSEA BAPTIST CHURCH
The Rev. Elmer S. Steenson, Pastor
Sunday, Jan. 12—
10:00 a.m.—Sunday school.
11:00 a.m.—Worship service.
Nursery care available during Sunday school and worship service.
6:00 p.m.—Junior and Senior Baptist Youth Fellowship.
7:00 p.m.—Evening worship.
Wednesday, Jan. 15—
7:30 p.m.—Bible study and prayer meeting.

ST. JACOB EVANGELICAL LUTHERAN CHURCH
12501 Reithmiller Rd., Grass Lake
The Rev. Andrew Bloom, Pastor
Sunday, Jan. 12—
8:45 a.m.—Worship service.
9:45 a.m.—Sunday school.
10:45 a.m.—Worship service.

FIRST UNITED PRESBYTERIAN CHURCH
Unadilla
The Rev. T. H. Liang
Sunday, Jan. 12—
9:45 a.m.—Sunday school.
11:00 a.m.—Worship service.
Every Tuesday—
8:00 p.m.—Choir practice.

IMMANUEL BIBLE CHURCH
The Rev. Frank C. Frinkle, Pastor
145 E. Summit St.
Sunday, Jan. 12—
9:45 a.m.—Sunday school, nursery provided.
11:00 a.m.—Morning worship, nursery provided.
7:30 p.m.—Revival meeting.
Every Wednesday—
7:30 p.m.—Family Hour and Junior choir.

ST. PAUL UNITED CHURCH OF CHRIST
The Rev. Warner Siebert, Pastor
Thursday, Jan. 9—
7:30 p.m.—B. S. Y. Bee-Helping Hand Interest Group.
Friday, Jan. 10—
1:00 p.m.—Sugar and Spice Interest Group.
Saturday, Jan. 11—
9:00 a.m.—Confirmation.
11:00 a.m.—Youth choir.

ST. BARNABAS EPISCOPAL CHURCH
20500 Old US-12
The Rev. William D. Laska, Vicar
Sunday, Jan. 12—
11:00 a.m.—Morning Prayer.
11:00 a.m.—Church school and nursery.
Wednesday, Jan. 15—
6:30 p.m.—Annual meeting.

FIRST CHURCH OF CHRIST, SCIENTIST
1883 Washtenaw Ave., Ann Arbor
Sunday, Jan. 12—
10:30 a.m.—Morning service.
Lesson-Sermon: Sacrament.
10:30 a.m.—Sunday School.

SALEM GROVE METHODIST CHURCH
The Rev. George Nevin, Pastor
Sunday, Jan. 12—
10:00 a.m.—Sunday school.
11:15 a.m.—Church service.

BETHEL EVANGELICAL AND REFORMED CHURCH
(United Church of Christ)
Freedom Township
The Rev. T. W. Menzel, Pastor
Sunday, Jan. 12—
3:00 p.m.—Retirement reception.
10:00 a.m.—Worship.
11:00 a.m.—Sunday school.

GREGORY BAPTIST CHURCH
The Rev. Grant Lapham, Pastor
Sunday, Jan. 12—
10:00 a.m.—Worship service.
11:15 a.m.—Church school.
8:30 p.m.—Baptist Youth Fellowship.
7:30 p.m.—Evening worship service.

EVANGELICAL LUTHERAN CHURCH
Cor. Ellsworth and Haab Rds.
Freedom Township
The Rev. Daniel L. Mattson, Pastor
Saturday, Jan. 11—
9:00 a.m.—Confirmation class for 6th and 7th graders.
Sunday, Jan. 12—
10:00 a.m.—Church service.
11:00 a.m.—Sunday school.

METHODIST HOME CHAPEL
The Rev. John Fall Administrator
The Rev. Wm. Johnson, Chaplain
Sunday, Jan. 12—
8:45 a.m.—Worship service.

WATERLOO VILLAGE CHURCH
(Evangelical United Brethren)
The Rev. Wilbur Silvernail, Pastor
Sunday, Jan. 12—
10:00 a.m.—Sunday school.
11:15 a.m.—Worship service.

ST. JOHN'S EVANGELICAL AND REFORMED CHURCH
(United Church of Christ)
Ann Arbor
The Rev. Robert Townley
Sunday, Jan. 12—
9:45 a.m.—Sunday school.
11:00 a.m.—Church services.

Nature is grand until the weeds begin to grow.

SUNDAY'S SERMON

★ What We Need

What the country needs now is a revival of the great American spirit. We're talking about the spirit that sent the pioneers westward to face hardships and countless dangers to turn wilderness into towns and cities. We're talking about the determination to succeed and the subsequent contributions to progress that came to this country in the hearts and minds and suffering of immigrants from many lands.

America became great because men were given the opportunity to use their minds and energies and talents to earn for themselves a place in the business and social communities. The United States is still the greatest of all the lands of opportunity. Rewards await the proper application of individual effort and skill. Our country will remain great only so long as she is blessed with citizens who believe that the only way to succeed is to try.

Evangelist Meetings Set at Immanuel Church

The Rev. Ken Oulette will be guest speaker at the Immanuel Bible church during a special evangelistic campaign Sunday, Jan. 12 to 19. The Rev. Oulette is a former director of Detroit City Rescue Mission and has been a pastor and full-time evangelist. Special music will highlight each service. Weeknight meetings will be at 7:30 p.m. The public is invited to attend all services.

A New Leaf or a New Life?

Most of us look forward to the New Year because it gives us opportunity to begin anew or else make some important changes in our way of life.

Mentally, we try to clear the page of all blobs, mistakes, failures and deficit. We suppose a new page or new "leaf" will give us the incentive to do things right in the coming year. Of course, it isn't long before a smudge, or a slip, or a "setback" appears and we need ANOTHER new leaf.

What's really needed is a NEW LIFE! We need Someone who is wise enough, strong enough, who cares enough to help us in our weakness and defeats. That Person is Jesus Christ, who loved us and gave Himself for us, even though we were sinners, and desires to live in us that we can enjoy life abundantly.

"I am the resurrection and the life: he that believeth in me, though he were dead, yet shall he live."
—John 11:25

IMMANUEL BIBLE CHURCH

145 E. Summit, Chelsea Rev. Frank Frinkle, Pastor

NOTICE Lyndon Township Taxpayers

Lyndon Township Treasurer will be at Chelsea State Bank to collect Lyndon Township taxes all day Friday, Jan. 31 and Friday, Feb. 28, only, from 9 a.m. to 5 p.m., and on any other day, at my home, 11437 Boyce Road, R.F.D. 2, Grass Lake, Mich. Those who wish may send check or money order by mail. Receipt will be returned by mail.

All Dog Licenses must be paid to Lyndon Township Treasurer on or before March 1, 1969, to avoid penalty.
MALE AND UNSEXED, \$3.00 - FEMALE, \$5.00
Rabies Vaccination papers must be presented in order to obtain license.

MARY CLARK
LYNDON TOWNSHIP TREASURER

SEALTEST Quality Dairy Products

For
HOME DELIVERY
PHONE 429-4294
Gordon L. Macomber



Now Is A Good Time to
SUBSCRIBE TO
THE CHELSEA STANDARD

FILL OUT AND MAIL THE COUPON BELOW—TODAY!

Here's What You Get for Less Than 6c per Week:

- + Community News
- + Church News
- + Social Events
- + Farm News
- + Local Sports News
- + Dollars Saved

by shopping Advertised Specials and by following the Want Ads for your needs.

Please send me THE CHELSEA STANDARD for one year, for which I enclose \$3.00.

Name _____
Address _____
Route or Street _____
City _____ State _____
I wish my subscription to start with the issue of _____
Date _____ Signed _____

—NOTICE—

Sylvan Township Taxpayers

Sylvan Township Treasurer will be at 103 N. Main St., Chelsea, to collect Sylvan Township Taxes Monday through Friday, 8 a.m. to 5 p.m., until Feb. 28, 1969

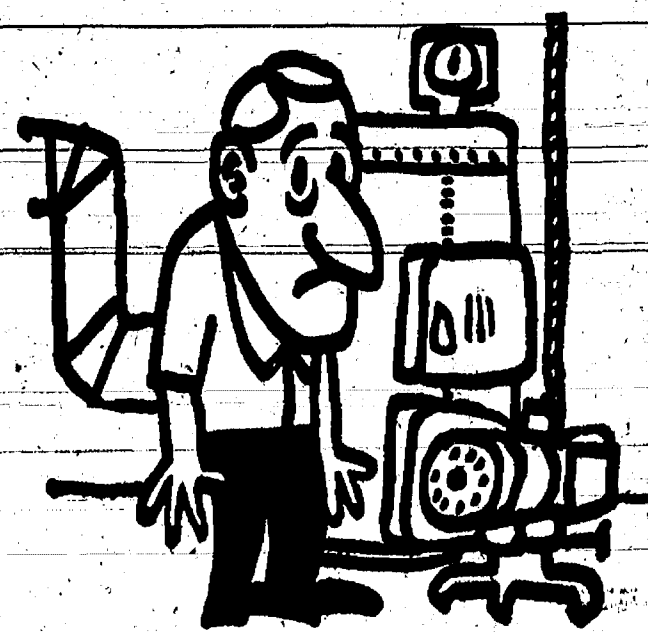
CHECKS WILL BE ACCEPTED BY MAIL

All Dog Licenses must be paid to Sylvan Township Treasurer on or before March 1, 1969, to avoid penalty.

MALE AND UNSEXED, \$3.00 - FEMALE, \$5.00

Rabies Vaccination papers must be presented in order to obtain license.

FRED W. PEARSALL
SYLVAN TOWNSHIP TREASURER



Just put off the payments.

Before winter hits you with a lot of expensive misery again, convert to clean, economical Natural Gas heat. We'll remove your old oil tank free of charge, and pay you for any leftover oil or coal. There's no down payment, and you pay nothing for the installation for six months. Then, if you like, you can pay on your Gas bill over a period of 36 months. Easy. And, you can save up to one third on present heating bills. But using is believing. Just call us or your participating heating contractor today. You'll know it's the truth when they say: Gas makes the big difference... gas is less, too!

MICHIGAN CONSOLIDATED GAS COMPANY



Mrs. Lanny V. Carr

Harry Kealys Feted on 25th Anniversary

Mr. and Mrs. Harry Kealy were honored Sunday afternoon with a 25th anniversary dinner at the Ambassador Restaurant and party at the home of their daughter and son-in-law, Mr. and Mrs. Thomas Penhaleggon, 321 Grant St.

The party was arranged by Mr. and Mrs. Tom Penhaleggon, Mr. and Mrs. David Kealy, Kathy Kealy and Mrs. Anna McDonald, mother of Mrs. H. Kealy.

Refreshments were served by Mrs. Penhaleggon, Mrs. John Perry, Mrs. Orville Moore, Mrs. Gary Moore and Mrs. Anna Penhaleggon to the 50 guests.

The Kealys received many gifts, including a snowmobile from their children.

Edith McDonald and Harry Kealy were married Dec. 30, 1943 by the Rev. Ede, minister of the Methodist church. They have three children, David, Mrs. Thomas (Linda) Penhaleggon, and Kathy; and one grandchild, Erin Kealy, all residing in Chelsea.



ENGAGED: Mr. and Mrs. Homer Kuhl of 4902 M-52, announce the engagement of their daughter, Deborah Ann, to James Leon Diederich, son of Mr. and Mrs. James Diederich 13717 Recreation Dr., Gregory, Miss Kuhl and her fiancé, both graduates of Chelsea High school, are attending Michigan State University. Mr. Diederich is majoring in Industrial Arts. An August wedding is being planned.



DENS 2, 3, PACK 455—Dens 2 and 3 of Pack 455 opened with the Pledge of Allegiance Dec. 20. Thirteen boys were present for a gift exchange and chorus of "Jingle Bells." Alex Eresen, Jr., served refreshments. Candy canes were given to the members by the den mother. Games committee was Anthony Houle and Jay Dellinger, assisted by Rodney Brannan and Richard Worden.

At previous meetings the scouts elected Brian Kalishok as denner and Jeff Sweet as assistant denner and prepared for Christmas by cutting and decorating stars from aluminum pie plates.

PACK 415—Cub Pack 415 held their annual Christmas party Dec. 22 at the Knights of Columbus Hall in Chelsea. The cubs and their families played games and sang Christmas carols. They were later joined by Santa, who passed out boxes of candy, canes and presents to cubs and parents.

While refreshments were being served Cecil Clouse announced that he would retire as cubmaster. Carmer Slocum will take over as the new cubmaster.

St. Louis School for Boys received a Christmas tree, hot chocolate, home-made cookies and Christmas spirit Dec. 16, from Cub Pack 415.

The cubs performed skits and sang Christmas carols. The Rev. Fr. Umberto led the St. Louis boys' band in several Christmas selections for the cubs and their parents.

While refreshments were served the cubs and boys of St. Louis school decorated the tree with articles made by the cubs at their den meetings.

The priests, sisters and boys of St. Louis school were presented with cigars, chocolates and candy canes donated by Mr. and Mrs. Bob Lewanosky of the Waterloo Store.

LEGION AUXILIARY—The January meeting of the American Legion Auxiliary was held Jan. 7 at the Sylvan Township Hall. Due to bad weather and much illness, only nine members attended.

Announcement was made that Girls' State will be held in Ann Arbor beginning June 15.

The president announced that the next District meeting will be Sunday, Jan. 26 in Ypsilanti. The next meeting will be 8 p.m. Feb. 4 at Sylvan Township Hall.

Home Economics Study Groups Calendar

Thursday, Jan. 9—Ann Arbor Suburbanettes, home of Mrs. Ned Hardesty, 2522 East, Ann Arbor.

Thursday, Jan. 9—Ellsworth Road, home of Mrs. Willis Luckhardt, 2831 Stone School Rd., Ann Arbor.

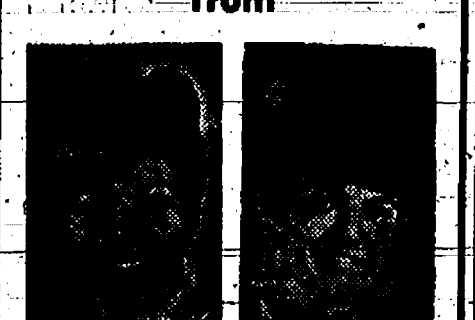
Thursday, Jan. 9—Geddes, home of Mrs. Robert Steeb, 514 Krause, Ann Arbor.

Tuesday, Jan. 14—Webster, home of Mrs. Floyd Grubbaugh, 7895 Forest, Dexter.

Tuesday, Jan. 14—Domestic Daughters, home of Mrs. George Westendorf, 713 Carver, Ypsilanti.

Telephone Your Club News.
To GR 5-3591.

TIPS for your TOP from



TODDY and FRAN

We read a prediction, made by an expert in the investment field, that suggested buyers of stock look to those products that have "to do with the head and face." Now there's a man after our own heart. We say too: "When you take stock (of yourself, that is) pay particular attention to 'the head and face.' If you're happy with what you see—with the style of your hair and the way your cosmetics accent your best points, you're a happier, more confident woman. May we be of service in 1969, helping you take stock of what's the loveliest for your head and face grooming?"

Magie Mirror Beauty Salon
Phone 665-0816
5585 Jackson Rd., Ann Arbor

4-H Clubs

LEARNING BY DOING—The annual Christmas party of the Learning By Doing 4-H club was Saturday afternoon, Jan. 4. We met at the home of Wendy and Cindy Bradbury and went as a group to the Chelsea Bowling Lanes. Later we went to the home of Debbie Gross for the gift exchange and refreshments.

The next meeting will be at Janette Chaffa's on Feb. 1, at 2 p.m. Jane Sias, reporter.

MEDICINE CABINET NEEDED—Every home should have a compartment in medicine chest or elsewhere that can be locked, keeping medicines and poisons out of the reach of curious little children.



GIRL SCOUTS
TROOP 58
Girl Scout Troop 58 opened the meeting with a flag ceremony. A new treasurer, Terri Jones, and scribe, Jane Knott, were elected. We then played the sneeze game and divided into patrols to pick new patrol leaders, assistant patrol leaders and scribe.

In patrol No. 1, the new patrol leader is Terri MacDonald, assistant patrol leader and scribe is Susie Schulze. In patrol No. 2,

the new patrol leader is Jan Frisch and assistant leader is Kayen Milliken. Patrol No. 3 leader is Debbie Packard, assistant leader is Lola Worden and scribe is Brenda Shadon.

The meeting was closed with "Taps."

EASIER HOUSECLEANING
House cleaning can be made easier. Use a duster for venetian blinds that will do both sides at once. Select a window cleaner that repels dust. Use wax on floor and furniture to permit dust from accumulating.

WATERLOO BEAUTY SHOP

Operated By Rosemary Klink.

Open Tues. thru Sat., 8 a.m. to 6 p.m.

475-8895

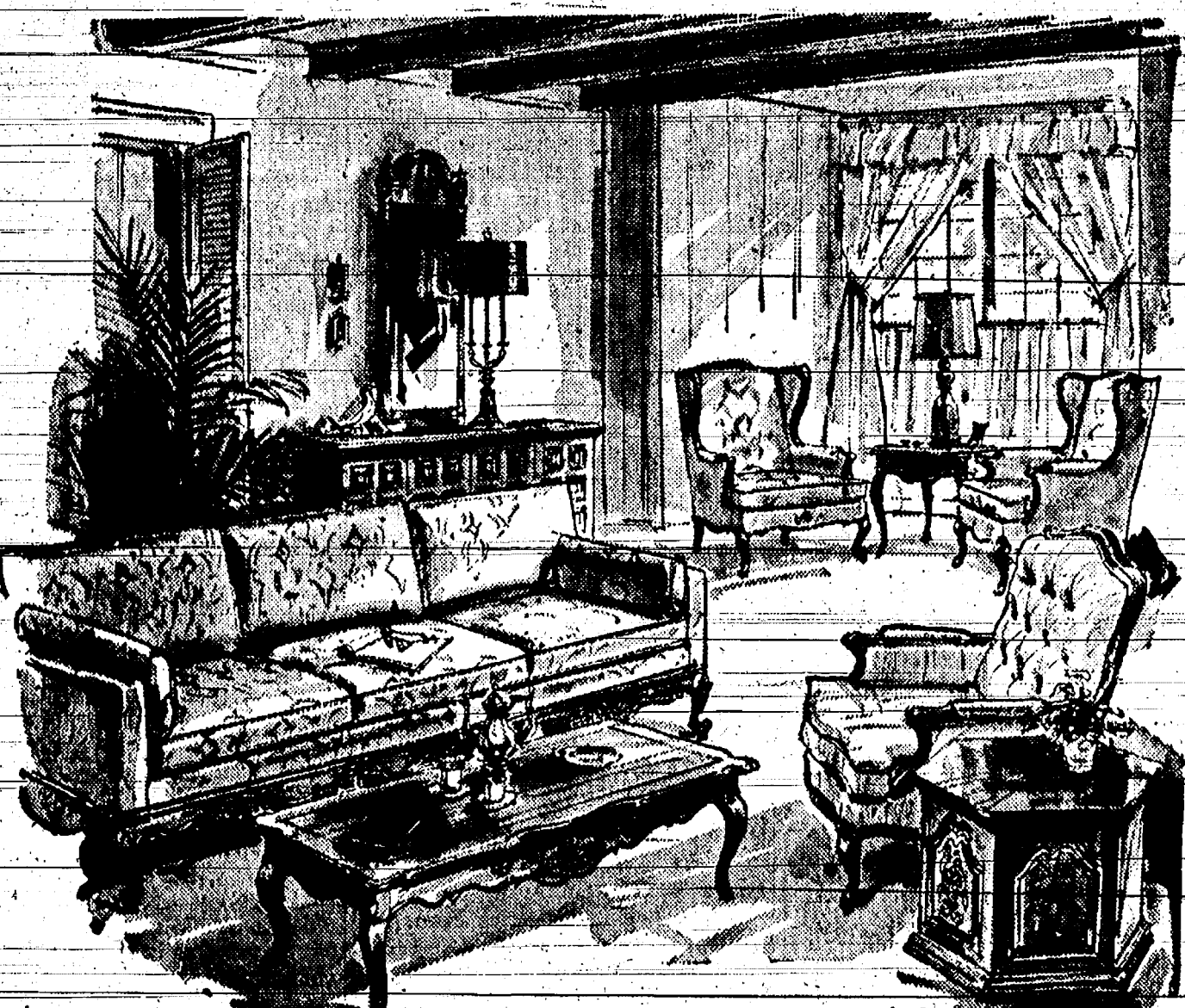
CALL FOR APPOINTMENT

FURNITURE SALE

ENTIRE STOCK REDUCED*

*EXCEPT PRICE RESTRICTED ITEMS

SAVE 10% to 40% SAVE



- ★ SOFAS
- ★ BED SOFAS
- ★ CHAIRS
- ★ RECLINERS
- ★ LAMPS
- ★ END TABLES
- ★ MIRRORS
- ★ PICTURES
- ★ LOVE SEATS
- ★ COFFEE TABLES
- ★ BOOKCASES
- ★ CABINETS
- ★ Accessories

DINING ROOM GROUPS

Modern - Mediterranean

EARLY AMERICAN DINETTE SETS



BEDROOM GROUPS

- COLONIAL
- TRADITIONAL
- MEDITERRANEAN
- MODERN

MATTRESSES & BOXSPRINGS



WALNUT, CHERRY, OAK, PECAN, MAPLE, FAMOUS NAME BRANDS, QUALITY YOU TRUST

Franklin, Selig, Wieland, La-Z-Boy, Globe, Conover, Pennsylvania House, United, American of Martinsville, Founders, Thomasville, Stiffel, Stanley, Bassett, Sprague & Carleton, Lane, Simmons, Stearns & Foster, U. S. Koyloh, Rowe.

MERKEL BROS.

ALL SILVER REPLATING REDUCED 20% DURING JANUARY ONLY



Every Item Replated at Sale Prices

Since silver metal prices are up 50% and still rising... this is an excellent time to take advantage of these low, low prices to have your worn silverware, antiques and family heirlooms replated like new. These pieces are now more valuable than ever and make wonderful gifts. All work QUADRUPLE SILVERPLATED by our skilled silversmiths and sale prices apply to ALL pieces.

EXPERT REPAIR SERVICES AVAILABLE

Dents removed... Items straightened

Broken handles, legs, knobs, repaired & replaced

Missing parts & insulators repaired & replaced

New combs, brushes, mirrors, knife blades, thermos fillers furnished

Gold, copper plating

Staining and powder expertly refinished

SALE ENDS JANUARY 31
BRING IN SILVER TODAY!

Winans Jewelry Store

SALE

ALL WOOL SLACKS WOOL SWEATERS

Large Assortment

Reduced for Big Savings!

ASSORTED BOOTS Reduced to \$9 and \$10

Cleaning House on Odds & Ends of Nylon Hose

Take Your Pick - 50c pr.

Were as much as \$1.35 and \$1.50. Mojuds and Kayzers.

Patty Ann Shoppe

CHELSEA VILLAGE COUNCIL PROCEEDINGS

December 17, 1968
Council Room
Regular Session.

This meeting was called to order at 8:00 p.m. by Pres. Baldwin. Trustees present: Fulk, Gorton, Hoydauff, Miller, Pennington and Weber. The Minutes of the Regular Session of December 3, 1968 were read and approved.

A discussion was held with Mr. W. Day, Superintendent of the Washtenaw County Building, regarding a request for the possible use of the Chelsea Village Council Room as a temporary District Court, until such time as the old Chelsea State Bank building will be remodeled and available for use. Hours would be from 8:30 a.m. to 5:00 p.m. each week day.

Motion by Miller, supported by Weber, to grant permission for the use of the Council room as a District Court on a temporary basis, not to exceed 8 months. Trustees Weber and Pennington were instructed to meet with Mr. Day, and Village Attorney John Kusch to draft an agreement and fee for such use. Roll call: Yeas all. Motion carried.

A discussion was held with George A. Staffan regarding the Free-Rd. sewer. The village engineers will be consulted, but no official action was taken at this time.

Motion by Pennington, supported by Weber, to authorize Superintendent of Light & Water, Homer

3 Scholarships Are Offered By March of Dimes

Three senior high school students from Washtenaw county will be awarded \$500 college scholarships by the Washtenaw County Chapter of The National Foundation-March of Dimes.

The primary considerations for the scholarship are financial need, academic achievement, personal qualifications and professional promise. Applicants must be accepted by a college or university for their field of study within the State of Michigan. The fields of study include nursing, physical therapy, occupational therapy, pre-medical studies, social work, medical technology and special education.

Ralph J. Scheffler, scholarship chairman for the Washtenaw chapter, announces that the applications are available at county high schools. Application deadline is Feb. 26. Recipients of the scholarships will be announced in March.

If you are in good health, you are one of the luckiest among your fellow citizens.

YOU'LL PROFIT FROM BETTER FEEDS

Extra proteins, vitamins and minerals are scientifically blended to promote your stock's growth and health, and to boost your profits.

FARMERS' SUPPLY CO.

PHONE GR 5-5511

ACT NOW

Winter Is HERE!

We have the materials you will need to save on heating costs

COMBINATION DOORS and WINDOWS

Snug in winter... cool in summer.

STORM SASH

STORM WINDOWS

Weather Stripping

CAULKING COMPOUND

Cartridges and Guns

Finkbeiner Lumber Co.

Phone Chelsea GR 9-3881

On Old US-12 Just off S. Main St.

MARTIN STEINBACH

Time To Spare

By GERALD ANDREWS - Retirement Adviser

An Organization Called SIR

If you're fed up with sitting around trying to use up retirement leisure, here's an interesting idea. It came from California, where a group of retirees decided to band together to make their new and unfamiliar lives more worthwhile.

The formed an organization based on the premise that every member has something to offer, and something to gain from his colleagues. Its name—Sons in Retirement, which collapses nicely into the monosyllable—SIR.

The idea is to put talent to work. For instance, a professor who has taught literary courses may be invited to direct a SIR reading program. Or an amateur naturalist may take groups on bird-watching jaunts.

But it isn't all that highfalutin. Sports are prominent, sometimes

Home Remedies To Prevent Cold Damage Often Dangerous

Freezing Michigan weather can bring headaches as well as colds, plumbing headaches. Do-it-yourself friends, experimenting with all kinds of weird home remedies for cold-weather plumbing problems, can damage their property or themselves by improper procedures.

Chelsea Fire Chief Jim Gaken cites instances where persons in the area have set houses on fire while attempting to thaw frozen pipes with torches. One individual started a fire in a well pit when trying this handy home remedy.

Electric heat tapes with thermostats are rated tops by persons familiar with plumbing problems. The tapes come in assorted lengths beginning at one yard, plug into an electric outlet and are wrapped around the pipe with insulation. When the pipe temperature drops to 34 degrees, the thermostat automatically heats the pipe to 36 degrees and shuts off.

The tapes are often applied by homeowners to protect pipes in basements, crawl spaces, barns and milkhouses. Trailers, which boast a completely exposed plumbing

About Your Social Security

By Robert A. Kehoe
Social Security District Manager

Q. Are my earnings for 1968 likely to affect the amount of my social security benefits?

A. If your earnings exceed \$1680 in 1968, you may not receive all your checks. The exact number of benefits you can receive will depend upon your total earnings and when you work.

Q. My mother purchased a hospital bed which was necessary because of her condition. Will Medicare pay for this?

A. Beginning Jan. 1, 1968, your Medicare insurance can help pay for either rental or purchase of medical equipment such as wheel-chair, hospital bed, etc. Payments by Medicare on purchased items will be made over a period of time, as if the purchased item had been rented.

Q. I do not have the money to pay my doctor bill and he does not wish to collect the Medicare payment directly. I understand I must pay the bill before I can receive payment from Medicare.

A. This is no longer true. All you need to do now is get an itemized bill (paid or unpaid) and send it in with your Medicare benefits claim form.

ICY SURFACE

Glaçiers cover about one-tenth of the earth's land surface and contain almost one percent of the world's water.

Gambles

The Friendly Store

STOP FROZEN PIPES!

USE WRAP-ON HEAT TAPES

NO TIME LIMIT FREE REPLACEMENT GUARANTEE

Sold at GAMBLES

SALYERS COLONIAL DINING

112 E. Middle St., Chelsea

Enjoy good eating in friendly Early American surroundings.

HOURS:

Open Monday through Wednesday, 10 a.m. to 9 p.m.

Closed Thursdays

Open Friday and Saturday, 10 a.m. to 10 p.m.

Open Sunday, 8 a.m. to 8 p.m.

OWNED & OPERATED BY JEFF and MARILYN SALYERS

Birds Find Winter Haven At Frederick Schultz Home

Among Chelsea's wildlife enthusiasts are Mr. and Mrs. Frederick Schultz and their feeder service for hungry birds, now in its 17th year.

The Schultz's home at 20184 West Old US-12 is surrounded by 125 acres, five bird feeders and a large assortment of feathered visitors.

Mrs. Schultz has familiarized herself with the daily and seasonal habits of each bird she spots taking advantage of the feeders. She keeps a log of when each species arrives and departs during the year and knows when to expect each type of bird.

Mr. Schultz built each of the five feeders and refines the food supply each day with new sunflower seeds, wild bird feed and scratch. He and his wife gather enormous pleasure from the small visitors that perch as near as their window will feeder each day.

property. Yellow-Bellied Sapsucker and Purple Finch are other additions to the winter collection. One male pheasant with his six-year-old hen near a group of evergreens where they roost at night. When spring arrives, winter birds will be replaced by a group of summer birds. Mrs. Schultz knows the departure and arrival dates of each kind.

During summer months Robins, Canaries, Kildeer, Larks; Phoebe, and others descend upon the Schultz property. Each year, a Baltimore Oriole has the audacity to build his long, drooping nest in a position that the garage door cannot be moved during the summer. Beet-loving canaries especially raised for this purpose near the house.

Although most of their birds outside, the house has not altogether escaped, becoming a bird haven. Though her colorful coat recently left for bird heaven, Mrs. Schultz still raises two parakeets indoors.

CHARM BEAUTY SALON

4396 CLEAR LAKE ROAD (Formerly of Grass Lake)

Two Operators - Hair Styling and Wig Service

PHONE 475-2700

Enjoy magnificent entertainment with

Magnavox COLOR TV

Today's BIGGEST PICTURES in space-saving fine-furniture

NEW SHOWS—colorful drama, adventure, comedy, movies, and thrilling spectaculars for your entire family.

SPORTS—enjoy the World Series, Olympic Games, college and professional football—all in vivid color.

CAMPAIGN '68—follow the action of your favorite candidates... you'll see it best on Magnavox Color TV.

Your Choice **NOW ONLY \$548.50** of Styles **SAVE \$50.00**

Beautiful Contemporary—model 6952

...brings you perfect pictures AUTOMATICALLY!

Instant Automatic Color gives you a perfectly tuned picture that stays precise—on every channel, every time! Other advanced features include: Brilliant Color 295 sq. in. pictures with the most natural color ever. Chromatone adds thrilling depth and dimension. Quick-On lets pictures flash-to-life in seconds—without annoying "warm-up" delay. And exclusive Magnavox Bonded Circuitry for highest reliability and years of TV viewing pleasure. Authentic style cabinets have concealed swivel casters for easy moving. Revolutionary 82-Channel Instant Automatic Remote Control is optionally available on all models for the ultimate in convenience.

Now Only \$648.50

Charming Early American—model 6954

Elegant Mediterranean—model 6956

2-YEAR PICTURE TUBE GUARANTEE

No Matter Where You Live or Where You Move—Anywhere in the U.S.... your Magnavox Gold Seal Picture Tube Warranty is valid for 2 years! If defective material or workmanship cause failure in normal use, tube is replaced by the authorized Magnavox Dealer where purchased or in any new service area you've moved to! In-home service labor required to replace tube (carry-in service on model 6000 only) also furnished without charge for first 90 days.

15" COLOR PORTABLE

Slim-and-trim... take along and enjoy this ruggedly-built, highly dependable Magnavox value wherever you go. Its 17 sq. in. screen is 15 sq. in. larger than most other color portables. Model 6000, with telescoping dipole antenna, plus many other Magnavox quality features. Ideal for shelves or tables—makes the ideal second set.

ONLY \$319.90

Open Friday Evening Until 9. Close Saturday at 4 p.m.

FRIGID PRODUCTS

113 N. MAIN STREET LLOYD R. HEYDLAUFF PHONE GR 9-6651