

WEATHER

Oct. 5	67	85	7.00
Oct. 6	68	78	6.00
Oct. 7	68	74	6.00
Oct. 8	67	74	6.00
Oct. 9	67	74	6.00
Oct. 10	67	74	6.00
Oct. 11	67	74	6.00

The Chelsea Standard

QUOTE

If we spend our lives in loving, we have no leisure to complain, or to feel unhappiness.
—Joseph Joubert.

SIXTH YEAR—No. 16

14 Pages This Week

CHELSEA, MICHIGAN, THURSDAY, OCTOBER 13, 1966

10c per Copy

SUBSCRIPTION \$3.00 PER YEAR

Homecoming as Bulldogs Facing Dexter

Defenders Find Scoring Combination to Rack Up First Win over S. Lyon

Chelsea Bulldogs registered their first victory of the 1966 season Friday evening, defeating South Lyon, 20 to 14. This was Chelsea's first home ball game. Chelsea kicked off to South Lyon, returning to the 37-line. After picking up one down, the Lions were forced to Chelsea. Chelsea took their own 4. With the help of Ron Montague and Bowling the Bulldogs moved to the 20-yard line. Here the Bulldogs back and a down pass went incomplete. The two teams traded punts Chelsea gaining the ball on the 44-yard line. After picking up one down, Chelsea moved to South Lyon receiving three plays, South Lyon quarterback dropped back to throw a 31-yard touchdown to end Tim Mahoney. Half-Jim Richardson then ran the point to give South Lyon a 7-0 lead.

Chelsea's Larry Gaken picked up the ball on the 44-yard line. After picking up 14 yards, a first down, Bill Harvey then took a pass to split end Dan Allen. Allen ran the ball back and hit him with a 34-yard touchdown pass. Bowling was stopped short of the goal line.

The teams then traded fumbles as the Lions the ball on the 20-yard line.

Then quarterback Chuck Royal dropped back to pass and throwing over the middle, Bulldog Larry Gaken picked off the pass and raced down the west side line to South Lyon's seven-yard line, a return of 69 yards. After two plays netted three yards, Tom Bowling did the remaining four yards for the TD. Bill Harvey passed to Dan Allen for the extra point and Chelsea led, 13 to 7.

The half ended with Chelsea leading, 13 to 7.

The second half started with South Lyon kicking off to Chelsea. Chelsea's running attack again showed improvement as Tom Bowling carried for 10 yards. Ron Montague for six and Bill Harvey for 30 yards. This put the ball on the nine-yard line. Two plays put the ball on the three, but an offside penalty put Chelsea back to the eight. South Lyon was then guilty of offside and placed the ball on the two with fourth down. Bill Harvey tried the right side ad fell inches short of the TD. Chelsea's defense then kept the Lions in the hole and forced only to their 27-yard line.

With Mike Harvey picking up 16 yards in two carries and Tom Bowling picking up nine, Chelsea moved to South Lyon's two-yard line. Here quarterback Bill Harvey, sneaked in for the third touchdown. Harvey also ran the extra point on a kick around end. The score in the third quarter ended 20 to 7.

South Lyon then scored to tie, 20 to 7.

(Continued on page three)

Need for Low Cost Housing To Be Studied

Low cost housing came under discussion at the Thursday, Oct. 6 meeting of the Chelsea Village Planning Commission.

Mrs. Louis Rump and Louis Burghardt of the Chelsea Social Service presented information to the commission concerning the need for low cost housing in Chelsea. Families on welfare and Aid to Dependent Children are having increasing trouble finding suitable housing at prices they can afford according to the information received by the planning commission.

The Planning Commission stated that they are in sympathy with the need and can make provision for such housing in their planning, but since they were established as an advisory planning commission, they did not feel that they could actually acquire, construct or administer such housing.

The matter was thus transmitted to the Village Council for action.

Approval has been received from the Washtenaw County Metropolitan Planning Commission granting the Chelsea Planning Commission's request for assistance in planning the first-year program.

A letter was also received from Joseph J. Gillings of the Community Planning Division of the Office of Economic Expansion for the State of Michigan, regarding the preliminary application for the Urban Planning Assistance Program. Commissioners William Freeman and George Staffan along with one or two Village Councilmen, were designated to meet with the state planners to tour the Village on Oct. 27. A special meeting with the planners and the Commission will take place at Schumm's at 6:30 p.m. that evening.

The discussion of the present zoning map was continued by the Commission, and will make further study by the committees through the October and November meetings.

A motion by Merle Barr, Jr., (Continued on page three)



CHARTER MEMBERS: Seven charter members of the Chelsea Woman's Club, organized in 1931, gathered recently at the McKune Memorial Library, which their club organized and for many years volunteered all the staff work to maintain. It was primarily through the efforts of the Chelsea Woman's Club that the present building was obtained for use as a library. Charter members are, seated from left, Mrs. Charles Meserve, Mrs. Leigh Palmer and Mrs. Harold Spaulding; standing from left are Mrs. Paul Schabile, Sr., Mrs. Wilbur Hinderer, Mrs. Archie Wilkinson and Mrs. George Walworth.

Community Chest Drive Starts Monday

Kick-Off Luncheon Slated Tuesday With Campaign Goal Set at \$19,785

The Chelsea Community Chest will kick-off its 1966 campaign next Tuesday, Oct. 18, at the 12:30 luncheon meeting of the Chelsea Chamber of Commerce at the Congregational United Church of Christ.

Goal for the 1966 drive, which officially begins on Monday, Oct. 17, is \$19,785.

Present at the Chamber meeting on Tuesday will be chairman Roland Eder and co-chairman Gene Miller, with several of the division chairman also scheduled to attend. A movie on the benefits of the United Fund on a local as well as a national level will be shown.

This movie, available for any organization to show, helps explain the benefits derived from the Community Chest campaign.

Benefiting from this year's drive will be the Chelsea Recreation Council, which is slated to receive \$5,000 if the goal is reached; the Chelsea Social Service, scheduled to receive \$2,200; the Boy Scouts and the Girl Scouts, each to receive \$2,100; the Catholic Social Service, which will get \$325; the Washtenaw Association for Retarded Children, to gain \$150; the Salvation Army, which will derive \$300 from the Chelsea campaign.

Other beneficiaries of the local drive include the Chelsea United Fund, which will receive \$450; the Michigan Children's Aid Society, which will receive \$300; the Heron Valley Child Guidance, to derive \$150; and the American Red Cross, which is scheduled to receive \$3,300.

The goal this year is \$2,000 more than the total of the 1965 drive.

The purpose of the Chelsea Community Chest is to consolidate fund raising drives for those health, welfare, character building and recreational agencies which are members of the drive.

The chairman, co-chairman, and the chairman of each of the group drives met last Thursday evening to complete arrangements for all the Community Chest drives.

Woman's Club Looks Back on 35 Years of Useful Service

Thirty-five years ago, a group of young women decided to form a club.

As a result of that meeting, and the 35 years of meetings which followed, Chelsea now has a library and an impressive library building, the Chelsea Social Services and Chelsea Recreation Commission were formed, the Chelsea Girl Scouts organized, the child study club established and the Chelsea Community Chest started.

Only seven of the original charter members are still living in the Chelsea area and are still active in the organization today known as the Woman's Club of Chelsea.

The seven are Mrs. Archie Wilkinson, Mrs. Paul Schabile, Sr., Mrs. George Walworth, Mrs. Wilbur Hinderer, Mrs. Leigh Palmer, Mrs. Harold Spaulding and Mrs. Charles Meserve.

Another charter member, Mrs. Blanche Palmer, who has been living in California, died Sunday.

The Woman's Club was first organized in April, 1931, as the Chelsea Child Study Club. The late Mrs. Warren Daniels served as the club's first president and was instrumental in implementing many of the projects which have since developed into independent agencies.

Mrs. Paul Schabile, Sr., the first program committee chairman, asked each member of the newly-organized group to bring in written form her reason for wanting a Child Study Club to be used as a guide in building a program.

Three important ideas came out of the suggestions: to start a public library, to start a Girl Scout troop and to work with the needy.

Membership dues for 1931 were set at 50 cents and later a provision was added that the dues could be paid 10 cents at a time, if desired!

One of the first club activities was a bake sale, at which the ladies earned \$18. The proceeds were used to buy mittens and stockings for four families, and club members also agreed to collect toys and clothes for the Red Cross to distribute.

In November, 1931, after the Child Study Association convention in Ypsilanti, the Club charter was received listing the charters or members.

The Chelsea group became involved in starting a library in Chelsea early in 1932. Mrs. A. A. Palmer headed a committee investigating the possibility of starting a library and the club voted to stand the expense of cleaning a store owned by the Palmer family which was donated for use as a library. The store was too large for the two bookcases and tables the club mustered, so sheets were dyed maroon and hung across the room to provide a storage and workroom area in the rear of the building.

Books in the new library totaled 22 donated and 100 on loan from the state library. Today, McKune Memorial Library has a collection of approximately 14,000 volumes.

They Said It Couldn't Be Done. The club supported the library financially until 1938, when the library became tax supported. Fourteen women gave volunteer help faithfully over the years, and thus disproved the conten-

Possible Shared Time for Schools Closer to Reality

The possibilities of shared facilities between St. Mary Parochial school and the Chelsea Public school at the sixth, seventh and eighth grade levels was explored at a public meeting Monday evening, Oct. 10, in the High school library. Approximately 20 persons were present.

Among those present were Sister John Edna, principal of St. Mary's school; the Rev. Father John Zwiers, superintendent of parochial schools from Detroit; the Rev. Father Francis Maliszewski, pastor of St. Mary's Catholic church; Sister Marie Anita and Rose Sharon, teachers at St. Mary's school; Charles Cameron, superintendent of Chelsea Public schools; Robert Taylor, Robert Foster and Charles Lancaster, Chelsea School Board members; and Fred Mills, business manager of Chelsea Public schools.

Superintendent Cameron cited several quotations from an article on shared time, pointing up factors to consider. One fact quoted was that there is no legal barrier in Michigan against shared facilities.

Only the top three grades at St. Mary's would be included in the proposed sharing program, which would begin when the new Junior High school is completed.

If the school board passes favorably on the plan and all parties involved agree, the principals of both St. Mary and the Junior High schools; Robert Taylor, Robert



ADMINISTRATORS HONORED: Administrators of the Chelsea Methodist Home since 1940, including the present administrator, the Rev. John H. Lord, received recognition Friday at the observance of the 60th anniversary of the founding of the Home. A plaque, which will be hung near the entrance to the Home, lists all the names of the superintendents and administrators of the Home since the founding. Included, in addition to the Rev. Edwin J. Weiss, second from left, who served as administrator from 1956 to 1966, and who now makes his home in Ann Arbor; the Rev. Leroy Lord, administrator from 1940 to 1948; and the Rev. Matthew Betz, administrator from 1948 to 1957. The Rev. Lord and the Rev. Betz both reside at the Home today.

More Than 600 Guests Attend Methodist Home Anniversary

More than 600 persons arrived at the Chelsea Methodist Home Friday to help celebrate the 60th anniversary of the home's founding.

Dr. Frederick C. Vosburg, co-chairman of the 60th Anniversary Committee, presided at the anniversary observances in the home.

He discussed some of the retirement homes developments which he foresees for the next 25 years. Among the new concepts which he believes will come are a new concept of the person, which makes everyone a "first-class citizen," and a new type of residency—older, sicker, native born, better educated, with well-developed, moderate, and wider interests, abilities and hobbies, demanding more privacy, less stable family relationships and more demanding of medical specialists' services.

The Homes are expected to change in the future too, Dr. Palmer said. He mentioned that the facility of the future will place more emphasis on privacy and dignity, with living rooms rather than hospital-like rooms, also receiving more emphasis. Homes might also include "fun areas" for young children who come to visit their grandparents, he added. Homes of the future are likely to be modern campuses, he said, with areas for retirement living, areas for rehabilitation, areas for long-term illnesses and areas for care of seniles.

Because of increased house-keeping and public nursing services, combined with programs such as "Meals on Wheels," Dr. Palmer commented that most aging people of the future will remain in their own homes and perhaps die there.

Dr. Palmer also predicted that most communities of moderate size will establish homes, hospital affiliated, where the aging may elect to live, paying their own way. These may come from tax dollars or be foundation-oriented, he said.

(Continued on page six)

Blood Bank Clinic Needs Food for Staff Luncheon

Chelsea residents are reminded that Tuesday, Nov. 1, has been selected as the date for the Chelsea Community Blood Clinic.

The Clinic will be at the Congregational United Church of Christ between the hours of 11 a.m. and 5 p.m. The Detroit Regional Operating Unit, which has an eight-bed unit, will conduct the Blood Clinic.

(Continued on page six)



QUEEN CANDIDATES: The 1966 Homecoming Queen at Chelsea High school will be selected from among this bevy of beauties. Representing the sophomore class are, front row, from left, Sarah Lindauer and Connie Parker; Connie Taylor, second row, from right, and Barb Harvey, also second row, are the freshmen candidates, Karin Tandy and Anita Wenk, standing, from left, are the senior candidates, and Wanda Saylor and Faye Policht represent the junior class.

CHS Homecoming Festivities Scheduled This Week-End

Homecoming festivities at Chelsea High school will highlight this week-end in Chelsea.

Chairman for the 1966 Homecoming, scheduled for tonight and tomorrow are Cindi Hercules and Russ Maurer, both seniors.

Kick-off for the Chelsea Bulldogs-Dexter Ducks football game is set for 7:30 p.m. tomorrow evening, Oct. 14.

A pre-game program by the Chelsea High school band will include salutes to the Dexter and Chelsea schools and "The Star Spangled Banner."

The crowning of the 1966 Homecoming Queen at the half-time of the Chelsea-Dexter game Friday evening will climax two weeks of suspense for the eight candidates. Each of the High school classes selected two candidates.

The eight candidates are, Karin Tandy and Anita Wenk, seniors; Wanda Saylor and Faye Policht, juniors; Sarah Lindauer and Connie Parker, sophomores; Connie Taylor and Barb Harvey, freshmen.

Queen candidates will be driven to the football field for introductions at the half-time of the game. The new queen, elected by the varsity football players, will be crowned by Sharon Stahl, 1965 Homecoming Queen.

The Queen will reign at the Homecoming dance following the game. A group of Chelsea High school students, known as the Rolling Brass, will provide music for the dance. Included in the combo are Mike Funderburgh, Russell Maurer, Tim Meininger, Bob MacDougal, Gordon Heelman, Danny Maurer and Cathy Taylor.

Thursday evening (tonight) has been selected for the annual Snake Dance, which will originate in the Municipal Parking lot and wind through the village. A pep rally will be held by the light of a large bonfire at an undisclosed location.

This week has been known as "Pop Week" at the High school, with various classes decorating different parts of the building.

During this week, the freshmen, sophomores, Junior and senior classes vied with one another to win the pep trophy awarded annually to the class which shows the most school spirit.

Established 1871
The Chelsea Standard
 Telephone GR 5-5881
 Excellence Award by Michigan Press Association
 1951-1952-1953-1954-1955
 Walter P. Leonard, Editor and Publisher

Published every Thursday morning at 300 North Main Street, Chelsea, Mich. 48118, and second class postage paid at Chelsea, Mich., under the Act of March 3, 1879.

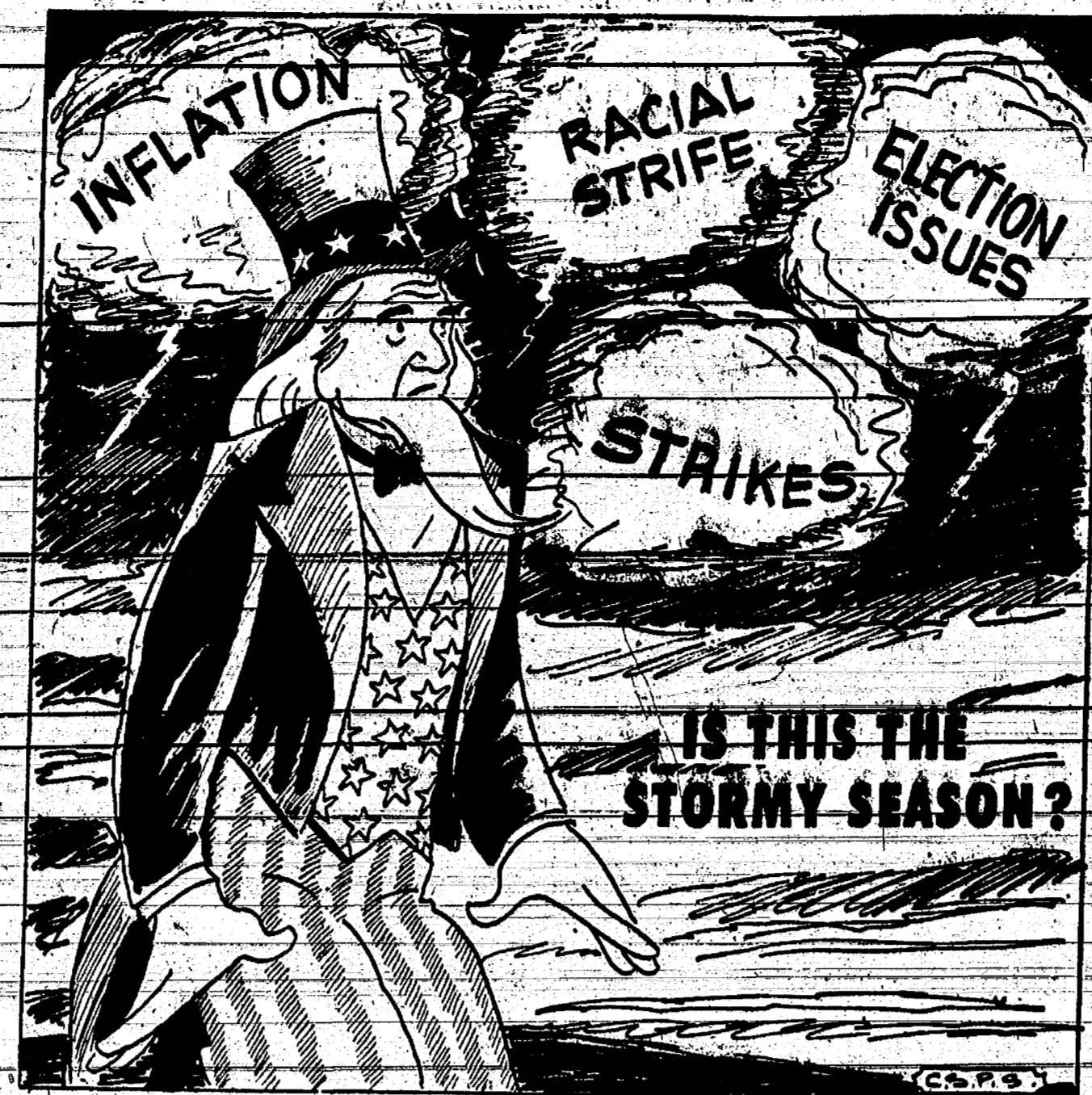
RETURN POSTAGE GUARANTEED

Subscription Rates (Payable in Advance)

In Michigan:	One Year \$9.00	Outside Michigan:	One Year \$10.00
Six Months \$4.75	Three Months \$2.37	Six Months \$5.25	Three Months \$2.62
Single Copies \$.10	Single Copies \$.10	Single Copies \$.10	Single Copies \$.10

Service men or women, anywhere, 1 year \$3.00

NATIONAL NEWSPAPER ASSOCIATION
 National Advertising Representative:
MICHIGAN NEWSPAPERS, INC.
 241 Michigan Ave.
 East Lansing, Mich. 48823



★ **MICHIGAN MIRROR** ★

By Elmer L. White, Secretary, Michigan Press Association

THE LANSING REPORT
 FROM
 Senator
GIL BURSLEY

Last Friday it was my privilege to attend to the Governor's Regional Traffic Safety Conference on the Eastern Michigan University campus in Ypsilanti.

I re-emphasized my support for new traffic safety legislation. Specifically I have previously cosponsored "safer cars" legislation and hope to do so again in 1967. In essence this would mean that a driver consent to take a chemical test for body alcohol in response to a drinking driving charge.

I have supported and will continue to work for a mandatory motor vehicle inspection law. We passed a road bill this year in the Senate, for which I voted, but the House of Representatives has yet to accept it.

I also support uniform driver licensing with a stricter examination of new and renewal drivers by state employees under civil service.

Last week I introduced a bill to legalize studied tires. We hold up action awaiting results of engineering and road tests. There is now evidence that studied tires can reduce skidding and improve traction on winter roads. Use of such tires could be limited to winter months to eliminate possible road surface damage in hot

weather. I hope next year to see this bill enacted into law.

I have requested preparation of a statute covering excessive noise in motor vehicles including motorcycles and trucks. We are studying laws of other states and countries on this subject.

At this same Traffic Conference last week I read a letter which I have just sent the Director of the State Highway Department calling for rapid completion of the repairs on the Huron River bridge on N. Main St., leading from Ann Arbor to US-23. It indicates bad planning to have this bridge half repaired and then to have all work suspended for over three weeks. Meanwhile driving over this bridge presents a constant danger to motorists. Press reports indicated plans to complete work by mid-November. I have asked the Highway Department to try to have the road under normal usage by the end of October.

There is no reason why we can't cut Michigan's highway death toll next year with the legislation I have suggested, with better driver education, inspected, safer vehicles and meaningful traffic laws with teeth in them.

Force 'Improvements'

Influence of Washington upon state affairs is now being handled a little differently than in previous decades.

The use of the dollar as "bait" by the federal government was effective in past years in getting high speed roads built, new welfare programs initiated and many other segments of law enacted.

These were the result largely of the federal government saying, "The money is here if you want to add it and use it in these specific ways."

"Incentive" would probably best describe this approach, but another word is needed for the tactic taken in recent years.

The 1959 legislature adopted billboard and junkyard control measures this year because federal authorities said highway funds would be partially withheld if such laws were not on the books within a specified time.

Now the same threat is made for the withholding of highway money if the state does not improve its traffic safety programs.

Since the federal highway contribution to Michigan is some \$12.2 million annually and 10 percent of this would be threatened by failure to act, legislative concern will once again be sharply focused on safety proposals.

Value of some additional traffic safety measures can hardly be questioned, especially in view of the continually rising death and accident toll in Michigan.

What must be asked, however, is where will the federal dictates in this manner be halted? Ideally, state legislators would turn down the promised funds if legislation which was not in the best interests of Michigan was the contingency.

Realistically, as in the case of the \$12.2 million highway funds, it raises an ethical question for the federal government to use considerable sums of project money

Four Year Fight

Four-year terms for Michigan's Governor and members of the State Senate will start with those officials elected Nov. 5.

If House of Representatives members had their way, they would be starting longer terms in January.

The by-play involved at the end of the regular legislative session over this question brought out some of the age-old animosity, or at least rivalry between the two houses.

A Constitutional amendment would be required to give House members four-year terms. A proposal to put the question before voters in November got through the House in the last days of the session, but failed to get much serious consideration in the Senate.

Actually it was pretty much ignored. This was intentional by the Senate committee to which it was assigned. Needless to say the committee was hounded by a number of House members for several days and was considerably less than popular when it failed to consider the matter in time to bring the proposal to the floor.

Some Republicans in the House opposed the idea, saying it was brought forth too late. Candidates had already filed for office and presumably a four-year term would have drawn more contestants, they said, among other reasons.

Proponents of the change were very disappointed it was not even voted on in the Senate, although many capital observers noted from the start that it was a futile attempt at self-perpetuation.

Four-year terms for Senators while maintaining two-year elections for the House of Representatives brought back memories of the days when the Senate was designated the "upper house" and the

Winning Combination

A unique idea for continued observance of Michigan will be held over for the third straight year in the 1967 observance of Michigan Week.

This is the theme, "Michigan: Dynamic in World Progress." Until 1965, a new theme was selected each year for the annual week-long observance.

Then came the real push to get the bragging about Michigan attention outside the state and beyond the seven days of the official program.

Since the 1965 theme still has many possibilities for international impact, many community organizations and individuals urged it be used again for the 14th annual Michigan Week to be held next May 21-27.

Older Homeowners

Older individuals in the U.S. increasingly maintain independent homes, the Census Bureau says. About 10 million persons, two-thirds of them 65 and over, in 1966, lived alone in a house or apartment or headed a household with no relatives present. This was twice the number of persons in this category in 1950.

CHELSEA THEATRE
 CHELSEA, MICH.
 24-Hr. Program
 Information: 475-8212
 FRI. - SAT. - SUN.
 OCT. 14 - 15 - 16

"Nothing Short Of Wondrous" - LIFE

COLUMBIA PICTURES
 CARL FOREMAN
BORN FREE

Produced by SAM JAFFE and PAUL RADIN
 PANAVISION-COLUMBIACOLOR

PLUS

THE FLINTSTONES
 FIRST FULL-LENGTH MUSICAL SPY ADVENTURE!

THE MAN CALLED FLINTSTONE
 A MANNA-BARBERA PRODUCTION
 & COLUMBIA PICTURES RELEASE

PEARLS OF WISDOM

Companionship — People are also judged by the company they keep away from.

— Joseph C. Salak

Objective — In whatever position you find yourself determine first your objective.

— Marshall Ferdinand Fech

Non-conformity — Read every day something no one else is thinking. It is bad for the mind to be always a part of a unanimity.

— Christopher Morley

Ange — It wouldn't hurt so much to become angry, except that for some reason, anger makes your mouth work faster than your mind.

— Author Unknown

Affrogance — Those who are surely and innocuous to their factors are generally humble, flat-tongued and cringing to their superior.

— Thomas Fuller

DEAR MISTER EDITOR:

Most of the fellers at the country store Saturday night was agreed that things in general was getting worse.

Ed Doolittle more or less took charge of the session and when Ed gets wound up he don't leave much time for the commercials. Ed is the kind of feller that if you ask him what time it is he'll set down and explain how you can build a eight-day clock.

What got Ed started was Zeke Grubb reporting he had saw two items in the papers that had got him shook up a bit. One item announced the Government was spending \$6,300,000 to turn a old hotel into a Job Core center for 1,000 girls to study water skiing, makeup, dancing and gardening and they was going to have a teaching staff of 330, or one teacher fer ever three girls. The second item, reported Zeke, was about the Government setting up \$91,000 to teach 40 women in Gibson county, Tennessee, how to cook.

Ed claimed that actual this was small change in the overall program agin poverty they was running in the Great Society. He reported, fer instant, that Senator James Pearson of Kansas had found out this new-fangled office of Economic Opportunity had paid a private company \$87,000 just to compile a catalog of the Government anti-poverty programs, and had give the same firm another \$25,000 to print a comic book aimed at promoting the Job Core.

Senator Pearson, said Ed, had reported that they decided not to use the stuff and that the books was now in a warehouse running up a storage charge of \$125 a month.

Clem Webster of the Great Society claimed the Government was tightening up on them things and the situation would get better. Personal, Mister Editor, I don't put much faith in Clem's predictions. He's what my preacher calls a opportunist, and I have took note through the years that when Clem goes talking with a pretty regular, he always takes a trying pan with him. The last time I saw the pan it was practical new.

But the storekeeper allowed as how maybe Clem was right, reported he had saw where the U.S. Department of Agriculture had announced that, as of January 1, 1967, soup companies would have to put 2 per cent chicken and 2 per cent turkey in the can afore they could label it "chicken" soup or "turkey" soup. He told the fellers the soup companies had been fighting this rule in the Federal court in New Jersey since 1964 and it probably cost the taxpayers a million dollars for lawyers but he was expecting a increase in his sales of canned chicken soup when they started putting a little chicken in it.

Yours truly,
 Uncle Lew.

Uncle Lew from Lima Says:

OLDER HOMEOWNERS

Stanley Knickerbocker, Chelsea sophomore at the University of Michigan, played with the Michigan team in the Stanford Michigan football game which Michigan lost by a score of 14-7 at Palo Alto, Calif., last Saturday.

The Chelsea Village Council at its meeting Monday evening approved the opening of Keizer subdivision as presented in an engineer's plan submitted by Dale

Fancy Jonathon and McIntosh

APPLES
 Bring Containers, Pick Your Own

\$2.00 bu. or 3 bu. \$5.00

BEISIEGEL ORCHARDS

Telephone NO 8-7563

2645 Peters Road
 (Across from King-Seely Factory)

Dexter, Mich.

'67 Chevrolet

Everything new that could happen in styling... happened!

Impala Sport Coupé

With bright bold grille styling so proud it extends all around the front fenders.

A graceful, sweeping new roof line, gently sloping rear window and an interior you'll just have to peel.

More comfort, new safety too

- Improved steering makes cornering even easier.
- New-type body mounts give you a smoother, quieter ride.
- There's an 8-track stereo system you can order! 80-minute tape, free!
- Add our fully automatic Comfortron heating and air conditioning.
- Enjoy new driving ease with a completely restyled instrument panel.
- Luxurious interiors! You wonder where your living room leaves off and your Impala begins.
- New GM-developed energy-absorbing steering column.
- Seat belts, front and rear, with pushbutton buckles.

Now... at your Chevrolet dealer's

Spaulding Chevrolet Sales & Service Company
 CHELSEA, MICHIGAN

21-1494

Nothing Short Of Wondrous

Life

THE FLINTSTONES

FIRST FULL-LENGTH MUSICAL SPY ADVENTURE!

7 GREAT NEW SONGS!

THE MAN CALLED FLINTSTONE

A MANNA-BARBERA PRODUCTION & COLUMBIA PICTURES RELEASE

SCIO

3 BIG FEATURES

FRI. SAT. - SUN.

PETER FONDA NANCY SINATRA

THE WILD ANGELS

PANAVISION PATHECOLOR

"FIREBALL 500"

ALFRED HITCHCOCK'S

REVOLVED

ALFRED HITCHCOCK'S

REVOLVED

Howell

Livestock Auction

Every Monday at 2 p.m.

Southeastern Michigan's largest and most complete Auction Market.

For Trucking Information
 Call Howell 546-2470

10-Year-Olds To Be Guests of Kiwanians

Kiwanians whose guests are the 10-year-olds of the Chelsea Kiwanians, who will be at the national convention in Chicago, Ill., from Oct. 29-31.

Each Kiwanian was given a 10-year-old as a gift from the Chelsea Kiwanians, who are sponsoring the project.

The 10-year-olds were given a special luncheon at the Chelsea Kiwanian Club on Wednesday night.

Mr. and Mrs. W. B. ...

Robert Niehaus Named V.P. by Connecticut Firm

Robert J. Niehaus of New Canaan, Conn., a former area resident, has been named vice-president of the Wallace-Murray Corp., according to an announcement published in The New Canaan Advertiser.

Niehaus was vice-president of the company from 1964 to 1965. He is a graduate of the University of Michigan and earned a master's degree in business administration from the University of Detroit. He served three years in the U. S. Navy following his graduation from the U. S. Naval Academy.

Before joining Wallace-Murray, Niehaus was vice-president of the Ford Motor Co. in Detroit.

Gridders of the Week



BROTHERS MIKE (81) AND LARRY (77) GAKEN, sons of Pire Chief and Mrs. James Gaken of 310 Pierce St., play offensive, defensive tackle and defensive linebacker, offensive center, respectively.

Larry picked up a pass from quarterback Chuck Baval in the Friday evening victory over South Lyon, raced down the west sideline to South Lyon's seven-yard line. The 63-yard return made possible Chelsea's second touchdown of the game. Larry also contributed to the Chelsea defense by intercepting two South Lyon passes. Brother Mike was part of the Bulldogs' offensive blocking team. Mike, who measures 6'7", weighs 180 pounds, is a sophomore who played on the freshman basketball team and the Junior Varsity baseball team last year. He is a member of the Hi-Y club and the Catholic Youth Organization, and enjoys listening to music. Larry, 205-pound, 5'11" junior, was the only sophomore on the varsity squad last year, earned his letter in football and also lettered during his freshman and sophomore years in track, where he competed in the shot put. Larry played basketball during the past two years also, is a member of the Hi-Y and vice-president of that organization this year. He is also a member of the Varsity Club, the Catholic Youth Organization and the Athletic Board. For the past

two summers he has umpired for Little League games and likes to do mechanical work in his spare time.

BULLDOG ENDS. John Collins, number 80, and Danny Allen, number 88, are both seniors. John is 6'11", 160 pounds, and the son of Mr. and Mrs. John R. Collins of 301 Cavanaugh Lake. Danny, Bulldog co-captain, is 6 foot, weighs 170, and is the son of Mr. and Mrs. Richard E. Fouty of 13225 E. Old US-12. In last Friday's victory over South Lyon, Allen caught a perfect 42-yard touchdown pass to give the Bulldogs their first score of the season. Allen later caught a pass from Bill Harvey to give the Bulldogs the extra point following Chelsea's second touchdown. College bound, John has already been accepted by Michigan State University in East Lansing, where he hopes to study biology. John plays the baritone in the Chelsea Band, is a member of the First Methodist church and the Methodist Youth Fellowship. Danny is playing his third year on the varsity squad, also playing varsity baseball. Interested in conservation work and industrial arts, Danny plans to go to college next year but his plans are indefinite.

Science Topics

TWO CLOUDS of cosmic "ribble" are orbiting the earth in the same path as the moon, report space scientists who have photographed the faint clouds. They say that the space "ribble" may have come from all over the universe and could offer clues to the earth's origin, solar winds, and even the possibility of life in outer space.

4-H Clubs

LEARNING-BY-DOING

The first meeting of the year was held at the home of Mrs. Leonard McCalla.

Plans for the year's activities were discussed and completed and an election of officers took place as follows: Marilyn Miller, vice-president; Wendy Bradbury, secretary; Dorene Pomsbury, treasurer; Cheryl Trinkle, reporter.

The club decided to set their dues payable by the week at 10 cents a week or 60 cents for the year.

Each girl is to come prepared with material for her given project.

Leaders are Mrs. Mary Hasel, Mrs. Kathryn Reddeman and Mrs. Janet McCalla. Saturday, Oct. 29, is the date for the next meeting at the home of Mrs. McCalla.

Michigan is the home of three of America's billion-dollar corporations and 16 of America's hundred-million-dollar corporations.

Bulldogs Win

(Continued from page one)

en the game on a pass from QB Chuck Baval to end Mike Gelande for the TD. The extra point was run in by QB Chuck Baval. Chelsea's offense again moved after the kick-off moving to South Lyon's 47-yard line. But here the Bulldogs fumbled and South Lyon recovered.

The defense for the Bulldogs held for four downs and Chelsea took over on South Lyon's 38. On the second play a fumble with South Lyon recovering gave the Lions the life. The South Lyon quarterback then tried to pass and line-backer Larry Porath stepped in front of the receiver and intercepted the pass giving Chelsea their first victory as the clock ran out.

Chelsea's defensive play by Jeff Hittingham, Mike Lehmann, Larry Porath, Brad McGinley, Larry Gaken, Gary Ellenwood and Greg Stephens showed good desire. The defense intercepted three passes (two by Larry Gaken) and recovered two fumbles. The defensive secondary of Tom Bowling, Kim Flintoff, and Dan Allen were tested by South Lyon's passing attack and performed adequately.

The offensive blocking, which has been missing in Chelsea's running attack, showed improvement led by Tom McGaw, Mike Gaken, Roy Holiday, Mike Lehmann, and Gary Ellenwood. The offensive running of Ron Montange, Mike Harvey, Tom Bowling, Dan Allen, Kim Flintoff, and Bill Hirsley was quite encouraging although being guilty of four fumbles.

This Friday night Chelsea will host the Dexter Dreadnights for Chelsea's Homecoming game. Dexter has a record of 3 and 1, losing Friday to Salline, 7 to 0.

A public showing of the South Lyon and Dundee film will be Wednesday night at the audio-visual room in the High school at 7:30 p.m.

Area Church Women Will Meet Here

The Area Three meeting of the United Church Women is scheduled for Wednesday, Oct. 10, at the First Congregational church in Chelsea.

Attending the meeting in addition to members of the Chelsea Area United Church Women which includes members of St. Barnabas Episcopal church, First Congregational United Church of Christ, St. Paul UCC, First Methodist church, Salem Grove Methodist church and the North Lake Methodist church, will be United Church Women from 10 surrounding communities, including Jackson, Adrian, Ann Arbor, Monroe and Ypsilanti.

Registration for the meeting will begin at 9:30 a.m. The program will include a 12 noon luncheon at the church. Persons interested in attending the luncheon are to make reservations with Mrs. William Geddes, 479-0741, by Saturday, Oct. 15.

Mrs. P. G. Schable, St. president of the Chelsea Area United Church Women, will act as hostesses for the meeting.

Meditations will be presented by Mrs. Henry Karner of the Chelsea organization.

On the agenda for the morning session, which is scheduled to begin at 10 a.m., is a discussion moderated by Mrs. Ben Donaldson. The topic of the discussion, "The Role of the Christian Woman in Her Community," will include the following topics: race relations, school desegregation, senior citizens, Operation Head Start, better literature, migrants and Christian Rural Overseas Program (CRQP). Different persons from the various councils participating in the conference will present discussions on each topic.

Following the luncheon, a state team will present a general picture of the work of the United Church Women with emphasis on special days. This presentation will include both local and national items.

The state presentation will be followed by a short discussion regarding responding to the challenge.

All area women are invited to attend the session, and a nursery will be provided for children.

MARINADE

In many recipes meat is soaked in a marinade to enrich its flavor. A marinade is a simple base of cooking oil and vinegar with seasonings added to suit your taste. Common seasonings are garlic, oregano, tabasco, sauce or Worcestershire sauce.

Michigan is one of the nation's leading camping areas with more than 17,330 public campsites in 350 state parks and recreation areas, state and federal forest campgrounds, and county, township and city parks, according to the Michigan Tourist Council.

Scholarships To '66 Grads Total \$850

A total of \$850 in scholarships and subject area awards were presented to 1966 graduates by the Chelsea School District, according to a report from the scholarship committee of the school district.

The total included \$700 in scholarships and \$150 in special awards for excellence in mathematics, languages, social studies and English.

Included in the scholarships and awards were \$100 donated by Chelsea merchants, \$800 from Chelsea unions, \$276 from student clubs, \$277.77 from the Teacher's Club treasury and \$49.56 from the 1964-65 balance. The total in the scholarship treasury for 1965-66 was \$1,002.88, and the new balance for 1966-67 is \$152.33.

Members of the 1965-66 scholarship committee were Mrs. Nancy Gerad, Mrs. Isabel Eisele, Mrs. Sandra Scoville, Mr. and Mrs. John Walton and Charles Lane.

Members of the 1966-67 committee, in addition to Mr. and Mrs. Walton and Principal Lane, are Wesley Cowell, Mrs. Bernice Packard, Mrs. Helen Lange, David Knisely and George Palmer.

Committee members say they expect a more vigorous effort this year to contact community organizations and individuals.

Written invitations to participate in the scholarship program are expected to reach all industries, businesses, professional men, service and civic organizations, church groups and interested individuals.

Anyone wishing to participate should contact a member of the committee or the school.

Michigan has a highly diversified skilled labor force, as shown by the fact that skilled labor in Michigan mans 365 different types of industry.

Low Cost Housing

(Continued from page one)

seconded by John Merkel, was approved unanimously requesting that the Village Council appoint a councilman to attend all planning committee meetings to act as a liaison between the Council and the Commission.

Commissioner Robert Rudd reported on his presentation to the Village Council of the recommended change in Ordinance 55 with regard to industrial side-yard requirements. The Council is taking the proposal under advisement.

Rudd reported that the Council is eager for the Commission to take over the function of zoning. In preparation for this move, the Commission members will attend all Council meetings where zoning problems are to be discussed by the Village Council.

Commissioners present for the meeting were Staffan, Daniel Ewald, Rudd, Dr. J. V. Fisher, Lawrence Dietz, Markel, Bart Freeman and William Chandler. Fred Barclay of the Washtenaw County Metropolitan Planning Commission also attended the meeting.

Michigan ranks second among the 14 leading industrial states when productivity is measured by value-added-per-man-hour and ranks third measured by value-added-per-man-hour.

Personal Notes

Ray Huston has returned home after spending three weeks at St. Joseph Mercy Hospital in Ann Arbor, where he underwent surgery for the removal of a disc in his back.

Mr. and Mrs. Carl Sanderson, Judy and Trudy, Mrs. Bertha Allshouse spent the week-end at Richmond, Ind., with the Robert Allshouse family. Mrs. Sanderson was the installing officer for her district, who was installed as Worthy Advisor of Rainbow Girls at Richmond.

Glenn Wikerson son of Mr. and Mrs. William C. Wikerson of 329 Railroad St., Chelsea, is a patient at St. Joseph Mercy Hospital in Ann Arbor. He dislocated an ankle Monday afternoon while participating in a scrimmage between two Junior Varsity and Varsity football teams. Glenn, a freshman at Chelsea High school, is on the JV team.

BECKER
6033 Jackson Road
ANN ARBOR, MICHIGAN

BE WISE
Go Budget-Wise for Discounts
DISCOUNTS
Prices Effective Thursday, Friday and Saturday, Oct. 13-14-15

DELUXE Ironing Board Pad & Silicone Cover 69¢	GILLETTE RIGHT GUARD DEODORANT King Size 69¢ Delightfully Scented	ROUND-THANECK MIRROR One Side Magnifying 49¢ 40-HOUR WIND-UP ALARM CLOCKS \$1.98 Made by Westclox
---	---	--

NON-AIRLINE PILOTS Last year flew a record 2.6 billion miles in 16.7 million hours in 95,442 aircraft and achieved the lowest fatal accident rate in history, reports the Federal Aviation Agency.

HEAVY METALS In a food big gold, silver, platinum, mercury, bismuth, antimony, tantalum and tin, are in short supply and are being consumed at a rate far exceeding domestic production, say the directors of the Geological Survey and Bureau of Mines.

4-H Clubs
LEARNING-BY-DOING

The first meeting of the year was held at the home of Mrs. Leonard McCalla.

Plans for the year's activities were discussed and completed and an election of officers took place as follows: Marilyn Miller, vice-president; Wendy Bradbury, secretary; Dorene Pomsbury, treasurer; Cheryl Trinkle, reporter.

The club decided to set their dues payable by the week at 10 cents a week or 60 cents for the year.

Each girl is to come prepared with material for her given project.

Leaders are Mrs. Mary Hasel, Mrs. Kathryn Reddeman and Mrs. Janet McCalla. Saturday, Oct. 29, is the date for the next meeting at the home of Mrs. McCalla.

Michigan is the home of three of America's billion-dollar corporations and 16 of America's hundred-million-dollar corporations.

Bulldogs Win
(Continued from page one)

en the game on a pass from QB Chuck Baval to end Mike Gelande for the TD. The extra point was run in by QB Chuck Baval. Chelsea's offense again moved after the kick-off moving to South Lyon's 47-yard line. But here the Bulldogs fumbled and South Lyon recovered.

The defense for the Bulldogs held for four downs and Chelsea took over on South Lyon's 38. On the second play a fumble with South Lyon recovering gave the Lions the life. The South Lyon quarterback then tried to pass and line-backer Larry Porath stepped in front of the receiver and intercepted the pass giving Chelsea their first victory as the clock ran out.

Chelsea's defensive play by Jeff Hittingham, Mike Lehmann, Larry Porath, Brad McGinley, Larry Gaken, Gary Ellenwood and Greg Stephens showed good desire. The defense intercepted three passes (two by Larry Gaken) and recovered two fumbles. The defensive secondary of Tom Bowling, Kim Flintoff, and Dan Allen were tested by South Lyon's passing attack and performed adequately.

The offensive blocking, which has been missing in Chelsea's running attack, showed improvement led by Tom McGaw, Mike Gaken, Roy Holiday, Mike Lehmann, and Gary Ellenwood. The offensive running of Ron Montange, Mike Harvey, Tom Bowling, Dan Allen, Kim Flintoff, and Bill Hirsley was quite encouraging although being guilty of four fumbles.

This Friday night Chelsea will host the Dexter Dreadnights for Chelsea's Homecoming game. Dexter has a record of 3 and 1, losing Friday to Salline, 7 to 0.

A public showing of the South Lyon and Dundee film will be Wednesday night at the audio-visual room in the High school at 7:30 p.m.

WEEK-END SPECIAL at DANCER'S

Our Regular 49c Prints
Thurs., Fri., Sat. Only ... **37¢ yd.**

Sew and Save
FALL FABRIC FIESTA
Reg. 49c Prints
Special This Week-End **37¢**

DANCER'S

CHELSEA

BUDGET-WISE STORE
Chelsea's First Discount Store
116 SOUTH MAIN ST. PHONE GR. 9-1611

- ADVANCE SALE - BOXED CHRISTMAS CARDS

Your opportunity to have first selections of many new, exciting designs of American Greeting Card Company's 1966 Christmas selections at discount savings.

From Now 10% DISCOUNT To Oct. 30

1000 Bold Personal Address Labels \$1
1 to 4 lines
Plastic base included

AS SEEN IN House Beautiful MAGAZINE
NOW AVAILABLE AT THE CHELSEA STANDARD

Ad Taken Till 5 p.m. Tuesday

IT'S EASY TO BUY-SELL-RENT-HIRE & FIND WITH

WANTED ADS

Just Phone GR 5-3501

WANT ADS

The Chelsea Standard

WANT-AD-RATES

1-1/2 CENTS PER LINE PER DAY...
 3-1/2 CENTS PER LINE PER DAY...
 5 CENTS PER LINE PER DAY...
 7 CENTS PER LINE PER DAY...
 10 CENTS PER LINE PER DAY...
 15 CENTS PER LINE PER DAY...
 20 CENTS PER LINE PER DAY...
 30 CENTS PER LINE PER DAY...
 40 CENTS PER LINE PER DAY...
 50 CENTS PER LINE PER DAY...
 75 CENTS PER LINE PER DAY...
 1.00 PER LINE PER DAY...
 1.25 PER LINE PER DAY...
 1.50 PER LINE PER DAY...
 2.00 PER LINE PER DAY...
 3.00 PER LINE PER DAY...
 4.00 PER LINE PER DAY...
 5.00 PER LINE PER DAY...
 7.00 PER LINE PER DAY...
 10.00 PER LINE PER DAY...
 15.00 PER LINE PER DAY...
 20.00 PER LINE PER DAY...
 30.00 PER LINE PER DAY...
 40.00 PER LINE PER DAY...
 50.00 PER LINE PER DAY...
 75.00 PER LINE PER DAY...
 100.00 PER LINE PER DAY...

WANT ADS

WANTED - Part- or full-time farm help. Jack Bradbury, GR 8-2406.

FOR SALE - Ford tractor and 28 ft. trailer, \$800. May be seen at 1769 Plymouth Rd., Ann Arbor. 17

WANTED TO BUY - 2 bedroom home in Chelsea. Call Dick Meyers, 475-8941, Dana Corp., 17

WOMAN'S CLUB Rummage Sale - Sylvan Town Hall, Oct. 21-22. For information call Mrs. Jess Meininger, 475-8832. 17

LADIES

We invite you to explore all of the opportunities we have to offer: secretarial, general office, sales, pleasant high production and many more. Must have a desire to work and earn top wages. See me, Mrs. Stewart.

International Personnel Service

605-8882 or 407 First National Bldg., Ann Arbor. 16

FOR SALE - Wooden corn crib, 500 bu. capacity, 37' 2x18' 18. Oil and electric chicken brooder and feeder. Wooden bushel crates.

FOR SALE - 52 Chev. pickup, \$200; rabbit cages, 10c and 25c; Louis Ramp, phone 475-5531. 18

FOR SALE - '64 Chevy II, low mileage, A-1 condition. Ph. 475-8207. 18

WANT ADS

WANTED - Gas consumers: Jerry's Ashland Service Station, 500 N. Main, Chelsea. 10

FOR SALE - White birth baby bed with mattress. 475-8398. 10

WILL TAKE CARE OF children in my home in Chelsea, days or afternoons. While mothers work. Phone 475-7408. 16

WOMEN - Start now for big Christmas earnings as an Avon Representative. Territories available in Sylvan and Sharon Townships. Write 225 Shadowlawn Dr., Inkster, Mich., or call 1-562-8417 (after 7 p.m.). 92f

FORD CORNER ORCHARD & MAIN

Chelsea's Largest and Finest Selection of

USED CARS

65 Ford LTD	\$67.00
65 Ford 2-dr.	\$44.00
64 Comet 4-dr.	\$42.00
64 Galaxie 500 2-dr. HT.	\$55.00
63 Buick Special 2-dr.	\$37.00
63 Chev. Impala HT.	\$45.00
63 Chev. Wagon	\$45.00
'63 Ford 4-dr.	\$38.00
'62 Galaxie 4-dr.	\$38.00
'62 Ford Hardtop	\$34.00
'61 Ford Wagon	\$31.00
'61 Ford 2-dr.	\$21.00
'60 Rambler Wagon	\$17.00

WANT ADS

SEMI-PRO FOOTBALL - Saturday Oct. 22, 7:30 p.m. Chelsea High Athletic field. Sponsored by American Legion Post No. 31. For benefit of CHS Band Boosters. Adults \$1.00; Students, 50c. 17

Painting & Decorating Building Contractors

Phone GR 5-5583
 Gregory 468-2140

APARTMENT FOR RENT - Unfurnished one-bedroom apt., located near downtown Chelsea. Write Chelsea Standard Box Q6

FOR SALE - New 38x18 gold rug, all wool, with pad. Call mornings, 475-7600. 17

Free Designing Free Planning Free Engineering

Let Smiley Buildings help you with your new building for your farm or business. No obligation. Call your Smiley man.

Smiley Post Buildings

P. O. Box 232
 Chelsea, Michigan
 (517) 522-8258 Call Collect

SWEET CIDER for sale, 65 cents per gallon. Bring your own containers. Open 7 days, 12 noon to 5 p.m. Czar's Orchard, 1041 1/2 W. Wagon Rd., Chelsea, Mich. Phone GR 9-0408. 16

Chelsea Heat Treating, Inc.

11850 DEXTER, CHELSEA - RD.

Inexperienced and experienced help needed. Steady employment, paid vacation and holidays, fringe benefits, some overtime.

Part-time help also needed.

Apply in person 9 a.m. to 5 p.m. 16ff

WANT ADS

FOY DRIVE - Cleaning out the attic? the basement? or the children's toy box? If so, the Joyce Auxiliary is starting the annual Christmas Toy Drive early this year in order to catch you! If you have any old toys, books, dolls, etc. contact Anna Steiny at GR 5-8300 for pick-up or if you are in the neighborhood of 2751 McKinley Rd., drop off.

FOR SALE - '62 half-ton Chevy pickup, \$895. Call 475-8270 after 7 p.m. 17

BULLDOZING

Grading & Land Clearing

DICK KISS

8245 Wacker Rd., Chelsea, Mich. Phone 475-8445

If no answer call 475-2791

FOR SALE - Lounge chair and sofa, table, small table, foot-stool and chair, rocker. 20156 Old US-12. 16

WOMAN'S CLUB Rummage Sale - Sylvan Town Hall, Oct. 21-22. For information call Mrs. Jess Meininger, 475-8832. 17

MOTHERS - Will give your child a mother's care in my home while you work. References furnished. Mrs. Nelly Cobb, 475-7850, 852f

For high performance and ease of maintenance

See the All-New

67 Line of Admiral TV

Color and Black and White

Easy monthly payments arranged for your best deal yet. See Willis Service, you bet!

Fine selection on display at

PORTER'S TV Sales & Service

212 Buchanan Chelsea -16

WANT ADS

OREN F NELSON

9555 Main St., Chelsea, Mich. Ph. 449-9761

HELP WANTED - Male or female, Rawleigh business available in Chelsea and Dexter or E. Jackson C. Experience unnecessary. Above average earnings. Write Rawleigh Dept. M-C-752-240, Freeport, Ill. 17

Wanted TRUCK DRIVERS

for Ann Arbor city routes. Must know city. Automatic pay increase after 60 days. Additional increase after 6 months. Exceptional fringe benefits.

Apply

REA Express Agency

416 W. Huron, Ann Arbor. 16

REAL ESTATE

Sugar Loaf Lake Cottage, 150 foot frontage. This could easily be made into a year-around home. One tenth mile off Waterloo Rd. Priced at \$17,900, including some furniture, stove and refrigerator.

Chelsea, near high school, seven rooms, all one floor, located on beautifully landscaped three-acre lot. Priced at \$75,000.

Zeeb Rd., Ann Arbor schools, eight rooms, four bedrooms, dining room, basement recreation room, family room, two-car attached garage, on one acre. Priced at \$49,500.

EIBLER REALTY CO.

Phone 685-8663

Plenty of parking at junction of W. Huron, Jackson and Dexter. Evenings call George Frisinger, 479-4161 or Fred Eibler, 682-2841. 15ff

WANT ADS

HOUSE FOR SALE - Small rancher, 8 miles west of Chelsea, 13800 Bohne Rd., south of 94. Use Clear Lake Rd. Exit, aluminum siding, attached garage, and nice neighbors. \$8900. Call Willis real estate, Grass Lake, 522-8121. 17

MALE HELP WANTED - Mill hand and truck driving. Dexter Co-Op, HA 8-2491. 22c

FOR RUBBISH and garbage services, call 475-8038 after 4:30 p.m. 10b

HELP WANTED - Full or part-time waitress. Experience not necessary, will train. Must be 18 years or older. Call GR 9-4211 for interview. Schumm's Restaurant. 36f

FARM LOANS

Federal Land Bank Association

Phone: Ann Arbor 695-8139

FOR SALE - Horse trailer tandem axle, 4 new tires and spare, mounted, 1800 S. Rd., Chelsea, 475-8675. Merle Sibley.

MOTHERS - Will give your child a mother's care in my home while you work. References furnished. Mrs. Nelly Cobb, 475-7850, 852f

For high performance and ease of maintenance

See the All-New

67 Line of Admiral TV

Color and Black and White

Easy monthly payments arranged for your best deal yet. See Willis Service, you bet!

Fine selection on display at

PORTER'S TV Sales & Service

212 Buchanan Chelsea -16

WANT ADS

George's Shoe Repair Shop

2nd Floor above Hilltop Plumbing, 106 Park St.

Half Sols & Rest Monday through Friday 8:30 - 4:45 No. Saturdays

LOSE WEIGHT safely with Diet Tablets. Only 98c at C. J. Russell. 20624 Waterloo Rd., Chelsea, Mich. 475-8501

CUSTOM BALING with new Pease or New Holland or Russell-Ferry, 20624 Waterloo Rd., Chelsea, Mich. 475-8501

DON'T merely brighten your eyes. Buy Blue Lustrum eye drops. Rent electric shampooer. J. J. Sea Hardware, Phone GR 9-3301

REFRIGERATION REPAIR MAN

Excellent, permanent, full-time opportunity. Start at \$3 per hour plus complete benefits, profit sharing and retirement. Immediate discount privileges. Apply in person, Montgomery-Ward Arborland Shopping-Center 606f

TRAILER FOR SALE - Ideal for a home. Reasonable price, terms. All equipped with toilet, gas, apartment stove, etc. 11506 Jackson Rd., GR 9-7404. 18ff

Attention Working Farm Owners

I have a hope-a-hope buyer for a good working beef-cattle farm or hog farm within one hour's drive of University of Michigan Hospital, Ann Arbor, Michigan. My buyer has a large working farm in the East and is transferring into Ann Arbor, Michigan. Call me personally or to person collect so that I might talk about what you will sell. Size is no object.

Contact:

FOR INSURANCE

Call evenings or week-ends

N. H. MILES

AGENT

GR 5-8334

ALLSTATE

381f

NEW TWO STORY COLONIAL House for Sale in Lanewood. Living room, 3 bedrooms, den, all carpeted, dishwasher, garage, large lot. \$25,900. FHA available. Merle Schwann Construction Co. Call 479-7132.

FOR SALE - General Electric refrigerator with large freezing compartment, gas stove. Both in good condition. 475-8809. 16

For the Best in

POLE BUILDINGS

Be sure to see "SMILEY"

Call or Write

JOHN LIVERMORE

Grayson, A.L.Pine 6-2827

96ff

FOR TRACTORS and equipment Also New Holland machinery. Sales and service. Cobb & Schraer, Stockbridge, Ph. Ulysses 1-4525, 49ff

SEE US for transit mixed concrete. Klump Bros. Gravel Co. Phone Chelsea 479-2712, 4050 Loveland Rd., Grass Lake, Mich. 40ff

O. R. Clark, Painting Cement Work and Block Work

Free estimates. Call Grass Lake 722-5352, collect after 5 p.m. All work guaranteed. I carry my own insurance. 22

McINTOSH AND JONATHAN Apples. Pique plums, Lincoln pears. Open 7 days a week, 12 to 1 p.m. Czar's Orchard, 1041 1/2 Wagon Rd., Chelsea, Mich. 16f

VAN BUREN EAST APTS. 1 and 2 bedrooms and 2-bedroom garage disposal system. Call 479-5916. 14ff

FOR SALE - 12 1/2 school boy's 279 sq. ft. lot, \$24,900. 11c

605-3171, Mike McLean, GR 6-5071

16

INTERNATIONAL

Personnel Service

605-8882 or 407 First National Bldg., Ann Arbor. 16

FOR SALE - Wooden corn crib, 500 bu. capacity, 37' 2x18' 18. Oil and electric chicken brooder and feeder. Wooden bushel crates.

FOR SALE - 52 Chev. pickup, \$200; rabbit cages, 10c and 25c; Louis Ramp, phone 475-5531. 18

FOR SALE - '64 Chevy II, low mileage, A-1 condition. Ph. 475-8207. 18

CLOGGED SEWER

Reynolds Sewer Service

We Clean Sewers Without Digging Drains Cleaned Electrically

FREE ESTIMATES

3-YEAR GUARANTEE

Phone Ann Arbor NO 2-5277

Sewer Cleaning Is Our Business - Not a Sideshow 98ff

INFORMATION WANTED As to the whereabouts of all empty gas tanks, Jerry's Ashland Service Station, 500 N. Main, Chelsea. 16

WANTED - Used Spanish guitar and a banjo. In playable condition. Ph. 475-8754. 16

FOR SALE - Kitchen table, with six chairs, \$15.00. Ph. 475-8145, 750 Taylor St. 15

NOTICE

All our 1964-65-66 Ford Used Cars now carry the new 5-year or 50,000-mile Ford Factory Warranty.

TRUCKS

2 1967 FORD PICK-UPS	16ff
3 1966 FORD PICK-UPS	16ff
(All 5 Are Brand New)	
1964 Chev. 1/2-Ton Pick-Up	16ff
1963 Ford 1/2-Ton Pick-Up	16ff
1962 Ford 1/2-Ton Pick-Up	16ff
1960 Chevrolet 1/2-Ton Utility Box	16ff
1957 Jeep	16ff

Dads - Sign your sons up for PPGK

OCT. 7 IS THE LAST DAY TO REGISTER

Shop Our Brand New Outdoor Showroom

Open Day & Nite

Sundays & Holidays

SEE OR CALL

LYLE CHRISWELL

EVERETT JOHNSTON

GEORGE PALMER

PALMER FORD

50-Year Dealer

GR 5-3271

16

FOR SALE - Crosley comb. radio- record player plus records in excellent condition. \$25. Ph. GR 5-4191. Call after 6 p.m. 10

SEMI-PRO FOOTBALL - Saturday Oct. 22, 7:30 p.m. Chelsea High Athletic field. Sponsored by American Legion Post No. 31. For benefit of CHS Band Boosters. Adults \$1.00; Students, 50c. 17

Real Estate FOR SALE

ONE ACRE, 127x848 on Old US-12 East. Gas available.

10 VACANT ACRES. Close in. Can be subdivided.

LOT 55x163 N. Village of Chelsea with building, 24x36. All village utilities.

4 BEDROOM HOME on 2 lots. All modern, plus garage, screened porch.

On 2 Acres

3-year-old Ranch type 3-bedroom. Full basement, tile floor, steel and laundry. Modern kitchen, dining space. Living room, closed space. Full bath, walk-out wall carpeting in living room, hall and 3 bedrooms. On blacktop road.

Listings needed very badly.

Kern Real Estate

Phone 475-8563 16ff

Wanted TRUCK DRIVERS

for Ann Arbor city routes. Must know city. Automatic pay increase after 60 days. Additional increase after 6 months. Exceptional fringe benefits.

Apply

REA Express Agency

416 W. Huron, Ann Arbor. 16

REAL ESTATE

Sugar Loaf Lake Cottage, 150 foot frontage. This could easily be made into a year-around home. One tenth mile off Waterloo Rd. Priced at \$17,900, including some furniture, stove and refrigerator.

Chelsea, near high school, seven rooms, all one floor, located on beautifully landscaped three-acre lot. Priced at \$75,000.

Zeeb Rd., Ann Arbor schools, eight rooms, four bedrooms, dining room, basement recreation room, family room, two-car attached garage, on one acre. Priced at \$49,500.

EIBLER REALTY CO.

Phone 685-8663

Plenty of parking at junction of W. Huron, Jackson and Dexter. Evenings call George Frisinger, 479-4161 or Fred Eibler, 682-2841. 15ff

HIGGINS & SONS ORCHARDS

Located 1/2 mile west of Manchester 16

Bookkeeping - Typing

Pleasant, local position for alert girl with some knowledge of accounting. Please reply in writing and state experience.

Write Box OC-20
 Care of Chelsea Standard
 Chelsea, Mich. 17

REAL ESTATE

Eugene R. Young, Broker

Phone 878-3782
 Mary Allen, 878-3826
 Virginia Visel, 426-2224 80ff

Home For Sale

Between Dexter and Ann Arbor, on one acre with trees, landscaped, fenced, is this attractive 5-bedroom home, basement and garage, in perfect condition. Clean as a pin inside and out. \$18,000. Terms.

Mary Wolter, Broker

Call 428-8188
 7421 Dexter-Pinekey Rd., Dexter 16

STEADY JOBS

For Young Men Out of Service

Offset press and bindery jobs. Day and night shifts. High school graduates with some trade shop education preferred.

Apply at

Braun-Brumfield, Inc.

100 N. Staebler Rd. 41f

SWEET CIDER for sale. Bring your own containers. Open 7 days, 12 noon to 6 p.m. Czar's Orchard, 1817 Rank Rd., phone GR 9-8468. 18

Commercial Building

Large concrete block building on 1/4 acre, industrially zoned land, 5 miles west of Ann Arbor. Call collect for details.

Lyle E. Jordan

BROKER

Phone Jackson 517-782-0088 16

NOTICE

No Hunting or Trespassing

on property of

Czapla's Orchard

Signed:
 Douglas Mullen
 Stanley Czapla

FOR SALE

LAWN SWEEPERS

Parker's Clean Sweep 888
 Parkerette, 20 in. brush - \$88
 Parker Homemaster, 28 in. brush - \$188
 8 bushel capacity, with 21 c.c. engine

18-tine steel-leaf rakes
 26-tine tempered tine rakes
 Stoddard's Triple XXX Lawn Fertilizer, 100 lb. 10,000 88 bags

GUNS AND AMMUNITION

Before you buy see our line of caliber .22 mm. guns, rifles and shot guns.

WE STOCK AMMUNITION all commonly used rifles, shotguns, at reduced prices your needs early.

CLOSE-OUT PRICES on Hats, Coats and Pants
 CLOSE-OUT White Flyer City Targets - box of 125

MERKEL BROS.

I Need An Assistant

Because of the new holiday products, I need help. Full or part time.

Call Viviane Woodard Cosmetics 475-8785 16

Need Listing Immediately

on 40 to 100 acres with modern house in Chelsea area.

Jim Williams, Salesman

MARY WOLTER, Realtor
 Phone 475-8820 92f

APPLES FOR SALE - Spies, Ida Reds, Montees and crab apples. E. Heininger, 2671 N. Lima Center Rd. Phone GR 9-1810. 15ff

FOR RENT - Furnished upstairs apt. Suitable for two. Phone 475-8499 or 479-5441 after 6 p.m. 15ff

NOTICE - Anyone having motors at the Ray Steward residence, 12005 Scio Church Rd., please pick them up or call me. I will not be responsible after 30 days. Mrs. Ray Steward, 479-5916. 16

Male Factory Help Wanted

We have openings in all job classifications for full-time and part-time factory work. Starting wage based on ability plus various benefits after probationary period.

No phone calls - Stop-in and fill out an application between 8 a.m. and 5 p.m.

Fortune Industries, Inc.

11770 Dexter-Chelsea Rd., Chelsea, Mich. 71f

REAL ESTATE FOR SALE

Beautiful Building Site on 2 acres between Pinckney and Portage Lakes on Darwin Rd. \$1700 full price.

10 acres on Dexter-Pinekey Rd. with 482 ft. frontage on pavement. High and dry. Excellent building site. Between Pinckney and Portage Lakes. Price, \$9,900, terms.

Huron River near new dam and Portage Lake outlet, 200x200. A very picturesque lot. Beautiful view looking up the river. \$6,500 per lot.

Portage Lake, Mumford Park canal, lot 50x160' with access to lake. \$2,500.

Spring Lake near Cavanaugh Lake. front year-round home on 2 lots with 77 ft. on lake and 88 ft. on road. Insulated throughout. 2-bedroom and bath, new pump, pipes and point, new 20-gal. hot water heater. Taxes \$115 per year. Trees. Sale price, \$12,000.

Portage Lake front year-round modern home with fireplace. Property in excellent condition. \$21,000 with \$8,000 down. Bal. on land contract.

Mabel Zimmerman

"Lady of the Lakes"

Phone 426-8880 10ff

- FOR SALE -

THREE 2-ACRE LOTS. Excellent location, east of Chelsea. \$2,000 per acre. Small down payment.

RANCH-TYPE HOUSE, attached 2-car garage on 2-acre lot. \$28,000, \$12,000 down. Owner will finance balance.

CLOSE-IN 5-BEDROOM Country Home, 2 complete baths, full basement, oil furnace, 4-1/2 inch well, large lot. Reasonable down payment. Owner will finance balance.

118-ACRE FARM. Good hip-roofed barn, fair house. Price: \$30,000, \$10,000 down.

3-BEDROOM COUNTRY HOME, full bath, oil furnace, garage, other buildings. 1.9 acre lot. Price: \$10,500 cash.

ON HARRISON ST., 4-bedroom, modern house, 2-car garage, large lot. \$15,000.

260-ACRE GRAIN AND FEEDER FARM. Mostly level land. Owner reports 100 bu. shelled corn per acre. Modern out buildings, 6-bedroom modern house. Very reasonable down payment

List your property with Miller - fast, efficient service.

R. D. MILLER

REAL ESTATE BROKER

EVELYN ABDON, Phone 475-7551 (after 6 p.m.)
 Office: 15775 Cavanaugh Lake Road Chelsea, Michigan
 Post Office Box 381 Phone: GR 9-5892

Home For Sale

Between Dexter and Ann Arbor, on one acre with trees, landscaped, fenced, is this attractive 5-bedroom home, basement and garage, in perfect condition. Clean as a pin inside and out. \$18,000. Terms.

Mary Wolter, Broker

Call 428-8188
 7421 Dexter-Pinekey Rd., Dexter 16

REAL ESTATE FOR SALE

BARTLETT ROAD - Almost new 2-bedroom house on 3 1/2 acres. Fireplace, family room, ceramic bath. \$16,800.

10 MILES NORTH - 2 bedrooms. Kitchen has built-in range and oven. Aluminum siding, aluminum storms and screens. \$10,600.

HALF MOON - BLIND LAKE 2-bedroom lakefront, year around home. Screened porch, 2-car attached garage. \$18,000.

11 ACRES with small barn and older house. 7 miles south. \$8,000.

PARTY STORE - Has beer and wine take-out license, soda fountain and lunch counter. A well established business (10 years in the same location). If you are tired of working for someone else call me for details.

CLARENCE WOOD

BROKER

846 Flanders St.
 Phone 479-4808 15f

FOR SALE

THREE 2-ACRE LOTS. Excellent location, east of Chelsea. \$2,000 per acre. Small down payment.

RANCH-TYPE HOUSE, attached 2-car garage on 2-acre lot. \$28,000, \$12,000 down. Owner will finance balance.

CLOSE-IN 5-BEDROOM Country Home, 2 complete baths, full basement, oil furnace, 4-1/2 inch well, large lot. Reasonable down payment. Owner will finance balance.

118-ACRE FARM. Good hip-roofed barn, fair house. Price: \$30,000, \$10,000 down.

3-BEDROOM COUNTRY HOME, full bath, oil furnace, garage, other buildings. 1.9 acre lot. Price: \$10,500 cash.

ON HARRISON ST., 4-bedroom, modern house, 2-car garage, large lot. \$15,000.

260-ACRE GRAIN AND FEEDER FARM. Mostly level land. Owner reports 100 bu. shelled corn per acre. Modern out buildings, 6-bedroom modern house. Very reasonable down payment

List your property with Miller - fast, efficient service.

R. D. MILLER

REAL ESTATE BROKER

EVELYN ABDON, Phone 475-7551 (after 6 p.m.)
 Office: 15775 Cavanaugh Lake Road Chelsea, Michigan
 Post Office Box 381 Phone: GR 9-5892

STEADY JOBS

For Young Men Out of Service

Offset press and bindery jobs. Day and night shifts. High school graduates with some trade shop education preferred.

Apply at

Braun-Brumfield, Inc.

100 N. Staebler Rd. 41f

SWEET CIDER for sale. Bring your own containers. Open 7 days, 12 noon to 6 p.m. Czar's Orchard, 1817 Rank Rd., phone GR 9-8468. 18

Commercial Building

Large concrete block building on 1/4 acre, industrially zoned land, 5 miles west of Ann Arbor. Call collect for details.

Lyle E. Jordan

BROKER

Phone Jackson 517-782-0088 16

NOTICE

No Hunting or Trespassing

on property of

Czapla's Orchard

Signed:
 Douglas Mullen
 Stanley Czapla

FOR SALE

LAWN SWEEPERS

Parker's Clean Sweep 888
 Parkerette, 20 in. brush - \$88
 Parker Homemaster, 28 in. brush - \$188
 8 bushel capacity, with 21 c.c. engine

18-tine steel-leaf rakes
 26-tine tempered tine rakes
 Stoddard's Triple XXX Lawn Fertilizer, 100 lb. 10,000 88 bags

GUNS AND AMMUNITION

Before you buy see our line of caliber .22 mm. guns, rifles and shot guns.

WE STOCK AMMUNITION all commonly used rifles, shotguns, at reduced prices your needs early.

CLOSE-OUT PRICES on Hats, Coats and Pants
 CLOSE-OUT White Flyer City Targets - box of 125

MERKEL BROS.

Without Your Confidence

we could not exist
 ... we merit your consideration.

Staffan Funeral Home

"Funeral Directors for Four Generations"

124 PARK STREET PHONE GR 5-4417

- FOR SALE -

THREE 2-ACRE LOTS. Excellent location, east of Chelsea. \$2,000 per acre. Small down payment.

RANCH-TYPE HOUSE, attached 2-car garage on 2-acre lot. \$28,000, \$12,000 down. Owner will finance balance.

CLOSE-IN 5-BEDROOM Country Home, 2 complete baths, full basement, oil furnace, 4-1/2 inch well, large lot. Reasonable down payment. Owner will finance balance.

118-ACRE FARM. Good hip-roofed barn, fair house. Price: \$30,000, \$10,000 down.

3-BEDROOM COUNTRY HOME, full bath, oil furnace, garage, other buildings. 1.9 acre lot. Price: \$10,500 cash.

ON HARRISON ST., 4-bedroom, modern house, 2-car garage, large lot. \$15,000.

260-ACRE GRAIN AND FEEDER FARM. Mostly level land. Owner reports 100 bu. shelled corn per acre. Modern out buildings, 6-bedroom modern house. Very reasonable down payment

List your property with Miller - fast, efficient service.

R. D. MILLER

REAL ESTATE BROKER

EVELYN ABDON, Phone 475-7551 (after 6 p.m.)
 Office: 15775 Cavanaugh Lake Road Chelsea, Michigan
 Post Office Box 381 Phone: GR 9-5892

Home For Sale

Between Dexter and Ann Arbor, on one acre with trees, landscaped, fenced, is this attractive 5-bedroom home, basement and garage, in perfect condition. Clean as a pin inside and out. \$18,000. Terms.

Mary Wolter, Broker

Call 428-8188
 7421 Dexter-Pinekey Rd., Dexter 16

REAL ESTATE FOR SALE

BARTLETT ROAD - Almost new 2-bedroom house on 3 1/2 acres. Fireplace, family room, ceramic bath. \$16,800.

10 MILES NORTH - 2 bedrooms. Kitchen has built-in range and oven. Aluminum siding, aluminum storms and screens. \$10,600.

HALF MOON - BLIND LAKE 2-bedroom lakefront, year around home. Screened porch, 2-car attached garage. \$18,000.

11 ACRES with small barn and older house. 7 miles south. \$8,000.

PARTY STORE - Has beer and wine take-out license, soda fountain and lunch counter. A well established business (10 years in the same location). If you are tired of working for someone else call me for details.

CLARENCE WOOD

BROKER

846 Flanders St.
 Phone 479-4808 15f

- SPECIALS -

10-OZ. PKG. ECKRICH
Smok-y-Link Sausages 59c

SWIFT'S PREMIUM
Rib Steaks lb. 79c

FARMER PEET'S "RE-PEET-ER"
Bacon 1-lb. pkg. 69c

KEYKO
Margarine . . . 4 lbs. \$1.00

MCINTOSH
Apples 4-lb. bag 35c

22-OZ. GIANT SIZE
Lux Liquid 3

WANT ADS

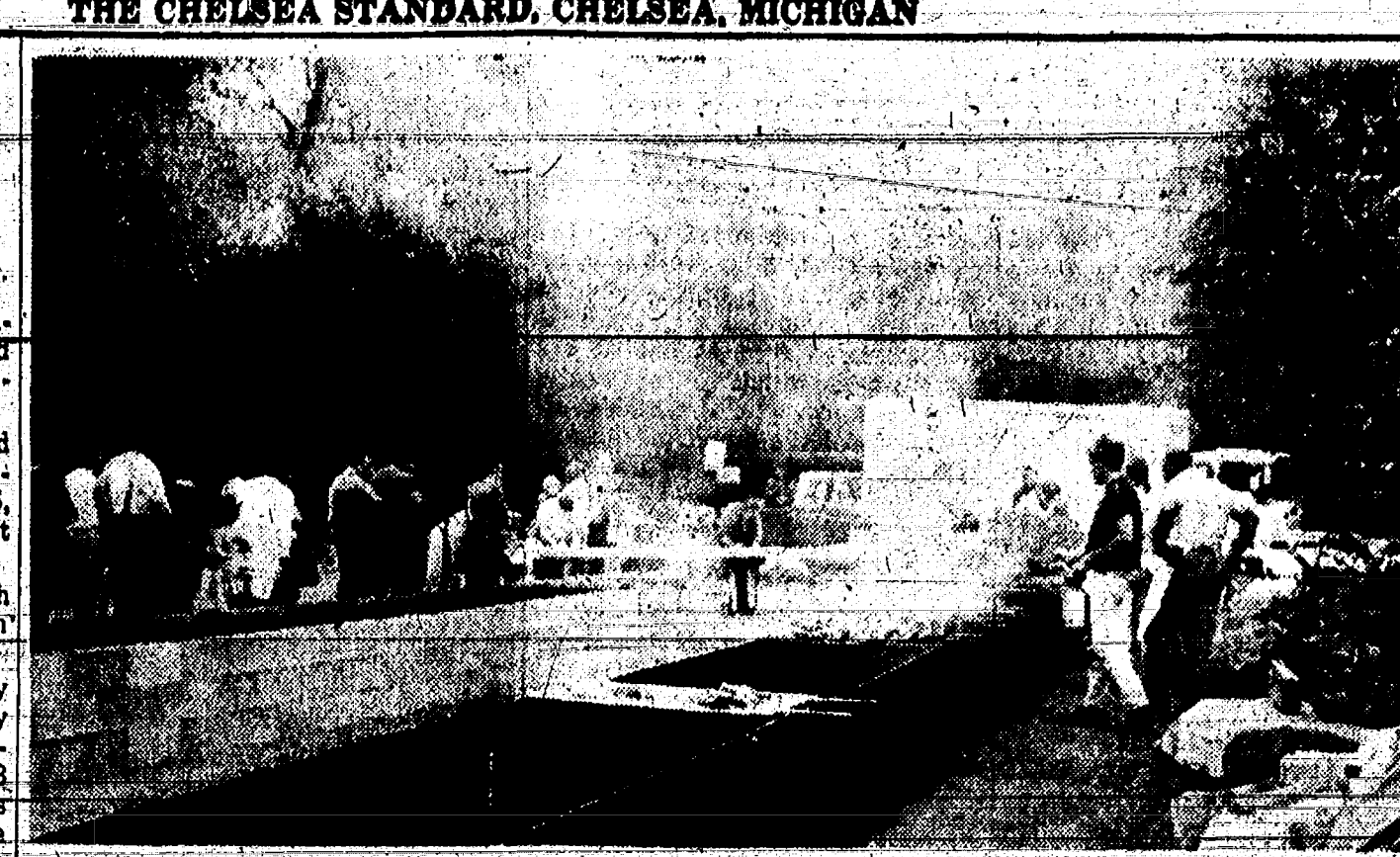
WANT TUBA. Left in park... KING TUBA. Left in park... Four bedroom home... Woman or girl... SHOE. See Denny Tal... PARTY CLEAN CAR...

CARD OF THANKS

To all of our friends and neighbors... I wish to thank my relatives... I would like to thank everyone... When planning menus, consider...

Two Cars Demolished In Accident

Four separate automobile accidents in the Chelsea area resulted in totally demolished cars and injuries to several residents... Three persons were injured and two cars demolished in an accident Wednesday evening, Oct. 5...



TWO BARBECUE PITS were set up in Morce Park to provide faster service for the Sunday Color Tour Barbecue which provided dinners for 2,500 tourists... The Chelsea Jaycees, Jaycee wives and Jaycee Auxiliary members served 900 more dinners this year than last...

Boy Scouts Hold Honor Court Monday

Troop 425 of the Boy Scouts of America held a Court of Honor Monday evening at the George Frisinger tent barn... Before the Court of Honor began, Rodney Branham demonstrated pizza making and Bill Harrison made a cobbler.

Possible Shared Time for Schools Nearer to Reality

Question: If a parochial school teacher wanted to teach her own students in the public schools using public school facilities... Answer: No. Anyone using the public school facilities must be under the jurisdiction of the public schools.

OB FREER'S GRASS LAKE RESTAURANT 101 E. MICHIGAN AVENUE - OLD HOTEL BUILDING... Have You Tried Our Smorgasbord Table? FEATURING WEEK-DAY SPECIALS... SUNDAY SPECIALS - Fried Chicken and Dumplings \$1.55...

CANCELED CHECKS ARE PROOF OF PAYMENT File Them Systematically WITH AN Amille CHECK CASE... 3 Attractive Colors... Priced at only \$1.95... THE CHELSEA STANDARD 300 N. Main Street Phone GR 5-3581

English Leather STRIETER'S MEN'S WEAR "The Place To Go for Brands You Know" English Leather ALL-PURPOSE LOTION... Always at Your Service on the Double Quick! Looking for heads-up auto service? Look no further... JIM'S PURE SERVICE PHONE 479-3541 501 SOUTH MAIN

MAKE YOUR OWN TV TEST 1. He'll star in "T.H.E. Cat" Charlton Heston Robert Loggia Dale Evans... 2. Seen in comedy, "I Started With a Kiss" Kirk Douglas Cary Grant Glenn Ford... 3. Emmy winner, co-star of "A Small Rebellion" Susanne Pleshette Ann Sothern Simone Signoret... 4. Co-star of "I Spy" Sheldon Leonard Bill Cosby Doug McClure... 5. He sought the "Secret of the Incas" Henry Fonda Charlton Heston Rex Harrison

Always at Your Service on the Double Quick! Looking for heads-up auto service? Look no further... JIM'S PURE SERVICE PHONE 479-3541 501 SOUTH MAIN

Non-stick cookware is easy to clean and safe to use... CRANE APPLES TASTE BETTER from ORCHARDS 4880 W. M-36, Pinckney Open Daily BRING CONTAINERS

YOUR PRICELESS FREEDOMS FREEDOM OF SPEECH "Congress shall make no law abridging the freedom of speech." From the First Amendment to the Constitution (part of the Bill of Rights) The Constitution guarantees citizens the right to express their opinions - even if against the government... BURGHARDT FUNERAL HOME - SPECIALS - Margarine lb. 24c Roasted Sausage . lb. 65c Sandwich Cookies . . 39c Soup pkg. 25c Syrup 49c KUSTERER'S FOOD MARKET DIAL GR 9-3331 WE DELIVER

24-HOUR AMBULANCE SERVICE Phone GR 5-4141 or GR 5-5141 BURGHARDT FUNERAL HOME - SPECIALS - Margarine lb. 24c Roasted Sausage . lb. 65c Sandwich Cookies . . 39c Soup pkg. 25c Syrup 49c KUSTERER'S FOOD MARKET DIAL GR 9-3331 WE DELIVER

BUYING A HOUSE? Ask about our low-cost Mortgage Financing plan. 5% annual rate on 1 year Certificates of Deposit in amounts of \$1,000 and multiples of \$500, with automatic renewal. THIS BANK WILL BE CLOSED SATURDAY, OCT. 15 As Required by Public Act No. 152 CHELSEA STATE BANK Member Federal Reserve System Member Federal Deposit Insurance Corp.

Ads Taken Till 5 p.m. Tuesday

IT'S EASY TO BUY-SELL-RENT-HIRE & FIND WITH

WANTED ADS

Just Phone GR 5-3581

WANT ADS

The Chelsea Standard

WANT AD-RATES

PAID IN ADVANCE-All regular advertisements...

FOR INSURANCE

N. H. MILES AGENT GR 5-8334 ALLSTATE

NEW TWO STORY COLONIAL House for Sale in Lanewood...

FOR SALE-General Electric refrigerator with large freezing compartment...

FOR THE BEST IN POLE BUILDINGS

FOR TRACTORS and equipment. Also New Holland machinery...

SEE US for transit mixed concrete. Klump Bros. Gravel Co.

O. R. Clark, Painting Cement Work and Block Work

Free estimates. Call Grass Lake 522-6352, collect after 5 p.m.

McINTOSH and JONATHAN Apples, Prune plums, Lincoln pears...

VAN BUREN EAST APTS. 1 single bedroom and 1 2-bedroom...

FOR SALE-High school boys' everyday blazer, size 34 like new...

I Need An Assistant Because of the new holiday products, I need help...

Call Viviane Woodard-Cosmetics 475-8785

WANT ADS

WANTED-Part or full-time farm help. Jack Bradbury. GR 8-2460.

FOR SALE-Ford tractor and 28-ft. trailer, \$800. May be seen at 1709 Plymouth Rd., Ann Arbor. 17

WANTED TO BUY-3 bedroom home in Chelsea. Call Dick Meyers, 475-8644. Dana Corp. 16

WOMAN'S CLUB Rummage Sale-Sylvan Tower Mall, Oct. 21-22. For information call Mrs. Jess Meiningner, 475-8332. 17

LADIES

We invite you to explore all of the opportunities we have to offer...

International Personnel Service 635-3692 or 407 First National Bldg., Ann Arbor. 15

FOR SALE-Wooden corn crib, 500 bu. capacity, 31'x16'x 18'. Oil and electric chicken brooder and feeders...

FOR SALE-Automotive washer, 1900 deluxe model Frigidaire. Needs slight repair. \$50. NO 3-8228. 9tf

CLOGGED SEWER Reynolds Sewer Service

We Clean Sewers Without Digging Drains. Cleaned Electrically. FREE ESTIMATES 2-YEAR GUARANTEE

Phone Ann Arbor, NO 2-5277. 'Sewer Cleaning Is Our Business - Not a Side-Line' 88tf

INFORMATION WANTED-As to the whereabouts of all empty gas tanks. Jerry's Ashland Service Station, 600 N. Main, Chelsea. 16

WANTED-Used Spanish guitar and a banjo. In playable condition. Ph. 475-5754. 16

FOR SALE-Kitchen table. Will do light house work. Ph. GR 5-8145. 750 Taylor St. 17

Need Listing Immediately on 40 to 100 acres with modern house in Chelsea area.

Jim Williams, Salesman MARY WOLTER, Realtor Phone 475-8820 8tf

APPLES FOR SALE-Spies, Ida Reds, Monroes and crab apples. E. Heiningner, 2571 N. Dima Center Rd., Phone GR 9-1810. 15tf

FOR RENT-Purnished upstairs apt., suitable for two. (Phone 475-8469 or 475-5441 after 5 p.m.) 15tf

NOTICE-Anyone having motors at the Ray Steward residence, 12005 Scio Church Rd., please pick them up or call me. I will not be responsible after 30 days. Mrs. Ray Steward, 479-5916. 16

Male Factory Help Wanted

We have openings in all job classifications for full-time and part-time factory work. Starting wage based on ability plus various benefits after probationary period.

No phone calls. Stop in and fill out an application between 8 a.m. and 5 p.m.

Fortune Industries, Inc. 11770 Dexter-Chelsea Rd. Chelsea, Mich. 7tf

WANT ADS

WANTED-Gas consumers. Jerry's Ashland Service Station, 600 N. Main, Chelsea. 16

FOR SALE-White birch baby bed with mattress, 475-8388. 16

WILL TAKE CARE of children in my home in Chelsea, days or afternoons. White mothers work. Phone 475-7408. 16

FORD CORNER

ORCHARD & MAIN Chelsea's Largest and Finest Selection of USED CARS

65 Ford LTD \$87.00 Per Mo.

65 Ford 2-dr. \$44.00 Per Mo.

64 Comet 4-dr. \$42.00 Per Mo.

64 Galaxie 500 2-dr. HT. \$55.00 Per Mo.

63 Buick Special 2-dr. \$37.00 Per Mo.

63 Chev. Impala HT. \$45.00 Per Mo.

63 Chev. Wagon \$45.00 Per Mo.

63 Ford 4-dr. \$38.00 Mo.

62 Galaxie 4-dr. \$38.00 Mo.

61 Ford Hardtop \$34.00 Mo.

61 Ford Wagon \$31.00 Mo.

61 Ford 2-dr. \$21.00 Mo.

60 Rambler Wagon \$17.00 Mo.

NOTICE

All our 1964-65-66 Ford Used Cars now carry the new 5-year or 50,000-mile Ford Factory Warranty.

TRUCKS

2 1967 FORD PICK-UPS 3 1966 FORD PICK-UPS (All 5 Are Brand New)

1964 Chev. 1/2-Ton Pick-Up 1963 Ford 1/2-Ton Pick-Up 1963 Ford 1/2-Ton Pick-Up 1960 Chevrolet 1/2-Ton Utility Box 1957 Jeep

Dads - Sign your sons up for PPK-K OCT. 7 IS THE LAST DAY TO REGISTER

Shop Our Brand New Outdoor Showroom Open Day & Nite Sundays & Holidays

SEE OR CALL LYLE CHRISWELL EVERETT JOHNSTON GEORGE PALMER -At- PALMER FORD 50-Year Dealer GR 5-3271 16

FOR SALE-Crosley comb. radio-gramm-phonograph. Excellent condition. \$25. Ph. GR 5-4191. Call after 6 p.m. 16

SEMI-PRO FOOTBALL - Saturday Oct. 22, 7:30 p.m. Chelsea High Athletic field. Sponsored by American Legion Post No. 31 for benefit of CHS Band Boosters. Adults \$1.00; Students, 50c. 17

REAL ESTATE FOR SALE

Beautiful Building Site on 2 acres between Pinckney and Portage Lake on Darwin Rd. \$1,700 full price.

10 acres on Dexter-Pinckney Rd. with 462 ft. frontage on pavement. High and dry. Excellent building site. Between Pinckney and Portage Lake. Price, \$8,800, terms.

Huron River near new dam and Portage Lake cottages, 200x322. A very picturesque lot. Beautiful view looking up the river. \$5,800 per lot.

Portage Lake, Mumford Park canal lot, 60x150' with access to lake, \$2,500.

Spring Lake near Cavanaugh. Lake-front year-round home on 2 lots with 77 ft. on lake and 66 ft. on road. Insulated throughout. 2-bedrooms and bath, new pump, pipes and point, new 20-gal. hot water heater. Taxes \$115 per year. Trees. Sale price, \$12,000.

Portage Lake front year-round modern home with fireplace. Property in excellent condition. \$21,900 with \$8,000 down. Bal. on land contract.

Mabel Zimmerman "Lady of the Lakes" Phone 428-9830 10tf

WANT ADS

SEMI-PRO FOOTBALL - Saturday Oct. 22, 7:30 p.m. Chelsea High Athletic field. Sponsored by American Legion Post No. 31 for benefit of CHS Band Boosters. Adults \$1.00; Students, 50c. 17

WOMEN - Start now for big Christmas earnings as an Avon Representative. Territories available in Sylvan and Sharon Townships. 16 224 Shadowlawn Dr., Inkster, Mich., or call 1-562-8417 (after 7 p.m.). 9tf

G. G. HOPPER

Painting & Decorating Building Contractors Phone GR 5-5581 Gregory 498-2148 7tf

APARTMENT FOR RENT - Unfurnished, one-room apt. located near downtown. White Chelsea Standard Box 05. 16

FOR SALE-New 12x18 gold rug, all wool, with pad. Call mornings, 475-7690. 17

Free Designing Free Planning Free Engineering Let Smiley Buildings help you with your new building for your farm or business. No obligation. Call your Smiley man.

Smiley Post Buildings P. O. Box 232 Chelsea, Michigan (517) 622-8258 Call Collect 10tf

SWEET CIDER for sale, 65 cents per gallon. Bring your own containers. Open 7 days, 12 noon to 9 p.m. Czapla's Orchard, 1817 Rd., phone GR 9-9468. 23

Chelsea

Heat Treating, Inc. 11850 DEXTER-CHELSEA RD. 16

Inexperienced and experienced help needed. Steady employment, paid vacation and holidays, fringe benefits, some overtime.

Part-time help also needed. Apply in person 9 a.m. to 5 p.m. 16tf

Real Estate

ONE ACRE, 127x348 on Old US-12 East. Gas available.

10 VACANT ACRES. Close in. Can be subdivided.

LOT 05x103 N. Village of Chelsea with building, 24x36. All village utilities.

4 BEDROOM HOME on 2 lots. All modern, plus garage, screened porch.

3-year-old Ranch type 3-bedroom. Full basement, tile floor, stool and lavatory. Modern kitchen, dining space, living room, closet space. Full bath, wall-to-wall carpeting in living room, hall and 3 bedrooms. On blacktop road.

Listings needed very badly.

Kern Real Estate Phone 475-8563 16tf

- FOR SALE -

THREE 2-ACRE LOTS. Excellent location, east of Chelsea. \$2,000 per acre. Small down payment.

RANCH-TYPE HOUSE, attached 2-car garage on 2-acre lot. \$28,000. \$12,000 down. Owner will finance balance.

CLOSE-IN 5-BEDROOM Country Home. 2 complete baths, full basement, oil furnace, 4-inch well, large lot. Reasonable down payment. Owner will finance balance.

118-ACRE FARM. Good hip-roofed barn, fair house. Price: \$30,000, \$10,000 down.

3-BEDROOM COUNTRY HOME, full bath, oil furnace, garage, other buildings. 1.9 acre lot. Price: \$10,500 cash.

ON HARRISON ST., 4-bedroom, modern house, 2-car garage, large lot. \$15,000.

260-ACRE GRAIN AND FEEDER FARM. Mostly level land. Owner reports 100 bu. shelled corn per acre. Modern out buildings. 6-bedroom modern house. Very reasonable down payment.

List your property with Miller-fast, efficient service.

R. D. MILLER

REAL ESTATE BROKER EVELYN ABDON, Phone 475-7551 (After 6 p.m.) Office: 15775 Cavanaugh Lake Road Post Office Box 381 Chelsea, Michigan. Phone: GR 9-5892 10tf

WANT ADS

TOY DRIVE - Cleaning out the attic? The basement? or the children's toy box? If so, the Jaycee Auxiliary is starting the annual Christmas Toy Drive early this year in order to catch you if you have any old toys, books, dolls etc. contact Ann Stelmawicz at GR 5-8386 for pick-up or if you are in the neighborhood of 2751 McKinley Rd., drop off.

FOR SALE-62 Half-Ton Chevy pickup, \$895. Call 475-8270 after 6 p.m. 17

ELECTRONICS

REPAIR MAN Excellent, permanent, full-time opportunity. Start at \$3 per hour, plus complete benefits, profit sharing and retirement. Immediate discount privileges. Apply in person, Montgomery-Ward Arborland Shopping Center 50tf

Attention Working Farm Owners

I have a bona-fide buyer for a good working beef-cattle farm or hog farm within one hour's drive of University of Michigan Hospital, Ann Arbor, Michigan. My buyer has a large working farm in the East and is transferring into Ann Arbor, Michigan. Call me person to person collect so that I might talk about what you will sell. Size is no object.

OREN F. NELSON REALTOR

9555 Main Street, Ph. 449-9751 Whitman Lake, Michigan 16

HELP WANTED, Male or Female. Raleigh business available in Chelsea and Dexter or E. Jackson C. Experience necessary. Above average earnings. Write Raleigh Dept. M-C-1752-240; Prospect, Ill. 37

Wanted TRUCK DRIVERS

For Ann Arbor city routes. Must know city. Automatic pay increase after 60 days, additional increase after 6 months. Exceptional fringe benefits.

Apply REA Express Agency 416 W. Huron, Ann Arbor 16

REAL ESTATE

Sugar Loaf Lake Cottage, 150 foot frontage. This could easily be made into a year-around home. One-tenth mile off Waterloo Rd. Priced at \$17,900, including some furniture, stove and refrigerator.

Chelsea, near high school, seven rooms, all one floor, located on beautifully landscaped three acres. Priced at \$75,000.

Zeeb Rd. Ann Arbor schools, eight rooms, four bedrooms, dining room, basement recreation room, family room, two-car attached garage, on one acre. Priced at \$49,500.

EIBLER REALTY CO. Phone 665-8683 Plenty of parking at junction of W. Huron, Jackson and Dexter. Evenings call George Fritsinger, 479-4161 or Fred Eibler, 662-2941. 15tf

WANT ADS

FOR SALE - 3-bedroom brick ranch home at 408 Dale St. Phone GR 5-8516 after 5 p.m. 18

FOR SALE - 31 acres in Sylvan township. GR 5-8971. 43tf

CARPET is the softest, warmest, quietest, prettiest and takes care of easier and faster than any floor you can own. Prices installed with padding from \$4.95 to \$12.95 a square yard. 5 credit plans. For a free estimate call Merkel Brothers call 475-8821, ask for Jack. 88tf

BULLDOZING

Grading & Land Clearing DICK KISS 8945 Warkner Rd. Chelsea, Mich. Phone 475-9448 If no answer call 475-2791. 24tf

FOR SALE-Lounge, chair and sofa, table, small table, foot-stool and chair, rocker. 20156 Old US-12. 16

WOMAN'S CLUB Rummage Sale. Sylvan Town Hall, Oct. 21-22. For information call Mrs. Jess Meiningner, 475-8832. 17

MOTHERS-Will give your child a mother's care in my home while you work. References furnished. Mrs. Nelly Cobb, 475-7236. 88tf

For high performance and ease of maintenance See the All-New '67 Line of Admiral TV Color and Black and White Easy monthly payments arranged for your best deal yet. See Willis, Seryce, you bet! Fine selection on display at

PORTER'S TV Sales & Service

212 Buchanan Chelsea 16

APPLES

Choice-and utility grades. Pure Sweet Cider Home-made doughnuts, fresh daily. Open every day 9 a.m.-6 p.m. Phone 428-5041

HIGGINS & SONS ORCHARDS

Located 1/2 mile west of Manchester 16

Bookkeeping - Typing

Pleasant, local position for alert girl with some knowledge of accounting. Please reply in writing and state experience.

Write Box OC-20 Care of Chelsea Standard Chelsea, Mich. 17

REAL ESTATE

Do you want a home or cottage on a lake, a farm or country home, a building site? We have them.

Eugene R. Young, Broker Phone 878-3792 Mary Allen, 878-3826 Virginia Visel, 428-2224 80tf

Home For Sale

Between Dexter and Ann Arbor, on one-acre with trees, landscaped, fenced-in is this attractive 2-bedroom home, basement and garage, in perfect condition. Clean as a pin inside and out. \$18,000. Terms.

Mary Wolter, Broker Call 428-8188 7421 Dexter-Pinckney Rd. Dexter 16

REAL ESTATE FOR SALE

BARTELL ROAD - Almost new 2-bedroom house on 3/4 acre. Fireplace, family room, ceramic bath, \$16,600.

10 MILES NORTH - 2 bedrooms. Kitchen has built-in range and oven. Aluminum siding, aluminum storms and screens. \$16,600.

HALF MOON - BLIND LAKE - 2-bedroom lakefront, year around home. Screened porch, 2-car attached garage. \$16,000.

11 ACRES with small barn and older house. 7 miles south. \$3,000.

PARTY STORE - Has beer and wine take-out license, soda fountain and lunch counter. A well established business (10 years in same location). If you are tired of working for someone else call me for details.

CLARENCE WOOD BROKER 646 Flinders St. Phone 475-4603 16

WANT ADS

HOUSE FOR SALE - Small Rancher, 8 miles west of Chelsea, 13800 Bohne Rd., south of 94. Use Clear Lake Rd. Exit, aluminum siding, attached garage, and nice neighbors. \$9900. Call Willis estate, Grass Lake 522-8121.

MALE HELP WANTED - Mill hand and truck driving. Dexter Co-Op. HA 6-2491. 86tf

FOR RUBBISH and garbage service, call 475-8038 after 4:30 p.m. 40tf

HELP WANTED - Full or part-time waitress. Experience not necessary, will train. Must be 18 years or older. Call GR 9-4211 for interview. Schumm's Restaurant. 8tf

FARM LOANS

Federal Land Bank Association Phone: Ann Arbor 665-6139 50tf

FOR SALE-Horse trailer tandem axle, 4 new tires and spares. mounted. 18250 Bush Rd., Chelsea, 475-8576. Merle Sibley. 11tf

MOTHERS-Will give your child a mother's care in my home while you work. References furnished. Mrs. Nelly Cobb, 475-7236. 88tf

Septic Tanks And Drain Fields INSTALLED TO COUNTY CODE SPECIFICATIONS

Septic tanks from 300 gal. to 2,000 gal. available for prompt installation.

HILLTOP PLUMBING BOB SHEARS 201 S. Main Phone 475-3851 2tf

WANTED TO BUY - Small, two-bedroom house in Chelsea. 475-4691. 16

FOR SALE - General Electric tank type cleaner. All attachments. Runs like new. \$18. Call NO 9-9177. 25

10 ACRES

ON JACKSON ROAD EAST OF CHELSEA OFFERED FOR SALE Phone 479-5491

A. Pommerening BROKER 41tf

STEADY JOBS

For Young Men Out of Service Offset press and bindery jobs. Day and night shifts. High school graduates with some trade shop education preferred.

Apply at Braun-Brumfield, Inc. 100 N. Staebler Rd. 4tf

SWEET CIDER for sale. Bring your own containers. Open 7 days, 12 noon to 6 p.m. Czapla's Orchard, 1817 Rank Rd., phone GR 9-9468. 16

Commercial Building Large concrete block building on 1 1/2 acres. Industrially zoned land. 5 miles west of Ann Arbor. Call collect for details.

Lyle E. Jordan BROKER Phone Jackson 517-782-0088 18

- SPECIALS -

10-OZ. PKG. BCKRICH Smok-y-Link Sausages 59c

SWIFT'S PREMIUM Rib Steaks . . . lb. 79c

FARMER PEET'S "RE-PEET-ER" Bacon . . . 1-lb. pkg. 69c

KEYKO Margarine . . . 4 lbs. \$1.00

McINTOSH Apples . . . 4-lb. bag 35c

22-OZ. GIANT SIZE Lux Liquid 39c

DELIVERY DEADLINES: Morning 10:30 a.m. - Afternoon 3:00 p.m.

SCHNEIDER'S MEATS - GROCERIES WE DELIVER PHONE GR 9-2411

Without Your Confidence

we could not exist . . . nor merit your consideration.

Staffan Funeral Home "Funeral Directors for Four Generations" 124 PARK STREET PHONE GR 5-4417

WANT ADS

WANT ADS
KING TUBA. Left in park...
Four bedroom home...
Woman or girl...
SHOES - See Denny Tal...
WALTRISS (full time)...

CARD OF THANKS

CARD OF THANKS
To all of our friends and neighbors...
THANK YOU
I wish to thank my relatives...

Two Cars Demolished In Accident

Two Cars Demolished In Accident
Four separate automobile accidents in the Chelsea area resulted in totally demolished cars and injuries to several residents.



TWO BARBECUE PITS were set up in Pierce Park to provide faster service for the Sunday Color Tour Barbecue...

OB FREER'S GRASS LAKE RESTAURANT

OB FREER'S GRASS LAKE RESTAURANT
101 E. MICHIGAN AVENUE - OLD HOTEL BUILDING
Have You Tried Our Smorgasbord Table?
FEATURING WEEK-DAY SPECIALS

CANCELED CHECKS ARE PROOF OF PAYMENT

CANCELED CHECKS ARE PROOF OF PAYMENT
File them Systematically
Amfile CHECK CASE

Amfile CHECK CASE
Now you can find that important canceled check at a moment's notice!

THE CHELSEA STANDARD
300 N. Main Street Phone GR 5-3581

English Leather
STRIETER'S MEN'S WEAR
"The Place To Go for Brands You Know"

Boy Scouts Hold Honor Court Monday

Boy Scouts Hold Honor Court Monday
Troop 425 of the Boy Scouts of America held a Court of Honor Monday evening at the George Frisinger theater barn.

Possible Shared Time for Schools Nearer to Reality

Possible Shared Time for Schools Nearer to Reality
Question: If a parochial school teacher wanted to teach her own students in the public schools...

Even in large families, where "sharing" among children is essential, it is necessary that each child have something that is "his" alone.

Teacher expense for the shared facilities were discussed, it was pointed out that state aid is paid for shared time, pupils on the basis of one full state aid paid for every six part time pupils per period.

Michigan in autumn is one gigantic color tour. For those who prefer planned color trips...

Non-stick cookware is easy to clean and safe to use. If you use special nylon, plastic, wood, or rubber spoons instead of forks and metal utensils...

JIM'S PURE SERVICE
Always at Your Service on the Double Quick!
Looking for heads-up auto service? Look no further. That's us! Always on our toes to serve you promptly, efficiently, courteously!

Steel windows should be coated with one of the metal primers and water. Once the primer coat is especially formulated for that purpose, before they are painted.

YOUR PRICELESS FREEDOMS
FREEDOM OF SPEECH
"Congress shall make no law... abridging the freedom of speech."

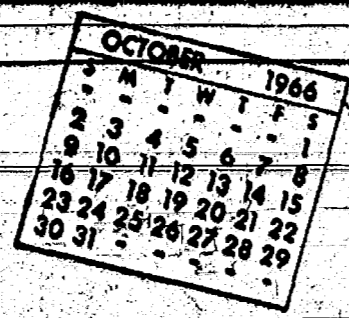
BURGHARDT FUNERAL HOME
24-HOUR AMBULANCE SERVICE
Phone GR 5-4141 or GR 5-5141

KUSTERER'S FOOD MARKET
Margarine lb. 24c
Roasted Sausage . lb. 65c
Sandwich Cookies . . 39c
Soup pkg. 25c
Syrup 49c

BUYING A HOUSE?
Ask about our low-cost Mortgage Financing plan.
5% annual rate on 1 year Certificates of Deposit in amounts of \$1,000 and multiples of \$500, with automatic renewal.

CHELSEA STATE BANK
THIS BANK WILL BE CLOSED SATURDAY, OCT. 15
As Required by Public Act No. 152
"THE Saturday nearest the twelfth day of October of each year is declared a public holiday to be known as 'Columbus Day' and the same shall be recognized, classed and treated as other legal holidays under the laws of this state."

Community Calendar



American Red Cross open blood bank, American Red Cross Center, 2729 Packard Rd., Ann Arbor, Oct. 14, 2 to 7:30 p.m. Call 602-5546 for appointments. Donations may be credited to the Chelsea Blood Bank.

Business Chapter of the Congregational Church, Oct. 20, 8 p.m., at home of Mrs. A. Penhalligan at Pleasant Lake. Those with cars please drive and everyone meet at church before 7:30 p.m. for rides.

Chat 'n' Seau, Oct. 18, 7:30 p.m., at home of Mrs. Robert Livingston.

Chelsea Camera Club, Tuesday, Oct. 18, 7:30 p.m., K. of C. Hall. Lesson on light exposures. Alvin Reinhardt will show Alaskan pictures taken with Boy Scout group. Guests welcome.

Chelsea Rebekah Lodge No. 130 meets first and third Tuesday of each month at 8 p.m., at the Hall.

ING club of Rebekah Lodge at home of Mrs. Elwood Keezer, Oct. 27, 7:30 p.m., with Mrs. Gene Colter assisting. Costumes.

Annual turkey supper of the Waterloo Village E.L.B. church will be served Thursday evening, Oct. 20, beginning at 5:30 p.m., at the Church School House. -adv17

Wide Awake 4-H club Saturday, Oct. 15, 1:30 p.m., at home of Mrs. H. C. Powers.

Chelsea Coin Club, Oct. 21, 7:30 p.m., at the Kerner House, Main and Middle Sts. Waldo Hostetter, president of Michigan Numismatic Society and magician will speak. Coin show will be Oct. 23, 1 p.m. at the Kerner House.

Methodist Older Adult Group meeting Saturday, Oct. 15, 12:30 p.m., in social center. The program will be presented by the Rev. William Hainsworth of Ann Arbor. The "inspirational" humorists "Bring own tale service and hot dish."

Chelsea Community Farm Bureau, Thursday, Oct. 13, at the second floor of the Memorial Library, 8 p.m. Mr. and Mrs. Cliff Ford Huxford and Mr. and Mrs. Leon Sanders, hosts.

American Legion Auxiliary monthly party at home of Mrs. Howard Klutha, Walz, 414 Cavanaugh Lake Rd., guests invited.

Woman's Club Rummage Sale, Saturday, Oct. 21, 9 a.m. For information call Mrs. Jess Meininger, 175-832. -adv17

Fun and sew every Tuesday at 1:30, Kerner House. Sewers needed.

Card party for Senior Citizens each Thursday, 12:30 p.m., at Kerner House.

Jerusalem Homemakers' Study group, Tuesday, Oct. 18, 8 p.m. at the home of Mrs. Ralph McGalla.

Methodist Home

(Continued from page one)

In addition to these plans, private dwellings of more than one generation, commercial homes for the aging, and church, fraternal and other non-profit homes will continue to be built, he added. However, this work will cost much more in the future, which may mean an increased "pooling" in the use of professional and technical help, such as therapists, accountants, purchasing, personnel, and social workers.

The title of Dr. Palmer's speech, "With Years A Richer Life Begins," cannot be realized, he said, until good living facilities are available to all aging citizens who desire them.

Other highlights of the anniversary observance included a message by Bishop Marshall R. Reed, who spoke about "This Remarkable Century."

A plaque honoring all former administrators of the Chelsea Home was dedicated during the 60th anniversary observances. The plaque will hang near the main entrance to the Home.

BIRTHS

A daughter, Deborah Sue, Oct. 10 to Mr. and Mrs. John W. Hays, 410 S. Main. Siblings: Lake-Rid, Chelsea.

Mrs. Blanche Palmer Dies Sunday in San Francisco

Mrs. Mary Blanche Palmer, died Sunday afternoon, Oct. 9 in a San Francisco Hospital where she had been taken after falling in her home earlier that day.

She was born Sept. 8, 1878 in Easton, Pa., the daughter of John B. and Martha Wright Cole. When she was two years old she was stricken with scarlet fever which developed into black diphtheria. After what seemed a miracle she recovered but her throat was so scarred and the ears so badly damaged that she was left with partial deafness for the rest of her life. When she was nine years old, she came to Chelsea with her parents and a sister, Ethel.

A person of varied interests, at the age of 14, she began the study of painting in oils with Miss Alice Gorman, a professional artist of Chelsea, an interest maintained for years, and at 15 she started the study of music with the violin. Devoted to the instrument until late in life, in her earlier years she was prominent in musical circles wherever she lived. Working hours after school and Saturdays she learned the millinery trade in the millinery shop of Miss Kathryn Hooker.

She attended Chelsea High school and finished with the class of 1897, but was unable to get her diploma because of her deafness which made it impossible to master the subject of algebra. However, her class honored her on "Class Day" night, with a number on the program in a violin solo, La Sonambula.

In July of that summer, 1897, she was married to Henry Wood, son of Lincoln Wood, a Chelsea merchant, and in June of 1898 their daughter, Maurine, was born. The marriage ended in divorce two years later and she accepted a position in the millinery shop of Miss Mary Haub, in the space now occupied by the Patty Ann Shoppe. The next year, 1901, she obtained a position in a millinery shop in Bronson and in 1903 was married to George Davis of that town. During the eight years of her residence in Bronson she was active in social, literary and musical circles. A member of the Organized Mystery Star, she organized the Mystery Star Chapter, served as its first Worthy Matron and again two years later. Mr. Davis died of tuberculosis in 1912 and as she contracted the disease in caring for him, returned to Chelsea with her daughter to stay with her parents, and during the next year she taught and conducted the play.

In 1911 she opened a needle-craft shop in the Freeman building above the present Striker Men's Wear Shop. In this she was assisted by her daughter Maurine's itinerary covered all the New England States and most of the Southern States, and during the spring and summer months she accompanied him, visiting all the principal cities and points of historic interest. He died in 1918.

Once more thrown on her resources, she, in company with Miss Pauline Girbach, in the rooms over Penn's Drug store, opened a millinery shop. Two years later she bought Miss Girbach's interest in the business and in 1922 sold out to the Miller sisters. Dec. 2, 1922 she was married to Dr. Faye Palmer, a World War veteran (Capt. Faye Palmer) who had opened an office in Chelsea for the practice of dentistry.

Through the years she had been writing poems. In 1937 she began to study fiction and poetry through the medium of correspondence courses and writer's conferences at Olivet college. Many of her poems have been published in magazines and newspapers, many under a pen name. In 1953 a book of her poems was published by Edwards Brothers of Ann Arbor. In 1939 she began writing greeting card verse. Many of her verses are appearing on cards on the market today. She had begun work on a novel but laid it aside when Dr. Palmer died in 1942.

In 1957 she moved to San Francisco to live with her daughter, Mrs. J. V. Copren. She now took a two-year extension course at the University of California. At the age of 83, she took up the novel again and in three years completed the book now in the hands of the publisher. She was a professional member of the National Writer's Club.

Both Dr. and Mrs. Palmer were active in social and civic affairs in Chelsea. She was a member of the First Congregational church of Chelsea, and in earlier years had taught a class of boys. She was a member of the What 'n' Seau of the church and of the Women's Fellowship. She was a Past Matron of the Order of the Eastern

DEATHS

Mrs. Henry Norris
Methodist Home Resident
Entered from Highland Park
Selma B. Norris, 89, a resident of the Chelsea Methodist Home, died there Sunday evening after a long illness. She entered the Home from Highland Park on June 7, 1966.
Born June 17, 1877, at Helston, Cornwall, England, she was the daughter of John and Maria Matthews-Rule. She was married to Henry Norris on July 8, 1899, and came to the United States from England in 1928. He preceded his wife in death in 1930.
Mrs. Norris had been a member of St. Paul's Methodist church, Highland Park, for the last 41 years. Surviving are two sons: Hedy of Detroit and George of Highland Park; a brother, Jack Rule of Spring Arbor, Mich.; a sister, Mrs. Annie Dunn of Cornwall, England; four grandchildren and nine great-grandchildren.
Funeral services were held at 1 p.m. Wednesday at St. Paul's Methodist church, Highland Park, with the Rev. Lois Martindale officiating. Burial followed in Roseland Park cemetery, Royal Oak. Funeral arrangements were made by the Burghardt Funeral Home.

Mrs. Edwin G. Braun

Former Chelsea Resident
Dies in Ann Arbor
Ruth K. Braun, 66, of 603 Cressfield, Ann Arbor, died Oct. 5, 1966 in Ann Arbor. She had been ill for the past several years.
She was born in Chelsea on March 19, 1899, the daughter of Eugene and Stella Conlan McKernan. She and Edwin G. Braun were married on Nov. 26, 1932 in St. Thomas church in Ann Arbor. They lived in Ann Arbor most of their married life.
Survivors include her husband; a son, Eugene, of Kalamazoo and a daughter, Mrs. Carl (Patricia) Burman of Arkrak, Turkey; one brother, Mark McKernan of 20179 W. New US-12, Chelsea, and two sisters, Mrs. Jacob (Teresa) Bauer of Clinton and Mrs. Francis (Monica) Lefevre of Ann Arbor, four grandchildren and several nieces and nephews.
Requiem high mass was sung at 10 a.m. Saturday morning, Oct. 8, by the Rev. Father Francis Maliszewski. Rosary was recited at 8 p.m. Friday evening at the Staffan Funeral Home. Burial was in Mt. Olivet cemetery Chelsea.

GOING PLACES?

Go protected. With the extra protection of State Farm's new "GO" insurance. Arranged instant!



WALLACE WOOD, AGENT
105 S. Main, Chelsea GR 5-5341
STATE FARM FIRE AND CASUALTY COMPANY
HOME OFFICE: BLOOMINGTON, ILLINOIS



DEVIL'S OUT-POST: Troop 425 of Chelsea was the first group to camp at Mel Reinhardt's "Devil's Out-Post" camp site on Kelly Rd. in Hell Mich., this last weekend. The troop hiked the Potawatomi Trail from their camp on Saturday. The trail has been extended to include this area and is now 12 miles long. Mr. Reinhardt of Hell donated approximately two acres for this camp site to the

Blood Bank Clinic Needs Food for Staff Luncheon
(Continued from page one)

Volunteers are still needed to provide casseroles, salads and dessert for the staff luncheon. Anyone who would like to help with the clinic in this manner is asked to call Mrs. Dudley Holmes, 476-2181.

In order to donate blood, the donor must be in good general health, between the ages of 18 to 59 years inclusive, and must weigh at least 110 pounds. Pregnant women are not accepted.

Mrs. Robert Wagner is making appointments through Chelsea area factories. Mrs. Helen Baxter will be in charge of the canteen.

The American Red Cross will have an open blood bank clinic at the American Red Cross Center, 2729 Packard Rd., Ann Arbor on Oct. 14, 2 to 7:30 p.m. Call 1662-5646 for appointments.

Any Chelsea donor who cannot participate in the Chelsea Blood Clinic on Nov. 1, may donate to the Oct. 14 open clinic in Ann Arbor may be credited to the Chelsea Blood Bank, according to Mrs. Holmes.

To keep steaks, chops, and ham slices from "cupping" while broiling, slash through the outside fat covering at one-inch intervals.

Gambles OCTOBER SALE!

None Finer!
Buy VARCON Permanent Anti-Freeze
Gallon \$1.49
Bulk in Your Container

VARCON Bonded Anti-Freeze \$1.09
Forget about dangerous cold weather freeze-ups with Varcon Bonded Anti-Freeze. Pay only \$100. If liquid results in damage when used according to directions, a \$50.00 mixture protects to 45° below zero. Buy yours today!

VARCON METHANOL THERMOSTATS
Dependable freeze protection at lowest cost! Anti-rust. Gallon bulk in your container. \$5.99 GALLON ANTI-FREEZE 17c

WE CARRY ALL THE FAMOUS MAKE GUNS.
Browning Remington
Savage Martin Stevens
WINCHESTER

HIAWATHA 12 Gauge Pump Shotgun

TRADE TODAY!
One of these famous brand guns will cost you far less when you trade. Bring in your old gun today for a free appraisal.

Buy on our Thrifty Pay Plan!
\$1.50 per week
\$84.95

CHECK THESE GREAT FEATURES!
Top shotgun value! Hiawatha has many deluxe features now in demand: recoil pad, pistol-grip wood stock and beaver tail forend. Has double sights and polished bolt. Available in full or modified choke, 12 gauge; weighs 6 1/4 lbs.

Blackboard & BULLETIN BOARD
Handy family communication center for your home! \$88c

MEN'S CHORE GLOVES
12.5 Napou Cotton Canvas, Knit Wrists \$37c

SHOT GUN SHELLS
12 Ga. Reg. \$2.54 bx. \$1.99 New Only

All Purpose BROOM 99c
Push-type broom is great for patio and garage, 14"W, 30-1179

Pint Size VACUUM BOTTLE Compare at \$1.69. **99c**
Hot drinks taste great on outings—at work, too, 25-9028

Sueded GUN CASE Reg. '98c **66c**
Cotton flannel case is 52" long—fits most guns. 25-9114

WORLD'S FIRST JET ACTION WASHER
by **FRIGIDAIRE**
Hurry in now while they last!

NO WONDER THE JET ACTION WASHER IS SELLING SO FAST!

- New Deep Action Agitator—creates jet currents for "deep action" cleaning.
- Jet-Away lint removal—needs no lint trap.
- Jet-spin assures quick drying.
- Jet-simple mechanism has fewer parts for top dependability!

Check Our Low Price!

MEABON'S TV, FURNITURE & APPLIANCE
1170 S. M-52, Chelsea Phone GR 5-5191

Diamond Crystal REDOUT
recharges tired—rusty water softeners
50 lbs. \$1.95
DIAL GR 5-3391
CHELSEA LUMBER CO.

Gambles - Famous for Discount Savings

THE SUPERMARKET THAT'S JUST A LITTLE BIT BETTER

Stop & Shop

14901 Old U.S.-12
Corner at M-52
Chelsea



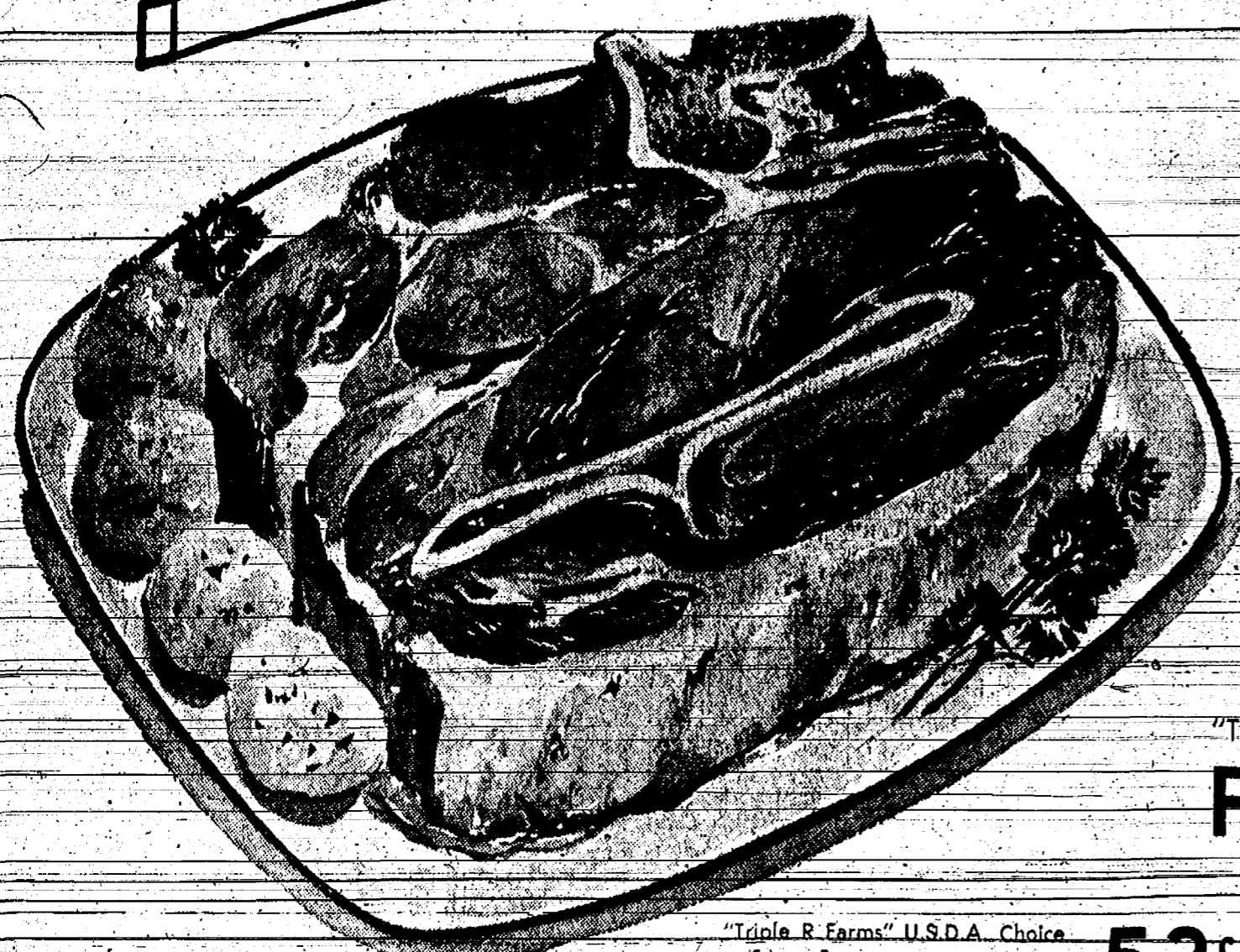
Prices Effective Wednesday,
Oct. 12 through Tuesday, Oct. 18

The Know How of Intelligent
Meat Buying
is Really the "Know Where"

Our customers have learned to depend on the outstanding quality of Stop & Shop meats - unflinching satisfaction with every cut they purchase. The finest quality, together with the experienced expertise of our meat cutting experts, makes an unbeatable combination!



WE RESERVE THE RIGHT TO LIMIT QUANTITIES



"TRIPLE R FARMS" U.S.D.A. CHOICE

CHUCK ROAST

Blade Cut

43^c lb.

"Triple R Farms" Fresh Dressed

Fryers Grade A Whole 29^c lb.

"Triple R Farms" U.S.D.A. Choice
Chuck Roast 53^c lb.

"Triple R Farms" Hickory Smoked
Picnics 43^c lb.

"Triple R Farms" U.S.D.A. Choice
Chuck Roast 69^c lb.

Spencer's Hickory Smoked
Bacon 79^c lb.

Stop & Shop's Fresh, Lean, All Beef
Hamburger 55^c lb.

"Triple R Farms" Michigan Grade 1
Sliced Bologna 49^c lb.

Fresh, Lean, Tender
Pork Chops 79^c lb.

"Triple R Farms" Michigan Grade 1
Ring Bologna 53^c lb.

Lean, Tender, Boneless and Cubed
Pork Cutlets 79^c lb.

"Triple R Farms" Homemade
Pork Sausage 49^c lb.

Farm Fresh Produce

Michigan Sno-White - Solid Heads
Cauliflower 29^c

Michigan U.S. No. 1
Potatoes 39^c

Mash 'Em - Bake 'Em - Fry 'Em

Dole Pink Drink
Pineapple-Grapefruit 89^c



Tips from the
STOP & SHOP CHEF
Questions & Answers

What is cream of tartar and what effect does it have on ingredients with which it is combined?

Technically, cream of tartar is a purification of acid potassium tartrate. Combined with egg whites, its most frequent use, it stabilizes the whites after they are beaten, enabling them to retain the air. When cream of tartar is combined with egg whites for angel food cake, it makes for a lighter, whiter product.

Michigan Pure Granulated
Sugar 48^c

Del Monte
Catsup \$1

Shur-Good London Creme
Assorted Cookies 39^c

Stokely's
Fruit Cocktail 89^c

Duncan Hines
Cake Mixes 89^c

Nabisco Chocolate
Chip Cookies 47^c

Stokely's
Pumpkin 23^c

Sunshine
Krispy Crackers 29^c

White or Assorted
Northern Tissue 29^c

Hekman's
Graham Crackers 39^c

Maxwell House
Coffee 66^c

Stop & Shop's Enriched, Sliced
White Bread \$1

Breast O' Chicken
Tuna 29^c

Libby's
Pork & Beans 13^c

Ocean Spray
Cranberry Sauce 23^c

Domino
Sugar 15^c

Del Monte
Tomato Juice 29^c

McDonald's Prize-Winning
COTTAGE CHEESE 27^c

STORE HOURS
Monday, thru
Wednesday
9 a.m. to 6 p.m.
Thursday and Friday
9 a.m. to 9 p.m.
Saturday
8 a.m. to 9 p.m.
Sunday
10 a.m. to 6 p.m.

Legal Notices

ORDER OF PUBLICATION
State of Michigan, Probate Court for the County of Wayne, Michigan, In and for the Estate of ANNA E. VEALY, Deceased.

Publication and service shall be made as provided by Statute and Court Rule.
Dated: Sept. 21, 1966

JOHN W. CONLIN, Judge of Probate.

JOHN W. CONLIN, Attorney for Plaintiff.

ORDER OF PUBLICATION
State of Michigan, Probate Court for the County of Wayne, Michigan, In and for the Estate of ANNA E. VEALY, Deceased.

Publication and service shall be made as provided by Statute and Court Rule.
Dated: Sept. 21, 1966

JOHN W. CONLIN, Judge of Probate.

JOHN W. CONLIN, Attorney for Plaintiff.

ORDER OF PUBLICATION
State of Michigan, Probate Court for the County of Wayne, Michigan, In and for the Estate of ANNA E. VEALY, Deceased.

Publication and service shall be made as provided by Statute and Court Rule.
Dated: Sept. 21, 1966

JOHN W. CONLIN, Judge of Probate.

JOHN W. CONLIN, Attorney for Plaintiff.

MORTGAGE SALE

Default having been made in the terms and conditions of a certain mortgage made...

Publication and service shall be made as provided by Statute and Court Rule.

JOHN W. CONLIN, Judge of Probate.

JOHN W. CONLIN, Attorney for Plaintiff.

MORTGAGE FORECLOSURE SALE

Default having been made in the terms and conditions of a certain mortgage made...

Publication and service shall be made as provided by Statute and Court Rule.

JOHN W. CONLIN, Judge of Probate.

JOHN W. CONLIN, Attorney for Plaintiff.

MORTGAGE FORECLOSURE SALE

Default having been made in the terms and conditions of a certain mortgage made...

Publication and service shall be made as provided by Statute and Court Rule.

JOHN W. CONLIN, Judge of Probate.

JOHN W. CONLIN, Attorney for Plaintiff.

DIVORCE ACTION

ORDER TO ANSWER
State of Michigan, In the Circuit Court for the County of Wayne, Michigan.

Publication and service shall be made as provided by Statute and Court Rule.

JOHN W. CONLIN, Judge of Probate.

JOHN W. CONLIN, Attorney for Plaintiff.

ORDER OF PUBLICATION

State of Michigan, Probate Court for the County of Wayne, Michigan, In and for the Estate of ANNA E. VEALY, Deceased.

Publication and service shall be made as provided by Statute and Court Rule.

JOHN W. CONLIN, Judge of Probate.

JOHN W. CONLIN, Attorney for Plaintiff.

ORDER OF PUBLICATION

State of Michigan, Probate Court for the County of Wayne, Michigan, In and for the Estate of ANNA E. VEALY, Deceased.

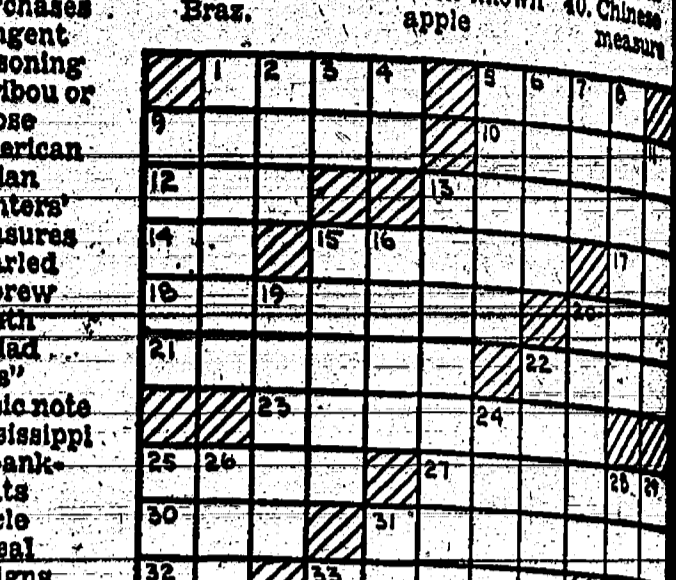
Publication and service shall be made as provided by Statute and Court Rule.

JOHN W. CONLIN, Judge of Probate.

JOHN W. CONLIN, Attorney for Plaintiff.

CROSSWORD PUZZLE

ACROSS
1. Conceal
2. Tagged mass
3. Island group in Pacific



DOWN
1. Hurry
Michigan has in the National Music Camp and the Interlochen Arts Academy which were founded by the late Joseph E. Maddy...

ORDER OF PUBLICATION

State of Michigan, Probate Court for the County of Wayne, Michigan, In and for the Estate of ANNA E. VEALY, Deceased.

Publication and service shall be made as provided by Statute and Court Rule.

JOHN W. CONLIN, Judge of Probate.

JOHN W. CONLIN, Attorney for Plaintiff.

ORDER OF PUBLICATION

State of Michigan, Probate Court for the County of Wayne, Michigan, In and for the Estate of ANNA E. VEALY, Deceased.

Publication and service shall be made as provided by Statute and Court Rule.

JOHN W. CONLIN, Judge of Probate.

JOHN W. CONLIN, Attorney for Plaintiff.

ORDER OF PUBLICATION

State of Michigan, Probate Court for the County of Wayne, Michigan, In and for the Estate of ANNA E. VEALY, Deceased.

Publication and service shall be made as provided by Statute and Court Rule.

JOHN W. CONLIN, Judge of Probate.

JOHN W. CONLIN, Attorney for Plaintiff.

ORDER OF PUBLICATION

State of Michigan, Probate Court for the County of Wayne, Michigan, In and for the Estate of ANNA E. VEALY, Deceased.

Publication and service shall be made as provided by Statute and Court Rule.

JOHN W. CONLIN, Judge of Probate.

JOHN W. CONLIN, Attorney for Plaintiff.

ORDER OF PUBLICATION

State of Michigan, Probate Court for the County of Wayne, Michigan, In and for the Estate of ANNA E. VEALY, Deceased.

Publication and service shall be made as provided by Statute and Court Rule.

JOHN W. CONLIN, Judge of Probate.

JOHN W. CONLIN, Attorney for Plaintiff.

ORDER OF PUBLICATION

State of Michigan, Probate Court for the County of Wayne, Michigan, In and for the Estate of ANNA E. VEALY, Deceased.

Publication and service shall be made as provided by Statute and Court Rule.

JOHN W. CONLIN, Judge of Probate.

JOHN W. CONLIN, Attorney for Plaintiff.

ORDER OF PUBLICATION

State of Michigan, Probate Court for the County of Wayne, Michigan, In and for the Estate of ANNA E. VEALY, Deceased.

Publication and service shall be made as provided by Statute and Court Rule.

JOHN W. CONLIN, Judge of Probate.

JOHN W. CONLIN, Attorney for Plaintiff.

VILLAGE TAXES ARE DUE AND PAYABLE

At the Office of the Village Treasurer, WALLACE WOOD. 105 S. Main St., Chelsea, Mich. Deadline Extended to Oct. 20, 1966. Hours: 9 a.m. - 5 p.m. daily; 9 a.m. - 2 p.m. Sat.

VILLAGE TAXES ARE DUE AND PAYABLE

At the Office of the Village Treasurer, WALLACE WOOD. 105 S. Main St., Chelsea, Mich. Deadline Extended to Oct. 20, 1966. Hours: 9 a.m. - 5 p.m. daily; 9 a.m. - 2 p.m. Sat.

REPORT OF CONDITION OF Chelsea State Bank

Table showing assets and liabilities of Chelsea State Bank. Assets include cash, securities, and other assets. Liabilities include deposits and other liabilities.

WATERLOO

Miss Mary Barber of Ann Arbor spent the week-end with her grandchildren, Mrs. Eva Barber...

Advertisement for Hilltop Plumbing, Heating & Electrical Contractors. Located at 201 South Main Street, Chelsea, Mich. Phone 479-851.

Advertisement for The Legal Advertiser. 10 Bertlett Ave. Detroit 8, Mich. Phone Townsend 8-9709.



WINNERS IN PPK COMPETITION: These eight out-puncted, out-passed and out-kicked others...

REPORT from LANSING
State Representative
Thomas G. Sharpe

Township Legislation, 1966 Session

Township Sidewalks—New Law. This act provides that a township board may order the construction of sidewalks in any area...



WINNERS IN THE 8-9- & 10-YEAR-OLD division of the Punt, Pass & Kick competition last Saturday in Chelsea...

Chelsea Gets Rail Rate Reduction on Shipping Potatoes to Southern Cities

Chelsea has been named as one of eight Michigan points of origin which will put in a new rail reduction on the shipment of potatoes to Southern destinations...

Brownies, Junior Girl Scouts on Waiting List For Lack of Leaders

The Brownie and Junior Girl Scout programs will begin in Chelsea, but only those Brownies whose mothers are actively involved in scouting will be placed in troops until more leaders are found...

Halloween Funds Will Be Collected For UNICEF

"Share rather than Scare" will be the motto of Chelsea youngsters participating in the 1966 UNICEF Halloween collection. During this drive, designed to benefit the United Nations Children's Fund, Chelsea participants will go from door-to-door collecting money in orange and black boxes...

AGRICULTURE in ACTION

Montreal, Canada: Things are really buzzing here at the site of the big International Exposition scheduled to open April 28, 1967. Both the Russian and American pavilions are well along...

Chelsea Voters, ... here's the record



Congressman Wes Vivian

#3: HIGHWAY SAFETY. Congressman Wes Vivian was one of the original sponsors of Federal legislation to require safety standards for automobile tires...

#4: COMMUNITY COLLEGES. Congressman Wes Vivian was one of the sponsors of the Higher Education Act of 1965 and voted in the House of Representatives for its passage...

Distinctive WEDDING ANNOUNCEMENTS INVITATIONS. Let us provide you with the very finest printed or engraved invitations and announcements...

Diamond Crystal REDOUT® recharges tired—rusty water softeners. 50 lbs. \$1.95. CHELSEA LUMBER CO.

Re-Elect Wes Vivian ... your full-time U. S. Congressman. Democrat. paid pol. adv. Comm. to Re-Elect Wes Vivian Robert W. Carr, Co-ord.

BOWLING NEWS



Chelsea Women's League

Standings as of Oct. 5

W	L
Chelsea Cleaners	17-3
Jim's Pure Service	12 1/2-7 1/2
Foster's	12-8
Goucher & Weber	12-8
Chelsea Milling Co.	12-8
Schneider's	11 1/2-8 1/2
Chelsea Lanes	11 1/2-8 1/2
Chelsea Grinding Co.	9-11

425 series and over: Rosemary Hummel, 540; Peg Poortner, 539; Agnes Turner, 528; Genevieve Wheeler, 502; Mary Ritter, 499; Marilyn Powell, 487; Jan Hutzel, 475; Pearl Fitzsimmons, 462; Lois Orlovski, 199; Audrey Knickerbocker, 448; Helen Morgan, 451; Delores Fouty, 439; Brenda Larson, 448; Phyllis Warster, 430; Dorothy Fitzsimmons, 423; Rosemary Hummel, 434; Lynn Adams, 433; Marge Ellen Sutter, 430; 150 games and over: Lynn Adams, 168; Janet Salyer, 163; Agnes Turner, 149; Rosemary Hummel, 150; Eileen Sutter, 179; Marge Ellen Sutter, 433; Carolyn Sawyer, 182; Rosemary Kadavsky, 155; Margaret Scott, 192; Delores Fouty, 176; Mary Ritter, 189; 174: Peg Poortner, 202; 175-181: Pearl Fitzsimmons, 192; Marilyn Powell, 179; Helen Morgan, 192; Rosemary Hummel, 150-180; Rosemary Kadavsky, 161; Genevieve Wheeler, 174-183; 175-199: Lynn Adams, 151; Agnes Turner, 167; Audrey Knickerbocker, 151; Marge Ellen Sutter, 179; Carolyn Sawyer, 182; Phyllis Warster, 155; Dorothy Fitzsimmons, 154; Delores Fouty, 176; Rosemary Hummel, 173-198-199.

Men's 475 and over: D. Lyndon, 608; F. Powell, 546; H. Burnett, 588; W. Griffith, 529; D. Singlinger, 528; R. Fike, 508; M. Poertner, 502; R. Doody, 485; G. Burnett, 485; J. Goltra, 481. Women's 150 and over: L. Doody, 160-175-219; J. Burnett, 180; P. Poertner, 172; R. Harrook, 151-171; R. Davine, 160; A. Turner, 162; 156-169: J. Rabbitt, 187-189; M. Powell, 187-184; J. Longworth, 165; L. Alexander, 164; B. Fike, 154; R. Hummel, 153; H. Morgan, 152; K. Lyndon, 151-180. Women's 450 and over: L. Doody, 554; A. Turner, 487; M. Powell, 404; J. Rabbitt, 400.

Chelsea Lanes Mixed League

Standings as of Oct. 7

W	L
H. & H.	13-5
Nichurs, Droplets	13-7
Johnson's Tool Shop	12-8
Sams	11-9
Triangle Auto Sales	11-9
Wolverine No. 2	10-10
Red & Fiddkamp	8-12
Harriet & Weisshaus	9-11
Phyl's Bar	10-11
Wolverine No. 1	8-12
University Studios, Inc.	8-12
Chelsea Lanes	6-14

Men's 175 and over: D. Lyndon, 242-182-179; D. Singlinger, 238; R. Burnett, 217; D. Alexander, 191; G. Powell, 188-184; R. Doody, 173; G. Burnett, 179; W. Griffith, 179.

Chelsea Suburban League

Standings as of Oct. 10

W	L
G. A. Sales & Saw	15-5
Patty Ann Shoppe	14-6
Four Service	14-6
Waterloo Garage	13-6
Dana Corp.	12-8
Royal Lancers	11-9
Chelsea Lanes	8-12
Dancer's Dept. Store	7-13
Waterloo Store	7-13
Kresko-Anderson	6-14
State Farm Ins.	6-14
G. E. Gale	6-14

425 series and over: M. L. Westcott, 217-179; Jane Priest, 202; L. Jarvis, 183. Men's 175 and over: M. L. Westcott, 547; J. Priest, 500; R. West, 491; L. Jarvis, 453; E. Schultz, 437; S. Bowen, 436; A. Hookings, 449; D. Fouty, 436; N. Simpson, 446; L. Welshans, 451; B. Smith, 432; A. Bohne, 425; B. Hatley, 443; R. McGibney, 471; P. Elliott, 425; P. Huston, 434; M. DeLaTorre, 434; B. Fritz, 436.

Junior House League

Standings as of Oct. 6

W	L
Gambles	26-9
Jiffy Mixers	23-12
Balmis-T-Birds	20-15
Shumans-Contractors	19-16
Harsh Cleaners	19-16
Wolverine No. 3	19-16
The Pub	19-16
Mid-State Finance	18-17
Chelsea Mig.	18-17
Rowell-Standard	13-22
Harriet's	11-24
Wolverine No. 2	8-27

200 games: D. Welshans, 220; J. Miller, 215; L. Chriswell, 212; A. Fouty, 210; B. Ringe, 209; G.

Fouty, 204; W. Griffith, 202; E. Harrook, 200. 500 series: D. Welshans, 572; D. McKinley, 532; J. Miller, 504; Lyle Chriswell, 188; J. Warmingham, 550; W. Griffith, 545; G. Fouty, 542; N. Fahrner, 542; H. Kunzelman, 538; R. V. Worden, 530; A. Fouty, 510; R. Fouty, 518; R. Ringe, 519; R. Fouty, 518; R. Stinehelfer, 510; L. Salyer, 511; F. Gee, 514; H. Morton, 509; D. Allen, 502; B. Ringe, 501.

Ann Arbor Old Timers Bowling League

Standings as of Oct. 7

W	L
Colonial Lanes	16-4
B.G.R.	13-7
Blatz Beer	12-8
Team No. 4	12-8
Huron Lanes	11-9
Carpenters	10-10
Washtenaw Lanes	9-11
Chelsea Lanes	8-12
Hartman Inc.	5-15

High team game: Chelsea Lanes, 794. High team series: Colonial Lanes, 2,231. High ind. 3 game and series: Jonas Otto, 243-582. Colonial Lanes won three. Other 200 games and over: Larry Dann, 208; Paul Grabowski, 207.

Cuys and Cats Mixed League

Standings as of Oct. 6

W	L
Manchester Farms	17-9
Schneider's Grocery	13-7
Chelsea Lanes	13-7
Pleasant Lake Resort	11-9
The Four E's	10-10
The Four B's	10-10
Warner's Greenhouse	10-10
Raydons	9-11
Altes	8-12
Smith-Schclair	8-12
Steinway Four	6-14
Runnersup	5-15

Women's high ind.: P. Elliott, 200. Women's 150 or over games: K. Covert, 186; P. Elliott, 200-179; J. Clark, 150-163; K. Riddle, 150; B. Fritz, 159-167.

Chelsea Lanes Mixed League

Standings as of Oct. 7

W	L
H. & H.	13-5
Nichurs, Droplets	13-7
Johnson's Tool Shop	12-8
Sams	11-9
Triangle Auto Sales	11-9
Wolverine No. 2	10-10
Red & Fiddkamp	8-12
Harriet & Weisshaus	9-11
Phyl's Bar	10-11
Wolverine No. 1	8-12
University Studios, Inc.	8-12
Chelsea Lanes	6-14

Men's 175 and over: D. Lyndon, 242-182-179; D. Singlinger, 238; R. Burnett, 217; D. Alexander, 191; G. Powell, 188-184; R. Doody, 173; G. Burnett, 179; W. Griffith, 179.

Chelsea Suburban League

Standings as of Oct. 10

W	L
G. A. Sales & Saw	15-5
Patty Ann Shoppe	14-6
Four Service	14-6
Waterloo Garage	13-6
Dana Corp.	12-8
Royal Lancers	11-9
Chelsea Lanes	8-12
Dancer's Dept. Store	7-13
Waterloo Store	7-13
Kresko-Anderson	6-14
State Farm Ins.	6-14
G. E. Gale	6-14

425 series and over: M. L. Westcott, 217-179; Jane Priest, 202; L. Jarvis, 183. Men's 175 and over: M. L. Westcott, 547; J. Priest, 500; R. West, 491; L. Jarvis, 453; E. Schultz, 437; S. Bowen, 436; A. Hookings, 449; D. Fouty, 436; N. Simpson, 446; L. Welshans, 451; B. Smith, 432; A. Bohne, 425; B. Hatley, 443; R. McGibney, 471; P. Elliott, 425; P. Huston, 434; M. DeLaTorre, 434; B. Fritz, 436.

Junior House League

Standings as of Oct. 6

W	L
Gambles	26-9
Jiffy Mixers	23-12
Balmis-T-Birds	20-15
Shumans-Contractors	19-16
Harsh Cleaners	19-16
Wolverine No. 3	19-16
The Pub	19-16
Mid-State Finance	18-17
Chelsea Mig.	18-17
Rowell-Standard	13-22
Harriet's	11-24
Wolverine No. 2	8-27

200 games: D. Welshans, 220; J. Miller, 215; L. Chriswell, 212; A. Fouty, 210; B. Ringe, 209; G.

500 series: P. Boham, 573; J. Elliott, 538; J. Warmingham, 515; L. Bauer, 514; W. Watkins, 506; C. Staphis, 500. 200 games: P. Boham, 212-214; 208; O. Hansen, 239; C. Staphis, 208; G. Schiller, 230.

Nite Owl League

Standings as of Oct. 10

W	L
Boyer's Auto Supply	14-6
Cavanaugh Lake Store	14-6
Poster's Men's Wear	12 1/2-7 1/2
Waterloo Garage	12-8
Jack & Son Barbers	12-8
Chelsea Drug	10 1/2-7 1/2
Strophs	10-10
Don's Std. Service	10-10
Klwanis	9-11
Chelsea State Bank	8-12
Daniel's Buick Olds	6-16
Walsh's Dinos	3-17

Chrysler Proving Grounds League

Standings as of Oct. 11

W	L
Frigid Products	15-9
Poor Mobil	14-10
The Pub	14-10
Chelsea Lanes	14-10
Drewery's	13 1/2-7 1/2
G. A. Sales	11-11
Wolverine Bar No. 1	11-13
Triangle Auto Sales	10-14
Mattag	8-16

500 series: Harmon, 555; Robertson, 530; Sampson, 525; Walker, 520; R. Kiel, 517; R. Ash, 515; Young, 508; Simpson, 506; E. Kiel, 506; Boyd, 509; Grodens, 506.

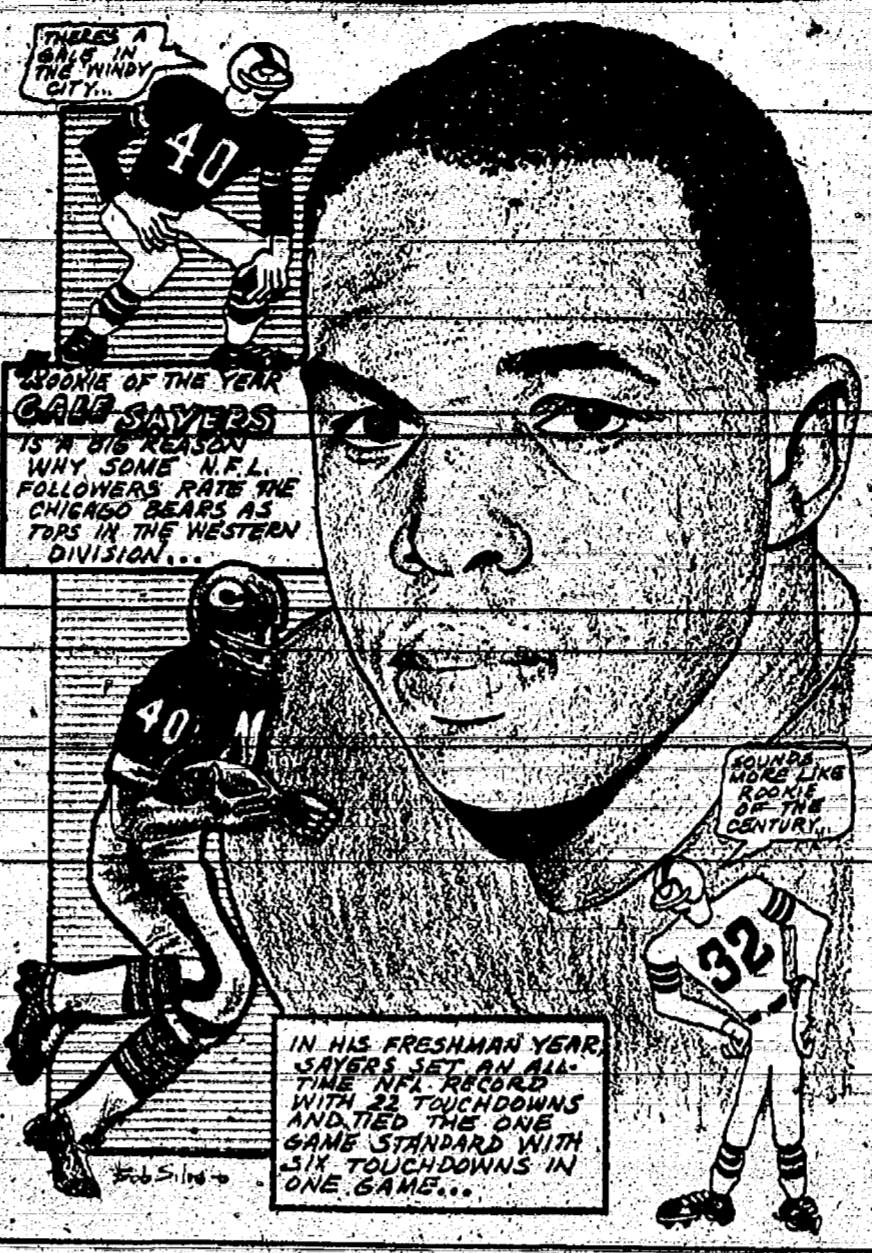
Rolling Pin League

Standings as of Oct. 11

W	L
Mopper Uppers	15-5
Coffee Cups	14 1/2-5 1/2
Spooners	14-6
Pots	13-7
Egg Beaters	9-11
Jolly Mops	8-12
Kookie Kutters	7 1/2-12 1/2
Mixers	7-13
Kitchen Kapers	7-14
Grinders	6-14

Series over 400: J. Blaess, 487; W. Landwehr, 400; P. Krueger, 436; M. Coltre, 447; J. Rabbitt, 474; J. Priest, 434; R. Abell, 410; J. Freeman, 444. Games over 140: G. Weiner, 140; D. Palmer, 140; J. Blaess, 144-173-170; W. Landwehr, 149; P. Krueger, 147-150; M. Coltre, 144-176; J. Rabbitt, 172-164; J. Lofquist, 140; J. Priest, 141-140-141; R. Abell, 170; G. Brier, 162; P. Reilly, 143; E. Reynolds, 143; K. Del Prete, 140; E. Swanson, 145; A. Thornton, 142; J. Freeman, 173; A. McGuire, 141. Splits converted: P. Krueger, 5-7; B. Cook, 3-10; M. Coltre, 3-10; Rabbitt, 3-7, 5-7; J. Priest, 9-10; K. Del Prete, 5-7.

SPORTS CORNER



WHY SOME N.F.L. FOLLOWERS WIFE THE CHIEF OF POLICE THIS IN THE WESTERN DIVISION...

WHY SOME N.F.L. FOLLOWERS WIFE THE CHIEF OF POLICE THIS IN THE WESTERN DIVISION...

WHY SOME N.F.L. FOLLOWERS WIFE THE CHIEF OF POLICE THIS IN THE WESTERN DIVISION...

Tri-City Mixed League

Standings as of Oct. 7

W	L
The Jets	13-7
Schultz	13-7
Peppi-Cola	12-8
Team No. 10	12-8
Parish-Cruze	11-9
Waterloo 23ers	11-9
Cavanaugh Lake	10-10
Team No. 2	8-12
The Odd-Balls	7-18
Team No. 8	6-14

Senior House League

Standings as of Oct. 11

W	L
Chelsea Cleaners	15-5
Schneider's Grocery	13-7
Chelsea Grinding Co.	12-8
Collings	12-8
Wolverine Bar No. 1	12-8
Spaulding-Chevrolet	11-9
G.E. Boys	9-11
Dana Corp.	9-11
Seitz's Tavern	8-12
Universal Flour Co.	8-12
Mexkel's 49ers	8-14
Sylvan Center	5-15

500 series: J. Phillips, 675; R. Spaulding, 608. 200 games and over: J. Phillips, 235-248; H. Burnett, 232; R. Spaulding, 204-232; D. Davon, 228; N. Biseman, 232; Lee Jess, 215; E. Keizer, 213; Yocum, 208; McMannis, 203. 500 series and over: P. DeHaven, 577; Lee Hess, 576; McMannis, 570; E. Keizer, 568; W. Griffith, 546; Padgham, 540; R. Eder, 539; E. Eide, 537; Adams, 534; Padgham, 534; H. Burnett, 533; R. Hutzel, 529; N. Biseman, 528; Yocum, 528; Ed. Miller, 523; S. Slane, 523; Hookings, 519; D. Lawson, 519; R. Bauer, 518; B. Robertson, 516; Peterson, 513; R. Liebeck, 512; Kruse, 511; McClear, 500; S. Hopkins, 506; D. Bauer, 502; White, 501.

OLYMPIC WARMUP

Mexico City's second International Sports Week, popularly called the "Little Olympics" will be held this year October 12-24. The games, begun to give prospective Olympic competitors experience in the city's 7,400-foot altitude include track and field, canoeing, cycling, boxing, gymnastics, volleyball, fencing and swimming.

The Serviceman's Corner

Larry Schrader Home From Vietnam Service

Larry Schrader returned home from duty in Vietnam Oct. 8, after 18 months in Southeast Asia. Mrs. Schrader, who is the former Mary Jane Harris, daughter of Mr. and Mrs. Thomas Harris of 122 Orchard St., has been living at 118 Grant St., with the couple's two children, Kevin and Karl, while her husband was overseas. Schrader is the son of Mr. and Mrs. Walter Schrader of 2335 Cavanaugh Lake. His brother, Michael, is now undergoing navy boot camp in San Diego, Calif.

Robert James Weir Leaves for Service 'Somewhere in Pacific'

Robert James Weir, hospital corpsman third class aboard the USS Canbers, currently based at San Diego, Calif., left Sunday after spending since Sept. 28 with his wife and sons, Jimmy and Bobby at Grand Rapids. He also visited his parents, Mr. and Mrs. Garnett Weir and other Chelsea area relatives.

Pfc. Thomas Tuttle Now in Germany

Thomas Tuttle is now in Augsburg, Germany, with the United States Army. He was recently promoted to private first class. Pfc. Thomas J. Tuttle RA 4984860 Co. A 2nd BN 34th INF APO New York City, N.Y. 09112

Pfc. Clinton Whitaker in Vietnam with Marines

Pfc. Clinton Whitaker, son of Mr. and Mrs. Willie Whitaker of Iron Point, Mich., is scheduled to be sent to Okinawa in November for special training. He is now serving with the U.S. Marine Corps in Da Nang, Vietnam, and is scheduled to return to Vietnam in January, following his special training. His address is Pfc. Clinton Whitaker 2245635 1st BN 3rd Marine Div. 3rd Marine Reg. 1153 P.O. San Francisco, Calif. 96602

Youthful Hunter Wins Wrestling Bout with Goose

Hunting season has opened and Chelsea area hunters are returning with tales of their exploits. The first day of the duck-hunting season brought extra delight to one young hunter. Carl Schwiager, known to friends as "Bub," went duck hunting with his father, Earl "Dutch" Schwiager, of 109 Main Lake Rd., on the opening day. In the duck season besides a bag for the father and son, Bub won a 10-point Canadian goose. His father commented that "of the most gratifying experience for me is to be out hunting with my son and to see him outdo me." According to accounts of hunting, Bub had only made two shots for him to down a honker. When the goose fell, he shot at him and a wrestling ensued. "The honker almost got the best of it," Dutch related. Bub pulled off his leather back looped one end around the honker's neck, the middle of the belt around a bush, and the other end around the goose's leg. "By this time the goose was quite dead, but Bub tethered the goose just so it wouldn't fly away again."

WOLVERINE TAVERN

1 Block North of Bowling Alley on Old US-12

SERVING YOUR FAVORITE BEER • WINE ALE • LIQUOR HOME-MADE CHILI HAMBURG SANDWICHES

CARL - NINA DON - GINNY

BOWL for the fun of it...

Having Fun Lately? Bowling is a Ball!

Put some fun in your life... Bowl for laughter and health at our modern, well-equipped lanes with rarely a wait. Bring the gang down!

CHELSEA LANES

1180 M-52 Phone GR 5-8141

Faster gains from better FEEDS

Pounds and profits mount up when you feed our Cattle rations... scientifically compounded to promote early weight gains.

Complete feeding rations for all your livestock, poultry.

FARMERS' SUPPLY CO.

PHONE GR 5-5511

Enter the Big Dodge Rebellion "Winner's Choice" Sweepstakes. See your Dodge Dealer for details.

FALLIN

...the youth movement has a new leader—Dart.

Don't let others set the pace. Do it yourself. With bold '67 Dart, the hot all-new swinger that's a cut above the look of length. Inside, foam-padded seats and plush-carpeting in Dart GT proves you don't have to sacrifice style and pizzazz to get compact economy and handling ease. Look what Dart has outside, curved side windows and crisp, sweeping lines for a noncompact look of length. Inside, foam-padded seats and plush-carpeting in Dart GT hardsip models. Under the hood, your choice of Six or V8 power. The Dodge Rebellon wants you!

Dodge

CHRYSLER MOTOR CORPORATION

G. A. SALES & SERVICE

1185 Manchester Road Chelsea, Michigan

Watch the Bob Hope Chrysler Theatre (Wednesday)... All Football (Weekends)... and the Roger Miller Show (Monday)... all on NBC-TV. Check local listing for times.

Turner's Alaska Capers



Camper Don Turner made his way down the long Alaska highway in his van (right rear). With him are Marion and Dough Shaw of Edmonton, Alberta, also traveling down the gravel highway.

PART NINE
Camper Don Turner arrived in the Yukon Territory of Canada, again traveled many...
Well as to the fellowship, as Marion is quite adept with the Culinary Arts.

9 Candidates Seek WCC Board Posts

Filing for positions on the Washenaw Community College Board of Trustees closed at 4 p.m. Saturday...
Running for the two four-year terms are Robert Forman, executive director of the University of Michigan Alumni Association...

Extension Service Know Your County Tour Slated Oct. 27

Do you love a mystery? Would you like to know more about Washenaw County? Then join the "Operation W"...

Congressman Wes VIVIAN Reports from WASHINGTON



The great majority of citizens in the Second Congressional District are all too aware and concerned about the sorry state of our streams and lakes and the air we breathe...
Upon my return to Washington, I wrote the 534 other members of the U. S. House and Senate...



Unopposed for the three six-year posts are Edward Adams, Jr., president of the National Bank and Trust Co. of Ann Arbor...

Michigan has 11,000 inland lakes and 30,000 miles of rivers and streams whose waters at this season mirror a kaleidoscope of colors.

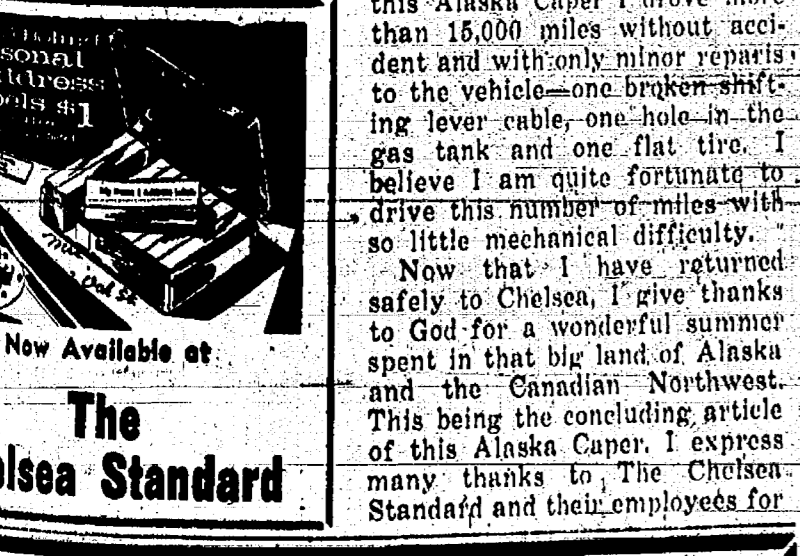
From Dawson Creek to Prince George on Highway 107 the scenery is pretty as the steep mountains are heavily timbered...
From Prince George to Kamloops, B.C., I retraced my route...

Scout Sign-Up Night Scheduled Next Thursday
Next Thursday, Oct. 20 will be the sign-up night for all boys of the Chelsea area...

HIGH LEARNING
California's White Mountain Research Station claims to be the highest institution of high learning. Facilities are provided for meteorologists, geologists, and other scientists working as high as 14,246 feet.

Home Economics Study Groups Calendar
Oct. 13 - Geddes Study Group, 10 a.m., home of Mrs. Ed Frederick, 1640 Green Rd., Ann Arbor.

Need Money? It's in Your Attic or Basement... Sounds funny, doesn't it? But you can get ready cash for that furniture you can no longer use... A Want Ad in The Standard Will Sell Them for You TELEPHONE GR 5-3581 THE CHELSEA STANDARD



Football Tickets Available Downtown
All tickets at the gate for home football games are \$1.00. Elementary students through fifth grade, 50c.

Diamond Crystal REDOUT® recharges tired - rusty water softeners 50 lbs. \$1.95 CHELSEA LUMBER CO.

Services in Our Churches

CONGREGATIONAL CHURCH (United Church of Christ) The Rev. R.A.J. Livingston, Pastor Thursday, Oct. 13- Michigan UCC Ministers Convocation concludes at Camp New...

FIRST METHODIST CHURCH The Rev. James A. Craig, Pastor Thursday, Oct. 13- 7:00 p.m. - High School choir...

FIRST ASSEMBLY OF GOD CHURCH 14900 Old US-12 The Rev. Charles E. Hardin Sunday, Oct. 15- 9:45 a.m. - Sunday school...

BETHEL EVANGELICAL AND REFORMED CHURCH (United Church of Christ) Freedom Township The Rev. T. W. Menzel, Pastor Saturday, Oct. 14- 9:00 a.m. - Confirmation class...

The Hi-Light

Edited by Students of the Chelsea High School Journalism Club Now that the clubs and organizations have started there should be some kind of activity for everyone...

Just A Minute... By the Rev. James A. Craig The Church, under attack for several reasons, discovered last week that it was under attack again...

THE COUNTRY PULPIT

CAN PRAYER SAVE AMERICA?

In the days of the Civil War, a personal friend of Abraham Lincoln was a visitor at the White House. I had been spending several weeks with Mr. Lincoln as his guest...

Chelsea School District Cafeteria Menu

- Monday, Oct. 17- 8:00 p.m. - Sunday school teachers meeting. Wednesday, Oct. 19- 8:00 p.m. - Cottage Bible study...

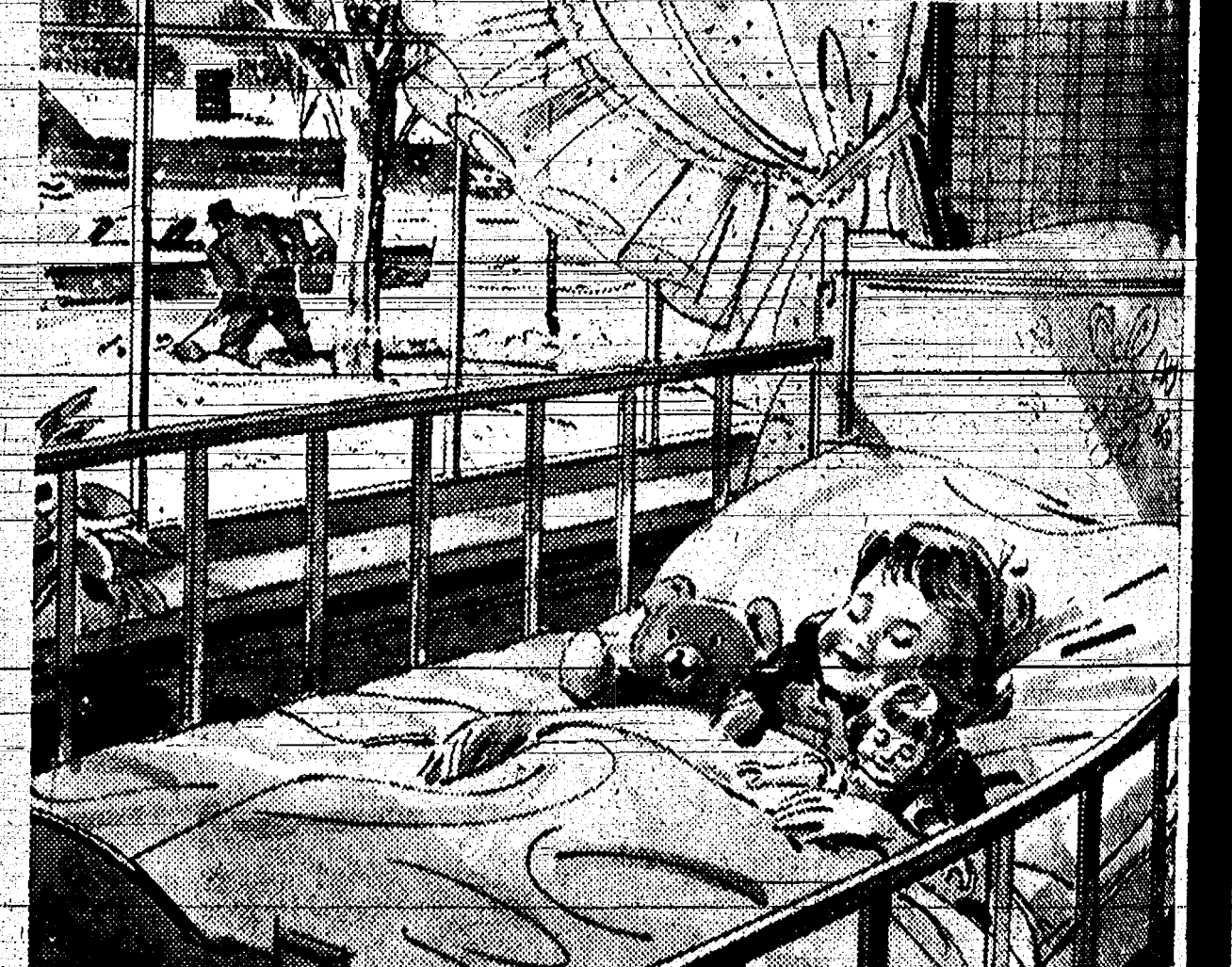
THINK! Structural change (of muscles, bones, nerves) precedes changes of functions in the body! CHIROPRACTIC - The natural way to health Dr. George N. Koffeman CHIROPRACTIC PHYSICIAN

Casualty Auto-Owners Insurance Company An old and trusted name announces A NEW SERVICE Auto-Owners marks its 80th anniversary this year...

BAILEY'S RESTAURANT Corner of Clear Lake Road and I-94 Good Home Cooking SUNDAY, OCTOBER 16 ROAST TURKEY & DRESSING

INSPIRED BOOKS DIMENSIONS IN SALVATION, 320 pages STEPS TO CHRIST, small, 126 pages...

Don't Miss The Tony Fontane Story Sunday, Oct. 16 - 10 a.m. A 79-minute, full-color dramatic musical



Cozy Comfort... all winter long with Dependable Ashland Fuel Oil Your Ashland Oil Distributor is genuinely interested in your home heating comfort...

Chelsea Baptist Church Rev. Elmer S. Steenson, Pastor

FULL SPINE MANIPULATION & UPPER CERVICAL SPECIFIC ADJUSTING Literature available without charge on low-back conditions...

A. D. MAYER AGENCY Your Protection is Our Business! 115 Park St. Chelsea, Mich. Phone: Office 479-5061

ASHLAND OIL & REFINING COMPANY R. D. Watson, Agent 5404 Sand Beach Road James French, Agent 162 West Middle Street

Club and Social Activities

LAFAYETTE GRANGE Lafayette Grange met Tuesday evening, Oct. 4, at the Lima Community Hall.

SUBURBAN MOTHERS' Suburban Mothers' Child Study Club had its Oct. 6 meeting at the home of Mrs. David Longworth.

WOMEN'S FELLOWSHIP Women's Fellowship of the regional church met at the church, Thursday, Oct. 6 at 8 p.m.

WOMAN'S CLUB The Woman's Club of Chelsea met at the McKune Library on Oct. 11.

HAY RIDE The CYO of St. Mary's church had a hay ride on Oct. 1. Members at Karen Porter's house proceeded to Betsy Doll's and the hay wagon there.

WOMAN'S CLUB The Woman's Club of Chelsea met at the McKune Library on Oct. 11.

Margaret Livermore, R. C. Gillette Kristin Kadau, Donald Blalock Speak Vows

Miss Margaret A. Livermore became the bride of Robert Charles Gillette Saturday evening, Oct. 8, at a double-ring candlelight ceremony performed in the Grass Lake Methodist church.

Kristin Faye Kadau and Donald G. Blalock were united in marriage Friday evening, Oct. 7, at 7:30 p.m. in the St. Mary's student chapel in Ann Arbor.

Guests attended the wedding from Gregory, Ann Arbor, Chelsea, Battle Creek, Gaylord, Dexter, Plainfield, Plymouth, Manchester and Grass Lake.

Parents of the couple are Mr. and Mrs. Edward Kadau of Southfield and Mr. and Mrs. Donald W. Blalock of 642 S. Main St., Chelsea.

The bride is the daughter of Mr. and Mrs. John R. Livermore, Jr., 15000 Washburne, Grass Lake, Pa.

The bride entered the chapel wearing a fingertip veil held in place by a jeweled crown. Her fitted lace gown was floor-length, with a top train attached to the gown at the shoulders.

The bride's wedding gown was made of silk organza over tulle, featuring a scoop neckline and elbow-length sleeves.

The newly-married couple left for a week-long wedding trip in northern Michigan. They will make their home at 3450 Packard Rd., Ann Arbor, when they return.

The bride's hair style was a crown of pink roses attached to a veil, and she carried a nosegay of pink carnations with pastel ribbon streamers.

Her husband graduated from Chelsea High school in 1961 and served four years with the United States Marines. He is a draftsman at Gelman Instrument Co. in Ann Arbor.

The bride's hair style was a crown of pink roses attached to a veil, and she carried a nosegay of pink carnations with pastel ribbon streamers.

Her husband graduated from Chelsea High school in 1961 and served four years with the United States Marines. He is a draftsman at Gelman Instrument Co. in Ann Arbor.

Altar Society Makes Plans for Christmas Bazaar

St. Mary Altar Society, regular monthly meeting was held on Oct. 5 with 38 members and two guests present.

Silver Tea Slated Sunday for Sisters at St. Mary's School

A Silver Tea will be held Sunday Oct. 16, honoring the sisters of St. Mary's School.

County Federation of Women's Clubs To Meet in Milan

The Washtenaw County Federation of Women's Clubs will meet Monday, Oct. 17, at the Milan Community House, Milan.

Fashions, Fabrics Program Planned At Arborland

Home economics teachers, 4-H clothing leaders and Study Group program leaders will learn about the latest in fabric and fashion news at a program planned and presented by the J. C. Perry Co. and the Co-operative Extension Service, Thursday, Oct. 20.

County Hospital Auxiliary Plans Annual Meeting

Washtenaw County Hospital Auxiliary will hold their semi-annual meeting Oct. 19 at 1:30 p.m. at the hospital.

WOMAN'S CLUB The Woman's Club of Chelsea met at the McKune Library on Oct. 11.

Following the business meeting a delightful program on her favorite poetry was given by Mrs. Russell Bernath.

County Hospital Auxiliary Plans Annual Meeting

Washtenaw County Hospital Auxiliary will hold their semi-annual meeting Oct. 19 at 1:30 p.m. at the hospital.

CHILD STUDY CLUB Chelsea Child Study Club met Tuesday evening, Oct. 11, at the home of Mrs. Marion Dietle.

Speaker for the evening was Dr. James Shadoan, whose topic was "Abuse of Drugs."

WOMAN'S CLUB The Woman's Club of Chelsea met at the McKune Library on Oct. 11.

Following the business meeting a delightful program on her favorite poetry was given by Mrs. Russell Bernath.

MODERN MOTHERS Modern Mothers Child Study Club met Tuesday, Oct. 11 at the home of Mrs. Robert Schaeffer.

After a short business meeting a discussion was held on "Family Problems."

WOMAN'S CLUB The Woman's Club of Chelsea met at the McKune Library on Oct. 11.

Following the business meeting a delightful program on her favorite poetry was given by Mrs. Russell Bernath.

GUM REMOVAL When removing chewing gum from clothing, rugs, or upholstery, scrape off gum without damaging the fabric.

When removing chewing gum from clothing, rugs, or upholstery, scrape off gum without damaging the fabric.

WOMAN'S CLUB The Woman's Club of Chelsea met at the McKune Library on Oct. 11.

Following the business meeting a delightful program on her favorite poetry was given by Mrs. Russell Bernath.

POT FROST Frosty white coating that forms on the outside of clay flower pots belongs there. It indicates that the millions of tiny breathing holes in the porous walls of the clay pot are doing their essential work of "teaching" out harmful salts.

MONEY TROUBLE? ONE PLACE TO PAY! Credit Management Service 662-2565 342 Municipal Court Bldg. Ann Arbor State Licensed and Bonded

In the Chelsea Area, the In Crowd's waiting at your Quality Buick dealer's. Get with them! Daniels Motor Sales, Inc., 118 North Main St.

Advertisement for a 1967 Buick car, featuring an image of the car and the text "In the Chelsea Area, the In Crowd's waiting at your Quality Buick dealer's. Get with them! Daniels Motor Sales, Inc., 118 North Main St."

Where would you use OZITE Town 'N' Terrace Carpet made of Vectra fiber?

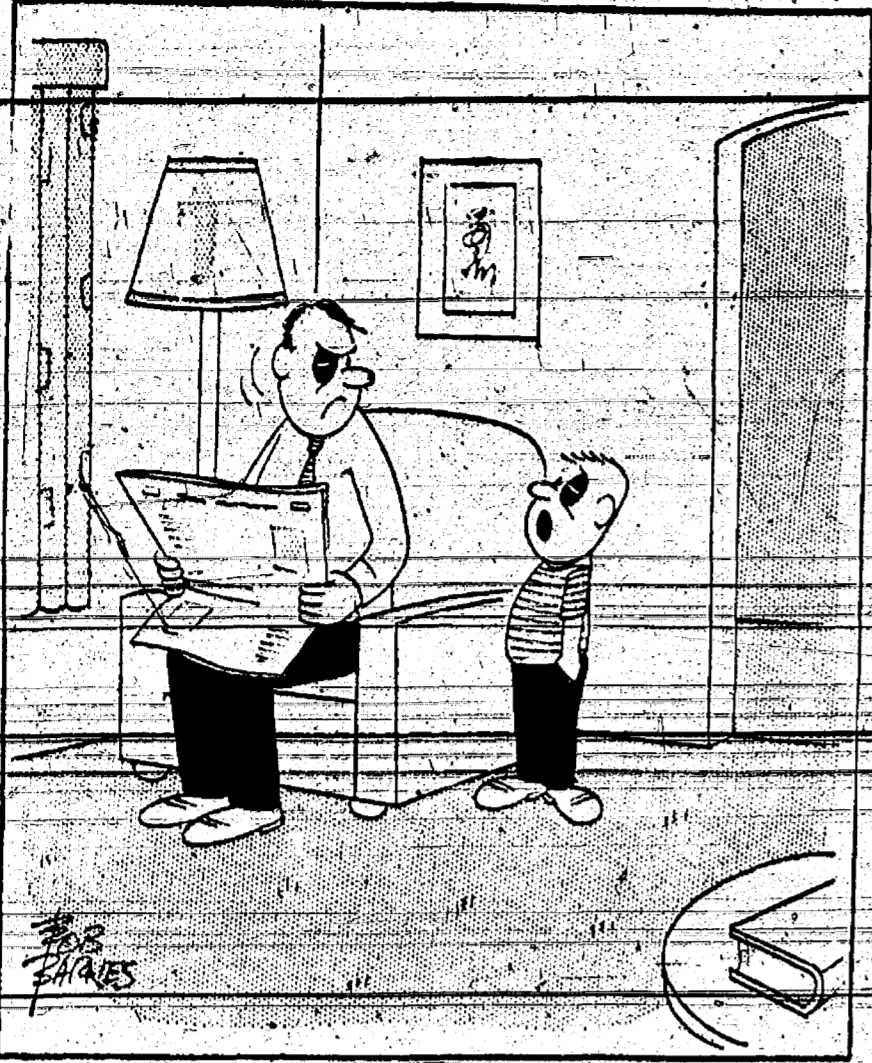
Advertisement for OZITE Town 'N' Terrace Carpet, showing various home settings like patio, porch, rec room, and bath. Text includes "Use your imagination!" and "Ozite Town 'N' Terrace is the original outdoor-indoor carpet... \$4.95 yd."

Advertisement for MERKEL BROTHERS, featuring the OZITE Town 'N' Terrace Carpet. Text includes "MERKEL BROTHERS BEAUTIFUL HOME FURNISHINGS" and "5 CREDIT PLANS Ozite Town 'N' Terrace Carpet made with Vectra clean fiber."

Advertisement for WEINBERG DAIRY, featuring a child holding a glass of milk. Text includes "Tastes good! Milk's a taste treat for the entire family to enjoy daily. Arrange delivery of our top-quality milk and other dairy products. WEINBERG DAIRY QUALITY PASTEURIZED DAIRY PRODUCTS Old US-12 Phone GR 5-5771"

Advertisement for WINANS JEWELRY STORE, featuring an image of a watch. Text includes "From \$29.95 to \$150 WINANS JEWELRY STORE"

LAFF OF THE WEEK



"Hey, pop — how about giving me a boxing less . . . er, skip it."

Groundbreaking Set Sunday For CAP's New Building

CAP, Inc. will break ground Sunday, Oct. 16, for its new manufacturing and training facility on Enterprise Dr.

The public is invited to attend the 2 p.m. groundbreaking and open house. The site is located on Jackson Rd., six miles west of Ann Arbor.

Mayor Wendell Hulcher will be the principal speaker at the groundbreaking for the new CAP building, which will allow the nonprofit industrial firm to at least double its employment of handicapped workers and install new training facilities for others.

Two Chelsea Residents Sentenced This Week In Municipal Court

Two Chelsea residents were sentenced in Ann Arbor Municipal Court during the past week. Owen D. Cavender, 17, appeared before Municipal Court Judge Francis J. Blythe and pleaded guilty to malicious destruction property. He was sentenced to two days in jail, \$50 in court costs, six-month probation and restitution of \$112.50 to the Chelsea Community Fair.

Mrs. Ken Larson Wins Top Prize In Football Contest

Mrs. Ken Larson of 244 Jefferson Ave. has just won \$500 in a contest. She won by writing a story about the game played Oct. 15 at the University of Michigan. Mrs. Larson picked the Michigan team. Her story was published in the University of Michigan Yearbook. Mrs. Larson and her family are from Chelsea and are now at the University of Michigan.

Advertisement for Wedding Stationery, featuring illustrations of envelopes and wedding cards.

- ☆ INVITATIONS
☆ ANNOUNCEMENTS
☆ RECEPTION CARDS
☆ THANK YOU NOTES
☆ PERSONALIZED MATCHES
☆ PLACE CARDS
☆ PERSONALIZED NAPKINS

Intensive Study of UFO's Assigned to U. of Colorado

Area "saucer sighters" will be interested to note that the United States Air Force has engaged the University of Colorado to undertake a 15-month study of unidentified flying objects (UFO's). Reports vary on the length of time to be involved in the study. Some reports say 15-months and others say 18-months. A United Press-International news release stated that they study will cost \$300,000.

Dr. Edward U. Condon, professor of physics at the university, will serve as scientific director of the project. He is the former head of the National Bureau of Standards, a past president of the American Association for the Advancement of Science and played an important role in developing the first atomic bomb.

Headquarters for the project will be in Boulder, Colo., on the university campus. The Air Force will help to transport investigation teams to communities where sightings of such objects have been reported.

According to a news story in The New York Times, the project is an outgrowth of public distrust and distrust over the Air Force's handling of reports about unidentified flying objects. The situation has been aggravated by numerous accounts of sightings in recent years and by a spate of flying saucer books, contending that UFO's are more recent visitations from other worlds.

At one time the Air Force staff checking out such reports included one officer, one sergeant and a secretary. The reports of this

staff were known as "Project Blue Book." Public pressure finally forced the Air Force to seek an independent university with an impeccable reputation to conduct a study of sightings. The agreement with the University of Colorado is a result of that decision.

Under the new arrangements, as reported in The New York Times, Project Blue Book will continue to operate at Wright-Patterson Air Force Base in Ohio. The base will notify the University of Colorado when events seem to merit special investigation. The original proposal for a university program indicated that about 10 such events each year would be investigated in depth.

The plan is for the university to provide specialists in such fields as astronomy, meteorology and psychiatry to help evaluate what witnesses report they have seen. The university is to be solely responsible for the conclusions drawn.

At the same time, the Air Force is to make available to the university all that it knows about current and past reports. Part of the material will not be passed on to the public in later reports because it deals with such classified matters as military aircraft and space surveillance systems.

It is also expected that such information as psychiatric evaluations of some witnesses will not be made public to avoid recriminations. In the past, many flying saucer sightings were rumored not reported because witnesses feared ridicule.

Accounts by independent investigators have confirmed that witnesses were reluctant to speak openly of what they saw. It is therefore planned to offer witnesses anonymity if they so desire.

Last March, residents throughout the Dexter-Chelsea areas reported seeing UFO's. An investigation by the Air Force expert on unidentified objects, Dr. J. Allen Hynek, brought forth the explanation that two of the sightings over marshes were "swamp gas."

The explanation brought forth a storm of controversy. Many area residents indignantly believed their observations were being brushed aside.

Later, Professor Hynek commented that he thought a serious study should be undertaken by professional scientists. Several other persons closely connected with the Air Force investigations, including Major Gen. E. B. LeBailly, the Air Force Director of Information, also called for an independent study in order to quell charges that the Air Force was concealing the truth about these episodes lest there be general panic.

The Air Force Scientific Advisory Board convened ad hoc committee of scientists in February of this year in response to Major General LeBailly's suggestion. The committee recommended the program that is now being put into effect.

A UNICEF Halloween "treat" of 25 cents protects 20 children against tuberculosis.

Autumn Leaf Color Change Still Has Scientists Baffled

One of the great mysteries of nature is unfolding in Michigan's woods and forests as the greens of summer give way to the flamboyant colors of autumn.

The reasons why some trees turn and others do not, and why some turn faster than others is somewhat obscure, botanists admit, but it all adds up to scenic delight for vacationers and sightseers. Those who look at the change of the season through scientific eyes have observed that both the manner of the turning of colors and the falling of the leaves coincide with a definite timetable of nature, related to the shortening of the daylight hours. It is the same kind of timetable that triggers the southern migration of birds and the spawning run of certain species of fish—a mystery which scientists have never been able to unravel.

It seems likely, too, that the widely accepted theory that color changes are induced by heavy frost is probably a myth. Conversely, it appears that such extreme weather has a tendency to reduce the formation of fall color rather than enhance it. Frost, as related to the turning of leaves, is now thought to be more of a coincidental rather than a contributing factor.

An abundance of chlorophyll in wooded plants accounts for Michigan's green summers. Towards late September and early October, nature springs the mysterious mechanism that breaks down the chlorophyll supply and the pigmentation of yellows, browns and reds — already present in the leaves — remain. In some trees, the color chemistry occurs just before the leaves fall.

Added to this mystery is the fact that the turning of leaves in autumn is characteristic to a greater extent of American rather than European trees. Plants imported to Michigan soil will turn bright colors or remain green, according to the timetable of their native region. This factor is a dead giveaway as to their origin. Climate is not necessarily a factor and neither is the relationship of one tree to another, for many unrelated trees turn identical colors while others of the same family will turn different colors.

Whatever the cause, color tour enthusiasts find Michigan's fall season is resplendent with nature's most magnificent fiery. From the rocky crags of the Upper Peninsula to the gentle, rolling hills of the southern counties, Michigan in autumn is one gigantic color tour.

Michigan is well supplied with a variety of trees making it the fall showplace of the nation. With 85 kinds of soft and hardwood species it has a greater offering than any other state. It has more types of trees than all of Europe.

Rambling through Michigan's wooded countryside on a fall weekend can prove a rewarding experience for those who find enjoyment in traveling where their fancy may take them. For the many others who prefer planned color trips, the Michigan Tourist Council offers the newly revised Michigan Autumn Color Tour Guide containing 24 suggested routed color tours through various sections of the entire state.

Copies of the publication are available without charge by writing the Michigan-Tourist Council, Lansing.

Methodist Board Supports County Bonding Proposal

The official board of the Methodist church of Chelsea Tuesday evening went on record supporting three proposed bond issues which will appear on the 8 ballot.

The first bond issue is for addition to the present City Building to house two new City Courtrooms with their respective offices and facilities. Bonds for the addition in the amount of \$1,055,000 will be sought.

Approval of bonds for a Juvenile Court Center on the West Farm property between Washtenaw and Platt Rds. to house 100 of the Juvenile Court workers, and the Judge's Court, is a new detention building in the amount of \$1,400,000 will be sought.

The third proposed issue is being asked to approve \$4,050,000 needed for the beds for extended nursing and rehabilitative care as a replacement to the present County Hospital, Washtenaw, also to be located the County Farm property.

Sports Quiz Answers

- 1. G. S. Rodgers
2. Russia
3. Billy Casper
4. The Willwag of New Jersey
5. 1961

Allow 2 inches of space of closet rod for each dress, shirt, raincoat, or pair of trousers. Take 7 1/2 inches. Skirts require 1 1/2 inches each, depending on home economists in the U. S. Department of Agriculture.

Advertisement for Magnavox Color TV, featuring a large image of the television set and the text: 'Once you've seen the spectacular, VIVID PICTURES of Magnavox COLOR TV... you'll never be satisfied with less!'

Advertisement for Magnavox Astro-Sonic Stereo, featuring a large image of the stereo unit and the text: 'Magnavox ASTRO-SONIC STEREO... surpasses all other achievements in the re-creation of sound!'

Advertisement for Frigid Products Magnavox Color TV, featuring two images of television sets and detailed feature lists. Features include: Brilliant Color Tube, Chromatone, Quick Pictures, Color Purifier, Magnavox Sound, and Highest Reliability.

Advertisement for Frigid Products Magnavox Astro-Sonic Stereo, featuring a detailed list of features and specifications for the stereo system, including 'NO TUBES!', 'Complete Audio Controls', and 'Gliding top panels'.

Large advertisement for FRIGID PRODUCTS, featuring the company name in large bold letters, address '113 North Main Street, Chelsea', name 'LLOYD R. HEYDLAUFF', and phone number 'Phone GR 9-6651'. A price tag of '\$89.90' is also visible.