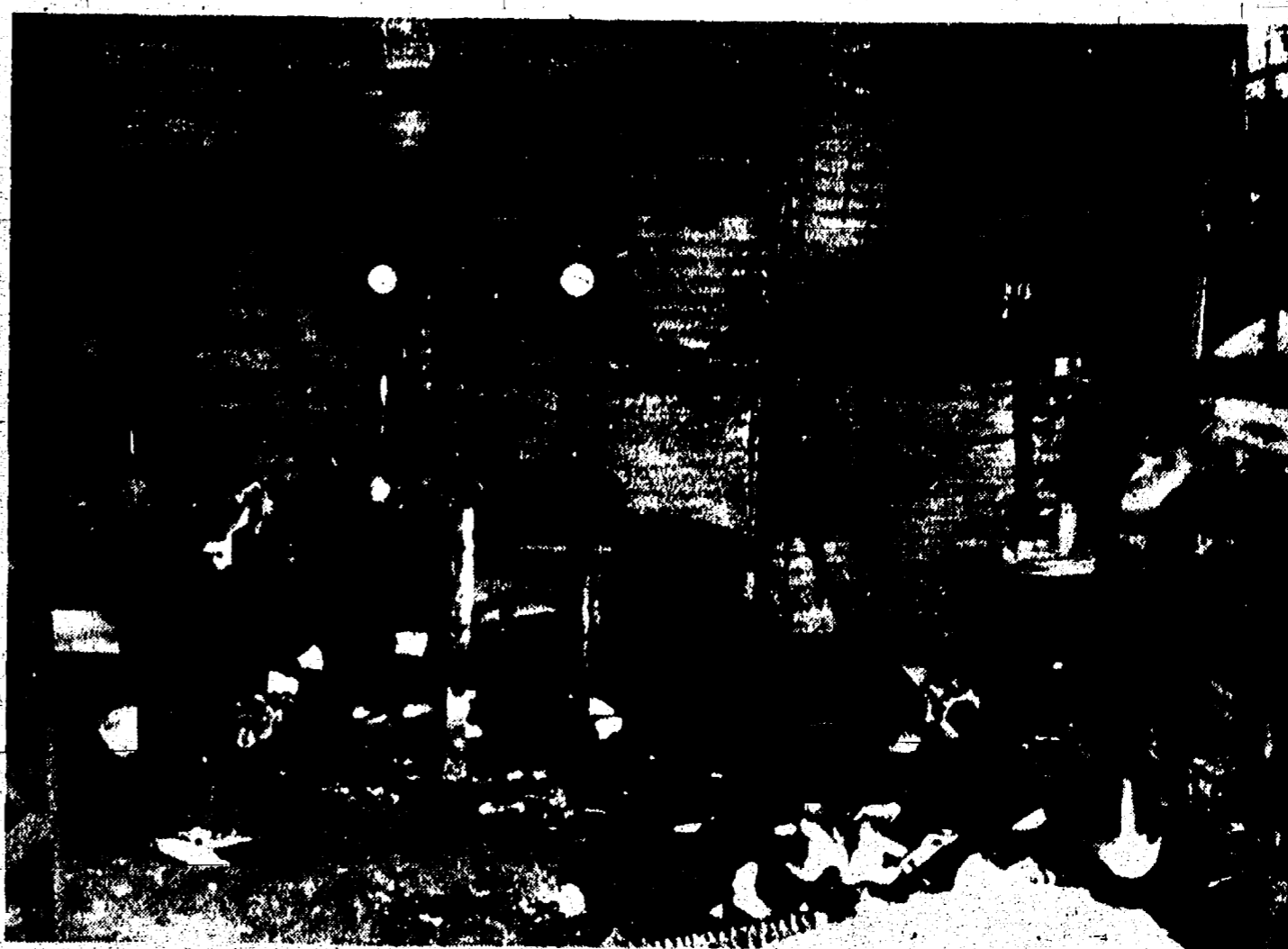


Y, MAY 6, 1965
name and street
seahorse is a
ERS
lively look in
mmer sports
en you buy
re. We have
new materials
SHIRTS
to \$5.95
R SLACKS
to \$10.95
COATS
to \$45
MUDAS
to \$6.95
WEAR
to \$4.95
Near

Fire Destroys Chelsea Heat Treating Plant



While police held back hundreds of spectators, more than 50 firemen from local and outside departments battled a raging blaze at Chelsea Heat Treating, Inc., for more than an hour before bringing the conflagration under control Saturday night.

According to Eldon Hellet, president of the firm, the damage was estimated at approximately \$120,000.

The fire broke out about 7:30 p.m., starting in one of the automatic heat treating furnaces. Chelsea and Dexter fire departments were aided by companies from Ann Arbor, Milan and Jackson. The outside crews provided the necessary equipment to extinguish the blaze caused by oil.

No fire or police officers were injured during the blaze. Two men, however, were hurled back when they tried to shut off the main gas line after the blaze was nearly under control. Robert May, 52, of Ann Arbor, a Michigan Consolidated Gas Co. employee, and Douglas Dexter, 38, of S. Main St., Chelsea, an employee of Chelsea Heat Treating, were taken to St. Joseph Mercy hospital in Ann Arbor. Their injuries were listed as painful but both men were later reported in good condition.

Extreme heat was the cause given for the malfunction of the system.

Heller and Merle Sutton, the firm's vice-president, estimate (Continued on page three)

EQUIPMENT IN SHAMBLES — While much of the equipment was destroyed at the blaze which hit Chelsea Heat Treating Saturday evening, a fair percentage is salvageable, according to officials of the steel-processing firm. Until repairs are completed and production made possible, existing jobs are being handled through the co-operation of other firms.

AFTER THE BLAZE — This shows an interior view of Chelsea Heating, Inc., taken after the \$120,000 fire had swept through the building last Saturday evening. Of the two men who were injured at the scene, Douglas Dexter, an employee of the firm, has recovered and returns home from St. Joseph Mercy Hospital tomorrow.

WEATHER

	Min.	Max.	Prec.
Thursday, May 6	54	64	0.00
Friday, May 7	54	74	0.07
Saturday, May 8	53	82	0.00
Sunday, May 9	53	83	0.00
Monday, May 10	52	82	0.01
Tuesday, May 11	50	76	0.01
Wednesday, May 12	45	85	0.00

The Chelsea Standard

QUOTE
Good company, and good discourse are the very sinews of virtue.
—Izaak Walton

SEVENTY-FOURTH YEAR—No. 46

14 Pages This Week

CHELSEA, MICHIGAN, THURSDAY, MAY 13, 1965

10c per Copy

SUBSCRIPTION \$3.00 PER YEAR

School Millage Election Slated Next Monday

Instruction Costs, Buses, Junior High Maintenance Increase Budget Total

Money to run the schools for 1965-66 school year will be set at the annual operational millage election of the Chelsea school district Monday, May 17, from 7 a.m. to 8 p.m., in the Junior High school gym.

Combined with the levy from a County Tax Allocation Board, the 23 mill levy to be voted on Monday will increase the total by 22 mills over the 1964-65 school year.

Improvements in the school include an expanded curriculum and a more favorable pupil-teacher ratio. The five-and-one-half teachers to be added will include one elementary, two junior high, two high school, and the advancement of a half-time band teacher to full-time status.

Increases in the maintenance budget amounting to \$3,000 per year are due almost entirely to the growing costs of using the ob-

solete Junior High school building. Three new 60-passenger school buses scheduled for purchase this year will replace the older vehicles now in use which grow continually more costly to maintain. All of the Chelsea district's school buses are now nine years old, or older. The Board of Education plans to replace three buses per year until the bus maintenance problem has been minimized, then reduce the bus expenditure sharply.

\$21,000 is included in the 1965-66 budget for the three buses. Actual purchases are made, of course, by sealed competitive bids. Total budget increase is \$62,795. Instruction costs alone have gone up \$643 more than this amount, but the over-all rise is held down because of economies effected in various other parts of the program. Reasons for increasing instruction costs are (1) teacher pay raises, (2) additional teachers and (3) more materials and supplies for the growing numbers of teachers and pupils.

Net result in money to the individual taxpayer will be increases ranging by township, as follows: Waterloo township \$2.37 per thousand and dollars of assessed valuation; Grass Lake \$2.54; Freedom \$2.66; Lyndon \$3.04; Lima \$3.27; Sylvan \$3.47; Dexter \$3.75; and Sharon township \$4.15.

All Electors May Vote
Unlike bonding elections, the operational millage election to be held Monday, May 17 is open to every registered voter. Voting will be from 7 a.m. to 8 p.m., in the Junior High school.

Absentee ballots may be secured from Robert G. Foster, secretary of the Board of Education.

16-Year-Old Shot in Flight After Robbery

The wooded area near the Chelsea exit on I-94 was the scene of a shooting Saturday morning which climaxed a chase of four robbers fleeing from a clothing store near Jackson which they had broken into about 8 a.m.

Involved in the pursuit and apprehension were State Police troopers from Jackson, Ypsilanti and Clinton; the Ann Arbor Police and Sheriff's deputies from Washtenaw county. The escaping youths got as far as the Chelsea exit when their car stalled because of radiator trouble.

Minutes later a Washtenaw county Sheriff's Department patrol car, driven by Deputy Thomas Spiess, intercepted the car and the occupants dispersed into the fields. Other police and deputies—about nine cars in all—converged on the area.

State Police said Police Chief John Palmer and Patrolman Earl Willis, Jr., spotted the youth and ordered him to stop. Two additional orders to halt were disregarded as was a fourth warning—shots fired into the air. Since several of the groups took part in the shooting it is not known whose shot struck the youth.

The injured youth, a 16-year-old boy, from Inkster, is in Foots Hospital in Jackson, where he is treated for a shattered femur. The other three apprehended are Thomas Sims, 18, of River Rouge; Kenneth L. Davenport, 18; of Inkster; and Gary M. A. Burnside, 17, also of Inkster.

Sims and Davenport stood mute Monday in the Jackson Circuit Court to charges of breaking and entering in the daytime. They are at the Jackson County Jail awaiting trial, in lieu of \$2,500 bond. Burnside, the fourth youth, has demanded examination on the charges which will be heard May 20 in justice court, Jackson.



SAFETY PATROLLERS from Chelsea, Ann Arbor, Brighton and Romulus got the special honor of meeting the second-ranking member of the U. S. House of Representatives while visiting Washington as Automobile Club of Michigan's guests. House Republican Minority Leader Gerald R. Ford of Grand Rapids, greeted 130 white-belted Michigan youths from 105 cities who visited the capital May 7-9 during Auto Club's annual trip to the AAA National Patrol Rally there. Shown above with Ford in the Capitol are, left to right, Steven Bruneau of Ann Arbor; David Tipword of Brighton; Michael Schnadt, 850 Island Lake, Chelsea, St. Mary's school; and Gary Martin of Romulus. The flag Ford holds flew over the Capitol Thursday.

BOARD OF EDUCATION STATEMENT:

Schools Need Your Help

Your School Board is composed of seven men interested in the education of the children of this district.

Twice during this past year the public has voted down a bond proposal presented by the board. Both times 90-1,000 citizens voted. This is but a fraction of the eligible voters (1/4-1/2). Those who oppose educational progress, for any of many reasons given, will always see to it

that they vote "NO." The board feels, however, that the biggest reason for the defeat of school issues is the apathy of the school supporters. These are the people who must be stirred to realize that their vote is needed.

These seven members of the board were elected by the public. They spend many hours studying the problems involved with running an educational institution. After careful thought, and searching, decisions are made. The facts from these decisions are made public in the news-

paper, but only those people interested in attending these open meetings, will fully understand the thinking behind these decisions.

We, the Board, are always distressed at the apathy shown by the public especially when we seek their support on millage election. The board has unanimously voted to request 2 1/2 mills operational for the school year 1965-66. To maintain and improve our teaching staff, administration, and facilities, costs continually rise. The 2 1/2 mills request is a net increase of 1.22 mills over last year. Last year the County allocation to schools was 6.12 mills. The operation of the school called for 12.5 mills therefore 3.5 mills was voted. This year the allocation from the county will be 11.22. The budget calls for 13.77 mills. Hence we must request 2 1/2 mills. This is a net increase, once again, of 1.22 mills over the total operational cost last year. Based on an assessment of \$2,600, the average taxpayer would pay less than \$1 a month more than last year.

All persons in the district who are properly registered in their township may vote. You do not have to be a property owner. We of the board sincerely feel that it is your duty to give these issues your support with a "Yes" vote on Monday. Chelsea Board of Education.

Poppy Day Sale Slated Here Friday, May 21
Chelsea residents are reminded that the annual Poppy sale will be held Friday, May 21, co-sponsored by the Ladies Auxiliary to the Veterans of Foreign Wars, Post No. 4076, and the Herbert J. McKune Unit No. 31, American Legion Auxiliary.

VFW Auxiliary Poppy Sale chairman is Mrs. Fred Klink, Sr. Mrs. William Blaess is chairman for the American Legion group. Proceeds from the sale go into programs for disabled veterans and their families.

All Plans Set To Welcome Visiting Mayor

Exchange Mayor from Sturgis Will Be Welcomed at Pierce Park

Chelsea's observance of the 12th annual Michigan Week, May 18-22 will be highlighted by the annual exchange of mayors and correlated with the dedication of Sugar Loaf Lake Campgrounds Monday.

Municipal responsibilities will be exchanged by Village President Howard Haselschwardt and Mayor Ross Lower of Sturgis. While President and Mrs. Haselschwardt, accompanied by Mr. and Mrs. J. V. Burz, 11, are feted in Sturgis, Mayor and Mrs. Lower and Mr. and Mrs. Carlyle Kition will be honored guests at a program which will kickoff with a reception in Pierce Park at 9:15 a.m.

The traditional presentation of the key to the Village will follow a parade from the park to the Municipal Building. Among the participants will be village officials, civic and community leaders, and the Michigan Week committee. Music will be provided by the Chelsea High school band.

FFA Teams Score High in State Contests

The Chelsea Chapter of the Future Farmers of America made an excellent showing at the nine agricultural judging contests at Michigan State University last Saturday, with eight teams and 24 boys entered among the 360 teams, totalling 1,080 boys, from across the state.

The farm management team of Dick McCalla, Don Underer and Doug Young competing with 18 teams, received a Silver award. The forestry team of Greg Kuhl, Bill Wenk and Dave Clark took a Silver award and eighth place out of 38 competing.

The meats team of Ron Montague, Ron Cuddeby and Dan Eder (Continued on page six)

The dedication of Sugar Loaf Lake Campgrounds will take place at 11 a.m.

Luncheon at Schummi's Restaurant for the official party will be followed by a tour of the Chrysler Proving Grounds, the Village and the Chelsea-Milling Co. plant.

The day's festivities will conclude with a social hour at the William Weber, Sr. home, 221 Congdon St., at 4:30 p.m., and dinner will be at the regular meeting of the Kiwanis Club at 6:15 p.m. in the Congregational church.

Livelihood Day, which is Wednesday, will focus attention on Chelsea's business and industry through industrial and other displays in the downtown area.

The new home of the Chelsea Senior Citizens at the corner of Main and Middle will provide the setting for the events planned for Friday, designated as Heritage Day. In addition to the showing of historical movies, there will be a display of historical artifacts and information on centennial farms in the area.

The Senior Citizens Open House will continue on Saturday as well as the dedication of their new building, which has been set for 2 p.m. The CHS Band will provide the music.

Saturday is Youth Day. The participation of various youth groups in Chelsea, through posters, displays and similar programs, bring to a close the events planned for Michigan Week this year.

Okemos, Chelsea Bands To Present Joint Concert

The Chelsea High school band, under the direction of Bruce W. Gallun and Martin Gurvey, will be joined by the Okemos High school band and its director, Philip E. Hillstrom in a band concert Sunday at 3 p.m. in the CHS gymnasium.

George Cavender, assistant director of the University of Michigan bands, will be guest conductor of the two groups, totalling 170 members.

Arriving Saturday afternoon, the Okemos band will be guests in the homes of Chelsea band members that night following a reception and dance at CHS.

Everyone is invited to attend. A free will offering will be taken at the concert to defray concert costs.

GEORGE CAVENDER

4 Girls Win College Scholarships



LINDA L. SANDERS



JANE M. FAIST



SANDRA D. OSBORN



KRISTINA KAYSER

Four girls from Chelsea won Higher Education Auxiliary scholarships, it was announced last week. They are Jane M. Faist, daughter of Mr. and Mrs. E. Faist, Jr., 189 Clardale Ct.; Sandra D. Osborn, daughter of Mr. and Mrs. William Osborn, 422 W. Maple St.; Linda L. Sanders, daughter of Mrs. Goldie Sanders, 10 Orchard St.; and Kristina Kayser, daughter of Mr. and Mrs. Ed. A. Kayser, 4701 Kalmbach Rd.

The first three seniors at Chelsea High school, plan to attend Michigan State University. Miss Kayser, a student at the University High school in Ann Arbor, will matriculate at the University of Michigan.

Awards also went to two girls from Dexter. They are Rosemary G. Pennock, daughter of Mr. and Mrs. Gilbert Pennock, 8838 N. Zeeb Rd.; and Susan Schnebelt,

daughter of Mr. and Mrs. Joseph Schnebelt, 3539 Hudson St. Some 2,844 applicants were awarded scholarships with a cash value of \$1,044,000. In making his announcements, Dr. Lynn M. Bartlett, state superintendent of public instruction and chairman of the Michigan Higher Education authority, said that a total of 8,847 students qualified for consideration of awards on the basis of their performance in the State

Competitive Examination given in November 1964. This is the second time awards have been given through the program which went into effect 11 months ago. More than 16,500 students applied for the competition. Of the 785 public and non-public high schools in the state, only 38 sent no applicants. The average award was \$372, with a high of \$800. The examination date for the 1966-67 scholarship program will be Saturday, Nov. 20, 1965.

Teachers Organize Education Association

The adoption of a constitution and election of officers took place at a recent meeting of the newly organized Chelsea Education Association, a chapter of the Michigan Education Association. The officers are Gary Jackson, president; Mrs. Robert Winkle, vice-president; Mrs. King Hanna, secretary; and Mrs. William Hinkel, treasurer.

Established 1871
The Chelsea Standard
 General Excellence Award by Michigan Press Association
 1951-1953-1956-1959-1960
 Walter P. Leonard—Editor and Publisher

Published every Thursday morning at 300 North Main Street, Chelsea, Mich., and second class postage paid at Chelsea, Mich., under the Act of March 3, 1879.

Subscription Rates (Payable in Advance)

In Michigan:		Outside Michigan:	
One Year	\$3.00	One Year	\$4.00
Six Months	\$1.75	Six Months	\$2.25
Single Copies	\$.10	Single Copies	\$.10

Service men or women, anywhere, 1 year \$3.00

NATIONAL EDITORIAL ASSOCIATION
 AFFILIATE MEMBER



MICHIGAN MIRROR

By Elmer E. White, Secretary, Michigan Press Association

GOVERNOR ROMNEY REPORTS

Last week I returned with 50 Michigan businessmen from a market study tour of seven European countries. The purpose of this trip was in line with the theme of Michigan Week, "Dynamic in World Progress," and I will report on the tour in my Michigan Week column, May 16-22.

Here at home we still have that major problem of maintaining our state's reputation while at the same time continuing to meet the needs of people.

Last Friday I met with the members of the legislature who have been designated to study and discuss the financial problems and future of Michigan. As you may know, I submitted various alternative proposals designed to avoid a financial crisis and provide sufficient income for the state to keep pace with our expanding population and essential state services necessary to meet these needs.

CHELSEA THEATRE
 CHELSEA, MICH.
 24-Hr. Program
 Information: 475-8212

NOW THRU SAT. MAY 15

JAMES BOND IS BACK IN ACTION!

ALBERT R. BROOKS & GARY SUTHERLAND
 "GOLDFINGER"
 TECHNICOLOR—UNITED ARTISTS
 Adults \$1.00 - Children 50c

SUN. THRU WED. MAY 16 - 19

JACK LEMMON VIRNA LEE
 "HOW TO MURDER YOUR WIFE"
 TECHNICOLOR—UNITED ARTISTS
 Adults 85c - Children 35c

Let your wife die laughing!
 All wives will be admitted free with their husbands Mon., Tues. and Wed. evenings this week.

Dirty People
 Social change is a major cause for the estimated \$750,000 bill Michigan taxpayers meet each year for picking up litter, according to a national study.

The Institute for Motivational Research recently confirmed previous indications that thoughtlessness and carelessness were the chief reasons people threw litter in public places.

"Apparently the complex social trends of our modern world have tended to sever the individual's relationship to his community and thus reduce his sense of social responsibility and civic pride," the study says.

Simply stated, the Institute reported, "the litterer who wouldn't think of dropping his cigarette pack on his living room floor could be expected to discard it unnoticed in a public building."

Much of the cost of pickup is on the highways. State Highway Department officials estimate it costs an average of 32 cents to pick up a single litter item.

Cleanup campaigns in communities across the state properly center the burden of responsibility on each individual. Yearly state-wide cleanup costs would indicate a need for these special campaigns to last 12 months rather than just a few days or a week.

Little relief has been gained to date from Michigan's anti-litter law, touted as one of the best of its kind in the nation, although a stepped up enforcement program is under way.

As Gov. George Romney said in a proclamation for Michigan's special cleanup week this year, "It is absolutely essential for every citizen, regardless of where one lives or how busy one is, to exercise a relentless concern and personal responsibility to keep trash of any kind off our public and private thoroughfares and lands."

At the continuing rate of rivalry between the several state-supported colleges, it would appear there is little hope of any future agreement on a unified budget request for higher education.

College officials are not alone in presenting the "I like me best and you should too" attitude to the legislature, however.

Every agency administrator in state government brings in a similar plea when the budget hearings are held annually. This year, legislators will hear this twice, but the colleges will be left out of the second round.

Once the budget is settled upon, hearings are anticipated on the government reorganization proposals. In these the fighting is likely to become even more bitter since administrative survival will be at stake.

In budget hearings, agency heads know they will get some portion of their request. Government reorganization will result in the absorption of some agencies and possible abolition of others.

Record Counts
 Proof of effective service likely will become a key tool in arguing for self-preservation in the organizational shuffle. It also looms largely as a big vs. little fight. Each agency head will want to

JUST REMINISCING

Items Taken from the Files of The Chelsea Standard

4 Years Ago...
 Thursday, May 11, 1961—
 A copy of The Chelsea Standard, dated Dec. 22, 1960, was "planted" in a time capsule along I-94 as part of the State Highway Commission's observance of "Michigan Week." Included with a collection of representative materials which would prove of interest to future historians, that particular copy of The Standard carried a story of the ribbon-cutting ceremony near the Parker Rd. overpass when I-94 was officially opened to the public.

24 Years Ago...
 Thursday, May 8, 1941—
 An ordinance for licensing and regulating the maintenance and use of housecars and trailers within the village limits was adopted by the village council.

34 Years Ago...
 Thursday, May 7, 1931—
 A heated campaign which resulted in the largest attendance at a school election in Chelsea's history, some 700 voters cast their ballots at a special election called to replace Howard Holmes, John Kalmbach and Fred Broessamle, who had resigned. The voters replaced them with J. P. Fletcher, David Mohrlock and M. J. Dunkel.

14 Years Ago...
 Thursday, May 10, 1951—
 Dillon Olmstead suffered cuts and bruises as did Norman Houk of North Lake, when they were thrown from their motorcycles after colliding with a cow wandering down the road. Olmstead was following Houk when his motorcycle collided with the animal. Olmstead's vehicle crashed into Houk's and both drivers were thrown to the pavement. The cow died.

Three Chelsea High school seniors were awarded Regents-Alumni scholarships by the University of Michigan. They are Duane L. Gentner, son of the Floyd Gentners, 202 Harrison St.; Ruth Marie Elsemann, daughter of Mr. and Mrs. Harold Elsemann, 13875 Waters Rd.; and Theodore A. Betts, son of Mr. and Mrs. Wesley Betts, 1751 Hayes Rd.

Mrs. Edwin Gaunt was elected president of the Methodist WSCS at a meeting held May 2 at the Methodist Home. Named vice-president was Mrs. Beth Hollidge.

John P. Keusch, son of Mr. and Mrs. Ed Keusch, was among the 343 U-M students with outstanding records and honors at the convocation services held in Hill Auditorium. Another student from Chelsea, Donald Katz, was also honored for outstanding achievement in Engineering and Architecture Engineering.

More than 200 members attended the annual Pythian Sisters convention of District No. 8, held Thursday in the Chelsea public school auditorium. Among those on the program was Evelyn Smith of Chelsea temple.

W. G. Kolb, proprietor of Kolb's restaurant, announced the opening of his new electrically refrigerated soda fountain on May 9. Chelsea residents heard a grand concert by the Jackson Police band which was scheduled at the Chelsea High school auditorium on May 14.

CARD OF THANKS

We wish to extend our sincere appreciation and gratitude to our friends, neighbors and relatives for their sympathy and thoughtfulness during our recent bereavement, also to Pastor Renner for his comforting prayers.

The Wilkinson, Schmidt, and Earl families.

IN MEMORIAM

In loving memory of Ethel B. Havens who passed away one year ago, May 11, 1964.

Little did we know when dawned that morning the sorrow that day would bring. The end was sudden, the shock severe, to part with one so dear. Death leaves a void no one can heal.

They live with us in memory still, not just today, but always will. To think we could not say goodbye will always bring regret, but hearts that loved one best of all are hearts that won't forget.

Sadly missed by sister, Lea.

THANK YOU

Mr. and Mrs. Ray Thomas wish to express their thanks and appreciation to Chelsea Rebekah Lodge for the beautiful plant Mr. Thomas received while he was a patient at the hospital.

CARD OF THANKS

We wish to express our most sincere thanks to all the Junior class mothers who helped with the Junior-Senior Prom banquet. Special thanks to Mrs. Duane Weis, Mrs. Virginia Ferris, kitchen chairman, Mrs. Robert Houle, dining room chairman.

CARD OF THANKS

We extend our appreciation to the firemen, police officers and others who helped us in overcoming Saturday's fire. Our sincere thanks, also, go to all the members of neighboring firms who offered their services.

Chelsea Heat Treating, Inc.

FAT OVERWEIGHT

Available to you without a doctor's prescription, our product called Galaxon, must lose extra fat and your money back. Galaxon is a tablet and easily swallowed. Get rid of excess fat and live longer! Most cost \$8.00 and based on this guarantee: If not satisfied for any reason, just return the package to your dealer and get your full money back. No questions asked. Galaxon is sold with the guarantee by:

CHELSEA DRUG STORE - CHELSEA, MICH.
 Mail Orders Filled.

PROTECTALL

FIREPROOF WALL SAFES
 For Use at Home or Office
 Protect your money and valuable papers.

\$63 - \$70

MOSLER SAFE CO.
 426-4410
 Distributes and services complete line of commercial safes

Uncle Lew from Lima Says:

DEAR MISTER EDITOR:

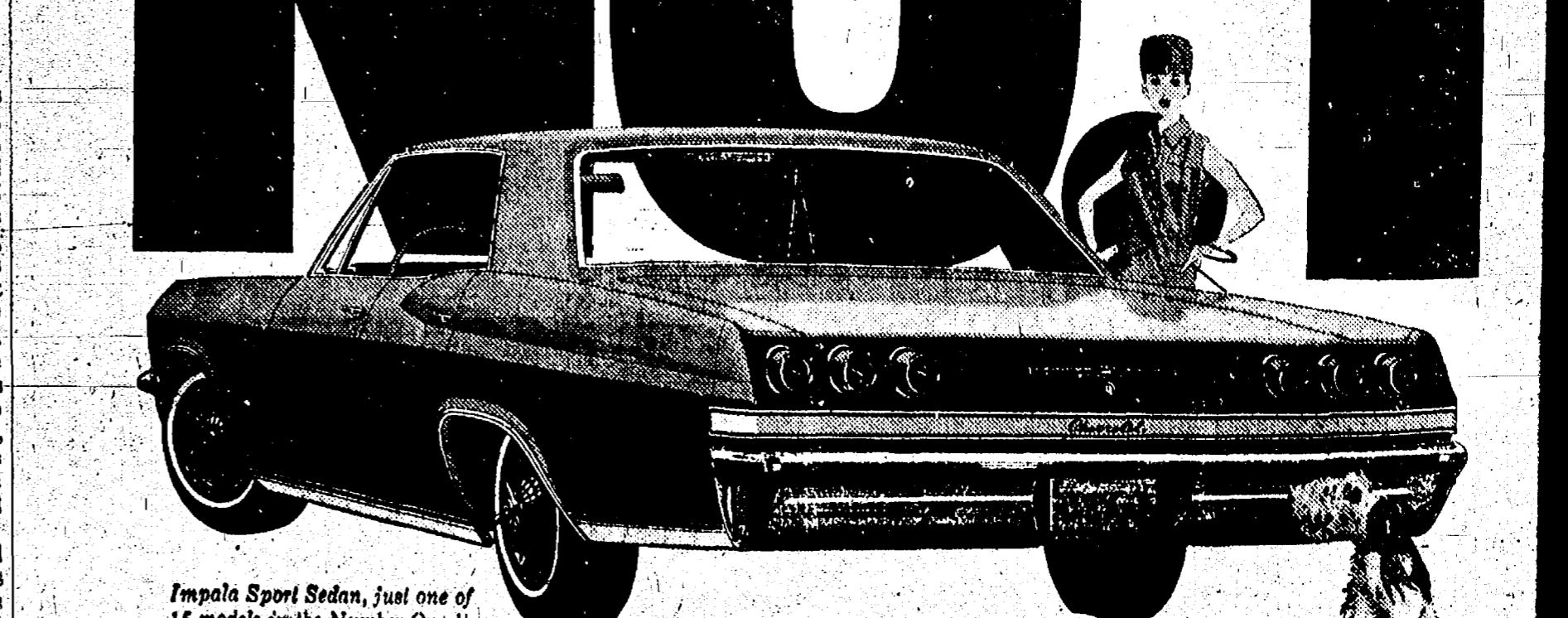
Ed Doolittle reported to the folks at the country store Saturday night that he ain't heard nothing yet from Washington about our request for the Government to make a study on which side of the big pond the best side of the hunt. But Ed was optimistic, said he had saw in his latest pamphlet from the Department of Agriculture where they was appropriating \$20,000 for a study on the breeding of tree shrews and \$70,000 for a study on the population habits of the Australian ant.

He figured our study on hams couldn't be far behind on the agenda.

Zeke Grubb said he didn't know what tree shrew was and couldn't pass no judgement on this item, but he was high in favor of that \$70,000 on ants. He allowed as how, if they was anything this country needed right now, it was to know all about the population habits of the Australian ant.

Glen Webster was disagreed with Zeke, said he didn't have nothing against them Australian ants perviding they stayed in Australia, but we had studies here at home that ought to get top priority. For instance, he claimed he recollected two year ago when some feller ask the Department of Agriculture to appropriate \$100,000 to make a study on why a chicken crosses the road and they ain't done nothing about it yet. He was of the opinion a study on this matter would be a big help to the poultry industry. About half his chickens, he reported, gets killed every year crossing the road. Farther north, he complained, if they don't slow traffic down in front of his place, the other half was going to get killed coming back home.

NO. 1



Impala Sport Sedan, just one of 16 models in the Number One line

Success hasn't gone to its price

After all, you don't get the No. 1 place (or stay there year after year after year) unless you give people a lot for their money. That, Chevrolet does. Look what's new for 1965. Everything.

Like the handsomest new styling you've ever turned around for another glance at. Like Chevrolet's Jet-smooth ride, even better now with Wide-Stroke to steady

things as you go. Like however much economy or excitement you'd want, our miserly 140-hp Six to our ferocious Turbo-Jet V8, 325 hp on order.

Besides price, one other thing hasn't changed: Chevrolet's traditional resale value... still so good you won't believe it until you get it. So get it (along with all that's new) at your Chevrolet dealer's.

SEE THE U.S.A. THE NO. 1 WAY

CHEVROLET

Red Hot and Rolling! See your Chevrolet dealer for a new CHEVROLET • CHEVELLE • CHEVY II • CORVAIR

SPAULDING CHEVROLET SALES & SERVICE
 Chelsea, Michigan

SCIO DRIVE-IN THEATRE

6588 Jackson Road, Ann Arbor—Phone NOrmandy 8-7083
 Just West of Zeeb Road Interchange, off I-94

Friday, Saturday and Sunday, May 14-15-16

SOPHIA LOREN MARCELLO MASTROIANNI
 VITTORIO DESICAS
YESTERDAY, TODAY, TOMORROW
 In Color, in Monochrome and Black

—PLUS—
"DIVORCE ITALIAN STYLE"
 Starring Marcello Mastroianni

Sunday, Monday and Tuesday, May 16-17-18

ALL THE BLISTER-MEAT OF THE BEST-SELLER
YOUNGBLOOD HAWKE
 JAMES FRANCIS—SARAH PALMER—GENEVIEVE PAGE
 Present this adv. to Box Office for 1 free admission along with 1 regular admission. (Offer good only Monday, May 17 thru Thursday, May 20.)

Box Office Open at 7 p.m. Feature Starts at 8 p.m.

FARMERS FOR TOP PRICES FOR YOUR LIVESTOCK
 Consign to the
Howell Livestock Auction
 We have buyers for all kinds of livestock. Sale every Monday at 2 p.m.
 Phone 1089 Howell
 For Any Information

DAN CHI EV

VO-5 \$1.00
 Fresh Stick
 Jergen \$1.00
 Brylcre \$9c
 Pacqui \$9c
 E) Prices

REG. 98c L
 HAIR SP
 REG. 98c CF
 TOOTHPI
 PKG. OF 10
 CONTACT

BUY

Just
Phone
GR 5-3581

BUY SELL TRADE RENT HIRE HELP

Ads
Taken
Till 5 p.m.
Tuesday

WANT ADS

The Chelsea Standard

WANT AD RATES

PAID IN ADVANCE—All regular advertisements, 10 cents per line per week or less, each insertion. Count each line as a word. For more than 10 words add 2 cents per word for each insertion. "Blind" ads or box number ads, 75 cents per insertion. "HITLER" RATES—Same as cash in advance, with 15 cents bookkeeping charge if not paid before 5 p.m. Tuesday preceding publication. Pay in advance, send cash or stamps and save 15 cents.

CARDS OF THANKS or MEMORIALS—Single photograph style, \$1.00 per column inch, 10 words or less; 2 cents per word beyond 10 words. Minimum, 1 inch.

DISPLAY WANT ADS—Rate, \$1.10 per column inch, 10 words or less; 2 cents per word beyond 10 words. Minimum, 1 inch.

WANTED—Ironing to do, \$1.05 an hour, 316 East St., Ph. 479-4072.

TWO KITTENS—house-trained, to give away, 750 Book St., 479-2011, Gayle Winans.

WANTED TO RENT—3- or 4-bedroom house in Chelsea area. Will consider lakes. Ph. 475-8532.

DON'T GO AWAY—To get your car washed! Do it at SOFSRAY, 1188 S. Main, (next to Chelsea Lanes).

Property For Sale

2-bedroom home, full basement, gas heat.

3-bedroom ranch-type on 1 acre. Lots of fruit and berries.

Several building lots.

11 acres, 2-bedroom home, with basement.

119 acres, 10-room home. All modern, gas furnace, 22 acres wheat, 40 acres seeding, some timber.

Kern Real Estate
616 South Main St.
Phone 475-8563

SAVE YOUR usable discards, for Jaycee Rummage sale, coming up at Chelsea Fairgrounds. For pickup call GR 9-5457 or GR 9-2362.

CHICKEN BAR-B-Q Sunday, May 30, Pierce Park, Knights of Columbus.

BULLDOZING
Grading & Land Clearing

DICK KISS
6945 Werkner Rd., Chelsea, Mich.
Ph. 475-8446
If no answer call 479-2791

AGRICULTURAL
LIME SPREADING

Free soil test
LEONARD FOSTER
GR 9-2341

We Try
HARDER

to give you better value for your used car dollar. You can tell a BUTICK DOUBLE CHECKED USED CAR is a better value as soon as you drive it—why don't you?

'63 Buick LeSabre 4-dr. \$1095.00
'62 Buick Electra 4-dr. \$995.00
'60 Olds 88 4-dr. \$895.00
'60 Ford V-8 2-dr. \$895.00
'60 Rambler 4-dr. \$495.00
'60 Pontiac 4-dr. H.T. \$595.00
'61 Buick Wildcat 4-dr. \$1,195.00

Stop by real soon where you see the double check sign. It means savings and satisfaction.

Open Friday till 9 p.m.

Daniels Motor Sales
BUICK & OLDS
118 N. Main St.
Ph. GR 9-0731 Chelsea, Mich.

GRASS SEED

Perennial Rye, 1-lb. 19c
(Fast-growing Grass Seed)
Kentucky Blue Grass, 1-lb. 79c
(Red Top mixture) 5-lb. \$3.69
(Pine grass seed for shady areas) 5-lb. \$4.29

GRASS SEED

Perennial Rye, 1-lb. 19c
(Fast-growing Grass Seed)
Kentucky Blue Grass, 1-lb. 79c
(Red Top mixture) 5-lb. \$3.69
(Pine grass seed for shady areas) 5-lb. \$4.29

GRASS SEED

Perennial Rye, 1-lb. 19c
(Fast-growing Grass Seed)
Kentucky Blue Grass, 1-lb. 79c
(Red Top mixture) 5-lb. \$3.69
(Pine grass seed for shady areas) 5-lb. \$4.29

GRASS SEED

Perennial Rye, 1-lb. 19c
(Fast-growing Grass Seed)
Kentucky Blue Grass, 1-lb. 79c
(Red Top mixture) 5-lb. \$3.69
(Pine grass seed for shady areas) 5-lb. \$4.29

GRASS SEED

Perennial Rye, 1-lb. 19c
(Fast-growing Grass Seed)
Kentucky Blue Grass, 1-lb. 79c
(Red Top mixture) 5-lb. \$3.69
(Pine grass seed for shady areas) 5-lb. \$4.29

GRASS SEED

Perennial Rye, 1-lb. 19c
(Fast-growing Grass Seed)
Kentucky Blue Grass, 1-lb. 79c
(Red Top mixture) 5-lb. \$3.69
(Pine grass seed for shady areas) 5-lb. \$4.29

GRASS SEED

Perennial Rye, 1-lb. 19c
(Fast-growing Grass Seed)
Kentucky Blue Grass, 1-lb. 79c
(Red Top mixture) 5-lb. \$3.69
(Pine grass seed for shady areas) 5-lb. \$4.29

GRASS SEED

Perennial Rye, 1-lb. 19c
(Fast-growing Grass Seed)
Kentucky Blue Grass, 1-lb. 79c
(Red Top mixture) 5-lb. \$3.69
(Pine grass seed for shady areas) 5-lb. \$4.29

GRASS SEED

Perennial Rye, 1-lb. 19c
(Fast-growing Grass Seed)
Kentucky Blue Grass, 1-lb. 79c
(Red Top mixture) 5-lb. \$3.69
(Pine grass seed for shady areas) 5-lb. \$4.29

GRASS SEED

Perennial Rye, 1-lb. 19c
(Fast-growing Grass Seed)
Kentucky Blue Grass, 1-lb. 79c
(Red Top mixture) 5-lb. \$3.69
(Pine grass seed for shady areas) 5-lb. \$4.29

GRASS SEED

Perennial Rye, 1-lb. 19c
(Fast-growing Grass Seed)
Kentucky Blue Grass, 1-lb. 79c
(Red Top mixture) 5-lb. \$3.69
(Pine grass seed for shady areas) 5-lb. \$4.29

WANT ADS

WANTED TO RENT—Furnished house, 2 to 5 miles from Chelsea. Must be neat. Phone 313-227-1949.

TRAVEL TRAILERS—13-ft. and up, 10x55 ft. trailers. John R. Jones Trailer Sales, Gregory, Mich. Phone Alpine 6-2855.

For the Best in
POLE BUILDINGS

Be sure to see "SMILEY"
Call or Write
JOHN LIVERMORE
Gregory, Alpine 6-2827

FOR SALE—Used Pennsylvania real power mower, \$25. GR 5-5551, Bob Daniels, 605 Washington.

LOTS OF FAMILY FUN—Bowl at Sylvan Recreation, Chelsea Michigan, 9 games for \$1.00.

A New Dealer in Town for the Magnificent hand-wired, all-unitized

Setchel-Carlson TV
Brilliant movie-clear color and black and white

On Display at
PORTER'S TV
Sales & Service
212 Buchanan

FOR RENT—Room. Phone 479-7921.

USED TRACTOR TIRES—Large inventory on hand. Also used passenger truck - grader tires. Jackson Tire Brokers, M-106, Muncie, Mich. Ph. 596-2925.

THE SCHWINN BICYCLE Co. reports that bicycle sales this year are the greatest in the company's long history. Plan now. Lay away your choice early. Trade-ins wanted. Merkell Brothers, authorized Schwinn Dealer.

Septic Tanks
And Drain Fields

INSTALLED TO COUNTY CODE SPECIFICATIONS

Septic tanks from 300 gal. to 2,000 gal. available for prompt installation.

HILLTOP PLUMBING
BOB SHEARS
201 S. Main. Phone 479-3851

FOR SALE—14 ft. alum. boat with oars. Condition good. 475-5731.

FOR RENT—3-rooms, first floor apartment, unfurnished. Heat and water furnished. GR 5-4851 after 6 p.m.

INVESTMENT PROTECTOR—SOFSRAY (Chelsea Lanes). 46

GAMBLES
FERTILIZER

Gambles 20-10-5 \$3.95 (bag covers 5,000 sq. ft.)
Greenfield 20-10-5 \$4.95 (bag covers 5,000 sq. ft.)
(See our special price on 2 bags of Greenfield 20-10-5 fertilizer)

Gambles Organic 5-4-0 \$2.79 (50-lb. bag)
Milorganite 6-6-0 \$2.89 (50-lb. bag)
(Gambles Weed & Feed, (20-10-5) (bag covers 5,000 sq. ft.)

GRASS SEED

Perennial Rye, 1-lb. 19c
(Fast-growing Grass Seed)
Kentucky Blue Grass, 1-lb. 79c
(Red Top mixture) 5-lb. \$3.69
(Pine grass seed for shady areas) 5-lb. \$4.29

GRASS SEED

Perennial Rye, 1-lb. 19c
(Fast-growing Grass Seed)
Kentucky Blue Grass, 1-lb. 79c
(Red Top mixture) 5-lb. \$3.69
(Pine grass seed for shady areas) 5-lb. \$4.29

GRASS SEED

Perennial Rye, 1-lb. 19c
(Fast-growing Grass Seed)
Kentucky Blue Grass, 1-lb. 79c
(Red Top mixture) 5-lb. \$3.69
(Pine grass seed for shady areas) 5-lb. \$4.29

GRASS SEED

Perennial Rye, 1-lb. 19c
(Fast-growing Grass Seed)
Kentucky Blue Grass, 1-lb. 79c
(Red Top mixture) 5-lb. \$3.69
(Pine grass seed for shady areas) 5-lb. \$4.29

GRASS SEED

Perennial Rye, 1-lb. 19c
(Fast-growing Grass Seed)
Kentucky Blue Grass, 1-lb. 79c
(Red Top mixture) 5-lb. \$3.69
(Pine grass seed for shady areas) 5-lb. \$4.29

GRASS SEED

Perennial Rye, 1-lb. 19c
(Fast-growing Grass Seed)
Kentucky Blue Grass, 1-lb. 79c
(Red Top mixture) 5-lb. \$3.69
(Pine grass seed for shady areas) 5-lb. \$4.29

GRASS SEED

Perennial Rye, 1-lb. 19c
(Fast-growing Grass Seed)
Kentucky Blue Grass, 1-lb. 79c
(Red Top mixture) 5-lb. \$3.69
(Pine grass seed for shady areas) 5-lb. \$4.29

GRASS SEED

Perennial Rye, 1-lb. 19c
(Fast-growing Grass Seed)
Kentucky Blue Grass, 1-lb. 79c
(Red Top mixture) 5-lb. \$3.69
(Pine grass seed for shady areas) 5-lb. \$4.29

GRASS SEED

Perennial Rye, 1-lb. 19c
(Fast-growing Grass Seed)
Kentucky Blue Grass, 1-lb. 79c
(Red Top mixture) 5-lb. \$3.69
(Pine grass seed for shady areas) 5-lb. \$4.29

WANT ADS

PROTECT the investment in that car! Wash it at SOFSRAY, 1188 South Main (Next to Chelsea Lanes).

FREE, CUTE, pampered kittens, one grey, one white. D. Church, 510 N. Zeeb Rd. 602-8035.

WANTED—Lady to work in Dairy Queen; choice of hours. NO 2-4631 evenings only.

FORD CORNER
ORCHARD AND MAIN
CHELSEA'S LARGEST
AND FINEST SELECTION
OF USED CARS AND
TRUCKS

THIS WEEK'S
SPECIAL

1955 FORD STATION WAGON.
Runs good. Good tires.
Only \$95.00

Late Model
Like New

1966 Ford Demonstrators \$ave 3 to choose from.
1965 Mustang Hardtop. New car warranty. \$2,195.00
1964 Fairlane 2-dr. \$1,795.00 New car warranty
1963 Ford Galaxie fast back Hardtop. Power. \$3,500 new.
1963 Chevrolet 4-dr. \$1,695.00 V-8 automatic transmission
1963 Ford Fairlane \$1,395.00 6 cylinder.

Medium Priced
Values

1962 Comet Wagon \$1,195.00 Extra clean.
1962 Fairlane 500 \$1,195.00 4-dr. Power.
1962 Galaxie 4-dr. \$1,395.00 V-8, standard transmission
1962 Pontiac 4-dr. H.T. \$1,595.00 A real value
1962 Ford Galaxie 500 2-dr. \$1,395.00 V-8 automatic transmission
1961 Chevrolet Convert. \$1,195.00 V-8 Standard.
1961 Corvair Monza \$1,095.00 4-speed transmission
1959 Thunderbird Conv. \$1,095.00 Extra clean.

No Money Down
Bargains

1961 Falcon 2-dr. \$31.00 per mo. Standard trans.
'61 Ford 2-dr. \$36.00 per mo. All black—no rust
'61 Rambler 4-dr. \$31.00 per mo. Overoner
'61 Plymouth 4-dr. \$31 per mo. Very low mileage
'60 Galaxie Starliner Hardtop. Jet black \$31.00 per mo.
'60 Ford Galaxie \$31.00 per mo. Excellent condition
1960 Ford 4-dr. \$27.00 per mo. 6 standard.
1959 Chevrolet 4-dr. \$27.00 per mo. Excellent condition.

Our Lots Are Full of
New and Used Cars—
So Stop and Look at
Your Leisure or Call
Your Leisure or Call

Lydia Christwell, Everett Johnston, George Palmer for information

GR 5-9271
GR 5-8549
GR 9-3941
GR 5-8531

PALMER
FORD
50-Year Dealer

RUMMAGE SALE—Dexter Friends of Library, to be held at Murray's warehouse at the corner of Grand and Broad Streets May 21 and 22. Many items of interest including a reed organ. Hours: Friday 9 a.m. to 9 p.m., Saturday 9 a.m. to 6 p.m. For donations call HA 6-8622 or NO 5-7186.

LOT
OWNERS!

SAVE THOUSANDS
On Your New Home!
Only \$50 Down!

Unique Homestead Corporation Owner Participation Plan means possible enormous savings. Not a shell or a pre-fab.

HOMESTEAD CORP. will build a new home on your lot anywhere in Michigan, Ohio, or Indiana. 15-year mortgage, no closing costs. Monthly payments low as \$43. Choice of 32 models, \$4750 to \$17,500.

Phone or see us NOW for details.

MARY WOLTER
7421 Dexter-Pinckney Rd., Dexter
Phone 426-8188

FOR SALE

133-ACRE FARM—Modern 3-bedroom home, barns, tool shed, garage, other buildings. Equipped with 2 modern tractors, all tools. 70 head good breeding ewes. All for \$35,000, with \$10,000 down. Owner will finance balance.

2-BEDROOM modern Chelsea home with aluminum siding, gas furnace, screen porch, attached garage, large lot, 66'x124'. \$10,000 cash.

160-ACRE FARM about 5 miles west of Chelsea. Excellent nearly new 3-bedroom house, large basement barn. About 50 acres of alfalfa. All-weather road. Chelsea schools.

5-BEDROOM COUNTRY HOME, garage, two acre lot. 12085 Old US-12 E. Price \$13,500.

2-BEDROOM modern Cavanaugh Lake cottage; oil furnace, good beach. Price \$9,000.00.

HAVE BUYERS for good 2- to 4-bedroom modern houses in or near Chelsea.

List your property with Miller—fast, efficient service.

R. D. MILLER
REAL ESTATE BROKER
EVELYN ADDON, Phone 479-4522 (after 6 p.m.)
Office: 15775 Cavanaugh Lake Road
Post Office Box 388 Chelsea, Michigan
Phone: GR 9-5892

FOR SALE

133-ACRE FARM—Modern 3-bedroom home, barns, tool shed, garage, other buildings. Equipped with 2 modern tractors, all tools. 70 head good breeding ewes. All for \$35,000, with \$10,000 down. Owner will finance balance.



"Ethel! What's the car you got in the Standard Want Ad—doing on the roof?"

WANT ADS

SAVE YOUR usable discards for Jaycee Rummage sale, coming up at Chelsea Fairgrounds. For pickup call GR 9-5457 or GR 9-2362.

FOR SALE—Boy's Schwinn bicycle, 24", good condition, \$15. GR 5-8190.

HELP WANTED—Fork lift operator and general tractor operator, on radish farm. George Weasel, Jr., Inc., McClure, O. Contact Adolph Klein, 4800 Esch Rd., Manchester.

FOR SALE—61 Plymouth Fury, 2-dr. hardtop. Automatic transmission, power steering, two 4-barrel carbs. No rust. \$750. GR 5-8254.

GAMBLES
FOR RENT
POWER RAKE

Get rid of harmful thatch, which is an accumulation of dead grass clippings and roots that choke your lawn. Flexible steel tines groom your lawn.

Rental Rate—\$2.50 per hour

GAMBLES
GR 9-2311

FOR SALE

'62 Alma 10x50 mobile home. Carpeted and furnished. Dennis Boos, Gregory, Mich. 498-2843 or 498-2895.

FOR SALE—16-foot Chris-Craft, 60-hp. Gray marine motor, new salmon upholstery, running lights, horn, radio, flags and trailer. \$475.

7x10 houseboat with sundeck, sleeps 3, running lights, radio, 18 h.p. outboard motor, remote controls and wheels. Heavy-duty steel dump trailer and winch. \$350. Days call 479-3851, nights 479-5948.

BEAUTIFUL CUSTOM DRAPES made to your exact measurements from Dexter's in Chelsea. Washable cottons and rayons and new fiberglass fabrics.

FOR SALE

2 ACRES—4 bedrooms, 2 baths; aluminum storm windows, oil furnace, water softener, full basement. 1 1/2 miles from Chelsea. \$13,500.

1 1/2 ACRES—3 bedrooms, aluminum siding, attached garage, outbuildings, on blacktop. \$14,500.

FURNISHED lake-front cottage with 80 feet frontage on Sugar Lake.

ACRAGE on Waterloo Road, Bush Road, and Old US-12 east.

Leo A. Guinan, Broker
1478 Sugar Lake Lake
Phone 479-4645

FOR SALE

133-ACRE FARM—Modern 3-bedroom home, barns, tool shed, garage, other buildings. Equipped with 2 modern tractors, all tools. 70 head good breeding ewes. All for \$35,000, with \$10,000 down. Owner will finance balance.

2-BEDROOM modern Chelsea home with aluminum siding, gas furnace, screen porch, attached garage, large lot, 66'x124'. \$10,000 cash.

160-ACRE FARM about 5 miles west of Chelsea. Excellent nearly new 3-bedroom house, large basement barn. About 50 acres of alfalfa. All-weather road. Chelsea schools.

5-BEDROOM COUNTRY HOME, garage, two acre lot. 12085 Old US-12 E. Price \$13,500.

2-BEDROOM modern Cavanaugh Lake cottage; oil furnace, good beach. Price \$9,000.00.

HAVE BUYERS for good 2- to 4-bedroom modern houses in or near Chelsea.

WANT ADS

FOR SALE—Shorthorn bull calf, born Oct. 31, 1964. GR 5-7239.

FOR SALE—Rabbits 10-weeks old, \$1.00 ea. or \$1.75 a pr. 8000 Smythe Rd., Manchester.

LETTERGRAPH (mimeograph machine) good condition, \$20. Saginaw Grove Church, 475-8487.

FOR INSURANCE
Call evens. or week-ends
N. H. MILES
AGENT
GR 5-8334
ALLSTATE

FOR SALE—Lots in scenic Noah Heights, near Half Moon Lake. Septic approved. 150 x 235. Cross Chelsea School District. Also 4 bedrooms, 2-bath Cape Cod with look-through fireplace. Builder's home. E. A. Wigle, Phone Chelsea 479-4471.

BRIGHTEN UP your home for spring with wallpaper from Dan's in Chelsea. Over 1,500 patterns to choose from.

Real Estate For Sale

TWO YEARS OLD—Large Country home, 3 bedrooms, 1 1/2 baths, fireplace. Living room and dining room carpeted. Built-in range, oven & dishwasher, 2-car basement garage. \$26,500.

DUPLEX HOUSE—Owner's apartment can be 2 or 3 bedroom. Other unit 1 or 2 bedrooms. Separate utilities. A real good paying investment. Let me show you the tax advantages of a two-family house.

LAKEFRONT—Year-around home. 2 bedrooms, large living room, separate dining room and kitchen. Large lot. \$11,500.

2 ACRES—with 2-bedroom house, approx. 10 miles from town. House needs some work. \$8,000. Will consider land contract.

BUILDING LOTS:

1 ACRE just east of town on Old US-12. Nice and level. \$1,500.

3 LOTS IN TOWN from \$1,600 to \$1,800. Complete with sewer, water and gas.

LARGE COUNTRY LOT at \$1,600.

LISTINGS URGENTLY NEEDED—Phone me.

CLARENCE WOOD
BROKER
646 Flanders St.
Phone GR 9-4603

FOR SALE

133-ACRE FARM—Modern 3-bedroom home, barns, tool shed, garage, other buildings. Equipped with 2 modern tractors, all tools. 70 head good breeding ewes. All for \$35,000, with \$10,000 down. Owner will finance balance.

2-BEDROOM modern Chelsea home with aluminum siding, gas furnace, screen porch, attached garage, large lot, 66'x124'. \$10,000 cash.

160-ACRE FARM about 5 miles west of Chelsea. Excellent nearly new 3-bedroom house, large basement barn. About 50 acres of alfalfa. All-weather road. Chelsea schools.

5-BEDROOM COUNTRY HOME, garage, two acre lot. 12085 Old US-12 E. Price \$13,500.

2-BEDROOM modern Cavanaugh Lake cottage; oil furnace, good beach. Price \$9,000.00.

HAVE BUYERS for good 2- to 4-bedroom modern houses in or near Chelsea.

List your property with Miller—fast, efficient service.

WANT ADS

FOR SALE—3-story building site, Chelsea school bus and telephone; 7 miles from Chrysler Proving Ground. Call C. W. Lake, 479-6188 or 475-8880.

WANTED—Waitress and cook. Apply in person. Bailey's Restaurant, corner Clear Lake Rd. and I-94.

PAINTING
SPRAY OR BRUSH
Commercial, residential and Farm buildings.
Free Estimate Phone GR 5-8424
MARK McKERNAN

FOR SALE—Matched engagement and wedding rings, size 7 1/2. Small diamonds in both. Ph. 479-7921.

MORTON EXCAVATING, trenching, driveways, fill dirt. Top soils. We specialize in septic tanks and drained installations. Free estimates. Phone Pinckney 878-3819.

WANTED—Light trucking by job or hour. Call after 5:30.

WE RENT
FORMAL WEAR
For All Occasions
Foster's Men's Wear

LAWNMOWERS, Tillers and Rides, small engine repair, parts, service. Free pickup and delivery. Chelsea Mower Shop, S. Main and Old US-12. Ph. 475-7235.

BOATS FOR RENT—At Green Lake. Also bait. To reserve one call 479-4871.

Real Estate

3 homes, 3 miles out. One 2-bedroom, modern, beautifully finished, 2 other smaller ones. Priced to sell.

NEED LISTINGS

Scripter Real Estate
MINNIE LESSER, BROKER
4401 Musbach Rd.
Phone 475-5978

FOR SALE—Waterfront cottage; oil furnace, completely furnished. \$

Community
Calendar

Special communication, Olive Lodge 156 F&M E. A. degree, Tuesday, May 18, 7:30 p.m. Luncheon.

Jerusalem Homeamkers Extension Study group, at the home of Mrs. Walter Wolfgang, Tuesday, May 18, 7 p.m.

Women's Relief Corps Monday, May 17, at 7:30 p.m. at the home of Mrs. Watson Hart, 419 Madison. Mrs. Lucille Olson, cohostess.

St. Mary's Bake Sale at K. of C. Hall Friday, May 14, 12:30 to 5 p.m. Note time change. adv.40

Older Adult Group at Chelsea Methodist Church Social Center Saturday, May 15. The Rev. Robert A. J. Livingston will have charge of the program. Members are asked to bring their own dish and a dish to pass. Dinner at 12:30 p.m.

Rummage Sale May 20-21-22, from 12 noon to 8 p.m., St. John's United Church of Christ, Francisco, Church Hall Bake Sale Saturday, adv.47

Jerusalem Farm Bureau May 13, 8:30 p.m., at the home of Mr. and Mrs. Irvn Weiss. Members are to bring several rolls.

St. Mary's mother-daughter breakfast Sunday, May 23, Chelsea High school cafeteria following 8 a.m. Mass.

Mrs. Harold McDonald will hostess the Thursday, May 20, 2 p.m. meeting of the Sylvan Extension group. The program will consist of a silent auction or a "white elephant" sale.

Rogers Corners Farm Bureau Friday, May 14, at 8 p.m. at the home of Mr. and Mrs. Armin Kuhl, 2826 Peckens Rd.

Rebekah Rummage sale, Saturday, May 22, beginning at 10 a.m. at the Town Hall. For pickup call 475-8204 or 475-8893. adv.46

Senior Citizens benefit card party, Wednesday, May 26, at 8 p.m. at the Corner House, corner of Middle and Main streets.

Rogers Corners Herdman 4-H club Thursday, May 13, Linia Community Hall.

Special meeting, Olive Chapter No. 198, O.E.S. Wednesday, May 19, 8 p.m. Collingwood Chapter No. 184 of Toledo, O., will exemplify the degrees.

Junior and Senior High PTO Wednesday, May 19, 8 p.m. at High school cafeteria. Final meeting of the year. Election of officers.

Rummage Sale at Sylvan Town Hall May 14 and 15 sponsored by St. Barnabas ECW. Open Friday 9 a.m.-8 p.m.; Saturday 9 a.m.-5 p.m. adv.46

Past Matrons of the Order of the Eastern Star at the home of Mrs. Henry Leggett Thursday, May 13, for a pot-luck luncheon at 12:30 p.m. Election of officers. adv.47

C. of C. To Meet
Tuesday Noon

Chelsea Chamber of Commerce, which formerly held its regular monthly meetings in the evening, has changed the time to 12:30 p.m., every third Tuesday of the month at the Congregational church. It was announced by President Robert Barlow, as a reminder to members.

A special meeting of the C. of C. board of directors took place yesterday at 8 a.m. at Schumm's Restaurant to discuss plans for the coming year and fill the presently vacant position of secretary.

Headed by Barlow, the officers are John Merkel, vice-president, and Martin Steinbach, treasurer. Board members include Leon Meabon, John Pierson, Clarence Pendley, Rolly Spaulding, Charles Lancaster and Carl Schneider.



MICHAEL P. CHURCH

U-M Official
Will Address
Library Friends

A special program has been arranged by the Chelsea Friends of the Library following their meeting Monday, May 17, at 8 p.m. Slides will be shown and a discussion, "Seeing is Believing."

An "Excursion into the World of Art," will be presented by Michael P. Church, assistant director for the cultural activities in the Extension Service at the University of Michigan and lecturer in art at the College of Architecture and Design.

Church is a member of the Detroit Art Council, serves on the Ann Arbor Civic Arts Commission and for the past 10 years, has been state secretary of the Cultural Activities Board for Michigan Week.

Library Friends are reminded that payment of annual dues is being handled through Mrs. Eldon Gorton, treasurer. They are \$1 for private citizens, \$5 for professional and retail persons, \$10 for patron membership, and \$25 for industrial, and \$50 for life membership. Checks made out to Mrs. Gorton, may be mailed to the Chelsea Friends of the Library, McKune Memorial Library, Chelsea. Everyone interested in working for the library is eligible for membership.

The May 17 meeting is open to the public.

Eugene Martin Named
New Commander of
American Legion Post

New officers elected at last Thursday's meeting of Herbert J. McKune Post 31, the American Legion were headed by Eugene Martin, new commander.

Others on the slate include Keith Boylan, first vice-commander; Ralph Guenther, second vice-commander; David Stotter, financial officer; Alex Ersten, sergeant-at-arms; Merle Barr, Sr., historian; Paul Maroney, chaplain; Duane Hall, adjutant; and Charles Smith and Charles Spencer, executive committee.

The next meeting will be held Thursday, June 3, at 8 p.m., at the American Legion Home.

Tornado Victim Answers

Curiosity and friendly concern prompted Mrs. C. C. Ordway, 785 Dancer Rd., to write to the people whose address was printed on some of the stationery left in the wake of the recent tornado. In response, the woman from Elkhart, Ind., wrote that their house was destroyed—with only the walls left partially standing—ancient maps and a 100-year-old shrub were completely uprooted but the several family bibles and more important books were curiously unharmed. Neither was the family—they weren't home at the time.

WINDOW
BROKEN?

Your Auto-Owners Agent goes ALL-OUT FOR YOU

COMPLETE TAILORED PROTECTION FOR YOUR CAR, HOME, PERSONAL, BUSINESS. Call

A. D. MAYER AGENCY

"Your Protection Is Our Business" 115 Park St. Chelsea, Mich. Phone: Office 479-5061 Res.: GR 5-4201

Auto-Owners INSURANCE

DEATHS

G. Edward Nordman

Former Chelsea Resident Dies at Mt. Clemens

G. Edward Nordman, 71, a former Chelsea resident, died Monday at Mt. Clemens General Hospital where he had been a patient for three weeks. He was a former pharmacist but in recent years had been in the real estate business. His home was at Romeo. Born in Lima township, he was a son of George W. and Alice Guninan Nordman.

Survivors of Mr. Nordman are his widow, Marie; a daughter, Mrs. Rosemary Desmond of Romeo; two sisters, Mrs. Charles Bycraft of Chelsea and Mrs. Mary Koch of Brighton; two brothers, Frank of Byron and Paul of Lawton; and five grandchildren.

Funeral services are being held at 10 a.m. Thursday (today), at St. Clement's Catholic church in Romeo. Burial will be at Mt. Olivet cemetery, Detroit. The rosary was recited Wednesday evening at Roth's Funeral Home, 296 S. Main, Romeo.

Choir Travels to Willis
For Combined Concert

Chelsea High school choir joined the Lincoln High school choir for a concert at the latter school at Willis, Wednesday afternoon.

The annual spring concert by the Chelsea High school choir, with Paul Schultz conducting, is scheduled to be held in the Chelsea High school auditorium on Sunday, May 23, at 3 p.m.

BIRTHS

A daughter, Julie Ann, Tuesday, May 4, at St. Joseph Mercy Hospital, Ann Arbor, to Mr. and Mrs. Jack Patrick, 218 E. North St.

William J. Fox

Dies Tuesday Evening Following Long Illness

William J. Fox, who had made his home at 720 Island Lake since his marriage July 27, 1890, died Tuesday evening at a Chelsea nursing home following a long illness. He was 93 years old.

Born May 31, 1871, in Germany, he came to the United States with his parents, William and Sophia Fox, when he was two years old. The family settled at Flat Rock where he lived until young manhood when he came to the Chelsea area and was employed on farms here.

On July 27, 1890, in Detroit, he was married to Johanna Mostor who survives. Both have been members of St. Paul's United Church of Christ for many years.

Surviving in addition to his widow, are a son, Henry J. Fox of Detroit; a daughter, Mrs. Ralph Cannon (Clara) of North Territorial Rd., Chelsea; one granddaughter, Mrs. Joanna M. Alter of Detroit; and two great-grandsons, Craig and Glenn Alter, also of Detroit.

Funeral services will be held at 3 p.m. Friday at the Burghardt Funeral Home with the Rev. R.A.J. Livingston officiating. Burial will take place at Oak Grove cemetery. Friends may call at the funeral home.

Car Stolen Monday

The theft of a 1963 brown Chevrolet was reported stolen from Spaulding Chevrolet Sales on N. Main St. Monday night according to Fred Klink, Jr., salesman.

The vehicle has not yet been recovered. It is suspected that two escapees from the eastern part of the state, who are missing from Cassidy Lake Technical School, could possibly be involved.

Telephone Your Club News To GR 5-3581

Methodist
Home Hosts
Kiwanis Club

A discussion of the bands in various Chelsea schools and a musical program were featured at the meeting of the Kiwanis Club at the Chelsea Methodist Home Monday evening.

Special guests introduced by the superintendent of the Home included Chaplain William A. Johnson and Mrs. Johnson, the Rev. Leroy Lord and the Rev. M. J. Betz, both past superintendents of the Home; Mrs. John M. Fall, wife of the assistant administrator; G. A. Ziegler, a long-time resident of the Home; and his own wife, Mrs. Edwin J. Weiss.

Toastmaster Charles Cameron introduced Bruce Galbraith, Chelsea High school band director, and his assistant, Martin H. Gurvey. According to Galbraith, there are 94 students from CHS in the band at present, of whom only seven are seniors. There are 40 eighth grade students playing, 49 in the seventh grade, 75 in the sixth and 65 in the fifth.

Performing in the program were Chris Marzee, sixth grader, in a trombone solo by Peiz; Crystal Impola, seventh grader, clarinet solo by Mozart; Diane Stoffer, Sarah Lindauer and Barbara Bauer, eighth graders, composition for flute by Buchetel; and Mike Funderburgh, ninth grader, cornet solo by Anderson. James Daniels was program chairman.

Michigan Week will theme next Monday's meeting of the Kiwanis Club at the First Congregational church. Attending as special guests will be the visiting mayor and his group, village officials and members of the Chelsea Michigan Week committee.

Mr. and Mrs. A. W. Lyons of Kalamazoo spent Sunday with the latter's mother, Mrs. Henry Werner and all attended the Mothers' Day dinner at the Manchester Knights of Columbus Hall.

Library Donors
During Past Year
Acknowledged

Donors to the McKune Memorial Library of money or services in 1964 are listed by the Library Board as follows:

Miriam Hale, McKune Memorial Fund; the Lateral Estate; the Woman's Club of Chelsea; Mrs. Edmund Kayser; Miss Doris Schumacher; Mrs. Russell Bernath; Mrs. Edwin Eaton; Mrs. Daphne Treado; Miss Beverly Smith; Blue Ribbon 4-H club.

Gly Scouts Penny Graham; Tina Lindauer, Sharon Sutter, Barbara Watson and Judy Schneider; Friends of the Library; Girl Scout Troop 58; Chelsea Boy Scouts; Harold A. Jones.

Personal Notes

Mr. and Mrs. George Knoll spent from Friday until Monday visiting Mr. and Mrs. Beecher Risner and family, at Trenton, O.

Following a week in Nassau and another in Miami, Carol McCalla, daughter of Mr. and Mrs. Ralph McCalla, 12875 Old US-12, will resume studies at St. Joseph Mercy Hospital in Ann Arbor Monday. Carol is studying to become an x-ray technician.

Attending an open house in honor of Timothy Steel's First Communion, given by Mr. and Mrs. Joseph A. Steele of Ann Arbor, Sunday, were his grandmother, Mrs. Bertilla Forner, Mr. and Mrs. Keith Boylan and their family, and his godparents, Mr. and Mrs. Robert Steele and their son, all from Chelsea. Also there were Mr. and Mrs. Robert Forner and their family, of Francisco, and the James Foxalis and daughters, of Detroit.

SCHOOL AID BILL

President Johnson signed the billion-dollar school aid bill April 11, outdoors by the one-room schoolhouse he attended as a child. The President said he believes the bill will mean more to the future of the nation than any law he'll ever sign.

FFA Judging Teams

(Continued from page one) received a Silver award out of competing.

The dairy judging team of L. Barnhill, Jim Grissom and Kushmaul received a Gold award and second place out of 66 teams. Their score was 900 points out of a total of 1,050, against the school's 905. As winner in event, the Rockford chapter represent Michigan in the finals in Waterloo, Ia., in October. If they are unable to attend, opportunity will go to the Chapter. Out of the 118 judging, Barnhill was 2nd, Kushmaul, 20th; and Grissom, 45th.

Correction

In the obituary of Emory man in the May 6 issue of Standard, his birthdate was incorrectly given. He was born 20, 1895. Also omitted was name of Clarence Lehman, of three surviving brothers.

School Board Meeting

The date for the regular meeting of the Chelsea School Board has been changed.

Instead of meeting on the usual date (May 18) the board will hold the meeting on Wednesday evening, May 19.

The U. S. Navy's USS prize inaugurated a new by carrier warfare in November by introducing night fighting the invasion of the Gilbert Islands.

Kiwanis
Quotes

"Card playing can be a 'pensive'—but so is any game where you hold hands." —AUTHOR UNKNOWN

Now is the time to

PAINT

And Now Is the Time
To Try

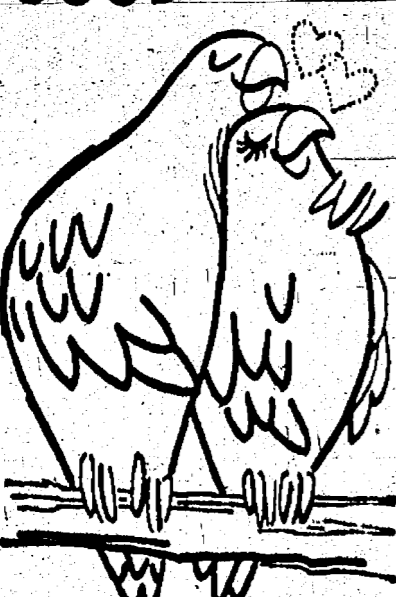
ROX

AMERICA'S FINEST
HOUSE PAINTKISS peeling
paint problems
GOODBYESPECIALLY
PRICED

at

\$6.95 gal.

Dries in 1/2 Hour!



DIAL GR 5-3391

CHELSEA
LUMBER CO.Gambles
The Friendly Store

WHAT A BARGAIN!

The "Royal 40" costs you only \$9.47 per cu. ft. of storage... while others with no more storage space (or even less) cost as much as \$13.80 per cu. ft. That's a TREMENDOUS SAVING...

A SAVING OF
\$91.77!TRADE!
Your Used
Freezer's Worth
More at
GamblesSAVE
\$40
OUR REG. LOW
PRICE \$239.95

Triple Warranty

1. Against defects in sealed systems for five years.
2. Against defects in all other parts for one year.
3. Against loss of frozen food to \$300 for 5 years.

Fabulous CORONADO
"ROYAL 40" FREEZER740 POUNDS OF FOOD CAN
BE STORED IN THIS
21 CU. FT. FREEZER!\$198.88
Easy
Terms

NO DOWN PAYMENT

Designed for Our 40th Anniversary
Year, the "ROYAL 40" is an All Feature
Custom Deluxe 21 Cubic Foot Freezer!

It's a BIG CAPACITY freezer! The size freezer the American family of today wants and needs. With the Coronado "Royal 40" you can save through quantity food and meat purchases. You'll be able to buy weekly specials in quantity and still have reserve space to stock up on low-price "in season" foods that become family favorites the year 'round. Serve your family better, work, too.

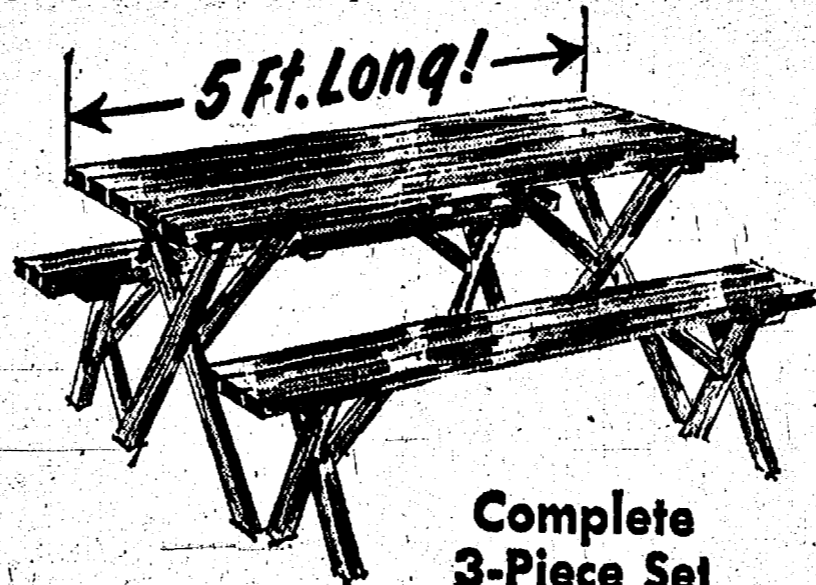
The "Royal 40" is built to last, with chip-proof interior and tough baked enamel exterior. Flexible counter-balanced lid opens easily—stays put, seals tight. It's child-safe! Come in—see the "Royal 40" today!

2 BASKETS PLUS DIVIDER

Two big baskets and a movable divider make food storage easy—keep frozen or meat.

DRI-WALL CONSTRUCTION

More efficient heat transfer and dissipation stops cabinet sweating. Another Coronado 111!



REDWOOD PICNIC SET

Seasoned California redwood picnic table and benches are pre-drilled, ready to assemble. 6-FT. REDWOOD SET \$23.95

Complete
3-Piece Set\$19.95
No
Money
Down

- Beige Vinyl Headboard
- Multi-Coil Sleep Set

Terrific
Value!

Complete! HOLLYWOOD BED

You get a multi-coil mattress, matching box spring, headboard, 6 walnut finish wood legs—all for one low price!

\$49.95
No
Money
Down

ZEBBO 202

NOW ONLY
\$2.99

Famous push-button casting reel, with anti-reverse drag and 100 yds. 10-lb. mono.

GARDEN RAKE

\$1.66

Bow style, 14" wide, 1" tooth, 4 1/2' handle.

GARDEN HO

\$1.38

Has 6 1/2" welded carbide steel blade. 4' ash handle.

GAMBLES—CELEBRATING OUR 40th YEAR OF GROWTH WITH YOU

A SUPERMARKET THAT IS JUST A LITTLE BETTER

STORE HOURS:
Monday thru Wednesday 9 a.m. to 6 p.m.
Thursday & Friday 9 a.m. to 9 p.m.
Saturday 8 a.m. to 9 p.m.
OPEN SUNDAY 10 a.m. to 6 p.m.

Stop & Shop

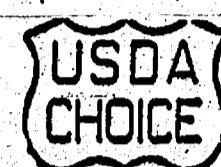
14901 Old U.S.-12
Corner at M-52
Chelsea

Our Friendly,
Competent Meat
cutting experts
are always on duty



All Stop and Shop Meat Is
Cut to Customer's Specifications

Select your Meat
the same way
your Mother did



"Triple R Farms" Tender, Delicious Cube Steak . **99¢** Lb.
"Triple R Farms" U.S.D.A. Choice Sirloin Steak . **99¢** Lb.
"Triple R Farms" U.S.D.A. Choice Chuck Steak . **69¢** Lb.
"Triple R Farms" U.S.D.A. Choice Rib Steak . **99¢** Lb.
"Triple R Farms" U.S.D.A. Choice Ground Round **79¢** Lb.

Morrell's Pride Skinless Weiners 1-Lb. Package **49¢**
Lean, Tender Boston Butt Pork Roast **39¢** Lb.
Lean, Meaty Tender Pork Steak **49¢** Lb.
Stop & Shop's Homemade Pork Sausage **39¢** Lb.
Lean, Tender, Boneless and Cubed Pork Cutlets . **69¢** Lb.

"TRIPLE R FARMS"
U.S.D.A. CHOICE
Rump or Sirloin Tip
ROAST
99¢ Lb.



"TRIPLE R FARMS"
U.S.D.A. CHOICE
Boneless
ROUND STEAK
99¢ Lb.

Tree Sweet Frozen
Lemonade 6-Oz. Can **10¢**
Sealtest Lower Calorie
Ice Milk 1/2 Gallon **39¢**
Hunt's Choice
Pork & Beans 1-Lb. Can **10¢**
Cherry Star Imported
Mandarin Oranges 4 11-Oz. Cans **89¢**
Golden, Delicious
Bananas **10¢** Lb.
Libby's Rosedale
Sweet Peas 6 1-Lb. 1-Oz. Cans **79¢**
Nabisco
Ritz Crackers 1-Lb. Box **39¢**
Baby Food, Strained Varieties
Gerber's 3 4 1/2-Oz. Jars **25¢**

"TRIPLE R FARMS" U.S.D.A. CHOICE

ROUND STEAK 89¢

Bondware All Purpose White
Paper Plates 150 Count Pkg. **97¢**
Hort Fancy
Tomato Juice 1-Qt. 14-Oz. Can **26¢**
Goya
Salline Crackers 1-Lb. Box **19¢**
Oaken Keg
Sweet Pickles 2-Lb. Jar **39¢**

All Popular Varieties

FAYGO
12-oz. Can **7¢**

Kraft's Parkay
Margarine 4 1-Lb. Cartons **\$1.00**
Kraft's—Delicious for Snacks
Jar Cheese 4 5-Oz. Jars **\$1.00**
Kraft's Jet Puff
Marshmallows 2 1-Lb. Bags **49¢**
Pennsylvania Dutchman
Mushrooms 5 4-Oz. Cans **\$1.00**
Jack Frost Instant
Chocolate Milk Shake 18-Oz. Pres-sure Can **57¢**
Wilson's Grade "A"
Half & Half Quart Carton **39¢**
Kraft Philadelphia
Cream Cheese 8-Oz. Pkg. **29¢**
Hart California
Barlett Pears 1-Lb. 13-Oz. Can **29¢**

KRAFT'S CHEESE SPREAD
VELVEETA
2-Lb. Box **79¢**

WILSON'S GRADE-A
Cottage Cheese
ALL GRINDS MAXWELL HOUSE
Coffee

STOP & SHOP'S ENRICHED SLICED
White Bread

SHAMROCK GRADE "A" COUNTRY FRESH
Large Eggs

PIK-NIK RICH
Tomato Catsup
BANQUET FROZEN BEEF, CHICKEN, TURKEY
Pot Pies

1-Lb. Carton **19¢**

1-Lb. Can **66¢**

6 1-Lb. 4-oz. Loaves **1.00**

All White, Dozen in Carton **39¢**

14-oz. Bottle **13¢**

8-oz. Pkg. **15¢**

Discount Prices
on all
HEALTH AND BEAUTY AIDS

KRAFT'S SALAD DRESSING
Miracle Whip
Quart Jar **44¢**

WE RESERVE
THE
RIGHT
TO
LIMIT
QUANTITIES

Prices effective Wednesday,
May 12 thru Tuesday, May
18, 1965.

Services in Our Churches +

ST. BARNABAS EPISCOPAL CHURCH
1400 Old US-12
Rev. J. A. Smucker, Vicar
May 16—Holy Communion
9 a.m.—Morning Prayer
Church school.

LUTHERAN CHURCH
(Rogers Corners)
Rev. C. J. Renner, Pastor
May 15—Junior catechism
9 a.m.—Junior catechism
May 16—Sunday school.
9 a.m.—Worship service.
10:30 a.m.—Singing Unto The Lord A Song.

NORTH LAKE METHODIST CHURCH
Rev. George Nevin, Pastor
May 16—Worship service.
9 a.m.—Sunday school.
10 p.m.—MYF meeting.

ST. CHURCH OF CHRIST SCIENTIST
Washburn Ave., Ann Arbor
May 16—Sunday school.
9 a.m.—Morning service.
10 a.m.—Morning service.
10:30 a.m.—Morning service.

FIRST UNITED METHODIST CHURCH
UNADILLA
Rev. John Jeffrey, Pastor.
May 16—Church school.
9 a.m.—Worship service.
10:30 a.m.—Choir practice.

BRLO VILLAGE CHURCH
Washburn Ave., Ann Arbor
May 16—Sunday school.
9 a.m.—Worship service.

NORTH SHARON UNITED BIBLE CHURCH
Washburn Ave., Ann Arbor
Rev. Paul Collins
May 16—Sunday school.
9 a.m.—Worship service.
10:30 a.m.—Evening service.

FIRST ASSEMBLY OF GOD CHURCH
1400 Old US-12
Rev. Harold S. Bilotta, Pastor
Sunday, May 16—
9:45 a.m.—Sunday school.
11:00 a.m.—Worship service.
7:00 p.m.—Evening service.

ST. JOHN'S EVANGELICAL AND REFORMED CHURCH
(United Church of Christ)
(Francisco)
The Rev. J. Tracy Luke, Pastor
Sunday, May 16—
10:00 a.m.—Worship service.
11:00 a.m.—Church school.
7:00 p.m.—Youth Fellowship.

GREGORY BAPTIST CHURCH
The Rev. Millard Heron, Pastor
Sunday, May 16—
10:00 a.m.—Worship service.
11:15 a.m.—Church school.
6:30 p.m.—Baptist Youth Fellowship.
7:30 p.m.—Evening worship.

ST. PAUL'S EVANGELICAL AND REFORMED CHURCH
(United Church of Christ)
The Rev. Donald G. Baeke, Interim Pastor, Ph. 475-7215
Thursday, May 13—
7:30 p.m.—Junior choir rehearsal.
8:00 p.m.—Senior choir rehearsal.
Saturday, May 15—
9:30 a.m.—Youth choir rehearsal.
10:00 a.m.—Catechism class.
Sunday, May 16—
9:30 a.m.—Church school.
10:45 a.m.—Worship service.
Sermon topic: "Pure Religion."
James 1, verses 17-22.
Tuesday, May 18—
1:30 p.m.—Joyce Louise Circle at the home of Joyce Dietle, 228 Washington St.
1:30 p.m.—Merry Jean Circle at the church.
7:30 p.m.—Ruth Circle at the home of Eleanor Wank, 202 Lincoln St.
Wednesday, May 19—
1:00 p.m.—Esther Circle at the church hall. Hostesses: Lulu Beutler, Esther Nicolai, Martha Weinmann.
Thursday, May 20—
9:00 a.m.—Koinonia Circle at the home of Arlene Schreen, 3854 Waltrous Rd.

CONGREGATIONAL CHURCH
(United Church of Christ)
The Rev. R. A. J. Livingston, Pastor
Thursday, May 13—
4:00 p.m.—Confirmation class.
4:00 p.m.—Junior choir.
Sunday, May 16—
10:00 a.m.—Worship service and church school.

ST. JOHN'S EVANGELICAL AND REFORMED CHURCH
(United Church of Christ)
(Rogers Corners)
The Rev. J. Tracy Luke, Pastor
Sunday, May 16—
9:30 a.m.—Worship service.
10:30 a.m.—Sunday school.

FIRST METHODIST CHURCH
The Rev. James A. Craig, Pastor
Thursday, May 13—
7:00 p.m.—Youth choir.
7:30 p.m.—Curriculum preview at Brighton.
7:30 p.m.—Adult superintendent at Stockbridge.
8:00 p.m.—Senior choir.
Friday, May 14—
6:30 p.m.—Mother-Daughter banquet, social center.
Saturday, May 15—
12:30 p.m.—Older Adult potluck, social center.
8:30 p.m.—Christian Home Group at the Ben Bowers.
Sunday, May 16—
9:00 a.m.—Church school for all ages.
10:00 a.m.—Church school nursery to grade 4.
Monday, May 17—
8:00 p.m.—Official Board, educational unit.
Tuesday, May 18—
9:45 a.m.—WCS Conference meeting, Ann Arbor, First Methodist church.
Wednesday, May 19—
4:00 p.m.—Fifth grade confirmation class, educational unit.

Just A Minute...

By the Rev. James A. Craig

The crisis in American families is seen in increasing divorce rates and a growing number of marriage counselors. For the most part these are only numbers. Even so we can't ignore the lists that appear too regularly in the newspapers.

Divorce rates increase in numbers that only become alarming when our friends or members of our families are among them.

Heads shake in amazement and confusion at why this should be so. The mystery may not be as deep as we sometimes think. Even so, no one will argue that it is shallow.

For one thing, our perspective is too often distorted. We tend to think about ourselves too much. There is no wrong here except that we should think as much about others.

Some words in the Bible remind us of this way of life. Jesus spoke to us of loving and praying for enemies. How much more should this apply to those with whom we live.

St. Paul reminds us of a couple of things that will help the family. First, "no one is to think of himself more highly than he ought to think; but should prefer others." We would rather that others prefer us.

Second, we are to "be subject to one another out of reverence for Christ." We would rather others be subject to us.

It may not be easy. Nobody said it should be.

But the marriage vows at least insist that we try.



SEN. GILBERT BURSLEY

Senator Bursley Will Address Area WCTU Convention

Election of officers and reports from the various presidents will highlight the Friday convention of the Women's Christian Temperance Union of Washtenaw County at the First Methodist church, 1951 Newport Rd., Ann Arbor. The all-day program will begin at 9:45 a.m.

Guest speaker, Senator Gilbert Bursley, will talk at the afternoon session. Mrs. Addison Osgood of Erie, Mich., WCTU district president, will preside at the election and installation ceremony. A memorial service and a white ribbon dedication will also be held.

This is an open meeting to which the public is invited; coffee will be provided for a sack lunch.

WHO KNOWS?

1. What was the late Ty Cobb's full name?
 2. What was his record?
 3. Approximately how many died last year from accidents in the home and public places?
 4. When did spring begin?
 5. Who wrote, "To err is human, to forgive divine"?
 6. If someone referred to your "embonpoint," to what would they be referring?
 7. What is another name for the Big Dipper?
 8. What American President was a citizen of France?
 9. When was the famous Sphinx built in Egypt?
 10. How many times did Henry VIII of England marry?
- (Answers on page 10)

NEW CIA CHIEF

President Johnson has named retired Admiral William F. Rayburn Jr., a native of Texas, as chief of the Central Intelligence Agency. He succeeds John A. McCona who is returning to private life.

Mental health facilities through-

out the state hold Open House during Mental Health Week. Plan now to attend the one nearest you. With passage of Michigan's Public Act No. 54, communities and counties will be caring for the mentally ill and the mentally retarded in their own area. This will speed recovery for the mentally ill and keep intact community and family ties.

Older Youth 4-H Awards Announced

Selections of the Older 4-H Youth awards were made this past week by the county 4-H Council. Some 4-H'ers won trips, and others will enter further competition on the District and State level.

Chosen to represent Washtenaw county at the National 4-H Citizenship Shortcourse in Washington D.C., June 20-26, were Richard McCalla, Bill Wenk, Don Hindorfer, of Chelsea; Janet Kemner of Manchester; Jane Kingston of Ypsilanti; Judy Thompson, Linda Neal and Mary Keleman of Willis; and Karen O'Neal of South Lyon. These nine delegates will be part of a group of 40 4-H'ers attending the conference from Michigan.

Two youth and one 4-H leader will attend Camp Shaw, the state 4-H Conservation Camp in the Upper Peninsula. Recipients for this conservation award are Mrs. Raymond Kingston, Ypsilanti; Debbie Fidler of Ypsilanti and Mike Kirk of Manchester.

In an award records program 25 4-H'ers will be having their 4-H achievement records considered on a 13-county district level of competition. One winner in each project area will be named from the district to compete at the state interviews in August at state 4-H show.

Chuck Avis, Ann Arbor; Bob Knapp, Ypsilanti; Cheryl Henes and Judy Thompson were selected to represent the county in the All-Achievement category. Cheryl Henes' report will also be submitted for Junior Leadership.

In the home economics areas Janet Kemner, Manchester, was selected for foods and nutrition; and in clothing, Cheryl Henes, Saline in dairy foods; Debby Fidler of Ypsilanti for home improvement; and Kay Gordon, Saline in food preservation.

In the agricultural projects Linda Neal, Willis, was selected for beef; Phil Gordon, Saline, for dairy; Kevin Kirk, Manchester for field crops; Richard McCalla, Chelsea for swine; Mike Kirk, Manchester for tractor; Judy Thompson, Willis for sheep and Cheryl Henes in poultry.

Conservation winners are Jane Kingston, Ypsilanti and Bob Knapp, Ypsilanti. Jane also received the entomology and photography county award and Bob Knapp the electrical award.

Horticulture award went to Judy Thompson of Willis. Duane Strieter, Saline, was recognized for forestry project. Linda Minges, Ann Arbor received the wood-working handicraft honor.

Others submitting records for district competition are Tom Brink, Ann Arbor, dog project; Wayne Luckhardt, Saline, the safety project.

Receiving honorable mention for their 4-H work in projects in which there are no state awards programs are: Judy Thompson, Willis, leather and vegetable garden project; Laurie Reddeman, Chelsea; flower garden; Mary Uphaus, Manchester, knitting; Judy Wiseman, Chelsea personal improvement; and Gerald Steeb, Ann Arbor, rabbits.

Warm weather months are the worst of the year for cases of child molesting, say the State Police. Parents should insist that youngsters be with companions when playing outdoors. It's safer.

LOOK AHEAD

When you finish papering or painting a room use a ball point pen to jot down on a strip of adhesive tape exactly how many rolls of paper or quarts of paint were required. Place the tape on the top edge of a door frame or behind a picture in the room where it is out of sight, yet always handy next time you re-do the room.

TAKE YOUR PICK

There are over 1200 different colors of paint available for home decorating — and a paint for every painting need.

The Coast Guard pioneered in the use of helicopters and in November 1943 set up a helicopter training base at the Coast Guard Air Station at Floyd Bennett Field in New York.

NOTICE OF LAST DAY OF REGISTRATION School Election

Notice of the Last Day of Registration of the Qualified Electors of CHELSEA SCHOOL DISTRICT WASHTENAW and JACKSON COUNTIES CHELSEA, MICHIGAN

TO THE QUALIFIED ELECTORS OF SAID SCHOOL DISTRICT: WHO MAY VOTE?

Section 532 of Act 269, Public Acts of Michigan, 1955, provides as follows:

"The Inspectors of Election at an Annual or Special Election shall not receive the vote of any person residing in a registration School District whose name is not registered as an elector in the City or Township in which he resides..."

LAST DAY OF REGISTRATION

The last day on which persons may register with the appropriate Township Clerks to be eligible to vote at the Annual School Election called to be held on Monday, June 14, 1965 is

MAY 17, 1965

Persons registering after 5:00 o'clock p.m., Eastern Standard Time, on the said May 17, 1965, are not eligible to vote at said Annual School Election.

BOARD OF EDUCATION NO LONGER TAKES REGISTRATIONS

Under the provisions of Chapter 8 of Act 269, Public Acts of Michigan, 1955, registrations will not be taken by school officials and only persons who have registered as general electors with the Township Clerk of the Township in which they reside, are registered school electors. Persons planning to register with the respective Township Clerks must ascertain the days and hours on which the Clerk's office is open for registration.

This Notice is given by order of the Board of Education of Chelsea School District, Washtenaw and Jackson Counties, Chelsea, Michigan.

Dated: May 3, 1965.

ROBERT G. FOSTER
Secretary, Board of Education.

CHOICE VARIETY of SPRING VEGETABLE and FLOWER PLANTS

POTTED PLANTS	
Geraniums, 2 1/2"	25c
Geraniums, 4"	60c, or \$6.50 doz.
Hardy Mums	25c
Tuberous Begonias	60c
FLOWERING PLANTS	
45c Doz. - Half Flat (4 doz. plants)	\$1.40
Whole Flat (8 doz. plants)	\$2.75
★ Petunias	★ Salvia
★ Zinnias	★ Snapdragons
★ Asters	★ Carnations
★ Marigolds	★ Alyssum
★ Moss Rose	★ Delphinium
★ Phlox	★ Ageratum
★ Verbena	★ Lobelia
	★ Dwarf Dahlias
VEGETABLE PLANTS	
40c Doz. - Half Flats (4 doz. plants)	\$1.00
Whole Flat (8 doz. plants)	\$2.00
★ Tomatoes (Most popular varieties)	★ Broccoli
★ Peppers	★ Sweet Onions
★ Cabbage	★ Egg Plant
★ Brussell Sprouts	★ Head Lettuce
	★ Cauliflower

OPEN EVERY DAY UNTIL 9 P.M.

CHELSEA GREENHOUSE
MEMBER FTD — WE TELEGRAPH FLOWERS ANYWHERE
7010 LINGANE ROAD
PHONE GR 9-6071

SEE THE GENERAL MOTOR *Futura* NEW YORK WORLD'S FAIR

If you're completely satisfied with humdrum driving stay out of tiger country.

This is the home of the GTO, the Grand Prix and Bonneville, the Le Mans and 2+2, the Catalina and Tempest. Bucket seats and luxury flourish. People seen entering tiger country never leave. You've been warned.

SEE THEM ALL AT YOUR AUTHORIZED PONTIAC DEALERS.

HARPER SALES & SERVICE, INC.
118 W. MIDDLE STREET CHELSEA, MICHIGAN

FIESTA SALE
personalized stationery by Rytex \$4.99 (regularly \$8.00)

200 single sheets
100 envelopes

For tenoritas and seniors
is a wonderful new fiesta
letter paper. Seven colors
paper to choose from.
White, Rancho Grey, Rio
Pattory Pink, Mesa Green,
Royal Orchid, or Patio Beige.
Colors of ink... Blue, Grey,
Violet, Green or
any. Your name and address
imprinted in choice of
color.

YOUR favorite color
combination. For gifts, give
the special single HIS or HER
color combination with his or
her name and address.

The Chelsea Standard

Rural Correspondence

• Items of Interest About People You Know •

NORTH FRANCISCO

Marilyn Hinderer spent the week-end at the home of her grandmother, Mrs. Nina Wahl, Friday evening. They attended a mother and daughter banquet at Rogers Corners. On Sunday Mrs. Wahl was one of the mothers and daughters honored at a steak roast at the home of Mr. and Mrs. Loren Hinderer.

Mrs. Leonard Loveland was a Sunday dinner guest at the home of Mr. and Mrs. Glen Rentschler. Sunday evening visitors of Mrs. Leonard Loveland were Mr. and Mrs. Dillman Wahl, Mr. and Mrs. Dillman Wahl, Mr. and Mrs. Harley Loveland, Mr. and Mrs. Dale Loveland and Barbara and Mr. and Mrs. Lofey Loveland and family.

Mrs. Harold Wahl was a caller one day last week at the home of Mrs. Leonard Loveland.

Mr. and Mrs. Arthur Schiller and daughters spent Sunday evening with Mrs. Eva Notten.

Mr. and Mrs. Jerry Herriek and children were Sunday dinner

guests of Mrs. Herriek's parents, Mr. and Mrs. Dillman Wahl.

Mr. and Mrs. Roy Miller called Friday evening at the home of Mr. and Mrs. Nelson Peterson. Saturday evening at the Jack Youngs', and Sunday evening at the home of Mr. and Mrs. Douglas Hoppe.

Dianna Peterson of Grass Lake spent from Friday until Sunday at the home of her grandparents, Mr. and Mrs. Nelson Peterson.

Mr. and Mrs. Chester Davis and family, of Toledo, O., and Mr. and Mrs. Henry Notten and family of Michigan Center spent Sunday afternoon with their parents, Mr. and Mrs. Chester Notten.

Mr. and Mrs. Chris Kachele spent the week-end at Hastings.

FOUR MILE LAKE

Mrs. Mary Reames of Ypsilanti, Mrs. William Hafter and Mr. and Mrs. Rudolph Weirich of Chelsea were Mother's Day dinner guests of Mr. and Mrs. William Weirich.

Mr. and Mrs. Donald McElide and Barbara Mark, all of Detroit, were Mother's Day guests of Mr. and Mrs. Harvey Fischer. Afternoon visitors were Mr. and Mrs. Robert Fischer and family, of Ann Arbor.

Mr. and Mrs. Conrad Turner of Dexter were Mother's Day guests of their daughter, son-in-law and family, Mr. and Mrs. Jerald Heydlauff.

Mr. and Mrs. Earle Pettibone were Mother's Day dinner guests of Mrs. George Parker and son, Everett, of Geddis.

Mr. and Mrs. Robert Blisseth and family, of Napoleon, were Saturday visitors of her parents, Mr. and Mrs. Clarence Moore.

Mr. and Mrs. Gary Wright and family, Mr. and Mrs. Donald Wright and daughters, of Chelsea, Mr. and Mrs. Alan Elasser and sons, of Dexter, were Mother's Day guests of Mr. and Mrs. Burton Wright.

Mr. and Mrs. Ezra Heininger and Mrs. Ethel Wahl were Mother's Day dinner guests of Mr. and Mrs. Alvin Wahl and family. Marvin Fischer of Ypsilanti and Scherrill Reed and sister, Tammy, of Whitmore Lake, were Saturday dinner guests of Mr. and Mrs. Harvey Fischer.

Margaret Moore of Ann Arbor visited her parents Mr. and Mrs. Clarence Moore on Mother's Day.

Farm Bureau Opposes Proposed Processing Tax

The present version of the Administration's farm bill puts both farmers and consumers over a barrel, local farmer Don Ruhlig, of Michigan Farm Bureau Board, said today.

"Proposals in this bill, now before Congress, would raise the price of wheat and rice products to the consumer. It masquerades under the banner of shifting more toward an emphasis on the market system, which, in fact, it does not. Actually, it would be very destructive to the market system, Ruhlig said.

"The new proposal would use a processing tax to raise prices to our consumers. It would use government surpluses to fix ceilings on the market prices received by farmers. It would make farmers dependent on government payments, and would permit the Secretary of Agriculture to determine support prices, payment rates, and the percentage of the crop that is to be eligible for payments.

"Consumers are being asked to pay \$300 million in higher bread and rice prices in order to continue a program of regimentation that makes farmers subject to the whims of the Secretary of Agriculture," Ruhlig said.

"Consumers should not be misled into thinking that this is a new approach to the farm problem. There is need for action to help farmers get better prices in the market place, but it is quite another thing to ask consumers to pay higher food prices to continue a program aimed at keeping producers dependent on government handouts," Ruhlig said.

The art of intelligent writing is to make the words so simple that no one can misunderstand you.

make your own TV TEST

1. She's Mrs. Daniel Boone. Sue Blaine Ann Anders Patricia Blair
2. She has title role in "Karen" series. Debbie Watson Mimi Scott Susan Webb
3. Star of Hitchcock's "The Monkey's Paw." Ann Sothern Bette Davis Jane Wyatt
4. Program host on "Say When" series. Hugh Downs Art James Bill Leyden
5. He's seen on "Wild Kingdom." Chris Schenkel Bob Palmer Jim Fowler

ANSWERS: Blaine, Watson, Sothern, Downs, Schenkel.

MAUSOLEUMS • MONUMENTS
BRONZE TABLETS • MARKERS

BECKER MEMORIALS
6033 Jackson Road
ANN ARBOR, MICHIGAN

Put All Your Corn in the Crib



TOUGH years for corn are ahead. Because DeKalb Break-Through Hybrids are bred to stand the stresses of muddling farming—thick planting and heavy fertilization—bred to stand, hold their ears and produce profitable yields. Next time, plant ALL DEKALB.

Depend on DEKALB
More Farmers Plant DEKALB Than Any Other Brand.
"DEKALB" is a Registered Brand Name

LLOYD BOYCE
2791 Dancer Rd., Dexter
Ph. HA 6-9352

NATHAN PIERCE
13245 Michigan Ave., Grass Lake
Ph. Grass Lake 4408



LUCKY LADY BUGS: Trophy winners in the final Bantam League competition at Chelsea Lanes Saturday were, left to right, Jackie Murphy, Betty Rose McNitt and Becky Tirt, members of the Lady Bugs girls' team. The Bantam League is composed of six teams of girls, ages 6-12, who have been bowling every Saturday morning throughout the past season.

Congressman Wes VIVIAN
Reports from **WASHINGTON**

Reduction Sought in Federal Excise Taxes

Federal Excise Taxes are a subject of much discussion in Washington these days, for President Johnson is expected to send a message to Congress within a week requesting cuts in these taxes totaling \$1.7 billion. It is my hope—and the goal toward which I am working—that reductions in the tax on telephone service, automobiles, and air-conditioners be included in the legislation that emerges from the Ways and Means Committee and is passed by the Congress.

Some might still doubt the wisdom of cutting Federal Taxes at a time when the Federal Government is running a deficit, but our recent experience with limited income tax cuts should put such doubts to rest: the longest peacetime economic expansion in the history of the nation continues; unemployment rates have fallen sharply, and most important—the added spending power generated almost as much new tax revenue as was lost.

Last week, I introduced legislation to eliminate one small, but unfair and locally troublesome excise tax. This is the tax on room air-conditioners.

These appliances are currently taxed at 10 percent, which is twice the rate on other home heating, cooling and refrigerating appliances. Reducing the tax on room air-conditioners to 5 percent would reduce federal revenues by about \$15 million, out of a total of over \$14 billion currently collected in excise taxes.

Against this insignificant tax loss are the interests of over 4,000 employees, and their families, of Tecumseh Products. This company, with headquarters in Tecumseh, and research facilities in Ann Arbor, is the world's largest manufacturer of air-conditioning compressors; its employees live throughout the Second Congressional District.

Reducing the excise tax on "room" air-conditioners from 10 to 5 percent could improve the world market position of American manufacturers, lower domestic prices, and create greater employment opportunities within the industry. Without doubt, Tecumseh Products and its employees will benefit from the abolition of the discriminatory taxation of "room" air-conditioners.

Early in February I submitted legislation to abolish the 10 percent excise tax on automobiles and automobile parts and accessories, which brings in about \$2 billion annually. While my bill, H.R. 4819, calls for repeal of the tax, a reduction in the rate would be a very big victory for the people of Michigan. The automobile manufacturers have stated publicly on a number of occasions that they will pass any tax savings directly to consumers by reducing auto prices. Such a price reduction will boost the sales of our Michigan-made automobiles; as auto sales climb, so do auto jobs and the demands for goods and services throughout the state.

Finally, I am strongly supporting the effort to end or reduce the wartime "luxury" tax on telephone service. This tax was imposed during the Second World War, at a time when the government was attempting to reduce consumer expenditures. Now, of course, with approximately five percent of the labor force still unemployed, the reverse is true: we are attempting to stimulate the economy. Moreover, telephone service is one of the most unlikely candidates for "luxury" taxation that I can think of. I am very hopeful that the House Ways and Means Committee will report legislation to reduce or end these three taxes and that it will be passed by the Congress. It seems

to me that both equity and the need for a strong, growing economy in Michigan and the nation demand it.

Baha'i Community Day To Be Observed at Mary Wolter Home

Baha'i Community Day for southern Michigan will be celebrated at the Mary Wolter home Sunday, May 16 with a noon smorgasbord dinner and talks by Dr. and Mrs. David Ruhe of Wilmette, Ill. Everyone is welcome.

Dr. Ruhe will speak at 2:30 on the Baha'i Society and his wife will talk previous to that on "Dynamics of True Religion." Mrs. Eulalia Barrow Bobo, the sister of former heavyweight champion, Joe Louis, was a dinner guest of Mrs. Mary Wolter Sunday. Mrs. Bobo, who is from Beverly Hills, spoke Saturday night at the Ann Arbor Community Center on "New Religion of God." A native of Detroit, Mrs. Bobo was formerly an inspector of cosmetology for the state of Michigan. She attended the Baha'i World Congress in London and then lectured in England and Wales.

Health is very valuable to those who have lost it.

If it's a job for Bottled Gas IT'S A JOB FOR SHELLANE

Product of the Shell Oil Company

HILLTOP PLUMBING
BOB SHEARS
201 S. Main St. Ph 479-3851

STIVERS
FINE FOOD & COCKTAILS
DINING ROOM AND COFFEE SHOP
OPEN 24 HOURS A DAY
1-94 at Fletcher Road Interchange

SUMMER SCHOOL STARTS JUNE 14

CLASSES IN THESE COURSES:

- ★ Executive Secretarial
- ★ Professional Accounting
- ★ Secretarial
- ★ Business Administration
- ★ Clerk Typist
- ★ Office Accounting

Three months sooner you will be employed than those who wait until September. Why procrastinate?

Three months sooner you have our Free Employment Service to place you on a good position.

Classes are from 8:30 to 2:20. Furnished dormitory apartments. File application early before classes are filled. Ask for our free catalog.

Jackson Business University

234 So. Mechanic Street Jackson Michigan

Standard Ads Are a Good Shopping Guide

HIGH GRADE HOLSTEIN DISPERSAL
FARM EQUIPMENT & DAIRY AUCTION
MONDAY, MAY 17, 1965 - 10:00 a.m.
(This is a large sale and must start on time)

I have been called to the army—will sell at the farm, located 16 miles south of Chelsea on W-52 to Grass Lake Rd., 3 miles west to S. Rd., 1 mile south to Washburne Rd., 1 1/2 miles west or 4 miles west of Manchester on M-52 to Pleasant Lake Rd., 3 miles west to S. Rd., 2 miles north to Washburne Rd., 1 1/2 miles west.

60 - HIGH GRADE HOLSTEINS - 60

35 COWS - 3 BRED HEIFERS - 25 OPEN HEIFERS
MANY COWS RECENTLY FRESH. IN HEAVY MILK PRODUCTION
This herd in good condition—the kind that will please.
TB & BANGS TESTED - MANY VACCINATED

FARM EQUIPMENT

- | | |
|--------------------------------------|--------------------------------|
| A. Chalmers D-14 Tractor, 1962 | Spoke Drag, 2 Hay Racks. |
| A. Chalmers 2-16" Plow, mtd. | J. Deere A Tractor |
| A. Chalmers Manure Loader | J. Deere A Tractor w/Loader |
| A. Chalmers Scraper Blade | J. Deere 16' Plow |
| A. Chalmers 1-row Corn Picker | J. Deere No. 290 Grain Planter |
| Lundell Chopper, 1963 | J. Deere 13-hole Grain Drill |
| Meyers Hay Conditioner w/mower, 1964 | J. Deere Tandem Disc |
| Case No. 200 Baler, 1963 | J. Deere 2-way Disc |
| Ford PTO Manure Spreader, 1963 | J. Deere Field Cultivator |
| Mayhew 40' Elevator | J. Deere Manure Spreader |
| Graham-Horse Plow | J. Deere 4-sec. Drag |
| N. Idea Side Rake, 1961 | J. Deere 7' Mower |
| 2 Wagons w/Flat Racks | J. Deere Cultivator |
| 2 Gravity Flo Grain Boxes | Air Compressor, Vise |
| Chambers Cultivator | Hand Tools, Drive Belt |
| Wilkomis Grass & Fertilizer Spreader | Carpenter Tools |
| PTO Roto Tiller, Road Grader. | Page Fence Stratcher |
| | Grass Guns, 2 Tarp |
| | Electric Fence & Steel Posts |
| | Saddle & Bridle, Extension C |
| | Miscellaneous Items |

TRUCKS

DODGE, 1964 1 T Pickup: Dual Wheels, Delux Omaha Combustion Rack, Overload Springs, HD 4-speed Transmission, 6 cyl. 170 Engine, West Coast Mirrors, Clearance Lights, Snow Tires. 50 miles. Just like new.

CHEVROLET, 1944 1 1/2 Ton with Flat Rack.

DAIRY EQUIPMENT

- | | |
|---------------------------|-------------------------------|
| C-P 375-Gal. Bulk Tank | 2 Surge Milkers |
| 12 Can T-33 Milk Cooler | Stainless Steel Wash Velt |
| Electric Fly Sprayer | Clippers, Pails and Strainers |
| Pesticides, Dairy Scales. | |

HOUSEHOLD GOODS

- | | |
|-----------------------------------|------------------------------|
| Kelvinator Freezer-Refrigerator | DeVosport w/Slip Cover |
| Gas Stove, 30" Nylon Arm Chair | Antique Walnut Chest |
| Nylon Studio Couch | Antique Walnut Bed & Springs |
| Reclining Arm Chair | Maple Bed & Springs |
| 9-piece Dining Room Set | Dresser w/Oval Mirror |
| Pool Table, like new | Round Cake Table, 2 Oak |
| Farmacia Kitchen Table w/4 chairs | Child's Desk, Swivel Rocker |
| Maple Studio Couch & Rocker | Hoover Portable Washer |
| Mahogany Coffee Table | Kitchen Cabinet |
| Mahogany Lamp Table | Miscellaneous Items |

Not responsible for accident on grounds day of sale. Lunch Served.
TERMS: See F. A. Kohl, National Bank of Detroit, Plymouth.

JAMES KNIGHT, Owner

EVERETT R. MILLER Auctioneer
Rivers Junction, Ph. 569-3465

HERB A. MILLER Pedigrees
Williamston, Ph. 655-1717

DAIRY AUCTION

Having decided to quit dairying the following personal property will be sold at public auction at the farm located 2 1/2 miles east of Chelsea on Chelsea-Dexter road or 4 miles west of Dexter on Dexter-Chelsea road, House No. 12370.

1:00 P.M. Tuesday, May 18 1:00 P.M.

Price Brothers Auctioneers
Phone Stockbridge 851-2172

25 - Head Dairy Cows & Heifers - 25

- | | |
|--|---|
| Registered Holstein cow 3 yr. old, fresh, open | Registered Holstein heifer, 14 months old |
| Registered Holstein cow 3 yr. old, bred Nov. 8 | 5 Holstein heifers 10-13 months old |
| Holstein cow 2 yr. old, fresh, open | Holstein steer 10 months old |
| Holstein cow 2 yr. old, fresh, calf by side | |
| Holstein cow 6 yr. old, bred Nov. 10 | |
| Holstein cow 6 yr. old, bred Dec. 22 | |
| Holstein cow 5 yr. old, calf by side | |
| Holstein cow 2 yr. old, fresh 8 weeks | |
| Holstein cow 6 yr. old, calf by side | |
| Holstein cow 6 yr. old, bred Nov. 16 | |
| Jersey cow 4 yr. old, bred Oct. 22 | |
| Jersey cow 4 yr. old, bred Aug. 8 | |
| Holstein cow 3 yr. old, milking, open | |
| Holstein cow 3 yr. old, bred Nov. 10 | |
| Holstein cow 3 yr. old, calf by side | |
| Holstein heifer 2 yr. old, bred Nov. 27 | |
| 2 Holstein heifers 18 months old, open | |

DAIRY EQUIPMENT
Esco 6-can milk cooler
2 Surge milker units
18 milk cans
Surge milker pump & motor

PONY
Dapple grey pony 2 yr. old, well broken

HORACE SMITH, Owner

Not Responsible for Accidents on grounds day of sale.
TERMS: Bank terms available, National Bank of Detroit, Plymouth Office.

One spray of Atrazine controls weeds and grasses in corn.

Spray Atrazine 80W herbicide at planting and you'll get season-long control of most annual broadleaf weeds and grasses.

Growing corn with Atrazine means your crop won't have weed competition for moisture and soil nutrients. So your yields will be higher. Profits, too.

And, you'll free labor and equipment for other farm tasks.

This year, take advantage of weed control in corn with Atrazine—the herbicide you spray just once for season-long control.

Contact your local supplier now for Atrazine.

Geigy Agricultural Chemicals, Division of Geigy Chemical Corporation, Ardsley, New York.

Geigy Atrazine

Track Team Wins Over Lincoln High

High school's track team won the Chelsea vs. Lincoln meet in Lincoln High in Willis last night. Chelsea scored 68½ points to Lincoln's 46½.

Place winners for Chelsea: Jack Speer, high jump; Paul Huber, pole vault; Jack McCalla, shot put, 45-1; Jim Ortrbink, high hurdles, 10-3; Scott Smith, 800-yd. run, 2:14.4; Dave Dietle, 220-yd. dash, 0:28.8.

Lincoln's firsts included Larry Allen, long broad jump, 10'3"; Steve Shukait, D. Jenkins, Joe Cole, 880 relay; Bob Blomhart, mile run, 4:40; Bob Allen, 440 dash, 1:00.4; Steve Shukait, 100-yd. dash, 0:16.4; and Larry Jenkins, 400-yd. dash, 1:00.4.

Second were Chelsea's Wojcik, pole vault, 9'; Golen, shot put, 38'10"; Perath, mile run, 5:10.2; Wojcik, high hurdles, 10-3; Jim Cameron, 440 dash, 1:00.4; Dave Dietle, 100-yd. dash, 0:16.4; and Tom Wojcik, 180-yd. hurdles, 0:22.8.

Chelsea Golf League

STANDINGS	Pts.
Sea Mfg. Corp.	10½
Lincoln's	10½
Warwick Hills No. 1	9½
Warwick Hills No. 2	9
Sea Products	8
Lincoln's	7½
Warwick Hills No. 2	6
May Ins.	6
Sea Drugs	5½
Tavern	3½
Lumber Co.	2

Want Ads Get Results!



In Michigan, after a day's fishing beer's the one... for good taste, good fun

Wherever you fish for sport—on the ocean, by the booming surf, or on some quiet country pond, it's great at the end of the day to head for a rewarding glass of beer. While you're talking over the ones that got away, or pan-frying the ones that didn't, you enjoy the hearty taste and cool refreshment only a glass of beer can give you so well. Yes, whatever your sport—bowling or strolling, golfing or gardening—a frosty glass of beer makes a naturally great accompaniment.

UNITED STATES BREWERS ASSOCIATION, INC.

New Bowlers! Good Bowlers! Pro Bowlers!

SUMMER LEAGUES NOW FORMING

- Tuesday Nite Men's Double League Meeting May 18, 7 p.m.
- Wednesday Nite Women's League Meeting May 12, 7 p.m.
- Thursday Nite Jr. Mixed League Meeting May 20, 7 p.m.
- Friday Night Mixed League Meeting May 21, 7 p.m.

BOWL IN AIR-CONDITIONED COMFORT THIS SUMMER

Join One of the Summer Leagues Listed Above.

MOONLIGHT DOUBLES... May 8-10 p.m.

MYSTERY DOUBLES... May 9-8 p.m.

Ann Arbor Women's Assn. Tournament is over... Open Bowl this week-end at

CHELSEA LANES

"The Modern, Family Lanes"

Greenleaf, Manager Phone 475-8141

BOWLING

Chelsea Lanes Mixed League

Final Standings as of May 7

	W	L
Hankard's Firebirds	75½	53½
Chelsea Lanes	75	57
4 R's	74½	57½
Sam's Barber Shop	70	62
Kiel-Bury	69½	62½
Jiffy Mixers	68	63½
IGA-Dexter	67½	64
Wolverine Tavern	67	64½
Wonder Bar	67	65
4 Reeds	58	74
Detling's Grocery	54	78
Feldkamp-Hansen	50½	81½

Men's 475 games: M. Detling, 570; M. Poertner, 589; E. Harok, 548; J. Collins, 582; G. Burnett, 523; D. Welshans, 495; D. Rogers, 494; R. Kiel, 487; M. Packard, 477.

Men's 175 games: M. Detling, 223; R. Feldkamp, 200; G. Burnett, 192-177; J. Collins, 190-185; M. Packard, 180; D. Welshans, 189-176; M. Poertner, 183; R. Kiel, 181.

Women's 425 series: P. Poertner, 540; L. Doody, 485; A. Alexander, 470; L. Welshans, 429.

Women's 150 games: P. Poertner, 189-184-167; L. Doody, 179-175; A. Alexander, 176-155; A. Turner, 188; H. Morgan, 160; E. Packard, 160; V. Detling, 158; W. Miles, 153.

ONE-MINUTE SPORTS QUIZ

1. What teams did the odds makers pick for pennants in the Majors this year?
2. How many years have the Yankees won successive pennants in the American League?
3. What is the astrodom?
4. How many people supposedly watched the seventh game of last year's World Series?
5. Who manages the Cincinnati Reds?

(Answers on page 14)

Sports Corner



ONE OF THE RING'S TALLEST—6'6"—AND 203 POUNDS—HE HAS POSTED A 37-4 RECORD IN EIGHT YEARS AS A PRO...

Buick Open In \$100,000 Prize Field

Grand Blanc—Michigan's only major golf tournament of the year, the eighth annual Buick Open, entered the \$100,000-prize class with the announcement by Buick Motor Division that the total purse has been increased more than 50 percent.

The Open will be played at Warwick Hills Golf & Country Club only five weeks from now, Thursday through Sunday, June 3-6.

Gerald H. Rideout, general chairman for the tournament and Buick director of public relations, said the \$100,000 includes television rights. The Open will be televised Saturday and Sunday, June 5 and 6.

"We have increased the purse so that the Buick Open will continue to attract top players and provide Michigan with a major sports event," Rideout explained.

He pointed out that when the Open started in Michigan eight years ago it carried a purse of \$52,000, at the time among the biggest on the PGA tour. This year, 13 of the 20 PGA tournaments have purses of \$100,000 or more.

Last year, the Buick increased the prize money to \$66,000, including a purse of \$55,000 and \$11,000 for television rights divided among the participating pros. That with the use of a car for the champion for five years and use of a car for each of 10 runners-up for one year ranked the Open in the near-\$100,000 class.

The champion's purse this year is \$18,000, plus use of a current-model Buick for five years and another \$1,000 for instructional sequences in the annual color-and-sound motion picture for free showing the year around. That could be calculated to bring the total prize to an estimated \$25,000 or more, just as all fringe benefits for the pros might make the Buick Open now a \$125,000, even a \$135,000 tournament.

Second prize this year is \$10,000 and there is a car as a prize for any hole-in-one, no matter how many. To date three pros have won cars with Buick Open holes-in-one—Butch Baird, Jerry Barber and George Bayer.

The 1965 Buick Open national telecast will be live and in color on Sports Network, upwards from 160 stations for a total of 2½ hours, 4 to 5 p.m. EST; Saturday, June 5 and 4 to 5:30 p.m. EST, Sunday, June 6.

WOLVERINE TAVERN

1 Block North of Bowling Alley on Old US-12

SERVING YOUR FAVORITE BEER • WINE and ALE

HOME-MADE CHILI HAMBURG SANDWICHES

CARL • NINA DON • GINNY

Bulldogs Win Fourth in Five Starts

Chelsea 4, Lincoln 1

The Chelsea Bulldogs baseball team scored their fourth victory in five games Tuesday night against the Lincoln Railspitters.

In the first inning, the lead-off batter, Neil Packard, took a base on balls. Dennis White next at bat, also walked. Bill Harvey got on base by a fielder's choice. Gary Dresch then hit a single to score Dennis White.

In the third inning, Neil Packard walked, stole second, and got on third on an error. He then scored on a sacrifice fly by Dennis White.

Gary White hit a single in the fourth inning and advanced to third on an infield hit by Danny Allen. Gary White came in to score on a throwing error by the catcher.

In the fifth, Dennis White got on with a single, stole second base and scored on a single hit by Gary Dresch.

Danny Allen went 2 for 3 while Gary Dresch went 3 for 4. The winning pitcher was Dennis Kyte with a three-hitter. The losing pitcher was Lincoln's Dave Cooper.

	R	H	E
Chelsea	4	5	1
Lincoln	1	3	3

Dennis Kyte and Oren Wireman. Dave Cooper, Jim Stanford (4) and Roger Cox.

Lincoln scored a single and a stolen base by Dale Merritt and a single by Tom Akalis.

There were only two walks by Kyte and five strike-outs.

Chelsea 8, Dexter 5

The Chelsea High School baseball team had scored its third straight victory last Thursday by defeating Dexter 8-5 on a fine pitching performance by Bill Harvey.

Dexter opened the scoring in the first on two singles and a stolen base. And then Chelsea came back in its half of the inning and tied it up on a walk to Dennis White and a triple by Gary Dresch.

Chelsea scored again in the second on a walk to Neil Packard, a stolen base, and a pass ball.

Chelsea scored five big runs in the fourth inning on two singles, a walk, and a hit batsman, to clinch the game. Chelsea scored

its final run in the sixth on a triple by Gary Dresch and a sacrifice fly by Duane Schroen.

Dexter scored four unearned runs in the seventh, but it was not enough.

Bill Harvey was the winning pitcher and Herb Gay was the loser.

Dresch went 3 for 3 on two triples and a single for Chelsea.

	R	H	E
Chelsea	8	7	5
Dexter	5	2	2

Harvey, Kyte (7), Wireman, Gay, Wallis (4), Miller

They—the newspapers—are as much a vital part of the community as the people themselves, to guardian and servant.

Mental Health Week now is a project of the National Association for Mental Health. In this State, it is the Michigan Society for Mental Health that sponsors the event.

The State Police recommend that children be with friends in any outdoor activity. A youngster alone, especially in isolated places, can too easily become the victim of a child molester.

YOUR FAVORITE SANDWICHES

Served at all hours.

BEER • WINE • ALE

Dancing at all times.

WONDER BAR

20750 Old US-12 West Phone 479-9841

Phone the pharmacist

Call your lawyer

Call a friend

Phone the florist

What a wonderful thing the telephone is! And how little it costs!

Michigan Bell

Part of the Nationwide Bell System

Plymouth Indy "500" Pace-Setter Sale!

Don't miss this chance to save! See us for a Pace-Setting Deal now!

We're celebrating the fact that Plymouth was chosen as the official pace car for the 1965 Indianapolis 500-mile race. If you want to ride with a winner, come test-drive a Plymouth today at our showroom!

'65 Plymouth Fury

Biggest, pluckiest Plymouth ever... still solidly in the low-price field.

'65 Plymouth Belvedere

The big buy in the intermediate class.

'65 Plymouth Valiant

Dollar-saving economy plus performance.

'65 Plymouth Barracuda

The fast-moving fastback at a low price.

Get a Pace-Setting Deal at your Plymouth Dealer's!

G. A. SALES & SERVICE

1185 MANCHESTER ROAD CHELSEA, MICHIGAN

BAILEY'S RESTAURANT

Corner of Clear Lake Road and I-94

Good Home Cooking

SUNDAY, MAY 16

ROAST TURKEY & DRESSING
Vegetable - Tossed Salad - Hot Rolls

\$1.40

May 23—Swiss Steak

May 30—Closed for Memorial Day

DANCING SATURDAY, MAY 15 WITH The FAMOUS TRI-COUNTY BAND

Music for Everyone!

ANCHOR INN

Call HA 6-8183 or 426-4160 To Make Reservations

For Parties and Banquets.

11980 MCGREGOR RD. PORTAGE LAKE, PINCKNEY

Standard Ads Are a Good Shopping Guide!

SPECIAL SCHOOL ELECTION

Notice Is Hereby Given To the Qualified Electors of
CHELSEA SCHOOL DISTRICT
THAT A SPECIAL ELECTION WILL BE HELD ON
MONDAY, MAY 17, 1965

The Polls for the said Election will be open from 7:00
o'clock A. M., and remain open until 8:00 o'clock P. M.,
of the same Election day.

The place of ELECTION is
JUNIOR HIGH SCHOOL GYMNASIUM

The following PROPOSITIONS or QUESTIONS will be
voted upon:

Shall the limitation on the total amount of taxes
which may be assessed against all property in the
Chelsea School District, Washtenaw and Jackson
Counties, Michigan, be increased by two and one-
half tenths of one percent (0.25%) (2½ mills) of
the assessed valuation, as equalized, of all property
in said school district for the year 1965, for the pur-
pose of providing additional funds for operating
expenses?

Dated: May 13, 1965

ROBERT G. FOSTER
Secretary, Board of Education

SOUTH ELEMENTARY SCHOOL NOTES

Third Grade, Mrs. Fulke—

In Social Studies we have been studying a unit on transportation. We collected pictures showing ways to travel. We made a very interesting and colorful chart. It was interesting to learn that people in other countries travel by different means than we do. In Peru people use llamas; in the Arctic regions, reindeer; in the jungle, elephants; in Mexico, the burro; and in Alaska, the dog sled.

On April 13, the third grades took a train ride. We boarded the train at Ann Arbor and rode to Jackson. We were busy watching for places we recognized. We found the reclining seats very comfortable, but found it hard to walk when the train was moving. The conductor told us that we were traveling at a speed of 80 mph.

First Grade, Mrs. Benford—

On Thursday our class walked to the McKune Library. For most of us it was our first visit. At the library we all got library cards. During the summer we are planning to use these cards, often to practice our reading so we will be all ready for second grade in the fall.

We are now doing a dairy unit. On Friday we made butter in class. Several of the children brought crackers and we had a nice treat using our "home-made" butter. Soon we will visit a dairy. One of our classmates, Doug Beaumont, had his tonsils out last week. We hope he will be back in school soon.

Kindergarten Mrs. Hinele—

We are pleased to say our alphabet books are finished. With notebook rings to hold them together and covers of cardboard and paper, the children can use the books over the summer to review for first grade.

We spent last week drawing pictures of our families. In the process we learned how to draw the human figure—remembering the head, neck, shoulders, etc. To complete our study we dressed a flat wooden stick in materials to resemble a person.

Our Weekly Readers have been discussing flowers—parts and how they grow, so we have decided to visit the Chelsea Greenhouse. Here we saw all we had talked about, plus being given a plant of our own to care for at home.

Now we are studying the farm. A trip to the Trinkle farm is planned as a climax to this unit. We'll tell you more about that later.

We wished our Mothers a Happy Mothers' Day with our hand print in pastel plaster of paris. They turned out very well plus giving us something to remember our kindergarten year.

The afternoon class is pleased to welcome Brenda Salyer from Jackson.

Mrs. Hanna, Second Grade—

Spring has arrived in our room. Spring flowers are blooming and we made some pictures of them. We are studying about birds and animals in science. We made bird feeders from milk cartons.

We have a new boy in our room. Howard Salyer from Jackson. Now we have 15 boys and 15 girls in our room.

Mrs. McKerrow, Kindergarten—

We in kindergarten have been learning about pets and the sea since we last reported to you. During our pet unit we have had various art activities and discussions on the care of pets. As a culminating activity we had a Pet Show.

Our study of the sea proved to be very interesting. Many of the children had good collections of shells which they brought to class and shared with us.

May will be a busy month for us. We have two field trips planned (we will report to you later about them). Don't forget Kindergarten Round-Up on May 14.

Fifth Grade—
The safety patrol boys and service girls attended the Detroit Tiger baseball game on Saturday, May 1. The Tigers defeated Boston, 9-8. A good time was had by all of us.

HONOR ROLL-SOUTH SCHOOL

5th GRADE—

"B" Debbie Barker, Melvin Buss, Marie Clouse, Brad Curtis, Derrick Harris, Karen Johnson, Kenneth Kusterer, Kathy Leach, Greg Osborn, Vickie Padgham, Iva Patrick, Thomas Peltes, Keith Pfeifle, Laurel Prinzing, Susan Rogers, Laurie Sannes, Janice Schenk, Jon Schenk, Jacqueline Schiller, Mark Thomson, Tom Winans, Robert Wojcicki.

Junior High HONOR ROLL

2nd Period, 2nd Semester

7th Grade — Jacquie Bailey, Treva Bentley, Floyd Boyce, Robert Brassow, David Bust, Angela Cavadas, Vickie Clemons, Stephen Eiseaman, Beverly GeBott, Patty Gilbert, Kathryn Grob, Jeanne Hinderer, Rhonda Kern, Gail Maistre, Dennis Morgan, Barry Novess, Jane Oesterle, Bruce Parks, John Perry, Bob Peterson, Rod Powers, Douglas Schoenberg, Brenda Seltz, all A, John Sutter, Connie Taylor, Caryl Thornton, Cayn Thornton, Tom Tirb, Ann Travis, Daniel Wenk, David Winter.

8th Grade — Shelley Baize, all A, Barbara J. Bauer, Curtis Belser, Ronald Bollinger, Terri Boyer, Lance Burghardt, Amy Cook, Ted Ewalt, Lynn Ferguson, Michael Guenther, Roy Holiday, Jane Kalmbach, Karen Leach, Richard Marshall, James McDonald, Don Passow, John Potts, Judy Sander, Barbara Schiller, Ryan Smith, Greg Stephens, Thomas Thomson, JoEllen Tison, Lynn Visel, Fred Worden, John Sears, Tom Taylor, Michael Grau.

Extra Hours Scheduled By County ASCS Office

Carolyn Stump, office manager of the Washtenaw ASCS office is reminding producers again that May 20 is the final date to certify for the 1965 Wheat Diversion Program. Producers who do not certify by the above date will be ineligible for program payments.

The Washtenaw ASCS county office will remain open the extra hours as follows: Thursday, May 13, until 8:30 p.m.; Saturday, May 15, 9 a.m. to 3 p.m.; Tuesday through Thursday, May 18-20, until 8:30 p.m.



DONALD YOUNG was recently elected to the legislative commission of the Michigan Education Association for a two-year term starting July 1. A past president of the Chelsea Teachers club, Young is currently president of the Washtenaw County District MEA. He has also awarded a grant by the National Science Foundation to study at DePauw university (Greencastle, Ind.) this summer.

CUB SCOUT NEWS

DEN 7, PACK 455—

Den 7 Pack 455 has a new member, Joe Potts.

We reviewed identification of birds by looking at colored pictures, before going on a nature hike May 6. Besides seeing and hearing several different birds, we noted a variety of wild flowers blooming in the woods.

DEN 13, PACK 435—

Cub Scouts of Pack 435, Den 13 played baseball with Den 14 and emerged victorious with a score of 30 to 8. Tom Skittenhelm provided the treats.

Doug Hellman, scribe.

DEN XIV, PACK 435—

On Monday Cub Scouts of Dens XIII and XIV, Pack 435, went to Pierce Park for a game of baseball. Boys of Den XIII won the game.

Cub Scouts of Den XIII gave their mothers natural looking carnations made of pipe cleaners and tissue. Their final work day on the Mothers' Day project was at the May 3 den meeting held at the home of Mrs. Kenneth Bucholz.

At that meeting Mark Schaible brought ice cream bars for the customary refreshments.

Barton Wellnitz is the scribe for Den XIII.

DEN III, PACK 445—

Cub Scouts of Den III, Pack 445, worked on the "Know Your Town" project, which is the theme for the May 20 pack meeting, when they held their weekly meeting Wednesday at the home of Mrs. Alfred Juergens, their den mother.

Scott Knight brought refreshments.

Michael Knight, scribe.

Sports Quiz Answers . . .

1. Los Angeles (NL) and New York (AL).
2. Five years.
3. The Houston Astros' new domed baseball stadium.
4. Over 70,000,000.
4. Dick Sisler.

HONOR ROLL

Chelsea High School

12th GRADE — Robert Allen; William Altenberndt; Beverly Arnett; Leon Barnhill, Philip Boham, Janet Bollinger, Judy Bollinger, Jennifer Bolton, John Bowling, Valerie Burghardt, Gary Cook, Barbara Doyle, Gary Dresch, Katherine Eder, Julie Eiseaman, (all A), Jane Faist, Madonna Freysinger, Jane Griffith, Carol Hazley (all A) Donald Hinderer, Paul Huber, Carol Jedele, Thomas Johnson, James Knott, Richard Lauhon, Billy Leiford, Jerry Manzel, Richard McCalla, Deborah Miller, Gary Moore, Dwayne Oesterle, Sandra Osborn, David Piest, Alyce Riemenschneider, Janet Rohr, Jere Rust, Linda Sanders, Lee Satterthwaite, Charles Schmunk, Cindy Schumm, Jane Scott, Thomas Sharrard, Dennis Stoffer, Kathleen Sutter, Linda Wahl (all A), Diane Walt, Audrey Wenger, Marilyn Wenk, William Wenk, Drinda West, Jerry Whitaker, Chris Wieland, Oren Wireman, Diane Worden.

11th GRADE — Larry Barnhill, Sandra Bauer, David Blaess (all A), Eleanor Brier, Rickie Curry (all A) James Dieckrich, Penny Eisenbeiser, Kathy Faber, Lee Fahrner (all A), Joseph Fisher, (all A), Susan Garlick, Kinyon Gorton, Patricia Guest, Lynn Heard, Cynthia Hepburn, Lauralyn Johnson, Toby Johnson, Linda Kealy, Nancy Koengeter, William Marsh, Patricia Oppe, Laurie Reddeman, Danny Salyer, Duane Schroen, Raymond Seltz, Ben Staphish, Roy Sundberg, Michael Tarasow, Larry Wengren, Carolyn Wilkerson, Mary Ann Winter, Judy Wiseman, Thomas Wojcicki, David Wood (all A) Douglas Young, Doris Zeeb.

10th GRADE — Mary Arnett, Eric Batzdorfer, Donna Bolanowski, Elizabeth Bower, John Collins, Candis Daniels, Timothy Eiseaman, Kathy Foster, Charles Fredette, Roger Frisinger, Sue Gardner, Cheryl Grau, Steve Harris, Susan Hines, Sheryl Kipf Miller, Janice Koengeter, Mary LaRose, Paul Lancaster, Tina Lindauer, Robert MacDougall, Tim Meininger, Ellen Merkel, Janet Miller, Marilyn Miller, Shirley Oesterle, Elaine Paul, Don Salyer, Joann Schramm, Cheryl Shephard, Sharon Sutter, Catherine Taylor, Susan Weller, Anita Wenk, Charles Winans, Arlys Wiseman, Ronald Worden.

9th GRADE — Irene Balmer, Kenneth Blaess, Alan Boyce, Melody Boyer, Diane Brand, Nancy Buckingham (all A), Janice Bush, Becky Clemons, Joan Dietle, Sandra Eisele (all A), Evelyn Estes, Lynn Faist, Joann Fisher, Gail Foster, Kathy Fulks (all A), Susan Grau, Mike Grob, Carol Hepburn (all A), Shirley Howard, Lynda Koch, Donald Koengeter, Sue Knickerbocker (all A), Sandy Knoll, Deborah Kuhl, Mark Lancaster, James LaFontaine, Gary Larson, John McKeighan, Lanny Patrick, Sheryl Peppers, Faye Policht, Don Rich, Judy Salyer, Carole Sharrard, Sandy Shears, Shari Stoffer, Chris Taylor, Carolyn Wenk, Ray Worden.

FDR MEMORIAL

Twenty years after the death of President Franklin D. Roosevelt, the first memorial in Washington has been dedicated to him. The small but dignified memorial was placed about midway between the Capitol and the White House.

IS YOUR CAR STILL WINTER WEARY?

If your car's muffler is rusted out from salt-laden roads the time is now to see us about a new muffler. We stock a complete line of mufflers for all models and makes of cars.

COMPLETE
ONE-STOP SERVICE

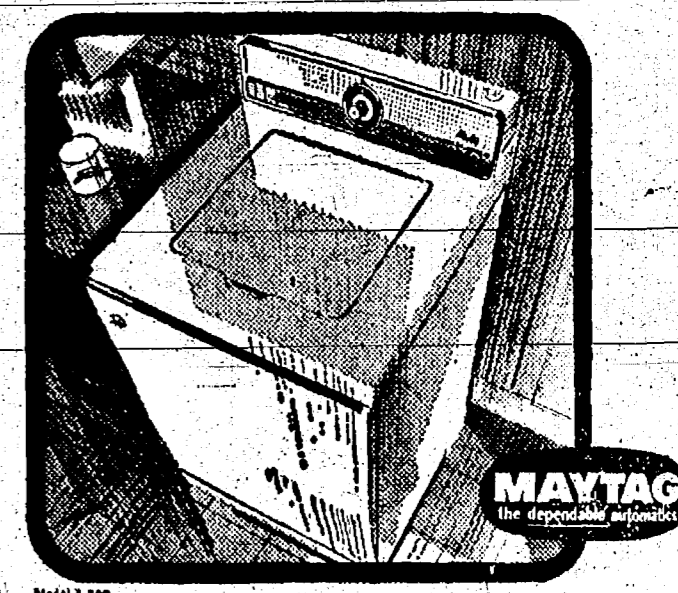
Bill Brown's Super Service

GOOD GULF PRODUCTS
295 SOUTH MAIN ST. PHONE GR 9-1311

Now there's a
dependable automatic
for everyone

ALL-NEW MAYTAGS

Which one is right for you?



most
automatic
automatic
ever!

This new Maytag introduces a new Pre-Wash and Soak Cycle with an automatic advantage. Just the thing for heavily soiled clothes and diapers. Takes a complete load through Pre-Wash, then soaks, then regular washing—with only 1 setting. Plus pushbutton selectors for temperatures, fill levels, speeds and times, automatic bleaching, softener dispenser, lint filter, many more.

SALE PRICES ON
MAYTAG AUTOMATICS \$188.00
START AT

Frigid Products

LLOYD R. HEYDLAUFF
113 N. Main Street Phone GR 9-665

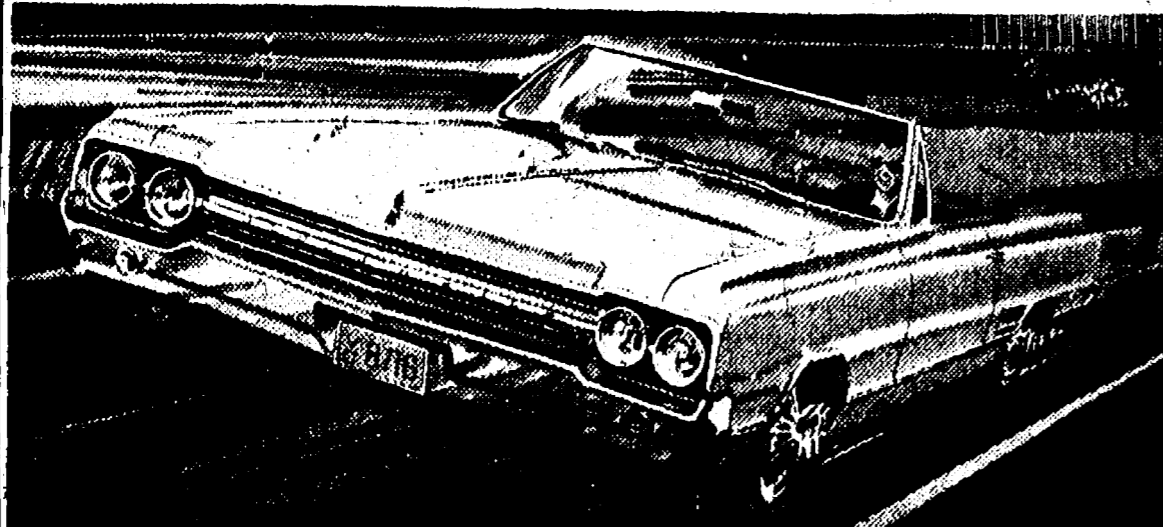
Enter
at
your
Olds
Dealer's!

Olds
Golf-O-Rama

WIN AN OLDSMOBILE 4-4-2

Four 4-4-2 grand prizes! Plus 442 transistor radios! You don't have to play golf to win. Visit your Olds Dealer or participating golf professional... get your "Golf-O-Rama" entry form!

This prize offer ends at 11:59 p.m., June 5, 1965, and is restricted to licensed drivers, 18 or older. This offer is void outside the U.S.A. and in Wisconsin and Florida, and is subject to all federal, state or local regulations. Residents of New Jersey, Delaware, Kansas and Nebraska may request entry form by writing Box 4470, Detroit 28, Michigan.



TUNE IN!
NBC-TV and Radio

USGA Champ Ken Venturi vs.
PGA Champ Bobby Nichols
in "Round of the Champions"

MONDAY, MAY 31
Time and station in local listing

Enter NATIONAL GOLF DAY... You may "Beat the Champ!"

HAGGAR SLACKS — — FARAH SHORTS OF SUPERIOR VALUE



The SLACKS are HAGGAR of many different materials. They stay wrinkle-free longer.

\$7.95 to \$12.95



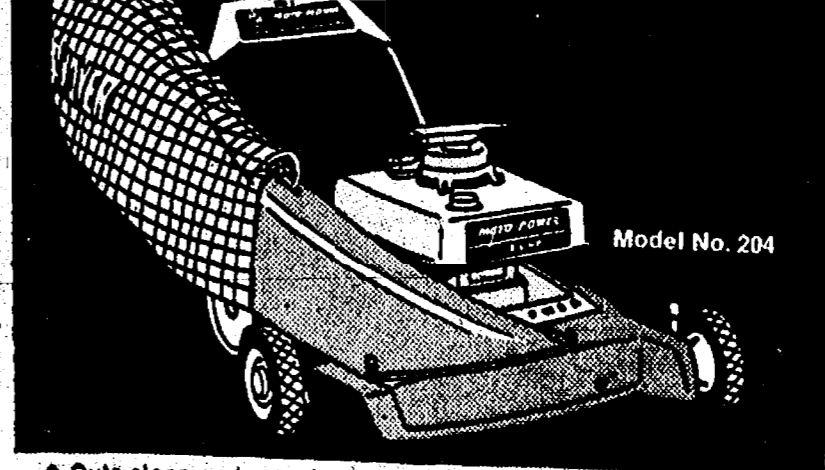
The WALK SHORTS are from FARAH. All with permanent press and washable. In plaids, stripes and solids.

\$5.00 and \$6.00

Strieter's Men's Wear

"The Place To Go for Brands You Know"

MOTO-MOWER "Hurricane Action" Self Propelled 21" Rotary... for smooth, soft even lawns



- Cuts clean and even for that velvet smooth look
- 3 1/2 H.P. 4-cycle engine with impulse starter
- Safest rotary in world with Safety-Guard Blade
- Non-scalping, die-cast aluminum deck
- Squeeze-N-Mow handle controls transmission
- Optional wind tunnel discharge and grass catcher for most efficient grass catching ever.

MOTO-MOWER

Price includes wind tunnel and grass catcher

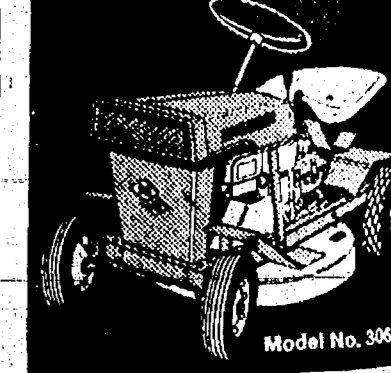
\$149.95

Wind Tunnel and Grass Catcher—\$14.95

MOWER TRADE-IN TIME!

BEST EVER ALLOWANCES ON NEW
MOTO-MOWER ROTARIES & REELS

MOTO-MOWER DeLuxe 24" Rider Has 3 Speeds forward, 1 reverse



- 4 H.P. 4-cycle engine with recoil starter
- Blade operation independent of engine—can go without mowing
- Single pedal clutch engagement; press down to go, release to stop

MOTO-MOWER

\$289.95

MERKE BROS.