

Easter Greetings

The Chelsea Standard

WEATHER

	Min.	Max.	Prec.
Wednesday, April 7	38	63	0.00
Thursday, April 8	38	48	0.00
Friday, April 9	36	50	0.00
Saturday, April 10	36	50	0.00
Sunday, April 11	41	71	1.75
Monday, April 12	40	50	0.00
Tuesday, April 13	34	62	0.00

FORTY-FOURTH YEAR—No. 42

14 Pages This Week

CHELSEA, MICHIGAN, THURSDAY, APRIL 15, 1965

10c per Copy

SUBSCRIPTION \$3.00 PER YEAR

QUOTE

We can offer up much in the large, but to make sacrifices in little things is what we are seldom equal to.

—Goethe

New Pastor Chosen By St. Paul's

The Rev. Warner H. Siebert has accepted the call of St. Paul's church after a unanimous vote was taken at a congregational meeting Sunday evening. He will begin his duties in late July.

The Rev. Siebert was born in Illinois, the son of a minister in the UCC who is now serving St. Paul's in Hartford, Conn. He received his undergraduate degree from the University of Illinois at Urbana-Champaign and his divinity degree from the Chicago Theological Seminary.

The Rev. Siebert has served parishes in Deerfield, Ill., as a student minister, in St. John, Ill., as a minister, and in St. Mark, Ill., as a minister. He has been active in radio and television and audio visual work with the church. He is also a member of the American Association of Ministers in the Church Federation of Greater Chicago. He is on the executive board of the Inter-Faith Council of the South Suburban Area, the executive board of the South Suburban Family Planning Service.

Activities in the community include his position as chairman of the Residential Committee of the Community Fund and being an officer in the St. Paul's Association.

He has been active in sports, playing several years of professional baseball in the St. Louis National farm system. Presently he has coached YMCA champions in baseball and basketball with the St. Louis Cardinals. He has been coaching the St. Louis Cardinals since 1958. He is also a graduate of the University of Illinois at Urbana-Champaign with a degree in Christian Education. He has worked as an executive secretary in the offices of the New Life Insurance Co. and law firm.

The family pastime and hobby is camping, anywhere, any time, the Rev. Siebert reports.

Easter Party Given Sunday for Boys at St. Louis School

Mr. and Mrs. Ed Bissel had an Easter party for the boys at St. Louis School for Exceptional Boys Sunday evening. Cake and ice cream were served and each boy received a small gift. Honor rolls observing their birthdays were Michael Robinson and Jim Michael. Music was enjoyed during the party from Italian records.

The school will close Thursday, April 14, and will reopen again on a short vacation on Tuesday, April 20.



GARY JACKSON, vocational agriculture teacher at Chelsea High School, has been selected as one of 20 persons in Michigan to attend a leadership conference for vocational education administrators from June 28 to Aug. 18 this summer at the University of Michigan. The 20 chosen were selected from 134 nominees for the U-M-Carnegie Institute co-operative program. Outstanding speakers in agriculture and vocational education will take part in the eight-week event.

Boy Scouts Give Charters To Kiwanis

Boy Scout Charters for Troop 425 and Troop 476 were presented to the Kiwanis Club at their meeting Monday evening at the Congregational church.

President Don Turner called on Ralph Raiford, district commissioner for District IV of the Iroquois District, Portage Trails Council. He introduced Vernon Parks, neighborhood commissioner, who presented the charters of Troops 425 and 476 to Fred Pennell, Kiwanis Boy Scout representative. The Kiwanis club sponsors these two Boy Scout troops.

Other Boy Scouts and leaders from Troop 425 as guests were Ralph Frisch, scoutmaster; Ross Scholtens and Leroy Grob, committee men; Vernon Parks, assistant scoutmaster; Ronnie Morley, star scout; David Pickell, first class and Gary Larson, senior patrol leader.

Those present from Troop 476 were Harold Baker, scoutmaster; Alvin Reinhardt, assistant scoutmaster; Vern Hills, assistant scoutmaster; Max Hepburn, committee chairman; William Hafner and Larry Poertner, senior patrol leaders and Ray Worden, patrol leader.

The Rev. James Craig introduced Key Club member Tom Rich and Edwin Eaton introduced Key Club member Church Reed.

Jerome Casey, Clarence Pendley, Don Turner, Jack Fowler, Paul Niehaus and George Doe attended an inter-club meeting of the Ann Arbor Eastern at the Michigan Union, Tuesday evening to serve a summons and retrieve the gavel a group of Ann Arbor Eastern (Continued on page three).

Top Rating Won By Band In State Meet

The Chelsea High school band participated Saturday in the State Band Festival, held at Ypsilanti Lincoln High school.

The bands participating all had to have won a one rating in performance and a one rating in sight reading in contrast to last month's ratings of the District festival when they obtained a one rating in performance and a two rating for sight reading. Their over-all rating at this time was a one.

The 94-member Chelsea band came away with a two rating in performance and a one rating in sight reading. Their over-all rating at this time was a one.

Comments of the judges at the festival were as follows: from Norman C. Dietz, director of bands, Central Michigan University: "A fine band — it was my pleasure to hear you," and George Cavender, assistant conductor of the University of Michigan bands who complimented the band on its training attitude, spirit and discipline: "Basically a good sound in this band."

Bruce W. Galbraith, Chelsea band director says "the Chelsea band is a very young band with only seven seniors, and it shows a great deal of potential. We can expect many fine things from this band in the years to come."

Easter Egg Hunt Slated Saturday

Final plans are completed for the third annual Easter Egg Hunt sponsored by the Chelsea Jaycees with assistance of the Jaycee Auxiliary.

Chelsea area children from preschoolers through the third grade are invited to participate in the fun and festivities Saturday at 2 p.m. at the Chelsea High School Athletic Field. Prizes will be awarded to first- and second-place winners from each grade who find the most eggs.

150 dozen eggs will be hidden throughout the athletic field by Jaycee members.

Jaycee Auxiliary chairman is Joan Rowe and co-chairman are Donna Blough and Neil Wright. The Jaycee chairman is Art Stain, and co-chairman is Robin Wright.

School Election Registration Set For Millage Vote

The last day for registration, enabling persons to vote in the special school election on May 17, is Monday, April 19 at 5 p.m. Electors in the Chelsea School District must register with their respective township clerks to be eligible to vote. They must be at least 21 years of age, Michigan residents for six months and residents of the Chelsea School District for 30 days. Only those properly registered at the time of the election will be able to vote.

Electors will be requested to vote 2½ mills for operation of the schools for a period of one year.

Chelsea School District electors who wish to apply for absentee ballots are reminded that applications for absentee ballots for the May 17 election must be filed with the School Board secretary, Robert Foster, before 2 p.m. on Saturday, May 15.

Reasons for making an application for an absentee ballot are (1) absence from the community on election day, (2) physical inability to appear at the polls; (3) appearing at the polls a violation of religious tenets; (4) working as an election inspector in precinct other than own.

Vacation Time

All of the Chelsea schools will be starting their Spring Vacation on Friday, April 16. Classes will be held on Friday morning and schools will close at noon.

School will resume as usual on April 26.



THE "PAINT SPIN" at the Key club booth interesting as a French painter could make. The promised a beautiful abstract painting from a piece of cardboard and a revolving topped table that spun paint around, leaving lines and blobs as bright and



LATIN CLUB'S fortune telling booth at the Nickel Carnival, Saturday, held mystery and great expectations for all who invested some silver and patiently awaited the voice from beyond the curtains. Madame "Whozit" knows all, sees all, tells all. Mark Pollett won a five-foot bunny at the sophomore ball toss booth, while Bob Snyder went home with the door prize.

Petitions Ready Now for School Board Candidates

The annual election of members of the Board of Education takes place June 14, with a deadline of May 15 for filing petitions with the Superintendent of schools.

The terms of Paul Mann and Arthur Kuhl expire. Neither of the incumbents indicates at this time that he plans to run for the office again.

Candidates must be citizens, more than 21 years old, and must have property listed on the tax rolls of the school district as well as be a resident of the district himself for at least 30 days.

Petitions may be obtained from the superintendent's office, and no less than 50 signatures of registered voters are required.

Organizations as well as individuals are urged to consider qualified persons who might be influenced to run for this important office.

The Board of Education is the policy-making group which controls the personnel, curriculum and development of the school system.

Three Leaving Monday For Vacation in Europe

Lawton Steger, William Marsh and William Freeman are flying to Europe April 19, on a pleasure trip. In Switzerland they will meet Steger's son, Max, who is stationed with the Air Force in Germany, and he will travel with them through Switzerland, Germany, Denmark and France.

The three men will also visit Spain, Italy, Greece and England in addition to those countries visited with Steger's son.

They plan to return around May 10.

Chelsea, Dexter Undefeated In Invitational Track Meet

Standings in the Chelsea Invitational League are as follows after Tuesday's dual meets here at Chelsea.

Chelsea with 80 points over St. Thomas, 20; Dexter 54 points over Stockbridge, 50; and Pinckney had 55 points over South Lyon, 54.

making it Chelsea two won, none lost; Dexter two won, none lost; Pinckney, 1-1; St. Thomas, 1-1; South Lyon, 0-2; and Stockbridge, 0-2.

Leaders in the relays are Dexter in the 880 and Chelsea in the mile.

Tuesday's dual meet between Chelsea and St. Thomas found Chelsea strong in most every area. Gary Houle, Don Salver and Jack Speer were entered in the high jump and Jack Speer came up with a first with 5'8", Gary Houle, second with 5'9", and Don Salver third, with 5'4".

In the broad jump Don Salver, Tom Wojcik, Scott Smith and Jim Orbring entered with Tom Wojcik taking first with 18'0½", Don Salver, second with 18'5½", and Downer of St. Thomas, third, with 18'3½".

The pole vault event saw Paul Huber, Tom Wojcik and Mike Funderburgh entering with Tom Wojcik in first with a vault of 10', Paul Huber, second with 9'8", and O'Neil of St. Thomas, third, with 9'0".

Dick McCalls, Dick Lauhon and Larry Gaken entered the shot put and came away with Dick McCalls putting 40'2" for second place and Dick Lauhon third, with 37'6½", while in this event St. Thomas' Tony Wienc took first with 42'6½".

Chelsea took the 880 relay with the team of Don Salver, Dick Lauhon, Jim Orbring and Dave Dietle in the time of 1:39.4. Five men entered the mile run for Chelsea, Jim Cameron, Gary Houle, John

Churches Plan Special Easter Week Services

Community Good Friday Service Set at 1:30 p.m. in Methodist Church

Several Chelsea area churches are observing Maundy Thursday today, with special services of communion.

Union Good Friday services will be held tomorrow at the Methodist church; and observances for others will be held Saturday with all maximizing Holy Week with Easter services on Sunday.

The Maundy Thursday services will be held as follows: St. Paul's United Church of Christ, two services at 7 and 8:30 p.m.; First Methodist church, St. John's United Church of Christ, St. Barnabas Episcopal church, St. Thomas Evangelical Lutheran and Waterloo Village church all will have their services at 8 p.m. this evening, while the Congregational church will have a candlelight communion service with extinguishing of the lights ceremony at 8 p.m.

Three Youths Injured in Auto Crash

Three Chelsea men were taken to St. Joseph Mercy Hospital early Sunday morning with injuries resulting from a one-car accident on I-94, four-tenths of a mile south of Platt Rd., at 3:30 a.m.

Gary D. Perry, 19, son of Mr. and Mrs. Russell Perry, was driving the car on the "rain-slick road" when, according to the police report, he apparently lost control of the car. He lost seven teeth in the accident and is still confined in the hospital.

Thomas Eder, 20, was released after treatment for abrasions.

Curtis Farley, 18, son of Mr. and Mrs. Curtis Farley, suffered a broken right leg, a dislocated pelvis and his sacroiliac is "out of line," according to a relative. Farley, a student at Eastern Kentucky University, was to have returned Sunday to school following spring vacation. He is in room 3383.

The police report indicated a guard rail entered the car through the passenger side and went through the car. "Eight yards of guard rail were inside the car," police told the spokesman for the Farleys.

Chelsea took all three places in the high hurdles with Jim Orbring, Paul Lancaster, Tom Wojcik and John Freeman entering (Continued on page three)

Good Friday united community services will be held at the Methodist church starting at 1:30 p.m. The speaker will be the Rev. R.A.J. Livingston, pastor of the Congregational church, and services will be conducted by the Rev. James A. Craig, pastor of the First Methodist church. This is the concluding Lenten service.

The High school choir, under the direction of Paul Schultz, will sing two numbers entitled, "When Jesus Wept" and "The Anguish Del." Kiwanis club members will usher for this service and the offering will go to UNICEF.

St. Mary's Catholic church on Good Friday will have at 1:30 p.m. Stations of the Cross and at 2 p.m. a Solemn Good Friday service.

Zion Lutheran church at Rogers Corners will have a Good Friday Lenten service with the Rev. C. J. Renner delivering a sermon on: "Am I An Heir of God?"

St. John's United Church of Christ at Rogers Corners, St. Thomas Evangelical Lutheran church in Freedom township, and Bethel United Church of Christ will have Good Friday Services at 8 p.m.

St. Mary's Catholic church will hold a Solemn Easter Vigil starting at 10:45 p.m. Saturday evening and will climax with the celebration of Holy Mass.

Easter Sunrise services, followed by breakfasts, will be held by four area churches. St. Paul's is scheduled for from 6:30 until 8 a.m.; St. John's at Francisco will hold their service at 7 a.m. Sunday morning; the Congregational church will have services at Mill Lake at 6:30 a.m.; while the First Assembly of God church will also hold their sunrise services at 6:30 a.m.

The First Methodist church will have their Sunrise service conducted by the Senior High MYP with Neil Packard as the speaker at 7 a.m. in the sanctuary of the church followed at 7:30 a.m. with breakfast being served by the men of the church under the direction of Don Boyer.

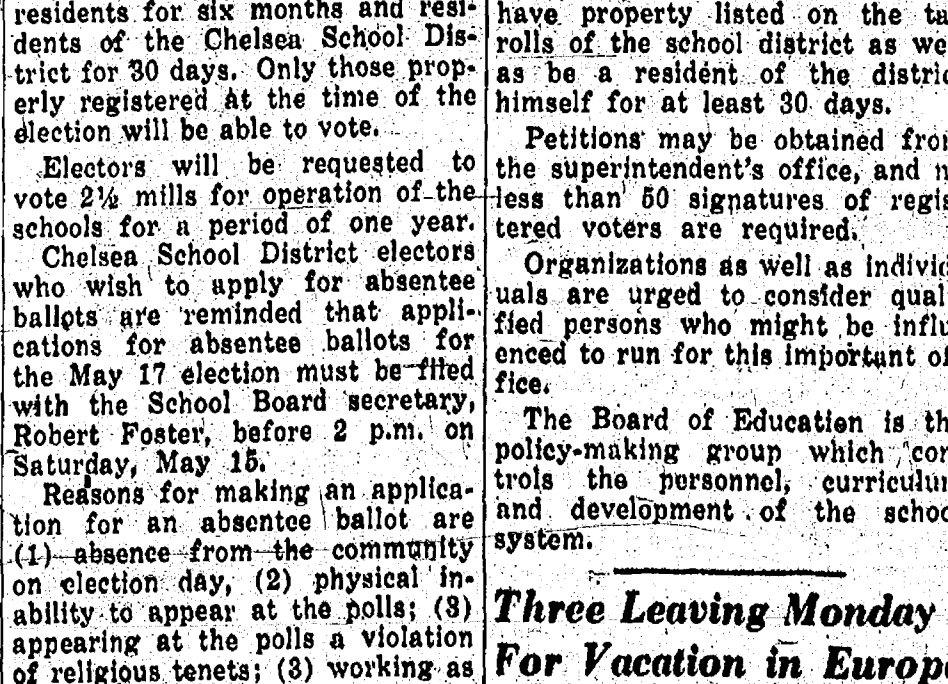
Regular Easter church services will be held at the usual hours on Sunday morning.

Detailed schedules for all the churches from Maundy Thursday through Easter will be found on the church page of this issue of The Standard.

Mr. and Mrs. M. J. Anderson returned Monday evening from an 11,000 mile trip through the south and west.



ECONOMY RUN WINNERS: Robert J. Cahill, left, of 2803 Elmwood, Royal Oak, captured a first-place in the Los Angeles-to-New York Mobil Economy Run which ended Sunday in New York. Cahill, driver of a 1965 Dodge Coronet, was winner in Class D, for intermediate-size eight-cylinder cars. He recorded 20.77 miles per gallon in the 3,200-mile run. Captain of the Dodge team in the run, Cahill is manager of special performance events for Chrysler Corp. Co-driver and navigator for the class-winning Dodge was Dave Bacon of 12905 Jerusalem Rd., Chelsea. Bacon is senior engineer, participation at the Chrysler Proving Grounds. Cahill, 49, has participated in four Mobil Economy Runs starting in 1961. His first time out, he was an also-ran, but won first-place positions in 1962, 1963 and 1964. A native of Indianapolis, Cahill is a graduate of the Purdue University College of Engineering.



CONFIRMATION CLASS: Fourteen young people of Zion Lutheran church at Rogers Corners were confirmed Sunday. Shown are the class with the pastor, the Rev. C. J. Renner. Members of the class are, back row, left to right: Mike Wackenhut, Paul Prinzing, Paul Wenk, Rodney Hoeft, the Rev. Renner, Gpy Freysinger, Sam Hoover and Loren Heller; front row, same order: Douglas Schoenberg, Michael Grau, Diane Schenk, Marilyn Hinderer, Linda Hoeft, Ronald Bollinger and William Lounsbury.



Mr. and Mrs. Richard Koontz of Pontiac called on their uncle and aunt, Mr. and Mrs. George Knoll and on their aunt, Lizzie Alber.



Mr. and Mrs. Richard Koontz of Pontiac called on their uncle and aunt, Mr. and Mrs. George Knoll and on their aunt, Lizzie Alber.

Established 1871 **The Chelsea Standard** Telephone GR 5-3551

General Excellence Award by Michigan Press Association 1951-1953-1956-1959-1960

Walter P. Leonard—Editor and Publisher

Published every Thursday morning at 200 North Main Street, Chelsea, Mich., and second class postage paid at Chelsea, Mich., under the Act of March 3, 1879.

Subscription Rates (Payable in Advance)

In Michigan:		Outside Michigan:	
One Year	\$3.00	One Year	\$4.00
Six Months	\$1.75	Six Months	\$2.25
Single Copies	\$.10	Single Copies	\$.10

Service men or women, anywhere, 1 year \$3.00

Official Publishing Agency of the **NATIONAL EDITORIAL ASSOCIATION**



REPORT from LANSING

State Representative

Thomas G. Sharpe

The majority party's inactivity—extending the tax cut for city, in dealing with the mounting unemployment problem by extending the work week before the legislature adjourns from the first session in 1960. It is a pity that the majority party is not doing more to help the city. It is a pity that the majority party is not doing more to help the city. It is a pity that the majority party is not doing more to help the city.

More and more it appears that the majority party is not doing more to help the city. It is a pity that the majority party is not doing more to help the city. It is a pity that the majority party is not doing more to help the city. It is a pity that the majority party is not doing more to help the city.

April 10 Set as Starting Date for Township Officers

LANSING — Secretary of State James M. Harbo has announced that the township officers will be elected on April 10. The election will be held at the same time as the state and federal elections. The township officers will be elected for a term of two years.

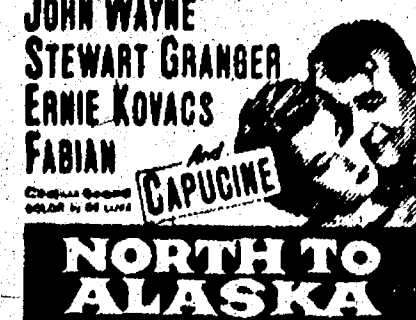
CHELSEA THEATRE

24-Hr. Program
Information: 475-8212

THURS. FRI. SAT.
APRIL 15, 16, 17



— PLUS —



NORTH TO ALASKA

SUN. THRU WED.
APRIL 18-21

COMMON SENSE AND HONOR

METRO GOLDWYN MAE R. COMBS

FORD FONDA

THE ROUNDERS

LANDON HOLLAND WILLS

SEASON FOR RENEWED HOPE



MICHIGAN MIRROR

By Elmer E. White, Secretary, Michigan Press Association

Understanding Needed

Public awareness must improve substantially if needs of higher education in Michigan are to be met in years ahead, according to members of the new State Board of Education.

Agreement on this point is reached by the board members, who are meeting in Lansing today. The board is the first of its kind in Michigan. It is composed of representatives from the state's various educational institutions.

Farm Workers

State farmers who anticipated possible trouble in recruiting seasonal labor help this year may get relief from this problem through operation of a private organization of religious leaders.

Difficulty in hiring so-called migrant workers was expected because of the federal law allowing import of laborers from Mexico was allowed to expire last year.

Population studies show more than 50 percent of Michigan's people will be under 25 years old by 1970.

Many of these individuals will want to study in Michigan's public and private colleges. Others will need job training of a sub-professional nature.

THE LETTERBOX

Dear Editor:

There will be some who complain that schools are costing too much. Admittedly, it seems so sometimes.

But we are directly on the path of the future city that will extend from Detroit all the way to Chicago. Already, many people talk of a continuous city from Ann Arbor to Jackson within the foreseeable future.

Uncle Lew from Lima Says:

DEAR MISTER EDITOR:

I see by the papers where the red roofs reached a all time high in February and that unemployment in the nation was now pushing the 5 million mark. I'm trying mighty hard to get in the mood to be my brother's keeper in spirit with the Great Society. But I got a bunch about half of them folks on relief and a third of them that ain't employed wouldn't work in a pie factory if the pie was all flavored strawberries and the house was from 10 till 2.

House Leader G. Ford Is Critical of Sitings

East Lansing — Mass siting and demonstrations as means of fighting a wrong for seeking a "new town" have been criticized by Rep. Gerald R. Ford, Republican leader in the House of Representatives.

Ford, speaking at Michigan State University's winter term commencement, said he "seriously questioned the sound merit of this kind of action to draw attention to a public issue."

NEWS HOLLYWOOD

Jerry Lewis is under treatment at home after receiving a hairline skull fracture and concussion after a fall. This happened while he was taping a television show with Andy Williams.

MONEY TROUBLE?

ONE PLACE TO PAY! Credit Management Service.

662-2565

342 Municipal Court Bldg., Ann Arbor

(State Licensed and Bonded)

FARMERS

FOR TOP PRICES FOR YOUR LIVESTOCK

Consign to the **Howell Livestock Auction**

We have buyers for all kinds of livestock. Sale every Monday at 2 p.m.

Phone 1089 Howell

For Any Information

JUST REMINISCING

Items Taken from the Files of The Chelsea Standard

4 Years Ago...

Thursday, April 12, 1957—

At the annual county 4-H Achievement Show April 5, Barbara Wenk, daughter of Mr. and Mrs. Norman Wenk, was named alternate model for the State 4-H Show dress revue to be held at East Lansing in August and also was chosen to exhibit her suit and blouse at the State Show. She was one of eight girls who won a place of honor in the senior miss division. Two other Chelsea girls are also included in the "top 20." They are Mary Kay Alber and her sister, Sharon.

Chelsea Junior Chamber of Commerce and its Ladies Auxiliary joined forces for the annual installation of officers of both organizations Saturday evening at the Dexter American Legion Home. This was followed by the two installation ceremonies after which Melvin Leach showed slide pictures of his travels in Europe. Dancing was the entertainment for the remainder of the evening.

Blaess Elevator Co. is announcing the assignment of their complete feed milling facilities to the Michigan Feed Milling Co. for the purpose of manufacturing Larro Sure Feeds for General Mills, Inc. This will be the first national feed company to be manufacturing feeds in the State of Michigan.

The 10th annual Jaycee-sponsored Teen-Age Safe Driver Road-race is scheduled to be held here at 2 p.m. Sunday. The road-race event will be held on the parking area at the Stop and Shop supermarket at M-92 and Old US-12. The event stresses safety and expert handling of a vehicle rather than speed. Special trophies are planned for the winner of first place, in addition to the regular awards.

Robert DeFanti is at San Bernardino Beach, Fla., where he reported April 1 for spring training in preparation for pitching with the Minnesota Twin farm team during the coming season. He is the son of Mr. and Mrs. Peter DeFanti.

14 Years Ago...

Thursday, April 12, 1951—

At a special meeting of the Chelsea Agricultural Schools Board of Education, Tuesday eve-

ning, the architects' preliminary plans for the new elementary school were approved. The plans as approved for submitting to contractors for bids include provisions for 14 classrooms, office space, kitchen, rest-rooms and an all-purpose room.

On April 5 the Humane Society of Washtenaw county moved from the Goodyear Animal Shelter, familiar to the thousands of citizens who have used its services, to the new shelter built for the Society by a public spirited, anonymous donor. The new shelter is located at 3113 Gale Rd., one-third of a mile from Dixboro. Special kennels have been provided for holding under observation stray animals suspected of rabies.

Michigan's TB death rate is declining. Discovery of new cases has remained about the same over the last 10 years. Some 6,000 cases are diagnosed annually, as against 5,900 cases per year between 1930 and '39. But the death rate has been cut in half in the last 20 years.

24 Years Ago...

Thursday, April 10, 1941—

With a total of 676 votes in Sylvan Township on Monday, Fred G. Broesamle was re-elected to the office of supervisor by a large majority over his Democratic opponent, Harry H. Lyons. Only one Democrat won in the township, William Schatz being re-elected constable.

Miss Vivian Kalmbach, home economics junior at Michigan State College, was elected to two major offices in the recent all-college election. Miss Kalmbach is the daughter of Mr. and Mrs. Max Kalmbach of Lyndon. Miss Kalmbach will take over duties as vice-president of the Spartan Women's League and as senior representative to the governing council of Associated Women Students during the next school year.

Marshall F. Richards, present principal at Napoleon High school, has been hired by the Chelsea Board of Education as high school principal and science teacher for the school year 1941-42.

Distribution of 200,000 copies of the newly revised summer high-ways map, which emphasizes Michigan's importance as "the play-

ground of the nation," was started this week by the state highway department.

34 Years Ago...

Thursday, April 9, 1927—

At the regular meeting of the Chelsea common council Monday evening, action was taken to reduce the electric light rates in Chelsea. According to the schedule of rates to be adopted, the small user of electric power will not benefit at all, as the rate for the first 20 kilowatts remains at 10 cents reductions taking effect where larger quantities of current are used.

About Your Social Security

If a worker in your family is some member of the family who inquires at the nearest Social Security office to see if benefits may be payable, Robert A. Keko, Social Security District manager, Ann Arbor, advises.

The Social Security Administration can help to partially replace income lost caused by the death of the head of the family.

Nine out of ten young American children—and their mothers—count on survivors benefits to help the family together if the winner dies. Survivors' benefits may be payable to young children when a working mother dies, though the father is the family's primary source of support.

The average benefit paid to widowed mother with two children is about \$193 per month. The benefit payable to a family with two children is \$254 per month.

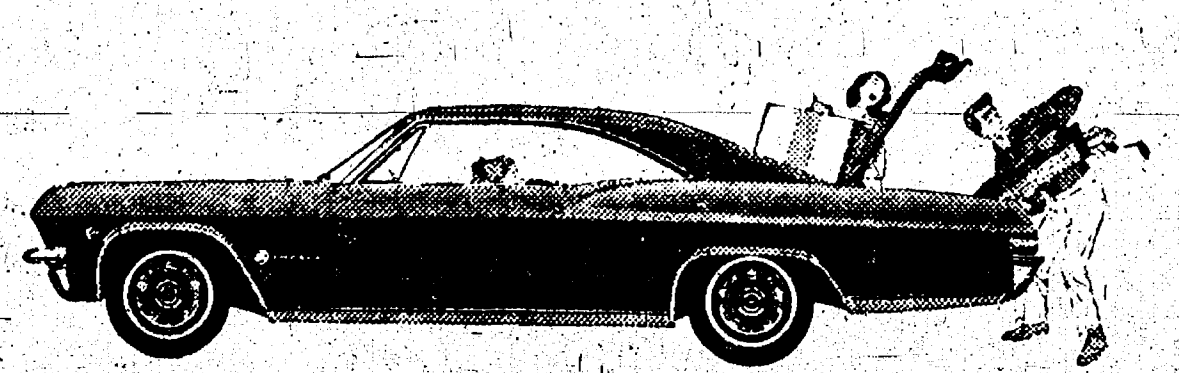
If you want to know more about Social Security for the family of deceased workers, visit our office at 1355 N. Main St., Ann Arbor. The people there will glad to help you and give you any information you need.

BACK TO THE ZOO

London—After 12 days of freedom, Goldie the Finnish golden eagle, is back with his mate, Gina. The seven-year-old eagle slipped out of his cage when keeper momentarily left the door open. The eagle's escape, a world-wide headline, and brought the zoo hundreds of letters mentioning an increase in admissions.

Telephone Your Club News To GR 5-3551

Zing into spring! in a new Chevrolet



If you've been sitting tight waiting for just your kind of car, with just your kind of power, at just your kind of price—wait no longer!

Chevrolet. It's a bigger, more beautiful car this year. Which is why that handsome silhouette could be mistaken for cars costing a thousand—even two thousand—dollars more.

Chevy II. No car so trim has a right to be so thrifty. But thrifty it is, with money-savers like brakes that adjust themselves and a long-lived exhaust system.

Corvair. Ask any '65 Corvair owner how it feels to drive a car with such easy steering, tenacious traction and responsive rear-engine power. And be ready to do lots of listening.

Zing into spring in a new Chevrolet, Chevelle, Corvair, Chevy II or Corvette

Spaulding Chevrolet Sales & Service
CHELSEA, MICHIGAN

track
the result
to S
60 t
De
the
Punch
the
fastest
was Ch
fastest
Dexter,
the first
to go to
third place
the broad
189 1/2
to get
Jim O'Brien
McCalli
Collins
in the
Huskins
Paul Hube
McCalli
put with 3
second win
took this
the 880-r
Orthing
the time
the mile run
bridge in
time of 5:09
and Gary
with 5:10.8
in Orthing
buries will
placed sec
Woicki o
Pell All
to you. W
soo, our mem
how they feel
of excess fat
lost \$200 and
if not satis
from the juic
of the diet
lost. Gains
were by:
CHELSEA DRUG
Nell Ford
CON
GOOD
NECE
Be sure your
driving and safe
soon and let us
—put them in—
CON
ONE-STC
Bill Br
355 SOUTH MA
Prices E
AQUA
HEAD
LANO
Stretch
SPECI
When you
funny
CAN
CL
BUL
116 SOU

WEDNESDAY, APRIL 15, 1965

Trackmen Win 'Big' Over Stockbridge

The 880 run saw Scott Smith with the time of 2:06.2, Mike Tarasow, second with 2:11.2 and Dennis Cobb of Stockbridge was third.

In the 440 dash Jim Cameron was first with 55.7 John Allen of Stockbridge was second and Ron Haab placed third with 60.8.

The 100-yard dash saw Dave Dietle in first with 10.8, Clark Curtis, Stockbridge, second and Dale Risner of Stockbridge third.

In the 180 low hurdles Jim Ortring was first with 23.0, Paul Lancaster second with 23.6, and Tom Wojcik third with 23.9.

Dave Dietle was first in the 220 yard dash with 23.3, Don Salyer placed second with 24.7 and Dale Risner of Stockbridge took third.

The mile relay was won by Speer, Smith, Tarasow and Cameron with the time of 3:45.7. This gave Chelsea a total of 90 points with Stockbridge only 19 points.

Members of the Chelsea track team for 1965 are as follows:

STANDINGS

Chelsea Invitational C. League	
Chelsea	1 0
Dexter	1 0
St. Thomas	1 0
Pinckney	1 0
South Lyon	0 1
Stockbridge	0 1

Today's results:

Chelsea, 90; Stockbridge, 19.

Dexter, 68; Pinckney, 32.

St. Thomas, 59; South Lyon, 49.

Fastest time, mile relay, Chelsea, 3:45.7.

Fastest time, 880 relay, Dexter, 1:36.3.

Invitational Track Meet

(Continued from page one)

and Jim Ortring finishing first with 15.9, Tom Wojcik second, with 17.2 and Paul Lancaster third with 18.0.

In the 880 run, Scott Smith, Larry Porath, Toby Johnson and Eugene Morley entered with Toby Johnson finishing second with 2:16.55 and Larry Porath third with 2:18.2. St. Thomas took first place with Mike Bangert, 2:12.0.

Two Chelsea men entered the 440-yard dash, Mike Tarasow and Ron Haab, with Mike Tarasow from Chelsea and Jerry Little of St. Thomas tying for second with a time of 56 seconds, and Tom Downer of St. Thomas placing first with 55.5.

Dave Dietle, Steve Slane and Dick Lauson were entered in the 100-yard dash with Dave Dietle taking first with 10.6, Steve Slane second with 10.6 and Kim Fiestone from St. Thomas third with 11.1.

In the low hurdles, Jim Ortring, Paul Lancaster and Tom Wojcik were entered with Chelsea taking all three places, Jim Ortring first with 21.8, Paul Lancaster second with 22.2 and Tom Wojcik third with 23.6.

Dave Dietle, Don Salyer and Steve Slane entered the 220-yard dash and came away again with all three places, Dave Dietle first with 22.8, Steve Slane second with 24.4 and Don Salyer third with 24.6.

The mile relay was entered by Larry Porath, Gary Houle, Mike Tarasow and Jim Cameron but the team of Jerry Little, Paul Woolner, Mike Bangert and Tom Downer won for St. Thomas with the time of 3:45.4.

There will be a meet Thursday, April 15, with Dundee, at Dundee which will also include the Chelsea Junior High track team, the first meet for them.

Unfortunately, the man who thinks he can control strong drink is usually the one who can't.

Kiwanis Quotes

"It takes a little time to deliver a rebuke but it takes a long time to forget it."

—CHINESE PROVERB

HOME DECORATIONS

The modern washer-dryer is a boon to any homemaker. Sometimes, however, if the laundry is located in the basement where there just isn't enough shelf and storage space convenient to the washer and dryer the homemaker wastes time trudging back and forth, upstairs and down, taking out a completed "load" and bringing down more soiled clothes.

A good solution to this problem is construction of two clothes hampers, one for soiled clothes, another for "clean" clothes. One on each side of the washer-dryer will save many steps each day. The homemaker can bring all the soiled clothes down at one time, transfer the washed and dried clothing to the other hamper when they are completed. Rollers on the hampers will be



IN THE OPEN

By Lee Smits



When the Conservation Commission holds its July meeting it will be urged to prohibit bear hunting for two years in the Lower Peninsula of Michigan. One of the leading advocates of this move is Carl T. Johnson, of Cadillac, a member of the Commission, founder of the Michigan Bear Hunters' Association.

Carl Johnson maintains a pack of bear hounds, of his own breeding. Carl's business is insurance; his vocation, bear hunting. Carl is largely responsible for saving the state's most spectacular game animal from extinction.

Until the black bear became recognized as Michigan's most spectacular game animal, 20 years ago, the killing of any bear at any time by any means was regarded as a public service. Carl Johnson's first move on behalf of the bear was to promote legislation prohibiting bear-trapping. Nothing is crasier than a bear in eluding a hunter; no animal is easier to trap.

In the Lower Peninsula the future of the species is threatened by more highways, more hunters, while the kind of wild habitat needed by the bear keeps shrinking.

Proposals have been considered to give total protection to bear cubs. Michigan Bear Hunters' Association members have their own code, and it works. Anyone who kills a cub is permanently barred from bear-hunting parties. He is told to leave immediately, and not come back.

Bear hunting with dogs is the wildest, most exciting, strenuous, uncertain, sociable, individualistic form of outdoor exercise that has ever been carried on in this part of the world. Bear hunters assemble by the score, with their dogs, taking up all the guest facilities in a northern town.

Once the dogs give tongue the hunters scatter, tear around the countryside on foot and in cars, knowing that any one man's chance of being in at the kill are rather slim.

The bear turns on the hounds from time to time. Hounds that are more game than wary do not last long. A bear does not hug a dog to death; he knocks it flying with forepaws that can splinter a pine stump.

BUY EASTER SEALS

Help Grippled Children!

FOR PROFIT

FEED

Get Fortified Feeds. Step Up Egg Production. Prove it to yourself. Our Fortified Feeds are just the rations your hens need to produce more eggs, more profits for you.

Farmers' Supply Co.

Phone GR 5-5511

License Plate Color Schemes Stay Conservative

Lansing—Although such sophisticated colors as "azure, chartruese, mint, and burgundy," have gained popularity in recent years, license plates for the most part have stuck to the basic colors, with black and whites predominating down through the years.

"With the pastels and other colors being favored by car owners, perhaps we should adopt 'persimmon and sea mist' for next year's license. Have jokingly commented.

"We've been rather conservative in our license plate color schemes," Have said. Since Michigan began issuing license plates before 1910, the most popular color has been black, with white the second most popular color.

The two have been used in combination the most times, too. No less than 16 times, the combinations, counting silver and gray, were used on Michigan plates.

Yellow and blue, colors of the current batch of plates, were used twice before.

"A few years ago we decided to honor the state's universities and we're following the pattern," Have said.

Kiwanis Club . . .

(Continued from page one)

Kiwanians took with them from a meeting held at Chelsea on March 1.

Robert Barlow gave out sheets showing the working hours for each Kiwanis member for the Easter Flower sale to be held at Hilltop-Plumbing on Friday and Saturday, April 16 and 17.

Robert Daniels, chairman of the Kiwanis ushers for the Union Good Friday services to be held at the Methodist church, announced that the following members are to be at the church not later than 12:45 on April 16: Paul Mann, Paul Niehaus, Charles Lancaster, Wallace Wood, Parker Sharrard, Clare Warren, Paul

Schaible, Jr., and Charles Cameron.

Invitations were read for the following Kiwanis inter-club meetings: Belleville, Tuesday, April 27, with Belleville, Ont., and International 50th Anniversary meeting, Tuesday April 20, at Morenci.

The Rev. Edwin J. Weiss, chairman of the Support of Churches Holy Week programs, called on the Rev. Robert H. Jungeward, pastor of the Methodist church in Jackson, who spoke on the subject "Interpretation of the Ministry of Jesus."

The Conservation Department is charged with preventing and controlling fires anywhere within 20.5 million acres of forest and wild grass lands in Michigan.

CUSTOM SLAUGHTERING

By Appointment - Call GR 5-8280

COMPLETE MEAT PROCESSING

FRIGID PRODUCTS LOCKER DEPARTMENT

The best of everything for the Family's EASTER

at DANCER'S in CHELSEA



Mom, Dad . . . children of all ages, we're ready for you for Easter . . . fit the whole family in one place at our store!

SMOOTHIE TIE

BY Step Master



Flexible smooth leather uppers with popular moc toe in heavy stitching . . . feel good, look good—and polish up like new! Extra long wearing. Crepe rubber soles.

FOR PRE-TEENS \$5.99

HERE'S EVERYTHING YOUNG "FELLAS" WANT IN A MOC TOE LOAFER

- elasticized top-line for perfect fit
- modified tapered toe for smartness
- Stepmaster quality construction
- budget priced!



A TYPICAL Step Master VALUE AT \$5.99



Nice things for baby always say

Health-tex®

Sweet diaper sets and 1-piece creepers are knit of cuddly 2-ply combed cotton. Some have plastic lined bottoms for obvious reasons. Snap-crotch, snap-fasten shoulders for quick changes. Fresh colors and patterns. Very washable. Sizes: 3, 6, 12, 18 months.

DANCER'S

CHELSEA

CLOSED GOOD FRIDAY 12:00 TO 3:00

Better Living Begins When You Own A New Home

CONSIDER LANEWOOD

GOOD BRAKES NECESSARY!

Be sure your car is set for safe driving and safe stopping. Come in soon and let us check your brakes—put them in "tip top" condition.

COMPLETE ONE-STOP SERVICE

Bill Brown's Super Service

GOOD GULF PRODUCTS PHONE GR 9-1311

EASTER PARADE OF Discounts

Prices Effective Thursday, Friday and Saturday, April 15-16-17

AQUA NET HAIR SPRAY 69c

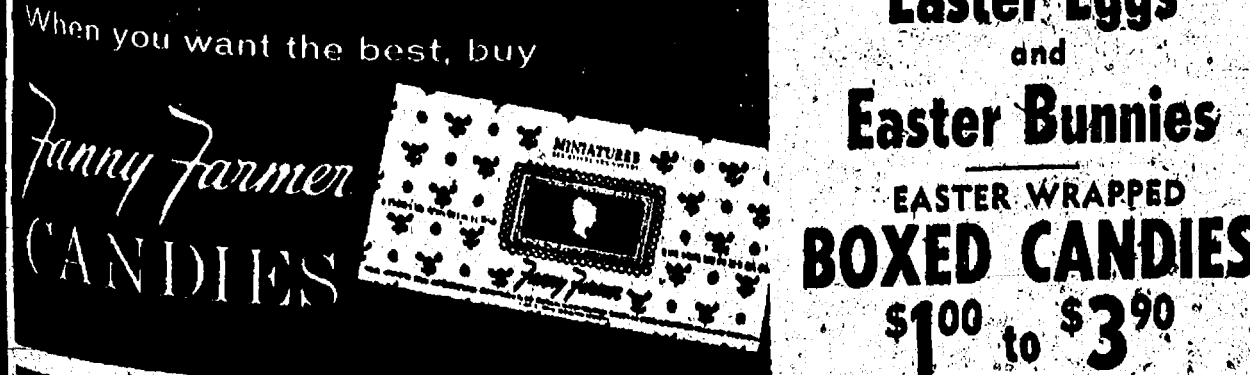
HEAD & SHOULDERS SHAMPOO . . \$1.29

LANOLIN PLUS CREME RINSE Giant Size 69c

Stretch Vinyl Gloves Little Girl's Sizes. White. 79c & 89c

SPECIAL for EASTER Egg Dyes - Easter Grass - Stuffed Bunnies Giant Hollow Eggs - Tiny Easter Chicks

When you want the best, buy



CLOSED GOOD FRIDAY from 12 to 3 p.m.

BUDGET-WISE STORE

Chelsea's First Discount Store 116 SOUTH MAIN ST. PHONE GR 9-1611

Just
Phone
GR 5-3581

BUY SELL TRADE RENT HIRE HELP

Ads
Taken
Till 5 p.m.
Tuesday

WANT ADS

The Chelsea Standard

WANT AD RATES

PAID IN ADVANCE—All regular advertisements, 50 cents for 25 words or less, each insertion. Count each line as a word. For more than 25 words add 2 cents per word for each insertion. "Daily" ads or box number ads, 50c extra per insertion.

CHARGE RATES—Same as cash in advance, with 15 cents bookkeeping charge if not paid before 5 p.m. Tuesday preceding publication. Pay in advance, send cash or stamps and save 10 cents.

CARDS OF THANKS or MEMORIALS—Single paragraph style, \$100 per insertion for 50 words or less. Display want ads—Rate, \$1.10 per column inch, single column width only. 8-point and 14-point type only. No borders or boldface type. COPY DEADLINE—5 p.m. Tuesday week of publication.

LOST—Full-grown blue point Siamese cat, Tuesday, in the vicinity of Wilkinson St. Ph. GR 9-1261.

DAIRY QUEEN now open. Malteds, sundae, cones, dilly bars, banana splits, etc. 42

FOR SALE—Vernal alfalfa seed. Ph. 475-8860 after 4 p.m. 42

Power Equipment Headquarters

SIMPLICITY

—Landlord Tractors
—Broadmoor Tractors
—Wonder Boy Mowers
—Rotocuts

JACOBSEN

—Chief Tractors
—Power Reel Mowers
—Turbocone Rotaries

PROVEN

—Riders
—Rotaries
—Ultra Vac

LAWN BOY

—Finger-Tip Starting
—Power Rotaries

USED EQUIPMENT. WE TRADE - SERVICE

Chelsea Hardware

FOR SALE—Girl's coats, sizes 4 and 6, \$2 and \$3. Boy's coat and suit, sizes 2 and 3, \$2 and \$3. 750 Book St. Ph. 479-2611. 42

WANTED—House to rent in country by young couple with child. Can give reference. Write to Mel Cotton, P.O. Box 313, Chelsea, Mich. Ph. 475-8034. 42

WOLFANG used to give harpichord recitals for a few close friends. Then he bought a Mustang. What happened? Being a Mustang brought out the wolf in Wolfgang! What could it do to you? Visit Palmer Mustang Sale and see. 42

We Try HARDER

to give you better value for your used car dollar. You can tell a BUICK DOUBLE CHECKER USED CAR is a better value as soon as you drive it—so why don't you?

63 Buick LeSabre 4-dr. H.T. \$2195
63 Ford Galaxie Conv. \$1895
62 Buick Electra 4-dr. H.T. \$1995
62 Chev. V8 Impala 4-dr. \$1895
H.T. \$1695
61 Olds 98 4-dr. H.T. \$1495
62 V.W. Bus. \$1295
62 Corvair Club Cpe. \$895
60 Olds 88 4-dr. \$895
60 Comet 4-dr. Wgn. \$595
60 Pontiac 4-dr. H.T. \$595
60 Olds 88 4-dr. \$595
60 Rambler 4-dr. \$495

Stop by real soon, where you see the double check sign... it means savings and satisfaction.

Open Friday till 9 p.m.

Daniels Motor Sales
BUICK & OLDS
118 N. Main St.
Ph. GR 9-6731 Chelsea, Mich. 42

WANT ADS

WANTED—Young man for part-time work. Farmer preferred. Phone 475-5096. 42

FOR TRACTORS and equipment. Also New Holland machinery. Sales and service. Cobb & Schreier, Stockbridge. Phone Ulysses 1-4525 42

FOR SALE—2,500-watt electric power plant, four openings, 115 and 220 on rubber, like new, \$350. J. E. Stapish, 8798 Olivet St., Detroit 9, Mich. VI 1-5634. 42

Send the Best—Send Hallmark

Hallmark Cards

Gift Wrapping,
Ribbons, Napkins,
Paper Plates

Complete line of Hallmark party goods.

Magic Mirror Beauty Salon

6595 Jackson Road Ph. 665-0816 42

WANTED—Fill jobs; any size; free estimates. Ph. GR 9-1001. 42

DON'T GO AWAY—to get your car washed! Do it at SOFSPRAY, 1188 S. Main, (next to Chelsea Lanes). 42

FOR SALE—Black mini-toy poodles. National and international championship pedigree. Ready for sale May 12. Choose yours now. GR 8-8205 or GR 9-3541. 42

Real Estate

3 homes, 3 miles out. One 2-bedroom, modern, beautifully finished, 2 other smaller ones. Priced to sell.

Lake lots for sale.

NEED LISTINGS

Scripter Real Estate
MINNIE LESSER, BROKER
4401 Musbach Rd.
Phone 475-5978 42

TRAILRIDES—Ph. GA 8-0452 for information. Sharon, Hills Ranch. 42

SPRAY OR BRUSH Painting. Interior and exterior, houses and barns. Free estimate. Mark McKernan, Ph. GR 8-8424 or Thomas Ball, Ph. GR 9-5757. 42

TRAVEL TRAILERS—13-ft. and up; 10x55 ft. trailers. John R. Jones Trailer Sales, Gregory, Mich. Phone Alpine 6-2656. 42

Lawn and Garden Supplies

SCOTTS—

Turf Builder
Halls
Cone
Scull
4X-D
Bonus Weed & Feed
Turf Builder Plus 1
Turf Builder Plus 2
Turf Builder Plus 4
Rose Food
Haze Rose Dust
Zephyr Dusts
Spreaders

GREENFIELD—

Triple Action Crabgrass Killer
Lawn Food
Bulb Dip
Rose Food
Rose Dust
Systemic Spray

MILORGANITE

PROVEN LAWN FERTILIZER
PEAT MOSS
DRI-CANURE LIME
12-12-12 FERTILIZER
GARDEN FERTILIZER
BULK SEEDS
HAND TOOLS
GARDEN CARTS
WHEELBARROWS

Chelsea Hardware
GR 9-6311 42

WANT ADS

DAIRY QUEEN now open. Malteds, sundae, cones, dilly bars, banana splits, etc. 42

FOR SALE—Lots in scenic Noah Heights, near Half Moon Lake. Septic approved. 150' x 285'. Trees. Chelsea School District. Also 4-bedroom, 2-bath Cape Cod with pop-through fireplace. Builder's home. E. A. Wigle, Phone Chelsea 479-4471. 23tf

FORD CORNER

ORCHARD AND MAIN
CHELSEA'S LARGEST
AND FINEST SELECTION
OF USED CARS AND
TRUCKS

Late Model Like New

1965 Ford Demonstrators—Save 3 to choose from.

1964 Fairlane 2-dr. \$1,795.00
New car warranty

1964 Falcon 2-dr. \$1,795.00
Just like new

1963 Dodge 4-dr. Hardtop \$1,795.00
Extra clean.

1963 Chevrolet 4-dr. \$1,695.00
V-8, automatic transmission

1963 Ford Fairlane \$1,395.00
6 cylinder.

Medium Priced Values

1962 Fairlane 2-dr. \$1,095.00
Low mileage

1962 Galaxie 4-dr. \$1,395.00
V-8, standard transmission

1962 Pontiac 4-dr. H.T. \$1,595.00
A real value

1962 Ford Galaxie 500 2-dr. \$1,395.00
V-8, automatic transmission

1961 Corvair Monza \$1,095.00
4-speed transmission

1959 Thunderbird Conv. \$1,195.00
A beautiful automobile

No Money Down Bargains

1959 Chevrolet 4-dr. \$27.00 per mo.
Excellent condition.

1959 Buick 4-dr. \$27.00 per mo.
A beautiful car

1959 Ford 2-dr. \$13.00 per mo.
A real buy

1957 Oldsmobile H.T. \$21.00 per mo.

Our Lots Are Full of New and Used Cars—So Stop and Look at Your Leisure or Call

Lyle Chriswell, Everett Johnston, or George Palmer for information and prices.

GR 5-3271
GR 5-8640
GR 3-3941
GR 5-8631

PALMER FORD

50 Year Dealer

MORTON EXCAVATING, trenching, driveways. Fill dirt. Top soils. We specialize in septic tank and drain installations. Free estimates. Phone Pinckney 878-3619. 42

FOR SALE—53-ton Chevrolet pick-up, excellent condition. Phone 475-8042. 412

WOULD LIKE baby sitter from 2:30 to 3:30 p.m. and live in town week days only. Ph. 475-8022. 42

Paint Special

INTERIOR LATEX
SEMI-GLOSS ENAMEL
FLOOR PAINT
WHITE HOUSE PAINT
Your Choice, Only
\$2.99 gal.

Chelsea Hardware

WAITRESS WANTED—Experience not necessary. Must be 18 or over. Ph. GR 9-4211 for appointment. Schumm's, 1820 M-62. 42

FOR SALE—June Clover seed. Paul Seitz & Sons. Ph. 475-5115. 38tf

For the Best in POLE BUILDINGS

Be sure to see "SMILEY"
Call or Write
JOHN LIVERMORE
Gregory, ALpine 6-2827 38tf

WANTED—Automobile mechanic. Daniel Motor Sales. Ph. GR 9-6731. 38tf

New Listing

4-bedroom, bath and 1/2, one bedroom 1st floor, eating space in kitchen, dining room, fireplace in living room, 3 bedrooms 2nd floor, screened porch. Ideal for young family, within walking distance of schools and shopping. To see this fine older home call—

The Butts & Swisher Co.

214 E. Washington St., Ann Arbor
Phone 9 a.m. to 5 p.m.: 665-0501,
eve.: George P. Frisinger, 479-4161 42



"The reason we're going to look for a larger house in the Standard Want Ads is—you're still growing!"

WANT ADS

LAWNMOWERS, Tillers and Riders, small engine repair, parts, service. Free pick-up and delivery. Chelsea Mower Shop, S. Main and Old US-12. Ph. 475-7234. 38tf

Imported Dutch Bulbs

—Tuberous Begonias
—Dahlias
—Lilies
—Anemones (Wind Flowers)
—Standard Gladioli
—Buxus Glads
—Green Woodpecker Glads
—Blue Lily of the Nile
—Garden Gloxinias
—Star of Bethlehem

AMERICAN GROWN CANNAS

Chelsea Hardware 42

DAIRY QUEEN now open. Malteds, sundae, cones, dilly bars, banana splits, etc. 42

DESMOND was afraid to let his cat out until he got his Mustang. He traded his kitten for an hearse named Olga (she followed him home). Come to Palmer's Mustang Sale and find out why Mustangs have more fun. 42

GAMBLES FERTILIZER

Gambles 20-10-5 (bag covers 5,000 sq. ft.) \$3.95

Greenfield 20-10-5 (bag covers 5,000 sq. ft.) \$4.95

(See our special price on 2 bags of Greenfield 20-10-5 fertilizer.)

Gambles Organic 5-4-0 (50-lb. bag) \$2.49

Milorganite 6-3-0 (50-lb. bag) \$2.89

Gambles Weed & Feed (20-10-5) (bag covers 5,000 sq. ft.) \$4.95

GRASS SEED

Perennial Rye, 1-lb. 19c
(Fast-growing Grass Seed)

Kentucky Blue Grass, 1-lb. 79c

(75% Ky. Blue Grass and 25% Red Top mixture) 5-lb. \$3.69

Creeping Red Fescue, 1-lb. 89c

(Fine grass seed for shady areas) 5-lb. \$4.29

GAMBLES

GR 9-2811 52

WANT ADS

LIFE was just housework and diapers until Sarah got her Mustang. Now her cares are gone and there's a gleam in her husband's eye. (For Sarah, The Car?) Put the gleam back in your eye and buy your wife a Mustang at Palmer's big Mustang Sale. She'll love you for it. 42

GAMBLES POWER RAKE

Get rid of harmful thatch, which is an accumulation of dead grass, clippings and roots that choke your lawn. Flexible steel tines groom your lawn.

Rental Rate—\$2.50 per hour

GAMBLES

GR 9-2811 52

FIREPLACE WOOD for sale. We deliver. John A. Klink. Phone 475-8858 or 479-2877. 23tf

TOP SOIL, fill dirt, gravel and driveway cinders. Ph. GR 9-1001. 42

Apples

SPECIAL SPRING SALE
Red and Golden Delicious
\$2.00 a bushel

Czapla's Orchard

1817 Rank Road
Phone: GR 9-6468 44

FOR SALE—Male German short-hair AKC. Excellent blood line, 14 months old. Did good in field last year. Ph. GR 475-8439. 42

BAR MAID and part-time waitresses wanted. References required. Call 426-4160 or HA 6-8183. 38tf

Springtime Is Here

ORTHO—Dormant fruit tree spray. One quart makes 12 gals. of solution. \$1.99.

ORTHO—Borer spray for peach tree borers. One-half pint makes 12 gals. of solution. \$1.19.

SPRINGFIELD roto-tillers on sale at \$109.50.

FOR RENT—lawn roller, \$1 per day.

Merkel Bros.

43

- FOR SALE -

133-ACRE FARM—Modern 3-bedroom home, barns, tool shed, garage, other buildings. Equipped with 2 modern tractors, all tools, 70 head good breeding ewes. All for \$35,000, with \$10,000 down. Owner will finance balance.

2 ACRES, and 5 rooms, bath; home located at 532 McKinley St., Chelsea.

160-ACRE FARM about 5 miles west of Chelsea. Excellent nearly new 3-bedroom house, large basement barn. About 50 acres of alfalfa. All-weather road. Chelsea schools.

2-APARTMENT HOUSE—Excellent income. Price: \$15,000, \$3,000 down.

5-BEDROOM COUNTRY HOME, garage, two acre lot. 12085 Old US-12 E. Price \$13,500.

2-BEDROOM modern Cavanaugh Lake cottage; oil furnace, good beach. Price \$9,000.00.

MODERN YEAR-ROUND Cavanaugh Lake home, in new condition. Oil furnace, basement recreation room, living room with fireplace, garage, 130-ft. frontage. Price \$16,800, \$4,000 down.

HAVE BUYERS for good 2- to 4-bedroom modern houses in or near Chelsea.

List your property with Miller—fast, efficient service.

R. D. MILLER

REAL ESTATE BROKER

EVELYN ABDON, Phone 479-4522 (after 6 p.m.)
Office: 15775 Cavanaugh Lake Road
Post Office Box 358 Chelsea, Michigan
Phone: GR 9-5892

WANT ADS

WANTED TO RENT—Responsible family requires 3-bedroom home in town or country. Prefer lease for minimum one year. Ph. John Mayes days, 603-4278; evenings, Plymouth, GL 3-8055. 43

HAULING SERVICE. Reasonable rates. Call GR 9-1001. 42

FOR SALE—Great Lakes 10'x57' 2-bedroom Expando mobile home. Furnished. Chelsea Trailer Park. Call 484-1222, Lansing. 40tf

MUSTANGS

HARDTOPS

MUSTANGS

FASTBACKS

MUSTANGS

CONVERTIBLES

MUSTANGS

at

ORCHARD

AND

MAIN

SALE

Continues Thru

April 17

\$2185.00

or

\$100.00 Down

and

\$68.00 Per Mo.

PALMER FORD

50 Year Dealer

WANTED—Light trucking by job or hour. Call after 5-826-4429. 42

WANTED—2- or 3-bedroom home or apartment in Chelsea area. Ph. 665-4398 after 5 p.m. 42

APARTMENT FOR RENT—First floor, three rooms and bath, heat furnished. Ph. 479-1801. 42

FOR SALE—Hermes Ambassador electric typewriter, nearly new, 13-in. carriage. Phone days 475-5511, evenings 475-4941. 42

USED TRACTOR TIRES—Large inventory on hand. Also used passenger truck and tractor tires. Jackson Tire Brokers, 34-106, Musich, Mich. Ph. 598-2825. 32tf

Let Us Service Your Lawn Mower - Tiller - Tractor

Factory-Trained Serviceman
Authorized Sales & Service for Briggs & Stratton, Clinton Tecumseh

WE PICK UP AND DELIVER

Chelsea Hardware
GR 9-6311

"Your Friendly Reliable Service Dealer" 42tf

FOR SALE—Bigelow carpets, rose, 18'x14' and 14'x11' with pads. Corner metal overhead cupboard. Ph. 479-5501 evenings. 42tf

BERNARD was a born loser—he couldn't win at solitaire even when he cheated. Enter Mustang and Bernie's luck changed. He broke the bank at Las Vegas and he's headed for Monte Carlo. Can your luck change? Visit Palmer's Mustang Sales and discover why Mustangs always win. 42

WANTED—Ironings to do. \$1.00 an hour. Ph. 479-4072. 43

WANTED TO RENT—Couple with 2 school children want a 3-bedroom home or farm house, outside of town. Can furnish references. Call Hamilton 6

A SUPERMARKET THAT IS JUST A LITTLE BETTER

STORE HOURS:
 Monday thru Wednesday 9 a.m. to 6 p.m.
 Thursday & Friday 9 a.m. to 9 p.m.
 Saturday 8 a.m. to 9 p.m.
 CLOSED EASTER SUNDAY, APRIL 18

Stop & Shop

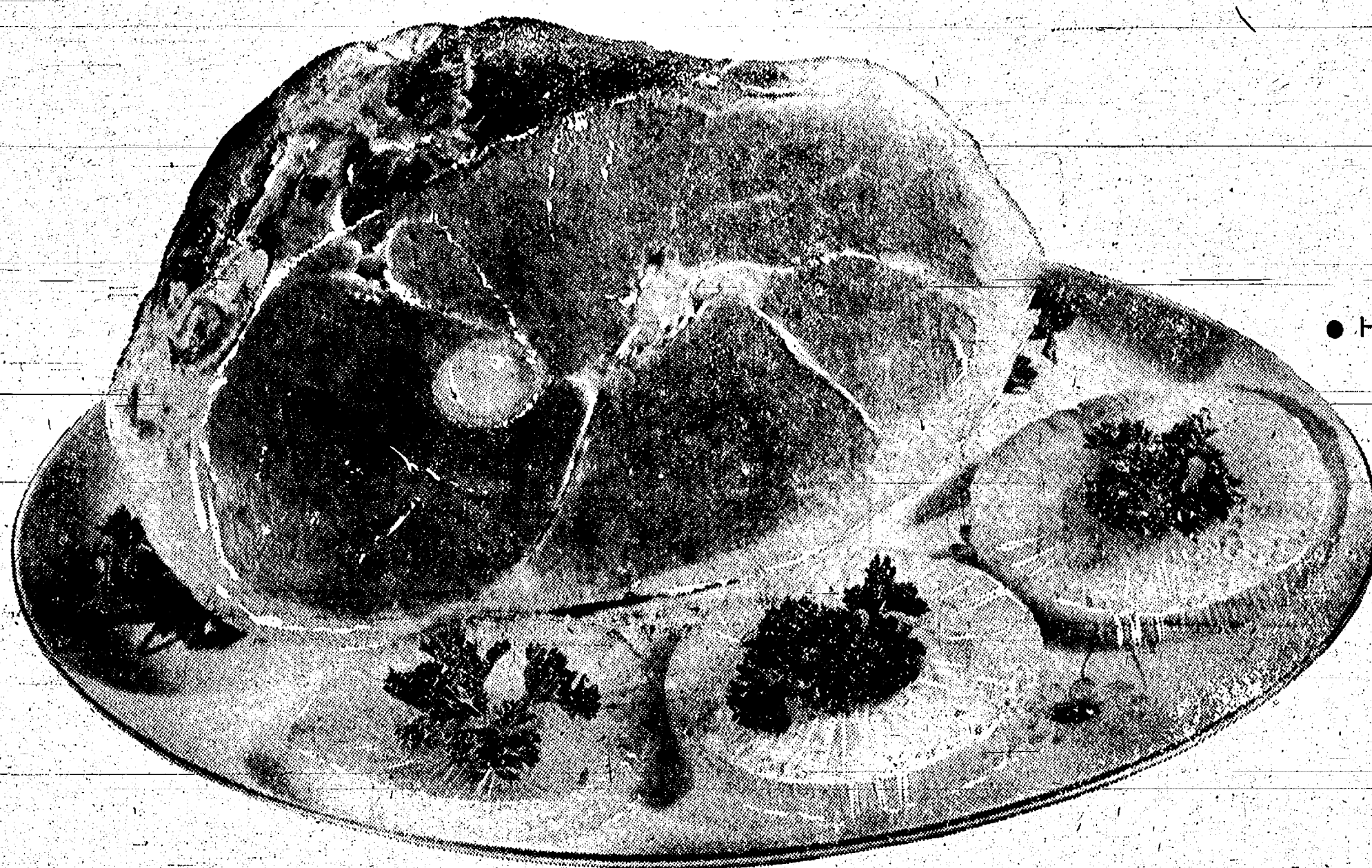
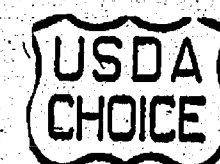
14901 Old U.S.-12
 Corner at M-52
 Chelsea

Our Friendly,
 Competent Meat
 cutting experts
 are always on duty



All Stop and Shop Meat Is
 Cut to Customer's Specifications

Select your Meat
 the same way
 your Mother did



"TRIPLE R FARMS" SEMI-BONELESS

HAMS

• HICKORY SMOKED • DE-FATTED • READY TO EAT

Whole
 or
 Half

57^c
 lb.

"TRIPLE R FARMS" U.S.D.A. CHOICE, BONELESS ROLLED
Rump Roast or Sirloin Tip Roast

99^c
 lb.

"TRIPLE R FARMS" FRESH DRESSED
FRYER LEGS

49^c
 lb.

FRYER BREASTS
 RIBS ATTACHED

59^c
 lb.

SWIFT'S ROYAL ROCK
HEN TURKEYS

12-14 Lb.
 Average

39^c
 lb.

STOP & SHOP'S HOMEMADE
PORK SAUSAGE **39^c** Lb.
 "TRIPLE R FARMS" MICHIGAN GRADE 1
SKINLESS FRANKS **39^c** Lb.
 "TRIPLE R FARMS" MICHIGAN GRADE 1
POLISH SAUSAGE **49^c** Lb.
 MORRELL'S READY TO EAT
CANNED HAMS **5^c** Lb. **\$3.99** Can

VELVET, RICH, DELICIOUS

ICE CREAM
 1/2-Gal. Carton **39^c**



Prices effective Wednesday,
 April 14 thru Wednesday,
 April 20, 1965.
 CLOSED 12 TO 3 GOOD
 FRIDAY, APRIL 16th.

KRAFT'S SALAD DRESSING
MIRACLE WHIP
 Quart Jar **44^c**

FLORIDA FRESH, CRISP
Pascal Celery

30-
 Size **19^c**
 8-oz. Bag **5^c**

FRESH, TENDER
Green Onions Bunch **9^c**
 SUGAR LOAF
Pineapple Large Size **29^c**

Stop & Shop's Enriched, Sliced
WHITE BREAD

5 1 1/4-lb. Loaves **\$1.00**

Assorted Flavors
FAYGO POP

6 Quart Bottles Plus Deposit **99^c**

Kraft's Philadelphia
CREAM CHEESE

8-oz. Pkg. **29^c**

Mandarin Oranges

4 11-oz. Cans **89^c**

Red or Yellow
Hawaiian Punch

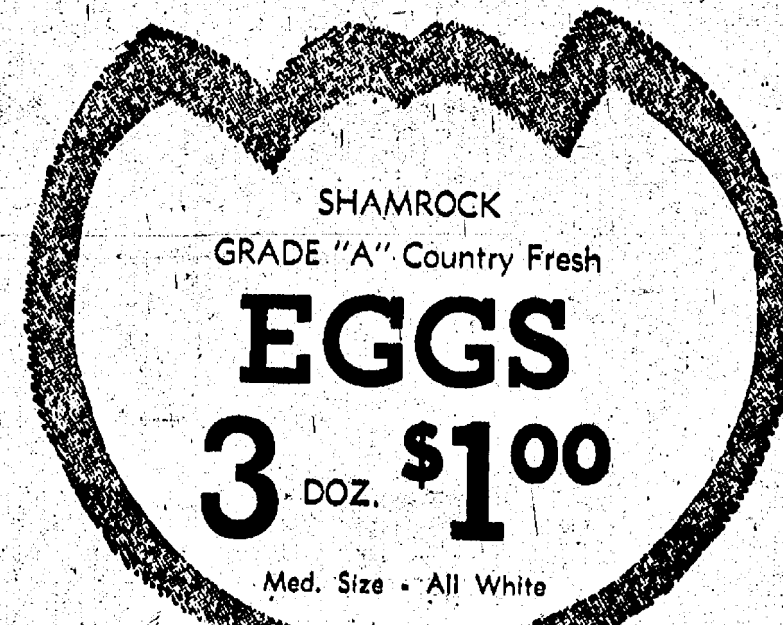
3 1-qt., 14-oz. Cans **\$1.00**

BABY FOOD—STRAINED
Gerber's **3** 4 1/2-oz. Jars **25^c**

SLICED, CRUSHED, CHUNK, SPEARS
Libby's Pineapple 15 1/4-oz. Can **27^c**

AQUA NET
Hair Spray Plus F.E.T. 13-oz. Can **59^c**

WILSON'S GRADE A
Half 'n' Half Quart Carton **39^c**



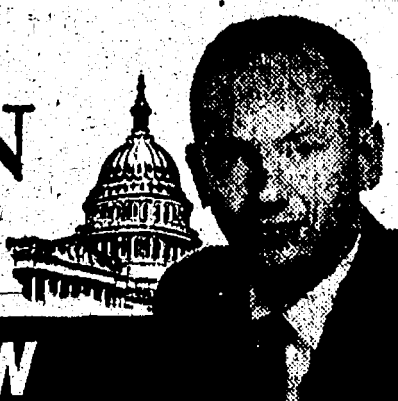
SHAMROCK
 GRADE "A" Country Fresh
EGGS
 3 DOZ. **\$1.00**
 Med. Size - All White



Brighten
 Your Holiday
EASTER PLANTS
 Available
 Thurs., Fri. & Sat.
 WHILE THEY LAST

Congressman Wes VIVIAN

Reports from
WASHINGTON



In the last two weeks the House of Representatives has passed three very significant bills: the Water Resources Planning Act, the Older Americans Act of 1965, and the Medicare Bill.

Members of the League of Women Voters in the Second District were strong supporters of H. R. 1111, the Water Resources Planning Act. After passage by the Senate, it will authorize the creation of Federal-State river-basin commissions and planning councils in order to foster greater conservation and more efficient use of fresh water. Such planning and coordination will help our efforts to clean up Lake Erie and the Raisin and Huron Rivers in the Second District.

The Older Americans Act will establish an agency within the Department of Health, Education and Welfare which will administer existing Federal programs for the aging, and sponsor research and provide information useful to the elderly.

The most important and historic bill to pass the House in the last two weeks is H.R. 6675, popularly known as the Medicare Bill; it carried by a vote of 313 to 115 last Thursday evening.

The Bill, when originally introduced in 1961 contained provisions for limited hospital and nursing care benefits for persons over 65, financed by Social Security payroll taxes.

It became evident early this year that with increased Democratic majorities elected to the Senate and the House of Representatives, a bill providing hospital care for the elderly under Social Security almost surely would pass. Groups which previously had opposed such legislation providing health care for the aged, now changed tactics and instead submitted alternative versions. One of these was the so-called Eldericare Bill sponsored by the American Medical Association; it stressed medical and surgical as well as hospital care.

The leadership of the House, agreeing that such benefits were needed, then incorporated the AMA Eldericare concept into the Medicare Bill.

If passed by the Senate as expected, beginning in July of 1966, senior citizens will be eligible for 60 days of hospital care plus subsequent nursing care for each illness; these benefits to be financed out of increased Social Security payroll taxes. No doctors fees will be paid out of this fund.

In addition, all persons over 65 will be eligible to enroll in a 100 percent optional supplementary program that will pay for physician's and surgical services whenever performed including the home or doctor's office, diagnostic x-rays, lab tests, necessary surgical dressings, and medical equipment and aids. This part of the program will be financed by a premium payment of \$3.00 by the individual participant and an additional \$3.00 a month by the Federal Government.

A third section of the bill will provide an increase of 7 percent Social Security Old Age and Survivor benefits.

H. R. 6675 will provide added financial security for millions of Americans. Benefits will, of course, add immeasurably to the financial security of most senior citizens. Many such citizens also will be relieved to know that they will no longer be forced by ill fortune to burden young sons and daughters with unplanned hospital and medical expenses.

I am proud that this bill is the result of a joint effort by the legislators of both political parties who, with few exceptions, recognized the need for health protection for the aged and finally combined their ideas in meaningful legislation to meet that need. I am sure most families in the Second District will welcome the added security H. R. 6675 will provide.

State Police Destroy 'Weed' Worth \$635,500

Michigan State Police officers have destroyed \$635,500 worth of marijuana in the incinerator at Michigan State University in East Lansing. The estimated value of the 205 pounds was based on the number of average-sized cigarettes that could have been rolled from it.

The marijuana was seized by Detective Kerr and Cpl. Thomas Krusniak, now at the Gaylord post, in an old schoolhouse at Lake Odessa in 1959. The seizure resulted from a tip given to the officers.

Two of three Mexicans involved in smuggling the dope were apprehended and convicted in Michigan. A third subject, a cousin of the other two, was later apprehended by federal agents on a smuggling charge in Texas and convicted.

LAKE & POND DIGGING
Ditching - Bulldozing
Largest crane in area.
EGELER TRUCKING
Phone 475-4381

W. E. FARRELL SHEET METAL

INDUSTRIAL AND GENERAL SHEET METAL WORK
115 WEST MIDDLE STREET—CHELSEA
PHONE GREENWOOD 9-2011



WHAT SIZE SNEAKERS DOES A RETARDED BOY WEAR?

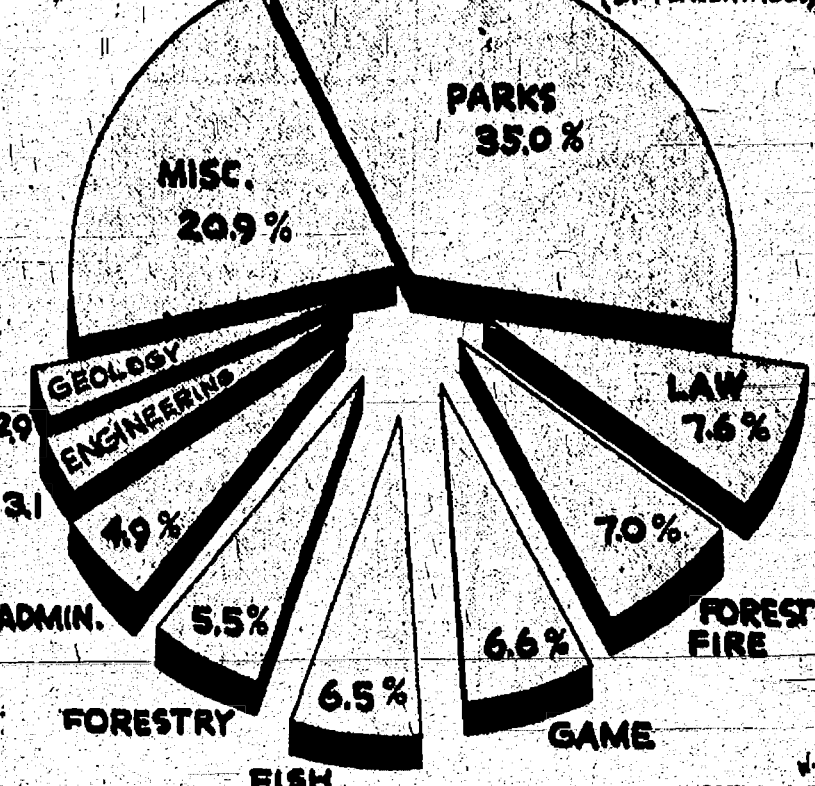
Retarded boys come in assorted sizes; tall and short, fat and thin—just like other kids. Their sneakers, too, come in assorted sizes.

If you could walk in a retarded boy's sneakers you would learn the frustration of never being able to play first base, or throw a touchdown pass, or take a date to the Junior Prom.

Retarded youngsters need people who understand, not sympathize. There's a lot you can do to help... lend your voice to those already assisting the retarded.

APRIL IS AMERICAN-LEGION CHILD WELFARE MONTH
Your local Legionnaires and Auxiliaries are working for a "Square Deal for Every Child"—they urge you to contact your County Unit of the Michigan Association for Retarded Children and lend your voice and assistance to make a better life for the mentally retarded child in your community.

THE 1965-66 MICHIGAN CONSERVATION BUDGET (84 PERCENTAGES)



Have any idea what it would cost to do a sound job of managing Michigan's natural resources during the 1965-66 fiscal year? The Michigan Dept. of Conservation, which is the most realistic thinking of the Conservation Department, is about \$32.1 million. If that figure sounds high, consider: Management of state forests generates about \$70 million of new income for Michigan each year; spending by state park visitors totals almost another \$50 million annually. And they're just part of the conservation picture. As this pie chart shows, a big slice of the \$32.1 million appropriation sought from the State Legislature this year would be used for state park development and maintenance. The next largest category—miscellaneous—contains more items than can be shown here. A few of them cover wildlife research, payments of bounties and taxes for state lands, recreation resource planning, engineering, and nuisance animal control. Increases are recommended for law-enforcement coverage, mostly in southern Michigan. Fish—intensively work on Great Lakes sport fishing, step up lake and stream inventories, improve maintenance of access sites, etc. Game—to construct wildlife floodings, improve deer ranges. Forest Fire Control—to replace worn-out and obsolete equipment and erect remote areas with roads and bridges. Geology—expand geologic mapping and iron ore investigations, accelerate water resources studies.—Mich. Dept. of Conservation

'Bridge-Spanners' Patrol Training For Summer Girl Scout Roundup Trip

By Kathy Foster

The "Bridge-Spanners" is a local patrol that is in training for the roundup. This is Patrol No. 4 in the Huron Valley Girl Scout Council, and they will go to Idaho in the summer of 1965. They are as follows: Margaret Beal from Sa-Kathy Foster, Chelsea; Patty Higgins, Ann Arbor; Mary Horsfall, Northville; Pam Lemmon, Howell; Mary Ronk, Ypsilanti; Dianne Rodgers, Wayne and Pam Sekeres, Ann Arbor, who is assistant patrol leader. Each of the other girls have specific jobs that she will do at Roundup.

Each patrol in the Council prepares a demonstration, which will be presented at Roundup. Aprons, flags and other articles are made by the girls to go along with their patrol's name and demonstration. The "Bridge-Spanners" has a flag made from a deer hide with the map of Michigan enlarged and it shows the Upper Peninsula united together with a bridge. The location of each girl in the patrol is indicated by a dot where they come from. This drawing is also on the girl's aprons, the colors are dark brown and yellow. All of these projects are made by the girls themselves and will go with them to the "big one" next summer.

Demonstrations are a must, and this patrol has taken theirs from the Chippewa Indians from Michigan. The girls have all made the Indian costume, a sack type of dress and a head band, both decorated with bead work. These designs are carried through right down to the moccasins that they are also making from the hide of deer. While the girls are dressed this way they will be demonstrating the art of making Indian "mats" which were used in the Indian dwellings. Dyed husks of corn were used. Red and yellow strips were braided together and then sewn to form the mats. Moccasin making will also be shown and how they decorated them. Drums were made out of barrels cut in half and covered to add to the demonstration. Marracas were made to add to the background.

The U. S. Naval Academy was established in the fall of 1845.



THE EXPERT

They say there's plenty of "luck" involved in fishing. And, this may be true. But it must be equally true that experience, concentration and just plain "know-how" contribute to the chances of becoming an "expert" angler.

There is no substitute for experience in most things. If you have a house to build, you want it built by a professional carpenter. If some appliance or item in the home is in need of repair, you wouldn't think of calling "just anybody."

By the same token, if there is something you want to buy, you're much better off to do business with someone you know, not perhaps, with someone who is "just passing through."

Shop and trade in the local business community, with the established local businessmen. Experience has made him an expert in meeting the needs of the local community.

Trade at Home

For Your own sake and community progress

Chelsea Chamber of Commerce

Smelt Run Expected Late This Spring

Lansing — Lower Michigan's smelt-dipping season, like spring itself, will be a little late this year, according to field reports of the Conservation Department.

From the way conditions look now, the prolonged spell of colder-than-usual weather will set back all but a smattering of the region's first smelt migrations until April 15 at the earliest.

In most years, these small, silvery fish begin trickling into Great Lakes tributaries and minor inland streams of the Lower Peninsula around April 10. With water temperatures warming up to touch off full-scale invasions, the fish usually provide top action for dip-netting sportsmen about April 20 in this part of the state.

Although Lower Michigan's smelt runs may fall behind schedule this spring, the Conservation Department fisheries men advise sportsmen not to become over-anxious. They point out that many net-welding enthusiasts make the mistake of starting and ending their spring outings before the action is at its best.

In the Upper Peninsula, where smelt migrations normally get underway later than in downstate Michigan, this spring's dipping season is expected to line up closely with the timetable for other years. With more time left for conditions to improve in the upper region, its upstream movements of smelt should start in earnest around May 1, with heaviest runs taking place between then and about May 10.

When they do hit their peak this spring, the state's smelt runs should be at least as good as they were a year ago, judging from latest catch figures of commercial fishermen.

As in the past, sportsmen will have the best chances of filling their nets and wash tubs with these fish in streams that empty into the northern third of Lake Michigan, including those of the Green Bay region. Sizeable smelt runs may also be expected in streams and cuts which drain into Saginaw Bay.

Other good smelt waters include northern Lake Huron streams and Lake Michigan tributaries along the southwestern side of the state.

Complete listings of waters open to this springtime sport in Michigan are available free from the Conservation Department's Publications Room in Lansing or any of its field offices.

The Department reminds resident sportsmen that they need regular \$2 fishing licenses to take smelt upstream from the Great Lakes with standard hand nets. Non-residents are required to have annual (\$5) or temporary (\$4) license for dipping smelt in all Michigan waters, including the Great Lakes.

Sportsmen with special \$3 licenses may catch smelt with gill nets not longer than 50 feet during April and May in Great Lakes waters open to commercial fishing. Mesh size of these nets must measure between 1 1/4 and 1 1/2 inches.

More than \$208,000 was spent last year by private companies and the State Highway Department to construct firebreaks and clean up burnable debris along railways, power lines, and roads.

Cong. W. Vivian To Meet with Dexter Residents

Congressman Weston Vivian will be in Dexter Thursday, April 22 from 9 until 10:30 a.m. at the Methodist Church Education Building.

A coffee hour is being arranged. Persons wishing to hear what Congressman Vivian has to say about bills before Congress or who want to ask questions or express their opinions to the congressman are invited to attend.

It is expected that Virgil Walling, chairman of the Christian Concerns committee of the church will introduce the speaker.

Applications Sought for Orientation Course in Speech Therapy

A girl from Chelsea High school may be selected as one of 12 high school girls being offered a close-up view of an unusual program this summer. Applications for a week-long orientation program in the field of speech and hearing disorders will be offered by Western Michigan University's Speech and Hearing Clinic July 18.

This unique career program was announced by Mrs. Rosemary Irving, a graduate of Western's professional training program in speech pathology and audiology, who is speech therapist in Chelsea Public Schools.

Mrs. Irving reported the July 18-23 program will bring the girls selected in close touch with this very much needed and challenging profession. In addition to talks with WMU professors, the girls will see and hear speech therapists at work and participate in other activities intended to stimulate their interest in choosing a career helping children and adults with speech and hearing problems.

Professional speech therapists are much in demand by school systems, hospital clinics and by universities, according to Mrs. Irving. All participants will be awarded an all-expense scholarship by the Psi Chi Xi Sorority chapter in Niles. Enrollment in the program will be limited. Applications will be accepted from local girls who will be in their senior year of high school in September, 1965. Further information about this program may be obtained by contacting Mrs. Martha Grant, counselor, or Mrs. Irving at Chelsea High school. This program has been endorsed by Charles Lane, high school principal.

Nearly \$23,000 worth of personal property went up in smoke last year as the result of forest fires caused by Michigan recreationists.



MAUSOLEUMS * MONUMENTS
BRONZE TABLETS * MARKERS
BECKER MEMORIALS
6033 Jackson Road
ANN ARBOR, MICHIGAN

NOTICE OF AMENDMENT TO VILLAGE ZONING ORDINANCE NO. 55 AND ALL AMENDMENTS THERETO RELATING TO A CHANGE IN THE ZONING MAP

Notice is hereby given that the Chelsea Village Council will conduct a public hearing for the amendment of the Chelsea Village Zoning Ordinance by the rezone of the premises hereinafter described from "A" Agricultural to Single-Family District, said premises are described as follows:

Commencing at the southeast corner of "Palmer's Subdivision" as recorded in the office of the Register of Deeds, Liber 10 of Plats, page 9; thence along the center line of Washington Street south 82° 24' east 322.08 feet FOR A PLACE OF BEGINNING; thence continuing along the center line of Washington Street south 82° 24' east 172.17 feet; thence south 1° 30' 30" east 516.86 feet; thence south 89° 12' 30" west 170.01 feet; thence north 1° 30' 30" west 542.12 feet to the place of beginning being a part of the southwest quarter of Section Seven (7), Town Two (2) South, Range Four (4), East, Village of Chelsea, County of Washtenaw, State of Michigan.

Subject to the rights of the public over the northerly 25.0 feet thereof as occupied by Washington Street, (being the lands immediately east of the driveway from Washington Street to Chelsea High School)

which hearing will be held in the Council room in the Chelsea Municipal Building on Tuesday, May 4, 1965, at 8:00 o'clock p.m.

The proposed zoning ordinance amendments and changes are on file in the office of the Chelsea Village Clerk and may be examined prior to the date of hearing.

This notice is given pursuant to a resolution adopted by the Chelsea Village Council at a regular meeting thereof held April 6, 1965.

VILLAGE OF CHELSEA
GEORGE L. WINANS, CLERK

First Quarter Traffic Deaths Down 22% Over Last Year

Michigan traffic deaths provisionally totaled 884 for the first quarter this year, a sharp reduction of 104 or 22 percent compared with 488 in the same period of 1964, according to a State Police report.

March deaths numbered 117, which was 42 or 26 percent less than the record high of 159 for that month set last year.

March was the fifth month in a row to show a decrease compared with the same months a year earlier. February's 120 deaths were 89 less and January's toll of 147 was a decrease of 23.

Adverse weather and driving conditions which affected speed and volume of traffic are believed to have had significant influence on the monthly death toll in the first quarter. Because of the variance between weather factors in the first quarters of 1964 and 1965, April is expected to provide a fairer evaluation of the trend.

Despite the reduction in deaths, however, more complete figures for the first two months this year showed that the 10,389 injured in 25,017 accidents in February were respective increases of six and 19 percent over that month a year ago, while January's 12,275 injured in 28,171 accidents were increases of 12 and 17 percent over January 1964.

Estimated mileage for January, according to latest available information, was three billion, about the same as in January a year ago, while the death rate of 4.9 per 100 million vehicle miles was

decreased 14 percent on the comparative basis. Rural traffic volume in February, according to highway department figures, was down 3.8 percent, the first decrease since November, 1961.

EAGER SALESMAN
Ottawa, Ill. — When Orin Schlink, 68, found a car he liked, the auto salesman told him to take the car, drive it around and see how he liked it. Within two blocks Schlink hit a guard rail, a parking meter, street sign and used brick wall instead of his brakes stop. Police charged him with intoxication and reckless driving. The \$195 car was demolished.

From Pearl Harbor until end of World War II, Coast Guard aircraft delivered 61 bombing attacks on enemy submarines, sank some 1,000 survivors, downed aircraft and torpedoed surface craft, and actually took part in the rescue of 35 these.

BUY EASTER SEALS
Help Grippled Children!



HANKERD'S SERVICE
Tires — Batteries — Tune-Ups — Brake Service — Wheel Alignment
PHONE 479-3541
CHELSEA, MICH.

NOTICE OF LAST DAY OF REGISTRATION

School Election

Notice of the Last Day of Registration of the Qualified Electors of CHELSEA SCHOOL DISTRICT
WASHTENAW and JACKSON COUNTIES
CHELSEA, MICHIGAN

TO THE QUALIFIED ELECTORS OF SAID SCHOOL DISTRICT: WHO MAY VOTE?

Section 532 of Act 269, Public Acts of Michigan, 1955, provides as follows:
"The Inspectors of Election at an Annual or Special Election shall not receive the vote of any person residing in a registration School District whose name is not registered as an elector in the City or Township in which he resides..."

LAST DAY OF REGISTRATION
The last day on which persons may register with the appropriate Township Clerks to be eligible to vote at the Special School Election called to be held on Monday, May 17, 1965 is

MONDAY, APRIL 19, 1965
Persons registering after 5:00 o'clock p.m., Eastern Standard Time, on the said April 19, 1965, are not eligible to vote at said Special School Election.

BOARD OF EDUCATION NO LONGER TAKES REGISTRATIONS

Under the provisions of Chapter 8 of Act 269, Public Acts of Michigan, 1955, registrations will not be taken by school officials and only persons who have registered as general electors with the Township Clerk of the Township in which they reside, are registered school electors. Persons planning to register with the respective Township Clerks must ascertain the days and hours on which the Clerk's office is open for registration.

This Notice is given by order of the Board of Education of Chelsea School District, Washtenaw and Jackson Counties, Chelsea, Michigan.
Dated: April 12, 1965.

ROBERT G. FOSTER
Secretary, Board of Education

WINDOW BOXES
Check your window boxes for
necessary repairs. If refurbish-
ing old ones, or building new boxes,
use old and select wood that
will last. Redwood and cy-
prus are first choices but oak
can be used, if given a

water-repellent finish. Be sure
windowbox walls are higher than
the depths of the largest clay
flower pots you plan to use in
them.
Telephone Your Club News
To GR 5-3581

**HOW MUCH DOES
IT REALLY COST FOR
THAT EXTENSION PHONE
YOU'RE DOING WITHOUT
BECAUSE YOU IMAGINE
IT COSTS TOO MUCH??**

It costs less than you may think. If you have:

• Flat rate residence service,
the monthly charge for a wall or
table model extension phone is
only \$1.10

• Message rate residence ser-
vice, the monthly cost is \$.95

Depending on your local calling area, the
one-time installation charge for one or more
residence extension phones put in at the same
time is \$2.25 or \$2.50

Color or Princess® phones are extra.

(Prices do not include Federal Excise and State taxes.)

To order your extension just call our Business
Office, or ask your Telephone Man.



Michigan Bell

Part of the Nationwide Bell System

Auto Sales Boom Sets New Record In Tax Collections

Lansing — A \$10 million increase
in revenue collections over 1963's
previous high mark... a true
barometer of the record-shatter-
ing year enjoyed by the auto-
motive industry... was reported
by the Michigan Department of
State for last year.

According to Secretary of State
James M. Hare, total collections
from vehicle licenses, titles and
registrations, driver licenses, and
other sources rose from a peak of
\$104 million in 1963 to another
all-time high of \$174.4 million last
year. Vehicle licensing accounted
for \$74.1 million of the total
amount.

Sales and use tax revenue col-
lected by branch offices of the
Secretary of State amounted to
\$180 million to account for most
of the other revenue handled by
the Department, Hare said.

In 1964, total vehicle registra-
tions were over the 4-million mark
for the second straight year. The
4,257,621 licenses issued represent-
ed more than a quarter-million
increase. This included a high
of 3,323,151 passenger car licenses;
a rise of more than 175,000 over
the previous year and the third
year passengers ran over 3-mil-
lion.

Tax revenue collected by the
Department of State, Hare said,
is used on the Motor Vehicle High-
way Fund and for the construction
and maintenance of roads and
in the state's general and school
aid funds.

Record Snowfall Reported in Northland

Crystal Falls — The State High-
way Department district office
here reported recently that snow-
fall in the Copper Country area
has reached an all-time record.

A total of 284.6 inches of snow
has been recorded thus far this
winter at the U. S. Weather Bu-
reau Station in Delaware, L.D.
Austin, Highway Department dis-
trict maintenance engineer report-
ed.

The previous record was 282.2
inches established in 1949-50 at
the Houghton County Memorial
Airport.

**BUY
EASTER
SEALS**

Help
Crippled Children!

Rural Correspondence

• Items of Interest About People You Know •

NORTH FRANCISCO

Mrs. Nina Wahl attended the
confirmation services at the Ro-
gers Corners Zion Lutheran church
Sunday. Her granddaughter, Mar-
lyn Hinderer, was one of the class.
Mr. and Mrs. Norman Hinderer
entertained the entire family for
dinner in honor of their daugh-
ter.

Mrs. Leonard Loveland attended
the Methodist church in Grass
Lake Sunday where her grandson,
Tommy Loveland, son of Mr. and
Mrs. LeRoy Loveland, joined the
church. Mrs. Loveland was a din-
ner guest later at the home of
LeRoy Loveland.

Harley Loveland spent Sunday
evening with his mother, Mrs.
Leonard Loveland.

Mr. and Mrs. Roy Miller called
on Mr. and Mrs. Emerson Lesser
Wednesday evening.

Mrs. Esther Waddell and George
Zeab called on Mr. and Mrs. Roy
Miller Friday evening.

Mrs. Clifford Peterson and Mrs.
Nelson Peterson called on Carrie
Benter at Cedar Knoll Rest Home
Friday afternoon.

Mr. and Mrs. Clifford Peterson
spent from Saturday until Sunday
evening with the Partee family of
Clayton.

George Lewis called on Mr. and
Mrs. Nelson Peterson Monday af-
ternoon.

Mrs. Eva Daner spent from
Monday until Saturday with Mr.
and Mrs. Chester Notten.

Mr. and Mrs. James Grey of
Wayne spent Sunday afternoon
with Mr. and Mrs. Philip Hoeler
and family.

Mr. and Mrs. Dillman Wahl at-
tended Sunday services at the
Grass Lake Methodist church.

FOUR MILE LAKE

Mr. and Mrs. John Push and
daughters, of Stockbridge, were
Sunday afternoon visitors of Mr.
and Mrs. Tony Push.

Mrs. Robin Wright entertained
Sunday at a birthday gathering
honoring her niece and nephew,
Brian and Shari Wright's sixth
birthday. There was a beautiful
birthday cake and those present
were Mrs. Burton Wright and Mr.
and Mrs. Gary Wright and fam-
ily.

Mr. and Mrs. Earl Pettibone and
Mr. and Mrs. Floyd Fowler spent
Friday evening at Farmington and
visited Mr. Pettibone's brother, Roy
Pettibone.

Mr. and Mrs. William Weich
visited Mrs. Weich's mother, Mrs.
Mary Reams of Ypsilanti, Satur-
day evening.

Carolyn Barais of Western Mich-
igan University, Kalamazoo, spent
the weekend with her parents,
Mr. and Mrs. Oscar Barais.

Linda Brassow of Michigan

Lutheran Seminary of Saginaw is
spending her Easter vacation with
her parents, Mr. and Mrs. Ray
Brassow.

Mrs. Ezra Heininger was pleas-
antly surprised on Saturday when
her daughter, Mrs. Alvin Wahr en-
tertained her mother and 14 rela-
tives at a dinner in honor of her
birthday. A beautiful birthday
cake was made by Mrs. Wahr and
Mrs. Heininger received many nice
gifts.

WATERLOO

Sunday visitors of Mr. and Mrs.
Hugh Gaddis and her mother were
Mr. and Mrs. John Highland of
Livonia.

Mrs. Doris Stanfield and daugh-
ter, Delores, of Stockbridge, Mrs.
Florence Walz and Mrs. Betty
Wahl were Sunday callers at the
home of Mrs. Arthur Walz.

Dr. and Mrs. E. R. Weddon of
Stockbridge were Saturday dinner
guests of Mr. and Mrs. George
Pluek.

Fred Fairbrother, who has been
a patient at St. Joseph Mercy
Hospital for some time, returned
to his home and is coming along
as well as could be expected.

The Waterloo Village Church
was the scene of four baptisms
last Sunday, April 11: Rita Chris-
tine Harp, daughter of Mr. and
Mrs. Donald Harp; Stephen Charles
Adkins, son of Mr. and Mrs.
Charles Adkins; Eric Stephen Case
and his sister Betty Sue, son and
daughter of Mr. and Mrs. Cas
Case were all given baptismal
rites.

Mrs. Frank Kitchen and Mrs.
Wendell Bliken of Ypsilanti, and
Mrs. Will Barber called on Mrs.
Glenn Swetland of Leoni on Tues-
day.

Thursday afternoon Mrs. Welton
Bohne and Mrs. Will Barber were
Jackson visitors. Friday, Mrs.
Mary Boyce called on Mrs. Bar-
ber.

Mrs. Vern Glenn and mother,
Mrs. Louise Foster of Ypsilanti,
spent Saturday with the latter's
sister, Mrs. Will Barber. All
called on friends at Michigan Cen-
ter and Grass Lake.

The Wendell Barbers of Stock-
bridge were Sunday visitors at the
home of the former's mother, Mrs.
Will Barber.

The choir at the Village church
wore their new robes in green,
with gold color satin collars and
trim. Fifteen members of the
choir were present, with their
leader, Miss June LeVan.

Know Your Fescues
Before Buying Supply of
Lawn Grass Seed

When seeding your lawn this
spring, don't confuse your fescues.

Some make attractive, fine-
leaved lawns; others look more
like tough, hardy clumps suitable
for roadsides, but not for front
lawns.

Carter M. Harrison, Michigan
State University crop scientist,
points out that the preferred fes-
cues are members of the "creeping
red" species. Any one of its im-
proved varieties is a worthy in-
gredient in a lawn seed mixture.

Harrison says the varieties to
look for include "Chewings," "Ill-
ahoe," "Pennlawn" and "Rainier."
All are excellent companions for
Kentucky bluegrass, he says, and
are noted for persistence on poor,
droughty or shaded areas.

But the M.S.U. crop scientist
warns home owners to beware of
the less favorable coarse, bunchy,
"tall fescue." This includes "Alta"
or "Kentucky-31" which are not
suitable for attractive lawns.

Auto-Owners
Agent goes
ALL-OUT
FOR YOU

COMPLETE
TAILORED
PROTECTION
FOR YOUR
CAR, HOME,
PERSONAL
BUSINESS.

Call

**A. D. MAYER
AGENCY**

"Your Protection Is Our Business"

115 Park St. Chelsea, Mich.
Phone: Office 479-5081
Res.: GR 5-4201

**Auto-Owners
INSURANCE**

Travel Info Centers Open on Schedule

Lansing — Wintry weather or
not, Michigan's five Travel Infor-
mation Centers operated by the
State Highway Department open-
ed on schedule the first day of
spring.

The Centers, which last year
served nearly 370,000 travelers,

are located near Monroe on I-75
near New Buffalo on US-12, in
Mackinaw City on I-75 near US-23
near Ironwood on US-23 and near
Meemine on US-41.

Two more of the Centers are
scheduled to be built and opened
before heavy summer tourist travel
begins. These are located on I-75
near Clare and near Sault Ste.
Marie. Scheduled for construction
later this year is a Center in Port

Huron primarily to serve inter-
national travelers utilizing the
Blue Water Bridge.

APRIL IS FIRE MONTH

With ground cover dangerous
and debris burners in full swing,
April is Michigan's most explosive
month for forest fires. In 1964,
nearly 13,000 acres burned in that
month, compared with only 5,000
during the 11 other months.

TORNADO SAFETY RULES

**TO KNOW WHAT TO DO WHEN A WARNING IS RECEIVED,
OR A TORNADO IS OBSERVED, MAY MEAN THE DIFFERENCE
BETWEEN LIFE AND DEATH!!**

I There is no universal protection against tornadoes except caves or under-
ground excavations. When time permits, go to a tornado cellar, cave, or
underground excavation which should have an air outlet to help equalize
the air pressure. If should be kept fit for use, free from water, gas, or debris;
and preferably equipped with pick and shovel.

II If you are in open country:

1. Move at right angles to the tornado's path. Tornadoes usually move
ahead at about 25 to 40 miles per hour.
2. If there is no time to escape, lie flat in the nearest depression such as a
ditch or ravine.

III If in a city or town:

1. Seek inside shelter, preferably in a strongly reinforced building. STAY
AWAY FROM WINDOWS!
2. In homes: The southwest corner of the basement usually offers greatest
safety, particularly in frame houses. People in houses without basements
should find shelter, preferably in a storm cellar, although a depression,
such as a ditch or ravine, can offer some protection. If doors and windows
on the north and east sides of the house are opened it may help to reduce
damage to the building.
3. Standing against the inside wall on a lower floor of an office building
offers some protection.

IV If in school:

1. In city areas: If school building is of strongly reinforced construction,
stay inside, away from windows, remain near an inside wall on the lower
floors when possible. AVOID AUDITORIUMS AND GYMNASIUMS with
large, poorly-supported roofs!
2. In rural schools that do not have strongly reinforced construction, remove
children and teachers to a ravine or ditch if storm shelter is not available.

V If in factories & industrial plants:

On receiving a tornado warning, a lookout should be posted to keep safety
officials advised of the tornado's approach. Advance preparation should be
made for shutting off electrical circuits and fuel lines if the tornado ap-
proaches the plant. Workers should be moved to sections of the plant offer-
ing the greatest protection.

VI Keep calm! It will not help to get excited. People have been killed by running
out into streets and by turning back into the path of a tornado. Even though
a warning is issued, chances of a tornado striking one's home or location
are very slight. Tornadoes cover such a small zone, as a rule, that relatively
only a few places in a warned area are directly affected. You should know
about tornadoes though, "just in case."

VII Keep tuned to your radio or television station for latest tornado advisory
information. Do not call the Weather Bureau, except to report a tornado,
as your individual request may tie up telephone lines urgently needed to
receive special reports or to relay advisories to radio and television stations
for dissemination to thousands in the critical area.

TORNADO INFORMATION

WHERE TORNADOES CAN OCCUR:

Any place in the United States at any time of the year. They happen
most frequently in the midwestern, southern and central states from
March through September.

HOW OFTEN DO THEY OCCUR:

The records show that the average number of days with tornadoes varies
from about 12 per year in parts of the Mid-West to less than one per
year in the Northeastern and far Western states.

HOW TO RECOGNIZE A TORNADO:

Usually observed as a funnel-shaped cloud, spinning rapidly, and
extending toward the earth from the base of a thundercloud. When
close by, it sounds like the roar of hundreds of airplanes.

TORNADO "WEATHER":

Hot, sticky days with southerly winds and a threatening, ominous sky.
However, many such days occur without tornadoes.

CLOUDS:

Familiar thunderstorm clouds are present. An hour or two before a
tornado, topsy-turvy clouds appear, sometimes bulging down instead
of up. The clouds often have a greenish-black color.

PRECIPITATION:

Rain, frequently hail, preceding the tornado, with a heavy downpour
after it has passed.

TIME OF DAY:

Mostly between 3 and 7 p.m., but they have occurred at all hours.

DIRECTION OF TRAVEL:

In most cases they move from a westerly direction, usually from the
southwest.

LENGTH OF PATH:

Usually 10 to 40 miles (the average length is 16 miles) but they may
move forward for 300 miles.

CONTACT YOUR C. D. DIRECTOR FOR FURTHER INFORMATION:

VIC SINDLINGER, DIRECTOR, ZONE 5

**MICHIGAN OFFICE OF CIVIL DEFENSE
CHELSEA CIVIL DEFENSE ZONE**



SCHOOL ADMINISTRATOR

The public school administrator is,
in a sense, a businessman — a busi-
nessman in charge of our most important
industry. He must be a combination
personnel director, legal expert, archi-
tect, building maintenance engineer, ac-
countant and public relations man.
Above all these, however, he is an edu-
cator.

The main concern of the school ar-
ministrator is quality education for the
boys and girls of his district. His philoso-
phy of education will govern the quality
of instruction throughout his school or
school system. He must give his teachers
a sense of direction, then oversee and
evaluate their teaching methods.

The administrator's position is an im-
portant and often difficult one. He must
maintain the respect and cooperation of
his teachers, his school board and the

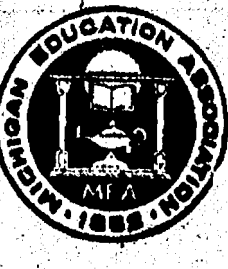
community. Too often he becomes the
scapegoat for everything that goes
wrong within the schools — from a los-
ing football season to inadequate build-
ings.

To be effective, the administrator
must have the support of his community.
All education is expensive. Good edu-
cation is more expensive but poor edu-
cation is the most expensive in the long
run. Even the very able executive will
be held back if there is no money for a
good teaching staff, necessary supplies
and adequate buildings.

The role of the administrator is ex-
tremely complex. He must act as a
professional leader for his teaching as-
sociates; he must run his school system
efficiently and economically, and he
must guarantee educational opportunity
for the students under his jurisdiction.



THIS IS ONE OF A SERIES OF EDUCATION FEATURES PUBLISHED
AS A PUBLIC SERVICE IN COOPERATION WITH THE MICHIGAN
PEDIA ASSOCIATION, THE MICHIGAN EDUCATION ASSOCIATION,
AND THIS NEWSPAPER.



COME TO CHURCH ON EASTER SUNDAY

ST. PAUL'S EVANGELICAL AND REFORMED CHURCH
(United Church of Christ)
The Rev. Donald G. Baacke,
Interim Pastor, Ph. 475-7215

Thursday, April 15—
7:00 p.m.—Communion service.
8:30 p.m.—Communion service.

Saturday, April 17—
9:30 a.m.—Youth choir.

Sunday, April 18—
6:30-8:00 a.m.—Easter break-

fast.
8:15 a.m.—First worship service. Sermon topic: "I believe in Jesus Christ, the resurrected." 1 Cor. 15:20-26.
10:15 a.m.—Second worship service.

9:30 a.m.—Church school.

Tuesday, April 20—
1:30 p.m.—Joyce Louise Circle at the home of Joyce Dietle, 228 Washington. Project: Baby showers for Michigan migrant workers' families.

1:30 p.m.—Mary Jane Circle at the church hall.
7:30 p.m.—Ruth Circle at the home of Ruth Wenk, 245 Jefferson.

8:00 p.m.—Sunshine Circle at the church hall.

Wednesday, April 21—
1:00 p.m.—Esther Circle at the church hall.



Holy Week SERVICES

ST. MARY'S CATHOLIC CHURCH
The Rev. Fr. Francis Maliszewski

Friday, April 16—
1:30 p.m.—Stations of the Cross
2:00 p.m.—Solemn Good Friday service begins. The faithful may receive communion only during the Solemn service.

7:30-9:00 p.m.—Confessions.
Saturday, April 17—
Solemn Easter Vigil starts at 10:45 p.m. and comes to a climax with the celebration of Holy Mass. Those present for Easter Vigil fulfill their Mass obligation of Easter Sunday.

Hours of Confession: 10:30 a.m.-12:30 p.m. and 7-9 p.m.
Sunday, April 18—
Masses at 6:30 a.m., 8 a.m., 10 a.m., and 11:30 a.m.

ST. JOHN'S EVANGELICAL AND REFORMED CHURCH
(United Church of Christ)
(Francisco)

The Rev. J. Tracy Luke, Pastor

Thursday, April 15—
8:00 p.m.—Evening Communion service.

Sunday, April 18—
7:00 a.m.—Easter sunrise service.

8:00 a.m.—Breakfast.

10:00 a.m.—Worship service.

11:00 a.m.—Church school.

7:00 p.m.—Youth Fellowship.

NORTH LAKE METHODIST CHURCH
The Rev. George Nevin, Pastor

Sunday, April 18—
9:30 a.m.—Worship service.

10:30 a.m.—Sunday school.

6:00 p.m.—MYF meeting.

NORTH SHARON COMMUNITY BIBLE CHURCH
Sylvan and Washburn Roads
The Rev. Paul Collins

Sunday, April 18—
10:00 a.m.—Sunday school.

11:00 a.m.—Worship service.

7:00 p.m.—Evening service.

FIRST CHURCH OF CHRIST SCIENTIST
1833 Washtenaw Ave., Ann Arbor

Sunday, April 18—
9:30 a.m.—Sunday school.

11:00 a.m.—Morning service.

The Bible lesson subject is "Doctrine of Atonement," and will include this verse from II Corinthians: Therefore if any man be in Christ, he is a new creature: old things are passed away; behold, all things are become new.

6:30 a.m.—Easter sunrise service.

9:45 a.m.—Sunday school.

11:00 a.m.—Worship service with specials by the young people.

7:00 p.m.—Evening service.

FIRST ASSEMBLY OF GOD CHURCH
14300 Old US-12

The Rev. Harold S. Bilotta, Pastor

Sunday, April 18—
6:30 a.m.—Easter sunrise service.

9:45 a.m.—Sunday school.

11:00 a.m.—Worship service with specials by the young people.

7:00 p.m.—Evening service.

WATERLOO VILLAGE CHURCH
(Evangelical United Brethren)

The Rev. Wilbur Silvernail, Pastor

Thursday, April 15—
8:00 p.m.—Maundy Thursday Communion service.

Sunday, April 18—
10:00 a.m.—Sunday school.

11:15 a.m.—Worship service.

CONGREGATIONAL CHURCH
(United Church of Christ)

The Rev. R. A. J. Livingston, Pastor

Thursday, April 15—
8:00 p.m.—Maundy Thursday candlelight communion service, with extinguishing of the lights ceremony.

Friday, April 16—
1:30 p.m.—Good Friday Union services at the Methodist church.

Sunday, April 18—
6:30 a.m.—Sunrise service at Mill Lake.

9:00 a.m. and 11:00 a.m.—Identical worship services.

CHURCH OF CHRIST
13661 Old US-12, East

C. Arthur Peddie, Pastor

Sunday, April 18—
10:00 a.m.—Bible study.

11:00 a.m.—Worship service.

6:00 p.m.—Worship service.

Bible study each Thursday at 7:00 p.m.

FIRST UNITED PRESBYTERIAN CHURCH UNADILLA
The Rev. John Jeffrey, Pastor.

Sunday, April 18—
9:30 a.m.—Church school.

10:45 a.m.—Worship service.

Tuesday, April 19—
8:00 p.m.—Choir practice.

GREGORY BAPTIST CHURCH
The Rev. Millard Heron, Pastor

Sunday, April 18—
10:00 a.m.—Worship service.

11:15 a.m.—Church school.

6:30 p.m.—Baptist Youth Fellowship.

7:30 p.m.—Evening worship.

ST. BARNABAS EPISCOPAL CHURCH
20500 Old US-12

The Rev. J. R. Smucker, Vicar

Thursday, April 15—
8:00 p.m.—Maundy Thursday Holy Communion.

Friday, April 16—
7:00 a.m.—Holy Communion.

1:30 p.m.—Community Lenten service.

Sunday, April 18—
7:00 a.m.—Holy Communion, breakfast following.

10:00 a.m.—Worship service with Holy Communion.

There will be a nursery at this time but no church school.

ST. JOHN'S EVANGELICAL AND REFORMED CHURCH
(United Church of Christ)
(Rogers Corners)

The Rev. J. Tracy Luke, Pastor

Friday, April 16—
8:00 p.m.—Good Friday Communion service.

Sunday, April 18—
9:30 a.m.—Worship service.

10:30 a.m.—Sunday school.

SALEM GROVE METHODIST CHURCH
The Rev. George Nevin, Pastor

Sunday, April 18—
10:00 a.m.—Sunday school.

11:00 a.m.—Worship service.

ST. THOMAS EVANGELICAL LUTHERAN
Freedom Township

The Rev. H. Spomer, Pastor

Thursday, April 15—
8:00 p.m.—Maundy Thursday Communion service.

Friday, April 16—
8:00 p.m.—Good Friday service.

Saturday, April 17—
9:00 a.m.—Junior catechism.

10:00 a.m.—Junior choir.

Sunday, April 18—
10:00 a.m.—Easter festival service with Communion.

11:00 a.m.—Sunday school.

ZION LUTHERAN CHURCH
(Rogers Corners)

The Rev. C. J. Renner, Pastor

Friday, April 16—
1:00 p.m.—Good Friday Lenten church service. Sermon topic: "Am I An Heir of God?" Holy Communion celebrated at this time.

Saturday, April 17—
9:30 a.m.—Junior catechism.

Sunday, April 18—
9:00 a.m.—Sunday school.

10:15 a.m.—Easter worship service. Sermon topic: "The Easter Call." Holy Communion will be celebrated at this time.

Monday, April 19—
8:00 p.m.—Senior choir.

Thursday, April 22—
10:00 a.m.—Menorah Women's Conference at Dundee.

Friday, April 23—
6:30 p.m.—Women's shuffleboard banquet.

BETHEL EVANGELICAL AND REFORMED CHURCH
(United Church of Christ)

Freedom Township

The Rev. T. W. Menzel, Pastor

Friday, April 16—
8:00 p.m.—Good Friday communion service.

Sunday, April 18—
10:00 a.m.—Easter service with communion.

No Sunday school.

Just A Minute...

By the Rev. James A. Craig

Huge, brilliantly colored "bunnies" decorate some store windows. Eggs, made of plastic foam and all colors of the rainbow, nest attractively in shredded cellophane grass.

All sorts of candles are on sale to surprise the children on Easter morning. America's celebration of the most important Christian holiday is underway. It will soon reach its peak.

With all the color and stuff it is too easy to lose track of the week we are in and what the Sunday that comes stands for.

The egg is a Christian symbol of uncertain origin. The bird breaking through the shell came to stand for Christ's breaking through the "shell" of death. It was a symbol also of a new life in a new world.

The colored Easter egg adds even more to the meaning. Color, usually bright, adds a lightness and happiness to the day. The meaning once was to demonstrate the Christian's joy at the battle won by Jesus Christ.

You'll be getting things ready this week. That's what Lent is for.

While you're at it, get yourself ready, too—for the new possibility in life that Jesus Christ makes possible.



REV. ROBERT H. HARPER

THE AGED

THE ADVANCES of science and modern medicine have combined to increase "life expectancy" considerably in our lifetime. Today, we not only have more young people than a generation ago; we also have many elderly men and women with many years of living yet ahead of them.

The care of the aged among us has been given attention by the Government and by many institutions. We have learned more and more that an individual's useful years are not ended merely because that person reaches the age of "retirement" or becomes old enough to qualify for social security.

Centuries ago, the Psalmist wrote that he had been young and was grown old, yet had he not seen the righteous forsaken nor his seek begging bread. Today, as a nation and as individuals, we should cooperate to make the Psalmist's words the expression of the aged among us. Let us acknowledge the right of the elderly to be useful and let a sense of obligation and responsibility lead us to cherish with love and needed care the aged and the infirm.

There is no such thing as an off-season for forest fires in Michigan. Last year, these breakaway blazes occurred in every month, destroying 18,108 acres for the highest toll since 1949.

Moon Phase Determines Easter Date

Ann Arbor — Every spring for the last 1,640 years people have checked the calendar for the date of Easter.

The reason is that this holiday, which falls this year on Sunday, April 18, fluctuates between March 22 and April 25, depending on the phases of the moon, University of Michigan astronomer Hazel M. Losh says.

To understand this fluctuation, one must recall that the church fathers, gathered in the Council of Nicaea in 325 A.D., decreed that Easter was to be kept on the Sunday following the first full moon that comes after the vernal equinox.

This year the vernal equinox came on March 20. Thus the full

moon of April 15 places Easter Sunday on April 18.

Says Professor Losh, "Perhaps one good reason for choosing the full moon for reckoning Easter was to enable the pilgrims to the Holy City to have the advantage of moonlight for safe travel."

In 1948 Easter came on the possible day, April 25, and it will happen again in 2038 A.D. The earliest Easter fell on March 22, and will not come again until 2285.

Next year Easter will be April 10.

Sports Quiz Answers.

1. Dawn Frazer of Australia.
2. Detroit (3).
3. Twenty-two.
4. Reportedly, \$70,000.
5. Star basketball player Davidson.

The greatest Naval engagement of World War I, The Battle of Jutland, was fought off the entrance of Skagerrak, May 31, 1916.

We'll put "wings" on your car

You'll think your car has sprouted wings, the way it responds after filling up with our new PURE gas.

You'll like the way the pep, power and performance steps up when you fill up with PURE Gas and Oil. Our batteries will assure you quick starts, too!



PURE OIL PRODUCTS

HANKERD'S SERVICE

Tires — Batteries — Tune-Ups — Brake Service — Wheel Alignment

PHONE 479-3541 CHELSEA, MICH.

DO YOU KNOW

WHY JESUS REALLY DIED?

The Bible says that He died for our sins. If you have never received Him as your own personal Saviour, then His death and resurrection, as far as you are concerned, was in vain.

Listen to What the Bible Says:

"Moreover, brethren, I declare unto you the gospel which I preached unto you, which also ye have received, and wherein ye stand; By which also ye are saved, if ye keep in memory what I preached unto you, unless ye have believed in vain." For I delivered unto you first of all that which I also received, how that Christ died for our sins according to the scriptures; And that He was buried, and that He rose again the third day according to the scriptures." I Cor. 15:1-4.

You Are Sincerely Invited To Attend the GOOD FRIDAY SERVICE

at 1:30 p.m., and also the

EASTER SUNDAY EVENING SERVICE

at 7:00 p.m., at the

CHELSEA BAPTIST CHURCH

At which time the film, "The Power of Resurrection," will be shown. Special music will be featured at both services.

An Olds 88 has everything going for it (including many of America's most particular car buyers!)



- DELTA 88 Newest, most luxurious of the all-new 88s, Delta totes up to 370 high-stopping horses packaged in a Super Rocket V-8—and the glamor to match its go!
- DYNAMIC 88 The most popular Olds of all comes on bigger than ever with crisp new styling and smart new interiors... and a 428-cubic-inch Super Rocket V-8 standard!
- JETSTAR 88 Here's another big 'n' brawny full-size Olds 88... complete with easy-riding 123-inch wheelbase and a price that starts below 30 models with low-price names!

'66 OLDSMOBILE

Look to Olds for the New!

DANIELS MOTOR SALES, INC., 118 N. Main St.

Club and Social Activities

CHILD STUDY CLUB
The Chelsea Child Study Club met Tuesday, April 13, at the home of Mrs. Thomas Burt. The program was given by the guest speaker, Walter Roch von Roehs, of the Washenaw Farm and garden center on do's and don'ts of house plants and general information on gardening and lawn tending. Co-hostesses for this meeting were Mrs. Charles Cattell and Mrs. Warren.

The next meeting will be held at the home of Mrs. Alvin Perry, 27, at the home of Mrs. Dwight DeRoo a 4th grade teacher from Plymouth. The topic will be "Experiments in Science."

WOMAN'S CLUB
Chelsea Woman's Club met Tuesday, April 13, at the McKune Memorial Library with 28 members present.

The program, in the form of a very interesting skit, was presented by Helen Weiss as the grandmother, Alice Schumuk as the mother and Betty Schenk portraying the teen-ager. This light and comic sketch of teen-agers of different eras was enjoyed very much by the club.

Plans were made for the annual spring dinner in May and two new members were welcomed.

Co-hostesses were Shirley Smith and Alice Schumuk.

SUBURBAN MOTHERS
Suburban Mothers Child Study Club met Thursday, April 8 at McKune Memorial Library. Mrs. Clarence Snyder acted as hostess, with Mrs. Basil Reilly and Mrs. William Dehn as co-hostesses.

Members had invited guests to the meeting at which the garden authority Walter Roch von Roehs of Ann Arbor, showed colored slides and gave information on various flowers, shrubs, and lawn plantings.

The next meeting will be held April 22 at the home of Mrs. Dale Eisele.

LEGION AUXILIARY
American Legion Auxiliary held its regular meeting April 8, at the Legion Home. Seventeen members were present.

Some of the business of the evening, was making plans for a Mother and Daughter pot-luck supper to be held May 4, preceding the regular meeting, and a social party on May 13 at the Cavanaugh Lake home of Mrs. Howard Walz.

A delegate and alternate, to Girls State, to be held in June were also chosen.

The unit is planning a coffee hour at Veterans Hospital in Ann Arbor, May 8, and has sent their quota of seven handkerchiefs and stamped Mothers Day cards which will be given to patients at the hospital to send to their mothers.

Hostesses for the meeting were Mrs. Irwin Klump, Mrs. Richard Kern and Mrs. Roy Miller.

MODERN MOTHERS
Modern Mothers Child Study Club met Tuesday, April 13, at the home of Mrs. John Steele with Mrs. William Clark as co-hostess.

Mrs. Clarence Wood and Mrs. Errol Jones are two delegates planning to attend the Spring Planning Conference at Michigan Center on April 24.

New officers for 1965 and 1966 are Mrs. Clarence Wood, president; Mrs. Errol Jones, first vice-president; Mrs. Donald Mshar, second vice-president; Mrs. Richard Harvey, secretary; Mrs. Richard Duseau, treasurer and Mrs. Gary Jackson, auditor and parliamentarian.

A steak roast for Husband's Night is set for May 22 at 6 p.m. at the home of Mrs. Richard Duseau. Committee assisting with husband's Night is Mrs. Donald Bussler, Mrs. William Clark, Mrs. Donald Eder and Mrs. David Fischer.

The group enjoyed slides of vacations brought by Mrs. Donald Bussler and Mrs. John Steele and a movie was shown by Mrs. Donald Mshar.

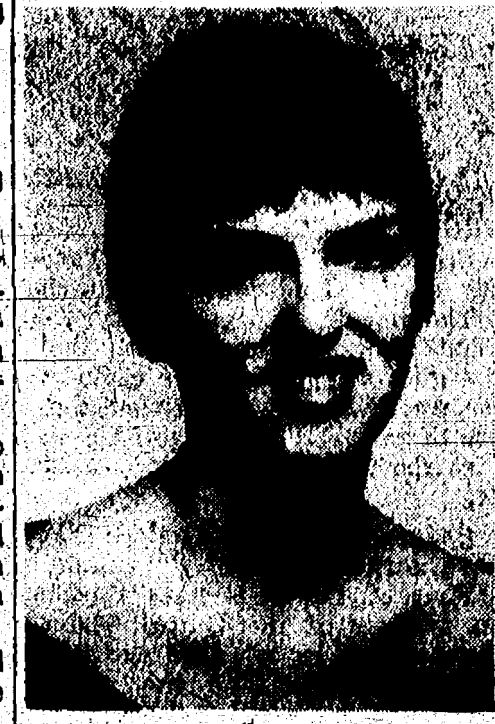
PAST NOBLE GRANDS
Past Noble Grand Club of the Rebekah Lodge No. 130 met at the home of Mrs. Donley Boyer, Tuesday, April 13, with Mrs. Mac Packard as co-hostess.

Thirteen members and a guest, Mrs. Iva Root of Charlotte enjoyed a dessert luncheon served by the hostess and co-hostess.

Business voted on at the meeting included a "Kooks" night out on May 11, at a restaurant in Mason; a June pot-luck with husbands invited; and the ordering of vanilla for re-selling, and ideas for simple money-makers was included.

WVWCS
The Women's Society of Christian Service met in the Narthex of the Methodist church Wednesday, April 7. An oriental luncheon served in the Social Center at 12:30 p.m. by Mrs. Robert Daniels and her committee was enjoyed by all.

Mr. James Gaunt presented the program, the topic being "Mothers of Other Cultures." She spoke of the changing role of women in several foreign countries and of the desperate need of help and understanding these women must have to prepare themselves for their new life. She reminded members that just as we have a responsibility to come to know and to understand women overseas so we also have a responsibility to help them to know and to understand us. Since the program concerned women in foreign countries Mrs. Gaunt asked Mrs. Ben Donaldson to tell of her visit with her two Korean foster daughters in Korea last summer. Mrs. Robert Benedict told what the women of England think of the American Women. Mrs. Benedict was born and raised in England.



ENGAGED Mrs. Verne T. Buehler, 208 Lincoln St., announces the engagement of her daughter, Dolores Annette, Lieutenant in the United States Air Force Nursing Corps, Keeler Air Force Base, Biloxi, Miss., to Lt. Frank Albert Perry, son of Mr. and Mrs. John Perry, 576 Larkin St., Monterey, Calif. Lt. Perry is in the United States Air Force Communication Electronics school, Keeler Air Force Base. Miss Buehler, who is also a daughter of the late Verne Buehler, is a graduate of Chelsea High school and St. Joseph Mercy School of Nursing in Detroit. She has a sister, Mrs. R. Rickman and two brothers, Verne Buehler and Neil Buehler. Lt. Perry is a graduate of Junipero Memorial High school and the University of San Francisco in California. He has one sister, Mrs. Dewayne McFadden. The wedding will take place July 10 at St. Mary's Catholic church in Chelsea.

'Homestead Acres,' J. Merkel Home In Chelsea House Tour
Of historical interest to many residents of the Chelsea-Dexter area will be "Homestead Acres" the 100-acre farm residence of the George Frisinger family.

The house, characteristic of Michigan farm architecture for the period, is believed to be one of the oldest, most well built frame houses in this area. The house was originally built in 1838 by Abraham Storms, great-grandfather of Mrs. Warren Daniels. It was the widow's family homestead for many years until Mr. and Mrs. Alvin Fommerninger acquired the farm in 1940 and lived there until the Frisingers bought it in 1959.

During the process of remodeling, it was discovered that the entire frame is of hand-hewn solid oak timbers fastened together with hand-made wooden pins. The studs, set on a stone foundation two feet wide, are 4"x4" and 8"x8" in size and of solid oak.

Since the Frisingers purchased the farm, they have remodeled the big chicken house into a comfortable bunkhouse which is a popular place for the younger Frisingers to entertain their friends and weekend-end guests. It also includes a play-piano with dozens of music rolls and Mrs. Frisinger's large weaving loom.

Another feature of the farm is an old-time stone smokehouse. A former "brooder" house holds a collection of "old-time" hand farm tools and other useful objects.

For the past four years the Barn Area has been converted into an active Summer Theater Day Farm Camp for young people, 10-17 years. Costuming, make-up, scenery shop, and stage transform areas usually housing horses, feeders, cattle, and other livestock. The recent addition of a large artificial pond and recreation area has added much enjoyment for the family and "Homestead Acres" day campers alike.

Another home to be shown is the residence of Mr. and Mrs. Jack Merkle on Freer Rd. There is a clean-cut, functionally designed example of contemporary living designed by Arthur Lindauer of Chelsea.

The large glass wall areas provide an abundance of natural light throughout the house. A very striking white brick fireplace with the flues exposed serves as a divider between the foyer and living room.

The Merkels have refurnished several pieces of basic furnishings, attractively streamlining them to a modern setting. Walnut pedestal table topped with black forming is in the dining area, which looks out over a suspended deck at the rear of the house.

Co-ordinated wallpaper has been used effectively throughout to highlight the pleasing color scheme of blues and greens.

Tickets for the House Tour may be obtained from any Chelsea Co-operative Nursery Member. Reservations for the Salad Luncheon, also sponsored by the Nursery Mothers, must be made in advance.



ENGAGED Mr. and Mrs. Francis G. Smyser of 1045 Wellington Rd., Lawrence, Kans., announce the engagement of their daughter, Sharon Suzanne, to Duane Lee Lindemeyer of Ellsworth, Kans. Mr. Lindemeyer's parents are Mr. and Mrs. Fred R. Lindemeyer of Salina, Kans. Miss Smyser was graduated from Chelsea High school and attended Eastern Michigan University, Ypsilanti, for two years. She was graduated from the University of Kansas in 1964, with a Bachelor of Science degree in Education. Mr. Lindemeyer was graduated from Salina, Kans., high school and received his Bachelor of Science degree from Southwestern College, Winfield, Kans. After serving in the U. S. Navy he received his Master of Science degree from South Dakota University. Miss Smyser teaches physical education and English in the Ellsworth junior and senior high schools. Mr. Lindemeyer teaches chemistry, physics and biology in the Ellsworth high school. The wedding will be an event of this summer at Ellsworth.

Marilyn Pajot Chosen For Phi Beta Kappa At Albion College
Marilyn Pajot, daughter of Mr. and Mrs. Jack A. Pfeiffer, 105 E. Middle St., along with 15 other Albion College seniors and two recent graduates, has been elected to membership in Phi Beta Kappa national scholastic honorary.

The group was tapped Tuesday, April 6 at a special awards convocation in Goodrich Chapel and will be formally initiated at ceremonies on the campus, May 12.

To be eligible for Phi Beta Kappa a student must excel in the field of liberal arts, obtaining at least a 2.4 over-all grade average (based on 3.0 system) by the end of the first semester of the senior year. The candidate must also have demonstrated high character and leadership qualities.

Beta of Michigan Chapter was installed on the Albion Campus in 1940.

RESUMES CAREER
Madison, Wis. — Mary Lou Lawrence, 28, resumed her career as an aerialist in the same arena where she nearly lost her life in 1963. The audience gave her a standing ovation. Two years ago she plunged 35 feet to a concrete floor when she fell from the flying trapeze.

SHRINKING SLOUHHETTES
The local chapter of Take Off Pounds Sensibly club met Wednesday, April 14 at the Methodist church building in Dexter.

The business meeting was conducted by the group leader, Mrs. Leonard Reith, and the hostess for the day was Mrs. Marvin Cornell.

Mrs. Ethyl Mettleship of the Alexander School of Beauty in Ann Arbor gave a very interesting talk on hair styles and self improvement.

Queen for the week was Bertha Baumgardner with the entire club having a total weight loss of 22 pounds.

Standard Want Ads Get Results!

MOTHERS CLUB
The Mothers Club of Chelsea met Tuesday, April 13, at the home of the president, Mrs. Robert Yorks. During the business meeting it was voted by the club to go to a Jackson restaurant on the Mother's Night Out in May. "Robber" bingo was played and refreshments were served by the co-hostess Mrs. Clifford Lyster.

Home Economics Study Groups Calendar
April 15 — Kinder Küche Study Group, home of Mrs. Walter Grothe, 4455 Lima Center Rd., Manchester.
April 20 — Lodi Study Group, 8 p.m., home of Mrs. Frank Riggs, 5610 Ellsworth Rd., Ann Arbor.
April 20 — Northfield Study Group, spring party, all groups attend.
April 20 — Rogers Corners Study Group, home of Mrs. Harold Powers, 12755 Scio Church Rd., Chelsea.
April 20 — Model Homemakers Study group, home of Mrs. Heller, 1405 Miller, Ann Arbor.
April 20 — Fosdick Study Group, home of Mrs. Ernest Christner, 9745 Warner Rd., Salina.
April 20 — Rowses Corners Study Group, Sharon Town Hall, Mrs. Alvin Beuerle and Mrs. Paul Feldkamp, hostesses.
April 20 — Lodi Study Group, home of Mrs. F. Riggs, 5610 Ellsworth Rd., Ann Arbor.
April 21 — Freedom Ideal Homemakers, Ypsilanti State Hospital, mending.
April 21 — North Lake Study Group, home of Mrs. Wilfred Lane, 636 N. Main, Chelsea.

Olive Chapter, OES, Entertains Officers of County Association
Olive Chapter No. 108, OES, met Wednesday, April 7, in honor of the Washtenaw County officers, with 78 members and guests present.

Sister Ila Kanitz, president, was presented with a Tree of Life, by the Worthy Matron, Mildred Golliver. Seven yellow roses were tied on the tree representing the seven county officers and each officer was presented a hand-made apron of orchid and yellow, the colors of the county president.

Following this presentation a portrayal of the Life of Electa; in costume, was given by some of the members.

After the close of the meeting all retired to the dining room for refreshments. The tables were decorated with red roses and the open Bible in honor of Electa and orchid and yellow candles in honor of the county officers.

Washtenaw county officers are as follows: Mrs. Ila Kanitz of Milan, president; Mr. Wayne Predmore of Salina, first vice-president; Mrs. Marguerite Harvey of Dexter, second vice-president; Edna Diferderfer of Manchester, secretary and treasurer; Frieda Voth of Ann Arbor, chaplain; Ruth Christwell of Chelsea, marshal and Dorothy Schaaf of Ypsilanti, historian.

Heart Association Booklet Answers Many Often Asked Questions
"After a Coronary," a 10-page booklet containing straightforward answers to 16 questions commonly asked by victims of heart attack is being distributed free by the Michigan Heart Association, a Michigan United Fund Agency. Those interested in receiving a copy may phone, write, or call at their nearest regional office at 200 Mill Street, Lansing.

Questions and answers are presented in non-technical language. Some samples are:

"Why don't I have any warnings of heart attack?"

"How was my heart injured and will this affect the way my heart works?"

"What are my chances of leading a normal life again?"

"Will my job be too hard for me?"

"What kind of exercise can I take?"

"What about alcohol and coffee?"

"Why didn't my doctor give me medicine that keep blood from clotting?"

Children playing with matches started 57 forest fires in Michigan during 1964.

WEDDING Invitations

ASK FOR *Forever Yours* NATIONAL

- INVITATIONS
- ANNOUNCEMENTS
- ACCESSORIES

You may select your needs with confidence as to quality and correctness of form.

- COMPLETE SELECTION
- PROMPT DELIVERIES

The Chelsea Standard

CHESA COMMUNITY BUREAU
Chelsea Community Farm Bureau met at the home of Mr. and Mrs. Clifford Heydlauff, Thursday, April 8, with Mr. and Mrs. Leon Johnson as co-hosts. A pot-luck was served and the meeting was opened by Walter Zeob. Mr. Zeob held the discussion "What the Supermarket is Doing to Farm Prices." Prizes were played and prizes were given to Mrs. John Cook for the best and high ladies prize, to Roy Kalmbach for low ladies prize, and high men's prize went to John Brooks, while the low prize was taken by Allen Zeob.

Telephone Your Club News To GR 5-3581

TIPS for your TOP from

TODDY and FRAN

Want to take the first step toward beauty? O.K. — First, look in your mirror. Make you feel challenged? Confident in your own perfection? Then you need us. But do you see that hangs unevenly, is too dark, or drab, or hangs straight down? You think a curl would make a world of good? Then you need us. Our operators are ready to shape or thin your hair, perhaps add a touch of color or give you a hair style that is the first step to beauty. Call us.

Mirror Beauty Salon
135 Jackson Rd., Ann Arbor
Phone 665-0816

and the

RVICE

IRCH

uraction, ed at both

say Happy Easter with **FLOWERS and PLANTS**

FLOWER SALE
Friday and Saturday
April 16-17

FRIDAY 8 a.m. to 9 p.m.
SATURDAY 8 a.m. to 6 p.m.

Sold by Kiwanians at **Hilltop Plumbing Store**
Corner of Main and Park Streets
Flowers Grown by Chelsea Greenhouse

ORDER IN ADVANCE
Corsages - Cut Flowers
Potted Plants
Phone GR 5-5864 Evenings or GR 5-5341 Days

-Sponsored by-
Kiwanis Club of Chelsea

THE EASTER PARADE STARTS AT

Strieter's Men's Wear
WITH FINERY FASHIONED BY **VAN HEUSEN**

Now is the time for you to round out your Spring wardrobe with the newest ideas in men's wear by Van Heusen. Admirably fashioned, impeccably tailored. A word to the wives: If you're looking for the perfect Easter Gift for him, this is the place to do your looking.

Strieter's Men's Wear
"The Place To Go for Brands You Know"

WHY A Keepsake DIAMOND RING

Because Keepsake gives you . . .

1. A perfect center diamond, flawlessly clear, of fine color and expert cut.
2. The famous Keepsake guarantee of a perfect center diamond or replacement assured.
3. Permanent registration of your diamond for lifetime protection.
4. Lifetime trade-in privilege toward another Keepsake at any Keepsake jeweler's store.
5. All diamonds protected against loss from the setting for one year.

WINANS JEWELRY STORE

young family
...with the young look-of today!

By **BASIC-WITZ**

Beauty and Value for Modern Living!

Now . . . put this dramatic 4-piece bedroom ensemble in your home at an unbelievably low price! Styled in the exciting decor of the 60's by Basic-Witz, with warm, hand-matched walnut veneers . . . inlays of natural brier rosewood . . . Ensemble includes handsome panel bed, 4-drawer double dresser with large plate glass mirror, and 4-drawer chest. This superb "Young Family" bedroom suite can be yours for only

\$259⁰⁰

MERKEL BROS.
Beautiful Home Furnishings



THE LANSING REPORT

FROM
senator
GIL BURSLEY

Many Dexter and Chelsea residents clipped and mailed me the questionnaire which appeared in this column a couple of weeks ago. The 10 questions I posed appeared in five newspapers as well as being included in a direct mailing of several thousand.

I will share with you the tabulated returns this week and next. On the question of lowering the voting age to 18, the overall return from more than 2,000 respondents in Lenawee and Washtenaw counties was 77 percent against. In the Dexter and Chelsea area, alone returns ran 79 percent against lowering the voting age.

A proposed constitutional amendment to lower the voting age to 18 has just been reported out of committee in the Senate. The opinion of such a large sample of the voting public will thus be of especial value to me in discussions with fellow Senators.

The most one-sided vote among the 10 questions was on subjecting 16- and 17-year-old drivers to the point system for traffic violations the same as for adults. Here 98 percent of voter favored such a measure with Dexter and Chelsea residents expressing the same percentage response.

I am happy to report that Senate Bill 134 which places 16- and 17-year-olds under the point system passed the Senate overwhelmingly and is now in the House for consideration.

On the question of Sunday liquor where local communities vote to allow sales, Dexter and Chelsea opinion was almost 5 to 1 against and in the area as a whole, the vote was 2 to 1 against Sunday liquor.

Senate Bill No. 20 which would have permitted Sunday sales has been referred back to the Liquor Committee and has little chance of passage. Similar legislation is still under consideration in the House of Representatives. I will do what I can to defeat Sunday liquor sales as I do not believe such a move to be in the public interest.

Legalizing greyhound dog racing was opposed by 62 percent in the entire area and by 72 percent in Saline. Oddly enough Dexter-Chelsea showed a majority in favor of dog-racing. This was one of the few cases where some differences of opinion was expressed between different areas.

Last week the Senate passed a workmen's compensation bill which I opposed on several grounds. I feel its provision for bringing agriculture under the workmen's compensation law was not carefully worked out. I am also opposed to a bill which increases the tax load on Michigan business by some \$60,000,000 annually and will discourage establishment of more job creating industry. We do need improvement in workmen's compensation laws and benefits but I believe a much better law could be worked out.

As a readiness factor in beating the clock with forest fires, Conservation Department field workers each year build and maintain hundreds of miles of roads to give fire units quick access into remote, high danger areas.

HALF-PAST TEEN



MANNEY

More Than Half of Tax Returns Come From 100 Cities

Detroit — The 100 largest metropolitan areas of the U. S. accounted for well over half of the individual income tax returns filed and income and tax reported, the Internal Revenue Service announced today.

The 100 areas involved in the study are those, within the 50 states, having the largest population.

Some two-thirds of salaries and wages as well as capital gains were attributable to these large metropolitan areas.

State and metropolitan area data for 1959, 1960 and 1961 individual income tax returns are available in a new supplementary report to the Statistics of Income series which the Revenue Service issues. The data in this supplement include many tables that have never been published before.

For each of the 50 states, detailed information is shown for the years 1960 and 1961 for such items as adjusted gross income, source of income and loss, exemption and income tax.

Also included is information on standard deductions and itemized deductions, including separate figures for state and local sales taxes, contributions, interest paid, total taxes paid, and medical and dental expenses.

The table concerning state and local taxes presents the number of returns by size of deduction for these taxes classified by States. For example, there were 18 million returns on which deductions for state and local sales taxes were claimed. Over 10 million of these returns claimed a deduction between \$50 and \$150.

For each of the 100 largest metropolitan areas, as defined by the Bureau of the Budget for 1959 and 1961, there is included material on many aspects of income and its sources, tax, and exemptions.

One table presents the number of returns in each specified income and tax sources, tax, and exemptions.

One table presents the number of returns in each specified income class. The 100 largest metropolitan areas accounted for over 70 percent of all returns with adjusted gross income of \$10,000 or more.

The publication "Statistics of Income, State and Metropolitan Area Data for Individual Income Tax Returns, 1959, 1960, and 1961" is available for 50 cents from the Superintendent of Documents, U. S. Government Printing Office, Washington, D.C. 20402.

CUB SCOUT NEWS

DEN 13, PACK 435— Den 13, Pack 435 met Monday at the home of Mrs. William Wade. The boys colored Easter eggs and John Gilbert brought treats. The pledge to the flag and the "living circle" closed the meeting. Doug Hillman, scribe.

DEN 15, PACK 435— Cub Scouts of Den 15, Pack 435 met Tuesday at the home of their den mother, Mrs. Vincent Stahl. The meeting began with the pledge of Allegiance and the boys spent the rest of their time making surprise Easter treats for their families.

After refreshments were served by Bill Kalmbach the boys played ball out in the yard. Bill Kalmbach, scribe.

DEN 9, PACK 455— Cub Scout Den 9, Pack 455 met at the home of their den mother, Mrs. John Potts, April 8. Steve Worden furnished refreshments.

Bill Harrison entertained us with a puppet show. We learned new ways to use Easter eggs. Each Cub decorated a white eggshell to resemble a long-eared, whiskered rabbit with a real cotton tail. Our Den mother showed us how to make candle eggs.

We planted marigold seeds.

DEN 3, PACK 455— Cub Scouts of Den 3, Pack 445 met April 7, at the home of Mrs. Alfred Juergens. After opening the meeting with the flag ceremony, Mike Juergens showed the boys plants he had been growing and exercises were done.

Ricky Sweeney served refreshments and the meeting closed with the "living circle." Mark Jacobs, scribe.

DEN 10, PACK 455— Cub Scouts of Den 10, Pack 445 met Monday, April 5, at the home of Mrs. Carl Carpenter.

Mrs. Carpenter took the group to the Chelsea flower shop and each member received a flower. The boys were also interested in a snake cactus they saw.

There are two new members in the den, Bob Rudd and Joey Perry. Bean bags were made at the meeting with Mrs. Carpenter instructing the boys on the sewing of the bags.

Chuckie Carpenter celebrated his birthday with a party and refreshments. Kenneth Bentley, scribe.

Girl Scout Notes

TROOP 82— Scouts of Troop 82 met Tuesday at the Congregational church. The meeting began with the scout laws and promise and then the girls went over their calendar for April. It was found that they are to go to Kellogg's April 20 and that the Troop camp-out is April 24.

Badges were given to those who have earned them.

Four of the girls gave reports on symbols of the United States. Janet Green reported on the flag, Annette Ersten, on the penny, Lynn Jacobs on the "Pledge of Allegiance" and Janice Schenk reported on the Statue of Liberty. The girls discussed going to "Hill Top" and planned their menus. Janet Green brought refreshments. Jane Mann, scribe.

TROOP 98— Girl Scouts of Troop 98 held their meeting at the Pent House Wednesday, April 7.

Cathy Foster was present to discuss the round-up and the meaning of the Girl Scout Promise. We would like to extend our thanks to Troop 82 for inviting us on the hike April 8. We discussed the craft which we will teach on Brownie Day on May 3. At our next meeting we're scheduled to make potlashes. Linda Merkel, scribe.

TROOP 47— Girl Scouts of Troop 47 met Tuesday and donated their last week's troop dues to the Washtenaw County Humane Society, toward the new addition to their building. The Girl Scout law number six says that the Girl Scout is a friend to animals and this will be the girl's Easter service.

There was no regular meeting because of the swimming party at the YWCA in Ann Arbor. The troop invited Kadette Troop 98 to go along with them.

Nine girls are planning to go to Newkirk Day Camp this year. There will be no meeting next Tuesday because of Spring Vacation.

All hobby badges must be finished by April 27 and the Girl Scout cookies will be ready the same day.

Mary K. Slocum, acting scribe.

TROOP 170— Girl Scout Troop 170 met at the Municipal Building on April 8. We will be going swimming on April 19 at Tappan Junior High from 6:30 p.m. til 8 p.m.

On April 23 we are going to Linden to camp overnight. Dianne Snyder, scribe.

Isn't it funny how some women spend so much time on beauty treatments?

From HISTORY'S SCRAPBOOK

The first "all-American" play, "The Contrast," was produced in New York, April 16, 1759.
The French and Indian War began, April 17, 1753. Doolittle raided Tokyo, April 17, 1942.
President Roosevelt created the War Manpower Commission, April 18, 1942. Paul Revere's ride was made, April 18, 1775.
Cessation of hostilities marked the end of the Revolutionary War, April 19, 1783.
The first electric railroad was put into operation, Washington, D.C. to Bladensburg, Maryland, April 20, 1831.
The first steamboat, the Virginia, ascended the Mississippi, April 21, 1824.
The Office of Price Administration started rationing of sugar, April 22, 1942.

KITE FLYING HIGH
Atlanta, Ga.—Two high school students were taking advantage of the wind by seeing how high they could fly their 28-cent kite. When they got it up 2,800 feet, they ran out of cash to buy string. Interested bystanders financed 2,500 more feet of string. Tying their kite to a small tree, the youngsters went home to do their homework, leaving their kite hanging at 5,100.

The Marine Corps emblem, consisting of the eagle, globe, anchor, was authorized by the secretary of the Navy, Nov. 19, 1913.

BAILEY'S RESTAURANT

Corner of Clear Lake Road and I-94
Good Home Cooking
SUNDAY, APRIL 18
BAKED VIRGINIA HAM
Vegetable - Tossed Salad - Hot Rolls
\$1.40
April 25—Swiss Steak May 2—Roast Pork & Dressing

Gambles

The Friendly Store

6 REASONS WHY A GAMBLE MOWER IS YOUR BEST BUY!

- 1 Gambles have vast experience in the mower business—to assure you of quality for less!
- 2 All power mower units meet the safety requirements of the American Standards Association.
- 3 All models are guaranteed against defects in materials and workmanship for one year.
- 4 Free home trial with any mower—wide variety of models to choose from at Gambles.
- 5 You can trade in your old mower—Gambles allow you more on the purchase of a new model.
- 6 All models are built to rigid specifications to assure longer, trouble-free service.

21" JET SWEEP \$89.95
NO MONEY DOWN
FREE GRASS CATCHER
Rugged Aluminum Deck!

Come! 19" ROTARY \$49.95
\$1.25 Per Week
NO MONEY DOWN
TRADE & SAVE
A proven performer at low cost! Handle throttle control. Heavy duty wheels. Full baffling eliminates unsightly clumping!

THE TITAN Powerhouse Tiller \$139.95
40th Anniversary Special
NO MONEY DOWN
Powerful Tiller has 2 speeds forward and power reverse! Unbreakable 14" steel tillage path to 26" wide, 8" deep. Easy-spin recoil starter, one handle controls all gears. 4 HP engine.

LAWN & GARDEN Headquarters!

Imperial 19" DELUXE \$64.95
NO MONEY DOWN
\$1.40 a Week—Payable Monthly
Loaded with features! Ball bearing wheels, easy storage handle, impulse starter, hinged engine shroud. Briggs-Stratton engine.

SELF-PROPELLED 21" Jupiter ROTARY \$69.88
\$1.50 Per Week
NO MONEY DOWN
A real work saver! Simple drive control, positive mesh drive. Big 3-horsepower engine.

24" Imperial RIDER MOWER \$159.95
TRADE YOUR OLD MOWER
40th Anniversary Special
\$2.15 a Week—Payable Monthly
Rider mower comfort at low cost—features comparable to those of the most deluxe, high cost models!

FIELD KING 3 HP TILLER \$119.95
NO MONEY DOWN
Rugged 3 HP Briggs-Stratton engine powers unbreakable tiller tines, tillage up to 26" wide. "Quick Lok" clutch. Recoil starter. Two 10" x 1.75 semi-pneumatic transport wheels.

Gambles—Celebrating our 40th Year with Extra Values!

Say **HAPPY EASTER** With Beautiful **EASTER PLANTS** Bouquets of **CUT FLOWERS** or **CORSAGES** You Can Get Them All at **SYLVAN FLOWER SHOP** 716 W. Middle St., Chelsea, Mich. Phone GR 5-4561 Local Delivery WE WIRE FLOWERS EVERYWHERE

It's lovely! and I did the entire room in one afternoon
And with Minflo Latex Flat Wall Paint there isn't a trace of a brush or lap mark. It's so easy to apply... flows on smoothly without dripping, and dries in just 20 minutes. And because it's free of objectionable odors, you can entertain the same evening. "Accidental" hand prints wash off the surface easily, too. Minflo is completely washable. Clean up brushes and rollers in minutes with just warm, soapy water. Painting with Minflo is easier than you ever imagined it could be.
GIVE NEW LIFE, NEW COLOR TO ANY ROOM WITH JUST ONE COAT OF MINNFLO LATEX
MINNFLO PAINTS
Finkbeiner Lumber Co. Phone Chelsea GR 9-3881 On Old US-12 Just off S. Main MARTIN STEINBACH, Owner

Take Time Out for a Milk "Pick-Up"! When you need new "get-up-and-go"... take a milk break! When you "raid the ice box" at evening's end, reach first for milk... and pour yourself a glass full of good health!
WEINBERG DAIRY QUALITY PASTEURIZED DAIRY PRODUCTS Old US-12 Phone GR 5-5771