

PACKS GUN
ter losing thou-
to thieves. An-
ner of a leas-
ed to get a par-
She said she had
recently when she
of shoplifters at
the gun in a hol-
waist, Miss Sol-
ready for any

WEATHER

	Min.	Max.	Pre.
Wednesday, Feb. 10	-8	14	25
Thursday, Feb. 11	-9	18	25
Friday, Feb. 12	-8	28	20
Saturday, Feb. 13	-8	28	20
Sunday, Feb. 14	-8	28	20
Monday, Feb. 15	-8	28	20
Tuesday, Feb. 16	-8	28	20

The Chelsea Standard

QUOTE

The value of a sentiment is
the amount of sacrifice you are
prepared to make for it.

—John Galsworthy

NINETY FOURTH YEAR—No. 38

16 Pages—This Week

CHELSEA, MICHIGAN, THURSDAY, FEBRUARY 11, 1965

10c per Copy

SUBSCRIPTION \$3.00 PER YEAR



JANE E. SCOTT

Homemaker Award Goes to Jane Scott

Jane E. Scott is this year's Betty Crocker Homemaker of Tomorrow for Chelsea High school.

Jane is the daughter of Mr. and Mrs. Joe Scott of 415 North St. She is active in many activities. While attending Chelsea High school she belongs to the Journalism class and writes for the school paper, is a member of the Student Council, vice-president of the Dramatics club, president of the Girls Athletic Association and is chairman of the publicity committee for the forthcoming "Oklahoma."

Her hobbies are dancing, ice-skating, water skiing, folk singing, basketball, and football, she also plans to take guitar lessons.

In addition to all of her other interests Jane is employed at Stop & Shop supermarket after school and on week-ends. After graduating she plans to attend a business school.

Test-papers of all school winners in the state are being judged competitively. From this, the State Homemaker of Tomorrow will be named, and will receive a \$1,500 scholarship from General Mills, Inc., sponsor of the annual Betty Crocker search. In addition, her school will be awarded a set of the Encyclopedia Britannica by Encyclopaedia Britannica, Inc. The second-ranking girl will receive a \$500 educational grant.

Following her selection, the State Homemaker of Tomorrow, together with a school advisor, will join winners and advisors from each of the 40 other states and the District of Columbia in an expense-paid educational tour of Colonial Williamsburg, Va., Washington, D.C., and New York City. Climax of the trip will be the naming of the 1965 Betty Crocker All-American Homemaker of Tomorrow. Chosen from among the state winners on the basis of her original test score, plus personal observation and interviews during the tour, her scholarship will be increased to \$5,000. Grants of second, third, and fourth-ranking girls in the nation will be raised to \$4,000, \$3,000 and \$2,000, respectively.

Mr. and Mrs. Fred Harris left Saturday, Jan. 30 to drive Dr. and Mrs. L. J. Paul to Wickenburg, Ariz., where the doctor and his wife will spend several weeks. Mr. and Mrs. Harris returned Monday by plane.

Bulldogs Fall To South Lyon Late Rally

Utilizing a pressing defense and some hot shooting in the final quarter, the South Lyon Lions rolled to a 74-60 victory over the Chelsea Bulldogs last Friday. In fact it was the last minute and one-half when South Lyon made the surge-scoring 18 points to Chelsea's 0. Up to that point the Bulldogs held a 60-58 lead.

The Bulldogs led the entire game after the first quarter. Some mighty ball hawking by Jim Cameron, Charles Schmunk and Tom Wojcicki gave the Bulldogs a 37-31 half-time lead. The Bulldogs were using a half-court press which put pressure on the South Lyon guards. Cameron stole the ball four times and scored on three layups during that time.

The smaller Bulldogs were staying with the bigger Lions on the backboards, also. Rebounds were just about even in the first half. At one time in the third quarter the Bulldogs ran up a 10 point lead only to see it dwindle to three points at the end of the quarter. The South Lyon size was beginning to show as Jim Smith, Rich Duncan and Tom Duncan began to gather more rebounds than the Chelsea boardmen.

The final quarter was nip and tuck until those fateful 90 seconds when the Lions ran the Bulldogs off the court. Rebounds were again a major factor in the Chelsea downfall.

Besides the inability to rebound with the South Lyon quintet the Bulldogs completely lost their poise as the game drew close to the end. Shots were taken that never should have been attempted. The ball was lost in misplays by the Chelsea guards which helped South Lyon score some easy baskets.

The ability to maintain poise makes the difference between a solid basketball team and one that wilt when the pressure is on.

Individual scoring was as follows: Tom Wojcicki 12, Jim Cameron 12, Mike Tarasow 6, Dennis Stoffer 4, Charles Schmunk 17, Ed Windell 1, Tom Steele 1, David Clark 7, and for South Lyon: Tom Duncan 30, Rich Duncan 11.

Score by quarters:
Chelsea 19 18 15 8—60
South Lyon 19 12 18 25—74

Conference Standings
W L
Dexter 5 2
South Lyon 5 2
Chelsea 4 3
Dundee 4 3
Lincoln 3 4
Saline 0 7

Three Injured in Collision Friday On S. Main St.

Three persons of one family were injured Friday night, Feb. 5 at 11:15 p.m. when the car in which they were riding and another car that was backing out of driveway collided at S. Main St. near Pierce St.

Gail Allen-Shears, 16, of 19501 Old US-12, had just let a passenger out of his car and was backing out of the driveway onto S. Main St. and collided with a car driven by Elmer Fletcher, 42, of 123 North St. Fletcher, his wife, Lily, 40, and his daughter, Connie, 8, were all taken to the hospital. Shears was not injured.



RETIREES FROM THOMAS CO.: Julius Kaercher retired last week from the William A. Thomas Co., after 17 years of service as maintenance mechanic. A testimonial dinner was given him Thursday at Schumm's restaurant with 10 company employees present. Kaercher joined the Thomas company soon after its start in January, 1947, and has been with the company from then until his retirement. A gold wrist watch was presented Kaercher as a retirement gift for his 17 years of service to the company. Miladore Liebeck, left, president of the firm is shown here making the presentation while Charles Gelman, member of the board of directors, looks on.

Village Candidates To Be Chosen at Monday Caucuses

The two Chelsea village political parties will hold their party caucuses Monday, Feb. 15, at 8 p.m. The Independent Party caucus will be held in the Council Room of the Municipal Building, and the People's Party caucus will be held on the third floor of the Municipal Building.

Purpose of the party caucuses is to nominate candidates for the various village offices to be filled at the annual village election on March 8.

Offices to be filled at that election are president, clerk, treasurer, three trustees for two-year terms, assessor, and two library board trustees for three-year terms.

The last day for Chelsea residents to register for the March 8 election was Monday, Feb. 8, the 30th day before the election.

Much interest is being shown in the caucuses this year and a good sized crowd is expected Monday evening at both meetings.

Lloyd R. Jeffries was admitted Sunday afternoon to St. Joseph Mercy Hospital, Ann Arbor. His room number is 7062.

Dancer's Now Distribute Scout Supplies

Clarence Doud, scout executive of the Portage Trails Boy Scout Council, announced Monday the appointment of Dancer's store of Chelsea as a new Boy Scout equipment distributor.

Dancer's application was approved locally by the Portage Trails Council early this winter and negotiations were opened with the National Council Supply Service Division in Melrose Park, Ill., at that time.

Approved by the National Council has now been secured and the initial supply of equipment has been received at Dancer's in time to set up a display for the 55th Anniversary of Scouting this week. Pack 415 and Troop 476 of Chelsea have co-operated with the opening by setting up window displays.

Linda Blaess Receives Nurses Cap at Jackson

Linda Marie Blaess, 18, daughter of Mr. and Mrs. William Blaess, and a student at Foote Hospital School of Nursing, Jackson, received her nurses cap Sunday, Feb. 7.

The capping ceremony was held at the First Congregational church of Jackson. Thirteen girls received their caps at this time.

Attending the ceremony from Chelsea were Mr. and Mrs. William Blaess and family, Mr. and Mrs. Eldon Gorton and family, and Mr. and Mrs. Robert Elise and family. Miss Blaess' maternal grandmother, Mrs. George Randall of Ann Arbor, and her paternal grandparents Mr. and Mrs. Oswald Blaess of Ann Arbor were also in attendance.

Miss Blaess is a 1964 graduate of Chelsea High school.

Wrestlers Win Big One from Whitmore Lake

Chelsea High school wrestling team, in their best performance to date, defeated Whitmore Lake, 30-10 last Thursday. Whitmore Lake is one of the better area wrestling teams. The Chelsea wrestlers have won their last three matches and seem to be developing strength as the regionals draw near.

Bill Lounsbury won by a fall in the 95-lb. class. Mike Roark, forfeit, 108; Mike Punderbruch, forfeit, 112; Mike Hendricks, decision 110-0; Dennis White, fall, 145; (Continued on page six)

PTA Sponsoring Valentine Day Dance Saturday

A Valentine Day dance will be held for parents of the community Saturday, Feb. 13, at Chelsea High school from 9 p.m. to 1 a.m. There will be ballroom dancing to the orchestra of Keith Edwards and refreshments will be served at intermission.

Tickets will be available at the door.

The dance is sponsored by the Chelsea High school Parent Teachers Association.

JV Cagers Win Two; Dexter Next

Chelsea High Junior Varsity defeated the Brighton JV's and the South Lyon JV's last week.

The little Bulldogs jumped to a 34 to 26 half-time lead against Brighton and won the game, 67 to 66.

High scorer was Dan Parsons with 21, followed by Rick Salyer 9, Don Salyer, Dave Blaess, and Larry Porath with 4 each, Paul Lancaster 2, and John Lixey 1.

Top rebounder was Dan Parsons with 11, Rick Salyer added 8, John Lixey 6, Bill Harvey 5, Don Salyer 4, Jim Henry 3, Larry Porath and Eric Batzdorfer 2 each.

In the South Lyon contest the Junior Varsity took a 14 to 7 lead at the end of the first quarter and was never headed. Improved shooting and good defense paved the way for the 55-41 victory.

Dan Parsons again collected 21 points, Tom Kern 8, Rick Salyer 9, Don Salyer 5, Bill Harvey 4, Dave Blaess 4, John Lixey and Eric Batzdorfer 2.

The Little Bulldogs controlled the boards by out-rebounding the Lions 47 to 30. Dan Parsons collected 11, Rick Salyer added 10, Don Salyer 8, Bill Harvey 7, John Lixey 4, Tom Kern 3, Jim Henry and Pete Defant 2 each.

The next game is Friday, Feb. 12 at the high school with Dexter. The JV game starts at 8:30 p.m.

Radio Operators Will Meet Sunday

All citizen band and walkie talkie owners or people interested in these types of communications, in and around the Chelsea area, are invited to attend an informal meeting to discuss operating and emergency procedures regarding this type of equipment.

This meeting will be held in the communications center in the Municipal Building Sunday, Feb. 14 at 4 p.m. under the direction of the local Civil Defense office.

Vote Slated Feb. 24 On Bonding Issue for High School Addition

Cub Scouts Hold Blue-Gold Banquet

Pack 415 held its first Blue and Gold Banquet Sunday, Feb. 7, at 2:30 p.m. at St. Paul's United Church of Christ, with 135 attending.

Guests included the Rev. and Mrs. Edwin Weiss; Cubmaster and Master of Ceremonies Don Fritz and family; Don Turner, District Executive William Winkle and family; Scoutmaster of Troop 476, Harold Baker; Scoutmaster of Troop 425, Ralph Frisch and family.

After the invocation by the Rev. Weiss, Dens 5 and 6 opened the program with a flag ceremony. Committee Chairman Carmer Slocum led the group in singing and a skit, "The King With the Terrible Temper," was presented. A talk on the "History of Cubbing" was given by District Executive Bill Winkle.

Master of Ceremonies Don Fritz introduced the two scoutmasters for Chelsea, Pack 415 committee men, and the den mothers, Mrs. Willis Heydauff, general chairman of the Blue and Gold dinner, and new publicity chairman, was introduced. When the banquet was acclaimed a big success, Mrs. Heydauff commented: "This was not just a one-woman job if it hadn't been for the co-operation of the den mothers, committee and parents it could not have been a success."

Don Fritz told about the summertime plans and announced the next pack meeting which will be held Feb. 23 at Chelsea High school cafeteria.

Everyone enjoyed the nature film shown by Don Turner.

Boy Scouts Give Program For Kiwanis

International Boy Scout Week was celebrated at the Kiwanis meeting Monday evening: Floyd Fowler, vice-president, had charge of the program. Key Club member David Wood was introduced by Charles Cameron and Key Club member Neil Packard was introduced by Charles Lancaster.

Max Hepburn, committee member of Troop 476 introduced Assistant Scoutmaster Charles Hafner, Life Scout Vincent Stoll and Patrol Leader Larry Poertner. Ralph Frisch, Scoutmaster of Troop 425, introduced Leroy Grob, member of Troop committee; Senior Patrol Leader Mike Grob and Scout Bryan Polich. John M. Fall introduced Dr. James Shadon and Dr. Gene Miller.

Pictures were shown of the Jamboree at Valley Forge and campouts at Bruin Lake camp. Ralph Frisch showed pictures of he and his family enjoying a trip to Phillips Ranch, Cimmaron, N. M. last summer.

President Don Turner was to show some of his nature films at the Ruckham Building, in Ann Arbor, Wednesday, Feb. 10 at 7:30 p.m.

\$240,000 Project Will Provide 10 Classrooms To Relieve Overcrowding

Wednesday, Feb. 24, the electorate of Chelsea School District will have the opportunity to vote on the proposed bond issue for a 10-classroom addition to the Senior High school.

Many area organizations are throwing their support behind the proposal after becoming informed

Authorities Will Explain Water Study

Next Tuesday evening at Lima Community Hall at 8 p.m. interested persons may hear members of the Washtenaw County Watershed committee and representatives of the U. S. Corps of Engineers explain the preliminary study going on in the Lima-Scio township area.

The study is to determine the feasibility of construction of reservoirs or waterways along the north and south branches of Mill Creek. The preliminary study that is now underway will take until 1968 to complete. At that time, it will be determined whether it will be practical to definitely carry on a study of this area with such a waterway a goal.

Speakers Feb. 16 will give some idea of the time element and what they hope to learn by the preliminary study as far as areas that should be considered if the study indicated a reservoir should be constructed.

Two Eagle Scout Awards To Be Given

Boy Scout Troop 476 plans an Eagle Court of Honor at the Congregational church on Saturday, Feb. 13, at 7 p.m. Scouts Robert Miller, Kenneth Reinhardt, and Ray Worden will receive their Eagle awards in an appropriate ceremony.

Members of the troop observed Boy Scout Sunday by attending the church of their faith in uniform. Troop members will be seen wearing the Scout uniform at school in recognition of Boy Scout Week.

Scouts Ray Worden, Larry Poertner, Mike McClear and Bill Hafner decorated a display window in Dancer's store in observance of the 54th birthday of the Boy Scouts of America.

There will be a Philmont meeting at the Municipal Building on Sunday, Feb. 14, for Scouts and parents of both Troop 476 and Troop 425 at 3:00 p.m.

Slides of Philmont Scout Ranch will be shown and the costs and modes of transportation will be announced.

All interested persons are invited to attend this meeting.

Mrs. John (Anna) Heselschwerdt is a patient at St. Joseph Mercy Hospital. She fell and fractured her hip Saturday. Her room number is 3007.

on the necessity of the project at this time.

Most frequent question on the three-mill for three year \$240,000 bond issue is why not the Junior High School first? This has been explained fully in The Standard of Feb. 4. Very briefly it is due to the overcrowding of the existing facilities at the high school now and in the next two years when the Junior High school will add nearly 100 students more than are now enrolled in the High school. The Board of Education recognizes the need to replace the Junior High school and is presently having a committee work on site selection.

Our community is growing. This may be seen from recent information releases from Chrysler Corp. This expansion at Chrysler and growth expected in other area industries are just other reasons that we must be concerned now. Ask any member of the Board of Education for information on any questions which you might have. Urge all property owners to be sure to vote on Wednesday, Feb. 24.

Treasurer's Report Shows Area Growth

County Treasurer Sylvester A. Leonard submitted his annual report to the Washtenaw County Board of Supervisors this week.

His report made apparent to all the growth of Washtenaw county during the past 20 years. Total revenue for 1964 increased tenfold over what it had been in 1944; 1964's revenue totaling \$19,238,875.74 and 1944's revenue totaling \$2,075,344.92. Disbursements for 1964 were \$18,218,314.20; Disbursements in 1944 amounted to \$2,441,828.20.

The county treasurer's office, in spite of the tremendous surge of growth in Washtenaw county, maintains an office staff of six—the same number that have always been employed there. Leonard credits the addressograph machine with saving several hundred work hours a year. Condensation of printed forms, and the pamphlet "Tax Facts" also are credited with relieving the increased workload.

The Washtenaw County Employees Retirement Fund now stands at \$916,066.19, most of which is in U. S. Treasury Bonds.

Some figures of interest to Chelsea and Dexter area residents are these: Village Chelsea received \$26,604.60 from the state sales tax and \$4,003.10 from the intangible tax—Chelsea school district received \$354,116.30 and McKame Memorial Library received \$1,063.35.

Dexter Public Library received \$1,894.37; Dexter Village, \$15,622.24; and Dexter schools, \$287,170.21.

State tax money distributed to Lyndon township was \$8,485.74; to Lima, \$9,074.40; and to Sylvan, \$13,248.78; Dexter, \$15,485.76; Webster, \$11,728.32; Sharon, \$6,031.20; Freedom, \$9,712.80; and Scio, \$40,620.48.



TOPS IN LIVESTOCK JUDGING: A team of five boys from the Chelsea FFA chapter represented Washtenaw county at a livestock judging contest at Michigan State University during Farmers Week. They came home with first place team honors and the electric clippers valued at \$52 which

Bill Wenk is holding. Team members shown here, from left to right, are, Don Hinderer, Doug Young, Bill Wenk, Bob Kushmaul and Dick McCalla. This same team represented Chelsea and Michigan at the National Livestock Judging contest last October in Kansas City.



PLANT ADDITION: The Cold Extrusion Division of Federal Screw Works is building an addition to their existing facility located at 516 Congdon St. This addition of approximately 9,000 square feet will more than double the division's manufacturing space. Future planning will provide for additional extrusion equipment with the emphasis

on larger presses. These expansion plans will, of course, include an increase in the number of employees. It is anticipated that the major portion of the construction work will be completed by late February. Prime contractor for the addition is F. C. Belser.

Established 1871 **The Chelsea Standard** Telephone GR 5-3551
General Excellence Award by Michigan Press Association
1951-1953-1955-1956-1960
Walter P. Leonard—Editor and Publisher

Published every Thursday morning at 300 North Main Street, Chelsea, Mich., and second class postage paid at Chelsea, Mich., under the Act of March 3, 1879.

Subscription Rates (Payable in Advance)

In Michigan:		Outside Michigan:	
One Year	\$3.00	One Year	\$4.00
Six Months	\$1.75	Six Months	\$2.25
Single Copies	\$.10	Single Copies	\$.10

Delivery men or women, anywhere, 1 year \$3.00

NATIONAL EDITORIAL ASSOCIATION

GOVERNOR ROMNEY REPORTS



This is the second of a number of articles in which I would like to discuss the various aspects and problems of traffic safety.

At the rate of increase during the last two years—an increase each year of more than 200 lives lost in traffic over the year before—more than 14,000 people will be killed on our streets and highways over the next five years alone.

By 1969 we will be killing more than 32,000 people in traffic each year. Injuries will skyrocket to more than 200,000 each year.

To effectively attack the problem, we need documented solutions. We need informed, coordinated and co-operative action.

As an important step in evaluating Michigan's traffic needs, I appointed, during the past year, a

Special Commission on Traffic Safety to study, in depth, the strengths and weaknesses of Michigan's traffic accident prevention efforts.

219 key Michigan citizens and officials co-operated to review every aspect of traffic safety in Michigan and to recommend needed administrative and legislative improvements and public action.

Eight Commission study committees produced more than 100 recommendations. They studied Michigan's accident prevention efforts, not in generalities, but in specific detail. They found that responsible officials lack much needed legislation, manpower, financial and public support to keep with the ever mounting problem.

Their recommendations can be summarized by one key word. That word is "strengthen."

We must strengthen our current laws, the basic framework within which our officials charged with responsibility for traffic safety must operate.

We must strengthen budgets to provide necessary manpower and equipment to do the job.

We must strengthen our efforts in traffic law enforcement and accident records in driver education, improvement and control in highway engineering, in safety condition of the vehicle and in public information.

We must strengthen research programs to allow for more studies of how to more effectively manage our resources and activities and to develop better methods of accident prevention. We must study long-range solutions including the human factors in accident causation.

The Commission's specific recommendations—representing the combined and co-operative thinking of citizens, responsible officials and special consultants—were presented to me in September, and since that time have been further considered and refined in the light of:

1. Detailed study, comment and suggestions during eight regional Governor's Safety Conferences;
2. Careful review and study by the Michigan State University Highway Traffic Safety Center and by leading officials and traffic consultants; and
3. Forthcoming re-organization steps in state government required by Michigan's new Constitution.

Based on these factors, I will recommend that the bulk of the Special Commission's recommendations requiring legislative action be introduced during the present legislative session. Other recommendations requiring appropriations have appeared in my budget recommendations.

Additional GOVT recommendations requiring legislative action have been deferred pending constitutional reorganization. These are mainly in areas relating to courts handling traffic cases.

An adequate understanding of the traffic problem depends upon the efficiency of our accident records system. Discrepancies requiring attention include: additional accident information not now consistently reported; more uniform reporting of modern electronic data processing systems.

Based on these needs, I will support bills:

1. To strengthen accident and violations reporting by including information not now consistently reported—such as non-fatal accidents, juvenile violations and no driver license violations—and by requiring the reporting to the Michigan State Police of property damage accidents involving \$100 or more in damages.

2. To provide appropriations to allow for modern electronic data processing systems to increase the value of accident records to law enforcement agencies, to courts and driver education specialists, to driver licensing and improvement officials and to state, county and local engineering authorities.

Prefer Women Drivers

A car assembly firm in Sydney, Australia, uses women exclusively to deliver cars around the metropolitan area. The reason? The ladies safety record. The firm has been using women drivers since 1955 and has had only two accidents.

AMERICAN SUCCESS STORY



★ MICHIGAN MIRROR ★

By Elmer E. White, Secretary, Michigan Press Association

Better Than None

Halfway houses, a fairly new concept in the social welfare field in Michigan, are already being modified to further meet individual needs.

Two such units designed to help delinquent youth adjust from training school or detention home life back to normal society have been opened in Detroit in the past year. More are planned for the metropolitan area.

State Social Welfare officials say additional facilities such as the 12-bed houses in Detroit are planned for other large communities where the delinquent case load warrants them.

Less populous areas, however, apparently will see the creation of a program whereby youths close to the release stage will be placed in foster-home situations, or near their own towns to make the adjustment under adult guidance.

To be operated by husband-wife teams, the new type of houses would hold as many youths as the couple could accommodate—or who might need care at a given time.

John Miller, halfway house supervisor for the state, says the establishment of the privately operated units was considered primarily because of the economic factor.

"It's just not economically feasible to lease a house in an area where we might not have 12 boys at a time as guests," he said. "And distance becomes a factor in northern Michigan. We want to keep the boys as close to home as possible."

School Problems

It may already be too late for Michigan to undertake a master plan for higher education in the form it is being viewed by some study groups. This is the opinion of Dr. John X. Jamrich, associate

dean of Michigan State University's College of Education.

One segment of the state's educational community views the so-called "California plan" as the best means of meeting local needs for college facilities. It is with this viewpoint that Jamrich takes issue.

Under the California plan, existing state institutions would be authorized to open branches in communities throughout the state similar to MSU's Oakland branch near Rochester.

The various branches of the state university in California will one day soon seek to establish themselves as autonomous colleges, Jamrich predicts.

For Michigan, he sees the answer to present college facilities problems in the establishment of entirely new colleges and community colleges.

Another possibility, the MSU spokesman contends, would be the extension of high schools through the 14th year and use of existing community and state colleges for a four-year program resulting in the award of a master's degree.

Create Land

A proposal to create a chain of islands in Lake St. Clair for recreation use has apparently been tucked into a wide pocket for future reference. It came before the Legislature and State Conservation Commission in 1963 several times in the trial balloon stage.

Paul Lutzeier authored the idea when he was in an administrative position with the Secretary of State. He has since left Lansing to return to his former field of education.

Little encouragement was given Lutzeier by his superiors when he made the idea public. This idea related to the conservation-recreation

field was totally outside his realm, Lutzeier was told.

Enthusiasm for the plan was voiced by several legislators and many conservationists, but Lutzeier let the matter become buried rather than draw further personal criticism or charges of political aims.

"I don't really care who gets credit for it," Lutzeier said. "I still think it's a very good idea and would, like to have anybody who sees the dream pick it up and use it."

There was some indication when Lutzeier left his post in Lansing that U. S. Senator Phil Hart was interested in working on the project at the national level. Some supporters of the plan in 1963 said it could not be accomplished by the state because of the proposed location.

Hart, however, has been so involved with his Sleeping Bear Dunes proposal he reportedly felt he should finish with it before attempting another major conservation-recreation plan such as that of the islands.

Flashing Light Signals Ordered at Railroad Crossing

New modern flashing-light signals have been ordered installed at the Ann Arbor Railroad crossing with William St. in Ann Arbor, Peter B. Spivak, chairman of the State Public Service Commission, said this week.

The modernized protection results from complaints from the Ann Arbor area and a comprehensive investigation by the Commission's Railroad Division staff.

Present wig-wag signals which must be replaced within 120 days originally were installed in 1925, Spivak said.

The PSC order requires modern side-of-street flashing lights signals at the main and house track. It also calls for an additional set of flashing lights focused toward motorists entering William St. from southbound First St.

Finally, because of a steep roadway ascent to the crossing from the east, the Commission order requires the flashing light on both signal installations to be clearly visible to motorists approaching the crossing from that direction.

Sophia Lore, Italian actress, is playing an 80-year-old woman in "Lady L." Bill Tuttle, Hollywood make-up man hid her charms for the part.

PLANNED FAMILY SECURITY with Farm Bureau Life Insurance



• mortgage protection
• education funds
• family income
• retirement plan
• savings plans

Contact me today!
TED DOTTS
2935 Shady Lane, Ann Arbor
Phone 665-0981

FARM BUREAU INSURANCE
Companies of Michigan

FARMERS
FOR TOP PRICES
FOR YOUR LIVESTOCK
Consign to the
Howell Livestock Auction
We have buyers for all kinds of livestock. Sale every Monday at 2 p.m.
Phone 1089 Howell
For Any Information

JUST REMINISCING

Items Taken from the Files of The Chelsea Standard

4 Years Ago...

Thursday, Feb. 9, 1961—

Keith Haab, 15-year-old sophomore at Chelsea High school, was named one of three 1960 Swiss Bell award winners during Farmers Week at Michigan State University. The highly-prized awards are made annually by the Michigan Brown-Swiss Cattle Breeders Association. Keith is the son of Mr. and Mrs. Elmer Haab, 18081 Waters Rd. Signifying the award is a beautifully made brass bell, appropriately inscribed, which comes directly from Switzerland.

Cub Scouts of den VI were presented with 50th anniversary awards at their meeting on Feb. 2 at the home of their den mother, Mrs. Vernon Parks. Boys in the den are Bruce Parks, Arthur Farley, John Hepburn, Lee Diekelman, David Conklin, and Barry Novess. The Chelsea Junior Chamber of Commerce held their annual "Bosses Night" dinner Tuesday evening in the Congregational church dining room. "Bosses Night" is held each year by the Chelsea Jaycees as an expression of appreciation for the support and co-operation their bosses give them. Morle Leach is the Chelsea Jaycees president.

14 Years Ago...

Thursday, Feb. 8, 1951—

The school bond issue was approved here yesterday by a margin of 17 votes. Results of the election show 451 "yes" and 484 "no." This was the fourth time that a school bond issue has been brought to a vote here in the past 16 months.

All plans have been completed for the World Day of Prayer observance here tomorrow. The service, sponsored by women of the three Protestant churches of Chelsea, is being held this year in the Congregational church and the Congregational ladies will serve tea in the church parlors afterward.

Mr. and Mrs. J. C. Bradbury were surprised Sunday with a family gathering held at their home on US-12 in observance of their 25th wedding anniversary. Approximately 40 guests were present from Dearborn, Mason, Dexter, Pinckney, Ann Arbor and this vicinity.

24 Years Ago...

Thursday, Feb. 8, 1941—

The first phase of the Michigan Bell Telephone company's \$80,000 expansion and improvement program here is underway as contractors begin work on the firm's new central office building, located on W. Middle St. The structure, which will house the company's new business office and dial equipment, is expected to be completed by March 1.

Mrs. W. R. Daniels, general chairman of the local committee to raise funds for the infantile paralysis campaign, announced that when the campaign closed Saturday night, a total of \$128.51 had been collected locally, in addition to the coin cards that were mailed direct. Half the proceeds from this drive will stay in Washtenaw county, to aid Infantile Paralysis victims. The other half will be sent to the National Foundation for research into the causes and cures of the disease.

Chelsea Public Library is the one civic project of which the citizens can be truly proud. This library has meant untiring outlay of service and material needs by a small group of interested people during the first years of its development, and the loyal support of all the citizens of the community during the past few years. Because of this fine interest, the library has been able to improve and progress a little each year in spite of the curtailment of funds and the lack of adequate facilities.

34 Years Ago...

Thursday, Feb. 5, 1931—

Burglary seems to be increasing in popularity in Chelsea. The latest sensation is a report that a large hound dog has been engaged in stealing daily papers from porches about town perhaps to provide its master with plenty of up-to-date reading material. We would lead a movement to purchase a medal for this member of the canine family, if its master would train it to gather the promiscuous flow of so-called literature which is scattered on the

porches and about the lawns, and carry it to the village dump.

Announcement has been made that a series of interdenominational evangelistic meetings will be held in Chelsea at the Methodist church beginning Sunday evening, Feb. 8. E. J. Rollings, nationally known layman evangelist, will be in charge of the meetings, with Dorothy Wilson Rollings assisting as pianist and soloist. Rollings comes here direct from Monroe county, where it is reported hundreds of people were converted and joined churches.

George W. Beckwith, Sylvan Township supervisor, was appointed chairman of a committee of five supervisors to investigate alleged irregularities of the county road commission, at the special session of the county board of supervisors held in Ann Arbor, on Tuesday. Other members of the committee are Donald Comstock, Ypsilanti; Fred Blumhardt, Bridgewater; Harry Raschbacher, Ann Arbor; and John Lawson, York.

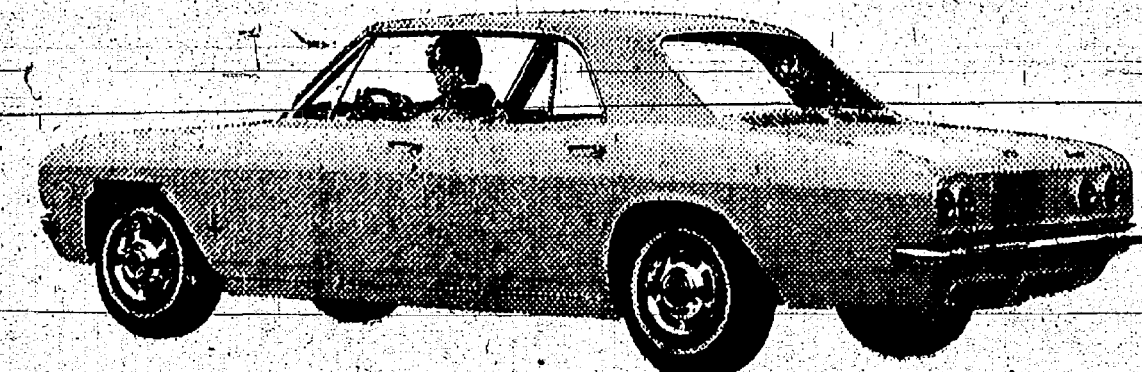
An automobile driven by Lewis Moore, of Lincoln St., in which his wife and his mother-in-law, Mrs. Sarah Drudge, were passengers, skidded Sunday afternoon on the icy road near Unser camp, northwest of Chelsea, collided with a car driven by Dr. A. L. Brock, who was accompanied by D. A. Rigen, and plunged backward over a 30-foot embankment. Both drivers were proceeding with caution at a very low rate of speed, and the accident was reported as being unavoidable. Moore was severely injured about the head and it was feared he had sustained a slight fracture. Mrs. Drudge received injuries to her back and was bruised. The others were uninjured.

Percy Kilbride, known to millions in his film role as Pa. Kettle in "The Egg and I," died as a result of injuries received when struck down by a car last September.

MONEY TROUBLE?
ONE PLACE TO PAY!
Credit Management Service
662-2565
342 Municipal Court Bldg.
Ann Arbor
State Licensed and Bonded

No window post.
No floor hump.
No radiator.
No power steering.
No power brakes.

(Some of the things you don't get in a Corvair are among your best reasons for buying it.)



'65 Corvair Monza Sport Sedan

Corvair by Chevrolet

The beauty of it, of course, goes deeper than the things you don't get. There's the other side of the coin—what you do get in their place.

Take the no window post, for example. What you do get is hardtop styling—with curved frameless side windows—in every Corvair closed model.

The transmission and driveline hump you don't get means more foot room. Thanks to Corvair's rear engine, the floor is practically flat.

No radiator—the engine's air-cooled—also means no water, no antifreeze and no hose leaks to worry about. All of which add up to some more important pluses.

Power steering? Power brakes? Corvair needs them like a centipede needs crutches. With most of the engine weight on the rear wheels, the front ones are free to steer easily. And stops are quick and sure—with no nosediving.

Come on down to our showroom and discover the difference.



Drive something really new—discover the difference at your Chevrolet dealer's
Chevrolet • Chevrole • Chevy II • Corvair • Corvette

Spaulding Chevrolet Sales & Service
CHELSEA, MICHIGAN

CHELSEA THEATRE

24-Hr. Program
Information: 475-8212

ADMISSION PRICES
CHELSEA, MICH.

ADULTS 75c
CHILDREN Under 12 35c

FRIDAY and SATURDAY
FEB. 12-13

ONLY THE WITCH
DEFLECTOR
CAN SAVE YOU
FROM THE
ERIE WEB OF THE UNKNOWN!

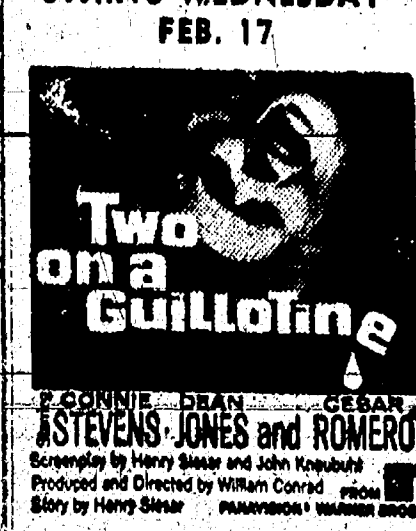


SUN.-MON.-TUES.
FEB. 14-15-16

Here Comes HAYLEY!



STARTS WEDNESDAY
FEB. 17



ARY 11, 1965
the lawn, and
large dump,
has been made
interdenominational
meetings will
it the Methodist
Sunday evening
ings, nationally
nists, will be
meetings, with
illings assisting
sist. Rollings
from Monroe
reported hun-
were converted
kwith, Sylvan
r was appointed
mittee of five
istigate alleged
e county road
special session
of supervision
r, on Tuesday,
the committee
ock, Ypsilanti,
Bridgewater,
r, Ann Arbor,
York.
riven by Lewis
8x, in which
his mother-in-
lidge, were fast-
day afternoon
r Unser came
a, collided with
A. J. Brock,
backward over
ant. Both driv-
g with caution
of speed, and
ported as being
d sustained a
s. Drilidge re-
her back and
thors were us-
own to millions
Pa. Kettle is
led as a result
when struck
September.

KEY
LE?
TO PAY!
gement
e
55
ourt Bldg.
ior
nd Bonded

g.

Sedan

mpor-
? Cor-
needs
engine
front
stops

the
ce

er's

vice

+ Services in Our Churches +

CONGREGATIONAL CHURCH (United Church of Christ) The Rev. R. A. Livingston, Pastor

Thursday, Feb. 11—
4:00 p.m.—Junior choir re-
hearsal.
7:30 p.m.—Regular choir re-
hearsal.
Saturday, Feb. 13—
7:00 p.m.—Eagle Court of
Honor.

Sunday, Feb. 14—
10:00 a.m.—Church school and
worship service. Sermon topic: "To-
day's Faith."
5:00 p.m.—Senior High con-
firmation class.
Monday, Feb. 15—
Last day of Stewardship pro-
ject.

Tuesday, Feb. 16—
8:30 a.m.—Chelsea ministers
breakfast meeting at Chelsea
Methodist home.
Thursday, Feb. 18—
10:00 a.m.—Worship service.
Topic: "The Second Coming of
Christ."
Nursery care available during
Sunday school and worship serv-
ice.
6:00 p.m.—Young People's serv-
ice.
7:00 p.m.—Evening service.
Prayer meeting each Thursday
at 7:30 p.m.

ST. BARNABAS EPISCOPAL CHURCH 20500 Old US-12 The Rev. J. R. Smucker, Vicar

Sunday, Feb. 14—
8:00 a.m.—Holy Communion.
10:00 a.m.—Morning Prayer and
church school.
Wednesday, Feb. 17—
7:00 a.m.—Holy Communion and
breakfast.

BETHEL EVANGELICAL AND
REFORMED CHURCH
(United Church of Christ)
Freedom Township

The Rev. T. W. Menzel, Pastor
Saturday, Feb. 13—
9:00 a.m.—12:30—Confirmation
classes.
Sunday, Feb. 14—
10:00 a.m.—Worship service.
11:00 a.m.—Sunday school.
7:00 p.m.—Youth meeting.
Thursday, Feb. 18—
8:00 p.m.—Anniversary commit-
tees.
Thursday, Feb. 25—
7:00 p.m.—Father and son ban-
quet.

ST. JOHN'S EVANGELICAL
AND REFORMED CHURCH
(United Church of Christ)
(Francisco)

The Rev. J. Tracy Luke, Pastor
Sunday, Feb. 14—
10:00 a.m.—Worship service.
11:00 a.m.—Church school.
7:00 p.m.—Youth Fellowship
meeting.
Thursday, Feb. 18—
8:00 p.m.—Worship service.

CHELSEA BAPTIST CHURCH
The Rev. Elmer S. Steenson, Pastor
Sunday, Feb. 14—
10:00 a.m.—Sunday school.
11:00 a.m.—Worship service.
Topic: "The Second Coming of
Christ."
Nursery care available during
Sunday school and worship serv-
ice.
6:00 p.m.—Young People's serv-
ice.
7:00 p.m.—Evening service.
Prayer meeting each Thursday
at 7:30 p.m.

METHODIST HOME CHAPEL
The Rev. E. J. Weiss, Pastor
The Rev. John Fall, assistant
The Rev. Wm. Johnson, chaplain
Sunday, Feb. 14—
8:00 a.m.—Worship service.

ST. PAUL'S EVANGELICAL AND REFORMED CHURCH (United Church of Christ) The Rev. Donald C. Bascke, Interim Pastor, Ph. 475-7215

Thursday, Feb. 11—
7:00 p.m.—Junior choir re-
hearsal.
7:15 p.m.—Senior choir re-
hearsal.
Saturday, Feb. 13—
9:30 a.m.—Youth choir re-
hearsal.
10:00 a.m.—Confirmation class
catechism.
Sunday, Feb. 14—
9:30 a.m.—Church school.
10:45 a.m.—Worship service.
Sermon topic: "Jesus Calls Us
from Hell to Hope." I Corinthians
9:24-10:5.

Tuesday, Feb. 16—
1:30 p.m.—Merry-Jean Circle
meeting at church hall.
Tuesday, Feb. 16—
1:30 p.m.—Joyce Louise Circle
meeting at the home of Emma
Seitz, 304 E. Middle.
Tuesday, Feb. 16—
7:30 p.m.—Bath Circle at the
home of Elma Elise, 314 Madis-
son.
Tuesday, Feb. 16—
8:00 p.m.—Sunshine Circle at
the church hall.
Wednesday, Feb. 17—
1:00 p.m.—Esther Circle meet-
ing at the home of Hilda Trinkle, 847
N. Steinbach Rd. Anna Schairer
is co-hostess. Note change of
meeting place.
Thursday, Feb. 18—
9:00 a.m.—Koinone Circle place
to be announced later.

ZION LUTHERAN CHURCH
(Rogers Corners)
The Rev. C. J. Renner, Pastor
Saturday, Feb. 13—
9:30 a.m.—Junior catechism.
10:45 a.m.—Senior catechism.
Sunday, Feb. 14—
9:00 a.m.—Sunday school.
10:15 a.m.—Worship service.
Sermon topic: "Man's Poorest Sup-
port in Cases of Need."
Monday, Feb. 15—
4:30 p.m.—Junior choir.
8:00 p.m.—Senior choir.
Tuesday, Feb. 16—
Women sew all day for mis-
sions.
Thursday, Feb. 18—
8:00 p.m.—Men's shuffleboard.

FIRST CHURCH OF CHRIST
SCIENTIST
1833 Washtenaw Ave., Ann Arbor
Sunday, Feb. 14—
9:30 a.m.—Sunday school.
11:00 a.m.—Morning service.
Bible lesson entitled, "Soul," is the
dramatic account from the book of
Genesis, telling how Joseph met
the many challenges to his trust
in God through the years.
Golden Text is from Psalms
(99:9) "Exalt the Lord Our God,
and worship at his holy hill; for
the Lord our God is holy."

FIRST UNITED
PRESBYTERIAN CHURCH
UNADILLA
The Rev. John Jeffrey, Pastor.
Sunday, Feb. 14—
9:30 a.m.—Church school.
10:45 a.m.—Worship service.
Tuesday, Feb. 16—
8:00 p.m.—Choir practice.

ST. THOMAS
EVANGELICAL LUTHERAN
Freedom Township
The Rev. H. Spomer, Pastor
Thursday, Feb. 11—
6:30 p.m.—Confirmation.
7:30 p.m.—Junior choir.
8:30 p.m.—Adult Choir.
Sunday, Feb. 14—
10:00 a.m.—Worship service.
11:00 a.m.—Sunday school.

FIRST METHODIST CHURCH The Rev. James A. Craig, Pastor Thursday, Feb. 11— 6:00 p.m.—Jub Pack 455 Blue an 7:00 p.m.—High school choir. Gold Banquet, Social Center. 7:30-10 p.m.—Curriculum pre- view, Brighton. 8:00 p.m.—Senior choir. Saturday, Feb. 13— 9:00-4:00—Winter Workshop on Social Concerns, Dearborn First. 9:00 a.m.—Junior choir. 10:00 a.m.—Primary choir. Saturday, Feb. 14— 9:00 a.m.—Church school for all ages. 10:00 a.m.—Church school through grade 6. 10:00 a.m.—Worship service. 6:00 p.m.—Junior High MYF. 7:00 p.m.—Senior High MYF. Tuesday, Feb. 16— 7:00 a.m.—Men's Breakfast group. 8:30 a.m.—Chelsea Minister's, Methodist Home. 7:30 p.m.—Wesleyan Service Guild, Educational Unit. 8:00 p.m.—Grace Otto Circle, home of Mrs. E. Lewis. 8:00 p.m.—Marion Kline Cir- cle, home of Mrs. C. Warren. Wednesday, Feb. 17— 9:00 a.m.—Marion Simons Circle, Mrs. R. Harris. 9:00 a.m.—Vivian Otto Circle, Mrs. L. Merrell's. 1:00 p.m.—Marion Shaw Cir- cle, parsonage. 1:00 p.m.—Pearl Baxter Circle, home of Mrs. J. Potts.

SALEM GROVE
METHODIST CHURCH
The Rev. George Nevin, Pastor
Sunday, Feb. 14—
10:00 a.m.—Sunday school.
11:00 a.m.—Worship service.

WATERLOO VILLAGE CHURCH
(Evangelical United Brethren)
The Rev. Wilbur Silvernail, Pastor
Sunday, Feb. 14—
10:00 a.m.—Sunday school.
11:00 a.m.—Worship service.
7:00 p.m.—Youth Fellowship.

ST. JOHN'S EVANGELICAL
AND REFORMED CHURCH
(United Church of Christ)
(Rogers Corners)
The Rev. J. Tracy Luke, Pastor
Sunday, Feb. 14—
9:30 a.m.—Worship service.
10:30 a.m.—Sunday school.

FIRST ASSEMBLY OF GOD
CHURCH
14200 Old US-12
The Rev. Harold S. Bliotta, Pastor
Sunday, Feb. 14—
9:45 a.m.—Sunday school.
11:00 a.m.—Worship service.
7:00 p.m.—Evening service.
Wednesday, Feb. 10—
7:30 p.m.—Prayer service.

NORTH SHARON
COMMUNITY BIBLE CHURCH
Sylvan and Washburn Roads
The Rev. Paul Collins
Sunday, Feb. 14—
10:00 a.m.—Sunday school.
11:00 a.m.—Worship service.
7:00 p.m.—Evening service.

CHURCH OF CHRIST
18661 Old US-12, East
C. Arthur Peddle, Pastor
Sunday, Feb. 14—
10:00 a.m.—Bible study.
11:00 a.m.—Worship service.
6:00 p.m.—Worship service.
Bible study each Thursday at
7:00 p.m.

ST. MARY'S
CATHOLIC CHURCH
The Rev. Fr. Francis Maliszewski
Sunday, Feb. 14—
Masses at 6:30 a.m., 8:00 a.m.,
10:00 a.m., and 11:30 a.m.

GREGORY BAPTIST CHURCH
The Rev. Millard Heron, Pastor
Sunday, Feb. 14—
10:00 a.m.—Worship service.
11:15 a.m.—Church school, Fel-
lowsip.
6:30 p.m.—Baptist Youth.
7:30 p.m.—Evening worship.

NORTH LAKE
METHODIST CHURCH
The Rev. George Nevin, Pastor
(United Church of Christ)
Freedom Township
The Rev. T. W. Menzel, Pastor
Sunday, Feb. 14—
9:30 a.m.—Worship service.
10:30 a.m.—Sunday school.
6:00 p.m.—MYF meeting.

Rayma Smith Helps With Capping Ceremony At Nursing School

Rayma Smith, daughter of Mr.
and Mrs. Richard Smith, Harrison
St., participated in the capping
ceremony of the W. A. Foot Hos-
pital School of Nursing in Jackson
last Sunday.

Miss Smith, a junior in the
school of nursing, is president of
the student body, and vice-presi-
dent of her class. She also holds an
office in the Caduceus club.

Miss Smith is a 1963 graduate
of Chelsea High school.

Kiwanis Quotes

"The question is not
whether you have failed, but
whether you are content with
failure."

FRIENDLY CHATS



DANCER'S Valentine GIFTS

Captivate her with your timely fashion gifts. Any
one of these wonderful selections will be sure
to send Cupid's arrow winging her way.
Come in and let us help you
choose that special some-
thing for her.

To Please Her
on
Valentine's Day
BLOUSES

To every Cupid's helper
we can truthfully say our
blouses are right on tar-
get for fashion. Lots of
variety, too.

GIFT BOXED
AT NO EXTRA CHARGE

MacShore
New Era

Lacy, Lovely Valentine
LINGERIE
Pamper her with a gift
from our fine selection.

GREATEST SALE

We've Ever Had on

shoes for the family

WOMEN'S - GIRLS' - MEN'S - BOYS' - INFANTS'

Ten Price Ranges and
Hundreds of Pairs To Choose From!

\$7.44 Reg. \$10.98	\$6.88 Reg. \$9.98	\$5.88 Reg. \$8.88	\$5.44 Reg. \$7.98
\$4.88 Reg. \$6.98	\$4.44 Reg. \$6.45	\$3.88 Reg. \$5.98	
\$3.44 Reg. \$4.98	\$2.88 Reg. \$3.98	\$1.88 Reg. \$2.98	

Ties and bow
ties in silk,
blends, made
for wear any-
where.

Select from our
assortment of

SHIRTS
By VAN HEUSEN,
B.V.D.



DANCER'S

CHELSEA

Will You Be Ready?

Jesus Is Coming Again!

There are no less than three hundred references
in the New Testament that assure us of the second com-
ing of the Lord Jesus Christ.

Although this great event is imminent and could
take place at any moment, many people know nothing
about it. They will be completely unprepared.

Jesus came once as a Babe in a manger. He will
come the next time as King of Kings and Lord of Lords.
He will first remove the Christians, and then all of
those that do not know Him as their own personal Sav-
iour, will be left behind. "For the Lord himself shall
descend from heaven with a shout, with the voice of the
archangel, and with the trump of God; and the dead in
Christ shall rise first. Then we which are alive and
remain shall be caught up together with them in the
clouds, to meet the Lord in the air; and so shall we
ever be with the Lord." I Thess. 4: 16, 17.

Then after the great tribulation period as revealed
in the Book of Revelation, Jesus will come as the King
of Kings. "Behold, He cometh with clouds; and every
eye shall see Him, and they also which pierced Him,
and all kindreds of the earth shall wail because of Him."
Rev. 1: 7. "And to you who are troubled rest with us,
when the Lord Jesus shall be revealed from Heaven
with His mighty angels. In flaming fire taking ven-
geance on them that know not God, and that obey not
the Gospel of our Lord Jesus Christ; II Thess.
1: 7, 8.

If you would care enough to know more about this
great event and the part that you will play in it, you are
sincerely invited to attend the morning worship service
of The Chelsea Baptist Church, on Sunday, February
14th, and Sunday, February 21st. Pastor Elmer S.
Steenson will be speaking on the subject, "The Second
Coming of Christ." The public is invited to attend.
Visitors are always most welcome.

If you're going to enter something like the Pure Oil Performance Trials, you might as well do it to win.

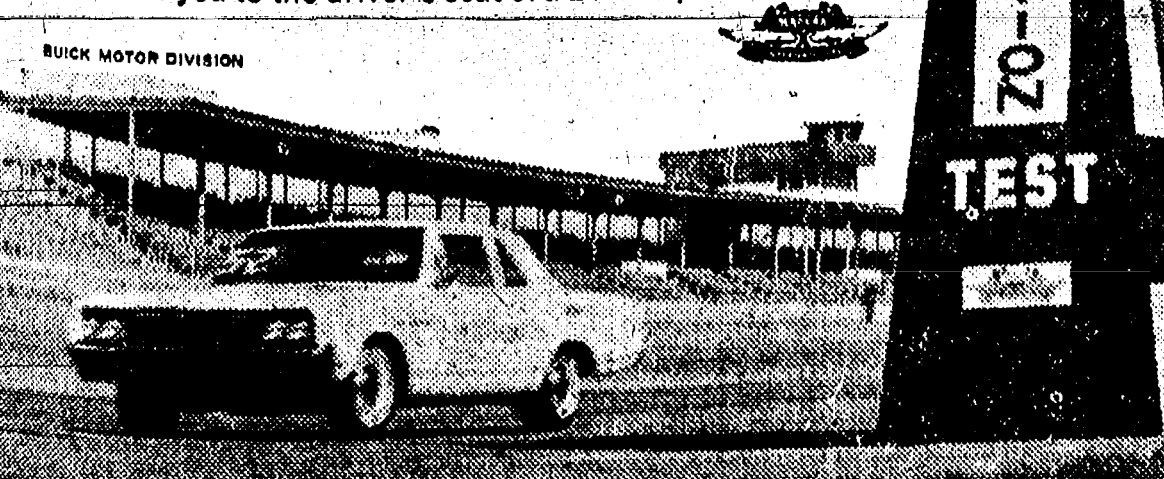
So we did. Class IV—won by Buick Special.

Down at Daytona Beach, we gave everyone another look at Buick's "Win Policy"
A V-8 Buick Special won over stiff competition (sorry, boys!) in Class IV—in the
1965 Pure Oil Performance Trials. The winning Special was equipped with
our 300 cubic inch Wildcat 310 V-8 and Super Turbine Transmission.

Remember that the drivers in the Performance Trials are skilled professionals,
and the cars finely tuned standard production models. (If it can be said
that the Special is "Standard" anything.) Also remember that the
trials are an exhausting, carefully graded test of a car's all-
around ability. In economy, acceleration and braking. Small
wonder the Special came out on top. Handsomely.

(The specific detail? Our hero averaged 20.689 mpg in
economy, to score second among 10 cars. It accomplished
the acceleration test—from 25 to 70 mph—in 9.315
seconds, for a fifth. And took another second in braking:
from 65 to 0 mph in 172.0 feet. The cumulative result:
we won all the marbles in Class IV.)

Now then, if you're going to enter something—like a car—
you might as well do it to win, too. Your Buick dealer can
introduce you to the driver's seat of a Buick Special.



SEE YOUR LOCAL AUTHORIZED BUICK DEALER!

TUNE IN "LOWELL THOMAS AND THE NEWS"—CBS RADIO

SPECIAL SCHOOL ELECTION

NOTICE OF SPECIAL ELECTION
of the Qualified Electors of
CHELSEA SCHOOL DISTRICT
WASHTENAW AND JACKSON COUNTIES, MICHIGAN
To Be Held

Wednesday, February 24, 1965

To The Qualified Electors of Said School District:
Please Take Notice that a special election of the
qualified electors of said School District will be held in
the Gymnasium of the Junior High School Building, in
the Village of Chelsea, Michigan, on

Wednesday, February 24, 1965

THE POLLS OF ELECTION WILL OPEN AT 7:00
O'CLOCK A.M., AND CLOSE AT 8:00 O'CLOCK, P.M.,
EASTERN STANDARD TIME.

The following proposition will be submitted to the
vote of the electors at said special election:

Shall Chelsea School District, Washtenaw and
Jackson Counties, Michigan, borrow the sum of
not to exceed Two Hundred Forty Thousand Dol-
lars (\$240,000) and issue its bonds therefor, for
the purpose of erecting, furnishing and equipping
an additional high school building, and for site
development and improvement?

Each person voting on the proposition of borrowing and issuing
the bonds of said School District must be a citizen of the United
States, attained the age of 21 years, have resided in the State of
Michigan six months and in the School District 30 days next preced-
ing the election, and have property assessed for ad valorem taxes with-
in the School District or be the lawful husband or wife of a qualified
voter of the District having property so assessed.
Only persons registered as electors in the township in which they
reside are eligible to vote.

Take Notice that the Board of Education has esti-
mated the total expense of erecting, furnishing and
equipping an additional high school building, and for
site development and improvement to be Two Hun-
dred Forty Thousand Dollars (\$240,000), all of which it is
necessary to raise by borrowing and issuing the bonds
of the District.

This Notice is given by order of the Board of Edu-
cation of Chelsea School District, Washtenaw and Jack-
son Counties, Michigan.

ROBERT Q. FOSTER
Secretary, Board of Education

Just
Phone
GR 5-3581

BUY SELL TRADE RENT HIRE HELP

read the Want Ads

WANT ADS

The Chelsea Standard

WANT AD-RATES

PAID IN ADVANCE—All regular advertisements, 50 cents for 25 words or less, each insertion. Count each figure as a word. For more than 25 words add 2 cents per word for each insertion. "Blind" ads or box numbers add 50 extra per insertion. CHARGE RATES—Same as cash in advance with 15 cents bookkeeping charge if not paid before 5 p.m. Tuesday preceding publication. Pay in advance, send cash or stamps and save 15 cents. CARDS OF THANKS or MEMORIALS—Single paragraph style \$1.00 per insertion for 50 words or less; 2 cents per word beyond 50 words. Minimum, 1 inch. DISPLAY WANT ADS—Rate, \$1.10 per column inch, single column width, 100 words and 14-point light type only. No borders or boldface type. COPY DEADLINE—5 p.m. Tuesday week of publication.

TAKE soil away the Blue Lustre way from carpets and upholstery. Rent electric shampooer \$1. Chelsea Hardware, Ph. GR 9-6311.

FOR REAL DOLLAR SAVINGS. Be sure and see us before you buy any new or used car. Palmer Motor Sales, Inc. Your Ford Dealer for over 50 years.

Septic Tanks And Drain Fields

INSTALLED TO COUNTY CODE SPECIFICATIONS.
Septic tanks from 300 gal. to 2,000 gal. available for prompt installation.

HILLTOP PLUMBING

BOB SHEARS
201 S. Main Phone 479-3851
WOOL TWINE—2-lb. balls, 59¢ each; 25-lb. carton, \$5.50. Merkel Bros.

HELP WANTED MALE—Good Rawleigh locality available in part Washtenaw Co. or Chelsea. No experience needed to start. Large sales mean good profits. Permanent. Write Rawleigh, Dept. ME-762-104, Freeport, Ill.

Leonard Reith Co.

LICENSED MASTER PLUMBER
All Brand Names of Plumbing
TRIAD HOT WATER HEAT
PUMP REPAIR
BOTTLED GAS
ELECTRICAL WIRING
18238 N. TERRITORIAL RD.
GR 9-4811

QUALITY WORK

FOR RENT—Modern 5-room house, 5251 Water St. in village of Waterloo. Welton Bohne, Ph. 475-8554.

FOR SALE—Ford tractor with plow, mounted drag. Call 479-7467.

5 1/2% FARM LOANS

Federal Land Bank
Association
Call Ann Arbor NO 5-6139

MORTON EXCAVATING, trenching, driveways. Fill dirt. Top soils. We specialize in septic tank and drain installations. Free estimates. Phone Pinckney 878-3019.

FOR RENT—Downstairs apartment, 2 bedrooms, kitchen, living room, bathroom, basement and enclosed back porch. Ph. GR 479-4721.

Red Wing Work Shoe Headquarters
Jarman Dress Shoes
Wide range of sizes and styles
Foster's Men's Wear

WANT ADS

FOR RENT—Modern 5-room house, 5251 Water St. in village of Waterloo. Welton Bohne, Ph. 475-8554.

LISTINGS WANTED—For houses and land to be sold in the Chelsea area. Evelyn Abdon, phone GR 9-4522. Roy D. Miller, broker.

HELP WANTED—Man for occasional installation of aluminum storm sash. Suit your regular work schedule. Ph. GR 5-3931, Chelsea Lumber Co.

Used Ranges

Reposessed '30' Monarch Modern 'Que eye-level range, stainless steel cooking top, 1001 burner controls. Like new. Half-price.

Apartment size gas range \$29.95
30" Magic Chef gas range \$39.95

Chelsea Hardware

GR 9-6311

FOR TRACTORS and equipment. Also New Holland machinery. Sales and service. Cobb & Schreier, Stockbridge. Phone ULYSSES 1-4625.

WANTED—Light trucking by job or hour. Call after 5. 326-4429.

ANCHOR INN

11980 McGregor Rd.
PORTAGE LAKE - PINCKNEY

FOR BANQUETS AND PARTIES

Call HA 6-8183
or 426-4160

COINS TO TRADE for your half dollars. Lawrence E. Guinan, coin collector, 1571 Sugar Loaf Lake, Chelsea.

USED TRACTOR TIRES—Large inventory on hand. Also used passenger truck & grader tires. Jackson Tire Brokers, M-106, Monticello, Mich. Ph. 505-2255.

FOR SALE—'34 pickup camper, used three times. Cheap. 475-7111 or 128 W. Middle St.

FOR SALE—Sofa, chair, 2 limed-oak end tables, cocktail tables, 2 table lamps. Phone 479-7931, 33

Real Estate For Sale

THREE-BEDROOM—Older house. Carpeted living room and dining room. Modern kitchen with lots of cabinets. New family room, garage. \$700 down (plus closing costs) on P.H.A.

RETIREMENT HOUSE—Ideal for a couple, 2 bedrooms. New carpeting in living room and dining room. Basement. Screened porch, garage. \$13,500.

DUPLEX HOUSE—Owner's apartment can be 2 or 3 bedrooms. Other unit, 1 or 2 bedrooms. Separate utilities. A real good paying investment. Let me show you the tax advantages of a two-family house.

THREE BEDROOMS—9 years old. Full basement, hardwood floors. Landscaped. Can be financed at 5 1/2% interest, with substantial down payment or 6% with lower down payment. Phone me for details.

PLANNING TO BUILD?—Now is the time to buy your lot. Three in town from \$1,500 up. Two acres near town at \$1,650.

LISTINGS NEEDED—Now is the time to list for spring sales.

CLARENCE WOOD BROKER

646 Flanders St.
GR 9-4603

WANT ADS

FORD CORNER
ORCHARD AND MAIN

This Week's Special

1962 FORD BUS
This deluxe club wagon has 3 seats and will carry 9 passengers, has radio, heater.

On Display Today
At Orchard and Main

A-1 Like New Values

1963 Chevrolet 4-Dr. \$55.00
1963 Mercury Hardtop \$58.00
1963 Ford Galaxie 2-Dr. \$55.00
1963 Fairlane 500 2-Dr. \$45.00
1962 Falcon Futura 2-Dr. \$38.00
1962 Ford Galaxie 500 2-Dr. \$48.00
1962 Ford Galaxie 500 2-Dr. \$48.00

No Money Down
Values

1960 Comet 2-Dr. \$27.00
1959 Mercury Convertible \$24.00
1957 Pontiac 4-Dr. \$9.00
1951 Chevrolet 2-ton Stake \$9.00

Brand New 1964
Fairlane 2-Door
Only \$49.00 per mo.

Open
Mondays, Wednesdays and Fridays
till 9:00 for your convenience.

COMING IN

The following cars and trucks are coming in the next week or so. Call for more information.

1964 Ford 1/2-ton Pick-up
1964 Fairlane 2-Door
1961 Falcon 2-Door
1960 Ford 2-Door
1958 Ford 1/2-ton Pick-up

1964 and 1965
DEMONSTRATORS

Savings Up to \$1,000
4 to choose from—See us today for real savings!

SEE OUR SELECTION

of over 40 new and used vehicles. Our New and Used Lots are never locked. Stop in anytime or call Lyle Christwell, Everett Johnson, or George Palmer for information and prices.

GR 5-3271
GR 5-8549
GR 5-8341
GR 5-8531

PALMER FORD

50-Year Dealer
WANTED—Farm work or other, by 28-year-old man. Experienced. GR 9-5502.

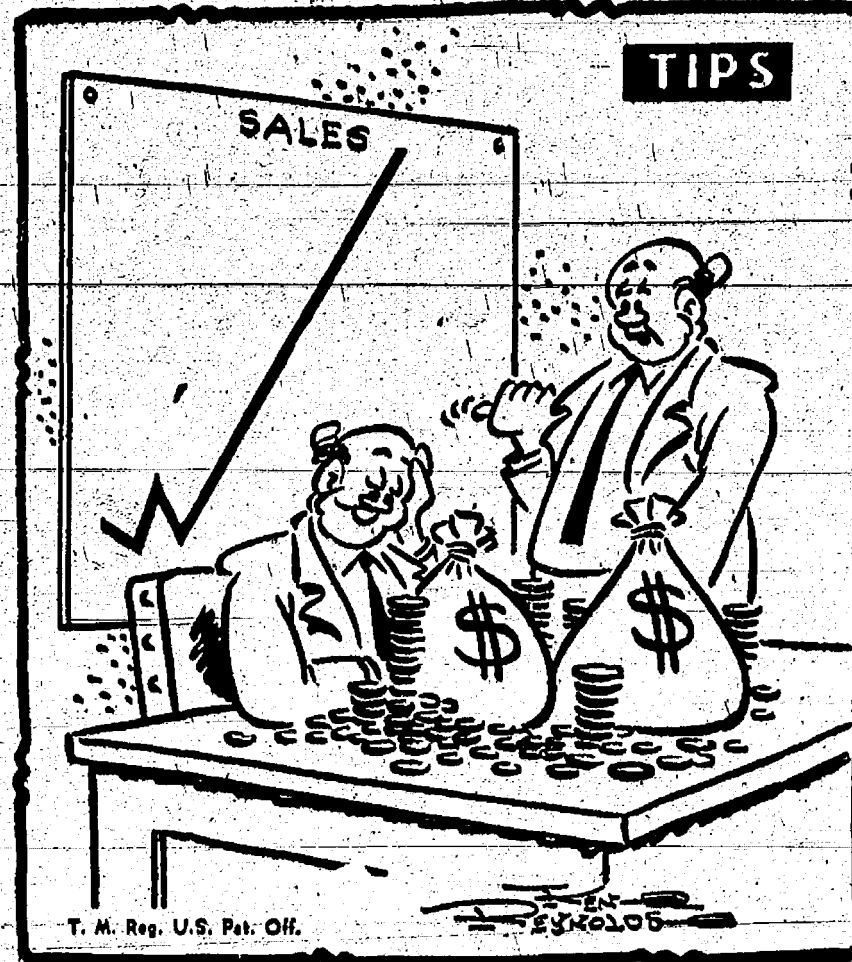
FOR SALE—Registered English Setter puppies. Call 475-7144.

For the Best in
POLE BUILDINGS
Be sure to see "SMILEY"
Call or Write
JOHN LIVERMORE
Gregory, Alpine 6-2827

When you
think of
bottled gas,
think of
SHELLANE—
only a few pennies
a day to use

Shellane Bottled Gas
is a product of the
Shell Oil Company

HILLTOP PLUMBING
BOB SHEARS
201 S. Main St. Ph. 479-3851



It's pretty obvious we're doing something right—maybe it's the Standard Want Ad we used!

WANT ADS

FOR RENT—4-room apartment, unfurnished except for stove and refrigerator. Garage with apartment. 131 E. Middle St., Chelsea.

FOR SALE—4-bedroom house, new gas furnace, 1 1/2 baths, basement, large lot with trees, garage, nice location, good neighborhood. Ph. GR 9-7653.

FOR SALE—Lots in scenic Noah Heights, near Half Moon Lake. Septic approved. 150' x 285'. Trees. Chelsea School District. Also 4 bedrooms, 2-bath Cape Cod with look-through fireplace. Builder's home. E. A. Wigle, Phone Chelsea 479-4471.

WANTED—Young man for part time work. Farmer, preferred. 475-5096.

FIREPLACE WOOD for sale. We deliver. John A. Klink. Phone 479-8558 or 479-2077.

COUNTRY LIVING
COUNTRY LIVING in a brick and field stone, eight year young ranch. Two-car attached garage. Three bedrooms. FULL basement, with outside entrance for the children, plus over an acre of land for your personal enjoyment and privacy. The fireplace, in its wall built of sandstone, will enhance your evenings at home in the coming winter months. Call now and please let us give you the rest of the details on this fine home priced at \$26,500.

CONTEMPORARY Home near Chelsea High School. This well-kept home, with its thermo-pane doors, walls, modern and efficient kitchen, hardwood floors and its custom design can be most appreciated by living in the home itself. It has three bedrooms, a full basement with outside entrance, two dining areas.

FARMS
A BEAUTIFUL 100-acre dairy farm in the Ann Arbor School district area just two miles from the North Campus with frontage on two roads. Eight acres of woods, and features a complete set of modern buildings, a four-bedroom two-bath home makes for gracious living as well as a sound investment.

130-ACRE FARM, two miles Northeast of Chelsea. Three new feeder buildings, 100 acres tillable, two 12'x60'x6' bunkers. Farm can handle 60 or more feeders. Modern farm house.

The Butts & Swisher Co.
REALTORS
NO 3-0501
eves: Geo. Frisinger 479-4161

Maple armchair with naugahyde seat and back cushion, man-size \$24.95
Lounge chair in beige nylon, good condition, well-styled \$29.95
Pair of modern occasional chairs, gold fabric \$19.95 pr.
Mr. and Mrs. Chair set with ottoman, good condition, traditional style with kick-pleat skirt, casters. Coral nylon upholstery. Set \$79.50
3-cushion sofa, burgundy fabric, clean \$19.95
5-pc. Chrome dinette, oval extension table \$9.95
Walnut dining room suite. Extension table with leaf and pads, 6 chairs, buffet and china cabinet. \$89.95
Walnut dresser and mirror, good condition \$24.95
Dinette table, 86x48, extends to 60, woodgrain plastic top, bronze legs, like new. \$14.95
Full size upholstered headboard, gray vinyl \$8.00
Walnut poster bed w/spring, full size \$19.95

Merkel Bros.

FOR SALE—Roper gas stove, \$60. Chrome formica table and three chairs, \$12. Alex Mshar, 742 Book St. Ph. 479-3431.

USED REFRIGERATORS—Guaranteed. \$45 and up. Frigid Products. Phone GR 9-6551.

ALLSTATE
INSURANCE
HOME - PERSONAL
COMMERCIAL - AUTO - BOAT
N. H. MILES, Agent
Phone GR 5-8334
Call evenings or week-ends

WANTED—Light trucking by job or hour. Call after 5. 426-4429.

3-Bedroom Home
For Sale
The H. D. Litteral house,
345 Madison, by heirs.
CALL 479-7241

FOR SALE—Roper gas stove, \$60. Chrome formica table and three chairs, \$12. Alex Mshar, 742 Book St. Ph. 479-3431.

Maple armchair with naugahyde seat and back cushion, man-size \$24.95
Lounge chair in beige nylon, good condition, well-styled \$29.95
Pair of modern occasional chairs, gold fabric \$19.95 pr.
Mr. and Mrs. Chair set with ottoman, good condition, traditional style with kick-pleat skirt, casters. Coral nylon upholstery. Set \$79.50
3-cushion sofa, burgundy fabric, clean \$19.95
5-pc. Chrome dinette, oval extension table \$9.95
Walnut dining room suite. Extension table with leaf and pads, 6 chairs, buffet and china cabinet. \$89.95
Walnut dresser and mirror, good condition \$24.95
Dinette table, 86x48, extends to 60, woodgrain plastic top, bronze legs, like new. \$14.95
Full size upholstered headboard, gray vinyl \$8.00
Walnut poster bed w/spring, full size \$19.95

Merkel Bros.

FOR SALE—Roper gas stove, \$60. Chrome formica table and three chairs, \$12. Alex Mshar, 742 Book St. Ph. 479-3431.

Maple armchair with naugahyde seat and back cushion, man-size \$24.95
Lounge chair in beige nylon, good condition, well-styled \$29.95
Pair of modern occasional chairs, gold fabric \$19.95 pr.
Mr. and Mrs. Chair set with ottoman, good condition, traditional style with kick-pleat skirt, casters. Coral nylon upholstery. Set \$79.50
3-cushion sofa, burgundy fabric, clean \$19.95
5-pc. Chrome dinette, oval extension table \$9.95
Walnut dining room suite. Extension table with leaf and pads, 6 chairs, buffet and china cabinet. \$89.95
Walnut dresser and mirror, good condition \$24.95
Dinette table, 86x48, extends to 60, woodgrain plastic top, bronze legs, like new. \$14.95
Full size upholstered headboard, gray vinyl \$8.00
Walnut poster bed w/spring, full size \$19.95

Merkel Bros.

FOR SALE—Roper gas stove, \$60. Chrome formica table and three chairs, \$12. Alex Mshar, 742 Book St. Ph. 479-3431.

Maple armchair with naugahyde seat and back cushion, man-size \$24.95
Lounge chair in beige nylon, good condition, well-styled \$29.95
Pair of modern occasional chairs, gold fabric \$19.95 pr.
Mr. and Mrs. Chair set with ottoman, good condition, traditional style with kick-pleat skirt, casters. Coral nylon upholstery. Set \$79.50
3-cushion sofa, burgundy fabric, clean \$19.95
5-pc. Chrome dinette, oval extension table \$9.95
Walnut dining room suite. Extension table with leaf and pads, 6 chairs, buffet and china cabinet. \$89.95
Walnut dresser and mirror, good condition \$24.95
Dinette table, 86x48, extends to 60, woodgrain plastic top, bronze legs, like new. \$14.95
Full size upholstered headboard, gray vinyl \$8.00
Walnut poster bed w/spring, full size \$19.95

Merkel Bros.

FOR SALE—Roper gas stove, \$60. Chrome formica table and three chairs, \$12. Alex Mshar, 742 Book St. Ph. 479-3431.

Maple armchair with naugahyde seat and back cushion, man-size \$24.95
Lounge chair in beige nylon, good condition, well-styled \$29.95
Pair of modern occasional chairs, gold fabric \$19.95 pr.
Mr. and Mrs. Chair set with ottoman, good condition, traditional style with kick-pleat skirt, casters. Coral nylon upholstery. Set \$79.50
3-cushion sofa, burgundy fabric, clean \$19.95
5-pc. Chrome dinette, oval extension table \$9.95
Walnut dining room suite. Extension table with leaf and pads, 6 chairs, buffet and china cabinet. \$89.95
Walnut dresser and mirror, good condition \$24.95
Dinette table, 86x48, extends to 60, woodgrain plastic top, bronze legs, like new. \$14.95
Full size upholstered headboard, gray vinyl \$8.00
Walnut poster bed w/spring, full size \$19.95

Merkel Bros.

FOR SALE—Roper gas stove, \$60. Chrome formica table and three chairs, \$12. Alex Mshar, 742 Book St. Ph. 479-3431.

Maple armchair with naugahyde seat and back cushion, man-size \$24.95
Lounge chair in beige nylon, good condition, well-styled \$29.95
Pair of modern occasional chairs, gold fabric \$19.95 pr.
Mr. and Mrs. Chair set with ottoman, good condition, traditional style with kick-pleat skirt, casters. Coral nylon upholstery. Set \$79.50
3-cushion sofa, burgundy fabric, clean \$19.95
5-pc. Chrome dinette, oval extension table \$9.95
Walnut dining room suite. Extension table with leaf and pads, 6 chairs, buffet and china cabinet. \$89.95
Walnut dresser and mirror, good condition \$24.95
Dinette table, 86x48, extends to 60, woodgrain plastic top, bronze legs, like new. \$14.95
Full size upholstered headboard, gray vinyl \$8.00
Walnut poster bed w/spring, full size \$19.95

Merkel Bros.

FOR SALE—Roper gas stove, \$60. Chrome formica table and three chairs, \$12. Alex Mshar, 742 Book St. Ph. 479-3431.

Maple armchair with naugahyde seat and back cushion, man-size \$24.95
Lounge chair in beige nylon, good condition, well-styled \$29.95
Pair of modern occasional chairs, gold fabric \$19.95 pr.
Mr. and Mrs. Chair set with ottoman, good condition, traditional style with kick-pleat skirt, casters. Coral nylon upholstery. Set \$79.50
3-cushion sofa, burgundy fabric, clean \$19.95
5-pc. Chrome dinette, oval extension table \$9.95
Walnut dining room suite. Extension table with leaf and pads, 6 chairs, buffet and china cabinet. \$89.95
Walnut dresser and mirror, good condition \$24.95
Dinette table, 86x48, extends to 60, woodgrain plastic top, bronze legs, like new. \$14.95
Full size upholstered headboard, gray vinyl \$8.00
Walnut poster bed w/spring, full size \$19.95

Merkel Bros.

WANT ADS

FOR RENT—4-room apartment, unfurnished except for stove and refrigerator. Garage with apartment. 131 E. Middle St., Chelsea.

FOR SALE—4-bedroom house, new gas furnace, 1 1/2 baths, basement, large lot with trees, garage, nice location, good neighborhood. Ph. GR 9-7653.

FOR SALE—Lots in scenic Noah Heights, near Half Moon Lake. Septic approved. 150' x 285'. Trees. Chelsea School District. Also 4 bedrooms, 2-bath Cape Cod with look-through fireplace. Builder's home. E. A. Wigle, Phone Chelsea 479-4471.

WANTED—Young man for part time work. Farmer, preferred. 475-5096.

FIREPLACE WOOD for sale. We deliver. John A. Klink. Phone 479-8558 or 479-2077.

COUNTRY LIVING
COUNTRY LIVING in a brick and field stone, eight year young ranch. Two-car attached garage. Three bedrooms. FULL basement, with outside entrance for the children, plus over an acre of land for your personal enjoyment and privacy. The fireplace, in its wall built of sandstone, will enhance your evenings at home in the coming winter months. Call now and please let us give you the rest of the details on this fine home priced at \$26,500.

CONTEMPORARY Home near Chelsea High School. This well-kept home, with its thermo-pane doors, walls, modern and efficient kitchen, hardwood floors and its custom design can be most appreciated by living in the home itself. It has three bedrooms, a full basement with outside entrance, two dining areas.

FARMS
A BEAUTIFUL 100-acre dairy farm in the Ann Arbor School district area just two miles from the North Campus with frontage on two roads. Eight acres of woods, and features a complete set of modern buildings, a four-bedroom two-bath home makes for gracious living as well as a sound investment.

130-ACRE FARM, two miles Northeast of Chelsea. Three new feeder buildings, 100 acres tillable, two 12'x60'x6' bunkers. Farm can handle 60 or more feeders. Modern farm house.

The Butts & Swisher Co.
REALTORS
NO 3-0501
eves: Geo. Frisinger 479-4161

Maple armchair with naugahyde seat and back cushion, man-size \$24.95
Lounge chair in beige nylon, good condition, well-styled \$29.95
Pair of modern occasional chairs, gold fabric \$19.95 pr.
Mr. and Mrs. Chair set with ottoman, good condition, traditional style with kick-pleat skirt, casters. Coral nylon upholstery. Set \$79.50
3-cushion sofa, burgundy fabric, clean \$19.95
5-pc. Chrome dinette, oval extension table \$9.95
Walnut dining room suite. Extension table with leaf and pads, 6 chairs, buffet and china cabinet. \$89.95
Walnut dresser and mirror, good condition \$24.95
Dinette table, 86x48, extends to 60, woodgrain plastic top, bronze legs, like new. \$14.95
Full size upholstered headboard, gray vinyl \$8.00
Walnut poster bed w/spring, full size \$19.95

Merkel Bros.

FOR SALE—Roper gas stove, \$60. Chrome formica table and three chairs, \$12. Alex Mshar, 742 Book St. Ph. 479-3431.

USED REFRIGERATORS—Guaranteed. \$45 and up. Frigid Products. Phone GR 9-6551.

ALLSTATE
INSURANCE
HOME - PERSONAL
COMMERCIAL - AUTO - BOAT
N. H. MILES, Agent
Phone GR 5-8334
Call evenings or week-ends

WANTED—Light trucking by job or hour. Call after 5. 426-4429.

3-Bedroom Home
For Sale
The H. D. Litteral house,
345 Madison, by heirs.
CALL 479-7241

FOR SALE—Roper gas stove, \$60. Chrome formica table and three chairs, \$12. Alex Mshar, 742 Book St. Ph. 479-3431.

Maple armchair with naugahyde seat and back cushion, man-size \$24.95
Lounge chair in beige nylon, good condition, well-styled \$29.95
Pair of modern occasional chairs, gold fabric \$19.95 pr.
Mr. and Mrs. Chair set with ottoman, good condition, traditional style with kick-pleat skirt, casters. Coral nylon upholstery. Set \$79.50
3-cushion sofa, burgundy fabric, clean \$19.95
5-pc. Chrome dinette, oval extension table \$9.95
Walnut dining room suite. Extension table with leaf and pads, 6 chairs, buffet and china cabinet. \$89.95
Walnut dresser and mirror, good condition \$24.95
Dinette table, 86x48, extends to 60, woodgrain plastic top, bronze legs, like new. \$14.95
Full size upholstered headboard, gray vinyl \$8.00
Walnut poster bed w/spring, full size \$19.95

Merkel Bros.

FOR SALE—Roper gas stove, \$60. Chrome formica table and three chairs, \$12. Alex Mshar, 742 Book St. Ph. 479-3431.

Maple armchair with naugahyde seat and back cushion, man-size \$24.95
Lounge chair in beige nylon, good condition, well-styled \$29.95
Pair of modern occasional chairs, gold fabric \$19.95 pr.
Mr. and Mrs. Chair set with ottoman, good condition, traditional style with kick-pleat skirt, casters. Coral nylon upholstery. Set \$79.50
3-cushion sofa, burgundy fabric, clean \$19.95
5-pc. Chrome dinette, oval extension table \$9.95
Walnut dining room suite. Extension table with leaf and pads, 6 chairs, buffet and china cabinet. \$89.95
Walnut dresser and mirror, good condition \$24.95
Dinette table, 86x48, extends to 60, woodgrain plastic top, bronze legs, like new. \$14.95
Full size upholstered headboard, gray vinyl \$8.00
Walnut poster bed w/spring, full size \$19.95

Merkel Bros.

FOR SALE—Roper gas stove, \$60. Chrome formica table and three chairs, \$12. Alex Mshar, 742 Book St. Ph. 479-3431.

Maple armchair with naugahyde seat and back cushion, man-size \$24.95
Lounge chair in beige nylon, good condition, well-styled \$29.95
Pair of modern occasional chairs, gold fabric \$19.95 pr.
Mr. and Mrs. Chair set with ottoman, good condition, traditional style with kick-pleat skirt, casters. Coral nylon upholstery. Set \$79.50
3-cushion sofa, burgundy fabric, clean \$19.95
5-pc. Chrome dinette, oval extension table \$9.95
Walnut dining room suite. Extension table with leaf and pads, 6 chairs, buffet and china cabinet. \$89.95
Walnut dresser and mirror, good condition \$24.95
Dinette table, 86x48, extends to 60, woodgrain plastic top, bronze legs, like new. \$14.95

Ads
Taken
1 5 p.m.
uesday
AUS
airs, unfur
2 bedroom
S - Mr. and
nger of Dow
Chelsea Col
u?
SED
R
Sewer
e
thout Dig
Electrically
MATES
RANTIE
NO 2-827
ur Business
line?
is of Rox
text-base on
1-GR 5-591
PPER
corating
tractors
-5581
-8148
S-13-ft. u
llers. John
Gregory, M
5.
TATE
ALE
ore, 3-bedr
rn-2-bedr
is in coun
Close up to
nd lunch at
bee and wh
ull baseme
kitchen.
EDED
Estate
dn. St.
3693
otes
ar-old daug
Wayne Pe
dial, Ann A
Dlyn is a p
e's afterno
South scho
ING
280
NG
TS
Home
S
TING
vice
MONEY
RING
ORS
ch.
10c
3.19
49c
1.49
49c
52c
p.m.
S

Auto Crash Friday Kills Webster Man

A Webster township man was killed instantly Friday night on North Territorial Rd. in a one-car head-on crash into a tree.

Deputies said they found no skid marks at the scene of the fatal accident of Floyd McMichael, 39, of 6145 W. North Territorial Rd. The smash-up occurred about 10 p.m. not far from the McMichael home.

The speed of the car was estimated to be 75 miles per hour. Deputies said the car crossed the center line while traveling west and went off the south side of the road for approximately 108 feet

before striking the tree which was six feet from the road surface. The car bounced off the tree and landed across the road. Traffic was blocked in both directions for more than an hour while the Dexter Fire Department prevented fire by washing gasoline from the road as it ran from the broken gas tank.

McMichael was tossed into the rear seat of the car. Dr. Paul Gikas, deputy medical examiner, pronounced him dead at the scene and said he was apparently killed instantly.

Force of the impact ripped doors from the car and tossed wreckage over a wide area.

McMichael was the third person to be killed in auto accidents in Washtenaw county this year.

Mrs. Wanda Howard and son, Billy Jo, returned home from Jacksonville, Fla., Wednesday by plane, where they had spent several weeks with relatives.

NOTICE

Sylvan Township Taxpayers

Sylvan Township Treasurer will be at Chelsea State Bank to collect Sylvan Township taxes every Friday, except Feb. 12, from 9 a.m. to 5 p.m., until further notice. Those who wish may send check or money order by mail. Receipt will be returned by mail. No collections received after 7 p.m.

SATURDAY, FEB. 27

Is The Final Day To Pay Township Taxes Without Penalty

Also Final Day for Dog Licenses.

LETHA BEACH

SYLVAN TOWNSHIP TREASURER

Gambles

The Friendly Store

RCA VICTOR

BIG SCREEN PORTABLE

at a budget-pleasing price!

RCA VICTOR

BIG SCREEN PORTABLE

★ All-channel VHF and UHF tuning ★ Trans-former-powered 18,000-volt chassis (design average) ★ Tinted RCA Pan-O-Ply picture tube ★ Front-mounted 4" dual-cone speaker ★ "V" antenna for VHF, loop antenna for UHF ★ One-set VHF fine tuning

OUR PRICE \$169.95

PAY ONLY \$2.50 A WEEK

THE MOST TRUSTED NAME IN TELEVISION

New! from RCA VICTOR

COLOR SWIVEL TV

"AIMS" PICTURE AND SOUND ANYWHERE IN THE ROOM

★ Glare-proof RCA High Fidelity Color Tube ★ All-channel VHF and UHF tuning ★ Powerful New Vista Tuners ★ Improved 25,000-volt New Vista Color Chassis (factory adjusted) ★ Automatic Color Purifier ★ Static-free "Golden Throat" FM sound.

OUR PRICE \$559.95

THE MOST TRUSTED NAME IN TELEVISION

Compare RCA VICTOR Natural Color TV in Your Own Home... Stop in Today For A Free Trial

Gambles



SIT-DOWN STALL: "The basket's a long way down game of ball" at the Jaycee-Varsity club from here but guess I haven't got any choice." Bill Watkins and his charge seem to be playing a sit-donkey basketball game Saturday evening.

Rural Correspondence

Items of Interest About People You Know

NORTH FRANCISCO

The Rev. George Nevin, called on Mr. and Mrs. Roy Miller Thursday afternoon.

Mr. and Mrs. Chester Davis and family spent Sunday afternoon with her parents, Mr. and Mrs. Chester Notten.

Arnold Escher of Flat Rock was a caller Monday at the home of Mr. and Mrs. Nelson Peterson.

Mr. and Mrs. Clifford Peterson spent Saturday evening at the Dick Bopwigs at Grass Lake.

Mr. and Mrs. Clifford Peterson attended the Steam Show meeting in Hastings on Sunday.

Mr. and Mrs. Loren Hinderer and family spent Sunday afternoon with Mrs. Nina Wahl.

Mrs. Phillip Hosier and Joyce spent Tuesday afternoon with Mrs. Bertha K. Riemenschneider in Chelsea.

WATERLOO

Denise and Annette Eresten were Sunday guests at the Kenneth Platt home.

Mr. and Mrs. Cecil Clouse and Debbie and David spent Sunday with relatives in Monroe.

The WSW of the Waterloo Village church will meet Thursday, Feb. 11, at 1:30 p.m. at the home of Mrs. Kenneth Platt.

Mr. and Mrs. Donald Beeman and family attended the Cup Scout dinner Sunday at St. Paul's church, Chelsea.

Mr. and Mrs. Leigh Beeman spent Sunday afternoon and evening with their son, George Beeman and family.

Mr. and Mrs. Leigh Beeman were guests Tuesday at the home of Mrs. John Dykema in Jackson.

Because of the weather, the World Service Day planned for Feb. 7 was postponed, and will be held Feb. 14 at First Church at 8 p.m.

Calling on Mrs. Will Barber Sunday were Mr. and Mrs. Theron Foster, and Mr. and Mrs. William Glenn, of Ypsilanti.

LYNDON TOWNSHIP

Mrs. Floyd Balmer and daughter, Irene, spent the week-end with her mother, Mrs. P. G. Crockett of Beaverton.

Tommy Shanahan spent the week-end with his grandparents, Mr. and Mrs. Lawrence Shanahan.

Mrs. Betty Messman was a Sunday afternoon caller.

Mrs. Beulah Boyce is spending several weeks with Mr. and Mrs. Ira Blakely in Florida.

Mr. and Mrs. G. A. Barton spent the first of the week with their granddaughter, Pamela Seyfried, while her parents were on a short vacation.

Mr. and Mrs. Floyd Balmer were Monday evening callers of Mrs. Mary Clark.

Mrs. John Prentice and son, Paul, were Thursday evening callers at the home of Mrs. Mary Clark and son, Dean.

Larry and Janis Hopkins spent the week-end with their grandparents, Mr. and Mrs. Carl Wolpert.

"How much is that Dart in the window...?"

"I just have to give up chasing Dodge Darts... too tiring. For a change, I'd rather ride in one."

"Like that Dart GT... with all-vinyl bucket seats, padded dash, carpeting... the works. It's so sporty. I'm sure she'll notice it."

"But I'm not taking any chances."

Don't you take chances either... get a sure thing. Get a Dart.

Dart, the family-size compact: 111 inch wheelbase. Sound big? It is. Big, roomy and comfortable. More trunk space, too. Your choice of economical Six or quick V-6's. And there's a little compact price in the rear window of every one.

'65 Dodge Dart

G. A. SALES & SERVICE

1185 CHELSEA-MANCHESTER ROAD CHELSEA, MICHIGAN

WATCH "THE BOB HOPE SHOW" NBC-TV. CHECK YOUR LOCAL LISTING.

CARD OF THANKS

I wish to express my sincere thanks to my relatives, friends and neighbors for their visits, cards, flowers, and other gifts during my stay at the hospital.

Mrs. George Winchester, Sr.

CARD OF THANKS

I wish to thank everyone who visited me, or sent cards, gifts or flowers during my recent hospital stay. I particularly wish to thank the Rev. James Craig for his visits.

Amelia Parsons.

CARD OF THANKS

I wish to thank all those who so thoughtfully remembered me and my family while I was in the hospital and since my return home.

Oleta Mayer.

CARD OF THANKS

I want to thank all my friends and neighbors, the American Legion Auxiliary, the past presidents of the Auxiliary and the Altar Society for the beautiful plants and cut flowers, gifts and cards I received while in the hospital and since my return home. They were very much appreciated.

Mrs. Margaret Birch.

CARD OF THANKS

I wish to thank everyone for the cards, flowers and gifts I received while in the hospital and since my return home.

Elmer Below.

CARD OF THANKS

I wish to thank all of my friends for all the lovely cards and flowers sent me while I was in the hospital and since my return home. I also wish to thank the Rev. Craig for his calls.

Mrs. Rae Lillie.

NOTE OF THANKS

I wish to thank my relatives, friends, and neighbors for their visits, cards, food, flowers, and other gifts that my family and I received during my recent stay in the hospital and since my return home. Many thanks to the Rev. J. Tracy Luke. These thoughtful remembrances were very much appreciated.

Ruth Whitaker.

Personal Notes

Mrs. Wanda Howard and son, Billy Joe, returned home by plane from a two-week vacation in Jacksonville, Fla., where they visited Mrs. Howard's cousin, Mrs. Janet Carpenter.

Mr. and Mrs. Robert Fletcher are visiting Mr. and Mrs. Steve Slane and Mr. and Mrs. Charles Fletcher.

Robert Fletcher and his mother, Mrs. Charles Fletcher, and her three daughters, Wanda and son, Billy Joe, Connie and Vicki, visited Mrs. May Howard at Stockbridge, Saturday evening.

WIDE AWAKE 4-H CLUB

Wide Awake 4-H club met Saturday, Feb. 6, at the home of Denise Bycraft. The girls answered roll call by telling how their sewing projects were coming.

The Spring Achievement Dress Revue will be held March 23-25 at Ann Arbor High school. There will be a program Feb. 24 to demonstrate the use of accessories and modeling for the dress revue.

Girls were asked to bring articles for the Kiwanis sale which is Feb. 11-13.

FIRE?

Your Auto-Owners Agent goes ALL-OUT FOR YOU

COMPLETE TAILORED PROTECTION FOR YOUR CAR, HOME, PERSONAL BUSINESS.

Call

A. D. MAYER AGENCY

"Your Protection Is Our Business"

115 Park St. Chelsea, Mich.
Phone: Office 479-5061
Res.: GR 5-4201

Auto-Owners INSURANCE

W. E. FARRELL

SHEET METAL

INDUSTRIAL AND GENERAL SHEET METAL WORK

115 WEST MIDDLE STREET—CHELSEA

PHONE Greenwood 9-2011

We'll put "wings" on your car

You'll think your car has sprouted wings, the way it responds after filling up with our new PURE gas.

You'll like the way the pep, power and performance steps up when you fill up with PURE Gas and Oil. Our batteries will assure you quick starts, too!

PURE OIL PRODUCTS

HANKERD'S SERVICE

Tires — Batteries — Tune-Ups — Brake Service — Wheel Alignment

PHONE 479-3541 CHELSEA, MICH.

BURGHARDT FUNERAL HOME

Phone GR 5-4141 or GR 5-5141

24-HOUR AMBULANCE SERVICE

214 E. MIDDLE ST. CHELSEA

-SPECIALS-

SWIFT'S SELECT BLADE CUT

Chuck Roast . . . lb. 39c

24-OZ. CAN DINTY MOORE . . . 39c

Beef Stew . . . 39c

Roman Cleanser gal. 54c

NO. 303 CAN DEL MONTE

Fruit Cocktail . 2 for 38c

NO. 303 CAN GREN GIANT CREAM STYLE

Corn . . . 4 for 57c

KUSTERER'S

FOOD MARKET

DIAL GR 9-3331 WE DELIVER

BUYING A HOUSE?

Ask about our low-cost Mortgage Financing plan.

4% INTEREST PAID ON ALL SAVINGS ACCOUNTS

CHELSEA STATE BANK

Member Federal Reserve System

Member Federal Deposit Insurance Corp.



BOWLING NEWS



Sylvan Mixed League

Standings as of Jan. 29

	W	L
Bowling Hounds	50	20
The Jets	41	35
Sandbaggers	41	35
8 B's & A R	30 1/2	39 1/2
Sylvan Hotshots	32	44
Strike Outs	27 1/2	48 1/2
500 series: C. Lake, 502; R. Fike, 557; B. Cruse, 541; W. Griffith, 514; R. Hutzler, 508.		
200 games: C. Lake, 244; B. Cruse, 210.		
450 series: P. DeHaven, 483; R. Capino, 465; J. Hutzler, 462; H. O'Neill, 460.		
175 games: W. Griffith, 130; 182; R. Fike, 133-138-178; R. Capino, 193; R. Hutzler, 189; B. Cruse, 186; P. DeHaven, 177.		

Chelsea Nite Owl League

Standings as of Feb. 8

	W	L
Foster's Men's Wear	50	32
Chelsea State Bank	52 1/2	35 1/2
Chelsea Drug	47 1/2	40 1/2
Boyer's Automotive	45	43
Waterloo Garage	43 1/2	44 1/2
Chelsea Lake Store	43	44 1/2
Chelsea Heat Treat	43	44 1/2
Frey'sing's Plastering	41 1/2	46 1/2
Tower Shell	41 1/2	46 1/2
Kiwans	39	49
Strohs	39	49
Turner's Electric	36	52
500 series: M. Packard, 565; R. Ray, 551; J. Elliott, 527; E. Wenk, 520; W. Ruggles, 519; A. Steinaway, 518; J. Peterson, 516; L. Kusterer, 514; B. Ousley, 505.		
200 games: M. Packard, 226; E. Wenk, 204; M. Bauer, 201; W. Ruggles, 201.		

Chelsea Women's League

Standings as of Feb. 3

	W	L
Chelsea Cleaners	64 1/2	25 1/2
Chelsea Lanes	55	33
Jiffy Mixers	53 1/2	34 1/2
Foster's Men's Wear	50 1/2	37 1/2
Hankard's	48	40
Chelsea Milling Co.	47	41
Modern Beauty Shoppe	42 1/2	45 1/2
Den's Standard	40	48
Wonder Bar	39 1/2	48 1/2
Schneider's	32 1/2	55 1/2
Dancer's	29 1/2	58 1/2
Chelsea Grinding Co.	25 1/2	62 1/2
450 series and over: D. Frisbie, 465; M. Ritter, 472; P. Poettner, 506; P. Fitzsimmons, 466; P. Shoemaker, 477; R. Johnson, 468; G. Wheeler, 463; R. Hummel, 532; M. Ashmore, 502; R. Lutovsky, 457; B. Edens, 513; L. Dove, 453; D. Alber, 468.		

Senior House League

Standings as of Feb. 8

	W	L
GE Boys	54	34
Chelsea Products	53	35
Drewry's Beer	53	35
Spaulding Chevrolet	51	37
Chelsea Grinding Co.	48 1/2	39 1/2
Sylvan Center	48	40
Waterloo Tavern	45	43
Wolverine Tavern	44	44
Schneider's Grocery	40	48
Wolverine Tavern	32	56
Daniels Olds & Buick	30 1/2	57 1/2
Market Place	29	58
200 games: B. McClanahan, 648; N. Fahrner, 629; C. Lake, 602.		
500 series: P. Volak, 574; E. Miller, 568; H. Burnett, 557; D. Alber, 546; R. Kuti, 544; E. Harlock, 545; D. Feldkamp, 522; G. Weir, 530; L. Hocking, 529; S. Poch, 526; P. McClanahan, 526; G. West, 522; C. Schneider, 519; R. Spaulding, 519; D. Johnson, 516; P. Merkel, 515; J. Wilson, 514; M. Pochner, 512; C. Chenes, 512; L. Edens, 507; Warren Eisenbein, 500.		

Junior House League

Standings as of Feb. 4

	W	L
Palmer's T-Birds	54	26
Wolverine Tavern	51	29
Dancer's	47	33
Farrall-Sheet-Metal	46	34
Gambles	44	36
Wolverine No. 2	43 1/2	36 1/2
Blitz Beer	39	41
Jiffy Mixers	38	42
Western Auto	35	45
Chelsea Spring	33 1/2	46 1/2
Chelsea Mfg. Corp.	29	51
Slocum Construction	20	60
200 games: A. Kaiser, 235; S. Hopkins, 226; L. Hafner, 220-201; D. Feldkamp, 215-215; O. Hart, 212; M. Bauer, 209; W. Howes, 208; W. Guest, 205; L. Hocking, 205; B. Bassett, 204; P. Kinsey, 204; B. Yocum, 203; D. Fouty, 203; E. Buku, 202.		
500 series: D. Feldkamp, 628.		
500 series: N. Fahrner, 566; W. Howes, 562; S. Hopkins, 559; L. Hocking, 546; C. W. Lake, 545; L. Salyer, 543; W. Guest, 537; B. Bassett, 535; W. Luchardt, 535; L. Hafner, 531; A. Kaiser, 523; O. Hart, 517; R. H. Ringe, 515; M. Sweet, 512; B. Yocum, 512; M. Bauer, 512; R. Kiel, 510; R. Yorks, 510; R. V. Worden, 508; Carl Lake, 507; L. Schneider, 507; C. Hafley, 505; W. Farrell, 505; J. Eisenmann, 501.		

Chelsea Lanes Mixed League

Standings as of Feb. 5

	W	L
Sam's Barber Shop	50	30
Jiffy Mixers	45 1/2	34 1/2
4 R's	45 1/2	34 1/2
IGA-Dexter	44	36
Hankard's Firebirds	43 1/2	36 1/2
Wonder Bar	41	39
Chelsea Lanes	41	39
Kiel-Bury	39 1/2	40 1/2
Wolverine Tavern	38 1/2	41 1/2
4 Reads	38	42
Dettling's Grocery	31	49
Feldkamp-Hansen	24 1/2	55 1/2
Men's 475 series: H. Burnett, 561; M. Packard, 560; M. Poettner, 520; B. Fitzsimmons, 504; R. Reed, 499; G. Burnett, 488; R. Morgan, 494; D. Welshans, 486; J. Collins, 483; H. Reed, 481; R. Doodly, 478.		
Men's 375 series: H. Burnett, 512-514; M. Packard, 512-516; G. Burnett, 512-515; M. Poettner, 512-513; H. Reed, 517; B. Fitzsimmons, 516-518; R. Feldkamp, 517; D. Alexander, 519.		
Women's 425 series: P. Poettner, 475; L. Welshans, 471; L. Doodly, 463; R. Harok, 460; M. Degener, 459; A. Alexander, 447; W. Miller, 428.		
Women's 150 games: L. Welshans, 174-183; M. Degener, 171-152; R. Harok, 168-164; P. Poettner, 166-164; L. Doodly, 163-151; A. Alexander, 161-152; J. Rabbitt, 154; M. Burnett, 153.		

Women's Inter-City League

Standings as of Feb. 2

	W	L
Dancer's Store	62	26
Blanche's Beauty Salon	51	37
Sportsman's Tavern	48	40
Ann Arbor Bank	44 1/2	43 1/2
Dexter Bowling Club	43	45
Huron Farm Supply	40	48
Central Fibre Products	32	56
McLeod Drugs	31 1/2	56 1/2
Team high series: Ann Arbor Bank, 2,133.		
Team high game: Blanche's Beauty Salon, 769.		
Individual high series: Marian Murray, 499; Ruby Brown, 493; Alice Lockhart, 489; Karen Lyndon, 487; Lori Doodly, 480.		
Individual high game: Alice Lockhart, 1,071; Marian Murray, 1,024; Arleen Crocker, 188; Ruby Brown, 185; Margaret Guenther, 176.		

Some people pay their debts and others forget them, if they can.

Guys and Gals Mixed League

Standings as of Feb. 4

	W	L
Jack Pots	50	22
Good Loggers	43	29
Green Giants	42	30
Raydon's	39	29
Altes	35 1/2	35 1/2
Jolls	35 1/2	36 1/2
Harper Sales & Serv.	33	30
Two plus Two	29 1/2	42 1/2
Chelsea Lanes	25	43
Two Seasons	22 1/2	49 1/2
Women's 150 or over games: S. Roberts, 156; K. Covert, 154; V. Covert, 156; N. Simpson, 163; P. Krueger, 168; A. Turner, 174-167-152; N. Eisenmann, 150; J. Priest, 162.		
Women's 425 or over series: A. Turner, 493; N. Eisenmann, 150; P. Krueger, 426; K. Covert, 425.		
Men's 175 or over games: E. Greenleaf, 223-211-177; B. Prielipp, 223-215; F. Boyer, 180; E. Dickelman, 191-178; L. Kusterer, 188; C. Hafley, 178; J. Eisenmann, 192-183; R. Barth, 190; W. Steinaway, 177.		
Men's 475 or over series: E. Greenleaf, 611; B. Prielipp, 607; F. Covert, 505; L. Kusterer, 519; E. Dickelman, 513; C. Hafley, 488; J. Eisenmann, 539; R. Barth, 496.		

Boys Junior League

Standings as of Feb. 6

	W	L
UAW 437 No. 2	35	25
UAW 437 No. 1	34	26
Chelsea Lanes	32 1/2	27 1/2
Dodge Boys	30	30
Tornadoes	30	30
UAW 1284	17 1/2	42 1/2
400 series: Larry Sanderson, 485; John Freeman, 483; Norm Green, 428; Jack Risner, 419; Neil Packard, 489; Dave Blaess, 405; Bob Woods, 414; Louie Deloy, 419; Bub Schwiager, 400; Mike Policht, 406; Doug Weatherwax, 408.		
200 games: Bub Schwiager, 214; Larry Sanderson, 207.		
180 games: Neil Packard, 199; 140 games: Bob Woods, 164; Louie Deloy, 159; Bub Schwiager, 147; Mike Policht, 152-153; Doug Weatherwax, 163; Craig Houle, 150; Jim Lyeral, 141; Roy Holliday, 157; Jack Wilson, 144; Tony Keizer, 143; Ken Blaess, 143; Dave Blaess, 144; Neil Packard, 155; Norm Green, 169; Bob Taylor, 150; John Freeman, 124-161-148; Jack Risner, 150.		

Chrysler Proving Grounds League

Standings as of Feb. 2

	W	L
Foor Mobil	55	33
Wonder Bar	51	37
Frigid Products	48	40
Triangle	44 1/2	43 1/2
Maytag	43	45
Wolverine Bar	42 1/2	45 1/2
The Pub	42	46
Chelsea Lanes	42	46
G.A. Sales	41	47
Schitz	31	57
200 games: Dann, 226; Stevens, 225; Chapman, 212; Smith, B. E. 208; Ash, 204; Hutzler, 203; Anderson, 202; Pniowski, 200.		
500 series: Stevens, 576; Chapman, 559; Smith, B. E., 549; Robertson, 549; Hutzler, 532; Pniowski, 536; Dann, 529; Ash, 519; Hafner, 518; Anderson, 517; Fike, 511; Reed, 501.		

Chelsea Suburban League

Standings as of Feb. 3

	W	L
Colonial Manor	60	28
GE Gals	50 1/2	37 1/2
Dancer's Dept. Store	50	38
Patty Ann Shoppe	47	41
Altes Beer	46	42
Miller's Grocery	46	42
Royal Lancers	44	44
State Farm Ins.	41 1/2	46 1/2
Tower Shell	41 1/2	46 1/2
Traff Blazers	38	48
Waterloo Garage	34 1/2	53 1/2
Chelsea Products	28	60
High team, 1 game: Altes Beer, 817.		
High team, 3 games: Tower Shell, 2,288.		
High indiv. 1 game: Mary Lou Westcott, 204.		
High indiv. 3 games: Mary Lou Westcott, 525.		
Over 200: M. DeLaTorre, 202; B. Hafley, 201.		
Over 425: J. Hafner, 509; B. Hafley, 502, 514; M. DeLaTorre, 490; L. Welshans, 463; M. Breiten-		

WOLVERINE TAVERN

1 Block North of Bowling Alley on Old US-12

SERVING YOUR FAVORITE BEER - WINE and ALE

HOME-MADE CHILI HAMBURGS SANDWICHES

CARL - NINA DON - GINNY



JEFF SPAULDING tries the "one-two-three" lift method during the donkeyball game Saturday evening, but he might have had better success with a couple of sticks of dynamite.

Open Blood Clinic Scheduled Friday

An open Blood Clinic will be held at the American Red Cross Operations Center, 2729 Packard Rd., Ann Arbor, on Friday, Feb. 12 from 2 p.m. to 7:30 p.m. Appointments may be made by calling 662-5540. Donations will be credited to your Blood Club or to a hospital patient of the donor's choice.

Rolling Pin League

Standings as of Feb. 9

	W	L
Coffee Cups	44	24
Kookie Kutters	40	28
The Pots	40	28
Mixers	39	29
Guinders	33	35
Egg Beaters	32	36
Moppper Uppers	29	39
Spooners	19	53
140 and over games: E. Reynolds, 151; J. Priest, 144-180-154; R. Abell, 143-147; J. Rabbitt, 146-162; M. Robertson, 158-157; J. Freeman, 149.		
400 and over series: J. Priest, 478; M. Robertson, 405; J. Rabbitt, 497.		
Splices picked up: K. DelPrete, 4-5-7; L. Vorece, 3-10; E. Beck, 2-10; M. A. Robertson, 5-10.		

Dexter Township Man Enters Guilty Plea to Illegal Deer Charge

A jury trial set for Wednesday in the case of John L. Graybill, 4879 Dexter-Pinckney Rd., was not held because the previous day Graybill's attorney entered a plea of guilty to possession of two illegal deer for Graybill.

Wrestlers Win Big . . .

(Continued from page one)

Tom McClanahan, decision, 114; Dick McCalla (11-0) defeated Doug Bruton who had been undefeated to this time. Bob Snyder won his match in the heavyweight class by a fall.

The last home match of the season will be Thursday, Feb. 11, against Monroe Catholic Central. Starting time is 7:30 p.m.

The Junior Chamber of Commerce is a civic organization working for community betterment open to all young men 21 to 35 years of age.

There must be something wrong with education or we would have more of it.

BILLIARDS

Chelsea Sharp Shooters

Standings as of Feb. 8

	W	L
Bates-Fletcher	10	2
Marshall-Tribble	9	3
Mosier-Kincaide	8	4
Fahrner-Schauer	8	4
Blough-Rowe	6	6
Pierce-Sindlinger	3	10
Edey-Ferry	2	10
Koenn-Marsh	2	10
1st high team, 3 games: Marshall-Tribble, 220.		
2nd high team, 3 games: Fahrner-Schauer, 176.		
3rd high team, 3 games: Edey-Ferry, 162.		
1st high, ind. 3 games: Jim Marshall, 110.		
2nd high, ind. 3 games: Ted Tribble, 110.		
3rd high, ind. 3 games: Al Schauer, 98.		
1st high, team game: Marshall-Tribble, 75.		
2nd high, team game: Marshall-Tribble, 73.		
3rd high, team game: Marshall-Tribble, 72.		
1st high, ind. game: Ted Tribble, 44.		
2nd high, ind. game: Jim Marshall, 45.		
3rd high, ind. game: Al Schauer, 38.		

New Handbook Ready For Ice Fishermen

Lansing — Like to join Michigan's happy throng of ice fishermen, but lack the know-how to get started in this sport?

The how-to's for this brand of winter fun are waiting for you in the new "Handbook for Ice Fishermen," now available free from the Conservation Department's Publications Room, Lansing, 48926. Its 18 pages pass along the tried-and-proved savvy of fishermen around the state—their crests to successful fishing, together with do-it-yourself ideas on rigging up angling extras, tips on dressing to keep warm, and safety suggestions.

Standard Want Ads Result

YOUR FAVORITE SANDWICHES

Served at all hours.

BEER - WINE - ALE

Dancing at all times.

WONDER BAR

20750 Old US-12 West Phone 479-9841

In Michigan, in the game room beer's the one... for good taste, good fun



You name your game, ping-pong or checkers, cards or chess. Play it hard, and it takes a lot out of you. That's when you like most to settle down in a soft chair and enjoy your friends' talk and your beer's taste. Beer was made to relax with. Made to refresh you, cool you, cheer your taste. So next time you're playing some sociable at-home game, take time out for the companionable taste of beer.

UNITED STATES BREWERS ASSOCIATION, INC.

WINTER SPORTS

- ★ SKIING
- ★ SKATING
- ★ TOBOGGANING
- ★ BOWLING
- ★ ROCKET BILLIARDS
- ★ ICE FISHING

Bowling

BOWL THIS WEEK-END

Ask Your Neighbor Where Bowling Is Best

CHELSEA LANES OF COURSE!

Open Bowling Every Week Day and Week-Ends

CHELSEA LANES

"The Modern Family Lanes"

1180 M-52, Chelsea Phone 475-8141

WOLVERINE TAVERN

1 Block North of Bowling Alley on Old US-12

SERVING YOUR FAVORITE BEER - WINE and ALE

HOME-MADE CHILI HAMBURGS SANDWICHES

CARL - NINA DON - GINNY

Get a snappin' good deal on a snappy '65 Plymouth now!

Wintertime is dealin' time at Plymouthland! Plymouth Dealers are determined to keep sales at fever pitch! They've got the greatest line of Plymouths ever... the Roarin' '65s. They're offering the greatest deals ever... real snow shovel specials! No need to wait—your present car will never bring any more in trade than it will right now. So put on your overshoes and slosh into a showroom... you'll get a real warm welcome and a red-hot deal to boot!

GET A DEAL ON A GOOD USED CAR, TOO!

With Plymouth sales up, Plymouth Dealers are taking more cars in trade. So, for a good buy on a top-quality used car, go to Plymouthland.

See your "Dealin' Man" at Plymouthland!

AUTHORIZED PLYMOUTH DEALERS CHRYSLER MOTORS CORPORATION

G. A. SALES & SERVICE

1185 CHELSEA-MANCHESTER ROAD

CHELSEA, MICHIGAN

Club and Social Activities

MOTHERS CLUB OF CHELSEA

The Mothers club met Wednesday, Feb. 3, at the home of Mrs. Albert Rosenbater at 525 Arthur. Co-hostess was Mrs. Dora Myers. The monthly meeting date has been changed from the first Wednesday of the month to the second Tuesday.

Next meeting of the Mothers club will be Tuesday, March 9, at the home of Mrs. Clifford Lyoria. This will be project night.

LYNDON EXTENSION GROUP

Lyndon Extension Study Group met Thursday, Feb. 4, at Lyndon Town Hall with 11 members present.

Luncheon was served at 12:30 by Mrs. George Goodwin, Mrs. Ployd Balmer and Mrs. Mark McClear.

The business meeting was conducted by chairman Mrs. Walter Bolanowski. A project was discussed to make napkin rings for Easter.

The lesson was given by Mrs. Charles Fuhman on "Teen-age driving."

The next meeting will be Thursday, March 4, at 10 a.m. for everyone interested in helping make the napkin rings. Those interested in helping please contact the chairman of material for what they will need. All others will come at 12:30 p.m. for the luncheon and meeting. Hostesses for the March 4 meeting are Mrs. Jay Hopkins, Mrs. Charles Fuhman and Mrs. Nettie Hall.

HILLS-A-PLenty FARM BUREAU GROUP

Hills-A-Plenty Farm Bureau met at Lyndon Town Hall Saturday for a pot-luck supper. Four families were present.

The meeting for Saturday, March 6, is at the home of Mr. and Mrs. Max Kalmbach.

MODERN MOTHERS

Modern Mothers Child Study club met Tuesday evening at the home of Mrs. Errol Jones. Mrs. David Elkins was co-hostess. Members brought baby pictures



Harold Wahls To Be Honored At Open House

The children of Mr. and Mrs. Harold Wahls are planning an open house at the Francisco Church Hall in honor of their parents' 25th wedding anniversary, Sunday, Feb. 14 from 2 p.m. to 6 p.m.

Mr. and Mrs. Wahls, the former Margaret Curtis, were married Feb. 14, 1940 at Rogers Corners United Church of Christ by the late Rev. John Fontana. The late Reuben Hartman and Mrs. Douglas Kennedy were their attendants.

The Wahls have resided their entire married life at Mr. Wahls' home on Francisco Rd. Their three children are Daniel of Pleasant Lake, Eugene of Grass Lake, and Joan at home. They also have three grandchildren.

OES Chapter Plans Fun Night For All Masons

Olive Chapter No. 108, OES, will hold a Master Masons Fun Night at the Masonic Hall Saturday, Feb. 13, at 8 p.m. with all Masons and their wives or ladies being invited.

Program for the evening will be as follows: Posting of the Colors, Henry Shephard and officers from Zal-Gaz Grotto No. 34, Ann Arbor; Structure of Masonry, Harrison H. Caswell, Past Master; Golden Rule Lodge, Ann Arbor and Past Pryor of the Michigan Priory of York Cross of Honor; reading by Lula Sweeney and a special initiation for Masons.

There will be a country store to enjoy in the dining room, following the program, after which the refreshments will be served.



GIRL SCOUTS

TROOP 47—Girl Scout Troop 47 entertained third grade Brownies Tuesday, Feb. 9.

The girls are working on their Health Aid Badges and demonstrated first aid and safety while working in patrols.

Dorothy Gauss explained the Girl Scout uniform and pins. Questions were asked and answered about our experiences at camp and the girls told what the camps were like at Hilltop Lodge, Burns Frontier cabins and Cedar Lake cabins. It was explained how the work is divided into patrols and rotated so each patrol had a different job each meal.

Songs were sung and the meeting closed with taps and the "squeeze."

Jeryl Hafner, scribe.

TROOP 82—Troop 82 sang some Girl Scout songs. We had a discussion on the sewing badge which we are working on. The troop took a tour through the Chelsea Standard. Valentine refreshments were served by Gloria Morningstar.

Laurel Lancaster, scribe.

TROOP 77—Girl Scout Troop 77 met last Wednesday, Feb. 9. Penny Eisenbeiser called the meeting to order. Sue Eisenbeiser taught us how to teach songs to younger troops.

There will be a senior conference on March 12 and 13 in Indianapolis, Ind. The theme is "The Magic of Scouting." The cost will be \$3 per girl. April 23 and 24 is Scout Day at Michigan State University. The theme is "Through the Looking Glass." This will cost \$2.50 per girl.

We talked about Washington, D.C., and plan to write the Girl Scout Council of that city as we



Co-Op Nursery Makes Plans for House Tour

Plans for the annual House Tour were formulated at the Thursday Feb. 4 meeting of the Chelsea Co-op Nursery which was held at McKune Library. This year in connection with the House Tour a salad luncheon will be sponsored by the Nursery School mothers. The tour will be held on Thursday, April 20.

Father's Night at the Nursery will be held Saturday, March 27 for fathers of three-year-olds and on March 30 and April 3 for fathers of four-year-olds. On this occasion the fathers and their child go to the Nursery school and take part in a regular session. This gives the fathers a chance to see how the nursery works and how their child takes part in the activities.

Parent-teacher conferences will be held on Tuesday, Feb. 16 and Thursday, Feb. 18. These conferences give the parents an opportunity to discuss the progress of their child with the teacher and to hear the observations that the teacher, Mrs. Raymond Schaefer, and others have noted.

A Valentine party will be held Thursday, Feb. 11. Special refreshments are planned and Valentines will be exchanged by the children. February birthdays will be celebrated during the month by John Daniels, Danny Richards and Jan Vaughn.

Applications for membership for three- and four-year-olds for the 1965-66 school year are now being taken. For more information, contact Mrs. Merle Leach, 1313 Freer Rd., Chelsea.

Hostess for the February meeting was Mrs. Donald Richards with Mrs. Robert Updegraff and Mrs. James Craig as co-hostesses.

Just A Minute...

By the Rev. James A. Craig

There wasn't any road. At least not any more. Once it may have been fairly busy for a small village. Now only the curious walked among the buildings.

Some repairs had been made. Some were still being made. It helped to encourage the imagination. You could almost feel the presence of the villagers gone a hundred years and more ago.

Nothing hinted at greatness. Nothing really set this place apart from the thousands that must have been like it. Like all the rest it was built by a stream giving power to the mill.

For us that village is different. Here a young man lived whose name and life, and whose legends, are as fresh as this morning.

He was a tall man, built to look up to. He was a brooding man, feeling in himself a nation's pain. He was a humorous man, laughing to find, and give, freedom from that pain. He was an honest man, a religious man, who said that when all else failed him he was driven to his knees in prayer.

A verse in Ecclesiastes starts saying "Let us now praise famous men." From them much is to be learned. Much we have to learn.

Much we can learn from A. Lincoln of New Salem, Ill.

The best advice for modern propaganda, is the simple, simple young people, facing all sorts of word: Think.

Attend the Annual Ann Arbor
KIWANIS SALE
THURS, FRI, SAT, FEB. 11-12-13
At Ann Arbor Armory
Fifth Avenue and East Ann St.
Furniture Annex - 113, 119 E. Washington
All proceeds are used for Kiwanis Club's Community Service projects.

CARPET REMNANT ENDS SATURDAY, FEB. 13

MERKEL BROTHERS



CAPRI \$280
ALSO TO \$1000

Extra Assurance
Guaranteed by
Keepsake DIAMOND RINGS

You get protection against loss of the diamonds from the setting for one year, free... plus a perfect center diamond, guaranteed for replacement, assured.

WINANS JEWELRY STORE

TIPS for your TOP from



TODDY and FRAN

If there's ever a time a woman needs a lift it's in mid-winter when unco-operative weather plays havoc with her hair and, in general, she feels that everything is again her. Her spirits have a better chance of improving if she can start first with some self-improvement — and here's where a new hairdo comes to the rescue. Why not treat yourself to an appointment? Or treat someone you love to a Valentine gift of beauty? Our operators are eager to help you out of the February doldrums!

Magic Mirror Beauty Salon
6585 Jackson Rd., Ann Arbor
Phone 665-0816

WE WOO YOU WITH BARGAINS

VALENTINE'S DAY IS SUNDAY, FEB. 14

Trays Full of Valentines for Boys & Girls	CLASSMATE VALENTINES
NOVELTY OUT-OUTS	For older boys and girls.
19 for 29c	30 for 49c
PLAYMATE VALENTINES	
24 for 39c	
JUMBO VALENTINES	
36 for 49c	
GIANT ASSORTMENT	
38 for 59c	

PLUS A COMPLETE ASSORTMENT OF REGULAR VALENTINE CARDS FOR EVERYONE

Fanny Farmer Fresh VALENTINE CANDIES

GAL & YOUNG BOXED HEARTS, 6 oz.	\$1.00
OLD FASHIONED HEARTS, 1 lb.	\$2.50
FANCY RED, PINK OR WHITE SATIN HEARTS, 1 lb.	\$3.00
RED FANCY HEARTS, Miniature Chocolates, 1 lb. 2 oz.	\$3.95
RED, PINK OR RED SATIN HEARTS, 2 lbs.	\$5.50

Plus, Reg. Fresh Pack Fanny Farmer Chocolates \$1.00 to \$3.90

BUDGET-WISE STORE
Chelsea's First Discount Store
116 SOUTH MAIN ST. PHONE GR 9-1611

TROOP 77—Girl Scout Troop 77 met last Wednesday, Feb. 9. Penny Eisenbeiser called the meeting to order. Sue Eisenbeiser taught us how to teach songs to younger troops.

There will be a senior conference on March 12 and 13 in Indianapolis, Ind. The theme is "The Magic of Scouting." The cost will be \$3 per girl. April 23 and 24 is Scout Day at Michigan State University. The theme is "Through the Looking Glass." This will cost \$2.50 per girl.

We talked about Washington, D.C., and plan to write the Girl Scout Council of that city as we

TROOP 144—Troop 144 met at the Congregational church Monday, Feb. 8. After our songs and discussion of good Brownies habits we made valentine felt needle holders for our mothers.

Refreshments were brought by Ruth Freeman, Jennifer Lane, Pam Blackwell, scribes.

TROOP 148—Brownies Troop 148 met at St. Paul's church, Monday, Feb. 8.

The meeting was opened with the Brownie promise and the Brownie smile song.

A game was played and treats were brought by Laurie Fritz and Gena Shoemaker.

We practised our play which will be presented at a Mothers Tea, Monday, Feb. 15, at 4:00 p.m. until 5:30 p.m. in basement of St. Paul's church.

The meeting was closed with taps.

Trudi Sanderson, scribe.

DON'T FORGET YOUR VALENTINE GIVE FLOWERS

They mean so much!

FRESH CUT FLOWERS - CORSAGES
FLOWER ARRANGEMENTS - Made To Order
POTTED PLANTS - Large or Small
Novelty Potted Plants - African Violets

We Phone Flowers Anywhere

SYLVAN FLOWER SHOP
716 W. Middle St., Chelsea Phone GR 5-4561. Local Delivery

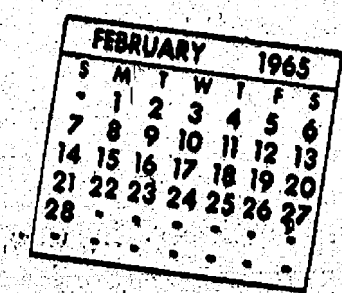
After six great years like this what could Pontiac possibly come up with next?

1965 Pontiac: Car of the Year! That's what!

We had to reach a climax somewhere along the line. And what better climax for a car than to win Motor Trend's Car of the Year Award for 1965? Nothing could please us more, except maybe the way people are buying our cars. And they are. Drive one and find out why.

SEE YOUR AUTHORIZED PONTIAC DEALER

HARPER SALES & SERVICE, INC.
118 West Middle St. Chelsea, Mich.

Community
Calendar

Board of Education meeting originally scheduled for Tuesday, Feb. 16, has been postponed until Wednesday, Feb. 24.

Chelsea Camera club at the K. of C. hall Tuesday, Feb. 16 at 7:30 p.m. A Kodak slide presentation of indoor pictures will be the program.

St. Mary's Ushers club Thursday, Feb. 11, at 8 p.m. at St. Mary's school.

Chat 'n' Sea club of the Congregational church at the home of Mrs. Walter Pielemeier Tuesday, Feb. 16, at 7:30 p.m.

Jerusalem Home Extension Study Group Tuesday evening, Feb. 16, at 8 p.m. at the home of Mrs. Leon Chapman.

Painting bee at the Methodist church at 1 p.m. Saturday Feb. 13. All senior high MYF should be in attendance.

Olive chapter OES 108 will entertain Master Masons and their wives Saturday, Feb. 13, at 8 p.m. at the Masonic Hall.

Annual meeting of Oak Grove Cemetery Association Monday, Feb. 15, at 7 p.m. at the A. D. Mayer Agency, 115 Park St.

Special communication of Olive Lodge No. 156, F&AM. First degree, Tuesday, Feb. 16, 7:30 p.m.

All single people over 25 are invited to the weekly dances held at the YW-YMCA in Ann Arbor at 9 p.m. Lessons on any kind of dance may be had each week at 8 p.m. New people admitted free (by mentioning this announcement) to the dances of Feb. 2, 9, 16, and 23. Good orchestra and refreshments. Call Lorena Liston HA 9-7353 for information.

Youth Fellowship of St. Paul's church Sunday night, Feb. 14, from 7 p.m. to 8:30 p.m. at the church. There will be election of officers and refreshments.

WRC will meet at the home of Mrs. Beulah Knott, Monday, Feb. 15, at 7:30 p.m. Mrs. Margaret Dietle is co-hostess.

Older Adult group of the Chelsea Methodist church Saturday, Feb. 20, at the Methodist church social center. Everyone bring a valentine and table service. Dinner will be at 12:30 p.m.

Freedom Ideal Homemakers meeting postponed from Wednesday, Feb. 17 to Wednesday, Feb. 24. The meeting will be held at the home of Mrs. Arthur Kuhl, Seio Church Rd.

ECW of St. Barnabas wishes to again invite the public to the Saturday night card parties held every 2nd and 4th Saturday of the month, 7:30 to 11:00 p.m. at the church.

St. Mary's bake sale Saturday, Feb. 13, 10 a.m. to 2 p.m., K. of C. hall, H to M.

Sylvan Extension Study Group Thursday, Feb. 18, at the home of Mrs. Roy Miller. Lesson topic: "Salads and You."

Chelsea Community Farm Bureau Thursday, Feb. 11, with a pot-luck supper at 7:15 p.m. at the K. of C. hall. Mr. and Mrs. Roy Miller and Mr. and Mrs. Roy Kalmbach will be hosts.

Jerusalem Farm Bureau Thursday, Feb. 11, at 8:30 p.m. at the home of Mr. and Mrs. Walter Beutler. Please bring Jell-O.

Cub Scouts of Pack 455 are holding their Blue and Gold ban-

quet, Thursday, Feb. 11, at 6:00 p.m. in the Social Center of the Methodist church. Serving starts at 6:30 p.m. Everyone is to bring their own table service. Drinks are furnished by the pack.

North Lake Methodist Church Sunday, Feb. 14. Pot-luck dinner at 12:30. Bring own table service and passing dish. Coffee furnished. Speaker, the Rev. Jesse DeWitt, from Methodist church of Missions & Extensions.

Past Matrons of the Order of the Eastern Star will meet Thursday, Feb. 11, at the home of Mrs. Lional Vickers. Pot-luck luncheon at 12:30 p.m.

Valentine's Day dance Saturday, Feb. 13, at Chelsea High school cafeteria from 8:00 a.m. until 1:00 a.m. Music will be by Keith Edwards' Orchestra.

Francisco Study Club Feb. 11, at home of Mrs. Clarence Nicolini on Michigan Ave. Grass Lake. Lesson will be "Home Management, A Science and an Art". Each member will bring a valentine gift for her "secret pal".

Ann Arbor Friendship club, sponsored by Ann Arbor Recreation Dept., card and dancing party at Pattengill school, Cressland Dr., Ann Arbor, on Friday, Feb. 12 at 8 p.m. Donations. Refreshments. Unmarried persons, age 39 through 64, are invited. For further information, call NORMANDY 8-6900.

BIRTHS

To Mr. and Mrs. Kenneth C. Buckholz, a daughter, Claudette Joy, Saturday, Feb. 6.

Mr. and Mrs. Michael A. Bowen, Wednesday, Feb. 3, a daughter, Cynthia Diane.

A daughter, Celeste Elaine, to Mr. and Mrs. Fred Powell, 1030 N. Fletcher Rd.

A son, Daniel Carleton, to Mr. and Mrs. Jerry Russo, 997 Sugar Loaf Lake.



MUSICAL PRODUCTION COMING: Superintendent of Schools, Charles Cameron purchases the first ticket to "Oklahoma" from Paul W. Schultz, (right) director of the show. The popular musical is to be presented by Chelsea High School seniors March 26 and 27.

Thomas L. Jensen
Hospitalized After
Friday Auto Crash

Thomas L. Jensen 19, of 8123 Lima Center Rd., Manchester, is reported in "fair" condition at St. Joseph Mercy Hospital with injuries suffered in a two-car collision at 3:45 p.m., Friday, Feb. 6 at M-62 and Werkner Rd., Sylvan township.

Ronald Howard, 18, of 17904 Old US-12, Chelsea, and Gordon Carpenter, 20, of 303 Madison, Chelsea, passengers in the Jensen auto were treated for minor injuries at St. Joseph Mercy Hospital and released.

Sheriff's deputies said the brakes on Jensen's car failed as he was driving down a hill on Werner Rd. The car went through the intersection, and collided with a car driven by Peter Robu, 44, of Stockbridge, who reportedly escaped uninjured.

Construction Started on
Fertilizer Warehouse

Building has begun on a bulk fertilizer distribution warehouse on Parker Rd. north of Liberty Rd. as approved by the Seio township board in January.

A request by Robert Kushmaul and Allen April for re-zoning of the property had been under dispute since October, and the Seio Township Planning Commission recommended to the board that it be approved.

Men's Phys Ed Class
Meeting Date Changed

The adult men's physical education class which normally meets Wednesday evening will meet on Thursday, Feb. 18 instead of Wednesday, Feb. 17 because of a conflict in the gym schedule. This class will also meet on Thursday, March 4, rather than on Wednesday, March 3.

DEATHS

Mrs. J. R. Fischer

Former Ann Arbor Resident Dies at Methodist Home

Mrs. Minnie Fischer, 80, died Friday morning, Feb. 6, at the Chelsea Methodist Home where she had lived since 1949. She was a former resident of Ann Arbor and Grant County, Ind.

She was born Jan. 17, 1885, in Grant County, Ind., to Joseph and Susannah Bish Harrell. She was married to Jacob R. Fischer on July 21, 1920 in Indiana and they came to live at the Chelsea Methodist Home on Sept. 12, 1949 where Mr. Fischer died the following year.

After attending schools in Grant county Mrs. Fischer moved to Sweetzer, Ind., where she studied the dressmaking trade. There she worked as a dressmaker while caring for neglected children.

Following her marriage to Mr. Fischer, the couple moved to Ann Arbor in 1928, where Mrs. Fischer became a member of the Ann Arbor First Methodist church.

Mrs. Fischer is survived by three sons, Harry B. of Ann Arbor, Laurence of Hartford, Conn., and Lyman of Silver Springs, Md., and a daughter, Mrs. Minnie Green of Ann Arbor.

Funeral services were held Monday, Feb. 8, at 10 a.m. from the Chelsea Methodist Home Chapel with the Rev. John Fall, assistant administrator of the Home and the Rev. Burlin Main of Ann Arbor officiating. Burial was in Oak Grove cemetery.

Miss Marguerite Eise of Detroit spent Sunday with her aunt, Miss Lillie Wackenhut.

Miss Jessie Hutton

Former Flint Schoolteacher Dies at Methodist Home

Miss Jessie Hutton, 88, died Thursday, Feb. 4, at the Chelsea Methodist Home following a long illness. She had been a resident of the Home since May 20, 1964 and was a former Flint school teacher and resident of Northville.

Miss Hutton was born to Clarence A. and Anna Gillette Hutton April 5, 1880, at Northville. She graduated from Northville High school and Western Michigan University. After 38 years of teaching in Flint schools she retired and went to live with a cousin, Mrs. Ann Fry of Northville. Last year both she and the cousin entered the Methodist Home.

Miss Hutton was a member of the Northville Methodist church. Funeral services were held Monday, Feb. 8, at 10 a.m. from the Chelsea Methodist Home Chapel with the Rev. John Fall, assistant administrator of the Home and the Rev. S. D. Kinde officiating. Burial was in Avondale cemetery, Flint.

Alfred Bommer

Dies Suddenly Saturday At His Home in Chelsea

Alfred Bommer, 71, of 321 East St., Chelsea, died suddenly at his home Saturday, Feb. 6.

Mr. Bommer was born in Seio township, Dec. 25, 1893, the son of Mr. and Mrs. William Bommer. He was married to Naomi Seybold. She died in 1954 and Mr. Bommer married Frieda Mosher in 1956. She survives.

Mr. Bommer was a veteran of

World War I. He was a caretaker for the Huron-Clinton Parkway Authority for several years retiring in 1960. He was a member of St. Paul's United Church of Christ, Chelsea.

Survivors include his widow, Frieda; a son, Wesley Bommer, Manchester; two daughters, Mrs. Sarah Putman of Delhi, and Mrs. Rachel Gillan of Brighton; stepsons, Charles Mosher of Detroit and Raymond Mosher of Detroit and one step-daughter, Mrs. Doris (Margaret) Schumaker, White more Lake. Survivors also include a half-brother, Harry Booth of Ann Arbor, Burt Booth of Lansing, half-sister, Mrs. Harry (Ida) Waldrop of Pontiac, nine grandchildren and two great-grandchildren.

The funeral was held at St. Paul's United Church of Christ, Chelsea, at 2 p.m. Monday, with the Rev. T. W. Mann officiating. Burial took place at Bethlehem cemetery, Ann Arbor.

Dexter American Legion Post No. 557 conducted the military graveside service.

Guitar Lesson Classes

Begin Next Wednesday

Guitar lesson classes will begin Wednesday, Feb. 17, at the Chelsea High school cafeteria. The classes are scheduled for 4 p.m. to 7 p.m. and 8:30 p.m.

All three classes are filled at the present time but if anyone is urged to contact Allan Conklin at the Junior High school to be placed on the waiting list.

Breaks Leg Skiing

Mary Ann Horning, daughter of Mr. and Mrs. Edwin Horning, suffered a fractured leg while skiing Mad River on Thunder Mountain near Petoskey. The accident happened Sunday, Jan. 31. Mary Ann leg will be in a cast for a period of six months.

the world's most advanced

COLOR TV

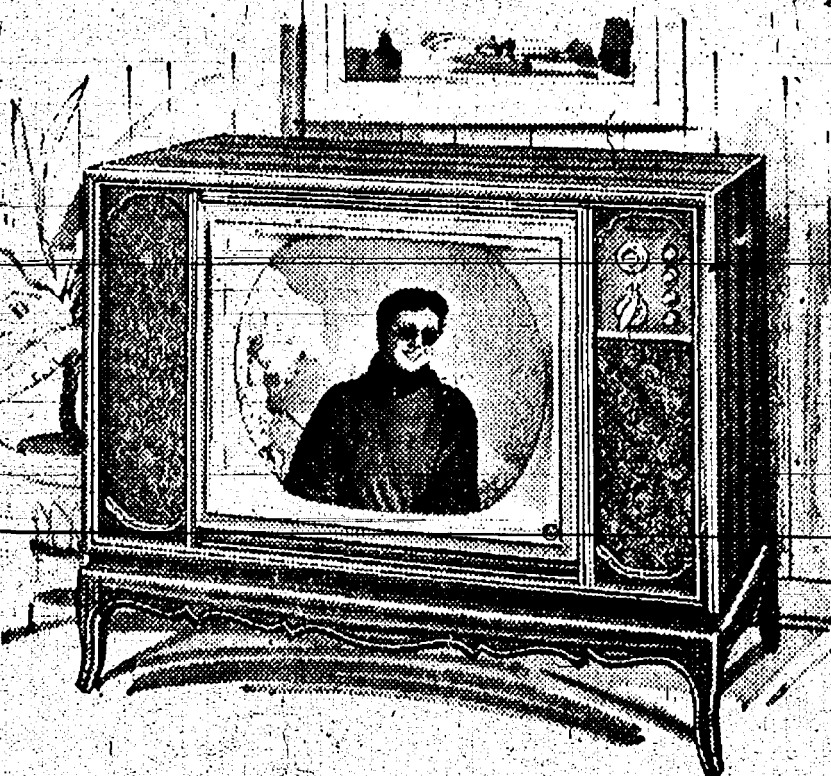
Never before such vivid color pictures
... such glorious tonal fidelity in TV sound ...
and you can enjoy it all—today!

the magnificent
today's
finest,
most
advanced
Magnavox
COLOR TV

Beautiful
French Provincial
fine furniture

Reg. \$695.00
SPECIAL
\$595.00

Model 2-T544 in
Antique Ivory or
Distressed Cherry
finishes.



Spectacular program realism—is enhanced even further by more life-like sound from two Magnavox high fidelity speakers and tone control. Backed by today's most all-inclusive guarantee of dependability, a Magnavox is truly the finest and your best buy on any basis of comparison. Prove it to yourself—right now!

ENJOY DAZZLING COLOR PICTURES
AND A NEW STANDARD OF RELIABILITY

Color-Brite Tube gives vivid, natural-color pictures half-again as bright as most others. Quick Pictures come on 4 times faster, no more waiting. Chroma-Tone Control adds another thrilling dimension to color—depth and beauty! Also replaces drab mono-chrome pictures with a warm sepia-tone. Automatic Color eliminates critical fine tuning; pictures appear instantly, perfectly—stay color-true! Color Purifier always keeps pictures pure, even after you've moved the set.

FRIGID PRODUCTS

LLOYD R. HEYDLAUFF

113 N. MAIN ST.

PHONE GR 9-6651

Gambles
The Friendly Store

SPECIAL SALE!

GET DOUBLE VALUE
with the
RESTMASTER
mattress and box spring!



Sleep Value

PLUS

Construction Value

MATTRESS
and
BOX SPRING

Double
or
Single
Size
\$68.00
Set

MATTRESS ONLY, Single or Double—\$39.88

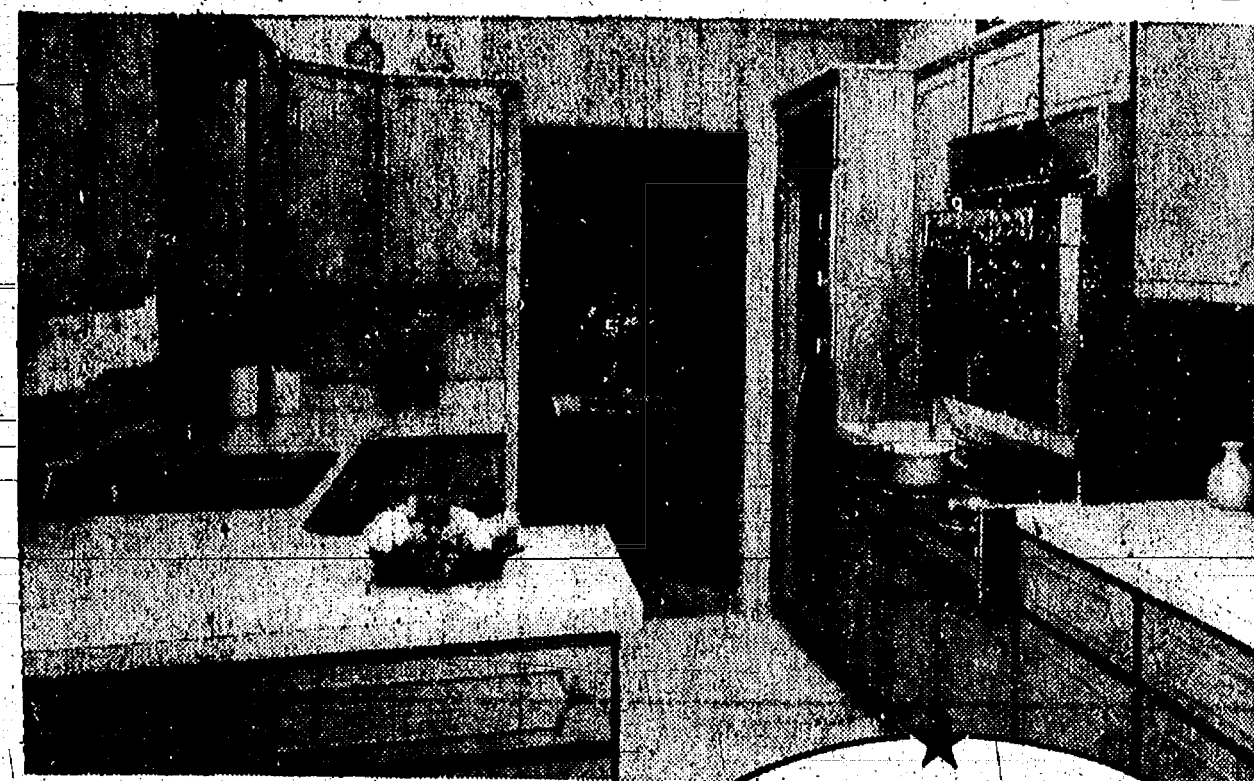
Buy On Easy Terms - No Money Down

RESTMASTER GIVES YOU MUCH MORE VALUE AT
LOWER COST!

- Pressurized 405 coil spring unit!
- Bench built by Grand Rapids craftsmen!
- Fully upholstered with sisal and felt!
- True pre-built border and inner-roll edge!
- Beautifully tailored in sturdy woven ticking!
- Guaranteed for 10 years of sleep comfort!

ALWAYS BETTER BUYS at

Gambles
The Friendly Store



You get MORE in **Merillat KITCHENS**

Cabinets Thoughtfully Designed

With YOU in Mind ...

MERRILLAT CABINETS offer a lifetime of kitchen charm and service—CONSIDER this check list of custom-quality features in design and durability: (usually found in only the most expensive kitchens!)

- ★ **FORMICA FACING** on all doors and drawer-fronts. Genuine brushed-finish, natural-grain fruitwood or driftwood formica that will never need refinishing or special care. (A single wipe with a damp cloth is the only cleaning it needs.)
- ★ **ALL DOORS GUARANTEED AGAINST WARPAGE**
- ★ **SOLID OAK DRAWER CONSTRUCTION** (To stand the punishment a drawer gets!)
- ★ **DOUBLE-CONSTRUCTION DRAWER FRONTS**
- ★ **SELF-CLOSING HINGES**
- ★ **NYLON DRAWER GLIDES**

MAY WE HELP with the layout and design of the kitchen you've always wanted?

Just give us a call, we'll take necessary measurements and render a scale drawing with a complete price for your consideration. No obligation, of course!

LOW-COST FHA Home Improvement Financing is readily available for kitchen modernizing.

AND—Merillat Cabinets are on display in our kitchen-corner. We hope you will see them soon!

DIAL GR 5-3391

CHELSEA LUMBER CO.

"Where the Home Begins"

A SUPERMARKET THAT IS JUST A LITTLE BETTER

STORE HOURS:
Monday thru Wednesday 9 a.m. to 6 p.m.
Thursday & Friday 9 a.m. to 9 p.m.
Saturday 8 a.m. to 9 p.m.
OPEN SUNDAY 10 a.m. to 6 p.m.

Stop & Shop

14901 Old U.S.-12
Corner at M-52
Chelsea

"TRIPLE R FARMS" U.S. CHOICE

Round Steak

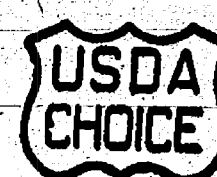
79^c

lb.



All Stop and Shop Meat Is
Cut to Customer's Specifications

Select your Meat
the same way
your Mother did



"TRIPLE R FARMS" U.S. CHOICE

Boneless Round Steak 89^c

"TRIPLE R FARMS" U.S. CHOICE

Rib Steak 89^c

"TRIPLE R FARMS" LEAN, TENDER

Cube Steak 99^c

CHASE & SANBORN

COFFEE

ALL PURPOSE GRIND **3** LB. CAN **\$1.99**

"Triple R Farms" Sirloin Steak . . . 89 ^c lb.	"Triple R Farms", Fresh Delicious Ground Round Steak 79 ^c lb.
"Triple R Farms" U.S. Choice Boneless Rolled Rump Roast . . . 89 ^c lb.	"Triple R Farms" U.S. Choice Sirloin Tip Roast . . . 89 ^c lb.
Lean, Tender, Boston-Butt Pork Roast . . . 39 ^c lb.	"Triple R Farms" Fresh Sliced Beef Liver . . . 39 ^c lb.
Lean Sliced Boiled Ham . . . 89 ^c lb.	"Triple R Farms" Mich. Grade 1 Polish Sausage . . . 39 ^c lb.
"Triple R Farms" Boneless Stewing Beef . . . 79 ^c lb.	Herrud's All Beef Franks . . . 1-Lb. Pkg. 59 ^c

SUNSHINE **KRISPY CRACKERS** 1-Lb. Box **19^c**
U.S. NO. 1 MICHIGAN **WHITE POTATOES** 10-Lb. Bag **69^c**

Kraft's Salad Dressing
Miracle Whip
Quart Jar **44^c**

MILD IVORY FLAKES . . . 2-Lb. Box	81 ^c
FAST ACTING DETERGENT OXYDOL . . . 5-Lb. 4-Oz. Box	1 ³⁷
NABISCO RITZ CRACKERS . . . 1-Lb. Box	37 ^c
HEKMAN CLUB CRACKERS . . . 1-Lb. Box	35 ^c

KRAFT'S VELVEETA CHEESE 2-Lb. Loaf	89 ^c
EVAPORATED PET MILK 14 1/2-Oz. Can	14 ^c
CAMPBELL'S TOMATO JUICE 1 Quart 14-Oz. Can	29 ^c
Heinz BABY FOOD 3 4 1/2-Oz. Jars	25 ^c
NEW! UNDERWOOD CHICKEN SPREAD . . . 4 3/4-Oz. Can	39 ^c

Kraft's **Orange Juice** 1/2-Gallon Jug **69^c**

New! Giant Size Instant **Maxwell House Coffee** 14-oz. Jar **\$1.69**

Mueller's Enriched **Egg Noodles** 1-lb. Cello Pkg. **29^c**

MEADOWDALE FRESH FROZEN

ORANGE JUICE

5

6-Oz. Cans **89^c**

WILSON'S CHOCOLATE MILK 1/2 Pint	7 ^c
DOLE-LOW CALORIE FRUIT COCKTAIL 1-Lb. 13-Oz. Can	3 For \$1.00
Our Favorite Cut Green Beans 1-Lb. 12-Oz. Can	4 For 99 ^c
SWIFT'S BEEF STEW 1-Lb. 8-Oz. Can	39 ^c

Prices Effective: Wednesday, Feb. 10th thru Tuesday, Feb. 16th, 1965.

Michigan Sweet Cream **BUTTER**
1-Lb. Print **59^c**

CROSSWORD PUZZLE

tion by Public Sale
1964, by the Circuit
County by His Hon-
or, Jr., Circuit Judge,
act Sale and Partition
on the same date, 1.
J. Garrison, shall sell
the highest bidder or
(1) through seven (7)
described in the at-

and located in Section
of Township, Washita
County, Oklahoma, subject
to the rights of the
directing race. The
parcel shall be sold for
one thousand dollars
and parcel shall there-
after in that parcel num-
beral likewise be of-
fered individually.
The place at the south-
east corner of the City of Ann
Arbor, said County Bully,
place of holding the
said County. Said sale
at eleven o'clock
forenoon.

pallion
18. Beat
19. Certain
20. Insec
27. Sprin
toy
19. Full
20. Affir
22. Cria
a crea
26. A cro
28. Cont
30. Cubic
meter

[illegible]

both inclusive, and
both inclusive, and
both inclusive. West-
viston, as recorded in
page 46 and 47, Wash-
18.

[illegible][illegible][illegible]

thence S. 85° 54' 00" W. 44° 05' 10" E. 186.00 feet to the station where a circular curve concave to the right with a central angle of chord which equals 127.60 feet; thence S. 80° 29' 00" W. 127.60 feet to the station where a circular curve concave to the right with a central angle of chord which equals 127.60 feet; thence S. 45° 54' 00" E. 44° 05' 10" W. 126.00 feet to the station where a circular curve concave to the right with a central angle of chord which equals 127.60 feet; along the arc of a circular curve concave to the right with a central angle of chord which equals 127.60 feet; thence S. 80° 29' 00" W. 127.60 feet to the Point of Beginning in the N. E. 1/4 of Township 36 North, Range 12 East, County, Michigan, Acres of land, more or less, 65.00

REAL ESTATE SALE
 The undersigned, having
 been duly appointed and
 sworn to, do hereby sell
 the same by and through
 the said **PARK**
 and **PATRICIA**
 of the Township of
 County, Michigan.
TRUSTEES
MORTGAGE
TROIT, a Michigan
 corporation, the
 of 1958, and recorded
 in the Register of Deeds,
 of the State of Michi-
 gan, of January 1958,
 at 1414 of Washtenaw
 page 300, which
 hereunto on, to wit:
 of A.D. 1918, as
NATIONAL MORTG-
GUARANTEE
 and recorded on

the office of the
County of Wash-
Washington Coun-
which said mort-
to, to-wit the 20th
of the month of
LOAN ASSOCIA-
Association and re-
108 in the office
for said County of
1017 of Washenteau
Dukes 357-362, on
is claimed to be
this notice, for wit-
of THIRTEEN
UNNAMED PORT-
(\$15,847.63) DOL-

day, the 4th day of
n-o'clock forenoon.
me, said mortgage
a sale at public
ent-bidder, at the
Washtenaw County
y of Ann Arbor,
Michigan (that ho
e the Circuit Court
Washtenaw is held),
blished in said mort-

HAWAIIAN
LARID ORNE
STIRINGS OISE
ORNO OISE ATITU
ORNO OISE ATITU
ORNO OISE ATITU
ORNO OISE ATITU
ORNO OISE ATITU
ORNO OISE ATITU
ORNO OISE ATITU
ORNO OISE ATITU
ORNO OISE ATITU
ORNO OISE ATITU
ORNO OISE ATITU
ORNO OISE ATITU
ORNO OISE ATITU

43. Hawaiian
wreath
45. Large
tube
47. Compass
point;
abbr.

6	7	8	9	10
12				
15	16			
18	19			
	21			
			26	27
30				

aid Court, and to serve a copy on WILLIAM A. KAISER, of 1515 E. Byne Drive, Gregory, Michigan, of said estate, and that he will be heard by said Court in Probate Office on April 7, 1944.

registered, certified or bonded
with proof of mailing), or by
service at least fourteen (14)
to such hearing.
JOHN W. CONLIN,
Judge of Probate.
By _____
Deputy Clerk.
_____ of Probate.
_____ Rademacher, Attorney
_____ Idle St.
_____ Chicago Feb. 4, 1911

...p.m. and became the 36th
of the United States. As
presidents have done,
added four words — "so
God" — to the 35 words
presidential oath. The Pres-
d his mother's Bible and
a wife to hold the Bible

CE
taxpayers
will be at Chelsea

**Township taxes
ay, Feb. 26 only,
any other day,
my home, 11437
ke, Mich. Those
money order by
y mail.**

3. 27
To Pay
Out Penalty
censes.
ARK

ARK TREASURER

E

taxpayers

be at Chelsea
ship taxes every
a.m. to 5 p.m.
wish may send
will be returned

paid to
n or before
penalty.
ALE, \$5.00
be presented
ense.

Congressman W. Vivian Names Two District Field Representatives

Washington — Congressman W. Vivian of Ann Arbor has announced that two field representatives have been appointed to his staff. Mrs. Daniel Longene will be field representative for Lenawee county, the Plymouth-Northville portion of Wayne county and Washtenaw county west of US-23. Mrs. Gerhard Weinberg will be field representative for Monroe county, Livingston county, and Washtenaw county east of US-23.

The Congressman expects to spend as much time as his congressional duties will permit meeting with his constituents.

The District Office, located in Ann Arbor at the Lamp Post Plaza, Room 107, 2378 East Stadium Blvd., is open from 9 a.m. to noon, 1 p.m. to 5 p.m. Monday through Friday. Telephone number 761-0491.

Standard Want-Ads Get Results!

Community College Board Names Harmon Chairman

Samuel T. Harmon, Jr., who received the highest number of votes for the Community College Board of Trustees, was unanimously elected last week as chairman of the Board at the organizational meeting.

All of those persons who have been active in promoting the college in addition to the elected trustees were invited to attend the meeting.

Robert W. Harrington, chairman of the citizens committee which conducted the election campaign, turned over to the new board "a legacy of unfinished business," including the offer of a gift of 75 acres of land north-west of Ann Arbor for a college site.

The offer was made by Dr. E. M. Isberg and Associates, which controls approximately 727 acres bounded largely by Stein Rd. on the west and south and Joy Rd. on the north. The intersection of these roads is just west of the juncture of the townships of Ann Arbor, Scio, Webster and Northfield townships.

Some parcels totaling 252 acres extend west and south of Stein Rd. and one is north of Joy Rd. The entire area is west of US-23 and Whitmore Lake Rd.

The trustees were told they should choose the exact location for the college, if they accept the offer.

Harrington said Dr. Isberg, a former member of the University's medical staff, will return from his present home in Florida any time to meet with the college board on his offer.

In his communications with Harrington Dr. Isberg said that he will provide without cost to the college sewer and water mains, and will sell additional land for college purposes at \$2,000 per acre.

An additional 180 acres could become available to the college once the land is no longer needed for a lagoon system of disposal to serve the Isberg development, presumably a residential subdivision. Dr. Isberg estimates it could be connected to a municipal sewer system within eight to 10 years.

Harrington also presented the possibility that the Pinckney and South Lyon School Districts which participated in the original survey of college needs might want to annex to the college district.

He also stated that the Community College board will be contacted by Cleary College to arrange co-operation between the two schools, that the committee had in effect promised the people of the county that the board would want to use citizens advisory committees to keep in touch with the entire district, and that the committee would turn over approximately \$2,000 left over from the election campaign requesting its use for scholarships.

Harrington also turned over to the board its first request for its catalog, along with one application for the college presidency, and one application for a teaching position.

Dr. Raymond J. Young, University professor of higher education and director of the citizens survey, which reported a need for the college, told the board that a "thoroughgoing survey of the educational need has been made and that this information has not changed." The survey was completed in the summer of 1963, and

released publicly in September of that year.

Dr. Young advised the board to begin its search for a president through the Midwest Training Program for Community College Leadership of which he is the director for the U.M. He warned the board "not to proceed without competent professional advice" and said that citizens committees should not be set up until a president and administrative staff have been employed.

He stressed the resources of the University's School of Education which he said "wants to continue to assist in the development of this college."

He said a 150-acre site is required and that he knows of two additional proposed sites.

Ardis asked Young to prepare a written summary of his advice for the board's future reference.

Chairman Harmon said the board plans to deal with its many problems in several groups, by-laws and organization of the college, curriculum, finance, land and facilities, and purposes.

Trustee Kenneth L. Yourd has been designated to begin work on a preliminary statement of purpose and also on board by-laws.

Trustee Adams was authorized to negotiate loans of up to \$100,000 against future tax collections for interim operating expenses. Adams said this is the usual procedure and all such loans must have the approval of the state's Municipal Finance Commission.

He said the board can request to have its taxes collected next fall if its budget is established by April. A public hearing is required before the budget can be adopted. The board may levy up to 1.25 mills (\$1.25 on each \$1,000 of assessed valuation as equalized on property within the district). This power was given by the voters on Jan. 15.

The next formal board meeting was set for 7:30 p.m. Tuesday, Feb. 9.

Cub Scouts of Den II, Pack 445 met Monday, Feb. 1 at 3:45 p.m. at the home of Mrs. David Fischer. The meeting opened with the flag ceremony. Bill Aldrich and Brian Annett told a story to the den. The boys worked on the centerpiece for the Blue and Gold dinner. David Bedford served cupcakes which he made himself. The meeting closed with the living circle.

Mark Heydlauff, scribe.

DEN I, PACK 415—

Den I, Pack 415 met Thursday, Feb. 4, at the home of their den mother, Mrs. George Atkinson, Cavanaugh Lake. One member, Mark Stapish was absent. Dues were collected.

Steve Collins and Billy Osinski had their books checked and each had a finished project. The boys forgetting to bring their books and dues had holes punched in their thinking caps.

After a short visit and singing of songs the boys decided which of the articles they had made should be put in Dancer's store for Scout Week, and what their parts were for the next pack meeting.

The boys made favor cups and place cards for the Blue and Gold dinner and valentines for their parents. Treats were furnished by Mrs. Atkinson.

Present for the Blue and Gold dinner on Sunday, Feb. 7, were Steve Collins, his parents, two brothers and uncle, Ed. Hartman, his parents and sister, Billy Osinski, his mother, and four sisters, Carmer Slocum, his parents, sister and brother and our den mother Mrs. Atkinson and her husband.

The grand "howl" was given for Mrs. Osinski who assisted in the den preparations for the Blue and Gold dinner.

Steve Collins, scribe.

DEN 3, PACK 445—

Cub Scouts of Den 3, Pack 445 met Wednesday, Feb. 3, at the home of their den mother, Mrs. Alfred Juergens, for a meeting and birthday party for Mike Juergens. The den has a new Cub Scout whose name is Ricky Sweeney. The boys made peanut cups for the Blue and Gold banquet.

Mark Jacobs, scribe.

DEN 13, PACK 435—

Den 13 Pack 435 met at the home of their den mother, Mrs. William Wade, Monday, Feb. 8. Eight members were present.

We made decorations for the Blue and Gold banquet which will be held Tuesday, Feb. 23, at 8 p.m. Treats were brought by Tom Skittenhelm.

The meeting was closed with the pledge of allegiance, the law of the pack, the living circle and the grand "howl."

Tom Skittenhelm, scribe.

DEN 9, PACK 445—

Den 9, Pack 445 met at the home of their den mother, Mrs. Gardner, Tuesday, Feb. 2. The meeting was opened with the flag ceremony and our scout promise.

Table decorations were made for the Blue and Gold banquet. Refreshments were brought by Todd Gardner.

Steve Cantrell, scribe.

St. Mary's School Association Plans Smorgasbord March 7

Final approval was given early this week to plans for a public smorgasbord which St. Mary's School Association will sponsor on Sunday, March 7, at the Chelsea High school cafeteria.

Frank Warywoda and Ed Orlovski, smorgasbord co-chairmen, have appointed the following committees: kitchen — Martin Tobin, Mrs. Frank Warywoda, and Mrs. Ed Orlovski; tickets — Hal Pennington; dining room — Mr. and Mrs. William Windle; publicity — Mrs. Keith Boylan.

A large variety of foods will be served, the chairman report, and free transportation will be available within the village limits for those persons needing a ride to the cafeteria.

Ticket prices and where to call for transportation will be announced at a later date in an advertisement in The Standard.

W. Blaess Named to American Forage Alliance Advisory Board

William K. Blaess of Blaess Elevator Co. has been appointed to the 1965 Advisory Board of the American Forage Alliance. This announcement was made in Milwaukee, Wis., by L. Wm. Tewele, president of the group.

As a member of the Advisory Board, Blaess will be responsible for representing the AFA members in his territory at the meetings to be held during the year with the headquarters staff.

The American Forage Alliance represents a group of more than 700 farm supply dealers who have banded together in an attempt to offer their farmer-customers a more professional forage seed and crop service.

Making plans for the future is wise, but never get so far into the future that you overlook the present.

Better Living Begins When You Own A New Home

CONSIDER LANEWOOD

WHY YOU SHOULD VOTE "YES" On School Bond Issue

(SECOND IN A SERIES)

On February 24th, we the land holding and tax-paying citizens of Chelsea, will have an opportunity to express our views on whether Chelsea shall have an additional building added to the high school. At this time, we, "The members of the Chelsea Jaycees," feel it is important to give you a number of straightforward facts concerning this new bond issue:

1. The Chelsea High School is lacking in a number of educational facilities and is suffering from overcrowded conditions in the classrooms.
2. The new addition would provide six (6) general classrooms, language laboratory, a special education room, and two (2) commercial rooms, enough space for 300 students.
3. The bond would be in the amount of \$240,000 and would advocate an increase of 3 mills on the assessed valuation of property as equalized in the Chelsea School District for a period of 3 years.
4. Because Chelsea is a thriving industrial community, over 50% of the tax load will be carried by its industry.

And one final fact for you to consider. Material and construction costs are booming as well as our school population but sooner or later we must provide these proposed school facilities. The longer we wait to build the more we are going to end up paying.

CHELSEA JAYCEES

Super Faréx, Faréx's own blend of polyester and combed cotton

Just wash and wear them anywhere...

Never Need Ironing!

They're SUPER Faréx Slacks by FARAH

with FaraPress™

The perfected slack fabric

Faréx builds smooth, neat good looks into these new, washable slacks that will stay there permanently. Creases stay in, wrinkles stay out. They offer the utmost in serviceability and popular Ivy styling.

Colors: Light Olive and Black. \$6.98
Waists: 29 to 42 Lengths: 29 to 34.

Also: DACRON-COTTON FARAH'S — \$5.98
In Olive Black, Brown or Tan.

Best Wishes to the Boy Scouts on Their Anniversary.

Strieter's Men's Wear

"The Place To Go for Brands You Know"

Hey, honey, I got it!

I got it! I got it!

A full-size Olds for less than that car with a 'low-price' name!

Now tell your mother what a brilliant son-in-law she has!

Now going on at your Olds Dealer's...

OLDs Jetstar Jamboree

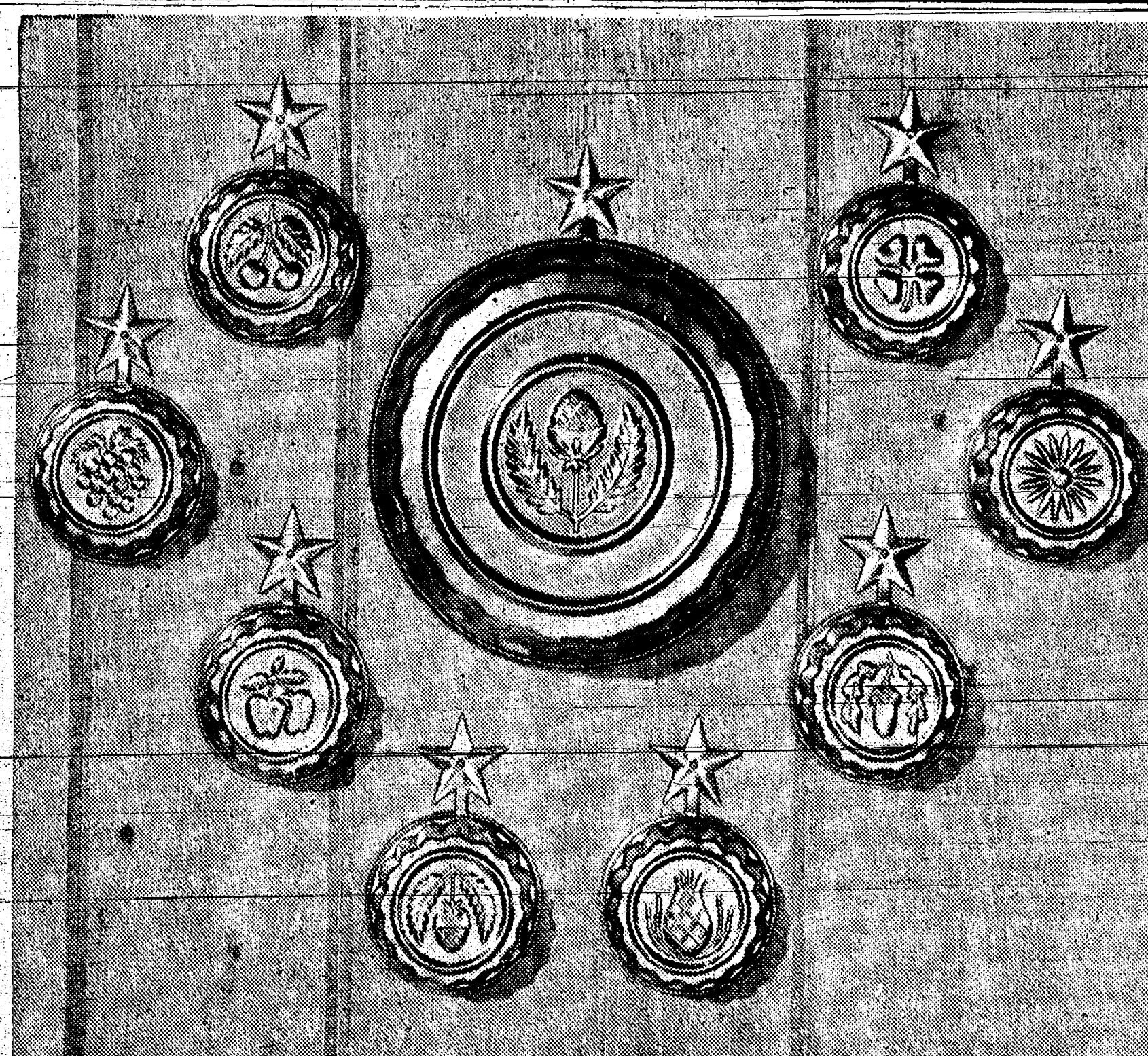
Your chance to step out in style and save!

Try a Rocket in Action! '65 OLDSMOBILE

SEE YOUR LOCAL AUTHORIZED OLDSMOBILE QUALITY DEALER... WHERE THE ACTION IS!

DANIELS MOTOR SALES, INC. 118 N. Main St.

FOR THE BEST IN USED CARS... SEE YOUR OLDS DEALER FOR A LATE-MODEL VALUE-RATED USED CAR!



FREE individual 3 1/2" COPPERTONE SALAD MOLD when you buy 7 gallons Ashland Gasoline

Now you can add appetite appeal to gelatin salads and desserts with Early American coppertone molds available FREE from Ashland Oil Dealers. These lustrous, anodized aluminum molds are ideal for individual servings, and they can add a decorator touch to your kitchen when displayed on the wall. You'll want to get all eight of the different mold designs. And, to complete your set, you can get a large, one and one-half quart mold, plus nine decorator wall hangers, all for only 49 cents with an oil change or lubrication at regular prices.

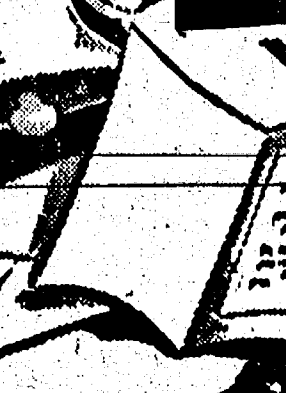
Drive in now where you see the "FREE SALAD MOLD" sign displayed by Good Neighbor Ashland Oil Dealers!



Offer expires March 31, 1965

ASHLAND OIL & REFINING COMPANY

[illegible]



Wedding Stationery

- ☆ INVITATIONS
- ☆ ANNOUNCEMENTS
- ☆ RECEPTION CARDS
- ☆ THANK YOU NOTES
- ☆ PERSONALIZED MATCHES
- ☆ PLACE CARDS
- ☆ PERSONALIZED NAPKINS

The Chelsea Standard

A SCOUT IS TRUSTWORTHY



Proudly, we put our trust in the Scouts of this community. Congratulations, and a sincere salute to all who give their time, effort and money to Scouting.

FOSTER'S MEN'S WEAR

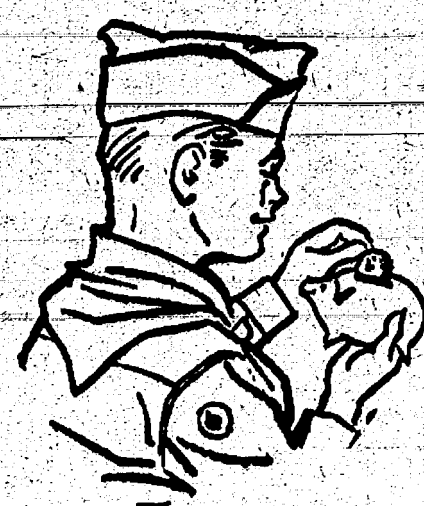
Boy Scout Week

We Salute the Scouts of Chelsea



Congratulations to the Scouts of this community, and to their leaders, too. During Boy Scout birthday week, February 7th to 13th, we are proud to express a special salute in honor of Scouting . . . that great movement dedicated to building better citizens, a better community and a better world. Best wishes, Boy Scouts, and may you ever "Strengthen America's Heritage."

A SCOUT IS THRIFTY



Congratulations to the Boy Scouts and their leaders, who set an example in learning values not only in money, but the value of kindness, friendship and honesty. Best wishes!

KUSTERER'S FOOD MARKET

A SCOUT IS LOYAL



Loyalty is one of the many fine qualities exemplified by our Boy Scouts. Support them and their leaders, in every way, at all times. They are tomorrow's hope and promise.

PATTY ANN SHOPPE

A SCOUT IS BRAVE



Make a young man brave, make him strong, honest and loyal — make him a Boy Scout. Support the Scouts of this town and their advisers, help build boys into tomorrow's great leaders!

STATE FARM INSURANCE
Wallace Wood, Agent

A SCOUT IS HELPFUL



To our local Boy Scouts go our congratulations for setting an example all of us could well follow . . . an example of helpfulness, always. Our best wishes to Scouts everywhere!

SCHNEIDER'S GROCERY

A SCOUT IS COURTEOUS



All his life, a Scout seeks to follow the principles inculcated by the Scout Law. We say, "Happy Birthday, Scouts," and thanks to all who help encourage the Scout program.

SPAULDING CHEVROLET

A SCOUT IS OBEDIENT



Congratulations to a great team of young men that's always working so hard everywhere, for the young, the old and the entire community. We support you and we thank you!

PALMER FORD

A SCOUT IS CLEAN



Cleanliness is next to Godliness, a man once said. Our Boy Scouts have both qualities — they are clean in mind, heart and body. Help them to become leaders in every walk of life!

SCHUMM'S RESTAURANT

A SCOUT IS FRIENDLY



Make friends with Boy Scouts and their adult leaders this week. Support them with time, effort, money . . . invest in the nation's future. And a big vote of thanks to all our Scouts!

GAMBLES
"The Friendly Store"

A SCOUT IS KIND



This is Boy Scout Week . . . take time out to support these fine boys and the men and women who work with them. Appreciate, encourage and invest in their great organization.

MERKEL BROTHERS

A SCOUT IS CHEERFUL



Boy Scouts! Here's our three cheers for you on your 55th Anniversary. We are supporting you and hope all others will, too! Hearty Congratulations on a job well done!

DANIELS MOTOR SALES

A SCOUT IS REVERENT



Boy Scouts of every denomination, we thank you. Your belief in the true ideals of mankind is an example for all to follow and for all to encourage! We hope everyone will!

DANCER'S DEPT. STORE

AF WANTS NEW BOMBERS with the 10-year-old B-52's. The Air Force continues to hope for a brand new group of manned bombers. At the present time, the Air Force will have to make do

ask for more than \$300,000,000 for improving the capabilities of about 630 B-52's.

BAILEY'S RESTAURANT

Corner of Clear Lake Road and I-94

Good Home Cooking

SUNDAY, FEBRUARY 14

BAKED VIRGINIA HAM

Vegetable - Tossed Salad - Hot Rolls

\$1.40

Feb. 21 - Roast Turkey and Dressing

Feb. 28 - Swiss Steak

GOOD BRAKES NECESSARY!

Be sure your car is set for safe driving and safe stopping. Come in soon and let us check your brakes — put them in "tip-top" condition.

COMPLETE ONE-STOP SERVICE

Bill Brown's Super Service

GOOD GULF PRODUCTS

295 SOUTH MAIN ST.

PHONE GR 9-1311



It's lovely! and I did the entire room in one afternoon

And with Minflo Latex Flat Wall Paint there isn't a trace of a brush or lap mark! It's so easy to apply... flows on smoothly without dripping, and dries in just 20 minutes. And because it's free of objectionable odors, you can entertain the same evening. "Accidental" hand prints wash off the surface easily, too... Minflo is completely washable. Clean up brushes and rollers in minutes with just warm, soapy water... Painting with Minflo is easier than you ever imagined it could be!

GIVE NEW LIFE, NEW COLOR TO ANY ROOM WITH JUST ONE COAT OF MINNFLO LATEX



Finkbeiner Lumber Co.

Phone Chelsea GR 9-3881



MARTIN STEINBACH, Owner

NORTH ELEMENTARY SCHOOL NOTES



HONOR ROLL

Grade 5— "A"—Cynthia Chandler, G. e. g. Howard, David Porath, Karen Schaefer.

"B"—Garry Collins, Patty Eisele, Terri Eisele, Richard Foytik, Sherree Freeman, Daniel Gaunt, Judy Gray, Maryann Hess, Danny Hoover, Larry Hopkins, Leslie Irving, Dennis Landwehr, Charles Lane, Janice McGaw, Robert Mester, Joan Platt, Michael Reilly, Chintia Reynolds, Michael Rossbach, Kathryn Schaefer, Janet Sibley, Betty Snyder, Norbert Weber, Wayne Welton, Cheryl Wilkerson.

MRS. GRAU'S Third Grade:

Our class has been writing stories in English. First we talked about using where, when, color, and sound words to make the story more interesting. We also reviewed the use of capital letters and punctuation—marks—in sentences. The subjects we chose for our stories ranged from our own experiences to make believe tales. Many of our stories were most interesting and enjoyable!

One day we tried some modern art. Each child used dark green paper as background to place his abstract design on. Smaller pieces of orange, yellow, and red paper were used in creating the design. Randy Romine had a birthday on Feb. 1.

MRS. BONNER'S Third Grade:

To encourage the class to read library books, Mrs. Bonner's class has been having a reading contest. As each student finished reading a book, he gave an oral report on it. The books were recorded. Last Wednesday the pages were added and prizes awarded. The proud winners were: Jennifer Lane, Phyllis Jedele, Steven Billingsley, Michael Moore, and David Schuelke.

MRS. WINKLE'S Fifth Grade:

Ruth Verchegau, in Mrs. Winkle's fifth grade, made a darling kitten from scraps of wood, cloth, and other material.

She got the idea from our television art program which we have on Wednesday at 10:30.

MRS. VONK'S Fifth Grade:

On Monday afternoon we had a television science program on the eye. We learned that the eye is an organ of sight and should be cared for as something which is irreplaceable. We have a model of the eye in our room. We have made drawings of the eye; one from the book and one from memory. These enable us to visualize the eye and its parts.

We discussed what causes eye-strain. Through class discussions, some of us have vowed to wear our glasses now so we won't have to in Junior and Senior High School.

Friday, Jan. 29, we had 14 parents visit Mrs. Vonk for conferences.

We are well into our projects on Michigan. The invitation still stands to come in and visit. We've become quite good salesmen.

LIBRARY NEWS

From the Desk of Mrs. McManis: We have added the second grades from both North and South Schools to our library classes.

New book shelves have been installed in both schools which help in holding and displaying the new books that we have.

EXTRA NOTICE:

Saturday, Feb. 13, the PTA is sponsoring a Valentine's Day Dance. We invite the public to come out and enjoy an evening of relaxation. Bring your neighbor! Music will be from 9 p.m. to 1 a.m. It will be held in the High School cafeteria.

MR. BENEDICT'S Fifth Grade:

Our class has found some more new friends. We are answering letters from a class of children our own age in Blackpool, England. So far we have found that English school children play some different games and have some different school subjects. They also say something differently from us. We learned from their letters that they are interested in many of the same things we are—sports, doing adventurous things, and popular singing groups. The Beatles and Elvis Presley are known on both sides of the Atlantic Ocean.

We have a new girl who comes from Brighton. Her name is Antoinette Weller but we call her Toni.

A NORTH SCHOOL EXCLUSIVE:

Mrs. Elizabeth Cresswell has joined our staff at North School. She is teaching Mrs. Francis Baldright's second grade class. Mrs. Baldright is expecting a "blessed event." We as a staff welcome her and wish her every teaching success.

She is from Manchester, however we like to think: "She has chosen to teach here!"

Junior High School

HONOR ROLL

End of First Semester

6th Grade — Susan Bales, Eileen Bristle, Jeff Bust, Jant Gross, Donita Dyson, Jill Flintoft (all A), Milton French, Dorothy Gauss, Larry Gorton, Janice Guenther, Jill Kipfmiller (all A), Laurel Lancaster, Jane Mann, John Merkel, Gordon Morgan, Jeff Parsons, Lisa Pfeffer, Denise Salver, Robert Schaefer, Joan Schmidt, Lisa Sharard, Steve Smith, Brad Thompson, Carol Weir, Gayle Winans, Jim Wojcik, Patty Young.

7th Grade — Jacquie Bailey, Trena Bentley, Floyd Boyce, Robert Brassow, Carolyn Buckingham, Cavadas, Vickie Clemons, Stephen Eisman, Terry Freysinger, Beverly GeBott, Pat Gilbert, Kathryn Grob, Jeanne Hinderer, Gail Maistre, Dennis Morgan, Jane Osterle, John Perry, Bobby Peterson, Rod Powers, Douglas Schoenberg, Brenda Seitz, John Sutter, Connie Taylor, Ann Travis, Daniel Wenk, Vickie Wilkerson.

8th Grade — Shelley Balze (all A), Barbara J. Bauer, Curtis Bales, Cynthia Benjamin, Terri Boyer, Steve Dierich, Michel Gray, Susan Guenther, Karen Leach, Richard Marshall, John Potts, Paul Prinzing, Linda Salver, Judy Sanderson, Ryan Smith, Greg Stephens, Thomas Thomson, Jack Wilson.

Ideas are a dime a dozen; what makes success is the ability to put an idea across.

Cafeteria Menu

Monday, Feb. 15 — Goulash, peach cottage-cheese salad, sparkling jelly cubes, bread and butter, milk.

Tuesday, Feb. 16 — Cheese-dog in bun, baked beans, tapioca pudding, milk.

Wednesday, Feb. 17 — Manhattan beef-rod, country gravy, buttered spinach, cheese wedge, bread & butter, pink applesauce, milk.

Thursday, Feb. 18 — Hot-chi chili, cheese sandwich on rye or white, peach cobbler, milk.

Friday, Feb. 19 — Fish-wich on bun, chips, pickles cabbage salad, fruit, milk.

HONOR ROLL

FIRST SEMESTER, 1964-65

12th Grade—Robert Allen, Beverly Arnett, Leon Barnhill, Jennifer Bolton, John Bowling, Valerie Burghardt, Neil Colvia, Gary Cook, Barbara Doyle, Katherine Eder, Julie Eisman (all A), Jane Faust, David Frisinger, George Gavy, Carol Hatley (all A), Donald Hinderer, Carol Jedele, Grace Kuschmaul, Richard Lauson, Billy Leaford, Jerry Manzel, Richard McCalla, Gary Moore, Dowaine Oestler, Sandra Osborne, Alyce Riemenschneider, Linda Sanders, (all A), Lee Satterthwaite, Charles Schmunk, Lucinda Schumm (all A), Kathleen Sutter (all A), Linda Wahl (all A), Audrey Wengren, Marilyn Wenk, Jerry Whitaker, Chris Wieland, Oren Wireman, Diane Worden.

11th grade—Larry Barnhill, Sandra Bauer, David Bales (all A), Rickie Curry, Marianne Edwards, Lee Fahrner (all A), Joseph Fisher (all A), Susan Garlick, Kinyon Gorton, Patricia Guest, Ann Heydlauff, Lauralyn Johnson, Toby Johnson, Linda Keezer, Nancy Koengeter, William Marsh, Patricia Oppe, Laurie Reddeman, Sara Schnake, Duane Schroon, Raymond Seitz, Ben Staphish, Michael Tarasow, Larry Wengren, Carolyn Wilkerson, Mary Ann Winter, Thomas Wojcik, David Wood (all A), Doris Zeeb.

10th grade—Mary Arnett, Eric Batzdorfer, Donna Bolanowski, Elizabeth Bower, John Collins, Candis Daniels, Bonnie Erskine, Jane Farrell, Kim Flintoft, Rebecca Freeman, Sue Gardner (all A), Cheryl Gray, Sheryl Kipfmiller, Janice Koengeter, Mary LaRose, Paul Lancaster, Tina Lindauer, Robert Mac Dougal, William McFall, Tim Meininger, Ellen Merkel, Elaine Paul, Lawrence Porath, Joann Schramm, Sharon Sutter, Catherine Taylor, Anita Wank, Sandra White, Charles Winans, Arlys Wiseman, Ron Worden.

9th grade—Diane Brand, Nancy Buckingham, Janice Bush, Becky Clemons, Sandra Eisele, Evelyn Estes, Joanne Fisher, Kathy Fulk (all A), Susan Gray, Michael Grob, Carol Hepburn (all A), Shirley Howard, Sue Knickerbocker, Sandy Knoll, Lynda Koch, Donald Koengeter, Deborah Kuhl, Karen Lehmann, Dan Maynard, John McKeighan, Karen Miles, Lanny Patrick, Sheryl Peppers, Faye Policht, Cecilia Ritter, Judy Salver, Patricia Sears, Carole Sharrard, Shari Stoffer, Sarah Storey, Carolyn Wenk.

If you are very good, or very smart, somebody will eventually discover it without your bragging about it.

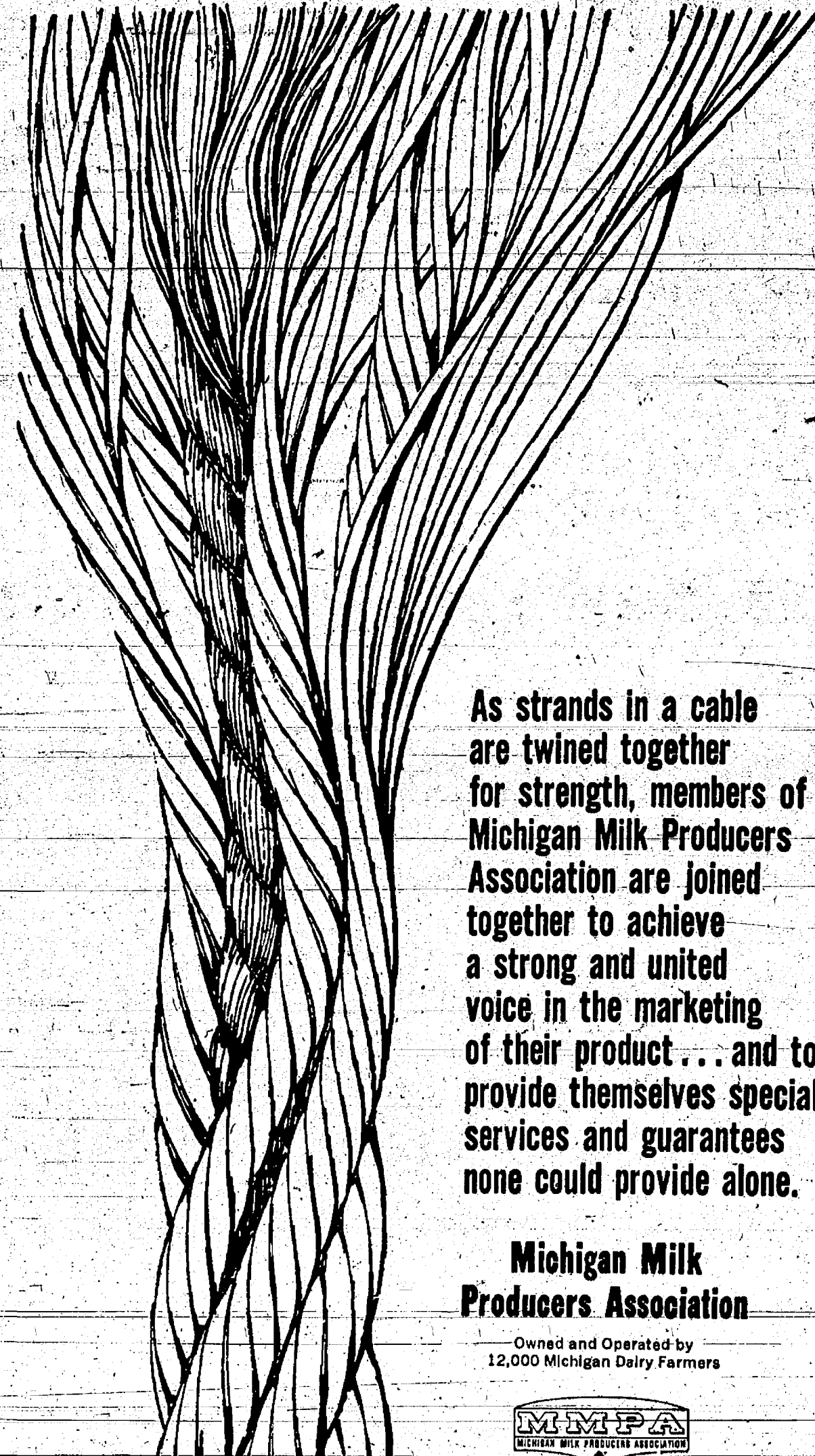
BE COMFORTABLE

There is no "right" temperature setting for a thermostat. There are variables that affect comfort and the setting that suits a home's occupants is the only one that can be called "right."

REPUBLICANS LAUD SPEECH

Many Republicans agreed with the goals President Johnson outlined in his inaugural speech. Senate Republican Leader Everett Dirksen of Illinois called it "an eloquent resume of our history and

an equally eloquent reminder of our responsibilities." House Republican Leader Gerald R. Ford of Michigan said it was a call to arms "on a high plane." Standard Want Ads Get Results!



As strands in a cable are twined together for strength, members of Michigan Milk Producers Association are joined together to achieve a strong and united voice in the marketing of their product... and to provide themselves special services and guarantees none could provide alone.

Michigan Milk Producers Association

Owned and Operated by 12,000 Michigan Dairy Farmers



Stop walking across the street to look at somebody else's Mustang...



now you can get one of your own at your Ford Dealer's!

Mustang production is up! Pick your color, your body style, your engine! (Choice of blazing new 200-cubic-inch Six or V-8's!) Test-drive the one you want... check its unexpected low price... and you'll drive it home! Tomorrow your neighbors will be looking at yours!

CORRAL A MUSTANG FOR AS LOW AS

\$2395.00*

F.O.B. Detroit. Mfr. suggested price

*Manufacturer's suggested retail price for Mustang Hardtop. Destination charges, state and local taxes and fees, if any, not included. Options such as whitewall tires are extra cost. See your Ford Dealer for his selling price.

Test-drive Mustang's lively new Six at your Ford Dealer's PALMER MOTOR SALES, INC.

Chelsea, Michigan

Don't miss "Trial at Nuremberg," Wednesday, February 17, 10 p.m., WWJ-TV, Channel 2. Brought to you by your local Ford Dealer.

Gambles

The Friendly Store

IT'S THE SWEETEST DEAL IN TOWN!

You End Battery Worries for the Next 4 Winters!

VARCON 12 VOLT SUPER ACTIVE

\$19.95

Group 245 Exch. Group 60K, 29H 19.45 Exch.

Buy on Time—No Money Down

Get these Premium Features at a price for less than others charge!

SILVER SEALED GRIDS

HI-IMPACT RUBBER CASE

BONDED Glass Separators

GUARANTEED 4 YEARS*

VARCON 6 VOLT SUPER ACTIVE

14.95

Gr. 1-2L Exch.

Buy on Time—No Money Down

Other Batteries as low as \$7.95 Exch.!

*Warranted on a pro-rata basis. Pay only for service obtained.

ALWAYS BETTER BUYS AT GAMBLES