

HAPPY NEW YEAR

1962



PRIZEWINNING DISPLAY — Tony Juergens' Christmas lighting display, which won first place in the Chelsea Chamber of Commerce lighting contest this year, stressed the spiritual aspect of the holiday season. Prominence was given the Holy Family—Mary and Joseph and the infant Jesus—the entire scene most effectively

lighted by means of a colored disc spotlight. Suspended stars added a novel feature and choir boys at either side seemed to give the traditional atmosphere of peace and goodwill. Juergens' display is at his home, 714 Freer Rd. His prize is \$15 cash.

"MERRY CHRISTMAS" in five languages, English, French, German, Finnish and Polish, decorated the large door of the Donald Baldwins' home, 1023 Freer Rd. The garage decoration also featured a figure of Santa Claus, the entire scene effectively spotlighted. The Christmas wishes were part

of the over-all Yuletide scene which won second prize (\$10) for the Baldwins in the Christmas lighting contest. Stressing simplicity of design, the display included a lamp post on the lawn and colored lights and greens in a continuous line across the house.

SANTA CLAUS and his sleigh and the animated reindeer in the above scene are part of the third place prizewinning Christmas lighting display at the Frank Reed home, 121 North St. Animation was also stressed by means of a rotating Christmas tree while the Christmas display in its

entirety also included a manger scene as well as interior decorations visible from the street. Judges commented that the display at the Reed home gave evidence of "a great deal of time and effort in the preparation." Third prize was \$5.00.

Weather		
	Min.	Max. Prec.
Wednesday, Dec. 20	27	33 Tr. Sn.
Thursday, Dec. 21	25	31 0.00
Friday, Dec. 22	23	31 0.00
Saturday, Dec. 23	24	28 0.03
Sunday, Dec. 24	13	30 Trace
Monday, Dec. 25	18	32 Trace
Tuesday, Dec. 26	22	34 0.00

The Chelsea Standard

QUOTE

Little minds are tamed and subdued by misfortune, but great minds rise above it.
—Washington Irving

NINETY-FIRST YEAR—No. 26

14 Pages This Week

CHELSEA, MICHIGAN, THURSDAY, DECEMBER 28, 1961

10c per Copy

SUBSCRIPTION \$3.00 PER YEAR

BUSINESS EXPERTS SEE BETTER YEAR AHEAD



CHRISTMAS STORE—This was the scene in Sylvan Town Hall Thursday as the annual "Christmas Store" of Chelsea Social Service was set up in order that children and parents in families being assisted this year might come in and choose two toys as a gift for each child. The toys shown include those gathered together in a used-toy drive by the Junior Chamber of Commerce Auxiliary during the past year and repaired and refinished like new at Cassidy Lake Technical Training School. Mrs. Louis Ramp, Chelsea Social Service director,

Many Groups, Persons Help To Provide Christmas Gifts

Chelsea Social Service, one of the beneficiaries of the Chelsea Community Chest, this Christmas has substantial assistance to 72 dolls and 120 children of the community, according to records of the director, Mrs. Louis Ramp. Through the efforts of the Junior Chamber of Commerce Auxiliary, a large number of toys were made available for distribution; the J.C. Auxiliary had collected used toys as a community service project and under the direction of Kenneth J. Shea, superintendent of Cassidy Lake Technical Training School, and Melvin Dunn, instructor in the woodworking shop at the school, the toys were repaired and finished like new at the school and donated to Chelsea Social Service.

Mrs. Ron Branham was JCC auxiliary chairman of the toy drive with Mrs. Richard Salonen and Mrs. Charles Goldman on the committee with her. The three young women took the responsibility for collecting the used toys and setting them to Cassidy Lake

Predict No Nuclear War During 1962

By Roger W. Hanson

1. I am hopeful for 1962; it should be a better year for my readers than 1961. Industrial production will exceed that of 1961.

2. There will be neither a nuclear war nor total disarmament in 1962. Considerable progress may be made toward a ban on atomic weapons.

3. Some 3,000 stocks may reach an average of 1,000 during 1962, although these will not necessarily be the 30 Dow-Jones stocks.

4. Retail trade will make new records during 1962. Increased newspaper advertising, especially in colors, will be a great boon to merchandising.

5. Commodity prices will act erratic during 1962. Agricultural prices will be held up by legislation, but many metals will sell for less.

6. The official cost-of-living figure will rise slightly in 1962, but there may be a scandal in Washington over how this figure is calculated or adjusted. The real increase in the cost-of-living will be due to increased wages demanded.

7. The only certain shortages during 1962 will be in land suitable for parking places and waterfront property readily accessible to building lots; also for automobile "graveyards" near cities which have been zoned.

8. The building of shelters will look silly before the end of 1962. Certainly the Federal Government will not underwrite the building of private shelters for individual families.

9. Good real estate must rise in price as the population increases. Elementary mathematics determines the price of suburban real estate. This is notwithstanding the claim of the "space companies" which are said to be interested in selling rights on the moon. There probably are crazier speculations.

10. While the land on which your house now stands should increase in value during 1962, the building itself depreciates from the moment when it is first occupied. A possible exception would be certain very attractive ranch houses painted in color.

11. Automobile production will be the most important statistical indicator during 1962. This applies to both the number of automobiles and their sales value. We now have no reliable figures for the latter.

12. We will gradually approach an average of two cars for every family. The life of automobiles should gradually increase. The percentage of automobiles annually destroyed will decrease in 1962.

13. Automobiles and gasoline will be increasingly sources for raising money by taxation. These means will be extended to include an additional assessment on the manufacturers of automobiles.

14. Taxes, as a whole, will continue to increase in 1962 for every

family. The life of automobiles should gradually increase. The percentage of automobiles annually destroyed will decrease in 1962.

13. Automobiles and gasoline will be increasingly sources for raising money by taxation. These means will be extended to include an additional assessment on the manufacturers of automobiles.

14. Taxes, as a whole, will continue to increase in 1962 for every

If You See Red Geese Don't Blame New Year's Party

By Roger W. Hanson

1. I am hopeful for 1962; it should be a better year for my readers than 1961. Industrial production will exceed that of 1961.

2. There will be neither a nuclear war nor total disarmament in 1962. Considerable progress may be made toward a ban on atomic weapons.

3. Some 3,000 stocks may reach an average of 1,000 during 1962, although these will not necessarily be the 30 Dow-Jones stocks.

4. Retail trade will make new records during 1962. Increased newspaper advertising, especially in colors, will be a great boon to merchandising.

5. Commodity prices will act erratic during 1962. Agricultural prices will be held up by legislation, but many metals will sell for less.

6. The official cost-of-living figure will rise slightly in 1962, but there may be a scandal in Washington over how this figure is calculated or adjusted. The real increase in the cost-of-living will be due to increased wages demanded.

7. The only certain shortages during 1962 will be in land suitable for parking places and waterfront property readily accessible to building lots; also for automobile "graveyards" near cities which have been zoned.

8. The building of shelters will look silly before the end of 1962. Certainly the Federal Government will not underwrite the building of private shelters for individual families.

9. Good real estate must rise in price as the population increases. Elementary mathematics determines the price of suburban real estate. This is notwithstanding the claim of the "space companies" which are said to be interested in selling rights on the moon. There probably are crazier speculations.

10. While the land on which your house now stands should increase in value during 1962, the building itself depreciates from the moment when it is first occupied. A possible exception would be certain very attractive ranch houses painted in color.

11. Automobile production will be the most important statistical indicator during 1962. This applies to both the number of automobiles and their sales value. We now have no reliable figures for the latter.

12. We will gradually approach an average of two cars for every family. The life of automobiles should gradually increase. The percentage of automobiles annually destroyed will decrease in 1962.

13. Automobiles and gasoline will be increasingly sources for raising money by taxation. These means will be extended to include an additional assessment on the manufacturers of automobiles.

14. Taxes, as a whole, will continue to increase in 1962 for every

Holiday Cage Tournament Is Underway

By Roger W. Hanson

Saline Hornets vs. South Lyon Lions were to play the opening game of the third annual Chelsea Holiday Basketball tournament, scheduled for 5 o'clock yesterday afternoon.

According to the tournament schedule this first game was to be followed by Manchester's Flying Dutchmen against the Brooklyn Golden Eagles at 6:30 p.m.; Dexter Dreadnaughts against Stockbridge Panthers at 8 p.m.; and Jackson St. Mary Celts vs. Chelsea Bulldogs at 9:30 p.m.

The Holiday tournament continues for its second round this evening (Thursday) when the loser of the Saline-South Lyon game will play the loser of the Manchester-Brooklyn game at 5:00 p.m., followed by the winners of the Dexter-Stockbridge and Chelsea-St. Mary's games at 6:30 p.m. At 8:30 p.m. the loser of the Chelsea-St. Mary's game will play the loser of the Dexter-Stockbridge game, with the winners of the Saline-South Lyon and Manchester-Brooklyn games playing at 9:30 p.m.

No games are scheduled for tomorrow night but the tournament will resume with a 5 p.m. game Saturday between the losers of tonight's 5 p.m. and 8 p.m. games.

At 6:30 p.m. Saturday the competing teams will be last night's winners of the 5 p.m. and 8 p.m. games playing for a consolation bracket trophy being awarded for the first time this year.

The 8 p.m. game Saturday will be between the losers of tonight's 6:30 and 9:30 p.m. games, followed by the championship game at 9:30 between the winners of tonight's 6:30 and 9:30 p.m. games.

Impromptu Committee Starts Improvements On Ice Skating Pond

Extra New Year's Patrols Planned By Police Forces

Emphasizing that the increased drinking and fatigue which accompany New Year's partying add to traffic dangers, the State Police are preparing for the holiday patrol urge motorists and pedestrians to take extra precautions during the 78-hour week-end.

"The New Year is an appropriate time to resolve that, whenever you drive or walk, you will do all that you can to avoid being involved in an accident," said Commissioner Joseph A. Childs. "Full attention to the safety rules, in cooperation with law enforcement patrols, can help hold the line on the holiday toll."

The state Police will operate increased patrols from noon Friday, Dec. 29, to midnight Monday, Jan. 1, assisted during part of that time by 106 members of the National Guard.

Maximum patrol coverage will be in effect from 1 p.m. Sunday, Dec. 31, to 6:30 a.m. New Year's day, the hours when most year-end celebrating is being done.

Seventeen persons were killed in traffic mishaps in the 78-hour New Year's period a year ago, an average of one death every four hours and 45 minutes.

Letts Creek Clean-Out Project Requires Deepening Adjacent Pond

A committee of five Chelsea men, designated as "Chelsea Activities Committee" has set in motion a grand-scale improvement project at the skating area adjacent to Veterans Memorial Park and behind the residences on the west side of North Main St., known as Macwood Skating Pond.

Literally tons of earth have been dug up to deepen and enlarge the pond area.

A member of the committee told the story of developments as follows:

The arrival of Christmas vacation triggered the stampede of children from all over town toward the Macwood skating area adjacent to Veterans Memorial Park only to see them dejectedly turn around and return, some with their unused skates still slung over their shoulders.

The cleaning and deepening of Letts Creek had left their skating pond, which had echoed their laughter and merriment for the past four winters, high and dry.

Something had to be done! The success of this skating area depends upon the pond being as deep or deeper than the creek in order to maintain proper water level in the skating area, and this fact left



SKATING POND DEEPEMED — At left in the above photo, Dr. L. J. Paul, Wallace Wood, Lyle Haselswerdt and Thomas McClellan were on hand for a look at the deepened original skating area of Macwood Skating Pond nearest Letts Creek. The digging equipment is visible at the upper right and the great piles of earth which were removed to raise the water level in the pond are in full view all around the water's edge. Grading must await warmer weather in the spring. (See other photos, page 8.)

Established 1871
The Chelsea Standard
 General Excellence Award by Michigan Press Association,
 1951-1952-1953-1954-1955
 Walter C. Leonard—Editor and Publisher



Published every Thursday morning at 300 North Main Street, Chelsea, Mich., and second class postage paid at Chelsea, Mich., under the Act of March 3, 1879.

Subscription Rates (Payable in Advance):
 In Michigan: One Year \$3.00 Six Months \$1.75 Single Copies \$.10
 Outside Michigan: One Year \$4.00 Six Months \$2.25 Single Copies \$.10
 Service men or women, anywhere, 1 year \$3.00
 RETURN POSTAGE GUARANTEED

New Year's Resolutions Might Include Plans To Start Family Health Record

This is the week for New Year's Resolutions and we have a suggestion. Resolve to begin in 1962 keeping a Family Health Record.

How many times have you needed basic health facts about members of your family—for school records, for insurance forms, for a doctor's medical history?

A family health record is your compilation of these facts. Like vital statistics in the family Bible, notations on family health—kept accurately and up to date—can be of permanent value.

The record should contain pertinent facts on immunizations, illnesses, injuries and physical examinations. The record will prove its worth only if kept carefully. Start immediately to jot down basic information you know already. Enter accurately all injuries and illnesses. When you next see your physician, take the family health record along so notations may be made while they are fresh in your mind.

A small schoolboy's notebook will do for a record book. Or you may obtain a small account book or ledger from a stationery shop.

Begin with a brief listing of the family history. Date and place of birth of each member. If any are deceased, date and cause of death. Pertinent medical facts about each family member such as chronic disease or illnesses (cancer, diabetes, epilepsy).

Next should come a section for dates of immunizations, with spaces for each member of the family. The columns should allow room for listing immunizations against whooping cough, diphtheria, tetanus, typhoid, polio and smallpox. There should be space for noting dates of booster shots.

A section on general information should include such data as the blood type of each family member, whether the RH blood factor is known to be present in any of the family and special allergies or drug sensitivity of each.

A check list of the more common diseases—chicken pox, measles, German measles, mumps, whooping cough, scarlet fever, diphtheria—should be included. Most of these are childhood diseases, but sometimes an adult is exposed. German measles can be very serious in an expectant mother. Mumps is a serious disease in adults.

Another section should provide a place for noting dates of physical examinations with a line or two to make note of special advice or instructions that followed the checkup. Illnesses requiring hospitalization should be recorded, listing nature of the illness or injury, name of physician, name of hospital, dates of entry and discharge, length of illness, if surgery was performed describe it briefly. Illnesses at home should be recorded also.

Finally, a section listing the family's health and accident insurance information will be helpful.

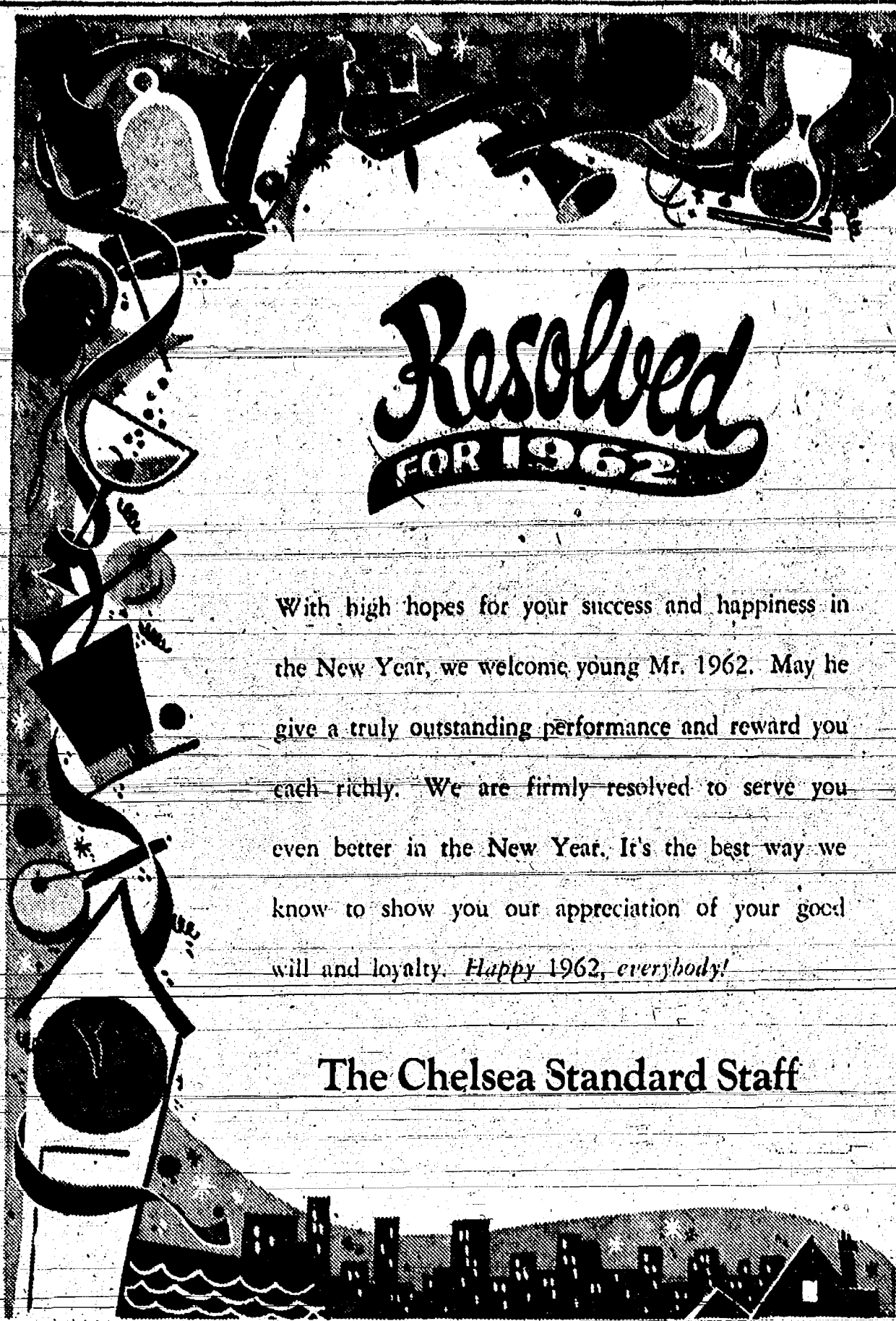
Relatively few families keep health records, but everyone sooner or later finds need for the information. Keep your family health record up to date at all times as an added safeguard to your family's health.

A HANDFUL OF GOOD WISHES FOR THE COMING NEW YEAR

Washtenaw Sheriff's Department
 Sheriff George A. Petersen and Staff



Wallace C. Wood
 State Farm Mutual Insurance Companies
 105 South Main Street Phone GR 5-5341
 Chelsea, Michigan



With high hopes for your success and happiness in the New Year, we welcome young Mr. 1962. May he give a truly outstanding performance and reward you each richly. We are firmly resolved to serve you even better in the New Year. It's the best way we know to show you our appreciation of your good will and loyalty. *Happy 1962, everybody!*

The Chelsea Standard Staff

MICHIGAN MIRROR

By Elmer E. White, Secretary, Michigan Press Association

Higher education in Michigan, especially in state-supported institutions, has come a long way since the 1907-08 constitution was written.

At that time the document, which is now under scrutiny for revision in Lansing, listed only one institution, the University of Michigan, as a constitutional entity unto itself.

Now, two universities have been added to the list: Wayne State University and Michigan State University, and many of the other state institutions of higher learning have changed their status.

Eastern, Western and Central were formerly teachers' colleges. They have gained university status and their enrollments reach new limits almost yearly. The others, Northern Michigan College, Michigan Tech and Ferris Institute, have also grown with increasing rapidity.

This year, a 10th four-year institution was created by the legislature for western Michigan, now known as Grand Valley State College.

During the years these developments have taken place, other changes in the field of higher education have also been recorded. The number, size and curricula in community colleges have increased. Educators now say the community colleges will gain in importance in future years, at least partly because of the rising need of some post-high school training for employment.

Michigan's college-age population, youth between the ages of 18 and 24, will be 35 percent larger in 1975 than it was last year, according to a prediction by Dr. David Goldberg, program director of the University of Michigan's Institute of Public Administration.

This would give Michigan's colleges and universities a potential enrollment of better than 400,000 students in less than 15 years.

Need for a sound philosophy by state leaders about the financing of college education is underlined in a Wayne State University proposal which comes up for legislative consideration in the next session.

Wayne has submitted a plan to raise tuition at that university in return for an increase in state support. "The matching feature," says President Clarence B. Hilberry, "means a sharing of responsibility by the taxpayers and by the families immediately concerned, rather than the assignment of the whole cost to either."

Loans to students is another suggestion from Wayne. This deferred payment feature would require the student or his family to start payment after he had finished college.

Initial reactions from legislators has been one of "interest." This is proper and predictable. Anyone connected with the budget should be interested in ways to reduce it and to make state money go further.

What Michigan needs in order to have a sound solution to its college financing question is a facing up to the basic problem of what people of the state want to supply in the way of higher education for Michigan youth.

If higher education is sufficiently important to make it available to a high percentage of qualified high school graduates, increasing tuition seems to be a step in the wrong direction. If college training is to be made available to those who can afford to pay the portion the state cannot or does not pay, then the increase in the cost to the student makes sense.

Until the philosophical policy is determined, educators, legislators and the public will be dealing with stopgap ideas.

Women drivers may take some encouragement from a national study which shows the female motorist has far fewer accidents than men.

That is, the report is cheering for women if they read only the first section.

The final conclusion of a 12-month study by the National Safety Council indicates women have less accidents than men, but in proportion to the number of miles driven by the sexes, women have the poorer record.

About 61 million male drivers were involved in 15 million accidents during the study. In the same period 8,500,000 accidents occurred involving the nation's 21 million woman drivers.

In Michigan water supplies are low in iodine, so use of iodized salt is important, say foods and nutrition specialists.

Women drivers may take some encouragement from a national study which shows the female motorist has far fewer accidents than men.

That is, the report is cheering for women if they read only the first section.

The final conclusion of a 12-month study by the National Safety Council indicates women have less accidents than men, but in proportion to the number of miles driven by the sexes, women have the poorer record.

About 61 million male drivers were involved in 15 million accidents during the study. In the same period 8,500,000 accidents occurred involving the nation's 21 million woman drivers.

In Michigan water supplies are low in iodine, so use of iodized salt is important, say foods and nutrition specialists.

JUST REMINISCING

Items Taken from the Files of The Chelsea Standard

4 Years Ago . . .

Thursday, Dec. 19, 1957—The annual Community Chest-CIO Christmas party, held at Sylvan theatre Saturday, was attended by 1,425 children.

Middleman David Bertke, home on holiday leave from the U. S. Naval Academy at Annapolis, showed a film pertaining to the Academy at the Kiwanis club meeting Monday.

In the 34 Years Ago column (Dec. 13, 1923): L. E. Guinan is entitled to claim a pound of coffee from a Chicago company, according to a note attached to a tiny balloon which came down on his farm in Lyndon township. The coffee is a prize for finding the balloon, the note states.

14 Years Ago . . .

Thursday, Dec. 18, 1947—Connecting its first year as the Women's Guild of St. Paul's church, the organization held the Christmas meeting Friday evening with more than 65 percent. Guild membership now numbers 102.

Many fox hunters are testing their skill in this area and conservation officers report that some giant ones are turning up in claim for bounties—one said to be four feet long and another, killed in Shiron township, weighed 21 lbs. In the two months since the fox bounty went into effect, the conservation department has paid \$39,300 for the killing of 7,878 foxes.

In the 34 Years Ago column (Dec. 13, 1923): Taxes now being collected in Sylvan township amount to \$28,000, the assessment being \$17 per \$1,000.

24 Years Ago . . .

Thursday, Dec. 23, 1937—George E. Haist, Lima township sheep breeder the past 34 years and winner of many awards on his Black Top Delaine Merino fleeces, has this year, for the first time, received the honor of exhibiting the grand champion fleece at the Chicago International Livestock Show.

Beginning Jan. 1, 1938, ice fishermen may use two lines with a total of not more than four hooks on all lines. This replaces the former regulation of two lines with a single hook on each line.

In the 24 Years Ago column (Dec. 25, 1913): It is announced that no special services will attend the opening of traffic of the new Michigan Central depot in Detroit on Jan. 4, 1964.

In the 34 Years Ago column (Dec. 24, 1903): Stat' in & Son have torn down their old ice house at Cavanaugh Lake and are erect-

34 Years Ago . . .

Thursday, Dec. 22, 1927—A new signal system is being installed at the Main St. railroad crossing. The system is equipped with red lights which flash when a train is approaching.

Mrs. Neva Hatt Lehman, 22, her son Leonidas, 4, and daughter Alene one and one-half years old, died Monday as the result of burns received when Mrs. Lehman was kindling a fire with kerosene and it exploded.

Unholstered seats have been installed in the Princess Theatre, greatly adding to the seating comfort.

Good quality interfacing for clothes feels springy when it is crushed in the hand and recovers quickly without wrinkles when it is released, says Bernette Kahanka, clothing specialist at Michigan State University.

Standard Want Ads Not Results

FROM THE GOVERNOR'S CHAIR

By John B. Swainson

Lansing—A recent tour of a Michigan state home and training school for the mentally retarded and a state hospital for the mentally ill was a vivid reminder that the holiday season is not always a joyous time for many.

A group of newsmen joined me in a day-long inspection of facilities at Lapeer State Home and Training School and Pontiac State Hospital that pointed up the problems of overcrowded conditions and lack of personnel facing all our state-operated mental health institutions.

We saw, for instance, one of the buildings at Lapeer where two attendants supervise some 70 severely retarded patients. Facilities for these patients include one bathtub and one toilet. At night three persons supervise six dormitories that sleep 265 patients.

More than 3,600 patients are cared for at Lapeer, with more than 1,000 on the waiting list. Probably one of the most significant facts that becomes apparent when visiting any of our hospitals for the mentally ill or the retarded is that many of the patients represent a generation of neglect.

As in all illnesses, early detection and treatment can mean the difference between many years of hospitalization or the chance of a constructive, productive life for the community.

I have emphasized the need for community care facilities for mentally and emotionally disturbed and the mentally retarded, and will continue to ask the legislature for funds so that action can be taken on this front.

In addition, the legislature no longer continues to ignore the fact that our hospitals for the mentally ill are 18 percent over capacity and facilities for the mentally retarded are 16 percent over capacity—that more than 10,000 mentally retarded patients are waiting for care.

We must provide attendants some 90 wards in our state hospitals that are unattended at night during one shift change.

We must also see that the children now housed with adult patients in our mentally ill hospitals have suitable quarters, proper specialized treatment and that they are not receiving now.

So, as we approach the new year, it is my profound hope that Michigan will meet its responsibility in providing for the mental health needs of our citizens. We can afford to do otherwise.

Uncle Lew from Lima Says:

DEAR MISTER EDITOR:

Zeke Grubb's preacher come by the country store Saturday night, told the fellers he was trying to get his nerves back in shape from a pretty hard week.

He reported that things got started on the wrong foot last Sunday morning when he had a few words to say about drinking and gambling. He got a unsigned letter Monday advising him that drinking and gambling was a disgrace and a matter for the medical profession. It was caused, the letter claimed, by somepun that happened to a feller in his youth, like weaning him too young.

The good Parson said he recollected when he was a boy his Uncle Cyrus come home drunk every Saturday night and his old lady used the rolling pin on him.

Now, allowed the Parson, she'd probably give him a shot of penicillin. He said it looks like a penicillin has took over all the sins and it might be better for him just to pass out a few pills at Sunday School and go on home.

But the hard part of the week, he told the fellers, come Friday night when the Fund Raising Committee met to report on the annual canvas. After counting up the pledges it was voted that the church budget was in a state of emergency and it might be necessary to name a Emergency Committee to work on the problem.

One feller, for instant, told Rufe Zinder he didn't believe in making no pledge. He said things was so uncertain these days that he didn't sign nothing in no shape or form.

Rufe told the Committee he happened to know this fellow was buying his car, his motor boat and color TV set on the installment plan. Rufe couldn't figure out how he was getting them things without signing somepun.

Another member told Hezekiah Adams that he didn't use no envelopes, just dropped a big handful of money loose in the plate. He allowed as how the congregation would be surprised at how much he dropped in the plate loose ever Sunday. The Parson said he took all the loose offering one Sunday and divided it among the members that said they give loose and it

come to seven cents apiece. He said the major problem was them putting-it-in-loose members.

Ed Doolittle told the preacher that if he was in his fix he'd invent a new kind of offering plate. Ed said he had somepun in mind like a plate that, if you put a paper bill in it, the bill would float to the bottom real quiet. If you put in small silver, a bell would ring, and if you put in pennies, it would snap your pleasure.

Ed figured the preacher could get the film whole and that after the first couple Sundays, he wouldn't need no film. The good Parson thanked Ed, said he would take the idea up with the Emergency Committee.

Yours truly,
 Uncle Lew.

Stamps To Battle Malaria

More than 60 countries have already given firm commitments to issue a special stamp during 1962, the sale of which will raise funds to help the World Health Organization of the United Nations in its campaign to eradicate malaria as a threat to mankind. In making public this fact Dr. Rudolph L. Coigney, of the WHO noted that despite progress to date, more than 1,000,000,000 persons are still susceptible to the disease in 140 countries and territories, in which it takes a fearful annual toll in lives and in economic losses. The inter-governmental Philatelic Corporation is assisting in the drive, Dr. Coigney added.

We men believe nothing that contradicts their intelligence.

FARMERS

FOR TOP PRICES
 FOR YOUR LIVESTOCK
 Consign to the

Howell Livestock Auction

We have buyers for all kinds of livestock. Sale every Monday at 2 p.m.

Phone 1089 Howell
 For Any Information



Father Time ushers in the New Year
 . . . and we'd like to begin it by extending our hearty good wishes to you and your family. May your New Year be a healthy, happy, prosperous one. We are proud to be able to serve you, and most grateful for your patronage and good will.

ALBER OIL COMPANY

Don, Betty, Will, Al, Clarence and Doug

Chickadees Reported Feeding Here

Frederick Schultz of 20184 West, reports that 10 chickadees were at her window feeder station at 10:30 a.m. on Friday morning. As large as the male birds are a metallic yellow with white on the wings and with the heavy conical bill which they derive their name from.

Among the many bird feeders in the village is one at the home of Mr. and Mrs. Walter and Mrs. Annabelle Woolf. There at least nine varieties of birds are seen feeding every day. House, creper, cardinal, junco, tree sparrow and English sparrow.

Feeding with Mr. and Mrs. J. I. who have three feeding stations in full view from a large window at the rear of their home on Wilkinson St. It was as 30 of the evening frost feeding at one time.

Cardinal, downy woodpecker, titmouse, chickadee, blue jay and starling are represented in large numbers as are pheasants, rabbits and some cedar waxwings. Refreshments were served by Troop 58.

Corinne Musser, scribe.

BROWNIES

TROOP 625—We took our Santa Claus, made out of orange juice cans, to the convalescent home Thursday and went from there to the home of Mrs. Basil Greenleaf for our Christmas party and opened our Christmas gifts.

Charlotte Salyer, scribe.

TROOP 606

Troop 606 met in room seven and then left for Bismarck's farm. We were guests of Troop 58. They put on a play for us. Then we sang some Christmas carols. Refreshments were served by Troop 58.

Corinne Musser, scribe.



Gelman Instrument Develops New Cancer Detection Kit

CANCER DETECTION KIT—A low cost testing kit, which simplifies cancer detection, features apparatus manufactured in Chelsea by Gelman Instrument Co. The Journal of Clinical Pathology reported details of the technique of the kit in its November issue.

A simplified, low cost testing kit designed to make the individual doctor's office a cancer detection center has been introduced by Gelman Instrument Co. of Chelsea.

The kit, to be used at bedside or in the office to filter cancer cells from body fluids for laboratory examination, consists of a polypore membrane filter and a disposable plastic filter holder. With it are used inexpensive, readily available materials including an ordinary paper clip, a standard hypodermic syringe and glass microscope slide, instead of costly equipment.

The effectiveness of membrane filters in the recovery of cancer cells from the urine and other body fluids has been scientifically documented, but general use has been limited heretofore because of the cost of special equipment and the time and care required in its handling.

Dr. H. Bernhardt, assistant chief of laboratory services at the Veterans Administration Hospital in Memphis, Tenn., headed a team of scientists who researched the improved technique which features Gelman apparatus. Details of the technique were reported in the November issue of the Journal of Clinical Pathology.

Christmas Gifts for Needy ...

(Continued from page one)

Bureau and Chat 'n' Seau of the Congregational church each contributed money to Chelsea Social Service to provide Christmas gifts for needy families.

More money than ever before was contributed this year by private families in Chelsea who wished to help provide for needy persons.

The FHA club, (Future Homemakers of America) of Chelsea High school secured names of a large number of children four to nine years old from Mrs. Ramp and had a Christmas party for the children. Esther, Chapter of the Women's Fellowship of the Congregational church made holiday centerpieces to place on top of each box of gifts distributed; Cub Scouts of Den VI and Webelos, also Girl Scouts of Troop 496 made toys or otherwise provided some as their Christmas project for Chelsea Social Service; and the Women's club packed gift boxes for patients at Colonial Manor Nursing Home.

The list of contributors continues with Ruth-Naomi Chapter of the Congregational Women's Fellowship, whose members wrapped individual packages of candy to include in each family box; Chelsea High school and Junior High school students who contributed a total of 23 large cases of canned goods delivered to the Social Service headquarters by High School Principal Charles Lane assisted by faculty members; the CHS Latin club who contributed a lump sum of \$40; Chelsea Milling Co., who contributed six cases of Lifty Mixes and 25 new cottons for packing the boxes of food for delivery to families; and St. Barnabas Episcopal church members who held a White Gift Sunday and contributed a large amount of canned goods individually wrapped in white tissue.

Direct assistance of Chelsea Social Service went to 48 adults and 102 children; referrals of 20 adults to the Salvation Army were arranged; and four families (four adults and 18 children) were referred to organizations at the organizations' requests.

In addition to the large box of food given to each of the families on the list, food orders of from \$5 to \$20, according to the size of the family, were added to provide holiday meals.

New clothing, most of it contributed through the Chelsea Branch of the Needlework Guild, is being distributed this week by Chelsea Social Service.

Mrs. David Colquhoun and Mrs. Arthur Patterson assisted Mrs. Ramp in setting up the customary "Christmas Toy Store" at Sylvan Town Hall, together with the committee of JCC Auxiliary members who had been active in collecting and arranging for the rejuvenation of toys for distribution.

Mrs. Ramp, mentioning the assistance received from so many sources, said "every effort was made to provide a good Christmas for each needy family in the community, and a whole-hearted assistance freely provided by many persons and organizations made it possible for Chelsea Social Service to achieve this goal."

The Rev. and Mrs. Harold S. Biotta and children spent the Christmas week-end at Indian Head, Md., near Washington, D. C., visiting friends in their former congregation there. Guests at their home here last week were the Rev. Biotta's parents, Mr. and Mrs. T. M. Gurney of Delphos, O. Saturday evening the family enjoyed a pre-Christmas gathering at the home of Mrs. Biotta's parents, Mr. and Mrs. Gottfried Metzger in Ann Arbor.

CUB SCOUT NEWS

PACK 125—Cub Scout Pack No. 125 met Dec. 21 at the Junior High school. The theme for December is "A Cub Follows, Helps and Gives." The Webelos and Den 8 put up the chairs and tables.

Den 1, with Mrs. A. J. Harmon, and Den 5, with Mrs. P. Hollinger, formed a reception committee.

Decorations were provided by Den 8, Mrs. J. Eversen, and Den 9, Mrs. McKaig. There were two Christmas trees all decorated and the front table had a lighted decoration.

The opening and closing flag ceremony was by Den 9 and Mrs. McKaig.

Mrs. Russell Gardner led the group in a Christmas song.

There were many lovely Christmas exhibits displayed by Dens 1, 2, 3, 4, 5, 6, 7, 8, 9, 11, 13, and Webelos.

Perfect attendance awards for parents present went to Dens 1, 2, 3, 4, 5, 6, 7, 8, 9, 11, 12, and Webelos.

Den 6 presented all committee members with a gift.

This area is now known as District 4 and includes Chelsea, Saline, Milan, Dexter, Manchester and Whitmore Lake. The executive director, Fred Sundling, of Saline, was introduced and he gave a talk. He said Chelsea Cub Scouts should be very proud of the fact that they have had the highest number of representatives at the roundtable meetings.

Mrs. V. Parks gave a reading entitled, "A Christmas We Never Forgot."

All dens participated in a prayer poem with each den reading a portion.

Everyone joined in singing "Jingle Bells" and Santa Claus arrived with candy canes for all the children.

It was announced that there will be a social hour for den mothers at Mrs. V. Parks' home on Jan. 8 at 7:30 p.m.

The January Pack meeting will be held at Junior High school Jan. 18 at 7:00 p.m.

The following awards were presented by V. Hills and W. Grossman at Thursday's Pack meeting: Floyd Boyce and Richard Marshall, 1 silver arrow; David Heydlauff, 1 wolf patch; 1 gold and 1 silver arrow; Donald Bower, 1 wolf patch; James Kalmbach, 1 wolf patch; 1 gold and 2 silver arrows; Ben Bower, 1 silver arrow; Craig McLarty, 1-year pin; Donald Soule, 1 gold, 2 silver arrows; Andy Soule, 1 gold, 1 silver arrow and 2-year pin.

The list continues with Doug Lindsay, 2-year pin; John Hepburn, 2 silver arrows; Bruce Parks, 1 silver arrow; Michael Bauer, 1 wolf patch and 1-year pin; Michael Bassett, 1 wolf patch; 1 gold and 1 silver arrow; 1-year pin; John Bassett, bob cat pin; Lawrence DeSmith, 1 gold arrow; near patch; 1-year pin; Richard Pichea, 1 wolf patch; 1 gold arrow; Daniel Scott, 1 gold, 1 silver arrow and 1-year pin; Bobby Peterson, 1-year pin; Don Arnett, 6 silver arrows; Steve Eversen, 5 silver arrows; Tom Taylor, 2 gold, 4 silver arrows; Don Hafner, 2-

year pin; Paul Prinzing, 2-year pin; Daniel Maurer, 2-year pin; Bill Boyle, 2-year pin; James Poertner, 1-year pin.

Raymond Worden received a Den Chief's Warrant and Den Chief cards went to John Harmon and Harry Burnett, III.

An Honor Unit award was presented to W. Grossman at the Fall Roundup and is to be given to the Junior Chamber of Commerce.

Den 6, Mrs. Vernon Parks and Mrs. Curtis Farley, had inspection of all the dens on wearing the uniform properly. Perfect score of 20 went to Den 6.

Deep plowing to a depth of 22 inches increased the yield of corn 15.4 bushels per acre in research conducted by Michigan State University soil scientists.

Holiday Tourney ...

(Continued from page one)

Chelsea was the winner in the 1960 tournament and Saline won the first Chelsea-Holiday tournament which took place here in 1959.

In announcing the tournament Chelsea's Coach Robert Taylor predicted some of "the finest competition the area can provide," contestants being four Class "B" schools—South Lyon, Saline, Stockbridge and Chelsea—and the four remaining ones being Class "C" schools—Brooklyn, Dexter, Manchester and Jackson-St. Mary's.

Tickets are available at the door only.

The tournament is being held at the Chelsea High school gymnasium.

Happy New Year

Hope 1962 treats our customers as well as they treated us in 1961. Thanks, all!

YEAR-END FURNITURE SALE

Drastic Reduction on entire stock Friday and Saturday, Dec. 29-30 Only

MERKEL BROS.

HAPPY NEW YEAR

Our wish is that you may rise to ever greater heights of success and happiness in the New Year.

And may your future rest on a firm foundation of good health and good fellowship.

WEINBERG DAIRY

HAPPY NEW YEAR

THE MARTIN E. MILLER INSURANCE AGENCY WISHES EVERYONE A VERY HAPPY AND PROSPEROUS NEW YEAR AND ANNOUNCES ITS AFFILIATION WITH HARRY LEE FRENCH INSURANCE, 1829 WEST TADIUM BOULEVARD, ANN ARBOR, MICHIGAN.

MR. MILLER WILL REMAIN IN THE INSURANCE FIELD AT HIS PRESENT ADDRESS, 525 McKINLEY, AS A REPRESENTATIVE OF THE FRENCH AGENCY, CONTINUING TO OFFER THE PEOPLE OF CHELSEA AN OPPORTUNITY TO PURCHASE DEPENDABLE INSURANCE AT MODERATE PREMIUM COSTS.

TRUSTING OUR FUTURE RELATIONS IN THIS FIELD WILL BE OF MUTUAL BENEFIT, I REMAIN,

Sincerely,
MARTIN E. MILLER

Look to 1962... May you see a New Year of bright promises fulfilled, a year of happiness, good health, prosperity and peace.

A. D. MAYER AGENCY
Insurance for Every Need

New Year Greetings

May success and happiness be yours in 1962 and in all the years to come.

We will close at 7 p.m. New Year's Eve and be closed all New Year's Day

Bill Brown's Super Service
Bill — Bill, Jr. — Bob — Jim — Doug

Best Wishes for the New Year

Lots of luck in the coming New Year! We hope it proves to be the happiest ever!

CHELSEA BODY SHOP
WM. L. WILKERSON

MEABON'S TV, Furniture & Appliance
LEON and ESTHER

YEAR-END SALE FRIDAY and SATURDAY

CLEARANCE

All soiled, discontinued merchandise, short lots, broken sizes, plus special purchase will be put on sale at Drastic Price Reductions ...

25% to 50% Off

After the Busiest and Biggest Christmas business we have had in our entire Chelsea history, we find odd lots, broken sizes and many items that we do not wish to take in inventory. We have combed our stocks and marked these items at Drastic Price Reductions ... They are assembled on our Second Floor for easy shopping. Don't miss this opportunity to buy Quality Merchandise at just a fraction of original prices!

Another Lot of Salesman's Samples REDUCED from 33 1/3 to 50%

Men's Wear, Women's Sportswear, Hosiery, Gloves and Mittens, Boys' and Girls' Wear, Blouses, and many others ...

Shop FRIDAY AND SATURDAY, DECEMBER 29th and 30th

ANDERSON'S Where Friendly, Courteous Service Makes Shopping a Pleasure.

Force Seeks Teachers for Jobs Foreign Bases

A civilian personnel office at Selfridge Air Force Base has announced that an Air Force representative will be conducting interviews during January and February at the University of Michigan, Wayne State University, and Eastern Michigan University for Air Force dependent school children during the 1962-63 school year.

Positions are available for Air Force dependent schools in England, Pakistan, Morocco, Libya, France, The Azores, Brazil, Philippines, Japan, Saudi Arabia, Newfoundland and Labrador, and applicants may indicate countries in which they would accept assignments.

To be eligible, the applicant must have a bachelor's degree; a teaching certificate; two years of teaching experience; and be unmarried.

Those interested in applying for these teaching positions should contact Miss Fuller, overseas personnel officer in the civilian personnel office at Selfridge Air Force Base for an interview appointment or to learn further details about the program.

During January, interviews will be conducted at Western Michigan University, Grand Rapids; Central Michigan University, Northern Michigan University, and at the Michigan Employment Security Commission office in Traverse City.

Mrs. Mildred Jarvis returned yesterday morning after spending the Christmas week-end with her daughter and family, Mr. and Mrs. Ivan Guiter and children, at Mazoo.

Babson Forecasts Better Business for '62

(Continued from page one)

family, Business net taxes, however, will decrease in 1962, through the granting of depreciation refunds which can be done by Executive Order. The manufacturer may greatly increase his deductions for past investments and new machinery, plant, and equipment.

Douglas-Dillon feels that such tax reductions will increase the purchase of new equipment, develop greater efficiency, and result in a net improvement in the employment situation. This is good news for 1962.

15. Speculation in real estate and securities will be active during 1962; but good children will gradually be recognized as the best investment. Young people will be married earlier and will want to have large families.

16. Public education will gradually be reorganized during the year ahead. Schoolhouses will be built in places to "park the kids" while the parents are at work. New schoolhouses will be built so as not to be over one story high with lots of sunshine.

17. Owing to the lack of airport facilities and to inadequate equipment, there will be increasing airplane accidents during 1962.

18. With all the above changes plus increased public improvements and longer vacation periods, families must save somehow and cut somewhere. I think it will begin in 1962 with clothing. This will gradually become cheaper and more attention will be paid to color.

19. The time is approaching when the weaving of cloth will be greatly curtailed. Clothes will be made like paper. Plastic coats are already on the market. These are produced by feeding the cellophane into a machine which cuts to desired sizes and bonds (not sews) the material into beautifully finished goods of different colors.

20. We will hear more about automation during 1962. But the cost of building automatic factories is so great that the change is coming slowly. Even electronics has been overemphasized.

21. There need be no unemployment among steel workers during 1962. But Government unemployment figures will remain high. Foreign competition, due to low wages abroad, will be an invariable factor.

22. Women will prefer to work in air-conditioned factories and have their home pantries filled with pre-cooked foods.

23. Labor unrest will grow in extent and power. The Kennedy Administration is friendly to union leaders and their demands. There will be demands for more "fringe" in 1962. A steel strike is possible.

24. This means that with increased taxes, prices of retail products will be higher. This will be blamed on "inflation" of money, but it will be due to inflation of living standards.

25. The real value of the dollar will decline slightly during 1962, due to the decrease in the productivity of labor. The electronics industry will temporarily suffer in 1962 if atomic warfare is out-hyped. But otherwise the electronics industry will increase for some years to come and hold up the dollar value. Watch polymer chemicals and "epoxy" cements.

26. There will be enough money for mortgages insured by the Federal Housing Administration in 1962. Plenty of money will be available for mortgages guaranteed by the Veterans Administration, although this supply varies with different sections of the country. Interest rates on conventional loans not having any government guarantee will be a little higher. Real estate people will worry about the public's desire to build, rather than about their obtaining mortgage money.

27. The kilowatt hours of electricity produced in 1962 will exceed the total of any previous year. This is favorable to utility producers.

28. Steel production in 1962 will exceed this year's 100 million tons, but the increase will come from producing steel in colors.

29. Cement production will be about the same in 1962 as in 1961, but the industry's capacity to produce is increasing too rapidly in view of the demand. The cement manufacturers must give more attention to colors.

30. Expenditures for plant and equipment in 1962 will increase, supplemented by large appropriations for repainting factories and offices in many colors.

31. Newsprint production depends upon the number of newspapers and the amounts of advertising sold. I forecast a decline in the amount of newsprint sold during 1962, but advertising receipts may increase through the better use of colors. This may result in the increased use of coated paper to better take color printing with a 50 percent increase in advertising rates.

32. Furniture manufacturers are marking up prices so that young couples will buy furniture in the raw and paint some themselves.

33. There will be some increases in color TV sales in 1962. In fact,

I think the present TV market is far from being saturated.

34. First-class postage rates will not be increased during 1962. Hence, more money will be spent on direct mail selling. This should help job printers in 1962, as their present margin of profit is very small. Billboard advertising will increase during 1962, due to a new kind of paint.

35. Lumber will do well to hold its own in 1962 and much of it will be sold colored. Wall-to-wall carpeting will become even more popular, reducing the price of the best hardwood floors.

36. One of the greatest developments during 1962 will be the increased use of color in homes, offices, stores, and factories. This should increase both the demand for and the price of good paint.

37. Exports will probably increase during 1962, but the surplus of trade in favor of the United States is constantly decreasing.

38. President Kennedy is encouraged by the recent elections in New York, New Jersey, and Texas. This Democratic trend will continue during 1962, notwithstanding former President Eisenhower's campaign speeches.

39. President Kennedy will be more favorable to "big business" in 1962 only when he is able to use big business to increase employment. Profit margins will not improve during 1962, although most industries will do better in terms of gross and volume.

40. Bond prices will not change much during 1962, except in the case of "non-taxables." European investors are buying American stocks and bonds feeling that their money is safer in United States industries and real estate. Even the first mortgage bonds of transcontinental railroads are being bought by Europeans. The manufacturers of West Germany are making huge profits through the use of new machinery and low wages. They are sending their money to the United States to be invested. They seem to prefer suburban real estate, shopping centers, and electric utilities. I hope they are not buying into too many "fly-by-night" new electronic companies.

41. Buying of Mutual Funds will continue to exceed selling in 1962. Considering that brokers make much more profit by selling Mutual Funds than by selling shares of individual stocks—and considering the thousands of salesmen selling Mutual Funds—this should help stock prices during 1962. Remember that the Mutual Funds operators must go to the New York Stock Exchange to purchase stock to support these Mutual Funds which salesmen are selling in the field.

42. The so-called "service industries"—including education, beauty parlors, travel, entertainment, and government positions—should prosper in 1962.

43. Among the fastest growing industries in 1962 will be the plastics and glass industries. These materials will gradually take the place of wood, stone, cement, and even some metals—except as these are colored. Plastics and glass will become more important building materials and perhaps be used much more for automobiles.

44. Some unexpected event or discovery will cause the Dow-Jones Industrial Average to sell much higher during the next few years. As an illustration of what one of these unexpected events will be, I mention the polymer developments in chemistry, including "DNA" and "RNA," which may provide the source of life and extend it, yes, perhaps restore it, in special cases.

45. I am bullish on Canada for problem for the United States. Canada has a small population of only about 18,000,000, but it is rich in natural resources and has a sound, progressive government. I do not expect a nuclear war to be started by Russia; but if it comes, Canada will be a good place to live and to have your money invested.

46. South and Central America also have great natural resources; but most of their countries are ruled by selfish dictators. I believe most of our southern neighbors will suffer from serious inflation during 1962 and become a great safe investment during 1962. Canada.

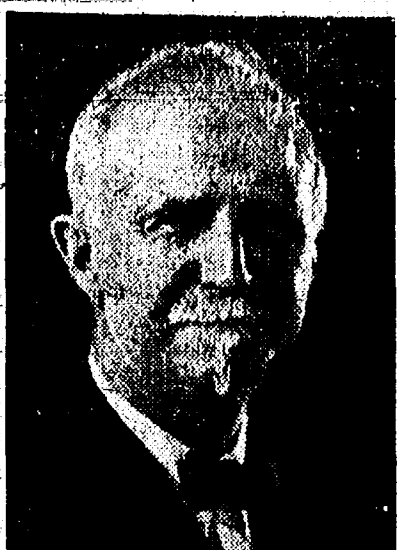
47. Although the countries of Europe could be the greatest sufferers in case of World War III, the people I meet in Europe fail to realize this. I forecast that they will look at the situation more realistically during 1962.

48. West Germany is very prosperous; East Germany is in terrible condition. Much unemployment exists in Italy, France, and even Great Britain. I advise against investing money in Europe during 1962.

49. I am uncertain how to advise about Africa. But it is very rich in natural resources—including gold, diamonds, and almost every metal as well as having the greatest undeveloped waterpower in the world. Barclays Bank I am personally acquainted with and

About the Forecast Author

American business has no more inspiring personality than Roger W. Babson, internationally-known business commentator and investment adviser. An outstanding feature of his philosophy has been his lifelong insistence on the importance of both religion and advertising in business.



ROGER W. BABSON

Born and reared in an old-fashioned atmosphere of hard work and bustle on a farm in Gloucester, Mr. Babson went to the Massachusetts Institute of Technology. Upon graduating, he turned instinctively to financial and business activities in which his father was engaged.

His exertions, however, undermined his health; he contracted tuberculosis and he was sent West "as good as dead." It was while he was convalescing from this dread malady that he worked out some of the possibilities and problems of business forecasting. His weekly releases are used by over 400 newspapers and his financial reports by 20,000 corporations and estates. His research work is carried on by a large staff of experts.

Babson founded Babson Institute for Men; and, in

co-operation with the late Mrs. Babson, developed Webster College for Women—both nationally-known educational institutions. Here young men and women may concentrate on the fundamentals of honest and efficient business administration. Later, he founded a Midwest Institute of Business Administration, located in Eureka, Kansas, the center of the United States. He has been active also in the establishment of other mediums of service to the public, such as the Gravity Research Foundation, located at New Boston, N. H.



GIFTS FOR JUVENILE WARDS—40 at 8" Voltaire 957, at a dinner held Thursday night at the Dexter American Legion Home, presented 60 Christmas gifts to Probate Judge John Conlin for distribution to children under the Court's jurisdiction. In addition the organization donated \$75 in cash for the project. The presentations were accepted by Judge Conlin following a "turkey dinner and all the trimmings," prepared and served by the ladies of the Dexter American Legion Auxiliary. Shown in the above group, standing, from left, are Art Klump, William Blaes, Harold Baker, Harold Golds, Judge Conlin, Louis Rome who is director of Juvenile Court Services, Ernest Rowe and Roger Howard. Kneeling from left, are Dean Coy, Leo Burns and Louis Farrell. Voltaire 957 of the "40 at 8" which is a fun organization of American Legion members, has established the gift project for children under Probate Court jurisdiction as an annual custom. Guests at Thursday's affair included Grand Chief of Gare Roy Hodge and Grand Correspondent Ralph Maynard, both of Detroit, and Washtenaw County Sheriff George Petersen.

A Very Happy New Year

We resolve to do our very best to make it so!

CLOSED ALL DAY NEW YEAR'S DAY

FOUR MOBIL SERVICE

ALVIN FOOR

ack Chriswell, Ralph Fletcher, Len Hofer, Art Stoll, Andy Blackwell, Gerald Wenk

It's time to wish everyone, everywhere, 6 "Happy New Year"

It's a happy time... to say, "All the best to you and yours in 1962"... time to look ahead, and to hope with all our hearts that the New Year holds lasting peace. And it's time to look back, too, at the old year, and to thank our friends and patrons to whose loyalty we owe our progress and growth.

HILLTOP PLUMBING

BOB SHEARS

AGRICULTURE in ACTION

by M. L. Woe

★ Water Cress Farming

"I invite you to visit the most pleasant state of all," offers Sumida, Hawaiian farmer and farm leader. "We have so much sunshine that we offer it to all the people of Michigan," he grins. Sumida was in Chicago attending the annual meeting of the American Farm Bureau Federation in his capacity as president of the Hawaiian Farm Bureau—newest state addition to the Federation. He, along with the rest of the Hawaiian delegation, was blue with cold and finding it difficult to understand how some people could actually prefer such weather.

Included in the Hawaiian invitation is a visit to Sumida's 30 acre water-cress farm where more than one million gallons of fresh water daily flow across the water-cress beds. "The roots are in water but not the leafy tops that we pick and sell," Sumida offered.

"How much per pound?" I inquired, thinking that in lush Hawaii where so much greenery abounds water-cress might be a drag on the market. Not so, apparently, with the price strength coming to about 25 cents per bunch. "We prefer to sell by the bunch," Sumida said. "Our bunches are just under a pound, around 15 ounces."

"Where is your major market located?" I asked. "In the city of Honolulu, although I am working hard to bring water-cress into the San Francisco market too," Sumida said. When asked if water-cress was difficult to grow, he said that as any specialty crop it presents problems, mainly those tied to hand labor and keeping the leafy salad-green in crisp, fresh condition. "I added a crisping room where chilled air circulates through the water-cress to remove field heat last year. My investment came close to \$50,000 just for this room."

As in most other branches of agriculture, Sumida feels that research is the key to the future. Right now he and other growers are checking out the possibilities of anti-enzymes, chemicals used to keep water-cress even more crisp.

"Why don't Michigan farmers grow water-cress too?" Sumida laughed, "then they could use the facilities of your good Michigan State University to help us with our research!"

With Chicago nearby he felt there could be a substantial market for some fearless Michigan entrepreneur with a farm located handy to an ample source of fresh running water.

It's big news! It's good news! Have a happy time greeting the New Year.

GUENTHER STUDIO

RALPH GUENTHER

Off to a Good Start

Set your sights on a star and start the New Year right. May it hold much happiness for you and yours.

Burghardt Funeral Home

-SPECIALS-

46-OZ. CAN
Hawaiian Punch 2 for 59c

HEINZ
Catsup 2 for 43c

200-COUNT BAG
Napkins 23c

JIFFY
Brownie Mix . 3 boxes 25c

We Wish Everyone a Happy and Prosperous New Year!

KUSTERER'S FOOD MARKET

DIAL GR 9-3331 WE DELIVER

CELEBRATE YOUR NEW YEAR'S PARTY at the ANCHOR INN

PORTAGE LAKE

Fun For Everybody SUNDAY, DEC. 31

Beginning at 9:00 p.m.

Make Your Reservations Now!

Phone HA 6-8183 or HA 6-9181

Community Calendar

Herbert J. McKune Unit No. 31, American Legion Auxiliary, Tuesday, Jan. 2, 8 p.m., at McKune Memorial Library.

McKune Memorial Library will be closed all day Saturday Dec. 28 and Dec. 30; also all day Christmas and New Year's day.

Cavanaugh Lake Grange, Tuesday, Jan. 2, at the home of Mrs. Nina Wahl. Pot-luck dinner, 12:30 p.m.

Annual Masonic banquet Saturday, Jan. 13, 7 p.m., at OHS cafeteria. Reservations to be made with Don Dancer by Saturday, Jan. 10.

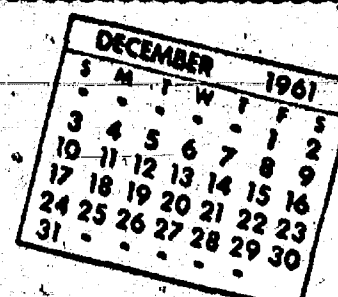
Olive Chapter No. 108, OES, regular meeting Wednesday, Jan. 3, 7:30 p.m.

Olive Chapter No. 140, RAM, Thursday, Jan. 4, 7:30 p.m. Regular meeting.

Olive Lodge No. 156, F&AM, Tuesday, Jan. 2, 7:30 p.m. Regular meeting.

St. Paul's Mission club Thursday, Jan. 4, 2 p.m., at the home of Mrs. Wilbert Grieb.

Past President of Herbert McKune Unit No. 31, American Legion Auxiliary, Christmas party Thursday, Dec. 28, 8 p.m., at the home



of Mrs. Merle Barr, Sr. Exchange of home made gifts. Each member to bring one serving of her favorite dessert.

BIRTHS

A son, Kevin Allen, Saturday, Dec. 23, to Mr. and Mrs. Lyle Wenk of Manhattan Beach, Calif. The new baby is a grandson of Mrs. Eleanor Wenk.

A daughter, Debbie Lynn, Thursday, Dec. 21, at St. Joseph-Mercy Hospital, Ann Arbor, to Mr. and Mrs. Merritt Honbaum, 2820 N. Lima Center Rd. Mrs. Honbaum is the former Arlene Lesser, daughter of Mr. and Mrs. Ezra Lesser, of 12651 Island Lake Rd.

A daughter, Tonja Dee, Christmas Day, at a Bay City hospital, to Mr. and Mrs. Theodore Nixon of Standish. Mrs. Nixon is the former Shipley Dyer.

A son, Robert Todd, Saturday, Dec. 23, at St. Joseph-Mercy hospital, Ann Arbor, to Mr. and Mrs. Robert White, 201 Wilkison St. Mrs. White is the former Mary Lou Ghidotti, daughter of Mrs. Lester Hall of Mt. Hope Rd.

THE LETTERBOX

To the Editor:
I feel the Christmas lighting display at the J. V. Burg home on Wilkison St. is the most magnificent, breathtaking holiday decoration I have ever seen and I've seen a good many in different communities and in various parts of the United States and Canada.

The symmetrical design, with large colored lights across the entire front of the home; the beautiful indoor decorations visible through the picture window; the large trees on the lawn, with their colored lights; and the large gold star over the front entrance combine to make the display an outstanding holiday decoration.

I'm sure I speak for many others in Chelsea when I say the Burgs deserve commendation for their efforts in providing such a beautiful display for the pleasure of all who pass their home during the holiday season.

A Chelseaite.

Grandparents Can Be Good Influence on Child

Ann Arbor—Grandparents can be a valuable aid in rearing grandchildren just by being grandparents, says a University of Michigan man.

Eugene Litwak, associate professor of social welfare research, states that grandpa and grandma generally have more free time available than do parents and can enjoy a more relaxed companionship with the youngsters.

The senior parents need not worry about disciplining the children and therefore can be sympathetic adult friends—thus providing a safety-valve for the inevitable frustrations of childhood. In a program in the "Family Living" series prepared by the U-M Television Center, Litwak also says that the children can often provide the grandparents with a meaningful contact with life at a time when such contact might otherwise be lacking.

DEATHS

Mrs. Isadore J. Wencel

Lyndon Township Resident Dies Thursday at Hospital
Mrs. I. J. Wencel of 115 Island Lake Rd., in Lyndon township, died Thursday at St. Joseph-Mercy hospital, Ann Arbor, where she had been a patient since Nov. 10. She was 50 years old.

Born March 14, 1914, in Webster township, she was the former Grace L. Altonbernt, a daughter of John and Blanche Koch Altonbernt, and was married at Toledo, O., Aug. 23, 1929, to Isadore J. Wencel. He survives.

Also surviving are a son and grandson, James Wencel and James, Jr., of Jackson; two sisters, Mrs. John Otto of N. Territorial Rd., and Mrs. Zina Opal of Tipton; and a brother, Mervin Altonbernt of Dexter.

Funeral services were held at 2 p.m. Sunday at the Staffan Funeral Home with the Rev. John W. Laird officiating. Burial followed at Oak Grove cemetery.

Walter L. Spaulding

Dies Enroute to Hospital Following Heart Attack
Walter L. Spaulding, 69, of 180 Fairview, Ann Arbor, died Christmas day while enroute to St. Joseph-Mercy hospital following a heart attack suffered at his home.

Mr. Spaulding was born in Sylvan township, Sept. 12, 1892, a son of Edward and Emma Everett Spaulding.

He was a graduate of Chelsea High school and attended Eastern Michigan University, then known as Ypsilanti State Normal College.

He was married in 1924 at Millbank, Ontario, Canada, to Florence Wagner who survives.

Mr. Spaulding was a representative of the State Mutual Insurance Co. of Flint for many years, moving to Ann Arbor in 1927 as district supervisor.

He was a member of the First Presbyterian church of Ann Arbor, Olive Lodge No. 156, F&AM and Olive Chapter No. 140, RAM, of Chelsea.

Surviving, in addition to his widow, are a son, Dale Spaulding, and three grandchildren, David, Dennis and Diana Spaulding, all of Lansing; an uncle, William Spaulding, an uncle and nephew, Mrs. Thomas McClear and Roland Spaulding of Chelsea.

Private funeral services for the family will be held at 1 p.m. today (Thursday) at the Burghardt Funeral Home with the Rev. William P. Lenson of Ann Arbor, officiating. Burial will follow at Vermont cemetery here.

Friends may call at the funeral home.

Dr. Raymond L. Webb

Dies Suddenly Sunday at Hollywood, Calif., Home
Dr. Raymond L. Webb, 40, Hollywood, Calif., died suddenly at his home on Sunday, Dec. 24.

Dr. Webb was born on Jan. 21, 1901 at North Lake, Dexter township. He was the son of the late George M. Webb and Jennie Faulkner Webb. He graduated from Chelsea High school and the University of Michigan Dental School. In 1937, he established his dental practice in Hollywood. His wife, Martha, preceded him in death on Dec. 13 of this year.

Dr. Webb is survived by his mother, Mrs. George M. Webb of North Lake, two sisters, Mrs. Lyle (Lucy) Engle, of Dexter, and Mrs. Fred (Olive) Janke of South Lyon; a brother, Harmond J. Webb, D.D.S. of Detroit; and several nieces and nephews.

Funeral services were held Wednesday, Dec. 27, at Hollywood, Calif., with interment there.

Mrs. Eugene Towner

Dies at Ann Arbor Hospital After Cerebral Hemorrhage
Mrs. Eugene Towner, 1020 Lincoln Ave., Ann Arbor, died Sunday night at St. Joseph-Mercy hospital where she had been a patient since suffering a cerebral hemorrhage a week ago. She was 52 years old.

The former Wanda Jean Park, she was born at Grand Rapids, April 19, 1909, a daughter of Ed and Stella Park, and was married July 28, 1926, to Eugene Towner who now is one of the owners and operators of the Wash 'n Dry automatic coin laundry on West Middle St. here, and co-owner of the Big Top Party Store at Ann Arbor. They have lived in Ann Arbor since 1930.

Mrs. Towner was a charter member of the Numa Club.

Survivors, in addition to her husband, are her mother of Lansing; two brothers, Harry Park of Pinckney and Raymond Park of Ann Arbor; and two sisters, Mrs. Maunie Gauss and Mrs. Theodore Edgar, both of Lansing.

Funeral services were held at 3 p.m. yesterday (Wednesday) at the Muehlberg Funeral Chapel at Ann Arbor and burial followed at Washtenaw Memorial Park, Ann Arbor.

Mrs. Margaret Mallick and Miss Emma Graber of Detroit, spent the Christmas weekend with their mother, Mrs. L. P. Vogel.

Mrs. Henry Gilbert

Dies Saturday Morning at Ann Arbor Hospital
Mrs. Henry Gilbert, 67, of 14140 North Lake Rd., Lyndon township, died early Saturday morning at St. Joseph-Mercy hospital, Ann Arbor. She had entered the hospital Friday after she became suddenly ill at her home.

Born June 19, 1894, in Lyndon township, she was the former Pearl Mohrlock, a daughter of Theodore and Carrie Moore Mohrlock. On May 3, 1910, she was married to Henry Gilbert, who survives. They had lived at the present farm home since their marriage.

Surviving, in addition to the husband are two daughters, Mrs. Robert Eisele (Audrey) of North Lake, and Mrs. Virginia Ferris of Lansing; a son, Robert Gilbert of Dexter; two sisters, Mrs. Ivah Harker of North Lake, and Mrs. Elmer Lindemann (Helen) of Chelsea; six grandchildren and several nieces and nephews.

The body was at the Burghardt Funeral Home until noon Tuesday, and then lay in state at the North Lake Methodist church until the funeral service at 2 p.m. with interment following in the church cemetery. The Rev. John Laird was the officiating clergyman.

Mrs. Sarah Martin

Dies Monday Evening After Lingerin Illness
Mrs. Sarah Martin, widow of William F. Martin, died Monday evening, Dec. 25, at Colonial Manor Nursing Home at the age of 94, following a lingering illness.

For the past 20 years she had made her home here with her daughter, Florence, Mrs. Hazen Leach.

Born in Bridgewater township, Aug. 2, 1867, she was a daughter of Victor and Ann Catherine Foley.

Maible and was married to Mr. Martin Nov. 1, 1892. He died in 1941. They had made their home at Manchester.

Survivors in addition to the daughter, Mrs. Leach, are a brother, Albert Maible of Manchester; four grandchildren, Maynard Leach and Mrs. Hangel Hughes of Manchester; Donald Martin of Clinton and Mrs. Harold McDonald of Kilmer Rd.; 10 great-grandchildren; and several nieces and nephews.

A son, Glen, died in 1935.

Funeral services are being held at 2 o'clock this afternoon (Thursday) at the Jenter Funeral Home at Manchester and burial will follow at Oak Grove cemetery, Manchester.

The Rev. Jesse Epps officiated.

Michigan's first restriction on deer hunting came in 1869, when hunting was limited to the last five months (168 days) of the year.

That year, the census shows, Michigan had a population of about 750,000. Today, it has a 10-day deer season and a population of 7,825,000—the population being 10 times greater, and the deer season being one-tenth as long.

Personals

Pfe. Maltos Misailides, M. P., of Camp Walters, Tex., leaves this week-end by jet plane to return to duty after spending a three-week furlough with his parents, Mr. and Mrs. Mike Misailides. Guests who visited him at the Misailides home during his stay included Mr. and Mrs. John Hofman and family, of near Manchester; Mr. and Mrs. Sam Misailides and daughter, Maria of Kalamazoo; and Mr. and Mrs. Dillon Olmstead.

Miss Marguerite Elson of Detroit, came Saturday to pick up her aunt, Miss Lillie Wackenhut is a symptom of tuberculosis.

and take her to Detroit for week-end. Christmas Eve the Church of Christ (E.B.) Christmas day they were guests of Mr. and Mrs. Elson of Birmingham, Mr. and Mrs. Elson brought Miss Wackenhut home Monday evening.

When you are purchasing a range, ask yourself if extra features will really be useful or if they will be unused "gadgets." Advise home managers.

Persistent indigestion is a symptom of tuberculosis.

VILLAGE PICK-UP

of
CHRISTMAS TREES
WEDNESDAY, JAN. 3

Place Trees Between Sidewalk and Curb

VILLAGE OF CHELSEA
DEPARTMENT OF PUBLIC WORKS
Kellie Allen, Supt.



Skate Exchange

WE BUY-TRADE AND SELL
Used Skates as low as \$2.50
LOWEST PRICES ON NEW SKATES



Boys' and Girls' FIGURE SKATES

Only **8.95** Less Trade

Winter-fun! Black for boys, white for girls. Leather shoes, hi-cut flared pattern give needed ankle support. Hollow ground steel blades. Sizes 1-4.

Men's or Ladies' Figure Skates
Women's 5-9, Men's 5-11.

Men's - Ladies' FIGURE SKATES

Blades made in Canada from Sheffield Steel. Insulated shoe.

\$11.95 Less Trade



BOYS' AND MEN'S HOCKEY SKATES

Boys' **8.95** Less Trade

Hiawatha hard-toes in sturdy cowhide leather; composition soles; tubular blades. In boys' sizes 1 to 3. Men's 4-10 8.95

SKATE GUARDS

Fit figure, hockey blades. Folding plastic. 1-13. Pr. **98c**

HOCKEY STICK

Rock elm, pitched blade. Assorted lies, 38 and 40". **98c**

SKATE STRAPS

Sturdy tanned leather with metal buckles. 21" L. Pr. **20c**

SKATE LACES

Sturdy mercerized cotton in gay plaids. 54" long. **20c**

HOCKEY PUCK

Tough, all-black rubber in official size and weight. **25c**

SKATE, SKI SOX

Wool nylon socks are antiseptic treated. 9-12. Pr. **98c**

All Of Us At Chelsea Lumber Co.

Wish You
A Peaceful and Prosperous
New Year

JIM - BOB - RAY
JANET
FRED - JOHN - CHARLIE

GENERAL ELECTRIC PRESENTS THE NEW

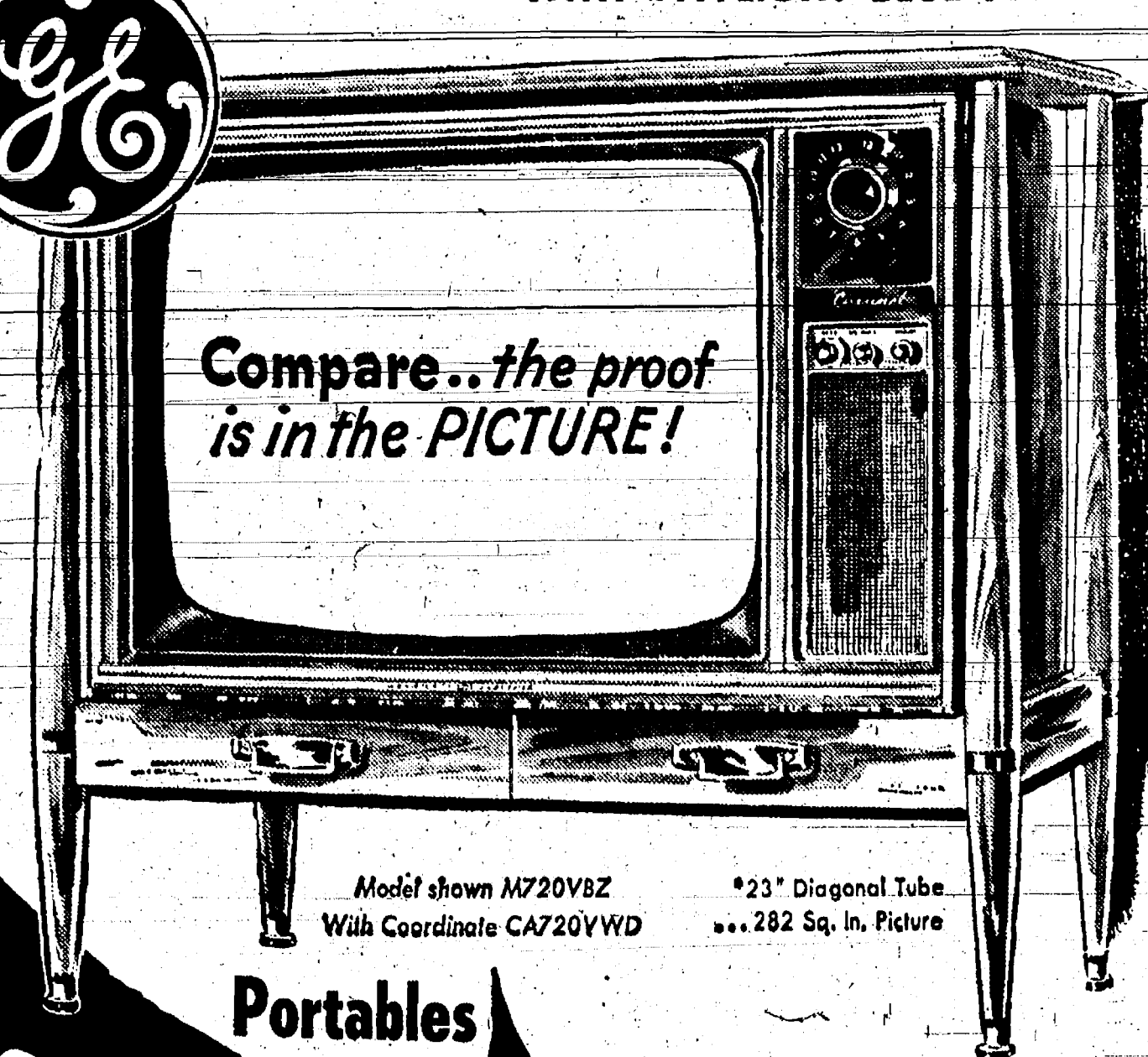
LO-BOY

NEW 23" TV

WITH DAYLIGHT BLUE PICTURE



Compare...the proof
is in the PICTURE!



Model shown M720VBZ
With Coordinate CA720YWD

*23" Diagonal Tube
...282 Sq. In. Picture

Portables

AS LOW AS \$159.95

TERMS
TO SUIT
YOUR
BUDGET

FRIGID PRODUCTS

113 NORTH MAIN STREET

LLOYD R. HEYDLAUFF

PHONE GR 9-6651

YOUR GENERAL ELECTRIC DEALER

YEAR IN REVIEW:

Top Chelsea News Events for 1961

January

5—Announcement the CHS Bulldogs won the holiday basketball tournament held at CHS gymnasium the past week.

5—Area gasoline thefts solved with arrest and conviction of two separate groups in past two weeks.

5—Announcement that Mrs. Willard Baker of Manchester replaces the late Miss Mabel Fox as teacher of social science studies at Chelsea High school.

8—Douglas and Karen Schneider commissioned as missionaries to India at ceremonies at St. Paul's church and honored at reception following service.

9—New Kiwanis club officers installed for 1961—James P. Liebeck, president; Albert Penhalligon and Robert Daniels, first and second vice-presidents; Paul F. Niehus, secretary; and Wallace Wood, treasurer.

10—Lima township vote on permanent zoning ordinance approved ordinance by vote of 150-50.

10—William Van Riper named Outstanding Young Farmer and Donald Baldwin chosen as Distinguished Service Award winner at Jyvees annual banquet and awards dinner.

16—Major Marjorie Solt presented certificate of achievement "for distinguished and meritorious service" performed at Walter Reed Army Medical Center, Washington, D. C., the presentation ceremony taking place at Womack Army Hospital, Fort Bragg, N. C., where Major Solt is head nurse in the receiving office.

18—Community Chest directors named at annual meeting: Lyle Haselswerdt, Miles Smith, Mrs. Alfred Mayer, James Allan, Armin Schneider, Jack Wellnitz and Lyle Christwell.

19—Announcement of retirement of Miss Grace Ward, chief bookkeeper for Chelsea Electric & Water Department the past 27 years.

19—Carol Reddeman chosen DAR Good Citizen of CHS class of 1961.

22—Eight foxes sighted and five bagged was score for 50 hunters who participated in annual Rod & Gun club fox hunt here.

26—Announcement the Boy Scouts "penalty-for-polio" day Jan. 14 and 21 netted total of \$208 for March of Dimes fund.

26—Total of 217 dogs given rabies shots at Sylvan-Town Hall clinic.

26—Marilyn Pajot announced as winner of 1961 Betty Crocker Homemaker of Tomorrow award for Chelsea High school.

31—New March of Dimes Mothers' March netted approximately \$700 according to chairman, Mrs. Thomas Bust.

7—Gelman Instrument Co., manufacturers of air sampling machines and other devices, announced signing a two-year agreement with Loughborough Glass Co., Leicester, England, for distribution of Gelman products throughout the British Commonwealth.

8—Chelsea FFA parliamentary procedure team placed first in district competition at Clinton High school. Team members: Richard Haist, Al Schauer, Richard Harvey, Ned Heydlauff, Charles Koenn, Stan Dyer, Ron Walter, Don Wenz.

9—Announcement by Mrs. Charles Lancaster and Mrs. Leo Bishop, co-chairmen, that March of Dimes contributions here reached a grand total of \$2,377.

9—Announcement that Vern Foster, of Detroit, formerly of Chelsea, was named 1961 president of American Society of Automotive Body Engineers.

9—The Rev. Paul Schnake arrived home after air trip to Ecuador for Church World Service.

16—Total of 19 shop and office employees at Chelsea Products awarded 15-year service pins.

17—Sixteen men at Chelsea Products presented 10-year service pins.

17—Annual World Day of Prayer service held at Congregational church attended by 125 area women.

18—Pat, Molly and Mike Foster, Chelsea triplets, observed their eighth birthday. They had a party at South Elementary school yesterday.

18—Merle Barry, Sr., presented with a Meritorious Service citation by American Legion for 20 years leadership in connection with American Legion school awards.

19—St. Barnabas Episcopal church held first service in new church building, 20600 Old US-12 West.

20—Independent party named full slate of candidates for March election headed by Robert Daniels for president, Village President Donald Alber of Peoples party, made no bid for re-nomination and no other candidates named on ticket.

21—Members of Zeta Beta Chapter of Beta Sigma Phi Sorority prepared and stuffed 2,000 Easter Seal letters for Chelsea area mailing of Society for Crippled Children and Adults, Inc.

21—William G. Kolb, life-long Chelsea resident active in community and business circles, died following long illness.

21—Chelsea Camera club presents automatic coffee maker to McKune Memorial Library to be used in the meeting room. The gift is a memorial to Miss Mabel Fox.

22—Annual Washtenaw county Beef Tour included farms of Walter and Robert Breuninger on Marshall Rd. near Dexter and Hendley and Reinhart River Acres Farm on Sharon-Valley Rd. near Manchester.

24—Weight restrictions into effect at 6 a.m. on all Washtenaw county roads.

25—Ice storm resulted in extensive damage to telephone and electric power lines, trees etc. Power on west side of Main St. interrupted almost two hours and 78 telephones in the village out.

26—The Rev. Donald Vass concluded two-year pastorate at St. John's churches at Francisco and Rogers Corners.

March

2—Chelsea Village Council announces plan for sanitary land fill east of Chelsea between I-94 and Old US-12, East.

7—Daniel Muroney elected president of Chelsea Junior Chamber of Commerce.

9—First rehearsal of a community choir held at Methodist church to rehearse for appearance as massed choir at the Good Friday community service at Methodist church March 31.

10—Lenawee-Washtenaw county sheep tour.

11—Chelsea High School Band received highest "first division" rating at the district festival at Southgate.

11—Chelsea Bulldogs became District Basketball Tournament champions by defeating Dexter Dreadnaughts, 63-48. This was the first district basketball championship for Chelsea in 10 years.

12—Crocus blooming at P. F. Niehaus home on Jefferson St.

12—John Tracy Luke of Ann Arbor took up duties as pastor of St. John's churches at Rogers Corners and Francisco.

13—Unopposed slate of Independent Party candidates elected to village offices as follows: Robert Daniels, president; George Winans, clerk; Wallace Wood, treasurer; Merle S. Barry, Jr., William Chandler, Dr. Louis Paul, trustees; Thomas Smith, assessor; Jean Eaton and John Thomson, library board members.

16—Chelsea Bulldogs vanquished by Wyandotte St. Patrick's team in first game of Class C. Regional tournament at Ypsilanti by heart-breaking score of 63-62.

16—Announcement that a "Mabel Fox Memorial Fund" has been set up as a student loan fund at Chelsea High school.

17—Girl Scout Week observed at special program at Junior High school gymnasium.

18—Annual Washtenaw county Dairy Banquet held at Salina, attended by 600. Katrene Gall of Salina, granddaughter of Mrs. W. C. Boyce of Lyndon township, chosen "dairy princess."

18—Chelsea Police Chief John Palmer presented meritorious citation by American Legion for work with young people.

18—Chelsea Junior High School Band received First Division rating at District Festival in Belleville.

18—Break-ins at Chelsea Lanes and Knoll's Ashland Service netted thieves more than \$400.

21—Thomas McClear elected C. of C. president.

21—Mrs. E. W. Eaton named president of McKune Memorial Library Board.

22—Charles Koenn awarded State Farmer degree at FFA convention at East Lansing.

23—Announcement that new industry (for manufacture of ceramic tile and fiber glass swimming pools) to begin production

next week in former Gudeman plant on Old US-12.

23—Two Ann Arbor men, R. D. Marsh and Keith Matry, captured near Pinckney by State Police, admitted 40 burglaries including those at Chelsea Lanes and Knoll's Ashland Service here two weeks ago.

25—Philip Barais left for Fernando Beach, Fla., to begin spring practice for baseball with the Tobs, a class "B" team in the Carolinas League.

25—Kathy White and Christine Tarasow receive First Division rating at State Solo and Ensemble Festival held at Jackson, Chelsea's brass quartet—Ed. Lauson, Eric Kniskely, Wendy Gilbert, Rose Zahn—received Second Division rating.

considered excellent in state competition.

27—Hectic day for Chelsea firemen because of numerous grass fires (two at Lyndon township dump at home of Dr. V. R. Hanson, Wayne Harvey farm, Carmer Slocum property).

30—Chelsea Milling Co. receives wide-spread publicity for its exhibit of "Jiffy" cake, frosting and biscuit mixes at the United States Exhibit at International Agricultural Exhibit in Cairo, U.A.E.

30—Announcement of plans for Community Show Boat program to be held in June. Chairman, Donald Alber.

30—Announcement that Methodist Home plans addition, 260'x40'; (Continued on page nine)



Let the bells ring in the New Year

The bells ring out a message of gratitude to all our customers. We look forward to serving you again during the new year.

Grove's 5c to \$1.00 Stores

JOHN and DORIS PERRY
Lou Parsons - Jan Flint - Edith Kealy
Loretta Dall - Marie Shaver - Anna Werner



Happy New Year

As we celebrate the happy arrival of the New Year, we take time out to thank our friends for their good will.

Finkbeiner Lumber Co.

February

2—John Clark, Chelsea Products employee, named member of "Wise Old Owls Club" founded by National Society for the Prevention of Blindness. He became eligible because he was wearing safety glasses which prevented eye damage when a piece of flying metal struck him.

6—First report this year of robin seen in area—at the home of Mr. and Mrs. J. V. Burg, 1.

7—Six Chelsea women receive Red Cross certificates for work with Blood program—Mrs. M. J. Buxter, Mrs. Ray Franklin, Mrs. D. A. Riker, Mrs. Harold Spaulding, Mrs. Fred Patterson, Mrs. Duane Rowe.



XII I
a II
Toast
to the New Year

As the New Year bows in, our hope is that it will bring us many opportunities to serve you and your family. Please accept our sincere thanks for your patronage, our best wishes for your happiness.

Winans Jewelry Store

YEAR-END FURNITURE Sale

2 DAYS ONLY
Friday and Saturday
ENTIRE STOCK
AT REDUCED PRICES

32 SOFAS and LOVE SEATS
COLONIAL - TRADITIONAL - MODERN
96 CHAIRS and ROCKERS
ALL STYLES and COLORS
13 RECLINING CHAIRS

19 BEDROOM SUITES

2- and 3-Pc. GROUPS

COLONIAL and MODERN
Maple, Cherry, Walnut, Mahogany

8 LANE CEDAR CHESTS from \$37.50

CHESTS, BEDS
DRESSERS
BUNK BEDS
DESKS

TABLE LAMPS
80 Styles
25% off

FLOOR LAMPS
40 Styles
25% off

PICTURES
Choice of 146
25% off

Hide-a-Beds
Sofa Beds
Studio Couches
Odd Mattresses
and Box Springs

OVER 50 STYLES
of
END TABLES & COCKTAIL TABLES
MAPLE - MAHOGANY - WALNUT

DAYSTROM & LLOYD
DINETTE SETS

Choice of 19
3 pc. 5 pc. 7 pc.

MERKEL BROS.



BOWLING NEWS



Junior House League

Standings as of Dec. 21

	W	L
Palmer's T-Birds	37	23
Chelsea Spring	35	25
Slocum Construction	35	25
Jiffy Mixers	34	26
Parker's Cleaners	32	28
Farwell Sheet Metal	30 1/2	30 1/2
Gambles	29	31
Mason's	28	32
Knights of Columbus	27	33
Bob's Bar	26	34
Marked Bros. Hdw.	23	37
Brown's Super Serv.	22	38

Senior House League

Standings as of Dec. 17

	W	L
Chelsea Mfg. No. 1	38	22
Spaulding Chevrolet	30	24
Chelsea Grinding	28	26
Altes Beer	34	20
Schneider's Grocery	30	30
Stop & Shop	28	32
Sylvan Center	28	32
Chelsea Products No. 1	28	32
Drewry's Beer	28	32
Wolverine Tavern	20	34
Marked's 49ers	24	36
Chelsea Milling Co.	18	42

C. Schneider, 512; E. Keizer 505; D. Houle, 501; J. D. West, 502; H. Burnett, 500; R. Eder 500; R. Worden, 500.

Chrysler Proving League

Standings as of Dec. 12

	W	L
Wolverine "Kegs"	40	24
Four Mobil Service	38	26
Frigid Products	28	36
Luckhardt Service	35	29
Drewry, Detroit	34 1/2	29 1/2
WAW Local 1284	32 1/2	31 1/2
Weber's Dairy Bar	32	32
Detting's Marathon	29 1/2	34 1/2
Carling Black Label	29	35
Drewry, Ann Arbor	28 1/2	35 1/2
Tison Motor Sales	25 1/2	38 1/2
Knoll's Ashland Serv.	23 1/2	40 1/2

200 series: Collins, 292; O'Brien, 221; Lake, 221-208; Waugh, 205; Stecher, 203; Post, 210; Harok, 202; Svanberg 201; Chapman, 202; Frinkle, 200.

Grass Lake-Chelsea Women's League

Standings as of Dec. 20

	W	L
Colonial Manor	76	29
Pabst Excavating	61	44
Pete's Shell	57	48
Waterloo Garage	54	51
Sail Inn	54	51
Forner's Take-Out	53	52
A. D. Mayer	51	54
Three Sons Bar	51	54
Meyer's Finer Foods	47	58
Freddie Trucking	46	59
Balmer's Brack Service	41	64
Detting's Marathon	39	66

High team single game: Sail Inn, 775.

High team series: Colonial Manor, 2,208.

High individual single game: B. Hafley, 187.

High individual series: B. Hafley, 524.

Over 450 series: B. Hafley, 524; R. McGibney, 486; M. Britten, 476; R. DeBolt, 469; J. Hutzel, 467; E. Wyers, 465; M. Gould, 462; W. Bahnmiller, 460.

Splits picked up: S. Snyder, 3-9-10; H. Goltra, 4-5; M. Gould, 2-7; J. Strat, 7-9; B. Hafley, 8-10; R. McGibney, 3-10; F. Lake, 5-7-8; V. Matthews, 5-7.

Boys Junior League

Standings as of Dec. 21

	W	L
VFW No. 4076	44	16
Pepsi-Cola No. 3	33	22
UAW No. 1284	33	27
Slocum Construction	32	28
Coca-Cola	27	33
Pepsi-Cola No. 1	25	35
Jiffy Mixers	19	37
Pepsi-Cola No. 2	18	38

400 series: M. Oesterle, 477; C. Miller, 460; N. Packard, 407; E. Windell, 404.

140 games: M. Oesterle, 200-140; C. Miller, 188-152; G. Houle, 163; R. Green, 161; E. Windell, 150; N. Packard, 150; J. Orthing, 148.

Chelsea Lanes Mixed League

Standings as of Dec. 22

	W	L
Block Busters	47	17
Jack Pots	39	25
Geer's Aquilard	37 1/2	28 1/2
GreenLeaf's Service	34 1/2	29 1/2
Kings & Queens	34	30
Jells	34	30
Town & Country	31	33
Night Owls	29 1/2	34 1/2
Ups & Downs	29	35
Heydnuff's GE	28	36
Alley Cats	22	42
Hankard's Pure Serv.	18 1/2	45 1/2

475 series (men): M. Poertner, 500; L. Mayne, 553; R. Huston, 538; L. Kusterer, 525; G. Lawrence, 510; C. Lake, 502; M. Packard, 496; R. Koch 481; C. Sanderson, 480.

425 series (women): P. Poertner, 490; R. Winchester, 440; N. Eisenman, 433.

175 games (men): M. Poertner, 175.

THE CHELSEA STANDARD, CHELSEA, MICHIGAN



NEW HOCKEY RINK—Although not readily discernible at left in this photo, Rolly Spaulding and Tom McClear were looking at the new hockey rink at Maewood Skating Pond, when the photographer came by. Separated from the main skating surface, the hockey rink provides a special place where hockey players may enjoy the sport without fear of danger to other skaters or to the younger children who use the skating area.

Railroad Crossing Signal

To Be Installed on M-36

West of Pinckney

Lansing—The State Administrative Board has approved \$20,892 in contracts for installation of three new railroad crossing flashing signals, the State Highway Department reports.

The signals will be on Townline Rd., about one mile west of East Tawas in Isosco county, on M-64 about one-half mile south of Maenisco in Gogebic county and on M-36 about one mile west of Pinckney in Livingston county.

203-200-187; L. Mayne, 205-188; C. Sanderson, 202; R. Huston, 195; M. Packard, 188; L. Kusterer, 183; C. Lake, 179; N. Eisenman, 176.

150 games (women): P. Poertner, 180-170; N. Eisenman, 178; R. Winchester, 167; E. Mayne, 157; A. Turner, 153; P. Foytik, 151.

Women's Bowling Club

Standings as of Dec. 20

	W	L
Chelsea-Milling Co.	41 1/2	29 1/2
Chelsea Lanes	40 1/2	23 1/2
Blatz Beer	38	26
Anderson's	38	26
Wilson Dairy	36	28
Chelsea Grinding	32	32
Foster's Men's Wear	31	33
Hank's Refrigeration	29	35
Chelsea Cleaners	28	36
Jiffy Mixers	27	37
Patty Ann Shoppe	26	38
Stop & Shop	17	47

200 games: P. Shoemaker, 210.

175 games: P. Shoemaker, 191; J. Hutzel, 189; P. Poertner, 187; A. Knickerbocker, 184; M. Ritter, 183; P. Poertner, 183; A. Turner, 182; M. Winchester, 181; B. Fritz, 180; R. Winchester, 176; D. Frisbie, 175; P. Rogers, 175.

500 series: P. Shoemaker, 547; P. Poertner, 500.

450 series: A. Turner, 499; M. Ritter, 499; B. Fritz, 483; J. Hutzel, 479; A. Knickerbocker, 478; B. Frisbie, 470; L. Foster, 467; M. Winchester, 460; R. Winchester, 458; L. Dove, 453; T. Matthews, 451; B. Chriswell, 451; R. Johnson, 450.

425 series: M. McFadden, 440; J. Fletcher, 440; R. Hummel, 443; N. Eisenman, 441; P. Rogers, 439; M. A. Moore, 437; D. Dault, 435; M. Scott, 433; G. Wheeler, 433; C. Miller, 433; V. Hopkins, 430; N. Kern, 428; C. Steiner, 427; W. Branson, 425; B. Blatz, 425.

High actual game and series: Blatz, 850-2,410.

High Handicap game and series: Patty Ann, 836-2,430.

Women's Inter-City League

Standings as of Dec. 19

	W	L
Madge's Beauty Shop	48	16
Dancer's Store	39	25
Central Fibre	32 1/2	31 1/2
Dexter Bowling Club	32 1/2	31 1/2
Sportsman's Tavern	31 1/2	32 1/2
Dexter Bank	27	37
McLeod's Drugs	25	39
Ehns Grocery	20 1/2	33 1/2
Team high series: Dancer's Store, 2,317.		
Team high game: Dancer's Store, 812.		

Individual high series: Ruby Brown, 540; Janet Knope, 481.

Individual high game: Janet Knope, 193; Ruby Brown, 187; Selma Haab, 183; Marian Murray, 181; Darlene Eisenbeler, 178; Elaine Klopferich, 177; Virginia Cavanaugh, 177; Dorothy Eder, 175.

Skating Rink...

(Continued from page one)

ed skaters coming and going, or a combination of all three, but at this point the committee, who had just finished signing a contract with the equipment operators for more than \$1,000 (as yet non-exactly), decided the skating area should be enlarged even further to separate the hockey players from the other skaters, and the smaller children; also to provide more skating area.

This addition was included in the contract and the members of the committee, at present "poor in dollars but rich in faith in Chelsea" are starting out to raise the necessary funds to meet their obligation.

Any service group, organization

PERSONALS

Dr. H. J. Webb of Detroit, Mrs. Fred Janke of South Lake, left Tuesday morning for Los Angeles, Calif., to attend the funeral of their brother, Dr. Raymond Webb, who was born at Chelsea in Dexter township.

Holiday guests at the Smith home were Mr. and Mrs. Philip H. Smith and son, Scott, Chelsea and Mr. and Mrs. P. Smith and sons, Brad and of Clio.



In the New Year, as in the old, we look forward to serving all our friends with ever increasing mutual pleasure.

Floyd D. Rowe & Son
Plumbing and Well Drilling
FLOYD and DUANE ROWE

Happy New Year

A hearty "Hello" to the New Year. May it bring good luck—good cheer and happiness to you.

Farmer's Guild
Sylvan-Lima Local 254

Greetings

Welcome 1962! He's bringing you the happiest New Year ever!

LAWTON S. SCHAIBLE
INSURANCE
CHELSEA, MICHIGAN

Hi! IT'S TIME TO CELEBRATE!

And the very best way we know to celebrate the arrival of a New Year is to begin by greeting all our friends, with hearty hopes for their success and happiness.

Farmer's Supply Co.
ANTON NIELSEN

1962

May the dawning of the New Year portend a new era of progress, prosperity and peace for all...bringing new opportunities for achievement and fulfillment to all.

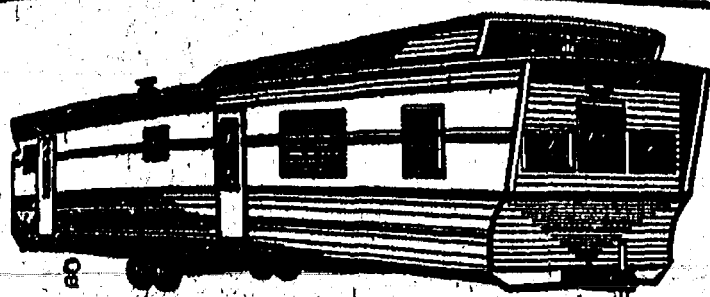
Foster's Men's Wear

a new horizon...

We welcome the New Year with the hope that the new frontiers of time will reveal to us great achievements...achievements that will bring enduring peace and plenty to all; and a steadfast faith in the future of mankind. To our many friends we extend our sincerest New Year greetings.

GAMBLES
"The Friendly Store"

Ruby and Wes Howes
George and Carl Elkins
LaVonda Hayes



NOW AVAILABLE IN THIS AREA

PARTS

SUPPLIES and ACCESSORIES for
MOBILE HOMES

Oil Stove—Carburetor Service
Cleaning — Checking — Adjusting

All Steel
Folding Steps

Heating and
Plumbing Parts

Trailer Lot
For Rent

Hitches, Couplers
Overloads and
Brake Equipment

Locks and Hardware

Furniture and
Furnishings

Stop in and Check Our Catalog
for Your Trailer Needs

Brand Names A-1 Quality

CHELSEA TRAILER PARK

525 North Main St.
Chelsea GR 5-4121



We will close at 6 p.m. New Year's Eve
and be closed all New Year's Day

Dettling's Marathon Service

South Main and Old US-12. Phone 479-1561

GREETINGS



Balmer's Brake Service

CLYDE MYERS TED BALMER LAWTON SCRIPTER

YEAR IN REVIEW:

News Highlights of Chelsea Area for 1961

(Continued from page seven)

April

1—Fire Chief Ted Balmer busy issuing burning permits which are required before starting fires to burn of grass or brush. Firemen had made numerous runs because of grass fires.

1—Chelsea Junior High School Band won Second Division rating at State Festival in Grand Rapids.

3—"Heavier than usual" vote at biennial election. Supervisors elected in this area: Maurice Hoffman, Sylvan; Leigh Beach, Linda; George Bauer, Lyndon; Russell Fuller, Sharon; Edwin Schable, Freedom.

3—A 350-ton high speed WARCO impact extrusion press arrived here by train for Federal Forge Works new cold extrusion plant on Congdon St.

3—Seventy-nine Chelsea High school seniors return from five-day trip to New York and Washington.

6—Lima Township Zoning Board voted unanimously to refuse permit for Chelsea Village sanitary land fill on I-94 in Lima township.

8—Dan Maroney and Mrs. George Ellenwood installed as presidents of Jaycees and Jaycee Auxiliary, respectively, at ceremonies at Dexter American Legion Home.

12—McPherson State Bank at Pinckney robbed. Suspect caught by Ann Arbor police two hours later.

13—Announcement by Blass Elevator Co. that its complete feed mill facility has been assigned to Michigan Feed Milling Co. for the purpose of manufacturing Larro SureFeeds for General Mills, Inc.

16-17—Four inches of snow fell here clinging to bushes and trees to give Christmas-like effect.

17—Workmen began tearing down St. Mary's Catholic church, condemned because of deteriorating walls and floor supports. The church has been in continuous use since its construction in 1869. Services are being held in McKune Memorial Hall until a new church can be erected.

20—Letter published from Byron Pearson reporting on his experiences as a member of the U. of M. Band touring Russia.

22—CHS Band received Second Division rating in state competition of Michigan School Band and Orchestra Festival at Slauson Junior High school.

25—Industrial Development Commission organized here. Present appointees represent Chelsea Chamber of Commerce, the Village Council and community at large. Additional people still to be appointed.

26—Mrs. Theodore Dahmiller honored at Methodist Mother-Daughter banquet for 50 years of service as cradle roll superintendent.

26—Early morning explosion in boiler room at Chelsea High school tore off front of big boiler and smashed all windows in the building.

27—Patron ticket sale for Chelsea Community Ol' Time Show.

boat production June 22-24, began today.

27—Announcement that George Knickerbocker is named campaign chairman for Chelsea Community Chest 1961 drive for funds.

27—Mrs. Robert Daniels won title of "Mrs. Ann Arbor Area" at Michigan Consolidated Gas Co. Ann Arbor.

28—A. D. Mayer, 64, prominent in business, civic, church and community affairs, died of a heart attack while mowing the lawn at his home.

28—Lloyd Grau tied for fifth place in swine judging at the contest held at Iowa State University, Ames, Ia.

30—St. Paul's church appoints committee to study proposed new church building program.

May

4—Dr. J. V. Fisher and Earl Beeman, whose terms as school board members expire this year, announce they will not be candidates for re-election.

4—Harvey Likely re-elected to fourth term as president of Amalgamated Local 437; UAW-CIO.

5—CHS baseball team won its third consecutive game by defeating Manchester, 7-0.

6—Coach Alan Conklin entered four track men in the big Albion Relays and each of the four placed. They are David McLaughlin, Jim Maynard, Don Sexton and Larry Cattell.

7—Richard Schneider commissioned a full-time worker in Home Mission program of the Evangelical and Reformed Church at a special commissioning service at St. Paul's, his home church.

13—Dave McLaughlin set new records—120-yard high hurdle in 14.6 and 180-yard low hurdle in 20.0 seconds at Michigan High School Regional at Eastern Michigan University.

15—Mrs. Blanche B. Coggan of Lansing, was guest speaker for a meeting of Friends of McKune Memorial Library. Her topic: "Underground Railroad of Pre-Civil War Days."

18—Chelsea Church of Christ announces plan to construct its own church building on US-12, one mile east of Chelsea.

19—May Fellowship Day held at St. Barnabas' Episcopal church and attended by 75 Protestant women of Chelsea.

22—Mayor Exchange Day of Michigan Week with Mayor Joseph Quinn of Manistee and Chelsea Village President Robert Daniels exchanging visits to the two communities.

24-25—Mrs. Robert Daniels, competing as Mrs. Chelsea in the Michigan Consolidated Gas Co. sponsored Mrs. America contest, eliminated in Mrs. Michigan event at Detroit after being "in the running all the way."

26—VFW and American Legion Poppy Day. Proceeds for Legion, \$164.68; for VFW, \$172.37.

30—Memorial Day observance included parade to cemetery with George Winans as officer of the day and J. V. Burg, Jr., drill sergeant.

ates with the Rev. Fr. Francis Maliszewski officiating.

4—Baccalaureate service at Chelsea High school for Class of 1961. Presiding pastor, the Rev. Paul M. Schnake. Speaker: the Rev. Philip Rusten.

7—Commencement exercises at Chelsea High school for 94 seniors of the Class of 1961. Speaker: Dr. Norman B. Scherer of Santa Barbara, Calif.

7—Honor graduates announced at Chelsea High school commencement exercises: Carol Cameron, Susan Grossman, Diane Hayes, Kathryn Kinde, Lynn Lipphart, Daniel Mayer, Carolyn Miller, Marilyn Pajot, Ruth Prentice, Carol Reddeman, Kay Runelman and Ann Schumuck.

9—Vandals damaged 40 mail boxes in rural area here.

9—Big "Friday Night" entertainment in downtown area in preparation for Showboat program, June 22, 23, 24.

10—Approximately 225 attended CHS Alumni banquet in high school cafeteria.

11—St. Barnabas' Episcopal church dedication of new church, memorial organ and Communion vessels.

12—Paul E. Mann and Arthur Kuhl elected as members of Chelsea School Board for four-year terms.

15—Richard Haist and Donald Atkinson leave for Wolverine Boys' State, East Lansing, as representatives of American Legion and Kiwanis club, respectively.

18—Lambert Mopyans and Chester Keizer rose gardens open to public.

20—School Board organized for year electing Howard Flintoff president; Stuart Booker, secretary; Luther Kusterer, treasurer.

20—Elaine Pearson leaves for Girls' State at Ann Arbor as representative of American Legion Auxiliary in place of Nancy Carter who injured her foot yesterday, forcing her to cancel plans.

22, 23, 24—Chelsea's Ol' Time Showboat production held at CHS Auditorium.

26—Chelsea Recreation summer program opened with total first day participation listed as 462 as follows: swimming 148; morning baseball 142; arts and crafts 102; evening program 00.

26—Announcement that James Daniels won the all-events trophy at the Kiwanis state bowling tournament at Cheboygan in April. Score: 1,976. Wallace Wood second with 1,952.

29—Harry Burnett won championship flight finals in Chelsea City Golf Tournament.

29—Announcement that Leigh

Beach, Lima township supervisor, was elected chairman of the Washtenaw County Planning Commission.

July

2—The Rev. Donald C. Baacko, husband of the former Audrey Haab, installed as pastor of Emmanuel—St. Matthews churches, Sugar Grove, O.

4—More than 1,000 people on hand at Chelsea Community Fairgrounds for American Legion-Kiwanis Fourth of July fireworks display.

5—Village Council acquires landfill site on Warren Eisenbese farm, Lyndon township. Landfill to be in operation by Aug. 1.

7-8—Kiwanis annual rummage sale at Community Fair building. Gross receipts \$1,150.

9—Four generations, including the maternal great-grandmother, Mrs. William Pritchard, and the paternal great-grandfather, Martin Wenk, were present for the baptism of Jeffrey Hauao, son of Mr. and Mrs. Carleton Hauao who are moving to Chula Vista, Calif.

12—Fred Sager observed 83rd birthday by making daily trip from his home on Dewey St. to

the downtown area, using his wheelchair.

13—Saturday Evening Post article reviewed—Arthur Baum, one of the editors, in July 8 issue, pointed out lack of facilities in Chelsea area to serve 1-04 travelers.

13—Conservation Officer Donley Boyer had a fawn, raccoon and do-dorized skunk at his home—all three confiscated from Washtenaw county residents who were keeping them as pets, an illegal practice.

20—School Board announces special election to be held Aug. 22 requesting two-mill operational levy for three-year period.

20—Richard Haist announced as one of 12 4-H club members of state selected as "top 4-H'ers" as

State 4-H Show at Michigan State University.

21—Word received of death in Munich, Germany, of Mrs. Jean Walworth, former Chelsea teacher and member of board of directors of Chelsea Social Service.

23—Tornado warnings during afternoon. No tornado materialized but severe wind and rain storm at about 4 p.m. disrupted 1,500 phones in Ann Arbor, 39 in Chelsea and 27 in Dexter.

23—Former St. Mary's High school classes of 1930 and 1931 held reunion at K. of C. Hall. Nine of the 16 surviving members of the two classes present.

25—Only 211 votes cast here in Con-Con primary election.

27—Washtenaw County Health Department and Drain Commission air disagreement over pro-

(Continued on page twelve)

SAVE HEAT
NOW WASTED

New kind of oil firing saves
1 gallon out of 3, say users

IRON FIREMAN
CUSTOM MADE
OIL FURNACE

NO SMOKE...NO SOOT

A flame that starts clean and stays clean, thanks to Volumetric Combustion, the new method of oil firing that makes the big difference in fuel savings, comfort, cleanliness and trouble-free operation. Come in and see for yourself.

Gallup-Silkworth
Co., Inc.

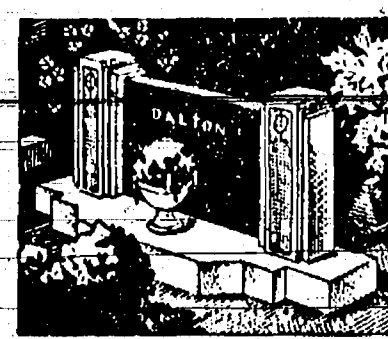
2141 S. State Ann Arbor
Phone NO 5-6161



WE WILL CLOSE NEW YEAR'S DAY

HANKER'S SERVICE

EMMETT and BUD



MAUSOLEUMS ★ MONUMENTS
BRONZE TABLETS ★ MARKERS

BECKER
MEMORIALS

6033 Jackson Road
ANN ARBOR, MICHIGAN

June

1—Fortune Industries, Inc. announce addition of 6,000 sq. ft. to its Chelsea-Dexter Rd. plant.

4—St. Mary's school commencement exercises held at 10 a.m. Mass for 21 eighth grade gradu-

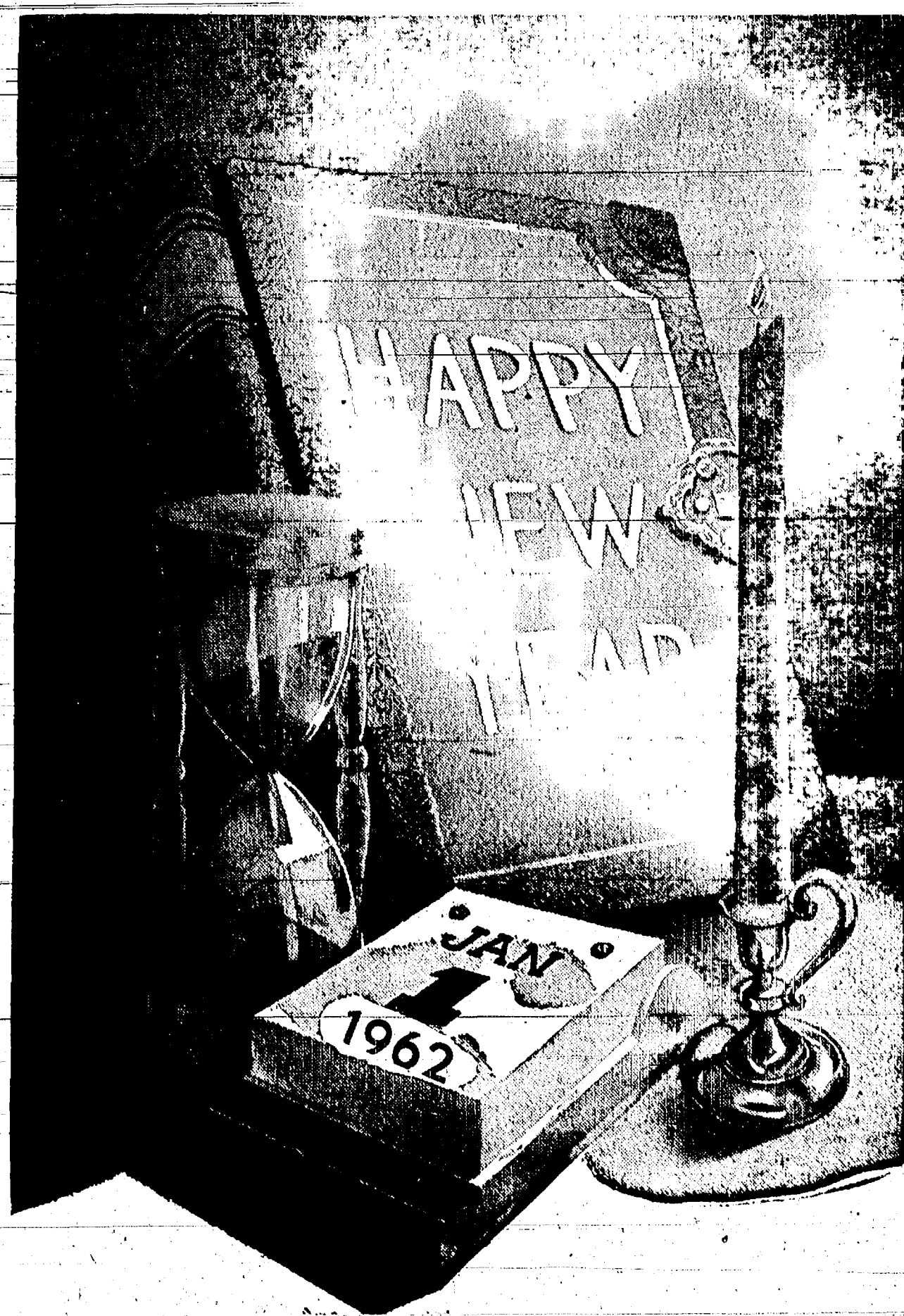
An abundance of Good Wishes

To all friends...may
the New Year bring all the
good things you're wishing for.



KNOLL'S
ASHLAND SERVICE

DON KNOLL



A Merry Christmas from:

"Rolly" Spaulding
Tom McClear
Charlie McDaniels

R. V. Worden
Stan Weir
Charlie Adkins

Dave Luick
Carl Benjamin

Spaulding Chevrolet Sales & Service

"Your Chevrolet Dealer Since 1929"

Chelsea, Mich.

Standard Ads Are a Good Shopping Guide!

Happy New Year
to You

...and please accept our
wishes that your
New Year will
be wonderful.



Herbert L. Paul & Son

Plumbing and Well Drilling
HERBERT and ARTHUR



We hope all our friends will greet the
New Year with a rousing cheer!

WOLVERINE TAVERN

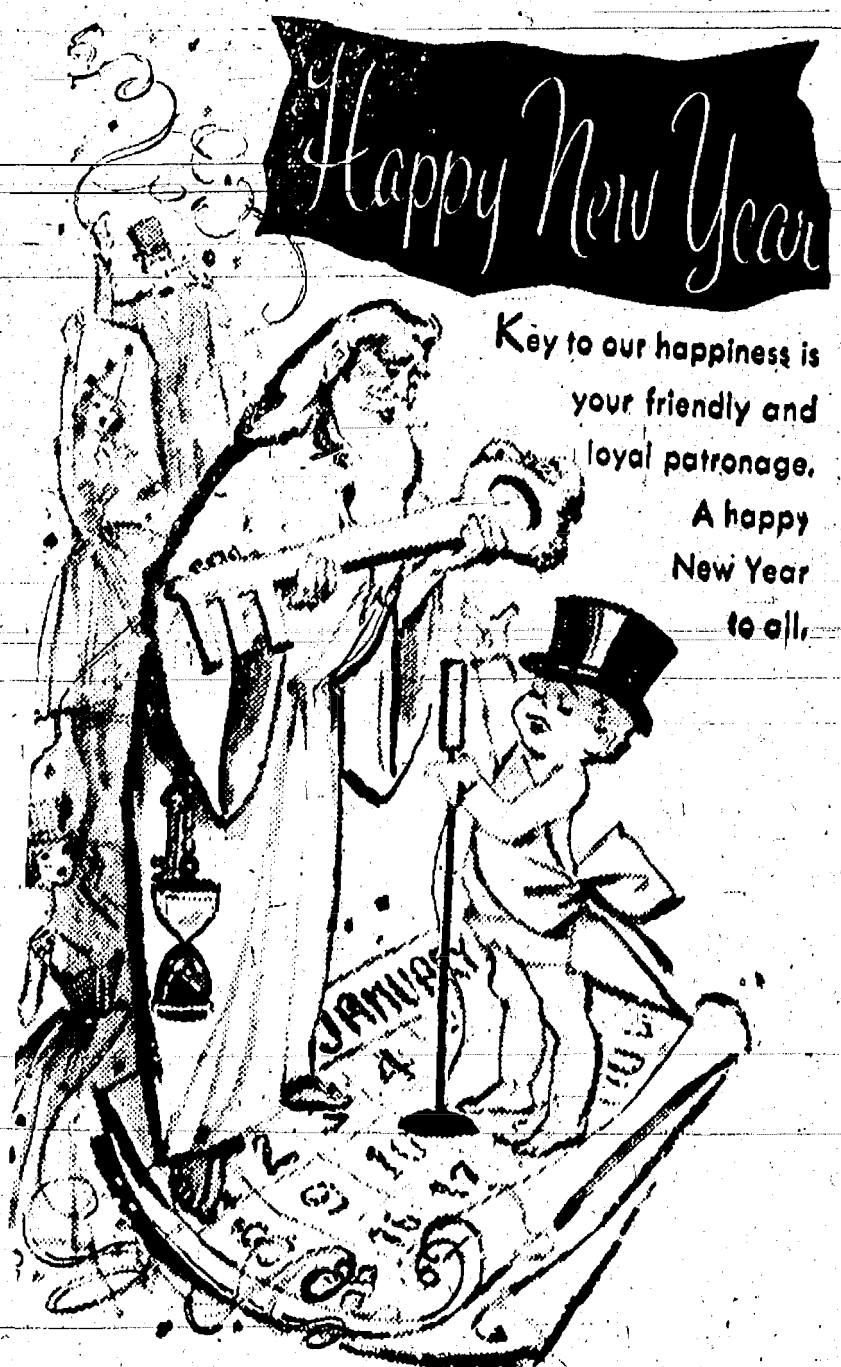
Carl — Nina — Don — Ginny



Open New Year's Eve and New Year's Day

BOB'S BAR

BOB and MARIE HUGHES



John W. Steele, Sheet Metal
521 Garfield St.

YEAR IN REVIEW:

News Highlights of Chelsea Area for 1961

(Continued from page nine)

posed Mill Creek drain project in Chelsea area.

27 — Announcement that Paul Mann was named-treasurer of the Michigan Bankers Association.

27 — Chelsea Fire Department distributing stickers with letter "F" imprinted—to be affixed to front door window at every home where there is an invalid or person who is unable to walk without assistance.

31 — Southeastern Michigan Association of Fire Chiefs and Firemen met at Chelsea High school. Principal speaker: John S. Chapman, educational director of Fyfe-Fyter Co., Dayton O.

August

1 — Chelsea and Sylvan township landfill on Warren Eisenbeiser farm begins operation.

8-11 — Washtenaw County 4-H Show at Rural Activities Center.

10 — Announcement that Raymond Steinbach is appointed to serve as zoning inspector for Sylvan township.

12 — Three weddings — Kathleen Marie Fitzgerald-James G. Baxter; Emma Jean Parshall-David Bristol; Patricia Bradbury-Robert Eder.

13 — Chelsea police picked up four escapees from Southern Michigan State Prison farm—two at midnight and two at 3:15 a.m.

13 — John Glick, former Chelsea businessman, died suddenly at Lansing.

14 — Police Officer Karl Koch flagged train to stop before it reached McKinley St., crossing where a car driven by Mrs. Emerson Wheeler was stuck on the track. Mrs. Wheeler and her three-month-old son had managed to get out of the car.

15 — Mrs. Mary Boyle installed as president of Herbert J. McKune Unit No. 31, American Legion Auxiliary, by her mother, Mrs. Ruth Christwell, a former district president.

18-19 — Sidewalk Sales days in Chelsea.

22 — Community work "bee" at annual Community Fair next week.

23 — James Gaken, grand knight, and his staff of officers of Chelsea Council No. 3092, Knights of Columbus, installed in office.

22 — Chelsea School District request for two-mill levy for three years, turned down by vote of 484-363.

24 — Announcement that Chelsea School District Board of Education will hold election Sept. 11 on proposal for two-mill levy for one year.

24 — New 100'x50' garage building under construction at Chelsea Yards of County Road Commission on West Middle St.

25 — First grid practice of year in preparation for CHS-Milan game, Sept. 15.

30 — Chelsea Community Fair opens.

September

2 — Nancy Carter named Chelsea Community Fair queen.

2 — First place winners in Community Fair parade were floats entered by Chelsea Fire Department and CHS sophomore class.

5 — Total registration in Chelsea public schools listed at 1,708, including 204 in kindergarten.

9 — Governor John B. Swainson and officials of General Mills, Inc., here for open house at New Michigan Feed-Milling Co. at Blass Elevator Co. at Four Mile Lake.

11 — Chelsea School District's two-mill operational levy for one year approved by vote of 558 "yes" and 836 "no."

19 — Col. G. G. Miller, Washtenaw county Civil Defense director, guest speaker at Chamber of Commerce meeting, impressing on listeners the importance of preparing fallout shelter protection at once.

21 — Announcement that Mr. and Mrs. Warren Daniels are donors of new 22'x34' addition to McKune Memorial Library and that

Central Fibre Products, Inc., is providing furnishings for the new addition.

21 — Announcement that Lambert Meyers is disposing of his rose garden in the interest of his wife's health—she is increasingly allergic to roses.

24 — Dedication of new St. Louis School for Exceptional Boys on former Van Valkenburg farm.

28 — Announcement that Mrs. Wilbur Worden has been named chairman of Chelsea Girl Scout Neighborhood.

October

2 — Eleven CHS football team members suspended for year because of infraction of rules.

3 — Richard Haist elected to head Washtenaw League Student Council as president.

5 — Needlework Guild ingathering tea held at Congregational church.

8 — Jaycees chicken barbecue served 1,500 chicken dinners at Pierce Park.

9-13 — Civil Defense course given at Junior High school each evening by Washtenaw county Civil Defense Director Gerald Miller.

11 — Donald Sexton given citizen award for valor from Law Enforcement and Industrial Security association of Washtenaw county for preventing drowning of young child last summer.

13 — Laura Weir, CHS sophomore, named "homecoming queen." Her court: Susie Holmes, Margot Murphy, Sue Lofquist, Hila Weir, Linda Batzdorfer, Sandy Gieske, Grace Kuschmaul.

16 — Chelsea Community Chest "kick-off" luncheon held at St. Paul's church signalling start of annual campaign. Goal: \$15,300.

19 — Rockwell-Standard Corp. beginning construction of additional warehouse space adding approximately 7,000-square-feet to the plant.

24 — Groundbreaking ceremony at Methodist Home for new \$1,118,000 addition.

25 — Toll-free telephone service between Dexter and Chelsea went into effect 1 p.m.

26 — Announcement that Robert Kuhl, Stanley Dyer, Charles Koenig and Richard Bragg have been awarded MSU short course scholarships by Washtenaw County Bankers Association.

November

2 — Chelsea Junior High Bulldogs finished 1961 football season undefeated.

2 — Chelsea church women hold joint World Community Day service at the Methodist church.

4 — Mrs. K. R. McManis installed as worthy matron of Olive Chapter No. 108, OES, at public installation of officers at Masonic Hall.

4 — Eagle Scout Victor Parks guest of Don Weir, sports announcer, in the press box at U of M-Duke football game, Ann Arbor.

5 — Chelsea Baptist church congregation, founded here in October, 1950, dedicated new church building on Wilkinson St., in process of completion by voluntary work of members since April, 1956.

6 — Kiwanis club annual pancake supper held at CHS cafeteria with a total of 400 served.

7 — Washtenaw County Board of Supervisors acted to set up a County Library Service Department and authorized appointment of a five-man Board of Library Trustees.

7 — Village Council delegates village clerk to obtain pertinent information—prices, types available, etc.—regarding new street sweeper equipment with view to including the cost in next year's budget.

9 — John Flook, Washtenaw county drain commissioner reports that work is progressing rapidly on cleaning of Mill Creek Drain.

9 — Weddings announced this week—Mary Anne Sorensen-Robert Balmer; Joyce Gourley-Clive Mo-

aler; Sharon Jacobs-Kenneth Roberts; Virginia Hawks-Max Mock.

11 — Wedding of Sandra Buehler and Frederick Weber at St. Mary's Catholic church.

13 — James Schneider and Tom Penhallegon received Life Scout Awards at Troop-26 Court of Honor.

14 — Tom Eisenbeiser and Jack Howard announced as the 1962 co-captains of CHS football team at the annual football banquet.

15 — First deer kills in area reported by Lewis DeLois at 7:45 a.m. and James Westfall at 9:15 a.m.

18 — Jeff Spaulding awarded Life Scout rank; Jim Ortbling and Dave Adams, Star Scout; and Paul Stahl, First-Class rank at Troop 78 Boy Scout Court of Honor.

19 — First ground covering snow of the season coupled with drop in temperature caused slippery driving conditions contributing to several accidents—one on I-94 at New York Central viaduct west of Pierce Rd., involving nine cars.

21 — Chamber of Commerce packs 900 Christmas gift bags in preparation for first official Santa Claus visit Saturday.

22 — Sylvan township tax rate announced by Supervisor Maurice Hoffman as \$98.80 per \$1,000 assessed valuation. (Mill Creek Drain assessment, where applicable, in addition to rate).

22 — Weird vehicle noticed in Chelsea the past week is a Jeep fitted with an infra-red gas analyzer to detect possible gas main leaks. It is an experimental project of Michigan Consolidated Gas Co. for cost comparison with regulation method of inspection.

22 — United community Thanksgiving service held at Congregational church with the Rev. S. D. Kinde of the Methodist church delivering the sermon.

23 — Weddings announced this week: Susan White-Lawrence-McLeese; Judith McCormick-Richard Ashley.

24 — Charles Koenig and Gerald Schiller left for Chicago to attend International Livestock Show, having won the trip for 4-H club achievement. Also in Chicago is Richard Haist who won the trip because of his prize-winning beef project and outstanding 4-H record. He is a delegate to the 4-H Club Congress.

27 — Kiwanis club program included direct amplified telephone message from NORAD headquarters at Colorado Springs, Colo. on program topic, "Communications and National Defense."

27 — Civil Defense heads approved by Village Council—Ted Balmer, fire chief, Kellie Allen, engineering and transportation; John Palmer, police; Robert Schreiner, signal service; J. V. Burg, welfare; George Winans, administrative and manpower; Dr. James Shanon, health; William Hunter, radiologic detection.

28 — Mr. and Mrs. Joseph Dreyer observe 50th wedding anniversary.

28 — Jaycees announce plans to prepare area at Pierce Park for skating rink.

30 — Announcement that recordings of religious publications now available at McKune Memorial Library—the recordings being a gift from Miss Lonah May Burrows of the Methodist Home.

30 — A total of 51 boys reported for basketball with 14 competing for varsity positions.

December

3 — Chelsea firemen receive first fire alarm since Nov. 9, almost two months. Sunday's call: a car fire at the Richard Smith home on Harrison St.

4 — Joanne Wojciehowski named "DAR Good Citizen" of the Class of 1962.

7 — Announcement that Stanley Knickerbocker has been promoted to rank of captain at Williams Air Force Base, Phoenix, Ariz.

7 — Sylvester Parker, David Reid and Donald Till become members of Quarter Century Club signifying 25 years of continuous employment at Chelsea Spring Division of Rockwell-Standard Corp.

9 — Total of 18 sheep killed and nine injured by dogs in two raids on flock owned by Dean Clark.

10 — CHS speech student s—Mary Ann Hanson, Donna Snyder, Nancy Carter, Richard Haist, Carol Mayers—in Detroit for "Quiz 'Em" panel show vs. Romeo High school team.

10 — CHS speech students—Mary open house at newly-completed clubhouse, 13800 N. Territorial Rd., North Lake.

12 — Olive Lodge No. 156 F&AM and Olive Chapter No. 140, RAM, hold joint installation of officers. The two Masonic groups are headed by Curtis Farley and Clinton Collier, respectively.

12 — Richard Smith elected chairman and Max Kenyon of Dexter, commissioner of new Boy Scout District IV at meeting held at Dexter Divisions.

14 — Announcement the Chelsea Village Council is being petitioned to annex land adjoining south end of village to I-94.

16 — 1,500 children attend annual Christmas party sponsored by Community Chest, UAW-CIO Local 1284, Chrysler Proving Ground Division, and UAW-CIO Local 437, Federal Screw, Central Fibre, Rockwell-Standard and Chelsea Products Division.

17 — Francisco St. John's E and R church burns mortgage signifying full payment of debt on church hall constructed four years ago.

21 — Wash. n Dry automatic coin laundry announces expansion plans and beginning of 20x24-foot addition to building.

21 — Tony Juergens named as first prize winner in Chamber of Commerce Christmas lighting contest. Other prizewinners: Donald Baldwin, second; Frank Reed, third; and Danny Denay, fourth. Douglas Nutt, honorable mention.

27 — Christmas story hour at McKune Memorial Library with Mrs.

Raymond Schaller as story lady.

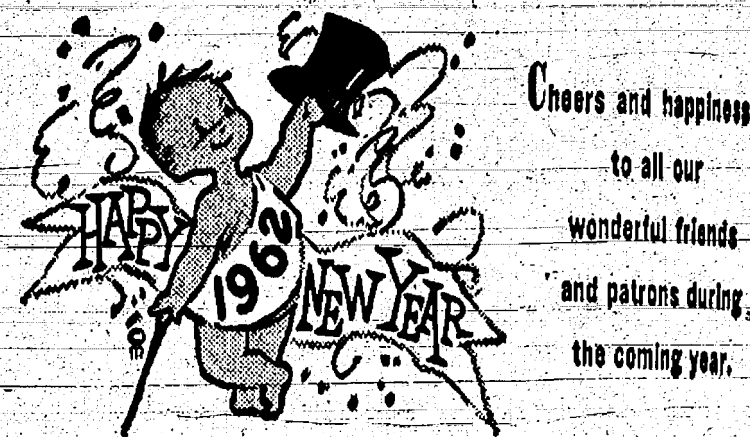
28 — Announcement that additional skating area is being added at Maeswood Skating Pond near Veterans Memorial Park.

28 — Announcement that 72 adults and 120 children received Christmas gifts and food and clothing through Chelsea Social Service assistance of organizations and individuals of the community.

28 — Area residents who maintain bird feeding stations report many varieties of birds seen.

W. E. FARRELL
SHEET METAL

INDUSTRIAL AND GENERAL SHEET METAL WORK
115 WEST MIDDLE STREET—CHELSEA
PHONE Greenwood 9-2011



Sylvan Flower Shop



Palmer Motor Sales, Inc.

LEIGH PALMER — GEORGE PALMER

Florence Fox — Lyle Chriswell — Bob Freeman
Earl Schanz — Slim Hubbard — Joe Kruse
Brian Leisinger — Keith Schuelke

Chelsea Theatre

CHELSEA, MICHIGAN
PHONE GR 9-2211

FRI. - SAT. DEC. 29 - 30

TRUE...UNTOLD TILL NOW!

ARMORED COMMAND

AN ALLIED ARTISTS PICTURE

PLUS: SHORT - CARTOON

SUNDAY - MONDAY

DEC. 31 - JAN. 1

WALT DISNEY'S

BOBBY

TECHNICOLOR

PLUS: DISNEY SHORT-CARTOON

When you think of bottled gas, think of SHELLANE—only a few pennies a day to use

Shellane Bottled Gas is a product of the Shell Oil Company

HILLTOP PLUMBING

BOB SHEARS

201 S. Main St. Ph. 479-3851



Cavanaugh Lake Store

CHELSEA, MICH.
Phone GR 9-6511

SAVE SURE

FARM

General Mills

FEEDS SAVE

TESTED

BULK TON PRICE CHELSEA

SUREDAIRY 32%

\$75.60

SURETASTY

16% PEL

\$65.60

SUREMILK 50%

\$91.00

SUREMILK 32%

\$82.80

AMPLE PARKING AND LOADING SPACE

General Mills

General Mills

General Mills

General Mills

General Mills

General Mills

General Mills

General Mills

General Mills

General Mills

General Mills

General Mills

General Mills

General Mills

General Mills

General Mills

General Mills

General Mills

General Mills

General Mills

General Mills

General Mills

CHELSEA, MICH.
Phone GR 9-6511

SAVE SURE

FARM

General Mills

FEEDS SAVE

TESTED

BULK TON PRICE CHELSEA

SUREDAIRY 32%

\$75.60

SURETASTY

16% PEL

\$65.60

SUREMILK 50%

\$91.00

SUREMILK 32%

\$82.80

AMPLE PARKING AND LOADING SPACE

General Mills

General Mills

General Mills

General Mills

General Mills

General Mills

General Mills

General Mills

General Mills

General Mills

General Mills

General Mills

General Mills

General Mills

General Mills

General Mills

General Mills

General Mills

General Mills

General Mills

General Mills

General Mills

CHELSEA, MICH.
Phone GR 9-6511

SAVE SURE

FARM

General Mills

FEEDS SAVE

TESTED

BULK TON PRICE CHELSEA

SUREDAIRY 32%

\$75.60

SURETASTY

16% PEL

\$65.60

SUREMILK 50%

\$91.00

SUREMILK 32%

\$82.80

AMPLE PARKING AND LOADING SPACE

General Mills

General Mills

General Mills

General Mills

General Mills

General Mills

General Mills

General Mills

General Mills

General Mills

General Mills

General Mills

General Mills

General Mills

General Mills

General Mills

General Mills

General Mills

General Mills

General Mills

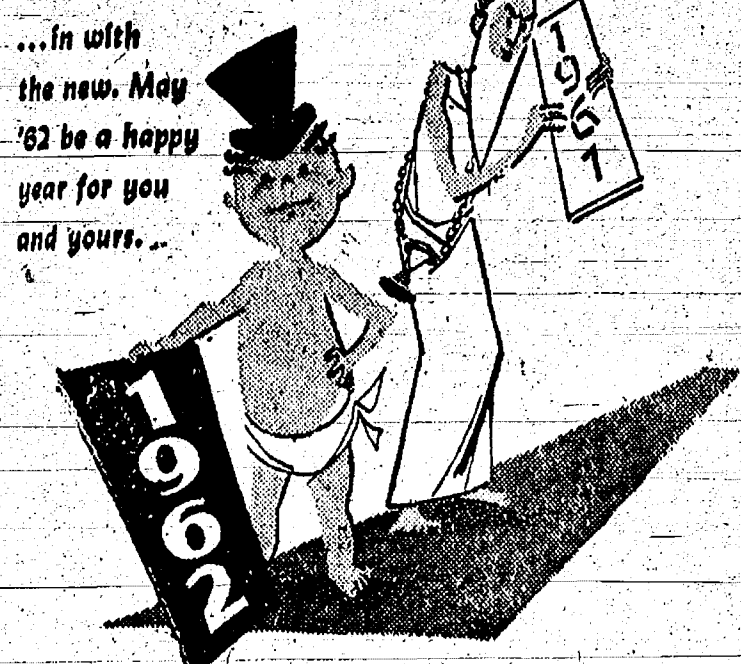
General Mills

General Mills

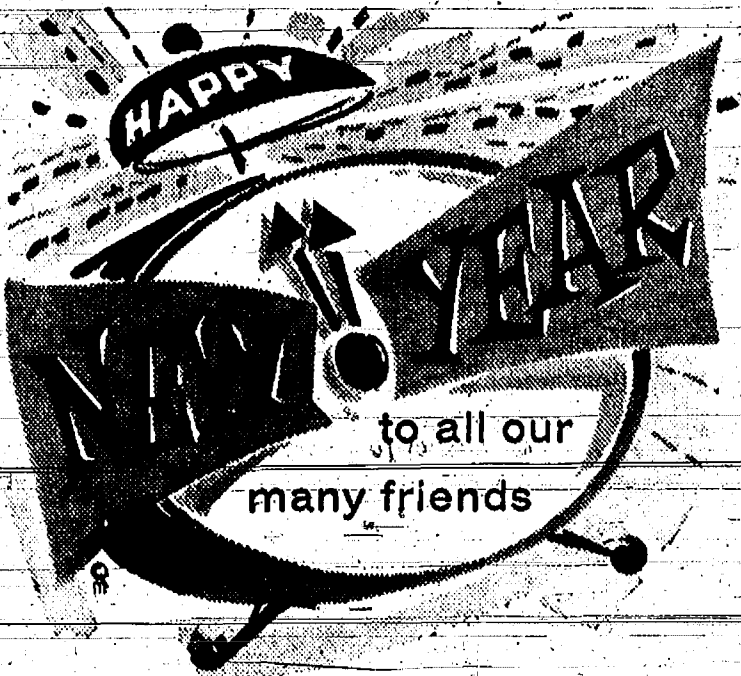


Daniels Motor Sales, Inc.

Out with the Old!



BROWN'S WELDING



CLOSED NEW YEAR'S EVE

GREENLEAF SERVICE

Week Days Open 7 a.m.-11 p.m.
Fri.-Sat.-Sun., 7 a.m.-1 a.m.

M-92 Phone 5-8580
Just Off I-94



As the picture changes to a bright New Year, we wish you the very best of everything. Warmly we thank you for your loyalty and good will in the past. Eagerly we look forward to serving you in the future.

Patty Ann Shoppe

EFFIE MORGAN

Services in Our Churches -

ST. THOMAS
EVANGELICAL LUTHERAN
Freedom Township
Ellsworth and Haak Road
The Rev. Richard W. Bierlein
Sunday, Dec. 31—
10:00 a.m.—Worship service.
8:00 p.m.—New Year's Eve service.

CONGREGATIONAL CHURCH
(United Church of Christ)
The Rev. Philip Rusten, Pastor
Sunday, Dec. 31—
10 a.m.—Worship service. Nursery and kindergarten.

Annual reports should be in the church office by Dec. 31.
Wednesday, Jan. 3—
7:30 p.m.—Women's Fellowship Program. Commitment to Christian Service. Leader: Mrs. John Hale.

Service of Communion and reception of adult members Sunday, Jan. 7.

METHODIST HOME CHAPEL
The Rev. F. J. Wells, Pastor
The Rev. G. P. Stanford, Chaplain
Sunday, Dec. 31—
8:00 a.m.—Worship service and Sacrament of Holy Communion.

SALEM GROVE
METHODIST CHURCH
The Rev. John Laird, Pastor
Sunday, Dec. 31—
10:00 a.m.—Sunday school.
11:15 a.m.—Worship service.
Wednesday, Jan. 3—
7:30 p.m.—WCS evening meeting at the home of Mrs. Leonard Loveland.

FIRST METHODIST CHURCH
The Rev. S. D. Kinde, Pastor
Thursday, Dec. 28—
Youth and senior choir rehearsals canceled.

Saturday, Dec. 31—
10:30 a.m.—Junior choir rehearsal.
Sunday, Dec. 31—
10:00 a.m.—Worship service. Student recognition day.

10:00 a.m.—Nursery, Kindergarten, primary and junior Sunday school department classes.
11:00 a.m.—Fellowship coffee hour.

11:15 a.m.—Youth and adult Sunday school classes.
8:00 p.m.—New Year's Watch Night party. Everyone invited. Theme: Latin America. Recreation, films, fellowship, food. Concluded with worship service 12 to 12:15 midnight. In charge of MYE.

ZION LUTHERAN CHURCH
(Rogers Corners)
The Rev. C. J. Renner, Pastor
Sunday, Dec. 31—
9:15 a.m.—Sunday school.
10:30 a.m.—Worship service. Sermon topic: "The Price of Our Redemption."

8:00 p.m.—New Year's Eve service. Film: "Introducing the American Lutheran Church."
Monday, Jan. 1—
10:30 a.m.—New Year's Day service and Holy Communion. Sermon topic: "God Controls the Future."

Wednesday, Jan. 3—
2:00 p.m.—Women of Zion afternoon group.
7:45 p.m.—Women of Zion evening group.
Thursday, Jan. 4—
8:00 p.m.—Brotherhood meeting.

ST. MARY'S
CATHOLIC CHURCH
The Rev. Fr. Leo J. Smith, Pastor
Sunday, Dec. 31—
Masses at 8:30 a.m., 8 a.m., 10 a.m., and 11:30 a.m.
Monday, Jan. 1—
Masses at 8:30 a.m., 8 a.m., 10 a.m., and 11:30 a.m.

NORTH LAKE
METHODIST CHURCH
The Rev. John Laird, Pastor
Sunday, Dec. 31—
9:30 a.m.—Worship service.
10:00 a.m.—Sunday school.

ST. PATRICK'S
EVANGELICAL AND REFORMED CHURCH
(United Church of Christ)
The Rev. Paul M. Schnake, Pastor
Sunday, Dec. 31—
8:15 a.m.—Early worship service.
9:30 a.m.—Sunday school.
10:45 a.m.—Second worship service.

Wednesday, Jan. 3—
7:30 p.m.—Council meeting. The annual congregational meeting is scheduled for Jan. 7 following a brief worship service at 10:45 a.m. There will be no early service but Sunday school will be held at the usual time, 9:30 a.m.

BETHEL
EVANGELICAL AND REFORMED CHURCH
(United Church of Christ)
Freedom Township
The Rev. T. W. Menzel, Pastor
Sunday, Dec. 31—
10:00 a.m.—Worship service. There will be no Sunday school. Wednesday, Jan. 3—
1:30 p.m.—Women's Guild meeting.

FIRST CHURCH OF CHRIST
SCIENTIST
1888 Washtenaw Ave., Ann Arbor
Sunday, Dec. 31—
9:30 a.m.—Sunday school.
11:00 a.m.—Morning service. Scripture from Matt. IX: "And Jesus went about all the cities and villages, teaching in their synagogues, and preaching the gospel of the kingdom, and healing every sickness and every disease among the people."

CHELSEA BAPTIST CHURCH
The Rev. David A. Wood, Pastor
Sunday, Dec. 31—
10:00 a.m.—Sunday school.
11:00 a.m.—Worship service.
6:15 p.m.—Young people's service.
7:00 p.m.—Evening service. Prayer meeting Wednesday, 7:30 p.m.

ST. BARNABAS'
EPISCOPAL CHURCH
20500 Old US-12
Sunday, Dec. 31—
11:00 a.m.—Morning Prayer. Church school and nursery. Choir rehearsal Thursday at 4 p.m. at the home of Mrs. Jerry Beaumont, 335 Washington.

ST. JOHN'S EVANGELICAL AND REFORMED CHURCH
(United Church of Christ)
(Francisco)
The Rev. J. Tracy Luke, Pastor
Sunday, Dec. 31—
9:30 a.m.—Worship service.
10:30 a.m.—Sunday school.

ST. JOHN'S EVANGELICAL AND REFORMED CHURCH
(United Church of Christ)
(Rogers Corners)
The Rev. J. Tracy Luke, Pastor
Sunday, Dec. 31—
9:45 a.m.—Sunday school.
11:00 a.m.—Worship service and Communion.

NORTH SHARON
COMMUNITY BIBLE CHURCH
Sylvan and Washburn Road
The Rev. Carmel Carpenter, Pastor
Sunday, Dec. 31—
10 a.m.—Sunday school.
11 a.m.—Worship service.
7 p.m.—Evening service. Prayer meeting each Wednesday evening at 8 o'clock.

FIRST ASSEMBLY OF GOD
CHURCH
14900 Old US-12
The Rev. Harold S. Blotta, Pastor
Sunday, Dec. 31—
9:45 a.m.—Sunday school.
11:00 a.m.—Worship service.
9:00 p.m.—Watch Night program and service at the parsonage, 11335 Chelsea-Dexter Rd.
Prayer meetings Tuesdays at 7:30 p.m.

GREGORY BAPTIST CHURCH
The Rev. Robert Ramsayer, Pastor
Sunday, Dec. 31—
10:00 a.m.—Sunday school.
11:00 a.m.—Morning worship.
7:30 p.m.—Evening worship.

CHURCH OF CHRIST
1194 Chelsea-Manchester Rd.
Stanley Hudgins, Minister
Sunday, Dec. 31—
10:00 a.m.—Sunday school and Bible study.
11:00 a.m.—Morning worship.
8:00 p.m.—Evening worship service.

WATERLOO VILLAGE CHURCH
(Evangelical United Brethren)
The Rev. Wilbur Silvernail, Pastor
Sunday, Dec. 31—
10:00 a.m.—Sunday school.
11:00 a.m.—Worship service.
7:00 p.m.—Youth Fellowship.

UNADILLA
PRESBYTERIAN CHURCH
The Rev. William Yauch, Pastor
Sunday, Dec. 31—
10:30 a.m.—Worship service.
11:30 a.m.—Sunday school.

Club and Social Happenings
EVENING PHILATHEA CIRCLE
Evening Philathea Circle held its Christmas meeting Tuesday evening, Dec. 19, at the home of Mrs. George Atkinson. Assisting Mrs. Atkinson as co-hostess was Mrs. Elwyn Beach. There were 14 members and one guest present.

In presenting the program on the Advent and Christmas theme, Mrs. Russell Bernath used advent candles and read appropriate Scripture passages.
An exchange of Christmas gifts followed.

The next meeting is to be held Jan. 16 at the home of Mrs. Thomas Smith with Shirley Smith as co-hostess.

CHELSEA SUBURBANETTES
At the Christmas meeting of Chelsea Suburbanettes Extension club, held Thursday evening, members responded to roll call by giving favorite recipes.

Reports were given during the business session on the club's Christmas community service project which provided 16 gifts for patients at Ypsilanti State Hospital; also on a trip to Detroit, Dec. 6, by eight of the club members.

Thursday's meeting was held at

Attend Wedding at Battle Creek Church

The Rev. and Mrs. S. D. Kinde, with their son and daughter, Kurt and Kathryn, accompanied by the former's sister and her husband, Mr. and Mrs. Rob. Gatewood of Trenton, were in Battle Creek Thursday evening to attend the wedding of Robert Richard Kinde and Susan Allen Deo at the First Congregational church. Parents of the couple are Dr. and Mrs. M. R. Kinde of Battle Creek and Mr. and Mrs. John Ballard Deo; also of Battle Creek. The reception, which the Kinde's also attended, was at the Battle Creek Country club. Both the bride and bridegroom are students at the University of Michigan.

the home of Mrs. Robert Heller with Mrs. Walter Beuerle assisting as co-hostess.

The next meeting, Thursday, Jan. 18, will be held at the home of Mrs. Bruce Everscraft and will begin at 7 p.m. with a Scandinavian smorgasbord, each member to bring a dish to pass.

Co-hostess for the January meeting will be Mrs. John Skittenheim.

CHAT 'N' SEAU
Members of Chat 'n' Seau met at the Congregational church Tuesday evening, Dec. 19, for a pot-luck Christmas dinner in charge of Mrs. Cora Lee Miller, followed by a program presented by Mrs. Lucille Olson.

The program included a condensation of the Lucius Ragby story, "The Man who Was Too Busy to Find the Child," read by Mrs. Lee Ferguson.

BETA SIGMA PHI
Mrs. Larry Chapman was the hostess for a meeting of Beta Sigma Chapter of Beta Sigma Phi sorority held at her home Tuesday evening, Dec. 19.

In keeping with the holiday season, members exchanged Christmas gifts and the hostess served appropriate refreshments.

Theresa Hankard and Mrs. Chapman presented the evening's program on the topics, "Literature" and "Travel."

The group will hold the next regular meeting Tuesday, Jan. 2, at the home of Ruth Beuerle.

VA CLOSING OFFICES
The Veterans Administration plans to close its 161 one-man contact offices by the end of the year.

The employees will be absorbed to the extent possible in other VA activities and most of them will be replaced.

Demand for services in these one-man offices has decreased. Remaining open will be 273 locations.



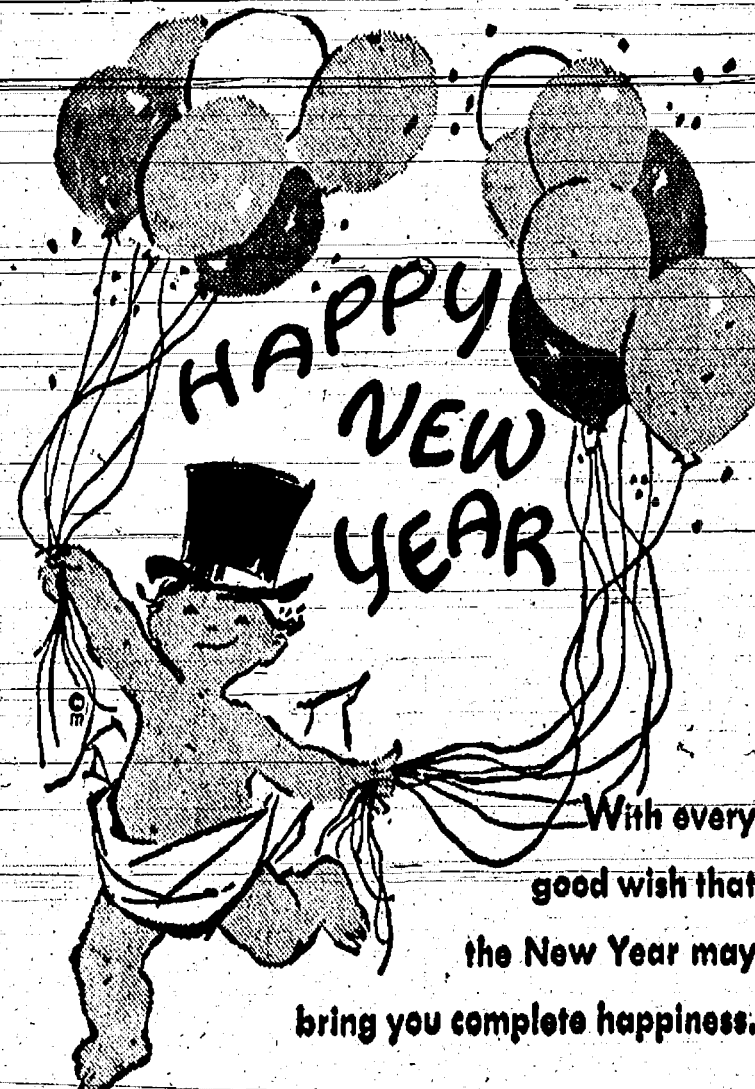
Mr. and Mrs. William G. Luick

William Luicks Will Observe 50th Wedding Anniversary New Year's Day

Mr. and Mrs. William G. Luick of 10701 Jackson Rd., Dexter, are celebrating their golden wedding anniversary on New Year's day. The couple spoke their vows Jan. 1, 1912, at the home of her parents, Mr. and Mrs. J. M. (Barbara) of Pleasant Ridge. A Frederick Thru of the Salem Evangelical Lutheran church of Sejo. They are members of St. Paul's United Church of Christ of Chelsea. Mr. Luick's parents were Mr. and Mrs. Henry H. Luick. The couple has been engaged in farming in Lima township throughout their married life. They have three daughters: Mrs. E. J. Blackmore (Grace) and Mrs. Carl L. Peterson (Ruth). St. Battle Creek and Mrs. Richard M. King (Barbara) of Pleasant Ridge. A son, Howard H., died at the age of 12 in 1928. They have four grandchildren and two great-grandchildren.

Mr. and Mrs. Luick are being honored at a family dinner party on Sunday.

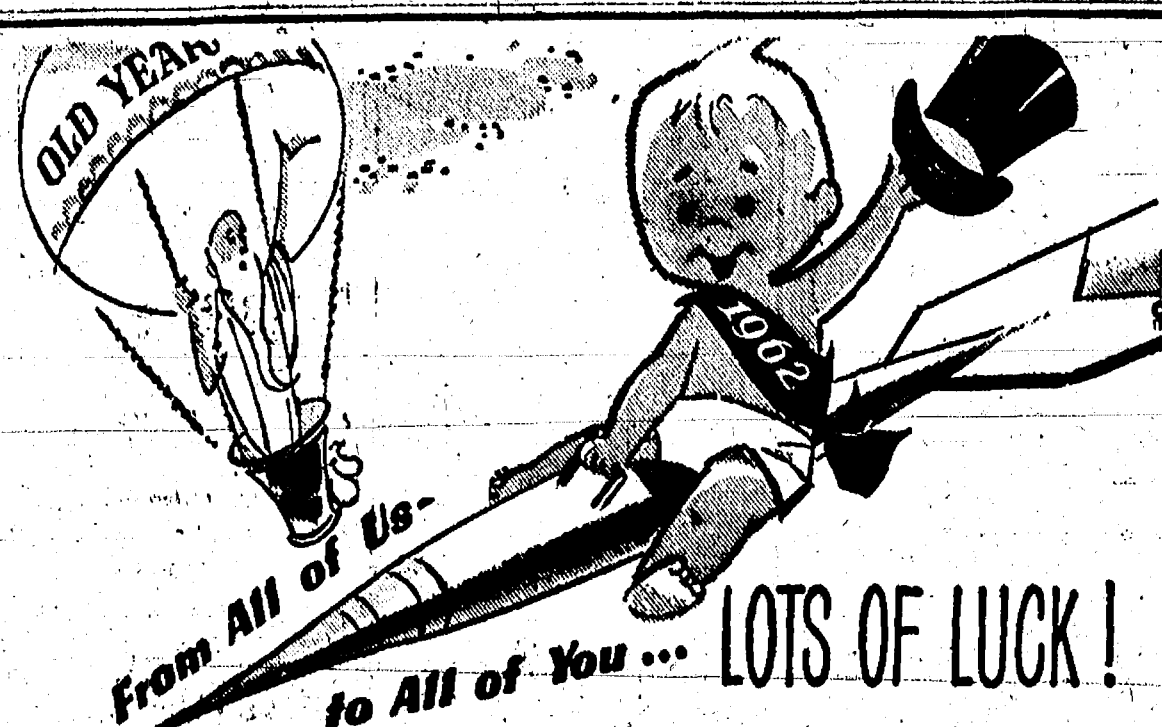
YEAR-END FURNITURE SALE
Drastic Reduction on entire stock
Friday and Saturday, Dec. 29-30 Only
MERKEL BROS.



With every good wish that the New Year may bring you complete happiness.

We will be closed all New Year's Day and re-open Tuesday, Jan. 2 at 6:00 a.m.

Chelsea Restaurant
JOHN and ELLA McMILLAN



From All of Us to All of You... LOTS OF LUCK!

Walter F. Kandlehner, Jeweler
"Where Gems and Gold Are Fairly Sold"



As the clock strikes New Year, may we add a note of thanks to our many friends for their much appreciated kindness.

Chelsea Greenhouses
MEMBER F.T.D.
7010 Lingane Rd. Phone GR 9-6071

