

25, 1961
up to one
reports of
when buyin
girls as
uction of
their pu
make

WEATHER				
Wednesday, Mar. 22	40	51	0.11	
Thursday, Mar. 23	38	45	Trace	
Friday, Mar. 24	31	40	0.00	
Saturday, Mar. 25	37	48	0.00	
Sunday, Mar. 26	37	48	Trace	
Monday, Mar. 27	37	48	Trace	
Tuesday, Mar. 28	37	48	0.00	

The Chelsea Standard

QUOTE
Spring hangs her infant blossoms on the trees, rocked in the cradle of the western breeze.
—William Cowper

SEVENTEENTH YEAR—No. 39 18 Pages This Week CHELSEA, MICHIGAN, THURSDAY, MARCH 30, 1961 10c per Copy SUBSCRIPTION \$3.00 PER YEAR

BIENNIAL SPRING ELECTION SET MONDAY

Area Churches Plan Special Services for Easter, Good Friday

Business Places Will Close Friday During Services

The United-Good-Friday service at Chelsea Protestant churches is scheduled to be held at the Methodist church from 1:30 until 2:30 tomorrow, with the Rev. Phil. B. Rusten delivering the sermon. The topic is to be "Personality in the Face of Deception," this being the leading topic of the entire Lent-series theme, "That All May Be Saved."

A feature of the United-Good-Friday service will be a community choir of approximately 50 voices. The choir will sing two anthems under the direction of David Lindy, instrumental music director of Chelsea schools.

Churchmen participating in the Good Friday service, in addition to the Rev. Rusten, include the Rev. D. Kinde of the Methodist church, the Rev. Paul M. Schnake of St. Paul's Evangelical and Reformed church, the Rev. Harry Fisher of Salem Grove and North Methodist churches; and the Rev. J. W. Smith of the First Baptist church.

(Continued on page six)

MSU Concert Band Makes Big Hit Here

"Excellent entertainment" was the descriptive comment on the concert presented Friday afternoon in the Chelsea High school auditorium by the Michigan State University Band.

Students of the Junior and Senior high school and members of the high school bands, as well as approximately 40 adults of the community were present.

The band, directed by Leonard V. Aline, played a wide variety of numbers including "Stars and Stripes Ballet Suite" by John Philip Sousa; "The Crown Imperial March" by Walton; "Hollywood Suite" a medley of light opera tunes arranged by Nacio H. Brown; "The Rhine Journey" from "Waldemar" by Richard Wagner, and such selections from the brilliant pen of Franz Liszt as "The Hungarian Rhapsody." The concert here was part of the "Cap and Gown" series, a continuing education program of the MSU College of Science and Arts, College of Communication Arts and College of Education.

Grass Fires Continue To Be Hazard

In spite of repeated warnings of Conservation Officer Donley Boyer and Fire Chief Ted Balmer, grass fires have plagued the Chelsea Fire Department the past 10 days.

Monday, with a strong wind blowing, proved hectic for firemen, calls coming in for help at widely scattered points so that they raced from one location to another without a chance to return to town between calls.

At 11:55 a.m. a grass fire started at the Lyndon township dump on Waterloo Rd. Firemen remained on the scene an hour.

At 1:40 p.m. a call was received from the residence of Dr. V. R. Hanson on Chandler St., but the grass fire was under control by the time firemen reached the spot.

At 2:20 p.m. another call was received because of a recurring blaze at the Lyndon township dump.

Without returning to town, the fire truck went to the Wayne Harvey farm, 14840 Harvey Rd., Waterloo township, to fight a grass fire and at 3:45 p.m. while enroute back from that call, the firemen were directed by radio to the Carmer Slocum place at Cavanaugh Lake for another hour of grass fire fighting.

Other recent grass fires were one on the Lyndon township property of C. E. Gingles, DDS, of Ann Arbor, on Saturday, Mar. 25, and (Continued on page six)



JAMES EGBERT of Webster Groves, Mo., in town for preliminary planning for a community-wide production of a "Show Boat" program this summer, was a guest at Monday's Kiwanis club meeting and took advantage of the opportunity to discuss the coming event with Village President Robert Daniels. According to a "roving reporter," Egbert was immediately surrounded by local talent eager to sign up as "deck hands." Seated around the table, from left, are Egbert, Leo Bishop, Dr. P. E. Sharrard, President Daniels, and Anton Nielsen. Standing, from left, are William Rich, James Liebeck, Jack Dettling, Wallace Wood, Paul Niehaus and A. S. Penhallegon.

2 Ensembles Win Honors At Festival

Two ensembles from Chelsea High school participated in the State Festival at Jackson last Saturday, one receiving a First Division rating and the other a Second Division rating.

The coveted First Division rating was won by Kathy White and Christine Tarasow for a clarinet duet.

Dan Kyser, professor of clarinet at Western Michigan University, Kalamazoo, was the judge for the clarinet section at the state festival.

The brass quartet group which won the Second Division rating, considered an excellent result in state competition, includes Ed. Laubon and Eric Kinsley, cornets; Wendy Gilbert, French horn; and Rose Zahn, baritone.

The brass quartets were judged by Leonard Marotta, cornet instructor and band director at Western Michigan University.

The judges praised the two Chelsea group winners for their musicianship.

The festival competition took place at Jackson High school and at Frost Junior High school at Jackson.

David Lindsay, instrumental music director in Chelsea schools, accompanied the students to the festival.

Mrs. Maxine White, mother of Kathy White, also accompanied the group.

Community-Wide Show Boat Project To Be Held in June

Donald Alber Is Chairman of Plan Committee

Chelsea's "roving reporter" is back on the job in preparation for another community-wide entertainment project scheduled to be held some time in June. Similar reporting in 1959 and the community minstrel show preparations in 1960, kept residents informed of the committee's progress in planning the event.

The 1961 project is described as a "Show Boat Extravaganza," hailed by the "roving reporter" as follows:

Here Come the Show Boat! Here Come the Showboat! That familiar old cry with all its old-time nostalgia and folklore will be echoing throughout the community in June. That's right—we're going to have a Show Boat! Last year's successful Old-Time Minstrel Show and Vaudeville Extravaganza will be "out-extravaganzaed" as only you folks who are past masters of extravaganza can extravaganza an extravaganza.

Initial plans that started taking shape last fall have come out of hibernation and are going all out now. Preliminary working committees are being formed, dates of production scheduled, rental of costumes arranged, and above all else—our friend, Jim Egbert, is back with us to produce your Show.

The key word of the showboat really and truly is extravaganza—for new effort will be put forth this year to get all new songs, jokes, skits, dances, etc. All sorts of new gimmicks will be employed this year to recreate the by-gone atmosphere of the Show Boat era. Chelsea's Show Boat will have a certain that will steer a straight, steady course to your funny bone.

His crew members will participate in the songs and dances that will certainly delight every member of the audience.

According to your Show Boat General Chairman, Donald Alber, "This is your Show Boat and all of you are asked to take part in this community activity. Let's all join in on the fun and let's get one fact established right at the start: If you are not asked to take an (Continued on page six)

All Township, Some State Officers, State Issues Are on Ballot Voters Will Decide on Issue of Calling Constitutional Convention

Monday, April 3, is election day in Michigan to name regents of the University of Michigan; members of the board of Michigan State University and Wayne State University; superintendent of public instruction; state highway commissioner; and a member of the state Board of Education.

Also to be elected are two state supreme court justices on a non-partisan ticket and, in addition, voters will cast their ballot on whether a convention shall be held to consider revision of or amendments to the Michigan constitution for subsequent submission to electors for approval. This is the much-discussed "con-con" proposal.

Another proposal which will appear on the ballot is for an amendment to the state constitution to allow the state to aid in financing industrial, manufacturing and municipal development projects.

This "last-minute" constitutional amendment was added to the Apr. 3 ballot after the measure cleared the State Senate Mar. 20 by a vote of 26-3. Approval by electors would pave the way for a Greater Michigan Authority.

It is part of Gov. Swainson's program which he contends would stimulate new industry and create more jobs in the state.

Also to be elected Monday are all township officials. Polls will be open from 7 a.m. until 8 p.m., each township voting at its own township hall.

Sylvan Township ...

Sylvan township and Lyndon township each have full slates of candidates on both the Democratic and Republican tickets; Lima and Sharon have partial lists on each ticket; and Freedom township's full Republican ticket is unopposed.

The Democratic candidates in Sylvan township are headed by the incumbent supervisor, Maurice Hoffman seeking his fourth term.

Other Democratic candidates are Robert Devine, clerk; Letha Beach, treasurer; Norman Eisman, trustee; George Brettschneider, justice of the peace; Herman Bertke, board of review; Earl Willis and John Pierson, constables; and Clyde Martin, commissioner of highways.

Republican candidates in Sylvan township are Thomas Bust, supervisor; Richard Kern, clerk; Marjorie Fischer, treasurer; Robert Rudd, trustee; Frederick Belsier, justice of the peace; Joseph T. McKel, Sr., board of review; Carl Holter and William Schatz, constables; and Martin E. Miller, commissioner of highways.

Two Burglars Captured At Pinckney

Two Ann Arbor men, captured early Friday after a search in which State Police from Brighton and Lansing, along with the trained State Police canine recruit "Jocko" participated, have admitted they were responsible for break-ins in Chelsea two weeks ago as well as numerous other burglaries in Washtenaw and Livingston counties in the past three months.

The two men were picked up on M-36 near Pinckney while trying to flee on foot after a burglary attempt at Lakeland where a burglar alarm had frightened them away. Their car was seen driving away and armed with its description, State Police located the vehicle parked in Pinckney. As a State Police officer stood by waiting for the car's owners to return, they fled on foot from Jim's Gulf Station where they were attempting to batter open a safe. The station had been robbed earlier this month and on Mar. 20 La-Rosa's Tavern at Pinckney had lost more than \$1,000 to burglars.

The two Chelsea burglaries at Chelsea Lanes bowling alley and at Knoll's Ashland Service, had occurred the same week-end.

The Ann Arbor men arrested are Ronald D. Marsh, 28, of 1042 N. Maple Rd., and Keith Metty, 19, of Maiden Lane.

They pleaded guilty to separate felony charges on Monday in Livingston county Circuit Court and are to be sentenced Apr. 10.

In addition to the Pinckney and (Continued on page three)

Lyndon Township ...

The Democratic candidates of Lyndon township are Gerald Grohner, supervisor; Genevieve DeSmith, clerk; Catherine Mester, treasurer; Scott Freeman, trustee; Lynwood Noah, justice of the peace; Orson Beeman, Sr., board of review, full term; Leslie Eisenbeiser, board of review to fill vacancy; Richard Menge, Norman Bott, Robert Bulck, Jr., and Thomas Kramer, constables.

Republican candidates include George Bauer, supervisor; Emma Goodwin, clerk; and Mary Clark, treasurer, all incumbents.

Others are Stephen Baker, trustee; Robert Meyers, justice of the peace; Duane Noah, board of review, full term; Donald Beeman, Max Boyce, Norman Kaiser and John Otto, constables.

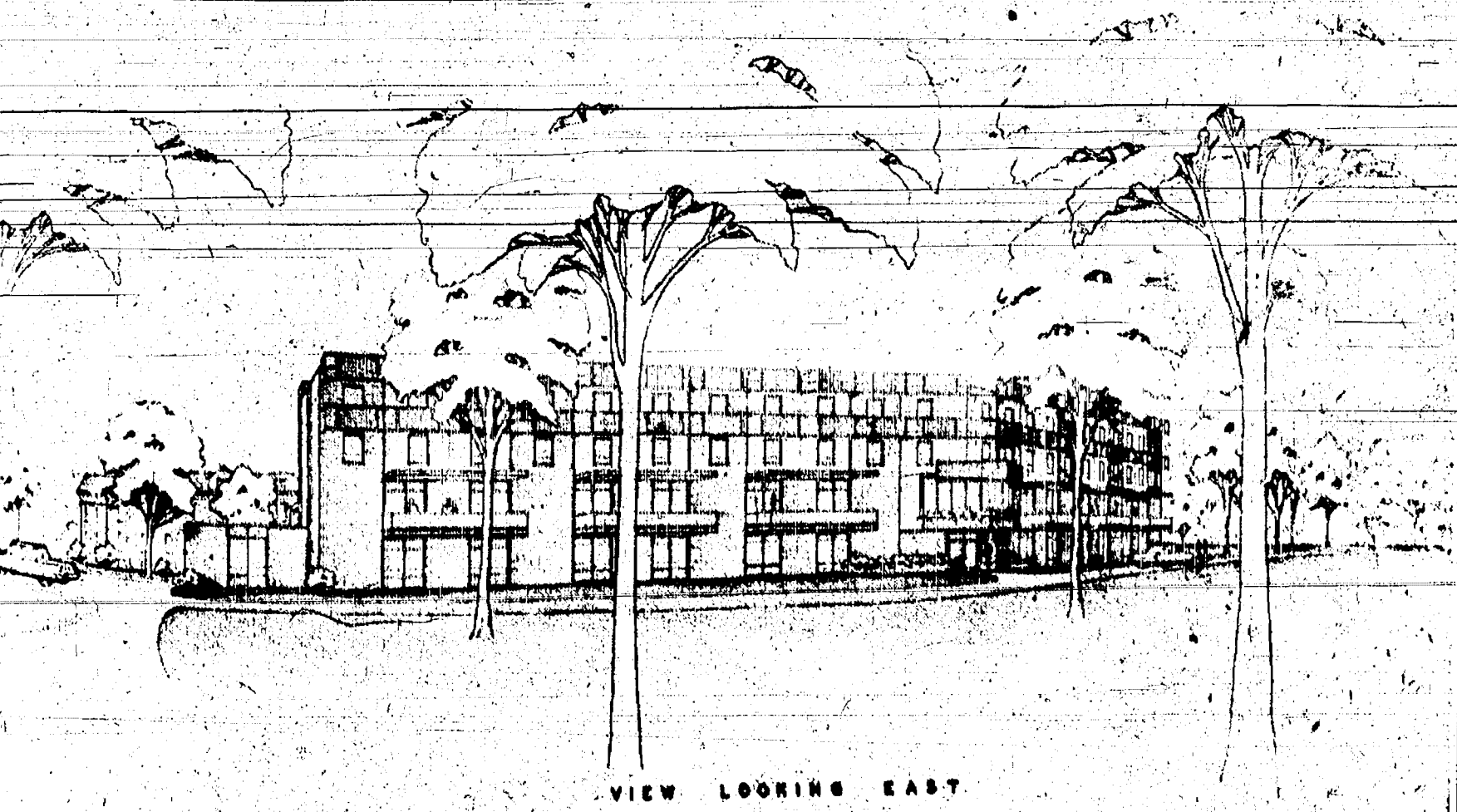
Ernest Clark is a sticker candidate for board of review to fill vacancy.

Lima Township ...

In Lima township, the incumbent supervisor, Leigh Beach, "on the Democratic ticket, and the incumbent treasurer, Hilda Pierce, on the Republican ticket, are unopposed.

Other candidates on the Democratic ticket in Lima townships are Ralph Stoffer, clerk; Fred Barth, trustee; Arthur Barth, justice of the peace; and Clifford Bradbury, board of review.

Lima township Republican candidates, in addition to Mrs. Pierce are David Soule, clerk; Walter (Continued on page three)



METHODIST HOME ADDITION—This is an artist's drawing of a proposed new addition to the Methodist Home. According to preliminary plans the building will be at the north and west of the present building. The Board of Trustees has approved the preliminary plan.

Methodist Home Addition To Be Built

Increasing responsibilities of caring for the aging of the Detroit area have led to the decision to build a new addition to the Methodist Home.

The Board of Trustees of the Home has already approved preliminary plans for the addition which will be 260 feet long and 40 feet wide. It is to be built in the form of an open V and will be at the north and west of the existing buildings.

Plans provide for 58 private rooms on two floors for medical care of residents, plus facilities for physical therapy, doctors' and nurses' quarters and additional storage facilities.

Also included are plans for 22 "apartment-like" residence units in the new building.

When completed the building will be the answer to three definite needs of the Home—space and facilities for better care of the ill and the infirm; it will lessen the waiting time of prospective residents already on the approved waiting list; and it will offer comfortable, pleasant living facilities in the apartments to those who have the means to assure the Home a so-called sustaining gift in addition to providing the means for the cost of life expectancy years.

Clark, Scripture and Phisals of Detroit, is the architectural firm which has drawn up the preliminary plans.

Steer Club Votes Change In Prize List

A change in the prize list for Chelsea Steer club members has been announced by N. L. Merkel, chairman of the board of directors.

At a meeting this week it was voted to omit the customary prizes for rate of gain of steers owned by club members this year. The decision was made because of irregularities in beginning weights of the steers in the club project.

Prizes will be given, however, for showmanship and for best set of records. In each category first prizes of \$10 and second prizes of \$5 will be awarded.



MYSTERY-FARM NO. 144—Here is another in the current series of aerial farm photos shown each week in The Standard for readers to identify if they can. If you recognize the place call GR 5-3581. The owner will receive, as a gift, a mounted photo of the farm if he calls at The Standard office by Saturday.

The Chelsea Standard
Established 1871
General Excellence Award by Michigan Press Association,
1951-1953-1956-1959-1960
Walter P. Leonard—Editor and Publisher

Published every Thursday morning at 300 North Main Street, Chelsea, Mich., and entered as second class matter at the postoffice at Chelsea, Mich., under the act of March 3, 1879.

Subscription Rates (Payable in Advance):
In Michigan: One Year \$8.00 Six Months \$4.00
Outside Michigan: One Year \$10.00 Six Months \$5.00
Single Copies \$1.00
Service men or women, anywhere, 1 year \$8.00
RETURN POSTAGE GUARANTEED

Vote for Every Issue, Every Office In Monday's Biennial Spring Election

As a good and conscientious citizen, of course you plan to vote in the Spring Election next Monday, Apr. 3.

This is to remind the conscientious voter that he does only half a job if he votes for only half of the offices or issues. In addition to the regular partisan ballot there are two important proposals and the non-partisan slate for the state supreme court.

The proposals are important, especially the one dealing with calling a constitutional convention. Don't miss the opportunity of making your choice on these issues which may have far-reaching effects on our state government.

And the non-partisan ballot is important, too, for it is here that voters will select two justices for the State Supreme Court. It is true that ours is a government of laws, rather than a government of men. But in the important business of interpreting law, the vital ingredient is the experience and ability of the men who do the interpreting.

Seeking re-election are the incumbent Chief Justice, John R. Dethmers, who has been a member of the court since 1946 and Chief Justice for six years, and the incumbent Justice, Harry F. Kelly, a Supreme Court Justice for more than seven years who previously served the state for two terms each as governor and secretary of state. Opposing them are Ernest C. Boehm, formerly an assistant prosecutor and Common Pleas Court Judge and presently a Wayne county Probate Judge, and James H. McLaughlin, a member of the State Workmen's Compensation Commission.

Remember: Don't vote half-way. Vote for every office and for every issue.

Your Newspaper Is Best Buy

Your newspaper continues, in this period of inflated prices, to represent one of your best buys.

At the same price, or a few more pennies per copy, more than 80 million subscribers and newspaper purchasers over the nation are getting a paper that is almost 20 percent bigger than it was ten years ago.

A major factor in making possible this impressive money's worth, is the research conducted continuously by newspapers and groups of publishers to hold down prices by constant improvement in methods and equipment. Outstanding in this field is the American Newspaper Publishers Association, which has announced that it will spend \$600,000 in research in 1961.

But newspapers cannot do the whole job alone. Nor are efforts to strengthen your newspaper confined to research on methods and equipment. For example, the Newsprint Information Committee, composed of six Canadian newsprint-producing companies—has just revealed that it is putting up \$60,000 this year for research to measure the advertising impact of newspapers. This, incidentally, is the same group which spent \$40,000 in 1960 to have Harvard University measure the effectiveness of advertising repetition in newspapers.

Your editor is always ready to take full credit for the journalistic excellence and high editorial standards of your paper, just as he must take the blame for his errors—and even for some things that are not errors. But he is likewise happy to acknowledge the help of others, such as ANPA and this small group of newsprint manufacturers, in making it possible for us to better serve our advertisers and to present the bargain that is delivered to your door for little more than it cost two decades ago.

Uncle Lew from Lima Says:

DEAR MISTER EDITOR:

My old lady went to town yesterday and got her hair done for Easter Sunday and she ain't done nothing today but try to decide if it looks better'n the one she wore last Easter. I told her it's a mighty important matter and don't come to no decision without meditation and prayer.

I think wimmen spend half their time trying to decide what to wear and, if you ask me, it's them decisions that finally git 'em in the end. I recollect about the feller that went crazy on his job of shirting potatoes by size, putting the big ones in this bin and the little ones in that bin. It was making them decisions all day long that finally got him.

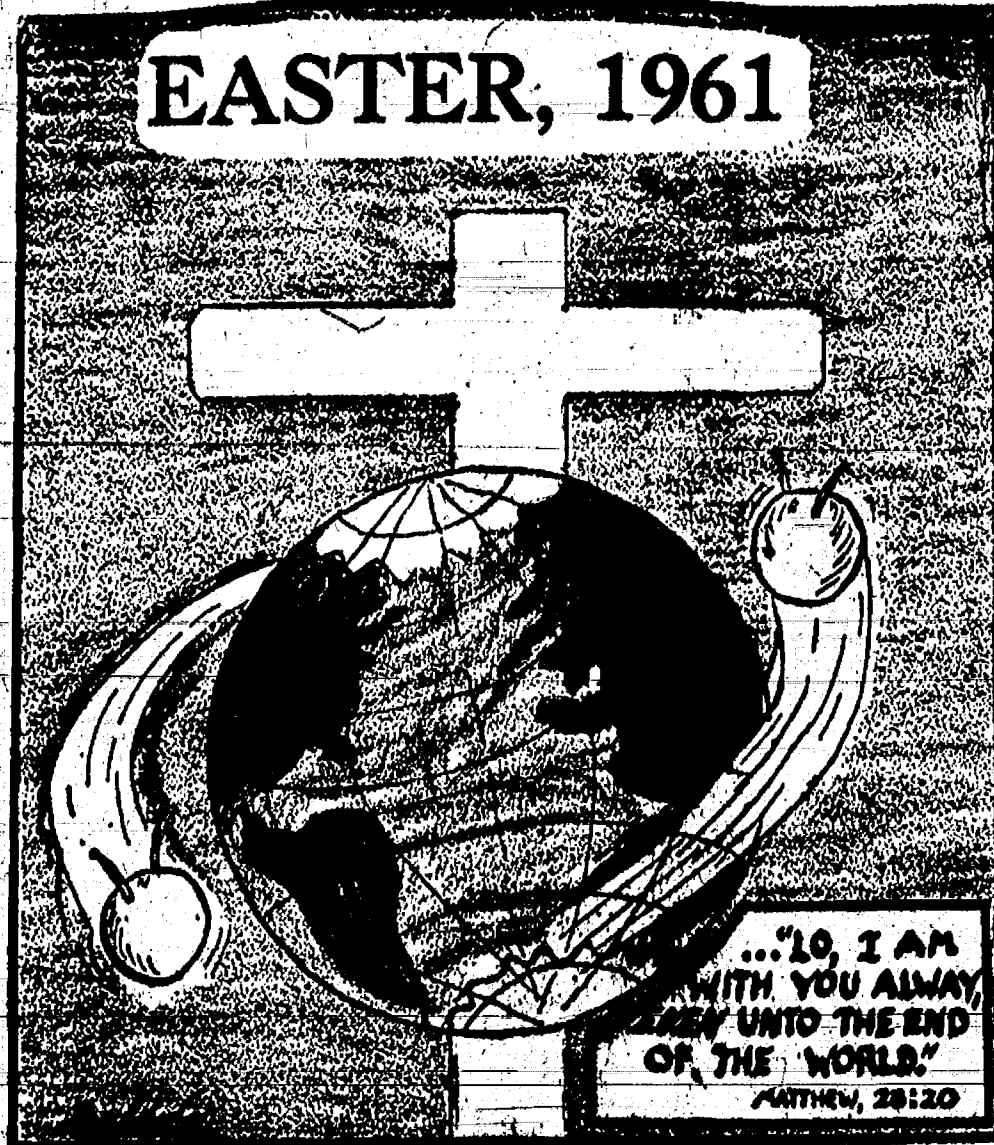
Maybe they git a little more nervous as they git older, but there's one thing you got to say for wimmen. They is—outlasting the men and is gradual taking over. I see by the census report where five year ago they was 84 men for ever 100 wimmen, and now they ain't but 80 men for 100 wimmen. At this rate, in another 50 years men will be as scarce in this country as Republicans in Georgia.

Incidental, talking about Easter hats, I was reading in the papers last week where some feller in Paris that designs wimmen's hats has come up with a new Spring model you can use for food when they git through wearing it. After your old lady wears this hat ter a spell, she can serve it for dinner, cutting down on the feed bill. Ever little bit helps and I'll take another look at the one my old lady bought and see if I think we can have it for dinner on V-J Day.

But I reckon, Mister Editor, that the most serious charge you can bring agin the wimmen of today is that they is responsible for the success of the installment plan in business. A dollar down and a dollar from now on and they tote the stuff home. It used to be a feller could take a nap on Saturday afternoon. Now he sets at the front gate waiting for the installment collectors to divide up his payroll.

Well, I see by the papers where the Congress is talking about twisting the public debt limit again. It don't seem to make no difference to Mister Editor, Democrats or Republicans, the public debt limit keeps climbing. Both sides talk different but they git the same results. I recollect when Hoover come to the White House he sent Coolidge's saddle horse to Ft. Meyer, said it was a "economy" move. When Cal heard about it he grunted and ask if the horse would eat less hay at Ft. Meyer. It looks to me like the Democrats and Republicans eat about the same amount of hay, just move the horse around.

Yours truly,
Uncle Lew



MICHIGAN MIRROR

By Elmer E. White, Secretary, Michigan Press Association

There's much in the news lately about legislation to bolster Michigan's position in the struggle to create jobs through industrial development. There are only two ways to bring this about: hold and expand existing payrolls; bring in new factories in competition with other areas. Work and luck play important roles in this effort.

Most professionals in the plant location field would probably agree that the search for new locations really matches community against community rather than state against state. This means that, in addition to the valuable financing plans a state might offer, the community itself is mighty important.

When a business is to be located, the executives usually contact (or are contacted by) the state Economic Development Department, many community leaders and utility representatives. Often they consult "plant locating" consultants. The resulting deliberations are of ten hectic and much less logical than one would think to be the case when all these interested people are working.

A \$35 million installation in Montague illustrates the point. Hooker Electro-Chemical was trying hard to find a suitable location on the shores of Lake Michigan. Everybody seemed to be in the act, but nothing was being decided. A local plumber wrote Hooker a letter stating emphatically that he knew there were many subterranean salt deposits nearby and wondered why the plant didn't locate there. Company officials checked, found the letter correct and the factory was built.

A mistake discovered by a member of the Economic Development Department is credited with saving another industry for Michigan. A consulting service recommended an Indiana location over one in Kalamazoo, the deciding factor being in a wage and tax differential. The Economic Development staff man felt sure the consultant's figures were wrong.

To prove it he worked several days at the MSU library collecting and sifting information. Then he found the mistake! Some hurried phone calls set up appointments in Chicago where the figures could be disproven. As a result the plant now operates in Kalamazoo.

In another instance one of the utilities men carted a prospect all over Southwest Michigan and showed him some of the finest towns in the area. Trouble was, every place he stopped it rained or snowed. Finally, after a few days of dismal outlook, the utilities man surrendered his guest into the hands of a competitor from another utility. That day dawned bright and fair as Nature put her best foot forward. The competitor signed, sealed and delivered the prospect and his plant to the first town where they stopped. You're never going to convince that first professional that there isn't any luck to this business.

A few years ago, a prospect stopped at the office of the Economic Development Department in Lansing. He was looking for a building in which to house a new industry which he had just assembled. The department's man gave him lists of buildings on three different occasions and the prospect spent about eight weeks traveling around looking at these vacant plants. None of them were quite what he wanted, so he went back to the department for a fourth attempt.

The industrial agent told him that the only remaining building he knew of was right in Owosso that he himself had listed in the department's available plant file. The prospect remarked in utter amazement that he had never thought of this possibility and proceeded, after weeks of searching elsewhere, to move his new industry into his own building.

Professionals in the plant locating field will tell communities to assemble every possible bit of information about their towns. This will help. It is of value to those looking for locations. It will show the community is interested. The utility or state representative can knock himself out trying to sell a community. This helps too.

But luck, the efforts of little people, the unexpected, the whimsical; these too can be the deciding factor.

Pesticides and insecticides can be bad news—and not just for the bugs.

The Department of Agriculture fights a constant battle to keep farmers from mishandling chemicals that are harmful only to pests if handled properly. It also continually has to warn people who buy treated goods.

Neither job is easy. But the application of pesticides on a large scale, if not handled properly, can produce more problems than the bugs themselves.

The Conservation Department is also concerned about large scale applications.

Large numbers of fish can be killed by dumping chemicals or washing equipment in a stream. Wildlife, while not as susceptible as fish, can also be killed.

At one time, there was conflict between the agriculturists who said the spraying had to be done and some of the conservationists, who were concerned about wildlife.

Co-operation has increased markedly in recent years, however, and while more chemicals are being used, there are fewer incidents that cause conflict.

By FRANK C. MORRIS

Want To Assume Detroit Welfare Load?

Because attention is focused on welfare bill, As recorded on tape, the Governor's legal adviser said: "This bill is aimed at an assist for local governments and provides that local units shall not be required to expend in excess of one mill on state equalized value before the State assumes the cost of relief."

It's part of the Governor's tax package and its significance did not come to light until the public hearings held last week by Senator Clyde St. Gerlings, (R) of Holland, chairman of the Senate tax committee. Even then, the bill was not mentioned in the press.

If passed, Swainson's measure would require the state to send another \$5 million or more this year to Detroit for welfare purposes, thus raising the state aid to the city to about \$23 million for relief expenditures during 1961.

The taxpayers of all 83 counties would be footing the immense bill for the metropolis.

It would be another step in Swainson's income tax program which Senator Gerlings and Senator Carlton H. Morris, (R) of Kalamazoo, have condemned as an attempt to "ball out Detroit at the expense of outstate taxpayers."

The impact of the measure is not apparent on its face. It simply provides that no local government shall spend on relief more than one mill on state equalized value. The cost thereafter would be assumed by the state.

Under the present statute, the Lansing government pays half of the cost of welfare in all communities. When Wayne county lost its battle for a state contribution of 75 per cent, Gov. Williams three years ago quietly out-committed the legislature.

His Social Welfare Commission members, all appointed by the Democratic Governor, adopted a rule that they would pay 100 per cent of the cost of welfare after a municipality had expended 1 1/2 mills of assessed valuation for this purpose.

This rule, never submitted for legislative approval, required the state to contribute \$15 million last year to the cost of relief in Detroit. The city contributed only \$8.5 million, making a total expenditure there of \$23.5 million.

Gov. Swainson now is asking the lawmakers to fix the maximum responsibility of Detroit for its welfare at \$5.8 million a year, based on present property assessments.

The cost of this activity in the metropolis during 1961 probably will reach \$28 million.

If it hits this peak, the taxpayers in all 83 counties will be footing the bag for about \$22.4 million, a sum that would retire the \$57 million Cobo Hall debt in 30 months.

Swainson sent his legal adviser, Robert Derengoski, to explain this measure and the whole income tax package at Senator Gerlings' public hearing.

The smooth way in which the administration justifies its tax program is demonstrated by Derengoski's passing comment about the welfare bill. As recorded on tape, the Governor's legal adviser said: "This bill is aimed at an assist for local governments and provides that local units shall not be required to expend in excess of one mill on state equalized value before the State assumes the cost of relief."

Many units are presently not expending this amount prior to the state assuming the load, but there are instances where one mill or more are being expended."

Notice the plurals. From Derengoski's testimony, a legislator would conclude that several cities and townships need extra help to meet rising relief costs.

But the unrevealed truth is that Detroit is the only municipality that would benefit.

And if Gov. Swainson's whole package happens to pass, the taxpayers of all Michigan would be another \$100 million or more down to the dynamic city that is the citadel of the Democratic Party.

If they win a sweeping victory in the election next Monday, Democrats will probably contend that the voters demonstrated willing approval of Gov. Swainson's income tax package.

JUST REMINISCING

Items Taken from the Files of The Chelsea Standard

4 Years Ago...

Thursday, Apr. 4, 1957—

The eighth grade basketball team closed a "very satisfactory season" with five wins and two losses. Members of the team: Jerry Abdon, Homer Nixon, Danny Mayer, Herman Hoskins, Charles Koenn, Ken Larson, Alton Nixon, Tom Dunlap, Mike Marsh, Stanley Dyer, Max Mock, Daryl Keezer, Richard Schaules.

With the exception of township clerk and one trustee, Sylvan township voters named all Democratic township officials in Monday's election. Maurice Hoffman won reelection as supervisor defeating Republican Thomas Smith 544-418.

A check for \$95,078.78 sent to the Detroit Bank and Trust Co. of Detroit retires all outstanding bonded indebtedness on the South Eldemary school. The School Board has announced.

At a meeting Friday evening of the Washtenaw Farm Council, it was voted to locate the planned Farm Center on Ann Arbor-Saline Rd. 5 1/2 miles south of Ann Arbor.

A female ruffed grouse flew out of peat marsh here yesterday, injuring its leg as it crashed through a basement window of a Washington-St. home. Conservation Officer Donley Boyer is caring for the bird until it recovers. The species is rarely seen in this area.

24 Years Ago...

Thursday, Apr. 1, 1937—

The Rev. Ray W. Barber, M. Barber and their youngest daughter, Martha, arrived today for Granville Ill. and the Rev. Barber will take over his duties immediately as pastor of the Congregational church.

During the past week two off-way men from the State Highway Department have been in the vicinity to arrange for purchase of property to relocate US-12.

Specials advertised: Fancy 5 cents per lb.; coffee 17, 22 and cents per lb.

Kenneth Gilbert rationman on Coast Guard Cartigan at Alpe stopped to visit his parents.

past week while enroute to a guard radio school at New London, Conn.

34 Years Ago...

Thursday, Apr. 7, 1927—

Appropriations approved at annual Sylva township meeting: contingent fund, \$3,000; repaid, \$2,000; Town Hall, \$3,000; poor fund, \$300; county fair.

An effort to put through an appropriation of \$400 for amusement purposes lost by one vote. Lack of its approval is the equivalent of "music-less" summer since money would have provided a series of band concerts.

14 Years Ago...

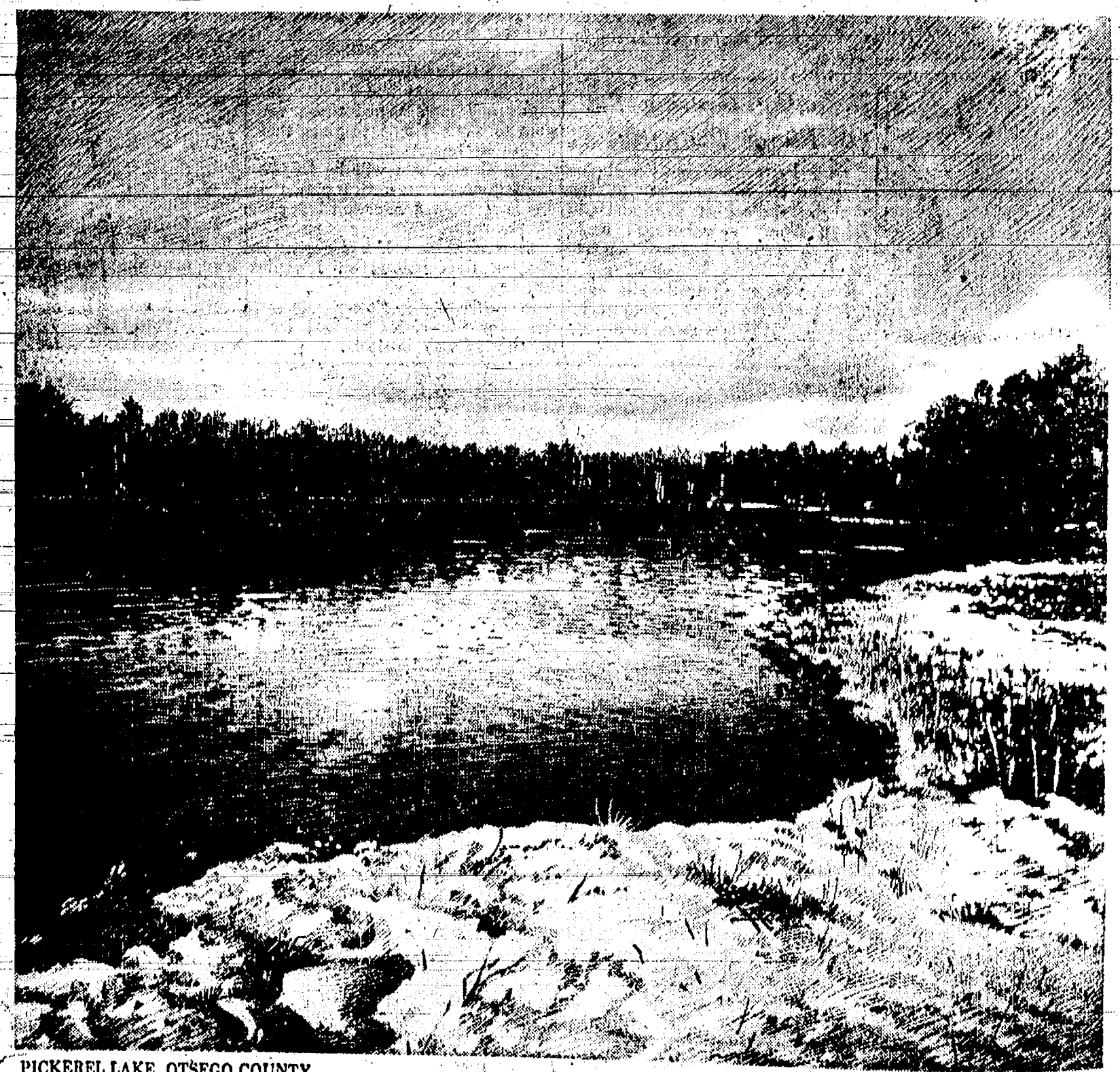
Thursday, Apr. 5, 1947—

Damage estimated at \$450,000 resulted when fire set off by explosion of stoker destroyed Central Fibra-plant on North Main St.

Readers of The Chelsea Standard find the name of Walter P. Leonard editor and publisher, in the masthead of this issue of The Standard.

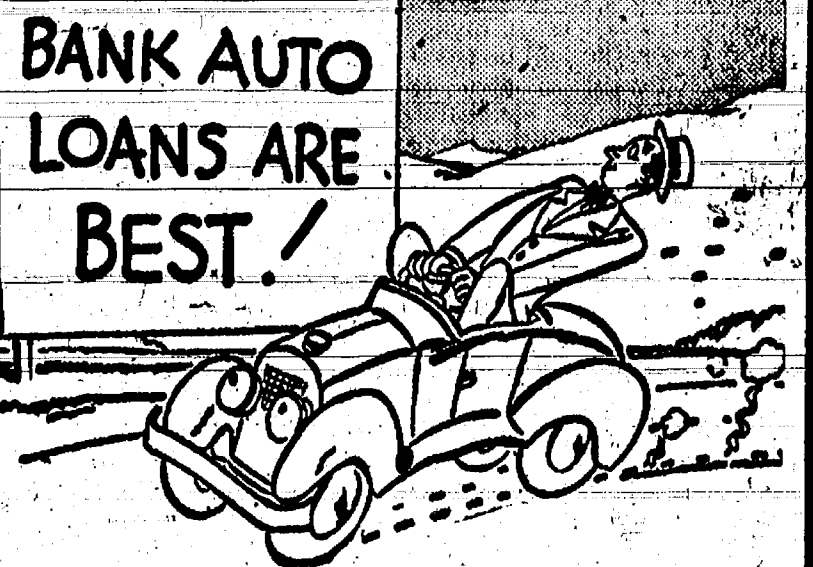
Instead of M. W. McClure. This marks the change of ownership from M. W. McClure who was "Mr. Chelsea Standard" for more than 26 years.

Chelsea gave \$672 to 1947 March of Dimes according to final tabulation by county committee; total contributed for Red Cross is March



PICKEREL LAKE, OTSEGO COUNTY

Free Full Color Reproduction suitable for framing sent upon request



**BANK AUTO
LOANS ARE
BEST!**

**PUT ON THE BRAKES before you
choose any car financing plan. Compare
the complete cost of other plans
with a Bank Auto Loan. Then decide.**

**3% NOW PAID ON ALL
SAVINGS DEPOSITS**

CHELSEA STATE BANK

Member Federal Reserve System Member Federal Deposit Insurance Corp.

**FARMERS
FOR TOP PRICES
FOR YOUR LIVESTOCK
Consign to the
Howell Livestock
Auction**

We have buyers for all kinds of livestock. Sale every Monday at 2 p.m.
Phone 1089 Howell
For Any Information

Discover the natural beauty of Michigan...
enjoy the natural goodness of Michigan brewed beer

Michigan Brewers' Association
350 Madison Avenue • Detroit 26, Michigan

Corning Brewing Co. • Goebel Brewing Co. • National Brewing Co. of Michigan • Pflafer Brewing Co. • Seaway Brewing Co. • The Shock Brewery Co.

Burglars Nabbed . . .

(Continued from page one)
Chelsea burglaries, the two men have admitted break-ins in Saline, Milan, Pittsfield township and Ann Arbor. Their arrest has cleared up more than 40 break-ins which have occurred in the area during the three-month period which began Dec. 14.

When people fight over religion it is a good sign that there isn't much of it.

Serviceman's Corner

George Clark Serving Aboard Aircraft Carrier

Norfolk—George G. Clark, fireman apprentice, USN, son of Mr. and Mrs. Stephen Clark of 422 Madison St., Chelsea, Mich., is serving aboard the anti-submarine warfare support aircraft carrier USS Valley Forge operating out of Norfolk, Va.

The Valley Forge entered the Norfolk Naval Shipyard, Mar. 6, for a three-month overhaul period.

Pvt. Kelly Carpenter Complete Basic at

Marine Corps Base
Camp Pendleton—Marine Pvt. Kelly G. Carpenter, son of Mr. and Mrs. Ellis Carpenter of 128 W. Middle St., Chelsea, Mich., completed four weeks of individual combat training, Feb. 10, at the Marine Corps Base, Camp Pendleton, Calif.

The course included the latest infantry tactics, first aid, demolitions, field fortifications and advanced schooling on weapons. Trainees learn that all Marines are basically infantrymen, whether they serve as cooks, typist, truck drivers, or with aviation units.

Mr. and Mrs. Don Labo of Flint, spent Saturday here at the home of Mrs. Labo's parents, Mr. and Mrs. Elba Gage.

Confirmation and Graduation GIFT SUGGESTIONS

- Bulova, Elgin
Watches ----- \$19.95 to \$150.00
- Clock Radios ----- \$29.95 to \$39.95
- Portable Typewriter
(by Smith-Corona) ----- \$89.95
- Bulova Pocket Transistor
Radios, starting from ----- \$29.95
- Electric Shavers, all makes.
- Ladies' and Men's Billfolds from \$2.75
- FINE JEWELRY - TIE BAR AND CUFF LINK SETS

Winans Jewelry Store



Easter FLOWERS

Nothing completes the holiday picture like flowers! What better way to give Easter Day a lovely bloom of fragrant loveliness?

- LILIES \$1.00 up
- HYACINTHS \$1.00 up
- CORSAGES \$1.00 up
- BEGONIAS 25c
- CENTERPIECES . \$3.00 up

EASTER PLANTS

- LILIES
- AZALEAS
- HYACINTHS
- DAFFODILS
- CYCLAMEN
- TULIPS
- ROSE BUSHES
- MUMS
- GLOXINIAS
- CALCEOLARIA

CORSAGES

ROSES - CARNATIONS - GARDENIAS
COLORED and WHITE ORCHIDS
CYMBIDIUM ORCHIDS
CAMELLIAS

See your choice of
Fresh Cut Flowers and Green Plants

Our flowers, plants and corsages available at the Kiwanis Club Flower Sale.

Chelsea Greenhouse

MEMBER FTD ASSOCIATION
7010 Lingane Road
Phone GR 9-6071

Floyd Spiegelbergs Honored at Sunday Open House on 60th Anniversary

Mr. and Mrs. Floyd Spiegelberg were honored at an open house Sunday afternoon from 2 to 5 p.m. in observance of their 60th wedding anniversary. Their two daughters, Mrs. John (Anna) Kelsay and Mrs. Charles (Ruth) McCauley of Saline were hostesses for the occasion at the Kelsay home, 8405 Dexter-Chelsea Rd.

Mr. and Mrs. Spiegelberg were married Mar. 28, 1901 in Ann Arbor, by the late Rev. A. L. Nicklas, pastor of the Evangelical Lutheran church.

Their attendants were the late Miss Anna Stauch of Ann Arbor and George Close of Whitmore Lake.

The couple are both 81 years old. Mr. Spiegelberg was born in Dexter and Mrs. Spiegelberg, the former Lena Bauer, was born in Northfield township. They have resided in the Dexter area for the past 50 years.

The couple have three grandchildren and two great grandchildren.

Assisting at the reception were the couple's granddaughters, Mrs. Willard Hertler (Constance McCauley) of Saline and Mrs. Edward P. Borden, III, (Barbara Kelsay) of Ann Arbor, serving tea and coffee from family heirloom silver tea and coffee services. Mrs. Arthur Bauer cut and served the wedding cake.

Refreshments were served from a table covered with a gold cloth interwoven with silver threads highlighted by a centerpiece of carnations.

Many friends and relatives were present to congratulate the honored couple and help them celebrate this memorable occasion.

Guests were present from Ann Arbor, Saline, Chelsea, Milan, Hamburg, Whitmore Lake and Pleasant Lake.

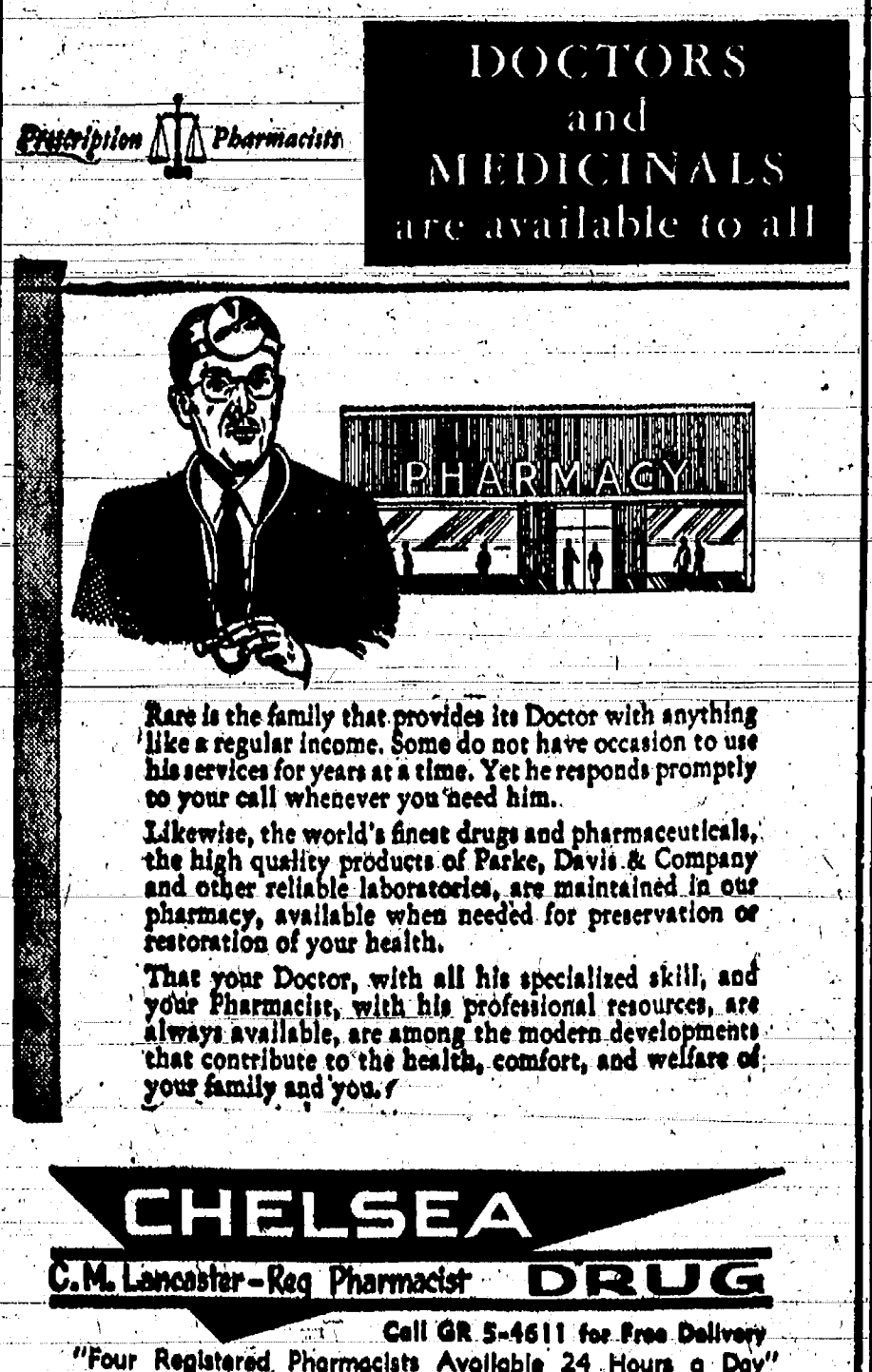
Mrs. Elba Gage and Miss Lillie Wackenhut, accompanied by Mrs. Hannah Schoen and Miss Emilie Steinbach of Dexter, were Wednesday dinner guests of Mrs. Robert Eisen, of Birmingham.

Republican candidates are Paul G. Goebel and James C. Zeder, regents of the University of Michigan; Hugh H. Holloway, superintendent of public instruction; Charles A. Rogers, member of state Board of Education; Fred England, Jr., and John S. Pingel, members of Board of Trustees, Michigan State University; Charles R. Bedwell, State highway commissioner; Thomas B. Adams and Charles E. Burke, members of Board of Governors of Wayne State University.

To be elected on the state ticket are two regents of the University of Michigan; two members of the Board of Trustees of Michigan State University; and two members of the Board of Governors of Wayne State University.

The non-partisan ballot for election of two judges of the Michigan Supreme Court, lists four candidates—incumbents John B. Delmonico and Harry F. Kelly; also, Ernest C. Boehm and James H. McLaughlin.

DOCTORS and MEDICALS are available to all



Rare is the family that provides its Doctor with anything like a regular income. Some do not have occasion to use his services for years at a time. Yet he responds promptly to your call whenever you need him.

Likewise, the world's finest drugs and pharmaceuticals, the high quality products of Parke, Davis & Company and other reliable laboratories, are maintained in one pharmacy, available when needed for preservation or restoration of your health.

That your Doctor, with all his specialized skill, and your Pharmacist, with his professional resources, are always available, are among the modern developments that contribute to the health, comfort, and welfare of your family and you.

CHELSEA

C.M. Lancaster-Reg Pharmacist DRUG

Call GR 5-4611 for Free Delivery
"Four Registered Pharmacists Available 24 Hours a Day"

Employment in the service-producing industries held steady or expanded somewhat during 1960, according to the U. S. Labor Department's Bureau of Labor Statistics.

If adults set youth the proper example it might be possible for young people to follow their lead.

an Easter Message.

Attending Easter Sunday Services together is one of the most rewarding experiences of family life.

All share richly in the infinite joy of the day. Each heart is lifted by the promise of spiritual rebirth that is the shining wonder of Easter.

EASTER GREETINGS!

Anderson's Chelsea Saline

we're all excited about

EASTER

We're ready to supply you and your family with exciting new apparel . . . yes, from head to toe we have wide assortments, and at modest prices, too!

It's an Easter tradition to wear a beautiful, flattering, glamorous hat in the fashion parade. See and choose from our colorful new array

\$2.00 to \$6.98



Just Arrived . . .

JEWELLED CIRCLE PINS

Regular \$1.00 Value **69c** ea.

LOVELY HATS FOR GIRLS

3 to 6X **\$1.98**
7 to 14
Vast variety.

SHORTY COATS FOR GIRLS

Sizes **\$10.98**
7 to 14
Washable - Arnel.

PATENT LEATHER PUMPS for GIRLS

\$3.98 and \$4.98
Smart new styles.

SMART NEW PURSES

\$2.98 to \$7.98
All the new Styles and colors.

LOVELY NEW Girls Dresses

\$2.98 to \$8.98
All are best selling styles. 3 to 6X and 7-14.

BOY'S HEALTHTEX -SUITS-

They're smart! They're new! They're serviceable. Sizes 3 to 8 years.



Modest Prices on Quality Footwear. Careful fitting, too!

ANDERSON'S

CHELSEA

Co	
Re	
\$22	
\$	
\$1	
\$4	

WANT ADS

ROOM LAKE DWELLING will be all basement located west of Chelsea. Has hot water heat, fire, incinerator, water heater, heater, laundry tubs and refrigerator, stove, refrigerator, washboard, dryer, etc. An attractive property and all in A condition for immediate possession. Price and terms considered.

BRICK FRAME HOME located on south side of Chelsea. Has living room, kitchen, bath and screened porch. First floor. 2 bedrooms on first floor with 2 more unfinished in basement with gas heat. The home exceptionally well built. Two full bathrooms and trim below \$17,000.

BEDROOM FRAME DWELLING 2 blocks east of Main St. All built brick. Has living room, kitchen, gas heat and furnace. Price \$15,000.

OTHER PROPERTIES OF ALL KINDS

POMMERENING

Phone GR 9-5491

apartment with private entrance and bath. Stove, refrigerator and heat furnished. Phone 6

R SALE—First cutting alfalfa and bromo. Conditioned. Will grow. GR 5-8421.
R SALE—New and used toy stoves, paint sets, Ga. 5-7672.
R SALE—Hearing aid, like new. \$5.00 Ann Arbor, NO 2-8331.
WANTED — Baby sitting after school.

SALE—First cutting condensed hay, Phone GR 9-2461.

Grey Holsteins
Official Test

of Elton Frey, Ann Arbor, Mich. Frey has been enrolled in Herd Improvement testing. The program is currently the most popular of three official production testing programs conducted by the Holstein-Friesian Association.

commonly known as HIR, it suits both lactation and life-time

cow in participating here
throughout the United States.
resulting data is published by
Association for ready refe

used in Silver Medal Type
Gold Medal Dam, and Pro
sive Breeders Registry recogn

us operation since 1928 and
a current enrollment of more
1,800 herds in all parts of
country.

rt Ord, Ca., — Miss Clara
ummer, a service club direct
is West Coast army post, ha
ved a package mailed to h

Mo., on December 13, 1950, at that time Miss Drommer was in Salzburg, Austria, and there was nothing to indicate where she

PECIALS

BONELESS, SHANKLESS)
1 lb. 65¢

HALF-LB. 69c
• • **1b. 59c**

3 lbs. \$1.45

2 for 19c

2 for 25c

... lb. 65c

Premium Ducks

DER'S

SERIES

... OF ...

10



Mr. and Mrs. Charles McCalla

Charles McCalla Observe Golden Anniversary

In 1904 Charles McCalla came to Pittsfield township from Detroit to split rails, and built a rail fence on the Samuel Morgan farm. Last Wednesday, Mar. 22, McCalla and his old employer's daughter, the former Anna Morgan, celebrated their golden wedding anniversary.

Mr. and Mrs. McCalla, who now live on Maywood Ave., Ann Arbor, spoke their vows Mar. 22, 1911, in the First Methodist Church, Ann Arbor, before the late Rev. Arthur Stalker.

An anniversary celebration was held from 2 to 6 p.m. Sunday in the Pittsfield Grange Hall for the couple. The Rev. H. Vaughan, White of the West Side Methodist church "re-married" the couple in a mock wedding ceremony.

The McCallas have a daughter, Mrs. Dalton (Carolyn) Stump of Pittsfield township; and six sons: Frank E. of Mason; Raymond of Soto township; Albert, who lives near St. Clair; Ralph of Lima township; and William of Pittsfield township.

They also have 31 grandchildren and three great-grandchildren. Mr. McCalla, 74, is an agent for State Farm Insurance Co. He is also an avid fisherman. Mrs. McCalla, 69, enjoys cooking as a hobby.

Mr. McCalla's family moved to Pittsfield township in 1907 and bought a farm adjoining the Morgan farm. They ran the Blue Grass Dairy at that time.

Insurance is a blessing to many people but it is also responsible for many fires and for some deaths.

County 4-H Achievement Program Set for April 4-5

Washtenaw county 4-H club Agents, Jim Hutchinson and Sharon Hall have announced the county-wide Spring Achievement Program, April 4-5, at Ann Arbor High school. "Flowers that Bloom in the Spring" will be the theme of the dress revue which will highlight the Wednesday evening awards program.

Washtenaw county 4-H members will be exhibiting more than 1,000 projects which they have completed this winter. Project exhibits will include clothing, knitting, wood-working, leather working, photography, electrical, conservation, gun-safety, and many others. These exhibits will be set up from 9 a.m.

to 4 p.m. on Tuesday, April 4. The public is invited to view the exhibit area from 9:30 a.m. to 8 p.m. on Wednesday, April 5. The County Dress Revue and various awards presentations will be made Wednesday evening, starting at 8 p.m. The girls who will be modeling their garments at the County Dress Revue have been pre-selected from two area revues, held at Saline High school and Dexter.

The Ann Arbor Kiwanis club is sponsoring this county-wide 4-H activity. They also will provide awards for the outstanding clothing and handicraft exhibitors.

Tourist, Resort Institute Scheduled April 3-5 at MSU

East Lansing—All persons interested in improving their tourist service businesses will get tips on how to accomplish this at the ninth annual Tourist and Resort Institute, April 3-5, at Michigan State University.

Alert resort, motel, food service and associated tourist service operators realize that the future success of their businesses depends on their vision and how well they plan and provide for future guests and customers. In order to assist in forecasting the needs and demands of these guests, this comprehensive Institute program has been developed.

Emphasis will be on color and lighting, furnishings for restaurants, motels and resorts, quantity food service, sales and convention ideas, public liability laws, gift shops, front office management, boating and water safety, guest entertainment and highway safety.

A highlight of Monday's session will be a talk by S. M. Mills, color and lighting consultant from Cleveland, O. Tuesday's session will feature concurrent sessions in quantity food service, including buffet meals, fish cookery, new food trends and outdoor meals. A special session will be held on gift shops Tuesday night.

Also on Tuesday will be sessions on boating safety, front office management and sales promotion. Wednesday's program will be

highlighted by a description of the latest trends in furnishings for motels, restaurants, and resorts. Details of the institute may be obtained from your local Co-Operative Extension Service office, located in Ann Arbor. Inquiries may be directed to the Tourist and Resort Service, Kellogg Center, Michigan State University, East Lansing.

Personal Notes

Mr. and Mrs. George Knoll were in North Parma on Wednesday of last week to visit the latter's brother and sister-in-law Mr. and Mrs. Homer Miller and family.

Tuesday evening Mr. and Mrs. Floyd Rowe entertained at a birthday dinner honoring their daughter, Mrs. Walter Bury of North Lake. Guests were Mr. and Mrs. Bury and Mr. and Mrs. Duane Rowe and their families.

SN James C. McKelvie of the U.S. Naval Base Helicopter Utility Squadron, Lakehurst, N. J., accompanied by his wife, is visiting his grandparents, Mr. and Mrs. Charles Byeratt. He is to report back for duty Tuesday. His wife plans to spend the summer with her parents in Ann Arbor.

CARD OF THANKS

To our friends, relatives and neighbors who expressed their sympathy in so many thoughtful and practical ways during our recent bereavement, we extend our heartfelt thanks and appreciation. Family of Elmer Kolander.

THANK YOU
Many thanks to my friends, relatives and neighbors for all the nice things that were done for me while I was in the hospital and since I returned home. The flowers, cards and many kindnesses to me and my family are deeply appreciated.
Mrs. Delores Houk

CARD OF THANKS
We wish to express our heartfelt thanks and sincere appreciation to our many friends and neighbors for their many acts of kindness during our recent bereavement.
Sheriff George A. Petersen
Helen, Marian and George, Jr.

THANK YOU
We wish to thank the many friends and relatives who helped us make our parents' 25th wedding anniversary Open House such a pleasant and memorable success.
The children of
Mr. and Mrs. Mac Packard.

IN MEMORIAM
In loving memory of our father Lawrence I. McKune who passed away one year ago March 30 1960. You can only have one father Patient-kind and true; No other friend in all the world Will be as true as you. For all his loving kindness He asked nothing in return; If all the world deserts you To your father you can turn. All we can do, dear father, Is go and tend your grave And leave behind a token of love To the best father God ever gave. Daughter and Husband

Non-white workers constituted 11 per cent of the civilian labor force in May 1960, according to the U.S. Labor Department, but represented 27 per cent of all workers on part-time work for economic reasons—sleek work, job turnover, or in ability to find a full-time job.



BPS Yacht Finishes and Marine Paints withstand the most vigorous action of water, wind and wear, and are far more durable than the ordinary marine finishes now in use. The new oil-based formula is your assurance of a better finish.

MERKEL BROS.

Congregational, St. Paul's Groups Invited to Meeting

The Women's Fellowship of the Congregational church has invited members of the Women's Guild of St. Paul's church and their husbands, St. Paul's Young People's League, the Congregational Senior High Pillar Fellowship and husbands of Women's Fellowship members to be guests at an April 5 meeting at the Congregational church. The meeting begins at 8 p.m. All Women's Guild members and Women's Fellowship members are especially urged to attend the meeting.

The evening's program will be in charge of the Christian Education Department and deals with campus ministry.

Ben O. Lillev, a ministerial intern with the Christian churches (Disciples of Christ), will be the speaker. He is sponsored by and serves both the Memorial Christian Church and the Student Guild which serves the Congregational, Evangelical and Reformed and Christian Church students.

Lillev, of South Bend, Ind., is a graduate of Butler University, Indianapolis, Ind. His work in Ann Arbor is part of his seminary program of the Federated Theological faculty of the University of Chicago.

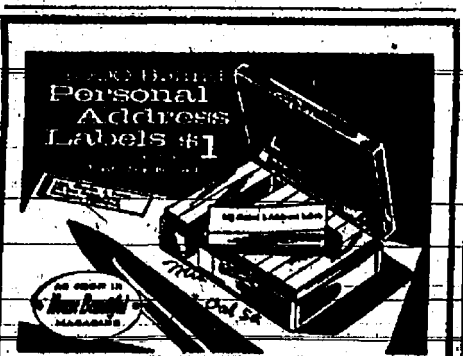
Also on the program will be folk songs sung by C. Grey Austin, who has been on the staff of the University of Michigan for nine years. His present position is assistant co-ordinator of religious affairs and lecturer in psychology. Singing folk songs is one of his hobbies and he often sings for student groups on the campus. His songs here Wednesday will be some which have proved favorites of Ann Arbor student groups.

Mrs. Max Hopburn is in charge of the program at this meeting.

Hearing Set on Zoning Request for Sanitary Land Fill

A meeting of the Lima Township Zoning Board has been scheduled for 8 p.m. Wednesday, Apr. 5, at Lima Center Community Hall for the purpose of acting on the Chelsea Village request for a conditional use permit for a sanitary land fill site in the township.

Location of the land fill site is on the property of Joseph and Esther Dunahut, east of Chelsea, between Old US-12 and I-94.



You've been asking for them!

Now Available at
THE CHELSEA STANDARD

Lynwood Noah Named On EMU Honors List

Lynwood E. Noah, with a grade point average of 3.21, is included on one of 778 Eastern Michigan University students who have been named to the semester honors list compiled at the completion of the fall 1960-61 semester.

A 1954 graduate of Chelsea High school, he spent two years in the U.S. Navy before taking up his studies at EMU where he is majoring in business administration. He is a son of Mr. and Mrs. Laurence Noah, 8826 Werkner Rd.

Standard Want Ads Get Results!

COLONIAL MANOR NURSING HOME

236 East Middle Street
PHONE GR 9-1491

Efficient Nursing Care
Day and Night
IN BEAUTIFUL CHELSEA

VOTE STRAIGHT DEMOCRATIC MONDAY, APRIL 3

For Transportation to the Polls
and Babysitting While You Vote
PHONE GR 9-6492 or GR 9-7021

Sylvan Township Democratic Committee

Phone GR 5-4141
or
GR 5-5141

24-HOUR AMBULANCE SERVICE
214 E. MIDDLE ST. CHELSEA

BURGHARDT FUNERAL HOME

- SPECIALS -

CELLO BAG
Radishes 5c
ICE BOX JAR MARIO'S
Stuffed Olives 32c
HOLSUM-BROWN 'N' SERVE
Rolls 2 pkgs. 45c
LARGE CAN
Hawaiian Punch . . . 29c
Spry 3-lb. can 77c

We Have a Complete Selection of Easter Hams

KUSTERER'S
FOOD MARKET
DIAL GR 9-3331 WE DELIVER

(Political Advertisement)

INTERNATIONAL - HARVESTER DEALER

C. G. LANTIS & SON
PHONE Ulysses 1-4105
STOCKBRIDGE, MICH.

Your Friendly Harvester Dealer

PARTS and SERVICE FREE ESTIMATES

AREA SALES REPRESENTATIVE:
IRWIN YOUNG - CHELSEA, MICH.
PHONE GR 9-3812

Standard Ads Are a Good Shopping Guide!

THE MAN WHO CAME TO DINNER (OR BREAKFAST)



A bright, interesting, informative, entertaining visitor arrives regularly in millions of American homes every Thursday just in time for dinner (or breakfast). It's that tried-and-trusted friend, counselor and guide to the family: the newspaper!

Always sure of a cordial welcome from every member of the family circle is this particular visitor. He's invited to stay overnight . . . or through the week! He has so much to tell about what everybody wants to know, that his regular visits are looked forward to and thoroughly enjoyed by one and all!

THE CHELSEA STANDARD

YOUR VOTE IS YOUR VOICE!

KEEP YOUR VOICE IN...

EDUCATION The people for whom you will vote influence the spending of more than \$1,000,000,000 of your tax money every year!
THE COURTS Justices Kelly and Dethmers will put the law ahead of politics!
GOOD ROADS The Highway Department has put the state \$400,000,000 in the red. Better road management will head off a gas tax increase.

FOR A BETTER MICHIGAN VOTE STRAIGHT REPUBLICAN!

STATE OFFICES	MEMBERS OF THE UNIVERSITY OF MICHIGAN	1961 GOVERNOR	1961 ATTORNEY GENERAL	1961 COMMISSIONER OF HIGHWAYS	1961 JUSTICE OF THE SUPREME COURT	1961 JUSTICE OF THE SUPREME COURT
Pull This Lever Republican	GOODE	ZEDER	KOLLOWAY	ROGERS	ENGLAND, JR.	PINGEL

ON THE MACHINE BALLOT
Pull the Republican Party lever, and THEN look for the non-partisan ballot for Supreme Court and push the levers down for Kelly and Dethmers.

ON THE PAPER BALLOT
Put your X in the Republican Party circle.

JUSTICES OF THE SUPREME COURT (FULL TERM)
(Vote for not more than Two)

THEN Vote on the non-partisan SEPARATE ballot for Kelly and Dethmers.

WASHTENAW COUNTY REPUBLICAN COMMITTEE

Community Calendar

★ ★ ★

St. Paul's Mission club Thursday, Apr. 6, 2 p.m., at the home of Mrs. Mina Seitz.

Chelsea Camera club Monday, Apr. 3, 7:30 p.m., at McKune Memorial Library.

American Legion Auxiliary, Tuesday, Apr. 4, 8 p.m., at McKune Memorial Library.

Olive Lodge No. 156, F&AM, Tuesday, Apr. 4, 7:30 p.m.

Olive Chapter No. 140, RAM, Thursday, Apr. 6, 7:30 p.m.

St. Mary Altar Society mother and daughter Communion Sunday, Apr. 2, 7 a.m. Mass. Altar Society regular meeting Wednesday, Apr. 5, 8 p.m.

Limeaneers Thursday Apr. 6, at Lima Center Community Hall. Pot-luck dinner, 12:30 p.m. Hostess: Mrs. Dave Pastor.

Cavanough Lake Grange, Tuesday evening, Apr. 4, at the home of Mrs. William Broesamle.

Regular meeting of Olive Chapter No. 108, Wednesday, Apr. 5, 7:30 p.m.

Clean-up "boos" at Maple Grove cemetery, Sylvan Center, all day Saturday, Apr. 8, or do your share at your convenience any other day.

Helping Hand Circle Thursday, Apr. 4, at the home of Leora Noll. Pot-luck dinner, 12 noon. Bring own table service and dish to pass.

Chelsea Rebekahs annual Easter bake sale Saturday, Apr. 4, 9 a.m., at Chelsea Hardware. Members to bring baked goods early or call Mrs. Robert Hochrein for pick-up, adv39

David Bertke, lieutenant (j.g.) in the U. S. Navy, enroute from Washington, D. C. to his base in Hawaii, spent Friday and Saturday visiting his parents, Mr. and Mrs. Roy Bertke, and his sisters, Barbara and Marcia, Barbara, freshman at Elmhurst College, Elmhurst, Ill., arrived home Friday to spend her spring vacation here.



TIBOR KISS, center, who had been employed as a machine operator at Chelsea Products, Inc., since June 9, 1948, retired this week in line with the company's retirement plan. Peter Volak, the retiree's foreman, at right, looked on as Donald Houle, acting for the company employees, presented Kiss with a check as a retirement gift from the Employees' Benefit Fund. Kiss lives at 6945 Werkner Rd.

DEATHS

Mrs. Julia A. Brown

Dies Early Tuesday

Following Long Illness

Mrs. Julia A. Brown, widow of William Brown, died early Tuesday at Colonial Manor Nursing Home following a long illness. She had entered the nursing home about a month ago. She was 81 years old.

For the past six years Mrs. Brown had made her home at 315 Congdon St. with her daughter and son-in-law, Mr. and Mrs. Charles McDaniels.

Born May 28, 1879, in Isoco township, Livingston county, she was a daughter of Levi and Jennette Wainwright-Fewless. She was married to Mr. Brown Sept. 27, 1899, at the home of her parents. They farmed in Livingston county for many years before moving to Chelsea in 1942. Their home here was at 264 South St. They observed their 55th wedding anniversary in September, 1954, shortly before Mr. Brown's death which occurred Oct. 14, 1954.

Mrs. Brown was a member of the North Lake Methodist church. Survivors of Mrs. Brown are three daughters, Mrs. Charles McDaniels (Nina), Mrs. Nils Saundene (Lucile) of Clearwater, Fla., and Mrs. Fred Prunzing (Mary) of Gregory; three sons, William D. Brown of Chelsea; Perry of Ann Arbor; and Cecil of Howell; 16 grandchildren; 13 great-grandchildren; and one sister, Mrs. Ethel Armstrong of Fowlerville.

Funeral services are to be held at 2 o'clock this afternoon at the Burghardt Funeral Home, with the Rev. S. D. Kinde officiating. Burial will be in Oak Grove cemetery.

Grass Fires...

(Continued from page one)

Fire at the Andrew Forber place on Steinbach Rd., the previous week, Friday, Mar. 17.

On Saturday, Mar. 18, the Chelsea Firemen responded to an alarm from the Jesse Cheek home at Wild Goose Lake. The floor underneath the fireplace in the new home was damaged.

Adolph F. Gross

Services To Be Held Friday

At St. Andrew's Church

Adolph F. Gross, life-long resident of Lima township, died Tuesday afternoon at his home, 8510 Gross Rd. He was born Mar. 11, 1883, a son of George Frederick and Wilhelmina Frey Gross.

Feb. 5, 1913, he was married to Esther Lesser who survives.

Also surviving are a son, Harold L. Gross of Dexter; a daughter, Mrs. Charles Leverett (Dorothy) of Ypsilanti; nine grandchildren; one great-grandchild; two brothers, Frank and Herman Gross of Chelsea, and two sisters, Mrs. Leigh Luick (Bertha) of Lima township and Mrs. Amanda Eschelbach of Grass Lake.

He was preceded in death by a son, Carl S. Gross on Apr. 4, 1944; also by two brothers Albert Gross of Jackson and Julius Gross of Lima township, and a sister Hilda Gross of Chelsea.

Mr. Gross was a well-known farmer in the Dexter-Chelsea area. He was a life member of St. Andrew's United Church of Christ at Dexter and served on the consistency of the church for many years. From 1926 until 1931 he served as clerk of Lima township.

He was appointed by the Washtenaw county Board of Supervisors to serve on the county Board of Canvassers and Board of Auditors. He was a member of the Washtenaw County Farm Bureau and for many years had served as secretary of the Dexter Cooperative Co.

Funeral services will be held at St. Andrew's church in Dexter at 3:30 p.m. Friday and burial will take place at Forestlawn cemetery, Dexter.

Friends may call at the Bendle Funeral Home, Dexter.

The family has suggested that any memorial contributions be designated for St. Andrew's church.

Miss Marguerite Eisen of Detroit was at dinner guest Sunday at the home of her aunt, Miss Lillie Wackenhut.

Mrs. F. Klink, Sr., Named President Of VFW Auxiliary

Officers for the coming year were elected at the March business meeting of the Ladies' Auxiliary to Veterans of Foreign Wars Post 4076. Mrs. Fred Klink, Sr., was elected president.

Others elected are Alda Juergens, senior vice-president; Mrs. Lena Cart, junior vice-president; Mrs. Vera Helm, treasurer; Mrs. Carl Lentz, secretary; Mrs. Margaret Gilbert, chaplain; Mrs. Mac Packard, conductress; Mrs. Eugene Garvey, guard; and Mrs. Wayne Harvey, the outgoing president, trustee for three years.

Appointive officers are to be named by the newly-elected president.

Also elected at Monday's meeting, held at the K. of C. Hall, were district delegates and alternates.

Delegates are Mrs. Harvey, Mrs. Helm, Mrs. Cart, Mrs. Packard and Alda Juergens.

Alternates are Mrs. Lentz, Mrs. Gilbert, Mrs. Joseph Merkel, Mrs. Anna Dvorak and Mrs. Garvey.

The group voted to buy a past president's pin for Mrs. Harvey and also a life membership in the National VFW Home at Eaton Rapids in recognition of her service as president of the Auxiliary.

Other business at the meeting included voting to contribute \$5 to the cancer fund.

A report of the March social meeting held Mar. 20 at the home of Mrs. Harvey, listed 10 members and one guest present to work on sewing cancer pads.

Chelsea Schools Closed For Spring Vacation

Chelsea schools closed after yesterday afternoon classes for spring vacation. Classes are to resume Wednesday morning, Apr. 5.

The following week, Monday, Apr. 10, both North and South Elementary schools will hold their annual "family night" when parents and their children are invited to visit the schools, greet their children's teachers and visit the children's classrooms.

The open house hours, as presently scheduled, are 7:30 p.m. to 9 p.m.

BIRTHS

A daughter, Kathy Ann, to Mr. and Mrs. Harold Trinkle of 9970 Trinkle Rd., Friday, Mar. 24.

A daughter, Janice Marie, Saturday, Mar. 18, at St. Joseph Mercy hospital, Ann Arbor to Mr. and Mrs. John Howe. Mrs. Howe is the former Marlene Kuhl, daughter of Mr. and Mrs. Arthur Kuhl.

A daughter, Michele Dianne, Monday, Mar. 27, at St. Joseph Mercy hospital, Ann Arbor, to Mr. and Mrs. Gary Wortley, 6889 Westbourne Drive, North Lake, Gregory. Mrs. Wortley is the former Lee Matthews.

SUBSCRIBE TODAY TO THE CHELSEA STANDARD!

"Michigan Outdoors"

Featuring Mort Neff, Mr. Michigan Outdoors, himself

7:00 P.M. WWJ-TV Channel 4 brought to you by

Corser's, Inc. 137 Park Street

Mrs. Olson Wins Prize for Recipe Entered in Contest

Mrs. Lucile Olson, 400 Madison St., received a prize of \$75 as winner of fourth place in a recipe contest sponsored by suppliers of institutional foods. Mrs. Olson is in charge of the school lunch program at Chelsea High school.

According to sponsors of the contest, the school hot lunch program, to serve its purpose, must have many menus that can be prepared at a minimum cost to fit the budget of the average family.

The Gage Food Products Co., of Chicago, to further this "good cause," each year sponsors a recipe contest to encourage the preparation of appetizing school lunches from low-cost recipes. Schools throughout the 14 states the company services are invited to enter contestants.

Mrs. Olson's recipe, for lemon fluff, was selected from more than 1,000 recipes submitted as the fourth place winner.

According to School Superintendent Charles S. Cameron, Mrs. Olson has done a "top quality job of managing the Chelsea school hot lunch program, thereby holding the cost of lunches to the students to a minimum."

Isn't it odd that the easier a gal is to look at, the harder the feller's stare?

STEEL FRAMED BUILDINGS by PRUDEN INDUSTRIAL COMMERCIAL FARM AUTHORIZED DEALER: Chelsea Lumber Co. Dial GR 5-3391

Show Boat

(Continued from page one)

active part, either in the actual cast of 278 plus or in the enormous amount of pre-show and back stage work, be sure to volunteer. "We want the entire community to join in on the fun. The one major drawback in any community activity is the fact that those in charge of it, through their own pressing schedule, do not have time to contact each and every one of you and personally ask you to participate.

"A community-wide meeting will be held as soon as plans are formulated so as to acquaint all of you with this coming community activity and at that time the recipients of any show profits will be chosen. It is planned that any profits will be left up to votes of the ticket holders similar to that plan which was so successfully used last year in the minstrel show."

Best thing for a cold shoulder is milk.

Rev. E. J. Weiss and the Rev. George P. Stanford of the Methodist Home.

St. Mary's Catholic church, its Good Friday service at 1 p.m., and St. Barnabas Episcopal church will have services during the afternoon, beginning at 4 o'clock noon.

North Sharon Community church and Chelsea Baptist church will unite for a Good Friday service at the Chelsea church on Kingston St. beginning at 7 p.m.

Business places will observe customary Good Friday closing from noon until 3 p.m.

Many area churches have planned special Maundy Thursday, Good Friday and Easter services. Make detailed announcements these notices on page 13 of this issue of The Standard.

The Rev. P. H. Grabowski, Roy Bertke have returned after spending a two-week vacation at Acapulco, Mexico.

Church Services

(Continued from page one)

St. Mary's Catholic church, its Good Friday service at 1 p.m., and St. Barnabas Episcopal church will have services during the afternoon, beginning at 4 o'clock noon.

North Sharon Community church and Chelsea Baptist church will unite for a Good Friday service at the Chelsea church on Kingston St. beginning at 7 p.m.

Business places will observe customary Good Friday closing from noon until 3 p.m.

Many area churches have planned special Maundy Thursday, Good Friday and Easter services. Make detailed announcements these notices on page 13 of this issue of The Standard.

The Rev. P. H. Grabowski, Roy Bertke have returned after spending a two-week vacation at Acapulco, Mexico.

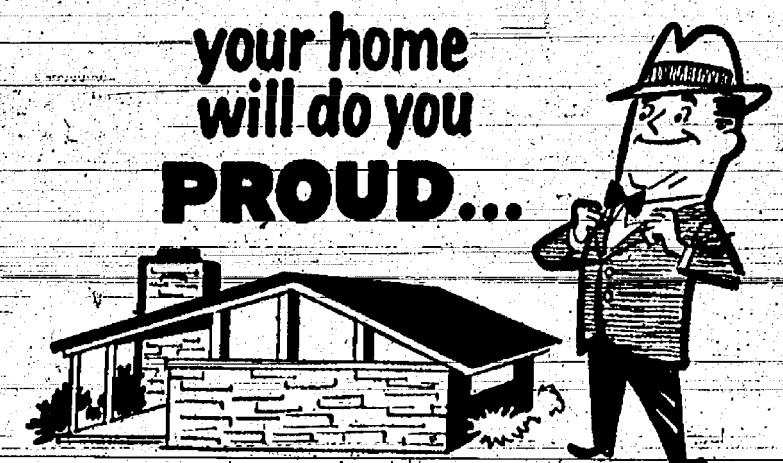
REPAIR WORK

Ready To Go Out May Be Picked Up At My Residence, 136 South Street.

Watches and other repair work may be brought to my home and will be completed in about 10 days.

Walter F. Kantlehner

"Where Gems and Gold Are Fairly Sold" JEWELER and OPTOMETRIST 102 East Middle Street Phone GR 9-6721



your home will do you PROUD...

WHEN YOU USE the right WOOD FINISH

Whether for Furniture, Woodwork, Floors or Panelling, you'll find it in our wide stock.

★ REZ Color-Tone Sealers

Seal the wood and impart the color-tone you want in one application. Gal. \$5.98 Qt. \$1.80

★ DEFT

Quick-drying clear finish, won't turn dark. Gal. \$5.96 Qt. \$1.99

★ ZAR

Finest, most durable clear finish made. Available in satin and gloss. Gal. \$11.95 Qt. \$3.25

★ FABULON

Famed, long-wearing floor finish. No filler needed. Gal. \$7.29 Qt. \$2.15

★ PUTTY-STIKS

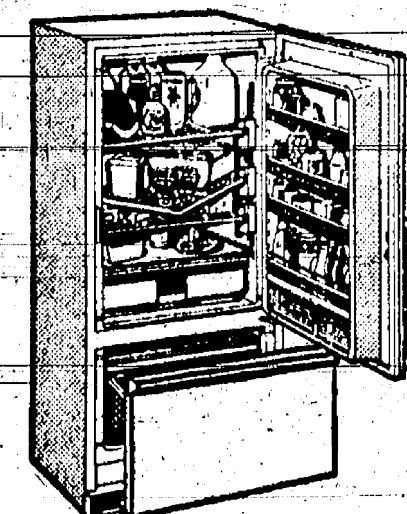
12 shades for filling nail holes and blemishes. 39c ea.

★ REZITE

Plastic exterior finish won't check or crack. Gal. \$6.30 Qt. \$1.80

DIAL GR 5-3391

Chelsea LUMBER CO.



It Would Be So Nice for Easter...and All Year Around!

GENERAL ELECTRIC FROST - GUARD REFRIGERATOR - FREEZER COMBINATION

Needs No Defrosting Ever... Not Even in the Freezer!

SPECIAL THIS WEEK \$279⁹⁵
A 100% Automatic Defrost Refrigerator

SHOP AND SAVE AT

FRIGID PRODUCTS

113 NORTH MAIN STREET

LLOYD R. HEYDLAUFF

PHONE GR 9-6651

USE YOUR CREDIT - BUY NOW - PAY LATER

Save \$15

Poweride 24" Rider

Reg. \$114.50 **99⁵⁰** With Reverse **\$139⁹⁵**

3 H.P. ENGINE

FREE! with purchase of filter **4.95** Furrowing TOOL

FARMCREST Rotary Garden TILLER

All New for '61

Offers riding mower luxury and comfort of downsized size. Extra power for steep hills and grades with rugged 3-HP, 4 cycle Clinton engine. Has variable speed control, quick shifts from forward to reverse, 10" rear wheels treaded for best traction. Only \$1 down on lay-away!

Takes the toll out of gardening, makes cultivating, plowing, weeding tasks "power-easy" New Farmcrest tiller has 3 1/2 HP, 4 cycle engine. Tills up to 21" deep, 25" wide with guaranteed unbreakable blade lines, E-Z teach controls, 10" front pneumatic tires, \$1 holds hill spring!

Lawn and Garden Supplies - Fertilizer

KENTUCKY BLUE 5 lbs. . . . \$2.95	MILORGANITE 80 lbs. - \$3.95
CHEWINGS FESCUE 5 lbs. . . . \$2.29	AGRICO - For Turf 10-6-4 50 lbs. - \$3.45
ECONOMY MIX 5 lbs. . . . \$2.20	AGRICO - TONIC 25-10-5 Treats 3,500 Sq. Ft. \$2.95

ALWAYS BETTER BUYS AT GAMBLES

High School Students To See 'Preview of Progress' Show

Have you ever seen a car run solely by the power of the sun? Or synthetic rubber manufactured in a pop bottle in 60 seconds?

How would you like to understand how a jet engine works, explore the mystery of controlling tomorrow's space ships and listen to a radio which is powered by "liquid sunshine"?

These are some of the exciting moments in store for Chelsea High school students when "Preview of Progress," the world-famous General Motors science show, is presented on April 11 at 2 p.m. in the High School Auditorium.

Packed with exciting demonstrations of science's dramatic role in industrial progress under America's free economy, the 40-minute stage show is non-commercial and admission-free.

Presented by a two-man team and narrated in understandable, non-technical language, the show uses exciting showmanship to make science come alive for more than three million students and adults who view it each year. Many more see it on television.

"We seek through Previews to inspire more young people to make science their career and provide the trained talent America must have to keep pace with the promise of the future," John F. Gordon, president of General Motors, declares.

"Our demonstrations dramatize the inquiring mind of all scientists which assumes that everything and anything can be improved. Previews hints at the tremendous secrets of power and energy that wait in the world of tomorrow to be unlocked by the young people of today who become scientists."

One of the highlights of the show is the amazing GM Sunmobile, the miniature car that actually runs on the power of the sun. It depends upon eight photoelectric cells located on its hood for its operation. These cells convert light into electrical energy which in turn powers a small electric motor to move the car.

In the Previews show, the demonstrator uses a 300-watt lamp to duplicate the sun's rays. As the light strikes the cells, the 15-inch Sunmobile moves smoothly across the table.

The Previews audience will see yet another example of sun power in the fascinating fuel cell. This device converts chemical energy of distilled plants into electrical energy with four times the efficiency now obtained by burning coal, oil or natural gas.

In the show, a few drops of "liquid sunshine" provide sufficient energy to operate a portable radio.

Philip Bareis Reports For Pro Baseball In Carolinas League

Mr. and Mrs. Philip Bareis of Clinton left Saturday morning for Fernand Beach, Fla., where he will train for baseball for a month. He will play for the Tobs in a Class B team in the Carolinas League, a farm team of the Minneapolis-St. Paul Twins.

Mr. and Mrs. Bareis resigned their teaching positions at Clinton for this school year.

ARMS CUT TALK IN AUGUST

President Kennedy has disclosed that the United States has suggested that East-West negotiations on general disarmament be resumed in August.

Meanwhile Kennedy said United States Ambassador Adlai Stevenson is trying at the United Nations to work out detailed arrangements for the proposed new disarmament exchange.

NOW...move up, and move over to SUPER-M GASOLINE POWER TONIC FOR TODAY'S CARS!

• Power Tonic for all driving conditions!
• Power Tonic for smooth, sure acceleration!
• Power Tonic for top mileage all year!
We're pumping it, your neighbors are buying it! Your MARATHON dealer

DETLING'S Marathon Service
Corner S. Main and Old US-12
Phone GR 5-7821

If a method for making the fuel cell practical were ever found, this device would have a tremendous economic impact and add to the life of coal and oil reserves.

In addition to sun-power, the Previews audience will see a visual history of the jet engine in "capsule" form. Beginning with a working model of the first jet which dates back to 200 B.C., this sequence is climaxed by the running of a miniature gas turbine engine with a non-miniature roar. This type of engine may power automobiles of tomorrow.

Safety conscious spectators will be intrigued by a demonstration of a new form plastic being used for crash pads in aircraft and automobiles. The lecturer actually makes the material in four minutes and shows its cushioning qualities by bouncing an egg off it from a height of our feet.

Missile enthusiasts will get an exciting introduction to a new glass harder than steel which can be used in the nose cones of intercontinental rockets to allow them to return from outer space.

Science proves quicker than a magician's sleight of hand in the Previews sequence in which synthetic rubber is produced in only 60 seconds. The demonstrator simply mixes two liquids in a pop bottle and a frothy glob of rubber 15 times the volume of the bottle leaps out above it.

Other Previews sequences include a vivid demonstration of the gyroscopes which will guide space ships of the future to their destination just as they control guided missiles, ships and planes today and a fascinating dramatization of the microwave relay which sends television programs and long distance telephone calls across the country.

Previews of Progress already has been presented to 18 million persons in the United States. Seven Previews units take the show to all sections of the country. Each team carries over 3,000 pounds of stage equipment in its station wagon.

In the true tradition of show business, Previews has been staged under a variety of conditions. It has been performed on the platforms of stake trucks in rural areas and also on the deck of the aircraft carrier USS Leyte.

It has been staged in a boxing ring at Port Dix, on the Boardwalk of Atlantic City and on the Starlight Roof of the Waldorf Astoria. Audiences have ranged from groups of 100 to crowds of 6,000.

Previews has won wide acclaim from educators and civic and fraternal organizations for its success in awakening both students and adults to the importance of science in daily life and the vital need for more skilled hands to carry scientific progress forward.



PORTABLE COLD FRAMES of polyethylene and weatherized steel tubing, used at the Gaunt gladiolus farm north of Chelsea as an experimental project last year, are being put to practical use this spring to get bulbs started so they will be ready for market about two weeks earlier than it is possible to grow them by means of conventional outdoor cultivation.

James Gaunt, owner of the gladiolus business, is shown in the photo in front of the opened end of one of the "portable greenhouses." The wooden end portion is lying on the ground in readiness to raise in place to shut out the cold. The two rows of frames provide protection for 60,000 bulbs planted last week.

Gaunts Pioneer Use of Cold Frames for Earlier Blooms

James Gaunt, who operates Southview Gladiolus Farms on Sibley Rd., a business founded 31 years ago by his parents, Mr. and Mrs. Edwin Gaunt, has been experimenting with a new type of cold frame which demonstrated its value on a trial basis last year. This spring he has already planted 60,000 bulbs in two of the portable installations 11 feet wide and 600 feet long.

The cold frames will be removed late in May and by the second week in June Gaunt expects to have blooms ready for marketing.

In the new cold frames the bulbs are planted in double rows. Because of the concentrated planting, the cultivation process requires heavier feeding and heavier watering. Weeding is done by hand.

The 40 acres of gladioli under normal cultivation will be planted in single rows, three feet apart.

Gaunt is now the franchised dealer for the portable cold frames or "greenhouses" and has already sold some in and around the Detroit area.

While Gaunt uses the installations principally for flowers, the portable cold frames are also ideal for truck gardeners who can get produce to market from two to three weeks ahead of the regular season by taking advantage of the protected early planting.

Trade name for the cold frames on the Gaunt farm is Porta-Green.

They are manufactured by the Waco-Porter Corp. of Minneapolis, Minn.

The quonset-type frames are made of lightweight steel tubing and the covering is made of a double thickness of polyethylene with an air space between.

The method of applying the film in the form of a tube or sleeve over the frame eliminates tacking or stapling of the material. Tearing due to piercing of the cover is therefore eliminated, resulting in several seasons of use.

Since the tight sleeve of the film cannot be drawn over a fixed frame without damaging the film, an arrangement for collapsing the frame during assembly and then expanding it to tighten the film has been developed. This simple, yet effective, method of expanding the frame inside the sleeve is an exclusive feature of these cold frames.

Two or three days of sunshine provides sufficient warmth to keep plants from freezing in early spring frosts.

The Gaunts call their place Southview Gladiolus Farms. Because of their long association with the business—first the Edwin Gaunts and now their son, James—they are well-known throughout the United States. They are members of the New England Gladiolus Society, Michigan Gladiolus Society, and Society of American Florists.

House Tour Planned By Nursery

The second annual Chelsea House Tour is being planned by the Chelsea Co-Operative Nursery to take place April 27 from 10:00 a.m. until 3:00 p.m.

The tour will provide a variety of design and content to catch every interest. The homes selected this year for a guided tour will include the Merle Barr Jr. residence, Congdon St. and the Clarence Wood residence, Warders St., both in Chelsea; and three homes at Cavanaugh Lake: the Lloyd Heydlauff residence, the Ben Donaldson residence and the Harold Jones residence.

The committee chairman in charge of the event is Mrs. William Chandler; Mrs. Ronald Cadogan is hostess; Mrs. William Chandler and Mrs. Duane Crouch are in charge of ticket sale.

The trouble with most public speakers is that they have nothing to say.

Ronald Stark Family Now Owns 122 Acre Former Davidson Farm on Grass Lake Rd.

Mystery Farm No. 143, which was identified by a number of people, is now owned by Ronald Stark, formerly an official tester for the Dairy Herd Improvement Association (DHIA). It is located at 17130 Grass Lake Rd. near Staro Hollow Rd.

Stark bought the place just a year ago and continued his work with DHIA until the beginning of this year. He plans to go into dairy farming but has no stock yet on the 122-acre farm.

Mrs. Stark raises and sells Chihuahuas, utilizing the large enclosed front porch as a run for the dogs.

The Starks have two sons, Ronald Jr., who is a junior at Chelsea High school, and Larry a sophomore. The family is affiliated with the

Seventh Day Adventist church at Jackson.

The Starks bought the place from Mrs. Susie Davidson who now lives at Ida. Her son Donald and his family also live at Ida.

Mrs. Davidson's husband, Roy, died in 1950 and she moved to Ida that fall. The Davidsons had owned the place for more than 30 years when it was sold to the Starks a year ago. The Starks came here from Emmet county in the northern part of the state.

The Davidsons added the beautiful enclosed stone porch at the front of the house during the time they owned the farm.

According to available information the Davidsons purchased the farm from the late Mrs. Ella Packens Butler, widow of Godfrey Butler who died in 1910. She and her

daughter, Anna, later made their home for many years with her nephew, Homer Lehman, on what is now the Blalock farm (Mystery Farm No. 143) at 8363 Sylvan Rd.

During the past 10 years since Roy Davidson's death, the farm home has been rented to various tenants. Mr. and Mrs. Amos Curtis lived there from 1956 until the place was purchased by the Starks. They now live on the Sylvester Weber farm on Selo Church Rd.

Among those who called The Standard office to identify the farm were Ronald Stark, the owner. Others who called are Allan Broesamle (who was first to identify it), Charles Curtis, Biass Elevator men, Mrs. Amos Curtis, Floyd Brand, Elmer Lehman, Mrs. Elmer Mayer, Leona Cooper, David Curtis, Mrs. Morgan Esch and James Brown.

EASTER PLANTS

Nice Selection To Choose From
Also - Flower Arrangements and Corsages

See Us Before You Shop Elsewhere

ORDER YOUR CORSAGE EARLY



SYLVAN FLOWER SHOP

716 West Middle St., Chelsea, Mich.
Phone GR 5-4561 Local Delivery

STEP OUT SMARTLY FOR EASTER

GIFT SUGGESTIONS for the Man in your Life

Arrow and Enro SHIRTS

Hart Schafner & Marx Clipper Craft - Royal SUITS

WEMBLEY and SUPERBA TIES

WE RENT FORMAL WEAR For All Occasions

Foster's Men's Wear

Model for model...there are 18 Chevrolets lower priced than any other full-sized car!

Leave it to these Jet-smooth Chevies to go easy on your family budget! All told there are 18 Chevrolets—V8's and 6's—priced lower than comparable competitive models*. Sumptuous Impalas, sprightly Bel Airs, bottom-priced Biscaynes and a whole stable of wonderful new wagons. And every

one of them has a road-gentling Jet-smooth ride. Body by Fisher refinements and dozens of engineering details you'd expect only in the most expensive makes. Look them over at your Chevrolet dealer's one-stop shopping center and see how easy it is to drive out in just the one you want!

*Based on comparison of manufacturers' suggested retail prices (including Federal tax) for models with 118-inch wheelbase or above.

IMPALAS	BEL AIR	
Impala V8 Convertible	Bel Air V8 2-Door Sedan	Bel Air V8 4-Door Sedan
WAGONS		
Impala V8 Sport Sedan	Nomad Six 4-Dr. 9-Pass. Station Wagon	Nomad V8 4-Dr. 9-Pass. Station Wagon
Impala V8 Sport Coupe	Nomad V8 4-Dr. 6-Pass. Station Wagon	Nomad Six 4-Dr. 6-Pass. Station Wagon
Impala V8 2-Door Sedan	Parkwood Six 4-Dr. 6-Pass. Station Wagon	Parkwood V8 4-Dr. 9-Pass. Station Wagon
BISCAYNES		
Biscayne V8 4-Door Sedan	Parkwood Six 4-Dr. 9-Pass. Station Wagon	Parkwood V8 4-Dr. 6-Pass. Station Wagon
Biscayne V8 2-Door Sedan	Brookwood Six 4-Dr. 6-Pass. Station Wagon	Brookwood V8 4-Dr. 6-Pass. Station Wagon

See the new Chevrolet cars, Chevy Corvairs and the new Corvair at your local authorized Chevrolet dealer's

SPAULDING CHEVROLET SALES & SERVICE

CHELSEA, MICHIGAN



BOWLING NEWS



Dexter Mixed League

Standings as of Mar. 25

	W	L
Rabbit & Dove	78	38
O'Connor's Service	75	41
Drewry's	71 1/2	44 1/2
H & W's	68	48
Sanderson & Norris	61 1/2	54 1/2
Williebobbers	60	58
A & W	58 1/2	57 1/2
Go-Willies	57 1/2	58 1/2
Schneider's Grocery	57	59
Price's Service	54	62
Climco Engineering	54	62
Robertson & Simpson	51	65
Trailers	50	66
Wolverine Tavern	47	69
Bouillon & Graf	43	73
Bowen & Schwartz	42	74

Team high series: Rabbit & Dove, 1,809.

Team high single: Go-Willies, 652.

Men's high series: Bill Dove, 660.

Men's high single: Dave Feldkamp, 217.

Ladies high series: Marian Murray, 499.

Ladies high single: Marian Murray, 198.

Chelsea Junior League

FINAL STANDINGS

	W	L
Slocum Contractors	68	24
VEW	56	36
Sutton Agency	54 1/2	37 1/2
UAW Local 1284	38 1/2	53 1/2
Jiffy Mixers	35	57
Pepsi-Cola	21	71

High team series: UAW Local 1284, 2,204.

High team game: Slocum Contractor, 745.

High individual series: Dave Feldkamp, 516.

High individual game: Lloyd Schackleton, 199.

Popular philosophy: The people of the world are divided into two types: me and the other people.

Senior House League

Standings as of Mar. 20

	W	L
Alber Oil Co.	73	43
Chelsea Mfg. No. 1	71	45
Spaulding	69	47
Sylvan Center	63	53
Stiver's	60	56
Chelsea Grinding	58	58
Schneider's	57	59
Chelsea Products No. 1	56	60
Chelsea Products No. 2	53	63
Stop & Shop	50	66
Chelsea Milling	43	73
49ers	38	79

200 games: H. Burnett, 238; O. Kruse, 231-214; O. Johnson, 211; C. Balze, 211; J. Stoffer, 209; D. Alber, 207; P. DeFant, 204; G. Winchester, 203; J. Kuzenski, 202; R. Liebeck, 202; G. Burnett, 201; E. Miller, 200.

500 series: H. Burnett, 584; O. Johnson, 581; C. Balze, 567; G. Winchester, 561; G. Burnett, 560; J. Kuzenski, 557; J. Stoffer, 557; V. Hatley, 546; G. Lawrence, 545; D. Alber, 541; K. McMannis, 540; R. Stineheiser, 539; E. Miller, 531; F. Klobuchar, 528; E. Ritter, 519; J. Ford, 510; D. Houle, 518; R. Spaulding, 515; D. Balze, 513; E. Keizer, 510; R. Eder, 507; R. Liebeck, 507; W. Eisenbeiser, 502; P. DeFant, 500.

600 series: O. Kruse, 619.

BROWNIES

TROOP 51—

Brownies of Troop 51 met Tuesday afternoon at South school, principal business being election of officers.

Joy Reynolds was elected president; Dianne Schneider, treasurer; Marilyn Lyons, scribe.

A donkey game and another game were played.

Vicki Fletcher, scribe.

Never overlook the fact that a free press and a free radio can be used to distribute propaganda.

Chelsea Mixed League

Standings as of Mar. 24

	W	L
Nine Pins	70 1/2	37 1/2
Jack Pota	68 1/2	39 1/2
Alber Motor Sales	62	46
Bull Dozers	59	49
Town & Country	55	53
Stinkers	51	57
First Nitters	50	58
Washington Tigers	44	64
Hoydauff's GE	41	67
Ten Pinners	39	69
475, men: G. Lawrence, 553; F. Schumm, 547; L. Mayne, 538; J. Harmon, 508; C. Clark, 494; J. Turner, 493; M. Packard, 489; D. Foytk, 487; R. Trinkle, 484; J. Eisenman, 480.		
425, Women: B. Pabst, 527; V. Geer, 499; N. Eisenman, 485; A. Turner, 448; E. Mayne, 440; E. Harmon, 437; R. Johnson, 429.		
175, men: J. Turner, 215; F. Schumm, 202-189; J. Harmon, 194; G. Lawrence, 193-158; M. Packard, 189; R. Geer, 187; L. Mayne, 182; 181-175; C. Clark, 176; R. Trinkle, 175.		
150, Women: B. Pabst, 200-177; 160; N. Eisenman, 189; V. Geer, 175-163-158; A. Turner, 170-167; E. Mayne, 170-150; R. Johnson, 161; E. Harmon, 158-150; R. Winchester, 157; F. Alber, 153; E. Packard, 150.		

Junior House League

Standings as of Mar. 23

	W	L
Farrell's	64	44
Frank's Bar	63	45
Parker's	62	46
Palmer's T-Birds	61 1/2	46 1/2
Chelsea Spring	57	51
Lou & Sam	56 1/2	51 1/2
Gambles	55	53
Chelsea Mfg. No. 2	52	56
Merkel Bros.	48	60
Jiffy Mixers	47	61
Stiver's	46	63
Slocum Const.	38	70

200 games: R. Sweet, 223; G. Harmon, 222; W. Steinaway, Sr., 213; S. Hopkins, 209; V. Hanson, 208; C. Popovich, 207; L. Schneider, 205; R. McKinder, 201.

500 series: S. Hopkins, 549; W. Steinaway, Sr., 540; G. Harmon, 535; R. Wurster, 535; V. Hatley, 534; L. Schneider, 532; C. W. Lake, 524; R. McKinder, 519; C. Popovich, 519; W. Howe, 519; J. Harook, 518; P. Kinsey, 518; H. Nabb, 517; V. Hanson, 517; R. Sweet, 512; T. Tirb, 511; R. Koch, 509; A. Kaiser, 506; L. Christwell, 501; H. Dresch, 501.

Itinerant Peddlers

Often Short Weigh

Topsoil, Fertilizer

Be on the watch for short-weight or short measure when buying topsoil, fertilizer, peat moss, grass seed or other items which homeowners are likely to purchase with the coming of spring.

The records of the Michigan Department of Agriculture, of which G. Monty is director, show that some sellers of such products on occasion deliver less than the amount the buyer thinks he is receiving.

Often itinerant peddlers of these products are guilty of this. Too often they are long on price and short on weight or measure. A check with local established businesses before buying these products often can save the potential buyer money.

In recent years inspectors of the Department's foods and standards division have found packaged fertilizer to be as much as eight per cent short weight. Weed killers have been found to be as much as 30 percent short. Grass seed, peat moss and topsoil have been checked at 10 to 15 per cent short of the quantity represented.

More than 325,000 pounds of these products have been seized in the past few years by inspectors of the Michigan Department of Agriculture for short weight.

Printed in:

BOSTON, LOS ANGELES, LONDON



The Christian Science Monitor

AN INTERNATIONAL DAILY NEWSPAPER

Interesting

Accurate

Complete

International News Coverage

The Christian Science Monitor

One Norway St., Boston 15, Mass.

Send your newspaper for the time checked. Enclosed find my check or money order. ☐ 1 year \$20 ☐ 6 months \$10 ☐ 3 months \$5

Name

Address

City

Zone

State

Early Filing of Wool Applications Urged by ASC

Mrs. Carolyn Stump, office manager for the Washtenaw County Agricultural Stabilization and Conservation Committee, today urged wool growers who sold or will be selling wool and unshorn lambs during the 1960 marketing year which ends Mar. 31, to file their applications for payment under the national wool program as early in April as possible.

Early filing is highly desirable, Mrs. Stump said, because the information on applications is needed for use in computing the average price received by growers. This must be done before the payment rates for shorn and unshorn lambs can be determined. The deadline date for filing applications for the 1960 wool year is the last of April.

Applications being filed at this time are to show all sales of wool and unshorn lambs during the period Apr. 1, 1960 and Mar. 31, 1961. For a sale to be considered completed during that period, title must have passed to the buyer, the wool must have been delivered, and the last of the factors needed to determine the net sales proceeds must be available.

Mrs. Stump urges growers to be particularly careful in reporting purchases of unshorn lambs on their applications. Inaccuracy on this point is the most troublesome problem in administering the wool payment program, she said.

Under the wool program, payments are made to growers as an incentive to increase wool production. The payment rate is the percentage necessary to bring the national average price received by growers up to the incentive level of 62 cents a pound. Under the percentage system, the grower who receives the highest price for his wool also receives the largest payment.

The cycle of success: Working hard to make money to leave to children who won't work. Grandchildren renew the cycle.



GIRL SCOUTS

TROOP 77—The girls of Troop 77 met at the home of Mrs. Wilber Worden. Roll was called and dues were taken. All were present. They made a list of the activities they wanted to take part in for the rest of the year. Mrs. Worden took a picture of the girls and then all were dismissed.

TROOP 498—Patrol No. 1 of Girl Scout Troop 498 was in charge of the opening flag ceremony at the meeting held Thursday at South school.

Last year 1,657 checks, averaging \$77.26 and having a total value of \$128,010.74, were processed by the State Police. The peak year in volume since the section was established in 1948 was in 1959 with 1,698 averaging \$74.38 and totaling \$126,263.38.

Known passers or previous forgery or fraud specimens are identified in about 60 per cent of the cases studied by the State Police.

High months for check fraud are usually January, July and August while April is generally the lowest. An analysis of the record indicates that when the economy flourishes, so does bad check activity.

According to Kelly, the apparent explanation is that business people are less cautious then or feel that the higher volume of business can more easily sustain any fraud loss.

Who suffers in this fraudulent activity? Kelly observes that the merchant or firm cashing a bad check must make good the loss originally but eventually it's the public that pays through increased business operating costs.

Kelly's advice is this: Treat every check with the same caution you would use in making an unsecured loan to a stranger.

To prevent opportunity for theft which can lead to forgery and fraud, check supplies and bank statements should be securely locked up when not in use.

Additional Funds Allotted Farmers Loan Agency

Additional funds have been made available to help meet the needs of eligible farmers who need operating money to carry out their farming operations.

Carroll L. Robinson, county supervisor for the Farmers Home Administration, announced today.

Robinson said that a \$35,000,000 contingency fund provided by the 1961 Agricultural Appropriations Act has just been released to the Farmers Home Administration to meet the growing demand for credit.

This move was taken by the U.S. Department of Agriculture, Robinson said, in an effort to make certain, within the authorities and funds available, that no qualified family-type farmer will be required to give up farming because of his inability to finance his 1961 operations.

The Farmers Home Administration makes operating loans primarily to help eligible farm families make improved use of their land and labor resources on family-type farms and make needed changes in their farming systems.

Most of the changes call for adopting better farming practices and improving the efficiency of their farming operations. Loans may also be made to qualified farmers who carry on smaller than family-type operations.

Operating loans help farmers pay seed, fertilizer, tractor fuel and other farm and home operating needs including the refinancing of chattel debts.

COUNCIL AGAINST LOANS

A National Council of Churches official, the Rev. Gerald K. Knoff, said he is sure a majority of its governing body "would be opposed to loans for parochial school construction."

According to the Rev. Knoff, "The majority sentiment would be in hearty agreement with the President of the United States and the Secretary of Health Education and Welfare."

Bogus Check Passing Is Big Business

Bogus check passing in Michigan is a million dollar a month operation which so far this year gives little indication of falling away from the high levels of activity reached in 1959 and 1960, according to Det. Sgt. Fred E. Kelly of the fraudulent check section at East Lansing State Police headquarters.

In the first two and a half months this year, 866 bogus checks were submitted to the section for examination, just three less than in the same period in 1960. Only about one per cent of the bad checks passed in Michigan are submitted to the State Police, the remainder are handled locally.

Last year 1,657 checks, averaging \$77.26 and having a total value of \$128,010.74, were processed by the State Police. The peak year in volume since the section was established in 1948 was in 1959 with 1,698 averaging \$74.38 and totaling \$126,263.38.

Known passers or previous forgery or fraud specimens are identified in about 60 per cent of the cases studied by the State Police.

High months for check fraud are usually January, July and August while April is generally the lowest. An analysis of the record indicates that when the economy flourishes, so does bad check activity.

According to Kelly, the apparent explanation is that business people are less cautious then or feel that the higher volume of business can more easily sustain any fraud loss.

Who suffers in this fraudulent activity? Kelly observes that the merchant or firm cashing a bad check must make good the loss originally but eventually it's the public that pays through increased business operating costs.

Kelly's advice is this: Treat every check with the same caution you would use in making an unsecured loan to a stranger.

To prevent opportunity for theft which can lead to forgery and fraud, check supplies and bank statements should be securely locked up when not in use.

Everybody's Happy . . .

"Smiling Service" works two ways here. Try it and see!

You'll leave us smiling with satisfaction in our friendly, heads-up service. We'll be smiling with satisfaction in new friend made.

PURE OIL PRODUCTS

HANKERD'S SERVICE

TIRES • BATTERIES • TUNE-UPS • BRAKE SERVICE

PHONE GR 5-7411 CHELSEA, MICH.

TRANSIT-MIX CONCRETE

Finest quality concrete made to your specifications in our new automatic plant and delivered to your job location.

A fleet of 6 modern transit-mix trucks assures you of prompt delivery anywhere in the area.

PROMPT DELIVERY

STONES: 1 1/2", 1", 3/4", 1/2", 3/8" — 2NS SAND

KLUMPP BROS GRAVEL CO.

Phone Chelsea GR 9-2712

4950 Loveland Road Grass Lake, Mich.

BIENNIAL SPRING ELECTION

To the Qualified Electors:

NOTICE IS HEREBY GIVEN, That a Biennial Spring Election will be held in the

TOWNSHIP OF DEXTER

(Precinct No. 1)

State of Michigan

AT

DEXTER TOWNSHIP HALL

within said Township on

MONDAY, APRIL 3, 1961

For the Purpose of Electing the Following Officers, viz:

STATE OFFICERS

Two Regents of the University of Michigan; Superintendent of Public Instruction; Member of the State Board of Education; Two Trustees of Michigan State University of Agriculture and Applied Science; Two Members of the Board of Governors of Wayne State University; and State Highway Commissioner.

NON-PARTISAN OFFICERS

Two Justices of the Supreme Court.

TOWNSHIP OFFICERS

Supervisor, Township Clerk, Township Treasurer, 1 Trustee, Justice of the Peace (Full Term), Member of the Board of Review, 1 Constable (Not to Exceed Four), Commissioner of Highways.

AND TO VOTE ON THE FOLLOWING CONSTITUTIONAL CONVENTION PROPOSAL:

"Shall a Convention be held to consider Revision or Amendment of the Michigan Constitution for subsequent submission to the Electors of this State for their approval?"

Also Any Additional Amendments or Propositions That May Be Submitted

Notice relative to opening and closing of the polls

ELECTION LAW, ACT 116, P. A. 1954

SECTION 720. On the day of any election the polls shall be opened at 7 o'clock in the forenoon, and shall be continuously open until 8 o'clock in the afternoon and no longer. Every qualified elector present and in line at the polls at the hour prescribed for the closing thereof shall be allowed to vote.

THE POLLS of said election will be open at 7 o'clock a.m. and will remain open until 8 o'clock p.m. of said day of election.

ROBERT A. WHEELER, Township Clerk

BIENNIAL SPRING ELECTION

To the Qualified Electors:

NOTICE IS HEREBY GIVEN, That a Biennial Spring Election will be held in the

TOWNSHIP OF FREEDOM

State of Michigan

AT

FREEDOM TOWNSHIP HALL

within said Township on

MONDAY, APRIL 3, 1961

For the Purpose of Electing the Following Officers, viz:

STATE OFFICERS

Two Regents of the University of Michigan; Superintendent of Public Instruction; Member of the State Board of Education; Two Trustees of Michigan State University of Agriculture and Applied Science; Two Members of the Board of Governors of Wayne State University; and State Highway Commissioner.

NON-PARTISAN OFFICERS

Two Justices of the Supreme Court.

TOWNSHIP OFFICERS

Supervisor, Township Clerk, Township Treasurer, 1 Trustee, Justice of the Peace (Full Term), Member of the Board of Review, 1 Constable (Not to Exceed Four), Commissioner of Highways.

AND TO VOTE ON THE FOLLOWING CONSTITUTIONAL CONVENTION PROPOSAL:

"Shall a Convention be held to consider Revision or Amendment of the Michigan Constitution for subsequent submission to the Electors of this State for their approval?"

Also Any Additional Amendments or Propositions That May Be Submitted

Notice relative to opening and closing of the polls

ELECTION LAW, ACT 116, P. A. 1954

SECTION 720. On the day of any election the polls shall be opened at 7 o'clock in the forenoon, and shall be continuously open until 8 o'clock in the afternoon and no longer. Every qualified elector present and in line at the polls at the hour prescribed for the closing thereof shall be allowed to vote.

THE POLLS of said election will be open at 7 o'clock a.m. and will remain open until 8 o'clock p.m. of said day of election.

WILL RENO, Township Clerk

When you think of bottled gas, think of SHELLANE—

only a few pennies a day to use

Shellane Bottled Gas is a product of the Shell Oil Company

HILLTOP PLUMBING

BOB SHEARS

201 S. Main St. Ph. GR 5-7201

Quit fighting fencer shorts



HOL-DEM Electric Fencers clip weeds on contact

Confine livestock with one wire - even on dry ground. HOL-DEM fencers have dual signals, battery charger, with circuit breaker. Guaranteed against lightning.

6 **\$13.95**

At hardware and farm supply stores everywhere.

HOL-DEM Electric Fencer Co.
1340 N.E. Quincy, Minneapolis 13, Minn.

MERKEL BROS.

PRINT STYLE MC

Carrie B. Waterhouse
8371 North Falmouth Road
Suite 10, Washington

PRINT STYLE AS

Miss Donald Lee Elms
624 Eastgate Lane
Alhambra, Florida

PRINT STYLE HL

Miss Donald Lee Elms
624 Eastgate Lane
Alhambra, Florida

march sale

Rytex

Hand-Craft Vellum

stationery with your name and address

double the usual quantity

3.19 (regularly 4.75)

Have your name and address custom-imprinted on famous Rytex Hand-Craft Vellum during this special sale.

You'll enjoy having a big supply on hand of your own personalized stationery. This is real convenience and luxury for only pennies more than you'd expect to pay for good quality plain stationery.

Choice of:

- 200 single sheets, 100 envelopes—or
- 100 double sheets, 100 envelopes—or
- 100 monarch sheets, 100 envelopes

Choice of clear white or smart pastels of blue or grey vellum. Choice of imprint styles shown: Blue, grey or mulberry ink.

And while you're about it, why not order some for gifts. As a gift, Rytex proves your thoughtfulness—it's obviously made to order for the occasion.

The Chelsea Standard

(Mail Order Coupon)

THE CHELSEA STANDARD, Chelsea, Michigan

Please place my order for _____ boxes Rytex Hand-Craft Vellum (double quantity) at \$3.19 a box, custom-imprinted as follows:

Name _____

Street _____

City, Zone and State _____

Be sure to specify:

Size Sheet _____ Color Paper _____

Imprint Style _____ Ink Color _____

Street _____

City, Zone and State _____

☐ Charge ☐ Payment enclosed ☐ Sorry, no C.O.D.'s

Rural Correspondence

Items of Interest About People You Know

NORTH FRANCISCO

Mr. and Mrs. Chester Notten and Miss Mabelle Notten were guests Sunday of Mr. and Mrs. Chester Davis at their home in Ango, Ind. Mrs. Davis entertained at a birthday dinner honoring her mother, Mrs. Notten.

Mrs. Nina Wahl spent last week with her daughter and family, Mrs. Lorin Hinderer. On Sunday Mrs. Wahl attended the confirmation of her grandson, Donald Hinderer, son of Mr. and Mrs. Loren Hinderer, at Zion Lutheran church, Mrs. Wahl, Fred Hinderer and Miss Martha Brustle were Sunday dinner guests of the Norman Hinderers.

Mr. and Mrs. Lynn Main and Mr. and Mrs. Gaylord Main of Jackson were Sunday visitors of Mrs. Eva Notten and Gilbert Main.

Mr. and Mrs. Harold Wahl and daughter, Joan, were Sunday afternoon visitors of Mr. and Mrs. Ellsworth Crandall.

Eugene Wahl left Sunday with the Senior class of Grass Lake High school on a trip to New York City.

Mrs. Iva Straub spent Sunday at the home of her nephew and his wife, Mr. and Mrs. Kenneth Straub, of near Jackson.

Sunday afternoon callers of Mr. and Mrs. Clarence Lehman were Mrs. Philip Seitz and daughter, Irene, and Mr. and Mrs. Walter Bohne.

Mr. and Mrs. Roy Miller called on Mr. and Mrs. Hazen Leach and the former's mother, Mrs. Martin, one day last week. Sunday afternoon they were callers of Mr. and Mrs. Philip Hoster and in the evening they called on Mr. and Mrs. Max Hoppe.

Mrs. Leonard Loveland was a Sunday guest of her sister, Miss Mabelle Notten.

FOUR MILE LAKE

Miss Marilee Tucker, who is attending Adrian College, spent Sunday with her parents, Mr. and Mrs. Nelson Tucker.

Mr. and Mrs. Henry Englehart and Mrs. Mary Lucht were Sunday supper guests of Mr. and Mrs. Julius Eschebach.

Mr. and Mrs. Rufus Gillum of Tecumseh were Sunday visitors of Mr. and Mrs. Harvey Fischer and Mrs. John Fischer.

Mr. and Mrs. Alvin Brassow were Sunday dinner guests of Mr. and Mrs. Dennis Engleberg of Saline.

Mr. and Mrs. Frank Abdon, Mr. and Mrs. Donald Wright and daughter, of Ypsilanti, and Mr. and Mrs. Robin Wright were Sunday afternoon visitors of their parents, Mr. and Mrs. Burton Wright and family.

Ann Heydlauff of Kalmbach Rd., was a week-end guest of her brother and sister-in-law, Mr. and Mrs. Gerald Heydlauff and family.

Mrs. William Wierich spent

Thursday with her mother, Mrs. Mary Reames of Gregory.

Mr. and Mrs. Robert Fischer and son, of Ypsilanti, were Saturday dinner guests of his parents, Mr. and Mrs. Harvey Fischer.

Mrs. John Fischer and Mr. and Mrs. Harvey Fischer attended open house, Sunday, at the home of Mrs. John Kelsey, Dexter, honoring the 60th wedding anniversary of Mrs. Kelsey's parents, Mr. and Mrs. Floyd Spiegelberg.

WATERLOO

Linda Prentice and Dawn Marie Silvernall were accepted as full members of the Waterloo Village church at the Palm Sunday services.

Susan Adkins daughter of Mr. and Mrs. Charles Adkins and Paul Case son of Mr. and Mrs. Case were baptized at the Palm Sunday services at the Waterloo Village church. The Rev. Wilbur Silvernall officiated.

Mr. and Mrs. Leroy Loveland and family of Grass Lake, were Sunday dinner guests at the home of Mr. and Mrs. Glenn Kentschler and Robert.

Mr. and Mrs. John Dykema and Mr. and Mrs. Vern Garfield of Jackson, were Sunday visitors at the home of Mr. and Mrs. Leigh Beaman.

Mr. and Mrs. Vern Mollenkopf and family, of near Parma, were visitors on Sunday evening at the Glenn Kentschler home. Mrs. Gordon Rietmiller, Sr., of Olivet, was a recent caller.

Sunday visitors at the Gottlieb Rothman home were their daughter and family; the Minor Brands of Metamora, O., and Mr. and Mrs. Glenn Crandall of Vandercook Lake.

Palm Sunday services at the Village church, included the baptizing of Paul Case, son of Mr. and Mrs. Case and Susan Adkins, daughter of Mr. and Mrs. Charles Adkins. Rose bids, given to the children were used to demonstrate the growth and life of a child. Miss Dawn Silvernall, daughter of the Rev. and Mrs. Wilbur Silvernall also was baptized and received into the membership of the church; also, Miss Linda Prentice, daughter of Mr. and Mrs. Bernard Prentice, was received as a member, each receiving their certificates and a Bible.

LYNDON TOWNSHIP

Douglas Showers of Dansville is in-law and sister, Mr. and Mrs. Bruce Whitman.

Sunday guests of Mr. and Mrs. Samuel Whitman were Robert Adams and Gary and Sheryl Whitman.

Mr. and Mrs. George Bott and children and Mrs. Verna West of Bunker Hill were Tuesday evening guests of the former's parents, Mr. and Mrs. Austin Bott. Mrs. George Bott made and decorated a birthday cake, and ice cream also was served, honoring the birthday of Austin Bott.

Mr. and Mrs. Clarence Bott of Batavia Lake were Sunday afternoon callers of Mrs. Mary Clark and son, Dean.

Friday evening guests of Mr. and Mrs. Stephen Baker were Mrs. Clara Hudson and Jim Goodwin, of near Stockbridge, and Mrs. Mary Clark and son, Dean.

Mrs. Mary Clark and son, Dean, were Saturday evening guests of Mr. and Mrs. George Merkel and family, of Chelsea.

Howard Clark of Jackson was a Friday afternoon caller of his uncle and aunt, Mr. and Mrs. John O'Conner. Dr. Thomas Clark and daughter, Mary, of Jackson, were Sunday afternoon callers.

Mr. and Mrs. Clarence Widmayer of Detroit were Sunday afternoon

BECKER MEMORIALS

6033 Jackson Road
ANN ARBOR, MICHIGAN

MAUSOLEUMS ★ MONUMENTS
BRONZE TABLETS ★ MARKERS

CRAB GRASS KILLER

This one really works

Kills crab grass before it can sprout! Tested, proved superior by turf specialists • Won't harm established bluegrass lawns • Treated turf won't harm pets, birds, or children • Dow Crab Grass Killer is guaranteed by The Dow Chemical Company to control crab grass for one full season—or money back!

Available in 2-1/2 and 30-lb. bags. See us today for your spring supply!

MERKEL BROS.

New Freeways Encourage Industrial Development

Lansing — Michigan's growing freeway system was credited recently with playing a major role in the location near Brighton of the midwest headquarters of an out-of-state mobile home firm.

Transit Homes, Inc. of Anderson, S. C., a nation-wide mobile home moving firm, announced it would establish new regional offices in Brighton township.

Brighton Township Supervisor Joseph H. Ellis said the firm chose the area to take advantage of Interstate 98 and US-28 freeways which intersect near this Livingston county community.

Ellis predicted that "selection by Transit Homes of a location in the new interchange area will encourage other companies interested in a strategic distribution location to examine Brighton Township."

In another highway-related development, a Grand Rapids trucking firm announced that it was opening a new terminal near Interstate 94 at Benton Harbor.

These two announcements are classic examples of how our new freeways are encouraging industrial development and attracting new industries to Michigan," State Highway Commissioner John C. Mackie said.

"Studies in Michigan and other

callers of Mr. and Mrs. Laurence Noah and Mrs. Eva Stofor.

Sheryl and Robert Stofor of Chelsea were week-end guests of their grandmother, Mrs. Eva Stofor.

Mrs. Arlene Howe of Erie, Pa., is spending a few days with her parents, Mr. and Mrs. Howard Boyce while she is lecturing and giving instruction at St. Joseph Mercy hospital, Ann Arbor.

Mr. and Mrs. Howard Boyce and Mrs. Arlene Howe were pre-Easter dinner guests of Mr. and Mrs. Dale Boyce of Jackson. Other guests present were Mr. and Mrs. Harold Boyce and family and Mr. and Mrs. Robert Boyce and family, of Dundee. Mrs. Howard Boyce made and decorated an Easter bunny cake which was used as a centerpiece.

Mrs. Nettie Hall and Mrs. Charles Fuhrmann attended the African Violet convention from Thursday until Saturday at French Lick, Ind.

Mrs. Clayton Balmer of Williamston, and Mr. and Mrs. Donald Hanes and sons, of Lansing, were Sunday evening callers of Mr. and Mrs. Austin Balmer. Dennis Eubanks of Grass Lake, is spending his Easter vacation with his grandparents, the Balmers.

UNADILLA

Mrs. Springhall and daughter and son, of Detroit, visited the former's brother, Eli Brooks, Saturday.

Miss Joanne Hayes of Lansing spent a few days this week with her grandparents, Mr. and Mrs. Milo Corser.

Mr. and Mrs. Wilbur Lee returned home Wednesday from a two-week vacation with her parents, Mr. and Mrs. Emory Pickell, in Florida.

Communion service will be held at the Unadilla Presbyterian church Thursday evening at 8 o'clock. Easter Sunrise service will be held at 6:30 a.m. Easter morning on the hill back of the church. Breakfast will follow in the hall at 7 o'clock. Regular morning worship service will be at 10:30.

Mrs. Milo Corser and Mrs. Winona Pickett were in Lansing Saturday.

Mr. and Mrs. Richard Barker of Detroit were Sunday guests of Mr. and Mrs. Francis Richmond.

Mrs. Winona Pickett called Thursday on Mrs. John McMullen in Munith.

Mr. and Mrs. Clarence Embury visited Mr. and Mrs. Clyde Meunier near Ann Arbor Sunday afternoon.

Mrs. Milo Corser and Mrs. Ralph Wright took Mrs. Winona Pickett to Willow Run Airport Monday evening where she took a plane to West Palm Beach, Fla., for a visit with friends there.

Mrs. Rheubena Bailey entertained a group of co-workers at her home in Chelsea Friday evening at a baby shower for Mrs. Francis Richmond.

Mr. and Mrs. Carl Burkland and Mr. and Mrs. Harold Bates went to Detroit for dinner Saturday evening and to celebrate the wedding anniversary of Mr. and Mrs. Bates.

TERMITES?

Call Terminix!

\$5000 GUARANTEE

World's largest termite control organization

Against Future Termite Damage

For Free Inspection
Call GR 5-3391

Chelsea Lumber Co.

Terminix Authorized Representative

NOTICE OF PUBLIC HEARING

TO BE HELD

WEDNESDAY, APRIL 5, 1961

8:00 p.m.

at Lima Community Hall

The Lima Township Zoning Board has been petitioned by the Village of Chelsea for a conditional use permit for the purposes of a sanitary land fill on the property of Joseph and Esther Danahue and described as follows:

Southwest quarter of the Southwest quarter of Section Seventeen (17), Town Two (2) South, Range Four (4) East, Lima Township, Washtenaw County, Michigan.

Lima Township Zoning Board

H. CHARLES POWERS, Chairman

TAKE YOUR FAMILY TO

ANCHOR INN

FOR EASTER DINNER

Serving from 2 p.m. on

DANCING EVERY SATURDAY

ANCHOR INN

PORTAGE LAKE

Call HA 6-8183 for Banquets and Parties

(Political Advertisement)

ELECT

LIMA TOWNSHIP

REPUBLICAN PARTY

Monday, April 3, 1961

Supervisor
DAVID SOULE Clerk
HILDA PIERCE Treasurer
WALTER WOLFGANG, Trustee, 4 yrs.
JACK BRADBURY

..... Member, Board of Review
GEORGE DOE Justice of the Peace

Lima Township Republican Committee

BIENNIAL SPRING ELECTION

To the Qualified Electors:

NOTICE IS HEREBY GIVEN.

That a Biennial Spring Election will be held in the

TOWNSHIP OF LYNDON

(Precinct No. 1)
State of Michigan

AT

LYNDON TOWN HALL

Corner North Territorial Road and Old M-92
within said Township on

MONDAY, APRIL 3, 1961

For the Purpose of Electing the Following Officers, viz:

STATE OFFICERS

Two Regents of the University of Michigan; Superintendent of Public Instruction; Member of the State Board of Education; Two Trustees of Michigan State University of Agriculture and Applied Science; Two Members of the Board of Governors of Wayne State University; and State Highway Commissioner.

NON-PARTISAN OFFICERS

Two Justices of the Supreme Court.

TOWNSHIP OFFICERS

Supervisor, Township Clerk, Township Treasurer, Trustee, Justice of the Peace (Full Term), 2 Members of the Board of Review, Constables (Not to Exceed Four), Commissioner of Highways.

AND TO VOTE ON THE FOLLOWING CONSTITUTIONAL CONVENTION PROPOSAL:

"Shall a Convention be held to consider Revision or Amendment of the Michigan Constitution for subsequent submission to the Electors of this State for their Approval?"

Also Any Additional Amendments or Propositions That May Be Submitted

Notice relative to opening and closing of the polls

ELECTION LAW, ACT 116, P. A. 1954

SECTION 720. On the day of any election the polls shall be opened at 7 o'clock in the forenoon, and shall be continuously open until 8 o'clock in the afternoon and no longer. Every qualified elector present, and in line at the polls at the hour prescribed for the closing thereof shall be allowed to vote.

THE POLLS of said election will be open at 7 o'clock a.m. and will remain open until 8 o'clock p.m. of said day of election.

EMMA GOODWIN, Township Clerk

'Mrs. Ann Arbor Area' Contest Entries Must Be in by Apr. 3

Deadline date for entries in the "Mrs. Ann Arbor Area" contest sponsored by Michigan Consolidated Gas Co., has been extended from Mar. 31 to Apr. 3, it was announced yesterday.

Chelsea and Dexter area women who wish to enter the contest should make certain that their entry registration together with a full-length photo, is in the Ann Arbor office of Michigan Consolidated Gas Co. by Monday.

The contest date for Ann Arbor is Apr. 27. At that time contestants from Chelsea, Dexter, Saline, Ypsilanti, Milan and Ann Arbor will be judged and the winner selected.

Judges are Rosemary Phoenix, director of women's activities at an Ann Arbor radio station; Mrs. Alice Eppie, Home Economics Extension Agent, Washtenaw County Co-Operative Extension Service; and Bonnie Schulhardt, of the Ann Arbor News.

Winner of the Mrs. Ann Arbor Area title will be eligible for the

Mrs. Michigan finals at Detroit, May 24-25 and the winner of the state title will become eligible for national competition in the Mrs. America contest.

Prizes for the Mrs. Ann Arbor Area winner include a gas range and a two-day trip to Detroit with her husband.

The Mrs. Michigan title winner will receive numerous prizes, in addition to trips to Mackinac Island's Grand Hotel and to Florida with her husband, and the Mrs. America winner will win a two-week vacation in Florida for herself, her husband and family, a complete wardrobe and various valuable gifts for her home.

If the Mrs. Ann Arbor Area title winner on Apr. 27 is a representative of a club, her club will receive a prize of \$50 in addition to the gifts she, herself, receives.

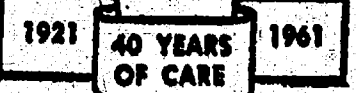
The only people who succumb to hard work are those who kill themselves dodging it.

(Political Advertisement)



No dollar you'll ever spend will buy more in care and hope... when you spend it to help crippled children mail a check today to

EASTER SEALS



What You Should Know About Civil Defense

Radiological Defense Vital

By Col. Gerald G. Miller
Washtenaw County Civil Defense Director

The ability of our civilian population to recover from a nuclear attack may be the decisive factor in ultimate victory or defeat for our country, and particularly for Washtenaw County, in case of general war.

In terms of national survival in a general war, the effectiveness of military forces has little meaning if our country cannot maintain an effective civil governmental structure following a nuclear attack. Civil Defense preparedness is in the mission of keeping the peace together they stand as a strong deterrent to war. Most Americans realize that radioactive fallout would be the greatest threat to all of us on the home-front if war should come.

For Civil Defense purposes the radiological hazard is of two kinds—that which comes directly from the weapon or device and that which is carried to earth on particles of matter thrown aloft by the explosion. The latter, fallout, is of greatest concern to Civil Defense. The amount of radioactivity from a nuclear detonation varies, depending on such factors as design and size of the weapon, and the environment in which it is detonated (i.e., kind of ground surface, height of burst, windspeed and direction, etc.). Direct radiation is usually confined to the area of blast, but fallout from a single weapon can occur over thousands of square miles. Radioactivity cannot be detected by the senses; however, instruments can detect and measure it.

The County Board of Supervisors has passed a resolution, stating that it will be the policy of county government to provide radiological defense information to the communities and residents of Washtenaw County; to develop a radiological defense capability with personnel so trained and equipped as to monitor, survey, analyze and disseminate radiological defense information throughout Washtenaw County.

Protective measures against fallout radiation involve two courses of action—shelter and evacuation. So states the National Plan for Civil Defense. There is no immunity that will permit exposure to high levels of radiation other than shelter, and still survive. Neither is there a pill or drug presently known that will provide protection of immunity.

Radiation shelter is anything that

radiation reaching the persons or objects involved. While specially constructed shelters are best, any shielding material affords some degree of protection, increasing with its thickness. Denser materials absorb more radiation and therefore provide more protection. Programs to provide improvised shelters in private homes and public buildings are strongly encouraged. When attack is imminent everyone must seek and remain in a place providing the best protection available. Hours may elapse before the arrival of fallout from a detonation many miles away.

Evacuation from shelter in a highly contaminated area may be necessary, however, this will not occur and government will not instruct the population, until it is certain that the exposure during evacuation is not more dangerous than the consequences of remaining sheltered.

Many, many citizens have come to the county Civil Defense office for information under the false concept that an all-out nuclear attack on the United States would blanket the entire continent for years, thus making survival impossible. On the other hand, many citizens have expressed the opinion that, should a hydrogen bomb be detonated, all life for many, many miles around, would cease to exist. Also, many citizens have expressed the opinion that, even though they were protected by a fallout shelter, upon emerging therefrom, they would find nothing.

In general, these concepts are false. Granted, unprotected exposure to radiation of high degree will be fatal... granted, for those whom circumstances placed at Ground Zero or within 8-5 miles of Ground Zero, at the time of an explosion, will not survive. Let us discuss these false concepts in order. First, radiation does not remain in existence to a harmful degree for any great length of time. In regard to radiation release upon the country-side in the form of fallout, we apply what is commonly known as the 10-7 rule of thumb, which is explained as follows:

Following the bomb burst, radiation intensities fall off (or decay) very rapidly. Decay is expressed in terms of half-life, the time required for the radioisotope to decrease of decay to half its value. A close approximation of the decay principle can be obtained by assuming that the dose rate will decrease by a factor of 10 for every (7) sevenfold increase of time. Using this assumption, a dose rate of 1,000 roentgens per hour at 1 hour will decay to 100 r/hr at 7 hours, to 10 r/hr at 49 hours, and to 1 r/hr at 343 hours (approximately 2 weeks). This assumption is satisfactory for planning purposes for the first month or two postattack but should be used with extreme caution for operation purposes.

Washtenaw County Civil Defense forces, in following out the policy as stated by the Board of Supervisors, will monitor with the proper instruments, the radiation levels, and through radio will keep the citizens informed as to the fallout conditions, radiation levels, and when it will be reasonably safe to emerge from shelters. As we see from the above formula, radiation decays at a reasonably fast rate. It can be said, without too much argument, that radiation decays in effectiveness at about the same rate that snow and ice melt. Thus it can be safely assumed that although Civil Defense personnel recommend equipping and provisioning shelters for a two-week stay, it is entirely within the realm of probability that residents may leave their shelters for short periods of time in 3, 5 or 6 days. However, it must be emphasized that we need the shelter to go back into. Continued exposure over long periods of time, such as two or three days to low rates of radiation, will be harmful.

Now to the second false concept—that all may die with the detonation of a hydrogen bomb. Let us discuss this, using the state of Michigan as our background. The United States Air Force installations in Michigan total four (4): Selfridge Field, Oscoda, and two in the upper peninsula. These are considered primary targets. Secondary targets in the state consist of centers of population and industry and are identified as the Detroit Target Area, Grand Rapids and Flint. Lansing has been removed by the

(Political Advertisement)

WE SAY NO TO CON-CON

VOTE NO on PROPOSAL no. 1

VOTE APRIL 3

Committee to Preserve Michigan's Constitution

State Police Issue Alert for Child Molestation Cases

Because warmer weather always brings an increase in child molestation cases, Sgt. Raymond McConnell, of the Jackson State Police Post, has issued a timely reminder to parents to warn their children now against talking, walking, or going anywhere with strangers.

"The best rule for children is to avoid strangers completely," Sergeant McConnell emphasized. "Caution them often to beware of strangers while outdoors at play, or on the way to or from school. Tell them to report any strangers who make offers or promises of candy or gifts for going for a walk or a ride with them."

Child molestation cases investigated by the State Police last year totaled 581, an increase of 15, or 2.6 per cent, compared to 1959. The offenses reach a peak in the summer. The high month for 1960 was August with 84, while July was second with 80, and June third with 67. The peak month in 1959 also was August with 76, June was next with 73 and July third with 61.

The cases usually increase beginning in April and taper off in September and October. Of last year's 581 cases, 431 occurred in the April-October period. The danger is prevalent to some degree the year around and in 1960 no month had less than 23 cases.

To help eradicate the menace, parents should notify police immediately of all incidents, no matter how minor they may seem, reported by their children. The failure or reluctance of parents to do so makes it difficult for police to cope with the problem and gives the child molester the chance to strike again. No publicity is given to the names of the children or the parents except in the case of murder.

Parents should impress upon children that policemen are their friends who want to help and protect them. Youngsters must be encouraged to report to police or their parents any strangers seen loitering suspiciously around playgrounds, neighborhoods, schools, or at public rest rooms.

These are important rules suggested for children to follow:

1. Don't stop to talk, or go for a walk or a ride with any stranger.
2. If he offers you money, gifts or candy, don't accept them. If he offers you a job to earn money, tell your parents first so they can investigate.
3. Always try to be with one or more playmates during play hours.

at school or near home or on tention. Don't play or walk alone alleys, deserted buildings, or secluded places.

3. Know the persons you are Don't let strangers try to join during play hours and report suspicious persons to your ents, teachers or police.

4. Don't loiter in public rooms. These are danger

5. Never go alone to the Go with a pal or a friend, stranger bothers you there, t this at once to the theater man

6. Do not play or walk too away so that strangers in p cars cannot easily reach out

7. These rules are for your tention so always obey them. let your friends or any str get you to disobey them. If have any question or problem them, tell your parents.

Here are ways children can in attempts or cases, of child lestation:

1. Write down or memorize stranger's description, his approximate height, weight, age, color, skin, eyes and hair.

Remember things like a must, eyeglasses, kind of clothes, jewelry, physical defects or thing else unusual.

2. If the stranger has a way to get the license numbers and ters, coloring, year and state it down on paper or use a stone or a stick to mark it sidewalk, a wall or in sand or

3. Remember your suspicion help protect you and your from harm. Any stranger rep by you and investigated by police will not be offended has a legitimate reason for activity.

JFK ASKS LATIN AID

President Kennedy has a Congress to provide \$600,000 the first step in aid to Latin America. He said there is "grave imminent danger that despotic peoples will turn to communistic forms of tyranny" if not forthcoming.

He wants the Latin American countries to join with the U. a massive drive to improve conditions and thereby help "tyranny" from a hemisphere which it has no rightful job.

You can always recognize a man in a big office by the manner in which he holds out his job.

PUSH DOWN THE SEPARATE LEVERS or your Supreme Court vote WON'T count

VOTE APRIL 3

TO KEEP

JUSTICE

HARRY F.

KELLY

ON THE MICHIGAN SUPREME COURT

EXPERIENCE COUNTS:

- Justice of Supreme Court for more than 7 years.
- Governor of Michigan two terms.
- Secretary of State two terms.
- More than 30 years' practice in all branches of law.

VOTE APRIL 3 ON THE NON-PARTISAN BALLOT

KEEP THE LAW ABOVE POLITICS!

VOTE APRIL 3

TO KEEP

CHIEF JUSTICE

JOHN R.

DETHMERS

ON THE MICHIGAN SUPREME COURT

EXPERIENCE COUNTS:

- Supreme Court Justice 15 Years.
- Chief Justice of Supreme Court 10 Years.
- Chairman of National Conference of Chief Justices.
- Former Attorney General of Michigan.

These Are Your DEXTER TOWNSHIP REPUBLICAN CANDIDATES

SUPERVISOR

EARL DOLETZKY

CLERK

DONALD RUHLIG

Resident of Dexter Township 35 years. Active in Faith Lutheran Church, Farm Bureau and Agricultural Stabilization Committee. Member Dexter School Board 11 years. President of Board 6 years.

Resident of Dexter Township 40 years. Active in 4-H, Farm Council, Farm Bureau, Republican Affairs. Member St. Paul's Lutheran Church, serving on Church Council since 1935.

TREASURER

ELIZABETH (Betty) LESSER

TRUSTEE

HARRY SUTHERLAND

Active St. Andrew's Church Choir and Women's Guild. Washtenaw County Home Economics Extension Council, Farm Bureau, and North Lake Extension Club.

Resident Portage Lake area many years. Active in St. James Episcopal Church and Dexter Community Chest affairs. Formerly employed by Ford Motor Co. as accountant.

HIGHWAY COMMISSIONER
ELGIN S. (Bud) WILSON

Resident of North Lake area 15 years. Active in Boy Scout affairs. Has 3 sons, 1 attending Eastern Michigan University. Employed by City of Ann Arbor Public Works Department. Experienced in construction work.

JUSTICE OF THE PEACE
NORMAN O. KLAWE

Resident of Dexter Township 22 years. Served Dexter Community School system 12 years, currently Bus Supervisor. Member Gallean Baptist Church.



BOARD OF REVIEW
HARVEY HOWARD

World War 2 Veteran and member of American Legion. Active in Boy Scout work. Born and raised in Dexter Township. Member of St. Joseph's Church. Experienced in carpentry and construction work.

Resident of Dexter Township 35 years. Member Faith Lutheran Church. President of Washtenaw County Livestock Producers Assn. and for many years engaged in farm equipment sales work.



CONSTABLE
ART DOLETZKY

PULL THE NON-PARTISAN LEVERS FOR SUPREME COURT JUSTICES KELLY AND DETHMERS
PULL THE REPUBLICAN HANDLE to the RIGHT and make sure LEVERS ARE DOWN
YOUR TOWNSHIP CANDIDATES LEVERS ARE LOWER RIGHT

FARMER GRANT GREENHOUSE



Beautiful
EASTER LILIES
\$3.00
Many Other Easter Plants

Jackson Rd. Service Loc
Phone NOrmandy 8-9000



Unequaled success in bargaining, modern marketing techniques, and outstanding membership support have won Michigan Milk Producers Association a nation wide reputation as a co-operative that gets results. Solid, economic results that dairy farmers see every month in their milk checks.

Combining the strength and resources of more than 18,000 dairy farmers into one strong, united organization, MMPA gives its members an effective voice in the marketing of their product. It is, in fact, as valuable to members in the marketing of milk as a herd of good cows is in producing milk.

Measured in terms of services, guarantees, stable market or negotiated premiums, dairy farmers have learned that it doesn't cost to belong to MMPA—it pays.

No organization, however, can rest on its reputation or its past record. It must plan beyond the needs of today... strive to grow and improve its services... maintain its leadership.

Continuously, boldly, MMPA searches for new and better ways to market milk... to stay a step ahead of tomorrow.

MICHIGAN MILK PRODUCERS ASSOCIATION
OWNED AND OPERATED BY 18,000 MICHIGAN DAIRY FARMERS

Impola-Elkins, Gage-Harris Vows Repeated Saturday at Double Wedding

ganza print in shades of blue, had a corsage of white carnations.

Following the two ceremonies a reception was held at the Howes home.

Mr. and Mrs. Harris are now at home at 2494 North Lima Center Rd. after a week-end wedding trip.

Mr. and Mrs. Elkins are spending three weeks on a trip to the west coast and Hawaii traveling by airplane. Upon their return they will make their home at 519 Howard Rd.

JERUSALEM HOME EXTENSION

Jerusalem Home Extension club, with Mrs. William Van Riper and Mrs. Charles Curtis as co-hostesses, held the March meeting Thursday evening at the home of Mrs. Van Riper. There were 18 members and three guests present.

The lesson "Calorie Counting" was presented by Mrs. Erwin Haist and Joyce Eiseaman.

Plans were discussed for the spring district meeting Thursday, Apr. 20, at St. Andrew's church in Dexter.

It was voted that the club would hold no regular meeting in April.

The University of Michigan in 1898 had branches in Pontiac, Monroe, Kalamazoo, Niles, and Detroit.

This would be a better world if we had more wild life in our forests and less in the big cities.

All the rugs are machine washable with non-skid latex-backings. They come in many sizes and colors. Budget prices from \$6.95 to \$59.95. All are at



Spring is here
new things in

cessories.
Come in an

to perk up
after winter.

BEAUTIFUL H

Come in and see our new arrivals, let us help you plan for your home, whether it be a whole roomful or that "just something" to perk up rooms tired-looking after winter.

MERKEL BROTHERS

BEAUTIFUL HOME FURNISHINGS

BEAUTIFUL HOME FURNISHINGS

Store Hours: 9:30 to 5:30 Phone NOrmandy 3-4177

Chelsea Greenhouse

6071 Lingans Rd. Phone GR 9-6071

6071 Lingane Rd. Phone GR 9-6071

Bulletin Available on Ag Secretaries' Talks At Farmers' Week

A brochure of the talks given recently by the five former secretaries of agriculture at the forum, "Agriculture in an Uneasy World," at Michigan State University is now available. The publication also includes questions asked by the panel and the answers given by the secretaries and, in addition, the introductions by John A. Hannah, president of MSU.

Copies may be obtained by requesting the "secretaries' talks" on a postcard to: The Bulletin Office, Box 231, Michigan State University, East Lansing.

It is up to the fault-finder to propose a remedy for the ills he discovers.

Story of Social Security Told In Radio Series

How does social security affect our lives? All of us go day in and day out living a vast number of experiences—some happy—others sad. Each has a story of his own. There are 15 million stories wrapped up in the envelopes that carry checks each month to 15 million beneficiaries of the old-age, survivors, and disability insurance program.

The Social Security Administration has developed a program of 13 high-impact interviews that unfold the dramatic role social security benefits play in our lives. This program is called the "Social Security Book," and is conducted by the radio and television announcer, Hugh Downs. The program is being presented as a public service by radio station WOL.

The Social Security Case Book reveals 13 unforgettable stories from the confidential files of the Social Security Administration—reveals them with the help of the people who actually lived these stories. There is the story of Carla who was born in Italy and came to this country as a young woman. What were the events in her life that lead her to say: "When I see that check come in, I say I never see a check like that in my life." Then there is the story of Howard, retired minister, who can face the future with confidence.

The social Security Case Book is presented to point up facts about social security you should know. The program is now being presented over radio station WOL at 10:30 a.m. each Tuesday and Thursday.

We make warm friends with clean, pure, low cost.

GULF GULFTANE HOME LP-GAS FUEL USES

Prompt, regular courteous service from

GALLUP-SILKWOORTH CO., INC.
Phone NO. 5-6161
2141 So. State Street Ann Arbor

\$850 Million Road Building Program Announced



JOHN C. MACKIE, State Highway Commissioner, has announced details of Michigan's second five-year road building program during which nearly \$850 million worth of highway improvements will be made throughout the state. Mackie said the second five-year program, which extends from July 1, 1962, to June 30, 1967, calls for construction of 175 miles of freeway and modernization of 1,400 miles of other highways in every section of Michigan.

The first five-year program—1957 to 1962—called for expenditures totaling \$1.25 billion. "The total highway investment in Michigan during the 10-year period from 1957 to 1967 will be nearly \$2 billion," Mackie said. "This huge investment means more jobs for Michigan workers, more income for farmers, better opportunities for business and lives saved for the motorist."

Continued Economic Growth Seen As Result of State Highway Program

Lansing—Michigan's first and second five-year highway construction programs will have a "profound impact" on Michigan's economic growth for the next 25 years, State Highway Commissioner John C. Mackie said today.

"Michigan is on the horizon of the greatest industrial and economic expansion in its history and the highway improvements we are now making will play a key role to open vast new economic and social frontiers," Mackie said.

Nearly 80 per cent of Michigan's first five-year road building program, which totaled \$1.25 billion, is either completed or under contract, Mackie said. The first five-year program started in 1957 and ends next year.

Mackie said the Highway Department will make \$850 million worth of highway improvements throughout Michigan during the second five-year program which extends from July 1, 1962 to June 30, 1967.

The 1957-62 program included construction of 900 miles of freeway and modernization of more than 3,000 miles of other highways. The second five-year program calls for construction of 175 miles of freeway, mostly in urban areas, and modernization of 1,400 miles of other highways.

"The total highway investment in Michigan during the 10-year period

from 1957 to 1967 will be \$2 billion," Mackie said.

"Jobs and business growth are the most challenging needs of Michigan today. This massive highway building program will have a profound impact on the creation of more jobs and more business opportunities in Michigan for the next 25 years."

Mackie said about half of the \$850 million to be spent during the 1962-1967 program will be in and around Michigan's large cities, where the per mile cost of construction is considerably higher than in rural areas.

The Highway Commissioner said he announced details of the second five-year program "as soon as they were firm" to allow local governmental bodies to make their plans for the future.

"By announcing our plans now, these communities will be able to start budgeting for their share of the cost of these improvements, as well as for other improvements they will want to make in conjunction with our road building program," Mackie said.

"At the same time, announcement of the second five-year program now will give persons who own property along the new routes as well as business and industry an opportunity to make their plans, too," Mackie said. 32 cities will contribute an estimated \$16.3 mil-

lion toward the cost of highway projects to be built in cities during the 1962-67 program.

Michigan was the first state in the nation to publish details of its road building program five years in advance. A number of other

states have followed Michigan's lead and are announcing advance planning programs but Michigan is still the only state that lists dates each project will be placed under contract five years in advance.

April will be on the question of calling a convention to revise the state constitution, Mrs. Franklin Moore, LWV president, explained that this was one of several elections which must be held in order to get an up-to-date constitution for Michigan.

Besides the factual material concerning the current proposal, citizens may be interested in looking at the proceedings of the 1908 convention which wrote the constitution under which the state presently operates.

All residents of the county are welcome to consult the pamphlets in the Ann Arbor library, which is open daily except Sundays.

There is little use to try to conceal your age. Your old friends know it and your new ones don't. Pointing out that the vote in

states have followed Michigan's lead and are announcing advance planning programs but Michigan is still the only state that lists dates each project will be placed under contract five years in advance.

Michigan was the first state in the nation to publish details of its road building program five years in advance. A number of other

states have followed Michigan's lead and are announcing advance planning programs but Michigan is still the only state that lists dates each project will be placed under contract five years in advance.

April will be on the question of calling a convention to revise the state constitution, Mrs. Franklin Moore, LWV president, explained that this was one of several elections which must be held in order to get an up-to-date constitution for Michigan.

Besides the factual material concerning the current proposal, citizens may be interested in looking at the proceedings of the 1908 convention which wrote the constitution under which the state presently operates.

All residents of the county are welcome to consult the pamphlets in the Ann Arbor library, which is open daily except Sundays.

There is little use to try to conceal your age. Your old friends know it and your new ones don't. Pointing out that the vote in

Notice of Re-Zoning Hearing

Notice is hereby given that the Village Council will conduct a public hearing on the petition of Paul Pierce for the rezoning of the premises hereinafter described, from "Neighborhood Business" to "General Business," at the Council Room in the Chelsea Municipal Building on Tuesday, April 4, 1961, at 8:00 o'clock P.M.; said premises being located in the northeast corner of the intersection of Highway M-92 and Old U.S. Highway 12, and described as follows:

Commencing at the north quarter post of Section Thirteen (13); thence south 88° 05' east 851.40 feet in the north line of Section; thence south 00° 30' east 890.99 feet along the center of M-92; thence south 74° 30' east 34.33 feet to the intersection of the north line of Territorial Road and the east line of M-92 FOR A PLACE OF BEGINNING; thence south 74° 30' east 19 rods; thence north 08° 30' west 19 rods; thence north 74° 30' west 19 rods; thence south 00° 30' east 19 rods to the place of beginning, being a part of the west half of the northeast quarter of Section Thirteen (13), Town Two (2) South, Range Three (3) East, Village of Chelsea, Washtenaw County, Michigan.

Standard Ads Are a Good Shopping Guide

Lyndon Township Voters - ELECT -

GERALD D. GROHNERT

Democratic Candidate for Supervisor at the April 3rd, 1961 Election

Member Michigan State Bar, Dexter Post 557 American Legion, Michigan Association of Professions, along with other affiliations. Capable and progressive.

VOTE STRAIGHT DEMOCRATIC

Genevieve DeSmith Clerk
Catherine Mester Treasurer
Scott Freeman Trustee
Lyndon Noah Justice of the Peace
Orson Beeman Board of Review, full term
Leslie Eisenbeiser Board of Review, to fill vacancy
Thomas Kramer Constable
Norman Bott Constable
Rubin Edick Constable
Richard Menge Constable

Above All - - - Get Out and Vote

SCIO DRIVE-IN THEATRE

6588 Jackson Road, Ann Arbor—Phone NOrmandy 8-7082

THURS.-FRI.-SAT. MARCH 30-31, APRIL 1

"FOR THE LOVE OF MIKE"

In Cinemascope and Color.
With Rex Allen
and Richard Basehart.

"THE WIZARD OF BAGHDAD"

In Cinemascope and Color.
With Dick Shawn
and Diane Baker.

ALSO: CARTOON

SUN.-MON.-TUES.-WED. APRIL 2-3-4-5

"NORTH TO ALASKA"

In Cinemascope and Color.
With John Wayne and Fabian.

"WHEN COMEDY WAS KING"

With Charlie Chaplin
and Buster Keaton.

ALSO: CARTOON

Bring your power mower to us for SERVICE!

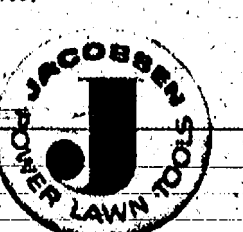


Now is the time to bring in your Jacobsen power mower for its annual tune-up and inspection.

Our qualified service department, working only with genuine factory replacement parts, will restore your Jacobsen to top operating efficiency.

Come in now! Take advantage of our special winter rates. Save now and guarantee delivery before the mowing season begins.

See us for the newest in Jacobsen power lawn equipment.



Chelsea Hardware

110 South Main St.

Phone GR 9-6311

MILK

Milk's the favorite of the teen set everywhere

Teenagers really go for milk in a big way. They know all about its body-building properties, and they're just wild about its cool taste.

It's the perfect between-meals refreshment!

WEINBERG DAIRY

QUALITY PASTEURIZED DAIRY PRODUCTS
Old US-12 Phone GR 5-5771



Customer Satisfaction Guaranteed

Parker's Chelsea Cleaners

113 PARK ST.

Phone GR 9-6701

Quick, Dependable Service

ADD AN EXTRA ROOM

Let us show you how easy it is to turn that idle space in your attic (or basement) into an extra room for added comfort and for your guests to enjoy.

We have a service that will enable you to improve your home by completing your remodeling job now and financing it on a monthly payment plan.

We Can Supply You With QUALITY BUILDING MATERIALS and will be glad to furnish you an estimate of materials and cost needed to do the job.

Finkbeiner Lumber Co.

Phone GR 9-3881



On Old US-12 Just off S. Main St.

MARTIN STEINBACH, OWNER

Come to Church on EASTER Sunday



HOLY WEEK SERVICES

Triumphant, joyous and deeply inspiring is the promise of spiritual rebirth, so beautifully reaffirmed at Easter.

ST. PAUL'S EVANGELICAL AND REFORMED CHURCH
(United Church of Christ)
The Rev. Paul M. Schnake, Pastor.
Thursday, Mar. 30—
7:00 p.m.—Maundy Thursday Communion service.
8:30 p.m.—Second Communion service.
Friday, Mar. 31—
1:30 p.m.—United Good Friday service at the Methodist church.
Sunday April 2—
8:15 a.m.—Early Easter service.
9:30 a.m.—Sunday school.
10:45 a.m.—Regular Easter service and Holy Communion.
Wednesday April 5—
8:00 p.m.—Women's Guild invited to meeting at Congregational church.
Thursday Apr. 6—
7:45 p.m.—First of three open forum meetings.

FIRST METHODIST CHURCH
The Rev. S. D. Kinde, Pastor.
Thursday, Mar. 30—
7:30 p.m.—Maundy Thursday Communion service.
Friday, Mar. 31—
1:30 p.m.—United Good Friday service at this church. Anthems by the Community choir.
Sunday April 2—
7:00 a.m.—Sunrise Easter service. Program in charge of MYF.
7:30 a.m.—Easter breakfast served by Methodist Men.
10:00 a.m.—Easter Day worship service.
10:00 a.m.—Nursery, kindergarten, primary and Junior department Sunday school classes.
Coffee hour, youth and adult Sunday school department classes and Junior High and Senior High MYF canceled.
Monday, Apr. 3—
8:00 p.m.—Commission on Membership and Evangelism meeting postponed.
Thursday April 6—
6:30-8:00 p.m.—All-church family night pot-luck supper. Mrs. Ben Donaldson will review the book "The Stumbling Block" dealing with the greatest social problem.

CHELSEA BAPTIST CHURCH
The Rev. David A. Wood, Pastor.
Friday, Mar. 31—
1:00 p.m.—United Good Friday service with North Sharon Bible church at this church.
Sunday, Apr. 2—
7:00 a.m.—Sunrise service.
10:00 a.m.—Sunday school.
11:00 a.m.—Worship service.
6:15 p.m.—Young people's service.
7:00 p.m.—Evening service.
Prayer meeting each Wednesday at 7:30 p.m.

METHODIST HOME CHAPEL
The Rev. E. J. Weiss, Pastor.
The Rev. G. P. Stanford, Chaplain.
Sunday, Apr. 2—
8:00 a.m.—Worship service.

ZION LUTHERAN CHURCH
(Rogers Corners)
The Rev. C. J. Renner, Pastor.
Friday, Mar. 31—
2:00 p.m.—Good Friday service and Holy Communion. Sermon topic: "Passion Places—The Upper Room."
Saturday April 1—
9:30 a.m.—Junior catechism class.
Sunday April 2—
9:15 a.m.—Sunday school.
10:30 a.m.—Easter service and Holy Communion. Sermon topic: "The Resurrection of Jesus."
7:00 p.m.—Adult instruction class.
Monday April 3—
7:00 p.m.—Junior choir rehearsal.
8:00 p.m.—Senior choir rehearsal.
Tuesday April 4—
7:45 p.m.—Evening Circle of Women of Zion.
Wednesday April 5—
2:00 p.m.—Afternoon Circle of Women of Zion.
Thursday April 6—
8:00 p.m.—Men's Brotherhood.

SALEM GROVE METHODIST CHURCH
The Rev. Harry Pyscher, Pastor.
Friday, Mar. 31—
8:00 p.m.—Good Friday Holy Communion service.
Sunday April 2—
10:00 a.m.—Sunday school.
11:15 a.m.—Easter worship service.
Wednesday April 5—
8:30 a.m.—WGS at the home of Mrs. Austin Arts.

ST. JOHN'S EVANGELICAL AND REFORMED CHURCH
(United Church of Christ)
(Rogers Corners)
The Rev. J. Tracy Luke, Pastor.
Friday, Mar. 31—
8:00 p.m.—Good Friday Communion service.
Easter Sunday April 2—
9:30 a.m.—Worship service.
10:30 a.m.—Sunday school.

GREGORY BAPTIST CHURCH
The Rev. W. T. Cochran, Pastor.
Sunday, Apr. 2—
10:00 a.m.—Morning worship.
11:15 a.m.—Sunday school.
6:45 p.m.—Training Union.
8:00 p.m.—Evening worship.

NORTH LAKE METHODIST CHURCH
The Rev. Harry Pyscher, Pastor.
Sunday, Apr. 2—
9:30 a.m.—Worship service.
10:30 a.m.—Sunday school.

UNADILLA PRESBYTERIAN CHURCH
The Rev. William Yauch, Pastor.
Sunday, Apr. 2—
10:30 a.m.—Worship service.
11:30 a.m.—Sunday school.

CHURCH OF CHRIST
M-92, 1/4 Mile South of Old US-12
Stanley Hudkins, Minister.
Sunday, Apr. 2—
10:00 a.m.—Sunday school and Bible study.
11:00 a.m.—Morning worship.
6:00 p.m.—Evening worship service.

FIRST CHURCH OF CHRIST SCIENTIST
1888 Washtenaw Ave., Ann Arbor
Sunday April 2—
9:30 a.m.—Sunday school.
11:00 a.m.—Morning service. The vital importance for all mankind of the resurrection of Christ Jesus will be stressed Sunday at Christian Science services. Scriptural selections will include accounts from Matthew, Mark, Luke, and John of incidents in the life of Jesus including the betrayal in Gethsemane, the crucifixion, and his resurrection.

ST. THOMAS EVANGELICAL LUTHERAN
Freedom Township
Ellsworth and Haab Road
The Rev. Richard W. Bierlein
Friday, Mar. 31—
1:00 p.m.—English Good Friday service.
Sunday April 2—
10:00 a.m.—Easter service and Holy Communion.
11:00 a.m.—Sunday school.

BETHEL EVANGELICAL AND REFORMED CHURCH
(United Church of Christ)
Freedom Township
The Rev. T. W. Menzel, Pastor.
Friday, Mar. 31—
10:00 a.m.—Good Friday German Communion service.
1:30 p.m.—United Good Friday service at the Manchester Methodist church.
Sunday April 2—
10:00 a.m.—Easter Festival service with all choirs participating. Holy Communion.
No Sunday school.
Wednesday April 5—
1:30 p.m.—Women's Guild meeting. Miss Esther Landwehr of Saline to show her pictures of Russia.

CONGREGATIONAL CHURCH
(United Church of Christ)
The Rev. Philip Rusten, Pastor.
Thursday, Mar. 30—
8:00 p.m.—Maundy Thursday Candlelight Communion service. Self-denial coin folders may be returned at this service.
Friday, Mar. 31—
1:30 p.m.—United Good Friday service at the Methodist church. Sermon topic: "Personality without Deception."
Sunday April 2—
9:30 a.m.—Easter service. Nursery only during this service.
11:00 a.m.—Easter service and church school for all classes.
Monday, April 3—
8:00 p.m.—Trustee meeting.

ST. MARY'S CATHOLIC CHURCH
The Rev. Fr. Leo J. Smith, Pastor.
Thursday, Mar. 30—
8:00 p.m.—Holy Thursday Mass, followed by Altar Society Holy Hour.
10:00 p.m.—Holy Hour for members of Holy Name Society and all men of the parish.
Friday, Mar. 31—
1:30 p.m.—Stations of the Cross, followed by Mass of the Presanctified and Veneration of the Cross.
Easter Sunday April 2—
Masses at 7 a.m., 9 a.m. and 11 a.m.

ST. BARNABAS' EPISCOPAL CHURCH
20500 Old US-12
The Rev. Allan W. Reed, Vicar.
Thursday, Mar. 30—
6:30 p.m.—Maundy Thursday Communion service and supper at the church.
Friday, Mar. 31—
12 noon-2 p.m.—The liturgical services of the Book of Common Prayer and three sermons by the vicar.
Sunday April 2—
8:00 a.m.—Holy Communion and early Easter service.
10:00 a.m.—Holy Communion and regular Easter service.
Wednesday April 5—
8:00 p.m.—Bishop's Committee meeting.

FIRST ASSEMBLY OF GOD CHURCH
14900 Old US-12
The Rev. James O. Sutton, Sr., Pastor.
Thursday, Mar. 30—
10:30 a.m.—Workers' training meeting. Topic: "Ways of Understanding God's Word."
Friday, Mar. 31—
9:00 a.m.—Sunday school visitation.
Sunday, Apr. 2—
9:45 a.m.—Sunday school.
11:00 a.m.—Morning worship.
7:30 p.m.—Evangelistic meeting.
Wednesday Apr. 5—
7:00 p.m.—CA group visits shut-ins.
Thursday, Apr. 6—
10:30 a.m.—Bible study. Workers' training meeting.

NORTH SHARON COMMUNITY BIBLE CHURCH
Sylvan and Washburn Roads
The Rev. Carmen Carpenter, Pastor.
Friday, Mar. 31—
1:00 p.m.—Good Friday service at the Chelsea Baptist church.
Sunday April 2—
10:00 a.m.—Sunday school.
11:00 a.m.—Worship service.
7:00 p.m.—Young people's meeting.
7:30 p.m.—Evening worship.
Prayer meeting Thursdays at 7:45 p.m.

ST. JOHN'S EVANGELICAL AND REFORMED CHURCH
(United Church of Christ)
(Francisco)
The Rev. J. Tracy Luke, Pastor.
Sunday April 2—
9:45 a.m.—Sunday school.
11:00 a.m.—Easter service and Holy Communion.

WATERLOO VILLAGE CHURCH
(Evangelical United Brethren)
The Rev. Wilbur Silvernail, Pastor.
Thursday, Mar. 30—
8:00 p.m.—Maundy Thursday Communion service.
Sunday, Apr. 2—
10:00 a.m.—Sunday school.
11:00 a.m.—Easter service.
7:00 p.m.—Youth Fellowship.

Cub Scout Awards Made Thursday

The March Cub Scout Pack meeting held Thursday evening at the Junior High school was opened with the flag ceremony by Mrs. Russell Gardner's Den III and Mrs. Benjamin Bower's Den II.

The song leader was Don Wilson of Boy Scout Troop-25.

A special feature was the song "Michigan" led by den mothers of Den VI, Mrs. Curtis Farley and Mrs. Vernon Parks and Cub Scouts John Hepburn, Barry Novess, Lee Diekelman, David Conklin, Arthur Farley and Bruce Parks.

The program included a film on railroading shown by George Prinzing and John Potts and the song "The Passenger Train" led by Don Wilson and the Rev. Paul Schnake. The program was in keeping with the Cub Scout theme for the month "Railroading."

Exhibits were displayed by Webelos and by Dens 2, 3, 4, 5, 6, 8, 9 and 10 of which the following are den mothers—Mrs. Paul Morley, Mrs. B. Bower, Mrs. R. Gardner, Mrs. May Tirb, Mrs. Richard Hoeftzer, Mrs. V. Parks, Mrs. Robert Olberg, Mrs. R. Smith and Mrs. G. Marshall.

Awards presented at the meeting are listed as follows:

Den I—David Orlovski, Paul Prinzing, one-year pins; Tom Harmon, wolf patch; Tim Oubring, denner bar; Donald Hafner, assistant denner bar.

Den II—Ben Bower, gold arrow; Fred Worden, wolf patch and gold arrow; Craig McLarty, wolf patch.

Den III—Ted Ewald, 2 silver arrows; Carson Soule, lion patch; Thomas Gardner, bear patch; Ralph Frisch, silver arrow.

Den IV—Robert Hess, Rod Powers, wolf patch; Tom Tirb, gold arrow.

Den VI—Barry Novess, Bruce Parks, John Hepburn, David Conklin, Arthur Farley, Lee Diekelman, silver arrows.

Den VII—Larry Blackwell, two silver arrows.

Den VIII—Robert Olberg, bear patch, one gold arrow; Stephen Eresten, one-year pin, bear patch; one gold arrow, nine silver arrows; Tom Taylor, Joe Edwards, Michael Roark, Jeff Reynolds, bear patch.

Den IX—Charles Patrick, bear patch; William Boyle, Ryan Smith, two-year pins.

Den X—Richard Marshall, bear patch, one gold arrow, one-year pin; Daniel Maurer, two-year pin; Keith Kusterer, bear patch; Michael Lehmann, bear patch, two-year pin, two silver arrows.

Den XI—Robert Peterson, Richard Olberg and Tony Burnett, wolf patch and one gold arrow each.

Red Cross First Aid Course Will Start Apr. 10

A standard Red Cross first aid course is scheduled to be given in Chelsea, beginning Monday, Apr. 10, and everyone interested should register as soon as possible. Registrations may be made and additional information obtained by calling the Red Cross office at Ann Arbor.

Instructor for the course will be Robert F. Fisher of Ann Arbor. The 10-hour course is divided into five two-hour sessions, held at 7 o'clock Monday evenings in the Home Ec. room at Chelsea Junior High school.

It's the rich man who doesn't hesitate to ask the store clerk to show him something cheaper.

GEORGE W. DOE

I am a Republican Candidate for the office of Justice of the Peace in the Lima Township Election April 3.

I feel that my years of police experience qualifies me for the office.

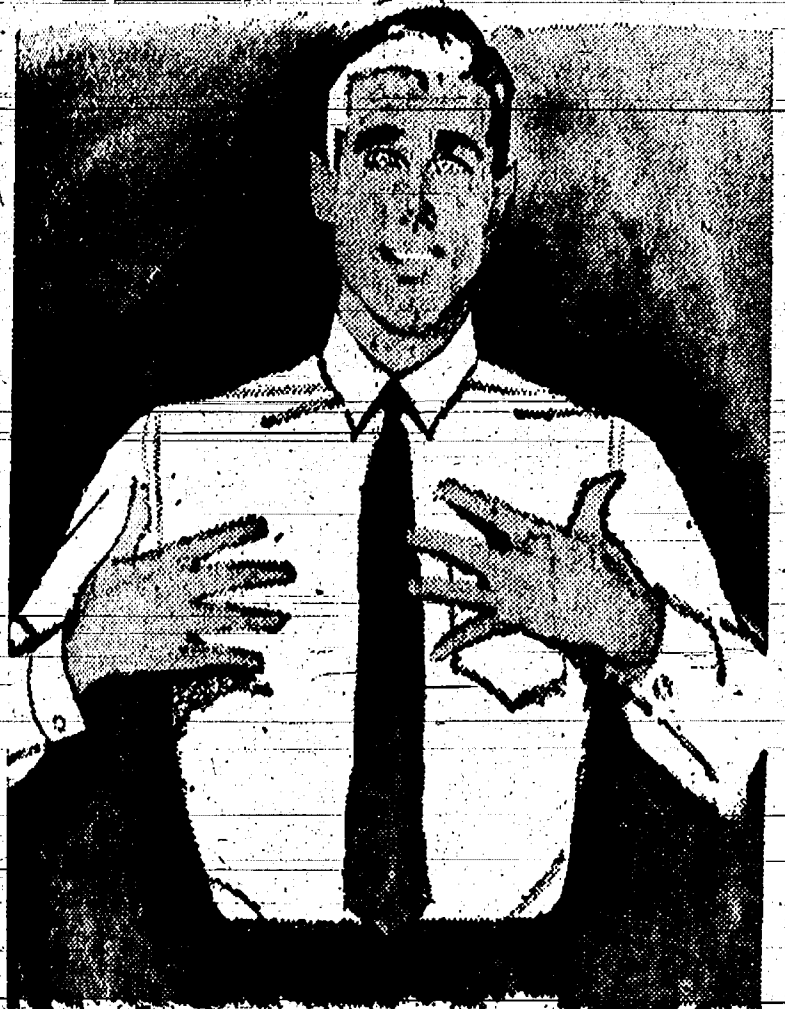
For transportation to the polls call GR 5-4191

YOUR VOTE WILL BE APPRECIATED



Join the Easter Parade

with a shirt that won't wrinkle—ever!



Thermo-bathed®
VAN HEUSEN®
Century Vantage.

This shirt has everything! The soft Century collar with its patented, one-piece construction won't curl or wrinkle... ever! Vantage fabric is perfected wash-and-wear and also thermo-bathed to keep its fresh pressed look all day.

Wrinkles just keep vanishing. Easy care... fine tailoring...yet it costs only

\$4.50 and \$5.00

P.S.—The new short sleeved Air-Weave White Shirts are now in.

Strieter's Men's Wear

"The Place To Go for Brands You Know"



Flowers for EASTER FLOWER SALE

Friday and Saturday, March 31 - April 1

FRIDAY 8 a.m. to 9 p.m.
SATURDAY 8 a.m. to 6 p.m.

EASTER CORSAGES
ORDER IN ADVANCE
Corsages - Cut Flowers
Potted Plants

Phone GR 5-5211 or GR 5-7131

Sold by Kiwanians at
Hilltop Plumbing Store
Corner of
Main and Park Streets
Flowers Grown by
Chelsea Greenhouses

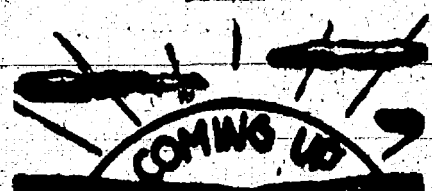


Sponsored by
Kiwanis Club of Chelsea

The Hi-Light

Edited by Students of the Chelsea High School Journalism Club

Co-Editors
Barbara Irwin - Nancy McCalla



Mar. 30-Apr. 5—Spring vacation.
Apr. 6—Van Buren county folk dancers and Paw Paw High school Varsity Choir Assembly; "Rhythm Around the World."

The high school choir under the direction of Mr. David Sanborn is now practicing for spring festivals. Most of the ground work has been laid and now the choir is perfecting for total effect.

After receiving top honors at the district band festival the high school band will soon start serious practicing for the state finals to be held in Ann Arbor on Apr. 22.

March 30, in the absence of Mr. Prinz, the World History students saw a film strip called "Divided Germany." This film discussed the states of Germany before, during, and after the two World Wars.

The Senior class left Wednesday on their Senior trip. The class left at 5:30 p.m. for New York and then Washington. It will be a five-day affair which all the Seniors will remember.

Mr. Smith's Latin II students are translating mythology. The students find this to be very interesting.

Shop students are now finding out many new things. They are on the subject of electronics.

The play "Good Night Ladies" is to be presented by the Junior Class, Apr. 7-8, Friday and Saturday night. It will be presented in the high school auditorium at 8 p.m.

The final major plans were made at a class meeting where the chairman for the basic committees were appointed. Al Schauer is responsible for the scenery, Lee Huber for properties, Ann Palmer and Dot Brown for make up, Shari Frisinger for publicity, Dave Fraser and Malcolm Reinhardt for lighting and Pat Pastor for tickets and programs.

Tickets for the play may be purchased from any Junior or at the

door on the night of the performance.

Third-year Home Ec. girls had a guest speaker to answer any questions concerning accounts, loans, checks, etc. The guest speaker, Paul Mann, executive vice-president of Chelsea State Bank, answered such questions as, "Do you think borrowing money from the bank is good?" or "How do you get a loan?" Such questions were given excellent answers which pleased all the girls.

First-year Home Ec. girls are constructing simple blouses. They are studying the different types of seams, and seem to be enjoying it.

Senior English classes are studying the Romantic Age. They will soon study the Victorian Age. Junior classes are studying modern drama. Sophomore English classes are studying the modern non-fiction writers. Fresh classes are reading stories from the literature book.

Girls Physical education classes are finishing up basketball. The next field of activity will be modern dance.

Advanced Algebra students are pleased to welcome a new student teacher, Mr. Sharer, to their third-hour class. Mr. Sharer with the assistance of Mr. W. Cowell is directing the students on graph equations.

The physics classes, taught by Mr. John McGill, are studying the perfect engine. All are very much interested in the work as it is practical.

Journalism class is busy making posters for the Bulldog. Also they have been working on their Hi-Light assignments which are checked and then placed in their scrapbook.

American History classes, under Mrs. Barbara Baker, have been giving Senior Scholastic reports orally in class for extra credit. They also are working on book reports, giving a brief summary of the book, evaluation of the material, and how the material applies to the course. Mr. Alfred Smith's American History class have been studying the causes and effects of the Spanish-American War.

Official 1961 State Highway Map Now Available

Lansing—An aerial picture of part of Interstate 94 freeway—the longest continuous toll-free interstate highway in the U. S.—is on the cover of Michigan's 1961 Official Highway Map.

The final section of the 203-mile freeway, which extends from downtown Detroit to Stevensville on Lake Michigan, was opened to traffic in December to give Michigan another highway "first."

State Highway Commissioner John C. Mackie said nearly half of the 600,000 maps to be printed are being shipped directly from the printer to tourist associations, chambers of commerce, hotels, travel bureaus and other organizations.

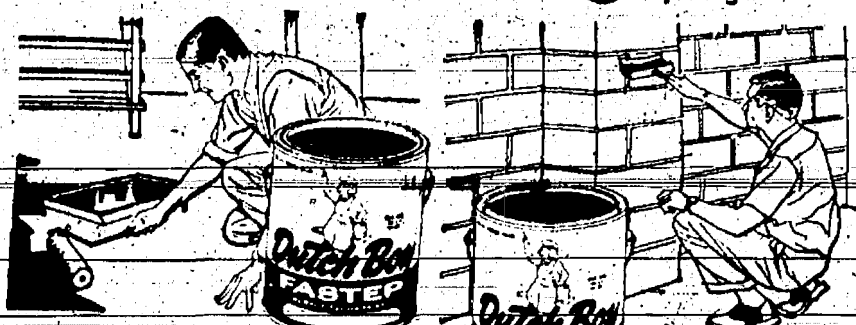
Mackie said copies of the map are available free of cost by writing: Motorist Services Division, Michigan State Highway Department, 732-W Mason Bldg., Lansing 26.



"Dutch Boy" NALPLEX

...the one-stroke, one-coat interior flat finish that lets you paint like an expert. No brush marks, no lap marks—begins to dry instantly! Easy cleanup, too—just use soap and water! You'll find many smart colors to choose from.

\$6.49 per gallon



"Dutch Boy" FASTEP

The quick, easy way to bring new life and beauty to floors and steps of playrooms, basements and patios. This new latex paint is color-fast, with a semi-gloss lustre that defies traffic and year-round exposure.

\$6.79 gal.

"Dutch Boy" NALCRETE

This sturdy, weather-resistant paint has been specially formulated to give maximum protection to brick, stone and concrete surfaces. Won't crack or blister. Stain resists it, too!

\$6.75 gal.

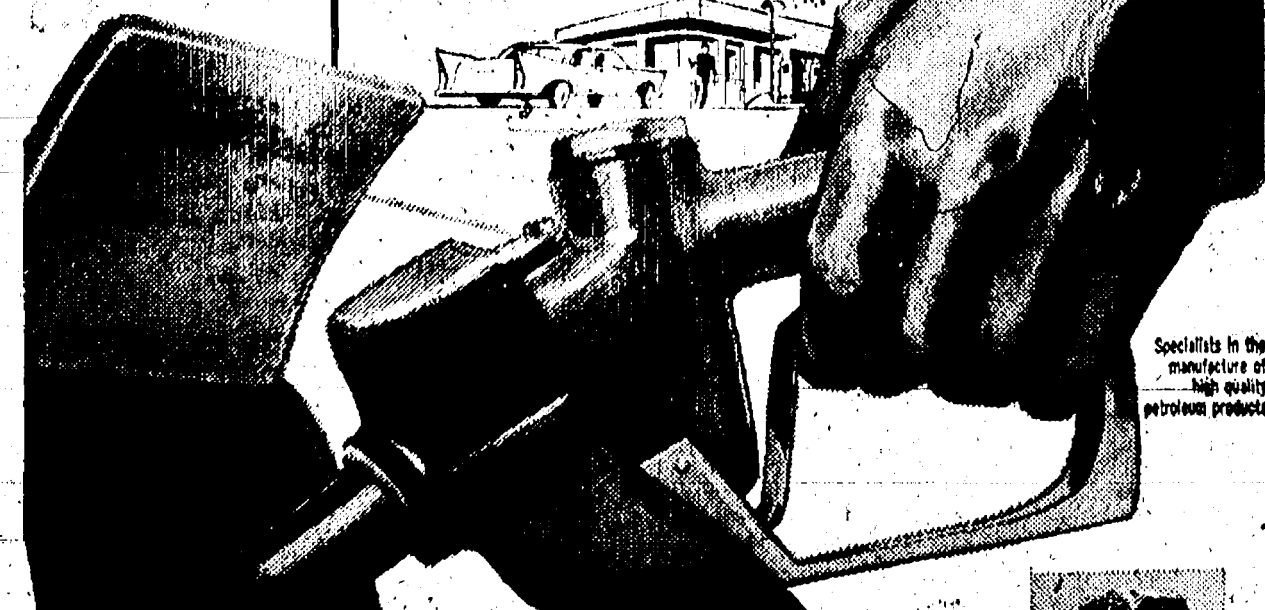
MERKEL BROS.

PROTECT YOUR CAR FROM RUST AND CORROSION

When Michigan changes, so do we!

LEONARD

That's "weather-blending"—and Leonard's formula is changed as often as necessary to keep up with Michigan weather. When you use Leonard, you know your car will do its best. You can depend on Leonard.



CORSER'S
137 PARK STREET

YOUR SYLVAN TOWNSHIP



MARJORIE FISCHER
For Treasurer

Resides at 115 Orchard St. Is co-chairman of Chelsea Chapter of American Red Cross. Member of First Methodist church. Attended school in Illinois. Resided in Chelsea for past 19 years and formerly served as Library Board Trustee for 11 years. No 4% penalty will be charged on tax collections.



ROBERT D. RUDD
For Trustee

Age 40. Born and educated in central Ohio. Married, father of three children. Resides at 220 W. Middle St. Employed at Rockwell-Standard Corp. as Plant Engineer for past 8 years. Member of First Methodist church, serving as trustee in charge of building and grounds. Past Master of Olive Lodge No. 156 F&AM, member of Community Chest Board of Directors, serving as chairman of 1961 Budget committee. Member American Society of Tool and Manufacturing Engineers. Navy veteran, World War 2. I feel my background qualifies me for this office and I shall consider it a privilege to serve the people of this community.



Frederick C. Belser
For Justice of the Peace

FREDERICK C. BELSER, age 40, is married and the father of four. A life-long resident of the Community. Educated in the Chelsea schools and attended the University of Michigan. Has been in building business for 16 years and is treasurer of Chelsea Associated Builders. Member of Congregational church, Masons, Rod and Gun club, and Chelsea Chamber of Commerce. If elected, I pledge an active participation in the office of Justice of the Peace.



THOMAS BUST
For Supervisor

Married, father of two children. Farm reared. Graduate Michigan State University School of Agriculture. Navy veteran, World War 2. Member of St. Paul's church, former member of Church Council. Immediate Past President of Chelsea Community Fair Board and presently member of Board of Directors. Member Chelsea Rod and Gun club, American Legion. Now owns and operates Chelsea Hardware after serving as sales representative for Ford Tractor Division and 2 years as assistant County Agricultural Agent for Washtenaw County. Served as Vocational Agricultural instructor for Chelsea schools. I believe every citizen should devote some time to public service. If elected I will serve this office sincerely and to the best of my ability. Your vote in the April 3 election will be appreciated.



WILLIAM H. SCHATZ
For Constable

"Bill" Schatz has owned and operated Schatz Cigar Store for past 18 years. Born in Chelsea, living here most of his life. Graduate of Chelsea High school, class of '16. Have served as village clerk. Spent 20 years as a salesman for national organizations, living mostly in Detroit and Pontiac, also in out-of-state cities in Indiana, Illinois and Ohio. I have known most of you people in Chelsea and Sylvan Township from kids to Grandpa, and will certainly appreciate your support for myself and those on my ticket.



CARL HELLER
For Constable

Born and raised on the farm where he now resides in the occupation of farming. An active member on the Church Council of the Zion Lutheran church at Rogers Corners, Washtenaw Farm Bureau, Farmers' Guild, Washtenaw County Livestock Council, and the ASC Committee. Married and the father of two sons.



RICHARD J. KERN
For Clerk

Was born in Chelsea, 36 years ago where he has lived his entire life. A graduate of Chelsea High school, he served three years in U. S. Navy, is assistant cashier at Chelsea State Bank; member of Chelsea Rod and Gun Club, American Legion, First Methodist church. Is married and father of two children.



Joseph T. Merkel, Sr.
For Board of Review Member

Knows real estate values. Born in Sylvan township in 1899, educated in the Chelsea schools and is a member of St. Mary's Catholic church. Joe is successfully self-employed in the agricultural industry. He has served as a village trustee from 1954-1956.



MARTIN E. MILLER
For Commissioner of Highways

Born in Collins Center, N. Y. Grade and high school education, structural engineering. Came to Chelsea in July, 1942, became property owner at that time and have been ever since. Operated Miller Funeral Home for 10 years. Formerly a commercial construction man with varied successful experience in supervising large construction crews. Returned to construction work after sale of funeral home until last August when retired voluntarily. Health generally good and remaining quite active in local affairs. Formerly Director of Civil Defense for Chelsea and Sylvan Township. Continuing business of insurance agent, started by the late S. A. Mapes.

VOTE APRIL 3rd! We Need Your Vote.

CHELSEA VILLAGE COUNCIL PROCEEDINGS

March 7, 1961
Council Room

Regular Session.
This meeting was called to order by Pres. Alber at 8:00 p.m. Trustees present: Baldwin, Barr, Chandler, Clark, Lixey, and Paul. Invocation by the Rev. Schnake of the St. Paul's Evangelical & Reformed church.

The minutes of the regular session of February 21, 1961 were read and approved.

PROCLAMATION

WHEREAS, The American Legion, dedicated to service for God and Country, has become one of the great bulwarks of the American way of life through its leadership in all movements designed to promote a dynamic conviction of patriotism for the preservation of our freedoms and free institutions; and

WHEREAS, The American Legion, whose members have served in the Twentieth Century's three wars, will celebrate the 42nd anniversary of its birth, March 15 to 17, 1961, marking the completion of 42 years of patriotic labors which have had a great and beneficial impact on the welfare and security of America;

NOW, THEREFORE, I, Donald C. Alber, President of the Village of Chelsea, do hereby proclaim the week of March 12 to 18, 1961 as AMERICAN LEGION BIRTHDAY WEEK, and do call upon all citizens and all organizations to join in paying as a token of the public appreciation of the wartime and peacetime services of local Legionnaires.

In Witness Whereof, I have hereunto set my hand and caused to be affixed the Seal of the Village of Chelsea at the Village Hall on this day of March, 1961.

Donald C. Alber, President.

George L. Winans, Clerk.

March 10, 1961
Council Room

Special Session

This meeting was called to order by Pres. Alber at 8:45 p.m. Trustees present: Baldwin, Barr, Chandler, Clark, Lixey and Paul. Absent: None.

Motion by Baldwin, supported by Paul, that the matter of determining the results of the Village Election held March 13th, 1961 being under consideration that the following be declared duly elected officers of the Village of Chelsea:

President, Robert Daniels, term 1 year;

Clerk, George Winans, term 1 year;

Treasurer, Wallace Wood, term 1 year;

Trustee, Merle S. Barr, Jr., term 2 years;

Trustee, William Chandler, term 2 years;

Trustee, L. J. Paul, term 2 years;

Assessor, Thomas Smith, term 1 year;

Library Trustee, Jean Eaton, term 3 years;

Library Trustee, John Thompson, term 3 years.

Roll call: Yeas all. Motion carried.

Motion by Lixey, supported by Clark, that these minutes be approved. Roll Call: Yeas all. Motion carried.

Motion by Barr, supported by Chandler, to adjourn the meeting. Meeting adjourned.

Approved: March 16, 1961.

Donald C. Alber, President.

George L. Winans, Clerk.

SUBSCRIBE TODAY
TO THE CHELSEA STANDARD

7th day of March in the year of our Lord 1961.
(Signed) Donald C. Alber, Pres.

RESOLUTION

BE IT RESOLVED AND IT IS HEREBY RESOLVED that on the written application of Paul Pierce for the rezoning of the premises hereinafter described from "Neighborhood Business" to General Business, that a public hearing be held before the Village Council in the Chelsea Municipal Building, and provided further, that at least fifteen (15) days notice of the time and place of such public hearing shall be published in the Chelsea Standard, and that all public utilities and railroads to be effected are to be given notice of such hearing by registered United States mail as the Statute in such case provides.

Said premises are described as: Commencing at the north quarter post of Section Thirteen (13); thence south 88° 05' east 861.40

feet in the north line of Section; thence south 00° 30' east 890.89 feet along the center of M-92; thence south 74° 30' east 34.33 feet to the intersection of the north line of Territorial Road and the east line of M-92 FOR A PLACE OF BEGINNING; thence south 74° 30' east 19 rods thence north 00° 30' west 19 rods; thence to the place of beginning, being a part of the west half of the northeast quarter of Section Thirteen (13), Town Two (2) South, Range Three (3) East, Village of Chelsea, Washtenaw County, Michigan.

Motion by Barr, supported by Paul, that the preceding resolution be approved as read. Roll call: Yeas all. Motion carried.

Motion by Chandler, supported by Clark, to authorize the Chelsea Electric and Water Department to enter into a contract with Mr. Wilson Silkworth to make a survey of the Village power system at the rate of \$600.00 per month plus material. Roll call: Yeas all. Motion carried.

Motion by Baldwin, supported by Baldwin, to authorize the Supt. of Chelsea Electric & Water Dept. to advertise for a new 3/4 ton truck with utility box attached. Roll call: Yeas all. Motion carried.

Motion by Chandler, supported by Barr, to authorize the Supt. of Chelsea Electric & Water Dept. to transfer \$10,000.00 from the Chelsea Electric & Water Dept. to the General Fund. Roll call: Yeas all. Motion carried.

A meeting was held with Mr. Robert Wilgong of Finkbeiner, Pettis & Strout regarding the Sewage Treatment Plant, and the problem of oil in the Village sanitary system. Mr. Wilgong informed the council that the oil has been traced to one section of the Village and will perhaps be pin-pointed by the use of dyes. The Council was informed that the contractor will be finished at the Sewage Treatment Plant on the 17th of March with the exception of final landscaping and general cleanup as the weather permits.

Motion by Baldwin, supported by Clark, to authorize the purchase of new laboratory furniture from Metalab Equipment Co. and the installation by the Chelsea Associated Builders. Total amount of addition to original contract \$1,194.40 to be paid from the Sewage Treatment Bond account as recommended by Finkbeiner, Pettis & Strout. Roll call: Yeas all. Motion carried.

Motion by Clark, supported by Paul, that the Audit of the Village of Chelsea and the Chelsea Electric and Water Dept. as prepared by Iceerman, Johnson, and Hoffman be approved as submitted for publication. Roll call: Yeas all. Motion carried.

Roll call: Yeas all. Motion carried.

Motion by Lixey, supported by Chandler, to authorize the Supt. of Chelsea Electric and Water Dept. to invest \$10,000.00 yearly into an emergency and improvement fund. Roll call: Yeas all. Motion carried.

Motion by Chandler, supported by Clark, to authorize the Clerk to enter into a contract with the Wolverine Tractor and Equipment Co. for the purchase of one Hough Model H. 30 Front End Loader with Drott 4-in-1 bucket in the amount of \$11,776.00. Roll call: Yeas all. Motion carried.

Motion by Barr, supported by Clark, to authorize the Clerk to issue check in payment of bills submitted: General Fund, \$4,410.25; Sewage Treatment Fund, \$9,592.65; Sewage Treatment Disposal Bond and Interest Account, \$5,564.05.

Motion by Lixey, supported by Paul, to adjourn the meeting. Roll call: Yeas all. Motion carried.

Meeting adjourned.

Approved: March 21, 1961.

Donald C. Alber, President.

George L. Winans, Clerk.

New Books On Shelves At Library

The new book list at McKune Memorial Library is as follows: "The Wolf Tree," Rucker; "The Magnolia Jungle," East; "Dr. Schweitzer of Lambarene," Cousins; "The Chord of Steel," Costain; "Sing Me A Murder," Nielsen; "Wall Street 20th Century," Roosevelt; "Look to the Rose," Selfert; "The Doctor's Bride," Selfert; "The Royal Box," Keyes; "The Governor's Lady," Raddall; "Morning at Jalna," DeLaRoche; "Born Free," Adamson; "You Learn by Living," Roosevelt.

"A Woolcott," Adams; "Pride of Possession," Street; "The Day Before Thunder," Spicer; "The Dean's Watch," Goudge; "Many a Voyage," Erdman; "Pilgrims in Paradise," Slaughter; "United Nations," Munro; "The Challenge We Face," Nixon; "View From the Ninth Decade," Penny.

"The Snake Has All the Lines," Kerr; "Full Circle," Eden; "Dictionary of American Slang," Wentworth; "From Cell to Test Tube," Chambers; "The Child Buyer," Hersey; "Favorite Recipes from the United Nations," "Known But To God," Reynolds; "The Interpreter," Cost; "Upon My Lips a Song," Smith; "The Decision at Delhi," MacInnes; "The Waste Makers," Packard; "Now We Are Enemies," Fleming.

"Cyrus, the Great," Lamb; "Wedding Train," Scherf; "Tonya," Royington; "Fallout," Fowler; "The Doomed Oasis," Innes; "Photography for Teen-Agers," Marshall; "Lord Fancy," White; "Masks and Flippers," Bridges; "Catherine Chai," Parkington; "The Day Christ Was Born," Bishop; "Mrs. Fitzherbert," Leslie; "The Rise and Fall of the Third Reich," Shirer; "Trout Madness," Traver; "Seed-time on the Cumberland," Arnott; "Sword of Clontarf," Brady.

"Drums of Destiny," Bourne; "The Wainwright Inheritance," Corbett; "Mother is Mine," Untermyer; "The Listener," Caldwell; "Groucho and Me," Marx; "How To Use Algebra in Everyday Life," "The King from Ashabula," Snelser; "Baruch: The Public Years," Baruch; "A Noble Profession," Boule; "Under the Red Sea Sun," Ellsberg; "Countdown for Decision," Medaris; "The Chess Players," Keyes; "Ten Short Plays," Shaw.

"The American Heritage," a picture history of the Civil War, Cotton; "The Complete Poems of Emily Dickinson"; "Young Men

Change the World," Herndon; "Invitation to Vengeance," Knight; "Seven into Space," Bell; "Anna Teller," Sinclair; "The Liberal Hour," Galbraith; "Trumpets from the Steep," Cooper.

"Peaceable Lane," Wheeler; "The Story of Sports," Juno; "Know Your Government," Ross; "Meyer Berger's New York," Berger; "Between You, Me and the Gate Post," Boone; "The Man Who Rode the Thunder," Rankin; "The Trumpet and the Rose," Appel.

"A Sense of Values," Wilson; "No King but Caesar," Powers.

"Lonely, but Not Alone," Princess Wilhelmina; "Men from Mt. Vernon," Boyce; "Return of the Tiger," Connell; "Pomp and Circumstance," Coward; "Summer of Pride," Savage.

BLIND TRAVEL

27,348 one-fare coupon books permitting blind persons to travel accompanied by sighted companions for the price of a single fare were issued free of charge in the past year by the American Foundation for the Blind, 15 West 10th Street, New York 11.

(Political Advertisement)

KEEP MICHIGAN ON THE MOVE

RE-ELECT

STATE
HIGHWAY
COMMISSIONER

JOHN C.

MACKIE
DEMOCRAT

"Nation's Leading Roadbuilder"

MAKE IT EMPHATIC...

Vote Straight ⊗ DEMOCRATIC

MONDAY, APRIL 3rd.

MACKIE CAMPAIGN COMMITTEE - LANSING, MICHIGAN

VOTE DEMOCRATIC - SYLVAN TOWNSHIP

MONDAY, APRIL 3, 1961

RE-ELECT
LETHA BEACH
Treasurer

Letha Beach, Treasurer is widow of William Beach, resides with her son, Elwyn Beach, at 151 E. Summit St., and is completing her second term as treasurer. Has lived in Sylvan Township about 19 years and was formerly employed at Chelsea Methodist Home following her husband's death in 1949. Has a background of 16 years as a stenographer and bookkeeper. Member of First Methodist church, WSCS, Wesleyan Circle, Rebekahs, and Eastern Star. Carried out her pledge to eliminate the 4% penalty on delayed tax payments in Sylvan Township and will continue to carry out that policy in office.

RE-ELECT
MAURICE J. HOFFMAN
Supervisor

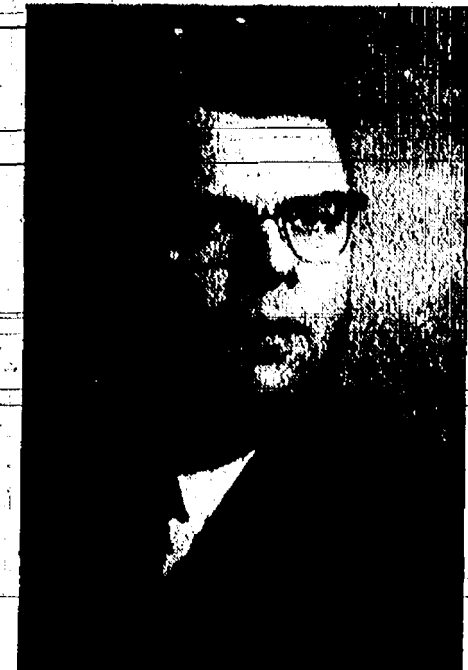
Maurice J. Hoffman, Supervisor, is married, has a family and is now completing his third two-year term as Sylvan Township Supervisor. Presently a member of Washtenaw County Board of Supervisors Committees on Sheriff, Health, and Tax Descriptions. Life-long resident of Chelsea, graduate of St. Mary's High School, attended Eastern Michigan College, Ypsilanti, member of St. Mary's church and Knights of Columbus. Has effectively promoted the interests of Sylvan Township and all of its residents.

ELECT
ROBERT B. DEVINE
Clerk

Bob Devine, candidate for Clerk, resides at 565 Chandler Street. He is 39 years old, married, father of 3 children. Born in Dexter. Graduate of Dexter High School and Dodge Radio and Telegraph Institute, Valparaiso, Ind. Employed by New York Central Railroad for 20 years, last 14 years of which has been as freight agent in Chelsea. Member of St. Mary's church, Knights of Columbus, Holy Name Society, and American Legion. He served 3 years in U. S. Navy. Has served 8 years as clerk of the Village of Chelsea.

RE-ELECT
NORMAN EISEMANN
Trustee

Norman Eisemann has served 4 years as trustee. Has resided in Sylvan Township his entire lifetime; married and has a family. Employed as a foreman at Federal Screw Works; member of St. Paul's Evangelical and Reformed church. Served as a member of the Chelsea Village Council and was active on various village committees. Has been member of St. Paul's Church Board. Pledges to continue his efforts to secure a dumping grounds for Sylvan Township residents.

ELECT
EARL WILLIS, JR.
Constable

Earl Willis, Jr., 36, is seeking election to the position of Constable. He resides at 123 North St., in Chelsea, and is married. His experience includes 16 years in police work and allied fields, 2 1/2 years as Deputy Sheriff, Washtenaw County; 3 years part-time police officer of Chelsea; 3 years as sergeant of Plant Protection at Chrysler Proving Grounds. He had 2 years of college at Berea College, Berea, Ky. Is a member of the Masonic Lodge and Southern Michigan Law Enforcement Association. Attends Chelsea First Assembly of God Church. If elected, he pledges a fair and honest disposition of matters coming before the office of constable.

RE-ELECT
CLYDE MARTIN
Highway Commissioner

Clyde Martin has served 4 years as Highway Commissioner and seeks re-election to the position. Resides at 17705 Old US-12, Sylvan Center, resident of Sylvan Township for past 37 years. Married, father of one child, employed at Goodyear Tire & Rubber, Jackson, for past 21 years. Member of Salem Grove Methodist church and the Moose Lodge. Trustee for 3 years and Steward for 5 years, URWA-CIO, Goodyear Local 185. Is interested in the most economical use of available funds for the improvement of Sylvan Township highways.

RE-ELECT
HERMAN BERTKE
Member Board of Review

Herman Bertke has served 4 years as a member of the Sylvan Township Board of Review and seeks re-election to that post. Has been a resident of Sylvan Township his entire lifetime. Married, and father of two children. Formerly employed at Merkel Bros. Member of St. Paul's Evangelical and Reformed church and the Masonic Lodge. Active in Civil Defense program for Washtenaw County and is a Deputy Sheriff. Pledge to respect and give consideration and fair treatment to the taxpayers appearing before the Board of Review.

ELECT
JOHN PIERSON
Constable

John Pierson, age 36, was born, and educated in New Jersey and has been a resident of Sylvan Township for the past 13 years. Married to the former Marian Eisela. Served in the U. S. Navy for 3 1/2 years during World War II. Has been in the building business for 17 years and is president of Chelsea Associated Builders. Member of St. Paul's church, Masons, American Legion, VFW, Rod and Gun Club, and Chelsea Chamber of Commerce. If elected, pledges fair and honest disposition of matters coming before the office of constable.

RE-ELECT
GEORGE BRETTSCHEIDER
Justice of the Peace

George Brettschneider is seeking re-election to the position of Justice of the Peace. He is married, a resident of Sylvan Township for 36 years. Alumnus of Michigan State University. Formerly represented Farm Group and other farm organizations before U. S. Senate Agriculture Committee. Member of Chelsea Rod and Gun Club, Sylvan Township Zoning Board. Actively engaged in farming in the township. Pledges continued fair and honest disposition of matters coming before the office of Justice of the Peace.



We Pledge Continued Good Government - - - Continued Policy of Eliminating 4% Penalty on Late Tax Payments.

tute in such case made
 Friday, May 12, 1961, at
 Orono, the undersigned
 the entire tract of land in Wash-
 ington in the City of Ann
 that being the place
 Court for the County of
 sell at public auction to
 the premises described
 or as much thereof as
 to pay the amount afore-
 said with interest at
 thereon to date of sale
 and expenses, together
 s' fee, allowed by law,
 of the Court, which may
 be needed, necessary to pro-
 the premises, situated in
 of the County of Wash-
 of Michigan, to-wit:
 Township Subdivision
 of the south half of the sec-
 south, Range 2 east,
 10th, Waukegan County,
 Indiana, to-wit: there be
 liber 8 of Plats, page
 utions Records.
 1. NATIONAL MORTGAGE
 Assignee of Mortgage
 2. FIDELITY
 Assignee of Mortgage
 3. The Probate Court for
 the County of Wash-
 said Court, held on
 Monday 2-4-62
 Feb. 9-May 4
 4. PUBLICATION
 of Real Estate.
 46148
 The Probate Court for
 the County of Wash-
 of the Estate of HELEN
 ly Incompetent.
 said Court, held on
 Monday 2-4-62
 Feb. 9-May 4
 5. PUBLICATION
 of Real Estate.
 46149
 The Probate Court for
 the County of Wash-
 of the Estate of HELEN
 ly Incompetent.
 said Court, held on
 Monday 2-4-62
 Feb. 9-May 4
 6. PUBLICATION
 of Real Estate.
 46150
 The Probate Court for
 the County of Wash-
 of the Estate of HELEN
 ly Incompetent.
 said Court, held on
 Monday 2-4-62
 Feb. 9-May 4
 7. PUBLICATION
 of Real Estate.
 46151
 The Probate Court for
 the County of Wash-
 of the Estate of HELEN
 ly Incompetent.
 said Court, held on
 Monday 2-4-62
 Feb. 9-May 4
 8. PUBLICATION
 of Real Estate.
 46152
 The Probate Court for
 the County of Wash-
 of the Estate of HELEN
 ly Incompetent.
 said Court, held on
 Monday 2-4-62
 Feb. 9-May 4
 9. PUBLICATION
 of Real Estate.
 46153
 The Probate Court for
 the County of Wash-
 of the Estate of HELEN
 ly Incompetent.
 said Court, held on
 Monday 2-4-62
 Feb. 9-May 4
 10. PUBLICATION
 of Real Estate.
 46154
 The Probate Court for
 the County of Wash-
 of the Estate of HELEN
 ly Incompetent.
 said Court, held on
 Monday 2-4-62
 Feb. 9-May 4
 11. PUBLICATION
 of Real Estate.
 46155
 The Probate Court for
 the County of Wash-
 of the Estate of HELEN
 ly Incompetent.
 said Court, held on
 Monday 2-4-62
 Feb. 9-May 4
 12. PUBLICATION
 of Real Estate.
 46156
 The Probate Court for
 the County of Wash-
 of the Estate of HELEN
 ly Incompetent.
 said Court, held on
 Monday 2-4-62
 Feb. 9-May 4
 13. PUBLICATION
 of Real Estate.
 46157
 The Probate Court for
 the County of Wash-
 of the Estate of HELEN
 ly Incompetent.
 said Court, held on
 Monday 2-4-62
 Feb. 9-May 4
 14. PUBLICATION
 of Real Estate.
 46158
 The Probate Court for
 the County of Wash-
 of the Estate of HELEN
 ly Incompetent.
 said Court, held on
 Monday 2-4-62
 Feb. 9-May 4
 15. PUBLICATION
 of Real Estate.
 46159
 The Probate Court for
 the County of Wash-
 of the Estate of HELEN
 ly Incompetent.
 said Court, held on
 Monday 2-4-62
 Feb. 9-May 4
 16. PUBLICATION
 of Real Estate.
 46160
 The Probate Court for
 the County of Wash-
 of the Estate of HELEN
 ly Incompetent.
 said Court, held on
 Monday 2-4-62
 Feb. 9-May 4
 17. PUBLICATION
 of Real Estate.
 46161
 The Probate Court for
 the County of Wash-
 of the Estate of HELEN
 ly Incompetent.
 said Court, held on
 Monday 2-4-62
 Feb. 9-May 4
 18. PUBLICATION
 of Real Estate.
 46162
 The Probate Court for
 the County of Wash-
 of the Estate of HELEN
 ly Incompetent.
 said Court, held on
 Monday 2-4-62
 Feb. 9-May 4
 19. PUBLICATION
 of Real Estate.
 46163
 The Probate Court for
 the County of Wash-
 of the Estate of HELEN
 ly Incompetent.
 said Court, held on
 Monday 2-4-62
 Feb. 9-May 4
 20. PUBLICATION
 of Real Estate.
 46164
 The Probate Court for
 the County of Wash-
 of the Estate of HELEN
 ly Incompetent.
 said Court, held on
 Monday 2-4-62
 Feb. 9-May 4
 21. PUBLICATION
 of Real Estate.
 46165
 The Probate Court for
 the County of Wash-
 of the Estate of HELEN
 ly Incompetent.
 said Court, held on
 Monday 2-4-62
 Feb. 9-May 4
 22. PUBLICATION
 of Real Estate.
 46166
 The Probate Court for
 the County of Wash-
 of the Estate of HELEN
 ly Incompetent.
 said Court, held on
 Monday 2-4-62
 Feb. 9-May 4
 23. PUBLICATION
 of Real Estate.
 46167
 The Probate Court for
 the County of Wash-
 of the Estate of HELEN
 ly Incompetent.
 said Court, held on
 Monday 2-4-62
 Feb. 9-May 4
 24. PUBLICATION
 of Real Estate.
 46168
 The Probate Court for
 the County of Wash-
 of the Estate of HELEN
 ly Incompetent.
 said Court, held on
 Monday 2-4-62
 Feb. 9-May 4
 25. PUBLICATION
 of Real Estate.
 46169
 The Probate Court for
 the County of Wash-
 of the Estate of HELEN
 ly Incompetent.
 said Court, held on
 Monday 2-4-62
 Feb. 9-May 4
 26. PUBLICATION
 of Real Estate.
 46170
 The Probate Court for
 the County of Wash-
 of the Estate of HELEN
 ly Incompetent.
 said Court, held on
 Monday 2-4-62
 Feb. 9-May 4
 27. PUBLICATION
 of Real Estate.
 46171
 The Probate Court for
 the County of Wash-
 of the Estate of HELEN
 ly Incompetent.
 said Court, held on
 Monday 2-4-62
 Feb. 9-May 4
 28. PUBLICATION
 of Real Estate.
 46172
 The Probate Court for
 the County of Wash-
 of the Estate of HELEN
 ly Incompetent.
 said Court, held on
 Monday 2-4-62
 Feb. 9-May 4
 29. PUBLICATION
 of Real Estate.
 46173
 The Probate Court for
 the County of Wash-
 of the Estate of HELEN
 ly Incompetent.
 said Court, held on
 Monday 2-4-62
 Feb. 9-May 4
 30. PUBLICATION
 of Real Estate.
 46174
 The Probate Court for
 the County of Wash-
 of the Estate of HELEN
 ly Incompetent.
 said Court, held on
 Monday 2-4-62
 Feb. 9-May 4
 31. PUBLICATION
 of Real Estate.
 46175
 The Probate Court for
 the County of Wash-
 of the Estate of HELEN
 ly Incompetent.
 said Court, held on
 Monday 2-4-62
 Feb. 9-May 4
 32. PUBLICATION
 of Real Estate.
 46176
 The Probate Court for
 the County of Wash-
 of the Estate of HELEN
 ly Incompetent.
 said Court, held on
 Monday 2-4-62
 Feb. 9-May 4
 33. PUBLICATION
 of Real Estate.
 46177
 The Probate Court for
 the County of Wash-
 of the Estate of HELEN
 ly Incompetent.
 said Court, held on
 Monday 2-4-62
 Feb. 9-May 4
 34. PUBLICATION
 of Real Estate.
 46178
 The Probate Court for
 the County of Wash-
 of the Estate of HELEN
 ly Incompetent.
 said Court, held on
 Monday 2-4-62
 Feb. 9-May 4
 35. PUBLICATION
 of Real Estate.
 46179
 The Probate Court for
 the County of Wash-
 of the Estate of HELEN
 ly Incompetent.
 said Court, held on
 Monday 2-4-62
 Feb. 9-May 4
 36. PUBLICATION
 of Real Estate.
 46180
 The Probate Court for
 the County of Wash-
 of the Estate of HELEN
 ly Incompetent.
 said Court, held on
 Monday 2-4-62
 Feb. 9-May 4
 37. PUBLICATION
 of Real Estate.
 46181
 The Probate Court for
 the County of Wash-
 of the Estate of HELEN
 ly Incompetent.
 said Court, held on
 Monday 2-4-62
 Feb. 9-May 4
 38. PUBLICATION
 of Real Estate.
 46182
 The Probate Court for
 the County of Wash-
 of the Estate of HELEN
 ly Incompetent.
 said Court, held on
 Monday 2-4-62
 Feb. 9-May 4
 39. PUBLICATION
 of Real Estate.
 46183
 The Probate Court for
 the County of Wash-
 of the Estate of HELEN
 ly Incompetent.
 said Court, held on
 Monday 2-4-62
 Feb. 9-May 4
 40. PUBLICATION
 of Real Estate.
 46184
 The Probate Court for
 the County of Wash-
 of the Estate of HELEN
 ly Incompetent.
 said Court, held on
 Monday 2-4-62
 Feb. 9-May 4
 41. PUBLICATION
 of Real Estate.
 46185
 The Probate Court for
 the County of Wash-
 of the Estate of HELEN

That notice thereof has been given to the said executor of said mortgage the interest of in real estate described in the purpose of distribution of the said property.

JOHN W. CONLIN,
Judge of Probate.

Mar 23-Apr 6

PUBLICATION
of Real Estate.

The Probate Court for
the Estate of GLEN
L. HARRIS, a/k/a Glen
said Court, held on
sole John W. Conlin,
Given. That all persons
estate are directed to an
Probate Court on April
M., to show cause why
said estate should not be
Sanford, Executor of
or mortgage the inter-
est in said real estate
ation, for the purpose
notice thereof be given
of a copy hereof to said
to the Chas. Sanford
er cause a copy of this
upon each known party
to be made.

or ordinary mail (with or by personal service) 72 days prior to such date.

JOHN W. CONLIN,
Judge of Probate.

City Mar 30-Apr 14

FINDINGS

Capital is the only city, where Ne-
majority of the pop-
sion Bureau said.
said -preliminary
1960 -census show
53.9 per cent, of
3,956 residents are

y has the largest
 roes, 1,087,931, or
 the total popula-
 New York were
 delphia, Detroit,
 Angeles and Bil-

MERS
UTION!
 BUY
 ipped - Yellow

Old Cattle
pickup service
Detroit Collect
CES-PAID
coin 8-8288
Yler 6-3739

TICE -
PRODUCTS
Co.
new location
MAIN ST.

Y, MICH.
 headquarters during
 our new building,
 some at the same
 time.
 0% on rebuilding,
 upholstering fur-

**IVE TO GREGORY
 IINGS TO YOU!
 line 6-2800**

SYLVAN TOWNSHIP

FINANCIAL STATEMENT AS OF MARCH 21, 1961
and Income and Disbursement Report March 22, 1960 to March 21, 1961

CONTINGENT FUND

Balance on Hand March 22, 1960	\$ 3,908.34
RECEIPTS:	
Sales Tax Diversion	\$ 6,517.15
Intangible Tax	2,471.66
Tax on Conservation Dept. Land	15.26
Excess of Roll	1,492.48
Tax Collection 1960 Levy	\$ 11,145.86
Less Taxes Returned Del.	424.15
Taxes due from Dept. of Cons.	9.28
	10,712.43
Delinquent Taxes 1958 and 1959	58.22
Zoning	115.00
Consumer Power Co. Franchise	100.00
Miscellaneous	2.50
	24,484.70
TOTAL	\$ 28,393.04

LESS DISBURSEMENTS:	
Salary Supervisor	\$ 3,000.00
Salary Clerk	1,500.00
Board Meeting	510.00
Board of Review	80.00
Zoning Board	597.59
Election Expenses	808.16
Car Expenses	310.00
Chelsea Fire Department	1,784.92
Washtenaw County Road Commission	4,395.71
Chelsea Public Library	1,000.00
Chelsea Fair	180.00
American Legion Grave Decorating	100.00
Care of Cemeteries	300.00
Legal Fees, Law Books, and Auditing	167.00
Office Supplies, Postage and Printing	540.73
Miscellaneous	298.09
Drain at Large	3.17
Installation for Voting Machines	610.05
Transfer to Townhall Fund	500.00
	16,605.48
Balance on Hand March 21, 1961	\$ 11,787.56

TOWNHALL FUND

Balance on Hand March 22, 1960	\$ 120.56
RECEIPTS:	
Rent	\$ 10.00
Refunds on Merchandise	24.07
Transfer from Contingent Fund	500.00
	534.07
TOTAL	\$ 654.63
DISBURSEMENTS:	
Repairs	\$ 400.81
Gas	65.67
Light and Water	72.02
	538.50
BALANCE ON HAND MARCH 21, 1961	\$ 56.13

LIQUOR CONTROL COMMISSION FUND

Balance on Hand March 22, 1960	Debit (\$ 163.85)
--------------------------------	-------------------

RECEIPTS:	
Fees from Liquor Control Commission	582.10
TOTAL	\$ 582.10
DISBURSEMENTS:	
Law Enforcement	\$ 582.10
	—
Balance on Hand March 21, 1961	—
POOR FUND	
Balance on Hand March 22, 1960	\$ 547.90
RECEIPTS:	
Interest on Savings Account	16.54
TOTAL	\$ 564.44

SUMMARY

Contingent Fund	\$ 11,787.56
Townhall Fund	56.13
Poor Fund	564.44

TOTAL ASSETS OF TOWNSHIP	\$ 12,408.13
Balance with Chelsea State Bank:	
Check Account	\$ 12,153.09
Less Outstanding Checks	310.00
	11,843.09
Savings Account	564.44
	\$ 12,408.13

In addition the township has an account receivable of \$480.43 for outstanding delinquent taxes.

REPORT ON TAX COLLECTIONS

Balance on Hand March 22, 1960	\$ 04.31
Tax Paid under 98-A to County Treasurer	9/28/60
	63.18
Tax Paid Letha Beach 11/14/60	1.13

Balance on Hand December 1, 1960	374,361.34
1960 Taxes Assessed	371,361.34
Less Taxes Returned as Uncollected	
To County Treasurer	\$ 14,218.92
Taxes for Conservation	
Department Land Due from	
Department of Conservation	310.68
	14,529.60

1960 Taxes Collected	359,821.74
Delinquent Taxes Received from:	
April, 1960 to March, 1961 and	
Old Personal Taxes Collected	4,912.37

TAXES COLLECTED	\$364,734.11
LESS DISTRIBUTION:	
To Township Contingent Fund:	
Excess of Roll	\$ 1,492.48
Township Tax 1960	10,712.43
Delinquent Taxes	58.22
	\$ 12,263.13

To County:	
1960 Taxes	89,410.24
Delinquent Taxes	8.23
	89,418.47

To Chelsea Public Schools:	
1960 Taxes	256,417.13
Delinquent Taxes	4,845.92
	261,263.05

Special Education Tax	7,789.46
	\$364,734.11

Balance on Hand	—
Unaccounted Money in Bank	—
Account	120.85

Respectfully submitted,
LETHA BEACH

Senator Philip A. Hart's

REPORT from
WASHINGTON

★ School Aid and the Congress ★

No single legislative proposal before the Congress this year has interested people in Michigan more than the issues surrounding the aid-to-education bills.

Last year in January and February, when the Senate was debating the McNamara-Hart Bill (S.8), the letters coming into my office were pretty evenly divided for and against the basic issue of the need for any kind of federal program. There were those who felt strongly the national crisis in education demanded national action. Others felt federal funds to build schools and to raise teachers' salaries was wrong.

Today, as I look over the hundreds of letters that have come in from all over Michigan, I find that the issue is not really whether we need a program at the national level, but rather what kind of program are we to have. Some letters indicate support for only public schools; some are committed to no program unless aid is given equally to private schools; and some are disturbed that aid does not go into school districts defying desegregation orders of a federal court.

It has always been my belief that a representative of the people should have his position as clearly understood as possible. That is why I appreciate the privilege afforded me by this newspaper to have my column appear from time to time. Let me restate my convictions. Clearly the need for assistance to the States for school construction and teachers' salaries is very great indeed. This year, as in the last Congress, I joined with Senator McNamara to introduce S.8, to provide grants to the States which they could use for teachers' salaries and school construction within the public school system. Included in this bill is an "Assurance against Federal interference in schools." The Federal Government should not

say what is to be taught in our public schools nor who does the teaching. This is the same bill we sponsored in the 86th Congress and which passed the Senate in 1960.

My position may be summed up as follows: First, I want a program of grants to public schools to pass this Congress. Second, I would support this year, as I did last year, an amendment or a separate bill to provide for repayable loans to non-public school systems for construction purposes. However, if such a loan amendment were defeated, as it was last year, I would support the bill providing grants to public schools, just as I did last year.

Third, I would oppose loans or grants to any school system, public or private, where there was intent to subvert a specific court ruling on desegregation.

Finally, I would not support any amendment, loan or otherwise, that is designed to kill a school aid bill. This is the prime consideration: passage of a school aid bill. I believe our survival as a nation requires that we do all possible to improve the excellence of our education.

We in our nation have a great investment in the fullest education of every child. The widespread response to the debates going on in Congress is a clear sign that every Michigan home with children in public or private schools feels the need for the very best in teaching and education. This is what is so heartening to me. The disagreements are not over the need to do something; but rather how best to do it.

If any of my readers have further questions, I hope you will write to me soon. I can't promise that I will change my views if you disagree with me, but I do promise that your thoughts and comments will receive careful attention.

(Political Advertisement)

VOTE X
JOHN R. DETHMERS
HARRY F. KELLY
Justices of the Supreme Court

Look for the Non-Partisan Ballot
and Push the Lever Down.

BIENNIAL SPRING
ELECTION

To the Qualified Electors:

NOTICE IS HEREBY GIVEN,

That a Biennial Spring Election will be held in the

TOWNSHIP OF LIMA

(Precinct No. 1)

State of Michigan

AT

LIMA COMMUNITY HALL

within said Township on

MONDAY, APRIL 3, 1961

For the Purpose of Electing the Following Officers, viz:

STATE OFFICERS

Two Regents of the University of Michigan; Superintendent of Public Instruction; Member of the State Board of Education; Two Trustees of Michigan State University of Agriculture and Applied Science; Two Members of the Board of Governors of Wayne State University; and State Highway Commissioner.

NON-PARTISAN OFFICERS

Two Justices of the Supreme Court.

TOWNSHIP OFFICERS

Supervisor, Township Clerk, Township Treasurer, 1 Trustee, Justice of the Peace (Full Term), Member of the Board of Review, 1 Constable (Not to Exceed Four), Commissioner of Highways.

AND TO VOTE ON THE FOLLOWING CONSTITUTIONAL CONVENTION PROPOSAL:
"Shall a Convention be held to consider Revision or Amendment of the Michigan Constitution for subsequent submission to the Electors of this State for their approval?"

Also Any Additional Amendments or Propositions That May Be Submitted

Notice relative to opening and closing of the polls

ELECTION LAW, ACT 116, P. A. 1954

SECTION 720. On the day of any election the polls shall be opened at 7 o'clock in the forenoon, and shall be continuously open until 8 o'clock in the afternoon and no longer. Every qualified elector present and in line at the polls at the hour prescribed for the closing thereof shall be allowed to vote.

THE POLLS of said election will be open at 7 o'clock a.m. and will remain open until 8 o'clock p.m. of said day of election.

RALPH STOFFER, Township Clerk

Servicemen's Corner

Lt. Llewellyn Lehman

Completes Missile

Orientation Course

Fort Bliss Tex.—Army 2nd Lt. Llewellyn H. Lehman son of Mrs. Alda A. Lehman 14900 Harvey rd. Grass Lake Mich. completed the missile officer orientation course Mar. 20 at the Air Defense School, Fort Bliss Tex. "During the eight weeks of instruction, Lieutenant Lehman was

trained in the duties and responsibilities of a missile officer. The Air Defense School, the largest military school in the nation trains personnel to man and maintain the guided missile systems employed in the air defense of the U. S. by our armies overseas, and by our allies of the NATO and SEATO nations.

Lieutenant Lehman 22 was graduated from Chelsea High School in 1956 and from Michigan State University in 1960. He is a member of Phi Kappa Tau fraternity.

Never waste time in discussing an issue with a man who thinks he knows it all.

HEY KIDS!

FREE KITE

When accompanied by either parent to our store.

ROYAL VALUES MARCH

BUNS of the MONTH!

"Fluffed" Rubber Tire DOOR MAT

The chenille-like finish cleans off all dust and dirt. Easy to clean, longer wear. 14" x 23" size.

REG. \$2.69 **\$1.69**

10-QT. GALVANIZED PAIL

Guaranteed rust and leak proof. Replace your damaged pail now at this low price. Correct size for most all sponge mops. Buy one for the house and one for the garage.

REG. 79c **69c**

BISSELL UPHOLSTERY SHAMPOO KIT

Controlled foam applicator that allows you to clean upholstery without soaking. Easy to use, dries fast. No pads, no messy mop-ups. Gives you deep-down action, lifts dirt out in one application.

\$2.29 REG. \$2.98

DELUXE PLASTIC SILVERWARE TRAY

"Cushion Soft" plastic protects everything tray touches. Special dividers stacks silver automatically.

REG. 98c **69c**

GIANT 9" x 8" x 3" SPONGE

Ideal for washing cars, cleaning floors, washing walls, ceiling, also handy to use as a boat sponge.

REG. 88c **69c**

GIANT 44-QT. PLASTIC WASTEBASKET

(20 1/4" high — 14 1/2" wide)

Heavy-duty flexible plastic. Can't break, dent, or chip! Seamless construction! Top rim serves as continuous easy grip handle. In lovely pastel colors.

REG. \$3.98 **WITH COUPON \$1.99**

Sale Price Without Coupon, \$2.33

3-PC. PAINT & VARNISH BRUSH SET

Set consists of 1", 2", and 3" brushes. 100% pure bristles. Buy now for those Spring painting jobs.

WITH COUPON \$1.29

Sale Price Without Coupon, \$1.49

MARINE SPAR VARNISH QUART

Designed to "take it" in the face of water, weather and wear. Gives you beauty, toughness, durability and excellent sealing. Easily applied and is resistant to both fresh and salt water. Good for maintaining any wood that is exposed to the weather.

WITH COUPON \$1.98

Sale Price Without Coupon, \$2.25

COUPON

400 stores working together to give you top quality, lower prices and friendly service.

MERKEL BROTHERS

(POLITICAL ADVERTISEMENT)
RE-ELECT
RALPH STOFFER
LIMA TOWNSHIP CLERK.
Your support will be appreciated
at the Biennial Spring Election
MONDAY, APRIL 3

**ORDER YOUR
SPRING SEEDS
NOW!**

SEED OATS -
✓ CERTIFIED CLINTLAND 60
✓ CERTIFIED RODNEY
✓ CERTIFIED SIMCO
✓ RODNEY, 1st Year from Certified

PIONEER SEED CORN

ALFALFA SEED -
✓ TEWELES BADGER BRAND
DURA-STAN - MULTI-STRAIN
SOCHEVILLE - ALFANURE

We Stock All Field Seeds and Clovers

Blaess Elevator Co.
PHONE GR 9-6511
Four Mile Lake Chelsea, Mich.

**BIENNIAL SPRING
ELECTION**

To the Qualified Electors:
NOTICE IS HEREBY GIVEN,
That a Biennial Spring Election will be held in the

TOWNSHIP OF SYLVAN
(Precinct No. 1 and 2)
State of Michigan

AT

SYLVAN TOWN HALL
Within said Township on

MONDAY, APRIL 3, 1961

For the Purpose of Electing the Following Officers, viz:

STATE OFFICERS

Two Regents of the University of Michigan; Superintendent of Public Instruction; Member of the State Board of Education; Two Trustees of Michigan State University of Agriculture and Applied Science; Two Members of the Board of Governors of Wayne State University; and State Highway Commissioner.

NON-PARTISAN OFFICERS

Two Justices of the Supreme Court.

TOWNSHIP OFFICERS

Supervisor, Township Clerk, Township Treasurer, 1 Trustee, Justice of the Peace (Full Term), Member of the Board of Review, Constable (Not to Exceed Four), Commissioner of Highways.

AND TO VOTE ON THE FOLLOWING CONSTITUTIONAL CONVENTION PROPOSAL:
"Shall a Convention be held to consider Revision or Amendment of the Michigan Constitution for subsequent submission to the Electors of this State for their approval?"

Also Any Additional Amendments or Propositions That May Be Submitted

Notice relative to opening and closing of the polls

ELECTION LAW, ACT 116, P. A. 1954

SECTION 720. On the day of any election the polls shall be opened at 7 o'clock in the forenoon, and shall be continuously open until 8 o'clock in the afternoon and no longer. Every qualified elector present and in line at the polls at the hour prescribed for the closing thereof shall be allowed to vote.

THE POLLS of said election will be open at 7 o'clock a.m. and will remain open until 8 o'clock p.m. of said day of election.

RICHARD J. KERN, Township Clerk