

CELEBRATION FURNISHES FUN, BARGAINS

Independents Gain Victory at Ann Arbor

McClanahan Pitches Two-Hit Game in Winning 14-0 Sun.

By BILL SCHATZ
Chelsea Independents slapped the Ann Arbor Independents into the deep freeze Sunday at beautiful West Park, Ann Arbor, to the tune of 14-0. Our expert rifeman, B. "Slim" McClanahan laid the opposing batters in neat, restful positions, allowing only two runs. Among his victims were some so-called heavy artillery who pre-empted to Sunday, have chased opposing pitchers of other clubs to the showers.

Along with this fine pitching exhibition Mac also helped his cause by gathering three hits for five trips to the plate and scoring two runs. Andy Policht clambered out of his batting slump by collecting four lousy "bingos" in six times at bat.

Yes, boys and girls, your Eastern division champs, the Chelsea Independents, playing top calibre ball, looked mighty fine as they breezed this one home. The first works started in the first stanza when they touched Johnson A. Ace hurlers for six runs. Every man on your club connected for

(Continued on page ten)



DONNA LOU KALMBACH
Donna Kalmbach Elected Lt.-Gov. at 'Girls' State'

Donna Lou Kalmbach, who attended Girls' State at Ann Arbor the past week, sponsored by Herbert J. McKune Post No. 31, American Legion Auxiliary, returned home Tuesday afternoon. Miss Kalmbach was honored by being elected lieutenant governor in the general election held Thursday, June 17, in the Kalamazoo building, Detroit girls. Barbara Jane Wade and Betty Jan Kelly, were named governor and secretary of state, respectively.

On Monday of this week Miss Kalmbach was again honored, this time by being chosen as one of two girls out of the two hundred and more at Girls' State, to attend Girls' Nation at Washington, D. C. from August 7 to 12. The other Michigan girl chosen is Pat Henke of Albion.

Donna Lou is the youngest daughter of Mr. and Mrs. Oscar Kalmbach and will be a Senior at Chelsea High school in the fall.

Wednesday evening, June 16, eleven members of the Chelsea Legion Auxiliary went to Ann Arbor and gave a pajama party for all the girls and committee members at Girls' State. Sandwiches, ice cream and homemade cake was served.



TED MCCLEAR

Ted McClear, pictured above, is attending the American Legion's eleventh annual Wolverine Boys' State at Michigan State college this week. He was sponsored by Chelsea's Herbert J. McKune Post No. 31. He is the son of Mr. and Mrs. Mark McClear.

Boys' State enrollment numbered about one thousand. High school communities on the basis of scholarship and potential leadership. Boys' State closes tomorrow, June 26.

Miss Mary Chriswell Severely Injured by Hit-Run Driver Thurs.

Mary Chriswell, daughter of Mrs. Lyle Chriswell, was injured when she was struck by an automobile driven by a woman hit-and-run driver at the corner of John R. and Alexandrine avenues in Detroit about four o'clock Thursday afternoon, and is a patient at Grace hospital where she has been in training the past three years. She graduated early this month with her class but still has two months of training to finish.

The accident occurred as Miss Chriswell was crossing the street to return to the hospital. She was walking with the green light and the car which struck her, it was reported, ran the red light. The woman driver sped away without stopping. However, two Catholic priests who witnessed the accident from their car, gave chase and forced the hit-and-run car to the curb. It was reported that the woman driver had been drinking. At the hospital examination disclosed no broken bones, but Miss Chriswell was badly bruised and suffered from shock. Her mother and other members of her family have visited her at the hospital a number of times during the week since the accident.

Fisher Quits as Trustee Monday Eve.

Accepts Interest in Klumpp Brothers Trucking Business

Eugene Fisher resigned as village councilman at Monday night's council meeting, giving as his reason that he has obtained an interest in the Klumpp Brothers trucking business. At this business concern is employed at times by the village of Chelsea. Mr. Fisher is automatically disqualified for serving as councilman for the village. His resignation was accepted by the council and Graham Sprague was appointed to fill the vacancy.

Corporal Bliss of the State Police, and State Highway department representative Levine were in Chelsea Monday and the council was advised that they had ordered that all parking be prohibited north of the New York Central railway tracks to a point opposite North street and from there on only parallel parking is to be allowed. Parking there was declared a traffic hazard on a State highway, this being part of M-92.

This ruling should cause no undue hardships to employees of adjacent factories it was pointed out, since the Chelsea Film company has provided a large parking lot north of the factory for the use of its employees, leaving the street parking spaces free for others to use.

The tax rate for village operation was set at ten mills and at one mill for the sewerage system. It was reported by the sidewalk committee that work has been begun on sidewalk repairs in the village. At least \$5,000 is to be spent this year on curbs and sidewalks.

Chelsea Fire department representatives recommended the purchase of a new fire truck at an estimated cost of about \$1,500 and were ordered by the council to purchase the needed equipment. Representatives of a company engaged in spraying DDT over communities to combat mosquitoes and flies presented their proposition to do this in Chelsea, but their offer was rejected on the ground that other expenditures were more necessary at this time.

Advertising was ordered, asking for submission of bids for the new Electric Light and Water department building to be erected on North street near the filtration plant and pumping station. In answering to inquiries it was stated that road crews of T. P. Flynn & Co., who are to do extensive street repair work here are expected to be here to begin work soon.

Miss L. Broesamle Bride of Dr. Hogan of Fenton, Tuesday

Miss Lucille Broesamle, daughter of Mr. and Mrs. Fred Broesamle, and Dr. Daniel L. Hogan of Fenton, son of Mrs. Mary Hogan of Fenton, were married at eleven o'clock Tuesday morning, June 22, in the Michigan League Chapel in Ann Arbor. Only twelve guests were present, including members of the immediate families of the couple and a few close friends.

Rev. Orville W. Morrow of the Chelsea Methodist church was the officiating clergyman on the ground. The bride wore a white pique two-piece dress with lace trimming on the jacket. Her hat was of matching pique and her ensemble was completed with a corsage of Poinsettia roses.

Mrs. C. Slater, Kern of Detroit, attended the bride as matron of honor, wearing for the occasion a powder blue linen dress and a white starched lace hat. Her corsage was of tea roses.

Dr. John A. Henkel of Ann Arbor assisted the bridegroom as best man.

Following the ceremony a wedding breakfast was given by the bride's parents in the Kalamazoo room of the League and then the couple left for a month's honeymoon at Banff and Lake Louise, going by way of Yellowstone and Glacier National Parks. For going away the bride wore a brown shantung suit with white accessories.

After July 20, Dr. and Mrs. Hogan will be at home at 14174 Dartmouth Drive, in Fenton.

The bride received her Teachers' Life Certificate at Michigan State Normal College and her B.A. degree from Michigan State College. She has been a teacher in the Lansing schools.

Dr. Hogan received his D.D.S. degree at the University of Ypsilanti. He is a member of Xi Psi Phi fraternity.

DESSERT BRIDGE CLUB

Mrs. George F. Staffer entertained the Dessert Bridge club at her home on Monday afternoon.



MRS. ARTHUR B. COLLINS was the former Margaret June Harper before her marriage Saturday afternoon, June 19, in the First Methodist church, Chelsea. The couple will make their home in Madison, Wis., this summer.

Miss Margaret J. Harper Married to Arthur B. Collins in Methodist Church

At two o'clock Saturday afternoon, in the Methodist church, decorated for the occasion with bouquets of white peonies and gladioli, Miss Margaret J. Harper, daughter of Mr. and Mrs. Arthur B. Collins of Lansing, was married to Arthur B. Collins of Madison, Wis., by Rev. F. W. Mumby, former pastor of the church, assisted by Rev. O. W. Morrow, the present pastor, performed the ceremony.

The bride's parents are Mr. and Mrs. Walter A. Harper of Chelsea, while the bridegroom is the son of Mrs. Evelyn Rowe Collins of Lansing, and the late William Harry Collins.

Preceding the bride and her father, who gave her in marriage, were the two bridesmaids, Miss Mary Alice Duncan of Woodward, Okla., and Miss Catherine Huxtable of Lansing, both sorority sisters of the bride, and the matron of honor, Mrs. William Peterson, the bride's sister.

The bridesmaids were in pastel green rayon marquisette over tulle, fashioned with long, full skirts trimmed with three double ruffles and an interlaced effect around the entire width of the skirt. The fitted bodices were finished with short cap sleeves and a wide bias fold giving an off-the-shoulder effect.

The matron of honor was in pastel pink made exactly like the bridesmaids' gowns. The bridesmaids and matron of honor all wore white daisy wreaths in their hair and carried shower bouquets of white daisies, and all wore white lace mitts.

The bride's gown was of white rayon marquisette over satin, the long-sleeved bodice having a transparent yoke edged all around with a double ruffle and finished down the back with a row of tiny buttons.

The long, full, hooped skirt, with its long train edged all around the bottom with a ruffle, the marquisette overskirt being caught up in the front showing the satin underskirt. A white flower held the marquisette at the point where it was caught up.

Her wedding veil was the one her sister wore when she was married a year ago. It was fingertip length and fell from a tiny satin cap trimmed with three bands of lily-of-the-valley. Her bouquet was of stephanotis centered with a white orchid.

Mrs. Neva Peterson of Cadillac, mother-in-law of the bride's sister, Mrs. Stephen De Vries of Ypsilanti, when she sang, before the ceremony, "Because" and "On, Promise Me," and during the ceremony, "The Lord's Prayer," by Malotte.

Assisting the bridegroom as best man was his brother, Russell Collins of Detroit.

Following the ceremony a reception for one hundred and twenty-five guests was held at the home of the bride's parents, Garden flowers were used as decorations.

Program of Factory Tours, Entertainment, Sales, Set for Chelsea Days Event Fri., Sat.

Miss Audrey White Married Saturday to Wayne Patterson

Miss Audrey Lois White of Chelsea, and Wayne E. Patterson of Marion, Michigan, were married in the Methodist church here at eight o'clock Saturday evening. Rev. Orville W. Morrow performed the ceremony.

Miss Shirley Jean Platt, in a pink linen suit with white accessories and a corsage of white roses, was maid of honor, and Carroll Patterson of Marion, brother of the bridegroom, was best man.

The bride's costume was all white, including a white gabardine suit, white lace hat and accessories and a corsage of lily-of-the-valley and a white orchid. For going away she wore a grey suit with white accessories and her orchid corsage. After June 23, she and her husband will be at home in Marion, where the bridegroom's parents, Mr. and Mrs. Thomas Patterson, reside.

The bride graduated from Chelsea High school in 1946.

The bridegroom is a graduate of Marion High school and served two years in the U. S. Army. He is now employed by the Consumers Power company in Marion.

A reception was held after the ceremony, at the home of the bride's parents, Mr. and Mrs. Bert A. White, on McKinley street. Forty guests were present from Wayne, Detroit, Ypsilanti, Marion, Romulus, and Chelsea.

The bride's sisters, Mrs. George Titus of Detroit, Mrs. John Clark of Romulus, and Mrs. William Briston of Chelsea, assisted at the reception and Miss Alma Ann Titus of Detroit, niece of the bride, poured and was in charge of the guest-book.

Throughout the rooms and on the lace-covered table from which the refreshments were served, with Mrs. Glenn Gordon of Allegan, aunt of the bride, pouring, and Mrs. James Deal of Mason, cutting the cake.

For her daughter's wedding Mrs. Harper wore navy with white accessories and a corsage of pink roses, while Mrs. Collins in brown and white print, wore a white rose corsage.

Mr. and Mrs. Collins left after the reception for Devil's Lake, Wisconsin, where they will spend a week before going to Madison, where Mr. Collins will attend the summer sessions at the University of Wisconsin. He will continue his studies in the Engineering school at the University of Michigan in the fall. He spent three years in the army, fourteen months of which were spent in the European theater.

Mrs. Collins, a graduate of Chelsea High school, received her A.B. degree at Albion college and her M.A. at the University of Michigan and is a teacher in Ypsilanti High school. She is affiliated with Alpha Xi Delta sorority, Sigma Alpha Iota and Mortar Board.

For going away the bride wore a gabardine suit in a medium shade of blue with navy and white accessories and the white orchid from her bridal bouquet.

Valeria Whitney Is Bride of N. Niehaus in Sat. Ceremony

Norman Niehaus, son of Mr. and Mrs. Alvin Niehaus, was married in Jackson Saturday afternoon to Valeria Whitney, daughter of Mr. and Mrs. William Buck.

The ceremony was performed at two o'clock at the home of the bride's parents, 335 South street, in the presence of the immediate families of the couple. Rev. J. J. Pease, pastor of the Loomis Park Baptist church of Jackson, read the service.

The couple's only attendants were the bride's sister, Mrs. Charles Scott of Jackson, and Richard Kinsey of Chelsea.

The bride wore for her wedding a powder blue gabardine suit with white flowers to which a short blue veil was fastened. Her corsage was of white roses. For going away she wore navy accessories with belt suit, removing the tulle and veil and substituting a navy blue hat.

Her sister wore a pink crepe street-length dress with pink accessories.

Following a short honeymoon trip to northern Michigan, the couple will live in Ann Arbor.

The bride an employee of the Michigan Bell Telephone company, has been transferred from Jackson to the Ann Arbor office.

Mr. Niehaus is employed by the Muehlis-Lamphear hardware firm in Ann Arbor. He is a graduate of Chelsea High school and was in the army for about three and one-half years.

Relatives from Chelsea who attended the wedding were Mr. and Mrs. Alvin Niehaus, Mrs. Robert Niehaus and Mrs. Emma Niehaus.

Stores Will Remain Open from 8 a.m. to 9 p.m. Both Days

It's Open House time in Chelsea with the coming of "Chelsea Days" on Friday and Saturday of this week-end.

Under the sponsorship of the Chelsea Chamber of Commerce, local merchants, businessmen and factory owners have joined in a concerted effort to sponsor a two-day bargain festival which will attract shoppers from all parts of this and neighboring counties.

Free entertainment has been arranged for both days on the downtown streets and on Saturday night under the lights at the Chelsea Athletic Field on Washington street. Details of the programs for each day are given on page one, section two of this week's edition of The Standard.

"Chelsea Days" will have its educational side, too. In keeping with the wishes of the Chamber of Commerce to let the bars down to persons from the surrounding territory may learn more about Chelsea's facilities and to acquaint local residents with little known or forgotten advantages of their own home town, plant managers of Chelsea factories are co-operating in furnishing conducted factory tours. It is felt that many wives, relatives and friends of the many persons employed in our local plants, probably have had the opportunity to learn little of the details of the products made or the work performed, aside from the payroll check angle every week.

With this thought in mind plans have been made to make all learn more about Chelsea's own growing industrial strength.

Beginning at 2:00 p.m. Friday afternoon, all those interested in such a tour of the plants, will gather in front of the Municipal building on Middle street and be escorted two blocks to the Chelsea Spring company, where plant officials will take over the tour. Here, visitors will see 150 different machines making a total of some 1,500 different types of springs, and the heat treating department where the springs are tempered. The Spring Co. employs about 500 persons on a three-shift arrangement and the first shift workers will be on duty at the time of the tour.

From the Spring Co. the group will move another block to the Central Fibre company, where a total of 35 different machines will be in operation, manufacturing various paper twine and paper covered wire.

At Chelsea Products, the third and final stop on the tour, visitors will see the complete manufacture and assembly of a power take-off unit which acts as the hoist on dump-truck bodies. Products also manufactures a fuel metering device for use in pumping and measuring oil delivered from trucks. Chelsea Products is one of the nation's largest producers of power take-offs.

The factory tour will be completed in plenty of time for witnessing the street show at 4 p.m. Exhibits of products manufactured locally will be on display continuously in the fire truck hall of the Municipal building.

For the convenience of shoppers all stores will remain open from 8 a.m. until 9 p.m. on both Friday and Saturday.

Come early and take advantage of the many bargains offered for these two days only. A study of the advertisements in this special edition of The Standard will quickly convince anyone that savings which may be made by combining pleasure with the shopping tour on "Chelsea Days," Friday and Saturday.

Popularity of The Standard must be increasing if this little incident is any indication.

Among regular subscribers on Dexter route I mailing list this fact was already known and borne out by the many calls received at The Standard office up until Tuesday noon, saying, "I didn't receive my paper last week!"

It seems that a railway mail clerk, who is an ardent reader of The Standard, just couldn't let that particular bundle out of his hands until he had time to read every word which meant he had to carry them around over the state several days before delivering them to the Dexter post-office for delivery.

HAY RIDE
Twenty-two members of the Paul's Young People's League enjoyed a hay ride followed by a wicker roast at the Oscar Hapkins farm Thursday evening.

Chelsea Mill Team Wins Game from Grass Lake Club

By DWIGHT GADD
Chelsea Milling surged back into the win column last Sunday as they took a slug-fest from Grass Lake, 1-7, here at the local field.

The Lakers scored first as they got four big runs in the first inning on two walks, an error, and two hits, but after that shaky start Slane settled down and pitched good ball until relieved by Alber in the fifth inning.

Duffy Mixers got two of them back in the second as Slane tripled to right center to score Redemacher and Cakem. Mr. Drieland, who formerly was a Chelsea resident, was ninety-three years old. He went to California to live about 28 years ago and his only close survivor is a daughter, Mrs. John Riley of San Gabriel.

Milling added another in the fourth, but Grass Lake got one in the fifth on Slane and another in the sixth off Alber to tie it up at 7-7.

In the last of the sixth, the "wiles" tucked the game away with four runs on four hits, a walk and a batter hit with a pitch, and that's the way it ended, 11-7, as Alber pitched out his ball the rest of the way.

Milling—11 runs, 11 hits and 4 errors.

Grass Lake—7 runs, 7 hits and 3 errors.

Next Sunday Milling goes to find second place, and another win will put the "Jiffies" right back into the race, so it should be a good game.

BENEFIT ICE CREAM SOCIAL
An Ice Cream Social will be held Wednesday, June 24, beginning at 5:30 p.m. (Slow Time) at Glenn Rentschle's new Waterloo Garage which he plans to open for business about July 1. Proceeds are for the benefit of the Waterloo U. S. Salem Grove and Mt. Hope churches. Ice cream, home-made cake, hot dogs, coffee and pop. Music by Waterloo Band. Every-one welcome.

Albert Jurgens assisted the bridegroom as best man and Albert B. Doll, Jr., brother of the bride, acted as ring bearer.

(Continued on page five)

MRS. DONALD W. DOLL

Lyons-Doll Vows Spoken Saturday at St. Mary's

St. Mary's church was the scene of the wedding, Saturday morning at nine o'clock, of Miss Therese Lyons and Donald W. Doll, with Father Lee Laige officiating in the presence of one hundred guests.

The bride is the daughter of Mr. and Mrs. H. H. Lyons and Mrs. Doll's parents are Mr. and Mrs. Albert B. Doll, Sr.

Thomas J. Lyons, a brother of the bride, sang Rosewings "Ave Maria" and the Junior choir girls sang the Nuptial Mass. Mrs. George Clark was the organ accompanist and also played the traditional wedding music.

White lace fashioned the bride's gown which was finished with a long train. A tulle of white seed pearls held her fingertip veil in place and she wore a white pearl choker necklace which was a gift from the bridegroom. Her bridal bouquet was of white roses and was centered with a white orchid which she later wore with her going away suit of wine-colored gabardine with boned accessories.

Miss Rosemary Lyons, in a lavender tulle floor-length gown, with matching elbow-length gloves, flowered tulle and veil and carrying lavender gladioli was her sister's maid of honor while Mrs. H. B. Orthing, a cousin of the bride, and Miss Joan Shutes were the bridesmaids. Mrs. Orthing was in yellow faille with a matching tulle and flowers and Miss Shutes in grey faille with a pink tulle and flowers.

Albert Jurgens assisted the bridegroom as best man and Albert B. Doll, Jr., brother of the bride, acted as ring bearer.

(Continued on page five)

The Little Store Around The Corner

\$2.85 Ladies' Crepe Night Gowns	\$2.45
\$1.39 Children's Pajamas	\$.98
\$2.39 Ladies' Sanforized Overalls	\$2.98
\$2.49 Boys' Sanforized Overalls	\$2.19
All Girls' Dresses Marked Down to Cost	
\$2.98 Leatherette Zipper Bags	\$2.49
\$1.49 Beach Bags	\$1.29
\$2.89 Beach Bags	\$2.39
\$1.00 Boxed Stationery	\$.79
\$2.85 Gilbert Alarm Clocks	\$2.39
\$.89 Kwik-Lite Flashlight	\$.69
\$2.69 Electric Toaster	\$2.19
\$3.39 Electric Hot Plate	\$2.46

Our Free Door Prize Tickets will be given to each customer, Friday and Saturday. Drawing Saturday Night.

J. F. HIEBER & SON

5c and 10c 107 W. Middle Street \$1.00 and up

Club and Social Activities

BIRTHDAY OBSERVED

Helen Anne Stapish, who celebrated her sixth birthday on Saturday with her grandmother, Mrs. Ella Stapish, whose birthday occurs on the same day, shared honors with her grandmother at a family dinner which featured a lovely birthday cake. The dinner was given at the family home by her parents, Mr. and Mrs. Clarence Stapish.

ANNOUNCE MARRIAGE

Rev. and Mrs. Bart E. Van Zyl announce the marriage of their daughter, Marian Ruth, to Rev. Robert VanderHart, which took place on Monday, June 14, 1948, at Holland, Mich.

Rev. VanderHart was formerly pastor of the Salem Grove Methodist church for one year, leaving there about two years ago.

Rev. and Mrs. VanderHart are making their home in Detroit, Mich.

PHILATHEA PICNIC

Members of the Evening group of Philathea Circle of the Methodist church enjoyed a picnic dinner at Clear Lake Wednesday noon, June 16.

ATTENDING CONFERENCE

Ellen Jane Goddes, Jean McClure and Mary Jane Jarvis left Sunday to attend the Congregational High School Conference at Olivet which is being held there all this week. They were accompanied there by Mr. and Mrs. Goddes, who returned home Sunday evening. Mrs. M. W. McClure plans to go there Saturday to bring the girls home.

FAMILY DINNER

Mr. and Mrs. Alvin Vail entertained at a dinner at their home on Sunday in honor of their father, Thomas Vail and E. M. Eisemann, and in celebration of the birthdays of Thomas Vail and Mrs. Charles Winans, as well as the first wedding anniversary of Mr. and Mrs. Charles Winans.

In addition to the honor guests those present included Mrs. E. M. Eisemann and Helen Vail.

Afternoon callers were Mr. and Mrs. Waldo Eisemann and children, of Ann Arbor.

SURPRISED ON BIRTHDAY

Mrs. Chester Keezer was surprised with a celebration of her birthday at her home on Wilkinson road, Friday evening. Guests who came in for an evening of pinocle, were Mr. and Mrs. Allan Benedict of Manchester, Mr. and Mrs. Dean Hepburn and daughter, and Mr. and Mrs. Donovan Sweeney and sons.

Refreshments, which included a birthday cake, were served, and Mrs. Keezer was presented with a gift from the group.

PRE-NUPTIAL SHOWERS

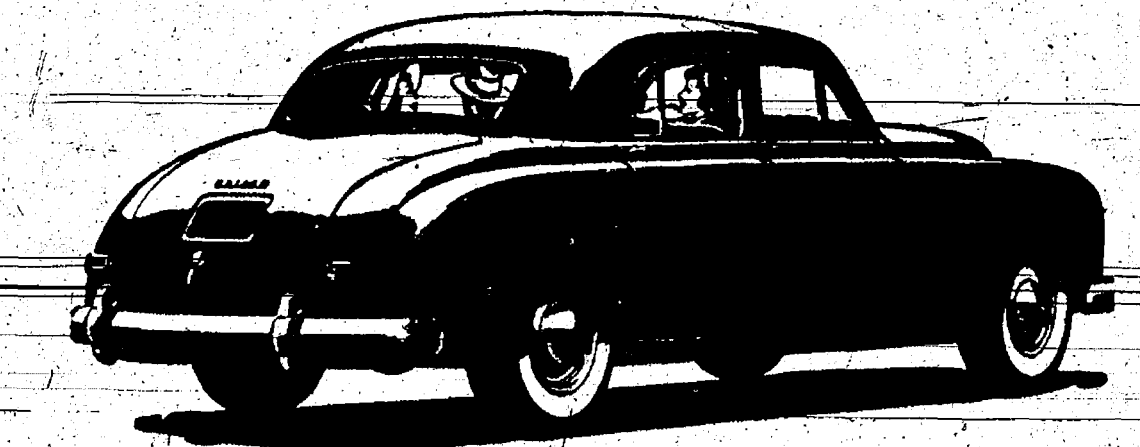
Miss Doris Trinkle, daughter of Mr. and Mrs. Clarence Trinkle, whose marriage to Ellis Pratt is to be an event of July 10, was guest of honor at three miscellaneous showers over the week-end.

On Friday evening Mrs. Pratt's sisters-in-law, Mrs. James Pratt and Mrs. Robert Pratt, entertained at the home of Mrs. James Pratt, near Clinton. Mrs. Trinkle, with Mrs. John Pratt, of Manchester, accompanied her daughter to attend the shower.

Saturday evening, Jeanette Frey, of near Manchester, a friend of the bride-to-be, entertained at her home, the guests including, in addition to young friends of Miss Trinkle, Mr. and Mrs. John Pratt, of Manchester, and Mr. and Mrs. Clarence Trinkle and son, Robert.

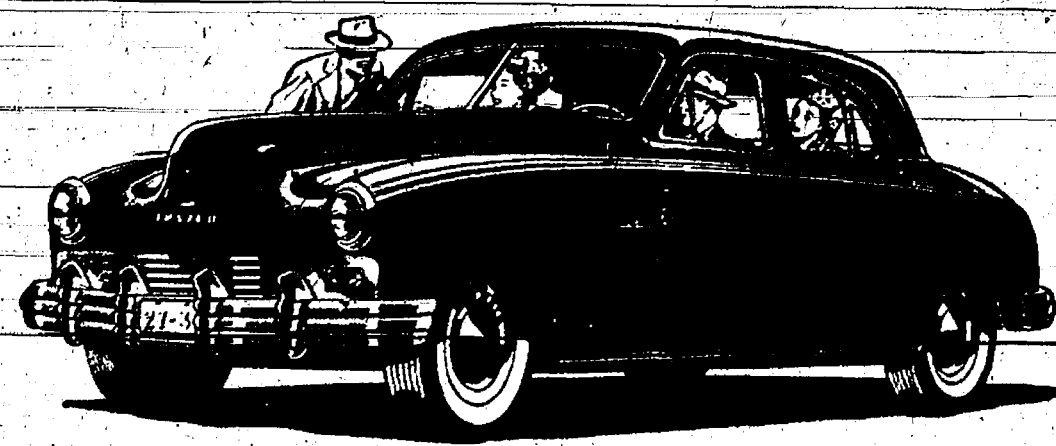
Sunday evening the home of Mr. and Mrs. David Wahl, of Saline, was the scene of the third shower and this was given by the relatives of Mrs. Trinkle and her sister, Mrs. Wahl.

The bride-to-be received many lovely gifts at all three showers.



KAISER FRAZER

Service... Wherever You Go!



...still the newest cars on the road!

We Invite You to SEE, DRIVE and COMPARE Them, Today!

137 Park Street **SPRAGUE MOTOR SALES** Phone 5901

DOLLAR DAY SPECIALS

The Rexall Store

Two Big Days - June 25-26

DOOR PRIZE

Brownie Target Six-16 Camera
Come in and Sign a Ticket.

Summer Specials

76c Gypsy Sunburn Cream with 1 oz. Cotton 59c

60c Mum Deodorant 49c

\$1.00 Mennen's Baby Oil 89c

Sun and Sport Glasses 25c to \$4.98

6-12 Insect Repellant 49c

Tartan Antiseptic Suntan Lotion 59c

Schraatz Leg Make-up, Shower Proof. 59c

100 Rexall Little Liver Pills 17c

Rexall Diuretic Pills 60 for 26c

\$ Savings \$

\$1.00 Rexall Cold Cream
\$1.00 Rexall Bath Powder
Both for \$1.00

\$1.00 Schraatz Bubble Bath.
Two 40c Size Avaderma Soap.
Both for \$1.00

\$1.00 All Purpose Sprayer.
25c Flit Spray.
Both for \$1.00

Giant Special

69c Rexall M 31 Sol.
39c Kleenex Tooth Brush
50c Dr. West Tooth Paste
All Three for \$1.00

\$1.50 Parke-Davis Pure VANILLA
\$1.00

200 McKesson's 5 Gr. Aspirin Tablets 49c

50c

PHILLIP'S MILK of MAGNESIA

39c

Fitch's Shampoo .75
Bath Spray 1.25

\$2.00 VALUE
Both for \$1.19

1 oz. Spirit Camphor

12c

\$1.50 LEATHER BILLFOLD
\$1.00

Attention Farmers!

WHEAT STORAGE

200,000 Bushel Capacity

Bonded and Insured



EASY UNLOADING

QUICK SERVICE

Storage Rates:

1-20th cent per bushel per day, or 1½ cents per bushel per month.

Bonded Warehouse Receipts will be Issued

All wheat accepted for storage must not contain smut, weevil, or exceed 14% moisture; that is, it must grade No. 2 wheat.

Take Advantage of this Opportunity!

It's New for This Territory!

For Further Information Contact Us Directly or
Phone Chelsea 6511

We will also be in the market for cash wheat at harvest.



Full Stocks of Larro "Farm Tested" Feeds

"See us about the Larro Feeding Program"



BLAESS ELEVATOR

Four Mile Lake

Phone Chelsea 6511

Shop at **HENRY H. FENN'S**

CHELSEA DAYS CELEBRATION SPECIALS for TWO DAYS ONLY!

Yessir, men, here are shirts women admire — and when women admire something — it's "something." A shirt fully cut, mind you, not baggy — a shirt that gives full breadth across the shoulders — full length in the sleeves and fullness through the body is a shirt you enjoy wearing. Make your selections from a pleasant variety. They wash and wear endlessly.



Men's fine count fast colors, sanforized. Permanent finish collars. Sizes: 14½ to 16½. Only —

\$2.89

Men's Waist Band Blue Denim
DUNGAREES

8 oz. Sanforized. All sizes to 42.

\$1.99

EXTRA SPECIAL

Boys' Blue Duck
Overall Pants

Sanforized. 8 to 16 years.

\$1.00

Hurry For This One

Men's Blue Denim Trousers

Sizes 32 to 36 only. Choices in these sizes. Regular \$2.29.

\$1.49

Men's Knit Shorts

All sizes — Pair

59c

Men's Athletic Under Shirts

59c



Men's lightweight Zipper in shower-proof Zeelon Poplin. Just the coat for now.

\$5.95



**LITTLE BOYS' WASH
PLAY-ALLS**

Sizes 2 to 5. Cool, comfortable and smart.

Values — \$1.49 and \$1.79

98c

**BOYS' BIB
OVERALLS**

8 oz. Sanforized
6 to 16 years.

\$1.98

Men's Short Sleeve
Sport Shirts

\$1.98

MEN'S FINE COUNT COMBED YARN

White T-Shirts

Small, Medium and Large. 79c Values.

Special Price 69c



**BOYS' FAMOUS TOM
SAWYER**

Sport Shirts

Fast colors. Beautiful patterns. Short or long sleeves. Sizes 4 to 20's.

\$1.98 - \$2.98

Men's Zipper Shower-Proof Coats

Light Tan Suede Lining. Sizes 34, 36, 38, 40 only.

\$4.98 VALUE

\$2.98

Shoe Repair While You Wait

(Small Jobs)

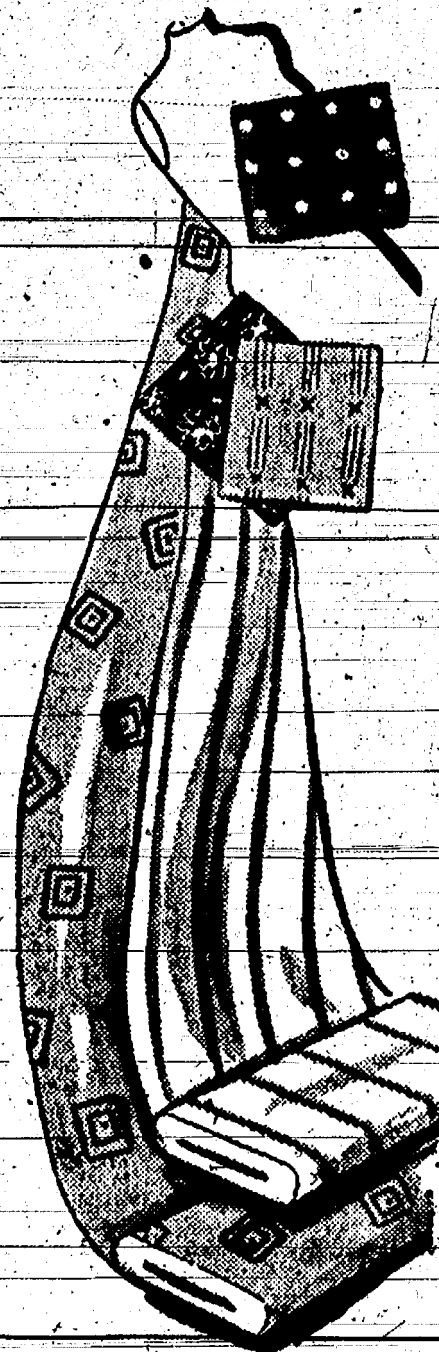
EVERY JOB GUARANTEED

BASEMENT SHOE REPAIR

FIRST --

Please Do Not Forget to Register for
One of Our Three Free Gifts

1st Prize 100% Virgin Wool Blanket—Value \$13.00
2nd Prize One 24x48 Wunda Weave Rug \$7.95
3rd Prize One 81x90 Sheet, 1 Pair Pillow Cases \$4.00



SALE --

SPECIAL FOR 2 DAYS
ONLY

Three Yards

of
**Extra Fine
Bleached
Muslin**

1 Yard Wide.

Regular 39c

3 Yards

\$1.00

FAST COLOR

Guadruga

Print

Over 100 patterns. Dark,
Light, Floral, Stripes.

59c

Stevens

100% Linen Crash

Towel

49c



Colorful Floral sprigged cotton housedress with ric-rac trim. Pinafores and Zippers.

\$3.49 to \$4.49

SALE --

WOMEN'S HOSIERY

Includes (Pure Silk) (Nylon) and (Rayon). Good colors. All sizes, 8½ to 10½. Value to \$2.00. (Not all sizes in each type.)

**CLEARANCE
PRICE**

98c

Muslin

Pillow Cases

42x36

39c

LITTLE GIRLS'

Loomcraft

Dresses

Sizes 3 to 6X — 7 to 12.

PRICE

\$1.98 - \$2.98



2 FOR 1 SALE

Blanket Lay-a-way

Start early and have it paid for early.

**DURING CHELSEA DAYS
TWO DAYS ONLY**

1st—Select Your Blanket.
2nd—Pay \$1.00 and we give you credit for \$2.00.

TOTAL PAYMENT \$2.00—SAVE \$1.00
Good on Only All Wool Blankets.

\$9.95 \$10.95 \$12.95 \$14.95

Be Ready...WHEN WINTER COMES!



Corrigan



*Captures the New Mood in Casuals
in a Sunny Sunling* Print*

\$11.95

Many others \$8.95 to \$11.95

With free flowing lines Georgiana brings new softness and new half size flattery to this button-front casual. In navy or green on white, wine on pink, or navy on blue sedan chair print. Sizes 14½ to 24½.

*Everized Shrink

GLICK'S

WANT ADS

FOR SALE—Four tires, 16x6.00 with two tubes; two-wheel trailer with new tires. Holden Farm, Heim Rd. -49

FOR SALE—Regular 6 ft. Case mower, horse drawn. 12755 Seio Church Rd. RFD No. 2, Chelsea. Phone 4681. -50

WANT ADS

FOR SALE—1938 Fordson tractor and cultivator. Ollie Conley, 2690 McKinley Rd., Chelsea. -49

FOR SALE—McCormick-Deering mowing machine, horse drawn; dump rake, both nearly new. Chelsea Greenhouses, 7010 Lingane Rd. Phone 6971. -49

WANT ADS

FOR SALE—Window, frame, sash and screen, complete, 24x28-in. also several larger and smaller sizes. Albert Hinderer. Phone 2-2076. -50

FOR SALE—1946 Jeep, priced to sell, with low mileage. Phone 3593. -49

WANT ADS

SPECIALS FOR CHELSEA DAYS

First Aid Kit, was \$1.55, Now 98c

White Exterior Paint, was \$6.50 gal. now \$5.50

Universal Automatic Iron, was \$10.10, now \$9.00

Baseball Gloves, were \$3.75, now \$3.40

Baseball Glove, was \$7.49, now \$6.75

Baseballs, were \$2.65, now \$2.39

Ironing Board Pad and Cover, were \$1.39, now \$1.25

Plasta Paint, was \$3.00, now \$2.75

5 H.P. Outboard Motor, was \$129.95, now \$119.95

Electric Trolling Motor, was \$49.00, now \$44.95

WANT ADS

WANTED—Young man to work in yard and care for shrub beds. Mrs. Leigh Palmer. Phone 2-1669. -49

WANT ADS

MONUMENTS—I now have the agency for a nationally known line of cemetery memorials. I will not be under sold. For free estimate call 7893. C. L. Sloum, Sr. 81tf

Iron Fireman Stokers

The question before the house is when will they come down to a price where the average person can buy one?

Moore Coal Company

"MORE COAL FROM MOORE" DIAL 2-2911

INSURANCE . . .

WORLD-WIDE THEFT . . . PERSONAL LIABILITY . . . RESIDENCE LIABILITY . . . coverages that are becoming very popular and also a necessity.

A. D. MAYER

"INSURANCE FOR EVERY NEED"
Corner Park and Main Chelsea, Michigan



Your Church Calls You

Pagan dictators still seek to control the bodies and souls of all mankind. Join your neighbors in church and register your belief in the Rule of God and Conscience. The forces of Christendom are mobilizing to protect liberty-loving people from enslavement.

Your church needs you and you need your church.

Funeral Directors for 3 Generations
STAFFAN
FUNERAL HOME
EMERGENCY SERVICE—PHONE 4211
241 Main St. Chelsea, Mich. 48115

FREE ESTIMATE

CABINET WORK

TERMS IF DESIRED

GRANT MOHRLOCK
610 Taylor St. Phone 2-2891 37tf

100 HORSES WANTED—For highest prices phone 9881. Louis Ramp. 16tf

WANTED—Light carpenter work and painting. Earl Schans. Phone 7570. -50

WANTED—Custom pick-up hay baling, new equipment. Oran Schiller, phone Chelsea 2-3360. -50

AL'S RADIO SERVICE
at
PALMER'S GOODYEAR STORE
110 E. Middle St. Phone 7601 -51

FOR SALE—Oil stove in good condition, used 2 years. Phone 2-2072. -49

FOR SALE—John Deere hay loader in new condition. Oran Schiller, phone Chelsea 2-3360. -49

FOR SALE—A few White Rock pullets, 6 weeks old. Franklin Van Valkenburg. Phone Chelsea 2-1362. -49

FOR SALE—1937 Terraplane, \$125. Good tires, battery and seat covers, new clutch, loose bearings in motor. Phone 2-1863. -49

FOR SALE—2-wheel trailer, 4x8 ft. with sides, spare tire and wheel. Phone 2-3372. -49

FOR RENT—Clark, lightweight, high speed electric floor sander and edger. Sandpaper for sanders, fillers, sealers, waxes and varnishes in stock at all times. Merkel Bros. Hardware. 27tf

REG-USED SCHOOL BUS
Painted red, white and blue. A-1 mechanical condition. This bus built for good, safe transportation. A Real Bargain.
Reo Sales, 1314 S. Washington Ave., Lansing, Michigan. 49tf

PROPERTY WANTED for listing. L. W. Kern, phone 3841. 21tf

LAWMOWER SHARPENING and REPAIRING. F. Almon, phone 5581, 406 Washington St., Chelsea. 49tf

FOR SALE—Oak bed with good coil springs and felt mattress. Phone 2-1061. -49

WANTED TO BUY—All types of cattle, feeder pigs, horses, sheep. Phone 6463. Winston Schenk. 49tf

YOUR OPPORTUNITY TO OWN A PROFITABLE BUSINESS
Own a Western Auto Associate Store! Sell auto supplies, household appliances, radios, bicycles, electrical accessories, sporting goods, etc.!!
You, like the present 1850 owners of Western Auto Associate Stores can capitalize on Western Auto's nation-wide consumer acceptance. No experience needed—we train you. Approximate cash capital of \$10,000 required.
Choice locations available. See, write or phone us for information.

WESTERN AUTO SUPPLY COMPANY
Wholesale Division
Phone: Randolph 8280
1965 Porter St. Detroit 16, Mich. 49

FLOOR SANDER AND EDGER
For Rent, heavy duty models for the best job.

CHELSEA LBR. GRAIN & COAL COMPANY
Dial 6911

CUSTOM WORK—Orders taken for spring corn picking, plowing, fitting or Seaman tiller. Phone Ann Arbor 9025 after 6 p.m. 28tf

FOR SALE—Kelvinator refrigerator, good condition, reasonably priced. 541 N. Main St. Phone 2-2082. -49

PALMER'S GOODYEAR STORE

110 E. Middle St. Phone 7601 -51

FOR SALE—Extension dining room table, 6 chairs, buffet, bed and porch glider. Phone 6431. 49

FOR SALE—Large oak flat top desk, reasonable; also steel medicine cabinet with mirror. L. R. Lord, W. Middle St. Phone 4631. -49

STRAWBERRIES FOR SALE—Dunlap, best for locker. Phone your orders now. We deliver. W. A. Carlson. Phone 5782. -49

USED TIRE SALE

PALMER'S GOODYEAR STORE
110 E. Middle St. Phone 7601 -51

FOR SALE—About 1400 ft. 2"x6"x14' & 16' oak and ash, price \$70 per M ft.; also about 800 ft. pine boards, oak, planed, on one side. 270 per M ft. George L. Staffan, Phone 4417. -50

FOR SALE—New Idea hay loader in good condition. G. W. Steeds, Phone 2-3215. -49

SIGNS and Show Cards painted—For estimate phone 2-2651 or 4174. -49

FARM FOR SALE

238 acres, to settle Chris McGuinness Estate. Bidding will start Tuesday, June 22. Write or phone Dexter 2788. -49

EDWARD DOLAN, Adm.
Route 2, Dexter Flemming Rd. 49

LIST YOUR FARMS and houses for sale with Alvin H. Pommerening, phone 7776. 36tf

PRICED TO SELL—7 room modern house, automatic oil heat, full basement, automatic gas water heater. Phone 2-3161. -50

NOTICE—I am now connected with the W. M. Blackman Agency as a Real Estate Salesman. I would appreciate any listings you have to offer. With my being in this vicinity and our Jackson salesman in that locality, we can assure you of a prompt turn over. See Minnie Scripser, evenings and week-ends, Phone 2-1369. 49tf

FOR SALE—1939 Pontiac, good condition; new motor; priced for quick sale. Phone 2-5704. -49

PAINT—Outside White in 5 gal. Cans, \$2.50 a gallon. High titanium lead and oil—a snow-white paint. Money-back guarantee not to peel, rub off or wash off. Sample can, 50c. Nate's Outlet, 12544 Livernois. Phone Texas 4-4710. 51

GRACEY'S AT LIMA CENTER—Packaged coal; Firestone tires and batteries; Shell gas; groceries, meats; frozen foods, vegetables and ice cream. Open evenings to 8:30 o'clock, except Friday, Saturday and Sunday, open 10 p.m. 18tf

FOR SALE—LAKE COTTAGE
Four rooms and sun porch; running water, lavatory and seat; septic tank; completely furnished. Very desirable lot 50x100 ft., on Crooked Lake.
Roy D. Miller, 15775 Cavanaugh Lake Rd. Phone Chelsea 5547. -49

FOR SALE—Mandarin soybean seed. E. Heiminger, 2571 North Lima Center Rd. Phone 2-2080. 48



Home Made Bread

ROLLS

AND

PASTRIES

Party Orders and Decorated Cakes our Specialty.

SPECIAL

For Chelsea Days
ORANGE PINEAPPLE CAKES
and
BANANA CAKES
45c and 60c

DOOR PRIZE

1st Prize—\$10.00 in Trade.
2nd Prize—A Special Birthday Cake.

The Chelsea Bakery

115 S. Main — Phone 4011

This Week's SPECIALS

3 lb. can Swiftening . . . \$1.14

2 cans Monarch Sweet Peas . . . 39c

2 cans Monarch Vacuum Pack Corn . . . 35c

1 large package Duz . . . 33c

3 pkgs. Jello, all flavors . . . 23c

Libby's No. 1 can Fruit Cocktail . . . 23c

All Popular Brands Cigarettes, Carton . . . \$1.63 plus tax

FREE Monarch Hot Coffee served all day Saturday

Get Your Ticket on Friday or Saturday for a Chance on Our

FREE DOOR PRIZE

HINDERER BROS.
QUALITY GROCERIES AND MEATS
PHONE 4211
WE MAKE DAILY DELIVERIES—Call Orders Early!

For Real Values in

Diamonds, Watches, Clocks,

Jewelry and Silverware

Call at Kantlehner's

We now have a fine line of Playing Cards, Book Matches, Paper China Coasters, Sheer Crepe Cocktail Napkins and Guest Towels, all nicely boxed and monogrammed, or name printed on each. This is our 80th Anniversary and we have Real Buys For All.

W. F. KANTLEHNER

"Where Gems and Gold Are Fairly Sold"
CORNER MAIN AND MIDDLE STREET
JEWELER and OPTOMETRIST

"As You Like It!"

Kroger

You tell us what brands of merchandise you want by choosing from the brands on our shelves. Yes, indeed—it is you and many, many other homemakers who decide what your Kroger store carries. It's our business to provide what you want.

19¢ Cookie Sale!
REGULAR PRICE 23c

Only the finest ingredients go into these superb cookies—popped fresh from our ovens and rushed to our stores. Fill your cookie jar today—buy several packages at this special low price and save!

REGULAR PRICE 23c

Chocolate Chips Pkg. 19c
REGULAR PRICE 23c

Macaroon Snaps Pkg. 19c
REGULAR PRICE 23c

Giant Can of Tamy Vitamin Rich Florida
Grapefruit Juice 46-Oz. Can 15c

Pure Granulated
SUGAR 10 Lbs. 89c
DOMINO CANE
Sea Beauty

Red Salmon 1-Lb. Can 55c
Kroger Hot-Dated

Spotlight Coffee Lb. 40c

SENSATIONAL SAVINGS
HOUSEHOLD INSTITUTE
CART ALUMINUM
8-CUP PERCOLATOR
\$3.69 WITH \$9.98 WITHOUT CARD
30 DAYS TRIAL—SATISFACTION GUARANTEED
When offered Thurs., Fri., Sat., June 24-26, 1948

*You Choose Wisely
when you choose from...*

Winans Jewelry Store

Fully meeting our high standards of excellence and quality, we proudly offer genuine registered Keepsake Diamond Rings. Choose with confidence, for the Keepsake Certificate of Guarantee and Registration is part of your purchase.

Keepsake
DIAMOND RINGS



ELGIN AND HAMILTON WATCHES

1847 ROGERS, COMMUNITY AND HOLMES AND EDWARDS SILVERWARE
FOSTORIA GLASSWARE

FREE DOOR PRIZE
FOR CHELSEA DAYS

Winans Jewelry Store

Something From the Jewelry Store Is Always Something Special.

Wholesale Prices
for Everyone
on CHELSEA DAYS

Home Killed Pork, Beef, Veal, Lamb and Chickens.
Home Cured Bacon, Hams, Lard, Liver Sausage, Bologna, Etc.

PORK

Lean Pork Sausage . . . 39c lb.
Lean Pork Steak . . . 49c lb.
Fancy Bacon Squares . . . 39c lb.
Whole or Half Pork Loins, 14-16 . . . 49c lb.
Whole Fresh Picnic Hams . . . 39c lb.
Fancy Slab Bacon . . . 49c lb.
Fancy Smoked Picnic Hams . . . 49c lb.
Pork Neck Bones . . . 15c lb.
Meaty Spare Ribs . . . 39c lb.

BEEF

Extra Lean Short Ribs . . . 39c lb.
AA Beef Roasts . . . 59c lb.
Tender Cube Steaks . . . 69c lb.
Boneless Beef Chuck, Ground . . . 59c lb.

NATIVE VEAL

Boneless Veal . . . 59c lb.
Veal Breast with Pocket . . . 39c lb.
Veal Roasts . . . 59c lb.

OFFALLS

Pork Liver . . . 39c lb.
Hearts and Tongues . . . 29c lb.
Pigs Feet . . . 05c lb.
Pigs Ears . . . 09c lb.
Pure Lard . . . 23c lb.
Perch Fillets . . . 39c lb.

Our Door Prizes will be a Smoked Ham, Slab of Home Cured Bacon, a 25 Lb. Can of Lard and a Large Roasting Chicken.

DEXTER'S MARKET

Phone 2-1011
126 S. Main St. -- In Kolb's Grocery

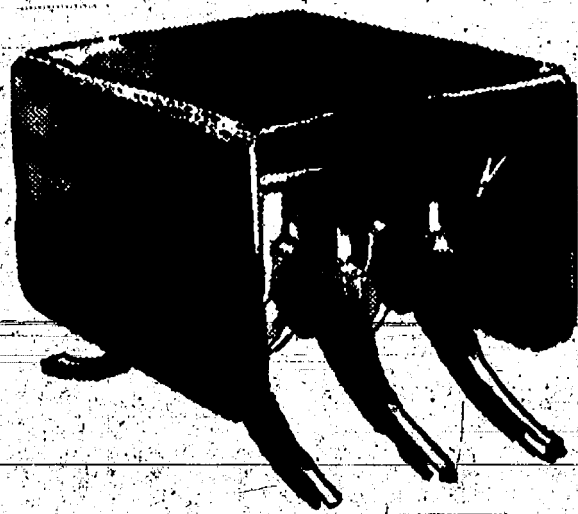
Chelsea Day Specials

DOOR PRIZE

JUNE 25 - 26

DOOR PRIZE

Temporary Reductions on Good, Clean, Quality Merchandise



Drop Leaf Duncan Fife Tables

In walnut, extension top.
Reduced from \$67.50 to \$55.00



Bedroom Suites

Mahogany vanity, chest, bed and bench, period design, top quality, well constructed.

Reduced from \$250.00 to \$199.50

Same make and style suite as above but in solid maple.

Reduced from \$275.00 to \$239.50

Lined oak 4-piece modern suite.

Reduced from \$195.00 to \$169.50



Living Room Suites

Kroehler Davenport and Chair in Bergundy Mohair Frieze.

Reduced from \$250.00 to \$209.50

Kroehler 3-piece sectional Davenports in light green, light blue, rose fig. tapestry.

Reduced from \$185.00 to \$139.00

Kroehler Davenport and Chair, 2 cushion, modern, tan Mohair Frieze.

Reduced from \$219.50 to \$179.95

Davenport and Chair, 2-piece sectional, attractive grey figured tapestry.

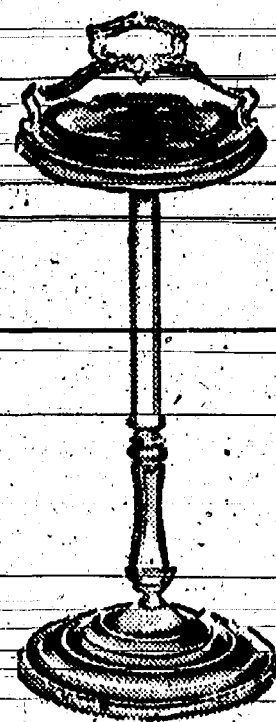
Reduced from \$185.00 to \$139.00

Davenport and Chair, 3 cushion, Rose Mohair Frieze.

Reduced from \$228.00 to \$169.50

Davenport and Chair, 3 cushion, Blue Mohair Frieze.

Reduced from \$199.50 to \$149.50



Pedestal Type All Metal Smokers

Reduced from \$7.95 to \$4.95



Unfinished Book Shelves or Cases

48" high, 10" deep, made of good clear material.

36 inches wide Reduced from \$12.95 to \$9.95

30 inches wide Reduced from \$12.50 to \$9.50

24 inches wide Reduced from \$10.95 to \$8.50

18 inches wide Reduced from \$ 9.95 to \$7.50



Kroehler Reclining Chair with Ottoman. Reduced from \$78.00 to \$59.50

Kroehler Spring Rocker, deep upholstery. Reduced from \$59.95 to \$44.50

Chairs

Occasional Chairs

Murphy Occasional Chairs, attractive tapestry covering. Reduced from \$24.95 to \$17.95

Murphy Occasional Chairs, brown leatherette covering. Reduced from \$17.50 to \$9.50

Plywood Clothing Cabinets, two door, 34 inches wide, 63 inches high. Reduced from \$29.95 to \$19.95

Casting Rods—4 1/4 ft. one-piece tool steel, stainless steel guides and tips. Reduced from \$7.50 to \$3.95



Breakfast Suites

Porcelain top tables, 2 chrome chairs with leatherette seats. Reduced from \$32.50 to \$19.95

Solid oak table top, chrome legs, 4 chrome chairs with red leatherette seats and backs. Reduced from \$85.00 to \$49.50

Breakfast Suites, solid oak table and four chairs, chairs have red leatherette seats. Reduced from \$75.00 to \$45.00

Dining Room Chairs

Maple or walnut finish, hardwood construction, red leatherette seats. Reduced from \$6.25 to \$3.49

Maple Bunk Beds

Maple Bunk Beds, 39 inches wide, less springs and mattress. Reduced from \$47.50 to \$35.00

Maple Bunk Beds, 39 inches wide, less springs and mattress. Reduced from \$57.00 to \$42.00

Axminster Rugs

9x12 ft., select quality.

Reduced from \$ 59.50 to \$49.50

Reduced from \$ 72.50 to \$61.95

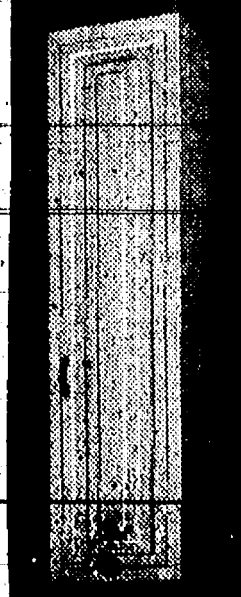
Reduced from \$ 75.00 to \$72.50

Reduced from \$ 95.00 to \$79.50

Reduced from \$115.00 to \$95.00

9x15 ft.

Reduced from \$125.00 to \$99.95



WHITE ENAMEL METAL UTILITY CABINETS

5 Shelves, 62" High.

Single Door was \$18.95—Now \$13.95

Double Door was \$24.50—Now \$18.95

Gold Band Tumblers (9 oz.)—Reduced from \$1.20 dz. to \$.69 dz.

Glass Salt and Pepper Sets—Reduced from \$.10 set to \$.07 set

Glass Decorated Utility Jars—Reduced from \$.29 to \$.19

Glass Juice Sets—Reduced from \$1.00 to \$.69

Glass Ash Tray Sets—Reduced from \$.35 to \$.19

Glass Individual Ring Molds—Reduced from \$.15 to \$.08

Attractive Large Glass Vases—Reduced from \$.55 to \$.39

Combination Meat Choppers and Dispensers. Reduced from \$.29 to \$.19

Colored Table Mats (three in a set)—Reduced from \$.65 set to \$.39 set

Lustrous Plastic Kitchen Sets—Reduced from \$1.00 set to \$.39 set

Colorful Range Sets—Reduced from \$2.25 set to \$1.79 set

Bread Boards—Reduced from \$.19 to \$.09

Earthen Pitchers in three attractive colors, in three sizes, at reduced prices—Now \$.39 to \$1.19

Chrome Bun Warmers—Reduced from \$2.95 to \$1.99

Vacuum Type Coffee Makers—Reduced from \$3.95 to \$2.49

Flavor-Saver Drip Coffee Makers—Reduced from \$2.25 to \$1.50

White Granite 6-Cup Percolator—Reduced from \$2.25 to \$1.49

Lyons-Doll

(Continued from page one)

bridgroom, and H. E. Ortring were ushers.

A wedding breakfast was served at eleven o'clock at Black's Country Club at Unadilla, and from two until four o'clock in the afternoon, a reception was held there with Mrs. Albert Juergens and Mrs. Albert Doll, Jr., serving the wedding cake, punch and ice cream and Miss Angelina Markel pouring.

Mrs. Thomas Lyons registered the guests.

The new Mr. and Mrs. Doll left after the reception for a two week's honeymoon in northern Michigan and upon their return will make their home in Chelsea.

The bride, an office employee at the Chelsea Products, Inc., is a graduate of St. Mary's Parochial school and of Chelsea High school.

The bridegroom, also a graduate of St. Mary's Parochial school, attended Chelsea High school for three years before he enlisted in the U. S. Navy. He is now employed at the Chelsea Milling company.

Gilson-Ferry

(Continued from page one)

was finished in a scalloped outline. Her veil, of fingertip length, was fashioned of imported lace and was held in place with a beaded tiara. She carried a shower bouquet of white roses with ivy streamers.

Miss Doris Gilson, the bride's sister, as maid of honor, wore a pink rayon taffeta gown with which she wore a pink net sash.

Heart tapers, Her bouquet was of aqua colored carnations.

Miss Dorothy Archer of Lansing, and Mrs. Raymond Johnson of Cedar Lake, were the bridesmaids. Both were gowned alike in aqua taffeta with matching colored sweetheart tiaras and their bouquets were of deep pink carnations.

Lady Welch, daughter of Mr. and Mrs. George Welch of Sylvan Center, dressed in a floor-length yellow taffeta dress and carrying a tiny basket of rose petals, was the flower girl.

Robert Schultz of Dexter, a cousin of the bridegroom, was best man, while Brent Schultz, another cousin, also of Dexter, and Joseph Roy reception for two hundred guests was held immediately after the ceremony in the church parlors.

Mrs. Lawrence Fowler of Cavanaugh Lake, cut the wedding cake and Mrs. Edmund K. Miller, Jr., was in charge of the guest book.

Following a week's wedding trip to Niagara Falls and other points in the East, Mr. and Mrs. Perry will be at home in their apartment on Sibley road after June 29.

For going away the bride wore a pink silk crepe dress trimmed with white lace. Her fingertip-length coat was white and her accessories were all white. Her corsage was of pink roses.

Both the bride's and bridegroom's mothers chose navy blue dresses to wear for the wedding and both wore corsages of pink roses.

Mrs. Gilson's accessories were pink while Mrs. Perry's were white.

The bride is a graduate of Chelsea High school with the class of 1945, and attended Michigan State college. She is now employed in the business office of the Michigan Bell Telephone Co. in Ann Arbor.

Mr. Perry attended Chelsea High school and spent two years in the army. He is at present employed by the King-Seely Corporation in Ann Arbor.

Lehman Family Holds Annual Reunion Sun.

Forty-two were present at the annual Lehman family reunion held Sunday, June 20, at the Cleaners Hall in Waterloo. A short business meeting was held at which time it was announced that next year's reunion will be held at the same place the third Sunday in June, 1949. All officers were re-elected, with Chris Lehman, of Detroit, being retained as president.

A pot-luck dinner was enjoyed at one o'clock after which the afternoon was spent in visiting. There was no specially prepared program.

RAINED OUT

The American Legion Junior Baseball team got off to a bad start again Saturday with the game called off against Dexter after two innings because of the rain. With the score Dexter 1, Chelsea 2.

There will be a game with Dundee here Saturday.

Chelsea Independents

Eastern Division Champions

It's BASEBALL Time

Chelsea Independents

Salvo

Sunday, June 27

2:30 P. M. at Chelsea

WE DELIVER

WE DELIVER

WE DELIVER

WE DELIVER

WE DELIVER

WE DELIVER

WE DELIVER

WE DELIVER

WE DELIVER

WE DELIVER

WE DELIVER

WE DELIVER

WE DELIVER

WE DELIVER

WE DELIVER

WE DELIVER

WE DELIVER

WE DELIVER

"Chelsea Day Specials"

Two Days Only -- Friday and Saturday

June 25 and 26

Special Sale on Shirts

All Dress and Sport Shirts, \$1.00 Off.

One Lot of Dress Shirts, value to \$3.95,

Special at \$1.49

Dress Straw Hats 1-3 Off

Work Straw Hats, regular 75c and \$1.00 value.

Special at 59c

Boys' Sweaters

Regularly priced at \$3.50 and \$4.25

Special at \$1.95

Neck Ties

Special Lot of \$1.00 Ties

Your Choice at 49c

Dress Oxfords and Loafers

Most Complete Stock ever assembled at 20% Off.

As a Special Added Attraction We Will Offer a

Genuine Leather Zipper Traveling Bag

AS A FREE DOOR PRIZE

STRIETER'S

MEN'S WEAR

BENEFIT ICE CREAM SOCIAL

Wednesday, June 30th

Starts at 5:30 (Slow Time) at

New Waterloo Garage

on Waterloo Road

ICE CREAM, HOME-MADE CAKE, HOT DOGS,

COFFEE and POP.

MUSIC—By WATERLOO BAND

Benefit for the Waterloo United Brethren, Salem Grove and Mt. Hope Methodist Churches.

Ice Cream and place furnished by courtesy of GLENN RENTSCHLER owner of the modern, new WATERLOO GARAGE—which opens for business about July 1.

EVERYONE WELCOME

'Chelsea Days' SPECIALS

FREE!

5 Lbs. Cane Sugar

With every \$5.00 purchase

10 Lbs. Free

With every \$10.00 purchase, etc.

Cigarettes not included

Ask for your Ticket for the Door Prize

KUSTERER'S

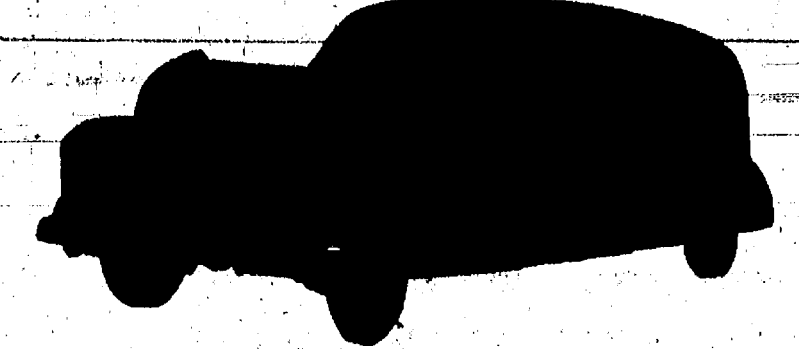
FOOD MARKET

DIAL 2-3331

WE DELIVER

CONGRATULATIONS . . .

to the Chelsea Chamber of Commerce on its united effort in promoting Chelsea Days. SUCCESS TO YOU.



WE CARRY . . .

Folding Stretchers and Litter Rolls.

OUR AMBULANCE

is equipped with Traction Leg and Arm Splints and a First Aid Kit for Accidents and Emergencies.

Our assistants are qualified, Experienced and Courteous.

24-Hour Service



We Have Many Other Items Specially Reduced for this Occasion. It Will Pay You to Shop Our Store and Take Advantage of These Temporary Price Reductions.

MERKEL

BROS.

Everything in Hardware & Furniture

CHELSEA

The Chelsea Standard

Walter P. Leonard, Publisher

Subscription price: \$2 per year; six months \$1; three months 50 cents.

Published every Thursday at 108 East Middle Street, Chelsea, Mich. Entered as second class matter at the postoffice of Chelsea, Mich. under the act of March 3, 1879.

Church Circles

CONGREGATIONAL CHURCH
Rev. W. H. Skeneburg, Pastor
10 a.m.—Worship service;
11 a.m.—Sunday school.

ST. PAUL'S EVANGELICAL
Rev. P. H. Grabowski, Pastor
Sunday, June 27—
10 a.m.—Worship and sermon.
11 a.m.—Sunday school.

FIRST METHODIST
Rev. Orville W. Morrow, Pastor
10:00 a.m.—"Christian Use of Life" is the subject of the sermon for next Sunday morning. Our choir will present "Abide With Me," by Monk, and led by Mrs. Elizabeth W. Powell, organist and director.

Next Sunday is family day in this church and all of the members are bringing their "pledges" for the support of the local church and the World Service and Conference denominations. The pledges will place their pledges, filled out, at the altar for consecration. Let us all co-operate in this Christian Community endeavor and world-

wide service for Christ and His church.
11:15 a.m.—Church school hour. Each department will have a complete program. The pastor will teach the adult class.

SALEM METHODIST CHURCH
Earnest O. Davis, Pastor
10 a.m.—Sunday school.
11 a.m.—Worship service.
Choir rehearsal on Wednesday evening.

The Detroit Annual Conference, held in the Narden Park Methodist church, Detroit, closed last Sunday evening.

Rev. E. O. Davis was returned to this church for the ensuing year. The newly appointed District Superintendent for the Ann Arbor District is the Reverend Frank L. Fitch, D.D. of Grace church, Detroit.

This church extends a hearty welcome to everyone as we start the new Conference year. We have teachers for every class in our church school and a class for all ages.

ROGERS CORNERS CHURCH
(St. John's Evangelical)
Rev. J. Fontana, Pastor
Sunday, June 27—
9 a.m.—Sunday school.
10 a.m.—Worship service (English).

ZION LUTHERAN CHURCH
Rogers Corners
Rev. M. W. Brueckner, Pastor
Sunday, June 27—
9 a.m.—Sunday school.
10 a.m.—Worship service.

2nd EVANGELICAL UNITED BRETHREN CHURCH
(Waterloo)
Rev. C. S. Harrington, Pastor
10 a.m.—Sunday school.
11 a.m.—Worship service.

ST. MARY'S CHURCH
Rev. Fr. Leo Laige, Pastor
First Mass.....8:00 a.m.
Second Mass.....10:00 a.m.
Mass on week days.....8:00 a.m.

GREGORY BAPTIST CHURCH
Gregory, Michigan
Rev. M. E. Walton, Pastor
10:00 a.m.—Morning worship.
11:00 a.m.—Bible school.
6:30 p.m.—Youth Fellowship.
8:00 p.m.—Evening worship.
Bible study and prayer services each Thursday at 8:00 p.m.

NORTH SHARON COMMUNITY BIBLE CHURCH
Sylvan and Washburn Roads
R. W. Grindall, Pastor
10 a.m.—Sunday school.
11 a.m.—Worship service.
7 p.m.—Youth hour.
8 p.m.—Evening service.

ATTEND RALLY
Ten young people of Zion Lutheran church at Rogers Corners attended the Central Michigan Federation of Luther Leagues Rally held at St. John's Lutheran church at Fowlerville on Sunday. The pastor of the church, Rev. Clarence Steinert, was formerly an army chaplain and his wife was a missionary worker in India.

Rev. M. W. Brueckner accompanied the group to the Rally.

CARD OF THANKS
We wish to thank the many friends and neighbors for the beautiful floral offerings received during our recent bereavement, in the loss of our beloved mother and grandmother. We especially thank Rev. Robert Bryce, pallbearers and Staffan Funeral Home.

Standard Liners Bring Results

DEATHS

Mrs. Theresa Koels
Mrs. Theresa Shafer Koels, a resident of Waterloo for more than 60 years, died Tuesday, June 8, at the home of her son, Mrs. Clayton Jones, in Grass Lake, where she had made her home the past two years. She was the widow of the late August Koels.

Mrs. Koels was 89 years old. She was a native of Wurtemberg, Germany, where she was born Nov. 2, 1858.

She survived by three sons, Theodore, of Jackson, Herman, of Detroit, and Walter, of Thibet; two brothers, Charles Schafer, of Jackson, and Herman Schafer, of Germany; a sister, Louise, of Germany; and several nieces and nephews.

Funeral services were held at the Staffan Funeral Home here on Friday, June 11. Rev. Robert Bryce, of the Grass Lake Methodist church, officiated and burial was in Mt. Hope cemetery, Waterloo.

ATTEND ENCAMPMENT
Mrs. Joseph Dreyer and Mrs. Harold Bair attended the 65th annual Encampment of the GAR at Grand Rapids Wednesday, Thursday and Friday as delegates of the local Women's Relief Corps.

Highlights of the convention, as listed by Mrs. Bair, were first, the adoption of a boy and girl, twins, of the Protestant Children's Home in Detroit. (The adoption will provide help for them until they are old enough to care for themselves.) Second, a resolution passed to re-district the districts which took eleven corps from district No. 1 and made a new district of some and placed the Chelsea Corps in district No. 3; and third, the election of Mrs. Harriet Walmsley, of Munger, as president for the coming year.

The death of Commander Le Valley, of Caro, last April, left the Department of Michigan without a Civil War veteran. As it was the last wish of the veterans that the Relief Corps carry on their work after all the men were gone, the Department Encampment went on record as saying members hoped to do this for years to come.

RECEIVES DEGREE
Miss Rosemary Wallace, granddaughter of Mr. and Mrs. John Wenk, received her Bachelor of Science degree June 17 at the commencement exercises of Wayne University in Detroit. Miss Wallace was a member of the graduation class of 1944 at Chelsea High school.

NEW RESIDENTS
Mr. and Mrs. Alvin T. Kolander are new residents of Chelsea, making their home at 529 McKinley, after having moved from Ann Arbor last month. Mr. Kolander is employed at Klorer Ball and Bearing Co., in Ann Arbor.

Olive Chapter Holds Initiation Ceremonies

Olive Chapter, No. 108, OES, held its Past Matrons' and Past Patrons' night on Wednesday, June 16, at the Masco Hall.

In the initiation Helen Baxter and Leora Noll took the parts of Worship Matron, the former being first lecturer and the latter, second lecturer. The first part of the initiation was put on by Past Patron Paul Belser and the second part by Past Patron Lionel Vick-

Others putting on the work were as follows:
Ada Littler, Associate Matron;
Martin Steinbach, Associate Patron;
Lenore Schmidt, Secretary;

May Luick, Treasurer; Lila Ash-fal, Chaplain; Emma Vickers, Marshal; Leah Smith, Organist; Alene Steinbach, Adah; Blanche Palmer, Ruth; Bertha Freeman, Esther; Betty Hall, Martha; Mary Ann Gracey, Electa; Virginia Brook, Warder; Helen Lindemann, Sentinel.

After the initiation the regular officers took their stations and presented each Past Patron and Past Matron with a small gift. Visiting Past Matrons were Cora Beach of Washtenaw Chapter, Dexter, Mrs. Flora Hopkins of Northport Chapter, No. 406, and Mrs. Beulah Collins of Grass Lake Chapter, No. 169, each of whom was also presented with a gift, after which refreshments were served.

CHAT 'N' SEAU
Sixteen members and seven guests attended the meeting of the Chat 'N' Seau held Tuesday evening, June 15, at the home of Mrs. M. W. McClure, with Mrs. Rex Miller as assisting hostess.

During the business meeting it was voted to give fifteen dollars to send a girl to summer camp. The program included two quizzes, one on the subject of trees and the other on the Bible. Five ladies tied for first place. Members were asked to write their favorite recipes or household hints on the reverse side of their quiz papers and these were presented to the hostess, at her request. Cake, pineapple sherbet and iced tea were the refreshments served at the close of the meeting by the two hostesses.

Mr. and Mrs. Roy Dean and sons, Robert and Nelson of South Lyon, spent Sunday afternoon at the home of Mr. and Mrs. Guy Murphy.

DANCE

MIXED

Grass Lake High School

SATURDAY EVENING

JUNE 26

GREEN'S ORCHESTRA

Sponsored by

FARMERS' COMMANDOS

4-H - Grass Lake

CHELSEA APPLIANCE

Specials for Chelsea Days

	Regular Price	Chelsea Day Price	SAVE
Bendix Radio Combination and Phonograph	\$289.95	\$189.95	\$100.00
SOUNDMIRROR Home Recorder	229.50	129.50	100.00
Majestic Combination Radio-Phonograph Table Model	98.95	68.95	30.00
ARVIN Combination Radio and Phonograph Table Model	89.95	64.95	25.00
REGINA SWEEPER	84.75	64.75	20.00
APEX SWEEPER	69.95	54.95	15.00
SPEED-O-MATIC HOT WATER HEATER	49.50	39.50	10.00
TAYLOR JR. APARTMENT SIZE WASHER	39.95	34.95	5.00

Baked Goods

over-fresh for weeks!

Whether you bake at home or buy at the corner bakery, you save time, work, food and money with a Deepfreeze home freezer.

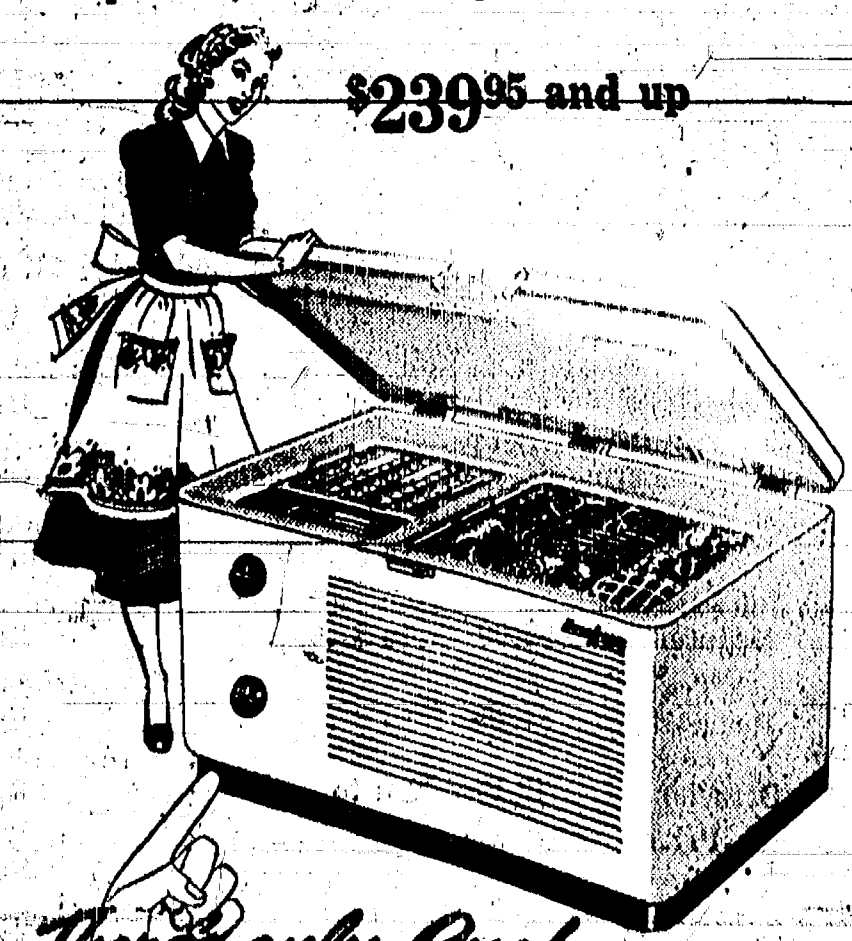
Bread, rolls, pies, cakes, cookies—all kinds of baked goods—stay over-fresh for weeks in a Deepfreeze home freezer. Just stow away in quantity—take out as needed. No last-minute rushes to the store. No stale leftovers, spoilage, waste!

See the Deepfreeze home freezer in action
Now is the time to investigate the many advantages of a Deepfreeze home freezer—now is the time to put one in your home.

Come in and see one in operation. Let us show you in detail how a Deepfreeze home freezer gives you brand-new baking freedom—how you can save real money on your food bills. Let us prove to you that a Deepfreeze home freezer actually pays for itself with the money it saves.

Stop in today. There's no obligation.

\$239.95 and up



There's only One!
Deepfreeze
HOME FREEZER
Come in today for a demonstration!

Just Arrived for CHELSEA DAYS

NOW HAVE A BEAUTIFUL KITCHEN

- 1—Toastmaster
- 2—Dorameyer Mixers
- 2—Sunbeam Mixmasters
- 1—Sunbeam Iron
- 2—K-M Pop-up Toasters

10% OFF

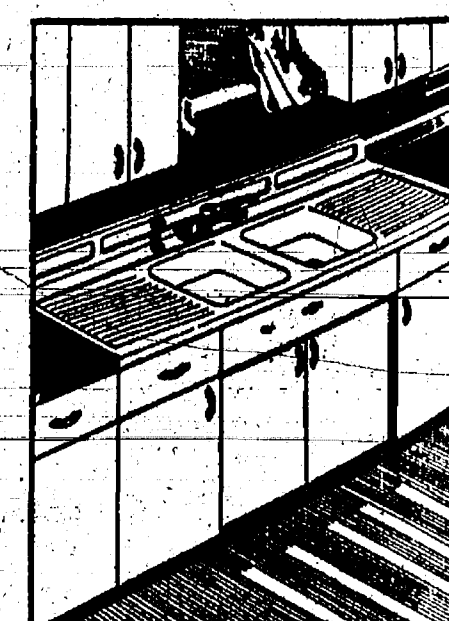
ON ALL
Electric FANS

DOOR PRIZES

SANDWICH GRILL

DOMINION TOASTER

Visit Our Store and Get a Free Chance on Our Prizes.



START with a "Kitchen-Sider" cabinet sink, a great work-saver in itself. Built to highest quality standards in gleaming white enameled steel, "Kitchen-Siders" have acid-resisting porcelain tops, and are available in different models to fit your own plans.

Special features include twin-bowls, dish and vegetable spray, silent doors and drawers, ample storage space. Spotlessly white floor cabinets and wall cabinets in all sizes and types, to fit any home.

These Youngstown units will bring new beauty and convenience to your kitchen. No expensive remodeling needed. Low Monthly Terms.

Youngstown Kitchens
BY MULLINS

Chelsea Appliance

Formerly Known as Chelsea Electric Sales & Service
KARL KOENIGTER
PHONE 3068

**THANKS . . .**

to all of you who have helped to make our **FIRST YEAR** a success. May we continue to serve you in the future.

TED and FLOYD

Balmer's Brake Service

GENERAL REPAIR 24-HOUR WRECKER SERVICE
140 W. Middle St. **TED BALMER** Phone 5131

Chelsea Days Bargain Specials!

Popular Brand Cigarettes	Per Carton	\$1.61
One Gallon Can Peaches		79c
One Gallon Can Apricots		79c
Hill's Bros. Coffee	Two Pounds	99c
Maxwell House Coffee	Two Pounds	99c
46 Oz. Can Quaker Orange or Blended Juice	5 Cans for	\$1.00
12 Oz. Tin Swift's Prem	3 Tins for	\$1.00

No. 2 Can OLD SOUTH BRAND GRAPEFRUIT SECTIONS—7 Cans for	\$1.00
Heinz Cream Tomato Soup	15 Cans for \$1.00
46 Oz. Can Quaker Tomato Juice	6 Cans for \$1.00
No. 2 Can Del Monte Cream Style Corn	7 Cans for \$1.00
No. 2 Can Grosse Pointe Quality Peas	7 Cans for \$1.00
No. 2 1/2 Can Chef Brand Peaches	4 Cans for \$1.00
No. 2 Can Premier Apple Sauce	8 Cans for \$1.00

Last Week of Bicycle Contest

Bring in your box tops before June 30th.

Come in and Enter Our Door Prize Drawing

- 1st Prize—One Large Swift's Premium Ham.
2nd Prize—100 Lb. Bag Cane Sugar.

SCHNEIDER'S

Meats

121 So. Main Street

PHONE 2-2411

Groceries

WE DELIVER

Mr. and Mrs. Leo Gulpan and family spent last week-end at their Sugar Loaf Lake cottage, after returning from Springfield, Mass., where they were guests of their daughter and her husband, Mr. and Mrs. Jack Hughes.

Week-end guests of Mr. and Mrs. Adam Eppler the past week were Mrs. A. Eppler and Mr. and Mrs. Robert Randolph of Battle Creek, Mr. and Mrs. Conrad Rasp of Elkhart, Ind., and Miss Gertrude Eppler of Bowling Green, Ohio.

JUANITA'S BEAUTY SHOP

Open Days and Evenings

SHAMPOOS • WAVES
PERMANENTS • MANICURES

Phone 2-3351 JUANITA DeFant 303 W. Middle St.



Chelsea Days SPECIALS

FOR

JUNE 25th and 26th

20% Off on all Tires

Plus Good Trade-in Allowance

Authorized Dealer For
Evinrude and Neptune Outboard
Motors

Free Door Prize

Harper Sales & Service

PHONE 5311

118 W. Middle Street Chelsea, Mich.

Fibre Plant Again Producing in Volume After Disastrous Fire in March, 1947

The Central Fibre Products Company was originally started on Aug. 6, 1920, with James Bacon as president, Donald Bacon, as business manager, and Benjamin Bacon as shop manager. Their first headquarters was known as the "Green Barn" and this building still stands by the side of the New York Central railroad tracks, near the present Chelsea Lumber, Grain & Coal Company.

Approximately 12 machines, including spinners, stake machines and wetting machines were operated in the "Green Barn." Although cord was the principal product manufactured at this time, a few reed chairs and floor lamps were also produced. The company employed three men, Garnet Weir, Allyn Kaercher and Leonard Weir, all of whom are still in the employ of the company with a record of 26 years employment.

In 1924 the company moved to the stone building on North Main street. This building is now known as Frigid Products. They remained here for approximately 15 years until the purchase of what was known as the "Saw Tooth Building" on North Main street. During this period the principal product of the company

was paper cord used by farmers in tying fleeces. Here, due to the addition of the Power Take-Off Division, the number of employees was increased and expansion became quite rapid.

In 1930 Donald Bacon started a plant in Detroit which produced fibre products for the automotive industry and which, before it was closed in 1931 employed approximately 100 people. At the onset of the war the equipment from this plant was transferred to Chelsea as well as certain valued employees.

During the war period Central Fibre Products company employed approximately 225 employees. However, in 1945 the Power Take-Off Division was sold to what is now known as Chelsea Products, Inc., and Central Fibre Products reverted to its peace-time products of Seaming Cord, Tacking Strips, Bare and Paper Covered Wire and Paper Fleece Twine.

On March 31, 1947, ninety per cent of the plant was destroyed by fire and it was necessary to rebuild all of the buildings with the exception of the brick paper warehouse which was not greatly damaged. Within six months, however, due to the excellent cooperation of its employees, production was almost back to normal.

There are now approximately 100 men and women employed, with Harold A. Jones as general manager and the following list of officers: Donald H. Bacon, president; Harold A. Jones, vice-president; and general manager; Henry

Cemetery Memorials

Both sides and top are polished - ALSO BASE - Compare Values

ARNET'S

936 North Main Street
ANN ARBOR, MICH.

JOHN W. RANE
Representative

Phone 2881, Whitmore Lake
or Phone 8914, Ann Arbor

Chelsea Milling Is One of Nation's Largest Producers of Mixes

The Chelsea Milling Company, located on North street in Chelsea, has been manufacturing wheat flour for more than 75 years, and through the years has enjoyed a continual growth, until at the present time it is one of the nation's largest producers of specialty flour mixes.

Much of the wheat ground in the Chelsea mill is obtained from local farmers. Since 1930 prepared baking mixes for the grocery and baking industries have been manufactured here under the trade name of "Jiffy" products, which are nationally advertised and distributed.

While The Chelsea Milling Company is one of the original three producers of baking mixes in the United States, the addition of new automatic machinery in recent years has greatly expanded the plant capacity until today production of more than a quarter of a million "Jiffy" packages per day is possible in this department.

During both World War I and the recent World War II flour for the Armed Services was produced here, and at the present time flour for the government's export food program is being manufactured.

Married Saturday

Mrs. Lola Feuerbacher, daughter of Mrs. Leone Mathias of Manchester, and Corbin Joseph of Chelsea, were married at the Methodist parsonage by Rev. Orville W. Morrow on Saturday, June 19.

Their only attendants were Miss Margaret Kaleko and George Oesley.

The bride wore a dusty rose and aqua gabardine suit with brown accessories and a corsage of white carnations, while Miss Kaleko in teal blue gabardine, wore a corsage of pink carnations. Mr. and Mrs. Joseph will make their home at Manchester.

MT. HOPE NEWS

Miss Clara Baldwin has been ill in bed for two weeks. Ted Razmus of Chicago is spending this week with his niece, Mrs. Joe Siegrist.

The Gottlieb Rothman family entertained their uncle, Frank Bartig of Henrietta, Sunday. Mr. and Mrs. DeWayne Wild and family of North Munnith, were Sunday evening visitors at the Guy Baldwin home.

Mrs. Joe Wisnold and Mrs. Roy Martin attended the wedding of the latter's son at Dunkirk, Ind., Saturday.

Mr. Shaver, owner of the new store, corner of Seymour and Portage Lake road, has his new gas pump installed and open for business.

Mr. and Mrs. Lewis Rogers spent Sunday in Litchfield at the home of their parents. Little Annette Rogers spent several days there last week.

Mrs. Lawrence Henry attended the Methodist Annual Conference at Detroit from Wednesday until Saturday last week. Miss Dorothy Frolich stayed at the Henry home.

Mrs. Lula Siegrist and Hazen, the Verde and Clair Siegrist families attended a family gathering at Portage State Park Sunday afternoon.

Mrs. Pauline Harr, Victor, Elsa and Dwight were Sunday visitors at the Homer Echard home in Eaton Rapids. On Saturday afternoon the Harr family attended the wedding of Mary Harr in Jackson.

Bible school was held at Mt. Hope church last week with an attendance of 24 each day. On Sunday a Children's Day program was held at 10 a.m. Teachers were Mrs. Ardell Lantis, Mrs. Joe Wisnold, Mrs. Joe and Clair Siegrist, Mrs. Herman Rothman and Mrs. Ardell Lantis represented the Mt. Hope W.C.S. Saturday afternoon at a joint meeting with Salem Grove and Waterloo to make plans for the ice cream social to be held at the new Waterloo garage June 30.

FOUR MILE LAKE

Miss Martha Moore spent last week visiting friends at Holly. Clarence Moore was called to Hatfield, Mo., by the serious illness of his father, F. A. Moore.

Mrs. Alma Bangs of Ann Arbor, was a week-end guest of Mrs. John Fischer.

Mrs. Jessie Smith of Jackson, was a Sunday visitor of Mrs. Clarence Moore.

Mr. and Mrs. Wilbur Tisch and daughter Leona of Stockbridge, were Friday visitors of Mrs. Tisch's mother, Mrs. Bertha Bareis and son Arthur.

Miss Harriett Heininger spent Monday morning in Ann Arbor attending a teachers' meeting at the four-day Sunday school convention being held there.

Mr. and Mrs. Claude Wright and Mr. and Mrs. Alton Wright all from Dearborn, were Sunday visitors of Mr. Wright's parents, Mr. and Mrs. Elmer Wright.

Mr. and Mrs. Mayron Hoard and Mr. and Mrs. Arthur Schuman and family of Mumford, Mr. and Mrs. John Decou and family of West Acres were Sunday dinner guests of Mr. and Mrs. Frank Koseika.

Mr. and Mrs. Harry Fischer and family spent Monday at Detroit Zoo. Guests Monday evening at the Fischer home were Mrs. Charles Mumford of Wheeler and Mrs. Ivis Mumford of Detroit.

Mr. and Mrs. Harvey Fischer and sons David, Robert and Marvin spent Sunday at Saginaw and attended the first reunion of Mrs. Fischer's nursing class which graduated in 1928.

KOLB'S GROCERY

PHONE 6391

WE DELIVER

— SPECIALS —

ONE POUND

Hill's Bros. Coffee . . 51c

ONE QUART MIRACLE WHIP

Salad Dressing . . . 62c

14 OUNCE BOTTLE

Catsup 17c

FRANCO-AMERICAN

Spaghetti, 2 for . . . 25c

Beer and Wine To Take Out

DROP YOUR TICKET IN BOX FOR
Chelsea Day Prize

FLOWERS



You are cordially invited to visit our Greenhouses at 7010 Lingane Road, or call us.
WE DELIVER.

DOOR PRIZE

Bouquet of Cut Flowers with Vase
Free ticket on prize at the Greenhouses or at our exhibit in the Municipal Building.

Chelsea Greenhouses

MEMBER F. T. D.

We Telegraph Flowers Anywhere

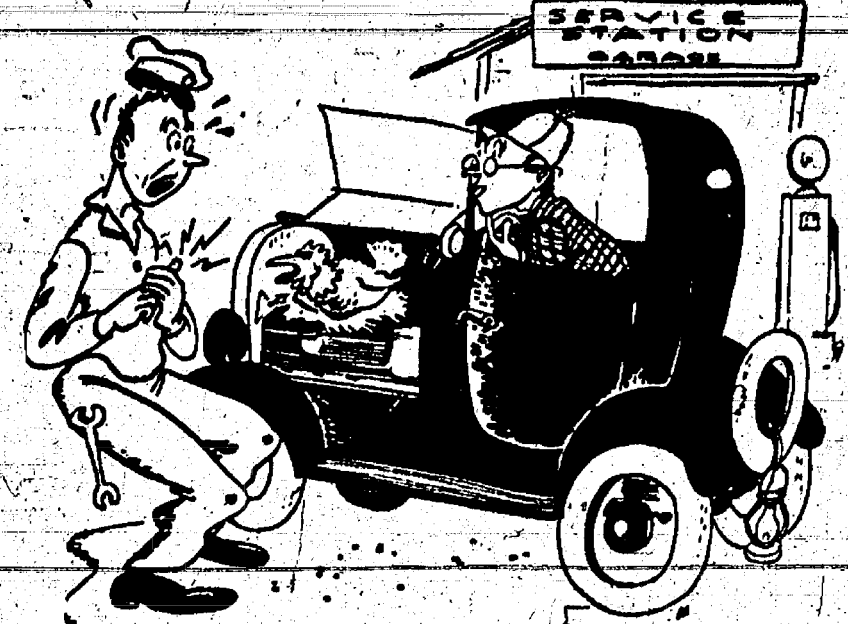
PHONE 6071

25TH ANNIVERSARY
Mr. and Mrs. Ray Whipple of Jackson, observed their 25th wedding anniversary at Salem Grove church basement on Sunday, May 23.

A bountiful dinner was served at 1:30 to about 55 relatives from Jackson, Grass Lake, Chelsea, Francisco and Waterloo. The tables were decorated in silver and white and centered with a beautiful three-tiered wedding cake. The basement was decorated with tulips and lily-of-the-valley.

A short program followed the dinner: Song, "Sweeter as the Years Go By," assembly; recitation, "Just a Boy," Llewellyn Lehmann; reading, "The Back Seat Driver," Mrs. Wm. H. Lehmann; reading, "Love and Labor," Mrs. Lehmann; community singing; assembly.

The honored guests were presented with many lovely tokens of remembrance.



"S'matter - - Get A Shock?"

Not as much as you think! Talant the first car that's come in here and laid an egg. And You'll be pleasantly surprised at how well and how quickly we can service your car... put it in tip-top running order... no matter how old it is. Drive in that buggy now.

'Chelsea Day' SPECIALS

FRIDAY AND SATURDAY

Quick Action Gulf Fly Spray, gal. \$1.55, qt. 45c, pt. 25c
Gulf Spray Aerosol Bomb \$1.25

CAR POLISH

Whiz Air Flow or Johnson's Carnu . . . \$.50
Car Washing Soap . . . \$.40
Wax Treated Polish Cloth . . . \$.40
Exhaust Deflectors . . . \$1.35
Back-up Lights . . . \$4.35
White Sidewall Cleaner . . . \$.45
Seat Cushions . . . \$1.50

FREE BUBBLE GUM FOR THE CHILDREN
DOOR PRIZE—\$10.00 Value in Merchandise or Service

McLaughlin Motor Sales

Desoto GOOD GULF PRODUCTS PLYMOUTH
John and Don Alber, Props.

WISE QUACKS BY HARVEY KNICKER



We Test and Repair
Electrical Appliances

"Don't Kick, See Knick"

Electrical
Wiring

Supplies
and
Fixtures

FREE DOOR PRIZE

FLUORESCENT TABLE LAMP
Visit Us and Get Your Chance.

KNICKERBOCKER'S
APPLIANCE SERVICE

Radio and Electrical Appliance Repairs

115 Park Street

Phone 3081



(Reading time — 21 — sec.)

W D B

stands for Weinberg's Dairy Bar on Old US-12 on the west side of town, serving to Chelsea and surrounding farming sections and resorts, delicious sundaes and many new and different taste treats, pleasing to eat or sip. For those at home we have carry out service on all menu items.

We are open from 2:30 p.m. to 11:00 p.m. week days.
9:00 a.m. to 12:00 p.m. Fridays, Saturday, Sundays, and Holidays.

It's Weinberg's Dairy Bar who serves that
"EVERYTHING GOES"

Chelsea Days
FREE DOOR PRIZES

"Everything Goes"
BANANA SPLITS

Visit Us to Get Your Ticket

TRY WEINBERG'S MILK OR CREAM,
you'll like it.

WEINBERG DAIRY

QUALITY PASTEURIZED DAIRY PRODUCTS

WEST ON OLD US-12

PHONE 5771

Miller's
HIGH TEST
Farm Made
Ice Cream



HAVE A PICTURE TAKEN OF
YOUR WEDDING... AT HOME,
AT CHURCH, AT RECEPTION...
A Candid Wedding Album Makes
A Wonderful Keepsake.
Baby Portraits In Your Own Home
**Geneva Photographic
Service**
Phone Chelsea 8-2568
After 12 Noon for Appointments

High Test Agricultural Lime

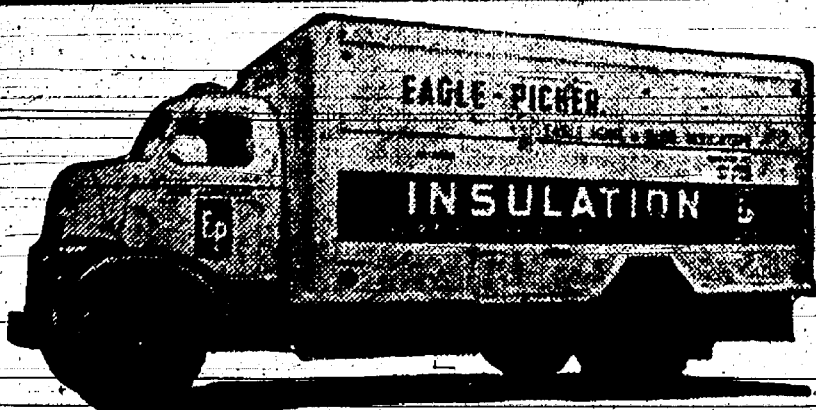
Spread with efficient double spinner
equipment.

at
Prevailing Community Prices.

Write

Grindall & Southwell

Box 271, Michigan Center, Michigan
Phone Jackson 3-9127 Days—3-0508 Nights



EAGLE-PICHER INSULATION

and
ALUMINUM or WOOD

Storm Windows - Doors - Screens
to fit Any Opening

All Labor and Material Guaranteed Highest Quality

EAGLE INSULATORS

J. KAMMERAD.

1129 Birk Avenue Ph. Ann Arbor 2-7610 Collect

Standard Ads Are a Good Shopping Guide!

Rural Correspondence

• Items of Interest About People You Know •

FRANCISCO

Mrs. Grover Arts called on Mr.

and Mrs. Max Steele of Jackson.

Monday evening.

Mr. and Mrs. Woodrow Arts and

Larry were Sunday dinner guests

of Mr. and Mrs. Austin Arts.

Mrs. George Arts and boys called

at the Grover Arts home Sat-

urday afternoon.

William Cochrane of Detroit

called on the Lewis Lamberts Sun-

day.

Mr. and Mrs. Clifford Wolfe

were Sunday dinner guests of Mr.

and Mrs. William Wolfe.

Mr. and Mrs. James Richards

and Sheldon H. Frey were callers

at the home of Mrs. James Cad-

well Saturday afternoon.

Mrs. Charles Denton and Mrs.

Richard Schrader of Brooklyn were

callers at the Grover Arts home

Monday.

Mrs. Kathryn Vyse of Austin,

Texas, and Mr. and Mrs. Calvin

Clark and son called on the Wal-

ter Kalmbachs Sunday evening.

The Walter Kalmbachs were

Sunday evening guests of Mr. and

Mrs. Lloyd Heydauff at a family

gathering at Cavanaugh Lake.

Mr. and Mrs. Truman Lehmann

and Mr. and Mrs. Walter Bohne

motored to Woodland Sunday to

visit at the home of Charley Velte

and family.

Week-end callers at the Kaiser

home were Mrs. Lena Brown, John

Brown, Mrs. Livingway, Mr. Neu-

bert and Mr. and Mrs. Al Kaiser

and grandson.

Mr. and Mrs. George Heydauff

were Sunday dinner guests of Mr.

and Mrs. Walter Kalmbach. Later

they called at the Fred Winter

home in Chelsea.

Mr. and Mrs. Edmund Robinson

and son Ralph, instead of Horace

Robinson, as stated in last week's

paper, left for Glacier National

Park, Montana, Tuesday.

Mr. and Mrs. Louis Scramblin of

Detroit called on Mr. and Mrs.

Lewis Lambert Sunday afternoon.

Later Mr. and Mrs. Scramblin and

Mrs. Lambert called on Mrs. Gene-

vieve Long of Jackson.

Mr. and Mrs. Truman Lehmann,

Mr. and Mrs. Walter Bohne of

Francisco, visited their aunt, Mrs.

Ashley Holden, on Thursday after-

noon. Mr. and Mrs. Henry Mus-

bach on Saturday afternoon, Mr.

and Mrs. Dan McCall and Mrs.

Mary Baird of Dearborn on Sun-

day, and Mr. and Mrs. Herbert

Harvey on Sunday afternoon.

Lake church's Father and Son

banquet.

Mr. and Mrs. Alvin Reinhardt

spent Saturday evening in Ann Ar-

bor as guests of Mr. and Mrs. El-

ton Frey.

Mr. and Mrs. Perry Noah spent

Fathers' Day with their son and

his family, Mr. and Mrs. Lawrence

Nah.

Mr. and Mrs. Paul Ellsworth

and daughters spent Sunday even-

ing as guests of Mr. and Mrs. Hol-

ton Knisely.

Mr. and Mrs. Chris Fitzsimmons

had as Sunday dinner guests Mr.

and Mrs. Ira Stanfield of Munnith,

and Sunday callers were Mr. and

Mrs. Monroe Phillips of Saline.

Lorna and David Knisely re-

turned home today after spending

several days visiting their grand-

mother, Mrs. Holton Knisely, Sr.,

in Jackson.

Rhoda Knisely of Jackson and

Phais Livingston of Parma spent

Friday and Saturday of last week

as guests at the Holton Knisely

home.

Guests of John Sullivan on Sun-

day were his brother and wife, Mr.

and Mrs. Harold Sullivan of De-

troit; also Mr. Sullivan's daughter

Virginia and Mrs. James Murphy

of Ann Arbor and James Murphy

of Big Rapids.

The annual dinner for the Lynde-

Extension club was held in

Rosedale Gardens June 16. Four-

teen members and one guest, Mrs.

Ralph Kinney of Rosedale, were

present. After the dinner the

group was shown through Mrs.

Kinney's home where a completely

modern kitchen had recently been

installed. Mrs. Kinney is the daugh-

ter of Mr. and Mrs. Howard

Brooks of Chelsea.

Waterloo

Mrs. Annabelle Woolley, Judy

and friend spent Sunday afternoon

in Moscow.

Bi-Me school will be held this

week at the church with closing

program the last of week.

Mrs. Milton Riethmiller spent

Saturday evening with E. M. Eis-

man in Chelsea.

Mr. and Mrs. Elmer Marsh en-

tertained their children on Father's

Day.

Mr. and Mrs. Wm. S. Stocking

and Mr. and Mrs. Smith of Detroit,

called on Mrs. Milton Riethmiller

on Thursday.

Mr. and Mrs. Bill Meyer of

Stockbridge are the parents of a

son, Perry Wm. She was formerly

Mrs. Doris Moeckel, daughter of

Reuben Moeckel.

Mr. and Mrs. Arthur Walz were

Sunday guests at the home of

their daughter, Mrs. Kenneth

Stanfield and family in Stock-

bridge.

The Lehmanns held their annual

reunion at Gleaner Hall on Sun-

day. Guests were present from

Stockbridge, Battle Creek, Fran-

cisco and Detroit.

Mr. and Mrs. Ray Coulter and

daughter of Lansing, are spending

the summer at the home of their

grandmother, Mrs. Hattie Gorton.

He will teach a class at Ann Ar-

bor this summer.

All members and friends of the

2nd Ev. L. B. church are urged to

resort with cakes for the Social,

opening at Glenn Rentschler's new

garage, on Wednesday evening,

June 30.

Mr. and Mrs. W. Vicary, Mrs.

Annabelle Woolley and Judy and

Mrs. B. J. Austin spent Friday

afternoon with the former's cousin,

Mrs. Lulah Clancy and sons,

Holling of California, and Allen,

at home.

Mr. and Mrs. Leigh Beeman,

Mr. Geo. Beeman, Mr. and Mrs.

Now you can build . . .

Here's a Partial List of Dependable Items You'll Need
For Building or Repair at Prices That Will Please You.



LUMBER

Smooth - Bright - Stock

- Douglas Fir
- Yellow Pine
- Flooring -- Fir, Oak, Yellow Pine
- Siding -- Yellow Pine, Clear Fir, Red Cedar
- Finish

Some Oak and Yellow Pine at \$72.50 M Brd. Ft.

YOU CAN ALWAYS
ADD A ROOM

WINDOWS

- ANDERSENS
- ROW & NSW. WEATHER STRIPPED
- COMMON SASH AND FRAMES
- STEEL AND WOOD CELLAR SASH
- STEEL AND ALUMINUM WINDOWS



...to Expand the
Size of Your Home!

Adding a room to an overcrowded home, finishing the basement or remodeling for better space utilization no longer are complicated matters. And you'll be rewarded by increased comfort, livability and property values.

Depend upon us for helpful information and quality building materials.

Interior Board Insulation

- Celotex, Nuwood \$.05 sq. ft.
- Paragon Board \$.05 sq. ft.
- Masonite \$.10 sq. ft.
- Armstrong Enamel Tile Board \$.40 sq. ft.
- Balsam Wool \$.065 sq. ft.
- Mica \$1.30 bag
- Batts \$.065 sq. ft.
- Rock Wool \$1.20 bag

Also

JOHNS-MANVILLE PRODUCTS

- 3-1 THICK BUTTS — \$7.50 square
- No Better Roof Anywhere at This Low Price.
- J-M ASBESTOS SHINGLES — Roofing \$15.50 square Siding \$11.50 square
- AND FAMOUS J-M FLEXBOARD — 10c sq. ft.

Ideal for
Lining Milk Houses
Fire Proof - Weather Proof



...to Serve You Fully in the Competitive Years Ahead

- - and - -

ALUMINUM ROOFING
GALVANIZED ROOFING
TILE
LIME

PLASTER
CEMENT
CEMENT BLOCKS
CINDER BLOCKS

HEATILATOR FIREPLACES

DOOR PRIZE ONE TON OF COAL
or its equivalent.

CHELSEA LUMBER, GRAIN & COAL CO.

DIAL 6911

Remember the Complete Line of KASCO Quality Feeds

Announcements

Chelsea Aeris, No. 8888, FOR sale tonight (Thursday) at 8:00 o'clock at the Eagle hall, 118 So. Main street.

The Past Presidents club of the WRC will meet with Mrs. David Mohrlock, Thursday, June 24 at 8 p.m.

The Limaners will meet July 1 at the home of Mrs. Reuben Hartman, of Cavanaugh Lake. Usual pot-luck dinner.

The Social meeting of the YFW Auxiliary will be held Monday, June 28, at 8 p.m., at St. Mary's Hall. White elephant games will be played and each member is to bring a prize. Mrs. Marie De Mint will be chairman.

The Evening group of Philathea Circle will meet at the home of Mrs. Jay Weinberg, Wednesday, June 30, from 1 until 4 p.m. to sew for the Fair. Bring needle, thread and scissors.

FAMILY DINNER
Mr. and Mrs. Martin Miller entertained at a family dinner at their home Saturday evening, those present including Mr. and Mrs. Lyle Duncon of Washington state, who are spending several months with Michigan relatives; Mr. and Mrs. Paul Miller of Detroit; Mr. and Mrs. E. J. Smith of Dexter; Mr. and Mrs. Walter Miller and family of Grosse Pointe Park, and Mr. and Mrs. Darwin Bush and son of Stockbridge.

On Sunday they all attended a reunion of the Wiseman family at the home of Mr. and Mrs. E. J. Smith in Dexter, this being the first time in twenty-three years that the whole family has been together at one time.

Mrs. Winifred Coffron of Detroit, who spent from Friday until Tuesday with the Millers, was also present.

PERSONALS

Mr. and Mrs. Joseph Czaplak were in Flint Thursday evening to attend the graduation of their niece, Miss Agnes Marka from Northern High school. The exercises were held at Atwood Park Stadium.

Ray Gohn and Mrs. Lina Whitaker were in Mason Saturday to attend the wedding of the former's granddaughter, Vivian Joyce Phillips, and Marvin Lott of Lansing, which was held in the First Congregational church at 3 p.m.

About thirty-five members of the Ladies' Aid Society of Zion Lutheran church at Rogers Corners, enjoyed a trip to the Kaiser-Frazer plant as guests of the company on Friday. The ladies were taken on a sightseeing tour of the plant and were served a lunch and then were returned home about 3:30 in the afternoon. They left for Willow Run, in company cars about 11 a.m.

Mrs. Albert Johnson, Mrs. Philip Olin, Mrs. Lawton Steger, Miss Dorothy Beach and Miss Harriet Hennings are attending the "Workshop in Religious Education" which is being held this week in Ann Arbor at Lane Hall and Bethel Church. Ref. church. Professor Leonard A. Stidley of the Oberlin Graduate School of Theology is one of the instructors. Object of the workshop is leadership training for teachers and leaders of all churches in Ann Arbor and vicinity from nursery through senior high school age groups.

KIWANIS
Attorney Francis O'Brien of Ann Arbor, speaker at the Kiwanis club meeting, Monday evening, took for his topic, "Veterans' Problems in the Court."

The club decided to hold a meeting July 6, at the American Legion cottage at Cavanaugh Lake.

Standard Liners Bring Results

15% REDUCTION ON

LEE DE-LUXE TIRES

5.25-5.50x17	\$12.95	6.50x16	\$15.75
5.50x16	\$12.45	7.00x15	\$17.70
6.00x16	\$12.95	7.00x16	\$18.10
6.50x15	\$15.45		

—Plus Tax—

All Sizes of Good Used Tires.

\$3.50 ALLOWANCE

For Your Old Battery Towards a New Hi-Speed De-Luxe Battery.

HANKERD SERVICE

Corner South Main and Van Buren

Phone 7411

SPECIALS FOR CHELSEA DAYS

BARBEQUE HAMBURG

With Colelaw and French Fries

40c

Free Door Prize

\$5.50 MEAL TICKET
(Come in for your chance)

Sylvan Court Grill

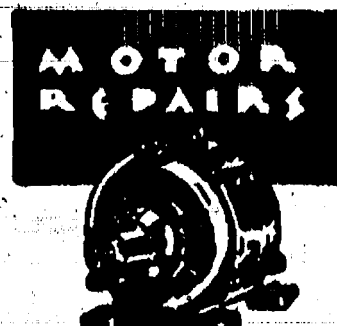
103 West Middle Street

Turner & Schuler Electric Company completes Store Lighting and Power job for Thom McAn Shoe Store in Jackson

A Local Firm was awarded the contract to rewire and install modern window and store lighting equipment for the Thom McAn Shoe Company of New York, in their Jackson store, which opened June 12.

The Modern lighting throughout the store, makes that place of business an attractive addition to Jackson. Turner & Schuler welcomes the public to view the work completed by them in Jackson, June 10th, as a sample of work done by them during years of experience in Electrical Power and Lighting Engineering and Installation throughout the state.

When in Chelsea, visit their shop, where a complete stock of Lighting Fixtures for the home or industry, and all kinds of Wire and Electrical Equipment can be obtained.



IN STOCK:
A Fine Line of 3-phase and Single-phase Electric Motors.

PHONE CHELSEA 2-3821

TURNER & SCHULER ELECTRIC CO.

114 WEST MIDDLE STREET

WANT ADS

FOR SALE—Whizzer motor bike. Call after 6:30 p.m., 629 N. Main St. Phone 2-1562.

ATTRACTIVE well-built home—144 sq. ft. living room with fireplace, dining room, den, kitchen, open stairway and three bedrooms; oak floor and trim below; pine above; full basement with stoker furnace, gas water heater and softener; two garages and nicely landscaped lot. Located at 314 Washington, Chelsea. Drive by and interested. Phone Alvin H. Fommerninger at 7778.

FOR SALE—Late '36 Chevrolet 1 1/4 ton truck; fair condition; good tires; price \$225. Phone 5522; or call at Charles Loomis, 220 W. Middle St.

WANTED—Standing Timber. We will pay top prices for large virgin or second growth trees. Thurston Lumber Company, Howell, Michigan. Phone 931.

FOR SALE—4-piece bedroom suite of lined oak with box spring and inner spring mattress; set top deck; 9x12 ft. rug and one 9x9 ft. rug. Phone 4293.

FOR SALE—240-acre Dexter farm in Franciscan. Inquire on premises.

7-ROOM HOUSE located on Orchard street, for sale. Phone 4417.

KEYS—Automobile keys cut to code; all kinds of keys duplicated. Jones Garage, dial 2-2121. 38th

FOR SALE—1937 Chevrolet Master Deluxe 2 door in parts. Engine to be sold complete; good condition, recently overhauled; also Model A Ford truck for sale, long wheel base, motor in good condition. William Klunk, Rte. 2, Chelsea, on Bush Rd., 3 miles north-west of Chelsea. Call between 8 a.m. and 2 p.m.

GAMBLE STORE

KEM-TONE—The Modern Miracle Wall-Finish—Complete selection of colors . . . \$1.17 qt., \$3.49 gal.

WALL PAPER—Washable, fade-proof with "Ready-Trim" edge. Newest patterns now in stock. Average small room can be papered for as low as . . . \$1.49.

GAMBLES

Authorized Dealer

FOR SALE—Studio couch, wine color. Leigh Luck. Phone Chelsea 5961.

BABY SITTER—Experienced; will work by the hour, day or week. Phone Chelsea 6591.

Salem Grove MYF Guests at Banquet Supper in Church

Members of the Methodist Youth Fellowship of Salem Grove church were guests of honor at a banquet supper given in the basement of the church on Friday evening, June 11.

During the winter months these young people sponsored a series of six programs which were very beneficial to the church. Those who took an active part in the work were Donna Kaibach, Kenneth Jr., Jayne and Marjorie Proctor, Henry and Mildred Notten, Richard Kaibach and Lee Max Hoppe, Elsie Peterson, Dean and Jean Ruth Schweinfurth, Taylor Davis, Phyllis Kaibach and Virginia Quilatt.

Mrs. Dorr Whitaker was in charge of decorations. The long table was beautifully decorated in the Youth Fellowship colors, blue and gold. The motto, "Christ Above All," in gold letters mounted on blue paper, formed a beautiful centerpiece with the emblems in blue and gold at each end of the table. Place cards were in blue.

Table waiters consisted of new members and those who did not take an active part in the project. Blue and gold caps and aprons made by Mrs. E. O. Davis and Mrs. E. T. Quilatt, were worn by the waiters. Members who have recently joined the Youth Fellowship are Joyce and Rowena Lentz, Donna Fowler and Marjorie Wahl.

Following the three-course banquet supper, the judges of the programs were introduced. Walter Riemenschneider gave a short talk commending the young people for their fine spirit and the very good work that they were doing. Mrs. E. O. Davis, Mrs. Dorr Whitaker and Mrs. George Welch also spoke briefly. Reuben Hartman was also a member of this committee. Rev. Davis spoke highly of the young people and their work.

Mrs. George Welch and Mrs. Ronald Lentz were in charge of the scavenger hunt which was won by Taylor Davis and his group of young people. Mrs. E. T. Quilatt had charge of the games which closed the evening's entertainment.

Chelsea Independents

(Continued from page one)

at least one hit—that's music—that's harmony; the old "Baseball Chord." We are now all alone in undisputed first place.

Summary:
Runs: Birch, Marsh, S. Davis, 4, Beeman 3, McClanahan 2, A. Policht, Koneski, J. Miller, Effron, Beeman 2, King, Veigel, Johnston 2; Two Base Hits: Marsh, A. Policht; Three Base Hits: Beeman; Struck out by McClanahan 6, Johnston 2, Dinnhotter 1; Bases on Balls: Off McClanahan 4, Johnston 2; Winning Pitcher: McClanahan; Losing Pitcher: Johnston.

Beginning Sunday, June 27, we open a five-game stand here at our local corral, meeting the Saline nine which has dropped only one game this season. They were two-time losers to us last year and are going to try mighty hard to break our defense for a win this year. It should be a rousing affair so come on out folks, Sunday, June 27, 2:30 p.m., and again see your local favorites in action. Batter up.

Farm Bureau Group Plans Pot-Luck Picnic To Be Held July 18

Sixteen members of the Lima-Scio Farm Bureau met last Thursday evening in the Lafayette Grange Hall with Mr. and Mrs. LaVerne Coy as hosts. The business of the evening dealt with reports of a district meeting given by Jack Bradbury and LaVerne Coy, and plans for a picnic. The pot-luck picnic will be on Sunday, July 18, at the Dexter Park with Mr. and Mrs. Walter Breuninger as hosts.

Discussion of Farm Bureau services, including fertilizer, oil and insurance, was led by Lowell Spike. The group is in favor of the Farm Bureau purchasing an oil well and in turn, selling oil and gas to their Farm Bureau members.

Refreshments of cookies, cake, of a regular July meeting.

NEW JUVENILE BOOKS
It Happened in Australia—Harris.
The Bewitched Cavern—Rab.
Peter Paints the U. S. A.—Colby.
Jeff Roberts, Railroad—Ford.
A Girl Can Dream—Caranna.
Roommates—Rendina.
My Friend, the Dog—Terhune.
Pinto's Journey—Bronson.
CHELSEA PUBLIC LIBRARY

Birth Announcements

Born to Mr. and Mrs. Tom Mervel, at St. Joseph's Mercy hospital, Ann Arbor, on Sunday, June 20, a son.

Jello and coffee were served by the hostess.
The picnic is to take the place of a regular July meeting.



2 DOOR PRIZES

1 From Meat Dept.
1 From Grocery Dept.

- Maxwell House Coffee, lb. 55c
- Wheaties, Extra Big Pak 20c
- Robin Hood Flour, 5 lb. bag 49c
- Heinz Tomato Soup, 3 for 25c
- Peter Pan Peas, No. 2 can 15c
- Campbell's Pork & Beans, lb. can 15c
- Oz Peanut Butter 35c
- 1 Jiffy Biscuit Mix, 20 oz. and 1 Jiffy Pie Crust, both for 21c
- Rinso, large package 32c
- Lux Soap, bath size 13c
- Lifebuoy Soap, 3 for 27c

Fresh, Smoked and Salted Meats

GROCERY DEPARTMENT MEAT DEPARTMENT

Tom Smith Phone 6611 Bill Weber

Everybody Wins Here . . .

Free Coffee with Every Food Purchase at

Nelson's Coffee Shop

June 25 and 26 -- Chelsea Days Only
IN THE SYLVAN HOTEL

Dinners Sandwiches Ice Cream

SYLVAN THEATRE

CHELSEA, MICHIGAN AIR CONDITIONED
Michigan's Finest Small Town Theatre!

Friday and Saturday, June 25-26

"Under California Stars"

Starring Roy Rogers, Jane Frazee, Andy Devine, "Trigger."

CARTOON — THREE STOOGES — NEWS
Shows 7:10 and 9:00 (Fast Time)

Sunday and Monday, June 27-28

"Dark Passage"

Starring Humphrey Bogart, Lauren Bacall, Bruce Bennett.

CARTOON—Mexican Joy Ride
Sunday Shows—3-5-7-9

Tues., Wed., Thurs., June 29-30, July 1

"April Showers"

Musical with Jack Carson, Ann Southern, Robert Alda.
CARTOON—I Taw a Putty Tat.
Shows 7:15 and 9:05.

—COMING—

"Prince of Thieves," "You Were Meant For Me," "Magic Town."

"SHOP IN CHELSEA
and
SAVE THE DIFFERENCE"

The Chelsea Standard

CHELSEA DAYS
EDITION
SECTION TWO

CHELSEA, MICHIGAN, THURSDAY, JUNE 24, 1948

- - - We Want You To See Our Town - - -

It's OPEN HOUSE in CHELSEA

Friday and Saturday, June 25-26

STORES OPEN 8:00 A.M. TO 9:00 P.M. BOTH DAYS

FREE

FIREWORKS . . . ENTERTAINMENT
FACTORY TOURS . . . BARGAINS, . . . PRIZES

PROGRAM FRIDAY, JUNE 25

All Day and Evening—Exhibits of Chelsea manufactured products, held at the Municipal Building.

2:00 P.M.—Conducted factory tours, starting at the Municipal Building. This is your opportunity to see operations in the making of items such as springs, power take-offs, paper twine, etc., some of the products manufactured here in Chelsea that keep the wheels of industry turning.

4:00 P.M.—Street Show: Barth and Meir hand-to-hand balancing and 20-ft perch act.

8:00 P.M.—Street Show—Repeat performance of the afternoon show.

8:00 A.M.—9:00 P.M.—Store Bargains.

FREE DOOR PRIZES GIFTS FROM CHELSEA MERCHANTS

\$5.00 Value in Merchandise.
Philco Radio-Phonograph—Combination, console model.
\$15.00 Value in Merchandise.
Bouquet of Cut Flowers, with vase.
Brownie Target Six-16 Camera.
Tackle Box with Fishing Tackle or \$7.50 value in other merchandise.
Table Model Electric Radio.
Large Swift's Premium Ham.
Genuine Leather Zipper Traveling Bag.
1 Ton of Coal or its equivalent value in other merchandise.
24"x48" Wonda Weave Rug.
Armour's Star Boneless Ham.
Decorated Birthday Cake.
81"x90" Sheet and 1 pair of Pillow Cases.
100% Virgin Wool Blanket, treated to resist moths.
6-months Subscription to the Detroit Free Press.
100% Virgin Wool Blanket.
\$5.00 Value in Merchandise.
100-lb bag of Cane Sugar.
5 "Everything Goes."
Personalized Stationery.
Ronson Desk Lighter.
2% Gallons of Ice Cream.
\$10.00 Value in Trade.
Fluorescent Table Lamp.
Electric Occasional Clock.
Electric Sandwich Grill.
Car Spotlight.
Dominion Electric Toaster.
100-lb. Bag Cane Sugar.
2-Gallon Thermos Jug.
Chair.
And many, many more not listed here.

Each Door Prize will be drawn separately. Nearly every place of business is offering at least one door prize which costs you only a visit to the store to secure a chance. No purchase is necessary. Simply sign your name and address on a card presented to you in the store, and drop it in the box provided in that store. You need not be present to win.

PROGRAM SATURDAY, JUNE 26

8:00 A.M.—9:00 P.M.—Store Bargains.

All Day and Evening—Exhibits of Chelsea manufactured products, held at the Municipal Building.

4:00 P.M.—Street Show, Barth and Meir hand-to-hand balancing and 20-ft. perch act.

8:00 P.M.—Street Show—Repeat Performance of the afternoon show.

9:30 P.M.—Variety Floor Show under lights at the Athletic Field on Washington Street. Acrobatic, Ballet, Russian numbers, Tango, Spanish Dances, Song solos, and several Specialty numbers.

Drawing for Free Door Prizes Offered by Merchants.
Huge Fireworks Display.

Chelsea Days are for your enjoyment - Sponsored by
CHELSEA CHAMBER OF COMMERCE

FARMERS . . .**LIME DELIVERED AND SPREAD**Limestone Chips For Driveways and Barnyards
PROMPT DELIVERY**Alfred Burkhardt**

3655 Jacob Road

Phone 4733 Manchester



"Believe it or not, Warden—I found this musical instrument under 'Hardware' in the telephone directory Yellow Pages."

FEDERAL SCREW WORKS' CHELSEA PLANT is shown in the above photograph. At the present time the entire local production of this firm is housed in the one plant with additional warehouse facilities being utilized in part of the "Tower Building." During World War II Federal Screw Works operated four plants in Chelsea and employed more than 1,100 workers.

(PAID ADVERTISEMENT)

**ATHLETES FOOT GERM
KILL IT IN ONE HOUR.
YOUR 35c BACK**

If not pleased—The germ grows DEEPLY. To kill it, you must REACH it. Get TE-O-L at any drug store. A STRONG—fungicide made with 80% alcohol. It PENETRATES. Reaches More Germs—Today at
CHELSEA DRUG STORE

Federal Screw Works Was Originally Organized as The Chelsea Screw Co.

State Agents To Gather at MSC

Michigan's county agricultural agents are going back to school. From June 28 to July 2, approximately 80 county agents and assistants will spend a week on the campus of Michigan State college at East Lansing. They will get a concentrated short course in new developments in agricultural and home economics research.

Last June Michigan's agents visited the research plant of the U. S. Department of Agriculture at Beltsville, Md., near Washington, D. C. This year they're going to find out what's new at Michigan's own experiment station. They will be housed and fed in one of the college dormitories.

First Lincoln Road
The swamp trail that was the forerunner of Lincoln road, one of America's most beautiful shopping streets, was blazed across Miami Beach in 1905 by woodsmen who were gathering mangrove bark for tannic acid. The thoroughfare in its modern form was created by the late Carl G. Fisher, pioneer developer of the resort city.

On May 6, 1918 The Chelsea Screw Company, manufacturers of screw machine products, was organized by M. J. Dunkel, Conrad Lehman and Pauline Gribbach, starting its operations at the location now occupied by W. R. Daniels Automobile Sales.

A steady growth of the business necessitated larger quarters with the result that the company was reorganized on April 5, 1916, and a new building was erected at the site now housing the successor company, The Federal Screw Works, with which the Chelsea Screw Company was merged on Oct. 1, 1928.

Federal Screw Works has been in business since 1919 and has its main office in Detroit. During the last World War the company converted 100 per cent to war work, operated four plants in Chelsea and employed more than 1,100 people. For its war production record, the company was awarded the Army-Navy "E" flag with five stars.

The company primarily manufactures component parts for the automotive, farm implement, camera, electrical appliance and a variety of other industries, presently employing about 200 persons at its Chelsea division.

Twenty-four former Japanese warships, stripped of armament, have been turned over to the U. S. Navy for use as target vessels or for scrapping.

Men's and Ladies' ALTERATIONS REPAIRS and DRESSMAKING SLIP COVERS

Lauretta Jarvis
PHONE DEXTER 4191
Washtenaw Cleaners

REO SAFETY SCHOOL BUSES

now available for immediate delivery in various seating capacities.

REO MOTORS, Inc.

Retail Sales
1314 S. Washington Avenue
Lansing 10, Mich.

Starting Tuesday, June 8th

AND EVERY TUESDAY NIGHT

MIDGET AUTO RACES

JACKSON FAIRGROUNDS

Legion Motor Speedway Track

A new Quarter Mile Asphalt Lighted Speedway . . . Auspices of American Legion, Richard F. Smith Post, No. 29 . . . Approved and Sanctioned by AAA Association.

TIME TRIALS 7:00 P.M. RACES SHARP 8:15 P.M.

No Phone Reservations . . . No Children Under 16 Years Unless With Adults.

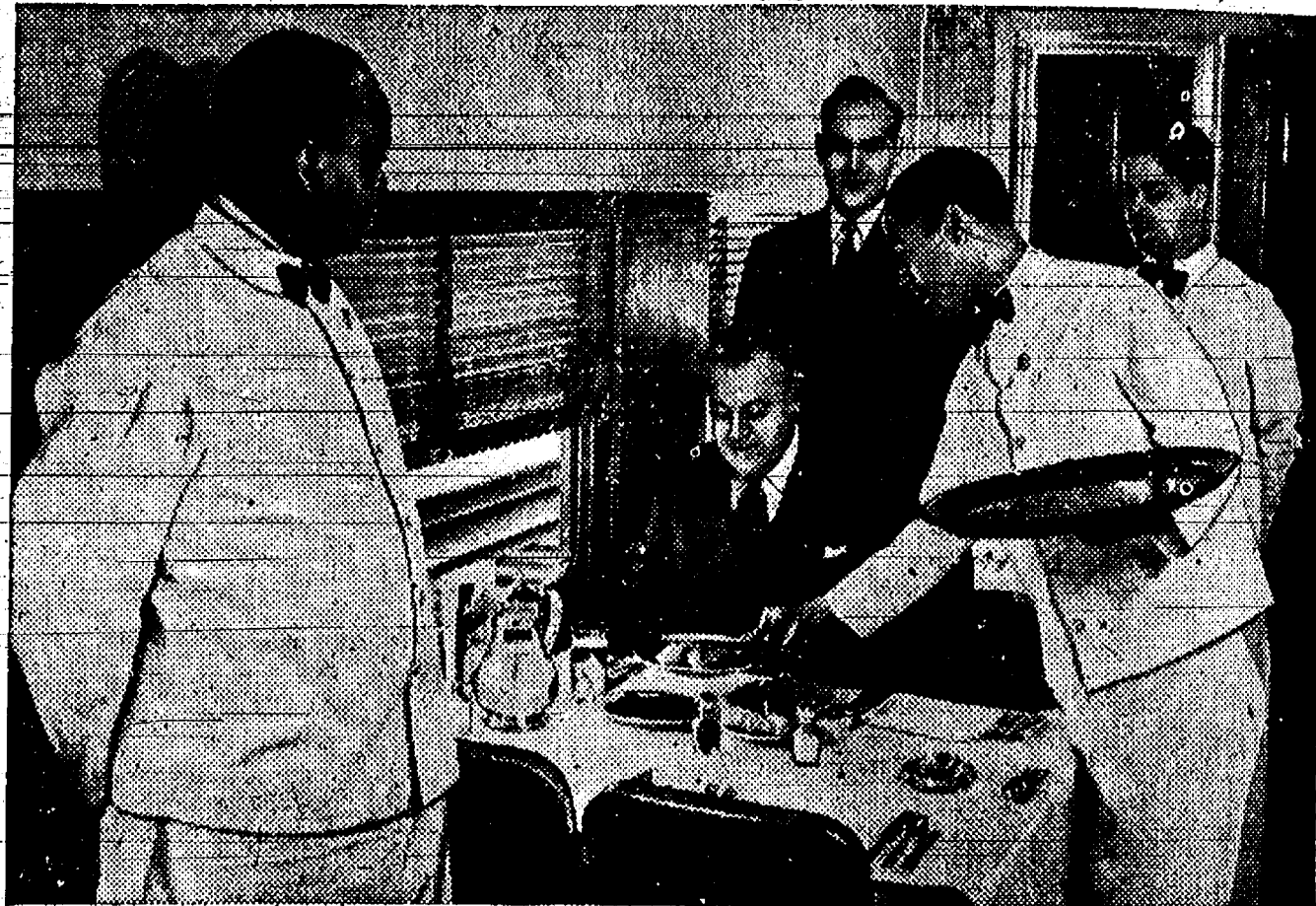
FEATURING: Ronnie Householder, Ralph Pratt, Carl Forberg, Art Hartsfield, Iggy Katona, Wesley Sagesser, All Star Drivers and AAA Cars.

WM. R. JAY
Lessor and Promoter.

FRANK DAVIS
Assistant

What's New on New York Central?

(Snapped by your Central photographer)



SCHOOLHOUSE ON WHEELS. Walter Smith. Starting scores high in his final tests aboard one of New York Central's new "King-Size" diners. He serves his instructor, Mr. Robert Ogg, a delicious dinner on a table set with snowy linen, gleaming silver, glass and china. Every New York Central waiter attends these classes to brush up on the niceties of service so important to your dining pleasure. Today you'll find this famous Central hospitality in the smart surroundings of a great new dining car fleet. New full-length diners with separate kitchen-lounge cars . . . new single-unit diners . . . and smart new diner-lounge cars too . . . all part of the NEW in New York Central.

PUBLIC AUCTION!

In order to settle the estate of the late Julius F. Schmidt the following items will be sold at Public Auction at the farm, located 4 miles West of Scio Church on Scio Church Road, House No. 11301, on

SATURDAY, JULY 10

Commencing at 1 O'clock P.M.

Rubber tired John Deere Tractor, Model A, with Gang Plow and Cultivator.
John Deere Manure Spreader.
Grain Binder.
Corn Binder.
John Deere Mower.
Hay Loader.
New Idea Hay Loader.
Side Delivery Rake.
Regular Horse Dump Rake.
2 Double Corn Cultivators.
Single Corn Cultivator.
Corn Planter, with Fertilizer Attachment.
2 Spring Tooth Drags, four sections.
Spike Tooth Drag, three sections.

Spike Tooth Drag, Steel Frame, two sections.
2 Single Walking Plows.
Grain Drill.
Land Roller.
2 Farm Wagons.
Corn Sheller.
Horse Scraper.
2 Sets Bob Sleighs.
2 Sets Hay Slings and Rope.
Extension Ladder.
Stock and Hay Rack combined.
Hay Rack.
Single top Buggy.
Double Buggy.
2 Iron Kettles.
DeLavel Cream Separator.
Power Churn.
Grind Stone.
Tank Water Heater.

Wheelbarrow Seeder.
Chicken Brooder.
Buffalo Farm Scales.
60 Rods Woven Wire Fence, (approx).
Roll Barbed Wire.
2 Barn Trolley Cars.
2 Sets of Heavy Harness.
Pair of Light Harness.
Set of Fly Nets.
30 Steel Fence Posts (approx).
Quantity of Seasoned Lumber.
Saw Logs.
Quantity of Wooden Crates.
Quantity of Hay, Oats and Corn.
1 Bushel of Red Clover Seed.
1/2 Bushel of Timothy Seed.
Quantity of Small Tools too numerous to mention.

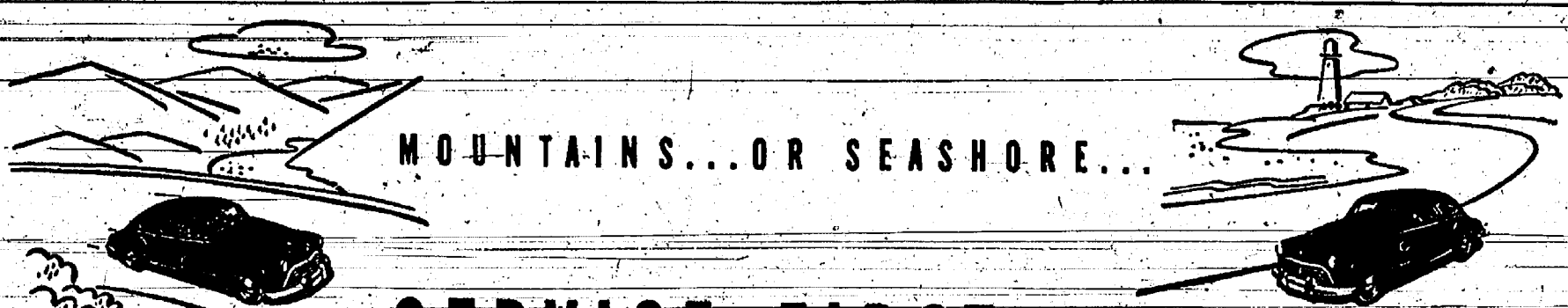
HOUSEHOLD FURNITURE - including wood range and heating stove.

TERMS - CASH

EDWIN O. WENK, Adm.

JULIUS F. SCHMIDT ESTATE

IRVING KALMBACH, Auctioneer



MOUNTAINS...OR SEASHORE...

SERVICE FIRST is SAFETY FIRST!

Come in for an Oldsmobile
Check-Up and Tune-Up . . . then
Whirlaway on Your Vacation!



Head for the open road with an open mind—free of care and worry about your car! Visit our modern, completely equipped service department for an Oldsmobile "Pre-Vacation Check-Up." Factory-trained mechanics will give your car a thorough-going safety-disposition. They'll follow through with whatever service is needed—tune-up, brake adjustment, wheel alignment—anything up to a major overhaul. Oldsmobile quality standards are maintained—genuine Oldsmobile parts are always on hand. Your job will be done thoroughly, finished promptly. And as you "Whirlaway" for a safe and carefree holiday, you'll feel that Oldsmobile is "way out ahead in service, too!"

YOUR OLDSMOBILE DEALER

W. R. DANIELS — 208 Railroad Street — Chelsea

Times to Henry J. Taylor, Mutual Network, Mondays and Fridays

OLD FASHION

BARGAIN DAYS

June 25-26

HERE AT

LESSER'S

Vacation Suggestions



RIGHT FROM THE PACIFIC... out of the foamy waters... comes this striking bathing suit ideal for the active swimmer. One-piece satin lastex with built-in bra... to give you a sylph-like appearance.

\$5.98

2-Pc. Satin Lastex.
\$6.29

3-Pc. Play Suit
For getting that-tan.
\$3.19

2-Pc. Cotton Bathing Suit
With ruffled skirt.
\$3.98

Shorts
With or without cuff.
\$1.59 to \$3.39

Gabardine Slacks
With press on hem,
Stitched down crease.
\$5.50

Cotton Slacks
Sizes 12 to 44.
\$2.89 to \$2.98

Girls' Dungarees
Sizes 24 to 32.
\$2.79

Girls' Slacks
Adjustable.
Sizes 3 to 6X.
\$2.98

Children's Bathing Suits - Special 98c

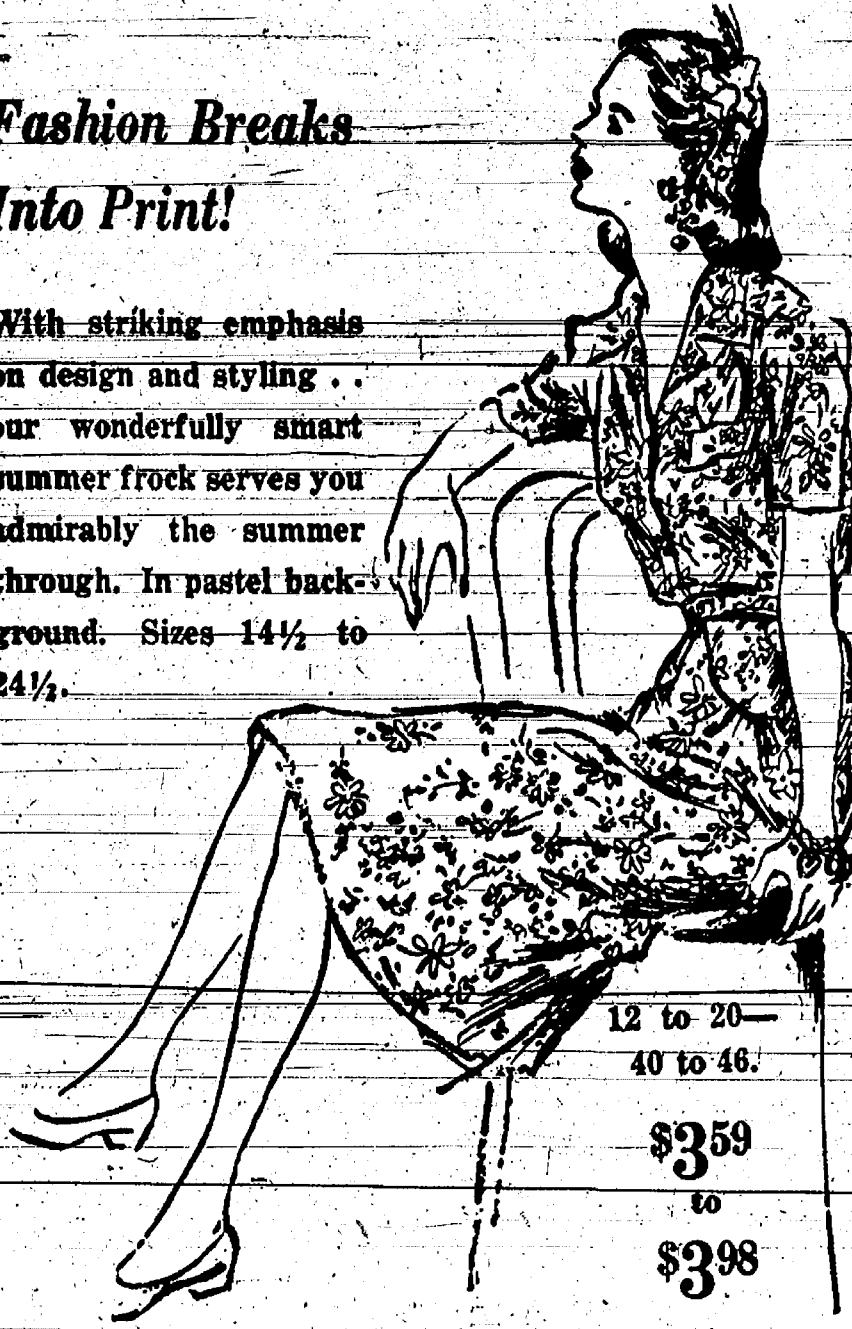


Sizes 14 1/2 to 24 1/2.

\$4.49 to \$10.98

Fashion Breaks
Into Print!

With striking emphasis on design and styling... our wonderfully smart summer frock serves you admirably the summer through. In pastel background. Sizes 14 1/2 to 24 1/2.



12 to 20—
40 to 46.

\$3.59

to
\$3.98

LIGHTWEIGHT
WORK SHOE



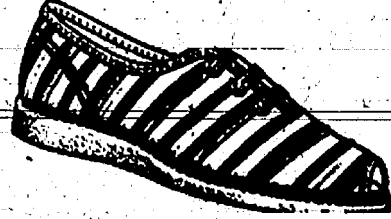
This shoe provides solid comfort without weight. In top grain leather. Black, brown.

\$4.65 to \$7.95

- | | |
|---------------------------------------|------------------|
| Men's Covert Zipper Jackets | \$8.79 |
| Navy Jackets | \$1.39 |
| Covert Work Pants | \$2.95 |
| Covert Work Shirts | \$1.98 |
| Shop Caps | \$.39 |
| Band Overalls | \$2.19 |
| Bib Overalls | \$3.29 |
| Rockford Socks, pair | \$.25 |
| White Cotton Socks, pair | \$.25 |
| Men's Loafers | \$5.95 |
| Boys' Moccasin | \$3.98 |
| Men's Trench Coats, special | \$11.95 |
| Men's Sport Jackets | \$4.98 to \$8.50 |
| Sport Shirts, plain | \$3.98 |
| Sport Shirts, plaids | \$1.98 |
| Boys' Slipover Sweaters, "Roy Rogers" | \$3.95 |

* Posture Foundation

You'll feel as great as all outdoors with "P.F." Canvas Shoes... and be in high footwear style as well. "P.F." Canvas Shoes are made with a patented feature that revolutionizes canvas shoe comfort and foot protection... Put more spring in your step... Make all your activities more fun. Come in today... See "P.F." Canvas Shoes.



"P.F."
Canvas
Shoes

\$2.89 to \$3.00



FREE DOOR PRIZE

Get Your Free Ticket on the
100% Virgin Wool
BLANKET

Treated to Resist Moths
TO BE GIVEN AWAY
SATURDAY EVENING,
JUNE 26

ODDS AND ENDS

All Dark Straw Hats
1/2 OFF

Children's Knit Pajamas
Special 79c

Girls' 2-Pc. Pajamas
\$1.98

Girls' Crepe Gowns
\$2.98

Ladies' Crepe Gowns
Sizes 32 to 46.
\$2.98

Boys' Cotton Wash Suits
Short Pants.
Special 79c

Wash Cloths - 10c to 15c

Children's Cotton Sweaters
Sizes 2 to 8.
\$1.19

Boys' Knit Training Pants
With Fly Front. Sizes 2 to 6.
45c

T-Shirts
White, Plain, or Stripes. Sizes 0 to 14
79c to \$1.19

Anklelets - - 9c
8 1/2 to 9 1/2.

Children's Seersucker
Sun Suit
Special 79c

Bath Towels - 29c to 59c

MOTHERS!

YES, IT'S TRUE!

A Free 3"x5" Portrait

in Mount of Your Child Taken at Our
Store on June 25, between the Hours of
10 a. m. and 6 p. m.

NO COST OR OBLIGATION

This offer is good for children under 12 years. Older children and adults taken at small cost. Selection of proofs. We positively guarantee our highest quality materials and workmanship in this offer.

IDEAL STUDIO

BUY THE BEST FOR LESS

— AT —

LESSER'S

Phone 2-2171

\$ SALE

Sheer Nylons
Seams and Seamless.

Special \$1.00

Lace Curtain Material
2 Yards \$1.00

Girls' 2-Pc. Play Suits
Sizes 8 to 14.
\$1.00

Women's Shoes
Not in all sizes.
\$1.49 to \$1.98

Children's Shoes
Special \$1.00

Drapery Material
\$1.00 per yd.

Boys' Wash Pants - - \$1.00

Cotton Hose
Sizes 8 1/2 — 10 1/2.
2 Pair \$1.00

Play Suits, 2-Pc., \$1.00

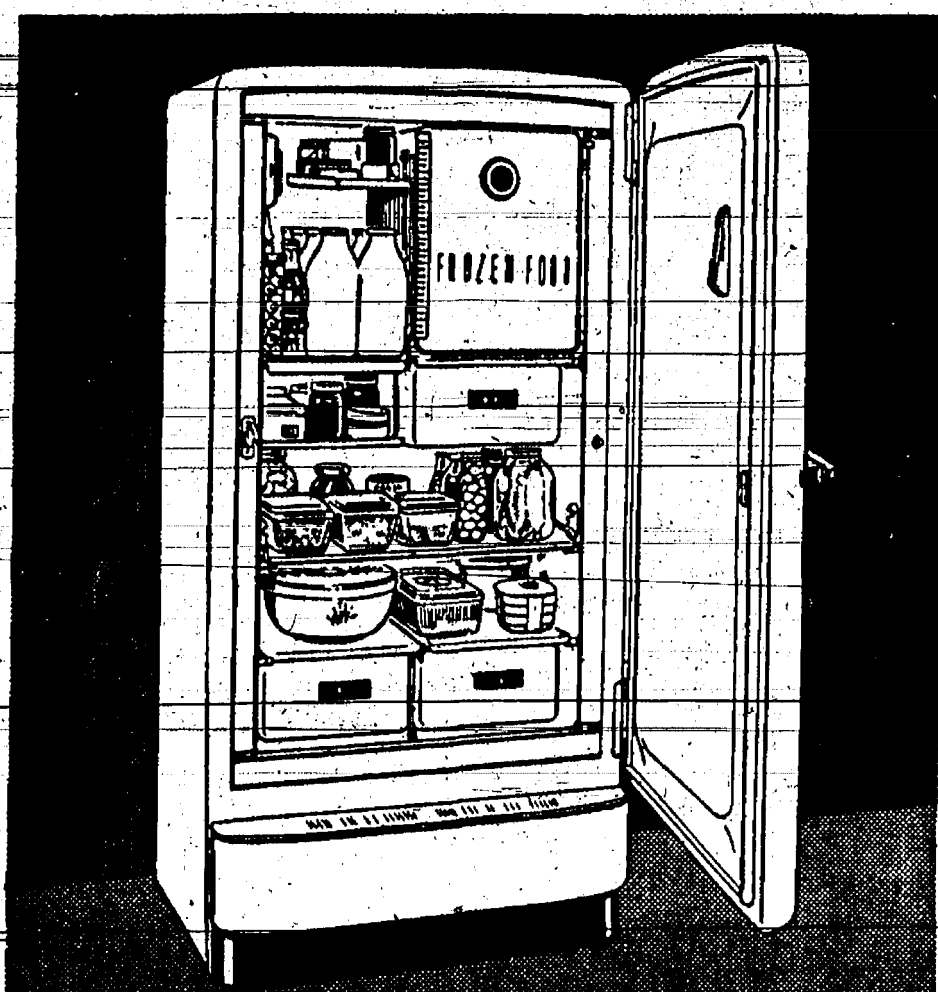
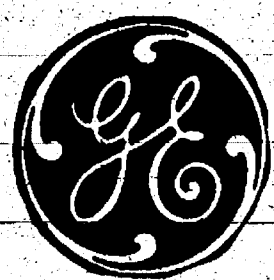
2-Pc. Pajamas
Sizes 12 to 18.
\$1.00

Girls' Slacks \$1.00

Girls' Dresses & Pinafores
Sizes 3 to 14.
Special \$1.00

FOR THE GREATEST ASSORTMENT OF ELECTRIC REFRIGERATORS

GENERAL ELECTRIC



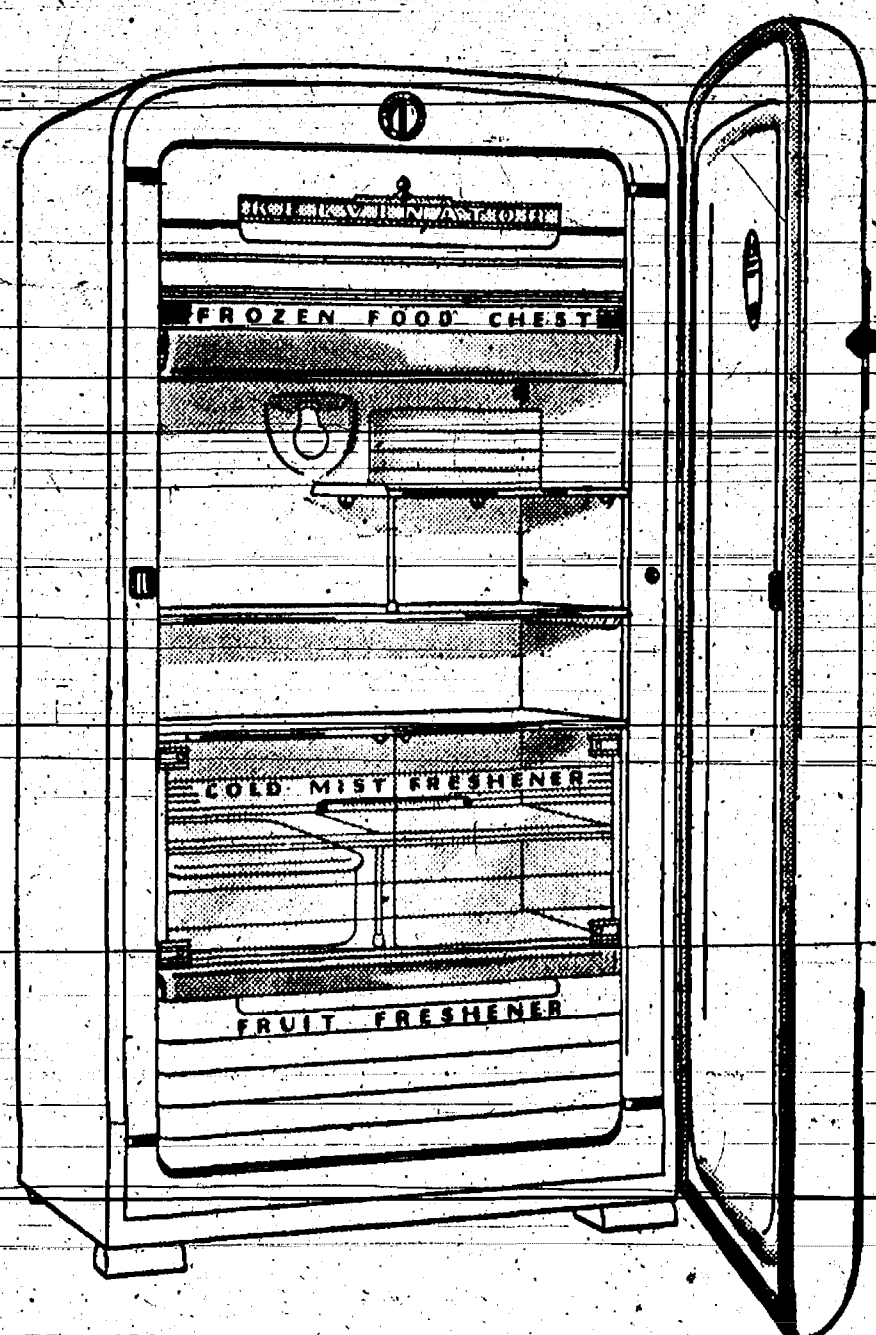
See how the new G-E 8-cubic-foot Space Maker fits in the same floor space as the old-style 6-cubic-foot model—yet gives one-third more refrigerated food-storage capacity!

**The Greatest Refrigerator
Ever Built by General Electric!**

FEATURES:

Butter Conditioner . . . keeps butter just right for spreading.
Big Freezing Compartment . . . holds 24 packages of frozen foods, plus 4 ice trays.
Deep Drawers . . . meat, fruit and vegetable drawers 6 inches deep.
Bottle Storage Space . . . holds 12 square quart-size milk bottles. Enough space for tallest bottles.
Sliding "Hostess" Shelf . . . convenient for chilling and serving desserts and salads.
Sealed-in Refrigerating System . . . more compact, more efficient, more economical than ever.

KELVINATOR



**You'll Open Your Eyes
When You Open the Door!**

- 8½ cubic feet within the shelf area, plus 1½ cubic feet . . . used by refrigerated Fruit Freshener . . . all in a refrigerator using no more floor space than a 7 cubic foot model!
- Big Frozen Food Chest . . . 50 pounds packaged frozen foods and ice cubes!
- Spacious Balanced Cold Compartment . . . ideal for dairy products and other everyday foods!
- Cold-Mist Freshener to keep vegetables, salad greens, left-overs moist and fresh!
- Kelvinator's exclusive new Fruit Freshener . . . moist-cold preservation!
- Kelvinator's famous Polarsphere mechanism . . . permanently lubricated . . . trouble-free performance. And many other equally big, important features!

NORGE

with Exclusive Self-D-Froster



Every night at midnight this new Norge defrosts itself automatically, saves you the work and worry of regular defrosting. Eliminates muss and fuss; results in efficient, economical operation.

ONE-THIRD MORE STORAGE SPACE

Eight-cubic-foot refrigerator in no more floor space than prewar six.

GIANT SIDE FREEZER

Holds up to 37 pounds of frozen foods. Sealed doors keep out frost and odors.

MORE SPACE FOR TALL BOTTLES

Holds full case 12-ounce bottles! Plus four quart bottles and four quarts of milk!

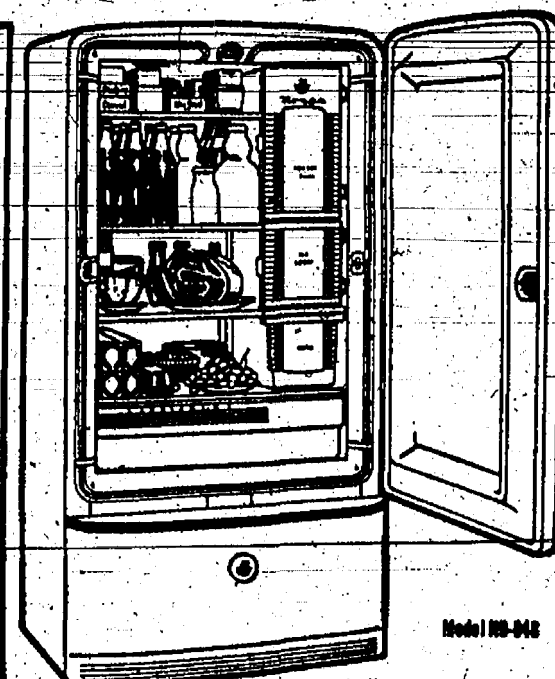
DOUBLE-WIDTH HYDROVOIR

Double space to keep fruits and vegetables moist, chill and fresh.

SPACIOUS TILT-A-BIN

More than 1½ cubic feet of storage space for staple foods: cereals, canned goods.

See these Money-Saving Conveniences Today!



You'll find 33½% more refrigerated storage space in this big eight-cubic-foot refrigerator. Yet it takes up no more floor space than a prewar six. Giant safety-sealed side freezer provides for convenient left-hand storage.

Prices and Terms To
Suit Your Purse



PHILCO



SENSATIONAL NEW

PHILCO

Advanced Design
REFRIGERATORwith Built-in
FREEZER
LOCKER

All the conveniences and refinements of modern refrigeration in Philco Advanced Design Model 885. Greater capacity in the same floor space; quiet, dependable operation; and new beauty. You get your money's worth in better living when you buy a Philco Advanced Design Refrigerator.

Famous PHILCO Features

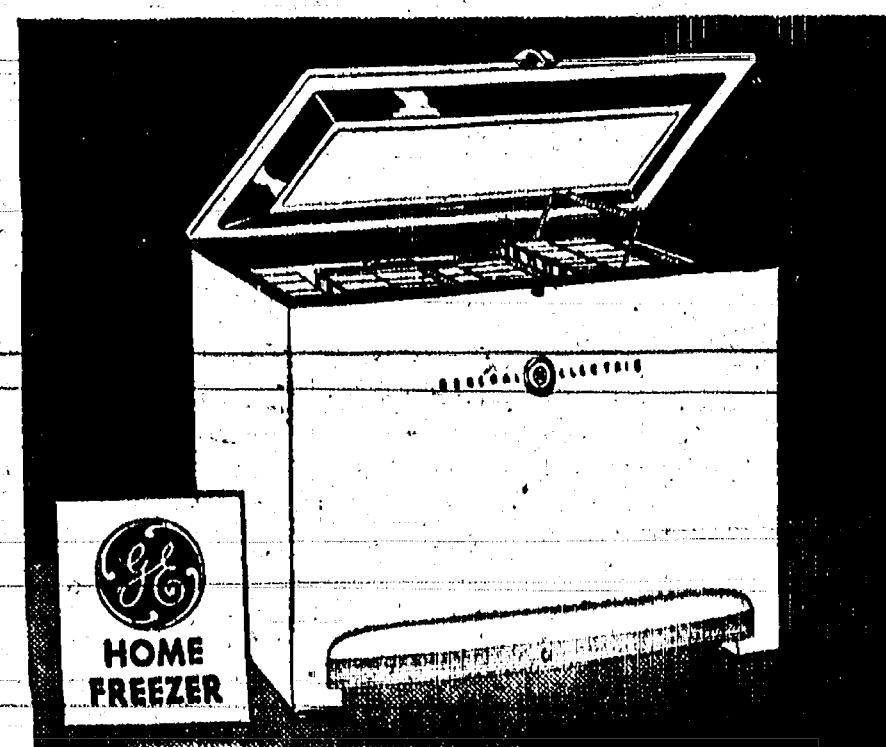
- Freezer Locker—Huge clear space for frozen food; separate fast freezing ice tray shelf.
- Cold Shelf—Philco Exclusive Auxiliary Cooling System cools food quickly, keeps temperature uniform.
- Balanced Humidity with Summer-Winter Control—Adjusts humidity in refrigerator for every season and climate. No need to cover food!
- 8 Deep Crisper Drawers—Keep fruits and vegetables "crisp" and fresh in moist cold.
- Moist Storage—Built-in cold, high humidity keeps meats fresher.
- Large Vegetable Bin—For handy storage.

Prices and Terms To
Suit Your Purse

plus FROZEN FOOD
RENTAL LOCKERS
Storage Service and Meat
Processing

HOME FREEZERS

plus



- GENERAL ELECTRIC
- KELVINATOR
- VICTOR
- ESCO

GENERAL ELECTRIC HOME FREEZERS
ARE AVAILABLE IN 4-8- and 18 CU-FT MODELS.

plus

plus

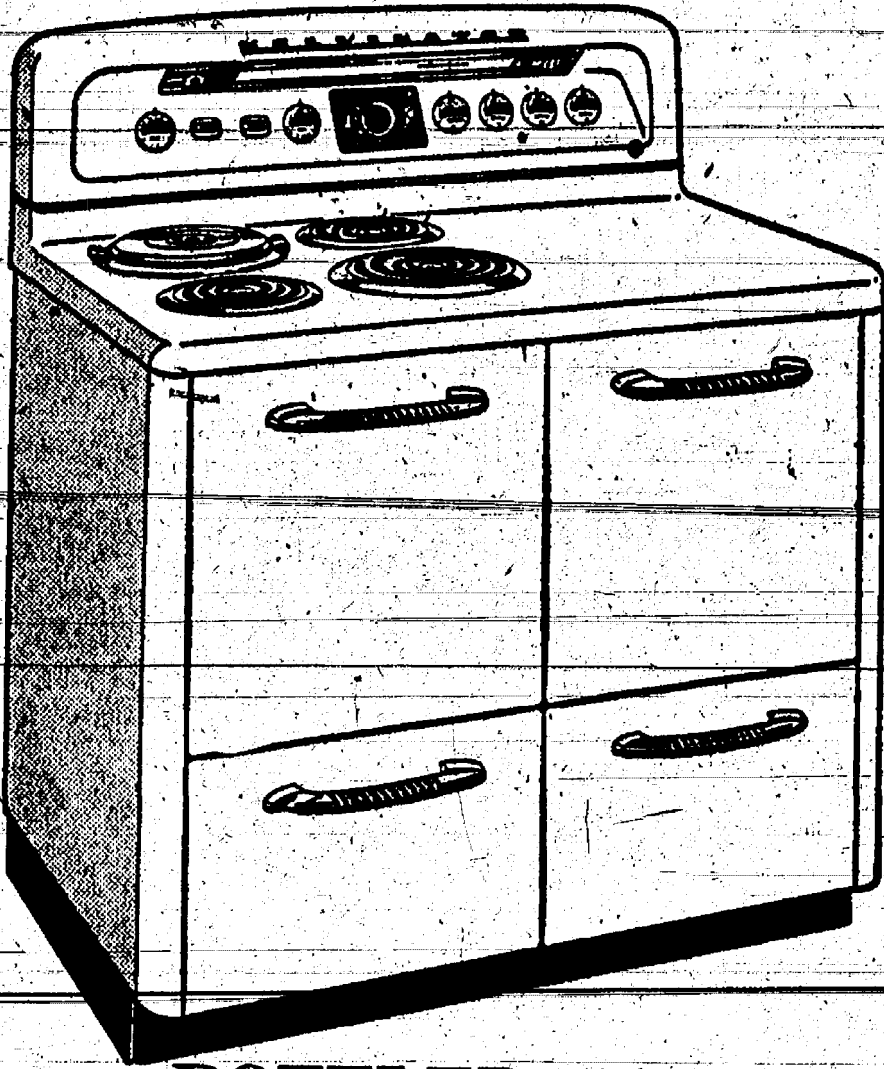
4-6-8-Can
VICTOR and ESCO
MILK COOLERS

Check These
SPECIALS

4-Can . . . \$295⁰⁰
6-Can . . . \$340⁰⁰
8-Can . . . \$395⁰⁰

Expert Service on All Makes

**GENERAL ELECTRIC -- KELVINATOR
NORGE
ELECTRIC RANGES**

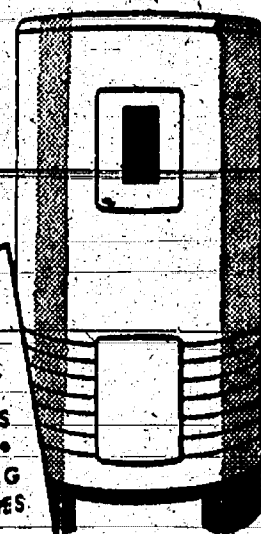


PLUS

**Hot Water Heaters
Electric, Oil and Bottled Gas
WITH THE NEW
GENERAL ELECTRIC
Water Heater**

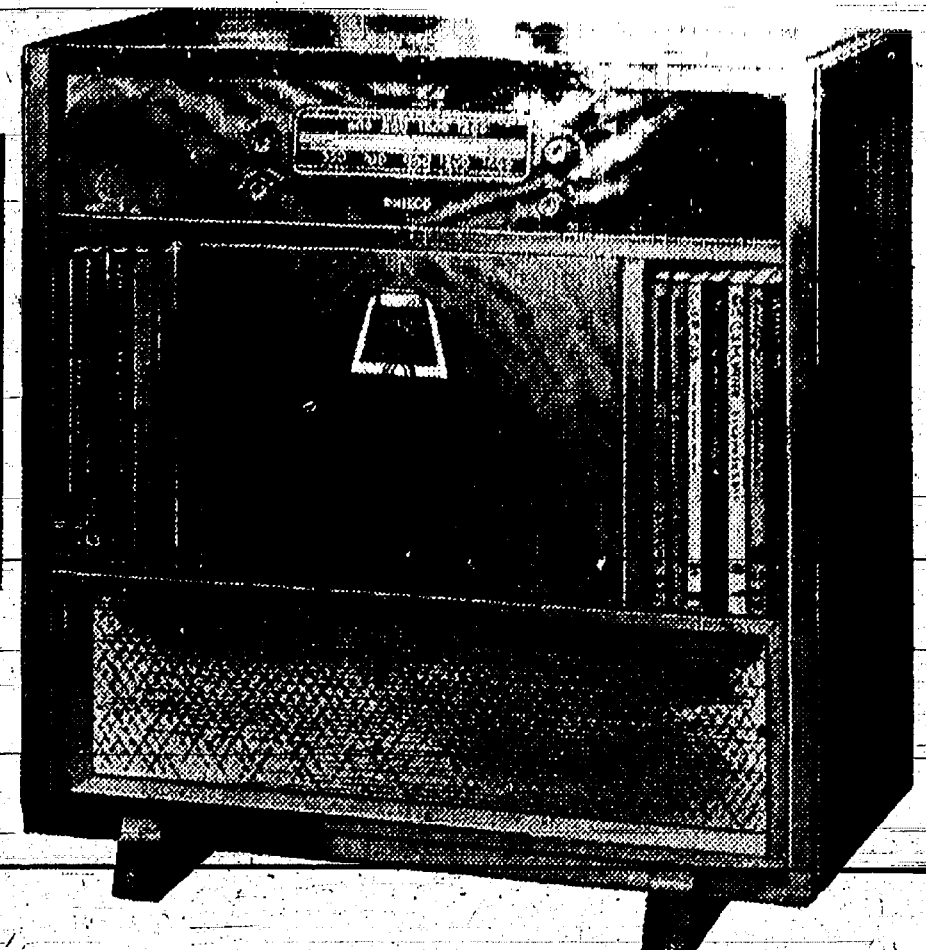
**YOU HAVE
10-Year
WARRANTY**

Once your General Electric Water Heater is installed, forget all the trouble of heating water. The automatic thermostat will provide you with plenty of hot water at just the right temperature for BATHING • WASHING DISHES • LAUNDRY • THE BABY • SHAVING • HOUSECLEANING AND A HUNDRED OTHER USES.

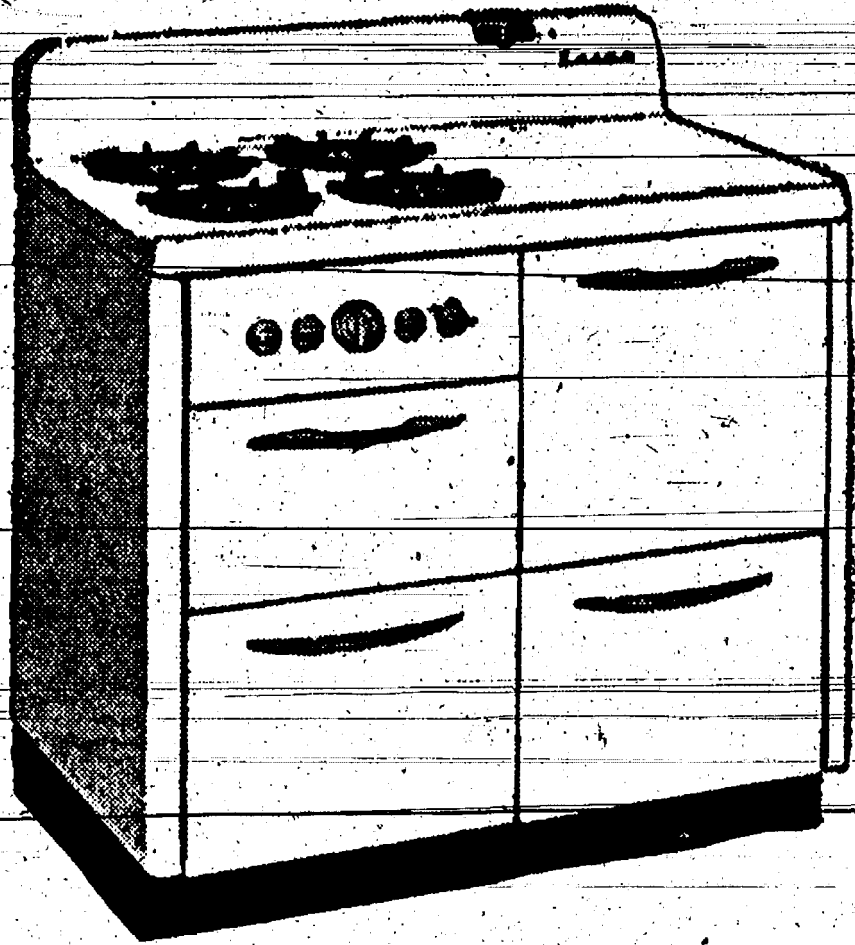


**Savings
Up to
\$75.00
on
CHELSEA
DAYS
SPECIALS**

**Radio and Radio
Phonograph Combinations
Philco - Zenith - General Electric - Sparton**



**BOTTLED GAS
Installation and
Bottled Gas Ranges**



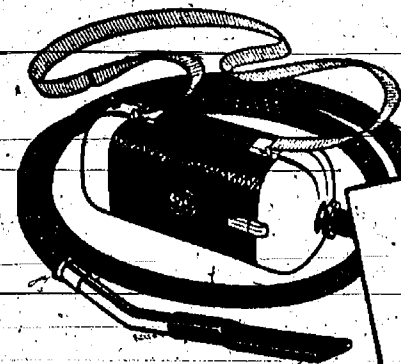
PLUS

**HOME CLEANING
EQUIPMENT**

**AT LAST! The Answer to All
Your Housecleaning Needs**

Above the Floor, the diminutive TIDY... a new kind of above-the-floor cleaner.

On the Floor, the distinguished TALL... perfect for rug cleaning.



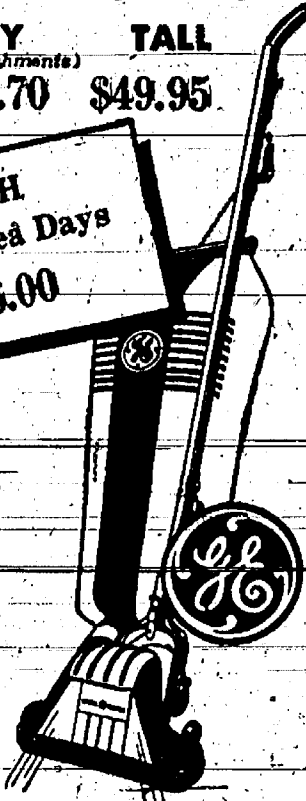
TIDY (with attachments) \$43.70

TALL \$49.95

**BOTH
on Chelsea Days
\$86.00**

Tidy, the 7 3/4 pound cleaning wonder that slings over your shoulder by an adjustable strap. Complete set of light weight attachments clean upholstery, lamps, draperies, dust floors, walls, stairs—spray insecticides and light lacquers.

Tall, a marvel of ease and efficiency—cleans rugs to perfection. Handle locks in position for easy under-furniture and rug-edge cleaning. Dirt-spotter light hunts out dark-corner dust. Easy-to-empty, accordion-top bag. They're the "PERFECT PAIR"—right for all your housecleaning needs. Other G-E upright cleaners can also be bought in combination with the Tidy.



**PLUS A Most Complete Line of
PHONOGRAPH RECORDS**

Choose this shop in which to browse and listen



**PLUS A COMPLETE LINE OF
ELECTRICAL APPLIANCES**

**Irons Toasters Roasters
Heating Pads Blankets Etc.**

Home Laundry Equipment

- Norge • Maytag
- Speed Queen • General Electric

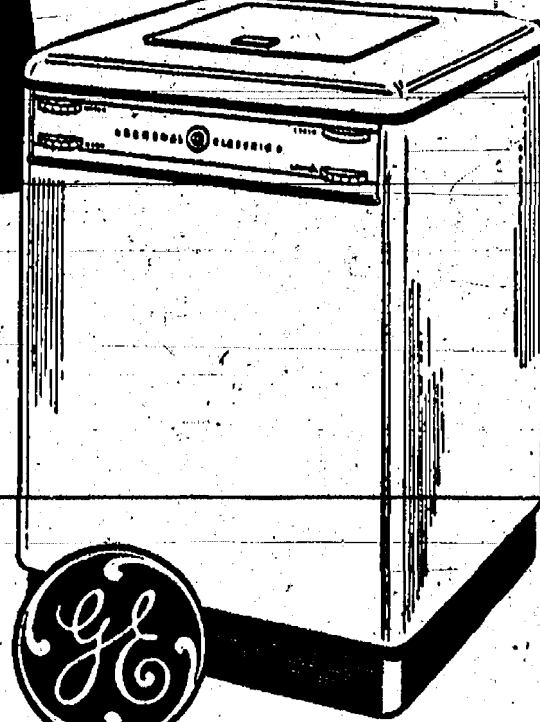
**NOW YOU CAN SEE IT!
TRY IT! BUY IT!**

**The G-E
All-Automatic
Washer**

No Other Automatic Washer Has So Many IMPROVED FEATURES

- Portable
- No Boiling Down
- Thoro Washing
- Top-loading Cover
- Drier Clothes
- Filtered Water
- Automatic Soap Dispenser
- Water Temperature Control
- No Oiling... No Greasing
- Rinse Water Saved

Come in and ask to see this revolutionary all-automatic washer.



PLUS

**Dish Washers and Steel
Kitchen Cabinets**

GENERAL ELECTRIC

Electric Sink

DOES TWO

THANKLESS KITCHEN TASKS



**AUTOMATIC DISHWASHER
WASHES ALL THE DISHES!**



**DISPOSAL*
DISPOSES OF GARBAGE
ELECTRICALLY**

**SEE IT
IN ACTION
on
CHELSEA DAYS**

**PLUS DOOR
PRIZE**

**A Chance on a
\$129⁵⁰ Philco**

**Radio-Phonograph
Combination**

**for only the price of a visit to
our store - No purchase required**

**GENERAL ELECTRIC AND IRONRITE
IRONERS**

LOOK CLOSELY, LADIES! REMEMBER

there's only one Ironrite

And wait till you see this newest of them all!



**A New
"Rhythmic"
Ironrite
You Iron
Everything
Sitting Down**

FRIGID PRODUCTS

L. R. HEYDLAUFF

113 NORTH MAIN STREET - CHELSEA

State Operated Parks Popular for Vacations

For vacationers who like to get back off the main trails, the conservation department has 53 campgrounds available in state forests this season.

In keeping with their location deep in the woods, the campgrounds have a minimum of conveniences: tables and benches, fire places, walls and toilets. Most of

them accommodate only two to ten parties, a few are larger. Upwards of 40,000 persons use the state forest campgrounds each year; many return year after year to the same spot. Besides campers who make use of the campground facilities, and sign the registers there, thousands of others visit more isolated spots, along lakes and streams where only a table and stove are furnished.

No fee is charged for camping in the state forests.

SALES for Chelsea Days

2 Qt. White Enamel Sauce Pans with Cover. Special 29c
Wire Dish Drainers. Special 39c
White Napkins, 9c pk. 3 pks. 25c

NEW GLASS TABLEWARE

Pink Decorated — A quality look of Expensive Glass at a Reasonable Price.

Cocktail Glasses 10c Salad Plates 15c
Juice Tumblers 10c Sherberts 10c
Table Tumblers 15c

Fire King Jadite Mixing Bowls, large size. Special 39c
Plastic Fruit or Salad Bowl, assorted colors. Special 19c

2 Qt. Red Glass Jars with Cover. Formerly sold for 39c. Special 10c

Aluminum Bun Warmers. Formerly sold for over \$1.00. Special 49c

Enamel Trays. Special 25c

Pyrex Ware — Complete Assortment — Ideal Gift for the June Bride

We have the New Brownie Oven-proof Kitchen Ware—Range Sets, Icebox Sets, Teapots, Jugs, Mixing Bowls and Custard Cups.

Plastic Hangers 10c
Skirt and Trouser Hangers 10c

Ladies' Crepe Slips, Lace and Tailored Trim, Sizes 32 to 38. Special \$1.79

Plastic Aprons 59c

Luncheon Cloths, Plastic and Cotton, 54x54 inches and 54x72 inches 1/4 OFF

4-Pc. Canister Sets, Dutch Girl Pattern. While they last, Set 69c

Ladies' \$1.98 Handbags. Special \$1.69

Infant's Creepers, Broadcloth, 6 months to 18 months. Formerly sold for \$1.39. Special 89c

Men's Shaving Brushes, sterilized, 25c value 10c

Men's Shaving Mirrors, 49c value 29c

12-Pc. Jadite Dinner Sets, \$1.20 value \$1.00

DOOR PRIZES

TOYS

Buck Roger's Atomic Pistol, Harmless. Special 29c

79c Garden Sets. Special 69c

CANDY

1 Lb. Box Brach's Chocolates. Special 79c

Jelly Beans 29c

GROVE BROS.

5c - 10c - \$1.00 Up



NOW THE CHELSEA HOME of a branch plant of Argus, Inc., the building shown above, on Hayes street, was formerly known as the Hoover Ball and Bearing plant. Windows which appear in the picture to be broken are among some 1,400 panes Argus replaced when they moved into the plant three months ago. Old panes are frosted glass, which were not available at the time, so plain glass was used as replacements.

Argus Branch Plant Newest Addition to Chelsea's Growing Industrial Strength

Schatz Cigar Store and



Chelsea Independent Ball Club

Extend a Hearty Welcome

It's an invitation to visitors on Chelsea Days. Chelsea, the "Gateway" to Waterloo Recreational Area. It's a mile of a town, but a mighty fine community to live in. Mighty fine folks for miles around.

Schatz Cigar Store

Smokers Headquarters
Chelsea Independent Ball Club Headquarters
Chatter Headquarters — Come in and Gossip
Same Corner, "McKune Bldg." over 50 Years.

ASK FOR DOOR PRIZE COUPON

Prize to be 6 months subscription to "The Detroit Free Press" either Daily or Sunday.

Without the men who do tricks with glass-hard metals, manufacturers like Argus, Inc., could not make at low cost the small precision parts which go into cameras and optical instruments.

Tool and die makers working in Argus' Chelsea plant are the craftsmen whose tools enable automatic machines to turn out these parts. Parts whose dimensions must fall within hairbreadth tolerances.

Shutter blades, small rotating shafts and lenses are some of the pieces which make up today's expensive cameras. Automatic production and elimination of hand-

work—through careful tooling, result in interchangeable parts, quick assembly in the finished product and low-cost precision cameras.

The company which opened plant facilities here three months ago, has a number of "firsts" to its credit along with a reputation for skillful tooling.

Argus was first to introduce in this country the inexpensive 35-mm. "candid" camera. In 1940 the company introduced America's first twin-lens reflex camera.

A group of Ann Arbor men formed Argus in 1931. Until 1938 the organization was known as International Radio Corp. The name was changed to International Industries in 1938 and the present name, Argus, Inc., was adopted in 1944.

At first the company made table and cabinet model radios. Most popular of these was the "Kiddie," among the first inexpensive small radios produced in America. It could be used on AC or DC current outlets, a "first" in this industry.

In 1936 the company turned to cameras and three years later production of radios was stopped and facilities were devoted entirely to photographic products including cameras, enlargers and other photographic accessories.

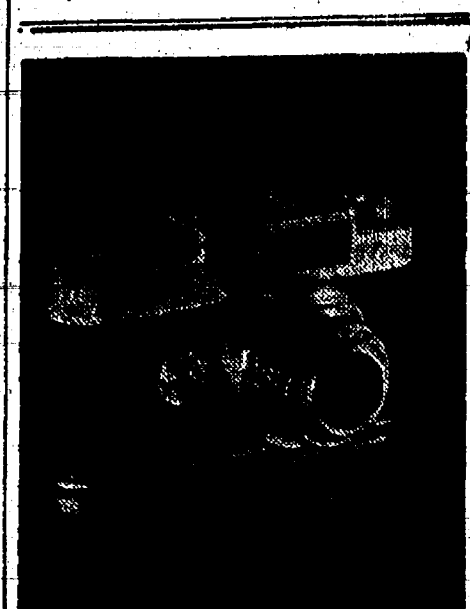
From 1942 to 1945 production was 100% for the war effort. Two types of equipment were made by Argus for Uncle Sam: optical and electronic. The former included fire control instruments, telescopes, sighting instruments, and lenses and prisms.

Certain war-time electronic devices were made by the Ann Arbor concern because of its past experience in this field. Government contracts called for manufacture of pilot control units, navigators' turn controls, radio compass control boxes, and fighter plane gun-sight controls.

Gunsight and fire control experience enabled Argus to introduce in 1947 the "Markkinder," a new kind of camera viewfinder and a feature of the company's first post-war camera, the Model 21.

In July, 1946, upon completion of government contracts, Argus purchased the RFC-built optical

plant erected in Ann Arbor during the war. This plant now manufactures lenses. Assembly of shutters, whose parts are made in



Latest Argus Camera Model 21

Chelsea, is done in the new plant. In addition to plants here and in Ann Arbor, Argus has plant facilities in Cheboygan, in Minneapolis and Faribault, Minnesota.

Farmers' Week Dates Announced for 1949

Farmers' Week, which attracts more than 30,000 farm people to the campus of Michigan State college each winter for exhibits, contests, talks and demonstrations, will be held again in 1949. Dean E. L. Anthony of the school of agriculture has announced the week of January 24 to 28 as the time for the event.

Standard Liners Bring Results

Chelsea Spring Co. Makes Many Types of Springs, Locally

For the past nine years Chelsea Spring Company has been located here in Chelsea, engaged in the manufacture of many types of steel springs. Previous to the transfer in 1939 this firm operated as a part of the Falls Spring and Wire Company in Detroit, and now operates as a subsidiary of its parent company.

Principal products of the local firm are extension, compression, and torsion springs, small stampings, wire forms and spring clips utilized by the automotive trade. These are mass-produced in amazing quantities. One newly-designed automatic machine alone is capable of producing up to 15,000 springs per hour.

Although the plant is a beehive of activity and has its share of noise, as does any factory, visitors can find much of interest to them in a tour of the plant which is being offered on Friday, June 25, in cooperation with the Chelsea Chamber of Commerce.

At the present time Chelsea Spring Company employs approximately 200 employees, some of whom live in the town and some in the surrounding Chelsea, as well as many who live within the village. Through the years the firm has come to be looked upon as an integral and important part of the local community life.

Motor in Propeller Hub
One of the more unusual assignments for electric motor in aviation calls for a one-horsepower motor mounted within the hub of a whirling propeller to vary its pitch in the event of hydraulic pitch control failure.

REPAIR Save WEAR



PHONE 2-3491

- ENGINE REPAIR
- GENERAL REPAIR
- ACETYLENE WELDING
- WRECKER SERVICE



SERVICE

R. and R. SERVICE

Corner US-12 and M-92

ROLLIE ROBARDS and HARRY ROSE

SPLASHED with SAVINGS



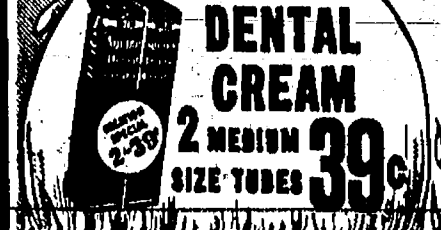
TAMPAX

35c

Invisible Under Shorts And Swimsuits



SHAMPOO SPRAY



39c



35c

Bothered with MOSQUITOES—

Insect Bombs 1.39

Large Size Special

Swift White Shoe Cleaner - 16c

100 ft. Long

Heavy Waxed Paper, only 25c

New Improved

\$1.00 Drene Shampoo 79c

50c Colgate Tooth Paste 41c

6-12 Insect Repellent 49c

100 in Bottle

50c McKesson Aspirin .2 for 49c

For Poison Ivy

Ivy-Dry 59c

One Gallon

Unbreakable - All Metal Picnic Jugs 3.48

8-in. Electric Fan 4.89

Fresh Candy

Whitman's - Gilbert's Chocolates

Always Fresh in Our Refrigerated Case.

We're making a big splash this week with real money-saving prices on things you need for fun in the sun—things that help you look better... feel better... have a better time on all your play days. So plunge into Summer by coming to Chelsea Drug Store for dependable quality merchandise at our famous "low-as-possible" prices.

Brewing Up A Cold Wave

Break up the heat wave by coming to our fountain where we'll brew up a cold wave to your order—a tall, tinkling glass of full-bodied stimulating iced coffee or refreshing iced tea. Now, there are two taste treats mighty hard to beat — satisfying with meals... sensational heat chasers between meals.

15c

15c

15c

15c

15c

15c

15c

15c

15c

15c

15c

15c

15c

15c

15c

15c

15c

15c

15c

15c

15c

15c

15c

15c

15c

15c

Plenty of Hot Water

To be sure of all the hot water you want at all times, install an automatic GAS water heater. Because gas is constantly on the job. Not a moment day or night when it is not on guard to keep an abundance of hot water awaiting your needs. This means a SMALLER tank will meet your requirements when you heat water automatically with GAS.

Remember gas heats water FAST-EST and CHEAPEST. See your plumber, your dealer or the Gas Company about installing an automatic GAS water heater.

INSTALL A GAS AUTOMATIC WATER HEATER

Michigan Consolidated Gas Company



OUR CHELSEA DAY GIFTS

1st—Ronson Desk Lighter—Value \$12.50
2nd—2 Gallon Thermos Jug—Value \$7.98

COME IN FRIDAY or SATURDAY FOR YOUR FREE TICKET.

CHELSEA DRUG

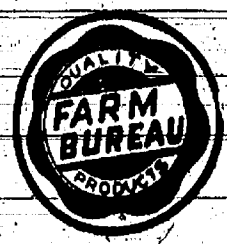
PHONE 4611

C.M. LANCASTER, REG. PHARMACIST

CHELSEA DAY BARGAINS

Get a Free Chance on
\$15.00 Value
in
Merchandise

The Farmers' Supply Company Invites You to come in and see their store and mill; also the fine line of Vitality and Farm Bureau Feeds and Farm Bureau products, including aluminum roofing, paints, motor oil, tires, fencing, steel fence posts, etc.



FARMERS' SUPPLY CO.

SEEDS, FEEDS AND FERTILIZER
DAIRY AND POULTRY EQUIPMENT

Phone 5511

Anton Nielsen

Air-Hydraulics Plans Expansion Program in Future

Air-Hydraulics, Inc., located at 120 West Middle street, Chelsea, is an outgrowth of a company formed during World War II to develop and build a much needed and inexpensive hydraulic press. For some time the original partnership operated as a division of Beyer Machine Company. Reorganized, it was incorporated under its present name in 1945 and moved to Chelsea.

Principal products manufactured locally are air operated hydraulic presses in 2 1/2- and 6-ton capacity, and a 1,200 lb. air press. The firm has representatives in the principal cities of this country and several foreign countries. At the present time Air-Hydraulics, Inc. has in development several allied products and in the near future expects to expand its facilities to take care of the increasing demand for this type of equipment.

Within the past several months Air-Hydraulics, Inc. has developed a substantial export business. The favorable reception accorded these machines in the foreign market indicates a continued and increasing demand for the future.

Officers and directors of the company are E. B. Miller, P. W. Beyer, and E. A. Forner, all of Jackson. The plant is under management of C. H. Flick, secretary-treasurer, also of Jackson.

The U. S. Marine Corps has loaned a mobile hospital to each of the eleven Naval districts within the United States for use in disaster relief work.

Cold Waves

OUR SPECIALTY

PHONE 7892

CHELSEA
BEAUTY SHOP

Dexter Machine Products in Gear Making Since 1939

Dexter Machine Products, Inc., at present located on Old US-12, one block west of South Main street, was originally organized in Dexter in 1939 by E. B. Sorensen and his son, Hugh Sorensen. Both have been actively engaged in the production of gears since 1938 and have built up an enviable reputation throughout the nation in this particular industry.

Prior to World War II the firm was engaged in production of timing gears and oil pump gears for several of the large automobile and engine companies.

During the recent war Sorensen converted their plant entirely to the manufacture of war material, consisting of gun-shafting mechanisms, gearing used in aircraft engines and radar equipment.

To house their greatly increased production efforts Sorensen built a new modern plant in the Chelsea village limits in 1942, and moved from Dexter to the new plant here in February of the year.

At the close of the war the plant was sold to outside interests and Dexter Machine Products transferred to their present location.

The firm is now manufacturing aluminum timing gear sets under their trade name of "Sylvan," in addition to aircraft gears, screw machine parts, and all types of spur and helical gears.

Dexter Machine Products now maintains a sales office that covers nearly every state in the nation and has warehouses in four principal cities.

Standard Lines—Living Results

Colonial Manor

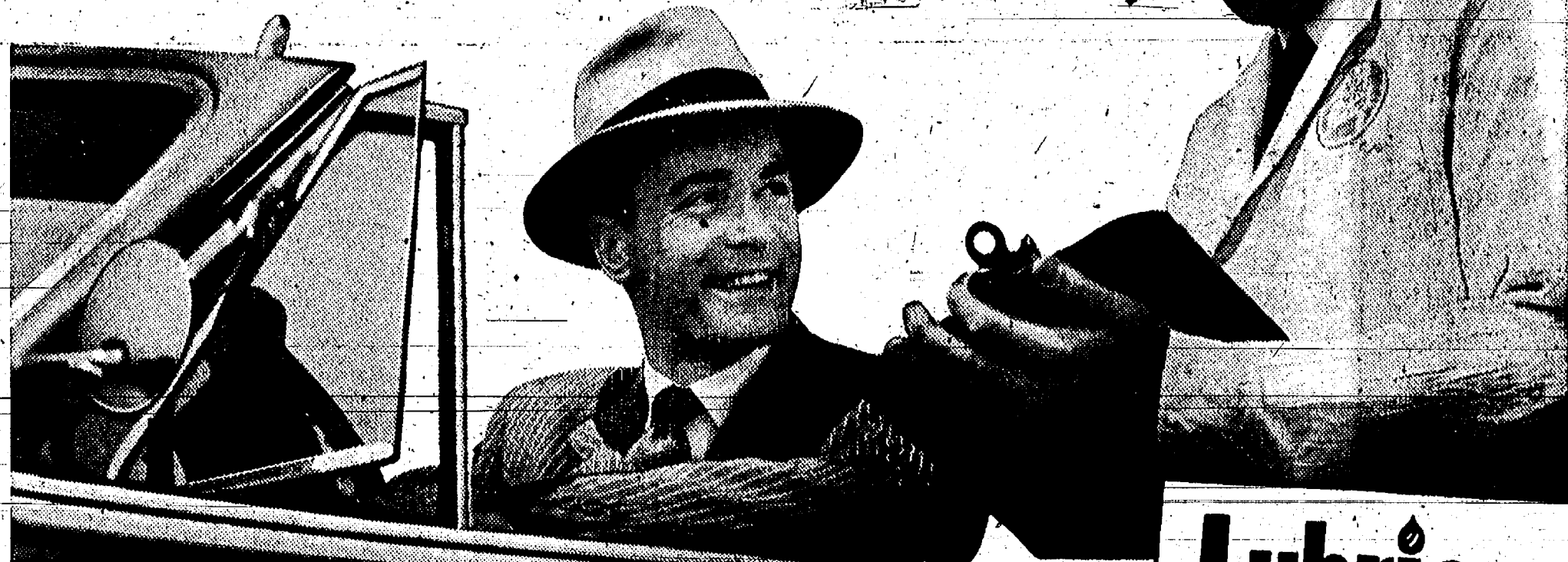
Convalescent Home

236 East Middle Street

PHONE 1491

Efficient Nursing Care Day and Night
IN BEAUTIFUL CHELSEA

How to keep a Champ in Trim!



YES sir, there's a championship caliber all through that Buick of yours.

It's caliber that calls for mighty little "conditioning"—if the attention it gets adds up to really knowing and understanding care.

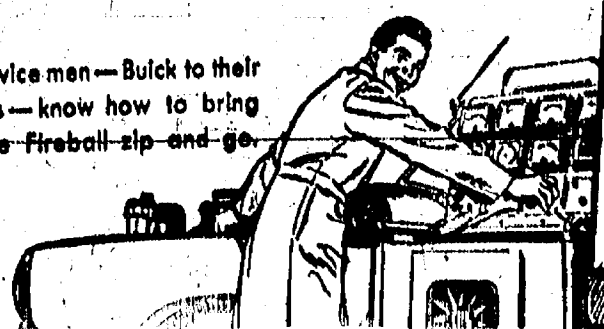
For instance, these Fireball cylinders will keep on packing all the wallop they should, if you let us—compression—check them in the Buick way. Steering will stay easy and light, tire wear will stay at the minimum, if you keep your wheels lined up on our special-tracking gauges.

And when wear does take its inescapable toll, we have the parts—Buick-engineered for their job—that restore factory-new standards of performance.

Even our tools are specially designed to do a typical Buick job—and for the personal, interested, specialized attention that tops off genuine Buick care, you simply can't beat the Buick specialists in our shop.

Yes, give your champ real Buick care—Buick know-how, Buick parts, Buick interest in keeping your car at its peak. Costs no more than ordinary attentions—but what a whale of a difference it makes!

Skilled service men—Buick to their finger tips—know how to bring out all the Fireball zip and go.



Lubricare

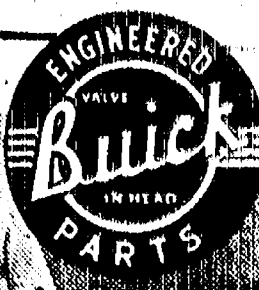
Matched-to-mileage maintenance for Buicks

* Lubricare is specified for your Buick by the engineers who built the car—with the right kind and the right amount of lubricants carefully chosen for just one reason: they are best for your Buick.

* Lubricare is matched to the mileage your Buick has traveled—including a thorough inspection, a report of anything needing attention and a record of the service for future reference.

* Lubricare adds thoughtful care to complete lubrication. For protection and smooth performance, your Buick deserves Lubricare regularly.

SEE YOUR BUICK DEALER EVERY 1000 MILES FOR LUBRICARE



BUICK CARE
KEEPS BUICKS BEST

W. R. DANIELS

208 Railroad Street

Chelsea, Michigan



MONEY SAVING features

for CHELSEA DAYS

Enjoy the Comfort of This RECLINING LAWN CHAIR WITH FOOT REST

\$5.49

The last word in comfort—has built-in box-style seat with wide kidney support. Strong, colorful striped canvas over a selected Northern hardwood frame.



GET ACQUAINTED SALE

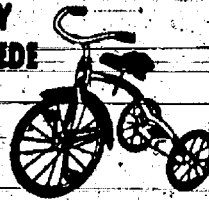
REGULAR \$3.98 MAKE-A-LITE BICYCLE HEADLIGHT AND GENERATOR SET

SPECIAL \$3.49

No batteries to burn out with this set. Voltage-controlled generator provides a steady flow of current for a uniformly bright light. Set complete with bulb and wire.

STRONG, WELL BUILT MERCURY VELOCIPED

\$9.95



A dandy little trike with 12" front and 8" rear wheels. Seat and handlebars adjustable.



WIRE BIKE BASKET

\$1.69

A strong 15" x 10" x 4" basket with ribs electrically welded together at all stress points.

Chelsea Days Door Prize Tackle Box

WITH TACKLE

\$7.50 Value

or equivalent value in other merchandise.

Self Adjusting, Fast Action

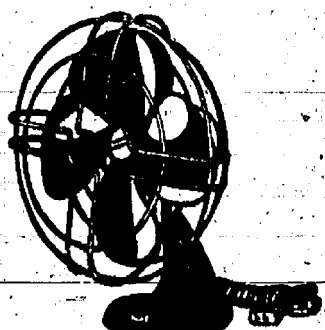


AUTO GRIP WRENCH

\$1.49

An extra strong wrench that really feels a grip. Made of special alloy tool steel, drop forged and heat treated. Chrome finish.

Breezy Coolness For
Sweltering Weather!

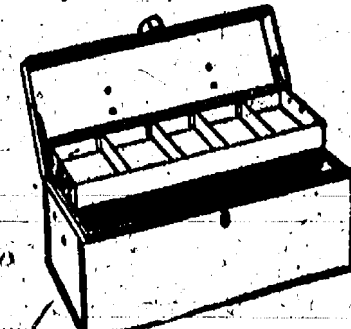


KNAPP-MONARCH 10" OSCILLATING FAN

\$14.95

Covers the whole room with a cooling breeze... and is adjustable up or down. Streamlined design with heavy cast-metal base. Powerful motor with reservoir type self-oiling bearings. Finished in brown baked-on enamel.

Makes Fishing Tackle
Easy To Use And Select



STEEL TACKLE BOX

\$2.79

A dandy — has a corklined cantilever tray with five partitions... securely hinged to sides and lid. It's a convenient sized box, too — 15" x 6 1/4" x 6 1/4". Made of enamel finished steel with steel carrying handle. Get one for your fishing trips.

SOUTH BEND OREN-O-MATIC FLY-ROD REEL

\$9.25

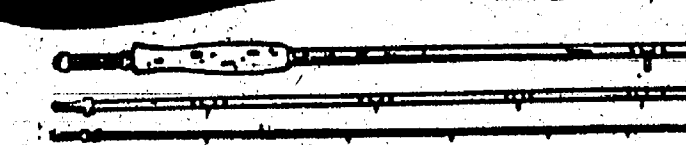
Man, what a reel! Free stripping, slant operating with automatic line brake and spring release.

A Good Reel at a Low Price OCEAN CITY CASTING REEL

\$2.49

A smooth action, quadruple multiplying reel with 100 yard line capacity.

YOU'LL HAVE A
WHALE OF A TIME FISHING WITH THESE!



SOUTH BEND SPLIT BAMBOO FLY ROD

A 3 piece rod, single built of genuine Tonkin cane, 9 feet long. Has extra tip, 6" grip, and end locking reel seat. Packed in khaki bag. \$16.00

STRONG LINES THAT LAND THE "BIG ONES" SOUTH BEND BLACK ORENO NYLON CASTING LINE

An exceptionally smooth finish 20 lb. test line. \$2.88

SOUTH BEND EXCEL ORENO NYLON FLY LINE

A 32 level test line that floats perfectly. \$2.35

ASHAWAY BLACK NYLON CASTING LINE—20 LB. TEST \$2.78



NEW GOODYEAR DeLuxe TIRES

80% of all tire trouble occurs in the last 10% of tire life. Don't wait for trouble... blowouts, skids and punctures. Sell us the last 10% and ride worry free on new Goodyears.

34% MORE NON-SKID MILEAGE
AVERAGED
IN ACTUAL ROAD TESTS

\$15.25 Plus Tax
6.00x16

NEW TUBES
SAVE TIRES



Palmer's Goodyear Store

110 East Middle Street

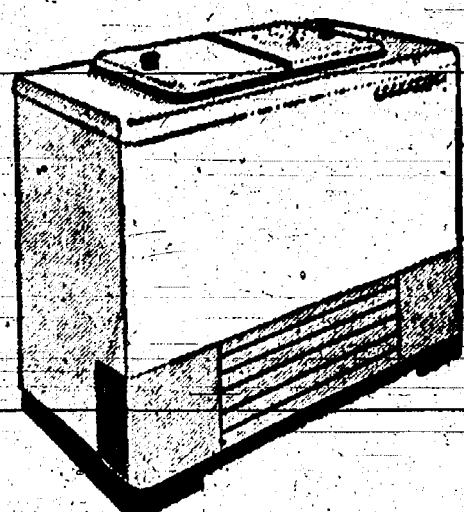
Phone 7601

Gambles

The Friendly Store

CHELSEA DAY JUBILEE!

It's Something to Get Excited About - 2 Big Days of Special Features
Big Surprises and Amazing Savings! Friday and Saturday, June 25 and 26. Store Hours -- 8 a. m. to 9 p. m.



Coronado
Home Freezer
\$269⁰⁰

Use our
Thrifty Payment Plan

An excellent home freezer for the medium size family that wants to store food safely and economically. Twin lids of chest type freezer allow easy access to frozen foods. Holds up to 260 pounds.

JUBILEE SPECIAL!

Glass Lemon Reamers

Regular Price

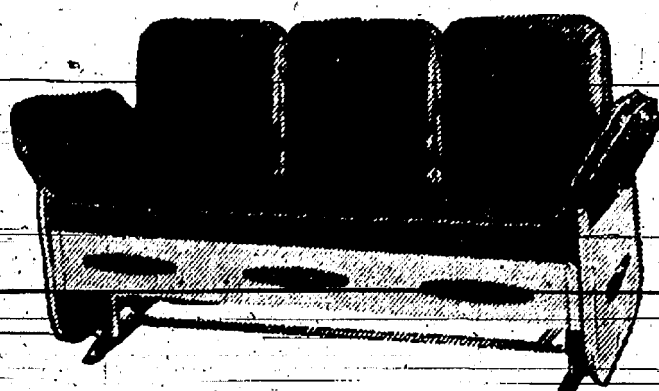
8c

Jubilee Price

1c

(One to a customer—Please)

Gliders For Lawn or Porch



\$59⁵⁰ and \$37⁵⁰

(Not exactly as pictured)

Savings on Housewares

Johnson's Paste Wax, Reg. 59c - Now 39c
Close-Out

Johnson's Liquid Wax, Reg. 59c - Now 39c

Electric Percolator (Guaranteed for one year) 7 Cup size, only \$2.98

Tumblers -- 9½ oz. with Gold Bands --
Reg. 10c -- Now 2 for 15c
(Limit 6 to a Customer)

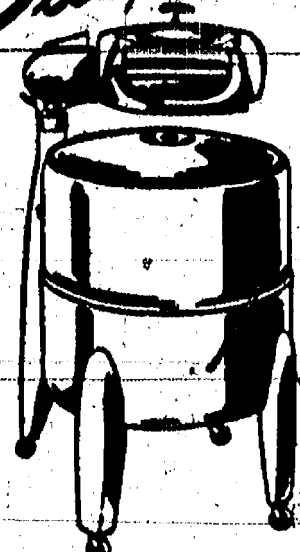
Whistling Teakettles, 2 Pint Size... \$1.79

Dinner Plates, Whiteware 17c

Fruit Juice Glass, 5 oz. Decorated -- Reg.
4c each -- Now 3 for 10c

Deluxe Features at Savings

For Purse-Wise Buyers

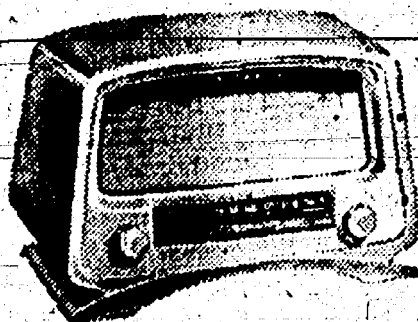


CORONADO ELECTRIC WASHER
Available NOW! Saves time, money,
and effort. A value washer for really
clean clothes! **99⁵⁰**

- Easy-action but thorough washing agitator
- Washes dirty clothes clean
- Big tub holds 7 lbs. of dry clothes
- Wringer has a dual safety release

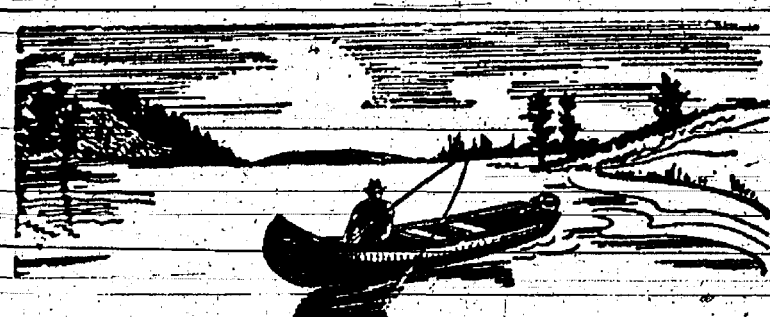
**TO BE
GIVEN AWAY
FREE!**

"LYRIC", A Beauty!



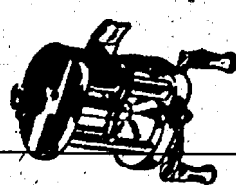
This lovely 6-tube Coronado "Lyric" radio with a sleek ivory plastic case and a beautiful bass tone will be given away free as a door prize.

COME IN AND GET YOUR
TICKET.



**Make a Date
With a Bass...**

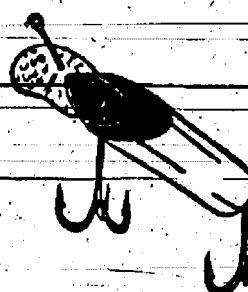
...and go properly equipped to keep
your date in a satisfactory manner



Shakespeare "Criter-
ion Deluxe" Casting
Reel \$9.95

Shakespeare Glass
Wonderod \$21.50

Ocean City Casting
Reels. \$2.75 and \$4.98



Shakespeare "Silent
Tru-art" Automatic
Fly Reel \$7.95

Pflueger "Progress" Single
Action Fly Reel \$1.98

Shakespeare "Black Knight"
Casting Rod \$8.95

Hiawatha Telescope Rod \$5.95

South Bend Fly Rod, 9-foot
(Extra Tip) \$14.50

Shakespeare "Triumph" Fly
Rod (Extra Tip) \$24.00

Montague "Rapidian" Fly Rod, 9-inch
(Extra Tip) \$15.00

Langley Fisherman DeLiar \$2.00

Hiawatha Tackle Boxes... \$1.98 to \$5.29

Minnow Buckets \$1.39 to \$2.98

Shakespeare Nylon Casting Line,
15 lb., 20 lb., 25 lb. Test. . \$1.40 to \$2.00

Shakespeare and Gladding Fly
Line \$2.98 and \$3.50

Glass Minnow Traps \$1.49

Coleman Gasoline Lantern
(Two Mantel) \$9.45

We carry a complete line of Plugs, including the
Shakespeare Mouse, Heddon, River Runt, Hiawatha
Wiggler and Flatfish.

JUBILEE SPECIAL!

100% Pure Penn Motor Oil
2 Gallon Can

Regular Price

\$2.05

Jubilee Price

\$1.88

CREST TIRES

YOU CAN'T BUY A BETTER TIRE
AT ANY PRICE

- Deep, sure tread design.
- Stronger carcass.
- 24 Month Written Guarantee.

6.00x16 4-Ply **\$12⁹⁵** plus Fed. Tax

**\$4.00 ALLOWANCE FOR YOUR OLD
BATTERY!** When you purchase a new
Varcon Deluxe Battery



Reg. Price

\$11⁴⁵

NOW

\$8⁹⁵

Exchange

Exchange

45 and 51 Plate Battery — 2 Year Guarantee.

JUBILEE SPECIAL!

Steering Wheel Spinners

Here's a Wonderful Buy!...It's the New

"STEERING PILOT"

Not 1.98!... Not 1.49!

ONLY **59c**

HIAWATHA OUTBOARD MOTORS



9 H.P. Standard
Only 1.75 Week
Payable Monthly **93.50**

- Speed, Power & Economy
- The Sportsman's Choice

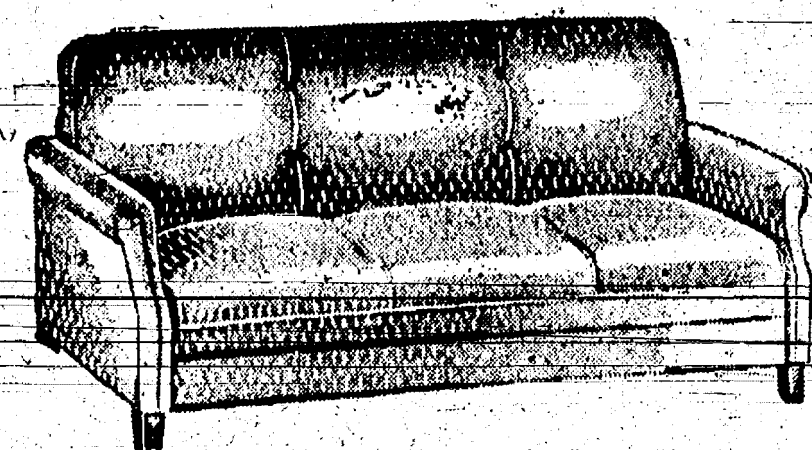
Here's the motor for fishermen "in the know." Pop for cruising—B throttles to perfect trolling.

HIAWATHA 1½ H.P. The perfect all-family motor. **63.50**

HIAWATHA 5 H.P. Deluxe quality, all purpose **127.50**

HIAWATHA 12 H.P. The power answer for boats!..... **215.00**

SOFA BEDS

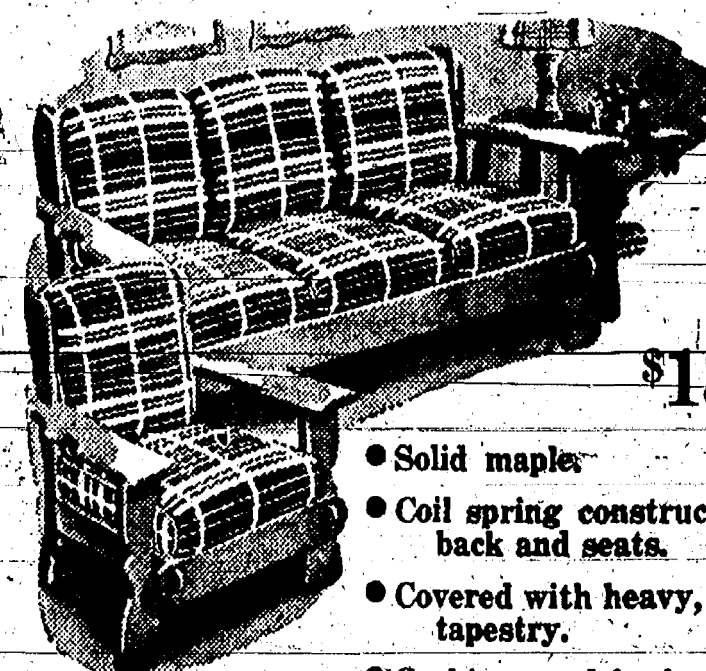


It's a handsome davenport by day, a comfortable double bed by night. Walnut finished frame... upholstered in tapestry. Contains genuine Foamed Latex.

\$69⁹⁵ and \$79⁹⁵

\$1.25 Week—Payable Monthly

2-Pc. MAPLE LIVING ROOM SUITE



\$139.50

- Solid maple
- Coil spring construction in back and seats.
- Covered with heavy, attractive tapestry.
- Cushions and backs reversible for longer wear.

The Best in Baby Furnishings
Keep that Precious Newcomer
Happy and Comfortable!

Doubles as an Auto Seat

TEETER BABE

5.65

Spring metal infant seat with drill
cloth seat cover and toy tray. Handy
when traveling—use as auto seat.



NON-TIP HIGH CHAIR

Tray and foot rest adjust to
child's height. Leather safety
strap. Birch or maple. **\$10⁹⁵**

Training Seat
Smooth sanded nat-
ural finished seat
with easily adjust-
able foot rest. **\$3.19**



180 Coil Innerspring MATTRESSES

\$29⁹⁵



Built for years of restful slumber,
priced to save you money. Flexo-
lator pads and foamed cotton keep the soft coil
springs firmly in place. Choice of double or twin
size, with blue and white ticking cover.

Gambles

The Friendly Store
AUTHORIZED DEALER

Wes. Howes, Owner Phone 2-2811 Chelsea, Mich.