

SPRING HOUSECLEANING TIME

Decorated Double Shelf Paper	5c
Glazed Shelf and Lining Paper Rolls	10c - 50c - 75c
Sponges	10c - 19c and up
Rubber Sponges	10c
Johnson's Glo-Coat	1 1-3 pints 59c
Old English Liquid Wax, pints	50c
H and H Carpet Soap, Liquid Veneer, Woodtone Furniture Polish	
Climax Wall Paper Cleaner	10c
Rubber Gloves	29c - 49c
Mandeville's Flower Seeds.	
St. Regis Watches	\$1.00
Leather Wrist Supporters	50c
Elastic Anklets and Knee Cap	69c
Rex Rub (an athlete's rub)	75c
Suspensories	50c to \$1.00

HENRY H. FENN
The Rexall Store Phone 53

THIS WEEK'S SPECIALS

1 lb. Best Creamery Butter	30c
1 lb. Monarch Coffee, Reg. or Drip	25c
46 oz. Blended Orange and Grapefruit Juice	19c
2 pkgs. Shredded Wheat	17c
Large pkg. Lux Flakes	23c
Lifebuoy Soap	3 for 17c
Lux Toilet Soap	3 for 17c
Rinso, Large Size	2 for 39c
Spry, 3 pound can	47c
Spry, 1 pound can	21c
3-1 lb. cans Campbell's Pork and Beans	20c
Fresh Vegetables and Fruits	
Bulk Garden Seeds	
3% Sales Tax Included	

HINDERER BROTHERS
GROCERIES and MEATS



You have the right to expect the best.
we can give — we try to handle our
services tactfully and properly.

Plankell Funeral Home
Phone No. 6 Ambulance

Vitality Homestead Starter Mash	\$2.60
Vitality Starter - - None better!	\$3.15
Vitality Broiler Mash	\$2.75
Fine and Medium Salt	85c

Farmers' Supply Co.
PHONE 184 ROY C. IVES

THIS WEEK'S SPECIALS

White Clover for Lawns, lb.	65c
Lawn Seed, per lb.	30c
Brom Grass, lb.	20c
Alfalfa, Special	\$15.00
Alsike	\$15.00
Baldwin Apples, per lb.	4c
Steele Red Apples, per lb.	6c
Irish Cobbler Seed Potatoes, per 100	\$2.25

We have another shipment of that fine quality Cookie - Very cheap!

Idaho Baking Potatoes, per lb.	3c
Water Softner Salt	\$1.00

A. B. CLARK

Enlarged NYA Camp Will Help Young Men

Cassidy Lake, largest resident work project of the NYA in the state, is increasing its facilities for helping jobless young men.

With approval from Orin W. Kaye, State Administrator of the Michigan National Youth Administration, work began Monday, April 1, on a new general shop building to be completed early this summer. The addition means that greater facilities for providing youth with needed work experience will be available, Kaye said.

The new shop, to be made entirely of some twelve thousand concrete blocks made at the camp last fall, will measure 180x80 feet when completed. Work is to be done almost entirely by the youths themselves under the supervision of experts in the construction field.

When completed, it will bring the number of buildings at the camp to forty-two. Present accommodations for the 210 young men enrolled in the camp consist of eight groups of cabins arranged in clusters of four. Each cabin accommodates 12 youth and a counselor. Space is provided so that each youth has a desk space, lamp, a chair and a reasonable amount of privacy.

In addition to the housing facilities, there is a large dining hall, a first-aid building, a large craft shop, an industrial building housing the metal shop and machine shop, a laundry, central garage, an administrative office building, director's home, and a recreation building with space for basketball, handball, a stage for dramatics, and a pleasant library with a large fireplace.

Workers at this NYA project are given the opportunity to gain experience in aviation mechanics, garage, machine shop, sheet metal, woodwork, carpentering, painting, electrical operation, plumbing, ground improvement, landscaping, gardening, agriculture, cafeteria, laundry, warehouse, office, and photography.

Enrollees are not expected to become experts along any of these lines through the facilities provided at the camp. Work is designed to fit youth with enough experience to make them employable in private industry or desirable apprentices in a number of fields.

A program of related training is carried out in conjunction with actual experience on the job.

Similar projects for unemployed young men are maintained by the NYA at Ironwood, Houghton, Marshall, Belding, East Lansing, and Cheboygan. Resident work projects for girls are located at Crystal Falls, Idlewild, and Charlevoix.

Past Matrons Honored Wednesday By O. E. S.

Olive Chapter No. 108, O. E. S. held a meeting last Wednesday evening, honoring Past Matrons of the chapter. The Past Matrons were escorted to the East and introduced by Luella Weinberg. Worthy Matron, the positions being filled as follows:

Worthy Matron—Leora Grove.
Assoc. Matron—Helen Lindemann.
Conductress—Lenore Schmidt.
Aid—Virginia Brock.
Ruth—May Luick.
Esther—Blanche Palmer.
Martha—Anna Hoag.
Electa—Evelyn Smith.
Soloist—Helen Baxter.

The Past Matron welcomed Mrs. Nellie Whaley and Mrs. Leon Fox as new members, and flowers were presented in behalf of the chapter.

The regular officers then resumed their respective positions and formed a fence of love in honor of Past Matrons, each member offering a token of memory, and the star points placing lighted candles at the altar for the honored Matrons and Patrons.

Mr. and Mrs. Edward Brown and Mrs. Harold Hansen of Jackson were guests at the meeting.

PARKER-WALWORTH WEDDING

Mr. and Mrs. C. M. Connor of Holt announce the marriage of their daughter, Miss Eva A. Parker, to Thomas K. Walworth of Fort Wayne, Ind., son of Mr. and Mrs. T. Kent Walworth of Chelsea.

The ceremony was performed Saturday, April 6 at the Presbyterian manse, Bryan, Ohio, with Rev. A. Carlton officiating. The attendants were Donald Rank of Hazel Park and Miss Jean Sayre of Belleville.

Following the ceremony the couple left on a motor trip through the Smoky Mountains. After June 1 they will be at home to their friends at 4209 1/2 Tacoma Ave., Fort Wayne, Ind., in which city Mr. Walworth has a position with the International Harvester Co.

OPEN HOUSE TONIGHT

As announced in last week's Standard, open house will be held in the Home Economics Department of the public schools tonight (Thursday) from 7:00 to 9:00 o'clock. The public is invited to visit this new department of the school system.

Mr. and Mrs. Harry Sorviss have returned to their Cavanaugh Lake home, after a winter's sojourn in Florida.

Library Will Hold Formal Opening In Its New Location

Citizens of Chelsea can be justly proud of their library in its new location and of its present service to the community.

The library was moved this week from the upstairs room of the Chelsea State Bank building to the ground floor offices of the former Kempt Commercial Bank and beginning Monday, April 15 it will be open to the public every week day from 2 to 5 p. m. and on Saturday evenings from 2 to 8.

The library board has planned for a formal opening of the library in its new location Saturday afternoon and evening. Everyone is invited to come and see the fine library—the Village of Chelsea now may enjoy.

Considering the meager beginnings of the library eight years ago it can boast of exceptional progress in its service to the community and in the interest shown by the people toward the library. The library opened its doors Feb. 27, 1932 at the Palmer-Rafferty building on East Middle St. with 22 books donated by interested patrons.

150 books borrowed from the State Library, and furniture and equipment donated and redecorated by interested people and members of the Child Study Club. That first year with the expenditure of \$120.48 about 700 books were acquired (mostly donated), 652 books were loaned by the State Library, 685 people were registered and 10,280 books were circulated to the public.

In the fall of 1933 the library was moved to the upstairs room of the Chelsea State Bank building. From Sept. 1933 to July 1, 1938 the library continued its service through the generous donation of rent, light and heat by the bank officials and the untiring efforts of the Child Study Club members, who donated their services. Funds were raised through bake sales, tag days, game tournaments, etc. Beginning in the fall of 1938 the Village Council contributed sums yearly varying from \$60 to \$300 and beginning April 1935, \$150 was received from Sylvan township. Most of the money was spent for books. A paid librarian was engaged September, 1935.

In the spring of 1938 the taxpayers of Chelsea voted to have the library placed on the tax roll and it is through this generous gesture that it has been possible to enlarge library service in the community and to establish the library in its new permanent location.

The library board extends its appreciation to the Chelsea Child Study Club for its untiring efforts in beginning the library project, to Mrs. G. W. Palmer and members of the Rafferty Estate for the donation of their building the first year; to the board of directors of the Chelsea State Bank for its generous accommodations for five years; to the members of the Village Council for their fine interest and financial help; to the Townships of Sylvan, Lima and Lyndon for their contributions in recent years; to Mr. McClure for his ready assistance in publishing library news; to O. D. Schneider for his cooperation in obtaining the new location; and to all interested patrons who have contributed books and their loyal support.

Chelsea High Baseball Season Opens Friday

By Wayne Van Orman

Chelsea High's baseball team gets underway Friday when the local lad meets Belleville there. It is expected that Chelsea will be a little slow in starting this year because of the lack of proper training time. They will meet Belleville with less than a week of actual practice and without sufficient pitchers.

The turnout for baseball practice was very small. However, more are expected later in the season. No pitchers have been named as yet and they will probably not be known until game time Friday.

Those who turned out for the first week's practice were White, Schneider, A. Policht, Hoover, Lane, Rademacher, Konecki, E. Miller, J. Miller, Dietle, Kuatrerer, Strieter, Gadd, and Lu Van.

Beach and Broesamle Head Co. Supervisors

At a reorganization meeting of the Washtenaw County Board of Supervisors held on Tuesday morning, Leigh Beach, Lima township supervisor, was elected chairman of the board, succeeding Carl Mast of Webster township, who had expressed a desire to retire from the post. Mr. Beach won the chairmanship on the first ballot. Fred G. Broesamle, Sylvan township supervisor, was elected vice-chairman.

George E. Albert, Sharon township supervisor, who was forced to resign last year because of illness, was back in his old seat again following his victory at the spring election.

The Republicans outnumber the Democrats on the board by a margin of 25 to 8.

Cooking School Will Be Held at Sylvan Theatre

The Home Service Department of the Michigan Consolidated Gas Company, Ann Arbor District, will give a two-day cooking school from two to four on the afternoons of April 17 and 18 in the Sylvan Theatre auditorium.

The classes will be conducted by Mrs. Ruth Bush, who has been Home Service Director for the Gas Company for four and one-half years. She is a former student of Rockford Woman's College and holds her Bachelor of Science degree from the University of Illinois in Home Economics.

On Wednesday, April 17, Mrs. Bush will prepare and discuss cakes, frostings, pastries, cookie baking, also Serval gas refrigerator salads and desserts. On Thursday, April 18, the program will consist of meat cookery prepared both in the oven and in the broiler, one-dish meals, surface burner vegetable cookery and bridge party refreshments. Everyone is invited to attend these demonstrations.

If anyone has any cookery problems they may take their questions to the school and in an open discussion after the program, Mrs. Bush will gladly answer them.

There will be many attractive prizes awarded, including a modern gas range.

Vocational Agriculture Teachers Meet Here

The district meeting for teachers of Vocational Agriculture and Farm Shop was held in the agriculture room of the Chelsea public schools last Thursday afternoon and evening. The meeting opened at 4:00 o'clock with Thomas Bust, local teacher of vocational agriculture, acting as chairman. After a welcome given by Supt. A. C. Johnson, Dr. Harold Byram of the Department of Education, Michigan State College, acted as discussion leader on the question "What are some problems involved in developing a functional course in vocational agriculture, including farm shop, for next year?"

The group adjourned at 6:00 o'clock to the Kiwanis hall above Kolb's restaurant, for their evening meal. The meeting was resumed at 7:00 o'clock in the high school building. The topic for discussion at this meeting was "The activities and responsibilities of vocational agriculture and farm shop teachers during the summer." The discussion leader for this topic was Luke Kelley of the State Board of Control for Vocational Education.

Both meetings were in the form of open forums in which those present could pass on successful or unsuccessful experiences about some of the problems discussed.

Present at the meeting were representatives from Michigan State College, the State Board of Control for Vocational Education, County Agricultural agents and teachers of vocational agriculture and farm shop in high schools in this vicinity.

Those present from Michigan State College were Dr. V. H. Noll, head of the Department of Education, Dr. Harold Byram from the same department, and R. J. Baldwin, head of the Extension Department. County agricultural agents present were H. S. Osler, Washtenaw county, S. B. Thomas, Livingston county, and Howard Barnum, Ingham county; vocational agriculture and farm shop teachers and superintendents in attendance were Joseph Lang, Manchester, Russell Egan, Ypsilanti, Seal Briggs and Clyde Allen, Damsville, Elmer Tate, Fowler, Alvey Hansen, Howell, Howard Cusvier and Max Huff, Cement City, Richard J. Drillingier, Haslett, Glenn Brainard and George Allen, Milan, H. E. Laing, Lincoln Consolidated, C. E. Monroe, Brooklyn, Henry Burgess, Saline, R. N. Kober, Jackson, C. J. Stroud, Stockbridge, Ezra Eby and Oliver Byam, Napoleon, L. J. Morse, Grass Lake, Thomas Bust and A. C. Johnson, Chelsea.

FORM ALUMNAE ASSOCIATION

The second meeting to form the Ypsilanti, Ann Arbor, Chelsea, Dexter, Manchester, Milan, Pinckney Chapter of the Alumnae Association of Siena Heights College and St. Joseph Academy, Adrian, was held recently at St. Mary's school, Chelsea. This organization will be known as the Washtenaw Chapter and will meet once a month. The following officers were elected: President, Miss Lucille Lonskey, vice-president, Mrs. Agnes McKel, recording secretary, Mrs. Genevieve Lonskey, corresponding secretary, Mrs. Anna Weber; auditor, Mrs. Mary Merkel; director, Mrs. Bertha Davis. The next meeting will be held April 30 at 8:00 o'clock at the home of Miss Lucille Lonskey, 5000 Washtenaw Road, Ypsilanti.

EGG SUPPER

The annual egg supper will be held at North Lake church Friday, April 12, serving to start at 6:30. Public invited. Adv.

Mrs. Andrew Sawyer, who has been spending the winter with her daughter, Mrs. Paul Geiger of Clinton, returned home on Thursday.

SEEDS! FEEDS!

Call Us for Prices!

BUILDING SUPPLIES

LUMBER COAL

No Charge for Country Delivery

CHELSEA

Lumber, Grain & Coal Co.

PHONE 112

CHELSEA

THIS WEEK'S SPECIALS!

2 pkgs. Shredded Wheat	17c
3 lb. can Spry	47c
2 lge. pkgs. Rinso	37c
3 cans Babbitts Lye	29c
2 Jumbo Hershey Bars, Plain or Almond	20c
1 lb. Perfection Butter	32c
2-1/2 lb. pkgs. Kraft Cheese	31c
1 qt. Miracle Whip Salad Dressing	32c
3 extra lge. cans Swift's Pork & Beans	20c
Let us tell you about Larro Chick Feeds and Egg Mash.	

Now is the time to fertilize your lawns with Vigoro. We can supply your needs.

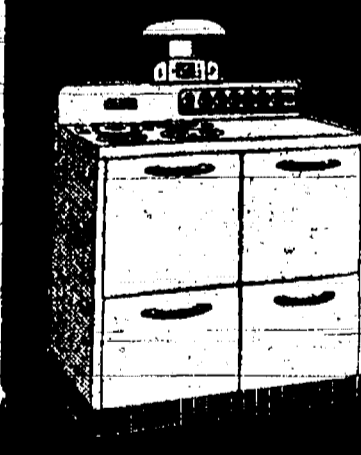
SCHNEIDER & KUSTERER

If You're Looking for a Better Buy, Mrs. Jones... See this New General Electric Range!

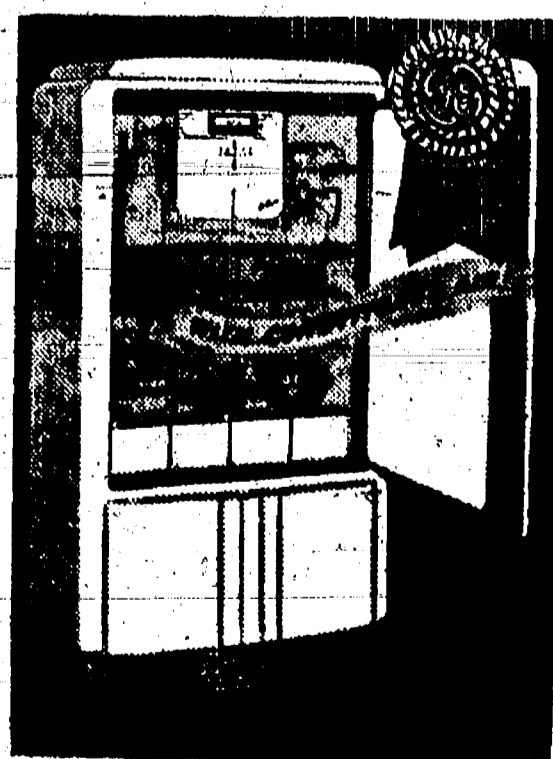
This beautiful General Electric Range gives you the advantages of modern electric cooking at new low cost. It's faster, uses less current, and priced lowest in G-E history. See it! Compare it! You'll find it has more money-saving, time-saving features than you have ever seen on any range.

Priced from
\$89.50 up

GENERAL ELECTRIC



We Believe You
Cannot Buy
a Refrigerator
that Will
Cost You Less
to Own
than a
G-E



Terms as low as \$5.00 per month.

Service for all makes of
Refrigerators, Washers and Radios

L. R. Heydlauff

PHONE 413-W

CHELSEA, MICH.

The Chelsea Standard

Published Every Thursday
M. W. McCLURE, Publisher

Entered in the postoffice at Chelsea, Mich., as second class matter.

Subscription price: \$1.50 per year; 50 cents a month. 75 cents: four months, \$3.00.

LEMON JUICE-RECIPE CHECKS
RHEUMATIC PAIN QUICKLY

If you suffer from rheumatic aches or neuritis pain, try this simple inexpensive home recipe that thousands are using. Get a package of Ru-Ex Compound today. Mix it with a quart of water, add the juice of 4 lemons. It's easy. No trouble at all and pleasant. You need only 2 table-spoonfuls two times a day. Often within 48 hours—sometimes overnight—splendid results are obtained. If the pains do not quickly leave and if you do not feel better, Ru-Ex will cost you nothing to try as it is sold by your druggist under an absolute money-back guarantee. Ru-Ex Compound is for sale and recommended by

BURG'S CORNER DRUG STORE

For Memorials
GRANITE
or MARBLE

A. J. Burrell & Sons

CALL or SEE

Ed. J. Frymuth

Phone 228

WEST SIDE DAIRY

Pasteurized

Milk and Cream

Try our Dairy-Rich Chocolate-Delicious Hot or Cold

Sold at

HINDERER BROS.

RED & WHITE STORE

West Side Dairy

24 Years Ago

Thursday, April 13, 1916

A new company has been formed this week to take over the plant and business of the Chelsea Screw Co. The new corporation, which bears the same name as the old company, has been capitalized at \$50,000, fully paid, and the stock is all held by Chelsea people.

Olive Chapter, No. 108, O. E. S. elected the following officers Wednesday evening: W. M., Mrs. Charles Martin; W. P., J. F. Maier; A. M., Mrs. Otto Laick; secretary, Mrs. Carl Palmer; treasurer, Miss Elizabeth Depew; Cond., Miss Adah Schenk; Asst. Cond., Mrs. A. B. Clark.

Building activities in Chelsea just at present run to the erection of garages.

Mr. and Mrs. Carl Burton of Ypsilanti have moved to the James Smith farm in Lyndon which they recently purchased.

34 Years Ago

Thursday, April 12, 1906

Miss Katherine Welsh of Lima died in Monday AM 11:00.

Mrs. Thomas Fitzsimmons has sold her farm near Unadilla to John Dunbar.

Ralph Freeman has purchased the residence property on Park street known as the Canfield place.

Edwin Stupish has purchased the farm known as the Peter Handelman homestead in Dexter township.

Rev. P. M. McKay, pastor of the local Baptist church, has resigned his pastorate and accepted a call to the Baptist church in Manistee.

Chas. Lange has purchased of Ralph Freeman the property known as the Clark residence on Park St.

Mrs. H. D. Fuller died at her home on Jefferson street on Tuesday, April 10, 1906.

Several new houses will be built in Chelsea this spring. Conrad Lehman will have one built on Garfield street, Adolph Alber will build on McKinley street and Mrs. E. Stimson is building on East street.

Our Neighbors

DENTON—Rev. A. A. Schoen is confined to his bed by a heart attack.

Leader. Rev. Schoen is a former pastor of St. Paul's church and has many friends in Chelsea and vicinity.

GRASS LAKE—After 24 years of service as supervisor from Grass Lake

township, N. M. Davis, (D), veteran member of the board of supervisors, was defeated for reelection Monday by J. M. Fuller (R) by a vote of 242 to 202.—News.

PLYMOUTH—Plymouth voters made it known at the general spring election Monday that they are emphatically opposed to the sale of liquor by the glass by an overwhelming majority of about four to one. The total vote was 879 against the sale of spirits and 280 in favor of it.—Mail.

CHARLOTTE—Mrs. Lamont Ballard accompanied her son-in-law, and daughter, Mrs. and Mrs. Ardylh Benson of Battle Creek, to her parents' home in Tennessee last week-end.

Saturday noon, as they attempted to ford a creek three miles from their destination, high water washed the road out from under their car.

The car was carried down stream for about 75 yards before they were able to get out of it. Mr. Benson carried his year old son, Mrs. Ballard held on to her daughter Ruth until the current carried them close enough to the bank to catch hold of overhanging branches. The water was about eight feet deep. Meanwhile the car went on down stream for a quarter of a mile before it caught against a log. Farmers chained the car to a foot bridge until the water went down. Then it was pulled out with mules. By working most of Sunday on the car, Mr. Benson got it in running order and they were able to return home, Monday.

Sand in the motor has damaged it until it is almost a total loss. However the car was covered with insurance. All clothing was ruined in the muddy water. Mrs. Ballard lost all her money and two bank books and keys to her home.—Republican-Tribune.

Question And
Answer Dept.

Problem—It is a fact that no girl or woman inhales a cigarette when they smoke. Do you know the reason why? (Answer elsewhere in this column).

Ques.—Why is it that an airplane cannot go on up and up as long as the fuel will hold out?

Ans.—An airplane rises because it is lighter than air at the moment it begins to leave the ground. The higher it goes, the thinner the air becomes. The airplane will rise only until it is just the same weight as the amount of air it displaces.

Ques.—Is it true that a certain rare chemical element is necessary for the growth of teeth?

Ans.—Yes. It is known as fluorine, which is a poisonous, intensely corrosive gas. In its pure form it destroys all living matter, yet a very little of it, in chemical combination, is necessary for the enamel on our teeth. For elaboration see your local dentist.

Ques.—Will you kindly explain for me what psycho-analysis is? Thank you.

Ans.—This is a method developed comparatively in the last 25 years of finding out what is going on in one's unconscious mind. All of us have to some extent a multiple personality—one part of it is conscious and the other part unconscious. Obsessions, illusions, etc., out of the unconscious part of our mind are sometimes the unsuspected causes of melancholia, irritability, etc., or of some other mental disorder. Such troubles are often curable if one can find out exactly what is causing them. This is what psycho-analysis tries to do.

Ques.—Why are there no trees on the tops of high mountains?

Ans.—Usually this is because the mountain top is too cold, especially at night. But sometimes because it is too windy.

Answer to problem—They may inhale the smoke, but, of course, not the cigarette.

Ques.—What was the Holy Roman Empire and when was it founded?

Ans.—The Holy Roman Empire was founded in A. D. 800 and Charlemagne was crowned emperor by Pope Leo III. The empire consisted of France, Germany, Spain to the Ebro, Italy to Benevento, several isles of the Mediterranean sea and the greater portion of Pannonia.

Ques.—Was Andrew Jackson a married man? If so, did he have any children?

Ans.—Andrew Jackson's wife was Rachael (Donelson) Robards. She was the divorced wife of Capt. Robards. Jackson had three sons and no daughters.

Ques.—What is the origin of the Gypsy tribes?

Ans.—The origin of the Gypsies is not known for sure, but ethnologists generally concur in regarding them as descendants of some obscure Hindu tribe. By their nomadic habits they are now to be found in every civilized nation in the world. The modern Gypsy claims Romany (Rumania) as their origin, but the claim is not given credence.

Ques.—How do plants grow?

Ans.—From the soil they take water and certain mineral elements which they need; out of the air they take carbon dioxide gas and oxygen. They use these materials to make food for themselves and also to construct more living cells so they can grow.

Deep Planting Reduces
Sunburn On Potatoes

Housewives refuse to look kindly upon a retailer's supply of potatoes if the spuds are sunburned. So a three-year experiment by staff members at Michigan State College has been used to prove that proper depth of planting is the best safeguard.

The new Katahdin variety, for instance, likes to produce tubers fairly near the surface. Result—sunburning on the topside.

E. J. Wheeler, potato specialist at the college, ran experiments three years in succession at the Lake City experiment station. He planted potatoes at depths of two inches, four inches and six inches and compared yields. In nearly every plot, four inches produced not only more potatoes to the acre but the sunburning was reduced to a minimum. In extremely dry years the six-inch planting had some effect on yield.

In 1937 the russet rural showed little sunburn at 2, 4 or 6-inch plantings, but yields ranged from 173 bushels, 164.3 and 191.5 bushels, respectively.

The Katahdin in the same year at 2, 4 and 6-inch depths of planting ranged from 11.9 per cent sunburning down to 1.9 per cent at 6 inches. Yields were 135.6, 149.5, and 187.5 bushels, respectively.

For the Chippewa with 2, 4, 6-inch plantings, yields were 126.2 bushels, 177.3, 106.6 bushels, respectively, with sunburn at 4.1 per cent, 1 per cent and 1.8 per cent.

Average planting depth, Wheeler concludes, should be four inches. Closeness of planting must depend upon fertility of the soil. Within good judgment, growers bothered by hollow heart can avoid this trouble by closer and deeper planting. Slight hilling or ridging of Katahdins and Chippewa is recommended at the last cultivation to avoid sunburn.

Francisco

(Last week's items)

Rev. Henry Lens was a recent caller at the Emma Kalmbach home.

Mrs. Walter Gardner was in Jackson Monday on business.

Mrs. Benj. Knickerbocker joined a group of Grass Lake friends and spent the afternoon with Mrs. John Partee last week, in observance of Mrs. Partee's birthday.

Mrs. Louise Wise and daughter of Detroit spent a few days last week with Mrs. Ray Lyon.

The pupils attending high school resumed their classes Monday following the Easter vacation.

Miss Nadine Lehmann is home from Ypsilanti, having completed her business course at Cleary's College.

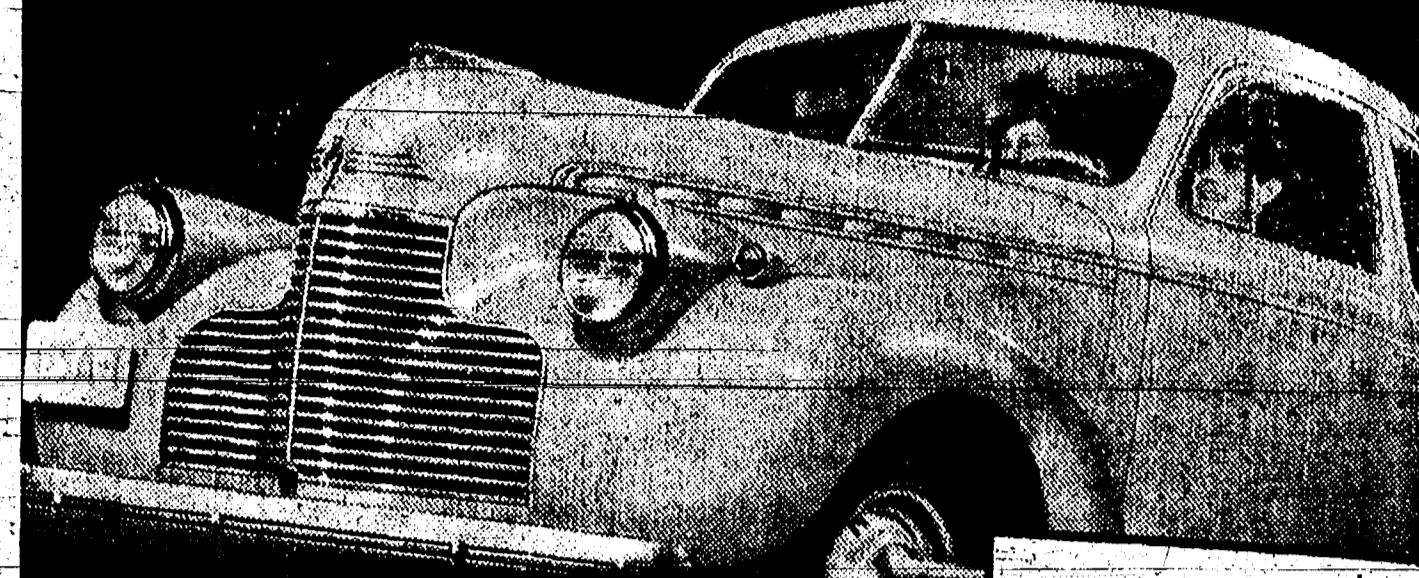
Mrs. Cecil Taylor has gone to De-

troit, where she is employed. Mrs. Olive Scramblin, who has been spending some time with her daughter, Mrs. Lewis Lambert, returned Sunday to the home of her other

daughter, Mrs. Pearl Lowe, near Jackson. Albert Walz, accompanied by his niece, Mrs. Lyle Harvey of Royal Oak, left Sunday by bus for Florida

to visit Mr. and Mrs. Charles Limpson, formerly of this locality. Robert Eversole and family of West Manchester spent Sunday at the Knickerbocker home.

IT HOLDS FIRST PLACE in Pep, Power and Pick-up among all low-priced cars!



1st in Value, just as it's 1st in Sales!

\$659

MASTER 85
BUSINESS COUPE

Other models slightly higher

All models priced at Flint, Mich. Transportation based on rail rates, state and local taxes (if any), optional equipment and accessories—extra. Prices subject to change without notice.

You drive the leader when you drive a Chevrolet for '40—the leader in pep, power and pick-up—and the leader in style, stamina and sales!

It holds first place in acceleration—first place in hill-climbing—first place in all-round performance with all-round economy—among all cars in its price range.

That's why Chevrolet for '40 is first in sales... why more people buy Chevrolets than buy any other make of car... and why your Chevrolet dealer strongly recommends that you eye it—try it—buy it—today!

Eye It...
Try It...
Buy It!

LEADER IN SALES... 8 OUT OF THE LAST 9 YEARS

"CHEVROLET'S First Again!"

SPAULDING CHEVROLET SALES

CHELSEA, MICHIGAN

NEW LOW TRAIN FARES! NOW IN EFFECT

ONE-WAY

Coach Fares

2¢ A MILE

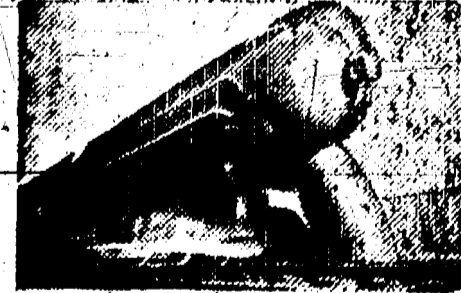
ROUND-TRIP

Coach Fares

as low as

1½¢ A MILE

Go by Rail and Relax!



ALWAYS—SPEED WITH SAFETY—You will enjoy a fast, steady pace! No traffic lights or road-wrecks. They are out of the way! You get there safe and on time.



NOW—LUXURY WITH SAVINGS—Dine as you ride. Enjoy delicious meals, courteously served at reasonable prices in the pleasant surroundings of the Dining Car. Arrive at your destination refreshed and feeling fit.

ENJOY LOW PULLMAN FARES! Both one-way and round-trip. It costs less to travel by Pullman than by coach. Save 50¢ a day! Ask about the economy of Pullman.

NEW YORK CENTRAL

THE WATER LEVEL ROUTE... YOU CAN SLEEP

Travel in spacious comfort! Trains always saved you time, trouble, energy. Now New York Central's trains save you money, too!

Fares per mile go down as distance goes up. Round-trip fares as low as 1½¢ a mile. You can't buy more economical transportation—with comfort, speed and safety.

Big improvements have been made in New York Central's modern coach trains. But now they cost you less than ever. Take the train and read, sleep, dine, stroll, or enjoy the scenery. Let the engineer drive for you—and save money!

Ask your local ticket agent about new low fares.



New Ideas --- Gifts Awarded Daily --- Free Recipes

The Michigan Consolidated Gas Co. wishes to extend their appreciation to the following Chelsea merchants for their splendid co-operation and for the donations used as daily awards.

CHELSEA MILLING CO.
LOEFFLER & SON

MERKEL BROS. HARDWARE
SCHNEIDER & KUSTERER

A Modern Roper Gas Range Given Away!

PERSONALS

Miss Florence Palmer was home from Detroit for a week-end visit.

Mr. and Mrs. George Clark have sold their house on South Main street to Dearborn parties.

Mr. and Mrs. Fred Sager spent Sunday in Mason at the home of Mr. and Mrs. Michael Osterle.

Mr. and Mrs. Donald Osterle spent Sunday in Ortonville as guests of Mr. and Mrs. Howard Park.

Mr. and Mrs. F. D. Fox, who have been spending several months in Blissfield, returned home on Saturday.

Mr. and Mrs. Philip J. Olin and children spent Sunday in Adrian, as guests of Mr. and Mrs. Russell McAfee.

Mr. and Mrs. Herman Bertke and family were guests of her mother, Mrs. Ernest Lamperter of Saline on Sunday.

Mr. and Mrs. George Schultz are the parents of a son, Franz Peter, born Thursday, April 4 at Chelsea Private hospital.

Mrs. Norman McPherson and Miss Gladys Voss of Detroit were week-end guests at the home of Mr. and Mrs. G. G. Hopper.

Miss Cornelia Copeland of Dexter and Miss May Peters of Scio were guests at the home of the Misses Jane and Josephine Walker on Sunday.

Miss Mary Jane Riker and Frederick Leeman of M. S. C., East Lansing spent the week-end with the former's parents, Mr. and Mrs. B. A. Riker.

Mr. and Mrs. Harold McCarthy and daughters, Nancy and Constance, of Detroit were callers at the home of Mr. and Mrs. Martin Merket on Sunday afternoon.

Mrs. John Hale and son, John, Jr. spent the past week in Troy, Ohio with her mother, Mrs. Sophia Braun-schweiger, and Mr. Hale's parents, Mr. and Mrs. Louis Hale. Mr. Hale joined them for the week-end.

Mr. and Mrs. Fred Sager spent last Sunday evening at the home of Mr. and Mrs. Leigh Deeman and Mrs. George Beeman.

Miss Doris Schmidt of Bronxville, N. Y. arrived on Saturday morning to spend the spring vacation with her mother and sister, Mrs. H. W. Schmidt and Miss Marian Schmidt.

Mr. and Mrs. L. G. Palmer entertained as over Sunday guests, her parents, Mr. and Mrs. Fred Stokoe, who were enroute from Florida to their home in Middleville.

Mr. and Mrs. P. M. Broesamle, who have been spending the winter months in San Pedro, Calif. with their son, Dr. Kenneth Broesamle and family, returned home on Thursday evening.

Mr. and Mrs. Herbert Laros of Flint, Mr. and Mrs. O. H. Hinderer and son Roger and Mrs. Martha Weinmann were guests at the home of Mrs. Christian Gray of Rogers Corners on Sunday.

Carl Fletcher, Mrs. Edward East-terre, Miss Lillie Wackenhut, H. G. Gage, accompanied by Mrs. Henry Steinbach of Dexter spent Sunday in South Haven at the home of Mr. and Mrs. Donald Barden.

Mrs. Joseph Thalhammer, Mrs. Alfred Faulkner and daughter, Gladys Harrison, were guests on Friday at the home of Mr. and Mrs. Frank Dingle, Detroit. Ralph Dingle returned with them to Chelsea, after a vacation visit with his parents.

Dr. and Mrs. H. T. Fuller and daughter Shirley and son Dickie of Mt. Morris, Mr. and Mrs. C. Fuller of Attica and Mr. and Mrs. Herbert Sager and son David of Ann Arbor were recent guests at the home of Mr. and Mrs. Fred Sager of Sugar Loaf Lake.

Mr. and Mrs. David J. Miller are moving this week from the Bahn-miller apartment on Summit St. to the farm residence of W. M. Cook on U.S. 12, Lima township. Mr. and Mrs. George Welch will move from Sylvan Center to the Bahn-miller apartment.



Lansing—Is anything wrong with the Michigan party system?

James Thomson, chairman of the Republican State Central committee, has concluded that while the system is good, it could be improved. In fact, he proposes specific suggestions for changes in the state laws governing the selection of committee delegates and nominees. These changes he believes would obviate the need of large campaign contributions or assessment of political employees.

"Jim," the genial farmer-chairman of the Michigan Republican party, draws a line between party organizations and government. His philosophy of the whole matter is old-fashioned.

"Our American system of government is based on the existence of political parties," he said. "History has proved that we should have at least two major parties. It is all based on the theory that a public official is an employee of the unit of government which he serves, and that the closer the official is to the people the more apt he is to reflect public opinion in the conduct of public affairs."

Selecting Delegates

"It must be understood that party organization is a distinct and separate function from government, although a public official may be a member of the party."

"As the function of a party organization is to win elections, it is quite apparent that satisfactory administration of public affairs by the party in power is an absolute necessity. My conception of government is that the best party policy is to do the job well while the party is in power."

"Consequently the selection of ward and precinct delegates who will attend the county convention should be given close scrutiny. Likewise, the selection of delegates from the counties to the state convention should be approached with a view of selecting persons who have the interest of the entire public at heart."

How Nominees are Chosen

"You are probably well aware that the governor and lieutenant governor are selected by direct primary vote of the people, while other elective state officials are selected by these party delegates who attend the state conventions."

How are these delegates picked?

"The town and ward delegates are selected for two-year terms by direct vote at the September primary election. Following the primary election, the delegates meet in county conventions which in turn elect delegates to the state convention. Thus the state convention is not held until close to 30 days prior to the general election itself, permitting only a very short time for perfecting party organizations and raising of campaign funds."

"In the first place, the primary election in Michigan is held at such a late date (September) that it does not give more than 30 days of actual working time for formation of party campaign organization. I believe that perhaps a slightly longer period might be desirable in order to acquaint the voting public with campaign issues and with the qualifications of the nominee although this period should not exceed 60 days."

Mr. Thomson indicated that a pri-

mary election early in August would be preferable over the present time in September.

Who Picks Committees?

Who selects the ward and precinct committees?

"In Michigan the ward and precinct committee members are selected ordinarily by county chairmen and county secretaries of party organizations," the Republican leader explained.

Who selects the county chairman?

"After the primary election the party nominees meet and select the county chairman."

"This method results in a loss of interest after the November election is over and the nominees for office who have selected the county chairman have either won or lost. I feel that if the township and ward committee members could be elected in the same manner as is used for election of delegates to the county convention it would promote a wider interest in party affairs and result in a more wholesome attitude looking towards a better public opinion."

Campaign Contributions

"The haste of a campaign conducted in 30 days quite obviously makes it necessary that campaign contributions be forthcoming in sizeable amounts. Could this campaign be spaced over a longer period of time then smaller and more numerous contributions could be made available. These smaller contributions cause the contributor to take the attitude that he is a stockholder in the party organization and thus the party will receive the moral as well as financial support. Large campaign contributions sometimes prove embarrassing after the campaign has been won. The most notable example in recent years was the substantial contribution by John L. Lewis of the C. I. O. to the Democratic National Committee which precipitated introduction of the Hatch bill and the new amendment now pending before Congress."

The most desirable method of financing a political party would be small contributions by individuals without the odium attached to assessment of political employees. This could be accomplished if sufficient time

elapsed between the primary election and the November election to enable enough approaches for individual contributions.

"The work of soliciting party contributions could then be largely entrusted to local party organizations. They (committee members) would not feel that if they were elected for a term of two years their value to the party was ended after the November election."



Several times, in this column, I have asked certain questions pertaining to safe driving. Some of the editors have felt that this type of information is valuable and interesting. The question today is: During any one hour period, when are automobile accidents most frequent?

There have been some wild guesses on this, but statistics show that the hour between 5 and 6 p.m. is the danger hour for accidents. This is due to several things. In a congested or metropolitan area, people on their way home from work, take unnecessary chances in hurrying through heavy traffic. On long trips, the average person becomes tired at dusk and, therefore, coming darkness together with fatigue, are responsible for many accidents.

Be careful all of the time, but be especially careful at this time of the day.

Fog Lifting Apparatus

Designs of a coke-burning apparatus intended to lift fog from aerodromes have been submitted to the British Royal Air force and are being tested.

President's Assassination

President McKinley was assassinated by an anarchist, Leon Czol-gosz, who shot him twice with a pistol hidden in a handkerchief at the Pan-American exposition in Buffalo in 1901.

ANNOUNCING

U. S. RUBBER'S GREAT NEW TIRE VALUE!

THE U. S. TIRE

AS LOW AS

\$6.41

4.50x21

with your old tire

6.50x16	\$10.57
6.00x16	8.70
5.50x17	7.99
4.75x19	6.52



Why THE U. S. TIRE IS TODAY'S GREATEST TIRE VALUE

FLATTER TREAD FOR MORE MILEAGE	STAGGERED TREAD BLOCKS FOR MORE COMFORT	DOUBLE GUARANTEE
SAFER & SMOOHER RIDE FOR MORE SAFETY	NEW STREAMLINED BEAUTY	Backed by The United U. S. Rubber Co. 100% plus

MACK'S SUPER SERVICE

R. A. McLaughlin, Prop.
Phone 51-W

Try Standard Liners—They Bring Results!

Our New Exchange Basis

Per Bu. of Wheat

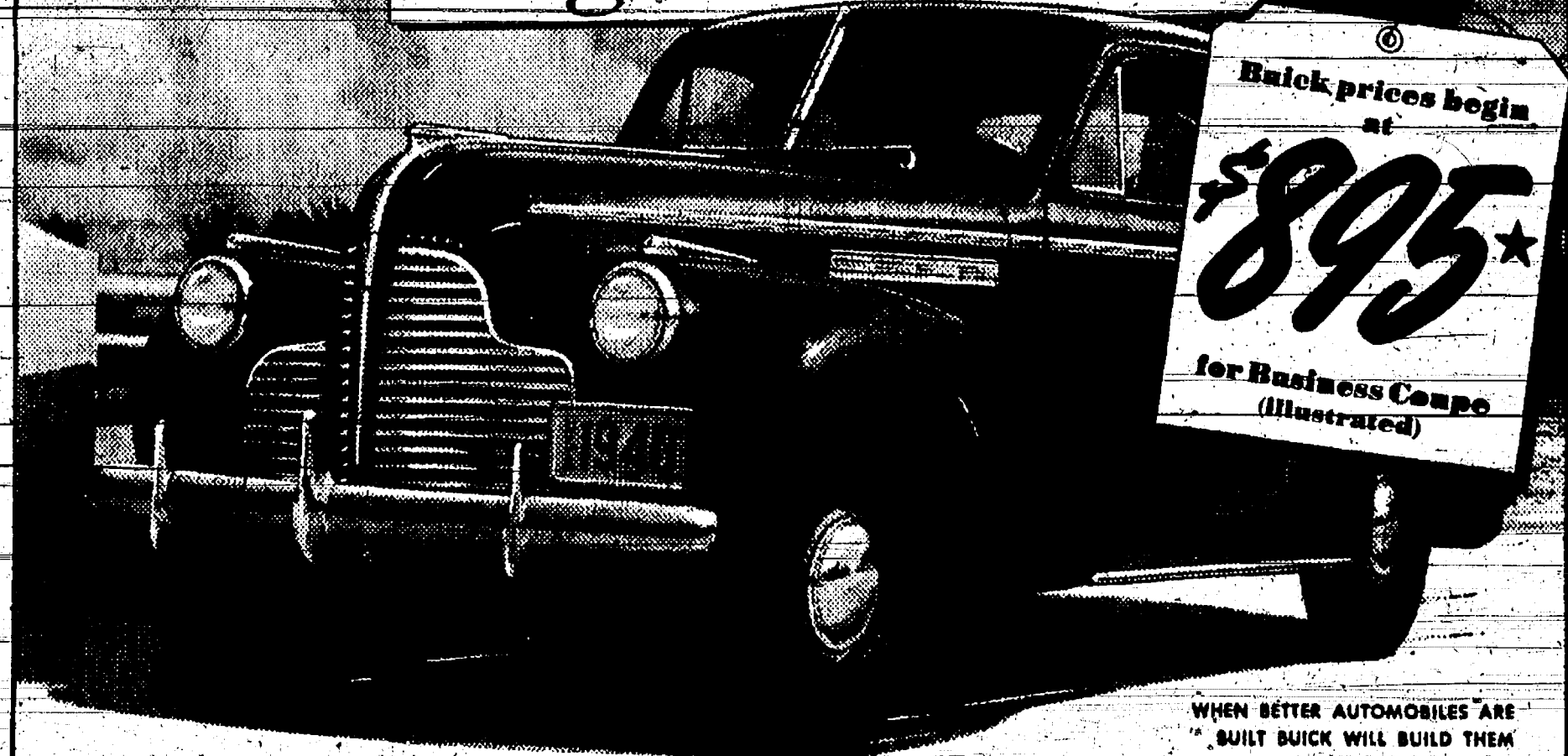
PHOENIX	33 pounds
PIONEERS	32 pounds
ACME	31 pounds
CAKE	27 pounds
PANCAKE	30 pounds
WHOLE WHEAT	32 pounds

Chelsea Milling Co.

CHELSEA, MICHIGAN

Want "in" on next year's

"Big News" Now?



WHEN BETTER AUTOMOBILES ARE BUILT BUICK WILL BUILD THEM

YOU can figure it out for yourself from what you see in daily traffic and what you hear when the talk turns to automobiles.

Buick's pacing the pack. Has been for several years.

It called this year's style turn a year ago. It set current performance standards in '38 with its Dynaflash engine. It still leads the crowd for riding qualities with its BuicCoil

Springing, now in its third year.

So where's a more logical place to look for next year's "big news" than in this year's big and roomy Buick?

It may be smoother engines. Buick is the only car that now balances power plants after assembly.

Coil springs all around may come. Buick's never need lubrication, are practically indestructible, and even cut down skid-risks.

You get all of these things now in Buick.

Get them with the plus of Buick quality of materials and workmanship—get them at a price that suggests a six instead of an eight.

So it's easy to start enjoying future "new features" right now.

Just go try a Buick. Look it over, inside and out. And get the prices.

Even if you've been buying in the lowest-price field you'll find it takes less than you think to step up to a Buick. Prices begin at \$895* delivered at Flint, Mich.; transportation based on rail rates, state and local taxes (if any), optional equipment and accessories—extra. Prices subject to change without notice.

You get a "Good Deal" Two Ways from Your Buick Dealer

A good "deal" when it comes to old-car allowances—and a whole lot of automobile in your new Buick. See your dealer and find out for yourself.

Maybe it'll be heavier frames—Buick has the heaviest of any car of its price. Or maybe many of the "extra touches" Buick so freely applies—safety-latches on rear doors and Two-Way Direction Signals with automatic cut-off.

"Best buy's Buick!"

EXEMPLAR OF GENERAL MOTORS VALUE

W. R. DANIELS, Chelsea, Mich.

Corner R. R. and Main Streets

PROMPT, DEPENDABLE and COURTEOUS



Every time you use your telephone... whether you merely wish to have a social chat, place an order for groceries, or summon a doctor at midnight... the service you receive is prompt, dependable and courteous. Scientific research, and constantly improving equipment and methods are among the factors that make this possible. But none is more important than the spirit of service of the more than 8000 men and women who serve the telephone in Michigan.

MICHIGAN BELL TELEPHONE

COMPANY

Bringing to the People of Michigan the Advantages of the Nation-wide Bell Telephone System

Between Ourselves

Before coffee was used as a beverage, it was used as a medicine by the natives of Northern Brazil.

Piping hot coffee—golden brown toast—or if you prefer, tasty buns or rolls such as we bake DAILY—will start EVERY day off PERFECTLY. In fact, OUR baked goods are really famous. Customers tell us they are EXCEPTIONALLY fine. The proof of the pudding is in the eating—TRY THEM!

CHELSEA BAKERY

IT'S HERE!

THE ELECTRIC RANGE THAT HAS EVERYTHING!



Prices start at \$99.95

Model ER-9—\$199.95

SEE THE MARVELOUS NEW 1940

KELVINATOR

It's all new... big and beautiful! Gleaming porcelain-on-steel, inside and out... no sharp corners, easy to clean... with all the features you've wanted!

BIG OVEN—Yes—big enough to cook a complete oven meal. Two units for fast pre-heating. And it's automatically spotlighted!

TUNE IN "MAGIC"—With Kelvinator's new Cooking Timer and Selector Switch. Automatic control to oven, appliance outlet or Scotch Kettle.

LIGHTS! Every switch has a tiny light that signals when heat is on. Attractive chrome-trim lamp lights top of range!

KELVINATOR COOKERY SAVES YOU MONEY!

Begin now—cook the Kelvinator way. Fast as fire without the flame... clean and cheap like electric light—for the Kelvinator Chromalox 5-speed units heat fast, hold heat longer. Current bills easy low!

COME IN TODAY!

E. J. Claire & Son, Inc.

PHONE 128-W

Chelsea, Michigan

CASH PAID

FOR DISABLED OR DEAD HORSES

MARKET PRICE FOR CALVES AND HOGS

Carcass Must Be Fresh and Sound

Phone Collect Nearest Station

ANN ARBOR 5538 HOWELL 360

OSCAR MYERS RENDERING CO.

Week-End Specials!

Silk Chiffon Hose 39c
New Spring colors

Run of Mill Sheet \$1.00
Tape edge, 81x99, extra heavy.

Bigelow Sanford Tailor-Made Rugs Give You -

Correct Size - Correct Color - Correct Style
Correctly woven of "Lively Wool". Your choice of an outstanding selection of patterns. Bring in your room size for an estimate.

Print House Dresses, \$1 to \$2.95
New styles in Spring materials.

Cotton Slips 39c and 59c
Built-up shoulder. Pink and white.

Need Window Shades?

We can furnish anything you wish in quality or size.
All shades cut to fit without extra charge.
Let us quote you prices

VOGEL & WURSTER

PERSONALS

Miss Gertrude Eppler is home from Ypsilanti for the spring vacation. Mrs. Stanley Weed of Saginaw is spending this week with her mother, Mrs. Fannie Naekel.

Miss Marian Downer, who is attending M. S. C. at East Lansing, spent the week-end at home.

Mrs. Adolph Eisen and daughter Marguerite of Detroit were Chelsea visitors on Saturday.

Mrs. E. H. Dancer returned Sunday from a visit with her daughter, Mrs. Edward Leja, of Detroit.

Mrs. Fred Kenouse of Jackson spent the first of the week with her sister, Mrs. Peter Kinsey.

John Pielmeier and children of Ann Arbor spent Sunday at the home of his father, W. S. Pielmeier.

E. J. Feldkamp and daughter Cora were Sunday afternoon guests of Mr. and Mrs. John Boettner, Saline.

Mr. and Mrs. H. L. Bleeker of Lansing called at the home of Mr. and Mrs. Wm. G. Luick last Tuesday.

Richard Butcher of Ann Arbor is spending the week with his grandparents, Mr. and Mrs. N. W. Laird.

Mrs. W. K. Guerin, Mrs. Gertrude Hammond and grandson, Jerry Herick, spent the week-end in Owosso.

Mrs. J. F. Mohrlock is spending several weeks at the home of her sister, Mrs. O. K. Parlett in Baltimore, Md.

Walter Appleton and Miss Hilda Appleton of Ann Arbor were guests of Mr. and Mrs. M. J. Dunkel on Sunday.

Mr. and Mrs. Peter Kinsey were Sunday guests at the home of Mr. and Mrs. Barney Wilson, at Whitmore Lake.

Mr. and Mrs. Clifford Glover and daughter of Ann Arbor were Sunday callers at the home of Mr. and Mrs. J. H. Boyd.

Peter and Nicholas Fletcher of Ypsilanti are spending this week with their grandparents, Mr. and Mrs. H. C. Schneider.

Mr. and Mrs. Norman Schmidt and family spent Sunday at the home of her mother, Mrs. Anna Kalmbach, in Wauseon, Ohio.

Mr. and Mrs. Harold Davis and children of Ann Arbor were Sunday visitors at the home of Mr. and Mrs. Clarence Vogel.

Mr. and Mrs. Earl George and children, Marvin and Marlene, of Detroit were Sunday guests of Mr. and Mrs. Walter Helridge.

Miss Pamela Staples and Elmore Staples, Jr. of Skookumchuck, B. C., Canada, are guests of Paul Rogers for several days this week.

Mrs. Elba Gage, Mrs. Edward Easton and Miss Lillie Wadenhut visited Mrs. Henry Vogel of Ann Arbor on Wednesday of last week.

Mrs. F. A. Kauska of Detroit and Miss Irene Kauska of Marquette were guests at the home of Mr. and Mrs. D. H. Wurster on Wednesday.

Mr. and Mrs. P. M. Boehm, daughter Margaret and Miss Grace Ward spent Sunday as guests of Mr. and Mrs. Palmer Davidson, Detroit.

Mr. and Mrs. H. C. Breitenwischer, Mr. and Mrs. Wilbert Breitenwischer and children were entertained Sunday at the home of Mr. and Mrs. Leo Woods, Marshall.

Mr. and Mrs. William Luick and daughter Barbara were in Battle Creek on Sunday to see their son-in-law and daughter, Dr. and Mrs. E. J. Blackmore and their new son, Edward John.

Mr. and Mrs. H. L. Craven spent Sunday in Toledo, where they were joined by their son and wife, Mr. and Mrs. Hubert Craven of New London, Conn. for a few days' visit with relatives.

Mr. and Mrs. L. T. Freeman, accompanied by their son, daughter-in-law and grandson, Mr. and Mrs. H. W. Freeman and son Hollis, Jr. of Ann Arbor, left Friday morning on ten day motor trip to Florida and other points of interest in the South.

Miss Anna Miller spent several days of the past week with Ann Arbor friends.

Mr. and Mrs. O. B. McLaughlin returned to their home here on Wednesday after a winter's sojourn in Florida.

Miss Florence Laird, who is a teacher in the Allen St. school, Lansing, is ill at the home of her parents, Mr. and Mrs. N. W. Laird.

Mr. and Mrs. Paul Niehaus spent Sunday with her parents, Mr. and Mrs. G. Fred Bauerle, of Lansing.

Their son, Junior, accompanied them home, after a week's visit with his grandparents.

William Atkinson, who was convalescing from a recent major operation, was taken Friday to St. Joseph's Mercy hospital, Ann Arbor, for further observation. He is reported as getting along nicely.

ATTEND DISTRICT MEETING

Twenty-eight members of the local Rebekah Lodge attended a district meeting at Hanover last Wednesday.

Mrs. Lulu Sweeney of Chelsea was elected secretary of the district at this meeting.

MRS. GRACE BOYER

Mrs. Grace Boyer of Redhouse, N. Y., mother of Mrs. John L. Fletcher of Chelsea, died Thursday night, April 4 in Saginaw City hospital, following an operation. Funeral services were held Sunday at the Redhouse Methodist church, with interment in Redhouse cemetery.

ATTEND "CHEER-UP" PARTY

Mr. and Mrs. Paul C. Maroney, Mr. and Mrs. Lyle Christwell, Mr. and Mrs. John Bird, Mrs. C. W. Maroney and Mrs. Chester Miller, representing the local American Legion Post and Auxiliary, attended a "Cheer-Up" party on Sunday afternoon at the American Legion hospital and Veterans hospital No. 100, Battle Creek.

A musical entertainment by Ford Dutch band was a feature of the program.

COAL GATHERERS WARNED

People who gather coal along the Michigan Central tracks are pursuing a dangerous occupation, according to railroad detectives who were in Chelsea during the past week.

According to reports, a local man who was recently gathering coal along the tracks stepped between the east and westbound tracks to escape being struck by a train and at the same time a train came from the other direction, which resulted in a very narrow escape for the man.

COMMITTEES APPOINTED

At the regular meeting of the Chelsea Rod and Gun Club held Tuesday night at Marilyn Inn, President Stanley Beal appointed the following standing committees for the year:

Entertainment—Albert Doll, Jesse Parsons, Raymond Canine, and Otto Lucht.

Publicity—M. C. Dunkel and Bert Foster.

Lease—Norbert Merkel, Geo. Hart, Paul Messner, Elmer Weinberg, and H. B. Murphy.

Educational—J. A. Park, Donald Miller, Jas. Almond, F. W. Merkel, and Armin Zincker.

FELLOWSHIP CLUB MEETS

The Fellowship club of the Methodist church held the final meeting of the season on Tuesday evening in the church dining room. An excellent potluck supper was served under the direction of Mr. and Mrs. Ed. Hammond, Mrs. Howlett, and Mrs. Steger.

A business session was conducted by President McClure. Wesley Smith and Charles Finkbeiner, members of the nominating committee, reported, and the following officers were elected for 1940-41: President, Vernon Downing; vice-president, Iren H. Weiss; secretary, Roy Ives; treasurer, Ed. Hammond. On motion of Mr. Sidwell, who acted as proxy for the secretary-elect, the officers were installed.

Group singing was followed by a monologue by Miss Henrietta Beach, reading by George McClure, and prayer was offered by Dr. Leeson. The feature address by P. M. Broesamle on "Our Winter Vacation in California" was much appreciated and enjoyed by all the members present. After singing the Doxology the meeting was adjourned. It is expected that the club will resume its work in October.

Standard Liners Bring Quick Results!

ANNOUNCE ENGAGEMENT

Mr. and Mrs. Emmet H. Dancer announce the engagement and approaching marriage of their daughter, Joy Harriet, to Victor Paul Hoek, son of Mr. and Mrs. Paul Hoek of Grand Rapids.

The ceremony will take place on May 11 at the home of the bride-elect's parents, Miss Dancer has asked her sister, Mrs. Edward Leja of Detroit, to attend her as matron of honor and Freeman Hoek will assist his brother as best man. The bride-to-be is a graduate of Chelsea high school and Cleary Business College, Ypsilanti, and her fiancé was graduated from South high school, Grand Rapids, and Grand Rapids Junior College.

CHILD STUDY CLUB

A meeting of the Child Study club, held on Tuesday evening at the home of Mrs. Paul C. Maroney, was attended by 15 members and one guest.

Committee reports were given as follows: Recreation, Mrs. Paul Schabale; girl scouts, Mrs. Wilbur Hinderey; nominating, Mrs. P. C. Maroney; and a decision to have a rummage sale in May, the place and date to be announced later.

The topic for the evening, "What Is Good Discipline?" was presented by Mrs. E. W. Eaton and comments relating to the subject were given in answer to roll call.

The hostess served refreshments. The next meeting will be held at the home of Mrs. Donald Miller, Cassidy Lake.

Y. M. STUDY CLUB ELECTS

The annual meeting of the Young Mothers' Study Club was held at the home of Mrs. Walter Zeeb on Tuesday night. Annual reports were read and approved, and the following officers were elected for the ensuing year:

President—Mrs. Harold Widmayer. Vice-Pres.—Mrs. Norman Schmidt. Secretary—Mrs. Gale Gilson.

Treasurer—Mrs. G. H. Hopper. Parliamentarian—Mrs. Emmett Hanked.

Auditors—Mrs. Walter Zeeb.

The birthday of the hostess was observed with small gifts from the club members. Refreshments were served by the hostess.

The next regular meeting will be held at the home of Mrs. Harold Gracey on April 23.

MRS. LOUISE WINANS

Mrs. Louise Winans, widow of Lester Winans, died Sunday, April 7 in Santa Ana, Calif., at the home of her sister, Mrs. Minnie Houchen, where she had been spending several months.

Formerly Mary Louise Hieber, she was born March 10, 1882 in Lima township, the daughter of John and Emilie Hieber. On July 17, 1920 she was married to Mr. Winans, who died June 20, 1939.

Mrs. Winans was a lifelong resident of this vicinity and was a member of St. Paul's Evangelical church and the Ladies' Aid Society of the church.

Surviving are two brothers, John and Charles, of Chelsea, and the sister, Mrs. Houchen, of Santa Ana, Calif.

The body will arrive here today and funeral services will be held Friday afternoon at 2 o'clock at the Staffan funeral home. Rev. P. H. Grabowski will officiate and interment will be in Oak Grove cemetery.

South Waterloo

Mr. and Mrs. Ted Schmidt and family of Jackson spent Sunday at the home of the latter's parents, Mr. and Mrs. Edwin Lutz.

Sunday dinner guests of Mr. and Mrs. Chris Katz were Mr. and Mrs. Clarence Eschbach and son of Grass Lake, Mr. and Mrs. Joseph Baldwin and son Kenneth.

Several from this vicinity attended the funeral of Mrs. Sarah Willis of Grass Lake.

Mr. and Mrs. Daryl Lantis and daughter Vivian of Jackson were Sunday evening callers at the Ben Lantis home.

Miss Jennie Rothman, who has been ill this past week, will return to Ann Arbor this week.

Mr. and Mrs. Vern Moore and daughter Nancy of Allegan visited the former's parents of Sunday. Mrs. Frank Moore, who has been seriously ill, is improving rapidly.

Mr. and Mrs. D. Wayne Wild and children spent Sunday at the Guy Baldwin home.

Mr. and Mrs. Walter Lutz and children of Detroit spent the week-end at the Jacob Lutz home.

Mr. and Mrs. Joseph Siegrist and children, Mr. and Mrs. Adolph Siegrist, Miss Clara Baldwin motored to Romeo on Sunday to visit Mrs. Emma Siegrist who has been seriously ill, and also called on Reuben Bjorkman and daughter of Pontiac.

Mr. and Mrs. Clair Siegrist had as Sunday dinner guests, Mr. and Mrs. Verde Siegrist and Hazel Siegrist.

Mr. and Mrs. Oland Siegrist visited Mr. and Mrs. Clair Siegrist Sunday afternoon.

Mr. and Mrs. James Hathaway of Williamston, Mr. and Mrs. Roy Raymond called on Mrs. Clair Siegrist on Thursday afternoon.

Mrs. Roy Frinkel of Munith entertained at a shower given at her home in honor of Mrs. Robert Baldwin, the former Miss Evelyn Frinkel, Saturday.

Dwight Harr was suddenly taken ill Thursday and taken to Chelsea hospital for observation, and was later released.

Sunday afternoon callers at the home of Mr. and Mrs. Will Brooks were the Henry Brooks family of Somerset Center, Mr. and Mrs. Clarence Green and Mrs. Hansen.

North Francisco

Mr. and Mrs. H. Harvey were Sunday dinner guests of Mr. and Mrs. Esley Main.

Mr. and Mrs. Keith Harvey and daughter spent Sunday evening at the Harvey home.

Mrs. Edna Loveland has been on the sick list for the past few days.

Mr. and Mrs. Ralph Loveland and family of Monroe spent Sunday at the home of their parents, Mr. and Mrs. Leonard Loveland, and afternoon callers were Mr. and Mrs. Ezra Heininger and daughter and Mr. and Mrs. Harley Loveland and family.

Mr. and Mrs. J. Mitchell Reid of Detroit spent the week-end at the home of Mr. and Mrs. Erle Notten.

Mr. and Mrs. H. Harvey spent last Thursday afternoon at Jackson.

Mrs. Ardes Wahl is spending some time at the home of her parents.

Philip Fauser spent Sunday at the home of Mr. and Mrs. Frank Moore.

Mrs. Fauser is still assisting in the care of her mother, who has been ill for some time.

Francisco

At the annual meeting of the quarterly conference of Salem Grove Methodist church April 3, Mrs. Geo. Heydlauf was elected delegate to conference to be held in Pontiac in June.

Chester Notten was elected lay leader of the church.

Mr. and Mrs. Benj. Knickerbocker were in Grass Lake to attend the "chili" dinner at the Legion home last week.

They were among the dinner guests Sunday, as were Mr. and Mrs. Walter Kalmbach, at the CCC camp north of town.

There was no school here the fore part of the week on account of the death of the teacher's sister.

Mrs. Benj. Knickerbocker assisted Mrs. Charles Smith with her household a couple of days last week.

Mrs. James Cadwell was hostess on Friday to the Congregational Yurtees. All members of the club were present.

The occasion was the eleventh anniversary of the first time Mrs. Cadwell entertained the group.

Miss Mary Koch entertained her uncle from Ohio last week.

Mr. and Mrs. E. E. Kohn and daughter of Grass Lake called on Mr. and Mrs. Knickerbocker recently.

Mrs. James Cadwell visited Mrs. Minnie Plowe in the Chelsea private hospital last week. Mrs. Plowe is able to sit up a few minutes at a time now.

Notten Road

Dr. and Mrs. L. V. Riemenschneider of Detroit were guests of Mr. and Mrs. T. G. Riemenschneider on Sunday.

Mr. and Mrs. Albert Schweinfurth and Mrs. Fred Notten were in Lansing on Wednesday of last week.

Lawrence Kruse and family of Jonesville were visitors at the home of Mr. and Mrs. P. H. Riemenschneider on Sunday.

Mrs. Tony Riemenschneider visited Howard Boyce and family of Lyndon on Sunday.

Mr. and Mrs. Fred Kalmbach of N. Baltimore, Ohio visited here Sunday.

Remember the supper to be given by the Ladies' Aid at the church here April 25.

Miss Lechman-Roth of Northville visited at the Wm. Broesamle home on Sunday.

Mr. and Mrs. P. M. Broesamle, who have been spending the past winter in California, visited Wm. Broesamle and family on Sunday.

Mrs. Clifford Heydlauf of Lima, and Mrs. Irving Kalmbach visited Mrs. Oscar Kalmbach on Friday afternoon.

Miss June Crawford, who has been a patient at the Chelsea hospital, was brought to her home Saturday.

Waterloo

The Ever-Ready Circle met at the home of Mrs. Eva Barber on Wednesday, April 8. Plans were made for the Mother and Daughter Tea, to be held on May 10. Each member brought a gift for the chairman, Mrs. Mary Hoyce Clark, who was recently married. The hostess served refreshments.

Mr. and Mrs. Walter Vicary, Annabelle and Richard, visited their cousin, Mrs. Mina Mann, at Dansville, on Sunday.

Miss Isabelle Hitchcock of Detroit spent the week-end with her parents, and Mr. Thompson, their son-in-law, was a Sunday visitor.

Mr. and Mrs. Percy Pratt of Napoleon and Fred Schulz of Jackson spent Friday evening with Mr. and Mrs. Ed. Schulz.

All young people are urged to make a special effort to attend the young people's meeting at the church on Monday evening, April 15. The public is invited.

The Ladies' Aid will meet at the home of Mr. and Mrs. Orson Beeman on Thursday, April 18, with dinner at noon. Everyone is cordially invited.

On Sunday, March 31, Mr. and Mrs. Glenn Rentschler entertained at a dinner in honor of the latter's parents, Mr. and Mrs. Leonard Loveland, the occasion being their wedding anniversary. Members of the family who attended were Mr. and Mrs. Harley Loveland and family, Mr. and Mrs. Dillman Wahl and daughter and LeRoy Loveland.

Mrs. Glenn Rentschler was hostess to the L. A. S. of Salem Grove church on Thursday afternoon.

Mr. and Mrs. Dillman Wahl and daughter are spending some time at the home of the latter's parents, Mr. and Mrs. Leonard Loveland. Mrs. Wahl is caring for her mother, who is

confined to her bed with sciatic rheumatism.

Mr. and Mrs. Henry Mollenkopf spent Sunday evening with Mrs. Mary Rentschler.

Leslie Housel is spending this week in Toledo, Ohio.

Mr. and Mrs. Tom Stafford of Detroit, Mr. and Mrs. Herbert Stafford and family of Hazel Park spent Sunday with Mr. and Mrs. Dallas Stafford.

Mrs. Etta Bunker of Jackson spent Monday evening with Mr. and Mrs. Kara J. Moeckel.

Mr. and Mrs. Walter Bohne and sons of Francisco spent Sunday afternoon at the home of Mr. and Mrs. Victor F. Moeckel.

Miss Leona Moeckel spent Sunday at the home of Mr. and Mrs. Philip Seitz.

Mrs. Lizzie Beeman, Mr. and Mrs. Leigh Beeman and son Donald were entertained at the home of Mr. and Mrs. John Dykemaster on Sunday, at a birthday dinner in honor of Mrs. Dykemaster.

Rev. Darwin Clupper spent Monday in Ann Arbor.

Jay Boushelle Gregory was a recent caller of Mr. and Mrs. M. A. Riethmiller.

Mrs. Elmer Marsh and daughter Shirley spent Sunday and Monday with Mr. and Mrs. Harold Marsh in Jackson.

Mrs. Theresa Koelz spent a day recently in the U. of M. hospital, Ann Arbor, and at the home of Dr. and Mrs. Riecker.

Prof. and Mrs. Ross of Dexter, Prof. and Mrs. K. C. McMurry, Mr. and Mrs. Wm. Burleson of Ann Arbor, Mrs. Lula Dean of Jackson were recent callers of Mrs. Theresa Koelz.

Mr. and Mrs. Harold Marsh and family of Jackson spent an evening recently with their parents, Mr. and Mrs. Elmer Marsh.

Lima

Mrs. Stanley Valant was called to Detroit on Friday on account of the death of her father.

Donald Barth spent the week-end with relatives in Ann Arbor.

Try Standard Liners—Only 25c

FARM GUILD NEWS

The Sylvan and Lima Farmers Guild met at the home of Mr. and Mrs. Joseph Merkel on Monday, April 8, with 20 members present. A directors' meeting was held, in which the local Guild discussed certain farm bills now before Congress, the Senate bill S. 162, and House bill H. R. 944.

A bill to protect producers, manufacturers and consumers from the un-revealed presence and substitutes and mixtures in spun, woven, knitted and felted or otherwise manufactured wool products. A talk was given on "The Life Insurance Farmers" who during the past 18 years have become the nations' largest farmers. They are interested in the AAA subsidy. In eight years companies took in a total of \$1,535,158, and the AAA is insisting that its program protect the "family size" farm against the corporate activities of large land owners.

Standard Liners Bring Quick Results!

Winter Fishermen Get Larger Catch Per Day

A higher total catch in summer, but a higher catch per day in winter, are shown in the first report of the Conservation Department's institute for fisheries research on the winter-summer fishing study.

The study is being made through creel census kept for 85 to 90 per cent of the fishing on eight inland lakes: Bear lake, Hillsdale county; Craig lake, Branch county; Christiansburg lake, Cass county; Paw Paw lake, Berrien county; Stearns bayou, Ottawa county; Clear and Big Portage lakes, Jackson county; and Sugar Loaf lake, Washtenaw county.

Total legal catch on the eight lakes in winter was 65,884. In the summer season through October 15 the catch was 93,988 fish. But the average catch per hour on the eight lakes in winter was 1.5 fish, against 1.0 fish per hour in summer. Fish caught in summer averaged 7.9 inches, a tenth of an inch longer than the winter average. The

average angler fished longer in winter, 8.8 hours to 8.5.

In winter, bluegills were 89 per cent of the total catch, in summer they were 69 per cent of the total. Black crappies ranked second in winter, perch second in summer. Other species taken were rock, warmouth and black bass, sunfish, northern pike, dogfish, bullheads.

From mid-December through March was considered the winter season. Continuity of census records over several years is emphasized by the institute as necessary before making conclusions or setting up policies for stocking and improving of fishing grounds.

INSTALLS BEVERAGE COOLER. J. V. Burg has installed a Kelvinator bottled beverage cooler in his drug store. The unit, which has a capacity of 218 bottles, is located in the stock room at the rear of the store.

ATTEND SALES MEETING. Mr. and Mrs. D. J. Claire were in Detroit last Thursday night where they attended a sales meeting at the Kelvinator branch. More than 100 Kelvinator dealers of this district attended the meeting.

ENTERTAIN MOTHERS. The Snappy Fingers entertained their mothers at a 6:30 dinner on Wednesday night at the home of Virginia Lesser. Covers were laid for 24. A display of their work for the year was given by the mothers.

CARD OF THANKS. I wish to thank all my friends for the many acts of kindness extended me during my recent illness. Their thoughtfulness was greatly appreciated.

Alfred Lindauer.

CARD OF THANKS

We wish in this way to thank the friends and neighbors for their many acts of kindness during our bereavement; we want to especially thank Mr. and Mrs. Paul Niehaus for the songs, and Rev. Ray Barber for his comforting words.

Mr. and Mrs. Wm. Luick, Mrs. Eva Wood, Harold Luick.

JEWETT P. T. A. MEETS

A meeting of the Parent-Teacher Association of Jewett school, District No. 10 Fr. was held Friday evening at the home of Mr. and Mrs. Reuben Lesser. About 50 members were in attendance. This year marks the 100th anniversary of the school and the business session plans were discussed for a celebration of the event. Eucher furnished pastime for the evening. Mrs. George Satterthwaite and Tony Haran holding high score, George Koenigster and Joseph Steele, low. A cooperative supper was served.

ENTERTAINS ST. PAUL'S L. A. S.

The April meeting of the Ladies Aid Society of St. Paul's church was held on Friday afternoon at the home of Mrs. Adolph Duerr, with 28 members present, and four guests. The subject for consideration was "Foreign Missions", and the meeting opened with devotionals by Rev. F. H. Grubowski, interspersed with readings on Honduras, India, and China, by Mesdames Carl Mayer, Lewis Eppler and W. H. Kusterer. Mrs. J. N. Strieter at the organ, and Adolph Duerr, violin, furnished accompaniments for the musical numbers. Plans were made for attending the Women's District convention, to be held April 24 in Dexter. Refreshments were served by the hostess, assisted by Mrs. August Hilsinger and Mrs. Otto Goetz.

BIRTHDAY SURPRISE

A company of relatives gathered Sunday at the home of Mr. and Mrs. Wm. G. Price in Lima township for a surprise in honor of her birthday anniversary. Dinner was served, with covers for the following: Mrs. William Brook, daughters Clara and Grace, and Harold Greenwood of Saginaw; Mr. and Mrs. Bert Weinheimer and sons, Jack, Bert and Robert; Mr. and Mrs. Howard Scarlett, daughter Susan; and Mr. and Mrs. Harry Scarlett of Detroit; Mr. and Mrs. Albert Barker and Mr. and Mrs. Victor Sindlinger and children of Ann Arbor and Mr. Robert Robert of Fort Wayne, Ind. The dinner also celebrated the birthday of Mrs. Price's brother, Mr. Barker. On Monday evening, the neighbors gave an evening party for Mrs. Price. Games were played and refreshments were served.

MRS. EMMA WEST

Mrs. Emma West, 92, widow of Russell West, died Thursday night, April 4 at her home at Sylvan Center.

The daughter of David and Narcissa Porter, she was born January 26, 1843 in Adrian and was married February 2, 1865 to Mr. West, who died February 2, 1939. She had resided at Sylvan Center since 1880.

Surviving are two daughters, Mrs. Della Giles of Jackson and Mrs. Ruth LaMatrice of New Baltimore; three sons, Charles, Lyman and Harrison, all of Sylvan Center; 35 grandchildren, 31 great-grandchildren, and three great-great-grandchildren.

Funeral services were held at 2:30 Sunday afternoon at the home of Mr. and Mrs. Harrison West. Rev. Henry W. Lenz officiated and interment was in Maple Grove cemetery, Sylvan township.

MRS. SUSAN CONGDON

Mrs. Susan Congdon, 85, a former resident of Chelsea, died Monday, April 8 at the Beyer Memorial hospital, Ypsilanti, following a week's illness.

The daughter of Hiram and Catherine Cassidy Pierce, she was born October 18, 1854 in Chelsea. November 26, 1876 she was married to Alfred R. Congdon and they made their home in Chelsea and Dexter before moving to Ypsilanti in 1890. Mr. Congdon died November 12, 1932. Mrs. Congdon was a member of the First Methodist church, Ypsilanti, and the Order of Eastern Star.

Surviving are a son, Howard A. Congdon, and a daughter, Mrs. Ralph Hebb, both of Ypsilanti; a sister, Miss Alma Pierce of Chelsea; two grandsons and two great-grandchildren.

Funeral services will be held at 2 o'clock this afternoon at the residence, 422 S. Huron St., Ypsilanti, and burial will be in Oak Grove cemetery, Chelsea.

Ice Yachting at 111 M. P. H.

At the great ice-yachting races at Djursholm and Saltsjobaden in Sweden, racers have attained a speed of 111 miles an hour.

SPEAKS ON "SELL MICHIGAN"

"Jim" Welch, well-known writer, traveler and publicity man was the guest speaker at a sell-Michigan program at the Chelsea Kiwanis club on Monday evening. He said there were annually over 10,700,000 tourists in Michigan. These tourists spend an average of \$6.43 a day while they are vacationing. The profit on this spending finally reaches the pockets of every business and professional man in the state. While other states are appropriating as high as \$800,000 annually for tourist propaganda, Michigan, that has everything on the "top side of the earth" gives only \$75,000 to its four tourist bureaus. Michigan has the highest number of tourists annually of any state in the union. To increase this business every Michigan resident should appoint himself a committee of one to "Sell Michigan."

FREEER SCHOOL NEWS

Richard Schulze was the only student not absent nor tardy for the fifth marking period.

The new officers of the Freeer School Civic Health Club are Richard Schulze, president; Mary Ann Gage, vice-president; Edward Paschegoba, secretary.

On March 20 we lost Mary and Dorothy Paschegoba and Mildred Schable to the Doll school near Ann Arbor. Our school has been awarded the Honor Trophy by the Automobile Club of Michigan for excellence in safety activities. Edward Paschegoba, the captain, has made all the necessary reports, and the whole school has carried on an extensive safety program.

While Chelsea public schools were having vacation, Joyce Crawford and Beverly Fielder spent several days with us and assisted Mary Ann Gage in building and furnishing a large doll house. It is teaching Mary lessons in measuring and handling different materials.

The third grade is also working on a sandtable unit of the desert. We have completed several instruments for our rhythm band, and they will be on display at the music festival to be held in the Hill Auditorium in May.

Edward Paschegoba, Reporter.

JERUSALEM SCHOOL NEWS

The fifth period of school for the Jerusalem school closed Friday, April 5. The following were neither absent nor tardy during the period: Paul Alton, Roy, Ralph, Dean and Earl Gumbert, Robert Trinkle, Joyce Hoffman, Joyce Eileman, Wilma and Joan Koenigster.

Doris Trinkle, who broke her leg February 13, is not back at school as yet. The president of our Civic Health Club is Stella Valant, the secretary, Genevieve Valant. We are summarizing our health for the year by making a movie. We have completed the problems in our scrapbook, but add to them as we find good materials.

We did not have school on Good Friday. We all received some candy from the teacher for Easter and she received many gifts from the children. We made several greeting cards and drawings for Easter.

We have been doing various things for Art Work. We painted pictures and we have been doing some etching. We have been drawing and painting birds along with Nature Study. We are making some book-ends. We are doing various phases of art along with our everyday work.

We have worked several projects in Nature Study. We have made a Spring bird and flower calendar and are recording facts on it. We have made several bird houses and some bird feeders. We have enjoyed watching the sprouting of seeds.

For language the third and fourth grade read stories about Holland and made an interesting notebook containing stories, poems, pictures, drawings and clippings. They have likewise made a booklet containing the same kinds of work on China after reading several stories of China.

Several of the children made illustrated stories on Holland. The 3rd and 4th grades also put a scene of Holland in the sandbox.

The first, third and fourth grades made a collection of spring pictures and wrote stories about them and made a booklet of them.

We are finishing our music scrapbook and symphony orchestra project. Four of the children went to Manchester on Friday, March 29, to the first rehearsal for the Music Festival in May. They were Robert Trinkle, Lois Schlosser, Joyce Hoffman, Wilma Koenigster. We have been listening to some of the musical programs over the radio on Friday afternoon.

We have been checking up on our book reports and books read. Several of us have to read a few more books for a Book Certificate. The first grade have read the most books.

Mrs. Robinson visited us March 11. She gave the third graders a test and found they did very well. She also gave the upper grades a test in place geography. We have been working on place geography for some time.

We have discussed the lives and works of the famous people whose birthdays come during this period. We find it reviews many interesting facts.

We have some interesting spring pictures about our room. We also have a new framed picture of Abraham Lincoln in our room. It is very pretty. It was given to the teacher by her sister.

The visitors during the period were Mrs. Robinson, Mrs. Inez Rank, Mary Ann Gage, Shirley Ahrens, Dale Thomas, Mrs. D. Nanry.

Lois Schlosser, Joyce Hoffman, News Reporters.

LOCAL SCOUTS INVITED TO TAKE PART IN SWIM MEET

At the invitation of Harvey Ward, Field Commissioner of Special Events, local Scout leaders have been invited to arrange for their troops to participate in the Inter-Troop swimming meet to be held at the Intramural Sports Building in Ann Arbor on Saturday afternoon, April 27. All entry blanks must be filed at the Council office, 324 E. Huron St., Ann Arbor, not later than Wednesday, April 24. There will be six events for Scouts over 14 years of age and six events for Scouts under 14. They are: 25 yd. free style, 50 yd. breast, 50 yd. free style, 50 yd. back stroke, relay, diving.

A Scout may enter any three events. All contestants must be registered Scouts. First, second, and third ribbons will be awarded for each event. The junior events are open to Scouts who have not yet reached their 14th birthday. Senior events are open to Scouts 14 and over.

Each Scout is asked to bring his own towel with him on the day. Additional information may be secured from your Scoutmaster.

NICKNAME CONTEST REPEATED

The Ford Dealers' Used Car Nickname Contest, closing tonight at midnight, has proved to be so popular that it is being repeated, according to D. D. Harris, chairman. The second contest will end at midnight, April 18, says Mr. Harris. As in the first contest, the ten best nicknames given by used car buyers to the cars they buy from Ford dealers, will each win \$100 cash prizes. The judges will be the Honorable John L. Carey, Mayor of Dearborn; Gordon Kingsbury, Director of Advertising Courses at Wayne University, Detroit; and G. D. Gettins, automobile editor of the Toledo Blade. "We were agreeably surprised at the cleverness of the nicknames submitted in our first contest," said Mr. Harris. "In fact, it seems the custom of car naming, so prevalent a few years ago, is being revived through the Nickname Contest. It was gratifying to note how few 'ordinary' nicknames, such as 'Bluebird' or 'Bessie,' were submitted. In any case we were practically forced to repeat our \$1000 contest because of the enthusiasm which Nickname aroused. Incidentally, the contest has served as a reminder that this is the best time of the year to make a used car purchase, when Ford dealers' stocks offer a wide variety of makes, models, and body types."

World War Fatalities. The World War cost the United States over 50,000 men killed in action, 238,000 wounded, 57,000 dead of disease and 4,500 dead of other causes.

Family Post Office

The Potosi, Wis., post office has been a family affair for 86 of the last 102 years. The Kallenbach family—father, son and grandson—has held the postmastership 102 years continuously except for two intervals of eight years.

Silver Dollar Coed

Miss Mary Crockett, Springfield, Ohio, who has started her first-year classes at Wittenberg college, paid her tuition with 125 silver dollars. Mary made a hobby of saving silver dollars during her high school career.

OF SAVINGS IN

Black and White

Words about savings never put any extra change in your purse, so we give the proof of our economy in black and white. No gadgets. No games. We prove it with merchandise you need and use daily—your favorite nationally advertised brands at the lowest prices. Come in today and start to save where savings count!

47c Mead's Pabulum	39c
35c Sloan's Liniment	29c
25c Carter's L. Liver Pills	19c
\$1.00 Miles Nervine	83c
60c Minit Rub	49c
75c Bayer's Aspirin	59c
\$1.20 Caldwell's Syrup Pepsin	94c
75c Family Size Fletcher's Castoria	59c
\$1.20 Extra Large Bromo Seltzer	95c
75c Listerine Antiseptic	59c
\$1.25 Mead's Cod Liver Oil	\$1.09
\$1.00 Value Halo Shampoo, two 50c sizes	51c
1/2 gal. Heavy American Mineral Oil, jug included	97c



But You Won't Have a Watch

All the parts of a watch could be put in your hands, but without the training and experience of a watchmaker, you could not assemble them into an accurate timepiece. So it is with prescription work. You could take all the drugs in our laboratory, but you wouldn't have a medicine. The skill of a pharmacist is necessary to combine them in the right way.

SEE OUR HANDBILLS FOR MORE BARGAINS THIS WEEK

BURG'S CORNER

PHONE 76 Drug Store CHELSEA

DEXTER'S MARKET

PHONE 132 WE DELIVER

Veal Roast	Boneless and Rolled	lb. 19c
Smoked Picnics	Pre-Cooked	lb. 12½c
Tastie Tender Hams	whole or shank half	lb. 19c
Home Rendered Lard		lb. 5c
Pure Pork Sausage or Fresh Side Pork		lb. 11c
Fresh Hams	whole or shank half	lb. 14c

These Prices for Friday and Saturday Only

Central Market

Corn Kix	Marmalade Jar Free	2 pkgs. 23c
Motor Oil	Emerald	2 Gallon Can \$1.08
Cookies	FANCY ASSORTMENT	lb. 19c
Babbitt's Cleanser	3 cans	10c
Pork and Beans	Symons No. 2 1-2 can	10c
Silver Dust	LARGE PACKAGE	22c

GROCERY DEPT. MEAT DEPT.

Carl Beutler Loeffler & Son

SPRING WORK

Now is the time to check up on your Work Clothes and Footwear. Buy good merchandise - it pays, in fit and longer wear! - 'Finck' and 'Winner' Overalls and Pants, 'Racine' Work Shirts and 'Peters' 'Diamond Brand' Shoes make a combination that is hard to beat - and prices are low for value received.

Also new Spring Furnishings and Shoes of all kinds!

SPECIAL - RUBBER BOOTS at \$2.00 pair

Walworth & Strieter

Super Market

VOGEL BUILDING EAST MIDDLE STREET

Opening Saturday, April 13

Due to delay of several things and the necessity of getting our advertisement in time for publication we could not get our Fresh Meats and Produce Prices in our advertisement. We pledge ourselves to have for you at the very lowest prices all standard and QUALITY Merchandise. Our prices are all marked so low that to bring them in our ad. we would have to include all items.

Fancy Tomato Juice---20-oz. can	5c
Hand Packed Tomatoes---No. 2 can	5½c
CATSUP---14-oz. bottle	6½c
SNOW DRIFT	3 pound can 39c
Pure GRANULATED SUGAR	5 lbs. 23c
PEACHES in syrup	No. 2½ large can 12½c
GREEN GIANT PEAS	2 cans 27c
MAXWELL HOUSE COFFEE	lb. 23c
OUROWN COFFEE	3 lbs. 39c
Gold Medal or Pillsbury FLOUR	... 93c
CRACKERS	2 lbs. 13c
ROMAN CLEANSER	2 bottles 15c
MISSION BRAND TUNA	... 11c
OLEO---Flosco	lb. 9c
LARD---in carton	lb. 5c
Ring and Large BOLOGNA	2 lbs. 25c

The Hi-Light

Edited By The PUPILS OF THE CHELSEA PUBLIC SCHOOL

STAFF
 Editor: Don Cook
 Co-Editor: R. McDonald
 Senior Editor: Melissa Balmer
 Junior Editor: Donald Clark
 Fresh-Soph. Editor: Mary Birch
 Band: Peggy Almond
 Confucius Say: Ruth Yettah, Jeanne Meserva
 Latin Banquet: Miss Pawloski

Band and Orchestra

On the evening of April 19 the band and orchestra of Chelsea high school will present their spring concert, so that they may raise some more money to go toward their new uniforms. The concert will show the families

The Latin Banquet

Chelsea high school students suddenly took on a strange appearance last Monday when they donned sheets (Roman togas) and wore laurel wreaths. The cause of it all was the annual banquet. The 9th grade girls acted as slaves. The festivity began

with a Roman wedding acted out by the 2nd year Latin class with Betty Fletcher and Wilgus Osbourne as the fictional couple. The feast itself was accomplished in a very cramped position on the floor. But spirits were undaunted and songs in lingua Latine floated from the gymnasium. The first year students received ample initiations at the hands of their upperclassmen. The whole affair was brought to a close when Lois Palmer, acting of the oracle of Delphi, foretold the future for all the participants.

Seniors

Well, at last! The big moment has arrived. The senior dance. It is to be Friday night at 9:00 and we will have Red Ritz of Ann Arbor to play. This dance will be an invitation dance so see a senior. Here's hoping we see all of you here in our high school gym.

Confucius Say

J. M. really parks them in (3 deep). At least Art L., Bill S. and Bob S. escorted her home Sunday night.

What's this? Balmer and Birch have found another black "8" and of course its from Manchester. Anyway, Balmer has "his" ring.

Edith "Mae" and K. Sloum were "rug cutting" at Bridgewater Sunday night.

Lima Center still holds the interest of Jack and Junior Miller. Nice going, Ruthie!

Wayne and M. J. B. are going pretty strong—maybe the weather got them.

Peggy A. and Ted C. find study hall an interesting place to chat.

What would happen if V. B. and Ed V. didn't sit together every noon hour?

By all reports the boys are going stag to the senior dance—don't forget gals, this is leap year!

A. P. has been faithfully practicing his batting during the past week. Was J. D. an observer, Andy?

Riek R. must have a "heart interest" somewhere—and Ann Arbor seems to be the place. At least he was sauntering about the town!

Elementary News

Seventh Grade
 A number of our members went on short trips during vacation. Marjorie Gilson visited in Battle Creek; Norman Aberle, James Gault, Robert Reed visited in Detroit; Philip Thompson visited Ann Arbor. Phyllis Hoppe celebrated her birthday during vacation.

In spite of our pleasant experiences we were glad to return to our freshly finished desks, of which we are so proud. We found our plants alive and thriving after a waterless week, though our room was less dusty than we had expected.

Republican's Elephant

The elephant as the symbol of the Republican party was originated by Thomas Nast in a cartoon published in 1874.

Mickey Mouse Multiples

More than 20,000,000 molded plastic products with full color images of Mickey Mouse and his faithful crew have been produced in Bridgeport, Conn., in the last three years.

Children In Court

By Judge Malcolm Hatfield

An Example for Others to Follow
 The Delinquency Prevention Council of Michigan has undertaken a task which should be supported by every social, civic, fraternal, educational and religious group throughout the nation.

This organization is the nucleus of a committee whose purpose is to stimulate parental education and leadership in the fight against juvenile delinquency. To date, in conjunction with the Michigan Society for Mental Hygiene, it has sponsored a series of radio programs over radio station WWJ, Detroit, and is serving as a clearing house for information on delinquency prevention.

Organizations such as Kiwanis, Rotary, Lions, V. F. W., American Legion, Y. M. C. A., Federated Women's Clubs, Parent Teachers Clubs, juvenile courts, as well as churches, newspapers and schools, should contact Professor L. J. Carr at the University of Michigan, Ann Arbor, if they care to participate in such a worthwhile movement in their own locality.

Indifference of the Public

A survey of the causes of juvenile crime which was recently made in a juvenile court indicates that in its effort to combat the peril of juvenile delinquency, this nation is confronted not with one problem, but with many, and that these must be attacked from various positions. The survey also disclosed that the causes themselves vary, not only in different communities, but also in diversified types of juvenile delinquents.

Another interesting fact uncovered by the survey was that many experts on the subject are advocating their own personal methods for dealing with youthful crime, so that it is difficult for parents and for the public to comprehend the problem in its entirety. However, the survey indicates that the major element which has contributed to youthful delinquency is the indifference of many parents and the public at large. As long as this situation prevails, there is little use to formulate methods for curing juvenile crime, especially as it is difficult to gain public support and parental cooperation.

Therefore, if the problem of juvenile crime is to be successfully dealt with, the public must be made to realize that only when public opinion is aroused in support of preventive measures, will youthful and eventually adult crime be effectively checked.

Translation

Translated from the Spanish, here is what the names of some New Mexico post offices mean: Louise Egg, Fly Trap, Bib Head, Bib Onion, Chicken and Mouse.

First Death Sentence

The first sentence of death imposed by a federal court in the United States was passed in New Betn, N. C., in 1793 when four sailors were hanged for mutiny at Ocracoke Island, N. C.

White Papers

Occasional official publications issued by the British government are known as "White Papers." Regular official publications issued by the British government in colored covers are blue.

FORMER RESIDENTS CELEBRATE 50TH WEDDING ANNIVERSARY

Mr. and Mrs. Charles Limpert of Lakeland, Florida, former Chelsea residents, held open house on Wednesday in celebration of their fiftieth wedding anniversary. A beautifully appointed tea-table covered with a lace cloth over gold satin was centered with a large gold engraved crystal bowl filled with orange blossoms and yellow roses, and matching candelabra with gold tapers.

Mrs. Limpert's brother, Albert Wals of Grass Lake, and the two daughters of Mr. and Mrs. Limpert, Mrs. M. N. Allmendinger of Arlington, Virginia, and Mrs. L. H. Harvey of Royal Oak, and Mrs. Harvey journeyed to Florida to be with them on this occasion.

Their many friends and relatives have shared in a fond remembrance shower.

WORK PARTY AT SCOUT CAMP

If the weather permits, several dozen Scouts and Scout leaders will spend next Saturday, April 13 at the Scout camp near Dexter in the first work party of the season.

Every effort is being made toward getting the new Kiwanis baseball diamond in perfect shape for use this summer, as well as a considerable amount of tree planting and transplanting, etc.

While the date has not been definitely set, plans are under way for the breaking of ground for the new Junior Chamber of Commerce cabin at camp.

Approximately \$200 is to be put into the materials of the cabin, and it is planned to be one of the finest in the camp layout.

Camp Newkirk is used each weekend by numerous troops, as well as serving as the Scout Haven for Scoutling during the summer months.

M. S. C. Uncovers New Vitamin Supply

Development of a new process, on which a patent has been obtained for obtaining carotene from green plant tissue such as alfalfa is announced by the Michigan State College experiment station. This is the first major finding under research financed from the half-million dollar Rackham research foundation given to the college in 1938.

H. G. Petering, P. W. Moirag and E. J. Miller are the three men credited with the research. Their project is receiving the attention of scientists this week in a meeting of the biological section of the American Chemical Society in Cincinnati (April 8-12).

Carotene in vegetables may not be yellow pigments which occur naturally in green plant tissue and to some extent in other parts of plants such as carrots. The substance is transformed into vitamin A in the bodies of humans and animals, and thus is the ultimate source of this vitamin—whether it is obtained from milk, vegetables or fish liver oils.

Carotene in vegetables may not be readily absorbed in digestion because it is closely bound up in the cells of the plant. When isolated, however, it is readily available for nutrition of the body.

In chemistry laboratories the three research men developed a method which makes use of dried alfalfa meal. A primary process extracts the carotene, chlorophyll and fatty materials

and then the latter two are removed from the extract to leave the desired carotene. Concentration and purification follows. The process is much simpler than any other now available for a year.

REPORT OF THE CONDITION OF

Chelsea State Bank

of Chelsea, in the State of Michigan, at the close of business on March 26th, 1940.

Published in accordance with a call made by the Federal Reserve Bank of this district pursuant to the provisions of the Federal Reserve Act and by the Commission of the Banking Department pursuant to the provisions of Section 82 of the Michigan financial institutions act.

ASSETS

	Dollars Cts.
Loans and discounts (including \$184.40 overdrafts)	\$491,729.25
United States Government obligations, direct and guaranteed	249,868.00
Obligations of States and political subdivisions	184,823.99
Other bonds, notes, and debentures	178,062.29
Corporate stocks (including \$8,300.00 stock of Federal Reserve Bank)	3,300.00
Cash, balances with other banks, including reserve balances, and cash items in process of collection	384,650.73
Bank premises owned \$12,910.00, furniture and fixtures \$2,250.00	15,160.00
Real estate owned other than bank premises	1,165.00
Other assets	1,117.00
TOTAL ASSETS	\$1,453,875.74

LIABILITIES

Demand deposits of individuals, partnerships, and corporations	\$309,069.93
Time deposits of individuals, partnerships, and corporations	905,432.31
Deposits of States and political subdivisions	41,066.67
Other deposits (certified and officers' checks, etc.)	293.55
TOTAL DEPOSITS	\$1,255,862.46
TOTAL LIABILITIES	\$1,255,862.46

CAPITAL ACCOUNTS

Capital	\$ 55,000.00
Surplus	55,000.00
Undivided profits	63,023.23
Reserves	22,000.00
TOTAL CAPITAL ACCOUNTS	\$195,023.23

TOTAL LIABILITIES AND CAPITAL ACCOUNTS	\$1,453,875.74
This bank's capital consists of common stock with total par value of \$55,000.00.	

MEMORANDA

Pledged assets (and securities loaned) (book value):
 (a) U. S. Government obligations, direct and guaranteed, pledged to secure deposits and other liabilities \$ 5,000.00

(c) TOTAL \$ 5,000.00

Secured and preferred liabilities:
 (a) Deposits secured by pledged assets pursuant to requirements of law \$ 5,000.00

(c) TOTAL \$ 5,000.00

On date of report the required legal reserve against deposits of this bank was \$ 61,066.67

Assets reported above which were eligible as legal reserve amounted to \$384,650.73

I, John L. Fletcher, Vice-President and Cashier of the above-named bank, do solemnly swear that the above statement is true, and that it fully and correctly represents the true state of the several matters herein contained and set forth, to the best of my knowledge and belief.

Correct—Attest:

J. L. FLETCHER,

Vice-President and Cashier.

P. G. SCHAUBLE,

OTTO D. LUCK,

L. G. PALMER,

Directors.

State of Michigan, County of Washtenaw, ss:
 Sworn to and subscribed before me this 30th day of March, 1940, and I hereby certify that I am not an officer or director of this bank.

James C. Hendley, Notary Public,

Washtenaw County, Michigan.

My commission expires January 31, 1944.

"INSTEAD OF DOING THE SAME OLD THING AGAIN—BUYING ONE OF THE LOWEST PRICED CARS—WE THOUGHT WE'D SHOP AROUND THIS TIME"

"IMAGINE OUR SURPRISE WHEN WE FOUND WE COULD STEP UP TO AN OLDS AND EASILY AFFORD IT! OLDS PRICES ARE LOWER THAN YOU THINK!"



MORE SIZE
 MORE STYLE
 MORE COMFORT
 MORE POWER
 MORE QUALITY
 MORE PRESTIGE
 plus
 ECONOMY THAT COMPARES WITH THE BEST

COMPARE OLDSMOBILE WITH THE LOWEST PRICED CARS. YOU'LL FIND ONLY A SMALL DIFFERENCE IN COST, BUT A WHOLE OF A BIG DIFFERENCE IN WHAT YOU GET FOR YOUR MONEY!

"BIG CAR" doesn't necessarily mean "Big Expense!" Look at Oldsmobile. The Olds Sixty is a really big car any way you measure it. 197 1/2 inches front bumper to bumper. Big and roomy inside. It's powered by a big 95 H. P. Econo-Master engine, and it's the lowest priced car with modern coil springs all around for extra riding comfort. In addition, Olds gives you more style, more quality and more prestige. Yet the Oldsmobile Sixty costs only a few dollars more than deluxe models of lowest priced cars, and figures show Olds is very economical to run. See it! Drive it—today!

OLDSMOBILE

"BEST LOOKING CAR ON THE ROAD?"

W. R. DANIELS, R. R. and North Main Streets Chelsea, Mich.

"60" DE LUXE 2-DR. SEDAN \$853

PRICED FOR EVERYBODY

★ Olds prices begin at \$807 for Coupes, \$853 for Sedans, delivered at Lansing, Michigan. Transportation based on rail rates, state and local taxes (if any), optional equipment and accessories—extra. Prices subject to change without notice. A GENERAL MOTORS VALUE Help promote safety—dim your lights when passing!

"OLD KING COLE IS A MERRIER SOUL, SINCE THEY CHANGED TO ELECTRIC COOKING, SO QUICK AND CLEAN, THAT KING COLE'S QUEEN IS EVEN BETTER LOOKING!"



To have beautiful hands is a woman's delight, and electric cookery banishes the principal household task that causes rough, reddened hands—the constant scouring of pots and pans. Electric heat is just as clean and pure as sunshine and leaves no sooty, grimy deposit on utensils.

Old-fashioned flame cooking requires much air for fuel combustion and fuel ovens must have large quantities of air which pass off, carrying the fume-laden, grease-freighted air that is deposited on your walls and draperies, with an ultimate heavy cost for re-decorating. On an Electric Range, the heating element takes no air and is completely enclosed in the oven, so that nothing is carried off. Not only is your home kept clean; the range itself has no stopped up, greasy burners. It is as easy to keep spotless as a china dish!

Electric Cookery Is Economical!

Chelsea Electric & Water Dept.

NOTICE OF MORTGAGE SALE

Whereas, default has been made in the payment of the money secured by a mortgage dated the 20th day of October, A. D. 1921, executed by Dorothy B. Lowry, of the City of Ann Arbor, County of Washtenaw, Michigan, to the Farmers & Merchants Bank, of Ann Arbor, Michigan, which said mortgage was duly recorded in the office of the Register of Deeds for the County of Washtenaw, Michigan, in Liber 189 of Mortgages on Page 410, on the 24th day of October, A. D. 1921; and,

Whereas, said mortgage, together with the note or obligation mentioned therein, was thereafter duly assigned by deed of assignment by the Farmers & Merchants Bank to the Federal Deposit Insurance Corporation, which assignment was dated the 14th day of February, A. D. 1936, and was thereafter duly recorded in the office of the Register of Deeds for Washtenaw County, Michigan, on the 15th day of February, A. D. 1936, in Liber 27 of Assignments of Mortgages, on Page 10; and,

Whereas, the amount claimed to be due and unpaid on said mortgage, at the date of this notice is the sum of Fifteen Thousand Four Hundred Fifty Dollars (\$15,450.00) for principal; the sum of Three Thousand Four Hundred Two and 46-100 Dollars (\$3,402.46) for interest and the sum of Thirty-Five Dollars (\$35.00) for an attorney fee; and,

Whereas, said mortgage, together with the note or obligation mentioned therein, was thereafter duly assigned by deed of assignment by the Ann Arbor Savings Bank to the Federal Deposit Insurance Corporation, which assignment was dated the 14th day of February, A. D. 1936, and was thereafter duly recorded in the office of the Register of Deeds for Washtenaw County, Michigan, on the 15th day of February, A. D. 1936, in Liber 26 of Assignments of Mortgages, on Page 280; and,

Whereas, the amount claimed to be due and unpaid on said mortgage, at the date of this notice is the sum of Six Thousand Five Hundred Dollars (\$6,500.00) for principal; the sum of One Hundred Thirty Seven and 50-100 Dollars (\$137.50) for interest; and the sum of Thirty Five Dollars (\$35.00) for an attorney fee as provided in said mortgage; making the total now due and unpaid on said mortgage the sum of Six Thousand Six Hundred Seventy Two and 88-100 Dollars (\$6,672.52);

Whereas, said mortgage, together with the note or obligation mentioned therein, was thereafter duly assigned by deed of assignment by the Ann Arbor Savings Bank to the Federal Deposit Insurance Corporation, which assignment was dated the 14th day of February, A. D. 1936, and was thereafter duly recorded in the office of the Register of Deeds for Washtenaw County, Michigan, on the 15th day of February, A. D. 1936, in Liber 26 of Assignments of Mortgages, on Page 280; and,

Whereas, said mortgage, together with the note or obligation mentioned therein, was thereafter duly assigned by deed of assignment by the Ann Arbor Savings Bank to the Federal Deposit Insurance Corporation, which assignment was dated the 14th day of February, A. D. 1936, and was thereafter duly recorded in the office of the Register of Deeds for Washtenaw County, Michigan, on the 15th day of February, A. D. 1936, in Liber 26 of Assignments of Mortgages, on Page 280; and,

Whereas, said mortgage, together with the note or obligation mentioned therein, was thereafter duly assigned by deed of assignment by the Ann Arbor Savings Bank to the Federal Deposit Insurance Corporation, which assignment was dated the 14th day of February, A. D. 1936, and was thereafter duly recorded in the office of the Register of Deeds for Washtenaw County, Michigan, on the 15th day of February, A. D. 1936, in Liber 26 of Assignments of Mortgages, on Page 280; and,

Whereas, said mortgage, together with the note or obligation mentioned therein, was thereafter duly assigned by deed of assignment by the Ann Arbor Savings Bank to the Federal Deposit Insurance Corporation, which assignment was dated the 14th day of February, A. D. 1936, and was thereafter duly recorded in the office of the Register of Deeds for Washtenaw County, Michigan, on the 15th day of February, A. D. 1936, in Liber 26 of Assignments of Mortgages, on Page 280; and,

Whereas, said mortgage, together with the note or obligation mentioned therein, was thereafter duly assigned by deed of assignment by the Ann Arbor Savings Bank to the Federal Deposit Insurance Corporation, which assignment was dated the 14th day of February, A. D. 1936, and was thereafter duly recorded in the office of the Register of Deeds for Washtenaw County, Michigan, on the 15th day of February, A. D. 1936, in Liber 26 of Assignments of Mortgages, on Page 280; and,

Whereas, said mortgage, together with the note or obligation mentioned therein, was thereafter duly assigned by deed of assignment by the Ann Arbor Savings Bank to the Federal Deposit Insurance Corporation, which assignment was dated the 14th day of February, A. D. 1936, and was thereafter duly recorded in the office of the Register of Deeds for Washtenaw County, Michigan, on the 15th day of February, A. D. 1936, in Liber 26 of Assignments of Mortgages, on Page 280; and,

Whereas, said mortgage, together with the note or obligation mentioned therein, was thereafter duly assigned by deed of assignment by the Ann Arbor Savings Bank to the Federal Deposit Insurance Corporation, which assignment was dated the 14th day of February, A. D. 1936, and was thereafter duly recorded in the office of the Register of Deeds for Washtenaw County, Michigan, on the 15th day of February, A. D. 1936, in Liber 26 of Assignments of Mortgages, on Page 280; and,

Whereas, said mortgage, together with the note or obligation mentioned therein, was thereafter duly assigned by deed of assignment by the Ann Arbor Savings Bank to the Federal Deposit Insurance Corporation, which assignment was dated the 14th day of February, A. D. 1936, and was thereafter duly recorded in the office of the Register of Deeds for Washtenaw County, Michigan, on the 15th day of February, A. D. 1936, in Liber 26 of Assignments of Mortgages, on Page 280; and,

Whereas, said mortgage, together with the note or obligation mentioned therein, was thereafter duly assigned by deed of assignment by the Ann Arbor Savings Bank to the Federal Deposit Insurance Corporation, which assignment was dated the 14th day of February, A. D. 1936, and was thereafter duly recorded in the office of the Register of Deeds for Washtenaw County, Michigan, on the 15th day of February, A. D. 1936, in Liber 26 of Assignments of Mortgages, on Page 280; and,

Whereas, said mortgage, together with the note or obligation mentioned therein, was thereafter duly assigned by deed of assignment by the Ann Arbor Savings Bank to the Federal Deposit Insurance Corporation, which assignment was dated the 14th day of February, A. D. 1936, and was thereafter duly recorded in the office of the Register of Deeds for Washtenaw County, Michigan, on the 15th day of February, A. D. 1936, in Liber 26 of Assignments of Mortgages, on Page 280; and,

Whereas, said mortgage, together with the note or obligation mentioned therein, was thereafter duly assigned by deed of assignment by the Ann Arbor Savings Bank to the Federal Deposit Insurance Corporation, which assignment was dated the 14th day of February, A. D. 1936, and was thereafter duly recorded in the office of the Register of Deeds for Washtenaw County, Michigan, on the 15th day of February, A. D. 1936, in Liber 26 of Assignments of Mortgages, on Page 280; and,

scribed in said mortgage as that certain piece or parcel of land situated and being in the City of Ann Arbor, County of Washtenaw, State of Michigan, described as follows:

"Lot number seven of Periwinkle Park Subdivision in the City of Ann Arbor, Washtenaw County, Michigan, according to the recorded plat thereof, as recorded in Liber 6 of plats, page 20. This property is known as 113 Longman Lane."

Dated: March 18, 1940.
Caroline Schearle, Survivor of George J. Schearle and Caroline Schearle, husband and wife, and Cora C. Schearle.

Assignment of Mortgage
WILLIAM M. LAIRD,
Attorney for Assignees of Mortgages.
Business Address: 201-3 Ann Arbor Trust Building, Ann Arbor, Michigan.
Mar21-June18

NOTICE OF MORTGAGE SALE
Whereas, default has been made in the payment of the money secured by a mortgage dated the 26th day of February, 1919, executed by May B. Sumner, of the City of Ann Arbor, Washtenaw County, Michigan, to the Ann Arbor Savings Bank, of the same place, which said mortgage was duly recorded in the office of the Register of Deeds for the County of Washtenaw, Michigan, in Liber 144 of Mortgages on Page 263, on the 26th day of February, 1919; and,

Whereas, said mortgage, together with the note or obligation mentioned therein, was thereafter duly assigned by deed of assignment by the Ann Arbor Savings Bank to the Federal Deposit Insurance Corporation, which assignment was dated the 14th day of February, A. D. 1936, and was thereafter duly recorded in the office of the Register of Deeds for Washtenaw County, Michigan, on the 15th day of February, A. D. 1936, in Liber 26 of Assignments of Mortgages, on Page 280; and,

Whereas, the amount claimed to be due and unpaid on said mortgage, at the date of this notice is the sum of Six Thousand Five Hundred Dollars (\$6,500.00) for principal; the sum of One Hundred Thirty Seven and 50-100 Dollars (\$137.50) for interest; and the sum of Thirty Five Dollars (\$35.00) for an attorney fee as provided in said mortgage; making the total now due and unpaid on said mortgage the sum of Six Thousand Six Hundred Seventy Two and 88-100 Dollars (\$6,672.52);

Whereas, said mortgage, together with the note or obligation mentioned therein, was thereafter duly assigned by deed of assignment by the Ann Arbor Savings Bank to the Federal Deposit Insurance Corporation, which assignment was dated the 14th day of February, A. D. 1936, and was thereafter duly recorded in the office of the Register of Deeds for Washtenaw County, Michigan, on the 15th day of February, A. D. 1936, in Liber 26 of Assignments of Mortgages, on Page 280; and,

Whereas, said mortgage, together with the note or obligation mentioned therein, was thereafter duly assigned by deed of assignment by the Ann Arbor Savings Bank to the Federal Deposit Insurance Corporation, which assignment was dated the 14th day of February, A. D. 1936, and was thereafter duly recorded in the office of the Register of Deeds for Washtenaw County, Michigan, on the 15th day of February, A. D. 1936, in Liber 26 of Assignments of Mortgages, on Page 280; and,

Whereas, said mortgage, together with the note or obligation mentioned therein, was thereafter duly assigned by deed of assignment by the Ann Arbor Savings Bank to the Federal Deposit Insurance Corporation, which assignment was dated the 14th day of February, A. D. 1936, and was thereafter duly recorded in the office of the Register of Deeds for Washtenaw County, Michigan, on the 15th day of February, A. D. 1936, in Liber 26 of Assignments of Mortgages, on Page 280; and,

Whereas, said mortgage, together with the note or obligation mentioned therein, was thereafter duly assigned by deed of assignment by the Ann Arbor Savings Bank to the Federal Deposit Insurance Corporation, which assignment was dated the 14th day of February, A. D. 1936, and was thereafter duly recorded in the office of the Register of Deeds for Washtenaw County, Michigan, on the 15th day of February, A. D. 1936, in Liber 26 of Assignments of Mortgages, on Page 280; and,

Whereas, said mortgage, together with the note or obligation mentioned therein, was thereafter duly assigned by deed of assignment by the Ann Arbor Savings Bank to the Federal Deposit Insurance Corporation, which assignment was dated the 14th day of February, A. D. 1936, and was thereafter duly recorded in the office of the Register of Deeds for Washtenaw County, Michigan, on the 15th day of February, A. D. 1936, in Liber 26 of Assignments of Mortgages, on Page 280; and,

Whereas, said mortgage, together with the note or obligation mentioned therein, was thereafter duly assigned by deed of assignment by the Ann Arbor Savings Bank to the Federal Deposit Insurance Corporation, which assignment was dated the 14th day of February, A. D. 1936, and was thereafter duly recorded in the office of the Register of Deeds for Washtenaw County, Michigan, on the 15th day of February, A. D. 1936, in Liber 26 of Assignments of Mortgages, on Page 280; and,

Whereas, said mortgage, together with the note or obligation mentioned therein, was thereafter duly assigned by deed of assignment by the Ann Arbor Savings Bank to the Federal Deposit Insurance Corporation, which assignment was dated the 14th day of February, A. D. 1936, and was thereafter duly recorded in the office of the Register of Deeds for Washtenaw County, Michigan, on the 15th day of February, A. D. 1936, in Liber 26 of Assignments of Mortgages, on Page 280; and,

Whereas, said mortgage, together with the note or obligation mentioned therein, was thereafter duly assigned by deed of assignment by the Ann Arbor Savings Bank to the Federal Deposit Insurance Corporation, which assignment was dated the 14th day of February, A. D. 1936, and was thereafter duly recorded in the office of the Register of Deeds for Washtenaw County, Michigan, on the 15th day of February, A. D. 1936, in Liber 26 of Assignments of Mortgages, on Page 280; and,

Whereas, said mortgage, together with the note or obligation mentioned therein, was thereafter duly assigned by deed of assignment by the Ann Arbor Savings Bank to the Federal Deposit Insurance Corporation, which assignment was dated the 14th day of February, A. D. 1936, and was thereafter duly recorded in the office of the Register of Deeds for Washtenaw County, Michigan, on the 15th day of February, A. D. 1936, in Liber 26 of Assignments of Mortgages, on Page 280; and,

Whereas, said mortgage, together with the note or obligation mentioned therein, was thereafter duly assigned by deed of assignment by the Ann Arbor Savings Bank to the Federal Deposit Insurance Corporation, which assignment was dated the 14th day of February, A. D. 1936, and was thereafter duly recorded in the office of the Register of Deeds for Washtenaw County, Michigan, on the 15th day of February, A. D. 1936, in Liber 26 of Assignments of Mortgages, on Page 280; and,

Whereas, said mortgage, together with the note or obligation mentioned therein, was thereafter duly assigned by deed of assignment by the Ann Arbor Savings Bank to the Federal Deposit Insurance Corporation, which assignment was dated the 14th day of February, A. D. 1936, and was thereafter duly recorded in the office of the Register of Deeds for Washtenaw County, Michigan, on the 15th day of February, A. D. 1936, in Liber 26 of Assignments of Mortgages, on Page 280; and,

Whereas, said mortgage, together with the note or obligation mentioned therein, was thereafter duly assigned by deed of assignment by the Ann Arbor Savings Bank to the Federal Deposit Insurance Corporation, which assignment was dated the 14th day of February, A. D. 1936, and was thereafter duly recorded in the office of the Register of Deeds for Washtenaw County, Michigan, on the 15th day of February, A. D. 1936, in Liber 26 of Assignments of Mortgages, on Page 280; and,

Whereas, said mortgage, together with the note or obligation mentioned therein, was thereafter duly assigned by deed of assignment by the Ann Arbor Savings Bank to the Federal Deposit Insurance Corporation, which assignment was dated the 14th day of February, A. D. 1936, and was thereafter duly recorded in the office of the Register of Deeds for Washtenaw County, Michigan, on the 15th day of February, A. D. 1936, in Liber 26 of Assignments of Mortgages, on Page 280; and,

whereby the power of sale contained in said mortgage has become operative.

Now, Therefore, Notice is Hereby Given, that by virtue of said power of sale, and in pursuance of the statute in such case made and provided, the said mortgage will be foreclosed by a sale of the premises described therein at public auction to the highest bidder, at the southerly or Huron Street entrance to the Court House in the City of Ann Arbor in said County of Washtenaw, that being the place where the Circuit Court for the County of Washtenaw is held, on Tuesday, the 18th day of June, A. D. 1940, at ten thirty o'clock in the forenoon of said day, which said premises are described in said mortgage as all that certain piece or parcel of land situated and being in the City of Ann Arbor, in the County of Washtenaw and State of Michigan, and described as follows:

Commencing at the southeast corner of lot number nine in block three south of Huron Street, range two west in William S. Maynard's Addition to the Village (now City) of Ann Arbor, and running thence north along the east line of said lot number nine and lot number five in said block, ninety feet; thence west parallel with the south line of said lot number nine, thirty three feet; thence south parallel with the east line of said lot number five and nine, ninety feet to the south line of lot number nine, thence east thirty three feet to the place of beginning, being a part of lots number five and nine in block three south of Huron Street, range two west, according to the recorded plat of William S. Maynard's Addition to the Village (now City) of Ann Arbor, Washtenaw County, Michigan.

Dated: March 19, 1940.
Katharine K. Hawley,
Assignee of Mortgage.

FRANK A. STIVERS,
Attorney for Assignee of Mortgage,
1005 First National Bldg., Ann Arbor, Michigan.
Mar21-June18

STATE OF MICHIGAN
In the Circuit Court for the County of Washtenaw, In Chancery.
Allan A. Templeton and Edith M. Templeton, his wife, Plaintiffs,
vs.
Simmons Mallory, James H. Rowley, William Brayton, Tim M. Palmer, Stephen Moe, John Moe, Franklin L. Parker, Charles Abbott, Israel L. Adams, G. H. Hazelton, Artemus Thayer, George H. Hazelton, Artemus Thayer, Jr., Jason Neilson, Joseph Phelon, Josiah A. Easton, Timothy J. Tuomey, John M. Cumings, Ezra J. Smith, Samuel W. Foster, Lucretia B. Hoskins, Lucretia B. Hoskins, Thomas Hoskins, Ellen Cunningham, President, Directors & Company of Paseosag Bank of Rhode Island, Mary Hawkins, Henry Harkness, Patrick Cosgrove, Thomas A. Cosgrove, George H. Cosgrove, Edward Cosgrove, Luther N. Hutchinson, Lyman Worthington, Susan Worthington, George Worthington, Charles Worthington, Donald McIntyre, and their unknown heirs, devisees, legatees and assigns, Defendants.

Order of Publication
At a session of said court held at the court house in the city of Ann Arbor in said county on the 20th day of March, A. D. 1940:

Present: Hon. George W. Sample, Circuit Judge.
On reading and filing the bill of complaint in said cause and the affidavit of Allan A. Templeton, attached thereto, from which it satisfactorily appears to the court that the defendants above named, or their unknown heirs, devisees, legatees and assigns, are proper and necessary parties defendant in the above entitled cause, and;

It further appearing that after diligent search and inquiry it cannot be ascertained, and it is not known whether or not said defendants are living or dead, or where any of them may reside if living, and, if dead, whether they have personal representatives or heirs living or where they or some of them may reside, and further that the present whereabouts of said defendants are unknown, and that the names of the persons who are included therein without being named, but who are embraced therein under the title of unknown heirs, devisees, legatees and assigns, cannot be ascertained after diligent search and inquiry;

On motion of Burke and Burke, attorneys for plaintiffs, it is ordered that said defendants and their unknown heirs, devisees, legatees and assigns, cause their appearance to be entered in this cause within three months from the date of this order, and in default thereof that said bill of complaint be taken as confessed by the said defendants, their unknown heirs, devisees, legatees and assigns.

It is further ordered that within twenty days plaintiff cause a copy of this order to be published in the Chelsea Standard, a newspaper printed, published and circulated in said county, such publication to be continued therein once in each week for six weeks in succession.
Geo. W. Sample, Circuit Judge.
Countersigned:
Irene A. Seitz, Deputy Clerk.

Take Notice, that this suit, in which the foregoing order was duly made, involves and is brought to quiet title to the following described piece or parcel of land situated and being in the Township of Lodi, County of Washtenaw, State of Michigan, described as follows, to-wit:

The southeast quarter of section number four; also the east half of the north part of the southwest fractional quarter of section number four, excepting and reserving therefrom so much as may hereafter at any time be overthrown by the construction or reconstruction of a dam in the Huron

River at or below the present dam or part of dam at Scio Mills, all in town two south, range five east, in the Township of Scio, County of Washtenaw and State of Michigan, excepting a release of right of way to the Board of County Road Commissioners dated November 4, 1926 and recorded in Liber 266 of Deeds on page 560.

A part of the northeast fractional quarter of section number nine, in the Township of Scio, commencing on the north line of section nine, 10 chains and 50 links west of the corner of sections number 8, 4, 9 and 10; thence south 2 degrees east 14 chains and 50 links to the north line of the mill property; thence north 62 degrees west 12 chains and 27 links; thence south 18 1/2 degrees west 6 chains to the Huron River; thence northwesterly along said River in its various windings to the north line of section number nine; thence east on said section line, 40 chains and 91 links to the place of beginning, excepting and reserving land owned and occupied by the Michigan Central Railroad, also excepting one-half acre lying in the southeast corner north of the Railroad and west of Scio Village, also excepting the right of flowing belonging to the Scio Mill Property, also excepting all that part of the northeast fractional quarter of section nine, lying between the Michigan Central Railroad Company's right of way and high water mark and between the Huron River and top of the bluff north of said railroad track, also excepting a release of right of way to the Board of County Road Commissioners, dated November 4, 1926 and recorded November 8, 1926 in Liber 266 of Deeds, on page 660.

Blocks number eleven, thirteen and fourteen in the Village of Scio, according to S. W. Foster's Plat of said Village as recorded in the office of the Register of Deeds, on the 5th day of August, 1885.

BURKE and BURKE,
Attorneys for Plaintiff.
Business Address: 215 Ann Arbor Trust Bldg., Ann Arbor, Michigan.
ROWAN PASQUELLE of Counsel,
215 Ann Arbor Trust Bldg., Ann Arbor, Michigan.
A true copy: Mar22-May20
Irene A. Seitz, Deputy Clerk.

NOTICE OF MORTGAGE SALE
Whereas, default has been made in the payment of the money secured by a mortgage dated the 4th day of September, A. D. 1915, executed by May B. Sumner, of the City of Ann Arbor, Washtenaw County, Michigan, to the Ann Arbor Savings Bank, of the same place, which said mortgage was duly recorded in the office of the Register of Deeds for the County of Washtenaw, Michigan, in Liber 136 of Mortgages on Page 195, on the 4th day of September, 1915; and,

Whereas, said mortgage, together with the note or obligation mentioned therein, was thereafter duly assigned by deed of assignment by the Ann Arbor Savings Bank to the Federal Deposit Insurance Corporation, which assignment was dated the 14th day of February, A. D. 1936, and was thereafter duly recorded in the office of the Register of Deeds for Washtenaw County, Michigan, on the 15th day of February, A. D. 1936, in Liber 26 of Assignments of Mortgages on Page 282; and,

Whereas, the amount claimed to be due and unpaid on said mortgage, at the date of this notice is the sum of Seven Thousand Dollars (\$7,000.00) for principal; the sum of One Thousand Eight Hundred Thirty Six and 33-100 Dollars (\$1,836.33) for interest; and the sum of Thirty Five Dollars (\$35.00) for an attorney fee as provided in said mortgage; making the total now due and unpaid on said mortgage the sum of Eight Thousand Eight Hundred Seventy One and 88-100 Dollars (\$8,871.58);

Whereas, said mortgage, together with the note or obligation mentioned therein, was thereafter duly assigned by deed of assignment by the Ann Arbor Savings Bank to the Federal Deposit Insurance Corporation, which assignment was dated the 14th day of February, A. D. 1936, and was thereafter duly recorded in the office of the Register of Deeds for Washtenaw County, Michigan, on the 15th day of February, A. D. 1936, in Liber 26 of Assignments of Mortgages on Page 282; and,

Whereas, said mortgage, together with the note or obligation mentioned therein, was thereafter duly assigned by deed of assignment by the Ann Arbor Savings Bank to the Federal Deposit Insurance Corporation, which assignment was dated the 14th day of February, A. D. 1936, and was thereafter duly recorded in the office of the Register of Deeds for Washtenaw County, Michigan, on the 15th day of February, A. D. 1936, in Liber 26 of Assignments of Mortgages on Page 282; and,

Whereas, said mortgage, together with the note or obligation mentioned therein, was thereafter duly assigned by deed of assignment by the Ann Arbor Savings Bank to the Federal Deposit Insurance Corporation, which assignment was dated the 14th day of February, A. D. 1936, and was thereafter duly recorded in the office of the Register of Deeds for Washtenaw County, Michigan, on the 15th day of February, A. D. 1936, in Liber 26 of Assignments of Mortgages on Page 282; and,

Whereas, said mortgage, together with the note or obligation mentioned therein, was thereafter duly assigned by deed of assignment by the Ann Arbor Savings Bank to the Federal Deposit Insurance Corporation, which assignment was dated the 14th day of February, A. D. 1936, and was thereafter duly recorded in the office of the Register of Deeds for Washtenaw County, Michigan, on the 15th day of February, A. D. 1936, in Liber 26 of Assignments of Mortgages on Page 282; and,

Whereas, said mortgage, together with the note or obligation mentioned therein, was thereafter duly assigned by deed of assignment by the Ann Arbor Savings Bank to the Federal Deposit Insurance Corporation, which assignment was dated the 14th day of February, A. D. 1936, and was thereafter duly recorded in the office of the Register of Deeds for Washtenaw County, Michigan, on the 15th day of February, A. D. 1936, in Liber 26 of Assignments of Mortgages on Page 282; and,

Whereas, said mortgage, together with the note or obligation mentioned therein, was thereafter duly assigned by deed of assignment by the Ann Arbor Savings Bank to the Federal Deposit Insurance Corporation, which assignment was dated the 14th day of February, A. D. 1936, and was thereafter duly recorded in the office of the Register of Deeds for Washtenaw County, Michigan, on the 15th day of February, A. D. 1936, in Liber 26 of Assignments of Mortgages on Page 282; and,

Whereas, said mortgage, together with the note or obligation mentioned therein, was thereafter duly assigned by deed of assignment by the Ann Arbor Savings Bank to the Federal Deposit Insurance Corporation, which assignment was dated the 14th day of February, A. D. 1936, and was thereafter duly recorded in the office of the Register of Deeds for Washtenaw County, Michigan, on the 15th day of February, A. D. 1936, in Liber 26 of Assignments of Mortgages on Page 282; and,

Whereas, said mortgage, together with the note or obligation mentioned therein, was thereafter duly assigned by deed of assignment by the Ann Arbor Savings Bank to the Federal Deposit Insurance Corporation, which assignment was dated the 14th day of February, A. D. 1936, and was thereafter duly recorded in the office of the Register of Deeds for Washtenaw County, Michigan, on the 15th day of February, A. D. 1936, in Liber 26 of Assignments of Mortgages on Page 282; and,

Whereas, said mortgage, together with the note or obligation mentioned therein, was thereafter duly assigned by deed of assignment by the Ann Arbor Savings Bank to the Federal Deposit Insurance Corporation, which assignment was dated the 14th day of February, A. D. 1936, and was thereafter duly recorded in the office of the Register of Deeds for Washtenaw County, Michigan, on the 15th day of February, A. D. 1936, in Liber 26 of Assignments of Mortgages on Page 282; and,

Whereas, said mortgage, together with the note or obligation mentioned therein, was thereafter duly assigned by deed of assignment by the Ann Arbor Savings Bank to the Federal Deposit Insurance Corporation, which assignment was dated the 14th day of February, A. D. 1936, and was thereafter duly recorded in the office of the Register of Deeds for Washtenaw County, Michigan, on the 15th day of February, A. D. 1936, in Liber 26 of Assignments of Mortgages on Page 282; and,

NOTICE OF MORTGAGE SALE

Whereas, default has been made in the payment of the money secured by a mortgage dated the 26th day of June, A. D. 1915, executed by Alfred A. Graf and Anna G. Graf, his wife, of the City of Ann Arbor, Washtenaw County, Michigan, to Clara M. Hawley, of the same place, which said mortgage was duly recorded in the office of the Register of Deeds for the County of Washtenaw, Michigan, in Liber 137 of Mortgages on Page 236, on the 3rd day of July, A. D. 1915; and,

Whereas, said mortgage, together with the note or obligation mentioned therein, was thereafter duly assigned by deed of assignment by the said Clara M. Hawley to Katharine K. Hawley, which assignment was dated the 26th day of May, A. D. 1932; and was thereafter duly recorded in the office of the Register of Deeds for Washtenaw County, Michigan, on the 26th day of May, A. D. 1932, in Liber 22 of Assignments of Mortgages, on Page 580; and,

Whereas, the amount claimed to be due and unpaid on said mortgage, at the date of this notice is the sum of One Thousand Eight Hundred Dollars (\$1,800.00) for principal; the sum of Eighty Six and 70-100 Dollars (\$86.70) for interest; and the sum of Thirty Five Dollars (\$35.00) for an attorney fee as provided in said mortgage; making the total now due and unpaid on said mortgage the sum of One Thousand Nine Hundred Twenty One and 70-100 Dollars (\$1,921.70);

Whereas, said mortgage, together with the note or obligation mentioned therein, was thereafter duly assigned by deed of assignment by the said Clara M. Hawley to Katharine K. Hawley, which assignment was dated the 26th day of May, A. D. 1932; and was thereafter duly recorded in the office of the Register of Deeds for Washtenaw County, Michigan, on the 26th day of May, A. D. 1932, in Liber 22 of Assignments of Mortgages, on Page 580; and,

Whereas, said mortgage, together with the note or obligation mentioned therein, was thereafter duly assigned by deed of assignment by the said Clara M. Hawley to Katharine K. Hawley, which assignment was dated the 26th day of May, A. D. 1932; and was thereafter duly recorded in the office of the Register of Deeds for Washtenaw County, Michigan, on the 26th day of May, A. D. 1932, in Liber 22 of Assignments of Mortgages, on Page 580; and,

Whereas, said mortgage, together with the note or obligation mentioned therein, was thereafter duly assigned by deed of assignment by the said Clara M. Hawley to Katharine K. Hawley, which assignment was dated the 26th day of May, A. D. 1932; and was thereafter duly recorded in the office of the Register of Deeds for Washtenaw County, Michigan, on the 26th day of May, A. D. 1932, in Liber 22 of Assignments of Mortgages, on Page 580; and,

Whereas, said mortgage, together with the note or obligation mentioned therein, was thereafter duly assigned by deed of assignment by the said Clara M. Hawley to Katharine K. Hawley, which assignment was dated the 26th day of May, A. D. 1932; and was thereafter duly recorded in the office of the Register of Deeds for Washtenaw County, Michigan, on the 26th day of May, A. D. 1932, in Liber 22 of Assignments of Mortgages, on Page 580; and,

Whereas, said mortgage, together with the note or obligation mentioned therein, was thereafter duly assigned by deed of assignment by the said Clara M. Hawley to Katharine K. Hawley, which assignment was dated the 26th day of May, A. D. 1932; and was thereafter duly recorded in the office of the Register of Deeds for Washtenaw County, Michigan, on the 26th day of May, A. D. 1932, in Liber 22 of Assignments of Mortgages, on Page 580; and,

Whereas, said mortgage, together with the note or obligation mentioned therein, was thereafter duly assigned by deed of assignment by the said Clara M. Hawley to Katharine K. Hawley, which assignment was dated the 26th day of May, A. D. 1932; and was thereafter duly recorded in the office of the Register of Deeds for Washtenaw County, Michigan, on the 26th day of May, A. D. 1932, in Liber 22 of Assignments of Mortgages, on Page 580; and,

Whereas, said mortgage, together with the note or obligation mentioned therein, was thereafter duly assigned by deed of assignment by the said Clara M. Hawley to Katharine K. Hawley, which assignment was dated the 26th day of May, A. D. 1932; and was thereafter duly recorded in the office of the Register of Deeds for Washtenaw County, Michigan, on the 26th day of May, A. D. 1932, in Liber 22 of Assignments of Mortgages, on Page 580; and,

Whereas, said mortgage, together with the note or obligation mentioned therein, was thereafter duly assigned by deed of assignment by the said Clara M. Hawley to Katharine K. Hawley, which assignment was dated the 26th day of May, A. D. 1932; and was thereafter duly recorded in the office of the Register of Deeds for Washtenaw County, Michigan, on the 26th day of May, A. D. 1932, in Liber 22 of Assignments of Mortgages, on Page 580; and,

Whereas, said mortgage, together with the note or obligation mentioned therein, was thereafter duly assigned by deed of assignment by the said Clara M. Hawley to Katharine K. Hawley, which assignment was dated the 26th day of May, A. D. 1932; and was thereafter duly recorded in the office of the Register of Deeds for Washtenaw County, Michigan, on the 26th day of May, A. D. 1932, in Liber 22 of Assignments of Mortgages, on Page 580; and,

Whereas, said mortgage, together with the note or obligation mentioned therein, was thereafter duly assigned by deed of assignment by the said Clara M. Hawley to Katharine K. Hawley, which assignment was dated the 26th day of May, A. D. 1932; and was thereafter duly recorded in the office of the Register of Deeds for Washtenaw County, Michigan, on the 26th day of May, A. D. 1932, in Liber 22 of Assignments of Mortgages, on Page 580; and,

Whereas, said mortgage, together with the note or obligation mentioned therein, was thereafter duly assigned by deed of assignment by the said Clara M. Hawley to Katharine K. Hawley, which assignment was dated the 26th day of May, A. D. 1932; and was thereafter duly recorded in the office of the Register of Deeds for Washtenaw County, Michigan, on the 26th day of May, A. D. 1932, in Liber 22 of Assignments of Mortgages, on Page 580; and,

CHURCH CIRCLES

METHODIST EPISCOPAL
Rev. Frederick D. Munby, Pastor
Morning worship at 10:00. Anthem: Senior choir. Sermon theme: "The Early Christian Church, or The Foolishness of Preaching."
Sunday school at 11:15. Junior school in the dining room. The Primary and Senior Adult departments upstairs. Study your Bible.
Epworth League devotional meeting at 6:30. Lorraine Weatherwax, president.
Senior choir rehearsal this Friday evening, April 12, at the home of Mr.

and Mrs. P. M. Broesamle. New music.
Lay leaders' meeting, First Church, Ypsilanti, April 17 at 7:30 p. m. Junior choir Saturday evening, April 20 at 7:15, at the church.
CONGREGATIONAL CHURCH
Rev. Ray W. Barber, Pastor
Divine worship Sunday at 10:00. Sermon theme: "A Name to Live."
Sunday school at 11:15. Raymond Gadd, superintendent. Classes for all ages.
Confirmation class on Wednesday at 4:00. Junior chorus Wednesday at 7:00. Church choir practice Thursday at 7:30.

We invite you to worship with us. The attendance last Sunday was the largest at any regular communion service during the present pastorate.
ST. PAUL'S EVANGELICAL
Rev. P. H. Grabowski, Pastor
Sunday, April 14th—
10:00 o'clock—English service.
10:30 o'clock—Congregational meeting. As a final decision in regard to a new hall will in all probability be made at this meeting, all members should be present.
11:30 o'clock—Sunday school.
Tuesday, April 16th—
7:30 o'clock—Young People's meeting at the home of Miss Clara Trinkle.

SALEM METHODIST CHURCH
Rev. Henry Lenz, Pastor
Sunday school—10 a. m.
Worship service—11 a. m.
W. F. M. S. will meet with Miss Philip Riemenschneider on Thursday afternoon, April 18. The Thank Offering will be received at this time. The Epworth League will meet this Thursday evening with Carl Sanderson.
The annual spring supper will be served on Thursday evening, April 25. Serving will start at 6:30 o'clock.

NORTH LAKE CHURCH
Rev. H. C. Brubaker, Pastor
10:30—Church school.
11:15—Morning worship.
7:00—Epworth League.

ST. MARY CHURCH
Father Lawrence Dorr, Pastor
First Mass 8:00 a. m.
Second Mass 10:00 a. m.
Mass on week days 8:00 a. m.

WATERLOO CIRCUM
U. B. CHURCH
Rev. Darwin Clapper, Pastor
Morning worship—10:00 a. m.
Sunday school—11 a. m.
Children's Bible Class Saturday at 9:30 a. m.
Monday, April 15, 8:00 p. m., Christian Education Rally. Dr. O. T. Deever of Dayton, Ohio, speaker.
Thursday, 8:00 p. m., Bible study. Official Board and trustee meeting.

Announcements

Final fraternal euchre party will be held tonight (Thursday) at the I. O. O. F. hall. Supper will be served at 6:30 by the Rebekahs.
A meeting of the Washtenaw County Association, O. E. S. will meet May 3 at the Saline school. All members are urged to attend.

The Women's Relief Corps will hold their regular meeting, Tuesday, April 16 at Kolb's hall. The meeting will start at one o'clock sharp. Please note the change of time.

The Chat 'N' Sea will meet at the home of Mrs. Fred Hall, Jr. on Tuesday evening, April 16, at 7:30 o'clock.
The Women's Guild of St. Paul's church will meet on Friday, April 19 (instead of Thursday, April 18) at the home of Mrs. John Metzger. Pot-luck supper.

LINER COLUMN

REACH FOR THE TAKE—It's all yours; Long-wearing, thick, work-glove comfort! Just put on a pair of Wolverine Horsehide Hands and you can handle the toughest jobs with a firmer grip. These amazing gloves dry soft and stay soft, due to secret tanning process. Try 'em for size at Quality Shoe Repair. -37

WANTED—Married man to work on farm. John Koback, R. 2, Milan. Phone 143-F4. -37

COMPLETE LINE of high grade nursery stock, covered by a five-year guarantee. Also farm and garden seed, windstorm and hail on crops insurance. (Michigan Mutual), auto insurance. Landscape work a specialty. J. A. Kaecher, 515 Madison St., Chelsea. -39

FOR RENT
Water filled lawn roller, 50c per lawn.
FOR SALE
Used Superior grain drill, good condition \$35.00
Used team harness, including style \$15.00 and \$20.00
MERKEL BROS. Phone 91. -37

RELIABLE MAN WANTED—Steady work, good pay, call on farmers. No experience or capital required. Write Mr. Raby, Box 192, Bay City, Mich. -37

FOR SALE—A quantity of early seed potatoes, and eating potatoes. Herman Gross, phone 155-F2. -38

1.00 CREDIT on each order for 100 chicks ordered in April for May delivery. For Sale: Small quantity of June clover seed. LeRoy Heller, phone 202-F13. -37

WANTED—Man or boy for greenhouse work. Chelsea Greenhouse, phone 180-F21. -38

GET ON "EASY STREET"—Men who wear Wolverine Shell Horsehide Work Shoes say they're easy on feet as house slippers. Soft as buckskin wear like iron. The extra wear will save you money. Try on a pair. We have them. Quality Shoe Repair. -37

SPECIAL PRICES ON PICK-UPS!
1935 Ford heater, gov. filter, \$115.00
1935 Chev. heater, governor, \$113.00
1937 Ford heater, governor, 6-ply tires, \$175.00
1938 Ford heater, gov. filter, \$255.00
Hurry and get one of these bargains!
PALMER MOTOR SALES - 38

FOR SALE—Thoroughbred beagle hound, 11 mo. old, broke to hunt. 3 miles west of Chelsea on Cavanaugh Lake Road, known as Sanders farm. B. H. Icenogle. -37

FOR SALE—15 bu. Wisconsin seed oats, cleaned. Lewis Schneider, phone 262-F31. -37

FOR SALE—Grimm alfalfa seed, cleaned. Call Henry Merkel, phone 412. -37

FOR SALE—Team of sorrel mares, age 5 and 7; also sorrel mare colt, age 3. Mrs. Jacob Maute, phone 9812, Grass Lake. -37

FOR RENT on Shares—Oats, corn, and hay fields. Inquire of Mrs. Geo. J. Hinderer, phone 147-F12. -37

WANTED—Girl, or middle aged lady to assist with housework and care of two children. Address Box 21, Chelsea. -37

FOR SALE—20 pigs 6 weeks old; 3 shoats; 2 sows due last of April; sow with 8 pigs. Arthur Weber, phone 154-F11. -37

FOR SALE—160-acre farm, 3 miles northwest of Chelsea. Inquire of Mrs. Chris Schneider, at the farm. -37

FOR SALE—Swedish Star seed oats. Rudolph Zahn, phone 157-F15. -37

FOR SALE—1 year old Leghorn and New Hampshire Red pullets, and hens. Good laying strain. R. McDonald, phone 103-F2. -37

SUGAR LOAF LAKE LOT, lake front, will trade for good used automobile; will furnish deed and abstract. Write Charles Benn, Rives Junction, Mich., 392 E. Main St. 40

FOR RENT—2-room cottage, 1 mile out US-12. For Sale: Lumber for barn frame. Wanted: Scrap iron, metal and paper. Conrad Schanz, phone 152. -37

FOR SALE—Choice of Guernsey or Durham and Jersey cow. Chas. Wood, US-12 at Deckert Road, 2 1/2 mi. west, phone 150-F15. -37

FOR SALE—Matched pair of 3-year-old mare colts; 1 black horse, wgt. 1600 lbs.; also weaning pigs. Ed. Scripser, 1 mi. west of Chelsea on Cavanaugh Lake Road. -37

FOR SALE—Quick Meal kitchen range; also some re-cleaned June clover seed. A. J. Pielomeler, phone 169-F14. -37

ELECTRIC MOTORS—We have a stock of quarter, third, and half h. p. electric motors. Priced from \$7.50 on the quarter h. p. to \$19.95 on the half h. p. L. R. Heydauff. -38

FRESH SWEET CIDER—N. W. Latrod, phone 422-F2. -38

SINCLAIR PRODUCTS for the farm cover all your requirements for the home, machinery, tractor and car. Try our Sinclair Super Flame Kerosene for the brooder house. Bert Foster, Agent, phone 52-J. -36

FOR SALE—7-room modern house, at 240 Jefferson St. Phone 215-J. Wm. Behrnhiller Estate. -30

Inner Spring Mattresses

Stearns & Foster Countess - Imported paneled covers with Prebuilt French edges. Regular \$25.00 values on sale at \$19.95

Stearns & Foster Hotel Built Inner Spring Mattress. Only a few left. Regular value \$16.00, on sale at \$12.95

Bed Room Suites - Bed, Vanity, Chest and Bench - Walnut veneer \$58.00

Hair Rug Pads, 32 oz. to the yd., \$6.00 value, on sale at \$4.95

We stock Modern Chrome Cabinet Hinges, Knobs, Drawer Pulls and Catches. Look over our well assorted line of this Decorative Hardware.

Golf Balls, popular brands at 25c, 3 for \$1.00 and 50c each.

Playground Balls, 12-in., from 25c to \$1.00

Playground Bats, from 39c to \$1.00

Wood Handle, Wire Teeth Lawn Combs to clean up your lawn or garden, ea. 50c

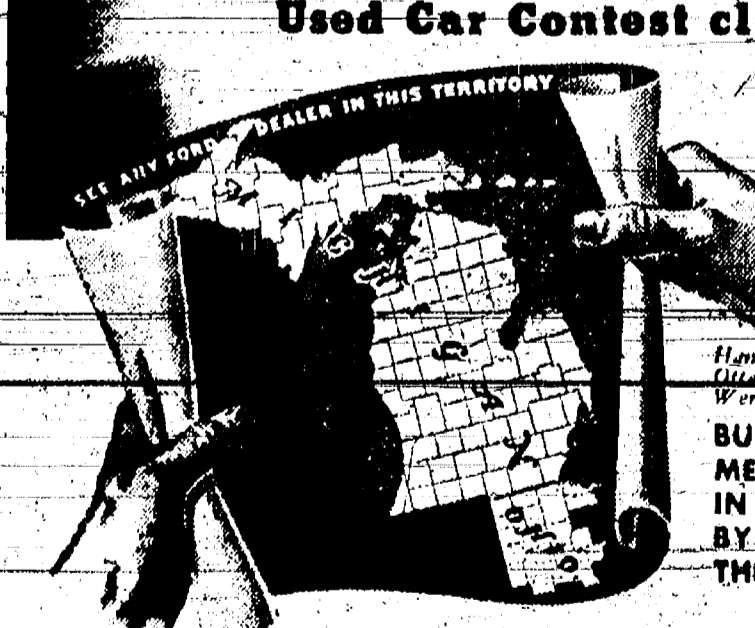
General Purpose Wheelbarrows, steel hoppers \$4.25

We sell Hudson Electric Brooders and Poultry Supplies.

Wire Flower Bed Border, 16-in. per ft. 5c
22-inch, per foot 7c

MERKEL BROS.
HARDWARE

ANOTHER \$1000.00 CASH!
Ten \$100 prizes to be awarded in the FORD DEALERS NICKNAME
Used Car Contest closing April 18th



BUY YOUR USED CAR FROM ANY FORD, MERCURY, OR LINCOLN-ZEPHYR DEALER IN THE TERRITORY SHOWN ON THE MAP BY MIDNIGHT, APRIL 18, AND YOU'RE IN THE RUNNING FOR A \$100 CASH PRIZE!

Follow these 3 Simple Rules

1. See any Ford, Mercury, or Lincoln-Zephyr dealer in the territory shown on the map. Pick out any used car in his stock. When you've made your down payment, the dealer or his salesman will give you a certified, self-addressed and post-paid Entry Card.
2. Write or print on the card a nickname for the car you bought, using not more than five words. Mail the card. It must be postmarked not later than midnight of April 18.
3. The ten best nicknames as determined by the judges will each be awarded a \$100 cash prize within a week after the contest closes. Decisions of the judges will be final. In case of a tie, duplicate prizes will be awarded. The judges are: Hon. John L. Carey, Mayor of Dearborn, Mich.; G. D. Gerding, Automobile Editor, Toledo Blade; Gordon Kingsbury, Director of Advertising Course, Wayne Univ. (NOT ELIGIBLE: Ford Dealers or their families, Ford dealers' employees or their families.)

\$100 apiece to 10 more Used Car Buyers! Last week ten people each won \$100 checks for nicknaming the used cars they bought from Ford dealers! And ten more people will get a cool hundred apiece if they act before midnight, April 18!

Buy a used car from any Ford dealer in the territory shown on the map; write a nickname for your car on the Entry Card the dealer gives you, and you're in the Contest!

Read the 3 Simple Rules—then ACT! Look over your Ford dealer's stock of used cars today! Prices slashed! You'll see bargains galore! You'll find just the car you want at the price you want to pay. And your down payment gets you a post-paid Entry Card! See your Ford dealer!

ACT TODAY
Palmer Motor Sales
Your Local Ford Dealer Since 1911 Chelsea, Mich.

DEAD or ALIVE!
Farm animals collected promptly.
HIGHEST PRICES PAID!
Sunday service.
PAUL PIERCE, Agent
PHONE COLLECT
44 Chelsea 98
CENTRAL DEAD STOCK CO.

CASH
For Dead and Disabled HORSES—\$3.00 COWS—\$2.00. Market prices for Hogs and Calves.
Phone collect to MILLENBACH BROS. CO. ANN ARBOR 6366
The original Company to pay for dead stock.
MILLENBACH BROS. CO. Phone Collect Ann Arbor 6366

Try Standard Liners—Only 25c

Standard Liners Bring Quick Results!

SYLVAN THEATRE
CHELSEA, MICH. AIR CONDITIONED
Michigan's Finest Small Town Theatre!

Friday and Saturday, April 12-13
"I Take This Woman"

A Romantic Drama with Spencer Tracy, Hedy Lamarr, Verree Teasdale and Kent Taylor.
CARTOON—"The Fishing Bear" NEWS

Sunday, Monday, Tuesday, April 14-15-16
"Too Many Husbands"

A Comedy with Jean Arthur, Melvyn Douglas and Fred MacMurray.
Cartoon Screen-Snapshot "Birth of Queen Elizabeth"

Wednesday and Thursday, April 17-18
"Slightly Honorable"

A Mystery Comedy with Pat O'Brien, Edward Arnold, Broderick Crawford and Ruth Terry.

Also --

"City Of Chance"
A Drama with Lynn Bari, C. Aubrey Smith and Donald Woods.

Coming **"Gone With the Wind"**
April 21 - 22 - 23 - 24
RESERVED SEATS GO ON SALE APRIL 13

Sunday—3:00 continuous. Two shows the remainder of week, starting 7:15 and 9:15. Admission 10c and 25c.

THE RED & WHITE STORES

Green & White Coffee lb. 15c
Blue & White Coffee lb. 25c
Leader Brooms each 31c
IB. CAN R & W Peanut Butter 23c
QT. CAN G & W Salad Dressing 30c
NO. 2 CAN BULK Lima Beans—Naas Supreme 3 for 25c
Water Softner 3 lbs. 25c
Produce
FRESH GROUND **Hamburg . . . 2 lbs. 35c**
BRANDED BEER **Kettle Roast . . . lb. 19c**
HOME CURED **Chunk Bacon . . . lb. 14c**
LEAN **Pork Steak . . 2 lbs. 35c**

CLIMAX Wall Paper Cleaner . . 2 for 15c
OUR VALUE Soap Chips 5 lb. box 29c
SWIFT'S Sunbrite Scouring Cleanser 2 cans 9c
WASHINGTON COUNTY Pumpkin - No. 2 1-2 size can - 3 for 25c

CLOTHES PINS 2 pkgs. 11c
WINDEX each 15c
Big Ben Candy lb. 10c
Red & White RED Salmon 25c
L.G. BOX Chipso 2 for 39c
SAL SODA box 8c

ASPARGUS—tender 2 bunches 15c
ORANGES—Cal. Navels . . . doz. 27c
GREEN ONIONS . . . 2 bunches 9c
RADISHES—fresh - solid 3 bchs. 10c

GROCERY DEPARTMENT
NORM GRIMWADE
MEAT DEPARTMENT
Bill Weber
PHONE 226